

**C** Cornerstone Investments  
 Chuck Riggenschach  
 Financial Planner  
 108 W. Jefferson St. (641) 664-3700  
 Bloomfield, IA 52537  
 Securities offered through Questar Capital Corporation (QCC)  
 Member FINRA/SIPC. Advisory Services offered through Questar  
 Asset Management (QAM) a registered investment advisor.  
 Cornerstone Investments is independent of QCC and QAM.

# Tri-County SHOPPER

It's Fall Y'all!

STANDARD MAIL  
 U.S. POSTAGE  
**PAID**  
 TRI-COUNTY SHOPPER, INC.  
 POST OFFICE BOXHOLDER  
 LOCAL RURAL BOXHOLDER  
 OCCUPANT  
**CIRCULATION OVER 11,750  
 THIRD CLASS**

P.O. Box 168 • Bloomfield, IA 52537 • www.tri-countyshopper.com  
 Phone 641-664-1333 • Fax 641-664-3761 • Email shopper@netins.net



Vol. 46, No. 37  
 Wednesday, September 12, 2018



## KEN'S GARAGE

### TRENCHING • EXCAVATION

**Kenneth Richardson**  
 641-208-7980

- Waterlines
- Hydrants
- Livestock Waters
- General Excavation
- Repair
- Drainage Pipe

Competitive Rates • On Site No Hassle Free Estimates  
 Special Discounted Rates For Long Distance Trenching  
**Kenneth Richardson • 641-208-7980**  
 Licensed & Insured

## GRAND OPENING

Everyone Welcome! 7AM - 5PM

Check out our all new  
**Burkholder Ag Hardware Store!**  
 First 10 people to spend \$25 will receive a free gift!

Come visit us on September 15th and enjoy a free  
 lunch of burgers with all the fixings!  
 5% Off Total In-Store Purchase!  
**Excess NEW tools and hardware at dirt  
 cheap prices in shop! Cash & carry only!**

50073 State Hwy 15, 1 mile south of Baring • 660-342-7228  
 burkagpart@gmail.com

## Nutrena Minerals SPECIAL

through the month  
 of September!

Now Through 9/30/18

### BUY 9 GET 1 FREE!

# Fall Fertilization

Fall is just around the corner. See us for all your fertilization needs!

## CROP SERVICES, INC

John & Kathy Bos, Owners  
 Drakesville, IA  
 641-722-3293

## What a DEAL

### Ratcheting Tie Down Straps

2"x27" with flat hooks • 3,333 lb. working load limit

→ **SPECIAL PRICE** ←

**\$10.49 each or Box of 9 \$9.49 each**

### Don't Fret A Flat!

Check out our **NEW FLEXILLA PRO AIR HOSE!**  
 Air and water hose cut to custom lengths!

**SEE US FOR A FREE ESTIMATE ON ANY BUILDING PACKAGE!**

## Cantril Lumber & Hardware

319-397-2351 or 319-397-2354  
 Mon-Fri 7-5 & Sat 7-12

**FRESH LOCAL APPLE CIDER HERE NOW!**

<b>\$.99</b> LARGE WHITE EGGS	<b>\$1.49</b> /LB RED GRAPES	<b>\$1.29</b> BLACKBERRIES	<b>\$1.99</b> /LB 3LB BAG PAULA RED APPLES

**PRESENT THIS COUPON** MUST PRESENT COUPON CODE: ED

**- FRIDAY AND SATURDAY ONLY -**

**10% OFF FALL MUMS**

3 MILES SOUTH OF MEMPHIS, MO ALONG HWY 15 | COUNTRYVIEWSTORE.COM  
660-883-5388 | MON-FRI 8:00AM-6:00PM & SAT 8:00AM-5:30PM

**NEW MATTRESSES FOR SALE!**  
Selling individually or in sets. Factory warranty.

**TWIN - FULL - QUEEN - KING**

**641-664-3060**

FOR SALE: Registered beagel puppies have shots & wormed, parents are good hunters.  
PH: 660-956-6399 37

FOR SALE: Red Star pullets, 16 wks old on Sept. 4th, \$7.50 each. Mahlon Gingerich.  
VM 641-664-2723 38

FOR SALE: 1953 Chevy Powerglide, good title and license up to date, good tires (2 new), new battery, runs real good; 1958 520 JD, good tires, good tin work; Harley Davidson motorcycle trike kit for '98 Harley Davidson Ultra Classic, make offer; Priefert cattle head gate. Leave message.  
PH: 641-652-7707 38

MILITARY ITEMS WANTED BY LOCAL COLLECTOR: Patches, medals, uniforms, hats, helmets, etc. Always buying. Mark Warren, PH. 641-664-3705. mpwarren@netins.net 40

**HILLTOP GREENHOUSE**  
Large Variety Of **MUMS!**  
Irises • Peonies  
Hostas • Tulips  
12" Fern Baskets  
**HONEYE STRAWBERRY PLANTS**  
641-929-3036 Mon.-Sat., Closed Sundays  
11049 HWY 2, MOULTON, IA  
BETWEEN WEST GROVE & MOULTON

FOR SALE: 28'x80', 1999 model double wide manufactured home. 6" walls, 4 bedrooms, all new vinyl windows, new exterior doors, Some kitchen cabinets replaced, new roof 2 years ago. Also includes 12'x16' wooden deck. Must see to appreciate. \$42,000 OBO. William Beechy 19511 Harvest Ave., Bloomfield, IA. PH. 641-722-3061. 38

WANTING TO BUY: Good used 300 gal. (w/ stands) & 500 gal. fuel tanks. ALSO interested in 250 to 1000 gal used propane tanks.  
PH: 641-722-3002 38

**Need Repair?** **Let Us Help!**

**We can take away the stress and get you results!**

Auto Body Shop  
Auto Glass  
Automotive Restoration

**KARR COLLISION CENTER**  
Shawn Scott, Owner  
701 Karr Ave. • Bloomfield, IA  
641-664-1024

Yoder's Indian Creek Furniture. Check out our great selection of outdoor Polly lawn furniture. Maintenance free with lifetime warranty. Also Polly Martin houses & gourd racks. Rt. V64 Milton, Iowa. Located 4 miles North of Cantril or 3/4 miles South of Lebanon on RT. V64, Monday to Saturday 8 a.m. to 5 p.m. No Sunday sales.  
PH. 319-538-7332 TF

**C.H.I. MIDWEST LiftMaster Overhead Door**

✓ **Out Our Competitive Prices!** **21387 Route V64 Keosauqua, IA 52565** **660-216-0812** *Our goal is to keep your doors rolling smooth!*

Sales • Parts • Service ~ Free Estimates  
We sell new doors and openers or we'll service your old one.

WANTING TO BUY: Good used 300 gal. (w/ stands) & 500 gal. fuel tanks. ALSO interested in 250 to 1000 gal used propane tanks.  
PH: 641-722-3002 37

FOR SALE: 2 used horse stalls, 12'x12'x7'; 3 point hitch bale fork; 7) 100 gallon Rubbermaid stock water tanks. Leave message.  
PH: 660-355-4809 38

**We'll Put Collision Damage in Reverse**

Let our certified technicians quickly restore your vehicle to pre-accident condition with a satisfaction guarantee.

State-of-the-Art  
Frame Straightening  
Dents, Dings & Scratches Removed  
Custom Color Matching Service

**WE'LL DEAL DIRECTLY WITH YOUR INSURANCE COMPANY**  
FREE Estimates.

**Hertz**  
Rentals for all Occasions!  
Great Rates!

**WALKER MOTORS**  
Collision Repair Inc.  
375 S. Main St. • Memphis, Mo • 660-465-2159



**We have all the parts to keep your car together!**

Brakes • Plugs • Battery • Axle • Pistons  
Fuel Injecor • Radiator • AC Compressor  
Clutch Water Pump • Hoses • Alternator

**AND SO MUCH MORE!**

**If you need it, we can make it!**

We have a state of the art hydraulic hose machine!

**TALLMAN AUTO** AutoPlus

Patrick & Joanna Tallman  
Owners  
660-457-2191  
Mon - Fri : 8:00 am - 5:00 pm  
Sat: 8:00 - 12:00 pm



is accepting applications for a full time

### Utility Billing Clerk

to be the first step in the helpline for residents of Bloomfield.

Applicants must be detail oriented, organized, have the ability to multi-task, have awesome customer service, and strong computer skills.

Applicants will have a minimum of 4 years' experience working with the public in a fast-paced office setting. Must be a positive presence in the workplace.

Successful candidate is required to have a pre-employment drug test, physical and functional capacity test as well as random drug and alcohol testing. Starting wage is \$16.19 per hour. Internal applicants will not be considered for this position.

Applications available at Bloomfield City Hall or on-line at [www.cityofbloomfield.org](http://www.cityofbloomfield.org).

Job description available upon request.

Submit resume and application to Deputy Clerk, City of Bloomfield 111 W Franklin St.

Bloomfield, Iowa 52537

Applications close at noon on 9/14/18.

EOE



\$2,500

1994 Chevy K1500 4.3 V6, Auto, 4x4 103K Miles, Work Truck Mechanically Sound Ready To Drive!

712-363-0346

FOR SALE: 3 vacant lots on the N.W. block of the Lancaster, MO. square. Legal description & information available upon request. Submit proposed offers to: P.O. Box 102, Lancaster, MO 63548. Your earliest response requested.



### Nice Selection of Fall Mums!

### Gingerich Greenhouse

1 mi. East & 1/2 mi. North of Drakesville on Jade Ave.

FOR SALE! Nice oak roll top desk. Caramel stain. Asking \$1500.00 OBO. PH. 660-341-4714. 37

FREE BARN CATS: Will deliver within a reasonable distance. Call after 5 pm. PH: 641-680-8686 37

### COUNTRY ACREAGE FOR SALE

Buildings, & nice shop with central air. Call for more details.

641-757-0201

MULTI-FAMILY GARAGE SALE. 403 East Walnut in Floris. Men's, women's, baby clothes, scrubs, baby items. Home decor items. Dirtbike, go-cart, and woodchipper. Sat 15th 8-4. Sun 16th 8-12

SELLING 11,500 HYLIN BROWN LAYING HENS: Loading out Oct. 5 & 6. \$1.00 each. Quantity discount. Place orders. Mervin Gingerich 641-722-3047. 39



WE CARRY HIGH QUALITY MATTRESSES & BOX SPRINGS! ALSO AVAILABLE IN PILLOW TOPS!

Special Sizes • Double Sided Mattresses • 20 Yr Warranty 12 Gauge Innerspring



VM: 641-664-0207 1 Mile East of Drakesville on Jade Ave. Mon.-Sat. 8:00 AM - 5:00 PM

### SHADY LANE VARIETY

New Item Just In! Canning & Freezing Cookbook!

By Local Contributors

Canning Supplies JARS & LIDS SAUCE MAKERS & MORE

1 mi. E. of Drakesville on Jade Ave. • 641-664-0207 8-5 Mon. thru Sat.

RYS DAM'S PUMPKIN PATCH: Pumpkins, gourds, squash, corn shocks, straw, Indian corn, squirrel corn, mums, honey & more. We have everything for your fall decorating ideas.

1 1/4 mile East of Drakesville. Open 7 days, Dawn/Dusk.

### Slayton Polaris

Authorized Polaris dealer since 1988

Your Adventure Awaits!

New & Used Polaris Rangers & ATV's



660-328-6627 8 mi. S. & W. from Pulaski or 6 mi. W of Memphis then 13 mi. N. on Route B

GARAGE SALE: Previously located at Rutledge Pavilion. NOW located at Rutledge Flea Market. 2nd Friday & Saturday of the month. March thru October. 1st building by west parking lot & big tree. Colored dishes & Tupperware. I.W. 39

5 FAMILY GARAGE SALE Saturday, September 15, 8 am to 2 pm. 209 North Main St., Milton Iowa. Women's size small to 3x, very nice name brand clothes. Kitchen items, VCR and DVD movies, toys, misc furniture, name brand shoes and bags. Prom dresses, wedding dress, man cave items. Rain or shine..all inside

Don't let your old mower get the best of you!

Come see all the great new mowers we have to offer!



curtsmowers.com 641-664-2784

502 E. Franklin • Bloomfield, IA



- Tropicana Orange Juice .....\$2.99 gal
- Oscar Mayer Link Sausage 13 oz..... 99¢
- Frozen Ground Beef, 2 lb.....\$1.59 lb.
- Creamy Peanut Butter, 18 oz ..... \$1.49
- Cottage Cheese, 24 oz ..... \$1.79

Taking orders for frozen fruits & vegetables



3/4 mi. E. of Drakesville, IA on 180th St. Mon-Sat: 8:30am - 5:00pm VM: 641-664-2661



2012 Ford F150

FX4, 4X4, 67,000 MILES, LEATHER



2013 Ford F-150 Limited



2013 Chevy Suburban

47,000 MILES LTZ, HEATED & COOLED LEATHER SETS, DVD PLAYER.

### Kollision Korner

504 South Drake St, Bloomfield, IA PH: 641-664-2648

John says, "Like us on Facebook!"



Rush in for these good deals!



# SEPTEMBER Events

## HELP WANTED

Schuyler County Nutrition Site is looking for a Part Time Cook/ Asst. Cook to work approximately 3-4 days per week, ranging 22-27 hrs. per week. Must be dependable. If interested please call for appt. to apply & interview, ask for Jean Robbins.

203 N. Marion St., • Lancaster, MO

## Friday, September 14<sup>th</sup>

### Jumbo Shrimp with sides

Serving at 6:00 P.M.

Dine In

**722-3355**

Carry Out

### RAY'S LONGBRANCH

Drakesville, IA



## 100.5 FM - AMERICA'S BEST COUNTRY

REQUEST LINE ..... 660-465-2715

TOLL FREE AT ..... 800-748-7875

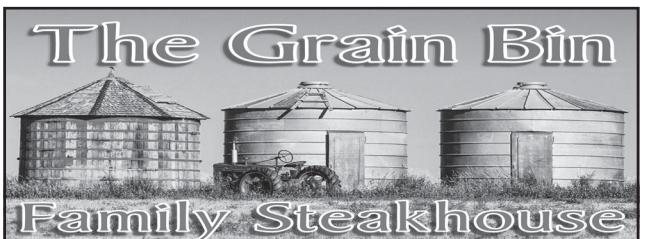


## KMEM RADIO • MEMPHIS, MO

FOR THE BEST IN AREA COUNTRY MUSIC STAY TUNED TO KMEM IN MEMPHIS, MISSOURI. DAVE BODEN HAS THE MIDDAY SHOW FROM 10 TO 2. BRANDON MONROE WITH THE DRIVE TILL FIVE AND DONNA CRAIG FINISHES THINGS OFF FROM 6 TO MIDNIGHT. JOIN US FOR GREAT CLASSIC COUNTRY HITS, NEWS, WEATHER, COMMUNITY CALENDAR, SPORTS AND MARKET REPORTS ON

KMEM FM 100.5 OR STREAMING AUDIO KMEMFM.COM

**WWW.KMEMFM.COM**



**Friday & Saturday Night Special**  
Sidewinder Fries, Hot Roll, One trip to the Salad Bar and Veggie of the day.

With 20 oz. Porterhouse T-bone steak \$29.99  
or 14 oz. T-bone steak \$21.99

102 W Jefferson St., Bloomfield 641-664-3597

## DAVIS COUNTY Country & Old Time

# MUSIC FESTIVAL

Davis County Fairgrounds - Bloomfield  
September 17<sup>th</sup>-23<sup>rd</sup>, 2018

### 3 OPEN STAGES

Country Dance Stage and Ryman Stage will be open starting Sunday, Sept. 16th and will be open all week with sign up for performance times at the stages. Show Pavilion Stage will be open on Friday, Sept. 21st and Saturday, Sept. 22nd with sign up for performance time at Noon each day. Number of bands registering will determine starting time for the performances to begin. Last performance at this stage both days is at 10PM.

### SCHEDULE OF EVENTS

Monday Sept 17: Country Square Dance - Country Dance Stage in Veatch Building	7:00PM
Tuesday Sept 18: Gospel Night - Ryman Stage in Jr. Livestock Pavilion. Sign up at stage.	TBD
Wednesday Sept 19: Stump the Band - Veatch Stage	7:00PM
Thursday Sept 20: Band Jamble - Show Pavilion Stage. Sign up at stage & draw at 5pm.	6:00PM
Friday Sept 21: Stage Shows - Show Pavilion Stage. Sign up at Noon	Time TBD
Saturday Sept 22: Stage Shows - Show Pavilion Stage. Sign up at Noon	Time TBD
Sunday Sept 23: Gospel Sing - Veatch Stage	8:00AM

Camping by donation begins at 7:00AM on Sunday Sept 16.

### QUESTIONS?

Darin Manson (641) 895-4522

Cara Manson (641) 895-9401

Bob Wilson (641) 208-0043

daviscountyfair.org

Check us out on Facebook!

## IOWA THEATER BLOOMFIELD, IOWA

### "Alpha"



Friday, Sept. 14th  
Saturday, Sept. 15th  
7:00 PM  
Sunday, Sept. 16th  
4:00 PM PG-13

## • COURSE OPEN TO PUBLIC WITH PAID GREENS FEES REMAINDER OF SEASON!

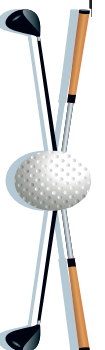
• Friday, September 14th  
Scramble with auction at 6pm.  
Bring favorite covered dish

Thanks to all that have supported the clubhouse for the 2018 season. Hours will be reduced according to daylight as season comes to a close.



(641) 664-2089

Open 7 Days A Week



## SATURDAY, SEPTEMBER 15TH

11:00 A.M. - 12:30 P.M.

Brunch items, dessert and drink.

## COME AND JOIN THE FELLOWSHIP!

GOOD SHEPHERD LUTHERAN CHURCH  
19419 Lilac Avenue, Bloomfield, North end of West St.  
Delivery in Bloomfield after 12:15 P.M.



Caring for our community with God's help!  
ELCA Hunger Grant

Need a ride? Call 664-3242  
Worship time: Sunday 9:00 AM

# 29<sup>th</sup> ANNUAL END OF SUMMER RALLY

PRESENTED BY

## STATE LINE RALLY ASSOCIATION

WITH SUPPORT FROM GOLDEN EAGLE DIST.



SEPTEMBER  
14th - 15th - 16th



VAN BUREN CO.  
FAIR GROUNDS  
HWY. 1  
KEOSAUQUA, IA

GATES OPEN:  
NOON, FRIDAY  
SEPT. 14th  
FOOD & CAMPING ON GROUNDS.  
FREE FIREWOOD & HOT SHOWERS AVAILABLE.

- **FUN RUN**  
FRIDAY and SATURDAY  
NIGHT AT 7:00 P.M.
  - **BIKE SHOW**  
SATURDAY 11:30 A.M. - 2:00 P.M.
  - **POKER RUN**  
SATURDAY SIGN UP 10:00 A.M. - NOON  
PAYOUT 3:00 P.M.
  - **BURNOUT PIT**  
FRIDAY NIGHT
  - **BIKE RODEO**  
SATURDAY 2:00 P.M.  
500cc or Larger
  - **PULLING SLED**  
FRIDAY & SATURDAY - 8:00 P.M.
  - **Sunday Worship Service 9:00 A.M.**  
Christian M/C Assoc.
  - **LIVE MUSIC**
- |   |  |
|---|--|
| <p><u>Friday Night</u><br/>Riverdogs<br/>Blues Band</p> <p><b>BILL KIRCHEN</b><br/>Rukkus</p> | <p><u>Saturday Night</u><br/>Jennifer Handling &amp;<br/>The Revolution Band</p> <p><b>AUSTIN HANKS</b><br/>PhanieRae &amp; the<br/>Soul Shakers</p> |
|---|--|

**NO GLASS CONTAINERS ALLOWED IN THE BAND BUILDING**

## ADVANCE TICKETS

AVAILABLE AT USUAL PLACES • Covers Tent Camping & All Events  
Advance Tickets: \$30.00 PERSON • At Gate: \$35.00



In Beautiful Downtown Belknap  
Bloomfield, Iowa  
641-722-3388

**Tillies Tap**  
Keosauqua, IA  
319-293-3995

**Vet's Club Bar & Grill**  
202 Van Buren St.  
Keosauqua, IA  
319-293-9153

**Boyd Grocery**  
20611 Hwy 1 N.  
Keosauqua, IA  
319-293-3731



**MOSSY OAK PROPERTIES**  
Boley Real Estate  
America's Land Specialist  
Keosauqua, IA  
319-293-2575



**Osborne OIL COMPANY**  
Keosauqua, IA  
319-293-3155

**Circle B Market**  
Keosauqua, IA  
319-293-3079

**Misty's Malt Shop**  
Keosauqua, IA  
319-293-3815

**American Legion**  
Bloomfield, IA  
641-664-2446

**First Street Grille**  
Street Dance  
Saturday, Sept. 13th  
Beer Garden at 7 PM  
Stump Town at 8 PM  
Keosauqua, IA  
319-293-6462

**Keosauqua Lumber**  
21561 205th St.  
Keosauqua, IA  
319-293-3366

**T&C Tavern**  
Keosauqua, IA  
319-293-3879  
Randy Fowler  
Owner

# 1st Half Property Taxes Due Now!

Last Day to Pay without Penalty

**Monday, October 1st**

Penalty Starts Tue., October 2nd. Penalty Per Month 1.5%.

Hours: 8 a.m.- 4:30 p.m. Monday - Friday

Driver's Licenses: Tuesday-Friday 8:30 AM-3:30 PM

Driver's License Closed on Mondays

Written Tests: Tuesday-Friday 8:30 AM-2:30 PM

Car Drives: Thursdays by appointment only.

Driver's License Station

**CLOSED September 27th & 28th**

because of heavy tax collections

The county treasurer is now accepting "in office" payments with debit cards, Discover, Master Card and Visa credit cards.

**A service delivery fee will apply.**

Applicable fees:

**Credit Cards** - 2.5% plus \$1.50 per transaction

**Debit Cards** - motor vehicle or property tax - \$2.00 per transaction

Pay Your Taxes On The Internet at

[www.iowatreasurers.org](http://www.iowatreasurers.org)

24-Hours A Day ---- 7 Days A Week

A service delivery fee is charged for this service.

Online Tag Renewals at [www.iowatreasurers.org](http://www.iowatreasurers.org)

Motor Vehicle Registration Renewals-You can't do them

without the PIN number which will be on the

renewal notice you receive in the mail.

A service delivery fee is charged for this service.

## Davis County Treasurer

Phone 641-664-2155

100 Courthouse Sq., Suite 8 • Bloomfield, IA

Come In, Mail Your Payment in, or use the Payment Drop Box located next to the Courthouse on NE corner of the Courthouse drive.

FOR SALE: 6 month old Alpine, \$100; 5 month old male Savannah/boar, \$75. Both were bottle fed and are very tame and healthy.

PH: 319-677-6497 38

GOT APPLES? MAKE CIDER! 15 years of service. Fresh Honey \$4.00 lb. at Rustic Acres, West Grove, IA.

PH: 641-929-3056 41

# We are OPEN!

Locally grown apples • While supplies last

- Ginger Gold • Gala • Honey Crisp • Crimson Crisp
- Cortland, *Mid Sept.* • Pink Lady & Goldrush, *Nov.*
- Suncrisp, *Mid Oct.* • Honey from local bees

Tired of making applesauce? Custom Cider pressing is back!

- 4 bushel minimum
- No waiting time and no minimum when trading apples for cider!

- Sauce apples \$9.95/bushel
- Fresh pressed apple cider
- Raw apple cider vinegar

## The Bushel Basket

2 miles S. of Memphis on 15 to the first gravel rd. west (country rd. 512) then 1 1/2 miles to the 2nd house on the left.

Retail Phone (660) 342-5031

Wholesale Phone (660) 216-1710

Open Mon. - Fri. 7:30 to noon

Afternoon and Sat. by chance or appointment • Closed Sundays

**BLOOMFIELD MINI FOR SALE:** Registered STORAGE. Serving you beagel puppies have shots & from 2 safe, convenient wormed, parents are good locations. hunters.

PH. 641-664-1066. TF PH: 660-956-6399 37

## Fox Valley Welding

No matter what size the project customer satisfaction is always our first priority.

Tig & Aluminum • Welding • Millwork • Lathe • New Steel Sprockets • Roller Chain Barings • PTO Parts • Fabricating CNC Machining • CNC Cutting

Hours: M-F 8-5:30 • 641-656-4684  
12190 East Hwy. 2 • Milton, IA

WANTED: Hedge Posts. FOR RENT: 12' no till drill. Please leave message. Yoder Equipment VM: 641-664-1459 37 PH: 641-664-2797 TFN

## GARAGE DOORS

Residential • Commercial • Doors • Operators

Quality Products + Quality Workmanship = Quality Customers

Call us today for your • FREE door estimates.

### WE FIX DOORS!

**MAST OVERHEAD DOORS** 105 S. Dodge St., Bloomfield, IA  
641-680-2016

FOR RENT: 1 or 2 bedroom apartments Milton, IA. Kitchen appliances & heat furnished. Very reasonable rent. PH: 641-757-0201 44

TRI-COUNTY SHOPPER CLASSIFIED AD DEADLINE IS FRIDAY, 5 P.M. EVERY WEEK. Classified ads must be paid for in advance. Mail your ad to Tri-County Shopper, P.O. Box 168 Bloomfield, IA. 52537. For questions call us at 641-664-1333.

## FOR SALE

Driveway Fabric Rolls Commercial, Heavy Duty, Designed for Heavy Traffic

12' 5" Wide  
432' Long  
\$370/roll

**660-216-0938**

## Davis County Community School District

Board of Directors

Regular Meeting

Date: Mon., Sept. 17, 2018

Time: **7:00 P.M.**

Place: 608 S. Washington St. Bloomfield, Iowa

### TENTATIVE AGENDA

1. Call to order/roll call/visitors
2. Approve tentative agenda
3. Approve consent agenda items
  - a. Positive comments
  - b. Minutes of special board meeting August 31, 2018
  - c. Minutes of board work session August 20, 2018
  - d. Minutes of regular board meeting August 20, 2018
  - e. Payment of warrants
  - f. Monthly financial reports
4. Examine Financial Accounting Books for end of the FY 2018 - Annual Meeting
5. Elect Board President and administer oath of office - Annual Meeting
6. Elect Board Vice President and administer oath of office - Annual Meeting
7. Appoint Board Secretary and administer oath of office - Annual Meeting
8. Appoint Board Treasurer and administer oath of office - Annual Meeting
9. Approve personnel resignations and contracts
10. Administrative reports
11. Approve FFA National Convention trip
12. Approve 2018-19 lane changes for teachers
13. Approve \$8,000 expenditure to Iowa Learning Online for Spanish 3 & 4
14. Approve/authorize district to update Davis County Special Education Delivery Plan
15. Approve Job Descriptions
16. Approve dissolution of SODA Club and transfer funds to Jr. Optimists and High School Student Council
17. Approve Elementary Playground concrete
18. Approve Notice of Award for West Athletic Complex - Site Preparation
19. Approve A101 Owner-Contractor Agreement for West Athletic Complex - Site Preparation
20. Discuss board member attendance at IASB Annual Convention
21. Appoint Delegate for IASB Delegate Assembly
22. Board policy review
23. Adjournment

## Hawkins - Harrison Insurance



SHOPPER ADS CAN BE DROPPED OFF HERE!

Proud to be your partner.

P.O. Box 365  
Lancaster, MO  
63548  
660-457-3020

103 W. Monroe St.,  
Memphis, MO  
63555  
660-465-8533

## LEECONTAINER

Our Containers. Your Success.

## OPEN INTERVIEW DAY

Join us in Bloomfield, IA for an open interview day!

We will be at the Bloomfield Public Library

**SEPTEMBER 19TH, 2PM - 4PM**

We offer a competitive wage and benefit package.

If you have any questions, please contact us at 641-856-6123

An Equal Opportunity Employer



**99¢**  
per lb.

**Boneless Skinless Chicken Strips**

**Bowties**

**FROZEN NOODLES**  
**50¢**  
per lb.

**Fettuccine**

**\$1.99**

12 count  
18 oz. Pack

**Summer Sausage**

**79¢**  
each

**head Lettuce**

**\$1.49**  
6 oz.

**Blackberries**

**\$1.75**  
24 oz.

**Cottage Cheese**

**5 lb. pouch**  
**\$3.99**

**Frozen Cheese Sauce**

**50¢**  
per lb.

**Frozen Bulk Broccoli Florets**

**Smithfield**  
PREMIUM PORK  
BREAKFAST SAUSAGE  
ALL NATURAL  
Hometown Original

**Smithfield \$1.25**  
16 oz.

**All Natural Breakfast Sausage**

**Oscar Mayer** **75¢**  
16 oz.

**Bun Length Weiners**

**HERE NOW**

**Prune Plums**

**Concord Grapes**  
available approx  
Sept 20th

**New!**

**\$1.99 6/\$10**

**XL Size - Reusable Wool Dryer Balls**  
Natural Fabric Softener

**88¢**  
15 oz.

**Stokely's Canned Pumpkin**

**3/\$7**  
6 pack half liter bottles

**7up products**

**99¢**  
20 pack

**Joy**

**Ice Cream Cones**

**4/\$5**

**Little Debbie**  
Top Five Little Debbie Snacks

**Annual Tent/Sidewalk SALE! September 26th thru 29th**



**DUTCHMAN'S STORE** Division Street CANTRIL, IA (319) 397 2322

SALE PRICES September 12-18, 2018 While Supply Lasts

STORE HOURS • Weekdays, 8a.m. - 6 p.m. • Saturday 8a.m. - 5 p.m. • Sunday Closed

View our specials online - [www.DutchmansStore.com](http://www.DutchmansStore.com)

HOUSE FOR SALE: 122 N. James, Ottumwa, IA. Newly remodded, new central air, roof and kitchen, fenced in backyard. Call for an appointment.  
PH: 641-455-8829 39

FOR SALE: Holstein Dairy Cows. 5 dry cows, 3 just fresh in last 10 days, 2 more milking 80 lbs.  
VM: 641-664-3784. 3

FOR SALE: 28 - 1 year old laying hens, \$2.00 each; 2003 Ford Taurus, \$1,000.  
PH: 641-777-6899. 39

BLOW IN INSULATION Add & removal, fiberglass. A&R Insulation  
PH: 641-799-7448 40

**HELP WANTED**  
**Part Time Maintenance Man**  
for a 20 unit complex in Stanberry Missouri.

Experience preferred but not required. Must have own tools.

Call Action Management  
660-535-4305 for an application.

*Save money and time*

**WE HAVE ALL THOSE HARD TO FIND AUTO PARTS!**

**IF WE DON'T HAVE IT, WE'LL GLADLY GET IT FOR YOU.**

**SPILMAN AUTO PARTS**  
OLD HWY. 2 & 63 W.  
PO BOX 31, BLOOMFIELD, IA  
PH: 641-664-2463 • 1-800-477-1367  
[WWW.SPILMANAUTO.COM](http://WWW.SPILMANAUTO.COM)  
M-F 8AM-5PM • SAT. 8AM-12NOON

*Relax! Spilman's Got It!*

# NEW LISTINGS



**\$180,000**

#20171339  
609 E. Pennsylvania,  
Ottumwa, IA  
4 Plex



**\$180,000**

#20171340  
1120 N. Green  
Ottumwa, IA  
4 Plex



**\$180,000**

#20171341  
554 W. Park  
Ottumwa, IA  
4 Plex



**\$170,000**

#20171337  
1425 N. Jefferson  
Ottumwa, IA  
4 Plex



**\$170,000**

#20171336  
644 N. Court  
Ottumwa, IA  
4 Plex



**\$180,000**

#20171330  
206 W. Poplar  
Bloomfield, IA  
4 Plex



**\$170,000**

#20171331  
103 N. West  
Bloomfield, IA  
4 Plex



**\$19,900**

#20171352  
10794 Mink Blv.  
Bloomfield, IA  
3.30 Acres in Northern  
Davis County. Does  
have electricity to  
the property. On an  
unmaintained hard  
surface road between  
Ottumwa & Bloomfield.



**\$49,000**

#20171343  
311 S. Main  
Moulton, IA  
Affordable living in  
Moulton, 4 bedroom  
2 bath home sitting  
on 2 lots.  
2100 sq ft home.  
MOVE IN READY.



**\$230,000**

#20171342  
17710 212th  
Bloomfield, IA  
Well built family home  
in the heart of the  
Amish community.  
Sitting on 3.46 acres,  
horse barn, 5  
bedrooms, full  
unfinished basement.

We have the  
property for you!

## COMMERCIAL

#20170726	104 Smith St., Bloomfield	\$639,000
#20170701	903 S. West St., Bloomfield	\$275,000
#20167279	102 S. Madison St., Bloomfield	\$150,000
#20164815	109 E. Jefferson St., Bloomfield	\$75,000
#20167281	104 S. Madison St., Bloomfield	\$75,000

## FARM

#20170439	0 Peach Ave., Bloomfield	\$576,000
#20171168	0 Whiskey Ridge, Ottumwa	\$39,000

## LAND

#20169066	0 258th St., Bloomfield	\$170,000
#20170214	0 North St., Bloomfield	\$49,000
#20170912	0 N. West, St., Bloomfield	\$35,000

#20169088	0 Apache Drive, Moravia	\$10,000
#20168691	702 S. Columbia St., Bloomfield	\$8,000
#20171022	17 Country Club Drive, Bloomfield	\$30,000
#20169089	0 Shanghi Drive, Moravia	\$20,000

## RESIDENTIAL

#20170769	22697 Ebony Ave., Bloomfield	\$699,000
#20169209	20095 Bluegrass Rd., Ottumwa	\$150,000
#20170353	204 S. Pine St., Bloomfield	\$38,000
#20169211	209 N. Jefferson St., Drakesville	\$11,900
#20170904	308 W. Locust St., Bloomfield	\$68,000
#20170168	407 S. Howard St., Bloomfield	\$65,500
#20170867	312 Main St., Moulton	\$65,000
#20170975	156 N. Ransom, Ottumwa	\$65,000
#20170618	407 N. Elm St., Bloomfield	\$50,000



**641-664-2275**  
lynchrealtyinc.com



# CONTACT US TODAY!

106 S. Madison • Bloomfield, IA  
Licensed in Iowa • Stephanie Lynch, Broker





**Oscar Mayer hearty thick cut bologna, 16 oz. 79¢**

**Cool Whip, twin pack, 2/ 16 oz. \$2.99**

**Chocolate meringue pie \$3.99**

**Phillsbury biscuits 75¢ a can**

**Shullsburg Yellow sliced American cheese, 5 lb. \$11.99**

**Variety of yogurts! NEW LOAD!**

**Oscar Mayer P3, chicken, cheddar & peanuts, 2 oz 25¢ each or case of 10 \$2.50**

**Bartlett pears \$16.00 a bu.**

**Great American cream of mushroom soup, 10.5 oz. 69¢**

**Cracker Barrel macaroni & cheese dinner, white cheddar, 14 oz. \$1.25**

**Planter's dry roasted peanuts, 1 lb. 4 oz. \$1.49**

**Shawnee Mills white cornbread mix, 6 oz. 35¢**

**Bubble Yum gum, cotton candy flavor, 12 pk. \$2.39**

**Variety of pet carriers, cages, collars, etc. COME SEE!**

**Highway 2 DISCOUNT Groceries L.L.C.**

**Mon. - Sat 8:30am - 5:00pm**  
**VM: 641-664-1187 • 19686 Hwy. 2,**  
**Approx 2 miles West of Bloomfield**

**Sale good Wed., September 12th through Tue., September 18th.**

## L&M Country Store

1 1/2 miles south of west Hwy 2 & 63 jct.  
 Mon-Sat. 8am-5pm **CLOSED SUNDAYS**  
 VM: 641-664-1936

### LOCAL GROWN TOMATOES!

Local grown butternut squash..... 99¢ ea.  
 ..... or 6/\$4.50

26 oz. cream or mushroom soup..... 99¢

16 oz. Best Buy sliced bacon ..... \$1.99 ea.

Jamestown ham steaks ..... \$1.49 lb.

Pineapple chunks..... \$2.99 gal.

Whole kosher dill pickles ..... \$2.50 gal.

## TREE & TRANSPLANTING

**660-341-6267**

Fall is the best time to plant!!!  
 These Trees Are Up To 3" In Diameter & 15' Tall.

Red Maples • Autumn Blaze • Red Sunset  
 Locust • River Birch • Cleveland Pear  
 Bald Cypress • Red Bud • Crab Apple  
 Chicapin Oak • Shingle Oak • Swamp White Oak  
 Pin Oak • Celebration Maple  
 Kentucky Coffee Tree • Red Oak

20-10-15 Tree Tablets  
 Arbor Tree Gourds \$1.98  
 We can plant or move trees! Call for rates!  
 Discount For Volume Orders

**6 miles east of Baring, MO on Rt. K**

WANT TO BUY your manufactured home or mobile home 1990 and newer CENTURY HOMES 641-672-2344. (MCN)

Want to purchase minerals and other oil/gas interests. Send details to: P.O. Box 13557, Denver CO 80201(MCN)

FOR SALE: 3 vacant lots on the N.W. block of the Lancaster, MO. square. Legal description & information available upon request. Submit proposed offers to: P.O. Box 102, Lancaster, MO 63548. Your earliest response requested.

## Mum's the Word!

**MUMS \$10 each or 3 for \$25**

**DOUBLE MUMS! 2 Colors in 1 pot \$15 each**

**Fall is the time to plant perennials!**  
**Check out our wide selection!**

**Lilac Hill GREENHOUSE**  
 660-342-9554

25957 US Hwy 136  
 Lancaster, MO  
 Monday-Saturday 8:00 AM - 8:00 PM  
 Closed Sundays

Gift Certificates Available

## Friesen Excavating

Specializing in Septic Systems, Certified For Peat Tanks and Sand Filters. Can Also Do Other Drains and Water Lines.  
 Call or Text Shawn @ 641-208-0861 • Bloomfield, IA

**Free Quotes Available**

## 8 FT. RAILROAD TIES

Great for landscaping and garden boxes

**SPILMAN AUTO PARTS**  
 20311 Old Hwy. 2  
 PO Box 31 • Bloomfield  
 641-664-2463

## Making Memories

Flowers & Gifts

It's beginning to feel alot like fall!

**Drink Moore Coffee!**

**Menu Includes**

Hot Drinks: Cappuccino, Latte, Mocha, Chai Tea, Americano, and Hot Chocolate

Frappe: Mocha, Lattee, Red Velvet, Cookies & Cream, and Toffee

Extra Flavors: Vanilla, Almond, Marshmallow, Royal Toffee, Carmel, and Hazelnut

**108 S. Madison, Bloomfield**  
**641-664-1600**



# DUELING PIANOS

JOIN US FOR AN EVENING OF MUSIC, FUN,  
FOOD & AUCTION ITEMS/BASKETS,  
INCLUDING A WHOLE BEEF DONATED BY  
BLOOMFIELD LIVESTOCK MARKET & WHITTINGTON ANGUS!

**SEPTEMBER 15, 2018**

7:00 PM - 11:00 PM  
DOORS OPEN @ 6:00 PM

THE MEADOWS  
15220 HWY 63 - BLOOMFIELD, IOWA

ADVANCED PURCHASE \$25/PERSON  
@ THE DOOR \$30/PERSON

TICKET INFORMATION:  
LYNN SHUMATE: CHAIRPERSON TICKET SALES CALL 641-208-0095  
PURCHASE ON OUR WEBSITE AT  
WWW.DCSSUPPORTFOUNDATION.ORG

ALSO AVAILABLE AT BLACKBOARD PRINTING,  
MAKING MEMORIES & VAN MERSBERGEN INSURANCE

SPONSORS OF DUELING PIANOS:  
WIGWAM DAYCARE & PRESCHOOL · VAN MERSBERGEN INSURANCE  
PIPER'S AUTO SALVAGE · SINCLAIR TRACTOR · PEGGY EAKINS

KOLLISION KORNER · KINCART PHYSICAL THERAPY SERVICES  
ARVID & DONNA GOETTSCHKE · BMW JANITORIAL SERVICES  
DAVENCORP, INC. · SPILMAN AUTO PARTS · DAVIS SEED · SUCCESS BANK

TACO BAR INCLUDED IN TICKET PRICE. CASH BAR AVAILABLE.

## Your One Stop Shop For Your Farming Needs!



**Capacity:**  
100 Cattle Or 25 Horses  
8 Gallons  
36" x 22 1/2" x 22" Tall



**Capacity:**  
100 Cattle Or Sheep  
25 Gallons  
36" x 22 1/2" x 22" Tall

We Have  
Cobett Waterers  
**IN-STOCK!!**



FOR-MOST  
CATTLE CHUTES



Various Sizes



24-48 Inch Available

Culvert & Field Tile

**Hamilton Produce Co.** 105 W. Franklin  
Bloomfield, IA 52537

641-664-2459 or 1-800-469-7749

# Garage Sale Order Form

Fill in the form below as you want your ad to appear. We must receive this by Friday at 5pm to appear in that weeks Shopper. This is a SPECIAL GARAGE SALE WANT AD with the SPECIAL rate of 30 words or less for \$5.00. This rate will expire September 28, 2018. Want ads are CASH or CREDIT CARD.

**BUSINESS EXEMPT.**

					<b>5</b>
					<b>10</b>
					<b>15</b>
					<b>20</b>
					<b>25</b>
					<b>30</b>

NAME \_\_\_\_\_  
ADDRESS \_\_\_\_\_  
PHONE \_\_\_\_\_



**Tri-County SHOPPER**

BOX 168

Bloomfield, Iowa 52537

P: 641-664-1333 F: 641-664-3761





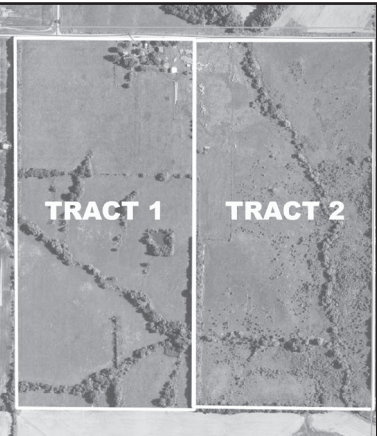
**McAfee/Hayes Auction Service, LLC**  
 375 S Johnson • Kahoka, MO  
 660-727-3796  
 www.mcafeeauctionservice.com

# CLARK COUNTY, MO LAND AUCTION

**FRI SEPT 28<sup>TH</sup> - 6 PM**

Sale Conducted at the CARE Building in  
Kahoka, MO

**151 ACRES/ 2 TRACTS**  
(SUBJECT TO FINAL SURVEY)



Selling 2 tracts of land with several acres of attractive open tillable land currently in grass and several additional potential acres to be gained. Lying in Sect.8, Twp.64N, R9W, Clark County MO.

**THE FAMILY OF  
CLIFFORD AND LOIS WILSON**



**McAfee/Hayes Auction Service, LLC**  
 375 S Johnson • Kahoka, MO  
 660-727-3796  
 www.mcafeeauctionservice.com

# LARGE COUNTRY ESTATE AUCTION

**SAT SEPT 29<sup>TH</sup> - 10 AM**

Sale Conducted on the Farm, take Rte A 1 mile South of  
Wyaconda, MO to Co Rod 220 then East 1/2 mile.



Selling IH and AC Tractors  
Skid Steer  
Older Farm Machinery  
Scrap Iron  
Farm Related  
Farm Primitives  
Antiques  
Household Misc.

**THE FAMILY OF  
CLIFFORD AND LOIS WILSON**



# 3rd Annual Lebanon School Consignment Auction

Saturday, September 15, 2018 @ 9:00 a.m.

**Machinery & Storage Containers** (sell at 2:00 p.m.)  
 AC roto baler original paint - NI 5 bar hay rake - IH hay loader  
 28" McCormick thresh machine - IH No. 9 chopper  
 Pioneer 2 bottom plow - IH #9 hay mower - JD Big 4 hay mower  
 Pioneer draft shafts - JD side delivery rake - 8' pickup toppler  
 JD rake parts & wheels - flare box wagon w/ hydraulics  
 Graybuilt bale mover - 2 barge boxes w/ hoists - IH gang plow  
 PTO pull type sickle bar mower w/ 7' bar - 6' pull type brushcutter  
 Pickup bed trailer on rubber - IH 100 manure spreader on rubber  
 (2) IH #7 mowers w/ dollies 6' & 7' bars (field ready)  
 12' cargo trailer - 2 IH endgate seeders 1 for parts - IH sulky plow  
 McCormick Deering stalk chopper - IH 1 row disc cultivator  
 Tandem disc - Emerson 3 bottom plow - 7' single disc  
 1 horse 2 row corn cutter with discs (good condition)  
 1 ton Pioneer wagon w/ springs - No. 9 sickle bar mower  
 (2) 28"x8'6"x 9' tall storage containers (good condition)  
 New pony cultivator - several walking plows - IH grain binder  
 18 new Hickory 12' to 14' wagon tongues - McCormick corn binder  
 3' jack shaft w/ large pulley & PTO stub - small bale straw chopper  
 Antique spring wagon 2 spring seats - dolly wheel for hay mower  
 48" blade portable sawmill w/ carriage & track PTO hook up

**Horses - Buggies - Tack & Ram**

2018 April born registered Kahtadin Ram lamb  
 Team 14 yr. old Belgian mare & gelding, parade and hayride ready  
 Bud 15 yr. old Belgian gelding, ride or drive, colt starter deluxe  
 Nellie 4 yr. bay mare ride & drive 60" 1/2 Stdbrd qtr pony 1/4 Dutch  
 Queen 1 yr. black mare w/ strip 58" broke to drive 1/2 Friesian  
 qtr pony 1/4 Stdbrd - 5 yr. old Sorrel mare green broke  
 9 yr. old 48" red Sorrel pony ride & drive - Dark Brown mini pony  
 Chocolate Brown mini pony - 12 yr. old paint pony mare, broke  
 6 yr. old Palomino pony mare 48" broke - single top buggy  
 Open buggy rebuilt - single top buggy rebuilt - road cart w/ top  
 1 seated open hack buggy w/ steel wheels (good condition)  
 6 buggy wheels, good condition - pony harness - collars - etc.  
 Set Boyt draft harness triple britching (new) - 2 draft harnesses  
 2 loads new & used tack lead ropes, halters, waterhose etc.

20x36 greenhouse HD purlins (sold off site)  
can be seen at the Joe Lengacher farm

Beginning at 9:00 am  
Selling approx. 300 shade & evergreen trees, shrubs & rose bushes. lots of mums

Also selling a large selection of shop tools, weed and lawn mowers, building materials, hay, farm misc., antiques and collectibles. A good variety of new and used furniture, rustic bedroom set, sewing machine cabinets, poly outdoor furniture, Lifetime tables, etc. Several cookstoves, Maytag wringer washers, rugs, etc.  
 For a full listing and photos go to  
[www.highauction@marktwain.net](http://www.highauction@marktwain.net)

LUNCH AND BAKE SALE ON GROUNDS! Free coffee & Donuts till sale time!

Auction will be held at the Devon Weaver Farm  
 14682 Rt J40 - Milton, Iowa 52570  
 Just West of the 4 way stop in Lebanon, Iowa.

For more info. contact

Larry Weaver  
660.216.4954

Devon Weaver  
319.397.2298

**Guns - Bows - Hunting Related** (Guns sell at 1:00 pm)  
 Browning BPS 10 ga. pump shotgun (mint condition)  
 Remington 788 22-250 black bolt action w/ 3x9x50 Nikon scope (mint)  
 Remington 788 243 cal. bolt action w/ 3x9x40 Leupold scope (mint)  
 Remington model 870 12 ga. pump shotgun (new)  
 Remington model 700 243 cal. w/ varmint barrel, laminated stock  
 Savage 7mm Rem. M 110 bolt w/ active trigger, 3x12x56 Barska scope  
 Marlin mod. 1895 45-70 - Marlin mod. 1895 45-70 w/ SS barrel & scope  
 Noble model 70A 410 ga. pump - Bone Collector Edition pellet gun  
 Ruger model 1022 black 22 cal. LR - Daisy pellet rifle w/ scope (new)  
 Henry 22 cal. lever (like new) - Daisy Powerline pellet rifle scope (new)  
 Remington model 700 SPS 30-06 (new)  
 Remington model 700 300 win. mag (new)  
 Ruger mini 14 223 cal. SS/black w/ Leupold scope (mint)  
 Remington model 1100 12 ga.w/ smooth barrel & rifled cantilever barrel  
 Remington model 870 20 ga. pump shotgun (mint)  
 Traditions Vortek 50 cal. muzzleloader  
 2- Thompson center FireHawk 50 cal. muzzleloaders  
 Browning A5 Belgium made lite 12 ga. gold trigger (good condition)  
 Mossberg model 835 12 ga. pump 31/2" camo (turkey special)  
 Winchester model 250 22 cal. LR - Winchester model 275 22 mag  
 Winchester model 290 22 LR - Winchester 22 long rifle  
 Norinco 22 ATD 22 LR - Ruger model 1022 22 cal. LR  
 Marlin model 60 22cal. LR - Rossi model 89 22 cal. LR  
 Remington model 597 M 17 HMR - Winchester model 94 30-30 rifle  
 Mossberg MVD 6.5 Creedmore - Marlin model 1895 45-70  
 Henry H010B 45-70 - Remington mod. 870 Express mag. 12 ga.  
 Remington mod. 7600 243 cal. pump synth. stock w/ Bushnell scope  
 Henry Golden Boy REM 44 mag. octagon barrel (new in box)  
 Franchi model 520 12 ga. auto engraved (mint)  
 Mossberg model 500 20 ga. 3" slug gun - Marlin mod. 39-A 22 cal.S.LR  
 Remington Wingmaster 20 ga. full choke - Winchester mod. 94 30-30  
 Remington Wingmaster model 552 22 cal. LR-SR (mint)  
 OE Mossberg & Sons 20 ga. bolt 185 D-B full - extra full choke  
 Winchester mod. 1300 12 ga. synth. w/ screw in choke  
 Remington model 1100 12 ga. 3" mag. - Winchester mod. 19273 44-40  
 Ruger model 10-22 22 cal. (new in box)  
 Ruger model 10-22 22 cal. w/ Walnut stock (new in box)  
 Stage coach double barrel T - Parker 12 ga. shotgun  
 Winchester model 1300 12 ga. w/ rifled slug barrel & scope  
 Browning Medallion engraved walnut stock 223 WSSM gold trigger  
 A-bolt with BSA Platinum 6x24x44 scope (like new)  
 Browning A-5 Belgium made 16 ga. adjustable choke & ribbed barrel  
 Remington model 1100 auto 12 ga. 2 3/4" (mint)  
 Win. 1200 12 ga. 28" V rib barrel, walnut stock & screw in choke  
 Stevens Buckhorn mod.66-B 22 cal. S.L.LR new original box  
 Original manual sold by Sears & Robuck w/ peep site (very rare find)  
 Iver Johnson Champion 410 ga. single shot shotgun  
 Expert Witte HDWE Co. 22 cal. bolt action S.L.LR  
 To purchase firearms, a state issued ID will be required.  
 Not accepting additional firearms to sell at this auction.

All commission will go to the school.  
 Rates: up to \$100.00 15% over \$100.00 10%  
 All items under \$2.00 will be donated to the school fund.  
 \$25.00 no sale fee will apply  
 Accepting consignments from Tue. Sept. 11 to Fri. Sept. 14  
 No items accepted day of the Auction.  
 Notice: no garage sale items please  
 Loader available on Auction day. Selling times approximate.

**Auctioneers : Randy High - Jared Miller - Lamar High - Owen Gingerich - Jr. Fox**

for additional photos go to: [www.highauctionservice.com](http://www.highauctionservice.com)

email: [highauction@marktwain.net](mailto:highauction@marktwain.net)

Terms: Cash or check with proper I.D. Not responsible in case of accidents or theft. Announcements day of sale take precedence over any advertising.

**FOR SALE:** Matching set Estate heavy duty super capacity washer & heavy duty super capacity dryer, \$150 each.  
 PH. 660-328-6318 or 660-341-9586. 37

**FOR SALE:** Firewood at RJ Lumber, \$15 a pickup load. 18989 160th St., Drakesville, IA 52552. TF

**FOR SALE:** Clarinet excellent condition, Bloomfield, IA  
 PH: 641-208-2754 37

**OBERHOLTZER**  
**TRAILER REPAIR**  
 Specializing in Aluminum Grain Trailers  
 Repair & Rebuild  
 3 miles east of Gorin, Mo. on Route U  
**660-282-1012**

**REAL ESTATE AUCTION**  
**OPENING BID \$200,000**

**Open House**  
 We Invite You to Inspect The Property From:  
 1 pm - 5 pm  
**SATURDAY**  
**SEPT. 22, 2018**  
**AND**  
 The Morning of the Sale!

**THURS., OCT. 11<sup>th</sup> AT 1 P.M.**  
**Auction held on-site, located at 17781 Hazel Green Way, Brashear, MO.**

- Executive Style Home
- 4 Bed • 3 Bath • Over 4,500 Sq. Ft.
- 52 Acres M/L Pasture Land
- 5 stall horse barn with tack room.
- NEW fencing on 3 sides of the farm.
- (2) freeze resistant cattle waters.
- 60'x60' Outbldg. w/ concrete floor, (2) 24 ft. overhead doors, (1) walk-thru door.

**Roberta & Howard Baumgardner, Sellers**

**LOWDERMAN** [www.lowderman.com](http://www.lowderman.com)  
 Auction & Real Estate 309-833-5543  
 4 Generations of Experience/A Tradition of Results



# NATIONAL Hunting & Fishing Day

## September 22nd

Thousands of people across North America find hunting game to be a rewarding pastime. People hunt many different types of animals, but deer are some of the most popular to target. Deer hunting can help to address deer overpopulation in many areas. Hunting requires more than going out with a weapon and targeting deer. Hunters must prepare themselves and purchase the appropriate equipment to protect themselves and make sure they are hunting in adherence to local laws. To begin, hunters should check with their local fish and game organizations to learn about acquiring hunting licenses. Licenses will ensure that hunting is being done according to the rules of a particular state, town or province, and establish just how many animals can be taken. Hunters will need to make sure their firearms or bows are operational and clean. Hunters may also want to invest in tree stands, binoculars, knives, ammunition, hunting blinds, shooting glasses, ear protection, processing kits (for field dressing), and hunting attire. To make themselves more visible to fellow hunters, hunters should wear clothing in blaze orange rather than camouflage. Hunters can visit fishing and game retailers for additional recommendations on gear.




### GEAR UP FOR HUNTING & FISHING

With a new  
**2019 Ranger  
1000 Crew**

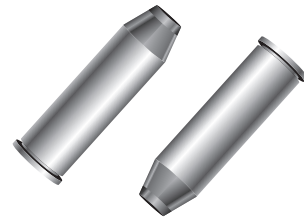
## COME SEE US TODAY!

# Slayton Polaris

10456 St., Rt. B • Downing  
8 mi. S & W from Pulaski or 6 mi. W  
of Memphis then 13 mi. N on Route B

### 660-328-6627


 **POLARIS**  
The Way Out. Authorized Polaris dealer since 1988

## COUNTRY CUT MEATS

Custom Butchering  
**Beef • Pork • Deer**  
Homeraised Beef Available

**641-675-3683** 26824 Veatch Ave  
Pulaski, IA



## MOULTON LOCKER

641-642-3422

### Process Your Deer Here!

You will always get YOUR OWN meat back.  
**HIGH QUALITY**

*Established 1943  
31 years experience at Moulton Locker*

Owners: Randy & Tracy Welch  
112 S. Main St. | Moulton, IA | Cell 641-895-6949



## BARGAIN SHOWDOWN

*We've got the right gun for the hunt!*  
Dealer | Gunsmith | Conceal Classes

# Garmon Firearms

111 S. Second St. | Pulaski, IA  
641-208-0187 | 641-675-3060  
M-F 4:30-7:30pm • Sat. 12:00-6:00pm



Get that fishing boat or hunting camper checked out and ready for use this fall!



## Whitney RV & Marine

Scott and Jennifer Poole: Owners  
**641-684-8284**  
9418 151st Ave., Ottumwa  
Monday-Friday: 8:30 AM - 5:30 PM  
Saturday: 8 AM - 1 PM

Follow the tracks to...



## TRAILS END TAXIDERM

Keosauqua, IA  
Josette Robison  
319-288-0113  
\$400 Shoulder Mounts  
\$85 Skull Mounts

Like us on Facebook!

## Bow Season Is Right Around The Corner ARE YOU READY?








### ARCHERY & OPTICS


## LET OUR EXPERTISE HELP YOU BAG THAT TROPHY THIS YEAR!

18243 Iris Blvd.  
Bloomfield, IA 52537  
for more info. call  
**641-664-1069**  
Open Mon. & Wed. 3-7 PM • Fri. & Sat. 9AM - 6 PM

Come check out the  
PSE Evolve 31 bow



## Hunting For AUTO PARTS...



### SPILMAN AUTO PARTS have used car parts with



# SAVINGS\$

*that are on Target*

When you need a pre-owned or hard-to-find part for your vehicle, you'll find it right here at...

## SPILMAN AUTO PARTS

Old Hwy. 2 & 63 W.  
P.O. Box 31, Bloomfield IA  
Ph. 641-664-2463 • 1-800-477-1367  
www.spilmanauto.com

**Please join us for an  
OPEN HOUSE**

**Thursday, September 13th  
4:30 pm - 6:00 pm**



**1107 E. Franklin  
Bloomfield, Iowa**

3 bedroom, 3 bathroom, many updates,  
full finished basement with walk-out,  
close to golf course and schools.

\*seller is related to listing agent.



315 E. Maple • Centerville, IA

**641-437-1060**

www.HometownOnline.com



Lynette Cisler, Broker • Licensed in IA & MO

NOTICE: I have moved my footwear to Milton Country Store, 1 mile South of 2 & 15 Jct. PVC boots, lightweight, E.V.A. with better traction. Also Quatro, Reed insulated boots. 5% discount the last week of September.

Daniel M. Hostetler,  
Milton. 38

Cross country Moving,  
Long distance Moving  
Company out of state move  
\$799 Long Distance Movers  
Get Free quote on your  
Long distance move. 1-800-  
503-6126 (MCN)

**GELBIEH BULLS FOR SALE:** 2 - Black, Registered, 17 month old bulls. Excellent Quality. **Hobbs Gelbvieh Lucas, Iowa PH: 641-203-0863 or 641-766-6779 40**

**FOR SALE:** Silky Bantams, white, brown, gray & black, \$6.00 ea.; **REGISTERED BEAGLES:** 2 year old male, 1 year old female. Serious hunters, \$50.

Yoder's 641-664-2797. 39

**FOR SALE:** Bantys, roosters & hens. PH: 641-929-3036

**JOE'S BARBER SHOP**  
Hours: Thursday & Friday 8:00-5:00 & Saturday 8:00-Noon. 210 E. Franklin St., Bloomfield, IA.  
PH: 641-664-2020, 641-208-5561 TF

**FOR SALE:** German Shepherd puppies born July 3rd and 5th. 7-females, 5-males. Wormed and shots. \$200. May be seen Mon. - Fri. 5p-7:30p, Sat. 8 - 5. Queen City, Mo.  
PH: 660-216-1853 39

**HOURS**  
8 A.M.  
to  
5:00 P.M.  
DAILY EXCEPT  
SUNDAY



**Our  
Everyday  
Low Prices!**

50# unwashed red potatoes..... ONLY \$7.95  
50# Russet potatoes.....\$11.35  
Ginger Gold apples..... \$13.95 bushel  
**More apples & Barlett pears coming from Michigan soon!**

50# all trump bleached or unbleached enriched flour .....\$17.29  
50# Gold Medal king wheat enriched flour .....\$12.80  
50# Occident patent flour .....\$16.95  
50# Gold Medal stone ground wheat-a-laxa flour.....\$13.86  
50# Bay State winona patent flour.....\$13.79  
50# Prairie Gold Montana wheat whole grain white flour .....\$21.09

50# chemical free Montana hard spring wheat flour  
50# chemical free all purpose natural flour..... \$25.50 non GMO  
25# Gold Medal hotel & restaurant flour, unbleached .....\$8.28  
25# Gold Medal hotel & restaurant flour, bleached .....\$8.05

**MORE FLOURS** Purasnow cake flour, Durham wheat flour, Wingold pasta flour, pie & pastry flour, fine, medium ground & coarse stone ground, yellow corn flour, potato flour, oat flour, medium dark rye flour, white & whole spelt flour & light buckwheat flour.

Bulk pearled barley • 63¢ lb.  
Bulk buckwheat groats • \$2.79 lb.  
Bulk hulled millet • \$1.42 lb.  
Bulk steel cut oats • 45¢ lb.  
Bulgar wheat • 69¢ lb.

Organic kamut berries • \$2.29 lb.  
Whole oat groats • 50¢ lb.  
Quinoa grain • \$2.88 lb.  
Tri-Color Quinoa grain • \$3.15 lb.

3 qt. S.S. sauce pan w/ lid, \$13.98  
6" cast iron skillet, \$6.49  
8" \$9.35 10" \$9.85

Men's split leather cowhide gloves with rubberized safety cuff, \$6.98

Men's Xlong tube socks, 6 pr, \$7.95

**Check out our new fabrics!**

**DRIVE A LITTLE & SAVE A LOT**

**Stick With The Want Ads!**

*We get you the results you need!*

**TRI-COUNTY SHOPPER**

P.O. Box 168, 208 Weaver Road,  
Bloomfield, Iowa 52537

CALL 641-664-1333 TO SCHEDULE YOUR AD



**VINYL WINDOWS**

- Replacement
- New Construction
- Many Glass & Color Options

**Free Estimates**

19467 Driftwood Blvd.  
Bloomfield, IA 52537

Call Today: 641. 722. 3667

**YODER EQUIPMENT**  
BLOOMFIELD, IOWA

SOUTHERN YELLOW PINE TREATED WOOD POSTS  
Mineral Feeders  
Gates  
Variety of Sizes & Styles  
Feed Bunks  
Water Tanks  
CONTINUOUS FENCING

19887 Jade Ave  
2 1/2 Miles W of Bloomfield  
V.M. 641-664-2797

**WANTED:** All types handyman work in & around Scotland County, MO. Experience in industrial, farm, lawn, landscaping, fencing, tree trimming, cutting firewood, painting, & other repairs or cleaning. Call Kenny Bair  
PH: 660-342-4050 39

**FOR SALE:** 3x3x8 bales 1st cutting alfalfa, \$90 each. Can load. PH: 641-664-2060 38

**FOR SALE:** 2018 alfalfa hay. Mark Rogers, Douds, IA.  
PH. 641-919-9447. 39

**TIRES PRICED TO ROLL**

Rotate your tires every 5,000 miles!

Locally Owned

**Tire Sales and Service**

Cars and Light Trucks

- New Tires -Major Brands
- Mounting • Balancing
- Tire & Mechanical Repair
- Hand Torqued Lugs

**Karr Street Automotive**

500 Karr Ave. • Bloomfield, IA • 641-664-2551

# KEOSAUQUA SALE CO.

20511 Hwy. 1, Keosauqua, IA

<b>Results from Aug. 25th</b>	Fat lambs.....	\$135.00-140.00/cwt
Butchers.....	Ewes.....	\$65.00-95.00/cwt
\$32.00-38.00/cwt	Kid goats.....	40-70#
Sows.....	\$27.00-32.00/cwt	\$52.50-165.00/hd
Feeder lambs.....	Nannies.....	\$95.00-155.00/hd
\$140.00-152.50/cwt		
<b>Pound cows</b>	\$47.00-54.00/cwt low yielding	
	\$55.00-62.00/cwt high yielding	
<b>Pound bulls</b>	\$78.00-86.00/cwt	

## SPECIAL CATTLE SALE SAT., SEPT. 15TH

- 230 hd 350-550 blkx sstrs & hfrs - Bigger Farms
- 45 hd 600-750 Ang Gelv x strs & hfrs, GT - K Heisel
- 69 hd 400-550 Ang Balacerx strs & hfrs, GT - Eads
- 19 hd 400-550 red & blkx strs & hfrs - B Thomas
- 15 hd 600-650 blkx strs - M Gabel
- 17 hd 450-600 bwf strs - J Miller
- 45 hd 450-650 blk & bwf strs & hfrs - J Stucker
- 25 hd 600-650 blk Sim x strs - B Caves
- 100 hd 650-750 blkx hfrs, yearlings - Black

Watch website for early listings [www.keosauquasaleco.com](http://www.keosauquasaleco.com)

**Thank You For Your Business!** For More Information Contact:  
Selling Times  
Hogs.....9:30 a.m.  
Sheep & Goats.....10:00 a.m.  
Outside Merch.....11:00 a.m.  
Cattle.....Noon

Keosauqua Sale Co.  
319-293-3508  
Bill Goehring  
641-919-9365

[www.keosauquasaleco.com](http://www.keosauquasaleco.com)

Garages • Pole Barns Commercial Free Estimates

**LAN-DOW BUILDINGS**

We Stock a Complete Line of Building Materials

**Lancaster Lumber, Inc.** Complete Buildings or Packages Available

Toll Free 800-424-5071 Fax 660-457-3133

Hardware • Plumbing • Electrical • Paint  
500 Green Street • Lancaster, MO 63548

## Van Buren County, Iowa LAND AUCTION

WED., OCTOBER 10<sup>TH</sup> @ 5 P.M.

Auction Venue: Douds Community Center, 14159 Hwy. 98, Douds, IA

**78.73 TAXABLE ACRES± • 1 TRACT**



The Fordyce property is located in Section 14, Chequest Township, Van Buren County, IA. (4 miles south of Douds, IA, 13 miles northwest of Keosauqua, IA.) Make plans now to attend this upcoming Van Buren County, IA land auction. This farm features improved pastureland with excellent to good perimeter fencing. The parcel also offers excellent recreational acreage with high signs of all species of wildlife including whitetail deer and wild turkey. There is also several new home building sites with outstanding views of the the country side and includes rural water.

DETAILS, MAPS & PHOTOS ONLINE @:  
[www.SullivanAuctioneers.com](http://www.SullivanAuctioneers.com)

### FORDYCE CATTLE LLC

David & Amy Fordyce - Owners  
Attorney: James Dougherty • Dougherty Law Firm  
801 North Ave., Norwalk, IA 50211 • Phone: (515) 981-5401  
FOR ADDITIONAL INFORMATION, CONTACT:  
JIM HUFF (319) 931-9292 • JEFF HOYER (319) 759-4320

SULLIVAN AUCTIONEERS, LLC • TOLL FREE (844) 847-2161  
[www.SullivanAuctioneers.com](http://www.SullivanAuctioneers.com) • IL Lic. #444000107

## Scotland County LIVESTOCK AUCTION

P.O. Box 111 • Hwy 15 North • Memphis, MO  
660-465-7213 • Jerry & Barb Blomme  
660-341-0069 • Grant Blomme

### SPECIAL CATTLE SALE

Tues., Sept. 18th - 12:30 pm

- Early Listings  
80 black strs & hfrs, 475# - 600#  
40 black strs & hfrs, 550#  
20 Char x strs & hfrs, 500#  
15 mix bulls & hfrs, 600#  
Expecting more cattle by sale time.

#### Market Report for Tuesday, Sept. 4th:

STEERS:	310# - \$200.00	HEIFERS:	537# - \$154.00
	315# - \$201.00		630# - \$150.00
	430# - \$193.00		818# - \$136.00
	468# - \$197.00	FDR BULLS:	313# - \$200.00
	508# - \$182.00		395# - \$183.00
	518# - \$180.00		445# - \$165.00
	547# - \$170.00		492# - \$163.00
	554# - \$173.00		610# - \$143.50
	610# - \$172.00		656# - \$138.50
HEIFERS:	397# - \$171.00	BULK OF	
	404# - \$160.00	COWS:	\$45.00 - \$55.00
	414# - \$161.00	TOP COWS	\$55.00 - \$60.00
	487# - \$155.00	LB BULLS	\$78.00 - \$84.00
	505# - \$156.00	HOL VEALS	\$45.00 - \$65.00

[www.ScotlandCountyLivestock.com](http://www.ScotlandCountyLivestock.com)

FOR SALE: Baby Holstein bull calves. \$125 each.  
John Earl Kuhns, 16246 Jade Ave., Bloomfield, IA 52537. PH. 641-664-2336. 39

FOR SALE: 28'x80', 1999 model double wide manufactured home. 6" walls, 4 bedrooms, all new vinyl windows, new exterior doors, Some kitchen cabinets replaced, new roof 2 years ago. Also includes 12'x16' wooden deck. Must see to appreciate. \$42,000 OBO.  
William Beechy 19511 Harvest Ave., Bloomfield, IA. PH. 641-722-3061. 38

FOR SALE: Good used wood stove, glass door, ash pan, draft fan, new paint, new firebricks, \$800. Also antique square metal nails.  
PH: 660-328-6278 39

FOR SALE: New 500 gallon reverse flow smoker & grill combo. Includes easy transport trailer with pin hitch. Can view in Memphis, MO. For more information contact Bob Bair.  
PH: 660-341-5628 39

FOR SALE: Dakota saddles, 16" 1 horse, \$400 and 1 mule \$250. Both used very little.  
PH: 641-777-1229 38

**GET READY FOR WINTER!**

All Stoves UL Approved for Insurance Purposes

Comfort Max Model #75  
• Coal Stove  
• 92% Efficiency

Huntsville Model #1400  
• Wood Stove  
• 70,000 BTU

GINGERICH STOVES and PLUMBING

3/4 Mile East of Drakesville Southside  
VM: 641-664-2814

## Kirksville Livestock LLC

Kirksville, Missouri

### SPECIAL BREEDING STOCK SHEEP & GOAT SALE

Thur., September 20th • 6 PM

- Marvin Miller - 45 hair ewes, running with a buck
- Alvin Miller - 25 hair ewes, running with a buck
- Eli Borntreger - 20 registered Dorper, 1 1/2 to 3 yr old
- Amos Miller - 10 wool ewes, 1 wool buck, 1 dairy billy, 2 yr old

Pollard Bros Club Lambs - 2 xbred yrlg ewes, due Jan 20th, 1 xbred ewe lambs, due Jan. 30th

**CHECK OUR WEBSITE FOR UPDATED LISTINGS!**

"Proud to Serve Area Livestock Producers"

**YOUR BUSINESS IS VERY MUCH APPRECIATED**

We are open on Sundays to receive your livestock.

Phone for information: Patty Foster, Office 660-665-9804  
Chuck Ambrosia...660-342-3530 Doug Fleshman.....660-626-7148  
Caleb Randolph ....641-919-8539 Daniel Smith ..... 660-341-8396  
Mark Herbold.....515-720-8667 Jeremy Jarman .... 660-341-9879  
Al Ashmead..... 660-216-8730 Cory Cook .....660-651-7453

Visit our website at [www.KirksvilleLivestock.com](http://www.KirksvilleLivestock.com)

FOR SALE: 1,000 bushel grain bin. WANTED: Hedge Posts. Please leave message.  
PH: 641-664-1520 Ext. 1 39 VM: 641-664-1459 37

**GLENWOOD Elevator**

301 State Hwy. M  
Glenwood, Mo 63541

Logan Ford, Manager  
PH: 660-457-3973 • Cell: 660-956-3973  
Fax: 660-457-3045 • [gelevator@marktwain.net](mailto:gelevator@marktwain.net)

ALL THINGS BASEMENTY! Basement Systems Inc. Call us for all of your basement needs! Waterproofing, Finishing, Structural Repairs, Humidity and Mold Control. FREE ESTIMATES! Call 1-800-640-8195 (MCN)

## BLOOMFIELD IZAAK WALTON

Quail Marathon (Trap Shoot)

Five Person Team - \$180.00 per team (\$30.00 per shooter plus \$30 Sponsor Fee)

What: 100 targets

- First 50 targets establish handicap
- Second 50 targets shoot handicap
- Shoot 25 targets each Monday night.

ATTENTION: TRAP SHOOTSTARTING ONE WEEK LATER THAN LAST YEAR!

- Monday, September 17th
- Monday, September 24th
- Monday, October 1st
- Monday, October 8th

Practice at 6:00 PM with program starting at 8:00 PM

Turkey Shoot:

Sunday, October 13th  
Practice at 11:00 am with program starting at 1:00 pm

All Shooters Welcome  
Food Available on Grounds

For information call:  
Kenny Mincks - 641-777-7276  
Mike Vanderhoof - 641-208-5862

**MFA** TrendSetter **MFA** CATTLE CHARGE **MFA** FULL THROTTLE **MFA** CADENCE



We can cover all of your feed needs with MFA Trendsetter, MFA Cattle Charge, MFA Full Throttle and MFA Cadence brands.

Stop in you local MFA Agri Services location for all of your cattle feed needs!

**HAVE A LOT OF CORN?**

MFA has the supplements to get the most gain from your cattle. Stop in your local MFA Agri Service location to talk to us about Cadence and other supplement products.



Call or stop by today for more information or visit [www.mfa-inc.com](http://www.mfa-inc.com)

**Memphis, MO • 660-465-2603**

*Great quality at*  
**GREAT PRICES!**



**WEATHER COAT ENTERPRISES BUILDINGS**

*Perfect for*  
Hunting cabins • Storage sheds  
Garden sheds • Pet houses

**OZARK WOOD HEAT PELLETS**

*Clean, green, efficient*

- Premium-quality, 100% hardwood for the maximum amount of heat with minimal ash
- Environmentally-friendly



\*See store for details



**BUNK FEEDERS**

- High-density polyethylene bunk liners prevent rust
- Available with poly or metal ends
- Excellent drainage – lets water out while trapping feed inside
- Built strong to withstand the test of time, weather, and heavy usage

*Hometown*  
ANIMAL HEALTH

660.465.2967 • [hometownanimalhealth.com](http://hometownanimalhealth.com)  
18743 US Hwy 136 • Memphis, MO 63555 • On Highway 136 west of Memphis



NUTRITION • MEDICAL • PET • FARM • APPAREL

**NEMO** AUTHORIZED DEALER OF NEMO FEED.

**HELP WANTED**

**Full Time  
Depart. Manager & Clerk**

*Great benefits, retirement plan  
and holiday pay*

Apply in person:

**Memphis  
Farm & Home**

411 S. Market St., Memphis, MO

**660-465-8678**

Mon. - Sat. 8-5 • Closed Sunday

**CUSTOM COMBINING:**  
Downed corn no problem!  
Tim Zeiset.

PH: 660-216-6964 39

**FOR SALE:** Silage \$42/ton. Located 4 miles N. of Bloomfield.

PH: 641-895-6527 39

**WANTED:** Small forage wagon.  
Levi Mast. 641-722-3080. 39

**GILBERT'S SALE**  
YARD REC & GUN CONSIGNMENT SALE,  
OCTOBER 6, 9:00 A.M.  
Need gun permits to buy before sale. Advertising deadline is September 21, 641-398-2218, Hwy, 218, Floyd, IA, [www.gilbertsaleyard.com](http://www.gilbertsaleyard.com) (MCN)

**MAST VINYL WINDOWS**  
THERMO-PRO WINDOWS  
Custom Size Is Our Specialty  
Professional Installation Available  
THERMA-TRU DOORS  
**FREE ESTIMATES**  
22172 Hwy. 63  
Bloomfield, IA 52537  
**800-206-9949**

**STOR MOR MINI STORAGE**  
QUEEN CITY, MO  
10 x 10 Unit- \$35/mo.  
10 x 20 Unit- \$50/mo.  
10 x 30 Unit - \$65/mo.  
**515-720-7180**  
or  
**660-766-2228**  
"NUF SED"

**FRIESEN CONSTRUCTION**  
New Houses  
Remodeling  
Garages Electrical  
Plumbing  
Custom Cabinets  
**Arlen 664-3270**  
**Cell 641-208-0170**  
**Bloomfield, Iowa**

**HI-MOISTURE CORN GRINDING**

- Grinds corn coarse or fine – excellent for dairy or beef
- Can be fed any time of the year
- Preservative application available
- 6.5' & 8' bags



**HI MOISTURE ADVANTAGES**

- No drying or shrink deductions
- Inexpensive storage
- Grains retain their quality & nutrients
- Increases starch availability which allows you to feed less pounds. More feed value to the pound. (24-26% corn = 62-64 lb./bu.)
- Flexibility from harvest to feeding

**Call Nolan Diller • 660-956-3656**

**WAGLER METALS LLC**



**Need Metal Fast?**

**WE CAN HELP!**  
**Now roll forming metal roofing!**

21 colors to choose from!



19049 Ice Ave., Bloomfield, IA • 641-722-3692  
M-F 7:30AM-5PM • Sat. 8-11:30AM

# BLOOMFIELD



# LIVESTOCK MARKET

Wed., September 19th.....Fat Cattle, Slaughter, Cows & Bulls..... 9:00 AM  
 .....Special Yearling Sale ..... 11:30 AM  
 Wed., September 26th.....Fat Cattle, Slaughter, Cows & Bulls..... 9:00 AM  
 Wed., October 3rd.....Fat Cattle, Slaughter, Cows & Bulls..... 9:00 AM  
 .....Annual All Calf Sale ..... 11:30 AM  
 Wed., October 10th.....Fat Cattle, Slaughter, Cows & Bulls..... 9:00 AM  
 Wed., October 17th.....Fat Cattle, Slaughter, Cows & Bulls..... 9:00 AM  
 .....Calf & Yearling Sale ..... 11:30 AM

**SALE BARN OPEN UNTIL 9:00 PM  
 EVERY TUESDAY TO RECEIVE LIVESTOCK**

Phil Schooley ..... 641-664-3450  
 Ron Schooley..... 641-777-0302  
 Roman Schooley ..... 515-450-3685

*We appreciate your business!*  
 Tyler Schooley ..... 641-208-5442  
 Barn Phone ..... 641-664-2435

**HWY. 63 NORTH • BLOOMFIELD, IA**

## Building Packages



**We Can Roll Your Metal  
 While You Wait!**



**A W Metal LLC**  
 Metal Roofing Headquarters

Free 12 pack of  
**A&W Root Beer®**  
 with your next  
 purchase of \$500 or more!

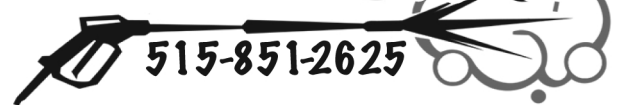


**641-664-3990 awmetal.net**

FOR SALE: Clarinet excellent condition, Bloomfield, IA  
 PH: 641-208-2754 37

FOR SALE: Big round hay bale forks. Silage/haylage feeding cart.  
 PH: 641-208-1054. 37

## HAMMEL HOGWASH!



**515-851-2625**

Pressure Washing • Siding & Gutters

## HOG BARN

Patrick Hammel • Bloomfield, IA  
 Check us out on Facebook!

FOR SALE! Nice oak roll top desk. Caramel stain. Asking \$1500.00 OBO.  
 PH: 660-341-4714. 37

FREE BARN CATS: Will deliver within a reasonable distance. Call after 5 pm.  
 PH: 641-680-8686 37

## ADVERTISE WITH US!

**GARAGE SALE** →

Run your garage sale ad with us for

**ONLY \$5.00**

Call or stop by the office for more details or to place your ad!

**641-664-1333**

Offer good through Sept. 28th at 5:00 PM.



Bring your plans in for a **FREE ESTIMATE**



Trusses Engineered and Designed to Your Specs



• Commercial • Agriculture • Residential •

17893 212th Street • Bloomfield, IA 52537  
 641-722-3605 • Mon.-Fri. 7 AM to 5 PM