

# Elkhart Lake Depot Dispatch

October 2018

www.depotdispatch.com

www.elkhartlake.com

FREE

Published by the Elkhart Lake Chamber of Commerce to support and promote its members and provide a service to the community



## School funding request explained

**Dr. Ann Buechel Haack**  
Elkhart Lake-Glenbeulah  
District Administrator

On November 6, residents of the ELG School District will be asked to vote on a referendum that will allow the ELG District to exceed revenue limits for a five-year period (beginning in the 2019-2020 school year) for operational and general maintenance expenses, as well as address three facility renovation projects: renovation of the high school performing arts auditorium, culinary arts classroom and lab stations and updating the high school football/soccer field.

Receiving strong support for this proposal from the community survey, the Board of Education at their August meeting moved forward with this referendum as it addresses the District's educational and facility/maintenance needs while maintaining a steady tax rate of \$8.21 per \$1,000 of assessed property value (\$821 for each \$100,000 assessed value) for the District taxpayers. The rate of \$8.21 retains the 2017-18 tax rate of \$7.91 for operations and general maintenance and adds on \$.30 to cover the cost of the loan to do the three projects outlined above.

As I speak to various individuals and organizations, the question arises as to why the ELG School District needs to go to the community for ask for referendum approval. While an informational brochure will be sent to all District residents in mid-October, and informational presentations will be held, it is those questions most commonly asked that I will try to address in this article.

Some residents don't understand why with the "property value/property wealth" in our district the school district does not just levy for additional funds.

This is usually followed with the question of why the District can't live within a set budget. The answer to both questions is the same. Funding for public schools in Wisconsin has been done in a unique manner since 1993, when the concept of Revenue Limits was put into place. The purpose behind the legislation had merit—it was an attempt to stop the unrestricted increase of property taxes. At that time, a district's revenue was divided by the amount of students and a per pupil amount was determined. This amount was then used in the Revenue Limit calculation.

Turn to **SCHOOLS**/page 8

Elkhart Lake-Glenbeulah High School's Homecoming was celebrated in Elkhart Lake this month. The 2018 Resorter Homecoming Court includes, from left Ransom Yasko, Kaylin Kalbacken, Cody Nelson, Karly O'Grady, Cody Rebedew, Saylor Schoenborn, Regan Dippel, Ciara Hassinger, Bryce Sitko, Megan Flora, King Cole Entinger, Queen Mia Rentmeester.

## HOMECOMING 2018



Les Tension Photos by Michael D. McGill

Grill and court photos by Morgan Vollbrecht





# Trick or Charity in Elkhart Lake and Glenbeulah

During trick or treat time in the communities of Elkhart Lake and Glenbeulah, be on the lookout for Elkhart Lake-Glenbeulah FFA members.

The FFA members will be part of the "Trick-or-Charity" campaign to collect nonperishable items to donate to the

Plymouth Food Pantry. Students will be stopping at houses with lights on for trick or treaters to collect donations of nonperishable items.

If FFA members happen to not stop at your house, feel free to drop items off at the Elkhart Lake-Glenbeulah High School.

HOST YOUR

# Holiday PARTY

AT THE OSTHOFF RESORT



Gather your group and celebrate the Yuletide season in one of our elegant ballrooms at the beautiful Osthoff Resort. Choose from a variety of delicious holiday-themed plated and buffet menus. At the end of the evening, take the elevator home with reduced overnight rates for groups reserving ten rooms or more!

For smaller group celebrations, ask about our private dining room in Lola's on the Lake Restaurant.

---

Special rates are based on availability.

Call 920.876.5827 for reservations or more information on holiday parties at The Osthoff Resort.



**THE OSTHOFF RESORT**  
Elkhart Lake, WI • [www.osthoff.com](http://www.osthoff.com)



**Rural Arts Roadtrip**  
FINE ART, FOOD & FUN  
October 12 & 13, 2018  
9-5

Scenic small towns and rural roads make for a terrific October getaway! A self-guided roadtrip allows you to observe artists demonstrating their techniques, interact with local farmers (bring your meat coolers), search for the perfect antique, artwork, or reclaimed furniture, enjoy a hayride, or purchase local foods already prepared!

## Self-guided Roadtrip October 12 & 13

- Host sites include guest artists offering glass, leatherwork, jewelry, fibers, paintings, wood, photography, pottery, metal art and more.
- Organic farm stops, artists studios, country markets, antique and upcycled creations.
- Demonstrations in wool-spinning, glass blowing, cider pressing and woodcarving.
- Hayrides, corn maze, shops and cafes.
- There is something for everyone!



For more information, brochure with map:  
Call 920-286-0971 or visit  
[www.RuralArtsRoadtrip](http://www.RuralArtsRoadtrip)  
See our Facebook page for updates



## Your perfect solution to your cleaning needs.

Rental Properties  
Residential • Commercial  
Construction New/Remodel

[www.MaidPerfectCleaning.com](http://www.MaidPerfectCleaning.com)



**Melissa Schneider 920.375.0208**  
Melissa@MaidPerfectCleaning.com  
P.O. Box 86 • New Holstein 53061  
BONDED & INSURED

From Shore to Shore, Lake to Lake, Call for an Estimate

# Harvest Moon Ball



**NOVEMBER 9-11, 2018**

Enjoy a special autumn weekend of music and dance with sumptuous dining, spacious accommodations, professional dance instruction and ballroom dancing.

**Weekend Package Includes:**


- Accommodations for two nights • Friday evening welcome reception
- Friday evening dancing with the **Bob Kuether Band** • Saturday dance instruction
- Saturday evening reception and five-course dinner
- Saturday evening dancing with the **Bob Kuether Band** • Sunday Breakfast Buffet

**From \$549 per couple, plus tax and gratuity**  
*(Based on a one-bedroom Woodland Suite; packages including other accommodation types are available.)*

**Call 888.473.8896 for reservations or more information.**




**THE OSTHOFF RESORT**  
Elkhart Lake, WI • [osthoff.com](http://osthoff.com)




Serving Midwest favorites with eclectic fare, for lunch and dinner.  
Tuesday-Saturday, 11AM-9PM and Sunday, Noon-9PM.  
Sunday European Brunch Buffet, 9AM-Noon.

It's not too early to reserve our private dining room for your holiday celebration!



**LOLA'S**  
*on the lake*  
RESTAURANT AND LOUNGE

920.876.5840 • [WWW.LOLASONTHELAKE.COM](http://WWW.LOLASONTHELAKE.COM)  
AT THE OSTHOFF RESORT • ELKHART LAKE





# Sharing our Journeys

By Carol Edler Baumann



## Eating in or eating out?

(Part one: Eating Out)

So often we pose the dinner question as if it were a matter of this or that. But now, living in retirement, we find that reality is not just an alternative between two choices, but involves a decision between many alternatives—A or B—or, yes, you guessed it: C or D or even E or F!

Take the question of eating in or eating out as an example. Before retirement, dining at home usually won hands down when my husband and I were faced with the dual choice dining query.

Why? Family. We would need a sitter and have to plan (or even prepare) the meal for her to serve. Cost. A modest restaurant would cost a lot more than even the fanciest leftovers that our freezer might be able to offer.

But what about now—we're retired! Yes, we can afford eating out and the kids don't need sitters any more. But do we really want to labor over a two to four-page menu to find something we both like? And although we can afford it, doesn't it still bug you to pay \$8 or \$12

for a hamburger when you know that even the ground sirloin can be purchased for a fourth of that price?

But even worse, does every restaurant today have to turn the volume so loud that even if they try to play something that sounds like music, it's impossible to recognize either the singer or the song? Now, I'll be the first to admit that my hearing is not what it used to be, but I do wear my hearing aids and we do try to frequent restaurants that recognize that good music is not synonymous with ear-splitting sound!

A final few words about the eating out choice. My husband writes a column on food and restaurants so I don't want to even touch his territory. But I would like to conclude with a plea to those restaurant owners or managers who would like to offer something different to a few of their customers who have passed the "60" plus age marker; dig up a few oldies and just see if you won't get a positive feed-back to the "fabulous 50s" or to a couple of Johnny Mathis or Nat King Cole pieces. Just try it!

Come join your fellow shutterbugs at the monthly meetings of:

## The Elkhart Lake Camera Club

Meeting held 3rd Monday of each month • 7-8:30pm

Cedar Landing Club House  
102 Cedar Lane, Elkhart Lake

For more information call 920-781-5004





# AVENUE Real Estate

**"Key to the Market"**

**AVENUE Real Estate Branch Office now located in downtown Elkhart Lake at 99B Lake Street**

*"Your Local Lake, Land & Country Experts!"*

Facebook YouTube LinkedIn Twitter

**WANTED:**  
Houses To Sell in Plymouth, Elkhart Lake, Crystal Lake, Plymouth, Sheboygan Falls & Kiel.  
*We have pre-qualified clients searching to buy property in a variety of styles and price ranges! Inquire Today!*

**NEW LISTING: CHRISTI'S INN**



121 S. East St., Elkhart Lake

OWN a piece of Elkhart Lake History! This beautiful Federal Victorian home sits on a beautiful fenced in yard and is currently operating as a bed and breakfast. Quite a few celebrities and race car drivers have lodged here. Each bedroom has access to its own bath room. Hardwood floors, beautiful furnishings, and unique nooks and crannies are featured everywhere. Many updates have been done on this home! Newer furnace, roof, windows (storms and screens), and updated electrical. Home is surrounded by mature trees. Entire third floor is owner's living area with full bath! You do not want to miss seeing this charming Victorian!

**Lot/Land-Division Road and County Highway C, Greenbush:** Peaceful 30 acres located conveniently between Sheboygan and Fond du Lac! Acreage features tillable land and wildlife abundant! A tranquil stream cuts into the property as well. You don't want to miss this rural setting. **\$275,500**



154 S East St, Elkhart Lake

Perfect Elkhart Lake Location! Adjacent to the Osthoff Resort and 700 feet from the private Village beach. You get a view of the lake from the porch. New roof, sewer, plumbing, central air conditioner, flooring and carpeting. This charming centrally located 3 bedroom 1 1/2 bath home has a large kitchen, nice size living room, with dining room and sun room. Call now to schedule your private showing today! MLS# 1574543

**NEW LISTING**




N3006 Mill Rd., Lyndon

This country setting gem is sure to take your breath away! This 79.22 acre property has been meticulously maintained and features an abundance of wildlife! The beautiful 2 bedroom home features a main level master with en suite bath, upper level loft, large stocked fish pond, countless fruit trees, and a large outbuilding for the toys and hobbyists. The property invites you to an outdoor enthusiasts dream featuring an abundance of deer, turkey, and wildlife including food plots, bedding areas, trails, deer stands, and so much more. Call today for your private showing!



441 Rhine St., Elkhart Lake

SOLD




W5922 Plateau Dr., Elkhart Lake

You don't want to miss this gorgeous 2 bedroom, 1 1/2 bath home. Large living room and nice kitchen, first floor laundry with beautiful staircase to the bedrooms upstairs. Large master bedroom has a skylight, and deck to the amazing view of the backyard. This 1.65 acre lot is in a quiet circle close to Elkhart Lake. Call now to view this property before it is gone.


**NEWLY LISTED: Lot/Land- LT Akin Street, Glenbeulah.** This lot is a fantastic location across from the village park and within the Glenbeulah city limits! Walking distance to local churches, park areas, and not far from the Kettle Moraine state hiking trails. **\$23,900**

*Make your own property search at [www.AvenueRET.com](http://www.AvenueRET.com) and receive property updates in minutes!*


[www.AvenueRET.com](http://www.AvenueRET.com)




**KATY CAIN**  
Katy@AvenueREI.com  
920.980.9302




**DONNA KRUEGER**  
Donna@AvenueREI.com  
920.627.1123



**JOA CAIN**  
Joa@AvenueREI.com  
920.334.0800



**NICK CAIN**  
Nick@AvenueREI.com  
920.980.8081



**JENNA KLINGER**  
Jenna@AvenueREI.com  
920.980.1925


**AVENUE Real Estate | 920.893.3001 | 410 S Milwaukee St., Plymouth**

**JOSEPH SARTORI CONCERT SERIES**

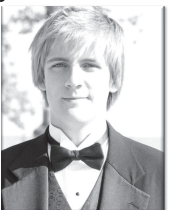
## An Afternoon of the Classics

Musical Masterpieces


**SUNDAY, OCTOBER 7, 2018 ~ 2:30 P.M.**




Tricia Marton  
Piano



Thomas Pibal  
Piano




Thomas Roberts  
Baritone  
*Accompanied by Jenna Howell*




Joshua Yang  
Piano

SPONSORED BY:



**PLYMOUTH ARTS CENTER**  
520 E. Mill, Plymouth, WI  
[www.plymoutharts.org](http://www.plymoutharts.org)  
920.892.8409



**SARTORI**

TICKETS:

**\$13/Adults (tax incl.)**

**\$7/Students (tax incl.)**

Children under five are free.

## DEPOT DISPATCH

**October 2018 - No. 384**  
Published 12 times yearly by the Elkhart Lake Area Chamber of Commerce, to support and promote its members and provide a service to the community

© 2018 Depot Dispatch  
All Rights Reserved

Publisher, **Pam Mathes and the Delta Publications staff**  
Executive Director, **Melissa Koehler**  
Membership Representatives, **Ron Nielsen,**  
**Rachel Montaba and Branden Boerner**  
Columnists, **Carol Baumann;**  
**Marcia Schamberger**

[www.depotdispatch.com](http://www.depotdispatch.com) • [www.elkhartlake.com](http://www.elkhartlake.com)

Accounting, **Megan Martin-Rohr**  
Distribution, **Abbey Hau**  
and **Delta Publications**  
Contributing Sponsors  
**Cleveland State Bank,**  
**Friends of the Library,**  
**Sargento**  
and **Sohn Mfg.**

Subscriptions  
**\$20.00/year (First Class)**

Address correspondence or questions to the **DEPOT DISPATCH**, P.O. Box 425, Elkhart Lake, WI 53020, or call (920-876-2922) between 9 a.m. and 4 p.m. For advertising questions, please call and ask for Pam Mathes (920-894-2828).  
E-mail address: [depotdispatch@elkhartlake.com](mailto:depotdispatch@elkhartlake.com)

The Depot Dispatch accepts non-member advertisements. It encourages and welcomes story contributions, press releases and event promotions from all members. Materials submitted for consideration will be reviewed by the editor, who reserves the right to adapt, as necessary. Submitted materials will not be returned unless specifically requested at the time of submission and accompanied by a stamped, self-addressed envelope.



# Front line emergency response

## Elkhart Lake's First Responders are usually first on the scene

When the emergency call is placed in the Elkhart Lake area, you can bet that one of the earliest groups to rally to help others will be the Elkhart Lake First Responders.

In their 20th year of serving the Village of Elkhart Lake and the Town of Rhine, the Elkhart Lake First Responders have an outstanding history of volunteerism and service to the community.

Their quick emergency response and faithful community service are steeped in dedication to the community by a group of 15 volunteer first responders.

To be kept in the loop for a possible emergency, they all carry pagers, radios, jump kits and automated external defibrillators.

"This equipment provides our members the necessary resources to render care in emergency situations ranging from motor vehicle accidents to heart attacks," Captain Darren Lindstrom said. He noted that the First Responders have an around the clock on-call response ready. "We are on-call 24/7/365," he added.

### Connections to community

Lindstrom said that the dedication of his fellow team members comes from a sense of commitment to the local community.

"I know you hear this part a lot but it's about being connected to your community through helping others in need," he said.

"The current group we have are amazing people! We come from different backgrounds and day jobs but in that moment that someone needs our help we gel together each taking a part in caring for patients making it look seamless," he added.

Lindstrom said the goal of the Elkhart Lake First Responders is to assess our patients and prepare them to be transported as soon as possible so they can receive more advanced care.



"We have seen heartbreak and we have seen miracles. There have been calls I will never forget, both good and bad, but just knowing we were there to try and make a difference makes me grateful for being a member of the Elkhart Lake First Responders," Lindstrom noted.

Elkhart Lake First Responder Members include Rob Schmidt, Cody Schmitt, Darren Lindstrom, Jeff Schmidt, Jeff Miller, Randy Lawrence, Amy Gross, Ben Grunenwald, Tad Matzdorf, Kim Purkey, Todd Purkey, Katelyn Purkey, Dean Bauer, Lisa Holzmann and Lee Vanderloop.

The Elkhart Lake Police Department is also a great help to us with a few 1st responders of their own.

First Responder Officers are Darren Lindstrom, Captain; Amy Gross, Lieutenant; Cody Schmitt, Training Officer; Rob Schmidt, Training Officer; and Kim Purkey, Secretary.

### Placing defibrillators

The Elkhart Lake First Responders, in partnership with the Kohl Foundation, have placed Public Access Automated External Defibrillators (AED's) throughout the Village of Elkhart Lake and Town of Rhine. AED's are lightweight, portable devices, which provide an electrical shock capable of restoring the normal heart rhythm of cardiac arrest victims.

On-the-spot access to this device for people who suffer a cardiac arrest has been found to be a key to survival.

### Fundraising Events

In addition to the defibrillator efforts, the Elkhart Lake First Responders also offer public CPR training. The group has

also offered other public education events to teach CPR course. The Elkhart Lake First Responders raise awareness and conduct fundraising at two community events, a booth at Downtown Night and at the annual fish boil at the Elkhart Lake/Town of Rhine Fire Station.

This year's fish boil is September 28 from 4-8 p.m.

"We use the proceeds from these events to upgrade any equipment that may be outdated," Lindstrom said. "We appreciate community and private donations to assist us with equipment replacement."

Anyone interested in donating to the Elkhart Lake First Responders should contact the first responders at 920-876-3333 or email EMS@elkhartlakewi.gov.

## Lakeshore Technical College ranked third by national pub

When it comes to openness and responsiveness to adult students, Lakeshore Technical College is among the top in the nation. Washington Monthly, a bimonthly nonprofit magazine of U.S. politics and government based in Washington, D.C. placed LTC in the number three spot in their national ranking of Best Two-Year Colleges for Adult Learners.

In addition to noting that LTC is top-notch at meeting the needs of adult learners, the ranking highlighted how well adult students fare once they graduate from LTC.

"Although LTC serves over 10,000 learners each year, we are a relatively small college on the national stage. Receiving this type of national recognition demonstrates that quality, innovation and student outcomes trump the size or location of the institution," said LTC President Paul Carlsen.

LTC had the highest ranking of any two-year college in Wisconsin.

The Washington Monthly rankings are constructed based on ease of transfer/enrollment, flexibility of programs, services available for adult students, percent of adult students (age 25+) at the college, mean earnings of adult students ten years after entering college, loan repayment rates of adult students five years after entering repayment, and tuition and fees for in-district students.

"Lakeshore Technical College is among the institutions doing the best job of helping adult students attain marketable degrees at affordable prices," said Paul Glastris, editor-in-chief of Washington Monthly. "We hope other colleges are inspired to follow the example Lakeshore Technical College has set—that's why we highlight these programs."

A full list of the selected colleges and details on the selection process are available at [www.WashingtonMonthly.com/college-guide](http://www.WashingtonMonthly.com/college-guide).

## EL-GHS hosts pie fundraiser

The Elkhart Lake-Glenbeulah High School Band's annual pie sale is underway. Dutch apple pies will be assembled by the band and their family members on Saturday, Oct. 6.

On Saturday, Nov. 17, the band and family members will assemble pumpkin and cherry pies. The cherries are from Door County.

The apple as well as the cherry pies can be frozen and baked at your convenience. The pumpkin pies are ready to eat or can be frozen.

Prices are apple \$11; cherry \$12; and pumpkin \$9. Orders are being accepted through Oct. 1 for apple and Nov. 9 for cherry or pumpkin.

To place an order, call Jodi Voss, band director, of the Elkhart Lake-Glenbeulah High School at 876-3381 or e-mail her at [jvoss@goresorters.com](mailto:jvoss@goresorters.com).

# Ed Carter

## Custom Home Remodeling

**Kitchens • Bathrooms • Decks  
Rec Rooms • Additions  
Handyman Services**

**920-876-2154**





# Van Horn expands footprint in Sheboygan

Employee Owned Auto Group expands their brand offering and selection in Sheboygan County

Van Horn Automotive Group has purchased Russ Darrow Nissan of Sheboygan and Russ Darrow Volkswagen of Sheboygan, located at 5515 Racetrack Road, Sheboygan, WI, from the Russ Darrow Group. The acquisition marks the second Nissan dealership and first Volkswagen dealership for the Van Horn Automotive Group, which now has sixteen total dealerships throughout Wisconsin and Iowa.

“We’re very excited to now offer 10 manufacturer brands and a selection of over 1,500 new/used vehicles under the Van Horn name in Sheboygan County,” said Chuck Van Horn, co-CEO of Van Horn Automotive Group. The south-side Sheboygan location featuring Nissan and Volkswagen add to a lineup of Sheboygan County locations, including: Van Horn Chevrolet of Plymouth, Van Horn Chrysler Dodge Jeep Ram Fiat of Plymouth, Van Horn Truck Center of Plymouth, Van Horn Budget Auto of Plymouth, and Van Horn Hyundai Mazda of Sheboygan. Chuck adds, “Not only does this acquisition offer another location for purchasing a vehicle from Van Horn, but also another option for vehicle service and repairs.”

The first Van Horn Dealership (Joe Van Horn Chevrolet) opened in Plymouth in 1966. Dick Strong, COO Van Horn Automotive Group said, “We got our start in Sheboygan County over 52 years ago. We are very familiar with the area and the people, and are happy to bring local ownership back to this location.

With recent acquisitions in Oconomowoc, Lomira, Stevens Point and Nehall, Iowa, our organization has been expanding quite a bit; but nothing is more satisfying than growing in our own backyard. The automotive industry is rapidly changing in the way customers buy cars; with access to more information online than ever. As we’ve grown, we’ve worked hard to improve our processes to meet customer expectations. We became the first employee owned automotive group

in Wisconsin in 2016; and our associates have a heightened sense of accountability for customer satisfaction. While we’ve been in this area a long time, we invite both new and previous customers to any of our locations to experience the difference.”

“As local owners, we feel it’s important to have a strong connection to our community,” said Teresa Van Horn, co-CEO Van Horn Automotive Group. “There are several meaningful organizations right here in Sheboygan County, and this store opening is a great opportunity to give back.” During the months of October and November, Van Horn will donate \$100 to Safe Harbor of Sheboygan County, for every vehicle sold from the Van Horn Nissan and Volkswagen Sheboygan location. Safe Harbor of Sheboygan County, Inc. provides prevention, intervention, education and outreach services to empower individuals, families and the community to end domestic abuse and sexual assault. “Van Horn Automotive Group has always been a long-standing supporter of Safe Harbor and invests in this community; especially those most at risk. Safe Harbor relies on the support of organizations and individuals in this community to provide critical services to victims of sexual assault and domestic violence,” said Laura Roenitz, Executive Director of Safe Harbor. “Van Horn is a leader both in the community and with cars. We are so grateful to Van Horn and their customers who support the work of the Safe Harbor team through this fundraiser.”

Van Horn Automotive Group, Inc. is a family born, employee owned automotive group with headquarters in Plymouth, Wisconsin. Founded in 1966 by Joe Van Horn as a single Chevrolet dealership, and purchased by his children: Chuck, Teresa and JP Van Horn, Van Horn Automotive Group has grown to include 16 automotive dealerships, a finance company, a real estate business and several insurance companies. The group employs over 580 people throughout Wisconsin and Iowa. For employment opportunities visit the Careers page at [www.vhcars.com](http://www.vhcars.com).



The Elkhart Lake Chamber of Commerce welcomed two new businesses to the community last month, holding ribbon cutting ceremonies for Insurance Solutions, above, and North Gate Floral, below.



## Harvey promoted to bank manger

National Exchange Bank & Trust is pleased to share the news of Sally Harvey’s promotion to Operations Manager for the Elkhart Lake and Sheboygan Falls offices. Harvey joined the bank in 2013 as a Customer Service Representative in Elkhart Lake and was previously promoted to Team Leader in 2016. In her expanded role, Harvey manages the day-to-day deposit operations for both offices.

Since beginning her banking career more than four years ago, Harvey has earned a Team Leader Certificate, Supervisor Certificate and her Diploma in Bank Operations from the Center for Financial Training.

Harvey and her family live in Plymouth, where she also grew up and attended high school. As an active member of the Elkhart Lake Community, Harvey frequently volunteers her time to help with Elkhart Lake Chamber events.

National Exchange Bank & Trust is an independent bank with locations throughout Southeast Wisconsin. For more information, visit the bank’s website at [nebat.com](http://nebat.com)

## Four Seasons Comfort LLC

*“Quality Service with Your Comfort in Mind”*

W2074 Garton Rd., Sheboygan • Office: 920-565-2095  
633 Eastern Ave., Plymouth • Office: 920-893-8900

[www.fourseasonscomfort.net](http://www.fourseasonscomfort.net)

---

**Infloor Heating • Heating • Air Conditioning • Sales & Service**





*Licensed / Insured*  
Mike Pelzel • Jeremy Lensmire

## THEEL AUTO INC.

### AUTO BODY, SALES & SERVICE

#### YOUR FULL SERVICE REPAIR SHOP

- Used Car & Late Model Repairables
- Refinishing & Rebuilding
- Computerized 4 Wheel Alignments
- Tire Sales

- Loaner Vehicles Available
- Insurance Work Welcome
- Sell INTERSTATE Batteries
- WI State Vehicle Emission Testing

**Wally Theel • [www.TheelAuto.com](http://www.TheelAuto.com)**

**N8364 CTH J • ELKHART LAKE • 800.588.4335 • 920.876.2703**

*Hours: Mon - Fri 8-5; Sat 9-12 • Accepting all major credit cards.*



## HomeReview

### Inspection Services, Inc.

RESIDENTIAL AND COMMERCIAL INSPECTION

**SERVICES:**

- Residential Inspections
- Commercial Inspections
- New Construction Inspections
- Phase Inspections
- Warranty Inspections
- Caretaking Inspections
- Radon Screening

Serving Sheboygan, Manitowoc, Ozaukee, Washington and Fond du Lac Counties



**Bob Turicik**  
920-892-7654  
[www.HomeReview.biz](http://www.HomeReview.biz)  
[www.facebook.com/HomeReviewWI](https://www.facebook.com/HomeReviewWI)



# Jewelry designer reaches for stars

## Kim Jakum finds high end niche in TV, movie jewelry

By Mike Mathes  
for the Depot Dispatch

When Elkhart Lake jewelry maker Kim Jakum started her hobby many years ago, she had no idea that she would one day be reaching for the stars.

Her unique creations have captured the fancy of wardrobe stylists linked to the stars of television and movie production specialists. In fact, her jewelry has already reached its own "star status" on many productions you may be familiar with.

Jewelry from Kim Jakum Designs has appeared on programs like *The Vampire Diaries*, where the actor Michael Malarkey, himself, picked out the ring to be worn by his character "Enzo." The ring was worn by the character for the entire final season.

Other shows in which jewelry from Kim Jakum Designs has appeared include—

- Bones;
- Chicago Fire;
- Sleepy Hollow;
- Cedar Cove;
- Arrow;
- The Young and the Restless;
- Baby Daddy;
- Law and Order SVU;
- Jane The Virgin; and
- The Fosters.

Her work has also appeared in movies, though they are not big name cinema titles.

### Upcoming appearances

Jakum has been in the process of pitching other upcoming shows for this fall season, including standards such as *Madam Secretary* and *The Orville*, along with newcomers *God Friended Me*, *Chambers* and *Charmed*.

She will also have several pieces worn on *This is Us*, starting with episode 4 of the upcoming season.

A Navy mom, Jakum is particularly proud to note that her creations will appear this fall on *Seal Team*, making special note of the fact that her son is in the Navy.

### Getting connected

Making inroads from her in-home studio on the edge of Elkhart Lake has provided an interesting pathway for Jakum.

Her work, comprised mostly of silver, gemstones and beaded jewelry takes shape in the studio, where she has a fully equipped metal smithing workshop.

Through an acquaintance, she was connected with a group known as The Artisan Group who helps artisans get their designs in front of the television show stylists.

Getting connected was only half the battle, Jakum noted. She had to find a way to catch the attention of the wardrobe stylists. "One of the reasons I think I have been so successful getting my jewelry worn on television, is that I put a lot of time and effort into researching the shows and I design my pieces with specific characters in mind," Jakum said.

Her designs get picked out of a bag full of jewelry from different designers, "It has opened a lot of doors for me and I now have connections to wardrobe stylists on my own."

She has literally sent hundreds of her



Enzo's ring - *The Vampire Diaries*



Bones earrings



*The Vampire Diaries* - Season 7

designs, in hopes of making a connection with the stars. Some of Jakum's Jewelry were part of the swag bags to the stars at the Golden Globes two years ago.

### Internet galleries

In addition to selling to the stars, Kim Jakum Designs also markets its custom jewelry on line through two different websites.

Her main site is [www.kimjakumdesigns.etsy.com](http://www.kimjakumdesigns.etsy.com) and is where her creations are on display and can be purchased. She indicated that the television connection has given her jewelry business more credibility, since fans of the various programming like to purchase jewelry worn by their favorite TV personalities. "I have used social media to let people know about my jewelry, and people from all over the world own my pieces," she said.

You can request custom work and find memorial jewelry and jewelry made with your child's artwork and signatures on her site [www.metalmorphis.etsy.com](http://www.metalmorphis.etsy.com).

"My work is considered artisan jewelry, and it takes time to make it. Everything is done on a piece by piece basis," Jakum said.

She has literally no local retail outlets for her jewelry, but has on occasion, been present at the Elkhart Lake Farmer's and Artisan's Market. She also has a friend in Bel Air, MD that carries her jewelry designs in her shop Julie Ellyn Designs, Handmade on Main.

Jakum also teaches private lessons out of her studio. She can be contacted at [kimjakum@yahoo.com](mailto:kimjakum@yahoo.com).



Commemorative Naval jewelry




From *The Fosters*



*Charmed* - Season 1



To see her latest creations follow her on instagram @kimjakumdesigns.



**paddockclub**  
elkhart lake

*Closed Sundays, Mondays & October 30 - November 3*  
Our menu changes often to bring you fresh local ingredients  
Available for private parties including rehearsal dinners & weddings

61 South Lake Street  
Elkhart Lake, WI 53020  
Phone: (920) 876-3288

[www.paddockclubelkhartlake.com](http://www.paddockclubelkhartlake.com)  
[www.facebook.com/paddockclub](http://www.facebook.com/paddockclub)





# SwitchGear honors firefighters with special brew, donation

SwitchGear Brewing Company of Elkhart Lake is putting its money where its beer is during the early fall brewing season.

To highlight a new brew called "Halligan," a special firefighter beer release, the Elkhart Lake microbrewery pledged to donate \$1 for every pint sold to a local fire department.

Halligan comes from the Halligan Bar, also known as a Hooligan Bar, which is a forcible entry tool used by firefighters and law enforcement officials.

The official description of the beer follows, "While pulling up on the scene and before giving your first report, don't ignore the 'light smoke showing.' While breach-

ing the door with the Halligan, ready to do your primary search, you notice a malty, yet smoky appearance. While doing your primary search, you find malty, ambery carmelly and a hint of sweetness inside this red ale. As this red ale extinguishes your thirst, pay close attention to that lingering light smoke left behind."

In its first contribution to local firefighters, SwitchGear Brewing Company presented a check for \$400 to the Elkhart Lake Fire Department.

SwitchGear will be donating to Elkhart Lake Improvement Association 50¢ for every bar of Artisan handcrafted goat's milk & beer soap until the end of September.



The EL-G Elementary Library received a generous book donation from Lucille Dickrell in honor of her 90th birthday, which was celebrated in June. Lucille and her family asked guests to consider bringing a children's book in lieu of a gift to the party. All the books were donated to the EL-G Elementary Library. In August Lucille and her daughters came to the EL-G Elementary Library and delivered the awesome books. Thank you so much, Lucille, for this wonderful book donation!



## D&D Carpentry

"Our name stands for quality"

OUR SPECIALTIES INCLUDE:  
Additions • Remodel Work  
Masonry • New Homes

General Contractors  
36 years of Serving our Community  
1324 Eastern Ave., Plymouth • (920) 526-3648  
www.ddcarpentry.com



# Celebrating 8 Years in Real Estate

**PVR** I look forward to continuing to guide my clients through stress-free home transitions.



Always willing to help with your Real Estate needs.

Todd Smith REALTOR®  
(920) 838-1770  
Todd@PleasantViewRealty.com



# PLEASANT VIEW REALTY

View ALL Area Listings, Daily Updates & Detailed Information at:  
**www.PleasantViewRealty.com**  
Kiel 894.7713 • Plymouth 892.7711  
327 Fremont St, Kiel • N6050 Pleasant View Rd, Plymouth



**110 Crestwood Drive Elkhart Lake**  
Affordable living space in Historic Elkhart Lake is available to you in this great ranch style listing. Starting with 3 bedrooms and 1 1/2 baths this home has an open concept kitchen, dining and living rooms that

enjoy great window areas to allow for wonderful natural lighting. Extra living space potential in the partially finished basement and a two car attached garage makes this home very easy to live in. Located in an established neighborhood with nearby churches, schools and downtown Elkhart Lake.

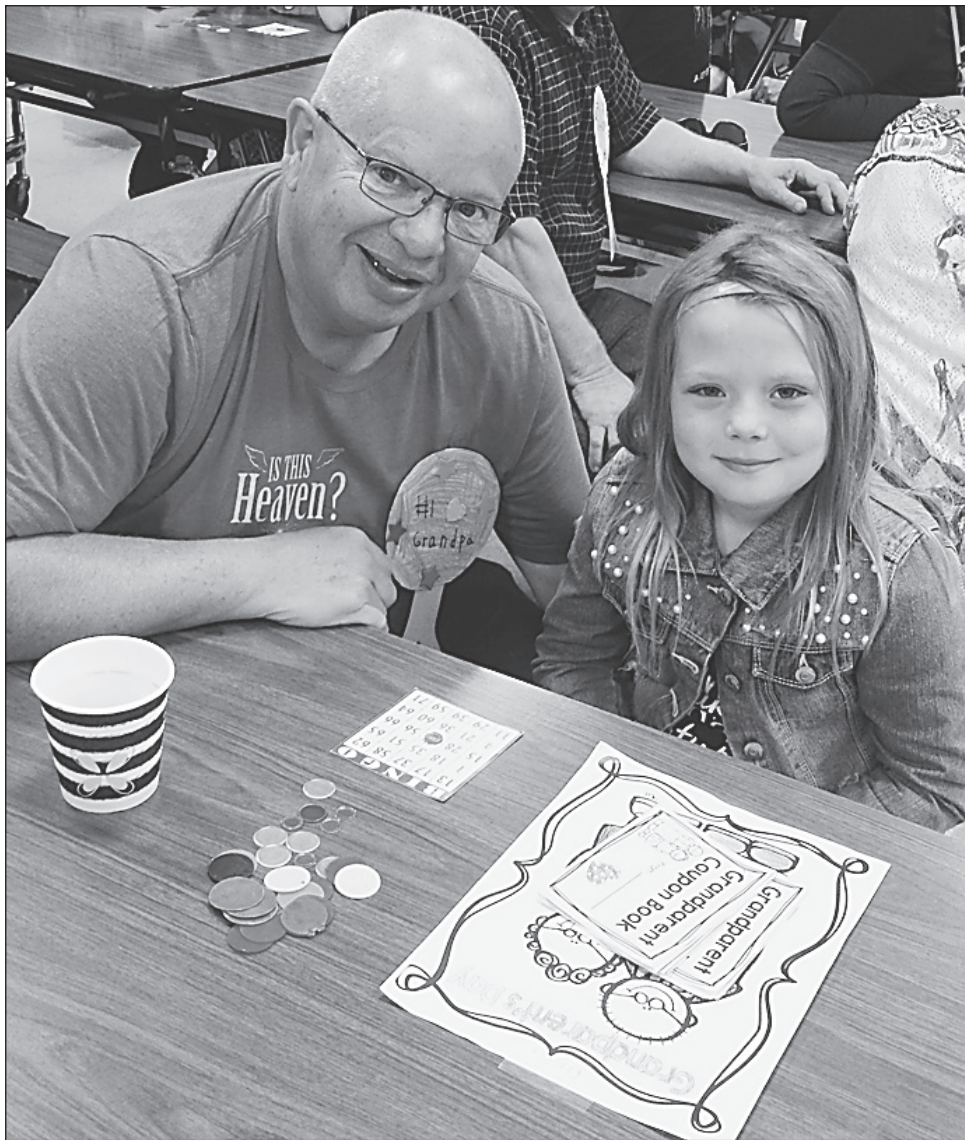


### Selling Real Estate Tips from Sharon...

1. Boost Curb Appeal. This is something you always hear, and with very good reason. Many people thinking of touring your home will do a quick drive-by first, often deciding on the spot if it is even worth a look inside. Make sure your home is ready to lure in onlookers.
2. Get your house Sparkling Clean. From shining floors and gleaming windows to clean counters and scrubbed grout, every surface should sparkle. This is the easiest (well, maybe not easiest, but certainly the cheapest) way to help your home put its best foot forward.
3. Beware pet odors. Really, this can be a big one! If you have pets, get all rugs steam cleaned and be extra vigilant about vacuuming and washing surfaces. Also be sure to keep any extra loved pet toys and doggie bones hidden when tours are scheduled.

 MATT 207-5450	 KARI 980-0431	 GAIL 946-2693	 JIM 946-2854	 LINDA 286-1949	 CONNIE 918-0698	 TY 918-0615	 SHARON 286-1944	 TODD 838-1770	 WAYNE 286-0463	
 ANN 207-2039	 JOHN 980-2539	 CLEO 331-3567	 BRIDGETT 262-224-7553	 CHRIS 395-8004	 KAREN 207-4041	 KRISTINE 980-5542	 SARAH 838-4660	 AMANDA 627-4225	 TAYLER 316-0237	 DONNA 980-2623





Olivia Godbert and Grandpa Carl Gunn enjoyed Grandparents Day.

## Grandparents have their day

On Monday, Sept. 10, the first graders from Mrs. Porath and Mrs. Hochmuth's classrooms invited their grandmas and grandpas to Elkhart Lake-Glenbeulah Elementary school for a Grandparents Day Celebration. The elementary cafeteria was filled with nearly 60 grandparents in attendance!

The grandparents and grandchildren spent an hour and a half together eating breakfast goodies, touring the classroom, and playing Bingo. Each grandparent left with a special project that was made during the first week of school. It was a special morning for some very special people in the lives of children.



Brody Sonntag with Grandpa and Grandma Sonntag.

# Schools

continued from page 1

tion going forward. It is this calculation that is multiplied by the student count to determine how much revenue a school district can raise under the state formula. State aid is then subtracted from the total amount, with the remainder determining the tax levy for the school district. One problem behind the origination of this calculation was there was no equity in determining this initial amount—for some school districts the level was at the lower range, such as ELG, and for others, it was set at the higher end. It is for this reason our base revenue number per member is approximately \$9,700 (below the state average) while other districts have a base revenue number that is close to \$20,000 per member-- over \$10,000 more per student. This puts the districts with a lower per pupil amount at a disadvantage.

While initially this base revenue amount was often adjusted for cost of living increases, that has happened less in recent years and has even decreased. For example, our current base revenue limit per member is \$9,781. Ten years ago, in 2009-10, our base revenue limit per member was \$9,746. Over the past 10 years, our rate per pupil has remained basically flat. However, this is only one factor in revenue limit formula. This per pupil rate is multiplied by the number of students to arrive at your base revenue limit. As we have had a decrease of 90 students over the past 10 years, our base revenue limit has decreased by almost \$800,000 from approximately \$5,300,000 to \$4,500,000. For the 2018-19 school year, our referendum dollars of \$725,000 will "backfill" this amount, but as this is the final year, it does not address this shortfall going forward.

People question if there are 90 less students over the past 10 years, shouldn't the District be able to operate with less money. Ninety students is a lot but when divided by 14 grade levels (don't forget 4K and kindergarten), it averages to 5 to 6 students per grade level. Where numbers allow, we have reduced staff, having one section instead of two at a grade level. However, as our student population changes, so do their needs. Due to special education needs, more special education aids and services are required under the students' Individual Educational Plans. The District is always looking for ways to reduce costs and be fiscally responsible. For example: One of the second bus routes has been eliminated, but due to our large geographic area, if more were cut, students would be on the buses well over an hour each way; maintenance upgrades have helped reduce electricity and heating costs; current administration has taken on the special education leadership thus

eliminating this position; fundraising has been done to support the cost of several projects such as the greenhouse, an all-inclusive playground, and various equipment upgrades. The District is constantly looking for ways to contain expenses while continuing to provide exceptional educational experiences for our students and maintain an environment which not only attracts but retains quality staff. Both are critical for any school's success and have been instrumental in ours. However, while the District contains cost when possible, there are also costs that continue to rise and/or we have new expenses, such as in the technology area.

While the total amount of revenue the District was able to raise in 2017-18 was less than the previous three years, the District's revenue limit that year of \$5,600,000 enabled the district to sustain the programs and staffing needed and also allowed for continued advancement. It was for these reasons, the referendum was based on the tax levy mill rate (\$7.91) from that year. After experiencing several years of decreasing revenue, the district reached the minimum financial level needed to sustain operations. This can be compared to a homeowner. Regardless of whether there is one person in a home or more, there are basic expenses—heat, lighting, car/transportation expenses, property insurance, etc. While the district has adjusted staffing to address student enrollment variations at different grade levels and meet current student needs and also made reductions in other areas, there is little left to cut without affecting our students' educational experience, our District's academic/co-curricular offerings, the quality of our staffing, or the continual upkeep/improvement of our facilities.

As Districts have to operate under the parameters of a revenue limit formula, often there is very little control over how much funding a District can raise each year. The District has no control over the amount of the per pupil amount and even when this remains stable or even slightly increases, it is only one factor. The largest factor for smaller districts is this amount is then multiplied by the student population, which is not known until after the third Friday in September as that is the "pupil count" date used in the formula. This can cause huge fluctuations to a budget. For example, as a gain or decrease in 10 students will make approximately \$100,000 difference to the budget, which for a small district is huge. So while the District tried to live within a basically flat budget, plan-

Turn to **FUNDS**/page 9

## SecurLOCK™ Equip

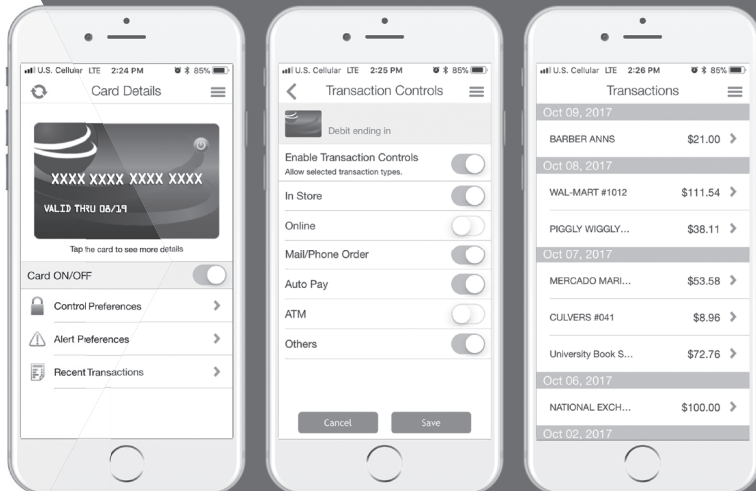
A free fraud alert tool  
Download the app today



nebat.com/securlock

**National Exchange**  
Bank & Trust

Member FDIC





# Funds

continued from page 8

ning can be difficult when your budget numbers vary annually based on the student count.

As school districts must operate under this revenue limit funding formula, the amount of value in a district has no bearing on the district's ability to increase their revenue for tax-levying purposes. The only way for a district to exceed the revenue limit calculation by state law is to go to referendum. That is why ELGS has done so in the past and will continue to need to do so, unless there are changes to the funding formula or our student population grows. The state wants the individual taxpayer to determine if they are willing to approve a property tax increase to support their local school system. Our community has done so in the past, and as a District, we hope this continues. However, this commitment of our community to the school district is not taken lightly. It is for this reason, that the District has honored the promises made in each referendum and worked hard to be sure that not only were operational expenses met, but the maintenance projects were completed as promised (the roofing and HVAC) and at the end of each referendum period, ELGS once again is a debt-free district. While loans are taken out to cover the major maintenance projects, all others are done on a "pay as you go" basis—which has worked very well for our District's financial picture and has also kept us on track for maintaining our facilities.

A follow-up question that is often asked is if the District's overall assessed property value has increased, but the amount of revenue limit for the District has decreased or has been basically flat, why haven't property taxes decreased? There are two reasons for this. First, much of the growth, especially in the Village of Elkhart Lake has occurred in Tax Incremental Districts (TID). The taxes generated from these areas are directed to covering the infrastructure and project costs. These properties do not go on the general tax roll until the TID closes—at which time there could be a substantial impact on the overall tax rate as the District's value would greatly increase. Second, as under the School Funding Formula, the amount of the revenue that can be raised is covered by State Aid and property taxes, if there is a change in one area, it affects the other. This is the area where the District's high property values do have a negative effect. While the higher values do not let us raise additional money, due to the fact that the state views ELGS as being a "property-rich" district, under the revenue limit formula, our district loses the maximum amount of state aid possible each year. For example, since 2009-2010 our state aid under the revenue limit formula has decreased from \$1,031,855 to \$253,955. This decrease of over \$775,000 has been shifted to the tax levy. And under the formula, the District will continue to lose the maximum amount of 15% annually until it becomes a zero-aided district. If there is any "silver lining" to this scenario is that even with this shift of funding from the state to the local taxpayer, the District's tax mill rate for its tax levy remains in the bottom 20% of the districts in the state and the lowest of any district in the area at \$7.91. This remains true even at the proposed referendum mill rate of \$8.21 as the mill rates of other school districts in the area range from \$9.08 to \$10.46.

What will this look like for a referendum question? This answer is a little difficult

to answer as the State will not allow the District to put a referendum question on the ballot that states "The ELG School District will maintain an \$8.21 mill rate for the 5 years spanning 2020-21 to 2023-24." Dollar amounts must be given, even though they will be estimates based on projected student population counts and a 2% increase in property values. As estimated, the dollar amounts listed on the ballot would be the maximum amounts the District could levy for under the referendum. And ultimately, there will be years to maintain the \$8.21 mill rate, the District may need to levy less, such as if property values increase less than 2%. Under the State law, what cannot happen is for the District to levy an amount higher than what is listed in the question. This scenario could happen if property values increase more than 2%. In that case, the District would levy for the proposed dollar amount and the tax mill rate could end up being less than \$8.21. As the Board of Education has honored the promises made on behalf of the District in the past referendums, they are committed to keeping the levy at a maximum of \$8.21 over the five-year period. Maintaining the District's credibility with the community is extremely critical.

Based on the assumptions explained prior, the referendum question will read as such:

Shall the School District of Elkhart Lake-Glenbeulah, Sheboygan County, Wisconsin, be authorized to exceed the revenue limit specified in Section 121.91, Wisconsin Statutes, by \$1,467,920 for the 2019-2020 school year, by \$1,560,171 for the 2020-2021 school year, by \$1,698,640 for the 2021-2022 school year, by \$1,843,433 for the 2022-2023 school year, and by \$2,175,909 for the 2023-2024 school year, for the non-recurring purposes consisting of operational and general maintenance expenses, including, but not limited to, renovating the high school performing arts auditorium, culinary arts classroom and lab stations and updating the high school football/soccer field?

A yes vote means you DO support the referendum and agree to allow the district to exceed the revenue limits for amounts not to exceed those listed in the question. (Reminder: Keeping the mill rate at \$8.21 will determine the final referendum number annually). With this support, the District will be able to maintain current programs and services, undertake the three projects, as well as address future technology and maintenance needs (for example: abatement/replacement of remaining h.s. floors, renovating lower level bathrooms by elementary gym, updating fire alarm system in elem./m.s.).

A no vote means you DO NOT support the referendum. Under this scenario, the District will need to make significant cuts to programs and services, eliminate/postpone the completion of the three proposed projects, and delay technology replacements/upgrades and maintenance projects in an attempt to balance the budget.

What is the tax impact if the referendum would pass? As the District is committing to maintaining the \$8.21 mill rate over the period of the referendum, the tax impact from the \$7.91 that was levied in 2017-18 school year would be an additional \$.30 annually. This would cover the amount of the loan to do the three projects. This impact would be an increase of \$30 per year per \$100,000 in property value over the property taxes paid in 2017. For example, the increase on a \$200,000 property would be \$60 a year or \$5 per month.

While the tax levy for the 2018-19 is still unknown at this time, the projected tax mill rate most likely will decrease below the \$7.91 level. If this is the case, property

taxes would decrease for one year before increasing back to the \$8.21 level for the next five years. At this time, the projected mill rate is between \$7.50 and \$7.70 but will vary dependent on September's third Friday pupil count and the final equalized valuation for the district—which is not known until mid-October. The District will pass the tax levy by November 1, 2018.

The final question that I will address, as I am asked this occasionally, is whether property taxes would go down if ELG did not have their own school, but instead, consolidated with another district. This issue was posed to Michel Clark from Robert W. Baird and Company. He stated he did not believe this to be the case. Whether the school District is located within or without a community, taxpayers are still going to pay school taxes to some district. This cannot be avoided. From the cases Baird has studied of this similar situation, their finding was that if a higher property-value district (such as ELG) joined a lower property-value district (such as Plymouth, Kiel, etc.), the higher-property-value district would see an increase in taxes while the lower property-value district would realize a decrease. Also, taxpayers must remember that if our local school district would cease to exist and if we joined another district, not only would we assume

part of that district's operational costs, but we also assume part of their debt. At this time, ELG is the only debt-free district in the area; the districts surrounding us have substantial debt. For example, the districts which border ELG have long-term debt balances ranging from approximately \$8,000,000 to \$31,000,000.

Hopefully this "Referendum Overview" doesn't leave you with more questions than answers, but if it does, do not worry. Not only is school finance very unique, it is also, at times, very confusing. If you have additional questions, watch for more information to arrive in your mailboxes in by mid-October. In addition, informational sessions will be hosted on Wednesday, Oct. 17 and Thursday, Oct. 23 at the ELG high school at 7:00 p.m. Also do not hesitate to visit or give me a call at 876-3381 (school), 876-3330 (home) or 920-980-8369 (cell). I'd be happy to talk with you. Information will also be posted on the district website at [www.elgs.k12.wi.us](http://www.elgs.k12.wi.us). It is important to us that you have the information necessary to form your opinion on this referendum question. Most importantly, please remember to exercise your right to vote on Tuesday, November 6 or contact your town/village clerk if you need to vote via absentee ballot.



**NEUMANN**  
Plumbing & HVAC  
Residential, Commercial,  
Industrial & Remodeling

Residential Homes • Apartments • Hotels • Multi-Unit  
Buildings • Restaurants • Assisted Living Facilities

**Call Neumann for ALL Your  
Plumbing and HVAC Needs**

**24 HOUR SERVICE**  
**920-565-3345**  
[neumannplumbing.com](http://neumannplumbing.com)



turn to the experts™

1114 Millersville Ave  
Howards Grove

**OVER 50 YEARS OF QUALITY WORKMANSHIP**

## ALL THINGS AUTOMOTIVE

### Vehicle Maintenance and Repair

- Brakes
- Tires
- Shocks
- Engine
- Suspension
- Restoration
- Computer Diagnostic

**Get  
your car  
ready for  
winter**

### Vintage & Classic Cars Import & Domestic

More than  
just racecars



790 S. Lincoln Street, Elkhart Lake, WI 53020 • 920-207-2511  
[www.wolfmotorsport.com](http://www.wolfmotorsport.com) • [bwolf28@yahoo.com](mailto:bwolf28@yahoo.com)



# Badger State Restoration offers calm in crisis

The unthinkable happens to homeowners, apartment dwellers and business owners every day.

- A fire.
- Flooding.
- Toxic mold.
- A pest infestation.
- Even a violent death.

Where would you turn in a time of crisis?

How would you begin to restore your family's or business' peace of mind and bring order back to your life?

That's exactly the kind of professional help Badger State Restoration prides itself in.

"When a traumatic situation strikes, you need someone who knows how to put your life back together - now," owner Curtis Voight said.

"Badger State Restoration's team is here to help you through the most challenging and stressful times you may ever experience. And, while cost is hardly the first thing on your mind, you can rest assured we'll deliver top-quality care that's on time and on budget."

Badger State Restoration is a partner that, individuals, business owners, emergency responders and insurance professionals can — and do — rely on every day.

"The truth is, there's no substitute for capable, caring professionals who can respond to the most challenging crises quickly, efficiently and effectively. That's because restoration situations are anything but do-it-yourself jobs. They need to be done fast. They need to be done right. They need to be done by licensed, bonded professionals with years of experience, specialized equipment, and advanced training and techniques, and Badger State Restoration offers that professionalism for many challenges," Voigt said.

## Fire aftermath

When fire hits your home, apartment or business, you need to act fast. Cleaning up the smoke, fire and water damage left behind by a fire isn't a do-it-yourself job.

"No matter what day or time, we'll respond quickly and take the necessary steps to help you start putting your life back in order," Voigt said.

Badger State Restoration fire recovery services include:

- Prompt and an accurate damage assessment;
- Boarding up doors and windows of a damaged property as needed;
- Neutralizing corrosive soot and smoke before it does more damage;
- Mitigating smoke odor;
- Moving and storing salvageable items;
- Cleaning and deodorizing premises; and
- Completely restoring fire, water and smoke damage - we are General Contractors.

## Weather damage

Eastern Wisconsin residents are no strangers to severe thunderstorms, lightning strikes, hail, high winds, tornadoes, freezing rain, ice damming and blizzards.

Badger State Restoration is no stranger to putting life back in order when weather disasters strike.

Badger State Restoration's seasoned,



trained professionals take on a storm's aftermath with a sharp focus, keen skills and great care to start putting your life back in order. They take all the necessary action steps to make things right, including:

- Prompt and accurate damage assessment;
- Emergency boarding and tarping;
- Moving and storing salvageable items;
- Complete water extraction, clean-up;
- Drying and dehumidifying affected spaces;
- Mold prevention; and
- Complete damage repair.

## Water damage

Whether it's a broken pipe or a river or stream that's topped its banks, when disaster strikes you need an experienced hand to help put your life back in order now.

Cleaning up flood damage no job for the untrained. Flood waters contain pathogens, pollutants and even raw sewage. And, the dangers don't stop there. Water damage clean-up requires the services and skill of the experienced, well-trained professional team from Badger State Restoration.

"We respond quickly to minimize water's damaging effects and take the necessary action steps to make things right," the owner said.

- Services include—
- Prompt and an accurate situation assessment;
  - Moving and storing salvageable items;
  - Complete water extraction and clean-up;
  - Drying and dehumidifying affected spaces;
  - Mold removal and prevention;
  - Cleaning, deodorizing and sanitizing premises; and
  - Completely restoring flood or water damage.

## Hoarding situations

Perhaps nowhere is the need to regain order more obvious and pressing than when a loved one, friend or tenant has fallen into the grasp of a hoarding disorder.

Hoarding situations pose many health hazards that require the services of trained, experienced and properly equipped resto-

ration professionals.

Badger State Restoration's team members understand the unique issues the lead to hoarding situations. We know hoarders deserve our care, compassion and discretion. We develop an effective plan of action to sort and organize items; move and storage salvageable items; remove and dispose of waste materials; and clean, deodorize and sanitize the premises. In cases involving animal hoarding, Badger State Restoration utilizes commercial-grade equipment and odor removal technology to thoroughly remove animal waste and its effects.

## Infestations

Animal and insect infestations come in many forms - bed bugs, cockroaches, rodents, bats, birds, raccoons and more.

Animal waste poses many dangers, especially when particle becomes airborne, that can lead to serious illness and death. Cleaning up an infestation and its effects should never be left to untrained individuals.

## Pack Up

We take extra care when packing and moving your valuables and sentimental treasures. We adhere to the highest standards of professionalism, care and integrity to meet - and exceed - your expectations. That includes keeping you informed throughout a restoration project by communicating clearly and treating you like we'd treat our own family and friends.

## Inventory

When a disaster forces you to move your contents from your home or business, it's

absolutely critical that you have a complete accounting so you know where things are or what you've lost so you can start the insurance claims process. Badger State Restoration knows how to inventory your property right the first time.

## Storage

We have the manpower, expertise, and facilities to warehouse your property's contents for safe keeping with speed and great care.

## Cleaning

Furniture, clothing, family heirlooms, documents, electronics and appliances that appear irretrievably lost can often be saved by our specialized equipment and advanced techniques that remove smoke, water, contaminants, dirt and odor. The contents cleaning process is just one more service that reflects Badger State Restoration's commitment to services done right, on time and on budget.

## Appraisal

You deserve to receive fair value and a fair settlement when faced with a catastrophic loss. A fair settlement starts with an accurate appraisal of your losses. And, that's where Badger State Restoration's trained staff comes in. We know how to do appraisals right - and stand by them. Appraisals are just one more area where we keep our promise to property owners and their insurers to do things the right way every time.

## Professional standards

Badger State Restoration maintains the highest standards of professionalism, care and integrity.

Our specialized equipment, years of experience and advanced training and techniques add up to fire restoration that's done right, on time and on budget.

Badger State Restoration's employees are licensed, certified and bonded.

The firm is locally owned, locally operated and available 24/7, 365 days a year. Headquarters are 11 Rustic Street, Plymouth.

When disaster strikes, call the experts at Badger State Restoration, (920) 946-9477, and regain control.

Badger State Restoration serves Sheboygan, Manitowoc, Calumet, Fond du Lac, Washington and Ozaukee Counties.



Russ cutting Ryan Pafford's hair.

## GOODFELLAS

### BARBERSHOP

"Cut the way you like it!"

**Men & Women Cut.. \$14**

**12 & Under or 65 & Over .. \$13**

**Shampoo & Cut..... \$17**

**Beard Trim ..... \$5**

APPOINTMENTS APPRECIATED  
WALK-INS WELCOME

**RUSS HORNECK, Barber**  
**894-HAIR or 894-4247**  
**630 Fremont St., Kiel**  
**Fades, Taper & Flat Tops**  
 Mon. 12-8 • Tues. 8:30-5:30 • Wed. 8:30-8  
 Thurs. 8:30-5:30 • Fri. 8:30-5:30  
 Cash or check.

Quality hair care products to fit all your needs like Paul Mitchell & American Crew.

Requests accepted for special products.



www.goodfellasbarbershopinc.com



# Two bank sites bought by National Exchange

National Exchange Bank & Trust Chairman of the Board Peter Stone announced today that it has reached a definitive agreement with Wisconsin Bank & Trust, a subsidiary of Heartland Financial USA, Inc., to purchase the assets of two of its banking centers in Chilton and Elkhart Lake, both in Wisconsin.

"These two offices will be a natural fit with the geographic footprint and culture of National Exchange Bank & Trust. We are a community bank, which started in Fond du Lac, Wisconsin in 1933. We look forward to welcoming the Wisconsin Bank & Trust staff as a part of the National Exchange Bank & Trust team and welcoming customers to our organization," Eric Stone, CEO of National Exchange Bank & Trust, said.

All current banking center employees will be retained by National Exchange Bank & Trust. National Bank & Trust banking services in Elkhart Lake will be combined into the current Wisconsin Bank & Trust facility, which will allow for the addition of drive-up services for current National Exchange Bank & Trust customers. The Chilton office will remain open as a National Exchange Bank & Trust office.

James Chatterton, President and Chief Operating Officer of National Exchange Bank & Trust, commented: "The leadership teams of the two institutions will be integrally working together to preserve a quality customer experience. We have a strong commitment to support the staff and customers as we make this transition."

Wisconsin Community Bank President, Curtis Chrystal said, "Reaching this agreement with a community bank such as National Exchange makes the most sense for our customers." Chrystal stated that the local Board of Directors for Wisconsin Community Bank is grateful and appreciates the communities for their past support.

The transaction is scheduled to be completed in the first quarter of 2019, pending regulatory approval.

National Exchange Bank & Trust, an

independent, Wisconsin-based bank headquartered in Fond du Lac, Wis., has more than \$1.8 billion in assets and operates offices throughout Southeastern Wisconsin. It has been held in high regard as one of the highest performing financial institutions in the Midwest based on its strong balance sheet, asset management, community investment, and products and services that are meaningful to today's financial customer. For more information, visit [www.nebat.com](http://www.nebat.com) or call 920.921.7700. National Exchange Bank & Trust is a member of FDIC and an Equal Housing Lender.

Wisconsin Bank & Trust a subsidiary of Heartland Financial USA, Inc., (NASDAQ: HTLF), is a business-focused community bank with assets of more than \$1 billion. Wisconsin Bank & Trust serves customers in the Madison, Milwaukee, Green Bay, Sheboygan, Monroe and southwest areas of Wisconsin. WBT offers a wide range of personal and business banking, private client and mortgage lending services. For more information, visit [www.wisconsin](http://www.wisconsin)

**BUSINESS DIRECTORY**



Serving the Surrounding Areas  
**GREAT SERVICE AT A REASONABLE RATE**  
 Call John Buss  
**920-876-3357**  
[www.jbrealty.net](http://www.jbrealty.net)

**BUSINESS DIRECTORY**

**Sohn Manufacturing Inc.**  
*"Sohn has meant quality for over 60 years."*  
 544 Sohn Drive  
 Elkhart Lake, WI 53020  
**920-876-3361**  
 email: [sohn@sohnmanufacturing.com](mailto:sohn@sohnmanufacturing.com)  
[www.sohnmanufacturing.com](http://www.sohnmanufacturing.com)

# SteffeS

*Builders, Inc.*

**Full Service General Contractor**  
 Family owned & operated since 1949  
**810 Church Street, St. Cloud • (920) 999-2091**  
[steffesbuilders@charter.net](mailto:steffesbuilders@charter.net) • [www.steffesbuilders.com](http://www.steffesbuilders.com)

RECLINERS • SLEEPERS • SOFAS • BEDDING

**SPECIAL PRICING**

FROM OUR CLEARANCE CENTER BEDDING DEPT.!

**11 Styles on Display**

<b>Twin</b>	<b>\$129</b>	per set
<b>Full</b>	<b>\$199</b>	per set
<b>Queen</b>	<b>\$299</b>	per set

**FIRM**

<b>Twin</b>	<b>\$269</b>	per set
<b>Full</b>	<b>\$299</b>	per set
<b>Queen</b>	<b>\$329</b>	per set

**PILLOW TOP**

<b>Twin</b>	<b>\$289</b>	per set
<b>Full</b>	<b>\$349</b>	per set
<b>Queen</b>	<b>\$379</b>	per set
<b>King</b>	<b>\$549</b>	per set

**Bring Your Truck, Trailer, Van, Etc. DELIVERY AVAILABLE**

**PLYMOUTH FURNITURE CLEARANCE CENTER**  
 Fairfield Plaza • 2133 Eastern Ave. • Plymouth  
[PlymouthFurnitureWI.com](http://PlymouthFurnitureWI.com)

OPEN Mon.-Fri. 9-8;  
 Sat. 9-5; Sun. 11-4



RECLINERS • SLEEPERS • SOFAS • BEDDING

## Classified Ads

**In the Depot Dispatch!**

Sell an item, send a birthday, anniversary, congratulatory or thank you message, list an employment ad, list an event, etc.

**\$10 for the first 15 words and 35 cents each additional word.**

To include a Classified Ad in the next edition, email [depotdispatch@elkhartlake.com](mailto:depotdispatch@elkhartlake.com) by the 15th of every month. Include billing information.

[www.depotdispatch.com](http://www.depotdispatch.com)

## Elkhart Lake's Real Estate Agent

Thinking of Selling?

Call Judith Salzwedel 920-918-5449 or email [judithsalzwedel@vicvill.com](mailto:judithsalzwedel@vicvill.com) now for professional, expert help for a smooth transaction!

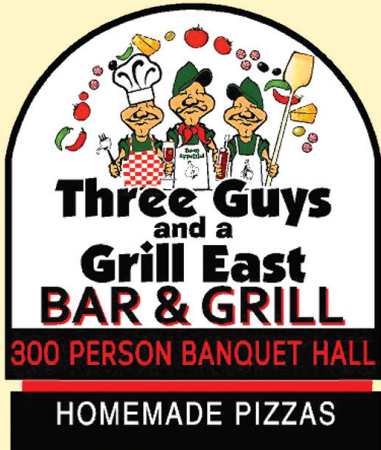


# Judith Salzwedel

Salzwedel Woods & Water Real Estate



**EAST EXCITEMENT**  
**3 Guys & a Grill East**



**MONDAYS:**  
 Burgers \$1.50  
 Rail Old Fashioneds \$2

**WEDNESDAYS:**  
 16" 1 Topping Pizza \$6.99  
 Pints of Beer \$2

**THURSDAYS:**  
 3 Pork Sliders with Slaw \$4.50  
 Bottles of Craft Beer \$2.50

**SUNDAYS:**  
 Chicken Bruschetta Pasta \$6.99  
 Rail Mixers \$2

N8350 HWY J • ELKHART LAKE • 920.876.4404

\*\*Dine in only. No substitutions. No other offers can be combined.

**MARSH MADNESS**  
**3 Guys & a Grill on the Marsh**



**At Marsh Lodge**  
 Elkhart Lake, WI

W7039 CO RD S R • ELKHART LAKE  
 920.876.2535

\*\*Dine in only. No substitutions. No other offers can be combined.

**TUESDAYS:**  
 3 Beef Tacos \$3.99  
 3 Fish Tacos \$4.99  
 Tap Beer \$2

**WEDNESDAYS:**  
 Burgers \$1.50  
 Rail Old Fashioneds \$2

**THURSDAYS:**  
 1/2 Rack of Baby Back Ribs,  
 French Fries, Coleslaw,  
 Dinner Roll \$7.99  
 Rail Mixers \$2

**SUNDAYS:**  
 BBQ Pork Sandwich \$3  
 Rail Screwdrivers \$2  
 Short Rail Bloody Marys \$3

**Otto's**

**RESTAURANT**

Dine at *Your Place on the Lake*™

Join us each weekend for our  
**FRIDAY FISH FRY**

Offering perch and cod, includes coleslaw and choice of french fries, baked potato or homemade German potato salad.

Adult \$17, Child \$10 (age 10 and under), plus tax.

Serving breakfast, lunch and dinner.  
 Seasonal hours apply.

**For reservations or more information,**  
 call 920.876.5857.

Located on first floor of The Osthoff Resort.  
 101 Osthoff Avenue, Elkhart Lake • www.osthoff.com

Thanks for reading the **Elkhart Lake Depot Dispatch**

**big deals ON COOL STUFF in october**



**THE Paddock Shop**

Open Sat., Oct. 27th for the Cancer Walk/Run!



**October Hours: Weekdays 10-4**

Some exceptions apply~ call ahead, 920-892-8116  
 Enter via Gate 6 on State Hwy 67

Teeing Off Together in the 12th Annual  
**GOLF Challenge**

to benefit  
 Elkhart Lake-Glenbeulah Education Foundation  
 and Athletic Association

**October 6, 2018**

Quit Qui Oc Golf Club • Elkhart Lake, WI

**Schedule of Events**

**Approximate Times**

- 11:00 a.m. Golf begins for 18 hole golfers
- 12:30 p.m. Golf begins for 9 hole golfers
- 10:30 a.m.-5:30 p.m. Silent Auction/Raffles
- 3:00-6:00 p.m. Cocktails/Appetizers



Elkhart Lake-Glenbeulah Education Foundation



For more information visit [www.elgef.org](http://www.elgef.org)  
 Register by September 21, 2018



# Halloween Pops Concert ahead

The Elkhart Lake-Glenbeulah High School Band and Choir Members will present a Halloween Pops Concert on Friday, Oct. 26 and Saturday, Oct. 27 at 6:30 p.m. in the high school auditorium.

Literature meets music in this haunting concert. Enjoy an evening of original and classic poems as well as other pieces surrounding the American Halloween Tradition.

For \$5 at the door you can listen to the EL-GHS Band, Choir and Jazz band perform unique Halloween pieces. There will

be games for the kids and lots of snacks. The event offers entertainment for the entire family.

Come and show your support by dressing up in your Halloween costume for the concert. For more information call (920) 876-3381.

Instrumental Music Director is Jodi Voss. Choral Music Director is Holly Green. The proceeds from this concert will benefit music activities at the high school.



## Give Your Family *Time Together* at The Osthoff Resort.

Own a beautiful one-, two- or three-bedroom, fully furnished condominium on Elkhart Lake. A great vacation home with rental income and no work or worry for you! Prices range from \$150,000 to \$875,000.

**It's a great time to buy!**

For ownership information, contact:

**Julie Kath, Broker**

juliekath@osthoff.com

920.876.5854

800.876.3399, ext. 5854



OSTHOFF RESORT REALTY, LLC

www.osthoffrealty.com

# The Santa Steam Train is Coming!!!

**Friday, November 23**



On November 23 the Santa Steam Train will visit the Village of Elkhart Lake from 4-6pm.

The train will deliver Fraser Fir Christmas Trees that can be purchased for \$55. Trees must be purchased in advance.

Tree tickets can be purchased at the Elkhart

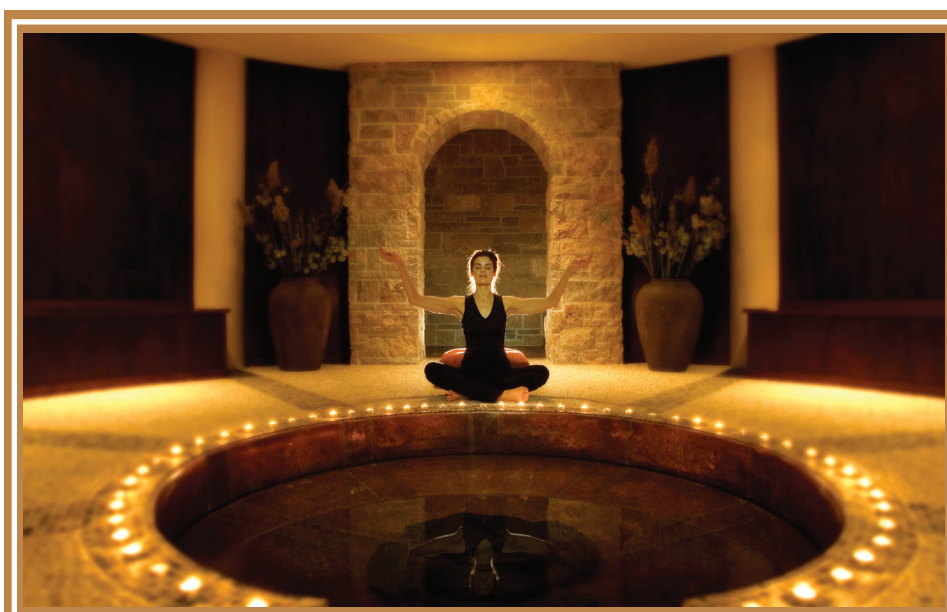
Lake Chamber Office or Elkhart Lake Village Office.

Proceeds from the sale of the trees benefit the Elkhart Lake Fire Department and the Plymouth Fire Department.

Sponsored by the Elkhart Lake Area Chamber of Commerce and Plymouth Chamber of Commerce.



Thanks for reading the <sup>Elkhart Lake</sup> Depot Dispatch



## *Treat Yourself Well*

Receive 60% off a second service of a 50- or 80-minute massage, facial or body treatment of equal or lesser value.

Offer is per person. Valid on new appointments, Sunday–Thursday, through October only! Based on availability, may not be combined with other offers.

To begin your Aspira Spa journey, call 920.876.5843.



at The Osthoff Resort • Elkhart Lake, WI • www.aspiraspa.com



## Elkhart Inn

### Fresh Fish Fridays

In the tradition of The Elkhart Inn, fresh fish specials will be featured weekly.

### Perch Stack

Parmesan baked, or breaded and fried.  
Served with tartar sauce.

### Saturday Night Prime Rib

Includes wedge salad, choice of potato and vegetable.

It's not too early to reserve our private dining room for your holiday celebration!

Serving dinner Thursday through Saturday, 5–9PM.

Reservations are encouraged; call 920.876.3133.

91 S. Lincoln Street • Elkhart Lake • www.elkhartinn.com





# PAC hosts high school class reunion musical

The “Eden Prairie All-Class High School Reunion” musical is a brand-new theatre production written and directed by Kerrylynn Kraemer featuring the ever-popular String Along Band. The Plymouth Arts Center invites you to take a Stroll Down Memory Lane as our cast of characters from Eden Prairie High School reminisce about those Glory Years. Find out what has happened to them since their high school days at “The All-Class High School Reunion.” You will enjoy listening and dancing to all those wonderful tunes from the past decades played by the String Along Band. Only two shows will be presented, Friday, Oct. 26 and Saturday, Oct. 27 at 7:30 p.m. at the Plymouth Arts Center, 520 E. Mill Street, Downtown Plymouth, WI.

music spans the generations, playing Rock N’ Roll, Bluegrass, Country, and various classics that we all love from days gone by. A few of their favorite artists are Johnny Cash, Willy Nelson, Patsy Cline, John Denver, Elvis, and Roy Orbison.

About the Playwright/Director. Kerrylynn Kraemer is an actress, singer, songwriter, director, and a playwright, She has been volunteering with the Plymouth Arts Theatre Company since 2007, presenting her own original material as well as directing numerous other productions. “Eden Prairie High School Reunion” is her fifth original play presented at the Plymouth Arts Center. A Fredonia native, she makes her home in Plymouth with her family.

The Plymouth Arts Center is western Sheboygan County’s leading arts destination, celebrating its 25th Anniversary in 2018. Visit Gallery 110 North showcasing Wisconsin fine artists in changing exhibits and the PAC Gift Shop for original art and gifts created by members.

The PAC offers a vibrant schedule of live musical and theatrical performances, art classes, chartered bus trips, and special annual events, i.e. Jazz & Blues Crawl, Spring Art Tour, Paint the Towns En Plein Air, and the nationally acclaimed, “Big Cheese Drop/New Year’s Eve Party.” The PAC serves as an unique backdrop for private parties or meetings. Tour/School groups are always welcome. Gallery admission is free. Open Tuesday-Friday 10 a.m.-4 p.m.; Saturday & Sunday noon to 3p.m.; or by special appointment. Closed on Mondays and holidays.

## Fresh Meals On Wheels helps people stay home

A recent survey conducted by Fresh Meals On Wheels of Sheboygan County found that 88% of meal recipients are at risk of malnutrition due to issues such as poor health, swallowing problems, depression, inability to acquire or prepare healthy meals, and more.

“That is right here in Sheboygan County, not in some other far-away place,” explained Allison Thompson, associate executive director of Fresh Meals On Wheels. “What that says to us, is that without our meals and friendly visits, these wonderful people would be more likely to be in a hospital or other facility.”

Data shows that half of Sheboygan County’s seniors are a high-risk of malnutrition. “We can help,” said Thompson. “Everyone thinks that meals are for the ‘other’ person. But really, our freshly cooked meals are for anyone who is unable to properly obtain or prepare food that meets their dietary needs.” That could include any person who cannot get to the store, or stand long enough to cook, or a person recently diagnosed with diabetes or kidney failure, or someone recovering from hip surgery or cancer.

Meals On Wheels employs a registered dietitian to meet needs in a variety of diets including heart healthy, controlled carb, renal, gluten free, lactose intolerant, and bland. Many clients say they eat better with Meals On Wheels. As Terry, a Meals On Wheels client says, “I am finally eating all of my vegetables!”

“We need the public’s help to find those in need and let them know it is okay to have fresh meals delivered to their homes. Our mission is to keep people well at home,” Thompson said. There is no waiting list, and referrals can be made for those in need of financial assistance.

According to the U.S. census, more than 2,000 seniors in Sheboygan County live alone, as do more than three-fourths of Meals On Wheels of Sheboygan County meal recipients. Living alone contributes to not just malnutrition, but also depression and injuries due to falls. Having a friendly volunteer who has cleared a background check visiting and delivering a hot meal decreases depression and isolation, and increases overall wellness.

Meals are available Monday through Friday, and frozen meals can be delivered on Friday for weekend enjoyment. Each meal is homemade by a ServSafe-certified culinary staff in the Christopher Family Kitchen at Meals On Wheels. Many of the ingredients – particularly the fruits and vegetables – are locally sourced.

Sheboygan’s Meals On Wheels program was the first in the country to begin significantly utilizing locally-sourced produce in their meals. Since then facilities in Canada and Texas have followed suit.

For more information about Meals On Wheels, to register a loved one for meals, or to volunteer, please call 920-451-7011, or email [freshfood@FreshMealsOnWheels.org](mailto:freshfood@FreshMealsOnWheels.org).



Join us for this one-of-a-kind interactive show! Tickets are \$12 in advance and \$14 at the door tax included. A cash bar will be available. Tickets may be purchased at the PAC Box Office Tuesday-Friday, 10 a.m. to 4 p.m., call 920.892.8409 or conveniently online: [www.plymoutharts.org](http://www.plymoutharts.org).

About the Band. The String Along Band is based in Southeastern Wisconsin and features members: Brian Karthaus; Steve Karthaus; Zach Karthaus; Karen Karthaus; Steve Vogt; John Higgins; “Doc” Nock; Fred Heyman; and David Morrissey. Brian, Steve K., Karen, Steve V. and David were musicians/performers in Plymouth Arts Center’s recent production of the award winning, “Ring of Fire...Johnny Cash Story.” String Along plays music to sooth the savage soul! Their



## The Pumpkin Patch

Fall Family Weekend  
**October 6 & 7 • 10am - 4pm**

**ACTIVITIES:** Indian museum tours, wagon rides to the effigy mounds, pumpkin patch, corn maze, fall snacks, fall decorations, kid activities, trout feeding & fishing.

**Henschel’s Indian Museum & Trout Farm**

N8661 Holstein Road, Elkhart Lake • (920) 876-3193

Open in the fall by appointment.

**New! Native American Artifact Show**  
Sunday, October 7

Painting • Wallcoverings • Drywall • Woodgraining • Faux Finishes  
Wood Finishing • Deck Restoration • Free Estimates • Fully Insured



**Hi-Tech**  
PAINTING & DECORATING

**REFERENCES • FULLY INSURED**  
20+ YEARS OF EXPERIENCE

**Ron Gerharz 920-207-2479**

Interior • Exterior  
Residential • Commercial



Find us on Facebook

**www.hitechpaintingdecorating.com**

*Serving The Entire Sheboygan County Area*



## Schwaller’s Painting & Staining

Professional interior & exterior painting & staining

**www.schwallerpainting.com**  
**(920) 876-4020**







**The Waelderhaus, managed by Kohler Foundation and located in Kohler, WI, stands as a tribute to the tradition of Bregenzerwald Province of Vorarlberg, Austria. It faithfully reproduces the architecture peculiar to this Alpine area and stands as a museum of minute detail in the perfect marriage of artistry and superb craftsmanship.**

## Kohler Foundation among new Chamber members

Kohler Foundation located in Kohler, Wisconsin and established in 1940, has long supported the arts and education. The work of the Kohler Foundation encompasses five major areas of concentration: art preservation, grants, scholarships, a performing arts series (the Distinguished Guest Series), and the management of the Waelderhaus, an historic home.

Kohler Foundation was established in 1940 by Evangeline Kohler, Marie C. Kohler, Lillie B. Kohler, Herbert V. Kohler, Sr. and O.A. Kroos. One of the foundation's first projects was the care of the Waelderhaus for use by the community, particularly the Kohler Girl Scouts and Kohler Women's Club, and participating in the construction of a theatre building in the Village of Kohler.

As early as the 1950s, Kohler Foundation was involved in preservation efforts. Led by Ruth DeYoung Kohler, Old Wade House, a stage coach inn in Greenbush, Wisconsin was restored and brought back to life. In June 1953, the site was gifted to the people of Wisconsin through the Wisconsin Historical Society and is now operated as the Wade House Historic Site. The Wade House remains a popular attraction and recently added a new visitor center and the Wesley Jung Carriage museum (opened June 2013).

Since the 1970s, the preservation of artist-built environments, folk architecture, and collections by self-taught artists has been a major focus of Kohler Foundation. Ruth De Young Kohler II, director emeritus of the John Michael Kohler Arts Center and past president of the Kohler Foundation, was instrumental in providing the leadership and vision that has brought the Kohler Foundation to a preeminent position in this field. Early preservation projects included Wisconsin Concrete Park and Painted Forest. Kohler Foundation is now active outside of Wisconsin, with preserved art environments in Louisiana, Kansas, Ohio, Georgia and Maine. Over the past several years, gifts of art have been made to nearly 100 institutions ranging from prestigious museums to colleges and universities and other non-profits, small and large. This ensures the art will be cared for in perpetuity and made accessible to the public. Collections have included art created by self-taught and relatively unknown artists as well as prominent artists who are recognized

regionally and/or nationally.

The performing arts have long been important to the Kohler family and to Kohler Foundation. At a time when television was nearly non-existent and professional performing artists were a rarity in small town Wisconsin, the Kohler Women's Club began to offer guest lectures and musical attractions at their afternoon meetings. Under the direction of Ruth De Young Kohler, the Kohler Women's Club brought guests like Admiral Richard E. Byrd, Pearl S. Buck, Princess Ileana of Romania, the Boston Opera Choir, and many others to Kohler. In 1944 this program became the Kohler Foundation Distinguished Guest Series and continues today as the longest running performing arts programs in Wisconsin. This season performances include Katharine McPhee, Postmodern Jukebox and Wynonna & The Big Noise. With three to four events per season, the Distinguished Guest Series offers world-class performances at accessible prices.

Kohler Foundation also makes charitable grants to local non-profits for arts and education programs. Most grants are awarded in Sheboygan County and occasionally in other small towns in Wisconsin. Small grants provide needed seed money to organizations and are offered by the foundation twice each year.

Scholarships are another important part of Kohler Foundation's mission. Each year, scholarships are awarded to graduating seniors at 12 high schools in Sheboygan County. These highly competitive scholarships include the Herbert V. Kohler Scholarship for leadership and the Ruth DeYoung Kohler Scholarship for Artistic Merit.

The Waelderhaus managed by Kohler Foundation, was designed by noted architect Kaspar Albrecht. Marie Christine Kohler brought the Bregenzerwald-born and talented architect and sculptor to Kohler to design and build the Waelderhaus in honor of her father, John Michael Kohler. Completed in 1931, the home stands as a tribute to the tradition of Bregenzerwald Province in Vorarlberg, Austria. The Waelderhaus offers daily tours beginning at 2:00 p.m., welcomes visitors for musical performances throughout the year, and every December hosts the annual Gingerbread Festival.

The Kohler Foundation is a new member of the Elkhart Lake Chamber of Commerce in 2018.

# Distinguished Guest Series hits 75th year

Accomplished actress and singer Katharine McPhee, fresh off her Broadway debut in the hit musical *Waitress*, will open the 75th season of the Distinguished Guest Series on Saturday, November 3 at 8:00 p.m., in the Kohler Memorial Theatre.

McPhee made her worldwide debut on Season 5 of *American Idol* before landing at #2 on Billboard's Hot Singles Sales chart in 2006 and #2 on the Billboard Top 200 albums in 2007. While releasing several successful albums, she also starred in the CBS drama series *Scorpion* and the NBC musical drama *Smash*. In spring 2018, McPhee made her Broadway debut starring in the hit musical *Waitress*.

Renowned for her powerhouse presence and show-stopping performances, McPhee will take the stage at the Kohler Memorial Theatre performing a range of music that has defined her acting and singing career, including a host of reimagined, recharged, and reinvigorated timeless jazz standards from her latest full-length album, *I Fall in Love Too Easily*.

### Ticket Prices and Ordering for Katharine McPhee

Individual Tickets: Katharine McPhee Adult/Student A Seat- \$55/\$28; Adult/Student B Seat- \$50/\$25.

(Prices do not reflect sales tax or minimal service fees. Student group discounts are available).

Order tickets online and choose your own seat at [kohlerfoundation.org/tickets](http://kohlerfoundation.org/tickets) or order by phone at (920) 458-1972 (be-



**Katharine McPhee**

tween the hours of 8:00 a.m. and 5:00 p.m., M-F). The concert begins at 8:00 p.m. at the Kohler Memorial Theatre, 260 School St., Kohler, Wis.

The Kohler Foundation is a non-profit, private foundation dedicated to supporting arts, education and art preservation initiatives in Wisconsin. The Distinguished Guest Series is one of the longest running performing arts series in the state of Wisconsin. Since 1940, the series has been inviting poets, actors, musicians and dancers to express their artistic vision and connect people through the arts.

## Quit Qui Oc Sunday Packer Special\*



### RESTAURANT HOURS:

**Lunch Daily** 11am-2pm  
**Friday Fish Fry** 5-9pm  
**Sunday Breakfast** 9am-1pm  
**Rib Night** Third Thursday every month



**9 holes\***  
 after 11:00am  
 \$10 walking  
 \$15 riding

**18 holes\***  
 after 11:00am  
 \$20 walking  
 \$30 riding

\*Special good through the end of the year.

500 Quit Qui Oc Lane • Elkhart Lake • 876-2833 • [www.QuitQuiOc.com](http://www.QuitQuiOc.com) | [www.facebook.com/quitquioc](http://www.facebook.com/quitquioc)



Specializing in:

**Wedding Floral & Event Design**  
**Special Occasion Arrangements • Home Decor**  
**Handcrafted Products & Unique Gifts**



141 E. Rhine St. • Elkhart Lake • 262-781-5025  
 OPEN: Tues.-Fri. 10am-5pm • Sat. 10am-3pm



[www.northgatefloral.com](http://www.northgatefloral.com)



# Wolf Motorsports offers services to area

**By Mike Mathes**  
for the Depot Dispatch

It doesn't matter whether the car you drive gets you to work each day, or takes a spin through the Road America carousel on a vintage race weekend.

Both need a dependable and trusted maintenance regimen.

That's where one of Elkhart Lake's newest auto maintenance business enters the picture. At Wolf Motorsports,™ an experienced team of mechanics treats both racing cars and every day vehicles with the kind of care that helps them reach their own finish line successfully.

Wolf Motorsports is located on the south end of the Motorsports Villas development that was constructed in 2016.

Although a newcomer to the community Wolf Motorsports features the face of experience in its owner and staff. Bart Wolf, who worked for the families' Chrysler dealership for many years, operates the facility with a skilled staff of auto repair technicians. Wolf has additional experience prepping race cars for nearly 40 years.

"I've been doing automotive work all my life," Wolf said.

Together the two worlds of auto repair experience give Wolf Motorsports the opportunity to repair, tune or prep just about any sort of vehicle, whether it's destined for highway use, headed for the race track, or simply one of those vintage kinds of vehicles that needs a bit of mechanical restoration work from time to time. The broad scope of services offered by Wolf Motorsports also includes work on minivans and trucks of all varieties.

## Open to serve community

Wolf emphasized that his service center may have "upscale" trappings, but its vision is to provide automotive service opportunities for the entire community.

"We offer our services to anyone," Wolf said. "If the vehicle you are driving is out of factory warranty, why pay dealer prices for service."

Wolf Motorsports handles all varieties of repair needs from the most mundane and simple, to the most complicated.

Wolf said the market has indicated a need for experience car mechanics that can be trusted. "People don't feel comfortable going off to a big box to get their vehicles repaired. They want a place where people are passionate about the cars they are working on. That's who we are," he said.

## Range of work

"We work on oil changes, all the way up to motor and transmission rebuilds and everything in between."

Tires, breaks and exhaust systems are also specialties for the Wolf Motorsports staff.

"Because we deal with vintage race cars, our techs are really well versed in carburetion. "It's become a lost art," Wolf said. "We are fortunate to have the experience in tuning those vehicles, and it transfers to working with both modern cars and restoration vehicles. People don't always know where to take their collector cars from the 60's, 70's and 80's to get their work done, but that's right in our wheelhouse. It's stuff we really enjoy working on."

Altogether, Wolf Motorsports has a technical staff of five people full time, and another 3-4 who are available on a part-time basis during peak seasons.



**At Wolf Motorsports, experienced mechanics offer technical service to cars and trucks, whether they are race cars, collector cars or every day vehicles. The customer lounge, right, offers an upscale waiting experience at the area's new 'car nirvana.'**



## Finding the unobtainable

Through its many connections, Wolf Motorsports is also able to link vintage vehicle needs with hard-to-find parts.

"We specialize in unobtainium wheels," Wolf chuckled. That term refers to wheels that are largely unobtainable because they haven't been manufactured in the past 40 years.

## Strong in diagnostics

"We believe strongly in diagnostics for our repair work," Wolf said. Computer technology employed by the service center helps to detect and diagnose potential mechanical issues before failure occurs.

"If you have a fuel pump starting to go out, or coils are starting to go bad, we can help detect those issues," Wolf added. "We can predict when something might be failing before its truly on its last legs."

## Car nirvana

Wolf Motorsports has an eye-catching presence from the outside, as its show room opens to State Highway 67 just south of the Elkhart Lake firehouse.

"We see people slowing down or almost



stopping to catch a glimpse of the cars in the show room," he said.

Perhaps its that glimpse of the vision for Wolf Motorsports that intrigues them. At any time, the technicians might be working on cars valued between \$50,000 and \$3 million.

Maybe it's the vintage appearance of the repair shop surroundings, carefully crafted during the build to reflect a passion for vintage cars.

Better yet, customers or potential customers are invited into the "car nirvana" experience in the Wolf Motorsports waiting room. The upscale, second story customer lounge offers a great place to wait for repairs in what amounts to a car lover's paradise, complete with couches, work stations and WiFi connections to the outside world.

"We want people to truly feel welcome when they stop to get their service work done," Wolf said.

## Part of community

Wolf emphasized that the automotive service offered at Wolf Motorsports is done with the intent of serving the Elkhart

Lake area community, as well as the racing community.

Being part of the community makes Wolf Motorsports a stakeholder in the community, and builds reciprocal trust between the service staff and the community it serves.

"We are neighbors with the people we serve. We have to look people in the eye. So, it's even more important to maintain our reputation for service and keep a fair price on the scope of work we provide," he said.

To schedule an appointment for your vehicle, you can call, email or text.

Wolf Motorsports is located at 790 S. Lincoln Street, Elkhart Lake. The phone number is 920-207-2511.

Hours for the business are 9 a.m. to 5 p.m. Monday through Friday, and by appointment. Wolf Motorsports can also accommodate early morning and evening drop offs or pickups.

**Send us your  
calendar items to  
depotdispatch  
@elkhartlake.com**





# Inside the Bottle

by Jaclyn Stuart CS, DWS, FWS

## Inside the Bottle: Sweet vs. Fruity

“Real wine drinkers don’t drink sweet wine.” This misguided proclamation came from a tasting room employee that went on to declare that people should never ask for sweet wine, but instead should ask for wine that is “fruity”. I was told about this by a customer that had stopped in for a good “fruity” wine and when I inquired if she wanted a sweet or a dry wine, she shared this tasting room experience.

As wine is a beverage made by fermenting fruit, it would seem logical that all wine is “fruity”. However, depending on how the wine is made, it may be earthier in flavor and aroma - not just fruity. Typically, wines from the New World (North America, South America, New Zealand, and Australia) are fruit-driven wines, while wines from the Old World (Europe) tend to be more earth-driven. Regional origins often define the wine’s aromas and flavors, but not necessarily the level of sweetness.

To understand “sweet” versus fruity one must understand one of the most confusing wine words: “dry”. Those new to wine often think that “dry” refers to the mouth-drying sensation caused by many red wines. This is actually tannin. Tannins are the bitter, textural (chalky, velvety) component of wine that comes from the grape skins, stems, and seeds. They can cause your palate to feel dried out, much like other things with tannin can (like chocolate, tea, and coffee), but this isn’t what “dry” refers to in wine.

Simply put, in wine “dry” is the opposite of sweet. It is a wine that has been made by fermenting out all of the natural sugars in grape juice to make it void of sweetness. If residual sugar exists in the wine when it is bottled, then it would be semi-dry, semi-sweet, or sweet – a range of terms that are sometimes used interchangeably, but always refer to a wine that isn’t dry.

If you enjoy sweeter wine but are afraid to ask (please don’t ever feel that way in my shop!), then you could use this little trick to figure out the sweetness level in wine:

“Inside the Bottle” will be a monthly column that dives into the world of wine, craft beer, spirits, and other beverages – fermented and beyond. Jaclyn Stuart, author of *The Complete Idiot’s Guide to Wine & Food Pairing* and owner of Vintage Elkhart Lake, will author the column and answer questions she frequently encounters inside her shop, at our wonderful Elkhart Lake area restaurants, and on her travels. If you have a question that you would like to see answered in this column, you can submit it to [sommelier@vintageelkhartlake.com](mailto:sommelier@vintageelkhartlake.com).

check out the alcohol by volume (abv) percentage. Legally, every bottle of wine sold in the U.S. must have the abv declared on the label (though sometimes it is a challenge to find, it can be found on the back label or along the edge of the front label). The lower the abv percentage, the sweeter the wine. Wines that have an abv of 10.5% or less tend to be sweeter, while wines that are 11% and higher tend to be drier. This isn’t always the case (there are no rules in wine, only guidelines), but hopefully it will help you pick out the perfect bottle for your palate. Never let a wine snob make you feel like it’s not okay to like the wine you like - whether it be fruity, earthy, tannic, sweet, or dry.

Cheers!

**Grace Lutheran Church**



**Sunday Divine Service**..... 8 & 10:15 am

**Thursday Divine Service**..... 7 pm

**Bible Class**

- **Wednesday**..... 9 am and 7 pm
- **Sunday**..... 9:15 am

**Hwy 67, Elkhart Lake**



**Bill's Piggly Wiggly in Howards Grove... Fighting to Save you Money!**

**COUPON**

PLU 50

**\$5.00 off**

**Your order totaling \$75 or more**  
(excludes spirits).

With coupon. Good only at Bill's Piggly Wiggly, Howards Grove, WI. One coupon per person. Valid through 10-31-18.

## Intuitive Massage, LLC

### Mark Novitovic

Licensed Massage Therapist

262-237-4719

[www.massageintuitive.com](http://www.massageintuitive.com)



❖Offering rejuvenating customized massage

**Deep tissue & relaxation**

**Myofascial release**

**Sports massage**

**Hot Stone**

**Headache**

**Lymphedema**

**Burn scarring**

**Mark's Studio is located at:**

**Charlene's of Elkhart**

**511 East Rhine**

**Elkhart Lake**

**920-876-3258**

❖Chair massage also available for your next event



Buy a 16" Two-Topping Pizza for \$10.95 and...

Get a 12" Two-Topping Pizza

**\$5** for



## All Seasons

### Family Restaurant

510 E. Rhine Street • Elkhart Lake

920-876-2839

Next to Marshall's One Stop

Mon.-Fri. 6am-8pm; Sat. & Sun. 6am-3pm

Free Wi-Fi

SENIOR CITIZEN DINNERS AVAILABLE - 11 AM TO CLOSE



**"We don't stop playing because we grow old. We grow old because we stop playing."**  
*George Bernard Shaw*

**Cedar Community ... where you can enjoy, explore and embrace your best life!**

• A welcoming senior living community where adults age 55 and better live independently with assistance as needed.

*Enjoy a private apartment fully decorated with your loved one's own personal touches.*

• Connecting seniors to great friends, good health, active living and personal wellbeing.

*Residents stay engaged and meet new friends right outside their door.*

• A carefree lifestyle, free of everyday living responsibilities such as meal preparation, housekeeping and home maintenance.

*Time to enjoy the finer things in life.*

• Redefine retirement living in an active, socially engaging community.

*Be part of an engaged living community with vibrant activities.*

**cedar community**  
Elkhart Lake

**Call to schedule a private tour of Elkhart Lake's only assisted living, 920.876.4050, and enjoy lunch on us!**

920.876.4050 | [cedarcommunity.org](http://cedarcommunity.org)





# Elkhart Lake Village Report



## Elkhart Lake Village Board Members

If you have concerns or questions call any of our Village Trustees

**PRESIDENT:** Alan Rudnick, Pres. (611 Otto Way) — 876-3113. Email: arudnick@elkhartlakewi.gov

**TRUSTEE:** Geoffrey Bray (POB 736) — (920) 452-5397. Email: gbray@elkhartlakewi.gov

**TRUSTEE:** Terri Knowles (POB 35) — (920) 876-3448. Email: tknowles@elkhartlakewi.gov

**TRUSTEE:** John Schott (913 Grasse Lane) — 876-2436. Email: jschott@elkhartlakewi.gov

**TRUSTEE:** Richard Sadiq (POB 188) — 876-3732. Email: rsadiq@elkhartlakewi.gov

**TRUSTEE:** Lynn Shovan (POB 682) — (920) 207-4561. Email: lshovan@elkhartlakewi.gov

**TRUSTEE:** Richard Baumann (22 Cedar Lane) — (920) 781-2030. Email: rbaumann@elkhartlakewi.gov

Excitement is building for the arrival of Soo Line Steam Engine 1003. Plans are being finalized for this event. Watch for more news on this event.

### Soo Line Caboose Dedication

After the tree lighting the Elkhart Lake Historical Society will dedicate the caboose. Renovations were completed last fall and we were not able to do a formal dedication.

There are so many people to thank for their generous donations.



### New Stop Sign

A new 4-way stop will be located at the corners of N. Lake Street and Pine Street, near the Village Hall and Sargento. Stop signs will be added on N. Lake Street. Please be cautious at this intersection, as this is a new 4-way stop.

### Planning Commission

Work continues on the apartment/condo project at the Braun's Ranch site. The Commission is working on the details of a Development Agreement with Premiere Elkhart Lake, LLC. Work is also proceeding on the proposed housing development on the Victory North property. The project would provide affordable to high-end housing. Approximately 55 units are planned.

### Trick or Treat

The Trick or Treat hours have been set for the Village. Trick or Treat hours will

be on Sunday, Oct. 28, 2018 from 1 p.m. to 3 p.m.

### Yard Waste and Leaves

Yard waste, leaves, brush, garden debris, etc. can be disposed of at the dumpster located at the Village garage from April through October. Dumpster hours are Wednesdays 2 p.m. to 6 p.m. and Saturdays 8:30 a.m. to 3 p.m.

### Help Us Reduce Chloride Levels – Softeners, Salt, and You

#### Background

It is estimated that most of the groundwater in the United States has some degree of hardness. Basic hardness is produced by the presence of calcium and magnesium dissolved in water. These minerals, if not removed from your water, may build up as scale on pipes and porcelain or metal fixtures. They coat water-heater elements. They may cause increased laundry detergent usage. This is way most people have water softeners.

#### The Problem

The chlorides discharged from the home water softeners end up at the wastewater treatment plant. The Wisconsin Department of Natural Resources (WDNR) is asking the Wastewater Treatment Plant (WWTP) to reduce these chloride levels.

#### How Water Softeners Work

(A Technical Explanation)  
Home water softening is one good way of removing hardness from water coming to your house. Hard minerals are attached to a man-made resin in your home water-softening unit. The resin bed is first washed with a salt brine (sodium chloride dissolved in water). As hard water passes through your softener, the hard minerals (calcium and magnesium) are exchanged for sodium in the resin bed. The hard minerals take the chloride portion of the salt brine and form altered minerals (cal-

cium chloride and magnesium chloride). The resin has a certain exchange capacity. When that capacity is reached, it is time to regenerate the resin. During regeneration, the altered minerals are flushed down the drain. A new salt brine is passed over the resin. Extra salt is flushed down the drain. This process usually happens by a preset timer or by a preset flow demand meter during the night, around midnight.

#### So what is the problem?

Chapter NR 140-Groundwater Quality establishes groundwater quality standards for substances detected in the groundwater resources of the state. Due to home water softeners, the Commission's plant discharge is higher than allowed by the WDNR.

#### Why can't we remove the hardness in our water treatment plant or remove chlorides in our wastewater treatment plant?

Construction of facilities to remove hardness at our water treatment plant or remove chlorides at our wastewater plant would cost approximately 2-4 million dollars, and would cause a sharp increase in overall rates. Due to the extreme costs, these alternatives are not being considered by the Village Board at this time.

#### What can our customers do about our chloride problem?

They can have their water softening equipment inspected and adjusted to make them more efficient reducing the chlorides going to the wastewater treatment plant. When replacing or upgrading old water softeners use a high efficiency softener that is metered demand. Our goal is to reduce the chlorides entering the environment by reducing the rate of salt used by our water softener, while still delivering continued quality water. This in turn, will simply help keep long-term sewer rates down. You may also see some reduction in your water and salt usage,

thus saving you money!

### First Responders Fish Boil

A reminder that the First Responders Fish Boil fundraiser will be held on Friday, Sept. 28 from 4 p.m. to 8 p.m. at the Fire Station. There will also be steak sandwiches, chili, and hot dogs. Some of the activities available for kids and adults alike are: a kids obstacle course, tours of the fire station, Orange Cross ambulance, fire trucks and police cars. There will also be a raffle and much more. Proceeds from the fish boil will go towards equipment.

### Winter Rules begin Nov. 15

Winter parking regulations go into effect on Nov. 15. As a reminder, here is the ordinance.

#### PARKING REGULATIONS

All Night Parking Regulated.

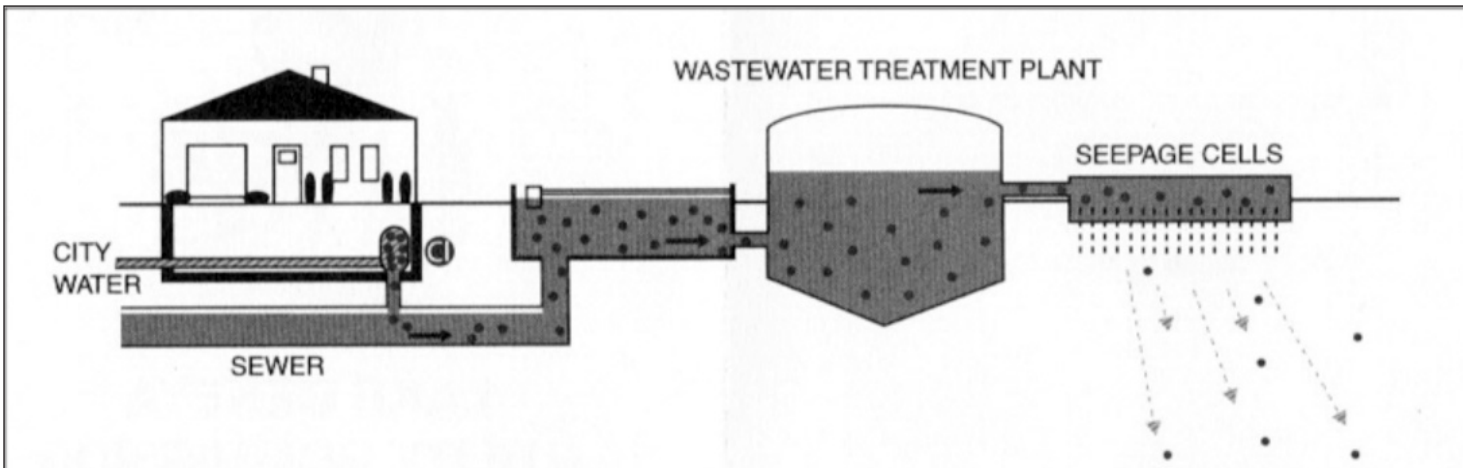
6.04(2) (a) No parking of any motor vehicle shall be permitted on either side of any Village street or in the parking lot north of Square Street or the parking lot on North East Street between the hours of 2:00 o'clock A.M. and 6:00 o'clock A.M. commencing the fifteenth (15th) day of November and ending on the first (1st) day of April of every year.

(b) Any vehicle parked in violation of the provisions of this ordinance shall be removed from the streets and stored, and such removal and storage shall be at the expense of the owner of said vehicle.

Vehicles violating this ordinance will be ticketed.

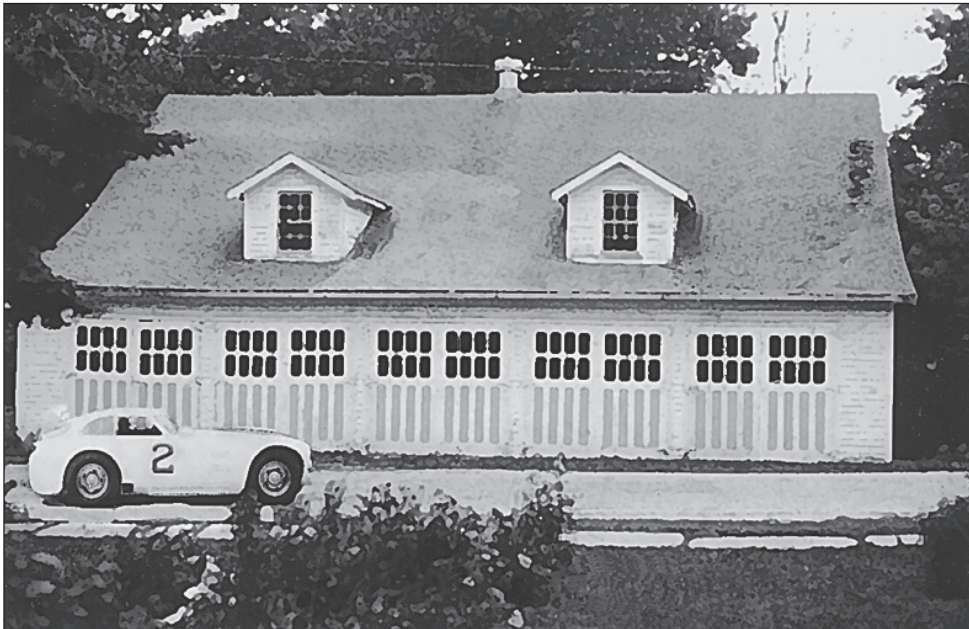
### Obtaining a Building Permit

Applications for any type of residential remodeling, roofing, decks, patios, windows, siding, additions, accessory buildings, fences, driveways, demolition, electrical or plumbing requires a building permit. Depending on the type of project, many

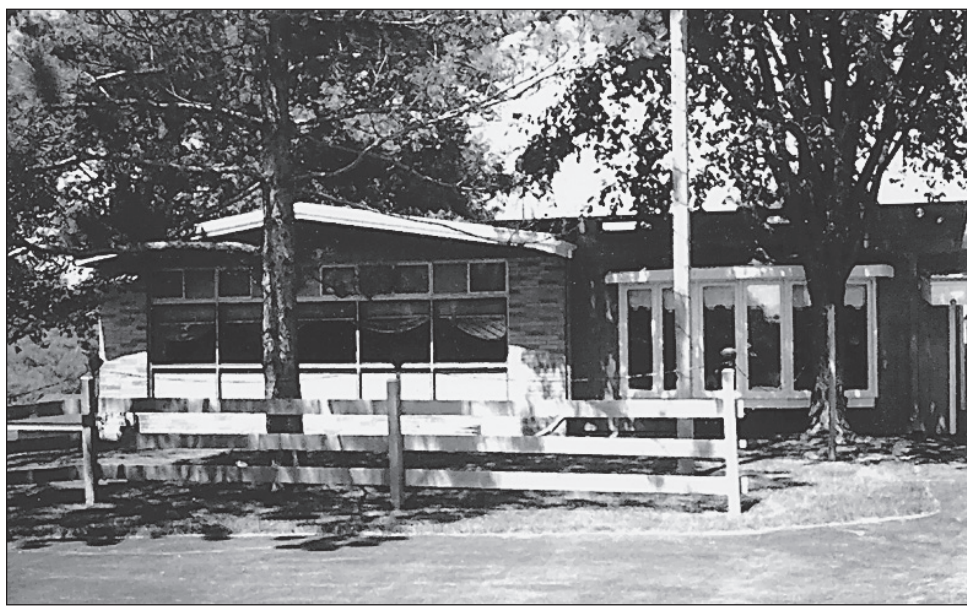




## October mystery photo



## September mystery photo



## Can you identify the photo?

Take a look at October mystery photo above. Do you know anything about it? Where was the location? What was the approximate year? Do you know specific building in the photo?

If so, let us know!

To enter the October contest, send an email or letter with as many details as you can include to the Elkhart Lake Chamber. Either drop off at our office, or email [depotdispatch@elkhartlake.com](mailto:depotdispatch@elkhartlake.com).

The person with the best submission will receive a finely matted, quality enlarged print of the original, courtesy of Schamberger Gallery in Elkhart Lake.

We are also still looking for entries for

the September photo contest. Please send those entries in as well.

Following last month's edition, we received a note from Dan Garton, indicating that the boathouse was incorrectly identified as being in Turtle Bay. The boathouse pictured actually belong to his late uncle Bill Hayssen.

Thus, the correct winner for the August contest is Cathy Brubaker Becker, who identified the Hayssen boathouse at Lakeside Farms. "I'm guessing the photo is from the 60's, but can't be sure. I grew up at Lakeside and spent countless hours at the boathouse and in Elkhart Lake," Becker said.

## August mystery photo



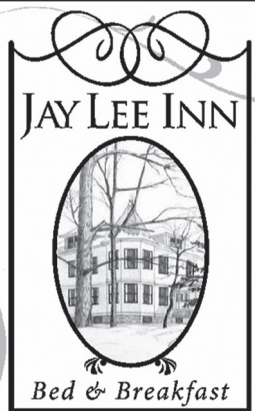
## Village

continued from page 18

permits can be issued when you bring your application to the Administrator/Clerk-Treasurer's Office. If you would like to fill out the building permit application ahead of time please complete the building permit form online and bring it to the Village Administrator/Clerk-Treasurer's Office.

Alan Rudnick  
Village President

**Thanks for reading the Depot Dispatch**



- ~ 7 Bedrooms, 5 with Private Baths
- ~ Full Breakfast!
- ~ Lake View
- ~ Walking distance from Elkhart Lake activities!

444 South Lake St. • Elkhart Lake, WI 53020  
920-876-2910  
[www.jayleeinn.com](http://www.jayleeinn.com)

**Full Service Laundromat**  
• Fluff & Fold  
• Commercial Laundry  
• Ironing

**LOST SOCK LAUNDROMAT**  
OPEN 24 HOURS

**Imogene's Dry Cleaning Service**  
Drop off & Pick up done on WEDNESDAYS

**Sippel's Lost Sock Laundromat**

510B East Rhine Street  
Elkhart Lake • 920-946-1750

**Maid-Rite Cleaning Service LLC**

Elkhart Lake • 920-946-1750

**RESIDENTIAL COMMERCIAL**

Clean-ups, Move Outs & More!

Weekly, Bi-Weekly & Monthly



**Lake Street Cafe**  
21 Lake Street  
Elkhart Lake, WI  
920-876-2142  
[www.lakestreetcafe.com](http://www.lakestreetcafe.com)

**KEEP CALM AND EAT FISH FRY**



**Lake Street Cafe**

Great Food • Great Drinks • Great People • Elkhart Lake, WI





# Elkhart Lake Chamber Calendar

## SEPTEMBER 25

**Community United Church of Christ**  
AA Meeting 10 a.m.

## SEPTEMBER 26

**Elkhart Lake Public Library**  
Book Chat and Coffee Hour 10 a.m. Come and see our new books and enjoy the conversation.

## SEPTEMBER 27

**Community United Church of Christ**  
AA Meetings 7 p.m.

**Elkhart Lake Public Library**  
Toddler Time 10 a.m. Play date for preschoolers.

**Elkhart Lake Public Library**  
We can help you use your device or phone to access ebooks, emagazines, Gale courses, Ancestry Library edition and Tumblebooks. Can't come on Thursday, call and make an appointment.

## SEPTEMBER 28

**Elkhart Lake First Responders**  
Fish Boil 4-8 p.m. at EL Fire House. Support you local EL First Responders. Steak sandwich, chili & hot dogs available. Raffles, tours, North High Drum Line

**Paddock Club**  
Live Music, Paul Sucherman on keyboard and Auggie on drums 7-11 p.m.

**Plymouth Arts Center**  
Paint the Towns-Public Reception. Reception & Silent Auction 6-9 p.m. Info 920-892-8409

## SEPTEMBER 29

**Elkhart Lake Farmers & Artisans Market**  
Elkhart Lake Chamber of Commerce. Head to the Village Square for a unique shopping experience 8:30 a.m. to 12:30 p.m. For details or to sell your craft, contact the Elkhart Lake Chamber of Commerce at 920-876-2922 or 877-355-3554.

**Plymouth Arts Center**  
Landscapes: Pastels over Watercolor; Painting with Water & Dust class, 9 a.m.-4 p.m. Info and registration 920-892-8409.

**Sheboygan County Fair Park**  
IRA Sprints with Plymouth Dirt Track Racing 360 Sprints, WIMS Sprints and WingLESS Sprints. Special event pricing. Championship Night for PDTR 360 Sprints.

**The Sewing Basket**  
See our website for events and classes throughout the month. Plymouth, 920-892-4751. sewingbasket.biz

**SwitchGear Brewing Co.**  
Annual Oktoberfest celebration 12 p.m.- 11 p.m. Food, games, and some specialty beers.

**Wade House Historical House**  
28th Annual Wade House Civil War Weekend 9 a.m.-5 p.m. Civil War drama unfold in the largest Civil War re-enactment and encampment in Wisconsin. Admission.

## SEPTEMBER 30

**The Hub Studio Cafe**  
See our website for events and classes throughout the month. Plymouth, 920-893-9000. thehubstudiocafe.com

**Wade House Historical House**  
28th Annual Wade House Civil War Weekend 9 a.m.-4 p.m. Civil War drama unfold in the largest Civil War re-enactment and encampment in Wisconsin. Admission.

## OCTOBER 1

**Elkhart Lake Board of Trustee**  
Village of Elkhart Lake Board of Trustee meeting, Grashorn Civic Center 7 p.m.

**Elkhart Lake Lions Club**  
Directors meeting 7 p.m. Anchor Lanes.

**Elkhart Lake Study Club**  
Tamara Remington, Sheboygan Police Department, "Human Trafficking Awareness and Prevention." Social at 11:30 a.m. Noon lunch at Civic Center.

**The Sewing Basket**  
See our website for events and classes throughout the month. Plymouth, 920-892-4751. sewingbasket.biz

## OCTOBER 2

**Community United Church of Christ**  
AA Meeting 10 a.m.

## OCTOBER 3

**Elkhart Lake Public Library**  
Book Chat and Coffee Hour 10 a.m. Come and see our new books and enjoy the conversation.

## OCTOBER 4

**Community United Church of Christ**  
AA Meetings 7 p.m.

**Elkhart Lake Public Library**  
Tech Thursdays 11 a.m.-2 p.m. Need help with downloading an ebook from Overdrive or an emagazine from RBDigital? Need help using Libby? Need help getting started using your new tablet or finding out about our databases? Can't come on Thursday, call and make an appointment.

## Plymouth Arts Center

Toddlers + Caregivers: Loreiei & Hugh Make Art with You class 10-10:45 a.m. Info and registration 920-892-8409.

## OCTOBER 5

**Paddock Club**  
Live Music, Paul Sucherman on keyboard and Auggie on drums 7-11 p.m.

**Rumors**  
Dave Steffen Band 8 p.m. N7454 Summit Rd., Plymouth.

**The Hub Studio Cafe**  
See our website for events and classes throughout the month. Plymouth, 920-893-9000. thehubstudiocafe.com

## OCTOBER 6

**Camp Y-Koda**  
Fall Festival 10 a.m.-4 p.m. All ages. Free, includes archery, arts & crafts, etc. Food and refreshments will be available to purchase.

**Elkhart Lake Farmers & Artisans Market**  
Elkhart Lake Chamber of Commerce. Head to the Village Square for a unique shopping experience 8:30 a.m. to 12:30 p.m. For details or to sell your craft, contact the Elkhart Lake Chamber of Commerce at 920-876-2922 or 877-355-3554.

**Henschel's Indian Museum and Trout Farm**  
Henschel's Pumpkin Patch Family Weekend 10 a.m.-4 p.m. Indian museum tours, wagon rides to the effigy mounds, pumpkin patch, corn maze, fall snacks, fall decorations, kid activities and trout feeding and fishing. For more information call 920-876-3193 on the days of the event.

**Quit Qui Oc Golf Club**  
Golf Challenge to benefit EL-G Education Foundation & Athletic Association. For more info: www.elgef.org

**Sheboygan Symphony Orchestra**  
The first concert of the 100th Season: "Celebrating 100 Years: Meeting the Mission" featuring Frank Almond, Violin 7:30 p.m. Admission.

**Wade House Historical House**  
Breakfast at the Inn 8-11 a.m. Admission.

## OCTOBER 7

**Camp Y-Koda**  
12th Annual Sheboygan River Clean-Up 10 a.m.-2 p.m. All ages. Pre register, call for more info.

**Henschel's Indian Museum and Trout Farm**  
Henschel's Pumpkin Patch Family Weekend 10 a.m.-4 p.m. Indian museum tours, wagon rides to the effigy mounds, pumpkin patch, corn maze, fall snacks, fall decorations, kid activities and trout feeding and fishing. For more information call 920-876-3193 on the days of the event.

**Plymouth Arts Center**  
Joseph Sartori Concert Series, An Afternoon of the Classics 2:30 p.m. Admission.

**The Sewing Basket**  
See our website for events and classes throughout the month. Plymouth, 920-892-4751. sewingbasket.biz

## OCTOBER 8

**Elkhart Lake Public Library**  
Story Time 10:30 a.m.

## OCTOBER 9

**Community United Church of Christ**  
AA Meeting 10 a.m.

## OCTOBER 10

**Elkhart Lake Public Library**  
Book Chat and Coffee Hour 10 a.m. Come and see our new books and enjoy the conversation.

## OCTOBER 11

**Community United Church of Christ**  
AA Meetings 7 p.m.

**Elkhart Lake Public Library**  
Ukulele Club 10 a.m., Grashorn Civic Center. This group is just getting started. Bring your ukulele or other instrument and join in the fun.

**Elkhart Lake Public Library**  
Tech Thursdays 11 a.m.-2 p.m. Need help with downloading an ebook from Overdrive or an emagazine from RBDigital? Need help using Libby? Need help getting started using your new tablet or finding out about our databases? Can't come on Thursday, call and make an appointment.

**Elkhart Lake Public Library**  
Toddler Time 10 a.m. Play date for preschoolers.

**Plymouth Arts Center**  
Toddlers + Caregivers: Loreiei & Hugh Make Art with You class 10-10:45 a.m. Info and registration 920-892-8409.

**Wade House Historical House**  
The Story of Act 31 7 p.m. Since its passage in 1989, a state law known as Act 31 requires that all students in Wisconsin learn about the history, culture, and tribal sovereignty of Wisconsin's federally recognized tribes. Admission.

## OCTOBER 12

**Abler Art Glass Gallery**  
Rural Arts Road Trip 9 a.m.-5 p.m. Self-guided tours at area points of interest. Abler Art Glass Gallery, LLC, 16205 Little Elkhart Lake Road, Kiel is participating.

**Elkhart Lake Public Library**  
Book Club on the Move 1 p.m. "Station Eleven" by Emily Mandal. Please call for meeting location

**Elkhart Lake Public Library**  
Sheboygan Children & Teen's Book Festival. A full weekend of events. Meet authors, illustrators and performers in several different locations in Sheboygan. Pick up a schedule at the library or go to sheboyganchildrenbookfestival.org or sheboyganteenbookfestival.org for more information.

**Paddock Club**  
Live Music, Paul Sucherman on keyboard and Auggie on drums 7-11 p.m.

## OCTOBER 13

**Abler Art Glass Gallery**  
Rural Arts Road Trip 9 a.m.-5 p.m. Self-guided tours at area points of interest. Abler Art Glass Gallery, LLC, 16205 Little Elkhart Lake Road, Kiel is participating.

**Elkhart Lake Farmers & Artisans Market**  
Elkhart Lake Chamber of Commerce. Head to the Village Square for a unique shopping experience 8:30 a.m. to 12:30 p.m. For details or to sell your craft, contact the Elkhart Lake Chamber of Commerce at 920-876-2922 or 877-355-3554.

**Elkhart Lake Public Library**  
Sheboygan Children & Teen's Book Festival. A full weekend of events. Meet authors, illustrators and performers in several different locations in Sheboygan. Pick up a schedule at the library or go to sheboyganchildrenbookfestival.org or sheboyganteenbookfestival.org for more information.

**Plymouth Arts Center**  
Elementary/Middle School: Twinkle Twinkle Art Studio. Info and registration 920-892-8409.

**The Hub Studio Cafe**  
See our website for events and classes throughout the month. Plymouth, 920-893-9000. thehubstudiocafe.com

**Wade House Historical House**  
Autumn Celebration 10 a.m.-4 p.m. Guests will learn about the traditional harvest season in Wisconsin.

## OCTOBER 14

**Elkhart Lake Public Library**  
Sheboygan Children & Teen's Book Festival. A full weekend of events. Meet authors, illustrators and performers in several different locations in Sheboygan. Pick up a schedule at the library or go to sheboyganchildrenbookfestival.org or sheboyganteenbookfestival.org for more information.

**Wade House Historical House**  
Autumn Celebration 11 a.m.-4 p.m. Guests will learn about the traditional harvest season in Wisconsin.

## OCTOBER 15

**Elkhart Lake Board of Trustee**  
Village of Elkhart Lake Board of Trustee meeting, Grashorn Civic Center 7 p.m.

**Elkhart Lake Lions Club**  
All member and spouses meeting at Anchor Lanes 6 p.m. social hour. 7 p.m. meeting & dinner.

**Plymouth Arts Center**  
Adults: Open Studio with Lori Beringer 1:30-4:30 p.m. Info and registration 920-892-8409.

## OCTOBER 16

**Community United Church of Christ**  
AA Meeting 10 a.m.

**Elkhart Lake Chamber of Commerce**  
Chamber board meeting 8:30 a.m. Grashorn Civic Center.

**Elkhart Lake Public Library**  
A Readers Social: Not-a-Book Club 6 p.m. Location to be determined. Call the library or check the website.

**Plymouth Arts Center**  
Adults: Open Studio with Lori Beringer 1:30-4:30 p.m. Info and registration 920-892-8409.

## OCTOBER 17

**Elkhart Lake Public Library**  
Book Chat and Coffee Hour 10 a.m. Come and see our new books and enjoy the conversation.

## OCTOBER 18

**Community United Church of Christ**  
AA Meetings 7 p.m.

**Elkhart Lake Public Library**  
Tech Thursdays 11 a.m.-2 p.m. Need help with downloading an ebook from Overdrive or an emagazine from RBDigital? Need help using Libby? Need help getting started using your new tablet or finding out about our databases? Can't come on Thursday, call and make an appointment.

**Elkhart Lake Public Library**  
Story Time 10:30 a.m.

**Plymouth Arts Center**  
Toddlers + Caregivers: Loreiei & Hugh Make Art with You class 10-10:45 a.m. Info and registration 920-892-8409.

**Quit Qui Oc Golf Club**  
Rib Night 5-8 p.m.

**The Hub Studio Cafe**  
See our website for events and classes throughout the month. Plymouth, 920-893-9000. thehubstudiocafe.com

## OCTOBER 19

**Camp Y-Koda**  
No School Days at Camp Y-Koda 8:30 a.m.-4 p.m. Ages 4-12. Pre-registration required. The registration deadline is one week prior to each no school day. 920-467-6882. Admission.

**Paddock Club**  
Live Music, Paul Sucherman on keyboard and Auggie on drums 7-11 p.m.

**Plymouth Arts Center**  
"Halftime Harmony" Sound Celebration Women's Chorus' Annual Barbershop Concert 7:30 p.m. Admission.

**The Sewing Basket**  
See our website for events and classes throughout the month. Plymouth, 920-892-4751. sewingbasket.biz

## OCTOBER 20

**Elkhart Lake Public Library**  
2018 Family Frontier Day 10 a.m.-2 p.m. at Ozaukee County Pioneer Village in Saukville. This free event is sponsored by Monarch Library System, Ozaukee County Historical Society, Ozaukee County Pioneer Village and local libraries.

**Plymouth Arts Center**  
"Halftime Harmony" Sound Celebration Women's Chorus' Annual Barbershop Concert 2 p.m. Admission.

## OCTOBER 21

**Camp Y-Koda**  
Fall Colors Family Climbing Day 1-4 p.m. Age 10 & older and adults. Pre-registration required by Oct. 15. 920-467-6882. Admission.

## CALENDAR SPONSOR



### CLEVELAND STATE BANK

*Providing financial options that are always in the best interest of our clients' success and the future of our communities.*

**CLEVELAND OFFICE:** 1250 W. Washington Ave.  
Ph: 920.693.8256 • F: 920.693.8344 • TF: 833.321.9854

**HOWARDS GROVE OFFICE:** 502 W. Wisconsin Dr.  
Ph: 920.565.6000 • F: 920.565.6205

www.bankatcsb.com





**Community United Church of Christ**  
Annual "Fall Rally Day" 11:30 a.m. in the Church Fellowship Hall. There will be a chili dinner, raffle, silent auction, and Bingo, for all ages. Questions, 920-876-2525.

**Plymouth Arts Center**  
Sound Celebration Chorus Show features Hard Hat Harmony 2 p.m. Admission. Info 920-922-2147.

**OCTOBER 22**  
**Elkhart Lake Public Library**  
Movie, Hotel Transylvania 3 (rated PG) 1 p.m.  
**Plymouth Arts Center**  
Adults: Open Studio with Lori Beringer 1:30-4:30 p.m. Info and registration 920-892-8409.

**OCTOBER 23**  
**Community United Church of Christ**  
AA Meeting 10 a.m.  
**Plymouth Arts Center**  
Adults: Open Studio with Lori Beringer 1:30-4:30 p.m. Info and registration 920-892-8409.

**OCTOBER 24**  
**Elkhart Lake Public Library**  
Book Chat and Coffee Hour 10 a.m. Come and see our new books and enjoy the conversation.

**OCTOBER 25**  
**Community United Church of Christ**  
AA Meetings 7 p.m.

**Elkhart Lake Public Library**  
Toddler Time 10 a.m. Play date for preschoolers.

**Elkhart Lake Public Library**  
Tech Thursdays 11 a.m.-2 p.m. Need help with downloading an ebook from Overdrive or an emagazine from RBDigital? Need help using Libby? Need help getting started using your new tablet or finding out about our databases? Can't come on Thursday, call and make an appointment.

**Plymouth Arts Center**  
Toddlers + Caregivers: Lorelei & Hugh Make Art with You class 10-10:45 a.m. Info and registration 920-892-8409.

**The Hub Studio Cafe**  
See our website for events and classes throughout the month. Plymouth, 920-893-9000. thehubstudiocafe.com

**The Sewing Basket**  
See our website for events and classes throughout the month. Plymouth, 920-892-4751. sewingbasket.biz

**OCTOBER 26**  
**Camp Y-Koda**  
No School Days at Camp Y-Koda 8:30 a.m.-4 p.m. Ages 4-12. Pre-registration required. The registration deadline is one week prior to each no school day. 920-467-6882. Admission.

**Elkhart Lake-Glenbeulah School**  
Halloween Pops Concert 6:30 p.m. at the high school. A fun, entertaining unique family event. Costumes are encouraged.

**Paddock Club**  
Live Music, Paul Sucherman on keyboard and Auggie on drums 7-11 p.m.

**Plymouth Arts Center**  
Eden Prairie All-Class High School Reunion Musical 7:30 p.m. Plymouth Art Center. Admission.

**OCTOBER 27**  
**Elkhart Lake Public Library**  
Bats at the Library 10:30 a.m. Join us for fun "bat" activities.

**Elkhart Lake-Glenbeulah School**  
Halloween Pops Concert 6:30 p.m. at the high school. A fun, entertaining unique family event. Costumes are encouraged.

**Plymouth Arts Center**  
Eden Prairie All-Class High School Reunion Musical 7:30 p.m. Plymouth Art Center. Admission.

**Rumors**  
Halloween Bash 8 p.m. N7454 Summit Rd., Plymouth.

**OCTOBER 28**  
**Trick-or-Treating**  
Halloween Trick-or-Treating 1-3 p.m.

**OCTOBER 29**  
**Camp Y-Koda**  
Camp Y-Koda Halloween Party 4-7:30 p.m. Ages 5-12. Pre-registration required by Oct. 22. 920-467-6882. Admission.

**OCTOBER 30**  
**Community United Church of Christ**  
AA Meeting 10 a.m.

**OCTOBER 31**  
**Elkhart Lake Public Library**  
Book Chat and Coffee Hour 10 a.m. Come and see our new books and enjoy the conversation.

**Elkhart Lake Public Library**  
Trick or Treat Drop In, all day. Come by in costume and get a treat!

**DEPOT DISPATCH DEADLINES NOVEMBER 2018 issue**

October 10 - Ad space reservations.  
October 16 - Contributing writer stories/ad design changes due.  
October 16 - Print ready ads due.  
October 23 - Issue on newsstands.



**Our Commitment to You...**

Relationships  
Integrity • Trust

- Quality Custom Homes
- Commercial
- Additions
- Remodeling
- Decks
- Siding
- Roofing

510 Belitz Drive • Kiel  
**920-894-7008**  
www.krausconstruction.biz

**Huge Selection of Used Tires**  
14" - 20"

**Over 2000 Tires In-Stock!**

Buying scrap vehicles.  
Call for current price. Must be delivered.  
Buying batteries. \$5 each

**Rhine Auto, Inc.**

W5695 Garton Road  
Plymouth • 876-2779  
Mon - Fri 7:30 - 5:00  
www.rhineauto.com



**Your beautiful autumn STARTS HERE!**

**Millhome Nursery and Greenhouses, LLC**  
Landscaping & Garden Center

920-894-7877 • ELKHART LAKE  
Mon-Fri 9-5 • Sat 9-4 • Closed Sun

www.millhomenursery.com

**New this year Host Stop Rural Arts Roadtrip Oct 12 & 13**

- Mums
- Hardy Pansies
- Fall Yard Decorations
- Ornamental Kale

**REDUCED! Perennials Shrubs • Trees**

**You will like our haircuts and love our price!**


**Cutting With Style**

Dyanna Muldoon and her father Willie Mueller provide haircuts, styles, colors and perms for men and women.

**Mueller's Barber & Styling**

325 Fremont St. • Kiel • 894-3939

**BUSINESS HOURS: Tues.-Fri. 8 a.m. - 5:30 p.m. • Sat. 8 a.m. - Noon**



**PLYMOUTH ARTS CENTER THEATRE COMPANY PRESENTS:**


**Eden Prairie All Class HIGH SCHOOL REUNION**

JOIN US FOR THIS ONE-OF-A-KIND INTERACTIVE MUSICAL SHOW!

**\*Dance Along to Live Music**  
Performed by the **STRING-ALONG BAND**  
Playing your favorite oldies from the past six decades.

**Only Two Shows:**  
**Fri. & Sat., October 26 & 27, 2018, 7:30PM**

Tickets for Reserved Table Seating: \$12 in Advance, \$14 at the Door  
520 EAST MILL STREET . PLYMOUTH, WI ~ Phone: 920.892.8409  
Order Online: www.plymoutharts.org







**Elkhart Lake's farmers and artisans market continues to attract visitors throughout the early fall. The farmers market will continue to be open on Saturday mornings through October 13.**

Mike Koehler photo

# ELKHART LAKE Public Library News

Grashorn Civic Center  
40 Pine Street, P. O. Box 387  
Elkhart Lake, WI 53020

**920-876-2554**

elkhartlakepubliclibrary.org

## Fall Library Hours

Monday thru Thursday 10 - 7  
Friday 10 - 5  
Saturday 10 - 2

## New Books for Adult Readers

### ADULT FICTION

Dinner List, Rebecca Serle  
Dutch Wife, Ellen Keith  
Everything She Didn't Say, Jane Kirkpatrick  
Forbidden Door, Dena Koontz#  
Forgotten Place, Charles Todd  
Hitting the Books, Jenn McKinley  
Juror #3, James Patterson^#  
Lethal White, Robert Galbraith^  
Lies, T. M. Logan  
Mermaid and Mrs. Hancock, Imogen Gowan  
Ordinary People, Diana Evans  
Red War, Vince Flynn  
The 7-1/2 Deaths of Evelyn Hardcastle, Stuart Turton  
Tattooist of Auschwitz, Heather Morris  
Times Covert, Deborah Harkness  
Transcription, Kate Atkinson  
When the Lights Go Out, Mary Kubica  
Why not Tonight? Susan Mallery

Winter Soldier, Daniel Mason

### ADULT NON-FICTION

Betty Ford: 1st Lady Women's Advocate, Lisa McCubbin  
Home After Dark, David Small  
In Pieces, Sally Field  
Leadership in Turbulent Time, Doris Goodwin  
Ninety-Nine Glimpses of Princess Margaret, Craig Brown  
Old in Art School, Nell Painter  
Personality Brokers, Merve Emre  
These Truths, Jill Lepore  
What in the Hell do you have to Lose? Juan Williams  
Whiskey in a Teacup, Reese Witherspoon

### LP FICTION

Christmas by the Sea, Melody Carlson  
Late Bloomers' Club, Louise Miller

## New Books for Youth Readers

### (YA) YOUNG ADULT

Pride, Izi Zobi  
Summer Blue Bird, Akemi Dawn Bowman  
When Elephants Fly, Nancy Fischer  
Wildcard, Marie Lu

Sayres

### (J) FICTION

Big Nate Goes Bananas by Lincoln Peirce  
Saving Winslow, Sharon Creech  
24 Hours in Nowhere, Dusti Bowling

### (J) JUVENILE NON-FICTION

She made a Monster: Mary Shelley, Lynn Fulton  
Where is Area 51? Paula Manzanero  
Where is the Town of London? Janet Pascal

### (+) PICTURE BOOKS

All of a Kind Family Hanukkah, Emily Jenkins  
The Dam, David Almond  
Douglas You're a Genius, Ged Adamson  
How to Catch a Turkey, Adam Wallace  
Where do Diggers Celebrate Christmas, Brianne

## Audio -- DVD -- CD ROM -- Music

### DVDS

Adrift  
Book Club+  
Deadpool 2  
Hereditary  
Jurassic World: Fallen Kingdom

Show Dogs+  
Won't You be my Neighbor

### AUDIO BOOKS

Juror #3, James Patterson

+ also available in Blu-Ray  
\* Lucky Day copy available  
^Large Print available  
#Audiobook

## Events at the Library

### STORY TIME

Thursdays, October 4 & 18 • 10:30 a.m.

ent locations in Sheboygan. Pick up a schedule at the library or go to sheboyganchildrensbookfestival.org or sheboyganteenbookfestival.org for more information

### UKULELE CLUB

Thursday, October 11 • 10:30 a.m., Grashorn Civic Center. This group is just getting started. Bring your ukulele or other instrument and join in the fun.

### A READERS SOCIAL: NOT-A-BOOK CLUB

Tuesday, October 16 • 6 p.m. Location to be determined. Call the library or check the website.

### TODDLER TIME

Thursdays, October 11 & 25 • 10 a.m. Play date for preschoolers.

### 2018 FAMILY FRONTIER DAY

Saturday, October 20 • 10 a.m.-2 p.m. Ozaukee County Pioneer Village in Saukville. This free event is sponsored by Monarch Library System, Ozaukee County Historical Society, Ozaukee County Pioneer Village and local libraries.

### BOOK CLUB ON THE MOVE

Friday, October 12 • 1 p.m. "Station Eleven" by Emily Mandal. Please call for meeting location.

### SHEBOYGAN CHILDREN & TEEN'S BOOK FESTIVAL

October 12-14. A full weekend of events. Meet authors, illustrators and performers in several differ-

ent locations in Sheboygan. Pick up a schedule at the library or go to sheboyganchildrensbookfestival.org or sheboyganteenbookfestival.org for more information

### MOVIE

Monday, October 22 • 1 p.m. Hotel Transylvania 3 (rated PG).

### BATS AT THE LIBRARY

Saturday, October 27 • 10:30 a.m. Join us for fun "bat" activities.

### TRICK OR TREAT DROP IN

Wednesday, October 31 • all day. Come by in costume and get a treat!

### BOOK CHAT AND COFFEE HOUR

Every Wednesday morning at 10 a.m. Come and see our new books and enjoy the conversation.

### TECH THURSDAYS

11 a.m.-2 p.m. We can help you use your device or phone to access ebooks, emagazines, Gale courses, Ancestry Library edition and Tumblebooks. Can't come on Thursday, call and make an appointment.

## Fall Rally Day at Community UCC

Community UCC will hold its annual "Fall Rally Day" on Sunday, Oct. 21 at 11:30 a.m. in the Church Fellowship Hall. There will be a chili dinner, raffle, silent auction, and Bingo for all ages.

Our church is located at 174 N. East Street. We have completed our accessible entrance and are continuing our fund raising to help defray the cost. A percentage of the proceeds will be given to a local charity, yet to be determined.

We will serve chili, hot dogs, cheese and crackers, desserts, and drinks. Bingo is available for all ages with gifts for the winners. Our raffle and auction have many excellent items, including signed Packer football, Packer paraphernalia. Road America winter driving certificate, numerous gift cards from local businesses, wood/cast iron bench, baskets of goodies, sporting event tickets, and much, much more!

The Fall Rally Day is one of our planned events to promote fellowship within our church and community. We invite all to come, relax, and enjoy our event.

For any questions, please contact Kelly, office manager, at 920-876-2525.

## FRANKLIN HAUS

Historic Gathering Hall,  
Tavern & Market

Party at the Sheboygan River!

### HALL FOR RENT

Spirits, Coffee, Juices, Teas, Wines  
"Sehr gut!" (So Good)

920-565-2565 • wicar@tds.net  
www.franklinhauswisconsin.com  
N8133 Franklin Rd, Village of Franklin  
Five miles east of Elkhart Lake

Open Thur, Fri & Sat 11am-5pm  
or by appointment  
Est. 1857



## 2019 Membership KICK-OFF PARTY

at SwitchGear Brewing starting at 5:30pm  
**Monday, October 15**

Current members and new members are invited to sign up for 2019. Come network and win great chamber prizes!

RSVP to chamber@elkhartlake.com  
\$15 at the door.

WISCONSIN'S  
**Elkhart Lake**  
Chamber of Commerce

**Stardus**  
LIMOUSINE, LLC

Interior of 14 Passenger Limo Coach

14 Passenger SUV

Kiel 773-2270 • Sheboygan (920) 452-5696  
www.stardustlimousine.com • Mike Hartmann, Owner

SPONSORED BY

Our Family's Passion is *Cheese*.



**Bob Schoenborn's JEWELRY**  
 YOUR FAMILY'S JEWELER SINCE 1905



307 Fremont St. • Kiel • 920-894-2772  
 www.bobschoenbornsjewelry.com  
 OPEN: M, T, Th 9-5:30 • W, F 9-6 • Sa 9-1

**Kaat's Culligan**

You could give your people Culligan® Water RENT OR OWN FOR ONLY \$49/MONTH

**HEY CULLIGAN MAN!**



The Culligan H.E. is the world's most efficient water softener

\*Offer Expires 10/31/18. Ask for details. Dealer participation varies. The BESTBUY SEAL is a registered trademark of Consumers Digest Communications, LLC, used under license.

**Culligan** Serving these counties for over 70 years:  
 Outagamie • Calumet • Sheboygan • Manitowoc • Kewaunee

Call (920) 663-2520 or visit [www.CulliganWI.com](http://www.CulliganWI.com)

**Culver's**  
 BUTTERBURGERS & FROZEN CUSTARD

**Culvers - Plymouth**  
 2318 Eastern Ave • Plymouth  
 920-893-2663  
 Open 10 am until 10 pm daily

**\$1 Off Any Seafood Dinner Entree**



North Atlantic Cod Dinner

Butterfly Jumbo Shrimp Dinner

All dinners served with your choice of two sides: real mashed potatoes, fries, salad, coleslaw or green beans and a dinner roll.

Expires 11/30/18. GOOD ONLY AT THE PLYMOUTH, WI LOCATION WITH COUPON.


Thanks for reading the **Depot Dispatch** Elkhart Lake

**YOUR LAKE LIVING CONNECTION!**

Best properties in the Best Locations

**the Krieg CONNECTION**

**Chris Krieg**  
 Senior Executive Associate  
 Elkhart Lake Resident



Best in Client Satisfaction by Milwaukee Magazine since 2007

414-840-8486 • [ckrieg@firstweber.com](mailto:ckrieg@firstweber.com) • [chriskrieg.firstweber.com](http://chriskrieg.firstweber.com)

Talk to me about properties coming soon!

**LIVE ON THE LAKE**

**ACCEPTED OFFER**



Seagull Rd: Stunning newly custom built home overlooks Lake Michigan! Priced way below cost! Top quality craftsmanship and materials makes this executive home better than anything new! Gorgeous views from every room! Gourmet chef's kitchen, coffered ceilings, library, movie room, exercise room, 8000 sq. feet of luxury! Must see! \$1,149M. MLS 1552997

**NEW PRICE!**



Sandwood Lane: Best Sand beach frontage in the county! Home has sophisticated contemporary style and is sited on the lot to provide surf and beach views from every room! Incredible views, suspended cedar ceilings, 3BR, 2 BA, 3600 sq. ft of entertaining space! Guest apt. and detached 2 car garage. Amazing value at \$759K! MLS 1571462

**NEW PRICE!**



Willows of Cascade condo home. Just an hour N of Milwaukee, and a stones throw from Lake Ellen, this 5 BR vacation retreat is just what a busy family needs! Located on the sandy beach of a nonmotor quarry lake, it offers fun for all ages! Hunt, fish, hike...! \$499K. MLS 1577742

**NEW PRICE!**



**OSTHOFF RESORT CONDO. 2** bedroom, 2 bath lake view. Split bedroom floor plan. Third floor south wing. \$299K. MLS 1592875

**ACCEPTED OFFER**



**AMAZING LAKE MICHIGAN PARCEL.** Rare 450 ft. of frontage on sand beach just south of Sheboygan. 6 acres of land with cottage/home with easy access off Wilson Lima Rd. Move in ready or Build your dream home! \$1,119M. MLS 1600193

**Insurance Solutions of Wisconsin**

**Open Enrollment is Here! WE CAN HELP!**

**MEDICARE'S Annual Election Period begins October 15 and ends on December 7.**  
 Do you want to make sure you still have the best Medicare plan for you?

**The HEALTH INSURANCE Annual Open Enrollment for individuals and families to sign up is between November 1 through December 15.**  
 Do you need new coverage or want to compare options?

Your local, independent health insurance advisors...

- Paulette Ruminski
- Kristina George
- Kevin Stifle
- Dorcas George



**Are you getting the best value for your health insurance dollar? One size does NOT fit all!**

435 East Mill Street, Plymouth, WI 53073  
 Call us at 920-268-1600

Neither Insurance Solutions nor its agents are affiliated with the federal Medicare program.

**FIRSTWEBER REALTORS®**  
 a Berkshire Hathaway affiliate







*Lynn Schwensow*  
"Premier Property Specialist"  
Cell: 920-946-4054  
e-mail: lynn@lynn-sells.com



WE  
ARE  
#1

~~~ *BUYERS and SELLERS* ~~~  
**I WANT TO BE YOUR REALTOR!**



LOT 2— N9635 LAKESHORE RD  
220' Lk Frontage on 1.96 Acres. Close  
to Golfing, RA Races, Air-Ports and  
More. Build to Suit! Call Lynn Now!  
MLS # 1562715 NOW ONLY \$250,000



WE HAVE MOVED!!!  
OUR NEW LOCATION IS:  
**3100 WILGUS AVENUE**  
**SHEBOYGAN, WI 53081**



1314 NORTH 8TH ST—Sheboygan  
3300 SF to Turn into Your Dream Property!  
High Visibility Location— with Updated Me-  
chanicals & Attached Garage. REDUCED!!!  
MLS # 1559091 NOW \$112,900

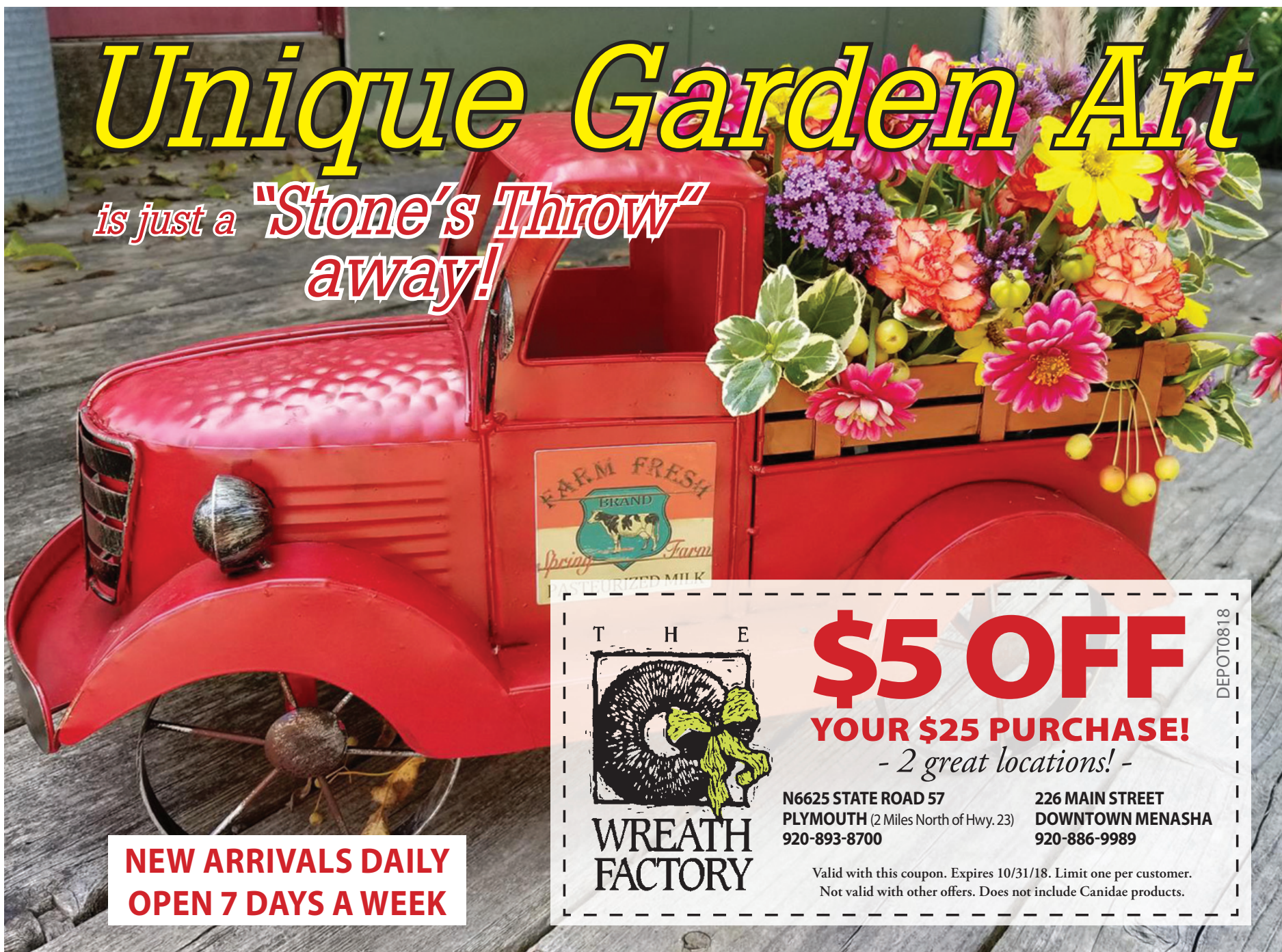
WISCONSIN'S  
**Elkhart Lake**  
*A legendary getaway*

Follow Elkhart Lake  
Chamber of Commerce  
on Social Media



# Unique Garden Art

is just a "Stone's Throw"  
away!



T H E



**\$5 OFF**

**YOUR \$25 PURCHASE!**

- 2 great locations! -

N6625 STATE ROAD 57  
PLYMOUTH (2 Miles North of Hwy. 23)  
920-893-8700

226 MAIN STREET  
DOWNTOWN MENASHA  
920-886-9989

WREATH  
FACTORY

Valid with this coupon. Expires 10/31/18. Limit one per customer.  
Not valid with other offers. Does not include Canidae products.

DEPOT0818

**NEW ARRIVALS DAILY**  
**OPEN 7 DAYS A WEEK**