

CHECK WITH US FOR
**HIGH QUALITY
BOX SPRINGS &
MATTRESSES!**



1 mi. E of Drakesville
16961 Jade Ave.,
Bloomfield
VM: 641-664-0207

Tri-County SHOPPER

GOING PINK FOR
BREAST CANCER AWARENESS MONTH



STANDARD
MAIL
U.S. POSTAGE
PAID
TRI-COUNTY
SHOPPER, INC.
POST OFFICE BOXHOLDER
LOCAL RURAL BOXHOLDER
OCCUPANT
**CIRCULATION
OVER 11,750
THIRD CLASS**

P.O. Box 168 • Bloomfield, IA 52537 • www.tri-countyshopper.com
Phone 641-664-1333 • Fax 641-664-3761 • Email shopper@netins.net



Vol. 46, No. 42
Wednesday, October 17, 2018



**Watch
For
Falling
Prices**

Fall Inventory Clearance Sale

Now thru the end of October!

All Remaining Inventory

PRICED 2 SELL

- Chain Saws • Trimmers
- Walk Mowers • Tractor
- Zero Turns • Snowblowers

"1 gallon of bar oil & 6 pack of 2 cycle mix with chain saw purchases"



**Simplicity Courier 44"
Zero Turn Mower**
Reg. Price \$3,499
SALE \$2,950



**Regent Tractor 48"
Fabricated Deck with
full suspension**
Reg. Price \$3,299
SALE \$2,550




502 E. Franklin, Bloomfield, IA
641-664-2784




www.curtsmower.com

KEN'S GARAGE

TRENCHING • EXCAVATION



Kenneth Richardson
641-208-7980



- Waterlines
- Hydrants
- Livestock Waters

- General Excavation
- Repair
- Drainage Pipe

Competitive Rates • On Site No Hassle Free Estimates
Special Discounted Rates For Long Distance Trenching
Kenneth Richardson • 641-208-7980
Licensed & Insured

CORNER COLLECTIBLES

Flea Market & Antiques



**Large selection
of die cast
collectibles,
video games,
records,
instruments &
more**

**102 W. Main St.,
Ottumwa, IA
641-777-6098**

BUYING:
Collections • Hot Wheels
Toys • Video Games
Records • Musical Instruments

Retirement Party • Open House

Wed, October 31st ~ 9am - 4pm

HELP DR. PAM FLY AWAY INTO RETIREMENT!



25% OFF ALL REMAINING INVENTORY!

REFRESHMENTS WILL BE SERVED INCLUDING HOTDOGS

Bring in your pet dressed for Halloween and have your picture taken!



Welcome the new owner Dr. Anthony White who will be taking over the practice on Nov. 1st

Sessions Vet Clinic • 903 S West St, Bloomfield, IA • (641) 664-1815

COME WORSHIP WITH US AND STAY FOR A Taco Buffet

Sunday, October 28th
Service at 11:00 am
Lunch at Noon

Mark Baptist Church
16033 276th St. • Bloomfield

WE WOULD LOVE TO GET TO KNOW YOU!



FOR SALE: 2006 Dutchman 28 ft. travel trailer and 2003 Ford F250, 7.3 Diesel, 4 door, 2WD, 168,000 miles, no rust. Sell together or separate.
PH: 319-316-3619 or 641-242-1021 42

FOR SALE: Black & tan coon hound, male, 4 year old, \$1,200.
PH: 641-895-8593 42

FOR SALE: Reg. Chocolate Labrador pups. Very friendly, 1/2 price, must go.
PH: 641-664-1320 42

FOR SALE: 3 adult female German Shepherds.
PH: 641-777-1627. 43

FOR SALE: Model SE-6 Rhino brush cutter, 6' 3pt 540 PTO, very good shape. \$1,000. PH: 641-777-8821

FOR SALE: Farmhand 1140XL loader w/ joy stick & mounts, quick attach. No welds, Good condition, \$4,500 OBO.
PH: 641-208-5046 42

Re-Elect Ron Bride

For Supervisor

- 42 years of experience working with the public
- Involved in the community

Your Vote On Tuesday, Nov. 6th would be appreciated.

Paid for by Ron Bride, 23064 Mahogany Ave., Bloomfield, IA 52537

ANNUAL OPEN HOUSE

October 27th



10:30AM - 2:00PM

FREE GRILLED PIZZA, POPCORN & FRESH CIDER

7% DISCOUNT & DOORPRIZES ALL DAY.



Country Side Grocery

- Kraft Miracle Whip, 1 gal \$5.99
- Cream of mushroom soup, 26 oz 99¢
- Chicken leg quarters, 40# 39¢ lb.
- Tropicana orange juice, 1 gal \$2.75
- Corn King smoked bacon, 12 oz \$2.19
- Jimmy Dean all natural sausage links, 7.5 oz \$1.19

3/4 mi. E. of Drakesville, IA on 180th St.
Mon-Sat: 8:30am - 5:00pm
VM: 641-664-2661

Graber's COUNTRY STORE

18932 200th St., Bloomfield, IA 52537 | 641-664-3163 V.M.
Mon-Wed & Fri 9am-5:30pm | Thur 9am-6:00pm | Sat 9am-3:00pm | Sun Closed

FOR SALE: Approx. 7 ton bulk bin on 6 legs.
PH: 641-722-3036 43

FOR SALE: Dairy cows, Guernsey/Jersey crosses. Bred to Black Angus. \$600-\$850. Linda Axtell, Drakesville, Iowa.
PH: 641-208-0172 42



Insurance Claims Welcome
We'll handle the paperwork and deal directly with your insurance company.

Hertz

Rentals for all Occasions!
Great Rates!

We Put Collision Damage In Reverse

Complete Collision Repair
Paintless Dent Removal
Custom Paint Service
Expert Color Matching
Frame & Unibody Repair



Walker Motors Collision Repair Inc.

375 S. Main St. | Memphis, MO
660-465-2159 | Shop Phone/Fax

FREE SAWDUST: At Petershiem Sawmill. 14256 Jewel Ave, Bloomfield, IA
PH: 641-722-3020 TFN

WANTED: Purebred Norwegian Elkhound puppy.
PH: 660-342-2708 42

Custom Built, Painted and Vinyl Buildings & Sheds

~David W. Schrock~

Hillview MINI BARNS

15383 180th Street Drakesville, IA 52552 641.664.2842 U.M.

Your One Stop Shop For Your Farming Needs!





Ritchie Fresh Water For Life™

Watermatic 300 R18050 (heat & anchors not included)

We Have Cobett Waterers **IN-STOCK!!**

MIRACO Livestock Water Systems

M3101 Lil' Spring with heat

Hamilton Produce Co.

641-664-2459 or 1-800-469-7749
105 W. Franklin • Bloomfield, IA 52537

NORTHERNER **STETSON HATS** **KARMA** **Levi's JEANSWEAR**

HALLOWEEN SPECIALS
All Of October

Wigwam socks half price with the purchase of one at reg. price! Made In The USA

LEVI - WRAGLER - CARHARTT - LEE
GEORGE STRAIT - DOCKERS - RIGGS
JEANS & SLACKS

GET ON 50% OFF WITH THE PURCHASE OF ON AT REGULAR PRICE

Jackets • Coats • Vests • Sweatshirts
20% To 40% OFF

Suits - Sportcoats - Varsity Letter Jackets Available
SOME AT DISCOUNTED PRICE

Boots and Shoes from
Red Wing - Wolverine - Carhartt - Muck
Justin - Tony Lama - Rocky - Durango
Hushpuppies - New Balance
20% Off - Some at clearance prices

Fall - Winter Clothing & Footwear In Stock!

Wide selection of sizes
Free hemming for pants purchased here
OTHER ALTERATIONS AVAILABLE!

Cook's Mens & Womens Store
116 S. Market • E. side of Square
Memphis, MO
Ph. 660-465-2511 • Fax 660-465-8905
Monday-Friday: 8-5 & Saturday: 8-9
Short-Big-Tall • Narrow to Extra Wide • Tux Rentals
Gift Certificates • Alterations • Gift Wrapping

STETSON HATS **Hanes** **BIG SMITH** **KEY QUALITY** **WOLVERINE** **new balance** **FREEMAN** **Packard's Slim**

TINGLEY **DeLONG** **Antone Belts** **Samsonite**

GARMAN? FLOWERS

At the farm: 14132 CR 857, Memphis, MO
660-341-9586

1/2 price MUM SALE
Only \$5.00 • Reg. \$10.00

We still have 400 nice plants to chose from.
Some just opening!

FOR SALE: Mountain Cur pups, medium size short haired dogs. Great pets, good hunters, tough on varmints. \$45. Loren Martin.
PH: 660-341-1854 42

PUPPIES FOR SALE: ACA Registered Golden Retriever Puppies. Family raised & very friendly. Ready now. Born May 31st.
PH: 319-201-0900 43

MISSOURI MEAT PROCESSING LLC
26832 CR 161
Rutledge, MO 63563

CUSTOM BUTCHERING
Beef - Pork - Deer
Schedule Now • 660-342-8534
Hours: Mon. - Fri. 7:30 - 5 & Sat. by Appointment

FOR SALE: 65' Thunderbird 351, fresh overhaul engine & trans., new alternator, fuel pump, water pump, carburetor, tire rods, head liner, carpet, \$4,700; 68' Ford pickup F100, 390, auto, factory air, \$1,600 or \$6,000 for both. Kubota garden tractor, 3 cyl. Diesel, clutch overhauled, 2 WD, hydrostat, 5' belly mower, \$2,650. Located 5 miles north of Cantril.
PH: 217-260-1876 43

FOR SALE: 2015 Chevy 2500 crew cab, 4x4, Dura Max, 75,000 miles, \$39,500.
PH. 641-799-7720 or 641-459-2162. 43

FOR SALE: Thompson Center Omega mussel loader stainless steel, 45 cal., scope & strap & much more, \$525. PH: 660-223-6616

FOR SALE: Approx. 7 ton bulk bin on 6 legs.
PH: 641-722-3036 42

FRIESEN CONSTRUCTION
New Houses
Remodeling
Garages Electrical
Plumbing
Custom Cabinets

Arlen 664-3270
Cell 641-208-0170
Bloomfield, Iowa

MAST VINYL WINDOWS
THERMO-PRO WINDOWS
Custom Size Is Our Specialty
Professional Installation Available
THERMA-TRU DOORS
FREE ESTIMATES
22172 Hwy. 63
Bloomfield, IA 52537
800-206-9949

WANTED: 20-30 loads of clay dirt.
VM: 641-664-1891, ext. 3 42

SHADY LANE VARIETY
GET READY FOR COLDER WEATHER!
• Stocking Caps
• Socks • Gloves
• Scarves • Etc.
Hosiery Sale
Oct. 17th - 31st
1 mi. E. of Drakesville
on Jade Ave. • 641-664-0207
8-5 Mon. thru Sat.

KW Electric

Keith Waller: 641-777-6701
Matt Waller: 641-799-9220
Austin White: 641-226-4495

Licensed & Insured
Free Estimates

641-459-3889 13346 Lily Ave.
Bloomfield, IA

FOR RENT: 12' no till drill. Yoder Equipment
PH: 641-664-2797 TFN

BLOOMFIELD MINI STORAGE. Serving you from 2 safe, convenient locations. PH. 641-664-1066.

Slayton Polaris Authorized Polaris dealer since 1988

Your Adventure Awaits!

New & Used Polaris Rangers & ATV's

POLARIS The Way Out.

660-328-6627 8 mi. S. & W. from Pulaski or 6 mi. W of Memphis then 13 mi. N. on Route B

COUNTRY CUT MEATS
Custom Butchering
Beef • Pork • Deer
Butcher Hogs Available
641-675-3683 26824 Veatch Ave
Pulaski, IA

October Fall BLOWOUT Sale!

Bring in this ad and get **\$500 off** any camper or RV on the lot thru Wed., October 31st!!!
(Does not include consigned units)

Had your eye on a trailer all summer?
Come in through Oct. 31 for an extra **\$500 OFF!**
ALREADY LOW PRICES!

COME SEE US FOR ALL YOUR RV NEEDS!
Lakewood RV Sales and Rentals
Hwy. 136 E. Downing MO
660-379-2763
www.lakewoodrvsales.com

See John for a **SCARY Good Deal**

2013 Ford F-150 Limited
2016 Ford Fusion
2013 Chevy Suburban

"Like us on Facebook!"

504 South Drake St, Bloomfield, IA
PH: 641-664-2648

ONLY 33,000 MILES
47,000 MILES LTZ, HEATED & COOLED LEATHER SETS, DVD PLAYER.

Kollision Korner

GREAT EVENTS FOR Guys, Ghouls & Party Monsters!



"BIG ASS SAMMIES"

Food Truck

FERDINAND'S OCTOBER SPECIAL!

Big Ass Sandwich & Drink
\$6.00

Drink & sandwich only!
Thru October 31st



Open Wed., - Sat.
11 am to 2 pm

**Don't forget our
rewards card!**
Purchase 10 get one free!

In Lancaster on the hill
3 1/2 miles south of the line!

Join us for a spooky good time...

City of Pulaski

TRICK OR TREAT

Monday, October 29th
5-7 pm

MARK YOUR
CALENDERS



Schuyler County Nutrition Site

Northwest corner of the square
in Lancaster



SOUP SUPPER
FUNDRAISER

Sat., October 20, 2018
Serving starts at 5 P.M.

Soups, crackers, sandwiches, several desserts,
with tea, coffee and/or water.

All are welcome & we hope to see you there!

FREE WILL DONATION TO HELP WITH
OPERATIONAL COSTS

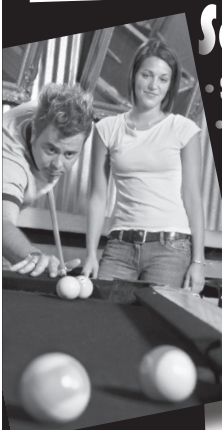
2nd Annual Co-Ed 8 ball Pool Tourney

Saturday, Oct. 20th

- Sign up at 12:30/ play at 1pm sharp
- \$20 per team -
- Silent Auction - Casserole contest
- Co-Host - American Legion Women's Aux.

All proceeds go to help our local
men & women in the military

**American
Legion**
Bloomfield, IA



Friday, October 19th

Choice of 12 or 14 oz. Ribeye with sides

Serving at 6:00 P.M.

Dine
In

722-3355

Carry
Out

RAY'S LONGBRANCH

Drakesville, IA

Paul Yoder Family
Benefit
Supper & Auction
Fri., October 19th
Supper 4:30-7:30 • Auction 7:00
Located at Devon Weaver Farm
14682 Route J40 • Milton, IA 52570
1/4 mile west of Lebanon
Marcus Lynn, 3 months old, had open heart surgery
on Sept. 17th with a 4 week stay.
Benefit will help with medical expenses.
Supper will include
Grilled Chicken and Homemade Ice Cream
For Auction Donations, please contact:
Gun Raffle Lengachers Small Engine Gun Raffle
319-293-3754 or
Yoder's Indian Creek Furniture
319-538-7332

IOWA THEATER
BLOOMFIELD, IOWA
"SmallFoot"
Friday, Oct. 19th &
Sat., Oct. 20th 7:00 PM
Sun., Oct. 21st 4:00 PM
PG

LOOK TO THE STARS
CANCER FOUNDATION
Bloomfield, Iowa
Annual
**SOUP SUPPER &
AUCTION**
Saturday, October 20th
Supper at 5:00 PM - 6:30 PM
with Auction to follow.
Bloomfield Christian Church, 107 N. Davis Street
All proceeds to Davis County
residents diagnosed with cancer.
Any business or individuals wishing to
donate to the auction please contact
Gary Feldmann • 641-208-5324

Bloomfield
United Methodist Church
**Lord's Harvest
Auction & Bazaar**
Sat., November 10th
Bazaar - 3:00 pm • Dinner - 5:00 pm
Auction - 6:30 pm
Roast Beef, Mashed Potatoes, Vegetable,
Several Salads, Various Desserts, Rolls, Coffee, and Tea
AUCTION ITEMS INCLUDE: Hawkeye Tickets,
Event Tickets, Gift Certificates to Local
Businesses, Locally Grown Meat, Metal Yard
Art, Weekend Cabin Get Away, Candies
& Much More!
Please join us for an evening of fun,
fellowship and shopping!
Contact:
641-664-3206



**FREE
LUNCH!**
Caring for our community with God's help!
ELCA Hunger Grant
Need a ride? Call 664-3242
Worship time: Sunday 9:00 AM

**SATURDAY, OCTOBER 20TH
11:00 A.M. - 12:30 P.M.**
Roast Beef, gravy, mashed potatoes,
trimmings, dessert & drink.
COME AND JOIN THE FELLOWSHIP!
GOOD SHEPHERD LUTHERAN CHURCH
19419 Lilac Avenue, Bloomfield, North end of West St.
Delivery in Bloomfield after 12:15 P.M.

October Spooky DEALS

- 5% Mineral Blocks - \$1.00 OFF PER BLOCK
- Mouse Poison - \$1.00 OFF
- Rock Salt - \$1.00 OFF
- Black Bale Rings - \$10.00 OFF
- Safe Guard Blocks - \$42.00
- Metal Bale Ring - \$10.00 OFF
- 20% Lick Tubs - \$82.00 EACH
- Safe Guard Pellets - \$2.00 OFF PER BAG
- 37% Mineral Blocks - \$1.00 OFF PER BLOCK
- Bucket Rattlers • \$1.00 OFF HWT
- Cement Feed Bunks - \$5.00 OFF
- Smoker Pellets - \$1.00 OFF PER BAG



MFA
AGRI SERVICES
FARM & HOME
PO Box 253
Memphis, MO

660-465-2603

FOR SALE: 2018 alfalfa hay. Mark Rogers, Douds, IA. PH. 641-919-9447. 45

FOR SALE: 10' disc Allis Chalmers, good shape, \$250. PH. 641-777-8821 43

FARM TRACTOR & SMALL EQUIPMENT RESTORATION.

Show quality paint finishes are our speciality! References available.

KIRKSVILLE, MO • 660-665-1595

FOR SALE: 2004 VW Jetta, TDI diesel, auto., black, 155,000 miles, \$3,400 OBO. PH. 660-988-0890. 44

FOR SALE: American Bulldogs, shots & wormed, \$200. PH. 641-777-6522 44

Hawkins - Harrison Insurance



SHOPPER ADS CAN BE DROPPED OFF HERE!

Proud to be your partner.

P.O. Box 365
Lancaster, MO
63548
660-457-3020

103 W. Monroe St.,
Memphis, MO
63555
660-465-8533



FEED & SUPPLY
641-722-3045
17599 200TH STREET • BLOOMFIELD
STOP BY MON.-FRI. 8-5 & SAT. 8-12

Complete line of bagged feed in stock!
CUSTOM BULK
Non GMO Poultry Feed we deliver!

FENCING SUPPLIES • FENCING SUPPLIES

Wortmann Machine & Welding

- Large Steel Inventory
- Lathe Work
- Mill Work
- Shear Capacity 8x10 Ga.
- Press Work
- Oxygen & Welding Gases (Rent or Lease)
- S. J. Smith & Midwest Airgas



910 W. Walnut
Bloomfield, IA
Ph: 641-664-1300

Yoder's Indian Creek Furniture. Check out our great selection of outdoor Polly lawn furniture. Maintenance free with lifetime warranty. Also Polly Martin houses & gourd racks. Rt. V64 Milton, Iowa. Located 4 miles North of Cantril or 3/4 miles South of Lebanon on RT. V64, Monday to Saturday 8 a.m. to 5 p.m. No Sunday sales. PH. 319-538-7332 TF

FOR SALE: Approx. 7 ton bulk bin on 6 legs. PH. 641-722-3036 43

FOR SALE: WINTER IS COMING: DS stove, wood or coal, used 2 seasons. Also 5 aluminum storm windows, \$5.00 each. PH. 641-996-7255. 43

HOUSE FOR SALE: To be moved or torn down by the 15th of December. Call for more info. PH: 641-664-3462 or 641-208-4710 43

FOR SALE: 20 big round bales of good grass hay, \$60.00 a bale and small square bales of hay, \$5.00 a bale. In Birmingham area. PH. 319-498-4394. 44

NEW MATTRESSES FOR SALE!

Selling individually or in sets.
Factory warranty.
TWIN - FULL
QUEEN - KING

641-664-3060

WANTED:

TIRE & SERVICE TECHNICIAN

Immediate Opening. Willing to train right person. Good benefits.



Call Rob Williams at 641-664-1801

108 Smith Street • Bloomfield
TOLL FREE 1-888-855-8740

GOT MUD? 1 have 4 Firestone 18.4x38 R-2 rice tires and tubes, like new, for \$1,200/pr. I also have a set of Roll-o-Cones for 6 row cornhead, \$500. PH. 641-656-4956. 44

FOR RENT: House in Queen City, Mo. 3 bedroom, 1 car garage, stove & refrigerator. Furnished. 1st month & deposit required. References. PH. 660-216-5655. 43

TRI-COUNTY SHOPPER CLASSIFIED AD DEADLINE IS FRIDAY, 5 P.M. EVERY WEEK. Classified ads must be paid for in advance. Mail your ad to Tri-County Shopper, P.O. Box 168 Bloomfield, IA. 52537. For questions call us at 641-664-1333.

FOR SALE: Wheat straw, small squares, \$4.50 per bale. PH: 660-216-3640 44

FOR SALE: S&W .357 SS revolver w/case and extra grips. Need permit, \$650. PH. 319-498-4394. 44

WANTED: 250-500 gallon LP tanks. PH. 641-722-3002. Ext. 2.

HOURS
8 A.M. to 5:00 P.M. DAILY EXCEPT SUNDAY

Zimmerman's Store
Rutledge, MO
660-883-5766

Our Everyday Low Prices!

FABRIC SALE Friday & Saturday October 19th & 20th

10% off on fabric & sewing notions.

Empty a bolt of 5 yards or less and get 20% off!
Selected fabrics 20% OFF & some 1/2 PRICE!

- 50# White potatoes, \$9.50 • 10# Russet Potatoes, \$3.19
- 5# Yukon Gold potatoes, \$3.85 • 5# Russet Potatoes, \$2.29
- Jumbo sweet potatoes, 59¢ lb. • White onions, 75¢ lb.
- 50# medium yellow onions, \$21.95 or less lbs 45¢ lb.

SPECIALS • SPECIALS • SPECIALS
NEW LOAD, VARIETY OF SIZES YOGURT

- Turkey breast oven roasted98¢ lb.
- 14.4 oz. Cinnamon Graham crackers.....79¢ dated 10-28-2018
- 19 oz. Food Club orange drink mix.....\$1.05 dated 01-2019

SPECIAL BUY: 30.5 oz. Folgers classic roast coffee, ONLY \$7.75
2.2# Nestle coffee mate original creamer, \$5.95

- 12 oz. Ovaltine classic malted chocolate malt \$5.55
- 3 oz. makes 30 qts Lipton iced tea, unsweetened \$4.19
- Backroad Country fresh crisp apple cider..... \$6.25

Fresh duck eggs • \$2.30 a dozen
Brown large cage free eggs, \$2.49 a dozen

REDUCED PRICES ON MUMS!

DRIVE A LITTLE & SAVE A LOT

Farm Nutrients Brand

All Natural Chicken Litter Fertilizer
No Additives, Organic Accepted
Several options available.

Contact David Yoder for Ordering Information
641-722-3037

FOR SALE

Driveway Fabric Rolls
Commercial, Heavy Duty,
Designed for Heavy Traffic

12' 5" Wide
432' Long
\$370/roll

660-216-0938

We would like to express our sincere gratitude to everyone who attended and assisted in any way to help make Ken Hartman's Celebration of Life a memorable day. Dianna Hartman & family

L&M Country Store

1 1/2 miles south of west Hwy 2 & 63 jct.
Mon-Sat. 8am-5pm **CLOSED SUNDAYS**
VM: 641-664-1936

- APPLES •
- Yellow Delicious & Jona Gold
- 60 lbs. Raw Unfiltered Honey.....\$139.00
- Miracle Whip.....\$5.99/gal.
- Mini Horn Co-Jack Cheese\$2.29/lb.
- Mini Horn Pepper Jack Cheese\$1.79/lb.
- Frozen.12 oz. Oscar Mayer Beef Bologna59¢
- Frozen 5 lb. Fully Cooked Johnsonville Brats\$6.99
- HOMEMADE FRUIT CAKES!**

GARAGE DOORS

Residential • Commercial • Doors • Operators

Quality Products + Quality Workmanship = Quality Customers

Call us today for your • **FREE** door estimates.

WE FIX DOORS!

MAST OVERHEAD DOORS 105 S. Dodge St.,
641-680-2016 Bloomfield, IA

FOR SALE: 2 Kiko buckling goats, 7 months old, from registered parents, ready to breed, \$650 each. Located 5 miles north of Cantril.
PH: 217-260-1876

43

FOR RENT: 1 or 2 bedroom apartments Milton, IA. Kitchen appliances & heat furnished. Very reasonable rent.
PH: 641-757-0201

44



We have what cows want! Come see us today!

HARRIS DISTRIBUTING
1-800-727-5589 OR 641-929-3379 • WEST GROVE, IA



FOR SALE: 2001 Ford Windstar 7 passenger van, tan with gold interior, 149,000 miles, runs good. Small dent on back hatch, brand new tires, \$1,150.
PH. 660-341-7263.

42

FOR SALE: '07 Chrysler Town & Country, touring, 7 passenger van, silver w/gray interior, 153,000 miles. Runs great, little rust, \$1,475.
PH. 660-341-7263.

42

GET READY FOR WINTER!



All Stoves UL Approved for Insurance Purposes

Comfort Max Model #75

- Coal Stove
- 92% Efficiency



Huntsville Model #1400

- Wood Stove
- 70,000 BTU



GINGERICH STOVES and PLUMBING

3/4 Mile East of Drakesville Southside
VM: 641-664-2814

HUGE ESTATE AUCTION

Saturday, October 20 • 10 AM

Located Spees Auction Center, 1947 Hwy 1 North, Fairfield, IA

— PARTIAL LISTING —

26 MORGAN DOLLARS • NICE OLD COSTUME JEWELRY
GRISWOLD COLLECTION (OVER 100 PIECES)

ANTIQUE FURNITURE: Walnut barrel front desk; Victorian beds & dressers; Lawyer stack bookcases; Sellers cabinet with drawers; marble top sideboard; Larkin desk; oak dressers & highboys; old show cases & store displays; trunks; claw foot round oak table & chairs; oak roll-top desk; child's roll-top desk; 10+ wicker pieces; oak bookcase; parlor tables; rockers; brass beds.

ANTIQUES: Large rendering kettle; black mannequin; 2 Dazey churns; lanterns; copper-boilers; cast iron delivery sign; Carnival animals; old cash register; old store displays; Zippo store display; crocks; old glassware & primitives; birdcages.

LAMP COLLECTION: Over 15 floor lamps; white Aladdin lamps; slag glass shades & lamps.

FANCY NEW ENGLAND PIANO

PICTURE COLLECTION: over 100 paintings, prints & pictures
TRACTORS & MOWERS: Ford tractor; New Huskee 42" rider; Simplicity 52" rider; lawn mower trailer 4' x 8'; Husqvarna reartine tiller; snowblower; lawn sweep; 3pt. King Kutter tiller, 5'; brush cutter; 2 bottom plow

TOOLS: Bosch table saw; planer; tile cutter; 2 hayracks full of hand tools & yard tools; ladders.

HOUSEHOLD: Kenmore upright freezer; couches; table & chairs; china cabinets; usual run of household items.

AUCTIONEER'S NOTE: Outstanding collector's auction from the historical Sloca house. We will run 2 rings.

MILLER and SEPTER ESTATES, Owners

1960 Libertyville Road, Fairfield
641-919-4786

Rick Spees AUCTIONEER

Not responsible in case of accident.
www.speesauction.com

Any announcement made day of auction holds precedence over advertising.

FOR SALE: 4755 JD Tractor. Always been shedded, in excellent shape.
PH: 660-216-7696

FOR SALE: Kubota L2650 tractor, 4WD and mower deck on bottom, \$5,000.
PH. 641-799-8103.

44

C.H.I. MIDWEST Overhead Door by LiftMaster

✓ *Out Our Competitive Prices!* 21387 Route V64 Keosauqua, IA 52565 **660-216-0812** *Our goal is to keep your doors rolling smooth!*

Sales • Parts • Service ~ Free Estimates
We sell new doors and openers or we'll service your old one.

FOR SALE: 6 bar, 20ft. Continuous paneling, 14 panels total.
VM: 641-664-1964 ext. 5

FOR SALE: Firewood at RJ Lumber, \$15 a pickup load. 18989 160th St., Drakesville, IA 52552.
TF

HEIFERS FOR SALE

Red Angus & RAX

Bred heifers, due Feb. • Open weaned heifers

- Bred for performance
- Developed for longevity
- Docile & easy to handle

CR CATTLE CO

Jennifer Gardner • 641-895-4116

Troyer Seeds

Special!

Rye \$12.50 Bagged \$11.50 Bulk bushel

FALL DISCOUNTS
on Pre-Paid for 2019 Planting

12722 245th Street Emanuel Moulton, IA 52572
641-929-3381



FALL SALE

Brown Sugar
2lb. bag
\$1.25

39¢ per lb.

Sweet Potatoes

75¢

14.4 oz.

Cinnamon Graham Crackers

2 Liters

88¢ plus deposit

Fanta Fruit Flavored Soda

75¢

15 oz.

Stokley's Canned Pumpkin

2/\$3

21 oz.

Musselman's Lemon & Cherry Pie Filling

15 oz.

2/\$1

Smokies Smoked Sausage

6 pack

2/\$1

Velveeta Stuffed Grilled Cheese

79¢ per lb.

Bone In Pork Brisket

99¢ per lb.

Fully Cooked Pancake & Sausage Bites

99¢ 355ml

Mexican Glass Coke

24 pack - \$21.95

\$1.99 8 oz.

Seasons 25 pounds of Meat

A. C. Leggs Pork Sausage Seasoning

\$7.95 10# box

Jalapeno & Cheese Hot Dog

\$4.99 gallon

Blue Cheese Dressing

99¢ 12 oz.

Tartar Sauce

Breaded Pollack Fish Sticks
99¢ per pound

100 pack \$24.95

McCafe Dark Roast Coffee K cup



DUTCHMAN'S STORE Division Street CANTRIL, IA (319) 397 2322

SALE PRICES October 17-24, 2018 While Supply Lasts

STORE HOURS - Weekdays, 8a.m. - 6 p.m. - Saturday 8a.m. - 5 p.m. - Sunday Closed

View our specials online - www.DutchmansStore.com

Annual Rigdon Ridge
Haunted Trail
OCT. 19TH, 20TH, 26TH & 27TH

\$5 Per Person
ALL PROCEEDS DONATED TO SCHUYLER CANCER RELIEF

Thank you to the following for your donation last year:
Western, Lancaster Lumber, Angela Steele, Jean Dufur, Amanda Lindquist, Megan Anderson, Brandon Sholle, Glenda Lawson, Kyle Randall and Downing Fire Dept.

In great appreciation to all the volunteers who donated their time, supplies and efforts to make the Haunted Trail a success last year!

For more info **660-216-9087**

Mums
Mums
Mums

We still have plenty to choose from!
Pumpkins & Gourds too!

Large variety of succulents.

New Shipment of **AIR PLANTS**

Lilac Hill GREENHOUSE
660-342-9554

25957 US Hwy 136 Lancaster, MO
M-Sat. 8:00 AM - 6:00 PM Closed Sundays

FOR SALE:
TMR mixers, new & used
Call: 660-216-3640

ALL THINGS BASEMENT-TY! Basement Systems Inc. Call us for all of your basement needs! Waterproofing, Finishing, Structural Repairs, Humidity and Mold Control. FREE ESTIMATES! Call 1-800-640-8195 (MCN)

Happy Birthday to a **FABULOUS Gal!**

Have a great birthday Tiffany!
You deserve it!

From your Shopper Family!

VOTE ABSENTEE • VOTE MATT GREINER

For County Supervisor



FRESH LOCAL HONEY FOR SALE: \$4.50 for 1 lb. jar, \$42.00 per gallon, \$185 for 5 gallons. PH. 641-722-3507 after 4 p.m

44

FOR SALE: Round bales hay, 3rd cut alfalfa & grass. Some foxtail, no rain, net wrapped, \$85. Loader available. PH. 641-682-1455 or cell 515-339-5502.

FOR SALE: Kawaski Bayou 220 4-wheeler, needs starter and car work, \$350; Also a 4 compartment dog trailer, \$300. PH. 319-498-4394.

44

Shop Local

Bloomfield Farmers' Market
Thru Oct. 20th
Saturdays
8:30 - 11:30

For more information contact
Market Manager Patsy Boas
641-459-3387

TROPHY RIDGE TAXIDERMY

Serving Bloomfield & surrounding counties for over 15 yrs.

Mike & Cindy Tinkham
14955 293rd St. • Bloomfield, IA
319-230-6215

EGGS FOR SALE: Brown farm fresh eggs. Les McCarty • 20543 Jewel Ave. Keosauqua, IA 52565 PH: 319-293-3768

FOR SALE: Winter wheat suitable for seed \$10 a bushel bulk; New Idea 2 row wide corn picker, sealed, \$2500.00 PH. 319-540-4601.

8 FT. RAILROAD TIES

Great for landscaping and garden boxes

SPILMAN AUTO PARTS
20311 Old Hwy. 2
PO Box 31 • Bloomfield
641-664-2463

FARMLAND FOR RENT: Taking sealed bids on 59.50 acres of organic farm ground until November 15th. They can be sent to Rick Piper, 306 W. Poplar, Bloomfield, IA or dropped off at Spilman Auto Parts. Any questions call Rick at 641-208-6015.

BULLS FOR SALE

Red Angus 18-36 months old

- Bred for performance
- Developed for longevity
- Docile & ready to work!

CR CATTLE CO

Jennifer Gardner • 641-895-4116

WHEAT STRAW FOR SALE

Big square bales of western wheat straw, \$125.00 per ton delivered.

660-216-0938

Boneless skinless pollock fillets, 10 lb. box **\$1.99 a lb.**

Fresh boneless pork loin, approx. 4 lb. pkg **\$1.59 a lb.**

Fresh boneless beef ribeye roll, approx. 12 lb. **\$4.99 a lb.**

Nathan's Famous beef franks, approx. 5 lb. **99¢ a lb.**

Dietz & Watson pasteurized process sliced American cheese, 8 oz. **85¢ each**

Sauerkraut, 1.18 lb. **25¢**

Hard boiled eggs, 5 lb. bags **\$1.99**

Califia Farms dairy free yogurt, cultured nut milk, strawberry, 8/ 8oz. **\$1.50**

Reese's popped snacks mix, 8 oz **\$1.29 or 2/\$2.00**

Lipton diet green tea, citrus **\$1.25 a gal.**

Maxwell House coffee, Columbian medium, 24.5 oz. **\$7.00**

Velveeta shells & cheese, original, 12 oz. **79¢**

Buried Treasure soothing syrup ACF, 16 oz. **\$19.95**

Energizer batteries, AA & AAA, 24 ct. **\$9.39**

Highway 2 DISCOUNT Groceries L.L.C.

Sale good Wed., October 17th through Tue., October 23rd.

Mon. - Sat 8:30am - 5:00pm VM: 641-664-1187 • 19686 Hwy. 2, Approx 2 miles West of Bloomfield

Customer Appreciation Day!

Saturday, October 27th, 2018

8 a.m.-4 p.m.

Check out our
**Luverne Grille
Guards**

WeatherTech®

We will have a

BOUNCE HOUSE!!

Floormats!

**B & W TRAILER
HITCHES**

Check Them Out!

DISCOUNTS ON ALL TRAILERS AND FLATBEDS!

**Super Specials on 8 bolt trailer tires!
You don't want to miss these prices!**



STOREWIDE DISCOUNTS that you won't want to miss!

DOOR PRIZES

Enter to win:

- Children's Bike
- \$100 towards a set of tires
- DIY Spa Basket • MUCH MORE

• FREE •

DONUTS & COFFEE WHILE SUPPLIES LAST

FREE Lunch 11-2

**Serving hotdogs, hamburgers
and sides!**

Don't Miss This Event!

CANTRIL TRUCK & TRAILER

319-238-7367

101 North St. • Cantril, IA



Check us out on Facebook 

THANK YOU

After 91 years in business the Hoskin Family has sold the management of Hoskin Elevator to Brett, Blake, Abby & Stephanie Barnhart.

The family would like to thank all of our customers for allowing us to serve your farming needs.

We hope you will allow the Barnhart Family to give you the same service.

Good Luck
Barnhart
Family!



We would like to thank the Hoskin Family for building this wonderful small town family business and all the help in this journey. We look forward to serving their exiting customers in all the ways they have known and continuing to grow the Hoskin legacy in Davis and surrounding counties.

Thank you, Brett & Stephanie and Blake & Abby Barnhart

Please give us a call with any questions or stop in and see us!

Ask about our ADM mineral, commodity mix feed in bulk and starting next week commodity mix feed in bags

Cover crop wheat \$7.00 a bushel

Call Brett about farm pick up during harvest!

HOSKIN ELEVATOR, INC.
29067 Juniper, Bloomfield, IA
641-929-3568



Cosmetology & Massage Therapy Month

Image Shapers

107 1/2 E. Jefferson, Bloomfield

641-664-1650

Open Monday - Friday

Call to book your new look today!



Brenda Williams
Stylist/Owner
Tues.-Fri. 9-5

Barbie Slayton
Stylist
Tues.-Wed. 9-7
Fri. 9-5

Tiffany Panos
Stylist
Tues. 10-?
Wed. 10-8

Brittany Bremer
Stylist
Wed.-Thurs. 10-7
Fri. 10-5
Sat. 9:30-1:00

Shari Yahnke
Nails
Tues. 11-7
Fri. 10-5

THE HAIR CO.

in Memphis Missouri

We are proud to serve women who are battling cancer.

Wigs For Love supply a wig along with the wig stand to ladies in need,

FREE OF CHARGE!

We offer many different colors and styles and will help you from start to finish!

If you or someone you know is in need of our services, call us today for full details!

111 E. Monroe St.
Memphis, MO
660-465-7700



MASSAGE works
therapeutic massage

112 N. Dodge St. Bloomfield, IA

Secluded and quiet, come relax and get the treatment that your body needs...

Heather Boas, LMT

Tuesdays & Thursdays 641-777-1824

Massage Therapists listen with their hands and their hearts.



FRIENDS COME AND GO,
BUT A GOOD HAIRSTYLIST IS FOREVER.

Come See
Marcia Schubert
at
Tangles Salon
For all Your Beauty Needs!

Tues. - Fri. 9-6
Evenings & Saturdays
By Appointment

- Cuts •Colors
- Perms •Waxing
- Nails •Spray Tanning

105 W. Washington
Lancaster, MO
660-457-2090

High Auction Service, LLC
 Auction Location: 1 mile West of Downing, Mo on Hwy 136.

Fall Consignment Auction

Friday, October 26, 2018 @ 9:00 a.m.

Tractors - Skidsteer - Machinery
 2003 Case 70XT Skid Steer, cab, heat, ride control 2486 hr. good cond.
 1979 JD 4640 tractor 8 speed power shift trans. 7300 hours
 1970 IH 656 Utility Hydro. gas tractor w/ IH 2000 loader, new paint, new tires, totally rebuilt approx. 10 hr. on engine overhaul
 AC WD tractor new radiator new carburetor kit runs good
 JD 60 gas tractor NF power steering good tires runs good sn 6050664
 JD 60 gas tractor NF good tires power steering motor stuck
 IH 560 gas tractor wide front w/ loader runs good - 3 pt. seeder
 Farmall M w/ loader runs - IH 560 parts tractor - Big OX 3 pt. blade
 Farmall M parts tractor - JD 7000 6 row planter - JD 3 pt. blade
 Knight Reel Auggie 3030 mixer wagon w/ scales - gravity box
 Coossen Industries 3 pt. bale chopper - IH 1550 manure spreader
 JD HX15 15' brush cutter 540 PTO - M&W 15' 3 pt. drill
 Woods 315 15' brush cutter 1000 PTO - JD 14T square baler
 Kilbros. gravity flow wagon - J&M gravity flow on Gehl gear
 300 bu. gravity flow wagon - 10 ton running gear
 IH Vibra shank 18 1/2' field cultivator - 3 pt. 2 bottom plow
 Woods Dixie Cutter 5' 3 pt. brush cutter (good condition)
 Large barge box wagon w/ hoist - 3 pt. Deutz Allis hay tedder
 Lundell 3 pt. snow blower w/ hydro. spout - Woods auger wagon
 NH 717 Super forage chopper w/ 2 row corn head
 IH 540 manure spreader (needs gear box) - Knoedler auger wagon
 Kelly Ryan manure spreader - AC snap coupler 2 bottom plow
 Industrial HD 800 10' hyd. 3 pt. blade - AC snap coupler blade
 2 new hayracks on gears - 2 section harrow - old 9' disc
 Side Winder SW-842 pull type brush cutter JD 640 hay rake

Trucks - Vehicles - Trailers & Flatbeds
 2016 PJ 30' trailer Flat Deck w/ slide in ramps 25000 GVWR
 2016 Big Tex 18' trailer 14000 GVWR
 2008 JN 20' trailer w/ gravity tilt 14000 GVWR (new brakes)
 2007 Rice 26' equipment trailer 14000 GVWR
 1997 Rice 12' trailer w/ 4' gate - 1995 18' equip. trailer (good tires)
 Heavy Duty 32' trailer hyd. disc brakes, good lights & 14 ply tires
 Homemade 20' gooseneck trailer triple axle - Ford pickup trailer
 Homemade 8 bale gooseneck hay trailer w/ HD dually truck axle
 8' 3/4 ton pickup bed trailer w/ toolboxes on front lights work
 2007 Dodge Caliber AWD 209xxx miles new trans. runs good
 1990 Ford F250 4x4 351 V8 new tires, wheels & manifolds etc.
 2001 Chevy 1500 pickup truck regular cab 4x4 120xxx miles
 New CM 8' flatbed for dually pickup w/ tool boxes & skirting
 New CM 8' flatbed for dually pickup no boxes

Shop Tools - Etc.
 IR 1/2" drive 20 volt impact 2 batteries & charger
 Lincoln grease gun 14.4 volt 2 batteries & charger
 Hitachi 18 volt drill & 1/4" impact 2 batteries & charger
 100 gallon fuel barrel w/ pump - Peter Wright anvil 100 lb.
 (2) 300 gal. waste oil tanks - Olympic Avalon wood stove
 80 gal. fuel barrel w/ 2 compartments & 2 pumps
 North Star 30 ton log splitter w/ Honda motor
 (2) 710/70-42 tires - 50 pc. 2x6 16' lumber - assorted metal
 Husqvarna 365 special chainsaw w/ 20" bar
 Stihl MS 180C chainsaw w/ easy start like new
 Husqvarna 36 chainsaw - 6" SS stove pipe

Livestock Equipment - Fencing Etc.
 Powder River squeeze chute w/ For-Most head gate
 (2) Feed King 2 ton portable creep feeders w/ gates
 (5) Chore Time 4 ton bulk bins - 4 bale rings
 (2) Ritchie cattle waterers - SS hog waterers
 (4) Smidley SS pig feeders - several pcs. 3/4 sucker rod
 (3) poly feed bunks - misc. cattle panels - 200 + T posts
 Several wooden fence posts - used barb & woven wire
 Assorted chicken wire etc.

Can Am - ATVs & Mowers
 2015 CanAm Maverick RS 1000R 3276 miles
 2016 180cc youth side by side good condition
 Honda 400 Foreman 4x4 ATV good condition
 Kawasaki 300 Bayou ATV good condition
 Kawasaki 220 Bayou ATV good condition
 Exmark 48" ZTR mower (needs engine)

Skidsteer Attachments - Etc.
 New skidsteer buckets etc. from Kival Attachments
 Good used Danuser EP 15 post hole digger w/ auger
 2 New skidsteer root grapples - 2 new skidsteer back plates
 2008 Bobcat LT313 trencher for skidsteer - also 1 for parts
 Set of steel skidsteer tracks - other attachments pending
 For-Most hydro. bale spear for pickup like new w/ remote

Lunch by Country Cookin'
 Ralph & Linda Burkholder

Auctioneers Note: This is a partial listing as there were several items pending at time of print. We anticipate lots more than this bill reflects. We will be accepting consignments until Wednesday, October 24th. Loader and personnel there to assist on auction day.
 Thanks, Randy

High Auction Service LLC - Randy 660.216.0515 - Clair 660.341.1687 - Kris 660.342.8634
 for additional photos go to: www.highauctionservice.com email: highauction@marktwain.net
 Terms: Cash or check with proper I.D. Not responsible in case of accidents or theft. Announcements day of sale take precedence over any advertising.

DO YOU HAVE THE RIGHT COVERAGE?

WITH TIGHT PROFIT MARGINS, ARE YOUR CROPS & LIVESTOCK COVERED?

THINGS TO CONSIDER...

NEW COVERAGE! DAIRY REVENUE PROTECTION	WHEAT REPORTING PRODUCTION NOV 14 ACREAGE DEC 17	MULTI-PERIL REVENUE PROTECTION CORN & SOYBEANS MARCH 15 {Sales Closing Date}
PASTURE, RANGELAND & FORAGE RAINFALL INDEX NOV 15 {Sales Closing Date}	CONTACT US TODAY!	

CROP HAIL PROTECTION WIND & EXTRA HARVEST EXPENSE ENDORSEMENTS

CROP INSURANCE SERVICE AND ANSWERS FROM AGENTS WITH A FARMER'S PERSPECTIVE.

JOHN AYLWARD (660) 328-6289 **CHRISTY AYLWARD (660) 341-7254**

Friesen Excavating
 Specializing in Septic Systems, Certified For Peat Tanks and Sand Filters. Can Also Do Other Drains and Water Lines.
 Call or Text Shawn @ 641-208-0861 • Bloomfield, IA
Free Quotes Available

Davis County, Iowa Land Auction
Monday, October 22 • 10 a.m. Sharp
16834 180th St., Drakesville, Iowa
 473.21 Surveyed Acres—6 tracts
 Land is located in sections 5-6-7-8 Drakesville Township, Davis County, Iowa. General directions to sale site 1 mile west of Drakesville, Iowa on 180th black top road.

Tract I: 20.701 acres
 Open pastureland and two story wood frame home, garage, machine shed, open front shed, grain bins. Has 34.95 C.S.R. rating.

Tract II: 26.124 acres
 Tillable farm ground, has a 56.97 C.S.R. rating

Tract III: 79.987 acres
 Tillable farm ground, has a 54.97 C.S.R. rating

Tract IV: 40.718 acres
 Tillable farm ground, has a 53.57 C.S.R. rating

Tract V: 129.540 acres
 Tillable farm ground, Fox River bottom, has 76.18 C.S.R. rating

Tract VI: 176.139 acres
 Tillable farm ground and open pastureland. Has open front cattle shed, hay barn, ideal cattle farm

Terms: Twenty (20%) percent of the successful bid price shall be due on the day of auction with the balance of the bid price due at closing which shall be held at the Lynch Law Office on or before November 30, 2018. Immediately following the auction, the successful bidder(s) shall enter into a written agreement with the Estate for the sale of the real estate. The real estate taxes shall be prorated to the date of closing. Title to all tracts will be conveyed by recorded surveyed description. The successful bidder(s) shall be given possession of all of the Tracts at the time of closing, but SUBJECT TO a farm lease that terminates on March 1, 2019. The successful bidder of Tract 1 shall be given full possession of the house and pasture at the time of closing. Tract 6 is subject to a perpetual easement for ingress and egress to Tract 5. The Estate is NOT required to and will NOT inspect or update the septic system on Tract 1. Any and all announcements made the day of the auction shall take precedence over any prior advertising either written or oral. This real estate is being sold "AS IS" without any representations or warranties made regarding the real estate, either express or implied.

Please Note: This will be a rare opportunity to purchase one of the top farms to be offered at public auction in this area. If you are interested in viewing this farm please call the Auction Co. at 641-208-0254 or 641-664-1385. All 6 tracts will be sold at Tract 1. The farm will be sold in 6 individual tracts and will not be combined at the conclusion of the auction.

Lewis Horn Estate
 Ashley Leyda Walkup Attorney at Law
 Iowa City, Iowa Lynch Law Office
 Executor for Estate Bloomfield, Iowa
 16834 180th Street, Drakesville, Iowa Attorney for Estate

SALE CONDUCTED BY
Don Horn Auctioneering Service
 209 East Jefferson, Bloomfield, IA
 Phone: 641-664-1385 • 641-722-3796 • Home
 • 641-208-0254 • Cell
 "We don't talk service, we give it."
 Auctioneers:
 Don Horn • Rodney Lawson • Josh Williams
 • Trevor Nightingale • Richard Yoder

Terms: Cash or good check. \$35.00 returned check fee. Not responsible in case of accident. The information in this sale brochure was obtained from the best reliable sources available to us. However, the Auctioneers or their employees will not be held liable should the above information be incorrect. Any announcement made day of sale will take precedence over any previous advertising.

FOR SALE: All black trotting filly. Broke and has been jogging. Would trade for yearling that is Iowa eligible or could be eligible.
 PH. 641-799-8103. 44

FOR SALE: 2-Brand NEW 9'x7' white, 2" thick flush panel garage doors, with windows in the top section. Prepped for garage door openers. \$900.00 each Brand New. Make an offer. Memphis Area.
 PH: 660-883-5371 44

FOR SALE: 1987 Ford F150 4x4, 5.0 (302) engine, flat bed, 4 spd. manual trans., front hub lockouts, lots of new parts and sensors. Also have some rust free body parts. All for \$900 OBO.
 PH. 641-208-2661. 44

YODER EQUIPMENT
 BLOOMFIELD, IOWA

CONTINUOUS FENCING

EXTRA HEAVY 10 GAUGE BALE RINGS & HAY SAVERS

SOUTHERN YELLOW PINE 30 YR. WOOD POSTS 7-9 FT.

19887 Jade Ave
 2 1/2 Miles W of Bloomfield
 V.M. 641-664-2797

FOR SALE: Isa Brown Pullets. Available October 20th. \$6.00ea. if you pick up. \$8.00 ea. delivered. Ivan Miller 28483 Timber Ave. Pulaski, Iowa 43

FOR SALE: 2006 Jet flat bed, 48x102, spread axle, aluminum/steel comb., coil pkg., 2 boxes, new wiring & lights, new king pin, 80% on tires & brakes, \$12,500.
 PH. 641-799-7720 or 641-459-2162. 43

Fox Valley Welding
 No matter what size the project customer satisfaction is always our first priority.

Tig & Aluminum • Welding • Millwork • Lathe • New Steel Sprockets • Roller Chain Barings • PTO Parts • Fabricating CNC Machining • CNC Cutting

Hours: M-F 8-5:30 • 641-656-4684
12190 East Hwy. 2 • Milton, IA

HELP WANTED

We are looking for **Concrete Finishers and Laborers.**

- Competitive Wages
- Drivers License Required

Wettstein Concrete

For more details call: **641-208-7470**

Autumn Auto Care

Indicators it's time to change air filters:

Vehicle maintenance can protect drivers' investments and help their automobiles run efficiently. One area drivers should pay particular attention to is their vehicles' air filters. When operating at optimal capacity, an air filter improves fuel efficiency while ensuring vehicles accelerate smoothly without taxing the engine. But when air filters are clogged, fuel efficiency is reduced and emissions are increased, a 1-2 punch that costs motorists money and hurts the planet at the same time. Drivers can check their owners' manuals to determine the recommended intervals to replace air filters, but the following are a handful of indicators that suggest it's time to change them.

Gas mileage: Unless you just purchased your vehicle, you likely know how many miles you can drive on a full tank of gas. If that gas mileage is suddenly slipping and you find yourself visiting the filling station more frequently, then it might be time to replace your air filter. **Engine light:** Drivers may be alerted to engine issues when the "Check engine" lights up on the vehicle's dashboard. This light may come on to indicate a problem with the air filter, as clogged air filters reduce air flow to the engine, resulting in an imbalanced air-fuel mixture that adversely affects the engine.

Starting and idling problems: Vehicles sometimes don't start up as smoothly as they once did, and

drivers may also notice vehicles are not idling smoothly. These symptoms may indicate misfiring spark plugs that are being polluted (and made less effective) by a dirty air filter that is reducing the flow of air to the engine.

Acceleration difficulties: Automobiles that are operating at peak capacity accelerate quickly. But dirty, worn out air filters adversely affect acceleration. Drivers who notice that their cars are struggling to accelerate when stoplights turn green or on highways may need to replace their vehicles' air filters.

Starting and idling problems: Vehicles sometimes don't start up as smoothly as they once did, and drivers may also notice vehicles are not idling smoothly. These symptoms may indicate misfiring spark plugs that are being polluted (and made less effective) by a dirty air filter that is reducing the flow of air to the engine.

Acceleration difficulties: Automobiles that are operating at peak capacity accelerate quickly. But dirty, worn out air filters adversely affect acceleration. Drivers who notice that their cars are struggling to accelerate when stoplights turn green or on highways may need to replace their vehicles' air filters.

FALL...
ON THE ROAD

Give Your Car a Makeover! Insurance Specialists



Guaranteed Paint Match
Guaranteed Craftsmanship

Factory Color Matching | Dent & Scratch Repair
Frame Straightening | Unibody Repair | Collision Repair **Hertz**

All Paint & Bodywork Service Guaranteed! Rentals Available

Walker Motors 375 S. Main St. Memphis, MO
Collision Repair Inc. 660-465-2159
Shop Phone/Fax

Tip #1
Replace batteries that are more than 3 years old.

Memphis Auto & Truck Parts



Alan & Tammy Adams- Owners

300 South Market, Memphis, MO
PH: 660-465-2470

Tip #2
Wiper blades should be replaced every six months.

Beeler Motor Co.



Hwy 136 E. P.O. Box 40
Lancaster, MO
660-457-3718

TIRES PRICED TO ROLL




Rotate your tires every 5,000 miles!

Tire Sales and Service

Cars and Light Trucks

- New Tires - Major Brands
- Mounting • Balancing
- Tire & Mechanical Repair
- Hand Torqued Lugs

Locally Owned

Karr Street Automotive
500 Karr Ave. • Bloomfield, IA • 641-664-2551

Our service is so good you will fall back in love with working on your vehicle!



Offering a large variety of hoses & ends.

We have a state of the art hydraulic hose machine!



If you need it, we can make it!

CHECK OUT

AutoPlus
Tallman Auto Parts
Patrick & Joanna Tallman, Owners
660-457-2191
Mon - Fri : 8:00 am - 5:00 pm
Sat: 8:00 - 12:00 pm

Our full line of auto parts!

Autumn Auto Care

TRUXEDO
BAK
EXTANG
ACCESS

COME SEE OUR HUGE SELECTION OF BEDCOVERS!

LINE-X of Ottumwa
Brad Lisk
15514 Blackhawk Rd., Ottumwa, IA
641-683-9334

Need Repair?
Let Us Help!

We can take away the stress and get you results!

Auto Body Shop
Auto Glass
Automotive Restoration

KARR COLLISION CENTER
Shawn Scott, Owner
701 Karr Ave. • Bloomfield, IA
641-664-1024



Tip #3
Check tire pressure & tread depth. In the winter pressure should be checked weekly.



Tip #4
Check fluid levels:

- transmission • brake
- power steering • coolants

Your Key To Finding The Best Auto Parts!

We have the parts you're looking for, at the price you want to pay!
Stop in today or check out our website.
www.spilmanauto.com
If we don't have it, we'll gladly get it for you.

Engines • Mufflers • Tires • Bumpers
Transmissions • Alternators • Much More

SPILMAN AUTO PARTS

Old Hwy. 2 & 63 W. P.O. Box 31, Bloomfield IA • Ph. 641-664-2463 • 1-800-477-1367 • www.spilmanauto.com

WE OFFER INSURANCE THROUGH CROP RISK SERVICES, RAIN & HAIL, & GREAT AMERICAN

FINAL WHEAT PLANTING DATE - OCTOBER 31ST
PRODUCTION - NOVEMBER 14TH
ACREAGE REPORT - DECEMBER 15TH

Coverage for Pasture, Rangeland, Forage Rainfall Index (Provides protection for a lack of precipitation)
Sales Closing - November 15th

BRADLEY INSURANCE
Tonya Bradley, Owner/Agent

226 S. Market St. • Memphis, MO • 660-465-2764
Don't Miss Out! *Licensed in Iowa and Missouri*

MPCI is available to all producers regardless of race, color, national origin, gender, religion, age, disability, political beliefs, sexual orientation, marital or family status

AUCTION
Monterey Auction House
Sunday, October 21, 11:00 am

Located 10 miles S. of Bloomfield on 63 then 4 miles W. on J51 or 10 mi. N. of Lancaster, then 4 mi. W. on J51

Portable tail lights, 5 gal. hydraulic oil, Havoline oil in quart cans, cans of STP, 2 oz. standard oil can, old beer openers, old watches, old wire rim eye glasses, several auto repair manuals, plastic lawn chairs, costume jewelry, jewelry boxes, old belt buckles, wood ammo box, milk bottles, green & purple jars, old post cards, child's VCR tapes, match box cars, horse pictures, buttons, marbles, brass ice cream scoop with wood handles, Elvis records and 8 tracks, brace & bits, buck saw, bench & weights, lady head planter, big little books, JD cushions, Charlie's Angels posters, western paperback books, Oster heavy duty body massager, 30 McDonald Ty toys (never opened), 1966 DC platbook.

All Consignments Welcome!
Announcements made day of sale take precedence over any advertising. Not responsible in case of accidents.

LAWSON AUCTION SERVICE
For More Info.: John Lawson 641-895-3852

Scotland County LIVESTOCK AUCTION



P.O. Box 111 • Hwy 15 North • Memphis, MO
660-465-7213 • Jerry & Barb Blomme
 660-341-0069 • Grant Blomme


CATTLE SALE
Tues., Oct. 23 - 12:30 pm

Results for Dairy Sale, Tuesday, Oct. 9th

SPRINGERS	HOLSTEIN STEERS
\$800.00-\$1,100.00	224 LBS. \$116.00
FRESH COWS	240 LBS. \$117.00
\$700.00-\$1,150.00	318 LBS. \$96.00
OPEN HEIFERS	333 LBS. \$82.00
Light Test	383 LBS. \$82.00
STARTED CALVES	400 LBS. \$75.00
UNDER 300 LBS.	432 LBS. \$96.00
\$200.00-\$350.00	451 LBS. \$82.00
VEAL CALVES	489 LBS. \$89.00
\$70.00-\$100.00	544 LBS. \$80.00
	582 LBS. \$75.00
	762 LBS. \$80.00

www.ScotlandCountyLivestock.com

Follow the tracks to... **TRAILS END TAXIDERMY**



Keosauqua, IA
Josette Robison
 319-288-0113
\$400 Shoulder Mounts
\$85 Skull Mounts

Like us on facebook

Hawkeye 79 Elite Lots
 Simmental Sale

40th Anniversary! Sunday, Nov. 4th at 12:00 PM
 Bloomfield Livestock Market, Hwy. 63 North, Bloomfield, IA

SimGenetics: Bred Heifers and Fancy Show Heifer Prospects



Lot 1: Sired by CCR Wide Range 9005A
 Lot 32: Sired by Mr HOC Broker
 Lot 13: Sired by W/C Utah 6C
 Lot 33: Sired by W/C Relentless 32C

Val & Lori Eberspacher
 2904 Co. Rd 6, Marshall, MN
 Office 507-532-6694
 Val 612-805-7405
 sales@ebersale.com

Professional Sale Management: 

Catalog & Sale Details online: www.Ebersale.com

Kirkville Livestock LLC
 Kirkville, Missouri

REGULAR SALE
MONDAY, OCT. 15 . 11:00 A.M.

SPECIAL CATTLE SALE
MONDAY, OCT. 22 . 11:00 A.M.

Early Listings:

Drew Bruner - 126 Blk yrlg str, 825-875#
Shane Linhart - 105 Blk & Red str & hfrs, 3rd round shots, LTW, 700-750#
 40 Blk hfrs, replacement quality
Mike Stiles - 65 mixed yrlg str, 800#
Mike Stiles - 65 mixed yrlg hfrs, 800#
Richard Brown - 52 Blk str & hfrs, 1 round shots, 550-650# breeding quality hfrs
Davis County - 50 Blk hfrs, 2nd round shots, LTW, 450-500#
Keaton Farnsworth - 39 BBWF str, 2nd round shots, 750-850#
Roy Martin - 38 BBWF few Red str & hfrs, 2nd round shots, LTW, 600-700#
Jason & Laura Watson - 37 BBWF & RWF str & hfrs, 550-650#
John Sullivan - 35 Red Angus str & hfrs, 2nd round shots, LTW, 450-600#
Skyler Wheeler - 28 mix str & hfrs, 1 round shots, 450-550#
Clarence Miller - 28 Blk & RWF str & hfrs, 350-450#
Sonny Darr - 20 CharX str & hfrs, 1 round shots, 450-550#
Johnny Gunnels - 18 Blk str & hfrs, 2nd round shots, LTW, 650-750#
Richard Mauk - 15 CharX str & hfrs, 1 round shots, LTW, 700-800#
Shaw Farms - 12 mix bulls & hfrs, all natural, 350-500#
Paul Perry - 8 Blk str & hfrs, 1 round shots, LTW, 650-700#
Shaw Farms - 18 CharX & RWF cows, running ages, some with calves, bred to Polled Hereford, 1- 3 yr old Purebred Polled Hereford bull, McCalment Breeding

CHECK OUR WEBSITE FOR UPDATED LISTINGS!

"Proud to Serve Area Livestock Producers"
YOUR BUSINESS IS VERY MUCH APPRECIATED
 We are open on Sundays to receive your livestock.

Phone for information: **Patty Foster, Office 660-665-9804**
Chuck Ambrosia...660-342-3530 Doug Fleshman.....660-626-7148
Caleb Randolph641-919-8539 Daniel Smith 660-341-8396
Mark Herbold.....515-720-8667 Jeremy Jarman 660-341-9879
Al Ashmead..... 660-216-8730 Cory Cook660-651-7453

Visit our website at www.KirkvilleLivestock.com

Schuylar County, Missouri
LAND AUCTION
MON., NOVEMBER 12TH AT 5:00 P.M.

SALE TO BE HELD AT THE LANCASTER COUNTRY CLUB • LANCASTER, MO

76.2 TAXABLE ACRES±

Land is located in Section 13, T64N•R14W, Independence Township, Schuyler County, MO approximately 8 miles east of Greentop, MO or 10 miles SE of Queen City, MO.

LAND REPRESENTS PRODUCTIVE TILLABLE CROPLAND (CURRENTLY IN CRP) WITH THE BALANCE IN WOODED DRAWS. FARM OFFERS EXCELLENT HUNTING/RECREATIONAL ACREAGE, PRIME BUILDING SITES WITH RURAL WATER & ELECTRIC.

RICHARD O. ERWIN ESTATE
 CYNTHIA SUE OLSON - PERSONAL REPRESENTATIVE

Representing Attorney: Michael W. Mulford • Mulford & DeLeeuw LLC
 601 North Main Street • Kirkville, MO 63501 • 660-665-4617
 Closing & Title Work By: Schuyler County Abstract Co.
 118 West Jackson Street • Lancaster, MO • 660-457-3804

AUCTION MANAGER: BILL FRETWELL (660) 341-7735

SULLIVAN AUCTIONEERS, LLC • TOLL FREE (844) 847-2161
www.SullivanAuctioneers.com • IL Lic. #444000107

KEOSAUQUA SALE CO.
 20511 Hwy. 1, Keosauqua, IA

Results from Oct. 15th

Butchers.....	\$46.00-49.00/cwt	Fat lambs.....	\$120.00-125.00/cwt
Sows.....	\$35.00-48.00/cwt	Ewes.....	\$40.00-64.00/cwt
Feeder lambs.....	\$135.00-153.00/cwt	Kid goats.....	40-70#
		Nannies.....	\$70.00-155.00/hd

3-6 yr old pairs \$1625 to 2000
3-6 yr old fall bred cows \$925-1300

Pound cows \$42.00-55.00/cwt low yielding
 \$56.00-61.00/cwt high yielding

Pound bulls \$72.50-82.00/cwt

SPECIAL CATTLE SALE
SAT., OCTOBER 20TH

30 hd 400-500 xbred str & hfrs - G Meinhardt
 14 hd 500-650 Hereford str & hfrs - K7 Herefords
 20 hd 550-725 blkx str & hfrs - D Swafford
 13 hd 500-625 blkx str & hfrs - D Detweiler
 10 hd 500-600 blk str & hfrs - Grassland
 20 hd 600-650 blk Balancer x hfrs - M Gabel
 40 hd 450-550 bwf & blk str & hfrs - Harbison
 20 hd 500-675 bwf str & hfrs - D Trevitt
 28 hd 650-800 xbred str & hfrs - J Weaver
 8 hd 700-800 blk str - J Stutzman
 33 hd 600-700 xbred yearlings, mostly heifers - C Nealey

Watch website for early listings www.keosauquasaleco.com

Thank You For Your Business! For More Information Contact:

Selling Times
 Hogs.....9:30 a.m.
 Sheep & Goats.....10:00 a.m.
 Outside Merch.....11:00 a.m.
 Cattle.....Noon

Keosauqua Sale Co.
 319-293-3508
 Bill Goehring
 641-919-9365

www.keosauquasaleco.com

Garages • Pole Barns Commercial Free Estimates

LAN-DOW BUILDINGS

We Stock a Complete Line of Building Materials

Lancaster Lumber, Inc.

Complete Buildings or Packages Available

Toll Free 800-424-5071 Fax 660-457-3133

Hardware • Plumbing • Electrical • Paint
 500 Green Street • Lancaster, MO 63548

ADAIR COUNTY, MISSOURI
LAND AUCTION
FRI., NOVEMBER 9TH AT 11:00 A.M.

AUCTION TO BE HELD AT THE DAYS INN
 3805 S. BALTIMORE • KIRKVILLE, MO

395± ACRES
 (SUBJECT TO SURVEY)
 Selling in 4 TRACTS

Open House
 Sun., Oct. 28th • 12:00 - 1:00 P.M.

LAND IS LOCATED IN SECTION 26, T63N•R16W & SECTIONS 2, 3 & 11, T62N•R16W, ADAIR COUNTY, MO.

✓ Beautiful country residence ✓ Premier hunting/recreational acreage
 ✓ Well maintained improved pasture land ✓ Mature hardwood timber

JAMES D. SMITH REVOCABLE TRUST
 SHELLEY BECK - TRUSTEE

Closing & Title Work By: Pickell Abstract Co.
 116 South Franklin Street • Kirkville, MO 63501 • Ph: 660-665-8324

AUCTION MANAGER: BILL FRETWELL (660) 341-7735

SULLIVAN AUCTIONEERS, LLC • TOLL FREE (844) 847-2161
www.SullivanAuctioneers.com • IL Lic. #444000107



Keep Your Farm Moving in the Right Direction

See us for all your seed, feed & fertilizer needs.

CROP SERVICES, INC

John & Kathy Bos, Owners
Drakesville, IA
641-722-3293



HAMMEL HOG WASH;

 515-851-2625
 Pressure Washing • Siding & Gutters
HOG BARN
 Patrick Hammel • Bloomfield, IA
 Check us out on Facebook!

FOR SALE: Brand new clapper board siding, already primed (gray); 1/2"x6"x16', 153 pcs., make offer. Call between 9 AM - 7 PM & after 5 PM in evenings:
PH: 641-208-5728 42

FOR SALE: Mission by Matthews bow, pink camo, fully equipped, hard case 2 releases. WANTED: 12 gauge shotgun.
PH. 641-664-2831. 43

NEED A KEY???



**Come see us...
We now do key cutting!
10% Discount On All Paint**
 until October 31st
We have all the supplies you will need & we can mix over 800 different Valspar colors!!!
Cantril Lumber & Hardware
 www.cantrillumber.com
 319-397-2351 or 319-397-2354
 Mon-Fri 7-5 & Sat 7-12



Great quality at GREAT PRICES!



HMC 3 TON PORTABLE CREEP FEEDER

- 12 gauge G90 galvanized bottom trough
- 16 gauge G90 galvanized hopper
- Painted steel frame
- Made in Missouri



SELF FEEDER ON SKIDS

- 4-ton capacity
- Custom-built
- All stainless steel
- Adjustable feed trough slides
- Fully-open top lid from ground
- Steps on the side to look inside feeder



OZARK HEAT WOOD FUEL PELLETS

- Premium-quality, 100% hardwood for maximum heat with minimal ash
- Environmentally-friendly

\$159.50 PER TON



660.465.2967 • hometownanimalhealth.com

18743 US Hwy 136 • Memphis, MO 63555
On Highway 136 west of Memphis



NUTRITION • MEDICAL • PET • FARM • APPAREL

AUTHORIZED DEALER OF NEMO FEED.

FOR SALE: Breeding roosters. Great for 4-H or breeding. Cantril area.
PH. 480-383-9763. 43

FOR SALE: Brand new set of Crosley 3.9 cu. ft. front load washer, white and matching Crosley 7 cu. ft. electric dryer, front load, white. Sell as a set. Only asking \$990, was \$1,650 MSR.
PH.641-664-7223 8 am-5 pm. 43

FOR SALE: 15 bales of big round grass hay, \$125 per bale.
VM: 641-664-1891, ext. 3 42

OVERHOLTZER
TRAILER REPAIR
 Specializing in Aluminum Grain Trailers
 Repair & Rebuild
 3 miles east of Gorin, Mo. on Route U
660-282-1012

FOR SALE: Ferguson 35 w/ new tires & brakes. Ferguson 2x14 plow. Ford 3pt. dirt scoop. PH: 641-680-6555 42

WANTED: Young laying hens or pullets. Prefer nice colors and full feathered. Will be used for 4-H projects.
PH: 641-208-6436 42

WAGLER METALS LLC

Need Metal Fast?



**WE CAN HELP!
Now roll forming metal roofing!**
 21 colors to choose from!

19049 Ice Ave., Bloomfield, IA • 641-722-3692
 M-F 7:30AM-5PM • Sat. 8-11:30AM

BLOOMFIELD



LIVESTOCK MARKET

Mon., October 22nd.....IMBO Sale.....7:00 PM

.....Please Call Head Count In For This Sale.....

Wed., October 24th..... Fat Cattle, Slaughter, Cows & Bulls9:30 AM

..... No Special Sale

Tues., October 30th Bred Cow & Pair Sale6:00 PM

Wed., October 31st..... Fat Cattle, Slaughter, Cows & Bulls9:30 AM

Wed., November 7th.... Fat Cattle, Slaughter, Cows & Bulls9:30 AM

..... Special All Calf Sale11:30

**SALE BARN OPEN UNTIL 9:00 PM
EVERY TUESDAY TO RECEIVE LIVESTOCK**

Phil Schooley..... 641-664-3450
Ron Schooley..... 641-777-0302
Roman Schooley 515-450-3685

We appreciate your business!

Tyler Schooley 641-208-5442
Barn Phone 641-664-2435

HWY. 63 NORTH • BLOOMFIELD, IA

Building Packages



**We Can Roll Your Metal
While You Wait!**



A W Metal LLC

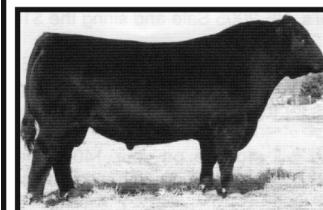
Metal Roofing Headquarters

Free 12 pack of
A&W Root Beer®
with your next
purchase of \$500 or more!



641-664-3990 awmetal.net

ANGUS BULLS 2 YEAR OLDS & YEARLINGS



- ★ CALVING EASE
- ★ GROWTH
- ★ THICK
- ★ GOOD DISPOSITION

Sired by Musgrave Reachout 530

SELECT YOUR BULL NOW

Open heifers show prospects.
Will make great cows. Top blood lines!

DORAN BOLLMAN
PULASKI, IOWA
641-675-3467

Spilman Auto Parts

20311 Old Hwy. 2 • PO Box 31 • Bloomfield, IA
641-664-2463 • 1-800-477-1367
M-F 8AM-5PM • Sat. 8AM-12Noon
www.SpilmanAuto.com

Check Us Out!

*Taking care of your vehicle
never goes out of style!*



FRIENDLY SERVICE!

NEW & USED

**We have everything
you need to keep
your vehicle running
in tip top shape.**

Engines
Mufflers
Tires
Bumpers
Transmissions
Alternators
Much More

RYSDAM'S PUMPKIN PATCH: Pumpkins, gourds, squash, corn shocks, straw, Indian corn, squirrel corn, mums, honey & more. We have everything for your fall decorating ideas.
1 1/4 mile East of Drakesville. Open 7 days, Dawn/Dusk.

SURPLUS LUMBER: 2x12' 85¢ ft.; 2x10' 65¢ ft.; 2x8' 50¢ ft.; 2x6' 35¢ ft.; 2x4' 25¢ ft.
HEADERS: 12" LVL'S \$2.00 ft.; 9 1/2" LVL's \$1.50 ft.; 2) 24'x 24" \$5.00 ft.; 3 1/2"x12" headers \$2.00 ft.; 3 1/2"x9 1/2" headers \$1.50 ft.; Joists - random lengths. Also new S.Y.P. No. 1 and No. 2-No. 3.
MILLER LUMBER, 27547 Timber Ave., Pulaski, IA 52584, 3 1/2 miles south of Pulaski. TFN



VINYL WINDOWS

- Replacement
- New Construction
- Many Glass & Color Options

Free Estimates

19467 Driftwood Blvd.
Bloomfield, IA 52537

Call Today: 641. 722. 3667



Bring Your Plans In For
FREE ESTIMATE



Full Line Of
Building
Materials



**COMMERCIAL - AGRICULTURAL
RESIDENTIAL**

17893 212th Street • Bloomfield, IA 52537
641-722-3605 • Mon. - Fri. 7 AM - 5 PM