

C Cornerstone Investments
 Chuck Riggenschach
 Financial Planner
 108 W. Jefferson St. (641) 664-3700
 Bloomfield, IA 52537
Securities offered through Questar Capital Corporation (QCC).
 Member FINRA/SIPC. Advisory Services offered through Questar
 Asset Management (QAM) a registered investment advisor.
 Cornerstone Investments is independent of QCC and QAM.

Tri-County SHOPPER

STANDARD
 MAIL
 U.S. POSTAGE
PAID
 TRI-COUNTY
 SHOPPER, INC.
POST OFFICE BOXHOLDER
 LOCAL RURAL BOXHOLDER
 OCCUPANT
**CIRCULATION
 OVER 11,750
 THIRD CLASS**

P.O. Box 168 • Bloomfield, IA 52537 • www.tri-countyshopper.com
 Phone 641-664-1333 • Fax 641-664-3761 • Email shopper@netins.net



Vol. 46, No. 46
 Wednesday, November 14, 2018







Yoder's KOUNTRY KORNER

CUSTOMER APPRECIATION SALE

One Day Only
Saturday, Nov. 24, 2018

KOUNTRY KORNER Bakery
 OPEN ALL DAY

Thank You, we appreciate your business.

Doors Open
 at 9:00 AM
REFRESHMENTS ALL DAY!
 Serving Lunch 11 AM - 2 PM



**21050 ICE AVENUE
 BLOOMFIELD, IA
 641-664-2545 V.M.**

FALL

Into a
New
Building!



**Stocking framing nails by the box/
pallets. Call for pricing!**

- Metal Roofing
- FREE estimates!
- Crews available
- Call today!

Happy Thanksgiving
CLOSED
THURS., NOV. 22ND

**Need Metal
Fast?**
WE CAN HELP!
**Now roll forming
metal roofing!**
 21 colors to choose from!



WAGLER METALS LLC

19049 Ice Ave., Bloomfield, IA • 641-722-3692



WORKING NIGHT & DAY FOR YOUR FARM



See us today for your early
seed order discounts and your
upcoming fertilizer needs.

Let John & the guys at Crop Services help
you get better crop results.

Happy Thanksgiving from our family to yours.
We are thankful for great neighbors like you.

We will be Closed Thurs., Nov. 22nd

Crop Services, Inc

John & Kathy Bos, Owners

**Drakesville, IA
641-722-3293**

CHECK OUT OUR OPTIONS FOR ENGRAVING YOUR NAME OR BUSINESS!

COUNTRY VIEW STORE
Memphis, Missouri

12% OFF POLY FURNITURE! ORDER NOW FOR CHRISTMAS!

THIS WEEK'S SPECIALS: NOVEMBER 14TH-20TH

			
\$.99 LARGE WHITE EGGS	\$1.19 TURKEY GRAVY MIX	\$3.19 HOMEMADE DUTCH MAIDS' NOODLES	\$.99/LB HONEY SUCKLE TURKEYS

CHECK OUT OUR LARGE SELECTION OF HANDMADE WOODEN TOYS, HANDMADE DOLL CLOTHES, AND A LARGE VARIETY OF OTHER BRANDS!

**CELEBRATE HOLIDAY CHEER WITH US FOR OUR
Annual Midnight Gladness Event!**

NOVEMBER 30TH • 6PM-MIDNIGHT

**3 MILES SOUTH OF MEMPHIS, MO ALONG HWY 15 | COUNTRYVIEWSTORE.COM
660-883-5388 | MON-FRI 8:00AM-6:00PM & SAT 8:00AM-5:30PM**

**We will be closed
Thursday & Friday,
November
22nd and 23rd**

HAVE A HAPPY AND SAFE THANKSGIVING!

Lynch
REALTY, INC.
641-664-2275
lynchrealtyinc.com

106 S. Madison
Bloomfield, IA
Licensed in Iowa
Stephanie Lynch, Broker

TROPHY RIDGE
TAXIDERMISTRY

Serving Bloomfield & surrounding counties for over 15 yrs.
Mike & Cindy Tinkham
14955 293rd St. • Bloomfield, IA
319-230-6215

FREE Estimates

Quality in Collision Repair
Our commitment to our customers shines through in every job we do.

We handle every aspect of the collision repair process, from rental car arrangements to claims handling and 100% satisfaction guarantee. Our highly trained technicians used today's most advanced tools and equipment to achieve the best quality results.

Our state-of-the-art facility features
Frame & Unibody Machine • Heated downdraft spray booth • Computerized color matching

Rental Cars Available for all Occasions!
Hertz Great Rates!

Walker Motors
Collision Repair Inc.
375 S. Main St. | Memphis, MO
660-465-2159 | Shop Phone/Fax

FOR SALE: 2011 Mansion Elite Manchester, 28x70, 4 bedroom, 2 living rooms, new carpet, oak trim, lots of updates to much to list. Come take a look! Valley Village lot 41, 11620 Rabbit Run Road, Ottumwa, IA
PH: 641-777-1445 47

FRIESEN CONSTRUCTION
New Houses
Remodeling
Garages Electrical
Plumbing
Custom Cabinets

Arlen 664-3270
Cell 641-208-0170
Bloomfield, Iowa

**Please join us for the
3rd Annual**

**Church Street Stroll
Holiday
Open House**
Sat., December 1st
From 1-3 PM

Start the stroll at our
320 CHURCH ST. location
with Santa as our guest of honor.
We will have goodies to share!

**Get your "Christmas Stroll
Passport" to have stamped at
each participating business
& join in the fun!**

**SOUTH
Ottumwa
SAVINGS BANK**

L&M Country Store

1 1/2 miles south of west Hwy 2 & 63 jct.
Mon-Sat. 8am-5pm **CLOSED SUNDAYS**
VM: 641-664-1936

Fresh 5 lb. in shell cracked pecans.....\$15.95
50 lb. white popcorn.....\$19.95
16 oz. sliced oven roasted white turkey 79¢
Heavy whipping cream..... \$1.99 pt.
24 oz. Brakestones cottage cheese 99¢
Local grown turnips.....79¢ lb.
Sweet potatoes59¢ lb.

HOMEMADE FRUIT CAKES & CANDY

FREE SAWDUST: At FOR SALE: 1940 Ford 9 in
Petershiem Sawmill. 14256 tractor with 60" finishing
Jewel Ave, Bloomfield, IA mower.
PH: 641-722-3020 TFN PH: 641-938-2161 47

*We've
Moved*

Come see us at our new
location!

**801 N. Quincy Ave., Suite 2
Ottumwa, IA**



Craig D. Heemsbergen
641-683-1891

FOR SALE: Butcher hogs, BLOOMFIELD MINI
\$150. Holstein cross bull STORAGE. Serving you
calf, \$125. from 2 safe, convenient
Jacob Kuhns locations.
PH: 641-664-1061. 48 PH. 641-664-1066. TF



Fat Free Chicken Broth, 14.5 oz..... 39¢
Applewood Smoked Boneless Ham ... \$1.19 lb.
Oscar Mayer Deli Sliced Ham, 9 oz 59¢
Cauliflower \$1.99 head
Chicken Drumsticks or Thighs, 40 lb ... 39¢ lb
Cottage Cheese, 24 oz..... \$1.59



3/4 mi. E. of Drakesville, IA on 180th St.
Mon-Sat: 8:30am - 5:00pm
VM: 641-664-2661



We will be closed on Thanksgiving Day
Thursday, November 22nd



301 W. Jefferson St. • Bloomfield, IA
641-664-2975

FOR SALE: Miniature Australian Shepherd puppies, 3 1/2 months old, registered.
PH: 641-664-2095 48
WANTED: Someone to help purchase & install a broiler for natural gas.
PH: 641-682-1731 or after 11 am 501-553-2964 46

**FOX VALLEY
WELDING**
MILLING • LATHE WORK
STEEL SALES • FABRICATING
641-656-4684

A Bounty of Best Wishes at Thanksgiving

*May the coming holiday bring an abundance
of good fortune to you and your family.
We know we feel truly fortunate to have
neighbors like you.*



We will be closed
Thurs., Nov. 22nd.
& Fri., Nov. 23rd.

Bryan: 660-341-8217
Elvin: 641-799-4068

Winter Hours: M-F • 8-5:30
12190 East Hwy. 2 • Milton, IA

**MAST
VINYL
WINDOWS**
THERMO-PRO WINDOWS
Custom Size Is Our Specialty
Professional
Installation Available
THERMA-TRU[®] DOORS
**FREE
ESTIMATES**
22172 Hwy. 63
Bloomfield, IA 52537
800-206-9949

FOR SALE: 20 ft. long and
24 inch diameter culvert;
7 ft. Bison tractor blade, 6
positions, CAT. 2, NVH-210.
PH: 641-208-6448 or
641-208-5805 47

SHADY LANE VARIETY

**GET READY FOR
COLDER WEATHER!**
• Stocking Caps
• Socks • Gloves
• Scarves • Etc.

Christmas is Coming
We have great gift ideas!

1 mi. E. of Drakesville
on Jade Ave. • 641-664-0207
8-5 Mon. thru Sat.

FOR SALE: 1500 bushel
grain bin.
PH: 641-664-1520 Ext. 1 47

Happy THANKSGIVING

So our families may enjoy the Thanksgiving
Holiday our office will be closed:

**THURSDAY & FRIDAY
NOVEMBER 22TH & 23RD**

We will resume regular hours on
Monday, November 26th.

Please have a safe and fun filled holiday.

FENTON MEDICAL BUILDING
Donald R. Wirtanen, D.O.
Dianne Knapp, ARNP

Slayton Polaris It's time to get Muddy!

Authorized Polaris
dealer since 1988

New & Used
Polaris Rangers
& ATV's



We will be closed November 22nd - 24th
& we will re-open Monday, November 26th

660-328-6627 8 mi. S. & W. from Pulaski or 6 mi. W.
of Memphis then 13 mi. N. on Route B

2013 Ford F-150 Limited

2013 Chevy Suburban



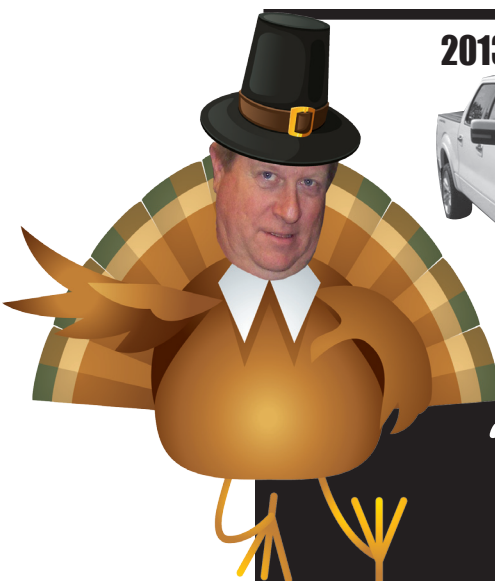
47,000 MILES LTZ,
HEATED & COOLED
LEATHER SETS, DVD
PLAYER.

**GOBBLE
UP** these good deals!

Kollision Korner

504 South Drake St. • Bloomfield, IA 52537

PH: 641-664-2648 • Fax: 641-664-2948





THANKS!

FOR GIVING YOUR SUPPORT TO LOCAL BUSINESSES!

We are deeply grateful for the kindness and compassion you extended to our family during this difficult time.

Whether you held us up in prayer, spoke words of encouragement, gave a memorial or performed other act of kindness, you have touched our hearts.

God Bless You ~ The Family of Ron Joos

VERNA'S FABRIC

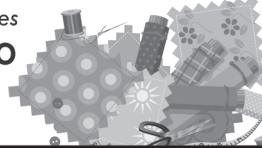
Pre- Gladness Sale

FRIDAY, NOVEMBER 16TH • 8-6

15% OFF ALL FABRICS

Sale excludes new Tropical Breezes

6 MILES E. OF BARING, MO
ALONG ROUTE K
660-397-3220



The Grain Bin



Family Steakhouse

Open Thanksgiving Day!

Serving 11-2

NO RESERVATIONS NEEDED!

*Contact us today to start planning your
Holiday Parties!*

102 W Jefferson St., Bloomfield 641-664-3597

Troy United Methodist Church Fall Harvest Supper & Sale

Saturday, November 17, 2018
Supper starts serving at 5 pm

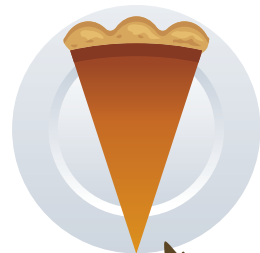
(Serving turkey, ham balls, noodles and all the trimmings, desserts.)

Sale at 7 pm (Wood and craft items, baked goods)

Give Thanks Always & For Everything
Ephesians 5:20

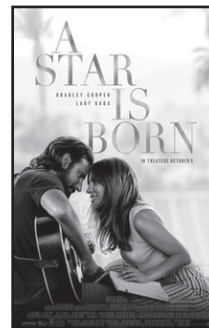
All Welcome Free Will Offering

TROY UNITED METHODIST CHURCH
Come enjoy the food & fellowship



IOWA THEATER BLOOMFIELD, IOWA

"A Star Is Born"



Friday, Nov. 16th

Saturday, Nov. 17th

7:00 PM

Sunday, Nov. 18th

4:00 PM PG

Coming Next: The Grinch

Friday, November 16th

Choice of 12 or 14 oz. Ribeye with sides

Serving at 6:00 P.M.

Dine
In

722-3355

Carry
Out

RAY'S LONGBRANCH

Drakesville, IA

CANTRIL FIREMEN'S FISH & BBQ CHICKEN SUPPER

Saturday, Nov. 24th

At 5:30 PM • Cantril Fire Station

Free Will Offering

**RAFFLE
DRAWING!**

45/70

Rifle

& other
raffle items

\$5⁰⁰ EACH

Purchase ticket(s) at the door
or from a Cantril fireman!

FOR QUESTIONS CALL

Josh 641-799-7237 or Wayne 319-288-1065

PROCEEDS GO TOWARDS PAYMENTS OF EQUIPMENT

SATURDAY, NOVEMBER 17TH

11:00 A.M. - 12:30 P.M.

**Turkey, dressing, mashed potatoes and
gravy, trimmings, dessert and drink**

COME AND JOIN THE FELLOWSHIP!

GOOD SHEPHERD LUTHERAN CHURCH

19419 Lilac Avenue, Bloomfield, North end of West St.

Delivery in Bloomfield after 12:15 P.M.



Caring for our community with God's help!
ELCA Hunger Grant

Need a ride? Call 664-3242
Worship time: Sunday 9:00 AM



**The Mustang
football program would like
to thank the following sponsors for
the meal and support of
the Banquet Awards Night at
Southfork Grill!**

Channel Seed • Piper's • True Value
Route 63 • Kuberski Lawn Car
CGM Logistics • Jerry's Hunting Supply
Southfork Motel & Grill
Bloomfield Mini Storage
Keith's Foods • Tri-County Shopper

THANK YOU!

**MIDWEST**
Overhead Door

21387 Route V64
Keosauqua, IA 52565
660-216-0812

Our goal is to keep your doors rolling smooth!

✓ Out Our Competitive Prices!
Sales • Parts • Service ~ Free Estimates
We sell new doors and openers or we'll service your old one.

HAY FOR SALE

BIG SQUARE BALES, GRASS HAY

(660) 216-0938

100 GALLON STORAGE TANK CONTAINING 60 GALLON K-1 KEROSENE. \$250.00 (OBO) INCLUDES TANK, STAND, KEROSENE. YOU HAUL.

CALL DAVE: 641-919-7145

GINGERICH STOVES and PLUMBING



Stoves & Furnaces
WOOD • COAL
PELLET/CORN • GAS

- Many brands, sizes & styles to choose from
- SS Chimney & Blk.Stovepipe
- Plumbing Supplies

Many Models In Stock!

19091 180th St • Bloomfield, IA • VM 641-722-3540
3/4 miles east of Drakesville, south side

FOR SALE: Puppies 3/4 beagle, 7 weeks old, \$50 ea. Also have free siamese kittens. PH: 641-664-1176

FIREWOOD FOR SALE: Seasoned oak & hickory, \$50 a load, you haul. PH: 641-208-5812 TFN

FOR SALE BY OWNER: 2-3 bedroom house, 2 car garage, 3 acres in country between Ottumwa & Agency. Newer energy efficient furnace, will consider offers. \$82,000. PH: 817-343-3317 47

Operation Christmas Child
National Collection Week for Operation Christmas Child is November 12th -19th

Local drop off location:
First Baptist Church
401 E Crestview Circle, Bloomfield, IA

Drop Off Times:
Mon, Nov. 12: 6:00 PM - 8:00 PM
Tue, Nov. 13: 4:00 PM - 6:00 PM
Wed, Nov. 14: 6:00 PM - 8:00 PM
Thu, Nov. 15: 4:00 PM - 6:00 PM
Fri, Nov. 16: 4:00 PM - 6:00 PM
Sat, Nov. 17: 10:00 AM - 12:00 PM
Sun, Nov. 18: 4:00 PM - 6:00 PM
Mon, Nov. 19: 8:00 AM - 10:00 AM

GET IT SOLD WITH THE TRI-COUNTY SHOPPER!

Tri-County
SHOPPER

Personal Classified Ads

PH: (641) 664-1333
shopper@netins.net
tri-countyshopper.com

1ST WEEK Only! \$9²⁵ **2ND WEEK + \$1⁰⁰ \$10²⁵** **3RD WEEK Wow! FREE**

Fill in the form below as you want your ad to appear. We must receive this by Friday at 5:00 PM to appear in the following week's Shopper. There will be an additional 10¢ charged for each word after 20.

BUSINESS EXEMPT • WANT ADS ARE CHECK, CASH, OR CREDIT CARD

									5
									10
									15
									20
1 WK - \$9.35	3 WK - \$10.35	1 WK - \$9.45	3 WK - \$10.45	1 WK - \$9.55	3 WK - \$10.55	1 WK - \$9.65	3 WK - \$10.65	1 WK - \$9.75	3 WK - \$10.75
									25
1 WK - \$9.85	3 WK - \$10.85	1 WK - \$9.95	3 WK - \$10.95	1 WK - \$10.05	3 WK - \$11.05	1 WK - \$10.15	3 WK - \$11.15	1 WK - \$10.25	3 WK - \$11.25
									30
1 WK - \$10.35	3 WK - \$11.35	1 WK - \$10.45	3 WK - \$11.45	1 WK - \$10.55	3 WK - \$11.55	1 WK - \$10.65	3 WK - \$11.65	1 WK - \$10.75	3 WK - \$11.75
									35
1 WK - \$10.85	3 WK - \$11.85	1 WK - \$10.95	3 WK - \$11.95	1 WK - \$11.05	3 WK - \$12.05	1 WK - \$11.15	3 WK - \$12.15	1 WK - \$11.25	3 WK - \$12.25
									40
1 WK - \$11.35	3 WK - \$12.35	1 WK - \$11.45	3 WK - \$12.45	1 WK - \$11.55	3 WK - \$12.55	1 WK - \$11.65	3 WK - \$12.65	1 WK - \$11.75	3 WK - \$12.75
									45

Name: _____ Address: _____
City: _____ State: _____ Zip: _____ Phone: _____ Run my ad _____ times.



Mail your completed ad form & payment to:

Tri-County Shopper • P.O. Box 168 • Bloomfield, IA 52537

YOUR MEDICARE PART D EXPERTS

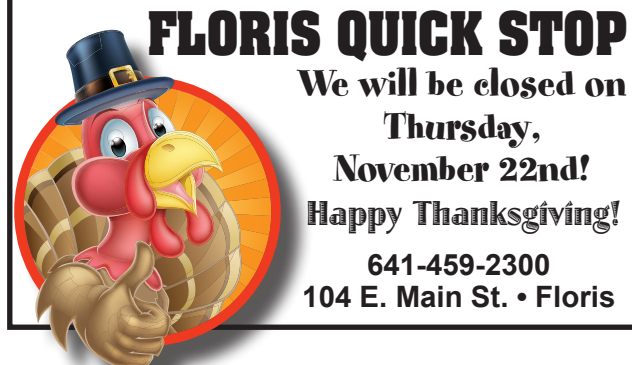
Ask your pharmacist for a free medication review and plan comparison.

HyVee
PHARMACY

301 W. Jefferson St. • Bloomfield, IA
641-664-2975

**OPEN ENROLLMENT
OCT. 15 - DEC. 7, 2018**

FARMLAND FOR RENT: Taking sealed bids on 59.50 acres of organic farm ground until November 15th. They can be sent to Rick Piper, 306 W. Poplar, Bloomfield, IA or dropped off at Spilman Auto Parts. Any questions call Rick at 641-208-6015.



FLORIS QUICK STOP

We will be closed on
**Thursday,
November 22nd!**
Happy Thanksgiving!

641-459-2300
104 E. Main St. • Floris

THANKSGIVING SUPPER & TALENT AUCTION:
Barker United Methodist Church • 11276 County Road 968, Downing MO. North of Downing or South of Bloomfield on the Iowa/Missouri line. **SATURDAY, NOVEMBER 17, 2018 5:00 p.m.** Turkey, Dressing, Ham Balls, Noodles, Homemade Rolls, Delicious salads & desserts. Supper followed by auction of beautiful hand crafted items & baked goods, woodshop items, garden produce, canned goods. Door Prizes. **FREE WILL OFFERING.** For directions or more information call: 641-675-3439, 641-664-3859, 660-379-2615, or 660-379-2848

NEW MATTRESSES FOR SALE!

Selling individually or in sets. Factory warranty.

TWIN - FULL - QUEEN - KING

641-664-3060

FOR SALE: Great building site on edge of Bloomfield in quiet neighborhood on dead end road. Approximately 1.9 acres with 30x45 shop with concrete.

PH: 641-226-1884

48

WANTING TO RENT:
House with pasture & hay storage. Please leave message.

PH: 641-226-2431 or 641-919-3969

46



**We can take away
the stress and get
you results!**

Auto Body Shop
Auto Glass
Automotive Restoration

KARR COLLISION CENTER

Shawn Scott, Owner
701 Karr Ave. • Bloomfield, IA
641-664-1024

FIREWOOD FOR SALE:
Seasoned oak & hickory, \$50 a load, you haul.
PH: 641-208-5812 TFN

**YODER
EQUIPMENT**
BLOOMFIELD, IOWA

STAY-TUFF

Woven & barbwire
fencing with fix knot

EXTRA HEAVY 10 GAUGE
BALE RINGS & HAY
SAVERS

19887 Jade Ave
2 1/2 Miles W of Bloomfield
V.M. 641-664-2797

THE BIG WAGON SALE

Get ready for
the Holidays

Check out the **BIG** wagon in our store for
baking supplies marked **20% OFF** for a limited time!

NOVEMBER 14-28



17192 Highway 2, Bloomfield, IA
www.dutchcountrygeneralstore.com

METAL WORKING MACHINES: Clausing Mill Model #8525, Screw cutting turret, Lathe - Logan Model #1840-2, Stand - all Sharpener Model #UTG, Smith - Nielsen equip. Co. Serial No. 118. PH: 641-682-5731

46

Building Better, Healthier Lives



WELCOME
**DR. JOSEPH
WHITMAN**
Ear, Nose & Throat

Welcoming New Patients

*Specializes in Surgical & Medical Care of the
Ears, Nose and Throat of all ages.

*Available for Appointments at Davis County Hospital

*Available 1st & 3rd Monday of Every Month

Davis County To schedule an appointment
HOSPITAL call 641-664-7091.
Dedicated. Compassionate. Healthcare.

WANT TO DO: House cleaning also, outdoor fall clean-up. Call Doug or Joyce. PH: 641-929-3919

WANTED: Hedge trees to cut this winter. Also Wanted ice fishing shack.
PH: 641-664-2831

47

FOR SALE: 3 purebred beagle females, 3 yrs. old. PH: 319-677-6386

FOR SALE: Butcher hogs, ready now. Omar Kuhns
PH: 641-664-2549

46

CLOSED *Thanksgiving Day* Nov. 22nd

*We are so thankful
for your friendship
and your business.*

Have a wonderful Thanksgiving!

WINTER HOURS beginning Nov. 26th
Mon.-Fri. 8-5; Sat. 8-noon

Bloomfield
RENT-ALL
INC

We will be open Fri., Nov. 23rd
& Sat., Nov. 24th
**(641)
664-3806**
www.bloomfieldrent-all.com
502 E. Franklin St., Bloomfield, IA

HOURS
8 A.M.
to
5:00 P.M.
DAILY EXCEPT
SUNDAY

**Zimmerman's
Store**
Rutledge, MO
660-883-5766

*Our
Everyday
Low Prices!*

5# Yukon Gold Potatoes	\$1.98
50# Yukon Gold Potatoes	\$16.95
50# White Potatoes.....	\$9.50
#1-10# Red potatoes.....	\$4.19
#1 Illinois Firm Gold Apples (Like Golden Delicious)	\$16.95
#1 Illinois Fuji Apples	\$16.95
#2 Cortland, Gala, Jona Gold, Golden Delicious, Fuji Apples ..	\$13.95/bu.
2# Clementines	\$1.69
5# Clementines	\$3.89
Ruby Red Grapefruit.....	65¢/ea.
3# Kiwi	\$3.19
Avocados.....	85¢/ea.
Red Grapes	\$1.59/lb.
Black Grapes, 3 lb. box.....	\$3.29
Bibb Lettuce.....	98¢/hd.
Organic Jumbo Yellow Onions	79¢/lb.
Sweet Onions	79¢/lb.
Medium Onions	45¢/lb.
Local Grown Butternut & Acorn Squash	59¢/lb.
Spaghetti Squash.....	69¢/lb.

16 oz. Farmers Prepared Horseradish.....\$2.98
8 oz. Fresh Ground Horseradish-Good & Hot.....\$2.98
Free Range Duck Eggs\$2.30/doz.

~~~~~  
"Eastwind" Organic Peanut Butter, Cashew Butter & Almond Butter.

|                                                                                  |             |
|----------------------------------------------------------------------------------|-------------|
| Tahini Roasted 100% Pure Ground Sesame Paste.....                                | \$3.89      |
| 30 oz. Butcher Boy 100% Pure Refined Coconut Oil.....                            | \$4.05      |
| Butcher Boy Cholesterol Free Vegetable Oil.....                                  | \$5.85      |
| Natures Secret 100% Canola Oil.....                                              | \$6.45/gal. |
| 24 oz. Original Western Sweet & Smooth Dressing.....                             | \$4.29      |
| 2# Spring Hill Pure Honey, U.S. Grade A.....                                     | \$5.79      |
| 13 oz. No Sugar Added Seedless Blackberry, Red Raspberry & Strawberry Jelly..... | \$3.79      |

**DRIVE A LITTLE & SAVE A LOT**



# Black Friday Open at 7:00 am SALE ALL DAY SALE!

**LARGE SELECTION** 10% off all Christmas Cards and Décor, Music CD's and Toys!

Lots of fabrics, craft supplies, scrapbooking, and gift items

Gift Certificates Available

## DELI SPECIALS

Mini Pit Ham \$1.99 lb.  
Yellow American Cheese \$2.99 lb.  
Stop in to see our other deli specials!

**Whirlpool**  
**MEMPHIS**  
**MERCANTILE**  
EST 2016  
South Side of the Square in Memphis  
660-465-2345  
Monday - Friday: 7:00 AM to 5:30 PM • Saturday: 8:00 AM to 4:00 PM / Sunday CLOSED

**MAYTAG**  
**APPLIANCES**  
**SALES & SERVICE**

**MEMPHIS**  
**MERCANTILE**  
EST 2010  
115 E. Monroe • Memphis, MO  
660-465-2102  
Monday - Friday: 7:00 AM to 5:30 PM • Saturday: 8:00 AM to 4:00 PM / Sunday CLOSED

## Thanks to Our Valued Customers!

As we gather around with family and friends this holiday, we offer up thanks for the many blessings that make life meaningful. Gifts like friendship, love, health and prosperity make us especially grateful, and we hope you enjoy these same blessings in abundance at this special time of year and always.

We will be closed November 22nd-24th and will re-open Monday, November 26th  
**HAPPY THANKSGIVING!**

# Slayton Polaris

660-328-6627

8 mi. S. & W. from Pulaski or 6 mi. W of Memphis then 13 mi. N. on Route B

**Dutchman's**  
an old time general store.

# Happy Thanksgiving DAY

## SALE!

CLOSED November 22 for Thanksgiving



**\$1.79** 10# bag  
**\$8.95** 50# bag

Wisconsin Russet Potatoes

**99¢** Celery  
**\$1.19** 12 oz. Cranberries



**89¢** 6 oz.  
Stove Top Chicken Stuffing Mix

**89¢** per lb.



Seasoned Boneless Skinless  
**Chicken Breast**

**89¢** per lb.



Whole Frozen  
**Turkeys**



Truckload SALE!  
**99¢** 13 oz.

RESTAURANT STYLE  
**Tortilla Chips**



**2/\$1** 15 oz.

Stokely's Canned Pumpkin



**\$1.49** 12 oz.

**Cool Whip**



**2/\$5**  
Chef Pierre 43 oz. Baked Pumpkin Pie



**\$3.99** 2 pound  
Original Velveeta Cheese



**\$3.49** 24 oz.  
Butcher Thick Cut Hickory Smoked Sliced Bacon



**\$2.99** per lb.  
John F. Martin Whole Smoked Turkeys  
JFM Whole Bone In Smoked Hams  
**\$2.59** lb.



**4/\$1** 14 oz.  
Ocean Spray - Jellyed Cranberry Sauce



**\$1.75** Quart  
Prairie Farms Half & Half



Milk Chocolate Melting Wafers  
**\$1.99** per lb.  
Raw Spanish Peanuts



**75¢** per lb.  
30# box \$15.00  
Bulk **Philadelphia Cream Cheese**



**10% OFF**  
Dutchman's Jar Goods



**99¢** 12 oz.  
Velveeta Sharp Cheddar Cheese Slices



**2/\$5**  
Sterzing's Potato Chips

**Dutchman's**  
an old time general store.

**DUTCHMAN'S STORE** Division Street CANTRIL, IA (319) 397 2322

STORE HOURS • Weekdays, 8a.m. - 6 p.m. • Saturday 8a.m. - 5 p.m. • Sunday Closed

View our specials online - [www.DutchmansStore.com](http://www.DutchmansStore.com)

SALE PRICES November 14-20, 2018  
While Supply Lasts



**Honey hams (pit style), fresh, approx. 6 lb.**  
**\$1.69 a lb.**

**Pick 5 Select corn dogs, batter wrapped chicken franks, 26.81 lb.**  
**\$2.39**

**Hillshire Farm polska kielbasa, 1.75 lb.**  
**\$2.79**

**Carving ham, cooked, smoked**  
**69¢ a lb.**

**Seasoned raw turkey breast, skin on, approx. 2 lb.**  
**99¢ a lb.**

**Frozen turkeys**  
**79¢ a lb.**

**Great American bacon & cheddar beef patties, 2 lb.**  
**\$2.99**

**Smithfield applewood smoked, sliced, boneless pork loin, fully cooked**  
**\$1.99 a lb.**

**Sweet potato pie, approx. 1.5 lb.**  
**37¢ a lb.**

**Tropicana Pure Premium 100% orange juice, never from concentrate, no pulp, 32 oz.**  
**99¢**

**Sliced Swiss cheese, approx. 2 lb.**  
**\$1.75 a lb.**

**Vidal gummi circus clowns, 4.4 lb.**  
**\$4.49**

**Member's Mark chocolate pudding**  
**\$3.09 a gal.**

**Hostess orange cupcakes, 8 cakes**  
**\$1.50**

**2019 large calendars**  
**\$7.99**

**Highway 2 DISCOUNT Groceries LLC.**

**Sale good Wed., Nov. 14th through Tue., Nov. 20th.**

**Mon. - Sat 8:30am - 5:00pm**  
**VM: 641-664-1187 • 19686 Hwy. 2, Approx 2 miles West of Bloomfield**

**Where We Sell Fun & Excitement**

**Pellet Grills** **Generators**

**Indian MOTORCYCLE** **All Apparel On Sale**

**VICTORY** **POLARIS** **ROXOR**

**YAMAHA**

**HUGE YEAR-END SALES EVENT!!**

**R/J PERFORMANCE** Est. 1982

**Ottumwa, IA**  
**641-684-8400**  
**rjperformance.com**

**Who is never hungry on Thanksgiving?**  
**A: The turkey because he's already stuffed!**

**It's no joke that the**  
**Tri-County Shopper**  
**will have you laughing all the way to the bank!**

**I'M NOT A TURKEY.** **HAPPY THANKSGIVING**

**Don't Rush Out On Black Friday**

**WE ALREADY HAVE THE BEST DEAL IN TOWN!**

**Call Sid today for great deals on your 2019 seed needs.**

*So this Thanksgiving, relax and enjoy good food and time with family.*

**NuTech Seed** **REFUGE ADVANCED**

**LIBERTY LINK** **Roundup Ready** **SmartStax**

**SIDWELL SEEDS**  
**Queen City, MO**  
**660-766-2737 • 660-216-6380**

**SHOW OFF YOUR TEAM!**  
**So many items & teams to choose from!**

**Makes an easy holiday gift!**

**Shaped Mats** **Tufted Rugs** **Cargo Mats** **Dashboard Phone Grips** **Car Mats**

**RICHWELL**  
**CARPET & CABINET CENTER**

**545 N. Weller • Ottumwa**  
**641-683-4084**  
**www.richwellcarpet.com**



# We are your **FULL SERVICE** Pharmacy!

- Free prescription delivery
- Convenient drive-thru
- Preferred Pharmacy on Many Prescription Plans
- Accept most prescription drug plans including Medicare and Medicaid.
- Select Generic prescriptions for just \$4 on 30-day supply and only \$10.00 on 90-day supply.
- Immunizations available without a prescription (age restrictions apply)  
Flu, Shingles, Pneumonia, Tetanus and Whooping Cough.
- Convenience with technology:
- Mobile app, automatic refills, text/phone or e-mail notifications
- We bill Medicare for diabetes testing supplies.
- Pet medications available
- Receive 5 cents off gas on every prescriptions, available to all customers.

**Let our friendly Pharmacist assist you with all your prescription needs!**

**Amanda Mathews**  
R.Ph.



**Kim Burton**  
R.Ph.



**Get 20¢ Off per gallon on your Hy Vee fuel saver card when you get your flu shot!**

**HyVee**  
PHARMACY

301 W. Jefferson St. • Bloomfield, IA  
**641-664-2975**

**DENTAL Insurance**  
Physicians Mutual Insurance Company

**A less expensive way to help get the dental care you deserve**

- ✓ If you're over 50, you can get coverage for about \$1 a day\*
- ✓ Keep your own dentist! You can go to any dentist you want
- ✓ NO annual or lifetime cap on the cash benefits you can receive
- ✓ No wait for preventive care and no deductibles – you could get a checkup tomorrow
- ✓ Coverage for over 350 procedures including cleanings, exams, fillings, crowns...even dentures

**FREE Information Kit**  
**1-877-905-3716**  
[www.dental50plus.com/midwest](http://www.dental50plus.com/midwest)

\*Individual plan. Product not available in MN, MT, NH, NM, RI, VT, WA. Acceptance guaranteed for one insurance policy/certificate of this type. Contact us for complete details about this insurance solicitation. This specific offer is not available in CO, NY, call 1-800-969-4781 or respond for similar offer. Certificate C250A (ID: C250E; PA: C250Q); Insurance Policy P150 (GA: P150GA; NY: P150NY; OK: P150OK; TN: P150TN) 6096E-0917 MB17-NM008Ec

**FOR SALE:** Bob Seger concert ticket for Tuesday, Nov. 27th in Des Moines, \$100. PH: 641-208-0650.

**FOR SALE:** 2 - 2 year old registered female Beagles, \$100 each. PH: 660-216-6842.

**FOR SALE:** 2 year old female Beagle, nice markings, hunter & pet. VM: 641-664-2997, Ext. 1 46

**FOR SALE:** Cheap for furniture repair or refinishing tables, chairs, leaves, spindles, legs, handles, pulls, decorative blocks also Passive solar panel with blower, gas barrel on stand, tripod tower, used 7' garage door. PH: 660-949-2572 46

**WANTED:** 250-1,000 gallon LP tanks. PH: 641-722-3002, Ext. 2. 47

**LOOKING TO PURCHASE A NEW MOWER?** Check out our Ferris Commercial mowers! Ferris has a patented suspension system that allows each wheel to move up & down independently. The deck works in conjunction with the suspension for a consistent cut. Ferris is the smoothest riding mower on the market. We also carry professional grade Makita (Dolmar) chain saws, for all your wood cutting needs. We service all brands. We are also your authorized Nemo Feed & DAC Products Dealer. Miller's Power Equipment. 504 S. Humbert St., Milton, Iowa

**SALE!**

**Don't Wait For Black Friday To Save Money...**

**We Have GREAT DEALS NOW!!!!**

**25% OFF IN STOCK CLOTHING!**

**10% OFF IN STOCK BOOTS**

**Watch for our BARGAIN RACK for HUGE DISCOUNTS!!!!**

**WE WILL BE CLOSED THANKSGIVING DAY THURSDAY, NOVEMBER 22ND**

**Hamilton Produce Co.**

641-664-2459 or 1-800-469-7749

105 W. Franklin Bloomfield



**Accessories Sale**  
**November 1st to November 21st**  
**BUY 2 GET 1 FREE**

**MIX & MATCH ALL CATEGORIES**

Lamps • Plants • Wall Signs • Candles • Clocks • Wind Chimes

**Witmer's Furniture**  
17999 Hwy 136, Memphis MO • 660.465.2461 • M & F 9-8; W,TH, Sat 9-5



# Great quality at GREAT PRICES!



## SAVE \$4.00 on 200# MLS Tubs

- Proven performance
- All-natural protein
- Controlled, consistent intake
- Add more to your forage-based or range feeding program



## CATTLE CHUTES

- Quality brands such as StrongHold, For-Most, and KFS
- Heavy-duty construction to keep livestock in and operators safe
- Use for branding, semen testing, hoof trimming, and veterinary care
- Available in a variety of sizes

*Hometown*  
ANIMAL HEALTH

660.465.2967 • [hometownanimalhealth.com](http://hometownanimalhealth.com)

18743 US Hwy 136 • Memphis, MO 63555  
On Highway 136 west of Memphis

NUTRITION • MEDICAL • PET • FARM • APPAREL



AUTHORIZED  
DEALER OF  
NEMO FEED.



## COUNTRY CUT MEATS

Custom Butchering  
**Beef • Pork • Deer**  
Butcher Hogs Available

**641-675-3683** 26824 Veatch Ave  
Pulaski, IA

FOR SALE: Let us be your firewood headquarters. Mixed hardwoods seasoned 6 months. \$50 a pickup load. You haul. Some pole wood also available. Beechy Sawmill, 16611 Eagle Blvd. 4 miles West of Drakesville, IA  
PH: 641-664-2437 TFN



46502 St. Hwy C • Baring, MO • 660-892-4717

**NOW** is the time to schedule your  
**combine & headers** for  
**inspection, cleaning & repairs!**

All combine work scheduled  
before **JANUARY 1ST** gets a  
**\$10** per hour labor discount!

Doing most tractor & combine repairs:  
Major • Minor • Mechanical • Electrical  
Air Conditioning • Hydro • Headers • Engines

## Happy 8th Birthday Casen Rupe!

**READY, AIM....FIRE!**  
*We hope your birthday  
is right on target!*

*Love Always,  
Grandma & Papa*



# BULK FEED

It Pays To Know The Efficiency Of Your Feed

- Cattle Charge AS700
- Cattle Charge BT
- Stockgrower BT
- 14% Commodity Blend
- Custom Grind & Mix Available

we carry  
a full line  
of pelleted  
feed!

"Service you can count on!"

**MFA**  
AGRI SERVICES

Lancaster  
660-457-3728

Kirksville  
660-665-4695

FREE  
Delivery  
on 3 ton+

## Christmas Open House

Thurs. & Fri.,  
November 15th & 16th  
9 am to 5 pm

Refreshments • Door Prizes • Sales

25% OFF Fall Items/Decor

Come Check Out Our  
New Clothing Line!  
Many Styles To Choose From!  
Women's Sizes Small to 3X

Warm up with.... **Drink Moore Coffee!**  
**Hot Drinks:** Cappuccino, Latte, Mocha,  
Chai Tea, Americano & Hot Chocolate



Thank you to all our costumers. We want to  
wish you a happy and safe holiday season!

**Making Memories**

108 S. Madison, Bloomfield  
641-664-1600

Scott & Brandi Moore Owners

## Holiday Open House Specials

Sunday, Nov. 18th • 1 - 4 p.m.

Full Service Salon

Haircutting • Colors • Weaving  
Mirabella Makeup  
Tanning Bed & Spray  
Shellac Nails • Spa Pedicures  
Powder Dip Nails

10% Off  
that day  
Snacks &  
Drinks

**Hair Co.**

Michele Garnett, Stylist/Owner  
Kaela Garnett & Beth Boyer, Stylists  
660-465-7700

111 East Monroe • Memphis, MO  
Hours: Mon-Sat. Evenings by Appt.

With purchase  
of mirabella  
makeup you  
will receive  
mirabella  
bucks!



# HELP WANTED

We are looking for  
**Concrete Finishers  
and Laborers.**

- Competitive Wages
- Drivers License Required

*Wettstein*  
**Concrete**

For more details call:

**641-208-7470**



**Happy  
Thanksgiving**

from all of us at

**SPILMAN  
AUTO PARTS**

CLOSED THURS., NOV. 22ND

20311 Old Hwy. 2 • PO Box 31 • Bloomfield, IA

641-664-2463 • 1-800-477-1367

M-F 8AM-5PM • Sat. 8AM-12Noon



SpilmanAuto.com



FOR SALE: 2011 Ford F450 pickup, 4 dr. dually, 95,000 miles, 6.7 engine. Will sell for less than book price.

PH: 641-895-0419. 48

FOR SALE: 300 plus small square bales of alfalfa hay 4th cutting. Call after 4:30 pm.

PH: 641-208-7714 46

FOR SALE: 3.5 year old beagle female, hunts good, \$200; 2.5 year old beagle female, \$150; 2 year old beagle female, smaller, \$100. All beagles are APRI registered. Also 4 puggle puppies, 8 wks. old November 10th, shots and wormed. Would make great pets, \$75 each. PH: 641-722-3047

**FEED & SUPPLY**  
**641-722-3045**  
17599 200TH STREET • BLOOMFIELD  
STOP BY MON.-FRI. 8-5 & SAT. 8-12

**Complete line  
of bagged  
feed in stock!**

**CUSTOM  
BULK**

**Non GMO  
Poultry Feed  
we deliver!**

**FENCING SUPPLIES • FENCING SUPPLIES**

FOR SALE: Clean Case backhoe, open station, good rubber and diesel engine, new brakes and wheel bearings, \$6,250 Cash.

PH: 641-777-5618. 46

FOR SALE: Rottweiler puppy, 9 wks old, dewormed & vaccinated, can be registered, \$300.

PH: 660-328-6338 or 660-988-3066 46

Custom Built, Painted and Vinyl  
Buildings & Sheds  
~David W. Schrock~

**Hillview  
MINI BARNs**

15383 180th Street Drakesville, IA 52552 **641.664.2842** U.M.

FOR SALE: 1998 Toyota Tacoma for parts light rollover engine has less than 500 miles on new (not rebuilt) cylinder head, hoses, radiator, sparkplugs and wires, 4 wheel drive with 5 speed transmission, are all good truck starts and moves, \$2,500. PH: 660-216-1964 46

**KW  
Electric**

Keith Waller: 641-777-6701  
Matt Waller: 641-799-9220  
Austin White: 641-226-4495

• Licensed & Insured  
• Free Estimates

**641-459-3889** 13346 Lily Ave. Bloomfield, IA

Follow the tracks to...

**TRAILS END  
TAXIDERM**

Keosauqua, IA  
Josette Robison  
319-288-0113  
\$400 Shoulder Mounts  
\$85 Skull Mounts

FOR SALE: Boston Terrier puppies, 1- male & 1 female. Black & White. Have puppy papers. Also have 2 yr. old white Frenchton female.

PH: 641-664-1080 46

FOR SALE: German Jagd-Patterdale cross puppies, excellent varmint dogs, people friendly, farm raised and ready now.

PH: 641-722-3066 47

MISSOURI  
**MEAT PROCESSING  
LLC**

26832 CR 161  
Rutledge, MO 63563

**CUSTOM  
BUTCHERING**  
Beef - Pork - Deer

Schedule Now • 660-342-8534  
Hours: Mon. - Fri. 7:30 - 5 & Sat. by Appointment

**TRUCK DRIVER WANTED:**

**Grain/ Van**

**Possible on farm work also**

Send Resume to:  
Help Wanted  
P.O. Box 168, Bloomfield, IA 52537

**THANKSGIVING SUPPER & TALENT AUCTION:**  
Barker United Methodist Church • 11276 County Road 968, Downing MO. North of Downing or South of Bloomfield on the Iowa/Missouri line. **SATURDAY, NOVEMBER 17, 2018 5:00 p.m.** Turkey, Dressing, Ham Balls, Noodles, Homemade Rolls, Delicious salads & desserts. Supper followed by auction of beautiful hand crafted items & baked goods, woodshop items, garden produce, canned goods. Door Prizes. **FREE WILL OFFERING.** For directions or more information call: 641-675-3439, 641-664-3859, 660-379-2615, or 660-379-2848

**Fall Savings**

**Hay Rings - \$10.00 OFF**

**Feed Bunks - All \$10.00 OFF**

**Mouse Poison - \$1.00 OFF**

**All Steel Post - 10¢ OFF**

**Super 10 - \$3.00 HWT OFF**

**Mineral Feeders - \$10.00 OFF**

**Head Chute - \$200.00 OFF**

**Lick Tubs - \$82.00**

**Safe Guard Blocks - \$42.00 EACH**

**QLF Tanks - \$5.00 OFF**

**QLF Liquid - \$10.00 TON OFF**

**Bucket Rattlers - \$1.00 HWY OFF**



**MFA**  
AGRI SERVICES

FARM & HOME

PO Box 253

Memphis, MO





# {Graber Family} AUCTION

Directions: From Bloomfield IA go 3.5 miles west on Hwy 2 to Ice Ave then north 1 mile to 212th street then east 1 mile to Jade Ave and north to site. Watch for signs!!

**SATURDAY, NOVEMBER 24TH 2018 @ 9:30 AM**

## DAIRY HERD DISPERSAL

Dairy Cows: 48 head including heifers and calves•approximately 25 milking by sale day•several dry cows•approximately 8 bred heifers•12 open heifers•small calves•cows ages ranging from 2yr to 7yr; most of these cows will calve late fall and winter so numbers are subject to change till sale time. Low scc herd. Around a 50lb. tank average.

Machinery: 6 cyl. Perkins 140hp diesel, with 3pt, hydraulics & Pioneer torsion axel gear•6 cyl. Perkins 100hp diesel with 3pt hitch on JD 953 gear•2 cyl. Deutz 40hp on 2 wheel Pioneer cart 200hr. on overhaul with hydraulic outlets(hillside steering)•all power units have hydraulic brakes•White Horse hyd. cart with hyd. steering

Sawmill items: Baker double head resaw model C with return, excellent condition with less than 3000 hr. pallet stacker(air operated, max size 76"x76")•hydraulic driven cut off saw•Dewalt compound miter saw with ox air motor

## Starting on dairy cows around 10:30

### Buildings

Horses: team of 18 & 19yr. old Percheron mares•team of 6 yr. old Percheron mares•12 yr. old Percheron gelding•coming 2 yr. old mini paint stud pony

### Balage

### Bee Equipment

### Shop & Farm Related Items

### Milkhouse Equipment:

700 gal Sunset bulk tank•2-Therma-King cooling compressors•Dynagen autostart engine controller

**RISLER V975  
VERTICAL TMR, SELF  
PROPELLED MIXER  
WITH SCALES**

**David & Lucy Graber  
1971 Jade Ave  
Bloomfield IA 52537**

lots more items online at  
[www.foxauctionservice.com](http://www.foxauctionservice.com)

•• JR. (ALLEN) FOX: 660-341-1453 KENNY FOX: 660-216-0700 ••

## Soil Fertility & Product Info

Moulton Crossing Line Center, 108 S. Main St., Moulton, IA.

**Friday, November 16th • 10:00 AM**



## GUEST SPEAKER:

**Cory Schurman**  
National Sales Manager  
Sure Crop

**Meal Will Be Provided**

**For Healthy Fields & Optimum Yields, Call Mark Or Brett!**

## PLEASE RSVP TO:

**Mark Fowler:** 641-208-5741  
fowleragllc@gmail.com or  
**Brett Johnson:** 641-242-0302  
brett.johnson92@gmail.com

## For greater return on your investment:

- Complete Soil Analysis
- Volume Discounts
- Flexible Financing Options
- Delivery Direct To Your Farm

FOR SALE: JD 425 lawn tractor, 20 HP V twin liquid cooled, 54" cut, hydro drive, great condition, \$4,200; Storage/entertainment cabinets, double doors, \$50; 79"x24" workbench, \$10; ball hoop & pole, \$25.  
PH: 641-208-5136 48

FOR SALE: Gehl 7190 silage mixer wagon, \$3,500.  
PH: 641-777-8821 48

## FIREWOOD FOR SALE:

Seasoned oak  
& hickory,  
\$50 a load,  
you haul.

## PHONE

**641-208-5812**

**COMMUNITY BLOOD DRIVE:** Van Buren County will host a community blood drive at 801 Front St., inside Keosauqua Senior Center. Wednesday, November 14, 3:30 pm - 7:00 pm. To donate, please contact the Blood Center at (800) 452-1097 or visit [www.bloodcenterimpact.org](http://www.bloodcenterimpact.org) and use code 5084 to locate the drive.

## 2011 Dodge Nitro VERY NICE, BLACK, 93,000 MILES, CLEAN TITLE



**\$11,500 OBO • 660-988-1624**

## GLENWOOD Elevator

**301 State Hwy. M  
Glenwood, Mo 63541**

Logan Ford, Manager

PH: 660-457-3973 • Cell: 660-956-3973  
Fax: 660-457-3045 • [gelevator@marktwain.net](mailto:gelevator@marktwain.net)

## OBERHOLTZER TRAILER REPAIR

*Specializing in Aluminum Grain Trailers  
Repair & Rebuild*

3 miles east of Gorin, Mo. on Route U

**660-282-1012**

Garages • Pole Barns  
Commercial

Free  
Estimates

**LAN-DOW  
BUILDINGS**

We Stock a  
Complete Line  
of Building  
Materials

**Lancaster  
Lumber, Inc.**

Complete  
Buildings or  
Packages  
Available

Toll Free 800-424-5071 Fax 660-457-3133

Hardware • Plumbing • Electrical • Paint  
500 Green Street • Lancaster, MO 63548

## FOR SALE

3 year old Red Angus bull,  
moderate frame, \$2,500

Dorper and Dorper/Katahdin  
cross ewe lambs for breeding.

**CHAD WUTHRICH • 641-208-5933**

## GARAGE DOORS

*Residential • Commercial • Doors • Operators*

Quality Products + Quality Workmanship = Quality Customers

Call us today for your • **FREE** door estimates.

**WE FIX DOORS!**

**MAST OVERHEAD DOORS**  
**641-680-2016**

105 S. Dodge St.,  
Bloomfield, IA

## FOR SALE:

**1998 John Deere 8400  
MFWD tractor. Tractor is on  
18.4/42 duals and has 7300  
hours. Tractor is excellent  
mechanically and has great  
appearance.**

**Asking \$62,500**

**For more information call  
Doug Aylward (660) 341-4278 or  
John Aylward (660) 341-2386**

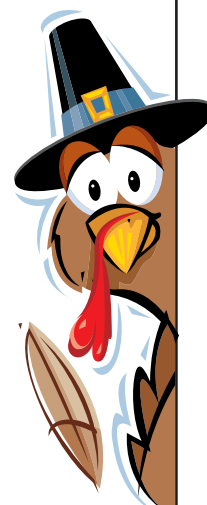
FOR SALE WHEEL  
CHAIR VAN: 2007 Dodge  
Grand Caravan, motorized  
lift with remote control.  
Cruise, air, cd player, stow  
and go seats, power side  
doors, 149,000 miles, good  
tires, clean title, \$4,500. PH.  
641-208-6100.

## FOR SALE

Driveway Fabric Rolls  
Commercial, Heavy Duty,  
Designed for Heavy Traffic

12' 5" Wide  
432' Long  
\$370/roll

**660-216-0938**



*Wishing you & those dear to  
you a wonderful Thanksgiving Day!*

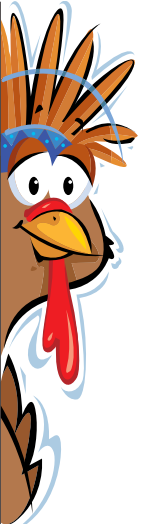
**Our Office will be CLOSED  
Thursday, November 22<sup>nd</sup> &  
Friday, November 23<sup>rd</sup>**

*Happy Thanksgiving*

**Tri-County  
SHOPPER**

208 Weaver Rd. • Bloomfield, IA

641-664-1333 • [www.tri-countyshopper.com](http://www.tri-countyshopper.com)







**18<sup>TH</sup> ANNUAL "TRUMP" BRED HEIFER AUCTION**

**FRIDAY, NOVEMBER 23<sup>RD</sup>**  
**AT 1:00 PM**

SALE HELD AT  
CARTHAGE  
LIVESTOCK INC.  
CARTHAGE, IL

**180 HEAD OF REPUTATION BRED HEIFERS**  
90 AI'D WITH THE BALANCE BRED NATURAL SERVICE.  
All w/ "Show Me Select" ear tag! Selling in small uniform lots.

**MR. & MRS. HAROLD TRUMP**  
EVE. (660) 866-2240 • CELL (660) 341-5730

SULLIVAN AUCTIONEERS, LLC | TOLL FREE (844) 847-2161  
IL LIC. #444000107 | www.SullivanAuctioneers.com

SURPLUS LUMBER: 2x12' 85¢ ft.; 2x10' 65¢ ft.; 2x8' 50¢ ft.; 2x6' 35¢ ft.; 2x4' 25¢ ft. HEADERS: 12" LVL'S \$2.00 ft.; 9 1/2" LVL'S \$1.50 ft.; 2) 24'x 24" \$5.00 ft.; 3 1/2"x12" headers \$2.00 ft.; 3 1/2"x9 1/2" headers \$1.50 ft.; IJoists - random lengths. Also new S.Y.P. No. 1 and No. 2-No. 3. MILLER LUMBER, 27547 Timber Ave., Pulaski, IA 52584, 3 1/2 miles south of Pulaski. TFN

FOR SALE: 25 used traps, 4/ 220 Conibears, 12/ 110 conibears, the rest are foot holds.

PH: 641-208-5307

47

**HELP WANTED**  
General Laborers,  
Machine Operators & Welders  
**BLOOMFIELD, IOWA AREA**  
**CALL: 641-664-3480**

FOR SALE: Firewood at RJ Lumber, \$15 a pickup load.  
18989 160th St., Drakesville, IA 52552.

FOR SALE: 2003 Ford Explorer V8, loaded with options, \$2,500.  
PH: 641-226-8032

46



**WAPELLO COUNTY, IA LAND & FARM RETIREMENT AUCTION**  
**2 SEPARATE TIMES & LOCATIONS!**  
**PLEASE READ CAREFULLY**  
**MONDAY, DECEMBER 10, 2018**

**PLEASE NOTE THE TWO TIMES & LOCATIONS:**

**MON., DECEMBER 10<sup>TH</sup> @ 9:30 A.M.**

**Held Onsite: 4662 150th St., Hedrick, IA**

After a long farming career, Larry & Katherine have decided to retire from farming. This farming operation spans 3 generations for the Whittington family and you will find their equipment in field ready condition. This auction features a full line of Case-IH equipment, planting/tillage equipment, harvesting equipment & other farm related items.

**LARRY & KATHERINE WHITTINGTON – OWNERS**

**Larry's Cell Number: (641) 777-4759**



**MON., DECEMBER 10<sup>TH</sup> @ 5:00 P.M.**

**Held at the Hedrick Community Center,  
109 N. Main Street, Hedrick, IA**

The Whittington Farms are located in Section 21, Compentine Township & Section 5, Pleasant Township, Wapello County, Iowa. Tract 1 is located 4 miles southeast of Hedrick, Iowa and Tract 2 is located 8 miles southeast of Hedrick, Iowa. (14 miles northeast of Ottumwa, Iowa.)

Make plans now to attend this Southern Iowa retirement land auction. Both tracts represent productive tillable farmland & are both in an excellent state of fertility. If you are an investor or looking to add to your farming operation, we urge you to take a look at these Wapello County, IA parcels.

**DETAILS, MAPS & PHOTOS AVAILABLE ONLINE @:  
www.SullivanAuctioneers.com**

**LARRY DEAN WHITTINGTON REVOCABLE TRUST**

**Larry Dean Whittington – Trustee/Seller**

**Atty: Paul Zingg • Ottumwa, IA • Ph: (641) 683-1626**

**FOR ADDITIONAL INFORMATION, CONTACT:  
John Probasco (641) 856-7355 or Jim Huff (319) 931-9292**

**SULLIVAN AUCTIONEERS, LLC • TOLL FREE (844) 847-2161  
www.SullivanAuctioneers.com • IL Lic. #444000107**

## ANGUS BULLS 2 YR. OLDS & YEARLINGS



Musgrave Big Sky

A breed leader in calving ease & preformance.

**Also: Bred heifers & cows bred AI to Musgrave Bulls**

**DORAN BOLLMAN**  
**PULASKI, IOWA**  
**641-675-3467**

FOR SALE: Border Collie Australian Shepherd puppies, farm raised, working parents.

PH: 641-208-6854

46

FOR SALE: French Bulldog cross puppies, have been wormed, ready to go next week. \$300

PH: 641-664-1964 Ext. 5

46

## Estate and Consignment Auction

**Saturday, November 17, 2018**

**Starting at 10:00 am**

**Sale will be located at Jackson Auction House on the North West Corner of the Memphis Square. Watch for auction signs.**

**ITEMS SELLING:** ¾ HP Large Meat Saw/ Grinder, Small Chest Type Freezer, 2 Refrigerators, Natural Gas Stove, Large Haier Humidifier, Rocking Chairs, Wicker Chair and End table Set, Coffee Table, Brick Heater on a Stand, 19.2 Craftsman Drill and Angle Drill Set, 19.2 Craftsman Zaw Saw, Tool Shop Air Nailer, Many Hand Tools, Sansui TV/VCR Combo, Large Stereo, Microwave, Christmas and Holiday Decorations, New Solar Lights, Many Yard Decorations, Blankets, Sheets, Sleeping Bags, Several Pictures, Tupperware, Pots and Pans, Many Household Items, Many Many Boxes to go through. There are a lot of good usable items. There is something for everyone. Items sold as is where is with no guarantee.

Announcements Day of Auction Holds Precedence over any advertising. Lunch will be served.

**Terms: Cash, Check or Credit Card.**

Follow us on Facebook @ Jackson Auction. Pictures will be posted there.



*Sale Conducted by:*  
*Jackson Auction Service*  
*David and Jodie Jackson*  
*Memphis, MO*

For more information email us at: auctions@nemr.net or call:

David Jackson  
660-341-1762

Jodie's Cell  
660-216-3750

Auction House  
660-465-2889



*4 Upcoming Iowa*  
**LAND AUCTIONS**  
*Appanoose County, Iowa*  
**MON., NOVEMBER 19<sup>TH</sup> @ 10 A.M.**

Auction to be held at Wrays Banquet Room, 24256 IA-5, Centerville, IA  
**192 ACRES± Selling in 4 TRACTS**



The Vinzant Estate Land is located in Sections 21 & 28, Bellair Township, Appanoose County, Iowa. (2 1/2 miles northwest of Centerville, Iowa.)

Make plans now to attend this upcoming Appanoose County, Iowa land auction. This farm features productive tillable farmland, improved pastureland and a nice country acreage. Tract 4 (The Acreage) is improved with a 3 bedroom ranch style home, a 54' x 75' Morton machine shed, 2 Harvester silos and several other usable livestock and storage buildings. This parcel also includes over 20 acres of improved pastureland suitable for cattle or horses.

### THE BONNIE VINZANT ESTATE

**David Vinzant – Executor**

**Margaret Kester, Jan Vinzant, Mary Davis & John Vinzant – Sellers**

**ATTY: Michael D. Craver • Centerville, IA 52544 • Phone: 641-856-2244**

**For Additional Info, Contact: John Probasco (641) 856-7355**

## JEFFERSON COUNTY, IOWA

**MONDAY, NOV 19<sup>TH</sup> @ 5 P.M.**

Auction Venue: The Jefferson County Fairgrounds, 2606 W. Burlington Ave., Fairfield, IA

**117 ACRES± • 1 TRACT**

The Brokken Farm is located in Section 19, Round Prairie Township, Jefferson County, Iowa. (7 miles southeast of Fairfield, IA.)

This farm offers productive tillable farmland and income producing CRP. This parcel is improved with a very usable hay & livestock barn and grain storage bins. The property is conveniently located in close proximity to Fairfield & Lockridge, Iowa and offers hard surface road frontage. We urge you to look at this upcoming Southeast Iowa land auction!

### MIKE BROKKEN – SELLER

**ATTY: Alyssa R. Stewart • Burlington, IA 52601 • Phone: 319-754-7585**

## Van Buren County, Iowa

**TUESDAY, NOV 20<sup>TH</sup> @ 10 A.M.**

**Sale to be held at the American Legion Hall, Stockport, IA**

**80 ACRES± • 1 TRACT**

The Campbell Farm is located in Section 2, Washington Township, Van Buren County, IA (3½ miles southwest of Stockport, IA).

This farm offers productive tillable farmland and several new home building sites that overlook a 1½ acre stocked pond. If you are looking to add to your farming operation or just wanting a tract to build your dream home that has income producing farmland, this could be the one for you!

### EVELYN L. CAMPBELL

**Aleta J. Harris – POA**

**ATTY: Tim B. Kuiken • Foss, Kuiken, & Cochran, P.C. • Fairfield, IA • Ph: 641-472-3129**

## Van Buren County, Iowa

**TUESDAY, NOV 20<sup>TH</sup> @ 11 A.M.**

**Sale to be held at the American Legion Hall, Stockport, IA**

**332 ACRES± • 7 TRACTS**

The Miller Farm is located in Sections 3 & 4, Washington Township, Van Buren County, Iowa. (North of Keosauqua, Iowa.)

Mark your calendars now for this large upcoming Southeast Iowa land auction. This farm has it all, including productive tillable farmland, income producing CRP & excellent hunting & recreational acreage. There is also a turn of the century 2 story brick home that is situated on approximately 1 acre and includes a very nice Morton garage/storage building.

### THE MILLER FARM

**Michael D. Miller & Jane Ann Miller – Sellers**

**ATTY: Michael Mumma • Mumma & Pedersen • Jefferson, IA 50129 • Phone: (515) 386-8198**

**DETAILS, MAPS & PHOTOS AVAILABLE ONLINE @:**

**www.SullivanAuctioneers.com**

**FOR ADDITIONAL INFORMATION, CONTACT:**

**Jim Huff (319) 931-9292 or Jeff Hoyer (319) 759-4320**

**SULLIVAN AUCTIONEERS, LLC • TOLL FREE (844) 847-2161  
www.SullivanAuctioneers.com • IL Lic. #444000107**

FOR SALE: 2018 alfalfa hay.  
Mark Rogers, Douds, IA.

PH: 641-919-9447.

FOR RENT: 12' no till drill.  
Yoder Equipment

PH: 641-664-2797

TFN

## Friesen Excavating

Specializing in Septic Systems, Certified For Peat Tanks and Sand Filters. Can Also Do Other Drains and Water Lines.  
Call or Text Shawn @ 641-208-0861 • Bloomfield, IA

**Free Quotes Available**



## KEOSAUQUA SALE CO.

20511 Hwy. 1, Keosauqua, IA

### Results from Nov. 10th

|                    |                     |
|--------------------|---------------------|
| Butchers .....     | \$38.00-46.00/cwt   |
| Sows .....         | \$39.00-49.00/cwt   |
| Feeder lambs ..... | \$131.00-175.00/cwt |
| Fat lambs .....    | \$119.00-121.00/cwt |
| Ewes .....         | \$55.00-65.00/cwt   |
| Kid goats .....    | 40-70#              |
| Nannies.....       | \$75.00-180.00/hd   |

|                    |                                 |
|--------------------|---------------------------------|
| <b>Pound cows</b>  | \$32.00-40.00/cwt low yielding  |
|                    | \$45.00-60.00/cwt high yielding |
| <b>Pound bulls</b> | \$64.50-74.00/cwt               |

## SPECIAL CATTLE SALE

### Sat., Nov. 17th

- 50 hd 550-650 blk simmx str & hfrs - McLain  
 20 hd 500-650 blkx str & hfr, green - Brewster Bros  
 28 hd 550-700 Red Angus str & hfrs - R Gates  
 18 hd 550-700 blk str & hfrs - P Louth  
 15 hd 500-650 blk str & hfrs - W. Hootman  
 22 hd 500-650 blk str & hfrs - A. Box  
 20 hd 700-750 blkx str - Kinsey  
 12 hd 600-700 blkx str & hfrs - A. Meierotto  
 70 hd 675-725 blkx yearly hfrs - Pierce  
 120 hd 800-830 xbred yearling str, straight off grass - James  
 70 hd 725-750 xbred yearling str, straight off grass - Giesendorfer

## LUMBER SALE

### Sat., Nov. 17th

Lumber exposed by the tornado and can't be sold as number 1 from Keosauqua Lumber Co.

Watch website for early listings [www.keosauquasaleco.com](http://www.keosauquasaleco.com)

Thank You For Your Business!

For More  
Information Contact:

#### Selling Times

|                    |            |
|--------------------|------------|
| Hogs.....          | 9:30 a.m.  |
| Sheep & Goats..... | 10:00 a.m. |
| Outside Merch..... | 11:00 a.m. |
| Cattle.....        | Noon       |

Keosauqua Sale Co.  
319-293-3508  
Bill Goehring  
641-919-9365

[www.keosauquasaleco.com](http://www.keosauquasaleco.com)

## FOR SALE

### 18 Month old Charolais Bulls

#### TROJAN HILL FARMS



Phil Archer  
(641) 675-3769  
Cell (641) 680-6769  
Angus & Charolais

Yoder's Indian Creek Furniture. Check out our great selection of outdoor Polly lawn furniture. Maintenance free with lifetime warranty. Also Polly Martin houses & gourd racks. Rt. V64 Milton, Iowa. Located 4 miles North of Cantril or 3/4 miles South of Lebanon on RT. V64, Monday to Saturday 8 a.m. to 5 p.m. No Sunday sales. PH. 319-538-7332

## CONSIGNMENTS WANTED

### Southern Iowa Produce Auction

Sales every 2nd & 4th Saturday, November thru March

### Next Sale Sat., November 24th - 10 A.M.

For advertising your consignments they must be called in by 10 A.M. Monday on the week of sale. Unloading available on Fridays before auction otherwise by appointment.

19141 Ice Ave. Bloomfield, IA

Call 641-722-3623 on auction days or leave a message.  
Market Report or Information call 712-432-8593.

## Scotland County LIVESTOCK AUCTION

P.O. Box 111 • Hwy 15 North • Memphis, MO  
660-465-7213 • Jerry & Barb Blomme  
660-341-0069 • Grant Blomme

## SPECIAL CATTLE SALE

Tues., November 30th  
Outside at Noon  
Cattle at 12:30

#### Early Listings:

65 hd Mostly Black Strs & Hfrs 400-500#

25 hd Black Strs & Hfrs 450-500#

30 hd Black & BWF Strs & Hfrs 500-600#

15 hd Black Strs & Hfrs 500#

35 hd Mostly Black Strs & Hfrs 500-600#

## SPECIAL COW SALE

### SATURDAY NOVEMBER 24TH

### Cattle @ 12:30

#### Early Listings:

44 Hd Black & Bwf Second Calf Cows  
A'Id To Start Calving Feb 20

21 Hd Black Second Calf Cows Mated To Black  
Bulls Start Calving March 1st

7 Hd Registered Angus Replacement Heifers 900#

31 Hd Black And Red SS To Old Cows Mated To  
Hereford & Black Bulls, Start Calving Feb 1st  
For 70 Days

14 Hd Black Heifers Mated To Lbw Snyder Bulls,  
Pelvic Measured, Start Calving February 21st  
For 25 Days

14 Hd Black And Red Cow Calf Pairs, 200# Calves,  
Exposed Back To Black Bulls

26 Hd Black 4 To 6 Yr Old Cows, Mated To Black  
Bulls, Spring Calving

14 Hd Black 4 Yr Old To SS Cow Calf Pairs, Calves  
Will Be Tagged To Match Cow, Cows Have Not  
Been Exposed Back To Bulls

40 Hd Black Cows, 3Yr Old To SS Cows, Mated To  
Black Bulls, Spring Calving

#### Market results for Tuesday, November 6th

| Steers                     | Heifers Continued          |
|----------------------------|----------------------------|
| 300# - \$193.00            | 488# - \$148.00            |
| 385# - \$192.00            | 500# - \$140.00            |
| 450# - \$171.00            | 534# - \$146.00 Not Weaned |
| 451# - \$172.00 Not Weaned | 577# - \$140.00            |
| 491# - \$175.00            | 647# - \$138.00            |
| 553# - \$165.50            | 691# - \$146.50 Pot Load   |
| 607# - \$156.00            | <b>Bulls</b>               |
| 649# - \$152.50            | 371# - \$180.00 Not Weaned |
| 755# - \$141.50            | 490# - \$161.00 Not Weaned |
| 837# - \$162.00 Pot Load   | 498# - \$156.00 Not Weaned |
| <b>Heifers</b>             | 550# - \$145.00 Not Weaned |
| 388# - \$151.00            | 555# - \$148.00 Not Weaned |
| 406# - \$152.00            | 570# - \$146.50 Not Weaned |
| 408# - \$158.00 Not Weaned | <b>LB Cows</b>             |
| 429# - \$158.00            | \$30.00 to \$43.00         |
| 460# - \$146.00 Not Weaned | <b>Holstein Veals</b>      |
| 468# - \$153.00            | \$25 - \$45                |

[www.ScotlandCountyLivestock.com](http://www.ScotlandCountyLivestock.com)

## Kirksville Livestock LLC

Kirksville, Missouri

## NORTH CENTRAL MISSOURI SHOW-ME-SELECT BRED HEIFER SALE FRIDAY, NOVEMBER 16TH 6:30 P.M.

**Randy Baker** - 10 Ang/Hereford X heifers, bred to Angus bulls, calving dates: Al: 2/27; NS: 3/14 to 4/15  
**Bennett Farms** - 20 home raised purebred registered Angus hfrs, bred to Angus bulls, calving dates: Al: 2/21; NS 3/1 to 4/15

**Jeff & Marge Lindquist** - 12 AngX heifers, bred to Angus bulls, Calving dates: Al: 2/8; NS: 2/22 to 4/20  
**Calvin Good** - 6 AngX heifers, bred to Angus bulls, Calving dates: Al: 1/29/19

**Randy Miller** - 10 Ang/AngX heifers, bred to Angus bulls, Calving dates: NS: 2/17 to 3/30

**David Clark** - 35 Ang/AngX and HerefordX heifers, bred to Angus bulls, Calving dates: Al: 1/29; NS: 2/11 to 4/20

**Kevin & Beth Strange** - 25 Angus, HerefordX, Ang/CharX heifers, bred to Angus bulls, Calving dates: Al: 2/21; NS 3/7 to 4/20

**Double E Cattle Co.** - 2 Red Angus heifers, bred to horned hereford bulls, Calving dates: Al: 2/26

**Leon James** - 6 AngX heifers, bred to Angus bulls, Calving dates: Al: 2/23; NS: 3/11 to 4/10

Heifers have met minimum standards for reproduction soundness, pelvic size, body condition and weight, and are free of blemishes. Heifers have been breed to bulls meeting strict calving ease EPD requirements. A strict immunization program has been followed including official Brucellosis calfhood vaccination. Heifers will calve from late January to April. Many have been synchronized and will calve in a short time period.

**For more info: Zac Erwin, SMS Regional Coordinator 660-665-9866**

*The NEMO Cattlemen's Association will be cooking ribeye sandwiches, burgers and hot dogs as a fundraiser.*

**Check out the North Central Show-Me-Select facebook page for pictures and more infomation.**

**CHECK OUR WEBSITE FOR UPDATED LISTINGS!**

"Proud to Serve Area Livestock Producers"

**YOUR BUSINESS IS VERY MUCH APPRECIATED**

We are open on Sundays to receive your livestock.

Phone for information: Patty Foster, Office 660-665-9804

Chuck Ambrosia...660-342-3530 Doug Fleshman.....660-626-7148

Caleb Randolph ....641-919-8539 Daniel Smith .....660-341-8396

Mark Herbold.....515-720-8667 Jeremy Jarman ....660-341-9879

Al Ashmead.....660-216-8730 Cory Cook .....660-651-7453

**Visit our website at [www.KirksvilleLivestock.com](http://www.KirksvilleLivestock.com)**

THANKSGIVING SUPPER & TALENT AUCTION:  
Barker United Methodist Church • 11276 County Road 968, Downing MO. North of Downing or South of Bloomfield on the Iowa/Missouri line. SATURDAY, NOVEMBER 17, 2018 5:00 p.m. Turkey, Dressing, Ham Balls, Noodles, Homemade Rolls, Delicious salads & desserts. Supper followed by auction of beautiful hand crafted items & baked goods, woodshop items, garden produce, canned goods. Door Prizes. FREE WILL OFFERING. For directions or more information call: 641-675-3439, 641-664-3859, 660-379-2615, or 660-379-2848



**BLACK FRIDAY***Tired of paying high feed & delivery costs?*

Ask your neighbor

- Cantril Feed & Grain has great deals on quality feed!
- Low Delivery Costs!
- Most deliveries within 2 days!

**CANTRIL FEED & GRAIN**

Cantril, IA 52542 • 319-397-2215

DEDICATED TO MAKING YOUR FARM MORE PROFITABLE



- Poly Lawn Furniture
- Grandfather Clocks
- Solid Wood Bedroom Sets
- Wooden Rockers & Much More

We will be closed  
Thurs., November 22nd



Christmas Gift Giving Ideas  
Place your order now!



Also Browse Through Shady Lane Variety  
Featuring local-made items, homemaking supplies, unique gifts & more

16961 JADE AVE • BLOOMFIELD, IOWA 52537  
641-664-0207 • MONDAY-SATURDAY • 8:00AM-5:00PM

## White Communications AUCTION

Saturday, November 17th • 11 AM

4 Bader St., Bloomfield, Ia

Accepting up to 20 additional Ag/Construction, Vehicles, related consignments for this Auction. Please contact Lincoln at (641-208-3649) to get your items advertised.



- Takeuchi TL150 skid loader. 3500hrs. new tracks  
John Deere 4052M, 52HP, D170 Loader w/smooth bucket, 53 Hrs. FWA, Diesel,  
2017 John Deere Z930R zero turn lawn mower 60" deck, 92 Hrs. 25.5 hp Kawasaki  
DR All Terrain Premier 26 walk behind brush cutter 340cc Briggs  
2018 John Deere XUV 825 crew cab UTV, 53 m., 16 hrs. electric dump, windshield, roof  
2011 Suzuki King quad 4x4 750 AXI 400 miles, 75 hours  
John Deere cat. 2 fast hitch • Frontier RC 2072 3pt brush cutter  
County line 3pt 60" tiller • Country Tuff 22 ton pull type log splitter 8hp Kohler  
County line 3pt posthole digger • Frontier 1 bottom plow  
Quick Attach 8' snow bucket • Quick Attach pallet forks  
Quick Attach tooth bucket • 2015 CF Moto UTV 800cc 265 miles  
John Deere lawn sweep • Yard Machine 24" snow blower  
2006 CM 14' 2 horse slant w/tack room trailer  
(4) Bobcat Heavy Duty 12x16.5 wheels and tires  
72' Cat Bucket with Grapple and good bolt on edge  
(2) 72" Bobcat low profile tooth bucket  
Bobcat Heavy Duty tooth bucket  
60" Bobcat smooth bucket with good bolt on edge  
60" smooth bucket • Electric feeder for small pickup  
Lincoln 180 C Mig Welder like new  
Campbell Hausfeld 80 gal air compressor 230V 3 phase  
New 40' fiberglass extension ladder • 24' & 28' extension ladder

Full details and pictures online at [www.lynchboys.com](http://www.lynchboys.com)

**Lynch  
Boys**  
Auction Service

Terms: All items are sold "as is". All items must be paid for prior to removal.  
All announcements made day of sale take precedence over ad. Not responsible for accidents or theft.

[WWW.LYNCHBOYS.COM](http://WWW.LYNCHBOYS.COM)

BLOOMFIELD, IA  
641-2083649

**SALE****BLACK FRIDAY**

2 Day  
Sale

Fri. & Sat.  
NOVEMBER 23 & 24  
**11% OFF**  
ALL IN STOCK  
ITEMS!!  
**CASH & CARRY**

Excluding fencing & sale  
priced items.



Dewalt 18  
volt Cordless  
Battery 2 PK  
Reg. \$145.86  
**Sale \$99.00**



4pk Ratchet  
strap 15ft x  
500lb  
Reg. \$16.78  
**Sale \$14.99**



Snow Shovel,  
18 in Steel  
Poly D Grip  
Handle  
Reg. \$9.76  
**Sale \$5.99**



Dewalt DWE304  
Heavy Duty  
Reciprocating Saw,  
Reg. \$104.99  
**Sale \$75.99**



Keson 300'  
Tape Measure  
3/8" wide  
steel  
Reg. \$130.88  
**SALE \$92.99**



25' Fat Max  
tape measure  
Reg. Price \$20.03  
**SALE \$12.99**



30 ft Fat Max  
Tape Measure  
Reg. \$26.01  
**SALE \$16.99**



Air Compressor,  
3-1/2 hp, 15 gal  
Reg. \$257.49  
**Sale \$169.99**



500'  
braided  
string-liner  
Reg \$7.61  
**Sale \$5.99**



DeWalt 2PK 4.0ah  
Cordless Battery, 20 V,  
Reg. \$201.62  
**Sale \$134.99**



2"x27' Ratchet  
Straps  
Reg. Price \$16.77  
**SALE \$9.49**

32 GAL  
Round  
trash can  
Reg \$11.69  
**Sale \$9.99**



**No Mail in Rebate Hassle.,  
Discount comes DIRECTLY off  
invoice amount !**

**Cantril Lumber & Hardware**

319-397-2351 • 319-397-2354

Mon-Fri 7-5 & Sat 7-12





# BLOOMFIELD



# LIVESTOCK MARKET

Wed., November 21st..... Fat Cattle, Slaughter, Cows & Bulls ..... 9:30 AM  
Sat., November 24th..... Thanksgiving All Calf Sale..... 10:30 AM  
Wed., November 28th..... Fat Cattle, Slaughter, Cows & Bulls ..... 9:30 AM  
Wed., December 5th..... Fat Cattle, Slaughter, Cows & Bulls ..... 9:30 AM  
.....Special Calf & Yearling Sale .....11:30 AM

Market Report for Wed., November 7th - Selling 1350 Head

HEIFERS

|                 |                  |         |     |          |
|-----------------|------------------|---------|-----|----------|
| Ron Thomas      | Unionville, IA   | 10 BLK  | 374 | \$164.00 |
| Jerry Batterson | Bloomfield, IA   | 11 RED  | 602 | \$154.00 |
| Ron Thomas      | Unionville, IA   | 38 BLK  | 475 | \$151.00 |
| Donald Tharp    | Bloomfield, IA   | 13 BWF  | 619 | \$151.00 |
| Jadco           | Mt. Pleasant, IA | 41 BLK  | 543 | \$150.00 |
| Henry Heinze    | Williamstown, MO | 10 BBWF | 606 | \$150.00 |
| Danny Bankes    | Coatsville, MO   | 14 BLK  | 564 | \$149.50 |
| John Lynch      | Bloomfield, IA   | 30 BLK  | 637 | \$146.50 |
| Gail Farley     | Downing, MO      | 12 RED  | 585 | \$146.00 |
| John Lynch      | Bloomfield, IA   | 25 BLK  | 539 | \$145.00 |
| Mike Hootman    | Bloomfield, IA   | 13 BLK  | 664 | \$140.00 |
| Jim Blackwell   | Bloomfield, IA   | 12 BLK  | 625 | \$140.00 |

STEERS

|                      |                  |         |     |          |
|----------------------|------------------|---------|-----|----------|
| Ron Thomas           | Unionville, IA   | 22 BLK  | 376 | \$182.50 |
| Jadco                | Mt. Pleasant, IA | 11 BLK  | 455 | \$172.50 |
| Henry Heinze         | Williamstown, MO | 18 BBWF | 617 | \$170.00 |
| Ron Thomas           | Unionville, IA   | 60 BLK  | 496 | \$167.00 |
| Jadco                | Mt. Pleasant, IA | 45 BLK  | 568 | \$161.00 |
| Gail Farley          | Downing, MO      | 13 RED  | 568 | \$158.50 |
| Doud & Jolynne Davis | Bloomfield, IA   | 16 BLK  | 595 | \$158.50 |
| Dave Henderson       | Drakesville, IA  | 15 BLK  | 605 | \$158.00 |
| Jackie Foglesong     | Moulton, IA      | 15 BLK  | 581 | \$155.00 |
| John Lynch           | Bloomfield, IA   | 43 BLK  | 659 | \$153.00 |
| Nelson Fox           | Memphis, MO      | 30 BLK  | 657 | \$151.50 |
| Donald Tharp         | Bloomfield, IA   | 22 BWF  | 655 | \$148.75 |
| Mike Hootman         | Bloomfield, IA   | 23 B/R  | 671 | \$146.00 |

SALE BARN OPEN UNTIL 9:00 PM  
EVERY TUESDAY TO RECEIVE LIVESTOCK

|                      |              |                                     |
|----------------------|--------------|-------------------------------------|
| Phil Schooley.....   | 641-664-3450 | <i>We appreciate your business!</i> |
| Ron Schooley.....    | 641-777-0302 | Tyler Schooley ..... 641-208-5442   |
| Roman Schooley ..... | 515-450-3685 | Barn Phone ..... 641-664-2435       |

HWY. 63 NORTH • BLOOMFIELD, IA



Messes aren't a problem with  
**WeatherTech®**



**FLOOR MATS FOR YOUR CAR, TRUCK OR SUV!**



**LINE-X of Ottumwa**  
**641-683-9334**  
Brad Lisk  
15514 Blackhawk Rd., Ottumwa, IA



WeatherTech

FOR SALE: 20 powerful registered Angus 18-month-old bulls for fall breeding. Feed efficiency tested. Ultrasounded. All weights and EPDs available. Excellent quality. Breeding season guarantee. WernerFamilyAngus.com Diagonal, IA.  
PH: 641-344-5059 52

## Building Packages



 **We Can Roll Your Metal While You Wait!** 


 **W Metal LLC**  
Metal Roofing Headquarters

Free 12 pack of **A&W Root Beer®** with your next purchase of \$500 or more!  


**641-664-3990 awmetal.net**

## 8 FT. RAILROAD TIES

Great for landscaping and garden boxes



**SPILMAN AUTO PARTS**  
20311 Old Hwy. 2  
PO Box 31 • Bloomfield  
641-664-2463

## HAPPY THANKSGIVING

BEFORE THE FESTIVITIES COMMENCE, WE'D LIKE TO THANK YOU, OUR NEIGHBORS AND FRIENDS. YOU MAKE IT ALL WORTHWHILE FOR US, AND WE LOOK FORWARD TO SERVING YOU AGAIN SOON.

*We will be closed  
Thursday, November 22nd  
In observance of Thanksgiving.*



Located 4 Miles South of Drakesville on Ice Avenue  
or 4 Miles West of Bloomfield  
Closed Saturdays

Bring your plans for free estimates!

Joe Yoder  
17893 212th St.  
Bloomfield, IA 52537

Trusses engineered & designed to your specs.

Daniel Yutzy  
641-722-3605  
Mon. - Fri. 7:00 - 5:00