

C Cornerstone Investments
 Chuck Riegenbach
 Financial Planner
**Investing for your future is
 always a smart choice!**
 108 W. Jefferson St. (641) 664-3700
 Bloomfield, IA 52537
Securities offered through Questar Capital Corporation (QCC)
 Member FINRA/SIPC. Advisory Services offered through Questar
 Asset Management (QAM) a registered investment advisor.
 Cornerstone Investments is independent of QCC and QAM.

Tri-County SHOPPER

I stopped by your
 deer stand today...
**You were
 at work.**



STANDARD
 MAIL
 U.S. POSTAGE
PAID
 TRI-COUNTY
 SHOPPER, INC.
POST OFFICE BOXHOLDER
 LOCAL RURAL BOXHOLDER
 OCCUPANT
**CIRCULATION
 OVER 11,750
 THIRD CLASS**

P.O. Box 168 • Bloomfield, IA 52537 • www.tri-countyshopper.com
 Phone 641-664-1333 • Fax 641-664-3761 • Email shopper@netins.net



Vol. 46, No. 48
 Wednesday, November 28, 2018



Country View Store

660-883-5388
www.countryviewstore.com
 3 miles south of Memphis, MO along Hwy 15

MEMPHIS Midnight Gladness!
Friday, November 30th
 Great deals throughout the entire store!!!!

GREAT SAVINGS ALL NIGHT!!
10% off all purchases!!!
 Enter your name in drawing give aways!!
The Grand Prize will be Poly Outdoor Furniture!!
 Att. children!! Enter your name to win toys
 and don't forget your phone number!
 Need not be present to win.
Free Soft Pretzels and cheese served all night!!
EXTRA BONUS SPECIAL! From 10pm -12pm 15% off all
 Mens & boys jeans and Womens & girls socks!

Schaeffers Specialized Lubricants SPECIALS!!!

**10% off all
 Cash n Carry
 and orders
 placed!**



**Listen to the
 sleigh bells ring!!!**
**Giving Horse drawn
 wagon\sleigh rides
 ALL NIGHT.**



CHECK OUT OUR BOOTHS IN THE HEATED GREENHOUSE!

- Fox Country Roast Coffee • Farmhouse Treasurers
- Local made Dutchboy Poly Furniture (10% off cash & carry and all orders placed that night)

Your Key To Finding The Best Auto Parts!

We have the parts you're looking for, at the price you want to pay!
 Stop in today or check out our website.

www.spilmanauto.com

If we don't have it, we'll gladly get it for you.

**Engines • Mufflers • Tires • Bumpers
 Transmissions • Alternators • Much More**



SPILMAN AUTO PARTS

Old Hwy. 2 & 63 W. P.O. Box 31, Bloomfield IA



Ph. 641-664-2463 • 1-800-477-1367 • www.spilmanauto.com



We are your **FULL SERVICE** Pharmacy!



- Free prescription delivery
- Convenient drive-thru
- Preferred Pharmacy on Many Prescription Plans
- Accept most prescription drug plans including Medicare and Medicaid.
- Select Generic prescriptions for just \$4 on 30-day supply and only \$10.00 on 90-day supply.
- Immunizations available without a prescription (age restrictions apply) Flu, Shingles, Pneumonia, Tetanus and Whooping Cough.
- Convenience with technology:
- Mobile app, automatic refills, text/phone or e-mail notifications
- We bill Medicare for diabetes testing supplies.
- Pet medications available
- Receive 5 cents off gas on every prescriptions, available to all customers.

Let our friendly Pharmacist assist you with all your prescription needs!

Amanda Mathews
R.Ph.



Kim Burton
R.Ph.



Get 20¢ Off per gallon on your Hy Vee fuel saver card when you get your flu shot!



301 W. Jefferson St. • Bloomfield, IA
641-664-2975

TROPHY RIDGE
TAXIDERMY

Serving Bloomfield & surrounding counties for over 15 yrs.
Mike & Cindy Tinkham
14955 293rd St. • Bloomfield, IA
319-230-6215

C.H.I. MIDWEST LiftMaster
Overhead Door

✓ Out Our Competitive Prices! 21387 Route V64 Keosauqua, IA 52565 Our goal is to keep your doors rolling smooth!

660-216-0812

Sales • Parts • Service ~ Free Estimates
We sell new doors and openers or we'll service your old one.

SURPLUS LUMBER: 2x12' 85¢ ft.; 2x10' 65¢ ft.; 2x8' 50¢ ft.; 2x6' 35¢ ft.; 2x4' 25¢ ft. HEADERS: 12" LVL'S \$2.00 ft.; 9 1/2" LVL's \$1.50 ft.; 2) 24'x 24" \$5.00 ft.; 3 1/2"x12" headers \$2.00 ft.; 3 1/2"x9 1/2" headers \$1.50 ft.; I Joists - random lengths. Also new S.Y.P. No. 1 and No. 2-No. 3. MILLER LUMBER, 27547 Timber Ave., Pulaski, IA 52584, 3 1/2 miles south of Pulaski. TFN

8 FT. RAILROAD TIES

Great for landscaping and garden boxes

SPILMAN AUTO PARTS
20311 Old Hwy. 2
PO Box 31 • Bloomfield
641-664-2463

We Put Accident Damage in Reverse
collision repair • frame & unibody repair
guaranteed paint match • rental cars

Guaranteed Craftmanship
Insurance Specialists • Free Estimates

Walker Motors
Collision Repair Inc.

375 S. Main St. • Memphis, MO • 660-465-2159 **Hertz**

NEW 4 YOU Hwy. 136 East Memphis

MIDNIGHT GLADNESS SALE!
FRIDAY, NOVEMBER 30TH

TAG SALE! White Tags 75% Off All other tags 5% off from 6-10 pm
Yellow Tags 50% Off 10% off from 10pm - 12am

Refreshments we will served



CHRISTMAS OPEN HOUSE

* Refreshments
* Register For **FREE Poinsettias**

**Sat., December 1st
8:30AM-6:00PM**

FRESH CHRISTMAS TREES

* Scotch & White Pine
* Fraser & Douglas

FOR THE HOME

* Poinsettia
* Evergreen Roping
* Wreaths

FOR THE CEMETERY

* Head Stone Saddles
* Wreaths & Stands
* Silk Bushes



Bloomfield Greenhouses

708 Arkansas Ave. • Bloomfield • 641-664-1622

FOR SALE

Driveway Fabric Rolls
Commercial, Heavy Duty,
Designed for Heavy Traffic

12' 5" Wide
432' Long
\$370/ roll

660-216-0938

FOR SALE: Meat goat doelings, 3/4 Boer, 1/4 Dairy. Bred to Boer, vaccinated, dehorned, start kidding in Feb.
PH: 641-722-3269 50

FOR SALE: Butcher hogs, \$150. Holstein cross bull calf, \$125.
Jacob Kuhns
PH: 641-664-1061. 48

FOR SALE: Peafowl - 3 males & 2 females. Just in time for Christmas, \$100 ea. or all 5 for \$400. Contact Enos Detweiler, 24502 Gray Ave. Cantril, IA

FOR SALE: Thompson Center Omega mussel loader stainless steel, 45 cal., scope & strap & much more, \$525.
PH: 660-223-6616 49

HAY FOR SALE: 3rd & 4th cutting alfalfa & orchard grass. Stored inside.
Jeff Wuthrich
PH: 641-208-4311 or 641-664-2345 49



CHECK WITH US FOR
HIGH QUALITY BOX SPRINGS & MATTRESSES!



VM: 641-664-0207
1 Mile East of Drakesville on Jade Ave.
Mon.-Sat. 9:00 AM - 5:00 PM

WANTED: Looking for a Pekingese. PH: 641-683-4498

Shady Lane Variety

Winter is Coming!
Good Supply of caps, gloves, socks, underwear & More!

.....
Lots of great Christmas gift ideas!
toys, puzzles, games & much more

1 mi. E. of Drakesville on Jade Ave. • 641-664-0207
8-5 Mon. thru Sat.

GARAGE SALE: 910 W. Chestnut, Bloomfield
Various items.
Fri., 11/30 • 8-5
Sat., 12/1 • 8-7
Sun., 12/2 • 1-7
All items 1/2 price on Saturday and Sunday




Stoves & Furnaces

WOOD • COAL
PELLET/CORN • GAS

- Many sizes & styles
- SS Chimney & Blk. Stovepipe
- Plumbing Supplies

Jotul F 50 TL Rangeley
www.jotul.com

19091 180th St • Bloomfield, IA • VM 641-722-3540
3/4 miles east of Drakesville, south side

FOR SALE: 1 roll of 100x6'x6" building insulation; 4 weanling registered Shetland colts.
PH: 641-680-8109

FOR SALE: Miniature Australian Shepherd puppies, 3 1/2 months old, registered.
PH: 641-664-2095 48

L&M Country Store

1 1/2 miles south of west Hwy 2 & 63 jct.
Mon-Sat. 8am-5pm CLOSED SUNDAYS
VM: 641-664-1936

Texas Oranges & Grapefruits

30 lbs. Philadelphia Cream Cheese	\$15.00
9 oz. String Cheese	99¢
Frozen 40 lb. Bone - In Chicken Thighs or Drumsticks.....	39¢/lb.
Frozen Applewood Smoked Carving Ham .	\$1.19/lb.
Frozen Whole Turkeys.....	89¢/lb.
Approx. 6 lb. 1/2 Moon Colby Cheese.....	\$1.79/lb.
Golden Delicious Apples	\$12.95/bu.

HOMEMADE FRUIT CAKES & CANDY

FOR SALE: 65' Thunderbird 351, fresh overhaul engine and trans., new alternator, fuel pump, water pump, carb. ty rods, head liner, carper, \$4,200 OBO; 68' Ford pickup F100 390, automatic, factory air, \$1,300, OBO; med bill discounts model B7100 AST Kubota garden tractor, 3 cylinder, diesel, clutch overhauled, 2 wheel dr. hydrostat 5' belly mower, \$2,400. Located 5 miles north of Cantril.
PH: 217-260-1876 50

Authorized Polaris dealer since 1988

Slayton Polaris

Get out and play!

New & Used Polaris Rangers & ATV's



660-328-6627

8 mi. S. & W. from Pulaski or 6 mi. W of Memphis then 13 mi. N. on Route B

FOR SALE: 2 year old female Beagle, nice markings, hunter & pet.
VM: 641-664-2997, Ext. 1 48

FOR SALE: 1-Oreck up right sweeper, like new w/ owners manual, \$50.
PH: 641-683-3554 50

Fox Valley Welding

No matter what size the project customer satisfaction is always our first priority.

Tig & Aluminum • Welding • Milwork • Lathe • New Steel Sprockets • Roller Chain Barings • PTO Parts • Fabricating CNC Machining • CNC Cutting

Hours: M-F 8-5:30 • 641-656-4684
12190 East Hwy. 2 • Milton, IA

FOR SALE: 30 in. Snapper snowblower, good condition, \$700.
VM: 641-664-1370 50

FOR SALE: 2006 Nissan Murano 4250, all wheel drive, good shape.
PH: 660-341-4499

Holiday Open House

Friday, Nov. 30th • 8:30am - 9:00pm
& Saturday, Dec. 1 • 8:30am - 5:00pm

STOP BY & SEE US WHILE YOUR OUT & ABOUT DURING MIDNIGHT GLADNESS!

EVERYTHING IN STOCK 10% OFF!

Succulents, Air Plants, House Plants, Decorative Pots, Miniature Gardening, Pottery, Metal Art, Gardening Supplies, Furniture and More!

OUR GIFT TO YOU!

\$10 gift certificate just for attending our open house!
(to be used on any future visit. 1 per household)

SNEAK PREVIEW FOR 2019

New items arriving weekly.
NEW- Wind chimes & pond supplies.

Great gift ideas for that hard to buy for person on your list.



Lilac Hill GREENHOUSE
660-342-9554

Fresh pizza crusts and Apple Cider Available

Gift certificates available in any amount.

25957 US Hwy 136
Lancaster, MO



2013 Ford F-150 Limited



2013 Chevy Suburban

47,000 MILES LTZ, HEATED & COOLED LEATHER SETS, DVD PLAYER.

Check out this 2017 Chrysler Pacifica BLACK, CLOTH INTERIOR, 32,000 MILES



\$19,700

It might be cold but our deals are **HOT**



Kollision Korner

504 South Drake St. • Bloomfield, IA 52537
PH: 641-664-2648 • Fax: 641-664-2948

DON'T MISS THIS!

ENTERTAINMENT, DINING, & CELEBRATIONS!

Sponsored by Epsilon Iota Sorority

The 37th Annual Christmas Bazaar

Saturday, December 1st

Scotland County R-1 High School in Memphis, MO.
from 8:30 a.m. - 3:30 p.m.



Santa Pictures 9am-1pm

Child Care available to bazaar shoppers

(A fee will be charged for these two services)

Concession stand will be open all day

**FREE
ADMISSION**

Downing United Methodist Church Winterfest!

December 1, 2018 • 9 a.m. to 6 p.m.

Lunch served at 11:00 a.m.

There will be quilts, crafts, baked goods & second-time around items for sale.

We will serve soups, sandwiches, desserts, & a drink. Free Will Offering

Southfork MOTEL & GRILL
JUNCTION OF HWY 2 & 63
BLOOMFIELD • 641-664-1063

Breakfast • Lunch • Dinner
Daily Hot Specials and Evening Features
Prime Rib Capital of the World! Served on Friday & Saturday Nights
Banquet Facilities Available for All Occasions • Catering

"Where Quality and Consistency Matter!"

Tues - Thurs 7am-9pm • Fri - Sat 7am-10pm
Closed Sunday and Monday

Friday, November 30th

Hawg Wild Wings with sides

Serving at 6:00 P.M.

Dine In

722-3355

Carry Out

RAY'S LONGBRANCH

Drakesville, IA



DEER HUNTER'S BREAKFAST

Saturday, Dec. 1st & Saturday, Dec. 8th
4:30 am to 9:00 am
Sausage Gravy & Biscuits & all the Trimmings

Drakesville United Methodist Church

Free Will Offering - Everyone Welcome

KMEM FM



100.5 FM - AMERICA'S BEST COUNTRY

REQUEST LINE 660-465-2715

TOLL FREE AT 800-748-7875



KMEM RADIO • MEMPHIS, MO

ITS BASKETBALL ON KMEM RADIO. LISTEN IN ON THE SCHUYLER COUNTY TOURNAMENT THIS THURSDAY AND SATURDAY ON 100.5 FM OR STREAMING AUDIO KMEMFM.COM. DONNIE AND ANDY MIDDLETON WILL BRING YOU THE PLAY BY PLAY. WE FEATURE CLARK COUNTY, KNOX COUNTY, MILAN, PUTNAM COUNTY, SCHUYLER COUNTY AND SCOTLAND COUNTY BOYS AND GIRLS. KMEM AND HIGH SCHOOL BASKETBALL JUST GO TOGETHER!!

WWW.KMEMFM.COM

IOWA THEATER BLOOMFIELD, IOWA

"Dr. Suess' The Grinch"



Friday, Nov. 30th
Saturday, Dec. 1st
7:00 PM
Sunday, Dec. 2nd
4:00 PM PG

Optimae

L I F E S E R V I C E S .

Now Hiring: Community Support Staff

Applicants must possess aptitude and willingness to provide health and human services for individuals seeking supports in living independently in the community.

Good driving record and background checks are a must. These are part-time positions, 24-28 hours per week. Starting wage is \$10.00 per hour.

Apply in person at: 712 S. West St. Suite 3, Bloomfield, IA
641-664-1839

KW Electric



Keith Waller: 641-777-6701
Matt Waller: 641-799-9220
Austin White: 641-226-4495

• Licensed & Insured
• Free Estimates

641-459-3889 13346 Lily Ave. Bloomfield, IA

FOR SALE: 2018 alfalfa hay.
Mark Rogers, Douds, IA.
PH. 641-919-9447. 51

FRIESEN CONSTRUCTION

**New Houses Remodeling
Garages Electrical Plumbing
Custom Cabinets**

**Arlen 664-3270
Cell 641-208-0170
Bloomfield, Iowa**

FOR SALE: 91' Chrysler Lebaron, 35,000 miles and 93' Chevy pickup, 4 WD.
PH: 641-242-0250

2011 Dodge Nitro

VERY NICE, BLACK, 93,000 MILES, CLEAN TITLE



Was \$11,500
NOW
\$10,900 • 660-988-1624

YOUR MEDICARE PART D EXPERTS

Ask your pharmacist for a free medication review and plan comparison.

HyVee

PHARMACY

301 W. Jefferson St. • Bloomfield, IA
641-664-2975

**OPEN ENROLLMENT
OCT. 15 - DEC. 7, 2018**

GARAGE DOORS

Residential • Commercial • Doors • Operators

Quality Products + Quality Workmanship = Quality Customers

Call us today for your • FREE door estimates.

WE FIX DOORS!

MAST OVERHEAD DOORS 105 S. Dodge St., Bloomfield, IA
641-680-2016

Country Side Grocery

Organic Corn Chips, 7.5 oz.	99¢
Evaporated Milk, 12 oz	69¢
Orange Juice, 4 oz	4/\$1.00
White Potatoes, 10 lbs.	\$1.99
Shredded Cheddar Cheese	\$1.49/lb.
Honey Crisp, Crimson Crisp, Jonathan & Fuji Apples	\$12.95/bu.

3/4 mi. E. of Drakesville, IA on 180th St.
Mon-Sat: 8:30am - 5:00pm
VM: 641-664-2661

HOURS
8 A.M. to 5:00 P.M.
DAILY EXCEPT SUNDAY

Zimmerman's Store
Rutledge, MO
660-883-5766

Our Everyday Low Prices!

Load of Texas Oranges & Grapefruits

Oranges 88 ct. or 72 ct. - \$18.50/box • Grapefruit 40 ct. - \$19.95/box
12 oz. Fresh Cranberries - \$1.95 • Bulk Carrots - 39¢/lb.
Fresh Broccoli - \$1.65/lb. • Special 2 lb. Fresh Lemons - \$1.79
Homegrown Hydroponic Lettuce Few Different Kinds
#1 Sweet Potatoes - 98¢/lb. • Nice #2 Sweet Potatoes - 59¢/lb.

Available
Dried Whole Elderberries & Dried Burdock Root (cut&shifted)

• BULK FOODS •

Organic Rolled or Quick Oats	86¢/lb.
Thick Rolled Oats	45¢/lb.
Quick or Rolled Oats	44¢/lb. or 50 lb. bag \$17.70
Baby Oats	50¢/lb.
Barley Flakes	45¢/lb.
Oat Fiber.....	90¢/lb.
Oat Bran.....	72¢/lb.
Farina or Cream of Wheat.....	37¢/lb.
White Hominy	\$1.11/lb.
White Corn Grits.....	72¢/lb.
Instant Potatoes	\$1.73/lb.
Instant Rice.....	\$1.85/lb.
White Rice.....	63¢/lb.
Brown Rice	66¢/lb.
Converted Rice	\$1.19/lb.
Organic Basmati Brown Rice.....	\$2.27/lb.
Dark Raisins.....	\$2.62/lb.
Golden Raisins.....	\$3.83/lb.
Dried Bananas.....	\$2.63/lb.
Dried Apricots	\$3.02/lb.
Macaroon, Medium, Flaked Sweet or Unsweetened - Priced To Save!	
Raw Peanuts	\$1.09/lb.
Roasted & Salted Jumbo Blanched Peanuts	\$2.13/lb.
3 lb. Cracked & Blown Pecans	\$13.95

Men's XL Cowhide Leather Insulated - \$5.79
Men's Extra Long Tube Socks - 6/\$7.95

DRIVE A LITTLE & SAVE A LOT

Follow the tracks to...

TRAILS END TAXIDERMY

Keosauqua, IA

Josette Robison
319-288-0113
\$400 Shoulder Mounts
\$85 Skull Mounts



Like us on facebook

Bring this coupon in and receive

20% OFF STOREWIDE

Ends 12-1-2018



17192 Highway 2, Bloomfield, IA 52537 | 641-722-3678
www.dutchcountrygeneralstore.com
Open M-F, 9am - 6pm | Sat 8am - 5pm



WORKING DAY & NIGHT FOR YOUR FARM

See us today for your early seed order discounts and your upcoming fertilizer needs.

Let John & the guys at Crop Services help you get better crop results.

Crop Services, Inc
John & Kathy Bos, Owners

NuTech Seed Drakesville, IA
641-722-3293



6 HOUR ONLY SALE
4:00 PM TO 10:00 PM

Open Till 10:00 PM On **Friday, November 30th**
MIDNIGHT GLADNESS

15% Off ALL In Store Items!
•Cash & Carry•
Serving **FREE Coffee & Donuts**

Come spend the evening with us and check off some names on your **Christmas list!**

Cantril Lumber & Hardware
319-397-2351 or 319-397-2354
Mon-Fri 7-5 & Sat 7-12

NEW MATTRESSES FOR SALE!
Selling individually or in sets. Factory warranty.

TWIN - FULL - QUEEN - KING

641-664-3060

FOR SALE: Marlin semi automatic 22 rifle. PH.641-664-2831. 49

WANTED: Sm. upright freezer. PH: 660-949-2780

GLENWOOD Elevator

301 State Hwy. M
Glenwood, Mo 63541

Logan Ford, Manager
PH: 660-457-3973 • Cell: 660-956-3973
Fax: 660-457-3045 • gelevator@marktwain.net



FEED & SUPPLY
641-722-3045
17599 200TH STREET • BLOOMFIELD
STOP BY MON.-FRI. 8-5 & SAT. 8-12

Complete line of bagged feed in stock!
CUSTOM BULK
Non GMO Poultry Feed we deliver!

FENCING SUPPLIES • FENCING SUPPLIES

2nd Annual Holiday Open House

Hosted by Lancaster Flowers & Tangles Salon

Fri., December 7th
10 am - 7 pm

South Side of the Square Lancaster, MO
(660) 457-3410 • (660) 457-2090

STORE WIDE DISCOUNTS!
Enter for Prize Drawings with the grand prize valued at more than \$150!
Snacks served all day!


Visit our vender booths to include:
LuLaRoe • Scentsy • B Crafty
Pampered Chef • Norwex
Maskcara Beauty

4:00 - 7:00 pm
Visit with Santa & Mrs. Claus who will be handing out goodie bags!




FREE SAWDUST: At Petershiem Sawmill. 14256 Jewel Ave, Bloomfield, IA PH: 641-722-3020 TFN

MILITARY ITEMS WANTED BY LOCAL COLLECTOR: Patches, medals, uniforms, hats, helmets, etc. Always buying. Mark Warren, PH. 641-664-3705. mpwarren@netins.net 52



YODER EQUIPMENT
BLOOMFIELD, IOWA



Woven & barbwire fencing with fix knot

EXTRA HEAVY 10 GAUGE BALE RINGS & HAY SAVERS

19887 Jade Ave
2 1/2 Miles W of Bloomfield
V.M. 641-664-2797

LETS FIND OUT! ED PH: 641-208-4253



Yoder Glass & Window

VINYL WINDOWS
• Replacement
• New Construction
• Many Glass & Color Options

Free Estimates

19467 Driftwood Blvd.
Bloomfield, IA 52537
Call Today: 641. 722. 3667

TRUCK DRIVER WANTED:

Grain/ Van

Possible on farm work also

Send Resume to:
Help Wanted
P.O. Box 168, Bloomfield, IA 52537



OBERHOLTZER

TRAILER REPAIR

Specializing in Aluminum Grain Trailers
Repair & Rebuild

3 miles east of Gorin, Mo. on Route U
660-282-1012

Huff's Polled Herefords
Private Treaty
Spring Heifer Calves & Service Age Bulls

Low birth rates & excellent EPD's

Leroy Huff
660-341-6392

Sean Huff
417-499-3639

Rutledge, Mo.

ERRORS: When your ad is printed, please check for errors. Any error must be reported to our office within three (3) days after publication. If not reported within this time, the SHOPPER assumes no responsibility for correction. If the error is found to be made by the SHOPPER, we will change the error only, free of charge. However if the wrong information was given, the SHOPPER will not change the ad, unless customer wants to run another ad at full price. We will not be responsible for errors made on advertising given to us that is not legible. **CREDIT POLICY:** All advertising submitted is subjected to credit review and restriction. Publication may be withheld on the basis of unpaid past due balance or poor credit history. The SHOPPER reserves the right to refuse or reject, without prior notice, any copy submitted for publication.

DONATE YOUR CAR, TRUCK OR BOAT TO HERITAGE FOR THE BLIND. Free 3 Day Vacation, Tax Deductible, Free Towing, All Paperwork Taken Care Of. CALL 1-855-977-7030 (MCN)

Earthlink High Speed Internet. As Low As 14.95/month (for the first 3 months.) Reliable High Speed Fiber Optic Technology. Stream Videos, Music and More! Call Earthlink Today 1-855-679-7096 (MCN)

Life Alert. 24/7. One press of a button sends help FAST! Medical, Fire, Burglar. Even if you can't reach a phone! FREE Brochure. CALL 888-227-0525 (MCN)

DO WARM WINTERS SOUND GOOD?? Bring your RV down to the warm Rio Grande Valley. J-5 RV Park in Mission Tx. will welcome you with a country setting, friendly people and lots of activities to keep you busy. We have a special for first time visitors. Phone us at 956-682-7495 or 515-418-3214. Email info@j5rvparktexas.com Tom and Donna Tuttle, Managers (MCN)

Spectrum Triple Play! TV, Internet & Voice for \$29.99 ea. 60 MB per second speed No contract or commitment. More Channels. Faster Internet. Unlimited Voice. Call 1-855-577-7502 (MCN)

Paying too much for car insurance? Not sure? Want better coverage? Call now for a free quote and learn more today! 855-417-7382 (MCN)

MAST VINYL WINDOWS
THERMO-PRO WINDOWS
 Custom Size Is Our Specialty
 Professional Installation Available
 THERMA-TRU DOORS
FREE ESTIMATES
 22172 Hwy. 63
 Bloomfield, IA 52537
800-206-9949

Jen Abbott
 NEW LOCATION (Nov. 26th):
 209 E. Franklin St., Bloomfield
 641-664-1022
 www.essentialmassagespa.com

Essential MASSAGE & SPA

Aesthetics Menu

Skin Care
 Essential Classic Facials
 Essential Signature Facial
 Essential Teen Facial
 Clarifying Back Facial
 Classic Men's Facial
 Essential Express Facial
Essential Premium Facials
 Glycolic Facial
 Microdermabrasion Facial
 Calming Antioxidant Facial
 Age-Defying Facial
 Revitalizing Facial

Body Scrubs & Wraps
 Exfoliating Sugar Scrub
 Vinotherapy Wine Wrap
 Detoxifying Seaweed Wrap
 * Save 10% when you book a scrub and wrap combo!

Eyelash Extensions
 Full Classic Set
 Two week classic refill
 Three week class refill*
 Full volume set
 Two week volume refill
 Three week volume refill*
 *Over four weeks, a full set will be charged

Microblading
 Consult
 First Session
 Second Session
 Touch Up 6-9 months
 Touch Up 9-12 months
 *After 12 month a full first & second session would be necessary

Full Body Waxing
Women's Body Waxing
 Brazilian Wax • Bikini Wax
 Full Leg Wax • Half Leg Wax
 Arm Wax • Underarm Wax
 Facial Wax
Men's Body Waxing
 Back Wax • Arm Wax
 Chest Wax

Introductory Special
 Book ANY Aesthetics service with Jen by Dec. 31st and add any body scrub or wrap **FOR JUST \$40!**

Let Jen pamper you before the Holidays!

TRUXEDO BAK EXTANG

COME SEE OUR HUGE SELECTION OF BEDCOVERS!

LINE-X of Ottumwa
 Brad Lisk
 15514 Blackhawk Rd., Ottumwa, IA
 641-683-9334

'Tis the Season for Coughs & Colds

When you need more than a dose of holiday cheer, your friendly neighborhood pharmacy has just what the doctor ordered.

Amanda Mathews, R.Ph.
Janet Zeitler, R.Ph. • Kim Burton, R.Ph.
 301 W. Jefferson St.
 Bloomfield, IA • 641-664-2975
 Emergency Numbers South HyVee Pharmacy
 800-371-6524 or 641-683-4483

HyVee PHARMACY

APARTMENT LIVING AT ITS FINEST!

Check out all the apartment rentals we have available. From 1 to 2 bedrooms, let us show you an apartment that fits your needs!

CHECK OUT OUR WEBSITE OR CALL US TODAY!

Lynch REALTY, INC.
 641-664-2275
 lynchrealtyinc.com

106 S. Madison
 Bloomfield, IA
 Licensed in Iowa
 Stephanie Lynch, Broker

Keep your critters warm this winter with a NEW BARN!

- Metal Roofing
- Crews available
- FREE estimates!
- Call today!

Stocking framing nails by the box or pallet. Call for pricing!

WAGLER METALS LLC

19049 Ice Ave., Bloomfield, IA • 641-722-3692

Garages • Pole Barns Commercial Free Estimates

LAN-DOW BUILDINGS

Lancaster Lumber, Inc.

We Stock a Complete Line of Building Materials Complete Buildings or Packages Available

Toll Free 800-424-5071 Fax 660-457-3133

Hardware • Plumbing • Electrical • Paint
500 Green Street • Lancaster, MO 63548

FOR SALE: Let us be your firewood headquarters. Mixed hardwoods seasoned 6 months. \$50 a pickup load. You haul. Some pole wood also available. Beechy Sawmill, 16611 Eagle Blvd. 4 miles West of Drakesville, IA PH: 641-664-2437 TFN

FOR SALE: Gehl 7190 silage mixer wagon, \$3,500. PH: 641-777-8821 48

GET READY FOR WINTER AT HAMILTON'S!

BOLTS & NUTS
We carry grade 2-8 bolts

GLOVES FOR ALL SIZES & AGES

We carry Cobett Waters

10% OFF ALL BOOTS & GLOVES!

Gift Certificates Available

Hamilton Produce Co.
641-664-2459 or 1-800-469-7749
105 W. Franklin • Bloomfield, IA 52537

Carhartt & KEY
Jeans, Shirts, Bib Overalls & Hats!!
25% OFF Through December 24th!
In Stock Only!

WINTER NEEDS
• Howes & Power Service Diesel Additive
• Snow Shovels & Ice Melt

CULVERT & FIELD TILE

Great quality at
GREAT PRICES!



SAVE \$4.00 on 200# MLS Tubs

- Proven performance
- All-natural protein
- Controlled, consistent intake
- Add more to your forage-based or range feeding program



CATTLE CHUTES

- Quality brands such as StrongHold, For-Most, and KFS
- Heavy-duty construction to keep livestock in and operators safe
- Use for branding, semen testing, hoof trimming, and veterinary care
- Available in a variety of sizes

Hometown
ANIMAL HEALTH

660.465.2967 • hometownanimalhealth.com

18743 US Hwy 136 • Memphis, MO 63555
On Highway 136 west of Memphis

NUTRITION • MEDICAL • PET • FARM • APPAREL

AUTHORIZED DEALER OF NEMO FEED.

FOR SALE

18 Month old Charolais Bulls

TROJAN HILL FARMS
Phil Archer
(641) 675-3769
Cell (641)680-6769
Angus & Charolais

BLOOMFIELD MINI STORAGE. Serving you from 2 safe, convenient locations. PH. 641-664-1066.

FOR SALE: Firewood at RJ Lumber, \$15 a pickup load. 18989 160th St., Drakesville, IA 52552. TF

FOR SALE: New set of Cook Essentials cast iron pans, very nice; new fireplace toolset, very nice; 9 drawer dresser with mirror; Crosley stove, Precious Moments, old school desk and lamp. FREE La-Z-Boy recliner. PH: 641-208-6674

Need Repair?

Let Us Help!

We can take away the stress and get you results!

Auto Body Shop
Auto Glass
Automotive Restoration

KARR COLLISION CENTER
Shawn Scott, Owner
701 Karr Ave. • Bloomfield, IA
641-664-1024

SIDWELL SEEDS
Queen City, MO
660-766-2737 • 660-216-6380

Your complete seed headquarters!
seed corn • seed beans • small seed

Step up your field with Refuge Advanced powered by SmartStax!
Makes a significant difference in root protection and yield.

REFUGE ADVANCED
SmartStax
Roundup Ready
NuTech Seed
LIBERTY LINK

NOTICE

Southern Iowa Electric Cooperative, Inc. will be cutting and trimming trees in Appanoose, Davis, Wapello and Van Buren Counties.

Overgrown right-of-way can cause problems during severe weather and can make it difficult to reach trouble spots to make repairs. Due to our experience with the ice storms, maintenance issues and the requirements for increased reliability, we will be trimming re-growth and areas that may have been previously missed in years past to insure your electric reliability. Southern Iowa Electric Cooperative has hired contractors to cut and trim trees in the Belknap & Floris substation areas starting in Dec. 2018 & throughout 2019. The contractor will attempt to contact each house along the right-of-way at least one week before clearing will commence.

If you have any questions, you may contact the Cooperative toll free, 800-607-2027.



Southern Iowa Electric Cooperative
A Touchstone Energy® Cooperative

22458 Hwy. 2 • Bloomfield, IA 52537 • (641) 664-2277 • sie.coop

"This institution is an equal opportunity provider and employer"

FOR SALE: 40 big round bales of grass hay, \$60 each for all. Please leave a message. PH: 641-799-8365 or 641-929-3659 49

FOR SALE: 40 head of Dorper/Katahdin cross ewe lambs, born May - June 2018. Lancaster, MO. PH: 641-208-6961 49

HAY FOR SALE

BIG ROUND BALES GRASS HAY. NET WRAPPED. STORED INSIDE.

(660) 216-0938

COUNTRY CUT MEATS
Custom Butchering
Beef • Pork • Deer

641-675-3683 26824 Veatch Ave
Pulaski, IA

CONSIGNMENTS WANTED

Southern Iowa Produce Auction
Sales every 2nd & 4th Saturday, November thru March

Next Sale
Sat., December 8th - 10 A.M.

For advertising your consignments they must be called in by 10 A.M. Monday on the week of sale. Unloading available on Fridays before auction otherwide by appointment.

19141 Ice Ave. Bloomfield, IA
Call 641-722-3623 on auction days or leave a message.
Market Report or Information call 712-432-8593.

LAND FOR SALE

45 Acres +/- and House

Property Located At:
26364 Jasper Avenue
Bloomfield, IA 52537

Viewing Information:
Contact Rod Veatch
641.664.7174

Bids Due By:
4:00pm on Dec. 13th
Attorney Handling Sale:
John Martin



FOR SALE: 20 powerful registered Angus 18-month-old bulls for fall breeding. Feed efficiency tested. Ultrasounded. All weights and EPDs available. Excellent quality. Breeding season guarantee. WernerFamilyAngus.com Diagonal, IA. PH: 641-344-5059 52

CHAMPION SEED

Plant Champion • Finish Stronger
2018 F.I.R.S.T. Winner
64A15 DGVT2



For Your 2019
Seed Needs

Give us a call
888-417-2004



Sealed Bids: The seller is soliciting bids from bona fide buyers. Bidding instructions with sealed bid form and other pertinent information are to be obtained from OMMG Law Office, John B Martin 101 S Madison Street, Bloomfield, Iowa 52537 641.664.2025 OR Success Bank Rodney D Veatch 109 N Madison Street Bloomfield, Iowa 52537 641.664.7174 or veatch@success.bank. Any questions about the property please contact Rodney Veatch, Success Bank, 109 N Madison Street, Bloomfield, Iowa 52537. Property is sold on an "AS-IS" basis. Buyer is responsible for any updating septic system. All bids must be sealed and submitted to OMMG Law Office by no later than 4:00pm December 13, 2018. Bids not received by the above time and date shall not be considered. The Five Highest bidders shall be notified and shall be given an opportunity to increase their respective bids on Tuesday December 18, 2018 at 11:00am at Success Bank Board Room 109 N Madison Street Bloomfield, Iowa 52537. In the event the seller accept bid on December 18, 2018, the buyer shall sign a contract and pay 20% down at that time. The balance of the purchase price shall be due at closing to be held on or before December 28, 2018 at OMMG Law Office. ALL BIDS MUST BE SUBMITTED ON TOTAL PURCHASE PRICE NOT PER ACRE BASIS. ALL BIDS ARE SUBJECT TO APPROVAL BY FARM SERVICE AGENCY. SELLER RESERVES THE RIGHT TO REJECT ANY AND ALL BIDS, INCLUDING THE HIGHEST BID.

FOR SALE: Lab puppies very friendly, must go. 6 weeks old PH: 641-664-1320 49

FOR SALE: 55 gal. metal barrels (burning barrels top cut out), \$13, Ottumwa, IA. PH: 641-814-2562 49

FOR SALE:

1998 John Deere 8400 MFWD tractor. Tractor is on 18.4/42 duals and has 7300 hours. Tractor is excellent mechanically and has great appearance.

Asking \$62,500

For more information call
Doug Aylward (660) 341-4278 or
John Aylward (660) 341-2386

KEOSAUQUA SALE CO.

20511 Hwy. 1, Keosauqua, IA

Results from Nov. 24th	Fat lambs.....	\$117.00-129.00/cwt
Butchers.....	Ewes.....	\$60.00-82.50/cwt
\$39.00-47.00/cwt	Kid goats.....	40-70#
Sows.....	\$60.00-160.00/hd	
\$32.00-42.50/cwt	Nannies.....	\$87.50-185.00/hd
Feeder lambs.....		
\$140.00-210.00/cwt		
Pound cows	\$31.00-40.00/cwt low yielding	
	\$42.00-55.00/cwt high yielding	
Pound bulls	\$62.00-78.50/cwt	

SPECIAL CATTLE SALE SAT., DEC. 1ST

- 110 hd 450-650 blk & bwf str & hfrs, 1 rd shots weaned - A Lang
- 18 hd 450-600 xbred bulls & hfrs - Baldosier
- 20 hd 600-700 blk & charx str & few hfrs 1 rd shots - S Caldwell
- 40 hd 500-700 blk & bwf str & hfrs, green tagged weaned - Mills Farms
- 17 hd 500-700 blk & bwf str & hfrs, green tagged weaned - J Woodruff
- 37 hd 500-650 blk str & hfrs, green tagged, weaned - K Thracker

GOEHRING HEREFORD & BIG BEND BRED FEMALE SALE WED., DEC 5TH Hereford Sale 1:00 Big Bend Sale 5:00

Watch website for early listings www.keosauquasaleco.com

Thank You For Your Business!	<i>For More Information Contact:</i>
Selling Times	Keosauqua Sale Co.
Hogs.....9:30 a.m.	319-293-3508
Sheep & Goats.....10:00 a.m.	Bill Goehring
Outside Merch.....11:00 a.m.	641-919-9365
Cattle.....Noon	

www.keosauquasaleco.com

Kirkville Livestock LLC

Kirkville, Missouri

SPECIAL BRED COW SALE FRIDAY, DECEMBER 7 6:00 P.M.

- Farin Mullenix** - 26 Blk bred hfrs, bred to calving ease Angus bull, to start calving late Feb
- Delmar Rhodes** - 41 BBWF 2 yr old hfrs, 18 AI'd, 23 bull bred to Brinkley genetics, to start calving Feb 10
- Scott Eitel** - 10 Blk 3 yr olds, AI'd to start calving Feb 18 with a 45 day calving period
- Weeks Farm** - 75 Blk & BWF cows, 4 to BM, bred to Gooch & Jackson Blk bulls, 10 with calves by side, Spring calvers
- Dennis Snyder** - 10 BBWF cows, 6 to aged, Bred to Registered Angus bull, 1 - 4 yr old Registered Angus bull, AI Son of New Design
- Hurley Angus** - 14 Blk cow/calf pairs, 4 to 6, Sept calves

CHECK OUR WEBSITE FOR UPDATED LISTINGS!

"Proud to Serve Area Livestock Producers"
YOUR BUSINESS IS VERY MUCH APPRECIATED
We are open on Sundays to receive your livestock.

- Phone for information: **Patty Foster, Office 660-665-9804**
Chuck Ambrosia...660-342-3530 Doug Fleshman.....660-626-7148
Caleb Randolph641-919-8539 Daniel Smith 660-341-8396
Mark Herbold.....515-720-8667 Jeremy Jarman 660-341-9879
Al Ashmead..... 660-216-8730 Cory Cook660-651-7453

Visit our website at www.KirkvilleLivestock.com

FOR SALE: 20 sheets of corrugated tin, 7ft. to 7 1/2 ft. perfect for decorating room \$300 for all.
Call: 641-929-3919

FOR SALE: Puppies 3/4 beagle, 7 weeks old, \$50 ea. Also have free siamese kittens.
PH: 641-664-1176 48

Scotland County LIVESTOCK AUCTION

P.O. Box 111 • Hwy 15 North • Memphis, MO
660-465-7213 • Jerry & Barb Blomme
660-341-0069 • Grant Blomme

SPECIAL CATTLE SALE Tuesday, December 4th 12:30 PM

DAIRY SALE

Tuesday, December 11th 10:30 AM

Cow Sale Results for Sat., November 24th 2ND CALF SPRING CALVING COWS

11 HD.....	1127#.....	\$2,150.00
10 HD.....	1134#.....	\$2,150.00
9 HD.....	1199#.....	\$2,050.00
11 HD.....	1135#.....	\$1,950.00

SPRING CALVING HEIFERS

12 HD.....	1141#.....	\$1,750.00
4 HD.....	1231#.....	\$1,550.00
12 HD.....	1110#.....	\$1,525.00
3 HD.....	1055#.....	\$1,500.00
10 HD.....	990#.....	\$1,550.00
9 HD.....	886#.....	\$1,475.00
7 HD.....	1102#.....	\$1,475.00
5 HD.....	1105#.....	\$1,475.00

4-6 YR. OLD SPRING CALVING COWS

3 HD.....	1200#.....	\$1,450.00
5 HD.....	1267#.....	\$1,350.00
9 HD.....	1520#.....	\$1,250.00

5-6 YR. OLD FALL PAIRS

7 HD.....	1189#.....	\$1,900.00
7 HD.....	1214#.....	\$1,800.00
2 HD.....	1013#.....	\$1,700.00

SS TO OLD SPRING CALVING COWS

\$600.00 to \$1,000.00

Sale Results for Tue., November 20th

STEERS	HEIFERS CONT.
308# - \$182.00	535# - \$150.00
410# - \$177.00 - not weaned	557# - \$141.00
425# - \$181.00	562# - \$137.00
440# - \$185.00	696# - \$131.00
445# - \$182.00	843# - \$125.00
455# - \$185.00	BULLS
505# - \$177.00 - not weaned	348# - \$162.00
535# - \$169.00 - not weaned	413# - \$166.00
550# - \$170.00 - not weaned	432# - \$178.00
582# - \$154.00 - not weaned	437# - \$175.00
743# - \$136.00	456# - \$175.00
902# - \$153.00 pot load	478# - \$174.00
HEIFERS	534# - \$145.00
319# - \$161.00 - not weaned	HOL. VEALS
370# - \$156.00 - not weaned	\$35.00 - \$45.00
394# - \$150.00 - not weaned	LB COWS
429# - \$154.00 - not weaned	Bulk of Cows \$28.00 to \$35.00
452# - \$148.00 - not weaned	Top Cows
465# - \$146.00	\$35.00 - \$51.00
500# - \$140.00 - not weaned	
539# - \$138.00	

www.ScotlandCountyLivestock.com

Birthplace of Performance Champions and EPD Outliers.



SELLING 270 HEAD COMPLETE ANGUS DISPERSION

SATURDAY DEC. 8, 2018 11 AM CST
AT RUSSELL LIVESTOCK, RUSSELL, IOWA

- Birthplace of:
- "World Champion Pen of Three Bulls" for ADG at the 2016 Midland Bull Test
 - #2 YW and #3 WW EPD sire in the breed: 2XL Exploration 5230
 - #12 SW sire in the breed: 2XL Ragnar 5908
 - 50 SPRING PAIRS • 70 FALL PAIRS
 - 15 SPRING BRED HEIFERS • 12 PREG RECIPS
 - 27 FALL YEARLING HEIFERS • 3 HERD BULLS
 - 21 YEARLING BULLS • EMBRYOS & SEMEN

FEATURED SIRE

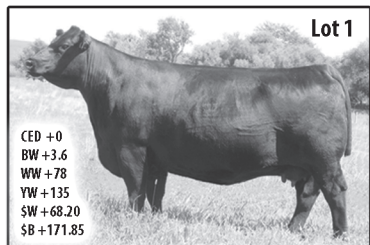
Baldrige Bronc, Basin Bonus 4345, Mill Brae Identified 4031, VAR Discovery 2240, VAR Generation 2100, Baldrige 38 Special Connealy Earnan 076E, Hilltop Open Range 2279

SERVICE SIRE

KCF Bennett Southside, Mead Magnitude, Byergo Titus, DL Dually, BAR R Jet Black 5063, 2XL Weigh Up 6232, 2XL Generation X 5226, 2XL Exploration 5230

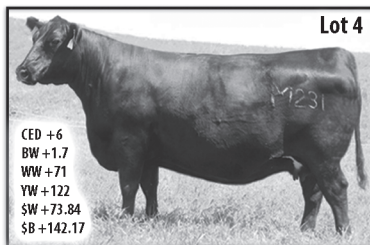


AUCTIONEER
AL CONOVER



Lot 1
CED +0
BW +3.6
WW +78
YW +135
\$W +68.20
\$B +171.85

This "Ten X" donor dam produced 2XL Generation X 5226, member of the 2016 World Champion Pen of Three Bulls at the Midland Bull Test. Her daughter in the sale is the breed's #2 YW EPD Baldrige Waylon W34 and #5 in the breed, while another is the #2 KCF Bennett Southside daughter for YW. Sells with a 9/25/18 "Southside" heifer calf at side, 5 more daughters and "5226".



Lot 4
CED +6
BW +1.7
WW +71
YW +122
\$W +73.84
\$B +142.17

This daughter of Basin Excitement was selected from Hoover Angus and produced 2XL Exploration 5230, the #2 YW EPD sire in the breed; 2XL Ragnar 5908, the #12 SW sire in the breed; and 2XL Ten X 5208, member of the "World Champion Pen of Three Bulls" for ADG at the 2016 Midland Bull Test. She sells with a 10/15/18 bull calf by 2XL Generation X 5226. Daughters by VAR Discovery 2240, Baldrige Colonel and Mead Magnitude will also be featured.



Lot 179
CED +15
BW -1.5
WW +87
YW +148
\$W +99.46
\$B +174.38

This son of Baldrige Bronc from a Bennett Southside daughter is the #1 son of "Bronc" for his combination of +15 CED and +148 YW. His dam sells, as do two flush brothers and one maternal brother. He boasts 9 genomic traits in single digits.

CALL FOR A SALE BOOK



Adam Krull OWNER 515-290-8589
adamkrull@gmail.com
Glenn Kreuder OWNER 563-357-4467
kreuderfarms@yahoo.com
33792 160th Street, Garden Grove, IA 50103



AL & JEANNE CONOVER
641-227-3537 - 641-227-3792 (FAX)
DAVE SWEENEY - 641-373-4340
www.conoverauction.com
conover@conoverauction.com

1 DAY 2 SALES DECEMBER 5

Goehring Hereford & Big Bend Ranch Female Sale

AT 1:00 PM: HEREFORD SALE

SELLING 60 SPRING BRED HEIFERS & COWS

Heifers were AI bred to R Excitement 4356,
Sensation 028X, F Final Test 722
Cows were AI to R Excitement 4356,
GO King E33, PCR Bentley 454B,
BHF 21Z Every Storm 58C

AT 5:00 PM: THE 10TH ANNUAL BIG BEND RANCH FEMALE SALE

OFFERING 185 FANCY BLACK & BLACK WHITE FACE HEIFERS

AI to Basin Rainmaker 4404 on May 7 & May 14
Cleaned up with Marcy Cattle Co Angus bulls
until July 16

100 head of black heifers coming with 2nd calf
AI to HWCC Wyarno 9500 due March 1 then
cleaned up with Hereford bulls for 75 days.

Big Bend Listing and
Hereford Catalog
found online at:
keosauquasaleco.com

Sale at Keosauqua Sales Co
Keosauqua IA
Bill Goehring 641-919-9365
Sale Barn 319-293-3508
Auctioneer Cody Lowderman
309-313-2171

FOR RENT: Efficiency
apartment appliances
included, great location,
100% handicap accessible,
available Dec. 1st, \$500 rent
and \$500 deposit.
PH: 641-208-6551

49

A PLACE FOR MOM. The
nation's largest senior living
referral service. Contact our
trusted, local experts today!
Our service is FREE/no ob-
ligation. CALL 1-855-811-
8392 (MCN)

MIDNIGHT GLADNESS Sale

FRIDAY, NOVEMBER 30th

Save on almost **everything*** inside and
outside the store! Sales start at 6:00 PM.

6 PM	7 PM	8 PM	9 PM	10 PM
6% OFF	7% OFF	8% OFF	9% OFF	10% OFF

Cash & carry • *Some exclusions apply.



Hometown
ANIMAL HEALTH

660.465.2967

hometownanimalhealth.com

LOOKING TO PURCHASE
A NEW MOWER? Check
out our Ferris Commercial
mowers! Ferris has a
patented suspension
system that allows each
wheel to move up & down
independently. The deck
works in conjunction
with the suspension for a
consistent cut. Ferris is the
smoothest riding mower on
the market. We also carry
professional grade Makita
(Dolmar) chain saws, for all
your wood cutting needs.
We service all brands. We
are also your authorized
Nemo Feed & DAC
Products Dealer. Miller's
Power Equipment. 504 S.
Humbert St., Milton, Iowa

ALL THINGS BASEMEN-
TY! Basement Systems Inc.
Call us for all of your base-
ment needs! Waterproofing,
Finishing, Structural Re-
pairs, Humidity and Mold
Control. FREE ESTIMATES!
Call 1-800-640-8195 (MCN)

Friesen Excavating

Specializing in Septic Systems, Certified For Peat Tanks
and Sand Filters. Can Also Do Other Drains and Water Lines.
Call or Text Shawn @ 641-208-0861 • Bloomfield, IA

Free Quotes Available

LYNCH BOYS MARKET REPORT Davis County, Iowa - November 2018

SOLD!



Foster Farm
Tract I - 40.88 Acres - \$3700/ac
Tract II - 76.80 Acres - \$3800/ac
Tract III - 37.48 Acres - \$3900/ac

SOLD!



Christy Farm
(Shown right)
30 Acres - \$7200/ac

IF YOU WANT TO HEAR "SOLD", CALL US TODAY!

LINCOLN - 641.208.3649
WWW.LYNCHBOYS.COM

Goods Ag Repair

46502 St. Hwy C • Baring, MO • 660-892-4717

NOW is the time to schedule your
combine & headers for
inspection, cleaning & repairs!

All combine work scheduled
before **JANUARY 1ST** gets a
\$10 per hour labor discount!

Doing most tractor & combine repairs:
Major • Minor • Mechanical • Electrical
Air Conditioning • Hydro • Headers • Engines

BLOOMFIELD LIVESTOCK MARKET

**SALE BARN OPEN UNTIL 9:00 PM
EVERY TUESDAY TO RECEIVE LIVESTOCK**

Phil Schooley 641-664-3450
 Ron Schooley 641-777-0302
 Roman Schooley 515-450-3685
 Tyler Schooley 641-208-5442
 Barn Phone 641-664-2435

WE APPRECIATE YOUR BUSINESS!

HWY. 63 NORTH • BLOOMFIELD, IA

Wed., December 5th Fat Cattle, Slaughter, Cows & Bulls 9:30 AM
 Special Calf & Yearling Sale 11:30 AM
 Tue., December 11th Speical Bred Cow, Heifer & Pair Sale 6:00 PM
 Wed., December 12th Fat Cattle, Slaughter, Cows & Bulls 9:30 AM
 Wed., December 19th Fat Cattle, Slaughter, Cows & Bulls 9:30 AM
 Special Calf & Yearling Sale 11:30 AM
 Wed., December 26th NO SALE MERRY CHRISTMAS
 Thurs., December 27th Special IMBIO Sale 7:00 PM

Market Report for Sat., November 24th - Selling 2,771 Head

HEIFERS

Tim Nelson	Greentop, MO	13 BLK	445	\$164.00
Jim Robertson	Kirkville, MO	24 BLK	419	\$162.00
Herman Holton	Downing, MO	8 BLK	455	\$159.00
Tim Hale & Marla Hale	Bloomfield, IA	11 BLK	435	\$156.00
Jim Robertson	Kirkville, MO	62 BLK	507	\$155.00
Brad Crile	Wayland, IA	25 BLK	491	\$154.00
Orman Land & Livestock LLC	Blakesburg, IA	19 BBWF	527	\$151.00
Joe Hampton	West Point, IA	11 BBWF	496	\$151.00
A & T Steffensmeier	Fort Madison, IA	9 BBWF	500	\$149.00
Logan Frescoln & Richard	Batavia, IA	17 BLK	503	\$147.50
Tim Nelson	Greentop, MO	55 BBWF	544	\$145.50
Kenny McNamar	Gorin, MO	24 BLK	600	\$145.00
AMC Farms	Wayland, IA	33 BLK	557	\$144.50
Mike McGoldrick	Glenwood, MO	45 BLK	548	\$144.50
Tim Dotterer	Bloomfield, IA	13 BLK	537	\$144.00
A & T Steffensmeier	Fort Madison, IA	77 BBWF	580	\$142.75
Brad Schulte	Fort Madison, IA	29 BBWF	609	\$139.50
BJ Farm Corp	West Point, IA	42 BLK	638	\$138.75
Dave Doerscher	Bloomfield, IA	33 BLK	640	\$138.00

STEERS

Jim Robertson	Kirkville, MO	24 BLK	420	\$198.50
---------------	---------------	--------	-----	----------

STEERS CONTINUED

Brad Crile	Wayland, IA	17 BLK	461	\$194.50
Tim Nelson	Greentop, MO	31 BLK	466	\$189.00
Herman Holton	Downing, MO	14 BLK	489	\$188.00
Leo Hunting	Mount Pleasant, IA	16 BLK	532	\$184.00
Mahlon Gingerich Cattle	Bloomfield, IA	9 BLK	503	\$183.00
Donna Byrn	Greentop, MO	10 BLK	473	\$182.50
Joe Hampton	West Point, IA	9 BLK	497	\$180.50
Doug Kollar	Kirkville, MO	18 BBWF	497	\$177.50
Jim Robertson	Kirkville, MO	67 BLK	524	\$176.50
Mike McGoldrick	Glenwood, MO	64 BLK	562	\$166.85
AMC Farms	Wayland, IA	28 BBWF	583	\$164.00
TA Farms	Bloomfield, IA	24 BLK	586	\$160.75
Tim Nelson	Greentop, MO	67 BLK	597	\$159.85
BJ Farm Corp	West Point, IA	69 BLK	714	\$157.10
Doug Kollar	Kirkville, MO	60 BWF	620	\$157.00
Judd Parker	Libertyville, IA	13 BLK	618	\$155.50
A & T Steffensmeier	Fort Madison, IA	67 BBWF	606	\$155.25
Orman Land & Livestock LLC	Blakesburg, IA	34 BBWF	631	\$155.00
Donna Byrn	Greentop, MO	27 BLK	648	\$155.00
A & T Steffensmeier	Fort Madison, IA	65 BBWF	730	\$152.60
Kenny McNamar	Gorin, MO	34 BLK	645	\$152.50
Larry Weaver	Lancaster, MO	56 RED	662	\$151.50

Building Packages



We Can Roll Your Metal While You Wait!



A W Metal LLC

Metal Roofing Headquarters

Free 12 pack of A&W Root Beer® with your next purchase of \$500 or more!



641-664-3990 awmetal.net

FOR SALE: JD 425 lawn tractor, 20 HP V twin liquid cooled, 54" cut, hydro drive, great condition, \$4,200; Storage/entertainment cabinets, double doors, \$50; 79"x24" workbench, \$10; ball hoop & pole, \$25.
 PH: 641-208-5136 48


FOR RENT: 12' no till drill. Yoder Equipment
 PH: 641-664-2797 TFN

FOR SALE: 2011 Ford F450 pickup, 4 dr. dually, 95,000 miles, 6.7 engine. Will sell for less than book price.
 PH: 641-895-0419. 48

FOR SALE: 4 New Zealand Kiko buckling, 7 to 8 months, ready to breed, registered, high quality, \$500 to \$650. Located 5 miles north of Cantril.
 PH: 217-260-1876 50

ANGUS BULLS

2 YR. OLDS & YEARLINGS



Musgrave Big Sky

A breed leader in calving ease & preformance.

Also: Bred heifers & cows bred AI to Musgrave Bulls

- ★ CALVING EASE
- ★ THICK
- ★ CORRECT
- ★ GENTLE

Bulls tested and ready to breed!

DORAN BOLLMAN
 PULASKI, IOWA
 641-675-3467



Bring Your Plans In For FREE ESTIMATE



Full Line Of Building Materials



COMMERCIAL - AGRICULTURAL RESIDENTIAL

17893 212th Street • Bloomfield, IA 52537
 641-722-3605 • Mon. - Fri. 7 AM - 5 PM



LATE NIGHT Gladness SALE!

OPEN till 10 PM ~ Friday Night November 30th

**FREE Cookies & Punch
Friday and Saturday**

15% OFF
All- Berne Insulated Work Wear

BERNE
WORKWEAR

10% OFF

All - In Stock Footwear

15% OFF
All Regular Priced - In Stock
Non Food Gift Items
Includes Toys, Gift Items, Books, Clothing, Fabrics, Kitchenwares
Not Included - Gift Cards, Quilts, Footwear, Grocery, Food Items
**6 Hours Only 4pm -10pm
Friday November 30th**
See store for more details



SALE
\$29.95 Was \$44.98
John Deere Tractor & Combine Harvesting Set

\$10.98 - \$19.98
SAVE 15%
Twin - King
2100 Thread - Egyptian Cotton Sheet Sets

\$3.99 Was \$4.99
6 Pairs
Mens Yellow Cotton Chore Gloves

12 pairs per bundle **\$4.99**
November 30th 4-10 pm Only
FREE
with a \$100 purchase
Limit One Per Customer
Rubber Dipped Knit Gloves

Rolling Delight Wagons
Poly Bottom Wooden Stake Side
EXPRESS WAGONS
4-10 pm Only - November 30th
\$199
Regular price \$249
Available in: Green, Blue, Red

QMT
Windchimes
20% OFF
Corinthian Bells Windchimes

66" long Wooden Corral Fence **\$12.99**
Lil Bucker - Inflatable Horse or Bull
Riding Toy Hopper Ball **\$23.98**

15% OFF
Hanes
Essentials for the Family
Sock, TShirts Underwear, Etc.

\$5.99 regular \$7.29
3 Pairs Value Pack
Fox River® Mens Crew Cut Cotton Work Socks

SAFELY GREAT TASTE
creamy & smooth with no artificial flavors
\$3.99 2/ 30 oz.
Kraft Mayo

\$3.99 per lb.
Customer Favorite
12# Avg
Fresh - Whole Boneless Beef Ribeye

20% OFF
RADA
CUTLERY

\$89.95 reg. \$113.25
Titan series Stainless Steel 20 quart Stockpot

LODGE
CAST IRON
\$22.95 reg. \$26.69
Lodge 12 inch Cast Iron Skillet

10% OFF
Indera Mills Thermals

99¢ 21 oz.
Cherry Pie Filling

First Load from TEXAS
Oranges & Grapefruit

75¢ per lb.
Seasoned Boneless Skinless Chicken Breast

10% OFF
Meat Slicers

SALE!
\$79.95 Regular \$113.99
VICTORIO 8 Quart Deluxe Stainless Steel Steam Juicer

\$150 Regular \$250
NutriMill Artiste Mixer
little sister to the Bosch Mixer
Compact Powerful Affordable

\$9.95 Regular \$16.99
SAVE 41%
11 oz.
Watkins Baking Vanilla

\$1.29 per lb.
Bulk Dutch Baking Cocoa

99¢
2 pound
Brown Sugar

75¢ per lb.
Frozen - Whole or Half Bone-In Hams



DUTCHMAN'S STORE Division Street CANTRIL, IA (319) 397 2322

STORE HOURS - Weekdays, 8a.m. - 6 p.m. - Saturday 8a.m. - 5 p.m. - Sunday Closed

SALE PRICES Nov.28 - Dec. 4, 2018

While Supply Lasts

View our specials online - www.DutchmansStore.com

ment ON

8 • 8:00 A.M.

Upcoming Auctions in
2019: March 8
August 9 & December 13

THANK YOU TO ALL CONSIGNERS AND BUYERS. YOU ARE APPRECIATED!



Blue Jet 5 Shank Ripper, sn 004631

HAY & FORAGE

Chopping Equipment

- JD 6710, 2WD, Kernal Processor, new blower & transition, dura drum, w/JD 676, 6R Kemper & 645A Heads
- NH FX45, w/2 Heads
- NH 892 w/ 900W Head
- JD 914, 7 Belt Pickup
- 04 JD 640B, Windrow Pickup
- JD 100 4 Belt Pickup
- JD 3 Row 30" Corn
- CIH 1015, 7-Belt Pickup

Forage Wagons

- Miller Pro 5200, 18', Rear Unload, w/ Roof, Hyd Drive
- 2- Miller Pro 5200, 18', 540 PTO, Hyd Drive Apron w/ 2' Ext, Frt / Rear Unload
- Miller Pro 4100, 16', Frt Unload, 540 PTO
- H&S 16', Roof, Tandem, Meyer Gear
- 2- Badger BN1055, 14', Frt Unload
- Farmhand F18L, 540 PTO
- Richard 700 Dump Wagon

Discbines & Haybines

- JD 956 Center Pivot, 1000 PTO, Metal Rolls, AS IS, Bad Cutter Bar
- 2- JD 946 MoCo
- 12 JD 835, Center Pivot, 1000 PTO, 2 PT, Impeller
- 87 JD 1600-14', Nonclog Gaurds
- Hesston 1345 MoCo
- NH 1475, 2326 16' Head, Rubber Rolls
- NH 1465, 9', 540 PTO, Rubber Rolls
- NH 1432, Center Pivot, 13'
- NH HW340, 15' Head, Rough
- NH 489, 9'
- NH 488, 9', 540 PTO

Rakes & Tedders

- 04 Lely 725, Classic Rotary, 540 PTO
- 2- NH 258
- 2- NH 256
- JD 702, 6 Wheel
- JD 670
- Andex 653, Twin Rotary Rake, 540 PTO
- Rossi 4BSK Tedder

TMR Mixers

- Kuhn Knight 5143 Vertical TMR
- Kuhn Knight 5127 Vertimaxx Vertical TMR, 540 PTO, Scale, New Liner
- Knight 2250 Reel Augie
- Patz V615 Vertical, RH Discharge, 1000 PTO, 12.5/16 Tires, Scales
- Roto Mix 354-12, Scale, 540 PTO, Left Side Discharge
- Henke 2209, Scale Works
- Vandale Tumble, Hyd Drive, Scale, on Wheels

Grinders

- ArtsWay 500, Scale, Screens, Hyd Unload & Swing
- Arts Way 475, Scales, 540 PTO
- Arts Way PM 30
- NH 352, 540 PTO
- Gehl 170, w/ Hay Table
- Gehl 170, 540 PTO, 2 Screens, Scales, Ext Auger
- Gehl 100, w/ Scales, No PTO

Misc. Hay & Forage

- 08 Jiffy 1000 PTO, Bale Processor
- Haybuster 2100 Bale Processor
- Degelman 3100, RH Unload, Bale Processor
- 12 Vemeer BP7000, LH Discharge, 540 PTO, Bale Processor
- Kelly 4755 Discmower, Caddy
- Rowse 8', Hyd Driven hay Inverter
- Schwartz Feeder Wagon
- Schuler HF255 Feed Wagon
- Schuler 125 Feed Wagon
- Kuhn 3250 Feed Wagon
- S&H Tandem Axle Feeder Wagon
- Bale Trailer 10 Bale w/ Dauls, Gooseneck
- Bale Trailer 6 Bale
- Farm Hand Bale Accumulator
- Farmco 20' Feed Wagon w/ Head Locks

CONSTRUCTION

Skidsteers

- Cat 246, 3500 Hrs
- NH LX665, Aux Hyd, Recent Eng Overhaul
- 11 NH L232, 1466 Hrs, ISO Controls, 2 Speed, Cab Heat/AC, Aux Hyd
- Gehl 5636SX, Series II, 1910 Hrs
- JD 6675
- 13 JD 333E, 1667 Hrs, Track Loader
- 12 JD 326D, 3072 Hrs, Aux Hyd, Radio, Cab Heat A/C

- 08 JD 325, 4390 Hrs
- JD 250, 1032 Hrs, Aux Hyd, Tooth Bucket
- JD 250 Series II, 730 Hrs
- Mustang 940
- Mighty Mac 8
- Case TR380, 1300 Hrs
- 15 Case TR340, 864 Hrs, Hyd Quick Attach
- Case 450CT
- 05 Case 420, 2325 Hrs, Aux Hyd
- Forklifts**
- 98 Cat T150D Forklift, 90/189 Mast, 40" Forks
- Cat GC18 Forklift
- 11 Bobcat V417, Crab Steer, Aux Hyd, Hyd Bobcat Forks, Kubota Diesel, Forklift
- IMC Forklift
- 2- Hyster E45Z, Electric Forklift
- Clark Forklift, AS IS, Runs but does NOT Drive
- Construction Misc.**
- 10 Cat D7E XL Electric, 3970 Hrs, S-U Blade, Ripper
- JD 450 Dozer
- 86 Kobelco SK200 Trackhoe Mark IV, 6253 Hrs
- Case 580D Backhoe, 2X4, Cab, Extra 2' Bucket
- Case 580 Super E, 4500 Hrs, 4WD Extend, 4-Stick Controls, 36" Bucket
- JD 762, Self Propelled Paddle Scrapper, Shows 276 Hrs
- Champion 710A C/A Grader, weak brakes
- Champion D565T Road Grader
- Liebrecht, 3 PT, Ditcher, MFG 5PT
- Woods RB850, 8', 3PT, Hyd Blade
- Komatsu WA250-5L, 12000 Hrs

TRUCKS & TRAILERS

Trucks

- 01 Peterbilt 357, 187000 Miles, Bulk Feed, 20' Pacer, C12 Eng, 9 Spd
- 78 Kenworth K100 Silver 8V92 Detroit, 13 Spd
- 97 International 9400, 10 Spd, Tandem Axle Grain Truck
- 86 IH Eagle 9300, Cummins 350 Eng, 13 Spd, Air Tag, 20' Steel Bed, Roll Tarp
- 07 International 4300 Automatic Trans, 18' Box w/Air Tag
- 08 GMC Yukon XL, Black, 4WD, 78787 Miles
- Ford L9000, Dry Fertilizer Spreader,
- 87 Ford L8000, 123682 Miles, 5 Plus 2 Spd, 3208 Cat, Bradford Built Flatbed
- 06 Ford 450, 108000 Mi, Deisel 6.0, 6 Spd Trans, 3400 lb. Hoist, 12' Aluminum Bed
- 97 Ford Bus 48 Passenger, 5.9 Cummins Eng, Auto Trans, Air Brakes
- 14 Dodge Ram 5500, 166000 Miles, 35000 on New Eng, 11' Flat Bed, 4X4
- 07 Chevy 2500, 202000 Miles, 4X4, Flat Bed
- 02 Chevy 29' Boom Bucket Truck

Trailers

- 92 Wilson Hopperbottom, 42', Air Ride
- 86 Timpte Hopper Bottom
- 3- Mickey Body Co, All Aluminum 40' Beverage Trailer, Single Axle
- Lufkin Semi Flat Bed Trailer 48' X 102" Prior Salvage Title
- 06 Merit Gold Line 53', Spread Axle, Crank Nose
- 97 Freuhauf End Dump 22', Aluminum Bed
- 00 Utility 53' Van, Air Ride, 22.5 Wheels, Adjustable Axle
- 00 Trail-Eze 20R24, 24', 19'+5' Over Beaver Tail, Tandem Axle, Pintle Hitch
- L&L Dump Trailer 20', Tandem Axle w/ Dauls, Title
- 12 Loading Gooseneck 32' w/ Beaver Tail
- 10 PJ Flatbed, 32', Tandem Duals, Ele/Hyd Disk Brakes
- 91 Homemade 20' Flat Bed, Tandem Axle, w/Winch
- 10 Featherlite 8x24 Cattle Trailer, Ele/Hyd disc Brakes
- 80 WW,3 Horse,Living Quarters in Front, Rough

SPRAYERS & APPLICATORS

Sprayers

- Walsh LP-500, 500 Gal, 40' Booms
- Spray Coupe 3430, 2856 Hrs, 5 Spd Manual, Ag Leader Display, 3 Shut Offs
- 98 Spray Coupe 3440, 2121 Hrs, 60' Booms
- Spray Coupe 3440, Self Propelled
- Mist Jatco AJ401, 110 Gal, 3 PT
- 00 Miller 200, 4420 Hrs, 90', 15" Spacing, 1200 Gal, Raven Monitor
- 89 JD 4700, 3147 Hrs, 380/85R34, 90' Booms, Stainless Tank
- 13 Hardi Ranger 550, 65' Boom, 540 PTO, 550 Gal Tank, Foam Marker
- 14 Hardi Presidio, 366 Hrs, 90' Booms, 20" Spacing, 700 Gal Poly Tank, Hydro, 4X4, Eductor
- Hardi 1000M Pull Type, 60' Boom, 20" Spacing, Hyd Fold
- Demco Conquest, 1200 Gal, 60' Boom, 15" Spacing, Hyd Drive, 5 Shutoffs
- 99 CIH SPX3185, 2469 Hrs, 90' Booms, 20" Spacing, 5 Shutoffs, 700 Gal

- Tank
- Bestway 500 Gal, Tandem, 40' Boom
- Best Way Field PRO II 1000, 60' X Fold Booms, 20" Spacing, 900 Gal Tank
- Tyler Patriot Wide Trax, 750 Gal, 4860 Hrs, 80' Booms, Monitor
- Ag Chem 800, Pull Type
- Sprayer / Mister 3 PT

Applicators

- CIH NPX5300, 17 Knife NH3
- DMI 4250 13 Knife NH3, Hiniker Cooling System
- DMI Applicator, 14 Knife, 100 Acres, Raven Controls
- Yetter 6 Knife Manure
- Applicator 9 Knife 30" Row

BRUSHCUTTERS

- Bush Hog 12720 Brushcutter, sn 12-10266
- Bush Hog 12715, 15', 1000 PTO
- Bush Hog 15'
- Bush Hog SM60
- 4- Bushog 2615L, 1000 PTO
- Woods S106 Ditch Mower, 3 PT
- JD Finish Mower 60"

MANURE HANDLING

- Tube-Line Nitro 750, Vertical beater, slog gate, Near New
- New Idea 3743, T/Axle
- 2- New Idea 3632, T/Axle, Slop Gate
- New Idea 2632, T/Axle, Slop Gate
- Knight Pro Twin Slinger 8118
- 04 H&S 430BP
- NH 308 Tandem Axle, V-Bottom
- Balzer 7500, Hyd Driven, 6 Knife Injector
- 08 Pichon 2270
- Manure Stand w/ 50' X 7" Hose

MISC.

- 13 JD X710, 417 Hrs Lawnmower
- JD F911 Lawnmower
- Bobcat 2300, Diesel, 275 Hrs, 4X4, Hyd Frt Blade, Power Bed, Rec Vehicle
- 12 Kubota 400 RTV, w/ Snow Blade
- Joyner 4X4 UTV, NO TITLE
- Yetter All-Steer Cart
- Westgo Grain Cleaner
- Top Air Conveyor, 31" Seed Belt Conveyor
- Marco RMK 230, 5 Bale Retriever w/ Auto Loader, NEW
- 3- New LeaderL3220G Fertilizer Spreader
- Mobility 500, 5T Stainless, Dual Spinner, Fertilizer Spreader
- Deitrich Slurry Injector 6 Knife
- Cat D18-2 Generator, Yr 06, Hrs 0.4, 18 KW, 208/120
- All Power 7500 Watt Generator w/ Electric Start, NEW
- 2- Onan Generators
- Generator 30 KW
- Aerway 10', pull type, Aerator
- Multiple sizes of overhead garage doors
- Aircompressor w/ Kolher 16 Hp Eng
- Aluminum Flat Bed
- Sears Aircompressor, 3 Hp, 20 Gal.
- 10- Concrete Fence Line Cattle Bunk
- Rock Sifter
- Snowplow, Fits Skidsteer & Truck
- Norseman Woodburner Furnace, Good Condition
- Heavy Built 6' Box Scrapper
- Grade Master 6', 3PT Blade
- Feterl Auger 8X50 w/ Swing Hopper
- Hiniker IH Tractor Cab
- Kit Containers
- New Varies Sizes of Stout & Lowe Grapples
- Bush Hog Post Hole Digger

- 12 Lexion 740, duals, 2wd, 2165/1916, 1 owner
- Lexion 575R, tracks, 4x4, 3126/2024 hrs
- Lexion 570R, duals, 2wd, 2692/1887 hrs
- Capela 12 row folding Lexion Hookup
- Lexion 512, 12 row, knife, hyd, headsight
- Lexion 1050 35' flex head
- 16 Brent 1196, w/1250 floats
- 30' and 35' head trailers, 3 axle
- All items are well taken care of and in good condition
- Contact: Eric Meyer 563-593-5560

Conditions: First time buyers must provide a bank reference letter having equipment. All items are sold "as-is" and must be paid for in one day with cash, cashier check, personal, or company check. A title will be charged to consignor and buyer. All items must be removed in one day to daily business, list is subject to change! Sales tax applicable on all items and lawn mowers. Visit our website at www.edsmachinery.com for more information. NO on-site buyers premiums, or tear down fees! Selling with three rings!

SALES WILL BE PROVIDED BY MENNONITES OF THE TRI-COUNTY AUCTION AREA TO SUPPORT LOCAL SCHOOLS.



Dutch Garden Nursery
660-341-5777

Memphis Midnight Gladness
Friday, November 30th

VISIT OUR BOOTH IN THE GREENHOUSE AT COUNTRY VIEW STORE!

YEAR END INVENTORY BLOW OUT ON

Poly Furniture
Locally made by Dutch Boy Poly Furniture

SALE • SALE • SALE • SALE

Martin Bird Gourd's (plastic) and Pole Sets (aluminum)
Perfect gift for the bird lover!

Gift certificates for greenhouse also available!

Custom Built, Painted and Vinyl Buildings & Sheds
~David W. Schrock~

Hillview MINI BARNS

15383 180th Street Drakesville, IA 52552 641.664.2842 U.M.

The Christmas STORE
At Bridge View Center,
Saturday, December 1st, 9:30 AM -- 1 PM

This store is designed for families who may have financial challenges during the holidays. For \$5 per child, parents will have the opportunity to shop for socks, underwear, a book and a toy for each child.

There are two ways to purchase your ticket(s)
1. Go online to the christmasstore.cc
2. Stop by The Hub (133 W. 2nd St., Ottumwa) Monday - Friday 10 am - 1 pm

Each ticket is good for one child (birth - 5th grade). Please contact the organizer at 641-954-5203 with any questions.

Activities and supervision for kids will be available during the shopping experience.

Get them something they....

Need Pillow & case
Read variety of books to choose
Wear underwear & socks
Want variety of toys to choose

www.TheChristmasStore.cc
Not an Ottumwa Community Schools Sponsored Program

Highway 2 DISCOUNT Groceries L.L.C.

Mon. - Sat 8:30am - 5:00pm
VM: 641-664-1187 • 19686 Hwy. 2,
Approx 2 miles West of Bloomfield

Sale good Wed., Nov. 28th through Tue., Dec. 4th.

Fully cooked chicken wings, approx. 5 lb. \$1.29 a lb.	Digiorno crispy pan pizza, pepperoni, 26 oz. \$3.49	Pecan pie \$2.99
Mandarin orange segments, IQF, approx. 4 lb. \$1.29 a lb.	Hormel pork loins, variety of flavors \$1.59 a lb.	Catfish nuggets \$1.99 a lb.
Frontier spiral sliced bone in ham, approx. 6 lb. \$1.29 a lb.	Texas Oranges \$18.95 a box	Simply grapefruit juice, all natural, 52 oz. \$1.50
Texas Grapefruits \$19.95 a box	Post Honey Bunches of Oats, 48 oz. \$2.59	Ahold yellow cling peach chunks, 7 oz. 30¢
Miracle Whip, 1 gal. \$6.99	McCafe Frappe mocha flavored coffee beverage, 13.7 oz. 65¢ or 12 ct. \$5.99	Post Nutter Butter cereal, 11 oz. \$1.09

Trailer Sale: 102"X24' 4-Place Snowmobile trailer 15' tires, 3k torsion axles, Combo salt shield- Drive off-ramp (Hold-Over) \$4,799.00; Triton 2018 TC128 Enclosed 2-Place Snowmobile trailers, three colors (Light hail) \$4,599.00; 2019 H&H 6'X12 V-nose ramp door \$3,099.00 (Spare \$49.00); 16,000 & 20,000 lb. Gravity tilt bumper-pull 83X16'+4'skidloader trailers. 515-972-4554 www.Fort-DodgeTrailerWorld.com for information & prices!!!! (MCN)

GENE'S SURPLUS

MIDNIGHT GLADNESS
Friday, November 30th
6:00 PM - Midnight

6:00 PM - 9:00 PM • 10% OFF All Purchases
9:01 PM - Midnight • 15% OFF All Purchases

Refreshments ALL Night!

Brands you like at prices you love
HWY 136 WEST • MEMPHIS, MO • 660-465-7445
MON-FRI 8:00 TO 5:30, SAT 8:00 TO 4:00