

# SHELBYVILLE

VISITOR'S GUIDE 2019



## Inside

The Horse Whisperer  
Navigating Bell Buckle  
Uptown Car Show  
The Original Square



## Celebrate The Ride

A Publication of the Shelbyville-Bedford County Chamber of Commerce



**Less waiting  
for emergency care**  
(and a lot more care, if you need it).

In a medical emergency, every minute matters. So, at Tennova Healthcare, you'll find faster care in the emergency room. We work diligently to have you initially seen by a medical professional\* in 30 minutes - or less. And, with a team of dedicated medical specialists, we can provide a lot more care, if you need it.

## **The 30-Minutes-Or-Less E.R. Service Pledge at Tennova Healthcare.**

**Tennova.com**

*\*Medical professionals may include physicians,  
physician assistants and nurse practitioners.  
If you are experiencing a medical emergency, call 911.*



Trust the team I trust.



Clarksville • Lebanon • Shelbyville • Tullahoma





## A NEW EXPERIENCE IN ANTIQUE SHOPPING

COME VISIT US

Wed thru Sat 10-6  
Sun 12-5

ON THE HISTORIC  
SHELBYVILLE  
SQUARE

**Now serving hand-dipped ice cream!**

8,600 square feet of fine  
antiques, handmade goods,  
and so much more!

Discover fossils, crystals,  
and other natural treasures  
in Alex's Rock Shop.

The Pop Culture Shop is a  
must see with an incredible  
selection of collectibles,  
books, toys, comics, vinyl  
records, and anything else  
to send you on a trip down  
memory lane.



**1 FREE ICE CREAM**  
with this coupon

100 S Main St  
Shelbyville, TN 37160



931-536-1626  
MainAndMcGrew.com

# Table of Contents



## FOR THE LOVE OF HORSES 6-9



## BED & BREAKFAST 10-13



## FESTIVALS & EVENTS 14-21



## ARTS & CULTURE 22-25



## THINGS TO DO 26-27



## EAT LIKE A LOCAL 28-31



## MEET ME IN THE SQUARE 32-37



## THAT 'OL 55 38-40



## THE SOUTHERN CHARM OF BELL BUCKLE 44-49



## WARTRACE 52-55



## THE CELEBRATION 58-61



## TENNESSEE WHISKEY 62-65



### Founder

**Bill Thomas (1940-2010)**

|                             |  |
|-----------------------------|--|
| Publisher                   | Will Thomas  |
| Director of Sales           | Katie McNabb   |
| Account Manager Leader      | Melanie Erwin  |
| Account Managers            | Andrea McCoy<br>Sarah Ray<br>Sandra Thomas   |
| National Account Manager    | Bob Barger   |
| Business Development Leader | Sissy Smith  |
| Business Development        | Julia Jernigan<br>Jenna Glenn<br>Sharlee Hobbs<br>Marisa Thornton<br>Janet Mullins<br>Tim Ashley |
| Accounting                  | Dawn Dixon   |
| Circulation Manager         | Greta Painter  |
| Creative Services           | Melissa Hyde<br>Will Kelly<br>Shane McKnight<br>Chase Perryman<br>Todd Pitts                     |
| Digital Strategist          | Ginger Jones   |
| Operations                  | Liz Ferrell<br>Barb Hargrove<br>Nancy Morrison<br>Tracey Pollock<br>Tim Weir                     |
| Distribution                | Tim Lackey   |
| Writer                      | Trisha Sandora   |

404 Main Ave. South  
Fayetteville, TN 37334

Monday Thru Friday, 8:00 AM - 5:00 PM

931-433-9737 | 931-359-1994 | 931-968-1144

931-455-1360 | 931-728-3273 | 931-684-1285

800-247-7318

sales@exchange-inc.com | www.Exchange-inc.com

©Copyright 2018 Exchange Inc.

# MICROTEL<sup>®</sup>

— INN & SUITES —

## BY WYNDHAM

DESIGNED FOR  
A BETTER HOTEL STAY<sup>®</sup>

### Hotel Features & Amenities

- Free Hot Breakfast
- Free Wi-Fi • 32" Flat Screen HD TV
- 24-Hour Fitness Center
- Free Parking • Laundry Facilities
- Outdoor Saltwater Pool



**WINNER**

JD Power's Award

Hotel.com Certificate of Excellence

### Microtel Inn & Suites by Wyndham

1207 North Main Street, Shelbyville, TN 37160

Hotel 931-684-8343

**microtelinn.com 1-800-771-7171**



*Ryan Riddle, Shawn Rueff, Dennis Young Sr., Jessica Osborne, Mary Gay Burton, Dennis Young, Jr. and Brian Riddle*



931-680-1011  
www.younginsur.com



**Erie  
Insurance<sup>®</sup>**

Auto - Home - Life - Business - Farm<sup>\*</sup>

1500 Madison St., Shelbyville, TN 37160

\*Product not offered by Erie Insurance.



# FOR THE LOVE OF HORSES





## Marie Lloyd Of Clearview Horse Farms Is Living Proof That Some Dreams Do Come True.

BY TRISHA SANDORA

**T**rucks and horse trailers line the drive to Clearview Horse Farm just outside of Shelbyville. These visitors have traveled from Texas, Alabama, Florida, California, and other faraway places to spend some quality time with their horses. For some, it's a chance to work on their horsemanship skills. For others, it's a time to relax and do what they love most. Whatever the reason, these horse lovers have come to the right place, and it's all part of a dream come true for Marie Lloyd.

### From England to Tennessee

Horses have filled many a young girl's dreams, but for Lloyd, it was more than that. Although she didn't grow up around horses, she has always been deeply drawn to them. Originally from Manchester, England, Marie had made several trips to the United States in the past. On one visit, the beautiful rolling hills of Middle Tennessee caught her eye. After spending twenty-five years in the entertainment business, she decided it was time for a change and time to go back to her first love—horses. So she packed her bags and headed for America.

### A Bed and Barn

In 2012, Lloyd purchased a farm in Shelbyville and set out on a mission to create a place where people, horses, and dogs are welcome. Starting with only a small structure that was initially on the acreage, Marie developed the farm into a top-notch equine facility complete with a professional indoor show arena, a lighted outdoor arena, an extreme trail course, and two barns with over 100 stalls—fifty-two of which were imported from England. The Victorian-styled stalls were crafted by Monarch, a company that builds similar stalls for the Queen of England's Royal Mews at Buckingham Palace.

Not only the horses have luxury accommodations, but five horse-themed guest rooms are available for their owners—the Tennessee Walking Horse Room, the Quarter Horse Room, the Thoroughbred Room, the Safari Room, and the Mule Lodge. For those who want to stay in the comfort of their RV, there are hookups for those as well.





## Calling in the Horse Whisperers

Attracting the world's top trainers and clinicians is no easy task. You have to know the business inside and out. Marie's experience in the show ring has given her the horsemanship and knowledge to understand what it takes to put on a successful equine event. "That's why I have been able to identify with so many groups—because I've done it myself," Marie says. To gain the trust and respect of the professionals you've got to be a horse person. "The biggest compliment I've ever had came from a professional trainer who said, 'Marie, you are a horseman,' that meant a lot."

Clearview Horse Farm is a destination for many well-known equine clinicians including renowned horse trainer Chris Cox, who filmed his RFD TV series there. Whether it's a miniature donkey show, an Arabian horse show, a Western Dressage show, a youth rodeo or dozens of other events, horses of all shapes and sizes are making their way to Shelbyville. Marie sees to it that the arena is suitable for each event. "Different disciplines require a different footing," she explains as she kicks through the dirt in the arena to make sure it is holding up well during a recent Buck Brannamon Clinic.

## Life Lessons

Horses are great teachers. But for many of us, it's hard to find the time to listen. "Sometimes you have the mistaken concept that you're better than what you are and then the horses will give you a major reality check. When I first started to ride western, I wanted to ride a Reiner, that was my obsession. So eventually I bought one, and I bought a bloody good one," Marie pauses. "I had bought completely the wrong horse for my level of ability. I noticed people make that mistake a lot," she continues. "They'll buy themselves the best horse they can afford, which is great—but can you ride it?"

Marie is a strong advocate for cross training. "I've always liked the idea of cross training. If the horse just gets to do one thing, it gets bored," she says. Whether it's trail riding or working through obstacles in the arena, variety is the key. "It's good for their health, mentally and yours."

## Drum Horses

Clearview Farm has many different breeds of horses including a Clydesdale mare named Dixie, an Appaloosa named Tucker, a Gypsy Vanner stallion named Radison, as well as



Tennessee Walkers, quarter horses, ponies, gated mules, and lesser-known drum horses. A drum horse is a cross between a Gypsy Vanner and a Clydesdale. A Gypsy Vanner horse, originally from Ireland, is a small, solidly built horse used to pull a gypsy wagon. When they are bred to a Clydesdale, they get more height. The result is a very docile breed with beautiful feathered legs and an easy gate. A drum horse is typically bred for use in the Queen of England's calvary, where the stout horse carries a drummer and two solid silver kettle drums. As you can imagine, a drum horse must have an exceptional disposition. If things go as planned, there should be a new drum foal at Clearview soon.

Clearview Horse Farm is also a special place for the ladies. Especially those who may have ridden when they were younger and are a little unsure of their capabilities. With supervised rides and well-trained horses, they can gain their confidence back and rekindle their love

of horses. Marie adds, "We do have a lot of people traveling through who are going to Florida for the winter, people who make it their vacation." If you want to come for an hour, a day, or a month, there is something for everyone. A one-hour ride costs only \$35, and a private ride is \$45 per hour.

Marie's days on the farm are busier than ever. There is always something to do, whether it is greeting visitors, feeding horses, filling water troughs, taking a mare to the vet to be tested or petting the dogs. But even though the work is never done, Marie still makes time for herself, "I'm hoping to ride this evening. It's a great de-stressor," she says. When the sun sets in Shelbyville, Tennessee, Clearview Horse Farm is a good place to be. And how does this English horsewoman like her home in Tennessee? "Everybody's into country music, dogs, and there's always a horse show somewhere—it's perfect." ✨



### ***How many hands?***

*Horses are measured in "hands." One hand equals 4 inches, a measurement derived from the typical length of a palm. Tennessee Walking Horses are 15 to 17 hands tall.*







# BED & BREAKFAST

Staying at a Bed and Breakfast is the perfect opportunity to get an insider's view of Bedford County from those who know it best. If you are looking for an experience full of character, charm, and an interesting story or two, these B&Bs will not disappoint.





### **Clearview Horse Farm - Shelbyville**

Clearview Horse Farm is situated on 150 acres with six horse-themed guest rooms. Horseback rides are available, and pets are welcome. There are also RV hookups and a well-stocked pond with catfish and bass. 2291 Hwy. 231 S. Shelbyville TN 931-684-8822 [clearviewhorsefarm.com](http://clearviewhorsefarm.com)



### **Cinnamon Ridge B&B - Shelbyville**

Cinnamon Ridge is a beautiful, plantation-style bed & breakfast that has spacious rooms and a southern charm that will make you feel right at home. The two-story colonial-style house is just a short walk from the Walking Horse National Celebration grounds. 799 Whitthorne St. Shelbyville, TN 37160. 931-685-9200 [cinnridgebb.com](http://cinnridgebb.com)



### **Lane Street Inn - Shelbyville**

The Lane Street Inn is a charming, pet-friendly bed and breakfast that occupies three green acres just blocks from the Celebration grounds. It blends historic character with modern amenities. 508 E. Lane St Shelbyville, TN 37160. 931-684-6226 [lanestreetinn.com](http://lanestreetinn.com)



### **Rebel Run B&B - Shelbyville**

Rebel Run is a horse farm located on sprawling pastures and gently rolling hills. The view from your window opens up to a large southern sky. Horse boarding is available. 2131 Hwy. 130 W. Shelbyville, TN 37160. (510) 543-0966 [cinnridgebb.com/rebel-run](http://cinnridgebb.com/rebel-run)



### **Walker Inn B&B - Bell Buckle**

The Walker Inn Bed & Breakfast is a beautifully restored 1890s Eastlake Victorian home in the heart of Bell Buckle. The Inn offers a warm and relaxing lodging experience and a delicious home cooked breakfast. Just a short walk to downtown Bell Buckle. 207 Webb Rd E Bell Buckle, TN 931-312-0856 [walkerinnbellbuckle.com](http://walkerinnbellbuckle.com)



## Seasons B&B - Bell Buckle

The Seasons Bed & Breakfast is a Victorian home with three unique bedrooms and full baths. It is available for overnight reservations. 101 Webb Rd E Bell Buckle, TN. 615-971-9365



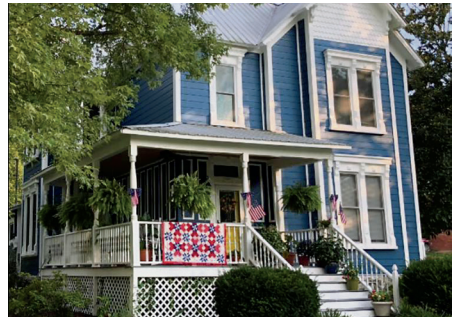
## Hinkle Hill Inn Retreat House Bell Buckle

Hinkle Hill Inn is the perfect place for a retreat. It has a large room with 16 tables for crafting or dining. There are five individually themed bedrooms with a total of 15 beds in the house. 201 Hinkle Hill Street East Bell Buckle TN 37020 615-429-8629 [www.hinklehillinn.com](http://www.hinklehillinn.com)



## The Blue Victorian Bed & Breakfast Wartrace

Relax and unwind in the charm and comfort of a spacious suite in an updated 1886 Victorian home nestled among the rolling hills. Enjoy the rocking chair front porch with a picturesque view of a nearby wedding chapel and historic homes. 124 College Street Wartrace, TN. 931-813-3033 or 615-427-3504



## Ledford Mill Bed & Breakfast Wartrace

Voted "most rustic" B&B in North America. The 1884 Gristmill, listed on the National Register of Historic Places, and the Tennessee Heritage Trail, offers three unique rooms within the old "factory" setting. 1195 Shipman Creek Rd, Wartrace, TN 37183. 931-455-2546



## Mulberry Lavender Farm - Mulberry

Enjoy an authentic farm experience less than 30 minutes from Shelbyville. Mulberry Lavender Farm has several rooms inside a historic 1860s Farmhouse. There is also a private cottage. The farm was previously owned by Jack Daniel's brother and Civil War Veteran, Wiley. 9 Back St, Mulberry, TN 37359. 931-632-2919 [mulberrylavender.com](http://mulberrylavender.com)





# FESTIVALS & EVENTS



## 1. Daffodil Day - Bell Buckle

Third Saturday in March

Daffodil Day is a celebration of spring and Bell Buckle's green thumb. Mass plantings of Daffodils began over 100 years ago resulting in fields of daffodils that burst forth in color every March. The event includes a Daffodil flower show, vendors offering bulbs and spring plantings, special speakers on beekeeping, honey, and gardening, and activities the whole family will enjoy. As the smallest town in Tennessee to have Tree City USA status, Bell Buckle also celebrates Arbor day at the festival, offering free tree seedlings.







## 2. Strolling Jim 40 Ultra Marathon - Wartrace

### First Saturday in May

For nearly 4 decades, the Strolling Jim 40 mile Ultra Marathon has taken place in Wartrace on the first Saturday in May. The race is named after a legendary Tennessee Walking Horse. Road warriors from around the world return each year to compete in the race which winds through some of the most picturesque vistas in the south. In conjunction with the race, there is a standard 26.2 mile marathon and a 10 K race for those not quite ready to take on the challenge of the big one.



### **Musgrave Pencil Company**

*In the 1950s, Shelbyville was home to a half-dozen pencil manufacturers, garnering the nickname "Pencil City". Today one remains, Musgrave Pencil Company. The family-owned, 100-year-old pencil factory is one of only four pencil manufacturers in the United States.*



### 3. Tennessee Walking Horse Spring Fun Show - Shelbyville

May

Ranked as one of the top horse shows in America after the Celebration, the Spring Fun Show takes place on Thursday, Friday, and Saturday before Memorial Day. The show offers fans a sneak preview of the horses which will perform at the Celebration later in the summer. Classes will be held in Calsonic Arena. Plan to visit the Fun Show Emporium on the concourse of Calsonic Arena. Vendors from all over will be set up for shopping.

### 4. Wartrace MusicFest Wartrace

First Weekend in June

This annual celebration of various genres of music takes place the first weekend in June each year at Jernigan Field in Wartrace. Whether it's rock and roll, blues or country, you will find some of your favorite songs being played here. There is fun for the entire family with great food, pony rides for the kids, arts and crafts and a fireworks show finale on Saturday night.



### 5. RC Cola & Moon Pie Festival

Third Weekend of June

Celebrating two southern favorites, RC Colas and Moon Pies, this festival in Bell Buckle draws visitors from around the country each year on the third weekend in June. Highlights include a 10-mile run, parade, music and food. The parade culminates in the crowning of the King and Queen of the Festival followed by games for all ages. The grand finale is the cutting of the World's Largest Moon Pie.





## **6. Bell Buckle Farmers Market**

Fourth Friday of June through Second Friday in October

The Farmers Market features locally grown vegetables, baked goods, gourmet coffees, and other various local homegrown products. Held under the new pavilion beside the Findery.



**Bedford County Agriculture Center • July 22 - 27, 2019**

For More Information: Contact Judy Gambill (931) 684-0239

**[www.BedfordCountyTNFair.org](http://www.BedfordCountyTNFair.org)**





## 7. The Great Celebration Mule and Donkey Show - Shelbyville

Second Weekend in July

The Great Celebration Mule and Donkey Show is held each year at the Tennessee Walking Horse National Celebration ground on the second weekend of July. The show brings three days of quality mules and donkeys from 25 states. Riders and exhibitors of all ages are welcome to come and show their prized animals. The festive atmosphere includes vendors with unique items for sale as well as great food.



## 8. Bedford County Fair - Shelbyville

Last Week of July

The Bedford County Fair is held each year for six days the last week of July at the Bedford County Agricultural Center and Fairgrounds. This is one of the top county fairs in the area with all types of fun activities for the family. Events include a tractor pull, baking contests, carnival rides, music, livestock judging of all

types and great food. This is great way to cap off the summer before school starts each year.



### **Strolling Jim**

*Strolling Jim was the first Tennessee Walking Horse to become world champion of his breed (1939). He is buried in his hometown of Wartrace behind the Walking Horse Hotel.*

## Visit the Shops on the Square

### HISTORIC DOWNTOWN SHELBYVILLE

## Heritage Jewelers



Free Gift When You  
Mention This Ad!

Large Selection - Friendly Small Town Value  
Jewelry Repair & Design - Engraving - Financing Available

**The Home of Fine Jewelry for over 75 years!**



# 20% Off

One Regular  
Price Item\*



## Joli Cheval

BOUTIQUE

112 Public Square East, Shelbyville, Tennessee 37160  
(931) 808-6656 • [www.jolichevalboutique.com](http://www.jolichevalboutique.com)



\*One offer per customer. Offer Expires 12/31/2019.

## J Jordan

Boutique

*"Where Every Day  
is a Fashion Show!"*

104 Public Sq. E.  
Shelbyville, TN 37160  
Mon. - Sat. 9:30-5:30  
931-684-9695

[www.JJordanBoutique.com](http://www.JJordanBoutique.com)

Facebook & Instagram



## Talk of the Town

Boutique & Children's Shop



101 Public Square South  
Shelbyville, TN • 931-684-8728



## Leanne's Flowers

Flowers For All Occasions. Fresh And Silk

106 East Side Sq. Shelbyville, TN 931-492-5255  
Christy Boyce 931-224-5666 • Leanne Moore 931-224-6707

## ANTIQUES, ART & COLLECTIBLES MALL



Over 17,000 Square Feet of Antiques  
Vintage, Fashion & Home Decor

[AntiquesArtsCollectibles.com](http://AntiquesArtsCollectibles.com)  
123 Public Square South

**931-680-4745**

Monday - Saturday: 9:30 A.M. - 5:30 P.M.





## 9. The Tennessee Walking Horse National Celebration - Shelbyville

**Late August/Early September**

Beginning in 1939, the Tennessee Walking Horse National Celebration in Shelbyville is held each year for ten days ending on the Saturday before Labor Day. This is the premier event in

the industry with the World Grand Champion being crowned on the last Saturday night. Spectators and exhibitors from around the world assemble in Shelbyville at the historic Tennessee Walking Horse National Celebration Grounds for the annual spectacle. Fans fill the 30,000 seat arena in anticipation of the new World Grand Champion each year.



## 10. Butterfly Festival - Shelbyville

**September**

The Butterfly Festival is a two-day juried arts and crafts show along with art demonstrations, hands-on crafts for children, an outdoor classroom of the butterfly metamorphosis, live butterflies release (Saturday only), and entertainment stage. It is held at the historic Fly Arts Center in Shelbyville. [www.flyartscenter.com](http://www.flyartscenter.com)





## 11. Webb School Arts and Crafts Festival - Bell Buckle

Third Weekend of October

The Webb School Arts and Crafts Festival is the premier arts and crafts show in Tennessee. There are over 500 booths with unique and eclectic items from across the United States. Over 100,000 people attend this event each year. This festival includes live music, plenty of food vendors, health vendors, hand made furniture, photography, pottery, prints, clothing, purses, yard items, antiques, and so much more.



## 12. Old Fashioned Christmas - Bell Buckle

Every Saturday in December  
before Christmas

Old fashioned decorations, twinkling Christmas lights, and festive greenery adorn the small town stirring memories of simpler times. Santa and his old-fashioned sleigh offer free rides around the historic village. The first Saturday sports a free S'mores bar set up around a fire pit near Southern Charm. Many of the stores offer a taste of the holidays with teas, coffees, hot chocolate and cookies.





# ARTS AND CULTURE



The Fly Arts Center is a cultural facility managed by the Bedford County Arts Council. The building features a 120-seat theater, a 300-person capacity event hall, a history museum and art gallery, and a gift shop with items created by local artisans.



### **Fly Manufacturing Company**

The historic landmark was built in 1927 and was once a textile manufacturing factory. The Fly Manufacturing Company, established by Joel Orval Fly, operated in Shelbyville from 1915 to 1985. The company sold their products to local stores and national businesses including Sears and Montgomery Ward. The factory also produced pants, jackets, and fatigues for American soldiers during World War II.

Today, the old factory provides the perfect setting to showcase Bedford County's art and culture scene. Several times a year, the Fly Community Theater presents a variety of productions including plays, a theater festival, a dinner theater, and youth theater during the summer.

Throughout the year, a variety of events are held at the McGrew Event Hall. Past events include A Night of Witchcraft and Wizardry, a Harry Potter themed event, A Festival of Trees and Holiday Craft Show, a talent show, parties, dances, a chili cook-off and more. The popular venue is also available to rent for weddings, parties, or other private events.

A 7-foot mosaic statue honoring the women of Bedford County is on display in the Bedford County History Museum and Art Gallery. The sculpture, created by well-known Bell Buckle artist Sherri Warner Hunters is a three-sided image of a woman, with the sides representing vision, action and prayer. There are also old photographs, military uniforms, and historical documents that tell the history of Bedford County.

The Fly Arts Center is located at 204 S. Main St. Shelbyville, TN.  
For more information visit their website at [flyartscenter.com](http://flyartscenter.com) or call 931-684-8359.



### **Century Farms**

*Bedford County is home to 26 farms classified as "century farms," meaning these properties have been in the same family 100 years or more.*



# 2019 CALENDAR

**JANUARY**

Closed

**FEBRUARY**

11 - Potluck  
16 - Triple C Competition  
28 Theatre Committee/Group Mtg.

**MARCH**

8, 9, 15, 16, 17 Community Theater  
Presentation The Boys Next Door  
11 Potluck  
18 Theatre Committee/Group Mtg.  
23 Spring Fling Dance

**APRIL**

8 Potluck  
12, 13 Women's Club Play  
13 Postcard Show  
15 Theatre Committee/Group Mtg.  
27 April Foolishness





## MAY

**3, 4, 10, 11, 12** Community  
Theatre Play TBD  
**13** Potluck  
**20** Theatre Committee/Group Mtg.

## JUNE

**10** Potluck  
**17** Theatre Committee/Group Mtg.

## JULY

**8** Potluck  
**12** Play TBD  
**15** Theatre Committee/Group Mtg.

## AUGUST

**12** Potluck  
**19** Theatre Committee/Group Mtg.

## SEPTEMBER

**9** Potluck  
**13, 14, 20, 21, 22** Community  
Theatre Play TBD  
**16** Theatre Committee/Group Mtg.  
**24-28** Butterfly Festival

## OCTOBER

**14** Potluck  
**21** Theatre Committee/Group Mtg.  
**31** Halloween at the Fly

## NOVEMBER

**11** Potluck  
**11-16** Festival of Trees  
**18** Theatre Committee/Group Mtg.  
**23** Festival of Trees/Craft Show

## DECEMBER

**6, 7, 13, 14** Community Theatre

# THINGS TO DO

There is a whole world waiting to be explored in and around Shelbyville. Whether it's learning about history, shopping, or getting out to enjoy nature, there is something for everyone.



## Go for a walk

- Henry Horton State Park offers 10½ miles of hiking trails and is less than 30 minutes from Shelbyville.
- River Bottom Park - A beautiful little riverside walkway located at 390 S Main Street in Shelbyville.

## Take a flight

- Get a birds-eye-view of Bedford County with the Shelbyville Flight Academy at the Shelbyville Airport.

## Take a drive in the country

- Drive the scenic Hwy. 231 to Fayetteville
- Take a picnic lunch out to Normandy Lake
- Take the Flat Creek Highway (Hwy. 82) to Lynchburg

## Follow the Civil War Trail

- Blockade Runner Civil War Store and Museum in Wartrace
- Old Bedford County Jail in Shelbyville

## Get a workout or play

- Shelbyville Recreation Center
- H.V. Griffin Park in Shelbyville

## Go geocaching

- Go on a geocache treasure hunt on the Jack Trail

## Float the river

- Spend a lazy day on the Duck River, described in National Geographic as one of the most ecologically diverse rivers in North America.

## Catch a fish

- Duck River
- Normandy Lake
- Tim's Ford Lake

## Go shopping

- Shelbyville's Historic Uptown Square
- Downtown Bell Buckle Railroad District

## Pick some berries

- Pick blueberries, strawberries, and blackberries at Valley Home Farm, a 5-generation family farm. They are open daily in season. [www.valleyhomefarm.com](http://www.valleyhomefarm.com)

## Go horseback riding

- Visit Clearview Horse Farm for riding lessons or a trail ride





### Learn about the Tennessee Walking Horse breed

- Attend one of the events at Tennessee Walking Horse National Celebration Grounds in Shelbyville
- Visit the Walking Horse Museum in Wartrace
- Visit the gravesite of Tennessee Walking Horse Strolling Jim in Wartrace

### Attend a play, see an art exhibit, or catch a movie

- Fly Arts Center in Shelbyville
- Capri Theatre in Shelbyville

### Explore the Tennessee Whiskey Trail

- Cascade Hollow Distillery - Normandy
- Prichard's Distillery - Kelso
- Jack Daniel Distillery - Lynchburg
- Southern Pride Distillery - Fayetteville

**FYI**

#### **Capri Theatre**

*Originally named the Princess Theatre, the Capri Theatre is a deco delight. Many of the original amenities add to the charm of this historic theatre such as the illuminated signs above the restroom door, the sleek steel railing on the staircase, and the ornate carpeting. The balcony auditorium is equipped with stadium seating, and the main auditorium features plush rocking chairs. The Capri Theatre shows current releases on two screens nightly.*







EAT LIKE  
A LOCAL





### **Alfonso's Mexican Restaurant**

Shrimp chimichangas, enchiladas, nachos, draft beer. Patio seating available. 931-684-0504

### **Bocelli Pizza & Pasta Shoppe**

Pizza, spaghetti, chicken mushroom Alfredo, sandwiches, Caesar salad, desserts, and more. Closed Sunday. 931-680-9579

### **Halls Mill Country Diner**

Steak, ribs, brisket, cornbread, salads. Closed Monday. 931-294-3474

### **Koffee Beanz**

Fair Trade coffees and teas, sandwiches, soups, pastries. Free WI-FI. Closed Sunday. 931-684-2146

## **La Rivera Mexican Cantina**

Fajitas, Mexican pasta, pollo empanizado, pineapple margaritas. Trivia nights. 931-684-2766

## **Mai House Asian Cuisine**

Thai restaurant. Stir fry, pad thai, pho. Closed Monday. 931-492-4740

## **Pope's Cafe**

Vintage 50s style diner with world-famous biscuits served steaming hot. Burgers, chicken, fresh homemade pies. Closed Sunday. 931-684-4100

## **Southern Fare**

Southern comfort food. Meat and three, sandwiches, fried green tomatoes, and cornbread. Closed Saturday. 931-536-5768

## **SteBe Cakery & Cafe**

Cakes, pies, cupcakes, cookies, fudge. Sandwiches, soups, slaws, and salads. Closed Sunday and Monday. 931-684-8445

## **The Coffee Break on the Square**

Breakfast, lunch, and coffee. Biscuits and gravy, pastries, pancakes, creamy tomato basil soup, sandwiches, & salads. Closed Sunday. 931-680-2552

## **The Dinner Table**

Fried chicken, catfish, sweet potatoes, lunch buffet. 931-684-5663

## **Tortilleria Gomez**

Authentic Mexican food. Homemade tortillas and tamales. 519 Madison St. 931-680-1914

## **Urban Plantation**

Local and fresh. Hot chicken, broccoli casserole, mushroom and brie soup, homemade peach cobbler. Closed Saturday and Sunday. 931-448-7840

## **Uncle Sonny's Bar B Que**

Brisket, ribs, pulled chicken, sweet potatoes and cornbread. Closed Sunday and Monday. 931-684-9010



## **Bell Buckle Cafe**

Down-home cooking, prize-winning hickory-smoked barbeque, fresh hand-squeezed lemonade, and the famous Moon Pie Sundae. Live music Friday and Saturday night. Live broadcast radio show Saturday 1-3 p.m. Open seven days a week. 931-389-9693

## **Bell Buckle Coffee Shop**

Coffee, cappuccino, chai, hot chocolate, baked goods, sandwiches, soups, and salads. Closed Sunday. 931-813-3095

## **Southern Charm Tea Room**

Soups, salads, and sandwiches. English Afternoon Tea includes homemade scone, clotted cream, tartlet, finger sandwiches, and mini desserts. Open Tuesday-Saturday 11-3 pm. Reservations requested, but walk-ins are welcome. 931-389-0003





## Millers Grocery

Homestyle southern cooking. Meatloaf, chicken salad, mac & cheese. Made-from-scratch desserts. Live music Friday & Saturday nights. Sunday buffet. Closed Monday. 615-893-1878

## Granny Fishes' House

Fried catfish, chicken, trout, frog legs, hushpuppies, blackberry cobbler. Open Thursday, Friday, Saturday. 931-857-4025.

## The Pickin' Chicken & Sugar Plum Sweet Treats

Eatery and live music venue. Chicken and waffles, chuck steak burgers, sandwiches, salads, and desserts from their on-site bakery. Draft and bottled beer. Closed Mondays. 931-813-5050

**FYI**

**Bell Buckle:**  
**Home of Tennessee's Poet Laureate Maggi Vaughn**

*She penned the words, "We're the one-room schoolhouse in the holler. We're the university grad and the front porch scholar," an excerpt from "Who We Are," the official poem of Tennessee's Bicentennial.*



# MEET ME IN THE SQUARE

EXPLORE THE HEART OF SHELBYVILLE

BY TRISHA SANDORA







All roads lead to the square, or at least they used to. In the early days of Shelbyville, major trade routes ran through the town via the Duck River and the railroad, making it a bustling center for commerce. In those days, what happened in Shelbyville, happened in the square.

Although times have changed and businesses extend for miles in all directions, Shelbyville's downtown square, better known as the uptown square by locals, is still the heart of this town. It's a place to meet, take a walk, shop, and grab a bite to eat. It's a gathering place where the past and present come together amidst beautiful historical buildings, store window displays, and city sidewalks with decorative lampposts including one with a large clock set on Shelbyville time.









## The Shelbyville Plan

Shelbyville's walkable downtown did not happen by chance. It is the result of the Shelbyville Plan, a well thought out design that dates back to 1810. The design consists of a central block, bounded by four streets and surrounded by a grid of square city blocks the same size. The stately Bedford Shelbyville Courthouse stands proud in the center, the fifth to stand on this spot. Earlier versions were destroyed through historical conflicts, including an accidental burning in 1863 by Confederate soldiers, and later at the hands of a lynch mob.

The Shelbyville Plan also became the prototype for other town squares in southern Middle Tennessee created in the 19th century. The nearby towns of Pulaski, Fayetteville, and Winchester all share the same design as well as countless small towns throughout the Midwest.

## Uptown

Shelbyville's town square has one attribute that makes it especially unique—it's slightly elevated above the town. From the Shelbyville Square, you can catch a glimpse of the Duck River, a breathtaking



sunset, or watch storm clouds come rolling in. Your eyes can follow the busy streets leading to the outskirts of town, where car headlights and the red glow of taillights create streams of light as dusk settles in.

For country music fans, the Shelbyville Square has made it to the big time as the set for Miranda Lambert's "Famous In a Small Town" video.

### **What Happens In The Square**

So make a day of it. Grab a cup of coffee at The Coffee Break or lunch at the Pope Café. Wander through the shops around the square for a great selection of gifts, books, and boutique clothing. The Antiques, Art and Collectibles Mall, a former hardware store, is packed with home decor items, old and new. The Shops at Main & McGrew are located in the historic post office. See the work of local artisans at the Fly Arts Center

& Museum, once an apparel manufacturing site that dates back to the 1920s. It is also a venue for community theater performances held throughout the year. And when the sun goes down, and the marquee of the Capri Theatre lights up, it's time for pizza at Bocelli's and a movie at the historic theatre, which still has many of the original amenities.

Whether it's a celebration such as the Dog Days of Summer Mutt on a Leash Show, a chili cook-off, the Halloween Boo & Brew Street Festival, the annual Christmas Tree Lighting, or a classic car cruise-in, the Shelbyville Square is still the heart of this southern Middle Tennessee community.

For more information about what's happening in the Shelbyville Square call 931-684-3483 or visit [shelbyvilletn.com](http://shelbyvilletn.com) and Shelbyville-Bedford County Chamber of Commerce on Facebook.







### **East Shelbyville Historic District**

*The East Shelbyville Historic District includes roughly ten square blocks, of historic homes and buildings. It is bordered by the N. Brittain, Louisville, and Nashville railroad tracks and Lane, Evans, Sandusky, and Madison Streets.*





# THAT 'OL 55

Car Shows And Cruise-Ins In The Shelbyville Square Showcase The Coolest Cars In Town

BY TRISHA SANDORA

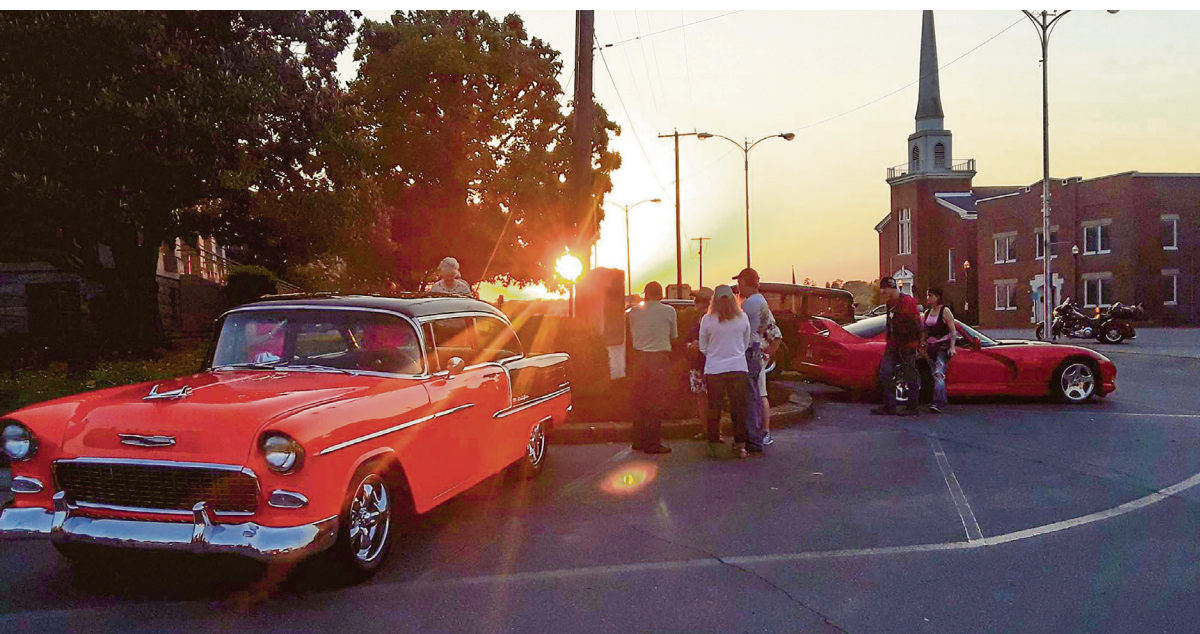


**O**n a hot summer evening when the sun drops behind the skyline of the historic buildings that stand tall around the Shelbyville Square, you can hear them coming. It's not the usual sound of Friday afternoon traffic. It's the revving of perfectly tuned engines.

As they roll into town for a cruise-in, all eyes are on them— a Crown Victoria, a souped-up muscle car, a well-preserved Mustang, and a Frankenstein rat rod built from spare parts. Proud owners carefully back their cars into spaces around the courthouse square and then open the hoods. With polishing rags hanging from their back pockets, they attend to the details of their cars, while family members set up camp for the evening, complete with lawn chairs and coolers.

The cruise-ins and car shows held at the Shelbyville Square are a pure slice of Americana, a portrait of America's love affair with the automobile, and a display of community pride. Meticulously renovated or restored cars represent the culmination of years of effort. And when these cars leave the safety of their garages and come to town, it's time to shine.

Jerry Clanton has been involved with the cruise-ins and car shows in the Shelbyville Square for years. From putting up banners to helping his son's band set up, Jerry works hard behind the scenes to make sure things go as planned. "My favorite part is interacting with other people who love their cars," he says.





Everyone has a memory of a car, whether it was the first time behind the wheel, a first date, or a road trip to the beach. It's funny how the simple details of a car, such as the sound, the smell, the chrome, or the color can instantly take you back to that moment in time you had all but forgotten--like the smell of the vinyl seats in a 1966 Volkswagen Beetle. Or riding in the rumble seat of your grandfather's gray 1932 Ford Model A. Then there's the time all the neighborhood kids piled into the Country Squire family station wagon for a trip to the circus.

Car shows and cruise-ins on the square are a time for reminiscing, admiration, and sharing a few hard-earned bragging rights. It's a showcase of impressive cars and the stories of the people who own them. Cars, food trucks, kids, and dogs, what more does a person need?

The Celebration City Region Car Club holds a cruise-in the 4th Friday of every month from April through October with live music by Chase Clanton and Vintage Vibes. Other events are also held throughout the summer by Car Shows of the South.

For more information about the car shows and cruise-ins on the Shelbyville Square visit Historic Uptown Shelbyville on Facebook. ✨

*Just like Granny makes it.*



*Since 1985*

• Fried & Grilled Catfish • Trout • Frog Legs  
• Hush Puppies • Homemade Pies • Kids Menu Available  
340 Shippmans Creek Rd. • Wartrace, TN 37183  
**931-857-4025**

Thurs.-Fri. 5:00 P.M. - 9:00 P.M. • Sat. 11:00 A.M. - 9:00 P.M.



### **First Presbyterian Church**

*This 1854 structure was built to house a congregation that first organized in 1815. It's a classic county seat church, serving not only as a house of worship but also as an anchor for the community.*



## Hometown SpecialistDianne Arnold



### IS THERE A NEW ADDRESS IN YOUR FUTURE?

As one of Coldwell Banker's Top Agents Nationwide, and with over 32 years of Real Estate experience, I am the one to work exclusively for you. Whether **buying** or **selling**, I will provide my greatest commitment in making your needs my first priority.

### FARMS • HOMES • LAND

**1708 North Main St.  
Shelbyville, TN 37160**

**Cell: 931-703-5104**

**Office: 931-684-6522**

**diannearnold@charter.net**



SEGROVES-NEESE REAL ESTATE

## WE RECYCLE

- Commercial & Residential Service Available
- 24 Hour Recycling in Front Bins



### DSC Sanitation

*Locally owned & operated since 1994*

210 Cedar King Rd., Shelbyville, TN

Tommy & Gail Dollar - 931-684-5635

## Butterfly Festival

Fine Arts & Crafts

204 S. Main Street, Shelbyville

**Friday, September 27, 4:00 P.M. - 7:00 P.M.**

### Preview Party

Fine arts & crafts vendors, wine & hors d'oeuvres, & drawings.  
Bedford Arts Council, Inc. is hosting the SBCC  
Business After-Hour during the preview party.

**Saturday, September 28, 9:00 A.M. - 5:00 P.M.**

### Free Admission

Morning & afternoon live butterfly releases, butterfly garden landscape dedication, entertainment stage, food, arts & crafts vendors (inside & outside), artist demonstrations, Children areas: Life cycle of butterfly outdoor classroom and butterfly exhibits, face painting, butterfly crafts.

Food and fine arts & crafts vendor applications available.  
Facebook: the butterfly festival/website: flyartscenter.com

For information, call Sylvia 931-580-9696 or  
931-684-8359 (leave a message)

## Home of the DRX9000

True Non-Surgical Spinal  
Decompression System

[www.familychirocomplex.com](http://www.familychirocomplex.com)



**Family  
Chiropractic Complex**

**Dr. Marilyn Everett**

**Dr. Karen Johnson**

111 Marbury Crossing, Tullahoma, TN  
931.455.0408

**Dr. Kerry Kiesiner**

1121 1/2 North Main St., Shelbyville, TN  
931.735.6160

Licensed Massage Therapists (Tullahoma Location)  
Sarah Edmondson L.M.T. • A.J. Mason L.M.T.



## ENJOYED EVERYPLACE, MADE IN ONE.


Visit America's oldest registered distillery in Lynchburg, Tennessee, the one place every drop of Jack Daniel's Tennessee Whiskey is crafted according to Mr. Jack's time-honored process. Several tour options are available. We have sampling tours 21+ and nonsampling tours (all ages welcome).

VISIT [JACKDANIELS.COM](http://JACKDANIELS.COM) FOR TOUR RESERVATIONS.


**JACK DANIEL**  
DISTILLERY  
LYNCHBURG  
TENN.

PLEASE DRINK RESPONSIBLY


JACK DANIEL'S AND OLD NO. 7 ARE REGISTERED TRADEMARKS. ©2018 JACK DANIEL'S TENNESSEE WHISKEY 40% ALCOHOL BY VOLUME (80 PROOF).  
DISTILLED AND BOTTLED BY JACK DANIEL DISTILLERY, LYNCHBURG, TENNESSEE. [JACKDANIELS.COM](http://JACKDANIELS.COM)



**Real Estate, Auctions, Appraisals.**  
Est. 1973



**Auctions**



**Real Estate**

[craigwheeler.com](https://www.craigwheeler.com)

508 Cannon Blvd. | Shelbyville, TN 37160 | 931-684-9112



**Beautiful Plants  
& So Much More!**

**Retail Greenhouse & Nursery | Landscape Services  
Deliveries to Hospitals & Funeral Homes**

**M&L  
GREENHOUSE**  
~ Loraine Sutton ~  
Serving Bedford County with locally-grown plants since 1979

199 Benford Rd. | 931-684-5850  
[mlgreenhouse@yahoo.com](mailto:mlgreenhouse@yahoo.com)



**MONDAY-THURSDAY  
HAPPY HOUR  
2 for 1 MARGARITAS**

**FRIDAYS  
LIVE KARAOKE**

**SATURDAYS  
LIVE MUSIC**

116 Sunlite Road, Shelbyville, TN  
931-684-2766 • [www.LaRiveraCantina.com](http://www.LaRiveraCantina.com)



## Providing Quality Care For The Whole Family.

Whether it's a checkup or something more serious, you need a doctor you can trust. Fortunately, the experienced and compassionate healthcare providers at Tennova Family Care-Shelbyville are here to help.

**Walk-ins welcome**  
For more information, call  
1-855-TENNOVA (836-6682)  
or visit [Tennova.com](http://Tennova.com)



### **Tennova Family Care** (An entity of Tennova Healthcare Shelbyville)

**Main Street-Shelbyville**  
1612 North Main Street, Suite B  
**Unionville**  
3335 Highway 41A North

**Wartrace**  
507 West Blackman Blvd.  
**Madison Street - Shelbyville**  
1401 Madison Street

### **Tennova Urgent Care** (An entity of Tennova Healthcare Shelbyville)

1612 North Main Street, Suite A  
Shelbyville, TN 37160  
Mon.-Fri., 8 a.m.-8 p.m.  
Sat., 8 a.m.-6 p.m.; Sun., Noon-6 p.m.



## OFFICE BASED LAB for VASCULAR/ ENDOVASCULAR Surgery

For Your  
Convenience



### **The Russell Center** for Vein & Vascular Care Over 30 Years Experience

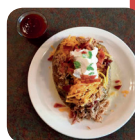
#### **William L. Russell M.D., F.A.C.S.**

Clinical Professor of Surgery  
University of Tennessee College of Medicine  
Diplomate American Board of  
Surgery / Vascular Surgery

**931-685-0986**

Russell Plaza, 120 Frank Martin Rd., Suite 101 Shelbyville, TN

## Great Food. Local Draft Beer!



- Live Music
- Pizza
- Chicken
- Burgers
- Cold Beer
- Espresso
- Ice Cream
- Bakery



Wartrace, Tennessee

*It's finger pickin' good!*

104 Main St. E | Wartrace, TN 37183  
[www.thepickinchicken.net](http://www.thepickinchicken.net)





# THE SOUTHERN CHARM OF BELL BUCKLE

BY TRISHA SANDORA













What's not to love about Bell Buckle? It's the Mayberry of Tennessee. A place where you expect to see Opie's bicycle parked outside the Bluebird Ice Cream Parlour, or Andy and Barney drinking coffee at the Bell Buckle Cafe. With friendly faces, southern drawls, and sweet tea, this small Tennessee town is good old fashioned southern hospitality at its best. And the perfect place to spend a leisurely day with family and friends.

### **A Railroad Town**

Bell Buckle was established in 1852 by local merchant A.D. Fugitt, who donated land for the main line and depot for the Nashville and Chattanooga (N&C) Railroad. Legend has it that the town got its name from a carving on a tree at a nearby creek. The carving, which resembled a cowbell and a buckle, was discovered by the first white man to traverse the area who interpreted it as a warning from Indians that the domesticated animals of white civilization were intruding upon their lands. After that, the creek was referred to as Bell

Buckle Creek, and the town which grew up on the banks of that creek adopted its name.

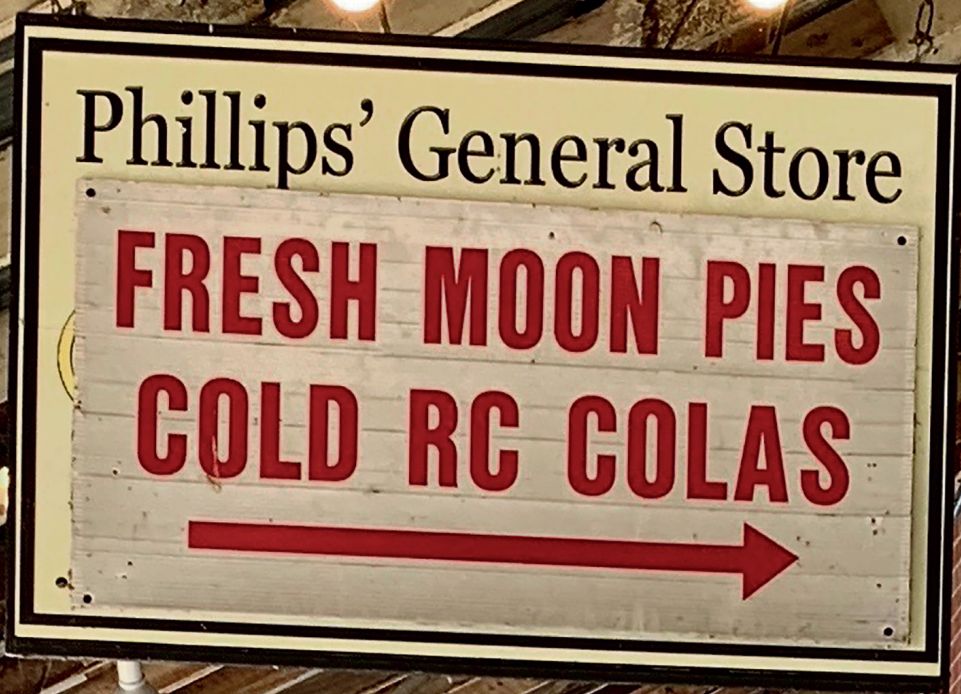
### **The Web School**

An integral part of the history of this unique town is the Webb School. Established in 1870, it is the South's oldest continuously operating boarding school. The school offers grades 6 through 12. Students from twelve countries and twenty states attend the school. On the grounds, a restored schoolhouse from the 1800s gives visitors a glimpse into the past of this world-renowned college preparatory school.

### **Boardwalks, Rocking Chairs, And Music**

Today, amidst Victorian homes, churches, eclectic shops, and eateries, is a thriving arts community. Antiques, clothes, nostalgic signs, candy, and many one-of-a-kind items make Bell Buckle a shopper's dream. There is even a kombucha bar, for those wanting a dose of something healthy.





### **James Gilliland**

Local craftsman James Gilliland's family was separated by slavery and reunited near the end of the Civil War. Having no formal education, he taught himself by candlelight and later became a student at the Turner Normal Institute in Shelbyville. He gained a reputation as one of the best stonemasons in the area. He was a savvy businessperson, eventually owning over 300 acres around Shelbyville, which he rented and sold to the poor at prices they could afford.





Throughout the entire state of Tennessee, small towns and big cities are alive with music, and Bell Buckle is no exception. On Friday and Saturday evenings, the Bell Buckle Cafe hosts live music in the 100-year-old building that was once the home of Bell Buckle Records. Many a legendary artist has walked through those front doors, and even today, you never know who might stop by and play a song or two. On Saturday afternoons, from 1 to 3 p.m. a live radio show is broadcast on WLIJ 1580 AM.

Bell Buckle also has a beautiful park with a playground for the kids, picnic facilities, a pavilion, a half-mile walking trail, an amphitheater, and an arboretum integrated throughout the park.

### It's A Celebration

Bell Buckle is a town that loves to celebrate, and people come from far away places to join in the fun. In March, the Daffodil Festival welcomes the coming of Spring with thousands of daffodils along a six-mile stretch of highway leading into Bell Buckle. In June, the RC Cola and Moon Pie Festival honors these two Tennessee originals with a parade, a 10-mile run, lots of good down-home bluegrass music and much more. The Bell Buckle Webb Art & Craft Show takes over the town on the 3rd weekend in October, featuring over 100 juried artists in addition to more than 700 craft and food booths. And then there is the Old Fashioned Christmas celebration every Saturday in December before Christmas.

Take time to visit this friendly town that's full of character and bustling with energy. It's only a ten-minute drive from Shelbyville, and it will do your heart good. ✱

## Beautiful Planes, & Rich History

**Beechcraft**  
HERITAGE MUSEUM

*37 Unique and Rare Aircraft  
in 78,000 Square Feet of Museum Space*



Tuesday - Saturday 8:30 A.M. - 4:30 P.M.  
570 Old Shelbyville Hwy. Tullahoma, TN  
931-455-1974  
[www.beechcraftm.org](http://www.beechcraftm.org)

**Clanton**  
**PIPE & SUPPLY**

904 Madison St. • Shelbyville  
931 684-4847  
[www.clantonpipeandsupply.com](http://www.clantonpipeandsupply.com)



**Contractors  
Call For Bid**

**Special Orders Available! If it's made, we can get it!**  
All types and sizes of corrugated metal and plastic  
culverts! We offer 10 ft pcs!



**Domino's**



**PIECE of the PIE  
REWARDS**

**ORDER ONLINE**  
[www.dominos.com](http://www.dominos.com)  
719 Madison Street  
**684-9592**

Hours: Sun. thru Thurs. 10 a.m. - midnight  
Fri. & Sat. 10 a.m. - 2:00 a.m.



## Orthopedic care that's close. So you can go far.



To help you get back to your active life, we provide services ranging from general orthopedic care and sports medicine to minimally invasive hip, knee and shoulder replacements.

To find an orthopedic surgeon, call 1-855-TENNOVA (836-6682).

### Tennova Orthopedics - Shelbyville

112 Airport Business Park Road, Suite C. • Shelbyville, TN 37160 • 931-685-8770

Brian Petersen, D.O., Orthopedics

Member of the Medical Staff of Tennova Healthcare



TennovaMedicalGroup.com



Where  
Shelbyville  
Reads

220 S. Jefferson St. Shelbyville, TN  
931-684-7323 sbcplibrary.org

**TENNESSEE COLLEGE  
OF APPLIED TECHNOLOGY  
SHELBYVILLE**

Programs offered  
in Shelbyville ~  
Lewisburg ~  
Fayetteville ~  
Tullahoma ~  
and Winchester

13 Technical Programs ~ 80% Placement Rate  
931.685.5013 www.tcatsshelbyville.edu

**Merchant's Walk On Main**  
Upscale Shops... Down Home Charm.

**A Name You've Trusted  
for Over 40 Years**

- Expert Jewelry Repair
- Excellent Customer Service
- Free Gift Wrap

**Lowery Jewelers**

768 North Main St., Shelbyville, TN  
931-684-8623 • loweryjewelers.com

**Keeping Shelbyville In Style  
Since 1956!**

- Nic & Zoe
- Multiples
- Tribal
- Renuar

Gift Certificates

**Carolyn's**  
Trendy & Traditional Ladies  
Apparel & Accessories

766 N. Main St., Shelbyville, TN  
931-684-4411



# THE WORLD'S GREATEST HORSE SHOW



## *The Celebration®*

Crowning World Grand Champions Since 1939

**August 21 - August 31, 2019**

300 RV Spots with ALL Utilities available year round

**Shelbyville, TN • 931-684-5915 • [www.twhnc.com](http://www.twhnc.com)**

### **Jump Right In!**

With Our  
Starter Program

**\$29<sup>95</sup>**

**Middle Tennessee  
Martial Arts**

Shelbyville Rec. Center  
**931-684-0244 • [mtma@cafes.net](mailto:mtma@cafes.net)**

### **THOMAS KINKADEE**

Murfreesboro | Shelbyville

2 locations to serve you:

**Thomas Kinkadee Gallery of Murfreesboro**  
2615 Medical Ctr. Pkwy., Suite 640 at The Avenue  
Murfreesboro, TN 37129

Phone (615) 896-6888 | Hours: Mon.-Sat. 10-8  
or

**The New Covenant Christian Bookstore**  
**Thomas Kinkadee Signature Gold Gallery**  
800 N. Main St. Shelbyville, TN 37160  
Phone (931) 684-8878 | Hours: Mon.-Sat. 8:30-5:30

Over 400 limited edition canvases in stock!  
90-day layaway | Same as cash financing | Shipping available

### *Grace Valley Farm Wedding, Event, and Retreat Venue*

**You Dream It...We Make It Happen!**



**[gracevalleyfarm@yahoo.com](mailto:gracevalleyfarm@yahoo.com)  
[gracevalleyfarm.com](http://gracevalleyfarm.com)**

**f 931-703-0667**









# WARTRACE

Time doesn't change everything. Some towns are lucky enough to stay the same.

BY TRISHA SANDORA

At a time when many small towns have disappeared and been swallowed up by progress, there are still a few places that time has left alone— Wartrace, Tennessee is one of those places. When you drive into Wartrace for the first time, you might think you have missed a turn, and that the central part of town is somewhere around the next corner—but it's not. When you see the gazebo in the middle of what appears to be an empty parking lot, with a sign that says, "Welcome to Wartrace," you have arrived.

With a railroad track on one side and a single line of storefronts on the other, there's a lot more to Wartrace than first meets the eye. So go ahead and park the car—you shouldn't have any trouble finding a parking place— and step back to a simpler time. Wander through the shops, enjoy an ice cream cone, or pull up a rocking chair and wait for the train to pass through. If you hang around long enough, you might happen to meet a local who is willing to share a few stories about this tiny town.



## Native Warpaths

The name Wartrace can be traced back to the Native Americans who referred to the area trails as warpaths. In 1852, Tennessee's first railroad was built through Bedford County, and the small settlement became known as Wartrace Depot. In the 1920s and 1930s, area horsemen developed the Tennessee Walking Horse breed, which is why Wartrace is also called "The Tennessee Walking Horse Cradle of America."

The entire downtown and most of the residential district is on the National Register of Historic Places. Wartrace served as a winter encampment for Civil War soldiers and was the site of a skirmish between Union and Confederate troops in 1862. The historic Chockley Tavern, a stagecoach stop near downtown, was a meeting place for Confederate officers. Blockade Runner

Civil War Store and Museum offers a glimpse into these times with authentic replicas and artifacts from this era. In its glory days during the late 1800s, Wartrace was briefly known as a health resort. Water from local wells and sulphur springs was bottled and sold for its healing properties.

History runs deep in this small town. However, a few present-day attractions have put it on the map of musicians, horse enthusiasts and backroad travelers worldwide. One such attraction is the Walking Horse Hotel on the other side of the tracks. Rumor has it, the 1917 hotel has a few stories of its own—ghost stories. The Travel Channel recently filmed a segment for their Haunted Live series at the old hotel. Strolling Jim, the first national champion Tennessee Walking Horse also happens to be buried behind the hotel. Purely coincidence? Maybe not.

# PARKS



Professional service with a personal touch.

**931-685-2010**

[www.ParksAtHome.com](http://www.ParksAtHome.com)



**PARKS  
AUCTION**  
CO. LLC FIRM 3984

Committed to Auction Excellence!

[www.ParksAuction.com](http://www.ParksAuction.com)





## It's About The Music

Don't let this sleepy little town fool you. In June, it comes alive during the Wartrace Music Festival. People flock to town for the festival that dates back to 1979. The celebration of music features nationally known recording artists and music tribute bands.

Gallagher Guitars, located in the heart of Wartrace, is known by guitar pickers for their exquisite handmade guitars. For three generations, the Gallagher family has been making guitars sought after and played by many world-famous musicians from Doc Watson to Joe Bonamassa.



## And The Horses

The Tennessee Walking Horse Museum, operated solely by volunteers is only open on Friday and Saturday. But on the two days it is open, you never know who might come strolling through the door. With only two cars in the parking lot, I stopped in there on a Friday afternoon. As I was looking at a photograph on the wall, a gentleman behind me remarked to his friend, "That's me." Then he pointed to a saddle and said, "That was my saddle. I sold it for \$35. I needed the money." Several minutes later, another gentleman walked in who happened to be the artist of several of the paintings on display. His father had been a well-known farrier in the area. And that is what makes Wartrace such a special place, the people.

There are not too many places like Wartrace anymore. It's a gem that is worth a stop and a few hours of your time. ✨

## EXTRAVAGANT POOLS, ALL YEAR ROUND.

- Pool Parties
- 94° Heated Therapeutic Pool
- HydroMassage Spa
- Swim Lessons



Omni Center, 920 Colloredo Blvd  
Shelbyville, TN 37160  
931-575-0822

236 Robert Rose Drive  
Murfreesboro, TN 37129  
615-962-9500

*Discover Hidden Treasures*



**The Old Rink Emporium**  
Furniture, Gifts, & Home Decor! 

611 Brents Rd., Lewisburg | 931-359-9789

## DEFENSIVE OPTIONS TRAINING GROUP



Law Enforcement, Security,  
Civilian Training and Sales.

Office: 931-294-2476  
Rick Gann: 931-703-3130  
defensiveoptiontraininggroup.com

# Come Visit the Shelbyville-Bedford County Chamber of Commerce



***Celebrating Business  
& Our Community!***

**Chamber of Commerce  
Economic Development  
Tourism**

100 North Cannon Blvd.  
Shelbyville, TN 37160  
**931-684-3482**  
[www.shelbyvilletn.com](http://www.shelbyvilletn.com)



## MORTGAGE MADE EASY

- 25 Years Of Lending Experience
- Bedford County Specialist
- Loves First Time Home Buyers
- Highest Level Of Customer Service In The Mortgage Industry



**Carrie Graff**

VICE PRESIDENT/MORTGAGE CONSULTANT  
931-684-8191  
CGRAFF@FNBFG.COM  
APPLY: [WWW.CARRIEGRAFF.COM](http://WWW.CARRIEGRAFF.COM)  
NMLS#769904



A DEPARTMENT OF  
FIRST NATIONAL BANK  
OF MIDDLE TENNESSEE  
NMLS#401715



1700 NORTH MAIN STREET  
SHELBYVILLE, TN 37160



**Come for our Pharmacy,  
*Stay for our Gift Store.***



521 West Commerce | Lewisburg, TN  
[handspharmacy.com](http://handspharmacy.com) | 931.359.2534







**GEORGE**  
**Dickel**  
**TENNESSEE WHISKY**  
 • CASCADE HOLLOW •  
 TULLAHOMA - TENNESSEE

**JOIN US FOR A TOUR & TASTING**  
 Mon. - Sat. 9:00 A.M. - 4:30 P.M. • Sun. 11:00 A.M. - 5:00 P.M.

1950 Cascade Hollow Road Tullahoma, TN 37388  
 931.857.4110 | georgedickel.com

Your friends at Cascade Hollow remind you to sip responsibly.  
 Must be 21+ to participate in tasting. ©GEORGE DICKEL Geo. A. Dickel & Co., Tullahoma, TN.

**ANTIQUES**  
 &  
**• ICE CREAM •**

The Shops at Main & McGrew

**Wed thru Sat 10-6 | Sun 12-5**  
 100 S Main St | Shelbyville, TN  
 931-536-1626 | MainAndMcGrew.com

**We Go the Distance For You!**



- Oil Changes
- Alignments
- Name-Brand Tire Sales,
- Brakes
- Starters
- Installation & Service

**GATEWAY**  
 TIRE & SERVICE CENTER

**931-685-8181**  
 April Brady Manager  
 1011 N. Main St, Shelbyville, TN

Mon-Fri: 7:00 A.M. - 5:30 P.M. • Saturday: 7:00 A.M. - 12:00 P.M.

**Come & Learn  
 What Makes Us Different.**



**Ask about our teeth  
 whitening options!**

Our mission is to provide you with excellent, comprehensive dentistry to help you achieve your dental goals and keep your smile healthy. We address your oral needs quickly and efficiently by providing high-quality dental care.

 **Chamberland Dentistry, P.C.**  
*Caring Professionals Providing Exceptional Dentistry*

**931.684.9167**   
 1006 Colloredo Blvd., Shelbyville  
 Monday - Friday 8:00 A.M. - 5:00 P.M. 

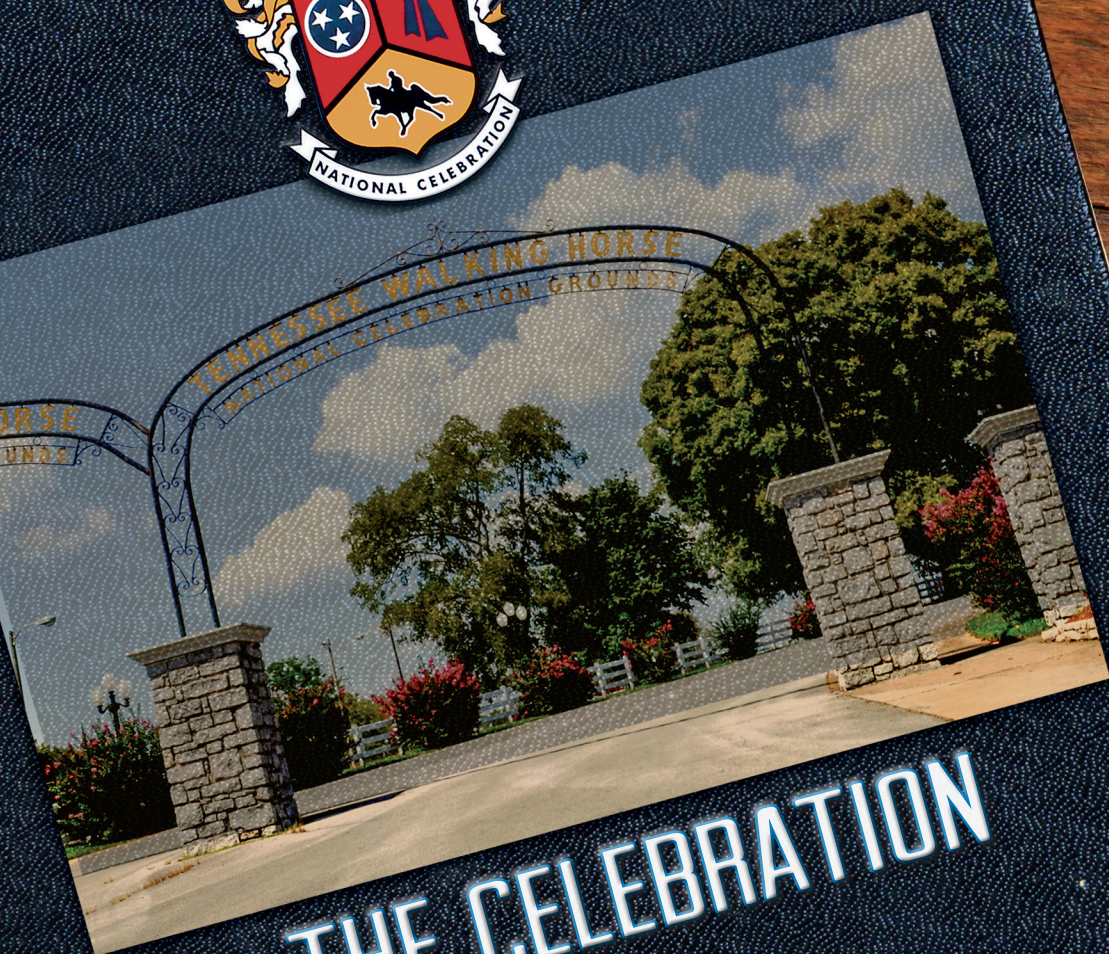
**chamberlanddentistry.com**



### ***The Governor Prentice Cooper House***

*Built in 1904, this historic home in Shelbyville is listed in the National Register of Historic Places. Prentice Cooper was a native of Bedford County and a graduate of Webb School, Princeton, and Harvard Law School. He served as the Governor of Tennessee for three successive terms, was Attorney General of the 8th Judicial Circuit, a member of the 63rd and 70th General Assemblies, U.S. Ambassador to Peru 1946-1948, President of the 1953 Tennessee Constitutional Convention, Veteran of WWI and State Commander of the American Legion.*





# THE CELEBRATION





*Strollin Jim*



*Henry Davis*





# THE CELEBRATION

It's a place, an event, an organization,  
and a word synonymous with Shelbyville.

**I**t all began on a spring day in 1939 when Wartrace resident Henry Davis travelled to nearby Winchester for the Crimson Clover Festival. The festival was a local celebration of the cash crop that sustained the Franklin County community during World War I. Davis must have been impressed because when he returned home, he decided Bedford County should have a festival that celebrated their own local hero—the Tennessee Walking Horse.

A few months later, the first Celebration was held, and it has continued ever since, from 1939 to 2018. The first Celebration was three days and Wartrace's own, Strolling Jim, was crowned the Tennessee Walking Horse National Champion. Today, more than 40 million tickets are sold to the event that spans eleven days, ending on the Saturday night before Labor Day. Fans travel from

around the world to witness the crowning of the World Grand Champion Tennessee Walking Horse, a majestic moment that captivates thousands of spectators.

The Celebration Grounds is an equestrian complex that covers over 100 acres and includes a 30,000 seat outdoor stadium, a 4,500 seat indoor arena, a covered outdoor practice arena, permanent stalls for more than 1,700 horses, and campgrounds featuring full hook-ups for more than 350 recreational vehicles.

Whether it's a massive outdoor arena, an annual event, a horse breed organization, or a town in Tennessee, the Celebration is a common bond. It's all about a horse, a breed that got its start in Bedford County. ✱



A close-up, low-angle shot of a heavy, cut-crystal tumbler glass filled with a golden-brown liquid, presumably Tennessee whiskey. The glass is set on a dark, textured wooden surface. To the left, a piece of coarse, light-brown burlap fabric is visible. In the upper right background, a blurred string of warm-toned lights adds a cozy, rustic atmosphere. The text "TENNESSEE WHISKEY" is superimposed in a bold, white, distressed serif font across the upper half of the glass.

# TENNESSEE WHISKEY





### **What is the Lincoln County Process?**

The Lincoln County Process is a step used in producing almost all Tennessee whiskeys. It is a charcoal mellowing system where whiskey filters through large tanks filled with 10-14 feet of charcoal. The process can take up to fourteen days.



### Cascade Hollow Distillery

The Cascade Hollow Distillery is surrounded by 600 protected acres of forest and crystal-fresh springs. Since 1870, the distillery has been faithful to the recipe George A. Dickel created. Today it is crafted just as it was then — Handmade the Hard Way. Take a one hour tour through the fully operational distillery and barrelhouse where you'll see the process of whiskey making from start to finish including the chill-charcoal mellowing process that gives Dickel that extra bit of smoothness. [georgedickel.com](http://georgedickel.com)



### Jack Daniel Distillery

The Jack Daniel Distillery is the oldest registered distillery in the United States. Make time for the 1.5-hour Angel's Share Distillery Tour where you'll hear stories about the history and sample some of their limited-edition single barrel whiskeys. [jackdaniels.com](http://jackdaniels.com)

## COMING SOON

### The Nearest Green Distillery at Sand Creek Farms

The Nearest Green Distillery at Sand Creek Farms will bring together the three things Tennessee is most known for - Tennessee Whiskey, Tennessee Walking Horses, and Country Music. Plans for the distillery at the historic Tennessee Walking Horse farm include a Nearest Green history walk, a music venue, a tasting room, and gift shop.

Who was Uncle Nearest? Nathan "Nearest" Green, fondly known as Uncle Nearest, was the slave who taught Jack Daniel the craft of distilling. He is the first African-American master distiller on record in the United States and thought to be responsible for helping perfect the Lincoln County Process, a requirement in being categorized as Tennessee Whiskey.





### Southern Pride Distillery

If you like moonshine, Southern Pride Distillery is the place for you. Using an old family recipe, they mill locally grown corn on-site, to produce their premium distilled spirits. On a beautiful farm outside of Fayetteville, the distillery produces seven flavors of distilled spirits and two Double Barrel Charred Shines. [southernpridedistillery.com](http://southernpridedistillery.com)



### Prichard's Distillery

Prichard's Distillery is in Kelso, Tennessee in an old schoolhouse where the basketball hoops still hang on the wall. Their quality rums and whiskeys are distilled in copper pots and stored in 15-gallon to 53-gallon charred white oak barrels to allow for the best possible flavor. [prichardsdistillery.com](http://prichardsdistillery.com)



**FYI**

Nicknamed "Little Boston," Shelbyville was one of the only Union towns in Tennessee during the Civil War. In 1864, twelve Union soldiers were captured while guarding the Shelbyville depot.

# Advertiser's Index

|   |    |   |            |
|---|----|---|------------|
| Bedford County Arts Council.....                      | 41 | H and S Pharmacy.....                                     | 56         |
| Bedford County Fair .....                             | 17 | Heritage Jewelers .....                                   | 19         |
| Beechcraft Heritage Museum.....                       | 49 | Jack Daniel's Visitor Center.....                         | 42         |
| Beyond Aquatics.....                                  | 55 | La Rivera Mexican Cantina.....                            | 42         |
| Bob Parks Realty & Auction.....                       | 54 | Lowery Jewelers .....                                     | 50         |
| Chamberland Dentistry.....                            | 57 | M and L Greenhouse.....                                   | 42         |
| City Of Shelbyville.....                              | 67 | Middle Tennessee Martial Arts .....                       | 51         |
| Clanton Pipe and Supply .....                         | 49 | New Covenant Christian Bookstore .....                    | 51         |
| Coldwell Banker Dianne Arnold.....                    | 41 | Pickin Chicken.....                                       | 43         |
| Craig and Wheeler Realty<br>and Auction, LLC.....     | 42 | Shelbyville Bedford County<br>Public Library.....         | 50         |
| Dennis Young Insurance .....                          | 5  | Shelbyville Bedford County<br>Chamber of Commerce.....    | 56         |
| Dominos Pizza.....                                    | 49 | Tennessee College of Applied Technology.....              | 50         |
| DSC Sanitation.....                                   | 41 | Tennessee Walking Horse<br>National Celebration .....     | 51         |
| Family Chiropractic Complex .....                     | 41 | Tennova Healthcare-Shelbyville.....                       | 2, 43 & 50 |
| First National Bank Of Middle Tennessee .....         | 56 | The Old Rink Emporium &<br>Ritzy Reruns Consignment ..... | 55         |
| Gann, Rick.....                                       | 55 | The Russell Center.....                                   | 43         |
| Gateway Tire .....                                    | 57 | The Shops at Main and McGrew .....                        | 3 & 57     |
| George Dickel Tennessee<br>Whisky Visitor Center..... | 57 | Uncle Nearest Premium Whiskey .....                       | 68         |
| Grace Valley Farm .....                               | 51 |   |            |
| Granny Fishes House.....                              | 40 |   |            |



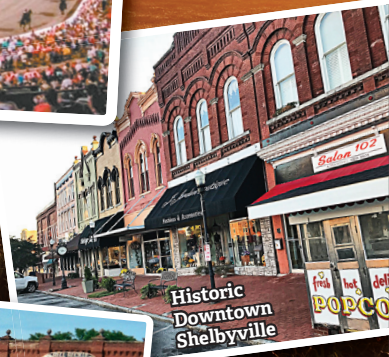
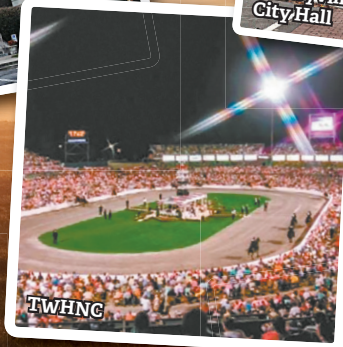
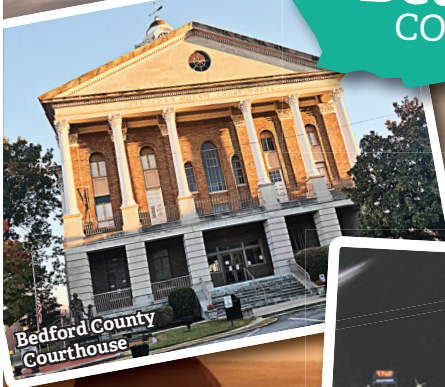
**Pencil City**  
*Shelbyville is known as "Pencil City." The abundance of cedar in the area made it a natural site for making the cedar slats used to make writing instruments. When resources were depleted, companies bought cedar fence posts and slats from houses; today the cedar used in factories comes from the Northwest.*



# WELCOME

to the City of  
**Shelbyville**  
and

**Bedford**  
COUNTY



## **Bedford County**

1 Public Square, Suite 101  
Shelbyville, TN 37160  
(931) 684-7944  
[www.bedfordcountyttn.org](http://www.bedfordcountyttn.org)



## **City of Shelbyville**

201 N. Spring St.  
Shelbyville, TN 37160  
(931) 684-2691  
[www.shelbyvilletn.org](http://www.shelbyvilletn.org)



## UNCLE NEAREST® PREMIUM WHISKEY



ALWAYS DRINK RESPONSIBLY. UNCLE NEAREST PREMIUM WHISKEY, 45% ALC/VOL, 50% ALC/VOL.  
UNCLE NEAREST, SHELBYVILLE, TN. © 2018 UNCLE NEAREST, INC. [WWW.UNCLENEAREST.COM](http://WWW.UNCLENEAREST.COM)