

ALPHA KAPPA PARTICIPATES IN 'SHOP WITH A COP' EVENT – P4



NEW TRANSIT SERVICE PLAN VTA PROPOSAL FOR 2019: COMMUNITY ENGAGEMENT TO BEGIN ON FEBRUARY 11 – P6

SUPERSTAR ANNE AKIKO MEYERS PERFORMS BARBER'S VIOLIN CONCERTO – P8



JAN. 25–FEB. 7, 2019 ■ VOL. 32, NO. 3

YOUR BEST SOURCE OF COMMUNITY NEWS FOR OVER 30 YEARS

Almaden Times

SERVING ALMADEN VALLEY SINCE 1986 ■ ALMADENTIMES.COM

Suffragette City takes to the streets

By Lorraine Gabbert
Senior Staff Writer

“A Dress is Not a Yes!” “My Body, My Rules!” shouts a procession of women, men and children dressed in costume and holding quilted banners aloft while marching through downtown San Jose from the San Jose Museum of Art (SJMA) to City Hall.

Both performance art and female empowerment, taking the vibrant exhibit of banners, clothing and sculpture to the streets is a dynamic part of Suffragette City, designed by artist Lara Schnitger. The collection, created in deference to the hundredth anniversary of the Suffragette Movement, also speaks to current slut shaming and the continuing fight for women’s self-expression without recrimination.

Schnitger has brought her bold collection to cities around the world, including Basil, Berlin, Dresden, Los Angeles, New York, Paris, Reims, San Jose and Washington, D.C. for the 2018 Women’s March.

“It can be empowering to affirm your purpose,” says Schnitger. “Every time it’s different. I’m excited to do it in San Jose.”

Two women dressed in blue jumpsuits lead the parade, ringing a bell which sets the tempo for the procession. Others wear protection cloaks, carry a Little Goddess sculpture, or negligees hung on wooden dowels, collectively called “slut sticks,” which boast titles like “harlot” and “pride.” With these and banners declaring: “Do Not Let the Boys Win,” “No = No. Proud Slut,” Schnitger aims not only to provoke, but illustrate that women have been treated unjustly simply because of the way they dress.

“The slut parades sparked my idea,” she says. SlutWalks call for an end to rape culture, including victim blaming and slut shaming. They started in Canada in 2011 in response to a Toronto police officer suggesting that “women should avoid dressing like sluts” to avoid sexual assault after a woman

See MOVEMENT, page 14

REMEMBERING A MOVEMENT



“It’s cool to see everyone coming together to walk and chant, especially for the people who don’t have a chance to go into museum to see everything,” says participant **Gabrielle Demay**, who wore one of artist **Lara Schnitger’s** constructed backpacks.



City Vice Mayor **Magdalena Carrasco** presents the City of San Jose proclamation to Assistance League President **Donna Christian**. Photo by Barb Nobler

San Jose City Council Honors Assistance League of San Jose

By Susie Lechner
Special to the Times

Assistance League of San Jose was recently honored by the San Jose City Council.

A proclamation plaque was awarded to the League for providing a varied array of services to the local community for more than 35 years.

City Vice Mayor Magdalena Carrasco also honored the Assistance League chapter at its 25th Operation School Bell anniversary this past spring. Operation School Bell (OSB), the League’s signature community program, provides uniforms to students in need at 39

local schools in three different districts.

Vice Mayor Carrasco not only surprised, but also emotionally moved the ALSJ membership when she spoke about how the OSB program had personally affected her family’s life. She recounted that in 2008 her husband was a real estate agent. That was the year the “housing bubble” burst. The family lost everything, and new school uniforms were out of reach. Then their daughter came home one day with two brand new uniforms! Because of their financial situation the uniforms were much appreciated, but

they did not know the name of the group that provided them. It wasn’t until the Vice Mayor was invited to the ALSJ anniversary luncheon that she realized it was Assistance League that had helped her family at a critical time. Her message was, often all that’s needed is a little boost at the right moment to help someone take the next step toward a better future.

ALSJ helped provide that step and other assistance to many local families for over 35 years. The Vice Mayor wanted ALSJ to be recognized in public for what the chapter

See PROCLAMATION, page 8

SEE OUR LISTINGS OF LOCAL REALTORS, CLASSIFIED ADVERTISING AND HOME IMPROVEMENT ADVERTISEMENTS INSIDE THE BACK COVER



1122 Barnes Lane
Listed for \$2,388,000 Sold for \$2,628,880
Sold in 10 Days! \$240,880 over asking!



1189 Spring Hill Way
Listed for \$2,300,000 Sold for \$2,300,000
Sold in 0 Days!



18530 Annie Lane
Listed for \$2,288,000 Sold for \$2,400,000
Sold in 10 Days! \$112,000 over asking!



6562 Graystone Meadow Circle
Listed for \$2,250,000 Sold for \$2,300,000
Sold in 10 Days! \$50,000 over asking!



18750 Annie Lane
Listed for \$2,100,000 Sold for \$2,100,000
Sold in 0 Days!



975 Marlinton Court
Listed for \$1,780,000 Sold for \$1,810,000
Sold in 8 Days! \$30,000 over asking!



6463 Camelia Drive
Listed for \$1,728,000 Sold for \$1,740,000
Sold in 10 Days! \$12,000 over asking!



6747 Mount Pakron Drive
Listed for \$1,650,000 Sold for \$1,750,000
Sold in 8 Days! \$100,000 over asking!



1282 Pampas Drive
Listed for \$1,650,000 Sold for \$1,700,000
Sold in 9 Days! \$50,000 over asking!

Nobody has sold more Almaden homes



962 Hurlstone Lane
Listed for \$1,588,000 Sold for \$1,670,000
Sold in 7 Days! \$82,000 over asking!



6609 Creekview Court
Listed for \$1,550,000 Sold for \$1,550,000
Sold in 0 Days!



1030 Nightfall Court
Listed for \$1,550,000 Sold for \$1,658,000
Sold in 7 Days! \$108,000 over asking!



6114 Calle Esperanza
Listed for \$1,500,000 Sold for \$1,535,000
Sold in 10 Days! \$35,000 over asking!



6611 Whitbourne Drive
Listed for \$1,475,000 Sold for \$1,605,000
Sold in 5 Days! \$130,000 over asking!



6028 Via Madero Drive
Listed for \$1,438,000 Sold for \$1,565,000
Sold in 7 Days! \$127,000 over asking!



1049 Timbercrest Drive
Listed for \$1,438,000 Sold for \$1,480,000
Sold in 10 Days! \$42,000 over asking!



6103 Franciscan Way
Listed for \$1,388,000 Sold for \$1,700,000
Sold in 9 Days! \$312,000 over asking!



1199 Mallard Ridge Loop
Listed for \$1,388,000 Sold for \$1,600,000
Sold in 10 Days! \$212,000 over asking!



1347 Via De Los Reyes
Listed for \$1,325,000 Sold for \$1,475,000
Sold in 6 Days! \$150,000 over asking!



1268 Butterfly Drive
Listed for \$1,288,000 Sold for \$1,420,000
Sold in 10 Days! \$132,000 over asking!



1107 Silver Oak Court
Listed for \$900,000 Sold for \$975,000
Sold in 9 Days! \$75,000 over asking!



THE YOST GROUP

Your neighborhood is our neighborhood too!

Planning a move in 2019?

We'll guide you through every step!

- We'll recommend property enhancements
- We'll guide you on paint colors
- We'll consult on landscaping improvements
- We'll provide 8 hours handyman services
- We'll guide you on reputable inspectors
- We'll advise you on packing and moving
- We'll stage your home
- We'll provide professional HDR photography
- We'll provide professional artistic floor plans and site plans
- We'll create a marketing campaign specifically tailored to your home
- We'll use our decades of local industry expertise and resources to maximize exposure
- We'll use Coldwell Banker's vast global resources to expand global exposure
- We'll have buyers fall in love with your home
- We'll negotiate the best price for your home
- We'll update you every step of the way
- We'll ensure your money arrives in your bank



Margaret Yost
Cal BRE #00947936

David Yost
Cal BRE #01450671



408.599.2130 | www.YostGroup.com | Team@YostGroup.com
1096 Blossom Hill Rd. Ste 200, San Jose

This Week:

COMMUNITY

VTA proposal for 2019
New Transit Service
Plan - meeting set for
February 11: **PAGE 6**

LOCAL

Councilmember Khamis
wants to be your
representative in
Sacramento: **PAGE 10**

COUNTY

Supervisor offers Santa
Clara County's 2018 in
review: **PAGE 17**



HOME

Yes, it's time for tulips:
planting and harvesting
tips and tricks: **PAGE 16**

ALSO

Realtor Guide: **PAGE 22**
Worship Guide: **PAGE 21**
Classifieds: **PAGE 23**

Valley Currents

cur | rent (adj.) Present, topical, timely, newsworthy. (n.) Movement in a definite direction, a flow.



Members, left to right: Janice Alvarez, Marsha Hamner, Nellwyn Doornbos, Margie Brooks, Lynn Duniway, Vivian Reif, Kathy Ereno, Audrey Itow, Judy Collard, Donna Christian

Alpha Kappa participates in 'Shop With a Cop' event

By LeAnne Cooley and
Lynn Duniway

Special to the Times

The Alpha Kappa Chapter of Delta Kappa Gamma participates in a Christmas Giving Project each year.

The chapter worked with Shop With a Cop Silicon Valley (SWACSV). In December, twelve members of the chapter went to Target on Coleman Avenue in San Jose to wrap presents for the students who participated in the "Shop with a Cop" Christmas event. One-hundred, sixty-five low income and at-risk students participated this year.

On the day of the event, the children were picked up in school buses at their home school, and first taken to

breakfast at Santa Clara University, sponsored by SWACSV. Each student had his or her own "cop" buddy. The uniformed law enforcement officers were from many different agencies, including the FBI, DEA, Sheriffs, and the San Jose Police Department.

Upon arrival at Target, they were met with a tumultuous welcome by many volunteers and Target employees, who handed each duo a cart to start their shopping. Each student received a \$150 Target gift card to spend on their family.

The students who attended "earned their way" to the shopping spree in two ways. They participated in the Readers Are Leaders Reading Campaign sponsored by SWACSV and

they maintained good school attendance. Each of the students was given a baseline reading test. Their progress was measured, monitored, supported and encouraged. Several Alpha Kappa chapter members are continuing to work with participating students to help them reach and maintain their reading goals.

For many of these children this was their first contact with police officers and it was an uplifting experience instead of a traumatic one. They bought presents for everyone in their families, including in one instance, the family dog. It was a heartwarming day as well as a lot of fun for all of the Alpha Kappa participants.

Water district files suit to protect Valley water supply

The Santa Clara Valley Water District has filed a lawsuit to challenge the state's plan to reduce water flows on the San Joaquin River and its tributaries – a move that could significantly impact the water supply to Santa Clara County. The water district also challenged the environmental review of the state's plan because it did not take into account the impacts of the plan on Santa Clara County's groundwater.

The State Water Resources Control Board voted in December to mandate an increase to the amount of water that flows through the San Joaquin River and its tributaries, in order to assist endangered and threatened fish species in the Delta. However, to increase the flow in the river and its tributaries, the flow to other water users must decrease. Specifically, the San Francisco Public Utilities Commission will see a significant reduction, which, apart from its supply to San Francisco and other Bay Area cities, will affect the SFPUC's customers in Santa Clara County. The county relies on the SFPUC for 15 percent of its water supply, and a decrease in water from the SFPUC means greater reliance on the water district, especially during droughts. This can create a strain on the groundwater supplies that the water district manages.

The groundwater aquifers in Santa Clara County hold more water than all 10 of the water district's surface water reservoirs combined and form a crucial part of the county's water supply picture. Their importance increases, particularly during droughts. The state's plan could impact these aquifers and substantially affect the water district's ability to meet water

See WATER, page 18

Senior Winter Walk and Resource Fair at Oakridge Mall to be held on Feb. 22

If you are over 50, be sure to attend our 12th Annual Senior Winter Walk and Resource Fair at Oakridge Mall on Friday, Feb. 22.

Festivities take place in the Macy's Court of Westfield Oakridge Mall starting at 8:30 a.m., where a light breakfast will be available following on-site registration.

The Resource Fair is a great time of fun, education, and hanging out with friends – and, of course, the ever-popular door prize drawing!

More than 50 resource vendors from local government, non-profits, businesses, and interest clubs will be attending this year's event.

Bring a gently used pair of eyeglasses and drop them off at the Lions Club table to receive an extra drawing ticket!

The 12th Annual Senior Winter Walk and Resource Fair is made possible by the following generous sponsors: Almaden Times, Westfield Oakridge, South Valley Family YMCA, Star One Credit Union, Alameda Family, Kaiser Permanente, and El Camino Hospital.

For more information, contact Michele Dexter at 408-535-4910 or email michele.dexter@sanjoseca.gov.

Almaden Times

Times Media, Inc. / (408) 494-7000

PUBLISHER / CEO: WILLIAM BELLOU
williamb@timesmediainc.com

SR. ACCOUNT EXECUTIVE: BRIGITTE JONES
brigitte@timesmediainc.com

CONTRIBUTING WRITERS: LORRAINE GABBERT,
FRANK SHORTT, GINA TSOURIS,
NIRBAN SINGH, SEAN EASTWOOD,
JEANNE CARBONE

ART DIRECTOR: JEFF BAHAM

CHIEF FINANCIAL OFFICER: SANDY BELLOU

Copyright © 2019 Times Media, Inc. All rights reserved. The Almaden Times prefers letters to the editor and submissions of guest articles and columns for consideration and possible publication to be sent by email to editorial@timesmediainc.com. All submitted materials become the property of Times Media, Inc., and receipt of unsolicited materials cannot be acknowledged.

LET THE ALMADEN TIMES HEAR FROM YOU!

Send your letters to editorial@timesmediainc.com or mail to: Almaden Times, Silicon Valley Business Center, 1900 Camden Ave., San Jose, CA 95124



MARK & MADELINE CHIAVETTA

THE
LEADING
100
THE TOP PERFORMERS
IN BAY AREA REAL ESTATE

Coldwell Banker International
President's Premier, Top 1%,
#10 Team in the United States



Almaden market is heating up! It's a fantastic time to call the Chiavettas if your thinking about selling!



6608 Leyland Park Drive

Sold off market, over list price
with multiple offers.

7071 Wooded Lake Drive

Sale pending



WE PUT THE "FULL" IN FULL SERVICE!

Mark's Mobile: 408.425.2848 Madeline's Mobile: 408.506.5393
Email: info@thechiavettas.com ■ Webpage: www.thechiavettas.com

410 N. Santa Cruz Avenue - Los Gatos, CA 95030 Madeline CaBRE# 01238932 Mark CaBRE# 013764000



GLOBAL
LUXURY

Times **Community**

New Transit Service Plan VTA proposal for 2019

**By Councilmember
Johnny Khamis**

Special to the Times

On January 10th, the VTA Board of Directors directed staff to begin comprehensive community engagement on the proposed 2019 New Transit Service Plan, which is a revision of the previously adopted 2017 Next Network Plan.

The draft 2019 New Transit Service Plan is VTA staff's proposal for how to implement the Board's recent direction to:

- keep bus and light rail services at levels comparable to present service levels
- place a greater emphasis on serving and increasing VTA riders; and
- minimize service reductions affecting residents in South Santa Clara County.

By keeping bus and light rail similar to current service levels, VTA projects it can save approximately \$15 million annually when compared to the cost of implementing the 2017 Next Network Plan. The cost savings from forgoing the Next Network is estimated at four percent.

Some of the proposed changes for District 10:

- Discontinue light rail service on the Almaden Line to Oakridge and replace it with the Route 80 bus, which would travel along Chynoweth and Winfield, serving bus stops near Oakridge and the Almaden light rail stations. Service would operate at 30-minute frequency, allowing for timed transfers with light rail at Ohlone/Chynoweth Station.
- Discontinue the current Route 13 (named Route 83 in the Next Network Plan). Route 13 connects the Ohlone/Chynoweth Station with



**District 10
Report**
Johnny Khamis,
City Councilmember

Almaden Valley and goes as far south as Almaden and Harry.

- Shorten Route 63, which currently extends south to Almaden and Camden along Meridan and Camden, to end at Blossom Hill. Route 64, which currently ends at Almaden Station would travel further south to Almaden and Camden.

VTA is now seeking public input on the draft 2019 New Transit Service Plan over the next several months. We encourage you to attend a community meeting (dates and locations below) or invite VTA staff to meet with your organization or neighborhood group to discuss the plan.

Upcoming Community meeting details: Almaden Valley Community Association
South Hills Campus of West Gate Church, 6601 Camden Avenue, San Jose, CA 95120
Monday, February 11th | 7pm

More details and maps may be found at <http://newtransitplan.vta.org/>. We strongly encourage residents to visit the website, as it also includes a link to a webpage that members of the public can use to provide input on the proposed plan.

VTA staff will also be conducting community outreach in addition to the community meetings, and will meet with other community organizations and neighborhood groups to discuss the plan.

For more information, please visit the 2019 New Transit Service Plan website or contact VTA's Community Outreach team at community.outreach@vta.org or 408-321-7575 (Monday – Friday, 8 AM to 5 PM).

**2019
CHINESE
NEW YEAR**

Leland Bridge Night

FEB. 2ND, 2019

5:00-8:00PM

LELAND CAFETERIA

For ticket information, please contact winnie.w.chiang@gmail.com or chief@lelandbridge.org

Hosted by Councilmembers
**Johnny Khamis,
Pam Foley & Sergio Jimenez**

**12TH ANNUAL
SENIOR WINTER WALK
& RESOURCE FAIR**

**FRIDAY FEB. 22, 2019
8:30AM-10:30AM**

WESTFIELD OAKRIDGE MALL
925 BLOSSOM HILL RD.
MACY'S COURT

FREE Continental Breakfast!
FREE On-site Registration!
FREE Prize Drawing!

Donate your used eye glasses
at the Lions Club table

Almaden Times
Westfield Oakridge
CITY OF SAN JOSE
CAPITAL OF SILICON VALLEY
Paid for by City of San Jose

the Y SOUTH VALLEY FAMILY YMCA
STAR ONE CREDIT UNION
www.starone.org
KAISER PERMANENTE
Alameda Family
www.funeralcremation.com
El Camino Hospital
THE HOSPITAL OF SILICON VALLEY

For more information 408.535.4910 | michele.dexter@sanjoseca.gov

**Become a
TREE AMIGO**

Love trees? Want to make a difference in San Jose? Want to learn more about urban forestry? Learn to properly plant and identify numerous local trees by becoming a Tree Amigo. Join our **free 5-week course** on urban forestry and volunteer once a month for a year with Our City Forest.

TREE AMIGO CLASS SCHEDULE:
SATURDAYS 9AM - 12 NOON

2/23	Introduction and Tree Tour
3/2	Community Nursery Work Day
3/9	Community Tree Planting
3/16	Lawnbusting Event
3/23	Tree Care & Maintenance

Contact for more information:
treeamigo@ourcityforest.org
ourcityforest.org/tree-amigo
408 • 998 • 7337 x 130

**SIGN UP BY
FEBRUARY 20TH** **OUR CITY FOREST**



**Open House:
Saturday and
Sunday 1-4**



1100 Trevino Terrace Country Club Town Homes of Almaden



This Beautifully remodeled Country Club Town home has an open living concept and contemporary flair. 1,876 square feet of living space offers, 3 bedrooms and 2.5 baths with a large loft area on the second level. Privacy and foothill views are a plus in this corner unit. Conveniently located, walking distance to shopping and Almaden Golf & Country Club.



JACKIE JONES

Realtor®

408.315.6186

jjones@cbnorcal.com | www.JackieJonesSells.com

COLDWELL BANKER RESIDENTIAL BROKERAGE | 1096 Blossom Hill Rd. #200, San Jose, CA 95123



CalRE#00595786

Times **Feature**

Symphony Silicon Valley presents Tchaikovsky's Fifth Symphony; Superstar Anne Akiko Meyers performs Barber's Violin Concerto

Symphony Silicon Valley presents Tchaikovsky's Fifth Symphony Saturday, March 2, 2019 at 8:00 p.m. and Sunday, March 3, 2019 at 2:30 p.m. at The California Theatre, 345 South First Street in downtown San Jose.

The opener is a musical tour through the folk traditions Bartók studied, full of life and complex rhythm.

Barber's virtuosic violin concerto follows, combining lush Romantic lyricism and angular 'modern' energy, with a brilliant ending that is a notorious test of the violinist's skill. In

The second half of the concert, we hear Tchaikovsky's magnificent symphony, with its unparalleled mastery of all the orchestra's voices -- famously played through without a pause in WWII Leningrad during a ferocious bombing attack.

PROGRAM:

Béla Bartók: Romanian Folk Dances

Samuel Barber: Violin Concerto, Op. 14

Pyotr Ilyich Tchaikovsky:



Violin superstar **Anne Akiko Meyers** is one of the most in-demand violinists in the world.

Symphony No. 5 in E minor, Op. 64

Conductor: John Nelson
Soloist: Anne Akiko Meyers, violin

PRICES: \$50 - \$94

BOX OFFICE: 408.286.2600

or visit www.symphonysiliconvalley.org

Or, visit the Box Office between 10am and 5pm, Monday through Friday at 325 South First Street in downtown San Jose, between San Carlos and San Salvador Streets just one-half block from the California Theatre. Easy, inexpensive parking is just one block away

at San Jose City Garage on San Carlos Street with entrances on 2nd and 3rd Streets.

About John Nelson

The distinguished conductor John Nelson is internationally renowned for his interpretation of large Romantic works including the great works of Berlioz. Central to John Nelson's work is the great sacred choral literature. John Nelson holds the title of Directeur Musicale Honoraire of the Ensemble Orchestral de Paris and Artistic Director of Soli Deo Gloria.

About Anne Akiko Meyers

Violin superstar, Anne Akiko Meyers, is one of the most in-demand violinists in the world. Regularly performing as guest soloist with the world's top orchestras, she presents groundbreaking recitals and is a best-selling recording artist with 36 albums. Meyers is known for her passionate performances, purity of sound, deeply poetic interpretations, innovative programming and commitment to commissioning significant new works from living composers.

Proclamation

Continued from page 1
does for the San Jose community through OSB and its six other programs, and a date to appear before the City Council was arranged. At the Council meeting, Mayor Sam Liccardo assisted Vice Mayor Carrasco in awarding the City Proclamation. They also honored the six other community programs' chairpersons with certificates of their own, thanking each for their devotion of time, talent, leadership and dedication to those in need in the local community.

As a non-profit organization, the chapter's programs are supported by major contributions from The George and Jeanette Stuart Trust, Applied Materials, Star One Credit Union, Safeway, and the Almaden Valley Women's Club. Their generosity enables ALSJ to help others.

Happy New Year 2019!

You had me at I need to sell or buy my home!

Carol Camilli Montgomery is celebrating over 20 years of selling real estate in the Bay Area (I love real estate!).

You've probably seen me with my dogs on the hiking trails, at my open houses or all around the Bay Area. My past clients have given me glowing reviews. Thinking of buying or selling in the coming months call me to discuss your real estate needs today!

CAROL CAMILLI-MONTGOMERY

REAL ESTATE PROFESSIONAL BRE #01210160

■ WWW.CAMILLIHOMES.COM

■ CAMILLIHOMES@SERENOGROUP.COM

■ CELL: 408.209.7809

AMY MCCAFFERTY

NATIONALLY RANKED - TOP 100 - WALL STREET JOURNAL/REAL TRENDS LIST 2018



6453 CRANBROOK COURT, ALMADEN

Beautifully updated contemporary home just minutes from neighborhood schools, parks and hiking trails!
Offered at \$1,548,000 | 6453CranbrookCt.com



16212 GEORGE STREET, LOS GATOS

Laurel Mews neighborhood, charming Craftsman-style home with designer finishes and state-of-the-art technology!
Offered at \$2,499,000 | 16212GeorgeSt.com

A Walk-Thru with Amy



Tips and Trends

Declutter & Simplify

Shorter, darker days can make a home dreary, removing excess can help to freshen things up. Simplifying, by decluttering is a great way to start. Whether you are getting ready to sell or just want to purge excess, de-clutter to a lighter look!

Find more information at Amy's blog: amccafferty.com/blog



COMING SOON!

15810 SHANNON HEIGHTS, LOS GATOS

Spectacular city light views in a peaceful setting yet close to town! A slice of paradise!
Offered at \$2,798,000

AMY MCCAFFERTY

408.387.3227

amccafferty@apr.com

amccafferty.com

License #00967324


- Top 1% in Santa Clara County based on sales dollar volume
- 100 most influential real estate agents in Northern California, 2015 - present
- Top producing agent, ranked by The Wall Street Journal and REAL Trends 2018
- 5-star reviews on Zillow, Trulia and Yelp
- Professional Interior Designer



Times News Briefs


ALMADEN VALLEY LAWYERS®

A Division of Roeser Law, PC



Steven R. Roeser ■ Attorney at Law

www.almadenvalleylawyers.com

<p>Estate Planning & Wealth Preservation</p> <ul style="list-style-type: none"> Wills and Trusts Tax Planning Probate and Trust Administration Probate and Trust Litigation <p>Corporate & Start Up Law</p> <ul style="list-style-type: none"> Business Entity Formation Outside General Counsel Services Commercial Contracts Financing Transactions Investment Transactions Mergers and Acquisitions Employment Agreements Stock Option Plans 	 <p>Personal Injury</p> <ul style="list-style-type: none"> Catastrophic Injury Suits Wrongful Death Suits 	<p>Commercial Real Estate & Construction Law</p> <ul style="list-style-type: none"> Construction Agreements Purchase and Sale Agreements Financing Transactions Hospitality/Hotel Transactions <p>Civil Litigation</p> <ul style="list-style-type: none"> Corporate Litigation Commercial Real Estate & Construction Litigation Employment Litigation <p>Intellectual Property Law</p> <ul style="list-style-type: none"> Registration/Protection Licensing Agreements Infringement/Enforcement Actions
---	---	--

Serving Silicon Valley Small Businesses and Individuals Since 1970
Thousands of Transactions and Litigation Cases Handled Successfully
Results Oriented, Personal and Professional Legal Team With a High Level of Business Acumen

We Would Be Delighted To Hear From You! Contact Us At:

Almaden Valley Lawyers
(A Division of Roeser Law, PC)

Phone: 408.268.9500 Los Gatos Office Opening in January 2017
Email: info@almadenvalleylawyers.com Offices in Menlo Park and San Francisco

Khamis wants to be your representative in Sacramento

District 10 San Jose Councilman Johnny Khamis will represent more residents than he currently serves should he win the seat held by termed-out state Senator Jim Beall in upcoming 2020 election.

Khamis, a former republican who left the party after disagreeing with Trump's immigration policies, has served on the San Jose City Council seat representing Almaden Valley since 2012.

Khamis said: "I'm running because I feel we need some different voices in the California State Legislature to bring a balance to what has become a very one-sided discussion. Fiscal responsibility needs to be heard in Sacramento, and that's exactly what I plan to do."

Khamis has ruled out running for San Jose mayor. "I believe I can make a bigger difference in Sacramento," said Khamis. "I have a great reputation working well with others, and I believe I have done a lot of successful things at City Hall working with people that are considered to be more liberal than I am."

Senate District 15 spans most of Santa Clara County, including San Jose, Campbell, Cupertino, Los Gatos, Monte Sereno and Saratoga.

City Council approves e-Scooter regulation

In response to widespread reports of serious injuries as a result of electric Scooter collisions in U.S. cities, Mayor Liccardo and the City Council approved requirements that e-scooter companies deploy innovative technology-based safety solutions to operate in San Jose.

The Mayor calls for companies to leverage geo-fencing technology to prevent scooters from operating at high speeds on

sidewalks. The Mayor has also called for technology to be implemented to restrict designated parking locations to prevent scooters from parking in obstructive spaces - like ramps critical for ADA access.

San Jose minimum wage rises to \$15

The minimum wage within San Jose has risen to \$15 per hour effective Jan 1, 2019.

Three years ago the goal among mayors in Santa Clara County was to reach the minimum wage in cities throughout County at a rate faster than the rest of the State of California. Going forward, the San Jose minimum wage will be automatically adjusted with cost-of-living increases (based on CPI, up to 5%) annually.

In September 2015, Mayor Liccardo launched an effort with fellow mayors in Santa Clara County and the Cities Association of Santa Clara County to raise the minimum wage across the region. As a result of these efforts, in November 2016, the San Jose City Council adopted a multi-step increase in the minimum wage that has now resulted in a \$15 minimum wage.

Through the regional effort spearheaded by Mayor Liccardo, several other Santa Clara County cities adopted ordinances to raise the minimum wage to \$15 by the year of 2019, including: Cupertino, Los Altos, Milpitas Mountain View, Palo Alto, Santa Clara and Sunnyvale.

"Our efforts to raise the minimum wage will provide a significant boost for the thousands of hard-working families across the valley who continue to struggle to keep up with rising costs," said Mayor Liccardo. "By moving forward with many of our neighboring cities, we'll ensure that more of our residents benefit from a higher wage and that we have a more even playing field for our small businesses."



san jose neighbor nights second fridays

almaden community center

Building Community Through Fun

Every Second Friday of the Month at 6:30-8:30 p.m.

FREE ACTIVITIES FOR ALL

Our community center will be hosting free activities every second Friday of the month! Rep our center by posting on your social media with **#SJNeighborNights!**

RSVP on our Facebook Event at tinyurl.com/SJNeighborNights

For more information, please contact (408) 268-1133.

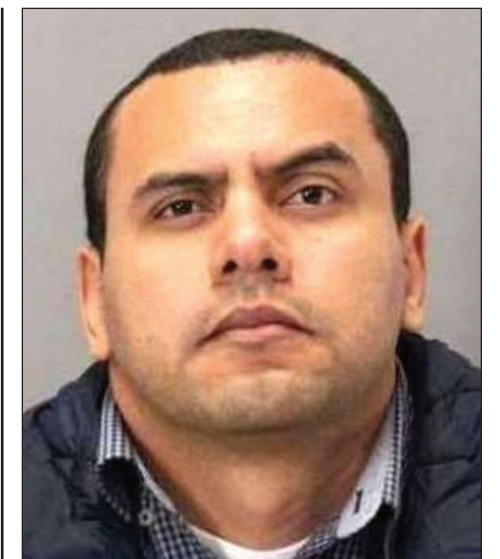
Pioneer High School Teacher arrested for inappropriate conduct with student

Ricardo Chavarria, 37, a Spanish Teacher at Pioneer High School, has been arrested for alleged inappropriate conduct with a 17-year old female student.

Chavarria, a resident of San Jose, was booked into Santa Clara County Jail on multiple felony sex charges with a minor on Tuesday, Jan. 22. Police said a staff member at the school called them to report the teacher. Chavarria was arrested at the school.

An investigation by the San Jose Police Department revealed that the assaults happened inside the classroom between November and December 2018, according to Sgt. Enrique Garcia.

Anyone with information regarding



Ricardo Chavarria

this incident or any other similar incidents are urged to contact Detective Frank Montoya of the San Jose Police Department's ICAC/CED Unit at (408) 537-1382.

Persons wishing to remain anonymous may call the Crime Stoppers Tip Line, (408) 947-STOP (7867).

Times Features

The Tabard Theatre Company announces Summer Youth Theatre Camps for 2019

The Tabard Theatre Company released its 2019 schedule for its Summer Youth Theatre Camps, beginning June 17 through Friday, July 19 for youth ages 6-14.

Tabard's Youth Performing Arts Summer Camps are fun musical theatre adventures for youth of all skill levels. Each Summer, Tabard Theatre conducts two 1-week sessions and one 2-week session.

Session I is for children ages 6 to 10, Session II is for children 7 to 12 and session III (two week) is for children/youth ages 8 to 14. Camps run Monday through Friday from 9 a.m. to 2 p.m. Each camp ends with a final showcase performance.

The Summer Youth Camps will be held at the Tabard Theatre (formerly Theatre on San Pedro Square), 29 N. San Pedro Street, San Jose, CA 95110 (Parking is validated at the San Pedro Garage directly across the street).

Camps run Monday through Friday from 9 a.m. to 2 p.m. at Tabard Theatre.

For more information, contact the Box Office by phone: 408.679.2330 or www.tabardtheatre.org/tickets. Tuition: Sessions I and II \$295 (\$275 before April 1, 2019) Session III (two-week camp) \$535 (\$515 before April 1, 2019) Lunches available for \$60 per week.

Camp Schedule:

Session I – June 17 – 21 (9 a.m. to 2 p.m.); Session II – June 24 – 28 (9 a.m. to 2 p.m.); Session III (two-week camp) – July 8 – 19 (9 a.m. to 2 p.m.)

Session I – June 17 – 21 (9 a.m. to 2 p.m.)

101 Dalmatians Kids Ages 6 to 10 years.

About: Set in the city of London, Dalmatian parents Pongo and Perdita raise their 15 Dalmatian puppies in a small house, along with their human pets, Roger (a composer) and Anita (an artist).

One day when Cruella De Vil spots the Dalmatian puppies, she is dazzled by their spotted fur and decides that their fur would be perfect for her new fur coat!

As the puppies get lured away, Pongo and Perdita must summon the other dogs of

London, as well as Sargent Tibbs, to help rescue the puppies from Cruella. You'll love the magic of 101 Dalmatians!

Including favorites "Dalmatian Conga" and "Cruella De Vil."

Session II – June 24 – 28 (9 a.m. to 2 p.m.)

How to be a Pirate in 7 Easy Songs

Ages 7 to 12 years

About: Hoist the sail and join the pirate crew! An ornery, yet sweet Captain and the 1st mate transform landlubbers into pirates. Through story and song, the shipmates raise the Jolly Roger flag, spy with telescopes, find buried treasure, & show "thar" pride in a raucous pirate party. Shiver me timbers!

Session III (two-week camp) – July 8 – 19 (9 a.m. to 2 p.m.)

Disney Mulan Jr.

Ages 8 to 14 years

About: The Huns have invaded, and it is up to the misfit Mulan and her mischievous dragon sidekick, Mushu, to save the Emperor! Defying the village matchmaker, Mulan takes up arms and disguises herself as a boy in order to spare her father from having to serve in the army. As the great battle with the Huns approaches, Mulan must choose between revealing her true identity as a girl or saving all of China with her clever plan.

Camp: \$535 (\$515 before April 1, 2019). Lunch: \$120 Tabard's Mission

Tabard's mission is to provide live entertainment experiences that are enlightening, appropriate and affordable for audiences of all ages. We champion new works, innovative interpretations, and unique plays rarely staged. Tabard is an inclusive environment where the community can participate in every aspect of the plays, musicals, educational programs and music concerts we produce. With altruistic attention to the underserved, Tabard reaches out to communities such as the visually impaired and children in low-income areas, and donates a portion of each production's concessions proceeds to a designated local charity.

State Supreme Court denies appeal to block 'Measure B'

As the Almaden Times went to press, the State Supreme Court denied the appeal to block the 2016 "Measure B" traffic relief and transit improvement initiative passed Santa Clara County voters in November of 2016.

The Supreme Court was the last of three courts that sided with Measure B, saying the Valley Transportation Authority (VTA) can proceed to disburse funds for transit improvements.

"The road block against road and transit improvements has been cleared," said Silicon Valley Leadership Group CEO Carl Guardino, who led the 3-year effort to qualify and pass Measure B on the 2016 ballot. "Voters will now receive the improvements promised in Measure B, paving the way for work to get started to improve the quality of life for 1.9 million county residents."

Resolve to give blood with the Red Cross

The American Red Cross encourages people to help meet the urgent need for blood and platelets by resolving to give blood this month. January is National Blood Donor Month.

Donating blood or platelets is a way to make a lifesaving impact this year for patients like Judy Janssen, who was diagnosed with end-stage autoimmune liver disease in 2016. Janssen received frequent blood transfusions – sometimes multiple times a week – until she underwent a liver transplant last January.

"Blood donors make a really big difference with very little effort," said Janssen, who received dozens of transfusions before and during her transplant surgery. "I wouldn't be here if it wasn't

for blood donations."

The Red Cross encourages eligible donors to resolve to give blood or platelets regularly, beginning in January. To encourage donations immediately, all those who come to donate by Jan. 6 will get a long-sleeved Red Cross T-shirt, while supplies last.

Make an appointment to donate blood or platelets by downloading the free American Red Cross Blood Donor App, visiting RedCrossBlood.org or calling 1-800-RED CROSS (1-800-733-2767).

Another way to help keep the blood supply strong in the new year is to host a Red Cross blood drive. To learn more about hosting a blood drive and to sign up, visit RedCrossBlood.org/HostADrive.

How to donate blood: Simply download the American Red Cross Blood Donor App, visit RedCrossBlood.org or call 1-800-RED CROSS (1-800-733-2767) to make an appointment or for more information. All blood types are needed to ensure a reliable supply for patients. A blood donor card or driver's license or two other forms of identification are required at check-in. Individuals who are 17 years of age in most states (16 with parental consent where allowed by state law), weigh at least 110 pounds and are in generally good health may be eligible to donate blood. High school students and other donors 18 years of age and younger also have to meet certain height and weight requirements.

Blood and platelet donors can save time at their next donation by using RapidPass® to complete their pre-donation reading and health history questionnaire online, on the day of their donation, before arriving at the blood drive. To get started, follow the instructions at RedCrossBlood.org/RapidPass or use the Blood Donor App.

Electronic Waste Collection Fundraiser

Help the City get rid of E-Waste the right way by diverting it from the landfills to a proper recycling process!

- E-waste is the fastest growing municipal waste stream in America, according to the EPA.
- 56% of American households have functional e-products that they will no longer use.
- Less than 15% of e-waste is currently being properly dismantled or recycled.
- 70% of heavy metals, 40% of lead found in today's landfills come from e-waste.

Saturday Feb 2, 2019

9:00am - 4:00pm (Rain or Shine)

1290 Blossom Hill Rd

San Jose CA 95118

Money raised will benefit the Pioneer High Education Foundation!

What is "E-waste"?

E-Waste is defined as any consumer electronic equipment that has reached its 'end-of-life,' 'end-of-usage,' whether in full or non-working condition.

FREE RECYCLING: Computer Monitors, Televisions/LCD's, PC's, Servers, Laptop/Tablets, Cell Phones, PC Boards, Wire

\$5 per ITEM Fee Recycling: Printers, Small Copiers, Scanners, Fax Machines, UPS & PDAs, Main Frame Units, Networking devices, VCR/VCD/DVD Players, Home Entertainment Systems, Landline Phones, Radios, Stereo Equipment, Medical Devices, and small household electronic devices.

Not accepting: Microwaves, Florescent bulbs, Smoke detectors, Vacuum cleaners, Large Appliances, Batteries or Fitness Equipment

ALL ITEMS ARE PROCESSED IN A CERTIFIED CA RECYCLER. NOTHING GOES TO THE LANDFILL OR CHINA

1-877-715-5515



Better rates, more savings and all about YOU.

As a member-owned, not-for-profit institution, we reinvest our profits to help improve financial wellness for our members. We'll help strengthen your financial future with personalized advice, lower rates and fewer fees than you'll find at big banks.

See your savings soar with one of the best rates in the nation.¹

3.00% APY ² Money Market Select Account		
Patelco Credit Union 3.00% APY	Wells Fargo	0.01% APY
	Chase	0.01% APY
	Bank of the West	0.01% APY

Money market account rates on a balance of \$2,000.

**Now open at
Almaden Ranch
Marketplace in
San Jose.**
5185 Cherry Avenue,
Suite 50, San Jose

You earn:	On your balance of:	It adds up to: (blended APY)
3.00% APY	\$1 – \$2,000	
2.00% APY	\$2,000.01 – \$5,000	2.40% on \$5,000
1.00% APY	\$5,000.01 – \$10,000	1.70% on \$10,000
0.50% APY	\$10,000.01 – \$50,000	0.98% on \$25,000

Calculate your blended APY on any deposit amount at patelco.org/MoneyMarket

Patelco[®]
CREDIT UNION

patelco.org/Almaden

¹Bankrate.com 09/01/18.

²APY=Annual Percentage Yield. Rates are valid as of 09/01/18 for balances up to \$2,000 and are subject to change after account opening without notice. Interest is paid at tier rates on balances within each tier. Total interest paid is the sum from each tier. "Blended APY" shown assumes the amount deposited is held in the account for one year. Withdrawing funds before one year will result in a different realized rate. Blended APY for higher tiers: \$50,000.01 - \$100,000 is 0.74% - 0.50% APY; \$100,000.01 - \$9,999,999 is 0.50% - 0.20% APY. No minimum deposit required to open an account. Limit one Money Market Select Account and one Money Market Select IRA Account per account number.

KW BAY AREA ESTATES

DRIVEN BY EXCELLENCE



15280 Blackberry Hill Road, Los Gatos
Offered at \$3,999,000
Mario Ramirez | 408.605.9999



1132 Millbrae Avenue, Millbrae
Offered at \$3,488,000
Steve Cooper | 408.828.0859



19361 Mountain Way, Los Gatos
Offered at \$2,699,000
Judi Matlack | 408.821.3533



14801 Berry Way, San Jose
Offered at \$2,399,950
Jim Myrick | 408.836.5375



150 Whitney Avenue, Los Gatos
Offered at \$2,399,000
Michael Kenyon | 408.529.0248



1194 Magnolia Ave, San Jose
Offered at \$1,995,000
Mark von Kaenel | 408.568.6602



1704 Grizilo Drive, San Jose
Offered at \$1,648,000
Ryan Larocca | 408.740.3356



2964 Custer Drive, San Jose
Offered at \$1,280,000
Shannon Rose | 408.915.7024



3087 Muirdrum Place, San Jose
Offered at \$1,150,000
Julie Wyss | 408.687.2026



408.560.9000
KWBAE.com

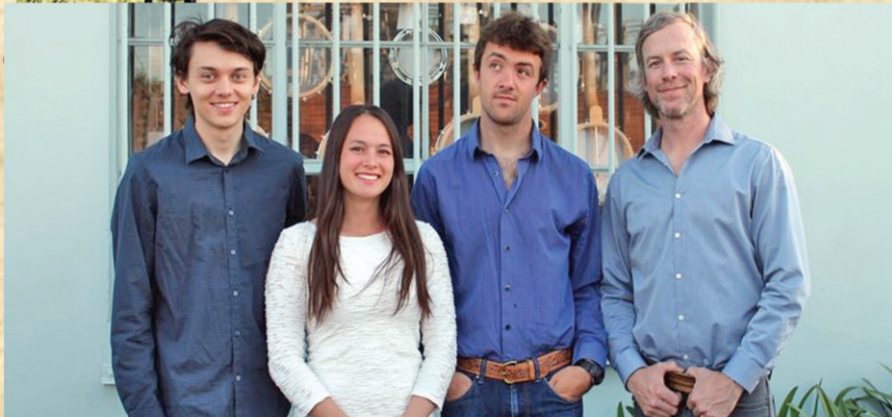
Los Gatos | Almaden Valley | Saratoga | Los Altos

Agent DRE#s for featured listings: Mario Ramirez DRE#01093234, Steve Cooper DRE# 01237958, Judi Matlack DRE# 01159697, Julie Wyss DRE# 01350871, Mark von Kaenel DRE# 01189869, Michael Kenyon DRE# 01942685, Jim Myrick DRE#00893246, Ryan Larocca DRE#01967232, Shannon Rose DRE#01422955

Each Office Independently Owned and Operated. All information in this document is from sources deemed reliable but is subject to errors, omissions, or changes without prior notice. All information should be independently confirmed, and any reliance is solely at buyer's own risk. Equal Housing Opportunity.



**FOOTHILL COMMUNITY
CONCERT SERIES
AMERICANA**



AJ LEE AND BLUE SUMMIT



**SATURDAY, FEBRUARY 9TH AT 7:00 PM
\$20.00 ADVANCE / \$22.50 DOOR**

Fueled by the powerfully sweet voice of seven-time NCBS award winning vocalist AJ Lee and the masterful instrumental work of the band,

Blue Summit has created an exciting repertoire of originals and covers spanning many genres including Bluegrass, Folk, Americana, Western Swing, Jazz, and Blues.

CONCERTS ARE LOCATED AT FOOTHILL PRESBYTERIAN CHURCH, 5301 MCKEE ROAD, SAN JOSE
TICKETS ARE AVAILABLE AT THE DOOR OR ONLINE AT WWW.FOOTHILLPC.ORG/FCCS
ADVANCE TICKET DISCOUNT AVAILABLE ONLINE UNTIL 48 HRS PRIOR TO CONCERT START



Marching by City Hall added a sense of purpose to the procession.

Movement

Continued from page 1
wearing a short skirt was raped.

“Whatever we’re wearing doesn’t mean we’re asking for it,” says Schnitger. “It’s fascinating compared with suffragettes, who wore long white gowns, to see what women are wearing now while protesting in SlutWalks in Europe: they’re going naked or wearing lingerie and writing on their bellies: ‘still not asking for it.’ No matter what we’re wearing, we’re not asking for it. It’s interesting over time how we use our bodies to express ourselves. I started this in 2016, before the Women’s March and Me Too movement. I sensed this was in the air. I feel it’s getting more and more attention and becoming a bigger platform.”

“You see leather, lace, fur undergarments,” says Curatorial Associate Kathryn Wade. “Schnitger is looking at SlutWalks in Europe in response to women having ownership of our bodies and making choices about what we wear. ‘Yes means Yes. No means No’ is about empowerment and everyone’s right to have ownership over their own body and self-expression.”

“I feel so thankful to be able to be a part of something like Suffragette City,” says SJMA Director of Development

Kristin Bertrand. “We’re all here because of the sacrifice, commitment and vision of the women who came before us and fought 100 years ago this year.”

Schnitger likes to cross history with ideas. “With references to sexuality, fashion and feminism...Schnitger uses lace, rhinestones, leather, and silk to create abstracted figures balanced between dress and undress,” says Curator Lauren Schell Dickens. “Her colored quilts are emblazoned with protest slogans from T-shirts, bumper stickers and buttons.”

“It is inspiring performance art and a joyful remembrance of the long history of women working together to secure equality,” says Trustee Lisa Lubliner. “We’re here to celebrate milestones such as the 19th Amendment, Title IX, and the Equal Pay Act, but we also have an eye to the future: namely equal representation in government and industry.”

As the exhibit winds its way through downtown, it captures the attention of passersby and invites the community inside the museum.

“We activated these works,” says Wade. “It’s a core part of the museum’s strategic plan over the next five years to look beyond the museum walls. This is a great representation of artwork mov-



Drive home the savings.

Al Olseen

State Farm Agent

3267 S White Road,
San Jose, CA 95148
Phone: (408) 274-4900
Hours: 9 am – 6 pm
(Lunch 1-2 pm)

Car and home combo.

Combine your homeowners and car policies and save big-time.

Like a good neighbor, State Farm is there.®
CALL ME TODAY.



State Farm Mutual Automobile Insurance Company
State Farm Indemnity Company, State Farm Fire and Casualty Company
State Farm General Insurance Company
Bloomington, IL



Times Features

ing from the gallery into the streets. It's thrilling to see that in action. Sometimes there is a sense of boundaries when things are inside, and you don't know what a museum holds. It's awesome to have it in a public space and rewarding to see art playing a civic role. We know art sparks really important conversations and in a performance like Suffragette City, that role is on view for everyone in the community to see and participate in."

"We're really striving to be a borderless museum," says Melanie Samay, SJMA Director of Marketing and Communications. "We're taking art out into the streets and allowing people to see it outside of the gallery—people who may not have gone to the museum before—and encouraging them to visit us. We don't want walls or barriers. We're striving to make sure the museum is inclusive, open and welcoming to everyone."

With thought provoking exhibits focusing on migration, borders and social justice, the museum is encouraging community discourse about difficult topics. "We're trying to bring them to life and create a dialogue reflecting what the community is thinking and talking about," says Samay. "We are a place for the community to gather and have conversations. We're not just showing traditional art. There are so many different types of media, including video and sculptures made of wood and material."

"Inspired by wanderlust and the desire to present views of walking by artists from the Bay Area to around the world, we opened the exhibition Other Walks, Other Lines...starting with Lara Schnitger's Suffragette City...to proudly celebrate the achievements of women in challenging political times," says SJMA Executive Director Susan Sayre Batton.

"You dream it up alone in the studio," says Schnitger. "You make your art pieces and wonder how will it look? Then all the volunteers come: people who want to be part of it. When everything comes together and we're out on the streets, there's always that moment of realization: We're doing it now. We're doing it!"

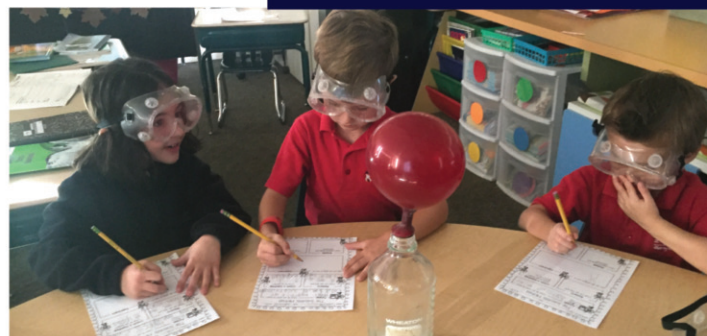
"It feels right for the San Jose Museum of Art because we believe in being part of our community and bringing art out," says Trustee Hildy Shandell. "What better thing to do than something that talks about women and their empowerment and what we all have to do to help that empowerment?"



The works of artist Lara Schnitger speak of the rights of women to self-expression without recrimination for their fashion choices.



(L to R: Ruth Koffman, Deanna La Torre and Nancy Coleman were delighted to participate in the Suffragette City event.



Excellent academics in a nurturing environment.

Holy Spirit School, where students, teachers, parents and staff enrich our FAITH, seek KNOWLEDGE and experience COMMUNITY everyday.

COME SEE FOR YOURSELF!
PRE-K TO 8TH GRADE
OPEN HOUSE
JANUARY 27, 2019
10:30 AM TO 1 PM



 **HOLY SPIRIT SCHOOL**
Faith.Knowledge.Community.

1198 Redmond Avenue
San Jose, 95120
408.268.0794

www.holyspirit-school.org

Calling ALL Players

Sign Up NOW!

@www.AVGSL.org

2019 Softball

6U, 8U, 10U 12U & 14U



ALMADEN VALLEY

GIRLS SOFTBALL LEAGUE

- Families will receive a \$20 discount per registered sibling for all age groups
- \$50 credit for each "New Player" referral

Grab a Friend and Come Join Our Team!

Yes, it's time for tulips!

After the glitter of Christmas and the glamour of New Year's Eve, January calls for a fresh new start with a smile on its face. Do it with tulips! January is exactly when these blithe and bouncy florist favorites become widely available in all kinds of varieties and sizes.

Time for tulips

Spring simply can't start soon enough. Although spring might be keeping you waiting outdoors, you can still have it indoors - with tulips! Their bright colors and elegant shapes lift your spirits and boost your energy level. These historic yet trendy flowers will cheer up the look of any room.

Shapes and colors

Because plant breeders have succeeded so well in crossing tulips over the centuries, you now have an extremely wide choice in flower colors and flower shapes. There are single-flowered, double-flowered, lily-flowered and fringed tulips - and these are just some of them. Did you know that tulips in certain colors even have a special meaning?

- Red tulip: perfect love
- Yellow tulip: happiness
- White tulip: forgiveness
- A mixed bunch of tulips: elegance

Enjoy them longer

Will you be bringing spring indoors with tulips? If so, it would be good to

know how to care for them so you can enjoy them as long as possible.

1. As soon as you bring them home, roll the tulips up in some newspaper and put them in a vase filled with water at room temperature. The tulips will become completely saturated with water and stand up

nice and straight.

2. Then trim the stems at an angle. The leaves can remain attached to the stem since they will not decay in the water. Arrange the tulips in a clean vase filled with fresh tap water at room temperature.

3. Tulip stems will lengthen considerably in the vase and gradually turn into an impressive natural work of art, so remember this when selecting the vase.

4. Put your vase of tulips in a place where you can see and enjoy them. Full sun, however, should be avoided if possible since this will reduce the flowers' vase life.

5. And, since tulips will mature faster if placed next to a bowl of ripening fruit, it's best to keep them away from the fruit bowl.

6. Keep your watering can handy, since these flowers are exceptionally thirsty. Top up the water in the vase often.

More inspiration about tulips and other bulb flowers is available at www.ilsays.com.




ALMADEN LAW GROUP
Amy L. Horowitz Attorney at Law

Almaden Law Group provides estate planning and probate services.

Amy is committed to delivering high value services at a reasonable price. She establishes a comfortable, compassionate and trusting relationship with her clients.

Contact Almaden Law Group to schedule a free initial office consultation.

Almaden Law Group
6501 Crown Boulevard, Suite 200
Phone: 408-268-8530
Email: amy@almadenlawgroup.com
www.almadenlawgroup.com
Now accepting all major credit cards





Festive February Dinner Celebration

Saturday, February 2, 2019

CELEBRATE WITH US AT THE
Italian American Heritage Foundation Cultural Center

We're throwing a party to welcome the festive month of February. Don't miss this chance to celebrate our "special guest" Christopher Columbus in his new home with **dining, dancing and fun for all.**

Saturday February 2, 2019
Italian American Heritage Foundation Cultural Center
425 N. 4th Street, San Jose, CA 95112
Doors and wine and beer bar opens at 5:00 / Dinner served at 6:00
Live entertainment 6:30 - 9:00
\$40 per person / \$20 for children under 12
RSVP by email at iahfsj@iahfsj.org
or call 408-293-7122

Proceeds from this event will help fund the Italian American Heritage Foundation

Times Feature

Santa Clara County 2018 in review

By Supervisor Mike Wasserman

Special to the Times

A few highlights of the past 12 months from Santa Clara County Supervisor Mike Wasserman (representing San Jose, Los Gatos, Monte Sereno, Morgan Hill, San Martin and Gilroy)

New Animal Services Center Coming.

Construction of the new Center is scheduled to break ground in Spring 2019, with a move-in date of mid-2021. The new 37,000 square foot building on 4.5 acres will replace the current facility in San Martin with an innovative and sustainable building design in a park-like setting. The no-kill Center will serve dogs, cats, horses, sheep and much more. It will also be an inviting destination for visitors focused on animal welfare, care, and education and will include a community multi-use room. Donations are now being accepted to help save and enhance the lives of shelter pets: www.countypet.org

Making Magic at Our Playgrounds. Children of all abilities deserve a safe and fun place to play, which is

why I am proud that the County approved \$10 million in matching funds for many new all-inclusive playgrounds. Instead of one centrally-located playground, soon our County will have Magical Bridge Playgrounds located in San Jose, Morgan Hill, Sunnyvale, Mountain View and Palo Alto to provide fun for people with autism, sensory challenges, cognitive developmental, physical disabilities, as well as those without special needs. In addition, we just approved several more playgrounds including one at Lake Almaden.

Exchanging Food for Library Fines.

As Chair of the Santa Clara County Library District (SCCLD), I am proud of the 7,936 patrons who took part in our "Food for Fines" program designed to clear library fines in exchange for food donations to Second Harvest Food Bank. A total of 18 tons of food (30,000 meals) were collected! The popular amnesty program offered SCCLD library card holders the chance to quickly return to good standing and enjoy full borrowing benefits while helping someone in need put food on the table, making this truly a win-win program.

Improving Street Safety. The County and the City of San Jose collaborated to improve safety and traffic on Branham Lane and Snell Avenue. Thanks to an innovative exchange of parkland, plans are now moving forward with a street-widening project near Martial Cottle Park. I am grateful for Councilmember Johnny Khamis's dedication to working with us on this win-win for San Jose residents.

Preserving Hospital Services. In 2014, I shared many residents' concerns when the Daughters of Charity announced their plans to sell O'Connor

Hospital in San Jose, St. Louise Regional Hospital in Gilroy, and the De Paul Health Center in Morgan Hill. The newest owner -- Verity Health System -- announced bankruptcy in 2018, and the County won the bid to purchase the hospitals for \$235 million, preserving access to healthcare for thousands of people living in San Jose and South County.

Building a Community Garden. A new Community Garden will soon spring up at Martial Cottle Park, thanks to an agreement between the County and the City of San Jose. The forthcoming public

garden space will operate in collaboration with existing partners including Our City Forest, Jacobs Farm, and University of California Cooperative Extension. The gardens reflect Martial Cottle Park's dedication to preserving and promoting our Valley's agricultural heritage.

Housing Homeless Veterans.

In collaboration with the City of San Jose, the Housing Authority and Destination: Home, the "All the Way Home" housing effort has resulted in housing for 1,237 local veterans to date. Additionally, the County made our Landlord Incentives Program a permanent resource and increased ongoing funding for supportive housing programs for homeless veterans by \$1.8 million annually.

Building Affordable Housing. In November 2016, Santa Clara County voters approved a \$950 million Affordable Housing Bond to produce new affordable housing units and to assist first-time homebuyers. It is projected that the Housing Bond will fund 120 new affordable housing developments over ten years. Just 18 months into the County's ten-year plan, over \$234 million in funding has been approved for 19 multi-family housing developments across six cities in Santa Clara County for a total of 1,437 new affordable apartments and 484 renovated apartments.

Ensuring an Accurate Census Count.

We are working hard now to make sure that all communities are counted in the upcoming 2020 Census -- a constitutional requirement to count everyone living in the United States. Congressional representation is based on the Census, as are significant amounts of funding; nearly \$2,000 per person per year in federal money comes into California based on census-derived data.

Leading in Women's Equality. The Women's Equality 2020 Leadership Council was established by the Board of Supervisors in 2018 to assist in the County's efforts to commemorate and honor the 100th anniversary of women's suffrage, help ensure a complete census count, broad electoral participation in 2020, and to advance women's equality.

See REVIEW, next page



County Report

Mike Wasserman,
County Supervisor

TeethXpress®

secure, natural looking smile



Restore your confidence. Feel good about your teeth and eat the foods you love again. With TeethXpress, you can immediately and permanently replace bridges, dentures and missing teeth. The best part, TeethXpress is a minimally invasive procedure and can often be completed in one day.

Contact us today for a free consultation.

Keith Cooper, D.D.S.

5150 Graves Avenue, Suite 12E
San Jose, CA 95129

408.253.4150

www.cooperdds.com

TEETH IN ONE DAY



Mr. Peabody's

The Most Powerful Green Cleaning On the Planet



10%
DISCOUNT:
Mention this
ad!

Carpet & Upholstery Cleaning

Complete Carpet Cleaning,
Stone Polishing and Repair
(408) 254-1949

Serving Almaden Valley since 1995

www.SouthCountyHyundai.com www.SouthCountyHyundai.com www.SouthCountyHyundai.com www.SouthCountyHyundai.com



SOUTH COUNTY HYUNDAI OF GILROY

408-842-0400

**Under New Ownership
Under New Management!**



HYUNDAI Assurance

America's Best Warranty[®]
10-Year/100,000-Mile
Powertrain Limited Warranty

People Matter, Prices Don't. We Are The People's Dealer!

2019 Hyundai Elantra SE AUTOMATIC



MSRP \$19,110
Dealer Discount -\$3,833
Sale Price \$15,277
Hyundai Retail Bonus Cash -\$1,500

Net Price After Discounts and Rebates
\$13,777

5 to choose at this Net Price!

2019 Hyundai Sonata SE AUTOMATIC



MSRP \$23,540
Dealer Discount -\$3,763
Sale Price \$19,777
Hyundai Retail Bonus Cash -\$2,000

Net Price After Discounts and Rebates
\$17,777

1 at this Net Price #735608



New 2018 Hyundai Elantra GT

MSRP \$21,475
Dealer Discount -\$3,087
Sale Price \$18,388
Hyundai Retail Bonus Cash -\$2,500

Net Price After Discounts and Rebates
\$15,888

1 at this Net Price #083180



2019 Hyundai Santa Fe Se 2.4 AUTOMATIC

MSRP \$26,605
Dealer Discount -\$3,356
Sale Price \$23,249
Hyundai Retail Bonus Cash -\$1,250

Net Price After Discounts and Rebates
\$21,999

5 to choose at this Net Price!

New 2018 Hyundai Tucson AUTOMATIC



MSRP \$25,260
Dealer Discount -\$3,872
Sale Price \$21,388
Hyundai Retail Bonus Cash -\$2,500

Net Price After Discounts and Rebates
\$18,888

1 at this Net Price #645151

2019 Hyundai Ioniq Hybrid Blue

57/59 City/Highway MPG* • *per EPA estimate.



MSRP \$23,515
Dealer Discount -\$2,777
Sale Price \$20,738
Hyundai Retail Bonus Cash -\$750

Net Price After Discounts and Rebates
\$19,988

1 at this Net Price #128054

SOUTH COUNTY PRE-OWNED "EVERYONE GETS ONE" SALE!



2016 NISSAN VERSA 1.6 S AUTOMATIC, AIR

14 to choose from!

\$7,988

#886729, 888795, 893993, 888565, 888895, 893324, 889783, 894126, 857262, 901714, 887302, 859249, 890038, 889937

2016 NISSAN QUEST 3.5 S AUTOMATIC, FRONT/REAR AIR



6 to choose from!

\$12,888

#157248, 157576, 155067, 157255, 157230, 157194

2017 NISSAN ROGUE S AUTOMATIC, AIR



3 to choose from!

\$12,888

#814195, 389610, 385454

UNDER NEW OWNERSHIP! HURRY IN FOR A GREAT DEAL TO START 2019!

All Roads Lead to South County
A Part of the South County Family
DRIVE A LITTLE - SAVE A LOT

6700 Auto Mall Parkway Gilroy, CA 95020

www.SouthCountyHyundai.com

408-842-0400



All prices exclude government fees and taxes, any finance charges, any dealer document processing charge, any electronic filing charge and any emission testing charge. Residency restrictions apply. See dealer for complete details. Vehicles pictured used for display purposes only and may vary slightly from the actual vehicle. All vehicles subject to prior sale. Not responsible for typographical errors. Sale prices end 1/27/2019.

www.SouthCountyHyundai.com www.SouthCountyHyundai.com www.SouthCountyHyundai.com www.SouthCountyHyundai.com

Times Feature

Review

Continued from previous page

Protecting Vulnerable LGBTQ+ Populations. Santa Clara County will become the second County in the nation to provide emergency shelter and a temporary housing program specially for LGBTQ+ residents. Lesbian, gay, bisexual, transgender, queer and questioning people face a variety of dangers in conventional homeless shelters, which forces them to either conceal their sexual orientation or fend for themselves outdoors. The new program is just one of several services dedicated to the well-being of LGBTQ+ communities in Santa Clara County.

Saying Goodbye and Hello. 2018 marked the end of Supervisor Ken Yeager's 12-year tenure on the County Board of Supervisors. My past eight years on the Board with Supervisor Yeager have been marked by his thoughtful innovation, forward thinking, and respectful discourse. I wish him the best on his future endeavors and extend my warmest welcome to Supervisor Susan Ellenberg!

In addition to some of the above highlights of 2018, the Santa Clara County Board of Supervisors also provided funding for vital services such as dental, vision, and hearing screenings for low-income children, meals for Seniors at 16 locations throughout the County, as well as support for survivors of domestic violence, sex trafficking, and intimate partner violence.

I wish you and your family a prosperous and healthy 2019! As always, you can reach my office at (408) 299-5010, or you can email me at district1@bos.sccgov.org.

Mike Wasserman, Santa Clara County Board of Supervisors, District 1. www.supervisorwasserman.org

Water

Continued from page 4

supply needs during dry years.

"The Santa Clara Valley Water District is an agency that places a great deal of importance on the environment, and we respect the state's efforts over the last few years to address the issue of fish decline," said water district board chair Linda J. LeZotte. "But the board would like to find a better balance and believes that there are other, more effective solutions that focus on the fishes' distinct problems – native fish being preyed on by nonnative fish, lack of habitat, insufficient food supply for the fish, contaminants, and water temperatures that get too high for fish to survive. We hope the courts can help us all arrive at a balanced decision that benefits the Delta and doesn't leave Silicon Valley high and dry."

The suit filed in Santa Clara County Superior Court asks the court to determine whether the state has taken proper action to require increased flows for fish and wildlife in the San Joaquin, Tuolumne, Stanislaus and Merced rivers. While the complaint moves through the courts, the water district will continue to negotiate with state officials and other agencies to address our interests, especially retaining sufficient water supply during droughts and supporting effective measures to sustain healthy native fish populations in the Delta and its tributaries.

The Santa Clara Valley Water District manages an integrated water resources system that includes the supply of clean, safe water, flood protection and stewardship of streams on behalf of Santa Clara County's nearly 2 million residents. The district effectively manages 10 dams and surface water reservoirs, three water treatment plants, an advanced recycled water purification center, a state-of-the-art water quality laboratory, nearly 400 acres of groundwater recharge ponds and more than 275 miles of streams. We provide wholesale water and groundwater management services to local municipalities and private water retailers who deliver drinking water directly to homes and businesses in Santa Clara County.

Times Feature

When the marriage ends

By **Steven R. Roeser, Esq.**

Special to the Times

This Week's Question:

"My sister is filing for divorce. She has two minor children with her husband and has been a career stay at home mother. What will the divorce process involve, and what can she expect to happen when all is said and done?"

—**Matthew H.**
Almaden Valley



Ask the Lawyer

Steven R. Roeser, Esq.
Attorney at Law

Dear Matthew:

I am sorry to hear of this sad turn in your sibling's life, and unfortunately it is all too common in not only California but in the U.S. these days. Divorce is often the most trying time in one's life and will undoubtedly take an emotional toll on the family which has to consider issues such as custody of children and division of assets.

First, a divorce does not always lead to vicious fighting or destroyed relationships. Especially when there are children of the divorcing couple, it is important to attempt to create a relationship with the ex-spouse that will minimize harm to the children. However, some divorce proceedings will be a war. Try to avoid war, but if you find yourself in one, you must fight hard in order to achieve a fair result with respect to custody of children, support determinations, and division of assets. As Shakespeare wrote, "Beware of entering a fight, but if you do enter it, make the other side beware of you."

Let us discuss the basics of the law of dissolution in California. California is a no-fault divorce state, meaning either party can file for and obtain a divorce without cause or any reason.

First, one party must commence proceedings by filing a petition for dissolution of marriage. The court then must determine what the custody arrangement for the minor children will be (example, Mom during the week, Dad on weekends, holiday schedules, etc.), what financial child support and/or spousal support obligations one spouse may have to the other, what property is community and what is separate, and what the ultimate of division of property shall be. Depending on the length of the marriage, assets and income involved, and whether minor children are involved, the proceedings can be complicated and expensive.

Under Family Code Section 2550, the court must divide the community estate equally, except as the parties may otherwise agree. The parties may not agree and often there is a costly fight over what is community property, what is separate property, and what the value of such property is.

The main factors in determining whether property is community or separate are (a) the time of acquisition (pre or post marriage) and (b) the manner of acquisition (with community funds or separate funds). (*Giacomazzi v. Rowe*

(1952) 109 C.A.2d 498). Under Family Code Section 760, property acquired during marriage and before separation is presumed to be community property. For example, property, cash or otherwise, earned by a spouse through his or her occupation during the marriage is community property. On the other hand, if one party solely inherits property from family, it is the separate property of that party.

However, there are many circumstances where community and separate property may be commingled, creating the need for fact investigation and, often, a fight as to what is what. Investigators and appraisers are hired, and allegations of hidden assets and/or wasteful spending can ensue.

In the end, unless the parties agree in writing, the court will determine what is community and what is separate property, and who gets what.

Absent an agreement, the court must also determine what spousal support, if any, is appropriate. A spouse must submit an application to the court for spousal support by filing a motion and order to show cause. The court may order a party to pay spousal support to the other in any amount, and for any period of time, that the court deems just and reasonable. All courts use a guideline formula to calculate support.

If the divorce involves children of the marriage, unless the parties agree on custody, visitation and child support arrangement, the parties may engage in lengthy discovery process involving written requests for information and documents, as well as oral questioning under oath and expert testimony, to provide the judge with as much information as possible to determine what is in the "best interest" of the child with respect to a custody arrangement and visitation rights and the like. The court will also order one parent to pay the other child support based on the parties' standard of living, each party's income, and who has primary custody of and care for the children.

Divorce is an end but it is also a beginning. Handling the process as best as you can will help you make that beginning happen sooner, with less disruption, and with an easier transition into your new life.

If you find yourself needing advice as to family law, estate planning or business matters, please feel free to contact me.

Until next time ...

Kindest Regards,

Steven R. Roeser, Esq.

You can reach Mr. Roeser with your questions by email at steve@roeserlaw.net, with "Almaden Times" in the subject line, or by telephone at (650) 300-5778. Your real name will not be used. No attorney-client relationship is created by these articles, and any information in this article does not constitute legal advice and is not to be relied upon. For more information on our practice, please visit www.roeserlaw.net.



Tuesday, February 12, 2019

Spend the day at *Cache Creek Casino*.
Try your luck, have lunch and leave the driving to us.

Arrive: 7:45 am

Depart: 8:00 am

Return: 7:00 pm approximately

Cost: \$35.00 which includes \$15.00 slot play or \$20.00 table match play with players card plus \$5.00 food

Sign up M, T, W, 9:30-11:30 am in the lobby of the
Almaden Community Center



Questions call:

Bea: 408 761-4002

Sally: 408 826-9616

The Almaden Senior Association Mardi Gras Celebration

"Let the Good Times Roll"

Saturday, February 2, 2019

1:00 pm- 3:00 pm

Savor Cajun & Creole cuisine by our
Almaden Senior Chefs

Ticket sales begin January 14th in the lobby of the
Almaden Community Center

8:40 am-10:00 am M,W,F

\$14.00 members, \$17.00 non-members.

Cash & check only. Bring membership card.

Live entertainment by Mike & Sandi Bell.

(408) 268-1133 for more information





CAMPBELL UNITED CHURCH OF CHRIST
400 W. Campbell Ave.
Campbell, CA 95008
(408) 378-4418
No Matter Where You Are On Life's Journey, You Are Welcome Here!
We are an Open and Affirming Congregation, and Welcome Members of the LGBTQ+ Community. Some of our recent ministries/activities include:

- Joy-filled worship every Sunday at 10:00 AM that includes communion for all.
- Bible study on the second and fourth Wednesday of every month, at 6PM.
- A Food Pantry serving anyone in need—open T/Th 11:00 AM to 1:00 PM and Sat 10:00 AM to Noon.
- Lighted Window Productions featuring uplifting concerts, thought-provoking theater productions, informative lectures, and even an occasional karaoke night—all in a wholesome environment.
- Our facilities also provide rental space for community based groups that promote understanding, wholeness, growth, and education. Some of these include the Old Orchard School, Orchard City Indivisible, AA, etc.

Our activities flow from our most important values:

- Extravagant Joy - John 15:9, 11
- Passionate Faith - James 2:17
- Loving Respect - John 13:34
- Deep Connectedness - John 15:5
- Intentional Growth - Acts 2:46-47
- Shared Laughter - I Peter 1:8

Visit us at our web site at: church@campbellucc.org

or better yet, visit us at our worship services on Sundays at 10:00 a.m. Coffee, refreshments, and conversation always, right after service.

CONGREGATIONAL CHURCH OF ALMADEN VALLEY, UCC
6581 Camden Ave., San Jose, CA 95120. Pastor, Rev. Marty Williams, 408 268 0243.
www.ccvucc.org.
We are a welcoming church with a progressive approach to faith, worship and giving to our local community. We are proud to be UCC, Open and Affirming (O&A) and welcome members of the LGBT community. We support local LifeMoves (formerly InnVision) Shelter Feedings once a month, San Francisco Night Ministry, Second Harvest Food Bank, Church World Service, and Communities Responding to End Poverty.
Worship Sunday, 9:00 AM followed by fellowship and refreshments. 1st Sunday in Worship: Holy Communion
2nd Sunday in Worship: Folks Choir and Potluck Sunday.
Tuesdays, AA Meetings, 8:15 - 9:15 PM.
Wednesdays, 9:30 AM, Women's Study Group.

CHURCH OF CHRIST
5351 Carter Ave., San Jose 95118
408.265.5837
www.bibleroad.org
We strive to be a group of Christians that love and honor God and Jesus Christ in our daily lives. We assemble each Sunday to encourage each other through singing, studying, praying and sharing in the Lord's supper. Simple—just like what one reads about in the New Testament.

Bible class at 9:30 AM
Worship at 10:30 AM
Located in south San Jose near Kooser Rd. and Camden Ave. (behind the Almaden Valley Athletic Club).
Come make new Christian friends!

EAST VALLEY CHURCH
We are a Multicultural Christian Community committed to making Christ known to our Neighbors, Community and World.
Sunday Schedule: Coffee and Conversation 9:15am
Worship 9:45am, Sunday School for all ages 11:15am
Childcare is provided for all our Sunday Services. Our NEW Children's Building is Open!
Uplifting music, Biblical teaching, ministries for Children, Youth, College & Career, Small Groups for all adults, Ministries to Men, Women, Seniors, Celebrate Recovery
Please see website for details and meeting times www.eastvalleychurch.com
Senior Pastor – Pastor Ron Johnson, Community-Life Pastor - Pastor Patrick Boyd, Children's Ministry Co-Directors – Alyssa Friend and Kristen Pearson
We are located at 2827 Flint Ave (Between Tully & Norwood) San Jose, CA 95148, Phone 408-238-0231, e-mail info@eastvalleychurch.com
We are associated with Converge Worldwide www.convergeworldwide.org

THE EPISCOPAL CHURCH IN ALMADEN
6581 Camden Ave. San Jose, CA 95120. The Rev. Shelley Booth Denney, Rector
Phone:408-268-0243
Web:www.eca-sj.org
At the Episcopal Church

in Almaden (ECA), we are joyful followers of Jesus Christ. Through worship, study, fellowship and outreach, we strive to nurture and grow a strong faith community of believers, a family of all ages, where each member feels welcomed, loved, valued and empowered to serve. Children are especially welcomed and cherished as an important part of God's family. All junior high and senior high students are welcome to participate in our Youth Groups. During the school year we have joint Sunday School with our sister church, the Congregational Church of Almaden Valley, UCC. The Episcopal Church in Almaden offers the following regular opportunities for worship: Sunday at 7:30AM and 10:45AM, Holy Communion service. Each Sunday service is followed by a coffee hour for friendship and conversation.

EVERGREEN VALLEY CHURCH
Visit our Web Site at www.evcsj.com
2750 Yerba Buena Rd. San Jose, CA 95121. Phone: 408-274-7422. Saturday worship is at 5 pm. Sunday worship services at 9 am and 11 am.. Excellent contemporary Christian music and Bible-based teaching. Nursery care and Children's Sunday School programs at 9 am and 11 am. Junior High students meet at 9am and High School students meet at 11am. Nuevo Comienzo: Servicio en español, Domingo 4pm.

FIRST CHURCH DOWNTOWN
Worshipping at 55 N. 7th Street, in downtown San Jose. (Horace Mann school) firstchurchdowntown.com

town.com
Telephone: (408) 294-7254 x310. We are a community serving the Christ from the heart of the City, working to know Jesus and make Jesus known by serving, worshipping, and learning together. Worship services are at 10:00 AM at the Horace Mann Community Center (7th and Santa Clara Streets). Worship includes both contemporary and traditional music, a message that is relevant to real life, based in the Bible, and meaningful to people of all ages and backgrounds. We work in our community to provide real assistance and long-term, life-saving solutions: food, housing, counseling, and spiritual direction. Our children's & families' ministries include Sunday classes, outdoor family activities such as bike rides and fishing trips. Come, Make a Difference and feel the difference God can make in your life!



GRACE CHURCH OF EVERGREEN
www.GraceChurchSJ.net
See you on Facebook 2650 ABORN ROAD at Kettmann, across from Evergreen Public Library. Serving Evergreen for over 50 Years. John S Goldstein, Pastor
Christian Worship every Sunday at 11.00 am
Together let us build lives toward excellence!
Music Institute (408)791 7772
After School lessons on Piano, Violin, Viola, Flute PreSchool, Age 2-6 years. Caring for your child with God's love and affection (408) 791 7772

HOLY SPIRIT CATHOLIC CHURCH
Faith.Knowledge.
Community - this is our promise to our members. If you are looking for an active Christian faith community, we invite you to experience Holy Spirit Parish Community. All are welcome! We are located at 1200 Redmond Avenue, San Jose, CA 95120. Mass is celebrated at 8:30 a.m. Monday - Friday. Our weekend Mass schedule is Saturday 5 p.m., Sunday 8 a.m., 9:30 a.m., 11:30 a.m. and 6 p.m. Rite of Reconciliation is every Saturday at 4 p.m. or by appointment. Our Parish Office is open Monday - Thursday 8:30 a.m. - 4:30 p.m. and Friday 9:00 a.m. - 3:00 p.m. Call 408-997-5100 for recorded information or 408-997-5101 to speak with someone in our parish office. Information on Faith Formation for children and adults can be obtained by calling our Catechetical Office at 408-997-5115. Get in the loop with our 3sixty High School Youth Ministry by calling 408-997-5106. Holy Spirit School serves grades Pre-K through 8th, and is located at 1198 Redmond Avenue. You can reach the school office at 408-268-0794.



THE POINT CHURCH
3695 Rose Terrasse Cir San Jose, CA 95148
(408) 270-7646
English Service: Sundays at 9:30 & 11:00 AM
Spanish Service: 11:00 AM
Cambodian Service: 11:00 AM
Cantonese Service: 11:00 AM
Mandarin Service: 11:00AM
Youth Extreme Point (7th-12th grade): Every Saturday at 6:30 PM - 8:30 PM

SAINT ANTHONY CATHOLIC CHURCH
We invite you to become a part of our hospitable, intimate Catholic parish. We are a caring community, promoting spiritual growth, reaching out to people in need and where you get to know people by name. We offer children's religious education (CREATE); Youth Ministry (BLAST & X-STATIC); Scripture Study (day & evening); Senior's Group

and many other adult ministries as well. Saint Anthony parish is located in Almaden Valley at 20101 McKean Road, San Jose, 95120. Our weekend Masses are at 4 p.m. on Saturday at our historic church at 21800 Bertram Road in New Almaden, CA 95042 and on Sunday at 8:30 a.m., 10:30 a.m., and 5:30 p.m. at the McKean Road location. Our Parish Office is open Monday 9 a.m. - 12 p.m. and Tuesday thru Thursday, 9 a.m. - 12 p.m. and 1 - 4 p.m. For more information, stop by the Parish Office or call 1+ (408) 997-4800, or visit our website at www.church-stanthony.com. Fr. Larry Hendel, Pastor.



God is One
ੴ ਸਿਕ ਹੈ
Rab Ik Hai

SAN JOSE GURDWARA
3636 Gurdwara Ave. San Jose, CA 95148
The word Sikh (see-kh) means "disciple" or "student." A Sikh is a practitioner of the faith founded in the 15th century by Guru Nanak in Punjab of old British India. A Guru who is a "teacher" or "enlightener" completes the relationship of teaching and learning. Sikhism is monotheistic and stresses the equality of all men and women. Sikhs believe in three basic principles; meditating on the name of God (praying), earning a living by honest means and sharing the fruits of one's labor with others. Currently there are close to one million Sikhs living in the USA and Canada and 25 million Sikhs living around the world. Sikhism is the 5th largest religion in the world. At the Gurdwara (House of God) in San Jose we welcome all. We pray daily for peace and prosperity for everybody in the world. Come to visit and enjoy Langer (food) in our kitchen which is open 365 days of the year and serves complementary vegetarian meals. We also encourage you to enter our history room on site and walk the beautiful grounds. Learn more about us and community events we sponsor by visiting our website; <http://www.SanJoseGurdwara.org>

ofassisipreschool.org
We invite you to join our community of faith located in the Evergreen area of San Jose. We are an inclusive diverse community striving to serve as Disciples of Jesus Christ in the footsteps of St. Francis, offering prayerful and joyful liturgies; evangelization, fellowship, and service opportunities to the community. We offer spiritual opportunities for all ages, including children's liturgy, dynamic E.C.H.O - Jr. High, IGNITE - High School and North Star-Young Adult Ministries, along with small faith communities and opportunities to help the poor and marginalized of San Jose. Our Preschool is the only Catholic Preschool offering quality family oriented service in the Evergreen and Silver Creek areas. Our Chapel, Gathering Hall, Parish Office, Mission Center, Parish Gift Shop, Memorial Garden and Preschool are all located at 5111 San Felipe Rd.
Please come join us to worship at one of the following times and locations:

St. Francis of Assisi Chapel
Saturday 5:00PM, Sunday 8:30 AM, 10:30 AM, 12:30 PM, 4:00 PM (Mass in Vietnamese), 6:00 PM Youth Mass
St. Francis of Assisi Gathering Hall
Sunday 9:00 AM, Sunday 11:00AM, Igbo Mass - Second Sunday of the month 12:30 PM
Mt. Hamilton Grange - 2840 Aborn Road
Sunday 9:30 AM
The Villages Gated Community (Cribari Auditorium)
Sunday 8:15 AM
For more information, please call or visit us at the Parish Mission Center open M-F 9:00 AM -12:00 PM; 1:00 PM - 4:00 PM.
Come join us and share your presence with us so that together we may grow and share our gifts to help build God's Kingdom!

For Worship listing ads, call 408.250.5242

The Secret is Out!

"Reach your friends and your community with your number one neighborhood news source - the *Evergreen Times!*"



ST. FRANCIS OF ASSISI CATHOLIC CHURCH
5111 San Felipe Rd., San Jose, CA 95135
408-223-1562.
www.stfrancisofassisi.com or www.stfrancis.com

Now Enrolling!
Call to schedule your tour!

KinderCare
LEARNING CENTERS

1081 Foxworthy Avenue,
San Jose, CA 95118
(408) 265-7380
M-F 6:30 am - 6:00 pm
www.KinderCare.com

KinderCare offers unique, expertly designed early education programs for infants as young as 6 weeks to children up to age 5, which includes preschool and pre-kindergarten programs.

Times **Feature**

Collins appointed as Area 3 trustee for San Jose Unified School District

Carla Collins, who currently serves director of the Santa Clara County Office of Women's Policy, was chosen as the Area 3 trustee for San Jose Unified School District.

Collins was appointed following Pam Foley's vacated Area 3 seat as a trustee when she won a seat on the San Jose City Council.

Collins is a San Jose native, and describes herself as a life-long feminist and a firm believer in democracy. She has three children attending school in the San Jose Unified School District.

Collins had the best qualifications of what the board was looking for, said SJUSD board president, Kimberly Meek.

Collins' term runs through 2020.

Faith Eusebio of Almaden named to Emerson College Dean's List for Fall '18

Dellin Zhang of Almaden Valley has been named to the Emerson College Dean's List for the Fall 2018 semester. Eusebio, who is majoring in Writing, Lit and Publishing, is a member of the class of 2022. The requirement to make Emerson's Dean's List is a grade point average of 3.7 or higher.

Emerson College is located in Boston, Massachusetts, opposite the historic Boston Common. Emerson educates individuals who will solve problems and change the world through engaged leadership in communication and the arts.



ALMADEN COUNTRY DAY SCHOOL BINGO NIGHT

WHAT: A NIGHT OF FOOD, FUN & PRIZES!

WHEN: SATURDAY, JANUARY 26, 2019

LOCATION: SCOTTISH RITE CENTER
ADDRESS: 2455 MASONIC DR. SAN JOSE, 95125
(NEAR CURTNER AVE & 87 FWY)

TIME: DOORS OPEN AT 6PM (BINGO BEGINS AT 7:00PM)

COST: \$50 PER PERSON (OPEN TO ANYONE 21 AND OVER)

BUY YOUR TICKETS NOW!

almadencountrydayschool.org/student-life/athletics/cougar-booster-club/acds-bingo-night

INCLUDES: ITALIAN DINNER, 10 BINGO GAMES WITH PRIZES FOR THE WINNER, TWO RAFFLE TICKETS FOR PRIZE DRAWINGS THROUGHOUT THE EVENING.

GRAND PRIZE IS TWO TICKETS TO GOLDEN STATE WARRIORS GAME + VALET PARKING = \$1500 VALUE!

BRING YOUR OWN BEER OR WINE!

PROCEEDS FROM THE EVENING HELP THE BOOSTER CLUB SUPPORT ACDS STUDENT-ATHLETES

www.SouthCountyCDJR.com • www.SouthCountyCDJR.com • www.SouthCountyCDJR.com • www.SouthCountyCDJR.com

WOW! HURRY OVER, THESE PRICES ARE AMAZING!

DRIVE A LITTLE, SAVE A LOT!!!

SOUTH COUNTY OF GILROY MARIN

CHRYSLER DODGE Jeep RAM FIAT

GILROY 408-842-8244 • WWW.SOUTHCOUNTYCDJR.COM • MARIN 415-886-4929

THANK YOU FOR MAKING US ONE OF CALIFORNIA'S BEST!*

START SOMETHING NEW SALES EVENT

NEW 2018 JEEP RENEGADE UPLAND 4X4 SPORT

AUTOMATIC, AIR, POWER WINDOWS

DEALER DISCOUNT OFF MSRP	-\$5,000
JEEP CA 2018 RETAIL BONUS CASH*	-\$1,000
JEEP CA BC RETAIL CONSUMER CASH**	-\$750
JEEP CA NON-PRIME RETAIL BONUS CASH***	-\$750
CA CHRYSLER CAPITAL BONUS CASH****	-\$500

NET SAVINGS OFF MSRP AFTER DISCOUNTS AND REBATES

\$9,000 ⁸ AT THIS NET SAVINGS! ⁸ AT GILROY

*RESIDENCY RESTRICTIONS APPLY. **FOR FICO SCORES BELOW 620. ***MUST FINANCE THROUGH CHRYSLER CAPITAL, SUBJECT TO CREDIT APPROVAL.

NEW 2018 JEEP GRAND CHEROKEE LIMITED

DEALER DISCOUNT OFF MSRP	-\$6,138
JEEP CA BC RETAIL CONSUMER CASH**	-\$1,750
CA CHRYSLER CAPITAL BONUS CASH****	-\$500
JEEP CA 2018 RETAIL BONUS CASH***	-\$500
JEEP CA 2018 BONUS CASH**	-\$2,000

NET SAVINGS OFF MSRP AFTER DISCOUNTS AND REBATES

\$10,888 ⁶ AT THIS NET SAVINGS ⁵ AT GILROY ¹ AT MARIN #266655

*RESIDENCY RESTRICTIONS APPLY. **MUST FINANCE THROUGH CHRYSLER CAPITAL, SUBJECT TO CREDIT APPROVAL.

NEW 2018 JEEP RENEGADE LATITUDE

MSRP	\$23,590
DEALER DISCOUNT	-\$5,202
SALE PRICE	\$18,388
JEEP CA BC RETAIL CONSUMER CASH**	-\$2,250
JEEP CA NON-PRIME RETAIL BONUS CASH***	-\$750
CA CHRYSLER CAPITAL BONUS CASH****	-\$500
JEEP CA 2018 RETAIL BONUS CASH***	-\$1,000

NET PRICE AFTER DISCOUNTS AND REBATES ⁴ AT THIS NET PRICE ⁴ AT GILROY #H97676, #H91005, #H92511, #H99271

*RESIDENCY RESTRICTIONS APPLY. **FOR CONSUMERS WITH A FICO SCORES BELOW 620. ***MUST FINANCE THROUGH CHRYSLER CAPITAL, SUBJECT TO CREDIT APPROVAL.

NEW 2018 DODGE JOURNEY 3RD ROW! AUTO & A/C

MSRP	\$24,985
DEALER DISCOUNT	-\$4,484
SALE PRICE	\$20,499
DODGE CA BC RETAIL CONSUMER CASH**	-\$2,788
DODGE CA NON-PRIME RETAIL BONUS CASH***	-\$500
CA CHRYSLER CAPITAL BONUS CASH****	-\$500
DODGE CA 2018 RETAIL BONUS CASH***	-\$1,000

NET PRICE AFTER DISCOUNTS AND REBATES

\$15,999 ⁵ AT THIS NET PRICE ⁵ AT GILROY

*RESIDENCY RESTRICTIONS APPLY. **FOR FICO SCORES BELOW 620. ***MUST FINANCE THROUGH CHRYSLER CAPITAL, SUBJECT TO CREDIT APPROVAL.

2019 JEEP CHEROKEE

WIRELESS PHONE CONNECTIVITY, EXTERIOR REAR PARKING CAMERA, PERIMETER APPROACH LIGHTS & MORE!

MSRP	\$26,735
DEALER DISCOUNT	-\$5,736
SALE PRICE	\$20,999
JEEP CA BC RETAIL CONSUMER CASH**	-\$2,750
JEEP CA NON-PRIME RETAIL BONUS CASH***	-\$750
CA CHRYSLER CAPITAL BONUS CASH****	-\$500

NET PRICE AFTER DISCOUNTS AND REBATES ¹⁵ AT THIS NET PRICE ¹⁵ AT GILROY ¹ AT MARIN

*RESIDENCY RESTRICTIONS APPLY. **FOR CONSUMERS WITH FICO SCORES BELOW 620. ***MUST FINANCE THROUGH CHRYSLER CAPITAL, SUBJECT TO CREDIT APPROVAL.

NEW 2018 JEEP COMPASS SPORT

WIRELESS PHONE CONNECTIVITY, EXTERIOR REAR PARKING CAMERA, PERIMETER APPROACH LIGHTS & MORE!

MSRP	\$24,285
DEALER DISCOUNT	-\$5,397
SALE PRICE	\$18,888
JEEP CA BC RETAIL CONSUMER CASH**	-\$1,250
JEEP CA NON-PRIME RETAIL BONUS CASH***	-\$750
JEEP CA RETAIL BONUS CASH**	-\$1,000

NET PRICE AFTER DISCOUNTS AND REBATES

\$15,888 ⁵ AT THIS NET PRICE ⁵ AT GILROY

*RESIDENCY RESTRICTIONS APPLY. **FOR CONSUMERS WITH FICO SCORES BELOW 620.

NEW 2018 FIAT 500e BATTERY ELECTRIC

LEASE FOR ONLY **\$99** /MO. PLUS TAX ⁵ AT THIS LEASE OFFER ⁵ AT MARIN

30 MONTH LEASE. \$2,999.00 AT SIGNING INCLUDES: EX-PRIME CUSTOMER CASH. \$1,000.00 CASH. \$10.00 PER MILE PER HOUR. \$0.25 PER MILE OVER 10,000 MILES PER YEAR. \$0.25 PER MILE OVER 15,000 MILES PER YEAR. \$0.25 PER MILE OVER 20,000 MILES PER YEAR. \$0.25 PER MILE OVER 25,000 MILES PER YEAR. \$0.25 PER MILE OVER 30,000 MILES PER YEAR. \$0.25 PER MILE OVER 35,000 MILES PER YEAR. \$0.25 PER MILE OVER 40,000 MILES PER YEAR. \$0.25 PER MILE OVER 45,000 MILES PER YEAR. \$0.25 PER MILE OVER 50,000 MILES PER YEAR. \$0.25 PER MILE OVER 55,000 MILES PER YEAR. \$0.25 PER MILE OVER 60,000 MILES PER YEAR. \$0.25 PER MILE OVER 65,000 MILES PER YEAR. \$0.25 PER MILE OVER 70,000 MILES PER YEAR. \$0.25 PER MILE OVER 75,000 MILES PER YEAR. \$0.25 PER MILE OVER 80,000 MILES PER YEAR. \$0.25 PER MILE OVER 85,000 MILES PER YEAR. \$0.25 PER MILE OVER 90,000 MILES PER YEAR. \$0.25 PER MILE OVER 95,000 MILES PER YEAR. \$0.25 PER MILE OVER 100,000 MILES PER YEAR. \$0.25 PER MILE OVER 105,000 MILES PER YEAR. \$0.25 PER MILE OVER 110,000 MILES PER YEAR. \$0.25 PER MILE OVER 115,000 MILES PER YEAR. \$0.25 PER MILE OVER 120,000 MILES PER YEAR. \$0.25 PER MILE OVER 125,000 MILES PER YEAR. \$0.25 PER MILE OVER 130,000 MILES PER YEAR. \$0.25 PER MILE OVER 135,000 MILES PER YEAR. \$0.25 PER MILE OVER 140,000 MILES PER YEAR. \$0.25 PER MILE OVER 145,000 MILES PER YEAR. \$0.25 PER MILE OVER 150,000 MILES PER YEAR. \$0.25 PER MILE OVER 155,000 MILES PER YEAR. \$0.25 PER MILE OVER 160,000 MILES PER YEAR. \$0.25 PER MILE OVER 165,000 MILES PER YEAR. \$0.25 PER MILE OVER 170,000 MILES PER YEAR. \$0.25 PER MILE OVER 175,000 MILES PER YEAR. \$0.25 PER MILE OVER 180,000 MILES PER YEAR. \$0.25 PER MILE OVER 185,000 MILES PER YEAR. \$0.25 PER MILE OVER 190,000 MILES PER YEAR. \$0.25 PER MILE OVER 195,000 MILES PER YEAR. \$0.25 PER MILE OVER 200,000 MILES PER YEAR. \$0.25 PER MILE OVER 205,000 MILES PER YEAR. \$0.25 PER MILE OVER 210,000 MILES PER YEAR. \$0.25 PER MILE OVER 215,000 MILES PER YEAR. \$0.25 PER MILE OVER 220,000 MILES PER YEAR. \$0.25 PER MILE OVER 225,000 MILES PER YEAR. \$0.25 PER MILE OVER 230,000 MILES PER YEAR. \$0.25 PER MILE OVER 235,000 MILES PER YEAR. \$0.25 PER MILE OVER 240,000 MILES PER YEAR. \$0.25 PER MILE OVER 245,000 MILES PER YEAR. \$0.25 PER MILE OVER 250,000 MILES PER YEAR. \$0.25 PER MILE OVER 255,000 MILES PER YEAR. \$0.25 PER MILE OVER 260,000 MILES PER YEAR. \$0.25 PER MILE OVER 265,000 MILES PER YEAR. \$0.25 PER MILE OVER 270,000 MILES PER YEAR. \$0.25 PER MILE OVER 275,000 MILES PER YEAR. \$0.25 PER MILE OVER 280,000 MILES PER YEAR. \$0.25 PER MILE OVER 285,000 MILES PER YEAR. \$0.25 PER MILE OVER 290,000 MILES PER YEAR. \$0.25 PER MILE OVER 295,000 MILES PER YEAR. \$0.25 PER MILE OVER 300,000 MILES PER YEAR. \$0.25 PER MILE OVER 305,000 MILES PER YEAR. \$0.25 PER MILE OVER 310,000 MILES PER YEAR. \$0.25 PER MILE OVER 315,000 MILES PER YEAR. \$0.25 PER MILE OVER 320,000 MILES PER YEAR. \$0.25 PER MILE OVER 325,000 MILES PER YEAR. \$0.25 PER MILE OVER 330,000 MILES PER YEAR. \$0.25 PER MILE OVER 335,000 MILES PER YEAR. \$0.25 PER MILE OVER 340,000 MILES PER YEAR. \$0.25 PER MILE OVER 345,000 MILES PER YEAR. \$0.25 PER MILE OVER 350,000 MILES PER YEAR. \$0.25 PER MILE OVER 355,000 MILES PER YEAR. \$0.25 PER MILE OVER 360,000 MILES PER YEAR. \$0.25 PER MILE OVER 365,000 MILES PER YEAR. \$0.25 PER MILE OVER 370,000 MILES PER YEAR. \$0.25 PER MILE OVER 375,000 MILES PER YEAR. \$0.25 PER MILE OVER 380,000 MILES PER YEAR. \$0.25 PER MILE OVER 385,000 MILES PER YEAR. \$0.25 PER MILE OVER 390,000 MILES PER YEAR. \$0.25 PER MILE OVER 395,000 MILES PER YEAR. \$0.25 PER MILE OVER 400,000 MILES PER YEAR. \$0.25 PER MILE OVER 405,000 MILES PER YEAR. \$0.25 PER MILE OVER 410,000 MILES PER YEAR. \$0.25 PER MILE OVER 415,000 MILES PER YEAR. \$0.25 PER MILE OVER 420,000 MILES PER YEAR. \$0.25 PER MILE OVER 425,000 MILES PER YEAR. \$0.25 PER MILE OVER 430,000 MILES PER YEAR. \$0.25 PER MILE OVER 435,000 MILES PER YEAR. \$0.25 PER MILE OVER 440,000 MILES PER YEAR. \$0.25 PER MILE OVER 445,000 MILES PER YEAR. \$0.25 PER MILE OVER 450,000 MILES PER YEAR. \$0.25 PER MILE OVER 455,000 MILES PER YEAR. \$0.25 PER MILE OVER 460,000 MILES PER YEAR. \$0.25 PER MILE OVER 465,000 MILES PER YEAR. \$0.25 PER MILE OVER 470,000 MILES PER YEAR. \$0.25 PER MILE OVER 475,000 MILES PER YEAR. \$0.25 PER MILE OVER 480,000 MILES PER YEAR. \$0.25 PER MILE OVER 485,000 MILES PER YEAR. \$0.25 PER MILE OVER 490,000 MILES PER YEAR. \$0.25 PER MILE OVER 495,000 MILES PER YEAR. \$0.25 PER MILE OVER 500,000 MILES PER YEAR. \$0.25 PER MILE OVER 505,000 MILES PER YEAR. \$0.25 PER MILE OVER 510,000 MILES PER YEAR. \$0.25 PER MILE OVER 515,000 MILES PER YEAR. \$0.25 PER MILE OVER 520,000 MILES PER YEAR. \$0.25 PER MILE OVER 525,000 MILES PER YEAR. \$0.25 PER MILE OVER 530,000 MILES PER YEAR. \$0.25 PER MILE OVER 535,000 MILES PER YEAR. \$0.25 PER MILE OVER 540,000 MILES PER YEAR. \$0.25 PER MILE OVER 545,000 MILES PER YEAR. \$0.25 PER MILE OVER 550,000 MILES PER YEAR. \$0.25 PER MILE OVER 555,000 MILES PER YEAR. \$0.25 PER MILE OVER 560,000 MILES PER YEAR. \$0.25 PER MILE OVER 565,000 MILES PER YEAR. \$0.25 PER MILE OVER 570,000 MILES PER YEAR. \$0.25 PER MILE OVER 575,000 MILES PER YEAR. \$0.25 PER MILE OVER 580,000 MILES PER YEAR. \$0.25 PER MILE OVER 585,000 MILES PER YEAR. \$0.25 PER MILE OVER 590,000 MILES PER YEAR. \$0.25 PER MILE OVER 595,000 MILES PER YEAR. \$0.25 PER MILE OVER 600,000 MILES PER YEAR. \$0.25 PER MILE OVER 605,000 MILES PER YEAR. \$0.25 PER MILE OVER 610,000 MILES PER YEAR. \$0.25 PER MILE OVER 615,000 MILES PER YEAR. \$0.25 PER MILE OVER 620,000 MILES PER YEAR. \$0.25 PER MILE OVER 625,000 MILES PER YEAR. \$0.25 PER MILE OVER 630,000 MILES PER YEAR. \$0.25 PER MILE OVER 635,000 MILES PER YEAR. \$0.25 PER MILE OVER 640,000 MILES PER YEAR. \$0.25 PER MILE OVER 645,000 MILES PER YEAR. \$0.25 PER MILE OVER 650,000 MILES PER YEAR. \$0.25 PER MILE OVER 655,000 MILES PER YEAR. \$0.25 PER MILE OVER 660,000 MILES PER YEAR. \$0.25 PER MILE OVER 665,000 MILES PER YEAR. \$0.25 PER MILE OVER 670,000 MILES PER YEAR. \$0.25 PER MILE OVER 675,000 MILES PER YEAR. \$0.25 PER MILE OVER 680,000 MILES PER YEAR. \$0.25 PER MILE OVER 685,000 MILES PER YEAR. \$0.25 PER MILE OVER 690,000 MILES PER YEAR. \$0.25 PER MILE OVER 695,000 MILES PER YEAR. \$0.25 PER MILE OVER 700,000 MILES PER YEAR. \$0.25 PER MILE OVER 705,000 MILES PER YEAR. \$0.25 PER MILE OVER 710,000 MILES PER YEAR. \$0.25 PER MILE OVER 715,000 MILES PER YEAR. \$0.25 PER MILE OVER 720,000 MILES PER YEAR. \$0.25 PER MILE OVER 725,000 MILES PER YEAR. \$0.25 PER MILE OVER 730,000 MILES PER YEAR. \$0.25 PER MILE OVER 735,000 MILES PER YEAR. \$0.25 PER MILE OVER 740,000 MILES PER YEAR. \$0.25 PER MILE OVER 745,000 MILES PER YEAR. \$0.25 PER MILE OVER 750,000 MILES PER YEAR. \$0.25 PER MILE OVER 755,000 MILES PER YEAR. \$0.25 PER MILE OVER 760,000 MILES PER YEAR. \$0.25 PER MILE OVER 765,000 MILES PER YEAR. \$0.25 PER MILE OVER 770,000 MILES PER YEAR. \$0.25 PER MILE OVER 775,000 MILES PER YEAR. \$0.25 PER MILE OVER 780,000 MILES PER YEAR. \$0.25 PER MILE OVER 785,000 MILES PER YEAR. \$0.25 PER MILE OVER 790,000 MILES PER YEAR. \$0.25 PER MILE OVER 795,000 MILES PER YEAR. \$0.25 PER MILE OVER 800,000 MILES PER YEAR. \$0.25 PER MILE OVER 805,000 MILES PER YEAR. \$0.25 PER MILE OVER 810,000 MILES PER YEAR. \$0.25 PER MILE OVER 815,000 MILES PER YEAR. \$0.25 PER MILE OVER 820,000 MILES PER YEAR. \$0.25 PER MILE OVER 825,000 MILES PER YEAR. \$0.25 PER MILE OVER 830,000 MILES PER YEAR. \$0.25 PER MILE OVER 835,000 MILES PER YEAR. \$0.25 PER MILE OVER 840,000 MILES PER YEAR. \$0.25 PER MILE OVER 845,000 MILES PER YEAR. \$0.25 PER MILE OVER 850,000 MILES PER YEAR. \$0.25 PER MILE OVER 855,000 MILES PER YEAR. \$0.25 PER MILE OVER 860,000 MILES PER YEAR. \$0.25 PER MILE OVER 865,000 MILES PER YEAR. \$0.25 PER MILE OVER 870,000 MILES PER YEAR. \$0.25 PER MILE OVER 875,000 MILES PER YEAR. \$0.25 PER MILE OVER 880,000 MILES PER YEAR. \$0.25 PER MILE OVER 885,000 MILES PER YEAR. \$0.25 PER MILE OVER 890,000 MILES PER YEAR. \$0.25 PER MILE OVER 895,000 MILES PER YEAR. \$0.25 PER MILE OVER 900,000 MILES PER YEAR. \$0.25 PER MILE OVER 905,000 MILES PER YEAR. \$0.25 PER MILE OVER 910,000 MILES PER YEAR. \$0.25 PER MILE OVER 915,000 MILES PER YEAR. \$0.25 PER MILE OVER 920,000 MILES PER YEAR. \$0.25 PER MILE OVER 925,000 MILES PER YEAR. \$0.25 PER MILE OVER 930,000 MILES PER YEAR. \$0.25 PER MILE OVER 935,000 MILES PER YEAR. \$0.25 PER MILE OVER 940,000 MILES PER YEAR. \$0.25 PER MILE OVER 945,000 MILES PER YEAR. \$0.25 PER MILE OVER 950,000 MILES PER YEAR. \$0.25 PER MILE OVER 955,000 MILES PER YEAR. \$0.25 PER MILE OVER 960,000 MILES PER YEAR. \$0.25 PER MILE OVER 965,000 MILES PER YEAR. \$0.25 PER MILE OVER 970,000 MILES PER YEAR. \$0.25 PER MILE OVER 975,000 MILES PER YEAR. \$0.25 PER MILE OVER 980,000 MILES PER YEAR. \$0.25 PER MILE OVER 985,000 MILES PER YEAR. \$0.25 PER MILE OVER 990,000 MILES PER YEAR. \$0.25 PER MILE OVER 995,000 MILES PER YEAR. \$0.25 PER MILE OVER 1,000,000 MILES PER YEAR. \$0.25 PER MILE OVER 1,005,000 MILES PER YEAR. \$0.25 PER MILE OVER 1,010,000 MILES PER YEAR. \$0.25 PER MILE OVER 1,015,000 MILES PER YEAR. \$0.25 PER MILE OVER 1,020,000 MILES PER YEAR. \$0.25 PER MILE OVER 1,025,000 MILES PER YEAR. \$0.25 PER MILE OVER 1,030,000 MILES PER YEAR. \$0.25 PER MILE OVER 1,035,000 MILES PER YEAR. \$0.25 PER MILE OVER 1,040,000 MILES PER YEAR. \$0.25 PER MILE OVER 1,045,000 MILES PER YEAR. \$0.25 PER MILE OVER 1,050,000 MILES PER YEAR. \$0.25 PER MILE OVER 1,055,000 MILES PER YEAR. \$0.25 PER MILE OVER 1,060,000 MILES PER YEAR. \$0.25 PER MILE OVER 1,065,000 MILES PER YEAR. \$0.25 PER MILE OVER 1,070,000 MILES PER YEAR. \$0.25 PER MILE OVER 1,075,000 MILES PER YEAR. \$0.25 PER MILE OVER 1,080,000 MILES PER YEAR. \$0.25 PER MILE OVER 1,085,000 MILES PER YEAR. \$0.25 PER MILE OVER 1,090,000 MILES PER YEAR. \$0.25 PER MILE OVER 1,095,000 MILES PER YEAR. \$0.25 PER MILE OVER 1,100,000 MILES PER YEAR. \$0.25 PER MILE OVER 1,105,000 MILES PER YEAR. \$0.25 PER MILE OVER 1,110,000 MILES PER YEAR. \$0.25 PER MILE OVER 1,115,000 MILES PER YEAR. \$0.25 PER MILE OVER 1,120,000 MILES PER YEAR. \$0.25 PER MILE OVER 1,125,000 MILES PER YEAR. \$0.25 PER MILE OVER 1,130,000 MILES PER YEAR. \$0.25 PER MILE OVER 1,135,000 MILES PER YEAR. \$0.25 PER MILE OVER 1,140,000 MILES PER YEAR. \$0.25 PER MILE OVER 1,145,000 MILES PER YEAR. \$0.25 PER MILE OVER 1,150,000 MILES PER YEAR. \$0.25 PER MILE OVER 1,155,000 MILES PER YEAR. \$0.25 PER MILE OVER 1,160,000 MILES PER YEAR. \$0.25 PER MILE OVER 1,165,000 MILES PER YEAR. \$0.25 PER MILE OVER 1,170,000 MILES PER YEAR. \$0.25 PER MILE OVER 1,175,000 MILES PER YEAR. \$0.25 PER MILE OVER 1,180,000 MILES PER YEAR. \$0.25 PER MILE OVER 1,185,000 MILES PER YEAR. \$0.25 PER MILE OVER 1,190,000 MILES PER YEAR. \$0.25 PER MILE OVER 1,195,000 MILES PER YEAR. \$0.25 PER MILE OVER 1,200,000 MILES PER YEAR. \$0.25 PER MILE OVER 1,205,000 MILES PER YEAR. \$0.25 PER MILE OVER 1,210,000 MILES PER YEAR. \$0.25 PER MILE OVER 1,215,000 MILES PER YEAR. \$0.25 PER MILE OVER 1,220,000 MILES PER YEAR. \$0.25 PER MILE OVER 1,225,000 MILES PER YEAR. \$0.25 PER MILE OVER 1,230,000 MILES PER YEAR. \$0.25 PER MILE OVER 1,235,000 MILES PER YEAR. \$0.25 PER MILE OVER 1,240,000 MILES PER YEAR. \$0.25 PER MILE OVER 1,245,000 MILES PER YEAR. \$0.25 PER MILE OVER 1,250,000 MILES PER YEAR. \$0.25 PER MILE OVER 1,255,000 MILES PER YEAR. \$0.25 PER MILE OVER 1,260,000 MILES PER YEAR. \$0.25 PER MILE OVER 1,265,000 MILES PER YEAR. \$0.25 PER MILE OVER 1,270,000 MILES PER YEAR. \$0.25 PER MILE OVER 1,275,000 MILES PER YEAR. \$0.25 PER MILE OVER 1,280,000 MILES PER YEAR. \$0.25 PER MILE OVER 1,285,000 MILES PER YEAR. \$0.25 PER MILE OVER 1,290,000 MILES PER YEAR. \$0.25 PER MILE OVER 1,295,000 MILES PER YEAR. \$0.25 PER MILE OVER 1,300,000 MILES PER YEAR. \$0.25 PER MILE OVER 1,305,000 MILES PER YEAR. \$0.25 PER MILE OVER 1,310,000 MILES PER YEAR. \$0.25 PER MILE OVER 1,315,000 MILES PER YEAR. \$0.25 PER MILE OVER 1,320,000 MILES PER YEAR. \$0.25 PER MILE OVER 1,325,000 MILES PER YEAR. \$0.25 PER MILE OVER 1,330,000 MILES PER YEAR. \$0.25 PER MILE OVER 1,335,000 MILES PER YEAR. \$0.25 PER MILE OVER 1,340,000 MILES PER YEAR. \$0.25 PER MILE OVER 1,345,000 MILES PER YEAR. \$0.25 PER MILE OVER 1,350,000 MILES PER YEAR. \$0.25 PER MILE OVER 1,355,000 MILES PER YEAR. \$0.25 PER MILE OVER 1,360,000 MILES PER YEAR. \$0.25 PER MILE OVER 1,365,000 MILES PER YEAR. \$0.25 PER MILE OVER 1,370,000 MILES PER YEAR. \$0.25 PER MILE OVER 1,375,000 MILES PER YEAR. \$0.25 PER MILE OVER 1,380,000 MILES PER YEAR. \$0.25 PER MILE OVER 1,385,000 MILES PER YEAR. \$0.25 PER MILE OVER 1,390,000 MILES PER YEAR. \$0.25 PER MILE OVER 1,395,000 MILES PER YEAR. \$0.25 PER MILE OVER 1,400,000 MILES PER YEAR. \$0.25 PER MILE OVER 1,405,000 MILES PER YEAR. \$0.25 PER MILE OVER 1,410,000 MILES PER YEAR. \$0.25 PER MILE OVER 1,415,000 MILES PER YEAR. \$0.25 PER MILE OVER 1,420,000 MILES PER YEAR. \$0.25 PER MILE OVER 1,425,000 MILES PER YEAR. \$0.25 PER MILE OVER 1,430,000 MILES PER YEAR. \$0.25 PER MILE OVER 1,435,000 MILES PER YEAR. \$0.25 PER MILE OVER 1,440,000 MILES PER YEAR. \$0.25 PER MILE OVER 1,445,000 MILES PER YEAR. \$0.25 PER MILE OVER 1,450,000 MILES PER YEAR. \$0.25 PER MILE OVER 1,455,000 MILES PER YEAR. \$0.25 PER MILE OVER 1,460,000 MILES PER YEAR. \$0.25 PER MILE OVER 1,465,000 MILES PER YEAR. \$0.25 PER MILE OVER 1,470,000 MILES PER YEAR. \$0.25 PER MILE OVER 1,475,000 MILES PER YEAR. \$0.25 PER MILE OVER 1,480,000 MILES PER YEAR. \$0.25 PER MILE OVER 1,485,000 MILES PER YEAR. \$0.25 PER MILE OVER 1,490,000 MILES PER YEAR. \$0.25 PER MILE OVER 1,495,000 MILES PER YEAR. \$0.25 PER MILE OVER 1,500,000 MILES PER YEAR. \$0.25 PER MILE OVER 1,505,000 MILES PER YEAR. \$0.25 PER MILE OVER 1,510,000 MILES PER YEAR. \$0.25 PER MILE OVER 1,515,000 MILES PER YEAR. \$0.25 PER MILE OVER 1,520,000 MILES PER YEAR. \$0.25 PER MILE OVER 1,525,000 MILES PER YEAR. \$0.25 PER MILE OVER 1,530,000 MILES PER YEAR. \$0.25 PER MILE OVER 1,535,000 MILES PER YEAR. \$0.25 PER MILE OVER 1,540,000 MILES PER YEAR. \$0.25 PER MILE OVER 1,545,000 MILES PER YEAR. \$0.25 PER MILE OVER 1,550,000 MILES PER YEAR. \$0.25 PER MILE OVER 1,555,000 MILES PER YEAR. \$0.25 PER MILE OVER 1,560,000 MILES PER YEAR. \$0.25 PER MILE OVER 1,565,000 MILES PER YEAR. \$0.25 PER MILE OVER 1,570,000 MILES PER YEAR. \$0.25 PER MILE OVER 1,575,000 MILES PER YEAR. \$0.25 PER MILE OVER 1,580,000 MILES PER YEAR. \$0.25 PER MILE OVER 1,585,000 MILES PER YEAR. \$0.25 PER MILE OVER 1,590,000 MILES PER YEAR. \$0.25 PER MILE OVER 1,595,000 MILES PER YEAR. \$0.25 PER MILE OVER 1,600,000 MILES PER YEAR. \$0.25 PER MILE OVER 1,605,000 MILES PER YEAR. \$0.25 PER MILE OVER 1,610,000 MILES PER YEAR. \$0.25 PER MILE OVER 1,615,000 MILES PER YEAR. \$0.25 PER MILE OVER 1,620,000 MILES PER YEAR. \$0.25 PER MILE OVER 1,625,000 MILES PER YEAR. \$0.25 PER MILE OVER 1,630,000 MILES PER YEAR. \$0.25 PER MILE OVER 1,635,000 MILES PER YEAR. \$0.25 PER MILE OVER 1,640,000 MILES PER YEAR. \$0.25 PER MILE OVER 1,645,000 MILES PER YEAR. \$0.25 PER MILE OVER 1,650,000 MILES PER YEAR. \$0.25 PER MILE OVER 1,655,000 MILES PER YEAR. \$0.25 PER MILE OVER 1,660,000 MILES PER YEAR. \$0.25 PER MILE OVER 1,665,000 MILES PER YEAR. \$0.25 PER MILE OVER 1,670,000 MILES PER YEAR. \$0.25 PER MILE OVER 1,675,000 MILES PER YEAR. \$0.25 PER MILE OVER 1,680,000 MILES PER YEAR. \$0.25 PER MILE OVER 1,685,000 MILES PER YEAR. \$0.25 PER MILE OVER 1,690,000 MILES PER YEAR. \$0.25 PER MILE OVER 1,695,000 MILES PER YEAR. \$0.25 PER MILE OVER 1,700,000 MILES PER YEAR. \$0.25 PER MILE OVER 1,705,000 MILES PER YEAR. \$0.25 PER MILE OVER 1,710,000 MILES PER YEAR. \$0.25 PER MILE OVER 1,715,000 MILES PER YEAR. \$0.25 PER MILE OVER 1,720,000 MILES PER YEAR. \$0.25 PER MILE OVER 1,725,000 MILES PER YEAR. \$0.25 PER MILE OVER 1,730,000 MILES PER YEAR. \$0.25 PER MILE OVER 1,735,000 MILES PER YEAR. \$0.25 PER MILE OVER 1,740,000 MILES PER YEAR. \$0.25 PER MILE OVER 1,745,000 MILES PER YEAR. \$0.25 PER MILE OVER 1,750,000 MILES PER YEAR. \$0.25 PER MILE OVER 1,755,000 MILES PER YEAR. \$0.25 PER MILE OVER 1,760,000 MILES PER YEAR. \$0.25 PER MILE OVER 1,765,000 MILES PER YEAR. \$0.25 PER MILE OVER 1,770,000 MILES PER YEAR. \$0.2

AlmadenTimes Real Estate

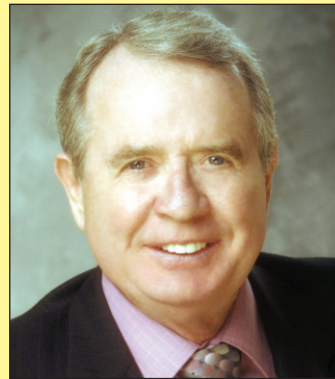
AlmadenTimes Real Estate



SUSAN BOERNER



(408) 921-7619
www.apr.com/sboerner
sboerner@apr.com



PAT O'CONNOR



(408) 691-7322
poconnor@kw.com



CAROL CAMILLI-MONTGOMERY



serenogroup.com/Profiles/Carol-Camilli
CamilliHomes@serenogroup.com
(408) 209-7809



DAN WALKER

Realtor® CalBRE #00758244



(408) 892-4813
Dan.Walker@cbnorcal.com



DAVID & VICKI HARRIS



2921 Villages Parkway,
San Jose
(408) 754-1572



KRAIG CONSTANTINO



kcreteam@gmail.com
www.KraigsListings.com
(408) 219-9122



ASHLEY R. AGUILAR
REALTOR®



LICENSE # 02049017
<http://araguilar.apr.com/>
C 510.205.9565
O 408.460.1493



STACY SEYMOUR



(408) 960-9416
www.stacyseymour.com
stacy.seymour@cbnorcal.com



1253 Washoe Drive
\$ 1,850,000
5 Beds | 3 Baths
2,733 +/- sq. ft.
Therese Swan
408.656.8240

REALTORS: YOUR AD COULD BE HERE!

STARTING AT \$89 PER ISSUE
Call now to place your ad by phone: **(408) 898-7534**

Times Classified Advertising



The Secret is Out!

“Reach your friends and your community with your number one neighborhood news source - the *Almaden Times!*”

Call now to place your ad by phone:
(408) 898-7534

Tree Service

Boyd's Tree Service - Since 1984

Michael W Boyd, Owner
Cell 408-391-2809
Fax 408-371-1083
Off. 408-371-5040
www.Boydstreeservice.com
boydstreetree@yahoo.com
Cont. Lic. 2-23-1993

Tree trimming, Structurally pruning Tree removal, Stump grinding and landscape maintenance. Find us on Yelp.

The Membership Trading Community
408.565.8569
www.itexSV.com

Shoe Repair

ANDY'S SHOE REPAIR
408-270-0850

No Shoe is Ever Too Old!

Hours:
Mon-Fri
9:00 am - 5:00 pm
Saturday
9:30 am - 4:00 pm

2850 Quimby Rd. Suite 100 • 270-0850

Want to submit a news item for the Almaden Times?

Press day: February 6, 2019
Deadline: February 3, 2019

Write to editorial@timesmediainc.com

We'd love to hear from you!

Almaden Times

Driving School

Advantage Driving School is the premier driving school in northern California. Advantage Driving School has trained more than 300,000 students to drive safely since 1994. We offer complete programs for both traditional classroom and online courses. Driver Training is the behind the wheel training which prepares your child to pass the driving test at the DMV. We also offer complete programs for adults and senior citizens. If you have never driven or just need some supplemental instruction to improve your driving skills, we are just the school for you! We believe Advantage Driving School offers a great combination of experienced driving instructors and affordable prices!

Location: 5440 Thornwood Drive, Suite F;
Hours: 9 am-5 pm M-F 9 am-12 noon S-S; Phone: 408.363.4182; Email: info@advantagedriversed.com | Website: advantagedriversed.com

House cleaning

Angelica's House Cleaning

Angelica Mayo
Cleaner

Houses, Construction Houses, Offices and more.

References Available
408-834-0159
mayoangelica30@yahoo.com

Recycle this newspaper

Property Management

Property Management Services
Tenant-Finding
Ongoing Management Available
Call Jill Curry
CURRY & ASSOCIATES REALTORS
408-223-3220
DRE # 01700460

Mind Body Spirit

YOGALITE!

Classes with Robin Pickel.

Light, mindful stretching, deep breathing, visualization and meditation.

Enroll at www.sjregistration.com. Type "Yogalite" in the search box.

Almaden, Evergreen and Southside Community Centers in San Jose.

(408) 270-2220
(Evergreen Community Ctr.)

Singles

Almaden Valley (Senior) Singles

The organization that brings single residents of Almaden Valley (95120) over 65 to enjoy a social life close to home and take part in community service.

Come and join us for our monthly breakfast which are held at 9 am on the third Tuesday of each month at Cup and Saucer,
Princeton Plaza Mall, 1375 Blossom Hill Road.

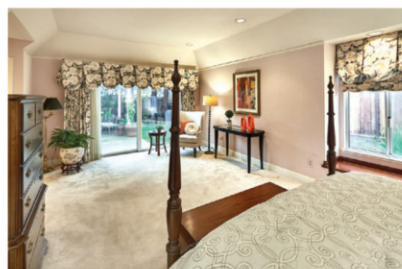


6
2
6
4

6264 TWEEDHOLM COURT ALMADEN VALLEY

Open Saturday & Sunday 1pm to 4pm

TWO MASTER BEDROOMS! This single-level home is 2000+/-sf with 4 spacious bedrooms and 3 full baths. Living area has solid oak flooring and high peaked ceiling with accent lights. Remodeled kitchen with wood cabinetry, custom counter tops and backsplash. Double doors open to a spacious master bedroom suite with his & hers closets, plush carpeting, a ceiling fan plus a built-in bench seat that provides extra storage. Room enough for a sitting area with recessed lights and a slider that provides access to the backyard. XV90 upgraded central heat and air conditioner, new Owens Corning Woodmoor shingle roof, fresh exterior and interior paint. Schools: Los Alamitos Elementary, Castillero Middle & Pioneer High. **Offered at \$1,425,000**



Therese Swan

408.656.8240
 tswan@apr.com
 AlmadenValleyRealEstate.com
 License #01355719



Swan has been the #1 Agent in Almaden Valley each year for the last 10 years as measured by Dollars per Agent per Year. And 2018 was no exception. In addition, she is the only Almaden Valley specialist to ever have been nationally ranked and recognized by Wall Street Journal/RealTrends twice for being in the Top 250 Agents in the US. Additionally, Swan is consistently among the Top 100 Agents in the SF Bay Area.



APR.COM

ALAIN PINEL
 REALTORS

LUXURY
 PORTFOLIO
 INTERNATIONAL

Square footage, acreage, and other information herein has been received from one or more of a variety of different sources. Such information has not been verified by Alain Pinel Realtors. It is important to buyers, buyers should conduct their own investigation.