

GARAGE DOORS
Residential • Commercial • Doors • Operators

Quality Products • Quality Workmanship = Quality Customers

Call us today for your • **FREE** door estimates.

WE FIX DOORS!

MAST OVERHEAD DOORS 105 S. Dodge St.,
641-680-2016 Bloomfield, IA

Tri-County SHOPPER

Valentines Day
is a week away!
LOOK INSIDE FOR GREAT GIFT IDEAS!

STANDARD MAIL
U.S. POSTAGE
PAID
TRI-COUNTY SHOPPER, INC.
POST OFFICE BOXHOLDER
LOCAL RURAL BOXHOLDER
OCCUPANT
CIRCULATION
OVER 11,750
THIRD CLASS

P.O. Box 168 • Bloomfield, IA 52537 • www.tri-countyshopper.com
Phone 641-664-1333 • Fax 641-664-3761 • E-mail shopper@netins.net



Vol. 47, No. 06
Wednesday, February 6, 2019




Buy her a gift she will love.... Handmade Chocolates!




Several unique chocolate items to choose from!
Roses, Suckers and More!

Make a chocolate bouquet with one of our Crow Canyon Mugs or plate stands!

NEW! NEW! NEW!
Carmel Chocolate Dipped Pretzel Rods

Chocolate Double Dipped Strawberries

2 miles west of Bloomfield on Hwy 2 • 21021 Jewel Ave.
641-664-1213 • Mon. - Sat. 8:30-5

COMMERCIAL & INDUSTRIAL ROOFING



- METAL
- RUBBER
- FOAM
- EPDM
- PLY SYSTEM
- BUILT-UP




FQC

FRENCH QUALITY COATINGS AND CONSTRUCTION
641.629.0621

Chad & Rose French Owners
12618 Mink Blvd.
Bloomfield, IA

www.fqcoatings.com

Like us on Facebook

Get your free estimates for your spring projects!

- BATH
- KITCHENS
- TILE
- DRY WALL
- FLOORING



RESIDENTIAL RENOVATIONS



Your Friendly Local Mechanic

Davis County Tire located in Bloomfield has an exceptional opportunity for :

TRACTOR/TRAILER & ALIGNMENT MECHANIC

We will train the successful applicant in alignment and related items. The person we seek must be experienced in diesel engines as well as all aspects of trailer repair. We will be involved in light maintenance of diesel engines such as oil changes, ac repair, cooling systems, batteries and alternators. There will be no internal engine repair. Trailer work will include brakes, lighting, door replacement, suspension, etc.

Compensation will be commensurate with experience. Benefits include health insurance, paid holidays, vacation and a great work environment.



Contact Rob Williams 641-664-1801
rwilliams@eitire.com

108 Smith Street • Bloomfield
PH: 641-664-1801
Hours: Mon. - Fri. 7:30-5:00
Saturday 7:30-Noon



Davis County

OLD SOLDIERS & SETTLERS REUNION

Fundraiser

Soup Supper

Sat., February 9th
(Alt. date Feb. 16th)

WIN • WIN • WIN

A gift card from Keith's Foods worth \$200!

Buy tickets at these locations:

- The Rusty Wagon
- Quick Time
- Go Gourmet
- Jessie's Sewing Room

Tickets are \$5.00 each or 5 for \$20.00

(Do not need to be present to win)
Winner will be drawn at the soup supper.

Drakesville Shelter House

4 PM - 8 PM
Soup, Drinks & Desserts
Free Will Donation!

- BINGO AT 5 PM
- BLACKOUT AT 7:30 PM

All proceeds will benefit the Davis County Old Soldiers & Settlers Reunion.

THANKS FOR YOUR SUPPORT!

MORE INFORMATION CONTACT: DANNY SCOTT 641-208-5884 OR
CATHY WARNER 641-722-3358



COUNTRY VIEW STORE
Memphis, Missouri



\$2.89 / 4LB
NAVEL ORANGES



\$0.39 / LB
BANANAS



\$1.78 / PINT
BLUEBERRIES

WE HAVE VALENTINE SUGAR COOKIES AND MORE!



\$1.99 / 3LB
ORGANIC GALA APPLES



\$2.59
ORGANIC CAULIFLOWER



2 FOR \$1.00
GRAHAM CRACKERS



\$1.99
PALMOLIVE DISH SOAP

10% OFF
SUNNY ACRES HONEY



3 MILES SOUTH OF MEMPHIS, MO ALONG HWY 15 | COUNTRYVIEWSTORE.COM
660-883-5388 | MON-FRI 8:00AM-6:00PM & SAT 8:00AM-5:30PM

10% OFF

Present this coupon and receive
10% off one item of your choice.

Includes in stock appliances.

Valid February 7th-16th.
MUST present coupon for discount.

10% OFF

MEMPHIS MERCANTILE
EST 2016
South Side of the Square in Memphis
660-465-2345
Monday - Friday: 8:00 AM to 5:30 PM • Saturday • 8:00 AM to 4:00 PM / Sunday CLOSED

MEMPHIS MERCANTILE
EST 2010
115 E. Monroe • Memphis, MO
660-465-2102

Check us out online- memphismmercantilemo.com

We are your local, full-service contractor, dedicated to meeting all of your home improvement and home building needs with integrity and quality craftsmanship.




Stocking framing nails by the box/pallets. Call for pricing!

- Metal Roofing
- Crews available

- FREE estimates!
- Call today!

Need Metal Fast?

WE CAN HELP!
Now roll forming metal roofing!
21 colors to choose from!




WAGLER METALS LLC

19049 Ice Ave., Bloomfield, IA • 641-722-3692

KW Electric

Keith Waller: 641-777-6701
Matt Waller: 641-799-9220
Austin White: 641-226-4495

• Licensed & Insured
• Free Estimates

641-459-3889

13346 Lily Ave.
Bloomfield, IA

ACREAGE FOR SALE: 5 bedroom house, 28x50 shop /horse barn with lean to, \$200,000. 17710 212th St. Bloomfield, IA
PH: 641-664-1520 ext. 1 08

WANT TO BUY: 16' bumper 2 axle car trailer; 4-10 shot gun, 22 pistol, cupola, musical instruments, older cars & trucks. Pay cash.
PH. 641-814-2639. 07

FOR SALE: Seasoned Firewood. PH: 641-208-6959 08
FREE: Mixed breed small black dog. Cantril, IA PH: 641-799-7529 08

FOR SALE: 2018 alfalfa hay. Mark Rogers, Douds, IA. PH. 641-919-9447. 11



Need Collision Correction

Yeah We Do That!

• Complete Collision Repair • Paintless Dent Removal • Custom Paint Service
• Expert Color Matching • Frame & Unibody Repair

Insurance Claims Welcome
We'll handle the paperwork and deal directly with your insurance company.

Rentals for all Occasions! Great Rates! **Hertz**

Walker Motors
Collision Repair Inc.
375 S. Main St. | Memphis, MO
660-465-2159 | Shop Phone/Fax

Valentine's Banquet

Saturday, February 16th
Seating at 5:00 and 5:30

Freewill Donations to Youth!

Food, fun & fellowship!

Childcare provided!

FREE PROFESSIONAL PHOTOS
WILL BE TAKEN OF EACH COUPLE!

Mark Baptist Church • 16033 276th St., Bloomfield • 319-230-6215



Cornerstone Investments

Chuck Riggerbach, Financial Planner

108 W. Jefferson St. • Bloomfield, IA 52537
Office (641) 664-3700

Securities offered through Questar Capital Corporation (QCC) Member FINRA/SIPC. Advisory Services offered through Questar Asset Management (QAM) a registered investment advisor. Cornerstone Investments is independent of QCC and QAM.

IRAs...

IRAs...

IRAs...

Funding your IRA, Roth IRA or SEP is a good way to plan for your retirement. Consolidating multi IRA's or rolling over old 401k's is a service I offer my customers. Whatever your retirement needs are I can help you choose the right investment.

Custom Built, Painted and Vinyl
Buildings & Sheds
~David W. Schrock~
Hillview
MINI BARNs
15383 180th Street Drakesville, IA 52552 **641.664.2842** U.M.

One Agent for Life

and **Auto**

and **Home**

and **Business**



Together, we'll develop a customized plan that's right for you.

It's your future. Let's protect it.™

Jeremiah Campbell
107 W Jefferson
Bloomfield
(641) 664-3180
<https://jeremiahcampbell.fbfsagents.com>

FARM BUREAU
FINANCIAL SERVICES

Farm Bureau Life Insurance Company,* Farm Bureau Property & Casualty Insurance Company,* Western Agricultural Insurance Company*/West Des Moines, IA. *Company providers of Farm Bureau Financial Services M123 (8-18)

GARAGE DOORS

Residential • Commercial • Doors • Operators

Quality Products + Quality Workmanship = Quality Customers

Call us today for your • **FREE** door estimates.

WE FIX DOORS!

MAST OVERHEAD DOORS 105 S. Dodge St.,
641-680-2016 Bloomfield, IA

FOR SALE: AKC registered Golden Retriever puppies. Very friendly, vet checked, dewormed, vacc. Ready to go Jan. 21st
PH. 319-201-0900. 06

FOR SALE: Raymond electric stand on forklift with charger. 18 ft, high lifts 3,000 lbs Asking \$3000.00 OBO GREENTOP MO.
PH. 660-216-0205. 08

L&M Country Store

1 1/2 miles south of west Hwy 2 & 63 jct.
Mon-Sat. 8am-5pm **CLOSED SUNDAYS**
VM: 641-664-1936

Nacho Cheese Sauce..... \$2.99/gal.
Coconut Oil..... \$8.95/gal.
Oscar Mayer Turkey Bacon,
36 oz \$3.39
Co-Jack Cheese Cubes, 16 oz..... \$1.49
Heinz Small Kosher Dill Pickles
..... \$2.50/gal.
Lemonade or Tang Drink Mix,
4 -5 lb. \$4.99
Pace Picante Sauce, 24 oz..... 99¢

WANT TO BUY: Old gas pumps, gas related signs, hit miss engines, any advertising signs, old pocket watches & wrists watches, class rings, old jewelry, wood clocks, yard wind mills, old metal gliders. Any condition. Pay cash.
PH. 641-814-2639. 07

NEW MATTRESSES FOR SALE!

Selling individually or in sets.
Factory warranty.
TWIN - FULL
QUEEN - KING
641-664-3060



in heirloom furniture that last a lifetime!



HAY FOR SALE: Grass & grass alfalfa mix.
JEFF GREINER
PH. 641-208-2235. 06

Slayton Polaris Authorized Polaris dealer since 1988
It's time to get Muddy!
New & Used Polaris Rangers & ATV's
POLARIS The Way Out.
660-328-6627 8 mi. S. & W. from Pulaski or 6 mi. W of Memphis then 13 mi. N. on Route B

FOR SALE: Free standing electric fireplace insert, 1 year old, \$100 Bloomfield.
PH. 641-208-2754. 06

FOR SALE: 8 month old Savannah billy, \$200.
PH: 319-677-6497 or 319-288-1054 08

2013 Ford F-150 Limited



2013 Chevy Suburban



2017 Chrysler Pacifica



BLACK, CLOTH INTERIOR, 32,000 MILES \$19,700

Check out these Cupid Approved Deals!



Kollision Korner

504 South Drake St. • Bloomfield, IA 52537 • PH: 641-664-2648 • Fax: 641-664-2948

Davis County HOSPITAL

Dedicated. Compassionate. Healthcare.

February

Specialty Clinic Schedule

Dr. Ron Graeff	Allergy/Pulmonology	641-664-3840	M, T, W, Th
Dr. John Harrington	General Surgery	641-664-7091	M, T, W, Th, F
Dr. Boling	OB/GYN	641-664-7091	28
Jay Brewer, CRNA	Pain Clinic	641-664-3602	5, 12, 19, 26
Dr. Whitman	Ear, Nose, Throat	641-664-7091	4, 18
Dr. Ciesemier	Allergy/Immunology	641-664-7091	8, 22
Dr. Cleaver	Dermatology	660-627-7546	14
Dr. Homedan	Orthopedics	641-664-7091	7, 20, 21, 27
Dr. Holte	Podiatry	641-664-7091	15
Dr. Jackson	Rheumatology	641-664-7091	5, 12, 19, 26
Shayla Sanders, ARNP	Rheumatology	641-664-7091	5, 12, 19, 26
Dee Dorsett, ARNP	Cardiology	641-682-5349	7, 21
Linda Schilling, ARNP	Dermatology	641-664-7091	11
Melissa Gingrich, ARNP	Women's Health	641-682-8761	1, 8, 15, 22

509 N. Madison • Bloomfield, Iowa 52537
www.DavisCountyHospital.org



Don't let the
winter weather
get you down...

**Check out these great
area events to lift those
winter time blues!**

SLICK'S CASH PRIZES 100% PAYOUT!!

ICE FISHING TOURNAMENT

SATURDAY, FEBRUARY 9TH
Check in 8:00 am Weigh in 4:00 pm
2 Person Teams, \$30/Team

SLICK'S 641-242-1008
East Side of Bloomfield Square

Friday, Feb. 8th
Choice of 12 or 14 oz. Ribeye with sides

Saturday, Feb. 9th
→ CHICKEN WINGS ←
and a bucket of beer!

Valentine's Day **SPECIALS** Thursday, Feb. 14th
Steak & Shrimp

Dine In **722-3355** Carry Out
RAY'S LONGBRANCH
Drakesville, IA



BUY TRADE SELL

**Bridgeview Center
Ottumwa, Iowa**

Friday, February 8
5:00 PM - 9:00 PM

Saturday, February 9
9:00 AM - 5:00 PM

Sunday, February 10
9:00 AM - 3:00 PM

For Information 660-342-2560

Southfork MOTEL & GRILL
JUNCTION OF HWY 2 & 63
BLOOMFIELD • 641-664-1063

Breakfast • Lunch • Dinner
Daily Hot Specials and Evening Features
Prime Rib Capital of the World! Served on Friday & Saturday Nights
Banquet Facilities Available for All Occasions • Catering

"Where Quality and Consistency Matter!"

Tues - Thurs 7am-9pm • Fri - Sat 7am-10pm
Closed Sunday and Monday

**Make Your
Valentine's
Plans Now!**

The Grain Bin
Family Steakhouse

Valentines Day Special!

♥♥♥ **PRIME RIB DINNER** ♥♥♥
16 oz. Prime Rib cooked to your preference. Garlic mash potatoes, green beans, One trip to the salad bar and a hot roll. **\$28.99**

♥♥ **"DINNER FOR TWO"** ♥♥
16 oz. USDA Prime New York Strip, 1/2 lb. of crab legs, choice of potato (2), one trip to the salad bar (2) and hot rolls. **\$49.95**

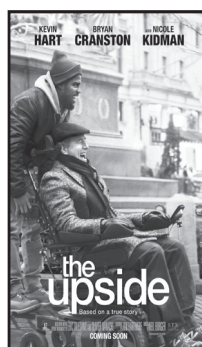
♥♥♥♥♥ **PETITE DINNER** ♥♥♥♥♥
8 oz. Filet topped with grilled asparagus and garlic sauce, garlic mash potatoes, green beans, salad bar and hot roll. **\$28.95**

Dessert: Vanilla or red velvet cheesecake
Hot Chocolate lava cake served with ice cream

102 W Jefferson St., Bloomfield 641-664-3597

**IOWA THEATER
BLOOMFIELD, IOWA**

"THE UPSIDE"



Friday, Feb. 8th
Saturday, Feb. 9th
7:00 PM
Sunday, Feb. 10th
4:00 PM **PG-13**
Coming Next: Glass

CONGRATULATIONS

2x4 B&W Ad Winner:
Memphis Farm & Home

2x5 Color Ad Winner:
Davis Seed Co.

1/2 Page Color (Front) Ad Winner:
J's Food

A Big Thanks to everyone
who participated.

TO OUR WINNERS

Coverage & Service You Can Count On

Our companies were founded more than 75 years ago to serve the needs of farmers and ranchers. Today we're the No. 1 ag insurer in our territory, delivering Smarter Insurance for Agriculture.®



Call me today to see how I can help protect your operation, family and future.

Gary Sprouse

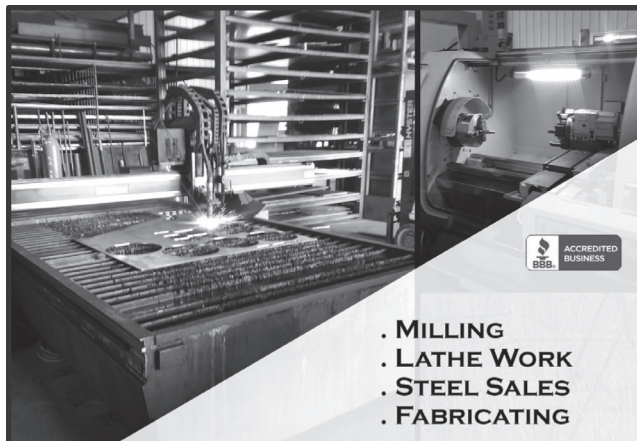
712 Southwest St Suite #2
Bloomfield
(641) 664-2238

FARM BUREAU FINANCIAL SERVICES

Auto | Home | Life | Annuities | Business | Farm & Ranch | Crop

2016 SNL P Group - Farm Bureau Property & Casualty Insurance Company and Western Agricultural Insurance Company direct written premium. Farm Bureau Property & Casualty Insurance Company,* Western Agricultural Insurance Company,* Farm Bureau Life Insurance Company*West Des Moines, IA. *Company providers of Farm Bureau Financial Services PC055 (1-18)

Become a Published Author. We want to Read Your Book! Dorrance Publishing-Trusted by Authors Since 1920 Book manuscript submissions currently being reviewed. Comprehensive Services: Consultation, Production, Promotion and Distribution Call for Your Free Author's Guide 1-855-520-9045 or visit <http://dorranceinfo.com/Midwest> (MCN)



• MILLING
• LATHE WORK
• STEEL SALES
• FABRICATING

ALSO HANDLING SJ SMITH GASSES

Fox Valley WELDING

fvwelding@gmail.com 641.656.4684

Hrs: 8am to 5:30pm ELVIN MARTIN BRIAN MARTIN

12190 E. HWY2 - MILTON, IA 52570

HAY FOR SALE: Selling big round bales grass hay. Call for more info.
PH: 641-777-9481 or 641-895-0814 06

FOR SALE: Puppies lab Australian Shepherd cross, chocolate and very cute, \$100.
PH. 641-208-5667. 06

WANT TO BUY: Antiques, collectables, primitives, small estates, quick response. Pay cash.
PH. 641-814-2639. 07

FREE: Soft wood firewood, 40" to 48" lengths, banded in bundles. 1 mile West of Pulaski to Scarlett Ave. then 3 miles South to 280th then 1/2 mile West at Sawmill.

Witmer's Furniture



Love Your Home Sale

Over 50 Amish & Mennonite Vendors
Exceptional Handcrafted Quality



Now through Feb 21
Take advantage of our 18 month
0% interest or 90 day payment plan!

17999 US Hwy 136, Memphis, MO
660-465-2461

www.witmersamishfurniture.com

DUTCHCRAFT
Mattress Company

GINGERICH STOVES and PLUMBING

Kozy-King

The Kozy-King comes with a 3-speed blower and a feature to prevent overheating. It puts out enough heat for your whole house, shop or greenhouse.



DS
STOVES
Where
Tradition,
craftsmanship
and quality
come first.

19091 180th St • Bloomfield, IA
VM 641-722-3540

3/4 miles east of Drakesville, south side • M-F 8-5 Sat. 8-12

SURPLUS LUMBER -
2X4- Pre-cut 8'-9'-10'.
2x6-Pre-cut 8'-9'-10'. Also
2x8_2x10_2x12. Treated 2x4
to 2x12. 12" LVL's.
Miller Lumber • 27547
Timber Ave. • Pulaski,
IA 52584. 3 1/2 mi. S. of
Pulaski. Open Monday -
Saturday.

FOR SALE: 80 18-month-old and 40 yearling registered Angus bulls for sale. Individual feed efficiency tested. All weights, ultrasound data, and EPDs will be available. Will keep until June. Werner Family Angus, Diagonal, IA. 641-344-5059. WernerFamilyAngus.com.

JR FEED & SUPPLY

641-722-3045

17599 200TH STREET • BLOOMFIELD
STOP BY MON.-FRI. 8-5 & SAT. 8-12

Complete line
of bagged
feed in stock!

**CUSTOM
BULK**

Non GMO
Poultry Feed
we deliver!

BIRD FEEDS • PET SUPPLIES

HOURS
8 A.M.
to
5:00 P.M.
DAILY EXCEPT
SUNDAY

**Zimmerman's
Store**
Rutledge, MO
660-883-5766

Our
Everyday
Low Prices!

FRUIT & VEGGIE SPECIALS!

Gala Apples, 5 lbs. - \$3.69 • Oranges, 4 lbs. - \$2.79

3 Romaine Hearts - \$2.29 • Baby Carrots, 1 lb. - \$1.19

Frozen Shrimp, 2 lbs.\$10.19

Frozen Frog Legs, 10 lbs.\$39.39

Organic Coconut Flour - \$2.44/lb.

Oat Flour - 60¢/lb.

Sprouted Spelt Flour, 32 oz. - \$5.49

Sprouted Wheat Flour, 32 oz. - \$3.89

Sprouted Wheat Flour, 25 lbs. - \$38.75

SPROUTING SEEDS - 4 oz. Alfalfa - \$3.85 • 4 oz. Broccoli - \$4.25

8 oz. Green Pea - \$2.85 • 4 oz. Radish - \$3.49 • 4 oz. 5 Salad Mix - \$3.95

GREAT BUY!!

Blown Cracked Pecans, 3 lbs. - \$13.95

Honey Glazed Walnut Pieces - \$3.39

Grape Seed Oil, 1 gal. - \$16.55

Organic Sunflower Oil, 16.9 fl.oz. - \$5.75

4 Double Rolls Twice As Soft Bath Tissue, 200 3-Ply Sheets - \$2.45

Big Mopper Paper Towels, 100 2-Ply Sheets - \$1.09

Tempered Glass Cutting Board 12" x 15" Printed\$5.98

Perfect Crust Pie Mat\$10.79

3 Cup Flour Sifter\$3.49

Silicone Spatula Heat Safe To 450°\$1.98

Biscuit/Cookie Cutter Set Of 6\$1.19

9 pc. Measuring Cups & Spoons\$1.79

DRIVE A LITTLE & SAVE A LOT

COUNTRY CUT MEATS

Custom Butchering
Beef • Pork • Deer

641-675-3683 26824 Veatch Ave
Pulaski, IA

Country Side Grocery

Nabisco Saltine Crackers, 1 lb 99¢

Yellow Sliced American Cheese

5 lb \$9.95

Lemons 3/\$1.00

Ultra Grain Whole Wheat Flour

50 lb \$8.50

Turkey Bacon, 3 lb \$3.49

Tang Orange Drink Mix, 72 oz \$4.99



3/4 mi. E. of Drakesville, IA on 180th St.
Mon-Sat: 8:30am - 5:00pm
VM: 641-664-2661



**YODER
EQUIPMENT**
BLOOMFIELD, IOWA

EXTRA HEAVY 10 GAUGE
BALE RINGS & HAY
SAVERS

CONTINUOUS
FENCING

Mineral Feeders

Feed Bunks

Water Tanks

19887 Jade Ave
2 1/2 Miles W of Bloomfield
V.M. 641-664-2797

Start building
up your →
savings today!

Place an ad in the
Tri-County Shopper!



Tri-County
SHOPPER

Personal Classified Ads

PH: (641) 664-1333
shopper@netins.net
tri-countyshopper.com

1ST WEEK Only! \$9²⁵ 2ND WEEK + \$1⁰⁰ \$10²⁵ 3RD WEEK Wow! FREE

Fill in the form below as you want your ad to appear. We must receive this by Friday at 5:00 PM to appear in the following week's Shopper. There will be an additional 10¢ charged for each word after 20.

BUSINESS EXEMPT • WANT ADS ARE CHECK, CASH, OR CREDIT CARD

									5
									10
									15
									20
1 WK - \$9.35	3 WK - \$10.35	1 WK - \$9.45	3 WK - \$10.45	1 WK - \$9.55	3 WK - \$10.55	1 WK - \$9.65	3 WK - \$10.65	1 WK - \$9.75	3 WK - \$10.75
									25
1 WK - \$9.85	3 WK - \$10.85	1 WK - \$9.95	3 WK - \$10.95	1 WK - \$10.05	3 WK - \$11.05	1 WK - \$10.15	3 WK - \$11.15	1 WK - \$10.25	3 WK - \$11.25
									30
1 WK - \$10.35	3 WK - \$11.35	1 WK - \$10.45	3 WK - \$11.45	1 WK - \$10.55	3 WK - \$11.55	1 WK - \$10.65	3 WK - \$11.65	1 WK - \$10.75	3 WK - \$11.75
									35
1 WK - \$10.85	3 WK - \$11.85	1 WK - \$10.95	3 WK - \$11.95	1 WK - \$11.05	3 WK - \$12.05	1 WK - \$11.15	3 WK - \$12.15	1 WK - \$11.25	3 WK - \$12.25
									40
1 WK - \$11.35	3 WK - \$12.35	1 WK - \$11.45	3 WK - \$12.45	1 WK - \$11.55	3 WK - \$12.55	1 WK - \$11.65	3 WK - \$12.65	1 WK - \$11.75	3 WK - \$12.75
									45

Name: _____ Address: _____

City: _____ State: _____ Zip: _____ Phone: _____ Run my ad _____ times.



Mail your completed ad
form & payment to:

Tri-County Shopper • P.O. Box 168 • Bloomfield, IA 52537

SALE



\$2.35
24 oz.
Smithfield
Brown Sugar Boneless
Pork Chops



\$2.99
20 oz.
A1
Steak
Sauce



\$3.99
per pound
Fresh or Frozen
Whole Boneless
Ungraded Beef
Ribeye Steak



\$2.99
per pound
Whole Boneless
New York Strip Steak



\$1.19
per pound
Bone-In
Pork Shoulder Butt



\$1.29
per pound
Boneless
Smoked Ham



69¢
per pound
Fully Cooked Breaded
Chicken Strips



\$1.69
16 oz.
KRAFT
Colby Jack Cheese



\$1.59
16 oz.
Jimmy Dean
Pork Sausage



99¢ pint
Grape
Tomatoes



5/\$1
\$20 - 113 ct. box
California Navel
Oranges



99¢
21 oz.
Cherry Pie Filling



69¢ 10 oz.
Jet Puffed
Marshmallows
Crispy Rice 12oz. 89¢



75¢
13 oz.
Restaurant Style
Tortilla Chips



\$2.25
16 oz Box
2% Velveeta
Cheese



\$1.99
48 pack
4 oz.
Trix Yoplait
Yogurt



99¢
14 oz.
HoneyComb Cereal



\$1.25
per pound
Colored Chocolate
Candy Gems



\$1.29
17 oz.
Toll House
Cookie Mix



99¢
10 pk.
Swiss Miss
Hot Cocoa Mix



\$7.99
plus deposit
24 Pack Cans
Pepsi Products



99¢
plus deposit
2 Liter Bottles
7up Products



DUTCHMAN'S STORE Division Street CANTRIL, IA (319) 397 2322

STORE HOURS • Weekdays, 8a.m. - 6 p.m. • Saturday 8a.m. - 5 p.m. • Sunday Closed

View our specials online - www.DutchmansStore.com

SALE PRICES Feb 6-12, 2019
While Supply Lasts

FOR SALE: 50'x25' greenhouse, great condition. Tables, drip lines, heater, fans, luvers, all included. PH. 641-208-6282. 08

FOR SALE: Healthy dirt lot butcher hogs, \$175 each. Ready to butcher soon. Call Calvin 660-342-8534.

FOR SALE: 60 large net wrapped bales of brome hay, 1,650 lbs, \$130 per bale. Promise City, Iowa. PH: 641-895-0884 08



Warm Up With
DRINK MOORE COFFEE!

sweet, sweet
LOVE

Shower her with flowers this Valentine's Day!
Come Check Out our Specials!
Floral Arrangements • Bouquets • Chocolates
Willow Tree • Yankee Candles • Jewelry & much more.
Making Memories
Flowers & Gifts

108 S. Madison St. Bloomfield, Ia 641-664-1600
M-F 9-5, Sat. 9-12 Owners: Scott & Brandi Moore
Gift Certificates Available!



We are your locally owned hometown pharmacy!
208 E. Franklin, Bloomfield, IA 641-664-3100
Hours: Monday - Friday 7:15 am - 5:30 pm
Saturday 8:00 am - 12:00 pm
Mylo Wells, PHARM.D., Owner

We are open early for the everyday busy families and farmers.

Preferred on most insurance plans including Medicare & Medicaid. Full over the counter service including Russell Stovers and American Greeting Cards

PLENTY OF PARKING AND NICE WAITING AREA!

DELIVERY SERVICE!
Free daily delivery to Bloomfield. Twice weekly deliveries to Drakesville, Floris, Pulaski, West Grove, Moulton and Eldon. Call for delivery dates and locations.

We offer many services to help make our life easier.
• RX Mobile App
• Free Mailing (some exclusions)
• Vaccinations
• Walk out prescription Service

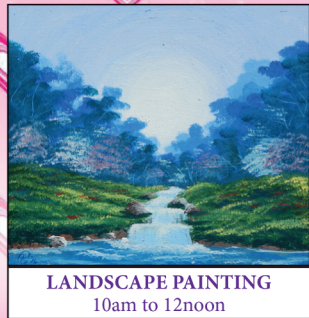
Fast, Helpful and Friendly Service Everytime!

"Art from the Heart"

Paint Party Fundraiser



CHOICE FROM 2 HEART PAINTINGS
2pm to 4pm



LANDSCAPE PAINTING
10am to 12noon

Sat., February 9th
Pulaski Community Center

(next to Fire Department)

\$35 for your canvas & seat

All proceeds go toward
required update of
communication equipment
for Pulaski Volunteer Fire Dept.

**Help us raise the
\$12,000 needed!**

Seat/Canvas Must be reserved no later then Friday, Feb 8th.

Contact person is Gin Lammert 641-208-5968 or 641-675-3402

FOR SALE: Firewood at RJ
Lumber, \$15 a pickup load.
18989 160th St., Drakesville,
IA 52552.

TF

FOR SALE: Bowflex
Extreme Home gym, good
condition, \$200.
PH. 641-664-3808.

06

FOR SALE: Amana
electric stove & light brown
recliner.
PH: 641-208-5695

06

FOR SALE: Meat goat
doelings. Pregnancy
checked. Vaccinated, de-
wormed. Start kidding
middle to late Feb. Bred
to Boer buck. Roman
Gingerich, 13418 Hill Blvd.
Drakesville, IA
PH. 641-722-3269.

06

FOR SALE:
24 acres m/1 with 50x70
insulated shop with semi
accessible loading dock,
24x48 insulated garage,
Hwy. 63 accessible. 4 miles
North on Bloomfield.
PH. 641-895-6527.

06

FOR SALE: 5 gallon pails
w/ lids.
PH: 641-664-3462

08

JESSIE'S SEWING ROOM



- Embroidery
- Signs
- Caps
- Clothing
- Home Décor

- Custom Wedding Dresses
- Personalized Wedding Memories

JESSIE GARMON

(C) 641-208-5036 • 641-664-5377

207 E. Franklin • Bloomfield, IA

GILBERT'S SALE YARD MACHINERY CONSIGNMENT SALE, MARCH 4, 9:00 A.M.. Advertising Deadline February 15. No Small Items, Tires after February 22. CONSIGN TODAY, 641-398-2218, Hwy 218, Floyd, IA, www.gilbert-saleyard.com (MCN)

DISH Network \$69.99 For 190 Channels. Add High Speed Internet for ONLY \$14.95/month. Best Technology. Best Value. Smart HD DVR Included. FREE Installation. Some restrictions apply. Call 1-855-434-0020 (MCN)

RUNNING BOARDS • MUDFLAPS

GRILL GUARDS • WEATHER TECH FLOORMATS

All brands of truck accessories available.

You Name It.... We Can Get It!

LINE-X of Ottumwa

641-683-9334

Brad Lisk
15514 Blackhawk Rd., Ottumwa, IA

FOR SALE: 3- step precast concrete steps, 2 1/2' x 5', with landing, includes wrought iron railings, \$150; 300 gal gas barrel w/stand, \$100; also old treadle Singer sewing machine in cabinet \$50-
PH. 641-459-3461 or 641-680-2461.

FOR SALE: 37 Big sq. bales of certified organic hay. 3 rd. & 4 th. cutting, stored inside. PH: 641-208-6335

Yoder Glass & Window

Design that fits your home!

Vinyl Windows
Entry Doors

FREE LAY VINYL FLOORING

Several Colors In Stock!

WHY USE FREE LAY FLOORING?

When you damage a tile or plank in the center of your floor, simply lift the offending plank and lay the new plank in it's place. It's that simple.

Installation Available!

**LAYS WELL OVER MOST FLOORS
INCLUDING CONCRETE!**

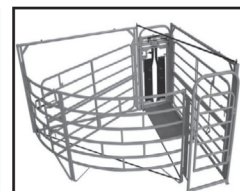
Robert W. Yoder

19467 Driftwood Blvd • Bloomfield • 641-722-3667

MAKE CALVING EASIER WITH....



For-Most
Livestock Equipment



**Calving Pen
Care Center**



We carry

Cobett Waterers



FILTER DAYS

FEB. 1st - FEB. 28th



15% OFF All

Baldwin Filters

Baldwin has over 3,300 different filters available for oil, air, fuel, coolant, transmission, hydraulic & many other applications.

Hamilton Produce Co.

105 W. Franklin • Bloomfield, IA 52537

641-664-2459 or 1-800-469-7749



spilmanauto.com

CHECK IT OUT!

Satisfaction **GUARANTEED**

Stop in today or check out our website.
If we don't have it, we'll gladly get it for you.

**WE BUY & SELL
PRE-OWNED PARTS!**



SPILMAN AUTO PARTS
Old Hwy. 2 & 63 W. • PO Box 31 • Bloomfield, IA
641-664-2463 • 1-800-477-1367
M-F 8AM-5PM • Sat. 8AM-12Noon

Like us on **facebook**

MasterCard VISA

BCS TWO-WHEEL TRACTORS



SPRING SALE!

SAVE \$200 ON SELECT TRACTOR MODELS - INCLUDING MODEL 732

- ALL-GEAR DRIVE • ROTATING HANDLEBARS •
- LIFETIME TRANSMISSION WARRANTY •

Sale ends March 31, 2019.



MODEL 732
W/ SICKLE BAR
MOWER



MODEL 732
W/ REAR-TINE
TILLER

TROYER ENGINE SERVICE, LLC
13321 245TH ST, MOULTON, IA 52572
DALE TROYER: 641-664-2788

Be sweet to your crops!

Start fighting those weeds now by calling your local
Nutrien Ag Solutions for an early spring pre.

WE ALSO DO:

- Soil testing
- Dry & Liquid Fertilizer
- Liquid Nitrogen
- Spreading
- Small Seeds
- Lots More!

Nutrien
Ag Solutions™

906 Karr Street • Bloomfield, IA
1-888-664-1045

FRUIT & NUT TREES From \$15. Blueberry, Strawberry, Grape, Asparagus, Evergreen & Hardwood Plants & MORE! FREE Catalog. **WOODSTOCK NURSERY**, N1831 Hwy 95, Neillsville, WI 54456. Toll Free 888-803-8733 wallace-woodstock.com (MCN)

Start Saving **BIG** On Medications! Up To 90% Savings from 90DAYMEDS! Over 3500 Medications Available! Prescriptions Req'd. Pharmacy Checker Approved. CALL Today for Your FREE Quote. 844-903-1317. (MCN)

Your complete seed headquarters!
seed corn • seed beans • small seed



Call Sid Today!!

Step up your yield
with Refuge Advanced powered by SmartStax! Makes a significant difference in root protection and yield.

NuTech Seed SmartStax Roundup Ready REFUGE ADVANCED

SIDWELL SEEDS
Queen City, MO
660-766-2737 • 660-216-6380

**WE OFFER THE
LOWEST
COPAY
ON MOST
MEDICARE
PART D PLANS**

Visit your Hy-vee Pharmacy or
Hy-Vee.com/Health for details.

**ON EVERY
PRESCRIPTION**
AVAILABLE FOR ALL PATIENTS

**EARN
5¢
OFF
PER GALLON**

Automatic Refills
HyVee
We Deliver

HyVee Amanda Mathews, R.Ph.
Kim Burton, R.Ph.
301 W. Jefferson, Bloomfield • PH. 641-664-2975
Emergency Numbers South HyVee Pharmacy
800-371-6524 or 641-683-4483



Mix 30
THE HIGH ENERGY LIQUID FEED

www.mix30.com

DESIGNED FOR USE IN COW-CALF OPERATIONS, FEEDLOTS & GRASS FED SITUATIONS

**MAXIMIZE YOUR PROFITS
FEED MIX 30 TODAY!**

16% PROTEIN - 10% FAT - THE ECONOMIC ALTERNATIVE
PROVEN INCREASE IN CONCEPTION • SHOWN TO INCREASE CALF SURVIVABILITY

**HARRIS
DISTRIBUTING**
West Grove, IA
641-929-3379 • 1-800-727-5589



HAPPY
Birthday!

To our precious girl,
Kinley Rupe!

We are proud of the young lady
you are growing up to be.

9

Love, Nanny and Papa

Hawkins - Harrison Insurance



SHOPPER ADS CAN BE DROPPED OFF HERE!

Proud to be your partner.

P.O. Box 365
Lancaster, MO
63548
660-457-3020

103 W. Monroe St.,
Memphis, MO
63555
660-465-8533

KUEHL'S COINS: Buying and selling gold & silver, collector coins, diamonds, gold jewelry, silver dollars, rare currency, any gold or silver items. Kuehl's Coins, Fairmont, Minnesota, 507-235-3886. (MCN)

A PLACE FOR MOM. The nation's largest senior living referral service. Contact our trusted, local experts today! Our service is FREE/no obligation. CALL 1-855-811-8392 (MCN)

**WE APPRECIATE
YOUR BUSINESS
TRI-COUNTY SHOPPER**

Oprah That's Good supreme pizza, 24.1 oz.

\$2.29

Sugardale smoked sausage, 40 oz.

\$2.49

Hormal Menumaster fully cooked oven roasted roast beef, 10 lb.

\$2.29 a lb.

Oscar Mayer Delifresh oven roasted sliced turkey breast, 15 oz.

89¢

R.B. Rice medium pork sausage, 16 oz

\$1.20

Johnsonville original summer sausage, 12 oz.

\$1.35

Prairie Farms fat free sour cream, 16 oz.

69¢

Prairie Farms half & half, 1 pt.

99¢

Prairie Farms sour cream, 3 lb.

\$1.99

Herr's deep dish pizza flavored cheese curls, 7 oz.

85¢

Musselman's chocolate creme pie filling, 21 oz.

\$1.49

Erewhon honey rice twice, 10 oz.

79¢

Kraft Jet Puffed rainbow mallow bits

3/\$1.00

Buried Treasure elderberry ACF

NEW ITEM!

Final Touch original fabric softener, 64 oz.

\$2.95

Highway 2

DI\$COUNT Groceries L.L.C.

Mon. - Sat 8:30am - 5:00pm
VM: 641-664-1187

Sale good Wed., Feb. 6th through Tues., Feb. 12th.

19686 Hwy. 2, Approx 2 miles, West of Bloomfield

SULLIVAN AUCTIONEERS, LLC

VISIT OUR WEBSITE FOR ADDITIONAL INFORMATION, PHOTOS & AERIAL TOURS OF **4,800+** ACRES OF LAND COMING UP FOR AUCTION AS WELL AS **24+** UPCOMING EQUIPMENT AUCTIONS!
www.SullivanAuctioneers.com

Quality Unreserved Farm RETIREMENT AUCTION TUES., FEB. 12, 2019 AT 9:30 A.M.

SALE TO BE HELD ONSITE AT: 16604 230th St., Bloomfield, IA



After nearly a lifetime of farming, the Knapp's have decided to retire. You will find their equipment in tip-top field ready condition. This is an auction that you will want to make plans to attend!

TRACTORS: '09 JD 8330 MFWD tractor, 4155 hours; '01 JD 8310 MFWD tractor, 8,826 hours. **FARM EQUIPMENT:** JD 1780 12/23 Conservation MaxEmerge Plus planter; JD 980 28'6" field cultivator; C-IH 496 32' disc; Brent 744 gravity wagon; JD 735 mower conditioner; H&S BF12C "High Capacity" 12 wheel hay rake; Artsway 475 grinder mixer; Westfield WR80-31 8" x 31" truck auger; 5' x 9' fiberglass flat rack wagon; JD 115 9' HD 3-pt. blade; (2) Older running gears. **PICKUP, ATV & LAWNMOWER:** '06 Chevy 2500HD 4wd standard cab pickup, 139,000 miles; Polaris 500 Sportsman AWD ATV, 4,483 miles; JD X475 lawnmower, 736 hours. **FARM RELATED ITEMS & TOOLS:** 1000 gal. fuel tank w/Bennett electric pump; (3) rolls of net wrap; 16' hyd. gravity wagon auger; Shop built pull type lawn sprayer; 38' lawn sweep; JD front mount lawn dethatcher; Shop built loader bale spear; 3-pt. bale mover; Hay saver bale feeder; Portable steel loading chute; Quantity of corner & line hedge posts; DMI Quick Cushion II pickup hitch; (6) rolling cultivator shields; Hitch pins, PTO adaptors, hyd. cylinders etc.; Electric over hyd. power beyond valve; Quantity of hand tools, drop cords & other shop related items.

ADDITIONAL INFORMATION, DETAILS & PHOTOS ONLINE:

www.SullivanAuctioneers.com

HAROLD & MARY JANE KNAPP – OWNERS
Harold's Phone: (641) 208-6592

FOR INFO, CONTACT: John Probasco (641) 856-7355

SULLIVAN AUCTIONEERS, LLC • TOLL FREE (844) 847-2161
www.SullivanAuctioneers.com • IL Lic. #444000107

JEFFERSON COUNTY, IOWA LAND AUCTION

Sale to be held at the Lockridge Community Center, Lockridge, IA

MONDAY, MARCH 11TH @ 10 A.M.

40 ACRES± • 1 TRACT

The Steele Farm is located in Section 16, Lockridge Township, Jefferson County, Iowa. (3 1/2 miles north of Lockridge, Iowa.)

Mark your calendars now for this upcoming Jefferson County, Iowa land auction that is located north of Lockridge, Iowa. This property offers productive tillable farmland that is currently in hay production, improved pastureland and attractive recreational acreage. There are several nice home building sites on this property and Rathbun Rural Water as well as electricity is in close proximity. This is an auction that you will want to attend!

DETAILS, MAPS & PHOTOS AVAILABLE ONLINE @:
www.SullivanAuctioneers.com

JERRY D. & MARY L. STEELE – SELLERS

ATTY: Tim B. Kuiken • Foss, Kuiken, & Cochran, P.C. • Fairfield, IA • Ph: 641-472-3129
FOR INFO: Jim Huff (319) 931-9292 • Jeff Hoyer (319) 759-4320

SULLIVAN AUCTIONEERS, LLC • TOLL FREE (844) 847-2161
www.SullivanAuctioneers.com • IL Lic. #444000107

LARGE LOUISA COUNTY, IA EQUIPMENT & LAND AUCTION 2 SEPARATE LOCATIONS! PLEASE READ CAREFULLY! MONDAY, FEBRUARY 18, 2019

PLEASE NOTE THE TWO TIMES & LOCATIONS:

EQUIPMENT AUCTION @ 9 A.M.

To be held onsite at 16365 110th Street, Wapello, IA

TRACTORS: '05 JD 7720 2wd tractor, 2,512 hrs.; '98 JD 8400 MFWD tractor, tach shows 5,430 hrs.; '98 JD 7810 MFWD tractor, 4,898 hrs.; '81 JD 4440 2wd tractor, tach shows 5,284 hrs.; '66 JD 4020 gas tractor, tach shows 6,333 hrs.; '66 JD 4020 gas tractor; '61 JD 4010 gas tractor, tach shows 3,135 hrs. **Combines, Heads & Head Trailers:** '13 JD S550 4wd combine, 2,462/1,813 hrs.; '92 JD 9500 2wd combine, 4,495/3,139 hrs.; '10 JD 606C 6R30" com head; '05 JD 693 6R30" com head; '07 JD 625F HydraFlex grain platform; '03 JD 920F grain platform; & head hauling trailers for above heads. **Collector Tractors:** '53 JD 50 tractor, 540 PTO; '36 JD A tractor; '36 JD B tractor; '37 JD B tractor, 540 PTO; '51 AC G tractor; Farnall Super M tractor; Farnall F-20 tractor. **Backhoe, Skid Loader & Attachments:** '09 JD 332 skid steer loader, sells complete w/steel skidsteer tracks 1,795 hrs.; '93 Case 580 Super K 2wd loader backhoe, tach shows 6,412 hrs.; Several high quality attachments. **Farm Equipment:** JD HX15 15' batwing mower, 1000 PTO; '03 JD 567 round baler, 540 PTO; JD R280 9' 3-pt. disc mower, 540 PTO; Frontier 10 wheel pull type V rake; H&S Columbia TR79 9 wheel hay rake; JD 670 5 bar hay rake; JD 346 wire tie baler, 540 PTO; JD 24T twine tie baler, 540 PTO; Unverferth 5000 grain cart, corner auger, 1000 PTO; Stan-Hoist 6.5' x 12' steel barge box; Parker 225 bu. gravity wagon on Hiniker gear; Several other pieces of farm equipment. **Planting & Tillage Equipment:** JD 1760 12R30" MaxEmerge XP no till planter; JD 750 15' grain drill; JD 726 26"6" soil finisher; JD 512 12'6" 5 shank disk chisel; JD 230 20' disk; JD 10' grain drill; JD 1350-1450 5 bottom plow; 16' Danish Tine harrow attachment w/single rolling basket; 20' Harrowgator. **Semis & Grain Trailers:** '06 Volvo VNL semi, shows 841,342 mi.; '93 Mack CH613 day cab semi; '79 Mack R Model day cab semi; '03 Merritt 42' hopper bottom grain trailer; '01 Timpte 40' hopper bottom grain trailer; '96 Wilson 41' hopper bottom trailer. **Pickups, Car & Trailers:** '10 Ford F-350 XL regular cab 4wd pickup, 62,902 mi.; '97 Ford F-250 regular cab 4wd pickup, 78,977 mi.; '83 Kiefer 6' x 20' tandem axle livestock trailer; '13 EBY "Maverick" 7' x 24' alum. gooseneck livestock trailer; '10 Delta 25' tandem axle gooseneck flatbed trailer; '64 Ford Galaxie 500, showing 41,555 mi.; Honda Fourtrax 4x4 ATV; Hoot Ridge gooseneck 6 place bale trailer; Shop built 6 place bumper hitch bale trailer. **Vintage Farm Equipment:** McCormick 127SP combine w/12' grain platform; JD 237 2 row mounted com picker; Several other pieces of vintage farm related items. **Also selling: Farm Support Items, Livestock Equipment, Tools & Shop Items.**

1,000 Acres± (subject to survey) • 9 Tracts



LAND AUCTION @ 5:00 P.M.

To be held at the Charles W. Briggs Civic Center, Wapello, IA

This farm offers it all, including productive tillable farmland and some of the most attractive & desirable recreational acreage that the state of Iowa has to offer! There are several thousand feet of Iowa River frontage that features some of the most awesome waterfowl hunting to be found anywhere in the Tri-State area. Included in this auction is a very nice country acreage that is improved with a ranch style home, 2 newer metal machinery storage buildings and other usable structures.

Details and photos available online @:
www.sullivanauctioneers.com

CHARLES & SANDRA KERR – OWNERS

Atty: Jay Schweitzer • Columbus Junction, IA • Ph: (319) 728-2219

AUCTION MANAGERS: JIM HUFF (319) 931-9292
JEFF HOYER (319) 759-4320 • CRAIG HOYER (319) 931-7016

SULLIVAN AUCTIONEERS, LLC • TOLL FREE (844) 847-2161
www.sullivanauctioneers.com • IL Lic. #444000107

WAYNE COUNTY, IOWA LAND AUCTION

Sale to be held at the Seymour Community Center, Seymour, IA

TUESDAY, FEBRUARY 26TH @ 10 A.M.



114 Acres±
Subject To Survey
3 Tracts

Land is located in Section 14, Monroe Township, Wayne County, IA. 5 miles south of Seymour, IA.

Make plans now to attend this upcoming Wayne County, Iowa land auction. This farm offers productive tillable farmland with CRP income and attractive recreational acreage that includes a very nice pond. Tract 3 features improved pastureland with good fences and includes a very nice 40' x 60' Morton equipment storage building. You will not want to miss this upcoming Southern Iowa land auction.

DETAILS, MAPS & PHOTOS AVAILABLE ONLINE @:
www.SullivanAuctioneers.com

LOUIS LUTZ INC. • JEFF LUTZ – PRESIDENT

ATTY: Rick Lynch • 603 N Washington St., Bloomfield, IA • Ph: 641-664-1997

FOR INFO, CONTACT: John Probasco (641) 856-7355

SULLIVAN AUCTIONEERS, LLC • TOLL FREE (844) 847-2161
www.SullivanAuctioneers.com • IL Lic. #444000107

KEOKUK COUNTY, IOWA LAND AUCTION

Sale to be held at the Bridgeview Center, 102 Church St, Ottumwa, IA

TUESDAY, FEB. 26TH @ 5 P.M.

155 ACRES± • 3 TRACTS

The Rouw Farm is located in Section 30, Benton Township, Keokuk County, IA. 6 miles north of Ottumwa, IA at the Junction of St. Hwy. 149 & St. Hwy. 23.

Mark your calendars now for this upcoming Keokuk County, Iowa land auction. This farm offers highly productive tillable farmland with CSR's in the 80's and sells with full farming rights for 2019. The property is conveniently located at the crossroads of 2 hard surface roads. Is in close proximity to the Pioneer Hedrick Production plant as well as the newly constructed JBS USA feed production facility. This is an auction you will not want to miss!

DETAILS, MAPS & PHOTOS AVAILABLE ONLINE @:
www.SullivanAuctioneers.com

EMERY & JULIANNE ROUW – SELLERS

ATTY: James Box • Box & Box • 304 North Court, Ottumwa, IA 52501 • Phone: (641) 682-4512
FOR INFO: John Probasco (641) 856-7355 • Jim Huff (319) 931-9292

SULLIVAN AUCTIONEERS, LLC • TOLL FREE (844) 847-2161
www.SullivanAuctioneers.com • IL Lic. #444000107

DES MOINES COUNTY, IOWA LAND AUCTION

Sale to be held at the Danville Community Center, Danville, IA

THURS., MARCH 14TH @ 6 P.M.

75 ACRES± • 1 TRACT

The JP Wagner Farm is located in Section 4, Danville Township, Des Moines County, Iowa. (1 1/2 miles northwest of Danville, Iowa.)

Mark your calendars now and plan on being in attendance at this prime Des Moines County, Iowa land auction. This farm features highly productive tillable farmland and offers an outstanding CSR2 of 87.4! This property sells with full possession for 2019 and is conveniently located just north of Danville, Iowa.

DETAILS, MAPS & PHOTOS AVAILABLE ONLINE @:
www.SullivanAuctioneers.com

JP WAGNER FARM

Pamela Day, Jill Bowers & Mark Wagner – Sellers

ATTY: Andrew L. Mahoney • Kozlowski Law Group LLC • Burlington, IA • Ph: (319) 753-6201

FOR INFO: Jeff Hoyer (319) 759-4320 • Jim Huff (319) 931-9292

SULLIVAN AUCTIONEERS, LLC • TOLL FREE (844) 847-2161
www.SullivanAuctioneers.com • IL Lic. #444000107

JEFFERSON COUNTY, IOWA LAND AUCTION

Sale to be held at the
Packwood Community Center, Packwood, IA

DETAILS, MAPS & PHOTOS ONLINE!

The Garrels property is located in Section 8, Polk Township, Jefferson County, Iowa. (4 miles northwest of Packwood, Iowa.)

Make plans now to attend this upcoming Jefferson County, Iowa land auction. This farm offers productive tillable farmland, has a CSR2 of 75.6 and is in an excellent state of fertility. If you are looking to add to your operation, we urge you to take a look at this nice tract that sells with full farming rights for 2019.

CECIL G. GARRELS FARM INC.

REPRESENTING ATTORNEY: Philip McCormick • Whitfield & Eddy Law • 110 N Jefferson St # 101, Mt Pleasant, IA • Phone: (319) 385-9522

FOR ADDITIONAL INFORMATION, CONTACT AUCTION MANAGERS: Jim Huff (319) 931-9292 • Jeff Hoyer (319) 759-4320

SULLIVAN AUCTIONEERS, LLC • TOLL FREE (844) 847-2161 • www.SullivanAuctioneers.com • IL Lic. #444000107

A RIDE PRESERVED FOR GENERATIONS.
IN THE BUILDING MADE FOR GENERATIONS.



BUILDING
VALUE
DAYS

Your dream garage begins with limited-time savings during Building Value Days. Now through February 28.

To get started, call:
(641) 472-3184 Fairfield IA



800-447-7436 | MORTONBUILDINGS.COM

@2018 Morton Buildings, Inc. A listing of GC licenses available at Mortonbuildings.com/licenses. Certain restrictions apply.

ERRORS: When your ad is printed, please check for errors. Any error must be reported to our office within three (3) days after publication. If not reported within this time, the SHOPPER assumes no responsibility for correction. If the error is found to be made by the SHOPPER, we will change the error only, free of charge. However if the wrong information was given, the SHOPPER will not change the ad, unless customer wants to run another ad at full price. We will not be responsible for errors made on advertising given to us that is not legible. **CREDIT POLICY:** All advertising submitted is subjected to credit review and restriction. Publication may be withheld on the basis of unpaid past due balance or poor credit history. The SHOPPER reserves the right to refuse or reject, without prior notice, any copy submitted for publication.

RENTALS AVAILABLE APARTMENTS & HOUSES!

Check out all the
rentals we have available.
1, 2 & 3 bedrooms,
let us show you a rental
that fits your needs!

**CHECK OUT OUR WEBSITE
OR CALL US TODAY!**

Office Space also Available!

Lynch
REALTY, INC.

641-664-2275
lynchrealtyinc.com

106 S. Madison
Bloomfield, IA
Licensed in Iowa
Stephanie Lynch, Broker



SHERI'S ACCOUNTING

Sheri Moore

25 Years Accounting Experience

Complete Tax Preparation

- Individual • Business
- Electronic Filing

QuickBooks ProAdvisor

Accurate Accounting at
Reasonable Rates

(641)919-4698

DON'T MISS IT!! Human Health Seminar Friday, Feb. 15th at 6:00 p.m. at the Mutchler Community Center, 900 E. North St. Bloomfield, IA. "Tips for healthy humans" by Dr. Paul Dettloff. "What is real health?" by Allen Detweiler. Refreshments served. Questions??

Call: 641-664-2060 07

FOR SALE: Hay, mixed grass/alfalfa, 47 large round bales. Drakesville Area. PH: 816-286-5969

FOR SALE: Shop Smith & Accessories, \$200. Bloomfield, IA. PH: 641-208-2754 08



PRIDE LIFT CHAIRS

The World's #1 Lift Chair

Years of experience in
manufacturing. Backed by up
to a 3 year warranty!

- Sit with security
- Stand with confidence
- Finger tip controls
- Economically Priced

Medicare & Insurance Billing

Friendly Service

Try our rent to own program!



SOUTHSIDE DRUG

337 Church St. • Ottumwa, IA
Hours: Mon.-Sat. 8-8 • Sun. 9-5

641-682-3467



FOR SALE: 61 - 1st & 2nd cutting grass hay, large round bales, \$80. Drakesville area. PH: 641-208-5448 05

PUPPIES: Must go to good homes! Mom Border Collie. Born Dec. 5, 2018. PH. 660-216-0380 for details. 5-7 p.m. only 06

BERHOLTZER

TRAILER REPAIR

Specializing in Aluminum Grain Trailers
Repair & Rebuild
3 miles east of Gorin, Mo. on Route U
660-282-1012

FOR SALE: Miniature Australian Shepherd puppies. Born 12/05/2018. \$250 each. PH. 660-216-0812. 08

FOR SALE: 10" Craftsman radial arm saw, needs assembly, all parts are there, \$50. PH. 660-956-5885 or 660-457-2114. 08

FOR SALE: Firewood. Backyard Depo. PH: 641-722-3641 08

FREE: 2 sunlamps; Sears humidifier, needs hamidistat. PH. 660-956-5885 or 660-457-2114. 08

No BULL About It The Tri-County SHOPPER Gets Results! 641-664-1333

MIDWEST

Overhead Door

✓ Out Our Competitive Prices! 21387 Route V64 Keosauqua, IA 52565 **660-216-0812**

Sales • Parts • Service ~ Free Estimates
We sell new doors and openers or we'll service your old one.

Our goal is to keep your doors rolling smooth!

FOR SALE: Iowa hunting ground South of Bloomfield. 47 +/- acres, \$97,000. PH. 660-342-1224. 08

FOR SALE: Big round bales mixed Legume & grass hay. All stored inside. PH. 641-777-6187. 06

GLENWOOD

Elevator

301 State Hwy. M
Glenwood, Mo 63541
Logan Ford, Manager
PH: 660-457-3973 • Cell: 660-956-3973
Fax: 660-457-3045 • gelevator@marktwain.net

DAVIS & LEWIS, CPA

Let our years of tax experience benefit you!

- Individual & Business tax preparation and planning
- Monthly accounting & payroll service
- Financial statement preparation
- Business consulting



Keith W. Lewis, CPA

Kyle R. Merry

641-682-8117

641-664-1999

639 E. Pennsylvania Ave.
Ottumwa, IA 52501205 N. Washington St.
Bloomfield, IA 52537

WANT TO BUY: Old toys, pedal cars & tractors, cast banks, old bikes and trikes, scooters, wagons, BB guns, black powder guns, old wall hanger guns, any ammo, large metal traps, pocket knives & hunting knives, swords and bayonets. Any condition. Pay cash. PH. 641-814-2639. 07

Farney Concrete & Construction

Jacob Farney, Owner



Agriculture:
Shop or Barn Floors
Drinking Pads
Cattle Pads
Bin Pads
Alleys
We do skidloader work!

Residential:
• Basement Floors
• Garage Floors
• Approaches
Basesment walls with Super Foam Blocks!

Bloomfield, IA • 641-208-5377
No Sunday Calls Please

FOR SALE: Great building site on edge of Bloomfield in quiet neighborhood on dead end road. Approximately 1.9 acres with 30x45 shop with concrete. PH: 641-226-1884 07

FOR SALE: Recycled 2 1/2 in. x 4 ft x 8 ft paper faced poly iso board insulation, 15 R value, \$15.75 per sheet. Richard Mast 18420 Flora Ave. Bloomfield, IA VM: 641-664-1891 Ext. 1 06

Huff's Polled Herefords

Private Treaty

Spring Heifer Calves & Service Age Bulls

Low birth rates & excellent EPD's

Leroy Huff
660-341-6392

Sean Huff
417-499-3639

Rutledge, Mo.

WANT TO BUY: Fallen wind mills, steel and wooden wheels, metal lawn chairs, rinse tubes with or without stands, metal yard gates, wooden whiskey barrels, old wooden doors, wrought iron fencing, 4 or 6 pane wood windows, pop bottles & crates, butter churns jars. Any condition. Pay cash. PH. 641-814-2639. 07

Garages • Pole Barns
Commercial

Free
Estimates

LAN-DOW
BUILDINGS

We Stock a
Complete Line
of Building
Materials

**Lancaster
Lumber, Inc.**

Complete
Buildings or
Packages
Available

Toll Free 800-424-5071 Fax 660-457-3133

Hardware • Plumbing • Electrical • Paint
500 Green Street • Lancaster, MO 63548



Quality Unreserved Farm RETIREMENT AUCTION

TUES., FEB. 12, 2019 AT 9:30 A.M.

SALE TO BE HELD ONSITE AT: 16604 230th St., Bloomfield, IA



After nearly a lifetime of farming, the Knapp's have decided to retire. You will find their equipment in tip-top field ready condition. This is an auction that you will want to make plans to attend!

TRACTORS: '09 JD 8330 MFWD tractor, 4155 hours; '01 JD 8310 MFWD tractor, 8,826 hours. **FARM EQUIPMENT:** JD 1780 12/23 Conservation MaxEmerge Plus planter; JD 980 28'6" field cultivator; C-IH 496 32' disc; Brent 744 gravity wagon; Brent 744 gravity wagon; JD HX15 15' batwing mower; JD 567 large round baler; JD 735 mower conditioner; H&S BF12C "High Capacity" 12 wheel hay rake; Artsway 475 grinder mixer; Westfield WR80-31 8" x 31" truck auger; 5' x 9' fiberglass flat rack wagon; JD 115 9' HD 3-pt. blade; (2) Older running gears. **PICKUP, ATV & LAWMOWER:** '06 Chevy 2500HD 4wd standard cab pickup, 139,000 miles; Polaris 500 Sportsman AWD ATV, 4,483 miles; JD X475 lawnmower, 736 hours. **FARM RELATED ITEMS & TOOLS:** 1000 gal. fuel tank w/Bennett electric pump; (3) rolls of net wrap; 16' hyd. gravity wagon auger; Shop built pull type lawn sprayer; 38" lawn sweep; JD front mount lawn dethatcher; Shop built loader bale spear; 3-pt. bale mover; Hay saver bale feeder; Portable steel loading chute; Quantity of corner & line hedge posts; DMI Quick Cushion II pickup hitch; (6) rolling cultivator shields; Hitch pins, PTO adaptors, hyd. cylinders etc.; Electric over hyd. power beyond valve; Quantity of hand tools, drop cords & other shop related items.

ADDITIONAL INFORMATION, DETAILS & PHOTOS ONLINE:

www.SullivanAuctioneers.com

HAROLD & MARY JANE KNAPP – OWNERS

Harold's Phone: (641) 208-6592

FOR ADDITIONAL INFORMATION, CONTACT:

John Probasco (641) 856-7355

**SULLIVAN AUCTIONEERS, LLC • TOLL FREE (844) 847-2161
www.SullivanAuctioneers.com • IL Lic. #444000107**

Davis County Cattlemen's Young Producer Assistance Program

This program is for children in fourth grade through high school and they must be involved in 4-H or FFA. The money from this program is to be used on a breeding beef animal project and can be used however the child wants as long as he/she completes all the following requirements:

Must be heifer or cow.



Must be shown at the Davis County Fair.
Must present a record book on their project.
Must attend the Davis County Cattlemen's Banquet and give a brief update on their project.



If all requirements are met, the Davis County Cattlemen will give the child \$300 the first year and \$100 for 2 more years.

Three children will be chosen for this program.

To apply for this program fill out the application from Rod Veatch at Success Bank or call Cory Fleming. Complete the application and return to Rod Veatch by 5:00 p.m. Mon., February 25, 2019. A brief interview will be set up after all applications are completed. If you and your family would like more information about this program, please feel free to call;



Cory Fleming @ 641-781-0668
Dusty Hunter @ 641-226-7924
or Roman Schooley @ 515-450-3685



BLOOMFIELD

MINI

STORAGE. Serving you from 2 safe, convenient locations.

PH. 641-664-1066.

TF

FOR SALE: Grass hay, big rounds, over the edge net wrap, bales 1,500 lbs., \$110 each. **Memphis, MO.**

PH: 660-216-1392

08



QUALITY ESTATE AUCTION

SAT. FEBRUARY 9, 2019 10AM

Located at SPEES AUCTION CENTER 1947 North Hwy. 1 Fairfield, Iowa.

COINS: Morgan & Peace dollars; Kennedy; Franklin; Walking Liberty & Barber Halves; Silver quarters; Mercury Dimes; Buffalo Nickels; Wheat Pennies; Misc. old coin tokens; 2 Dollar bills.

OLD JEWELRY: Gold baby ring (very old); Hamilton gold pocket watch; Other misc. old pocket watches; Men's gold ring; Ladies' gold and sterling rings; Gold glasses; Wahlpen; Pearl & glass necklaces.

GUNS: JJ Weston double barrel 12 gauge; 32 or 38 Smith & Wesson revolver; Enders Royal Cannon breach 12 gauge; Eastern Arms single shot 410; Very old shotgun; Old pump 22 rifle; Marlin model 81 22; Nobel model 40 shotgun; 1861 US Springfield Civil War musket; Daisy bb gun.

ART: 16 paintings from Jenny Mayor Fine art Collection; Picture of Kalona; Wyatt Earp's wife; three Couples II by Harold Altman; 4 paintings from Hu Ka-Iowa Pi; 5 Carolyn Wiley paintings; Master Weaver by Edward Cooke; Various other paintings & prints.

ROCKS: Crystal clusters; Geodes & various collector rocks.

ANTIQUES: Oak Sellers cabinet; Walnut Breakfront; Trundle sewing machine; Mantle clocks; Cedar chest; Victorian walnut dresser; Dropleaf tables & chairs; Several old rockers; Lennex fine china set; Painted bowls & plates; Salt crock; Crocks & jugs; various sizes; Mobile gas pump globe; Cast iron & primitives.

VEHICLES: 2007 Acura MDX, mile high AWD SUV; 1986 Dodge Convertible.

HOUSEHOLD: Queen beds; Couches; Dressers & chests; stove; refrigerator; Washer & Dryer; Desk; Oak file cabinets; Patio furniture; usual run of household items; hand tools; riding lawn mowers; nice suits & clothing.

AUCTIONEER'S NOTE: 3 generations of antiques. Gene was a collector of great things, some of which were given to museums. If you like art, don't miss!

PICTURES AT WWW.SPEESAUCTION.COM

GENE COPELAND ESTATES,
Mr. & Mrs. Stanly Simmons, Owners

1960 Libertyville
Road,
Fairfield
641-919-4786

Rick Spees
AUCTIONEER

Not responsible
in case of
accident.
www.speesauction.com

Any announcement made day of auction holds precedence over advertising.

Kirksville Livestock LLC

Kirksville, Missouri

MONDAY, FEBRUARY 11 • 11:00 A.M. SPECIAL CATTLE SALE

Monte Fisher - 125 BBWF str & hfrs, 2nd round shots, LTW, 450-600#

Trent Steinhoff - 65 BBWF str & hfrs, 1 round shots, LTW, 500-600#

Larry Head - 60 Blk & Red str & hfrs, 1 round shots, LTW, 500-650#

Davis Farms - 50 Blk bulls & hfrs, 300-700#

Powell & Powell - 40 Red str, 2nd round shots, 500-650#

Danny Vangendren - 32 BBWF str & hfrs, 1 round shots, LTW, 600-750#

Gene Yoakum - 16 BBWF str & hfrs, 2nd round shots, LTW, 600-750#

Cory Heidenwith - 12 BBWF bulls & hfrs, 450-650#

Joe Calhoun - 10 Blk & Red str & hfrs, 2nd round shots, LTW, 600-700#

Chuck Heidenwith - 8 mix bulls & hfrs, 500-600#

FRIDAY, FEBRUARY 15 • 6:00 P.M. SPECIAL BRED COW SALE

Complete Dispersal Rose Farms - 30 Blk cows, 3 to 4 yrs old, bred to Blk bulls, to start calving Mar 15 for 45 day calving period

Cory Heidenwith - 15 BBWF cows, few with calves by side, running ages, bred Blk

Jason Langstrap - 40 Blk hfrs, single source AI'd to Deer Valley Patriot due Mar 1, clean up bulls in for 60 days, complete vacc and mineral program

Thompson & Thompson - 40 Reputation Blk hfrs, ultrasounded for 30 day calving cycle, bulls turned in May 28, bred to Final Answer sons

Dennis Snyder - 1 - 4 yr old Blk bull, Galaxy Beef genetics

CHECK OUR WEBSITE FOR UPDATED LISTINGS!

"Proud to Serve Area Livestock Producers"

YOUR BUSINESS IS VERY MUCH APPRECIATED

We are open on Sundays to receive your livestock.

Phone for information: Patty Foster, Office 660-665-9804

Chuck Ambrosia ... 660-342-3530 Doug Freshman..... 660-626-7148

Caleb Randolph..... 641-919-8539 Daniel Smith 660-341-8396

Mark Herbold..... 515-720-8667 Jeremy Jarman..... 660-341-9879

AI Ashmead..... 660-216-8730 Karol Kirkpatrick..... 641-777-3403

Visit our website at www.KirksvilleLivestock.com

FOR SALE- Registered Purebred Gelbvieh and balancer bulls. Black and Red Bull's available. Born December 2017. Big stout bulls with excellent dispositions. Out of top AI sires on the market. Bulls stay free until you need them.

Rolling Hills Livestock, Bloomfield, Iowa
PH: 641-777-7060

06

Yearling Angus & Charolais Bulls

Trojan Hill Farms



Phil Archer
641-675-3769 - Home
641-680-6769 - Cell



KEOSAUQUA SALE CO.

20511 Hwy. 1, Keosauqua, IA

Results from Feb. 2nd

Butchers \$37.00-46.00/cwt
Sows \$41.00-63.00/cwt
Feeder lambs \$170.00-249.00/cwt

Fat lambs \$127.00-129.00/cwt
Ewes \$61.00-83.00/cwt
Kid goats 40-70#
Nannies..... \$70.00-168.00/hd
..... \$70.00-185.00/hd

Pound cows \$39.00-47.00/cwt low yielding
\$52.00-63.00/cwt high yielding

Pound bulls \$69.00-77.00/cwt

STRS

Blk	416	179.00	Mix	448	152.00
Bwf	473	176.00	Blk	476	156.00
Blk	584	166.00	Blk	557	147.00
Bwf	607	161.50	Bwf	591	139.00
Blk	634	154.75	Blk	646	137.50
Blk	778	141.50	Blk	707	130.25
Blk	800	142.50	Blk	748	129.00
Blk	849	139.50	Mix	806	124.25

HFRS

BRED COW SALE SAT., FEBRUARY 9TH

SPECIAL FEEDER CALF SALE SAT., FEBRUARY 16TH

Watch website for early listings www.keosauquasaleco.com

Thank You For Your Business!

For More
Information Contact:

Selling Times

Hogs.....9:30 a.m.

Sheep & Goats.....10:00 a.m.

Outside Merch.....11:00 a.m.

Cattle.....Noon

Keosauqua Sale Co.

319-293-3508

Bill Goehring

641-919-9365

www.keosauquasaleco.com

Hay, Straw & Firewood Auction

Southern Iowa Produce Auction

Sales every 2nd & 4th Saturday, November thru March

Saturday, February 9th - 10 A.M.

Early Listings:

Large Square Bales: Approx. 300 bales (3x3x8) assorted hay.

Large Round Bales: Approx. 200 - 300 bales assorted hay. Including approx. 60 - 70 bales of high moisture hay. Also approx. 16 bales of wheat straw.

Small Square Bales: Normal run.

Misc: 500 lbs. South Dakota potatoes.

**"Lots More Expected
By Sale Time"**

Unloading Available

Friday Before Sale!

Plugs & Plants

Following Hay Auction

STARTING AT 12 NOON

ATTENTION....GROWERS MEETING Tuesday, February 12th - 6:00 P.M.

At Southern Iowa Produce Auction
All growers & potential growers encouraged to attend.

19141 Ice Ave. Bloomfield, IA

Call 641-722-3623 on auction days or leave a message.
Market Report or Information call 712-432-8593

**BALANCER BULLS FOR
SALE:** Low birth weight
bulls for use on heifers.

JEFF WUTHRICH

PH. 641-208-4311 or 641-
664-2345. 08

FOR SALE

Driveway Fabric Rolls
Commercial, Heavy Duty,
Designed for Heavy Traffic

12' 5" Wide
432' Long
\$370/ roll

660-216-0938



Did you AI your beef cows or heifers for fall calving? If so, February is the time to ultrasound them to determine the fetal sex and weather they are AI bred. Cattle must be bred 30 days or more for pregnancy diagnosis and 60-90 days for fetal aging and sexing.

**Call for your appointment today.
641-664-2399**

CLEARVIEW ANIMAL HOSPITAL P.C.

601 Weaver Road, Bloomfield, IA

Dr. David Rasmussen

Dr. Nancy Hougland

Dr. Marilyn Brown

Scotland County LIVESTOCK AUCTION

P.O. Box 111 • Hwy 15 North • Memphis, MO
660-465-7213 • Jerry & Barb Blomme
660-341-0069 • Grant Blomme
660-216-4674 • Rodney Garman

DAIRY SALE

Tuesday, February 12th
Starting at 10:30 AM with Registered
Holstein Herd Dispersal

Local Top Herd - Catalog Available Sale Day
30 Registered Cows, 5 Registered Springer Cows
• AI bred herd since 2008

• Focused on efficiently produce high component
milk with a healthy herd.

• Herd average of 4.5 fat and 3.5 protein

• Also offering 3554 lbs. of Prairie Farms quota

Heifer Dispersal:

17 Short bred Holstein Heifers

16 Holstein Open Heifers, 450# - 650#

10 Holstein Open Heifers, 250# - 450#

2 Holstein Breeder Bulls

Top Local Herd Dispersal: 75 lb. tank average
45 Milk Cows

20 Holstein Bred Heifers

18 Holstein Open Heifers, 600# - 800#

8 Holstein Open Heifers, 250# - 400#

Also Selling:

15 Holstein Steers, 300#

40 Holstein Steers, 400#

30 Holstein Steers, 500#

90 Holstein Steers, 500#

11 Holstein Steers, 500#

30 Holstein Steers, 550#

Expecting more dairy cattle by sale time.

SPECIAL CATTLE SALE Tuesday, February 12th @ 12:30 PM

www.ScotlandCountyLivestock.com

Tri-County SHOPPER

Facebook.com/TriCountyShopper

Like us on
facebook

Watch for
upcoming contests!



Fall in love with our great seed deals!

Give John A Call Today!

Discounts still available for your spring planting!

♥♥♥♥♥♥♥♥♥♥♥♥♥♥♥♥

CROP SERVICES, INC

John & Kathy Bos, Owners
Drakesville, IA
641-722-3293

NuTech Seed **Nutrena**

Order your building now ahead of the spring rush!



COME CHECK OUT OUR HUGE SELECTION OF HARDWARE!

No matter your building need, BIG or small, we can help you at...

Cantril Lumber & Hardware

319-397-2351 • 319-397-2354
Mon-Fri 7-5 & Sat 7-12
www.cantrillumber.com



SAVE UP TO 40% OFF FILTERS! Offer valid through February 18th-23rd, 2019

Call Ahead and talk to Alan or Tammy to Pre-Order Filters!

Have lunch with us
MONDAY, FEBRUARY 18TH
11:30 AM - 2:00 PM

CARQUEST **CARQUEST**

BBQ Pork • Chips • Baked Beans

MEMPHIS AUTO & TRUCK PARTS
300 S. Market • Memphis, MO • 660-465-2470

ARE YOUR CROPS PROTECTED?

March 15th Sales Closing to:
Purchase, Transfer, Change Coverage, and Update Your Crop Insurance Policy

Do you have the right plan that works for you?

For All Your Crop Insurance Needs CALL TODAY.....

BRADLEY INSURANCE

226 S Market St. Memphis Mo • (660)465-2764

Serving in Iowa and Missouri

DON'T MISS OUT!

Serving: Rain and Hail, Great American and Crop Risk Services

MPCI is available to all producers regardless of race, color, national origin, gender, religion, age, disability, political beliefs, sexual orientation, marital or family status

Tri-Annual **Consignment AUCTION**

FRIDAY MARCH 8, 2019 • 8:00 A.M.

CONSIGNMENTS ACCEPTED UNTIL TUESDAY, MARCH 5TH AT 5:00 P.M.

ADVERTISING DEADLINE: FEBRUARY 12TH

Ed's Machinery LLC
quality machinery since 1997

(660) 883-5501 • Fax (660) 883-5702
17920 Hwy 136 • Memphis, MO
1 Mile West of Memphis on Hwy 136
www.edsmachinery.com

COMPETITIVE RATES | NATIONWIDE PUBLICITY
HUNDREDS OF BUYERS IN ATTENDANCE



Consign Now!

Deutsch Charolais

ONLINE BULL SALE

WEDNESDAY, FEBRUARY 27

Selling **20 Fall Charolais Bulls**

charauctions.com



lot 1

Newton, Iowa
Tim Deutsch 641-521-1618
Jeanne Deutsch 641-792-0311
www.charolaisbullsiowa.com

Pictures, Performance and Videos at CharAuctions.com

BLOOMFIELD**LIVESTOCK MARKET**

Wed., February 13th Fat Cattle, Slaughter, Cows & Bulls 9:30 AM

..... No Special Sale

Wed., February 20th Fat Cattle, Slaughter, Cows & Bulls 9:30 AM

..... Special Calf & Yearling Sale 11:00 AM

**SALE BARN OPEN UNTIL 9:00 PM
EVERY TUESDAY TO RECEIVE LIVESTOCK**

Phil Schooley 641-664-3450

Ron Schooley 641-777-0302

Roman Schooley 515-450-3685

Tyler Schooley 641-208-5442

Barn Phone 641-664-2435

We appreciate your business!

HWY. 63 NORTH • BLOOMFIELD, IA

FOR SALE: Sharp looking German Shepherd puppies, black with a little tan. 3- Males & 1- Female. Come and choose yours now! Had shots & wormed, \$150 OBO. Ready Now! **Joseph Graber, 17328 State Hwy. Y, Greentop, MO. 08**

FOR SALE: Great Dane female, blue, 3 yrs. old. Raised on farm, good with children, \$300 OBO; Also black (with white markings) female pup, standard Poodle, Great Dane mix, \$300.00 OBO. **PH. 660-216-9631. 08**

WANT TO BUY: Barn lanterns, railroad lanterns, railroad locks & keys, weather vanes, train sets & cars, old license plates, truck tailgates, well & pitcher pumps and parts. Any condition. Pay cash. **PH. 641-814-2639. 07**

FOR SALE: 2nd & 3rd cutting big round alfalfa grass mix, 1st cutting alfalfa timothy, both shedded. Also outside hay and some small squares alfalfa available. **PH: 641-680-7198 08**

CHICK DAYS

are here again!

LAYERS, BROILERS, GUINEAS, TURKEYS, DUCKS, and more!

Order by April 5
to pick up April 25

Order by April 26
to pickup May 16

Order 25 chicks, get **ONE FREE BAG** of NEMO Family Flock Chick Starter*

Order 100 chicks, get **TWO FREE BAGS** of NEMO Family Flock Chick Starter*

We also carry a full line of feeders, waters, and NEMO Family Flock Chick Grower and Layer Mash!



*Deals good through April 26

GroGel

- Provides baby chicks with the hydration and nutrients they need to get a good start
- Just mix with water
- Makes a very bright green gel that attracts chicks
- Small, but stable packets for easy storage

Hometown
ANIMAL HEALTH

660.465.2967 • hometownanimalhealth.com

18743 US Hwy 136 • Memphis, MO 63555
On Highway 136 west of Memphis



NUTRITION • MEDICAL • PET • FARM • APPAREL

NEMO
AUTHORIZED
DEALER OF
NEMO FEED.

MAST VINYL WINDOWS
THERMO-PRO WINDOWS
Custom Size Is Our Specialty
Professional Installation Available
THERMA-TRU DOORS
FREE ESTIMATES
22172 Hwy. 63
Bloomfield, IA 52537
800-206-9949

FREE: Soft wood firewood, 40" to 48" lengths, banded in bundles. 1 mile West of Pulaski to Scarlett Ave. then 3 miles South to 280th then 1/2 mile West at Sawmill. **06**

MILITARY ITEMS WANTED BY LOCAL COLLECTOR: Patches, medals, uniforms, hats, helmets, etc. Always buying. Mark Warren, PH. 641-664-3705. mpwarren@netins.net **06**

FRIESEN CONSTRUCTION
New Houses
Remodeling
Garages Electrical
Plumbing
Custom Cabinets

Arlen 664-3270
Cell 641-208-0170
Bloomfield, Iowa

Building Packages



We Can Roll Your Metal While You Wait!



A W Metal LLC
Metal Roofing Headquarters

Free 12 pack of A&W Root Beer®
with your next purchase of \$500 or more!



641-664-3990 awmetal.net

ANGUS BULLS 2 YR. OLDS & YEARLINGS



Musgrave Big Sky

- ★ CALVING EASE
- ★ THICK
- ★ CORRECT
- ★ GENTLE

Bulls tested and ready to breed!

A breed leader in calving ease & preformance.

Also: Bred heifers & cows bred AI to Musgrave Bulls

DORAN BOLLMAN
PULASKI, IOWA
641-675-3467



Imagine A Lifetime Of Beauty With The Strength Of Steel.

As The Original Stone Coated Steel Roofing System, The DECRA Product Line Represents A Perfect Blending of Over 50 Years of Research & Practical Experience. Offering The Ultimate In Performance & Engineering Design Is What DECRA Roofing Systems Are All About.

SHINGLE XD DECRA SHAKER XD
Stone Coated Steel Roofing Systems

Full Line Of Building Materials



Bring Your Plans In For A FREE ESTIMATE



17893 212th Street • Bloomfield, IA 52537
641-722-3605 • Mon. - Fri. 7 AM - 5 PM