

**SUNDAY, APRIL 7, 2019**

 Morning Star Publishing Company powered by  digitalfirst MEDIA

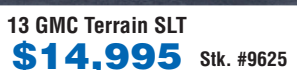
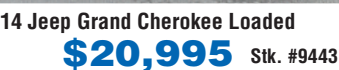
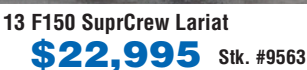
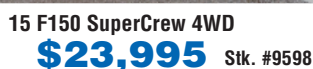
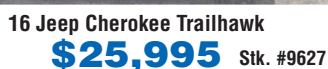
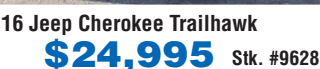
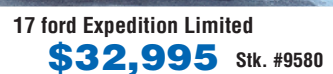
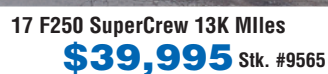
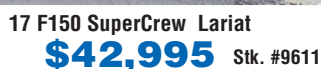
# AUTO GROUP OF MT. PLEASANT

## ***“You Deserve Peace of Mind”***

**www.theautogroup.biz**

# Spring Sales Event

• LIFETIME ENGINE WARRANTY • LIFETIME ENGINE WARRANTY • LIFETIME ENGINE WARRANTY • LIFETIME ENGINE WARRANTY



• LIFETIME ENGINE WARRANTY • LIFETIME ENGINE WARRANTY • LIFETIME ENGINE WARRANTY • LIFETIME ENGINE WARRANTY

**OUR GOAL IS 100% CREDIT APPROVAL! Regardless Of Your Credit History!  
Let Our In-House Finance Experts Help Get You Into The Vehicle Of Your Dreams!**

**4720 E. Pickard (M-20) • Mt. Pleasant, MI**  
**877-772-1113 OR 989-772-1113**

All prices plus tax, title, plate & doc fees. \*See dealer for details.

**VIEW OUR COMPLETE INVENTORY AT**  
**[www.theautogroup.biz](http://www.theautogroup.biz)**



# GET MORE BANG FOR YOUR BUCKS

GOOD, CLEAN, QUALITY PRE OWNED MERCHANDISE

**Jewelry**

**TVs**

**Wii, Xbox One, PS4**

**Musical Instruments**

**Paintball and Airsoft**

**Tools**

**Firearms and Muzzle Loader Gear**

**DIRT CHEAP • CAR AUDIO • NEW & USED**

Tested & Inspected. Why Pay New Prices?

## GLADWIN TRADE & SALES

**1-989-426-6811**  
1739 N. State St. • Gladwin

### Make a great choice for your child's education!

Farwell Kindergarteners Soar with All Day  
Every Day Kindergarten

Enrollment for the 2019/2020 school year  
April 24th, 25th, and 26th

- ❖ Focused Instruction
- ❖ Friendly Supportive Atmosphere
- ❖ Para Professional Support
- ❖ Parent Satisfaction
- ❖ Positive Learning Environment

Attention Area Kindergarten Parents ~ Now Accepting School of Choice! Imagine the Possibilities!

- ❖ Successful Programs
- ❖ Zoo Phonics
- ❖ Math Expressions
- ❖ McMillan Treasures

*One of the greatest gifts parents can give their children is an education paired with teachers who care for them like family. Thank you Farwell Schools for making this gift possible for my children. Edwards Family*

If you have a child who will be five years of age on or before September 1, 2019 and have not yet registered him/her to start kindergarten this fall, please call 588-9916 to schedule a day and time for enrollment. At the time of enrollment, you must bring a **COMPLETED** shot record, live birth certificate, along with your child. If your child needs immunizations, a nurse will be on hand from the health department to administer vaccinations on April 24th or the morning of April 26th. If you have any questions, please call 989-588-9916.

# Steve's Country Market

989-539-3110 3170 North Clare Ave., Harrison 44 Feet of Old Fashioned Meat Counter with Good Old Fashioned Service

Hours: Sun. - Mon. 8-8 Bridge Card & Wic Accepted

Sale Dates: APRIL 8 - APRIL 14, 2019

**Top Quality Meats At Rock Bottom Prices!**

**100% Satisfaction Guaranteed**

**Michigan Lottery**  
stevescountrymarket.com

**FRESH MEAT AND SEAFOOD ITEMS**

<b>GROUND CHUCK</b> FAMILY PACK 5 LBS. OR MORE  <b>\$2.79</b> LB.	<b>BONELESS CHICKEN BREAST</b>  <b>\$1.79</b> LB.	<b>WHOLE SELECT NEW YORK STRIP LOINS</b>  <b>\$3.99</b> LB. SLICED FREE!	<b>WHOLE BONELESS PORK LOINS</b>  <b>\$1.69</b> LB. SLICED FREE!	<b>WHOLE RIBEYE LOINS</b>  <b>\$4.99</b> LB. SLICED FREE!	<b>CENTER CUT PORK CHOPS</b> REG. OR STUFFED  <b>\$1.69</b> LB.
<b>BLUE RIBBON SPIRAL HAMS</b>  <b>\$1.99</b> LB.	<b>DEARBORN SPIRAL HAMS AND STEVE'S OWN DOUBLE SMOKED HAMS AVAILABLE FOR EASTER. ORDER YOURS NOW!</b>  <b>\$2.99</b> LB.	<b>THIS WEEK'S FEATURED BRAT STEVE'S OWN STORE MADE ASPARAGUS BRAT</b>  <b>\$1.99</b> LB.	<b>CHICKEN NUGGETS</b>  <b>\$4.99</b> EA.	<b>ECKRICH SMOKED OR POLISH SAUSAGE</b> 42 OZ. FAMILY PACK  <b>99¢</b> EA.	<b>ECKRICH FRANKS OR BOLOGNA</b> 14 OZ.  <b>\$1.69</b> EA.
<b>ARGENTINE WILD CAUGHT RAW SHRIMP</b> 16-20 CT. 1 LB. BAG  <b>\$6.99</b> LB.	<b>WHOLEY BRAND COOKED SHRIMP</b> 41/50 CT. 1 LB. BAG  <b>\$5.99</b> EA.	<b>TILAPIA FILLETS</b>  <b>\$2.99</b> LB.	<b>POLLOCK FILLETS</b> 10 LB. BOX  <b>\$15.99</b> EA.	<b>COD LOINS</b>  <b>\$4.99</b> LB.	

<b>Deli</b> <ul style="list-style-type: none"><li><b>ECKRICH OVEN ROASTED TURKEY BREAST</b>  <b>\$4.99</b> LB.</li><li><b>ECKRICH DELI HAM</b>  <b>\$3.99</b> LB.</li><li><b>SANDWICH SWISS CHEESE</b>  <b>\$4.99</b> LB.</li><li><b>PROVOLONE CHEESE</b>  <b>\$3.99</b> LB.</li></ul>	<b>Fresh Produce</b> <ul style="list-style-type: none"><li><b>RED SEEDLESS GRAPES</b>  <b>\$1.29</b> LB.</li><li><b>RED, YELLOW OR ORANGE SWEET PEPPERS</b>  <b>\$1.50</b> EA.</li><li><b>ON THE VINE TOMATOES</b>  <b>\$1.49</b> LB.</li><li><b>CELLO CARROTS</b> 2 LB.  <b>\$1.50</b> EA.</li></ul>	<b>Fresh Dairy And Frozen</b> <ul style="list-style-type: none"><li><b>PRAIRIE FARMS SOUR CREAM OR CHIP DIP</b> 16 OZ.  <b>\$1.39</b> EA.</li><li><b>OUR FAMILY FROZEN VEGETABLES</b> 10-12 OZ.  <b>88¢</b> EA.</li><li><b>4 QUART PAIL ICE CREAM</b>  <b>\$4.99</b> EA.</li></ul>	<b>Grocery</b> <ul style="list-style-type: none"><li><b>YODER'S SHREDDED OR BAR CHEESE</b> 8 OZ.  <b>2/\$4.00</b></li><li><b>NORTH STAR ICE CREAM SANDWICHES</b> 12 CT.  <b>\$3.49</b> EA.</li><li><b>SOFT &amp; GOOD GIANT LOAF WHITE</b> 24 OZ.  <b>BUY ONE GET ONE FREE</b></li><li><b>FAYGO 2 LITERS PLUS DEPOSIT</b>  <b>\$1.00</b> EA.</li><li><b>FRITOS OR CHEETOS</b> 9.5-10.25 OZ.  <b>2/\$4.00</b></li><li><b>BAREFOOT WINES</b> 750 ML.  <b>2/\$11.00</b></li><li><b>BUD OR BUD LIGHT</b> 18 PK. CANS PLUS DEPOSIT  <b>\$9.99</b> EA.</li><li><b>BUSCH AND BUSCH LIGHT</b> 30 PK. CANS PLUS DEPOSIT  <b>\$17.99</b> EA.</li></ul>
--	---	--	--

While supplies last. Not responsible for printing errors.

## April Showers of Savings

### SPRING HAS ARRIVED! GET YOUR VEHICLE ROAD TRIP READY.

**Two Great Services for ONE Great Price!**

Get Your Tires... ROTATED Plus...  
**LUBE, OIL & FILTER SPECIAL**  
Change Oil, Change Oil Filter Check All Fluid Levels and Lubricate Fittings

**ALL FOR \$47.00**

Most Vehicles w/Coupon - 5 qt. Max Dexos Extra \$10

Expires June 28, 2019

**Dexos Lube, Oil, Filter Special**

Change Oil, Change Oil Filter Check All Fluid Levels & Lubricate Fittings Up to 5 qts. - Additional oil or fluids extra

**\$39.95**

Expires June 28, 2019

**COOLING SYSTEM FLUSH**

**\$119.95**

Most Vehicles w/Coupon

Expires June 28, 2019

**Automatic Transmission Service All Fluid Flush**

**SPECIAL \$129.95**

Change All Fluids - 12 qts. Most Vehicles w/Coupon

Expires June 28, 2019

**Any Repair 10% OFF**

Most Vehicles w/Coupon Not valid with tire sale or any other coupon offer

Expires June 28, 2019

**MAIL IN \$100 REBATE ON 5 TIRE BRANDS**

BRIDGESTONE Continental GOODYEAR HANKOOK PIRELLI

Other rebates available on other brands

Expires 4-30-19

## MID MICHIGAN PAIN P.L.L.C

"Are you suffering from headaches, back pain, knee or hip pain??. I can help you to live a pain free life."

All insurance plans accepted. We guarantee to see you in 1 week.

SERVICES PROVIDED:

- Epidural injections
- Fascet blocks
- Nerve blocks
- Botox injections for migraine
- Laser microdiscectomy
- RFA rhizotomy
- Laser for hip and knee pain.
- Laser nerve ablations.

**NASS**  
ADVANCING GLOBAL SPINE CARE

**MID MICHIGAN PAIN PLLC**  
2305 Hawthorn Drive Suite:B  
Mt. Pleasant, Michigan 48858  
Phone: 989 317 8000 • 989 533 1037  
Fax: 989 317 8536  
Email: veinandpain@gmail.com  
Web: www.midmichiganpain.com

## Steve's Country Market

989-539-3110 3170 North Clare Ave., Harrison 44 Feet of Old Fashioned Meat Counter with Good Old Fashioned Service

Hours: Sun. - Mon. 8-8 Bridge Card & Wic Accepted

Sale Dates: APRIL 8 - APRIL 14, 2019





**TAX REFUND  
Sale**

**BEAUTY, QUALITY & FUNCTION ON SALE NOW!**

**Best**  
Home Furnishings  
**L A Z B O Y**

**England**  
FLEXSTEEL  
HOME

**ORDER FROM OVER 1,000 FABRICS**

**Sale Starts Today! Ends April 15th, 2019!**

**L A Z B O Y**



**12 MONTHS  
INTEREST FREE!**  
On any purchase of \$399 or more.

**SALE PRICES PLUS BONUS COUPON SAVINGS!**

**In-Stock & On Sale  
No Waiting • Take Home Today**



*See For Yourself...*



**LARGEST RECLINER SELECTION IN MICHIGAN**



**BONUS  
COUPON SAVINGS**

**\$50 OFF**  
Any purchase of \$499

Prior orders excluded. One coupon per purchase per household. Purchases must total \$499 before sales tax. EXPIRES 4/15/19.



**BONUS  
COUPON SAVINGS**

**\$100 OFF**  
Any purchase of \$999

Prior orders excluded. One coupon per purchase per household. Purchases must total \$999 before sales tax. EXPIRES 4/15/19.



**BONUS  
COUPON SAVINGS**

**\$200 OFF**  
Any purchase of \$1999

Prior orders excluded. One coupon per purchase per household. Purchases must total \$1999 before sales tax. EXPIRES 4/15/19.



**BONUS  
COUPON SAVINGS**

**\$300 OFF**  
Any purchase of \$2999

Prior orders excluded. One coupon per purchase per household. Purchases must total \$2999 before sales tax. EXPIRES 4/15/19.



**BONUS  
COUPON SAVINGS**

**\$500 OFF**  
Any purchase of \$4999

Prior orders excluded. One coupon per purchase per household. Purchases must total \$4999 before sales tax. EXPIRES 4/15/19.

\*Subject to credit approval. Minimum monthly payments required. See store for details.

**CLEARANCE-CLOSEOUTS**



**MATTRESS  
SUPER SAVINGS!**



**Super OFFER!**

**QUEEN  
ADJUSTABLE  
BASE** *As Low as*  
**\$599**



**Super  
DEAL!**  
**SPECIAL SERTA  
Twin Mattress  
\$99**

The only official mattress of the  
National Sleep Foundation.



**Clearance • Closeouts • Mattress Sale!**

HELPS COMFORTABLY **COOL & SUPPORT** EVERY CURVE OF YOUR BODY

**Serta Firm**

**\$299**  
Queen Mattress was \$449

	COMPARE AT	NOW!
Twin Mattress	\$329	<b>\$219</b>
Full Mattress	\$439	<b>\$289</b>

**Westmark**

Your Choice Plush or Firm

**\$499**  
Queen Mattress was \$749

	COMPARE AT	NOW!
Twin Mattress	\$589	<b>\$389</b>
Full Mattress	\$699	<b>\$459</b>
King Mattress	\$1129	<b>\$749</b>

**Signature Suite**

2-Sided Flipable Mattress

**\$799**  
Queen Mattress was \$1199

	COMPARE AT	NOW!
Twin Mattress	\$899	<b>\$599</b>
Full Mattress	\$1079	<b>\$719</b>
King Mattress	\$1479	<b>\$979</b>

**IComfort**

Your Choice Blue 100 Cool Gel Memory Foam or Blue Fusion 100 Hybrid

**\$1099**  
Queen Mattress was \$1649

	COMPARE AT	NOW!
Twin Mattress	\$989	<b>\$659</b>
Full Mattress	\$1379	<b>\$949</b>
King Mattress	\$2399	<b>\$1599</b>

**Serta iComfort**

Featuring TempActive™ Max Gel Memory Foam  
In select models, see store for details.



**Serta iComfort**

HYBRID

Featuring TempActive™ Gel Memory Foam with an Advanced Coil Support System



**MATTRESS DOORBUSTERS!**

**Supplies Limited!**



**FREE!**  
**DELIVERY\***

**FREE!**  
**SET-UP\***

**FREE!**  
**REMOVAL\***

**BONUS**  
**No Interest  
FINANCING! WAC.**

**FURNITURE  
LIFESTYLE**  
BRAND SOURCE NATIONAL BUYING POWER



**Kubin's Furniture & Mattresses**

101 N Mill St, Corner of M46, St. Louis, Michigan, (989) 681-5043  
Hours: Mon-Thurs: 9-6, Fri: 9-8, Sat: 9-5, Closed Sunday  
Shop On Line! [www.kubins.com](http://www.kubins.com)



\*Free delivery within 20 miles of store, otherwise \$50 credit toward out of area delivery, minimum \$699 mattress or set purchase. Offer expires 4/16/19.



# Quality Built. Quality Features.



**STOP BY OUR LOT AND CHECK OUT  
THE GREAT SELECTION OF BUILDINGS  
ON THE LOT - READY TO GO!**

 <b>12x16 Gable</b> 3 Windows, 2 4 Ft. Lofts <b>\$3,456</b> Rent to own \$160	 <b>12x20 Gable</b> 3x7 Roll Up Door, Side Entry, 1 Window, 4 Ft Loft <b>\$4,978</b> Rent to own \$208	 <b>14x32 Garage Door</b> Side Entry Door, 3 Windows, 3 Ft. Loft <b>\$6,965</b> Rent to own \$323	 <b>12x20 Cabin</b> 5 Windows <b>\$5,470</b> Rent to own \$257
---	--	---	--

**INVEST YOUR TAX RETURN ON A BUILDING  
YOU CAN ENJOY FOR YEARS TO COME!!**

**Statewide Delivery - Free Delivery w/ in 70 miles!**

Supplying Michigan with quality built portable  
buildings for over 25 yrs.

## Miller's Woodworking

3209 E. Beaverton Road • Clare  
(Voicemail) (989) 386-8110

Old US 127 to Surrey West on Surrey to Grant 1 mile north on Grant

Mon.-Fri. 7:30am-5:00pm  
Saturday 8:30-3:00 & Evenings by Chance or Appointment  
Closed Sunday

**Don't  
Wreck  
Your  
Life!**



## JACK OF ALL TRADES COINS

1028 S. Mission  
(next to Jon's Country Burger)  
**I BUY ALL COINS**  
Silver and Gold  
**FREE APPRAISALS**  
we will come to your home  
to do free appraisals for  
your convenience.  
*Over 25 Years experience!*

Do not take your coins,  
jewelry, gold, & silver to  
the we buy gold places  
they are not experts! We  
are your only experts!  
**WE PAY YOU MORE  
THAN ANYONE!**

**I BUY ALL  
COLLECTIONS**  
FROM ONE COIN TO A  
DUMP TRUCK FULL

**We are a Full  
Buy • Sell • Trade shop!**  
ANTIQUES • COINS  
Jewelry • Collectibles & more!

Stop in or call Matt for  
your free appointment  
**517-204-0787**



## DEWEY'S TRADING POST

Maple Rapids • 682-4158

Monday-Saturday: 8am - 7pm, Closed Sunday

Prices In This Ad Good for weeks of April 8th - April 13th, 2019

WIC • Bridge Card • VISA • Mastercard • Discover  
American Express • Debit Card & Chamber Bucks Gift Certificates.

"Whole" Select  
New York Strips  
13 lb. avg.  
**\$3.99**  
13 LB. AVG

Koegel's  
Slicing  
Bologna  
**\$3.99**  
LB.

Koegel's  
Holiday  
Bockwurst  
**\$3.99**  
LB.

"Our Own"  
Smoked Roasted  
Sausage  
**\$4.49**  
LB.

"Our Own"  
Mango  
Habanero Brats  
**\$3.99**  
LB.

"Our Own"  
Scandinavian  
Brats  
**\$3.99**  
LB.

"Our Own"  
Reg. Brats  
**\$3.99**  
LB.

**Time to Order Double Smoked Hams For  
Easter**

**\$2.69**  
13 LB. AVG

**Prestige "Boneless" Hams**  
Whole or Half

**\$2.79**  
8 LB. AVG

Smoked  
Pork Chops  
**\$3.49**  
LB.

Combo Roast  
"Beef-N-Pork"  
**\$2.99**  
LB.

10 lb. Bags  
Chicken Leg 1/4's  
**\$6.99**  
BAG

Fresh Pork  
Cutlets  
**\$2.99**  
LB.

Choice  
T-Bone Steak  
**\$8.99**  
LB.

Choice  
Patio Staeak  
**\$3.99**  
LB.

**DeweysTradingPost.biz**  
LIKE us on Facebook & see our WEEKLY SPECIALS!



# BRIAN'S FRUIT & MEAT MARKET

We accept all major credit cards & EBT card

**2167 S. M-76 • West Branch  
(Across from Kmart)**

While Supplies Last • Not responsible for printing errors

Prices good Sunday, April 7<sup>th</sup> through Friday, April 12<sup>th</sup>

Store Hours: Sundays 8am-6pm, Monday-Saturday 7am-7pm

**WE ARE A PACKAGED LIQUOR DEALER**

BRIAN'S MEATS: 989-345-3709

LIKE US ON FACEBOOK



WWW.BRIANSFRUITANDMEATMARKET.COM

Proudly  
Featuring

**Boar's Head**  
PREMIUM DELI MEATS & CHEESES

**GLUTEN FREE**

long before you  
even thought to ask

TRUST BOAR'S HEAD FOR - NO TRANS FAT  
- NO ARTIFICIAL FLAVORS OR COLORS  
- NO FILLERS - NO BY PRODUCTS  
TRY OUR NEW BOAR'S HEAD CHICKEN SAUSAGES!!

Old Tyme  
Deli  
**SLICED KETTLE  
FRIED TURKEY  
BREAST**  
**\$5.99**  
lb.

Great  
Lakes  
Brand  
**SLICED YELLOW  
AMERICAN  
CHEESE**  
**\$4.49**  
lb.

Great For  
Ham  
Roll Ups  
**SLICED PREMIUM  
DELI HAM**  
**\$2.99**  
lb.

Brian's  
Best  
**HOMEMADE  
SANDWICH  
SPREAD**  
**\$2.99**  
lb.

Holiday  
Favorite  
**VEAL & PORK  
GROUND  
MEATBALL MIX**  
**\$4.99**  
lb.

**LENT SPECIALS**  
6 OZ. PORTIONS  
PACIFIC COD LOINS  
**\$5.49** **\$45.00**  
10 lb. box

Great On  
The Grill  
**BONELESS BEEF  
NEW YORK STRIP STEAKS**  
**\$7.99**  
lb.

Beef It's  
What's For  
Dinner  
**BONELESS BEEF TOP  
ROUND ROAST & STEAKS**  
**\$3.99**  
lb.

Store  
Ground  
**FRESH GROUND  
BEEF FROM ROUND**  
**\$3.79** **\$3.49**  
lb. 10 lb. or more

BBQ  
Time  
**FROZEN  
BABY BACK RIBS**  
**\$2.99**  
lb. Frozen 3 pks.

8-10 OZ. PORTIONS  
YELLOW FIN TUNA STEAKS  
**\$7.99**  
lb.

Brian's  
Own  
**FROZEN POLISH  
SAUSAGE**  
**\$2.99** **\$3.99**  
lb. Smoked lb.

Easter  
Favorite  
**BONE-IN  
LEG OF LAMB**  
**\$6.49** **\$6.99**  
lb. Boneless lb.

Breakfast  
Time  
**BRIAN'S HOMEMADE  
BULK BREAKFAST  
SAUSAGE**  
**\$1.99**  
lb.

Fresh  
Never  
Frozen  
**FRESH BONELESS  
SKINLESS CHICKEN  
BREASTS**  
**\$1.99** **\$1.69**  
lb. 10 lb. pre-bagged

**NOW TAKING ORDERS  
EASTER HAMS, LAMB  
AND SAUSAGE.  
CALL OR STOP IN  
TODAY TO  
PLACE YOUR ORDER**

31/40 CT.  
COOKED PEELED & DEVEINED SHRIMP  
**\$7.99**  
lb.

**BRIAN'S PRODUCE: 989-345-2891**

**PRAIRIE FARMS  
PURE PREMIUM ORANGE JUICE**  
**\$2.29**  
52 oz.

**SEEDLESS  
NAVEL ORANGES**  
**\$2.99**  
10 ct. Bag

**BETTER MADE CHIPS**  
**2/\$5.00**

**LETTUCE**  
**99¢**  
ea.

**CAULIFLOWER**  
**\$1.99**  
ea.

**SWEET GRAPE  
TOMATOES**  
**99¢**

**DUTCH FARMS  
BUTTER**  
**\$2.99**  
1 lb. Quarters

**GREEN BEANS**  
**99¢**  
lb.

**BABY CARROTS**  
**89¢**  
1 lb. Bag

**CANTALOUPE**  
**\$1.99**  
ea.

**WILD BIRD SEED**  
**\$12.99**  
50 lb. Bag

**SUNFLOWER SEEDS**  
**\$16.99**  
50 lb. Bag

**THISTLE SEED**  
**\$8.99**  
10 lb. Bag

**CARDINAL TREAT  
BIRD SEED**  
**\$16.99**  
30 lb. Bag

**BUSCH & BUSCH LIGHT**  
**\$8.99**  
18 pk. cans + dep.

**MILWAUKEE'S BEST  
LIGHT & ICE**  
**\$9.99**  
24 pk. cans + dep.



# Largest Selection of Clean Used Cars in Central Michigan

**CERTIFIED 1.9%  
UP TO  
36 Months**

**GM Certified Pre-owned Vehicles = 2 Oil Changes & Tire Rotations  
in 2 years + 12 Month or 12,000 Mile Bumper to Bumper Warranty**

## USED CARS

### 2018 BUICK REGAL TOUR X AWD

Smoked Pearl, Certified, 4,000 Miles..... **\$28,900**

### 2018 CHEVY IMPALA LT

Black, 29,000 Miles, Great M.P.G. .... **\$21,900**

### 2016 BUICK REGAL PREMIUM

White, 19,000 Miles ..... **\$18,900**

### 2016 CHEVY MALIBU LTZ

Silver, V6, 32,000 Miles ..... **\$17,900**

### 2015 CHEVY MALIBU

White, 4 Cyl., LT, 52,000 Miles, Locally Owned..... **\$13,900**

### 2013 CHEVY IMPALA LT

Black, 86,000 Miles..... **\$10,900**

## USED SUVS

### 2018 CHEVY TAHOE 4X4 LT

Blue, 34,000 Miles, Loaded, New Tires ..... **\$48,900**

### 2018 GMC ACADIA SLT AWD

Crimson Red, 13,000 Miles ..... **\$33,900**

### 2018 CHEVY EQUINOX AWD LT

White, 13,000 Miles ..... **\$26,900**

### 2018 NISSAN ROGUE SL4W

Gray, 23,000 Miles..... **\$24,900**

### 2018 JEEP CHEROKEE 4X4

Gray, 24,000 Miles..... **\$23,900**

### 2018 FORD ESCAPE AWD

Blue, 17,000 Miles ..... **\$23,900**

### 2017 GMC YUKON SLT

Burgundy, Cocoa Leather 28,000 miles..... **\$43,900**

### 2017 GMC ACADIA ALL-TERRAIN

Black, 17,000 Miles, AWD, Heated Seats, Cloth..... **\$29,900**

### 2017 CHEVY TRAVERSE LT AWD

Dk. Blue, 23,000 Miles Certified..... **\$28,900**

### 2017 GMC TERRAIN

Grey, V6, AWD, SLE-2, 13,000 Miles..... **\$24,900**

### 2017 CHEVY EQUINOX LT AWD

Blue, 13,000 Miles, Certified..... **\$24,900**

### 2017 BUICK ENCORE AWD

White, 12,000 Miles ..... **\$19,900**

### 2017 CHEVY EQUINOX

18,000 miles, Burgundy, FWD..... **\$19,900**

### 2017 GMC TERRAIN

AWD, V6, SLE, 46,000 Miles, Silver..... **\$19,900**

### 2016 GMC ACADIA FWD

Champagne Silver, 52,000 Miles, SLT, 1 Owner ..... **\$26,900**

### 2016 FORD EDGE AWD

White, 45,000 Miles, Well Equipped ..... **\$20,900**

### 2016 GMC TERRAIN SLE

Black, V6, AWD, 39,000 Miles, 1-Owner ..... **\$20,900**

### 2016 GMC TERRAIN

Blue, AWD, 4 Cyl, 33,000 Miles..... **\$19,900**

### 2016 CHEVY EQUINOX LT

Blue, 49,000 miles, FWD ..... **\$16,900**

### 2015 BUICK ENCLAVE CXL FWD

Champagne Silver, Leather, 24,000 Miles, Certified..... **\$28,900**

### 2015 CHEVY TRAVERSE LT

Dk. Blue, FWD, 24,000 Miles, Certified..... **\$24,900**

### 2015 GMC ACADIA SLE

Silver, 43,000 Miles, Certified, FWD..... **\$23,900**

### 2015 CHEVY EQUINOX LT FWD

Black, 4 Cyl., 24,000 Miles, Certified..... **\$19,900**

### 2014 BUICK ENCLAVE CXL FWD

Mocha, 96,000 Miles ..... **\$18,900**

### 2014 CHEVROLET EQUINOX

Black, 4 Cyl, 96,000 Miles ..... **\$14,900**

## USED TRUCKS

### 2019 CHEVY SILVERADO DOUBLE CAB LT 4X4

Red, 5.3 V8, 15,000 Miles ..... **\$32,900**

### 2018 CHEVROLET COLORADO CREW CAB 4X4

Silver Ice, 24,000 Miles ..... **\$30,900**

### 2017 CHEVY DOUBLE CAB SILVERADO 4X4

5.3 V8, White, 30,000 Miles..... **\$30,900**

### 2017 GMC CANYON EXT. CAB SLE

All Terrain, 10,000 Miles, Silver 4x4..... **\$28,900**

### 2016 CHEVY SILVERADO DOUBLE CAB 4X2

White, 5.3 V8, 161,000 Miles..... **\$17,900**

### 2015 CHEVROLET SILVERADO CREW CAB LT

Summit White, 32,000 Miles..... **\$31,900**

### 2015 GMC SIERRA DOUBLE CAB 4X4 SLE

Black, 31,000 Miles..... **\$29,900**

### 2015 CHEVROLET SILVERADO DOUBLE CAB

Silver, 4x4, 56,000 Miles..... **\$27,900**

### 2015 CHEVY SILVERADO 4X4 EXT CAB

Brownstone, V6, 65,000 Miles..... **\$24,900**

### 2014 GMC CREW CAB SLE 4X4 2500

White, 6.0 V8, 86,000 Miles..... **\$28,900**

### 2014 GMC SIERRA DOUBLE CAB 4X4 SLE

Burgandy, V6, New Tires ..... **\$20,900**

### 2012 DODGE REG. CAB 4X4

Diesel, 65,000 Miles..... **\$28,900**

### 2012 GMC EXT CAB SLT

White, 107,000 Miles, Leather, 5.3 V8..... **\$18,900**

### 2011 GMC SIERRA CREW CAB DENALI 4X4

DURAMAX Diesel, Black, 54,000 Miles..... **\$40,900**

### 2010 CHEVY SILVERADO EXT. CAB 4X4 LTZ

82,000 Miles, Silver..... **\$19,900**

## USED VANS

### 2017 DODGE GRAND CARAVAN SXT

White, 34,000 Miles ..... **\$19,900**

### 2017 DODGE GRAND CARAVAN SX LT

Light Gray, 42,000 Miles..... **\$19,900**

# BENCHLEY BROS., INC.

1 Mile East of Doherty • US-10, Clare • Sales (989) 386-9900

For more info log on to: [www.benchleybros.com](http://www.benchleybros.com)

Parts & Service (989) 386-3197

**HOURS**  
8-6 Mon-Fri  
9-2 Sat



Specializing in  
**GM Certified**  
USED VEHICLES

# Lambert's Meat Market and Bakery

**Taste the difference "FRESH" makes!**

624 E. Cedar Ave., Gladwin (next to Family Dollar)

**989-246-1850**



**Hours: Mon-Friday 8-6:30; Saturday 8-6; Sunday 8-4:00 • Sale Dates: Monday, April 8, 2019 to Saturday, April 13, 2019**

**ITS WORTH THE DRIVE TO  
LAMBERT'S, ONLY 35 MILES FROM  
CLARE, STANDISH, WEST BRANCH,  
PINCONNING AND MIDLAND**



**Thanks for  
voting us #1  
Meat Market in  
Clare/Gladwin**

Believe on the Lord Jesus Christ and thou shalt be saved....Acts 16:31



## FILL THE FREEZER SALE!

### 10LBS OR MORE!

#### Pork Steak or Pork Strips

**\$1<sup>59</sup>**  
lb.

#### Pork Breakfast Sausage or Shoulder Roast

**\$1<sup>59</sup>**  
lb.

#### Boneless Chicken Breast

**\$1<sup>69</sup>**  
lb.

#### Center Cut Pork Chops or Country Style Ribs

**\$1<sup>69</sup>**  
lb.

#### USDA Choice Denver Steaks

**\$3<sup>49</sup>**  
lb.

#### USDA Choice English Roast

**\$3<sup>49</sup>**  
lb.

#### Family Pack Ground Beef Hamburger 73% Lean

**\$2<sup>29</sup>**  
lb.

#### Family Pack Ground Beef from Chuck 80% Lean

**\$2<sup>69</sup>**  
lb.

#### Wayside Bacon

**\$18<sup>90</sup>**  
10 lb.

#### Pollock Fillets

**\$16<sup>90</sup>**  
10 lb.

#### Chicken Nuggets

**\$9<sup>99</sup>**  
5 lb.

#### French Fries

**\$4<sup>99</sup>**  
5 lb.

## GRILLING SPECIALS

## BAKERY AND DELI DEALS

#### Whole USDA NR NY Strip Loins

**\$3<sup>69</sup>**  
lb. **CUT FREE!**

#### Whole NR Boneless Ribeye Loins

**\$4<sup>29</sup>**  
lb. **CUT FREE!**

#### Whole Boneless Pork Loins

**\$1<sup>59</sup>**  
lb. **CUT FREE!**

#### White Bread

**\$1<sup>49</sup>**  
ea

#### Iced Cinnamon Rolls

**\$3<sup>99</sup>**  
6 ct.

#### Kretschmar off the Bone Honey Ham

**\$3<sup>99</sup>**  
lb.

#### Lambert's Own Horseradish Cheddar or Fiesta Brats

**\$3<sup>29</sup>**  
lb.

#### Marinated NY Strip Steaks

**\$5<sup>99</sup>**  
lb.

#### USDA Choice NY Strip Steaks

**\$6<sup>99</sup>**  
lb.

#### Deli Swiss Cheese

**\$4<sup>99</sup>**  
lb.

#### Colby Jack or Colby or Provolone Mini Horns

**\$2<sup>99</sup>**  
lb.

#### Lambert's Own Sandwich Spread

**\$2<sup>89</sup>**  
lb.



# AUCTION

## SYKORAAUCTIONS.COM PRESENTS! A LIVE FARM AUCTION

BOB &amp; LEE WACHOWSKI

7386 S. ISABELLA RD. SHEPHERD, MI. 48883

WE ARE RETIRING FROM OUR PRODUCE BUSINESS, AND WILL SELL THE FOLLOWING AT A LIVE PUBLIC AUCTION HELD ON THE FARM LOCATED 2 MILES WEST OF SHEPHERD, MI. ON BLANCHARD RD., THEN NORTH ¾ MILE TO 7386 S. ISABELLA RD. SHEPHERD, MI. 48883 (ISABELLA COUNTY)

### FRIDAY APRIL 12, 2019 @ 10:00 AM SHARP!

1998 JD 7810 MFWD TRACTOR - 1974 JD 4430 2WD TRACTOR - LOTS OF FARM MACHINERY  
INCL. 2015 KUHN/KRAUSE 7300-21' C-FLEX WHEEL DISC - UNVERFERTH 24' ROLLING  
HARROW II - JD 712 9 LEG DISC CHISEL - JD 220 BI-FOLD WHEEL DISC - JD 940 20' S-TINE  
HYD. FLAT FOLD FIELD CULTIVATOR - IHC 710 5X18' SEMI MTD PLOW - VEGETABLE HARVEST  
& PACKING EQUIPMENT - IRRIGATION EQUIPMENT - WAGONS & TRAILERS -  
\*SPECIAL INTEREST \* 8 ANTIQUE GASOLINE STATION PUMPS



BOB & LEE WACHOWSKI 7386 S. ISABELLA RD. SHEPHERD, MI. 48883  
FOR INFO ON THIS AUCTION CALL BOB @ 989-854-2831



## SYKORA AUCTION SERVICE INC.

Scott Sykora, Auctioneer • (989) 386-9694  
John McConnell, Auctioneer • (989) 429-0444  
Colt Johnson, Auctioneer

Clare, Michigan • Visit our website [www.sykorauctions.com](http://www.sykorauctions.com)

SYKORAAUCTIONS.COM PRESENTS!

## A LIVE FARM AUCTION

GALE &amp; LOIS WILLOUGHBY

SHEPHERD, MI. 48883

WE ARE RETIRING FROM FARMING AND WILL SELL THE FOLLOWING AT A LIVE PUBLIC AUCTION, HELD ON THE FARM LOCATED 5 MILES WEST OF SHEPHERD, MI. ON BLANCHARD RD. THEN 2 ½ MILES SOUTH ON CRAWFORD RD. AND WEST 1 ½ MI. TO 1746 E. JERSEYVILLE RD. SHEPHERD, MI. 48883 (ISABELLA COUNTY)

### SATURDAY APRIL 13, 2019 @ 10:00 AM

RAIN, SNOW OR SHINE BE ON TIME!

FOR ANY INFO CALL GALE @ 989-828-6393

**SHARP - IHC TRACTORS**  
1983 CASE/IH 2294 2WD DSL. TRACTOR, CAH, ONLY 3765 HRS!  
1978 IHC 986 TRACTOR, CAH, ONLY 4730 HRS!  
1974 IHC 1066 DSL. TRACTOR, ONLY 3710 HRS  
IHC 2000 SERIES HYD. LOADER W/MATERIAL BUCKET

**FARMALL COLLECTABLE TRACTORS**  
1960 FARMALL 460 G TRACTOR  
1956 FARMALL 400 G TRACTOR  
1955 FARMALL 400 DSL. TRACTOR  
IH 300U TRACTOR, ORIGINAL  
1953 FARMALL SUPER M TRACTOR, RESTORED  
FARMALL MD TRACTOR  
1951 FARMALL SUPER C TRACTOR, RESTORED  
1951 FARMALL M TRACTOR, RESTORED  
1948 FARMALL M TRACTOR, N.F. ORIGINAL  
1948 FARMALL H TRACTOR, RESTORED  
FAST HITCH IMPLEMENTS

**COMBINE & HEADS**  
1991 GLEANER R 60 RWA DSL. COMBINE,

HYDRO, 2262S/3398E HRS  
1995 AGCO 500 SERIES 20' GRAIN PLATFORM  
W/AWS 2000 AIR SYSTEM & MANIFOLD  
UNVERFERTH HT-25 LO-PRO HEADER CART  
DUETZ ALLIS 630 6 ROW HUGGER  
CORN HEADER  
DUETZ ALLIS 300 20' FLOATING GRAIN  
HEADER, 4-PARTS  
CROP GUARD 200 BU. GRAIN DRYING WAGON,  
OIL FIRED

**TRUCKS**  
1979 CHEVY C 70 S/A GRAIN TRUCK W/  
16' WOOD BOX & HOIST  
1965 CHEVY 60 S/A GRAIN TRUCK W/  
14' WOOD HYD. DUMP BOX  
1997 NISSAN 4X4 PICKUP

FULL LINE OF IHC FARM MACHINERY  
SEE SYKORAAUCTIONS.COM WEB PAGE

**BOAT**  
14' ALUM. FISHING BOAT  
JOHNSON OUTBOARD BOAT MOTOR



**WOOD WORKING/SHOP & FARM MISC.** SEE WEB PAGE FOR FULL LISTING!

**AUCTIONEER'S NOTES:** SYKORAAUCTIONS.COM WOULD LIKE TO THANK GALE & LOIS WILLOUGHBY FOR THIS LIVE TRADITIONAL COUNTRY AUCTION. A VERY WELL KEPT LINE OF FARM EQUIPMENT! AS ALWAYS LOADING SALE DAY AND SHORT TERM STORAGE AVAILABLE! BE THERE!!

### GALE & LOIS WILLOUGHBY, OWNERS

1746 E. JERSEYVILLE RD. SHEPHERD, MI. 48883

FOR ANY INFO CALL GALE @ 989-828-6393



## SYKORA AUCTION SERVICE INC.

Scott Sykora, Auctioneer • (989) 386-9694  
John McConnell, Auctioneer • (989) 429-0444  
Colt Johnson, Auctioneer

Clare, Michigan • Visit our website [www.sykorauctions.com](http://www.sykorauctions.com)



## YODER BROS. LARGE 2 DAY SPRING CONSIGNMENT AUCTION

Farm Equipment • Shop • Outdoor Miscellaneous

★ CONSIGNMENTS WELCOME ★

3 AUCTION  
RINGS  
SELLING  
BOTH DAYS!

Location: ¼ mile north of Clare, Michigan on Business 27 to Colonville Rd.

East 3¾ miles to sale site. 7656 E. Colonville Rd., Clare, Michigan.

Follow Yoder Brothers Auction Signs.

Friday & Saturday, April 12th & 13th, 2019 @ 9:00 a.m.

### DAY 1 - 9:00 AM

**LAWN MOWERS** (Early Consignments) • 2012 CUB CADET L260 TANK Zero Turn Mower, 60", 149 hrs, 1 Owner, Very Clean, SN 1L122230013 • 2011 CUB CADET M-72 TANK Zero Turn Mower, 35hp Kawasaki, 664 hrs, SN 1L011230001 • 2013 CUB CADET L260 TANK Zero Turn Mower, 1001 hrs, SN 1E073230005 • 2016 CUB CADET XT1-42 Riding Mower, 97 hrs • CUB CADET H1748 Commercial Walk Behind Mower, Hydro Drive, 48", 550 hrs, 1 owner • 2014 JOHN DEERE WH60 Commercial Walk Behind Mower, Hydro Drive • 2009 JOHN DEERE WH52 Commercial Walk Behind Mower, Hydro Drive • XMARK 60" Zero Turn Mower • HUSQVARNA 60" Zero Turn Mower • HUSQVARNA 42" Zero Turn Mower • JOHN DEERE 130 Riding Mower • CUB CADET 1550 Riding Mower • SIMPLICITY K1528Z 3 Stage Snow Blower, Like New • BCS 718 Rear Tine Tiller w/4" Sickle Mower Attach., Like New • CASE Demonstrator Rider w/Rear Tine Tiller • JOHN DEERE 21" Self Propelled Mower • HONDA 21" Self Propelled Mower • New DeWalt 20" Lawn Mower **SHOP RELATED ITEMS** • 100+ Lots of New DeWALT and MILWAUKEE 20 Volt and 18 Volt Tools Include: Chain Saws • Impacts • Planers • Circular Saws • Combo Kits • Screw Guns • Grinders • Grease Guns • Jig Saws • 18 Volt & 20 Volt Batteries • MEP SHARK 270FX Metal Band Saw, Hyd/Air Powered • HOBART MEG FLEX 650 RVS Double Wire Spool Welder • CENTURY 225 Wire Feed Welder • Air Compressors • Bench Top Drill Press • Chain Saws • Generators • Elect. Tools • Wood Working Equipment • **SEVERAL WAGON LOADS OF SHOP RELATED ITEMS • MANY MORE ITEMS TOO NUMEROUS TO LIST BUILDING AND BUILDING SUPPLIES** • 12x12 Vinyl Mini Barn w/6" Loft • 10x16 Metal Mini Barn • 10x12 Metal Classic Mini Barn • 8x16 Grey Vinyl Garden Shed w/2-4' Lofts • 8' x 12' w/4" Porch Gambrel Building w/Loft • 8' x 12' Horse Shelter • 2 - New Chicken Coops • New & Used Metal Siding & Roofing **DRV and TRAILERS** • 2013 POLARIS SPORTSMAN 400 Four Wheeler, 170 hrs • Assorted Various Size Trailers • 2007 CAM-AM Outlander 400 4x4 4 Wheeler **OUTDOOR MISC ITEMS** • 50+ New Name Brand Outdoor Work Boots • New & Reconditioned Jamis Bicycles • Semi Load Various Size Treated Fence Posts • Variety of New Wood Lawn Furniture • Apple Sorter • Metal Yard Ornaments • New Sawmill Lumber **ANTIQUES and COLLECTABLES** • Copper Kettles • Copper Pots & Pans • 5-Cast Iron Dinner Bells • STAR

**MILL Coffee Grinder** • Cast Iron Patio Sets • R-R Lanterns • Cow Bells • GRISWOLD & WAGNER Skillets • Steel Wheels • Wooden Wheels • Hand Crank Corn Sheller • 25-ERTEL Toy Tractors



#### DeWalt Tools

• 20 Volt Recip Saw • 20 Volt 4.5" Grinder • 20 Volt Brushless Blower • 20 Volt Brushless Hammerdrill • 20 Volt Brushless Multi Tool • 20 Volt Brushless Drywall Screwgun • 20 Volt Jigsaw • 20 Volt Circular Saw • 20 Volt Chain saw • 20 Volt 2 Gallon Vac • 20 Volt Brushless 1/2" Mid Size Impact • 20 Volt Brushless String Trimmer • 20 Volt Grease Gun • 20 Volt Hedge Trimmer • 20 Volt Light Tower • 20 Volt Cut Out Tool • 20 Volt Brushless 3 Speed Impact • 18 Gauge Metal Shear • 20 Volt 5 AH Battery • 20 Volt Charger • 60 Volt Brushless Blower • 60 Volt 7 1/4 Circular Saw • 60 Volt Recip Saw • 60 Volt Grinder • 60 Volt 6 AH Battery, • 20/60 Volt Fast Charger • 20 Volt 3 Speed Impact • Metal Cutting Shear Attachment • 20 Volt 1/2" Hammerdrill • 20 Volt Recip Saw • 20 Volt Adjustable Clutch Screwgun • 20 Volt 4 1/2" Grinder • 20 Volt Multi Tool • 20 Volt Jigsaw • 20 Volt 5" Sander • 20 Volt Blower • 20 Volt Planer • 20 Volt 6 1/2" Circular Saw • 20 Volt 1/2 Drill • 20 Volt Drywall Cutout Tool • 20 Volt Drywall Screwdriver • 20 Volt Compact Recip Saw • 20 Volt Variable Speed Fan • 20 Volt 7 1/4" Circular Saw • 20 Volt Angle Drill • 20 Volt Grease Gun • 20 Volt 1/2" Hi Torque Impact Wrench • 20 Volt 1/2" Mid Size Impact Wrench • 20 Volt SDS Plus Hammer Drill • 20 Volt 2 Gal Wet/Dry Vac • 20 Volt 20" Lawn mower • 20 • Volt String Trimmer • 20 Volt Blower • 20 Volt 14" Chainsaw • 20 Volt Tripod Area Light • 20 Volt 5 AH Lithium Battery • 20/60 Volt Battery Charger Electric 11 OV • Small Nylon Tool Bags • 20 Volt Drill/Impact Combo Kit w/2 batteries • 60 Volt Sliding Miter Saw • Miter Saw Stand • 60 Volt Table Saw • 2 • 60 Volt Circ Saw • 60 Volt Recip Saw • 60 Volt Grinder • 60 Volt Joist Drill • 60 Volt Chainsaw • 60 Volt String Trimmer • 60 Volt Blower • 60 Volt Recip Saw • 60 Volt Grinder • 60 Volt 12 AH Battery • 60 Volt 9 AH Battery • 60 Volt 6 AH Battery • 20/60 Volt Fast Charger

#### Milwaukee Tools

• 18 Volt Recip Saw • 18 Volt Hammerdrill • 18 Volt 6

1/2" Cir Saw • 18 Volt Fuel 1/4" 3 Speed Impact Drive • 18 Volt 4.5" Grinder • 18 Volt 5 AH Battery • 18 Volt 9 AH Battery • Battery Charger • Tool Belt Combo • M 18 Fuel 18 Volt Hammer Drill • M18 Fuel 18 Volt 3 Speed Impact • M18 Fuel 18 Volt Recip Saw • M18 Fuel 18 Volt Grinder • M18 Fuel 18 Volt 7 1/4 Cir Saw • M18 Fuel 1/2" Impact • M18 Volt 6 AH Red Lithium Battery • 18 Volt Charger

#### Makita Tools

• 18 Volt Sweeper Kit W/1 Battery • 18 Volt impact W/1 Battery/Charger • 18 Volt 5 AH Battery • 18 Volt 3 Speed Impact Driver • 18 Volt Multi Tool • 18 Volt X2-Blower • 18 Volt 5 AH Battery • 18 Volt Dual Port Charger

#### Primitives, Antiques And Collectables

• 25 Gal Copper Kettle W/orig. Stand • 6 Wooden Primitive Bob Sled • Rare 3 Pc Childs Wire Patio Set: 3 Pc Grapevine Cast Iron Patio Set • Star Mill No. 8 Double Wheel • Coffee Grinder • Lg. Barrel Butter Churn • Black Smith Forges • Holwick Coffee Grinder • Fembury, Handlan And Dietz R-R Lanterns • Variety Of Crocks 1 Gal To 12 Ga. • Old Dinner Bells No. 2, No. 3, No. 4 Size • 4" Wide Wooden Box Wagon Wheels • Variety Of Steel Wheels • Tobacco Scales • Cast Iron Scales • Lg Meat Cleaver • Wood Pulleys • H. Pedal Tractor • Advertising Boxes • Granite Ware • Cast Iron Toys • Cast Iron Lamp Holders • Wood Goat Cart • Pitcher Pumps • J.D. Wall Pocket • Ideal Wash Tubs • Orig. Coca Cola Tray • Wood Grain Scoop • Charlie The Bartender Toy • Complete Set Hardy Boys Hard Cover Books • Anco Wiper Display • 5' Lazy Susan Bolt Bin • Lg. Selection Cast • Iron Skillets • 25 Ertel Toy Tractors • *Many More Items Too Numerous To Mention*

**New and Used Bikes Consigned by Peddlers Horse Bike Shop** • New Jamis Ventura Sport Bike • New Jamis Durango Sport Bike • New KHS A Lite 1000 mtn Bike • New KHS Flite 300 Road bike • Assorted other used name brand bikes • *Approximately 100 new outdoor work boots and shoes consigned by Tobacco River Rustics brands include:* Thorogood, Carolina, Wood N Steam, John Deere and others.



### DAY 2 - 9:00 AM

**TRACTORS and SKIDSTEERS** Expecting Approx. 30+ Tractors • NH TN60 A Tractor Synchro Command, 4x4, 2 Hyd Outlets, 3 pt, 4749 hrs, Tires: 420/90 R30, SN LFT519982 • **CASE 2090** Cab Tractor w/Duals, 18.4.38 Tires, 2 Hyd Outlets, 540/1000 pto, 5700 hrs, SN 9910586 • **GEHL 4640** Skidsteer, Joy Stick Controls, 5975 hrs • **JOHN DEERE 3020** Tractor, Good, 3pt, pto • **FORD 2110** Diesel Tractor 3pt-pto • **OLIVER 1600** Tractor, Rebuilt • **FORD 545** Loader Tractor w/Weights • **FARMALL SUPER C** Tractor, Wide Front • **FARMALL** Cub Tractor w/Flail Mower • **JOHN DEERE 855** Tractor w/70-A Loader, 4x4, 3pt, pto 24hp, Yarmar Diesel • 2015 TOYOTA BFGCU25 Forklift, 3000 lb, 3 Stage Side Shift, 11,182 hrs, Re-Conditioned **TRAILERS** • 2017 SURE TRAC 14' Dump Trailer • 1997 TITAN 28' Gooseneck Livestock Trailer **EARLY CONSIGNMENTS OF HAY EQUIPMENT** • **NEW HOLLAND ROLL BELT 450** Round Baler, Net Wrap, Silage Spec • **JOHN DEERE 100** Lg Sq. Baler w/Bale Accumulator • **NEW HOLLAND BR7070** Round Baler, Net Wrap/Twine Tie, 8000 Bales • **JOHN DEERE 435** Round Baler, Twine Tie, w/Gathering Wheels • **GEHL 2480** Round Baler, Twine Tie • **CASE I.H. DEX 101** Discbine • **JOHN DEERE 946** Flail Discbine • 2014 NEW HOLLAND 488 Haybine • 3 - NEW HOLLAND 488 Haybines, Good Cond. • 2 - NEW HOLLAND 492 Haybines, Good Cond. • **NEW HOLLAND 479** Haybine, Very Nice Cond. • **NEW HOLLAND 478** Haybine • **NEW HOLLAND 315** Sq. Baler • **NEW HOLLAND 311** Sq. Baler • **NEW HOLLAND 570** Sq. Baler • **NEW HOLLAND 273** Sq. Baler • **JOHN DEERE 24T** Sq. Baler • M.F. 12 Sq. Baler • **AGCO 4** Basket Tedder, Hyd Fold, Very Good Cond. • **AGCO 2** Basket Tedder



• **PELLA** 3pt 2 Basket Tedder • 2016 KUHN 5108 8 Wheel V Rake w/Kicker Wheel • 2014 RHINO ER-8 8 Wheel V Rake • H-S 10 Wheel V Rake • **DURA BUILT** 8 Wheel V Rake • 2 - **NEW HOLLAND** Tandem Hitch Carts • 2 - **NEW HOLLAND 258** Rakes, Very Good Cond. • **NEW HOLLAND 57** Rota Bar 3pt Rake • **NEW HOLLAND 260** Hay Rake w/Dolley Wheel • **NEW HOLLAND 166** Hay Inverter • **JOHN DEERE 1064-953** Wagon Gears • **KNOWLES** Tandem 10 Ton Gear • **JOHN DEERE 12** Ton Tandem Gear **EARLY CONSIGNMENT OF OTHER FARM EQUIPMENT** • **NEW HOLLAND 513** Pto Manure Spreader w/End Gate • **NEW IDEA 3626** Pto Manure Spreader w/ Hyd End Gate • **NEW IDEA 325** Corn Picker, 2 Row Narrow, 12 Roll Bed • **NEW HOLLAND 900** Chopper w/3 Row Corn Head • **NEW IDEA 323** 1 Row Corn Picker • **NEW IDEA 2** Wheel Manure Spreader • **NEW HOLLAND 357** Grinder Mixer, Mechanical Auger • **MCCURDY 300** Bu. Gravity Wagons • **KILL BROS 350** Bu. Gravity Wagons • **EZ TRAIL 300** Bu. Gravity Box • **EZ TRAIL** Gravity Wagon, Like New • **JOHN DEERE** Grain Dump Wagon • **BEHLEN** Grain Dryer w/Trailer • **MILLER PRO** Forage Box • **GEHL 980** Forage Box • Like New 23.1-26 Mounted Combine Tires • 2- **JOHN DEERE 14** Hole Grain Drills • Various Sizes New Gates • Semi Load Treated Fence Posts **EARLY CONSIGNMENT OF TILLAGE EQUIPMENT** • **GLENCO 5** Shank Soil Saver • **JOHN DEERE 331 24'** Tandem Disc • **I.H. 470** Hyd Fold Disc w/

Harrow • **UNVERFERTH 25'** Hyd Fold Crumbler • M.F. 520 14' Disc • 15' Vibrant • **BRILLION 14'** Cultimulcher • **ALLIS CHALMERS 15'** Disc • 2- **JOHN DEERE 10'** Wheel Discs • **JOHN DEERE 8'** Disc (New Blades) • I.H. 8' Disc • 12' Cultipacker • **BRILLION 10'** Cultipacker • **BRILLION 12'** Cultipacker • 6' **CROW A** Cultipacker • 2- 6' Cultipackers • 2- 4' Cultipacker Pups

**EARLY CONSIGNMENT OF HORSE DRAWN EQUIPMENT** • **MCDEERING 10'** Grain Binder, Pto, Excellent Cond. • **GEHL C-40** Silo Filler w/Shredder, Excellent Cond. • **NEW IDEA 10-A** Manure Spreader, Org. Choice of Rubber or Steel Wheels • **NEW IDEA** No. 8 Manure Spreader • **MOLINE** Manure Spreader, Very Nice Cond. • **JOHN DEERE** Mod. D Manure Spreader, Org Cond. • **MASSEY HARRIS** Hay Loader, Re-Cond • **JOHN DEERE BIG 4** Hay Mower, Rebuilt (Low Acres) • **MCDEERING** No. 7 Hay Mower, Rebuilt • **D-A** Hay Wagon w/Uprights & Side Boards • **JOHN DEERE 999 2** Row Corn Planter • **PIONEER R.H. 1** Bot Plow • 2012 **HOG BACK 100** Gal 1 Arm Sprayer for Standing Corn • **HOG BACK** Water Wheel Transplanter w/5 Wheels • **NOLTS** Produce Plastic Layer, New from H.P.D. • Shop Built Broadcast Seeder **3 PT. EQUIPMENT** • **BRILLION 8'** 3 pt Seeder • **HARDY 3** pt Sprayer • **ALLIS 3** pt 2 Row Corn Planter • 8' 3 pt Cultivator • 2- 4' 5 Tine Diggers • 3 pt Cultivators • **FORD 2** Bot, 3 pt Plow • 3 pt 6' Disc • 3 pt Cyclone Spreader • 5' 3 pt Back Blade • Bucket Attach Bale Spear **SAWMILL EQUIPMENT** • **LUMBER MASTER** Sawmill, Rebuilt Cond. • **FRICK 2** Blade Edger w/ Steel Frame • Cut Off Saw • **CAT'S CLAW** Band Saw Sharpener

For more photos  
go to [auctionzip.com](http://auctionzip.com)  
ID 2701 or gotoauction ID 2109

### CONSIGNMENT INFORMATION

We Will Start Taking Consignments on Saturday, April 6th at 8:00 am to 5:00 pm until Thursday evening, April 11th, 2019 at 5 pm Sharp! Closed on Sundays. Note: We will not be accepting any equipment Friday or Saturday morning. Only usable items. NO JUNK! Auction staff reserves the right to reject any items that do not reach this standard. No household, glass, or old tires. Loader tractors will be available for unloading and loading. *Thank you!*

## Yoder Brothers Auction Service

Auctioneers LeRoy and Willis Yoder 9484

S. Rodgers Ave., Clare, MI

PH: 989-386-9082



#### AUCTIONEER'S NOTE:

Mark your calendars and plan on joining us for Two Days of FUN and Auction Excitement! Bring your families and friends as there will be 3 auction rings selling both days. Hope to see you there! LeRoy

**2019 Clare Feeder Cattle Sales**  
Clare County Livestock Auction, LLC • David Clark, Owner/Auctioneer  
Contact: (810) 441-6191 • Sale Barn: (989) 386-9256

**ALL SALES ON THURSDAY  
START AT 1:00PM**

**ALL CATTLE WEIGHED AT SALE TIME  
ACCEPTING CATTLE ON WEDNESDAY  
ALL DAY! OVERNIGHT CATTLE  
WILL BE FED & WATERED!**

April 11, May 2, Sept. 5, Oct. 3, Nov. 7, Dec. 5

GO TO [WWW.DAVIDCLARKAUCTION.COM](http://WWW.DAVIDCLARKAUCTION.COM)  
FOR MORE INFORMATION!!  
“SALE EVERY MONDAY AT 3:00PM”

**Celebrate Responsibly**  
Please Don't Drink and Drive



assisted Living with Heart



1320 Pine Avenue,  
Alma, MI 48801  
[arborgroveassistedliving.com](http://arborgroveassistedliving.com)  
989.463.3074

Our residents, their families, and our staff have one thing in common - we genuinely care about each other. **We have heart.**

Share life's journey in a community that cares.

Offering Independent Living Duplexes (The Villas),  
Assisted Living & Moments Memory Care





## MIAL MEADOWS MHP

WE HAVE 2 & 3 BEDROOM  
MOBILE HOMES FOR SALE  
OR LEASE IN ALMA  
LOT RENT \$290

HOMES ARE GOING FAST, DON'T WAIT!!  
CALL AMBER AT **989-463-5187**  
TO SCHEDULE A TIME TO SEE YOUR NEW HOME!

AMBER MARCOUX  
MANAGER

411 S. GROVER, #2  
ALMA, MI 48801

## PAWN SHOP

Buy, Sell, Pawn

3 Month Pawn  
3% + \$3.00 Storage  
Firearms, Gold  
& More

Gladwin Trade & Sales  
**989-426-6811**

## Who's ready for kindergarten?



**Beaverton Elementary is ready for you.**

# KINDERGARTEN ROUND-UP

## APRIL 25 & 26

Student must be five  
years old on or before  
Sept. 1, 2019

What does Beaverton Elementary offer to  
your child?

- A caring and qualified staff
- A full-day program
- Positive behavior support
- Parent involvement



## CALL 246-3020 TODAY!



# RE/MAX

RIVER HAVEN, INC

Open Seven Days  
a Week to Serve You



**www.riverhavenhomes.com • Wayne R. Walts – Broker**

**Sugar Springs Office**

1415 W. Sugar River Rd. • Gladwin

**989-426-9239**

**Wixom Lake Office**

1239 Estey Rd. • Beaverton, MI 48624

**989-435-7755**

**Main Office**

777 W. Cedar • Riverwalk Place

**989-426-6893**

**We have a great selection of AFFORDABLE HOMES and LUXURY HOMES.  
Contact one of our offices and talk to an experienced agent today!**



Smallwood Lake - 3 bedroom, 2 bath chalet with  
2 car garage. 87 ft on 7 mile long all sports lake.  
**\$115,000** MLS#170791



Northern Midland County - 3 bedroom, 2 bath, 2 car garage PLUS  
30x40 pole barn, walkout basement, sun room. All this on 22 acres.  
**\$205,000** MLS#170806



Lake Lancer - Sugar Springs - 3 bedroom, 2 bath ranch,  
2 car att garage with 148 ft on 750 acre all sports lake.  
**\$242,000** MLS#170782

## CLASSIFIEDS...



**HELP YOU CLIMB THE  
LADDER OF SUCCESS!**



**See why millions  
trust us for  
Home & Auto.**

**Maury Irwin, Agent**  
1011 N McEwan, Clare  
Bus: 989-386-4141  
maury.irwin.l8gz@statefarm.com

I'm here to help life go right!™, by saving you time and  
money when you combine your home and auto insurance.  
**CALL ME TODAY.**



State Farm Mutual Automobile Insurance Company  
State Farm Indemnity Company  
State Farm Fire and Casualty Company  
State Farm General Insurance Company  
Bloomington, IL

1601486

# Auctions

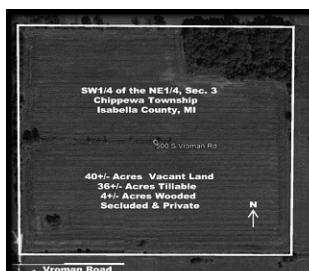
**SYKORAAUCTIONS.COM PRESENTS! LIVE BIDDING! - MT. PLEASANT, MI. 48858**

## 40 AC. LAND AUCTION

THE FOLLOWING 40 ACRES OF ISABELLA COUNTY LAND WILL BE OFFERED AT LIVE AUCTION HELD @ THE CHEERS NEIGHBORHOOD  
GRILL & BAR EVENT ROOM: LOCATED 1.5 MILES WEST OF MT. PLEASANT TO 1700 W. HIGH ST. (ISABELLA COUNTY)

**WEDNESDAY APRIL 17, 2019, 2019 @ 6:30 PM**

LAND ADDRESS: APROX 500 S. VROMAN RD. MT. PLEASANT, MI. 48858



- ✓ **DRIVING DIRECTIONS** FROM THE HOME DEPOT STORE @ US-127 FREEWAY & M-20 INTERCHANGE  
GO EAST ON M-20 1 1/2 MILE TO LEATON RD. THEN NORTH 1 MILE ON LEATON RD. TO RIVER RD.,  
THEN EAST 2 1/2 MILES ON RIVER RD. TO VROMAN RD., THEN NORTH 1/2 MILE TO 500 S. VROMAN RD.
- ✓ **SYKORA ADVERTISING SIGNS POSTED AT SITE!**
- ✓ **ON YOUR OWN INSPECTION INVITED ANYTIME!**

**40 +/- AC OF FARMLAND W/  
WOOD LOT SW 1/4 OF THE NE 1/4 SEC 3 T14N R3W  
CHIPPAWA TWP. ISABELLA COUNTY MICHIGAN**

**DESCRIPTION:** LAND IS VACANT FARM LAND W/ APROX.  
36 AC. TILLABLE & APROX 4 AC. OF WOODED AREA, POTENTIAL  
BUILDING SITES, HUNTING AND RECREATIONAL USES!  
**COME BID YOUR PRICE ON AUCTION NIGHT!**

SELLERS: MELISSA & JOHN KAMPF JR.



## SYKORA AUCTION SERVICE INC.

Scott Sykora, Auctioneer • (989) 386-9694

John McConnell, Auctioneer • (989) 429-0444

Colt Johnson, Auctioneer

Clare, Michigan • Visit our website [www.sykorauctions.com](http://www.sykorauctions.com)

## JOHN PECK UPCOMING LIVE AUCTIONS

### Osborne Retirement Auction • Saturday April 20 @ 10:00 A.M.

**Sale Features:** Komatsu Excavator, Case Crawler Dozer, Peterbilt Dump Truck, International Pole Truck, Chevy Pickup,  
Kubota Compact Loader Tractor, M.F. Utility Loader Tractor, Several Trailers Including 26' Enclosed Car Hauler,  
Large Amount Of Shop Tools & Oil Field Support Items, Lincoln LS 4 Door Sedan,  
Harley Davidson Soft Tail Motorcycle, Firearms, Farm Equip., Lawn & Garden Items.

**Located:** 5426 E. M-55, Hale

### Quinn Moving Auction • Saturday April 27 @ 10:00 A.M.

**Sale Features:** J.D. 4310 Compact 4X4 Loader Tractor, Kubota Sub Compact 4X4 Loader Tractor,  
3 Pt. Farm Implements, Like New Load Trail 18' T.A. Trailer, Sure-Trac Dumper Trailer, Polaris Ranger  
4X4 UTV, Lots Of Good Shop Related Tools, Lawn/ Garden Equip. & Household Items.

**Located:** 4300 Bel-Air Rd., Houghton Lake

### Swartz Estate Auction • Saturday May 4 @ 10:00 A.M.

**Sale Features:** (5) Tractors To Include: J.D. 60, I.H. 460, I.H. Super A, I.H. Cub, Ford 2N, Farm Equip., Large Amount Of  
Shop Related Tools, Fishing Boats, Snowmobiles, 3 Wheelers, Trailers, EZ-Go Gas Golf Cart, Lots Of Sporting Related Items,  
Lawn Equip., Automotive & Tractor Parts, Scrap Items & Household Items **Located:** 4476 Townline Rd., Standish

### Laidlaw Estate Auction • Saturday May 11 @ 10:00 A.M.

**Sale Features:** (9) Collectible Farm Tractors, Oliver Threshing Machine, J.D. 4400 Compact 4x4 Loader  
Backhoe Tractor W/ 72" Under Mtd. Mower Deck, Farm Implements, 16' Tandem Trailer, J.D. 6x4 Gator W/ Cab,  
(2) Ski-Doo 2 Up Snowmobiles & Much More.

**Located:** 2851 North Lake Rd., Glennie

### Caverly Living Estate Auction • Friday May 17 @ 10:00 A.M.

**Sale Features:** (3) Tractors, 4X4 Utility Vehicle, Honda ATV., Firearms, Shop Tools, Farm Equip.,  
Utility Trailer, Mini Van, Household, Collectibles & Lots Of Items Around The Farm.

**Located:** 1040 Beach Rd., Prescott

### Barkley Estate Auction • Sunday May 19 @ 11:00 A.M.

**Sale Features:** (50) Firearms, Guns Safe's, Large Amount Of Ammo., Fishing Boat, Kubota Compact Loader Tractor,  
3 Pt. Equip., Fishing Boat, Buick Enclave, Several Welders & Shop Related Tools, Large Amount Of Parts & Scrap

**Located:** 3700 Rhodes Rd., Rhodes

### Simlik Moving Auction • Saturday June 22 @ 10:00 A.M.

**Sale Features:** 2014 Dodge Ram Pickup Truck, 2018 16' Utility Trailer, 2015 Skyline Retro Tag Along Travel Trailer,  
J.D. Gator UTV, A.C. C Farm Tractor, Lawn Equip., Shop Tools, Antiques, Collectibles & Household Furnishings.

**Located:** 11171 E. Vernon Rd., Coleman

For A Complete Listing With 100's Of Photo's For All Our Upcoming Auctions Visit

**[www.johnpeckauctions.com](http://www.johnpeckauctions.com)**

"Auctioneers For Over 40 Years"

**(989) 426-8061**

# Building Supplies

Serving You For 15 Years!

**"OUR GOAL IS QUALITY  
PRODUCTS, COMPETITIVE  
PRICES & OUTSTANDING  
SERVICE."**



# Your project headquarters!

**New Homes, Garages, Pole Barns & Decks**

**Lumber, OSB, Treated Posts Trusses,  
Windows, Doors, Concrete Blocks,  
Mortar, Redi-mix Concrete**

## HERSHBERGER'S PRO HARDWARE

10289 N. Leaton Rd., Clare, MI 48617-9107

**(989) 386-5338**

**Full Line of Hardware & Building Supplies  
Stove & Furnaces All Fuel Chimneys**



ALL NEW

Cub Cadet

ULTIMA



**ZT1 42**  
ZERO-TURN RIDER

- 22 HP† Twin KH 7000
- 42" twin-blade deck
- Premium Seat

STARTING AT:  
**\$2,699\***



**ZT1 46**  
ZERO-TURN RIDER

- 22 HP† V-Twin Kohler
- 46" twin-blade deck
- Hydro-Gear™ EZT 2200

STARTING AT:  
**\$2,899\***



**ZT2 50**  
ZERO-TURN RIDER

- 23 HP†† Kawasaki V-Twin
- 50" FAB triple-blade deck
- Hydro-Gear™ EZT 2800

STARTING AT:  
**\$3,699\***

Amish Country Bakery

Grand Opening

April 12 and 13

Free! Coffee & Donuts all day April 12 & 13

We will be open every Friday & Saturday

Friday 9 A.M. - 6 P.M.

Saturday 9 A.M. - 3 P.M.

We bake full line of baked goods. Special Orders Welcome

5410 W. Blanchard Rd.

Blanchard, MI 49310

2 ½ Miles W. of Winn



Sell It In The Classifieds!

It's A Hit!



SAVE \$100 ON XT ENDURO SERIES

HURRY IN - OFFER VALID TILL MARCH 31



**XT1 LT46**  
LAWN TRACTOR

- 22 HP† Twin KH 7000
- 46" twin-blade deck
- Tuff Torq® Transmission

STARTING AT:  
**\$1,799<sup>Δ</sup>**  
REFLECTS \$100 OFF



**XT2 LX42**  
LAWN TRACTOR

- 22 HP† Twin KH 7000
- 42" twin-blade cutting deck
- Tuff Torq® Transmission

STARTING AT:  
**\$1,899<sup>Δ</sup>**  
REFLECTS \$100 OFF



**RZT SX54**  
ZERO-TURN RIDER

- 21.5 HP† KW FR651V engine
- 54" FAB triple-blade deck
- Cub Connect™ Bluetooth®

STARTING AT:  
**\$3,899\***

FOR FULL PRODUCT SPECS

Cub Cadet

VISIT CUBCADET.COM

YOUR INDEPENDENT CUB CADET DEALER—EXPERT SERVICE. LOCALLY OWNED.

THE ADVICE, SERVICE, SELECTION AND SUPPORT YOU NEED TO FIND THE RIGHT FIT FOR YOU.



981 East Railway Street

Coleman, MI 48618

989-465-1521

www.GenesPowerEquipment.com

1 Restrictions apply. See store for details. <sup>Δ</sup>\$100 off select XT1. \$100 off regular retail price. Price shown reflects \$100 off. Offer expires 3/31/19. \* Product Price -Actual retail prices are set by dealer and may vary. Taxes, freight, setup and handling charges may be additional and may vary. Models subject to limited availability. For full warranty details, visit cubcadet.com or see your local dealer. See your local dealer for limited warranty details and information. Certain restrictions apply. Specifications and programs are subject to change without notice. Images may not reflect dealer inventory and/or unit specifications. † As rated by Kohler, all power levels are stated in gross horsepower at 3,600 RPM per SAE J1940 as rated by engine manufacturer. †† As rated by Kawasaki, horsepower tested in accordance with SAE J1995 and rated in accordance with SAE J2723 and certified by SAE International.

© 2019 Cub Cadet Gene's Power Equipment 4.89 x 10

EXCEPTIONAL FINANCING OFFERS AVAILABLE



Country Corner MARKET

Bulk Food • Deli

2 Miles South of Rosebush • 2020 North Mission Mt. Pleasant • 989-433-8200

8:30am-5:30pm, Monday-Thursday

8:30am-7:00pm, Friday • 8:30am-4pm, Saturday

Large Selection of Freezer Food at Discounted Prices

SPECIALS OF THE WEEK

Great Selection of Bulk Foods We Accept Bridge Cards & All Major Credit Cards

Walnut Creek Smoked Gouda or Smoked Havarti

Sale \$4.49 lb. Reg. \$4.99 lb.

Walnut Creek Double Smoked Ham

Sale \$3.29 lb. Reg. \$4.29 lb.

MORE SPECIALS

Walnut Creek Cheese Shreds All Varieties 2 lb. \$5.49 ea.

Walnut Creek Pickles All Varieties pt. \$3.99 ea.

Walnut Creek Pork Rinds \$1.19 ea.

Walnut Creek Roll Butter 2 lb. \$7.49 ea.

Coffee of the week: Southern Pecan

1040

Income Tax Pay Day

GRATIOT COUNTY

PEOPLE'S CHOICE

2019

Vote For Your Favorite Person, Place, Or Thing In

Gratiot County & Win!

For completing and returning this entry, you will be entered into a drawing to win one of the following three prizes. (Please, one entry per person).

1st Prize- \$100 2nd Prize- \$50 3rd Prize- \$25

ENTER ONLINE!

You can enter online at <http://themorningsun.com/contest> or go to [www.themorningsun.com](http://www.themorningsun.com) and click on the People's Choice logo on the lower left side of the home page

The winners of the People's Choice Awards will be published in a special edition of the Mid-Michigan Buyers Guide in June.

1. Best Restaurant

2. Best Restaurant for Good Service

3. Best Fast Food Restaurant

4. Best Place for Breakfast

5. Best Ethnic Food

6. Best Restaurant Burger

7. Best Fast Food Burger

8. Best Salad Bar

9. Best Place for Pizza

10. Best Cup of Coffee

11. Best Ice Cream Shop

12. Best Sub/Hoagie/Grinder

13. Best Tavern

14. Best Waiter/Waitress & Name of Restaurant

15. Best Bartender & Name of Bar

16. Best Restaurant for Cleanliness

17. Best Place for Pie

18. Best New Car Dealership

19. Best Used Car Dealership

20. Best Car Salesperson & Name of Dealership

21. Best Auto Service Department

22. Best Auto Body Shop

23. Best Auto Parts Store

24. Best Quick Oil Change

25. Best Tire Store

26. Best Optometrist/Ophthalmologist

27. Best Dentist/Orthodontist

28. Best Dental Hygienist & Name of Office

29. Best Physician

30. Best Nurse & Name of Office

31. Best Chiropractor

32. Best Pharmacist

33. Best Veterinarian

34. Best Insurance Agent

35. Best Real Estate Agent

36. Best Real Estate Agency

37. Best Accountant/CPA

38. Best Financial Advisor

39. Best Banker/Loan Officer & Name of Bank

40. Best Bank Teller & Name of Bank

41. Best Auctioneer

42. Best Photographer

43. Best Administrative Assistant & Name of Business

44. Best Barber

45. Best Hairstylist & Name of Salon

46. Best Hair Salon

47. Best Place for a Massage

48. Best Tanning Salon

49. Best Place for Nail Care

50. Best Gift Shop (Not eligible for any other category)

51. Best Pet Groomer

52. Best Business for Customer Service

53. Best Local Website

54. Community Volunteer

55. Best Plumber

56. Best Electrician

57. Best Contractor/Builder

58. Best Painting Contractor

59. Best Place for Floor Covering

60. Best Heating and Air Conditioning

61. Best Welding Shop

62. Best Lawn Maintenance

63. Best Appliance Store

64. Best Appliance Repair

65. Best Computer Repair

66. Best Funeral Home

67. Best Elder Care Facility

68. Best Gas Station

69. Best Party Store/Convenience Store

70. Best Bakery

71. Best Deli

72. Best Furniture Store

73. Best Pharmacy

74. Best Flower Shop

75. Best Hardware Store

76. Best Window Displays

77. Best TV, Stereo, Electronics Store

78. Best Antiques and Collectibles

79. Best Lawn & Garden Store

80. Pet Food & Supplies Store

81. Best Golf Course

82. Best Gym/Health Club

83. Best Caterer

Name

Address

Phone

Signature

• One entry per person.

• No photocopies or facsimiles accepted.

• Must be 18 years or older to enter drawing.

• To be eligible for the drawing you must fill out at least 50% of the poll

\*MSP employees and families are not eligible for the drawing.

ENTRIES DUE BY: May 1, 2019.

Return to:

Mid-Michigan Buyers Guide

Attn: People's Choice

311 E. Superior St., Alma, MI 48801

989-463-6071



# West Branch Furniture's STOREWIDE CLEARANCE EVENT

### Queen Size Adjustable Bed

Featuring pillow top mattress



**\$699**

\*not exactly as shown      \*While Supply Lasts

### Coaster 5-Pc Pub Dinette



**\$399**

### Your Choice 63" TV Stand



**\$349**

### Lang 5 Drawer Chest

Available in White



**\$139**

### Ashley Tulen Reclining Sofa

Available in 3 colors



**\$569**

### Holland House Oak Glider Rocker

Your choice of colors



**\$299**

### Ashley 4-Piece Two Tone Bedroom Suite

Dresser - Mirror - Chest - Queen Headboard



**\$899**

### Ashley Chaise Sofa



**\$499**

### Wood Twin/Full Bunkbed

Mattresses & Drawers Optional



**\$289**

### Ashley 3-piece Drop Leaf Dinette

Price reflective of Table + 2 chairs. Additional chairs can be purchased separately



**\$299**

### Ashley Transitional Sofa



**\$399**

### Coaster Wallaway Recliner



**\$179**

### Ashley Wallaway Recliner

Available in 2 colors



**\$249**

### Ashley Rocker Recliner

Available in 7 colors



**\$289**

### Ashley Power Recliner

Available in 2 colors



**\$369**

### Ashley Power Recliner

Available in 4 colors



**\$449**

**\*12 MONTHS NO INTEREST FINANCING**      **\*NO CREDIT NEEDED FINANCING**      **FREE 90 DAY LAYAWAY**

## MATTRESS CLOSE OUT PRICING





### QUEEN SIZE PILLOW TOP

Mattress 2 Pc. Set



**\$299**

\*Photo for illustration purposes only; may not be exactly as shown

	TWIN MATTRESS	FULL MATTRESS	QUEEN MATTRESS	KING MATTRESS
MajesticSleep Heidelberg Comfort Plush or Firm 	<b>\$299</b>	<b>\$359</b>	<b>\$389</b>	<b>\$649</b>
MajesticSleep Heidelberg - Jumbo Eurotop 	<b>\$359</b>	<b>\$449</b>	<b>\$489</b>	<b>\$749</b>
MajesticSleep Comfort Pocketed Coil - Extra Firm or Plush Top 	<b>\$409</b>	<b>\$499</b>	<b>\$539</b>	<b>\$799</b>
MajesticSleep Tomkins - Comfort Plush or Firm 	<b>\$509</b>	<b>\$599</b>	<b>\$639</b>	<b>\$899</b>

\*Financing available to qualifying buyers. Minimum purchase \$599 with approved credit. Not available on prior purchases. See store for details. \* Tables and lamps may not be as shown in picture.



**136 S. Fifth St.**  
**West Branch**  
located block south of  
Mercantile Bank off Houghton Ave.  
**989-345-5326**

www.westbranchfurnitureoutlet.com

**\*12 Months No Interest**

**SUNDAY 11-3 MON.-FRI. 10-6 SAT. 10-5**

**LIFESTYLE**  
BRAND SOURCE NATIONAL BUYING POWER

Find us on facebook

MasterCard DISCOVER VISA

"The Outlet Store That Saves You More!"







**RABIES CLINIC**  
Special April Rates  
**\$15<sup>00</sup>**  
Reg \$20.00

By Appt. 426-0203  
Flexible Hours  
**KELLY'S KRUISSING**  
**KRITTER KARE**  
Kelly Jo Kelley, DVM



**Central Eavestrouthing, LLC**  
LICENSED & INSURED • FREE ESTIMATES  
Manufacturers of...  
• 5" Seamless Gutter  
• 6" Commercial Seamless Gutter  
• Leaf Protectors

Quality & Service Are #1!  
It's Gutter Cleaning Time!  
.032 Gauge Aluminum Hidden Screw Hangers

QUALITY WORKMANSHIP FAST FRIENDLY SERVICE  
Jeb Gilbert • (989) 828-6279 • Shepherd, MI

CUSTOM DESIGNS  
Buy Direct & Save  
Also Available  
Cremation Vaults and Urns

**Brewer Bouchey Monument Co.**  
Family Owned Since 1895  
211 N. Mill St. • Downtown St. Louis  
989-681-3300 • Toll Free 888-362-2920  
Hours: Mon.-Fri. 9-5; Sat. By Appt.  
www.brewer-bouchey.com

DON'T DRINK & DRIVE.

# Business Card Directory

THIS SPOT COULD BE YOURS: CALL KINDRA (989) 506-4640  
KNORLANDER@MICHIGANNEWSPAPERS.COM  
DELIVERY ISSUES: (989) 779-6000 PRESS 2

**North Country Metals, LLP**



**Metal Roofing & Siding**  
989-386-3013 • 5139 Pere Marquette • Clare

CALL NOW FOR YOUR FURNACE INSPECTION  
PROPANE SOLD HERE  
**SALE!!**  
20 LB. CYLINDER FILL  
**\$11.00 GPC**  
We make custom hoses & fittings!

PROPANE • HVAC • REFRIGERATION  
8512 E. M-46 - VESTABURG • 800-991-7477  
gasproductioncompany.com

Big Or Small - We Do Them All!  
FREE ESTIMATES  
**A & M**  
METAL ROOFING  
**989-487-9066**



5023 Grass Lake Rd. - Clare

VACUUM CLEANERS/SEWING MACHINES  
NEW & USED

FREE ESTIMATES Service On Most Brands  
**Circle Sewing & Vacuum Center**

Sales • Services • Parts • Top Quality • Low Prices  
Serving Midland For Over 50 Years  
We Have It All!

1900 S. Saginaw Rd. • Midland  
(989)-839-0800  
In the K-Mart Plaza

HOURS:  
M-F 9:30 - 5:30  
Sat. 9:30 - 3:30

digitalfirst MEDIA  
If you are located in Gratiot, Montcalm, Clinton or Saginaw Counties call today to schedule an in person meeting to discuss your advertising needs!

**Vonda Ryckman**  
Account Executive  
The Morning Sun • The Mid-Michigan Buyers Guide  
vonda@michigannewspapers.com  
For Advertising call **989-533-3105**  
For Circulation call 989-779-6000 Press 3

**CAL'S PAINTING**  
Over 30 Years Experience  
COMMERCIAL & RESIDENTIAL  
• Interior & Exterior • Power Washing & Deck Care  
• Window Washing & Gutter Cleaning • Drywall Repair  
• Cleaning and Refinishing Log Homes  
• Cabinet, Woodwork, Door & Furniture Refinishing

GO CALL TODAY! (989) 258-9638  
Free Estimates • Work Guaranteed • Insured  
Winter Rates Available

**TRUE NORTH FENCING LLC**  
We Install → Hi Tensile → Woven Wire  
→ Barbwire → Board Fence  
→ Continuous Fence

**Chris Yoder 989-802-1064**

**Miller's CONTRACTING LLC**  
Pole Barns • Roofing • Garages  
All types of concrete work -  
Specializing in Flatwork

Marvin Miller 989-487-4531  
Licensed

**VALET AUTO CARE, INC.**  
Since 1983

 • A.R.E. Pickup Toppers  
• Over 100 New & Used Toppers in Stock  
• Truck Accessories  
• Tonneau Covers

 Because you love your truck  
www.valetauto.com

**James Motz - Owner** (989) 773-3477  
610 N. Mission (3 blocks S. of Meijer) Mt. Pleasant

**CENTRAL MICHIGAN CEDAR RAILS**



**Quality Cedar Posts**



Manufacturer of Log Deck Railing  
6787 Grant Ave, Farwell  
Call for pricing 212-696-7491

**St. Helen - Roscommon Monument, Inc**  
"Because every life deserves to be remembered"



Tues.-Wed.-Thurs.  
Open  
10 a.m.-3 p.m.  
Outside these hours,  
call for appointment

\*Sculptured monuments available

Visit our indoor showroom at:  
**101 E. Federal Hwy, Roscommon**  
www.shmonument.com or email  
shrmonument@gmail.com  
Phone Number: 989-389-4921

**Michigan Metal Roofing & Siding Sales**  
700 E. Railway St. Coleman, MI45618 989-442-4019

20 Plus Colors to Choose From!  
  
Full Line of Accessories In Stock

LIFETIME WARRANTY HEAT FORMED  
METAL ROOFING & SIDING  
**DONT SETTLE, GO METAL!**

CALL KINDRA  
FOR YOUR  
ADVERTISING NEEDS:  
(989) 506-4640

**M & M FEED STORE**  
Tribute-Kalmbach-DAC-UP Shavings  
989-442-4019  
700 Railway Street Coleman

100% Organic Spruce & Balsam & Cedar Shavings  
Armada Grains  
Wild Bird & Sunflower Seeds Deer Feed And Much More  
If we don't have it, We can get it! Special Orders Always Welcome



# Business Card Directory

**Call Marlene at  
989-506-4647  
for Advertising  
Information  
Shop these local  
Professionals**



**Gateway Structures LLC**  
SPECIALIZING IN  
METAL CLAD STORAGE SHEDS

**Gable**

**Stop In And Check Out Our Great Selection of Buildings In Stock!**

**RENT TO OWN AVAILABLE  
FREE Delivery (within 70 miles)**

**High Barn**

Multiple Colors & Custom Sizes • Built to Order  
**7136 South Clare Ave. Clare, MI**  
Located 3 miles North of Clare **989-802-8000**  
BRINGING YOU QUALITY STRUCTURES AT AFFORDABLE PRICES

**HENRY EXCAVATING & CONCRETE LLC**  
989-539-7542  
CELL: 989-429-1175

POURED WALLS & ALL TYPES OF CONCRETE CONSTRUCTION  
COMPLETE DOZER AND BACKHOE WORK  
STUMPING • ROAD GRADING • FILL SAND  
SEPTIC SYSTEMS • BLACK DIRT  
GRAVEL • STONE • DITCHING  
CRUSHED CONCRETE  
CRUSHED ASPHALT  
FULLY INSURED

**MICHAEL HENRY TREE SERVICES LLC**  
989-539-7542  
CELL: 989-339-4377

TREE REMOVAL & TRIMMING,  
BRUSH CHIPPING AND CLEAN UP  
STUMP GRINDING,  
65' BUCKET TRUCK &  
WOOD CHIPPER  
INSURANCE WORK WELCOME -  
STORM DAMAGE CLEAN UP  
FULLY INSURED

**SERVING ALL OF MID MICHIGAN AREA!**  
FREE ESTIMATES - 3620 N. CLARE AVE. HARRISON, MI

New & Used  
**TIRES**  
1650 W. M-61  
Gladwin 989-426-3866

**GLADWIN TIRE CO.**

**SERVICE CALLS - USED TIRES-CAR-TRUCK-FARM**

New & Used  
**TIRES**  
210 N. McEwan St.  
Clare 989-386-3089

**CLARE TIRE CO.**

**ECOWATER SYSTEMS** **Lindsay Soft Water Co.**

1209 Michigan Ave. St. Louis, MI 48880  
P.O. Box 401 Gladwin, MI 48624

(989) 681-5436 (989) 426-4220  
1-800-244-3464 Cell (989) 620-1263  
www.ecowater.com

**GABE EAREGOOD**  
Water Specialist

**KAPS ANA Member**  
**KOINS LLC**

located across from the Doherty Hotel

Silver & Gold Coins Bought & Sold

**Integrity, Honesty & Peace of Mind.**  
That's what you deserve when it comes to your Coins & Currency!!!

Thomas Kapuscinski  
611 N. McEwan St. Clare, MI 48617  
231-357-2105 • 989-386-6500  
tjkap@charter.net

Mon.-Fri. 9:30am-5:30pm  
Sat. 10:00am-2:00pm  
or by appointment

**NOW BUYING Sterling Silverware & Scrap Gold**

BBB ACCREDITED BUSINESS

**TOM'S POLE BUILDINGS**  
Over 30 Years Experience

**Special! POLE BUILDINGS & GARAGES  
ROOFING & SIDING  
CONCRETE FLOORS DRIVEWAYS & FENCING**

**FEATURING ULTRA 2000 19 colors to choose from  
And A 45 YEAR WARRANTY**

From Beginning permit To Cleanup, We Do It All!  
**1-800-541-3974**  
We accept major credit cards. • email: tomspolebuildings@yahoo.com

24x40x10  
10% Down  
Today  
Guarantees  
Prices

**E & K EXCAVATING**

SEPTIC SYSTEMS  
PONDS  
DRIVEWAYS AND ROADS  
LAND CLEARING

LICENSED  
**EDWIN STEINER**

2239 EAST DENVER RD. ROSEBUSH, MI 48878  
**989-433-0004 or cell 989-430-2461**

**The Ultimate Wood Heat.**

Set the thermostat where you want for a more comfortable home

- More Comfort** - Thermostatically controlled wood heat.
- Peace of Mind** - Keep the fire outside and eliminate the dangers associated with indoor wood heating.
- Save Money** - Wood is a renewable, inexpensive and often free energy source.
- Durability** - Long-lasting, stainless steel firebox.

**Beaverton Outdoor Wood Furnace**  
3032 Calhoun Rd.  
Beaverton, MI 48612  
989-435-9240  
beavertonoutdoorwoodfurnace.com

**Central Boiler** **CLASSIC EDGE**  
TITANIUM HD SERIES  
Outdoor Wood Furnace

Central Boiler outdoor furnaces adapt easily to new or existing heating systems. It's important that your outdoor furnace and system be properly sized and installed. See dealer for details. **CentralBoiler.com**

**BURKHART-PRESIDIO INSURANCE AGENCY**  
GLADWIN • 989.426.9278

**Auto-Owners INSURANCE**  
LIFE • HOME • CAR • BUSINESS

**West Midland Family Center**  
4011 W. Isabella

Saturday, Doors open at 4:00  
Early Birds Start at 6:00  
Progressive Jackpot: 60#  
**\$1100**

Starburst Progressive \$792 Plus 50% Sales

Proceeds go to fund the West Midland Family Center

**FREE Hearing Test & Consult**

**bieri HEARING SPECIALISTS**

**888-641-0087**  
Clare and Midland Locations  
**www.bierihearing.com**

"Our Customers are our Warmest Friends"  
Guaranteed On Time and Certified  
FREE TANK SETS

**COYNE OIL & PROPANE**  
Clare • Harrison • Mt. Pleasant • Evart • Gladwin  
Cadillac • Breckenridge • Interlochen  
**800-386-7731 • 989-386-7731**

RESIDENTIAL • COMMERCIAL  
INDUSTRIAL • FARM

**digitalfirst MEDIA**

**Marlene Bennett**  
Account Executive

The Morning Sun • The Mid-Michigan Buyers Guide  
mbennett@michigannewspapers.com  
For Advertising call **989-506-4647**  
For Circulation call 989-779-6000 Press 3

Call for Quotes on digital advertising, print & deliver, pre prints and print advertising

313 W. Knox Road,  
Beaverton, MI  
1/2 Mile West of M-30  
**989-435-2707**

**ABC Auto Body**

**We Take Pride In Your Ride!**

- Quality Collision Repair
- Free Estimates
- Insurance Work Welcome
- Custom Color Matching & Painting
- We Repair All Makes and Models
- Car/Light Truck
- Genuine Original Equipment Parts

**Tag's Auto Repair**  
2 yr. 25,000 mile warranty nationwide on parts & labor

- COMPUTER DIAGNOSTIC SERVICE • 2 AND 4 WHEEL ALIGNMENT
- BRAKES & FRONT END REPAIR!**
- AC CHARGING
- TIRES AND BRAKES
- OIL CHANGES

FREE ROADSIDE ASSISTANCE PROGRAM TOWING, FLATS, LOCKOUTS, MORE!  
**CALL US FOR DETAILS!**

**Auto Value SERVICE CENTER**  
3780 N. Clare Ave. Harrison  
Hours M-F 8-5  
**989-539-1986**

**PIONEER POLE BUILDINGS INC.**

7400 S. Clare Ave. • Clare, Michigan 48617  
**800-292-0679**  
www.pioneerpole.com

**DEBRIS HAULING**  
Available 7 Days A Week  
Free Estimates

**DEBRIS HAULING**  
Good & Fast MOUNT PLEASANT AREA  
Quick & Quality Service  
Less than the price of a dumpster!

- Clean Out Basements Attics & Garages
- Tear Downs Sheds & Garages
- Scrap Metal
- Commercial Buildings

**25 Yards \$475**

**Dan Syzak**  
(989) 773-0735

**POLE BARNs**

**James Morche Builders**  
YOUR BUILDER FROM START TO FINISH  
garages • pole barns • concrete work  
FREE estimates

**James Morche** Cell 989-429-3479 • 989-539-9126  
Licensed & Insured



# Park it in the CLASSIFIEDS



and watch it go fast!

## BARGAINS!

**DIRECTV NOW.** No Satellite Needed. \$40/month. 65 Channels. Stream Breaking News, Live Events, Sports & On Demand Titles. No Annual Contract. No Commitment. CALL 1-833-716-0515

## FURNITURE

**AMISH LOG** Beds, Dressers, Rustic Table and Chairs, Mattresses for Cabin or Home. Lowest price in Michigan! dandanthemattressman.com 989-923-1278

**AN AMISH** Log Headboard and Queen Pillow Top Mattress Set. Brand new-never used, sell all for \$275. Call anytime 989-923-1278.

## MISCELLANEOUS

A PLACE FOR MOM has helped over a million families find senior living. Our trusted, local advisors help find solutions to your unique needs at NO COST TO YOU. 866-760-7235.

**ADJUSTABLE BED** Brand New with Imcomfort gel memory foam mattress. Retail Cost \$3,995.00, sacrifice for \$575.00. Call for showing or delivery: 989-615-2951.

**AMISH BUILT** mini cabins or storage sheds delivered to your site anywhere in Michigan! Starting at \$2,500.00. mynextbarn.com 989-832-1866

**ATTENTION: OXYGEN** Users! Gain freedom with a Portable Oxygen Concentrator! No more heavy tanks and refills! Guaranteed Lowest Prices! Call the Oxygen Concentrator Store: 855-970-1066

**AUCTION SAT.,** April 13, 10 am, 5703 W. Bennington Rd. Laingsburg, MI 48848. Tractor & Attachments, Lawn Tractor, Sailboats, Lots of Oak Furniture, Dental Cabinets, Collectibles. 810-266-6474 NarhiAuctions.com

## GARAGE SALES

### YARD, RUMMAGE & GARAGE SALES

**ESTATE SALE, snow blower & many garage items. Dishes & many kitchen & household items, tread mill, lamps, clothing, furniture, lots of Christmas items. All must go! Friday & Saturday, April 12 & April 13, 8am-5pm. 7263 Pincrest Ln, inside Nesen's Countryside Inc, 600 E Cheeseman Rd, St. Louis, MI**

**MT. PLEASANT CITY WIDE GARAGE SALES**  
Friday & Saturday  
June 21-22, 2019

**RUMMAGE & Book Sale, Sat, Apr 13, 2019, 9am-3pm, Veteran's Memorial Library Annex, 301 S University. Clothing, household items, books, & misc. Beniets the Zonta Club & The Friends of the Library.**

### GENERAL ANNOUNCEMENTS

**TO ALL MID-MICHIGAN BUYER'S GUIDE CUSTOMERS**  
  
**Deadline for Mid-Michigan Buyer's Guide classifieds is Wednesday before 5pm**  
  
**If you need assistance placing classifieds, please call Cindy at 989-779-6115**

**Need help placing your classified ads in the Morning Sun or the Mid Michigan Buyers Guide?**

**I can help you with Obituaries, Employment, House for Sale or Rent, anything you have to sell, garage sales, estate sales.**

**Call Cindy at 989-779-6115 or email her at cterwilliger@michigannewspapers.com**

## MISCELLANEOUS

## Countryside Apartments

1346 Charles Ave., Alma  
**989-466-5971** Think Spring!  
**LARGE 2 & 3 BR Units Available**  
**No Application Fee!**  
Income Limits Apply. MSHDA Vouchers accepted.  
Equal Housing Opportunity. TDD 711  
**countryside2@gldmanagement.com**

## Greenland Place Apartments

129 Michigan, St. Louis  
Seniors 55 + years old  
**2 Bedroom \$616 month**  
**989-466-5971**  
countryside2@gldmanagement.com  
Income Limits Apply. MSHDA Vouchers accepted.  
Equal Housing Opportunity. TDD 711

## MISCELLANEOUS

**BUILT BEST BARN**  
Michigan's Largest Pole Barn Company. Best Quality, Best Service, ORDER NOW for Spring Delivery at Winter Prices. License/Insured. 1-877-802-9591 (Office) 989-205-2534 (Cell).

**BUILT RITE POLE BUILDINGS,** State-Wide, 24X40X10=\$11,865.00, 30X40X10=\$14,000.00. Erected on your site. Call for price not shown on any size building or go to [www.BuiltRitePoleBuildings.net](http://www.BuiltRitePoleBuildings.net) Toll free 1-877-296-6802

**CASH FOR CARS:** We Buy Any Condition Vehicle, 2002 and Newer. Competitive Offer! Nationwide FREE Pick Up! Call Now For a Free Quote! 888-366-5659

**DENTAL INSURANCE.** Call Physicians Mutual Insurance Company for details. NOT just a discount plan, REAL coverage for 350 procedures. 844-393-7068 or <http://www.dental50plus.com/55> Ad#6118

**DIRECTV & AT&T.** 155 Channels & 1000s of Shows/Movies On Demand (w/SELECT Package.) AT&T Internet 99 Percent Reliability. Unlimited Texts to 120 Countries w/AT&T Wireless. Call 4 FREE QUOTE - 1-888-351-0154.

**DISCOUNT METAL ROOFING,** half off on special colors. Seasonal special on custom built pole barns, Licensed and insured builders. Quality work for 40 years! 517-575-3695.

**DISH Network.** \$69.99 For 190 Channels. Add High Speed Internet for ONLY \$14.95/month. Best Technology. Best Value. Smart HD DVR Included. FREE Installation. Some restrictions apply. Call 1-866-950-6757

**DONATE YOUR CAR TO CHARITY.** Receive maximum value of write off for your taxes. Running or not! All conditions accepted. Free pickup. Call for details. 855-413-9672

**Earthlink High Speed Internet.** As Low As \$14.95/month (for the first 3 months.) Reliable High Speed Fiber Optic Technology. Stream Videos, Music and More! Call Earthlink Today 1-844-275-3510

Get a SMARTPHONE for \$0 DOWN\* with AT&T Next and AT&T Next Every Year-#8480 \$250 Gift Card for Switching to AT&T! (\*Req's well-qualified credit. Limits & restr's apply.) 1-888-654-1709

**GET TAX HELP NOW! ARE YOU BEHIND \$10k OR MORE ON YOUR TAXES?** Stop wage & bank levies, liens & audits, unfilled tax returns, payroll issues, & resolve tax debt FAST. Call Now! 855-980-4592

**LARGE ESTATE** Auction Saturday, April 13, 2019 10:30 am, 6720 State Rd., Millington, MI. Household, glassware, tools, general merchandise. #3 of 10 auctions for the same client! [www.millingtonbid.com](http://www.millingtonbid.com) 989-912-4313

**CALL US TODAY!** ...and let the classifieds do the work.

### GENERAL ANNOUNCEMENTS

## MISCELLANEOUS

**MEET SINGLES RIGHT NOW!** No paid operators, just real people like you. Browse greetings, exchange messages and connect live. Try it free. Call now: 855-247-5909

**Pioneer Pole Buildings** Free Estimates Licensed and Insured. 2x6 Trusses. 45 Year Warranty Galvalume Steel-19 Colors. Since 1976 #1 in Michigan Call Today 1-800-292-0679

**Pond & Lake Weed Removal Tool** (The #1 alternative to chemicals.) Performs C.P.R. Cuts-Pulls-Rakes. Made in Pinconning, Michigan for pick up call 989-529-3992. Order online [www.weedgatorproducts.com](http://www.weedgatorproducts.com)

Reach Across Michigan with a MegaMarket Statewide Classified Ad! Over 1.2 million weekly circulation just \$249 per week! Buy 3 - Get 1 Free! Call 800.783.0267

**SPECTRUM TRIPLE** Play! TV, Internet & Voice for \$29.99 ea. 60MB per second speed No contract or commitment. More channels. Faster Internet. Unlimited Voice. Call 1-866-729-0394

Stay in your home longer with an American Standard Walk-In Bathtub. Receive up to \$1,500 off, including a free toilet, and a lifetime warranty on the tub and installation! Call us at 1-855-271-8452

**Tap duplication!** Transfer your old VHS, 8mm, film, photos, slides, audio tapes, and flash drives to DVD's!! Great gift! Local service!  
**Main Street Audio/Video 989-773-7370**

**Vacation Cabins for Rent** in Canada. Fish for abundant walleye, perch, northern pike. Boats, motors, gasoline included. For free brochure call Hugh 1-800-426-2550 [www.CanadianFishing.com](http://www.CanadianFishing.com)

**VIAGRA & Cialis Alternative,** 60 pills for \$99. 100 pills for \$150 FREE shipping. Money back guaranteed! Save Now! Call today 1-800-610-4820

**WEEKLY ONLINE Auctions** - Firearms, Sporting Goods, Tools, Lawn & Garden, Antiques & Collectibles! Go to: [SherwoodAuctionServiceLLC.com](http://SherwoodAuctionServiceLLC.com) for details. Contact Auctioneer Joe Sherwood for your LIVE ONSITE Auction Needs. 989-640-9401.

### MERCHANDISE WANTED

**Buying old guitars, banjos & mandolins. Also stereo equipment, microphones & amplifiers . 989-621-0628**


### AGRICULTURE & FARM

**BARN REPAIR,** Specializing in structural straightening of post & beam barns We can straighten & secure most all barn. 25 years experience, Free Estimate's, Call (231) 349-1064

### BUILDING MATERIALS & SUPPLIES

**PIONEER POLE BUILDINGS**  
Free Estimates  
Licensed and Insured.  
2x6 Trusses.  
45 Year Warranty  
Galvalume Steel-19 Colors.  
Since 1976 #1 in Michigan  
Call Today 1-800-292-0679

### ESTATE SALES



**ROSEWOOD CONDOS NORTH EXCELLENT MOVING SALE**  
**2434 ROSEWOOD NORTH DR. OFF EAST BROADWAY ST. MT.PLEASANT, MI. 48858**  
  
**THURSDAY APRIL 11th 9-5:00**  
**FRI. APRIL 12th 9-5 SAT. APRIL 13th 9-12**  
  
**DIRECTIONS:** From the corner of Mission St. & East Broadway St. Turn East proceed ¾ mile to North Rosewood Dr. Turn Left to sale. Follow Signs!!!!  
**NOTE: PARKING ON NORTH ROSEWOOD DR. ONLY!!!!**  
  
**ROWE PLAID KING SIZE SOFA SLEEPER; SMITH BROS. GREEN UPHOLSTERED CHAIR/OTTOMAN; THOMASVILLE SERVING CART; FLEXSTEEL BURGUNDY UPHOLSTERED CHAIR; DINING TABLE/4 CHAIRS & 1 LEAF; (2) BLACK LEATHER SIDE CHAIRS; VIRGINIA HOUSE CHINA CABINET; END TABLES; LAMPS; BEAUTIFUL VAUGHAN BASSETT BEDROOM SUITE MISSION STYLE QUEEN SIZE BED FRAME & MATTRESS SET, CHEST & MIRROR, CHEST OF DRAWERS, NIGHT STAND; LEXINGTON CHEST WITH MIRROR, NIGHT STAND; WHITE WROUGHT IRON QUEENSIZE BED FRAME; WICKER LOVESEAT; WICKER COFFEE TABLE; HALL MIRROR; THOMASVILLE 3 DRAWER CHEST; WINE RACK; DYSON DC25 VACUUM, DIRT DEVIL VACUUM; NEW HAIER 30 PINT DEHUMIDIFIER; HAIER 50 PINT DEHUMIDIFIER; PRINCESS CHINA SET "RIVIERA" SERVICE FOR 12; HOUSEHOLD DÉCOR; GARDEN TOOLS; LINENS; LADIES CLOTHES; HAMILTON UPRIGHT PIANO; OAK END TABLE; OAK COFFEE TABLE; LAVENDER UPHOLSTERY CHAIR; BLACK LADDER BOOKCASE; WALNUT TRAY TOPPED COFFEE TABLE; WHITE STORAGE BENCH; TV STAND; WHITE PORCH BENCH AND MUCH MORE!**  
  
**NOTE: THIS IS A PRE-PRICED HOUSE SALE. CASH OPEN 9:00 AM SHARP**  
  
**CENTRAL ESTATE SALE SERVICE**  
Patty & Mike Gostola 989-772-2053  
AD IS ALSO AVAILABLE ON FACEBOOK, MORNING SUN, CRAIGSLIST

### FARM - HEAVY EQUIPMENT & PARTS

**BUY FUEL DIRECT & SAVE**  
  
**GASOLINE-DIESEL FUELS-HOME HEATING OILS**  
  
•FARM •COMMERCIAL •INDUSTRIAL •RESIDENTIAL  
  
**TRI LAKES PETROLEUM, LLC**  
Serving the entire Central Michigan Area.  
  
**Call Scott Capen 989-620-7527 • [trilakesllc.com](http://trilakesllc.com)**

## DOGS

**AKC MINI-SCHNAUZERS,** white-males & females, \$750.00 (989)773-2641

## FARM FEED & SUPPLIES

**3RD PRIME CUT ALFALFA,** (Call for price); Straw, \$4/Bale; Cracked Corn \$12/100; Shelled-Corn, \$10/100; Cob-Corn, \$5/Bag; Rye, Barley, Wheat, Oats \$12/bag; Delivery-Available. (989)433-5418 Cell# (989)965-1391

## CAREER TRAINING

**HEALTHCARE CAREER TRAINING ONLINE.** Start a New Career in Medical Billing & Coding. Medical Administrative Assistant. To learn more, call Ultimate Medical Academy. 855-399-9137

### APARTMENTS FOR RENT (UNFURNISHED)

**1 to 6 Person Apts. Furnished/unfurnished, Short & Long Term Leases, (989) 772-2222 [www.LiveWithUnited.com](http://www.LiveWithUnited.com)**

**WEST UNION CONDO,** 3 Bed 3 Bath, 2 Car Garage, Finished Basement, Available April 2019 (989) 772-2222

### HOUSES FOR RENT (UNFURNISHED)

**NICE HOME** for rent. In country, Ithaca. Snow plowing & lawn mowing included. \$600./mo + security deposit. No pets. 989-875-4451

## LOTS & LAND

**5 ACRE** build-able parcel, Shepherd School District \$23,000 Call 989-506-2966

## MISCELLANEOUS

Attention all homeowners in jeopardy of Foreclosure? We can help stop foreclosure. We can help you with Loans Modifications. Foreclosure Defense Helpline. Call is absolutely free. 1-800-582-5804

**FINANCIAL BENEFITS** for those facing serious illness. You may qualify for a Living Benefit Loan today (up to 50 percent of your Life Insurance Policy Death Benefit.) Free Information. CALL 1-888-683-7139

## PASSENGER CARS

**2016 Cadillac SRX**  
**LOW MILES, DIAMOND WHITE**  
  
**ABSOLUTELY BEAUTIFUL VEHICLE!**  
  
**ONLY \$23,995 or about \$349mo.**  
  
**Dick Sovo Auto Sales (989) 828-6032 [dicksovaautosales.com](http://dicksovaautosales.com)**

**2018 Buick Encore**  
**ON 4K MI (NOT EVEN BROKE IN YET)!**  
  
**ABSOLUTELY BEAUTIFUL! SAVE THOUSANDS!**  
  
**SPECIAL PRICE! ONLY \$19,995 or about \$289mo.**  
  
**Dick Sovo Auto Sales (989) 828-6032 [dicksovaautosales.com](http://dicksovaautosales.com)**

**DO LITTLE ADS WORK?** You're reading this one... so they must! Place your little ad today

### ESTATE SALES

## PASSENGER CARS

**2018 Ford Edge SEL**  
  
**only 7k mi., heated leather, navigation, chrome wheels, full panoramic sun roof**  
  
**ABSOLUTLEY BEAUTIFUL!**  
  
**ONLY \$29,995 or about \$439 mo.**  
  
**Dick Sovo Auto Sales (989) 828-6032 [dicksovaautosales.com](http://dicksovaautosales.com)**

**2018 Ford Escape 4x4**  
  
**Titanium Package, only 8k mi., leather, navigation.**  
  
**EVERY POSSIBLE OPTION!**  
  
**NOW ONLY \$26,995 or about \$379 mo.**  
  
**Dick Sovo Auto Sales (989) 828-6032 [dicksovaautosales.com](http://dicksovaautosales.com)**

**SPECIAL**  
  
**2017 Ford Explorer 4x4**  
  
**only 19k mi., heated leather, navigation, double sun roof**  
  
**100% SPOTLESS!**  
  
**NOW ONLY \$29,995 or about \$439 mo.**  
  
**Dick Sovo Auto Sales (989) 828-6032 [dicksovaautosales.com](http://dicksovaautosales.com)**

## PARTS & SERVICE

**#1 IN** brakes & front end service. Same day service, fast in & out, best prices. Discount Tire St. Louis. 989-681-4100

**NEW & USED TIRES**  
Discount Tire & Battery still Central Mich. #1 Tire Supplier. There must be a reason to call. 989-681-4100 St. Louis

**NEED HELP? CALL A LOCAL PROFESSIONAL FROM OUR**

**Professional Services Directory**



### ADULT CARE SERVICES

**VB ADULT Foster Care.** Under new management in Mt Pleasant area. Immediate Vacancies. 989-772-7588.

### HANDYMAN

**RETIRED GENERAL Contractor** not ready to retire. Willing to do small jobs around the house of all types. Anywhere from a leaking basement to a leaking roof, installing windows & doors, laying floors. Free Estimates. Call 989-287-1175

### HEALTH & FITNESS

**OXYGEN** - Anytime. Anywhere. No tanks to refill. No deliveries. The All-New Inogen One G4 is only 2.8 pounds! FAA approved! FREE info kit: 855-970-1066

**VIAGRA AND CIALIS USERS!** 100 Generic Pills SPECIAL \$99.00 FREE Shipping! 100% guaranteed. 24/7 CALL NOW! 888-835-7273 Hablamos Espanol

**LOOKING FOR HELP?** People everywhere read the want ads. Phone today to place the ad that people want to read.

### PET ADOPTIONS



**HAPPY EASTER!**  
  
**YOU CAN HELP US MAKE A DIFFERENCE! ANYONE CAN SPONSOR A PET FROM THE ISABELLA COUNTY ANIMAL SHELTER**  
**Do it as a Birthday, Anniversary gift, an In Memoriam, Easter, or just because....**  
**Only \$39.87 and includes full color!**  
  
**ANY ONE CAN HELP! IF YOU ARE UNABLE TO ADOPT.... SPONSOR A PET TO GET THEIR PICTURE OUT TO THOSE WHO CAN....FIND A GROUP OR A PAL TO HELP SHARE THE COST OF THE SPONSOR FEE!**  
  
**This will print on Wednesday, April 17th in the Morning Sun. The deadline for sponsors will be Friday, April 12th at noon.**  
  
**THE SHELTER IS FULL AND NEEDS OUR HELP!**  
  
**SPONSORS ARE NEEDED** to publish the animal photos and descriptions. This page gives an animal a chance at a new home OR possibly a lost pet can be reunited with their owner.  
**MOST ANIMALS SPONSORED ARE ADOPTED!**  
**For more information or to participate....**  
**Call Cindy at 989-779-6115 or email [cterwilliger@michigannewspapers.com](mailto:cterwilliger@michigannewspapers.com)**

**▲ CASH FOR GOLD**  
  
**▲ CASH FOR GUNS**  
  
**GLADWIN TRADE & SALES**  
**1739 N. STATE ST. GLADWIN (North M-18)**  
**989-426-6811**

## PARTS & SERVICE

**TIRE SPECIALS EVERY DAY**  
We will not be undersold. Discount Tire & Battery still Central Mich. #1 Tire Supplier. There must be a reason to call. 989-681-4100 St. Louis

## MOTORCYCLES

**Pond & Lake Weed Removal Tool** (The #1 alternative to chemicals.) Performs C.P.R. Cuts-Pulls-Rakes. Made in Pinconning, Michigan for pick up call 989-529-3992. Order online [www.weedgatorproducts.com](http://www.weedgatorproducts.com)

**great BIG ADS**

**great BIG RESULTS**

### LANDSCAPE & TREE MAINTENANCE

**ARBOR TREE SERVICE.** Storm Damage, Landscaping, Tree Trimming & Removing. 20 Years Experience. Call 989-763-3830

### MEDICAL & DENTAL SERVICES

**SAVE ON YOUR NEXT PRESCRIPTION!** World Health Link. Price Match Guarantee! Prescriptions Required. CIPA Certified. Over 1500 medications available. CALL Today For a free Price Quote. 1-877-614-7149 CALL Now!

### POWER WASHING

**CONLAY'S POWER WASHING**

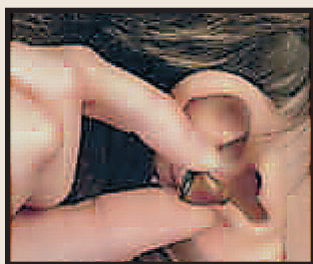
EXPERT POWER WASHING  
Deck Staining  
Soft Wash Roofs - Concrete  
Siding, Soaped and Brushed  
FREE Estimates  
Residential & Commercial  
**989-429-9211**

### PET ADOPTIONS

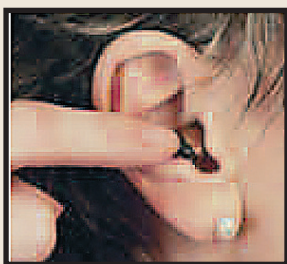


# NOW AVAILABLE!

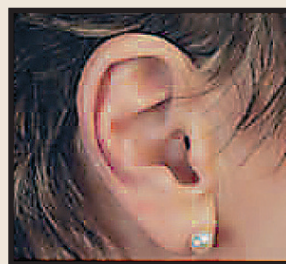
## Tiny Micro-Chip In the Ear



Now You  
See It...



Now You  
Don't!



**Tiny But Powerful  
Micro-processor**

- One of the smallest custom hearing aids ever made
- 48-channel digital signal processing
- Digital engineering allows 1,000's of custom settings
- Controlled by state-of-the-art software

**Space Is Limited! Call TODAY for Your  
FREE\* Hearing Screening and RISK-FREE Trial**

**LIMITED TIME ONLY**  
**CALL TOLL FREE (888) 381-0571**

**Mt. Pleasant**  
100 S. Mission, Suite G  
*South of Rite Aid*

**Clare**  
1430 N. McEwan  
*Carousel Mall*

**Gladwin**  
127 N. Arcade, Suite 2  
*In the Neely Building*

**Alma**  
116 W. Superior, Suite 7  
*Heritage Towne Square*

**Midland**  
6841 Eastman Ave  
*Behind Olive Garden*

**Prudenville**  
828 W. Houghton Lake Dr.  
*Corner of M55 & M18*



Justin Hess, HIS



Brook Monte, ACA



Korrey Shoup, HIS



Greg Weidman, BC-HIS



Kyle Wilson, BC-HIS

## One More Thing...

Some parts of the hearing evaluation include the use of a familiar voice, so please bring a spouse or a family member with you. You could qualify for a FREE GIFT! Call us today for additional details and to confirm your appointment time!

\*Hearing Screenings are always free

**Max Your  
Tax Return!**  
Lowest Prices of  
the Season

## THE MIRACLE-EAR ADVANTAGE

- **100% Satisfaction** Guarantee<sup>†</sup>
- **3-Year** Limited Warranty<sup>\*\*</sup>
- **FREE Lifetime** Service
- Over **70 Years** in Business
- Over 1,400 Locations Nationwide!

**0% Financing Available!**<sup>††</sup>

**We Work with Most Insurance  
Plans including Teachers and UAW**

**2 for ~~\$995~~<sup>^</sup>**

Receive 2 Audiotone™ Pro  
Hearing Aids for ~~\$995~~ for a limited  
time only at participating locations.

<sup>^</sup>Fits up to a 30db loss. Not valid with any other discounts or offers. Does not apply to prior purchases. Valid on model Audiotone Pro Only. Expires 4/30/2019

† If you are not completely satisfied, the aids may be returned for a refund within 30 days from the completion of fitting, in satisfactory condition. Fitting and delivery fees may apply. ††With credit approval. Down payment may apply. \*Hearing Screenings are always free, in-office demonstration. \*\*Not valid on Audiotone Pro.







CONNECT WITH US!



*'All You Can Eat!'*  
**PIZZA LUNCH  
BUFFET**

**Monday - Friday 11:30am - 2pm**



**FRIDAY, APRIL 12TH**  
**NATIONAL**  
**GRILLED CHEESE**  
**SANDWICH DAY!**

**\$8.99**

TRY OUR **NEW**  
**LASAGNA GRILLED CHEESE**

**Mt. Pleasant, MI 48858 2336 S Mission St. • 989-773-6836**



Serving Mt. Pleasant's  
Favorite Coneys since 1948!

**CONEYS • BURGERS • PIZZA • GRINDERS  
AND MUCH MORE!**



**302 N Mission St. Mt Pleasant, MI 48858  
989-772-7494**

Enjoy some  
**Tax Relief!**

**- WEDNESDAY, APRIL 10TH -**

**\$1.19** ea.

**Coneys all day.**

**No Limit!**

CONNECT WITH US!

