

PRST STD
U.S. POSTAGE
PAID
READING, PA - PERMIT 524

See Our
Lawn & Garden Guide
In This Week's Issue

NORTHERN BERKS

Happy Easter

Merchandiser

Serving Northern Berks County
Northern Reading &
Southern Schuylkill County
Weekly Circulation Over 31,254

PUBLISHED BY... THE WINDSOR PRESS, INC. (Family Owned & Independent Since 1958)
6 NORTH THIRD STREET, P.O. BOX 465, HAMBURG, PA 19526-0465 • FAX: 610.562.2770
610.562.2267 OR 1.800.562.5521 • Open Monday Through Friday 8 AM - 5 PM
ON THE WEB: www.windsorpress.com or www.nbmerchandiser.com.

Like Us On **facebook**

WE ACCEPT

All New 2019 Escapes
Up To **\$6,500 OFF!**



HALDEMAN
KUTZTOWN ROUTE 222
610-683-3553

ALL NEW FORDS ON CLEARANCE SALE!

0% APR Up To 72 Months

PLUS

Up To \$10,000 In Total Savings!*

<p>2018 Ford Mustang</p> <p>Up To \$6,000 OFF! In Stock!*</p>	<p>2018 Ford Expedition</p> <p>Up To \$13,500 OFF! In-Stock*</p>	<p>2018 Ford Explorer</p> <p>Up To \$10,500 OFF! In-Stock*</p>	<p>2018 Ford F-150</p> <p>Area's Largest Selection of '18s!*</p> <p>Total Savings Up To \$12,000 Off!*</p>
---	--	--	--

Home Of The 1-Year Warranty OVER 100 PREOWNED AVAILABLE!

<p>2014 Ford Focus</p> <p>\$9,995</p>	<p>2014 Ford C-Max Hybrid</p> <p>\$9,995</p>	<p>2013 Ford F-150</p> <p>\$11,495</p>	<p>2015 Jeep Patriot</p> <p>\$12,495</p>	<p>2015 Ford Fusion</p> <p>\$13,495</p>	<p>2014 Acura TSX</p> <p>\$13,995</p>
<p>2014 Chevrolet Equinox</p> <p>\$14,995</p>	<p>2015 Ford Fusion</p> <p>\$14,995</p>	<p>2018 Ford Focus</p> <p>\$14,995</p>	<p>2016 Ford Fusion</p> <p>\$14,995</p>	<p>2015 Ford Escape</p> <p>\$15,495</p>	<p>2016 Ford Escape</p> <p>\$16,295</p>
<p>2014 Ford Explorer</p> <p>\$16,995</p>	<p>2016 Ford Escape</p> <p>\$16,995</p>	<p>2018 Ford EcoSport</p> <p>\$18,495</p>	<p>2017 Ford Mustang</p> <p>\$18,995</p>	<p>2015 Ford Mustang</p> <p>\$21,495</p>	<p>2016 Ford Edge</p> <p>\$21,995</p>

2016 Ford Fusion \$16,995	2016 Ford Escape \$19,995	2016 Ford Explorer \$24,995	2016 Ford Explorer \$27,995	2015 Ford F-150 \$29,995
2016 Ford Escape \$17,445	2015 Ford Edge \$21,995	2016 Ford Edge \$25,995	2016 Ford F-150 \$28,995	2016 Ford Explorer \$31,495
2018 Ford EcoSport \$18,895	2017 Ford Explorer \$22,995	2016 Ford Explorer \$25,995	2017 Jeep Wrangler ... \$29,779	2015 Ford F-150 \$31,495
2016 Ford Escape \$18,995	2015 Ford Edge \$22,995	2016 Ford Explorer \$25,995	2016 Ford F-150 \$29,995	
2017 Ford Escape \$19,995	2015 Ford F-150 \$24,995	2015 Ford F-150 \$26,495	2016 Ford F-150 \$29,995	

COUPON

RIGHT NOW

PA State Inspection and Emissions
Includes Sticker & MCI Fee
\$32.95 For Both*
*Pass or fail. Does not include parts. Parts & Labor Additional.
Limited Time Only!
Good only at Haldeman Ford. Expires 4/30/19. WP

COUPON

THE WORKS

Synthetic Blend Oil Change and More
\$39.95 or less
Up to five quarts of Motorcraft® oil and Motorcraft® oil filter.
• Tire Rotation & Pressure Check
• Brake Inspection
• Vehicle Checkup
• Fluid Top-Off
• Battery Test
• Filter Check
• Belts and Hoses Check
GOOD ONLY AT HALDEMAN FORD.
See Haldeman Ford for vehicle exclusions and details.
Coupon good thru 4/30/19. WP

COUPON

Engine Coolant Flush Service
Helps prevent major overheating & coolant corrosion.
Have your coolant charged today!
\$109.95 only
Offer must be presented to Service Advisor at the time of arrival/write up. Offer is NOT good at the cashier window or upon checkout. Offer is on qualifying engine coolant systems and excludes previous service visits. Includes one gallon of coolant.
Good only at Haldeman Ford. Expires 4/30/19. WP

COUPON

Up To \$130 In Rebates
Buy Four Select Tires, Get A \$70 Rebate By Mail. Plus, Get Another \$60 When You Use The Ford Service Credit Card.*
On these name brands: Goodyear, Michelin®, Hankook, Continental, Pirelli®, Bridgestone, Firestone, Yokohama®, Toyo®, Nitto®
*Dealer-installed retail purchases only. \$70 tire rebate and \$60 credit card rebate by prepaid debit cards. Subject to credit approval. Not valid on prior purchases. Complete purchase must be made on the Ford Service Credit Card for \$130 maximum rebate. Offer valid 4/01/19 to 6/30/19. Submit rebate by 7/31/19 by mail-in rebate form or online at fordowner.com. Limit one rebate per account. Cannot be combined with any other tire manufacturer-sponsored or Ford Service Credit Card rebate/offer. Ford Service Credit Card is issued by Citibank, N.A. See Haldeman Ford dealership for vehicle applications and rebate details through 6/30/19.
Good only at Haldeman Ford. Expires 6/30/19. WP

*All sale prices are before additional tax, tags, title & all legal PA State fees. 0% x 72 on remaining 2018 F-150 at \$13.89 per \$1000 financed. 2018 Mustang #10111 1FJ5127396 MSRP \$34,695. 2018 Explorer Demo #9937 1FJGC38814 MSRP \$54,510. \$13,500 off on 2018 Expedition Demo #10018 1FJEA61913 MSRP \$68,155. F-150 \$12,000 in Total Savings on Demo #10220 1FKFA27520 MSRP \$56,705 before \$2,500 on-sticker package discount. Proof of Eligible '95 or newer trade-in must have been owned for a minimum of 30 days. Not good on prior purchases. See dealer for details. Good while supplies last, or 4/30/19, whichever comes first.



LARGE WRITE DOWN

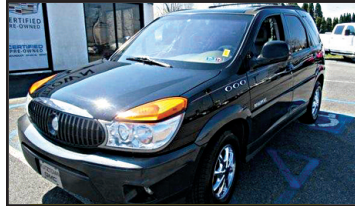
Easter Spring Sale GOING ON NOW!

**3 LOCATIONS:
Fleetwood
Morgantown
Preowned Superstore
Rt. 222**



2005 Sonata GLS
G18594B,
Great For Kids Summer Job

Now **\$4,500**



2002 Rendezvous CXL
G18594M, Loaded, Leather,
AWD, Heads Up Display, 3rd Seat

Now **\$4,900**



2014 Chevy Malibu
C18310B,
73K, Blue

Now **\$10,500**



2010 Buick Lucerne CXL
B18585B, Family Size,
Only 60K
Was **\$11,500**

Now **\$10,700**



2012 Kia Optima SX
B19347A, Sport Model,
Leather

Now **\$12,400**



2012 GMC Terrain SLT
G19108A, Leather, 77K
(If 40K miles would be \$16,900)
Save \$4,000

Now **\$12,700**



2013 Ford Escape AWD
U5214A, Only 71K
Was **\$12,900**
Save \$1,500

Now **\$12,800**



2015 Buick Verano FWD
U5171, Great on Gas,
Was **\$14,990**
Save \$1,500

Now **\$13,500**



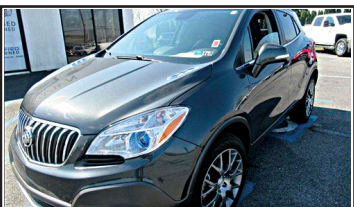
2014 Impala LTZ
B19316A, Loaded,
White Diamond

Now **\$14,500**



2015 Chevy Impala
U5233
Was **\$16,900**
Save

Now **\$14,500**



2016 Buick Encore
G19362A
Sport Touring

Now **\$18,900**



2014 GMC Siena SLE
U5250A, 6 Cyl., 4x2, & Z71
Books For Over \$23,000

Now **\$19,500**



2016 Mazda Miata Grand Touring
G18006A, Convertible
Low Miles, Rare Blue

Now **\$19,900**



2016 Mazda CX5 Grand Touring
B19387A

Now **\$24,500**



2016 Jeep Wrangler
U5367, Hyper Green
Stick, Low Miles

Now **\$24,500**

2015 Ford Fusion SE *SAVE \$1,900*
Stock U5231, Only 23K Miles
Was \$16,900 **SALE NOW \$15,000**

2013 Nissan Xterra *SAVE*
Stock G19169S,
Was \$16,900 **SALE NOW \$15,490**

2014 Ford F150 XL *SAVE \$1,500*
Stock U5200A, 64,000 Miles
Was \$16,990 **SALE NOW \$15,500**

2016 Buick Regal Turbo *SAVE \$1,900*
Stock U5302, Only 16K Miles
Was \$18,990 **SALE NOW \$17,000**

**All SUVs In Stock On Sale
Great Selection Now!!!**

2012 Ram Reg. Cab Sport Model *SAVE*
66K, Was \$19,990 **SALE NOW \$17,500**

2015 Buick Encore
Stock U5329, Leather, AWD, 27K **SALE NOW \$18,300**

2017 Honda Accord Sport *SAVE \$1,500*
Stock G18580A, Only 31K Miles
Was \$19,990 **SALE NOW \$18,500**

**Largest Amount of Savings
"GOING ON NOW!!!"**

2010 Silverado LT Crew Cab *SAVE*
4x4, Black Granite,
Was \$20,900 **SALE NOW \$18,600**

2014 Escalade *SAVE*
Loaded, Hard To Find, 59K
\$6,000 Less Than New **SALE NOW \$31,500**

2014 Silverado Reg. Cab 4x4 *SAVE*
Only 24K, Blue Granite,
Hard To Find **Save Thousands**

**2018
"15 PASSENGER VAN"**

**Write-Down Sale
Going On Now**

BUICK GMC CADILLAC and now CHEVROLET



**Rt. 222 & 662 In Fleetwood
610-683-8800
www.kutztownauto.com**



**Berks County's Exclusive Buick, Cadillac, GMC
& Preowned Superstore**
Mon. thru Thurs. till 8:00 pm • Fri. till 6:00 pm • Sat. till 5:00 pm

Preowned Direct Phone 484-575-8282

Naftzinger's Used Auto Parts

Buyer of Wrecked, Running and Disabled Vehicles
Drive In or We Pick Up

Complete Line of Batteries


**S. 7th St., Box 223,
Auburn, PA 17922**

Phone: 570.754.7491
Fax: 570.754.3005

*Open Monday thru Friday 8:30 to 4:30
Saturday 8:30 to 2:00 • Sunday Closed*

Titles Handled Properly

BATTERY SPECIAL
Factory Seconds
Most Sizes
\$5000 and Up
*Good only at Naftzinger's Used Auto Parts
Plus tax and exchange WP*



We're In Full Swing for Spring!

20%-50% Off Prom/Formal Wear

SPECIAL EASTER DISCOUNTS



Believe It!

CONSIGNMENT BOUTIQUE

Jr. & Women's New and "Like New" Brand Name Clothes & Accessories
1543 Old Rt. 22, Lenhartsville, PA 19534
610-562-5532 or 610-972-5532
Wed. & Fri. 11 am-5 pm; Thurs. 11 am-6 pm & Sat. 11 am-4 pm



www.believeitconsignments.com

HOME IMPROVEMENTS

ALL ELECTRICAL BY GIOVANNI Master Electrician, fully insured, for all your electrical needs. Local electrician. 610-780-7713 or 484-575-7057.

BOWERS CONSTRUCTION: Quality work, Reasonable Prices. Roofing, Siding, Remodeling, Windows, Decks, Additions, Garages. FROM FOUNDATION TO ROOF. Insured, 610-562-4692, PA#006953. Accepting Visa, Master Card, Discover and American Express.

JOHNSON'S REMODELING All types of home improvements, dump truck & backhoe services, Windows, Doors, Etc., Basements & Water Proofing, Drainage Pipe. Call Bill Johnson 610-509-4052.

EXOTIC AND DOMESTIC Hardwood Flooring, Large selection of solid & engineered styles. High Quality Products & Low Prices. Mountain Wood Co. 610-756-6381 or go to mountainwood.com

Interior/ Exterior Painting, Deck staining, Pressure Washing, licensed and insured. Call BG Spohn 610-926-1999 PA#103306.

THOMAS AC & HEAT. Your Independent Oil Repair Co. Gas, LP and Heat Pumps Too. Cleanings, Water heaters. April Special \$60 Service Call. Burner Service \$95. A/C + heat pump off season sale install now and Save. Air Conditioning Our Specialty. We Fix What Others Can't. 610-780-4712.

RICH CHRISTMAN'S

Asphalt Sealcoating

570.754.3638
Auburn, PA

HOME IMPROVEMENTS

20% off. Pot Hole/ Drive-way repairs/ Hot tar crack filling/ Paving/ Sealcoating. Licensed/ insured. BEST PRICE PAVING. Free estimates. 610-973-9086.

Affordable Roofs Now, Best Roofing Prices Period! Don't sign a contract until you see our Pricing. Save up to Thousands. Life time warranties included. Fully insured. Financing Available. Call for Free estimate. 610-929-2200.

BASTIAN CARPENTRY & Remodeling LLC. Windows, Doors, Decks, Porches, Siding, Aluminum Capping, Custom Interior Trim & Woodwork, Flooring, Cabinets, Basements Finished, New Construction & Restoration. 610-562-5326. Free Estimates. PA 047097

SEYLER CONSTRUCTION: General Contracting: All phases of Home Construction & Remodeling. Roofing, Siding, Decks, Concrete work, Kitchens, & Baths, Sunrooms. Full Insured. 45 yrs Experience. 610-926-6471.

HOME IMPROVEMENTS

Stuart Brooks Excavating Over 40 years of experience. PA 015932 Light commercial & residential excavating for additions, utility trenching, sewer, water & electric. Gravel driveway maintenance. New stone & regrading. Lawn regrading & erosion control. Storm water management. 610-929-8118.



JBMZ

Plastering & Stucco

Strausstown, PA 19559
Phone: 484-218-8931
jbmzplasteringandstucco.com
Over 30 years experience

Drywall ♦ Dryvit ♦ Stone, Brick, Slate Repointing
Interior & Exterior Painting & More

PA 120804 Fully Insured Free Estimate

QUALITY PUBLIC AUCTION

ARTIFACTS, COLLECTIBLES, PRIMITIVES, JEWELRY, TOYS, BOOKS, TEXTILES & MORE

Good Friday, April 19, 2019 AT 9:00 A.M.

Location: Indoors at Leesport Farmers Mkt. banquet hall, 312 Germant's Church Rd., Leesport, PA 19533. Just off Rt. 61 between Hamburg & Leesport. Large auction, doors open at 7:30.

Visit www.wagnerauctioneers.com for details, photos & terms.

WAGNER AUCTION SERVICE, LLC
AU-003172L, AU-001427L 610.741.3828

LYNN TWP. PUBLIC AUCTION

COUNTRY 3-BR RANCH ON 1.5 ACRES M/L, AMERICAN SHUFFLEBOARD, POOL TABLE, EARLY ROLLFAST MOTOR BICYCLE, PRIMITIVES, COLLECTIBLES, HOUSEHOLD, JEWELRY, TOOLS, BUTCHER ITEMS, FIREARMS & SPORTING ITEMS

Saturday, April 20, 2019 AT 8:00 A.M.

Location: 4729 Golden Key Rd., Kempton, Lehigh Co., PA 19529. Travel on Rt. 737 between Krumsville & Kempton, in Stony Run turn N. onto Red Rd. to Golden Key Rd. to auction on left.

Large Auction - Selling w/2 Auctioneers.

Visit www.wagnerauctioneers.com for details, photos & terms.

WAGNER AUCTION SERVICE, LLC Auction For:
AU-003172L, AU-001427L LEE & ANNA HUMMEL
610.741.3828



the bridge church

INVITES YOU TO JOIN US FOR

+

EASTER

APRIL 21ST AT 9AM & 11AM

3561 OLD ROUTE 22 | HAMBURG, PA

HAMBURGBRIDGE.COM

HOME IMPROVEMENTS

DEAN ARNDT CONSTRUCTION: For All Your Remodeling Needs, One Call Does It All from Replacement Windows, Additions & Anything in between. We specialize in Remodeling. Call 610-562-0296. PA002349

HOME IMPROVEMENTS

TERRY L. SCHAEFFER: Remodeling Contractor. Siding, Soffit, Concrete, Roofing, Decks, Rain Gutter Work, Replacement Windows, Doors, Paneling, Finished Basements and More. Fully Insured, Free Estimates. 610-926-3574. PAOAGHC 15177.

HOME IMPROVEMENTS

Todd Bender LLC Plumbing Heating & Air Conditioning. Personally serving Hamburg and surrounding areas since 1991. Install, Service & Repair. Quality Workmanship. Call, Text or Email 570-449-8035 tmb1269@gmail.com HIC #PA107531

WINDSOR NOW RENTING!

U-STORE

From Hamburg 1-1/2 miles East on Old Rt. 22 - turn Left on Valley Rd. 1 block. (Windsor Industrial Park)

STORAGE AREAS - 5'x5' TO 10'x20'

STARTING AT \$25.00 MONTHLY

CALL 610.562.5162

"Your First Choice for Party and Special Event Rentals"

PARTY CENTER

We Specialize In Weddings

Tents, Tables, Table Linens, Chairs, Chair Covers, Dance Floors, Staging, China, Flatware, Glassware, Food Serving Equipment, Grills, Concession Equipment, Drink Fountains, Chocolate Fountains, Bounce Rides

1180 Centre Turnpike, Orwigsburg, PA 17961
570-366-1071 or Toll Free 1-866-796-2792
www.arkrentals.com





It's **FREE** with no obligation!

Learn about various forms of financial aid, and let our experts help you prepare and pay for college.

Please stop in or call (570.622.3399) to reserve your seat.

FINANCIAL AID SEMINAR

Wednesday, April 24 at 6pm

*Albert T. Freeman Community Room
Pottsville Branch - 60 Westwood Road*



hdriver.org



A LOCAL PRIVATE STUDENT LOAN **SOLUTION** WITH YOUR BEST INTEREST IN MIND

SERVICES

AIRLINES ARE HIRING Get FAA approved hands on Aviation training. Financial aid for qualified students-Career placement assistance. Call Aviation Institute of Maintenance 877-818-0783 (*219931).

CLEANING BY CHRISTOPHER: A Division of Chris Castellano Maintenance: Commercial and Residential Cleaning. Insured & Bonded with many references. 35 years of service. Free consultations. Current staff has no less than 15 years of excellent service. Please call 610-334-7899.

Cleaning Solutions by Holly: Fully insure cleaning. Weekly, Bi-weekly and Monthly cleaning. Multiple pricing tiers. Home/ Business. Move in/ Move out. New Construction. Contract cleaning. 484-668-1313 or Customcleaning byHolly@gmail.com

Custom Construction: Professional Quality Craftsmanship. Carpentry Services. All phases of construction: Bathroom, Kitchen and Basement Remodeling Door and Window replacement, Renovations, Additions, Porch, Deck projects. Interior/exterior Painting. Deck refinishing. Licensed and Insured. Over 20 years experience. Contact Peter 484-350-2205 or psschreier@gmail.com PA#084327

EXTERIOR HOUSE Washing and Roof Cleaning, Deck Cleaning, Gutter Cleaning. Is the green on your siding and the black algae on your roof making your residence or business look ugly! Beautify your most important asset by getting it cleaned. We offer years of experience and the best pricing. Free Estimate, Insured. Spray-Away Cleaning Services. 610-682-6315. PA042982 www.sprayawayclean.com

HATE ROOF LEAKS? We Love 'Em! We'll Take Them Off Your Hands. DIAMOND QUALITY CONSTRUCTION 610-967-1283.

HOME REPAIR & REMODELING: We Offer Full Home Services from Small Repairs to Complete Homes. Call Us about your Project! Martin Construction 610-683-6120.

JOHN STETZLER UPHOLSTERING: Furniture, Car & Truck Seats, Replace Foam in Cushions, Recover Boat Seats, Make Custom Boat Covers, Restring Day & Night Shades, Restaurant Seats and Misc. Items. Hours 8-5, Call 610-488-7760, Cell 484-955-2436. 2485 Shartlesville Rd. Mohrsville. See our website at jjsupholstering.com

MTS Heating and Air Conditioning LLC is a new HVAC company located in Hamburg. We offer service, cleanings and maintenance plans on all heating and cooling systems as well as system installations and replacements. Give us a call to get your system serviced before the cold weather hits. 610-587-3715. Follow us on Facebook to see our reviews.

Upholstery Service: Auto, Truck, Furniture and Outdoor. Leather & Vinyl Repairs or Replacement. Other Services: Powder Coating, Lawn Equipment, Snow Blowers, Household Appliances, Lawn Cutting Service and More. Large or Small WE FIX IT ALL! 802 S. 4th St., Hamburg. 610-562-6868.

Kunkle's Stone Masonry, Stone fronts, fireplaces, chimneys, all types of masonry restorations, Stone, brick, block and stucco work. 3rd generation mason. 610-991-6650. PA#141089. Fully Insured.

"For God so loved the world, that he gave his only begotten Son, that whosoever believeth in him should not perish, but have everlasting life."

- John 3:16

EASTER Blessings



We wish you and yours all the blessings and joy of the season.



Six North Third Street, P.O. Box 465
Hamburg, PA 19526-0465
610.562.2267 or 1.800.562.5521
FAX: 610.562.2770
display@windsorpress.com
Office Hours: Monday to Friday
8 a.m. to 5 p.m.
www.windsorpress.com

SERVICES

Lawn Service/ Property Maintenance: Small business that services Berks County and parts of Schuylkill County offering honest reasonable and professional grass cutting and property maintenance. We offer weekly or biweekly services including cutting, trimming, and clean up at reasonable prices starting at \$25 a lawn. We are registered and insured. Please call to get a free estimate and find out all the services we offer. "Your Need is our Deed". We also offer 10% discount to Senior Citizens and Veterans. BTR Innovations 484-256-3887.

SERVICES

SEAMLESS GUTTERS AND DOWNSPOUTS. Made to any length on site. No seams, No leaks. 30 years experience. K.W. Greenawalt, 610-298-3380.

TREE CUTTING SERVICE: Pruning, Shaping, Topping, Trimming, & Full Tree Removal. Insured. Free On-site Estimates. Equipped with chipper. Call 610-562-5812.

TREE REMOVAL, Stump Grinding and Pruning By "King, At Your Service", a Local Father-Son Operation. For Free Estimate, kingatyourservice.com or Call Bradley at 610-756-6024. Fully Insured!

SERVICES

House Cleaning: 17 years experience. We use our own equipment. For Estimate, call Rick at 484-877-3354 and leave message.

Tom Suess Lawn Care and Landscape. Residential and Commercial. Full Service: Mowing, Mulch, Topsoil. 38 years Reliable Experience! Free estimates. 610-926-7934.

SCREENED ENRICHED TOPSOIL: \$30/ yard plus delivery fee, large quantity discounts; Nice soil for gardens, flowerbeds and lawns, aged mushroom soil available. Call JOHN HEFFNER 610-550-9881.

SERVICES

PROPERTY CLEANUP: We clean attics, garages, basements, brush piles, yard waste and scrap metals, we demo sheds, patio, concrete, fences, large and small buildings etc. along with lot clearing, stump removal and general excavation, small jobs are Our Specialty! Call JOHN HEFFNER 610-550-9881.

SHIRK'S LAWN and Landscape. Lawn Mowing, Aeration and Lawn Seeding, Mulching and Bed Edging, Pruning Shrubbery, Landscaping, Pavers, Retaining Walls. Estimates, 610-944-8009, 610-468-8751.


SERVICES

JACKS HAULING and DEMOLITION: Free clean outs, same day service, senior citizen discount, 484-332-5929.

Roy's Lawn Care. Muhlenberg, Blandon & Leesport Areas. Mowing and Trimming and Mulching. Free estimates, reasonable prices. Fully insured. Call 610-413-2343.

TIDY TINA'S cleaning services makes your life easier at an affordable rate. Once a month, bi-weekly or weekly. Call for a no obligation estimate for all your cleaning needs. Power Washing Service! 484-665-3384.

HALLELUJAH! HE IS RISEN.



AS WE
CELEBRATE
THE MIRACLE
OF EASTER,
WE'RE
TOUCHED
BY THE
LOVE AND
SACRIFICE
OF OUR
SAVIOR.

WE WISH YOU AND YOURS ALL THE BLESSINGS AND JOY OF THE SEASON.

"A Family Tradition Since 1940"

PETERS BROS. MEAT MARKET INC.

65 Penn St., Lenhartsville, PA
610-562-2231 • 800-952-8541

Mon. thru Fri. 7:00 AM to 6:00 PM;
Sat. 7:00 AM to 5:00 PM
www.petersbrosmeats.com

STYLES by Maureen Porter

- Experienced
- Professional
- Trusted

610.562.4471 • Hamburg, PA



Now Accepting
New Clients

Gift Certificates
Available

PERRY AUTO

TOTAL AUTO SERVICE CENTER

Complete Vehicle Repairs & Service

- Official Safety & Emissions Inspection Station
- Now Inspecting Motorcycles & Light Trailers
- Complete Check Engine Light Diagnostics

**Schedule
Your A/C
Checkup
Now**

12 Bellevue Ave., Shoemakersville, PA 19555
Check Out Our Used Car Lineup At www.perryautoservice.com
E-mail: perryauto@comcast.net  Check Us On Facebook

ASE Certified  610-562-7192

PETS & ANIMALS

D AND D KENNEL, Full Service Pet Grooming and Boarding with Luxury Bedding, Heated, Private Patio. Dog rates start at \$23. Also Daycare. <http://dandd.kennel.webs.com/> 610-944-6468.

ANTIQUES

Rare Complete Set of 25 Miniature Hummel Plates: \$250 Cash with wall rack, 610-562-4081.

ANNOUNCEMENTS

Do You Have an Antique or Classic Car to sell? Advertise with us. You choose where you want to advertise. 800-450-6631 Visit macnetonline.com for details (*215642)

AUTOMOBILES/ TRUCKS

For Sale: 2000 Mercury Marquis, 88,500 miles, good condition, call 610-413-2633.

Fill Your Easter Basket At Adams & Bright

EASTER CARDS from Leanin' Tree

PUZZLES and Other BASKET FILLERS

*Closed Sat., April 20th
For The Easter Holiday*



Adams & Bright Drugs, LLC

306 State St., Hamburg, PA 19526 Ph. 610-562-2738
Monday thru Friday 9 to 6; Saturday 9 to 3

SERVICES

Now Hiring: Lawn Care Co. in the Hamburg Area. Experienced preferred. Competitive pay. Flexible hours. 610-451-9744.

PET CREMATION Services
Peach Tree Cremation Services, LLC, Leesport. Call Derek M.D. Leibensperger, 610-926-2737. Family Owned & Operated.

EMAIL in your classified
classifieds@windsorpress.com

PETS & ANIMALS

PET FOODS STOCKED:
Science Diet, Pro-Plan, Eukanuba, Wellness, Iams, Nutro, Blue Buffalo, Nutri Source, Taste of the Wild, Canidae, Royal Canin, Earthborn, Canyon Creek, Southern States, Big Red, Mother Hubbard, Chicken Soup, The Natural Canine, Holistic, Loving Pets, Nature's Recipe, Cressona Agway Country Store. 22 N 2nd Street, Cressona, 570-385-2160.



FOOT & ANKLE SURGICAL ASSOCIATES

Medical and Surgical Treatment of the Foot & Ankle

- Diabetic Foot & Wound Care
- Sports Medicine
- Foot and Ankle Surgery
- Heel and Ankle Pain

Vincent G. Zuwiala, DPM
Joseph B. Watson, DPM
Mary Ann Patterson, DPM

- Accepting New Patients -

**CARD OF THANKS
DISPLAY AD \$18.50
Per Publication**
EMAIL:
display@windsorpress.com

260 State St., Suite 2, Hamburg, PA • 610-562-4999 • www.berksfootandankle.com

DEAN R. ARNER, AUCTIONEER, LLC PUBLIC AUCTION

Saturday, April 20, 2019 at 9:00 A.M.

Location: 795 Main Road, Lehighton, PA 18235.
1940 Deluxe & 1940 Custom 2-dr. coupes both in restored cond.! **Tools & More:** Snap-on tool chests, Eco tire inflator air meter, solar wire feed welder 2225, drill press & other shop tools, lg. asst. of hand/shop tools, Ford Motor Co. sign, Ingersoll Rand air compr.; garden trctrs.; lawn mowers; hugh amt. of tools & more! Antqs., glassware, collectibles, old bikes, vintage toys & much more!
Check full listing and photos @ www.auctionzip.com ID #21038.
**DEAN R. ARNER AUCTIONEER, LLC, AY-002077L
Ph.: 570.386.3389**

AUCTION LISTINGS

<p>04-15-19 Leesport Farmers Mkt., Ctr. Ct. Mtg. Room 04-15-19 31 Hill Alley, Bethel 04-16-19 501 Fairgrounds Rd., Hatfield 04-18-19 Oley Valley Auc. Co., Rts. 73, 662 & Oley Rd. 04-18-19 Fogelsville Auction Center, 820 Nursery St. 04-19-19 2025 Old Rt. 22, Lenhartsville 04-19-19 Leesport Farmers Mkt. Banquet Hall 04-19-19 Online Only Auction Closes 04-20-19 795 Main Rd., Lehighton 04-20-19 7667 County Bridge Rd., Slatington 04-20-19 1724 Mariton Pike, East Rt. 70, Cherry Hill, NJ 04-20-19 101 Schubert Rd., Bethel 04-20-19 4729 Golden Key Rd., Kempton 04-27-19 34 Mountain Rd., Boyertown 04-27-19 427 Wolf Creek Rd., Bernville 04-28-19 309 Golf Rd., Myerstown 04-28-19 574 Moselem Springs Rd. (662), Shoey 05-02-19 Oley Valley Auc. Co., Rts. 73, 662 & Oley Rd. 05-04-19 641 Church St., Fogelsville 05-04-19 5291 Pottsville Pike, Reading 05-06-19 1340 Centre Ave., Reading 05-10-19 Kutztown Produce Auc., 209 Oakhaven Rd., Fleetwood 05-11-19 Beltzner Hall, Kutztown Fairgrounds 05-13-19 Leesport Farmers Mkt. Mtg. Rm. 05-14-19 378 Bertolet Mill Rd., Oley 05-16-19 Oley Valley Auc. Co., Rts. 73, 662 & Oley Rd. 05-16-19 133 Wolf Creek Rd., Bernville 05-18-19 40 Rolling Rock Rd., Boyertown 05-18-19 399 Rt. 61 South, Schuylkill Haven 05-25-19 130 Ruth St., Yoder Heights, Tilden Twp. 05-30-19 Oley Valley Auc. Co., Rts. 73, 662 & Oley Rd. 06-08-19 471 Lake Front Dr., Orwigsburg</p>	<p>K. Leiby, B. Gelsinger D. & M. Miller Alderfer Auction Co. J. Haas Zettlemoyer Auc. Co. D. Loeb Wagner Auction Service Zettlemoyer Auc. Co. D. Arner D. & T. Houser K. Leiby L. Longenecker Wagner Auction Service Hornung Farm Agency K. Leiby, B. Gelsinger L. Longenecker Wagner Auction Service J. Haas T. Hall Auctions Wagner Auction Service Reist Auctioneers G. Miller IV Auc. Ctr. Wagner Auction Service G. Miller IV Auc. Ctr. J. Haas L. Longenecker Frey Auctioneers K. Leiby, B. Gelsinger K. Leiby, B. Gelsinger J. Haas K. Leiby, B. Gelsinger</p>
--	--

THE ABOVE AUCTIONS ARE CURRENTLY SCHEDULED TO APPEAR IN THE EAST PENN VALLEY AND/OR NORTHERN BERKS MERCHANDISER.
This listing published courtesy of The Windsor Press, Inc., Hamburg, PA

THE Merchandiser CLASSIFIED AD FORM:

STEP #1 ENTER YOUR
PHONE NUMBER _____
NAME _____
ADDRESS _____

(This information is for our records only)

**STEP #2 CHOOSE A CATEGORY YOU WANT
YOUR AD PLACED UNDER - (PLEASE CHECK ONE BOX.)****

<input type="checkbox"/> ANNOUNCEMENTS	<input type="checkbox"/> FARM EQUIPMENT/LIVESTOCK	<input type="checkbox"/> LOST & FOUND
<input type="checkbox"/> ANTIQUES	<input type="checkbox"/> GARAGE/YARD SALES	<input type="checkbox"/> MISCELLANEOUS
<input type="checkbox"/> AUTOMOBILES/TRUCKS	<input type="checkbox"/> HELP WANTED	<input type="checkbox"/> MOBILE HOMES
<input type="checkbox"/> AUTO PARTS & SVCS.	<input type="checkbox"/> HOME IMPROVEMENTS	<input type="checkbox"/> MOTORCYCLE/ATVs
<input type="checkbox"/> BOATS/MOTORS	<input type="checkbox"/> HOUSEHOLD ITEMS/FURNITURE	<input type="checkbox"/> PETS & ANIMALS
<input type="checkbox"/> CHILDCARE	<input type="checkbox"/> REAL ESTATE	<input type="checkbox"/> RVs/CAMPERS
<input type="checkbox"/> COMPUTERS/OFFICE		<input type="checkbox"/> RECREATION/SPORTING GOODS/EQUIPMENT
<input type="checkbox"/> SUPER AD (Bold Type) (\$2.00 additional per ad, per week, per publication)		<input type="checkbox"/> SEASONAL EQUIPMENT
FREE to Commercial ads		<input type="checkbox"/> SERVICES
		<input type="checkbox"/> WANTED TO RENT/BUY

For Your Convenience,
Place Your Ad:
By Phone: 610.562.2267
or 1.800.220.3053
FAX: 610.562.2770

E-Mail:
classifieds@windsorpress.com
OR USE THE CLASSIFIED AD
FORM ON OUR WEBSITE:
www.windsorpress.com

STEP #3 ENTER YOUR AD EXACTLY AS YOU WANT IT TO APPEAR
(Please print legibly...Please use punctuation...One word per box, please)

1.	2.	3.	4.	5.
6.	7.	8.	9.	10.
11.	12.	13.	14.	15.
16.	17.	18.	19.	20.
21.	22.	23.	24.	25.
26.	27.	28.	29.	30.
31.	32.	33.	34.	35.
36.	37.	38.	39.	40.

STEP #4 CHOOSE A PUBLICATION
DEADLINES FOR ALL CLASSIFIEDS IS THURSDAY, 5:00 PM

East Penn Valley Merchandiser (Reaches over 40,355 Homes)

Northern Berks Merchandiser (Reaches over 31,254 Homes)

Both (Cost Would Be Double) (Reaches over 71,609 Homes)




STEP #5 ENTER NUMBER OF WEEKS YOUR AD IS TO RUN:
(PLEASE CHECK ONE BOX.)

Run: 1 Week 2 Weeks 3 Weeks 4 Weeks _____

Enter Starting Date Of Ad _____

Total Amount Paid \$ _____ Check # _____

STEP #6 CHOOSE METHOD OF PAYMENT
(PAYMENT MUST ACCOMPANY AD)

We Accept Cash, Check, Money Order,   

Credit Card Information: NAME ON CARD _____

ACCOUNT # _____ EXP. DATE _____



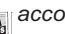
TYPE OF CARD: VISA _____ MasterCard _____ Discover _____ CVC Code: _____

SIGNATURE: _____

Mail Ad With Payment To: THE WINDSOR PRESS, INC., PO Box 465, Hamburg, PA 19526-0465

Bring Ad and Payment To Our Location At: 6 North Third St., Hamburg, PA 19526

Place Your Ad By Phone By Calling 610.562.2267 or 1.800.220.3053

Please have your    account number and expiration date available.

We Are Not Responsible For Incorrect or Inaccurate Information or Mistakes Either in The Classified Ads or In Any Other Advertisement In This Paper.

Tear Sheets Will Not Be Sent To You For Your Classified Ad.

BUSINESS OWNERS

Are You Ready For Spring?

Be Sure To Stock Up!

- Stock Forms
- Business Cards
- Invoices
- Delivery Receipts
- Brochures
- Pens & Pencils
- Letterheads
- Tablets
- Envelopes
- Trade Show Giveaways
- Contracts
- And Much More

Contact:



The Windsor Press
INCORPORATED

6 North Third Street
P.O. Box 465
Hamburg, PA 19526-0465
610.562.2267 or 1.800.562.5521
FAX: 610.562.2770
E-mail: ryan@windsorpress.com

AUTOMOBILES/ TRUCKS

2001 Ford Ranger Ext Cab, 4x4, 138K miles, new inspection, very good condition, \$5400; 610-392-3531.

AUTOMOBILES/ TRUCKS

Buying disabled cars, trucks and equipment. Call for a free quote today. 484-221-2278.

NORTHERN BERKS Merchandiser COMMUNITY CALENDAR

Any nonprofit organization within our circulation area may send us notification of your upcoming events. We will publish this information in the Northern Berks Merchandiser free of charge. Community Calendar listings are strictly limited to 35 words or less and 1 to 2 weeks prior to the event. The Windsor Press, Inc. will not edit your copy. If your copy is longer than the maximum 35 words, your listing will not appear. We must have this information no later than the Thursday prior to publication date. Mail information to The Windsor Press, Inc. Northern Berks Community Calendar, 6 N. Third St., P.O. Box 465, Hamburg, PA 19526-0465, or EMAIL it to: classifieds@windsorpress.com or FAX: 610.562.2770.

4/28/19, Schuylkill Valley Community Library Golf Tournament fundraiser, Sunday 1:15 at Maiden Golf Course, \$70/pp or \$280/foursome. Must register in advance, 610-926-1555, www.berkslibraries.org/svcl

4/5/19, Shartlesville Orange Country line and couples dance, Friday. Food available 6:30-8, Dancing 7:30-10:30. North 4th St., Donation \$6, benefits Shartlesville Lions Club, 610-698-0577.

4/18,19,21/19, St. Peter's UCC of Molltown; Maudy Thursday service 7pm, Good Friday worship 7pm, Sunday Easter Dawn Service 6:30am, Easter Communion 10:15am service. 219 Maiden-creek Rd., Fleetwood 610-944-9418.

4/18/19, Christian Women's Club of Reading: Protect Yourself Brunch, 9:15am, at The Highlands, 2000 Cambridge Ave, Lincoln Park \$15. Joyce 610-413-2167.

4/19&20/19, Bernville Community FC Easter Flower Sale: 6701 Bernville Road. Friday 8am-6pm, Saturday 8am-2pm. Proceeds benefit the Apparatus Fund.

4/19&20/19, Leesport Area Historical Society Flower Sale: Steve Moyer Subaru lot Rt. 61 Leesport. Saturday 10-6, Sunday 11-4.

4/20/19, Friends of Kaercher Creek Spring Cleanup, 9am-1:30. Rain date 5/4. visit on Facebook or call 610-562-4261 for details.

4/20/19, Shoemakersville Area Lions Club Annual Easter Egg Hunt, Saturday 2pm. Rain, snow or sunshine. At Perry Recreation Park, Onyx Cave Road, Perry Twp. Candy, Prizes.

4/22/19, PA Dutch Berks County 80th Fersommling: Leesport Auction Hall. Doors open 5pm. Wegman's Buffet meal 5:30pm. Laminated Place mat provided. Speaker: Donald Breininger. \$25/pp. Tickets: 717-866-3431.

4/24/19, Hamburg Senior Citizens Program: Song Styles by Cindy Robertson playing keyboard and singing. Meeting starts 2pm. In the Hamburg Middle School Cafeteria.

4/24/19, Local Shared Outreach Group Abundance Community Meal, 5:30-7pm. Free meal open to everyone in our community. Mt. Zion Lutheran Church, 1343 Long Lane Road, Krumsville, 610-756-6210.

4/24/19, Zion's Lutheran Church Shoemakersville: Lenape Culture in PA presented by Ruth Pye. Noon-3pm. 354 Zion's Church Rd. Open to all.

4/25/19, The Berks County Horticulture Club program: The World is Our Classroom, by Cindy Ross, at Berks County Agricultural Center. Thursday 7pm. Free program, refreshments served, silent auction.

4/26/19, St. Michael's Church Spring Flea Market, Friday 4-8pm. 529 St. Michael's Rd., Hamburg. Soups: Chicken Noodle, Italian Wedding, Beef vegetable, Corn Chowder. Food: Hot chicken sandwiches, hamburgers, hot dogs, sides baked goods.

4/27/19, Friedens Church Shartlesville Kauffman's Chicken BBQ & Bake Sale, 1/2 chicken and baked potato \$7.50, Saturday 9am-1pm, 28 Wolf Creek Road, Shartlesville.

4/27/19, Lynnport FC Gun Bingo, ages 21+, Doors open 5pm. Games start 7pm. \$50/20 games, 5 specials also available, \$13,000 in guns, kitchen open. Only 300 tickets available 610-972-0381.

4/27/19, Mt. Zion Lutheran Church Spaghetti w/meatballs Dinner: includes salad bar, homemade desserts. 4-7pm. 1343 Long Lane Rd. (Krumsville) Kutztown. Adult \$10, 4-10yrs. \$4, under 4yrs. Free. Take out available. 610-756-6210.

4/28/19, Dreibelbis Historic Farm Spring Peeper Walk, Sunday 6pm. Rte. 143 Virginville. Walk into Wetlands to see and hear the tiny singing frogs. Wear boots. Free parking and admission. 610-488-7896.

4/28/19, Friedens Church of Lenhartsville Family and Friends Dinner reservation deadline for 5/8/19 at 6pm. Dinner Cost \$15, 610-562-7272. Free Music 7pm by Mike Hertzog.

AUTOMOBILES/ TRUCKS

BUYING VEHICLES: 2005 through 2014, Reasonable Pay Offs Made or Fair trade in Price paid, Nice condition, or not running. Will pay accordingly. Call for Quote before 8pm. 570-449-4094. Jay & T's, Cressona. jaytautosales.com.

I Pay For Cars: I'll buy your used car, truck, RV, Motorhomes or classic. Licensed dealer pays cash. Don't sign a blank title, FREE PennDOT notary service + pickup. www.i pay4cars.com Maxatawny Auto Sales, 15320 Kutztown Rd. Kutztown 610-683-0480.

J&J TOWING: Always Buying Junk Cars, Wrecks and Your Unwanted Vehicles. Paying from \$100 & up. Call Jorge at 484-955-8386.

MOBILE HOMES

0 Cost To Seller List with US! We advertise Prequalify Buyers. Provide financing. 20 years experience. Marge Foster 610-223-7106. Discovery Homes Inc.

BUY DIRECT: Modulars, Double wides, single wides. Starting at \$35,900. We will not be Undersold! We Accept Trades. 717-875-1288.

Dare to Compare. We can match any floor plan. Discover Homes Inc. 610-413-8207.

Drive A Little, Save A Lot! Free delivery and Set up! New single wides \$34,900; Double wides \$45,900; Modulars \$59,900; We will not be undersold. 717-875-1288.

SENIORS, ENJOY QUALITY AFFORDABLE HOUSING FOR LESS! New and like new pre-owned housing in 3 beautiful 55 & older age restricted Land/Lease Retirement Communities. Wernersville, Bernville, Fleetwood areas. 2 very well maintained doubles (24x52 to 28x58). 2 BR & Den/2 Bath models. \$64,999 & \$69,999. 2 New Doubles (28x50), you pick the colors, \$89,999 each. 2018 16x72 (same square footage as 24x40 double), 2 BR's/ 2 Baths. Loaded. \$79,999. 2 very nice 14' wide singles (14x56 & 14x70 w/new C/A), 2 BR's/ 1 1/2 Baths. Your Choice \$29,999. Lots of upgrades. Move-in conditions. Also, 14x70 for rent 5 min North of Cabela's near Hamburg. \$615 per month + util. Visit [kellerhousingcommunities pa.com](http://kellerhousingcommunities.pa.com) for photos and details. Sorry, NO dogs. Keller Homes. 610-944-7696.

REAL ESTATE

SELLING YOUR OWN PROPERTY? Need to advertise it in your local paper and others like it? We have the placement services to help you. Contact MACnet MEDIA @ 800-450-6631 or online at MACnetOnline.com (*220960)

READER'S

Recipe



CREAMY AU GRATIN POTATOES

- 4 russet potatoes, sliced into 1/4 inch slices
- 1 onion, sliced into rings
- salt and pepper to taste
- 3 tablespoons butter
- 3 tablespoons all-purpose flour
- 1/2 teaspoon salt
- 2 cups milk
- 1-1/2 cups shredded cheddar cheese

Preheat oven to 400 degrees F. Butter a 1 quart casserole dish. Layer 1/2 of the potatoes into bottom of the prepared casserole dish. Top with the onion slices, and add the remaining potatoes. Season with salt and pepper to taste. In a medium-size saucepan, melt butter over medium heat. Mix in the flour and salt, and stir constantly with a whisk for one minute. Stir in milk. Cook until mixture has thickened. Stir in cheese all at once, and continue stirring until melted, about 30 to 60 seconds. Pour cheese over the potatoes, and cover the dish with aluminum foil. Bake 1-1/2 hours in the preheated oven.

Send your recipes to: The Windsor Press, Inc. 6 N. Third St., PO Box 465, Hamburg, PA 19526-0456 Fax: 610.562.2770 or E-mail: display@windsorpress.com

PROFESSIONAL HAIR DESIGNS

MATRIX

WINNER OF OUR MONTHLY DRAWING

MABEL FRY PERM

APPOINTMENTS RECOMMENDED

- Wayne Wessner, Prop. •Heidi Wessner
- Candi Hoffmaster •Kelsey Troxel
- Kelly Stertzel

69 South Third St., Hamburg, PA • 610-562-5250

COME AND EXPERIENCE

- SENSATIONAL HAIR CUTS
- EXCITING COLOR TECHNIQUES
- PERSONALIZED PERMS

HOURS:
Tues. thru Fri. 8:00 to 8:00;
Sat. 8:00 to 5:00



REAL ESTATE

One Acre Building Lots: Weisenberg Township, Lehigh County, North-western School District. \$110,000 each. Call 610-395-8438 or 610-285-2704.

Own a Modular on Land! 620 Credit Score and Up! Discovery Homes at 484-641-5055. discoverymodularhomes.com

FOR RENT

Apartment: Hamburg. Excellent for 1/2/3 persons. Living room, dining, kitchen, 1 1/2 Baths, 1 1/2 Bdrms. Enclosed porch, parking, 2 entrances. Appliances, heat, w.s.t, washer/ dryer hook-up. Absolutely No smokers or pets. 2yr. Lease, \$800 +deposit. 610-562-2516, leave clear message.

Apt. For Rent 2 BR 2nd floor, 13 Main St. Tipton. \$660/mo. Plus utilities. No pets, Call 610-682-2722.

Auburn 3rd Floor 3 BR stove, refrigerator, off street parking, laundromat, \$696 includes utilities. Call 610-562-8603 X 201.

FOR RENT: Commercial Space (1200 sq ft) for Rent in Tipton. Currently setup as a Hair Salon. Space could be used as an office, retail, salon etc. Unit is air conditioned. Space is available April 1st. Call 484-764-1047.

Garage For Rent: On Peach St., Hamburg. Clean and dry. Size 19'Lx8'W \$60 per month, call 610-858-7950.

New Ringgold: three bedroom home. Patio, yard. No pets, smoking, drugs. Rural quiet central location. Refs \$895 + utilities, 570-943-2629.

Orwigsburg 2nd floor 2 bedroom, stove, refrigerator, off street parking, laundromat, quiet neighborhood \$595 includes water, sewer, trash Call 610-562-8603 X 201.

Port Clinton, small cottage, 1 BR 1 bath, includes water, sewer, trash, fridge and stove, no pets, \$600 plus security deposit. 610-802-0394.

Restaurant Fully Equipped For Rent. Just bring yourself inspiring and be your own boss. Call Dave at 610-441-4414 or Jeannie at 346-218-2737.

Bamboula Ltd.

SPRING WAREHOUSE HOURS
Monday - Friday: 10am-5pm
SPECIAL SATURDAY HOURS, APRIL - JUNE
Apr 13 & 30, May 4 & 11, June 8 & 15: 10am-4pm

164 West Walnut Street, Kutztown, PA 19530
bamboulaltd.com 610.894.4800

20% off all purchases!

UNIQUE HANDCRAFTED GIFTS FROM AFRICA

WANTED TO RENT/BUY

CASH - local buyer seeks entire homes w/ contents. Factory, barn, store or antique shop contents, tractors trailers full, barns full, cars trucks motorcycles tractors signs anything in volume. Call John Burns 484-239-5053.

CASH FOR YOUR CAR, Call 610-916-7000. Steve Moyer's Subaru.

WANTED TO RENT/BUY

JEWELRY WANTED: All kinds. Old costume, new costume, used, designer. Bracelets, rings, pins, earrings, necklaces, watches. Good prices paid. Call 610-781-4951.

WANTED: CARS/ TRUCKS WANTED! All Makes/ Models 2002-2018! Any Condition. Running or Not. Competitive Offer! Free Towing! We're Nationwide! Call Now: 1-888-368-1016 (*217709)

HAMBURG FAMILY EYE CARE

John R. Smith, O.D. Lori J. Smith, O.D.
Advanced Eye Care Close To Home



CHECK OUT OUR NEW GLASSES

260 State St., Hamburg 610-562-4548
www.hamburgfamilyeyecare.com

Hours: Mon. & Fri. 9 am - 5 pm; Tues. 11 am - 7 pm; Wed. 12 pm - 8 pm

PUBLIC AUCTION

27-ACRE UPPER BERN TWP. FARM RESTAURANT & CATERING EQUIPMENT, COLLECTIBLES, HOUSEHOLD GOODS & TOOLS
Saturday, April 27, 2019 at 9:00 a.m.

Location: 427 Wolf Creek Rd., Bernville, Berks Co., PA. From Int. 78 take Shartlesville exit to stop sign & left onto Main St. into Shartlesville, right at Shartlesville Hotel onto Wolf Creek Rd. for approx. 2-1/2 mi. to auc. on left. R.E: Consists of 27 acres w/approx. 25 acres M/L tillable & rotational pasture, zoned R-1, Clean & Green (is not preserved). Prop. has a 3-BR stone & frame home, lg. open stone frpl., open beam ceilings, lg. loft, cedar siding, full bsmt., oil-hot water heat, 1-1/2 baths. Farm buildings inc: 26'x60' concrete flr. frame shed, 30'x50' concrete arched metal shed, 20'x60' & 20'x30' concrete floor manure structures, 3-trench silos & also a spring development water trough, is located along a state road with frontage. This farm operated as a beef operation, but has many other possibilities such as truck farming (vegetables), plus more. For Inspection: Call for appt at 570.924.4931. Terms: 10% down; balance in 45 days. Real Estate offered at 12:00 noon. Auctioneer: KENNETH P. LEIBY Sale For: PA L#AU001541-L DENNIS ESSIG 610.562.3929 (Owner relocated to Bedford Co.) www.auctionzip.com ID #5718

PUBLIC AUCTION

VALUABLE COMMERCIAL REAL ESTATE & PRIME CORNER LOT (known as COUNTRY SQUIRE MOTEL & RESTAURANT)
Saturday, May 18, 2019 at 11:00 a.m.

Location: 399 Rt. 61 South, Schuylkill Haven, Schuylkill Co., PA. R.E: Consists of 37 Motel Rooms, a nice Restaurant & Bar with liquor license, small banquet room, public water & sewer, city gas heat situated on a prime corner lot w/2 acres M/L. This has very good income potential or many other possibilities. Excellent location & business opportunity. For Inspection: Call for appt. at 570.294.4964. Terms: 10% down; balance in 60 days. Auctioneers: KENNETH P. LEIBY Sale For: PA L#AU001541-L DOMINIC MERCURI 610.562.3929 (Owner Retiring) Attorneys: Zane-Rossi www.auctionzip.com ID #5718

Spring 2019 LAWN & GARDEN



A Supplement To The East Penn Valley & Northern Berks Merchandisers April 17, 2019

IT'S HERE... THE NEW WORKMASTER 25S SUB COMPACT!

The **WORKMASTER™ 25S** sub-compact tractor is the perfect tractor for homeowners and AG-lifestylers who need a versatile small tractor to handle chores a garden tractor just can't. The economical, 25-horsepower WORKMASTER 25S may be the smallest model in the WORKMASTER line, but it's ready to take on your yard, landscape, gardening and property maintenance jobs.

YOUR YARD AND ESTATE WORK JUST GOT EASIER.

Your choice of four productive packages

Choose tractor and implement package combination that's right for your needs.

- Loader package
- Loader backhoe package
- Loader and mid-mount mower package
- Mid-mount mower package



IT MAY BE SMALL, BUT IT IS MIGHTY!

SPEAK TO A SALESMAN TODAY!



AG-INDUSTRIAL



1562 Ben Franklin Hwy., Douglassville, PA 19518
610.323.2500 | agindustrial.com



Your Full Service Dealership, with Quality Sales, Parts & Service

How Tree Services Can Protect Your Property

Cold weather can take its toll on a property, especially in regions of the world where winters are harsh. Most parts of the landscape are vulnerable to damage from winter storms, but trees may be especially susceptible. By the end of winter, many homeowners wonder if their trees would benefit from some professional TLC.

Tree services provide a host of services. While fall is a popular time to remove trees from a property, doing so in spring is not unheard of, especially if trees were affected by winter storms and now pose a threat to a home and the people who live inside it.

Homeowners considering tree services can explore the following ways that some professional arbor attention can protect them and their homes.

- Tree services can help protect a home's foundation. Old trees that stretch well into the sky can be captivating, but they also can pose a threat to a home's foundation. Such trees may have especially large root zones that may extend beneath walkways and even a home. In the latter instance, foundations may crack as roots try to stake their claim to the ground beneath a home. According to the home improvement resource HomeAdvisor, homeowners pay an average of just over \$4,000 to repair foundation issues, though major problems can cost considerably more than that. A professional tree service can remove aging trees that might be beautiful and awe-inspiring but still pose a threat to a home and the areas surrounding it.
- Tree services can improve visibility. Trees that have aged a bit since their last trimming might affect the view of a property from inside a home. Overgrown branches can compromise residents' ability to see and experience the natural beauty just outside their windows. The average homeowner may be able to trim short trees on his or her own, but if views from the second floor of a home or higher have been compromised, it's much safer to call a professional tree service. Such services have the right tools and experienced personnel necessary to safely trim high branches on tall trees.
- Tree services can help prevent future damage. Even if trees made it through a recent winter unscathed, that's no

Is Your Garage Too Full?



Post Frame & Conventional Buildings For All Your Residential Storage Needs.

We Turn Your Vision Into Reality.

Call:



Fleetwood, PA 19522 Phone: 610-683-6120
www.martinconstructionco.com

Find Us On Facebook

HIC# PA 8177

Total Building Solutions for over 35 years

KAREN R. MOHN

GARDENS BY KAREN

Personal care for your gardens

138 Farview Road
Hamburg, Pa. 19526

610.207.6851

karenmohn@gmail.com



guarantee next winter or even the coming seasons of spring, summer and fall won't ultimately prove their undoing. Travelers Insurance notes that weather-related roof damage, including damage resulting from falling limbs and branches weighed down by snow during the winter months, accounted for more than half of all Travelers property loss claims between 2009 and 2016. According to BNC Insurance

and Risk Advisors, homeowners may be liable if a tree they knew posed a threat falls onto a passerby or a neighbor's property and causes damage or injury. Having all trees properly trimmed each year, but especially those that can fall on your home and your neighbors' homes, may prevent future damage and legal issues. Tree services can ensure trees maintain their awe-inspiring beauty and help homeowners protect their homes and their belongings.



WATERING THE LAWN AND FLOWERS EARLY IN THE MORNING WILL PREVENT WATER LOSS TO EVAPORATION. THIS SAVES WATER.



Sproesser's

Lawn Care Inc.

**MULCH
TOPSOIL
PLAYGROUND
MULCH**

805 Zion's Church Road, Hamburg

610.562.5520 • 610.562.5808

Lawn Care

Mulch

FOR YOUR COMPLETE RESIDENTIAL AND COMMERCIAL LANDSCAPING NEEDS:

Landscaping Designs and Installation

Walks ~ Patios

Retaining Walls ~ Mowing

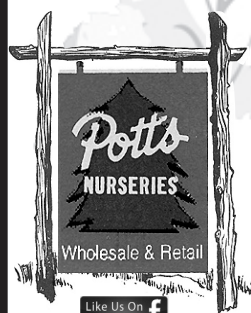
Spring and Fall Cleanup

Fully Insured

DELIVERY ONLY

It's Time To Plant!

Spring has Sprung at Potts Nurseries



STATE INSPECTED

LANDSCAPING SERVICES OFFERED

- 20+ Greenhouses filled with contained stock
- 100+ Acres of Field Grown Stock
- Specializing in Arborvitae, Evergreens, Shade & Flowering Trees & Woody Ornamentals
- Three Kinds of Mulch - Sold in Bulk

Potts Nurseries

Phone: 610-926-2131 • Fax: 610-926-7202
427 Ontelaunee Dr., Shoemakersville, PA 19555
Our Hours Are Mon. - Fri. 8-5 PM; Sat. 8-5 PM

Call If You Need Directions 610-926-2131 www.pottsnurseriespa.com

Cornerstone Organic Feeds, LLC

509 Long Lane, Kutztown, PA 19530
cornerstoneorganicfeeds@gmail.com
610-894-5106

Some of our popular items are:

- SUPER N 4-2-4 ZINC & BORON** Excellent Starter! 50# \$27.75
- SUPER K 3-4-7** Good for veg. crops 50# \$23.65
- TOMATO GROWER 3-4-7** Adds production and flavor! 5# \$9.00
- NEW!! ORGANIC POTTING SOIL** 2.8 cu ft \$23.95
- HIGH CALCIUM LIME** 50# \$7.00
- KELP MEAL** Builds Soil Life 50# \$50.00
- BERRY MIX 4-2-4** Bigger tastier berries! 5# \$12.15 or 50# \$26.95
- LIQUID #3**

Kelp, humates, fish emulsions for high producing crops! 1 Gal \$23.40
WORM CASTINGS Naturally stimulate growth! 30# \$30.45

Many other products available and in different sizes. Also quantity discounts.
Everything we sell is approved for Certified Organic Production!
We also sell bulk fertilizer, livestock mineral, and feed.

We can deliver and ship anywhere.



We are offering a full line of organic fertilizers to help you grow healthy crops!

1. YOU pick up soil sample bags here, as well as a free catalog with all our listed products, take samples, and send them to the lab. A full analysis and recommendation costs \$20.00.
2. The lab analyzes the sample, and sends the results to you and Fertrell.
3. Fertrell agronomists make recommendations on what your soil needs to be healthy and productive.
4. You call or email your order to Cornerstone, and WE will provide you with some of the best Organic fertilizer available anywhere, customized just for you at a price you can afford.

How To Guarantee Your Garden Starts Off On The Right Foot

As winter slowly winds down, many gardeners cannot wait to soak up the springtime sun and get their hands dirty in the garden. Such excitement is not just good for gardeners, but can benefit the garden in the months to come as well. Late winter or early spring is a great time to get a head start on the gardening season. Even if gardening season is still around the corner, completing the fol-

lowing projects can ensure your garden gets off on the right foot.

CLEAR DEBRIS

One of the best things you can do for your garden as winter winds down is to clear it of debris. Winter can be especially harsh on a landscape, and gardens left to the elements are often filled with debris once spring arrives. Dead leaves, fallen branches, rocks that sur-

rounded during the winter frost, and even garbage that might have blown about in winter winds can all pile up in a garden over a typical winter. Clearing such debris likely won't take long, but it's a great first step toward restoring the garden before the time comes to plant and grow the garden once again.

EXAMINE THE SOIL

Soil plays a significant role in whether a garden thrives or struggles. Examining the soil before the season starts can help gardeners address any issues before they plant. Ignoring the soil until a problem arises can turn the upcoming gardening season into a lost opportunity, so test the soil to determine if it has any nutrient or mineral deficiencies. This may require the help of a professional, but if a problem arises, you might be able to adjust the acidity or alkalinity of the soil and still enjoy a successful gardening season.

Another way to examine the soil is less complex but can shed light on when would be a good time to get back to work. Reach into the soil and dig out a handful. If the soil quickly crumbles, you can start preparing for gardening seasoning. But if the soil is still clumped together, it needs more time to dry out before you can begin your prep work.

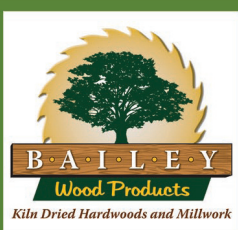
INITIATE EDGING

Edging is another task gardeners can begin as they get ready for the season. Edge plant and flower beds, but be sure to use a spade with a flat blade or an edger designed to edge flower beds. Such tools will cut deep enough so grass roots that may eventually grow into the flower bed are severed. Depending on how large a garden is, edging can be a time-consuming task, so getting a head start allows homeowners to spend more time planting and tending to their gardens once the season hits full swing.

FIGHT WEEDS

Though weeds likely have not survived the winter, that does not mean they won't return once the weather starts to heat up. But as inevitable as weeds may seem, homeowners can take steps to prevent them from turning beautiful gardens into battlegrounds where plants, flowers and vegetables are pitted against unsightly and potentially harmful weeds. Spring is a good time to apply a pre-emergent weed preventer, which can stop weeds before they grow. Though such solutions are not always foolproof, they can drastically reduce the likelihood of weed growth.

Though gardeners might not be able to start planting their gardens in late winter or early spring, they can still get outside and take steps to ensure their gardens thrive once planting season begins.



Picture Yourself Outside with ThermoWood Products

Adirondack Chair Kits

Resists Moisture
Solid Wood
Durable



Raised Bed Garden Kits

Non Toxic
Insect Resistant
Rot Resistant
...up to 25 years



Decking

Mold Resistant
Non Warping
Natural Wood



Call Today!

Bailey Wood Products - Kempton, PA
PH: 610-756-6827 - www.baileywp.com

SPRING BIG IRON REBATES ON SIMPLICITY RIDING PRODUCTS

FINANCING AVAILABLE!

\$100 Up To \$500 On Sales Models

(See Dealer For Details. Expires 4-30-2019)

DALE'S MOWER SERVICE
2541 Rt. 143 • Kempton 610-756-6453
HOURS: Mon. thru Thurs. 8:00 a.m. to 5:30 p.m.;
Fri. 8:00 a.m. to 4:30 p.m.; Sat. 8:00 a.m. to 12:00 p.m.

Only 15 Min. from Kutztown or Hamburg

Come see what's blooming.

PHENOMENAL SELECTION

FOR ALL YOUR FLOWERING & GARDENING NEEDS
BEST SELECTION IN BERKS

- Quality Plants • Grown On The Premises
- New & Unusual Varieties • Flowering Bags

FOR THE HOME GARDENERS

- 22 Varieties of Pepper Plants including Ghost
- 17 Varieties of Tomato Plants
- Hanging Tomato Baskets
- Beat Your Neighbor Tomato Plants
- 1000s of Herbs
- Perennials
- 1000s of Hanging Baskets

We Have EASTER FLOWERS

Hyacinths, Tulips, Daffodils, Lilies, Mums, Gerber Daisies

Temple Greenhouse

4821 8th Ave., Temple, PA 19560 • 610-921-0791
Hours: Open Sundays 10-3; Mon.-Sat. 9-5 Call for extended spring hours

Above all in SERVICE

Who is Erie Insurance?

Erie Insurance is the company you can rely on to get you back to normal if something bad happens. With our award-winning claims service, ERIE offers you the protection you need and the service you expect - all at a great price.

That's who we are.

Learn more about ERIE at erieinsurance.com or call us, your local ERIE Agent today.



Williams Insurance Svcs Ltd
 1124 Centre Tpk
 Orwigsburg, Pa 17961-9058
 366insurance@gmail.com
 570-366-2886

Auto • Home • Business • Life

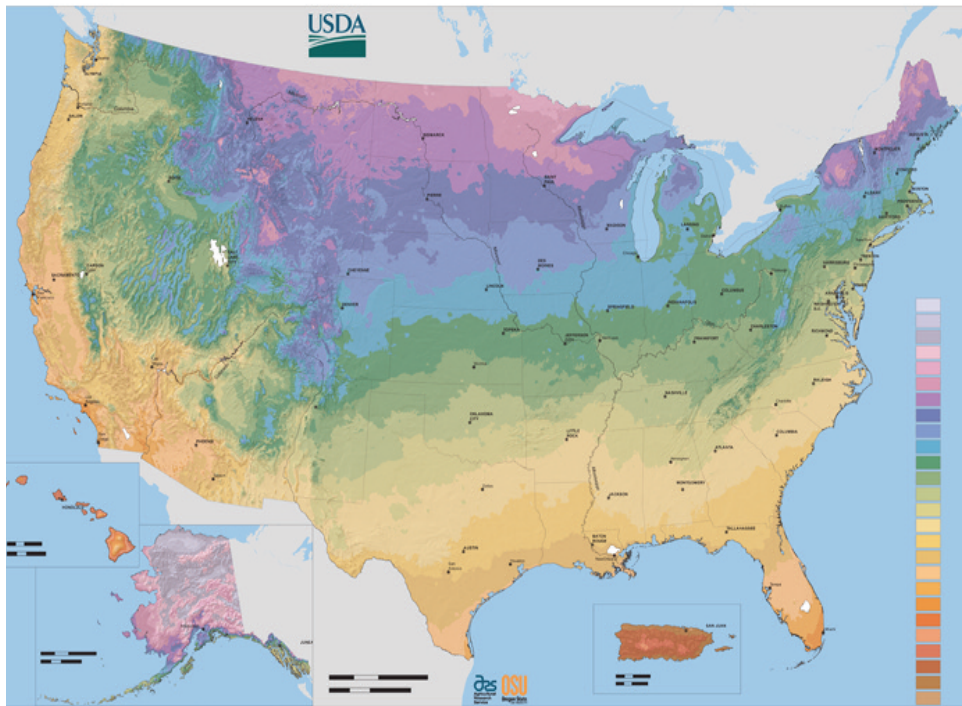
Go to erieinsurance.com for company licensure and product details. CMS149g agtcr 8/13

Understand Hardiness Zones Before Planting

Gardening benefits the environment in myriad ways. Maintaining natural landscapes and preserving green spaces can reduce the collective carbon footprint of the human race. Trees, flowers and other greenery filter the air and create welcoming habitats for all species

of animals and insects. Many home gardeners set out each spring to create landscapes that cater to all of the senses. But choosing plants that are unlikely to thrive in certain climates can lead to dissatisfaction and premature plant demise and may require gardeners to use more fertilizers, pesticides and other not-so-Earth-friendly techniques to help plants thrive.

One of the more important steps gardeners can take before spring arrives is to educate themselves about plant hardiness zones. Hardiness



Breeze Through Your Spring Projects!

RENTING.

So smart, so easy.

RENT: Aerators, Leaf Blowers, Trenchers, Backhoes, Saws, Dethatchers, Tillers, Post Hole Augers, Soil Compactors, Chippers, And More!

WE HAVE THE RIGHT EQUIPMENT FOR YOUR DIY PROJECT.

You've been itching to start those spring projects. Having the right tool for the job will make them easier. When you rent from Stoney Creek Rentals, you'll find hundreds of tools for both indoor and outdoor projects. And a knowledgeable staff will show you how to get the job done right.

TOOL & EQUIPMENT RENTALS SALES • SERVICE

STONEY CREEK RENTALS

We Sell Propane

www.stoneycreekrentals.com
 872 Park Road, Blandon, PA 19510 • 610-926-4567
 Business Hours: Mon.-Fri. 7 AM to 5 PM; Sat. 7 AM to 2 PM

zones are defined by the average climatic conditions of the region and are broken down into various zones. The USDA Hardiness Zone map divides North America into 13 separate zones. Each zone is marked by 10 F incremental differences from the last zone. In some versions of the map, each zone is further divided into "a" and "b" regions.

The National Gardening Association says the USDA Hardiness Zone Map was revised in 2012. The latest version was jointly developed by the USDA's Agricultural Research Service and Oregon State University's PRISM Climate Group. To help develop the new map, the USDA and Oregon State University requested that horticultural and climatic experts review the zones in their geographic areas. As a result, the zone boundaries in the 2012 edition of the map have shifted in many areas. Canada's Hardiness Zone map, updated in 2010, uses nine different zones. Zone maps are tools that show where permanent landscape

plants can adapt. Home gardeners who are looking for shrubs or perennials to last year after year should recognize that such plants must tolerate year-round conditions, including the lowest and highest temperatures and the amount of precipitation. Snow cover and humidity also can impact a plant's propensity to thrive.

While zone maps are not perfect, they can be useful in planning and ensuring the survival

of future gardens. Plant and seed manufacturer Burpee says that other factors to consider that also affect the viability of plants include wind, moisture and soil conditions. The company offers an interactive zone finder on their website that will indicate the hardiness zone as well as average first and last frost dates. Visit www.burpee.com/findgrowzone to enter a zip code. Learn more about plant hardiness at planthardiness.ars.usda.gov/PHZMWeb.

LANDSCAPE WORD SEARCH

S M R O W R D G E Z I L I T R E F R S U
 G L A C U R N L D B P R A R I Z D A S L
 A E S O H I U G M O S C O S P Y E Z L U
 W M Z R H E N G O B U O R D S H R U B S
 P T R C S I S U S R T L W E U D S G F E
 A A L T R B H S B S I U E E W N P H E S
 B U T P R I U A W C E Y I S P R L E E T
 M Z S H D O P R G O M B L D I Z A L L N
 U A S G W P U S G N R A E S Z W N I H N
 G D N S E A L B D E N B T Z T I T Y R G
 A S I A A A Y E L D I N R L R L I Z W Z
 R W L Y W R S D S E A I L Z I D N P P G
 D N E N O I G C O L S A P L H L G R M M
 E D E E G I A A P S W H I N T I S U C T
 N T N N D P T U W F P G O G H F B N R L
 C E P H E B R W A T E R C O Z E D E U D
 O P U S N N O T H G U O R D T L E R G C
 F P E S T I C I D E C T U C W S L Z O A
 O L G L H M Z T S O P M O C O R N B O S
 D D N H G R E E N N O I T A G I R R I P

WORDS

- BED
- COMPOST
- CURB APPEAL
- DESIGN
- DROUGHT
- FERTILIZER
- GARDEN
- GRASS
- GREEN
- GRUBS
- HOSE
- IRRIGATION
- LANDSCAPE
- LAWN
- MULCHING
- PATHWAY
- PESTICIDE
- PLANTING
- PLANTS
- PRUNE
- ROOTS
- ROWS
- SEEDS
- SHRUBS
- SOD
- SPRING
- TREES
- TROUBLESHOOT
- WATER
- WEED
- WILDLIFE
- WORMS

Come See What's New at...

RED OAK CREATIONS

GREENHOUSE

- Hanging Baskets: Large Selection
- Organic Herbs & Vegetable Plants
- Annuals • Aquatic Plants

376 Oakhaven Rd., Fleetwood 610.683.3185
 OPEN 6 DAYS A WEEK:
 Mon. - Fri. 8 a.m. to 6 p.m.;
 Sat. 8 a.m. to 5 p.m. Closed Sun.,
 or Call for Appointment

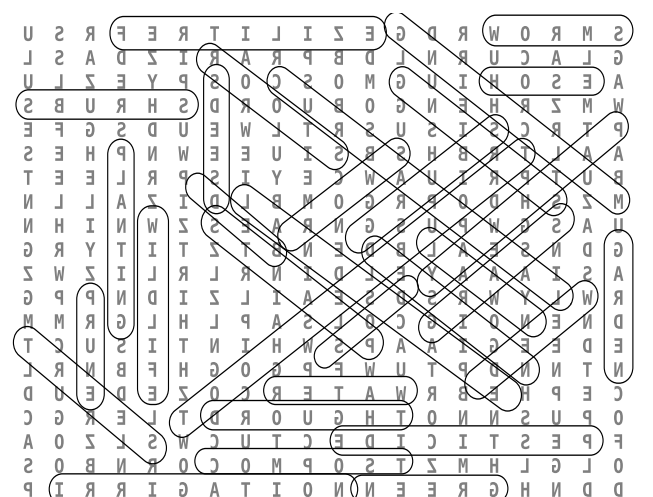
Two Guys Plumbing

HIC #PA005569

Specializing in All Types of Plumbing, Heating, Cooling, Electrical Service

- 30+ YEARS EXPERIENCE
- WATER CONDITIONING
- LICENSED AND INSURED
- REMODELING/NEW CONSTRUCTION
- FREE ESTIMATES
- WELL PUMP SERVICE & INSTALLATION

61 PRICETOWN ROAD • FLEETWOOD, PA 19522
610-683-5465 Fax: **610-683-3296**
 Email: twoguys61@yahoo.com



Find the words hidden vertically, horizontally, diagonally, and backwards.

APRIL MELTDOWN

End of Season Clearance

- Showroom Displays • Burn Model Displays
- Excess Inventory Clearance

HUGE SAVINGS \$\$\$ All with full manufacturer warranty • Wood, coal, gas, wood pellet & corn (stoves or fireplace systems)

- All sold on first come, first served basis.

25% OFF all chimneys, pipe and vent systems, with stove purchases via this sale, with this ad.

Starts March 31st



AUTHORIZED DEALER

Stoves n Stuff LTD.

www.stovesnstuff.com

"We Deliver Warmth"

One of the World's Largest FULL SERVICE Stove and Fireplace Shops

WOOD • COAL • GAS • ELECTRIC • CORN • WOOD PELLET

STROUDSBURG (570) 424-2421 **EMMAUS (610) 966-2271** **TAMAQUA (570) 386-5656**



Save Some **GREEN** when you buy the **ORANGE** during

STIHL DAYS

at

Mountain View Supply

Tuesday, April 16 through Saturday, April 20

Spring Promos

FS 91 R TRIMMER
Hardworking trimmer for professional applications
Features a powerful and lightweight low-emission engine
Includes a larger fuel tank for longer run time than previous models and reduced vibration for comfortable operation
Was \$329.95 Now \$299.95

MS170 CHAINSAW
Lightweight saw for woodcutting tasks around the home
IntelliCarb™ compensating carburetor maintains RPM level
Anti-vibration system for more comfortable operation
Was \$179.95 Now \$159.95

10% OFF

All Stihl Power Equipment

During this event. Excludes Sale Items

Mountain View Supply & Rentals
A Dutch Country Company

5104 Old Route 22, Hamburg, PA 19526 (5 Mi. W. of Hamburg, on Old Rt. 22)
Phone: 610-488-1025
infomvs@dutchcountry.net
www.mtviewsupply.com

ACE The Mutual Group

Mon. thru Fri. 7:00 to 7:00; Sat. 7:00 to 5:00; Sun. Closed

How To Control Common Spring Pests

Just when winter thaws out and people are anxious to enjoy the blooming flowers and luscious lawns of spring, pesky pests can appear and impact comfort levels and safety. Many pests resume their levels of activity as spring draws closer and temperatures warm up. The presence of these insects and rodents may cause problems in and around a home, which makes it essential to recognize them and avoid issues. The following are some of the more common spring pests and how to remedy infestations.

PAVEMENT ANTS

Pavement ants are some of the most common pests residents encounter inside and outside of their homes. These ants are light brown to black with appendages that are lighter than the rest of their bodies. Small in stature, pavement ants have parallel lines on their heads and thorax, according to a pest extermination company. Although pavement ants nest outdoors, they can enter homes through small crevices in search of food scraps. Their large colonies may not disappear until treatment is introduced. Keep foods in tightly sealed containers, clear counters and floors of crumbs, and address water sources, such as leaks. Pesticides may be needed in extreme conditions.

FLEAS

Fleas are tiny, jumping, biting pests that must find a host upon which to live. As ectoparasites, they feed on blood while living on the body of living hosts. Pets can bring fleas inside the yard and home in warm weather. According to the University of California Statewide Integrated Pest Management Program, flea larvae develop more quickly at higher temperatures. At normal room temperatures, the entire life cycle of a flea is about 18 days. Several flea control products are available to control fleas on cats and dogs. There also may be powders and sprays to alleviate flea infestations in the home. Vacuuming is also very effective in killing larvae in the carpet and at picking up adults.

WASPS

An errant wasp, hornet or yellow jacket may have survived winter and ridden out the colder temperatures within a home. Once the weather warms, queens will begin to look for places to lay eggs and establish colonies. Treating areas where wasps are seen entering and leaving the home is key. Seal holes as soon as possible. Although wasps help control other insect populations, their painful stings and potentially aggressive nature can make them challenging to have around a home. If a nest is found, hire a professional to remove it.

SPIDERS

Many spiders are not harmful enough to humans and pets to be much of a problem. In fact, spiders can be helpful to have around to control the populations of other insects. Still, many homeowners would prefer these web-slinging friends remain outdoors. Others can be very allergic and want to keep all spiders possible from entering their home. Therefore, sealing cracks in a home's foundation and repairing small openings around windows and doors can help keep spiders out. Also, alleviating moisture issues in basements, garages or attics may keep out other bugs that would be prey to spiders. Homeowners can take the steps necessary to cut down on pests in and around their homes.

Buy Direct from The Manufacturer!



Large or small, little or tall, we can build them all!

Storage Sheds, Single & Two Story Garages, Pool Houses, Studios, Finished Interiors, Site Preps, & Landscaping.

EASTERN Shed Company LLC
PA130101
14588 Kutztown Road
Fleetwood, PA 19522
610-683-6270

MILLER'S Est. 1974
Lawnmower Service

Sales & Service

Come In To See The **TORO**

All-Wheel Drive Walk Behind!

We Service All Makes and Models
Pick Up and Delivery

Simplicity **ECHO**

906 Centerport Road • Mohrsville, Pa. 19541 610-926-4265



Kolbe's pools & more

WE LOVE TO POOL AROUND!



Installation by Kolbe's Pools



Quality Steel, Resin & Aluminum Aboveground Pools

The Incredible Radiant Metric Series Pool

The Only Aboveground Pool That Gives You A True Lifetime Of Enjoyment Guaranteed!

Join the Club
Kolbe's Pools Loyalty Club Card.
Earn Money Back With Your Purchase.
Sign Up Today and Start Earning!

Special Memorial Day Weekend Hours!
OPEN SUNDAY MAY 26th - 10 am-2pm

574 Rt. 61 South, Schuylkill Haven • South of Renninger's Market
Phone: 570-366-5066 Fax: 570-366-5060 www.kolbespools.biz
Hours: Monday - Friday 10:00 a.m. to 6:00 p.m.; Saturday 10:00 a.m. to 4:00 p.m.

DISCOVER, VISA, MasterCard

MEMBER NESPANORTH EAST SPA & POOL ASSOCIATION

MEMBER NATIONAL SPA & POOL INSTITUTE

POOL FROG

SunGuard

Totally Hayward

WORLD FACT!



WHAT IS THE LARGEST FLOWER GARDEN IN THE WORLD?

ANSWER: KEUKENHOF WHICH IS LOCATED IN THE NETHERLANDS

Richmond Produce IN SEASON PRODUCE and FLOWERS

1276 Richmond Road • Fleetwood, PA 19522 610-944-7764
Hours: Monday to Saturday 8 a.m. to 7 p.m.
SAMUEL BURKHOLDER *Accept FMNP Checks

Open For The Season

- * Brown Eggs
- * Pansies
- * Vegetable Plants
- * Bedding Plants
- * Hanging Baskets



Original Pole Buildings



Great Prices Free Quotes

24'x30'x8'.....\$7,800	40'x40'x10'.....\$13,700
30'x40'x10'.....\$11,200	40'x60'x12'.....\$19,800

SEVING PA, NJ **Many sizes and options available.**

Above includes 1 - entrance door, 1 - overhead door, tax, material and labor.
Price subjected to your location.

1-888-553-5309 • Bethel, PA

RESIDENTIAL • COMMERCIAL • EQUESTRIAN

VISIT OUR WEBSITE TO VIEW OUR PHOTO GALLERY: WWW.ORIGINALPOLEBUILDINGS.COM

DBA WOOD ORIGINALS!

Ask about our Concrete Post option.



Pole Building Specialists Since 1990

HIC #PA018496
NJ #13VH06399800

PBA

PENNSYLVANIA BUILDERS ASSOCIATION

How Color Can Affect Your Garden

Flower gardens can add color and awe-inspiring appeal to a property. The National Gardening Association notes that gardeners can find nearly every color of the spectrum in flowering perennials. So whether you prefer soft pink, are partial to bright red or want to relax in a garden and gaze at something deep blue, chances are you'll find a perennial to tickle your fancy.

The NGA offers the following breakdown of colors to help gardeners learn how their gardens can set the mood they're looking for.

BRIGHT COLORS

A garden full of bright colors like red, orange, magenta, and yellow can provide a landscape

with vigor and energy. The NGA notes that brightly colored flowers can withstand especially bright sunshine, meaning gardeners can marvel at their appearance even when the sun might be adversely affecting other plants and flowers.

PASTEL COLORS

Pastels, which include soft pink, powder blue, lavender, and peach, create a tranquil feeling in a garden. This makes pastel perfect for those who want their gardens to be a relaxing, peaceful respite from the hustle and bustle of everyday life. The NGA notes that pastels may look washed out in the mid-day sun, so they might be best enjoyed early in the morning or late in the afternoon.

COMPLEMENTARY COLORS
Complementary colors are those that are opposite one another on the color wheel. Orange and blue are examples of complementary colors. According to the NGA, complementary colors can add creative energy and vitality to a garden.

HARMONIOUS COLORS

These colors are those that are next to each other on the color wheel, such as orange and red. The NGA recommends harmonious colors for gardeners looking to create a unifying feel in their gardens without resorting to a monochromatic color scheme. Harmonious colors give off a gentle feeling that can make for a relaxing garden atmosphere.

MONOCHROMATIC COLORS

Monochromatic gardens can be awe-inspiring even though they stick to a single color and don't provide an array of awe-inspiring colors. The NGA notes that gardeners with monochromatic gardens make them interesting by using plants of various sizes and shapes.

When planting a garden, gardeners can choose whichever color scheme they prefer. To learn more about the effects of color on a garden, visit the National Gardening Association website at www.garden.org.



Get Ready: Early Spring Landscaping Tips

During the cold months of winter, many people stare longingly out of the window dreaming of spring and time spent outdoors. For those with green thumbs, images of tending to the garden and other aspects of their landscapes no doubt dominate such daydreams.

Draw inspiration from those budding crocuses and daffodils pushing through the last remnants of snow and employ these tips to prepare for the upcoming gardening season.

- One of the first steps is to apply a natural preemergent weed killer to get a head start knocking out weeds that can plague the lawn during the growing season. Killing weeds at the roots early on can mean far fewer hassles in spring and summer, and may prevent new generations of weeds from

cropping up each year.

- While it may be tempting to take a prematurely warm day as a sign that spring is in full force and purchase a bunch of annuals, it's better to know the last of the possible frost dates (check "The Farmer's Almanac"); otherwise, you may waste time and money planting flowers or vegetables only to have them zapped by another frosty day.

- Amend the soil so that it is the right consistency, just crumbling when lifting it. Soil that is too muddy after spring thaw can harden, making it difficult for plants to flourish later on. Speak with representatives at a local lawn and garden center about which types of amendments you can add to the soil in your particular area to enrich it.
- Lawn and garden experts sug-

gest filling in bare patches of lawn now by mixing a few shovelfuls of soil with grass seed. Then apply this patch to the bare areas, water, and continue to care for the area until the spot fills in.

- Spend a day in the garage or shed tending to the lawn mower and other gardening equipment. Clean all tools and ensure that everything works, repairing parts as needed.

- Give outdoor entertaining spaces a good scrubbing, clearing away dirt and grime that may have accumulated over the winter. Use a leaf blower to blow away any left-over leaves.

- Check if the front porch, railings or decking need painting and/or staining. Tackle these projects when the weather is cooler so everything will be ready for those peak spring days.

- Think about any annuals you might want to plant in the landscape this year that will complement any existing shrubbery or perennials. Come up with a theme so that the entire yard is cohesive.

Before homeowners know it, winter is gone and it is time to once again enjoy long days spent outdoors. Get a jump start on spring lawn prep as soon as you can.





Enrich Your Outdoor Lifestyle

KEYSTONE LANDSCAPE SUPPLY

www.keystonelandscapesupply.com

80 Willow Street
Kutztown PA 19530
610-223-5622

4 Industrial Drive
Hamburg PA 19526
610-562-8662

Hours:
M-F 8-5 | Sat. 8-3

Delivery Available

Enriched Topsoil | Mulch | Decorative Stones
Pavers | Sand | and more!

We carry all of your landscaping and hardscaping supplies!

Shade-Tolerant Plants Help To Complete Landscapes

Plants need sunlight to thrive and grow, but some need less sunlight than others. People who find their landscapes are less supportive to sun-loving plants can choose from a variety of shade-tolerant plants, shrubs and trees.

Shade tolerance refers to a plant's ability to withstand low levels of light. Certain plants have adapted this feature to survive in the wild. Plants that grow at the base of forest floors, for example, will get less sunlight than others outside of the tree canopy. Such adaptations enable a wide variety of foliage to grow even though they are not exposed to much sunlight. While sun-loving plants often have broad leaves and expend significant energy to capture sunlight for photosynthesis, shade-tolerant plants expend less energy and tend to be more efficient consumers of soil nutrients and sunlight.

Penn State Extension's Plant and Pests division says the amount of shade a plant is growing under will directly affect the density of the foliage and the plant's flowering and fruiting characteristics. Blend-ing shade-tolerant plants into the landscape can be an effective use of space. Before choosing plants for an existing landscape, it's important to assess the level of shade or sun the plants will receive.

- **Heavy shade:** Heavy shade is when no direct sunlight reaches a plant. This occurs at the base of northern-facing walls or beneath thick tree canopies.
- **FULL SUN:** Areas that receive full sun enjoy direct sunlight between six and eight hours per day.
- **MODERATE SHADE:** These sites have reflected sunlight that may come off of water features.
- **LIGHT SHADE:** Plants in these areas will get partially filtered or dappled sunlight. Once homeowners understand which type of shade they are dealing with, they can then visit

plant nurseries and select their plants. Most greenery comes with care instructions that include recommendations regarding the amount of shade/sunlight the plant will need to do well. If further assistance is needed, a knowledgeable employee can make suggestions based on landscape needs.

Those who are looking for some preliminary guidance when it comes to selecting shade-tolerant shrubs, plants or trees can consult the following list.

- **BLEEDING HEART:** Bleeding heart, or Dicentra spectabilis, is typically found in woodlands. It's a perennial in the poppy family that produces mounded foliage and arching vine-like stems of heart-shaped flowers in the spring.

- **AMETHYST FLOWER:** Browallia hybrids offer star-shaped blooms of blue and violet. These plants will billow out of hanging baskets or containers, and they prefer warm shade or filtered sunlight.

- **COLEUS:** The coleus, Solenostemon scutellarioides, is another perennial that can have a variety of different leaf colors and striations.

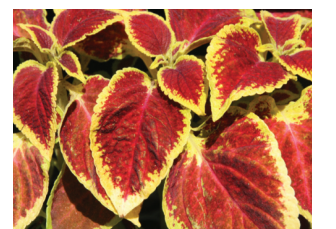
- **WITCH HAZELS:** These are a genus in the family Hamamelidaceae, which has four

different species in North America. This shrub or small tree features arching branches with dense, multi-stemmed clumps. Witch hazel produces flowers in the late autumn when most other plants are sparse.

- **BAYBERRY:** Myrica pensylvanica can grow in partial shade as a hedge or natural property divider. The leaves of this shrub are aromatic when crushed. The shrub will produce tiny, gray/white fruits in late summer.
- **ENGLISH IVY:** Also known as Hedera helix, this trailing plant is widely cultivated as an ornamental plant. It will spread easily and can become invasive.

Those searching for shade-tolerant trees can choose among Sugar maple, Black alder, Flowering dogwood, and White spruce, among others.

Shade-tolerant plants can make welcome additions to the landscape, offering greenery and color in the darker areas of a property.



STORAGE SHEDS MOVED

Serving PA & NJ for over 30 years!!!



Don't leave that shed behind! Move it with you! Do you have an unwanted shed, gazebo, or playhouse?

WEAVERS HAULING

Over 30 Years Experience!

Reasonable Rates
FREE ESTIMATES

Call: Glen
610-926-5671
FAX:
610-916-2954
Fleetwood, Pa.



HAWK VALLEY LANDSCAPE MATERIALS
 Premium Soils and Mulches
 www.hawkvalleyfarm.com

★ Quantity Discounts
 ★ You Pick Up or We Deliver
 152 Pine Creek Road, Kempton, PA 19529
 610-756-6259

THE BEST Lawn Cutting Service Now Offering 'Cutting For College'
 Call now to schedule and receive... **10% OFF** your current mowing bill!
 (copy of bill required)

— and —
 Refer a neighbor to receive an additional **10% OFF**
 (see store for additional details)

FIX IT ALL
 610-562-6868 802 S. Fourth Street, Hamburg
 Neighbor must be within 2 miles. Up to 3 referrals/max. of 30% Off
 10% OFFER valid for 2019 Mowing Season
 Used Equipment & Trade-Ins Pick Up & Delivery
 E-mail: fixitall222@gmail.com

The Many Benefits Of Hiring A Professional Landscaper

The flowers are blooming, and the grass has begun to grow anew, making spring a great time for homeowners to once again turn their attention to landscaping. Those who aren't looking forward to dusting off their lawnmowers and rethreading their string trimmers may want to hire professional landscapers to tend to their lawns and gardens.

A recent joint study by the National Gardening Association, Residential Lawn and Landscape Services and the Value of Landscaping found that homeowners spend roughly \$45 billion per year on professional lawn and landscape

services, as nearly 30 percent of all households across the United States use at least one type of lawn or landscape service. The rising use of lawn care services is indicative of homeowners' appreciation of the convenience and craftsmanship professional services can provide. While the impact professional landscapers can have on a property's aesthetic appeal is considerable, homeowners also benefit from working with professional landscapers in various other ways.

- Time savings: One of the biggest benefits of leaving lawn care to the professionals is the amount of time it will save for

the average homeowner. Lawns generally need to be mowed once per week during the spring and summer seasons and, depending on the size of the property, that can take an hour or more. Add the time it takes to clean up clippings, mulch landscaping beds and edge the property, and homeowners can expect to devote a significant chunk of their weekends to caring for their lawns. Lawn services employ a few workers who make fast work of the job, leaving homeowners time to enjoy their weekends however they see fit.

- Reduced risk for injury: Maintaining a landscape is hard work, and those unaccustomed to this type of activity may find themselves winded or at risk of injury. Improper use of lawn equipment also is a safety hazard. Leaving the work to professionals can help homeowners avoid strained backs, lacerations, pulled muscles, sunburns, and any other dangers that can result when tackling landscaping projects.

- Financial savings: On the surface, hiring a landscaping service may seem like a costly venture. However, after crunching some numbers, many homeowners realize that doing the work themselves may cost more in the long run than hiring a professional landscaping service. Homeowners who decide to go it alone must purchase expensive equipment, and those lawn tools will require routine maintenance, which costs additional money. Inexperienced homeowners may incur extra fees to "fix" mistakes that occur during the learning process. Each year, new seed, fertilizer, mulch, pesticides, and other supplies also must be purchased. But professional lawn care services typically charge a set fee per month, and that fee covers the maintenance of both your property and the equipment needed to keep that property looking great.
- Know-how: Many professional landscapers know how to address lawn care issues that may arise throughout the year. They will know how to deal with dry patches of lawn or poorly draining areas, and they also can make recommendations on

OPENING APRIL 25th
 RETAIL HOURS: Thursday 9am – 6pm Friday 9am – 6pm
 Saturday 8am – 4pm Sunday 8am – 4pm Mon – Wed CLOSED

SHADE TREES	FLOWERING TREES	PERENNIALS
MAPLE – October Glory, Sun Valley, Brandywine, Redsunset, Celebration, Crimson King, Red Rocket LONDON PLANE SYCAMORE GREEN VASE ZELKOVA OAK – Pin, Red, Scarlet, Swamp White AUTUMN GOLD GINKGO HORNBEAM	CHERRY – Kwanzan, Accolade, Whitcombi, Autumnalis, Snowgoose, Pink Weeping, Royal Burgundy DOGWOOD – Stellar Pink, Celestial White, Satomi, Cherokee Brave, Kousa Summer Fun REDBUD – Lavender Twist & Appalachian Red WINTER KING HAWTHORN CRABAPPLE – Royal Raindrop, Prairiefire, Candymint, Louisa Red Baron, Sugar Tyme	SUNBATHERS – Yarrow, Iris, Daylily, Bee Balm, Dianthus, Coreopsis, Phlox, Daylily, Ice Plant, Catmint, Lavender, Salvia, Sedum, Veronica, Shasta Daisy, St. Johns Wort, Red Hot Poker, Geum, Geranium, Russian Sage SHADY CHARACTERS – Ajuga, Ferns, Bleeding Heart, Coralbells, Astilbe, Columbine, Hosta, Spiderwort, Hellebore

FOLIAGE FARM
 57 Christman Rd. Kutztown 19530 Phone: 610-683-6585
 www.FoliageFarm.com *Only Open Through The End Of June

LEESPORT FARMERS MARKET
 EVERY WEDNESDAY 8 AM to 7 PM
 Flea Market 7 AM • Livestock Auction 1 PM
 610-926-1307 • www.leesportmarket.com

Visit Us For Your Gardening Needs
 Vegetable & Bedding Plants
 Hanging Baskets ~ Perennials
 Annuals ~ Potted Plants & Nursery Stock

★ **FLEA MARKET** ★
 Sunday, April 28, 2019 - 7 AM - 1 PM
Toy Show

★ **SPRING CRAFT FAIR** ★
 Saturday, May 11, 2019
 9 AM - 3 PM
 Over 350 Crafters - Rain or Shine
 • Free Admission & Parking

STONES THROW



We specialize in Hardscaping, Veneer Masonry, and Landscape Design.

484.668.1650 • asthardscapes@gmail.com
 www.astonesthrowllc.com
 Like us on Facebook! @astonesthrowllc

plants that will thrive under certain conditions.

- One-stop shopping: Certain landscaping services provide many different options for prospective customers. Basic lawn cuts may be one package, but there also may be services for seasonal seeding, weeding, leaf clean-up, and winterizing.
- Consistent maintenance: Homeowners who frequently travel or spend much of their summers away from home often find that lawn care companies are a wise investment. Established weekly schedules ensure the landscape always will look its best whether homeowners are home or out of town.

Spring is a great time for homeowners to decide if hiring professional landscaping services is in their best interests. The time and money saved, as well as impact professional landscapers can have on a property, makes landscaping services a great investment for many homeowners.

MOWER RECYCLER
 Recycle Your Old Lawn Equipment!

BUYING NEW RIDING MOWER? LET ME HELP YOU RECYCLE THE OLD!
 Riding Mowers, Tractors, Go Carts, Minibikes, Snowblowers - Any Condition.

www.mower-recycler.com
 Berks & Surrounding Areas 610.944.3047
 Free Removal • Quick Friendly Service

B. Young Asphalt Paving and Sealcoating
 SPRING SPECIAL! SAVE 15% NOW
 Free Estimates 484-486-0282
 PA #111185 • Driveways • Parking Lots • Hot Crack Repair • Gravel

How Lawns Benefit From Aeration

Compacted soil can have a dramatic effect on grass. Compacted soil blocks oxygen, water and nutrients from reaching the root systems of the turf. That creates a lawn with weak roots, which make grass more vulnerable to disease and compromising its ability to withstand harsh weather, such as summer heat.

The buildup of thatch, which is a matted layer of grass clippings and other organic debris that collects on the top of the soil, is one indicator that a lawn could benefit from aeration, a process in which the surface of the lawn is perforated to break up compacted soil and allow oxygen, water and nutrients to reach root systems. Other signs that aeration may be necessary include patches of thin grass, brown spots and a high concentration of clay in the soil.

When faced with a lawn that could benefit from aeration, homeowners may wonder if such as task lends itself to DIY or if it's best left to professional landscapers. Aerating a lawn is not always easy, and typically it involves the use of one of three types of aerators:

- Core aerator: A core aerator uses hollow tines to pull plugs

of soil from the lawn. The plugs are left on the surface of the lawn. Homeowners can pick up the plugs or, according to the grass seed experts at Pennington, even leave them in the yard and allow them to break down.

- Spike aerator: The experts at Pennington note that spike aerators employ solid, spike-like tines to poke holes in the soil. These aerators leave the spikes in the soil. Some people wear spiked aeration shoes while walking around the yard to mimic the effects of spike aerators.
- Slicing aerator: According to Pennington, slicing aerators employ rotating blades that slice through thatch and down into the soil. These aerators leave the soil in the ground. Aerators can be operated manually, though professionals tend to use motorized aerators. The machines are often heavy, so homeowners should consider their health and physical ability before deciding to aerate on their own. Hiring a professional landscaper who has experience aerating may be the quickest and most effective way to restore a lawn to full health.

DESIGN BUILT CONSTRUCTION
 New Homes • House Additions
 • Renovations
 • Kitchens & Baths



Contact John Scully

MARTIN CONSTRUCTION COMPANY
 14558 Kutztown Road / Fleetwood, PA 19522
 Phone: 610-683-6120 Fax: 610-683-9132
 www.martinconstructionco.com
 HIC Registration # PA 8177

Cub Cadet

ALL-AROUND STRENGTH



XT2™ LX42"
LAWN TRACTOR

- 22 HP** Cub Cadet-certified Kohler® 7000 Series V-Twin OHV engine
- 42" heavy-duty mowing deck delivers the Cub Cadet Signature Cut™
- Tuff Torq® automatic hydrostatic transmission

STARTING AT:
\$1,999*



Ultima™ ZT1 42"
ZERO-TURN RIDER

- 22 HP** Cub Cadet-certified Kohler® KT 7000 Series V-Twin OHV engine
- 42" heavy-duty mowing deck
- Dual Hydro-Gear® EZT-2200™ transmission

STARTING AT:
\$2,699*



RZT® SX 46
ZERO-TURN RIDER WITH STEERING WHEEL

- 23 HP** Cub Cadet-certified Kohler® 7000 Series V-Twin OHV with Smart-Choke™
- Cub Connect™ Bluetooth® app for maintenance reminders
- 46" heavy-duty fabricated mowing deck delivers the Cub Cadet Signature Cut™

STARTING AT:
\$3,499*

FOR FULL PRODUCT SPECS

Cub Cadet

VISIT CUBCADET.COM

ECKROTH
EQUIPMENT COMPANY

Eckroth Equipment
4910 Kernsville Rd
Orefield, PA 18069
www.eckrothequipment.com
610-366-2095

Eckroth Equipment
1813 Chestnut Street
New Ringgold, PA 17960
570-943-2131

*Product Price – Actual retail prices are set by dealer and may vary. Taxes, freight, setup and handling charges may be additional and may vary. Models subject to limited availability. Specifications and programs are subject to change without notice. Images may not reflect dealer inventory and/or unit specifications. †† As rated by Kohler, all power levels are stated in gross horsepower at 3600 RPM per SAE J1940 as rated by engine manufacturer. **See your local Cub Cadet Independent Dealer for warranty details. © 2018 Cub Cadet3PV_F

DINING & entertainment guide

PAPPY T's PUB

Gift Certificates Available • www.pappyts.com Delicious Pub-fare Check Out Our New Menu! 12 Beers on Tap Your Favorite Cocktails

Come Check Out Chad's All New Weekly Chef Specials

NASCAR RACING
PAPPY T'S RACE DAY SPECIALS
 (During Races Only)
All Domestic Pints \$1.75
 Bud Light, Coors Light, Miller Light & Yuengling Lager
Watch The Race On Our Big Screen Projector

Try Your Luck To Win REAL CASH!
 We Now Have PA Game Skills Machine

HAPPY HOUR:
 Monday thru Friday 5:00 pm to 7:00 pm

We Are A Nonsmoking Establishment
 50 Industrial Drive, Hamburg • 610.562.5645
 (Behind The Microtel Inn & Suites - Across From Cabelas)
OPEN 7 DAYS A WEEK: Bar Hours: Sun. 11 AM till 1 AM
 Mon. thru Thurs. 3 PM till 2 AM
 Fri. & Sat. 11 AM till 2 AM
 Kitchen: Sun. 11 AM till 10 PM
 Mon. thru Thurs. 3 PM till 10 PM
 Fri. & Sat. 11 AM till 10 PM

Live Music Now On Sat.

BIKER FRIENDLY BAR

Microtel Inn & Suites

MICROTEL INN & SUITES
 • Conference Room • Game Room • Jacuzzi Suites
WIRELESS HIGH SPEED INTERNET

WEEKLY FOOD SPECIALS

DAILY DRINK SPECIALS
 \$2.00 Well Liquor - All Day! Every Day!

- COUPON -
10% OFF Food Purchase
 PAPPY T'S PUB
 Meals Only, Beverages Not Included.
 Not to be combined with any other discount.
 Coupon good Thurs., April 18 - Wed., April 24, 2019

ENTERTAINMENT
 Tues., Apr. 16: 7:30 pm-?
FREE TEXAS HOLD'EM POKER
 Wed., Apr. 17: 9:00 pm-midnight
KA-MOTION KARAOKE w/ANGIE
 Thurs., Apr. 18: 8:00 pm-11 pm
OPEN MIC w/CHIP
 Fri., Apr. 19: 9:30 pm-12:30 am
KA-MOTION DJ NIGHT w/MONIGUE
 Sat., Apr. 20: 9:30 pm-12:30 am
'BOB NOBLE & THE BLUE VODOO BAND'

JOHNNY SMOKEHAUS & HONS
 924 West Penn Ave., Robeson, PA 19551
610.589.6397
 See FB for more info FB: @JHSmokehaus

Easter Buffet

Sun., April 21
 11 am to 4 pm
 Reservations Are Required
 Call: 610.589.6397



Buffet Includes:

Ham	Vegetables
Turkey	Salad
Roast Beef	Dessert
Potato Filling	

Buffet is \$12.95
 Kids 6 & Under \$5.99

SHOEMAKERSVILLE FIRE CO.
 300 CHURCH AVE., SHOEMAKERSVILLE 610.562.3998

ATM INSIDE
 Happy Hour Every Day
 FREE WIFI

Social Quarter Hours - Opening Noon Daily
SUNDAY AFTERNOON BINGO (Open To Public)
 Doors open 12 noon, **BINGO STARTS @ 2 PM**
NEW GAME: ONE ARM BANDIT
 For info. please call 610.568.4354 • Mgr.: Jackie Weiler

Check Out Our Website:
www.shoeyfire.com For All Events

Hoedown
 COUNTRY, MODERN & LINE DANCING
 Music by "The Majestics"
APRIL 27, 2019

Sponsored by
HAWK MOUNTAIN CIVIC CLUB
 Established 1973

Located at VIRGINVILLE GRANGE HALL, Virginville, PA
 Main Entrance & Parking in the Rear, Adjacent to the Virginville Hotel
Doors open 5:30 pm * Hot & Cold Buffet 6:30 pm * Dancing 7:30 pm
 Adults \$16 in advance with RSVP by April 20 * \$20 at the door;
 Children 6-12 years \$7 * Under 6 free
For reservations Call 610.562.7652 or 610.562.0169
Reservation Deadline: April 20, 2019
No Cleated Footwear, Please. Not Responsible For Accidents

U Are Not Forgotten

 sponsored by
 VFW Post 5069 Andreas

Oldies Dance

Sat., June 1 6 to 9 p.m.
"Flamin Dick & The Hot Rods"

NEW RINGGOLD FIRE CO.
 Benefit for VFW Charities
 \$20.00 a person - Limited Seating - Registration Only
 For info & registration Call: 570-386-3224 • 570-789-3187

3rd Street Café

29 South Third Street • Hamburg, PA 19526

Breakfast Specials 6:00 am - 11:00 am

4-15-19 thru 4-19-19	Sausage, Egg & Cheese Sandwich On Croissant & Coffee	\$4.95
4-22-19 thru 4-26-19	1 Pancake, 2 Eggs, 2 Pcs. Bacon & Coffee	\$5.75
4-15-19 thru 4-19-19	Breaded Shrimp Basket	\$7.75
4-22-19 thru 4-26-19	Dutch Boy w/Chips	\$5.75

Lunch Specials 11:00 am - 2:00 pm
 Vegetarian Selection Available

Every Tuesday: Rivel Soup
 Every Friday: New England Clam Chowder
 Visa/MC/Discover Accepted 610.562.0370 Takeout Available
 Hours: Mon.-Sat. 6 am - 2 pm; Sun. 7 am - 2 pm

Wed. thru Sat. 4 PM-8 PM;
 Sun. 11:30 AM-7 PM
 Closed Mondays & Tuesdays

DEUTSCH ECK
 (DUTCH CORNER)
 Sandwiches Platters
 Homemade Desserts
 The-Eck.com

LENHARTSVILLE, PA • 610.562.8520

THIS WEEK April 17, 18 & 19	Ham & String Beans
NEXT WEEK April 24, 25 & 26	Pig Stomach
May 1, 2 & 3	Corn Pie
May 8, 9 & 10	Shepherd's Pie

Plate It Forward For April: The Wellness Center For Pets & Their People, Strausstown. Plus Mother's Day Buffet Info On The-Eck.com

Gift Certificates Available

KAUFFMAN'S BAR-B-Q RESTAURANT

GRAVEL PIT ROAD, HALFWAY BETWEEN BETHEL & STRAUSSTOWN OFF OLD RT. 22 • PH: 717-933-8415
 Hours: Wed., Thurs. & Fri. 4 - 9 pm; Sat. & Sun. 11 am - 9 pm; Closed Mon. & Tues.
 website: www.kauffmansbbqrestaurant.com • Check Us Out & Like Our Page On Facebook

Miniature Golf Course NOW OPEN

Open Good Friday, April 19 - 11 am to 9 pm
 and Easter Sunday, April 21 - 11 am to 4 pm
NOW SERVING SOFT ICE CREAM

KUTZTOWN ROD & GUN CLUB
 Check us out on Facebook.com

Monthly Meeting
 Second Thursday Of Every Month!
 Breakfast Served 2nd Sunday Of Each Month From 7 AM to 11:30 AM - Breakfast Is Open To The Public

MONDAY, APRIL 15 & WEDNESDAY, APRIL 17:
HAPPY HOUR - 5 pm to 7 pm
\$.25 Off All Drinks (Excludes Soda) and **FREE Hot Dogs!**

TUESDAY, APRIL 16 & THURSDAY, APRIL 18:
HAPPY HOUR - 2 pm to 4 pm \$.25 Off All Drinks! (Excludes Soda)

TUESDAY, APRIL 16: FRYER NIGHT 5 pm to 9 pm

THURSDAY, APRIL 18:
WINGS & PEEL AND EAT SHRIMP NIGHT 5 pm to 9 pm

FRIDAY, APRIL 19 & SATURDAY, APRIL 20:
DINNER SPECIAL 5 pm to 9 pm
CRAB CAKES w/FRENCH FRIES & COLE SLAW - \$9.50

SUNDAY, APRIL 21 - EASTER DINNER
 Served 12 pm to 4 pm **THE CLUB WILL BE OPEN TO THE PUBLIC FOR EASTER DINNER.**

WEDNESDAY, APRIL 24 - 6 pm
FISH STOCKING FOR CHILDRENS' RODEO

SATURDAY, APRIL 27 & SUNDAY, APRIL 28
CHILDRENS' FISHING RODEO
TWO DAY EVENT - All Day Saturday & Sunday til Noon

WEDNESDAY, MAY 1
FISH STOCKING FOR ADULT FISHING RODEO

SATURDAY, MAY 4
ADULT FISHING RODEO
TWO DAY EVENT - All Day Saturday & Sunday til Noon

THE CLUB WILL BE NON-SMOKING DURING FRIDAY NIGHT DINNER 5-9 PM

The Hamburg **STRAND** Theater

Friday, Apr. 19 thru Thursday, Apr. 25
'UNPLANNED'
 Tuesday, Apr. 23 - FAITH NIGHT - 7 pm
'WONDER'
WE ARE CLOSED ON EASTER DAY MAY 21
 Showtimes: Thurs. - Mon. 7 pm; Matinee Sat. & Sun. 4 pm
 6 South Fourth St., Hamburg, PA • 610.562.4750

Shartlesville Grange #1512
 is hosting their first
Paint & Sip
Sat., April 27th at 2 p.m.

Price is \$40.00 which includes step-by-step instructions, all your supplies as well as a complimentary glass of wine and light snacks.
 For tickets or information please call:
 Rachel @484-332-6010
 or Berni @484-529-7414



Take I-78 to Exit 35 (old exit 11) Rt. 143, Lenhartsville

C.J. HUMMELS RESTAURANT
 Dining Room: Sun. & Wed. 11:00 am to 8:00 pm;
 Thurs., Fri., Sat. 11:00 am to 9:00 pm; MON. & TUES. CLOSED
 Bar Hours: Sun. & Wed. 11:00 am to 10:00 pm;
 Thurs., Fri., Sat. 11:00 am to 2:00 pm; MON. & TUES. CLOSED

610.562.4891

For Weekly Entertainment & Dinner Specials
 BE SURE TO VISIT OUR WEBSITE AT
www.cjhummels.com & Our Facebook Page
CJ Hummels Restaurant Bar and Gathering Place
 Also: follow us on instagram & twitter @ cjhummels

Bingo! **TRINITY U.C.C. Tool Bingo**

SUNDAY, APRIL 28, 2019
 Location: Bethel Fire Company
 Doors Open at 12 noon. Bingo Begins at 1:30 pm
\$20 If You Order By April 27
\$25 At The Door
 TICKETS INCLUDE 20 GAMES, 2 SPECIALS, SANDWICH OR SOUP AND A DRINK.
For Tickets Call 717.933.5462



DINING & entertainment guide



**Now OPEN!
DON'T MISS OUT!**

Homemade cuisine, comfortable laid back atmosphere, and a remote setting with a phenomenal view.

**All Happy Hour Wed.-Sat. 5pm-7pm
\$1 off all drinks & specialty drink prices**

Upcoming Events

Thursday 4/25/19 Karaoke Night 9pm-12midnight
Feat w/Angie and Ka-MOTION Karaoke & DJ.
Extended Happy Hour 5pm-9pm & complimentary Hors d'Oeuvres

Sunday 5/5/19 Cinco de Mayo Party 5pm-9pm
@ Chukar's Hideaway

Raffles, Giveaways & fantastic holiday appropriate buffet cuisine & \$3 Mojitos

1414 Moselem Spring Road
Hamburg, PA 19526

(past office end of drive)

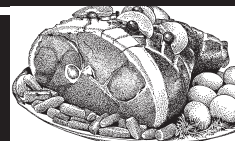
Restaurant # 610-562-6749

Catering - Angie 215-768-0010 or Eric 717-821-3289

Hours of Operation:

Mon. & Tues. Closed;
Wed. 11am-8pm;
Thurs.-Sat. 11am-11pm;
Sun. 11am-6pm

J. A. S. BUFFET



International Buffet: CHINESE • JAPANESE • AMERICAN • ITALIAN
Featuring: SUSHI - HIBACHI - BBQ GRILL - ROTISSERIE

EASTER DAY BUFFET

SUNDAY, APRIL 21 - 11 AM to 9 PM Call For Reservations 610.562.5828

Baked Ham	Seafood	Assorted Fish	Mashed Potatoes
Roast Turkey	Combination	Raw Mussels	Cranberry Sauce
Roast Pork Loin	Pepper Shrimp	Raw Clams	Vegetables
Roast Beef	Shrimp with	Raw Oysters	Dried Corn
Spare Ribs	Alfredo Sauce	Sweet Potatoes	& More
Steak	Peel & Eat Shrimp	Stuffing	Soup & Salad Bar
Snow Crab Legs	Cheese Mussels	Potato Filling	Dessert
Steamed Clams	Salmon	Lasagna	

\$15.99 per person Including Drink. Children's Dinner Priced By Age.

Also Serving Our Delicious Chinese Food

1752 Tilden Ridge Drive
(Tilden Ridge Shopping Center)

Private Room For Your Next Event!
Parties, Banquets, Meetings - Seats 100 persons
610.562.5828



Saturday, April 27, 2019

10 AM to 2 PM

**Free Food & Drinks,
Crafts, Music &
Benefit Drawings**

12:30 Cake Cutting

Let's Go Shopping!

Low Prices On All

**New and Gently Used
Clothing, Shoes and Accessories**

A Special "Thank You" to our food sponsors:
Berks Foods Hot Dogs, Dieffenbach Chips
& Clover Farms Drinks



HAMBURG
FAMILY STORE

& DONATION CENTER

700 South 4th Street, Hamburg, PA 19526

484-660-3851 - Store • 610-562-8440 - Service Center

BREAKFAST



**NO
BREAKFAST
DUE TO
EASTER**

**COMMUNITY
FIRE CO.
VIRGINVILLE**

Serving A
Variety Of Menus!!!

**HALL RENTAL
AVAILABLE**

**ANNUAL
SHOEMAKERSVILLE AREA
LIONS CLUB**

**EASTER
EGG HUNT**

SATURDAY, APRIL 20 AT 2:00 PM

★ HELD RAIN, SNOW OR SUNSHINE ★

Held at Perry Recreation Park

CANDY Onyx Cave Road, Perry Twp. **PRIZES**

Follow Us On



Free WiFi

**BLUE
MOUNTAIN**

OPEN 6:30 A.M. to 10:00 P.M.

Serving Cocktails

• Beer • Wine

• GIFT CERTIFICATES

Family Restaurant & Banquet Facilities

• ROADSIDE DRIVE, SHARTLESVILLE - EXIT 23, I-78 610.488.0353



Easter Day Buffet 11:00 am - 6:00 pm

ADULTS \$21.95 10-5 YEARS OLD \$10.95 UNDER 5 Free

Carving Station: Roast Beef & Whole Ham

Appetizers: Fresh Salad Bar & Soup, Fruit Tray, Fruit Punch Fountain

Lemon Pepper Chicken • Potato Filling • Mixed Vegetables • Candied Sweet Potatoes • Buttered Sweet Corn

• Swedish Meatballs • Rice Pilaf • Smoked Kielbasa • Baked Pasta • Seafood Newburg

• Rosemary Roast Loin Of Pork and Much More

Large Dessert Table Featuring: Homemade Pies & Cakes • Fresh Baked Cookies • Greek Pastries

Also Serving a la Carte Menu With All The Trimmings

Roast Leg Of Lamb • Roast Turkey • Roast Duckling • Baked Virginia Ham • Broiled Seafood

Pasta Dishes • Charboiled Steaks & Chops

CALL FOR RESERVATIONS: 610.488.0353

STRAUSSTOWN ROD & GUN CLUB GOOD FRIDAY SHOOT

Friday, April 19, 2019 - 9:00 AM to 2:00 PM

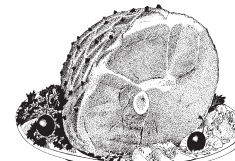
25 Bird Shoot • 5 Hams Per 25 Shooters

~ Open To The Public ~

Meat & Seafood Trays

Breakfast Is Available

Kitchen Open 8:00 AM - 2:00 PM



EASTER EGG HUNT

Sunday, April 21, 2019 - 3:00 PM

4 Age Groups - Kid's Up To & Including Age 15

1st, 2nd & 3rd Place Winners In Each Group

Drinks, Snacks & Goodies - Open To The Public

DINING & entertainment guide

Dee Dee's Diner

Route 61, Shoemakersville - Located next to Sheetz

Family Style

EASTER DINNER

All-You-Can-Eat

ROAST TURKEY, ROAST BEEF, VIRGINIA HAM

(All Sides, Soup and Salad Bar Included)

\$15.99, Seniors \$13.99

Additional Menu Items Available

Children's Egg Hunt



April 20th
12:00 Noon
Ages 1-10

Easter Bunny

Will Be Here April 20th
from 9 a.m. to 1 p.m.

610-562-0700

We accept all major credit cards.
Open 7 Days: 6 a.m. to 8 p.m.

Michael and Amanda Welcome You

St. Luke's Union Church

Holy Week and Easter Schedule

5th & Franklin Sts., Shoemakersville

April 18, 2019

Maundy Thursday 7:00 p.m.

Worship Service with Holy Communion

April 19, 2019

Good Friday 1:00 p.m.

Vigil Service with the reading of the Passion of our Lord Jesus Christ

April 21, 2019

Easter Sunday

Services of the Resurrection with Holy Communion

7:00 a.m. Altar Communion
10:15 a.m. Pew Communion

Everyone is welcome to worship God with us
Invite your family and friends



The Rotary Club of Hamburg is sponsoring

AYCE Pancake and Sausage Breakfast and Omega Health Screening

Saturday, May 11th 7 a.m. to 10 a.m.

HASD Middle School Cafeteria, Windsor St., Hamburg

Breakfast \$6

Tickets available at the door or
Fulton Bank, 100 S. 3rd St., Hamburg or
Creation Cabinetry 507 State St., Hamburg



Plan To Advertise In Our



summer FUN

Guide

Published in the edition of
May 22, 2019

- Day Trips
- Sports & Recreation
- Family Getaways
- Fairs & Festivals
- Food & Beverages

- Golf Courses & Games
- Outdoor Activities
- Picnics & Parks
- Campgrounds
- Museums & More

To place your ad in both the East Penn Valley and Northern Berks *Merchandisers* Please contact your sales representative or our office.

Your choice:

Full Page: \$880 Save \$272!	1/2 Page: \$440 Save \$300!
1/4 Page: \$220 Save \$272!	1/8 Page: \$110 Save \$191!

ONE PRICE - FULL COLOR - BOTH PAPERS!

DEADLINE:
TUESDAY,
APRIL 30, 2019

SINCE 1958



The Windsor Press

INCORPORATED

Six North Third Street, P.O. Box 465
Hamburg, PA 19526-0465
610.562.2267 or 1.800.562.5521
FAX: 610.562.2770
display@windsorpress.com
Hours: Monday to Friday 8 a.m. to 5 p.m.
www.windsorpress.com

GARAGE/YARD SALES

416 N 6th St., Hamburg. Friday 4/26 8-4, Saturday 4/27 8-2. Artificial Cement Fireplace, Screen House, 20' Sunsetter Awning, Table Saw, white oval table with 6 chairs, 6 stools 24" high, 4 drawer filing cabinet, Wooden Corner Computer Desk with separate file drawer, Roy Clark Guitar, Coffee Table, Dresser, Plate Collection, CD's, DVD's, Cameras, Lots of Christmas Items, And Much More.

April 19 & 20: 9 to 5, 11 Cheese Lane Hamburg. Collectibles, Kids, Games, Furniture, Household, Holiday, Pets, Hunting, Books, School Supplies, Crafting, Men/ Women clothing.

Gigantic Indoor Barn Sale -April 26, 27, 28 8am - 2 pm no early birds. Char Will kennels - follow signs- 2 East Railroad Ave New Ringgold literally over 10,000 items- new, used, furniture, books, household, kids, tools & so much more- best prices around all proceeds benefit Making it Pawsible -reduced cost neuter group fmi 570-573-3366.

GARAGE/YARD SALES

Household & collectibles sale held indoors at 535 Park Road, Fleetwood. Saturday, April 20, 2019 from 8:00 am to 3:00 pm. Hess Trucks, original packaging, never played with. Good deals on Longaberger Baskets and Pottery, Lenox Porcelain Bird Collection, Boyds bears, Assorted Holiday decorations and figurines Ceramic & glass bells, Ceramic Pitcher & Bowl Sets, Milk glass vases & candy dishes, Comforters & throws, Some costume jewelry, Lots of coffee mugs, Pyrex & Corningware, Household items.

Warehouse/ truckload sale Wed. April 17th. 7 to 7 only. 1000's of new t-shirts and sweatshirts \$1 each. Truckload of chips and soda way below wholesale, Bulk purchases encouraged. Plus much more. Leesport Farmers market, enter building at rear of building 1, 312 Gernants Church Road. Thriftyhippychick@gmail.com 484-269-3890.

You can link to any display advertiser's website through our online edition!

HIGHLIGHT & CLICK



NORTHERN BERKS *Merchandiser* AND EAST PENN VALLEY *Merchandiser*

Serving More Than 71,500 Homes & Businesses PLUS Worldwide With Our Online Editions!

PUBLISHED EVERY WEDNESDAY BY

SINCE 1958



The Windsor Press

INCORPORATED

SIX NORTH THIRD STREET
P.O. BOX 465
HAMBURG, PENNSYLVANIA 19526-0465
610.562.2267 1.800.562.5521
CLASSIFIED: 610.562.6595
1.800.220.3053
FAX: 610.562.2770
www.windsorpress.com

OFFICE HOURS: MONDAY - FRIDAY 8:00 A.M. TO 5:00 P.M.
YOU CAN CALL, FAX OR EMAIL US ANYTIME
Family owned and independent since 1958
WE ARE HERE TO SERVE YOU!

The Windsor Press, Incorporated, publishers of the Northern Berks Merchandiser and East Penn Valley Merchandiser, reserves the right to review all material submitted for publication, and to reject any material, in whole or part, which The Windsor Press, Incorporated, in its sole opinion, deems inappropriate for publication.

We assume no financial responsibility for any typographical errors in any advertisement, but will reprint that portion of an ad in which an error occurs.

The closing time for both the Northern Berks Merchandiser and the East Penn Valley Merchandiser "classified advertisement" and the East Penn Valley "display advertisement" is Thursday at 5:00 p.m. of the week prior to publication; the Northern Berks display advertisement is Friday noon. Any deviation from this will be published in both papers.

www.windsorpress.com

St. Ambrose 8th ANNUAL YARD SALE!
Saturday, April 27
 Doors Open At 7:00 a.m.



Come And See The Best Yard Sale In Schuylkill County!
 An entire gymnasium filled with furniture, collectibles, memorabilia and other treasures.

Food and Drinks Available • No Early Birds
 302 Randel St., Schuylkill Haven

MISCELLANEOUS

Snapper Model LE14.538H Riding Mower with 38" deck and bagger \$400; Snapper Quantum XRM6.5HP 21" Push Mower self propelled with catcher \$110; Call 610-944-1753.

Attention: Oxygen Users! Gain freedom with a Portable Oxygen Concentrator! No more heavy tanks and refills! Guaranteed Lowest Prices! Call the Oxygen Concentrator Store: 866-288-3671 (*212809).

Dish Network- Satellite Television Services. Now Over 190 channels for ONLY \$49.99/ mo! HBO-FREE for one year, FREE Installation, FREE Streaming FREE HD. Add Internet for \$14.95 a month. 1-800-219-1271(*209634).

FREE: 18 foot above ground Pool. Needs liner, take it away, it's yours. Call 610-781-8972 for info.

"JUKEBOXES" For Sale: Wurlitzer, Seeburg, Rowe AMI, Rock-ola. Call 610-944-9403 for appointment. Juke Box Service Available. Family Room Fun!

RECREATION/ SPORTING GOODS

I Buy Old Guns. Wanted: Flint Locks, Early Traps, Powder Horns, Tomahawks, Rifles, Pistols. Cash Paid. House Calls Made: P.J. Only a Phone Call Away. 610-417-0909.

HELP WANTED

CRYSTAL CAVE, Near Kutztown is hiring tour guides, ice cream parlor attendees and spring/summertime restaurant workers. Apply within or call Jim or Doug at 610-683-6765.

Tri-Axle Driver: Class B with Benefits. Call 610-562-3806, leave message.

Paving company in Hamburg looking for an experienced laborer and operator. Call 610-562-8512.

HAIRDRESSER: Experience preferable for busy salon in Hamburg. Call Wayne 610-562-5250.

FAX in your advertisement **610-562-2770**

HELP WANTED

Dietary Aide, FT/PT Positions available in local LTC facility. Benefits include health, dental, life insurance, paid holidays, sick, personal, vacation time and 401K. Shifts include every other weekend & holiday. Apply in person. Kutztown Manor, 120 Trexler Avenue, Kutztown, PA 19530 610-683-6220 E/O/E

Help Wanted for Growing Auto Parts Business. Drivers, Counter Sales, Outside Sales Positions Available. Apply in Person, NAPA Auto Parts Kutztown, Hamburg, Fleetwood, Fogelsville or call John 908-821-4180.

High School Basketball Coach. The Kutztown Area School District is seeking a Head High School Boys Basketball Coach. High school diploma or equivalent required, varsity level coaching in the direct sport preferred. Please visit www.kasd.org for additional information. EOE.

Lawn Care/ Landscapes Service seeks responsible reliable person w/valid drivers license for Full/PT. Experience w/zero turn mowers required and be able to drive truck w/trailer. 610-926-7934.

Line Cook PT Friday and Saturday Experience Preferred. Call 610-488-6268 for interview appt.

Medical Billing Specialist wanted. Part Time (30+ hrs/wk). Experience a MUST. Knowledge of ICD10 coding required. Certifications are a plus. Busy, family owned ambulance company. Contact Allison @ 610-683-3012.

Morrison Community Living at the Lutheran Home at Topton is hiring full and part time food service workers for our Culinary Services Department. Flexible schedules, competitive salaries and benefits/ perks available. Apply www.compassgroupcareers.com Search for Diakon to see positions. Or call 610-682-1339 for more information. Compass Group/ Morrison Community Living is an equal opportunity employer.

Now Hiring at Dunkin' Hamburg and Shartlesville Locations. Immediate crew member, opening for all shifts. Apply in person at Hamburg Location, 1618 Mountain Rd. or call 610-562-9499.

Part Time and Full time CDL Class A Drivers. Must have at least 5 years current driving experience. Competitive Wages; Sign on bonus after 90 days of Full time employment. We are a local company near Fogelsville. Call our office 610-395-5557 ext. 100 or Email office@westernlehighlandscape.com

Part Time Help Wanted; Property Maintenance and mechanics helper in the country, duties include but not limited to cutting grass, painting, chain saw work, oil changes, general maintenance, hourly work, rte dependent on experience and ability, located 1 mile north of 78 Rt 419, call 717-933-4230.

ATTN RETIRED AND WORKING NURSES: Small RN owned Home Care Agency that values and supports Nurses is seeking Day Shift Nurses to care for an ambulatory young woman in her Pottsville home. Trach. experience helpful but not required. Flexible schedule. You choose the amount of hours that fit your schedule. Equal Opportunity Employer. Contact Ellen ebusher@aehomecare.net or Ph. 570-401-2681.


Compare Our CD Rates <small>Bank-issued, FDIC-insured</small>	6-month	2.30 % APY*	Minimum deposit \$1,000
	1-year	2.35 % APY*	Minimum deposit \$1,000
	2-year	2.45 % APY*	Minimum deposit \$1,000

* Annual Percentage Yield (APY) effective 04/10/19. CDs offered by Edward Jones are bank-issued and FDIC-insured up to \$250,000 (principal and interest accrued but not yet paid) per depositor, per insured depository institution, for each account ownership category. Please visit www.fdic.gov or contact your financial advisor for additional information. Subject to availability and price change. CD values are subject to interest rate risk such that when interest rates rise, the prices of CDs can decrease. If CDs are sold prior to maturity, the investor can lose principal value. FDIC insurance does not cover losses in market value. Early withdrawal may not be permitted. Yields quoted are net of all commissions. CDs require the distribution of interest and do not allow interest to compound. CDs offered through Edward Jones are issued by banks and thrifts nationwide. All CDs sold by Edward Jones are registered with the Depository Trust Corp. (DTC).

David C Doll, AAMS®
Financial Advisor
39 S 4th St
Hamburg, PA 19526
610-562-9500

Dustin D Adam
Financial Advisor
26 W Main St
Fleetwood, PA 19522
610-944-9510

www.edwardjones.com
Member SIPC



Edward Jones®
MAKING SENSE OF INVESTING

PUBLIC AUCTION

ROSE-JOELLE ANNUAL SPRING AUCTION OF TREES, SHRUBS, PERENNIALS, EVERGREENS, EXOTICS
 Friday, April 27, 2019 at 4:00 PM

Location: 309 Golf Rd., Myerstown, Lebanon Co., PA. (Next to Lebanon Valley Golf Course). From Myerstown Rt. 422 take 501 North to Golf Rd. Turn right approx. 1 mile to sale on left. Follow signs.

Is offering a lg. selection of top quality nursery stock. Come take advantage of this great opportunity to purchase sm. or lg. quantities for either your own home or wholesale business at auction prices!! **Flowering Trees & Shade Trees - Flowering Shrubs - Knock-Out Roses.** This is an ongoing business, retail is open Mon. 8-8, Tues. 8-5, Wed. & Thurs. by appt., Fri. & Sat. 8-5. **Note:** Inventory may vary slightly from list. Come see what we have!!!! **Terms:** Cash, PA state check. 6% sales tax will be charged. Food served.

Sale For: ROSE-JOELLE NURSERY & LANDSCAPE DESIGN
 717-866-1995
 "Exotics Our Specialty"

484.256.1323 • AU 2975-L
auctionzip.com ID #11981



Carriers Needed!

To Deliver THE NORTHERN BERKS Merchandiser

No Collections • Once A Week Delivery (No Exceptions)

<p>HAMBURG LEESPORT CENTERPORT - Walking Route - Call Sue Wessner - 610.562.1333</p>	<p>AUBURN NEW RINGGOLD SCHUYLKILL HAVEN - Walking Route - Call Carolyn Ellex - 570.385.5570</p>	<p>MOHRSVILLE HAMBURG - Driving Route - Call Distribution Dept. - 610.562.2267</p>
---	--	---

The Windsor Press, Inc.
 Six N. Third St., PO Box 465, Hamburg, PA 19526-0465
 610.562.2267 or 1-800.562.5521 Hours: Mon-Fri 8-5

HELP WANTED

Berkleigh golf club is looking for PT seasonal employees who enjoy working outdoors. We offer an easy going work environment with a wide variety of jobs to be performed. The job duties will include but not limited to: raking bunkers, mowing lawns throughout the property, string trimming/edging, mowing tees, greens, and fairways. This job is ideal for a student looking for a summer job or a person who is retired and looking to fill their day and supplement income. Pay will be based on experience and will range from \$9.00 to \$11.00 per hour. Schedules and work shifts are flexible. Please contact the Superintendent if interested. 610-683-8268 or jdoney@berkleighgolf.com.

LIFE GUARDS NEEDED. Muhlenberg Swimming Pool, Full and PT, will pay half certified fee, we pay the most and expect the best. Call 610-223-8136.



MICHELIN DEFENDER

FOR CARS, MINIVANS AND CROSSOVERS

- Take on every mile
- Don't sacrifice safety
- Drive in comfort

WE HAVE THE TIRE YOU NEED!

KANTNER'S TIRE SERVICE, Inc.

OUT-THE-DOOR TIRE PRICES
All Tire Prices Include Mounting, Balancing, And New Valve Stem

230 South Franklin Street, Shoemakersville
 HOURS: MON. THRU FRI. 7 TO 5; SAT. 7 TO 12
 610-562-2567
www.kantnerstire.com
 Now Accepting: Goodyear Credit Cards

NOW HIRING

MATERIAL HANDLERS

For Receiving, Shipping, Inventory

\$14.00 to \$15.40/hour starting wage

Mon.-Fri. 6 AM - 2:30 PM or 7 AM - 3:30 PM

APPLY TODAY

www.kgpc.com/Careers and search Alburtis, PA

WORK HARD.
 WORK SMART.
ENJOY THE EXPERIENCE



KGPCo
Alburtis, PA

www.windsorpress.com

Congratulations

TO THE 2019 "SENIOR READER" (AGES 60+) COLORING CONTEST WINNERS!

Prizes must be picked up in person with identification at the office of The Windsor Press, Inc., 6 N. Third St., Hamburg, PA 19526 on Thursday, April 18 or Friday, April 19 - 8 am to 5 pm if possible or call 610.562.2267 if questions
(No early pick ups please - gifts will not be available)

**Thanks
To All Our
Participants!**



**1st Place:
Darlene Gerner,
Hamburg**



**2nd Place:
Dianne McGonigle,
Kutztown**



**3rd Place:
Lorraine Weitzel,
Shartlesville**



**Honorable
Mention
Elda Correll,
Hamburg**



**Honorable
Mention
Lucy Kahle,
Emmaus**



**Honorable
Mention
Marie Kahler,
Deer Lake**



**Honorable
Mention
Paulette Seton,
Hamburg**

A VERY SPECIAL "THANK YOU" TO THE SPONSORS WHO DONATED PRIZES!

BAG LADY'S BAKERY
CHRISTINE RISSMILLER, PASTRY CHEF
Renningers Farmers Market, 740 Noble St., Kutztown, PA 19530
610.926.2135

**CANDY'S HOMEMADE
ICE CREAM & ITALIAN ICE**
Rt. 61, 3/4 mi. N. of Shoemakersville traffic light
610.562.1620

CENTERPORT FLOWER SHOP
1615 Shartlesville Rd., Mohrsville, PA 19541
610.488.8997 or 1.888.609.5969

DEE DEE'S DINER
Rt. 61 (next to Sheetz), Shoemakersville, PA 19555
610.562.0700

MAVEN TRAVEL
APRIL NAFTZINGER, PROFESSIONAL TRAVEL CONSULTANT
19 S. Fourth St., Hamburg, PA 19526 • 610.562.2002 or 1.855.464.2002 • www.bookmaventravel.com

PENNY HILL FARM
ANNUALS, PERENNIALS & SEASONAL PLANTS
4319 Belleman's Church Rd., Mohrsville, PA • 610.926.3298

PINNACLE HYPNOSIS & THERAPIES
LORI D. KLEINSMITH
400B S. Fourth St., Hamburg, PA 19526
610.823.4160 • www.pinnaclehypnosis.com

SMOKIN' BRAYS' BBQ
278 West State St., Hamburg, PA 19526
610.562.6849 • www.smokinbrays.com

THE WINDSOR PRESS, INC.
6 N. Third St., PO Box 465-SCC, Hamburg, PA 19526
610.562.2267 • www.windsorpress.com