

GARAGE DOORS
Residential • Commercial • Doors • Operators
Quality Products + Quality Workmanship
= Quality Customers
Call us today for your • FREE door estimates.

WE FIX DOORS!
MAST 105 S. Dodge St.,
Overhead Bloomfield, IA
Doors 641-680-2016

Tri-County SHOPPER *Happy May Day*

STANDARD
MAIL
U.S. POSTAGE
PAID
TRI-COUNTY
SHOPPER, INC.
POST OFFICE BOXHOLDER
LOCAL RURAL BOXHOLDER
OCCUPANT
CIRCULATION
OVER 11,750
THIRD CLASS

P.O. Box 168 • Bloomfield, IA 52537 • www.tri-countyshopper.com
Phone 641-664-1333 • Fax 641-664-3761 • Email shopper@netins.net



Vol. 47, No. 18
Wednesday, May 1, 2019



Don't forget your mom on
Mother's Day
Sunday, May 12th
We have the perfect gift for the
mom in your life.....

- Flowers
- Hanging Baskets
- Candles
- Crow Canyon
- Chocolates
- Home Decor
- Gift Certificates

IS YOUR YARD READY FOR SUMMER?

This play set is all your active kids need to get moving in the fresh air!
Vinyl Roof • Rock Wall Swings • Trapeze • Slide
Busy Basecamp #B44-6

Choose from one of our many play sets or let us help you customize one for your families needs!

2 miles west of Bloomfield on Hwy 2 • 21021 Jewel Ave.
641-664-1213
Mon. - Sat. 8:00 am-5:30 pm

KEN'S GARAGE
TRENCHING • EXCAVATION

4
Kenneth Richardson
641-208-7980

- Waterlines
- Hydrants
- Livestock Waters
- General Excavation
- Repair
- Drainage Pipe

Competitive Rates • On Site No Hassle Free Estimates
SPECIAL DISCOUNTED RATES FOR LONG DISTANCE TRENCHING
Kenneth Richardson • 641-208-7980
Licensed & Insured

Open House
Sat., May 4th
8 - 5
5% DISCOUNT STOREWIDE

FACTORY REPS!

EXmark Mowers
Demos on site

Troy-Bilt Tillers

Chainsaws, Trimmers, Tillers, Shop Vacs, & Hand Tools.

REAL PEOPLE STIHL STIHL PEOPLE

DOOR PRIZES

Gingerich Logging Supply LLC
1 mile East of Drakesville, 1/8 mile North
STIHL Answering Service: 641-722-3414 STIHL
Hours: Mon. - Fri. 8-5 • Sat. 8- 12 Noon • Closed on Sunday

Specials
valid
May
1st-6th

COUNTRY VIEW STORE

Memphis, Missouri

COME CHECK OUT ALL OUR DAILY IN-STORE DEALS!
VISIT OUR WEBSITE TO SIGN UP FOR OUR EMAIL BLAST AND STAY UP TO DATE ON ALL OUR SPECIALS!

Come join us for our annual **MOTHER'S DAY EVENT**
on **SATURDAY, MAY 11TH!** We will have door
prizes & giveaways, free barbeque hotdogs,
free ice cream cones, and much more!



\$0.89
LIT'L
WEINERS



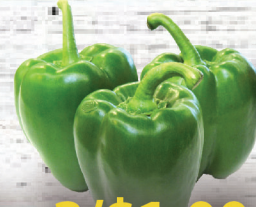
\$1.39/CASE
ACTIVIA
YOGURT



\$1.99
OSCAR MEYER
BACON



\$2.19/CASE
LUNCHABLES



3/\$1.00
GREEN
PEPPERS



3/\$1.00
CUCUMBERS



CHECK OUT OUR
SELECTION OF
POLY LAWN FURNITURE
& GREENHOUSE PLANTS!



\$2.99
SLAM DUNK MEAT
& CHEESE PARTY TRAY



\$1.19
STUFFED BREAKFAST
BISCUITS



\$0.69/1lb BAG
TRIO SNACK FUNS
COOKIES & CRACKERS



\$0.69 OR
\$2.59/CASE
CRACKER BARREL
CHEESE DIP & PRETZELS



\$2.19/PACK
GEORGIA
BLUEBERRIES



\$1.69/DOZEN
WEILER
BROWN EGGS



3 MILES SOUTH OF MEMPHIS, MO ALONG HWY 15 | COUNTRYVIEWSTORE.COM | 660-883-5388 | MON-FRI 8:00AM-6:00PM & SAT 8:00AM-5:30PM

BANTIES FOR SALE:
Roosters- \$1.50 each. Hens-
\$6.00 each.
PH: 641-929-3036 19

FOR SALE: Jack Russel
terrier puppies shots &
wormed.
PH: 641-664-1264 18

FOR SALE: Fox terrier
puppies, farm raised
wormed & ready to go now.
PH: 641-664-1964 ext. 5 18

COME WORSHIP WITH US AND STAY FOR A

Sunday, May 5th
Service at 11:00 am
Lunch at Noon

Mark Baptist Church
16033 276th St. • Bloomfield

WE WOULD LOVE TO GET TO KNOW YOU!

**Taco &
Burrito
Buffet**



complete with
desserts

WANTED: NON GMO
shelled corn. Also V rake.
VM: 641-664-1061 ext.1 19

WANTED: Looking for
some **RESULTS** at sheep.
PH: 641-652-7707 19

FOR SALE: Electric motors,
25 hp & one 30 hp with
controls. PH: 641-664-1145.

There are always obstacles on the road.



FREE
Estimates

While we wish you safe
travels, we know that
accidents happen.

See us for your dent/scratch repair,
unibody repair, factory color
matching and frame straightening.

**We are your Collision Repair
& Paint Specialist!**

Walker Motors
Collision Repair Inc. ————— **Hertz**

375 S. Main St. • Memphis, MO • 660-465-2159 • Shop Phone/Fax

Yoder
**Glass &
Window**

Vinyl Windows
Entry Doors

Design that fits your home!

FREE LAY VINYL FLOORING



WHY USE FREE LAY FLOORING?

When you damage a tile or plank in the
center of your floor, simply lift the
offending plank and lay the new plank in
it's place. It's that simple.

**Installation
Available!**

Robert W. Yoder

19467 Driftwood Blvd • Bloomfield • 641-722-3667



**Are you about to retire?
Have you already retired?**

*Rolling over your
retirement plan can
be simple and easy!*

**I offer a variety of investment
products that can help preserve
and grow your retirement savings!**

FOR SALE: Firewood at RJ
Lumber, \$15 a pickup load.
18989 160th St., Drakesville,
IA 52552. TF

FOR SALE: 55 gallon metal
barrels (burning barrels -top
cut out), \$13.00. Ottumwa.
PH. 641-814-2562. 19

NEW MATTRESSES FOR SALE!

Selling individually or in sets. Factory warranty.

TWIN - FULL - QUEEN - KING

641-664-3060

FOR SALE: 6 1/2' x 12' one
axle trailer, removable sides,
long loading ramp, 8 ply
tires, reasonable offer.
PH. 641-799-5970. 18

FOR SALE: Live Edge
slab table tops or complete
tables.
PH. 660-216-4907 or 660-
342-5417. 18



Butter \$2.29/lb.

Fully Cooked Bacon \$1.79

Heinz Ketchup 38 oz..... \$1.75

Honey Comb Cereal 14 oz..... \$1.25

Smithfield Sausage Patties 12 oz \$1.29

Muenster Cheese 6 lb. loaf \$2.19/lb.



3/4 mi. E. of Drakesville, IA on 180th St.
Mon-Sat: 8:30am - 5:00pm
VM: 641-664-2661

Cornerstone Investment

Chuck Riegenbach
Financial Planner

108 W. Jefferson St. • Bloomfield, IA 52537
Office (641) 664-3700

Securities and investment advisory services offered through Woodbury Financial Services Inc. (WFS), member
FINRA/SIPC. WFS is separately owned and other entities and/or marketing names, products or services referenced
here are independent of WFS.

FOR SALE: 1980 Dodge
3/4 ton, 2x4, 225 motor,
\$450 OBO. 300 gallon
Rubbermaid stock tank,
\$100 OBO.
PH: 660-216-2623 19

**MAST
VINYL
WINDOWS**
THERMO-PRO WINDOWS
Custom Size Is Our Specialty
Professional
Installation Available
THERMA-TRU
DOORS
**FREE
ESTIMATES**
22172 Hwy. 63
Bloomfield, IA 52537
800-206-9949

**Yoder's Indian Creek
Furniture.** Great selection
of dining room, living room
& bedroom furniture built
with solid hardwood. Also
maintenance-free poly lawn
furniture in a variety of
styles & colors. Poly martin
houses & gourd racks. Rt.
V64 Milton, Iowa. Located
4 miles North of Cantril or
3/4 miles South of Lebanon
on RT. V64, Monday to
Saturday 8 a.m. to 5 p.m. No
Sunday sales. PH. 319-538-
7332 22

FOR SALE: Used garden
tillers: several BCS, many
Troy-Bults and others. Also
used DR brush mowers and
attachments. Some like new.
Kahoka, MO.
PH: 660-216-1809 18

FOR SALE: 250 gal. fuel
tank w/ stand- \$350. 1000
gal. S.S. water tank on 2
wheel axle- \$800. 375 gal.
S.S. bulk tank- \$800. Double
5 wheel hay rake w/ new
hyd. hoses- \$1,800. Older
cattle head gate chute on
tires- \$300. OBO on any.
VM: 641-664-2570 19

FOR SALE: 2 1/2" x 4x8
sheets Polyiso insulation,
15R value, \$15.75 per sheet.
Richard Mast, 18420 Flora
Ave., Bloomfield, IA
VM: 641-664-1891, Ext.1 19

EARLY BIRD SPRING SALE



UP TO
**25%
OFF**

Select In Stock Items
**Now Through
May 15th!**
Check out the new colors
for 2019!

Locally Built!



VM: 641-664-0207
1 Mile East of Drakesville
on Jade Ave.
Mon.-Sat. 9:00 AM - 5:00 PM

WANT TO BUY: 16'x6' or
7' tandem axle utility trailer
with 2" ball hitch. Also cast
iron bell. PH. 641-814-2639.

Shady Lane Variety

OPEN HOUSE
SATURDAY, MAY 4TH
Refreshments Served!

Stop in and check out all
the great items we
have to offer!

1 mi. E. of Drakesville
on Jade Ave. • 641-664-0207
8-5 Mon. thru Sat.

FOR SALE: 4 drawer
dresser, \$75; Portable dish-
washer (Maytag), \$125;
6400 BU A/C, (Soleus air
& thermostat & remote),
\$125; 20 in. flat screen TV
(Sylvania, has remote), \$125;
6400 BTU A/C (Soleus air
- thermostat & remote),
only used one time, \$150;
Sylvania 20 inch flat screen
TV, \$125.

PH. 641-675-3070
CASH ONLY! 19



**2013 Polaris
Sportsman 400**
w/ windshield, green, 4,400
miles, very good condition



**2012 Polaris Sportsman
X2 550**
w/ dump bed, red, 6,200
miles, good condition



**2013 Polaris Ranger
800 Mid Size**
w/ 1/2 windshield, top, rear
bumper & wench, very
good condition

Slayton Polaris

8 mi. S & W from Pulaski or 6 mi. W of Memphis then 13 mi. N on Route B

660-328-6627

FOR SALE: 5'x8' Carry-
On Brand utility trailer, ex-
cellent condition, \$500.
PH. 319-293-9150. 19

FOR SALE: 498 IH Disk,
20 ft., Hyd. fold, \$4,000. 20
ft. Glencoe field finisher,
\$4,000. PH: 641-208-0318

FOR SALE: Truck bed trailer
\$75. Tilt bed trailer 10 ft.,
wood floor, New, \$200 OBO.
PH: 660-216-2623 19

2018 PIONEER FIFTH WHEEL



**JUST
IN!**

Beautiful Fifth Wheel with 2 slides, bunks,
outdoor kitchen, lots of cabinets/closets, nice
sized bathroom attached to queen bedroom.
Sleeps up to 8.

LakeWood RV Sales & Rentals

Hwy. 136 E., Downing, MO
9 miles W. of Memphis or 1 1/2 miles E. of Downing
Tues.- Fri. 8-5 • Sat. 8-Noon, Closed Sundays & Mondays
Ph: 660-379-2763 Cell: 660-341-1927
www.lakewoodrvsales.com

2016 Malibu LT



\$11,950
95,000 MILES



**JOHN IS
KNOCKING
HIGH PRICES
OUT OF THE
PARK!**

Check out these
great deals!



2013 Ford F-150 Limited

2017 FORD FUSION SE



\$10,800
4CYL, 84,912 MILES
CLOTH SEATS

2013 Chevy Suburban



**47,000 MILES LTZ, HEATED &
COOLED LEATHER SETS,
DVD PLAYER.**

2018 Chevy Equinox



\$16,225
FWD, 4CYL,
24,000 MILES,
ALLOY WHEELS

Kollision Korner

504 South Drake St. • Bloomfield, IA 52537
PH: 641-664-2648 • Fax: 641-664-2948



Gorilla Open Tournament



**Sunday,
May 5th**

9 am tee off

2 person best shot
\$30/person includes lunch.
Cart additional cost.



Call clubhouse to sign up
(641) 664-2089
Open 7 Days A Week



FRIDAY NIGHT SCRAMBLE

Starts
May 3rd at 6PM

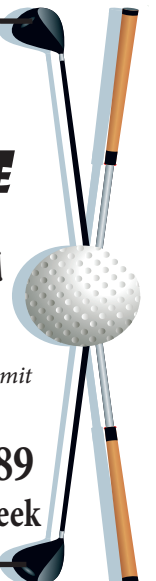
\$5/ member couples

\$10/ non member couples

(Does not count towards 2 time play per year limit
for non members in county)



(641) 664-2089
Open 7 Days A Week



Check out what's happening at the DAVIS COUNTY DAYCARE & PRESCHOOL

**SUPERHERO
Summer Camp**

**JUNE 3RD THRU
AUGUST 16TH**

**Mon. - Fri.
8:00 - 3:30**

**Age Groups : \$20 Enrollment
4-5 & 6-12 : \$20 Daily Rate**

Weekly Themes • Visiting Heroes • Swimming • Much More

Open House

Thurs., May 9 • 5-7 PM

Everyone is welcome to visit all our
classrooms & meet our teachers!

SERVING HOT DOGS, CHIPS & COOKIES

You can sign up your 3 year old
preschooler at this time.

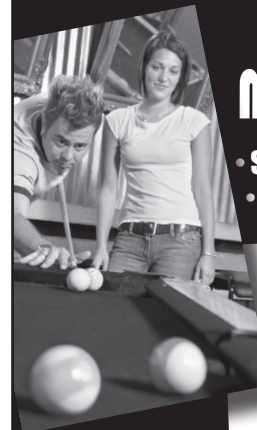
Check out our Facebook page for more details about both of these upcoming events.

Davis County Daycare & Preschool • 200 N. East St., Bloomfield • 641-664-3130

Scottish Co-ed Pool Tourney

**Saturday,
May 11th - 1 PM**

• Sign up at noon/ play at 1pm sharp
• \$20 per team



**American
Legion**
Bloomfield, IA

Friday, May 3rd

Choice of 12 or 14 oz. Ribeye with sides

Serving at 6:00 P.M.

**Dine
In**

722-3355

**Carry
Out**

RAY'S LONGBRANCH

Drakesville, IA

Celebrate
CANTRIL DE MAYO

Come join us for a wonderful
meal Mexican style
Sat., May 4th
5PM-?
(til the food runs out or
the people quit coming.)
**Cantril
Fire Station**
Tacos, Taco Salad
& Chicken Fajitas
Load them yourself with the works!
Cheese, tomato, onion, sour cream, black
olives, salsa, jalapeno, etc.
& Desserts Free Will Offering
Sponsored by Cantril Dayz Committee
for Cantril Dayz

**RUMMAGE
SALE**

Bloomfield United
Methodist Church
401 E. North St • Bloomfield
.....
Thursday, May 2nd
7:00 AM - 6:00 PM
Friday, May 3th
8:00 AM - NOON
Friday fill a sack for \$1

**IOWA THEATER
BLOOMFIELD, IOWA**

"SHAZAM"



**Friday, May 3rd
Saturday, May 4th**

7:00 PM

Sunday, May 5th

4:00 PM PG

Coming Soon:
Breakthrough



BMAI Bluegrass & Old-Time Country Music Festival

May 2 - 4, 2019 • Drakesville, IA

(Held at the Drakesville City Park)

SCHEDULE OF EVENTS

Thur., May 2nd
Open Stage • 7 PM

Fri., May 3rd
Open Stage Show • 7 PM

Sat., May 4th
Open Stage Show • 1-5 pm
Open Stage Show • 7 pm

Sign up for stage times.
Jam Sessions all week.
Activities all week.

- Food & Concessions on the grounds
- Free admission - Donations accepted
 - Camping \$10 per night.
 - Merchandise vendors welcome!

For Information:
Lori King
641-799-1442



FIND US ON
FACEBOOK

www.iowabluegrassmusic.com

Sponsored by: Bluegrass Music Association of Iowa

Southfork MOTEL & GRILL

JUNCTION OF HWY 2 & 63
BLOOMFIELD • 641-664-1063

Breakfast • Lunch • Dinner
Daily Hot Specials and Evening Features
Prime Rib Capital of the World! Served on Friday & Saturday Nights
Banquet Facilities Available for All Occasions • Catering

"Where Quality and Consistency Matter!"

Tues - Thurs 7am-9pm • Fri - Sat 7am-10pm
Closed Sunday and Monday

Can & Bottle Drive "Team Tammy" (Tammy Boxx)

Funds raised will help with on going cancer treatments.

Drop your cans & bottles off at:

Davis County Redemption Center, 204 S. Madison St., Bloomfield

Benefit scheduled for June 8th. For more information contact:

Linda Blackwell • 641-777-6978



L&M Country Store

1 1/2 miles south of west Hwy 2 & 63 jct.
Mon-Sat. 8am-5pm CLOSED SUNDAYS
VM: 641-664-1936

13 oz. Chips Ahoy Cookies.....\$1.89
Smithfield Ham Steaks\$1.49/lb.
3 lb. Shredded Mexican Blend
Cheese.....\$2.69
36 oz. Miracle Whip.....\$2.50
5 lb. Kluski Noodles.....\$9.95
12.9 oz. Whole Wheat Ritz Crackers \$1.99

WANT TO BUY: Old toys, pedal cars & tractors, cast banks, old bikes and trikes, scooters, wagons, BB guns, black powder guns, old wall hanger guns, any ammo, large metal traps, pocket knives & hunting knives, swords and bayonets. Any condition. Pay cash. PH. 641-814-2639. 18

GARAGE DOORS

Residential • Commercial • Doors • Operators

Quality Products + Quality Workmanship = Quality Customers

**Call us today for your.
FREE door estimates.**

MAST WE FIX DOORS!
Overhead Doors 105 S. Dodge St., Bloomfield, IA
641-680-2016

Reflexology

Give your mother
the gift of relaxation!

GIVE HER A GIFT CERTIFICATE!

Don't forget you mom on
Mother's Day • Sun., May 12th



Essential
MASSAGE & SPA

Renita Murrell • 641-664-1022
Book online :
www.essentialmassagespa.com
209 E. Franklin St., Bloomfield
Tuesday, Thursday, and Friday
10 AM - 6:00 PM and some Saturdays.

FOR SALE

Driveway Fabric Rolls
Commercial, Heavy Duty,
Designed for Heavy Traffic

12' 5" Wide
432' Long
\$370/ roll

660-216-0938

FOR SALE: 32' 1990
camper, good tires, air,
\$1,450 OBO; 10' tilt bed
trailer, \$650 OBO; 4' forks,
41" tall, 2 1/2" thick, \$350;
3 pt. big bale loader, 9' forks,
\$150; 2002 S10 parting out;
10:00-22 truck tires, 12 ply,
\$35 each. PH. 660-216-3715.



19091 180th St • Bloomfield, IA
VM 641-722-3540
3/4 miles east of Drakesville, south side
Hours: M-F: 7:30 AM - 5:00 PM
Sat. 7:30 AM - 12:00 PM

Competitive pricing & also
contractors discount!

1/2"x100' Pex Waterline
3/4"x100' Pex Waterline
1/2"x300' Pex Oxygen Barrier
200 lb. Test 1" - 500'
200 lb. Test 1 1/4"x500'
Boshart 4" Bury Hyd.
Any Flow 4' Bury Hyd.
Iowa 4' Bury Hyd.
Iowa 5' Bury Hyd.

FOR SALE: Black
Simmental bull, low birth
weight, good genetics.
PH: 641-208-0424 20



GOLDEN RETRIEVER PUPPIES FOR SALE:

AKC Registered, born March
7, ready for new homes
May 2. De-worming, shots
up-to-date. Parents are
house pets. Pups raised
in our home.

**816-560-0477 • 816 260-8914 in
Unionville MO .**

FOR SALE: Organic corn
16% moisture \$9.00 a bush.
William Yoder 15439 220th
St., Bloomfield, IA
PH: 641-664-2759 18

WANTED TO BUY
STANDING TIMBER:
"Buying all species." We do
quality work & pay up front.
PH: 641-799-2137 17



• Specializing in
Septic Systems
• Certified For Peat Tanks
and Sand Filters
• Can Also Do Other Drains
and Water Lines
• Cattle Waterers

Call or Text Shawn @
641-208-0861 • Bloomfield, IA
Free Quotes Available

HOURS
8 A.M.
to
5:00 P.M.
DAILY EXCEPT
SUNDAY



**Zimmerman's
Store**

Rutledge, MO

660-883-5766



Fresh Ocean Spray Strawberries, 1 lb. \$1.39 • Fresh Ginger Root, \$1.45 lb.
Fresh Home Grown Asparagus, \$2.49 1/2 lb. • Tomatoes, 95¢ lb.
Stop Light Peppers, 3 ct, \$3.19 • Cauliflower, \$2.75 each

SPECIALS!

Mild cheddar cheese, 1 lb. block\$2.19
Drinkable peach yogurt, 12/ 7oz.\$2.98
Strawberry/strawberry kiwi yogurt, 12/3.1 oz.....\$1.29
Reddi Wip aerosol chocolate whipped cream, 6.4 oz.....69¢
Kraft Cheez Whiz, original, 15 oz.\$1.55
Kraft ranch dressing, 1 gallon.....\$3.49
Maxwell House coffee, medium roast, 30.65 oz.....\$5.89
Nabisco Teddy Grahams, cinnamon, 10 oz.....\$1.15
Nabisco mini Oreo cookies, 8 oz.....89¢
Ambrosia white chocolate coating, 10 lb\$17.95
Orbit Bubblemint gum, sugar free, 3-14 piece packs95¢

FROZEN

Green beans, regular cut, 32 oz.....\$2.15
Green beans, french cut, 32 oz.....\$2.19
Broccoli florets, 2 lb\$2.35
Cauliflower, 2 lb\$2.49
Baby limas, 40 oz.....\$3.55
Potatoes, quartered, 5 lb\$5.49

Extendable LED Magnetic Pick Up Tool, \$3.89
Dual Cob LED Trouble Light, 300 Lumens, \$5.49
24 LED Camping Lantern, Compass On Top, \$7.59

DRIVE A LITTLE & SAVE A LOT

**KW
Electric**



Keith Waller: 641-777-6701
Matt Waller: 641-799-9220
Austin White: 641-226-4495

• Licensed & Insured
• Free Estimates

641-459-3889 13346 Lily Ave.
Bloomfield, IA

MAY

Specialty Clinic Schedule

Dr. Ron Graeff	Allergy/Pulmonology	641-664-3840	M, T, W, Th
Dr. John Harrington	General Surgery	641-664-7091	M, T, W, Th, F
Dr. Boling	OB/GYN	641-664-7091	23
Jay Brewer, CRNA	Pain Clinic	641-664-3602	7, 14, 21, 28
Dr. Whitman	Ear, Nose, Throat	641-664-7091	6, 13, 20
Dr. Ciesemier	Allergy/Immunology	641-664-7091	10, 24
Dr. Cleaver	Dermatology	660-627-7546	23
Dr. Homedan	Orthopedics	641-664-7091	15, 16, 22, 29
Dr. Holte	Podiatry	641-664-7091	17
Dr. Jackson	Rheumatology	641-664-7091	7, 14, 21, 28
Shayla Sanders, ARNP	Rheumatology	641-664-7091	7, 14, 21, 28
Dee Dorsett, ARNP	Cardiology	641-682-5349	2, 16
Linda Schilling, ARNP	Dermatology	641-664-7091	13
Melissa Gingrich, ARNP	Women's Health	641-682-8761	3, 10, 17, 24, 31

509 N. Madison • Bloomfield, Iowa 52537
www.DavisCountyHospital.org

**GENE'S
SURPLUS**

Brands you like at prices you love

JUST IN



New load of patio furniture! Lots to choose from.

Outdoor Cushions - Different Styles & Colors
Stepping Stones • Garden Memorial Items
Battery Powered Ride on Toys • Tricycles with Carts
SO MANY MORE ITEMS TO NUMEROUS TO MENTION!

HWY 136 WEST • MEMPHIS, MO • 660-465-7445
MON-FRI 8:00 TO 5:30, SAT 8:00 TO 4:00

*Thought to
ponder....*

It is the eyes of other people that ruin us. If all but myself were blind, I
should want neither a fine house or fine furniture - Benjamin Franklin

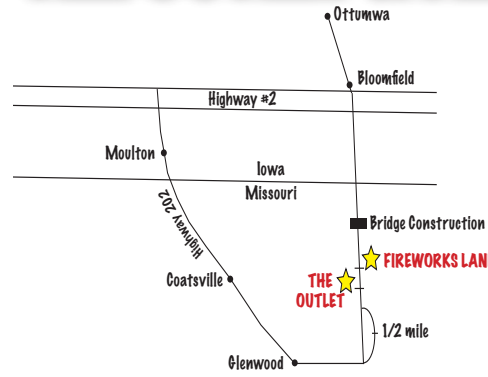


Warning!!! CONSTRUCTION!

Don't be "detoured" by bridge construction....

Just follow our map to

THE OUTLET & FIREWORKS LAND!



From Iowa

Highway #2, take

Highway #202

South to Highway

63. Turn north

1/2 mile.

Bring in this ad and receive \$1.00 OFF each carton of cigarettes purchased or 15% OFF any fireworks purchased during construction!

Save Your Punch Cards For Later!

Hwy. 63 Lancaster, Missouri

660-216-7632

AMERICAN OWNED & OPERATED!

THE OUTLET!

Premier Ag Solution, L.L.C.



Supplying your seed and precision farming needs

Bloomfield, Iowa Gene Joos: 641-777-5997 • Lincoln Joos: 641-777-2968
Office: 641-664-3412 premieragsolution@gmail.com

Trailer Sale: "Free Spare" with all Steel single axle utility trailers in-stock (Ends 05/08/19). 8'X20' Enclosed construction trailers; Aluminum single axle utility trailers; 14k, 16k & 20,000lb. Gravity-tilt skid-loader trailers; 15 models of DUMP trailers. Information & prices: www.FortDodgeTrailerWorld.com 515-972-455 (MCN)

DONATE YOUR CAR TO CHARITY. Receive maximum value of write off for your taxes. Running or not! All conditions accepted. Free pickup. Call for details. 855-752-6680 (MCN)

DISH Network \$69.99 For 190 Channels. Add High Speed Internet for ONLY \$14.95/month. Best Technology. Best Value. Smart HD DVR Included. FREE Installation. Some restrictions apply. Call 1-855-434-0020 (MCN)

Get a SMARTPHONE for \$0 DOWN* with AT&T Next® and AT&T Next Every Year? \$250 Gift Card for switching to AT&T! (*Req's well-qualified credit. Limits & restr's apply.) CALL 1-844-290-8275. (MCN)

Acts 18:10: For I am with-you, and no one is going to attack and harm you, because I have many people in this city."

Become a Published Author. We want to Read Your Book! Dorrance Publishing-Trusted by Authors Since 1920 Book manuscript submissions currently being reviewed. Comprehensive Services: Consultation, Production, Promotion and Distribution Call for Your Free Author's Guide 1-855-520-9045 or visit <http://dorranceinfo.com/Midwest> (MCN)

A PLACE FOR MOM has helped over a million families find senior living. Our trusted, local advisors help find solutions to your unique needs at no cost to you. Call 1-888-894-7038

Tri-County SHOPPER

PH: (641) 664-1333
shopper@netins.net
tri-countyshopper.com

Personal Classified Ads

1ST WEEK Only! \$9²⁵

2ND WEEK + \$1⁰⁰ \$10²⁵

3RD WEEK Wow! FREE

Fill in the form below as you want your ad to appear. We must receive this by Friday at 5:00 PM to appear in the following week's Shopper. There will be an additional 10¢ charged for each word after 20.

BUSINESS EXEMPT • WANT ADS ARE CHECK, CASH, OR CREDIT CARD


									5
									10
									15
									20
1 WK - \$9.35	3 WK - \$10.35	1 WK - \$9.45	3 WK - \$10.45	1 WK - \$9.55	3 WK - \$10.55	1 WK - \$9.65	3 WK - \$10.65	1 WK - \$9.75	3 WK - \$10.75
									25
1 WK - \$9.85	3 WK - \$10.85	1 WK - \$9.95	3 WK - \$10.95	1 WK - \$10.05	3 WK - \$11.05	1 WK - \$10.15	3 WK - \$11.15	1 WK - \$10.25	3 WK - \$11.25
									30
1 WK - \$10.35	3 WK - \$11.35	1 WK - \$10.45	3 WK - \$11.45	1 WK - \$10.55	3 WK - \$11.55	1 WK - \$10.65	3 WK - \$11.65	1 WK - \$10.75	3 WK - \$11.75
									35
1 WK - \$10.85	3 WK - \$11.85	1 WK - \$10.95	3 WK - \$11.95	1 WK - \$11.05	3 WK - \$12.05	1 WK - \$11.15	3 WK - \$12.15	1 WK - \$11.25	3 WK - \$12.25
									40
1 WK - \$11.35	3 WK - \$12.35	1 WK - \$11.45	3 WK - \$12.45	1 WK - \$11.55	3 WK - \$12.55	1 WK - \$11.65	3 WK - \$12.65	1 WK - \$11.75	3 WK - \$12.75
									45

Name: _____ Address: _____

City: _____ State: _____ Zip: _____ Phone: _____ Run my ad _____ times.

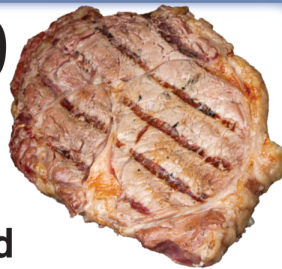
Mail your completed ad form & payment to:

Tri-County Shopper • P.O. Box 168 • Bloomfield, IA 52537





\$3.99
per lb.



Ungraded
Whole Boneless
Beef Ribeye



Frozen
85% lean

\$1.99
per lb.
Ground Beef

\$1.49
per lb.



Holton 7oz.
100% Beef
Hamburger Patties



Truckload SALE

89¢
8 oz.

RICH'S

Whipped Topping



99¢
16 oz.

Ocean Spray

Strawberries



Fully
Cooked

99¢
per lb.

Grilled Chicken Bites



\$1.29
per lb.

**Fully Cooked Breaded
Chicken Wings**



7-9 slices

\$1.75
2.5 oz.

Fully Cooked Bacon



• Chunky • Chewy • Original

\$1.89
13 oz.
**Chips Ahoy
Cookies**



\$6.99
plus deposit

**24 Pack Cans
Coke Products**



\$1.49
8 oz.

**WALNUT CREEK
FOODS**

**Walnut Creek
Shredded Cheese**



\$2.29
per lb.

**Walnut Creek
Easy Carve Ham**



\$4.99
gallon

KRAFT

Miracle Whip



\$10.95
25 roots
per bundle

You CAN plant your own
ASPARAGUS



\$7.95
25 Plants
per Bunch

5 Different Varieties
Plant your own
STRAWBERRIES



\$1.99
2 pound
pack

**Crumbled Queso
Fresco Cheese**



3/\$1
Assorted Candy Bars

\$1.49
per lb.
**Bulk Unwrapped
Peanut
Butter
Cups**



DUTCHMAN'S STORE Division Street CANTRIL, IA (319) 397 2322

STORE HOURS • Weekdays, 8a.m. - 6 p.m. • Saturday 8a.m. - 5 p.m. • Sunday Closed

View our specials online - www.DutchmansStore.com

SALE PRICES May 1-7, 2019
While Supply Lasts

C.H.I. MIDWEST
Overhead Door

✓ Out Our Competitive Prices!

21387 Route V64
Keosauqua, IA 52565
660-216-0812

Our goal is to keep your doors rolling smooth!

Sales • Parts • Service ~ Free Estimates
We sell new doors and openers or we'll service your old one.

FOR SALE: Holstein Beef Steers. Buy 1/2 or 1/4. Will deliver to local lockers within 15 - 30 miles. Located in Milton, IA. PH: 641-799-4068 or 641-799-4018

FOR SALE: 1997 Ford Econoline 150, Centaurus, 97,000 miles, PRICE REDUCED \$3,000 OBO. PH: 641-455-8371 20

FOR SALE: Mickey Thompson wheels with tires. Light truck. LT 265/70R18 fits F250. \$1,200. PH: 317-374-2753 20

FOR SALE: 2000 model, 3 bedroom, 2 bath mobile home. \$26,000 OBO. MOTIVATED seller. PH: 641-208-6689 20

FOR SALE: 1961 Frigidaire kitchen range, \$150 OBO; IH 1250 grinder mixer with digital scales, good condition, \$4,000 OBO; Also indoor & outdoor hog feeders. PH. 641-722-3300. 20

GARAGE SALE: 110 E. Main • Drakesville, IA. Baby girls clothes up to size 6. Lots of new girl toddler clothes. Womens size Med to XL. Household items, toys & kids shoes. Fri., May 3: 9 - 12 noon Sat., May 4: 8 - 12 noon

Hawkins - Harrison Insurance



SHOPPER ADS CAN BE DROPPED OFF HERE!

Proud to be your partner.

P.O. Box 365
Lancaster, MO
63548
660-457-3020

103 W. Monroe St.,
Memphis, MO
63555
660-465-8533

WITMERS FURNITURE
MEMPHIS, MO

For the way you live

NEW HOURS: Mon 9 - 5 • Tue By Appointment • Wed - Sat 9 - 5
Sun - Closed • Evenings - By Appointment

17999 US Hwy 136 • Memphis, MO 63555
PH: 660-465-2461
mwitmer@witmersfurniture.com • www.witmeramishfurniture.com

HELP WANTED

CANTRIL TRUCK & TRAILER
319-238-7367
101 North St. • Cantril, IA
www.cantriltruckandtrailer.com

Cantril Truck and Trailer
is currently looking for a **Salesperson & Shop Employees** for our Store in Cantril, Ia. Please apply in person.



Old Waybills Fireworks Stand Across From Conoco!

20956 E. IA/MO Street • Lancaster, MO • 847-379-1150
Mon-Thurs 8am-9pm. Fri- Sat: 8am-10pm
Sunday: 8am-8pm

Your One Stop Shop!

We are open during the construction of North Fabius Middle Fork River.
There will be detour signs posted but those are geared toward semis.

SO PLEASE REMEMBER WE ARE ACCESSIBLE FOR BUSINESS.

Also this year we have a massive fireworks collection update, and twice as many styles.

SO GET MORE BANG FOR YOUR BUCK!!!



CHECK OUT OUR SEVERAL IN-STORE SPECIALS!

MAKE CALVING EASIER WITH....



For-Most Livestock Equipment




Calving Pen Care Center



LaCrosse & Muck Boots



Flexilla Pro Custom Hose Center Air & Water Hose by Legacy



We carry Cobett Waterers

Hamilton Produce Co.
105 W. Franklin • Bloomfield, IA 52537
641-664-2459 or 1-800-469-7749

Spring for RANGER MINERALS

NEMO RANGER MINERALS
Purchase 1 ton, get **5 BAGS FREE***
Purchase 10 bags, get **1 BAG FREE***

***Deals good April 1 - May 31**

Check out these hot deals for the hot summer months ahead!
We also carry bale wrap, net wrap, twine, and more!

AquaVet
We carry a full line of pond dyes, pond cleaner, shoreline cleaner, and submerged weed cleaner.
Get your pond in shape this spring to enjoy this summer!



Diamond M Grilling Pellets
• 100% Natural Kiln-Dried Hardwood
• Competition Grade
• Apple, Hickory, Maple, Mesquite, and Cherry

\$9.99



Hometown ANIMAL HEALTH
660.465.2967 • hometownanimalhealth.com
18743 US Hwy 136 • Memphis, MO 63555
On Highway 136 west of Memphis



NUTRITION • MEDICAL • PET • FARM • APPAREL

AUTHORIZED DEALER OF NEMO FEED.

FOR SALE: 8 week old Holstein bull calf, \$155; 1 year old Holstein steer, \$500.
PH. 641-664-1891, Ext. 3 20

FOR SALE: 500 gal. diesel tank on wheels w/lights. Good shape.
PH: 641-777-8821 20

FOR SALE: JD 4850 MFD excellent condition field ready.
PH: 641-208-0424 20

FOR SALE: 1999 Dodge Ram 1500, \$1,100 OBO.
PH. 501-553-2964. 20

TRI-COUNTY SHOPPER CLASSIFIED AD DEADLINE IS FRIDAY, 5 P.M. EVERY WEEK. Classified ads must be paid for in advance. Mail your ad to Tri-County Shopper, P.O. Box 168 Bloomfield, IA. 52537. For questions call us at 641-664-1333.

MUTCHLER CENTER 20TH ANNIVERSARY SPECIAL

Through the month of May....
Get \$20 OFF an annual membership for individuals and \$40 OFF any annual family membership.
ONLY annual memberships, not a month, 3 or 6 months!

Mutchler Community Center
900 E. North, Bloomfield
641-664-3939

FOR SALE: 4 - 40 ft. trusses, 8' o.c., \$300; 17 - 30 ft. trusses, 4' o.c., 1 ft. O.H., \$1,200; 16 - 8 ft. mono trusses, 4' o.c., 1 ft. O.H., \$300; 15 - 26 ft. trusses, 2' o.c., 2 ft. O.H., \$900; Various length 3 ply 2x6 posts \$1.75/ft., slightly crooked; Slightly crooked or barked lumber: 2x10's 50¢ ft.; 2x8's 40¢ ft.; 2x6's 30¢ ft.; Treated lumber: 2x8's 55¢ ft.; 2x6's 45¢ ft.

QUALITY TRUSS
PH: 641-208-7378.

18

PUPPIES FOR SALE: Great Pyrenees pups. Parents are working guard dogs for our sheep herd, \$250 OBO.
PH: 641-799-2137

18

STAYING IN BUSINESS:
JOE'S BARBER SHOP
Hours: Thursday & Friday 8:00-5:00 & Saturday 8:00-Noon. 210 E. Franklin St., Bloomfield, IA.
PH: 641-664-2020, 641-208-5561

TF

LARGE GARAGE SALE:
Fri., May 3rd, 8 -5 & Sat., May 4th, 8 -12. Oak roll top desk, wicker furniture, household items, lots of brand new clothes (Some never worn) & Much Much More! 13351 Hwy 63 (Across from Floris turn off)

GARAGE SALE: Thursday, May 2nd, 4-7 p.m.; Friday, May 3rd, 8 a.m.-4 p.m.; Saturday, May 4th, 8 a.m.-noon. Lots of teaching materials, books, clothing, shoes, purses, household goods, toys & MORE.
16240 HWY. 63, Mayberry & Saner.

FOR SALE: Trailer 5' x 8' with 2 ft. high wood sides, spare tire & wheel tongue jack.

PH: 641-208-6868

20

Highway 2

DI\$COUNT Groceries L.L.C.

Mon. - Sat 8:30am - 5:00pm
VM: 641-664-1187
19686 Hwy. 2, Approx 2 miles, West of Bloomfield

Sale good Wed., May 1st through Tue., May 7th.

 Hormel pork loin fillet herb, dry seasoned, approx. 1 1/2 lb. \$1.59 a lb.	 Oscar Mayer smoked ham, 8 oz. 49¢	 Chicken tenderloin fritters, fully cooked, approx. 5 lb. 99¢ a lb.
 Frozen boneless pork loin, approx. 3 lb. \$1.59 a lb.	 Boneless skinless chicken thighs, 40 lb. \$1.49 a lb.	 Blue Ribbon vanilla ice cream, 1 gal. \$5.99
 GT's original kombucha, organic & raw, 48 oz. \$2.99	 Crider premium pulled pork, 9.5 oz. \$1.39	 Athenos baked pita chips, roasted garlic & herb, 9 oz. 65¢
 Palermo organic cold pressed unrefined coconut oil 14 oz. \$4.95	 Mt. Dew & Pepsi, 24 pk. \$7.99 + deposit	
 Tator Tots, 5 lb. \$1.25 a lb.	 Richfield Orchard plums in heavy syrup, 15 oz. 49¢	 Amish laundry soap is BACK! COME & GET IT!
		 Tide original cold water, scent free, 63-80 loads \$11.99

RUMMAGE SALE: Thurs., 5 p.m.-?, Fri., 11 a.m.-?, Sat., 11 a.m.-?. Plus size clothing, music gear, lots of misc.
Drakesville City Park Shelter.

FOR SALE: 3-yr. old Polled Hereford bull, have all the papers on bull. Also 4 yr. old Angus bull. Both will be semen tested & tick tested.
PH: 641-652-7707.

19

MOVING SALE: May 2nd - 3-7 & May 3rd - 9-2. Furniture, kitchen, household; all must go! 208 N. Madison • Bloomfield, IA

The best crop starts with the best seed!



Let John & the guys at Crop Services help you get the best from the start!

Invest in top-quality seed, and watch your farm reach its top earning potential.

Alfalfa & Clovers • Balanced Mixes
Seed Wheat & Oats • Grasses

Crop Services, Inc
John & Kathy Bos, Owners
Drakesville, IA • 641-722-3293

NuTech Seed

YODER EQUIPMENT
BLOOMFIELD, IOWA

Mineral Feeders
Gates
Variety of Sizes & Styles
Feed Bunks
Water Tanks
Continuous Fencing
Extra heavy 10 gauge bale rings & hay savers

PRIDE OF THE FARM WATERERS & BULK BINS

19887 Jade Ave
2 1/2 Miles W of Bloomfield
V.M. 641-664-2797

MFA- Agri Services Memphis
PO Box 253 • Memphis, MO 63555 • 660-465-2603



Ricochet Mineral and Cubes

MFA RICOCHET FESQ MAX

Now's the time to be offering to your bred cows 60 days before calving. Ricochet technology: developing healthier cows for healthier calves.

Contact your local MFA store or MFA feed salesman for more information!

MFA Agri Services

www.mfa-inc.com

LAWN & Garden

Gingerich Greenhouse

24 Years of Growing Plants

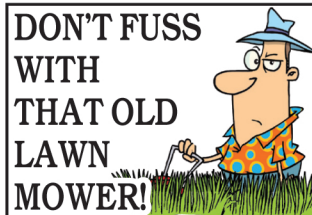
Join us
for our**OPEN HOUSE**

- Saturday, May 4th -

OPEN HOUSE HOURS: 7:30 am - 5:00 pm

**Refreshments
& Door Prizes****7% OFF Everything In Stock!****We have all your basic garden plants & needs plus much more!****THE USUAL & THE UNUSUAL!**Scented Geraniums • Popcorn Plant • Black Elephant Ears • Hippo White
Rex Begonias • Climbing Sweet Potato Vine*We have a large
variety of tomatoes
& pepper plants!***NEW! Tropical Plants!**Hibiscus Trees, Oleander Tree, Ginger,
Banana Trees, Bleeding Heart Vine,
Elephant Ears & More!**VM: 641-722-3444**1 mile east & 1/2 mile north of
Drakesville, 16577 Jade Ave.

Regular Hours: Mon - Fri 8 am - 6 pm • Sat. 8 am - 5 pm

**DON'T FUSS
WITH
THAT OLD
LAWN
MOWER!****Come see all we
have to offer!****WALKER****SNAPPER****Simplicity**

641-664-2784

502 E. Franklin

Bloomfield, IA

curtsmowers.com

OPEN HOUSE

Friday, May 3th & Saturday, May 4th

7% Discounts on large variety of items.Rhubarb, Raspberry, Strawberry, Gooseberry, Grapes,
Blueberry, Apple, Cherry, Peach, Plum, Sweet Cherry &
Pear, Apricot, Pecan, Hardy, Almond & Chestnut Trees

Hilltop Greenhouse

11049 HWY 2, MOULTON IA
BETWEEN WEST GROVE & MOULTONDogwood Tree, Gold Forsythia, Wisteria,
Japanese Maple, Crab Apple, Maple Tree
& Red Bud Tree, Large Lilac Bushes,
Magnolias & MoreOnion Sets & Plants • **VEGETABLE SEEDS ALL ON SALE**

- | | | |
|------------------|-------------------|-------------------|
| • Knockout Roses | • Garden Phlox | • Shasta Daisy |
| • Clematis | • Peony | • Salvia |
| • Lilac Bushes | • Lily | • Hen & Chicks |
| • Foxglove | • Bleeding Hearts | • Barberry |
| • Garden Phlox | • Mini Roses | • Bushes |
| • Annuals | • Oriental Hybrid | • Day Lilly |
| • Astilbes | • Lilies | • Large Assor. Of |
| • Hydrangeas | • Weigelas | Grasses |
| | • Hostas | |

10% OFF ALL ROSES & BASKETS

Mon-Sat

8:00 A.M. - 6:00 P.M.

641-929-3036

Davis County Master Gardeners' SPRING PLANT SALE

Saturday, May 4th • 8:30 - 12 Noon

DC Extension Office at 402 E. North Street in Bloomfield

641-664-2730Perennials, annuals, house plants,
compost and more! Most items \$1 and up!
All proceeds to MG projects in Davis County.

SPRING BCS SALE

bcsamerica.com

LIMITED TIME ONLY!SALE ENDS
5/31/19**SAVE BIG ON BCS.****\$100 OFF MODEL 710****\$200 OFF MODELS 718, 722 & 732**

Why buy single-purpose machines?

BCS Tractors power Tillers, Snow Throwers, Sickle Bar Mowers,
Chipper/Shredders, Sweepers, Pressure Washers, and more!

HANDLES ROTATE 180°



TROYER'S ENGINE REPAIR

13321 245th St, Moulton, IA 52572

(641) 664-2788

We service and repair all brands of lawn equipment, garden equipment, and air tools.

Bloomfield GREENHOUSES

Celebrating our 33rd year!

Spring OPEN HOUSE

Saturday, May 4th
8:30 am - 6:00 pm

Refreshments • Door Prizes

Great Petunia Color For Your Mustang, Hawkeye & Cyclone Pots!

*Flowers you can trust!
All of them a must.
Come while the gettin' is good,
and beautify your neighborhood!*

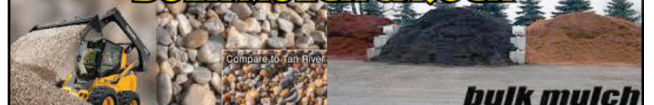
708 East Arkansas Ave., Bloomfield • May Hours: M-SAT. 8-7 641-664-1622



Dutch Garden Nursery

**Water Fountains • Wind Spinners
Solar Lighted Outdoor Decro****Hanging Baskets • Flower Pots,
Perennials • Shrubs • Trees • Herbs
Sweet Potatoes • Peppers • Tomatoes**

BULK ROCK

BULK MULCH & ROCK**TOPSOIL & COMPOST****Monday - Saturday • 8 AM to 6 PM**

4 miles north of Edina, MO • 660-341-5777 or 660-342-3854

www.burkholdergreenhouse.com

LAWN & Garden

Did you know?

Oxygen is essential for the roots of grass to breathe and grow strong enough to support healthy lawns. But according to the Center for Agriculture, Food and the Environment at the University of Massachusetts Amherst, compacted soil can produce a decrease in oxygen content that can make it hard for roots to thrive. Soil compaction can result from a number of activities, including walking on grass or driving or parking vehicles on grass. When soil is compacted, it breaks into small particles that reduce the amount of pore space in the soil. That makes it hard for water, oxygen and nutrients to get through, threatening the strength of the roots and putting the grass in jeopardy. Aerating a lawn can help homeowners foster strong root growth and healthy grass. When to aerate may be contingent upon local climate, so homeowners who suspect the soil in their yards is compact should consult with a local landscaping professional to determine the best time to aerate their lawns.

Rustic Acres Greenhouse

OPEN HOUSE

7% DISCOUNT SALE

Fri. & Sat. • May 3rd & 4th

DRINKS & FRESH DONUTS • DOOR PRIZES

Full Line of Greenhouse items!

On Hwy. 2, West Grove

641-929-3056

Pre Mother's DAY SALE

10 % OFF

Baskets & Planters

Friday, May 3rd &

Saturday, May 4th

Lengacher Greenhouse

22583 Heather Ave. • Keosauqua, IA 52565
6 miles W on J40 from Keosauqua 1/2 mile S. on Heather Ave.

GARMAN FLOWERS

660-328-6318 • 660-341-9586

Located at BP Station Gas N' More
Memphis, MO • Mon. - Sat. 9-5
Open on the farm only by appointment

Check out our great selection!

Mother's Day Sunday, May 12th!

Mother deserves something as
inspiring as her!

6 pk. Wave Patunias \$6.99	Hanging Baskets & Patio Pots	Miniature Roses \$9.89
---	---	-------------------------------------

Knockout & Hybrid Roses
Red, Pink & Yellow **\$17.99**

Bring coupon in for
\$2 OFF ALL
Hanging Baskets!



ATTENTION! Dads & Grandparents!

Great idea for Mother's Day from the kids!

CHILDREN'S WORKSHOP MAKE IT & TAKE IT!

Saturday, May 4th

8 am - 8 pm

*** Rain or Shine ***

Come plant a pot for your mother!

Only \$5.00 We supply the pot, soil and flowers.
All Day • No Reservations Needed
Children must be accompanied by an adult.

We are your destination for Mother's Day Gifts

**Lilac Hill
GREENHOUSE**

660.457.2139

12 inch
hanging
baskets

2 for \$35

Price Good 5/1/19 thru 5/11/19

25957 US Hwy 136, Lancaster, MO

Between Lancaster & Downing

CLOSED SUNDAYS

Check out our wide selection of
plants & garden decor!

Golden Acres Greenhouse
18097 Iris Blvd.
Bloomfield, IA 52537

Open House
Sat., May 4th 7:30 am to 6:00 pm

Refreshments All Day!
Discounts • Door Prizes

Spring Grove • Autumn Blaze
Tree Rep will be here to
answer any questions!

COME SEE WHAT'S NEW FOR 2019

Blooming Bargains
At Ramer Greenhouses

Open House!

Saturday, May 4th Refreshments all day!
Free Flower for Everyone!
Saturday Only

Large selection of pottery
VINE RIPENED TOMATOES!

Come check out all the
OPEN HOUSE SPECIALS

Ramer Greenhouses

26249 State Hwy A
1/8 mile south of Gorin, MO on Rt. A
Hours: Mon. - Fri. 8-6, Sat. 8-5, Closed Sunday
Edwin & Esther Mae Ramer, owners
660-282-3334 or 660-341-0360

**SUNSHINE HILL
GREENHOUSE**
Keith & Alma High • 1999 - 2019

Customer Appreciation Day
Celebrating 20 years!

SAT, MAY 4TH • 9 AM - 6 PM
Donuts, Coffee, & Popcorn ALL DAY!
*** DOOR PRIZES ***

Pony Cart Rides • 1:30 - 4:00
Each customer gets a free plant or seed from a 700# pumpkin!

- Bedding Plants • Perennials & Herbs
- Blueberry & Raspberry Plants
- Over 40 Varieties Of Tomatoes
- Rhubarb • Roses

Hanging Baskets
\$14.95

Great Selection of Proven Winners **\$2.75 - \$3.50**

PW PROVEN WINNERS Lilacs in 4 colors **\$16.95**

Wave Sale • \$1.50 • 4" pots

1 Mile E. Of Milton On Hwy 2
641-656-4203 • 641-208-7609

KEIM'S REPAIR **BIG DOG MOWER CO.**

Each mower is hand-built and demonstrates
our shared belief that a job worth doing is
worth doing right.

VM: 641-664-1245
2 1/2 east & 1/2 south of
Drakesville on Kelp Ave.



is seeking candidates for an

Electric Distribution Lead Journeyman Required

Job description available at City Hall.

Applications can be found at

www.cityofbloomfield.org

Hours of work are 6:30am - 3pm, Monday thru Friday. Starting wage is \$24.17/hr + Journeyman Incentive of .40¢/hr. Benefits include IPERS, Medical and Dental, Vacation, Sick and Casual time, OT and/or Comp, 9 paid holidays, Union eligible.

Send cover letter, resume and application to

**Human Resources, City of Bloomfield
111 W Franklin St., Bloomfield, IA 52537**

Position open until filled. Successful candidate will be subject to a drug test, physical and POPES testing. Questions may be directed to DPW at 641-664-9644. EOE

JUST IN: 95 hp track skid-loader. Available for rent now. **Bloomfield Rent-All**
PH. 641-664-3806. TFN

FOR SALE: JD late model 567 baler, low bale count, excellent condition.
PH: 641-208-0424 20

NOTICE

Southern Iowa Electric Cooperative, Inc. will be spraying its powerline right-of-way in portions of Wapello and Davis Counties.

Southern Iowa Electric Cooperative has hired contractors to perform this work. The work is expected to begin around May 1, 2019 and will continue throughout the year.

If you have any questions, you may contact the Cooperative toll free, 800-607-2027.



Southern Iowa Electric Cooperative

A Touchstone Energy® Cooperative

22458 Hwy. 2 • Bloomfield, IA 52537 • (641) 664-2277 • www.sie.coop
This institution is an equal opportunity provider & employer.

Troyer Seeds

Special!

Certified Organic Soy Beans \$30.00 for 50#

- Master's Choice Corn
- Epley Hybrids and Blue River Organic Corn & Beans

Alfalfa • Clover • Grass • Small Grains • Cover Crops

12722 245th Street Emmanuel 641-929-3381
Moulton, IA 52572 Troyer

FOR SALE: Registered English Setter puppies, 8 weeks old. Vaccinated and ready to go. For more info. and bloodlines call 641-777-5805. 18

FOR SALE: 3 yr old Red Angus Bull, bought at Mushrush Red Angus, gentle, easy calving, good growth, proven producer. We've saved a lot of his heifers is why he's for sale. Semen & Irich tested. \$3,000. Schrock Cattle.
PH: 660-988-1163 22

COMMUNITY BLOOD DRIVE: West Grove to host Community Blood Drive from 3:00 pm to 7:00 pm on Tuesday, May 7 at 22050 Eden Ave., inside Community Hall. To donate, please contact Blood Center at (800) 452-1097 or visit www.bloodcenterimpact.org and use code 5336 to locate the drive.

1 Pet 2:24: He himself bore our sins in his body on the tree, so that we might die to sins and live for righteousness; by his wounds you have been healed.

Life Alert. 24/7. One press of a button sends help FAST! Medical, Fire, Burglar. Even if you can't reach a phone! FREE Brochure. CALL 888-227-0525 (MCN)

FOR SALE: 1969 JD tractor with 240 JD loader. Jim Stoker, 22523 Timber Ave., Bloomfield, IA.
PH. 641-675-3648. 20

WAGLER METALS LLC



Need Metal Fast?

WE CAN HELP!
Now roll forming metal roofing!

21 colors to choose from!



19049 Ice Ave., Bloomfield, IA • 641-722-3692
M-F 7:30AM-5PM • Sat. 8-11:30AM

FOR SALE: 6- veal heifers. Start your own dairy. John Henry Yoder
VM: 641-664-0202 20

OTR DRIVER WANTED

YOU COULD MAKE OVER \$75,000 with our new pay plan!

Get the personal attention you deserve
Nice Equipment Great Benefits
Tractor/Trailer Experience Needed

McFarland Truck Lines

CALL 800-533-1564 X 205 • WWW.MCFGTL.COM

Garages • Pole Barns
Commercial

Free
Estimates

**LAN-DOW
BUILDINGS**

We Stock a
Complete Line
of Building
Materials

**Lancaster
Lumber, Inc.**

Complete
Buildings or
Packages
Available

Toll Free 800-424-5071 Fax 660-457-3133

Hardware • Plumbing • Electrical • Paint
500 Green Street • Lancaster, MO 63548



Josh Taylor • 641-208-6972

213 Gregory Lane, Bloomfield • info@snowmanplows.com • 641-664-3432

- Farm Services
- 24 Hour Emergency Service
- On Site Welding & Fabrication
- Minor Mechanic Work
- Agricultural GPS
- Agricultural Machinery & Automotive Wiring

HUFF'S POLLED HERFORD BULLS FOR SALE

Raising Hereford Cattle Since 1915

- Sires are selected for calving ease, maternal traits, calm dispositions, & rapid growth. Superior EPD's!!
- Raised on a diet that encourages growth not fat, they are ready to work!
- Docile & easy to handle - the disposition you always wanted.

HUFF'S POLLED HERFORDS

26574 STATE RT. M • RUTLEDGE, MO 63563

LeRoy Huff, Home: 660-883-5684 or Cell: 660-341-6392

Sean Huff, Home: 660-883-5383 or Cell: 417-499-3639 or 660-988-2937

GIVE US A CALL & VISIT OUR FARM TO SEE FOR YOURSELF THE QUALITY DESCRIBED!



These bulls represent the best genetics of the breed!

FOR SALE: 1986 34' Southwind motorhome, sleeps 8, 454 Chevy, 41,000 miles, rear bedroom, ONAN generator, \$4,000.

PH: 641-208-6704

19

FOR SALE: 756 International tractor, gas, cab & heat, \$4,500. 7 ft. pull brush cutter works good, \$350 OBO.

PH: 660-216-2623

19

WANT TO BUY: Fallen wind mills, steel and wooden wheels, metal lawn chairs, rinse tubes with or without stands, metal yard gates, wooden whiskey barrels, old wooden doors, wrought iron fencing, 4 or 6 pane wood windows, pop bottles & crates, butter churns jars. Any condition. Pay cash.

PH. 641-814-2639.

18

FOR SALE: 200 bushel gravitey wagon w/ auger; 3 pt. hitch JD model 400 rotary hoe; Earthquake garden tiller like new. See this at JR FEEDS.

PH: 641-664-6568

18

MISSOURI MEAT PROCESSING LLC

26832 CR 161

Rutledge, MO 63563

Hours: Mon. - Fri. 7:30 - 5
Sat. by Appointment

CUSTOM BUTCHERING
Beef - Pork
Deer

Schedule Now
660-342-8534

WANT TO BUY: Barn lanterns, railroad lanterns, railroad locks & keys, weather vanes, train sets & cars, old license plates, truck tailgates, well & pitcher pumps and parts. Any condition. Pay cash.

PH. 641-814-2639.

18

FOR SALE: Hesston 1120 mower conditioner, stub guards, 5 bat reel, \$3,200; JD 566 baler, twine, hyd. pickup, monitor, 7,000 bales, \$5,200; NH 256 rake, dolly wheels, \$1,050.

PH. 641-929-3204.

18

AUCTION Monterey Auction House Sunday, May 5th - 11:00 am

Located 10 miles S. of Bloomfield on 63
then 4 miles W. on J51 or 10 mi. N. of
Lancaster, then 4 mi. W. on J51

Stevens 12 gauge pump, ammo, lots of old pocket knives, brown fruit jar dated 1858, pint jars with glass lids, old copper broiler, 10 ft. windmill, old sad irons, hames with brass knobs, iron skillets, iron griddle, coal bucket, krout kutter with box, 5 and 10 gallon creme cans, iron implement seat, well pump holder, old saddle, barn lanterns, Pepsi signs, Lone Ranger sign, old bottles, old nail puller, milk bottles, steel traps, marbles, bird cage, bull float with 2 handles, lots of toys, 8 aluminum ball bats, western paper backs, lots of other books, 3 toddler beds - complete, Graco high chair, Yardman push mower, Earthway garden planter, small garden tiller, log chain binders, child's guitar, American Idol card game, 5 bundles Harbor blue shingles, white Christmas tree, child's Disney VHS collector tapes, No. 10 hand corn grinder, old barn boards, loft doors, wheel weights for mower, 5 gallon bucket red paint, set of 4) P215/60R16 tires, child's metal wagon, plastic tubs, carpet, set of 4) P265/65R18 Good year Wranglers, buggy harness, canning jars, kerosene lamps, Keen Kutter square, 77 hole wood bolt bin.

All Consignments Welcome!

Announcements made day of sale take precedence over any advertising. Not responsible in case of accidents.

LAWSON AUCTION SERVICE

For More Info.: John Lawson 641-895-3852

Weaver Brothers Whitetails and Supplies

"Expect Healthy Deer
Technology and Probiotics"

Gen 2 Soybeans (Shatter Resistant w/High Oil)
Switchgrass • Bedding in a Bag
Upland Game Blend • Mineral
Clover Chicory Blend • Whitetail Forage Oats



360 HUNTING
BLIND
GIVEAWAY
Contact us for details.

Stop by and see our display.

HARVEST SALAD
Winter Wheat,
Australian Winter
Peas, Winter Oats
and Rye Grain.

DEADLY DOZEN
FALL FAVORITE -
Harvest Salad and Plot
Topper Combined

PLOT TOPPER
Till Radish, Crimson
Clover, Purple Head Tur-
nips, Rape Plus, Sugar
Beets, Oil Seed Radish
and Forage Collards

21387 Route V64 • Keosauqua, IA 52565 • 660-216-0812

FOR SALE: JD 425 rider, 20 hp V-twin, liquid cooled, hydrostat, 54" deck, 749 hrs., great condition, \$2,500 OBO; All metal ball hoop and back board, \$40; entertainment cabinet, \$25.

PH. 641-208-5136.

18

MILITARY ITEMS
WANTED BY LOCAL
COLLECTOR: Patches,
medals, uniforms, hats,
helmets, etc. Always
buying. Mark Warren, PH.
641-664-3705. mpwarren@
netins.net



Give Nolan a call at 660-988-1624
for all your 3x3 baling needs!

Running late model John Deere equipment.



MFA
AGRI SERVICES

FOR ALL YOUR SPRING DRY
FERTILIZER NEEDS...
CALL US!

GREAT RATES & SERVICE!

Lancaster 660-457-3729 Kirksville 660-665-4695

JR
FEED & SUPPLY

641-722-3045
17599 200TH STREET • BLOOMFIELD
STOP BY MON.-FRI. 8-5 & SAT. 8-12

Complete line
of bagged
feed in stock!

**CUSTOM
BULK**

Non GMO
Poultry Feed
we deliver!

BIRD FEEDS • PET SUPPLIES

Fish for Stocking Lakes & Ponds

6-8" & 8-10" Catfish, Redear Sunfish, Minnows,
Bluegills, Hybrid Bluegills, Bass, Grass Carp, & Crappies

To order call Blyzo Fish Farm

Call 641-874-5907

Sat., May 11th

Bloomfield: Troy Elevator • 11 AM - 12 Noon
Ottumwa: Tractor Supply • 9 AM - 10 AM

Please bring your own POND water, Private Deliveries Available

Taking walleye orders for Fall delivery
Fish Farm open by Appointment.

FOR SALE: 1994 16X80 mobile home, new vinyl windows, newer metal roof, \$20,000 OBO. 10 miles NE of Memphis, MO.

PH. 660-216-7516

19

FOR SALE: Organic Sabre oats, good germination, suitable for seed, \$7.50 per bushel bin run; Also Gehl 95 mixer mill on steel wheels, \$950. PH. 641-664-1690.

MANUFACTURING COMPANY NOW HIRING

Taking Applications for
**WELDERS &
FABRICATORS**
Seeking motivated people willing to
learn new skills with good work ethics.
Pay based on experience.

ALL-STATES EQUIPMENT INC.
908 NORTH BROWNING ST.
MEMPHIS, MO 63555 • 660-465-8572

EOE

KEOSAUQUA SALE CO.

20511 Hwy. 1, Keosauqua, IA

Results from April 27th

Butchers\$47.00-57.00/cwt
Sows\$51.00-78.00/cwt
Feeder lambs\$147.50-217.50/cwt

Fat lambs\$160.00-165.00/cwt
Ewes\$52.00-69.00/cwt
Kid goats40-70#
.....\$95.00-210.00/hd
Nannies.....\$70.00-310.00/hd

Middle aged 3rd period cows \$950.00-1450.00
3-7 yr old pairs \$1600.00-2050.00

Pound cows \$45.50-52.00/cwt low yielding
\$58.50-67.00/cwt high yielding

Pound bulls \$73.00-92.50/cwt

SPECIAL CATTLE SALE SAT., MAY 4TH

80 hd 500-600 blk str & hfrs - Krueger
40 hd 500-650 blkx str & hfrs - T Miller
67 hd 400-600 Red Angus str & hfrs - L Vogel
50 hd 600-7500 Blk & red str & hfrs yearling - I Yoder
20 hd 400-500 blk & red str & hfr - I Yoder
12 hd 550-700 xbred str & hfrs - D Miller
25 hd 400-550 blk & bwf bulls & hfrs - Reighard
40 hd 800-900 mostly blk str & hfrs - Cole
20 hd 500-600 blkx str & hfrs - R Schwartz

Watch website for early listings www.keosauquasaleco.com

Thank You For Your Business!

For More
Information Contact:

Selling Times

Hogs.....9:30 a.m.
Sheep & Goats.....10:00 a.m.
Outside Merch.....11:00 a.m.
Cattle.....Noon

Keosauqua Sale Co.
319-293-3508
Bill Goehring
641-919-9365

www.keosauquasaleco.com

GELBVIEH PUREBRED BULLS FOR SALE: Top Quality, EPD's, Calving Ease. Raising top quality Gelbvieh genetics for 35 years. Hobbs Gelbvieh Genetics PH: 515-669-6145

WOODRUFF ANGUS Farms

Est. 1958 • MILTON, IA

BULLS FOR SALE

Semen Checked & Ready For Breeding

Roy
641-799-6912

Randy
319-470-6999

FOR SALE: Good used dishwasher, black. Bought with a set & do not need, \$350 OBO.

PH: 660-342-2708

18

WANT TO BUY: Antiques, collectables, primitives, small estates, quick response. Pay cash.

PH. 641-814-2639.

18

FIGHT STRONG® FOR CATTLE



WHEN THE STRESS IS ON

Fight Strong® for Cattle is a natural feed additive that gets cattle eating, boosts immunity, and doesn't require a VFD

HELPS OVERCOME: • Production stress • Transportation/handling
• Poor appetite • Suppressed immune system



Microfused™ Essential Oils: Promotes a balanced gut microflora & the health of stressed cattle while stimulation appetite.
Microbial Catalyst®: Stimulate rumen function & promote appetite. **Yucca Schidigera:** Promote digestion & gut health.
Actifibe® Prebiotic: Feed beneficial gut bacteria & promote immune function.
Integramos®: Promote a balanced gut microflora & the health of stressed cattle

NO VFD REQUIRED

HARRIS DISTRIBUTING 1-800-727-5589 OR 641-929-3379
WEST GROVE, IA

Scotland County LIVESTOCK AUCTION

P.O. Box 111 • Hwy 15 North • Memphis, MO
660-465-7213 • Jerry & Barb Blomme
660-341-0069 • Grant Blomme
660-216-4674 • Rodney Garman

SPECIAL CATTLE SALE TUESDAY, MAY 7TH 12:30 P.M.

Early Listings:

60 hd Black Steers 900# Pot Load
70 hd Black Steers 750# Pot Load
52 hd Black & BWF Strs & Hfrs 400-600#
40 hd Black Steers 700#
55 hd Mostly Black Strs & Hfrs 400-500#
45 hd Black Strs & Hfrs 500-600#
22 hd. Black Strs & Hfrs 400-500#

Market Results from Cow Sale., Sat., April 27th

HEIFER PAIRS

6 hd...1,275 lbs. ...\$1,950
4 hd...1,214 lbs...\$1,850
11 hd.1,109 lbs...\$1,900
3 hd...1,363 lbs...\$1,900

2ND CALF PAIRS

2 hd...1,498 lbs...\$1,900
7 hd...1,568 lbs...\$1,850
6 hd...1,275 lbs...\$1,750

3RD & 4TH CALF PAIRS

6 hd...1,484 lbs...\$1,600
2 hd...1,613 lbs...\$1,600
4 hd...1,350 lbs...\$1,525
6 hd...1,484 lbs...\$1,575

SOLID MOUTH PAIRS

5 hd...1,512 lbs...\$1,325
6 hd...1,480 lbs...\$1,300
3 hd...1,300 lbs...\$1,200

3-4 YR. OLD SPRING

CALVING COWS

7 hd...1,093 lbs...\$1,700
10 hd.1,053 lbs...\$1,600
5 hd...1,000 lbs...\$1,550
5 hd...1,000 lbs...\$1,500

4-6 YR. OLD SPRING

CALVING COWS

3 hd...1,050 lbs...\$1,625
10 hd.1,150 lbs...\$1,600
4 hd...1,150 lbs...\$1,550

5-7 YR. OLD FALL

CALVING COWS

4 hd...1,636 lbs...\$1,575
6 hd...1,364 lbs...\$1,400
3 hd...1,368 lbs...\$1,400
4 hd...1,578 lbs...\$1,300
5 hd...1,446 lbs...\$1,235

BULLS: \$1,800 to \$2,000

www.ScotlandCountyLivestock.com



Specializing in Aluminum Grain Trailers Repair & Rebuild

Timpte & Wilson Parts Available.

3 miles east of Gorin, Mo. on Route U

660-282-1012

Kirksville Livestock LLC

Kirksville, Missouri

Charlie Simmons - 3 Hereford bulls, 2 yrs old, moderate calving ease, O'Leen Bros breeding - Kansas

Lloyd Timbrook - 2 - 28 month old Registered Angus bulls, have had all Pre-Breeding shots, Fly Tags, Pink Eye shots, wormed and poured, Semen and Trich tested

Jim Weimer - 1 - 3 yr old Registered Blk Angus bull, calving ease genetics, good disposition

Matt Medford - 1 18 month old Registered Red Angus bull, Bieber genetics, moderate calving ease, top 30% of breed in growth and carcass.

John Sullivan - 1 - 3 yr old Registered Red Angus bull,

3 Red Angus cows, fall calvers

Dennis Jacobs - 1 - 18 month old Registered Red Angus bull

Duane Hines - 2 Blk bulls 1 - 3 yr old, 1 - 5 yr old, 2 Red bulls, 1 - 18 months old, 1 - 3 yrs old

Kent O'Laughlin - 15 Blk cow/calf pairs, 6 to s/s, spring calves 200#

Gibbon Ranch - 40 BWF 2 yr old hfr pairs, single source origin from South Dakota, calves from, Sherbinsky calving ease bulls

Galaxy Beef - 20 Blk 2 yr old hfr pairs

Delmar Rhodes - 3 Blk 2 yr old hfr pairs, calves have had Inforce 3, 7 way and cut with a knife, sired by Three Trees Brinkley genetics

Trevor Koellner - 30 BBWF 3 yr old pairs, cows have all shots, wormed & poured, calves have multi-min and blackleg shots

H&F Cattle Co - 70 Blk pairs, 4 to 6, calves mainly AI sired by Johnny Cash Angus bull

30 BLK cows, 4 to 6, bred to Sim/Ang & Char bulls

4- 3 yr old Sim/Ang bulls

Matt Roemer - 25 BBWF cows, some with calves, 4 to s/s, bred to Blk & Char bulls

Monte Fisher - 18 Blk cows, 3 to 6, few older, mated to sons of SAV Brilliance, start calving in Sept

Pending - 31 Blk fall calving hfrs, 14 AI'd to Prairie Pride Next Step 2036, 17 bull bred to sons of Coneally Consensus, start calving the first week of Sept

CHECK OUR WEBSITE FOR UPDATED LISTINGS!

"Proud to Serve Area Livestock Producers"

YOUR BUSINESS IS VERY MUCH APPRECIATED

We are open on Sundays to receive your livestock.

Phone for information: Patty Foster, Office 660-665-9804

Chuck Ambrosia 660-342-3530 Doug Fleshman.....660-626-7148

Caleb Randolph.....641-919-8539 Daniel Smith 660-341-8396

Mark Herhold.....515-720-8667 Jeremy Jarman..... 660-341-9879

Al Ashmead.....660-216-8730 Karol Kirkpatrick.....641-777-3403

Visit our website at www.KirksvilleLivestock.com

Yearling Angus & Charolais Bulls

We have yearling weights & IMF data on the bulls. Bulls are semen tested & ready to go!

Trojan Hill Farms



Phil Archer
641-675-3769 - Home
641-680-6769 - Cell



GLENWOOD Elevator

- Rock
- Feed
- Grain

Logan Ford, Manager
PH: 660-457-3973 • Cell: 660-956-3973
Fax: 660-457-3045 • gelevator@marktwain.net

We are the areas oldest ADM Dealer

We are your MLS Dealer! Stretch your feed & hay! Increase your cattle breed back!

Hunters Blend Dog Food
High Protein • \$19.80
Low Protein • \$18.75

SPECIAL ON NET WRAP

64X7000 \$10 Off
67X7000 A Roll!

301 State Hwy. M • Glenwood, Mo 63541

BLOOMFIELD MINI STORAGE. Serving you from 2 safe, convenient locations. PH. 641-664-1066.

FOR SALE: 15' JD no till drill w/ caddy cart, excellent condition, always shedded. PH. 660-216-7696. 18

12670 Neon Ave, Bloomfield, Iowa

3 bedroom, 2 1/2 bath home on 15.8 acres. Lg. kitchen/ dining room. Full unfinished walkout basement. This home has lots of extras.

#20173839

This one is a must see! Give Us A Call Today!

Lynch REALTY, INC.

641-664-2275
lynchrealtyinc.com

106 S. Madison, Bloomfield, IA
Licensed in Iowa
Stephanie Lynch, Broker

FOR SALE: Registered Angus bulls. AI sired by proven calving ease bulls with good maternal traits and growth, good heifer bulls. PH. 660-341-4043, please leave a message, if no answer I will call back. Miller Angus Farm. 18

WANTED: JD 7000 4 row planter with dry fertilizer boxes in good condition. VM: 641-664-1690. 18

FRIESEN CONSTRUCTION

New Houses
Remodeling
Garages Electrical
Plumbing
Custom Cabinets

Arlen 664-3270
Cell 641-208-0170
Bloomfield, Iowa

A Great Crop Starts With A Great Seed

Your complete seed headquarters!
SEED CORN • SEED BEANS • SMALL SEED

Call Sid today to discuss all your 2019 seed needs!

NuTech Seed SmartStax Roundup Ready REFUGE ADVANCED

SIDWELL SEEDS
Queen City, MO
660-766-2737 • 660-216-6380

CUSTOM BUILT storage buildings, livestock shelters, feed bunks, trusses. Delivery available. Surplus lumber, headers, I joists, S.Y.P. lumber, OSB plywood. Miller Truss & Lumber • 27547 Timber Ave. • Pulaski, IA 52584. 3 1/2 mi. S. of Pulaski. Open Monday - Saturday. TF

FREE TO GOOD COUNTRY HOME: Small 4 year old female Terrier, loves children, good hunter. Shots up to date, has been spayed. PH. 641-208-7997. 19



We have all the parts to keep your car together!

Brakes • Plugs • Battery • Axle • Pistons
Fuel Injector • Radiator • AC Compressor
Clutch Water Pump • Hoses • Alternator

AND SO MUCH MORE!

TALLMAN AUTO AutoPlus

If you need it, we can make it!

We have a state of the art hydraulic hose machine!

Patrick & Joanna Tallman
Owners
660-457-2191
Mon - Fri : 8:00 am - 5:00 pm
Sat: 8:00 - 12:00 pm

MULTIPLE COLORS TO CHOOSE FROM!

Check Out Our Great Pricing On Owens Corning Duration Shingles!

FREE Estimates on Building Packages!

Cantril Lumber & Hardware

319-397-2351 or 319-397-2354
Mon-Fri 7-5 & Sat 7-12
www.cantrillumber.com

13 COLORS IN STOCK!

Building Packages

We Can Roll Your Metal While You Wait!

A W Metal LLC
Metal Roofing Headquarters

Free 12 pack of A&W Root Beer® with your next purchase of \$500 or more!

641-664-3990 awmetal.net

BLOOMFIELD



LIVESTOCK MARKET

SALE BARN OPEN UNTIL 9:00 PM EVERY TUESDAY TO RECEIVE LIVESTOCK

Phil Schooley 641-664-3450
 Ron Schooley 641-777-0302
 Roman Schooley 515-450-3685

Tyler Schooley 641-208-5442
 Barn Phone 641-664-2435
We appreciate your business!

HWY. 63 NORTH • BLOOMFIELD, IA

WED., MAY 8TH: 9:30 AM: Fat Cattle, Slaughter, Cows & Bulls • 11:30 AM: Special Feeder Sale

TUES., MAY 14TH: 6:00 PM: Special Bred Cow & Pair Sale

WED., MAY 15TH: 9:30 AM: Fat Cattle, Slaughter, Cows & Bulls • No Feeder Sale

Market Report for Wed., April 24th - Selling 1860 Head

HEIFERS

Jeremy Erdmann	Floris, IA	8 BLK	432	\$170.00
Donna Byrn	Greentop, MO	12 BLK	434	\$167.75
Jim Gonnerman	Hurdland, MO	9 BLK	487	\$162.00
Davis Farms	Bloomfield, IA	14 BLK	537	\$161.00
Donna Byrn	Greentop, MO	28 BLK	512	\$160.50
Darren Mihalovich	Greentop, MO	15 BLK	570	\$160.50
Tim Nelson	Greentop, MO	19 BLK	572	\$160.10
Kenny McNamar	Gorin, MO	13 BLK	583	\$160.00
Gary Long	Centerville, IA	13 B/R	561	\$160.00
Greg Gordy & Dan Johnson	Bloomfield, IA	18 BLK	575	\$157.50
Fabius Creek Lamb	Bloomfield, IA	69 BLK	655	\$153.85
Davis Brothers	Moulton, IA	109 BLK	883	\$132.75

STEERS

Davis Farms	Bloomfield, IA	13 BLK	460	\$203.00
Darren Mihalovich	Greentop, MO	12 BLK	492	\$199.00
Donna Byrn	Greentop, MO	16 BLK	424	\$197.25
Greg Gordy & Dan Johnson	Bloomfield, IA	11 BLK	485	\$197.00
Tim Nelson	Greentop, MO	5 BLK	505	\$195.00
Justin Ewing	Clio, IA	18 BLK	525	\$191.50
Mark Vandolah	Kirksville, MO	13 BLK	502	\$188.00
Twyla Ewing	Lineville, IA	10 BLK	543	\$185.00
Donna Byrn	Greentop, MO	21 BLK	542	\$184.75
Tom Baxter	Downing, MO	25 BBWF	555	\$184.50
Davis Farms	Bloomfield, IA	15 BLK	554	\$184.00
Kenny McNamar	Gorin, MO	14 BLK	596	\$179.00
Jeremy Erdmann	Floris, IA	11 BLK	576	\$178.00
Tim Nelson	Greentop, MO	15 BLK	607	\$175.00
Allen Martin	Rutledge, MO	66 BLK	783	\$159.85

We're Celebrating Our 17th Anniversary!



**Door
Prizes**

**Spring
Specials**

**Lunch Served
11:00 to 2:00**

JOIN US FOR OUR

OPEN HOUSE • FRIDAY, MAY 3rd, 2019

BUILDING PACKAGES for:

• Commercial • Agriculture • Residential



Bring your plans in for a
FREE ESTIMATE

• Owens
Corning
Shingles
• Pro Cat



• Insulation
• Insulation
Board



17893 212th Street • Bloomfield, IA • 641-722-3605 • Mon.-Fri. 7 AM to 5 PM