

COME SEE US
FOR A
Simply Beautiful
Lawn!



CURTS Yard & Garden
curtsmowers.com • 641-664-2784
502 E. Franklin • Bloomfield, IA

Tri-County SHOPPER

Attend the 43rd
**Annual Floris
Flag Day**
See details on
page 5.

STANDARD
MAIL
U.S. POSTAGE
PAID
TRI-COUNTY
SHOPPER, INC.
POST OFFICE BOXHOLDER
LOCAL RURAL BOXHOLDER
OCCUPANT
**CIRCULATION
OVER 11,750
THIRD CLASS**

P.O. Box 168 • Bloomfield, IA 52537 • www.tri-countyshopper.com
Phone 641-664-1333 • Fax 641-664-3761 • Email shopper@netins.net



Vol. 47, No. 22
Wednesday, May 29, 2019



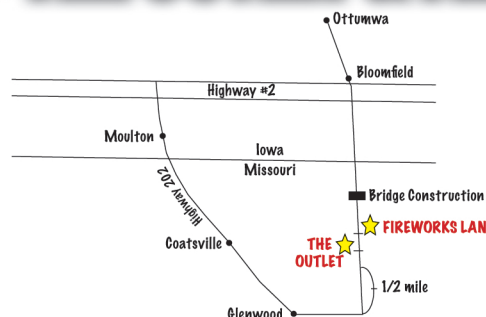
MFA- Agri Services Memphis
PO Box 253 • Memphis, MO 63555 • **660-465-2603**

EVERYTHING FOR YOUR BALING NEEDS

Twine, Net Wrap
& Much More



Warning!!!
CONSTRUCTION!
Don't be "detoured" by bridge
construction....
Just follow our map to
THE OUTLET & FIREWORKS LAND!



From Iowa
Highway #2, take
Highway #202
South to Highway
63. Turn north
1/2 mile.

Bring in this ad and receive \$1.00 OFF each
carton of cigarettes purchased or 15% OFF
any fireworks purchased during construction!

Save Your Punch Cards For Later!

Hwy. 63 Lancaster, Missouri
660-216-7632

AMERICAN OWNED & OPERATED!

**THE
OUTLET!**



**Old Waybills Fireworks Stand Across
From Conoco!**

20956 E. IA/MO Street • Lancaster, MO • 847-379-1150
Mon-Thurs 8am-9pm. Fri- Sat: 8am-10pm
Sunday: 8am-8pm

Your One Stop Shop!

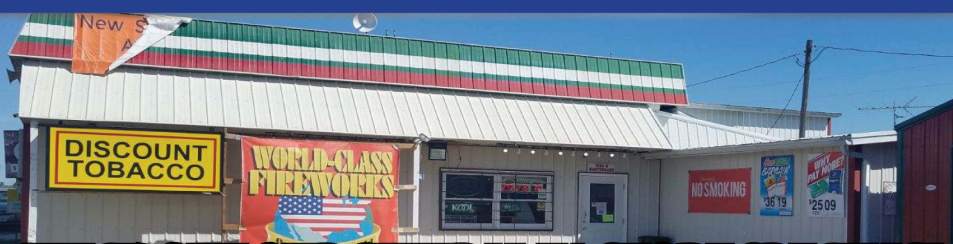
**We are open during the construction of
North Fabius Middle Fork River.**

There will be detour signs posted but those are geared toward semis.

**SO PLEASE REMEMBER WE ARE
ACCESSIBLE FOR BUSINESS.**

**Also this year we have a massive
fireworks collection update, and
twice as many styles.**

SO GET MORE BANG FOR YOUR BUCK!!!



CHECK OUT OUR SEVERAL IN-STORE SPECIALS!

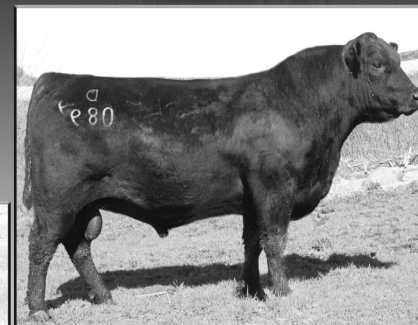
Hawkeye
COUNTRY
ANGUS SALE

Sunday 1:01 PM
JUNE 2, 2019

Bloomfield Livestock Market
BLOOMFIELD, IOWA

SELLING 200 HEAD

One of Iowa's Largest Angus Sales!



A former donor dam by PA Power Tool 9108 out of a "CC&7"
dam. She records BR 1@97, NR 1@117, while her dam boasts
BR 7@97 and NR 7@113. Sells with a February Baldrige
Dependable D089 heifer calf and rebred to MGR Treasure.

Featuring this proven herd sire by EF Commando 1366
out of a "Waylon" daughter. He posted a WWR 110 and
YWR 111. EPDs: CED +7, BW +1.2, WW +68, YW +120
and \$B +165.63.

Sale Managed By:
Conover
Auction Service
P.O. Box 9 - Baxter, IA 50028
AL & JEANNE CONOVER
641-227-3537 - 641-227-3792 (FAX)
DAVE SWEENEY - 641-373-4340
www.conoverauction.com
conover@conoverauction.com

Auctioneer
Al Conover 515-491-8078

This sale will be broadcast live on the internet.
DVAuction
Broadcasting Real-Time Auctions
Real time bidding & proxy bidding available.

SPECIALS VALID MAY 29TH - JUNE 4TH

COUNTRY VIEW STORE

Memphis, Missouri

June is dairy month!

FREE ICE CREAM CONES SATURDAY, JUNE 1STCHECK OUT OUR **GREENHOUSE** & **POLY LAWN FURNITURE!**

 <p>\$0.99</p> <p>HONEY NUT TOASTED OATS CEREAL</p>	 <p>\$24.99 /3 GAL TUB</p> <p>TURKEY HILL ICE CREAM</p>	 <p>\$1.89 /GALLON</p> <p>TROPICAL FRUIT SALAD</p>	 <p>10% OFF</p> <p>MOUNTAIN PIE CAST IRON</p>
 <p>\$0.89</p> <p>PRETZELS</p>	 <p>\$0.99 /DOZEN</p> <p>WEILER EGGS</p>	 <p>\$0.29 /LB</p> <p>BANANAS</p>	 <p>\$3.29 /EACH</p> <p>BREAKFAST CASSEROLES</p>
 <p>\$2.99 /24 PACK</p> <p>200Z BOTTLED SPRING WATER</p>	 <p>\$0.69 /PACK</p> <p>MINI & LARGE MARSHMALLOWS</p>	 <p>\$2.29</p> <p>FLORIDA & TEXAS CANTALOUPE</p>	 <p>\$2.99</p> <p>FLORIDA & TEXAS WATERMELONS</p>

3 MILES SOUTH OF MEMPHIS, MO ALONG HWY 15 | COUNTRYVIEWSTORE.COM | 660-883-5388 | MON-FRI 8:00AM-6:00PM & SAT 8:00AM-5:30PM



DONATE YOUR CAR TO CHARITY. Receive maximum value of write off for your taxes. Running or not! All conditions accepted. Free pickup. Call for details. 855-752-6680 (MCN)

A PLACE FOR MOM has helped over a million families find senior living. Our trusted, local advisors help find solutions to your unique needs at no cost to you. Call 1-888-894-7038 (MCN)

PROTECT YOUR HOME AND FAMILY with Vivint Smart Home. Call 844-500-8711 today to receive a FREE \$50 GIFTCARD with your purchase. Use promo code: FREE50 (MCN)

MILITARY ITEMS WANTED BY LOCAL COLLECTOR: Patches, medals, uniforms, hats, helmets, etc. Always buying. **Mark Warren, PH.** 641-664-3705. mpwarren@netins.net 24



Goat eat your favorite jeans? That's OK! You can now buy more locally at Graber's Country Store!





641-664-3616 | 18932 200TH ST, BLOOMFIELD, IA 52537 | Open Monday - Saturday 8am - 5pm

We Put Accident Damage in Reverse
Guaranteed Craftmanship
Insurance Specialists
Free Estimates



Collision Repair • Frame & Unibody Repair
Guaranteed Paint Match • Rental Cars
Walker Motors
Collision Repair Inc.

Hertz

375 S. Main St. • Memphis, MO • 660-465-2159

CLARA MIKELS
ESTATE SALE: 606 N. Washington, Bloomfield, IA • **SATURDAY ONLY,** June 8 • 9:00 - 1:00. Jim Beam & Ezra Brooks liquor decanters, vintage furniture, jewelry, vintage glassware & dishes, figurines, framed prints, & more! 23

FRIESEN CONSTRUCTION
New Houses
Remodeling
Garages Electrical
Plumbing
Custom Cabinets

Arlen 664-3270
Cell 641-208-0170
Bloomfield, Iowa

FREE TO A GOOD HOME: 4 yr. old chocolate lab, male. PH: 660-342-2520 23

FOR SALE: 12 ton bulk bin; 6 Farmall tractor weights. PH: 641-722-3036 22

City of Pulaski is looking for a DNR Certified Water Tester.

Must have Certification and Liability Insurance. This will be a one year contract for an independent contractor.

Please contact Jamie Gust at 641-675-3390.

Interviews will be held June 3rd, 2019, 6:00 pm at the city council meeting.

Hit the road this summer in a new ride!



2009 Chevy Traverse,
ADW, 3rd row seating,
cloth interior,
high miles,
runs good.

\$3,750



2005 Chevy Equinox,
AWD, leather interior,
ONLY 78,000 miles

\$4,850

WHAT A DEAL!

BEELER MOTOR CO.
Lancaster, MO
660-457-3718

2005 Chevy, automatic 5.3, 4 WD, crew cab,
178,000 miles, typical rust around fender
wells & rocker panels, new 10 ply tires,
\$5,200



TEXT ONLY: 660-216-0190
or 660-341-8782

L&M Country Store

1 1/2 miles south of west Hwy 2 & 63 jct.
Mon-Sat. 8am-5pm CLOSED SUNDAYS
VM: 641-664-1936

Frz. 5 lb. Tator Tots.....\$3.99
Frz. 28 oz. Little Smokies.....\$1.49
16 oz. Co-Jack Cheese Cubes.....\$1.49
21 oz. S'more Marshmallows.....99¢
66 oz. Pasta Sauce\$1.99
19 oz. Heinz Squeeze Mayonnaise.....99¢

We will be CLOSED
Thurs., May 30th for Ascension Day

FOR SALE: 2014 Polaris
RZR 800 S, 2,500 miles, w/
winch, \$8,995
PH: 641-680-3388 23

FOR SALE: One all red
registered Boer buck. 4 years
old, proven good breeder.
VM: 641-722-3269. 22

SHAWN SHIRK
641-208-6401
One of a kind Kitchens and Baths
CABINETRY and DESIGN
Quartz, Granite and Custom Edge Laminate Countertops
Commercial Cabinetry & Custom Kitchens

WANTED: Pasture to rent.
PH: 641-242-0169. 22

FOR SALE: 2 - Nanny board
goats, \$100 each.
PH: 319-288-1054 23

ATTENTION CONTRACTORS!



WE STOCK
push fit fittings, valves,
toilets, faucets, Pex, PVC,
CPVC, copper pipe & fittings
and hydrants
19091 180th St. • Bloomfield, IA
VM 641-722-3540
3/4 miles east of Drakesville, south side

FOR SALE: Dorper Katahein ewes, born spring 2018. All
raising lambs. This spring averaged 1.6 lambs per ewe.
Closed flock, never through sale barn. PH: 660-341-2530.

From cinnamon rolls to
ribeyes, this grill does it all!



Grill • Bake • Sear
Smoke • Cook

*The Silver Rocket... the most
efficient grill on the market!*

We will be closed
Thrus., May 30th for
Ascension Day.



VM: 641-664-0207
1 Mile East of Drakesville
on Jade Ave.
Mon.-Sat. 9:00 AM - 5:00 PM

FOR SALE: Roll Top desk
in excellent condition.
PH: 641-664-2831 23

Shady Lane Variety

Lifetime Ice Cream Freezers!

Wind Chimes • Sandbox Toys
S.S. Kitchenware • Area Rugs
AND MUCH MORE!

We will be closed
Thrus., May 30th for
Ascension Day.

1 mi. E. of Drakesville
on Jade Ave. • 641-664-0207
8-5 Mon. thru Sat.

FOR SALE: 2 Chihuahua
cross puppies, 1 chocolate
male, 1 adult black & tan
female.

Truman Gingerich
PH: 641-799-3980. 23

FOR SALE: 2008 Ford
Ranger pickup, reg. cab, 2
wheel drive, 35,600 actual
miles, nice truck.
PH: 641-208-0254. 22



2012 Can Am Commander
800
w/ cab & snowblade,
7,000 miles, runs good



2012 Polaris Sportsman
X2 550
w/ dump bed, red, 6,200
miles, good condition

Slayton Polaris

8 mi. S & W from Pulaski or 6 mi. W of Memphis
then 13 mi. N on Route B

660-328-6627

FOR SALE: JD 946 Mo-Co
13 ft. cut impellar, 2 pt. hitch,
shedded, great condition,
\$21,500.

PH: 641-208-5558. 22

FOR SALE: 1999 Ford F250
diesel, rebuilt automatic
transmission, 297,000 miles,
clean title, \$4,900 OBO.

PH: 660-216-0716 22



June Outpatient Clinic Schedule

June 4th	Rheumatology	Shawnee Kellison, ARNP
June 7th	Audiology	Greg Moore
June 7th	Psychiatry	Dr. Morcuende
June 7th	Podiatry	Dr. Holte
June 8th	Dermatology	Dr. Dika
June 11th	General Surgery	Dr. Zeman
June 12th	Urology	Dr. Kreder
June 12th	ENT	Dr. Berge
June 14th	General Surgery	Dr. Roe
June 17th	Anesthesia/ESI	Jay Brewer, CRNA
June 18th	Rheumatology	Shawnee Kellison, ARNP
June 21st	Psychiatry	Dr. Morcuende
June 21st	General Surgery	Dr. Roe
June 25th	Rheumatology	Shawnee Kellison, ARNP
June 25th	General Surgery	Dr. Zeman
June 26th	ENT	Dr. Berge
June 26th	Podiatry	Dr. Holte

Other Services Available at Van Buren County Hospital:

CT Scans	Ultrasounds
Fluoroscopy	OB/GYN
Digital Mammography	Surgical Consultations
Nuclear Med Scans	Colonoscopy
Magnetic Resonance Imaging	EGD
Epidural Steroid Injections	

Call Van Buren County Hospital
Outpatient Scheduling
319-293-8731

Schedules are subject to change by physicians.

2016 Malibu LT
\$11,950
95,000 MILES

2013 Chevy Suburban
47,000 MILES LTZ, HEATED & COOLED LEATHER SETS, DVD PLAYER.

2013 Ford F-150 Limited

2017 FORD FUSION SE
\$10,800
4CYL, 84,912 MILES CLOTH SEATS

2018 Chevy Equinox
\$16,225
FWD, 4CYL, 24,000 MILES, ALLOY WHEELS

JOHN IS KNOCKING HIGH PRICES OUT OF THE PARK!
Check out these great deals!

Kollision Korner

504 South Drake St. • Bloomfield, IA 52537
PH: 641-664-2648 • Fax: 641-664-2948

Check Out These GREAT LOCAL EVENTS Support Your Community

MOVING SALE

June 7th & 8th • 9 - 5

Many Household Items, Quilt Shop,
Wedding Business & Farm Related Items

3 miles west of Glenwood, MO on Rt
AA then North 1/2 mile on rock at
116598 Johnson Dr.

Friday, May 31st

Choice of 12 or 14 oz. Ribeye with sides

Serving at 6:00 P.M.

Dine
In

722-3355

Carry
Out

RAY'S LONGBRANCH

Drakesville, IA

DOWNING DEPOT MUSEUM

ANNUAL SMORGASBORD

SUNDAY, JUNE 2nd
11:30 A.M.

Appreciation Day Park

FREE WILL DONATION

Southfork MOTEL & GRILL

JUNCTION OF HWY 2 & 63
BLOOMFIELD • 641-664-1063

Breakfast • Lunch • Dinner

Daily Hot Specials and Evening Features

Prime Rib Capital of the World! Served on Friday & Saturday Nights
Banquet Facilities Available for All Occasions • Catering

"Where Quality and Consistency Matter!"

Tues - Thurs 7am-9pm • Fri - Sat 7am-10pm
Closed Sunday and Monday

A-Club Tournament 4 person Best Shot

Saturday, June 1st

Registration 8-8:30 a.m.

Shotgun start 9 a.m.

\$35/person

Cost includes lunch

Call Clubhouse to register

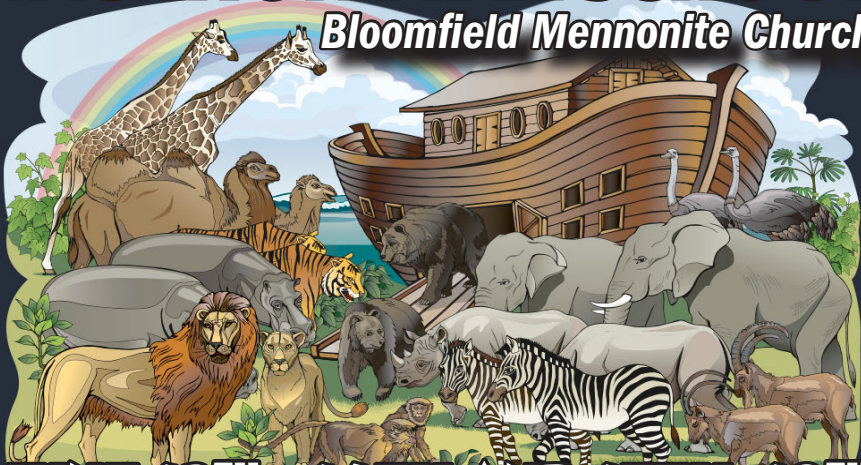


(641) 664-2089

Open 7 Days A Week

VACATION BIBLE SCHOOL

Bloomfield Mennonite Church



JUNE 12TH - 14TH AND 17TH-19TH

5:00 - 8:30 PM • SUPPER AT 6:15

Daryl & Millie Kendrick • 641-208-0328

Larry & Susan Nightingale • 641-208-5879

Shop
Local

Davis County
Farmers' Market
May 11th - Oct. 19th
Saturdays: 8:30 - 11:30
Tuesdays: 3 - 6



North Court
House Lawn

For more

information contact

Market Manager

Patsy Boas • 641-459-3387



Bloomfield
Main Street

Answers VBS

THE INCREDIBLE RACE

One Family, One Race,
One Savior

June 9 - 13 • 2019
6:00 - 8:30 PM

MARK BAPTIST CHURCH

16011 276th St., Bloomfield, IA

For kids entering Kindergarten thru 6th grade

For more information:
Tina Baskett • 660-216-8828 or Church • 641-929-3233

Lunch and Learn The Entrepreneurial Equation

Presented by: John Stookeberry
Financial Advisor

Please join Bloomfield Main Street
for our monthly
Lunch and Learn
on Friday, June 7 from
noon-1 p.m. at the
Bloomfield Public Library.

Learn strategies to help you:

- Building your business
- Creating value outside your business
- Save time
- Attract and retain employees
- Preserve your business for yourself and your heirs

Free admission and free lunch!
Please RSVP to Tammy Roberts at
info@Bloomfieldmainstreet.com



The Sweet Spot Bakery & Coffee Shop



Offering: Specialty Coffee

COME CHECK OUT OUR
BREAKFAST & LUNCH ITEMS!

Grand Opening

Sat. 1st
June

We look
forward to
serving you!

Sweet Rolls

Cupcakes

Cookies


Breads



Hours: Tuesday - Saturday • 6 AM - 2 PM

PH: 641-664-1901 • 103 E Jefferson St • Bloomfield, Iowa

**CLEARVIEW
ANIMAL
HOSPITAL P.C.**
Dr. David Rasmussen
Dr. Nancy Hougland
Dr. Marilyn Brown
601 Weaver Road,
Bloomfield, IA
641-664-2399



DOLLAR GENERAL
Save time. Save money. Every day!
Come see Robin
and the rest of the
gang today!
Bloomfield, IA
641) 664-2558


**JESSIE'S
SEWING ROOM**
• Embroidery
• Signs • Caps
• Clothing
And Much More!
Bloomfield, IA
641-664-5377
641-208-5036



**WELLS
HOMETOWN
DRUG**
641-664-3100
208 E Franklin St. Bloomfield, IA
We are your locally
owned
hometown pharmacy!



**1st IOWA
STATE
BANK**
110 N. Washington
Bloomfield, IA
641-664-1362
MEMBER
FDIC



**Image
Shapers**
Bloomfield, IA
641-664-1650
Call us today!



**Floris
Quick Stop**
Stop in for our daily
specials!
Owners: Cole & Devia Swaim
104 E. Main St.
Floris, IA 52560
641-459-2300

**DAVIS
TIRE**
Let Rob and the gang keep your
vehicle running in tip top shape!
22458 Hwy. 2
Bloomfield, IA
641-664-1801



**Harris
Distributing**
14219 231st St.
Bloomfield, IA
641-929-3379
RALCO
MIX 30
THE HIGH ENERGY LIQUID FEED



**Tri-County
SHOPPER**
The Shopper Gals
can help with all your
advertising needs!
Bloomfield, IA
641-664-1333

Nutrien
Ag Solutions™
See us for all your
seed & fertilizer needs!
906 Karr Ave.
Bloomfield, IA
641-664-1045

**Kollision
Korner**
See our ad on page 3!
Bloomfield, IA
PH: 641-664-2648
Fax: 641-664-2948

**Crop
Services**
NuTech Seed Nutrena
Drakesville, IA
641-722-3293



HyVee
PHARMACY
CELEBRATE FLAG DAY!
301 W. Jefferson St.
Bloomfield, IA
641-664-2975

**Keith's
Foods**
Ask about our
rewards cards!
207 E Locust • Bloomfield
www.keithsfoods.com
641-664-2539

**NEEBZ
GRAPHIX**
We can make your
business
STAND OUT!
641-664-3239
Bloomfield, IA

FARM BUREAU
Gary Sprouse - Agent
712 Southwest St Suite #2
Bloomfield, IA
641-664-2238



Miles
Construction LLC
Bloomfield, Iowa
Give us a call today
641-208-5738



43rd Annual Floris Flag Day Festival SATURDAY, JUNE 1ST

- 7-10:00 AM** Firemen's Pancake Breakfast provided by Floris Baptist Church (All proceeds to go to Floris Fire Dept. CASI & Open Chili Cookoff & Bean Contest. (Tasting cups available after 1:00 PM)
- 9-1:00 PM**
- 9-9:30 AM** Sign up for Baby Contest (Ages birth - 3 years)
- 10:00 AM** Baby Contest Starts
- 10-10:30 AM** Sign up for:
Lil Miss. & Lil Mr. Floris (ages 4-6)
Mr. & Miss Floris (ages 7-10)
DO NOT HAVE TO LIVE IN FLORIS
- 10:30 AM** Contest Begins
- 11:00** Parade line up begins
- 11:45** Prayer by David Birdsall
- 12 NOON** Parade - Grand Marshall : Floris Baptist Church
- 12:30 PM** Cook Shack Open (ALL DAY)
- 1-4:00 PM** Kids & Adult Games in the park.
- 1-4:00 PM** Cake Walk
- 1:00 PM** Fireman Games (by Fire Station)
- 3:00 PM** Pie Contest (bake it and bring it) Will be judged on taste and presentation
- 5:00 PM** Drawing for Raffle Prizes
- 7-11:00 PM** Randy Burk Duo from Atlantic, Iowa plays in the shelter house

ALL PROCEEDS GO TO FLORIS FLAG DAY FESTIVAL

For information on any of the events please contact:

Robin Fine.....641-208-6260

Russell Bales.....641-459-3304

Amanda Atwell.....641-455-4228

**Raffle Tickets: \$1.00 each or 6 for \$5.00
SOLD ALL DAY IN THE PARK!**

DO NOT HAVE TO BE PRESENT TO WIN!

Some items to be raffled include:

Electric Smoker • Fishing Poles

KIDS ONLY RAFFLE (BIRTH - 12 YRS OLD)

Beach Ottumwa Passes • Fishing Poles

MUCH MORE!

HOURS
8 A.M.
to
5:00 P.M.
DAILY EXCEPT
SUNDAY



Seedless Florida Watermelon • \$4.15
Leaf Lettuce, \$1.19 a head Sweet Red Peppers, \$1.79 lb.

SPECIALS! Frozen Blueberries, 20 lb. \$19.25
Thick Slice Oscar Mayer Bacon, \$2.79 lb.

SALE Coconut oil, virgin cold pressed, organic, 54 oz.
\$17.98 Reg. Price \$22.35

Folgers classic roast coffee, med. roast, 51 oz \$10.95
Large eggs, 1 1/2 dozen \$1.98

Marcal Bath Tissue, 12 - 2 ply double rolls • \$4.59

Kingsford lighter fluid, 64 oz • \$7.15

NEW • ORGANIC

50 lbs. Gold N White Flour \$46.59
25 lbs. Whole Wheat Flour \$21.85
25 lbs. Whole Spelt Flour \$36.89
25 lbs. White Spelt Flour \$40.19
25 lbs. Corn Flour \$18.75

8 1/2" cast iron skillet, \$8.95 or 6 1/2" \$6.49

6 qt. cast iron casserole, \$51.95

14"x20" non stick jelly roll/cookie pan, \$11.59

Spoon spatula, silicone, heat safe 450°

4 pc. SS measuring cups, \$5.19

We will be closed Ascension Day, Thursday, May 30th

DRIVE A LITTLE & SAVE A LOT

FOR SALE: 1994 16X80
mobile home, new vinyl
windows, newer metal roof,
\$15,000 OBO. 10 miles NE of
Memphis, MO.

PH. 660-216-7516

24

PUPPIES FOR SALE:
Beautiful golden retriever
puppies, male & female
available. Ready to go. Farm
& family raised.

PH: 319-201-0900

24

FOR SALE: 100 used
8x8x16 blocks (clean).
2 32" entrance doors,
good condition, 1 with
casement.

PH: 641-208-5812.

24

PUBLIC AUCTION

Sat., June 15th at 9 A.M.

Rathbun Regional Water Assoc., Inc.
16166 Hwy. J29 • Centerville, IA 52544

Rathbun Regional Water Assoc. will sell at public auction the following
pickups, pickup tool boxes and other miscellaneous items.

Auction will be held at:

RRWA Service Facility (1/2 mile north of Centerville on Hwy. 5)

VEHICLES

#30081 2007 Chevy Silverado, 3/4T, crew cab, 4x4, 6.6L Duramax, 6 spd Allison
Trans, 150,838 miles.

#30083 2007 Chevy Silverado, 1/2T, ext. cab, 4x4, 5.3L, auto, 83,355 miles

#30109 2012 Ford F150, 1/2T, ext. cab, 4x4, auto, Ecoboost 3.5L, V6, 146,035 miles

#30110 2012 Ford F150, 1/2T, ext. cab, 4x4, auto, Ecoboost 3.5L, V6, 173,093 miles

#30113 2012 Ford Flex, 3.5L V6, AWD, 6 speed auto, 47,262 miles

#30114 2013 Ford F150, 1/2T, ext. cab, 4x4, auto, Ecoboost 3.5L, V6, 145,867 miles

#30118 2013 Ford F150, 1/2T, ext. cab, 4x4, auto, Ecoboost 3.5L, V6, 147,972 miles

#30123 2014 Chevy Silverado, 1/2T, ext. cab, 4x4, auto, 5.3L V8, 169,885 miles

Mileages are approximate as of May 1st, 2019

EQUIPMENT

#30680 2001 Ditch Witch JT1720M1 directional boring machine on a T18 Belshe

Trailer, w/400' of rods, mixing unit, 1,000 gal poly transfer tank w/pump, 2,101 hours

#30513 2000 Keifer ILU 920, 20 ft. car trailer, 2-7,000 lb. axles

MISC

Weatherguard cross & side mount tool boxes for pickups

PVC pipe: various sizes (make good crossing culverts)

RRWA RESERVES THE RIGHT TO REFUSE ANY & ALL BIDS

CITY WIDE GARAGE
SALES IN MOULTON!
May 31st & June 1st •
Several sales planned
with a wide variety of
merchandise including
furniture, clothes,
toys, knick knacks,
miscellaneous. List of sales
will be available at T&L
Deli. Open at 8:00 am.
Some Earlier!!

We will be closed
Thurs., May 30th for Ascension Day.

Gingerich Logging Supply LLC

1 mile East of Drakesville, 1/8 mile North

Answering Service: 641-722-3414

Hours: Mon. - Fri. 8-5 • Sat. 8-12 Noon

Closed on Sunday

FOR SALE: Firewood at RJ
Lumber, \$15 a pickup load.
18989 160th St., Drakesville,
IA 52552. TF PH. 641-895-7691 24

FOR SALE: 2010 Jay Feather
Sport 165 camper, sleeps 5,
\$4,000 OBO.

AUCTION

Monterey Auction House

Sunday, June 2nd - 11:00 am

Located 10 miles S. of Bloomfield on 63
then 4 miles W. on J51 or 10 mi. N. of
Lancaster, then 4 mi. W. on J51

4x4 99' Chevy Blazer, V6, auto, runs good, needs
some work, Bolens riding mower with blade and pto
driven tiller, heavy duty 9" 3 pt. blade, 5' 3 pt blade,
bale stabber needs work, Master Force 10" portable
table saw, John Deere SRX75 riding mower, garden
tiller, push mower, 2 yard gates, Moormans single, hog
feeder, wheel barrel, 20 qts. Amco oil, lots of old Ford
wrench's Griswald iron skillets, brass pipe wrench,
Winchester flash lights, 2 pitcher pumps, green-brown
and purple fruit jars, tin butter churn, No. 441 coffee
grinder, sausage stuffer, iron implement seats, oil
jar, sunshine coffee jar, Iron stirrups, lots of enamel
ware, barn lanterns, 3 speed squirrel cage fan, metal
tubs, 18 cu. ft. Maytag refrigerator freezer, nice, duck
decoys, large counter top with double SS sink, old hay
hooks, tree trimmer, new pizza cooker, cherry pitters,
brass bell, Mossberg 12 gauge pump, Winchester
model 1897, needs some parts, 822 22 long rifle.

All Consignments Welcome!

Announcements made day of sale take precedence over
any advertising. Not responsible in case of accidents.

LAWSON AUCTION SERVICE

For More Info.: John Lawson 641-895-3852

Davis County Fair

QUILT BLOCK CONTEST

The \$5 quilt block contest packets
are ready to be picked up at the
Davis County Recorder's Office in
the Courthouse and at Upholstery
and So Forth on the north side of
the Bloomfield square.

**THIS YEAR'S BLOCK THEME: Pieced
with Memories. Deadline to return
block is June 28th**

See you at the Davis County Fair
July 16th -21st

www.daviscountyfair.org

Davis-County-Fair on Facebook



GARAGE DOORS

Residential • Commercial • Doors • Operators

Quality Products + Quality Workmanship = Quality Customers

Call us today for your.
FREE door estimates.



WE FIX DOORS!

105 S. Dodge St., Bloomfield, IA
641-680-2016

Weaver Brothers

Whitetails and Supplies

**"Expect Healthy Deer
Technology and Probiotics"**

Gen 2 Soybeans (Shatter Resistant w/High Oil)

Switchgrass • Bedding in a Bag

Upland Game Blend • Mineral

Clover Chicory Blend • Whitetail Forage Oats



**360 HUNTING
BLIND
GIVEAWAY**
Contact us for details.

Stop by and see our display.

HARVEST SALAD

Winter Wheat,
Australian Winter
Peas, Winter Oats
and Rye Grain.

DEADLY DOZEN

FALL FAVORITE -
Harvest Salad and Plot
Topper Combined

PLOT TOPPER

Till Radish, Crimson
Clover, Purple Head Tur-
nips, Rape Plus, Sugar
Beets, Oil Seed Radish
and Forage Collards

21387 Route V64 • Keosauqua, IA 52565 • 660-216-0812

FOR SALE

2008 Ford F150 Limited Edition,
keyless entry, 4x4, automatic start,
navigation system, heated seats, bed
cover, 79,500 actual miles, \$16,500

641-208-0725

FOR SALE: 2014, 19 ft., Wildwood, towable, A/C, heater, sleeps 6, bunk beds, full size bed, restroom shower, mini refridgerator, stove. Used very little, very clean, \$7,000.

PH: 641-799-8103

24

TRUCK DRIVER NEED-
ED for growing company.
Higher pay rate now. Driver
friendly. Great equipment.
No touch freight. Experi-
ence with Class A license
required. North Central Re-
gional. Call 800-533-0564
ext.205www.MCFGTL.com
(MCN)

Cenveo

Immediate Full Time Positions Available!!

Job openings available in manufacturing.

- Adjusters/Adjuster Trainees
- Machine Operators (Packer/Inspectors)

Benefits Available. Apply at

www.cenveo.com/careers

660-627-7427

Garages • Pole Barns
Commercial

Free
Estimates

**LAN-DOW
BUILDINGS**

We Stock a
Complete Line
of Building
Materials

**Lancaster
Lumber, Inc.**

Complete
Buildings or
Packages
Available

Toll Free 800-424-5071 Fax 660-457-3133

Hardware • Plumbing • Electrical • Paint
500 Green Street • Lancaster, MO 63548



#20174223

19533 Scarlet Avenue, Bloomfield, Iowa

Over 4400 sq ft of finished living space, up to 7
bedrooms, 3 full baths, 2 car attached garage, large
wrap around deck all sitting on a little over a acre.

Lynch
REALTY, INC.

**Come Take A Look!
Give Us A Call Today!**

641-664-2275
lynchrealtyinc.com

106 S. Madison,
Bloomfield, IA
Licensed in Iowa
Stephanie Lynch, Broker

FOR SALE: Adjustable
hold down clips for sickle
mowers & conditioners.
Can be tightened w/
removing sickle for a
better cut.

B & H Welding

VM: 641-664-2997, ext. 1
25

FOR SALE: BCS 830 tractor
with 8HP Kohler engine & 30
in. combo mower attachment,
\$2,850; 830 BCS tractor with
9HP vangaurd engine-26 in.
tiller attachment, \$2,650. Both
tractors are in good condition.
Troyer Engine Service PH:
641-664-2788

Store is CLOSED Thursday May 30th for Ascension Day



**SAVINGS by the
TRUCKLOAD**

\$299

22 oz.



Hardwood Smoked Bacon



Frozen
85% lean

\$199

1 pound

Ground Beef

\$225

36 oz.

Cranberry & Cheese

**Stuffed
Meat Balls**



\$275

36 oz.



Turkey Bacon

\$199



Whole Dill Pickles



18 ct - 38.7 oz Box

\$399

Easy Mac & Cheese

from the
makers of
**Blue
Bunny**
ICE CREAM

\$499

Blue Ribbon
4 Quart Pail



Ice Cream

\$199

per lb.

6 lb. mini horn

No Label

**Colby & Colby-Jack
Cheese**



89¢

8 oz.

RICH'S

Whipped Topping



\$299

3lb.



Vegetable Shortening



\$399

regular
\$6.49

**JUMBO
3 pound
bag**

Schultz

Salty Sticks Pretzels



88¢

7 oz.
Aerosol Can

**Rich & Creamy
Cool Whip**

\$159

per lb.

6 lb. mini horn

No Label

**Pepper Jack
Cheese**



\$995

32oz.
**Oriole
Feeder**

\$199

1 oz.

**Terro®
Ant
Killer**



\$499

Makes
34 Qts

• CountryTime Lemonade
• Kool-Aid Fruit Punch
DRINK MIX



**Oreo®
Drink Mix**

\$299

16 oz.

Truckload SALE

\$899

12 Pack ~ 18.5 oz. Bottles

Gold Peak Tea



DUTCHMAN'S STORE Division Street CANTRIL, IA (319) 397 2322

STORE HOURS • Weekdays , 8a.m. - 6 p.m. • Saturday 8a.m. - 5 p.m. • Sunday Closed

View our specials online - www.DutchmansStore.com

SALE PRICES May 29-June 4, 2019
While Supply Lasts

Having Storage Issues? CALL US TODAY!

Free estimates on all building packages!

Check With Us Before You Buy! • No Project To Big Or To Small!



- **MACHINE STORAGE**
- **HAY SHEDS**
- **NEW SHOPS**
- **NEW HOMES**
- **GARAGES**
- **DECKS**

**WE CARRY
OCCIDENTAL
LEATHER!**



Cantril Lumber & Hardware

319-397-2351 • 319-397-2354

Mon-Fri 7-5 & Sat 7-12

We will be closed Ascension Day, Thurs., May 30th.



NEW MATTRESSES FOR SALE!

Selling individually or in sets. Factory warranty.

TWIN - FULL - QUEEN - KING

641-664-3060

FOR SALE: 10- 1st calf black heifers, very gentle, nice 6 wk. old calves by side.
PH: 660-342-6907 22

J AND J PAINTING: Interior, exterior. Pressure washing of vinyl siding.
PH. 660-988-1519. 23

FOR SALE: Matching set of oak dining room furniture, table expands to 84" w/leaf, \$130; oak lighted china hutch w/ shelves, 48" wide x 76" high, \$150; oak lighted curio cabinet w/ shelves, 42" wide x 31" high, \$130; oak dry bar w/ slate that opens up for counter, 36" wide x 32" high, \$130. Will sell all pieces for \$500. PH. 641-684-5702. 22

JUST IN: 95 hp track skid-loader. Available for rent now.

Bloomfield Rent-All
PH. 641-664-3806. TFN

FOR SALE

Driveway Fabric Rolls
Commercial, Heavy Duty,
Designed for Heavy Traffic

**12' 5" Wide
432' Long
\$370/ roll**

660-216-0938

PLUMBING SERVICES:

Faucets, toilets, etc.

TJ's Enterprise,

Truman Gingerich

PH: 641-722-3980 E

**HORSE
TUBS
AVAILABLE!**





**We
carry
ADM
Mineral
& Tubs!**

**Ask about our
Pallet Discount!**



Davis Seed Available

**LOOKING FOR DAY AND NIGHT
TRUCK DRIVERS
CLASS A CDL REQUIRED.**

HOSKIN ELEVATOR, INC.

641-929-3568 Feed • Grain Brett- 641-208-1577
29067 Juniper Ave., Bloomfield, IA



Bulk Chocolate Cheerios..... 79¢

Oscar Mayer Sliced Turkey or Chicken

Breast, 22 oz pk\$1.49

Country Time Lemonade Mix, 5 lb\$5.50

Grated Cheese.....49¢ lb

6 pk Snapple Peach Lemonade\$2.79

Royal Oak Charcoal, 18 lb Bag\$5.25

**We will be CLOSED Thurs., May 30
for Ascension Day!**



3/4 mi. E. of Drakesville, IA on 180th St.

Mon-Sat: 8:30am - 5:00pm

VM: 641-664-2661

FOR SALE: 2 registered black Angus bulls, 2 years old, \$2,500 for choice. Mixed young gentle cows & calves, \$1,950 pair. Your choice.

Dean Goemaat

PH. 319-540-4601. 22

OPEN SOON MAY 31ST

FOR THE SEASON. Stop

by for tomatoes, Georgia

peaches, baked goods

& more. CR PRODUCE

at Mast Meats, Hwy. 63,

Queen City, MO. 22



**We will be closed Ascension Day,
Thursday, May 30th**

Stocking framing nails by the box/pallets.
Call for pricing!

- Metal Roofing
- FREE estimates!
- Crews available
- Call today!

WAGLER METALS

19049 Ice Ave., Bloomfield, IA

641-722-3692

Custom Ag Services



Call Nolan Diller
660-956-3656

- Inline Bale Wrapping
- Silage Bagging in 6' 8' & 9' Ag Bags

MAPLE VALLEY TREE SERVICE, LLC
SERVING SOUTHERN IOWA & NORTHERN MISSOURI

Specializing in: **VOICEMAIL:** Free Estimates
Storm Damage
Stump Grinding
Whole Tree Removal
Tree Trimming

641-664-2812
STEPHEN YUTZY, Owner/Operator
Liability Coverage & Bonded

HELP WANTED

CANTRIL TRUCK & TRAILER
319-238-7367
101 North St. • Cantril, IA
www.cantriltruckandtrailer.com

Cantril Truck and Trailer
is currently looking for a **Mechanic** for our business in Cantril, Ia.
Please apply in person.

Big or small, we can help with it all!

Come see us for all your cattle farming needs!

Hamilton Produce Co.
105 W. Franklin • Bloomfield, IA 52537 • 641-664-2459 or 1-800-488-7748

STOR MOR MINI STORAGE
QUEEN CITY, MO

10 x 10 Unit- \$35/mo.
10 x 20 Unit- \$50/mo.
10 x 30 Unit - \$65/mo.
515-720-7180
or
660-766-2228
"NUF SED"

ELS SHOES & MORE
We will be closed
Ascension Day,
Thurs, May 30th
20927 Ice Ave. • Bloomfield, IA
641.722.3357

YOUNG COWS FOR SALE: 75 BBWF cows; 45 red Angus cows; 25 Char. X cows; 45 black short cows. All cows are calving to P2. Gentle & big.
PH. 660-537-6247 or 660-838-6247. 22

MAST VINYL WINDOWS
THERMO-PRO WINDOWS
Custom Size Is Our Specialty
Professional Installation Available
THERMA-TRU DOORS
FREE ESTIMATES
22172 Hwy. 63
Bloomfield, IA 52537
800-206-9949

Highway 2 DISCOUNT Groceries LLC.

Mon. - Sat 8:30am - 5:00pm
VM: 641-664-1187
19686 Hwy. 2, Approx 2 miles, West of Bloomfield

Sale good Wed., May 29th through Tue., June 4th

Fully cooked pork ribs in sweet hickory BBQ Sauce \$1.89 a lb.	Hillshire Farm uncured polska kielbasa, approx. 4.5 lb pkg \$1.29 a lb.	Libby's peach slices, no sugar added, 23.5 oz. \$1.49
Breaded pollock fish fillets, irregular pieces, 4 oz. portions, 10 lb. \$1.29 a lb.	Oscar Mayer honey ham & honey smoked turkey subkit, 16 oz. 99¢	Frozen Grandpa's Oven cinnamon swirl bread 99¢ a loaf
Tru Moo after dark, vanilla & chai spice, vitamin D milk 75¢ a qt.	Tru Moo after dark, vanilla & chai spice, vitamin D milk 75¢ a qt.	Tru Moo after dark, vanilla & chai spice, vitamin D milk 75¢ a qt.
Tropicana 100% pure & natural orange juice, 1.65 L \$1.25	Pillsbury butter tastin' biscuits, flaky layers, 8 big biscuits 75¢	Richfield Farms strawberry preserves, 13.4 oz. 99¢
Starbucks iced coffee, blonde roast, 48 oz. \$1.25	Starbucks iced coffee, blonde roast, 48 oz. \$1.25	Starbucks iced coffee, blonde roast, 48 oz. \$1.25
Evo lea extra virgin olive oil, first cold pressed, 17 oz. \$2.99	T-Bone steaks \$4.49 a lb individual \$3.99 a lb approx. 6 lb box	Trappey's great northern beans, 15.5 oz. 59¢

We will be closed Thursday, May 30th for Ascension Day.

Public Auction

Due to the death of my husband, Gilbert Hood, I will sell at public auction the following personal property located at 12793 Highway 63. Watch for auction signs off Highway 63 north of Bloomfield, Iowa.

Saturday, June 1 • 10 a.m. Sharp
12793 Highway 63, Bloomfield

Household Goods, Collectibles and Misc.

Amish custom built living room set (sofa, loveseat, chair, 2-end tables, coffetable)
 Wood and glass display case (lighted)
 AmeriGlide lift chair
 Dark wood roll top desk
 Dark wood rocker
 Medium blue rocker recliner
 Black leather desk chair
 (2) Dark wood octagonal slide table
 Dark wood end table
 Metal 2-drawer file cabinet (woodgrain)
 Dark wood China hutch
 Wood antique highchair
 Hutch—TV
 Maytag portable dishwasher
 Microwave cabinet
 Homemedics chair massager
 Ham radio equipment
 Breadmaker
 Oil lamps
 4 qt. Dazy butter churn
 Silverware
 Misc. household
 Belt buckles

Farm Equipment, Tools and Misc.

New Idea manure spreader
 5 ft. Brush cutter, 3 point
 10 Role wire spinner
 1-300 gal. fuel barrel on stand
 1-500 gal. fuel barrel with pump
 Kewanee 600 elevator, 50 ft.
 Miller Pro 2150 Forage Wagon
 John Deere gear
 Buzz saw
 3-point seeder-salvage
 Torch set with cart

(8) corral panels
 (3) squirrel cage fans
 Grinder on stand
 Drill press
 Chop saw
 Work bench with vise
 Air compressor
 35 ton log splitter
 (4) Trolling motors
 Jointer
 Aluminum ramps
 Table saw
 Router with stand
 Pile of wooden fence posts
 2 section harrow
 2500 watt generator
 Several hay racks of misc. shop tools
 H & H dump trailer, 6x10, 1 ft. sides

Ford F 350 1996 with new aluminum flatbed
Aluminum 1994 Softtouch 28 ft. gooseneck stocktrailer
New Holland LS170 skidloader
5 ft. bucket
Bale spears
Pallet forks
Digging teeth for bucket

Golf cart
 Hobart Mod #222 portable welder
 2 bottom plow
 1 bottom plow
 (2) forecarts, 1 with brakes
 1 row cultivator
 2 row planter
 2 and 4 horse eveners
 Neck yokes
 Set of rope and pully's
 Single draft cart, like new
 2 sets of leather draft team harness
 Collars
 Halters
 Ropes
 Misc. tack
 (3) Saddles
 (1) Saddle, King of Texas

For more information contact auction rep.: Richard Yoder, 641-226-4984.
 Lunch served by Krazy K Kookin'.

Marian Hood, Owner

12793 Highway 63
 Bloomfield, IA 52537

Terms: Cash or good check.
\$35.00 returned check fee. Not
responsible in case of accident

The information in this sale brochure was obtained from the best reliable sources available to us. However, the Auctioneers or their employees will not be held liable should the above information be incorrect. Any announcement made day of sale will take precedence over any previous advertising.

SALE CONDUCTED BY

Don Horn Auctioneering Service

209 East Jefferson, Bloomfield, IA
 Phone: 641-664-1385 • 641-722-3796 -Home
 • 641-208-0254 -Cell

"We don't talk service, we give it."

Auctioneers:

Don Horn • Rodney Lawson • Josh Williams
• Trevor Nightingale • Richard Yoder

FOR SALE: 10 ft. Sun Dolphin
 Kayak, \$150.
 PH. 641-208-0949. 24

FOR SALE: 3 yr old Red
 Angus Bull, bought at
 Mushrush Red Angus,
 gentle, easy calving, good
 growth, proven producer.
 We've saved a lot of his
 heifers is why he's for sale.
 Semen & Irish tested. \$3,000.
 Schrock Cattle.
 PH: 660-988-1163

FOR SALE: Jack Russell
 terrior cross puppies. Shots
 & wormed.
 VM: 641-664-1264. Ext. 1 25

HELP WANTED

Piper Auto Salvage

is looking to fill the following positions:

- **PARTS PULLER**
- **EBAY SALESPERSON**

Apply in person at

PIPER AUTO SALVAGE
 607 S East St, Bloomfield • or email: eric@piperautoparts.com

---Clip And Save---

Wapello Chiefs

Bow Shoots

3D Bow shoots 2019

First ASA shoot May 4 & 5

Regular 3D shoots

June 1 & 2.

June 29 & 30.

July 27 & 28.

August 24 & 25.

FOR SALE: 2 Beagles, 1 male and
 1 female, good hunting bloodlines.
 VM: 641-664-3609. 24

For the way you live
WITMERS
 FURNITURE
 MEMPHIS, MO

NEW HOURS: Mon 9 - 5 • Tue By Appointment • Wed - Sat 9 - 5
 Sun - Closed • Evenings - By Appointment

17999 US Hwy 136 • Memphis, MO 63555
 PH: 660-465-2461
mwitmer@witmersfurniture.com • www.witmeramishfurniture.com

SPRING **BCS** **SALE**
bcsamerica.com



\$200 OFF!

LIMITED TIME ONLY!

SALE ENDS
 5/31/19

SAVE BIG ON BCS.

\$100 OFF MODEL 710

\$200 OFF MODELS 718, 722 & 732

Why buy single-purpose machines?

BCS Tractors power Tillers, Snow Throwers, Sickle Bar Mowers,
 Chipper/Shredders, Sweepers, Pressure Washers, and more!



TROYER'S ENGINE REPAIR

13321 245th St, Moulton, IA 52572
(641) 664-2788

We service and repair all brands of lawn equipment, garden equipment, and air tools.

C.H.I. MIDWEST
Overhead Door
LiftMaster

✓ **Out Our Competitive Prices!**

21387 Route V64
 Keosauqua, IA 52565
660-216-0812

Our goal is to keep your doors rolling smooth!

Sales • Parts • Service ~ Free Estimates
 We sell new doors and openers or we'll service your old one.

MAY IS MOTORCYCLE SAFETY MONTH!

Safely share the road with motorcycles

Motorcycle accidents can be deadly, and statistics indicate just how deadly such accidents can be compared to those that involve just automobiles. According to the National Highway Safety Administration, the fatality rate per registered vehicle for motorcyclists in 2015 was six times the fatality rate for passenger car occupants. While some people may be quick to blame rider error as the leading cause of multiple-vehicle accidents, the failure of motorists to detect and recognize motorcycles in traffic also contributes heavily to motorcycle accidents. Nearly two-thirds of accidents involving motorcycles are caused by the other vehicle violating the motorcycle's right of way. Drivers must respect the rights of motorcycle riders, and riders would be wise to acknowledge their own vulnerabilities to cars and trucks. In addition, motorists can heed the following tips to reduce their risk of being involved in accidents with motorcycles.

- Carefully check vehicle mirrors before changing lanes, as motorcycles are often obscured behind larger automobiles.
- Drivers should be on even higher alert at intersections and turns, actively looking for motorcycles. Forty-four percent of two-vehicle, fatal motorcycle accidents in 2013 were the result of cars trying to turn left while the motorcycle went straight, according to the Insurance Institute for Highway Safety.
- Allow for greater passing distance when passing a motorcycle. The gust of wind that results as cars accelerate and pass motorcycles could cause the bike to become unstable. Signal all intentions to pass and allow several car lengths before returning to the lane.
- Direct Auto and Life Insurance advises drivers to give motorcycles the entire lane. It is not alright to pass a motorcycle in the same lane even though they take up less room. Many bikers ride tandem in lanes for this reason.
- Drivers driving behind bikes should increase the distance between the back of the motorcycle and their own vehicles. Increasing this safety cushion makes drivers more able to react to the unexpected.
- Be mindful of changes in the weather. Driving in the rain or other adverse conditions can be challenging for cars and trucks, but inclement weather is even more hazardous for bikers. Allow for a little extra breathing room and drive slowly when sharing slick roads with motorcycles.
- Check blind spots often, as motorcycles can be hard to spot, especially when attempting to pass other vehicles.
- Exercise extra caution at night, when riding can be especially treacherous for motorcycle riders. Cars should refrain from passing and avoid using their high beams unless it's necessary. All motorists, whether on four or two wheels can navigate safely when they are courteous to others.



In Beautiful Downtown Belknap
15479 Liberty Ave.
Bloomfield, Iowa
641-722-3388

**AMERICAN FAMILY
INSURANCE®**
Craig D. Heemsbergen
Ottumwa, IA
641-683-1891

**Memphis Auto
& Truck Parts** 
300 S. Market
Memphis, MO
660-465-2470

 **Tillies
Tap**
Keosauqua, IA
319-293-3995

**Karr
Collision
Center**
 "Like" us on
Facebook
641-664-1024


641-664-1801

**North Side
Insurance**
Bloomfield
641-664-2362


Hwy. 136 E.
Memphis, MO
660-465-8597

**JESSIE'S
SEWING
ROOM**
Bloomfield, IA
641-664-5377
641-208-5036

HuVee
PHARMACY
301 W. Jefferson St.
Bloomfield, IA
641-664-2975

**Keith's
Foods**
everyday
VALUES
641-664-2539

**Slayton
Polaris**
8 mi. S. & W.
from Pulaski or
6 mi. W. of
Memphis then
13 mi. N. on
Route B
660-328-6627


Van Mersbergen Insurance Inc
Our policy is serving you.
104 East Franklin St.
Bloomfield, IA
641-664-2135
641-664-2108 fx

**NEEBZ
GRAPHIX**
641-664-3239
Bloomfield, IA


**Tri-County
SHOPPER**
 "Like" us on
Facebook
P.O. Box 168 • Bloomfield
641-664-1333

 **FARM BUREAU**
Gary Sprouse - Agent
Carol Lawson - Agent
712 Southwest St Suite #2
Bloomfield, IA • 641-664-2238

**Kollision
Korner**
Bloomfield, IA
PH: 641-664-2648
Fax: 641-664-2948



Van Buren County, Iowa
LAND AUCTION
MONDAY, JUNE 24, 2019 @ 6 P.M.
 To be held at the Riverview Club, 217 Riverview Dr., Keosauqua, IA



The Williams Farm is located in Section 26, Van Buren East Township, Van Buren County, IA. (1 mile northwest of Keosauqua, IA) Mark your calendars now for this upcoming Van Buren County, IA farm. This farm offers productive tillable farmland and is nearly 100% tillable. This farm is in a great state of fertility and the buyer will receive 50% of the cash rent income for the 2019 crop year. We urge you to take a look at this nice farm that is located in close proximity to Keosauqua, IA.

Details, maps & photos online @ www.sullivanauctioneers.com

J. WILLIAMS – SELLER
 Attorney: Tim Kuiken • Foss, Kuiken, & Cochran, P.C.
 Fairfield, IA • Phone: (641) 472-3129

FOR ADDITIONAL INFORMATION, CONTACT AUCTION MANAGERS:
 JIM HUFF (319) 931-9292 OR JEFF HOYER (319) 759-4320

SULLIVAN AUCTIONEERS, LLC • TOLL FREE (844) 847-2161
www.SullivanAuctioneers.com • IL Lic. #444000107

Friesen Excavating

- Specializing in Septic Systems
- Certified For Peat Tanks and Sand Filters
- Can Also Do Other Drains and Water Lines
- Cattle Waterers

Call or Text Shawn @
 641-208-0861 • Bloomfield, IA
Free Quotes Available

FOR SALE: 2005 Featherlite steel livestock trailer with wood floor, 24 ft. Z middle gates, all slam gates, \$8,000 OBO. PH: 641-208-0318

STAYING IN BUSINESS:
JOE'S BARBER SHOP
 Hours: Thursday & Friday 8:00-5:00 & Saturday 8:00-Noon. 210 E. Franklin St., Bloomfield, IA.
 PH: 641-664-2020, 641-208-5561 **TF**

GARAGE SALE

Baby clothes, crib set, baby swing, play mat, bumbo seat, rocking chair, changing table, toddler bed, lots of decor, end table, bar stool, household items, some men & women items.

FRIDAY, MAY 31ST ONLY • 8-2

6 miles north of Memphis, 3rd house on H off Hwy 15

GARAGE SALE: May 31st • 8-5 & June 1st • 8-12. 412 N. Maple, Moulton, Iowa. -City Wide- Mary Philby & Barb Martin. Antique Trunk, Antique Chairs, TV Stand, Plates, Fabric & Notions, Curtains, Old Blue Fruit Jars, Office Chair, Pop Bottles, & Rag Rugs.

Davis County HOSPITAL
 An Affiliate of **MERCYONE**

JUNE

Specialty Clinic Schedule

Dr. Ron Graeff	Allergy/Pulmonology	641-664-3840	M, T, W, Th
Dr. John Harrington	General Surgery	641-664-7091	M, T, W, Th, F
Dr. Boling	OB/GYN	641-664-7091	27
Jay Brewer, CRNA	Pain Clinic	641-664-3602	4, 11, 18, 25
Dr. Whitman	Ear, Nose, Throat	641-664-7091	3, 10, 24
Dr. Ciesemier	Allergy/Immunology	641-664-7091	14, 28
Dr. Cleaver	Dermatology	660-627-7546	27
Dr. Homedan	Orthopedics	641-664-7091	5, 6, 12, 19, 20, 26
Dr. Holte	Podiatry	641-664-7091	28
Dr. Jackson	Rheumatology	641-664-7091	11, 25
Shayla Sanders, ARNP	Rheumatology	641-664-7091	4, 11, 18, 25
Dee Dorsett, ARNP	Cardiology	641-682-5349	6, 20
Linda Schilling, ARNP	Dermatology	641-664-7091	10, 24
Melissa Gingrich, ARNP	Women's Health	641-682-8761	7, 14, 21, 28

509 N. Madison • Bloomfield, Iowa 52537
www.DavisCountyHospital.org

Dutch Garden Nursery

Large Selection of Beautiful Flowers
Annuals & Perennials

Let Us Help You With
Your Landscaping Needs!

Blocks • Pavers • Mulch
 Bulk Rubber Mulch • Bulk River Rock

New Shipment **OF SHRUBS**
LOTS OF TREES

Notice: We will be **CLOSED**
 Thursday, May 30th for
 Ascension Day.

Hours: Mon - Sat 8 am to 6 pm
 660-341-5777 • 641-397-4115
 See Our Catalog at:
www.burkholdergreenhouse.com
 4 miles north of Edina, MO

SPRING LAWN & GARDEN

Rustic Acres Greenhouse

Buy 2 Get One Free!

On All Perennials!

Large variety of bedding plants, annuals, perennials, baskets & planters.

Rose of Sharon Bushes & Rose Bushes

We will be closed Thursday, May 30th for Ascension Day.
 On Hwy. 2, West Grove **641-929-3056**

HILLTOP GREENHOUSE

11049 HWY 2, MOULTON IA
 BETWEEN WEST GROVE & MOULTON

Beautiful

African Violets - \$3.99 ea.

SALE • SALE • SALE • SALE

Roses

Buy 4 get One FREE!

Mini Roses

Buy 3 get One FREE!

Closed Thurs., May 30th for Ascension Day

Mon-Sat 8:00 A.M.-6:00 P.M. | 641-929-3036

Lilac Hill GREENHOUSE
 660-342-9554

May 29th - June 5th
Local Strawberries, Tomatoes & Peaches ARE HERE!

25957 US Hwy 136, Lancaster, MO
 Between Lancaster & Downing
CLOSED SUNDAYS
 Gift Certificates Available

MUM PLUGS \$1.50 Each
 Arriving next week. Call for availability.

If you want to establish mums as perennials, plant these small plants in your flowerbeds now. We have many colors and kinds to choose from.

Buy One Get One FREE

on all plants in the greenhouse!
Hanging Baskets • Annuals • Vegetable Plants
Perennials • Succulents
 Excludes shrubs, trees & patio pots

25% OFF

Tropical • Shrubs
 Roses • Patio Pots

Shop early
 for best
 selection

Gingerich Greenhouse
 24 Years of Growing Plants

Sweet Potato Plants!

Variety of tomatoes & bedding plants!

TROPICALS!

We will be closed Thurs., May 30th for Ascension Day

Hours: Mon - Fri 8 am - 6 pm
 Sat. 8 am - 5 pm
 1 mile east & 1/2 mile north of Drakesville • 16577 Jade Ave.

Golden Acres Greenhouse

18097 Iris Blvd.
 Bloomfield, IA 52537

Mention this ad & receive -
5% OFF SHADE TREES
 Come check out our selection!

Autumn Blaze **Spring Grow**
 Shade Trees Evergreens for wind breaks!

CLOSED ASCENSION DAY, THURS., MAY 30TH

KEIM'S REPAIR

Each mower is hand-built and demonstrates our shared belief that a job worth doing is worth doing right.




VM: 641-664-1245
 2 1/2 east & 1/2 south of Drakesville on Kelp Ave.

SUNSHINE HILL GREENHOUSE

- HANGING BASKETS
- POTTING SOIL
- PERENNIALS
- HERBS
- CLEMATIS
- HONEYSUCKLE
- BEDDING PLANTS
- TRUMPET VINE
- STRAWBERRIES
- RHUBARB
- ASPARAGUS

641-656-4203
 641-208-7609
 1 MILE EAST OF MILTON ON HWY. 2

We will be closed Thursday, May 30th for Ascension Day.

Premier Ag Solution, L.L.C.

BECK'S Ag Leader Technology

**Supplying your seed
and precision farming needs**

Bloomfield, Iowa
Office: 641-664-3412

Gene Joos: 641-777-5997 • Lincoln Joos: 641-777-2968
premieragsolution@gmail.com

NEED TRENCHING FOR SALE: Twin size extra
DONE? Call for quote on long adjustable bed, with
waterers, hydrants, drains, linens, new condition, used
etc. TJ's Enterprise, 4 times, \$1,200.
Truman Gingerich PH: 660-949-2780 or 660-
PH: 641-722-3980 E 216-1517. 22

Sunny Vue Farms
*Let us help put up your quality
hay & straw!*



**Give Nolan a call at 660-988-1624
for all your 3x3 baling needs!**
APPLICATOR & ROTOR CUTTER OPTIONS!
Volume Discounts!

GELBIEH BULLS FOR FOR SALE: Mathis tiller
SALE: Quality yearling & & Craftsman push lawn
older bulls. Excellent EPD's mower. Reasonably priced.
& tested. Hobbs Gelbvieh Richard Harper.
PH: 641-203-0863 or 641- PH. 660-341-4327 or 660-
766-6779 22 328-6216. 22

GLENWOOD Elevator



Logan Ford, Manager
PH: 660-457-3973 • Cell: 660-956-3973
Fax: 660-457-3045 • gelelevator@marktwain.net

**We are the areas oldest
ADM Dealer**

We are your MLS Dealer! Stretch your feed & hay!
Increase your cattle breed back!

Hunters Blend Dog Food
High Protein • \$19.80
Low Protein • \$18.75

SPECIAL ON NET WRAP

64X7000 \$10 Off
67X7000 A Roll!

301 State Hwy. M • Glenwood, Mo 63541

CUSTOM BUILT storage
buildings, livestock shelters,
feed bunks, trusses.
Delivery available. Surplus
lumber, headers, I joists,
S.Y.P. lumber, OSB plywood.
Miller Truss & Lumber
• 27547 Timber Ave. •
Pulaski, IA 52584. 3 1/2
mi. S. of Pulaski. Open
Monday - Saturday. TF

Yoder Glass & Window



VINYL WINDOWS
• Replacement
• New Construction
• Many Glass & Color Options
Energy Windows **Free Estimates**
19467 Driftwood Blvd.
Bloomfield, IA 52537
Call Today: 641. 722. 3667

FOR SALE: SimAngus
yearling bulls, homo black,
homo polled, easy calving,
excellent growth, gentle
dispositions, semen tested
& ready to go. AI sired by
Hooks Beacon, TJ Diplomat.
\$2,500 to \$3,500. Free
Delivery. Schrock Cattle
PH: 660-988-1163 22

FOR SALE: JD 568 round
baler.
641-208-6854. 22

YODER EQUIPMENT
BLOOMFIELD, IOWA



Mineral Feeders
Gates
Variety of Sizes & Styles
Feed Bunks
Water Tanks
Continuous Fencing
Extra heavy 10
gauge bale rings &
hay savers

PRIDE OF THE FARM
WATERERS & BULK BINS

19887 Jade Ave
2 1/2 Miles W of Bloomfield
V.M. 641-664-2797

AUCTION

SATURDAY, JUNE 8, 2019 • 10:00 AM
SALE TO BE CONDUCTED AT THE PROPERTY LOCATED
407 E. WALNUT STREET, FLORIS, IOWA

REAL ESTATE – 31 ACRES M/L: 2-story, 4 or 5-bedroom home; large eat-in kitchen, formal dining area, living room & one bedroom plus bath down. Upper level contains 4 large bedrooms. This home has a full basement with newer gas forced-air heat & central air. Open front porch plus large deck. Newer metal roof and vinyl siding. 20'x30' detached garage. Sitting on over 31 acres of mostly timber, at the edge of Floris, Iowa. If you are looking for that acreage with in-town amenities, make an appointment to inspect this property.

TERMS: 20% down day of sale, balance in cash upon delivery of a Warranty Deed, accompanied by Abstract of Title showing merchantable title. Real estate taxes will be pro-rated to possession date, possession given upon settlement.

REAL ESTATE WILL SELL AT 12:00 NOON

For further particulars or an appointment to inspect the property, please call the auction company: 641-682-5465.

APPLIANCES, FURNITURE & ANTIQUES: Kenmore refrigerator/freezer; Maytag port. dishwasher; Countertop refrigerator; Woods small chest-type deep freeze; Crosley upright deep freeze; Amana auto. washer; Whirlpool elec. dryer; Maytag square tub wringer/washer; Brown upholstered recliner; Floral upholstered 3-cushion sofa; Beautiful oak dining table w/2 extra leaves & 6 chairs & matching 3-door china cabinet; New large curved-glass china cabinet; Grandfather clock in walnut case; Pine dry sink; Wooden 2-drawer file cabinet; Slant-front writing desk; Oak roll-top desk w/matching chair; Elec. treadmill; Bird's eye maple 5-drawer chest w/mirror; Smoking stand; Sanyo 36" flat-screen TV w/stand; Floor & table lamps; Round coffee table w/claw feet; Single-door wardrobe; Full-size bed frame; Large asst. of pictures, frames & mirrors, some old; P. Buckley Moss Davis County Courthouse framed print; Old toy cannon & toys; Old dolls; Slot cars; Asst. of hand-sewn quilts; Extremely large asst. of Jewel-T incl. creamers, sugars, teapots, pitchers, plates, bowls, mixing bowls, salt & pepper shakers; 8-place of blue china ware; 4 & 10-gal. stone jars & jugs; Glass-enclosed quilt rack; Wicker chest; Asst. of kitchen items incl. pots, pans, dishes, Kenmore microwave, canister set, coffee maker, toaster oven, food processor; Large asst. of cast-iron cookware incl. skillets & pots, kettles, boiler & other cast-iron; Large asst. of graniteware incl. coffee pots; Asst. of jugs, stone jars & kettles; Wooden ironing board stool; Large asst. of books & cookbooks; Wooden barrels; 5-drawer antique chest; Round clawfoot dining table w/4 chairs; Several old oil lamps; Old painted cabinet w/glass doors. **COINS:** State Quarter collection; Kennedy halves; Silver dollars; Silver certificates; 2-dollar bills; (2) John Deere retirement watches.

BUCKSKINNER, OUTDOOR SPORTING EQUIPMENT & GUNS: Large Bucks Skinner's "teepee" canvas tent, complete; Camp box & assort. of primitive camping cookware; Old re-enactment clothing; Large asst. of knives; Hatchets; Throwing ax; Old cannonball; Sharpening stones; Large butchering kettle on stand; Guns – Ruger 357 magnum; Ruger 9mm; Ruger 22; Colt 380; Ruger 1022; Winchester Model 94 30/30 lever-action rifle; Mauser 30/06; Mossberg 20-gauge; Marlin 12-ga. goose gun; Remington 870 12-gauge; Winchester 22; Winchester Model 61 22 pump; Winchester Model 70 243 bolt-action rifle w/scope; Ruger Model 223 mini w/scope, auto; Colt Series 80 Government Model MK4380, auto; Ruger Bearcat 22 pistol; Ruger 22-cal. Mark II target pistol; Thompson 32, 45 & 50-cal. black powder rifles; Pedersen 50-cal. cap & ball pistol; TP Murray 50-cal. black powder rifle; Ellipietta Italian 44-cal. & matching 36-cal. black powder revolvers; Marlin 45/70; **GUN PERMIT REQUIRED FOR THE PURCHASE OF ALL FIREARMS.** Extremely large asst. of black powder incl. powder, shot, scales, reloading, shooting stand, gun-cleaning rods; Ammo belts & ammo; Crossmon BB gun; Red Rider BB guns; German-made pellet gun; Several gun stocks; Gun scopes & gun parts. Several bows & arrows; Gun cases; Several old lanterns; Hunting knives; 8-place wooden gun cabinet; Extremely large asst. of 100+ fishing rods & reels; Rod rack; Large asst. of tackle incl. fishing lines, sinkers, tackle boxes, nets; Small Johnson outboard motor; Minnkota trolling motor.

JEEP, 4-WHEELER & TOOLS: 2013 Jeep Wrangler Sport Unlimited, 6-cyl, auto, 4x4, 4-door, PW, PL, approx. 68,000 miles; Yamaha Grizzly 660 4-wheeler, 4x4; 24'x24'x10' metal carport; Kawasaki Bayou 4-wheeler, non-running; 8'x12' wooden building on skids; 5'x8' 2-wheel trailer; Power washer; John Deere 21" self-propelled mower; Pro Tech 10" table saw; Ryobi 9" bandsaw; Circular saw; Drill press; (2) Boat trailers; Stihl MS170 & 250 chain saws; Bench vise; Hoes, rakes & shovels; Axes; Leaf blower; Mantis tiller; Wheeled gas-powered string trimmer; Weedeater; Floor jack; Milwaukee chop saw; Bench grinder; Husky front-tine tiller; lawn roller; 2-wheel lawn cart; 16" scroll saw; Large asst. of hand tools incl. wrenches, pipe wrenches, bar clamps, drop cords, bolt cutters; Jigsaw; Set – aluminum ramps; Handyman jack; Air tank; Log chains; Tubing bender; Stepladders; 12' alum. canoe; 6'x12' dog kennel.

AUCTIONEER'S NOTE: This ad represents only the highlights of this sale. This will be an outstanding sale, as Mr. Yates was an avid outdoorsman. A large assortment of tools and other collectibles. Be sure & attend this outstanding auction and bring a friend, as we will be running two rings at least part of the day. Go to our website for pictures – www.almartinauction.net.

TERMS: CASH/GOOD CHECK
POSITIVE ID REQUIRED

MASTERCARD/VISA
DEBIT/CREDIT CARDS

All property must be settled for before removal – All items sold as is where is – Not responsible in case of accidents. Announcements made day of sale take precedence over any advertising.

DE WAYNE YATES, OWNER

Deb L. Cole, POA Rick Lynch, Attorney

JIM KOSMAN, ROGER CLINGAN & TODD CARROLL – AUCTIONEERS
AL MARTIN REAL ESTATE & AUCTION CO., INC.
307 Church St., Ottumwa, IA 52501 • 641-682-5465 • www.almartinauction.net

Kirksville Livestock LLC

Kirksville, Missouri

JUNE 2019**MONDAY, JUNE 3RD • 10 AM
SPECIAL SHEEP & GOAT SALE****FRIDAY, JUNE 7TH • 6 PM
SPECIAL BRED COW SALE****MONDAY, JUNE 10TH • 11 AM
SPECIAL CATTLE SALE****MONDAY, JUNE 17TH • 11 AM
REGULAR SALE****MONDAY, JUNE 24TH • 11 AM
SPECIAL CATTLE SALE****CHECK OUR WEBSITE FOR UPDATED LISTINGS!****"Proud to Serve Area Livestock Producers"****YOUR BUSINESS IS VERY MUCH APPRECIATED**

We are open on Sundays to receive your livestock.

Phone for information: Patty Foster, Office 660-665-9804**Chuck Ambrosia 660-342-3530 Doug Freshman 660-626-7148****Caleb Randolph 641-919-8539 Daniel Smith 660-341-8396****Mark Herbold 515-720-8667 Jeremy Jarman 660-341-9879****Al Ashmead 660-216-8730 Karol Kirkpatrick 641-777-3403****Visit our website at www.KirksvilleLivestock.com**

FOR SALE: 25 hp Evinrude short shaft outboard motor, completely gone through, \$900.

PH: 641-895-0145

23

WANTED: Ear corn flat elevator. Also I do custom no-till drilling for soybean & oats.

PH. 641-777-6187.

22

**LET US HELP IN
YOUR HAY
FIELD THIS
YEAR!****SERVICES AVAILABLE:**

- Mow & Condition • Tedding & Raking
- Round Bale w/ John Deere 560M Baler
- Tubeline Wrap High-Moisture Hay
- Hauling & loading available if necessary

**We can do one or all,
call to get on the schedule!****CALL OR TEXT JEFF AT 641-208-2235****Troyer Seeds**
Special!
Certified Organic Soy Beans **\$30.00**
for 50#

- Master's Choice Corn
- Epley Hybrids and Blue River Organic Corn & Beans

Alfalfa • Clover • Grass • Small Grains • Cover Crops12722 245th Street Emmanuel
Moulton, IA 52572 Troyer**641-929-3381****KEOSAUQUA SALE CO.**

20511 Hwy. 1, Keosauqua, IA

**SPECIAL CATTLE SALE
SAT., JUNE 1ST**

30 hd 500-700 Red str & hfrs, precondition, weaned - R Gates

29 hd 450-600 blkx str & hfrs, precondition, weaned - Thomann

25 hd 700-750 blkx hfrs, yearlings - M Black

**BRED COW, PAIRS &
BREEDING BULL SALE
SAT., JUNE 8TH**Watch website for early listings www.keosauquasaleco.com**Thank You For Your Business!**

For More

Information Contact:

Selling Times

Hogs.....9:30 a.m.

Sheep & Goats.....10:00 a.m.

Outside Merch.....11:00 a.m.

Cattle.....Noon

Keosauqua Sale Co.

319-293-3508

Bill Goehring

641-919-9365

www.keosauquasaleco.com

FOR SALE: 2 - Female beagles make offer, trained to hunt. Leanna Miller, 20967 Heather Rd. Keosauqua, IA.

VM: 319-677-6612

24

NOTICE: Miller's Furniture still repairs & refinishes all types of wood furniture. 15295 215th • Emanuel Miller Bloomfield, IA

PH: 641-208-6276

24

**Custom Built, Painted and Vinyl
Buildings & Sheds**

~David W. Schrock~

**Hillview
MINI BARNS**15383 180th Street
Drakesville, IA 52552**641.664.2842** V.M.

FOR SALE: 2004 Dodge Ram 1500, quad cab, 4x4, 125,000 original miles, body rough, \$1,100 OBO.

PH: 641-664-3198

23

FOR SALE: 2011 Ford Ranger Ex. cab, 6 cyl., 2WD, 119,000 miles, extra clean, \$8,000 OBO.

PH. 641-895-7691.

24

**KW
Electric**

Keith Waller: 641-777-6701

Matt Waller: 641-799-9220

Austin White: 641-226-4495

- Licensed & Insured
- Free Estimates

641-459-388913346 Lily Ave.
Bloomfield, IA**WOODRUFF ANGUS
Farms****Est. 1958 • MILTON, IA****BULLS FOR SALE**

Semen Checked & Ready For Breeding

Roy**641-799-6912****Randy****319-470-6999****Scotland County
LIVESTOCK AUCTION**P.O. Box 111 • Hwy 15 North • Memphis, MO
660-465-7213 • Jerry & Barb Blomme
660-341-0069 • Grant Blomme
660-216-4674 • Rodney Garman**Market Results for Tuesday, May 21st****Steers**

508# - \$162.00

520# - \$168.00

540# - \$168.00

578# - \$161.00

654# - \$155.00

838# - \$130.00

Heifers

440# - \$150.00

506# - \$150.00

546# - \$146.00

555# - \$144.00

598# - \$140.00

648# - \$134.00

729# - \$130.00

Feeder Bulls

413# - \$176.00

443# - \$170.00

513# - \$157.00

575# - \$141.00

579# - \$141.00

705# - \$133.00

745# - \$137.00

Bulk of the Cows

\$45.00 to \$52.00

Top Cows

\$59.00 to \$68.00

Hol Veals

\$75.00 to \$110.00

SPECIAL CATTLE SALE

Tue., June 4th

DAIRY SALE

Tue., June 11th

www.ScotlandCountyLivestock.comNEW SKIDLOADER BALANCER BULLS FOR
ATTACHMENTS: Buckets, SALE: Low birth weight
bale spears, pallet forks, bulls for use on heifers.
etc. Will custom build. No JEFF WUTHRICH
Sunday calls. PH. 641-208-4311 or 641-664-
PH. 660-988-7385. 26 2345. 22**2 SEPARATE LOCATIONS! PLEASE READ CAREFULLY!****SOUTHERN IOWA
LAND & FARM EQUIPMENT AUCTION
MONDAY, JUNE 24, 2019****EQUIPMENT AUCTION @ 9:30 A.M.**

To be held on the farm at 2606 Grastree Ave., Libertyville, IA

HIGHLIGHTS: AC 7060 tractor; AC 7000 tractor; AC 185 tractor; JD 4010 diesel tractor; Buhler 595 loader off of AC 185; '17 Kawasaki 610 Mule UTV, only 10 hours; CAT D6 9U cable dozer, new undercarriage; Gleaner R60 2wd combine; Gleaner M diesel combine; Gleaner C2 combine; several other pieces of quality farm equipment, farm related items, household goods, etc.

**33.50± TAXABLE ACRES • 1 TRACT****VAN BUREN COUNTY, IA LAND AUCTION @ 5 P.M.**

To be held at the Riverview Club, 217 Riverview Dr., Keosauqua, IA

The Metcalf property is located in Section 36, Lick Creek Township, Van Buren County, Iowa. (6 miles north of Keosauqua, Iowa.)

Make plans to attend this upcoming Van Buren County, Iowa land auction. This property offers productive tillable farmland and some of the most outstanding recreational acreage to be found in Southeast Iowa. There are 5 stocked ponds on this property featuring several species of fish including Catfish, Blue Gill, Bass and Perch. If you are looking for a small property that has the opportunity for white tail deer, wild turkey hunting as well as other recreational activities and includes an attractive cabin or home building site, we urge you to take a look at this one!

Details, maps & photos online @ www.sullivanauctioneers.com**KRIS D. & BETHANI D. METCALF – SELLERS**Attorney: Tim Kuiken • Foss, Kuiken, & Cochran, P.C.
Fairfield, IA • Phone: (641) 472-3129FOR ADDITIONAL INFORMATION, CONTACT AUCTION MANAGERS:
JIM HUFF (319) 931-9292 OR JEFF HOYER (319) 759-4320**SULLIVAN AUCTIONEERS, LLC • TOLL FREE (844) 847-2161**
www.SullivanAuctioneers.com • IL Lic. #444000107



DAIRY Deals

DAIRY MILK REPLACER*

20-20
Non-Medicated and
with Bovatec & Clarifly

22-20
with Bovatec
and Clarifly

NEMO DAIRY CALF STARTER*

20% & 18%

NEMO FEED
COMMITMENT TO QUALITY

*DEALS GOOD THROUGH JUNE 30th • DETAILS IN STORE



TWINE*
DUTCH HARVEST
SISAL
16000, 9000,
& 7200
TYRITE PLASTIC
20000 & 9600

NET WRAP*
HYBRID
67" x 9,000'
64" x 9,700'
TYTAN
64" x 9,000'
67" x 9,000'

Hometown
ANIMAL HEALTH

660.465.2967 • hometownanimalhealth.com
18743 US Hwy 136 • Memphis, MO 63555 • On Highway 136 west of Memphis

NUTRITION • MEDICAL • PET • FARM • APPAREL

NEMO FEED
COMMITMENT TO QUALITY

AUTHORIZED DEALER OF NEMO FEED.

Yearling Angus & Charolais Bulls

We have yearling weights & IMF data on the bulls. Bulls are semen tested & ready to go!

Trojan Hill Farms

Phil Archer
641-675-3769 - Home
641-680-6769 - Cell

Yoder's Indian Creek Furniture. Great selection of dining room, living room & bedroom furniture built with solid hardwood. Also maintenance-free poly lawn furniture in a variety of styles & colors. Poly martin houses & gourd racks. Rt. V64 Milton, Iowa. Located 4 miles North of Cantril or 3/4 miles South of Lebanon on RT. V64, Monday to Saturday 8 a.m. to 5 p.m. No Sunday sales. PH. 319-538-7332 22



A Great Crop Starts With A Great Seed

Your complete seed headquarters!
SEED CORN • SEED BEANS • SMALL SEED

Call Sid today to discuss all your 2019 seed needs!

NuTech Seed **SmartStax** **Roundup Ready** **REFUGE ADVANCED**

SIDWELL SEEDS

Queen City, MO
660-766-2737 • 660-216-6380



\$500 CLOSING COST*

OFFER IS VALID FOR PURCHASES AND REFINANCES OF PRIMARY RESIDENCE OWNER OCCUPIED HOMES. New Money Only - Great NEW rates available.

Fixed Rate Special - No Origination Fee Required With Long Term Fixed Rates Available.

*In-House loans only. Insurance may be required.

Ask us about Iowa Finance Authority Grant Money!



Dawn Benedict

NMLS# 780275

North Court, Ottumwa, IA



Penny Reed

NMLS# 780091

Church Street, Ottumwa, IA



Beth Riley

NMLS# 1466911

Church Street, Ottumwa, IA



Nicolette Proctor

NMLS# 1641326

101 Main St., Hedrick, IA



Insurance May Be Required



www.SOSB-IA.COM

Ottumwa - 320 Church:

641-682-7541

Ottumwa - 2525 N. Court:

641-683-6580

Hedrick:

641-653-4422

FOR SALE: AKC Registered Boston Terrier, male, 9 months old, up to date on shots & wormers, \$50. Memphis, MO Area. PH: 660-342-5532 23

FOR SALE: 5' x 8' Carry-on Brand utility trailer. Floor and sides covered with treated ply wood, \$450 in excellent condition. PH. 319-293-9150. 22

FOR SALE: AC WD45, 1955, heavy duty, loader, chains, wheel weights, wide front, 12 volt, runs good, \$1,500 OBO. PH: 641-233-7667 23



CUSTOM BALING

Hay - Straw - Corn Fodder
3x3 Big Square Bales
New Holland 330 Cropcutter™
Inoculate applicator

• Rotor Cutter for the widest range of chop length

BRYAN BURKHOLDER
ARBELA, MO • 660-342-2733

BLOOMFIELD LIVESTOCK MARKET

Wed., May 29th..... Fat Cattle, Slaughter, Cows & Bulls9:30 AM

..... No Feeder Sale.....

Sun., June 2nd Hawkeye Angus Sale..... 1:00 PM

Wed., June 5th Fat Cattle, Slaughter, Cows & Bulls9:30 AM

..... Special Feeder Sale..... 11:30 AM

NEW SUMMER SCHEDULE

Wed., June 12th **NO SLAUGHTER OR FEEDER SALE**

Wed., June 19th Fat Cattle, Slaughter, Cows & Bulls9:30 AM

..... Special Feeder Sale..... 11:30 AM

Wed., June 26th **NO SLAUGHTER OR FEEDER SALE**

Through the summer, starting in June, we will hold slaughter and feeders sales everyother week.

There will NOT be a slaughter sale every week through the summer!

Market Report for Wed., May 22nd - Selling 1089 Head

HEIFERS

Davis Brothers	Moulton, IA	74 BLK	513	\$168.50
Steve Morris	Memphis, MO	19 BLK	558	\$154.75
Kevin Good	Rutledge, MO	70 BBWF	700	\$151.25
Darlene Martin	Memphis, MO	70 BLK	777	\$151.00
Kirkhart Borthers	Cantril, IA	8 BLK	595	\$148.00

STEERS

R&R Cattle	Bloomfield, IA	5 BLK	518	\$178.00
Wes Henderson	Bloomfield, IA	5 BLK	547	\$176.00
Davis Brothers	Moulton, IA	56 BLK	547	\$174.75
Franklin Wheeler	Greentop, MO	7 BLK	605	\$169.75
Steve Morris	Memphis, MO	20 BLK	594	\$169.50
Richard Birchmier	Milton, IA	21 BLK	627	\$165.75
Kirkhart Brothers	Cantril, IA	18 BLK	630	\$162.50
Richard Western	Queen City, MO	15 BBWF	718	\$154.75
TA Farms	Bloomfield, IA	13 BLK	710	\$154.75
Erik Hopp	Luray, MO	70 B/CH	753	\$145.75
Ed Good	Memphis, MO	66 BLK	799	\$143.85
Ken Denning	Mount Pleasant, IA	54 BLK	845	\$138.75
Holtkamp Corp	West Point, IA	63 BLK	872	\$138.25

**SALE BARN OPEN UNTIL 9:00 PM
EVERY TUESDAY TO RECEIVE LIVESTOCK**

Phil Schooley 641-664-3450
Ron Schooley..... 641-777-0302
Roman Schooley 515-450-3685

Tyler Schooley 641-208-5442
Barn Phone 641-664-2435

We appreciate your business!

HWY. 63 NORTH • BLOOMFIELD, IA

Building Packages



**We Can Roll Your Metal
While You Wait!**



A W Metal LLC
Metal Roofing Headquarters

Free 12 pack of
A&W Root Beer®
with your next
purchase of \$500 or more!



641-664-3990 awmetal.net

FOR SALE: 100 used 8x8x16 blocks (clean). 2 32" entrance doors, good condition, 1 with casement. PH: 641-208-5812. 24

BLOOMFIELD MINI STORAGE. Serving you from 2 safe, convenient locations. PH. 641-664-1066. TF



BERHOLTZER TRAILER REPAIR
Specializing in Aluminum Grain Trailers Repair & Rebuild
Timpfe & Wilson Parts Available.
3 miles east of Gorin, Mo. on Route U
660-282-1012

NOTICE: Saw dust for sale at all times. Fox River Hardwoods PH. 641-664-2549. 22

FREE: Very nice home raised Red Heeler cross puppy, make offer. PH. 660-956-3656. 22



**Bring Your
Plans In For
FREE ESTIMATE**



**Full Line Of
Building
Materials**



**COMMERCIAL - AGRICULTURAL
RESIDENTIAL**

17893 212th Street • Bloomfield, IA 52537
641-722-3605 • Mon. - Fri. 7 AM - 5 PM

CLOSED ASCENSION DAY
THURSDAY, MAY 30TH