



The NewsHopper furnished FREE, because of the advertisers. Please let them know you appreciate it.

First Copy FREE, subsequent copies \$1 per copy.

Vol. 20 • Issue 31

Sat., August 3, 2019

NEWSHOPPER

FREE

PRST STD
U.S. Postage
PAID
Brainerd, MN
ZIP CODE 56401
Permit No. 681

PO Box 562, Ironton 56455 • By Appointment Only
218-772-0300 • 218-821-1393

email: hopper@crosbyironton.net
www.newshopper.net

WHAT'S INSIDE

COMMUNITY EVENTS
Page 3

OBITUARIES
Page 4

CLASSIFIEDS
Page 6

LEGALS
Pages 7 - 9

Pop-up gallery to feature images of disappearing landscape



"Lone Barn" - photograph by Rachel Cain

Award-winning photographer Rachel Cain will show her images of landscape and architecture at a one-day pop-up gallery at Ripple River Gallery near Bay Lake. The event is set for Saturday, August 3 from 12-5 p.m.

A photographer for over 15 years, Cain's subject matter is varied. "If I fall in love with a subject, it is fair game," she says. She is particularly drawn to old buildings, tex-

ture, architecture, landscapes and birds. Traveling the back roads of Minnesota, she captures images of the trappings of bygone eras—stately barns that have fallen victim to changing economies.

Cain, who lives in White Bear Lakes, says her goal with each photograph is to get to the 'essence' of the subject, eliminating distracting details. She enjoys the post-processing part of her work, using it to emphasize essential qualities. Cain has exhibited and earned awards at numerous venues around the region. Some of her im-

ages have been published in Capture Minnesota books.

Ripple River Gallery is open 10 a.m. to 5 p.m. Wednesday through Saturday; and from 11 a.m. to 4 p.m. Sundays. The gallery is located five miles south of Deerwood on Highway 6, then 3 miles east of Ruttger's Bay Lake Lodge on County Road 14 to Partridge Avenue; or south of Aitkin on Highway 169 to Bennettville, then 3.2 miles west on County Road 11 to Partridge Avenue.

For more information call 218-678-2575 or e-mail ripplegallery@gmail.com.



SOME CALL THIS OFFER COOL. OTHERS CALL IT HOT. WE SAY, IT'S BOTH.

Cool and heat your home with an energy-saving air source heat pump AND receive a HOT promotional rebate!

ASHP	Regular Rebate	Promo Rebate
14.5 SEER	\$500	\$1,000
15 SEER	\$600	\$1200
16+ SEER	\$700	\$1,400

Receive this rebate for a **LIMITED** time when installed in June, July, and August by a qualified contractor. Contact Mille Lacs Energy with any questions at 218-429-0431 or 888-433-4279.

ENERGY WISE  MN





BLUES. BBQ. BEER.

SATURDAY, AUGUST 10 | 5 - 9 p.m.
THREE BLUES BANDS | BBQ FEAST | BENT PADDLE BEER
TICKETS: \$25 FOR EVERYTHING! Available at www.ruttgers.com/blues-bbq-bash
FEATURING MINNESOTA BLUES HALL OF FAME INDUCTEE DEE MILLER!


PRESENTED BY BENT PADDLE BREWING CO.



DEE MILLER BAND
MN BLUES HALL OF FAME



Ruttger's
Est. 1898
Bay Lake Lodge
ruttgers.com
800-450-4545



SHIFT CLINIC

INTEGRATIVE MEDICINE

Chiropractic • Acupuncture • Massage • NeuroMetabolic Care • Guided Weight Loss • Slim Laser • Magnesphere

Schedule your first appointment by Aug. 31, 2019 and receive a **FREE Lyme Disease & Pain Consultation** \$149 Value

Drs. Murray & Shannon Smith • www.askdrsmith.com
23 West Main Street, Crosby • (218) 851-9626

WOW! Sign Up for **SHIFT Wellness Club***

*\$100 per month gets you up to 1 chiropractic adjustment per week! Call or see website for details. Limited Time / Limited Space



MAJOR BRANDS

at Low Prices Everyday!

Your Buy It Today... Have It Today Store!*



Genuine Solid Cedar, Log Bed



Full Size Reg. \$699

NOW ON SALE \$297

Available in Twin-Full-Queen-King Sizes
SALE PRICES ON ALL SIZES



Beautyrest
Plush Mattress

\$397

Queen Size Reg. \$699



371 FURNITURE & MATTRESS

Buy It Today... Have It Today!*

* on In Stock Items

16413 Highway 371, Brainerd, MN 56401 • 218-828-3020
2 Miles North of Baxter on 371 • www.371furniture.com
371sales@gmail.com • Hours: 9-6 Mon - Sat; 11-4 Sun


 <p>2010 Buick Lucerne \$6,995</p>	 <p>Pontiac Grand Am \$1,995</p>	 <p>2000 GMC Sonoma \$2,250 4x4 65K miles</p>
 <p>2009 Kia Sportage \$4,500</p>	 <p>Isuzu Box Truck \$6,500</p>	 <p>2008 Dodge Grand Caravan \$6,850 Stow'n Go Seats</p>
 <p>VW Passat \$2,500 While It Lasts</p>	 <p>SPECIAL: Kia Spectra \$995 Straight Stick</p>	 <p>PT Cruiser \$1,500 while it lasts!</p>
 <p>2010 Chevy Impala \$3,500</p>	 <p>2007 Chevy Fleet Truck \$6,450 with topper</p>	 <p>2006 Chevy Cab & A-Hall</p>
 <p>2008 Chevy HHR Panel \$3,450</p>	 <p>Chevy Impala \$2,000</p>	 <p>2007 Chrysler Town & Country \$3,650</p>
 <p>Dodge Coachman Camper low miles hard to find \$2,500</p>	 <p>Ford Explorer 4x4 \$1,500</p>	 <p>Dodge Dakota \$2,000 4x4</p>

Little Jim's Auto Sales

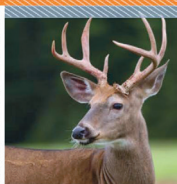
4 miles NW of Garrison on Hwy. 18
218-678-0045 office • 612-749-0193 cell
We Buy, Sell & Trade


2019 deer hunting regulations and chronic wasting disease restrictions

Effective July 2019 through June 30, 2020



MINNESOTA HUNTING & TRAPPING REGULATIONS





SHARE THE PASSION #huntmn

Hunters can start planning ahead for significant changes to deer season regulations, including a youth deer season that's expanded statewide, expanded deer feeding and attractant bans, and other updates related to managing chronic wasting disease.

"We heard a lot of support for a statewide youth deer hunting season," said Barbara Keller, big game program leader for the Minnesota Department of Natural Resources. "We're excited to make it easier for parents, relatives or trusted adults to share their hunting knowledge and traditions with the next generation of deer hunters."

The 2019 Minnesota Hunting and Trapping regulations handbook is now available on the DNR's deer hunting page at mndnr.gov/hunting/deer. Hunting licenses went on sale August 1, and are available at any DNR license agent, by telephone at 888-646-6367, or online at mndnr.gov/buylicense.

The dedicated, statewide youth season runs from Thursday, Oct. 17, through Sunday,

Oct. 20, for youth hunters ages 10-17. In the past, the youth season was only available in the southeast, northwest and Twin Cities metro permit areas.

Other significant changes this year include regulations that reflect the DNR's response to chronic wasting disease. In addition to hunters, all Minnesotans in central and southeast Minnesota should pay close attention to the deer feeding and attractant ban rule. The area where deer feeding and using deer attractants is prohibited will

expand starting Sept. 1, in areas of central and southeast Minnesota where CWD was detected in farmed or wild deer.

Feeding and attractants increase the risk of disease transmission between animals by bringing them together in close contact, which is a mechanism for CWD spread.

There are several changes to deer permit area numbering this year that will clarify where CWD management and surveillance occurs. Deer permit areas within a CWD management zone, in

southeast and north-central Minnesota, will now be part of a 600-series permit areas. The metro deer permit area will be renamed to 701 from 601.

The DNR is, as in previous years, enforcing carcass movement restrictions to limit the spread of disease. Hunters will also need to be aware of mandatory sampling during all deer seasons in the CWD management zones (southeast and north-central), and over the opening weekend of the firearms season in the CWD control zone (south-

east, bordering the CWD management zone) and in surveillance areas (central). Full details about CWD sampling, including sampling locations, carcass movement restrictions, and management and control zones are available at mndnr.gov/cwd.

For more information on what's new in the regulation changes, and for regularly updated deer hunting information including the DNR's deer permit area mapping tool, visit the DNR's deer hunting webpage, mndnr.gov/hunting/deer.

Law Enforcement Scholarship Program

Crow Wing County Sheriff Scott Goddard now accepting applications. The Minnesota Sheriff's Association is awarding up to 15 \$600 scholarships for 2019. The scholarships will be announced by December 28, 2019.

Students currently enrolled in one of the following three categories are eligible to apply:

1. Mandated post-secondary education skills program;
2. The second year of a two-year law enforcement program; or
3. The third or fourth year of a four-year college criminal justice program.

To qualify, students must have completed at least one year of a two-year program or two years of a four-year program. Applications for the scholarship are available at the Crow Wing County Sheriff's Office or online at: www.mnsheriffs.org.



GET REFRESHED! RECOVERY Worship Service

Sat., Aug. 3 • 5 p.m.
Cascade United Methodist Church
Deerwood

EVERYONE is welcome!
218-534-3507

support • hope • healing

Motion Adjustable Base with Power Headup and Power Feetup Wireless Remote

Regular Price \$499 **Sale Price \$297**



Crosby Mattress

• 209 Minnesota Avenue North, Aitkin • 14370 Dellwood Drive, Baxter

www.crosbymattress.com



KNIFE RIVER

AN MDU RESOURCES COMPANY



For Delivery or Pickup
1-888-450-3460

AGGREGATE:
Washed Sand • Washed Rock
Class 5 Gravel • Fill Sand
Crushed Concrete • Granite

MasterCard VISA Accepted



Autobody

218-330-6027

Michael Bednarczyk, owner mikeb_56441@yahoo.com

Restoration

Sandblasting

Ironton, MN

Pete's AUTO DETAILING

The only service that comes to you!
Mobile Auto and Boat Detailing Service for Your Vehicles
Interior, Exterior, and Odor Eliminating Needs.

Call Pete today for pricing and info!
(218) 838-5487

SHUTTLE SERVICE

Let Us Drive You!

Mike Bednarczyk
218-330-6027
mikeb_56441@yahoo.com

Golfing • Weddings • Reunions • Parties



R&R Landscaping & Construction

Aitkin, Minnesota • Lic. CR651172

218-839-3371

YOUR EROSION EXPERTS!

FLOODED BASEMENT REPAIR!

Get estimates for Summer Projects!

Specializing in Shoreline Restoration

Rip Rap Rock Installation



Specializing in Shoreline Restoration

Rip Rap Rock Installation



For Your Landscaping & Construction Needs

call Greg for a FREE ESTIMATE 218-839-3371

Specializing in Shoreline Restoration

- Rip Rap Rock Installation
- Boulder Wall Material Installation
- Sod Installation
- Class Five
- Bobcat Work
- Demolition
- All Dirt Work Needs
- Patios

General Building & Remodeling Contractor

- Roofing
- Window Installation
- Siding
- Garages
- Doors
- Decks
- Handicapped Bathrooms

Dozer & Backhoe Work

- Basements
- Driveways
- Ponds
- Wild Life Food Plots
- Land & Lot Clearing
- Stump Removal
- Rip Rap
- Demolition
- Building Pads
- Ditches and Ditch Cleaning
- Black Dirt, Sand & Gravel
- Roads / Road Building
- Boulder Walls
- Trail Brushing

Tree Removal

- Tree Removal and Clean-up
- Stump Grinding
- Storm Damage Cleanup
- Aerial Truck



COMMUNITY EVENTS

Ongoing Events:

AA - Aitkin - 322 1st Ave. NE 218-927-6240
Sun. Women's Meeting 5:30, Mon. Step Study 7:00pm Open, Tue. Big Book Discussion Meeting 6:30pm Open, Open Meeting 8:00pm, Wed. Women's Meeting 6pm, Thu. Sober Sailors Open 9am.

AA Garrison: Monday Night AA (open) 7:30 PM and Wednesday 7:30 PM at Community Alliance Church, 9475 Jefferson St.

ALANON - 322 1st Ave NE, Aitkin 6:30 pm Thursday evenings.

ALANON Garrison: Wednesday 7:30 PM at Community Alliance Church, 9475 Jefferson St.

Aitkin Friends of the Library meet 4th Tue. each month, 1 pm, Aitkin Public Library.

Aitkin IOOF 164 meeting every 4th Monday at 2 pm

Aitkin Lions meet on the 3rd Tuesday at 6 pm at the Aitkin Forty Club restaurant. Call 218-839-3954 for more info.

Aitkin Rebekah lodge. 151. Meets the 1 st and the 3rd Tuesday of each month. Come join us. We meet at the IOOF hall. 22 2nd st. Above the Napa auto parts store. The 1st tues. is a business meeting. The 3rd one is a social meeting

Aitkin Women of Today meet 2nd Mon. of month, 6:30 pm, Mille Lacs Energy Coop, info call 218-927-4558. Evening care is available and free. All are welcome!

Alzheimer's Support group meetings at ANGELS in McGregor meets the 1st Thurs. every month at 1 pm.

American Legion Aitkin Lee #86 & Unit 86, meets the 2nd Thurs. of each month at 7 p.m.

Art Club meets on the second and fourth Tuesdays at the Jaques Art Center in Aitkin, 1-3 pm "Ask An Attorney" Workforce Center - 20-3rd St. NE, Aitkin, 4th Tuesday of month at noon

Pre-registration required call 218-723-4005

Blow-Hards, a lung disease support group, meets the 4th Thu. of each month, Kanabec Hospital in Mora. Contact Carol, 320-225-3646.

Buddhism-Nichiren meetings held at the Brainerd Public Library conference room on the 3rd Saturday of every month at 1 pm. For information contact Mike Engblom-Bradley 936-525-7843.

Care N Share Community Cafe Community Meal, Wednesdays Located in the fellowship hall in the Wesleyan Church on Highway #6 in Emily. Please call Sharon - 612 669-3295

Caregiver/Memory Loss Support Group. Meets the first Wed., 1-2 p.m. at Birchstreet Center, downtown Aitkin. 218-9271383.

Circles of Support meets every Tue., 6-8 pm If you are living paycheck to paycheck and are ready for a change, Circles may be right for you, call Brandi, 800-997-5723.

Clear Lake Grange meets second Tue. each month, 6 p.m. potluck, 7 p.m. meeting. Meets at the Aitkin Library Community Center. More info call Bonnie 218-927-3485 or Roxy 218-927-4558.

Clothes Closet offers free clothing to men and women in need, open the fourth Saturdays of each month from 8 a.m. - noon. Located at 6297 Woods Bay Drive NE, just north of the Hwy. 6 bridge in Outing. For more information call 320-857-0182. Donations of clean, repair free clothing accepted that time also.

Co-dependants Anonymous meeting. 332 1st Av. NE Aitkin. Wednesday evenings. 5:30.

Cooks Night Out - 3rd Wed of month, McGregor Comm. Ctr., 5:30 p.m., no restrictions, donations welcome.

Cuyuna Rock Gem & Mineral Club, meet 2nd Sat. each month, 2:30 at the lower level of the Franklin Arts Center at 1001 Kingwood St, Brainerd.

Dance every second Tuesday at Moose in Grand Rapids.

Dance at VFW in McGregor every 1st Monday of the month, except holidays which will be on the following Monday

Dance at Waukenabo the second and last Wednesday of the month.

Deerwood Lakes Lions meet the 2nd Monday of each month at the Heartwood Senior Living Complex. Social begins at 5:30pm followed by Dinner/Meeting at 6:00pm. We are very involved in community events and would love to have you join us. If you would like to come to a meeting and see what we do or going to be doing, please call Lion Nancy at 218-678-4165 and let me know by the Thursday before our meeting.

Dyed in the Wool Spinners meeting 1st Tuesday of the month 1-4 p.m. If you knit, crochet, spin, weave or do any other fiber arts please join us in the Club Room at the Security State Bank, 402 Minnesota Ave. N., Aitkin.

Emily Community Care N Share is serving meals on Wednesdays in the fellowship hall at the Wesleyan Church, Highway 6, Emily

Evergreen P.A.C. ATV Club meetings 1st Thu. each month, 7 pm, Jackson Hole, Lawler, open to public.

FASD Caregiver Support Group - For caregivers of individuals with a diagnosed or suspected Fetal Alcohol Spectrum Disorder (FASD). Meet with other caregivers (adults only please) for support, understanding, and networking. Meetings are 9 am the second Saturday of each month at Bethlehem Lutheran Church, 418 8th Ave. NE, Brainerd. For more information, please contact Sheila York at 218-820-5903 or syork@mofas.org

Friends of Rice Lake National Wildlife Refuge meet 3rd Wed. each month, at 1 pm. at the Visitor Center at 36289 State Hwy. 65, McGregor 218-768-2402

Food Addicts in Recovery Anonymous Meeting Tuesday evenings. 6:30 pm small conference room at Aitkin Library. No dues, fees or weigh ins. For more information call: 217-248-6434. www.foodaddicts.org

Food Shelf (Aitkin) Open every Wednesday, 10:30 am - 3 pm. 102 4th St. NW, Aitkin

Food Shelf (Aitkin) at First Lutheran Church open on 2nd and 4th Thurs, 9:30 am-5 pm, at 107 2nd St SE, Aitkin. Must register by 4:45 pm to be served.

Food Shelf (Aitkin) Emergency Food Shelf at St. James Catholic Church, Aitkin. Hours are Tuesday from 12 to 3 pm. To enter the food Shelf go to the South side of the building, go to the 4th door and look for signs.

Food Shelf (Emily) First Wednesday of the month for produce and bakery only, 9:30 – 11:00 am. Third Wednesday distribution 9:30 – 11:00 am, followed by Thursday distribution 5:30 – 6:30 pm. Enter from south door.

Food Shelf (Garrison) Open Tue. & Thu. 1-5 pm, at 9541 Madison Street; Garrison. For emergency Food Shelf, call 320-692-5399 and leave a message.

Food Shelf (Hill City) Trinity Lutheran Church 3rd Saturday 8 am - Noon or by Appt.

Food Shelf (Jacobson) Carmel Lutheran Church 60346 240th Ave, 1st and 3rd Thursday, 4 - 6 pm

Food Shelf (McGregor) 45898 Hwy 65 2nd and 4th Wednesday of Month 9 am - Noon

Garrison Fire Auxiliary meets 2nd Thu. 7:30 pm, Garrison Fire Hall.

Garrison Thrift Store, Thurs.-Fri. 10-4, Sat. 11-4.

Gamblers Anonymous 7 pm Thursdays at the Heritage Church on College Drive in Brainerd. This is a closed meeting. Anyone who has a desire to stop gambling is welcome. For more info call 715-821-1749.

Heart to Heart Support Group, 4th Tue. of month, 2 pm, Kanabec Hospital, int. of Hwy. 65 & 23, Mora.

Jacobson Seniors meets every Thu., 10-2 pm at Jacobson Comm. Ctr. Potluck at noon. Beverage provided. All are welcome. For more info., 752-1515.

Marsh and Meadows Hunting Retriever Club, Mon. 5:30 pm in Pequot Lakes, for more info call Brett 651-270-5648 or facebook/Marsh and Meadows Hunting Retriever Club

McGrath City Council, first Thu. of the month, 6:30 pm at fire station hall.

McGrath Senior Center meets every Mon. 1-4 pm, cards & games, all are welcome.

McGregor Community Meal sponsored by ANGELS served at the Community Center on Highway 65 on the 3rd Wednesday of each month serving from 5:30 - 6:00 pm.

McGregor TOPS (Take off Pounds Sensibly) meets Thu., 4 pm weigh in, 4:30 meeting, Minnewawa Sportsman's Club, Goshawk St. (Co. Rd. 6). 218-768-2340 for more info.

McGregor VFW hosts a dance the 1st Monday every month at 1pm.

MS Support Group, meets the 1st Thu. of the month at 7 pm, 606 NW 5th St, Brainerd, 218-824-5228.

Mystic Masonic Lodge meets 1st & 3rd Tuesdays of the month at 7 pm except June, July & August meet only 1st Tuesday at 7 pm over the Eye Care Center in Aitkin.

National Alliance on Mental Illness meet Fri., 2:30, Community Presbyterian Church, 703 Pokegama Ave., room 105, Grand Rapids, Call Terrence at 218-327-1347.

North Central MN Farm & Antique Assn. meet 1st Wed. of month, Blackberry Town Hall. Info: Bruce 218-752-6592.

ORDER OF EASTERN STAR, Woodland Chapter #122 in Aitkin meets 2nd and 4th Tuesdays each month at 7PM, EXCEPT January, February and July which are dark . 4th Tuesday in June and 2nd Tuesday in August also are dark. Meetings are held on 2nd floor of the EyeCare Center 312 Minnesota Ave No. Aitkin, MN

Operation Minnesota Nice meets 3rd Monday each month at 6 pm at Trinity Lutheran Church, Hill City. For info call Tina Harcey at 218-697-8144. www.operationminnesotanice.com.

Overeaters Anonymous 9:30am at Aitkin Library, 7:00pm at 112 1st Ave SW - house next to New Life Church. Everyone is welcome, especially newcomers. OA is a 12 step program fashioned after AA. Not a diet club, no dues or fees or weigh-ins. For more info: OA.org, or call meeting contact Cheryl at 770-576-5984.

Praise & Worship Services, 101 S. Maddy St., McGregor, Intercessory prayer Wed 6-7 p.m.; Praise & Worship Services Sat. 2 pm, Sun 10 am.

Pickleball 9 a.m.- noon on Mondays, Wednesdays and Fridays at the Rutger's Bay Lake Lodge. For more information, contact Ron Mogen, u-equity@usa.net.

Recovery Worship Service, Cascade United Methodist Church, Crosby/Deerwood, 1st Sat., 5 pm. Everyone is welcome.

Rosary is ongoing the fourth Tuesday of each month at 1 pm at the Big Fish, Garrison, contact Jean at 218-764-2665 for more info.

RSVP Bone Builders (Osteoporosis exercise program) Tue & Thu: 10-11 First Lutheran Church, Aitkin; 11:30-12:30 Blackrock Terrace, Aitkin; 12:45-1:45 Journey North Church, Aitkin; Wed: 10-11 Malmo Evangelical Free Church, Malmo & Fri: 10-11 Bethesda Lutheran Church, Malmo. Free of charge. Info call 218-927-1383.

Second Tuesday Card Party, Deerwood American Legion. Open to public, 1 pm social, card playing 1:30-3:30 pm. Cost \$3 per person. Refreshments.

Senior Dance at Deerwood Legion, 1-4 pm, 1st and 3rd Fri. each month.

TOPS Aitkin (Take Off Pounds Sensibly) Every Tues at East Entrance, First Lutheran Church, 101 2nd St SE, Aitkin Weigh in at 4:30pm and meeting at 5pm

T O P S Irontron (Take Off Pounds Sensibly) meet Monday, 4 pm weigh-in, 4:30 pm meeting at Immanual Lutheran Church, Crosby. Call Mabel Semler 218-546-6523 for meeting location information.

Weight Watchers (now called WW) meets at Hallett Center in Crosby every Wednesday at 5:45 pm. Weigh in begins at 5:15 pm. For more information-

tion call 218-820-9725.

White Pine Riders ATV Club meet 2nd Sat. each month (Feb. - Oct.) at McGrath Fire Hall, 10 am, open to public.

August

2nd & 3rd - Aitkin High School Class of 1979 informal gathering at the 40 Club Friday at 6 p.m. Then on Sat., Aug. 3 gather at 1 p.m. on 3rd Street near Ripple-side to help decorate the float for the parade at 3 p.m. . Float riders also needed, wear red and black. The main reunion will be at The Landing 6 p.m. with (dutch) buffet dinner. For more info and to RSVP contact John Bright at johnbright@hibbing.edu

3rd - Riverboat Days in Aitkin Run to the Dump 8 - 10 am, Fun Float Down the River 11 am - 2 pm, parade 3 - 4 pm

3rd -Last day of the Crow Wing County Fair, Brainerd.

3rd - Aitkin High School Class of 1957 informal gathering to mark 62 years since its graduation at the 40 Club east room. Social hour will begin at 4 p.m. with dinner at 5:30 p.m. If you have updated telephone numbers of classmates, etc. contact Harriet Simonson at 218-549-3178 or email harhar50th@frontier.com.

4th & 11th - Brainerd Ski Loons will be performing a FREE water ski show at Lum Park, 5 p.m. Come and watch human ski pyramids, ski jumpers, barefooters, and skiers being pulled 360 degrees around the boat! This event is great fun for the whole family. Concessions will be available. Please bring blankets or lawn chairs for seating. The Ski Loons are a 501(c) (3) nonprofit organization in Brainerd. For more information, find the Brainerd Ski Loons on Facebook or visit their website www.skiloons.com.

8th - Bad Art Night 6-7 p.m. at East Central Regional Library in Aitkin. Teens, ages 16 and up, are encouraged to make the worst piece of art possible. The most dreadful will be earn prizes. Registration is required. Visit the events calendar at eclib.org to reserve your spot. Space and supplies provided, but limited. This program is sponsored by the Friends of the Aitkin Public Library and East Central Regional Library. The library is located at 110 1st Ave. NE in downtown Aitkin and can be reached at 218-927-2339.

8th - Music in the Park 5 to 8 p.m. Admission is free at Crosby Memorial Park on Serpent Lake sponsored by the Cuyuna Lakes Chamber of Commerce. Call 546-8131 for more details.

9th & 10th - Summerfest in Deerwood. Crafters line the streets of Deerwood, food and music.

9th & 10th - Deerwood Summerfest Treasures Sale, Health Booth, Bake Sale and Cold Water Bottles Sale. The Deerwood Lakes Lions will be inside of the Deerwood Auditorium 9 a.m. - 4p.m. on Friday and 9 a.m. - 3 p.m. on Saturday.

askdrsmith.com

featuring Dr. Murray Smith

A second bite of Lyme disease

In our last article, we looked at where Lyme Disease is most commonly found (most likely right where you're reading this), how we get it (from those nasty ticks), and what to do if you find one on you. Now we're going to look briefly at the culprit(s) that cause the problem and explore some common symptoms if you happen to unfortunate enough to get Lyme Disease


Erythema migrans, a bullseye rash, is one of the hallmarks of Lyme disease. Occasionally, some people develop this rash at more than one place on their bodies. It should be noted, though, that not everyone with Lyme Disease develops the rash. Some sources say that less than half of those who contract Lyme Disease actual get the rash. This can make early diagnosis very difficult.

Invading organisms, which are what the tick transmits, have fancy names like Borrelia burgdorferi (the Lyme bacterium), Babesia, and Ehrlichia. The invader is less of an issue than the toxins they excrete which in turn can cause a wide swath of symptoms. To complicate things, the symptoms can depend on where these bad guys set up shop. They pick important areas like the brain and spinal cord, joints, muscles and organs.

Like a great mimicker, the symptoms can be as simple as general fatigue, soreness and muscle aches. Fogginess, headaches, sleep

disturbances, and difficulty healing can develop. Other serious problems such as heart complications, hearing loss, paralysis, and memory issues also occur. These are the tip of the iceberg of possible symptoms. With this in mind, it's easy to see why having a experienced health professional in your corner can be extremely helpful.

Next time we'll touch lightly on some of the reasons for the symptoms. We will also get into some of the testing needed and some of the issue surrounding them that add insult to injury.



Dr. Murray Smith DC, cAcu, CSCS, CCSP is a Board Certified Doctor of Chiropractic, Board Certified Acupuncturist, Clinical Nutritionist with a passion for helping people reclaim their health naturally and empowering them to keep it! He is the co-founder of SHIFT Integrative Medicine serving the Cuyuna Lakes and Brainerd Lakes areas of central Minnesota for over 25 years.

For more information, log on to www.askdrsmith.com or call 218-851-9626.

CLIMBING RESCUE LADDERS OF COMMUNITY SUPPORT

To support Garrison Fire Dept. and SOTL Outreach Programs

SUNDAY, AUGUST 11

8:30 a.m.

Silent Auction Opens
Register for Door Prize (Hand Pieced & Professionally Quilted Quilt)
Coffee & Donuts served

10:00 a.m.

Community Outdoor Worship Service
Honoring our Dedicated Fireman and Women

11:00 a.m.

Luncheon/ Free Will Donation
Bake Sale Opens

12:00 p.m.

Games, Fire Trucks & Garrison Fire Dept.

1:30 p.m.

Silent Auction Ends
Winner of Door Prize Announced
(Need to be Present to WIN!)
Bidder Recipients Announced

COMPLETE LISTING OF AUCTION ITEMS ON SHEPHERD OF THE LAKE WEBSITE

SHEPHERDOFTHELAKE.ORG



Shepherd of the Lake
LUTHERAN CHURCH
Missouri Synod

Weather permitting
these events will be
held outdoors



1 mile north of Y Store in Garrison

DIRTY WINDOWS?

DON'T FRET!

Call or text Alex for window washing, power washing and painting at 218-839-1457 or 218-927-2086. Email: alexjschwartz@gmail.com



YEAH!
we do windows
THE CLEAR CHOICE

yeahwedowindows.com

Tim Turner's Yard Services

Reasonable • Experienced • Reliable

Call for
FREE
Quote



Call Tim at 218-330-7003

Full Service Lawn Care

Mowing • Trimming • Edging • Pruning

Raking • Yard Waste Removal

Also
Cabin
Cleaning

OBITUARIES

JACQUELINE PARK



Jacqueline Park, 76, of Aitkin, wife, mother and grandmother to be, died on Friday, July 26, 2019 at her home on Sugar Lake. Jacque fought hard for many pain filled months, trying to beat lung cancer that spread to her spine. She is now in a better place and in better hands.

A private family celebration of life will be held at her home on Sugar Lake. In lieu of flowers, memorials are preferred to the American Cancer Society or Dog / Animal Shelters.

Jacque was born on February 19, 1943 in Austin to Kenneth and Arlene (Rost) Churchill. She grew up in Spring Valley and graduated from Spring Valley High School in 1961. She attended the University of MN and received her BA Degree in Education in 1965. Jacque married Jack Park on September 12, 1964 in Spring Valley and in 1973 they were blessed with a baby, Travis. Jacque taught Kindergarten in the Roseville School District before a long successful and rewarding teaching career at Mounds Park Academy in St

Paul. Her guiding influence on hundreds of 5 and 6 year old children was a highlight of her life and also the lives of her now grown students. After retirement Jacque and her husband Jack moved to their lake home in Northern Minnesota for the summers and then spent the winter months at their home in Chandler, AZ. acque enjoyed the outdoors and to go to her summer and winter homes to play golf and plant beautiful flowers. She was an avid sports fan and followed many sporting events, especially the Masters and U S Open golf tournaments. Jacque loved her German Shorthair Pointer dogs, Annie and Gretta, they gave her so much joy.

Jacque is survived by her husband, Jack of Aitkin; son and daughter-in-law, Travis and Lizeth of Winter Garden, FL; sister, Susan Churchill of Casa Grande, AZ.

She was preceded in death by her parents and brother Craig Churchill.

Arrangements were with the Sorensen-Root-Thompson Funeral Home and Cremation Service of Aitkin. Go to www.srtfuneral.com to sign the online guest register.

BEVERLY BOYER

Beverly Boyer's family would like to invite friends and family to attend her graveside internment on August 3, 2019 at 11:00 a.m. in the Pequot Lakes Cemetery in Pequot Lakes. A memorial service will follow at 1:30 p.m. at Rice River Township Hall located at 32270 Hwy. 65, McGregor. All friends and family are welcome.

Sorensen-Root-Thompson

Aitkin, MN

218-927-2614

S

R

T

McGregor Funeral Home

McGregor, MN

218-768-3136

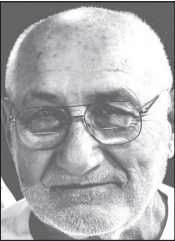
Traditional • Cremation • Memorials • Pre-Arranged Funerals

Directors: Jerry Thompson
Jason Brezinsky

www.srtfuneral.com

Community Events, Births, Open Houses, Engagements, Weddings & are published **FREE!**
Send your e-mail to hopper@crosbyironton.net

DONALD VRANISH



Donald Vranish, 86, of Cedar Rapids, IA, died Wednesday, July 24, 2019, at St. Luke's Inpatient Hospice Unit, Cedar Rapids.

Services have been held.
He was born on Sept. 9, 1932 in Crosby-Ironton, the son of Sam and Sylvia (Minarich) Vranish. He married Carolyn Haskins on July 31, 1959. The couple later divorced. He worked at Penick & Ford as a laborer until his retirement in 1994. He was a member of the Fraternal Order of Eagles in Cedar Rapids. He was an Iowa Hawkeyes fan and played golf in his younger years. He enjoyed doing yard work and going on road trips, which included stops

to the casinos. His greatest joy was his family. He is survived by his daughters and son-in-law: Kimberly and Darrell Jencks and Laurie Weatherly, all of Cedar Rapids, IA; three grandchildren, five great-grandchildren, sister, Nancy Rothwell of Idaho; brothers and sisters-in-law: Jack and Joni Vranish and Robert and Joyce Vranish Crosby; sister-in-law, Ann Vranish; and several nieces and nephews.

He was preceded in death by his parents; brother, Sam Vranish; sister, Jean Henriksson; one granddaughter and two nephews.

Arrangements were with Murdoch-Linwood Funeral Home & Cremation Service, Cedar Rapids, IA, www.murdochfuneralhome.com.

MARY ZILVERBERG

Mary Arlene Zilverberg, 75, died on Sunday, July 14, 2019.

Interment was in the Pleasant Valley Cemetery Grants Pass, OR.

She was born in Waukesha, WI on Oct. 21, 1943 to Jim and Helen Zilverberg. She moved to Aitkin with her parents and two sisters in 1947. She graduated from Aitkin High School in 1961 and moved to Minneapolis where she met Wallace Lyle Olson. They married on March 15, 1963 and had a son, Lyle and daughter, Leah, while living in Minnesota. They moved to Grants Pass, OR in 1971, where Rachel was born. In 1991, they moved to Boise, Idaho where Wally had a job with the U.S. Forest Service until he retired. They divorced in 2012. Wally and Mary

later became close companions and moved to Brookings, OR—making this coastal paradise their final home.

She is survived by Wally Olson, her children: Lyle (Linda), Leah and Rachel (Doug), 12 grandchildren, and 10 great-grandchildren; sisters: Shirley (Earl), Grace, Beverly (Iden); and six brothers: William, Thomas (Jeanne), Michael (Shannon), David Paul (Ellen), Steven (La Paz) and Timothy (Danae).

She was preceded in death by her parents; and two sisters, Betty and Bonnie. Arrangements were with Stephens Family Chapel, Grants Pass, OR, stephensfc.com.

JUDITH YOUNG

Judith Lorraine (Sutton) Young, 73, formerly from Aitkin, died on Saturday, July 20, 2019 in Las Cruces, NM.

Services were held Monday, July 29, 2019, at the Alamogordo Funeral Home. Burial was in the Monte Vista Cemetery.

She was born on Oct. 25, 1945 in Stow Creek, NJ to Trevah and Mary Sutton. She was married on Oct. 19, 2002 to Byron "Barney" Young. She is survived by her husband, Byron "Bar-

ney" Young; two daughters: Christie (Tim) Good, Shell Knob, MO; Kimberly Brunson, Grand Junction, CO.; son, Steve Brunson, Farmington, NM; three stepsons: Charlie (Sarah) Young, Alamogordo, NM; Matt (Camara) Young, Brainerd; Tyler (Katie) Young, Savage, MN; five grandsons; four granddaughters and two great-grandsons. She was preceded in death by her parents. Arrangements were with the Alamogordo Funeral Home Chapel, Alamogordo, NM.

CHURCH DIRECTORY

* Indicates handicap accessible. NOTE: All times are Sunday morning (a.m.) unless indicated otherwise.

ALLIANCE
Aitkin* — New Life; Larry Burg & John Baker, pastors; Worship 10:15 am & 5:30 pm; Adult Sunday School 9 am; "Elevate" youth group for 7th-12th graders, Wed 6:15 pm; 112 - 1st Ave. SW 218-927-2823.
Baxter* — Pointway Alliance Church; Rev. Charles Bolstridge, 218-537-6505; 7756 Highland Scenic Road; Worship 10; www.pointway.org
Garrison* — Pastor Michael H. Palkie; Worship 9; SS 10:30. McGregor/Big Sandy — Rev. S. DeMars, 426-3408; E. of Sather's Store; Worship 9:30; Children's Church 10
Onamia — Vineland Native American Chapel, Hwy. 169 north of casino; Worship 11; Pastor Boeringa 320-532-4449

ASSEMBLY OF GOD
Aitkin — Heritage Church, Rev. Hayden Loven ; Sunday Morning Service 10:45
Crosby — Pastor Dustin McCaleb; Worship 10:30
Crosslake — Crossroads Christian, Rev. Gary Espeseth; SS at 9:30; Worship at 10:45
Hill City — Interim Pastor John Koppel, Staff Pastor Lisa Jordan; Worship 10; hilicityagchurch@gmail.com; 218-697-2662
Palisade — Pastor Ed Sornberger; SS 9; Worship 10; Kids Church; Small groups during the week 218-845-2726

BAPTIST
Aitkin - The Journey North, Pastor Lynfield Hines, 218-824-5617, Worship 9: 30 and 11, thejourneynorth.com
Baxter - The Journey North, Pastor Mark Bjorlo, 218-824-5617, Worship Saturday 5, Sunday 9, 10:30, 11:45, thejourneynorth.com
Brainerd* - Faith Baptist Church, Pastor Chris Erickson, 218-829-3191; SS 9:00, Worship 10:30 and 6 p.m., Wed. Classes and Clubs 6:30 p.m.; fbcbrainerd.com
Brainerd- The Church On The Wise Road, Pastor Todd Stumbo 218-829-4673, Worship 11:00, SS 9:45 www.thechurchonthewiseroad.org
Brainerd — Eagles Nest, Pastor Bob Stockland 218-829-4673, Worship 11, SS 9:45.
Breezy Point — Eagles Nest, Pastor Bob Stockland 218-562-5252, Worship 9:30, SS 9:30.
Crosby — Bible Baptist, Pastor G. Fisher; SS 9:45; Service 10:45 and 6 p.m., Bible Study and Our Kids for Christ Wed. 7 pm
Deerwood* — Pastor W. Skog; SS 9:30; Worship 10:30 and 6 pm; Wed. Service, 6:30 pm.
Glory* — Pastor Chris Meirose; 927-3678; SS 9:15; Worship 10:30 am.; Wed 6pm Glory Family night, KidMin grades kindergarten - 6, Mad4Christ grades 7-12.
Hill City — Pastor Lonnie Lee; 218-697-2645; Adult SS 9; Worship 10 am; Bible Study, Fri., 7 pm.
Isle — Pastor Nick Skogen; 676-3171; SS 9:30; Service 10:30; Bible Study, Wed., 7 p.m.
Opstead — 676-8859; SS 9:30; Worship, 10:30; Bible Study Wed., 7 p.m.

CATHOLIC
Aitkin* — St. James, Fr. David Forsman, 218-927-6581; Mass Sat. 5 pm, Sun. 10 AM. Confession Sat. 10-10:45 am and 4-4:45 pm.
Brainerd — St. Andrew's, Fr. Daniel Weiske, Sat.4:30; Sun. 10:00 and St. Matthias Sunday 8:00.
Brainerd — St. Francis, Fr. Anthony Wroblewski, Sat. 5:00; Sunday 7:30, 9:00, 11:15 and All Saints Saturday 4:00 and Sunday 10:30.
Cromwell/Wright — Immaculate Conception, Mass: Sat. 5 p.m.
Crosby* — St. Joseph's, Mass: Sat. 4:30 pm; Sun 10:30.
Crosslake — Immaculate Heart, 218-692-3731; www.ihmstemilys.org; Mass: Sat. 4 pm; Sun. 8:30; Confession Sat. 3 pm.
Emily — St. Emily, Mass: Mon. & Wed. 8; Sun. 10:30; Confession 1st Sat. 11 or by appt. 218-763-2101.
Garrison — Our Lady of Fatima, Fr. Elias Gieske, Mass Sun. 8 am. Confession Sun 7:15-7:45 am.
Grand Rapids — St. Joseph's, Fr. Jerry Weiss, Mass: Sat. 5 pm; Sun. 8 & 10:30. 218-326-2483
Hillman — Holy Family; Sun. 10 to Mass Sat. 6:30 pm (only through Labor Day) w/ confession before or by appt.
McGregor — Holy Family, Fr. David Forsman, 218-927-6581;

Mass Sun. 8 am. Confession 7:15-7:45 am.
Vineland — St. Therese, Mass Sun. 11; Holy Days 8:30.
CHURCH OF CHRIST
Baxter, Lakes Area — Nondenominational; 7001 Highland Scenic Road; Bible Study every Wed. 7 pm; Worship 10:30-11:30. 218-828-1362
Tamarack — Pastor Terry Banker, 608-475-1528, Worship 9:30; SS 10:45; Wed Youth 4 pm.

CHURCH OF JESUS CHRIST OF LATTER-DAY SAINTS
Aitkin — Co. Rd. 12, Chapel Ph. 218-927-4454; Kevin Haffner 218-792-5684; Sacrament Mtg. 10
COMMUNITY
Aitkin — Nondenominational; 927-2749; at 219-1st Ave. NE., Aitkin, Services Sun.10, 218-927-6959
Brainerd - Community of Hope Church of the Nazarene- Pastor Dave McGaffey Sunday worship at 10:45, SS 9:30 -16549 Johnson Rd -church phone 218-829-9005
Glen — Pastor R. F. Stauter, 218-838-1981; Worship 9 May-Oct.
Grand Rapids — Solid Rock Church of God, Pastor Robert Kimberling; 218-326-0711; Sun. BS 9:30, Worship 10:30; Wed. BS 6:30 pm
Jacobson — Jacobson Community Church, Pastor George Collins, 218-252-5938, Sun. SS (All ages) 9:30, Worship 10:30; Family Time 2nd & 4th Sundays; Wed. BS 7 pm
Kimberly — Nature Ave. Rev. Rick Perry; Worship 9; Adult Bible Study & Sunday School 10:30; 218-927-6256.
McGregor — Amazing Grace Christian Church; Worship 10; 99 South 1st Street (at the McGregor United Methodist church [shared] in downtown McGregor) Pastor Joel Seibel.
McGregor — Victory Mission, Pastor J. Gould, 218-768-2160; Sun. 10; Wed. Bible Study, 7:30 pm.
Merrifield — Community Church of the Nazarene, Pastor Ron Christenson; Service 11 & 6 pm. Wed. Prayer Meeting, 7 p.m.; 218-829-7536.
Merrifield — Ossipee Community, SS 10; Service 11; Wed. Bible Study Prayer, 7:00 p.m.
Nisswa — Christ Community Church, Pastor Dave Uhrich; Service 10; Fellowship 9:30-10
Outing* - Narrows Community Church, Pastor Stanley Mikes, 218-792-5530 Worship 9:30; Children's Sunday School 9:30; Clothes Closet 8 am - noon 4th Saturday, 6297 Woods Bay NE, just north of Hwy. 6 bridge
Palisade/Waukenabo Twp. — Hilltop Chapel, Pastor B. Hite; Service 10 a.m.; Adult and Children's SS 9 a.m.; between Esquagama & Round Lake. Handicap Accessible.
Tamarack — Church of Christ, 218-768-3898; Service 9:30; SS 10:45.

CONGREGATIONAL
Aitkin — First (UCC) Rev. Susan Cline; Sun.10; Comm. 1st Sun; Council Mtg. 2nd Sun. Spiritual fellowship, Sun. 9.

EPISCOPAL
Aitkin — St. John's, Holy Communion or Morning Prayer 9
Brainerd* — St. Paul's, Holy Communion Sunday 10

EVANGELICAL FREE
Baxter — Lakewood EFC, Pastor Brian Erickson: Worship at 9 & 10:45; Wed for all ages 6:45 pm
Crosslake — Interim Pastor Mark Holmen; Call for Service Times at 218-692-4141, email telogchchurch@crosslake.net
Isle — Pastor Kerry Johnston; Worship 9; SS 10:15; Wed. Youth Group 6 pm; Adult Prayer 6:30 pm
Malmø — Pastor Glenn Browning; SS 9:30; Fellowship 10; Worship 10:15
Wright — Pastor Ken Mitchell, 218-426-5115; SS 9:30; Worship, 10:30; Thu., Bible Study, 7 pm.

HEBREW/MESSIANIC
Glen — Beth Shalom Tabernacle of Truth, Rabi Frank Dell, for information 320-684-2804

LUTHERAN
Aitkin — Bethlehem (ELCA), Rev. Rebecca Hinz; Worship 9:30; Holy Comm. 1st & 3rd Sun each month.
Aitkin — First* (ELCA) Pastor Doug Larson (Interim), Pastor

Jordan Gades; worship Sat. 5pm, Sun. 9 am (coffee fellowship at 10 am); communion every Sat. and 1st & 3rd Sun.; contemporary service 2nd & 5th Sun.; staffed nursery for Sun. service. Sun. service broadcast at 10 a.m on KKIN (94.3FM) and on TV cable channel 181 at 9am on Wed.; community meal every Mon. & Thurs. 5pm; food shelf 2nd & 4th Thurs. each month 9:30am- 5pm.
Aitkin — St. John's (Missouri Synod), Pastor D. Becker; Worship Sun. 9, SS 10
Baxter — Christ Lutheran Church and Preschool (WELS). Pastor Bill Werth. Sunday Worship 9. Sunday School/ Adult Bible Class 10:15. 13815 Cherrywood Dr. in Baxter. (Corner of Ingledwood and Cherrywood). 218-829-4105. www.christbaxter.com.
Baxter — Prince of Peace (LCMS); Communion every Sunday 9, Fellowship 10:15, Adult Bible Class & Sunday School 10:30 am 218-829-7092 www.pcpbaxter.org
Beaver Township — Finnish EA, Hwy. 27, Worship 1st & 3rd Sun., 10:30.
Brainerd — Good Shepherd Free Lutheran Church, AFLC, Sunday School 9, Worship 10 coffee fellowship 11, Wednesday evening 7 pm adult Bible study. Located at 5878 Pine Beach Road, Brainerd, 218-824-3052, www.goodshepherdfreelutheran.church
Brainerd - Laestadian Lutheran Church; 1501 So. 8th St. - Sunday Worship Services 11 am. (www.llchurch.org)
Brainerd — Trinity Lutheran Church (ELCA) 1420 South 6th Street Brainerd — Pastor Hans Anderson Worship times September through May are 8:15 a.m. & 10:30 a.m.; Summer Worship time is 9:00 a.m. Phone: 218-829-5147 Website: www.trinitybrainerd.org Email: trinity@trinitybrainerd.org
Brainerd — Truth Lutheran Church (LCMC, Pastor James Walth, Corner of 5th and Kingwood, Worship 9 Breezy Point* — Eagles Nest, Pastor Jonathan Lemaster, 218-562-5252, Worship 10:30 a.m. SS 9:30 a.m.
Cedar Lake, Norwegian Lutheran — Third Sun 11, May - Oct. Cedarbrook — St. John's (ELCA); Worship 8:30; Holy Comm. 1st & 3rd Sun.
Crosby — Immanuel (LCMC, NALC) Rev. Paul Mattson; Sun. 9 & 10:30 worship; SS (Sept.-May) 10:40.
Crosby — Zion (LC-MS) Pastor Dean Stolz; Worship 8:30; SS 10; Bible Study Wed. 7 pm; handicap accessible. 218-546-6910
Crosslake — (ELCA), Indoor worship 8:30; Coffee Fellowship 9:30; outdoor worship 10. 218-692-3682.
Crosslake — Mission of the Cross (LCMS), Pastor Leslie Uhrinak; Worship 9:30 with every Sunday Communion, Fellowship 10:30, Adult Bible Class 11, 218-692-4228, www.missionofthecross.org
Deerwood — Salem (ELCA), Pastor Michael Briggs; Worship: 8:15 (traditional) & 10 (contemporary); Sunday School 9:15.
Garrison — Light of the Cross (ELCA), Pastor Juli Sutton-Deem; Worship 9 SS 9; 320-692-4773 or 877-406-9101.
Garrison — Shepherd of the Lake (LCMS), Rev. Tom Petersen. Worship 10 with Communion Every Sunday. Adult Bible Study 8:30am, Sunday School Sept-May, 8:30am. Fellowship 11am. 320-692-4581. www.shepherdofthelake.org.
Giese — Immanuel, Rev. R. Langhorst & Rev. R. Lovaas; Worship 9; SS 10; Holy Communion 1st Sun. of month 8:45.
Hill City — Trinity, (Missouri Synod), Pastor M. Eckert; Worship 9; Bible Study 10:15.
Hillman — Immanuel, (ELCA) Sun. Worship 9:30, SS 10. Located on the corner of Hwy. 27 and Co. Rd. 47. (Handicap accessible)
Iron Hub — Immanuel (LC-MS), Pastor Dean Stolz; Worship 10:30; 218-534-3069.
Isle — Faith (ELCA), Interim Pastor Rev. Henry French; Worship 9:30; handicap accessible.
Isle — Holden (ELCA), SS 9:30; Worship 10:30.
Isle — Trinity (Missouri Synod), Rev. Mark Maunula; Worship 8:30; Fellowship follows; SS 9:45; Adult Bible 10.
Jacobson — Carmel, Vicar Mark Wagner; SS 1st & 3rd Sun. 10, Service 11, fellowship follows.
Lake Shore — Living Savior Lutheran Church, 8327 Interlachen Rd.; Worship 9:00 Sunday mornings, followed by fellowship and Bible study. (Located on Co. Rd. #77 N)
Malmø — Bethesda (ELCA) Sun. Worship 9 (winter) 8:30 & 10 (summer); Fellowship after first service; Comm. 1st & 3rd Sun.
McGrath — Grace; Wed. potluck 5 pm, Bible study 6 p.m.; SS 10; Worship 11.

McGrath — Zion (ELCA), Pastor Elliott Malm; Worship 9; SS 9.
McGregor/Big Sandy Lake — Grace Lutheran Log Church (ELCA), Pastor Ericka Foss; Worship 9, Fellowship follows, SS 10.
McGregor — Our Savior's (Missouri Synod), Pastor Joshua C. Reinke; Worship 9; SS 10; Bible Study Tue. 9, Wed. 7 pm
Outing — Our Saviors ELCA; Pastor Peter Rosenkvist, Worship 9.
Palisade* — Bethel (ELCA), Rev. Wm. J. Sass; Worship 9:30. Pequot Lakes* - Our Savior's Lutheran Church (ELCA) Rev. Peter Rosenkvist, Worship 9:00 a.m. SS 9:15 am. Adult Ed — 10:15 am. Wed. Worship 5:45 pm. Free Community Supper Wednesdays at 5 pm.
Rossburg — Bethesda (ELCA); Comm. 1st & 3rd Sunday each month.
Tamarack (AFLC) — Pastor Ron Staudinger; 1st, 3rd and 4th Sundays 10 am; 41163 Kestrel Ave 3.3 mi. South of Hwy 210
Thor — Zion, Pastor G. Salmonson; Worship 11; 1st and 3rd Sun. April through December.
Wright — Bethlehem, Worship; SS 9.
Wright — St. John's (Missouri Synod), Pastor Joshua Reinke; Worship 10:30; Bible Study and Sunday School Sun. 9:30; Lent services Wed. 5:30 pm.

NON-DENOMINATIONAL
Brainerd—Oak Street Chapel, Pastor Todd Wooden, Worship service is Sunday at 9:30 am, 523 SE 11th Street, Brainerd, 218-454-0984

PENTECOSTAL
Emily — Cornerstone Church; Pastor Earl Ready; Worship 10, 41536 Birchwood Drive, Emily; 218-763-2939.
Ironton — Iron Range Christian Center; Pastor Dwight Semler; 218-546-6523; meeting at Irontale Town Hall*, Co. Rd. 12, (Deerwood Shortcut); Worship 10 & Wed. 7 pm.
Tamarack — Warriors of the Rainbow Ministry, Pastors Ken and Ron Fairbanks, Sat. 11. 218-768-3585

PRESBYTERIAN
Crosslake — Pastor Tony Oltmann, 218-692-4769; Worship 10; Fellowship 11:15; Bible study on Wednesdays at 10; 14444 Daggett Pine Road just passed the Community Center; www.crosslakepres.org
McGrath — Calvary, Pastor - Todd Oltmann; Worship 9.
McGregor/Round Lake — Pastor Talley; Worship Sat. 5 pm.
Tamarack — First, Rev. J. Yingling; Worship 11.

REFORMED
Crosby — Lifespring Church, a member of Fellowship of Independent Reformed Evangelicals, 9:30, 30 Hallett Ave NE 218-545-5433, www.visitlifespring.com
SEVENTH DAY ADVENTIST
Aitkin — Pastor Peter Emery; Worship Sat. 9:30 a.m., Bible Study 10:30 a.m.; Prayer Mtg. Wed. 5:30 p.m.; www.aitkinadventist.org; 423-805-0933

UNITARIAN UNIVERSALIST
Pequot Lakes — 28877 State Hwy 371, Pequot Lakes 10:30 1st and 4th Sundays. 218-330-3476

UNITED METHODIST
Aitkin* — Pastor Dawn Houser; high school & adult SS 9; Worship 10:30; fellowship follows.
Crosby/Deerwood* — Cascade, Reverend Dr. Genia Garrett; Worship 9:45; fellowship follows.
Cutler — Pine Lake Chapel, Rev. Laurence Foote; Worship 9.
Cromwell — Pastor Tim Homstad; Worship 10; SS 9
Emily — Pastor Dawn Houser; Worship 8:45; fellowship follows; handicap accessible.
Fleming* — (Northern Lights Parish) SS 9:15; Worship 10:30; fellowship follows.
Hill City — Pastor Roger Lynn; Worship 10
McGregor* — (Northern Lights Parish) Worship 8:45; fellowship follows.
Onamia — Pastor Rick & Judy Wilder; Worship 11; fellowship 10; 2 blks north of Post Office; handicap ramp; 320-532-3150; office: 218-546-7656; cell: 218-360-1947

WESLEYAN
Emily — Pastor Ryan Fish; Worship 9; Friendship Time 10; SS 10:30; Wed. Activities 6:30 p.m.; 218-763-HOPE.

We ask you to support these sponsors of the church directory:

To become a sponsor of the church directory contact Eric at 218-821-1393 or hopper@crosbyironton.net

Call

Jim

Blakesley

Appliance Service & Repair

218-927-2027

Toll free: 1-888-450-8845

NewsHopper

www.NewsHopper.net

hopper@crosbyironton.net

READER RIBBETS

Let’s stand together

I have read all of the guest opinions by Kelly Avelsgard and I have but one question. Why doesn't any of the citizens of Crosby speak up and take their city back?

The Crosby administrator, police chief and mayor are going to be forever increasing our taxes, water and sewer and anything else they can think of to pay for their never ending lawsuits and mistakes.

The City of Crosby is growing and it's evident by the new businesses, murals, bike trails and lodging. In the years to come, we will all be taxed

into the poorhouse and forced to sell our homes, because the City of Crosby has no other means to pay for their mistakes. They will be digging deep in our pockets and soon this growing town will become a ghost town, because the citizens of Crosby won't be able to afford to live here.

The fear is real. I've experienced it and lived it for over two years. Knowing you are being watched in everything you do. Knowing that they are waiting for you to make a mistake. The ABUSE OF POWER by the Crosby police leadership

is real and it won't stop until we stand together and force their resignation.

It is time to take a stand people. We need to fight for our hard earned money and keep the City Crosby out of our pockets. We need an administration that is more conscientious about where they spend our money. It's easy to spend money that you haven't worked for and it won't stop until we take a stand together. There is power in numbers.

Candi McCartan,
A Concerned Citizen of Crosby

Politician’s flock protecting friends

My eternal message this week is simple: BIRDS OF A FEATHER FLOCK TOGETHER. Pigeons, like people, hang amongst their own. They spend their entire existence surrounded by their own kind. Sorta like the Crosby mayor and his pro-tourism cohorts that have brought so many changes here. While he is now cheerleading these changes, he forgets that they aren't all good.

Like pigeons who all come in for the spoils at once, much like those grant given businesses, I remind you they usually leave at the first sign of trouble, leaving their messes behind.

Tourists often have no loyalty or responsibilities here. No taxes to pay, no accountability. They just fly away when the fun is done.

Also Like pigeons, our mayor and his cohort rental property owner council members stick

together.

As just one example, I again humbly remind our voters, they pecked away at the concerns of citizens who made up a city sponsored committee and then eventually went against our Planning & Zoning committee's recommendations to start proceeding with a rental ordinance that would have protected our residents.

So like pigeons, the whole safety in numbers reigned true and our mayor's flock protected the pocketbooks of friends and fellow landlords. That smelled almost as bad as the pigeon pens on property owned by a council member that is less than two hundred feet away from a new restaurant's deck.

This politician's words are as slippery as pigeon poop. The mayors back peddling, denial and out-of-touch rhetoric is as gassy and toxic as the stuff that

hits the sidewalk. The actual poop is easier to hose off, but the next election is in sight and so is the flushing.

The tourists, who join in conversation with our mayor, may adore our town and even pat him lovingly on the back for his efforts in bringing in this phantom hotel and exciting new businesses, but the locals that put up with bad roads, lack of accountability, non transparency, ridiculous water bills, concerns about the 2021 road construction, dangerous bicyclists, favoritism, etc. aren't real impressed. But when one lives in denial, things are seen differently. Thankfully denial, like other disfunctions older men suffer, is curable.

Chris Ryan, Crosby
(Member of both the original Hwy 210 & Economic Development Committees of Crosby & Planning & Zoning)

Not my mantra

The editor of the *Courier* continues to print that opinions in the NewsHopper are the mantra of the author, not true. It's the mantra of BMS Case No 17-PA-0260, the mantra of the author is the massive violation of the public trust conducted by the current chief of police. BMS Case No 17-PA-0260, BMS Case No 13-PA-0659, 13-PA-0660, found the police chief lies, distorts the truth, alters documents, conducts biased, prejudiced, flawed investigations, makes three ring binders disappear.

The chief's professional touch has resulted in eight failed attempts to prosecute two former mayors, two wrongful termination lawsuits, the creation of a hostile workplace environment and subjected the city to the first of many potential lawsuits.

This should be the mantra of the city council, mayor, and every citizen in Crosby.

The chief's continued employment is destructive, the destruction is supported by

the city administrator, who continues to cost taxpayers with extremely poor judgment and leadership.

The lieutenant hired to replace the chief should be overwhelmed, not by the position or the role they're going to undertake, but by the baggage of the current chief who is now, not retiring, attempting to hire two sergeants, to replace the lieutenant position, where does that leave the current lieutenant? Without a job.

It appears the chief is attempting to eliminate their replacement before they retire, hence, the chief can't retire. The council and mayor are not smart enough to ask the appropriate questions as to why Crosby searched for, hired a great replacement, then allows the chief to lie and not retire as planned.

Crosby really needs to listen to the mantra of the arbitrators, jurors, judges, and immediately terminate the chief.

The Crow Wing County attorney could help — label the chief a Brady/Giglio of-

ficer. That office stated if it conducted itself in the manner the chief did, it would be unethical and basically criminal, but that office turns a blind eye and fails to act upon the evidence they have.

The explicit, anonymous, letter to the NewsHopper, telling them what I can do with my opinions are welcomed. Expressing them in person is encouraged. There is nothing more pleasant than listening to ill-informed people discuss something they know nothing about.

The social media postings demeaning and threatening the NewsHopper in any form is stupid.

The Crosby chief of police violated the public trust, that means all our trust, not just mine, everyone's. Everyone should be calling for the termination of the chief and angered by the failure of the council and mayor to act upon the egregious acts.

Kelly Avelsgard
Concerned Observer
Deerwood

Legislators respond to calls

The claims by metro legislators and anti-mining groups about PolyMet Mining are downright fabrications. It is very disappointing that people don't know or don't care what our strong rules and regulations require, and that the media continues to perpetuate the misinformation. The people of the Iron Range deserve better. The people of the state of Minnesota deserve better. There is no scandal. The agencies have done their jobs. The letter of the law was followed to a "T". Enough of the fake news already. Here are the facts:

Fact: Our DNR required PolyMet Mining to post bankruptcy proof of financial assurance (only accessible by the DNR) before they even issued PolyMet's permit to mine. It doesn't matter who or what the ownership looks like the resources needed to close the mine if the company went bankrupt are currently in place and only the state can release the funds.

Fact: PolyMet has undergone the most thorough and transparent environmental review and permitting process more than any other project ever in our state. Extra-long public review periods, with thousands of public comments, all of which were responded to, and extra meetings were held around the state including the Twin Cities. When was the last time a project in the Twin Cities was required to hold public meetings on the Iron Range?

Fact: We live in a state with a long mining history. We know how to mine safely; we hold

our companies to high standards. Note: According to the Environmental Quality Board's report card on Minnesota water, we have the only clean water in the state. PolyMet's tailings design is an enhanced version of what all but one of our taconite mining companies currently use and have been using for over 50 years of operation. We have never had a dam failure in Minnesota. And based on the level of scrutiny and multilevel independent review of the PolyMet project, we fully expect the PolyMet tailings basin to be no different.

These letters containing fabricated information to Governor Walz and to Attorney General Ellison are frustrating, but let's call them what they are: desperate last-ditch efforts by anti-mining folks to stop an important project for Northeastern Minnesota, because their efforts to stop the project through the multi state and federal agency environmental review and permitting process, a process they put into law, failed.

PolyMet has spent over 14 years diligently following and complying with every required

state and federal process to legally permit and operate a mine. They have shown their project meets state and federal environmental standards and meets or exceeds all factors of safety. As lawmakers we should be celebrating this monumental accomplishment not perpetuating lies and misinformation manufactured by anti-mining groups.

It's time for long awaited good-paying jobs on the Iron Range. Jobs that will contribute to our new economy of windmills, solar panels, electric cars, cell phones, computers and whatever our future brings.

It's time to mine.

Sincerely,
Rep. Dale Lueck, R-Aitkin
Rep. Sandy Layman, R-Cohasset
Sen. David Tomassoni, D-Chisholm
Sen. Justin Eichorn, R-Grand Rapids
Rep. David Lislegard, D-Aurora
Rep. Rob Ecklund, D-International Falls
Rep. Julie Sandstede, D-Hibbing

More on Page 10



Hallie Schroeder
Powersports Mechanic
Factory Trained

Halo's Motorsports

218-330-4641 • hallie.987@gmail • Crosby



2019 Minnesota
Renaissance Festival

All New in 2019!

Dragons Fire Aerial Act
Falconer
Vikings Invasion Encampment

Open weekends August 17th - September 29th

Labor Day and Festival Friday, September 27th

9am-7pm • Rain or Shine

FREE PARKING!



• Full Contact Live Armored Jousting • NEW! The King's Wine Cellar

Featuring Joel Gott Cabernet • 50 Free Family Friendly Activities

FlyOver Wizards Flight School Zipline • Mermaids, Fairies, Vikings & much more! •

    952.445.7361 • RenaissanceFest.com

Hoppers Helper’s Service Directory

APPLIANCE SALES & SERVICE

Jim Blakesley Appliance Service & Repair
218-927-2027 • 1-888-450-8845 • Aitkin Washers, Dryers, Stoves, Refrigerators, Air Conditions, Septic Protectors, and MORE. Authorized Platinum Star Service. ttf

COMPUTERS

Call Billy “Mac” (Billy Hoffs)
218-851-9990 or email bhoffs@mac.com
All things Mac, from purchasing new or used, to teaching, to repairs “Friendly & Honest” I make house calls ttf

CONTRACTORS

Radtke Remodeling & Construction
Custom Built Homes • Remodeling • Garages New Additions • Pole Buildings • General Contracting • Insulation Dean Radtke, Aitkin. Lic. #20108758 **www.radtkeremodelingconstruction.com**
218-678-3403 • 218-839-6103 2019w39

HEATING & AIR CONDITIONING

A & M Heating & Air Service & Installation, Great Prices & Quality Work. Licensed, Insured, Bonded 612-229-6011 • Credit Cards Accepted 2020 w10

Ken’s Heating & Cooling Mobile Home Supply LP & Natural Gas • Nationally Certified Service Technician — over 30 Years Experience Residential & Commercial • Mobile Home Heating and Air Conditioning • RV’s/Supplies 218-821-6720 • Aitkin • kensheatingllc.com 2019

SERVICE DIRECTORY RATES

5 lines for \$15.00 per week
4 lines for \$12.00 per week
3 lines for \$9.00 per week

INSURANCE



SECURITY STATE INSURANCE 2019 w6

4 locations to serve you
Aitkin 218-927-3712 • **Onamia** 320-532-3235 • **Isle** 320-676-3795 • **Grand Marais** 218-387-1540

LOCAL FOODS

Lakes Area Growers Market 8 – 12:30 Tues. Franklin Arts Center PL Brainerd, Fri. Viking Land Harley Davidson PL, Baxter. May 10th–Mid October

Nisswa Farmers Market 8 – 12:30 Thursdays American Legion Nisswa May 9th–Mid October

PAINTING

Solution Painting • 612-387-4042 Free estimates interior / exterior / professional results. 2019w41

PET CARE SERVICE

Dogpatch • 218-927-4353 Expert Pet Grooming & Boarding Services. West of Aitkin on Cedar Brook Rd.

SHOE REPAIR

Harting Shoe Repair 509 Washington Street, Brainerd. Drop Stations: Crystal Cleaner Crosby 218-829-2496 ttf

TREE SERVICES

Kokesh Stump Tree Removal • 218-927-2745 2019-w13

Published in the NewsHopper Saturday, August 3, 2019

CROW WING COUNTY
BRAINERD, MINNESOTA
SUMMARY FINANCIAL STATEMENT
FOR THE YEAR ENDED DECEMBER 31, 2018

The purpose of this report is to provide a summary of financial information concerning Crow Wing County for interested citizens. Questions about this report should be directed to Deborah A. Erickson, Administrative Services Director, and 218-824-1047. A full and complete copy of the County's Comprehensive Annual Financial Report (CAFR) is available on the County's web site at www.crowwing.us. The County also publishes the Popular Annual Financial Report (PAFR), a copy of which is also located on the County's web site.

CROW WING COUNTY BRAINERD, MINNESOTA			
STATEMENT OF NET POSITION DECEMBER 31, 2018			
	Primary Government		
	Governmental Activities	Business-type Activities	Total
ASSETS			
Current assets			
Cash and investments	\$ 43,879,403	\$ 9,023,095	\$ 52,902,498
Taxes receivable - delinquent	1,228,789	-	1,228,789
Accounts receivable, net	218,961	116,676	335,637
Accrued interest receivable	234,756	-	234,756
Contracts receivable	968,385	-	968,385
Due from other governments	7,449,192	-	7,449,192
Internal balances	(121)	121	-
Loans receivable	200,799	-	200,799
Inventories	826,537	-	826,537
Prepaid items	542,449	-	542,449
Total current assets	\$ 55,549,150	\$ 9,139,892	\$ 64,689,042
Noncurrent assets			
Restricted assets			
Cash and investments	\$ -	\$ 6,135,650	\$ 6,135,650
Long-term receivable	177,836	-	177,836
Investment in joint venture	15,843,000	-	15,843,000
Capital assets			
Non-depreciable	32,494,695	1,493,440	33,988,135
Depreciable - net of accumulated depreciation	165,059,134	2,233,857	167,292,991
Total noncurrent assets	\$ 213,574,665	\$ 9,862,947	\$ 223,437,612
Total Assets	\$ 269,123,815	\$ 19,002,839	\$ 288,126,654
DEFERRED OUTFLOWS OF RESOURCES			
Deferred charge on refunding	\$ 488,464	\$ -	\$ 488,464
Deferred outflow for other post employment benefits obligations	2,053,229	9,284	2,062,513
Deferred outflow for pensions	8,925,636	10,028	8,935,664
Total Deferred Outflows of Resources	\$ 11,467,329	\$ 19,312	\$ 11,486,641
	Primary Government		
	Governmental Activities	Business-type Activities	Total
LIABILITIES			
Current liabilities			
Accounts payable	\$ 1,495,279	\$ 193,282	\$ 1,688,561
Salaries payable	1,178,313	6,843	1,185,156
Accrued payroll taxes payable	162,875	936	163,811
Contracts payable	20,501	-	20,501
Retainage payable	18,257	-	18,257
Due to other governments	1,206,236	-	1,206,236
Accrued interest payable	201,059	-	201,059
Claims payable	54,860	-	54,860
Customer deposits	73,826	-	73,826
Compensated absences payable - current	2,643,212	16,283	2,659,495
Capital leases payable - current	103,350	-	103,350
General obligation bonds payable - current	5,133,405	-	5,133,405
Total current liabilities	\$ 12,291,173	\$ 217,344	\$ 12,508,517
Noncurrent liabilities			
Compensated absences payable	\$ 292,246	\$ 1,810	\$ 294,056
Capital lease payable	426,650	-	426,650
General obligation bonds payable	5,023,470	-	5,023,470
Net other post employment benefits obligations	40,618,078	183,659	40,801,737
Net pension liability	19,013,609	59,335	19,072,944
Estimated liability for landfill closure/postclosure	-	4,960,072	4,960,072
Total noncurrent liabilities	\$ 65,374,053	\$ 5,204,876	\$ 70,578,929
Total Liabilities	\$ 77,665,226	\$ 5,422,220	\$ 83,087,446
DEFERRED INFLOWS OF RESOURCES			
Property taxes levied for subsequent years	\$ 45,852	\$ -	\$ 45,852
Deferred inflow for pensions	14,753,959	19,239	14,773,198
Total Deferred Inflows of Resources	\$ 14,799,811	\$ 19,239	\$ 14,819,050
NET POSITION			
Net investment in capital assets	\$ 187,498,002	\$ 3,727,297	\$ 191,225,299
Restricted for:			
General government	1,381,913	-	1,381,913
Public safety	177,181	-	177,181
Highways and streets	12,208,090	-	12,208,090
Health and human services	781,544	-	781,544
Culture and recreation	303,992	-	303,992
Conservation of natural resources	4,727,216	-	4,727,216
Environmental uses - expendable	18,977	-	18,977
Environmental uses - nonexpendable	1,846,499	-	1,846,499
Economic development	205,257	-	205,257
Debt service	4,977,636	-	4,977,636
Landfill closure/postclosure	-	1,175,578	1,175,578
Unrestricted	(26,000,200)	8,677,817	(17,322,383)
Total Net Position	\$ 188,126,107	\$ 13,580,692	\$ 201,706,799

MAJOR RECIPIENTS OF CROW WING COUNTY EXPENDITURES

THE FOLLOWING IS A LIST OF THE RECIPIENTS OF CROW WING COUNTY EXPENDITURES TOTALING \$2,000 OR MORE DURING 2018. THE LIST DOES NOT INCLUDE INDIVIDUALS WHO RECEIVED FEDERAL, STATE, OR COUNTY HUMAN SERVICES AID.

GENERAL FUND	
3E COMPANY ENVIRONMENTAL ECOLOGICAL & ENGINEERING	2,989.00
424 W WAHSINGTON ST	2,100.00
7SIGMA	12,000.00
ACCELA INC	24,607.80
ACCESSIBLE360, LLC	9,375.00
ACT SPECIAL OPERATIONS	3,530.00
ADA A VITALE	12,600.00
AERIAL HORIZONS UAS LLC	4,478.00
ALL FURNITURE INC	3,065.00
ALL STATE COMMUNICATIONS INC	21,500.00
AMAZON MKTPLACE PMTS	4,906.13
AMAZON MKTPLACE PMTS WWW	2,044.78
AMERICAN DOOR WORKS	2,237.35
AMERICAN SOLUTIONS FOR BUSINESS	5,672.61
AMERIGAS PROPANE LP	20,579.19
AMERIPRIDE SERVICES INC	8,125.30
AMZN MKTP US M05A15C40	2,679.18
ANDREW WIPPER	2,334.00
API SUPPLY INC	48,786.67
ARCAS TECHNOLOGY INC	2,273.63
ARROWWOOD LODGE	19,598.00
ARROWWOOD RESORT AND CONF	6,683.63
ASSOCIATION OF MN COUNTIES	2,674.05
AUTO VALUE	48,069.00
AXON ENTERPRISE INC	3,500.00
BAY LAKE IMPROVEMENT ASSOCIATION	13,478.48
BAYCOM INC	9,000.00
BCA TRAINING EDUCATION	38,737.65
BDS LAUNDRY SYSTEMS	12,885.00
BIENIEK'S ABATEMENT SERVICES	3,851.29
BLASTERONE	3,625.00
BLUE CROSS BLUE SHIELD OF MN	13,614.55
BMC SOFTWARE INC	5,496,470.21
BOB BARKER COMPANY	8,006.50
BRAINERD & CROW WING PUBLIC TRANSIT	49,868.34
BRAINERD ABSOLUTE TRAILER SALES	11,175.80
BRAINERD LAKES AREA DEVELOPMENT CORPORATION	2,223.38
BRAINERD LAKES CHAMBER	44,790.00
BRAINERD LAKES REGIONAL AIRPORT	3,995.00
BRAINERD POLICE DEPARTMENT	157,000.00
BRAINERD PUBLIC UTILITIES	13,289.91
BUREAU OF CRIMINAL APPREHENSION	650,369.98
CALLYO 2009 CORP	13,910.00
CARVER COUNTY	3,360.00
CASH WELLS FARGO C/A #009	3,416.00
CBRE INC	5,200.00
CDW GOVERNMENT	4,500.00
CELEBRITE INC	18,050.33
CENTERPOINT ENERGY	12,485.00
CENTRAL LAKES DRUG TESTING	2,281.01
CENTURYLINK	2,161.00
CHARM-TEX	3,576.44
CITIZENOBSEVER	8,351.70
CITY OF BREEZY POINT	7,500.00
CITY OF CROSSLAKE	31,192.80
CITY OF MINNEAPOLIS	35,417.60
CIVICPLUS	3,870.00
CLEARWATER LAKE ASSOCIATION INC	15,105.32
CLIFTONLARSONALLEN	2,000.00
CMRS - POC	42,500.00
CODEx CORPORATION	100,000.00
COLLINS BROTHERS TOWING OF ST CLOUD INC	15,494.77
COMMAND CENTRAL	3,769.00
CONCEPT DEVELOPMENT CORPORATION	52,000.01
CONRAD C KRAGNESS II	6,045.00
CONSOLIDATED TELECOMMUNICATIONS	30,000.00
COOKS CORRECTIONAL	23,922.52
CORE PROFESSIONAL SERVICES PA	3,167.35
CORRECTIONAL DENTISTRY LLC	3,300.00
CPS TECHNOLOGY SOLUTIONS	4,818.55
CRADLEPOINT, INC	2,455.75
CREDITRON	2,607.08
CROW WING COUNTY CIVIL AIR PATROL	5,456.04
CROW WING COUNTY FAIR ASSOC	2,000.00
CROW WING COUNTY HISTORICAL SOCIETY	8,500.00
CROW WING POWER	31,500.00
CROW WING SOIL & WATER CONSERVATION DISTRICT	3,127.24
CROWN POINTE TECHNOLOGIES INC	5,798.65
CURTIS L PETERSON	4,560.00
CUSTOM UPHOLSTERY AND AWW	2,500.00
CUYUNA RANGE ECONOMIC DEVELOPMENT INC	2,430.00
CWC LANDFILL	20,300.00
DALCO	2,114.00
DATABANK IMX LLC	21,819.45
DEBBY ERICKSON	6,952.50
DECHANTAL EXCAVATION LLC	6,952.50
DELL MARKETING LP	2,746.44
DELTA DENTAL	3,400.00
DELTA VACATIONS	61,669.81
DIAMOND INDUSTRIAL CLEANING EQUIPMENT	399,679.00
DIGITAL HORIZONS	2,533.90
DONDELINGER CHEVROLET CADILLAC TOYOTA	3,882.11
DS SOLUTIONS INC	14,105.38
DYNAMIC OFFICE SERVICES LLC	12,972.90
ECOLAB	3,628.40
ELECTRIC MOTOR REPAIR	8,227.29
ELIOR INC	9,023.05
EMILY LAKES AND RIVERS ASSOCIATION	2,079.92
EPA AUDIO-VISUAL INC	482,845.90
ERIC MICHAEL POPP	5,985.23
ERIK A CHRISTENSEN	18,219.85
ERKENS WATER SOFTENER SERVICE INC	3,808.00
ESRI	2,500.00
ESSENTIA HEALTH MEDICAL CTR	8,107.02
ESSENTIA HEALTH PATIENT ACCT	60,000.00
EVERBRIDGE	43,458.02
FASTENAL COMPANYO1	7,000.00
FEDEX	25,345.39
FIRST IMPRESSION PRINTING	4,692.80
FORUM COMMUNICATIONS COMPANY	4,518.37
FREDPRYOR CAREERTRACK	14,091.84
FRSEQUE LLC	47,586.91
FURTHER	5,009.00
GAMMELLO - PEARSON PLLC	4,322.50
GARAGE DOOR STORE	11,587.60
GENERAL SECURITY SERVICES CORP	13,111.12
	4,044.75
	4,027.48

GEOGRAPH TECHNOLOGIES LLC	2,100.00
GERRY GREENWALT	3,225.00
GETTY IMAGES	2,939.00
GLOBAL KNOWLEDGE TRAINING LLC	3,595.50
GOBLES SEWER SERVICE	4,650.00
GOODIN COMPANY	12,076.04
GOPHER SIGN COMPANY	2,810.70
GOVERNMENT MANAGEMENT GROUP INC	7,250.00
GOVERNMENTJOBS.COM INC	16,800.62
GRAINGER	7,037.06
GRANITE CITY ARMORED CAR INC	3,011.56
GRANITE ELECTRONICS INC	19,977.27
GREG KOSSAN	58,350.00
GUARDIAN PEST SOLUTIONS INC	3,068.14
GULL LAKE GLASS INC	2,610.35
HABERKORN LAW OFFICES LTD	2,500.00
HANNAHER'S	27,316.58
HARRIS MECHANICAL SERVICES LLC	25,407.93
HAWK ANALYTICS	2,495.00
HEARTLAND GLASS CO	2,217.00
HENNEPIN COUNTY MEDICAL CENTER	4,671.72
HIGHWAY PRODUCTS, INC	19,347.00
HOLMVIG EXCAVATING	15,826.81
HUMAN RESOURCES INC	9,500.00
HYTEC CONSTRUCTION OF BRAINERD INC	15,002.78
ICOR TECHNOLOGY	3,135.00
IDEAL CONCRETE CONSTRUCTION INC	5,000.00
IN ATLAS OUTFITTERS ATR	2,158.00
INDEPENDENT EMERGENCY SERVICES	122,980.16
INFORMATION SYSTEM	5,635.00
INFORMATION SYSTEMS CORPORATION	21,168.00
INITIATIVE FOUNDATION	14,534.00
INN ROOM SUPPLIES	2,394.65
INNOVATIVE OFFICE SOLUTIONS LLC	48,840.76
INTEGRATED CUSTOM SOFTWARE INC	4,100.00
INTRADYN	2,125.00
IPSWITCH INC	5,495.82
ISPACE FURNITURE INC	23,892.43
I-STATE TRUCK CENTER	92,280.00
IUOE LOCAL 49	74,050.00
JANELLE THESING	2,048.33
JARED J MAGSTADT	7,756.72
JEAN GUSTAFSON	9,252.53
JEANNIE MARIE CROATT	2,500.00
JEFFREY A BIRKS	6,000.00
JEREMY FYLE	2,150.00
JOHN PAUL CHITWOOD	20,000.00
JOHNSON CONTROLS	23,278.88
JON KOLSTAD	2,574.06
KEEPRS	28,815.30
KENNER TECHNOLOGIES, LLC	11,059.40
KEYSTONE COMPENSATION GROUP LLC	7,125.00
KILPATRICK EQUIPMENT COMPANY	3,411.00
KINECT ENERGY INC	190,648.10
KITCHIGAMI REGIONAL LIBRARY	509,127.00
KNOW INK	10,750.00
KRAMER LEAS DELEO PC	29,013.00
LAKES PRINTING	9,029.87
LAMAR TEXAS LIMITED PARTNERSHIP	3,390.00
LAMBERT WATER WELLS INC	6,795.00
LARSON ELEVATOR COMPANY	14,895.80
LAW ENFORCEMENT TECHNOLOGY GROUP LLC	121,912.04
LENCO ARMORED VEHICLES	3,367.57
LUNA WOMENS WELLNESS AND BIRTH CENTER	3,538.16
MACO	2,500.00
MADDEN GALANTER HANSEN LLP	40,331.92
MAILFINANCE	3,160.83
MAINTENANCE CONNECTION INC	13,315.64
MARCO HOLDINGS LLC	18,736.11
MARCO TECHNOLOGIES LLC	78,278.48
MARTIN-MCALLISTER CONSULTING	
PSYCHOLOGISTS INC	16,050.00
MARY KOEP	5,220.00
MATTHEW BENDER & CO INC	5,932.99
MB MCGEE PA	36,000.00
MCKESSON MEDICAL-SURGICAL INC	16,012.55
MCLEAN & COMPANY	12,500.00
MED-ENG LLC	67,773.00
MEDICARE BLUE RX	138,246.00
MELANIE DOTTY	69,992.96
MENARDS BAXTER MN	6,651.19
MEND CORRECTIONAL CARE LLC	602,134.03
MICRO-TEL INC	2,065.00
MID-MINNESOTA DRUG TESTING	97,268.00
MIDWEST MECHANICAL SUPPLY	2,546.79
MILLS FLEET FARM 2300	4,322.47
MILLS MOTOR INC	3,098.60
MINNESOTA ASSOC OF ASSES	9,065.00
MINNESOTA ENERGY RESOURCES	6,138.66
MINNESOTA SHERIFFS ASSN	5,960.00
MISSION LAKES ASSOCIATION	8,000.00
MISSISSIPPI HEADWATERS BOARD	23,670.40
MITHIX PRO LLC	2,990.00
MN COUNTIES INFORMATION SYSTEMS	140,000.00
MN COUNTIES INTERGOVERNMENTAL TRUST	380,643.30
MN COUNTY ATTORNEY'S ASSOCIATION	7,188.12
MN DEPARTMENT OF REVENUE	3,415,364.03
MN DEPT OF FINANCE	311,185.00
MN DEPT OF HEALTH	27,375.50
MN DEPT OF HUMAN SERVICES	4,576.95
MN DEPT OF TRANSPORTATION	13,809.10
MN DEPT OF VETERAN AFFAIRS	2,464.00
MN INTER-COUNTY ASSOCIATION	16,335.00
MN SCHOOL OF DIVING INC	4,213.66
MN SHERIFF'S ASSOCIATION	15,169.00
MOBILE HEALTH SERVICES LLC	3,251.00
MORA PSYCHOLOGICAL SERVICES PLLC	4,575.00
MOTOROLA SOLUTIONS INC	45,248.57
M-R SIGN COMPANY INC	8,883.85
NATIONAL BUSINESS SYSTEMS	38,000.00
NATIONAL MEDICAL SERVICES	2,907.00
NATIONAL TACTICAL OFFICE	2,880.00
NEOPOST USA INC	8,588.56
NORMANDALE COMMUNITY COLLEGE	8,400.00
NORTH CENTRAL MEDICAL SUPPLY	3,386.39
NORTH COUNTRY JANITORIAL & SUPPLY INC	211,080.00
NORTH MEMORIAL AMBULANCE SERVICE	3,490.00
NORTHERN BUSINESS PRODUCTS	21,214.52
NORTHERN PACIFIC CENTER INC	3,000.00
NORTHERN TOOL AND EQUIPMENT CO	2,506.94
NORTHLAND BUSINESS SYSTEMS	4,454.10
OFFICE OF MN IT SERVICES	43,645.40
OMNI LEADERSHIP EXCHANGE LLC	10,268.00
ONE TIME PAY	249,777.29
OPERATING ENGINEERS H&W FUND	12,720.00
OPTUMHEALTH	10,718.70
PACKAGING HORIZONS CORP	2,251.39

CROW WING COUNTY BRAINERD, MINNESOTA							
STATEMENT OF ACTIVITIES FOR THE YEAR ENDED DECEMBER 31, 2018							
Functions/Programs	Expenses	Program Revenues			Net (Expense) Revenue and Changes in Net Position		
		Charges for Services	Operating Grants and Contributions	Capital Grants and Contributions	Governmental Activities	Business-type Activities	Total
Primary government							
Governmental activities							
General government	\$ 16,819,477	\$ 3,041,026	\$ 1,099,155	\$ -	\$ (12,679,296)	\$ -	\$ (12,679,296)
Public safety	17,875,341	3,065,290	1,977,273	-	(12,832,778)	-	(12,832,778)
Highways and streets	15,980,286	1,469,000	8,301,389	6,942,389	732,492	-	732,492
Sanitation	8,333	-	-	-	(8,333)	-	(8,333)
Health and human services	24,937,883	1,418,144	12,560,890	-	(10,958,849)	-	(10,958,849)
Culture and recreation	720,633	456	221,291	-	(498,886)	-	(498,886)
Conservation of natural resources	2,384,527	2,604,681	251,023	-	471,177	-	471,177
Economic development	56,416	3,743	-	-	(52,673)	-	(52,673)
Interest	398,779	-	-	-	(398,779)	-	(398,779)
Total governmental activities	\$ 79,181,675	\$ 11,602,340	\$ 24,411,021	\$ 6,942,389	\$ (36,225,925)	\$ -	\$ (36,225,925)
Business-type activities							
Landfill	\$ 2,593,282	\$ 2,921,411	\$ -	\$ -	\$ -	\$ 328,129	\$ 328,129
Total primary government	\$ 81,774,957	\$ 14,523,751	\$ 24,411,021	\$ 6,942,389	\$ (36,225,925)	\$ 328,129	\$ (35,897,796)
General Revenues							
Property taxes					\$ 36,269,538	\$ -	\$ 36,269,538
Transportation sales and use tax					6,417,078	-	6,417,078
Mortgage registry and deed tax					105,494	-	105,494
Payments in lieu of tax					562,442	-	562,442
Grants and contributions not restricted to specific programs					2,839,173	595	2,839,768
Investment income					897,569	140,327	1,037,896
Miscellaneous					222,925	-	222,925
Total general revenues					\$ 47,314,219	\$ 140,922	\$ 47,455,141
Change in net position					\$ 11,088,294	\$ 469,051	\$ 11,557,345
Net Position - Beginning					198,130,528	13,104,336	211,234,864
Restatement (See Note V)					(21,092,715)	7,305	(21,085,410)
Net Position - Beginning, as Restated					177,037,813	13,111,641	190,149,454
Net Position - Ending					\$ 188,126,107	\$ 13,580,692	\$ 201,706,799

CROW WING COUNTY BRAINERD, MINNESOTA								
BALANCE SHEET GOVERNMENTAL FUNDS DECEMBER 31, 2018								
	General	Highway	Community Services	Public Land Management	Debt Service	Capital Projects	Nonmajor Funds	Total
ASSETS								
Cash and investments	\$ 12,961,303	\$ 13,243,679	\$ 998,328	\$ 1,973,565	\$ 4,932,484	\$ 3,092,484	\$ 6,677,560	\$ 43,879,403
Taxes receivable - delinquent	628,164	83,675	288,940	-	176,373	24,278	27,359	1,228,789
Accounts receivable, net	76,397	-	117,729	-	-	2,157	22,678	218,961
Accrued interest receivable	232,052	-	-	-	-	-	2,704	234,756
Due from other funds	430,721	154,769	-	-	-	434,295	-	1,019,785
Contracts receivable	-	-	-	968,385	-	-	-	968,385
Due from other governments	197,206	4,302,521	2,896,263	-	-	-	53,202	7,449,192
Loans receivable	-	-	-	-	-	-	200,799	200,799
Inventories	-	826,537	-	-	-	-	-	826,537
Prepaid items	453,293	2,296	82,554	415	-	3,450	441	542,449
Total Assets	\$ 14,979,136	\$ 18,613,477	\$ 4,383,814	\$ 2,942,365	\$ 5,108,857	\$ 3,556,664	\$ 6,984,743	\$ 56,569,056
LIABILITIES								
Accounts payable	\$ 243,569	\$ 217,602	\$ 699,366	\$ 8,792	\$ -	\$ 285,362	\$ 40,588	\$ 1,495,279
Salaries payable	644,566	85,385	418,576	17,879	-	-	11,907	1,178,313
Accrued payroll taxes payable	90,475	11,569	56,767	2,463	-	-	1,601	162,875
Contracts payable	-	-	-	20,501	-	-	-	20,501
Retainage payable	-	18,257	-	-	-	-	-	18,257
Due to other funds	33,338	-	524	878,125	-	-	107,919	1,019,906
Due to other governments	422,582	5,275	248,613	494,805	-	-	34,961	1,206,236
Claims payable	54,860	-	-	-	-	-	-	54,860
Customer deposits	73,826	-	-	-	-	-	-	73,826
Total Liabilities	\$ 1,563,216	\$ 338,088	\$ 1,423,846	\$ 1,422,565	\$ -	\$ 285,362	\$ 196,976	\$ 5,230,053
DEFERRED INFLOWS OF RESOURCES								
FUND BALANCES								
Nonspendable:								
Missing heirs	\$ 29,350	\$ -	\$ -	\$ -	-	\$ -	\$ -	\$ 29,350
Inventories	-	826,537	-	-	-	-	-	826,537
Prepays	453,293	2,296	82,554	415	-	3,450	441	542,449
Environmental trust corpus	-	-	-	-	-	-	1,846,499	1,846,499
Restricted for:								
Enhanced 911	51,811	-	-	-	-	-	-	51,811
Sheriff's drug contingency	3,506	-	-	-	-	-	-	3,506
Sheriff's forfeited property	139	-	-	-	-	-	-	139
DUI assessment	77,659	-	-	-	-	-	-	77,659
Lakes area drug investigation forfeiture	44,066	-	-	-	-	-	-	44,066
Water plan	8,339	-	-	-	-	-	-	8,339
Recreation	303,992	-	-	-	-	-	-	303,992
Land based improvements	268,758	-	-	-	-	-	-	268,758
Recorder's technology	516,130	-	-	-	-	-	-	516,130
Law library	65,238	-	-	-	-	-	-	65,238
Attorney's forfeited property	39,805	-	-	-	-	-	-	39,805
Aquatic invasive species	24,010	-	-	-	-	-	-	24,010
Local option sales tax	-	6,759,696	-	-	-	-	-	6,759,696
Resource development	-	-	-	651,191	-	-	-	651,191
Forest access roads	-	-	-	48,432	-	-	-	48,432
Debt service	-	-	-	-	4,801,263	-	-	4,801,263
Solid waste (non-landfill)	-	-	-	-	-	-	2,164,720	2,164,720
Greater Minnesota landfill cleanup fee	-	-	-	-	-	-	862,361	862,361
Economic development revolving loans	-	-	-	-	-	-	4,458	4,458
Environmental uses	-	-	-	-	-	-	18,977	18,977
Unorganized townships	-	-	-	-	-	-	1,277,414	1,277,414
Ditch #13	-	-	-	-	-	-	7,261	7,261
Committed for:								
Dive team	11,999	-	-	-	-	-	-	11,999
Facilities	128,028	-	-	-	-	-	-	128,028
Mounted patrol	15,090	-	-	-	-	-	-	15,090
Triad	4,804	-	-	-	-	-	-	4,804
Veterans' service van	2,053	-	-	-	-	-	-	2,053
Thirty Lakes Watershed	130,990	-	-	-	-	-	-	130,990
Information technology	516,130	-	-	-	-	-	-	516,130
Employee recognition program	5,803	-	-	-	-	-	-	5,803
Other post-employment benefits (OPEB)	1,400,000	-	-	-	-	-	-	1,400,000
Highway improvement plan	-	3,796,618	-	-	-	-	-	3,796,618
Breastfeeding peer counseling project	-	-	7,003	-	-	-	-	7,003
Assigned for:								
Highway	-	3,573,095	-	-	-	-	-	3,573,095
Community services	-	-	2,159,051	-	-	-	-	2,159,051
Capital projects	-	-	-	-	-	3,243,010	-	3,243,010
Solid waste (non-landfill)	-	-	-	-	-	-	377,478	377,478
Debt service	-	-	-	-	124,407	-	-	124,407
Unassigned	8,623,412	-	-	(148,623)	-	-	-	8,474,789
Total Fund Balances	\$ 12,724,405	\$ 14,958,242	\$ 2,248,608	\$ 551,415	4,925,670	\$ 3,246,460	\$ 6,559,609	\$ 45,214,409
Total Liabilities, Deferred Inflows of Resources, and Fund Balances	\$ 14,979,136	\$ 18,613,477	\$ 4,383,814	\$ 2,942,365	5,108,857	\$ 3,556,664	\$ 6,984,743	\$ 56,569,056

CROW WING COUNTY BRAINERD, MINNESOTA								
STATEMENT OF REVENUES, EXPENDITURES, AND CHANGES IN FUND BALANCES GOVERNMENTAL FUNDS FOR THE YEAR ENDED DECEMBER 31, 2018								
	General	Highway	Community Services	Public Land Management	Debt Service	Capital Projects	Nonmajor Funds	Total
REVENUES								
Taxes	\$ 18,262,871	\$ 8,425,963	\$ 9,041,364	\$ -	\$ 4,994,417	\$ 859,676	\$ 882,924	\$ 42,467,215
Special assessments	-	-	-	-	-	-	632,609	632,609
Licenses and permits	574,265	-	-	815,218	-	-	175	1,389,658
Intergovernmental	2,888,795	14,610,909	14,046,663	93,394	93,343	2,536,714	284,883	34,554,701
Charges for services	3,913,857	1,882,398	797,899	5,731	-	-	341,610	6,941,495
Fines and forfeits	90,609	-	-	-	-	-	-	90,609
Gifts and contributions	32,060	-	10,000	-	-	-	-	42,060
Investment earnings	880,940	-	-	68,059	-	-	16,655	965,654
Sales	-	-	-	1,248,078	-	-	-	1,248,078
Miscellaneous	1,328,894	109,271	589,137	49,772	-	82,103	121,476	2,280,653
Total Revenues	\$ 27,972,291	\$ 25,028,541	\$ 24,485,063	\$ 2,280,252	\$ 5,087,760	\$ 3,478,493	\$ 2,280,332	\$ 90,612,732
EXPENDITURES								
Current								
General government	\$ 13,618,222	\$ -	\$ -	\$ -	\$ -	\$ 854,431	\$ 102,864	\$ 14,575,517
Public safety	14,803,285	-	2,838,490	-	-	178,922	163,286	17,983,983
Highways and streets	2,400	10,795,511	-	-	-	-	875,908	11,673,819
Health and human services	-	-	23,287,432	-	-	89,824	-	23,377,256
Culture and recreation	676,807	-	-	-	-	-	-	676,807
Conservation of natural resources	106,225	-	-	1,978,933	-	-	962,265	3,047,423
Economic development	-	-	-	-	-	-	56,416	56,416
Capital Outlay								
General government	70,891	-	-	-	-	2,145,622	-	2,216,513
Public safety	266,938	-	-	-	-	263,448	-	530,386
Highways and streets	-	10,261,665	-	-	-	427,555	-	10,689,220
Health and human services	-	-	2,114	-	-	52,623	-	54,737
Conservation of natural resources	-	-	-	234,768	-	-	43,003	277,771
Intergovernmental	-	424,552	-	-	-	-	-	424,552
Debt Service								
Principal	-	100,700	-	-	4,549,365	-	-	4,650,065
Interest	-	12,430	-	-	580,222	-	-	592,652
Administrative charges	-	137	-	-	2,750	-	-	2,887
Total Expenditures	\$ 29,544,768	\$ 21,594,995	\$ 26,128,036	\$ 2,213,701	\$ 5,132,337	\$ 4,012,425	\$ 2,203,742	\$ 90,830,004
Excess of Revenues Over (Under) Expenditures	\$ (1,572,477)	\$ 3,433,546	\$ (1,642,973)	\$ 66,551	\$ (44,577)	\$ (533,932)	\$ 76,590	\$ (217,272)
OTHER FINANCING SOURCES (USES)								
Transfers in	\$ 747,787	\$ -	\$ -	\$ -	\$ 177,836	\$ -	\$ 140,327	\$ 1,065,950
Transfers out	(177,836)	(747,787)	-	-	-	-	(140,327)	(1,065,950)
Proceeds from sale of capital assets	3,399	-	-	-	-	32,292	-	35,691
Insurance proceeds	27,457	16,696	1,733	-	-	37,331	-	83,217
Total Other Financing Sources (Uses)	\$ 600,807	\$ (731,091)	\$ 1,733	\$ -	\$ 177,836	\$ 69,623	\$ -	\$ 118,908
Net Change in Fund Balances	\$ (971,670)	\$ 2,702,455	\$ (1,641,240)	\$ 66,551	\$ 133,259	\$ (464,309)	\$ 76,590	\$ (98,364)
Fund Balance - January 1	13,696,075	12,238,668	3,889,848	484,864	4,792,411	3,710,769	6,483,019	45,295,654
Increase (decrease) in inventories	-	17,119	-	-	-	-	-	17,119
Fund balance - December 31	\$ 12,724,405	\$ 14,958,242	\$ 2,248,608	\$ 551,415	\$ 4,925,670	\$ 3,246,460	\$ 6,559,609	\$ 45,214,409

CROW WING COUNTY BRainerd, Minnesota		
STATEMENT OF FIDUCIARY NET POSITION FIDUCIARY FUNDS DECEMBER 31, 2018		
	NLLSSD Trust	Agency
ASSETS		
Cash and investments	\$ 4,882	\$ 4,235,144
LIABILITIES		
Accounts payable	\$ -	\$ 1,285,805
Due to other governments	-	2,949,339
Total Liabilities	\$ -	\$ 4,235,144
NET POSITION		
Held in trust for private purposes	\$ 4,882	

PAPER STORM	7,863.20
PATNODE'S CUSTOM CABINETS	6,196.00
PAUL THIEDIE	3,860.76
PAYPAL NTOA	6,400.00
PENMAC STAFFING SERVICES, INC	322,775.41
PETE'S CABIN CARE INC	2,250.00
PICTOMETRY INTERNATIONAL CORP	44,088.66
PIKE PLUMBING & HEATING	10,573.97
POWER LODGE-BRAINERD	6,519.27
PRIMARY PRODUCTS COMPANY	12,598.44
PRO PRINT	8,505.64
PRO STAFF	12,598.05
PROFESSIONAL PORTABLE X-RAY INC	5,330.00
PROMANTEK INC	11,277.40
PROWEST & ASSOCIATES INC	4,469.02
PRUDENTIAL INSURANCE CO OF AMERICA	158,583.87
QUINLIVAN & HUGHES PA	2,674.50
RAMSEY COUNTY-MEDICAL EXAMINER	91,060.00
RAMSEY ELECTRONICS LLC	2,189.02
RASINSKI DOOR SERVICE	11,435.90
RAYMOND HORTON	52,060.00
REALTRUCK	2,321.44
REGENTS OF THE UNIVERSITY OF MN	83,566.66
RELIANCE TELEPHONE INC	52,161.30
RHI SUPPLY - FARGO	3,967.50
RICHARD WAYN	5,917.20
RINKE NOONAN	2,200.00
RJ MECHANICAL	22,861.01
RMB ENVIRONMENTAL LABORATORIES INC	3,618.00
RONALD ROBBINS	2,700.00
ROYAL TIRE INC	17,581.43
RS EDEN	5,595.56
RTVISION INC	17,711.76
RUTH LAKE IMPROVEMENT DISTRICT	9,510.00
SCR - NORTHERN	2,198.36
SEACHANGE PRINTING AND	
MARKETING SERVICES LLC	55,813.34
SELECTACCOUNT	4,222.53
SHANNON'S AUTO BODY INC	22,843.97
SHI INTERNATIONAL CORP	131,764.40
SICORA CONSULTING INC	7,500.00
SMARTPROCURE INC	2,000.00
SMC DIRECT LLC	2,116.51
SMITH-SHARE FIRE BRICK SUPPLY	4,140.00
SOLDO CONSULTING PC	8,792.35
SOURCEWELL	2,364.00
SPIDER STRATEGIES INC	4,845.00
SPRINGSTED INC	6,700.00
SQUAD PRO LLC	11,910.65
STANLEY CONVERGENT SECURITY SOLUTIONS	19,522.20
STATE OF MINNESOTA	11,302.03
STEIN'S INC	23,397.39
STEVESEN TRANSPORT LLC	55,200.00
STONEBROOKE EQUIPMENT INC	12,107.18
STRATELIGENT	24,635.91
STREICHERS INC	44,843.26
SUMMIT COMPANIES	18,021.70
SUPREME CT LAWYER REGISTR	2,461.00
SYSTEM INNOVATORS	30,791.54
TAB PRODUCTS CO LLC	3,364.50
TACTICAL ELECTRONICS	4,320.50
TEAM WENDY	20,221.34
TEAMSTERS JOINT COUNCIL	
32-EMPLOYERS HEALTH	16,822.00
THE HEARTH ROOM	5,472.00
THE HOME DEPOT #2818	5,569.79
THOMSON REUTERS	73,388.97
THRIFTY WHITE PHARMACY	44,512.71
TIBEX TECHNOLOGY INC	30,305.00
TIMOTHY PIPPO	3,600.91
TRIMIN SYSTEMS INC	20,027.20
TURKEYE CORRECTIONS	2,479.52
TWIN CITY HARDWARE INC	21,571.04
TYLER TECHNOLOGIES INC	131,016.45
ULINE	2,437.93
ULTRAMAX AMMUNITION	24,622.00
UNITED STATES POSTAL SERVICE - HASLER	250,000.00
UPLAND ADVERTISING & DESIGN LLC	7,416.00
US WATER SERVICES INC	11,379.54
VADO, INC	19,990.00
VERIZON WIRELESS	52,478.19
VICKIE SULLIVAN	2,024.32
VIKING ELECTRIC SUPPLY	29,130.37
VITAL 2017 MINNESOTA EXEMPT TRUST	9,000.00
WASTE PARTNERS INC	12,873.68
WELLS FARGO BA/BRAINERD	4,540.00
WHITEFISH AREA PROPERTY OWNERS ASSOC	4,008.89
WIDETH SMITH NOLTING & ASSOC INC	44,440.00
WILLIAM O'HARA JR	31,245.00
WOLTERS KLUWER	2,639.80
WOLTERS KLUWER LAW & BUSINESS	3,102.62
WORKS COMPUTING INC	104,642.87
WW GRAINGER	3,768.71
XCEL ENERGY	3,876.23
ZIEGLER INC	6,073.91
HIGHWAY	
3D SPECIALTIES	8,602.51
AAA STRIPING SERVICE COMPANY	177,387.85
ADVANCE AUTO PARTS	10,400.74
ALVERO LLC	7,950.00
ANDERSON BROTHERS	
CONSTRUCTION COMPANY	8,829,624.07
ASTECH CORP	849,315.55
AT&T MOBILITY	2,607.40
B-DIRT LLC	8,500.00
BEST OIL COMPANY	43,123.96
BLUE CROSS BLUE SHIELD OF MN	115,379.50
BNFS RAILWAY COMPANY	150,979.06
BRAINERD ABSOLUTE TRAILER SALES	2,365.02
BRAINERD GENERAL RENTAL CENTER INC	2,784.00
BRAINERD HYDRAULICS AIR &	
INDUSTRIAL SUPPLY INC	5,495.71
BRAINERD LAKES REGIONAL AIRPORT	7,938.28
BRAINERD LICENSE OFFICE	2,924.63
BRAINERD POSTMASTER	2,039.84
BRIAN'S WELDING INC	6,308.40
BROCK WHITE CONSTRUCTION LLC	28,513.72
CARGILL INC	60,292.93
CASS COUNTY AUDITOR-TREASURER	18,543.43
CEMSTONE PRODUCTS COMPANY	3,300.00
CITY OF CROSSLAKE	750,414.97
CITY OF JENKINS	15,000.00
CITY OF PEQUOT LAKES	4,604,000.00
CONDUENT ENTERPRISE SOLUTIONS LLC	5,927.78
CONTECH CONSTRUCTION PRODUCTS	53,489.49
CROW WING POWER	3,715.66
DELL MARKETING LP	17,182.75
DIAMOND INDUSTRIAL CLEANING EQUIPMENT	2,712.23
DIAMOND MOWERS INC	3,190.36
DLL EXCAVATING INC	170,469.47
DLT SOLUTIONS INC	9,203.34
DONDELINGER CHEVROLET CADILLAC TOYOTA	2,548.51
DOUCETTE'S LANDSCAPING & CONTRACTING	10,950.00
DURACO INC	2,042.81
FATELOR COMPANY	5,592.66
FLEETPRIDE INC	18,764.38
FORCE AMERICA DISTRIBUTING LLC	2,062.90
FORUM COMMUNICATIONS COMPANY	2,502.47
FRANK FLORIN	11,575.25
GRANITE ELECTRONICS INC	2,454.90
H & R CONSTRUCTION	13,411.18
HANCOCK CONCRETE PRODUCTS LLC	5,169.60
HEARTLAND TIRE SERVICE	18,035.08
HENGEL READY MIX AND CONSTRUCTION INC	16,600.00
HOLMVIG EXCAVATING	34,060.50
HYTEC CONSTRUCTION OF BRAINERD INC	6,578.00
JAMIN S RUDOLPH	10,165.00
KUSTCO INC	110,876.00
KEENAN NIEMAND	3,800.00
KNIFE RIVER CORPORATION - NORTH CENTRAL	84,815.87
KRIS ENGINEERING INC	50,685.74
LEICA GEOSYSTEMS INC	6,418.72
LITTLE FALLS MACHINE INC	9,534.89
LOCATORS & SUPPLIES	5,621.35
MANSFIELD OIL CO OF GAINESVILLE INC	383,891.40
MARCO HOLDINGS LLC	2,503.62
MARCO TECHNOLOGIES LLC	4,872.56
MEDICARE BLUE RX	22,542.00
MIDWEST MACHINERY COMPANY	8,372.48
MIKE'S TREE COMPANY LLC	2,700.00
MILLS MOTOR INC	16,525.34

MINNESOTA POWER	2,542.32
MINNESOTA STATE COLLEGES	4,800.00
MN COUNTIES INTERGOVERNMENTAL TRUST	142,531.31
MN DEPARTMENT OF REVENUE	9,632.38
MN DEPT OF TRANSPORTATION	315,769.55
MN INDEPENDENT PETROLEUM SERVICE	18,147.71
MN TRANSPORTATION ALLIANCE INC	3,355.00
MORRISON COUNTY AUDITOR	2,879.78
MORTON SALT	186,632.91
M-R SIGN COMPANY INC	10,912.54
NAPA AUTO PARTS	18,488.94
NELSON SANITATION & RENTAL LLC	8,223.50
NEWMAN SIGNS INC	5,966.46
NORTHLAND FREIGHTLINER	4,128.36
NUSS TRUCK & EQUIPMENT	6,970.22
ONE TIME PAY	180,444.26
PENMAC STAFFING SERVICES, INC	9,658.18
POWER PLAN	23,491.68
PRECISE MRM	5,656.31
RCM EQUIPMENT COMPANY LLC	31,340.17
REICHERT ENTERPRISES	17,229.36
RL LARSON EXCAVATING INC	90,364.74
ROAD EQUIPMENT PARTS CENTER	2,264.68
ROYAL TIRE INC	14,324.32
RTVISION INC	10,378.02
RUFFRIDGE JOHNSON EQUIPMENT COMPANY	2,424.79
SHANNON'S AUTO BODY INC	12,082.30
SOUTHERN MINNESOTA	
INSPECTION COMPANY LLC	4,185.40
SUBSURFACE INC	29,620.00
SUPER GRIP CORPORATION	2,526.67
SWANSTON EQUIPMENT COMPANIES	2,550.00
TOWMASTER INC	3,130.42
TOWN OF DAGGETT BROOK	32,327.60
TOWN OF JENKINS	15,000.00
TRAFFIC MARKING SERVICE	170,809.59
TRI-CITY PAVING INC	103,340.52
TRUEMAN WELTERS	10,917.73
TYLER TECHNOLOGIES INC	27,582.49
U OF M CONTLEARNING	2,620.00
VARITECH INDUSTRIES INC	12,017.82
VOYAGER FLEET SYSTEMS INC	24,414.25
W W THOMPSON CONCRETE PRODUCTS	3,352.00
WIDETH SMITH NOLTING & ASSOC INC	15,369.39
WINZER CORPORATION	10,090.57
WSB & ASSOCIATES	320,233.32
YOUNG EXCAVATING	65,067.15
ZIEGLER INC	34,209.08
COMMUNITY SERVICES FUND	
AIMEE GILDART	2,194.05
AITKIN COUNTY HEATH AND HUMAN SERVICES	47,325.00
AL SHAMP CONSTRUCTION	3,200.00
ALEX AND BRANDON CHILD SAFETY CENTER	16,287.50
ALLEGRA	2,216.24
AME COMMUNITY SERVICES	24,550.89
ANALYTICS8	28,890.50
ANOKA COUNTY HUMAN SERVICES	82,758.00
ANYPROMO INC	2,507.87
ARNS CUSTOM BUILDERS	18,250.00
ARROWHEAD JUVENILE CENTER	33,575.00
ASSOCIATION OF MN COUNTIES	16,696.00
BAR NONE	73,860.00
BLUE CROSS BLUE SHIELD OF MN	644,266.29
BRAINERD & CROW WING PUBLIC TRANSIT	2,769.00
BRAINERD AREA TAXI	4,870.00
BRENNY FUNERAL CHAPEL	24,317.51
BRIDGES OF HOPE	140,500.00
BRYN YAHN	15,942.79
CARLYN BECKER	34,650.00
CASS COUNTY HEALTH & HUMAN SERVICES	45,460.00
CASSIE CAREY	4,696.12
CDW GOVERNMENT	6,160.40
CENTER FOR ALCOHOL & DRUG TREATMENT	8,038.00
CENTRAL LAKES COLLEGE	3,080.00
CENTRAL MN MENTAL HEALTH CTR	75,254.00
CHAMP SOFTWARE INC	8,928.00
CHILDREN'S HOME & LSS	19,480.26
CHRISTINE WINCH	3,009.88
CLAY COUNTY HEALTH DEPARTMENT	3,840.00
CLIFTONLARSONALLEN	6,000.00
COCHRAN RECOVERY SERVICES INC	14,245.00
COMMUNITY AND FAMILY SERVICES LLC	10,229.66
CONSOLIDATED TELECOMMUNICATIONS	11,475.35
CORE PROFESSIONAL SERVICES PA	8,620.00
CREMATION SOCIETY OF MN	3,703.00
CRISIS LINE AND REFERRAL SERVICE	81,686.95
CROW WING COUNTY SHERIFF	27,900.00
CROW WING ENERGIZED FOUNDATION	10,500.00
CURTIS ABRAHAMSON	10,399.66
CUYUNA RANGE YOUTH CENTER	3,094.73
DATABANK IMX LLC	64,879.70
DAVID C ANDERHOLM MD PA	19,537.24
DEERWOOD LUMBER	2,356.60
DELL MARKETING LP	37,151.54
DENE' JUSTEN	3,320.72
DERUYCK CONSTRUCTION LLC	28,263.00
DIANE VIEHAUSER	11,860.08
DISCOUNTMUGS.COM	3,020.35
DISCOVERY WOODS MONTESSORI SCHOOL	2,590.00
EAGLE RIDGE BOYS RANCH	23,400.00
EAGLE VIEW ELEMENTARY SCHOOL	3,000.00
EMBASSY SUITES ST PAUL	8,650.51
EMPLOYMENT ENTERPRISES	8,205.80
EMPLOYMENT RESOURCE CENTER INC	3,528.18
EPA AUDIO-VISUAL INC	3,309.14
ESSENTIA HEALTH MEDICAL CTR	2,150.00
ESSENTIA INSTITUTE OF RURAL HEALTH	88,531.67
FAIRVIEW HEALTH SERVICES	11,892.44
FAMILIES IN TRANSITION SERVICES INC	7,658.33
FASTER SOLUTIONS	3,405.00
FIRST IMPRESSION PRINTING	8,783.65
FOREST RIDGE YOUTH SERVICES	22,061.46
FREEDOM CONCEPTS, INC.	4,664.00
GEORGE SCOTT	4,752.98
GILBERT MEDIATION CENTER, LTD	2,767.50
GOODWILL INDUSTRIES	2,250.00
GRAB -A- CAB	7,930.00
HALLETT COMMUNITY CENTER	2,298.46
HALVORSON-JOHNSON FUNERAL HOME	14,218.20
HEARTLAND GIRLS RANCH	83,448.81
HENNEPIN COUNTY ACCOUNTS RECEIVABLE	3,600.00
HENRY EMMONS, MD	3,500.00
HOLIDAY	4,980.00
HOLIDAY STATION STORE	10,670.00
HOME DEPOT	17,114.00
HONORS HOUSE GROUP HOME	21,990.99
HOPE HOUSING	37,500.00
INNOVATIVE OFFICE SOLUTIONS LLC	19,550.10
ISD 181	3,636.00
ITASKIN JUVENILE CENTER	213,952.54
KAYLO BROOKS	2,592.92
KELLY PEDERSON	2,482.58
KENNETH VOPATEK	10,285.86
KINDRED FAMILY FOCUS	8,455.98
KLINE FUNERAL HOME	8,551.09
KOOP FUNERAL HOME	20,933.78
LABORATORY CORPORATION OF AMERICA	6,283.90
LAKE COUNTRY ASSOCIATES INC	13,150.00
LAKES AREA INTERFAITH CAREGIVERS	4,200.00
LAKES MEDI-VAN INC	70,852.29
LAKES PRINTING	2,005.55
LEANORA ANITA GRETEMAN	2,052.60
LEECH LAKE BEHAVIORAL HEALTH	4,500.00
LEIGHA JANEY	3,764.71
LEO A HOFFMANN CENTER-MAIN	35,523.55
LEXISNEXIS RISK SOLUTIONS	5,684.25
LITTLE SAND GROUP HOMES	114,808.01
LORI THOMPSON	2,078.71
LUTHERAN SOCIAL SERVICES MN	34,204.28
LUTHERAN SOCIAL SERVICES OF MN	131,604.34
MAILFINANCE	8,164.20
MARCO HOLDINGS LLC	11,956.57
MARCO TECHNOLOGIES LLC	29,422.40
MARK BARTA	3,590.54
MARY ARSENAULT	3,617.36
MAYO CLINIC	14,952.82
MCF RED WING - STILLWATER	34,480.00
MCMAHON COUNSELING & CONSULTATION SVCS	2,145.00
MEDICARE BLUE RX	135,361.00
META13	5,420.00
METRO LEGAL SERVICES INC	2,141.82

CROW WING COUNTY BRainerd, Minnesota		
STATEMENT OF CHANGES IN FIDUCIARY NET POSITION FIDUCIARY FUNDS FOR THE YEAR ENDED DECEMBER 31, 2018		
ADDITIONS		
Receipts from District	\$ 1,206	
Change in net position	\$ 1,206	
Net Position - Beginning		3,676
Net Position - Ending	\$ 4,882	

MID-MINNESOTA DRUG TESTING	10,773.00
MILLE LACS ACADEMY-NEXUS	256,684.51
MILLE LACS BAND BEHAVIORAL HEALTH D2	9,000.00
MILLE LACS BAND FAMILY SERVICES	27,832.71
MILLE LACS BAND OF OJIBWE	2,463.12
MILLE LACS DRIVING INSTRUCTION	2,350.00
MINNESOTA MANAGEMENT & BUDGET	4,070.82
MINNESOTA MOBILITY SYSTEMS INC	3,745.00
MINNESOTA RECOVERY CONNECTION	11,250.00
MN CHILD SUPPORT PAYMENT CTR	209,837.65
MN COUNTIES COMPUTER COOPERATIVE	9,436.60
MN COUNTIES INTERGOVERNMENTAL TRUST	93,772.24
MN DEPT OF HUMAN SERVICES	1,560,422.85
MN FINANCIAL WORKER & CASE AID ASSOC	2,100.00
MN GIRLS ACADEMY	67,443.71
MN MONITORING INC	14,338.50
MN SOCIAL SERVICE ASSOCIATION	2,155.00
MN TEEN CHALLENGE	5,556.39
MN UNEMPLOYMENT INSURANCE FUND	2,640.00
MORRISON COUNTY	
SOCIAL SERVICES-MH FLEX	53,262.68
NELSON-DORAN FUNERAL HOME	8,370.00
NORTH HOMES CHILDREN AND FAMILY SERVICES	86,694.14
NORTH HOMES COTTAGES	224,126.84
NORTHERN BUSINESS PRODUCTS	4,663.09
NORTHERN PINES	1,589,749.60
NORTHERN PINES MENTAL HEALTH CENTER	3,300.00
NORTHLAND ARBORETUM	3,200.00
NORTHLAND SMILES	2,269.84
NORTHWESTERN MN JUVENILE CENTER	227,816.81
NORTHWOOD CHILDREN'S SERVICES	216,277.24
NORTHWOODS	104,203.00
NYSTROM AND ASSOCIATES LTD	24,653.03
OAKRIDGE SUPPORT SERVICES	12,529.02
OFFICE SHOP	7,485.43
ONE TIME PAY	56,452.15
OPTUMHEALTH FINANCIAL SERVICES	14,349.85
PATHFINDERS CHILDREN'S TREATMENT CENTER	9,340.00
PATRICIA BLAHUT	7,709.88
PENMAC STAFFING SERVICES, INC	122,667.78
PENNY QUAST	2,441.66
PETRANGEIO, GEORGE MS	6,306.25
PHILIP B TANGE, MSW	3,825.00
PINE MANORS INC	43,883.82
PINEHAVEN YOUTH AND FAMILY SERVICES	328,163.57
PORT GROUP HOMES	74,911.96
PORT OF CROW WING COUNTY, INC.	15,335.76
PRAIRIE LAKES YOUTH PROGRAMS	31,449.87
PRAIRIE ST JOHN'S HOSPITAL	18,721.17
PRO STAFF	5,449.36
PRODUCTIVE ALTERNATIVES INC	70,056.50
PROGRESSIVE PROPERTY	2,200.00
RACHEL VON BANK	4,350.00
RANDAL SCHULTE	15,027.52
REAGE MENTAL HEALTH CENTER	4,788.00
REM CENTRAL LAKES, INC -	
AUTUMN (ALEXANDRIA)	22,032.21
REVERENCE FOR LIFE & CONCERN FOR PEOPLE	3,768.00
RIPPLEY RICHARD REAL ESTATE	
DEVELOPMENT SERVICES	27,313.87
RIVERSIDE ELEMENTARY SCHOOL	2,000.00
RON SHAW	9,099.07
RRHS UMCN MESABA CLINICS	10,853.00
RURAL MINNESOTA CEP INC	525,512.33
SARA SHERMAN	11,850.50
SICORA CONSULTING INC	9,000.00
SOCIAL SECURITY ADMINISTRATION	2,443.55
SOURCEWELL	137,581.54
ST CLOUD AREA YMCA	8,142.42
ST CLOUD HOSPITAL	4,587.13
STEVE JELLINGER	2,161.10
STRATELIGENT	12,421.25
SURVEY SYSTEMS	2,408.36
TAMALA LUECK	2,253.72
TASC CONTINUATION SERVICES	6,124.60
TEENS IN TRANSITION	6,174.74
THE HILLS YOUTH AND FAMILY SERVICES	104,895

READER RIBBETS

Pushing political prosecution

In March of this year, [Former Crosby Mayor] Jim Hunter was acquitted a third time by a Crow Wing County Jury. Three separate juries heard the evidence from both sides, and found Mr. Hunter not guilty on different charges. The remaining charges not resolved by the juries were dismissed by the Crow Wing County Attorney's Office in April of this year, finally bringing over two years of prosecution of Mr. Hunter, costing taxpayers tens of thousands of dollars, and untold hardship to Mr. Hunter, to an end.

As if this was not enough, a Crosby newspaper has taken upon itself to retry the case in the paper. The lead reporter for the paper works for the Crosby Police Department, and has had a personal interest in the case from the start. She was overheard saying an expletive in response to the first not guilty verdict coming in.

Unfortunately, there is no law requiring media outlets to be objective in covering a case, but, I think most of us expect our media sources to make an effort to be fair, and to not become personally involved in the cases they cover.

The juries in all three trials heard several days worth of testimony and evidence about the case, and heard arguments from the County Attorney's Office, and from myself ,Mr. Hunter's attorney. The jurors were in a better position than anyone to judge Mr. Hunter.

The rules of Court do not allow certain materials to be presented to the jury.

- The jurors in Mr. Hunter's trial did not hear about the arbitration proceedings involving a former Crosby Police Officer, who was fired by the Chief and Lieutenant, who also initiated the charges against Mr. Hunter.
- The jurors did not hear that the arbitrator ruled against the Chief and former Lieutenant, and found that they were not credible witnesses in the arbitration case.
- The jurors did not hear that the State's lead witness in the first trial, Thomas McCartan had a history of harassing Mr. Hunter, confronting him in the street, yelling at Mr. Hunter while grabbing his crotch. Mr. Hunter obtained a restraining order against Mr. McCartan, which Mr. McCartan violated, the jurors did not hear about that either.
- In the assault case, the jurors did not hear that Nick McCartan, Thomas McCartan's son, confronted Mr. Hunter in the parking lot of a restaurant, and only left when Mr. Hunter threatened to call the police, shortly after Mr. Hunter supposedly assaulted Nick McCartan.
- In the gambling fraud case, the jurors did not hear that one of the prosecutions lead witnesses owed thousands of dollars to Mr. Hunter for the purchase of a car she had not been making payments on for some time.
- Most important, the jurors did not hear that it is extremely unusual for the local police to investigate their own elected official, the normal practice is to have another police department from outside the city investigate an elected official accused of a crime.

These are only a few examples of what the jurors were not allowed to hear. What they were allowed to hear gives anyone plenty of reason to believe that Mr. Hunter was not guilty of a crime.

Instead of that Crosby newspaper retrying the case against Mr. Hunter over and over again in successive weekly issues and second guessing three juries, they should be asking why the Crosby Police were allowed to waste tens of thousands of dollars trying to convict a political opponent and then sitting Mayor, Mr. Hunter, of a crime.

Instead of looking back, the concern now should be restoring the rule of law to Crosby, removing the officials who pushed a political prosecution, and allowing all Crosby citizens to run for office and speak out without fear of reprisal.

Edward R. Shaw,
Ed Shaw Law, Brainerd

NEWSHOPPER
Deadlines are
Mondays at Noon

Lakes Area Music offers inspiring education and French fascination



Internationally renowned soloist, Sonora Slocum.

In a barn-busting opening weekend, the Lakes Area Music Festival offers unprecedented educational concerts on Saturday, August 3 at 7:30 p.m. and Sunday, August 4 at 2 p.m. at Tornstrom Auditorium, Brainerd. Both concerts will feature Edwin Outwater (formerly of the San Francisco Symphony) leading the Festival orchestra and guiding the audience through the music.

Saturday night's concert is geared toward adults and is entitled "Brahms' First." Maestro Outwater will discuss Johannes Brahms' 20-plus year journey to writing his first symphony and lead the orchestra in examples from pieces that influenced Brahms in his own work.

Sunday afternoon will be a rollicking good time for

kids of all ages. The students of Explore Music! (LAMF's kid's day camp) will offer an informal presentation of their musical skills at 1:30 p.m., followed by a mixed orchestral program of Beethoven and Gershwin, where attendees are welcome to dance, shout and play in the isles. Following the concert, LAMF will host an instrument petting zoo on the lawn outside of Tornstrom, where young folks can try out orchestral instruments for the first time.

On Wednesday, August 7 at 7:30 p.m. at Tornstrom Auditorium, the Lakes Area Music Festival will present "France Nouvelle," featuring three internationally renowned soloists. Sonora Slocum, principal flute of the Milwaukee Symphony will open the concert with



Paris-based tenor Zachary Wilder, will make his Lakes Area Music Festival debut.

Claude Debussy's haunting Syrinx. Kitty Cheung, Hong Kong-based violinist will perform the Meditation from Jules Massenet's Thaïs. Both Slocum and Cheung are long-time Festival favorites, but another artist, Paris-based tenor Zachary Wilder, will make his Lakes Area Music Festival debut in Massenet's sweeping song cycle Poème d'avril. Wilder returns to the Festival stage later this summer as Paris in The Beautiful Helen of Troy by Jacques Offenbach.

Each summer, the Lakes Area Music Festival brings more than 185 all-star artists from top orchestras and opera companies around the world to perform three weeks of classical music performances in the Brainerd Lakes Area. From chamber music and symphonic orchestra, to productions of opera and ballet that draw thousands of attendees each year, LAMF has become one of the most significant summertime destinations for classical music in the Midwest. To learn more, visit LakesAreaMusic.org.

Community Events,
Births, Open Houses,
Engagements, Weddings
& are published **FREE!**

Send your e-mail to
hopper@crosbyironton.net




ONE OF
**MINNESOTA'S
LARGEST
SELECTION**
of hydraulic hose & fittings
up thru 2" 4 wire
rileyautosupply.com

**RILEY'S NAPA
AUTO SUPPLY**
AITKIN • 218-927-2153

HOSES ALSO AVAILABLE AT:
PALISADE COOP • PALISADE • 218-845-2333
D&S TRUCK REPAIR • MCGREGOR • 218-851-1555
NORD AUTO PARTS • GRAND RAPIDS • 218-327-1191
*SOME SIZES NOT AVAILABLE AT ALL LOCATIONS

Flammable • Caution • Warning • Danger • Poisonous • Toxic • Explosive •
Reactive • Flammable • Caution • Warning • Danger • Poisonous • Toxic

Never dump household hazardous waste such as pesticides, fertilizers, paint or solvents down the toilet, down the drain, into a storm drain, open waterway or ditch. Beyond posing a threat to our health and environment, such dumping is illegal.



Crow Wing County
**Household Hazardous Waste Facility
Will Be Open July 10 & 13**
the **Second Wednesday** and the **Second Saturday**
of each month from **May to October 8 a.m. to 4 p.m.**
The Collection Site is at the Landfill
Nine Miles Southwest of Crosby on Highway 210
**Automotive • Paint • Home Improvement • Workshop • Crafts • Lawn •
Garden • Household Cleaners**

Read the Warning Labels: A product has one or more hazardous properties, if it shows the single words: Corrosive, Flammable, Caution, Warning, Danger, Poisonous, Toxic, Explosive or Reactive. It does not become any less hazardous when you throw it away.
**Please Note: The Household Hazardous Waste Facility
DOES NOT ACCEPT Florescent Light Bulbs, Business or Farm Hazardous Waste.**

For more information call the HHW Hotline 218-824-1290.
Sanitary Landfill is Open Monday through Saturday for April to October 8 a.m. to 5 p.m.

Explosive • Reactive • Flammable • Caution • Warning • Danger • Poisonous • Toxic



Miltimore
MOTOR COMPANY
16604 Hwy 371 Brainerd - 218-454-2886
Check us out at www.mmcmnnesota.com



**'Great Cars, Great Prices...
EVERYDAY!'**

2016 Ford F150 XLT Super Crew
**One Owner
Low Miles!**

\$34,900
Rough Country Lift, 20" Aftermarket Wheels, 35" Tires, Heated Seats, Dual Power Seats

2017 Chev Silverado Crew Cab LT
5.3 V8, Power Seats, Remote Start, Backup Cam, Bluetooth **\$27,248**
2017 Chev Silverado Crew Cab
5.3 V8, Heated Seats, Remote Start, One Owner, 20k Miles **In Transit!**
2017 GMC Sierra Crew Cab
One Owner, Bluetooth, Remote Start, Heated Seats & More! **\$32,999**
2017 Chev Silverado LT
5.3 V8, Z71 Appearance pkg., Backup Cam, Bluetooth, Alloys, More! **\$30,975**
2016 Ram 1500 Express
5.7 Hemi V8, Bluetooth, Backup Cam, Blackout Pkg., Only 22k Miles **\$27,388**
2016 Ford F-150 XLT Super Crew
3.5 EcoBoost, Bucket Seats, Backup Camera, Remote Start **\$31,995**
2016 Ram 1500 Big Horn
5.7 Hemi, V8, Remote Start, Keyless Entry, Low Miles **\$29,699**
2016 Ford F150 XLT Super Crew
5.0 V8, Keyless Entry, Power Seat, Bluetooth, Custom Wheels & Tires **\$34,900**
2015 Chevrolet Silverado High Country
V8, Leather, Heated/Cooled Seats, Moonroof, Bluetooth & More **\$33,300**
2015 GMC Sierra SLE Crew Cab
V8, Bluetooth, Dual Zone Climate Control, Backup Cam & More! **\$29,990**
2013 Chev Silverado 2500 HD Crew Cab LTZ
6.0 V8, Leather, Heated Seats, New Tires, Low Miles **\$33,380**
2013 Chev Silverado Ext. Cab LT
5.3 V8, Power Windows/Locks, Keyless Entry, 40k Miles **\$23,980**
2011 Toyota Tundra Double Cab SR5
5.7 V8, Loaded, & Low Miles **\$22,898**

2011 Toyota Tundra Double Cab SR5
**One Owner
Low Miles!**

\$22,898
5.7 V8, Dual Zone Climate Control, Power Seat, After Market Wheels & More

2015 Dodge Durango R/T AWD
**Local Trade!
Like New!**

\$27,999
5.7 Hemi V8, Leather, Heated Seats, Blue Tooth, Autostart, 3rd Seat

2018 Chrysler 300 S
3.6 V6, Leather, Heated Seats, Only 8k Miles, Like New! **\$25,999**
2016 Chevrolet Malibu LT
4 cyl, Automatic, Bluetooth, Low Miles **\$14,399**
2005 Chev Corvette Coupe
6.0 V8, Leather, Removable Roof, Heads Up Display **\$18,899**
2004 Chev Corvette Convertible
Commemorative Edition, 5.7 V8, Leather, Only 30k Miles **\$22,999**
1985 Toyota Celica GTS Convertible
One Owner, Only 79k Miles! **\$13,999**
1967 Chev Camaro RS
383 Stroker, Factory AC, Hideaway Lights, Nice! **\$32,900**

2016 Ram 1500 Big Horn
**Factory Warranty!
One Owner!**

\$29,699
5.7 Hemi, V8, Remote Start, Keyless Entry, Backup Camera, 20" Wheels, Low Miles

FINANCING AVAILABLE!
2016 Acura RDX AWD
V6, Leather, Heated Seats, Moonroof, Bluetooth, New Tires & More... **\$22,499**
2016 Subaru Outback 2.5 Premium AWD
4 cyl, Auto, HEated Seats, Bluetooth, One Owner, Low Miles! **\$21,980**
2016 Ford Edge SEL AWD
Leather, Heated Seats, Navigation, Remote Start, Bluetooth **\$21,999**
2014 Chevrolet Equinox LT AWD
4 cyl., Power Windows/Locks, Moonroof, New Tires & More **\$10,999**
2011 Chevrolet Tahoe LT
5.3 V8, Leather, Heated Seats, Third Row, Low Miles **\$18,499**
2010 Chevrolet Tahoe LT
5.3 V8, Leather, Moonroof, Rear DVD, Custom Wheels & More! **\$12,999**
2010 Ford Edge Limited AWD
Leather, Heated Seats, Dual Zone A/C, Sirius Radio, Alloy Wheels **\$9,499**
2010 GMC Yukon Denali XL
6.2 V8, Loaded, One Owner, Low Miles **In Transit!**
2003 Honda Odyssey EX-L
V6, Leather, Power Sliding Door & More! **\$2,999**

Ski Loons water ski show August 4

The Brainerd Ski Loons will be performing the next free water ski shows at Lum Park in Brainerd on Sunday, Aug. 4 at 5:00 p.m. You are invited to watch human ski pyramids, ski jumpers, barefoot skiers, and skiers being pulled 360 degrees around the boat. This event is great fun for the whole family. Concessions will be available. Free will donations are appreciated. Please bring blankets or lawn chairs for seating.

Other remaining shows at Lum Park in Brainerd will be Sunday, Aug. 11 at 5:00 p.m. and Wednesday, Aug. 14 at

6:30 p.m.

The Ski Loons are a 501(c)(3) nonprofit organization in Brainerd. For more informa-

tion, find the Brainerd Ski Loons on Facebook or visit their website www.skiloons.com.

(Published in the NewsHopper Saturday, Aug. 3, 2019)

CITY OF CUYUNA NOTICE OF SIREN TESTING CHANGE

The Emergency Sirens of the City of Cuyuna are now tied into the Crow Wing County alert system going forward and will automatically activate on the first Wednesday of each month at 1:00 p.m., instead of the previous 6:30 p.m.

Dated: July 5, 2019
William F. Bedard
Cuyuna City Clerk

NEWSHOPPER
Deadlines are
Mondays at Noon

Recycle More!

These items may all be recycled
in Crow Wing County:



Recycling is good for the environment and our community. Learn what you can do at home!

To learn more about recycling in your area, you may call your local refuse hauler or Crow Wing County Solid Waste Management 218-824-1290. There are numerous recycling containers throughout Crow Wing County, check out our website www.crowwing.us

Authorized Platinum Star Service

Serving All Makes • Over 35 Years Experience

Frigidaire
White-Westinghouse
Gibson
Kelvinator
Tappan
Electrolux
Asko

Maytag
KitchenAid
Amana
Jenn-Air
Roper
Whirlpool
Crosley

Amana Commercial Products
Frigidaire Commercial Products
Kelvinator Commercial Products
Electrolux Commercial Products



For more information call **Jim Blakesley**
jlblak@embarqmail.com

Appliance Service & Repair
Aitkin
218-927-2027
1-888-450-8845

TCBX TRUCKING BRainerd, MN Est. 1997

GUARANTEED NEXT DAY DELIVERY!*



*IN OUR COVERAGE AREA—

Major points included, but not limited to Brainerd and much of Central Minnesota Daily:

Twin Cities • Brainerd • Aitkin • Alexandria • Bemidji
Grand Rapids • Little Falls • Park Rapids • Wadena • St. Cloud

We Can Deliver It to You at:

Contractors Job Site, Door Step or Business
We provide Daily Freight delivery from the Twin Cities.

Give us a call • Fast service at an affordable price:

TCBX • 1748 SE 13th Street • Brainerd, MN 56401
1-888-829-8229 • www.tcbxtrucking.com
T(Twin) C(Cities) B(Brainerd Area) X(Express) • Established 1907

Tanner Motors

Brainerd Lakes Area's
Pre-owned

GIANT

• OVER 130 PRE-OWNED VEHICLES TO CHOOSE FROM •

2015 LEXUS NX 200T F SPORT



#390727

HARD TO FIND F SPORT AND
PRICED WAY BELOW BOOK!
LOADED!

\$26,993

2016 HONDA ACCORD SPORT



\$18,492

#290474

LOW MILES! ONLY 27,XXX MILES!
ONE OWNER!
CALL TODAY!

2015 NISSAN ALTIMA 2.5 S



\$11,991

#N290055

FANTASTIC FUEL ECONOMY AT 38 MPG
HIGHWAY! SEVERAL PREOWNED ALTIMAS
TO CHOOSE FROM!

2018 HYUNDAI ELANTRA SEL



\$14,444

#N195039

37 MPG HIGHWAY! BLUETOOTH, CROSS
TRAFFIC ALERT, PLUS MORE!

2013 TOYOTA HIGHLANDER SE 4X4



\$15,999

#280643

PRICED TO SELL! HARD TO FIND HIGHLANDER
4X4 IN THIS PRICE RANGE!

2019 JEEP CHEROKEE LATITUDE PLUS



\$21,444

#N195042

SAVE THOUSANDS ON THIS BLACK BEAUTY!
SEVERAL CHEROKEES TO CHOOSE FROM!

2015 BMW X3 XDRIVE AWD



\$18,899

#280565

REDUCED! LOADED!
FANTASTIC SPORT UTILITY WITH ALL
WHEEL DRIVE!

• OVER 50 PRE-OWNED AWD SUVs TO CHOOSE FROM! • Search our selection at www.tannermotors.net

2013 LEXUS CT 200H HYBRID



\$14,891

#290942

43 MPG CITY!
PRICED BELOW KELLEY BLUE BOOK!
GREAT RELIABLE CAR!

2018 TOYOTA SIENNA XLE VAN



\$26,991

#N195015

REDUCED! BEST DEAL IN BRAINERD!
LOW MILES!

2014 JEEP GRAND CHEROKEE SUMMIT



\$22,985

#190558

FLAGSHIP GRAND CHEROKEE THAT IS
LOADED! PANORAMIC ROOF, NAVIGATION
PLUS MUCH MORE!

2019 TOYOTA C-HR LIMITED



\$22,995

#280087

LIKE NEW!
ONLY 4,XXX MILES!
SAVE THOUSANDS

2015 FORD F150 KING RANCH 4X4



\$33,784

#290236

LOADED! FANTASTIC DEAL ON A KING
RANCH! TRUCK SALE GOING ON NOW AT
TANNERS

2019 RAM 1500 LIMITED CREW CAB



\$51,355

#195034

NEW BODY RAM! 12INCH SCREEN PLUS
MORE! SAVE OVER \$15,000 FROM NEW!

2017 RAM 2500 LARAMIE MEGA CAB



\$54,993

#280672

AWESOME TRUCK! GREAT PULLER,
LOADED AND ONLY 25,XXX MILES! DIESEL!

2011 CHEVROLET SILVERADO XCAB 4X4



\$19,992

#290555

HARD TO FIND TRUCK IN THIS PRICE
RANGE! READY FOR SUMMER TRAVELS

2017 FORD F150 CREW CAB PLATINUM



\$41,885

#290431

FORD'S FLAGSHIP TRUCK! LOADED
INCLUDING LEATHER, NAVIGATION &
MOONROOF

1996 DODGE RAM 1500 4X4 REG



\$8,991

#295009

GREAT TRUCK WITH LOW MILES,
TOPPER & MORE!
HARD TO FIND REGULAR CAB 4X4

2016 RAM 1500 LIMITED ECODIESEL



\$32,983

#290752

BEAUTIFUL TRUCK! LOADED!
AWESOME FUEL ECONOMY
FOR A HALF TON!

2018 NISSAN FRONTIER CREW CAB



\$23,991

#N195010

BLACK BEAUTY! STILL UNDER FACTORY
WARRANTY! SEVERAL FRONTIERS TO
CHOOSE FROM AT TANNERS!

2017 RAM 1500 LARAMIE LONGHORN



\$33,888

#290051

BEAUTIFUL TRUCK!
NEW RAM TRADEIN & LOADED!

2015 CHEVROLET SILVERADO CREW LTZ



\$29,990

#N695038

JUST REDUCED! LOADED INCLUDING
HEATED LEATHER, CHROME ALLOY WHEELS
PLUS MORE!

2014 GMC SIERRA CREW CAB SLT



\$30,981

#390212

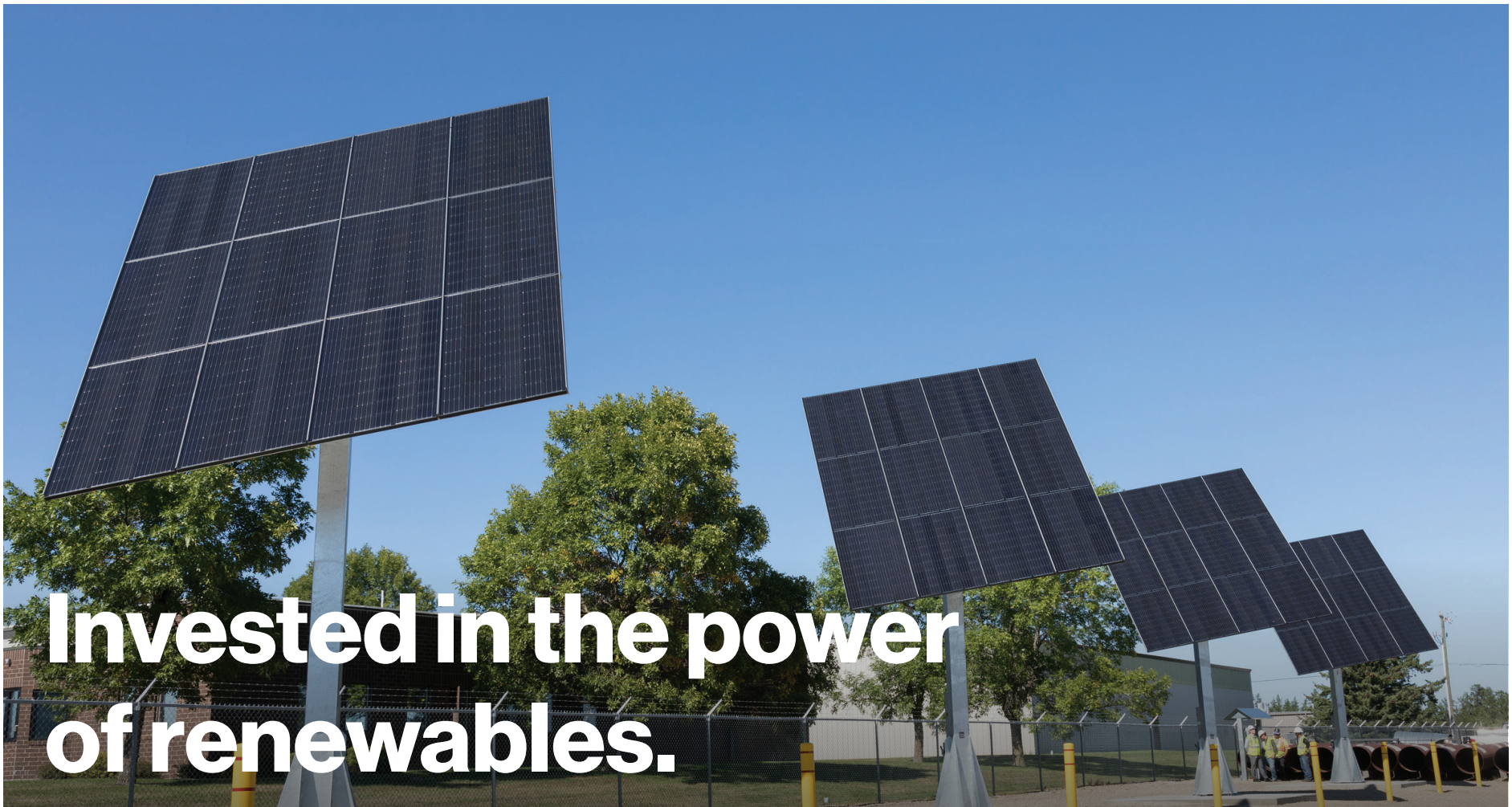
REDUCED! LOADED INCLUDING HEATED
LEATHER PLUS MORE!
VERY SHARP

John Tanner's
TANNER MOTORS

620 West Washington Street, Brainerd, MN 56401



218-829-3597 / 800-222-0434
www.tannermotors.com



Invested in the power of renewables.

We've been building our renewable energy portfolio since 2002. To date, we've invested more than \$6 billion in renewable energy and power transmission projects either in operation or under construction.

Our green energy investments include wind farms, solar farms, geothermal facilities and waste heat recovery plants across North America and Europe—which, collectively, produce enough zero-emission energy to power 700,000 homes.

In Minnesota, our Bemidji office is powered by a solar energy system, through a partnership with local Native American-owned businesses.

All forms of energy sources—crude oil, natural gas and renewables—are needed to meet rising global energy demand.

At Enbridge, we are working towards the future of energy and sustainability, and our portfolio of renewable energy assets is a prime example.

Learn more at Enbridge.com/renewableenergy





HURRY - Get On Board
SAVINGS YOU WON'T WANT TO MISS !

Clear^{the} Decks SALE

PRICES have been **SLASHED** on all remaining inventory!



Misty Harbor

Uncompromised Quality
Exceptional Value
Since 1989

Powered by **SUZUKI**



CROWNLINE



ALUMACRAFT

Powered by **SUZUKI**

Where You Get The **Best Deal** Everytime!
-Trades Welcome-

Brainerd Sports & Marine



Junctions Hwy. 18 & 25
SE Brainerd, MN

Hwy. 25	Hwy. 18
	

218-828-4728 OR Toll Free: 800-450-7669 • www.BrainerdSports.net