

Mid-Michigan Buyers Guide

SUNDAY, OCTOBER 20, 2019

Serving Clare, Gladwin, Gratiot, Isabella, Montcalm, & Southern Roscommon Counties

Morning Star Publishing Company powered by digitalfirst

The AUTO GROUP OF MT. PLEASANT

AUTUMN Bushels of SAVINGS

Lifetime Engine Warranty

"You Deserve Peace of Mind"

Over 100 Vehicles To Choose From! Check Out Our Whole Inventory At www.theautogroup.biz

Free 90 Days or 3,000 Power Train Warranty*

OVER 100 TO CHOOSE FROM

EXCLUSIVE LIFETIME ENGINE WARRANTY*

FREE \$250 Gas Card With Every Purchase

LIFETIME ENGINE WARRANTY • LIFETIME ENGINE WARRANTY • LIFETIME ENGINE WARRANTY • LIFETIME ENGINE WARRANTY



2015 GMC SIERRA SLT
Stk. #9969 **\$30,995**



2017 F150 SUPERCREW FX4
Stk. #10012 **\$32,995**



2016 FORD F350 SUPERCREW PLATINUM
6.7L V8, 4WD, Leather
Stk. #9941 **\$47,995**



2018 JAGUAR F-PACE S
AWD, V6, Leather
Stk. #9860 **\$48,995**



2018 FORD F250 SD SUPERCREW XLT
6.7L Diesel, 4WD
Stk. #9946 **\$43,995**



2015 FORD F350 SUPERCREW LARIAT
6.7L V8 Diesel, 4WD, Leather
Stk. #9955 **\$42,995**



2016 CHEVY TAHOE LTZ
5.3L V8, 4WD Leather
Stk. #9950 **\$41,995**



2016 FORD F250 SUPRECREW LARIAT
6.7L V8, Diesel, 4WD
Leather. Stk. #9938 **\$38,995**



2017 FORD EXPEDITION PLATINUM
3.5L, V6, 4WD, Leather
Stk. #9986 **\$35,995**



2016 GMC SIERRA 3500HD SLT
Stk. #9979 **\$44,995**



2016 FORD F250 SUPERCREW XLT
6.4L Diesel, 4WD
Stk. #9987 **\$32,995**



2016 RAM 1500 REBEL
5.7L V8, 4WD
Stk. #9927 **\$32,995**



2016 FORD F150 SUPERCREW SPORT
Stk. #9968 **\$30,995**



2016 CHEVY SILVERADO 1500 LT
35,000 mi., 5.3L V6, 4WD
Stk. #9883 **\$27,995**



2016 RAM 1500 SPORT
5.7L, 4WD
Stk. #9933 **\$28,995**



2016 FORD F150 SUPERCREW SPORT
5.0L, V8, 4WD
Stk. #9928 **\$26,995**



2016 F150 SUPERCAB
Stk. #9982 **\$25,995**



2015 JEEP CHEROKEE TRAILHAWK
V6, AWD, Leather
Stk. #9942 **\$21,995**



2015 JEEP GRAND CHEROKEE LIMITED
3.6L, Leather, 4WD
Stk. #9964 **\$25,995**



2011 RAM 2500HD LARAMIE
Diesel
Stk. #10000 **\$32,995**



2011 F150 SUPERCREW
5.0L
Stk. #10003 **\$31,995**



2016 F150 SUPERCREW Sport
Stk. #10004 **\$31,995**



2015 RAM 1500 CREW
Sport
Stk. #9989 **\$29,995**



2017 F150 SUPERCREW
5.0L
Stk. #9998 **\$28,995**



2015 CHEVY SILVERADO LTZ
Stk. #9902 **\$28,995**



2015 GMC SIERRA
43K Miles
Stk. #9870B **\$26,995**



2014 JEEP WRANGLER Sahara
Stk. #9939 **\$25,995**



2015 BUICK ENCLAVE
AWD
Stk. #10001 **\$23,995**



2018 JEEP RENEGADE
Limited
Stk. #9975 **\$22,995**



2018 JEEP COMPASS
Limited
Stk. #9985 **\$22,995**



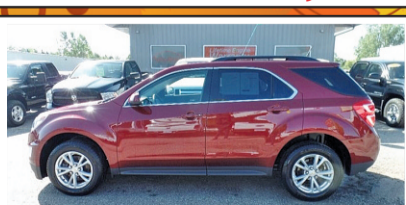
2015 FORD ESCAPE TITANIUM
17K Miles
Stk. #9954 **\$21,495**



2012 F250 SUPERCREW
xxxx xxx
Stk. #9991 **\$20,995**



2013 FORD EXPLORER
Limited
Stk. #9956 **\$17,995**



2016 CHEVY EQUINOX
34K Miles
Stk. #9966 **\$16,995**



2016 GMC TERRAIN SLE2
Stk. #10005 **\$16,495**



2013 FORD TAURUS
AWD
Stk. #9972 **\$11,995**

LIFETIME ENGINE WARRANTY • LIFETIME ENGINE WARRANTY • LIFETIME ENGINE WARRANTY • LIFETIME ENGINE WARRANTY

All Credit Applications Will Be Accepted. Regardless Of Your Credit History!
Let Our In-House Finance Experts Help Get You Into The Vehicle Of Your Dreams!

AUTO GROUP

4720 E. Pickard (M-20) • Mt. Pleasant, MI
877-772-1113 OR 989-772-1113

All prices plus tax, title, plate & doc fees. *See dealer for details.

VIEW OUR COMPLETE INVENTORY AT

www.theautogroup.biz

KOHLER® Walk-In Showers

YOUR KOHLER® LUXSTONE™ SHOWER CAN BE COMPLETELY CUSTOMIZED TO FIT YOUR NEEDS AND LIFESTYLE.



FREE SHOWER DOOR

PLUS!

\$500 OFF LuxStone™ WALLS!

32" x 60" WALK-IN SHOWER

GET PAYMENTS AS LOW AS

\$129 / mo.

Limited-Time Offer*

LIMITED

LIFETIME WARRANTY



SET-UP YOUR FREE DESIGN-CONSULTATION TODAY!

(248) 886-4991



ASK ABOUT OUR WALK-IN TUBS

SAFETY & ACCESSIBILITY FEATURES AVAILABLE

*Cannot be combined with any other offer. Previous sales excluded. Good at initial presentation only. Standard EURO door only. \$500 discount is only available to be used towards purchasing upgraded Luxstone walls, which is not part of the \$129/mo offer. Additional work is extra and optional. Financing available for qualified buyers only and based on a purchase price of \$12,268 with \$1500 cash down payment and financed for 120mos @ 6.99% APR.



Steve's Country Market

989-539-3110 3170 North Clare Ave., Harrison 44 Feet of Old Fashioned Meat Counter with Good Old Fashioned Service



Hours: Sun. - Mon. 8-8 Bridge Card & Wic Accepted Sale Dates: October 21 - October 27, 2019

Top Quality Meats At Rock Bottom Prices! 100% Satisfaction Guaranteed Michigan Lottery stevescountrymarket.com

FRESH MEAT AND SEAFOOD ITEMS	WHOLE SELECT NEW YORK STRIP LOINS SLICED FREE \$3.69 LB.	WHOLE RIBEYE LOINS SLICED FREE \$4.69 LB.	WHOLE BONELESS PORK LOINS SLICED FREE \$1.69 LB.	FRESH CHUCK FAMILY PACK \$2.69 LB.	COMBINATION PORK & BEEF ROAST \$2.99 LB.	USDA CHOICE BONELESS ENGLISH ROAST \$2.99 LB.
	USDA CHOICE TOP ROUND LONDON BROIL \$3.99 LB.	FRESH GROUND ROUND \$3.69 LB.	BONELESS CHICKEN BREAST \$1.49 LB.	THIS WEEK'S FEATURED BRAT STEVE'S OWN MARKET MADE MUSHROOM SWISS BRAT \$3.69 LB.	WAYSIDE BACON SOLD IN 10 LB. BOX FOR \$16.90 EA. \$1.69 LB.	ECKRICH FRANKS OR BOLOGNA 14 OZ. 2/\$3.00
	WHOLEY BRAND COOKED SHRIMP 41-50 CT. 1 LB. \$7.99 EA.	POLLOCK FILLETS 10 LB. BOX \$15.99 EA.	SALMON FILLETS \$7.99 LB.	COD LOINS 4 OZ. \$5.99 LB.		

Deli ECKRICH HARD SALAMI \$4.99 LB. ECKRICH OFF THE BONE HAM \$4.99 LB. PROVOLONE CHEESE \$3.99 LB. AMERICAN CHEESE WHITE OR YELLOW \$4.49 LB.	Fresh Produce CLEMENTINES 3 LB. \$4.99 EA. MICHIGAN COOKING ONIONS 3 LB. 99¢ EA. MICHIGAN APPLE CIDER GALLON \$4.99 EA. IDAHO RUSSET POTATOES 5 LB. BAG \$1.99 EA.	Fresh Dairy And Frozen PRAIRIE FARMS SOUR CREAM OR CHIP DIP 8 OZ. 99¢ EA. YODER'S SHREDDED OR BAR CHEESE 8 OZ. 2/\$5.00 NORTH STAR ICE CREAM CONES 6 PK. \$2.99 EA. HUDSONVILLE PREMIUM ICE CREAM 48 OZ. \$3.99 EA.	Grocery LAY'S POTATO CHIPS 9.5-10 OZ. BUY ONE GET ONE FREE TOSTITOS 9-10 OZ. 2/\$6.00 SOFT & GOOD GIANT LOAF WHITE BREAD 24 OZ. \$1.69 EA. BUSCH OR BUSCH LIGHT 18 PK. CANS PLUS DEPOSIT \$9.99 EA. ARBOR MIST WINES 1.5 LITER \$6.99 EA. BUD OR BUD LIGHT 24 PK. CANS PLUS DEPOSIT \$17.99 EA.
---	---	--	--

While supplies last. Not responsible for printing errors.

Largest Selection of Clean Used Cars in Central Michigan

CERTIFIED 1.9% UP TO 36 Months

GM Certified Pre-owned Vehicles = 2 Oil Changes & Tire Rotations in 2 years + 12 Month or 12,000 Mile Bumper to Bumper Warranty

2019 BUICK ENCORE • \$222.84 A Month + Tax
Includes GMS, Lease Loyalty, 12,000 Miles A Year

2019 GMC SIERRA LIMITED • \$264.72 A Month + Tax
Includes GMS, Lease Loyalty, 12,000 Miles A Year

USED CARS

2018 CHEVY IMPALA LT Black, 29,000 Miles, Great M.P.G., Certified.....	\$21,900
2018 CHEVY MALIBU LT 35,000 Miles White.....	\$17,900
2018 CHEVY CRUZE Black, 5 Door, Hatchback, Heated Seats, Rear Camera 7,000 Miles, Certified.....	\$17,900
2016 CADILLAC XTS-V Black, AWD, Twin Turbo, 61,000 Miles.....	\$29,900
2016 BUICK LACROSSE CXL White, 15,000 Miles, V6.....	\$22,900
2016 BUICK REGAL BURGUNDY LEATHER Sunroof, Chrome Wheels 27,000 Miles.....	\$19,900
2016 BUICK REGAL Black, Leather, Loaded, 24,000 Miles, Sunroof, Certified.....	\$18,900
2016 BUICK LACROSSE Silver, New Tires, 66,000 Miles, Locally Owned.....	\$17,900
2016 CHEVY MALIBU LTZ Silver, V6, 32,000 Miles.....	\$16,900
2016 CHEVY MALIBU Blue, 4cyl, 35,000 Miles, Locally Owned.....	\$16,900
USED SUVS	
2019 GMC ACADIA DENALI Smokey Quartz, AWD, 17,000 Miles.....	\$36,900
2019 CADILLAC XT5 AWD Sunroof Silver, 32,000 Miles.....	\$36,900
2019 JEEP CHEROKEE Gray, Leather, Limited, 4x4, 26,000 Miles.....	\$26,900
2018 CHEVY TAHOE 4X4 LT Blue, 34,000 Miles, Loaded, New Tires.....	\$45,900
2018 NISSAN ROGUE SL4W Gray, 23,000 Miles.....	\$23,500
2018 FORD ESCAPE AWD Blue, 17,000 Miles.....	\$21,900
2018 BUICK ENCORE AWD Grey, 14,000 Miles 1-Owner.....	\$19,900
2017 CHEVY SUBURBAN 4X4 Premier Model, Tungsten Metallic, Sunroof, Navigation, 27,000 Miles.....	\$50,900
2017 GMC YUKON SLT 4X4 Burgundy, 73,000 Miles 1-Owner.....	\$38,900
2017 CHEVY TRAVERSE PREMIER AWD 34,000 Miles, White, Loaded.....	\$29,900
2017 GMC ACADIA AWD SLT Burgundy, 35,000 Miles, 1-Owner.....	\$27,900
2017 BUICK ENCLAVE AWD Iridium Leather Pkg., 82,000 Miles.....	\$25,900

2017 GMC TERRAIN SLE-2 AWD V4, 40,000 Miles, Dark Blue.....	\$21,900
2017 GMC TERRAIN SILVER SLE FWD 23,000 Miles, 4 Cyl.....	\$21,900
2017 CHEVY EQUINOX FWD LT Burgundy, 20,000 Miles, Remote Start, Heated Seats.....	\$18,900
2016 BUICK ENVISION PREMIUM 1 AWD, Silver, 26,000 Miles.....	\$26,900
2016 BUICK ENCLAVE CXL FWD Burgundy, 41,000 Miles, 1-Owner, Certified.....	\$25,900
2016 BUICK ENCLAVE CXL AWD White, 84,000 Miles.....	\$20,900
2016 CHEVY TRAVERSE FWD Black, 85,000 Miles.....	\$18,900
2016 BUICK ENCORE Gray, 20,000 Miles, Certified.....	\$17,900
2016 CHEVY EQUINOX Blue, 34,000 Miles, FWD, 4cyl.....	\$17,900
2015 BUICK ENCLAVE CXL FWD Champagne Silver, Leather, 24,000 Miles, Certified.....	\$26,900
2015 GMC TERRAIN DENALI White, AWD, 72,000 Miles.....	\$20,900
2015 GMC TERRAIN AWD SLE-2 35,000 Miles, Gold.....	\$19,900
2015 FORD EDGE Green Gray, Well Equipped, SEL Pkg, 53,000 Miles.....	\$18,900
2014 BUICK ENCLAVE CXL FWD Mocha, 96,000 Miles, 1 Owner.....	\$17,900
2013 GMC YUKON XL Black, SLT, 93,000 Miles, 4x4, 5.3 V8.....	\$15,900
USED TRUCKS	
2019 CHEVY COLORADO CREW CAB Red, 4X4, V6, 25,000 Miles.....	\$31,900
2019 CHEVY SILVERADO DOUBLE CAB Silver, 24,000 Miles, 5.3 V8.....	\$30,900
2019 CHEVROLET DOUBLE CAB LT 4X4 Brown, 20,000 Miles, 20" Wheels.....	\$30,900
2019 NISSAN FRONTIER 4X4 Black, Sunroof, 16,000 Miles, 4x4 SL.....	\$27,900
2018 CHEVROLET COLORADO CREW CAB 4X4 Silver Ice, 24,000 Miles.....	\$29,900
2017 GMC SIERRA DENALI CREW CAB SLT 4x4, Silver, Duramax Diesel, 34,000 Miles.....	\$54,900
2017 GMC SIERRA DOUBLE CAB Pepperdust, 29,000 Miles, SLT.....	\$34,900
2017 GMC SIERRA CREW CAB Diamond White, SLT 5.3 V8, 82,000 Miles.....	\$31,900

2017 GMC DOUBLE CAB ALL TERRAIN PKG Blue, Leather, 4x4, Interior, 46,000 Miles.....	\$30,900
2016 GMC SIERRA DOUBLE CAB SLT, 4x4, Black, 35,000 Miles.....	\$33,900
2016 CHEVY DOUBLE CAB LTZ Red, 4x4, 48,000 Miles, 5.3 V8.....	\$30,900
2016 GMC SIERRA CREW CAB Satin Steel, 4x4, 5.3 V8, SLE, New Tires, With Leather Heated Seats, 70,000 Miles.....	\$27,900
2016 GMC SIERRA DOUBLE CAB SLE 5.3 V8, Black, 74,000 Miles, 1-Owner.....	\$26,900
2016 CHEVY EXT. CAB 4X4 White, 110,000 Miles.....	\$20,900
2016 CHEVY SILVERADO DOUBLE CAB 4X2 White, 5.3 V8, 161,000 Miles.....	\$16,900
2015 GMC SIERRA DOUBLE CAB SLT 3,000 Miles, Blue, 4X4 5.3 V8.....	\$32,900
2015 GMC SIERRA CREW CAB SLT 2 WHEELER 5.3 V8, Topper, 11,000 Miles, Navigation.....	\$31,900
2015 CHEVROLET SILVERADO CREW CAB LT Summit White, 32,000 Miles.....	\$29,900
2015 GMC SIERRA DOUBLE CAB 4X4 SLE Black, 31,000 Miles.....	\$29,900
2015 GMC SIERRA CREW CAB SLT 70,000 Miles, Burgundy.....	\$28,900
2015 GMC DOUBLE CAB Red, 4x4, 47,000 Miles, XX.....	\$25,900
2015 GMC SIERRA DOUBLE CAB Blue, 4x4 5.3 V8, 114,000 Miles.....	\$21,900
2014 GMC CREW SLT White, 89,000 Miles, Leather.....	\$28,900
2014 CHEVY SILVERADO CREW CAB LT Black, 5.3 V8, 82,000 Miles, V6.....	\$24,900
2014 CHEVROLET SILVERADO 4X4 DOUBLE CAB White, 70,000 Miles.....	\$20,900
2014 GMC SIERRA REG. CAB 4X4 V6, Stealth Grey, 45,000 Miles, 1-Owner.....	\$19,900
2014 CHEVROLET REG. CAB 2-WHEEL White, 87,000 Miles.....	\$13,900
2012 GMC EXT CAB DENALI SLT White, 107,000 Miles, Leather, 5.3 V8.....	\$18,900
USED VANS	
2019 DODGE CARAVAN MAROON GT Leather, Loaded.....	\$23,900
2019 DODGE GRAND CARAVAN Gray, 27,000 Miles, Leather, Loaded.....	\$22,900

BENCHLEY BROS., INC.

1 Mile East of Doherty • US-10, Clare • Sales (989) 386-9900

For more info log on to: www.benchleybros.com

Parts & Service (989) 386-3197

HOURS
8-6 Mon-Fri
9-2 Sat



Specializing in
GM Certified
USED VEHICLES

BRIAN'S FRUIT & MEAT MARKET

2167 S. M-76 • West Branch (Across from Kmart)

While Supplies Last • Not responsible for printing errors
Prices good Sunday, September 20th thru Friday, September 26th
Store Hours: Sundays 8am-6pm, Monday-Saturday 7am-7pm

WE ARE A PACKAGED LIQUOR DEALER

We accept all major credit cards & EBT card

BRIAN'S MEATS: 989-345-3709

LIKE US ON FACEBOOK



WWW.BRIANSFRUITANDMEATMARKET.COM

Proudly Featuring Boar's Head PREMIUM DELI MEATS & CHEESES

GLUTEN FREE

 long before you even thought to ask

TRUST BOAR'S HEAD FOR - NO TRANS FAT - NO ARTIFICIAL FLAVORS OR COLORS - NO FILLERS - NO BY PRODUCTS

TRY OUR NEW BOAR'S HEAD CHICKEN SAUSAGES!!

NEW TAKING TURKEY ORDERS FOR THANKSGIVING CALL OR STOP IN TODAY!

MEAT BUNDLES

- 1. BEEF: 5# Rump Roast, 5# Chuck Roast, 5# Denver Steaks, 5# Chuck Steaks, 5# Stewing Beef, 10# Ground Chuck **\$145.99**
- 2. PORK: 5# Butt Roast, 5# Best Buy Bacon, 5# Pork Chops, 5# Bulk Sausage, 5# Pork Sizzlers, 10# Pork Steaks **\$74.99**
- 3. BEEF & PORK: 5# Butt Roast, 5# Chuck Roast, 5# Denver Steaks, 5# Chuck Steaks, 5# Stewing Beef, 10# Ground Chuck, 10# Pork Steaks, 5# Bulk Sausage, 5# Best Buy Bacon **\$179.99**
- 6. VARIETY: 5# Best Buy Bacon, 5# Bulk Sausage, 5# Bone-In Chicken Breast, 10# Pork Chunks, 10# Chicken Leg Quarters, 5# Ground Chuck, 5# Chuck Steaks **\$94.99**

*ADVANCE NOTICE APPRECIATED

- VARIETY #4: 5# Top Sirloin Steaks, 5# Butterfly chops, 5# Bulk Sausage, 10# Boneless Chicken Breast, 5# Koegel Viennas, 5# Ground Chuck **\$109.99**
- VARIETY #5: 5# Pork Steaks, 5# Bone-In Pork Shoulder Strips, 5# Ground Chuck, 10# Chicken Leg 1/4", 5# Beef Sirloin Sizzlers, 5# Chicken Nuggets **\$74.99**
- BREAKFAST BUNDLE: 5# Bulk Sausage or 3# Links, 2# Dearborn Ham Steaks, 1 Pkg. Hashbrowns (Large), 5# 2 Dz. Eggs, 1 Gallon Milk, 1/2 Gallon Orange Juice, 1 Loaf of Bread **\$49.99**

BRIAN'S PRODUCE: 989-345-2891

NEW PRAIRIE FARMS FLAVORED COTTAGE CHEESE 99¢ 5 oz. Cup	HUDSONVILLE ICE CREAM 2/\$7.00 48 oz.	DAIRY FRESH POTATO CHIPS 2/\$5.00 11.5 Oz. bag	MEDITERRANEAN MARKET EXTRA VIRGIN OLIVE OIL \$5.99 34 oz.	DUTCH FARMS BUTTER QUARTERS \$2.99 1 lb. box	
FARM FRESH LARGE EGGS 2/\$1.00 dozen	MICHIGAN APPLES \$10.99 1/2 Bushel	HOME GROWN TOMATOES 99¢ lb.	FRESH APPLE CIDER \$3.99 gallon	GOLDEN RIPE PINEAPPLE \$1.99 Each	
RED-YELLOW-ORANGE PEPPERS 89¢ Each	FLORIDA RUBY RED GRAPE FRUIT 2/\$1.00	LARGE SELECTION OF PUMPKINS, GOURDS, INDIAN CORN, CORN STALKS, STRAW & MINI PUMPKINS FOR FALL DECORATING.	LEELANAU CELLARS WITCHES BREW \$5.99 750 ml.	SAMUEL ADAM'S OCTOBERFEST \$12.99 12 pk. bottles + dep.	BUSCH & BUSCH LIGHT \$9.99 18 pk. cans + dep.



STOVES • FIREPLACES • OUTDOOR COOKING
(989) 386-8960

\$100 OFF
a ton of pellets w Pellet Stove purchase!






Comfort Bilt
HIGH QUALITY
COMFORT

Check Out Our Pellet Stoves



Big Green Egg
The Ultimate Cooking Experience™

DS Stoves














Stainless Steel Chimneys

Chimney Liners Available

Hours: M-F 8-5 • Sat. 9-2
8989 Tobacco Dr., Clare
Division of Hershberger's Hardware

SERVICE & INSTALL

DELIVERY OPTIONS AVAILABLE
COAL/PELLETS

FALL Car Care Specials!

Two Great Services for ONE Great Price!
Get Your Tires... ROTATED Plus...
Oil Change with Dexos Full Synthetic Oil, Lubricate Fittings and Change Oil Filter

ALL FOR \$49.95
Most Vehicles w/Coupon - 5 qt. Max

Expires 12-31-19

Dexos Lube, Oil, Filter Special
Change Oil, Change Oil Filter, Check All Fluid Levels & Lubricate Fittings
\$39.95
Up to 5 qts. - Additional oil or fluids extra

Expires 12-31-19

MAIL IN \$100 REBATE ON 5 TIRE BRANDS
If bought with GM BuyPower credit card get an additional \$100 OFF!
BRIDGESTONE Continental GOODYEAR HANKOOK PIRELLI

Other rebates available on other brands
Expires 12-31-19

COOLING SYSTEM FLUSH \$119.95
Most Vehicles w/Coupon

Expires 12-31-19

Automatic Transmission Service All Fluid Flush SPECIAL \$129.95
Change All Fluids - 12 qts. Most Vehicles w/Coupon

Expires 12-31-19

Select Repairs 10% OFF
Most Vehicles w/Coupon
Not valid with tire sale or any other coupon offer

Expires 12-31-19

McGUIRE

70 Years Strong!
www.McGuireChevrolet.com
989-386-7714



FIND NEW ROADS

GET MORE BANG FOR YOUR BUCKS FIREARMS



Crossbows & Crossbow Gear

Broadheads • Soft Cases
Bolts • String Wax & More



Muzzleloaders and Muzzleloader Gear

Pyrodex
209 Primers
Power Belt Bullets
Percussion Caps & More

Tested & Inspected. Why Pay New Prices?

GLADWIN TRADE & SALES

1-989-426-6811
1739 N. State St. • Gladwin

Fall Inventory Reduction Sale

STOP BY OUR LOT AND CHECK OUT ALL OUR OTHER GREAT DEALS.

 12x16 Gable 3 Windows, 2 4 Ft. Lofts Reg. \$3,636 SALE \$3,525	<p>SOLD</p>  12x16 Gable 3 Windows, 2-4 Ft. Lofts Reg. \$3,456 SALE \$3,350	 10x16 Quaker 2 Windows Reg. \$2,795 SALE \$2,715	 12x16 Chalet 3 Windows, 4 Ft. Loft Reg. \$3,910 SALE \$3,795	 12x20 Gable 8x7 Roll Up Door, 2 Windows, Side Entry Door Reg. \$4,135 SALE \$4,010	 10x12 Gable Reg. \$2,480 SALE \$2,400
<p>SOLD</p>  12x12 Gable 2 Windows Reg. \$3,090 SALE \$2,600	 12x20 Quaker 5 Windows Reg. \$5,470 SALE \$5,300	 14x24 Gable 2 Windows, Side Entry Door, Insulated Garage Door Reg. \$6,060 SALE \$5,770	 10x14 Highbarn 8' Ft. Loft Reg. \$2,515 SALE \$2,440	 12x16 Bargain Barn 3 To Choose From Reg. \$2,520 SALE \$2,450	 10x16 Gable 6x7 Roll Up Door Reg. \$2,970 SALE \$2,880
<p>SOLD</p>  10x16 Gable Ridge Lite Reg. \$2,595 SALE \$2,515	<p>SOLD</p>  8x12 Gable Reg. \$1,755 SALE \$1,695	 12x20 Gable 8x7 Roll Up Door, Side Door, 1 Window, 4 Ft. Loft Reg. \$4,478 SALE \$4,345	 14x24 Gable 2 Windows, 8x7 Insulated Garage Door, Side Entry Door Reg. \$6,060 SALE \$5,770	 12x20 Gable 2 Windows, 4 Ft. Loft Reg. \$3,873 SALE \$3,755	 12x20 Highbarn 1 Window, 8 Ft. Loft Reg. \$4,100 SALE \$3,980
<p>SALE PRICE ON LOT MODELS ONLY</p>	 12x28 Highbarn 8x7 Roll Up Door, Side Entry, 8 Ft. Loft, 1 Window Reg. \$5,120 SALE \$4,965	<p>SOLD</p>  14x36 Highbarn 9x7 Roll Up Door, Side Door, 6 Ft. Double Door, 2 Windows, 8 Ft. Loft Reg. \$7,640 SALE \$7,410	 12x16 Gable 24 Ft. Lofts, 3 Windows Reg. \$3,908 SALE \$3,790	<p>SOLD</p>  12x20 H Barn 1 Window, 8 Ft. Loft Reg. \$3,635 SALE \$3,525	<p>RENT TO OWN 90 DAYS SAME AS CASH</p>

Statewide Delivery • Free Delivery w/ in 70 miles!

Supplying Michigan with quality built portable buildings for over 25 yrs.

Miller's Woodworking

3209 E. Beaverton Road • Clare • (Voicemail) (989) 386-8110
Old US 127 to Surrey West on Surrey to Grant 1 mile north on Grant
Mon.-Fri. 7:30am-5:00pm • Saturday 8:30-3:00 & Evenings by Chance or Appointment • Closed Sunday

ATTENTION: Deer Hunters
We have Deer Blinds In Stock



Your fridge, freezer, air conditioner or dehumidifier* could be wasting up to \$150 a year in energy costs. Save energy and get up to an \$80 rebate for letting us recycle your appliances. Stop wasting and start saving.

Schedule your free pickup by calling 888-990-2246.

*Limit of four small appliances per year. Receive \$50 for a working refrigerator or freezer, and receive an additional \$15 for a working air conditioner or dehumidifier. Air conditioners or dehumidifiers may only be included with the recycling of a refrigerator or freezer.

Consumers Energy

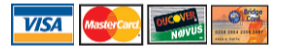
Count on Us®

Lambert's Meat Market and Bakery

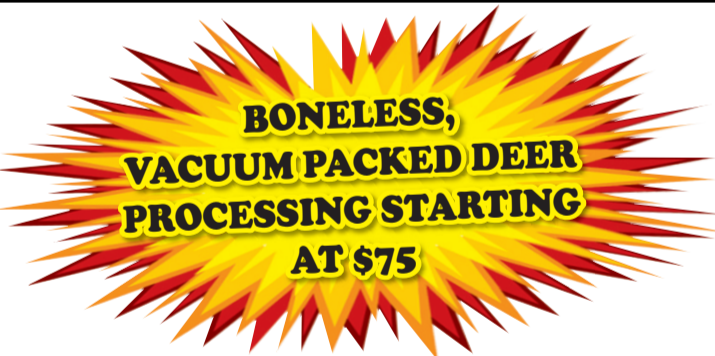
Taste the difference "FRESH" makes!

624 E. Cedar Ave., Gladwin (next to Family Dollar)

989-246-1850



New Fall Hours: Mon-Friday 8-6:30 • Saturday 8-6 • Sunday 8-4:30 • Sale Dates: Oct. 21 – Oct. 26, 2019



Believe on the Lord Jesus Christ and thou shalt be saved....Acts 16:31



10 LBS. OR MORE SALE!

Family Pack Ground Beef From Chuck \$2.69 lb.	Family Pack Ground Beef Hamburger 73% Lean \$2.29 lb.	Xtra Lean Ground Beef From Round \$3.99 lb.	Fresh! Never Frozen! Bagged Leg 1/4's \$6.90 lb.	Pork Steak or Pork Strips \$1.59 lb.	Pork Shoulder Roast or Breakfast Sausage \$1.59 lb.	Center Cut Pork Chops or Country Style Spare Ribs \$1.69 lb.	
Boneless Chicken Breast \$1.49 lb.	USDA Choice Denver Steaks \$3.39 lb.	USDA Choice English Roast \$3.39 lb.	Wayside Bacon \$19.90 10 lb. box	Chicken Nuggets or Jalapeno Poppers \$9.99 5 lb.	French Fries \$4.99 5 lb. pk.	Dearborn Smoked Sausage \$14.99 3 lb. pk.	
Whole NY Strip Loins \$3.69 lb. CUT FREE!	Whole NR Ribeye Loins \$4.79 lb. CUT FREE! Family Pack No Roll Porterhouse/T-Bone Steaks \$3.99 lb.	Whole Boneless Pork Loins \$1.89 lb. CUT FREE!	Tomahawk Ribeye Steaks \$8.99 lb.	BAKERY SPECIALS			Lambert's English Muffin Bread \$1.49 ea.
USDA Choice NY Strip Steaks \$7.99 lb.	Marinated NY Strip Steaks \$5.99 lb.	Garlic Steak Bites or Black Pepper Steak Bites \$5.99 lb.	Octoberfest Beer and Cheddar or Reuben Brats \$3.69 lb.	Brat Buns \$1.49 4 ct.	Gourmet Caramel Apples \$3.49 ea.	Kretschmar Off The Bone Turkey \$5.99 lb.	
				Deli Muenster Cheese \$3.99 lb.	Deli Mustard Potato Salad or Macaroni Salad \$1.79 lb.		



MARTIN SPORTSMAN AUCTION

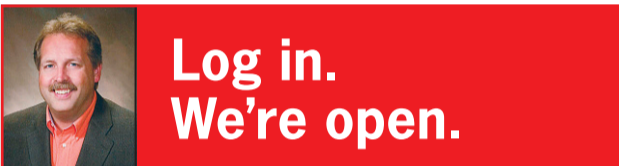
FREELAND SPORTSZONE - 5690 MIDLAND ROAD, FREELAND
(2-MILES SOUTH OF DOWNTOWN FREELAND, USE NORTHWEST PARKING LOT)

SATURDAY, OCTOBER 26 @ 10 A.M.

Auction Highlights: Monarch 1650-SC deluxe alum. fishing boat w/Mariner 75 h.p. outboard & trailer (excellent) * Mariner 15 h.p. outboard motor * (16) Premium Firearms inc. Winchester 1894, Steyr, Mauser, Browning (Belgium), Ruger & Colt - rifles, shotguns & handguns in .270, .223, .22 & .357 cal. * Quantity of factory & reloaded ammo in above cal. * Quantity of quality Salaman, Walleye & Perch fishing gear * Over 100 Western, Case, Buck & 1-Gladstone Marbles, collectors & hunting knives in various sizes * All FFL rules apply to this very nice sporting goods collection auction * Firearms to be sold at noon



Wegner Auctioneers
(989) 793-8689 • wegnerauctioneers.com



Maury S Irwin, Agent
1011 N McEwan Street
Clare
Bus: 989-386-4141
maury.irwin.18gz@statefarm.com

When you'd rather log in than walk in, check out our new mobile app. It's been redesigned with you in mind to help make your life even easier.
DOWNLOAD THE STATE FARM® MOBILE APP IN THE APP STORE OR GOOGLE PLAY TODAY.

1708120 State Farm, Bloomington, IL

FIREARMS AUCTION

Selling 100+ Rifles, Shotguns and more at public auction just in time for hunting season.

SATURDAY, OCTOBER 26, 2019 @ 11:00 a.m.
7880 E. Colonville Road, Clare, MI 48617

PRIVATE ONE OWNER COLLECTION • Guns will be held offsite till Auction Day!

- | | | |
|--|---|---|
| #1 ITHACA Model-37 20 ga. Pump | #42 TRADITIONS by Fausti O/U 12 ga. W/Engraving V.R. | #74 REMINGTON Model 12B Gallery Special Octagon Barrel .22 Short |
| #2 WINCHESTER Model-1400 12 ga. Pump | #43 SAVAGE Model-947E .410 Single Shot | #75 MARLIN Model 92 .22 Lever Action, Octagon Barrel |
| #3 SAVAGE Model-110 270 Win. Bolt w/3x9 Scope | #44 MOSSBERG Model-535 12 ga. Pump, Camo, Vent Rib | #76 WINCHESTER 30 WCF .30 Model 1894 Saddle Ring Lever |
| #4 SAVAGE Model-110 30-06 Bolt | #45 REMINGTON Model-141 .35 Pump | #77 SAVAGE Model 99 .300 Peep Sight |
| #5 WINCHESTER Model-1897 12 ga. Full Choke | #46 RUGER M-77 Mark II .223 Bolt w/Leupold Scope | #78 SAVAGE 110 30-06 Bolt Action |
| #6 MOSSBERG Model-535 12 ga. Pump | #47 Bolt Action .22 W/ISA Scope | #79 MARLIN GLENFIELD Model 60 .22 Semi Auto |
| #7 WINCHESTER Model-37A 16 ga. Break Action | #48 REMINGTON Model-742 Woodmaster 30-06 S/A w/Scope | #80 REMINGTON Model 760 .35 Rem Game Master Pump, Tasco Scope |
| #8 RUGER 10-22 Semi Auto | #49 WINCHESTER Model-1897 12 ga. Pump, Adj Choke | #81 ROSSI SQUIRE .410 Side x Side, Break Action |
| #9 MARLIN Model-30AS 30-30 Lever w/Simmons Scope | #50 SEARS Model-58314 16 ga. Bolt Action | #82 ITHACA Model 37 Full Choke Feather Light 16 ga. Pump, Chipped Forearm |
| #10 SAVAGE Model-245E 22/20 ga. Break Act | #51 WINCHESTER Model-12 12 ga. Pump, Adj Scope | #83 WINCHESTER Model 1912 20 ga. Pump, Full Choke |
| #11 MOSSBERG Model-500C 20 ga. w/Extra Slug Barrel-V.R. Scope | #52 ATIS 12 ga. S/A, Vent Rib Shotgun | #84 MARLIN Model XL7 .270 Bolt Variable Scope, Accu Trigger |
| #12 REMINGTON 700 .300 Win Mag Bolt Action | #53 REMINGTON Model-700 30-06 Bolt Action | #84A ITHACA Model 37 16 ga |
| #13 REMINGTON Model-7 .308 Bolt-Stainless w/Bushnell Scope | #53A MARLIN Bolt 22 mag w/Scope | #85 SAVAGE 110 30-06 Bolt |
| #14 REMINGTON Model 870 Light Weight .410 Pump, Wingmaster V.R. | #54 RUGER M77 Mark II .280 Bolt Action | #86 WINCHESTER Model 88 .308 Lever, Simmons Scope, CW Sling |
| #15 WINCHESTER Model-1400 MK2 20 ga. S/A Vent Rib | #54A Youth Stock for Ruger M77, Bolt Action | #87 MARLIN Model 60 .22 Semi Auto |
| #16 SAVAGE Model-340A 30-30 Bolt | #55 RUGER American .270 Bolt w/Scope and Accu Trigger | #88 MARLIN Model 336W 30-30 Lever |
| #16A BROWNING A5 Sweet 16 | #56 TRI-STAR O/U .410 w/Engraving Silver Receiver V.R. New | #89 SAVAGE Model 110 7mm Mag, Bolt Action, Good Scope |
| #17 WARDS Western Field Model-46-CS .22 Bolt | #57 REMINGTON 1100 12 ga. Semi Auto Extra C/W Extra Slug Barrel | #90 MARLIN Model 36-A-DL 30-30 Lever |
| #18 REMINGTON Model-12 Pump .22 S-L | #58 WINCHESTER Model 12 16 ga. Skeeet Gun, Pump Action | #91 REMINGTON Model 12 .22 Pump |
| #19 BAIKAL IZH-27EM-10 12 ga. O/U Vent Rib | #58A BROWNING SAFARI Grade 30-06 MADE IN BELGIUM | #92 MARLIN Model 38A .22 Lever, Bushnell Scope |
| #20 WESTERN Field Model-30 12 ga. Pump | #58B BROWNING A5 Sweet 16 | #93 REMINGTON Model S13T Bull Barrel, .22 Bolt Target Gun, Bushnell Scope |
| #21 WINCHESTER Model-37 .410 Break Action | #59 SEARS & ROEBUCK Ranger 12 ga. Pump | #94 REMINGTON Model 700 .270 Bolt |
| #22 MOSSBERG .300 Win Mag Bolt w/Variable Scope | #60 US SPRINGFIELD Model 1873 21725 | #95 MOSSBERG .410 Full Choke Pump |
| #23 MIDLAND CO. .308 Bolt w/Bushnell Scope (Sharp) | #61 Long Gun Percussion Cap, Marked E.G. Nickles | #96 MOSSBERG INT 715T .22 Semi Auto |
| #24 REMINGTON Model-760 Game Master 30-06 Pump w/Scope | #62 US SPRINGFIELD Model 1866 Trapdoor | #97 MOSSBERG INT 715T .22 Semi Auto |
| #25 ITHACA Model-37 20 ga. Featherlight Pump | #63 US SPRINGFIELD Model 1884 40011 Trapdoor | #98 30-06 Bolt Action |
| #26 MITCHELL 12 ga. Pump | #64 US SPRINGFIELD Model 1873 25263 Trapdoor | #99 WINCHESTER Model 77 .22 Semi Auto, Tasco Scope |
| #27 WINCHESTER Ranger .7mm Mag Bolt w/Scope and Sling | #65 EXCELSIOR WITTENTER STAHL Drilling Gun, 3 Barrels | #100 NEW ENGLAND PARDNER Break Action 12 ga. (Single Shot) White Tails Unlimited 1996-1997 Edition |
| #28 MARLIN Model-336 .35 cal. Lever w/Scope and Sling | #66 PARKER BRO SxS10ga. Dbl Trigger | #101 MARLIN Model 60 .22 Semi Auto, C/W Scope |
| #29 SAVAGE Model-99 .300 Lever Action | #67 US SPRINGFIELD Model 1870 | #102 MITCHELL Model 15-22 .22 Semi Auto (C/W Optima Scope) |
| #30 STEVENS Single Shot .410 | #68 US SPRINGFIELD Army Model-1903 (213831) Flaming Bomb | #103 J. STEVENS and CO. Octagon Barrel, Break Action 18" Barrel |
| #31 WINCHESTER Youth Model-37A 20 ga. Single Shot | #69 WINCHESTER Model 94 30-30 Golden Spike Commemorative | #104 Small Black Powder Pistol Damascus Barrel Per. Cap 4" Barrel Mounted Bear Flug Approx. 20 Lots of Ammo |
| #32 MARLIN Model-MR-7 .270 Bolt Action | #70 WINCHESTER Model 94 Carbine 32-40 John Wayne Comm. w/Box | |
| #33 REMINGTON Model-760 Game Master 30-06 Pump w/Scope | #71 WINCHESTER Model 94 30-30 Carbine Legendary Lawmen w/Box | |
| #34 WINCHESTER Model-370 .410 Single Shot | #72 WINCHESTER Model 94 30-30 Carbine Lone Star Comm. | |
| #35 SAVAGE Model-67F 20 ga. Pump | #73 WINCHESTER Model 94 30-30 Carbine Golden Spike Comm | |
| #36 WINCHESTER Model-97 12 ga. Pump | | |
| #37 WINCHESTER Model-12 12 ga. Pump, Full Choke | | |
| #38 REMINGTON Model-700 .243 Bolt w/Bipod and Leupold Scope | | |
| #39 REMINGTON Model-700 .270 Bolt w/Leupold Scope | | |
| #39A REMINGTON Bolt 7mm-08 | | |
| #40 WINCHESTER Model-12 12 ga. Pump, Modified Choke | | |
| #41 BROWNING Citori Grade O/U 12 ga. w/Silver Receiver w/Duck and Pheasant Game Engravings | | |

Auction Terms: Cash or approved check with proper I.D. and Visa and Mastercard accepted with 4% handling fee. Nothing to be removed until settled for. Buyers must sign and affirm they have no felony record, are over 18 years of age and are a legal and responsible gun owner. Not responsible for accidents. Lunch on grounds. All announcements made day of sale take precedence over all printed materials. Out of state buyers must have bank letter of credit.

For Questions or Absentee Bidding Call 989-802-9443

AUCTIONEERS:

Leroy Yoder 989-386-9082 John Peck 989-426-8061 J.R. Hochstetler 989-802-9443

For 100+ Photos see auctionzip.com Auctioneer I.D. 2701 or gotoauction.com ID 2109



CALL NOW! BUY FACTORY DIRECT!

Houseful of Windows Only

\$2195

Complete With Installation*

Plus Buy Our Premium Windows & We'll Add
FREE Low-E Glass & FREE Marble Sills!!

We Will NOT Be Undersold!

We carry Pella and Andersen windows

That's Why Over 39,000 Homeowners Have Chosen Paramount

Bay & Bow Windows

Payments as low as \$75 a month.

*Based on 7 double hung or slider windows up to 1200 sq. inches each. Includes basic installation.

FREE Gutters with Roofing + Siding That's A \$1600 Value

SIDING & ROOFING

INCLUDING METAL ROOFS

50% OFF

Any Roofing & Siding Installation Labor

WE OFFER NO INTEREST FINANCING OR NO PAYMENT UNTIL 2020

Factory Direct Windows

We Repair HAIL DAMAGE

SUNROOMS

Don't Buy Until We Quote You
We Will Beat Their Price On Any Comparable Product!

We are celebrating 30 years in business Since 1990

Paramount HOME IMPROVEMENTS, LLC

Statewide Coverage
Windows • Siding • Sunrooms • Roofing

Call Us Today For Your Free Estimate!

1-800-288-4385

License #2101109016



Hope

It is estimated that more than 200,000 women in the United States will be diagnosed with breast cancer this year, but we find hope in knowing that there are **more than 2.9 million breast cancer survivors in the U.S. today.** Great strides have been made in early detection and treatment of breast cancer, and these survivors are living proof. During Breast Cancer Awareness Month and all year, we are committed to fighting the disease with education outreach, screening tests, advanced treatment options and a team of dedicated medical professionals whose commitment to beating breast cancer never stops.



Avalon
LUXURY PONTOON BOATS
www.avalonpontoon.com

We Sell Steel To The Public! Walk-In Customers Welcome!

BILL'S
CUSTOM FAB, INC.
Estimator@billscustomfab.com • www.billscustomfab.com

Check Out Our 50% Off Steel Drop Rack

See Us For All Your Steel Needs!
Residential • Agricultural • Industrial
High Definition Plasma Table
Shear & Press Brake
Certified Welders • Portable Welding
Full Steel Inventory

Serving Central Michigan Since 1990
1836 Gover Parkway • Mt. Pleasant, MI 48858 • (989) 772-5817 • Fax (989) 773-7704

MID-MICHIGAN INSURANCE AGENCY OF MT. PLEASANT

"Built on Trust & Dedication to Service"

PROFESSIONAL INSURANCE AGENTS

2060 E. Remus • Mt. Pleasant, MI 48858
800-968-5315 • 989-772-9487
www.midmichiganinsurance.com

Mancino's
PIZZA & GRINDERS

Thank You To Our Loyal Customers!

Gluten Free Pizza & Buns
Downtown Alma
211 W. Superior
989-463-0047
www.mancinosofalma.com

Grinders, Pizza, Salads... and more!

GA General Agency Company

Insurance Since 1915

Knowledgeable. Committed. Trusted.

525 E Broadway St., Pleasant MI 48858
989-772-6981 www.ga.ins.com

Keepsake Quilts

TOGETHER WE FIGHT

4585 E Pickard Rd,
Mt. Pleasant,
(989) 317-8700

LOOMIS LOUNGE

Pork Chops \$9.95
Cod, Walleye \$12.95
New York Strip \$13.95

All dinners served with: Potato & Salad

Strawberry Shortcake \$1.50
Homemade Soup - Daily

10615 N. Loomis • (989) 386-2131

CENTRAL MICHIGAN ATHLETICS
PREFERRED PARTNER

Mt. Pleasant Realty

Sold Mine!

COLDWELL BANKER
MT. PLEASANT REALTY & ASSOC.
(989) 773-5972
www.mpr.net

Praying for the fighters, survivors, the taken, and families

Farm Bureau
Gordon Moeggenborg
100 S Mission St.
Mt. Pleasant
(989) 775-3415

2 Large - 3 Items \$20 plus tax
1 Large - 3 Items \$10 plus tax

Buccilli's PIZZA

Daily Lunch & Dinner Pizza Buffet
(989) 386-7231
1541 N. McEwan St, Clare
Dine In • Carry Out • We Deliver

"We Care Enough To Make A Difference"
Helping people stay home with dignity and independence

Daily Living HomeCare, Inc.
Non-Medical In-Home Services
145 E. Center St. • Ithaca

Services Offered

- Companionship • Transportation
- Meal Preparation • Personal Care

www.dailylivinghomecare.com Ph: (989) 875-7405

JOHNSTON ELEVATOR

307 N. McEwan
Clare
(989) 386-7271

COLEMAN FAMILY PHARMACY

Jeffrey P. Walton, R.Ph.

211 E. Railway,
Coleman
(989) 465-6661

colemanfamilypharmacy.com
M-F 9-6 & Saturday 9-1

Let's defeat breast cancer together

C&R ELECTRIC
Commercial, Industrial, Residential and Agricultural

491 E. Wright Ave
Shepherd, MI 48883
989-828-4020

MAKING STRIDES

See how we support the American Cancer Society in their mission to wipe out breast cancer, one step at a time

CHEVROLET CARES

FERNELIUS 113 S Bennett Rose City MI 48654 | 989-685-2401



Community for a Cure

We Stand Together in the Fight Against Breast Cancer!

Medical experts agree that early detection is a woman's best defense in overcoming breast cancer. In fact, the National Breast Cancer Foundation reports that when breast cancer is detected in the early, localized stage, the five-year survival rate is 98 percent. The organization encourages every woman to develop an early detection plan consisting of breast self-exams, clinical breast exams and mammograms based on age and health history. To learn how to perform a monthly breast self-exam, go to www.nationalbreastcancer.org or ask your healthcare professional. A family physician or gynecologist should perform a clinical breast exam as part of an annual visit, and can advise women on the frequency of mammography scheduling.

Breast Cancer Awareness

Valley Travel
of Mt. Pleasant, Ltd.

123 S Franklin St
Mt Pleasant

Toll-Free (800) 290-6714
Office (989) 773-9914

Women's Medical Center, PC
The care you need when you need it

Obstetrics & Gynecology
1201 South Drive Suite 220
Mt. Pleasant, MI 48858

Ph (989) 773-3411
Fx (989) 775-3187

Monday-Friday 8:30am-5pm

Jerry Elliot, M.D. • Steven Podolsky, M.D. • Michael Swirtz, M.D.
Robin O'Dell, D.O. • Michelle Sanders, D.O.

www.obgynmtpleasantmi.com

**Tougher than Cancer...
Stronger Together**

We're Proud to Support the fight Against Breast Cancer

3382 M-55, West Branch, MI 48661
989-345-1590
www.deanarbourford.com

Together against breast cancer

consano

309 W Michigan St., Mt. Pleasant, MI 48858
www.consanoprovisioning.com
Medical Marijuana Provisioning
consanomtp@gmail.com
Phone: (989) 317 0779

502 Industrial Avenue
Mt. Pleasant,
Michigan 48858

Phone: (989) 772-2881

Residential Commercial

**Mt. Pleasant Heating
& Air Conditioning**

**Lets Fight Breast
Cancer Together**

103 W Washington Ave, St. Louis
989-681-6126

**Tougher than Cancer....
Stronger Together**

We're Proud to Support the fight Against Breast Cancer

Anderson Custom Carpeting
603 E Washington St # A St. Louis, MI
(989) 681-3536
<http://www.andersoncustomcarpeting.com>

BENCHLEY BROS, INC.
Your Buick & GM Dealer
Serving Clare for Over 35 years

Tune Ups
Brake Work
Wheel Alignment
Transmission Service

Service Department (989) 386-3197
East US-10 • Clare • benchleybros.com

**JOINING THE COMMUNITY
IN THE FIGHT
AGAINST BREAST CANCER**

YOUR FAMILY & FRIENDS AT
BIGARD & HUGGARD DRILLING, INC.
5580 VENTURE WAY
MT PLEASANT, MI 48858
989-775-6608

WE SUPPORT
Breast Cancer Awareness

We appreciate your business and the opportunity to continue serving you.

Open Every Day
10:30 AM - 10 PM
804 S Mission St, Mt Pleasant,
MI 48858
989-772-0394

Boge, Wybenga & Bradley, P.C.
Certified Public Accountants

DANIEL J. BOGE, CPA
HERBERT L. WYBENGA, CPA
STEVEN BRADLEY, CPA
MICHAEL ZEIEN, CPA
LYNN POHL, CPA
PATRICK TRAVIS, CPA
RYAN BOGE, CPA

215 NORTH MAIN • MT. PLEASANT (989) 772-1730

POWER Gene's EQUIPMENT

SNOW SPECIALS GOING ON NOW

NOW'S THE TIME TO SHOW WINTER WHO'S BOSS.

CubCadet

YOUR INDEPENDENT DEALER
- EXPERT SERVICE. LOCALLY OWNED.
THE ADVICE, SERVICE, SELECTION AND SUPPORT YOU NEED TO FIND THE RIGHT FIT FOR YOU.

GENE'S Power Equipment Sales and Service
981 East Railway Street • Coleman • 989-465-1521

RE/MAX RIVER HAVEN, INC.
 Open Seven Days a Week to Serve You
 www.riverhavenhomes.com • Wayne R. Walts – Broker

Sugar Springs Office 1415 W. Sugar River Rd. • Gladwin 989-426-9239
Wixom Lake Office 1239 Estey Rd. • Beaverton, MI 48624 989-435-7755
Main Office 777 W. Cedar • Riverwalk Place 989-426-6893

We have a great selection of **AFFORDABLE HOMES** and **LUXURY HOMES**.
 Contact one of our offices and talk to an experienced agent today!

 Gladwin-Harrison area-3 bedroom, 2 bath, 30x50 pole barn garage, 3 decks and more. \$119,700 MLS#171819	 Gladwin City-Brand new 3 bedroom, 2 bath ranch with 1220 sq ft of living area, 2 car att garage. Move right in! \$159,900 MLS#171772	 Wiggins Lake-2 bedroom, 2 bath 1600 sq ft ranch with 60 ft on all sports lake close to Gladwin. 1 car att garage PLUS a 2 car garage across the street. \$199,900 MLS#172113
---	--	--



MIAL MEADOWS MHP
 WE HAVE 2 & 3 BEDROOM MOBILE HOMES FOR SALE OR LEASE IN ALMA
 LOT RENT \$290
 HOMES ARE GOING FAST, DON'T WAIT!!
 CALL AMBER AT **989-463-5187**
 TO SCHEDULE A TIME TO SEE YOUR NEW HOME!

AMBER MARCOUX 411 S. GROVER, #2
 MANAGER ALMA, MI 48801

JACK OF ALL TRADES COINS

1028 S. Mission (next to Jon's Country Burger)
I BUY ALL COINS Silver and Gold
FREE APPRAISALS we will come to your home to do free appraisals for your convenience.
 Over 25 Years experience!

Do not take your coins, jewelry, gold, & silver to the we buy gold places they are not experts! We are your only experts!
WE PAY YOU MORE THAN ANYONE!

I BUY ALL COLLECTIONS FROM ONE COIN TO A DUMP TRUCK FULL
We are a Full Buy • Sell • Trade shop!
 ANTIQUES • COINS
 Jewelry • Collectibles & more!

Stop in or call Matt for your free appointment
517-204-0787

A Salute to our Ag Community at Harvest Time

RIVERDALE FEED AND GRAIN
 6658 Mill Street Riverdale Michigan 48877
 CALL (989)-833-7757 or (989)-833-2308
 Custom Mix Feeds For Your Needs!

KALMBACH FEEDS OF MICHIGAN, LLC.

KALMBACH FEEDS
 EST. 1963
 Breckenridge, MI
 989-842-1075 • 866-243-7027

MAPLE RAPIDS LUMBER MILL
 Farm Lumber Sawn To Order
 BUYERS OF STANDING TIMBER

- Bark
- Chips

6366 N. Forest Hill Rd.
 989-682-4225
 Evening • 989-330-1994

October Specials
7 in 1 Dog & Puppy Shot
 Special **\$20⁰⁰** Reg. \$25⁰⁰
 By Appt. 426-0203
 Flexible Hours

KELLY'S KRUISSING KRITTER KARE
 Kelly Jo Kelley, DVM



OCTOBER IS National Breast Cancer AWARENESS MONTH

In the battle against breast cancer, early detection is a woman's most powerful weapon. In fact, according to the National Cancer Institute, when breast cancer is detected in an early, localized stage, the five-year survival rate is 98 percent. That's why it is so important for all women to make breast health awareness a regular part of their healthcare routine.

Growing Awareness to Save Lives



A mammogram can detect breast cancer in its earliest, most treatable stages, and many major health organizations recommend annual mammogram screenings for women beginning at age 40. Experts also recommend clinical breast exams and breast self-exams to check for breast abnormalities on a regular basis. Any woman noticing unusual changes in her breasts should contact her healthcare provider immediately. Women of all ages should speak to their doctor about his or her personalized recommendations for breast cancer screening.

As we recognize Breast Cancer Awareness Month, we remember the women who have lost their lives to the disease, and we voice our support for those in the fight of their lives.

MARTIN HEATING & COOLING

DTE \$250 Rebates Available on New Furnaces for a Limited Time
 Installation • Service • Parts
 • Free Estimates

Amana Heating & Air Conditioning
 LASTS AND LASTS AND LASTS.
 546 W. 5th street, Clare
(989) 386-3791

BREAST CANCER AWARENESS

We are celebrating 30 years of business Since 1990

Paramount HOME IMPROVEMENTS, LLC
 Statewide Coverage
 Windows • Siding • Sunrooms • Roofing
 License #2101109016
 Call Us Today For Your Free Estimate!
1-800-288-4385

Supporting the Fighters,
 Admiring the Survivors,
 Honoring the Taken,
 AND NEVER, EVER GIVING UP HOPE.

PERCHA PAINT & WALLPAPER
 4820 East Broomfield Road
 MOUNT PLEASANT, MI 48858

ONE NURSE ONE PATIENT ONE STEP AT A TIME

Largest Selection in Central MI • XXS - 5x
Scrubs R Us
 989-772-2128
 4585 E. Pickard/Ste I • Mt. Pleasant

Supporting the Fighters,
Admiring the Survivors,
Honoring the Taken,
AND NEVER, EVER GIVING UP HOPE.

PERCHA PAINT & WALLPAPER
 4820 East Broomfield Road
 MOUNT PLEASANT, MI 48858

CUSTOM DESIGNS Buy Direct & Save *Indoor Showroom*

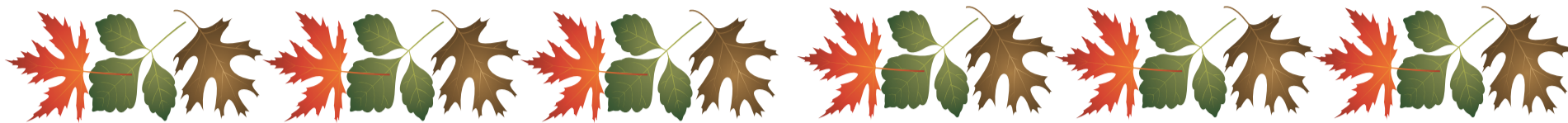
Also Available
Cremation Vaults and Urns

Brewer Bouchey Monument Co.
 Family Owned Since 1895
 211 N. Mill St. • Downtown St. Louis
 989-681-3300 • Toll Free 888-362-2920
 Hours: Mon.-Fri. 9-5; Sat. By Appt.
 www.brewer-bouchey.com

Central Eavestrouthing, LLC
 LICENSED & INSURED • FREE ESTIMATES
 Manufacturers of...
 • 5" Seamless Gutter
 • 6" Commercial Seamless Gutter
 • Leaf Protectors

Quality & Service Are #1!
 It's Gutter Cleaning Time!
 .032 Gauge Aluminum Hidden Screw Hangers

QUALITY WORKMANSHIP FAST FRIENDLY SERVICE
 Job Gilbert • (989) 828-6279 • Shepherd, MI



VISIT US ON FACEBOOK AT WWW.FACEBOOK.COM/VALLEYMEATMARKET

Like us on **Valley Meat Market** Like us on

989-200-2071 • 101 E. SECOND • PINCONNING
 WE ACCEPT THE BRIDGE CARD
 NOT RESPONSIBLE FOR PRINTING ERRORS • ALL LOTTERY GAMES AND LOTTO HERE

NEW HOURS: MON-SAT 9AM TO 8PM; SUNDAYS 9AM TO 6:30PM • PRICES GOOD MONDAY, OCTOBER 21ST THRU SUNDAY, OCTOBER 27TH

HOMEMADE FRESH HOLIDAY SAUSAGE \$1.99 LB.	CO-JACK - LONGHORN OR MOZZARELLA CHEESE \$2.99 LB. ANY SIZE CHUNK	PORK LOIN ROAST 99¢ LB.
DAIRY FRESH SHREDDED OR CHUNK CHEESE 3/\$5.00 8 OZ.	BULK SLICED BACON 10# OR MORE \$3.99 LB. \$3.69 LB.	WHOLE OR HALF RIBEYE LOINS \$5.99 LB. Cut Free!
KOEGEL PRODUCTS VIENNAS 10# BOX \$33.50	2PK PORK BUTTS \$1.19 LB.	SHORT LOINS = T-BONE \$5.99 LB. Cut Free!
VIENNAS 24 CT. PKG. \$9.99	WAYSIDE BACON 10# BOX \$14.90	NEW YORK STRIP LOINS \$3.99 LB. Cut Free!
SKINLESS FRANK 4# PKG. \$11.40	PORK STEAK, PORK BUTT ROAST OR FINGER RIBS \$1.29 LB.	BONELESS PORK LOIN \$1.69 LB. Cut Free!
BIG OR RING BOLOGNA \$3.69	BONELESS/SKINLESS CHICKEN BREAST 99¢ LB.	50/50 GRIND PORK & BEEF \$1.99 10# BAG *SAME USE AS BURGER
PICKLED BOLOGNA \$9.99 2.5# JAR	HOMEMADE BULK SAUSAGE 10# OR MORE \$1.59 LB. \$1.49 LB.	CHICKEN LEG 1/4'S 10# S OR MORE 59¢ LB.
NUBBINS 10# BOX \$29.90	COUNTRY STYLE RIBS 99¢ LB.	3 PK. BABY BACK RIBS \$2.49 LB.
SMOKED PORK LOINS WHOLE OR HALF \$2.99 LB. Cut Free!	SHAVED HAM OR TURKEY \$2.99 LB.	BIG BAG FRENCH FRIES \$4.99 VARIETIES
OUR BEST GROUND CHUCK 10# BAG \$29.90	CHICKEN NUGGETS 5# BAG \$6.99	HAMBURGER 10# BAG \$25.90
HAMBURG PATTIES 10# S OR MORE \$2.49 LB.	ST LOUIE STYLE SPARE RIBS \$2.49 LB.	BONELESS BEEF ROAST \$2.99 LB.
WHOLE OR 1/2 BONE IN PORK LOINS \$1.49 LB.	END CUT PORK CHOPS 99¢ LB.	SWISS STEAK, GRILL STEAK, OR DENVER STEAK \$2.99 LB.
	BONELESS STEW BEEF \$2.99 LB.	

DEWEY'S TRADING POST
 Maple Rapids • 682-4158
 Monday-Saturday: 8am - 7pm, Closed Sunday

Prices In This Ad Good for week of October 21st - October 26th, 2019
 WIC • Bridge Card • VISA • Mastercard • Discover
 American Express • Debit Card & Chamber Bucks Gift Certificates.

Select "Whole" New York Strips **\$3.99 LB.**

Koegel's 4 lb. Skinless Franks \$12.99 PKG.	Koegel's 2 1/2 lb. Jars Pickled Bologna or Red Hots \$9.99 JAR	"Our Own" Smoked Roasted Sausage \$6.99 LB.	"Our Own" Regular Brats \$3.99 LB.
"Our Own" Jalapeno Brats \$3.99 LB.	Boneless Rolled Combo Roast \$3.49 LB.	Boneless Arm Roast "Choice" \$3.49 LB.	Boneless Choice Patio Steak \$3.99 LB.
Boneless & Skinless Chicken Breast \$1.59 LB.	Our Own!! Stuffed Pork Chops \$2.99 LB.	"Lean-N-Meaty" Pork Steaks \$1.89 LB.	
Pork Butt Rst \$1.89 LB.	Our Own Smoked Dog Bones "Femur" \$2.99 LB.	Our Own Canadian Bacon "Slice How You Like" \$5.99 LB.	

DeweysTradingPost.biz
 LIKE us on Facebook & see our WEEKLY SPECIALS!

CLARE & GLADWIN COUNTY PEOPLE'S CHOICE

Vote for your #1 person, place or thing in Clare & Gladwin County and win!

For completing and sending in your ballot, you will be entered in a drawing.
First Prize \$100 • Second Prize \$50 • Third Prize \$25

The winners of the people's Choice Awards will be published in the Mid-Michigan Buyers Guide in December.
Don't miss the November 14th deadline!

ENTER ONLINE
 You can enter online at themorningsun.com/contest or go to themorningsun.com and click on the People's Choice logo in the middle of the page under Promotions & Specials.
 Online entry deadline is November 8, 2019.

<ol style="list-style-type: none"> 1. Accountant _____ 2. Antiques _____ 3. Attorney _____ 4. ATV's/Power Sports _____ 5. Auctioneer _____ 6. Auto Body Shop _____ 7. Auto Mechanic (Full name & shop) _____ 8. Auto Oil/Lube _____ 9. Auto Parts Store _____ 10. Auto Salesperson _____ 11. Auto Service _____ 12. Baked Goods _____ 13. Bank Teller _____ 14. Barber _____ 15. Bartender (Full name & Restaurant or bar) _____ 16. Bar/Tavern/Pub _____ 17. Beauty Salon _____ 18. Breakfast _____ 19. Bulk Food _____ 20. Car Dealer (New) _____ 21. Car Dealer (Used) _____ 22. Caterer _____ 23. Carpet Cleaning _____ 24. Chiropractor _____ 25. Clothing/Shoe Store _____ 26. Computer Service _____ 27. Contractor _____ 28. Cup of Coffee _____ 29. Day Care Provider _____ 30. Dentist _____ 31. Dental Hygienist _____ 32. DJ/Entertainment _____ 33. Doctor _____ 34. Electrician _____ 35. Event Venue _____ 	<ol style="list-style-type: none"> 36. Excavator _____ 37. Financial Institution _____ 38. Flower Shop _____ 39. Furniture Store _____ 40. Gift Shop _____ 41. Golf Course _____ 42. Grocery Store _____ 43. Gym/Fitness Center _____ 44. Hamburger _____ 45. Hardware Store _____ 46. Heating/Air Conditioning _____ 47. Hearing Aid Services _____ 48. Insurance Agency _____ 49. Investment/Financial Advisor _____ 50. Lawn Care/Landscaping _____ 51. Lumber Company _____ 52. Meat Market _____ 53. Metal Roofing _____ 54. Nurse (Full name & office) _____ 55. Nursery/Gardening _____ 56. Optometrist _____ 57. Pharmacy _____ 58. Physical Therapy _____ 59. Pizza _____ 60. Place For Hunting/Fishing Supplies _____ 61. Place for Pet Supplies/Grooming _____ 62. Place for Farm/Animal Supplies _____ 63. Plumber _____ 64. Police Officer _____ 65. Propane/LP Gas Provider _____ 66. Produce _____ 67. Professional Photographer _____ 68. Real Estate Agent & Office _____ 69. Rental Service Store _____ 70. Restaurant _____ 71. Restoration Service _____ 	<ol style="list-style-type: none"> 72. Senior Care Facility _____ 73. Septic Tank Service _____ 74. Storage Barns/Structures _____ 75. Storage Facility _____ 76. Tire Store _____ 77. Title Company _____ 78. Tobacco Shop _____ 79. Towing Service _____ 80. Tree Service _____ 81. Veterinarian _____ 82. Waiter/Waitress (Full name & restaurant or bar) _____ 83. Water Service Dealer _____ 84. Well Driller _____
--	--	---

Name _____
 Address _____

 City _____ Phone _____
 Email _____

Important: Please include individual's first & last name along with name of business they work at.

One entry per person. No photo copies accepted. Must be 18 or older to enter contest. **TO BE ELIGIBLE, YOU MUST FILL OUT AT LEAST 50% OF THE POLL.** Morning Star Publishing Co. employees & their families not eligible for contest. Winners determined by ballots returned by our readers.

Entries due by Thursday, November 14th, 2019
 Mail entire ballot to
Mid-Michigan Buyers Guide
 Attn: People's Choice
 311 E. Superior St. • Alma, MI 48801

Fall Home and Garden

5 Tips for Early Fall Home Maintenance

1. Furnace Repair

You don't want to wait until the cold winter months to turn on your furnace and find that it isn't working. That's why early fall is the best time to schedule your furnace repair. This off-peak time often costs less than it will in January, and gives you plenty of flexibility to schedule the technician at your convenience. Waiting until winter to tackle this project will mean you pay a higher rate in labor fees, and you risk your furnace breaking down when you need it the most.

2. Install a Portable Generator

If you live in an area that sees severe weather during the fall and winter months, you may want to invest in a portable generator to help keep your home running in case of a power outage. Portable generators come in many sizes so you can find the right fit for your home. Install one in early fall before costs go up during the colder months, and ensure that you're ready for the first outage of the year. Once the snow begins to fly, you can expect the demand for generators to go through the roof driving up prices and limiting availability. Waiting too long could mean that you run the risk of not finding one at a reasonable price or that you need to go without power in the event of a storm.

3. Mold Remediation

After a warm, humid summer, mold is a very common problem in a lot of areas. Basements, attics, and bathrooms are all particularly susceptible to mold growth. Before you spend more time indoors in the winter, you'll want to ensure that any mold is removed before it can cause health problems. Once the weather dries out in the early fall is the best time to get this done. Mold that began in the summer months will continue to grow right through the winter, so the early fall is the best time of year to tackle this job, while the air is dryer and the mold hasn't had as much time to spread.

4. Install Gutter Guards

During the autumn months, leaves and pine needles drop from trees at a very fast rate. These can collect in your gutter, clogging them up and forcing water back onto your roof. A gutter guard can help prevent this by stopping the debris from entering your gutters. Take care of this issue in early fall when it isn't too hot to work on your gutters, but before the leaves start falling to get the best results. Wait too long and you may have to pay a higher cost in labor due to demand and the fact that your gutters will need to be cleaned prior to installation.



STOP BY OUR EXPANDED SHOWROOM WITH MANY HOME ACCESSORIES AND NEW DESIGNS



GET YOUR HOME READY FOR THE HOLIDAYS!

Solid Oak and Cherry Furniture. Tables, Chairs, Hutches, Bedroom Sets, Sofas, Recliners, Mattresses and more



DINING SETS IN STOCK FOR YOUR LARGE HOLIDAY GATHERINGS



DOVER ROAD FURNITURE

William & Mattie Byler

2985 E. Dover Rd. Farwell, MI 48622
(3 miles North of Clare on Old 27, 1 Mile west on Dover Road.)

(989)386-4164 Let it Ring
Hrs: Mon~Sat – 10:00~5:30



Great Way Window & Door

It's not just a way of doing business...
It's our Family Heritage

Call for Estimates

- New Construction Windows
- Replacement Windows
- Sun Rooms
- Siding



www.greatwaywindow.com

Rosebush, MI 48878
989-433-2282
Toll Free 877-629-2282

2019 FALL INVENTORY REDUCTION SALE!

90 DAYS SAME AS CASH

Gateway Structures LLC
SPECIALIZING IN METAL CLAD STORAGE SHEDS



12x20 GABLE
4 windows.
\$4,390 • SALE \$4,200
\$206.11 RENT TO OWN



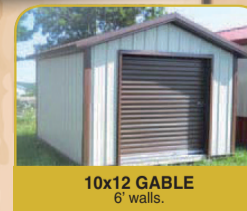
10x16 CLASSIC
\$2,650 • SALE \$2,575



12x16 GABLE
1 entry dr., 1 window, Wainscoting.
\$4,387 • SALE \$4,250
\$215.29 RENT TO OWN



12x16 GABLE
2 windows, 1 transom window.
\$3,670 • SALE \$3,750
\$189.92 RENT TO OWN



10x12 GABLE
6 walls.
\$2,950 • SALE \$2,850
\$144.77 RENT TO OWN

BUILDINGS DELIVERED STATEWIDE FREE DELIVERY WITHIN 70 MILES



12x20 CLASSIC
\$3,425 • SALE \$3,325
\$168.08 RENT TO OWN



12x20 HIGH BARN
1 entry dr., 2 windows, 8 loft.
\$4,520 • SALE \$4,400
\$221.61 RENT TO OWN



12x20 HIGH BARN
3 windows, 1 entry dr., 8' loft.
\$4,565 • SALE \$4,425
\$224.02 RENT TO OWN



10x20 ANIMAL SHELTER
\$2,703 • SALE \$2,625

ARE YOU NEEDING SOMETHING TO MATCH YOUR EXISTING HOME OR BUSINESS? STOP BY OUR OFFICE OR GIVE US A CALL!

40 YEAR PAINTED STEEL

All Prices Do Not Include Tax

Multiple Colors & Custom Sizes
Built to Order

7136 South Clare Ave. • Clare, MI 989-802-8000
Located 3 miles North of Clare

BRINGING YOU QUALITY STRUCTURES AT AFFORDABLE PRICES

Fall Home and Garden



SNOW SPECIALS GOING ON NOW



Cub Cadet

YOUR INDEPENDENT DEALER - EXPERT SERVICE. LOCALLY OWNED.
THE ADVICE, SERVICE, SELECTION AND SUPPORT YOU NEED TO FIND THE RIGHT FIT FOR YOU.

GENE'S Power Equipment Sales and Service
981 East Railway Street • Coleman • (989) 465-1521

Fall Gardening Tips

- 1. Leave some leaves**
Hooray! You don't have to rake all the leaves! It's OK not to rake up leaves under trees and shrubs and on sturdy ground covers (over time they become much-needed compost). However, must-rake leaves are those on perennial beds (they can cause crown rot) and grass lawns (they attract fungi and insects).
- 2. Protect perennials**
As perennials fade away, mark their locations with small sticks, so you don't lose them in the spring. If you haven't brought in your house plants, do it before you turn on your heat to give them time to adjust, and wash them first to get rid of pests.
- 3. Transplant fruit plants**
Rhubarb, raspberries and strawberries can quickly deplete the soil of nutrients, so find new locations for them every three or four years. Transplant them well before the first light frost so they can develop roots.
- 4. House the herbs**
Dig up your herbs to grow inside. Keep them in a cool, sunny spot, and let the soil dry out before watering. Snip leaves whenever you need herbs in your cooking, but don't strip completely. For herbs that have grown prolifically, cut them back halfway and dry or freeze the extra, or share it with friends.
- 5. Hang the tomatoes**
If you have unripe tomatoes still hanging on the vine, and frost is fast approaching, pull the vines out by the roots and hang them upside down in a cool, dark place to finish ripening.
- 6. Flash some fall color**
Replace spent annuals with fall-blooming hardy mums. These pretty perennials provide color for weeks, and if properly planted, maintained and winterized, they'll add color to your garden every fall for years to come.
- 7. Bring on the bulbs**
Fall is "now or never" time to plant spring bulbs. Shop early for the best selection, and don't delay too much in planting them after buying. You'll want to plant them 6-8 weeks before the first hard frost in your area.
- 8. Try new (tasty) trees**
Fall is the best season to plant fruit trees such as apples, pears, plums, cherries, peaches, apricots and figs. Young trees should be staked to prevent roots from being pulled by fall and winter winds.

POWER OUTAGE?



GENERAC

Standby Power From A Trusted name

Control Your Power, Control Your Life

"We Do Service"

Sales & Yearly, Preventive Maintenance

MARTIN ELECTRIC MOTOR

10116 Cleaveland Rd. (M-57), Carson City
(989) 584-3850
Hours: Mon.-Fri. 8-5, Sat. 8-12



Gamble's Redi-Mix

FAMILY OWNED AND ESTABLISHED IN 1947

Over 70 Years in Business

WE SERVE YOU THE WAY WE WOULD LIKE TO BE SERVED



FREE ESTIMATES

- CONCRETE PUMP
- CRUSHED CONCRETE
- TOP SOIL/AGGREGATES
- SEPTIC TANKS

Harrison Plant 1-800-539-6460 • Fax 989-539-3456
800-539-6460 1415 N. Clare Ave. • Harrison

Beautiful Yards Made Easy

Visit our Retail Nursery with the finest selection of plants, trees, shrubs & landscaping materials.
Located on M-55 1/4 mile East of Springbrook Inn

FREE ESTIMATES
Designing & Planting

"Quality & Pride in Every Job!"

Brick Paver Walks, Patios & Fire Pits
Flagstone Walks & Patios
Boulder/Retaining Walls • Ponds & Waterfalls
Hydroseed • Topsoil • Sod • Fill • Stone • Cedar Mulch

- AREA'S ONLY LICENSED UNILOCK CONTRACTOR OF PAVERS AND RETAINING WALL PRODUCTS
 - DISTRIBUTOR OF NATURAL STONE • COMMERCIAL & RESIDENTIAL
- Specializing In Boulder Work & Natural Settings

T&W Landscaping Inc.

125 W. West Branch Road (M-55) Prudenville, MI

989-366-0718

34 Years Of Landscaping Experience • tnwlandscaping.com



Voted #1 Landscaping Company for 10 Years



MARTIN HEATING & COOLING

DTE \$250 Rebates Available on New Furnaces for a Limited Time

**Installation • Service
Parts • Free Estimates**



Heating & Air Conditioning
Amana
LASTS AND LASTS AND LASTS

546 W. 5th street, Clare
(989) 386-3791

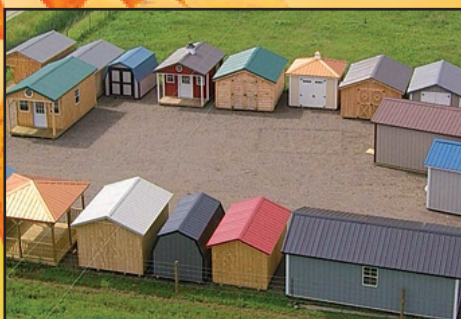
RENT TO OWN AVAILABLE

FOUR WAY STRUCTURES

**WE DELIVER ALL OVER MICHIGAN
FREE DELIVERY WITHIN 50 MILES**

SPECIALIZING IN PORTABLE STORAGE SHEDS, MINI HOUSES, SHE SHEDS AND MORE

Also check out our prices on Horse Shelters and Chicken Coops. Custom built to your desire.



STOP BY OUR LOT AND CHECKOUT THE SELECTION!

Owner: Lester Miller 1550 Wagarville Rd Gladwin, MI, 48624
Located at the intersection of Wagarville and Hockaday Roads.

Mon-Sat
7:30 am – 6:00 pm
No Sunday Sales

DISTRIBUTOR OF METAL ROOFING, SIDING, TRIM AND ACCESSORIES.



A Greener Approach to Affordable Housing

Heather Court
400 E. Warwick Dr., Alma

Tartan Terrace
423 Gratiot Ave., Alma

Heather Court & Tartan Terrace
1 bedroom apartments for
Elderly & Disabled
Amenities include:

- * Laundry facility on site
- * Utilities included
- * Monthly Activities/Outings
- * Secured Building/Surveillance
- * 24 Hour Maintenance
- * Reduced Cable fee
- * Smoke-Free Policy

Rent is based on 30% of monthly gross income.

Hampton Park
on Penrith Street, Alma

Forest Glen
on Euclid Ave., Alma

Hampton Park & Forest Glen have
3 & 4 bedroom family apartments
Must qualify under HUD guidelines as
a low-income household.

Alma Housing Commission
is accepting applicants for
1, 3 & 4 bedroom apartments.

989-463-4200

Downloadable application
@ www.ci.alma.mi.us
or stop in for an application

400 E. Warwick Dr; Alma

Office Hours: Mon. - Fri.,
9AM - Noon and 1:30 - 4pm

**Housing Choice Voucher Program
is now OPEN!
No application fee**



MID MICHIGAN PAIN P.L.L.C

"Are you suffering from headaches, back pain, knee or hip pain??.
I can help you to live a pain free life."

All insurance plans accepted.
We guarantee to see you in 1 week.

SERVICES PROVIDED:

- Epidural injections
- Fascet blocks
- Nerve blocks
- Botox injections for migraine
- Laser microdiscectomy
- RFA rhizotomy
- Laser for hip and knee pain.
- Laser nerve ablations.

NASS
ADVANCING GLOBAL SPINE CARE

MID MICHIGAN PAIN PLLC
2305 Hawthorn Drive Suite:B
Mt. Pleasant, Michigan 48858
Phone: 989 317 8000 • 989 533 1037
Fax: 989 317 8536
Email: veinandpain@gmail.com
Web: www.midmichiganpain.com



Get your projects completed before it snows!

BUILDING SUPPLIES
Serving You For 15 Years!

Your project headquarters!

"OUR GOAL IS QUALITY PRODUCTS, COMPETITIVE PRICES & OUTSTANDING SERVICE."

New Homes, Garages, Pole Barns & Decks

Lumber, OSB, Treated Posts Trusses, Windows, Doors, Concrete Blocks, Mortar, Redi-mix Concrete

efco
our power, your passion

• Chain saws
• Trimmers
• Blowers

MT4400 CHAINSAW DS 2400 S TRIMMER SA 3000 BLOWER

HERSHBERGER'S PRO HARDWARE
10289 N. Leaton Rd., Clare
(989) 386-5338
Full Line of Hardware & Building Supplies

Country Corner MARKET

Bulk Food • Deli

2 Miles South of Rosebush • 2020 North Mission Mt. Pleasant • 989-433-8200
countrycornermarket.net

8:30am-5:30pm, Monday-Thursday
8:30am-7:00pm, Friday • 8:30am-4pm, Saturday

Large Selection of Freezer Food at Discounted Prices

SPECIALS OF THE WEEK

Walnut Creek Mild Cheddar Cheese **Sale \$2.99 lb.** Reg. \$3.79 lb.

Walnut Creek Virginia Ham **Sale \$2.99 lb.** Reg. \$3.79 lb.

MORE SPECIALS

Walnut Creek Sour Cream Pt. **\$2.19 ea.**

Walnut Creek Pickles Pt. **\$3.89 ea.**

Walnut Creek Cinnamon Rolls Seasonal 6 pk. **\$3.89 ea.**

We have a large selection of Apples, Pumpkins, Mums and Fall Décor

Coffee of the week: Breakfast Blend

JIM'S BODY SHOP

VOTED 2018 BEST BODY SHOP

CLARE, MI **989-386-3600**

24-HOUR TOWING
HARRISON TO ALMA

ZUKER Towing & Recovery
888-MI-TOW-PRO

SNOOPY'S TOWING
989-386-2807

Mid Michigan Towing MMT
989-779-0077

Siler's HOT DELI & FRESH BAKERY
Downtown Breckenridge

MON OCT 21, TUES OCT 22, WED OCT 23, THURS OCT 24, FRI OCT 25, SAT OCT 26, SUN OCT 27

OPEN MONDAY-SATURDAY 8AM-8PM • SUNDAY 9AM-6PM
204 E. SAGINAW, BRECKENRIDGE • 842-5089 • 1-888-5SILERS

WE ACCEPT VISA, DISCOVER, MasterCard

\$2.99 52-Oz. Bl. SELECTED VARIETIES OF CRANBERRY, SIMPLY ORANGE & APPLE DRINK	2/\$4 11 to 14.75-Oz. Boxes • ALPHA BITS 12 OZ. • SEL. PEBBLES 11 OZ. • HONEY COMB 12.5 OZ. • GOLDEN CRISP 14.75 OZ.	2/\$4 10.8 to 16.4-Oz. Boxes SELECTED VARIETIES EGGO WAFFLES & PANCAKES	\$5.99 24.5 to 33.9-Oz. Pkg. SELECTED VARIETIES PEP'S DRAFTHAUS PIZZA	2/\$4 64-Oz. Bl. SELECTED VARIETIES OLD ORCHARD JUICE DRINK	\$6.99 30.5-Oz. Can SELECTED VARIETIES HILLS BROS. COFFEE
2/\$5 4.1 to 8.99-Oz. Boxes SELECTED VARIETIES NATURE VALLEY & FIBER ONE BARS	\$5.99 9 Pack of 20-Oz. Blts. SELECTED VARIETIES GATORADE THIRST QUENCHER	\$2.29 28 & 32-Oz. Box SELECTED VARIETIES HUNGRY JACK PANCAKE MIX	\$2.79 48-Oz. Bl. SELECTED VARIETIES BEST CHOICE OIL	2/\$3 3.8 to 6-Oz. Can/Unit SELECTED VARIETIES LINDSAY OLIVES	\$2.49 6.5-Oz. Can SELECTED VARIETIES REDDI-WIP WHIPPED TOPPING
\$1.99 FRENCH BREAD	2/\$4 3-Lb. MICHIGAN FUJI-RED DELICIOUS-MCINTOSH APPLES	\$4.99 3-Lb. CLEMANTINE MANDARINS	5/\$5 EA. AVOCADOS	\$1.49 LBS. TOMATOES ON THE VINE-POLY BAG	99¢ 3-Lb. MICHIGAN YELLOW ONIONS
WHOLE • LB. NEW YORK STRIP LOINS (SLICED FREE) \$4.99	BONELESS • LB. ROUND STEAK \$3.99	BONELESS • LB. SIRLOIN STEAK \$4.99	5 LB. PKG. FRESH GROUND BEEF \$15.99	LEAN PORK • LB. STEAK \$1.69	LEAN PORK • LB. CUTLETS \$2.99
LB. BULK LAYER BACON \$3.99	WHOLE OR SPLIT • LB. FRYERS \$1.19	5 LB. BAGS CHICKEN DRUMSTICKS \$4.99	LB. SMOKED PICNICS \$1.79	LB. KOEGLS BULK HOTDOGS OR POLISH SAUSAGE \$3.99	BULK • LB. SWISS CHEESE \$4.99

ALL OUR MEAT IS AND HAS ALWAYS BEEN BORN, RAISED & PROCESSED IN THE USA

Business Card Directory

To place an ad contact the ad consultant in your area:

Marlene...Clare & Gladwin Counties 989-506-4647

Kindra...Clare & Midland Counties 989-506-4640

Carol...Isabella & Roscommon Counties 989-323-7044

Vonda...Griott County 989-506-4349

Robby...Isabella County 989-854-0339



**BUYERS OF STANDING TIMBER and TIMBERLANDS
PURCHASING ALL SPECIES
PROFESSIONAL FOREST MANAGEMENT
SINCE 1972**

**FIREWOOD AVAILABLE BY THE TRUCKLOAD
CALL FOR INFO AND PRICING**

2725 Larch Rd. Harrison, M 48625
989-539-9842
billsbylumber.com • info@billsbylumber.com

313 W. Knox Road,
Beaverton, MI
1/2 Mile West of M-30
989-435-2707

WE TAKE PRIDE IN YOUR RIDE!

- Quality Collision Repair
- Free Estimates
- Insurance Work Welcome
- Custom Color Matching & Painting
- We Repair All Makes and Models
- Car/Light Truck
- Genuine Original Equipment Parts

**“Our Customers are our Warmest Friends”
Guaranteed On Time and Certified
FREE TANK SETS**

COYNE OIL & PROPANE
Clare • Harrison • Mt. Pleasant • Evart • Gladwin
Cadillac • Breckenridge • Interlochen
800-386-7731 • 989-386-7731

RESIDENTIAL • COMMERCIAL
INDUSTRIAL • FARM

KAPS ANA Member

located across from the Doherty Hotel

KOINS LLC

Silver & Gold Coins Bought & Sold

Integrity, Honesty & Peace of Mind.
That's what you deserve when it comes to your Coins & Currency!!!

Thomas Kapuscinski
611 N. McEwan St. Clare, MI 48617
231-357-2105 • 989-386-6500
tjkap@charter.net

Mon.-Fri. 9:30am-5:30pm
Sat. 10:00am-2:00pm
or by appointment

NOW BUYING Sterling Silverware & Scrap Gold

BBB ACCREDITED BUSINESS

The Ultimate Wood Heat.

Set the thermostat where you want for a more comfortable home

- More Comfort** - Thermostatically controlled wood heat.
- Peace of Mind** - Keep the fire outside and eliminate the dangers associated with indoor wood heating.
- Save Money** - Wood is a renewable, inexpensive and often free energy source.
- Durability** - Long-lasting, stainless steel firebox.

Beaverton Outdoor Wood Furnace
3032 Calhoun Rd.
Beaverton, MI 48612
989-435-9240
beavertonoutdoorwoodfurnace.com

CLASSIC EDGE
TITANUM HD STAINLESS
Outdoor Wood Furnace

Central Boiler outdoor furnaces adapt easily to new or existing heating systems. It's important that your outdoor furnace and system be properly sized and installed. See dealer for details.

CentralBoiler.com

E & K EXCAVATING

- SEPTIC SYSTEMS
- PONDS
- DRIVEWAYS AND ROADS
- LAND CLEARING

LICENSED
EDWIN STEINER

2239 EAST DENVER RD. ROSEBUSH, MI 48878
989-433-0004 or cell 989-430-2461

7400 S. Clare Ave. • Clare, Michigan 48617
800-292-0679
www.pioneerpole.com

West Midland Family Center
4011 W. Isabella

Saturday, Doors open at 4:00
Early Birds Start at 6:00
Progressive Jackpot: 55#

\$728

Starburst Progressive \$1,443 Plus 50% Sales

Proceeds go to fund the West-Midland Family Center

TOM'S POLE BUILDINGS
Over 30 Years Experience

Special! POLE BUILDINGS & GARAGES
ROOFING & SIDING
CONCRETE FLOORS DRIVEWAYS & FENCING

FEATURING ULTRA 2000 19 colors to choose from
And A 45 YEAR WARRANTY

From Beginning permit To Cleanup, We Do It All!
1-800-541-3974
We accept major credit cards. • email: tomspolebuildings@yahoo.com

24x40x10 10% Down Today Guarantees Prices

POLE BARN

James Morche Builders
YOUR BUILDER FROM START TO FINISH
garages • pole barns • concrete work
FREE estimates

James Morche Cell 989-429-3479 • 989-539-9126
Licensed & Insured

BURKHART-PRESIDIO INSURANCE AGENCY
GLADWIN • 989.426.9278

Auto-Owners INSURANCE
LIFE • HOME • CAR • BUSINESS

VALET AUTO CARE, INC.
Since 1983

- A.R.E. Pickup Toppers
- Over 100 New & Used Toppers in Stock
- Truck Accessories
- Tonneau Covers

LEER **ARE** Because you love your truck
www.valetauto.com

James Motz - Owner (989) 773-3477
610 N. Mission (3 blocks S. of Meijer) Mt. Pleasant

**YOU LOOKED HERE AND YOUR CUSTOMERS WILL TOO!
CONTACT YOUR AD CONSULTANT FOR MORE INFO.**

FREE Hearing Test & Consult

bieri
HEARING SPECIALISTS

888-641-0087
Clare and Midland Locations
www.bierihearing.com

ECOWATER SYSTEMS Lindsay Soft Water Co.

1209 Michigan Ave. St. Louis, MI 48880
P.O. Box 401 Gladwin, MI 48624

(989) 681-5436 (989) 426-4220
1-800-244-3464 Cell (989) 620-1263
www.ecowater.com

ISO 9001

GABE EAREGOOD
Water Specialist

Miller's CONTRACTING LLC
Pole Barns • Roofing • Garages
All types of concrete work -
Specializing in Flatwork

Marvin Miller (989)-487-4531
Licensed

**YOU LOOKED HERE AND YOUR CUSTOMERS WILL TOO!
CONTACT YOUR AD CONSULTANT FOR MORE INFO.**

St. Helen-Roscommon Monument, Inc
"Because every life deserves to be remembered"

Tuesday – Friday 10am-4pm or by appointment
Visit our indoor showroom at:
101 E. Federal Highway, Roscommon
www.shmonument.com - 989-389-4921
or email: shmonument@gmail.com

SCHEDULE YOUR FURNACE INSPECTION NOW!
Make sure your propane tank is full

20LB. CYLINDER FILL \$11.00

GAS PRODUCTION Co., INC.
8512 E. M-46 – Vestaburg
989-268-5079 OR 800-991-7477 • OPEN: MON-FRI. 8AM - 5PM
www.gasproductioncompany.com

North Country Metals, LLP

Metal Roofing & Siding
989-386-3013 • 5139 Pere Marquette • Clare



Comfort On Sale!

SUPER Deal!
SERTA TWIN
Mattress Only
\$99



America's #1 Brand†
 with over 7,000 5-Star
 Reviews on Serta.com!™



23
MODELS
ON
SALE!

Serta
ADJUSTABLE Base
 Only! **\$499**

QUEEN
SIZE

Save Big on All Serta Mattresses ★ Savings up to **50% & More!**

HELPS COMFORTABLY COOL & SUPPORT EVERY CURVE OF YOUR BODY

Serta Firm	Pinedale	Signature Suite	IComfort
\$299 Queen Mattress was \$449	\$499 Queen Mattress was \$749	\$799 Queen Mattress was \$1199	\$1199 Queen Mattress was \$1799
COMPARE AT NOW! Twin Mattress \$329 \$219 Full Mattress \$439 \$289	COMPARE AT NOW! Twin Mattress \$599 \$399 Full Mattress \$719 \$479 King Mattress \$1049 \$699	COMPARE AT NOW! Twin Mattress \$899 \$599 Full Mattress \$1079 \$719 King Mattress \$1479 \$979	COMPARE AT NOW! Twin Mattress \$1139 \$759 Full Mattress \$1579 \$1049 King Mattress \$2549 \$1699

Serta **icomfort**
 Featuring TempActive™ Max
 Gel Memory Foam
 In select models, see store for details.



Serta
perfectsleeper
 HYBRID

Cool Twist Gel
 Memory Foam &
 Custom Support
 Coil System



TRY BEFORE YOU BUY

Supplies Limited!



**We have Bed In A Box,
 Take One Home Today!**

BONUS
No Interest
FINANCING! WAC.



Kubin's Furniture & Mattresses

101 N Mill St, Corner of M46, St. Louis, Michigan, (989) 681-5043
 Hours: Mon-Thurs: 9-6, Fri: 9-8, Sat: 9-5, Closed Sunday
 Shop On Line! www.kubins.com



12 Months Interest
Free Financing Available
With Approved Credit.

\$300 Minimum purchase,
 monthly payments required.

LARGEST RECLINER SELECTION IN MICHIGAN! SEE FOR YOURSELF!

People's Choice #1
Furniture Store #1
Customer Service #1
Web Site

IN STOCK AND ON SALE NOW:

- Power Recliners ■ Leather Recliners ■ Big Mans Recliners ■ Ladies Recliners
- Gliding Recliners ■ Swivel Rocker Recliners ■ Wing Chair Recliners ■ Heat & Massage Recliners
- Lift Chair Recliners ■ Reclining Loveseats ■ Reclining Sofas ■ Children's Recliners



Over 10
Different
Lift Chairs
IN STOCK!



Kubin's Furniture & Mattresses

101 N Mill St., Corner of M46, St. Louis, Michigan, (989) 681-5043
 Hours: Mon-Thurs: 9-6, Fri: 9-8, Sat: 9-5, Closed Sunday
 Sign up Your Email at: <http://www.kubins.com/signup.htm>



*SEE STORE FOR DETAILS



NOW WITH 30 OFFICES STATEWIDE TO SERVE YOU!



IMPROVE YOUR QUALITY OF LIFE WITHOUT OVERPAYING!
 Wearing hearing aids reduces the risk of **cognitive decline** associated with hearing loss.

Call today to schedule a FREE Hearing Exam 989-340-6956

Source: Journal of the American Geriatrics Society

© Starkey Hearing Technologies. All Rights Reserved.



HEAR BETTER

FOR AS LOW AS:

\$650

OR \$39 PER MO*

*Based on 48 Months and Credit Approval.



ATTENTION
 Retired Teachers, State & Federal Employees, Priority Health, GM Retired, UAW - **CALL NOW!**



Best Price Guarantee
 We'll beat any competitor price by

\$200*

*Up to \$200 per hearing aid with documented hearing aid quote

Starkey All New Livio*

SPECIAL PRICE \$950 Each

HEAR MICHIGAN INC. logo
 *Ask for details. Expires 10/31/19

Signia Styletto Rechargeable

\$950 Each

HEAR MICHIGAN INC. logo
 Expires 10/31/19

Rechargeable, Bluetooth streaming, natural sounding, own voice and directional technology

Starting \$3490 Pair

HEAR MICHIGAN INC. logo
 Expires 10/31/19

Starkey CIC Muse

\$950 Each

HEAR MICHIGAN INC. logo
 Expires 10/31/19

Hearing Aid Trade-In

UP TO \$150 Each

HEAR MICHIGAN INC. logo
 Only behind the ear models. Dependent on year and condition. Expires 10/31/19



CALL HEAR MICHIGAN: 989-340-6956
WWW.HEARMICHIGAN.COM

NEW LOCATIONS:

HOUGHTON LAKE 1960 W. Houghton Lake
MT. PLEASANT 405 S Mission St.

ALMA 7336 N Alger Rd.

CLARE 2141 East Ludington Drive

SAGINAW 4600 Fashion Square Blvd. Suite 204

FRANKENMUTH 975 Main Street

WEST BRANCH 304 E. Houghton Ave.

MIDLAND 1519 West Wackerly

989.340.6956 • HEARMICHIGAN.COM