

Mid-Michigan Buyers Guide

SUNDAY, MARCH 1, 2020

Serving Clare, Gladwin, Gratiot, Isabella, Montcalm, & Southern Roscommon Counties

Morning Star Publishing Company powered by digitalfirst



BLARNEY BLAST!



**LIVE DJ SPINNING
YOUR FAVORITE TUNES**

**ICE LUGE
DRINK SPECIALS
GREEN BEER**

OFFERING CORNED BEEF & CABBAGE
MARCH 14TH - 17TH

CONNECT WITH US!
@ f t

2424 S Mission St. • Mt. Pleasant, MI • 989-772-5002



NATIONAL MEATBALL DAY!

Monday, March 9th

Spaghetti & Meatballs
\$6.99

Meatball Sub
\$5.99

2336 S Mission St. • Mt. Pleasant, MI 48858 • 989-773-6836



**MARK YOUR
CALENDER!**

FRIDAY, MARCH 13TH



PIZZA

3 TOPPING INDIVIDUAL PIZZA

\$5.00

BUNDLE IT WITH A BEER FOR \$7
(BUD LITE, BUDWEISER OR MILLER LITE)



PONDEROSA

STEAKHOUSE

MOUNT PLEASANT LOCATION ONLY

DIVE INTO OUR FRIDAY NIGHT SEAFOOD BUFFET

STARTING AT 4PM



ADD
ALL YOU
CAN EAT
CRAB LEGS
FOR AN
ADDITIONAL
CHARGE!



Add A Cold Beer!

CONNECT WITH US!
f t

1301 E Pickard Rd. • Mt Pleasant, MI • 989-732-8084

CABIN FEVER SPECIALS

RABIES CLINIC
Special March Rates

\$15⁰⁰

Reg \$20.⁰⁰

By Appt. 426-0203
Flexible Hours

KELLY'S KRUISSING
KRITTER KARE
Kelly Jo Kelley, DVM



PAST ITS PEAK or shabby chic?

SELL IT IN THE CLASSIFIEDS!

Sell! Shop! Hunt for a job!
And there's so much more! Call now and the Classified Department can help you place your ad today!



Home • Lifestyles • Leisure

Home Show 2020

MARCH 13-15, 2020

FRIDAY: 5-9 PM
SATURDAY: 9-6 PM
SUNDAY: 11-4 PM

NEW LOCATION

MOREY COURTS
5175 E. REMUS ROAD
MOUNT PLEASANT MI 48858

FEATURING: **Maine CABIN MASTERS**

MR. ELECTRIC **DEWITT LUMBER** **ISABELLA BANK** **DTE Energy**



END OF WINTER SPECIALS

Two Great Services for ONE Great Price!
Get Your Tires... ROTATED Plus...
Oil Change with Dexos Full Synthetic Oil, Lubricate Fittings and Change Oil Filter

ALL FOR \$49.95
Most Vehicles w/Coupon - 5 qt. Max
Expires 5-29-20 MMBG

PRICE MATCH GUARANTEE ON MOST NAME BRAND TIRES
GENERAL TIRE KELLY'S TIRES UNIROYAL
MICHELIN Firestone
BRIDGESTONE Continental GOODYEAR
HANKOOK PIRELLI
CALL FOR A QUOTE

Dexos Lube, Oil, Filter Special
Change Oil, Change Oil Filter, Check All Fluid Levels & Lubricate Fittings
\$39.95
Up to 5 qts. - Additional oil or fluids extra
Expires 5-29-20 MMBG

COOLING SYSTEM FLUSH
\$119.95
Most Vehicles w/Coupon
Expires 5-29-20 MMBG

Automatic Transmission Service
All Fluid Flush
SPECIAL \$129.95
Change All Fluids - 12 qts. Most Vehicles w/Coupon
Expires 5-29-20 MMBG

Select Repairs 10% OFF
Most Vehicles w/Coupon
Not valid with tire sale or any other coupon offer
Expires 5-29-20 MMBG

McGUIRE **70 Years Strong!**
www.McGuireChevrolet.com
989-386-7714

FIND NEW ROADS

GET MORE BANG FOR YOUR BUCKS

GOOD, CLEAN, QUALITY PRE OWNED MERCHANDISE

Jewelry **TVs** **Wii, Xbox One, PS4**

Musical Instruments **Paintball and Airsoft** **Tools**

Firearms and Muzzle Loader Gear

DIRT CHEAP • CAR AUDIO • NEW & USED
Tested & Inspected. Why Pay New Prices?

GLADWIN TRADE & SALES
1-989-426-6811
1739 N. State St. • Gladwin

Steve's Country Market

989-539-3110 3170 North Clare Ave., Harrison 44 Feet of Old Fashioned Meat Counter with Good Old Fashioned Service

Hours: Sun. - Mon. 8-8 Bridge Card & Wic Accepted Sale Dates: March 2, 2020 to March 8, 2020

Top Quality Meats At Rock Bottom Prices! **100% Satisfaction Guaranteed** **Michigan Lottery**
stevescountrymarket.com

FRESH MEAT AND SEAFOOD ITEMS

GROUND CHUCK FAMILY PACK 5 LBS. OR MORE \$2.79 LB.	WHOLE SELECT NEW YORK STRIP LOINS SLICED FREE \$3.69 LB.	USDA CHOICE BONELESS ENGLISH ROAST \$3.49 LB.	FRESH GROUND ROUND \$3.69 LB.	BONELESS CHICKEN BREAST 40 LB. BOX \$50.00 \$1.25 LB.	BONELESS BOSTON BUTT ROAST \$1.79 LB.
TOP ROUND LONDON BROIL \$3.99 LB.	WAYSIDE BACON 10 LB. BOX \$14.99 EA.	WHOLE RIBEYE LOINS SLICED FREE \$4.69 LB.	BONELESS PORK LOINS SLICED FREE \$1.59 LB.	ECKRICH SMOKED OR POLISH SAUSAGE 42 OZ. \$5.99 EA.	ECKRICH FRANKS OR BOLOGNA 14 OZ. 2/\$3.00
COD LOINS \$5.99 LB.	TILAPIA FILLETS \$2.99 LB.	SALMON FILLETS \$7.99 LB.	ARGENTINE WILD CAUGHT RAW SHRIMP 1 LB. \$6.99 EA.		

Deli **Fresh Produce** **Fresh Dairy And Frozen** **Grocery**

ECKRICH DELI HAM \$4.49 LB.	FRESH ASPARAGUS \$1.99 LB.	PRAIRIE FARMS SOUR CREAM OR CHIP DIP 24 OZ. \$1.99 EA.	DUTCH FARMS BUTTER 1/4'S 1 LB. 2/\$7.00	AUNT MILLIE'S HOMESTYLE BUTTERMILK OR CRACKED WHEAT BREAD 24 OZ. 2/\$4.00	TOSTITOS TORTILLA CHIPS 9-10 OZ. 2/\$6.00
ECKRICH OVEN ROASTED TURKEY BREAST \$4.99 LB.	CANTALOUPE 2/\$5.00	PRAIRIE FARMS SHERBET QUART 2/\$3.00	4 QUART PAIL ICE CREAM \$4.99 EA.	BAREFOOT WINES 750 ML. 2/\$10.00	LIBERTY CREEK WINES 1.5 LITER \$6.99 EA.
COLBY OR COJACK CHEESE \$4.99 LB.	ON THE VINE TOMATOES \$2.49 LB.	HEAD LETTUCE 88¢ EA.	BUD OR BUD LIGHT 24 PK. CANS \$17.99 EA.	BUSCH & BUSCH LIGHT 30 PK. CANS \$17.99 EA.	

While supplies last. Not responsible for printing errors.



Bulk Food • Deli

2 Miles South of Rosebush • 2020 North Mission
Mt. Pleasant • 989-433-8200
countrycornermarket.net

8:30am-5:30pm, Monday-Thursday
8:30am-7:00pm, Friday • 8:30am-4pm, Saturday

Large Selection of Freezer Food at Discounted Prices

SPECIALS OF THE WEEK

Great Selection of Bulk Foods
We Accept Bridge Cards & All Major Credit Cards

Walnut Creek **Swiss Cheese**

Sale
\$3.89 lb.
Reg. \$4.59 lb.

Walnut Creek **Cooked Ham**

Sale
\$2.49 lb.
Reg. \$2.99 lb.

MORE SPECIALS

Walnut Creek **Cinnamon Rolls**
Maple or Vanilla 6 ct.

\$3.89

Walnut Creek **Salsa pt.**
All Varieties

\$2.89 ea.

Walnut Creek **Blue Cheese**
4 oz.

\$1.89

Walnut Creek **Corn Chips**
Original or BBQ

\$1.79 ea.

Coffee of the week Italian Roast



MID MICHIGAN PAIN P.L.L.C

*"Are you suffering from headaches, back pain, knee or hip pain??.
I can help you to live a pain free life."*

**All insurance plans accepted.
We guarantee to see you in 1 week.**

SERVICES PROVIDED:

- Epidural injections
- Fascet blocks
- Nerve blocks
- Botox injections for migraine
- Laser microdiscectomy
- RFA rhizotomy
- Laser for hip and knee pain.
- Laser nerve ablations.

NASS
ADVANCING GLOBAL SPINE CARE

MID MICHIGAN PAIN PLLC
2305 Hawthorn Drive Suite:B
Mt. Pleasant, Michigan 48858
Phone: 989 317 8000 • 989 533 1037
Fax: 989 317 8536
Email: veinandpain@gmail.com
Web: www.midmichiganpain.com



Patients' Choice Award
2018

WINTER SPECIAL



BRIAN'S FRUIT & MEAT MARKET

We accept all major credit cards & EBT card

2167 S. M-76 • West Branch

While Supplies Last • Not responsible for printing errors
Prices good Sunday, March 1st thru Friday, March 6th
Store Hours: Sundays 8am-6pm, Monday-Saturday 7am-7pm

WE ARE A PACKAGED LIQUOR DEALER

Proudly Featuring **Boar's Head**
PREMIUM DELI MEATS & CHEESES

GLUTEN FREE | long before you even thought to ask

TRUST BOAR'S HEAD FOR - NO TRANS FAT
- NO ARTIFICIAL FLAVORS OR COLORS
- NO FILLERS - NO BY PRODUCTS
TRY OUR NEW BOAR'S HEAD CHICKEN SAUSAGES!!

BRIAN'S MEATS: 989-345-3709

WWW.BRIANSFRUITANDMEATMARKET.COM

Eckrich Brand SLICED PREMIUM DELI HAM \$3⁴⁹ lb.	Great Lakes Brand SLICED SWISS CHEESE \$5⁹⁹ lb.	Eckrich Brand SLICED PREMIUM HARD SALAMI \$4⁹⁹ lb.	St. Patrick's Day Favorite GROBBELS CORNED BEEF FLAT CUT \$4⁹⁹ lb. Points \$4²⁹ lb.	Great on the Grill BONELESS BEEF NEW YORK STRIP STEAKS \$7⁴⁹ lb.
Beef It's What's for Dinner BONELESS BEEF CHUCK ROASTS \$3⁹⁹ lb.	Store Ground FRESH GROUND BEEF FROM CHUCK \$3²⁹ lb. or \$2⁹⁹ lb. 10 lb. or more	Sliced Free WHOLE BONELESS PORK CENTERLOINS \$1⁴⁹ lb.	Pork the Other White Meat BONELESS BUTTERFLY PORK CHOPS \$1⁹⁹ lb.	Save \$1.00 lb. BONELESS PORK CENTERLOIN ROASTS \$1⁷⁹ lb.
Hardwood Smoked RANCH STYLE BACON \$3⁹⁹ lb.	Breakfast Time BRIAN'S OWN BULK BREAKFAST SAUSAGE w/BACON \$2⁴⁹ lb.	Fresh Never Frozen FRESH BONELESS SKINLESS CHICKEN BREAST \$1⁴⁹ lb. or \$1²⁹ 10 lb. Pre Bagged	Winters Brand SLICED PREMIUM CORNED BEEF \$7⁹⁹ lb.	

6 oz. Portions PACIFIC COD LOINS \$4⁷⁰⁰ 10 lb. Box or \$24.00 5 lb. Box or \$4.99 lb. Lesser Amount	Wild Alaskan FROZEN POLLOCK FILLETS \$22⁰⁰ 10 lb. Box	Wild Caught FROZEN SOCKEYED SALMON FILLETS \$9⁹⁹ lb.	8-10 oz. Portions YELLOW FIN TUNA FILLETS \$7⁹⁹ lb.	1 lb. Packs ORANGE ROUGHY FILLETS \$8⁴⁹ Each
31/40 ct. COOKED PEELED & DEVEINED SHRIMP \$6⁹⁹ Each	26/30 ct. RAW PEELED & DEVEINED SHRIMP \$5⁹⁹ Each	1 lb. Packs FROZEN TILAPIA FILLETS \$2⁹⁹ Each	8-10 oz. Fillets FROZEN WHITEFISH FILLETS \$7⁹⁹ lb.	4 oz. Portions MAHI MAHI FILLETS \$5⁹⁹ lb.

BRIAN'S PRODUCE: 989-345-2891

LIKE US ON FACEBOOK 

FAMILY PACK ICE CREAM \$4⁹⁹ 4 qt Pail	PRAIRIE FARMS SOUR CREAM \$1⁹⁹ 24 oz Tub	JAMES SKINNER COFFEE CAKES \$2²⁹ 14 oz Assorted Flavors	TABLE TALK BAKED APPLE CRUMB PIES \$2⁵⁹ 8"	ASSORTED MUELLER'S PASTAS 4/\$5⁰⁰	LIMITED SUPPLY CAULIFLOWER 99¢ Each
DOLE BANANAS 39¢ lb.	GRAPE TOMATOES 2/\$3⁰⁰	RED YELLOW ORANGE PEPPERS 99¢ Each	RED AND GREEN LEAF LETTUCE 79¢ Each	FRESH FLORIDA STRAWBERRIES 2/\$4⁰⁰ 1 lb. Pkgs	NO. 1 FANCY MICHIGAN APPLES \$5⁹⁹ 1/2 Peck Basket
LEMONS AND LIMES 3/\$1⁰⁰	CALIFORNIA SEEDLESS NAVEL ORANGES \$2⁹⁹ 4 lb. Bag	ASPARAGUS \$1²⁹ lb.	KILLIAN'S IRISH RED \$9⁹⁹ 12 pk Bottles + Dep.	BUDWEISER & BUD LIGHT \$16⁴⁹ 20 pack Aluminum Bottles	AURA WINES \$5⁹⁹ 750 ml Assorted Flavors

PET OF THE WEEK


989.343.7387

ADOPT ME!

Animal Name: JASPER
Date Available: 2/5/2020
Est. DOB: 2/14/2018 Male
I'M NEUTERED!

Energy Level: High Energy

Likes and Dislikes

Dogs <input checked="" type="checkbox"/>	Being brushed <input checked="" type="checkbox"/>
Cats <input checked="" type="checkbox"/>	Treats <input checked="" type="checkbox"/>
Kids <input checked="" type="checkbox"/>	Balls <input checked="" type="checkbox"/>
Being picked up <input checked="" type="checkbox"/>	Walks <input checked="" type="checkbox"/>

A Little About Me
I LOVE PEOPLE! I LOVE HUGS! I'm a BIG BOY but very sweet at heart. I want all the attention please. I'm better off being the only pup!

I'M 66LBS I LOVE "HUGS"



KOHLER LuxStone[™] Shower Systems

► Start your day with a shower you love.
A new shower you'll love in as little as a day or two.



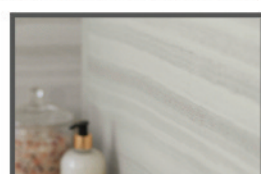
Customizable Accessories



Bath Options



Ultra-Low Step-In Height



Lifetime Finish



KOHLER. Walk-In Bath Authorized Dealer

SET-UP YOUR FREE DESIGN-CONSULTATION TODAY!

(248) 886-4991



ASK ABOUT OUR
WALK-IN TUBS



**SAFETY & ACCESSIBILITY
FEATURES AVAILABLE**

- **Durable Materials** for Long-Lasting Beauty
- **Low-Maintenance** Shower Walls
- Quality You **Expect From Kohler**
- Accessories to **Personalize Your Shower**
- **Safety-Focused** Design Features
- **Quick, Professional** Installation
- **Lifetime** Warranty
- **Affordable** Financing

LIMITED-TIME SPECIAL OFFER

\$0 ^{PLUS} **0** ^{PLUS} **0%**
DOWN PAYMENTS INTEREST
UNTIL 2021!

BUY NOW AND PAY LATER...
FOR QUALIFIED BUYERS

**\$1000 KOHLER
INSTANT
REBATE!**

*Cannot be combined with any other offer. Previous sales excluded. Good at initial presentation only. Financing available from GreenSky LLC for qualified buyers only who purchase with plan 3128. For deferred interest plans, interest accrues during the promotional period but all interest is waived if the purchase amount is paid in full before the end of the promotional period.

Lambert's Meat Market and Bakery

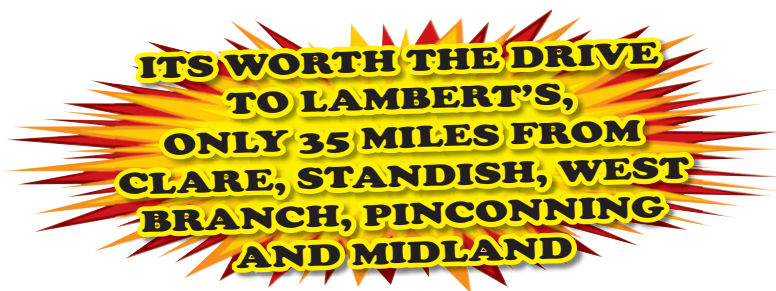
Taste the difference "FRESH" makes!

624 E. Cedar Ave., Gladwin (next to Family Dollar)

989-246-1850



New Fall Hours: Monday-Friday 8-6:30 • Saturday 8-6 • Sunday 8-4:30 • Sale Dates: March 2 - March 7, 2020



Winter Fill the Freezer Sale!

10 LBS. OR MORE SALE!

Believe on the Lord Jesus Christ and thou shalt be saved....Acts 16:31



Boneless Chicken Breast \$1²⁹ lb.	Family Pack Ground Beef from Chuck \$2⁷⁹ lb.	Family Pack Ground Beef Hamburger 73% Lean \$2³⁹ lb.	Fresh! Never Frozen! Bagged Leg 1/4's \$6⁹⁰ 10 lb. bag	Pork Steak or Pork Strips \$1⁴⁹ lb.	Pork Shoulder Roast or Breakfast Sausage \$1⁴⁹ lb.
Center Cut Pork Chops or Country Style Spare Ribs \$1⁴⁹ lb.	USDA Choice Denver Steaks \$3³⁹ lb.	USDA Choice English Roast \$3³⁹ lb.	Wayside Bacon \$19⁹⁰ 10 lb.	Dearborn Little Links (Regular or Maple) \$23⁹⁹ 6 lb. box	BAKERY AND DELI DEALS
Whole NR Short Loins (Cut into Porterhouse and T-Bones) \$3⁴⁹ lb.	Whole USDA Choice NY Strip Loins \$4⁷⁹ lb.	Whole NR Ribeye Loins \$3⁸⁹ lb.	Whole Boneless Pork Loins \$1⁶⁹ lb.	Tomahawk Ribeye Steaks \$8⁹⁹ lb.	Ground Elk Patties or Burger \$11⁹⁹ lb.
Marinated NY Strip Steaks \$5⁹⁹ lb.	Garlic Steak Bites \$5⁹⁹ lb.	Bacon Mac and Cheese Brats. Or Irish Bangor Sausage \$3⁶⁹ lb.	Chicken Nuggets or Jalapeno Poppers \$9⁹⁹ 5 lb.	Cheesy Tater Tots \$9⁹⁹ 5 lb.	French Fries \$4⁹⁹ 5 lb. pk.
				Dearborn Smoked Sausage \$14⁹⁹ 3 lb. pk.	Kretschmar Hard Salami \$4⁹⁹ lb.
					Deli Colby or Colby Jack Cheese \$3⁹⁹ lb.

No Rainchecks • Not Responsible for Printing Errors

JACK OF ALL TRADES

COINS

1028 S. Mission
(next to Jon's Country Burger)

I BUY ALL COINS
Silver and Gold
FREE APPRAISALS
we will come to your home
to do free appraisals for
your convenience.

Over 25 Years experience!

Do not take your coins,
jewelry, gold, & silver to
the we buy gold places
they are not experts! We
are your only experts!
**WE PAY YOU MORE
THAN ANYONE!**

I BUY ALL COLLECTIONS
FROM ONE COIN TO A
DUMP TRUCK FULL

We are a Full
Buy • Sell • Trade shop!
ANTIQUES • COINS
Jewelry • Collectibles & more!

**Stop in or call Matt for
your free appointment**
517-204-0787

WINTER

Fun

Home • Lifestyles • Leisure

Home Show 2020

Home Show Dates

Friday, Saturday and Sunday, March 13-14-15, 2020

IAC- CMU Campus Mt. Pleasant, MI | <http://hbacm.com>

See Next Week's Buyers Guide for More Information!

Mt. Pleasant Rental Center
Tool & Party Rentals 989-773-4620

Equipment Rental

- TOOLS -
Tillers • Thatchers • Aerators • Wood Chippers
Pressure Washers • Concrete Tools • Bobcats
Excavators • Aerial Lifts • Trenchers
Moving Trucks and Trailers

Party's Plus Rental

- PARTY -
Tents • Tables • Chairs • Dunk Tanks
Inflatable Bouncers • Heliums Tanks
Portable Restrooms • Yard Games
Catering Equipment... and more

Your One Stop Tool & Party Shop
4995 East Pickard (989) 773-4620
Mt. Pleasant www.mprentalcenter.com

BRAD MALLEY WELL DRILLING

24 HOUR ON-CALL EMERGENCY SERVICE
*No Automated Phone, Real Person, Real Time

Call Today!

- COMMERCIAL & RESIDENTIAL
- SPECIALIZING IN 5" PVC WATER WELLS
- 3 - LICENSED DRILLERS (100 years combined experience)
- 5 - YEAR MANUFACTURER WARRANTY
- INSTALLATION OF PUMP, TANKS & WELL CHLORINATION
- WATER FILTERS & CONDITIONING AVAILABLE
- COMPLETE SERVICE 2" - 12" WATER WELLS

1565 S Park Place St., Mt. Pleasant, MI 48858
(989) 772-2765 | www.bradmalleywelldrilling.com

LJ's Kitchens & Interiors, Ltd.

1105 N. Mission St., Mt. Pleasant, MI
(989) 773-2132
1-888-701-2883

Visit Our Showroom After Hours!
Appointments Available.
<http://www.ljskitchens.com>

OUR PREFERRED VENDORS

QC QUALITY CABINETS, DURASUPREME, CAMBRIA, KraftMaid, OMEGA CABINETS, Shiloh, RONBOW, JEFFREY ALEXANDER

Central Plumbing, Inc.

New Construction & Remodel Specialists

RESIDENTIAL - COMMERCIAL

- + Plumbing showroom with fixtures for kitchen and bath
- + Euro shower doors and installation
- + Water heater dealer
- + Sump pump and back-up systems
- + Installation of any plumbing need, old or new!

Experienced staff to service all your plumbing needs

989.772.9190
600 N. Mission St. • Mt. Pleasant, MI 48858
www.centralplumbinginc.com

Yoder Woodworking

Individually Customized Pieces & Complete Kitchens
Vanities, Islands, & Cabinets
Made To Order

Aden Yoder, Craftsman
(989) 429-7049

Coldwell Banker
Mt. Pleasant Realty & Assoc.

Coldwell Banker Mt. Pleasant Realty

Number 1 in Central Michigan with \$50 million in sales in 2019

Visit our booth at the Home Show!

Visit our booth at the Home Show!

Coldwell Banker
Each Office is Independently Owned and Operated

PREFERRED PARTNER

Mt. Pleasant Realty & Assoc.
304 East Broadway
Mount Pleasant

989-773-5972
office@mpr.net
www.mpr.net

PRAEDIUM REALTY

ROBIN STRESSMAN AND ASSOCIATES

WWW.MTPLEASANT.NET
209 E. Chippewa, Mount Pleasant
Intersection of Court & Chippewa
(989) 317-8352

ROBIN STRESSMAN
BROKER / OWNER
(989) 773-4387

LARRY BEAN
ASSOCIATE BROKER
(989) 289-1862

AURIC STRESSMAN
REALTOR
(989) 560-0980

PAULA BROWN
REALTOR
(989) 560-2303

CANDI MERSINO
REALTOR
(989) 621-7213

KATHY ROUTHAEUX
REALTOR
(989) 289-1025

BRYCE UPDEGRAFF
REALTOR
(989) 620-6595

JOE WENTWORTH
REALTOR
(989) 817-1291

KRISTINE FITZGERALD
ADMINISTRATIVE ASSISTANT
(989) 317-8352

JIM ENGLER
ASSOCIATE BROKER
989-330-2473

STEVE STRESSMAN
ASSOCIATE BROKER
(989) 289-3309

Great Way Window & Door

It's not just a way of doing business...
It's our Family Heritage

Call for Estimates

- New Construction
- Replacement
- Sunrooms
- Siding

www.greatwaywindow.com

290 E. Vernon Road, Rosebush, MI 48878
989-433-2282
Toll Free 877-629-2282

DeWitt LUMBER
SINCE 1890

Blanchard - 989-561-2100
Mt. Pleasant - 989-772-0906

Building Dreams and Friendships 130 years and Counting

We feature high-quality Andersen® Products

At Andersen, we're driven to deliver the best windows possible. For over 100 years we've constantly innovated how our windows are made. Along the way we've evolved each of our windows to use the right materials in the right places so that they provide unmatched beauty on the outside and industry leading performance on the inside. We back our windows with some of the most comprehensive warranties in the business, so rest assured that your windows will perform beautifully for years to come.

Andersen. **WINDOWS • DOORS**

"Andersen" and all other marks where denoted are trademarks of Andersen Corporation. ©2020 Andersen Corporation. All rights reserved.

Maine CABIN MASTERS

MEET THE MASTERS LIVE
Ryan • Ashley • Chas

DON'T DRINK & DRIVE.



**TAX REFUND
Sale**

BEAUTY, QUALITY & FUNCTION ON SALE NOW!



ORDER FROM OVER 1,000 FABRICS



12 MONTHS INTEREST FREE!*

On any purchase of \$399 or more.

SALE PRICES PLUS BONUS COUPON SAVINGS!



BONUS COUPON SAVINGS

\$50 OFF

Any purchase of \$499

Prior orders excluded. One coupon per purchase per household. Purchases must total \$499 before sales tax. EXPIRES 4/15/20.

BONUS COUPON SAVINGS

\$100 OFF

Any purchase of \$999

Prior orders excluded. One coupon per purchase per household. Purchases must total \$999 before sales tax. EXPIRES 4/15/20.

BONUS COUPON SAVINGS

\$200 OFF

Any purchase of \$1999

Prior orders excluded. One coupon per purchase per household. Purchases must total \$1999 before sales tax. EXPIRES 4/15/20.

BONUS COUPON SAVINGS

\$300 OFF

Any purchase of \$2999

Prior orders excluded. One coupon per purchase per household. Purchases must total \$2999 before sales tax. EXPIRES 4/15/20.

BONUS COUPON SAVINGS

\$500 OFF

Any purchase of \$4999

Prior orders excluded. One coupon per purchase per household. Purchases must total \$4999 before sales tax. EXPIRES 4/15/20.

*Subject to credit approval. Minimum monthly payments required. See store for details.



Comfort On Sale!

**SUPER
DEAL!**
**SERTA TWIN
Mattress Only
\$99**

**America's #1 Brand†
with over 7,000 5-Star
Reviews on Serta.com!***



**23
MODELS
ON
SALE!**

Serta
ADJUSTABLE Base
Only! **\$499**

**QUEEN
SIZE**

Save Big on All Serta Mattresses

★ **Savings up to 50% & More!**

HELPS COMFORTABLY COOL & SUPPORT EVERY CURVE OF YOUR BODY

Serta Firm	Pinedale	Signature Suite	IComfort
\$299	\$499	\$799	\$1199
Queen Mattress was \$449	Queen Mattress was \$749	Queen Mattress was \$1199	Queen Mattress was \$1799
COMPARE AT NOW!	COMPARE AT NOW!	COMPARE AT NOW!	COMPARE AT NOW!
Twin Mattress \$329 \$219	Twin Mattress \$599 \$399	Twin Mattress \$899 \$599	Twin Mattress \$1139 \$759
Full Mattress \$439 \$289	Full Mattress \$719 \$479	Full Mattress \$1079 \$719	Full Mattress \$1579 \$1049
	King Mattress \$1049 \$699	King Mattress \$1479 \$979	King Mattress \$2549 \$1699

Serta iComfort
Featuring TempActive™ Max
Gel Memory Foam
In select models, see store for details.



Serta
perfectsleeper.
HYBRID

Cool Twist Gel
Memory Foam &
Custom Support
Coil System



TRY BEFORE YOU BUY

Visit Our All
New Website



**We have Mattress In A Box,
Take One Home Today!**

**BONUS
No Interest
FINANCING! WAC.**



Kubin's Furniture & Mattresses

101 N Mill St, Corner of M46, St. Louis, Michigan, (989) 681-5043

Hours: Mon-Thurs: 9-6, Fri: 9-8, Sat: 9-5, Closed Sunday
Shop On Line! www.kubins.com



Business Card Directory

To place an ad contact the ad consultant in your area:

Marlene...Clare & Gladwin Counties 989-506-4647

Kindra...Clare & Midland Counties 989-506-4640

Carol...Isabella & Roscommon Counties 989-323-7044

Vonda...Griatiot County 989-506-4349

Robby...Isabella County 989-854-0339





TOM'S POLE BUILDINGS

Over 30 Years Experience

Special! POLE BUILDINGS & GARAGES

ROOFING & SIDING

CONCRETE FLOORS DRIVEWAYS & FENCING

FEATURING ULTRA 2000 19 colors to choose from
And A 45 YEAR WARRANTY

From Beginning permit To Cleanup, We Do It All!

1-800-541-3974

We accept major credit cards. • email: tompolebuildings@yahoo.com

24x40x10
10% Down
Today
Guarantees
Prices



313 W. Knox Road,
Beaverton, MI
1/2 Mile West of M-30
989-435-2707



We Take Pride In Your Ride!



- Quality Collision Repair
- Free Estimates
- Insurance Work Welcome
- Custom Color Matching & Painting
- We Repair All Makes and Models
- Car/Light Truck
- Genuine Original Equipment Parts

St. Helen-Roscommon Monument, Inc

"Because every life deserves to be remembered"



Jet Black Monument

36"x06"x20" P5
with Base 48"x12"x06 PT/BRP

\$2998.00

includes a full scene white • expires 4/31/20

Winter hours are Tues-Thurs 10-3 or by appointment
Visit our indoor showroom at:
101 E. Federal Highway, Roscommon
www.shmonument.com - 989-389-4921
or email: shrmonument@gmail.com

**VACUUM CLEANERS/SEWING MACHINES
NEW & USED**

FREE ESTIMATES
Service On Most Brands

Circle Sewing & Vacuum Center



Sales • Services • Parts • Top Quality • Low Prices
Serving Midland For Over 50 Years
We Have It All!

1900 S. Saginaw Rd. • Midland
(989)-839-0800
In the K-Mart Plaza

HOURS:
M-F 9:30 - 5:30
Sat. 9:30 - 3:30

Big Or Small - We Do Them All!
FREE ESTIMATES

A & M

METAL ROOFING

989-487-9066



5023 Grass Lake Rd. - Clare

POLE BARNs

James Morche Builders

YOUR BUILDER FROM START TO FINISH

garages • pole barns • concrete work

FREE estimates

James Morche Cell 989-429-3479 • 989-539-9126

Licensed & Insured

KAPS KOINS ANA Member LLC

located across from the Doherty Hotel



Silver & Gold Coins Bought & Sold

Integrity, Honesty & Peace of Mind.
That's what you deserve when it comes to your Coins & Currency!!!

Thomas Kapuscinski
611 N. McEwan St. Clare, MI 48617
231-357-2105 • 989-386-6500
tjkap@charter.net

Mon.-Fri. 9:30am-5:30pm
Sat. 10:00am-2:00pm
or by appointment

NOW BUYING Sterling Silverware & Scrap Gold

TRUE NORTH FENCING LLC

We Install — Hi Tensile — Woven Wire
— Barbwire — Board Fence
— Continuous Fence

Chris Yoder 989-802-1064



BUYERS OF STANDING TIMBER and TIMBERLANDS

PURCHASING ALL SPECIES

PROFESSIONAL FOREST MANAGEMENT

SINCE 1972



FIREWOOD AVAILABLE BY THE TRUCKLOAD

CALL FOR INFO AND PRICING

2725 Larch Rd. Harrison, M 48625
989-539-9842
billsbylumber.com • info@billsbylumber.com

E & K EXCAVATING

- SEPTIC SYSTEMS
- PONDS
- DRIVEWAYS AND ROADS
- LAND CLEARING

LICENSED EDWIN STEINER



2239 EAST DENVER RD. ROSEBUSH, MI 48878
989-433-0004 or cell 989-430-2461

VALET AUTO CARE, INC.

Since 1983



- A.R.E. Pickup Toppers
- Over 100 New & Used Toppers in Stock
- Truck Accessories
- Tonneau Covers



LEER LIVE LARGER **ARE** Because you love your truck

www.valetaauto.com

James Motz - Owner (989) 773-3477
610 N. Mission (3 blocks S. of Meijer) Mt. Pleasant

"Our Customers are our Warmest Friends"
Guaranteed On Time and Certified

FREE TANK SETS

COYNE OIL & PROPANE

Clare • Harrison • Mt. Pleasant • Evart • Gladwin
Cadillac • Breckenridge • Interlochen

800-386-7731 • 989-386-7731

RESIDENTIAL • COMMERCIAL
INDUSTRIAL • FARM

West Midland Family Center

4011 W. Isabella

Saturday, Doors Open at 4:00
Early Birds Start at 6:00
Progressive Jackpot: 55#

\$711

Starburst Progressive \$2604 Plus 50% Sales

Proceeds go to fund the West Midland Family Center

SCHEDULE YOUR FURNACE INSPECTION NOW!

Make sure your propane tank is full



20LB. CYLINDER FILL \$11.00

GAS PRODUCTION Co., INC.

8512 E. M-46 - Vestaburg

989-268-5079 OR 800-991-7477 • OPEN: MON-FRI. 8AM - 5PM

www.gasproductioncompany.com

BURKHART-PRESIDIO INSURANCE AGENCY

GLADWIN • 989.426.9278

Auto-Owners INSURANCE

LIFE • HOME • CAR • BUSINESS

Expressway Kitchens

Handcrafted Kitchens, Bath & Laundry

11652 South Eberhart Ave. Clare

Open Monday - Friday
Saturday by Appointment
Closed Sunday

FOR MORE INFORMATION
(989) 588-1596

Rudy Miller
Freeman Miller or Sylvan Miller

YOU LOOKED HERE AND YOUR CUSTOMERS WILL, TOO.

CALL 989-506-4647 FOR MORE INFO.

YOU LOOKED HERE AND YOUR CUSTOMERS WILL, TOO.

CALL 989-506-4647 FOR MORE INFO.

North Country Metals, LLP



Metal Roofing & Siding

989-386-3013 • 5139 Pere Marquette • Clare

FREE Hearing Test & Consult

bieri HEARING SPECIALISTS

888-641-0087

Clare and Midland Locations

www.bierihearing.com



**Want
fast
cash?**

Our
Classified
advertisers
get great
results.

If you have
merchandise
to sell,
place a
classified ad
by calling
877-483-3450



MIAL MEADOWS MHP

WE HAVE 2 & 3 BEDROOM
MOBILE HOMES FOR SALE
OR LEASE IN ALMA
LOT RENT \$290
HOMES ARE GOING FAST, DON'T WAIT!!
CALL AMBER AT **989-463-5187**
TO SCHEDULE A TIME TO SEE YOUR NEW HOME!
AMBER MARCOUX
MANAGER 411 S. GROVER, #2
ALMA, MI 48801



Maury S. Irwin,
Agent
1011 N. McEwan Street
Clare
Bus: 989-386-4141
maury.irwin@statefarm.com

**Listening &
understanding,
available here.**

As your local agent, I'm here to help life go right.
That's why I take the time to get to know you and
understand what you really need.
LET'S TALK TODAY.



1706841 State Farm
Bloomington, IL



Brewer Bouchey Monument Co.

Family Owned Since 1895
211 N. Mill St. • Downtown St. Louis
989-681-3300 • Toll Free 888-362-2920
Hours: Mon.-Fri. 9-5; Sat. By Appt.
www.brewer-bouchey.com

RE/MAX RIVER HAVEN, INC.
Open Seven Days
a Week to Serve You
www.riverhavenhomes.com • **Wayne R. Walts – Broker**

Sugar Springs Office 1415 W. Sugar River Rd. • Gladwin **989-426-9239**
Wixom Lake Office 1239 Estey Rd. • Beaverton, MI 48624 **989-435-7755**
Main Office 777 W. Cedar • Riverwalk Place **989-426-6893**

We have a great selection of **AFFORDABLE HOMES** and **LUXURY HOMES**.
Contact one of our offices and talk to an experienced agent today!

Beaverton Area-3 bedroom, 3 car garage, 10 acres of land on paved road. **\$69,900** MLS#172629
Beaverton-All Bright Shores area-3 bedroom, 2 bath, 24x32 pole barn garage, 20 acres of land. **\$129,900** MLS#172641
Rural Gladwin-5 bedroom, 3 bath, walkout lower level, 1960 sq ft ranch with 2+ car garage, 10 acres of land with Cedar River running thru property. **\$239,900** MLS#172640

DEWEY'S TRADING POST
Maple Rapids • **682-4158**
Monday-Saturday: 8am - 7pm, Closed Sunday
Prices In This Ad Good for week of March 2nd - March 7th, 2020
Bridge Card • VISA • Mastercard • Discover
American Express • Debit Card

**"Whole" Select
New York Strips
13 lb. Avg. \$3.69 LB.**

Koegel's Bulk Slicing Bologna \$3.99 LB.	"Our Own" Honey Mustard Brats \$3.99 LB.	"Our Own" Cheddar Brats \$3.99 LB.	Our Own Smoked Roasted Sausage \$6.99 LB.
Choice Boneless Arm Roast \$3.49 LB.	Choice Boneless Patio Steak \$3.99 LB.	Choice Boneless Petite Steaks \$3.99 LB.	Choice Boneless Combo Roast \$3.49 LB.
Choice Stew Meat \$4.99 LB.	Fresh Pork Cutlets \$2.99 LB.	Boneless-Skinless Chicken Breast \$1.89 LB.	
Smoked Pork Chops \$3.49 LB.	Bulk Breakfast Sausage 2 Flavors \$2.19 LB.	COLBY Cheese "Mini Horn Only" \$3.99 LB.	

DeweysTradingPost.biz
LIKE us on Facebook & see our WEEKLY SPECIALS!



FIRESIDE
STOVES • FIREPLACES • OUTDOOR COOKING
(989) 386-8960

**DISCOUNT
UP TO 20% OFF**
REGULAR PRICED KUMA & BLAZE KING STOVES IN STOCK ONLY

Blaze King
While Supplies Last & In Stock Only

KUMA
CHECK OUT OUR NEWLY DESIGNED SHOWROOM FEATURING:
GAS, WOOD BURNING FIREPLACES & INSERTS!

COMFORT BILT HP22SS
\$200 OFF
Regular Price
While Supplies Last

Stainless Steel Chimneys
Chimney Liners Available

Hours: M-F 8-5 • Sat. 9-2
8989 Tobacco Dr., Clare
Division of Hershberger's Hardware

SERVICE & INSTALL
DELIVERY OPTIONS AVAILABLE COAL / PELLETS

HERSHBERGER'S PRO HARDWARE

CONTRACTOR REFERRALS AVAILABLE.
Your project headquarters!
BUILDING SUPPLIES
Serving You For 15 Years!

Vinyl fencing, Privacy, Picket & Posted Rail Sales & Installation

Ranch Life Plastics Inc.
CORRUGATED TILE OF POLY STEEL CULVERTS

Owens Corning Pro Cat Blown Insulation.
Rent Our Loader Trailer & Blower For Your Projects.
Plumbing, Pumps & Heat Exchangers For In Floor Heat Systems.

New Homes, Garages, Pole Barns & Decks
Call Or Fax Your Lists Or Bring In Your Prints, Plans & Ideas
And We Will Provide You With A Quote For Your Projects.
10289 N. Leaton Rd., Clare
(989) 386-5338 • (989) 386-9331 Fax Service

SURREY WELDING & REPAIR

Your Idea Is My Priority

Custom Welding • Steel Fabrication
Tire Mounting & Repair • General Repairs

Specializing in Trailer Repair
Including **Trailer Brakes & Lights**



5957 E. Surrey Rd. • Clare, MI 48617
Raymond Gingerich
989-487-4722





Blanchard - 989-561-2100
Mt. Pleasant - 989-772-0906

Building Dreams and Friendships 130 years and Counting

We feature high-quality Andersen® Products



At Andersen, we're driven to deliver the best windows possible. For over 100 years we've constantly innovated how our windows are made. Along the way we've evolved each of our windows to use the right materials in the right places so that they provide unmatched beauty on the outside and industry leading performance on the inside. We back our windows with some of the most comprehensive warranties in the business, so rest assured that your windows will perform beautifully for years to come.

Andersen WINDOWS • DOORS 

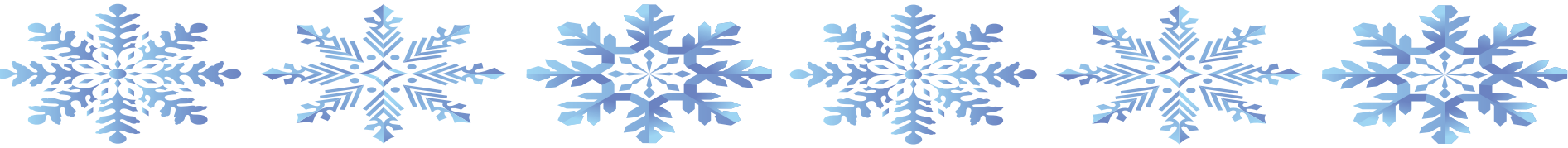
*Andersen" and all other marks where denoted are trademarks of Andersen Corporation.
©2020 Andersen Corporation. All rights reserved.





Don't let
your last
words
be a text
message.

www.donttextanddrive.com



REMEMBER...

Classified Does It ALL!



CLASSIFIEDS

THE MOST ADVANCED RECRUITING TECHNOLOGY

IN THE



TO HELP YOU FIND THE

BEST HIRE

IN TOWN.



FIND YOUR NEXT HIRE WITH MONSTER AND DIGITAL FIRST MEDIA

Finding great talent can be a challenge. Finding them nearby, even more so. Monster and Digital First Media have the technology and media solutions to help you reach, connect with and hire the best local talent. From social to mobile, print to the cloud, let us help you find the best hire, around the globe or around the corner. To learn more, visit www.theoaklandpress.com; www.heritage.com; www.dailytribune.com; www.macombdaily.com; and www.themorningsun.com



digitalfirst
MEDIA



MONSTER

Fernelius Chevrolet

USE YOUR INCOME
TAX REFUND
AS YOUR DOWN PAYMENT

WE WANT YOU!

... To Own A Great Pre-Owned Vehicle!



2018 CHEVROLET SILVERADO 1500

#1479A, MILES 23,932, GRAPHITE METALLIC, 4WD

\$29,900

2014 CHEVROLET SILVERADO 1500

#1695A, BROWNSTONE METALLIC, 4WD

\$19,900

2014 CHEVROLET SILVERADO 1500

#1667A, MILES 52,709, SILVER ICE METALLIC, 4WD

\$19,900

2014 CHEVROLET SILVERADO 1500

#1801A, MILES 50,839, SUMMIT WHITE, 4WD

\$26,900

2015 CHEVROLET SILVERADO 1500

#1721A, MILES 85,742, SILVER ICE METALLIC, 4WD

\$23,900

2015 CHEVROLET SILVERADO 1500

#1741A, MILES 91,799, SILVER ICE METALLIC, 4WD

\$16,900

2016 CHEVROLET SILVERADO 1500

#1644A, MILES 39,163, SILVER ICE METALLIC, 4WD

\$24,900

2016 CHEVROLET SILVERADO 1500

#1370A, MILES 56,360, DEEP OCEAN BLUE METALLIC, 4WD

\$25,900

2017 CHEVROLET SILVERADO 1500

#1515A, MILES 32,601, PEPPERDUST METALLIC, 4WD

\$26,900

2017 CHEVROLET SILVERADO 1500

#1505A, MILES 25,500, DEEP OCEAN BLUE METALLIC, 4WD

\$27,900

2015 CHEVROLET COLORADO

#1643A, MILES 129,033, BLACK, 4WD

\$19,950

2000 FORD F-150 WORK SERIES

#1752A, MILES 185,729, BLACK, 4WD

\$4,750

2010 FORD SUPER DUTY F-250 SRW

#5861A, MILES 126,324, DARK BLUE PEARL, 4WD

\$13,850

2012 FORD F-150

#1700A, MILES 135,200, STERLING GRAY METALLIC, 4WD

\$14,999

2008 GMC SIERRA 1500

#1429B, MILES 160,992, ONYX BLACK, 4WD

\$10,950

2012 CHEVROLET EQUINOX

#1794A, MILES 121,550, CARDINAL RED METALLIC, FWD

\$7,995

2017 CHEVROLET EQUINOX

#1687A, MILES 82,350, NIGHTFALL GRAY METALLIC, FWD

\$15,999

2019 CHEVROLET MALIBU

#1797A, MILES 13,392, SUMMIT WHITE, FWD

\$18,775

2018 CHEVROLET MALIBU

#5811, MILES 23,848, SUMMIT WHITE, FWD

\$18,995

2018 CHEVROLET TRAX

#1679A, MILES 25,175, CAJUN RED TINTCOAT, FWD

\$16,400

2017 CHEVROLET TRAVERSE

#5843, MILES 35,979, SUMMIT WHITE, FWD

\$23,950

2004 CHEVROLET SILVERADO 1500 CREW CAB

#1737C, MILES 145,938, ARRIVAL BLUE METALLIC, 4WD

\$9,500

2007 CHEVROLET SILVERADO 1500HD CLASSIC

#1686D, MILES 66,841, SUMMIT WHITE, 4WD

\$12,850

2018 CHEVROLET IMPALA

#1690A, MILES 38,056, SUMMIT WHITE, FWD

\$19,985

2019 CHEVROLET IMPALA

#5848, MILES 26,319, BLUE VELVET METALLIC, FWD

\$22,500

2016 CHEVROLET IMPALA

#1743B, MILES 76,215, SILVER ICE METALLIC, FWD

\$16,950

2017 CHEVROLET IMPALA

#5774A, MILES 73,805, SILVER ICE METALLIC, FWD

\$13,995

2017 CHEVROLET IMPALA

#1462A, MILES 46,212, SIREN RED TINTCOAT, FWD

\$16,999

2013 DODGE DART

#1781A, MILES 128,506, REDLINE COAT PEARL, FWD

\$5,850

2014 DODGE DART

#5845A, MILES 55,105, BILLET SILVER CLEARCOAT METALLIC, FWD

\$9,850

2015 GMC ACADIA

#1745B, MILES 78,985, SUMMIT WHITE, FWD

\$17,999

**Tax, title, license (unless itemized above) are extra. Not available with special finance, lease and some other offers.

HOURS OF OPERATION

SALES

MONDAY	8:00 AM - 6:00 PM
TUESDAY	8:00 AM - 6:00 PM
WEDNESDAY	8:00 AM - 6:00 PM
THURSDAY	8:00 AM - 6:00 PM
FRIDAY	8:00 AM - 6:00 PM
SATURDAY	9:00 AM - 2:00 PM
SUNDAY	CLOSED

SERVICE

MONDAY	7:30 AM - 6:00 PM
TUESDAY	7:30 AM - 6:00 PM
WEDNESDAY	7:30 AM - 6:00 PM
THURSDAY	7:30 AM - 6:00 PM
FRIDAY	7:30 AM - 6:00 PM
SATURDAY	9:00 AM - 2:00 PM
SUNDAY	CLOSED



FERNELIUS CHEVROLET

113 S Bennett Rose City MI 48654 US

Sales (866) 490-5942

Service (866) 769-1962

www.ferneliuschevy.com

Park it in the CLASSIFIEDS



and watch it go fast!

HELP WANTED GENERAL

THE MORNING SUN NEWSPAPER

is accepting applications for Newspaper Delivery Carriers and Substitute Carriers. You MUST have a dependable vehicle and auto insurance.

IF INTERESTED,
PLEASE CALL:

Isabella County Area
Brenda@989-779-6156

Gratiot County Area
Ron@989-533-3106

AUCTIONS

ONLINE TOOL Auction Several Rolling Toolboxes - Precision, Mechanics, Power, More! Pre-view March 5, 2-6 pm 110 N. Saginaw St., Byron, MI 48418 BID March 5-9 at **NARHIAUCTIONS.COM** 810.266.6474

SNOWMOBILE AND MOTORSPORTS Auction Saturday, March 7, 2020. Buy or Sell! Information at www.snowmobileauction.com 517.369.1153 White Star Motorsports Auction US12 Bronson, MI

WANTED: COLLECTORS, RE-sellers, Bargain Hunters NOTICE: Weekly Online Estate Sales & Collector Auctions. Full Homes, Themed Collections, Commercial. Local Pickup or Worldwide Shipping! Check out our Current & Upcoming Auctions: EstateAuctionExperts.com

BARGAINS!

BECOME A PUBLISHED AUTHOR! Publications sold at all major secular & specialty Christian bookstores. Call Christian Faith Publishing for your FREE author submission kit. 1-866-945-3813

SAY HELLO to the most mobile marketplace in the area - the Insider Classifieds.

DENTAL INSURANCE from Physicians Mutual Insurance Company. NOT just a discount plan, REAL coverage for [350] procedures. Call 1-877-253-3162 for details. www.dental50plus.com/55 6118-0219

AUCTION ANNOUNCEMENTS

Quality Indoor Firearms Auction

Sat. March 14 @ 10:00 A.M.
This Excellent One Owner Sale Features;
(140) New, Used & Collector Firearms To Include;
(62) Handguns, (37) Rifles, (41) Shotguns. **Located;**
1 Mile South Of Gladwin On M-18 To The K Of C Hall (751 S. M-18). John Peck, Auctioneers (989) 428-8061.
To View A Complete Detailed Listing With (140) Photo's Visit johnpeckauctions.com

BARGAINS!

HAVE YOU or your child suffered serious LUNG ISSUES from JUULING or Vaping? Let our attorneys fight for you! Get the justice you deserve! 1-866-394-0514

RECENTLY DIAGNOSED with LUNG CANCER and 60+ years old? Call now! You and your family may be entitled to a SIGNIFICANT CASH AWARD. Call 855-603-1125 today. Free Consultation. No Risk.

****STOP STRUGGLING ON THE STAIRS**** Give your life a lift with an ACORN STAIRLIFT! Call now for \$250 OFF your stairlift purchase and a FREE DVD & brochure! 1-855-280-6240

FURNITURE

AN AMISH Log Headboard and Queen Pillow Top Mattress Set. Brand new - never used, sell all for \$275. Call anytime. 989-923-1278

IT'S THE QUICK response that keeps people coming back to classifieds. Call today to place your fast-action ad.

INJURED BY the heartburn medication Zantac? Were you or a loved one diagnosed with Cancer following use of Zantac? Call Attorney Charles Johnson. 1-800-535-5727

LAWN & GARDEN

WILLIAMS LAWN CARE. (989) 239-0810
MOWING, TREE TRIMMING, LANDSCAPING.

MISCELLANEOUS

A PLACE FOR MOM has helped over a million families find senior living. Our trusted local advisors help solutions to your unique needs at NO COST TO YOU! Call 517-348-0526

GENERAL ANNOUNCEMENTS

MISCELLANEOUS

ADJUSTABLE BED Brand New with Imcomfort gel memory foam mattress. Retail Cost \$3,995.00, sacrifice for \$575.00. Call for showing or delivery: 989-615-2951.

Buying old guitars, banjos & mandolins. Also stereo equipment, microphones & amplifiers . 989-621-0628

CASH FOR CARS: We Buy Any Condition Vehicle, 2002 and Newer. Competitive Offer! Nationwide FREE Pick Up! Call Now For A Free Quote! 888-366-5659

DISH Network. \$59.99 For 190 Channels. Add High Speed Internet for ONLY \$19.95/month. Call today for \$100 Gift Card! Best Value & Technology. FREE Installation. Call 1-866-950-6757 (some restrictions apply)

CLASSIFIED - The one-stop shopping place! Convenience, Selection, Values. Classified - your complete marketplace.

DONATE YOUR CAR TO CHARITY. Receive maximum value of write off for your taxes. Running or not! All conditions accepted. Free pickup. Call for details. 855-413-9672

Earthlink High Speed Internet. As Low As \$14.95/month (for the first 3 months.) Reliable High Speed Fiber Optic Technology. Stream Videos, Music and More! Call Earthlink Today 1-844-275-3510

ELIMINATE GUTTER cleaning forever! LeafFilter, the most advanced debris-blocking gutter protection. Schedule a FREE LeafFilter estimate today. 15% off Entire Purchase. 10% Senior & Military Discounts. Call 1-844-369-2501

GENERAL ANNOUNCEMENTS

TO ALL MID-MICHIGAN BUYER'S GUIDE CUSTOMERS

Deadline for Mid-Michigan Buyer's Guide classifieds is Wednesday before 5pm

If you need assistance placing classifieds, please call Cindy at 989-779-6115

Need help placing your classified ads

in the Morning Sun
OR
the Mid Michigan Buyers Guide?

I can help you with OBITUARIES, LEGALS, EMPLOYMENT, MEMORIALS, HOUSE FOR SALE OR RENT, ANYTHING YOU HAVE TO SELL, GARAGE SALES, ESTATE SALES.

Call Cindy at 989-779-6115 or email her at cterwilliger@michigannewspapers.com

GLADWIN ADULT EDUCATION

3982 W M-61

We Offer:
•GED
•High School Diploma Completion
•Career Exploration Classes
•Adult Online Continuing Education Classes

BEAVERTON ADULT EDUCATION

115 Park Lane

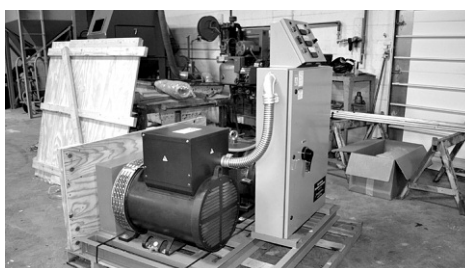
989-426-4442

"Helping Adults Prepare for the Future"

Find us on:
facebook.

AUCTION ANNOUNCEMENTS

AUCTION ANNOUNCEMENTS



ONLINE AUCTION: TUES, MARCH 3

Manufacturing & Fabrication Surplus
Selling a line of fabricating and manufacturing equipment items, including MIG welders, overhead crane systems, vacuum plate lifters, pneumatic production items, shelving, workbenches, and much more.
See website for full list.

1200 N Lansing St, Mt Pleasant, MI



Previews: Wed, February 19 (11am-3pm) & Mon, March 2 (1-5pm)

SHERIDAN Questions?
REALTY & AUCTION CO. Call us!
(517) 676-9800
www.SheridanAuctionService.com

MISCELLANEOUS

LIVE/SIMULCAST Farm Auction. Wednesday, March 11, 2020 @ 10:30 A.M. 7165 N. Center Rd., Saginaw, MI. Public inspection, Saturday, March 7, 9:00 A.M. to 3:00 P.M. Photos/Listing at : www.SykoraAuctions.com

MEET SINGLES RIGHT NOW! No paid operators, just real people like you. Browse greetings, exchange messages and connect live. Try it free. Call now: 855-247-5909

METAL ROOFING regular and shingle style, HALF OFF ON SPECIAL COLORS! Also, lifetime asphalt shingles available. Licensed and insured builders. Quality work for 40 years! 517-575-3695.

Reach Across Michigan with a MegaMarket Statewide Classified Ad! Over 1.9 million weekly in-home circulation just \$249 per week! Buy 3 ads - Get 1 Free! Call 800.783.0267

Stay in your home longer with an American Standard Walk-In Bathtub. Receive up to \$1,500 off, including a free toilet, and a lifetime warranty on the tub and installation! Call us at 1-855-271-8452

Vacation Cabins for Rent in Canada. Fish for abundant walleye, perch, northern pike. Boats, motors, gasoline included. For free brochure call Hugh 1-800-426-2550 www.CanadianFishing.com

VIAGRA & Cialis Alternative, 60 pills for \$99. 100 pills for \$150 FREE shipping. Money back guaranteed! Save Now! Call today 1-844-743-8144

AGRICULTURE & FARM

FARM DAYS FILTER SALE

NAPA OF MT. PLEASANT
(989-772-4442)
HYDRAULIC OIL & BATTERY
SPECIALS. MARCH 9-21, 2020.

BUILDING MATERIALS & SUPPLIES



BUILT BEST BARNs

Michigan's Largest Pole Barn Company
Best Quality, Best Service,
ORDER NOW for BEST PRICING!
License/Insured
1-877-802-9591 (Office)
989-205-2534 (Cell)

APARTMENTS FOR RENT (UNFURNISHED)

1 TO 6 PERSON APTS
Furnished/unfurnished
Short & Long Term Leases
(989) 772-2222
LiveWithUnited.com

ACTIVE ADULT LIVING

APARTMENTS FOR RENT (UNFURNISHED)



SHORT TERM AND LONG TERM OPTIONS

**3-24 Month Leases
Available**

4 Bedroom, 2.5 Baths

**1240 E Broomfield St
Mt Pleasant, MI 48858**

989-779-7900

CLASSIFIEDS hold many, many opportunities. They give opportunity for you to buy items, meet people, sell unwanted items, find housing, save money, earn a couple bucks, and much, much more.

PASSENGER CARS

2016 DODGE JOURNEY

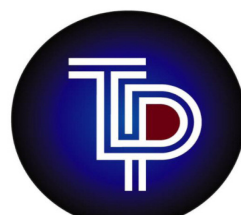
**All Wheel Drive,
heated leather, full
power, 3rd Rear Seat,
local trade**

**FANTASTIC
CONDITION!**

**ONLY \$16,995
or about \$259/mo.**

**Dick Sovia Auto Sales
(989) 828-6032
dicksovaautosales.com**

FARM - HEAVY EQUIPMENT & PARTS



**TRI-LAKES
PETROLEUM**

Buy Fuel Direct & Save

**Home Heating Oils
Gasoline-Diesel Fuels**

•Farm •Commercial
•Industrial
•Residential

Serving the entire
Central
Michigan Area

**Call Scott Capen
989-620-7527
trilakesllc.com**

ACTIVE ADULT LIVING

COLEMAN FIELDS ASSISTED LIVING

288 W. Old Orchard Trail, Coleman

Excellent Assisted Living ~ All-Inclusive Pricing

Coleman Fields offers all-Inclusive pricing that starts at \$3,100 per month. The cost of your room will not increase if your assistance needs increase.

For more information call Jodi at 989-442-4184 or visit www.colemanfields.com



ESTATE SALES

ESTATE SALES



ROY GUNDERSON ESTATE SALE 725 KANE ST MT.PLEASANT, MI. 48858

**THURSDAY MAR. 5TH 9-5:00
FRIDAY MAR. 6TH 9-4:00**

DIRECTIONS: FROM THE CORNER OF M-20/ EAST PICKARD RD. & NORTH RUSSELL ST. TURN SOUTH

O'HENRY MAPLE DINING TABLE/4 CHAIRS & 2 LEAVES;
2 MAPLE CAPTAIN CHAIRS; ETHAN ALLEN MAPLE CHINA HUTCH;
MAPLE COFFEE TABLE; END TABLE; MAPLE ROCKING CHAIR;
NORWALK FLORAL SOFA; VINTAGE MAGAZINE RACK; SEVERAL BOOKCASES; FRENCH PROVINCIAL MAKEUP TABLE; RATTAN PATIO SET; 2 CHAIRS, COFFEE TABLE, SOFA; SMALL GARDEN TABLE; DESK; FULL SIZE MAPLE FRAME & MATTRESS SET; KLING MAPLE CHEST; CARD TABLE SET; VINTAGE CAMERAS & PHOTOS; WHITE SEWING MACHINE/ CABINET; MAPLE SEWING CHEST; MILK GLASS & CRYSTAL; 1999 FRAMED "LAST PITCH" AT TIGER STADIUM; PINE SOFA, LOVESEAT, CHAIR, VINTAGE TRUNKS; (2)TWIN SIZE MATTRESS SET; GOLFING EQUIPMENT & SUPPLIES: CLUBS, SHAFTS, BALLS; OLDER TOYS & DOLLS; BISSELL RUG CLEANER; VACUUM; HOUSEHOLD ITEMS; CRAFTSMAN 4.5 HP MOWER/VACUUM LAWNMOWER; (2) GIRLS BIKES; YARD & HAND, ELECTRIC TOOLS;RECORDS COLLECTION; RADIO FLYER WAGON; & MORE!!

NOTE: THIS SALE IS PRE-PRICED SALE. ADS MORNING SUN & MID-MI BUYERS GUIDE, FACEBOOK.

OPEN 9:00 AM CASH

**CENTRAL ESTATE SALE SERVICE
PATTY & MIKE GOSTOLA 989-772-2053**

PASSENGER CARS

2017 BUICK ENCORE

**All Wheel Drive,
only 7,000 miles,
full power**

SHOW ROOM NEW!

**ONLY \$19,995
or about \$289/mo.**

**Dick Sovia Auto Sales
(989) 828-6032
dicksovaautosales.com**

2019 GMC TERRAIN SLE-2

**only 1,000 miles (not
even broke in yet) full
power,
Beautiful Graphite
Grey Metallic**

**COMPARE
ANYWHERE!
SAVE THOUSANDS!**

**ONLY \$24,995
or about \$349/mo.**

**Dick Sovia Auto Sales
(989) 828-6032
dicksovaautosales.com**

NEW BODY STYLE

**2019 Ram 1500 Crew
Cab**

**Big Horn Edition, only
9,000 miles, Hemi
Engine, Every
Possible Option!**

Save Over \$14,000!

LIKE NEW!

**ONLY \$37,995
or about \$549/mo.**

**Dick Sovia Auto Sales
(989) 828-6032
dicksovaautosales.com**

HOW TO WRITE a classified ad that sells: First - Be complete. Second - Include the price. And third - Be available. Call today and we will be happy to help you write the most effective ad.

PICKUP TRUCKS

2001 FORD Ranger, 3.0, 4WD, rebuilt transmission, new tires, shocks & brakes. \$2500. OBO (989)859-3224

PERSONALS

PAWN SHOP Buy, Sell, Pawn

**CASH FOR GUNS
CASH FOR GOLD
3 Month Pawn
3% + \$3 Per Month**

**Gladwin Trade & Sales
989-426-6811**



**NEED HELP?
CALL A LOCAL PROFESSIONAL
FROM OUR**

Professional Services Directory

HEALTH & FITNESS

OXYGEN - Anytime. Anywhere. No tanks to refill. No deliveries. The All-New Inogen One G4 is only 2.8 pounds! FAA approved! FREE info kit: 855-970-1066

VIAGRA AND CIALIS USERS! 100 Generic Pills SPECIAL \$99.00 FREE Shipping! 100% guaranteed. 24/7 CALL NOW! 888-835-7273 Hablamos Espanol

LANDSCAPE & TREE MAINTENANCE

ARBOR TREE SERVICE. Storm Damage, Landscaping, Tree Trimming & Removing. 20 Years Experience. Call 989-763-3830

RESTORATION SERVICES



QUALITY BARN RENOVATION & REPAIR. Foundation work, siding, cable jobs, roof's, any service you need for barn renovation. Free Estimates. Insured, Agricultural DBA (989)436-3732

tax Refund sale

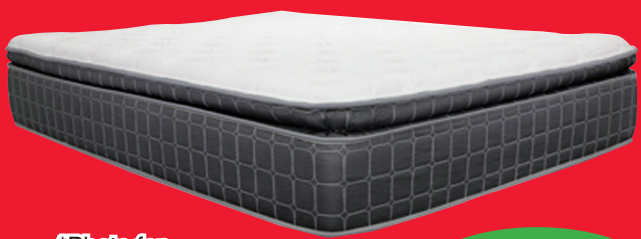
ONLY at West Branch Furniture



Serta *i*comfort

SAVE UP TO
\$700
On Select
iComfort Mattress Sets

QUEEN SIZE PILLOW TOP Mattress 2 Pc. Set



*Photo for
illustration
purposes only;
may not be exactly
as shown

\$299

	Twin Mattress	Full Mattress	Queen Mattress	King Mattress
WEST BRANCH FIRM OR EURO TOP	\$249	\$279	\$299	\$459
Serta <i>MajesticSleep</i> LEVEL 6 GOOD EURO TOP OR FIRM 805 POCKETED COIL	\$299	\$329	\$349	\$549
Serta <i>MajesticSleep</i> LEVEL 7 BETTER COMFORT FIRM OR PUSH COMFORT 850 POCKETED COIL	\$399	\$459	\$499	\$699
Serta <i>MajesticSleep</i> LEVEL 9 BEST LUXURY PLUSH OR EXTRA FIRM 850 POCKETED COIL	\$499	\$559	\$599	\$799
Serta <i>i</i> comfort HYBRID BLUE FUSION 100 HYBRID GEL MEMORY FOAM	\$659	\$919	\$1,099	\$1,599

*12 MONTHS NO INTEREST FINANCING

*NO CREDIT NEEDED FINANCING

FREE 90 DAY LAYAWAY

Ashley Queen Size Heads Up Adjustable Pillow Top Set



\$699

Ashley 6-Piece Dinette with Bench



\$444

Ashley Man Size Recliner



\$379



Lang 5 Pc Drawer chest

\$159

5-piece Livingroom set - Sofa, Loveseat, 2 end tables and cocktail table



**tables not as pictured

\$999

5-piece Livingroom set - Sofa, Loveseat, 2 end tables and cocktail table



**tables not as pictured

\$999

Micro Fiber Wall Away Recliner



\$179

Twin/Full Wood Bunkbed



drawers
sold
separately

\$289

Your Choice

5-piece Livingroom set - Sofa, Loveseat, 2 end tables and cocktail table



**tables not as pictured

\$999

5-piece Livingroom set - Sofa, Loveseat, 2 end tables and cocktail table



**tables not as pictured

\$999

Ashley Big Man's Power Recliner



Available
in 4-colors

\$449

Your Choice Ashley 63" Tv Console



\$349

Ashley Tulen Reclining Sofa



*available in
chocolate, gray
and mocha

\$569

Ashley Chaise Sofa



available in
7 colors

\$499

Ashley Bittersweet 4 pc Bedroom Set



(Dresser, mirror,
nightstand,
Queen Headboard)

\$699

*Financing available to qualifying buyers. Minimum purchase \$599 with approved credit. Not available on prior purchases. See store for details.

* Tables and lamps may not be as shown in picture.



136 S. Fifth St.
West Branch
located block south of
Mercantile Bank off Houghton Ave.
989-345-5326

www.westbranchfurnitureoutlet.com

***12 Months
No Interest**

**FURNITURE
LIFESTYLE**
BRAND SOURCE NATIONAL BUYING POWER

Find us on
facebook



"The Outlet Store That
Saves You More!"



Sunday 11-3 Mon.-Fri. 10-6 Sat. 10-5

SPRING 2020

ISABELLA CONSERVATION DISTRICT

TREE AND SHRUB AND FRUIT TREE ORDER BLANK

5979 E. Broadway, Mt. Pleasant, MI 48858

Ph # (989) 772-5927 ext. 3

HURRY!!

ORDERING

DEADLINE

IS APRIL 6

SEEDLINGS	NOTES	SIZE	50	100	250	500	1000	QUANTITY	COST
Red Pine	N, 12, 13, 14, 15, *	18"	\$50.00	\$65.00	\$180.00	\$250.00	\$370.00		
White Pine	N, 4, 5, 7, 10, E, F	12-15"	\$45.00	\$60.00	\$165.00	\$230.00	\$360.00		
Douglas Fir	12, 13	10-15"	\$45.00	\$60.00	\$165.00	\$230.00	\$360.00		
Blue Spruce	7, 12, 17, 18, *	10-15"	\$45.00	\$60.00	\$165.00	\$230.00	\$360.00		
White Spruce	N, 7, 8, 10, 16	10-15"	\$45.00	\$60.00	\$165.00	\$230.00	\$360.00		
Norway Spruce	5, 7, 18	10-15"	\$45.00	\$60.00	\$165.00	\$230.00	\$360.00		
Silky Dogwood	N, 7, 10, A	1-2'	\$55.00	\$70.00	\$190.00	\$270.00	\$390.00		
TRANSPLANTS			EACH	5	10	25	50	QUANTITY	COST
White Pine	N, 4, 5, 7, 10, E, F	18"	\$4.00	\$18.75	\$35.00	\$81.25	\$140.00		
Red Pine	N, 12, 13, 14, 15, *	2'	\$4.00	\$18.75	\$35.00	\$81.25	\$140.00		
Blue Spruce	7, 12, 17, 18, *	2'+	\$4.00	\$18.75	\$35.00	\$81.25	\$140.00		
White Spruce	N, 7, 8, 10, 16	2'+	\$4.00	\$18.75	\$35.00	\$81.25	\$140.00		
Norway Spruce	5, 7, 18	2'+	\$4.00	\$18.75	\$35.00	\$81.25	\$140.00		
White Cedar	N, 7, 10, 13, 16, A	2-3'	\$5.00	\$23.75	\$42.00	\$93.00	\$150.00		
Black Spruce	N, 7, 10, 16, 18	2-3'	\$6.00	\$28.75	\$55.00	\$131.25	\$237.50		
Hybrid Poplar	5, 13, 18	3-4'	\$4.00	\$18.75	\$35.00	\$81.25	\$140.00		
Bird & Butterfly Packet - Includes 2 each of the following: Butterfly bush, Lilac, Trumpet Vine, Rose of Sharon, and Rose Rugosa						\$15.00 each			
HARDWOODS	NOTES	SIZE	EACH	5	10	25	50	QUANTITY	COST
Red Maple	N, 5, 7, 10, 18, A	2-3'	\$4.50	\$21.25	\$35.00	\$81.25	\$150.00		
Sugar Maple	N, 7, 17, 18	2-3'	\$5.00	\$23.75	\$45.00	\$100.00	\$187.50		
White Oak	N, 8, 13, 18, *	2-3'	\$5.00	\$23.75	\$45.00	\$100.00	\$187.50		
Red Oak	N, 5, 8, 13, 18, *	1-2'	\$4.00	\$20.00	\$35.00	\$81.25	\$150.00		
Tuliptree	N, 2, 5, 15, 18	2-3'	\$4.50	\$21.25	\$35.00	\$81.25	\$150.00		
American Plum	N, 11, H	2-3'	\$6.00	\$28.75	\$55.00	\$131.00			
Mountain Ash	N, F, 10, A, 2	2-3'	\$6.50	\$31.25	\$60.00	\$143.00			
Serviceberry	N, 10, 23'	2-3'	\$6.00	\$28.75	\$55.00	\$131.00			
Willow-Weeping	N, 5, 10, 13	2-3'	\$6.50	\$31.25	\$60.00	\$143.00			
Sycamore	N, 5, 10, 18	2-3'	\$5.00	\$23.75	\$45.00	\$100.00			
White/Paper Birch	N, 7, 13, 15, 18	3-4'	\$4.00	\$20.00	\$35.00	\$81.25			
American Hazelnut	N, A, B	2-3'	\$6.50	\$31.25	\$60.00	\$143.00			
River Birch	N, 8, 13, 14	2-3'	\$4.50	\$21.25	\$35.00	\$81.25			
Larch/Tamarack	N, 7, 13	1-2'	\$4.50	\$21.25	\$35.00	\$81.25			
Black Walnut	N, 18, 13	2-3'	\$4.50	\$21.25	\$35.00	\$81.25			
American Chestnut	N, 13, 18	2-3'	\$4.50	\$21.25	\$35.00	\$81.25			
Redbud	N, 13, 15, 18	2-3'	\$5.00	\$23.75	\$45.00	\$100.00			
Swamp White Oak	N, 13	2-3'	\$5.00	\$23.75	\$45.00	\$100.00			

SHRUBS		EACH	5	10	25	NOTE	QUANTITY	COST
Silky Dogwood	2-3'	\$4.00	\$18.75	\$35.00	\$75.00	N, 13, 15, 18, *		
Red Osier Dogwood	2-3'	\$3.50	\$16.25	\$30.00	\$65.00	N, 5, 7, 10, 13, *		
Common Lilac	3-4'	\$4.00	\$18.75	\$35.00	\$75.00	13, 16, 17		
Rose Rugosa	2-3'	\$3.50	\$16.25	\$30.00	\$65.00	7, 13, 15, 18		
Rose of Sharon	2-3'	\$4.00	\$18.75	\$35.00	\$65.00	13, 18		
Fountain Grass Plugs		\$3.00	\$13.75	\$25.00	\$56.25	7, 13, 18		
Ninebark	3-4'	\$4.00	\$18.75	\$35.00	\$65.00	N, 7, 13, 15, A		
Butterfly Bush-root stock		\$3.00	\$13.75	\$25.00	\$56.25	13, 17, 18, G		
Trumpet Vine-root stock		\$3.00	\$13.75	\$25.00	\$56.25	13, 17, 18, G		
Elderberry, black	2-3'	\$4.50	\$21.25	\$40.00	\$93.75	N, 7, 13, 18, *		
Highbush Cranberry	1-2'	\$3.50	\$16.25	\$30.00	\$65.00	N, 7, 18, B		
Gray Dogwood	2-4'	\$4.50	\$21.25	\$40.00	\$93.75	N, 8, 13, B, C, E, F		
Forsythia	2-3'	\$4.50	\$21.25	\$40.00	\$93.75	N, 13, 17		
Blue Hydrangea	1-2'	\$4.50	\$21.25	\$40.00	\$93.75			
LIATRIS BULBS		Perineal	.30 CENTS EACH					
American Wildflower Mix - 1 oz. Covers 250 sq. ft.						\$3.50 oz.		
MILKWEED PACKETS - 1 for \$3.50 or 4 for \$10.00								
Common Milkweed - Approximately 100 seeds per packet								
Swamp Milkweed - Approximately 100 seeds per packet								
Prairie Milkweed - Approximately 50 seeds per packet								
Butterfly Weed - Approximately 100 seeds per packet								
Planting Gel - Mix 1 oz. with 1 gal of water. - Dips app. 50 seedlings						\$2.00 oz.		
Marking Flags						.20 ea.		
PLANTSKYDD - DEER AND RABBIT REPELLENT								
Plantskydd - 1 lb. granular treats app. 600 sq. ft.						\$12.95		
Plantskydd - 1 lb. powder treats app. 300 plants						\$29.95		
Plantskydd - 2.2 lb. powder treats app. 600 plants						\$49.95		
Plantskydd - 3 lb. granular shaker bag treats up to 1800 sq. ft.						\$26.95		
TOTAL								
ADD 6% SALES TAX								
TOTAL								

NOTES:
1. These trees must live in pairs to bear nuts.
2. Frost damage caused at the nursery.
3. Treat soil containing white grubs with Diazinon.
4. Plant in partial shade to discourage insect attack.
5. Fast grower
6. Spring planting recommended.
7. Shade tolerant
8. Brine tolerant
9. Alkaline tolerant
10. Tolerant of wet areas.
11. Fall planting recommended.
12. Not tolerant of wet areas.
13. Full sun
14. No shade tolerant
15. Does okay in well drained sandy soils.
16. Slow grower
17. Moderate grower
18. Prefers moist well drained soils

Payable to: Isabella Conservation District
Once purchased, it is unlawful to resell with roots attached. The District's liability ceases once trees/ shrubs are picked up. You will be notified when and where to pick up trees/shrubs.
Orders are not confirmed until paid for.

WILDLIFE PREFERENCES
A—Deer B—Ruffed Grouse
C—Cottontail Rabbit D—Pheasant E—Turkey
F—Quail G—Hummingbirds or butterflies
H—Human I—Deer Resistant
*Winter-bearing seed holders provide seed/fruit when snow covers normal food sources of birds and other wildlife

VARIETY		PURCHASE OF ONE	PURCHASE 2	PURCHASE 3 OR MORE	QUANTITY	TOTAL
APPLES						
Crimson Crisp	Mid Sept. to late Sept.	\$20.00	\$18.00 ea.	\$17.00 ea.		
Golden Delicious	Late Sept. to Mid-Oct.	\$20.00	\$18.00 ea.	\$17.00 ea.		
Gala-Ultama	Early Sept. to Mid-Sept.	\$20.00	\$18.00 ea.	\$17.00 ea.		
Red Fuji-Daybreak	Mid to late Sept.	\$20.00	\$18.00 ea.	\$17.00 ea.		
Red Delicious-Super Chief	Late Sept. to Mid-Oct.	\$20.00	\$18.00 ea.	\$17.00 ea.		
Granny Smith-Gold Rush	Mid to Late Oct.	\$20.00	\$18.00 ea.	\$17.00 ea.		
Enterprise	Mid Oct.	\$20.00	\$18.00 ea.	\$17.00 ea.		
Liberty	Mid Sept. to Early Oct.	\$20.00	\$18.00 ea.	\$17.00 ea.		
PEACHES						
Red Haven-self-pollinating	Approx. July 10th	\$20.00	\$18.00 ea.	\$17.00 ea.		
PF-Paul Friday	Early to Mid-Aug.	\$20.00	\$18.00 ea.	\$17.00 ea.		

VARIETY		PURCHASE OF ONE	PURCHASE 2	PURCHASE 3 OR MORE	QUANTITY	TOTAL
PEARS						
Bartlett	Mid-Aug. to early Sept.	\$20.00	\$18.00 ea.	\$17.00 ea.		
Harrow Sweet	Early to Mid Sept.	\$20.00	\$18.00 ea.	\$17.00 ea.		
PLUMS						
New York 9	Early to Mid-Sept.	\$22.00	\$20.00 ea.	\$19.00 ea.		
Stanley	Early to Mid-Sept.	\$22.00	\$20.00 ea.	\$19.00 ea.		
CHERRIES						
Emperor Francis-light sweet	Late June	\$22.00	\$20.00 ea.	\$19.00 ea.		
Kristen-Dark sweet	Early July	\$22.00	\$20.00 ea.	\$19.00 ea.		
Planting Gel-Root dip		\$2.00/oz.				
				SUB TOTAL		
				ADD 6% SALES TAX		
				TOTAL		

FRUIT TREE INFO

These fruit trees were chosen for our climate because of hardiness. When they arrive they will be approximately 5/8" in diameter and 5-6' tall with lateral branches. They are expected to produce fruit in 2-4 years. They will grow best in full sun and in loamy, well drained soil. Many fruit tree varieties are not self-pollinating, it may be necessary to plant 2 different varieties of tree. Call our office at 989-772-5927 Ext. 3 for more info.

- Make checks or money orders payable to: Isabella Conservation District or ICD
- Be sure to add 6% sales tax
- It is unlawful for these plants to be sold with roots attached after being purchased from the district. In accordance with the Insect Pest and Plant Disease Act, P.A. 189 of 1931 amended.
- The District's liability ceases once the trees and shrubs are picked up.
- You will be notified by postcard for pickup date.
Orders are not confirmed until paid for.
Orders are filled on a first come, first serve basis.

VISA MASTERCARD DISCOVER AMERICAN EXPRESS

Name _____ Phone _____

Address _____

City _____ State _____ Zip _____

Card# _____

3 Digit Security Code # on back of card _____ Exp. Date _____

Email _____

The Isabella Conservation District

Is hosting a

Free Electronic Waste Collection

Saturday, May 9, 2020 • 8:00AM—12:00PM

This collection is free to Isabella County and Non-Isabella County Residents.

Sponsored and Funded by:

At the Isabella County Fairgrounds

500 N. Mission Rd., Mt. Pleasant, MI

- Items that will be accepted:
- Desktop Computers
 - Laptop Computers
 - Tablets
 - Computer Monitors

- Televisions-all types
 - Desktop Printers
 - Microwaves
 - Desktop Fax Machines

- Computer Keyboards/Mice
 - Gaming Consoles
 - DVD Players
 - VCRS

- Desktop Scanners
 - Cell Phones

ISABELLA CONSERVATION DISTRICT

5979 E. Broadway, Mt. Pleasant, MI 48858 • (989) 772-5927