

Mid-Michigan Buyers Guide

SUNDAY, JUNE 7, 2020

Serving Clare, Gladwin, Gratiot, Isabella, Montcalm, & Southern Roscommon Counties

Morning Star Publishing Company powered by digitalfirst



**DINING ROOM WILL BE RE-OPENING
MONDAY, JUNE 8TH.**

HOURS:

12-8 Sunday –Thursday

12-9 Friday & Saturday

We're back!

**PLEASE PRACTICE
SOCIAL DISTANCING
AND WEAR REQUIRED
FACE MASK UNTIL
YOU ARE SEATED.
THANK YOU!**

CONNECT WITH US!



2424 S Mission St. • Mount Pleasant, MI • 989-772-5002



Steve's Country Market

989-539-3110 3170 North Clare Ave., Harrison
44 Feet of Old Fashioned Meat Counter with Good Old Fashioned Service

New Hours: Sun. - Mon. 8-6 Bridge Card & WIC Accepted

YES WE'RE OPEN!

We are diligently working with our suppliers to keep our market stocked during this crisis. Our top priority is keeping our community fed and healthy.



BUY LOCAL!

AND KEEP YOUR DOLLARS AT HOME!

DON'T DRINK & DRIVE



Flynn Lumber

"Building Community"



Free Computer Color Matching

We Can Help You With All Of Your Painting Needs!

BEST LOOK DECK AND SIDING STAIN

		
BEST LOOK Exterior Solid Color Stain \$29.99 gl. 794929 794945 772840	BEST LOOK Exterior Latex Acrylic Semi-Transparent Stain \$29.99 gl. 772865	BEST LOOK Exterior Latex Oil-Based Semi-Transparent Stain \$31.99 gl. 778718

Sale Effective June 7th - June 13th

Flynn Lumber

New Store Hours
Monday – Saturday 7:30 AM – 4:30 PM • Closed Sunday
2465 W. M-61, Gladwin, MI 48624 • 989-426-8861



Chickens

Small Farm Raised
GMO-free
Free range
Butchered: **\$14**

Order now
Two Guys And A Gal
989-304-0077

Ask for Corinna

Ask me about fresh local vegetables and fruits and flowers in season, honey, maple syrup, eggs, cheese, fresh baked, bread or pies.

CONGRATULATIONS

Graduates

Country Corner MARKET

Bulk Food • Deli

2 Miles South of Rosebush • 2020 North Mission Mt. Pleasant • 989-433-8200
countrycornermarket.net

8:30am-5:30pm, Monday-Thursday
8:30am-7:00pm, Friday • 8:30am-4pm, Saturday

Large Selection of Freezer Food at Discounted Prices

SPECIALS OF THE WEEK

Great Selection of Bulk Foods
We Accept Bridge Cards & All Major Credit Cards

Walnut Creek **Sharp Cheddar Cheese** **Sale \$4.49 Reg. \$4.99**

Walnut Creek **Rotisserie Chicken** **Sale \$4.39 Reg. \$4.89**

MORE SPECIALS

Walnut Creek Salads **Baked Potato and Pasta Rotelli** **Sale \$2.29 Reg. \$2.79**

Frozen Cake Rolls 6 Varieties **Sale \$4.99 Reg. \$5.49**

Walnut Creek **Twists** **Sale \$1.39 Reg. \$1.59**

Smokey Corn Chips With Flax **20% off**

Coffee of the week: Fog Mountain

GET MORE BANG FOR YOUR BUCKS

GOOD, CLEAN, QUALITY PRE OWNED MERCHANDISE

Jewelry **TVs** **Wii, Xbox One, PS4**

Musical Instruments **Paintball and Airsoft** **Tools**

Firearms and Muzzle Loader Gear

DIRT CHEAP • CAR AUDIO • NEW & USED

Tested & Inspected. Why Pay New Prices?

GLADWIN TRADE & SALES

1-989-426-6811
1739 N. State St. • Gladwin

We would be happy to bring you the car of your dreams to test drive! Call us...

CERTIFIED 1.9% UP TO 36 Months

GM Certified Pre-owned Vehicles = 2 Oil Changes & Tire Rotations in 2 years + 12 Month or 12,000 Mile Bumper to Bumper Warranty

USED CARS		USED SUVS		USED TRUCKS		USED VANS	
2018 CHEVY CRUZE Black, 5 Door, Hatchback, Heated Seats, Rear Camera 7,000 Miles, Certified	\$15,900	2020 BUICK ENCLAVE AWD White, 16,000 Miles	\$38,900	2017 GMC YUKON SLT 4X4 Burgundy, 73,000 Miles 1-Owner	\$36,900	2019 GMC CANYON CREW CAB White, 4x4, SLE, 19,000 Miles	\$30,900
2017 BUICK LACROSSE CXL Silver, 17,000 Miles, Loaded	\$24,900	2020 EQUINOX AWD Black, 11,000 Miles, 4 Cyl, Warranty	\$26,900	2017 JEEP GRAND CHEROKEE Silver, 34,000 Miles, 4x4	\$27,900	2018 GMC SIERRA CREW CAB SLE w/Buckets, 72,000 Miles, Silver	\$31,900
2016 BUICK LACROSSE Silver, New Tires, 66,000 Miles, Locally Owned	\$16,900	2019 CADILLAC XT5 AWD Sunroof Silver, 32,000 Miles	\$34,900	2017 GMC ACADIA LIMITED Champagne, 32,000 Miles, Loaded	\$26,900	2017 GMC SIERRA CREW CAB Diamond White, SLT 5.3 V8, 82,000 Miles	\$31,900
2015 FORD FOCUS RED 4Cyl, 113,000 Miles, Great Transportation	\$4,900	2019 JEEP TRAILHAWK 4X4 Burgundy, 20,000 Miles	\$24,900	2017 GMC ACADIA SLT Burgundy, AWD, 39,000 Miles	\$26,900	2017 GMC ALL TERRAIN CREW CAB 56,000 Miles, 4x4, Burgundy	\$31,900
2014 CADILLAC XTS All Wheel Drive, White, 87,000 Miles, 1-Owner	\$16,900	2018 CHEVY TAHOE 4X4 LT Blue, 34,000 Miles, Loaded, New Tires	\$43,900	2017 BUICK ENCLAVE AWD Leather, 30,000 Miles, Silver	\$25,900	2016 GMC SIERRA CREW CAB Satin Steel, 4x4, 5.3 V8, SLE, New Tires, With Leather Heated Seats, 70,000 Miles	\$27,900
2013 CHEVY IMPALA Silver, 73,000 Miles, V6	\$10,900	2018 GMC TERRAIN 23,000 Miles, AWD, Gray, Sunroof	\$21,900	2017 GMC ACADIA LIMITED All Wheel Drive, 69,000 Miles SLT	\$23,900	2016 GMC SIERRA DOUBLE CAB SLE 5.3 V8, Black, 74,000 Miles, 1-Owner	\$26,900
		2018 NISSAN ROGUE SL4W Gray, 23,000 Miles	\$21,900	2017 GMC TERRAIN AWD SLT Grey, 37,000 Miles, Sunroof	\$20,900	2015 GMC SIERRA CREW CAB SLT 70,000 Miles, Burgundy, V-8	\$28,900
		2018 BUICK ENCORE Silver, FWD, 19,000 Miles, Rear Camera	\$19,900	2017 BUICK ENCORE AWD Grey, 21,000 Miles	\$18,900	2014 GMC CREW SLT White, 89,000 Miles, Leather	\$26,900
		2018 BUICK ENCORE Coppertino, 30,000 Miles, FWD, 1-Owner	\$19,900	2017 BUICK ENCORE FWD White, 29,000 Miles	\$16,900	2014 CHEVY SILVERADO CREW CAB LT Black, 5.3, 82,000 Miles, V6, New Tires, Leveling Kit	\$25,900
		2017 CHEVY SUBURBAN 4X4 Premier Model, Tungsten Metallic, Sunroof, Navigation, 27,000 Miles	\$47,900	2016 BUICK ENVISION PREMIUM 1 AWD, Silver, 26,000 Miles	\$24,900	2013 GMC 1-TON CREW CAB SLT DURAMAX DIESEL 190,000 Miles, Black	\$28,900
				2016 RED ACADIA SLT 63,000 Miles, Loaded	\$23,900	2011 GMC SIERRA 2500 EXT. CAB 4X4 White, 146,000 Miles	\$14,900
				2016 CHEVY TRAVERSE LT Black, AWD, 7 Passenger, 62,000 Miles	\$21,900	2010 DODGE RAM Black, 135,000 Miles, 7-Ton, 4X4, Cummings, Diesel, Leather Sunroof	\$26,900
				2016 CHEVY EQUINOX LT FWD Black, 53,000 Miles	\$15,900		
				2016 CHEVY EQUINOX LT Blue, 53,000 Miles, FWD	\$15,900		
				2016 GMC TERRAIN FWD SLE 68,000 Miles, 4 Cyl, Silver	\$14,900		
				2015 FORD EDGE Green Gray, Well Equipped, SEL Pkg, 53,000 Miles	\$16,900		
				2013 GMC TERRAIN SLT Black, 61,000 Miles	\$13,900		
				2019 CHEVY DOUBLE CAB LT 4X4 Brown, 20,000 Miles, 20" Wheels	\$30,900		

BENCHLEY BROS., INC.

1 Mile East of Doherty • US-10, Clare • Sales (989) 386-9900

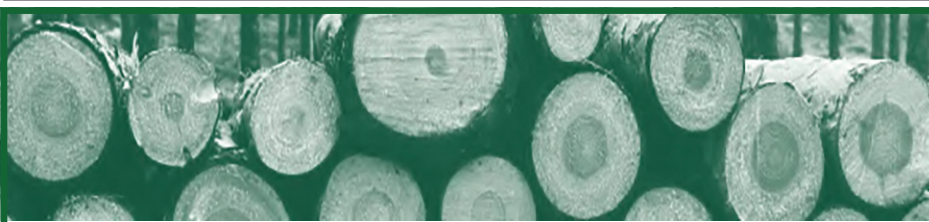
For more info log on to: www.benchleybros.com

Parts & Service (989) 386-3197

HOURS
8-6 Mon-Fri
9-2 Sat



Specializing in
GM Certified
USED VEHICLES



Horn Logging Co.

4490 N. 41 Rd • Manton, MI 49663

**WE BUY ALL
STANDING TIMBER
SELECT HARVEST
SUSTAINABLE FOREST
MANAGEMENT**



**FIREWOOD AVAILABLE
BY THE TRUCK LOAD
PLEASE CALL FOR
AVAILABILITY AND PRICING
(231) 920-0197 • (231) 920-6270
hornloggingcompany@gmail.com**

A Greener Approach to Affordable Housing

Heather Court Tartan Terrace
400 E. Warwick Dr., Alma 423 Gratiot Ave., Alma

Heather Court & Tartan Terrace
1 bedroom apartments for
Elderly & Disabled
Amenities include:

- * Laundry facility on site
- * Utilities included
- * Monthly Activities/Outings
- * Secured Building/Surveillance
- * 24 Hour Maintenance
- * Reduced Cable fee
- * Smoke-Free Policy

Rent is based on 30% of monthly gross income.

Hampton Park
on Penrith Street, Alma
Forest Glen
on Euclid Ave., Alma

Hampton Park & Forest Glen have
3 & 4 bedroom family apartments
Must qualify under HUD guidelines as
a low-income household.

Alma Housing Commission
is accepting applicants for
1, 3 & 4 bedroom apartments.

989-463-4200

Downloadable application
@ www.ci.alma.mi.us
or stop in for an application

400 E. Warwick Dr; Alma

Office Hours: Mon. - Fri.,
9AM - Noon and 1:30 - 4pm



**Housing Choice Voucher Program
is now OPEN!
No application fee**

**Do you
have a
car for
sale?**



How about
a boat?

Or maybe some
furniture?

Call to place a
classified ad
with one of
our helpful
representatives
& sell your
no longer
wanted items
FAST!

RE/MAX RIVER HAVEN, INC.
Open Seven Days
a Week to Serve You
www.riverhavenhomes.com • Wayne R. Walts – Broker

Sugar Springs Office 1415 W. Sugar River Rd. • Gladwin 989-426-9239
Wixom Lake Office 1239 Estey Rd. • Beaverton, MI 48624 989-435-7755
Main Office 777 W. Cedar • Riverwalk Place 989-426-6893

**We have a great selection of AFFORDABLE HOMES and LUXURY HOMES.
Contact one of our offices and talk to an experienced agent today!**

 \$39,900 MLS#172975	 \$154,700 MLS#172971	 \$299,900 MLS#172972
----------------------------	-----------------------------	-----------------------------



KOHLER LuxStone Shower Systems



Customizable Accessories

Bath Options

Ultra-Low Step-In Height

Lifetime Finish

KOHLER
Designer & Safety Showers

**50% OFF
INSTALLATION**

PLUS, ENJOY A BONUS OFFER OF

**NO PAYMENTS UNTIL
2021!**

- **Durable Materials** for Long-Lasting Beauty
- **Low-Maintenance** Shower Walls
- Quality You **Expect From Kohler**
- Accessories to **Personalize Your Shower**
- **Safety-Focused** Design Features
- **Quick, Professional** Installation
- **Lifetime Warranty**
- **Affordable** Financing



**NEW BATH
TODAY**
KOHLER. AUTHORIZED DEALER

SET-UP YOUR FREE DESIGN-CONSULTATION TODAY!

(248) 886-4991

WWW.NEWBATHTODAY.COM



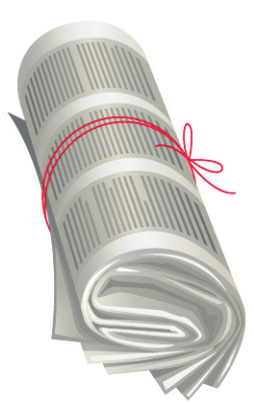
ASK ABOUT OUR
WALK-IN TUBS



*Cannot be combined with any other offer. Previous sales excluded. Good at initial presentation only. Half/50% off Installation plus pay nothing until 2021! GS plan 3108 No money due at signing.

Sell!
Shop!
Hunt for a job!

And there's so much more!
Call and the Classified Department can help you place your ad today!




Give your home the protection it deserves.

Maury S Irwin, Agent
1011 N McEwan Street
Clare
Bus: 989-386-4141
maury.irwin.l8gz@statefarm.com

Your home is where you make some of your best memories, and that's worth protecting. I'm here to help.
LET'S TALK TODAY.



State Farm Fire and Casualty Company, State Farm General Insurance Company, Bloomington, IL
State Farm Florida Insurance Company, Winter Haven, FL
State Farm Lloyds, Richardson, TX
1708136



PAST ITS PEAK or shabby chic?

SELL IT IN THE CLASSIFIEDS!



DEWEY'S TRADING POST

Maple Rapids • 682-4158
Monday-Saturday: 8 a.m. - 7 p.m.
Closed Sunday

Dewey's Trading Post has opened up to the public again. We are open our normal hours 8:00 a.m. - 7:00 p.m. Please wear a mask and follow social distancing guidelines as much as possible.

For those of you who still do not want to come in, we will continue curbside service. We will still accept phone (989) 682-4158/Facebook message orders, and you may pick up at the curb.

Thank you for your support through this time. You have been amazing!

DeweysTradingPost.biz
LIKE us on Facebook & see our WEEKLY SPECIALS!



HERSHBERGER'S PRO HARDWARE

Your project headquarters!
BUILDING SUPPLIES
Serving You For 15 Years!

CONTRACTOR REFERRALS AVAILABLE.



Vinyl fencing, Privacy, Picket & Posted Rail Sales & Installation

We Will Deliver To Your Door!

New Homes, Garages, Pole Barns & Decks

Call Or Fax Your Lists Or Bring In Your Prints, Plans & Ideas And We Will Provide You With A Quote For Your Projects.

10289 N. Leaton Rd., Clare
(989) 386-5338 • (989) 386-9331 Fax Service

Lambert's Meat Market and Bakery

Taste the difference "FRESH" makes!

624 E. Cedar Ave., Gladwin (next to Family Dollar) **989-246-1850**



Hours: Monday-Friday 8-6:30 • Saturday 8-6 • Sunday 8-4:30 • Sale Dates: June 8 - June 12, 2020

CURBSIDE SERVICE AVAILABLE, CALL STORE FOR DETAILS.



LAMBERT'S WILL BE CLOSING FROM 1-1:30 PM DAILY TO DO A THOROUGH DISINFECTING OF OUR STORE.

10LBS OR MORE!

Believe on the Lord Jesus Christ and thou shalt be saved....Acts 16:31 

80% Lean Ground Beef from Chuck  \$3.79 lb.	USDA Choice Denver Steaks or English Roast  \$4.59 lb.	Boneless Chicken Breast  \$1.49 lb.	Pork Steak  \$1.69 lb.	Pork Strip  \$1.69 lb.	Breakfast Sausage or Shoulder Roast  \$1.69 lb.	
Center Cut Pork Chops  \$2.49 lb.	Platter Bacon  \$3.39 lb.	Wayside Bacon  \$2.49 10 lb.	Pollock Fillets  \$1.99 10 lb.	Chicken Nuggets  \$9.99 5lb.	French Fries  \$4.99 5 lb.	
Frozen Cryovac USDA Choice NY Strip Steaks  \$8.99 lb.	Frozen Cryovac USDA Choice Ribeye Steaks  \$9.99 lb.	1/2 lb Frozen Ground Round Pattie  \$5.99 lb.	Marinated Chicken Breast  \$2.99 lb.	Marinated Steaks  \$7.99 lb.	DELI AND BAKERY DEALS	
Lambert's own Horseradish cheddar or Blueberry maple Bacon Brats  \$3.69 lb.	Stuffed Boneless Pork Chops  \$3.99 lb.	Cod Loins  \$5.99 lb.	Zander Perch  \$7.99 lb.	Lambert's own white bread  \$1.49 ea.	Lambert's own Brat Buns  \$1.69 4 ct.	
				Dearborn Off The Bone Ham  \$3.99 lb.	Deli Provolone Cheese  \$4.49 lb.	

Sale prices subject to change based upon national emergencies and pandemics due to product shortages • No Rainchecks • Not Responsible for Printing Errors



Auctions

SYKORAAUCTIONS.COM PRESENTS!
ON-SITE AG AUCTION
GENSCH TRUST FARM AUCTION

4798 S. MERIDIAN RD. (M-30) MERRILL, MI 48637

IN ORDER TO SETTLE THE CHESTER & MARGARET GENSCH FAMILY TRUST, THE FOLLOWING ITEMS WILL SELL AT A **LIVE ON-SITE AUCTION** HELD AT THE FARM LOCATED 2 MILES WEST OF MERRILL, MI. ON M-46 THEN NORTH 4 1/2 MILES TO 4798 S. MERIDIAN RD. (M-30) (MIDLAND COUNTY)

SATURDAY JUNE 13, 2020 @ 10:00 AM SHARP!

RAIN OR SHINE! - BE ON TIME!

TRACTORS
 1980 WHITE 2-105 DSL. TRACTOR-1975 IHC 766 DSL.
 TRACTOR-1953 FARMALL SUPER M GAS TRACTOR
 COMBINE JD 6600 & HEADS
 FARM SHOP/LAWN & GARDEN ITEMS
 2 GRAIN TRUCKS
 99 CHEVY 4X4 PICKUP
 20+ PCS OF FARM MACHINERY



JEWELRY WAGON WITH MISC. FARM & SHOP SMALLS!

CHESTER & MARGARET GENSCH FAMILY TRUST
PHIL & BEVERLY NEITZKE

4798 S. MERIDIAN RD. (M-30) MERRILL, MI 48637

SYKORA AUCTION SERVICE INC.

Scott Sykora, Auctioneer • (989) 386-9694

John McConnell, Auctioneer • (989) 429-0444

Colt Johnson, Auctioneer

Clare, Michigan • Visit our website www.sykorauctions.com



SYKORAAUCTIONS.COM PRESENTS!

FARM ESTATE AUCTION

AL GOODHALL ESTATE @ 2266 S. JEROME RD. ITHACA, MI. 48847

FRIDAY JUNE 12, 2020 @ 10:00 AM

RAIN OR SHINE! BE ON TIME! INSPECTION ON MACHINERY WEEK OF AUCTION!

TRACTORS

1980 JD 4440 2WD TRACTOR
 1976 JD 4430 2WD TRACTOR
 CASE 580B LOADER/BACKHOE
 SPRAYER & TENDER TRUCK
 FULL LINE OF FARM MACHINERY



TILE EQUIPMENT

OUTDOOR & SHOP ITEMS

1995 HARLEY DAVIDSON FXDL MOTORCYCLE
 2002 SOUTHWEST EXPRESS 6'X10' ENCLOSED S/A TRAILER,
 HARLEY HAULER
 YAMAHA RHINO 4X4
BOAT
 1993 20' RINKER SPEED BOAT FAST & PRETTY!
PICKUP/CONVERTIBLE/TRAILERS
 1999 FORD F-150 XLT 4X4 PICKUP
 1985 CHEVY CAVALIER CONVERTIBLE
LOTS OF SHOP TOOLS & MISC. FROM AROUND THE FARM



MANY BOX LOTS OF RELATED SHOP TOOLS AND POWER HAND TOOLS!
 IF YOU FEEL SICK OR FEARFUL PLEASE STAY @ HOME!

AL GOODHALL ESTATE

2266 S. JEROME RD. ITHACA, MI. 48847

SYKORA AUCTION SERVICE INC.

Scott Sykora, Auctioneer • (989) 386-9694

John McConnell, Auctioneer • (989) 429-0444

Colt Johnson, Auctioneer

Clare, Michigan • Visit our website www.sykorauctions.com



RAU FARM ESTATE AUCTION

In Order To Settle The Estate Of Mike & Evelyn Rau, The Following Will Sell At Public Auction. Located: 3 Miles South Of West Branch On M-30 To Rau Rd., Then East To The First Farm On The South Side Of The Rd. OR From I-75 & Cook Rd. (West Branch Outlet Mall, Exit #212), Go South 1 Mile On Cook Rd. To Rau Rd. Then West 2 Miles.

West Branch, MI

Saturday June 13, 2020 • 10:00 A.M.

(14) Tractors, Wheel Loader, Skidder, Fork Truck & Farm Machinery: J.D. 4040 Diesel Tractor, Quad Range Trans., 4 Post Canopy, 6,300 Hrs. • J.D. 3020 Diesel Tractor • J.D. 3010 Diesel Tractor • J.D. MT Tractor, N.F. • J.D. 60 Gas Tractor, N.F. • Ford 4000 Industrial Tractor W/ Loader & Ford Backhoe • Ford Jubilee Gas Tractor, 3 Pt. • Kubota BX1800 Sub-Compact Diesel Tractor, 4W.D., P.S. W/ Loader & 60" Under Mtd. Mower • Shandong TS354C Compact 4 W.D. Diesel Tractor W/ Loader, 557 Hrs. • Farmall H Tractor, N.F. • Ford Ferguson 30 Gas Tractor • Massey Harris 33 Tractor • Huber Tri Wheel Tractor W/ Waukesha Motor • McCormick Deering 10-20 Tractor • M.F. Wheel Loader, Perkins Dsl., Front Steer W/ 1 1/2 Yd. Bucket • Case 580 CK Fork Truck, 4,000 Lb. Cap. • 1973 Tree Farmer C4D Skidder, Ford Diesel, Runs Great & One Owner • (3) I.H. Farmall F-14 Tractors, For Parts • **Farm Machinery To Include:** Case International #8430 Round Baler, Makes 4x4 Bales • N.H. #488 Haybine • N.H. #268 Square Baler • N.H. 5 Bar Hay Rake • N.H. 352 Grinder Mixer • Gehl 55 Grinder/Mixer • OMC Grinder/Mixer • Sun-Master 12' P.T.O. Stalk Chopper • 24' Hay Elevator W/ Motor • N.I. #212 P.T.O. Manure Spreader, Good Cond. • N.I. #3231 Row Corn Picker • J.D. 10' Disc • M.F. #52 10 1/2' Disc • Brillion 9' Cultipacker • Oliver 13 Hole Grain Drill • (2) N.H. 38 Crop Chopper • J.D. #6 Chopper • J.D. 900 (12) Cultivator • Dearborn 3 Pt. 2 Bottom Plow • (6) 16' Farm Wagons • (4) Gravity Wagons • (3) Running Gears • 2 Section Drag Pull Type • 3 Pt. 2 Section Drag • (2) Pull Type 3 Sec. Drags • Other Drags • P.T.O. Sickle Bar Mower • 3 Pt. Fertilizer Spreader • Many More Misc. Farm Machinery Pcs. • **Livestock Trailer, Utility Trailers, Cattle Feeder Wagons, Shop Tools & Lots Of Misc. Items Around The Farm:** Bison 16' T.A. Livestock Trailer • 6' X 16' T.A. Trailer, Pinto Hitch • 6' x 12' Horse Trailer • 6' X 14' Trailer • 4 1/2' x 14' T.A. Trailer 4 1/2' X 8' Utility Trailer • (4) Farm Built Cattle Feeder Wagons On Running Gears • Portable 20" Board Edger • Ford F-6 Dually Self Loader Truck W/ 239 Ford Flathead V-8 • J.D. 345 Roto Boom On A Chevy 100 Dually Truck • **Large Selection Of Shop Tools To Include:** Craftsman Roll Around Tool Cabinet W/ Quon. Of Tools • Acetylene Torch Set • (3) Lincoln 225 Amp Welders • Coleman 5 H.P. Air Compressor W/ 20 Gallon Tank • Craftsman 5 H.P. Air Compressor W/ 20 Gallon Tank • Milwaukee Floor Model Drill Press • Grizzly Band Saw • RBI 8" Wood Planer • Chain Falls & Chain Hoists • Sawzall • Hilti Drywall Screw Gun • Several Small Tool Boxes • Several Pneumatic Power Tools • Cordless Grease Gun • Carpenter Squares • Tin Snips • C-Clamps • Files & Rasps • Bottle Jacks • Cut Off Grinders • Numerous Wrenches • H.D. Bench Vise • Several Chains • Several Chain Binders • Large Quan. Of Rough Sawn & Planed Lumber • Allis-Chalmers Gas Engine, Parts • Scaffolding • Many Tires & Rims • Livestock Tank • Quan. Of Cyclone Fencing • Propane Brush Burner Torch • Numerous Pipe Fittings • Squirrel Cage Fans • Tons Of Hardware • 3 Pt. H.D. Wood Splitter • 3 Yd. Bucket • Numerous Scrap, Copper & Wiring, Radiators • Several Farm Wagons Loaded With Items • **Hit N Miss Engines, (4) Vintage Snowmobiles, Large Amount Of Antiques, Farm Primitives & Collectibles (Very Partial Listing):** I.H. 3 H.P. Hit N Miss Engine • I.H. 1 1/2 H.P. Hit N Miss Engine • McCormick Deering 1 1/2 H.P. Hit N Miss Engine • (4) Scorpion Snowmobiles From 1968 & Up, All One Owner & In Running Cond. • 1972 Suzuki 90 Motorcycle, One Owner & Good Cond. • 6' Primitive Wooden Sled • Other Old Runner Sleds • (2) Primitive Harness Makers Stands • Large Cast Iron Scalding Kettle • Walk Behind Cultivators • Scythes • Chicken Crate • Carpenter Box • Clipper Fanning Mill • Farm Platform Scales • Cider Press • Little Wonder Walk Be-hind Planter • (2) Corn Shellers • Many Old Wooden Handle Yard Tools • Wooden Brine Barrel • 2 Man Saws • Kraut Kutter • I.H. Peddle Tractor • Enterprise #12 Coffee Grinder • Large Copper Apple Butter Kettle W/ Handle • Clipper Bean Sorter • Hall Tree • (3) Barn Beam Drills • Lots Of Wooden Ware • Kraut Cutters • (2) Wooden Butter Churns • Daisy Butter Churn • Other Butter Churns • Hump Back Trunk • Blue Canning Jars • Childs Chalkboard & Picnic Basket • Old Medicine Bottles • Misc. Old China • Smoking Stand • Library Table • Several Wooden Chairs; Including Children's Chairs • Cookie Jars • Chamber Pots • Pitcher & Basins • Old Fishing Rods • Numerous Crocks & Jugs • Wall Mtd. Wrought Iron Lamp Holder • (4) Mantel Clocks • (4) Wall Clocks • Pie Safe • Morning Glory Horns • Cuckoo Clock • Cow Bells • Ideal Double Wash Tub • Block Planes • Sad Irons • Ax Heads • Primitive Tools • Sausage Press • Copper Boiler • Several Old Baskets • Wooden Doors W/ Porcelain Knobs • Grain Cradles • Several Advertising Gas Cans • Hand Corn Planters • Several Lanterns & Oil Lamps • Old Bicycles • Misc. Pullies • (2) Old Victrola • Horse Collars • Harnesses • Asst. Implement Seats • Old Hand Tools • Several Saw Blades To 36" • **This Is A Partial Listing! Auctioneers Note:** Plan To Attend This Good Old Fashion Live Public Auction At The Rau Centennial Farm In West Branch. This Listing Represents Only A Partial Listing, As The Rau's Bams & Home Are Filled With Great Items. Please Be Prepared For 2 Auction Rings For Part Of The Day. Your Attendance At The Rau Farm Estate Auction Is Appreciated. **Terms Of Sale:** Cash, Check With Or Credit Cards Accepted.

TO VIEW A COMPLETE LISTING WITH PHOTO'S VISIT JOHNPECKAUCTIONS.COM

Mike & Evelyn Rau Estate
 3367 Rau Rd., West Branch, MI
 JOHN PECK AUCTIONS LLC
 Gladwin, MI (989) 426-8061



Largest Grilling Selection in Central Michigan!



Fire Disc
 24 & 36" Portable
 Propane Cooker



Cajun Fryer
 2 Basket - 4 Gallon
 Cooker w Stand
 Available 2.5, 4 & 6 Gallon In Stock

THE "ORIGINAL"
Cajun Fryer

THE SILVER ROCKET

The finest in outdoor cooking



breeo
 A WOODFIRE EXPERIENCE



Big Green Egg
 The Ultimate Cooking Experience



Saber Grill



Meadow Creek
 Cooker/Smoker



BLACKSTONE

Table Top Griddle
 & Griddle 28" & 36"



Hours: M-F 8-5 • Sat. 9-2
 8989 Tobacco Dr., Clare
 Division of Hershberger's Hardware

SERVICE
 & INSTALL
 AVAILABLE



GIFTS
 FOR
**G
 R
 A
 D
 S**

JACK OF ALL TRADES COINS

1028 S. Mission
(next to Jon's Country Burger)

I BUY ALL COINS
Silver and Gold
FREE APPRAISALS
we will come to your home to do free appraisals for your convenience.
Over 25 Years experience!

Do not take your coins, jewelry, gold, & silver to the we buy gold places they are not experts! We are your only experts!
WE PAY YOU MORE THAN ANYONE!

I BUY ALL COLLECTIONS
FROM ONE COIN TO A DUMP TRUCK FULL

We are a Full Buy • Sell • Trade shop!
ANTIQUES • COINS
Jewelry • Collectibles & more!

Stop in or call Matt for your free appointment
517-204-0787

Heart Worm Combo Test

Special June Rates

Sale: **\$40⁰⁰**

Reg **\$45.00**

By Appt. 426-0203
Flexible Hours

KELLY'S KRUISSING
KRITTER KARE
Kelly Jo Kelley, DVM



SURREY WELDING & REPAIR

Your Idea Is My Priority
Custom Welding • Steel Fabrication
Tire Mounting & Repair • General Repairs
Specializing in Trailer Repair
Including Trailer Brakes & Lights



5957 E. Surrey Rd. • Clare, MI 48617
Raymond Gingerich
989-487-4722

MIAL MEADOWS MHP

WE HAVE 2 & 3 BEDROOM MOBILE HOMES FOR SALE OR LEASE IN ALMA
LOT RENT \$350

HOMES ARE GOING FAST, DON'T WAIT!!
CALL AMBER AT **989-463-5187**
TO SCHEDULE A TIME TO SEE YOUR NEW HOME!

AMBER MARCOUX
MANAGER

411 S. GROVER, #2
ALMA, MI 48801

Central Eavestroughing, LLC

LICENSED & INSURED • FREE ESTIMATES
Manufacturers of...

- 5" Seamless Gutter
- 6" Commercial Seamless Gutter
- Leaf Protectors

Quality & Service Are #1!
It's Gutter Cleaning Time!

.032 Gauge Aluminum Hidden Screw Hangers

QUALITY WORKMANSHIP FAST FRIENDLY SERVICE
Jeb Gilbert • (989) 828-6279 • Shepherd, MI



SPRING has SPRUNG!

SUPPORT YOUR LOCAL RETAILERS

RECYCLE THIS



NEWSPAPER

NEWSPAPER

Miller's Woodworking

STOP BY OUR LOT AND CHECK OUT THE GREAT SELECTION OF BUILDINGS ON THE LOT - READY TO GO!

DON'T WASTE YOUR SUMMER VACATION TRYING TO BUILD YOUR OWN STORAGE BUILDING. COME SEE US! WE WILL BUILD IT FOR YOU!

 14x32 High Barn Side Entry, 8 Ft. Loft, 1 - 3x3 Window \$6,830 \$317/Month Rent To Own	 12x16 Quaker \$3,870 \$180/Month Rent To Own	 12x20 Gable 3 Windows, 2 - 4 Ft. Lofts \$3,971 \$184/Month Rent To Own
 14x32 Gable 3 Insulated Windows, 6 Ft. Side Door, 4 Ft. Loft, Insulated Garage Door \$7,772 \$360/Month Rent To Own	 8x10 Bargain Barn \$1,360 \$63/Month Rent To Own	 12x28 High Barn 8x7 Door, 8 Ft. Loft, 3x3 Window \$5110 \$237 Rent To Own

Statewide Delivery - Free Delivery w/ in 70 miles!

Supplying Michigan with quality built portable buildings for over 30 years

3209 E. Beaverton Road • Clare
(Voicemail) (989) 386-8110
Old US 127 to Surrey West on Surrey to Grant 1 mile north on Grant

Hours:
M-F 7:30-5
Sat. 8:30-3

TALL GRASS, LESS WORK.



0%
Financing up to 48 months

Special Husqvarna Financing options are available for qualified applicants in the U.S. only. Financing only available on new equipment purchases. This is a limited time offer at participating dealers only. Some restrictions apply.

TILMANN HARDWARE, INC.

PARTS • SALES • SERVICE
(989) 644-2252
Downtown Beal City
tilmannhardware.com

 **Husqvarna**
READY WHEN YOU ARE

Business Card Directory

To place an ad contact the ad consultant in your area:

Marlene...Clare & Gladwin Counties
989-506-4647

Kindra...Clare & Midland Counties
989-506-4640

Carol...Isabella & Roscommon Counties
989-323-7044

Vonda...Griott County
989-506-4349

VALET AUTO CARE, INC.

Since 1983



- A.R.E. Pickup Toppers
- Over 100 New & Used Toppers in Stock
- Truck Accessories
- Tonneau Covers



Because you love your truck

www.valetauto.com



James Motz - Owner
610 N. Mission (3 blocks S. of Meijer) Mt. Pleasant (989) 773-3477



BUYERS OF STANDING TIMBER and TIMBERLANDS
PURCHASING ALL SPECIES
PROFESSIONAL FOREST MANAGEMENT
SINCE 1972



FIREWOOD AVAILABLE BY THE TRUCKLOAD
CALL FOR INFO AND PRICING

2725 Larch Rd. Harrison, M 48625
989-539-9842

billsbylumber.com • info@billsbylumber.com

Big Or Small - We Do Them All!
FREE ESTIMATES



METAL ROOFING
989-487-9066



5023 Grass Lake Rd. - Clare



TOM'S POLE BUILDINGS
Over 30 Years Experience

24x40x10
10% Down
Today
Guarantees
Prices

Special! POLE BUILDINGS & GARAGES
ROOFING & SIDING
CONCRETE FLOORS DRIVEWAYS & FENCING

FEATURING ULTRA 2000 19 colors to choose from
And A 45 YEAR WARRANTY

From Beginning permit To Cleanup, We Do It All!

1-800-541-3974

We accept major credit cards. • email: tomspolebuildings@yahoo.com

TRUE NORTH FENCING LLC

We Install → Hi Tensile → Woven Wire
→ Barbwire → Board Fence
→ Continuous Fence

Chris Yoder 989-802-1064



313 W. Knox Road,
Beaverton, MI
1/2 Mile West of M-30
989-435-2707

Visa We Take Pride In Your Ride! MasterCard

- Quality Collision Repair
- Free Estimates
- Insurance Work Welcome
- Custom Color Matching & Painting
- We Repair All Makes and Models
- Car/Light Truck
- Genuine Original Equipment Parts

POLE BARNs

James Morche Builders

YOUR BUILDER FROM START TO FINISH

garages • pole barns • concrete work
FREE estimates

James Morche Cell 989-429-3479 • 989-539-9126

Licensed & Insured

KAPS ANA Member

located across from the Doherty Hotel

KOINS

LLC

Silver & Gold Coins
Bought & Sold

Integrity, Honesty & Peace of Mind.
That's what you deserve when it comes to your Coins & Currency!!!

Thomas Kapuscinski
611 N. McEwan St. Clare, MI 48617
231-357-2105 • 989-386-6500
tjkap@charter.net

Mon.-Fri. 9:30am-5:30pm
Sat. 10:00am-2:00pm
or by appointment

NOW BUYING Sterling Silverware & Scrap Gold



"Our Customers are our Warmest Friends" Guaranteed On Time and Certified

FREE TANK SETS

Coyne Oil & Propane

Clare • Harrison • Mt. Pleasant • Ewart • Gladwin
Cadillac • Breckenridge • Interlochen
800-386-7731 • 989-386-7731

RESIDENTIAL • COMMERCIAL
INDUSTRIAL • FARM

Miller's CONTRACTING LLC

We build: Pole Barns, Garages, Metal Roofing

All types of concrete work:
Specializing in Flatwork

Marvin Miller
Licensed

(989) 487-4531

North Country Metals, LLP

Pole Barns & Garages
Start to Finish



Metal Roofing & Siding

989-386-3013

5139 Pere Marquette
Clare

Everlast Roofing, Inc.
everlastingroofing.com

VACUUM CLEANERS/SEWING MACHINES NEW & USED

FREE ESTIMATES Service On Most Brands

Circle Sewing & Vacuum Center



Sales • Services • Parts • Top Quality • Low Prices
Serving Midland For Over 50 Years
We Have It All!

1900 S. Saginaw Rd. • Midland
(989)-839-0800
In the K-Mart Plaza

HOURS:
M-F 9:30 - 5:30
Sat. 9:30 - 3:30

Horn Logging Co.

4490 N. 41 Rd • Manton, MI 49663

WE BUY ALL STANDING TIMBER
SELECT HARVEST
SUSTAINABLE FOREST MANAGEMENT



FIREWOOD AVAILABLE BY THE TRUCK LOAD
PLEASE CALL FOR AVAILABILITY AND PRICING

(231) 920-0197 • (231) 920-6270

hornloggingcompany@gmail.com

BURKHART-PRESIDIO INSURANCE AGENCY

GLADWIN • 989.426.9278

Auto-Owners INSURANCE

LIFE • HOME • CAR • BUSINESS

St. Helen-Roscommon Monument, Inc

"Because every life deserves to be remembered"



Jet Black Monument

36"x06"x20" P5
with Base 48"x12"x06 PT/BRP

\$2998.00

includes a full scene white • expires 6/1/2020

HOURS are: Tuesday-Thursday 10-3 or by appointment
Visit our indoor showroom at:

101 E. Federal Highway, Roscommon

www.shmonument.com - 989-389-4921

or email: shmonument@gmail.com

IT'S GRILLING SEASON

Make sure your propane tank is full



20LB. CYLINDER FILL
\$11.00

GAS PRODUCTION CO., INC.

8512 E. M-46 - Vestaburg

989-268-5079 OR 800-991-7477

OPEN: MON-FRI. 8AM - 5PM

www.gasproductioncompany.com



7400 S. Clare Ave. • Clare, Michigan 48617

800-292-0679

www.pioneerpole.com

FREE Hearing Test & Consult



888-641-0087

Clare and Midland Locations

www.bierihearing.com

Mast Metal Roofing

Free Estimates

Specializing In Roofing
Standing Seam, Regular Steel, Shingles & More



Perry Mast
9780 E. Oak, Clare
Work (989) 418-2570
Home (989) 313-2176

E & K EXCAVATING

- SEPTIC SYSTEMS
- PONDS
- DRIVEWAYS AND ROADS
- LAND CLEARING



LICENSED
EDWIN STEINER

2239 EAST DENVER RD. ROSEBUSH, MI 48878
989-433-0004 or cell 989-430-2461

DINE LOCAL

Locally owned restaurants work on extremely slim margins (profit).
An event like this could be the final breaking point to cause permanent closure.

So when making your decision to go back out in the world and eat please consider the local place. Our families and the families of our staff members are in extreme need of your patronage!

**MOUNTAIN
TOWN STATION**

**CAMILLE'S
PRIME**

**SUMMIT
SMOKEHOUSE**

**MAX &
EMILY'S**

**MARTY'S
BAR**

**DOG
CENTRAL**

**BIRD BAR
& GRILL**

**PONDER
COFFEE**

**PLEASANT
CITY COFFEE**

**BRAVEHART
PUB**

STAN'S

**PISANELLO'S
PIZZA**

**VINTROFEOS
PIZZERIA**

**THE BRASS
CAFE**

**MIDORI
SUSHI**

**FREDDIE'S
TAVERN**

THE CABIN

**HUNTER'S
ALE HOUSE**

OKELLY'S

**JON'S
DRIVE-IN**

THE DINER

HUNAN HOUSE

TACO BOY

PIXIE

GREEN SPOT

LOS

PALOMINOS

LAS AZTECAS

SHEPHARD

BAR

PIZZA KING

CHEERS

**BARN
DOOR**

RUBBLES

ROZ'S

DOOZIES

Park it in the CLASSIFIEDS

and watch it go fast!



LAWN & GARDEN

RASBERRIES SHOOTS \$25.00/dozen. Rosebush area. Call (989) 433-0021

MISCELLANEOUS

FARM MARKETERS protect your profits, all steel drop boxes, with dual key-locks. \$60.00 989-544-2022

MERCHANDISE WANTED

WANTED TO buy small riding trencher, or a walk behind trencher or a tow behind mini backhoe. Call (989) 539-1159

IT'S THE QUICK response that keeps people coming back to classifieds. Call today to place your fast-action ad.

AGRICULTURE & FARM

EXCELLENT BLACK DIRT: Recycled cow manure; \$25/pick-up load. 1 load, you haul. Lots of repeat customers. Gladwin area 989-426-9691

APARTMENTS FOR RENT (UNFURNISHED)

1 TO 6 PERSON APTS Furnished/unfurnished Short & Long Term Leases (989) 772-2222 LiveWithUnited.com

Want fast cash?
Our Classified advertisers get great results. If you have merchandise to sell, place a classified ad.

PERSONALS

PAWN SHOP
Buy, Sell, Pawn
CASH FOR GUNS
CASH FOR GOLD
3 Month Pawn
3% + \$3 Per Month
Gladwin Trade & Sales
989-426-6811

FARM - HEAVY EQUIPMENT & PARTS

TRI-LAKES PETROLEUM
Buy Fuel Direct & Save
Gasoline-Diesel Fuels
Home Heating Oils
•Farm •Commercial
•Industrial
•Residential
Serving the entire Central Michigan Area
Call Scott Capen
989-620-7527
trilakesllc.com

GENERAL ANNOUNCEMENTS

TO ALL MID-MICHIGAN BUYER'S GUIDE CUSTOMERS
Deadline for Mid-Michigan Buyer's Guide classifieds is Wednesday before 5pm
If you need assistance placing classifieds, please call Cindy at 989-779-6115

GENERAL ANNOUNCEMENTS

ACTIVE ADULT LIVING

ACTIVE ADULT LIVING

COLEMAN FIELDS ASSISTED LIVING
Excellent Assisted Living All-Inclusive Pricing
Not all assisted living communities are licensed by the State of Michigan. Coleman Fields is proud to be state licensed and that brings peace of mind to our residents and their loved ones.
Call Jodi Today at 989-442-4184
www.colemanfields.com
The current Michigan Executive Order allows new residents to move into assisted living. Coleman Fields has implemented new safety procedures for the protection of our residents.
288 West Old Orchard Drive
Coleman, Michigan

AUCTION ANNOUNCEMENTS

AUCTION ANNOUNCEMENTS

MISSION MINI STORAGE *LARGE STORAGE UNITS*
989-773-5051
Perfect for Business or Large Vehicle Storage
14x16 16x40 20x30 20x40
Student Rental Specials May thru August!
5x10 unit \$42 a month, 10x20 units \$75
5353 S. Mission, Mt. Pleasant

MISCELLANEOUS

MISCELLANEOUS

River View Place Apartments For Seniors 55 and older
401 N. Mill St., St. Louis
2 Bedroom Units Available
\$674 a month with water/trash included
989-466-5000
countryside@gldmanagement.com
LIHTC Property. Income limits and Student Restrictions Apply. Equal Housing Opportunity. TDD 711. Section 8 Vouchers Accepted.



Do you have a car for sale?

How about a boat?

Or maybe some furniture?

Call to place a classified ad with one of our helpful representatives & sell your no longer wanted items **FAST!**

SUMMER CLEARANCE SALE

Dalhart 2-Piece Sectional

*available in 2 colors



\$999

Ashley Tulen Reclining Sofa



Available in 3 colors

\$569

Lang 5 Pc Chest



\$159

Twin/Full Wood Bunkbed



drawers sold separately

\$289

Ashley 6-Piece Dinette with Bench



\$466

Willowton 63" TV Console



\$349

* 12 MONTHS NO INTEREST FINANCING

*NO CREDIT NEEDED FINANCING

FREE 90 DAY LAYAWAY



Ashley Bittersweet 4 pc Bedroom Set (Dresser, mirror, nightstand, Queen Headboard)

\$699



Ashley Chaise Sofa available in 7 colors

\$549



\$259

Ashley Wallaway Recliner Available in 3 colors



\$289

Ashley Durapella Microfiber Rocker Recliner 7 Colors Available



\$369

Ashley Power Recliner



\$399

Ashley Big Man's Wallaway Recliner



\$449

Ashley Ludden Power Recliner



\$449

Ashley Man Size Heat & Massage Chair

Ashley Queen Size Heads Up Adjustable Pillow Top Set



\$699

	Twin Mattress	Full Mattress	Queen Mattress	King Mattress
WEST BRANCH FIRM OR EURO TOP	\$249	\$279	\$299	\$459
MajesticSleep LEVEL 6 GOOD EURO TOP OR FIRM 805 POCKETED COIL	\$299	\$329	\$349	\$549
MajesticSleep LEVEL 7 BETTER COMFORT FIRM OR PLUSH COMFORT 850 POCKETED COIL	\$399	\$459	\$499	\$699
MajesticSleep LEVEL 9 BEST LUXURY PLUSH OR EXTRA FIRM 850 POCKETED COIL	\$499	\$559	\$599	\$799
icomfort HYBRID BLUE FUSION 100 HYBRID GEL MEMORY FOAM	\$559	\$819	\$999	\$1,499

*Financing available to qualifying buyers. Minimum purchase \$599 with approved credit. Not available on prior purchases. See store for details. * Tables and lamps may not be as shown in picture.



136 S. Fifth St.
West Branch
 located block south of
 Mercantile Bank off Houghton Ave.
989-345-5326

www.westbranchfurnitureoutlet.com

*12 Months No Interest



Find us on facebook



"The Outlet Store That Saves You More!"



Sunday 11-3 Mon.-Fri. 10-6 Sat. 10-5

MILLER AUTO SALES

Call or email
sales@millerautosales.com
for appointments

Monday - Friday
8am-6pm;
Saturday
9am-2pm or by
appointment

Like Us
on Facebook



Now In Our 82nd Year
of Serving Mid-Michigan
and Beyond

989-681-2660
Located at the corner of M-46 & Begole
1984 W Monroe Rd.,
St. Louis MI, 48880

www.millerautosale.com

CARS		2008 CHEVROLET HHR Leather, Moon, Trade In \$3,995	2008 BUICK LUCERNE CXL, 75K Miles \$7,495	2014 CHEVROLET IMPALA LT, 102K Miles \$8,795	2013 CHEVROLET CRUZE Eco, 67K Miles \$8,995	2017 FORD FOCUS 47K Miles, SE \$10,495
2010 CADILLAC CTS AWD, Performance, 90K Miles \$10,495	2017 CHEVROLET CRUZE One Owner, LT, 20K Miles \$13,800	2017 FORD FUSION Moonroof, Leather, 53K Miles \$14,995	SUV'S		2011 CHEVROLET TRAVERSE New Timing chain, 96K Miles \$10,000	2012 FORD EDGE SEL, EcoBoost, Heated Seats, 99K Miles \$10,500
2011 HONDA CRV EX-L, 4WD, 90K Miles \$11,800	2015 BUICK ENCORE AWD, 85K Miles \$12,000	2014 JEEP CHEROKEE 4WD, Latitude, 106K Miles \$12,500	2017 FORD ESCAPE AWD, SE, 97K Miles \$12,995	2015 FORD EDGE AWD, SEL, Moon Leather, 106K Miles \$14,000	2013 DODGE DURANGO AWD, Loaded, 119K Miles \$14,200	
2017 JEEP COMPASS 4WD, High Altitude, Leather, Moon, 38K Miles \$14,850	2016 CHEVROLET TRAVERSE AWD, LT, 110K Miles \$15,495	2016 NISSAN PATHFINDER 4WD, 87K Miles \$15,495	2015 FORD EDGE Titanium, AWD, Loaded!, 84K Miles \$16,495	2016 DODGE JOURNEY AWD, Crossroad, DVD, Third row, 78K Miles \$17,995	2016 JEEP CHEROKEE 75th Anniversary, 54K Miles \$18,295	
2018 BUICK ENCORE AWD, 22K Miles \$18,495	2018 FORD ESCAPE AWD, 16K Miles \$19,000	2018 CHEVROLET EQUINOX LT, 2.0T, 18K Miles \$19,795	2015 JEEP GRAND CHEROKEE Diesel, Loaded, 99K Miles \$21,000	2018 JEEP COMPASS 4 x 4 Limited, 15K Miles \$21,000	2019 CHEVROLET EQUINOX AWD, 16K Miles \$23,000	2016 JEEP GRAND CHEROKEE 4WD, Limited, Loaded, 23K Miles \$26,000
2019 GMC TERRAIN 4x4, SLE, Navi, Moon, 12K Miles \$24,500	2017 FORD EDGE AWD, Titanium, 16K Miles \$27,000	2019 FORD EDGE Titanium, 7K Miles \$29,000	2015 GMC YUKON SLT, 74K Miles, Leather, Navi, DVD \$31,800	2016 GMC YUKON 4x4, Loaded, 76K Miles \$35,800	TRUCKS	
2012 CHEVROLET SILVERADO Work Truck, 2WD, 123K Miles \$10,700	2011 FORD RANGER 4WD, Clean!, 69K Miles \$14,700	2012 FORD F150 XLT, EcoBoost, 123K Miles \$15,000	2008 TOYOTA TACOMA 4WD, Double Cab, 112K Miles \$15,995	2011 GMC SIERRA Crew Cab, 95K Miles \$17,000	2014 DODGE RAM 4WD, Hemi, 56K Miles \$18,000	
2013 DODGE RAM 4WD, Quad Cab, 71K Miles \$18,295	2013 CHEVROLET AVALANCHE LTZ, 106K Miles \$19,995	2016 FORD F150 Supercrew, 4WD, 120K Miles \$19,995	2013 CHEVROLET AVALANCHE LTZ 4WD, Leather, Loaded \$19,995	2018 CHEVROLET SILVERADO True North, 4WD, 29K Miles \$27,000	2011 FORD F350 SUPER DUTY Crew Cab, Lariat, Leather Moon, 4WD \$28,395	2018 CHEVROLET SILVERADO 4WD, Quad Cab, 19K Miles \$29,000



And many more! Come see why Miller Auto is The #1 Used Car Dealer in Gratiot County

Visit www.millerautosale.com for FREE Carfax available online for All vehicles. Everything serviced and inspected