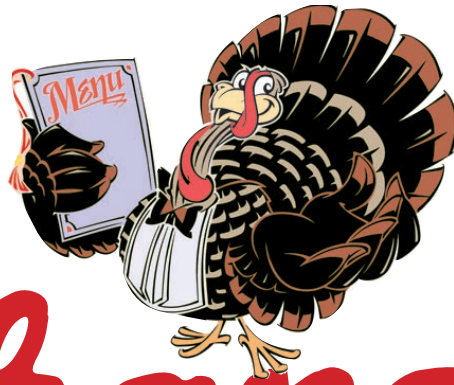




NORTHERN BERKS



PRST STD  
 U.S. POSTAGE  
**PAID**  
 READING, PA - PERMIT 524

You can directly link to any display advertiser's website through our online edition.  
**HIGHLIGHT & CLICK**

# Merchandiser

Serving Northern Berks County  
 Northern Reading &  
 Southern Schuylkill County  
 Weekly Circulation Over 31,056

PUBLISHED BY... THE WINDSOR PRESS, INC. (Family Owned & Independent Since 1958)  
 6 NORTH THIRD STREET, P.O. BOX 465, HAMBURG, PA 19526-0465 • FAX: 610.562.2770  
 610.562.2267 OR 1.800.562.5521 • Open Monday Through Friday 8 AM - 5 PM  
 ON THE WEB: [www.windsorpress.com](http://www.windsorpress.com) or [www.nbmerchandiser.com](http://www.nbmerchandiser.com)



WE ACCEPT

Helping Neighbors For Over 50 Years  
 Since 1964

**WEAVER'S**  
**ACE HARDWARE**

Right Products, Right Price, Great Service

Weaver's Ace Hardware Fleetwood  
 732 Fleetwood-Lyons Road  
 Fleetwood, Pa 19522  
 610.944.7681  
 Mon-Fri 7-8 • Sat 7-6 • Sun 9-5

Weaver's Ace Hardware Douglassville  
 905 West Postal Road  
 Douglassville, Pa 19518  
 610.385.4600  
 Mon-Fri 8-8 • Sat 8-6 • Sun 9-5

[www.weavershardware.com](http://www.weavershardware.com) • [www.facebook.com/weavershardware](http://www.facebook.com/weavershardware)

CLOSED Thursday, November 26- Happy Thanksgiving!!

## THANKSGIVING 5 DAY SALE

Wednesday, November 25 Through Sunday, November 29

### CHRISTMAS LIGHTS



Mini Light Set  
 300 Ct  
 Clear Or Multi-Color  
 #9239690, #9239708

SALE \$8.99  
 -\$4 INSTANT REBATE  
 With Card

You Pay **\$4.99**  
 Ea.

That's Only \$1.67  
 Per 100 Lights  
 After Instant Savings!

LED Reel Light Set  
 26 Ct Or 50 Ct  
 White Or Multi-Color  
 #9314618

SALE \$14.99  
 -\$2 INSTANT REBATE  
 With Card

You Pay **\$12.99**  
 Ea.

25' Lighted Length  
 Assorted Styles!

LED Reel Light Set  
 75 Ct Or 100 Ct  
 White Or Multi-Color  
 #9309873

SALE \$15.99  
 -\$3 INSTANT REBATE  
 With Card

You Pay **\$12.99**  
 Ea.

37' or 49' Lighted Length  
 Assorted Styles!

### CRAFTSMAN®

Craftsman® 12 Gal.  
 Wet/Dry Vac  
 #2339067



SALE \$59.99  
 -\$10 INSTANT REBATE  
 With Card

You Pay **\$49.99**

Craftsman®  
 Tools  
 & Accessories  
 #2295814, #2295830



SALE \$4.99



Craftsman®  
 5-Drawer  
 Tool Chest  
 #2296317

SALE \$79.99



Craftsman® 137 Pc.  
 Mechanics Tool Set  
 #2297828

SALE \$79.99

### GIFTWARE

Yankee Candle,  
 Willow Tree,  
 Ornaments, &  
 More!



**YEAR  
 END  
 SPECIAL**

20 Lb Ace  
 Wild Bird Food  
**\$5.50**  
 Was \$6.99  
 #81995



20 Lb Black Oil  
 Sunflower Seed  
**\$9.99**  
 Was \$11.99  
 #81121



40 Lb Black Oil  
 Sunflower Seed  
**\$17.99**  
 Was \$19.99  
 #8224024



We purchased 3 truckloads of bird seed at year end prices  
 & want to pass the savings onto you! **SAME PRODUCT, GREAT QUALITY**

# At R&R AUTO GROUP...



## IT'S ALL ABOUT YOU!

# FINAL SALE OF THE YEAR!

**EVERY CAR! EVERY TRUCK! EVERY SUV!  
EVERY 4X4! EVERY VAN! REDUCED!**

**2016 CHEVROLET CRUZE LT** #C6007



M.S.R.P.	\$21,750
R&R Discount	-\$1,187
GM Lease Cash	-\$1,700
Incremental CCR	-\$1,075
Competitive Lessee	-\$1,500
GM Select Model CCR	-\$1,000

**\$69\*** PER MO.  
**27 MONTHS! \$500 DOWN!**

**2015 CHEVROLET TRAX LT** #T6039x



M.S.R.P.	\$22,695
R&R/VRG Disc.	-\$795
GM Lease Cash	-\$1,450
Incremental CCR	-\$750
Competitive Lessee	-\$1,500

**\$76\*** PER MO.  
**24 MONTHS! \$1500 DOWN!**

**2016 CHEVROLET EQUINOX LT** #T6022



M.S.R.P.	\$30,895
R&R Disc.	-\$2,022
GM Lease Cash	-\$1,300
Incremental CCR	-\$750
Competitive Lessee	-\$1,500

**\$179\*** PER MO.  
**27 MONTHS! \$1000 DOWN!**

**2015 CHEVROLET SILVERADO 4X4** #52304



M.S.R.P.	\$39,195
R&R Disc.	-\$2,551
GM Lease Cash	-\$1,400
Incremental CCR	-\$2,500
Competitive Lessee	-\$500
Select Model Incremental CCR	-\$500

**\$209\*** PER MO.  
**39 MONTHS! \$2000 DOWN!**

**15 TO CHOOSE FROM!** #51097 **2015 CHEVROLET MALIBU LT**



M.S.R.P.	\$25,985
R&R Disc.	-\$1,612
Rebates	-\$5,197

**\$19,186\***  
**SAVE \$6,809**

**GREAT GAS SAVER!** **2015 CHEVROLET SONIC LT**



M.S.R.P.	\$18,865
R&R Disc.	-\$1,326
Rebates	-\$2,830

**\$14,709\***  
**SAVE \$4,156**

**HURRY! LAST ONE!** #51100 **2015 CHEVROLET CAMARO LS**



M.S.R.P.	\$30,890
R&R Disc.	-\$1,742
Rebates	-\$6,178

**\$22,970\***  
**SAVE \$7,920**

**"RARE" 2015 CHEVROLET CORVETTE Z06**



**\$10,000 off!**

## CADILLACS COST LESS AT THE R&R AUTO GROUP

**2016 CADILLAC SRX "AWD"** #K6005X



M.S.R.P.	\$50,065
Cadillac Loyalty	-\$750

**\$239\*** PER MO.  
**DRIVE IT! 24 MONTHS!**

**2015 CADILLAC ATS** #K6000X



M.S.R.P.	\$45,655
Cadillac Loyalty	-\$750

**\$299\*** PER MO.  
**DRIVE IT! 39 MONTHS!**

**2016 CADILLAC CTS "AWD"** #K6008



M.S.R.P.	\$53,225
Cadillac Loyalty	-\$2,000

**\$353\*** PER MO.  
**DRIVE IT! 39 MONTHS!**

**2016 CADILLAC XTS** #K6004



M.S.R.P.	\$56,180
Cadillac Loyalty	-\$750

**\$469\*** PER MO.  
**DRIVE IT! 39 MONTHS!**



Route 61, Just North of HAMBURG  
www.rnrautogroup.com  
**570-385-2881**

\*In stock units only. All prior sales and offers excluded. Lease payments do not include use/sales tax. All Advertised Leases: 10,000 miles per year. Cruze lease calculated with \$500 cash or trade equity down; Equinox using \$1,000 cash or trade down, Trax using \$1,500 cash or trade down, Silverado using \$2,000 cash or trade down. All Cadillacs use \$4500 Cash or Trade Equity Down. All tax, tags and applicable acquisition fees due at signing. Final Payment subject to lender tier and approval. Must finance with GM to qualify. Not all customers will qualify. Purchase priced vehicles do not include tax, tags, license or doc. fees. All rebates assigned to dealer. Must qualify for certain programs. Documentation to verify eligibility required. Pre-Owned vehicles: Tax, Tags, and Fees extra. Pictures are for illustration purposes only. Not responsible for typographical errors. Offers end 12/15/15 or earlier if manufacturer alters program in any way. Trades accepted at ACV.

# Give The Gift Of Travel!



Surprise your family and loved ones with a holiday gift they won't soon forget. We can help you plan the vacation of your dreams.

### We Have Something For Everyone!

- \* Ocean Cruises
- \* Escorted Tours
- \* River Cruises
- \* All Inclusive Vacations
- \* Honeymoons
- \* Adventure Travel

**April Naftzinger**

april@bookmaventravel.com  
19 S. Fourth Street, Hamburg, PA 19526  
610.562.2002 or 1.855.464.2002

Not sure what you want to do? Purchase a Maven Travel Gift Certificate and then come in after the Holidays to design your vacation. Give us a call today to schedule your free consultation. If you can dream it, we can plan it!

#### SERVICES

**Certified Pellet Stove CLEANING:** 26 years pellet stove installing, repairing and cleaning. Over 850 Wood Pellet Stoves Installed. Save Fuel & Maximize Your Efficiency with a thorough cleaning, Average cleaning 2-2½ hours. 20 Safety Point Inspection. Call: 484-529-3876.

#### SERVICES

**RYAN'S PAINTING & Coatings.** For all your painting, staining and paperhanging needs! Old fashion quality adding modern techniques. For a reputable, outstanding and insured service. Play it safe and call Ryan for your free quote 484-638-4801 www.ryanspandc.com Hic#PA004598

#### SERVICES

**UPHOLSTERY WORK DONE:** Furniture, Car & Truck Seats, Replace foam in cushions, Recover Boat Seats, Make Custom Boat Covers, Restraining Day & Night Shades, Restaurant Seats and Misc. Items. Call John Stetzler Upholstering, Hours 8-5 610-488-7760, After 5 484-955-2436. 2485 Shartlesville Rd. Mohrsville. See our website at jjsupholstering.com.

### PUBLIC REAL ESTATE AUCTION

#### LLEWELLYN REAL ESTATE

Saturday, December 12, 2015 at 11:00 A.M.  
Location: 1246 Bunting St., Llywellyn, PA 17944.  
Description: 100'x150' lot thereon erected a single family home w/3 BRS, 1½ BA, kit., DR, LR, drive-in basement, coal heat, town water & sewer & more! **Inspection:** To view home or to perform any tests phone: 570-345-8262 for an appt. Photos @ www.auctionzip.com I.D. #2712.  
Terms: 10% down day of auction, cash or good PA check, balance on or before 45 days.  
**DERFLER'S AUCTION** Selling For:  
**ROBERT W. DERFLER AUCTIONEER** BRUNO A.  
AU2682-L KAUKAS ESTATE  
Pine Grove, PA • 570-345-8262 Richard J. Wiest, Esq.

**PROPERTY CLEANUP:** We clean attics, garages, basements, brush piles, yard waste and scrap metals, we demo sheds, patio, concrete, fences, large and small buildings etc. along with lot clearing, stump removal and general excavation, small jobs are Our Specialty! Call JOHN HEFFNER 610-550-9037.

## After 72 Years In Business, We Are Closing Our Doors

# Super Going Out Of Business SALE

*Total Liquidation*  
**PRICES SLASHED UP TO 90%**

All Merchandise Must Go!

Fine Selection of Children's Wear, Lingerie, Sweaters, Slacks, Coats, Jeans

All First Quality

Summer & Winter Merchandise by...  
• Alfred Dunner • Ruby Rd.  
• Tribal • Christine Alexander and many, many more

— COUPON —  
Save An Additional **10% OFF** Total Purchase

GOOD AT DORIS BERRY SHOP  
Must be presented at time of purchase. Expires 12-30-2015 WP

STILL ONE OF THE LARGEST SPECIALTY STORES IN THE AREA!

THE *Doris Berry* SHOP  
WOMEN'S & CHILDREN'S WEAR  
20 South 4th St., Hamburg • 610-562-2051

PETITES, MISSES, WOMEN'S SIZES, BOYS' & GIRLS' SIZES STARTING AT INFANT

Mon., Tues., Wed. 9 AM to 5 PM; Thurs. & Fri. 9 AM to 8 PM; Sat. 9 AM to 4 PM

# WIN A HAMBURG SHOPPING SPREE

Make a purchase at participating merchants now through December 24th to register.

The more you shop, the more entries you can drop!

Discover Hamburg's Treasures Do your holiday shopping locally!

### FOUR WINNERS

will receive Hamburg Bucks to spend at participating businesses.

### ~ Participating Merchants ~

- |   |                                  |
|---|----------------------------------|
| The Art & Craft Gallery of Hamburg          | Lou'ees Pizza                    |
| Brett & Tonya's Primitives & Used Furniture | Necessities New & Used Furniture |
| Deutsch Eck Restaurant                      | Russo's Pizza                    |
| Hamburg Strand Theater                      | Ruth's Dress Shop                |
| Hecky's                                     | Sabor Vapors                     |
| Hermansader's Garage                        | Society Cleaners                 |
| Inner Peace & Wellness Center               | State Street Notary & Vinyl      |
| Kurtz Florist                               | Thren's Auto Parts               |
|   | VJ Wood Towing & Recovery        |

### The Perfect Holiday Gift Hamburg Bucks



Redeemable at 18 Downtown Stores and Restaurants

Available for Purchase at:  
Hamburg Public Library • Our Town Foundation Office  
Necessities New and Used Furniture

For More Information, Please Contact the Our Town Foundation  
335 State St., Hamburg, PA 610-562-3106

#### SERVICES

**FREE SCRAP Metal Removal.** Refrigerators, AC's, and all metal. Call anytime. 610-698-2284.

**ORWIGSBURG AREA LAWN MOWING & LANDSCAPE CARE** is accepting more mowing accounts for the 2016 season. 25 years exp. Owner always on job, senior discount, call us for an estimate 570-366-2686

#### SERVICES

**HYDRAULIC JACKS:** Air Jacks, Porta Power Pumps, Ram Hydraulic Cylinder, Air Cylinders, Rebuilt, Tests. Rod's Hydraulic Jack Service, 610-921-0591.

**Lendacki Enterprises, LLC:** Residential, Commercial and Agricultural Excavating, Land Clearing, Landscaping Materials. 610-682-7990.

#### SERVICES

**PET CREMATION Services** Peach Tree Cremation Services, LLC, Leesport. Call Derek M.D. Leibensperger, 610-926-2737. Family Owned & Operated.

**HOME REPAIR & REMODELING:** We Offer Full Home Services from Small Repairs to Complete Homes. Call Us about your Project! Martin Construction 610-683-6120.

## ~ FRESH ~ Wreaths • Cemetery Logs Christmas Trees - Cut & Balled



**COUPON**  
**\$5.00 OFF**  
Any Purchase of \$25.00 or More.

Good only at Pott's Nurseries.  
Cannot be combined with any other offer.  
Coupon expires 12/12/15 WP

STATE INSPECTED  
*Pott's Nurseries*

Phone: 610-926-2131 Fax: 610-926-7202  
427 Ontelaunee Drive, Shoemakersville, PA 19555  
Holiday Hours: Monday - Friday 9-5 PM  
Call If You Need Directions  
www.pottsnurseriespa.com

LANDSCAPING  
EVERGREENS  
SHRUBBERY  
TRIMMING

You don't have to be a corporate type to like **corporate bonds**

MCDONALDS CORP Bond

**4.60 %\*** Yield to call

Next Call: 11/26/2044 @ 100.00

Final Maturity: 05/26/2045

MCDONALDS CORP Bond

\* Interest paid semiannually

\* BBB+-rated by Standard & Poor's

\*Yield effective 11/20/2015, subject to availability and price change. Yield and market value may fluctuate if sold prior to maturity, and the amount you receive from the sale of these securities may be more than, less than or equal to the amount originally invested. Bond investments are subject to interest rate risk such that when interest rates rise, the prices of bonds can decrease and the investor can lose principal value. Any bond called prior to maturity may result in reinvestment risk for the owner of the bond.

Call or visit your local Edward Jones financial advisor today.



David C Doll, AAMS®  
Financial Advisor

39 S 4th St  
Hamburg, PA 19526  
610-562-9500

www.edwardjones.com  
Member SIPC

**Edward Jones**  
MAKING SENSE OF INVESTING

**SERVICES**

**EXTERIOR HOUSE** Washing and Roof Cleaning, Deck Cleaning, Staining, Gutter Cleaning. Is the green on your siding and the black algae on your roof making your residence or business look ugly! Beautify your most important asset by getting it cleaned. We offer years of experience and the best pricing. Free Estimate, Insured. SprayAway Cleaning Services. 610-682-6315. PA042982 www.sprayawayclean.com

**WE DON'T LEAP** Tall Buildings in a Single Bound, or Walk on Water but We Do Know How to Fix Your Home. Call **DIAMOND QUALITY CONSTRUCTION** Today for a Free Estimate, 610-967-1283.

**PROPERTY CLEANOUTS** low rates. Also TV and appliance removal \$25. Call 610-921-5474.

**RV MOBILE REPAIR:** cold weather is coming, get your camper ready for winter. Winterize, final repairs all at your location. 610-823-5058.

**HAPPY THANKSGIVING**

A season warmed by gratitude, brightened by hope, and blessed with memories of those we hold dear.

To Our Many, Many Friends and the Families We Have Served, Thank You, Thank You, Thank You. This joyful season is filled with warm thoughts of special people...who have remembered us.



M. DOMER LEIBENSPERGER  
Funeral Director  
President/Supervisor



DONNA M. LEIBENSPERGER-PARR  
Funeral Director  
Vice-President/  
Branch Supervisor



TODD J. KENNEDY  
Funeral Director



DEREK M.D. LEIBENSPERGER  
Funeral Director

From Our Family To Your Family

*Have a Happy Thanksgiving*

*Leibensperger*

**FUNERAL HOMES, INC.**

65 S. 4th Street  
Hamburg  
610-562-7823

223 Peach Street  
Leesport  
610-926-2737

**Naftzinger's Used Auto Parts**

Buyer of Wrecked, Running and Disabled Vehicles

Drive In or We Pick Up

Complete Line of Batteries

**BATTERY SPECIAL**  
Factory Seconds  
Most Sizes  
**\$40.00 and Up**  
Good only at Naftzinger's Used Auto Parts  
Plus tax and exchange WP



S. 7th St., Box 223,  
Auburn, PA 17922  
Phone: 570-754-7491  
Fax: 570-754-3005

Open Monday thru Friday 8:30 to 5:00  
Saturday 8:30 to 3:00 • Sunday Closed

**Titles Handled Properly**

**Weaknecht Archery**

159 Kutz Mill Road, Kutztown, PA 19530

610-683-7405

www.weaknechtarchery.com

Hours: Mon.-Fri. 2:00 to 8:00 PM; Sat. 11:00 - 5:00 PM

Area's #1 Shop for: Prices, Service, Selection, Expertise, Bowstring, Arrows, Targets & More!!

**SELL/TRADE**  
Your Used  
Compound Bow,  
Crossbow, or  
Recurve Bow

**HOLIDAY SALE**

\*Prices Good While Supplies Last\*

Save Up To **\$200.00** On  
**Select 2015 Bows & Crossbows**



**YOUTH COMPOUND BOW PACKAGES**

\*Mission Menace by Mathews  
(Reg. \$399.99) SALE: **\$329.99**

\*Hoyt Ignite Package  
**\$399.99** /w 6 Free Carbon Arrows

\*Bear Apprentice Package  
(Reg. \$299.99) Sale: **\$249.99**

\*Mission Craze by Mathews  
(Reg. \$399.99) Sale: **\$349.99**

**VICTORY CARBON ARROWS**

(Reg. \$59.99)  
SALE **\$39.99/doz.**

**GIFT CARDS AVAILABLE!**



**Knives ON SALE!**

**CROSSBOW SALE**

\*Barnett Recruit 100 Package  
(Reg. \$299.99) SALE: **\$200.00**

\*Barnett Raptor FX Package  
(Reg. \$399.99) SALE: **\$374.99**

\*Barnett BC Raptor Reverse  
(Reg. \$699.99) Sale: **\$599.99**

\*CX Interceptor Supercoil Package  
(Reg. \$799.99) Sale: **\$499.99**

\*Horton Storm Package /w ACUDraw  
**\$999.99** /w FREE CASE

**Muck Boots ON SALE!**



Woody Elite & Wetlands In Stock

**TACTACAM \$289.99**



/w FREE Replacement Battery & 32 GB SD Card

**CUDEBACK BLACK FLASH OR LONG RANGE**  
(Reg. \$149.99)  
SALE **\$129.99**

**SPY POINT EXCEL HD CAMERA**

(Reg. \$249.99)  
SALE **\$189.99**  
MORE FEATURES & MOUNTS THAN GoPro

**THERM-A-CELL HEATED INSOLES**

(Reg. \$129.99)  
SALE **\$89.99**  
w/MAIL-IN REBATE **\$69.99**



# Have a Blessed Thanksgiving



We hope your Thanksgiving celebration is especially satisfying. May it find you surrounded by loved ones, laughter and plenty of blessings.

Abundant thanks to the neighbors, friends, customers and associates who have helped make our year enjoyable. We value your support and we wish you all a very happy holiday.

We've been serving the area with quality since 1940.  
"A Family Tradition Since 1940"

## PETERS BROS. MEAT MARKET, INC.

65 Penn St., Lenhartsville, PA 19534  
610-562-2231 • 800-952-8541  
Mon. - Fri. 7:00 a.m. to 6:00 p.m.  
Sat. 7:00 a.m. to 5:00 p.m.  
www.petersbrosmeats.com



### SERVICES

VISIT THE FRAMING LOFT at Leibensperger Card & Gift Shop. We can frame any size picture, diploma, certificate, license, stitchery, or poster. 71 South 4<sup>th</sup> St., Hamburg. Ph. 610-562-7823, toll free 1-800-875-1446.

SEAMLESS GUTTERS AND DOWNSPOUTS. Will make and assemble on job site. Additional hardware available. K.W. Greenawalt, 610-298-3380.

TREE WORK DONE Professionally Since 1956. Free Estimates. Equipped with Chipper, Bucket truck, Full Insurance. Call Dale Glenn, 610-756-6062.

Maiden Creek Marine custom boat covers made on site, covers, bow covers, cockpit covers, repairs Quality work, 28 yrs experience. We know what boaters need and expect 610-944-9994.

## Have A Safe & Happy Thanksgiving

Get Started On Your Holiday Shopping At

### THREN'S AUTO PARTS

## GIFTS FOR EVERYONE AND THEIR VEHICLE

A Great Selection Of Auto Parts And Accessories

**BLACK FRIDAY**  
November 27, 2015

**GIFT CARDS**



515 Hawk Ridge Drive, Hamburg, PA 19526  
610-562-7838

HOURS: Mon. thru Fri. 8:00 AM to 7:00 PM; Sat. 8:00 AM to 5:00 PM; Closed Sun.



### REAL ESTATE

HUNTING CAMP Rehersburg Centr County 2.7 Acres, Borders 200 acres, landlocked state land, indoor plumbing electric sleeps 16 \$93,000 814-383-9919.

### REAL ESTATE

OWN A MODULAR ON LAND! 600 credit score and up! DISCOVERY HOMES at 484-641-5055. discoverymodularhomes.com

e-Subscribe to the Northern Berks & East Penn Valley Merchandiser at www.windsorpress.com

### REAL ESTATE PUBLIC AUCTION

VALUABLE POTTSVILLE 2 1/2-STORY HOME SITUATED ON 0.7 ACRE  
Saturday, December 12, 2015 at 12:00 Noon  
Location: 836 Cressona Road, Pottsville, PA 17901, Norwegian Twp., Schuylkill Co.  
Terms: 10% down on day of sale. Balance within 60 days. For appt. to see RE call 570-386-4586. View full ad & photos on auctionzip.com ID #5574.  
R. A. ARNER AUCTIONEER, LLC  
AY002071 • Ph.: 570-386-4586  
Auction Ordered By: INA KAY MINDLER Cynthia Allar, POA

## WINDSOR NOW RENTING! U-STORE

From Hamburg 1-1/2 miles East on Old Rt. 22 - turn Left on Valley Rd. 1 block. (Windsor Industrial Park)  
STORAGE AREAS - 5'x5' TO 10'x20'  
STARTING AT \$25.00 MONTHLY  
CALL 610.562.5162

## COUNTRYSIDE COAL Delivery Service

Anthracite Coal - Hard - Medium Hard All Sizes - Courteous Delivery Service  
717-933-9263 717-269-0804  
WE SELL BLASCHAK COAL DAVID W. ROHRER, PROP.

## THE Merchandiser CLASSIFIED AD FORM:

**STEP #1 ENTER YOUR PHONE NUMBER** \_\_\_\_\_  
**NAME** \_\_\_\_\_  
**ADDRESS** \_\_\_\_\_

(This information is for our records only)

### STEP #2 CHOOSE A CATEGORY YOU WANT YOUR AD PLACED UNDER - (PLEASE CHECK ONE BOX.)\*\*

- |  |  |  |
|--|--|--|
| <input type="checkbox"/> ANNOUNCEMENTS   | <input type="checkbox"/> FARM EQUIPMENT/LIVESTOCK  | <input type="checkbox"/> LOST & FOUND                        |
| <input type="checkbox"/> ANTIQUES  | <input type="checkbox"/> GARAGE/YARD SALES         | <input type="checkbox"/> MISCELLANEOUS                       |
| <input type="checkbox"/> AUTOMOBILES/TRUCKS  | <input type="checkbox"/> HELP WANTED               | <input type="checkbox"/> MOBILE HOMES                        |
| <input type="checkbox"/> AUTO PARTS & SVCS.  | <input type="checkbox"/> HOME IMPROVEMENTS         | <input type="checkbox"/> MOTORCYCLE/ATVs                     |
| <input type="checkbox"/> BOATS/MOTORS  | <input type="checkbox"/> HOUSEHOLD ITEMS/FURNITURE | <input type="checkbox"/> PETS & ANIMALS                      |
| <input type="checkbox"/> CHILDCARE   | <input type="checkbox"/> REAL ESTATE               | <input type="checkbox"/> FOR RENT                            |
| <input type="checkbox"/> COMPUTERS/OFFICE  |  | <input type="checkbox"/> RVs/CAMPERS                         |
| <input type="checkbox"/> SUPER AD (Bold Type) (\$2.00 additional per ad, per week, per publication) FREE to Commercial ads |  | <input type="checkbox"/> RECREATION/SPORTING GOODS/EQUIPMENT |

### STEP #3 ENTER YOUR AD EXACTLY AS YOU WANT IT TO APPEAR (Please print legibly...Please use punctuation...One word per box, please)

1.	2.	3.	4.	5.
6.	7.	8.	9.	10.
11.	12.	13.	14.	15.
16.	17.	18.	19.	20.
21.	22.	23.	24.	25.
26.	27.	28.	29.	30.
31.	32.	33.	34.	35.
36.	37.	38.	39.	40.

### STEP #4 CHOOSE A PUBLICATION

- DEADLINES FOR ALL CLASSIFIEDS IS THURSDAY, 5:00 PM)
- East Penn Valley Merchandiser (Reaches over 40,481 Homes)
- Northern Berks Merchandiser (Reaches over 31,056 Homes)
- Both (Cost Would Be Double) (Reaches over 71,537 Homes)

### STEP #5 ENTER NUMBER OF WEEKS YOUR AD IS TO RUN: (PLEASE CHECK ONE BOX.)

- Run:  1 Week  2 Weeks  3 Weeks  4 Weeks  \_\_\_\_\_
- Enter Starting Date Of Ad \_\_\_\_\_
- Total Amount Paid \$ \_\_\_\_\_ Check # \_\_\_\_\_

### STEP #6 CHOOSE METHOD OF PAYMENT (PAYMENT MUST ACCOMPANY AD)

We Accept Cash, Check, Money Order,

Credit Card Information: NAME ON CARD \_\_\_\_\_

ACCOUNT # \_\_\_\_\_ EXP. DATE \_\_\_\_\_

TYPE OF CARD: VISA \_\_\_\_\_ MasterCard \_\_\_\_\_ Discover \_\_\_\_\_ CVC Code: \_\_\_\_\_

SIGNATURE: \_\_\_\_\_

Mail Ad With Payment To: THE WINDSOR PRESS, INC., PO Box 465, Hamburg, PA 19526-0465  
Bring Ad and Payment To Our Location At: 6 North Third St., Hamburg, PA 19526  
Place Your Ad By Phone By Calling 610.562.2267 or 1.800.220.3053

Please have your account number and expiration date available.

We Are Not Responsible For Incorrect or Inaccurate Information or Mistakes Either in The Classified Ads or In Any Other Advertisement In This Paper.

**RATES:**

**REGULAR AD:**  
Up to 20 words \$4.80 per issue per week. Additional words after 20 - 10¢ each

**COMMERCIAL AD:**  
Up to 20 words \$7.90 per issue per week. Additional words after 20 - 10¢ each

Commercial ads include any person or group normally engaged in offering goods or services in a business environment and include: Rentals, Items Manufactured or Bought for Sale or Resale, Babysitting Service, Help Wanted, Business Listings, etc.

UNDER RULES ESTABLISHED BY THE PENNSYLVANIA HUMAN RELATIONS ACT, ANYONE WISHING TO SELL OR LEASE RESIDENTIAL OR COMMERCIAL PROPERTY OR SEEKING TO HIRE AN EMPLOYEE CAN MAKE NO REFERENCE IN THEIR ADVERTISING TO SEX, MARITAL STATUS, AGE, RELIGION, ETHNIC BACKGROUND, RACE, COLOR, DISABILITY, CHILDREN OR SUPPORT ANIMALS. Special Instructions: We will try to print your classified ad in the next issue after receipt, but reserve the right to hold for the following issue. Please write legibly. Please use only one word per space. Each word in a business name or address will count as one word.

Tear Sheets Will Not Be Sent To You For Your Classified Ad.

## Loose's CHRISTMAS TREES

Located on Bossler Road in Dauberville.  
GROWING & SELLING SINCE 1928

Cut Your Own Or Precut:

- BLUE SPRUCE
- DOUGLAS FIR
- CONCOLOR FIR

PRECUT TREES Starting at \$10.00

Opening Thanksgiving Day

Mon., Tues., Wed., Thurs. 10 a.m - 4:30 p.m.  
Fri., Sat., Sun. 8:30 a.m. - 4:30 p.m.  
CLOSING DECEMBER 20

1 mile North of Leesport, turn West at light onto Belleman's Church Rd., Left on Bossler. Follow signs.  
Phone 610.926.4849

LOOK US UP AT:  
www.looseschristmastrees.com

### AUCTION LISTINGS

11-24-15	8245 Holbens Valley Rd., New Tripoli	Zettlemoyer Auc. Co.
11-25-15	Leesport Auction Gallery, Leesport Farm. Mkt.	Diefenderfer Auc. Co.
11-26-15	Leesport Farmers Mkt, Banquet Hall	D. & T. Wagner
11-27-15	Andreas Station House, 42 Andreas Rd.	D. Arner
11-27-15	Beltzner Hall, 144 N. Whiteoak St., Kutztown	D. Loeb
11-27-15	184 Tulpehocken St., Bernville	L. Longenecker
11-27-15	121/123 Main St., Stouchsburg	D. & T. Wagner
11-28-15	349 Kindt Corner Rd., Leesport	B. Folk
11-28-15	561 Huff's Church Rd., Alburts	C. Shirk Auc. Service
11-28-15	1310 Hex Highway, Hamburg	D. & T. Wagner
12-02-15	Leesport Auction Gallery, Leesport Farm. Mkt.	Diefenderfer Auc. Co.
12-03-15	Oley Valley Auc. Ctr., Rts. 73, 662 & Oley Rd.	J. Haas
12-04-15	4701 Colebrook Ave., Emmaus	D. & T. Houser
12-05-15	624 Lincoln Ave., Northampton	T. Hall Auctions
12-05-15	7 Church Street (Richland), Lebanon	K. Leiby, B. Gelsinger
12-05-15	Beltzner Hall, 144 N. Whiteoak St., Kutztown	G. Miller IV
12-05-15	398 Topton Rd., Kutztown	C. Shirk Auc. Service
12-05-15	309 Hafer Dr., Leesport	Zettlemoyer Auc. Co.
12-09-15	Leesport Auction Gallery, Leesport Farm. Mkt.	Diefenderfer Auc. Co.
12-12-15	836 Cressona Rd., Pottsville	R. A. Arner, LLC
12-12-15	1246 Bunting St., Llewellyn	R. Derfler
12-12-15	Fogelsville Auc. Ctr., 820 Nursery St.	Zettlemoyer Auc. Co.
12-13-15	Leesport Farmers Mkt.	D. & T. Wagner
12-14-15	Leesport Farmers Mkt., Ctr., Ct. Mtg. Rm.	K. Leiby, B. Gelsinger
12-17-15	Oley Valley Auc. Ctr., Rts. 73, 662 & Oley Rd.	J. Haas
12-17-15	1671 Main St., Mohrsville	D. Henry
01-01-16	Oley Valley Auc. Ctr., Rts. 73, 662 & Oley Rd.	J. Haas
01-14-16	Oley Valley Auc. Ctr., Rts. 73, 662 & Oley Rd.	J. Haas
01-28-15	Oley Valley Auc. Ctr., Rts. 73, 662 & Oley Rd.	J. Haas
01-30-16	122 Spook Ln., Fleetwood	G. Miller IV

THE ABOVE AUCTIONS ARE CURRENTLY SCHEDULED TO APPEAR IN THE EAST PENN VALLEY AND/OR NORTHERN BERKS MERCHANDISER.  
This listing published courtesy of The Windsor Press, Inc., Hamburg, PA

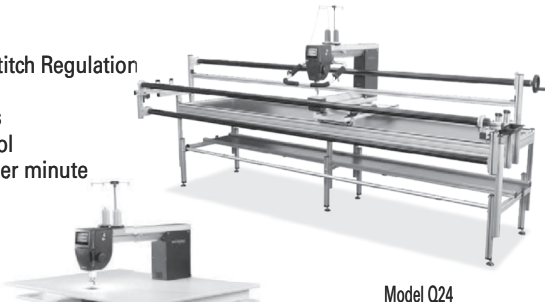
# made to create BERNINA<sup>+</sup> Annual Fall Sale

## 5 DAYS ONLY! Wed, Fri, Sat, Mon, & Tue...Nov 25, 27, 28, 30 & Dec. 1

### Made in Switzerland

#### Bernina Q24

- 24" throat space
- BERNINA Longarm Stitch Regulation
- Fully front operated & unique ergonomics
- Unique tension control
- Up to 2,200 stitches per minute



Model Q24

#### Bernina Q20

- BERNINA Longarm Stitch Regulation
- 20" throat space
- Up to 2,200 stitches per minute
- Unique tension control
- Built-in needle threader



Model Q20

#### Bernina 215

- Needle Stop Up-Down
- Built-in Stitches
- Button Holes
- Blind Hems
- Self Adjusting Tension
- Sews Heavy to Sheer



Model 215

Now Only \$499

Reg. Sug. Retail \$1149.00

While Supplies Last

#### Bernina 330

- Led Light
- One Step Buttonhole
- 41 Built-in Stitches

A Best Buy!



Reg. Sug. Retail \$1449.00

Now Only \$699

#### Model 800DL Now Only \$699



Model 800DL Reg. Sug. Retail \$1249.00

- Differential Feed
- Built in Rolled Hem
- 3-4-thread
- Bernina Quality
- Free Classes

Now Only \$599



Model 700D Reg. Sug. Retail \$1099.00

Model 700D

#### NEW Bernina 560

The Best Buy!

Affordable Sewing & Embroidery Machine



Model 560

Embroidery 25% Design Packs OFF

Buy a used 830 & 780E Bernina Get a jumbo hoop + \$500 of your choice embroidery design & stabilizer FREE!

#### Bernina 880E

Only while supplies last

- Create Unique embroidery arrangements with Shaping
- Colorize your embroideries with the Color Wheel
- 1,764 built-in stitches plus Create your own with the Stitch Designer
- Creatively distort Stitches
- High-speed sewing up to 1,200 stitches per minute



Model 880E

### Next Generation 7 Series

#### Bernina 740 New Revolutionized B9 Hook System

- BERNINA Hook with 9mm stitch width
- BERNINA Adaptive Thread Tension
- BERNINA Dual Feed

Special Sale!

- Total Stitch Control
- Simple, modern operation



Model 740

#### Bernina 790E

Sewing & Quilting Embroidery Combination



Model 790E

#### Bernina 770QE

Quilters Edition



Model 770QE

Bring this ad and Get 10% Off All Accessories, Threads, Needles, etc. WP

\$25 off any Solid Oak or Cherry Sewing Machine Cabinet with this ad. Expires Dec. 2, 2015

\* NO Interest for 12 MONTHS On All Bernina Products Over \$1000 Purchase

\*60 MONTHS On All Bernina Products Over \$3000 Purchase

\* with approved credit. Ends on Dec. 3

## HINKLETOWN SEWING

232 Wanner Road, Ephrata, PA 17522 717-354-0204  
Hours: Monday thru Friday 8am to 8pm • Saturday 8am to 4pm • Closed Sunday

Drivers, Class A  
**\$550 SIGN-ON BONUS**  
**1 cpm PRODUCTIVITY BONUS**  
Round trips from E. PA TEAMS - coast-to-coast  
SOLOS - midwest, midsouth, TX  
**REQUIREMENTS:**  
Flatbed/Reefer/Van exp  
Recent 2 years OTR with Class A CDL  
Min. Age 24 with Good Driving Record  
**BENEFITS:**  
Plenty of Miles/Great Pay  
Modern Equipment  
Health/Life/401K Electives  
**BELL TRUCKING CO., INC.**  
Shoemakersville, PA  
1-800-345-4115 x213  
or Apply Online at [www.belltrucking.com](http://www.belltrucking.com)

**ARE YOU LOOKING FOR A GREAT EMPLOYMENT OPPORTUNITY?**  
The SOS Group Inc. is currently accepting applications for FT, PT & Substitute paraprofessionals/aides, custodians, food service applicants in several Berks County School Districts and Conestoga Valley School District. Great opportunity for parents, college students, retirees or anyone interested in school services.  
**Apply today by visiting our website at [www.sosgroupinc.com](http://www.sosgroupinc.com) or contact Barb Richard at [brichard@sosgroupinc.com](mailto:brichard@sosgroupinc.com)! EOE**

**HELP WANTED**  
**HELP WANTED: Diesel and Truck Mechanic.** Full time position with competitive wages with full benefits. Reply to E.S. Savage Inc. PO Box 167 Hamburg PA 19526 or call 610-562-7581.

**PUBLIC AUCTION**  
**ONTELAUNEE TWP. REAL ESTATE, PERSONAL PROPERTY, TRAPS & RELOADING EQUIP.**  
Saturday, November 28, 2015 at 9:00 A.M.  
Location: 349 Kindt Corner Rd., Leesport, Berks Co., PA 19533. Traveling North on Route 61 in Leesport, turn right on Shackamaxon St. (1st road past Village Tavern). Continue .3 mi. to auction on left. Note: Shackamaxon St. becomes Kindt Corner Rd.  
Real Estate consists of a 60'x180' lot w/an all-brick 1 1/2-sty. home w/attached 1-car gar. & enclosed breezeway. 1st floor has kitchen, LR, 2 BRs & full BA. 2nd floor is finished open living area w/hardwood flooring & lots of hidden storage. Full basement has concrete flooring. Home features oil/hot water heat, on lot water, public sewer & updated windows. Property is located in Schuylkill Valley School District & has macadam driveway. Inspection by appoint, call 610-223-9360.  
**Terms:** 10% down payment day of auction, balance on or before 45 days. RE will be offered at 12:00 p.m. Frigidaire upright freezer, Frigidaire washer/dryer, WW refig., WW 40" range, 4-pc. wdn. dinette set, oak sideboard, wdn. dressers, 4-pc. BRS, dovetailed blanket chest, 2-pc. LRS, uphol. chairs, glider rocker, kneehole desk, Simplicity & Electrolux vac. cleaners, EdenPURE heater, Singer sewing mach., wdn. & mtl. shelves, sm. elec. appliances, drop-leaf dinette set, Pyrex grad. mixing bowls, Tupperware, SS cookware, flatware, milk glass, linens & blankets, Easter & Christmas dec., books incl. Mohrsville, Berks Co. Vol. 1 & 2, asst. hand & grd. tools, #10 crock, runner sled, Shop-Vac, ladders, chipper/shredder, lawn sweeper, live traps, lg. asst. leg traps, misc. reloading equip., fishing rods & tackle & more.  
**Terms:** Cash or PA check day of auction.  
**Auctioneer: Brian R. Folk**  
AU-002527-L  
610-683-5051  
[www.auctionzip.com](http://www.auctionzip.com) ID #43029  
**Auction For: ANNIE I. BORKEY**  
Helen Faller P.O.A.  
Koch & Koch, Atty.

**CARRIER NEEDED TO DELIVER**  
THE NORTHERN BERKS  
*Merchandiser*  
**AUBURN WALKING ROUTE**  
**Must Be Dependable!**  
Once A Week Delivery, No Exceptions.  
Call Carolyn Ellex 570.385.5570

**REAL ESTATE**

2016 Single wide homes available. 16x56 Move in Ready. 2 Bed/ 1 Bath. Located in Valley View Tuckerton MHP in Muhlenberg. \$41,500 Julian Ruiz 408-806-9003. [www.valleyviewtuckertonmhp@sbcglobal.net](http://www.valleyviewtuckertonmhp@sbcglobal.net)

Local Family Looking to Buy Home/ Farm. Prefer 10-50+ Acres & pond/ stream; Must be secluded. Northern Berks, Southern Schuylkill or Lehigh. Please mail property & contact information to: Our New Home, PO Box 152, Lenhartsville, PA 19534.

**HELP WANTED**

CNA's, LPN's, RN's & HHA's ProStat Healthcare has immediate Job Openings! We Offer Very Competitive Wages, Flexible Schedules, and Weekly Pay! Check Us Out Today! Call 610-736-9000 or visit us on-line [www.prostathealthcare.com](http://www.prostathealthcare.com)

Home Health Aides: PT evenings/ weekends. Min 1 year experience required. Must be dependable, caring & conscientious with your own reliable transportation.  
**AARON HEALTHCARE**  
610-691-1000

To Place A Classified Call 610.562.6595

*It's Beginning To Look  
A Lot Like Christmas!*  
**Tranquility Day Spa & Salon**

351 N. Centre Avenue (Rt. 61),  
Leesport, PA  
610.916.2860  
www.tranquilitydayspa-salon.com



**HOURS:**  
Mon., Wed., Thurs.,  
and Fri. 9:00-7:30  
Sat. 9:00-3:30  
Tues. & Sun. Closed

**Give the Gift of Tranquility.**

We have some great gift ideas for you this Holiday Season.  
Gift cards can be purchased online.

**Purchase \$100.00, receive an extra \$20.00**  
**Purchase \$50.00, receive an extra \$10.00**

For every purchase made or appointment scheduled, you will be eligible for our Gift Card and Basket Giveaway.  
We look forward to seeing you all here!

**The Best Black Friday Specials  
Are At BELIEVE IT! All Week Long!**

Storewide BOGO Specials (Buy One, Get One Free\* Or At 1/2 Price)

\*Equal or Lesser Price. Not valid with any other offer.

Closed To Give Thanks On Thanksgiving Day.



**Believe It!**

CONSIGNMENT BOUTIQUE

Jr. & Women's New and "Like New"  
Brand Name Clothes & Accessories  
1543 Old Rt. 22, Leesport, PA 19534  
610-562-5532 • 610-972-5532

Hours: Wed. & Thurs. 11 am - 6 pm; Fri. 11 am - 5 pm;  
Sat. 11 am - 4 pm; All Other Times by Appt. or by Chance

**Pellet Stoves**



Starting at  
**\$1699**

heating  
**ECHOCHOICE**



5369 Allentown Pike, Temple, PA 19560  
610-929-5794  
www.fehs.com  
Call for store hours.

**HELP WANTED**

**ESTIMATOR:** High Quality, custom sheet metal fabricator seeks entry level estimator. Responsibilities include job costing, data entry, filing and miscellaneous clerical duties. Good math and computer skills and familiarity with blueprint reading desired. Modern working conditions and excellent benefits package. Apply at Electro-Space Fabricators, Inc., 300 West High Street, Topton, PA. 19562.

Mature Person for Hostess/Host/ Cashier. Apply in person Blue Mtn. Family Restaurant, Shartlesville.

**HELP WANTED**

**INFINITY SECURITY** Company has full time and part time positions available. If interested please call 610-683-5221 for more information.

**SERVICES**

**PIG ROASTS** for Parties, Fundraisers, Reunions. We Do All the work or rent equipment. Reserve NOW for 2016 and receive a 5% discount. Check facebook Dan 484-256-2956 dans pulledporkandpigroasters.

**SCREENED ENRICHED TOPSOIL:** \$25/ yard plus delivery fee, large quantity discounts; Nice soil for gardens, flowerbeds and lawns, aged mushroom soil available. Call JOHN HEFFNER 610-550-9037.

**TIDY TINA'S** cleaning services makes your life easier at an affordable rate. Once a month, bi-weekly or weekly. Call for a no obligation estimate for all your cleaning needs. 484-665-3384.

★ **FRESHLY CUT & LIVE TREES** ★

ALL TREES UNDER ROOF

**DOUGLAS FIR**  
**BLUE SPRUCE • FRASER FIR**  
**• CONCOLOR • WHITE PINE**

★ **GREENS** ★

★ **STAND-STRAIGHT TREE STANDS** ★  
★ **TREE REMOVAL BAGS** ★

**OPENING FRIDAY, NOVEMBER 27**  
Wednesday - Friday 3 pm to 7 pm; Sat. 10 am to 7 pm  
& Sunday 10 am to 5 pm, Closed Monday & Tuesday  
All Trees Bailed & Drilled Free Of Charge

**ALSO \$5 OFF PURCHASE OF \$25 OR MORE.**  
~ WITH THIS AD~ WP

**HALABURA TREE FARMS**

- 2 Miles East of Orwigsburg on Route 443 -  
**570-943-7711** In Season Only

★ **Brett & Tonya's** ★  
Primitives & Used Furniture



**BLACK FRIDAY SPECIALS!**

8 am to Noon  
Come in and pick an envelope and receive

**10% to 50% Off**  
Entire Purchase

Open until 8 pm: Closed Thanksgiving Day

12 S. Fourth Street, Hamburg, PA 19526

717-673-3285 • 610-349-9432

Mon. & Tues. Closed; Wed. - Fri. 9 to 8; Sat. 9 to 5; Sun. 10 to 5



**AUTOMOBILES/  
TRUCKS**

1985 Oldsmobile Toronado Caliente. Rare American classic. New A/c, new inspection. Needs heater core (\$600). 82K miles. Garage kept. See at Williams Automotive, Rte 12 and 662, Pricetown Pa. \$2500 OBO. 610-944-8467.

**J&J TOWING:** Always Buying Junk Cars, Wrecks and Your Unwanted Vehicles. Paying from \$200-\$1000. Call Jorge at 484-955-8386.

**AUTOMOBILES/  
TRUCKS**

**BUYING VEHICLES: 1998 through 2008, Reasonable Pay Offs Made or Fair trade in Price paid, Nice condition, or not running. Will pay accordingly. Call for Quote before 8pm. 570-449-4094. Jay & T's, Cressona.**

1993 Dodge Ram Charger, runs great, new emissions and inspection, 209K miles, solid body. Call 484-824-1022, \$3500.

**AUTOMOBILES/  
TRUCKS**

**FOR SALE:** 1977 Chev. DeLuxe C10 Pickup 8ft. Bed, 307 V8, 305 AT, 1 repaint org. colors, 117,154 org. miles, garage kept, \$6000 obo; 1969 Plymouth Satellite 383 Automatic, AC \$31,000; 4 AR Outlaw 2 wheels, Uniroyal tires, fits S10 Blazer \$400; Ford 302 YYY Block \$150 Phone 610-207-3016.

**WE WILL DISPOSE OF** Your Used Motor Oil and Transmission Oil at No Charge. Monday through Friday, 7am to 4:30pm, Saturday 8am to 11:30am. **STEVE MOYER SUBARU**, 201 S. Centre Ave., Leesport, PA, 19533, 610-916-7000.

**SPORTSMAN PUBLIC AUCTION**

2013 CHRYSLER 300C CAR (LOADED) APPROX. 100 NEW & USED FIREARMS, (2) 4-WHEELERS, FISHING GEAR, GENERATORS, WILDLIFE PRINTS, HUNTING GEAR, LICENSES, LOG SPLITTER & MORE

Thanksgiving Day, November 26, 2015 at 1 PM.  
Location: Auction held indoors at the Leesport Farmers Market at 312 Gernants Church Rd., Leesport, Berks Co., PA. Located off Rt. 61 approx. 10 mi. N. of Reading or 6 mi. S. of Hamburg. Visit website for details, photos & terms: www.wagnerauctioneers.com

Auctioneers.: DENNIS F. WAGNER, AU-001427-L  
TRACY L. WAGNER, AU-003172-L  
Ph.: 610-562-7445 or 610-741-3828

**PUBLIC AUCTION**

MARION TWP. REAL ESTATE, BX2200 KUBOTA DIESEL 4WD w/ATTACH., HORSE BUGGY, LG. AMT. OF TOOLS, 18 GUNS & SAFE, ANTIQUES, TOYS, FURN. & H-HOLD ITEMS  
Friday, November 27, 2015 at 9:00 A.M.

Location: 121/123 Main St., Stouchsburg, Berks Co., PA. Just off of Rt. 422, 3 miles West of Womelsdorf.  
Visit website for details, photos & terms: www.wagnerauctioneers.com

Aucts.: DENNIS F. WAGNER, Auction for: AU-001427-L PAUL KINTZER TRACY L. WAGNER, AU-003172-L Calvin Yoh, POA Ph.: 610-562-7445 Frances Yoh, POA or 610-741-3828 William Miller, POA

**PUBLIC AUCTION**

TILDEN TWP. 3-STY. CUSTOM-BUILT HOME, GENERAC GENERATOR, ROTOTILLER, INSTRUMENTS, B-BALL CARDS, COLLECTIBLES, FURN., TOOLS & H-HOLD

Saturday, November 28, 2015 at 9:00 A.M.  
Location: 1310 Hex Highway, Hamburg, Berks Co., PA along Old Rt. 22 midway between Hamburg & Shartlesville.

Visit website for details, photos & terms: www.wagnerauctioneers.com  
Aucts.: DENNIS F. WAGNER, Auction for: AU-001427-L CHRISTIAN N. LEINBACH TRACY L. WAGNER, VALERIA Y. LEINBACH AU-003172-L Ph.: 610-562-7445 or 610-741-3828

**Red Fox Primitives**  
435 Hilltop Rd. (1 mile off 222), Kutztown, PA 19530  
610-683-5490  
www.redfoxprimitives.com  
Reproduction Furniture • Primitives  
Home and Holiday Decor  
**Christmas Open House**  
Friday, Dec. 4<sup>th</sup> 6-9pm &  
Saturday, Dec. 5<sup>th</sup> 10am-3pm  
Bring this ad and receive 10% OFF  
your purchase of \$25 or more! WP

**Dynapro AT-M**  
**LT-Metric**  
• R & S-Rated  
— and —  
**P-Metric**  
• T-Rated  
• U.T.Q.G. 560/A/B  
• 45/50/55/60/65/70/75 Series

Developed with innovative tread and sidewall designs, the Dynapro AT-M is an aggressive Premium All-Terrain tire for light trucks, vans and sport utility vehicles. The Dynapro AT-M offers unsurpassed grip, style, and performance both on and off-road.

**WE HAVE THE TIRE YOU NEED!**  
**KANTNER'S TIRE SERVICE, INC.**  
230 South Franklin Street, Shoemakersville  
HOURS: MON. THRU FRI. 7 TO 5; SAT. 7 TO 12  
610-562-2567  
www.kantnertire.com • GLENN ROBERTS

**OUT-DOOR TIRE PRICES**  
All Tire Prices Include Mounting, Balancing, And New Valve Stem

**JWL CONTRACTING**  
**POLE BUILDINGS & CONCRETE FLOORS**

• Residential • Commercial  
• Agriculture • Horse Barns  
• Stock Buildings  
• Custom Design

**Built Year 'Round**

Also Available: Concrete Floors, Perma Columns, Insulation and a Variety of Maintenance Free Metal Roofing & Siding Colors with 45 Year Paint Warranty.  
- FINANCING AVAILABLE -  
**JWL CONTRACTING, INC.**  
QUALITY ... START TO FINISH  
www.jwlpolebuildings.com metal sales  
FREE ESTIMATES **1-800-861-6445**  
#N113V102786900 #PA022680

**PUBLIC AUCTION**  
TILDEN TWP. 3-STY. CUSTOM-BUILT HOME, GENERAC GENERATOR, ROTOTILLER, INSTRUMENTS, B-BALL CARDS, COLLECTIBLES, FURN., TOOLS & H-HOLD  
Saturday, November 28, 2015 at 9:00 A.M.  
Location: 1310 Hex Highway, Hamburg, Berks Co., PA along Old Rt. 22 midway between Hamburg & Shartlesville.  
Visit website for details, photos & terms: www.wagnerauctioneers.com  
Aucts.: DENNIS F. WAGNER, Auction for: AU-001427-L CHRISTIAN N. LEINBACH TRACY L. WAGNER, VALERIA Y. LEINBACH AU-003172-L Ph.: 610-562-7445 or 610-741-3828

Thanks Berks County

**You Voted - We Won**

**Best Seafood**

Reading Eagle  
Reader's Choice

**Eric Senkovich  
Best Chef\***

**Best Meat Store\***

**We Got Crabs!**

**DELICIOUS SUPER DUPER**

**BERKS COUNTY'S FRESHEST SEAFOOD STORE**  
Always Making Sustainable Choices

Store 610.926.2025  
Fax: 610.926.3696

Purchasing & Wholesale  
610.926.2117

8472 Allentown Pike  
Blandon, PA 19510

Hours: Mon.-Fri. 7 AM to 6 PM;  
Sat. 7 AM to 5 PM; Sun. 10 AM to 3 PM  
Accepting Access/Quest Card

**FREE SOUP**  
w/ Purchase & Ad

**Littleneck Clams** ..... **\$2195** per 100

**Wild USA Shrimp**  
Jumbo \$750 lb. Large \$450 lb.  
In 5 lb. Box In 5 lb. Box

Lesser Quantities \$795 lb. Lesser Quantities \$495 lb.

**Halibut \$995 lb.**

**1/2 Rock Lobster Tail \$1195 ea.**

**Stewing Oysters \$695 doz.**

**Crab Salad or Crab Dip \$495 lb.**

**Salmon Fillets \$595 lb.**

**Purchase a \$100 Gift Certificate, Receive Free \$10 Super Duper Bucks**

**EXTRA Select Oysters \$895 1/2 doz.**

**CLOSED THANKSGIVING**

**Specials For Monday, November 23 thru Sunday, November 29** WP

**WANTED TO RENT/BUY CASH FOR YOUR CAR, Call 610-916-7000. Steve Moyer's Subaru.**

**CASH FOR YOUR Unwanted Jewelry, All varieties, Rings, Necklaces, Bracelets etc. even broken, also Watches, Pocket Watches, Coins and Sterling, Serious Prices Paid, Call or text Today, Lori 610-468-7110.**

**JEWELRY WANTED: All kinds. Old costume, new costume, used, designer. Bracelets, rings, pins, earrings, necklaces, watches. Good prices paid. Call 610-781-4951.**

**Wanted: Older Quality Stereos, Fisher, Scott Marantz, Thorens McIntosh etc. 78rpm and Alum collections. Call Kurt @ 610-916-3554.**

**CHOICE BUILDING LOTS**

**From 1 Acre to 2 1/4 Acres, Tranquil Country Setting, Surrounded By Mature Trees, Panoramic View, Southern Exposure.**

- Short distance to two large lakes, golf and shopping.
- Blue Mountain School District • Easy Access to Major Routes.

Starting at **\$30,000**

**Now Offering at \$239,000**



3-bedroom ranch, 2 full baths, open floor plan, tile and wood flooring, upgraded kitchen cabinets, 2-car garage. Large walkout basement. Set on 1-acre scenic lot.

**BRING YOUR PLANS OR CHOOSE OURS!**

Take a short ride out into the country and see why, at Landview, you do get a lot for your money!

**Landview Estates - 570-386-5753**

**AUTOMOBILES/ TRUCKS**

**FOR SALE:** 4 - 20" Wheels/Tires & Hub covers from a 2011 F350 King Ranch. Size: LT275/65R20 with Michelin LTX-AT rubber. Roughly 3/16" - 1/4" of tread life left. Asking \$1,000 OBO. Please call AJ @ 610-914-7425

**I Pay For Cars: I'll buy your used car, truck or classic. Licensed dealer will pay cash for your vehicle. Free pick up. www.ipayforcars.com**

**Maxatawny Auto Sales, 15320 Kutztown Road, Kutztown 610-683-0480.**

**WASTE OIL PURCHASED: We pay \$1 per gallon, drop off only, please call 570-366-1900, First Class 4x4. 424 Fork Mtn. Road, Auburn before drop off. Any amount purchased.**

**WE BUY OLD, Classic, Vintage, and Exotic Cars. \$\$\$ We pay cash \$\$\$.** Will pick up vehicle and handle title! Call **Ruozzi Brothers Collection at 610-398-9700 or contact@rbcarcollection.com**

**Visit Our Website At: www.windsorpress.com**

**EMAIL** in your advertisement  
display@windsorpress.com

**PINE CREEK COUNTRY GARDENS & Landscaping**

**Trees Available November 27th**

**Douglas Fir & Fraser Fir**

**Drilled & Baled for your convenience**

- Potted trees: Hemlock, Norway Spruce, White Pine, False Cypress
- Poinsettias - various sizes & colors • Specialty containers
- Wreaths, swags, door knockers • Cemetery boxes
- Assorted Greens: white pine roping, cedar roping, princess pine roping, magnolia leaves, red true dogwood branches
- Great selection of unique gift items
- Habersham candles... new wonderful holiday scents, great gift item
- Decorated and plain grapevine wreaths

Check out our Facebook page for photos

• Gift certificates

**Mon.-Fri. 8 am-6 pm; Sat. 8 am-4 pm; Sun. 10 am - 4 pm (In December)**

Rte. 443, 1425 Long Run Road, Friedensburg, PA • 570-739-1140

**www.pinecreekcountrygardens.com** Friend us on 



**PUBLIC AUCTION**

**LUMBER, FURNITURE, ANTIQUES, MISC. SATURDAY, DECEMBER 5, 2015 @ 9:00 AM**

**Location:** 398 Topton Rd., Kutztown, PA 19530. From Rt. 222 N., north of Kutztown (at Valentino's Restaurant), turn right onto Long Lane Rd. (towards Topton). Proceed to stop sign, turn right onto High Rd. & immediately right to auction entrance.

**Items:** Lighted neon Muhlenberg Dairy ice cream sign; Muhlenberg Dairy benches; Muhlenberg 1/2 gal. & pint milk btls.; 35+ milk cans; Keebler-Weyl biscuit box; Necto tin sign; C/I barn stars; 1931 PA license plate; oil btl. w/spout; asst. adv. tobacco tins; wdn. carnival games; Disco 79 pinball mach; C/I toy reel mower; pressed steel toy vacuum; wire egg baskets; chicken crates; galv. tubs; gumball mach.; bingo mach; 2 Electro Voice SX-100 amplifiers; sm. ornamental windmill; metal ammo box; roll-around oak framed chalkbrd; C/I pig troughs; steel spoke whls.; platform scale; bag trucks; fanning mill; Craftsman 3-1/2 T flr. jack; 2-man saws; painted vanity; oak church pews; swivel-back pews; park & porch benches; wdn. & metal fldng. chrs.; stackable banquet chrs.; pine tbl. & 4 chrs; 8 drwr. blueprint cabinet.; 9-drwr. 3-section pntd. oak blueprint cpbrd.; 1950s wdn. kitch. tbl.; panel dr. broom cpbrd.; wine btl. cpbrd.; rope beds; restr. booths & benches.; dbl. panel dr. cpbrd.; 3-tier 1/2 rnd. shelf; wdn. panel shutters; school desk; Keystoker self-feed coal stove; Fire Boss wd. stove; propane heater; Kenmore washer; Maytag elec. dryer; Amana ch. freezer; elec. kitch. stoves; numerous refrigs.; SS comer. trash recep.; Majestic chicken rotisserie (new); propane deep fryer; elec. & gas water heaters; elec. heaters; heat pumps; circulator pumps; ceiling fans; asst. lighting; pedstl brass church candlestick hldrs.; metal base tbl. top stands; SS roll-up service window closure; water fountain; towel dispensers; wdn. tool chst.; comer. pedstl. fan; dbl. ss sinks; wdn. organizer, smudge pots; propane convection heaters; elec. breaker panels; early porcelain sink; coil nails; asst. hrdrwr.; fire extinguishers; (4) 4'x7' slate pcs.; linoleum roller; pwr. cement trowel; Airco 180 amp welder; chain saws; Homelite 2250 watt gen.; Lemppo hydr. press; salt sprdr.; elec. fence chargers; asst. pwr. & hand tools; alum. siding cutting tbl.; 40' alum. ext. ladder; forge blower; old drill press; wdn. barn louvers; 5' rnd. wdn. architectural trim; asst. Int. & ext. doors; T&G attic flrng; 7'x8' wdn. fireproof lintels; asst. laminated roof beams; asst. 2x4 & 2x6 lumber; T-111 sheets; (9) 40' roof trusses; asst. tele. poles; wdn. spiral staircase; cathedral window w/stained glass; rnd. top wdn. barn dr.; C/I support posts; sidewalk pole lights; 10' O/H dr. w/opener; store frnt. drs.; chain link fence; asst. wrought railings; galv. gates; wdn. playground equip.; rolls tar paper; chimney caps; plow, cultvt & sulky for walking trac.; garden trac. & ATV tires & rims; walk-in cooler panels; asst. oil tanks; skid tank w/pump; utility carts; 5' 3-pt rotary cutter; 3-whl. elec. golf cart; Simplicity rear eng. rider; Ariens lawn trac.; go-cart frame; asst. mountain bikes; 4'x6' trailer frame; 24'x60' dbl. wide schoolhouse trlr. w/self-contained heating & AC; piles of brass, copper, alum & metal scrap; plus other items not mentioned. **Terms:** Visa/MC/Disc. 3% admin. fee, waived for cash or PA check.

Barbecued chicken, soft ice cream, lunch & bake sale by the Local Parochial schools.

**Auctioneers:** CLARENCE N. SHIRK AUCTION SERVICE, AU-3757-L • 610-683-5093 RANDALL S. SHIRK, AA019415 www.auctionzip.com ID#4430

**Selling for:** ANDERS FARM & TIM ANDERS 610-762-2677

**Terms by:** PAUL H. BURKHOLDER 610-683-8074

**AUTOMOBILES/ TRUCKS**

2007 Chevy Cobalt 118,000 miles, automatic, excellent condition, yellow sports car, alloy rims, \$4900 obo, 484-706-65176.

**SALE:** All original Classic Oldsmobile Cutless Cruiser S Station Wagon, silver, spotless inside out, excellent mechanically, \$2300 obo. 610-285-4761, 610-762-4292.

**AUTOMOBILES/ TRUCKS**

2008 Dodge Avenger: 244,000 miles, runs good, \$2000 obo; 240 Gallon Oil Tank with Gauge, used one season \$275 obo; Forced hot air furnace oil 225,000 BTU's \$1000 obo, three years old. Call 570-691-7992.

2008 Ford F150 XLT crew Fx4 4WD Color red 51,000 miles \$19,900 570-640-0860.

**AUTOMOBILES/ TRUCKS**

1988 Chevy P.U. 4X4: Needs body work. Good farm truck, many new parts \$1600; Phone 570-449-7228.

**NORTHERN BERKS Merchandiser AND EAST PENN VALLEY Merchandiser**

Serving More Than 71,500 Homes & Businesses PLUS Worldwide With Our Online Editions!

PUBLISHED EVERY WEDNESDAY BY SINCE 1958

**The Windsor Press** INCORPORATED

SIX NORTH THIRD STREET  
P.O. BOX 465  
HAMBURG, PENNSYLVANIA 19526-0465  
610.562.2267 1.800.562.5521  
CLASSIFIED: 610.562.6595 1.800.220.3053  
FAX: 610.562.2770  
www.windsorpress.com

OFFICE HOURS: MONDAY - FRIDAY 8:00 A.M. TO 5:00 P.M.  
**YOU CAN CALL, FAX OR EMAIL US ANYTIME**  
Family owned and independent since 1958  
**WE ARE HERE TO SERVE YOU!**

**SALES/MARKETING:** Linda Ahn, Jim Brandt, Greg Muntz  
**RECEPTIONIST:** Bonnie DeLong  
**CLASSIFIED ADVERTISING:** Bonnie DeLong  
**DISPLAY ADVERTISING/GRAPHICS DEPT.:** Karen Berger, Marilyn Brandt, Dolores Deisher, Linda Hartman, Lori D. Kleinsmith (asst. mgr.), Carol Marko, Katie Moyer, Bonnie A. Schaeffer (mgr.)  
**PRODUCTION:** Mae Berger (Retired), Grace Hoppes, Greg Miller, Allen Rauch, Ruth Rosado, Barbara Stewart  
**DISTRIBUTION:** David Wisniewski (mgr.)  
**COMMERCIAL PRINTING:** Ryan Strause, Katie Moyer  
**CONTROLLER:** Matt Figard  
**PRESIDENT:** George Mitten

The Windsor Press, Incorporated, publishers of the Northern Berks Merchandiser and East Penn Valley Merchandiser, reserves the right to review all material submitted for publication, and to reject any material, in whole or part, which The Windsor Press, Incorporated, in its sole opinion, deems inappropriate for publication. We assume no financial responsibility for any typographical errors in any advertisement, but will reprint that portion of an ad in which an error occurs.

The closing time for the East Penn Valley Merchandiser "classified" and "display" advertisements are Thursday at 5:00 p.m. The Northern Berks Merchandiser "classified" and "display" advertisements are Friday at 5:00 p.m. of the week prior to publication. Any deviation from this will be published in both papers.

**MEMBER OF** Greater Hamburg Business Association Northeast Chamber of Commerce

Find Us On Facebook!

MACPA CIRCULATION VERIFICATION COUNCIL

MACPA Mid-Atlantic Community Papers Association

**PUBLIC AUCTION**

**I.H. 1466; CASE IH 1594; MF & MM FARM TRACTORS; 1990 DODGE DSL.; PICKUP TRUCKS; FARM EQUIP., FISHER ANVIL**

**Saturday, November 28, 2015 @ 9:00 AM**

**Location:** 561 Huff's Church Rd., Alburtis Berks Co., PA 18011.

**Tractors:** I.H. 1466 dsl w/cab, 5627 hrs; Case IH 1594 dsl w/cab, 2155 hrs; MM G900 dsl, 5366 hrs; MM M670 dsl; MF 275 dsl, 4112 hrs; MF 180 dsl, Multi Power 7252 hrs; M.F. 35 gas trac; 1975 Case 850 dsl track loader w/roll cage, 2230 hrs; 1979 IH 260A dsl, hydro, loader/backhoe 2776 hrs' IH 2500B brush tractor; Bobcat 643 skid ldr w/Kubota dsl eng; NH 1495 s.p. haybine, Perkins dsl, w/1495 H 12' head; NH 1499 s.p. haybine w/Ford dsl eng.

**Trucks & Trlr:** '90 Dodge 250 dsl pickup, 200,000 mi; '79 Dodge motor home w/series 3 HD eng; '89 26' gooseneck flatbed trlr, w/hydr tilt; **Tillage & Planting:** IH 55 13' 3 pt. high clearance chisel plow; Sunflower 16' off-set disc; Frontier DH1612 trans disc; IH 12' field culvtr; Unverferth 20' roller basket; 10' cultipacker; JD 7000 conservation 4r 30" liquid fert C planter; JD fbb 17 disc grain drill; 3-blade trlr disc plow; MM 3-pt 4-r culvtr; 3-pt 2-r culvtr; **Haying & Forge:** Kuhn GF 5202 THA 17' 4-Star tedder; Pequea TT6000 27 tedder; NI 4240 11' rotary rake; NH 166 hay inverter; MF 3-pt rake; NH 575 baler w/hydr thrower; Diller 8x18 bale side wagon; (3) 8'x16' bale side wagons; Little Giant 30' bale elev; Badger 1050 & 2 JD 716A tandem axle forage wagons; NH 27 forage blower. **Misc:** IVA field sprayer w/500 gal tank & 60' booms; 30' hydr fold, 500 gal sprayer; 8x16 & Farmco 24' feeder wagon; Unverferth 200 bu, gravity box wagon; Calumet 3750 gal tandem axle manure tank w/injectors; Houle vertical pto manure pump; hydraulic dr manr pump w/6" discharge; IH 550 manr sprdr w/end gate; 3-pt spin sprdr, I.H. 2350 frnt end loader; Snap on duals; 35 KW PTO generator; K&S 210 TMR mixer w/electronic scales; auto roller mill; 5 asst. Rissler conveyors; Zimmerman cattle chute headlock; steel ft bath; asst farm gates; approx 900 bales mixed hay; 1000, 500 & 250 gal fuel tanks; 10,000 gal Fiberglass tank; snow V-plow, & stone forks for skid ldrs; hydr cylinders; lot of vari lengths of angle iron up to 20'; heavy duty steel shelving; steel shop tbls; parts & bolts bins; 4 T Porta-power; Lincoln 220 welder; acetylene torch set; air compressor; chain hoist; lg 1890 Fisher anvil; tool boxes; misc tools & supplies. Plus other items not mentioned.

**Note:** Anders Farms is discontinuing farming operations. Sale order: starting with small farm related items, tools, etc, farm equip approx 1:00 pm. Hours on tracs. May or may not be accurate. **Terms:** Visa/MC/Disc. 3% admin. fee, waived for cash or PA check. Out of state checks must have a bank letter of credit date specifically for this auction.

**Auctioneers:** CLARENCE N. SHIRK AUCTION SERVICE, AU-3757-L • 610-683-5093 RANDALL S. SHIRK, AA019415 www.auctionzip.com ID#4430

**Selling for:** ANDERS FARM & TIM ANDERS 610-762-2677





## Your Christmas Gift Hunt Ends Here!

**We have a wonderful selection of "Tailored-for-Him" Gifts**

Great Selection of Sport Shirts Sizes to 4XL,  
Levi's Jeans & Dockers • Sweaters  
Dress & Casual Pants • Suits & Sport Coats  
Florsheim, Dockers, Propét & Hush Puppies Shoes  
& Lots More

**CLOSEOUT SPECIALS ON LADIES' SHOES**

### DIETRICH'S MEN'S SHOP

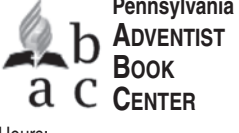
**320 State St., Hamburg 610-562-7548**

HOLIDAY HOURS: Mon., Tues., Thurs. & Fri. 10 am to 8 pm;  
Wed. 10 am to 12:30 pm; Sat. 9 am to 5 pm;  
Open Sunday 12/13 & 12/20 Noon to 5 pm; Christmas Eve 10 am to 2 pm

**Watch For Extended Holiday Hours Starting Dec. 14**

**FREE GIFTWRAP • FREE ALTERATIONS**

Telephone 610-562-5156 [www.adventistbookcenter.com](http://www.adventistbookcenter.com)



**Pennsylvania ADVENTIST BOOK CENTER**

Worthington, Loma Linda, Morningstar, and Gardein. If you like Gardein items then you'll LOVE our prices. Our prices are lower than Hamburg Walmart. We have Bagged Flours, Gluten Free Oats, Spices, Honey and much more. We carry an assortment of Bibles in KJV, NKJV, NIV, ad NLT Translations. S.S. Felts and materials. Communion Supplies!

Hours:  
Sunday: 11:00 am to 4:00 pm  
Monday - Thursday  
10:00 am to 6:00 pm  
CLOSED - Friday & Saturday  
Facebook.com/19526.ABC

2359 Mountain Road Hamburg, PA 19526 [www.abchealthfoods.com](http://www.abchealthfoods.com)

**MISCELLANEOUS**

Farm Weed Sprayer 30' boom \$950; Handicap stair lift alum. Beams \$450; electric treadmill \$65; Scaffolding walk through galvanized \$950; obo on above items. 610-966-3200.

**Ziegler's Nurseries: Christmas Trees: Fraser, Fir 6' to 8' \$20; Concolor Fir 5' to 6' \$15. Potted Trees Avail. Starts Nov. 27<sup>th</sup> 610-926-2113 or 484-269-9080. [www.ziegler'snurseries.com](http://www.ziegler'snurseries.com)**

**BuyUsedPCs.com** Refurbished Laptops & Desktops at Great Low Prices!  
A Division of JHR Corp. d/b/a 

**Great Affordable Prices for Everyone on your Gift List!  
Most PC's are eligible for the Windows 10 Upgrade!**

 <b>HP nc6910p</b> Intel Core 2 Duo, 2.0Ghz, 2GB RAM, 80GB HD, DVDRW, W7 Pro <b>\$129.95</b>	 <b>HP EliteBook 8440p</b> Intel i5, 2.4Ghz, 4GB RAM, 250GB HD, DVDRW, WebCam, W7 Pro <b>\$199.95</b>	 <b>HP dc5800 SFF</b> Intel Core 2 Duo, 3.0Ghz, 4GB RAM, 160GB HD, CDRW/DVD, W7 Pro <b>\$129.95</b>	 <b>Lenovo Think Center M91p</b> Intel i3, 3.10Ghz, 4GB RAM, 320GB HD, DVDRW, W7 Pro <b>\$189.95</b>
--	---	---	--

**Receive 10% off your entire order  
Enter Coupon Code "Holiday 15" during checkout!**

Stop in our showroom or visit our website at [www.buyusedpcs.com](http://www.buyusedpcs.com)  
40 Willow Street, Kutztown, PA 19530  
Monday-Friday 8:30 - 5:00 610-683-6883

## GUN EXCHANGE

New - Used - Consignment Shop



**Firearm Transfers**  
**Savage Rebates Still Available**

327 Mountain Rd., Lenhartsville, PA  
6 Miles East of Cabela's off Exit 35 - on I-78  
Office & Fax: 610-562-9630  
Day Phone: 610-334-6330  
Tues., Wed., Thurs., Fri. 1 to 6 p.m.  
Sat. 10 a.m. to 1 p.m.; or by Appointment

Keeping it Local Fundraising event for a 10 year old boy who is awaiting a multi-organ transplant at the Miami Transplant Institute. Come shop 28 local vendors and bring the kids to visit The Art Bus. Raffle items. The Inn at Reading, 1040 N Park Rd, Wyomissing, Pennsylvania 19610 Saturday November 28, 2015 11-3pm.

**'TIS THE SEASON FOR A TRAINER.  
KEEP FIT ON YOUR BIKE ALL YEAR LONG!**

**BIKES BY:**    

The Complete Cyclist Outfitter  
**Spokes BIKE SHOP**  
AND FITNESS EQUIPMENT

1073 Pottsville Pike (Rt. 61), Shoemakersville  
610-562-8900  
[www.spokesbikeshop.com](http://www.spokesbikeshop.com)

WINTER HOURS:  
Wed. to Fri. 11 AM to 7 PM; Sat. 10 AM to 4 PM;  
Sun. 12 Noon to 4 PM; Closed Mondays & Tuesdays

~ Holiday Coupon ~

**\$20.00 OFF**  
Any Purchase Of \$100.00 Or More

or

**\$10.00 OFF**  
Any Purchase Of \$50.00 to \$99.99

The Complete Cyclist Outfitter  
**Spokes BIKE SHOP**  
AND FITNESS EQUIPMENT

With Coupon Only. Not valid with other offers. Good only at Spokes Bike Shop. Expires 12/23/15

Gift Cards Available

WP

*Have a Blessed*

# Thanksgiving!



Let us pause to reflect on our blessings, give thanks for all we have been given, and pray for peace and the preservation of all that is good on earth.

Enjoy your holidays!

**Burkey & Driscoll Funeral Home, Inc.**  
40 South 4th Street, Hamburg, PA 19526  
610-562-2955  
Steven C. Burkey, Director - John C. Driscoll, Supervisor

**MISCELLANEOUS**

**For Sale: Delta 10" tilting arbor Unisaw (5hp, 3 phase) circa-1995, serial # 94596559 with 34-976 Uniguard, 34-897 Unifence and 34-998 extended table and shelf. Very good condition \$1200. Delta 10" right tilting arbor Unisaw (5hp, 3 phase) circa 1999, serial #99087768, two steel extension wings with standard fence and blade guard. Very good condition \$1,000. Please call 610-916-5487 for more information.**

**NICE TOPSOIL/TOPSOIL COMPOST MIX/ COMPOST, regular topsoil \$20/ ton, topsoil compost mix \$25/ ton, compost \$30/ ton, buy 3 or more ton of any item \$5 off per ton, loading available by appointment or local delivery available, Orwigsburg 570-366-2686.**

**MISCELLANEOUS**

Goodyear Wrangler AT Truck tires, P245/70R16, 8/32 tread \$175; 16" Echo chain saw, 452 VL, good condition, extra chains \$100; Wood stove, good condition \$100; Call 610-926-1694 after 4pm.

**MISCELLANEOUS**

Learn to Play an Instrument with Professional Music Instructions. Kids, Adults, Seniors. Daytime and evening. Beginning through Master. Meadowood Music, 8521 Allentown Pike, Blandon.

**HOLIDAY SALE**

# Randy's Carpet

Family owned since 1974



**10% off\***  
ALL FLOORING

\*Not to be used in conjunction with any other offer. Must be presented at time of order. Expires 12.31.15.

Carpet • Vinyl  
Ceramic • Hardwood

TOP BRANDS INCLUDING:  
 

1073 Pottsville Pike, (Back of Building), Shoemakersville, PA 19555 • 610.562.8838  
Monday - Thursday 10 AM to 7 PM • Friday 10 AM to 4 PM • Sunday 10 AM to 2 PM  
[www.RandysCarpet.com](http://www.RandysCarpet.com)



- ◆ Wood**
- ◆ Pellet**
- ◆ Gas**
- ◆ Fireplaces**

**Sales and Service**

**120 North Main St., Alburytis, PA 18011**  
**610-966-3556**

Mon., Tues., Thurs. & Fri. 8 a.m. to 4 p.m.; Wed. 8 a.m. to 8 p.m.; Sat. 9 a.m. to 3 p.m.; Sun. 10 a.m. to 3 p.m.

[www.kcstovesandfireplaces.com](http://www.kcstovesandfireplaces.com)

**QUADRA-FIRE**

**HARMAN**  
BUILT TO A STANDARD, NOT A PRICE

**HARMAN**  
BUILT TO A STANDARD, NOT A PRICE



**Quadra-Fire Classic Bay  
1200 Pellet Stove**

**Harman Advance  
Pellet Stove**

**Harman Absolute 43  
Pellet Stove**

**Stop By Our Showrooms  
To See All Our Stoves.**

**0%** **FOR 1 YEAR**

SEE STORES FOR DETAILS



- ◆ Wood**
- ◆ Pellet**
- ◆ Gas**
- ◆ Fireplaces**

**Sales and Service**

**Royer Plaza, 311 County Line Rd., Bldg. 15,  
Gilbertsville, PA 19525**  
**484-415-0751**

Tues. 9 a.m. to 6 p.m; Wed., Thurs. & Fri. 9 a.m. to 4 p.m.; Sat. 9 a.m. to 2 p.m.; Closed Sun. & Mon.

[www.kcstovesandfireplaces.com](http://www.kcstovesandfireplaces.com)

**NOW DELIVERING PELLETS IN THE BOYERTOWN AREA**



**RV 80 Ceramic  
BTU 8,500 UP TO 35,000**



**Napoleon®  
NZ6000  
Wood Burning  
Fireplace**



**Napoleon®  
BGD36  
Gas Fireplace**



**Napoleon® GVFS60  
Gas Stove**



# It's Martin's For The Holidays!

Be Sure To Put Martin's Farm Market's Unique Gift Shop As One Of Your Christmas Shopping Destinations This Year.



A Great Selection Of Primitive Amish-Made Furniture



As Well As Christmas Decor Items

- Milkhouse Soy Candles
- Swan Creek Soy Candles
- Earth Rugs
- Gift Baskets
- Homemade Jarred Goods
- Homemade Jams & Jellies
- Over 15 Flavors of Gourmet Popcorn

And Don't Forget Martin's Gift Cards Are Sure To Please.

**Martin's**  
Farm Market  
"A Unique Country Store"

744 S. Rt. 183  
Schuylkill Haven, PA 17972  
1/2 Mile N. of Lake Wynonah; 2 Miles S. of 183/443 Intersection  
570-739-2600  
www.martinsfarmmarket.com  
~ Major Credit Cards Accepted ~  
Hours: Mon. - Fri. 6 a.m. to 6 p.m.; Sat. 7 a.m. to 5 p.m.;  
Closed Sun.



## ADMIT ONE & ALL

One Day Shopping Pass  
**25% OFF**  
Entire Purchase  
Dec. 16th & 23rd

**OPEN HOUSE**  
DEC. 16TH & 23RD

Holiday Open House Pass  
**25% OFF**  
Any Single Item  
Dec. 15-24, 2015

# Christmas

at the **419 MARKET** & The Old County SEAT  
Cafe & Eatery

...located at 419 E. Market Street  
Orwigsburg, PA 17961  
(570) 866-2334

**MEN'S NIGHTS TO SHOP**  
Dec. 23rd & 24th  
10am-7pm  
Beverages and Snacks Provided

**Holiday Fun & Savings Galore**  
DEC. 15TH-24TH

MUST PRESENT THIS COUPON IN ORDER TO GET THE DISCOUNT

**MISCELLANEOUS**

Acrosonic Piano For Sale: Asking \$100; In great condition, must provide own movers. If interested call 610-926-2336.

FREE: Eight Black Walnut Trees. You cut down and take wood and branches. Call 610-926-8165 anytime. If no answer leave message.

**FRESH FARM RAISED Whole Turkeys** for Thanksgiving. Dressed-Ready to roast. Available for Pick up 11/25. Call for details. 610-533-7364.

"JUKEBOXES" For Sale: Wurlitzer, Seeburg, Rowe AMI, Rock-ola. Call 610-944-9403 for appointment. Juke Box Service Available. Family Room Fun!

**Ziegler's Nurseries: Christmas Trees:** Fraser, Fir 6' to 8' \$20; Concolor Fir 5' to 6' \$15. Starts Nov. 27th. 610-926-2113 or 484-269-9080. www.ziegler nurseries.com

## Bear Farms Evergreens

### CHRISTMAS TREES

Fresh Cut Trees, Wreaths, Greens

\*DOUGLAS FIR
\*FRASER

\*BLUE SPRUCE
\*CANAAN

or Cut Your Own

PIN STAND DRILLING SYSTEM  
FREE  
Shaking, Baling & Drilling

**OPENING BLACK FRIDAY 'TIL CHRISTMAS**

David J. Bear      Monday - Wednesday by Appt.;  
841 Stony Run Valley Rd.      Thursday & Friday 12 - 5;  
Kempton, PA 19529      Saturday & Sunday 8 - 5

Chris Bear 484-797-8599  
Connie Brown 610-295-2544

Directions: Traveling N. on Rt. 143, make a right onto Stony Run Valley Rd. (across the street from Hawk Mountain Rd.) Look for sign.

## GIVLER'S AUTO CLINIC & TRAILER SALES

Brad Givler, Proprietor

162 N. Centre Ave., P.O. Box 365, Leesport, PA 19533 • Brad Givler, Proprietor  
Shop: 610-926-8826 Cell: 484-955-3487 www.givlertrailers.com  
Mon., Tues., Thurs. & Fri. 8:30 - 5:30; Wed. 8:30 - 8:00; Sat. Hours Please Call

- State Inspections and Emissions
- Engine & Transmission Replacement
- 4-Wheel Alignments • Foreign & Domestic Autos • Check Engine Light Diagnostics

---

**Haulmark.com TRAILER SALES** The Best Name Behind You For The Long Haul

**SURE-TRAC**

•Utility Trailers      •Car Haulers

THE ONE YOU WANT NOT IN STOCK? We Can Order It. NEED A HITCH? We Have Them.

Installation Available - See Us For Your Best Deal

**NOW SELLING CARGO PRO and SNO-PRO ALUMINUM TRAILERS**

## BEER - SODA - SNACKS

For Your Holiday Get-Togethers

### 20 Varieties of Homemade Sodas In Kegs For Your Winter Parties

Including Diet - All Caffeine Free

### BEER TRAILER AVAILABLE

(Any Type of Beer)

Roll Your Own Tobacco

**HOURS:**  
Monday - Thursday  
8 a.m. to 6 p.m.;  
Friday 8 a.m. to 6 p.m.;  
Saturday 8 a.m. to 5 p.m.

204 W. FRANKLIN ST. TOPTON, PA  
**610-682-2411**

## Kubota BX2370

The versatility to do more

- Powerful 3-cylinder, liquid-cooled Kubota diesel engines - 23-25.5 HP
- Proven Kubota HST Transmission

www.kubota.com

## READING TRACTOR & EQUIPMENT

A DIVISION OF LIFT, INC.

5538 POTTSVILLE PIKE  
LEESPORT, PA 19533  
(610) 926-2441

MONDAY - FRIDAY: 7:30AM - 5PM  
SATURDAY: 8AM - 12PM  
WWW.READINGTRACTOR.COM

READING TRACTOR & EQUIPMENT WILL BE CLOSED FOR  
THANKSGIVING 11/26, 11/27 & 11/28, RE-OPENING MONDAY 11/30

# Paws to Give this holiday season

with **Interlace Communications & goMAaVA** **DESIGN MARKETING SOLUTIONS**

Receive 10% off  
any of our services\*  
when you donate  
\$15 or more in items!

Bring us your items and receipt  
to receive a 10% off coupon!

Help us help our furry friends!

For complete list and more information go to  
[www.gomaava.com/paws-give](http://www.gomaava.com/paws-give).  
Questions? Contact Kasey @ 484-709-6564



\*10% off qualifies for all of our services except Pick Your Own Plan and cannot be combined with any other specials. Receipt must be presented in order to receive 10% off coupon.

# BLACK FRIDAY and SMALL BUSINESS SATURDAY

## SALE

November 27 & 28

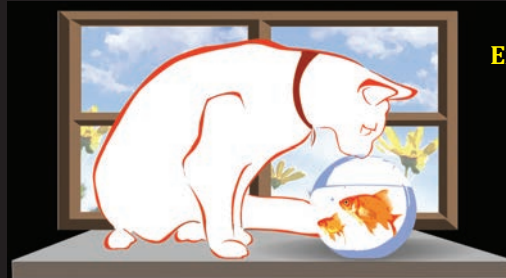
Hot Apple Cider Christmas Cookies

Buy any **BLUE** ticketed item,  
Get any **YELLOW** or **GREEN**  
ticketed item **FREE**

**Coats**  
**30% Off**

**Sale Rack**  
**Marked Down**  
**\$2.00**

**Party**  
**Dresses**  
**20% Off**



Unique, Upscale Boutique,  
Women's Consignment Store  
Exclusive Apparel & Designer Labels  
Clothing, Shoes, Handbags,  
Accessories & More

1660 Long Run Road,  
Schuylkill Haven, PA 17972

570-739-4CAT

E-mail: [cats1660@outlook.com](mailto:cats1660@outlook.com)

# THE CURIOUS CAT

"You've just got to be curious said the cat"

**New Store Hours: Tues.-Fri. 10-6: Sat. 10-4**



4111 Pottsville Pike, Reading, PA 19605  
PHONE: 610-370-6671  
WWW.BOBFISHERCHEV.COM

**FREE  
BODY SHOP  
ESTIMATES**

## EVERYDAY VALUE!

**\$99.95 BRAKE  
PAD  
SPECIAL**

Pricing is for the installation of  
ACDelco Professional  
DuraStop Brake Pads.

Not applicable with other coupons or offers.



Good only at Bob Fisher Chevrolet. GM Vehicles only.  
Expires 12/31/15. WP

**Everyday LOW  
PRICING**

**Oil Change  
With Multipoint Vehicle Inspection  
\$26.95**

**Oil Change, Tire Rotation,  
Multipoint Vehicle Inspection  
\$34.95**

Includes up to 5 quarts of  
Conventional 5w-30 Oil



Good only at Bob Fisher Chevrolet. GM Vehicles only.  
Expires 12/31/15. WP

**\$100.00 MAIL-IN  
REBATE**  
With The Purchase of  
4 Qualifying Tires

Eligible brands include: Bridgestone,  
Continental, Goodyear, Hankook and Pirelli.

\$50.00 Mail-In Rebate available for other select brands.  
Rebate form must be mailed by 11/30/15.  
See dealer for details



Good only at Bob Fisher Chevrolet. GM Vehicles only.  
Expires 11/30/15. WP

**\$10.00 OFF 4-WHEEL  
ALIGNMENT**

Includes inspection and adjustment of Camber,  
Caster and Toe. Check Tire Pressure and Wear.  
Inspect all Steering & Suspension Components.

Some vehicles may require additional parts and labor.  
Not applicable with other coupons or offers.



Good only at Bob Fisher Chevrolet. GM Vehicles only.  
Expires 11/30/15. WP

### 30-DAY PRICE MATCH ON TIRES

Buy Select Tires And If You Find A  
Better Price Within 30 Days Of The  
Purchase, We'll Refund The Difference

- FREE Lifetime Tire Rotation with  
the purchase of 4 new tires
- Free Alignment Quick Checks  
for ALL Customers

Save Time!  
Use our online  
service appointments  
[www.bobfisherchevy.com](http://www.bobfisherchevy.com)



### SERVICE DEPARTMENT HOURS OF OPERATION

Mon. 7:00 a.m. - 7:00 p.m. • Tues. 7:00 a.m. - 7:00 p.m. • Wed. 7:00 a.m. - 7:00 p.m.  
Thurs. 7:00 a.m. - 7:00 p.m. • Fri. 7:00 a.m. - 5:00 p.m. • Sat. 7:00 a.m. - 2:00 p.m.

**SUNDAY - CLOSED**



### MISCELLANEOUS

Handicap Stair Lift \$425; Electric treadmill \$55; SS grill \$65; all vgc, all obo, 610-966-3200.

**SEASONED FIREWOOD**  
(all hard wood) \$175 a cord, 1/2 cord \$100 delivered. 610-488-6268.

**SELF-STORAGE** Secured, Indoor & Outdoor, size for every need. 24 hour access. Located off Rt. 61 behind Bell Trucking & Kuzan's Hardware. Call RUBRIGHT'S 610-562-3886

### FARM EQUIPMENT/ LIVESTOCK

FOR SALE: 1957 International Cub Tractor with Woods 60" mower, includes 54" Snow Plow (blade) \$3000; tailskid60@aol.com

**HORSE BOARDING**, self care and full care, indoor and outdoor arenas, trails on property. Von Dohren Stables, Oley, PA. 610-987-6136

### ANTIQUES

59 FORD 4 Dr. \$5500; 610-926-2227.

### ANTIQUES

64 Chevy Impala, 4 dr hd top \$5500; Farmall C \$900; 610-926-5784.

### NELSON ADAMS ESTATE TOY AUCTION #5

Wednesday, December 2, 2015 at 1:00 PM  
Doors Open @ Noon

Location: Leesport Farmers Mkt. - Diefenderfer Auction Gallery, Rt. 61, Leesport, PA 19533. (Halfway between Reading & Hamburg on Rt. 61, located on the back side of the main market bldg.)

This is the 5th auction of vintage toys from the early 1900s thru the 1960s...highlighted as follows: (50+) **Cast Iron**: Cars & trucks from Hubley, Kenton & more; (70+) **Tin**: Wind-ups & Friction, cars, trucks, planes; (300+) **Die-Cast**: Cars, trucks & military from Tootsietoy, Dinky, Solido, Mercury, Britain & more; (30+) **Pressed Steel**: cars & trucks; **Trains**: 3 Lionel prewar train sets (IOBs); N-Ga train set w/platform; **Misc**: Slush metal; wood inc: WWII Buddy L; rubber; too much more to list!

See [www.westwall.com](http://www.westwall.com) for catalog & pictures.

**Terms**: Cash, Check, MC, Visa, AMEX, Discover, 10% Buyer's Premium cash/check, 15% credit cards.

**DIEFENDERFER AUCTION CO., LLC**  
Laureldale, PA • 610-929-8215,  
Auction House: AH-2010

**Seller: NELSON ADAMS ESTATE**  
Schonack Landing, NY  
Diana Adams,  
NYC Owner



BUY ★ SELL ★ TRADE  
Tel.: 610-398-2650

HOURS:  
Mon. thru Fri.  
10:30 to 5;  
Sat. 10 to 4;  
Closed Sun.

9331 Hamilton Blvd. (Rt. 222)  
Breinigsville, PA 18031  
[www.eaglearms.com](http://www.eaglearms.com)

98K Mausers  
G43 Semiautomatic  
Lugers, P38s, Colts

**WANTED!! GUN PARTS/BAYONETS/SWORDS/MILITARIA/  
ARMY SURPLUS/ALL FIREARMS/AMMO/RELOADING SUPPLIES**

### HI-POINT FIREARMS Carbines



40 / 45 / 9mm **Sale \$279.95**

### HI-POINT FIREARMS Pistols



Hi-Point Model 9MM C/P  
HH1550 00916 9MMC/P 3.5"  
Black Poly 8 SH 3 Dot AS  
**Sale \$139.95**

### IMR Powder \$26.95 lb.



### Anderson Machine Stripped, Lowers Russian M91/30



• Arsenal Refinished Hardwood  
• 7.62x54R 5Rd 26"  
Excellent #CENT R1660X  
Complete With All Accessories

# ORDER HOLIDAY PIES NOW!



219 Dryville Rd., Fleetwood  
(near Echo Hill Country Store)  
Now Open  
Wed. - Fri. 8-6; Sat. 8-5  
610.944.8243  
Accept

- Homemade Potato Filling
- Homemade Cranberry Salad
- Fresh Apple Cider
- Homegrown Potatoes
- Locally Grown Sweet Potatoes
- Free-Range Eggs
- Homemade Soft Pretzels (Thurs. - Sat. Only)
- Canned Goods - Great Selection
- Large Variety of Apples

## WEAVER'S BAKERY

- Mincemeat, Pumpkin & Sweet Potato Pie
- Fresh Homemade Fruit Pies & Custards
- Cinnamon Rolls & Raspberry Rolls
- Cookies
- Whoopie Pies
- Apple Dumplings
- Fresh Sticky Buns Made Daily
- Wet-Bottom Shoofly Pies
- Pumpkin Rolls & Pies



Stop In & Try  
**Ruthie's Pretzels**  
Handmade Sourdough

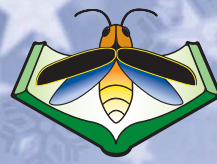
### COUPON

**FREE PRETZEL**  
Homemade Soft  
with every \$10 purchase  
Limit one coupon per customer.  
Good only at Shady Mountain Market  
Expires 12-24-15 WP



Order  
**Cookie Trays**  
Now For  
The Holidays!

**Closing For Season  
December 24**



# FIREFLY BOOKSTORE

230 W. MAIN STREET • KUTZTOWN

## NEW & USED BOOKS BOARD GAMES • TOYS

PUZZLES • CARDS • GIFTS • FAMILY TREES • PUPPETS

**2016 CALENDARS  
25% OFF**

**STORE HOURS**  
SUN-WED 11 am - 7 pm  
THU-FRI 11 am - 9 pm  
SATURDAY 10 am - 9 pm

**SMALL BUSINESS SATURDAY!**

**25% OFF  
YOUR PURCHASE**

**SATURDAY 11/28/2015 ONLY!**  
One coupon per customer, per transaction, per day.  
Excludes store credit purchases. Cannot be combined  
with other offers or promotions. Not usable on sale  
items. Excludes Gift Cards and Consignment items.

**FIREFLY BOOKSTORE  
230 W. MAIN • KUTZTOWN**

### HOLIDAY GIFT CARDS AVAILABLE!

**20% OFF  
YOUR PURCHASE**

Expires 12/31/2015

One coupon per customer, per transaction, per day.  
Excludes store credit purchases. Cannot be combined  
with other offers or promotions. Not usable on sale  
items. Excludes Gift Cards and Consignment items.

**FIREFLY BOOKSTORE  
230 W. MAIN • KUTZTOWN**

**BUY TWO USED  
BOOKS GET 1 FREE**

Expires 1/31/2016

One coupon per customer, per transaction, per day.  
Excludes store credit purchases. Cannot be combined  
with other offers or promotions. Not usable on sale  
items. Usable for purchases in the store only.  
Lowest priced item will be free.

**FIREFLY BOOKSTORE  
230 W. MAIN • KUTZTOWN**

#### ANTIQUES

Lester Breninger Pottery 32 Pieces, paid \$1200, sell for \$500; 1940's China Dinnerware \$200; Howard Miller Grandfather Clock, needs work. \$200; 610-562-3508.

#### GARAGE/YARD SALES

Indoor GARAGE SALE: Dolls, toys, lots of Christmas Items and misc. Friday Nov 27<sup>th</sup> 10-4, Saturday Nov. 28<sup>th</sup> 8-3. 110 Orchard Road, Fleetwood. 19522

#### RV'S/CAMPERS

**BOAT AND RV STORAGE:** Indoor RV \$75/mo. Boat \$50/mo. Outside storage available. Three spaces remaining. Dave 610-451-7011.

**KEEP YOUR CAMPER IN GREAT CONDITION!** Trailer, inspection, leak detection, roofing, carpeting, plumbing & electrical, minor repairs, AC installation, awning, heaters & refrigeration. Maiden Creek Marine & RV, 222 south of 662 Moselem Springs. www.maidencreekrv.com. 610-944-9994.

#### FOR RENT

**HOUSE FOR RENT:** 2 BR, 1 Bath, kitchen, dining room, and living room. Includes sewer and water. Tenant pays all other utilities. Security deposit plus one month's rent and credit check. No Pets! Call for more info. 610-562-8688.

**HIMMELBERGER'S**  
**CHRISTMAS TREES**  
DOUGLAS FIR, BLUE SPRUCE & FRASER FIR  
Fresh Cut or You Cut

6 foot & under	\$27 <sup>00</sup>	Over 6 foot	\$33 <sup>00</sup>
White Pine - Special	\$15 <sup>00</sup>		
B&B Trees -	\$7 <sup>00</sup> ft.		

FREE Pin Drilling & Baling  
2 miles west of Hamburg off Old Route 22 (Hex Highway) on Cheese Lane CALL 610.223.3849  
Fri. - Sat. - Sun. 8 a.m. 'til 5 p.m.

4030 Chestnut Street, Emmaus (next to Dunkin Donuts) 610-928-1515

## DECK YOUR HALLS SALE

We can make your spirits bright!

**FILLMAN & SONS**  
FLOORS AND MORE

Save on a new floor today,  
and have yourself a  
merry little Christmas!  
Just mention "BRIGHT"

Flooring Remodeling Decorating Handyman Service & Much More... Just Ask!

Mon, Tues, Wed, Fri 9am-5pm Thurs 9am-7pm Sat 9am-2pm www.FillmanAndSons.com HIC# PA092726

### SAVE THE DATE!

**WAREHOUSE  
CLOSEOUT  
SALE**  
Most Items \$1, \$2 or \$3  
**Only Open To The Public Once A Year**

- WRAPPING PAPER ■ GIFT ITEMS
- KITCHEN ITEMS ■ CANDLES ■ TOYS

### SAVE THE DATE!

Tuesday, Dec. 8 thru Tuesday Dec. 15, 2015

- BAGGED CANDY ■ BOXED CHOCOLATES
- COOKIE DOUGH ■ CHEESE & SAUSAGE
- APPETIZER & DESSERT MIXES



Merchandise Changes Daily - Bigger & Better Than Ever!

## GIFTS 'N THINGS

26 East Locust St., Fleetwood, PA 19522 (The Old Fleetwood Shirt Factory, Just Off Main St.)  
Open Daily: TUES. THRU FRI. 10:00 AM to 5:00 PM; SAT. 10:00 AM to 3:00 PM; SUN. CLOSED

610-944-1400



Directions: From Allentown/Poconos: Take 22 to Route 100 to Route 222 South. Follow 222 South to Route 662. Turn left onto 662 for 2-3 miles into Fleetwood. Go straight thru light, about 1 block to East Locust St. Turn left. Gifts 'N Things on right hand side.

From Reading: Take 222 North to Route 662. Turn right onto 662 and follow directions above.

ON-STREET PARKING

**OPEN LATE  
TUES., DEC. 8  
& WED., DEC. 9  
10 AM TO 8 PM**

### SAVE THE DATE!

e-Subscribe to the Northern Berks and East Penn Valley Merchandisers at: www.windsorpress.com

# HARD OF HEARING?

Your Doctor Said,  
"You Need a Hearing Aid"  
But The Price Was Ridiculous.  
**YOU'RE RIGHT!**



**STARKEY • PHONAK • FINETONE • AUDINA**  
Direct Laboratory Discounts on Most Major Brands

## HEARING AID OUTLET CENTER

"Personalized Service For Your Individual Needs"

Sales • Service • Repairs • All Makes & Models  
Digitals • Programmables • Battery Less

**610-929-9776** • Most Insurances Accepted  
• Same Day Service / In-Home Service  
• Satisfaction Guaranteed

**4802 Kutztown Road, Temple, PA 19560**

You can also visit us at our second location  
at The Leesport Market.

### FOR RENT

**FOR RENT:** House near Hamburg. 2 BR, kitchen, living room and bath, attached 1 car garage, no smoking and no pets, \$850/mo. Available December 1<sup>st</sup>. Call 484-772-5310.

### FOR RENT

**4rent:** 1st floor, Flying Hills Condo, 2bdm, partially furnished, \$1,000 per month, includes maintenance fee, association fee, taxes, cable, trash. No pets, no smoking. 484-797-2193.

### FOR RENT

**2<sup>nd</sup> Story 2 BR Apt.,** sewer, water and trash removal included. Straoustown. \$600mo. 610-488-6271.

**Apt for rent:** 2 Bedrooms 2<sup>nd</sup>. Floor \$600 per month plus utilities, 510 Main St., Shoemakersville. No pets. Call 610-682-2722.

**FLEETWOOD 3BR 1½ bath** House: off street parking, AC, gas heat, \$1150/mo. Water, sewer included. 484-357-8107.

**FOR RENT:** Hamburg 1500 + Square foot garage space. Call Jim at 610-972-7572.

**Hamburg Area Country Apartment,** 2<sup>nd</sup> fl. 4 rooms & bath, new windows, new kitchen, stove, & refig, new paint, carpet, vinyl, covered patio, off street parking, W&D hookup in basement, ideal for 1 or 2 mature adults. \$800/mo. Includes heat, water, sewer & trash. Must pass background and credit check. No smoking or pets, Min. 1 yr. Lease, Ph 610-562-7311.

**HAMBURG TWO 1 BR APTS.** One third floor, \$525; One second floor \$600; w/s/t included, off st parking, on site coin operated laundry, no smoking, no pets, electric heat, 610-698-7650, 484-332-4839

**HOUSE FOR RENT:** 3 BR 2 Baths Home. Off street parking, and garage. Private setting, credit check required. \$850/mo. Available Mid Dec. Call Dave 610-451-7011.

**Large 1 BR second floor Apt,** stove, refrigerator, wall to wall and trash and Heat included. Newly remodeled, \$620/mo. Blue Falls Grove, 610-926-4017.

**THREE BEDROOM HOUSE** in Hamburg. No pets, no smoking. Call for details, 610-562-7598 or 610-562-0314.

## Mohrsville

### Real Estate Auction

**Thursday December 17<sup>th</sup> 6:00 PM**

**1671 Main Street Mohrsville, PA 19541**

Built in 2003 - Like **NEW!!** Quality Greth Construction!  
Lg. 2 Story, 4 Bedrooms, 2½ Baths, Lg. Great Room w/ Fireplace, Vaulted Ceiling, Kitchen, LR, DR, Full Basement, Washer, Dryer, Refrigerator, Central AC, All Gas HW, Heat, Walk out Basement, 2 Car Garage,  
All Appliances Remain!

**Call for Showings!!**

Real Estate Terms: 10% down, Settlement in 30 Days

Property available for purchase prior to Auction with confirmation!

**Dick Henry Auctioneer**

AU005176

[www.dickhenryauctioneer.com](http://www.dickhenryauctioneer.com)

Cell 610-858-3065

Office 610-203-5249



Berks County Parks and Recreation Department presents

# Holiday Lights

at Gring's Mill

**December 4<sup>th</sup>-27<sup>th</sup>**  
**6:00-9:00 pm**  
Wednesdays thru Sundays  
and Dec. 21<sup>st</sup> & 22<sup>nd</sup>

**Entertainment Schedule**

- 4 **Opening Night** with Mt. Laurel Brass
- 5 Beverly McDevitt & Friends
- 6 1-4 pm FREE Kids Holiday Craft Workshop & Sing Along  
6-9 pm "Cinderella's Fairy Godmother," Shows at 6:30 & 7:30
- 9 Kendal Conrad
- 10 Pagoda Brass
- 11 Joe Soltysik Band
- 12 1-6 pm "Colonial Candlelit Holiday Reception," Beidler House, Gibraltar  
6-9 pm "Happy Holidays" with Miss Maggie, shows at 6:30 & 7:30
- 13 Maria Damore & Ken Bagenstose
- 16 Toad Creek Duo
- 17 By Request
- 18 Brass Menagerie
- 19 5:30 pm Winter Solstice with King Winter, Angora Fruit Farm  
6-9 pm Jurkiewicz Family Musicians
- 20 "A Mountain Folk Christmas" with East Side Dave & Friends
- 21 "Celtic Seasonings" with Ken Gehret and Irish Mist
- 22 Fyve Woodwind Quintet
- 23 Bravura Brass
- 26 The Schenlies
- 27 Rhythm Standard

Walk through Light Display  
Entertainment Nightly  
Santa Claus (until December 23rd)  
Model Train Display  
Refreshments

**2083 Tulpehocken Road, Wyomissing**

**Ancwalts**  
COMMERCIAL CONSTRUCTION

**69 NEWS**  
NEWS TV

**WEIU**  
The Morning Journal Company of Berks

**READING EAGLE**  
Bear Look, Bear Read

610-374-2944 • 610-372-8939 • [www.countyofberks.com/parks](http://www.countyofberks.com/parks)

# MoyerSubaru.com



**Don't get snowed  
in this year!**

**STEVE Moyer**



ROUTE 61 ♦ LEESPORT, PA ♦ 610-916-7000

### PUBLIC NOTICE

Notice Is Given That On Or After

**Wednesday, December 16 at 9 AM At:**  
**895 U Store It**

Rt. 895, Auburn, PA 17922 • 570-754-7632

The Undersigned 895 Will Sell At Public Lien Sale By Competitive Bidding In Accordance With The Pa. Self Storage Act In An Attempt To Satisfy The Owner's Lien, The Personal Property Heretofore Stored

With The Undersigned By:

Pritchard - 37, Seabolt - 22, Michalsky - 18, Sowers - 19, Schaeffer - 58

### LOST & FOUND

**MISSING:** SEVEN YEAR Male, Gray, neutered Cat, Answers to the name "Tyler". Family pet. \$40 reward, 500 Driebelbis Mill Road, 484-345-9440.

**FAX** in your advertisement  
**610-562-2770**

### FOR RENT

**Perry Twp 4BR 2 Bath** Farmhouse Includes W/S, 5-Bay Garage, Stove, Dishwasher, Large yard. 1 Yr. Lease +Security Deposit \$1,100. No Dogs. Call 610-562-4505.

**SECOND FLOOR 1 BEDROOM APARTMENT** near Leesport. Heat, water, trash included. \$650 per month plus security. No pets. 610-926-4017.

## BULK SALT TRI-AXLE DELIVERY

### Grim's Hauling

Call for Pricing  
**484-256-2428**



# Propane Delivery & Service

Propane Delivered To Your Tank For As Low As

120 gals. or more at <b>\$1.59<sup>9</sup></b> /gal.	250 gals. or more at <b>\$1.09<sup>9</sup></b> /gal.	500 gals. or more at <b>\$.99<sup>9</sup></b> /gal.
--	--	---

**Call Now To Place Your Order!**

**We Also Install Propane Tanks!**

Purchase or Rent...It's Your Choice.



A Local Family-Owned Business

610-916-0237

[www.elitefuelservice.com](http://www.elitefuelservice.com)

READING, PA 19605

HIC# PA017944

**SERVING BERKS COUNTY**

## OUT ON THE TOWN

**Take I-78 to Exit 35 (old exit 11) Rt. 143, Lenhartsville**

**DINING ROOM:**  
Sun., Tues. & Wed. 11:00 AM to 8:00 PM.;  
Thurs., Fri., Sat. 11:00 AM to 9:00 PM.

**This Weekend:**

**CHICKEN MARSALA** ..... \$10<sup>99</sup>

**HOMEMADE AUTUMN MEAT LOAF** ..... \$9<sup>99</sup>

**YUENGLING SEAFOOD PLATTER** ..... \$14<sup>39</sup>

**Sunday Lunch Specials:**

Roast Turkey, Baked Ham, Roast Beef, Smoked Sausage, Breaded Shrimp, Honey Dipped Chicken, Breaded Veal, (Includes 2 Sides)  
ALSO AVAILABLE WEDNESDAY AFTER 4:00 PM

**Catering:**

**Call Us To Cater Your Special Event!**  
Individual Banquet Rooms Available For 10-300 People

**C.J. Hummel's Entertainment**

**WED., NOV. 25** - 7:00 to 9:00 PM  
**All Ages Line Dance with D.J. "Nuggett"**

**21 & Over Thanksgiving Dance Party with D.J. "Shawn"** - 11:00 PM



**J. HUMMEL'S RESTAURANT**  
*Bar & Gathering Place*

**610-562-4891**

**BAR HOURS:**  
Sun., Tues. & Wed. 11:00 AM to 8:00 PM.;  
Thurs. - Sat. Open 'til 1:00 AM;  
CLOSED MONDAYS

**Closed Thanksgiving Day**

**Our Featured Burgers**

**Breakfast Burger**

**Cowboy Burger**

**10% Senior Discount Every Tuesday & Wednesday**

**FOLLOW US ON FACEBOOK**  
For Great Specials!

**For More Info Check Out Our Website: cjhummels.com**

**Our Featured Burgers**

**Breakfast Burger**

**Cowboy Burger**

**10% Senior Discount Every Tuesday & Wednesday**

**FOLLOW US ON FACEBOOK**  
For Great Specials!

**For More Info Check Out Our Website: cjhummels.com**

## WE ARE OPEN ALL HOLIDAYS

# SHOEY DINER

**Free WiFi** **FAMILY RESTAURANT**  
Rt. 61 Shoemakersville (next to Sheetz) **610-562-0700**  
We Accept American Express, Discover, And All Other Credit Cards

## Thanksgiving

All-You-Can-Eat **FAMILY STYLE DINNER**  
With Soup & Salad Bar



**For Only \$16.95**

**Kids 10 Years or Younger \$7.99**

**Senior Citizens 62 or Older \$12.99**

- Turkey Dark/White
- Fresh Baked Ham
- Roast Beef
- Sweet Potatoes
- Green Beans
- Corn
- Mashed Potatoes
- Dessert: Rice Pudding, Chocolate Pudding, Tapioca, Jello & Ice Cream

### Breakfast Special Thanksgiving Day

**Buy 1 Breakfast, Get 2nd Breakfast FREE**

**Other Holiday Meals Available**

[www.shoeydinerpa.com](http://www.shoeydinerpa.com)  
HOURS: Monday thru Thursday 6 am to 9 pm;  
Open 6 am Friday thru 9 pm Sun. with Special Menu & Special Prices

## BLUE MOUNTAIN

*Family Restaurant & Banquet Facilities*  
ROADSIDE DRIVE, SHARTLESVILLE - EXIT 23, I-78 610-488-0353

**THANKSGIVING DAY BUFFET**  
11 am to 5 pm

**Bountiful Buffet - Reserve Now 610-488-0353**  
Appetizers, Spectacular Salad Bar, Ham & Beef Carving Station, Fresh Roast Turkey, 6 Additional Entrees, 4 Vegetables, Fabulous Dessert Table (Made In Our Shop), Fruit Punch Fountain, Fresh Fruit Tray with Assorted Cheeses  
Also Serving Our Traditional A La Carte Menu  
Adults: \$18.95; Children Under 10: \$8.95 - Under 5: Free  
Call For Reservations 610-488-0353

**HOLIDAY SPECIALS**  
Roast Turkey With All The Trimmings • Half Roast Duckling  
Broiled Shrimp and Scallops Casserole  
Broiled Flounder Stuffed with Crabmeat



**ORDER YOUR Fresh-Made Holiday Pies and Cakes From Us!**

OPEN 6:30 A.M. to 10:00 P.M.  
Serving Cocktails • Beer • Wine  
• BANQUETS WELCOME • GIFT CERTIFICATES  
A GREAT IDEA

**HOURS:**  
Wed., Thurs. & Fri. 4 PM-8 PM;  
Sat. 11:30 AM-8 PM;  
Sun. 11:30 AM-7 PM  
Closed Mondays & Tuesdays

**DEUTSCH ECK**  
(DUTCH CORNER)

Sandwiches  
Platters  
Homemade Desserts  
STEVE STETZLER, Owner

LENHARTSVILLE, PA • 610-562-8520

**Closed Thanksgiving Day**

Wed., Thurs. & Fri., Dec. 2, 3 & 4  
**Chicken & Waffles**  
*Seconds On Us, While Quantities Last!*

## KAUFFMAN'S BAR-B-Q RESTAURANT

GRAVEL PIT ROAD, HALFWAY BETWEEN BETHEL & STRAUSS TOWN OFF OLD RT. 22 • PH: 717-933-8415  
Hours: Wed., Thurs. & Fri. 4 - 9 pm; Sat. & Sun. 11 am - 9 pm  
kauffmansbbqrestaurant.com

~ SPECIAL ~  
Wednesday, November 25 & Friday, November 27  
**CHICKEN & WAFFLES**  
CLOSED THANKSGIVING DAY

The Hamburg **STRAND** Theater

Fri., Nov. 27 through Mon., Nov. 30 & Thurs., Dec. 3  
**"HUNGER GAMES: MOCKING JAY"**  
Part 2

Sat., Dec. 12 - "KIDS POLAR EXPRESS P.J. PARTY" 10 AM  
Showtimes: Thurs. - Mon. 7 pm; Matinee Sat. & Sun. 4 pm  
6 S. 4th St., Hamburg, PA • 610-562-4750

**BEHLER-HEIN AMERICAN LEGION POST #637**  
650 Franklin St. • Hamburg, PA

**UPCOMING EVENT:**  
November 25  
**Boyd's Cafe**  
7:00 to 10:00 pm

ALL WELCOME  
Open To The Public

## SHOEMAKERSVILLE FIRE CO. BANQUET HALL

**Now Booking for 2015, 2016 & 2017**  
AIR CONDITIONED • SEATS 400 • STAGE & DANCE FLOOR

Available For:  
Holiday Parties, Corporate Events,  
Wedding Receptions, Meetings  
& Banquets

Ample Off-Street Parking  
**610.562.8096**  
E-mail: shoeybanquethall40@aol.com



## Tony's

*Italian Restaurant and Pizzeria*

15 Home Avenue, Topton

**GIFT CARDS FOR THE HOLIDAYS**  
610-682-6396  
Fax: 610-682-4618  
**Beer & Wine Available**  
Open 7 Days A Week  
10 a.m. to 10 p.m.

~Holiday Coupon~


**10% OFF**

**EAT IN OR TAKEOUT**  
Pizzas, Subs, Soups,  
Salads, Entrees

This coupon good at Tony's Italian Restaurant.  
Expires Dec. 30, 2015. WP



## OUT ON THE TOWN



**SANTA IS COMING TO TOWN!**

# Historic Hamburg's 14th Annual Christmas Parade

**Sat., Dec. 5, 2015 at 9:00 AM**

To Register Send Form To:  
Hamburg Christmas Parade  
P.O. Box 465, Hamburg, PA 19526

Registration Deadline: December 3, 2015 WP

Name \_\_\_\_\_  
Address \_\_\_\_\_  
Phone # \_\_\_\_\_  
Type of Entry \_\_\_\_\_  
Organization Name \_\_\_\_\_

Sponsored by Hamburg Lions Club, Greater Hamburg Business Assn., Union Fire Co. #1 of Hamburg & The Bridge Church. Have questions? Call 610-781-6779

## RAJAH SHRINE BINGO

Every Thursday  
Doors open at 5:00,  
Bingo starts at 6:30  
\*Refreshments available for purchase  
- Smoke Free -

**RAJAH SHRINE COMPLEX**  
221 Orchard Road,  
Reading, PA 19605  
www.rajahshrine.org  
AIR CONDITIONED FACILITIES

For information and directions  
call: 610-916-9000  
\*near Ontelaunee Dam off Rt. 73 in Blandon

**FREE GIVEAWAY EACH WEEK!**  
\*proceeds benefit Rajah Shrine and are not deductible as charitable donations  
Manager - W. Trautman



# LEESPORT FARMERS MARKET

**EVERY WEDNESDAY 8 A.M. to 7 P.M.**

Flea Market 7:00 A.M. Livestock Auction 1:00 P.M.  
8 miles north of Reading, PA. At the North End of Leesport, Turn East Off Rt. 61  
610-926-1307

www.leesportmarket.com



# Holiday CRAFT SHOW

**November 28 & 29, 2015**

Free Admission  
Free Parking

## FLEA MARKET & TOY SHOW

**December 6, 2015**  
7 a.m. to 1 p.m.

## The Westy Bar & Grill

Locally Owned & Operated For 18 Years  
Where The Locals Go!

Reservations For Parties of 8 or more  
www.westybarandgrill.com  
610-562-3777  
Takeout - 610-562-9303

ATM Available | VISA | MasterCard | Discover | American Express

**610-562-3777 - 279 West State St.**

Join The Westy Loyalty Club Ask Your Server For Details | **NEW! CRAFT BEERS ON TAP** Rotating Weekly | Follow Us On Facebook

**Bar Special**  
**MARTINI MONDAYS**  
**\$5.00 EACH**  
Stop By and Unwind

**OUR DECK IS OPEN**

Monday & Tuesday  
**LARGE 17" CHEESE PIZZA**  
**\$7.50 EACH**  
NO LIMIT!

# WINGS

**CLOSED THANKSGIVING DAY**  
*HAVE A GREAT HOLIDAY!*

**\*\* ALL DAY SPECIALS \*\***

**Monday - Takeout or Dine In**  
Large Cheese Pizza \$7.50 - No Limit.

**Tuesday - Dine In Only**  
24 Wings With Small Pitcher of Domestic Beer or Soda \$15.95  
Large Cheese Pizza \$7.50 - No Limit.

**Wednesday - Dine In Only**  
1 lb. Steamed Shrimp with French Fries \$11.95

**Thursday - Dine In Only**  
1 Doz. Middleneck Clams \$5.00 with purchase of Beverage

**Friday - Dine In Only**  
Fried Shrimp Platter \$13.25  
Fosters Oil Can 25 oz. \$4.65

**Sunday - Dine In Only**  
Bone-In Wings...\$5.99 doz. with purchase of beverage

---

**This Week's Lunch Specials**  
Dine In or To Go

Antipasto Salad ..... \$7.50  
Patty Melt With Fries ..... \$7.95  
Dozen Bone-In Wings ..... \$7.99

**BLACK FRIDAY:**  
Yuengling Girls 8-10 pm;  
Giveaways - Hats - T-Shirts -  
Free Collector's Glass with  
First Lager Purchase

*While Supplies Last*

**Monday:**  
Miller Lite  
(pint) - ALL DAY LONG!

**Tuesday:**  
Yuengling Lager  
(pint) - ALL DAY LONG!

**Wednesday:**  
Coors Light  
(pint) - ALL DAY LONG!

**\$1.75**

**THIRSTY THURSDAY**  
ALL DAY LONG!

**Coors or Coors Light**  
Bottles, Cans & Drafts

**\$2.00**

*Coors*

## Indian Fort Inn

Casual Fine Dining Restaurant

<b>MONDAYS:</b> Wings ... doz. \$6.00	<b>TUESDAYS:</b> Steamed Clams doz. \$6.00	<b>THURSDAYS:</b> Prime Rib Dinner \$13.95
--	---	---

**HOURS:**  
Mon., Tues., Thurs., Fri. & Sat. Open at 4:00; Sun. - Open at Noon; Closed Wed.

*Happy Thanksgiving*

From All Of Us At The Fort  
\*\*\*\*\*  
Book Your Holiday Party At The Fort  
Call Us For Details

CAN ACCOMMODATE LARGE PARTIES | 1343 Hex Highway, Hamburg, PA • 610-562-4315  
Check Us Out On Facebook and www.theindianfortinn.com

**Closed Thanksgiving Day & Sun., Nov. 29**  
(Open Regular Hours Fri., Nov. 27 & Sat., Nov. 28)

# PAPPY T'S PUB

Gift Certificates Available • www.pappyts.com | Delicious Pub-fare Check Out Our New Menu! | 12 Beers on Tap Your Favorite Cocktails

**~ PAPPY T'S SPECIALS ~**  
Served Thurs., Nov. 26 to Wed., Dec. 2, 2015

**CRAB FRIES** (Our Fresh-Cut Old Bay Seasoned Fries Topped w/Sauteed Crab Claw Meat & Drizzled w/Hollandaise Sauce)

**BLACK DIAMOND STEAK CHIMICHANGA** (Grilled Sliced Black Diamond Marinated Steak, Sharp Cheddar Cheese, Sautéed Onions & Bell Peppers All Wrap Inside A Flour Tortilla & Fried till Golden) Served w/Our Homemade Tortilla Chips & Homemade Salsa

**CHICKEN & GHOST PEPPER CHEESE FETTUCCINE ALFREDO** Served w/Fresh Baked Garlic Breadsticks & A Garden Salad

**APPLE CROWN ROYAL HAM STEAK** (Seared 16 Oz. Fresh Ham Steak Topped w/An Apple Crown Royal Whiskey Glaze). Served w/Your Choice of 2 Sides & Homemade Soup Or Garden Salad

**SRIRACHA BLUE CHEESE NY STRIP** (Choice 14 Oz. Fresh-Cut Spicy Sriracha Seasoned NY Strip Steak Grilled To Your Liking & Topped w/Melted Blue Cheese Crumbles). Served w/Your Choice Of 2 Sides & Homemade Soup Or Garden Salad

**Come Try Our All-New Local Handmade Desserts!**  
ORANGE RICOTTA CHEESECAKE • DARK SIDE OF THE MOON CAKE  
PEANUT BUTTER EXPLOSION

**50¢ WINGS** During All NFL Football Games

**HAPPY HOUR:** Monday thru Friday 5:00 pm to 7:00 pm

**We Are A Nonsmoking Establishment**  
50 Industrial Drive, Hamburg • 610.562.5645  
(Behind The Microtel Inn & Suites - Across From Cabelas)  
OPEN 7 DAYS A WEEK - Bar Hours: Sun. 11 AM till 1 AM;  
Mon. thru Thurs. 3 PM till 2 AM; Fri. & Sat. 11 AM till 2 AM,  
Kitchen - Sun. 11 AM till 10 PM; Mon. thru Thurs. 3 PM till 10 PM; Fri. & Sat. 11 AM till 10 PM

**WEEKLY FOOD SPECIALS**

**DAILY DRINK SPECIALS**  
\$2.00 Well Liquor - All Day! Every Day!

- COUPON -

**10% OFF**  
Food Purchase  
PAPPY T'S PUB  
Meals Only. Beverages Not Included.  
Not to be combined with any other discount. WP  
Coupon good Thurs., Nov. 26 - Wed., Dec. 2, 2015

**ENTERTAINMENT**  
**WED., NOV. 25:**  
THANKSGIVING EVE 9:30 pm-12:30 am  
**MUSIC BY "6x9"**  
**THURS., NOV. 26:**  
CLOSED THANKSGIVING DAY  
**FRI., NOV. 27:** 9:30 pm-12:30 am  
**"TOSSED SALAD"**  
**TUES., DEC. 1:** 7:30 pm-???  
**FREE TEXAS HOLD'EM POKER**

**BIKER FRIENDLY BAR**

**MICROTEL INN & SUITES**  
• Conference Room • Game Room • Jacuzzi Suites  
WIRELESS HIGH SPEED INTERNET

**f**

# A Season of Gratitude

*Customers and friends like you mean so much to us.  
We are grateful to be a part of this fine community,  
and wish everyone a blessed and*

## Happy Thanksgiving!

6 N Third St., Hamburg, PA 19526-0465 | **The Windsor Press** | 610.562.2267 | www.windsorpress.com  
e-Subscribe to the Northern Berks and East Penn Valley Merchandisers at: www.windsorpress.com



**OUT ON THE TOWN**

*Holiday Craft Show*

**Saturday, Dec. 5, 2015**  
9am to 3pm  
**Blue Mountain High School**  
1076 West Market Street  
Schuylkill Haven, PA 17972

**FREE ADMISSION**  
**OVER 50 CRAFTERS/VENDORS**

Bring the entire family and visit with Santa!

Delicious Food and Drinks for sale by the Blue Mountain Band Association

Please Support the Blue Mountain Band Program  
Vendors please visit our website: [www.bluemteagleband.org](http://www.bluemteagleband.org)

**BREAKFAST**

Mackerel, Ham, Sausage, Pancakes, Eggs, Home Fries, Scrapple, S.O.S., Bacon & French Toast

**SUNDAY**  
**NOV. 29, 2015**  
7:00 a.m. to 12 noon

**LANDINGVILLE COMMUNITY FIRE COMPANY**  
For Hall Rental  
Call 570.366.2572

Join Us For Cousin's

**THANKSGIVING EVE**

**GET-TOGETHER!**

Tröegs Breakout Party featuring **MAD EFL** and **MAD DREAMS**  
Great Food Features Too!

Music by: **"Pawn Shop Bound"**

Coming December 5  
Music by **"Branded"**

**HAPPY THANKSGIVING**  
from all of us at Cousin's Pub

Give a Cousin's GIFT CERTIFICATE This Christmas!

**BE A FAN! Follow Us On Facebook**

**PERRY PLAZA -**  
1360 Pottsville Pike, Rt. 61, Shoemakersville, PA  
**610-562-5202 • www.cousins-pub.com**  
For Carryout - 610-562-1733  
"A UNIQUE STOP FOR FOOD & SPIRITS!"

*Christmas* begins in **HISTORIC HAMBURG**

Join us during Historic Hamburg's Holiday Extravaganza '15

**Saturday, December 5th:**  
**CHRISTMAS PARADE - 9:00 AM**  
Starts at 4th and Windsor Sts. Goes North on 4th St. to State St. Turns West on State St. to 3rd St. Turns South on 3rd St. to Pine St. Turns East on Pine St. and ends at the Municipal Parking Lot at Fourth and Pine Streets.

**HEY, KIDS! AFTER THE PARADE, VISIT WITH SANTA - 9:45 AM**  
In his Workshop on the Municipal Parking Lot at Fourth and Pine Streets.

**TREE LIGHTING CEREMONY 5:00 PM (Raindate: December 6th)**  
Join us for a Tree Lighting Program with Live Christmas Music, Free Hot Chocolate and Cookies on the Municipal Parking Lot at Fourth and Pine Streets. (Brought to you by the Bridge Church)

**Visit Santa on Friday Nights**  
**December 11 & 18**  
**6:00 to 7:30 PM**  
In his Workshop on the Municipal Parking Lot at 4th and Pine Streets.  
Sponsored by the Greater Hamburg Business Association, the Hamburg Lions Club, and The Bridge Church

**SHOP HISTORIC HAMBURG FOR ALL YOUR GIFTS & DECORATIONS**

**VIRGINVILLEHOTEL.COM**  
**610-562-7072**  
CLOSED Mon. & Tues.;  
Wed. & Thurs. 3:30 p.m. to 9 p.m.  
Fri. & Sat. 12 noon to 9 p.m.  
Sun. 12 noon to 7 p.m.

**ALL-YOU-CAN-EAT SPECIAL:**  
**WEDNESDAY, NOVEMBER 25**  
**Clam Corn Pie**

Located In The Village Of Virginville Rt. 143  
Just 10 Minutes From I-78 or Rt. 222

**NOVEMBER MIDWEEK SPECIAL -**  
Every Wednesday & Thursday  
MEATBALL PARMESAN SANDWICH W/FRENCH FRIES .....\$8.25

**- WEDNESDAYS ARE S&S -**  
STEAK & SHRIMP w/1 SIDE...\$18.50

**- WEEKEND SPECIALS -**  
STUFFED PORTABELLA MUSHROOM  
DENVER CHICKEN  
BEEF RAVIOLI

Visit Our Website For Menu [www.virginvillehotel.com](http://www.virginvillehotel.com)

**HAMBURG GAME ASSOC. SPORTSMAN'S CLUB**

**KATHY'S KITCHEN IS OPEN!**  
Friday - 10 am to 6 pm  
Friday Specials - Call In and Takeout Orders Welcome  
Breakfast: English Muffin w/Egg, Bacon or Ham & Cheese

Wed. 11-25-15: Cheesesteaks  
Thurs. 11-26-15: Happy Thanksgiving  
Fri. 11-27-15: Shrimp & Fries  
Mon. 11-30-15: Pasta & Meatballs  
Tues. 12-1-15: Beef Stew

Coming:  
Fri. 12-04-15: Baby Back Ribs

**BREAKFAST SUNDAY, DEC. 6**  
7 am-11 am

**WED., NOV. 25 THANKSGIVING EVE**  
Music By: **COLE BIXLER**

**CHILDRENS' CHRISTMAS PARTY**  
Saturday, Dec. 12 - 1-3 pm  
FOR MEMBERS CHILDREN & GRANDCHILDREN ONLY.  
10 YRS. OLD & UNDER. Last Day For Sign-up Mon., Dec. 7

**MONTHLY MEETING MONDAY, DEC. 14 7 pm**

**PLEASE FOLLOW US ON FACEBOOK**  
[www.facebook.com/hamburggame](http://www.facebook.com/hamburggame)

935 N. FIFTH ST., HAMBURG • 610-562-3532  
CLUB HOURS: MON. thru THURS. 10 am to 2 am  
Fri. 10 am to 3 am; Sat. 10 am to 3 am; Sun. 10 am to ?

**DAWN'S DELI**  
HOAGIES • SALADS • BURGERS

**Attention Hunters!**  
**Opening For Breakfast At 4:00 AM**  
For The First Two Weeks Of Rifle Season  
Stop in for your frequent buyer card. Check our new DVD Exchange.

Hours:  
Mon. - Fri. 7 am to 6 pm  
Sat. 9 am to 6 pm

HOMEMADE SOUPS, SALADS & BAKED GOODS  
Signature Cheesesteaks and Hoagies.  
Party platters for all your gathering needs  
FREE Wi-Fi

Catering For Your Holiday Parties  
Phone: 484-665-3682  
Old Rt. 22, Lenhartsville, PA  
Dawnsdelee@yahoo.com

**SHOEMAKERSVILLE FIRE CO. HAPPENINGS**  
300 CHURCH AVE., SHOEMAKERSVILLE 610.562.3998

Check Out Our Daily Specials  
ATM INSIDE  
Happy Hour Everyday  
FREE WIFI

**BANQUET HALL NOW BOOKING FOR 2016 - 2017 - 2018**  
AIR CONDITIONED - SEATS 400  
STAGE & DANCE FLOOR  
ATMOSPHERE  
AMPLE OFF-STREET PARKING AVAILABLE FOR WEDDING RECEPTIONS, MEETINGS & BANQUETS  
FOR BANQUET HALL INFO. Call: 610.562.8096  
E-mail: [shoeybanquethall40@aol.com](mailto:shoeybanquethall40@aol.com)

MEMBERSHIP DUES NOW DUE. NEW MEMBERS ALWAYS WELCOME.

Monday, November 30: 6:30 pm to 8:30 pm  
**SHRIMP NIGHT**  
1 lb. Steamed Shrimp with FF - \$10.00 Shrimp Only - \$9.00

Social Quarter Hours - Opening Noon Daily  
Every Other Tuesday - 5:30 pm to 10 pm - MEMBERS ONLY  
**WINGS** Eat-In: Doz. \$6.00 Takeout: Doz. \$7.50  
**NEXT WINGS TUESDAY, NOVEMBER 17**

**KARAOKE:** 1st & 3rd Friday - 9:00 pm to 11:30 pm  
**SHRIMP NIGHT, KARAOKE, MUSIC & BINGO**  
ALL OPEN TO PUBLIC - SMOKE-FREE

Wednesday, November 25: 9:00 pm to 12:00 am  
Music "Mystic Warrior"  
Friday, November 27: 9:00 pm to 11:30 pm  
**Open Jukebox & Pool**  
Next Band - Saturday, December 5: 8:00 pm to 10:00 pm  
"Holy Smoke"

★★ CLOSED THANKSGIVING DAY ★★

**STARTING FRIDAY, NOVEMBER 27**  
**CHRISTMAS TREE SALE AT FIRE STATION**  
Benefits Truck Crew  
5:00 pm to 8:00 pm Tues., Wed., Thurs. & Fri.;  
Sat. & Sun. 9:00 am to 5:00 pm - On Fire Co. Grounds

**BINGO**  
**SUNDAY AFTERNOON BINGO Nov. 29**  
Doors Open 12 Noon Bingo Starts @ 2 PM  
★ NOVEMBER 29 KITCHEN ★  
CHICKEN PATTIES  
For info. please call 610-568-4354 • Mgr.: Jackie Weiler

**BREAKFAST WITH SANTA SATURDAY, DECEMBER 5** 7:30 am to 10:30 am  
Laurie Folk Of Folk Fotos's Will Be Taking Pictures With Kids & Santa  
**\$10 For Cd To Take Home • \$5 Of This Goes Directly To Firefighters**  
Check Out Our New Website [www.shoeyfire.com](http://www.shoeyfire.com) for Music Throughout The Year

**PLEASE SUPPORT "Small Business Saturday" NOVEMBER 28**

**SATURDAY SAVINGS FROM YOUR FAVORITE SMALL BUSINESSES**

~ And Every Day Of The Year! ~  
**SHOP LOCAL!!!**

**NORTHERN BERKS Merchandiser COMMUNITY CALENDAR**  
 Any nonprofit organization within our circulation area may send us notification of your upcoming events. We will publish this information in the East Penn Valley Merchandiser free of charge. Community Calendar listings are strictly limited to 35 words or less and 1 to 2 weeks prior to the event. The Windsor Press, Inc. will not edit your copy. If your copy is longer than the maximum 35 words, your listing will not appear. We must have this information no later than the Thursday prior to publication date. Mail information to The Windsor Press, Inc. East Penn Valley Community Calendar, 6 N. Third St., P.O. Box 465, Hamburg, PA 19526-0465, or EMAIL it to: classifieds@windsorpress.com or FAX: 610.562.2770.

11/27/15, Shoemakersville Fire Company Christmas Tree Sale, 300 Church Avenue. Starting Black Friday, Fridays 5pm-8pm. Saturdays 9am-5pm. Sundays 9am-5pm. We will be selling until Christmas.

11/28/15, Andulhea Heritage Center Christmas Open House in Rehersburg, Saturdays 9-1, Sundays 1-4 through 12/27, free admission, refreshments served, gift shop open. Info: 717-933-5925, 717-933-5792.

11/29/15, The Virginville Grange Benefit Dance and Raffle from 7-10pm at the Virginville Grange, 456 Main St., Virginville. Music by the Majestics, \$8. Refreshments available for sale. 610-562-4505.

11/29/15, St. Mary Catholic Church A Choral Christmas by Blue Mtn. Heritage Chorus Sunday 3-4:30pm. Tilden Twp, Hamburg. Music Director: Dave Rutt, Pianist: Bonnie Levan.

11/30/15, Shoemakersville FC Shrimp Night, 300 Church Avenue, Shoemakersville. 6:30pm-8:30pm. 1 pound of steamed shrimp and fries for \$10. Open to the public. Cash bar available.

12/5/15 - Bluegrass music at the Fivepointville Fire Co. : 1087 Dry Tavern Rd. Denver, Pa.(Rte. 897). "The Kevin Prater Band " (from KY) also "Chester Johnson". 2 bands - 4 sets of music. Great food! Doors open at 5', Music starts at 6'. More info. - Scott : 610-573-0797.

12/5/15, Auburn Fire/ Ambulance Lunch with Santa deadline registration, Lunch 11/12 Saturday 11am. Open to children 8 and under living in coverage area. 570-754-3014.

12/5/15, Bern Reformed UCC Live Nativity 3196 Bernville Rd., (Rt. 183) Leesport 5pm-7pm. Live animals, crafts, refreshments. Entertainment by Phoebe Berks Choraleers. Family Fun for all ages.

12/5/15, Bethany United Methodist Church Christmas Bazaar, 3rd and Island Sts., Hamburg. Saturday 8am-noon. Chipped beef breakfast, cookies, crafts and white elephant sale.

12/5/15, Grace EC Church Holiday Craft Show, Saturday 9am-1pm. 15 Earl Stoyer Dr., Schuylkill Haven by Stoyer's Dam. Crafters, vendors, food, bake sale. Free admission. Info: 570-385-2331.

12/5/15, Mt. Zion Church Christmas Bazaar, 1343 Long Lane, Kutztown (Krumsville) Sat. 9am-2pm. Homemade cookie sale, chicken noodle soup, crafts, flea market, raffles, vendors and Santa - Bring the children! 610-756-6210.

12/5/15, Shoemakersville FC Breakfast With Santa. 300 Church Avenue, Shoemakersville. 7:30am-10:30am. Santa will be taking pictures with the kids, for a small fee you can take it home with you on a CD.

12/5/15, St. Paul's UCC Christmas Bazaar 9am to 1pm, 47 S. Whiteoak Street, Kutztown. Christmas mice, decorations, crafts, cookies, white elephants, eat in or take out food.

12/5/15, Wyomissing Church of the Brethren Cookie Sale Saturday 9am-1pm. 2200 State Hill Road, Wyomissing, 610-374-8451, www.wcotborg. Lots of homemade Cookies, Breads, other Goodies. Fill your freezer!

**COMPUTERS/OFFICE**

**A+ COMPUTER REPAIR:** Slow Computer, Popups, Virus Infections? I will come to your home or office and fix all hardware and software problems on Lap tops, Desktops, and Servers. Very good rates. Local References. Call Mike at 610-285-8321 or email support@easytcs.com

**COMPUTERS/OFFICE**

**COMPUTER SLOW?** I come to your home or business. New and used computer sales and repairs. I migrate your files and data to new pc free if you buy from me. Teaching, 14yrs experience with FREE telephone estimates & reasonable rates. Call Rich "the Pc Man" 570-366-2141 or toll free 866-251-2141.

**RECREATION/SPORTING GOODS**

**FOR SALE:** Weatherby Vanguard Stainless Steel 7mm Rem Mag w/Simmons 3x9 Scope. Gun and Scope like brand new. Fired very few times. \$450; Call 484-332-8377.

**I Buy Old Ammo., Hunting Licenses, Knives, Swords, Traps, Powder Horns, All Guns, Weapons and Related Gear. Serious Cash Paid. House Calls Made FREE: P.J. 610-417-0909.**

**MOBILE HOMES**

**ENJOY THE FASTEST GROWING AFFORDABLE HOUSING FOR SENIORS!** 1 New Double (28x60), 1 Preowned Double (28x58), and 2 Preowned Singles (14x70's) located in 3 beautiful 55 & older age-restricted land/lease Retirement Communities. Wernersville, Fleetwood, & Kutztown areas. Lap/shingle. 2 BR & 2 BR & Den models. 1, 1 1/2, & 2 bath models. Covered porches/patios. One has enclosed patio/ ramp. Appl. C/A. Plus many more upgrades too numerous to mention. Move in conditions. Enjoy quality housing, beau. Communities & convenient locations for \$21,999 to \$89,999. Visit www.kellerhousingcommunities pa.com for details & photos. Sorry, NO dogs. Keller Homes. 610-944-7696.

**Inventory Needed. Buyers are waiting. Call Discovery Homes at 484-641-5055.**

**100 Plus Homes! New, used, repos. Mobile and Modular. If you have a need, we can fill it. Call Discovery Homes at 484-641-5055. mobieman.com**

**SEASONAL EQUIPMENT**

**6500 Electric Start Kobota Generator on wheel kit; 48" snow blower, fits Ingersoll or Case Tractors, 16" chains, call 610-683-3962.**

**PUBLIC AUCTION**

**SPORT CYCLE INC. MOTORCYCLE & WATERCRAFT PARTS, ACCESSORIES, SHOP EQUIP., OFFICE & DISPLAY EQUIP.**  
**Saturday, December 5, 2015 at 9:00 AM**  
**Location:** 309 Hafer Dr., Leesport, PA 19533.  
**Motorcycles & Watercraft:** 1974 Can-am 125cc Moto-Cross bike runs; 1983 Suzuki FA50 excellent, orig. cond.; 1988 Suzuki Cavalcade V4-1400, 1 owner; 1993 Suzuki Katana GSX 600F, runs; Suzuki Boulevard & other motorcycles; 1988 Sea-Doo GTX, runs; 5+ personal watercraft parts machines; forklift. **Shop Equipment:** 3 Handy pneu. motorcycle lift tables w/extensions; Snap-On YA434C abrasive blast system; Cyclecyl. Boremaster; Coats RC-100 rim clamp tire machine; All Tool CEMB C22 bike balancer; Ingersoll Rand 2340 vert. air comp.; Gaz-Away 5020 extractor; Handy tear-down shop cart; Pneu. oil extractor; motorcycle jacks; Craftsman 17" floor drill press; Craftsman professional 8" dbl. wheel bench grinder; Craftsman 3.5-ton jack stands; Craftsman ATV lift; Sea-Doo cradle lift; dozens watercraft rolling stands; 100s shop manuals; 20-ton H-frame press; pressure washer & Shop Vac; 12' Werner fib. stepladder. **Parts & Accessories:** Huge inventory of extremely rare vintage Puch, Hodaka, Bombardier & other 60s-70s motorcycle & moped parts; current inventory of motorcycle & ATV parts; Vespa windscreens, top trunks, helmets, jackets; 100+ HJC, Xpeed, Zox, AFX & Sands helmets; Suzuki filters, oil & cleaners; New Yuasa batteries; frame sliders & windscreens; saddle & back rests; Guardian & Sea-Doo motorcycle & watercraft covers; watercraft, ATV & motorcycle tires & rims, 2 sets AMS alum. ATV rims; new life vests & motorcycle jackets. **Display & Office Equipment:** Light-up Ice Sign message display sign; 2 Suzuki light-up neon signs; 2 motorcycle platform stands; ATV slanted display stand; 4 glass cube helmet display stands; clothing & garment racks; Suzuki 16' dbl.-sided lighted sign & letter sign; Benelli, Bombardier & other vintage signs; vintage Suzuki World's Fair umbrella & table; 100 linear feet plus of slat wall w/asst. hangers; 50" Panasonic flat-panel TV; gondola style shelving; 5 Suzuki bar stools; counters & asstd. display stands; industrial shelving; Nortel phone system; executive desk, bookcases, office chairs, HP Windows 7 PC systems; folding tables & chairs; water cooler, smoking stand; 4 picnic table & bench sets. Plus many more items too numerous to mention. Complete Liquidation Relocation Auction. Go to **www.zettauction.com** for pictures & link to bid live and online. Terms: Cash, check, Visa, M/C, Discover - w/2% fee, 10% buyer's premium.

Conducted by:  
**ZETTLEMOYER AUCTION CO., LLC**  
 820 Nursery St., Fogelsville, PA 18051-0215  
 www.zettauction.com  
 PH: 610-395-8084 • FAX: 610-395-0227  
 PA LIC #AY-000131-L



**Fri., Nov. 27 & Sat., Nov. 28**

**40% OFF**

*Boxed Christmas Cards*  
 By Leanin' Tree

*and Puzzles* by SunsOut

**ADAMS & BRIGHT DRUGS, LLC**

306 State Street, Hamburg, PA 19526  
 610-562-2738

Mon. thru Fri. 9 to 6;  
 Sat. 9 to 3





FOUNDED 1903

**A.R. Adom & Son**

Landscaping Supplies



**Techo-Bloc**

Precious Stones™  
 www.techo-bloc.com

HOMEOWNERS SNOW REMOVAL CONTRACTORS

**WE STOCK:**

- 50 lb. bags Rock Salt
- 50 lb. Calcium Pellets
- Bulk Rock Salt



See Our E.P. Henry Display

4 Industrial Drive, Hamburg, PA (formerly Lowland Road)  
**610-562-8662**  
 Hours: Mon. - Fri. 8 AM to 5 PM, Sat. 8 AM to 3 PM  
 "We Take The Toil Out Of The Soil"

**Holiday Open House**

Saturday, December 5 10 to 4

**Rock School**

1060 Pottsville Pike, Shoemakersville, PA 19555  
 610-562-4488

MUSIC INSTRUCTION FOR ALL AGES!

**50% OFF**  
 Gift Certificates



**SEASONAL EQUIPMENT**

Simplicity Snow thrower with cab 13HP Briggs Stratton motor 38" clearing width 2003 model good condition, leave message, 610-562-2644, \$1000.

**SNOW BLOWER:** 24" Troy Bilt 7524 7.5hp Tecumseh electric start 6 speed, 2 reverse, clear vinyl wind guard, \$500. 570-366-1781.

**SNOW BLOWER:** Bolens 8hp 26", very good cond. \$400; 610-683-7589.

**TWO SNOWBLOWERS:** Toro 7/24 and MTD 8/24. Both serviced with electric start. Two Leaf Vac, chipper, shredders. Always have or can get good equipment to meet your needs. Call or drop by 610-562-6868.

**HOUSEHOLD ITEMS/FURNITURE**

**FOR SALE:** Old Mill Wood Coal Combination Stove, very good condition, takes up to 24" logs or 40lbs. Of coal. 2 cords of seasonal oak firewood goes along with stove \$850 obo; Call for more info. 610-562-5734.

**USED FURNITURE SALE:** Sofas, Loveseats, Recliners, Chairs, Tables, Dressers, Cabinets, Beds, Retro, much more! Also Housewares, Glassware, Books, Toys, Clothing, Etc. **BLUE MOUNTAIN THRIFT STORE, 1251 E. Main St., (Rt. 422) Annville, 717-867-1595.**

**FOR SALE:** Brass Bi Fold FP Screen, with mesh screen, 37"W x 33 1/2"H \$50; 610-966-3034.

READER'S

**Recipe**



DOUBLE LAYER PUMPKIN CHEESECAKE

- |                                       |                          |
|---------------------------------------|--------------------------|
| 2 (8 oz.) Pkg. Cream Cheese, Softened | 1/2 C. Pumpkin Puree     |
| 1/2 C. White Sugar                    | 1/2 tsp. Ground Cinnamon |
| 1/2 tsp. Vanilla Extract              | 1 pinch Ground Cloves    |
| 2 Eggs                                | 1 pinch Ground Nutmeg    |
| 1 (9") Prepared Graham Cracker Crust  |                          |
| 1/2 C. Frozen Whipped Topping, Thawed |                          |

Preheat oven to 325 degrees. In a large bowl, combine cream cheese, sugar and vanilla. Beat until smooth. Blend in eggs one at a time. Remove 1 cup of batter and spread into bottom of crust; set aside. Add pumpkin, cinnamon, cloves and nutmeg to the remaining batter and stir gently until well blended. Carefully spread over the batter in the crust. Bake in preheated oven for 35 to 40 minutes, or until center is almost set. Allow to cool, then refrigerate for 3 hours or overnight. Cover with whipped topping before serving.

Send your recipes to: The Windsor Press, Inc.  
 6 N. Third St., PO Box 465, Hamburg, PA 19526-0456  
 Fax: 610.562.2770 or E-mail: display@windsorpress.com



We are now publishing obituaries.

Call for details.



6 N. Third St., P.O. Box 465  
 Hamburg, PA 19526-0465  
 610.562.2267 or 1.800.562.5521  
 FAX: 610.562.2770  
 display@windsorpress.com  
 www.windsorpress.com

# JOHN D. SMITH, INC.

10 Ballfield Lane, Fleetwood, PA 19522 • 610-944-8618  
PA4248 & Master Plumbers License #146

**Plumbing • Heating - Pumps  
Water Conditioning  
Sheet Metal Work**

Established In 1947

## GATES TREE FARM

**Choose and Cut Douglas Fir**  
BRING YOUR FAMILY & PICK THAT PERFECT TREE!  
Any size choose & cut tree \$25.00.  
Trees Drilled & Baled FREE.  
**Douglas Fir Wreaths**  
STAND STRAIT TREE STANDS FOR SALE  
Hours Of Operation: Starting Friday, Nov. 27th  
we are open daily from 10 a.m. until 4 p.m.

Directions: from intersection of Rts. 443 & 183, take 183 South for 1/10 of a mi., turn left onto Moonhill Dr. follow 7/10 of a mi. to stop sign, turn left on Schuylkill Mtn. Rd. follow for 4/10 of a mi., farm on right.  
OR GOOGLE US @  
722 Schuylkill Mountain Road, Schuylkill Haven, PA 17972 or 570.640.8554 or 570.617.3070  
**HAPPY HOLIDAYS!**

### HOUSEHOLD ITEMS/ FURNITURE

For Sale: 2 year old Whirlpool Cabrio washer, large stainless steel tub, 11 wash cycles, much more. White. Matching electric dryer. \$300 each. Must take both. You haul. 610-488-6196.

### BOATS/MOTORS

**16FT CAROLINA SKIFF with 40 hp Mercury, center console, trolling motor with Shoreland'r Trailer. \$7,900 or best offer. 570-366-0696 or 570-516-4602.**

## RUBRIGHT SELF STORAGE

Residential & Commercial Indoor & Outdoor

- U-LOCK IT... U KEEP THE KEY
- OPEN 24 HOURS 7 DAYS A WEEK
- SAFE, DRY STORAGE
- COMPLETELY FENCED & WELL LIGHTED
- PERSONAL PRIVATE SPACE
- ELECTRONIC GATE ACCESS
- MONTHLY LEASE
- CARS-BOATS-RV'S

**A SIZE FOR EVERY NEED**

**Conveniently Located**  
64 E. Bellevue Ave.,  
Shoemakersville - off Rt. 61  
behind Bell Trucking & Kuzans Hardware  
**610.562.3886**

## PUBLIC AUCTION

REAL ESTATE, FURNITURE, COLLECTIBLES, TOOLS & QUILTS  
**Black Friday, November 27, 2015 at 9:00 AM**  
Location: Beltzner Hall at the Kutztown Fairgrounds 144 N. Whiteoak St., Kutztown, PA 19530.  
Items: Mortised bucket bench, dower chest, red painted dovetailed blanket chest, Empire chest of drawers, marble-top dresser, early pie safe, feed chest, dry sink w/lid & other, jelly cupboard, oak chest of drawers. & other, drop-leaf table, Hoosier-style cabinets, china closet, dec. T-back chair, dovetailed cradle, piano stool, uphold. furn., wrought iron furn., quilts, dough box, witch weather vane, sm. inlaid chest, sugar bucket, Turks head molds, stereoscope, Adams Rose, Copper Luster & other early glassware, crocks, wicker bottle, agate-ware, redware pcs., milk bottles, Sorrelli jewelry & other, Jardiniere, slaw board, Shirley Temple doll, silverware, Griswold #5 & #8, mixing bowls, Roy Roger Rodeo ranch, Barbie & Midge dolls, doilies & linens, autoharp, misc. toys, vintage clothing, shadow box frames, baking boards, few arrowheads, wdn. wheelbarrow, butcher kettle, wdn. butcher tubs, row marker, butcher fork, bucksaw, Ariens mower w/bagger, traps, tool chest, drop & spinner spreaders, ext. ladder, milk bottle carrier, plus many other items. Terms: Cash or PA check only. Auction Note: Lg. quality auction. Plan to attend. Look for photos the week of the auction on auctionzip.com. Note: 9 AM Start Time. RE on separate ad.  
Auctioneer: DAVID P. LOEB  
AU-002753-L • 610-756-4260  
Auction For: DONALD KLINE  
Lenhartsville, PA 19534

## PUBLIC AUCTION

REAL ESTATE  
**Black Friday, November 27, 2015 at 9:00 AM**  
Location: Beltzner Hall, 144 N. Whiteoak St., Kutztown, PA 19530.  
RE: Sided home located at 147 Main St., Bernville, PA, has kit., LR, sm. rm. off kit., powder rm. on 1st fl. 2nd fl. has 2 BRs & den & full BA. House has attic & ground basement. Elec. heat. Boro. water & sewer. In the Tulpehocken Schl. Dist. Property has detached 1-car garage & garden shed. Terms on RE: 10% down day of auction. Balance on or before 45 days. Auction Note: RE offered from Beltzner Hall at 12 Noon. To view the property phone 610-507-3446.  
Auctioneer: DAVID P. LOEB  
AU-002753-L • 610-756-4260  
Auction For: DONALD KLINE  
Lenhartsville, PA 19534

## JERRY'S NORTHEAST AUTO SALES

RT. 61 S. POTTSVILLE, PENNSYLVANIA  
**PRE-HOLIDAY SALE!**

2008 Honda CR-V EXL 4WD  
Excellent Cond, 4 Cyl., Satellite, Sunroof, Fog Lights, Pwr. Dr. Seat, Alloy, Leather, Privacy, 74K ..... **Just \$262/mo. with \$2,000 down or trade**

2008 GMC Sierra SLE Reg. Cab 4x4  
Only 76k, V6, 4.3, Auto., Satellite, Bench Seat, OnStar, Matching Cap w/Rails, GVWR 6700 ... **\$16,995**

2008 Chev. Silverado K1500 LT Ext. Cab 4x4  
8 ft. box, 2 Owner, V8, OnStar, Tow Pkg., Bed Liner, Pwr. Dr. Seat, NO RUST ... **\$17,995**

2007 GMC New Sierra SLE 4 Dr. Ext. Cab 4x4  
V8, Auto., One Owner, New Tires, Step Bars, OnStar, Alloy Whls., Fog Lights, Bed Liner, Rust Free, GVWR 7000 ..... **\$16,995**

2012 Subaru Forester 2.5X AWD  
Salin White Pearl, One Owner, 4 Cyl., Pwr. Win. & Lcks., Multi-CD, Alloy Whls., Roof Rack, Remote Entry ..... **\$18,995**

2008 Ford Escape XLT 4x4  
V6, Pwr. Driver's Seat, Fog Lights, Alloy Whls., Remote Entry, Roof Rack, Traction Control **\$10,495**

2008 Mitsubishi Outlander SE AWD  
2 Owner, Rockford Fosgate Sound, Satellite, Drop-Down Hatch, Sunroof, Alloy Whls., Fog Lights, Bluetooth, Pearl White Met. ... **\$14,995**

2008 Jeep Compass Sport AWD  
4 Cyl., Auto., Pwr. Win. & Lcks., ABS, Roof Rack, Foldaway Mirrors, Fog Lights, Remote Entry, Aux Port ... **\$9,495**

2005 Subaru Impreza 2.5RS Sdn.  
Only 79K Miles, Auto., Pwr. Winds & Lcks., CD Rear Spoiler, Fog Lights ..... **\$10,995**

2002 Subaru Legacy Outback AWD Wagon  
ONLY 78K Miles, One Owner, Pwr. Win. & Lcks., Roof Rack, Fog Lights ..... **\$7,995**

Over 50 Vehicles In Stock  
FREE Lifetime Inspection - Bank Financing  
**TRADES WELCOME**  
WE BUY ESTATE CARS & TRUCKS & CLASSICS & ANTIQUES  
**FREE APPRAISALS**  
Rt. 61 South, Pottsville  
[jerrynortheast.com](http://jerrynortheast.com)  
Call Today 570-622-9510

### BOATS/MOTORS

**Keep Your Boat in Great Condition! Trailer Inspection, Engine, Gear Case Work. Repairs & Installations. Custom made boat covers and canvas repairs of sale. Maiden Creek Marine & RV, 222 south of 662 Moselem Springs. [www.maidencreekrv.com](http://www.maidencreekrv.com). 610-944-9994.**

### HOME IMPROVEMENTS

**HANDYMAN: ALL TYPES Done. Decks, Basement, Light Electrical, Plumbing. No job too small. Fully Insured. FREE ESTIMATE 484-660-3266.**

### STEVE KING HOUSE PAINTING LLC: Local, Reliable Contractor. Specializing in Interior Painting and Wall Repairs. Insured HIC #PA117438, 610-562-5187 610-223-3948.

### B.G. SPOHN Construction & Home Improvements. Custom kitchens, Bathrooms, Corian & Formica counter tops, Ceramic tile, steel, Fiberglass & Wood doors, Replacement Windows, Decks, Vinyl siding, Capping, Gutters, Painting and Small Jobs. Honest Reliable, Insured Local Contractor Providing Quality Services 31 years. 610-926-1999, PA#103306.

### BASTIAN CARPENTRY & Remodeling LLC. Windows, Doors, Decks, Porches, Siding, Alum-inum Capping, Custom Interior Trim & Woodwork, Flooring, Cabinets, Basements Finished, New Construction & Restoration. 610-562-5326. Free Estimates. PA 047097

### HOME AND PROPERTY MAINTENANCE: Interior, Exterior Painting, Wallpapering, Pressure Washing, Remodeling, Woodworking, Cabinetry and more. Call RUTHERFORD'S HOME IMPROVEMENTS at 610-756-4375.

## Check Cressona Agway's Great Selection & Prices On Animal & Pet Feeds

### Pets, Livestock, Bird, Deer & Wildlife

### ~ SPECIALS ~

**Legends CarbCare Senior**  
A pelleted/extruded feed for the special nutritional needs of older horses.  
14% Protein - 7% Fat  
50 lbs. **\$15.99** each

**Select Plus**  
12% Protein - 6% Fat  
3 bags or more  
**\$8.99** each

**Poultry Feed**  
Crumbles or Pellets  
16% Protein  
3 bags or more  
50 lbs. **\$11.99** each

**Deer & Wildlife Corn**  
50 lbs. **\$8.99** each

Prices good through Dec. 13, 2015

### ~ BLACK FRIDAY SPECIALS ~

50 lbs. <b>Black Oil Sunflower Seed</b> <b>\$16.99</b>	<b>Aspen Song Bird Seed</b> <b>20% Off</b>	Reg. \$7.99-\$9.99 <b>Zukes Dog Treats</b> <b>\$3.99</b> each	<b>Earth Born Dog Biscuits</b> Buy 1, Get 1 <b>50% Off</b>
---	---	---	--

**Cressona AGWAY**  
Your Yard, Garden and Pet Place

Serving Customers For 65 Years  
2nd & Walnut Sts., Cressona, PA  
**570-385-2160**  
HOURS: Mon. - Fri. 8 to 6; Sat. 8 to 3; Sun. 10 to 2

### HOME IMPROVEMENTS

Slate: 10X20 (85 used) 2.25 ea., 12X24 (4 used) 4.75 ea., 13X24 (10 new) 8.00 ea., 13X26 (13 new) 9.00 ea., 13X26 (50 used) 4.75 ea. All slate \$580.  
484-358-6786.

ALL ELECTRICAL BY GIOVANNI Master Electrician, fully insured, for all your electrical needs. Local electrician. 610-780-7713 or 484-575-7057.

### Absolute43 PELLET STOVE

• 43,000 BTUs—heats up to 2,400 sq. ft.\* with 78% efficiency  
• EASY Touch Control with scheduling, cleaning prompts and fuel gauges  
• The quietest pellet stove\*\*

\* Based on climate and home efficiency  
\*\* Based on independent 3rd party accredited lab testing with units set on high and Absolute43 in Whisper Mode

**Kegerreis Stoves**  
7758 Rt. 183, Bernville, PA 19506  
(610) 488-0890 • [www.kegerreisstoves.com](http://www.kegerreisstoves.com)  
Mon-Fri. 9-6 • Thurs. 9-8 • Sat. 9-1 • PA001654

Harman Pellet Stove  
HARMAN  
BUILT TO A STANDARD, NOT A PRICE

## Fall Build Specials!

24x30x10 ... \$7,300	30x64x10 ... \$13,850
24x40x10 ... \$8,500	30x48x12 ... \$12,600
30x30x10 ... \$8,300	40x60x14 ... \$19,100
36x48x10 ... \$13,400	40x80x14 ... \$23,600

**LIMITED TIME OFFER - CALL FOR DETAILS!**

**Fall Prices Valid Thru Nov. 30, 2015**  
Prices Include Materials, Delivery, Tax and Labor  
Within 75 Miles of Schuylkill Haven, PA 17972  
Specials Include 1 Overhead Door & 1 Entry Door  
Many Other Stock and Custom Sizes To Choose From

### POST FRAME PRECISION POLE BUILDINGS

1-877-POLEBARN  
1-877-765-3227  
[www.postframeprecision.com](http://www.postframeprecision.com) | [www.pfppolebuildings.com](http://www.pfppolebuildings.com)

FREE Estimates

Serving PA, NJ & MD

## WHEN A TRIP-EDGE ISN'T ENOUGH.

THE BOSS DXT combines both trip-edge and full moldboard trip technologies for high and low trip protection when striking hidden obstacles like frozen snow banks, manhole covers and curbs.

**THE DXT PLOW:**  
• Steel - 8'2", 9'2", 10'0"  
• Stainless Steel - 8'2", 9'2"  
• Poly - 8'2", 9'2"

**KEY FEATURES:**  
• Dual-Trip Design  
• Flared Blade Wings  
• High-Performance Hydraulics  
• Heavy-Duty Push Frame & Quadrant

- SmartHitch® 2
- SmartLight® 2
- SmartTouch® 2
- SmartShield®

ONLY AT YOUR BOSS DEALER!

**LEVAN MACHINE & TRUCK EQUIPMENT**  
machining & fabricating specialists since 1936  
©2013 BOSS Products/Northern Star Industries, Inc.

**THE BOSS**  
BACKS YOU UP  
[ssplow.com](http://ssplow.com)

3417 Pricetown Road, Fleetwood, PA 19522  
610-944-7455  
Mon. - Fri. 7 a.m. to 4:30 p.m.  
[www.levanmachine.com](http://www.levanmachine.com)

## AZ LUBE AUTO SERVICE & REPAIR CENTER

**Brakes • Shocks • Struts  
Batteries • Tune-ups**

5373 ALLENTOWN PIKE, TEMPLE  
ACROSS FROM WALMART  
610-929-8353

**\*Fast Service\***

Hours:  
Mon. to Fri. 8-5  
Sat. 7:30-3; Closed Sun.

**BOTH TESTS - ONE PRICE!**

**PA State Safety & Emission Inspection**

**\$36.00** + tax

Emiss = 21.00  
Safety = 25.00  
Reg. 46.00 For

Pass or Fail - Most Cars \*Sticker fee extra.  
Please present coupon at time of check-in.  
Apt. recommended, but not required.  
(Expires 12/6/15) TWP

## Mobil 1 Lube Express

For Inspection  
Appointment Recommended

**Oil & Filter**

**\$22.98** + tax

Oil change includes up to 5 quarts of 5W30 only. Oil filter surcharges apply on some models. Please present coupon at time of check-in. (Expires 12/6/15) TWP

**Mobil Super 5000 Oil  
Change for Long Engine Life**

**\$28.99** + tax

Includes up to 5 quarts of Mobil Super 5000 Engine oil. Oil filter surcharges apply on some models. Includes tire pressure adjustment, washer fluid top-off, suspension greased when required & air filter checked. (Expires 12/6/15) TWP

HARD TO WRAP. EASY TO GIVE.

**HOME IMPROVEMENTS**  
**BARRY BENNECOFF,**  
 PA015445 For All Interior and Exterior Renovations. Also Custom Pine Cabinets Furniture and Accessories Designed For You. 610-562-7226.

**PINE TONGUE AND GROOVE BOARDS:** 1x5 Beaded on one side, edge vee on opposite side. Great for walls, ceilings or wainscoting, \$.48/Lin. ft. Mountain Wood Co. 610-756-6381 or go to mountainwood.com

**HOME IMPROVEMENTS**  
**BUILD- A- BATH of PA**  
 Bathroom Renovations. Specializing in Acrylic Bath Systems. Certified in Walk In Tubs, Walk In Showers & Handicap Accessibility. Free Estimates Licensed/ Insured. HIC#-102776, 484-345-8833.

Master Electrician. No job too small. Licensed #PA093516 & Insured. Free Price Quotes. Reasonable prices. Todd Haring 484-951-8624.

**HOME IMPROVEMENTS**  
**DEAN ARNDT CON-**  
 STRUCTION: For All Your Remodeling Needs, One Call Does It All from Replacement Windows, Additions & Anything in between. We specialize in Remodeling. Call 610-562-0296. PA002349

**BOWERS CONSTRUCTION:**  
 Quality work, Reasonable Prices. Roofing, Siding, Remodeling, Windows, Decks, Additions, Garages. FROM FOUNDATION TO ROOF. Insured. 610-562-4692, PA#006953.

**JOHNSON'S REMODELING**  
 All types of home improvements, dump truck & backhoe services, Windows, Doors, Etc., Basements & Water Proofing, Drainage Pipe. Call Bill Johnson 610-509-4052. Snow Removal and Plowing.

**Todd Bender LLC Plumbing Heating & Air Conditioning.** Personally serving Hamburg and surrounding areas since 1991. Install, Service & Repair. Quality Workmanship. Call, Text or Email 570-449-8035 tmb1269@gmail.com HIC #PA107531

**NEW! BG 50  
HANDHELD BLOWER**

**\$139.95**

BUILT IN USA

Combines dependability and quality with affordability

**MS 170  
CHAIN SAW**

**\$179.95**

BUILT IN USA

★★★★★

"The price and reliability are outstanding."  
- user prutsmans93

Check out this review and others on the product pages at STIHLdealers.com.

All prices are NES-SRP. Available at participating dealers while supplies last. The actual listed guide bar length can vary from the effective cutting length based on which powerhead it is installed on. © 2015 STIHL NES15-1241-119940-6

**OUTSTANDING PUBLIC AUCTION**

**90-AC. FARM, 20 ANTIQUE TRACTORS, WAGONS, ENGINES, CARS, EQUIP., FARM ANTIQUES & H-HOLD**  
 Friday, November 27, 2015 at 9:00 AM

Location: 184 Tulpehocken St., Bernville, Berks Co., PA 19506. From Bernville take 183 North. Stay Left at the Y, follow New Schaefferstown Rd. to Tulpehocken St., stay Left go to sale on Left. Look for sign.

**90-ACRE FARM OUTSTANDING SECLUDED SETTING**  
 2 -sty. old log farmhouse, lg. old bank barn & sev. other out-bldgs. Farm owns lane to Tulpehocken St. also has road frontage & access to Oak Lane. Sm. pond & stream on the farm. Over 60 acres tillable plus pasture land & some woodland. A one-of-a-kind setting w/potential for ag or if you want a secluded private property w/great hunting opportunities. Call for appt. to check out this great property! RE offered at 1 PM. Sold subject to owners confirmation. Terms: 10% down day of sale, balance within 60 days.

**20 ANTIQUE TRACTORS, PARTS, ETC.**  
 Oliver 770 diesel w/loader & 3-pt hitch, (nice orig. cond.); Oliver Super 66; Oliver 77; Oliver 88. **John Deere's:** JD 620 w/loader, 3-pt hitch; JD 70, gas, 3-pt hitch; JD 530 w/3-pt hitch; wide front JD A; JD B; JD L w/sickle mower; JD 60; wide front end JD M; JD H; JD 36 AR w/factory round spoke on rubber, early red head; JD G parts tractor; JD A parts tractor; 15-30 McCormick Deering (1927 or '28); Huber Model HS tractor; Huber tractor (parts); SC Case tractor; old Economy tractor w/belly mower; early Bolens tractor w/front mower, sickle mower, disc & cultivators; Gravely walk-behind tractor; homemade tractor; old 3-wheeled Cushman scooter; lots of old tractor parts.

**OLD ENGINES, CARS, TRUCKS, PARTS**  
 Olds. Type A 4 1/2-hp Hit & Miss eng., round hopper, Saeger Engine Works (nice); 3-hp McCormick Hit & Miss eng.; 6-hp International Hit & Miss. **Cars:** 1957 Desoto Firesweep, 4-dr. hardtop; Essex 1927 trk.; 1953 Studebaker box trk.; '66 Fleetwood Cadillac; 2 AMC's. We will be selling lg. car graveyard!!! Approx. 20-30 asst. Hudsons, Packards, Studebakers & other misc. old cars!!! Lots of old car parts, engines, mufflers, all kinds of misc. parts; 3 old school buses (2 loaded w/old car parts); 383 Chrysler engine; Hudson engine; Cadillac parts.

**FARM EQUIPMENT, TOOLS, MISC.**  
 N.H. 202 manure spreader; NH 256 hay rake; gravity wagon; 3-btm. trailer plow; wood box Massey Harris grain drill; fert. spreader; cultipacker; 28' hay elevator; Winco generator; PTO generator; lots of old farm equip. most for parts or scrap: 14T bailer; sickle mowers; JD #5 mowers; pull-type corn picker etc.; long farm trailer (no title); N.H. spreader sides; pressure washer; 2 Van Semi trailers for storage; gas powered Lincoln welder; binder parts; manure spreader floor chains; sev. heavy floor jacks; workbench w/vise; Work Saver grain elevator; Cub Cadet lawn mower; lots of hand tools; wood ext. ladders; elec. motors; Myers transfer pump; Craftsman rolling tool box; rough-sawn walnut lumber.

**WAGONS, SLEIGH, FARM ANTIQUES**  
 1 Gruber wagon & 1 painted in Centerport (Reber? - old Anthony's Mill wagon); old sleigh (brass tag from J.H. Wilhelm Myerstown, PA); dump rake w/McCormick seat; potato plow & misc. walk-behind horse-drawn equip.; pull buck saw on wdn. wheels; butcher items; wood hog trough & rack; tripods; lg. hand-cranked American Meat Slicer; butcher kettle; lg. sausage stuffer; meat grinder; benches; scapple tins; wood kegs; steel wheels; grain cradle; scythes; Vac-A-Way seed cleaner; vacuum pump; chicken nests; oil tank & pump; #3 corn sheller; milk cans; balance scale & weights; saw mill blade; old wagon parts; chicken feeders; 2-man saws; single & dbl. trees; horse collars; Onan Power Plant; Genco Light Power Plant w/batteries; old equip. manuals; milking stools.

**HOUSE ITEMS, MISC. ANTIQUES**  
 Green painted jelly cupboard; blind upper cab.; old table; Prizer cookstove; wood bench; elec. range; washer & dryer; refrig.; chest freezer; 2 dr. file cab.; kero. heater; wood rocker; old pictures & frames; sev. old chest of drawers; 2 old BR suites; rope bed; old radio; pie safe; Military uniform; wall mirror; old magazines; Victrola player & more! Owners photos @ auctionzip.com ID #11981.

**AUCTIONEER: LES LONGENECKER** Sale For:  
 PA-AU2975-L LOVINA R.A. WERNER ESTATE  
 Ph.: 610-488-6575 Clinton Dunkelberger Exec. & Randy L. Stoudt & Michael W. Stoudt

The Family Of The Late  
*Clyde C. Casper, Sr.*

would like to thank relatives, friends & neighbors for their prayers, kind words, cards, baked goods & floral arrangements; as well as donations to St. Paul's Church & the Pennsylvania Vision Conservation Institute.

A special thank you to the staff at Laurel Center, especially to Tim Carlson, and to Donna & Derek Leibensperger for the respect & dignity shown to our family during this difficult time.

**HOME IMPROVEMENTS**  
**THOMAS AC & HEAT.**  
 Your Independent Oil Repair Co. Gas, LP and Heat Pumps Too. Cleanings, Water heaters, November Special \$60 Service Call. Air Conditioning Our Specialty. 610-780-4712.

**HOME IMPROVEMENTS**  
**DECKS DECKS Construction**  
 Building decks, fences and rams since 1979. Free estimates and design. Call Mark 610-589-9902 PA#047954. www.decksdecksconstruction.com

**Dependable claims service  
is no Accident.**

We know how difficult it is to be involved in an accident. It's a time when you need sound advice and professional claims service.

**Protect yourself from the unexpected by calling us today**

**STRAUSSER**  
Insurance Agency, Inc.

Your local independent agency proudly representing

WESTFIELD INSURANCE  
Sharing Knowledge. Building Trust.™

Serving Northern Berks For More Than 50 Years  
 401 South 4th Street,  
 Hamburg, PA 19526  
 PH: 610-562-2048  
 www.strausserins.com  
 Mon. thru Fri. 8:00 am to 5:00 pm;  
 Sat. 8:00 to 12:00 Noon;  
 Evenings by appointment

You can link to any display advertiser's website through our online edition.  
HIGHLIGHT & CLICK

Gail Kessler's  
**Ladyfingers** Sewing Studio  
 6375 Oley Turnpike Rd Oley, PA 19547 610-689-0068  
 www.ladyfingerssewing.com TUE-SAT 10-5 THU 10-8

**SUPER HOLIDAY SAVINGS ON BERNINA PRODUCTS**

**NOVEMBER 19 - 25**  
 Instant Savings up to \$250 on new BERNINA products

**NOVEMBER 26 - DECEMBER 3**  
 \$500 OFF a new B 880 or new B790 with FREE BERNINA Suitcase Set

**NOVEMBER 19 - DECEMBER 3**  
 0% FINANCING for 60 MONTHS



Thousands of designer fabrics, supplies and accessories  
 Shop Online find Class Schedules at:  
 www.ladyfingerssewing.com  
 Certified technician on site servicing all makes and models of machines



**B. Young**  
 Asphalt Paving and Sealcoating  
 Free Estimates  
 484-486-0282  
 PA #111185 • Driveways • Parking Lots • Hot Crack Repair • Gravel

**HOME IMPROVEMENTS**  
**SEYLER CONSTRUCTION:**  
 General Contracting: All Phases of Home Construction & Remodeling. Roofing, Siding, Additions, Decks, Concrete work, Kitchens, & Baths, Sunrooms. Fully Insured. 30Yrs. Experience. 610-926-6471.  
 HAVE YOU BEEN LOOKING FOR THE "GIANT" CIRCULAR IN THE NORTHERN BERKS MERCHANDISER? Contact Your Local Store Manager.

**ANNOUNCEMENTS**

**Lighthouse Community Church & Academy, 5 Penn St., Lyons, Pa. Call 610-682-2109 for Info, Sunday Service starts at 10 am. Join us for great contemporary worship!**

**NOTICE OF PUBLIC SALE OF PERSONAL PROPERTY**

Notice is hereby given that the undersigned will sell to satisfy the lien of the owner at public sale by competitive bidding at 12:00 PM on December 5, 2015 at DAK Self Storage, 25 Peach Street, Leesport, PA 19533, the personal goods stored in the following spaces of the following tenants:

- Unit 22 - Elaine Kauffman/ Tricia Romberger POA
- Unit 94- Shelly M. Snyder
- Unit L19- Alicia M. Cruz
- Unit U1- Benita J. Bates
- Unit U9- Rita M. Kocher

Purchases must be made with cash only and paid in full at the time of the purchase. All goods are sold as is and must be removed at the time of purchase. Sale is subject to adjournment.

**HOME IMPROVEMENTS**

**TWO OLD MEN WITH Tools. One Call Does It All. Renovations, Decks, Additions, Plus Much More. 25 yrs. Experience. Free Estimates. Licensed & Insured. PA#094465. 610-401-3373, 717-471-5090.**

**PETS & ANIMALS**

**D AND D KENNEL, Full service pet grooming and boarding with luxury bedding, heated floors, private patio. Dog rates start at \$20, also daycare and pet sitting http://danddkennel.webs.com/ 610-944-6468.**

**PET FOODS STOCKED: Science Diet, Pro-Plan, Eukanuba, Wellness, Iams, Nutro, Blue Buffalo, Nutri Source, Taste of the Wild, Canidae, Royal Canin, Earthborn, Canyon Creek, Southern States, Big Red, Mother Hubbard, Chicken Soup, The Natural Canine, Holistic, Loving Pets, Nature's Recipe. Cressona Agway Country Store. 22 N 2<sup>nd</sup>. Street, Cressona, 570-385-2160.**

**FOR SALE Have 2 Pitt Bulls, one male grey/black with blue streaks on face and a grey female with blue streaks on face. Both Pitt Bulls will be 12 month old December 4 and are brother and sister. They are very loving asking \$250 each, would a great Christmas gift, please contact Stuart at 610-781-0951.**

e-Subscribe to the Northern Berks and East Penn Valley Merchandisers at: www.windsorpress.com

**Treasures Through Generations**  
 Timeless Treasures Found Here

1064 Memorial Highway, Oley, PA 19547 • 484-336-8079  
 Hours: Tues. - Sat. 10am to 8pm; Sun. 11am to 5pm

**SPECIAL THANKSGIVING & BLACK FRIDAY HOURS:**  
 Wed. 11/25 10am - 4pm; Closed Thanksgiving Day; Black Friday 1pm-8pm  
**IN-STORE SPECIALS BLACK FRIDAY WEEKEND**

**HOLIDAY OPEN HOUSE - DECEMBER 4-6**  
 Lots of In-Store Specials, Drawings, Door Prizes and More!

- Carrying Gift Items**
- Jewelry by Jilzarah
  - Body Products by *Camille Beckman*
  - Variety of Delicious Homemade Foods
  - Large Selection of *Melissa & Doug* Toys
- Additional Gift Items for the Holiday Season**

We Carry New & Consignment Items For Your Home & Gift-Giving Needs.

www.treasuresthroughgenerations.com

**BLACK FRIDAY SPECIAL 8AM-7PM**  
 Buy \$100<sup>00</sup> or More of Carhartt and Receive a FREE Carhartt duffle bag, Igloo cooler or Stanley coffee mug.

**WHILE SUPPLIES LAST**

**DEWALD & LENGLE Hardware & Rental**  
 Rt. 443 (1 mile West of 183 & 443 Intersection) Friedensburg, PA  
 570-739-2100 • www.dewaldandlengle.com  
 Store Hours: M-F 8 to 7; Sat. 8 to 4; Sun. 9 to 4

**Messersmith & Keller GENERAL DENTISTRY**  
 Experience the Difference!  
 162A Trexler Avenue, Kutztown, PA 19530



We offer comprehensive family dentistry as well as cosmetic makeovers, Teeth Whitening and implants to replace missing teeth or secure your dentures. **Imagine never being afraid to smile.** Conveniently located on the corner of Trexler Ave. and Noble St. in Kutztown.  
**Call us for all your Dental Needs: 484-648-2389**

**Come And Experience Our New 3D X-ray Scanner**



3D imaging provides many benefits to our patients and allows for more precise diagnosis with clearer explanations. Implant planning and treatment rises to a new level, because we can see things clearly that were not visible on regular x-rays. If you are considering implants, this technology allows us to proceed with certainty. This simple low dose scan allows us to find unexpected nerve channels in root canals, fractures and other anomalies. We will be happy to help you with any questions about this amazing new technology. Please tell your friends and family about our new capabilities.

Find us on Facebook at **Dr. Messersmith DMD**  
 www.drbilldmd.com  
 484-648-2389

**ATTENTION PROCRASTINATORS!**  
 Call to schedule your routine dental checkup appointment before 12/31/15 and **Receive \$25.00 off your next visit.**  
 Good at Messersmith & Keller General Dentistry WP

**PETS & ANIMALS**  
**Windsor Press, Inc. OFFICE HOURS Mon. - Fri. 8am to 5pm**  
 FREE KITTENS TO A GOOD HOME: 2 male and 2 female. 1 Calico and 1 all gray. Also 2 turtles to good home. 610-406-5877.

**FALL CLEARANCE SALE**

SAVE NOW ON ALL IN STOCK INVENTORY!

**EASTERN building products**  
 14588 Kutztown Rd. Fleetwood, PA 19522  
 610-683-6120 • ebpsheds.com

# January Write-Down Sale Comes Early!

Now Thru Nov. 30th



**2015 GMC Canyon**  
Stk. #G15630, "Rare Truck"

**"Now Specializing" In AMERICAN LUXURY COACH LIFTED AND CUSTOM TRUCKS**

**SAVE THOUSANDS**

**STOP & SEE!**



**2015 GMC Sierra 1500**  
Stk. #G15631, Double Cab

## Over \$100,000 of Write-Down Savings!

### Cadillacs Over 20 In Stock

- 2015 Cadillac ATS** ..... **SAVE \$3,000**  
45,000 Miles, 6 Spd, Full Color Cue System  
Was \$36,888 - **NOW \$33,888**
- 2014 Cadillac CTS** ..... **SAVE \$4,000**  
21,000 Miles, Performance Model, Loaded with Extras  
Was \$38,888 - **NOW \$34,888**
- 2012 Cadillac SRX** ..... **SAVE \$2,000**  
Luxury Package, Low Miles,  
Was \$29,888 - **NOW \$27,888**
- 2012 Cadillac SRX** . **SAVE \$20,000 From New**  
Mocha, AWD, Luxury Model  
**NOW \$29,888**
- 2011 Cadillac SRX** ..... **SAVE \$3,000**  
Luxury Collection, C15440C, New Car Trade  
Was \$23,888 - **NOW \$20,888**
- 2010 Cadillac CTS Wagon** ..... **SAVE \$3,000**  
26,000 Mi., Showroom Ready!  
Was \$23,888 - **NOW \$20,888**
- 2009 Cadillac DTS** ..... **SAVE \$2,000**  
Blue Diamond, Heat & Cooled Seats  
Was \$18,777 - **NOW \$16,777**

### Large Selection Of Pickup Trades!

- 2015 Chevy Silverado 4x4** ..... **NOW \$34,777**  
12,000 Miles,  
**\$15,000 UNDER NEW**
- 2013 Chevy Silverado Ext. Cab** . **SAVE \$2,000**  
19,000 Miles, Gold Wheel Pkg., Like New  
Was \$32,990 - **NOW \$30,990**
- 2012 Ford Super Duty** ..... **Just Arrived!**  
"Diesel", 17,000 Miles, Own Owner, Long Bed
- 2012 Ford F-150** ..... **SAVE \$2,000**  
Local Trade, 44,000 Miles  
Was \$26,777 - **NOW \$24,777**
- 2011 Chevy Avalanche** ..... **SAVE \$2,000**  
A Rare Truck, Loaded, 45,000 Miles  
Was \$29,888 - **NOW \$27,888**
- 2010 Chevy Silverado** ..... **LOADED**  
Crew Cab, 56,000 Miles
- 2007 Cadillac Escalade Ext.** .... **SAVE \$2,000**  
Upgraded Sound System, Navigation, Loaded  
Was \$23,888 - **NOW \$21,888**

### Huge Selection Of Imports To Go!

- 2014 Toyota Tacoma** ..... **SAVE \$2,000**  
12,000 Miles, Black, 4 Door, 4x4  
Was \$29,990 - **NOW \$27,990**
- 2013 Nissan Frontier** ..... **SAVE \$2,000**  
19,000 Miles, 4x4, Looks New  
Was \$28,888 - **NOW \$26,888**
- 2013 Scion FR-S** ..... **SAVE \$2,000**  
Only 14,000 Miles, Sporty  
Was \$22,888 - **NOW \$20,888**
- 2013 Kia Sportage** ..... **SAVE \$2,000**  
Local Trade  
Was \$20,990 - **NOW \$18,990**
- 2011 Hyundai Sonata** ..... **SAVE \$2,000**  
Heated Leather Seats, Sunroof, Sporty  
Was \$17,888 - **NOW \$15,888**
- 2008 Hyundai Sonata** ..... **SAVE \$2,000**  
Leather & Sunroof, FWD  
Was \$9,988 - **NOW \$7,988**
- 2013 Volvo XC60** ..... **SAVE \$3,000**  
AWD, Special Trade, Loaded  
Was \$36,888 - **NOW \$33,888**

### Vehicles Under \$10,000

- 1997 Chevy Silverado 1500** 75K Orig. Mi., 4x4 . **\$6,900**
- 2006 Chevy Impala LS** ..... **\$6,900**
- 2004 Buick LeSabre** ..... **\$6,900**
- 2006 Buick LaCrosse** ..... **\$8,500**
- 2008 Hyundai Sonata** ..... **\$8,900**
- 2004 Jeep Liberty** 4x4, Special Ed., Nice Clean Trade **\$7,700**
- 2007 Buick Lucerne** 78K, Super Luxury Model ... **\$9,500**
- 2012 Chevy Cruze** Sporty, Stick Shift ..... **\$9,800**
- 2007 GMC Envoy SLT** Leather, Chrome ..... **\$9,800**
- 2000 Silverado 1500** Ext. Cab, Rear Cap, 4x4 .. **\$6,900**
- 2004 Ford Escape** AWD, Super Clean, Was \$6,900 **\$5,900**
- 2003 Chevy Monte Carlo SS** 1 Owner, Beautiful Cond. **\$5,400**

**Check Website For More Vehicles!**

## Berks County Jeep Headquarters

Stop & See New Units Daily! • Over 10 Preowed Jeeps In Stock!

**20 Vehicles Under \$20,000 As Low As \$3,900 Trades**

**2012 Jeep Sport**



Stk. #U4388, Only  
21,000 Mi., Gecko Green

**Rare Color!**

**2009 Jeep Wrangler**



Stk. #U4395, Army Green, Low Miles,  
41K Miles, Was \$20,990 **NOW \$18,990**

**Save \$2,000!**

**2013 Jeep Wrangler Sport**



Stk. #U4399, Special Lobster Bisque Color, Super Clean, Hardtop, AT

**Must See!**

**2010 Jeep Wrangler Sport** ..... **\$22,990**  
Blue


**2013 Jeep Wrangler** ..... **Save Thousands**  
Unlimited, 4 Door

**2013 Jeep Sport** ..... **Low Miles**  
2 Door, Automatic, Low Miles

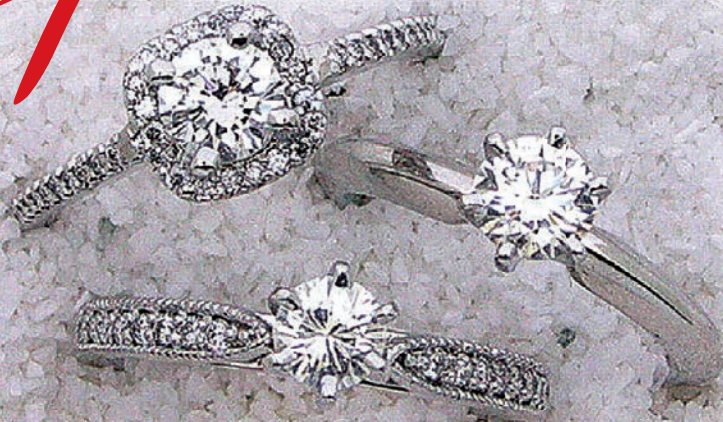


**Berks County's Exclusive Buick, Cadillac, GMC & Pre-owned Superstore**  
Monday thru Thursday till 8:00 pm • Friday till 6:00 pm • Saturday till 5:00 pm

**Rt. 222 & 662 In Fleetwood**  
**• 610-683-8800**  
**• www.kutztownauto.com**



*Special*



Made In The USA

1/2 ct **\$995**      3/4 ct **\$1,495**

FINANCING AVAILABLE

**J.A. Meyer**  
*Fine Jewelry*

156 West Main St.,  
Kutztown, PA 19530  
610-683-5920  
Tues. thru Thurs. - 10 am to 5 pm;  
Fri. 10 am to 7 pm; Sat. 9 am to 1 pm

Total weight may vary slightly

**OLEY VALLEY FEED, INC.**

**Pet Photos With Santa**  
Nov. 27 & 28

10 am to 3 pm  
Call For Appointment  
Walk-ins Also Welcome



**S A L E**  
Pet Toys, Treats & Beds  
Many Other In-Store Sales & Specials  
Nov. 27 & 28 Only

**\$20 OFF Muck Boots**

Good at Oley Valley Feed, Inc., Oley • 610-987-3568  
With this coupon.  
Not valid with other offers or prior purchases.  
Valid 11/27/15 through 12/24/15 WP

**20% OFF Birdfeeders**

Good at Oley Valley Feed, Inc., Oley • 610-987-3568  
With this coupon.  
Not valid with other offers or prior purchases.  
Valid 11/27/15 through 12/24/15 WP

143 Cleaver Road, Oley • 610-987-3568 • www.oleyvalleyfeed.com

Going Once...Going Twice



GET THE MOST FOR YOUR MONEY  
Place your public sale in the East Penn Valley and Northern Berks Merchandisers

**The Windsor Press**  
INCORPORATED  
6 North Third Street  
P.O. Box 465  
Hamburg, PA 19526-0465  
610-562-2267 or 1-800-562-5521  
FAX: 610-562-2770  
www.windsorpress.com

**PUBLIC AUCTION**

25+ PREOWNED & SALVAGE VEHICLES / PARTS  
CARS / SCRAP METAL - SOME RUNNING & TITLED  
Friday, December 4, 2015 at 10:00 A.M.  
Location: Mechanics Plus Emmaus Location - 4701 Colebrook Ave., Emmaus.  
NO RESERVES and NO PREMIUMS - See www.Houseauctioneers.com. for pictures and car list.  
Auctioneers: DOUG/TIM HOUSER, Sale by:  
AU-000446L MECHANICS PLUS  
JASON/NATHAN HOUSER,  
Assoc. Aucts., 610-799-2396  
or 570-386-2191

**You Can Advertise In This Space**

for only **\$36<sup>80</sup>**

Add Color For An Additional **\$25<sup>00</sup>**

**The Windsor Press**  
INCORPORATED  
6 North Third St.,  
P.O. Box 465  
Hamburg, PA 19526-0465  
610-562-2267 or 1-800-562-5521  
display@windsorpress.com  
www.windsorpress.com

**CENTER MOTORSPORTS VALLEY**



**BLACK FRIDAY SALE**

**15% off clothing & select merchandise**

5118 Route 309 • Center Valley, PA 18034  
888-539-1994 • www.cvmotor.com



**Open  
Nov. 27 thru  
Dec. 24**

**Join Us**

*at  
Schuylkill County's largest  
indoor/outdoor standing tree display.*



**Start a Family Tradition on the Farm!  
Providing Fresh Trees Since 1945**

**Forget-Me-Not  
Florist**

**Schuylkill  
County's Florist  
Since 1926**

- Custom-made Wreaths & Bows
- Fresh & Silk Floral Arrangements
- Poinsettias
- Gift Shop
- Yankee Candles
- Daily Deliveries

**Call 570-366-2619 or order online 24/7 at:  
www.OrwigsburgFlorist.com**

**Gift Shop**

Let us help decorate your home with our large selection of Holiday decor & accents. Come browse through our varied selection.

**One Stop for All Your Holiday Decorating & Gift Giving!**

**FRESH CHRISTMAS TREES**

**Fresh Wreaths, Swags, Garlands & Custom Handmade Bows**

**Trees from 2 ft - 15 ft!**

**Choose & Cut**

**Gift Shop Open House:  
Nov. 28 & Dec. 5  
Live Music**

**Trees Drilled & Baled FREE!!**

**Playground for the Little Ones**

**Pin Stand & Tree Accessories**

**Concession Stand Open on Weekends!**

**Holiday Hours:**

Open Every Day 9:00 a.m. to 8:00 p.m.

Until December 24th

Open Monday - Saturday Year Round

**COUPON**  
**10% OFF**  
**One Tree Purchase!**

WP Good only at Pioneer Evergreen Farms

**COUPON**  
**25% Off**  
**One Gift Shop Item!**

WP Good only at Pioneer Evergreen Farms

**COUPON**  
**10% Off**  
**One Premade Christmas Wreath!**

WP Good only at Pioneer Evergreen Farms

DISCOUNTS WITH COUPON Limit 1 Discount Per Customer.  
Valid November 27 thru December 24, 2014.  
~ NO CASH VALUE ~ Cannot be combined with any other offers.



GPS Address: 159 E. Adamsdale Rd., Orwigsburg, PA 17961  
**WE ARE 10 MINUTES NORTH OF CABELA'S ON ROUTE 61**



**159 East Adamsdale Road, Orwigsburg, PA 17961  
570-366-2619**

**www.PioneerEvergreenFarms.com**



*Presented by Sculps Hill Enterprises, LLC*

