

MARCH 25, 2015

Spring **Home Improvement**



Helping Neighbors For Over 50 Years
Since 1964
WEAVER'S
ACE HARDWARE
Right Products, Right Price, Great Service

Weaver's Ace Hardware Fleetwood
732 Fleetwood-Lyons Road
Fleetwood, Pa 19522
610.944.7681
Mon-Fri 7-8 • Sat 7-6 • Sun 11-5
www.weavershardware.com

Weaver's Ace Hardware Douglassville
905 West Postal Road
Douglassville, Pa 19518
610.385.4600
Mon-Fri 8-8 • Sat 8-6 • Sun 9-5
www.facebook.com/weavershardware

**YOUR
SPRING
HEADQUARTERS**



Potatoes



Onions



Seeds



**Bagged
Mulch**



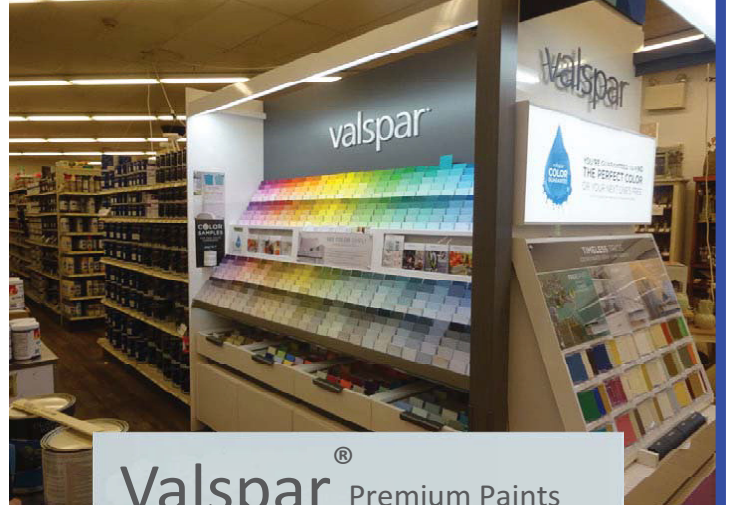
**Bulk
Mulch**

PAINT STUDIO



**CLARK+
KENSINGTON**
PAINT + PRIMER IN ONE

Clark+Kensington® Paint+Primer In One
Ranked #1 By A Leading Consumer Magazine.
Exclusively available at your neighborhood Ace.



Valspar® Premium Paints

With Performance That Is Second to NONE!

Valspar® Color Guarantee.
Valspar® Optimus™ and Aspire™. If you don't like
your color, get another free. Restrictions apply.

Wednesday, March 25—Sunday, March 29

Buy 1, Get 1 FREE

Buy one, get one free on all gallons of Interior and Exterior
Royal® and Clark+Kensington® paint.
Wed. March 25—Sun. March 29 only.
Limit 2 free gallons per household.



**1 WEEK
ONLY**

**TRUCKLOAD
BAG SALE**

**We Have At Least 10 Semi-Loads Of Product In Stock For Your
Lawn & Garden Needs!**

Monday March 30 - Saturday April 4

**Black,
Brown, Red,
& Hardwood
Mulch**

4 For \$10
\$2.50/Bag
Reg \$3.99
2 Cu Ft Bag



**Sale Price
Valid
March 30 -
April 4**

**Organic
Compost &
Manure**

4 For \$8
\$2.00/Bag
Reg \$3.49
40 Lb Bag



**Sale Price
Valid
March 30 -
April 4**

**Bagged
Top Soil**

4 For \$6
\$1.50/Bag
Reg \$1.99
40 Lb Bag



**Sale Price
Valid
March 30 -
April 4**

**WITH INCREDIBLE SAVINGS & EXPERT ADVICE, WEAVER'S ACE HARDWARE IS
YOUR HELPFUL HEADQUARTERS FOR ALL THINGS SPRING.**

Roundup® Pump 'N Go® Weed
& Grass Killer Spray, 1.33 Gal.
Limit 2 at this price.



SALE \$17.99
**-\$4 INSTANT
REBATE**
You Pay **\$13.99**

Roundup® Weed & Grass
Killer Concentrate, 36.8 oz.
Limit 2 at this price.



SALE \$21.99
**-\$5 INSTANT
REBATE**
You Pay **\$16.99**

Scotts® Turf Builder®
EZ® Seed , 10 lb.
Limit 2 at this price.



SALE \$26.99
**-\$7 INSTANT
REBATE**
You Pay **\$19.99**

Scotts® Nature Scapes®
Advanced Color
Enhanced Mulch
2 Cu. Ft. Limit 10 bags.



**-\$1
INSTANT
REBATE**

These Instant Rebates Valid Entire Month Of April (3/30-4/30).



**Fleetwood
Building Block, Inc.**

Techo-Bloc

240 West Main St., Fleetwood, PA 19522 Ph.: 610-944-8385 • Fax: 610-944-0827
Online: www.fleetwoodblock.com



Retaining Walls • Patio Blocks & Pavers • Ponds & Wallstones • "Gray" Block & Masonry Supplies

Get Started Now On Spring Cleaning

Warmer temperatures and longer hours of sunlight can recharge energy levels. Upon the arrival of spring, homeowners dust off their to-do lists and charge ahead with renewed vigor. But before homeowners can get started on renovation projects, many must tame the existing mess that may have built up over the winter. Spring is a great time to dive into spring cleaning projects and ready a home for a season of renovation and remodeling. Getting started on spring cleaning can be a tad overwhelming. In 2012, OnePoll asked 1,000 adults living in the United Kingdom how they felt about spring cleaning, and 41 percent of those surveyed found spring cleaning a daunting process while 68 percent had negative feelings about spring cleaning. But in spite of that initial lack of enthusiasm, respondents said they felt happy and more organized once they finished their spring cleaning. Establishing a plan and setting reachable goals

can make spring cleaning a lot less daunting.

- Set aside several days for spring cleaning. A long weekend is a great time to do some spring cleaning, as having consecutive days to clean will reduce the chances you grow distracted.
- Make a list and purchase all of the supplies you will need. Again, this will help you stay on course, rather than going out to the store to pick up cleaners or organizational systems.
- Try to set reasonable goals. Even if you hope to clean the entire house, stick to the one or two rooms that are most desperate for your attention. Divide each task into a series of steps so when you complete each step you will feel proud that you're making progress.
- Create your musical playlist. A playlist full of your favorite songs can provide some inspiration and energy to push you through the spring cleaning when your enthusiasm starts to wane. The music also may take your mind off of the work ahead and help to pass the time.

- Start from the top and work downward. Follow a logical cleaning order. Begin by dusting away cobwebs and lighting fixtures. Clean light switches and walls. Empty closets and then restock them in a more organized fashion. Leave the furniture and flooring for last, as dirt and dust may accumulate on furniture and flooring as you clean other areas of the home.
- Be prepared to bid adieu to some of your stuff. Have a few trash bags at the ready. Reorganize items you won't be keeping into separate piles, with one pile for items you plan to donate and another for those items you will discard. Donate what you can and promptly put the remainder of the items at the curb for pickup.
- Stay fed and hydrated. Cleaning can be physically and emotionally exhausting. Take breaks to fuel up on food and always have a refreshing beverage close by. Following a few guidelines can make the process of spring cleaning go quickly and smoothly.

Echo Spring Cleanup



Simplicity Tractors

Simplicity

On Sale Now

Briggs & Stratton Generators



In Stock



Simplicity, Toro, Wheel Horse, Columbia Riding Tractors, Lawn & Garden Equipment, Echo Power Equipment

**MILLER'S
Lawnmower Service**

Sales & Service

906 Centerport Road • Mohrsville, PA 19541 610-926-4265
www.millerslawnmowerservice.com

2nd Generation
ADAMS WINDOW FASHIONS

Shop-At-Home Service
Residential and Commercial

- Draperies and Valances
- Bedroom Ensembles
- Cornices
- Pillows and Window Seat Cushions
- Swags and Jabots
- Table Covers
- Roman Shades
- Hunter Douglas-Certified Installer

Custom Window Treatments are created in our workroom and are installed by us.

RENEE ADAMS MOSER
610-562-2150
awfashions@verizon.net

OPEN HOUSE

✓ **MARK YOUR CALENDAR**
FRI., MAY 8 • SAT., MAY 9 • SUN., MAY 10



**Wood
Gas
Pellet
Coal**
**Sales and
Service**



**Wood
Gas
Pellet
Coal**
**Sales and
Service**



Napoleon® NZ6000 Wood Burning Fireplace



Napoleon® BGD36 Gas Fireplace



JØTUL®

Jotul C450 Wood Insert \$2,599

while supplies last



**Boyertown
Special**

**311 County Line Rd., Bldg. 15, Boyertown, PA 19512
484-415-0751**

Tues. & Thurs. 9 a.m. to 6 p.m.; Wed. & Fri. 8 a.m. to 4 p.m.;
Sat. 9 a.m. to 1 p.m.; Closed Sun. & Mon.

www.kcstovesandfireplaces.com

QUADRA-FIRE®

Quadra-Fire Classic Bay 1200 Pellet Stove



HARMAN

BUILT TO A STANDARD, NOT A PRICE

Harman Advance Pellet Stove



**120 North Main St., Alburtis, PA 18011
610-966-3556**

Sun. 10 a.m. to 3 p.m.; Mon., Tues., Thurs. & Fri. 8 a.m. to 4 p.m.;
Wed. 8 a.m. to 8 p.m.; Sat. 9 a.m. to 3 p.m.

www.kcstovesandfireplaces.com

Over 30 Stoves On Display

EARLY BUY PRICING ON PELLETS

**Premium
Wood Pellets**

Pick Up & Delivery Available

FISHER FORGE

COPPER • BRASS • BLACKSMITH

572 St. Michaels Road
 Hamburg, PA 19526
 610.504.8060
 fforge@early.com www.fisherforge.com

Custom Blacksmithing and Ornamental Iron Work

Specializing in:
 Antique Reproductions and Hardware
 Restoration Work
 Custom Railings, Gates and Furniture

Explaining Aeration

First-time homeowners or those just beginning to embrace their inner landscaper may notice their neighbors using a machine to punch holes in their lawns and wonder what they're doing. While aeration is slightly more complicated than simply punching holes in a lawn, that's likely what your neighbors are up to when you see them manning an unfamiliar machine in their lawns. Aeration may be a foreign concept to men and women with little lawn care experience, but it's a relatively simple way to ensure your lawn stays healthy.

WHAT IS AERATION? Lawn aeration is the practice of perforating the surface of a lawn in an effort to promote stronger roots and a healthier landscape. A host of factors, from inclement weather to kids using the yard as a playground to the type of grass in a yard, can make it difficult for lawns to thrive. Aeration is a way to counter some of the things that prevent lawns from looking lush.

WHY SHOULD I AERATE? Aeration is practiced so lawns can grow deeper roots, as poking holes in the surface breaks up compacted soil, thereby allowing air, nutrients and water to reach the root system. Over time, a lawn that is not aerated is likely to feature compacted soil that won't absorb water and nutrients, which are essential to maintaining a healthy lawn. Lawns that are not aerated also tend to build up thatch. Thatch is a matted layer of materials that can build up in a lawn over time. Grass clippings and other debris might not stick to your shoe when you walk through the yard, but they are combining to create thatch just below the surface of the grass. That thatch also makes it difficult for water and nutrients to reach the soil where they can promote strong, healthy root systems. Aeration helps to combat the buildup of thatch and promote a healthy lawn.

CAN I DO IT MYSELF? Homeowners with little experience caring for their lawns may want to consult professionals before tackling the project themselves. Many professional landscaping services have experience in aerating lawns, which can be labor-intensive. Aeration is not necessarily a difficult task, but some aerators do not cover much soil surface with each pass they make, so it can take a while to complete a full aeration of your lawn. In addition, some homeowners may be uncomfortable operating an aerator, and that can lead to mistakes that can harm a lawn. Homeowners pressed for time or those concerned about their ability to operate an aerator may benefit from hiring professionals and then watching how the pros do it. If you watch carefully, you might be more confident come the next time your lawn needs to be aerated.

HOW OFTEN SHOULD I AERATE? Lawns that are not subject to heavy use can go longer between aerations than those with more frequent use. If kids play in the yard every day or if you routinely host parties where guests spend lots of time in the yard, your lawn will benefit from more frequent aeration. Speak to a landscaping professional about how often your property needs to be aerated, as there may be certain region-specific variables that will influence how frequently a lawn should be aerated.

WHEN SHOULD I AERATE? Landscaping professionals recommend aerating lawns during the growing season, when holes created by aeration can be filled by growing grass. Homeowners should consult with a landscaping professional about when to aerate their lawns, as the type of grass may also determine the best time to aerate. Aeration is a great way for homeowners to ensure their lawns stay lush and healthy for years to come.

Spring
POOL & SPA SALE **LOWEST PRICES OF THE SEASON**

- Pool Inflatables
- Pool Accessories
- Pool Chemicals
- Water Testing
- Replacement Parts
- Filter & Pump Repair

12 Months NO Interest NO Payments*
On Pools and Hot Tubs
*With approved credit. 10% deposit required. Financing provided by Diamond Credit Union.

STRONG SPAS



G-2 Premium Hot Tub
 only **\$3,849**
delivered



Madrid 60 Hot Tub
 only **\$8,495**
delivered

Over 10 Models On Display

Many Other Models Available
All Tubs Receive The "White Glove Treatment" with Delivery and Placement, Chemicals, and Training of Spa and Chemical Use.

Ask about other incentives and display discounts.

"BUY AMERICAN...BUY QUALITY"
 Over 12 Models To Choose From

Size	XL7000 Pool Only	Pool With Supreme Accessory Package and Sand Filter
18'	\$1149	\$2218
21'	\$1399	\$2468
24'	\$1549	\$2618
27'	\$1849	\$2918
15'x24'	\$1849	\$2918
15'x30'	\$2099	\$3168
18'x33'	\$2399	\$3468



Fehl's
 "Your Store For All Seasons"

- Hearth
- Home
- Pool
- Patio

5369 Allentown Pike,
 Temple, PA 19560
 610-929-5794
 www.fehls.com
 Call for store hours.

R M SCHAEFFER LLC
Plumbing & Hydronic Heating

2050 Old 22 • Lenhartsville, PA 19534 • Ph: 610-562-8362

Residential • Commercial • Agricultural

Myers® • Water Well Pumps
 • Sewage Pumps
 • Water Systems & Purification
 • Environmental Systems • Radiant Heat

Richard M. Schaeffer, Member Allen R. Schaeffer, Member
PA023263

DANENHOWER
LAWN SERVICES, LLC

...can handle your Spring Clean-up Needs!

RESIDENTIAL AND COMMERCIAL
 Mowing • Edging • Mulching • Lawn Repair
 Hedge Trimming • Stump Grinding
 Yard/Leaf Cleanup

259 CHURCH HILL RD, LENHARTSVILLE, PA 19534
 ~ FULLY INSURED ~
PH: 610-756-6074 CELL: 610-914-8742

Kitchens by **WSC** **Fine Custom Cabinetry**

Larry Ernst,
 Designer/Consultant
 162 Virginville Rd.,
 Hamburg, PA 19526
 610-562-1587
PA00325

On-site Kitchen Design Service
 With 35 Years Experience Creating The Area's Finest Kitchens



Also Mid-Range and Stock Cabinetry Available. Complete Kitchen and Bath Renovations. Countertop Replacements In Granite, Solid Surface, Tile & Laminate

24 Hours A Day - 7 Days A Week & Holidays

K&W SEPTIC SERVICE

WE REPAIR/INSTALL

- Standard & Sand Mound Systems
- Specializing In On-The-Job Repairs
- Tanks Located & Dug Open
- Lines Opened & Repaired
- Pumps Installed For Sand Mounds
- Risers & Baffles Installed
- Backhoe Service

WE CLEAN

- Septic Tanks
- Cesspools
- Holding Tanks

Serving BERKS COUNTY

610-488-6588 **Call The Septic Professionals!**
 5874 Old Rt. 22, Bernville PA006352

SPRING SALE

Randy's Carpet

10% off* ALL FLOORING **CELEBRATING 40 YEARS**

*Not to be used in conjunction with any other offer. Must be presented at time of order. Expires 4.30.15.

Carpet • Vinyl • Ceramic • Hardwood

www.RandysCarpet.com f/RandysCarpet

1073 Pottsville Pike, (Back of Building),
 Shoemakersville, PA 19555 • 610.562.8838

Mon - Thurs 10 AM to 7 PM • Fri 10 AM to 4 PM • Sun 10 AM to 2 PM



Renovate your homeowners policy.

Great insurance. Low rates.

Remodeling your home can increase its value. Protect it by taking a new look at your homeowners insurance policy **Like a good neighbor, State Farm is there.*** CALL ME TODAY.

Kay L. Greenawalt
 Ins. Agency, Inc.
 Kay Greenawalt, Agent
 124 S. 3rd St.
 Hamburg, PA 19526
 Bus: 610-562-4329
 Toll Free: 877-562-4603

State Farm™

0901136.1 State Farm Fire and Casualty Company, State Farm General Insurance Company, Bloomington, IL

SPRING SAVINGS EVENT!

CLARK'S *TV & Appliance*

13 Main St., Fleetwood, PA
 610-944-7335
 www.clarkstv.com

Knowledgeable Sales Staff • Professional Delivery • Custom Installation • Factory-Authorized Service Technicians

Delivering Style, Savings & Service For Over 60 years

e-Subscribe to the Northern Berks and East Penn Valley Merchandisers at: www.windsorpress.com

Spring Building Specials!



24x30x10 ... \$7,150 30x64x10 ... \$13,750
 24x40x10 ... \$8,300 30x48x12 ... \$12,300
 30x30x10 ... \$8,200 40x60x14 ... \$18,800
 36x48x10 ... \$13,100 40x80x14 ... \$23,400



LIMITED TIME OFFER - CALL FOR DETAILS!!

Spring Special Prices Valid Thru April 15, 2015
 Prices Include Materials, Delivery, Tax and Labor
 Within 75 Miles of Schuylkill Haven, PA 17972
 Many Other Stock and Custom Sizes To Choose From



POST FRAME PRECISION POLE BUILDINGS

1-877-POLEBARN
 1-877-765-3227

www.postframeprecision.com | www.pfpolebuildings.com

FREE Estimates

Serving PA, NJ & MD

Options Abound When Laying A New Driveway

A driveway is more than just a place to park your car. The right driveway material can add considerable curb appeal to your home, increasing its resale value along the way. Homeowners have many options at their disposal when choosing a driveway material, and the right material for one home may not be the best fit for another. The following is a run-down of popular driveway surfaces and what homeowners can expect of each of them.

BRICK
 Many homeowners believe brick driveways provide the most aesthetic appeal, and it's hard to argue with the beauty of brick driveways and walkways. Brick driveways come in various colors and hues, and many homeowners opt to have the color of their brick driveways match their landscaping, which further adds to curb appeal. But

that curb appeal is only appealing if the driveway is designed and installed correctly, and homeowners can expect to pay a premium for that, as brick driveway installation is very labor intensive.

GRAVEL
 Gravel driveways may not be as commonplace as they once were, but this cost effective driveway material is still an option. Homeowners who live in regions with mild winters without snow might benefit most from gravel driveways, which can be difficult to negotiate when shoveling snow. Gravel tends to be the least expensive driveway material to install, but professionals may recommend that a new top layer of gravel be laid once or twice a year to replace material lost to wind and everyday usage.

ASPHALT
 Asphalt remains a popular driveway material, thanks in large

part to its practicality and ease of installation. Unlike other driveway surface materials, asphalt is available in just one color, black, and that lack of versatility has led many homeowners to consider other options. But asphalt remains an affordable driveway surface material that's relatively easy to repair. Cracks and holes in asphalt are somewhat common, but resealing such blemishes once every three to five years is typically enough to maintain the appearance of an asphalt driveway.

CONCRETE
 Concrete driveways are popular thanks in large part to their affordability and aesthetic appeal. Concrete can be susceptible to extremely cold weather, but many homeowners prefer concrete because of its versatility. Concrete can be stamped or dyed to provide a unique look, which can

increase curb appeal. Concrete can be expensive to maintain, particularly when the material cracks. In addition, gas and oil spills are more noticeable on a concrete surface than other driveway surface materials. When replacing an existing driveway, homeowners have an array of new surface materials to choose from, and each material has its pros and cons.

Creation Cabinetry, LLC

557 State St., Hamburg, PA 19526

610-562-4700
 www.creationcabs.com

For All Your Home Cabinetry Needs

- Kitchen
- Bath
- Entertainment
- Home Office
- Closets

Custom Cabinetry At or Below Box Store Pricing

FREE DESIGN SERVICE
 FREE ESTIMATES



Featuring Custom Cabinetry by Creation Cabinetry and Semi-Custom Cabinetry by Wellborn and Other Quality Manufacturers



All Products are Proudly Made in the USA.

Slichter Painting

~ NO JOB TOO SMALL ~
 For All Your Painting Needs

Interior and Exterior
 Wallpapering and Odd Jobs

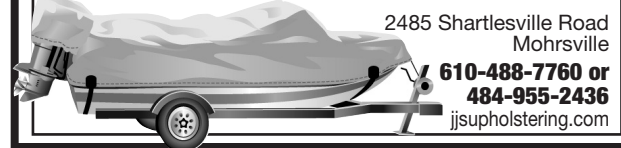


Call:

JEFF SLICHTER 610-562-0202

John J. Stetzler Upholstering

- Car and Truck Seats
- Furniture
- Recover Boat Seats
- Day-Night Shade Repairs
- Custom Boat Covers
- Miscellaneous



2485 Shartlesville Road
 Mohrsville

610-488-7760 or
 484-955-2436
 jjsupholstering.com

Spring Is Coming!

Make Your TV Reception
 The Best It Can Be!

CALL US!

Antenna Systems
 & DIRECTV



610-756-6441
 Old Rt. 22, Lenhartsville PA25726

schuykill paving inc.

285 Blue Mountain Road,
 Schuylkill Haven, PA
 17972



- Residential & Commercial Paving
- Milling • Line Striping
- Seal Coating • Hauling

FREE ESTIMATES

PAOAGHC005897

570-754-7800



Heating & Cooling, Inc.
 HIC #PA005569

Specializing in
 All Types of
 Plumbing, Heating,
 Cooling, Electrical
 Service & Hookups
 For All Types Of
 Generators

- 28 YEARS EXPERIENCE
- LICENSED AND INSURED
- FREE ESTIMATES
- REMODELING
- NEW CONSTRUCTION
- SERVICE

61 PRICETOWN ROAD • FLEETWOOD, PA 19522
 Pat & Rich 610-683-5465 Fax: 610-683-3296

2 Steiner Kubota Diesel Model 440 4x4 Demos. 480 & 550 Hours Special Pricing - One Year Warranty

STEINER

School Districts, Townships, State & County Parks, Etc. Can Purchase Under PA State Contract!

FINANCE PLANS AVAILABLE

Model 440 Articulating 4x4

Front Mounted 4, 5 & 6 ft. Decks Flip up for easy maintenance.



Trencher



Cab & Snowblower



Rototiller



Rotary Sweeper



Core Aerator

Above are just some of the 20 attachments available for the Steiner.

The new 440 offers many new features including a foot pedal for forward and reverse operation, repositioned hand controls, new hydraulic system, stronger axles, more horsepower, folding rops bar (standard), 2" receiver hitch (standard), seven-position seat adjustment that lowers as it moves forward, newly designed dash, four halogen headlights, 40-amp charging system (standard), stronger battery, electric clutch for PTO engagement (standard). Same quick-hitch system for the many front-mounted attachments.

MOW – BLOW – TRENCH
 HAUL – DRILL – TILL
 THE "STEINER" DOES IT ALL

ROY'S STEINER SALES

151 Sousley Road, Lenhartsville, PA 19534
 610.756.6150 • Cell 610.217.6446
 steiner151@verizon.net

NEW Model 235
 with 25 HP Kubota Diesel Engine.



Fully hydrostatic unit. Front-wheel drive, rear-wheel steer. Foot pedal for F&R. Unit accepts many of the "Quick Hitch" front mounted "Steiner" attachments.

LARRY MILLER GENERAL CONTRACTING

All Types of Building & Remodeling

- ◆ Additions
- ◆ Basements
- ◆ Kitchens & Baths
- ◆ Concrete
- ◆ Decks & Patios
- ◆ Trex Decking
- ◆ Doors & Windows
- ◆ Insulation
- ◆ Sewer Hookups

- ◆ All Types:
Roofing & Siding
- ◆ Flooring:
Hardwood
Ceramic Tile
Laminate
- ◆ Excavation
- ◆ Backhoe &
Skid Loader Service

**FREE
ESTIMATES**



Serving Berks & Surrounding Areas Over 25 Years

150 Upland Ct., Hamburg, PA 19526

484-256-8653 | Fax: 610-562-3311

Licensed & Insured | PA Lic 015141

**SOCIETY
CLEANERS**
Specialists in
Drapery Cleaning

**Spruce Up For Spring
20% OFF**
If You Book By April 30, 2015

Society Cleaners

216 S. 4th St., Hamburg, PA 19526
PH: 610-562-7852

When buying carpet for the first time, homeowners can be overwhelmed with unfamiliar terminology. Navigating such terminology, not to mention the vast array of options inside typical carpeting stores, can be difficult and make carpet buyers nervous about making the right decision.

Homeowners looking for carpeting for their homes are bound to hear about particular fibers and types of carpets. But such talk is lost when buyers don't understand carpet fibers and what makes each type of carpet unique. The following rundown of the various carpet fibers and types of carpet should help homeowners make more informed decisions.

CARPET FIBERS

When a carpet salesman or store employee references "carpet fiber," he or she is referring to the type of material used to make a particular carpet. No two fibers are the same, as each feels different to the touch and reacts to routine wear and tear differently. Here are the five most popular carpet fibers:

- Nylon: Nylon is the most durable carpet fiber, and that has contributed to its popularity. Nylon is available in a wide range of styles and is a flexible material. Many nylon carpets come with a stain-resistant treatment to protect the material from common stains and spills.

- Polyester: Highly resistant to stains and fading, polyester is soft, and today's polyester carpets are more resilient and durable than those of yesteryear.
- Triexta: Triexta is a type of polyester fiber that is especially soft. A relatively recent addition to the market, triexta carpet fibers are especially susceptible to stains and spills.

- Olefin: Olefin carpet fibers are among the least expensive, thanks in part to its lack of durability compared to other fibers. Olefin carpet fibers repel UV rays and therefore don't fade when exposed to sunlight.
- Wool: Wool tends to be the most expensive carpet fiber, but that cost is offset by its considerable durability and soft

Explaining Carpet Fibers And Types

feel. Wool carpets can last several decades, but they also are high maintenance and not especially resistant to stains.

CARPET TYPES

The type, or style, of carpet refers to how the carpet is designed. The type of carpet homeowners choose may depend on where in their homes the carpet will be installed.

- Frieze: Frieze carpet, sometimes referred to as twist carpet, is made of twisted strands of carpet, and many homeowners

prefer frieze carpet because of its modern and stylish look. Frieze carpet can be somewhat expensive, which is why some homeowners install it in bedrooms and sitting rooms where it won't be susceptible to high traffic.

- Saxony/Cut pile: Saxony or cut pile carpet is ideal for high traffic areas, such as the living room or hallways. That's because it tends to be resistant to matting and crushing and still feels soft underfoot.

- Berber: Berber carpets, often referred to as loop carpets, are especially durable, making them strong options for high-traffic areas of a home. Though there are variations in loop carpets, a traditional loop carpet is created when yarn is sewn or tufted into the backing and left uncut. Choosing a carpet for a home is no small task, but homeowners who educate themselves about the various carpet fibers and styles can find the right fit for their homes.

Can't Get A Shed In Your Yard ? We can Build It There !



Sheds & Garages

\$75 off \$1500 ~ \$125 off \$2500
\$175 off \$3500 ~ \$250 off \$5000

Playsets & Swingsets

Free Delivery and Setup
on Sets over \$1400

Cannot be combined with any other offer or used on in stock specials or sale items. WP
Must be presented at time of initial purchase. Cash or Check Only. Valid 3/25/15 - 5/2/15

We can Prepare Your Site & Remove Your Old Shed.



AMISH MARKETPLACE

610-921-1283 200 E. Bellevue Ave. Reading
Between Bus Rt. 222 and Rt. 61

HIGHLAND ESTATES
A QUALITY MANUFACTURED
HOUSING COMMUNITY
www.umhhomesales.com

**New, Used and
Rentals Available.
Prices in all Ranges**

610-285-6311 484-239-9825
Norma
60 Old Route 22, Kutztown, PA 19530

Explore The Alternatives To Granite Countertops

Granite has long been a popular countertop material for homeowners looking to combine functionality with aesthetic appeal in their kitchens. But granite is no small investment, and homeowners looking to refurbish their kitchens should know there are a multitude of countertop materials available to those working on a budget or those who simply want to give their kitchens a different look.

- Solid wood: Wood countertops create a warm, homey interior. Butcher block counters are less expensive than granite and do not necessarily need to be ordered from a speciality retailer. But wood can stain and dent and can even burn when hot kitchenware is placed atop it. Regular application of oil can help homeowners maintain the appearance of their wood counters for years to come.

- Marble: Marble tends to be less expensive than granite without sacrificing aesthetic appeal. However, marble is softer and more porous than granite, so it can stain and be etched. Diligence in wiping away spills, routine sealing and a gentle touch is necessary for those who choose marble countertops.
- Soapstone: This is a natural stone composed mainly of mineral talc that gives the stone its smooth feel. Soapstone ranges from black to gray but can sometimes have a green shade to it. Other materials in the stone can produce veining. Although softer than granite, soapstone is still high-density and will hold up well. It's impervious to stains and bacteria, and exposure to chemicals will not damage it.
- Quartz: Quartz is a manufactured product made of stone aggregate

and polymers compressed under high pressure. It has the look of natural stone but requires less work to maintain. Quartz has consistent colors and patterns and is a nonporous material, so it will not need routine sealing and resealing.

- Glass: Glass countertops are back-painted, so homeowners can order just about any color they want. Glass will be tempered, so it is safe and heat-resistant. Glass can scratch, though, so it is not as impervious as other materials.
- Concrete: Concrete is another material that can be colored to match homeowners' whims. Concrete is relatively inexpensive compared to other countertop materials, but it can crack or chip. While granite is a popular countertop material, homeowners who want something new have many additional options at their disposal.

Buildings For All Your Needs

Commercial, Residential and Agricultural



Designed and Custom Built by

MARTIN CONSTRUCTION COMPANY



Call Us For Your Next Building Project

We Can Help You With All Phases: Design, Site Work, and Building Construction. "Designed & Built With Care For Over 35 Years."

www.martinconstructionco.com
Fleetwood, PA 610-683-6120

pa 8177

Breeze Through Your Spring Projects!

RENTING.

So smart, so easy.

RENT:

Aerators	Saws	Soil Compactors
Leaf Blowers	Dethatchers	Chippers
Trenchers	Tillers	And More!
Backhoes	Post Hole Augers	

WE HAVE THE RIGHT EQUIPMENT FOR YOUR DIY PROJECT.

You've been itching to start those spring projects. Having the right tool for the job will make them easier. When you rent from Stoney Creek Rentals, you'll find hundreds of tools for both indoor and outdoor projects. And a knowledgeable staff will show you how to get the job done right.

TOOL & EQUIPMENT RENTALS SALES • SERVICE

STONEY CREEK RENTALS

We Sell Propane

www.stoneycreekrentals.com
872 Park Road, Blandon, PA 19510 • 610-926-4567
Business Hours: Mon.-Fri. 7 AM to 5 PM; Sat. 7 AM to 2 PM

E. S. SAVAGE, INC.

221 Island St., Hamburg, Pa. 19526
Phone 610-562-7581

- *Heating Oil Products
- *Burner Cleaning
- *Service Contracts
- *Budget Payment Plans Available

Come See Our **CARDTROL GAS PUMP FACILITY!**

Get Your Order In Now!

Spring

Time To Perk Up Your Driveway

FILL
(Sand - Stone)

DRIVEWAYS
(Base Stone)

The House of Your Dreams

DAVE MILLER & SONS, INC
CUSTOM BUILDER
RESIDENTIAL DEVELOPER

BUILDING PLANS?

Let Us Build Your Dream Home In One Of These Beautiful Country Settings Or We Will Build On Your Own Lot!

SCENIC MOUNTAIN

Blue Mountain School District - Southern Schuylkill County

Scenic Mountain residential development with a total of seventeen one acre+ building lots offers breathtaking views of Hawk Mountain as well as accessibility to two major highways, located just 1/4 mile off Route 895 and 4 miles from Route 61.

1 Lot Remaining (Lot 14)

Dave Miller & Sons, Inc.,
exclusive builder, can build your DREAM HOME in this picturesque country setting!

EVERGREEN ESTATES

Phase 1 & 2

Blue Mountain School District - Southern Schuylkill County

Evergreen Estates is one of Southern Schuylkill County's newest developments, located in East Brunswick Township with 5 lots currently available, beautiful views and quiet country setting.

Phase 2 - 2 Lots Remaining
(Lots 1 & 2) Large lots over 2 acres

Dave Miller & Sons, Inc.,
exclusive builder for the development, will build your Custom Home to your specifications.

Quality Custom Home Construction, Renovation, Excavation, Sewer Line Construction by:

Dave Miller & Sons, Inc. 570-366-2800

www.davemillerandsons.com

All Lawn Equipment
Any Make - Any Model
• Lawn & Garden Tractors
• String Trimmers • Sharpening
Custom Auto Interiors
Powder Coating

FIX IT ALL

610-562-6868
802 S. Fourth Street, Hamburg

IF WE CAN'T FIX IT,
YOU DON'T PAY!

Used Equipment & Trade-Ins
Pick Up & Delivery
E-mail: fixitall222@gmail.com

Ernest Z. Martin

CARPENTRY

PA#005466

**New Home Framing
Building & Remodeling**

- Basement Finishing • Additions
- Interior/Exterior Home Makeovers
- Vinyl Deck • Rubber & Metal Roofing

34 YEARS EXPERIENCE

Fleetwood, PA 610-944-0238
www.ezmcarpentry.com
No Sunday Calls

Tips For Homeowners On Their First Renovation Projects

Home renovations are typically exciting, as homeowners get to see the visions of their dream homes come to light before their very eyes. Turning an outdated bathroom into a modern oasis or an empty basement into the ultimate man cave strengthens the sense of attachment homeowners have with their homes.

But few home renovation projects go from start to finish without experiencing a few bumps in the road along the way. Such bumps can be difficult to handle for homeowners working on their first renovation projects, but there are many ways for novices to navigate the sometimes murky waters of home improvement projects and come out relatively unscathed on the other end, where a newly renovated home awaits.

- Plan well and know what to expect. When working with contractors, get all agreements in writing and spell out exactly what you desire in a home renovation. Photo references can help guide contractors and architects. Ask for the full picture of what can be expected with the work, from demolition to the punch list. Knowing what lies ahead can keep you grounded throughout the project.
- Discuss work each day and set payment schedules. Make payments contingent on work completed. This can help keep contractors on schedule. Paying for all work upfront leaves homeowners at a disadvantage, as it does not provide incentive for workers to be timely and efficient. Check in with workers to get daily progress reports.
- Have reasonable expectations. A renovation project may exceed its budget and take longer than initially expected. Understanding that these potential setbacks might be part

I want your
Stinking BUSINESS!

RODNEY LOEB

SEPTIC SERVICE, LLC

Septic Tanks, Cesspools
Business & Residential

164 Mill Hill Road
Hamburg, PA 19526
PH: 610-488-7351
PA016924



Here Comes Pooh...

of the process will make it easier to handle them when the foreman speaks to you about any issues that arise.

- Accept the mess. Construction work is messy. There's no way to maintain a pristine house when contractors are entering and exiting all day. Dust is bound to be generated, and tools can fill up rooms. A home in disarray can be stressful, but continue to visualize the end result and the mess won't bother you so much.
- Establish a contingency plan. Bathrooms and kitchen renovations are typically the most disruptive home improvement projects. Going without a kitchen can make it difficult to enjoy meals at home, while a bathroom remodel may require you to navigate water shutoffs. If your project is scheduled to

take several months, establish a contingency plan to deal with the consequences of your renovation project. Speak with family members about using some of their home amenities, and prepare and freeze meals in advance so you can reheat them later on when you don't have access to your stove.

- Plan your escape. Sometimes the constant work and mess of construction is too much to bear. Afford yourself time away by visiting relatives or staying at a hotel. Even a single night away can provide the relief you need. A home that is undergoing a remodel can be a less than comfortable environment. But homeowners who have never before lived through a renovation project can take several steps to make the process go as smoothly as possible.

DELONG'S FURNITURE

Discounted New, Used and Antique Furniture



**3-Piece Bench Craft
Reclining Sofa,
Reclining Love Seat and
Reclining Rocker Recliner**

\$1160.00

45,000 sq. ft.
Full of Furniture

**2-Piece
Reclining Sofa and
Reclining Rocker Recliner**

\$1075.00



**4-Piece
Signature Design Bedroom Set**

Set includes a queen-size head and footboard, dresser with mirror, high chest of drawers and nightstand

\$1075.00

We carry new and used brands such as
Pennsylvania House, Ethan Allen, Ashley,
Catnapper Recliners and many more name brands.

338 Main Street, Shoemakersville, PA 19555 • E-mail: DeLongsantiques@aol.com
Telephone: 610-562-0432 • Fax: 610-562-5704
Hours: Wed. - Sat. 10 to 4; Sun. 10 to 3; Closed Mon. & Tues.

Power Tool Safety Tips

Power tools can dramatically reduce the time it takes to complete home improvement projects. Professional contractors regularly rely on power tools for cutting and sanding, and many do-it-yourself renovators follow suit and invest in power tools to help get the job done. But power tools, in spite of their usefulness, are not without risk. According to the Work Safe Center, power tool injuries account for as many as 400,000 emergency room visits in the United States each year. Power nailers, chain saws and table saws account for the greatest number of injuries. Keeping safe is of the utmost priority when using power tools. Here's how:

- Read all manufacturers' instructions and guidelines before use.

- Keep your tools clean and in proper operating condition.
- Use the right tool for the job.
- Always wear eye protection, such as safety glasses or goggles.
- Wear standard cotton or leather work gloves to protect hands.
- Consider the use of earplugs or earmuffs with loud power tools.
- Don't use power tools in proximity to flammable vapors, dust or construction materials.
- Always check that wires are kept away from blades.
- Maintain a tight grip on a tool.
- Do not overreach when using tools, and maintain balance.
- Pay attention when working with any power tool.
- Only use attachments specifically recommended for the power tools and ensure proper

installation.

- Unplug all power tools during breaks and anytime when tools are not in use.
- Routinely inspect tools for damage.
- Keep tools stored in secure locations when not in use.

Did You Know...
A flat roof is more prone to leakage than other roofs, so homeowners may need to routinely inspect their flat roofs for any areas of water penetration. Another way to prevent leaks is to install gutter systems correctly. Gutters should not be hung completely level, but angled toward the roof's downspouts and drains. This angle will better facilitate water flow.

Check Our

END-OF-SEASON PRICING

on Breckwell and U.S. Stoves
Also Englander Pellet Stoves In Stock

— Expert Installation —

PREMIUM WOOD PELLETS IN STOCK Stored Inside - We Deliver	DOG & CAT FOOD & TOYS All National Brands	BIRD SEED, HOUSES & SUET
--	---	-------------------------------------




Seed Potatoes, Onion Sets & Veggie Seeds Are In!

Cressona AGWAY
Your Yard, Garden and Pet Place

L.P. 20 lb. Refill **\$13⁹⁹**

Serving Customers For 65 Years
2nd & Walnut Sts., Cressona, PA 570-385-2160
HOURS: Mon. - Fri. 8 to 6; Sat. 8 to 3; Sun. 10 to 2

For all life's special moments

10-Year Home Equity Loan

4.15%* APR

You've earned the equity in your home ... we let you enjoy it

Fleetwood Bank

fleetwoodbank.com
610.944.7666

Member FDIC

What you want your bank to be

*If you borrow \$25,000.00 for 10 years (120 months) at 4.15% APR, your monthly payments would be \$254.90. Maximum Loan To Value is 80%. Property insurance is required. Flood Insurance may be required. Customers must meet standard income and credit criteria and the home must be located in the Fleetwood Bank service area. Other Home Equity Loan terms and rates are available. This offer may be withdrawn at any time without notice.



THINK SUMMER!
 Schedule Your Installation Now.
Twilight Pools LLC
 SPECIALIZING IN:
 Inground Polymer and Steel Pools
 Aboveground Pools • Liner Replacements
 Free Estimates • 16 Years Experience
484-239-9763
 www.twilightpools.com PA009361

Add Value To Your Home With These Renovations

Homeowners choose renovation projects for a variety of reasons. Although many improvements are made to increase functionality and comfort of a home, several others are seen as worthwhile investments. These investments can add up to a higher resale value when the time comes to sell a home. Certain projects have a history of providing a greater return on homeowners' investments than others. The following renovation tips can add beauty to your home and generate great returns when you put the home up for sale.

- Invest in your kitchen. Kitchen remodels are a safe bet when it comes to putting money into improving a home. Residents tend to spend a great deal of time in the kitchen, but a dated, poorly functioning kitchen can detract from the value of a home, even if the rest of the home is in good shape. It's possible to recoup between 60 and 120 percent of your kitchen remodel investment, especially if the kitchen matches up well with the rest of your home. Homeowners should know that a deluxe renovation may not be necessary, as relatively moderate improvements can create a whole new look for a kitchen.
- Look to paint. One of the least expensive improvement materials, but one that has a significant impact, is paint. Neutral, modern colors can easily liven up any space. If you paint with low-VOC paint, you also can advertise an eco-friendly home, which is very desirable these days.



- Put in another bathroom. Multiple bathrooms are an attractive selling point, particularly in older homes that may not have been equipped with more than one bathroom. Finding extra space for a bathroom can be tricky, but consider closets, areas under stairs or even taking some space away from another room. Popular home-improvement television channel HGTV advises that half-bathrooms require at least 18 square feet of space, while full baths need 30 to 35 square feet for a stand-up shower or bathtub.
- Renovate the HVAC system. Aesthetic improvements aren't the only ones that add value to a home. Many home buyers are eager to purchase a home that has a new heating and cooling system, as buyers understand that furnaces and air conditioning units are substantial investments that can last for years. Other improvements, such as adding attic insulation or replacing older windows and doors

with more energy efficient options, also are smart bets.

- Add illumination to rooms. A dark home is a dreary home. Adding light can mean including more overhead and accent lighting. Under-cabinet task lighting is a nice touch. Inclusion of skylights and sun tubes can bring natural light into rooms that may not have south- or west-facing windows.
- Put a deck addition outdoors. Outdoor living spaces have become more desirable, especially as the "staycation" has grown in popularity. Decks and patios can make backyards more appealing. The scope of your investment will depend on the size of the deck and design. Doing the work yourself can cut the cost of decks in half, but only if you have the specific tools or experience to tackle such a project.
- Improve curb appeal. Adding attractive landscaping and freshening up the entryway to a home can add considerable value to your home, as buyers judge homes by their exteriors. Completely renovated interiors may never be seen if buyers pass up your home because of a less attractive exterior. Classy, subtle changes, like well-placed shrubbery and a green lawn, can work wonders. An inviting front door and well-lit entryway also add curb appeal to a home. Before making improvements, homeowners should determine if a given project will provide a solid return on their investment. Finding space to install an extra bathroom in a home can be a worthwhile investment.

REFRESH YOUR KITCHEN CABINETS

Here is a much less expensive option than replacing your entire kitchen or buying new furniture.



Refresh the things you already have with CeCe Caldwell's Paints and Miss Mustard Seed's Milk Paint.



**NO PREP!
 NO SANDING!
 NO PRIMING!
 NO STRIPPING!**

We offer a full line of both brands. We offer monthly classes teaching you how to paint your own kitchens, furniture, crafts...



VINTAGE THIS RE-PURPOSE THAT

1070 CENTRE TURNPIKE, ORWIGSBURG, PA 17961

570-728-4466

www.facebook.com/vintagethisrepurpose 




STONES THROW

Contact Us for a FREE Estimate!

We specialize in Hardscaping, Veneer Masonry and Landscape Design.

28 Northview Avenue • Shoemakersville
 484.668.1650 • asthardscapes@gmail.com

Like us on Facebook! facebook.com/astonesthrowllc

Spring Is Here... It's Time To Build



Call Today For Affordable Pricing & Free Estimates
1-800-861-6445

- Residential
- Commercial
- Agriculture
- Horse Barns

Pole Buildings Also Available with Concrete Floors, Shingle Roofing, Vinyl Siding, Insulation
 #PA022680

JWL CONTRACTING Stock & Custom Pole Buildings
 www.jwlpolebuildings.com

BRADY'S Small Engine Repair

Lawn, Garden and Contractor Equipment

- Equipment Service
- Welding Fabrication and Repairs
- Pick Up and Delivery Available



3390 Mountain Road, Hamburg, PA 19526

www.bradyssmallenginerepair.com

bradyssmallenginerepair@gmail.com

610-468-2429



Hours: Monday - Friday 8:00 am to 5:30 pm;
 Saturday 8:00 am to 3:00 pm

Authorized Dealer and Service Center:



Powered by



THE POWER WITHIN™



A Textron Company



Industrial Power Products



Engines/Power Products



Bailey Wood Products the Natural Choice



- ◆ Thermally Modified Wood for Organic Gardens
- ◆ Decking and Deck Panels
- ◆ Custom Milled Flooring
- ◆ Custom Profile Moldings, Baseboards, Paneling
- ◆ Custom Glued Countertops, Bartops, Tabletops
- ◆ Hardwood and Exotic Lumbers in Stock



Bailey Wood Products
441 Mountain Road
Kempton, PA 19529
PH: 610-756-6827
www.baileywp.com



How To Close Up A Fireplace For The Season

A roaring fireplace on a chilly day provides a welcome, aesthetically appealing respite from the cold.

Fireplaces are typically used throughout winter, but when spring rolls around, many homeowners no longer feel the need to light a fire. As fireplace season winds down, homeowners can take the following steps to close their fireplaces for the warm weather seasons ahead.

BEGIN THE CLEANUP
Repeatedly lighting fires results in an accumulation of ash and residual wood debris. Clean out what you can by hand and discard the soot. To conduct a more thorough cleaning, use a high-powered garage vacuum to clear out any remaining ashes from crevices and other parts of the firebox.

HIRE A CHIMNEY SWEEP
A fully functioning fireplace chimney should be swept annually by a certified chimney sweep. He or she will remove soot and any creosote from the inside of the chimney. Creosote is highly flammable and can cause considerable damage if it catches fire.

A professional chimney sweeping also reduces the amount of dirt and odor that will continue to enter a home after the fireplace has been retired for the season. Damp spring weather can moisten soot trapped in a chimney, causing it to smell. Cleaning and deodorizing can help keep rooms fresh.

ASK FOR AN INSPECTION
Ask a chimney sweep to inspect your chimney in addition to cleaning it. A sweep can look for leaks and cracks, and he or she should also look at the flashing system and rain cap, which can prevent water infiltration. You don't want to learn your chimney is in poor shape during a heavy spring rainfall. Ask that the pipes, brickwork and damper also be checked for functionality and good repair.

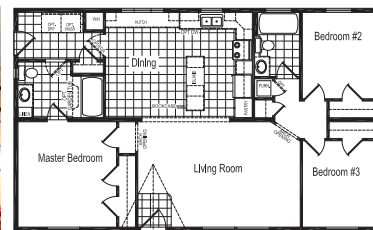
CLOSE THE DAMPER
Homeowners should close the dampers on wood-burning fireplaces when closing their fire-

HOUCK HOMES Inc.

Rt. 61, 1365 Pottsville Pike, Shoemakersville, PA 19555
www.houckhomesinc.com

610-562-5128

Affordable New Homes On Display



Be Sure To Check Out Our Easy Living Package Homes

- Beautifully Decorated Homes
- Prices Posted in Each Home
- No High Pressure Sales
- Contracted Improvements
- Financing Available for Qualified Buyers
- Service After the Sale is Our Commitment
- Family Owned & Operated For 54 Years



HARLEY SAYS:
The More You Look At Homes, The Better Our Homes Look!

Why Buy Elsewhere, Pay More And Get Less, It's Worth Your Time To Check Us Out!

COUNTRYSIDE COAL Delivery Service

Anthracite Coal - Hard - Medium Hard
All Sizes - Courteous Delivery Service
717-933-9263 717-269-0804

WE SELL
BLASCHAK COAL

DAVID W. ROHRER,
PROP.

STORAGE SHEDS MOVED

Serving PA & NJ for over 29 years!!!



Reasonable Rates
FREE ESTIMATES

Call: Glen
610-926-5671

FAX:
610-916-2954

Fleetwood, Pa.

Don't leave that shed behind! Move it with you!
Do you have an unwanted shed, gazebo, or playhouse?

WEAVERS HAULING

Over 29 Years Experience!

Free Estimates
610-926-7934

Reliable & Experienced

Tom Suess
Lawn Care and Landscape

MULCH
MOWING
PLANTING
FERTILIZING

TOPSOIL
TRIMMING
LANDSCAPE
WALLS & PATIOS



KitchenSaver
CUSTOM CABINET RENEWAL

Renew your cabinets with refacing.

New cabinet doors and soft-close drawers with hardware

Matching cabinet exteriors and reinforced cabinet boxes

New custom counter tops and a built-in sink

Storage and organization accessories customized for you

Installation by your professional technician in just **3-5 days**.

Save \$750
on the cost of your custom cabinet renewal

just by using this coupon!

Promo Code: 76230
Expiration Date: 5/10/2015

Must be presented and used at time of estimate only. May not be combined with other offers or applied to previous purchases. Valid only at select locations.



Prepare to be impressed.™

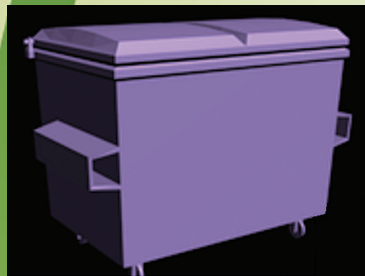
1-888-709-0997

visit us online at
ksreface.com/local

PA HIC #063180 Delaware Business License #2013605887 Ohio Registration #2219521

Since 1970

Roll-Off Units



Up To 15 Yards For Your Home Improvement and Large Clean-Out Projects

Your Cans Are In Good Hands!

Don't have much trash??

We have "Lawley's" Trash Bags in bundles of 10. Call for Details!

Lawley's

FAMILY OWNED & OPERATED

Disposal & Container Service, Inc.

610-916-5999

PO Box 778

Leesport, PA 19533

www.lawleysdisposal.com



No Hidden Charges In Our Billing!

CALL NOW FOR SERVICE!

Kick Start Spring With A Finished Basement

(MS) — After a winter of hibernation, spring is the perfect time to consider remodeling projects that will help keep your house cool in the coming summer months and reduce energy consumption. An unfinished basement is a source of energy loss in many homes. By simply finishing the space with wall and floor coverings, you will notice a difference on your energy bills. A remodeled

basement offers more than additional storage and living space. It can provide room for a growing family or a space where you can retreat for some privacy. Insulation is a key component in making your basement look and feel comfortable, inviting and dry. For the best results, install a rigid board insulation like ROXUL ComfortBoard IS against the concrete foundation before you stud

the wall. The board is mechanically fastened or adhered to the concrete foundation wall, preventing thermal bridging through the studs, offering a higher R-value and better thermal performance. It will ensure your basement is not a source of energy loss, but rather an inviting retreat all year round. Installation tips are available online at www.diywithroxul.com.

How You Can Finance Your Home Improvement Projects

Many homeowners recognize that improving and maintaining a property makes a home more livable for its inhabitants and more attractive to prospective buyers when the time comes to erect a "For Sale" sign in the front yard. But a well-maintained home also provides additional benefits. According to the United States Department of Housing and Urban Development, home improvements not only raise the values of individual homes, but they tend to raise neighborhood standards as well. Home improvements can create jobs and help local communities flourish economically. Maintaining a home can be a costly undertaking. Home improvement projects can be expensive whether homeowners hire professionals or tackle renovation projects on their own. The following are a handful of options homeowners can consider as they look for ways to finance renovation projects.

• Paying outright: Paying for the renovations upfront and in full is perhaps the simplest way to finance a

project. Homeowners who have the cash to pay for renovations outright won't have to worry about interest rates or balloon payments.

• Mortgage refinancing: Some homeowners tap into their home equity to cover home remodeling projects. Refinancing a mortgage means paying off the debt owed and starting over with a completely new loan. Refinancing comes with various fees and can cost between 3 and 6 percent of the loan's principal.

• Home equity loans and lines of credit: Both of these options are commonly referred to as second mortgages. When homeowners apply for home equity loans or lines of credit, they are borrowing against the equity value in their homes. A home equity loan is a term, or closed-end, loan. It is a one-time sum that will be paid off over a set amount of time with a fixed interest rate and the same payment each month. This is a one-time loan from which a person cannot borrow further. A home equity line of credit, or HELOC, is like having a credit card.

It's possible to borrow a certain amount for the life of the loan, which is a set time specified by the lender. During this time, homeowners can withdraw money as it is needed up to the value of the line of credit. HELOCs typically have a variable interest rate that fluctuates and payments can vary depending on the amount of money borrowed and the current interest rates.

• Title I property loan: Residents of the United States with limited equity in their homes may qualify for an FHA Title I loan. Banks and other lenders are qualified to make these loans from their own funds, and the FHA will insure the lender against a possible loss. Title I loans can be used for any improvements that will make a home more useful and livable. They cannot be used for renovations deemed luxury expenses.

• Borrow against retirement funds: Some people opt to borrow against a 401(k) plan, IRA or another retirement fund. If the retirement plan allows a loan without penalty, it can be another way to secure funds. Because it is the homeowner's money, there will be no credit check required and less delay in getting the funds. Borrowers should keep in mind that taking a loan against a retirement account will usually result in a lower retirement balance than it would have been had they not borrowed money from the account — even after the funds have been repaid.

• Credit cards: Credit cards are an option when improvements are not expensive. Individuals with excellent credit ratings may qualify for cards with a no-interest introductory period of several months or more. These cards can be a good way to pay off moderate improvements in a short amount of time.

Many home renovation projects require homeowners to develop a home improvement budget. Homeowners are urged to explore all options and find the least costly loan method and the one that will present the best possibility for avoiding debt.

GET READY FOR SPRING

AND SAVE DURING THE LARSON SPRING SALE.



Be Wise and Weatherize **SPRING SALE**

Save on LARSON® Storm Doors and Insulating Storm Windows during the Spring Sale now through May 15. Whether you want to improve energy efficiency or add ventilation, LARSON® storm doors or insulating storm windows are a quick, easy way to refresh your home.

STORM DOORS \$15.00 Mail-In Rebate*



Select from a complete line of storm doors with colors and sizes designed to fit your home.



346-60
4 Handle Finishes
\$290⁹⁵



370-81
Wood Core
\$177⁹⁵



350-04
2 Handle Finishes
\$175⁹⁵



370-50
Versa Screen
\$141⁹⁵



298-SS
Wood Core
\$117⁹⁵

LARSON® Spring Sale Rebate offer April 1 - May 15, 2015
*Valid on any standard size LARSON storm door. Limit 2 purchases per household. Not valid with any other offer.
**Rebate available on all insulating Storm Windows ordered. Not valid with any other offer.

After Mail-In Rebate After Mail-In Rebate After Mail-In Rebate After Mail-In Rebate After Mail-In Rebate

SCOTT MILLWORK Co., Inc.

40 North Sillyman Street, Cressona • Phone: 570-385-2046

Hours: Mon. - Fri. 7 a.m. to 5 p.m.; Sat. 7 a.m. to 4 p.m.

Dick Wessner Inc.



610-562-8512

ASPHALT PAVING

- Driveways
- Long Lanes
- Parking Lots
- Developments
- Roadways

E-mail: dickwessinc1@verizon.net

PA006152

We Do It Your Way!

Personalized Service, Sales & Installation

Heating & Cooling...Heating Oil, Propane & Natural Gas

- Air Conditioning Service & Tune-ups
- Heating & Cooling Upgrades & New Installations
- Conversion To Natural Gas or Propane Heating
- Installation Of Propane Tanks (Multiple Sizes In Stock)
- Whole House Backup Generator Installations

• Friendly • Family Owned • Fair Prices

FREE ESTIMATES

Call Today: 610-916-0237

212 SLATER RD., READING, PA 19605

www.elitefuelservice.com

HIC# PA017944



Bernard G. Spohn

Construction ▼ Remodeling ▼ Painting

- Garages
- Kitchens
- Replacement Windows & Doors, Storm Doors
- Ceramic Tile
- Vinyl, Hardwood & Engineered Flooring
- Family Rooms
- Bathrooms
- Additions
- Decks
- Siding
- Ceilings
- Formica & Corian

PA013306

QUALITY WORKMANSHIP AND MATERIALS

WE ALSO DO SMALL JOBS.

Free Estimates

Call 610-926-1999

MEMBER OF HOME BUILDERS ASSOCIATION





RELAX...

LET US TAKE CARE OF YOUR LAWN THIS SUMMER

Receive a
FREE MOWING
with a one-year contract.
See Creekside For More Details.

CREEKSIDE
Property Services Inc.

- Mulching
- Weekly Lawn Care
- Spring and Fall Cleanups
- Landscaping and Hardscaping
- Water Gardens
- Core Aeration
- Shrub and Tree Care
- New Lawn Installations



Call for your **FREE** Estimate Today!
(610) 683-5849 (office)
(484) 955-9863 (cell)

PA #033098

WAYNE STUMP CONTRACTING

P.O. Box 208, Virginville
610-562-1587

Custom and Stock Cabinetry

Countertop Replacements

- ◆ New Home Construction
- ◆ Additions
- ◆ Remodeling
- ◆ Concrete Work

Kitchen Showroom

PA00325

Home Improvement Glossary

Understanding the terminology used in the home improvement and construction industries can help homeowners be better informed and involved in projects around their homes. The following are some common industry terms.

Aggregate: Crushed rock used in many asphalt applications.

Ampacity: The amount of current a wire can safely carry.

Asbestos: A fibrous material that was once used widely in building materials but is linked to cancers of the lung and lung cavity.

Backfill: Soil or gravel used to fill in against a foundation.

Beam: Horizontal framing member designed to carry a load from joists or a roof.

Butt joint: Lumber pieces joined at the ends.

Casement window: A window with hinges on one of the vertical sides making it swing open like a door.

Caulking: Flexible material used to seal a gap between two surfaces.

Code: Rules set forth by a government institution to determine fair and safe trade practices.

Curing: A process that brings paint or masonry materials to their final, durable form.

Drywall: A wall finish made from gypsum plaster encased in a thin cardboard.

Estimate: The anticipated cost of materials and labor for a project.

Fixed price contract: A contract with a set price for the work.

Flashing: Sheet metal or roll roofing pieces fit to the joint of any roof intersection or projection.

Footing: Widened ground base of a foundation to support foundations or piers.

Framing: The structural wooden elements of most homes.

GFI: A ground fault current interrupter, which is an electrical device used to prevent injury from contact with electrical appliances.

Jamb: The exposed upright part on each side of a window frame or door frame.

Level: A tool to check for level or plumb surfaces.

Permit: A legal authorization to begin a work project.

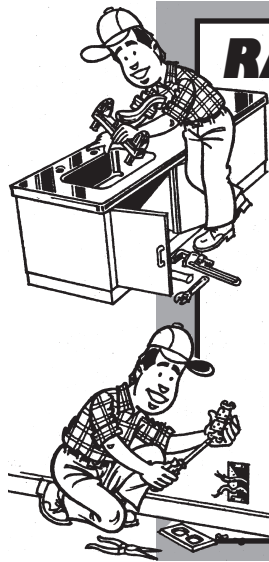
Pitch: The slope of incline on a roof.

Rebar: Steel rods that are imbedded in concrete for stability.

Shim: A tapered piece of wood used to level and secure a structure.

Stud: Vertical parts of framing placed 16 or 24 inches apart.

Watt: A measure of the electrical requirement of an appliance.



RANDALL R. RENTSCHLER, INC.

PA028367

21 South Third Street, Hamburg, PA
610-562-4077

Service Hours 7 AM to 3 PM - Mon. thru Fri.
Emergency Service Available. No Store Hours

CALL US TODAY
For Your
Home Improvement Needs
Plumbing & Electrical
Plumbing - Heating
Wiring - Air Conditioning - Heat Pumps

AMERICA'S FINEST FACTORY-BUILT HOMES

PRIDE
HOME SALES, LLC

Route 61, St. Clair 570-429-1977
www.PrideHomeSales.com



23 HOMES ON DISPLAY

2014 Factory Open House - Saturday, April 11, 2015

AT OUR MODEL HOME VILLAGE & DESIGN CENTER,
87 PLEASANT VALLEY ROAD, PINE GROVE, PA 17963

America's Finest Factory-Built Homes
38 Years of Quality and Value
MODULAR & MANUFACTURED HOUSING SPECIALISTS



Authorized Builder for: PLEASANT VALLEY HOMES



Buildings by WOOD ORIGINALS!

- **SERVICE & EXPERIENCE**
Wood Originals has been serving customers since 1990. We will be happy to come with you to your building site, sit down with you and review your ideas, and offer suggestions.
- **WORKMANSHIP**
Our buildings are built by our employees, many of which have been with us for years. We back our buildings with a 2-5 year workmanship warranty.
- **QUALITY MATERIALS**
We offer a concrete column post which eliminates wood posts in ground as well as many other options.



Bethel, PA • **1-888-553-5309** • SINCE 1990

RESIDENTIAL • COMMERCIAL • EQUESTRIAN • SPECIALIZING IN POST FRAME CONSTRUCTION

Visit Our Website To View Our Photo Gallery

www.woodoriginalsinc.com

HIC#PA018496



S724944

H

PennDOT-Approved Materials & Plant

OPEN SATURDAY MORNINGS

READY MIX CONCRETE

Serving All Of Schuylkill County and Northern Berks Counties.

READY MIX INC.
FREE ESTIMATES
Major Credit Cards Accepted



- Radio Dispatched Trucks
- Front Discharge Trucks
- Sand & Gravel • Bag Cement
- Lime • Mason Sand

570-385-0300

COAL ST., SCHUYLKILL HAVEN

"CONVEYOR YOUR CONCRETE TO WHERE YOU NEED IT"

Garden-Inspired Decor Brightens Spaces And Mood

Many homeowners take up gardening to transform their homes with beautiful flowers and foliage, while others do so to yield fresh fruits and vegetables. But gardening can be more than just a weekend hobby. In fact, it may be especially beneficial for homeowners to surround themselves with more plants and natural decor, whether in the yard or in the home.

Studies have indicated that gardening can be good for the mind and body. In addition to improving mood and reducing stress, plant life and gardening also may help people have a more hopeful outlook on life. If reaping the benefit of a beautiful landscape is not reason enough to get into gardening, elevating your mood and coping with depression or illness may be even further motivation to start developing your green thumb.

Home-design trends seem to be following suit, offering individuals more opportunities to surround themselves with potentially therapeutic plants. Explore these emerging and established garden décor trends to try in and around your home.

• **Living wall planters:** A living wall planter can add greenery to any décor without taking up floor or table space. Ideal for outdoor structures, these planters also can be used indoors if you safeguard against leaks and dripping. A living wall planter is a framed

device that houses plants in a manner that enables them to be vertically mounted to a wall surface. While there are commercially available models, you can create your own design and paint or stain it to match the existing décor. Use a soil-free potting substrate to avoid the mess that regular soil may create.

• **Combining fish with gardening:** Enjoy the best of two relaxing worlds by installing a water feature in your yard. Garden retailers offer ready-made kits that can make fast work of establishing a pond or other water feature in the backyard. Otherwise, there are plenty of water garden companies and installers who can suggest a design and put in your desired water features. Add fish suitable for outdoor life to your pond. These include koi and certain goldfish varieties. Game fish are discouraged because they can destroy pond plants. If an outdoor pond is more maintenance than you desire, consider an indoor aquarium with a combination of fish and live aquarium plants.

• **Creative furniture designs:** Maybe you're a person who appreciates the unique and whimsical? Tables, benches and chairs can be built with planting channels that enable you to have greenery and garden décor in one piece. Envision a picnic table with a cutout down the center for a thin row of plants or decorative grasses. This is a project the

entire family can get behind, as the more creative ideas the better.

• **Improved outdoor lighting:** People who like to spend time in their gardens and yards may not want to be limited by sunrise and sunset. By incorporating different lighting sources, you can create a retreat that is welcoming at any hour. Although flood lights and overhead lights can illuminate a space, consider ambient and decorative lighting to create the desired ambiance.

• **Functional fire pits and places:** A blazing fire creates a cozy spot to gather on chilly evenings, but fire pits and fireplaces also can be used as impromptu cooking spots for s'mores or frankfurters on a stick. You can purchase a stand-alone fire pit from a number of retailers or build your own with patio pavers and fire bricks to line the interior of the fire pit. Outdoor fireplaces require more work, and you want to hire a mason to ensure proper installation.

• **Enjoyable yard additions:** While plants and seating may take center stage, some people still want to have fun in their yards. There's an increased demand for yard designs and décor that can put the fun in backyard living. Bocce courts, ring- or horseshoe-toss setups, as well as bean bag-toss boards, can be incorporated into landscape designs, giving you yet another reason to spend a few hours in the great

GLAMOUR

ENTERPRISES

SPECIALIZING IN FIBERGLASS POOLS



PA1018

Specializing in
Fiberglass One-Piece Pools
Fiberglass Vinyl-Liner Pools

Complete Service:
Chemicals, Filters, Pumps,
Liner Replacements.

610-682-7972

Family Owned • 32 Years Experience • info@glamourpools.biz

outdoors, where you can experience a few healthy laughs in the process.

Gardening and spending time outdoors are great hobbies and may even boost your mood. Homeowners can explore the popular trends in garden décor and natural elements that they can enjoy inside and outside of their homes.

Fire pits and outdoor fireplaces are increasingly popular in backyards.



GENERAC

Authorized Sales and Service

29 Years Experience
PA107288

SEIDEL ELECTRIC

Industrial, Commercial, & Residential

Industrial Controls & Installations
New Electrical Services & Upgrades
Standby Power Generators
Emergency Service Work

484-824-2235

Licensed Master Electrician & Insured
www.seidelect.com

Cooler Summers, Warmer Winters LOWER BILLS

• Residential • Agricultural
• Commercial



Spray Foam
Insulation Services Inc

PA098824



Elmer Swarey
484-256-1079

Charles Swarey
484-256-2015

E-mail: elmerswarey@gmail.com
Fleetwood, PA

Is Your Plumber Worth The Price?

We Would Like You To Be Aware Of The Costs
Involved In A Service Call

- | | |
|--|---|
| <ul style="list-style-type: none"> * workman's wages * workman's compensation insurance * truck expenses - gas, oil, tires, etc. * replacement of tools * rent, heat, electricity, telephone * wear & tear on equipment * truck maintenance * truck insurance * fire insurance * unemployment tax * social security tax * business taxes * education & training costs | <ul style="list-style-type: none"> * customer property insurance * occupational health & safety equipment * preparation of state & federal forms * employee life and health insurance * postage, stationery * office equipment * employee vacation & holiday benefits * registration and usage fees * pension program contributions * secretary and/or bookkeeper wages * miscellaneous uncharged * parts - oil, grease, solder, lubrications, etc. |
|--|---|

FOR THE SAFETY OF YOUR FAMILY, FOR COMPETENT MECHANICAL WORK AND FOR QUALITY PRODUCTS...CALL FOR A LOCAL PROFESSIONAL PLUMBING CONTRACTOR

BADINGER PLUMBING, INC.
175 Moyer Rd., Reading, PA 19605
610-779-3640 PA017820

A.P. MERKEL, INC.
123 S. Richmond St., Fleetwood, PA 19522
610-944-0476 PA009543

BLANKENBILLER PLUMBING & HEATING
326 Freeman Drive, Fleetwood, PA 19522
610-929-2264 PA059110

MOYER PLUMBING & HEATING CO., INC.
105 Main St., Kutztown, PA 19530
610-683-7364 PA000949

COMFORT EXPERTS
207 South Richmond St., Fleetwood, PA 19522
610-944-1216 PA003038

WALTER F. NAUGLE & SONS, INC.
233 S. Miller St., Shillington, PA 19607
610-777-1357 PA009617

GMI FIRST, INC.
328 Buttonwood St., Reading, PA 19601
610-921-0790 PA018509

R.M. SCHAEFFER LLC PLUMBING
2050 Old Rt. 22, Lenhartsville, PA 19534
610-562-8362 PA023263

EARL F. KEGERISE, INC.
3454 Pricetown Rd., Fleetwood, PA 19522
610-944-8532 PA000544

LEROY SCHANNAUER PLUMBING & HEATING
1919 Old Lancaster Pike, Sinking Spring, PA 19608
610-777-0304 PA013664

KLINE'S MECHANICAL & HARDWARE
62 Main St., Strausstown, PA 19559
610-488-1897 PA005685

JOHN D. SMITH, INC.
10 Ballfield Lane, Fleetwood, PA 19522
610-944-8618 PA004248

LINCOLN PLUMBING & HEATING, INC.
450 Morgantown Rd., Reading, PA 19611
610-376-0863 PA008609

READING SUBURBAN

Plumbing, Heating &
Cooling Contractors, Inc.

Equipment & Party Rentals



Ark RENTALS
www.arkrentals.com



Need it? Rent It! **Rte.61 - Orwigsburg**
570-366-1071

Secrets To Keeping An Organized Shed

Despite other intentions, homeowners often turn their garages into storage centers for random, little-used items, leaving little to no room for the tools and even vehicles that actually belong in a garage. Such homeowners may turn to sheds to store their garage overflow and keep yard equipment at the ready, but storage sheds are not immune to clutter, and homeowners may find the very structure erected to keep them organized requires a bit of organization itself. A well-organized shed can save homeowners time and energy, as it's easy to abandon or delay a project if you can't find that pair of work gloves you stashed. The first step to any organizing project is to take everything out of the shed and determine just what needs to go back in. Items that do not belong in the shed should be moved to their rightful locations or tossed in the trash if they're no longer needed. Make a pile of anything that will be

kept, a separate one for donations and a third for garbage. Take inventory of what you have so you know whether you're missing any items or you have something and do not need to purchase another. Now that the entire shed is empty, you can assess just how much room you have. Utilizing vertical and overhead space effectively can free up areas on the floor for larger equipment. Shelving, racks, pegboards and any other materials that enable you to hang or store items off the floor are good investments. Visit your nearby home improvement retailer to find items that can simplify your storage. You also may be able to put scrap wood to use to make your own storage shelves or a work bench. Extra kitchen cabinets can be installed in the shed to organize additional items. In order to remember where items go, label or sort them accordingly. Some people like

to take organization a step further by tracing the outline of tools hung on the wall so they can be placed back in the same spot after use. This also serves as a visual reminder of which tools are missing and which ones need to be purchased. Don't forget to utilize shed doors as additional storage space. Hang frequently used tools, such as rakes and shovels, on the inside of the doors so they will always be easily accessible. You also can repurpose storage solutions designed for other areas of the home. For example, magnetic knife holders can be mounted to a shed wall to keep paintbrushes organized. These holders also can be used to keep many small metal tools tidy. Metal funnels can hold twine and string. Thread through the narrow end of the funnel for a handy dispenser. Keep dangerous substances off the floor and out of reach. Gasoline, chemical fertilizers and other potentially dangerous substances should be stored high up to keep pets and children safe. Make sure the shed floor is sturdy and level. This makes it easier to neatly store larger items. Roll in the lawnmower, wheelbarrow and any other cumbersome items. Now that more things are mounted vertically, you should find that you have more area to move around. Taking the time to clean and organize a shed can help make anyone more productive. Hanging items vertically frees up more space in a shed or garage.

Complete Sharpening Services
Welding ❖ Fabrication

STICHTER SHARPENING & CUSTOM MACHINING

stichtersharpening@gmail.com

835 Shartlesville Rd.
Mohrsville, PA 19541

Bus: 610-926-7839
Cell: 484-955-8287

Visit us on Facebook

MYERSTOWN

Sheds & Fencing

If you'd like to create your own personal backyard living space, browse our website or stop by our showroom today. We have a large selection in stock every day, and would love to help you find what you need to make your backyard your own.



Sheds

A workshop for dad and a garden shed for mom, storage sheds are a versatile and flexible way to create additional spaces. Choose from maintenance-free vinyl siding or the classic look of painted wood.



Swing Sets

Our playsets are loaded with activities that will spark every child's imagination and encourage daily physical activity and never-ending fun! For backyards and families of all sizes.



Fences

Did your dog get out again? We have fencing for pets, keeping children safe, making some privacy, or keeping the critters out of your garden. Choose from vinyl or aluminum...and make a lasting investment to your property.



Furniture

For maintenance-free outdoor living, choose outdoor patio furniture made from poly lumber. This material will not rust or rot. Choose from several lines of patio chairs, tables and much more.

Sheds • Swingsets • Lawn Furniture

Bulk Mulch • Soil • Stones

Located at Martin's Farm Market We Deliver

744 S. Rt. 183, Schuylkill Haven, PA • 570-739-7288 • 570-739-2600

www.myerstowndsheds.com

Mon. - Thurs. 7 a.m. to 7 p.m.; Fri. 7 a.m. to 8 p.m.; Sat. 7 a.m. to 5 p.m.; Closed Sun.

BATH FITTER®

WE'RE THE PERFECT FIT

A SEAMLESS SPRING CLEANING EXPERIENCE

A Bath Fitter system with our seamless wall makes your bathroom easy to use and easy to clean.



Before



AFTER

“I would recommend Bath Fitter because of the quality of the material and workmanship. *It's easy to clean* and it was done in 1 to 2 days!”

— Mrs. Boslet

SPRING CLEANING SPECIAL

SAVE \$600*

on a complete bathtub, wall, and faucet installation from Bath Fitter

CODE: 13045 EXPIRES: 5/10/2015

Call now or visit bfsave.com/local

1-877-922-2250





*Must be presented and used at time of estimate only. May not be combined with other offers or applied to previous purchases. Valid only at select locations. Fixtures and features may be different than pictured. Accessories pictured are not included. Plumbing work done by P.U.L.S.E. Plumbing. Daniel Paul Hemshrodt MD MPL #17499, PA HIC #017017, NJ HIC #13VH03073000, WV HIC #WV053085, MD HIC #129346, VA HIC #2705155694. Each Franchise Independently Owned And Operated By Bath Saver, Inc.

Page 15 e-Subscribe to the Northern Berks and East Penn Valley Merchandisers at: www.windsorpress.com



PROTECTION STARTS AT HOME

Strausser Insurance

Representing **DONEGAL INSURANCE GROUP**

610-562-2048
www.strauserins.com

401 South 4th St., Hamburg, PA 19526
Office Hours: Mon-Fri 8am-5pm • Sat 8am-12pm

A great rate and quality coverage for your home.
Call or stop in today!

SNAPPER

SNAPPER P2187520 3 in 1
21" 190cc Hi-Vac Self-Propelled Lawn Mower \$629

- More Efficient Bagging System
- 190cc Briggs & Stratton 875 Pro Series ReadyStart™ Engine
- Disc Drive, Self-Propelled, Rear Wheel Drive System
- Grass Gripper Mower Traction
- 21-Inch Hi-VAC® 3-In-1 Steel Mowing Deck
- 2.5 Bushel Rear Door Grass Bag

SNAPPER RE110
28" 11.5HP Rear Engine Riding Mower

- 11.5 HP/344cc Briggs & Stratton PowerBuilt 4-Cycle OHV Engine
- Disc Drive Transmission
- 28-Inch, Hi-Vac® Mower Deck
- User-Friendly Mower Features

ECHO

- Chain Saws
- Leaf Blowers
- String Trimmers

VIC'S MOWER SALES and SERVICE
Sales...Service...Parts
530 Park Road, Fleetwood 610-944-9270
"We don't care where you bought it."

The Many Benefits Of Hiring A Professional Landscaper

The flowers are blooming, and the grass has begun to grow anew, making spring a great time for homeowners to once again turn their attention to landscaping. Those who aren't looking forward to dusting off their lawnmowers and rethreading their string trimmers may want to hire professional landscapers to tend to their lawns and gardens.

A recent joint study by the National Gardening Association, Residential Lawn and Landscape Services and the Value of Landscaping found that homeowners spend roughly \$45 billion per year on professional lawn and landscape services, as nearly 30 percent of all households across the United States use at least one type of lawn or landscape service. The rising use of lawn care services is indicative of homeowners' appreciation of the convenience and craftsmanship professional services can provide. While the impact professional landscapers can have on a property's aesthetic appeal is considerable, homeowners also benefit from working with professional landscapers in various other ways.

- Time savings: One of the biggest benefits of leaving lawn care to the professionals is the amount of time it will save for the average homeowner. Lawns generally need to be mowed once per week during the spring and summer seasons and, depending on the size of the property, that can take an hour or more. Add the time it takes to clean up clippings,

- mulch landscaping beds and edge the property, and homeowners can expect to devote a significant chunk of their weekends to caring for their lawns. Lawn services employ a few workers who make fast work of the job, leaving homeowners time to enjoy their weekends however they see fit.
- Reduced risk for injury: Maintaining a landscape is hard work, and those unaccustomed to this type of activity may find themselves winded or at risk of injury. Improper use of lawn equipment also is a safety hazard. Leaving the work to professionals can help homeowners avoid strained backs, lacerations, pulled muscles, sunburns, and any other dangers that can result when tackling landscaping projects.
- Financial savings: On the surface, hiring a landscaping service may seem like a costly venture. However, after crunching some numbers, many homeowners realize that doing the work themselves may cost more in the long run than hiring a professional landscaping service. Homeowners who decide to go it alone must purchase expensive equipment, and those lawn tools will require routine maintenance, which costs additional money. Inexperienced homeowners may incur extra fees to "fix" mistakes that occur during the learning process. Each year, new seed, fertilizer, mulch, pesticides, and other supplies also must be purchased. But professional lawn care services typically charge a

set fee per month, and that fee covers the maintenance of both your property and the equipment needed to keep that property looking great.

- Know-how: Many professional landscapers know how to address lawn care issues that may arise throughout the year. They will know how to deal with dry patches of lawn or poorly draining areas, and they also can make recommendations on plants that will thrive under certain conditions.
- One-stop shopping: Certain landscaping services provide many different options for prospective customers. Basic lawn cuts may be one package, but there also may be services for seasonal seeding, weeding, leaf clean-up, and winterizing.
- Consistent maintenance: Homeowners who frequently travel or spend much of their summers away from home often find that lawn care companies are a wise investment. Established weekly schedules ensure the landscape always will look its best whether homeowners are home or out of town.

Spring is a great time for homeowners to decide if hiring professional landscaping services is in their best interests. The time and money saved, as well as impact professional landscapers can have on a property, makes landscaping services a great investment for many homeowners. Time saved and a professional job are just two of the reasons homeowners hire lawn care companies.

A.R. Adom & Son
Landscaping Supplies

WE SELL:

- QUALITY TOPSOIL (Specially Prepared Rich Mix)
- ASSORTMENT OF MULCHES
- AG BEDDING
- DECORATIVE STONE
- DRIVEWAY STONE
- FRESH & SUPER AGED MUSHROOM SOIL
- FILL DIRT • STONE • SAND
- BAGGED OR BULK

PROPRANE REFILLS 4 Industrial Drive, Hamburg, PA (formerly Lowland Road) 610-562-8662

RETAINING WALL SYSTEMS AND PAVERS
Pick Up At Our Yard Or We Will Deliver Any Size Load

See Our E.P. Henry Display

QUICKRETE **EP HENRY**
Techo-Bloc **KICHLER LIGHTING**

Our 35th Year
Hours: Mon. - Fri. 8 AM to 5 PM, Sat. 8 AM to 3 PM

The Relationship Between Paint And Mood

Painting is one of the easiest and least expensive ways to transform the look of a space. The colors homeowners choose for their walls can give rooms their own unique feel and even affect the moods of the people within them.

Finding the right shade for a bedroom or kitchen involves more than just selecting the first color that catches your eye. Design experts and psychologists alike say it may be worthwhile to choose a color that helps you feel good rather than just following design trends. The paint color you pick may add energy to a space or create a tranquil retreat where you can unwind at the end of the day.

BLUE: To create a spa-like environment and a more serene space, look to shades of blue in soft variations. Cool blues are soothing colors that can help lower stress levels and promote sleep. That's why blue is a frequent fixture in bedrooms and bathrooms. Just be

advised that too much blue can make a room appear cold and stark, so balance out blue with some warmer accents.

ORANGE: Many people do not immediately consider bright orange for their homes, but when used as an accent shade, orange can really brighten up a home. Orange is considered a shade that expands creativity and imparts a youthful appeal to a space. Consider an orange accent wall or a burst of color with orange throw pillows. If pumpkin orange is a little too bold for you, tone it down by choosing a more pastel, peachy hue, which is equally warm and energizing.

RED: Red stimulates energy and appetite, which is why the shade is so popular in restaurants and home dining spaces. Red is a good choice for social gathering rooms but may not be the wisest choice for a bedroom, as the color may prove overstimulating.

GREEN: Green can evoke

composure and tranquility and works in any room of the house. Since green is the primary color of nature, it also works well for those people who want to bring some of the outdoors inside and work with the fresh starts and new growth that green can inspire. To make green feel less subdued and sleepy, work with its complementary opposite, red, by using a few bold red accents here and there to balance out the tranquility of green.

PURPLE: People have long related purple to royalty, and this dramatic color can add a formal, regal aspect to a home depending on the hue. Purple also may help stimulate the creative side of the brain. In paler shades of lavender, purple can seem almost ethereal and spiritual. Some designers suggest avoiding purple in a bedroom because that is a place you want your brain to rest rather than be stimulated.

YELLOW: Few colors are more vibrant than yellow, which can help stimulate conversation and make thoughts more focused. A luminous shade of yellow is an ideal way to make any space more welcoming and bright. Just use it sparingly, as too much yellow may not be a good thing. Yellow accents mixed with touches of purple can offer the balance needed to prevent yellow rooms from overwhelming residents and guests. Home decorators should keep in mind that colors can be blended to create the desired environment. A color scheme based on complementary colors, or those opposite on the color wheel, may fit. Otherwise, analogous color schemes, or those colors that are next to one another on the color wheel, can create a variation that suits your design needs.

Why Did the Government Secretly "Break" Your Home Comfort System?

Total Indoor Comfort
Plumbing Heating Cooling Fuel

This law means your system may be "unfixable"...

The majority of air conditioning equipment is becoming obsolete and un-repairable, thanks to our government regulations. That's because a federal ban on the use of R-22 refrigerant in new air conditioning systems took effect in January 2010.

You see, R-22 has been used in almost EVERY Air Conditioner made for the last 40 years. Yet the replacement refrigerant is incompatible and won't work in systems using R-22. Not only that, air conditioning equipment manufacturers have stopped making replacement parts for many pre-2010 "orphaned" A/C systems. Without the right parts, they can't be repaired.

Get the picture? Yes, now may be a smart time to consider replacing your existing central air conditioner system. And we'll give you these attractive savings to make this smart idea easier:

- * 5% discount off ANY new central air conditioning system we install.
- * A \$320 trade-in allowance (whether your old system is working or not) on the purchase of a new energy efficient unit.
- * 5 years NO-CHARGE service contract. This is EXCLUSIVE to Moyer Total Indoor Comfort and covers ANYTHING that could possibly go wrong for a FULL 5 years. (Value is \$634.75)

Moyer
Total Indoor Comfort
Plumbing Heating Cooling Fuel
Kutztown, PA • 610-683-7364
www.MoyerComfort.com

Call today at 610-683-7364 because this special offer is only good until April 30, 2015.

LESHER'S APPLIANCES INC.

MAYTAG • WHIRLPOOL • AMANA
GE • LG • HOTPOINT • FRIGIDAIRE
BOSCH • SPEED QUEEN
SAMSUNG • KITCHENAID

Quality Residential Appliance Sales and Prompt Service
Family Owned & Operated Since 1941

Hours of Operation:
Mon., Wed., Fri. 8 am to 5 pm
Tues., Thurs. 8 am to 6:30 pm, Sat. 8 am to 12 pm

71 Penn Street, Lenhartsville, PA 19534
Phone: 610-562-8577
Discover, Visa, MasterCard

NECESSITIES

NEW & USED FURNITURE

WWW.SECONDHANDRULES.COM

Giving Quality Furniture a Second Chance



21 S. 4th STREET, HAMBURG, PA
610-562-6765

MON., TUES. & WED. 10-5; THURS. & FRI. 10-7; SAT. 10-5; SUN. 11-4
LIKE US ON FACEBOOK!!

MARK NOECKER

Window Cleaning

Residential - Commercial

New Customers:
10% Off First Visit
With this Ad WP

- FREE ESTIMATE
- FULLY INSURED
- SINCE 1996



Call 610-562-8556

Schedule Now For Your Appointment!

Help Your Home's Exterior Rebound From Harsh Winter Weather

The seasons can be harsh on homes, and perhaps no season is more taxing on a home's exterior than winter. Harsh winter weather can take a toll on roofs, gutters, landscaping, and just about any other part of the home that must face the cold head-on. The following are a few areas of your home that might need some help rebounding from winter now that spring has finally arrived.

• **Gutters:** Gutters are vulnerable to winter weather, as strong winds may blow debris into the gutters or even blow the gutters off of the house. Gutters should be cleaned prior to and immediately after winter to ensure they're working properly and not backing up to the point that water can build up and damage the roof. Reattach any loose gutters and clear them of any debris left behind by winter winds.

• **Roof:** The roof is another area of your home's exterior that may have been beaten down over the winter. Examine the roof for cracked, missing or deformed shingles that can allow water to enter a home and damage its interior. Some roof damage is visible from the ground, but homeowners who just endured especially harsh winters may want to climb up on their roofs or hire a professional to get a closer look. Another way to determine if the roof was damaged is to go into your attic and check for water damage near roof trusses. Water damage indicates something went awry over the winter.

• **Walkways and driveways:** Heavy snowfall or significant accumulation of ice over the winter can result in cracked or damaged walkways, driveways and porches. Some of this damage may have resulted from aggressive shoveling or breaking up of ice. Look for any cracks in areas that needed shoveling over the winter, as such cracks can be safety hazards and may even prove to be entry points into your home for water or critters.

• **Landscaping:** Landscaping also tends to take a hit in areas that experience harsh winters. Winter storms may damage trees, which can put a home right in the line of falling limbs or worse. Walk around your property to inspect for tree damage, removing any fallen limbs or cutting down any limbs that appear dead or that might eventually prove a safety hazard. In addition, check the grass for any dead spots that might have fallen victim to winter freeze, and address those spots when the time comes to revitalize your lawn.

• **Appliances:** When surveying your property after a long winter, inspect appliances like a central air conditioning unit or even dryer vents to make sure they made it through the winter unscathed. Such appliances may have proven an attractive nesting spot for animals over the winter, but damage can be significant if vermin or other animals seek shelter from winter weather inside appliances.



Mower Recycler

Recycle Your Old Lawn Equipment

Buying New Riding Mower? Let Me Help You Recycle The Old!

Riding Mowers, Tractors, Go Carts, Minibikes, Snowblowers - Any Condition.
Berks & Surrounding Areas

610-944-3047 www.mower-recycler.com
Free Removal • Quick Friendly Service

GENERATIONS OF QUALITY CRAFTSMANSHIP

D's TILE

547 Old 22, Lenhartsville, PA 19534

Business Phone: 484-857-5801
Business Fax: 484-857-5802

Lic # PA009756

THE BENEFITS OF CERAMIC AND PORCELAIN TILE

BEAUTY: The ceramic tile's vast selection of colors, styles, textures, sizes, and shapes will add beauty and style to any space or design theme.

DESIGN VERSATILITY: Combination of sizes and shapes allow for freedom of expression and custom design.

LOW MAINTENANCE: Ceramic tile resists dirt and stains and requires little effort to maintain its like - new appearance.

WATER RESISTANCE: Glazed or unglazed ceramic tile's composition permits little or no accumulation of moisture - porcelain tile absorbs none.

ENVIRONMENTALLY FRIENDLY: Ceramic tile is inhospitable to germs and bacteria, not to mention allergens.

FIRE RESISTANT: Ceramic tile is essentially burnt clay which does not burn and give off toxic fumes.

DURABLE: A properly selected tile will outperform most, if not all, non-ceramic finishes created for the same application.

FREE ESTIMATES
BEAT THE SPRING RUSH!!



2209 Shartlesville Road, Mohrsville, PA 19541
610.488.7382
www.jmfencecompany.com

Professional Installation Available.
Over 20 Years Experience.



Distributors and Contractors Welcome.

Berks County's #1 Fence Source

20 Vinyl Styles To Choose From



Vinyl Fence

12 Aluminum Styles To Choose From



Aluminum Fence

Lifetime Warranty on Materials (Vinyl and Aluminum)



Materials By: **BLUE MOUNTAIN VINYL**
Division of J/M Fence and Deck

All Vinyl and Aluminum Fence Fabricated On-Site

Eliminate The Middle Man



Chain Link Fence



Automated Gate Entrances



Split Rail

COUPON

5% OFF Residentially Installed Fence

Not valid on existing contracts.
Coupon must be presented at date of estimate.
Valid for residential contracts only.
GOOD AT J.M FENCE & DECK CO.
Expires May 31, 2015 WP

COUPON

10% OFF Residential Fence Material Only - Labor Not Included

Available Products: - PVC Fence - Chain Link
- Aluminum Fence - Split Rail
Coupon must be presented at date of estimate.
Valid for residential contracts only.
GOOD AT J.M FENCE & DECK CO.
Expires May 31, 2015 WP



AGUSTA CONSTRUCTION

Is your property barking for attention???

We can help!

RESIDENTIAL & COMMERCIAL

SPRING IS HERE

NEED TO REPLACE ROOF?

Free Estimates

Best Prices Available In This Area

In Business For 20+ Years

Fully Insured GAF Certified

Local Customer References Available

Call Your Local Roofing Specialist

Agusta Construction

PA License #014193

500 Tuckerton Road, Temple, PA 19560

Mike Lenhart, Sales Representative

610-944-6300 or 610-207-6803

Pruning Trees A Job Best Left To The Pros

Bountiful, healthy trees can be beautiful to behold and important contributors to a thriving environment. According to American Forests, a nonprofit conservation organization, a tree can absorb as much as 40 pounds of carbon dioxide per year and can sequester one ton of carbon dioxide by the time the tree reaches age 40. The United States Forest Service adds that trees placed properly around a home can reduce air conditioning and heating demands considerably. Many homeowners are content to leave healthy trees alone. However, trees eventually must be pruned or removed if they become safety risks or pose other threats. Trees with roots that are damaging home foundations or those with limbs overhanging property limits or power lines can be troublesome. Although homeowners can handle relatively minor tree maintenance, for a variety of reasons, many tree projects are best left to the professionals.

AVOID INJURY
Professional tree contractors recognize and understand the hazards associated with tree and limb removal. Many operate in accordance with national or local guidelines to maintain proper clearance of power lines and structures. Trimming trees close to electrical lines puts a person at risk of being electrocuted. Professionals know how to protect themselves and prevent power outages, which can result when limbs come into contact with power lines. Professional tree services will use machinery appropriate for the task. Cherrypickers and cranes may lift workers to the correct height to work on trees, while do-it-yourselfers who rely on climbing trees or using ladders are at risk of injury.

PREVENT DAMAGE TO THE TREE
Many tree services understand the proper way to prune trees to minimize stress and damage to the tree itself. Novice pruners

CUSTOM FINISHING **33% OFF Every Day**

Sculps Hill

Unfinished Furniture

"FURNITURE for LESS"

570-366-8948



Every Size & Style

Just Arrived! Over 100 Varieties of Occasional Tables!

Everything from Plant Stands to Phone Stands... End, Coffee, Accent & Sofa Tables

"Real Wood - Real Quality - Real Value"

HUGE Selection For Every Room In Your House Or Office!

Check Out Our Websites: whitewoodfurniture.com ebersolfurniture.com

Bonus Coupon

Buy any 4 Occasional Tables under **\$100 EACH** and receive the 5th table **FREE**

Sculps Hill GOOD unfinished FURNITURE *Cannot be combined with any other or prior purchase. Expires 3/27/15. WP

Rt. 61, Orwigsburg

Just 8 miles North of Cabela's on the left hand side at the light.

Tues.-Sat. 10 am to 5 pm, Sun. Noon to 4 pm - All Major Credit Cards Accepted

may inadvertently do more harm than good, resulting in proliferation of tree disease or shock. Improper pruning technique also can lead to an unsightly tree.

LIABILITY
A professional tree service will possess the correct liability and worker's compensation insurance. This protects homeowners against litigation should someone be injured while tree work is being done. Homeowners who damage neighboring properties when cutting down a tree may find that they are not covered by their homeowner's insurance policies. This can be a costly mistake that's easily avoided by simply hiring a fully insured tree

removal service.

THE RIGHT TOOLS
The right tools can mean the difference between a job done correctly and one that results in disaster. Professional arborists and tree services have acquired the training, tools and techniques to perform the job safely. This includes using the right tools to tackle the job. Ropes, pulleys, cranes, stump grinders, and other heavy machinery are just a few of the tools tree services have at their disposal that the average homeowner does not. Trimming or removing trees can be an unpredictable and potentially dangerous endeavor. Such work is best left to professionals.

The Potentially Harmful Effects Of Mold In Your Home

The presence of mold in a home is a sight few homeowners want to see. In addition to being unsightly, mold found in a home can be unhealthy. While certain cleaners may prove effective at removing mold, homeowners who want to remove existing mold growths and prevent future growths may benefit from gaining a greater understanding of mold and why it grows inside homes.

WHAT IS MOLD?
Mold is a blanket term used to describe fungi that can be found both indoors and outdoors. Many species of mold exist, and the Centers for Disease Control and Prevention notes that some estimates suggest there may be more than three hundred thousand different species of mold. Common indoor molds include cladosporium, penicillium, alternaria, and aspergillus.

WHICH CONDITIONS PROMOTE MOLD GROWTH?
Homeowners may notice that mold tends to grow in specific areas of their homes but not in others, and that's because molds grow best in certain conditions. Warm, damp and humid conditions, such as those found in poorly ventilated bathrooms and basements, make ideal breeding grounds for mold.

WHAT ARE THE EFFECTS OF MOLD EXPOSURE?
Molds are a natural and resilient part of the environment, but mold growth indoors should be addressed and avoided. Mold spores are tiny and invisible to the naked eye, and when these spores attach to wet surfaces, they begin to grow. Once these spores begin to grow, they can then affect people in various ways. Roughly a decade ago, the Institute of Medicine found sufficient evidence to support a link between exposure to indoor mold and respiratory tract issues, such as coughing and wheezing in people who were

otherwise healthy. The same report found that mold may trigger asthma symptoms among people with asthma and hypersensitivity pneumonitis, a disease in which the lungs are inflamed when a person breathes in certain dusts he or she is allergic to, in people susceptible to that condition. Some people who do not have a preexisting condition can still be sensitive to molds. When exposed to mold, such people may experience symptoms like nasal stuffiness, eye irritation, wheezing, or skin irritation.

HOW CAN EXPOSURE TO MOLD BE DECREASED AT HOME?
Adequate ventilation is arguably homeowners' best friend with regard to reducing mold exposure at home. Control humidity levels in areas of the home that tend to be warm and humid, such as the kitchen and bathroom. Install an exhaust fan in the kitchen and bathroom and a window in the bathroom if yours does not already have one. The CDC recommends that humidity levels be no higher than 50 percent throughout the day, and an air conditioner and dehumidifier can help you keep indoor humidity levels in check, especially during the summer when humidity levels tend to be their highest of any time during the year. When renovating your home, remove any existing carpeting from bathrooms and basements and toss out soaked carpets or upholstery as well. If painting will be part of your home renovation projects, add mold inhibitors to paints prior to application. Mold that grows inside a home is unsightly and potentially unhealthy. But concerned homeowners can take several reactive and proactive steps to reduce existing mold growths and prevent them from returning in the future.

Stay Cool Without Air Conditioning

Hot, steamy weather can derail the best intentions of reducing energy consumption. As temperatures soar, few can resist the temptation to crank the air conditioning unit and relax in some frosty comfort. However, relying too heavily on air conditioning can compromise the efforts of men and women hoping to reduce their carbon footprints. It is estimated that up to 50 percent of electricity used during the warm weather season is for air conditioning. The American Council for an Energy-Efficient Economy says energy consumption for home air conditioning accounts for more than 8 percent of all the electricity produced in the United States, costing homeowners more than \$15 billion annually. This translates to roughly 195 million tons of carbon dioxide, an average of almost two tons per year, for homes with air conditioning. Air conditioning costs and energy usage vary widely depending on the type and age of a unit, the size of a home, how well air conditioners are maintained and many other factors. Air conditioners work similarly to refrigerators. Evaporator and condenser coils either distribute cool air into the home or release hot air outdoors. When an air conditioner is running, a great deal of heat can be expelled outdoors. Air conditioners use pumps known as compressors to transfer heat between these components.

Refrigerant fluid is pumped through the tubing and fins surrounding the evaporator and condenser coils. When the fluid reaches the indoor coil, it evaporates, taking heat with it and cooling the air that will be pumped inside. The pump then moves the gaseous refrigerant over to the outdoor coil where it condenses, transferring that heat to the air that will be expelled from the building. Compressors, fans and additional components of air conditioning systems require a lot of energy and power. Reducing reliance on air conditioning can lower energy bills and benefit the environment. Before turning on your air conditioning unit this summer, consider these cooling tips.

- * Use cool water. Run your hands, head and feet under cold water. This will cool down the blood in key pressure points of the body and keep you feeling cool for an hour or more.
- * Run fans in a counter-clockwise position. Ceiling fans come equipped with a switch that enables you to change the blades' spinning direction. Counter-clockwise will draw the cooler air up from the floor and distribute it throughout the room.
- * Dress sparingly. While in the comfort of home, wear minimal clothing to remain cooler. Sleep in less clothing and remove covers if you're finding it difficult to get a

good night's rest.

- * Change your home's color scheme. A light-colored roof and siding will help reflect the sun's rays rather than absorb them. This can make a home considerably cooler.
- * Plant shade trees. Trees can stop sunlight from baking a home or backyard. Trees also absorb and sequester carbon dioxide emissions, which makes them beneficial to the environment for a variety of reasons.
- * Open windows and doors at night. Open windows to allow cool nighttime air to enter. Open interior doors (including closets) to allow trapped, hot air to be released. This may help cool the home down a few degrees.
- * Avoid steam and heat-producing appliances. Dishwashers, ovens and hot showers can add extra heat to an already warm home. Wait until the evening before running appliances. Stick to cool showers and cook outdoors if possible.
- * Insulate your home. A home that has a well-insulated attic and walls will keep the heat out of the house during the hotter months of the year. Air conditioning systems use a great deal of energy, but eco-conscious homeowners can explore other methods of keeping cool to help lessen their reliance on air conditioners this year.

HAWK VALLEY LANDSCAPE MATERIALS

Premium Soils and Mulches

www.hawkvalleyfarm.com

- ★ Quantity Discounts
- ★ You Pick Up or We Deliver

152 Pine Creek Road, Kempton, PA 19529

610-756-6259

HARMAN

BUILT TO A STANDARD, NOT A PRICE

Harman Stoves and HEAT & GLO Gas Fired Fireplaces

In stock at GREAT PRICES!

UP TO \$300 OFF Select Stoves



DEWALD & LENGLE Hardware & Rental

Rt. 443 (1 mile West of 183 & 443 Intersection) Friedensburg, PA

570-739-2100

Store Hours: M-F 8 to 7; Sat. 8 to 4; Sun. 9 to 4

www.dewaldandlengle.com





EP HENRY
Values that Endure™

Fleetwood Building Block, Inc.



240 West Main St., Fleetwood, PA 19522 • Phone: 610-944-8385 • Fax: 610-944-0827 • Online: www.fleetwoodblock.com

Pavers • Retaining Walls • Masonry Supplies • Patio Blocks • Pond Supplies

We have a FULL STAFF of CERTIFIED INSTRUCTORS on Hand to HELP You on Your Projects...FREE!!!



Break Ground With The Right Tools

The right tools for the job can be the difference between an interminable landscaping project and one that goes smoothly and efficiently. Aspiring landscapers probably have a few shovels and rakes hanging in their garages and sheds for basic landscaping work. But while such tools are effective for certain projects, when it comes to churning soil for garden beds or digging holes for outdoor structures, additional tools come in handy. It may be well worth a trip to a nearby home center to purchase or rent one of these tools ideal for breaking ground.
ROTOTILLER: A rototiller, sometimes called just a "tiller," is a powered garden tool designed to loosen soil prior to planting. A rototiller also can help aerate soil during the growing season. Because they reduce the need for

manual spade digging or hoeing, tillers can be useful landscaping tools, particularly for homeowners who want to work efficiently. Rototillers will break through tough soil and any plant roots. They come in a variety of sizes, and it's best to match the tool to the size of the job. Many homeowners can get by with smaller, less powerful models, especially if the tiller is only necessary at the beginning of planting season. Professional landscapers or those with large swatches of property may benefit from larger models.
AUGER: Augers, both mechanical and manual, are essentially large drill bits that help move materials from one location to another. Augers are typically used to cut holes in landscapes, and they are good for post-hole drilling, which is part of the process of installing

deck footings, fencing posts or other structures. Augers come in a variety of sizes, and homeowners can choose how much power they prefer. Augers can be heavy and cumbersome, and many do-it-yourselfers will find that one-person augers are more than adequate for their projects. Augers dig deep holes, so it is always smart to have the property surveyed prior to use. This way pipes, gas lines, buried electrical lines, and any other obstructions are clearly identified prior to drilling.
CULTIVATOR: Cultivators are similar to tillers in that they loosen soil. Cultivators are effective during the growth period of plants, when they can be used to aerate the soil and remove weeds. Cultivators come in hand-held versions and push models, and some are even motor-

ized. Cultivators get close to plants to remove weeds without disturbing the plant. They also are used to stir in compost or fertilizer. While many people think cultivators and tillers are the same, that is not the case. The former is less powerful and will mix the soil or stir up the top layer, while the latter can break up moderately hard ground and loosen firm soil. When using any tools around the garden, wear the proper protection. This includes devices to protect hearing when power tools are in use as well as gloves and safety goggles. Tillers, augers and cultivators have the potential to toss soil and rocks into the air, so make sure others keep their distance while work is in progress. Proper tools can churn up soil in a short amount of time to make landscaping projects that much easier.



Dean Arndt CONSTRUCTION

for all your remodeling needs.

FREE ESTIMATES
INTERIOR or EXTERIOR

**Call
610-562-0296**

PA002349

FENCING

To Improve The Beauty of Your Home or Business

Many Styles To Choose!!

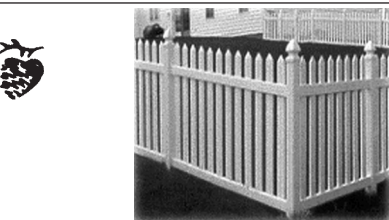
Call Us Today For a FREE Estimate on Beautiful Fencing For Your Property.

RESIDENTIAL OR COMMERCIAL

PVC • Chain Link • Aluminum Wood • Split Rail



For The Do-It-Yourselfers or We Install



Rte. 443, Friedensburg, PA 570-739-1140
www.pinecreekcountrygardens.com
Call For Current Hours or Check Our Website At
www.pinecreekcountrygardens.com

Imagine what the Pioneer could build for you...

Exceptional Quality Post Frame Buildings...



STOCK BUILDING PRICES

Ask about financing for your building!

24' W x 24' L x 8' H	\$6,250
24' W x 32' L x 10' H	\$7,500
24' W x 40' L x 10' H	\$8,500
30' W x 32' L x 10' H	\$8,500
30' W x 40' L x 10' H	\$9,500
30' W x 50' L x 12' H	\$14,500
36' W x 48' L x 10' H	\$13,500
36' W x 48' L x 12' H	\$14,500
40' W x 60' L x 12' H	\$17,500
40' W x 60' L x 14' H	\$19,500
40' W x 80' L x 14' H	\$25,500
50' W x 96' L x 12' H	\$31,500
50' W x 96' L x 14' H	\$33,500
60' W x 96' L x 14' H	\$42,500
60' W x 96' L x 16' H	\$44,500

Prices include (1) Overhead Door, (1) Entry Door, Delivery, Tax, Materials & Labor.

Many Other Sizes & Building Options are Available.



Pioneer Pole Buildings, Inc.

716 South Route 183, Schuylkill Haven, PA 17972

PA: PA001577 NJ: 13VH00797400 MD: 121132 DE: 2001105056 VA: 2705128610 WV: WV043315

Call for your **FREE** Quote Today!

PPB1.com • 888-448-2505



Like Us on Facebook!



LUMBER • MILLWORK • KITCHENS

Between Winter and Summer lies a beautiful Spring



"Only with winter-patience can we bring the deep-desired, long-awaited Spring."

~ Anne Morrow Lindbergh ~

Trex Select Decking Starting at **\$ 2.29** Ln Ft



With a virtually indestructible shell, unrivaled fade, stain, scratch and mold resistance, ultra-low maintenance and wood grain beauty to match, the one-and-only Transcend® Decking is the ultimate expression of luxury and function. And now, Tiki Torch, the third of our tropical-inspired shades, enhances our decking collection with a lighter alternative that complements our existing tropicals and five classic earth-tone hues.

Replacement solutions that make YOU look good!



ANDERSEN 400 SERIES TILT-WASH DOUBLE-HUNG INSERT WINDOWS

All the features of our best-selling double-hung windows are now available as an insert window, making replacement quick, easy and efficient



ANDERSEN 400 SERIES FRENCHWOOD HINGED PATIO DOORS

Available in both inswing and outswing designs, they give you custom sizes, seven hardware selections and your choice of pine, oak, maple or pre-finished white interiors. With low-maintenance exteriors and new High Performance LowE4 glass, these doors are the perfect combination of beauty, convenience and energy savings.



NEED A CONTRACTOR ASK US!



- MIDWAY** • 170 Midway Road Bethel, PA 19507 • 717.933.0500
- ORWIGSBURG** • 1070 Centre Turnpike Orwigsburg, PA 17961 • 570.366.0578
- LEHIGH VALLEY** • 1740 Lynnwood Street - Suite 2 Allentown, PA 18103 • 484.221.8796

- Hours: Mon-Fri 6:30 am—4:30 pm, Sat 8 am—Noon, Closed Sunday
- Hours: Mon-Fri 6:30 am—4:30 pm, Sat 8 am—Noon, Closed Sunday
- Hours: Mon-Fri 6:30 am—4:30 pm, Closed Saturday & Sunday

www.mrdlumber.com