

SAVING FOR COLLEGE?
I am a registered IA
529 Plan Advisor,
I CAN HELP!
Tax Exempt Earnings/ Iowa Tax Deduction

Bradford T. Martin, CLTC
Financial Advisor
Office: 641-664-2169
Cell: 641-799-4770

Ameriprise
Financial

- Professional investment manager 401K/IRA
- Retirement & tax strategy specialist
- Financial Planning

Tri-County SHOPPER



STANDARD MAIL
U.S. POSTAGE
PAID
TRI-COUNTY SHOPPER, INC.
POST OFFICE BOXHOLDER
LOCAL RURAL BOXHOLDER
OCCUPANT
CIRCULATION OVER 11,750 THIRD CLASS

P.O. Box 168 • Bloomfield, IA 52537 • www.tri-countyshopper.com
Phone 641-664-1333 • Fax 641-664-3761 • Email shopper@netins.net



Vol. 44, No. 11
Wednesday, March 16, 2016



WE HAVE THE TRUCK OR SUV THAT YOU'VE BEEN LOOKING FOR



2011 Silverado
Crew, 4x4, LT



2015 Edge LTD
AWD



2013 Explorer XLT
AWD



2012 Escape XLT



2011 Ford F250
Crew, 4x4, Gas

2012 F250
Reg, XLT, 4x4, Gas



2009 F150
Crew, XLT, 4x4



2013 F150
Crew, 4x4



2013 F150
Crew, 4x4

Diesels



2011 Silverado
Ext, LT, 4x4

2013 Silverado
Crew, LTZ, 4x4



2014 Toyota Tacoma
Double Cab, 4x4, SR5



2013 Chevy Avalanche
LTZ, Black Diamond, 4x4



2014 Silverado LTZ
4x4, Crew, 36K



2014 Silverado
High Country, 4x4, Crew, 25K



2006 Ford Ranger
Ext., 4x4, 80K Miles



2009 Ford Sport Trac
4x4, LTD, 54K



2015 Chevy Equinox LT
18K



2015 GMC Terrain
AWD, SLT, 19K



2014 Lincoln MKX
19K, AWD



2013 Lincoln MKT
AWD



2011 GMC Acadia
Denali, AWD



2015 Ford Flex
LMT, AWD



2015 Suburban LTZ
4x4



2014 Traverse LTZ
AWD



2011 Suburban
AWD

FESLER AUTO MALL

Fairfield, IA • 800-422-5269 or 641-472-3121 • www.feslerautomall.com
Monday - Friday 8:00 AM - 5:00 PM • Saturday 8:00 AM - 3:00 PM

Bowling Motors & RV Sales, Inc

14270 Sycamore Road - Ottumwa, IA • www.bowlingrvs.com
641-682-5497 or 800-246-5497



KICKOFF TO SPRING ANNUAL SALE-ABRATATION!

THURSDAY, MARCH 17TH • 8:30AM-6:00PM
FRIDAY, MARCH 18TH • 8:30AM-6:00PM
SATURDAY, MARCH 19TH • 9:00AM-3:00PM

ALL UNITS PRICED FOR IMMEDIATE SALE!

SERVICE SPECIAL!

\$99⁹⁹

De-winterize includes:

Flushing water system, checking for leaks, & for proper operation of all major appliances!

IRISH STEW

**FRI. & SAT.
11AM-2PM**

FREE!

10% OFF ALL IN STOCK PARTS!!

FOR SALE: Side by side fridge, ice & water in door; table & 4 swivel chairs; futon; twin bed complete, nice; love seat with 2 recliners, clean; lots of cookware; men & womens clothing and shoes. Centerville.
PH: 641-895-2966 11

COMING SOON: Purple Martins will be arriving in Davis & surrounding counties in a few short weeks. Nature Trails has many products to choose from that are sure to please. Catalog available.
Mahlon Gingerich
VM: 641-664-2723 12

FOR SALE: Banties hens, roosters, and chicks, \$3 each.
PH: 660-216-3981 11

40 ACRES FOR SALE: Southwest Davis County, currently in hay. Ideal building site on blacktop road. 1 mi. from Hwy 63.
PH: 641-208-5059 11



Fox Valley Welding

No matter what size the project customer satisfaction is always our first priority.

**Tig & Aluminum
Welding
Milwork**

**Lathe
New Steel**

**Fabricating
CNC Machining
CNC Cutting**

Hours: M-F 8-5:30

641-656-4684 • 12190 East Hwy. 2 • Milton, IA

MOST COMBINED YEARS OF EXPERIENCE IN THE AREA

GUARANTEED CRAFTSMANSHIP!

Walker Motors

COLLISION REPAIR, INC.

660-465-2159
Shop phone/fax

375 South Main St. Memphis, MO 63555



Give Us A Call Today!

RENTAL CARS AVAILABLE FOR ALL OCCASIONS

**Great Rates
Unlimited Miles**



New Year... New Career



Full & Part Time Positions

- RN
- LPN
- CNA

Enjoy additional benefits:

- Free Meals
- Shoe and Uniform Allowance
- Scholarship and Tuition Reimbursement

Apply in person or at www.abcmcorp.com!



Bloomfield Care Center

800 North Davis • Bloomfield, IA 52537
(641) 664-2699 • www.abcmcorp.com

Enhancing Relationships

ABCM Corporation is an Equal Opportunity Employer

NEEDED: CDL drivers with over the road flatbed experience. Please call for more information.
Tri State Timber
660-465-2975. 13

FOR SALE: 3 black Angus western origin heifer pairs with 3 AI calves. FFA & 4H project. Gabe Shultz, call after 3:30 pm.
PH: 660-342-7475 13

FOR SALE: John Deere Zero turn mower, 25 HP KAW. 62" cut, Z-465 305 hrs. \$3,000 OBO. Murray push mower, 6.5 HP, used 4 times, \$150.
PH: 641-208-0749 13

LUCKY PICKS

CHICKEN Waterers & Feeders 	TILLAGE PARTS <ul style="list-style-type: none"> • Sweeps • Disc Blades 	HAY RAKE WHEELS 			
PTO SEEDER 3 pt. 	<table border="0" style="width: 100%;"> <tr> <td style="font-size: small;"> PARMAK 12-Volt Battery Fence MAG1200 </td> <td style="font-size: small;"> PARMAK 6-Volt Solar Fence DFS PL1 </td> <td style="font-size: small;"> PARMAK 12-Volt Solar Fence MAG1200 </td> </tr> </table> 	PARMAK 12-Volt Battery Fence MAG1200	PARMAK 6-Volt Solar Fence DFS PL1	PARMAK 12-Volt Solar Fence MAG1200	DISC MOWER BLADES 
PARMAK 12-Volt Battery Fence MAG1200	PARMAK 6-Volt Solar Fence DFS PL1	PARMAK 12-Volt Solar Fence MAG1200			

25% OFF STRAW HATS while supplies last

SPRING GARDENING TOOLS

Garden Gloves	Grub Beater	Hoses
Garden Seeder	Grass Seed	Rakes
Weed Preventer	Watering Cans	Weed Killer

Hamilton Produce Co.

105 W. Franklin • Bloomfield, IA

641-664-2459 or 1-800-469-7749

C Cornerstone Investments
 Chuck Rigenbach, Financial Planner
 108 W. Jefferson St. • Bloomfield, IA 52537
 Office (641) 664-3700

Securities offered through Questar Capital Corporation (QCC) Member FINRA/SIPC. Advisory Services offered through Questar Asset Management (QAM) a registered investment advisor. Cornerstone Investments is independent of QCC and QAM.

IRAS... IRAS... IRAS...
 Funding your IRA, Roth IRA or SEP is a good way to plan for your retirement. Consolidating multi IRA's or rolling over old 401k's is a service I offer my customers. Whatever your retirement needs are I can help you choose the right investment.

ATTENTION! NOW OPEN
 Mon, Tues, Thurs, Fri, Sat.
 (Wed. by chance)
LILAC LANE VARIETY
 Garden seeds now here, seed potatoes, onion plants & sets, strawberry plants. Also, shoes, boots, hats, material, & more!
 19939 State Hwy. E
 Queen City, MO 63561
 (From 63 E 1 mile on Hwy. E)



Visit us at the Southern Iowa Business Expo
Poly Lawn Furniture

T-CORNER FURNITURE
 HEIRLOOM QUALITY
 BEDROOMS • DINETTES • CABINETS • STAIRWAYS • MILLWORK
 VM: 641-664-0207
 1 Mile East of Drakesville on Jade Ave.
 Mon.-Sat. 9:00 AM - 5:00 PM

shady Lane Variety
 1 Mile East of Drakesville on Jade Ave.
 641-664-0207
 Spring is coming soon! Check out our beautiful selection of wind chimes!
LOTS OF TOYS!

FOR SALE: Lift chair, like new, burgundy, petite, \$200 OBO.
 PH: 641-208-0749 13

GINGERICH GREENHOUSE
Bulk Garden Seeds Seed Potatoes Onion Sets & Plants
 1 mile East & 1/2 mile North of Drakesville, IA on Jade Ave.

ATTENTION CONTRACTORS!
 We have a place North of Bloomfield where you can dump old concrete & bricks free of charge!
641-777-5000

LaCrosse Est. 1897
Burly #266040
GRABER'S COUNTRY STORE
 2 miles South & 1 mile East of Drakesville

FOR SALE: Baby cribs 25"x40". Also, masonite for underlayment. Perry W. Yoder, 18078 Hwy. 2, Bloomfield, IA 52537. 13

NEW MATTRESSES FOR SALE!
 Selling individually or in sets. Factory warranty.
TWIN - FULL - QUEEN - KING
641-664-3060

Garages • Pole Barns Commercial Free Estimates
LAN-DOW BUILDINGS
 We Stock a Complete Line of Building Materials Complete Buildings or Packages Available
Lancaster Lumber, Inc.
 Toll Free 800-424-5071 Fax 660-457-3133
 Ron Oliver, Owner Lancaster, MO 63548
 www.lancasterlumber.com

L&M Country Store
 1 1/2 miles south of west Hwy 2 & 63 jct.
 Mon-Sat. 8am-5pm CLOSED SUNDAYS
VM: 641-664-1936

- GRAPEFRUITS & ORANGES**
- 3" Oreo Wafers \$1.39/lb.
 - 15 oz. Land-O-Lakes Butter w/Canola Oil \$1.49
 - 34 oz. Tomato Ketchup \$1.19
 - 13 oz. Snowflake Ritz Crackers \$1.45
 - 50 lb. Black Oil Sunflower Seeds \$16.99
 - Semi Sweet Chocolate Chips \$1.85/lb.
- SEED POTATOES, ONION SETS & CANDY ONION PLANTS
CLOSED GOOD FRIDAY • MARCH 25, 2016

Handyman Home Improvements
 Decks, Porches, Siding, Drywall, Windows, Roofing, New or Remodel - No job too small!
Joe Rohrer Free Estimates
 Bloomfield, IA **641.208.6930**

POLARIS The Way Out.
 Authorized Polaris dealer since 1988
Check Us Out!

Slayton Polaris
 8 mi. S & W from Pulaski or 6 mi. W of Memphis then 13 mi. N on Route B
BLOOMFIELD, IA 660-328-6627

Hersheberger's Bulk Food and GROCERY

store CLOSED UNTIL FURTHER NOTICE

Due to the fire at our building & remodeling. We will be closed until further notice.
 Thank you for your cooperation

Food Supplements Teas Vitamins

 3/4 mi. E. of Drakesville, IA on 180th St.
 HOURS: 8:30 a.m.-5 p.m. Mon.-Sat.
 VM: 641-664-2661

FARMER'S COUNTRY MARKET
 Stretch your miles & Stretch your dollars!
BIG SUPPLY Different Cake Mixes 70¢/box
HEAVILY STOCKED WITH GOOD SALVAGE CANDY!
BIRD FEED & PET FOOD
ALL KINDS & SIZES Tortillas & Taco Shells Boxes & Pkgs. 50¢ each
OVER SUPPLY Toothpaste Mouth Wash Detergents
 Campbells 14 oz. Lock Pouch Soups 30¢/ea.
 Campbells & Other 12-13 oz. Lock Pouch Sauces. 30¢/ea.
 32 oz. (whole qt.) Gatorade 70¢/ea.
 Gatorade by the box full 20Xs 60¢/ea.
 (Mostly orange & fruit punch, some lemon & blue)
 All VS drinks buy 1 get 1 free, 1 qt, 14 oz. 60¢/ea.
 16.9 oz. Water by box full \$4.50 less than 10¢/ea.
 Oatmeal, Regular Cereal, Mac & Cheese,
 Ramen Noodle Cups 20¢/ea.
 18786 200th St. • Bloomfield, IA
 VM: 515-830-2971
 Open Monday-Saturday 8-5, Closed on Sundays

SHAMROCKIN' SAVINGS

2013 CHEVY
 2500 CREW CAB
WAS \$35,000 NOW \$32,500
Kollision Korner
 504 South Drake St. • Bloomfield, IA 52537
 PH: 641-664-2648 Fax: 641-664-2948
 "Like us on Facebook!" for more pictures.

PRIME RIB CAPITAL OF THE WORLD!
SERVED ON FRIDAY & SATURDAY NIGHTS!

Breakfast • Lunch • Dinner

Daily Hot Specials & Evening Features!

Catering & banquet facilities available for many occasions!



Southfork
MOTEL & GRILL
JUNCT. OF HWY 2 & 63 • BLOOMFIELD • 641-664-1063
TUES. - THUR. 7AM-9PM • FRI. - SAT. 7AM-10PM
SUN. 7AM-2PM • CLOSED MONDAY

FEELING LUCKY?



Davis County Quail Forever

Annual Banquet

Sat., March 19 • Mutchler Community Center • Bloomfield, IA

Happy Hour 5:00 PM • Meal Catered by Bailey's BBQ 6:00 PM
For more info. contact Michelle 515-669-3762 or Josh 641-777-5805

GAMES! SILENT AUCTIONS! LIVE AUCTIONS!




DAVIS COUNTY COMMUNITY SCHOOL DISTRICT BOARD OF DIRECTORS REGULAR MEETING

Date: Monday, March 21, 2016
Time: **7:00 P.M.**
Place: 608 S. Washington St. Bloomfield, Iowa

TENTATIVE AGENDA

1. Call to order/Roll call/Visitors
2. Approve tentative agenda
3. Approve consent agenda items
 - a. Positive comments
 - b. Minutes of regular board meeting for February 16, 2016
 - c. Minutes of District certified initial proposal for February 2, 2016
 - d. Minutes of board work session for February 10, 2016
 - e. Payments of warrants
 - f. Monthly financial reports
4. Approve personnel contracts and resignations
5. Board Professional Development
6. Administrative reports
7. Present FY17 Budget
8. Approve Bloomfield Rent-All lease agreement for 2016-17
9. Approve GT trips to Hannibal & Kansas City
10. Approve Technology purchase
11. Approve change in accounting software to Software Unlimited
12. Approve bid for paint and refurbishing middle school lockers
13. Approve bid for floor repair in bus garage
14. Approve bid for removal and installation of new roof on support services building
15. Approve bid for LED light fixture install in middle and elementary school
16. Approve bid for LED light installation in middle/elementary school gym
17. Approve bid for emergency and exit LED lights in middle and elementary school
18. Board Policy Review
19. Adjournment

Friday, March 18th

Hawg Wild Wings

with sides Serving at 6:00 P.M.

Dine In **722-3355** Carry Out

RAY'S LONGBRANCH
Drakesville, IA

ST. PATTY'S PARTY
Drink & Shot Specials

GREEN BEER! \$1 CAN PBR!

Sat., March 19th
9pm-1am
DJ - Popstar Entertainment

SLICK'S
641-242-1008
East Side of Bloomfield Square

NEW HOURS!
Mon. - Sat. 6AM - 9PM
Sun. 7AM - 8PM

Shamrock Shakes

SUNDAY, MARCH 20TH
11:00 AM Corned Beef Brisket & Cabbage

NEW! Glazed Ring Donuts

The Cheese Post
601 E. Prime St. Downing, MO 660-379-2626

Senior Citizen's Soup Supper

FEATURING
David Thordason's Prize Winning Chili

Saturday, March 19th
5:00 PM to 7:00 PM

ALSO SERVING: POTATO SOUP, HOT DOGS, DESSERT, & BEVERAGE!

Free Will Offering
ALL PROCEEDS WILL GO TO BUILDING UPKEEP

All Ages Welcome!

Senior Citizen Center
109 E. Franklin St. • Bloomfield, IA 641-664-1167

Davis County Middle School
Production of

Disney's
101 Dalmatians KIDS

Music and Lyrics by
Mel Leven, Randy Rogel, Richard Gibbs,
Brian Smith, Martin Lee Fuller, Dan Root

Book Adapted and Additional Lyrics by
Marcy Heisler

Music Adapted and Arranged by
Bryan Louiselle

Based on the Screenplay by
Bill Peet

Based on the Novel *The Hundred and One Dalmatians* by
Dodie Smith

Iowa Theatre
East side of the Square, Bloomfield, Iowa
March 17 and 18 • 7 p.m.
\$6 Adults, \$5 12 and under
Reserve seating available at the Middle School on March 15 and 16 and at the door. Doors open at 6:15 p.m.
Directed by Joy Orwig

Curtis
Yard & Garden

Sales & Service of Outdoor Power Equipment

641-664-2784
502 E. Franklin • Bloomfield, IA

You're invited to the 3rd Annual
Women of Good Shepherd
SPRING BAZAAR!
Saturday, March 19th • 10am – 3pm
Good Shepherd Lutheran Church
19419 Lilac Ave, Bloomfield IA

SHOP LOCAL SMALL BUSINESSES & CRAFTERS!

VENDORS INCLUDE: Usborne Books & More, Park Lane Jewelry, Mary Kay, Thirty One, Young Living Essential Oils, At Home America, Scentsy, Tupperware, Naomi's Custom Embroidery, It Works, Girl Scout Cookies and other vendors.

IOWA THEATER 14TH ANNUAL BLUEGRASS SHOW
BLOOMFIELD, IA • SAT., MARCH 19 • 7PM

WILLIAMSON BRANCH-TN www.williamsonbranch.com
LORI KING & JUNCTION 63 www.junction63.com
BOB BLACK & BANJOY www.banjoy.com

FOR MORE INFORMATION CONTACT: LORI KING 641-799-1442

IN CASE OF INCLEMENT WEATHER CALL AHEAD BEFORE TRAVELING

Before the show join us in the afternoon from 3-5 pm in the Kay Burchett Room (next to the Iowa Theater) for an open jam session. Bring your acoustic instrument and finger foods. Also bring a non-perishable food item to donate to Davis County Food Pantry. No admission fee. Jammers and listeners welcomed. Open to the public.

TICKETS
Adults \$15, Youth 13-16 \$5
12 & under Free

www.iowabluegrassmusic.com

IOWA THEATER
107 S. Washington
Bloomfield • 641-664-9588

Happy Birthday
AMERICAN LEGION

Join Us For Our 97th
BIRTHDAY DINNER
Thursday, March 17th
Social Hour 6:00-7:00 p.m.
Dinner 7:00 p.m.
Meat & Drink Furnished
Bring a Covered Dish

All Legion Members & Family Welcome

AMERICAN LEGION
Reed Whisler Post #78
Bloomfield, IA

FIRST BAPTIST CHURCH
(Affiliated with G.A.R.B.C.)
Sunday:
Sunday School.....9:30 A.M.
(all ages)
Morning Worship...10:30 A.M.
Evening Worship.....6:00 P.M.
Wednesday:
Midweek Service.....7:00 P.M.
Thursday:
Youth Ministry.....6:30 P.M.

East of Middle School
on North Street
401 Crestview Ave.
Bloomfield, Iowa 52537
Phone 641-664-2240

www.bloomfieldfirstbaptist.com

FOR SALE: 14' wide by 10' tall steel overhead garage door, \$400. Complete.
PH: 319-350-0187 13

FOR SALE: 2 purebred Black Angus bulls. Green Diamond Farms. Queen City, MO.
PH: 660-342-2550 12

Davis County HOSPITAL
Dedicated. Compassionate. Healthcare.

DAVIS COUNTY HOSPITAL SPECIALTY CLINIC WELCOMES NEW WOMEN'S HEALTH PROVIDER

SUSAN TURNER, ARNP
SPECIALIZING IN...

Prenatal & Postnatal Care
Menstrual Disorders
Bladder Disorders
Well Exams (Breast Exam, Pap Smear)

To schedule an appointment call 641-664-7091.

509 N. Madison • Bloomfield, Iowa 52537
www.DavisCountyHospital.org

IT'S PRESCHOOL REGISTRATION TIME

WHEN: Monday, March 21st & Monday, April 4th
TIME: 9:00 AM - 2:00 PM
WHERE: Davis County Elementary Lobby

Child must be 4 years old by: September 15, 2016

Please bring birth certificate and immunizations to registration (for your 4 year old).

This year we will again be partnering with Sieda Headstart, however, it will not be with a 4 year old preschool. We are pleased to be able to offer a 3 year old class in partnership with Headstart.

On the above mentioned dates you will be able to register your 3 year old student as well as your 4 year old student.

Child must be 3 years old by: September 15, 2016

Please bring these items with you to registration (for your 3 year old):
Birth Certificate • Immunizations
Physical • Dental Screening
Copy of Insurance Card
Copy of Income Taxes

Yoder's Country Store
Bulk Foods & More

NOW SELLING!
Homemade Noodles & Angel Food Cakes!

BENEFIT PANCAKE SUPPER
Join us at the store for Andy Gingerich's benefit pancake supper to help with his medical expenses

Saturday, April 9th
from 4:00 pm - 8:00 pm

6 miles N. of Downing, MO on Hwy. N

CUDDLES & HUGS DAYCARE in Drakesville is now accepting children 5:00 AM - 5:30 PM Monday-Friday. Call Bobbi for more information.
PH: 641-799-2483 12

FOR SALE: Big 75 gallon Industrial water heater 300,000 BTU gas \$150; 3 point finish mower 5' \$700; Used Thermo King units \$800-\$1200.
PH: 641-664-2060 13

CLOSEOUT CLEARANCE

Vinyl fencing, vinyl decking & railing, mailbox posts, trellises & all accessories!

HUGE DISCOUNTS!!
\$1,000s of dollars of inventory!

Buy one piece or all!
THE MORE YOU BUY THE MORE YOU SAVE!!

BACKYARD DEPOT *Limited time only!*
17218 Kelp Ave, Bloomfield
641-722-3641

BENEFIT AUCTION!
Something for everyone!
Some dairy cattle & misc. items!


Tuesday, March 29th
Scotland County Livestock Auction
Memphis, MO
CHICKEN BBQ SUPPER - 5:30 PM
with all the fixings!!
AUCTION - 7:00 PM

100% of proceeds of this year's auction will again be used to place Bibles, Bible study courses, & other discipleship materials into the hands of prisoners all across the country.

We would be Blessed to see you there!

Gospel Express Ministries
For donations & more info call
660-216-0548

REMINDER



Deadline to remove
Ground Decorations from the
IOOF Cemetery & South Cemetery
is **March 20, 2016**

Clean up will begin March 21 if weather permits.

Thank You City of Bloomfield

Thank You

Thank you to the hundreds of friends, neighbors, co-workers & extended family for the outpouring of help & concern, the cards, flowers, food, donations & prayers that have kept our family going through this difficult time.

*The Family of
Eric Edward Hartman*

Spring Cleaning Sale





Revive your carpet with Riccar Dry Carpet Cleaner. It's **FREE** with the purchase of any Riccar vacuum. To sweeten the deal, we'll give you up to **\$100 OFF** your vacuum!

SHAMPOO YOUR CARPET WITH RICCAR EXTRACTOR



I way out clean the Rug Doctor!

REMOVE STAINS with Deep Green!

Takes out gum, tar, wax, rust, blood, grease, etc.

10% OFF ALL CLEANERS!

SALE PRICES GOOD FOR MARCH 17-24, 2016

Green Acres Sew & Vac

660-465-7131 • Memphis, MO • www.GreenAcresSewVac.com

MEMPHIS MERCAANTILE

EST 2010

Check Out Our Selection of..

- Books & Bibles
- Sweaters & Socks
- Kitchenwares
- Fabric & Notions
- Vitamins & Herbs
- Greeting Cards
- Scrapbooking
- Craft Supplies

Perfect for your next celebration!

SKY LANTERNS

Assorted Colors



WE WILL BE CLOSED

115 E. MONROE • MEMPHIS, MO
South Side of the Square
660-465-2102
M- F: 8am-6pm;
SAT.: 8am-3pm; CLOSED SUNDAY

Good Friday
March 25

FOR SALE: Sleeveless wedding dress with train size 18-20, \$50; Ivory wedding/special occasion dress size 20, \$25; Wedding dress with train size 14, \$50; Veil, \$20; New lavender prom dress size 11/12, \$35; Oreck XL upright sweeper & Oreck portable, all attachments and owners manual, \$50.
PH: 641-683-3554 13

FOR SALE: 8 week old registered male beagle puppy. Mervin Yoder.
PH: 641-722-3555 12

TIME TO PLANT YOUR GARDEN



Lilac Hill GREENHOUSE
660-342-9554

WE SELL

Potting Soil
2.8 cu. ft.
\$14.50

* Bulk & Packaged Seeds
* Seed Potatoes
* Onion Sets

Vegetable & Flower Bedding Plants
\$1.25/4 PK

Hwy. 136 • 2 miles W of Downing
Mon. - Sat. 9-4

HOURS
8 A.M.
to
5:00 P.M.
DAILY EXCEPT
SUNDAY

Zimmerman's Store
Rutledge, MO
660-883-5766

*Our
Everyday
Low Prices!*

2+ LBS. GALA, POMMES, HONEY CRISP, PACIFIC ROSE APPLES	\$1.98-\$2.05/BAG
NICE LARGE LIMES.....	2/49¢
138 CT. ORANGES.....	2/29¢
113 CT. CALIFORNIA ORANGES.....	2/45¢
ROMAINE LETTUCE.....	\$1.03/EA.
BULK CARROTS.....	40¢/LB.
GREEN CABBAGE.....	47¢/LB.
LARGE CUCUMBERS.....	\$1.15/EA.
BAKING POTATOES.....	45¢/LB.
FRESH GINGER.....	\$3.98/LB.

FROZEN MEATS • FROZEN MEATS • FROZEN MEATS

100% Pure Beef 80/20 - 8 oz. Patties \$1.89/lb. 40# box \$48

Boneless Ham Fully Cooked Sliced, Chunks or Whole \$1.59/lb.

5# Cooked Cured Beef Crumbles\$6.15

4# Bag Breaded Mozzarella Cheese Sticks ONLY \$6.99

5# Frog Legs\$15.95/box

32 oz. Uncooked Shrimp \$19.35

Frog Legs by the pound\$4.60

Catfish Steak\$5.03/lb.

ALOE VERA GEL CERTIFIED, NATURAL, FULL STRENGTH	\$14.69/GAL. OR 32 OZ. \$6.45
ALOE VERA JUICE CERTIFIED, NATURAL, FULL STRENGTH	\$15.15/GAL. OR 32 OZ. \$6.45
Kraft Miracle Whip.....	\$13.15/Gal.
Gold Medal Heavy Duty Mayonnaise	\$8.98 or Salad Dressing \$8.19/Gal.
24 oz. Hidden Valley Ranch Dressing.....	\$3.98
16 oz. Hidden Valley Ranch Seasoning & Salad Dressing Mix	\$5.95
16 oz. Savory Creamy Ranch Dressing	ONLY \$1.15

SLIGHTLY OUTDATED - SPECIALS • SLIGHTLY OUTDATED - SPECIALS

24 OZ. LITE PANCAKE SYRUP REDUCED CALORIE.....	ONLY 79¢
20 OZ. LIBBY'S CRUSHED PINEAPPLE.....	ONLY 59¢/CAN
28 OZ. SHUR FINE CRUNCHY PEANUT BUTTER.....	\$1.15

More New Shaped 1000 pc. Puzzles

Men's Black Gum Boots\$12.98

Come join our exciting team...

- Patient Care Tech - FT, Primarily Nights
- Staff RN - FT, Primarily Nights



509 N. Madison
Bloomfield, IA

You may view complete details of this and other current openings by visiting www.daviscountyhospital.org. Applications can be completed online or at Iowa Workforce Development offices. The successful candidate must pass a pre-employment physical, drug screen, and background check prior to beginning employment. E.O.E. Tobacco Free Campus.

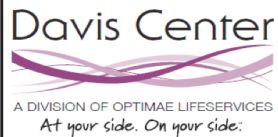
Over the Road carrier seeking experienced drivers. Midwest and west coast, no east coast. Drivers average 3,000+ miles per week, loaded and empty miles paid. Call recruiting 1-800-645-3748 www.gfltruck.com (MCN)

WE ARE GROWING

As we continue to grow, Davis Center-Optimae LifeServices has openings for the following positions:

FT & PT CNAs
PT Laundry/Housekeeping
FT RN
PT LPN

FT positions offer a wide range of benefits. For more information or to obtain an application contact the facility at 641-664-3202.



22425 Overland Ave,
Bloomfield, IA
641-664-3202
Optimae LifeServices is an EEO/AA employer.

Burkholder's GREENHOUSE

Notice We will be closed on March 25th in observance of Good Friday.

Bulk Garden Seeds
Onion Plants Candy, Walla Walla, Texas Super Sweet, Red Candy Apple

Asparagus Crowns, Rhubarb Roots, Strawberry Roots & Plants!

Bulk Grass Seed

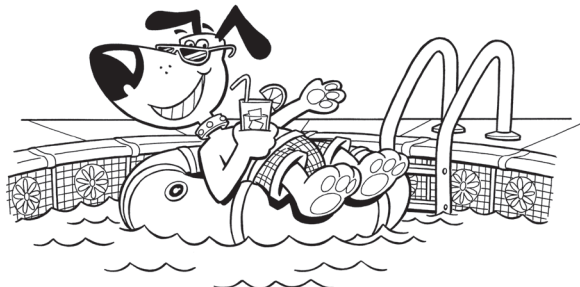
FRUIT TREES AVAILABLE NOW!

Early Spring Hours Mon-Sat 8am to 5pm
660-397-4115 www.burkholdergreenhouse.com
Edina, MO

City of Bloomfield
is taking applications for
Seasonal Help

Lifeguards

Deadline is
Thursday, March 31st



Have a wonderful Easter from all of us at the Shopper!

DEADLINE REMINDER!
Wanting to place a classified or display ad in our Wednesday, March 30th paper? You have until Monday, March 28th before 10am to do so.



641-664-1333
Bloomfield, IA

2ND Half Property Taxes

Due Now!
Last Day to Pay without Penalty
Thursday, March 31, 2016
Penalty Starts Fri., April 1st. Penalty Per Month 1.5%.

Hours:
8 a.m.- 4:30 p.m. Monday - Friday

Driver's Licenses: Tuesday - Friday 8:30 AM-3:30 PM
Closed on Mondays

Written Tests: Tuesday - Friday 8:30 AM-2:30 PM

Car Drives: Thursdays by appointment only.

Driver's License Station CLOSED March 29, 30 & 31.
The county treasurer is now accepting "in office" payments with debit cards, Discover, Master Card and Visa credit cards.

A service delivery fee will apply.

Applicable fees:

Credit Cards - 2.5% plus \$1.50 per transaction

Debit Cards - motor vehicle or property tax - \$2.00 per transaction

Pay Your Taxes On The Internet at
www.iowatreasurers.org

24-Hours A Day ---- 7 Days A Week

A service delivery fee is charged for this service.

Online Tag Renewals at www.iowatreasurers.org

Motor Vehicle Registration Renewals-You can't do them without the PIN number which will be on the renewal notice you receive in the mail.

A service delivery fee is charged for this service.

Davis County Treasurer

Phone 641-664-2155

100 Courthouse Sq. Bloomfield

Come In, Mail Your Payment in , or use the Payment Drop Box located on the northeast corner of the Courthouse lawn.

MARCH IS NATIONAL Colorectal Cancer Awareness Month

Colorectal cancer is one of the few cancers that can often be prevented entirely if caught early with proper screening.

THE IMPORTANCE OF COLORECTAL CANCER SCREENING

If you are age 50 or have a history of colon cancer in your family, this information is for YOU...

- According to the American Cancer Society, excluding skin cancers, colorectal cancer is the third most common cancer diagnosed in both men and women in the United States.
- When colorectal cancer is found through a screening, and not because someone already has developed symptoms, it is less likely to be widespread, and is more likely to have a better prognosis.



Jeff Davis, DO
Family Medicine



Celeste Miller-Parish, DO
General Surgeon



Lisa Rollison, DO
General Surgeon



450 E. Sigler Avenue
Memphis, Missouri
660-465-8511

Scotland County Hospital has two general surgeons and one family practice physician who offers colorectal cancer screening Monday through Friday.

For a consultation, please call 660-465-2828 to discuss your options with one of our physicians.



First Annual March Madness Prom Sale

All in-stock Prom Gowns 15-40% OFF
 FREE Shoe Rental with ALL Prom Tux Rentals (\$20 Value)
 Two Days ONLY Fri. March 18th and Sat. March 19th

M & W: 10-6
 Thur: 10-7
 Fri: 10-5
 Sat: 10-3



Hitched
 Bridal and Formal Wear

102 E. Franklin St. | Bloomfield, IA
 641-664-2743
 www.hitchedbridalandformalwear.com



Scotland County Care Center 434 E. Sigler Ave., Memphis, MO

Seeking kind, compassionate individuals to fill the following positions:

C.N.A./N.A. - Full Time & Part Time - All Shifts
 Long term care experience preferred, but not required
 Paid time off. Room for advancement. Must be 18. We will certify N.A.'s on-site. Weekend option (Friday, Saturday, Sunday) for C.N.A.'s pays an extra \$2.00/hour.

Apply in the Business Office
 Monday-Friday 8:00 a.m.-4:00 p.m.
 or online at www.scotlandcountycarecenter.com

For more information contact
Tammy Kirchner, H.R. or
Sheena Nichols, DON
 (660) 465-7221 E.O.E.

A UNIQUE ADOPTIONS, LET US HELP! Personalized Adoption Plans. Financial Assistance, Housing, Relocation and More. Giving the Gift of Life? You Deserve the Best. 1-888-637-8200. 24HR Hotline. (VOID IN IL) (MCN)

We BUY used manufactured homes, single wides and double wides. Call 641-672-2344 (MCN)

HELP WANTED

SCHUYLER COUNTY NURSING HOME

HELP WANTED: PART TIME DIETARY AIDE

Apply at Schuyler County Nursing Home, Queen City, Missouri. An equal opportunity employer; services provided on a non-discriminatory basis.

CALL 660-766-2291

or stop by and pick up an application.
 We are located on Hwy. 63 north in Queen City, MO

Hawkins - Harrison Insurance



SHOPPER ADS CAN BE DROPPED OFF HERE!

Proud to be your partner.

P.O. Box 365
 Lancaster, MO
 63548
 660-457-3020

103 W. Monroe St.,
 Memphis, MO
 63555
 660-465-8533

Tranquility Is a Beautiful Thing

Proud to introduce **Sabrina Proffitt**,
 Licensed Esthetician, who specializes in

- Repechage Skin Care (Facials/Peels)
- Facial & Body Waxing
- Lash Extensions

Schedule with Sabrina, now through March 31, 2016
 and receive 20% OFF her services!

To schedule your appointment, call 641-664-1022 or book
 online: www.essentialmassagespa.com

Bloomfield location is now open
 by appointment 6 days a week!



Essential
 MASSAGE & SPA



641-664-1022 www.essentialmassagespa.com

Linda Kulmatycki, LMT
 Tamie Watson, LMT
 Jacki Amstutz, LMT

Jennifer Abbott, Esthetician
 Sabrina Proffitt, Esthetician

How would you like to feel better, reduce stress, & take advantage of improved well-being? Schedule an appointment today!

Fetcho Family Chiropractic 641-664-2423

See how Chiropractic & Nutritional Care can
 improve & maintain your family's health!



North Side of The
 Bloomfield Square



Helping you & your family reach their
 optimal health potential to achieve
 amazing things for the glory of God!

MEDI HERB
 INNOVATIVE HERBAL SOLUTIONS

Standard Process
 Whole Food Supplements Since 1929

OFFICE HOURS

Mon. & Thurs.: 8-12:30, 1:30-6
 Tues. & Fri.: 8-12:30, 1:30-5; Wed.: 8-12:30
 Saturday by scheduled appointment

VISIT US AT THE SOUTHERN IOWA BUSINESS EXPO!
March 18th & 19th
LARGEST BOOTH AT THE SHOW!
Accessories & Flatbed Display!!



ALUMINUM BUMPER & GRILLE GUARD




FAB FOURS STEEL BUMPERS



CONVERTS TO A LEVEL BED IN SECONDS!

LAWN & GARDEN BATTERY SPECIAL!
 U1L, U1LH, U1RH

\$3⁰⁰ WITH THIS COUPON!!

Expires: March 31, 2016

B&W GOOSENECK HITCHES

ZIMMERMAN AUTO LLC TRAILER INC.

101 North St. • Cantril, IA 319-238-7367

Saving you time & money on those hard to find auto parts!!



SPILMAN AUTO PARTS

20311 Old Hwy. 2
 Bloomfield, IA
 641-664-2463
 1-800-477-1367
 M-F 8AM-5PM
 Sat. 8AM-12Noon
 www.SpilmanAuto.com



BLOOMFIELD MINI STORAGE. Serving you from 2 safe, convenient locations. PH. 641-664-1066. TF

FOR SALE: Windshield for '57 Ford, 2 dr., hardtop, \$200 OBO. Max Hamilton PH: 660-465-2206 12

METAL FOR SALE: Rainbow metal, \$30/sq. Also a quantity of used metal. John Wagler. PH: 641-777-5000 12

DISH TV 190 channels plus Highspeed Internet Only \$49.94/mo! Ask about a 3 year price guarantee & get Netflix included for 1 year! Call Today 1-800-390-3140 (MCN)

2015 CLEARANCE! Display model clearance including three bedroom, two bath double-wide for \$59,900, delivered, set, central air and skirting. CENTURY HOMES OF OSKALOOSA 1-877-241-3621 (MCN)

IF YOU HAD HIP OR KNEE REPLACEMENT Surgery and Suffered An Infection between 2010 and the present time, you may be entitled to compensation. Call Attorney Charles H. Johnson 1-800-535-5727 (MCN)

Highway 2 DISCOUNT Groceries LLC **NOW AVAILABLE**

dōTERRA
 Wellness Advocate

Many of the oils in this blend have been studied for their abilities to open and soothe the tissues of the respiratory system.

May be applied to ears, heart & wrists.

Mixed with water can be applied to disinfect countertops and other surfaces.

May be added to water for a relaxing bath.



19686 HWY. 2 • BLOOMFIELD, IA • 641-664-1187 V.M. • MON.-SAT. 8 to 5

Davis County High School to host a community blood drive Tuesday, March 15 from 10:45 am to 3:00 pm at 106 N E St., inside Concession's area. To donate, please contact member of student council or Mr. Wilson at 641-664-2200 ext. 1314 or visit www.bloodcenterimpact.org and use code 5015 to locate the drive.

Life Alert. 24/7. One press of a button sends help FAST! Medical, Fire, Burglar. Even if you can't reach a phone! FREE Brochure. CALL 800-306-1404 (MCN)


CURIOUS ABOUT GEOTHERMAL?

Southern Iowa Electric Cooperative's Spring Geothermal Workshop
Tuesday, March 22nd
6:30 p.m.

Southern Iowa Electric's Touchstone Energy Training Center
22458 Highway 2, Bloomfield

Guest Speaker Rick Rockacy
Geothermal Specialist with Water Furnace

Open to the public • Refreshments Provided (Local HVAC & General Contractors are Welcome)
 Discover how Geothermal can save you money on your heating bills for years to come!

 Southern Iowa Electric Cooperative
 A Touchstone Energy® Cooperative

22458 Hwy. 2 Bloomfield, IA (641)664-2277 sie.coop

BUYING? SELLING? TALK to LOCAL SPECIALISTS in the FIELD!

With more than 30 years of combined experience, you can count on our team to expertly navigate the complexities of your real estate transaction and protect your best interest.

Ashley Rupe Agent
 Rod Lynch Agent
 Lincoln Lynch Agent
 Nancy Holt Agent
 Pam Price Office Manager
 Stephanie Lynch Broker
 Lois Lynch Associate Broker

Lynch REALTY, INC.
 641-664-2275
 lynchrealtyinc.com

THANKS TO OUR AG INDUSTRY

103 E. Franklin Bloomfield, IA
 Licensed in Iowa Stephanie Lynch, Broker



EASTER SALE

Closed Friday March 25 for Good Friday



99¢ per lb.
Hillshire Whole Boneless Carving Ham

\$1.39 per lb.
Boneless Pork Loin

\$1.85 per lb.
 sold as a 15# box for **\$27.75**
HATFIELD Hotel Style Bacon

39¢ 12 oz.
 Frozen - **PIGGLY WIGGLY Hot Dogs**

\$2.29 per lb.
 Tray Packs **93% lean Ground Beef**

99¢ per lb.
 sold as a 10# box for **\$9.90**
Hormel - Seasoned Fully Cooked Pork Ribs

99¢ per lb.
 79¢ lb. by the case
JAMESTOWN® Bone-In Ham Steaks

\$1.75 20 oz.
Hellmann's REAL Mayonnaise

\$3.99 gallon
KRAFT Ranch Dressing

49¢ per lb.
 sold as a 5# roll for **\$2.45**
Frozen Farmland Bologna

79¢ per lb.
Boneless Skinless Chicken Thighs

\$1.59 24 oz.
Prairie Farms Cottage Cheese

\$1.75 bunch
FRESH Asparagus

\$1.69 per lb.
RED & WHITE Grapes

\$5.50 50# bag
MINNESOTA Extra Large Unwashed Red Potatoes

\$2.49 per lb.
Bulk Hershey's Miniature Candy Bars

99¢ per lb.
3 Pepper Co-Jack Trim Cheese

75¢ 16 oz.
Saltines Crackers

Everything for the GARDEN
 BUY EARLY FOR THE BEST SELECTION

- BULK Garden Seeds**
- Seed Potatoes**
- Onion Sets**
- Onion Plants**
- Earthway® Garden Seeders \$89.95**

10% OFF
 Your Choice one pair of Men Women or Children Footwear
Dutchman's
 COUPON EXPIRES - MARCH 24, 2016

2/\$5
Bachman 10oz. Tortilla Chips
Jake & Amos 16oz. Sweet Hot Pepper Relish

FRIESEN CONSTRUCTION
 New Houses
 Remodeling
 Garages Electrical
 Plumbing
 Custom Cabinets
Arlen 664-3270
Cell 641-208-0170
Bloomfield, Iowa

DAVIS COUNTY LAW ENFORCEMENT CENTER is accepting applications for a full time 9-1-1 telecommunicator/jailer. Must be at least 18 years of age with high school diploma or equivalent and successfully pass a background investigation. Will be required to work a variety of shifts, weekends, holidays. Must be: proficient with computers; able to learn quickly and work under stressful conditions; capable of multi-tasking and working with the public. Upon conditional offer of employment a physical and a drug screen will be required. Some training is off-site and employee will be responsible for their own transportation. Applications can be obtained at the Davis County Law Enforcement Center, 110 W. Franklin, Bloomfield, IA 52537 (641) 664-2700. Applications will be accepted until 4:00 pm March 18, 2016. Equal Opportunity Employer - It is the policy of Davis County to provide equal opportunity in employment to all persons. An individual shall not be denied equal access to employment opportunities because of race, creed, color, religion, national origin, sex, age, or physical or mental disability.

WANTED: Used, older washing machine in good condition. Also electric dryer.
 PH. 660-328-6278. 13

FREE BREEDING to Alkamsa mare by 100% Davenport, Regatta CF (Craver Farm) to be put down this fall.
 PH. 641-722-3283. 13

MAST VINYL WINDOWS
THERMO-PRO WINDOWS
 Custom Size Is Our Specialty
 Professional Installation Available
FREE ESTIMATES
 22172 Hwy. 63
 Bloomfield, IA 52537
800-206-9949

Best BLOOMIN' Deals!

MAKE YOUR TAX REFUND GO FURTHER

\$1.00 OFF CARTONS

.50¢ OFF LOGS

ALL THE MONTH OF MARCH

3 1/2 MILES SOUTH OF THE LINE
AMERICAN OWNED STORE
HWY. 63 LANCASTER, MO
YEA, IT'S WORTH THE DRIVE!

THE OUTLET

660-216-7632
Mon-Thurs. 9:00 AM - 6:00 PM
Fri. & Sat. 9:00 AM - 7:00 PM
Sun. 10:00 AM - 6:00 PM

JUST HONEST SALES

LOTS of New Antiques & Furniture!

ONLY American Owned Tobacco Outlet!
Friendly Service!

Lost Pines Longarm Quilting

Computerized Longarm Quilting
Maximum 120" x 120"
Customized to your pattern, edge to edge, or simple light designs
Many patterns available
Baste your sandwich for hand quilting
Apply Binding to front of finished sandwich


Call for an appointment I will quilt your tops
Sharon Kay Boyer  641-459-2183

PUPPIES FOR SALE: Lab & Australian Shepherd cross, 9 weeks old, \$25.
PH: 641-208-5667 11

FREE COMMERCIAL BUILDING: 100 ft x 100 ft. Brick needs repaired. New owner must take care of the closing cost, title, tax, etc. 2 bedroom apartment on one side. Centerville.
PH: 641-895-2966 11

GOLD MEDAL WHOLE WHEAT FLOUR 5 LBS. \$2.39 40% LESS THAN WALMART!	GOLD PEAK TEA \$1.19/EA. 12 CT. PACK	BABY CARROTS 1 LB. 75¢	BUTTER \$3.19	MILK \$2.65/GAL.
				

TURKEY LOADS IN STOCK!

Village Market
Rt. 3 Box 168-A (Hwy 136 & Hwy 15)
Memphis, MO 63555 • 660-465-7307
Mon. - Fri. 8:30 - 6:00 • Sat. 8:30 - 5:00 • Sun. Closed
EBT WELCOMED! 

Highway 2 DISCOUNT Groceries LLC.



The Ultimate Cooking Experience™



Big Green Egg

We have 5 different sizes to choose from plus accessories.
Come see our display at the
Southern Iowa Business Expo, March 18th & 19th
and pick up a **10% DISCOUNT** coupon.

19686 HIGHWAY 2 • BLOOMFIELD, IA • 641-664-1187 V.M.
MON.-SAT. 8 AM-5 PM

7th Annual Open House
Ridge Top Farm Supply, LLC
FOR YOUR GRAIN SYSTEM SOLUTIONS

NEW LOCATION!
GRAND OPENING!
SATURDAY, MARCH 26TH
10:30 AM - 4:00 PM

GSI Westfield • Patriot Seed Tenders - Batco - Service - Parts **GSI**

GUEST SPEAKERS

11:30-11:45 ... Scott Vincent (GSI)	"Who GSI is"
12:00-12:30	FREE LUNCH
12:30-1:15 Gary Woodruff (GSI)	"More profitable harvest - long term grain storage/management"
1:15-2:00 Ryan Russell (Russell Consulting)	"Markets/market projections - importance of on farm storage"

DIRECTIONS
Hwy. 136 - 3 miles East of Memphis, MO
(We will have signs posted)

GLEN MILLER Owner/Manager 660-341-6172	ROB MILLER Owner/Manager 816-550-7690
---	--

ANNUAL CUSTOMER APPRECIATION DAY! Thursday, March 24th

Post & Pole Frame Buildings



Ask about our **REBATE** for this special event!

Specializing In:

Post Frame Buildings (Up to 100' Wide Clear Span) • Agricultural • Commercial • Residential • Equine • Heat Formed Metal Roofing & Siding With 50 Year Warranty

Quality Workmanship • Best Quality Material

Lunch Served 11am - 2pm
Door Prizes



CALL US TODAY!

2 Miles N. of Drakesville on pavement
888-371-4710 641-722-3505
17549 Husky Trail Drakesville, IA 52552



FOR SALE: Portable 3 pen dog kennel with outside runs. Larry Yoder.
PH: 641-722-3555 12

FOR SALE: AC HD 10 dozer; also 600 bu organic certified shell corn.
PH. 641-680-3815 or 641-675-3307. 11

FOR SALE: Firewood at RJ Lumber, \$15 a pickup load.
18989 160th St., Drakesville, IA 52552. TF



Happy Birthday

Chance Rupe

Sunday, March 20

Love,
Casen, Kenzlee & Amber

FACTORY SECONDS SALE

SEVERAL TABLES, CHAIRS, & SLEIGH BEDS STILL AVAILABLE!

8:00am - 5:00pm WHILE SUPPLIES LAST closed Sunday

OAKWOOD INDUSTRIES I.L.C.

{ oak. maple. cherry. }

Hwy 136 Memphis, MO (800) 279-8252

MADE IN MEMPHIS

FOR SALE: 36" glass corner shower with angled door, new in box. Cost \$360, asking \$200. 36" white vanity with sink, new but out of box. Cost \$160, asking \$75. Keosauqua Area.
PH: 319-293-9150 11

Vinyl Windows

Replacement & New Construction

Window Features...
Fusion Welded
Triple Weather Strip
Aluminum Reinforced

Sliding/Swinging Patio Doors

Gerkin
"Quality products since 1932"

FREE ESTIMATES

Yoder Glass & Window
641-722-3667
19467 Driftwood Blvd.
Bloomfield, IA 52537

Cantril Lumber & Hardware

319-397-2351 • Mon-Fri 7-5 & Sat 7-12

We Custom Build Portable Chicken Coups!

Check with us for great **REBAR PRICES!**

FREE ESTIMATES!

CLOSED GOOD FRIDAY MARCH 25TH

imagine
your home reinvented.

Save NOW while reinventing your home with a new garage door from Clopay®

Now is the time to improve the curb appeal and energy efficiency of your home with a beautiful new garage door from Clopay, maker of America's Favorite Doors. Act now and you can save up to \$180 in rebates on select doors and LiftMaster® openers. Don't miss this special opportunity to reinvent your home and save!

SAVE UP TO **\$180**
IN REBATES ON SELECT GARAGE DOOR AND OPENER PURCHASES

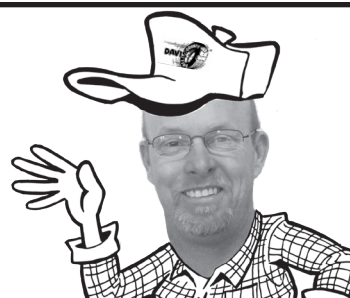
Clopay

MAST OVERHEAD DOORS
641-680-2016
105 S. Dodge St., Bloomfield, IA

© 2016 Clopay Building Products Company, Inc., a Griffon company.
Rebate good thru April 30, 2016



Let Our Service Technicians COME TO YOU!



Going on now thru 3/27/16

SPECIAL SALE ON FIRESTONE AG TIRES

Wagons, Tractors, or Implements

108 Smith Street • Bloomfield
TOLL FREE 1-888-855-8740
641-664-1801



ON THE FARM TIRE REPAIR SERVICE

We'll Get You Going In No Time!



Kuntryside Cabinets, LLC

Kitchen Cabinets
Custom Furniture
Millwork
Stairways



15641 175th St.
Drakesville, IA 52552
641-664-1677
Kenneth Yoder, Owner

Does your auto club offer no hassle service and rewards? Call Auto Club of America (ACA) & Get \$200 in ACA Rewards! (New members only) Roadside Assistance & Monthly Rewards. Call 1-800-778-9184 (MCN)



GET YOUR FIELD READY!

Springfield, MO - Ag Lime
Low-Mag • High Calcium



Call us for competitive pricing!

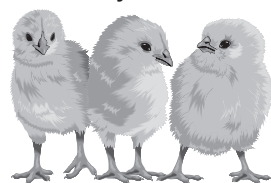
Cantril Feed & Grain

610 West North St. • Cantril, Iowa • 319-397-2215

Cliff Viessman Inc. is accepting applications for Regional Tanker Drivers for the Cedar Rapids terminal. \$1,000 Sign On Bonus. \$50 K+ per year. Health, Dental, 401K. Profit Sharing. Paid Weekly. Monthly safe driving bonus. CDL with tanker endorsement required. Two years experience required or driving school graduate with six months experience. Some weekend work required. Contact Nate at 800-353-0344. Option 5. natev@viessmantrucking.com. www.viessmantrucking.com. "A Driver Friendly Company" (MCN)

CHICK DAYS!

Starting March 24th
Order Anytime All Summer



ATTENTION: FFA & 4-H KIDS
Start your show season with us!

We support our local ag youth!



FEEDS & NEEDS

660-379-2055 Mon-Fri: 8-5
1 mile N of Downing, MO on Rt N

SKIDLOADER TRAILER SALE! 14,000# 82"x16'+2' \$3,757.00; NEW Skidloader trailer with 4' dovetail (less angle) & full width ramps 14,000# \$3,850.00; Fuel trailers with & without tanks; 6'x10' V-nose rampdoor \$2,729.00 www.FortDodgeTrailerWorld.com 515-972-4554 (MCN)

STUDENT LOAN PAYMENTS got you down? We can help reduce payments and get finances under control, call: 866-871-1626 (MCN)

MAST OVERHEAD DOORS, INC.

105 S. Dodge St., Bloomfield, IA 52537



GARAGE DOORS
Residential & Commercial
Doors & Operators

641-680-2016

CALL FOR AN APPOINTMENT

Quality Products
+ Quality Workmanship
= Quality Customers

Free Estimates We Fix Doors



Keep your farm operating at maximum efficiency with the help of Crop Services.

See them for your seed, feed & fertilizer needs.

CROP SERVICES, INC

John & Kathy Bos, Owners
Drakesville, IA
641-722-3293



SALUTING ALL FARMERS!



Come see our team for all your ag financing!

Farmer's Market

110 N. Washington
Bloomfield, IA
641-664-1362

Keosauqua | Birmingham
Cantril | Bloomfield



WESTERN'S SMOKEHOUSE

- Nationwide Shipping
- Cut to Order Meat Bundles
- Gourmet Cheeses
- Award Winning Sausages

Snack Sticks & Beef Jerky

Visit our retail shop in Greentop, MO
www.westerns-smokehouse.com
Mon. - Fri. 7am - 5pm • Sat. 8am - 4pm
660-949-2445 • 1-800-456-0250

National Agriculture Week

March 13th - 19th



WHAT IS AG DAY?

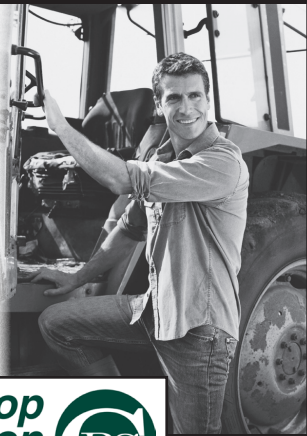
It's a day to recognize and celebrate the abundance provided by agriculture. Every year, producers, agricultural associations, corporations, universities, government agencies and countless others across America join together to recognize the contributions of agriculture.

<p>SIDWELL SEEDS Queen City, MO 660-766-2737</p>	<p>CANTRIL FEED & GRAIN Cantril, IA 319-397-2215</p>	<p>CATTLE AUCTIONS WEEKLY Beth Withrow 108 N. Dodge • Bloomfield 641-664-3493 www.cattleauctionsweekly.net</p>	<p>HAMILTON PRODUCE COMPANY INC. Bloomfield, IA 641-664-2459</p>	<p>Walker Motors COLLISION REPAIR, INC. 375 S. Main St. Memphis, MO 660-465-2159</p>
<p>CANTRIL LUMBER Cantril, IA 319-397-2351 1-888-791-9273</p>	<p>HARRIS DISTRIBUTING West Grove, IA 641-929-3379 800-727-5589</p>	<p>KAY EGGLESTON BOOKKEEPING & TAX Memphis, MO 660-465-2684</p>	<p>BRADLEY INSURANCE Tonya Bradley, Owner 226 S. Market St. Memphis, MO 660-465-2764</p>	<p>MEMPHIS FARM & HOME S. Market St. Memphis, MO 660-465-8678</p>
<p>citizens mutual 114 W. Jefferson Bloomfield, IA 641-664-2074</p>	<p>LYNCH LAW OFFICE & ABSTRACTING 207 S. Washington Bloomfield, IA 641-664-3188</p>	<p>KARR COLLISION CENTER 701 Karr Ave Bloomfield, IA 641-664-1024</p>	<p>Davis County HOSPITAL Dedicated. Compassionate. Healthcare. Bloomfield, IA 641-664-2145</p>	<p>BLOMME CONSTRUCTION Memphis, MO 660-216-0012</p>
<p>MEMPHIS AUTO & TRUCK PARTS 300 S. Market Memphis, MO 660-465-2470</p>	<p>MOULTON LOCKER 112 S. Main St. Moulton, IA 641-642-3422</p>	<p>SCHUYLER COUNTY NURSING HOME Hwy 63 N. Queen City, MO 660-766-2291</p>	<p>SCHUYLER COUNTY MUTUAL INSURANCE COMPANY Margaret Sapp & Stephanie March Queen City, MO 660-766-2505</p>	<p>SCOTLAND CO. LIVESTOCK AUCTION Hwy 15 N. Memphis, MO 660-465-7213</p>
<p>Slayton Polaris 8 mi. S. & W. from Pulaski or 6 mi. W. of Memphis then 13 mi. N. on Route B 660-328-6627</p>	<p>CHUCK'S BODY SHOP & GARAGE Hwy. 63 Queen City, MO 660-766-2312</p>	<p>MEMPHIS LUMBER CO. Memphis, MO 660-465-8595</p>	<p>MAST MEATS, LLC Hwy. 63 Queen City, MO 660-766-2211</p>	<p>JOE'S CARPET BARN 11067 Hwy. 63 Greentop, MO 660-949-2612</p>
<p>AMERICAN FAMILY INSURANCE Craig D. Heemsbergen 409 Church St. Ottumwa, IA 641-683-1891</p>	<p>Tri-County SHOPPER Tri-CountyShopper.com Bloomfield, IA 641-664-1333</p>	<p>MFA AGRI SERVICES Kirksville, MO 660-665-4695 Lancaster, MO 660-457-3728</p>	<p>GREINER IMPLEMENT CO. 10845 73rd Ottumwa, IA 641-683-1691</p>	<p>TLS EQUIPMENT Memphis, MO 660-465-2441</p>

SPRING PLANTING SEASON

Don't hesitate to start applying your fertilizer and chemicals for the spring season.

- Soil testing
- Dry & liquid fertilizer
- Liquid nitrogen
- Custom application of fertilizer & chemicals
- Spreading
- Small seeds



906 Karr Street • Bloomfield, IA 52537

For information & prices on our spring special call 888-664-1045 today!

FOR SALE: Timothy, brome, trefoil, clover mix. No rain, late 1st cut, \$3/bale, cash. North of Drakesville.
PH: 641-722-3283 12

FOR SALE: 1997 Chrysler, 122,600 actual miles, loaded, many new parts, tires, brakes. Make offer.
PH: 641-684-7955. 11

WOODRUFF ANGUS BULLS for SALE

AT THE FARM
Milton, IA



WOODRUFF CHEROKEE 34

2015 SHOW BULL of the YEAR

Roy 641-799-6912

Randy 319-470-6999

FOR SALE: Gas powered air compressor, wheel barrel type, new unloader valve and whip. Excellent condition, \$375.
PH: 660-341-8602 12

LAWN MOWING: Still accepting clients for 2016 mowing season. Call now to get on schedule - Randy Norman.
PH: 641-208-2300 12

FOR SALE: 10 month old yellow Labrador retriever, female, \$25, APR registered. **Mahlon Gingerich**
VM: 641-664-2723 12

WANTED: Pasture to rent for 2016 and beyond. 60 acres or more, good fences a must and water.
PH: 641-208-7535 12

FOR SALE: Blue Heeler Beagle cross puppies, \$30/each. **David Yoder**
PH: 641-722-3037 12

MOBILE HOMES FOR SALE: on contract or cash. Some others for sale, cheap.
PH: 641-680-3713 13

FOR SALE: 1 ton hog feeders with lids & hog gates.
PH: 641-722-3045 13

FARM EQUIPMENT FOR SALE: 18' wing disc, square baler, manure spreader. Call for details.
PH: 319-768-6023 13

Proud to Serve & Salute Our Local Farmers

Guard your farm against extreme weather and other unexpected events that may crop up! We provide you & your family with peace of mind!



Van Mersbergen Insurance Inc.

104 E. Franklin St. • Bloomfield, IA
PH: 641-664-2135 • FX: 641-664-2108



Drive safely.

You may not encounter many traffic hazards when operating farm machinery, but driving safely should still be your first priority. Especially when equipment is near power lines.

Any contact between farm machines and electric lines is potentially lethal. Plan your path to be sure you will clear power lines by at least 10 feet, especially when making turns and when entering and leaving the job site.

This institution is an equal opportunity provider & employer.



22458 Hwy. 2 • Bloomfield, IA 52537 • (641) 684-2277 • sie.coop

J.C.
Zeitler,
D.V.M



We support our local beef farmers!

Milton, IA
641-656-4616
Cell: 641-777-0598

We have the right insurance plan for all your needs!

Auto • Home • Farm • Crop • Business
• Life • Annuities • Health

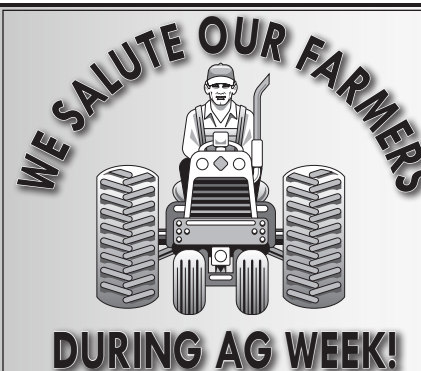
Your life is full of important things that need to be protected. Our insurance affords you and your family that protection by being your personal safety net.



www.NorthSideIns.com

106 E. Jefferson
Bloomfield, IA
641-664-2362

109 W. Van Buren St.
Centerville, IA
641-856-3333



Greg Shelley, Career Agent
Farm Bureau Financial Services

388 S. Clay Street, Suite A
Memphis, MO
Business 660-465-2623
Home 660-328-6603
gshelley@mofb.com

- Home • Farm • Life • Health • Auto
- Long Term Care • Annuities



Take a look at two tractors sized for your homestead and packed with features for getting the job done. The OnRamp™ Drive Over Deck means attaching a mower deck almost as fast as you can say, "Up to 72-inch cutting width." And you can attach more than 50 implements quickly and easily with an H130 Quik-Park™ loader & iMatch™ Quick Hitch.



SINCLAIR
TRACTOR

Bloomfield • Centerville • Durant • Fairfield
Houghton • Mediapolis • Muscatine • Ottumwa
Sigourney • Washington • Winfield

www.sinclairtractor.com

Striving to EARN Your Business Everyday.

*Financing subject to credit approval with John Deere Financial. Some restrictions apply. See dealer for details. Offer ends 5/2/16.





**CALL SID TODAY
FOR YOUR 2016 SEED NEEDS**

**Let Pfister help
your production
grow.**



Sidwell Seeds
Queen City, MO
660-766-2737

**THUMBS
UP TO OUR
FARMERS!**

PERFECT FOR... GARAGE • RESIDENTIAL
BUSINESS • SHOP

VARIETY OF COLORS! **RESISTS WATER, GREASE, & OIL!** **FREE ESTIMATES!**

**ALLEN CUSTOM DESIGN
CHIP FLOORING**

NOW OFFERING METALLIC FLOORING
Kenneth Allen
641-664-1648 • 641-680-2287 • 641-208-0037
Bloomfield, IA • www.AllenCustomFloors.com

Chick Days



Order April 1 for May 4 delivery

Layers, Broilers, Guineas, Turkeys,
Bantams, Ducks, & More!!

RR 1 Box 147B
Memphis, MO
660-465-2967

Hometown
Animal Health

Eliminate high heating costs. Central Boiler's all-new Classic Edge OUTDOOR WOOD FURNACE. Call Backyard Depot 641-722-3641

FIRST CHURCH IS SEEKING BIDS TO replace all the roofs on the church at 320 S. Main, Memphis, MO. Please call Tom Owings. PH: 660-341-5572

CHRISTIAN CHURCH IS SEEKING BIDS TO replace all the roofs on the church at 320 S. Main, Memphis, MO. Please call Tom Owings. PH: 660-341-5572

LANDSCAPE SPECIALS

8 FT. RAILROAD TIES!
Check them out at...

Spilman's Auto Parts
20311 Old Hwy. 2 • Bloomfield, IA
641-664-2463

YODER'S INDIAN CREEK FURNITURE We have furnishings for every room in your home. Large selection of styles and wood species to choose from. Custom orders welcome. Delivery available. Also available Martin houses and gourd racks complete with pole and winch. Great selection of outdoor poly furniture. Located 4 miles North of Cantril on RT. V64, 22769 Rt. V64 Milton, Iowa

FOR SALE: JD 4430, good tires, 10,000 hours, NICE. \$13,750. PH: 660-341-5758

WD 63 PIPE & STEEL

SPRING BLOWOUT SALE!

BIG SALE ON ALL CORRAL PIPE & CORRAL PANELS!!

PIPE SIZES: 3/4" - 60" any size or thickness
PLATE THICKNESS: 1/8" - 1" anything in between

Pick-up or delivery available. Call for pricing.

660.216.9061 OR 660.341.4753
Just south of Lancaster, MO off Hwy. 63

CABLE 1/2" - 9/16" • LIVESTOCK HANDLING EQUIPMENT

BIDS WANTED FOR MOWING THE DOWNING CEMETERY. Interested parties should contact City Clerk, City of Downing, P.O. Box 24, Downing MO, 63536, or call (660) 379-2515 to obtain a bid sheet. All bids must be returned before 4:00 pm., March 25th, 2016. Bids will be per season and per mowing. Mowers will be required to give proof of liability insurance and sign a contract prior to mowing. We reserve the right to refuse any or all bids. Kaci Westhoff, City Clerk.

FOR SALE: IHC dozer TD-20 200 Series, cable operated. PH. 660-216-3280.

City of Floris

is accepting bids for 2016 Mowing Season for the following:

- 1 Bid for Hall & City Park
- 1 Bid for Veteran's Memorial Park

Includes Mowing & Trimming of all Properties
MUST HAVE A CERTIFICATE OF LIABILITY OF INSURANCE TO BE AWARDED THE JOB

Sealed bids must be received no later than **4:00 PM on Sat., April 2nd, 2016**
Bids can be mailed to:
Floris City Clerk
Mowing Bid
Box 37, Floris, IA, 52560
City Council reserves the right to reject any & all bids.

For More Info. Call 641-680-4345

RED ANGUS BULLS FOR SALE!

A few select black Sim/Ang bulls available.

Yearling & 2 year old bulls available!

- These bulls are calving ease bulls that have a high weaning & yearling EPDs. Bulls have been developed on a roughage diet so they will go out and work and not sleep under a shade tree & melt!
- Sires include: Timberlake, Power Eye, Mission Statement, TrueBlood & Longs Steel Shot (Simmental)
- Dams include: Mulberry, Sakic, Feddes Norse Fire, Timberlake, & Messmer Packer.
- These bulls are super gentle & are handled so they respect people. They are NOT pampered & are raised like real cattle so they will go out & work.

CR Cattle Co.
Douds, IA • Jennifer Gardner, Owner • 641-895-4116





Goods Ag Repair

IS YOUR TRACTOR AC WORKING?

Repairing	Shop Rate
Tractors	\$45.00/HR
Combines	Service Call Fee
Etc.	\$75.00

ANY TRACTOR TROUBLES CALL
MONDAY - FRIDAY
7:30AM - 5:30PM

46502 St. Hwy C • Baring, MO
660-892-4717



CONTINUOUS FENCING

EXTRA HEAVY 10 GAUGE
BALE RINGS & HAY
SAVERS

SOUTHERN YELLOW PINE
30 YR. WOOD POSTS
7-9 FT.

19887 Jade Ave
2 1/2 Miles W of Bloomfield
V.M. 641-664-2797

ACNE SUFFERERS: Clear your acne with all natural Acnezine! Eliminate the root cause of acne fast. No negative side effects of chemical treatments. Exclusive Trial Offer, Call: 855-402-7215 (MCN)

HOOVER RENTAL

Manlifts • Telehandlers • Minihoes
Skidloaders & Skidloader Attachments



RENT BY
Hour • Day • Week • Month • Long Term



Call us for your construction needs!

660-216-8230
Mt. Sterling, Iowa

GET HELP NOW! One Button Senior Medical Alert. Falls, Fires & Emergencies happen. 24/7 Protection. Only \$14.99/mo. Call NOW 1-888-840-7541 (MCN)

Are you in BIG trouble with the IRS? Stop wage & bank levies, liens & audits, unfiled tax returns, payroll issues, & resolve tax debt FAST. Call 888-606-6673 (MCN)

TROJAN HILL FARMS HAS A GOOD SELECTION OF ANGUS & CHAROLAIS BULLS.

We ultrasounded our Angus bulls who had an IMF average of 5.71 and a ribeye average of 13.6. The Angus breed average IMF was 3.80 and the ribeye was 12.52. This was achieved with no creep and a silage based ration. Come take a look at these outstanding bulls!

Trojan Hill Farms



Phil Archer
641-675-3769 - Home
641-680-6769 - Cell



Private Treaty Bull Sale

Call or email jlanguis@outlook.com for a complete sale book today!!!



Conneally Comrade 1385 #17031465 Sons Sell

Jager Land & Livestock

March 26, 2016 Yrlg. & 2 Yr. Olds
TOP A.I. Sires Some Calving Ease
Viewing 1 p.m. Bid Offs 2 p.m. Held at the Farm

Curt & Lorie Jager
2371 330th Street
Curt 641-660-0771

Gina & Dan Hoy
Eddyville, Iowa 52553
Office 641-969-4600

Excellent Dispositions | Ultrasound & Performance Data | Parentage Verified | Semen Evaluated
AM, NH, CA, DD, BVD Free | Free Housing of Yearling Bulls till June 1, 2016 | Guaranteed

LINE-X OF OTTUMWA



KEEP YOUR RIDE
IN GREAT SHAPE!
PROTECT IT WITH A LINE-X COATING!

Bring it in and we can LINE-X® it!

Brad Lisk • Kevin Webster

Gift Cards Available!

641-683-9334

15514 Blackhawk Rd., Ottumwa, IA



See us at the Southern Iowa Business Expo
March 18 & 19

Troyer Seeds

- Baren Brug •
- Blue River Organic •
- Masterschoice •
- Epley Hybrids Conventional •

- SMALL GRAINS
- ALFALFA
- CLOVER
- GRASSES

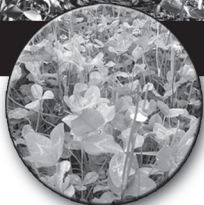


Special! **\$800**
Seed Oats bushel

QUALITY FORAGES IS OUR #1 GOAL

Cover Crop That Pays!

- ~ Improve Soil Fertility
- ~ Reduces Compaction
- ~ Increase Yields



12722 245th Street
Moulton, IA 52572

Emanuel Troyer

641-664-1381

MAST MEATS, LLC

Hwy 63 • Queen City, MO

660-766-2211



- Custom/Retail
- Inspected
- Slaughter
- Processing
- Deli Meat
- Cheese



Lunch Sandwiches
Homemade Bread
Chips & Drink

Tim Mast

Sheldon Mast

mastmeatsllc@gmail.com

PORK PRODUCTION

Fox Ridge Pork, a farrow to wean farm, has an immediate opening in its Gestation Dept. This position is located in the Bloomfield, IA area. We are looking for an individual with experience in sow breeding, that can work in a fast paced team environment. Further, this employee must be willing to hold the biosecurity of the farm in the highest regard. Fox Ridge prides its self on its long term work force it maintains, through hiring individuals with a good work ethic, are reliable, and respect their fellow coworkers. Salary is commensurate with qualifications, experience, and desire. Average of 45 hour work week with rotating weekends. Work clothing provided.

Fox Ridge Pork

P: 641-680-2292 • F: 641-682-3637
foxrigdgepork@gmail.com

FOR SALE: International 600 silo blower, good condition, shedded, 540 PTO, asking \$2,000. PH: 641-722-3075 11







Superior Form & Function for Your Farm

603 S. West • Bloomfield, Iowa
641-208-6890







Complete line of bagged feed in stock!

CUSTOM BULK

Non GMO Poultry Feed we deliver!

FEED & SUPPLY
641-722-3045
17599 200TH STREET • BLOOMFIELD
STOP BY MON.-FRI. 8-5 & SAT. 8-12

BIRD FEEDING NEEDS WILD BIRD SEED
SUNFLOWERS/CHIPS

The Car Spa

Auto Body Shop • Auto Glass
Automotive Restoration • Hand Detailing Service



KARR COLLISION CENTER & AUTO DETAILING

Shawn Scott, Owner • 701 Karr Ave. • Bloomfield, IA • 641-664-1024


FOR SALE

ANGUS BULLS

Yearling Registered Black Angus Bulls
Large selection
Pick now & we'll hold until May 1



HENDERSON FARMS
David:
641-799-3857



Selling 52 Powerhouse Bulls

Sale held at Appanoose Co. Livestock Inc. Centerville, Iowa

VIEW FULL SALE OFFERING AT WWW.EBERSALE.COM

Sat., March 19, 2016 at 12:00 Noon



Drake Trump Card A33C | 5/8 SM
W/C Lock Down x Elm-Mound/GS Stands Alone



Drake Lock Up 6C | 5/8 SM
W/C Lock Down x Lazy H Go Daddy



Drake Combustible C13
3/4 SM
FBF1 Combustible x Maas True Dream 404P



DFC Bull 44C | Red PB SM
SS/PRS Chasin Tail x GW Mr MT 790L

Selling 52 Powerhouse Bulls on March 19th!
All bulls will be semen tested and ready for service!

FOR SALE: Big round bales oat straw.
PH: 641-642-3379 13

FOR SALE: 2 AQHA stud colts. (1) 2 year old & (1) yearling. Oklahoma Star & Bert bred.
PH: 641-937-5234 13

FOR SALE: 6' bales net wrapped hay, grass/clover mix, 1st cutting, no rain, 61 bales, \$35/bale.
PH: 641-777-7748 13



We provide materials & expertise for all building projects.



New Homes Remodels Decks Kitchens ICF Basements Pole Buildings

Josh & Emily Hill
218 S. 2nd St. • Pulaski, IA
641-675-3405

YOU NAME IT WE HAUL IT!



COMPETITIVE RATES!

**Rock - Lime - Grain - Fertilizer
Wide Loads - Machinery, etc.**

NAGEL ENTERPRISES, LLC
660-457-3006 (OFFICE)
660-216-0303

Drake Simmental
Larry & Carol Drake 641-895-9422
Mason 641-895-5735, Flint 563-580-1053
24366 570th St., Centerville, IA 52544

Drake Cattle Co.
Denny & Cara Drake • drakecattle@gmail.com
Denny 641-658-2288 or Brady 641-856-9210
www.drakecattlecompany.com

Sale Management:
Eberspacher Enterprises Inc.
Val & Lori Eberspacher
507.532.6694 • 612.805.7405
Kelly Schmidt 406.599.2395
www.ebersale.com

KEOSAUQUA SALE CO.

20511 Hwy. 1, Keosauqua, IA

Results from March 12th

Butchers.....\$37.00-\$44.00/cwt	Kid Goats 40-70 lbs.....
Sows.....\$20.00-\$38.25/cwt\$105.00-\$160.00/hd
Lambs	Cull Nannies..\$65.00-\$195.00/hd
under 80 lbs.\$215.00-\$275.00/cwt	Black Heifer Pairs...\$2500-\$2975
over 110 lbs.\$127.00-\$130.00/cwt	Middle Aged Bred Cows.....
Ewes.....\$55.00-\$75.00/cwt\$1500-\$2000
Pound Cows	Aged Bred Cows....\$1000-\$1375
Low yielding.....\$61.00-\$71.50/cwt	High yielding.....\$74.00-\$82.00/cwt
Pound bulls.....\$85.00-\$97.00/cwt	

SPECIAL CATTLE SALE

Saturday, March 19th

30 hd 400-600 simm Angus x str & hfrs vaccinated, B Taylor
 90 hd 700-725 mostly blk hfrs open green fancy, Colby
 70 hd 700-750 mostly blk hfrs GT open, H Sandquist
 10 hd 400-550 blk str & hfrs GT, Baldosier
 7 hd 400-600 xbred bulls & hfrs, C Boyd

Thank You For Your Business! For More Information Contact:
 Selling Times
 Hogs.....9:30 a.m.
 Sheep & Goats.....10:00 a.m.
 Outside Merch.....11:00 a.m.
 Cattle.....Noon
 Keosauqua Sale Co.
 319-293-3508
 Bill Goehring
 641-919-9365

www.keosauquasaleco.com

FOR SALE: 5x12 gooseneck stock trailer.
 PH: 641-722-3045 13

FOR SALE: Sofa & recliner in good condition.
 PH: 641-722-5232 or 641-208-7825 12

2007 GT-185/BR GLASTRON BOAT FOR SALE: 18.5 ft, 8 passenger boat, 4 cylinder, 135 hp, IO, AM/FM stereo, swim platform. Very nice trailer included - fold away tongue, elec./hyd. disc brakes. Tarp, tube, rope, & accessories included! Great starter boat, very clean!! Less than 160 hours. \$13,500.
 PH: 319-350-0187 12

Wortmann Machine & Welding

- Large Steel Inventory
- Lathe Work
- Mill Work
- Shear Capacity 8x10 Ga.
- Press Work
- Oxygen & Welding Gases (Rent or Lease)
- S. J. Smith & Midwest Airgas

910 W. Walnut
 Bloomfield, IA
 Ph: 641-664-1300



CONSIGNMENTS WANTED

Southern Iowa Produce Auction

Sales every 2nd & 4th Saturday Nov. thru March

NEXT SALE

Sat., March 26th, - 10 A.M.
 HAY, STRAW, & FIREWOOD

For advertising your consignments they must be called in by 10AM Monday on the week of sale. Unloading Available Fridays before sale, otherwise by appointment.

19141 Ice Ave. Bloomfield, IA
 Call 641-722-3623 on auction days or leave a message.
 Market Report or Information call 712-432-8593

PARTS DISMANTLER POSITION

Spilman Auto Parts needs a Parts Dismantler.

Must have knowledge of vehicles, own tools and be reliable. Offer health insurance and retirement benefits.

Stop in to pickup up an application at

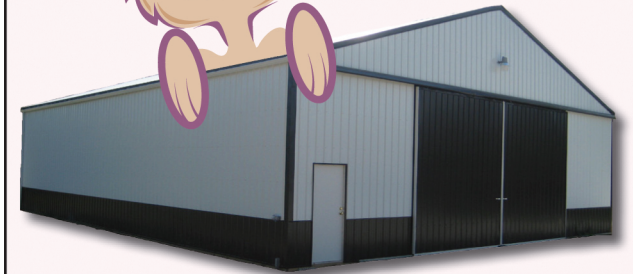
Spilman Auto Parts
 20311 Old Hwy. 2 • Bloomfield, IA
 641-664-2463 E.O.E.

WANTED: Cleaning jobs, commercial or residential. Experienced - \$15/hour.
 PH: 641-722-3919

Hop into spring with a new pole barn!



- Metal Roofing
- Crews available
- FREE estimates!
- Call today!



WAGLER METALS

19049 Ice Ave., Bloomfield, IA
 641-722-3692

FOR SALE: 4 foot harrow in good condition. No broke disk and all disk bearings good. Ready to be used only \$200.
 Call: 912-632-7370 13

FOR SALE: Used garden tillers rear & front tine. All sizes and makes includes Troy-Bilt & Mantis tillers.
 Kahoka, MO
 PH: 660-216-1809 13




GINGERICH STOVES and PLUMBING LLC


Stoves & Furnaces
 WOOD • COAL
 PELLET/CORN • GAS




• Many sizes & styles
 • Chimney SS & Blk. Stovepipe
 • Plumbing Supplies

Jotul F 50 TL Rangeley
www.jotul.com

19091 180th St • Drakesville, IA • VM 641-664-2814
 3/4 miles east of Drakesville, south side



Scotland County LIVESTOCK AUCTION

P.O. Box 111 • Hwy 15 North • Memphis, MO
 660-465-7213 • Jerry & Barb Blomme
 660-341-0069 • Grant Blomme

CATTLE SALE

Sat., March 19th at 12:30 PM

SPECIAL BRED COW & HEIFER SALE

ALONG WITH REGULAR SALE

Sat., March 26th at 12:30 PM

RESULTS OF SALE, SAT., MARCH 12th: Steers: 501 lbs. \$200, 512 lbs. \$203, 544 lbs. \$200, 605 lbs. \$190; Bulls: 399 lbs. \$205, 519 lbs. \$194, 695 \$146; Heifers: 378 lbs. \$190, 525 lbs. \$162, 565 lbs, \$157; Holstein Veals: \$220-\$260; LB. Cows: \$65 to \$84.

www.ScotlandCountyLivestock.com

Premier Ag Solutions



Supplying your seed and precision farming needs

Bloomfield, Iowa
Office: 641-664-3412
Gene Joos: 641-777-5997 • Lincoln Joos: 641-777-2968
premieragsolution@gmail.com

BLOOMFIELD LIVESTOCK MARKET



Wed., March 23rd Special Feeder Sale 11:00 AM
 Wed., March 30th NO SALE
 Sat., April 2nd Hawkeye Simmental Bull Sale TBA
 Wed., April 6th Special Feeder Sale 11:00 AM

TUESDAY POUND COW SALE EVERY WEEK
 10:30 a.m. Fat Cattle, Butcher Cows, Bulls, Veals

SALE BARN OPEN UNTIL 9:00 PM
EVERY MONDAY TO RECEIVE LIVESTOCK

Top Consignor's Report For March 9, 2016. Selling 1624 head.

STEERS

Grace Starbuck..... 7 BRC 420 lbs ... \$224.00
 Kenneth Hoover..... 5 BLK 445 lbs ... \$219.25
 Brandon Paget..... 6 BLK 450 lbs ... \$211.00
 Roy Holton..... 9 BLK 513 lbs ... \$208.50
 Roy Holton..... 6 CHCR .. 519 lbs ... \$202.50
 Dave Hopkins 6 BLK 545 lbs ... \$200.50
 Arch Marshall..... 7 BLK 558 lbs ... \$200.00
 Randy Abel 20 BLK.... 593 lbs ... \$190.00
 Steve Unkrich 9 BLK..... 631 lbs ... \$189.50
 Jared Schultz..... 12 BLK.... 614 lbs ... \$188.25
 Schooley Farm 63 BLK.... 691 lbs ... \$175.50
 Steve Hassman 13 BLK.... 684 lbs ... \$175.50
 Brent Thompson..... 15 BLK.... 733 lbs ... \$175.00
 Randy Abel 10 BLK.... 734 lbs ... \$174.00
 Charles Swaim 23 BLK.... 711 lbs ... \$170.60
 John Nevins..... 17 BLK.... 769 lbs ... \$164.00
 Jimmy Groseclose 15 BLK.... 770 lbs ... \$164.00
 Roger Porter 56 B/R.... 815 lbs ... \$156.10
 Kevin Good..... 40 BLK.... 797 lbs ... \$155.75
 Mark Henderson..... 69 BLK.... 811 lbs ... \$155.50
 Allen Martin..... 59 BRC ... 831 lbs ... \$150.00

Bud Heston..... 12 BLK.... 930 lbs ... \$143.75
 Mark Henderson 59 BLK.... 932 lbs ... \$141.75
 Mark Henderson 39 BLK.... 928 lbs ... \$141.75

HEIFERS

Phil McClure 6 BLK..... 414 lbs ... \$190.00
 Andrew Hoover..... 5 BLK..... 477 lbs ... \$181.50
 Randy Abel 7 BLK..... 517 lbs ... \$175.50
 Roy Holton..... 11 BLK.... 575 lbs ... \$170.50
 Jared Schultz..... 6 BLK..... 600 lbs ... \$169.50
 Randy Abel 16 BLK.... 610 lbs ... \$169.00
 Mike Christensen..... 10 BLK.... 604 lbs ... \$166.00
 Arch Marshall..... 9 BBWF .. 636 lbs ... \$165.00
 Steve Unkrich 10 BLK.... 662 lbs ... \$160.75
 John Nevins 17 BLK.... 648 lbs ... \$160.75
 Dave Hopkins 22 BLK.... 629 lbs ... \$160.50
 Ervin & Arlene Nolt Tr 92 BLK.... 665 lbs ... \$160.50
 Roger Porter 26 RED ... 708 lbs ... \$159.50
 Roger Porter 11 BLK.... 691 lbs ... \$159.50
 John Nevins..... 14 BLK.... 750 lbs ... \$147.25
 Western 67 BLK.... 741 lbs ... \$156.00

Phil Schooley 641-664-3450
 Ron Schooley..... 641-777-0302
 Roman Schooley 515-450-3685

Tyler Schooley 641-208-5442
 Barn Phone 641-664-2435

We appreciate your business!

HWY. 63 NORTH • BLOOMFIELD, IA

FOR SALE: 1998 Chevrolet S-10 ZR2, ext. cab, 4x4, 4.3 V6, 5 speed manual, black, approx. 143,000 miles. Call/Text: 660-341-8690 12

FOR SALE: 13+ different size big round bales, 1981 Ford 3/4, 4 spd., over loads stored. Make offer on them. Besick PH. 641-936-4452. 11

FOR SALE: Round bales of grass hay, \$22; Clover, net wrapped, \$25; 2 white faced ewe lambs, \$175/each. PH: 319-540-4601 12

FOR SALE: 24' Harrogator with hydraulic wings, \$1,300. 35' pasture harrow, \$700. PH: 319-750-1968 11

GELBVIEH REGISTERD YEARLING BULLS FOR SALE: Excellent quality, semen tested, & gentle. Hobbs Gelbvieh 641-766-6779 or 641-203-0863 12

FOR SALE

 Week old Heifer beef calf.
 641-722-3038

Davis & Lewis, CPA

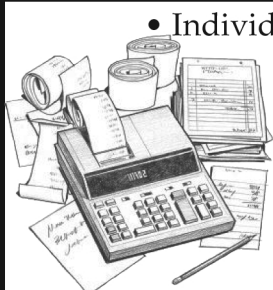
Let our years of tax experience benefit you!

- Individual & Business Tax Preparation And Planning
- Monthly Accounting & Payroll Service
- Financial Statement Preparation
- Business Consulting
- Auditing

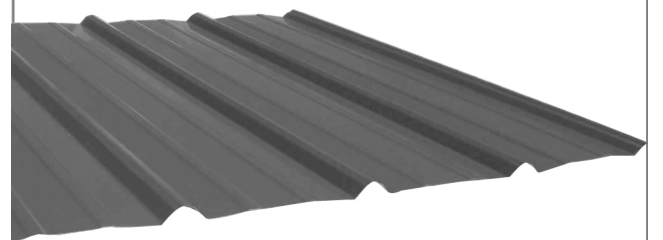
Keith W. Lewis, CPA
 Carol S. Howard, CPA
 Brian D. Clark, CPA

641-682-8117
 639 E. Pennsylvania Ave.
 Ottumwa, IA 52501

641-664-1999
 205 N. Washington St
 Bloomfield, IA 52537



Premium Metal Roofing



- Buy Direct & Save
- Fast Service
- Cut-to-length
- Professional Contractors Available

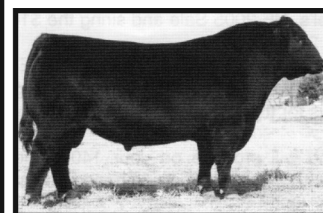


Metal Roofing Headquarters

641-664-3990 • awmetal.net

FOR SALE: JD 567 baler net-kicker, good shape. Milton, IA. PH: 515-419-1232 12

ANGUS BULLS YEARLINGS & 2 YR. OLDS



- ★ CALVING EASE
- ★ GROWTH
- ★ THICK
- ★ GOOD DISPOSITION

Sired by Musgrave Reachout 530

SELECT YOUR BULL NOW

DORAN BOLLMAN
 PULASKI, IOWA
 641-675-3467



Trusses Engineered and Designed to Your Specs

Full Line of Building Materials



Bring your plans in for a **FREE ESTIMATE**



17893 212th Street • Bloomfield, IA 52537
 641-722-3605 • Mon.-Fri. 7 AM to 5 PM