



The NewsHopper furnished FREE, because of the advertisers. Please let them know you appreciate it.

First Copy FREE, subsequent copies \$1 per copy.

Vol. 22 • Issue 35

Sat., August 28, 2021

# NEWSHOPPER

# FREE

PRST STD  
U.S. Postage  
PAID  
Brainerd, MN  
ZIP CODE 56401  
Permit No. 681

PO Box 562, Ironton 56455  
218-821-1393 By Appointment Only

email: [hopper@crosbyironton.net](mailto:hopper@crosbyironton.net)  
[www.newshopper.net](http://www.newshopper.net)

## WHAT'S INSIDE

COMMUNITY EVENTS  
Page 2

READER'S RIBBETS  
Page 3

OBITUARIES  
Pages 3 & 4

LEGALS  
Pages 5 - 7

CLASSIFIEDS  
Page 8

**GET MORE BUSINESS**  
**ADVERTISE**  
in the **NEWSHOPPER**

Call Eric at  
**218-821-1393**

## Parents save back-to-school receipts as school bells ring

By ANN SCHWARTZ

Parents who buy school-related supplies for children in grades k-12 may be eligible for tax credits on their Minnesota tax return.

One program, Education Subtraction, is not based on income.

For the Education Credit piece, if you have up to 2 children in grades k-12, and make less than \$35,500 a year, you may qualify for Minnesota tax credits that may either lower the taxes you need to pay in or increase your refund, according to the Minnesota Department of Revenue. Households with 3 children may make up to \$39,500. If you have four or more school-age children, add \$2,000 for each child.

When school shopping, save your receipts for school supplies, computers and software, tutoring costs and rental of a musical instrument during the school year.

You must file a Minnesota Income Tax refund to get these credits. For more information, log onto [www.revenue.state.mn.us](http://www.revenue.state.mn.us) or call 800-652-9094. **Back to school in Crosby**

Cuyuna Range Elementary School has over 800 students and Kurt Becker is the principal.

School starts on Tuesday, September 7, with kindergartners having conferences first and starting on Sept. 9.

The welcome back night for elementary is Wednesday, September 1, from 4:45 to 8 p.m. Jen Strom is the junior and senior high principal. Welcome back night for the secondary school is Tuesday, August 31, from 4:45 to 8 p.m.

### Aitkin

Thursday, September 2, is Kinderkamp at Rippleside Elementary in Aitkin. Entrance conferences are set for Tuesday-Thursday, September 7-9. The first day of school for elementary is Friday, Sept. 10, and Andy Dokken is the principal.



Principal Andy Dokken is ready to welcome elementary students back to Rippleside in Aitkin.  
Ann Schwartz photo

At the high school, where Paul Karelis is the principal.

Seventh Grade Orientation is on Wednesday, September 1, beginning at 5:45 p.m. The first day of classes is Tuesday, Sept. 7.

### Aitkin referendum set

The Aitkin School Board agreed to a vote on a \$9 million referendum this fall to avoid further staff cuts. According to Dan Stifter, superintendent, over \$1 million in cuts over the last four

years caused the elimination of 15 staff positions, including teachers in the areas of speech, arts, music, science and phy-ed, along with para-professionals, bus drivers, custodians and an assistant principal.

The tax impact of a "yes" vote would be \$33 a year on a \$100,000 home and \$83 a year on a \$200,000 home.

Early voting begins on Sept

17 and absentee ballots can be requested at [bit.ly/AbsenteeBallot21](http://bit.ly/AbsenteeBallot21), email [auditor@co.aitkin.mn.us](mailto:auditor@co.aitkin.mn.us) or call 218.927.7354.

November 2 polling places are the Glen/Kimberly Town Hall, the Palisade Town Hall and the Journey North Community Church in Aitkin.

More information can be found at <https://home.isd1.org/referenduminfo.html>.

## Focus on Azerbaijan at CLC event



Rebecca Rowe, center, with friends by the Kur River in Yevlakh.

Central Lakes College will begin the 25th year of its Cultural Thursday series with a program on Azerbaijan. Rebecca Rowe will speak about her time serving in the Peace Corps in Azerbaijan at noon on Thursday, September 2 in the Chalberg Theatre and online. (<https://tinyurl.com/2a32uazv>) The program

is free and open to the public.

Rowe is the director of the North Central Small Business Development Center (SBDC) at Central Lakes College. SBDCs are Resource Partners of the United States Small Business Administration (SBA) and provide training and technical assistance to help entrepreneurs and small busi-

nesses plan, start, grow and succeed.

Azerbaijan is a post-Soviet predominantly Muslim country located north of Iran and south of Russia on the shores of the world's largest inland body of water. Hear from both Rowe and Azerbaijani nationals on topics ranging from national service, education systems, religion and society, jobs and the economy and more.

For questions on this presentation or the Cultural Thursdays Series, please contact Tracey Kloock-Jimenez at 218-855-8183.

## SHIFT CLINIC

### INTEGRATIVE MEDICINE

Drs. Murray & Shannon Smith • 23 West Main Street, Crosby • [www.askdrsmith.com](http://www.askdrsmith.com) • (218) 851-9626

Chiropractic • Acupuncture • Massage • NeuroMetabolic Care • Guided Weight Loss • Slim Laser • Magnesphere Resonance Therapy

Schedule your first appointment by September 15, 2021 and receive a

**FREE Chronic Lyme Consultation\***

\*Up to 15 Minutes

• In Person or TeleHealth Access (online health consultation) • Doctor-grade supplements delivered to your door

To gain access to our Patient Hub, just text your name and email to (218) 851-9626

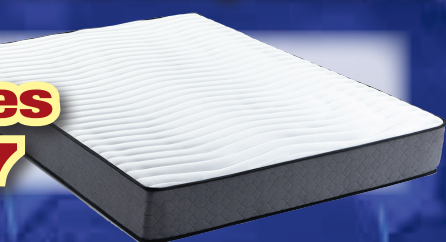
Fever  
Chills  
Fatigue  
Weakness  
Arthritis  
Muscle Soreness  
Involuntary Movements  
Lack of Muscle Coordination



## PRE-Labor Day Sale

**40-60% OFF Select Items throughout the Store!**

In-Stock Twin Size  
**Mattresses**  
Starting at **\$97**



**In Stock  
No  
Waiting!**



## 371 FURNITURE & MATTRESS

Locally  
Owned and  
Operated

**Buy It  
Today...  
Have It  
Today!\***

\*on In Stock Items

16413 Highway 371, Brainerd, MN 56401 • 218-828-3020

2 Miles North of Baxter on 371 • [www.371furniture.com](http://www.371furniture.com)

371sales@gmail.com • Hours: 9-6 Mon - Sat; 11-4 Sun

## UNCLAIMED FREIGHT NORTH

HOURS: Mon.-Sat. 9-5 • Hwy. 210 West, Aitkin • 218-927-6446

**STOP IN AND SEE OUR LARGE SELECTION OF FURNITURE!**

**SYMBOL MATTRESS TRUCKLOAD SALE!**

|                      |                     |
|----------------------|---------------------|
| Twin Mattress & Box  | \$259 <sup>98</sup> |
| Full Mattress & Box  | \$309 <sup>98</sup> |
| Queen Mattress & Box | \$369 <sup>98</sup> |
| King Mattress & Box  | \$699 <sup>98</sup> |

**WE HAVE LIVE BAIT**  
LEECHES  
NIGHT CRAWLERS

**PROPANE AVAILABLE**  
including for Motor Homes

**TOOLS • GIFTS • HOUSEHOLD • LIVING ROOM • BEDROOM • DINING**

*Tito's Handmade VODKA*

## SUMMER LANTERN BASH

4 FOUR BANDS IN ALL!

**Friday & Saturday, August 27 & 28**

Held at the **The Green Lantern**

9 miles East of Brainerd on Hwy. 18

**— 2 Day Outdoor Music Festival —**

Camping Available • General Admission  
**HUGE Bean Bag Tournament on Saturday**

One Night of **ROCK &** One Night of **COUNTRY**

**Friday, August 27**  
• 9 p.m.  
**Leathers and Lace**

Celebrating the music of Fleetwood Mac, Eagles & Tom Petty

• 6 p.m. **Tail Gunners**  
• 5 p.m. **Gates Open**

**Saturday, August 28**  
• 9 p.m. **Songs of the South**  
Alabama Tribute

• 6 p.m. **RJ Graff**  
• 5 p.m. **Gates Open**

**Tickets and info at [www.huff-entertainment.com](http://www.huff-entertainment.com)**



**KNIFE RIVER**  
AN MDU RESOURCES COMPANY

**For Delivery or Pickup**  
**1-888-450-3460**

**AGGREGATE:**  
Washed Sand • Washed Rock  
Class 5 Gravel • Fill Sand  
Crushed Concrete • Granite

MasterCard  
VISA  
Accepted

Reasonable • Experienced • Reliable

**Turner & Son**

Call for a  
**FREE**  
Quote

**Fall Cleanup  
and Vacuum  
Leaf Removal**

**Full Service Lawn Care**  
Lawn Mowing • Debris Removal  
Tree Trimming • RipRap and Shoreline Repair  
**Call Tim Turner 218-330-7003**  
Serving the Lakes Area

## COMMUNITY EVENTS

### August

28th - JACOBSON LANDING DAY Jacobson Recreation Area All Day Activities start at 9 a.m. Flea Market (All Vendors Welcome), Kids Games Starting at 10 a.m. Softball games, Volleyball and Cornhole Tournament. BINGO and Medallion Hunt at 1 p.m., Buried Treasure at 2 p.m., Pie Auction at 4 p.m. Beer Garden and BBQ sponsored by The Jacobson Fire Department Music by "Aftershock" 7:00-11:00 p.m.

28th - Ironton Kidsfest 11 a.m.- 2 p.m. at Morningside Park in Ironton. There will be free food (while supplies last), games, fire trucks on display, a water slide, music and more.

28th - Outdoor Gospel Concert 7 p.m.: *Jim Lee* from Brainerd, Jim is well known for his country-flavored gospel music. Bring a lawn chair. In case of rain, the concert will be inside the air-conditioned church. A free-will offering will be taken. Malmo Evangelical Free Church the northeast corner of Lake Mille Lacs.

### September

2nd - Central Lakes College Cultural Thursday program. Rebecca Rowe will speak about her time serving in the Peace Corps in Azerbaijan at noon on Thursday, Sept. 2 in the Chalmberg Theatre and online. (<https://tinyurl.com/2a32uazv>) The program is free and open to the public.

4th - Crossing Arts in Brainerd presents 'Northern Waters' Artist Talk And Closing Reception at 12:00 pm. Free will offering at the door. Light refreshments will be served. For more information contact Crossing Arts at 218-833-0416, info@crossingarts.org.

4th - Labor Day Patio Party with live music starting at 8 p.m. by The Wayne Renn Band with special guests at the Croft Pub & Grub in Crosby. Call 218-546-6575 for details.

8th - Senior LinkAge Line® Medicare Fraud Awareness and Prevention classes 10:00 - 11:30 a.m. and 2:00 - 3:30 p.m.

To register go to "Classes, Workshops, and Trainings" page at <https://www.arrowheadaging.org/classes-workshops-trainings> or call the Senior LinkAge Line® at 800-333-2433.

11th - Smoke on the Range fundraiser, watch the pit masters at work and enjoy the delicious food, people's choice and judge's choice awards, mega meat raffle, 50-50 raffle, his and hers gun raffle, entertainment and more at The Deerstand Restaurant and Bar in Deerwood. Call 218-534-9253 for more details.

14th - 17th - The Friends of the Brainerd Public Library Big Fall Book Sale at the Westgate Mall 11 a.m. - 7 p.m. Access will be through the service door on the front (south) side of the mall, to the right of the large JoAnn sign. For more info log on to [www.wineandwordsandfriends.com/book-sales](http://www.wineandwordsandfriends.com/book-sales).

14th - Lakes Area Unlimited Learning "Walt Whitman - Poet of American Democracy" presented by Jack Hickerson.

15th - Glory Baptist Church Fall Kick Off. All ages, free meal at 6 p.m. Fun activities until 8 p.m. Youth Group for ages 7th-12th (rightnowmedia). Kids programs for ages Preschool to 6th (I Stand in Awe curriculum). And an adult group on Wednesday nights, [www.aitkinchurch.com](http://www.aitkinchurch.com)

19th - Glory Baptist Church begins adult, youth and children's Sunday school for the school year. [www.aitkinchurch.com](http://www.aitkinchurch.com)

20th - Great Decisions: "The Korean Peninsula"

24th - Fabulous Armadillos 7 p.m. at the new Gichi-ziibi Center for the Arts in Brainerd. Call 218-855-8199 for tickets.

**Send Your Photos,  
News and Community Events to  
[hopper@crosbyironton.net](mailto:hopper@crosbyironton.net)**

**Back to School  
Savings**

**Brainerd Lakes Area's  
PRE-OWNED GIANT**

**2013 LEXUS RX350 AWD**



**2018 JEEP GRAND CHEROKEE**



**2016 LEXUS GX 460**



**2019 NISSAN MURANO SL**



**2018 BUICK ENCLAVE PREMIUM**



**2020 MASDA CX5 GRAND TOURING**



**2018 DODGE DURANGO**



• OVER 50 PRE-OWNED AWD SUVs TO CHOOSE FROM! • Search our selection at [www.tannermotors.net](http://www.tannermotors.net)

**2018 PATHFINDER PLATINUM**



**2018 JEEP COMPASS TRAILHAWK**



**2018 TOYOTA RAV4 LE AWD**



**2018 NISSAN ROGUE SV**



**2015 GMC ACADIA SLE AWD**



**2014 TOYOTA RAV4 LE**



**2009 CHEV SUBURBAN LTZ**



**2014 CHEVROLET EQUINOX**



**2018 NISSAN SENTRA SV**



**2018 NISSAN SENTRA**



**2019 CHEV SILVERADO TRAIL BOSS**



**2020 NISSAN TITAN SV CREW**



**2019 RAM 1500 BIG HORN**



**2018 RAM 1500 LARAMIE**



**2016 CHEVROLET COLORADO 4X4 LT**



John Tanner's  
**TANNER MOTORS**

**620 West Washington Street, Brainerd, MN 56401**



**218-829-3597 / 800-222-0434**  
**[www.tannermotors.com](http://www.tannermotors.com)**



**CASH 4 JUNK CARS  
AND MACHINERY**  
**Call 218-839-3371**



# OBITUARIES

## NOREEN SCHNELLER



Noreen June Schneller, 87, of Palisade, died Saturday, September 12, 2020 at her home.

A Celebration of Life will be held Saturday, September 11, 2021 from noon to 4 pm. in the McGregor Community Center. Interment was in Fleming Cemetery, Fleming Township.

She was born July 2, 1933 in St. Paul to James and Marie (Andersen) Kehoe. Noreen married to Darold Schneller on October 1, 1955 in Virginia. She worked as a Nurses Assistant at both Hastings State Hospital and Anoka State Hospital. Noreen later worked as a Security Guard at Target in Fridley, as a Hostess and later Manager at Roadside in McGregor, as an Aide at Oak Ridge Homes, as a Teacher's Aide at Rippleside Elementary School in Aitkin as well as a Bus Driver and Kitchen Aide. Noreen enjoyed crossword puzzles, cards, scrabble, dice, knitting, crocheting and watching the Twins. Noreen especially enjoyed Wednesday Night "Chicken Night" with her family which was a family tradition for 19 years. Noreen will be remembered for her wonderful sense of humor.

Noreen is survived by her children: Anthony Schneller of Palisade, Robin (Bill) Pratt of Palisade, Dawn (Eric) Myhra of Brainerd and Suzanne (DuWayne) Fredrickson of McGregor; nine grandchildren: Shanna Pratt, Chelsie Rose, Sabin and Suzanne Myhra, Nathan and Tyler Fredrickson, Lacey Wilkie, Kelly and Jackson Schneller; 10 great grandchildren: Ellie, Flynn and Will Rose, Darren and Brinlee Fredrickson, Wayde Fredrickson, Valerie, Barrett, Forrest and Konrad Wilkie; sisters: Virginia "Ginny" Schneller of Aitkin and Lynn Diederich of Crosby; several nieces and nephews. Noreen also leaves behind her dear friends from the Kingdom Hall of Jehovah's Witnesses of McGregor.

Noreen was preceded in death by her husband, Darold; parents; step-father, Louis Raitor. Arrangements were with the Sorensen-Root-Thompson Funeral Home and Cremation Service of Aitkin. Leave online condolences at [www.srtfuneral.com](http://www.srtfuneral.com).

More Obituaries on Page 4

# Bunkert offers meditative journey



'A Burning Within' - Denise Bunkert, pastel at Ripple River Gallery near Bay Lake through Sept. 26.

Trees. We see them every day, but do we really appreciate their beauty and the essential role they play in our lives? Through her pastel paintings, Denise Bunkert offers a meditative journey through trees. Her work will be featured through Sept. 26 at Ripple River Gallery near Bay Lake. The public is invited to meet the artist during the gallery's annual fall open house and benefit for Wild and Free Wildlife Rehabilitation Orga-

nization on Saturday, Sept. 25. Representing life, growth, peace and nature, trees are essential to survival, offering clean air, shade and shelter, food and carbon capture. Bunkert's paintings offer a glimpse into the mysteries of the woods as a community and as individuals on a path. Like exploring the layers of a tree's bark, with pastel she builds layers of color and texture, creating depth "to reveal a path to inner workings of heart, soul and nature."

Bunkert's expressive paintings range from vast landscapes to intimate portraits of trees and flowers. Her love of nature and forests remain a consistent thread in her artwork. "My paintings are not just a reflection of the surface, but an exploration of deeper paths to inner beauty and healing, beneath all the exterior layers," she said.

Bunkert, who lives and works in Savage, was awarded several commissions for paintings for the Minnesota

Children's Hospitals and the Make-A-Wish Foundation in Minneapolis and Saint Paul. Her paintings are in the permanent collection of the Minnesota Children's Hospitals, Regions Hospital, the Lake Nokomis Clinic and the Mother Baby Center. She exhibits regularly at local juried arts events and shares her passion for art by teaching painting workshops to children and adults at local art centers.

Ripple River Gallery is open from 10 a.m. to 5 p.m. Wednesday through Saturday; and 11 a.m. to 4 p.m. Sundays. The gallery is located five miles south of Deerwood on Highway 6, then 3 miles east of Ruttger's Bay Lake Lodge on County Road 14 to Partridge Avenue; or south of Aitkin on Highway 169 to Bennettville, then 3.2 miles west on County Road 11 to Partridge Avenue.

For more information call 218-678-2575 or e-mail [ripplervergallery@gmail.com](mailto:ripplervergallery@gmail.com).

# Northern Waters artwork

Crossing Arts presents 'Northern Waters', Artwork By Lindsey Personius and Calihan Yliniemi. This exhibition will be on display through September 4. An artist talk will take place on Saturday, September 4, from 12:00 - 12:30 p.m., followed by a closing reception on the same day from 12:30 - 2:00 p.m. Free will offering at the door. Light refreshments will be served.

This exhibition encompasses the beauty and abundant scenery and wildlife that Minnesota holds, through a collaboration of paintings by

Calihan Yliniemi and pottery by Lindsey Personius. Inspired by lake horizons, sunrises and sunsets, and reflections on the water, each of the mediums on display portrays fond memories of growing up on and around lakes in Minnesota, spending time with loved ones, and enjoying the sweet sounds of nature.

Lindsey Personius is a part-time artist that lives in Pillager, Minnesota who enjoys crafting functional, handmade pottery and paintings from her home studio. Her work is inspired by life in Minnesota and all things on, in,

and around the lakes. She primarily does wheel-thrown ceramics, with stoneware clay in a traditional and minimal style.

Calihan Yliniemi is a Minnesota-based artist, currently residing in Minneapolis. She found her true passion for art, especially in drawing and painting, in college. Her work is inspired by the beauty found in nature, as she continues to paint and draw landscape scenes. The majority of art she creates encompasses the vivid colors of the subject matter and the joy it evokes.



ONE OF  
**MINNESOTA'S  
LARGEST  
SELECTION**  
of hydraulic hose & fittings  
up thru 2" 4 wire  
**rileyautosupply.com**

**RILEY'S NAPA  
AUTO SUPPLY**  
**AITKIN • 218-927-2153**



# READER RIBBETS

## Rep. Dale Lueck legislative update

Busy week traveling. Tuesday my wife Linda and I had the pleasure of attending the Crow Wing County Farm Bureau Annual meeting at Brainerd. The group reviewed the past year's accomplishments and held elections for the board of directors. Looking forward the members adopted a policy recommendation that will be forwarded for further consideration at the annual Minnesota Farm Bureau meeting this fall.

The resolution would reduce state agencies' rule making authority and require all major policy decisions to go through the legislative process. Gov. Walz and the MPCA's recent adoption of the California car auto emission standards completely sidestepping the legislative process is the most recent example of the executive branch abusing agency rule making authority.

As a long-time Farm Bureau member, citizen and legislator, I fully support making significant adjustments to agency rule

making authority. Governors and state agencies are the executive branch, their duty is carry out the laws and policy established by the legislature. Their resolution is an excellent template for statutory change to existing agency rulemaking authority.

The seven-member bipartisan Iron Range Delegation issued a letter asking the DNR for a timely conclusion to a languishing Twin Metals Environmental Impact Study (EIS) which, soon will enter its third year. I along with my fellow Northeast legislators expressed our concerns with the lack of timely progress on a Twin Metals EIS.

We have a very thorough process for examining environmental impacts, however the apparent lack of progress requires attention. We know how to both protect the environment and safely mine. Non-ferrous mining has the potential to provide major economic benefits to

our state, plays a critical role in our national security and will significantly contribute to Minnesota's K-12 public school funding.

On Thursday I visited with Enbridge Line 3 officials to discuss construction progress and visited a pump station that is undergoing testing to make it ready for operations. The project is on schedule and very close to completion. Most the pipeline route has been smoothed and seeded. Like all of us they are awaiting for rain to get the grass growing.

Later that day I visited with US Steel officials and toured the MINTAC taconite mine and pellet processing facility. We discussed the extensive procedures that are involved in ensuring the environment is protected as Minnesota continues to provide our nation with the raw material to produce steel.

**Representative Dale Lueck  
Minnesota House  
District 10B**

# The catalyst

Whatever the purpose was, the ridiculous decision to narrow Hwy. 6 in Crosby is creating an issue about putting bicycles on the widened sidewalks. The rhetoric surrounding this issue is mute, Crosby's ordinance is in place, it states no bikes in the business district, and no riding on the sidewalks. The ordinance represents safety for all, what the citizens of Crosby want, and is a solid ordinance. The influx of bikes is great, but the solution is simple, walk the bike on the sidewalk. Bikes have multiple access to the downtown area, is not threatening, limiting, nor difficult to understand, and it is easily enforced.


New York state is getting another Governor because Cuomo has decided to do the right thing and resign. Citing pressure from other political figures and reduced ability to govern he steps down. A crucial part to getting rid of Walz is our political servants stepping up to demand he resign. The Joint Transportation Judiciary and Public Safety Committee Report is the document they can use. Walz allowed Minneapolis to burn, any life lost is blood on his hands. He gave his adult

daughter access to confidential information which she shared with the public and rioters. Walz was watching how he was trending on social media during the riots.

Letting a city burn and sexual harassment are both aw-


ful and both are worthy of a Governors resignation. The riots are the catalyst that Walz must resign. We the People must be the catalyst to send him packing. 651-201-3400 let your voice be heard.

**Kelly Avelsgard, Deerwood**



1st St. & 1st Ave., Crosby •  
218-546-6575  
Happy Hour: 4 pm - 6 pm

5th Annual  
**Labor Day Weekend  
Patio Party!**  
**Saturday, September 4th**  
**LIVE BAND STARTS AT 8PM!**  
with Wayne Renn Band and Friends





Got an interesting photo and story to share? Just send it to [hopper@crosbyironton.net](mailto:hopper@crosbyironton.net), along with your name, city and a description of the photo. We also accept news and community events. You may see your submission next week in the NewsHopper!





**We can't wait to Celebrate!**

**Royal Guard Encampment**  
**Birds of Prey Exhibit**  
**S'mores on a Stick**  
**Javelin' Throwing**  
**Doggie Dash**  
**Kiddie Krawl**

**2021 Minnesota Renaissance Festival**  
Weekends (Sat. & Sun.) + Labor Day  
Aug. 21 - Oct. 3 • Festival Friday, Oct. 1st  
9am - 7pm • Rain or Shine  
[RenaissanceFest.com](http://RenaissanceFest.com) • Free Parking

# Hoppers Helper's Service Directory

|   |   |   |  |
|---|---|---|--|
| <p><b>AUTOMOTIVE</b></p> <p><b>Pete's Auto Detailing</b> The only service that comes to you! Mobile Auto and Boat Detailing Service for Your Vehicles <b>Call Pete today for info (218) 838-5487</b> w18</p> <p><b>APPLIANCE SALES &amp; SERVICE</b></p> <p><b>Jim Blakesley Appliance Service &amp; Repair</b> 218-927-2027 • 1-888-450-8845 • Aitkin Washers, Dryers, Stoves, Refrigerators, Air Conditions, Septic Protectors, and MORE. Authorized Platinum Star Service. ttn</p> <p><b>COMPUTERS</b></p> <p><b>Call Billy "Mac" (Billy Hoffs)</b> 218-851-9990 or email <a href="mailto:bhoffs@mac.com">bhoffs@mac.com</a> All things Mac, from purchasing new or used, to teaching, to repairs "Friendly &amp; Honest" I make house calls ttn</p> | <p><b>CONTRACTORS</b></p> <p><b>Radtke Remodeling &amp; Construction</b> Custom Built Homes • Remodeling • Garages New Additions • Pole Buildings • General Contracting • Insulation Dean Radtke, Aitkin. Lic. #20108758 <a href="http://www.radtkeremodelingconstruction.com">www.radtkeremodelingconstruction.com</a> 218-678-3403 • 218-839-6103 2018w39</p> <p><b>HEATING &amp; AIR CONDITIONING</b></p> <p><b>Ken's Heating &amp; Mobile Home Supply</b> LP &amp; Natural Gas • Nationally Certified Service Technician — over 30 Years Experience Residential &amp; Commercial • Mobile Home Heating and Air Conditioning • RV's/Supplies 218-821-6720 • Aitkin • <a href="http://kensheatingllc.com">kensheatingllc.com</a> w47 2020</p> | <p><b>INSURANCE</b></p> <p> <b>SECURITY STATE INSURANCE</b></p> <p><b>4 locations to serve you</b><br/>Aitkin 218-927-3712 • Onamia 320-532-3235 • Isle 320-676-3795 • Grand Marais 218-387-1540</p> <p><b>PET CARE SERVICE</b></p> <p><b>Dogpatch • 218-927-4353</b> Expert Pet Grooming &amp; Boarding Services. West of Aitkin on Cedar Brook Rd.</p> | <p><b>SHOE REPAIR</b></p> <p><b>Harting Shoe Repair</b> 509 Washington Street, Brainerd. Drop Stations: Crystal Cleaner Crosby 218-829-2496 ttn</p> <p><b>UPHOLSTERY</b></p> <p><b>DRUK UPHOLSTERY • 218.763.3242</b> Family owned 50+ years. <b>NOW</b> servicing the <b>BRAINERD LAKES AREA!</b> Residential and commercial upholstery. Free estimates. Free pick up and delivery. <a href="http://www.drukupholstery.com">http:// www.drukupholstery.com</a> w41</p> <div><p><b>SERVICE DIRECTORY RATES</b></p><p>5 lines for \$15.00 per week<br/>4 lines for \$12.00 per week<br/>3 lines for \$9.00 per week</p></div> |
|---|---|---|--|



OBITUARIES

MICHAEL SCHWEITZER



Michael Joseph Schweitzer, 61, of Fairfield Township, died at his home on August 18, 2021.

A Memorial service was held at 11:00 a.m. on Friday, August 27, 2021 at the Bible Baptist Church in Crosby. A visitation was one hour prior to the service at the church.

He was born on May 20, 1960 in St. Louis Park to Joseph and Bonnie (Johnson) Schweitzer. Mike married Lisa Hoefner on November 6, 1981 in Coeur d'Alene, ID. He was a former employee of Fletcher Well Drilling in Emily; worked construction for Arrowhead Construction and the

Cuyuna Regional Medical Center in Crosby. He was a member of the Teamsters Union Local 346; the Bible Baptist Church in Crosby; a former Emily First Responder and served two terms as the Fairfield Township Supervisor.

Mike is survived by his wife, Lisa; sons: Zedekia Schweitzer of Crosby, Malachi (Dr. Kristin Aces-tra) Schweitzer of Cashmere, WA and Nehemia Schweitzer of Crosby; brother, Randy (Pauline) Johnson of Pine River; and sister, Penny (Stan) Behm of Waupun, WI.

He was preceded in death by his parents.

Arrangements were with the Koop Funeral Home of Crosby. To leave a message of condolence go to [www.koopfuneralhome.com](http://www.koopfuneralhome.com).

SHIRLEY FOOTE



Shirley Ann Foote, 85, of Crosby died on Sunday, August 22, 2021 at the Cuyuna Regional Care Center in Crosby.

A Memorial Service will be at 11:00 a.m. Monday, August 30, 2021 at the Immanuel Lutheran Church in Crosby.

A visitation will be one hour prior to the service at the church on Monday.

She was born on February 26, 1936 in Crosby to Henning and Rachel Anderson. Shirley married Beryl Foote on May 16, 1953 in Crosby. She was a member of the Immanuel Lutheran Church in

Crosby. Shirley was an outstanding cook and baker for many local restaurants. She loved preparing Sunday family dinners, camping, 4 wheeling and snowmobiling.

Shirley is survived by her husband Beryl; three sons: Tim (Cindy) Foote of Merrifield, Frank (Deb) Foote of Merrifield, Michael (Shelley Beseman) Foote of Crosby; two daughters, Lynette (Dick) Tabert and Jeanette (John) Radinovich all of Crosby; 15 grandchildren, 30 great-grandchildren and one great-great-grandchild.

Preceding Shirley in death are her parents; son, Danny Foote and brother, Dale Anderson.

Arrangements were with the Koop Funeral Home of Crosby.

WARREN TIBBETTS

Warren Roger Tibbetts, 76, of Garrison, died Wednesday, July 28, 2021 in Riverwood Health Care Center, Aitkin.

To honor Warren's wishes, no services will be held. He was born May 8, 1945 in Aitkin to Albert and Gladys (Spangenberg) Tibbetts.

Warren is survived by his loving wife of 56 years,

Mary Tibbetts; two sons: Roger and Tim Tibbetts; four grandchildren: Brett, Kole, Hannah and Faith; brother, John; and sister, Ann.

Arrangements were with the So-rensens-Root-Thompson Funeral Home and Cremation Service of Aitkin. Leave online condolences at [www.srtfuneral.com](http://www.srtfuneral.com).

VERA ANN REICH

Vera Ann Reich, 96, of McGregor, died Sunday, August 15, 2021 in Carefree Living, McGregor.

Graveside Services were held Thursday, August 19, 2021 in Fleming Cemetery, Fleming Township with Pastor William Sass officiating.

She was born November 29, 1924 in Gates, Nebraska to Joseph and Lena (Ferguson) Jewell. Vera was united in marriage to Earl Reich on July 24, 1942. Vera enjoyed various crafts, gardening, reading and especially spending time with her family.

Vera is survived by her children: Don (Sunny)

Reich of Tamarack, Judy (Mike) Nelson of Aitkin and Robert (Kathy) Reich of Pittsburgh, PA; five grandchildren: Cliff, Keith, Erik, Gina and Jeremy; 16 great-grandchildren; several nieces, nephews, other relatives and friends.

Vera was preceded in death by her husband, Earl; parents; two grandchildren: Jamie and Tracy and 10 siblings.

Arrangements were with the So-rensens-Root-Thompson Funeral Home and Cremation Service of Aitkin. Leave online condolences at [www.srtfuneral.com](http://www.srtfuneral.com).

DERICHARD IVERSON



DeRichard Iverson, 76, of Aitkin died on Tuesday, August 17, 2021 at the Cuyuna Regional Medical Center in Crosby.

No Services are being held.

He was born on May 23, 1945 in Minneapolis to Ellsworth and Jean (Bork) Iverson. He married Donna Sandberg on July 27, 1964 in Wa-

tertown, SD. He was a retired employee of Superior Platting in Minneapolis with 35 years of service.

DeRichard is survived by his wife Donna; daughter, Robin (Rick) Carlson of Brooklyn Center; brother, Tim Minikus; two sisters, Janet (Wayne) Larson and Valerie (Ken) Smith; two grandchildren, Arick and Adam Carlson.

Arrangements were with the Koop Funeral Home of Crosby. To leave a message of condolence go to [www.koopfuneralhome.com](http://www.koopfuneralhome.com).

RICHARD MONTELEONE



Richard Jeffrey Monteleone, 74, of Palisade, died unexpectedly on Wednesday, August 18, 2021.

A Memorial Mass of Christian Burial was held Wednesday, August 25, 2021 in St. James Catholic Church, Aitkin with Father Matthew Miller officiating. Interment will be at a later date.

He was born October 23, 1946 in Rahway, NJ to Charles and Margaret (Yurenda) Monteleone. Richard is a veteran of The United States Air Force, who

served during the Vietnam War. Richard married to Patricia Stolle on June 27, 1969 in Proctor. Richard loved the outdoors, fishing and working on old English sports cars. Richard especially loved spending time with his granddaughters.

Richard is survived by his wife, Pat Monteleone; daughter, Beth (Dan) Tucker; three granddaughters: Sophia, Margaret and Fiona Tucker; sister, Jane (Bill) Schumacher.

Richard was preceded in death by his parents and grandson, Luke.

Arrangements were with the So-rensens-Root-Thompson Funeral Home and Cremation Service of Aitkin. Leave online condolences at [www.srtfuneral.com](http://www.srtfuneral.com).

Locally Owned & Operated

**Sorensen-Root-Thompson**  
**Funeral Home & Cremation Services**  
Aitkin, MN  
218-927-2614

**McGregor Funeral Home**  
**& Cremation Services**  
McGregor, MN  
218-768-3136

Traditional Funerals • Cremation Services  
Celebration of Life • Pre-Planning Services

Directors: Jason Brezinsky  
Jerry Thompson • Tad Brezinsky

[www.srtfuneral.com](http://www.srtfuneral.com)

Births, Open Houses, Engagements, Weddings & Community Events are published **FREE!** Send your e-mail to [hopper@crosbyironton.net](mailto:hopper@crosbyironton.net)

CHURCH DIRECTORY

\* Indicates handicap accessible. NOTE: All times are Sunday morning (a.m.) unless indicated otherwise.

**ALLIANCE**  
Aitkin\* — New Life; Larry Burg & John Baker, pastors; Worship in the church building 10:15 am & 6:30 pm, check the website for the time of service [NewLifeAitkin.com](http://NewLifeAitkin.com); youth group for 7th-12th graders Wed 6:15 pm; 112 - 1st Ave. SW 218-927-2823.

Baxter\* — Pointway Alliance Church; Rev. Charles Bolstridge, 218-537-6505; 7756 Highland Scenic Road; Worship 10; [www.pointway.org](http://www.pointway.org)

Garrison\* — Pastor Michael H. Palkie; Worship 9; SS 10:30.

Onamia — Vineland Native American Chapel, Hwy. 169 north of casino; Worship 11; Pastor Boeringa 320-532-4449

**ASSEMBLY OF GOD**  
Aitkin — Interim Pastor Mark Boone; Sunday Morning Service 10.

Crosby — Pastor Dustin McCaleb; Worship 10:30

Crosslake — Crossroads Christian, Rev. Gary Espeseth; SS at 9:30, Worship at 10:45

Hill City — Interim Pastor John Koppel, Staff Pastor Lisa Jordan; Worship 10; [hillcityagchurch@gmail.com](mailto:hillcityagchurch@gmail.com); 218-697-2662

Palisade — Pastor Ed Sornberger; SS 9; Worship 10; Kids Church; Small groups during the week 218-845-2726

**BAPTIST**  
Aitkin — The Journey North, Pastor Lynfield Hines, 218-824-5617, Worship 10:30, [thejourneynorth.com](http://thejourneynorth.com)

Baxter - The Journey North, Pastor Lynfield Hines, 218-824-5617, Worship Saturday 5, Sunday 9 & 10:30, [thejourneynorth.com](http://thejourneynorth.com)

Brainerd\* - Faith Baptist Church, Pastor Jim Stephens, 218-829-3191; SS 9:00, Worship 10:30 and 6 p.m., Wed. Classes and Clubs 6:30 p.m.; [fbcbrainerd.com](http://fbcbrainerd.com)

Brainerd- The Church On The Wise Road, Pastor Todd Stumbo 218-829-4673, Worship 11:00, SS 9:45 [www.thechurchonthewiseroad.org](http://www.thechurchonthewiseroad.org)

Breezy Point — Eagles Nest, Pastor Zach Broom 218-562-5252, Worship 10:30, SS 9:30.

Crosby — Bible Baptist, Pastor G. Fisher; SS 9:45; Service 10:45 and 6 p.m., Bible Study and Our Kids for Christ Wed. 7 pm

Deerwood\* — Pastor W. Skog; SS 9:30; Worship 10:30 and 6 pm; Wed. Service, 6:30 pm.

Glory\* — Pastor Chris Meirose; 927-3678; SS 9:15; Worship 10:30 am.; Wed 6pm Glory Family night, KidMin grades kindergarten - 6, Mad4Christ grades 7-12. [aitkinchurch.com](http://aitkinchurch.com)

Hill City — Pastor Lonnie Lee; 218-697-2645; Adult SS 9; Worship 10 am; Bible Study, Fri., 7 pm.

Isle — Pastor Nick Skogen; 676-3171; SS 9:30; Service 10:30; Bible Study, Wed., 7 p.m.

Opstead — 676-8859; SS 9:30; Worship, 10:30; Bible Study Wed., 7 p.m.

**CATHOLIC**  
Aitkin\* — St. James, Fr. David Forsman, 218-927-6581; Mass Sat. 5 pm, Sun. 10. Confession Sat. 10-10:45 am and 4-4:45 pm.

Brainerd — St. Andrew's, Fr. Daniel Weiske, Sat.4:30; Sun. 10:00 and St. Mathias Sunday 8:00.

Brainerd — St. Francis , Fr. Anthony Wroblewski, Sat. 5:00; Sunday 7:30, 9:00, 11:15 and All Saints Saturday 4:00 and Sunday 10:30.

Cromwell/Wright — Immaculate Conception, Mass: Sat. 5 p.m.

Crosby\* — St. Joseph's, Fr. Anthony Craig, Mass: Mon. 8, Tues. Noon, Thurs. 6 pm, Fri. 8, Sun 8:30 & 10:30 ( 10:30 outdoors weather permitting)

Crosslake — Immaculate Heart, 218-692-3731; [www.ihmstemilies.org](http://www.ihmstemilies.org); Mass: Sat. 4 pm; Sun. 8:30; Confession Sat. 3 pm.

Emily — St. Emily, Mass: Mon. & Wed. 8; Sun. 10:30; Confession 1st Sat. 11 or by appt. 218-763-2101.

Garrison — Our Lady of Fatima, Fr. Anthony Craig, Mass Wed. 9 & Sat. 4 pm, Confession Sat. 3:30 - 3:50 pm

Grand Rapids — St. Joseph's, Fr. Jerry Weiss, Mass: Sat. 5 pm; Sun. 8 & 10:30. 218-326-2483

Hillman — Holy Family; Sun. 10 to Mass Sat. 6:30 pm (only through Labor Day) w/ confession before or by appt.

McGregor — Holy Family, Fr. David Forsman, 218-927-6581; Mass Sun. 8 am. Confession 7:15-7:45 am.

Vineland — St. Therese, Mass Sun. 11; Holy Days 8:30.

**CHURCH OF CHRIST**  
Baxter, Lakes Area — Nondenominational; 7001 Highland Scenic Road; Bible Study every Wed. 7 pm; Worship 10:30-11:30. 218-828-1362

Tamarack — Pastor Terry Banker, 608-475-1528, Worship 9:30; SS 10:45; Wed Youth 4 pm.

**CHURCH OF JESUS CHRIST OF LATTER-DAY SAINTS**  
Aitkin — Co. Rd. 12, Chapel Ph. 218-927-4454; Kevin Haffner 218-792-5684; Sacrament Mtg. 10

**COMMUNITY**  
Aitkin — Nondenominational; 927-2749; at 219-1st Ave. NE., Aitkin, Services Sun.10, 218-927-6959

Brainerd - Community of Hope Church of the Nazarene-Pastor Dave McGaffey Sunday worship at 10:45, SS 9:30 -16549 Johnson Rd -church phone 218-829-9005

Glen — Pastor R. F. Stauter, 218-838-1981; Worship 9 May-Oct.

Grand Rapids — Solid Rock Church of God, Pastor Robert Kimberling; 218-326-0711; Sun. BS 9:30, Worship 10:30; Wed. BS 6:30 pm

Jacobson — Jacobson Community Church, Pastor George Collins, 218-252-5938, Sun. SS (All ages) 9:30, Worship 10:30; Family Time 2nd & 4th Sundays; Wed. BS 7 pm

Kimberly — Nature Ave. Rev. Rick Perry; Worship 9; Adult Bible Study & Sunday School 10:30; 218-927-6256.

McGregor — Amazing Grace Christian Church; Worship 10; 99 South 1st Street (at the McGregor United Methodist church [shared] in downtown McGregor) Pastor Joel Seibel.

McGregor — Victory Mission, Pastor J. Gould, 218-768-2160; Sun. 10; Wed. Bible Study, 7:30 pm.

Merrifield — Community Church of the Nazarene, Pastor Ron Christenson; Service 11 & 6 pm. Wed. Prayer Meeting, 7 p.m.; 218-829-7536.

Merrifield — Ossipee Community, SS 10; Service 11; Wed. Bible Study Prayer, 7:00 p.m.

Nisswa — Christ Community Church, Pastor Richie Bean; Service 10; Fellowship 9:30-10

Outing\* - Narrows Community Church, Pastor Kenny Holm, 218-792-5530 Worship 9:30; 6297 Woods Bay NE, just north of Hwy. 6 bridge

Palisade/Waukenabo Twp. — Hilltop Chapel, Pastor David Hoffman; Service 10 a.m.; Adult and Children's SS 9 a.m.; between Esquagama & Round Lake. Handicap Accessible.

Tamarack — Church of Christ, 218-768-3898; Service 9:30; SS 10:45.

**EPISCOPAL**  
Aitkin — St. John's, Holy Communion or Morning Prayer 9

Brainerd\* — St. Paul's, Rev. Joyce A. Rush. In-person worship service at 10 am Sunday. Online at 5 pm Saturday. Call the church 219-829-3834 and leave a message with email to receive a Zoom invitation.

**EVANGELICAL FREE**  
Baxter — Lakewood EFC, Pastor Rick Foster; Worship at 8:30 & 10; Wed for all ages 6:30 pm

Crosslake — Pastor Mark Holmen; Call for Service Times at 218-692-4141, email [thelogchurch@crosslake.net](mailto:thelogchurch@crosslake.net)

Isle — Pastor Kerry Johnston; Worship 9; SS 10:15; Wed. Youth Group 6 pm; Adult Prayer 6:30 pm

Malmö — Pastor Glenn Browning; SS 9:30; Fellowship 10; Worship 10:15

Wright — Pastor Ken Mitchell, 218-426-5115; SS 9:30; Worship, 10:30; Thu., Bible Study, 7 pm.

**HEBREW/MESSIANIC**  
Glen — Beth Shalom Tabernacle of Truth, Rabi Frank Dell, for information 320-684-2804

**LUTHERAN**  
Aitkin — Bethlehem (ELCA), Rev. Rebecca Hinz; Worship 9:30; Holy Comm. 1st & 3rd each month.

Aitkin — First\* (ELCA) Pastor Reggie Denton, Pastor Jordan Gades; worship Sun. 9am In-person (Also available via livestream on YouTube — First Lutheran Church, Aitkin) This service will be broadcasted at 10am on KKIN 94.3 FM radio; take out community meal every Mon. & Thurs. 5pm and Tues. 12pm; food shelf 2nd & 4th Thurs. each month 9am- 4pm.

Aitkin — St. John's (Missouri Synod), Pastor D. Becker; Worship Sun. 9, SS 10

Baxter — Christ Lutheran Church and Preschool (WELS). Pastor Bill Werth. Sunday Worship 9. Sunday School/ Adult Bible Class 10:15. 13815 Cherrywood Dr. in Baxter. (Corner of Ingelwood and Cherrywood). 218-829-4105. [www.christbaxter.com](http://www.christbaxter.com).

Baxter — Prince of Peace (LCMS); Communion every Sunday 9, Fellowship 10:15, Adult Bible Class & Sunday School 10:30 am 218-829-7092 [www.princeofpeace-lutheran.church](http://www.princeofpeace-lutheran.church)

Beaver Township — Finnish EA, Hwy. 27, Worship 1st & 3rd Sun., 10:30.

Brainerd\* — Good Shepherd Free Lutheran Church (AFLC), Pastor David Franz, find service info at [www.goodshepherdfree-lutheran.church](http://www.goodshepherdfree-lutheran.church), 5878 Pine Beach Road, Brainerd, 218-824-3052

Brainerd - Laestadian Lutheran Church; 1501 So. 8th St. - Sunday Worship Services 10:30 am. ([www.illchurch.org](http://www.illchurch.org))

Brainerd — Trinity Lutheran Church (ELCA) 1420 South 6th Street Brainerd — Pastor Hans Anderson Worship times September through May are 8:15 a.m. & 10:30 a.m.; Summer Worship time is 9:00 a.m. Phone: 218-829-5147 Website: [www.trinitybrainerd.org](http://www.trinitybrainerd.org)

Brainerd — Truth Lutheran Church (LCMC, Pastor James Walth, Corner of 5th and Kingwood, Worship 9

Cedar Lake, Norwegian Lutheran — Third Sun 11, May - Oct. Cedarbrook — St. John's (ELCA); Worship 8:30; Holy Comm. 1st & 3rd Sun.

Crosby — Immanuel (LCMC, NALC) Rev. Paul Mattson; Sun. 9 & 10:30 worship; SS (Sept.-May) 10:40.

Crosby — Zion (LC-MS) Pastor Dean Stolz; Worship 8:30; SS 10; Bible Study Wed. 7 pm; handicap accessible. 218-546-6910

Crosslake — (ELCA) [www.crosslakelutheran.com](http://www.crosslakelutheran.com) Pastors Kristin Oltmann & Kurt Hagestuen 218-692-3682 Sundays May 23-Labor Day Indoor: 8:30 am at 35960 CR 66, Outdoor: 10 am 14019 Daggett Pine Rd

Crosslake —Mission of the Cross (LCMS), Pastor Leslie Uhrinak; Worship 9:30 with every Sunday Communion, Fellowship 10:30; Adult Bible Class 11, 218-692-4228, [www.missionofthecross.org](http://www.missionofthecross.org)

Deerwood — Salem (ELCA), Pastor Michael Briggs; Worship: 9; Sunday School 9:15.

Garrison — Light of the Cross (ELCA), Pastor Juli Sutton-Deem; Worship 9 SS 9; 320-692-4773 or 877-406-9101.

Garrison — Shepherd of the Lake (LCMS), Rev. Tom Petersen. Worship 10 with Communion Every Sunday. Adult Bible Study 8:30am, Sunday School Sept-May. 8:30am. Fellowship 11am. 320-692-4581. [www.shepherdofthelake.org](http://www.shepherdofthelake.org).

Giese — Immanuel, Rev. R. Langhorst & Rev. R. Lovaas; Worship 9; SS 10; Holy Communion 1st Sun. of month 8:45.

Hill City — Trinity, (Missouri Synod), Pastor M. Eckert; Worship 9; Bible Study 10:15.

Hillman — Immanuel, (ELCA) Sun. Worship 9:30, SS 10. Located on the corner of Hwy. 27 and Co. Rd. 47. (Handicap accessible)

Iron Hub — Immanuel (LC-MS), Pastor Dean Stolz; Worship 10:30 am 218-534-3069

Isle — Faith (ELCA), Interim Pastor Rev. Henry French; Worship 9:30; handicapped accessible.

Isle — Holden (ELCA), SS 9:30; Worship 10:30.

Isle — Trinity (Missouri Synod), Rev. Mark Maunula; Worship 8:30; Fellowship follows; SS 9:45; Adult Bible 10.

Jacobson — Carmel, Vicar Mark Wagner; SS 1st & 3rd Sun. 10, Service 11, fellowship follows.

Lake Shore — Living Savior Lutheran Church, 8327 Interlachen Rd.; Worship 9:00 Sunday mornings, followed by fellowship and Bible study. (Located on Co. Rd. #77 N)

Malmö — Bethesda (ELCA) Sun. Worship 9 (winter) 8:30 & 10 (summer); Fellowship after first service; Comm. 1st & 3rd Sun.

McGrath — Grace; Wed. potluck 5 pm, Bible study 6 p.m.; SS 10; Worship 11.

McGrath — Zion (ELCA), Pastor Elliott Malm; Worship 9; SS 9.

McGregor/Big Sandy Lake — Grace Lutheran Log Church (ELCA), Pastor Ericka Foss; Worship 9, Fellowship follows, SS 10.

McGregor — Our Savior's (Missouri Synod), Pastor Joshua C. Reinke; Worship 9; SS 10; Bible Study Tue. 9, Wed. 7 pm

Outing — Our Saviors ELCA; Pastor Peter Rosenkvist,

Worship 9.

Palisade\* — Bethel (ELCA), Rev. Wm. J. Sass; Worship 9:30.

Pequot Lakes\* - Our Savior's Lutheran Church (ELCA) Rev. Stephen Blenkush Worship 9:00 a.m., SS 9:15 a.m., Fellowship 10:15 a.m. Wed. Adult Bible Study 11:00 a.m.

Rosburg — Bethesda (ELCA); Comm. 1st & 3rd Sunday each month.

Tamarack (AFLC) — Pastor Ron Staudinger; 1<sup>st</sup>, 3<sup>rd</sup> and 4<sup>th</sup> Sundays 10 am; 41163 Kestrel Ave 3.3 mi. South of Hwy 210

Thor — Zion, Worship 11; 1st and 3rd Sun. April through December.

Wright — Bethlehem, Worship; SS 9.

Wright — St. John's (Missouri Synod), Pastor Joshua Reinke; Worship 10:30; Bible Study and Sunday School Sun. 9:30; Lent services Wed. 5:30 pm.

**NON-DENOMINATIONAL**  
Brainerd—Oak Street Chapel, Pastor Todd Wooden, Worship service is Sunday at 9:30 am, 523 SE 11th Street, Brainerd, 218-454-0984

**PENTECOSTAL**  
Emily — Cornerstone Church; Pastor Earl Ready; Worship 10, 41536 Birchwood Drive, Emily; 218-763-2939.

Ironton — Iron Range Christian Center; Pastor Dwight Semler; 218-546-6523; meeting at Irondale Town Hall\*, Co. Rd. 12, (Deerwood Shortcut); Worship 10 & Wed. 7 pm.

Tamarack — Warriors of the Rainbow Ministry, Pastors Ken and Ron Fairbanks, Sat. 11. 218-768-3585

**PRESBYTERIAN**  
Crosslake — Pastor Tony Oltmann, 218-692-4769; Worship 10; Fellowship 11:15; Bible study on Wednesdays at 10; 14444 Daggett Pine Road just passed the Community Center; [www.crosslakepres.org](http://www.crosslakepres.org)

McGrath — Calvary, Pastor - Todd Oltmann; Worship 9.

McGregor/Round Lake — Pastor Talley; Worship Sat. 5 pm.

Tamarack — First, Rev. J. Yingling; Worship 11.

**REFORMED**  
Crosby — Lifespring Church, a member of Fellowship of Independent Reformed Evangelicals, 9:30, 30 Hallett Ave NE 218-545-5433, [www.visitlifespring.com](http://www.visitlifespring.com)

**SEVENTH DAY ADVENTIST**  
Aitkin — Pastor Roger Hagen; Worship Sat. 9:30 a.m., Bible Study 10:30 a.m.; Prayer Mtg. Wed. 5:30 p.m.; [www.aitkinadventist.org](http://www.aitkinadventist.org); 423-805-0933

Brainerd — Pastor Roger Hagen; Worship Sat. 11:20 a.m., Bible Study 10:00 a.m.; Bible Study & Prayer Mtg. Wed. 6:30 p.m.; 2910 Oak Street, Brainerd, 218-829-1676

**UNITARIAN UNIVERSALIST**  
Pequot Lakes — 28877 State Hwy 371, Pequot Lakes 10:30 1st and 4th Sundays. 218-330-3476

**UNITED METHODIST**  
Aitkin\* — Pastor Dawn Houser; high school & adult SS 9; Worship 10:30; fellowship follows, Wednesdays at 5:30 pm Bible & Brew at Block North Brew Pub.

Crosby/Deerwood\* — Cascade, Reverend Dr. Genia Garrett; Worship 9:45; fellowship follows.

Cutler — Pine Lake Chapel, Worship 9, fellowship follows.

Cromwell — Pastor Tim Homstad; Worship 10; SS 9

Emily\* — Pastors Luke and Bethany Nelson; Worship 8:30; fellowship follows.

Fleming\* — (Northern Lights Parish) SS 9:15; Worship 10:30; fellowship follows.

Hill City — Pastor Roger Lynn; Worship 10

McGregor\* — (Northern Lights Parish) Worship 8:45; fellowship follows.

Onamia — Pastor Rick & Judy Wilder; Worship 11; fellowship 10; 2 blks north of Post Office; handicap ramp; 320-532-3150; office: 218-546-7656; cell: 218-360-1947

**WESLEYAN**  
Emily — Rev. Jason Gressman; Worship 9; Friendship Time 10; SS 10:30; Wed. Activities 6:30 p.m.; 218-763-HOPE.

To become a sponsor of the church directory contact Eric at 218-821-1393 or [hopper@crosbyironton.net](mailto:hopper@crosbyironton.net)

Call **Jim Blakesley** Appliance Service & Repair 218-927-2027 Toll free: 1-888-450-8845

[www.NewsHopper.net](http://www.NewsHopper.net)  
[hopper@crosbyironton.net](mailto:hopper@crosbyironton.net)



LEGAL NOTICE

Published in the NewsHopper Saturday, August 28

| CROW WING COUNTY<br>BRAINERD, MINNESOTA<br>SUMMARY FINANCIAL STATEMENT<br>FOR THE YEAR ENDED DECEMBER 31, 2020   |              |  |    |
|--|--------------|--|----|
| The purpose of this report is to provide a summary of financial information concerning Crow Wing County for interested citizens. Questions about this report should be directed to Deborah A. Erickson, Administrative Services Director, and 218-824-1047. A full and complete copy of the County's Comprehensive Annual Financial Report (Annual Financials) is available on the County's web site at www.crowwing.us. The County also publishes the Popular Annual Financial Report (PAFR), a copy of which is also located on the County's web site. |              |  |    |
| <b>MAJOR RECIPIENTS OF CROW WING COUNTY EXPENDITURES</b>   |              |  |    |
| THE FOLLOWING IS A LIST OF THE RECIPIENTS OF CROW WING COUNTY EXPENDITURES TOTALING \$2,000 OR MORE DURING 2020. THE LIST DOES NOT INCLUDE INDIVIDUALS WHO RECEIVED FEDERAL, STATE, OR COUNTY HUMAN SERVICES AID.  |              |  |    |
| <b>GENERAL FUND</b>  |              |  |    |
| 3E COMPANY ENVIRONMENTAL   |              |  |    |
| ECOLOGICAL & ENGINEERING   | 2,707.00     |  |    |
| 7SIGMA   | 12,000.00    |  |    |
| ACCRUENT LLC   | 20,027.18    |  |    |
| ACCURATE CONTROL INC   | 3,430.13     |  |    |
| ADORAMA, INC MOTO  | 4,943.88     |  |    |
| ADVANTAGE EMBLEM   | 3,773.16     |  |    |
| AK MATERIAL HANDLING SYSTEMS INC   | 4,204.54     |  |    |
| ALL FURNITURE INC  | 13,073.91    |  |    |
| ALL STATE COMMUNICATIONS INC   | 76,000.93    |  |    |
| AMANDA JOHNSTON  | 2,464.65     |  |    |
| AMARAMARK UNIFROM & CAREER APPAREL   | 3,924.57     |  |    |
| AMAZON.COM   | 6,414.70     |  |    |
| AMERICAN DOOR WORKS  | 5,460.60     |  |    |
| AMERIGAS PROPANE LP  | 9,630.29     |  |    |
| AMZN MKTP US   | 35,913.46    |  |    |
| ANDERSON BROTHERS  |              |  |    |
| CONSTRUCTION COMPANY   | 21,450.00    |  |    |
| ANDREW WIPPER  | 63,680.00    |  |    |
| ARCAS TECHNOLOGY INC   | 11,039.00    |  |    |
| ASSOCIATION OF MN COUNTIES   | 52,645.00    |  |    |
| AT&T MOBILITY  | 71,761.72    |  |    |
| AUTOMATION COMPONENTS IN   | 2,289.76     |  |    |
| AXON   | 3,671.50     |  |    |
| AXON ENTERPRISE INC  | 12,486.48    |  |    |
| BAKER TILLY MUNICIPAL ADVISORS   | 2,600.00     |  |    |
| BAYCOM INC   | 7,270.00     |  |    |
| BCA TRAINING EDUCATION   | 2,125.00     |  |    |
| BCA TRAINING EDUCATION   | 7,200.00     |  |    |
| BIENIEK'S ABATEMENT SERVICES   | 9,456.00     |  |    |
| BIG BLUE DIVE LIGHTS   | 2,383.54     |  |    |
| BLUE CROSS BLUE SHIELD OF MN   | 6,990,623.84 |  |    |
| BOB BARKER COMPANY   | 18,602.97    |  |    |
| BRAINERD & CROW WING PUBLIC TRANSIT  | 4,593.80     |  |    |
| BRAINERD HARDWOODS INC   | 2,900.00     |  |    |
| BRAINERD LAKES AREA  |              |  |    |
| DEVELOPMENT CORPORATION  | 84,750.00    |  |    |
| BRAINERD LAKES CHAMBER   | 6,527.88     |  |    |
| BRAINERD LAKES REGIONAL AIRPORT  | 157,000.00   |  |    |
| BRAINERD PUBLIC UTILITIES  | 607,355.14   |  |    |
| BRAINERD SPORTS & MARINE   | 22,948.55    |  |    |
| BUREAU OF CRIMINAL APPREHENSION  | 14,740.00    |  |    |
| CALLYO 2009 CORP   | 2,630.00     |  |    |
| CARAHSOFT TECHNOLOGY CORP  | 11,725.26    |  |    |
| CAREY GROUP PUBLISHING   | 14,625.00    |  |    |
| CASS COUNTY ATTORNEY'S OFFICE  | 2,917.00     |  |    |
| CDW GOVERNMENT   | 160,025.71   |  |    |
| CELLEBRITE INC   | 7,400.00     |  |    |
| CELLEBRITE INC.  | 3,850.00     |  |    |
| CENTERPOINT ENERGY   | 3,446.44     |  |    |
| CENTURYLINK  | 2,698.69     |  |    |
| CHAD PAULSON   | 2,241.75     |  |    |
| CHARM-TEX  | 11,059.06    |  |    |
| CITIZENOBSERVER  | 7,500.00     |  |    |
| CITY OF BAXTER   | 28,257.84    |  |    |
| CITY OF BRAINERD   | 6,713.54     |  |    |
| CITY OF BREEZY POINT   | 2,111.12     |  |    |
| CITY OF CROSSLAKE  | 34,686.57    |  |    |
| CITY OF NISSWA   | 2,392.53     |  |    |
| CIVICPLUS  | 15,570.49    |  |    |
| CLIFTONLARSONALLEN   | 61,203.78    |  |    |
| CMRS - POC   | 50,000.00    |  |    |
| CODEX CORPORATION  | 16,952.08    |  |    |
| COLLINS BROTHERS   |              |  |    |
| TOWING OF ST CLOUD INC   | 2,371.50     |  |    |
| COMMAND CENTRAL  | 82,393.10    |  |    |
| CONRAD C KRAGNESS II   | 60,000.00    |  |    |
| CONSOLIDATED TELECOMMUNICATIONS  | 23,771.75    |  |    |
| CONVENE, LLC   | 2,622.00     |  |    |
| CORRECTIONAL DENTISTRY LLC   | 4,903.00     |  |    |
| COVERTRACK GROUP INC   | 4,970.00     |  |    |
| CROW WING COUNTY CIVIL AIR PATROL  | 2,000.00     |  |    |
| CROW WING COUNTY COURT ADMIN   | 44,119.06    |  |    |
| CROW WING COUNTY FAIR ASSOC  | 7,500.00     |  |    |
| CROW WING COUNTY HISTORICAL SOCIETY  | 31,500.00    |  |    |
| CROW WING POWER  | 2,781.53     |  |    |
| CROW WING SOIL & WATER   |              |  |    |
| CONSERVATION DISTRICT  | 5,857.23     |  |    |
| CTC  | 2,005.85     |  |    |
| CWC LANDFILL   | 4,668.50     |  |    |
| DAHLEN DWYER FOLEY AND TINKER  | 3,500.00     |  |    |
| DALCO  | 35,819.66    |  |    |
| DATABANK IMX LLC   | 11,317.61    |  |    |
| DELL MARKETING LP  | 209,445.41   |  |    |
| DELTA DENTAL   | 425,294.08   |  |    |
| DH WIRELESS SOLUTIONS  | 7,965.36     |  |    |
| DIAMOND INDUSTRIAL   |              |  |    |
| CLEANING EQUIPMENT   | 24,618.65    |  |    |
| DIGITAL HORIZONS   | 38,182.13    |  |    |
| DIGITAL INK DESIGN & GRAPHICS INC  | 2,447.00     |  |    |
| DOMINION VOTING SYSTEMS INC  | 15,521.00    |  |    |
| DON HALES  | 3,844.28     |  |    |
| DONDELINGER CHEVROLET  |              |  |    |
| CADILLAC TOYOTA  | 6,083.51     |  |    |
| DS SOLUTIONS INC   | 4,737.90     |  |    |
| ECOLAB   | 3,713.56     |  |    |
| ELIOR INC  | 324,849.52   |  |    |
| EMILY LAKES AND RIVERS ASSOCIATION   | 3,000.00     |  |    |
| EMPLOYMENT SCREENING RESOURCES   | 10,664.85    |  |    |
| ENVIROTECH BUILDING SERVICES   | 254,239.32   |  |    |
| ERIK A CHRISTENSEN   | 2,500.00     |  |    |
| ERKENS WATER SOFTENER SERVICE INC  | 4,124.05     |  |    |
| ESRI   | 55,000.00    |  |    |
| ESSENTIA HEALTH MEDICAL CTR  | 70,548.91    |  |    |
| ESSENTIA HEALTH PATIENT ACCT   | 10,000.00    |  |    |
| ETTERMAN SALES LLC   | 2,203.41     |  |    |
| EVERBRIDGE   | 17,345.39    |  |    |
| FAMILY ADVOCACY CENTER   | 14,007.93    |  |    |
| FASTENAL COMPANY   | 11,696.62    |  |    |
| FEDEX  | 3,371.07     |  |    |
| FIRST IMPRESSION PRINTING  | 11,192.25    |  |    |
| FORUM COMMUNICATIONS COMPANY   | 88,809.94    |  |    |
| FRONTIER PRECISION INC   | 6,108.00     |  |    |
| FURNITURE LEISURE  | 3,243.95     |  |    |
| FURTHER  | 16,151.25    |  |    |
| GALLS  | 2,670.57     |  |    |
| GALLS LLC  | 19,982.50    |  |    |
| GAMMELLO - PEARSON PLLC  | 77,392.61    |  |    |
| GARAGE DOOR STORE  | 2,070.00     |  |    |
| GEOGRAPH TECHNOLOGIES LLC  | 2,100.00     |  |    |
| GOLDEN ENGINEERING INC   | 4,755.00     |  |    |
| GOODIN COMPANY   | 13,273.51    |  |    |
| GOVERNMENT MANAGEMENT GROUP INC  | 7,250.00     |  |    |
| GOVERNMENTJOBS.COM INC   | 20,302.29    |  |    |
| GRAINGER   | 3,218.50     |  |    |
| GRAINGER   | 11,024.77    |  |    |
| GRANICUS   | 24,607.80    |  |    |
| GRANITE ELECTRONICS INC  | 9,868.74     |  |    |
| GREG KOSSAN  | 102,050.00   |  |    |
| GUARDIAN PEST SOLUTIONS INC  | 2,892.50     |  |    |
| GULL LAKE GLASS INC  | 59,441.28    |  |    |
| HANNAHER'S   | 38,145.69    |  |    |
| HARRIS MECHANICAL SERVICES LLC   | 18,680.87    |  |    |
| HAWKANALYTICS  | 2,495.00     |  |    |
| HILDI INC  | 13,850.00    |  |    |
| HILLYARD HUTCHINSON  | 76,960.94    |  |    |
| HOLDEN ELECTRIC COMPANY INC  | 25,551.83    |  |    |
| HOLIDAY INN AND SUITES LA  | 2,485.40     |  |    |
| HOLMVIEW EXCAVATING  | 15,042.90    |  |    |
| HOMETOWN PLANNING LLC  | 8,000.00     |  |    |
| HUBBARD BROADCASTING, INC.   | 8,454.00     |  |    |
| HYTEC CONSTRUCTION OF BRAINERD INC   | 67,285.28    |  |    |
| IDEAL BLASTING SUPPLY  | 3,531.21     |  |    |
| IDEAL PRODUCTS INC   | 3,900.00     |  |    |
| IN *ALTERRA MEDICAL, LLC   | 10,060.00    |  |    |
| INDEPENDENT EMERGENCY SERVICES   | 22,530.34    |  |    |
| INFORMATION SYSTEMS CORPORATION  | 23,239.62    |  |    |
| INITIATIVE FOUNDATION  | 14,850.00    |  |    |
| INNOVATIVE OFFICE SOLUTIONS LLC  | 30,373.96    |  |    |
| ISPACE FURNITURE INC   | 27,243.08    |  |    |
| I STOCKPHOTO   | 2,388.00     |  |    |
| IUOE LOCAL   | 49           |  |    |
| 117,470.00   |              |  |    |
| J & N TACTICAL   | 5,325.00     |  |    |
| JARED J MAGSTADT   | 6,352.24     |  |    |
| JOHN HENRY FOSTER MINNESOTA INC  | 3,117.41     |  |    |
| JOHNSON CONTROLS   | 10,216.63    |  |    |
| KELLY MILLS  | 30,250.00    |  |    |
| KEYSTONE COMPENSATION GROUP LLC  | 9,925.00     |  |    |
| KINECT ENERGY INC  | 144,973.45   |  |    |
| KITCHIGAMI REGIONAL LIBRARY  | 509,127.00   |  |    |
| KNOW INK   | 25,050.00    |  |    |
| KNOWBE4 INC  | 5,232.66     |  |    |
| KURITA AMERICA INC   | 15,376.71    |  |    |
| LAKES PRINTING   | 4,588.20     |  |    |
| LAMAR TEXAS LIMITED PARTNERSHIP  | 5,910.00     |  |    |
| LAMBERT WATER WELLS INC  | 10,650.00    |  |    |
| LARSON ELEVATOR COMPANY  | 3,001.27     |  |    |
| LAW ENFORCEMENT  |              |  |    |
| TECHNOLOGY GROUP LLC   | 138,528.24   |  |    |
| LEDGEVIEW PARTNERS, LLC  | 32,642.32    |  |    |
| MACO   | 2,500.00     |  |    |
| MACTEK SYSTEMS INC   | 26,187.00    |  |    |
| MADDEN GALANTER HANSEN LLP   | 14,242.61    |  |    |
| MAGNET FORENSICS USA INC   | 2,000.00     |  |    |
| MARCO TECHNOLOGIES LLC   | 90,973.32    |  |    |
| MARIANNE AUGÉ  | 2,233.68     |  |    |
| MARTIN-MCALLISTER CONSULTING   |              |  |    |
| PSYCHOLOGISTS INC  | 14,850.00    |  |    |
| MARY KOEP  | 3,514.20     |  |    |
| MATTHEW BENDER & CO INC  | 4,501.02     |  |    |
| MB MCGEE PA  | 2,000.00     |  |    |
| MCI CARPET ONE   | 4,226.43     |  |    |
| MCKESSON MEDICAL-SURGICAL INC  | 9,519.37     |  |    |
| MCLEAN & COMPANY   | 13,977.00    |  |    |
| MCMAHON COUNSELING &   |              |  |    |
| CONSULTATION SVCS  | 2,625.00     |  |    |
| MEDICARE BLUE RX   | 177,340.98   |  |    |
| MELANIE DOTTY  | 69,186.36    |  |    |
| MENARDS BAXTER MN  | 7,134.20     |  |    |
| MEND CORRECTIONAL CARE LLC   | 670,968.65   |  |    |
| MESSICK LAW PLLC   | 2,500.00     |  |    |
| METROPOLITAN MECHANICAL  |              |  |    |
| CONTRACTORS INC  | 3,238.66     |  |    |
| MICRO-TEL INC  | 2,169.00     |  |    |
| MID-MINNESOTA DRUG TESTING   | 78,355.00    |  |    |
| MID-STATES ORGANIZED   |              |  |    |
| CRIME INFORMATION CENTER   | 10,800.00    |  |    |
| MIDWEST MACHINERY COMPANY  | 4,338.89     |  |    |
| MIDWEST MECHANICAL SUPPLY  | 2,779.14     |  |    |
| MILLS MOTOR INC  | 8,842.80     |  |    |
| MINNESOTA ASSOC OF ASSES   | 4,130.00     |  |    |
| MINNESOTA SHERIFFS ASSOC   | 2,995.00     |  |    |
| MINNESOTA T'S INC  | 2,959.66     |  |    |
| MISSISSIPPI HEADWATERS BOARD   | 10,100.00    |  |    |
| MN ASSOCIATION OF COUNTY OFFICERS  | 2,130.00     |  |    |
| MN CONTINUING LEGAL EDUCATION  | 3,568.90     |  |    |
| MN COUNTIES COMPUTER COOPERATIVE   | 13,939.13    |  |    |
| MN COUNTIES  |              |  |    |
| INTERGOVERNMENTAL TRUST  | 508,461.52   |  |    |
| MN COUNTY ATTORNEY'S ASSOCIATION   | 7,251.80     |  |    |
| MN DEPARTMENT OF REVENUE   | 4,926,117.54 |  |    |
| MN DEPT OF COMMERCE  | 2,758.99     |  |    |
| MN DEPT OF FINANCE   | 344,593.00   |  |    |
| MN DEPT OF HEALTH  | 27,110.00    |  |    |
| MN DEPT OF HUMAN SERVICES  | 3,967.72     |  |    |
| MN DEPT OF TRANSPORTATION  | 14,567.21    |  |    |
| MN INTER-COUNTY ASSOCIATION  | 36,238.00    |  |    |
| MN SHERIFF'S ASSOCIATION   | 16,620.43    |  |    |
| MN TEEN CHALLENGE  | 2,500.00     |  |    |
| MOBILE HEALTH SERVICES LLC   | 4,771.00     |  |    |
| MORA PSYCHOLOGICAL SERVICES PLLC   | 4,850.00     |  |    |
| MOTOROLA SOLUTIONS INC   | 68,615.83    |  |    |
| MOUNTED INTERNATIONAL  | 4,164.00     |  |    |
| M-R SIGN CO INC  | 8,065.20     |  |    |
| MULCAHY  | 4,202.55     |  |    |
| NORTH COUNTRY  |              |  |    |
| JANITORIAL & SUPPLY INC  | 67,999.50    |  |    |
| NORTH MEMORIAL AMBULANCE SERVICE   | 4,798.75     |  |    |
| NORTHERN BUSINESS PRODUCTS   | 23,493.55    |  |    |
| NORTHLAND LINING INC   | 17,600.00    |  |    |
| NORTHSTAR COMPUTER FORMS INC   | 2,603.25     |  |    |
| ONBERG FENCE CO  | 3,969.00     |  |    |
| OCELCO INC   | 54,720.00    |  |    |
| OFFICE OF MN IT SERVICES   | 51,129.60    |  |    |
| OPERATING ENGINEERS H&W FUND   | 13,920.00    |  |    |
| OPTIV SECURITY INC   | 44,894.06    |  |    |
| OPTUMHEALTH  | 11,449.40    |  |    |
| PAPER STORM  | 9,340.00     |  |    |
| PARAGON DEVELOPMENT SYSTEMS INC  | 264,951.80   |  |    |
| PENMAC STAFFING SERVICES, INC  | 32,112.87    |  |    |
| PETERSEN MANUFACTURING COMPANY   | 4,328.00     |  |    |
| PETE'S CABIN CARE INC  | 6,123.91     |  |    |
| PHOENIX SUPPLY   | 6,501.54     |  |    |
| PICTOMETRY INTERNATIONAL CORP  | 44,588.67    |  |    |
| PIKE PLUMBING & HEATING  | 11,424.42    |  |    |
| PRECISE MRM  | 5,909.82     |  |    |
| PRIMARY PRODUCTS COMPANY   | 9,441.00     |  |    |
| PROFESSIONAL PORTABLE X-RAY INC  | 2,780.00     |  |    |
| PROGRESS SOFTWARE CORPORATION  | 4,405.00     |  |    |
| PROMANTEK INC  | 15,872.00    |  |    |
| PROWEST & ASSOCIATES INC   | 10,363.94    |  |    |
| PRUDENTIAL INSURANCE   |              |  |    |
| CO OF AMERICA  | 192,747.56   |  |    |
| QUADIENT FINANCE USA INC   | 11,998.91    |  |    |
| QUADIENT LEASING USA INC   | 6,661.59     |  |    |
| QUINLIVAN & HUGHES PA  | 31,670.40    |  |    |
| R.M. COTTON COMPANY  | 3,292.00     |  |    |
| RAMSEY COUNTY-MEDICAL EXAMINER   | 92,329.84    |  |    |
| RANGE PRINTING   | 8,111.52     |  |    |
| RASINSKI DOOR SERVICE  | 7,222.19     |  |    |
| RAYMOND HORTON   | 52,000.00    |  |    |
| RCP SHELTERS INC   | 19,965.00    |  |    |
| REAL SOLAR SBC   | 8,433.81     |  |    |
| REBECCA ANN BEST   | 4,043.19     |  |    |
| REGENTS OF THE UNIVERSITY OF MN  | 101,035.14   |  |    |
| RELANCE TELEPHONE INC  | 31,765.00    |  |    |
| RHI SUPPLY - FARGO   | 3,288.89     |  |    |
| RICHARD SKOGEN   | 4,618.32     |  |    |
| RINKE NOONAN   | 2,400.00     |  |    |
| RJ MECHANICAL  | 29,865.16    |  |    |
| RMB ENVIRONMENTAL LABORATORIES INC   | 4,317.00     |  |    |
| ROCK YLINIEMI  | 2,714.70     |  |    |
| ROYAL TIRE INC   | 12,326.53    |  |    |
| RS EDEN  | 7,319.85     |  |    |
| RTVISION INC   | 12,711.76    |  |    |
| RUPP ANDERSON SQUIRES &  |              |  |    |
| WALDSPURGER PA   | 34,405.42    |  |    |
| SAFARILAND TRAINING GR   | 2,685.00     |  |    |
| SCAN AIR FILTER, INC   | 2,257.70     |  |    |
| SEACHANGE PRINTING AND   |              |  |    |
| MARKETING SERVICES LLC   | 171,877.77   |  |    |
| SECURE IT TACTICAL   | 3,079.92     |  |    |
| SHANNON'S AUTO BODY INC  | 12,981.52    |  |    |
| SHARPLGIXX LLC   | 49,950.00    |  |    |
| SHELLY BIRCHEM   | 2,174.55     |  |    |
| SHI INTERNATIONAL CORP   | 210,147.37   |  |    |
| SICORA CONSULTING INC  | 28,493.00    |  |    |
| SIGN SPOT  | 32,909.38    |  |    |
| SILVER STAR INDUSTRIES INC   | 7,213.55     |  |    |
| SMITH-SHARPE FIRE BRICK SUPPLY   | 2,851.00     |  |    |
| SPIDER STRATEGIES INC  | 8,882.50     |  |    |
| SQUAD PRO LLC  | 10,737.72    |  |    |
| STANLEY CONVERGENT   |              |  |    |
| SECURITY SOLUTIONS   | 17,128.68    |  |    |
| STATE OF MINNESOTA   | 2,006.10     |  |    |
| STEIN'S INC  | 23,097.20    |  |    |
| STEVENSEN TRANSPORT LLC  | 49,600.00    |  |    |
| STONEMARK LAND SURVEYING INC   | 42,840.00    |  |    |
| STRATELIGENT   | 39,281.25    |  |    |
| STREICHERS INC   | 63,273.34    |  |    |
| SUMMIT COMPANIES   | 15,833.70    |  |    |
| SUPERIOR RECREATIONAL PRODUCTS   | 6,371.63     |  |    |
| SUPREME CT LAWYER REGISTR  | 2,638.00     |  |    |
| SUSAN MASKE  | 4,519.55     |  |    |
| SYSTEM INNOVATORS  | 67,265.47    |  |    |
| TACTICAL SOLUTIONS   | 2,292.00     |  |    |
| TAMMY WISNIEWSKI   | 2,026.88     |  |    |
| TCBX   | 16,037.75    |  |    |
| TEAM WENDY   | 2,604.50     |  |    |
| TEAM WENDY LLC   | 2,604.50     |  |    |
| TEAMVIEWER.COM   | 4,080.26     |  |    |
| TELEROB USA INC  | 80,282.17    |  |    |
| THE HEARTH ROOM  | 9,372.00     |  |    |
| THE HOME DEPOT #2818   | 5,117.62     |  |    |
| THE HOME DEPOT 2818  | 4,356.77     |  |    |
| THE MASTERS TOUCH LLC  | 54,634.72    |  |    |
| THE SPYGLASS GROUP,LLC   | 3,783.60     |  |    |
| THE VERNON COMPANY   | 9,950.00     |  |    |
| THOMAS ESPERSEN  | 2,100.00     |  |    |
| THOMSON REUTERS  | 81,018.18    |  |    |
| THRIFTY WHITE PHARMACY   | 25,014.79    |  |    |
| TIBEX TECHNOLOGY INC   | 33,239.00    |  |    |
| TIERNEY  | 42,518.60    |  |    |
| TOWN OF BAY LAKE   | 2,043.38     |  |    |
| TOWN OF DEERWOOD   | 2,105.74     |  |    |
| TOWN OF IDEAL  | 3,704.74     |  |    |
| TWIN CITY HARDWARE INC   | 20,511.56    |  | </ |



LEGAL NOTICE

Published in the NewsHopper Saturday, August 28

|                                     |            |                                   |            |                                    |              |                                  |              |
|-------------------------------------|------------|-----------------------------------|------------|------------------------------------|--------------|----------------------------------|--------------|
| NORTHWOODS                          | 111,625.00 | VERICOR                           | 6,326.86   | FORUM COMMUNICATIONS COMPANY       | 3,887.02     | ALL STATE COMMUNICATIONS INC     | 44,257.07    |
| NORTHWOODS LANDSCAPING              | 26,523.41  | VERIZON WIRELESS                  | 51,005.66  | FUTURE FOREST INC                  | 12,830.00    | ANDERSON BROTHERS                |              |
| NYSTROM AND ASSOCIATES LTD          | 171,079.58 | VILLAGE RANCH INC                 | 287,677.11 | HOLMVIG EXCAVATING                 | 160,316.10   | CONSTRUCTION COMPANY             | 39,381.00    |
| OAKRIDGE SUPPORT SERVICES           | 3,000.00   | VITALS AWARE SERVICES INC         | 23,580.00  | HUBBARD BROADCASTING, INC.         | 2,268.00     | AUTOCLEAR                        | 21,386.00    |
| OFFICE SHOP                         | 6,400.68   | VOLUNTEERS OF AMERICA             | 22,238.61  | HUFFCUTT CONCRETE INC              | 73,910.00    | BAYCOM INC                       | 56,822.00    |
| PAMELA OR DARRIN POLANSKY           | 11,623.81  | WADENA COUNTY SOCIAL SERVICES     | 65,004.84  | HYTEC CONSTRUCTION OF BRAINERD INC | 32,535.00    | BERTS TRUCK EQUIPMENT INC        | 26,450.00    |
| PARAGON DEVELOPMENT SYSTEMS INC     | 2,869.17   | WELLNESS IN THE WOODS INC         | 24,150.31  | JAMES SEVERIN ADRIAN               | 5,180.00     | BRAINERD LICENSE OFFICE          | 6,825.88     |
| PARAGON RESIDENTIAL                 | 76,800.00  | WELLS FARGO BUSINESS CREDIT       | 3,370.18   | KEVIN AND WANDA HENNEN             | 6,244.73     | BROCK WHITE CONSTRUCTION LLC     | 73,920.58    |
| PENMAC STAFFING SERVICES, INC       | 120,143.36 | WEST CENTRAL REGIONAL             |            | LEDGEVIEW PARTNERS, LLC            | 60,764.56    | BURNSVILLE AUTOMOTIVE INC        | 35,471.00    |
| PERSONABLE INC                      | 2,940.00   | JUVENILE CENTER                   | 50,836.50  | M&B SEALCOATING INC                | 4,560.00     | CDW GOVERNMENT                   | 3,795.45     |
| PETRANGEIO, GEORGE MS               | 2,751.25   | WHITE OAK ESTATES OF BAXTER LP    | 10,924.00  | MARCO TECHNOLOGIES LLC             | 6,171.47     | COMMERCIAL KITCHEN SERVICES      | 2,634.86     |
| PHILIP B TANGE, MSW                 | 4,750.00   | WINGATE WILDERNESS THERAPY        | 43,400.00  | MEDICARE BLUE RX                   | 9,370.00     | CREDITRON                        | 3,400.00     |
| PINE MANORS INC                     | 71,410.04  | WOODLAND HILLS                    | 21,757.95  | MN COUNTIES                        |              | CULINEX                          | 19,938.21    |
| PINEHAVEN YOUTH AND                 |            | WOODRIDGE OF MISSOURI, LLC        | 69,420.00  | INTERGOVERNMENTAL TRUST            | 30,707.09    | CUSTOM CAGE INC                  | 11,590.00    |
| FAMILY SERVICES                     | 128,395.68 | SOLID WASTE (NON-LANDFILL) FUND   |            | MN DEPARTMENT OF REVENUE           | 2,425.00     | DATABANK IMX LLC                 | 6,852.08     |
| PLEASANT RIDGE APARTMENTS           | 3,716.00   | BLUE CROSS BLUE SHIELD OF MN      | 2,729.80   | MN DEPT OF FINANCE                 | 80,478.41    | DELL MARKETING LP                | 44,426.67    |
| PORT GROUP HOMES                    | 142,192.46 | BURNS & MCDONNELL                 | 105,853.47 | NORTHWOODS FORESTRY INC.           | 14,535.00    | DH WIRELESS SOLUTIONS            | 2,831.73     |
| PORT OF CROW WING COUNTY, INC.      | 22,503.74  | CITY OF CROSBY                    | 5,184.30   | OBERG FENCE CO                     | 8,730.00     | DIAMOND INDUSTRIAL               |              |
| PRAIRIE LAKES YOUTH PROGRAMS        | 48,972.00  | CROSSLAKE ROLL-OFF &              |            | OUTBACK AND YONDER FORESTRY        | 4,785.00     | CLEANING EQUIPMENT               | 7,386.92     |
| PRAIRIE ST JOHN'S HOSPITAL          | 56,449.83  | RECYCLING SERVICES, INC           | 32,100.00  | PAMELA LAMBRECHT                   | 2,530.00     | DODGE OF BURNSVILLE INC          | 160,291.00   |
| PRESBYTERIAN FAMILY FOUNDATION      | 14,057.19  | DELL MARKETING LP                 | 2,822.49   | PETE'S CABIN CARE INC              | 44,180.46    | DVS RENEWAL                      | 4,902.82     |
| PRODUCTIVE ALTERNATIVES INC         | 31,057.50  | DYNAMIC LIFECYCLE INNOVATIONS INC | 57,409.04  | PRICEWATERHOUSECOOPERS LLP         | 3,275.00     | ELITE FENCE AND DECK             | 4,450.00     |
| QUADIENT LEASING USA INC            | 7,808.64   | FIRST IMPRESSION PRINTING         | 12,058.45  | PRT USA INC                        | 35,316.00    | GARAGE DOOR STORE                | 6,480.00     |
| QUALITY INN AND SUITES              | 87,730.74  | FIRST STATE TIRE RECYCLING        | 23,933.30  | RCP SHELTERS INC                   | 19,965.00    | GARY'S PAINTING                  | 2,761.56     |
| RANDAL SCHULTE                      | 3,136.20   | FORUM COMMUNICATIONS COMPANY      | 2,790.50   | REAL SOLAR SBC                     | 25,305.16    | GRAINGER                         | 2,355.00     |
| RANGE MENTAL HEALTH CENTER          | 2,736.00   | GOODWILL INDUSTRIES               | 45,781.00  | REGENTS OF THE UNIVERSITY OF MN    | 2,674.00     | GULL LAKE GLASS INC              | 34,068.70    |
| RECON CONSTRUCTION LLC              | 4,850.00   | MARCO TECHNOLOGIES LLC            | 2,019.78   | SAPPI                              | 2,371.36     | HANNAHER'S                       | 17,112.86    |
| RED RIVER VALLEY                    |            | MARVIN STROSCHIEIN                | 47,237.40  | STRATELIGENT                       | 9,891.25     | HARRIS MECHANICAL SERVICES LLC   | 313,691.19   |
| JUVENILE CENTER - RRVJC             | 24,320.58  | MEDICARE BLUE RX                  | 2,062.60   | SUPERIOR RECREATIONAL PRODUCTS     | 7,367.22     | HIRSHFIELDS - 9 - BAXTER         | 2,003.45     |
| RESOURCE TRAINING & SOLUTIONS       | 2,945.18   | MN COUNTIES                       |            | WIDSETH SMITH NOLTING & ASSOC INC  | 24,947.48    | HOLDEN ELECTRIC COMPANY INC      | 135,615.53   |
| RON SHAW                            | 3,245.81   | INTERGOVERNMENTAL TRUST           | 7,826.35   | SMALL CITIES DEVELOPMENT PROGRAM   |              | HYTEC CONSTRUCTION               |              |
| RONALD MCDONALD HOUSE CHARITIES     | 2,350.00   | MORRISON COUNTY SOLID WASTE       | 4,825.62   | ATLAS ABSTRACT & TITLE             | 6,931.85     | OF BRAINERD INC                  | 1,418,104.60 |
| ROSS RESOURCES LTD                  | 2,118.75   | NEWSHOPPER                        | 5,080.00   | CROW WING COUNTY HRA               | 32,789.97    | INNOVATIVE OFFICE SOLUTIONS LLC  | 2,142.00     |
| RSI GROUP HOME                      | 8,417.59   | PRATT'S AFFORDABLE EXCAVATING INC | 211,884.39 | <b>UNORGANIZED TERRITORIES</b>     |              | JOHNSON CONTROLS                 | 70,745.00    |
| RURAL MINNESOTA CEP INC             | 577,028.71 | SHAWN FLETCHER TRUCKING INC       | 8,323.90   | ANDERSON BROTHERS                  |              | LEDGEVIEW PARTNERS, LLC          | 16,780.10    |
| SANFORD MEDICAL CENTER TRF          | 29,486.67  | TCBX                              | 12,100.00  | CONSTRUCTION COMPANY               | 135,646.06   | LEICA GEOSYSTEMS INC             | 59,650.27    |
| SARA SHERMAN                        | 4,360.00   | TODD COUNTY SOLID WASTE           | 6,138.71   | ASTECH CORP                        | 177,551.47   | LINESCAPE LINESTRIPING LLC       | 9,803.78     |
| SECOND CHANCES IN                   |            | TOWN OF IDEAL                     | 2,000.00   | CITY OF AITKIN                     | 2,831.97     | MCI CARPET ONE                   | 15,000.00    |
| SOUTHERN UTAH (SCINSU)              | 20,000.00  | VEOLIA ES TECHNICAL SOLUTIONS     | 40,851.07  | CITY OF BRAINERD                   | 192,291.00   | METROPOLITAN MECHANICAL          |              |
| SICORA CONSULTING INC               | 6,825.00   | WASTE MANAGEMENT OF WI-MN         | 88,260.63  | ENVIROTECH SERVICES INC            | 14,052.06    | CONTRACTORS INC                  | 2,086.56     |
| SILENT SHOUT PRODUCTIONS            | 3,500.00   | WASTE PARTNERS INC                | 126,262.18 | EVERGREEN CEMETARY ASSOCIATION     | 20,000.00    | MOBILE MARINE AND CAR AUDIO, LLC | 2,250.00     |
| SKIP BRENNY                         | 2,431.24   | PUBLIC LAND MANAGEMENT FUND       |            | HEARTLAND ANIMAL RESCUE TEAM       | 8,318.56     | MULCAHY                          | 8,412.81     |
| SKIPPED PARTS LLC                   | 2,100.00   | ANDERSON BROTHERS                 |            | HOLMVIG EXCAVATING                 | 310,382.25   | MUNIREVS INC                     | 11,365.87    |
| SMC DIRECT LLC                      | 2,216.25   | CONSTRUCTION COMPANY              | 18,567.27  | MIDWEST ASPHALT                    | 29,953.00    | NORTHERN BUSINESS PRODUCTS       | 16,489.94    |
| SOURCEWELL                          | 189,213.74 | BLUE CROSS BLUE SHIELD OF MN      | 56,138.52  | TOWN OF LAKE EDWARD                | 2,504.20     | NORTHWOODS FORD                  | 164,826.70   |
| ST CLOUD HOSPITAL                   | 8,579.64   | BRAINERD NORDIC SKI CLUB          | 5,850.00   | TRAFFIC MARKING SERVICE            | 8,657.30     | NUSS TRUCK & EQUIPMENT           | 128,828.00   |
| STARLIFT LLC                        | 3,650.00   | CHAMPION FORESTRY SERVICES LLC    | 4,840.00   | DEBT SERVICE FUND                  |              | OPTIV SECURITY INC               | 5,007.72     |
| STRATELIGENT                        | 33,760.00  | CONNECT INTERIORS LLC             | 3,964.40   | US BANK                            | 5,017,742.50 | PARAGON DEVELOPMENT SYSTEMS INC  | 72,202.34    |
| TECH KNOW SYSTEMS INC               | 3,696.00   | DECHANTAL EXCAVATION LLC          | 147,434.43 | CAPITAL PROJECTS FUND              |              | RHI SUPPLY - FARGO               | 2,158.80     |
| TEE HIVE LLC                        | 6,850.00   | DELL MARKETING LP                 | 16,759.75  | ACCURATE CONTROL INC               | 480,730.28   | RJ MECHANICAL                    | 86,197.84    |
| THE BBYC SHOP                       | 4,314.30   | DIAMOND INDUSTRIAL                |            | ACTION GRAPHICS INC                | 3,970.60     | RR BRINK LOCKING SYSTEMS INC     | 4,670.00     |
| THE HILLS YOUTH AND FAMILY SERVICES | 24,745.54  | CLEANING EQUIPMENT                | 6,995.00   | ALL FURNITURE INC                  | 2,512.37     | SCR INC                          | 4,241.00     |
| TODD COUNTY SOCIAL SERVICES         | 56,576.27  | DIGITAL HORIZONS                  | 3,883.50   |                                    |              |                                  |              |
| TRISH DOLLINGER                     | 5,027.17   | ELITE TITLE                       | 44,200.00  |                                    |              |                                  |              |
| US YOUTH TRANSPORT AGENCY LLC       | 3,063.40   | ERIKS LAWN SERVICE INC            | 6,475.00   |                                    |              |                                  |              |

| CROW WING COUNTY<br>BRAINERD, MINNESOTA<br>STATEMENT OF CHANGES IN FIDUCIARY NET POSITION<br>FIDUCIARY FUNDS<br>DECEMBER 31, 2020 |                     |                                |
|---|---------------------|--------------------------------|
|   | Custodial<br>Funds  | Private-Purpose<br>Trust Funds |
| <b>ADDITIONS</b>  |                     |                                |
| Contributions   |                     |                                |
| Individuals   | \$ 482,215          | \$ 197,452                     |
| Gifts and contributions   | 897,397             | -                              |
| Property tax collections for other governments  | 87,474,783          | -                              |
| License and fees collected for state  | 18,334,645          | -                              |
| Miscellaneous   | 3,740,844           | 2,293                          |
| <b>Total Additions</b>  | 110,929,884         | 199,745                        |
| <b>DEDUCTIONS</b>   |                     |                                |
| Beneficiary payments to individuals   | 502,004             | 182,028                        |
| Payments of property tax to other governments   | 87,822,737          | -                              |
| Administrative expense  | 81,252              | -                              |
| Payments to other entities  | 23,405,556          | -                              |
| <b>Total Deductions</b>   | 111,811,549         | 182,028                        |
| <b>NET INCREASE (DECREASE)<br/>IN FIDUCIARY NET POSITION</b>  | (881,665)           | 17,717                         |
| Fiduciary Net Position - January 1  | 5,267,637           | 24,810                         |
| <b>FIDUCIARY NET POSITION - END OF YEAR</b>   | <b>\$ 4,385,972</b> | <b>\$ 42,527</b>               |

| CROW WING COUNTY<br>BRAINERD, MINNESOTA<br>STATEMENT OF NET POSITION<br>DECEMBER 31, 2020 |                            |   |                       |
|---|----------------------------|---|-----------------------|
|   | Governmental<br>Activities | Primary Government<br>Business-type<br>Activities | Total                 |
| <b>ASSETS</b>   |                            |   |                       |
| <b>Current assets</b>   |                            |   |                       |
| Cash and investments  | \$ 40,706,908              | \$ 6,037,564                                      | \$ 46,744,472         |
| Taxes receivable - delinquent   | 1,057,069                  | -   | 1,057,069             |
| Accounts receivable (net)   | 187,370                    | 130,929   | 318,299               |
| Accrued interest receivable   | 144,258                    | -   | 144,258               |
| Contracts receivable  | 1,314,723                  | -   | 1,314,723             |
| Due from other governments  | 8,892,235                  | -   | 8,892,235             |
| Loans receivable  | 106,891                    | -   | 106,891               |
| Inventories   | 504,002                    | -   | 504,002               |
| Prepaid items   | 622,188                    | 414   | 622,602               |
| <b>Total current assets</b>   | <b>\$ 53,535,644</b>       | <b>\$ 6,168,907</b>                               | <b>\$ 59,704,551</b>  |
| <b>Noncurrent assets</b>  |                            |   |                       |
| Restricted assets   |                            |   |                       |
| Cash and investments  | \$ -                       | \$ 6,442,284                                      | \$ 6,442,284          |
| Long-term receivable  | 166,714                    | -   | 166,714               |
| Investment in joint venture   | 14,768,210                 | -   | 14,768,210            |
| Capital assets  |                            |   |                       |
| Non-depreciable   | 32,069,035                 | 5,179,343   | 37,248,378            |
| Depreciable - net of accumulated depreciation   | 182,370,966                | 2,264,517   | 184,635,483           |
| <b>Total noncurrent assets</b>  | <b>\$ 229,374,925</b>      | <b>\$ 13,886,144</b>                              | <b>\$ 243,261,069</b> |
| <b>Total Assets</b>   | <b>\$ 282,910,569</b>      | <b>\$ 20,055,051</b>                              | <b>\$ 302,965,620</b> |
| <b>DEFERRED OUTFLOWS OF RESOURCES</b>   |                            |   |                       |
| Deferred outflow for other post employment benefits obligations                           | \$ 8,699,552               | \$ 51,830   | \$ 8,751,382          |
| Deferred outflow for pensions   | 4,226,324                  | 6,593   | 4,232,917             |
| <b>Total Deferred Outflows of Resources</b>   | <b>\$ 12,925,876</b>       | <b>\$ 58,423</b>                                  | <b>\$ 12,984,299</b>  |
| <b>LIABILITIES</b>  |                            |   |                       |
| <b>Current liabilities</b>  |                            |   |                       |
| Accounts payable  | \$ 1,675,173               | \$ 28,748   | \$ 1,703,921          |
| Salaries payable  | 455,506                    | 1,254   | 456,760               |
| Accrued payroll taxes payable   | 31,684                     | 96  | 31,780                |
| Contracts payable   | 37,201                     | -   | 37,201                |
| Retainage payable   | 148,119                    | 316,584   | 464,703               |
| Due to other governments  | 512,900                    | -   | 512,900               |

| Primary Government Cont.                                       |                            |                             |                       |
|--|----------------------------|-----------------------------|-----------------------|
|  | Governmental<br>Activities | Business-type<br>Activities | Total                 |
| Accrued interest payable                                       | 5,223                      | -                           | 5,223                 |
| Claims payable   | 65,896                     | -                           | 65,896                |
| Customer deposits  | 70,576                     | -                           | 70,576                |
| Compensated absences payable - current                         | 3,230,703                  | 16,714                      | 3,247,417             |
| Capital leases payable - current                               | 106,000                    | -                           | 106,000               |
| General obligation bonds payable - current                     | 88,573                     | -                           | 88,573                |
| Other post employment benefits obligations - current           | 2,281,300                  | 13,591                      | 2,294,891             |
| <b>Total current liabilities</b>                               | <b>\$ 8,708,854</b>        | <b>\$ 376,987</b>           | <b>\$ 9,085,841</b>   |
| <b>Noncurrent liabilities</b>                                  |                            |                             |                       |
| Compensated absences payable                                   | \$ 358,967                 | \$ 1,857                    | \$ 360,824            |
| Capital lease payable  | 219,950                    | -                           | 219,950               |
| General obligation bonds payable                               | 92,381                     | -                           | 92,381                |
| Other post employment benefits obligations                     | 41,774,081                 | 190,735                     | 41,964,816            |
| Net pension liability  | 21,619,339                 | 64,331                      | 21,683,670            |
| Estimated liability for landfill closure/postclosure           | -                          | 4,675,336                   | 4,675,336             |
| <b>Total noncurrent liabilities</b>                            | <b>\$ 64,064,718</b>       | <b>\$ 4,932,259</b>         | <b>\$ 68,996,977</b>  |
| <b>Total Liabilities</b>                                       | <b>\$ 72,773,572</b>       | <b>\$ 5,309,246</b>         | <b>\$ 78,082,818</b>  |
| <b>DEFERRED INFLOWS OF RESOURCES</b>                           |                            |                             |                       |
| Property taxes collected for subsequent years                  | \$ 36,624                  | \$ -                        | \$ 36,624             |
| Deferred inflow for other post employment benefits obligations | 2,994,978                  | 17,843                      | 3,012,821             |
| Deferred inflow for pensions                                   | 4,804,460                  | 2,975                       | 4,807,435             |
| <b>Total Deferred Inflows of Resources</b>                     | <b>\$ 7,836,062</b>        | <b>\$ 20,818</b>            | <b>\$ 7,856,880</b>   |
| <b>NET POSITION</b>  |                            |                             |                       |
| Net investment in capital assets                               | \$ 213,757,439             | \$ 7,443,860                | \$ 221,201,299        |
| Restricted for:  |                            |                             |                       |
| General government   | 803,487                    | -                           | 803,487               |
| Public safety  | 164,188                    | -                           | 164,188               |
| Highways and streets   | 10,505,755                 | -                           | 10,505,755            |
| Health and human services                                      | 295,857                    | -                           | 295,857               |
| Culture and recreation   | 145,274                    | -                           | 145,274               |
| Conservation of natural resources                              | 4,644,809                  | -                           | 4,644,809             |
| Environmental uses - expendable                                | 257,596                    | -                           | 257,596               |
| Environmental uses - nonexpendable                             | 1,846,499                  | -                           | 1,846,499             |
| Economic development   | 1,398,370                  | -                           | 1,398,370             |
| Debt service   | 383,686                    | -                           | 383,686               |
| Landfill closure/postclosure                                   | -                          | 1,766,948                   | 1,766,948             |
| Unrestricted   | (18,976,149)               | 5,572,602                   | (13,403,547)          |
| <b>Total Net Position</b>                                      | <b>\$ 215,226,811</b>      | <b>\$ 14,783,410</b>        | <b>\$ 230,010,221</b> |

| CROW WING COUNTY<br>BRAINERD, MINNESOTA<br>STATEMENT OF ACTIVITIES<br>FOR THE YEAR ENDED DECEMBER 31, 2020 |                      |                      |                                    |   |                         |                          |                        |
|--|----------------------|----------------------|------------------------------------|---|-------------------------|--------------------------|------------------------|
|  |                      |                      |                                    | Net (Expense) Revenue and Changes in Net Position |                         |                          |                        |
|  |                      |                      |                                    | Primary Government                                |                         |                          |                        |
|  |                      | Program Revenues     |                                    |   |                         |                          |                        |
| Functions/Programs   | Expenses             | Charges for Services | Operating Grants and Contributions | Capital Grants and Contributions                  | Governmental Activities | Business-type Activities | Total                  |
| <b>Primary government</b>  |                      |                      |                                    |   |                         |                          |                        |
| <b>Governmental activities</b>   |                      |                      |                                    |   |                         |                          |                        |
| General government   | \$ 17,438,271        | \$ 2,461,388         | \$ 3,146,437                       | \$ -  | \$ (11,830,446)         | \$ -                     | \$ (11,830,446)        |
| Public safety  | 18,124,461           | 2,087,797            | 4,538,360                          | -   | (11,498,304)            | -                        | (11,498,304)           |
| Highways and streets   | 14,050,967           | 2,267,984            | 8,578,837                          | 2,466,458   | (737,688)               | -                        | (737,688)              |
| Sanitation   | 5,589                | -                    | -                                  | -   | (5,589)                 | -                        | (5,589)                |
| Health and human services  | 25,004,482           | 1,834,082            | 13,823,343                         | -   | (9,347,057)             | -                        | (9,347,057)            |
| Culture and recreation   | 740,934              | 2,359                | 4,090                              | -   | (734,485)               | -                        | (734,485)              |
| Conservation of natural resources  | 3,614,092            | 3,577,902            | 435,527                            | -   | 399,337                 | -                        | 399,337                |
| Economic development   | 5,945,478            | -                    | 5,892,940                          | -   | (52,538)                | -                        | (52,538)               |
| Interest   | 25,584               | -                    | -                                  | -   | (25,584)                | -                        | (25,584)               |
| <b>Total governmental activities</b>   | <b>\$ 84,949,858</b> | <b>\$ 12,231,512</b> | <b>\$ 36,419,534</b>               | <b>\$ 2,466,458</b>                               | <b>\$ (33,832,354)</b>  | <b>\$ -</b>              | <b>\$ (33,832,354)</b> |
| <b>Business-type activities</b>  |                      |                      |                                    |   |                         |                          |                        |
| Landfill   | \$ 2,578,034         | \$ 3,196,269         | \$ -                               | \$ -  | \$ -                    | \$ 618,235               | \$ 618,235             |
| <b>Total primary government</b>  | <b>\$ 87,527,892</b> | <b>\$ 15,427,781</b> | <b>\$ 36,419,534</b>               | <b>\$ 2,466,458</b>                               | <b>\$ (33,832,354)</b>  | <b>\$ 618,235</b>        | <b>\$ (33,214,119)</b> |
| <b>General Revenues</b>  |                      |                      |                                    |   |                         |                          |                        |
| Property taxes   |                      |                      |                                    |   | \$ 40,749,596           | \$ -                     | \$ 40,749,596          |
| Transportation sales and use tax   |                      |                      |                                    |   | 7,554,696               | -                        | 7,554,696              |
| Mortgage registry and deed tax   |                      |                      |                                    |   | 152,553                 | -                        | 152,553                |
| Payments in lieu of tax  |                      |                      |                                    |   | 572,945                 | -                        | 572,945                |
| Grants and contributions not restricted to specific programs   |                      |                      |                                    |   | 3,295,298               | -                        | 3,295,298              |
| Investment earnings  |                      |                      |                                    |   | 1,124,483               | 148,759                  | 1,273,242              |
| Miscellaneous  |                      |                      |                                    |   | 168,473                 | -                        | 168,473                |
| <b>Total general revenues</b>  |                      |                      |                                    |   | <b>\$ 53,618,044</b>    | <b>\$ 148,759</b>        | <b>\$ 53,766,803</b>   |
| <b>Change in net position</b>  |                      |                      |                                    |   | <b>\$ 19,785,690</b>    | <b>\$ 766,994</b>        | <b>\$ 20,552,684</b>   |
| <b>Net Position - Beginning</b>  |                      |                      |                                    |   | <b>196,064,138</b>      | <b>14,016,416</b>        | <b>210,080,554</b>     |
| <b>Prior Period Adjustment (See Note V)</b>  |                      |                      |                                    |   | <b>(623,017)</b>        | <b>-</b>                 | <b>(623,017)</b>       |
| <b>Net Position - Beginning, as Restated</b>   |                      |                      |                                    |   | <b>195,441,121</b>      | <b>14,016,416</b>        | <b>209,457,537</b>     |
| <b>Net Position - Ending</b>   |                      |                      |                                    |   | <b>\$ 215,226,811</b>   | <b>\$ 14,783,410</b>     | <b>230,010,221</b>     |



LEGAL NOTICE

Published in the NewsHopper Saturday, August 28

|                                   |            |                                  |            |                                   |            |   |            |
|-----------------------------------|------------|----------------------------------|------------|-----------------------------------|------------|---|------------|
| SETON                             | 3,603.84   | WOLD ARCHITECTS AND ENGINEERS    | 8,075.00   | MARVIN STROSCHEN                  | 132,477.36 | VEIT & COMPANY INC                                      | 74,678.20  |
| SIGN SPOT                         | 15,381.70  | WORKS COMPUTING INC              | 43,180.00  | MEDICARE BLUE RX                  | 2,062.60   | VIKING ELECTRIC SUPPLY                                  | 36,792.84  |
| SILVER STAR INDUSTRIES INC        | 7,537.34   | ZIEGLER INC                      | 28,532.72  | MILWAUKEE RUBBER PRODU            | 7,666.94   | WIDSETH SMITH NOLTING & ASSOC INC                       | 113,800.38 |
| SQUAD PRO LLC                     | 45,006.67  | LANDFILL ENTERPRISE FUND         |            | MINNESOTA ENERGY RESOURCES        | 3,464.10   | Chapter 156 of the Session Laws of 2005 [471.701]       |            |
| STEINBRECHER PAINTING             | 2,500.00   | BILL HETTVER                     | 2,204.90   | MINNESOTA POWER                   | 57,205.13  | [SALARY DATA]   |            |
| THE HEARTH ROOM                   | 2,526.00   | BLUE CROSS BLUE SHIELD OF MN     | 2,729.80   | MN COUNTIES                       |            | A city or county with a population of more than 15,000  |            |
| TOWMASTER INC                     | 132,241.50 | BOGART PEDERSON & ASSOCIATES INC | 3,965.00   | INTERGOVERNMENTAL TRUST           | 6,344.45   | must annually notify                                    |            |
| TWIN CITY HARDWARE INC            | 2,062.73   | BURNS & MCDONNELL                | 408,029.05 | NEW WASTE CONCEPTS INC            | 40,467.00  | its residents of the positions and base salaries of its |            |
| ULINE                             | 4,193.10   | EPG COMPANIES INC                | 3,361.66   | PRATT'S AFFORDABLE EXCAVATING INC | 713,061.48 | three highest-paid employees.                           |            |
| VERTIV CORPORATION                | 120,000.00 | FIRST IMPRESSION PRINTING        | 10,166.76  | RESOURCE WEST INC                 | 97,524.97  | County Administrator                                    | \$153,115  |
| VIKING ELECTRIC SUPPLY            | 2,005.60   | HAWKINS INC                      | 42,007.50  | SP SARAGLOVE.COM                  | 3,346.74   | County Attorney   | \$140,143  |
| WIDSETH SMITH NOLTING & ASSOC INC | 5,100.00   | HTX SOLUTIONS, LLC               | 172,005.57 | SWANSON FLO CO                    | 2,568.80   | County Engineer   | \$139,365  |
| WL HALL CO EXTERIOR SERVICE       | 10,475.00  | JOSHUA JAMES MOSER               | 5,790.00   | UNIVAR SOLUTIONS INC              | 69,824.68  |   |            |

| CROW WING COUNTY<br>BRAINERD, MINNESOTA<br>STATEMENT OF REVENUES, EXPENDITURES, AND CHANGES IN FUND BALANCES<br>GOVERNMENTAL FUNDS<br>FOR THE YEAR ENDED DECEMBER 31, 2020 |               |               |                    |                        |                |                  |                |                |
|--|---------------|---------------|--------------------|------------------------|----------------|------------------|----------------|----------------|
|  | General       | Highway       | Community Services | Public Land Management | Debt Service   | Capital Projects | Nonmajor Funds | Total          |
| REVENUES   |               |               |                    |                        |                |                  |                |                |
| Taxes  | \$ 22,889,943 | \$ 9,432,419  | \$ 13,381,842      | \$ -                   | \$ 186,127     | \$ 2,096,752     | \$ 1,017,016   | \$ 49,004,099  |
| Special assessments  | -             | -             | -                  | 1,046                  | -              | -                | 630,439        | 631,485        |
| Licenses and permits   | 718,312       | -             | -                  | 1,020,345              | -              | -                | 100            | 1,738,757      |
| Intergovernmental  | 13,600,975    | 11,034,806    | 14,925,710         | 163,945                | 5,357          | 2,607,300        | 391,776        | 42,729,869     |
| Charges for services   | 3,273,865     | 2,423,922     | 1,262,289          | 5,663                  | -              | -                | 390,187        | 7,355,926      |
| Fines and forfeits   | 30,940        | -             | -                  | -                      | -              | -                | -              | 30,940         |
| Gifts and contributions  | 11,769        | -             | 10,000             | -                      | -              | -                | -              | 21,769         |
| Investment earnings  | 1,157,963     | -             | -                  | 110,840                | -              | -                | 147,139        | 1,415,942      |
| Sales  | -             | -             | -                  | 1,810,083              | -              | -                | -              | 1,810,083      |
| Miscellaneous  | 1,099,869     | 4,587         | 539,791            | 23,809                 | -              | 104,698          | 124,897        | 1,897,651      |
| Total Revenues   | \$ 42,783,636 | \$ 22,895,734 | \$ 30,119,632      | \$ 3,135,731           | \$ 191,484     | \$ 4,808,750     | \$ 2,701,554   | \$ 106,636,521 |
| EXPENDITURES   |               |               |                    |                        |                |                  |                |                |
| Current  |               |               |                    |                        |                |                  |                |                |
| General government   | \$ 15,917,720 | \$ -          | \$ -               | \$ -                   | \$ -           | \$ 500,639       | \$ 123,664     | \$ 16,542,023  |
| Public safety  | 15,490,780    | -             | 3,180,784          | -                      | -              | 205,875          | 195,123        | 19,072,562     |
| Highways and streets   | 41,546        | 7,435,534     | -                  | -                      | -              | -                | 704,901        | 8,181,981      |
| Health and human services  | 131,470       | -             | 24,226,893         | -                      | -              | 12,155           | -              | 24,370,518     |
| Culture and recreation   | 650,521       | -             | -                  | -                      | -              | -                | -              | 650,521        |
| Conservation of natural resources  | 156,404       | -             | -                  | 2,204,412              | -              | -                | 1,318,085      | 3,678,901      |
| Economic development   | 5,892,940     | -             | -                  | -                      | -              | -                | 52,537         | 5,945,477      |
| Capital Outlay   |               |               |                    |                        |                |                  |                |                |
| General government   | 54,336        | -             | -                  | -                      | -              | 236,022          | -              | 290,358        |
| Public safety  | 131,978       | -             | -                  | -                      | -              | 992,284          | -              | 1,124,262      |
| Highways and streets   | -             | 14,915,380    | -                  | -                      | -              | 454,304          | -              | 15,369,684     |
| Health and human services  | -             | -             | -                  | -                      | -              | 1,434            | -              | 1,434          |
| Culture and recreation   | 109,455       | -             | -                  | -                      | -              | -                | -              | 109,455        |
| Conservation of natural resources  | -             | -             | -                  | 964,245                | -              | -                | 200,000        | 1,164,245      |
| Intergovernmental  | 437,955       | -             | -                  | -                      | -              | -                | -              | 437,955        |
| Debt Service   |               |               |                    |                        |                |                  |                |                |
| Principal  | -             | 103,350       | -                  | -                      | 4,797,500      | -                | -              | 4,900,850      |
| Interest   | -             | 8,375         | -                  | -                      | 124,996        | -                | -              | 133,371        |
| Administrative charges   | -             | 136           | -                  | -                      | 42             | -                | -              | 178            |
| Total Expenditures   | \$ 38,577,150 | \$ 22,900,730 | \$ 27,407,677      | \$ 3,168,657           | \$ 4,922,538   | \$ 2,402,713     | \$ 2,594,310   | \$ 101,973,775 |
| Excess of Revenues Over (Under) Expenditures   | \$ 4,206,486  | \$ (4,996)    | \$ 2,711,955       | \$ (32,926)            | \$ (4,731,054) | \$ 2,406,037     | \$ 107,244     | \$ 4,662,746   |
| OTHER FINANCING SOURCES (USES)   |               |               |                    |                        |                |                  |                |                |
| Transfers in   | \$-           | \$ 7,794      | \$ -               | \$ -                   | \$ -           | \$ -             | \$ 148,759     | \$ 156,553     |
| Transfers out  | -             | -             | -                  | -                      | -              | -                | (156,553)      | (156,553)      |
| Proceeds from sale of capital assets   | -             | -             | -                  | -                      | -              | 14,475           | -              | 14,475         |
| Insurance proceeds   | 65,848        | 1,911         | 2,382              | -                      | -              | -                | -              | 70,141         |
| Total Other Financing Sources (Uses)   | \$ 65,848     | \$ 9,705      | \$ 2,382           | \$ -                   | \$ -           | \$ 14,475        | \$ (7,794)     | \$ 84,616      |
| Net Change in Fund Balances  | \$ 4,272,334  | \$ 4,709      | \$ 2,714,337       | \$ (32,926)            | \$ (4,731,054) | \$ 2,420,512     | \$ 99,450      | \$ 4,747,362   |
| Fund Balance - January 1   | 12, 373,846   | 16,712,865    | 736,535            | 570,167                | 5,050,971      | 596,883          | 5,727,927      | 41,769,194     |
| Prior Period Adjustment (See Note V)   | -             | (623,017)     | -                  | -                      | -              | -                | -              | (623,017)      |
| Fund balance - January 1, as Restated  | 12,373,846    | 16,089,848    | 736,535            | 570,167                | 5,050,971      | 596,883          | 5,727,927      | 41,146,177     |
| Increase (decrease) in inventories   | -             | (424,607)     | -                  | -                      | -              | -                | -              | (424,607)      |
| Fund balance - December 31   | \$ 16,646,180 | \$ 15,669,950 | \$ 3,450,872       | \$ 537,241             | \$ 319,917     | \$ 3,017,395     | \$ 5,827,377   | \$ 45,468,932  |

| CROW WING COUNTY<br>BRAINERD, MINNESOTA<br>BALANCE SHEET<br>GOVERNMENTAL FUNDS<br>DECEMBER 31, 2020 |               |               |                    |                        |              |                  |                |                |
|---|---------------|---------------|--------------------|------------------------|--------------|------------------|----------------|----------------|
|   | General       | Highway       | Community Services | Public Land Management | Debt Service | Capital Projects | Nonmajor Funds | Total          |
| ASSETS  |               |               |                    |                        |              |                  |                |                |
| Cash and investments  | \$ 15,125,740 | \$ 12,759,670 | \$ 2,065,970       | \$ 1,841,594           | \$ 320,037   | \$ 2,677,563     | \$ 5,916,334   | \$ 40,706,908  |
| Taxes receivable - delinquent   | 560,176       | 62,457        | 297,333            | -                      | 80,914       | 31,233           | 24,956         | 1,057,069      |
| Accounts receivable (net)   | 27,972        | -             | 135,568            | -                      | -            | -                | 23,830         | 187,370        |
| Accrued interest receivable   | 141,681       | -             | -                  | -                      | -            | -                | 2,577          | 144,258        |
| Due from other funds  | 325,640       | 97,285        | -                  | -                      | -            | 434,186          | -              | 857,111        |
| Contracts receivable  | -             | -             | -                  | 1,314,723              | -            | -                | -              | 1,314,723      |
| Due from other governments  | 1,426,411     | 4,979,028     | 2,434,455          | -                      | -            | -                | 52,341         | 8,892,235      |
| Loans receivable  | -             | -             | -                  | -                      | -            | -                | 106,891        | 106,891        |
| Inventories   | -             | 504,002       | -                  | -                      | -            | -                | -              | 504,002        |
| Prepaid items   | 463,747       | 13,042        | 141,645            | 3,140                  | -            | -                | 614            | 622,188        |
| Total Assets  | \$ 18,071,367 | \$ 18,415,484 | \$ 5,074,971       | \$ 3,159,457           | \$ 400,951   | \$ 3,142,982     | \$ 6,127,543   | \$ 54,392,755  |
| LIABILITIES   |               |               |                    |                        |              |                  |                |                |
| Accounts payable  | \$ 391,129    | \$ 412,113    | \$ 607,899         | \$ 181,759             | \$ 42        | \$ 18,462        | \$ 63,769      | \$ 1,675,173   |
| Salaries payable  | 246,203       | 33,421        | 171,687            | 3,008                  | -            | -                | 1,187          | 455,506        |
| Accrued payroll taxes payable   | 15,670        | 2,557         | 13,136             | 230                    | -            | -                | 91             | 31,684         |
| Contracts payable   | -             | -             | -                  | 37,201                 | -            | -                | -              | 37,201         |
| Retainage payable   | -             | 73,822        | -                  | -                      | -            | 74,297           | -              | 148,119        |
| Due to other funds  | -             | -             | -                  | 759,826                | -            | -                | 97,285         | 857,111        |
| Due to other governments  | 42,600        | 1,342         | 137,502            | 325,469                | -            | -                | 5,987          | 512,900        |
| Claims payable  | 65,896        | -             | -                  | -                      | -            | -                | -              | 65,896         |
| Customer deposits   | 70,576        | -             | -                  | -                      | -            | -                | -              | 70,576         |
| Total Liabilities   | \$ 832,074    | \$ 523,255    | \$ 930,224         | \$ 1,307,493           | \$ 42        | \$ 92,759        | \$ 168,319     | \$ 3,854,166   |
| DEFERRED INFLOWS OF RESOURCES   |               |               |                    |                        |              |                  |                |                |
| Unavailable revenue (Note III.D.)   | \$ 593,113    | \$ 2,222,279  | \$ 693,875         | \$ 1,314,723           | \$ 80,992    | \$ 32,828        | \$ 131,847     | \$ 5,069,657   |
| FUND BALANCES   |               |               |                    |                        |              |                  |                |                |
| Nonspendable:   |               |               |                    |                        |              |                  |                |                |
| Missing heirs   | \$ 76,449     | \$ -          | \$ -               | \$ -                   | \$ -         | \$ -             | \$ -           | \$ 76,449      |
| Inventories   | -             | 504,002       | -                  | -                      | -            | -                | -              | 504,002        |
| Prepays   | 463,747       | 13,042        | 141,645            | 3,140                  | -            | -                | 614            | 622,188        |
| Environmental trust corpus  | -             | -             | -                  | -                      | -            | -                | 1,846,499      | 1, 846,499     |
| Restricted for: 911   | 117,409       | -             | -                  | -                      | -            | -                | -              | 117,409        |
| Sheriff's drug contingency  | 3,138         | -             | -                  | -                      | -            | -                | -              | 3,138          |
| DUI assessment  | 13,052        | -             | -                  | -                      | -            | -                | -              | 13,052         |
| Lakes area drug investigation forfeiture  | 30,589        | -             | -                  | -                      | -            | -                | -              | 30,589         |
| Water plan  | 15,594        | -             | -                  | -                      | -            | -                | -              | 15,594         |
| Recreation  | 145,274       | -             | -                  | -                      | -            | -                | -              | 145,274        |
| Land based improvements   | 320,115       | -             | -                  | -                      | -            | -                | -              | 320,115        |
| Recorder's technology   | 358,031       | -             | -                  | -                      | -            | -                | -              | 358,031        |
| Law library   | 62,877        | -             | -                  | -                      | -            | -                | -              | 62,877         |
| Attorney's forfeited property   | 46,870        | -             | -                  | -                      | -            | -                | -              | 46,870         |
| Aquatic invasive species  | 22,754        | -             | -                  | -                      | -            | -                | -              | 22,754         |
| Local option sales tax  | -             | 7, 527,723    | -                  | -                      | -            | -                | -              | 7,527,723      |
| Resource development  | -             | -             | -                  | 473,741                | -            | -                | -              | 473,741        |
| Forest access roads   | -             | -             | -                  | 57,464                 | -            | -                | -              | 57,464         |
| Debt service  | -             | -             | -                  | -                      | 307,917      | -                | -              | 307,917        |
| Solid waste (non-landfill)  | -             | -             | -                  | -                      | -            | -                | 2,098,757      | 2,098,757      |
| Greater Minnesota landfill cleanup fee  | -             | -             | -                  | -                      | -            | -                | 677,370        | 677,370        |
| Economic development  | 1,288,217     | -             | -                  | -                      | -            | -                | -              | 1,288,217      |
| Economic development revolving loans  | -             | -             | -                  | -                      | -            | -                | 3,262          | 3,262          |
| Environmental uses  | -             | -             | -                  | -                      | -            | -                | 257,596        | 257,596        |
| Unorganized townships   | -             | -             | -                  | -                      | -            | -                | 817,010        | 817,010        |
| Ditch #13   | -             | -             | -                  | -                      | -            | -                | 1,200          | 1,200          |
| Committed for:  |               |               |                    |                        |              |                  |                |                |
| Dive team   | 13,006        | -             | -                  | -                      | -            | -                | -              | 13,006         |
| Facilities  | 224,035       | -             | -                  | -                      | -            | -                | -              | 224,035        |
| Mounted patrol  | 11,571        | -             | -                  | -                      | -            | -                | -              | 11,571         |
| Triad   | 5,004         | -             | -                  | -                      | -            | -                | -              | 5,004          |
| Veterans' service van   | 2,053         | -             | -                  | -                      | -            | -                | -              | 2,053          |
| Thirty Lakes Watershed  | 127,311       | -             | -                  | -                      | -            | -                | -              | 127,311        |
| Information technology  | 121,609       | -             | -                  | -                      | -            | -                | -              | 121,609        |
| Employee recognition program  | 11,133        | -             | -                  | -                      | -            | -                | -              | 11,133         |
| Other post employment benefits (OPEB)   | 1,400,000     | -             | -                  | -                      | -            | -                | -              | 1,400,000      |
| Breastfeeding peer counseling project   | -             | -             | 322                | -                      | -            | -                | -              | 322            |
| Assigned for:   |               |               |                    |                        |              |                  |                |                |
| Highway   | -             | 7,625,183     | -                  | -                      | -            | -                | -              | 7,625,183      |
| Community services  | -             | -             | 3, 308,905         | -                      | -            | -                | -              | 3,308,905      |
| Capital projects  | -             | -             | -                  | -                      | -            | 3, 017,395       | -              | 3,017,395      |
| Solid waste (non-landfill)  | -             | -             | -                  | -                      | -            | -                | 125,069        | 125,069        |
| Public land management  | -             | -             | -                  | 2,896                  | -            | -                | -              | 2,896          |
| Debt service  | -             | -             | -                  | -                      | 12,000       | -                | -              | 12,000         |
| Unassigned  | 11,766,342    | -             | -                  | -                      | -            | -                | -              | 11,766,342     |
| Total Fund Balances   | 16,646,180    | \$ 15,669,950 | \$ 3,450,872       | \$ 537,241             | \$319,917    | \$ 3,017,395     | \$ 5,827,377   | \$ 45, 468,932 |
| Total Liabilities, Deferred Inflows of Resources, and Fund Balances                                 | \$ 18,071,367 | 18,415,484    | \$ 5,074,971       | \$ 3,159,457           | \$400,951    | \$ 3,142,982     | \$ 6,127,543   | \$ 54,392,755  |

(Published in NewsHopper Saturday, August 28, 2021)

**CITY OF CUYUNA NOTICE OF PUBLIC HEARING**

TO WHOM IT MAY CONCERN: Notice is hereby given the Cuyuna City Council will convene for their regularly scheduled meeting on Tuesday, September 14, 2021, at 7:00 p.m. at the Cuyuna Fire Department to conduct the following public hearing:

Rezoning Application RZ-01-21 to rezone the following parcels:

19090500, 19290510, 19290512, 19290518, 19290520, 19290522, 19290524, 19290527, 19290529, 19300562, 19300565, 1930P001, 19290517, 19320534,

and 19320536

from “Open Development/Extraction District, (Open)” to “Single and Two-Family Residential District (R-1).” This rezoning better reflects the current and future use of the area.

All interested persons are invited to attend these hearings at the Cuyuna Fire Department, 24849 Minnesota Avenue, and be heard or send written comments to City of Cuyuna, PO Box 536, Deerwood, MN 56444 or via email at amanda.peterson@sourcewell-mn.gov. A staff report is made available at the Cuyuna Fire Department typically one week before the scheduled meeting.

Dated this August 20, 2021

AMANDA PETERSON, Community Development Administrator

City of Cuyuna

7.7



SELL IT FAST

IN THE CLASSIFIEDS!

ATVs

ATV Batteries 14A-A2 \$44.99 w/ exchange Riley's NAPA, Aitkin, 218-927-2153. tfn

AUTOMOBILES

DONATE YOUR CAR, TRUCK TO HERITAGE FOR THE BLIND. Free 3 Day Vacation, Tax Deductible, Free Towing, All Paperwork Taken Care Of. CALL 1-855-977-7030 (MCN)

DONATE YOUR CAR TO CHARITY. Receive maximum value of write off for your taxes. Running or not! All conditions accepted. Free pickup. Call for details. 855-752-6680 (MCN)

BOAT

16' Lund deep hull boat with 48 hp Johnson and steering wheel on a roller trailer \$2500 call (612) 749-0193 w34

CABLE/INTERNET

DISH Network. \$64.99 for 190 Channels! Blazing Fast Internet, \$19.99/mo. (where available.) Switch & Get a FREE \$100 Visa Gift Card. FREE Voice Remote. FREE HD DVR. FREE Streaming on ALL Devices. Call today! 1-855-434-0020 (MCN)

DIRECTV for \$69.99/mo for 12 months with CHOICE Package. Watch your favorite live sports, news & entertainment anywhere. One year of HBO Max FREE. Directv is #1 in Customer Satisfaction (JD Power & Assoc.) Call for more details! (some restrictions apply) Call 1-866-296-1409 (MCN)

GOLF

Golf Cart Batteries \$139.99 w/exchange. Riley's NAPA Aitkin 927-2153 tfn

HELP WANTED

**COOK, BARTENDER AND WAITRESS WANTED** Apply at The Landing Aitkin. See Jim or Brent 218-927-9998 tfn

Furniture Sales, Cashier and Stocker positions available. Apply in person. Unclaimed Freight North Hwy 210 West Aitkin

COMMERCIAL APPLICATORS. Competitive wage and benefits, meal allowance, paid lodging. Traveling position for railroad vegetation control, 60-80 hours/week. RAW (Cooperstown, ND). 888.700.0292 [www.rawapplicators.com](http://www.rawapplicators.com), [info@rawapplicators.com](mailto:info@rawapplicators.com). (MCN)

Classifieds

GET THE JOB DONE!

By • 218 • 927 • 9998 • 9998 • 9998

MISCELLANEOUS

Pontoon Lift for Sale - Aitkin, MN Lift works perfectly - Recent damage to canopy (fixable) Used with 21 foot pontoon - Constructed by FIRM Hand Crank/Has wheels and pads/Aluminum Frame 3,500 lb capacity-aluminum frame \$3,000 or best offer Text/Call Steve at (612)245-9400

SAFES

**NEW AND USED SAFES FOR SALE** • Safe repair and locked safes opened • Heavy and light duty gun safes and vault doors on hand • High security safes for gold and silver • 320-360-5431 w36

TRAILERS



Utility Trailer brake & suspension parts Riley's NAPA Aitkin 218-927-2153

WANTED

We buy batteries: auto size \$5.00 Riley's NAPA Aitkin 218-927-2153

Buy! Buy! Buy! Sell! Sell! Sell!

JANZEN AUCTIONEERS

**LESLIE & YVETTE AITKIN AREA FARM MACHINERY & EQUIPMENT AUCTION**  
**Sunday, September 5 • 10:00 a.m.**  
36399 295th Street., Aitkin, MN

**Please refer to CDC guidelines for your safety and the safety of others.**

**TRACTORS:** 1981 International 1086 w/cab heat & air, w/duals (missing rear window), Case International 685 tractor w/ front wheel assist, w/KMW quick attach 835 loader, bale spear & snow bucket. (Tractor has small noise in transmission, good hydraulics; all gears work shifts & drives fine, Farmall M w/9 speed transmission, Farmall H narrow front w/farmhand high lift loader (approximately 20 ft. extension) **SKID STEER:** 2001 Gehl 4835 SXT turbo w/cab heat 5400 hours **ATV:** 2019 U Force 1000 Side by Side 4x4 EPS w/winch & dump box 2000 miles excellent condition, 1994 Yamaha Big Bear 350, 1991 Yamaha Big Bear 350 **IMPLEMENTS & FARM RELATED:** John Deere 6600 combine w/444 wide, low tin corn head needs some injector work (2700 hrs), Case 310 dozer not running at time of pictures) 3100 hours, New Holland 847 round baler, Dual 310 loader w/ all the brackets, Katlight power system solutions portable trailer style generator, 200 AMP, 50,000 KW, 540 PTO driven, Boss snow plow, Saw rig for a Farmall H, Shaver post pounder w/ International mounts, Minneapolis Moline double disk grain drill, Badger chopper box extensions, Walsh gravity box, Schwart loader w/cylinders, International 63 four row cultivator, 3 point w/fast hitch, Sanbakly 40 ft. elevator on rubber for hay or grain, electric or PTO, Case 8 ft. field cultivator, International 8 ft. disk, Allis B field cultivator, Vanbrundt 6 ft. grain drill pull style, 6 Ton feed tank, (2) 300 gallon fuels tanks one on steel frame one on wood frame, Various homemade feed bunks & feed tanks, Jamesway ring drive 12 ft. silo unloader, Vandale ring drive 14 ft. silo unloader (buyers to disassemble), 3 HP vacuum pump, 4 wheel running gear and other trailers, Schaffer hanging basket fans, Set of Duals for Farmall tractor, (2) Sets of tractor chains 15-5-38. Various gas cans & oil barrels, Older bale rines, Drag section, Cement mixer on wheels, Various power poles, Barn stanchions, **GRAIN BIN & CORN CRIB:** Grain bin approximately 2000 bushel w/weep arm (to be removed by buyer), Large corn crib (to be removed by buyer), **LAWN & GARDEN:** John Deere 400 lawn tractor w/snow blower & 60 inch mower deck (mower deck needs new gear box), Older Toro riding lawn tractor, (2) Trimming mowers, **PRIMITIVE & COLLECTIBLE FARM IMPLEMENTS:** Collectible 2 bottom plow w/points, Antiques steel wheel grader, McCormick Deering potato picker, Steel wheels for H or M International (2 sets), Grain binder, Antique fanning mill, Antique wrenches, **VEHICLES & RELATED:** 1997 Chevy half ton 4WD Z71 good motor needs transmission, 1978 Jeep Cherokee Chief (for parts or restoration), 1973 Ford 350 custom (non running), Ford 750 dump truck good steel box & twin telescoping hoists (non running), **SNOWMOBILES:** 1995 XCR 440, 5500 miles, 1973 Super Stinger 400, 1977 Scorpion Whip, **GARAGE RELATED:** Dewalt chop saw, Older floor model drill press, Misc. corded hand power tools, Pressure washer, Older McCullough chainsaw, Homelite chainsaw, Floor jack, Upright air compressor on wheels, Pipe vise, Various circular saw blades, Chain hoists & clevises **ITEMS OF INTEREST:** 300 gallon stainless bulk tank, Approximately 500 square bales in hay mow 5-6 years old always stored inside (to be removed by buyer) Large quantity of implement tires and rims of all sizes, Collectible wood table saw, Wood carpenters trunk & wooden whiskey barrel, Collectible wood convection heater model 2400, Metal AMPI sign, Masonite style sheeting 1/4 & 1/8 inch approximately 90 sheets 8x5 1/2 ft. & 7x4 ft., Large quantity of nuts, bolts, hardware & farm related materials, Wall furnace, propane vent less & Older gas furnace, Collectible iron lamp, Collectible platform scale, Various sawmill blades, Large barn fan on wheels, Various rabbit cages, feeders & waterers, Numerous ball canning jars, Wash tubs, Collectible Pepsi cola soda dispenser, Antique wood combination cook stove, Collectible metal ice cooler on wheels, Steel wagon wheels, Propane 100# cylinders, numerous cream & milking cans, Cream separator in wood crate, Collectible mail postal slots from the Aitkin post office, Phillips 76 Food Mart & Citgo sign, Wooden hand crank ringer washer, **ERTL TRACTOR COLLECTION:** Approximately 50 ERTL Tractors in 1/16th scale, John Deere, Case, International, Ford, Allis Chalmers, White & More, Most new with boxes, **SCRAP & RELATED:** Large quantity of scrap including copper tubing, electric motors, electric wire & much more

Plus much more! Many unlisted items be certain to attend and bring a friend!  
Thank you in advance, *Janzen Auctioneers*

BOB, JEREMY & ASSOCIATES • Aitkin

85 Years of Quality and Professionalism  
218-927-4488 or 218-851-0879 cell • [jerjanzen77@gmail.com](mailto:jerjanzen77@gmail.com)  
Please visit our websites: [www.janzenauctions.com](http://www.janzenauctions.com) or [www.midwestauctions.com/janzen](http://www.midwestauctions.com/janzen)  
for full auction line up, photos and directions  
Like us on Facebook @ Janzen Auctioneers

JANZEN AUCTIONEERS

**JANZEN AUCTION CENTER**  
**Saturday, September 4 • 9:00 a.m.**  
1 mile west of the stoplights in Aitkin - (Watch for signs)  
**5% Buyers Premium**

**Please refer to CDC guidelines for your safety and the safety of others.**

**TRACTORS & RELATED:** John Deere 5205 tractor w/ JD 521 loader, front wheel assist, great tractor, John Deere 1025R diesel tractor w/mower deck & bagger system, John Deere 40 w/ loader & 3 point auger attachment, pristine condition, John Deere 430 gas tractor w/ loader very good condition, BEFCO Green Rite II 3 point seeder, John Deere 3 point back blade **VEHICLES:** 1952 Chevrolet 3100 pickup 1/2 ton, 6 cylinder, 1998 GMC extended cab Z71 pickup 4WD, leather interior, 125,000 miles excellent condition, 2004 Jeep Liberty V6, 4WD with 141,000 miles great running vehicle **TRAVEL TRAILERS:** 2013 Rockwood Signature Ultra Light 25 ft. travel trailer w/three slide outs bumper pull very good condition, 2001 Dutchman travel trailer bumper pull one slide out new tires, very good condition, 1995 Fifth wheel camper **TRAILERS:** Alumna 7x14 aluminum trailer w/ wood bed like brand new, model 8414RT, Minnesota running gear 10 ton **FISH HOUSE:** 2014 Viking by Forest Hills fish house, 7x14, 4 holes, gas furnace & cook top, sleeps 3, power jacks, a lot of storage, excellent condition **ATV'S:** 2012 John Deere XUV 550 w/1080 HRS, 4WD has front windshield, custom side doors and windows, 5000 lb front winch & rear winch, brush guard, manual dump box, two new rear tires, new rear axle and new motor less than 1 HR on new motor, very good unit, John Deere Gator 4x2 with dump box, 2016 Polaris Sportsman 570 4WD w/cargo box that converts to a two up seat 450 miles excellent condition **MOTORCYCLES:** Honda CB 750 Custom motorcycle 17,600 miles, Ducati 250 Motorcycle (made in Italy) ser. 96774 **LAWN & GARDEN:** John Deere X570 riding lawn tractor w/bagger system 29 Hours like new condition, John Deere 322 riding lawn tractor w/ cab, front blade, snowblower attachment, 3 point tiller, bagger system, lawn trailer & more Toro industrial zero turn 50 inch deck, Simplicity riding lawn tractor, (2) Cub Cadet Hydro 125 riding lawn tractors, Trailer style horizontal or vertical wood splitter powered by 6.75 HP Briggs & Stratton, Troybilt Magnum 8 rear tire tiller, Yard Machine walk behind 24 inch snowblower & other snowblowers, Yard Machine 5HP trimming mower w/bagger, Kircher 2000 PSI pressure washer **SHOP TOOLS & RELATED:** Crystal Blast 3624 sandblaster on wheels manufactured by MBA, Central Machinery Shop Smith on rolling cart, Honda inverter EU 3000 is generator, Industrial Grizzly planer/jointer model G0452, Craftsman 12 inch two speed band saw, Craftsman tool chest on wheels & other tools cabinets, Ryobi compound miter saw, Set of contractor scaffolding, Floor model drill press, Oxygen & Acetylene tanks on cart, numerous hand corded power tools **BOATING & RELATED:** 1998 Tracker Tournament 17 Ft boat w/75 HP Mercury OB motor, Wooden strip canoe like new condition, Large industrial boat trailer **FIREARMS & AMMUNITION:** Over 125 Firearms including names like Winchester, Colt, Remington, Ruger, Springfield, Savage, Mossberg & More, Large quantity of ammo and gun related supplies, Cannon Gun safe & others **ANTIQUES & COLLECTIBLES:** American Scale & MFG 1 cent weight 5 cent weight & horoscope vending scale, Watling scale (no spring) with front mirror vending scale, Red Crown Gasoline collectible cabinet, Older Standard Oil gas pump, Large Speed Queen Laundry & dry cleaning sign, 7 UP cooler, Large anvil on stand, Antique fishing lures, Collectible coal bucket & water cooler **ITEMS OF INTEREST:** Horse drawn buggies & sleigh 3 Horse saddles on saddle rack & other related tack, Wildlife mounts, fish mounts & related, Framed wildlife artwork

This listing is a scratch of the surface, to view pictures and descriptions visit our websites at [www.midwestauctions.com/janzen](http://www.midwestauctions.com/janzen) or [www.janzenauctions.com](http://www.janzenauctions.com) unable to attend and would like to bid on the firearms visit [www.proxibid.com/janzen](http://www.proxibid.com/janzen). Remember the Auction starts at 9:00 AM sharp. Be certain to attend and bring a friend.  
Thank you in advance, *Janzen Auctioneers*

BOB, JEREMY & ASSOCIATES • Aitkin

85 Years of Quality and Professionalism  
218-927-4488 or 218-851-0879 cell • [jerjanzen77@gmail.com](mailto:jerjanzen77@gmail.com)  
Please visit our websites: [www.janzenauctions.com](http://www.janzenauctions.com) or [www.midwestauctions.com/janzen](http://www.midwestauctions.com/janzen)  
for full auction line up, photos and directions  
Like us on Facebook @ Janzen Auctioneers

DIRTY WINDOWS? DON'T FRET

YEAH ! we do windows THE CLEAR CHOICE

Call or text Alex for window washing, power washing and painting at 218-839-1457 or 218-927-2086.  
email: [alexjschwartz@gmail.com](mailto:alexjschwartz@gmail.com)  
[yeahwedowindows.com](http://yeahwedowindows.com)

Restoration

Sandblasting

24 Hour Towing

Iron ton, MN

Michael Bednarczyk, owner [mikeb\\_56441@yahoo.com](mailto:mikeb_56441@yahoo.com)

RIVERS EDGE ASSISTED LIVING & ADULT DAY SERVICES

— Home Health Aide —

Rivers Edge Assisted Living is seeking compassionate, caring and dependable Home Health Aides to provide assistance in daily living and personal care services in resident's homes in accordance with their care plan.

Available Shifts:  
AM/Day (6am-2:30pm) • PM/Night (2pm-10:30pm)

— Dietary Aide —

We are currently seeking an individual that is caring, compassionate and dependable to assist our cook with serving meals, clearing and resetting tables, washing dishes and keeping the kitchen and dining room clean. Shifts starting at 7:30am and 10:30am are available.

To apply, fill out an application online or call our office.  
11 Minnesota Ave South, Aitkin, MN 56431  
218-429-5785 / [riversedgeassistedliving.com](http://riversedgeassistedliving.com)

Upgrade Your Home with a NEW METAL ROOF

Guaranteed to Last a Lifetime!

Call today to schedule your FREE ESTIMATE 1-877-386-1058

LIMITED TIME OFFER 60% off YOUR INSTALLATION + TAKE AN ADDITIONAL 10% off

Install for Military, Health Workers and First Responders

**ERIE Metal Roofs**

New orders only. Does not include material costs. Cannot be combined with any other offer. Minimum purchase required. Other restrictions may apply. This is an advertisement placed on behalf of Erie Construction, Inc. ("Erie"). Other terms and conditions may apply and the offer may not be available in your area. Offer expires September 30th, 2021. To view call the number provided, give consent to being contacted by telephone. SMS text message, email, pre-recorded messages by Erie or its affiliates and service providers using automated technology notwithstanding, if you click on a DO NOT CALL list or register. Please review our Privacy Policy and Terms of Use on [homeservicerecruitment.com](http://homeservicerecruitment.com). All rights reserved.

Authorized Platinum Star Service

Serving All Makes • Over 35 Years Experience

Frigoaire White-Westinghouse Gibson Kelvinator Tappan Electrolux Askto

Maytag KitchenAid Amana Jenn-Air Roper Whirlpool Crosley

Amana Commercial Products Frigoaire Commercial Products Kelvinator Commercial Products Electrolux Commercial Products

Amana SERVICE INDEPENDENT SERVICE CONTRACTOR

ESTATE SERVICE INDEPENDENT SERVICE CONTRACTOR

JENN-AIR SERVICE INDEPENDENT SERVICE CONTRACTOR

KitchenAid SERVICE INDEPENDENT SERVICE CONTRACTOR

MAYTAG SERVICE INDEPENDENT SERVICE CONTRACTOR

Roper SERVICE INDEPENDENT SERVICE CONTRACTOR

Whirlpool SERVICE INDEPENDENT SERVICE CONTRACTOR

For more information call **Jim Blakesley**  
[jlblak@embarqmail.com](mailto:jlblak@embarqmail.com)

Appliance Service & Repair **Aitkin**  
**218-927-2027**  
**1-888-450-8845**

Births, Open Houses, Engagements, Weddings & Community Events are published **FREE!** Send your e-mail to [hopper@crosbyironton.net](mailto:hopper@crosbyironton.net)

TCBX TRUCKING

BRainerd, MN Est. 1997

GUARANTEED NEXT DAY DELIVERY!\*

TCBX TRUCKING

1-888-829-8229 (8229)

\*IN OUR COVERAGE AREA— Major points included, but not limited to Brainerd and much of Central Minnesota Daily: Twin Cities • Brainerd • Aitkin • Alexandria • Bemidji • Grand Rapids • Little Falls • Park Rapids • Wadena • St. Cloud We Can Deliver It to You at: Contractors Job Site, Door Step or Business We provide Daily Freight delivery from the Twin Cities.

Give us a call • Fast service at an affordable price:  
**TCBX • 1748 SE 13th Street • Brainerd, MN 56401**  
**1-888-829-8229 • [www.tcbxtrucking.com](http://www.tcbxtrucking.com)**  
**T(Twin) C(Cities) B(Brainerd Area) X(Express) • Established 1907**



Information about the Cultural Arts Series and tickets for each event will be made available soon on the Center's website: [www.clcperforming-arts.com](http://www.clcperforming-arts.com)



*Aicota....Making a difference*

**Openings Available**  
in Nursing, Culinary & Assisted Living.

For more information  
visit our website: **Aicota.com**

*Apply on site or online.*  
Resumes should be sent to  
staffing@aicota.com  
**850 2nd Street NW, Aitkin, MN 56431**  
**218.927.2164 • www.aicota.com**



# This is not just a home ... it's a secure, comfortable place *to call* home.



**AICOTA**  
ASSISTED LIVING

850 2nd Street NW, Aitkin, MN 56431  
218.927.2182 • [www.aicota.com](http://www.aicota.com)

*At Aicota Assisted Living, we offer residents a unique experience that combines high quality accommodations and services which are designed to promote a dignified independent lifestyle. As a resident, you will enjoy a peaceful setting, along with friendly, compassionate and professional staff that are available to meet your needs 24 hours a day.*

- 1-Bedroom & Studio Apartments
- Dining Rooms with 3 Meals/Day
- Living Rooms and Large Stone Fireplaces
- Outdoor Patio Area and Gardens
- Salon/Barber Shop
- Daily Planned Activities & more!
- Personalized Care Plans



**For Your Landscaping & Construction Needs!**

# R & R Landscaping & Construction

Aitkin, Minnesota

License# BC768287

**218-839-3371**

## Specializing in

### Shoreline Restoration

- Rip Rap Rock Installation
- Boulder Wall Material Installation
- Sod Installation
- Class Five
- Bobcat Work
- Demolition
- All Dirt Work Needs
- Patios

## General Building & Remodeling Contractor

- Roofing
- Window Installation
- Siding
- Garages
- Doors
- Decks
- Handicapped Bathrooms

## Dozer & Backhoe Work

- Basements
- Driveways
- Ponds
- Wild Life Food Plots
- Land & Lot Clearing
- Stump Removal
- Rip Rap
- Demolition
- Building Pads
- Ditches and Ditch Cleaning
- Black Dirt, Sand & Gravel
- Roads / Road Building
- Boulder Walls
- Trail Brushing

## Tree Removal

- Tree Removal and Clean-up
- Stump Grinding
- Storm Damage Cleanup
- Aerial Truck

**YOUR EROSION  
EXPERTS!**

**Get Estimates Now  
for Fall Your Projects!**

**Specializing in Shoreline Restoration Rip-Rap-Rock Installation**

**Call Greg for a FREE ESTIMATE 218-839-3371**





2021 NISSAN MURANO SL AWD

260-hp, 3.5-liter V6 engine, intelligent all wheel drive, Intelligent Forward Collision Warning, Automatic Emergency Braking, Rear Automatic Braking, Blind Spot Warning, Lane Departure Warning, Apple CarPlay - Android Auto, Bluetooth Hands-free Phone System, Intelligent Around View Monitor, Motion Activated Liftgate, Leather-appointed seats, Heated front and rear seats, Heated steering wheel, Bose Premium Audio System with 11 speakers, Nissan Door to Door Navigation, Intelligent Cruise Control, Remote Engine Start System with Intelligent Climate Control, 10-way power driver's seat, including 2-way power lumbar support, 4-way power front-passenger's seat, Dual Panel Panoramic Moonroof and Much More!

MSRP: \$45,575  
VIN: 5N1AZ2CSXMC128197  
Stock Number: N210154  
Model Year: 2021  
Model Code: 23411

28 MPG HWY.

\*\$2500 PLUS  
0% UP TO 60 MO.  
-OR-  
1.9% UP TO 75 MO.

\*\$2000 Nissan Special  
APR Only Cash  
\$500 Nissan Bonus Cash

2021 NISSAN ROGUE S CVT AWD

Intelligent All-Wheel Drive, Automatic Emergency Braking with Pedestrian Detection, Intelligent Lane Intervention, Intelligent Forward Collision Warning, Rear Automatic Braking, Rear Cross Traffic Alert, Blind Spot Warning, NissanConnect 7" touch-screen display, Apple CarPlay, Android Auto, Bluetooth® Hands-free Phone System, Streaming Audio via Bluetooth, RearView Monitor, and Much More.

MSRP: \$29,430  
VIN: 5N1AT3AB9MC754804  
Stock Number: N210025  
Model Year: 2021  
Model Code: 22011

33 MPG HWY.

ZERO DOWN\*

\$375 /MO

ZERO DOWN\*

3 year/30,000 miles per year lease  
\$1,000 Nissan Lease Cash  
Lease Sale Price \$27,854

2021 NISSAN SENTRA SV CVT

Remote Engine Start System, Apple Carplay, Android Auto, Intelligent Cruise Control, Dual Zone Temperature Control, Automatic Emergency Braking with Pedestrian Detection, Intelligent Lane Intervention, Intelligent Forward Collision Warning, Rear Automatic Braking, Rear Cross Traffic Alert, Blind Spot Warning and Much More.

MSRP: \$21,965  
VIN: 3N1AB8CV5MY201556  
Stock Number: N210024  
Model Year: 2021  
Model Code: 12111

37 MPG HWY.

ZERO DOWN\*

\$259 /MO

ZERO DOWN\*

3 year/30,000 miles per year lease  
\$675 Nissan Lease Cash  
Lease Sale Price \$21,128

2022 NISSAN PATHFINDER SL 4x4

3.5-liter V6 Engine with 284 hp, 9-speed Automatic Transmission, Intelligent 4x4, Intelligent Forward Collision Warning, Automatic Emergency Braking with Pedestrian Detection, Lane Departure Warning, Blind Spot Warning, Rear Automatic Braking, Tri-Zone Automatic Temperature Control, Remote Engine Start, 10-way Power Adjustable Driver's Seat. Including 2-Way Power Lumbar, Heated Front Seats, NissanConnect with Wi-Fi Hotspot, Around View Monitor, Power Liftgate, Leather-Appointed Seats, Heated Steering Wheel, 9" Touch Screen Display, Nissan Door to Door Navigation, Wireless Apple CarPlay and Much More!

MSRP: \$44,220  
VIN: 5N1DR3CC7NC206352  
Stock Number: N220003  
Model Year: 2022  
Model Code: 25412

27 MPG HWY.

\*\$500 PLUS  
0% UP TO 36 MO.  
-OR-  
0.9% UP TO 60 MO.

\*\$500 Nissan Special  
APR Only Cash

MSRP: \$21,965

\*O.A.C. Finance with Tanner. Does not include tax, title, license or first payment. Pictures for illustration purposes only, actual vehicle color may vary. See dealer for details.

TANNER NISSAN

218.829.1465 | 800.245.9689 www.TannerNissan.com 620 West Washington St., Brainerd

SUMMER Fun

Has Just Began at Tanner Motors

Hurry Sale Ends August 31, 2021

MAKE THIS THE SUMMER EVENT

NEW 2021 RAM 1500 QUAD CAB WARLOCK 4X4

5.7 HEMI, LUXUARY GROUP, ELECTRONIC GROUP, TECHNOLOGY PACKAGE AND MUCH MORE!!

STOCK # 21-0972 MRSP \$50,365

Lease Price

\$49,365 Sale Price  
- 7,400 Rebates  
\$41,965\* Your Price

Purchase Price

\$49,365 Sale Price  
- 5,750 Rebates  
\$43,615\* Your Price

YOU CHOOSE!

\* Must Finance with CCAP

NEW 2021 JEEP GLADIATOR WILLYS SPORT 4X4

LEASE FOR ONLY \$342\* PER MONTH O.A.C.

\* 48 months, 10,000 mile per year lease. \$2,999 Down. Tax, Title, License and First Payment Extra. All Rebates to Dealer.

NEW 2021 JEEP GRAND CHEROKEE LIMITED 4X4

3.6 LTR V6, LEATHER, HEATED SEATS & WHEEL, 8.4 U-CONNECT & MUCH, MUCH MORE!!

LEASE FOR ONLY \$479\* PER MONTH O.A.C.

\* 48 months, 10,000 mile per year lease. \$2,999 Down. Tax, Title, License and First Payment Extra. All Rebates to Dealer.

John Tanner's

TANNER MOTORS

218.829.3597 or 800.222.0434

TANNERAUTO.COM

620 WEST WASHINGTON  
BRainerd