

Farmers' Exchange

Place unlimited items for sale:

FarmersExchange.com

Used and New Farm Equipment.
Equipment, Land and Livestock Auctions.

Call for Subscription **800.247.7318**

FARM EQUIPMENT SPECIALS

Give us a call today!



Ford 4610, 2WD, loader, joystick, 6' bucket, 554 hrs., Stk#3667 **\$15,650**



Kinze 2000, 6/11, 6 30" rows or 11 15" rows, double frame, Stk#3395 **\$20,500**



Kinze 2000, 6 row, no till, dry fert, totally rebuilt, very good, Stk#3644 **\$10,250**



Kinze 2000, 6/11, 6 30" rows or 11 15" rows, thru shop, field ready, Stk#3461 - **\$21,500**



JD 7000, 4 row, thru shop, ready to go, excellent shape, Stk#3610 **\$6,450**



JD 750, 15', good boots & bearings, thru shop, field ready. Stk#3647 **\$17,500**



JD 7000, 6 row, 30", like new seed disc, new scrapers, field ready, Stk#3450 **\$5,950**



GP Solid Stand 7, 7', small seed box, very tight, hard to find size, Stk#3662 **\$15,750**



NH H6750, 9'2" cut, 7 disc, 3 pt. hitch, good curtain, field ready, Stk#3344 - **\$7,950**



NH BR7060, 2013, Silage Special, less than 5000 bales, very nice, Stk#3531 - **\$16,750**



JD 230, 18', 9" spacing, not broken & welded up, hard to find size, Stk#3627 - **\$4,950**



Brillion PMWT148-02, 12', not welded up, very solid, field ready, Stk#3602 - **\$4,350**

Newman Farms
www.newmanfarms.net

Cleveland, TN

Call 423-595-5715
or 423-464-5303



1702 Highway 72 East • Athens, AL 35613

256-232-5850

LS Package Deals: Tractor, Loader, Trailer, Box Blade & Cutter



2021 LS Tractor MT122-21.5HP
4WD, Dual Pedal, 2 range HST
Call For Price



Several LS Package Deals

Call For Details



2021 LS Tractor MT122-21.5HP
4WD, Dual Pedal, 2 range HST
Call for Price



2021 LS Tractor MT125-24.7HP
4WD, Dual Pedal, 2 range HST
Call for Price



2021 LS Tractor MT125-24.7HP
4WD, Dual Pedal, 2 range HST
Call for Price



2021 LS Tractor MT225E-24.6HP
4WD, Independent PTO
Call for Price



2021 LS Tractor MT225E-24.6HP
4WD, Independent PTO
Call for Price



2021 LS Tractor MT230E-30HP
3-Cylinder, Indirect-Injection,
Water-Cooled
Call for Price



2021 LS Tractor MT230E-30HP
4WD, Independent PTO
Call for Price



2021 LS Tractor MT240HE-40HP
4WD, Dual Pedal 3 range HST
Call for Price



2021 LS Tractor MT342-42HP
3 pt. control lever, premium dash
Call for Price

VIEW OUR COMPLETE INVENTORY AT HANEYEQUIPMENT.COM



OUR SPECIALS OF THE MONTH!



JAY-LOR

D&E is Your **SOURCE**
for Mixers! Huge
IN STOCK Inventory!

H&S



TOP SHOT
5234 Spreader
\$46,200




MASCHIO
Entry 150
4x5 Dry or
Silage Bales
twine & net
\$23,500

HAYBUSTER



7 & 10' in stock!
With Legume Box &
Lift Cylinder
Best \$\$ Around!

CLAAS



Balers, Tedders, Mowers
0% FINANCING
60 MONTHS
ON MOST HAY EQ

STRETCH-O-MATIC
8400 ELITE



\$32,500

Dependable, Quality.
Other wrappers have
higher price tags.
Doesn't make 'em better,
only costs you more.

S.I. FEEDERS



24' Feeder Wagons
Heavy Duty
Arrow Front
\$7250
with New Tires!

Call Us... Save \$\$\$

GEHL



**R220, R260 &
V270s**
IN STOCK!

GEHL

RT255 & RT320
Track Loaders
Fresh Inventory
Fully Loaded

Bush-Whacker



**12' MD144 &
15' ST180**
IN STOCK

Poultry Specials



LVI **BBI**

Litter Spreaders
Pulverizers & Windrowers!
Pulvimaster 96
\$6850 -1 left at this price!

D&E
DON ALLISON EQUIP, INC.

www.donallisonequipment.com
800-669-6450
THE MIXER PLACE!

If you need quality products with non-stop support,
it's time to **TriGreen...**

New Year Savings on A New Krone!

Call Today!



KRONE



Most models qualify for TAEP.
Call or come by for details!

EasyCut
Pull-Type Disc Mower

Swadro
Rotary Rake

KW/KWT
Rotary Tedders



Dependable cutting and professional quality.



Even and consistent windrows



Powerful rotors turning crops into high quality forage.

Krone machines are customer designed and German engineered for professional hay and forage producers. With their innovation comes efficiency, quality and technology to improve any operation. For a limited time take advantage of these discounts and experience equipment engineered for your performance.



www.krone-na.com

* Discount amount based on specific machine type & model. Discounts cannot be combined with low rate finance offers. Krone® is a registered trademark of Maschinefabrik Bernard Krone GmbH. PO Box 18880 Memphis, TN 38181-0880 (901) 842-6011



- Arab, AL
933 N. Brindlee Mt. Pkwy.
(256) 586-8304
- Athens, AL
131 US Hwy 31 S
(256) 232-2131
- Columbia, TN
2409 Pulaski Pk.
(931) 388-1557
- Cookeville, TN
1490 Interstate Dr.
(931) 526-8544
- Cullman, AL
3920 AL Hwy 157
(256) 739-5601
- Dickson, TN
707 Henslee Dr.
(615) 229-2400
- Fayetteville, TN
2894 Huntsville Hwy.
(931) 433-5620
- Florence, AL
3613 Florence Blvd.
(256) 757-9080
- Franklin, TN
340 9th Ave N
(615) 794-8187
- Hendersonville, TN
133 N. Shackle Island Rd.
(615) 824-9726
- Huntsville, AL
4550 Research Park Blvd.
(256) 830-4020
- Jasper, AL
3700 Industrial Pkwy.
(205) 384-3058
- Leighton, AL
1160 Sockwell Ln
(256) 446-5929
- Manchester, TN
812 Interstate Dr.
(931) 728-5400
- Mt Juliet, TN
10768 Lebanon Rd.
(615) 754-2600
- McMinnville, TN
305 Shangri La Ln.
(931) 668-1784
- Pelham, AL
3311 Pelham Pkwy
(205) 605-0412
- Scottsboro, AL
26685 John T Reid Pkwy.
(256) 259-0704
- Winchester, TN
176 Blair Pond Rd.
(931) 967-5144

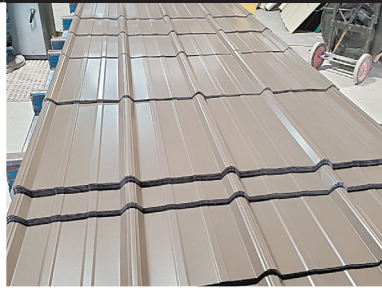
TriGreenEquipment.com



TRIGREEN

E Q U I P M E N T

QUALITY BUILDING SUPPLY



WE HAVE IT!

If you're constructing any kind of building, we have all the materials you need. Come by and see us for all your building supply needs!



**FOR A FREE MATERIALS QUOTE
PLEASE EMAIL: jeff@qbs.us
OR CALL THE OFFICE :
PHONE#
931-593-2027**

Quality Building Supply Is Here To Serve And Supply Middle TN With "Quality Building Supplies"

Our Goal Is To Provide The Best For Contractors And Home Owners, By Offering Fast Turn Around On Any Orders

LOCATION:
3492 HWY 438 E
LOBELVILLE, TN 37097

Cullman, AL • 256-739-5601



JD 560M - \$41,900



JD 5075E - \$33,500



Tonutti RCS10 - \$5,500



JD 560M - \$36,000

JD 6M/R Loader Frames, W43962, fits
H260-H340 loaders \$2,500
JD 73" Global Bucket, 2020, like new!.....\$1,250

Tonutti RCS10, 2019, 10 wheel..... \$5,500
JD 560M, megawide, 5x6, twine & net,
4000 rolls \$41,900

Frontier AB13D Hay Spears, fits 600 series,
loaders.....\$725
JD 3038E, 2018, 362 hrs., 4WD, loader,
warranty..... \$18,900
JD 5075E, 2015, 1370 hrs., 4WD, loader,
side exhaust \$33,500
JD 560M, 2019, mega wide, twine & net,
5x6, 9780 rolls \$36,000

Scottsboro, AL • 256-259-0704



JD 1990 - \$78,500



JD 7760 - \$355,000



JD 843 - \$8,500



JD WHP48A - \$2,750

JD 843, 1992, 30" rows, field ready..... \$8,500
JD WHP48A, 2017, 8113 hrs., 48", 18hp..... \$2,750
Durabilt CS2012, 2018, good condition \$6,800
Case IH 496, 25', 3 section folding, 7.25" spacing \$12,500
Durabilt CS2012, new condition..... \$8,500
Frontier WR3108, 8 wheel..... \$5,800

Cookeville, TN • 931-526-8544



Frontier WR2210 - \$7,500



JD 2025R - \$13,000



NH BR560 - \$15,000



JD 568 - \$14,900

JD 557, 4622 bales, Stk#1031476 \$11,900

JD 458, 2010, 16,300 bales \$9,500

JD 460M, 2019, 200 bales \$38,500
JD 569, 2017, 5700 bales \$28,500
JD Z930R, 1010 hrs., warranty,
Stk#1030671 \$7,000
Ogden RCR10-60 Hay Rake, kicker,
10 wheel, 2019..... \$7,500

Manchester, TN • 931-728-5400



NH T6.175 - \$76,000



JD 4830 - \$89,500



JD 893 - 11,900



JD 5055E - \$19,999

(2) JD Z915B \$3,000 & \$4,500
JD 737 \$3,000
JD 955 MoCo \$25,000
Frontier 1008 Wheel Rake \$3,295
JD R4023, 2020..... \$209,000

Leighton, AL • 256-446-5929



Vermeer WR20 - \$3,600



Kubota BX2230 - \$8,900



JD 6145R - \$125,000



JD 5045E - \$15,900

JD S690, 2013 \$279,000
JD R4038, 2017, self propelled, 767 hrs.. \$255,000
JD R4038, 2018, 623 hrs \$329,000
JD 6145R, 2017, Stk#1029889 \$95,000
JD 5045E, 2019, 75 hrs., loader, 4WD..... \$29,500

Fayetteville, TN • 931-433-5620



Kubota M5-111 - \$55,000



JD 5075E - \$40,000



NH BR7060 - \$21,000

Case IH 2188 \$18,500
Wilmar 7200 \$20,000
BH 2615 \$8,500
JD 930F \$7,500
Case IH 5500 \$6,500
Case IH MD92..... \$6,500

JD Z915B \$5,500
JD Z925A \$3,800
JD Z915E \$6,500
NH H6750..... \$4,500
Krone AM283S \$5,500
JD 7300..... \$6,500
Citrex H90 V10..... \$2,200
M&W ER10 \$2,200
Frontier WR008..... \$3,000
Schulte FX20..... \$8,500
Schulte FX1500..... \$8,000

Huntsville, AL • 256-830-4020



Fae Mulch Head - \$15,000



JD 750 - Call



JD 450 - \$29,000



JD 567 - \$7,150



JD R4038 - \$299,500



Krone AMR320 - \$9,500

Athens, AL • 256-232-2131



Scag SVR2 - \$8,200



JD 3038E - \$23,896



JD 4052R - \$39,500



NH Magnum 10 - \$6,400



JD 6405 - \$25,000

JDZ930M, 2015, 550 hrs.....\$6,500 JD 1025R, 2020.....\$15,500 Bushhog Cutter, 2016, 10'.....\$4,700
 Toro ZMaster 3000, 60" cut, 2014\$7,700 JD MX6\$2,300
 JD Z915E, 48", 75 hrs.....\$5,450 Kuhn SR110, 10 wheel, 2018\$6,550

Columbia, TN • 931-388-1557



Kubota M6950 - \$12,500



JD 4830 - \$125,000



JD 3035D - \$19,900



Vermeer 5520 - \$17,500



eXmark VT20K - \$3,699

Bad Boy Elite, 54", 30 hp, 145 hrs.,
 Stk#1030403\$4,250 JD X390, 54" deck, 119 hrs., 2019\$2,900 Kubota M6950, loader, 2WD, bucket, spear,
 3600 hrs., Stk#1031479.....\$12,500
 JD WHP48A, 2017, 48".....\$4,895 JZ Z930M\$7,500
 JD X300, 2013, 42"\$1,500 JD Z525E.....\$3,250

Mt. Juliet, TN • 615-754-2600



JD 630 - \$7,995



JD 926 - \$7,500



Kubota BV4580 - \$24,995



Ogden HR10 - \$5,999



Ogden HR8 - \$4,795



NH BR7080 - \$17,500

McMinnville, TN • 931-668-1784



Frontier WR1008 - \$3,250



NH H7320 - \$11,950



JD 469 - \$25,000



Landpride RCR1260 - \$1,250



Jacto 2600 - \$8,500

Winchester, TN • 931-967-5144



Gehl 2580 - \$5,750



JD Z950 - \$7,400



JD 630 - \$10,500



JD 6130M - \$138,500

Used Lawn & Garden TractorsCALL JD 661R.....\$5,900
 Commercial Zero Turn Mowers.....CALL Used Hay Movers..... Call
 Buffalo Flail Mower, 20'.....\$3,500 JD 4730 Sprayer..... Call
 NH 851 Baler.....\$1,750 JD 460M.....Coming Soon Call
 M&W Rake, 8 wheel.....\$2,000 JD Z425\$2,000
 Haymaster Rake, 8 wheel.....\$1,500 JD Z930M\$8,950
 JD Z445\$3,500 JD 558, mega wide twine only,
 JD 662 Rake, dolly wheel.....\$1,900 8900 bales\$12,500
 JD 660 Bar Rake\$1,250 JD 460M, 2018, net wrap, 13,500 bales...\$27,000
 NH BR7070\$6,500 Claas C512-30, 2005\$15,000

Florence, AL • 256-757-9080



JD Z920M - \$9,500



Frontier GM1060R - \$1,599



JD Z920M - \$9,500



JD Z915E - \$8,500

Mahindra 4550, 2017, 345 hrs.....\$18,500

Arab, AL
 933 N Brindlee Mt. Pkwy
 (256) 586-8304

Franklin, TN
 340 9th Ave N
 (615) 794-8187

Murfreesboro, TN
 464 Middle TN Blvd
 (615) 890-6258

Dickson, TN
 707 Henslee Dr
 (615) 229-2400

Hendersonville, TN
 133 N. Shackle Island Rd
 (615) 824-9726

Pelham, AL
 3311 Pelham Pkwy
 (205) 605-0412

Jasper, AL
 3700 Industrial Pkwy
 (205) 384-3058

LOW RATE FINANCING AVAILABLE

Contact any of our stores for details

Alabama's Branson Dealer

Call For Specials, Deals and Incentives.



2020 Bush Hog HDE2555KP2
Call for Price



Bush-Whacker T240
\$3,950



International 464,
runs good - \$4,500



1993 JD 5200
\$15,950



1990 Custom Build
24 ft. - \$5,500



JD 3020
\$6,950



1992 Ford 4630
\$9,950



International 504
\$5,500



Claas Disco 3050
\$4,250

We Carry Bushhog Mowers - Call For Info
Several Used Round & Square Balers For Sale

HUDDLESTON EQUIPMENT

Bush-Whacker® 29233 Hwy. 431 Wedowee, AL 36278



256-363-1132
huddlestonequipment.com



Animals

Place your ad: 800-247-7318

49 HEAD OF BLACK ANGUS HEIFERS, bred to calve end of January and first of February. Bred to low birth weight bulls from Branch View Angus, \$1,950 each or best offer. (270)221-1056.

RED ANGUS BULLS AND HEIFERS. Decherd, TN. (931)691-4864.

EIGHT REGISTERED ANGUS HEIFERS, put with low birth weight Angus bull 11-5-21, will be pregnancy checked by vet, meets TAEP heifer program in TN. Get \$500 back per heifer. FandPLivestock.com; (615)653-8913.

FOR SALE, REGISTERED Black Angus bulls, 16-17 months old, good EPD's, frame, length, disposition, TAEP qualified. Fifty years of selection for the best. Turrentine Angus, Shelbyville. (931)607-8950.

WAGYU HEIFERS for sale. (256)714-6182.

TANK COATINGS & ROOF COATINGS

Available for metal, composition shingles or Tar Roofs. Long lasting and easy to apply. We also manufacture Tank Coatings for Concrete, Rock, Steel, Galvanized and Mobile tanks.



Viriden Perma-Bilt
806-352-2761

www.virdenproducts.com



REGISTERED ANGUS BULLS, good EPD, several heifer bulls, 16 months-20 months old, passed GSE and meets TAEP bull program in TN. FandPLivestock.com; (615)653-8913.

16' CASE DISK, \$400. (256)708-5303.

REGISTERED PURE-BRED LIMOUSIN BULLS and bred heifers, and open heifers, excellent EPD's, homo polled and homo black. Erwin, TN. (423)833-8889; (423)743-8686.

WE ARE THE MATCHMAKERS for your farm animals. Contact us to buy a companion for your cow, bull, goat, chickens. Every farm animal has a match. 1-800-247-7318.



5 REGISTERED RED ANGUS HEIFERS and 6 registered Red Factor black Angus heifers, 3 for \$2,200/each, 8 for \$1,700/each. Located in Rome, GA, 20 miles past Centre, AL. Joe Gibson, (706)506-3026; Gibsoncattle.com.



LAKE AND POND FISH FOR STOCKING. Bass, Bluegill, Shell Cracker, Catfish, Grass Carp, Minnows and Other Species. Aerators and Fountains. We deliver! Call for prices! (615)977-0752.

ANGUS BULLS, by Enhance; LPF weigh up1, \$1,800-\$3,500. Discounts for multiples. Monterey, TN. (931)267-6813.

Thank You for Saying You Saw It in the Farmers' Exchange!



FOUR REGISTERED ANGUS COWS, will have second calf in spring 2022, have been pregnancy checked by vet, bred to high EPD Enhance bull. FandPLivestock.com; (615)653-8913.

50 BLACK COWS for sale. Call for information, (931)619-1338.

REGISTERED POLLED HERFORD BULLS for sale. Lynnville, TN area. (931)527-3392.

BUNK FEEDERS

CATTLE GUARDS



Concrete Water Troughs



With or Without Legs
Open or Closed Ends

Delivery Available

8' • 12' • 16' Widths
Rounded Top Design Keeping Livestock From Crossing



River City Concrete

9160 Hwy. 128 | Savannah, TN, 38372 | 731-925-0271

River City Concrete

www.rivercity-concrete.com

ABSOLUTE AUCTION

12,056 ± Square Foot Commercial Building On 1.31 ± Acres
3940 Fayetteville Hwy. - Peterburg, TN 37144

SATURDAY JAN. 29th 10:00 a.m



12,056 +/- square feet per tax card with partial new roof and siding.
Large parking capacity and loading dock.
Located on busy Fayetteville Hwy with a high traffic count.
Many possibilities in a central area of Bedford, Marshall and Lincoln Counties.

NO BUYERS PREMIUM WHAT YOU BID IS WHAT YOU PAY!!



931-684-9112

508 Cannon Blvd., Shelbyville, TN 37160

"SINCE 1973" craigwheeler.com

Lic. # 547



TERMS: REAL ESTATE: 20 % CASH DAY OF SALE, BALANCE WITHIN 30 DAYS.

ANNOUNCEMENTS DAY OF THE SALE TAKE PRECEDENCE OVER PREVIOUS ADVERTISING.

Buildings built prior to 1978 may contain lead-based paint. This ad serves notice to anyone to conduct an assessment prior to auction.

For pictures and more information, go to www.craigwheeler.com

For further information contact Listing Agent: Asa Kelly 931-703-2040 & Tad Craig 931-684-9112

EXCELLENT USED TRACTORS & EQUIPMENT



17C Reynolds Scraper Pan
Call Ben for Info
\$17,000



CX100 McCormick Tractor Cab
2003, Call Ben or Joe for more info.
\$33,000



MC105 McCormick
2007, Call Ben or Joe for details
\$57,500



504M Vermeer Baler Silage
12k bales. 5x4. Bale monitor.
Call Ben for Info
\$14,500



70A Case
4WD with Case loader.
Call Ben for Info
\$36,500



CX85 McCormick Tractor
with McCormick loader, cab and 4WD.
Call sales.
\$33,500

Snead Equipment

www.sneadequip.com



U.S. Hwy. 278 East, Snead, AL 35952

205-466-3500

FOR SALE REGISTERED BLACK ANGUS BULLS, 50k tested and will qualify for the full \$1,600 TAEP money, all are AI bred. Crawford Angus. Lewisburg, TN. (931)205-2450; or, (931)359-2633.

AUSTRALIAN SHEPHERD PUPPIES, AKC registered, blue eyes, ready to go, mom and dad on site, \$400. (256)762-2190.

16' CASE DISK, \$400. (256)708-5303.



CORRIENTE CATTLE for sale, bulls, heifers and roping cattle available. Call, (615)459-7773. Leave message, I do not have cell phone. Thank you.



SAN T A GERTRUDIS, young bulls and heifers, polled, registered, gentle. Free ballcap. Quality cattle since 1977. (256)566-7878.

REGISTERED ANGUS BULLS, 15 months-3 years old, AI sired, TAEP approved, excellent bloodlines, good EPDs, good frame and length, very gentle, starting at \$2,500. (931)510-1104.

ENGLISH SHEPHERD PUPPIES, purebred but not registered, 5 males and 4 females, ready December 18, \$200 each. (931)738-3114.

HEREFORD BULLS, breeding age - 20-22 months, AI sired-Top blood lines, great EPDs, excellent disposition. Call for details. (931)668-9749.



PUREBRED GELB-VIEH AND BALANCER BULLS, HEIFERS, AND COWS FOR SALE, TOP BLOODLINES AND EPDS. CALL FOR PRICES, (256)874-3488.

REGISTERED BLACK ANGUS BULLS for sale, fully TAEP qualified, A-I sired out of great cow families, gentle, good EPD's. Cedar Ridge Angus, Pulaski, TN. (256)508-2874. See Cedar Ridge Angus on Facebook.

REGISTERED BLACK ANGUS BULLS, all qualify for maximum TAEP money. Call for price, (931)589-2759.

WANT TO BUY, FJ40 Toyota, in model years from 1975 to 1980. Call, (931)607-9737.

The Crown For Your Home



Residential • Agricultural • Commercial

Increase the value & beauty of your home with our maintenance free metal roofing!
Available in many styles:

Slate, Clay Tile, Shake, Stone Coated Shingle, Thatch & Standing Seam

We manufacture the 3 ft. wide metal panels at our location, plus we use an in-house computerized custom trim machine, for better and faster service!

Plateau Metal Sales

www.plateaumetalsalestn.com

103 Randolph Rd. • Crossville, TN
Mon. - Fri. 7 to 5 • Sat. 8 to 12

931-277-3586
1-800-468-0149

• 2nd location to serve you better. •

2448 Buttermilk Road W. • Lenior City, TN

1-866-988-7670
865-376-0528

YOUR METAL ROOFING HEADQUARTERS

First Auction of 2022!

January 15, 2022 - 6:30 P.M.

www.mcnattliveauctions.com

For 100's of items up for bid!



McNatt Real Estate & Auction - Chris McNatt
27802 Capshaw Rd Harvest AL 35749
(256) 874-3786 • ASL 1476 • TSL 5074 • Firm 2652

Farm Equipment Specials



JD 1518 Batwing, laminated wheels, 540 PTO, very straight, Stk#3683 - **\$9,450**



Kuhn GA300GM, 3 pt., 9', good working rake, Stk#3691 **\$3,450**



NI 324, 2 row, sheller unit, 36" - 40" row, pull type, Stk#3635 **\$4,450**



Case IH 1020, 15', double drive, all fingers in reel & auger, immaculate, Stk#3561 - **\$10,850**



Case IH 1020, 25', SCH Cutterbar, good poly, nice, Stk#3571 **\$6,750**



Case IH 1020, 15', good floor, auger & reel very straight, Stk#3655 **\$7,250**



Kewanee 2000, 14', very heavy built, very good shape all the way around, Stk#3660 - **\$5,850**



JD 693, 6 row, 30', good floor & auger, chains & rollers good, Stk#3508 **\$9,250**



Case IH 5100, soybean special, 18 hole, 7" spacing, nice, field ready, Stk#3264 - **\$6,250**



JD 915, 15', cutterbar good, excellent poly on bottom, Stk#3184 **\$5,450**



JD 7000, 6 row, 30" conservation, thru shop, excellent condition, Stk#3320 - **\$7,650**



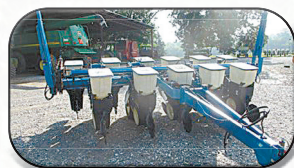
JD 310, 12' working width, 11" spacing, 2 cyl, good blades & bearings, Stk#3549 - **\$6,550**



Killbros 30, good tires, ext. tongue, Stk#3613 **\$3,150**



IH 510, 7" spacing, 13 hole, 8' width, manual lift, small seed box, Stk#3493 **\$6,450**



Kinze 2000, 6/11, 6 30" rows or 11 15" rows, new scrapers, field ready, Stk#3461 - **\$21,500**



Adams 5T, ground drive, twin disc, very nice, field ready, Stk#3687 **\$6,250**



JD 230, 18', 9" spacing, not broken & welded up, Stk#3627 **\$4,950**



JD 8300, 21 hole, 7" spacing, small seed box, very hard to find drill, Stk#3558 - **\$6,350**



Willmar 500, tandem axle, ground drive bed chain, field ready, Stk#3651 **\$5,250**



NI 3622 Manure Spreader, single beater, 180 bushel, 2 spd., drive, good poly floor, Stk#3483 - **\$6,850**

Adams 5T, ground drive, field ready, Stk#3688.....	\$5,950	NH H6750, 9'2" cut, good curtain, Stk#3344	\$7,950
Killbros 350, on Killbros running gear, Stk#1680	\$2,900	NI 5407, 7' cut, good curtain, Stk#3494.....	\$5,250
Case IH 1044, Stk#3191	Call	Int. 510, 7" spacing, 13 hole, 8', Stk#3493	\$6,450
Case IH 1020 Grain head, 20', very nice, Stk#3679	\$7,250	Kinze 2000, 6/11, 6 30" rows or 11 15" rows, Stk#3461.....	\$21,500
JD 643, 6 row, 30", low tin, nice straight head, Stk#3126	\$5,700	Kinze 2000, 6/11, 6 30" rows or 11 15" rows, Stk#3395	\$20,500
JD 915, 15', good cutterbar, field ready, Stk#3184.....	\$5,450	Kewanee 1020, 18', 8.5" spacing, good blades & bearings, Stk#3517.....	\$4,750
Morra RM280/8, 3pt., rotary rake, Stk#3337	\$3,250	NH BR7060, 2013, silage special, less than 5000 rolls, Stk#3531	\$16,750
Kinze 2600, 12/23, 12-30" rows or 23-15" rows, Stk#3307.....	\$31,500	NI 324, 2RW, runs good, 8 roll husking bed, Stk#3555.....	\$2,950
Int. 550 Manure Spreader, 210 bu., field ready, Stk#3510.....	\$4,950	Taylor Way 350, 10', very solid, Stk#3659.....	\$2,750
NH 256, 9', all teeth good, Stk#3521.....	\$2,450		



Cross Equipment PTSSSQP, 5 ton, 18" stainless bed chain, field ready, Stk#3505 - **\$7,250**

Newman Farms

www.newmanfarms.net

Cleveland, TN

Call 423-595-5715 or 423-464-5303

BUYING *Quality* USED EQUIPMENT



JD 9500 1995, 3072 hrs.,
2245 sep. hrs., 2WD **\$32,900**



Claas Lexion 740 1143 hrs., 781
sep. hrs., 4WD, very clean **\$135,500**



JD 4440 1981, 2WD, 144 hp, 7854
hrs., 2 sets remote **\$24,900**



JD 5085E 4WD, 1279 hrs., 12/12 PR,
85 hp **\$41,500**



JD 5083E 2011, 4WD, 83 hp, 2369
hrs., 2 remotes **\$38,900**



JD 5075E 2015, 4WD, 105 hrs.,
12/12 PR trans., 75HP **\$39,900**



JD 730 High Crop, 1959, 2WD,
California tractor, 65 hp **\$34,500**



JD 5320 2002, 64 hp, 1527 hrs.,
2WD, 1 set of remotes **\$24,500**



Kubota M5400 2WD, 58 hp, 2000,
696 hrs., 1 set of remotes **\$18,900**



Kubota M4900 4WD, 631 hrs., 54 hp,
8/8 SyncShuttle trans, 2008 **\$22,500**



Kubota M5040 2010, 4WD, 903 hrs.,
50 hp, 1 set remotes **\$35,900**



JD 5045E 4WD, 50 hp, 2018, 9/3
syncro trans **\$24,900**



JD 3720 2006, 989 hrs., hydro
trans., 4WD, 44 hp **\$39,500**



JD 2038R 37 hrs., 4WD, 2020,
38 hp, hydro trans. **\$29,900**



JD 770 4WD, 1996, 30 hp, 8/2 trans
\$11,500



JD 3025E 2021, 10 hrs., 4WD,
25 hp, hydro trans. **\$21,900**



JD 327 good tires, good knotters,
clean, shed kept **\$8,950**



JD 459E 2017, 986 bales,
twine & net **\$23,500**



Haybuster 107 pull type, 75"
spacing, small seed box **\$10,900**



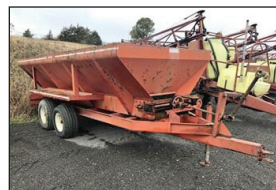
JD M15 2019, 540 PTO, field
ready, very little use. **\$17,900**



Aerway AWST 200 20', pull type,
pintle hitch **\$8,950**



KBH ST200 2 box tender, auger
unload, tandem, gas engine **\$8,950**



Chandler 16CLPT 16', good
chain, clean body, 540 PTO **\$9,950**



EZ Trail 850 850 bu, 1000 PTO,
14" auger **\$11,500**

Bush Hog Commercial & Mulicity Discounts Available

www.eaglevilleimplement.com

Reasonable Delivery Available Anywhere!

Come See Why We Are The Largest Independent Bush Hog Dealer In The USA!

We have TAEF Hay Equipment In Stock!



Bush Hog HT417H - hydro fold, one year warranty - **\$7,500**



New Bush Hog Rakes - 8 & 10 wheel - **In Stock**



Bush Hog DSP10 - 2¼ cu yd capacity, 39" depth - **\$5,950**



Bush Hog Disc Mowers - 7'-10' - **In Stock**



Bush Hog BH115 - 15', \$1,950



Bush Hog 2215 15', laminated tires - **\$21,500**



Bush Hog HDTH8 - 99" cut, 3 pt. - **\$6,350**



Bush Hog BH116 72", 540 PTO, 3 pt. - **\$2,250**



Bush Hog BH316 72", 3 pt., heavy duty - **Call**



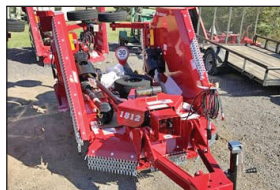
Bush Hog RT72GR 6', 2022, 3pt. - **\$3,450**



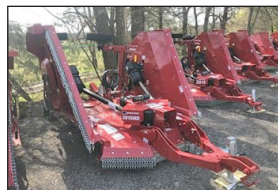
Bush Hog RT84GR 7', 2022, 3pt. - **Call**



Bush Hog BH215 60", 3 pt - **\$2,650**



Bush Hog 1812 12', 540 PTO, 2022 - **\$13,500**



Bush Hog 2815 15', 540 PTO, 2022 - **\$24,900**



Bush Hog 3815HD 15', 540 PTO, 2022 - **\$24,900**



Bush Hog 3510 10', 540 PTO, 2022 - **\$13,500**



Bush Hog 4815 2022, Flex Wing, 540 PTO - **\$28,500**



Bush Hog 3308 8', 2022, 540 PTO - **\$8,950**



Bush Hog ZT's - 49" - 73", 22HP - 38HP, 3 yr. warranty Kawasaki & Kohler - **Starting at \$7,500**



Call Us Today!
(615) 274-2200

775 South Main Street Eagleville, TN 37060

Proud sponsors of:



FARM AUCTION

**9:AM Friday, January 14th
- 1060 Mt. Stanley Rd., Town Creek, AL -**



Partial List of Items:

Trucks, Grain Trailers, Tractors, Combine, Bushhogs, Chisel Plows, Sprayer, Farm Equipment, Shop Tools, and much more!!

For more info, call Ben Phillips 256-710-9683

AMISH AUCTION



**9:AM Thursday, February 3rd
380 Teeters Rd., Morrison, TN
Lunch - Tent- Restrooms Available
Auction Held Rain or Shine!**

Partial Listing of Items:

Jersey Milk Cow, 2 Jersey Cross Steers, Ring Neck Pleasants 6 months old in January, Golden Red Pullets 6 months old in January, Saddles and Bridles, Harnesses, J.D. Corn Planter, MC #7 Silo Filler, Tobacco Bailers, Fertilizer Spreader, Log Chains, Wind Mill, Bales of Straw, Shelled Corn (Bring own bags), Clocks, Glassware & Dishes, Household Items, Farm Machinery & SO MUCH MORE!!! We never know until Auction day what will show up!

Load up the family & make plans to spend the day with us!

Seller: Amos Hershberger

For more info, call Shane Albright Auctions 256-757-8898



SHANE ALBRIGHT AUCTIONS

6508 US-72 KILLEN, ALABAMA 35645

AL PHONE 256-757-8898 TN PHONE 931-762-5134

Shane Albright Owner/Broker/Auctioneer AL#1569 TN#5431

Ben Phillips Vice President/ Realtor/ Auctioneer 256-710-9683 AL#1331

ESTATE AUCTION

"The Claude E. Felton Estate"

- 11 Total Properties in Colbert County, AL
- Each property will be held in its own **online auction**.

List of Properties to Be Sold:

1) House w/ 40 Acres +/- & Personal Property

- Ending Thursday, January 20th, 2022 **Online Auction**
- Visit www.shanealbright.com to Register & Bid!

2) Hardware Store in "Downtown Leighton"

- To be sold in **Online Auction** after home & personal property!!

3) Land Properties in Colbert County, AL

- 9 Land Properties around Colbert County to be sold in an **Online Auction** after Hardware Store!!

For more info, call Shane Albright Auctions 256-757-8898

NOW BOOKING FOR 2022 CALENDAR YEAR!

We have many Online Auctions Booked!

Visit our website www.shanealbright.com!



SHANE ALBRIGHT AUCTIONS

6508 US-72 KILLEN, ALABAMA 35645

AL PHONE 256-757-8898 TN PHONE 931-762-5134

Shane Albright Owner/Broker/Auctioneer AL#1569 TN#5431

Ben Phillips Vice President/ Realtor/ Auctioneer 256-710-9683 AL#1331

UPCOMING AUCTIONS

- ***The Oakland Gin Equipment Consignment***
 - 9:00AM Friday, February 11th **On-Site**
 - Held On-Site at the Oakland Gin
 - Call Terrell 256-710-8651 to consign!

- ***House & Personal Property - Florence, AL***
 - Begins ending 6:PM Thurs., Jan. 4th, 2022
 - House & Personal Property **ONLINE**
 - 645 Sannoner Ave, Florence, AL

- ***Personal Property Auction***
 - Furniture, Glassware, Cookware, etc.
 - Date is TBD but will be **ONLINE ONLY**
 - 6508 US-72, Killen, Alabama 35645

- ***Land & Personal Property Auction***
 - 2.2 Acres+/- Vacant Land
 - Furniture, Fenton & Glassware
 - Date is TBD but will be **ONLINE ONLY**

Call us today at **256-757-8898 for a
Free Auction Consultation!**



SHANE ALBRIGHT AUCTIONS

6508 US-72 KILLEN, ALABAMA 35645

AL PHONE 256-757-8898 TN PHONE 931-762-5134

Shane Albright Owner/Broker/Auctioneer AL#1569 TN#5431
Ben Phillips Vice President/ Realtor/ Auctioneer 256-710-9683 AL#1331

SHANE ALBRIGHT AUCTIONS

Let us sell for you!

Call us today at 256-757-8898 for a Free Auction Consultation!

Check Our Website for Weekly "Online" Only Auctions

www.shanealbright.com



SHANE ALBRIGHT AUCTIONS

6508 US-72 KILLEN, ALABAMA 35645

AL PHONE 256-757-8898 TN PHONE 931-762-5134

Shane Albright Owner/Broker/Auctioneer AL#1569 TN#5431

Ben Phillips Vice President/ Agent/ Auctioneer 256-710-9683 AL#1331

HWY 72 SALES



New Tires Every 3 Days
- Forestry
- Ag & Farm
- Commercial

Call Tim Thornton

256-366-9042

CHECK OUR PRICES BEFORE YOU BUY!

On-line Estate AUCTION

Tractors - Equipment - Trucks - Etc.

Selling for the George Jennings estate.

Location: 747 Champ Rd., Kelso, TN 37348

Online Bidding will begin January 17 and End on January 24.

Approximately 200 Lots Selling!

Ends: Monday, January 24 • 7:00PM
Preview: Friday, January 21 • 2:00PM - 4:00PM only
Pick-up: Tuesday, January 25 and Wednesday, January 26 • 10:00AM - 3:00PM only!



Auctioneers Note: For those who knew Mr. George, you knew that he would buy anything, anytime, anywhere. In this online auction, you're going to find everything from very good items to salvage items and all in between. Your inspection is highly encouraged, as all items sell AS IS.

Register to bid at: www.VanMassey.com



Van Massey
Broker/Auctioneer

VanMassey

AUCTION & REALTY

www.vanmassey.com

"Serving The Southeast Since 1982"

31 Lynchburg Hwy.
Fayetteville, TN 37334
(931) 433-8686

NAA
Auctioneer
AL Lic. #1289
ITAA
TN Lic. #1711
MS Lic. #1609

On-line Farm & Construction Equipment Consignment **AUCTION**

February 14th - 21st

Location: 31 Lynchburg Hwy., Fayetteville, TN 37334



Note: Receiving Equipment February 1st - 4th: Call Joe Massey if you have equipment to sell. Our last sale had over 1200 registered bidders from several states. We work hard to get you top dollar as we have for 40 years!! Put or experience to work for you.

See more at: www.VanMassey.com

Live Retirement **AUCTION**

Saturday, February 12th • 10:00 AM

Location: 127 Bennett Rd., Tullahoma, TN
Beef Cattle - Tractors - Equipment

Selling for Mr. Doug Sanders.

Cattle sells first at 10:00 AM



Register to bid at: www.VanMassey.com

Van Massey Auction & Realty: The Auction Authority!

- Specializing in the auction method of marketing for over 40 years
- Real Estate - Farm & Construction Equipment - Livestock - Estates
- Licensed Auctioneers in Tennessee, Alabama, and Mississippi
- We're Farmers Too! We know the land. We know the product. We know the People.



When you're selling a lifetime - don't sell it short!
Sell with Confidence -
Sell with Van Massey Auctioneers

www.VanMassey.com



Van Massey
Broker/Auctioneer

VanMassey
AUCTION & REALTY

www.vanmassey.com

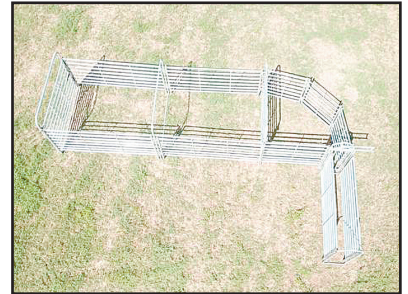
"Serving The Southeast Since 1982"

31 Lynchburg Hwy.
Fayetteville, TN 37334
(931) 433-8686

NAA
Auctioneer
AL Lic. #1289
ITAA
TN Lic. #1711
MS Lic. #1609

www.cbfarmoutdoors.com

Custom 15 Head Cattle Working System - \$3560



Includes 90 degree sweep tub with slide gate & 10' alleyway. Includes a 10x24 Holding Pen with a 10' bow brace. All panels are 8 rail HD panels & entire system is 6' tall. Heavy Duty System!



\$3,950

C&B Hereford Cattle Squeeze Chute with auto head gate



\$5,800

Heavy Duty Hydraulic Cattle Squeeze Chute



\$3,200

C&B Angus Auto Cattle Squeeze Chute



\$79

Econo 5x10 Corral Panels



\$3,800

C&B Angus Auto Squeeze Chute with Palp Cage



\$235

Heavy Duty 14 ga 10' Feed Troughs



C&B FARM + OUTDOORS

13976 Hwy. 72 West, Athens, AL 35611

www.cbfarmoutdoors.com

256-777-7137

Delivery Available On All Our Cattle Equipment We Sell



www.cbfarmoutdoors.com

C&B Wildlife Bait Buggy



3000 lb Unit - \$3,200

5000 lb. Unit - \$3,800



- Perfect for storing corn, beans, wheat, rice, pellets or any kind of grain.
 - Buy grain in bulk to save money & time
 - Highway ready with lights, safety chains & 2" hitch
 - HD 14ga steel
 - 4x4 top for easy fill up
 - 100% weather, moisture & rodent proof



C&B FARM + OUTDOORS

13976 Hwy. 72 West, Athens, AL 35611

www.cbfarmoutdoors.com

256-777-7137

Delivery Available On All Our Cattle Equipment We Sell



Lots More Farm Equipment For Sale (Most Used On My Farm)



**2010 Peterbilt
Dumptruck** 17K actual miles
\$39,750



Komatsu 180
Rubber Tire Loader, Quick Attach
Loader - **Call for Price**



2007 Mack - \$27,750
No debt, no regin, 1 w/rebuilt
new engine



JD 6110 - \$33,750
4WD, comes with JD 460 loader,
rear remotes



Case 480E - \$18,750
1300 hrs., cemetery owned



JD 6230 - \$48,750
w/675 JD Loader, 4823 hrs.,
left hand reverse



2000 JCB 803 Plus
\$14,750
Perkins eng., 2337 hrs.



**Cat 908 Rubber Tire
Loader - \$32,750**
Runs good,
quick attach loader



Pull Type 700 gal. Tank
comes with pump & hose
\$5,650



2010 Komatsu 160- \$63,750
runs great, (rep photo)



Case 690 - \$21,750
Disc Ripper, Exc. Cond.



2007 Dodge 3500 HD
\$18,750
Runs great



JD 18C - \$43,750
Dirt Pan, good cond.



JD 635 FD - Call for Price
Hydroflex, good cond.



Case 586E - \$21,750
4WD, 4800 hrs.,
Cummings Eng.



Case 580E - \$15,750
3700 hrs., runs great



**Caterpillar 112F Road
Grader \$12,750**
Scaffles, county owned,
runs great



Stone Vibrating Packer
\$21,750
JD Diesel Eng.



JD 5525 - \$42,750
90 HP, runs good



Mack Dump Trucks
3 to choose
Call for info & pricing

International Dump Truck, tandem axle	\$17,750	Westfield Grain Auger, 90', Hyd. Swing, 13"	\$7,500
Midland 6 yd. Dirt Scoop, very nice condition	\$6,850	JD 319 Skidsteer, 2001, open station, 1800 hrs	\$21,750
Cat 312B Trackhoe, w/ripper, good UC, runs good	\$16,750	Several 360 Hydroflex JD Headers	Call for Pricing
JCB, 803 plus, mini excavator, great 2331 hrs., plumb for hyd	\$15,750	Lowboy Triple Axle, 35 ton	\$16,750
Lull 644B-42, Cummings diesel, operates well	\$21,750	2007 Dodge 3500 HD, Cummings Eng., runs great	\$14,750
Fruehauf Equipment Trailer, 48' w/5' dovetail, w/side toolboxes	\$18,750	JD 650 Dozer, runs good	\$26,500
JD Rubber Tire Loader, w/ bucket	\$21,700	Great Plains ADC 2220, 36', Air Drill	\$34,705
Move All Equipment Trailer, w/winch, hydraulic dove tail	\$12,750	MF 245, dsl, ps, 3000 hrs	\$5,750

Call Gary 256-335-4919 Florence, Alabama
Used Trucks Plus TTL



JD 310S - \$41,500
4WD, pilot control,
4,000 hrs.



Kubota 105s
\$31,750
4WD, shuttle shift



**Fontaine
Equipment Trailer**
\$17,500
HD, w/dovetail



JD 450G - \$32,750
Series 4, 1800 hrs.



JD 4630 Sprayer
Call for Price
80' Boom, Excellent
condition



JD Backhoe 310G
\$32,750
extend-a-hoe, 4WD,
3900 hrs.



Kubota SVL75-2
\$33,750
2400 hrs.



Kubota M9000
\$29,500
4WD, runs good



2011 JD 524K
\$42,500
4x4, hood loader



**New Holland TN
65D - \$22,750**
1300 hrs.



**Sullair Air
Compressor**
185, diesel
\$7,750



JD 4020 - \$18,750
1 owner, console,
runs good



**Palmer Dump
Trailer - \$13,250**
18', new liner



JD 455G - \$24,500
runs good, 3900 hrs.



JD 7400 - \$38,750
1 owner, good sound
tractor



**1998 Mack
Dumptruck - \$37,750**
44 rear, 8LL,
good running truck



**Bushwacker
starting at \$10,500**
3 to choose,
15', w/540 shaft



**JD 35D Mini
Excavator - \$24,750**
Runs & operates good,
1600 hours



Kubota SVL75-2
200 hrs., heat & air
\$55,500



Mack - \$16,750
22 steel flatbed, nice,
setup to carry forklift,
44 rear



**New 14' Grader
Box - \$14,500**
right to left angle



JD 4240 - \$35,750
1 owner, power shift,
4700 hrs.



**2004 Lowboy
Challenger - \$28,750**
35 ton



**50 Ton Triple Axle
Equipment Trailer**
\$19,750



2014 JD 750K
Used on my farm, great
cond., 5365 hrs., new
motor - \$112,750



Kubota M8200
\$23,750
rear remotes, 4700 hrs.,
runs good



2006 Cat 930G
\$49,750
Quick attach bucket
and forks



JD Mini Excavator 35-D
\$26,950
1600 hrs, 4000 hrs,
1 has new tracks



Terex PT-70
\$26,750
Rubber trax, 1300 hrs.,
Perkins Eng.



99 Peterbilt
\$21,500
Heavy spec truck,
400 Cummings,
Stk#G-102

BUILDING DREAMS AT



SUMMERTOWN METALS



40' x 60' x 14'

- Haybarn
- Steel Trusses
- #1 galvalume roof

- #1 40-year metal walls & trim
- 6x6 treated post, 2x6 perlin
- 160 lbs. qcrete per hole

\$20,446*

Plus tax and delivery

\$15,955

Roof & Gable only
Plus Tax & Delivery



24' x 30' x 10'

- Fully enclosed building with finished soffit
- 6inx6in treated posts. (post frame construction)
- Wood trusses
- 6inx6in treated posts (post frame construction)
- 2-9'x8' garage doors
- 1-36in walk in door
- 40-year 29 gauge painted metal
- 4" concrete floor.

Installed for
\$20,912

Plus tax and delivery



30' x 40' x 12'

- Fully enclosed building.
- Wood trusses no overhang.
- 12' side-shed/porch.
- 1-10'10' non-insulated garage door.
- 4-3'x3' windows.
- 1-36in walk-in door.
- Reflective insulation in roof.
- 4" concrete floor (30'x40'x12').

\$30,938*

Plus tax and delivery

We Offer A Huge Array Of Sizes, Styles And Options!

www.summertownmetals.com

3864 Summertown Hwy., Summertown, TN 38483

931-796-1521

*Price includes all material and labor. Delivery and tax extra. Labor provided by independent contractor. Pad must be level. Any rock or changes will incur additional cost. Codes and permits are the responsibility of the buyer.

Price may change without notice. See our website for latest pricing: www.summertownmetals.com



SUMMERTOWN METALS

**Garages • Pavilions • Hay Barns • Horse Barns
Ag Buildings • Commercial Buildings**



Installed for \$28,299
plus tax and delivery

40' x 60' x 14'

- Includes Material & Labor by Independent Contractor
- 6" x 6" Pressure Treated Posts
- Steel Trusses
- One Walk-In Door
- One 10'x10' Garage Door
- #1 40 Year Painted Metal Walls
- #1 25 Year Galvalume Roof

***Concrete Not Included.**

With 4" concrete - \$37,299

"Expect Excellence"

Built on the traditions of hard work, ethical business, and commitment to quality, Summertown Metals has become a premier manufacturer and distributor of high quality building products. We are family owned and operated and have been in business for more than 10 years. We are committed to providing high quality materials and building solutions at the best possible prices resulting in an unbeatable value for our customers.



Installed for \$24,774*
plus tax and delivery

30' x 40' x 12'

- Wood Trusses
- (1) 3'x6'8" Walk Door
- (2) 10'x10' Garage Doors
- #1 40-Year Painted Metal
- Includes 4" Concrete



Timo's Tinker Shop

30'x50'x12' fully enclosed with soffit

- 10' porch with finished ceiling
- 1-10x10 garage door insulated with glass
- 1-36in walk in door
- 8-3'x3' windows
- 2-2'x3' windows in gables
- 1-30in cupola
- 4" concrete floor

Installed for

\$47,757

plus tax and delivery



FREE ONLINE ESTIMATES!

Need an estimate on your next barn, shop or Ag building? Simply fill in your project specifications and the price will be calculated automatically! It's perfect for customers who are unsure what building sizes will fit in their budget. Once complete, a copy of the estimate will be emailed to you in just minutes!

Online at: www.estimate.summertownmetals.com

We offer a huge array of sizes, styles and options! • Call us today for a free quote on a customized building!

3864 Summertown Hwy., Summertown, TN 38483

931-796-1521

www.summertownmetals.com

***Price includes all material and labor. Delivery and tax extra. Labor provided by independent contractor. Pad must be level. Any rock or changes will incur additional cost. Codes and permits are the responsibility of the buyer.**

Price may change without notice. See our website for latest pricing: www.summertownmetals.com

CHECK OUT OUR BOBCAT LINEUP!



2018 Bobcat E35, 1065 hrs., like new tracks
\$48,500



New Bobcat UV 34, gas, 39.9 hp, can haul 1250 lbs.
Call for Price



2018 Bobcat T770, 2 speed high flow, 1400 hrs., heat & air
\$65,995



2013 Bobcat T650, 3077 hrs., runs & operates great
Call for Price



2017 Bobcat E32, 1334 hrs., super nice w/new tracks
Call for Price



Bobcat 3650, 515 hrs. diesel, comes with 66" finishing mower & a snowblade
\$32,900



2016 Bobcat T870, 3083 hrs.
Call for Price & More Info



2014 Bobcat T650
New Tracks, 2591 hrs., heat & AC
Call for Price



2016 Bobcat T590
1390 hrs.
Call for Price & More Info



Bobcat CT 5555, 55 hp, Turbo Charged, 4WD, Power & Tilt Steering - **Call for info**



Bobcat[®] of The Shoals

Trucks Plus T.T.L.

See Our Website For Complete Listings & Info - www.OakleyEquipment.com



4210 Chisholm Rd.
Florence, AL 35630

Greg Halmark: 256-324-4367
Dwayne Oakley: 256-710-2111
Office: 256-766-5488

See our website for complete listings & info www.bobcatoftheshoals.com

NOW SELLING BOBCAT EQUIPMENT | BOBCAT OF THE SHOALS | NEW BOBCAT EQUIPMENT ARRIVING DAILY



NEW BOBCAT EQUIPMENT! MANY MORE IN STOCK. CALL TODAY!



2018 BOBCAT T770 EROPS, 2-Spd, High Flow, A/C-Heat, SJC (Joystick Controls), New Bkt 1,408 Hrs **\$64,900**



2018 BOBCAT E35 OROPS, Hydraulic Thumb, Backfill Blade, 1,065 Hours **\$48,900**



2013 BOBCAT T650 OROPS, Joystick Controls, Aux Valves, 3,077 Hours. **\$34,995**



2018 BOBCAT T870 EROPS, W/ Rubber Trks, A/C w/ SJC controls, High Flow and 2 Spd, 1,247 Hrs **\$72,995**



2018 TAKEUCHI TL8 Open Cab, Bucket, 528 Hours. **\$52,995**



2014 CASE 750M LGP EROPS, 6 Way Blade, A/C, Sweeps, Meter Reading 1,831 Hours. **\$99,900**



2018 CATERPILLAR D6N LGP EROPS, 6 Way Blade, Rear Screen, Grade Control, Diff Steer, GPS Ready, A/C, Sweeps, 4,506 Hours. **\$174,900**



2014 VOLVO G930B 4,020 Hrs., ROPS Enclosed, S/N: VCEG-930BE0S576162 **\$79,500**



2019 JOHN DEERE 6105E 105 HP, 4WD Drive, Cab, Air, Shuttle Shift, 3 Point Hitch, Draw Bar, 540 RPM PTO, 3 Remotes, 199 Hrs. **\$64,995**



2016 CASE IH FARMALL 120A S/N: CT00270M, 4WD, 120 HP, 3 Remotes, 302 Hours. **\$62,500**



2008 PRENTICE 2764 4WD, Cummins Engine, 67 x 34 x 25 Tires, Hour Meter Reads 5,393 Hours. **\$110,000**



2018 CATERPILLAR 545D EROPS, S/N: KGP00289, Dual Arch, Winch, 35.5 x 32 Tires, 4,730 Hours. **\$148,900**



2008 FORD F550 Powerstroke Diesel Engine, A/T, Enclosed Service Body, Miller Blue Welder, Compressor, Torch Hose, 74,742 Miles. **\$42,995**



2015 FORD F350 Utility Body, 6.7 Powerstroke Diesel Engine, A/T, 151,700 Miles. **\$38,900**



2012 KENWORTH T370 Aluminum Wheels, Paccar 250 HP Diesel Engine, Allison Auto Trans, Air Ride Susp., Hose Reel, 88,477 Mi **\$59,995**



2006 MACK GRANITE CT713 460 HP Mack Engine, 18 Spd Trans, Air Ride Susp, 270" Wheelbase, Engine Brake, Diff Lock, 210,877 Miles **\$164,995**



2007 MACK GRANITE CTP713 405 HP Diesel Engine, 10 Spd Trans, 18K Fronts, 44K Rears, Double Frame, Aluminum Whls, 401,432 Miles **\$76,995**



2012 MACK PINNACLE CHU613 Mack MP8 415 HP Engine, Jake Brake, 13 Spd Trans, Mack Spring Suspension, 445,079 Miles **\$79,995**



2007 WESTERN STAR 4900 14.0L 515 HP Detroit Diesel Engine, 10 Spd Eaton Fuller Trans, Jake Brake, Double Frame, 562,004 Miles **\$89,500**



2005 MACK GRANITE CV713 Mack Engine w/ 400 HP, 10 Speed Transmission, 20K Front, 44K Rears, 16' OxBody Bed, 597,780 Mi **\$63,500**

DeWayne Oakley • (256) 710-2111 | Jon Benoit (256) 412-5144 | Greg Hallmark • (256) 324-4367
oakleyequipment.com • Florence, AL

Commercial Trucks



2018 Chevy Silverado 1500
4DR, 4WD, LTZ Pkg. "Centennial Edition", GM Certified, 30k miles, Stk#220026B - **\$51,980**



2017 Chevy Silverado
4WD, 116k miles, Stk#3058A - **\$34,499**



2020 Ford F-150
4WD, STX Package, only 11,000 miles, Stk#220079A - **\$46,975**



2019 Chevy Silverado 1500
Reg. Cab, WT Pkg., 62k Miles, Stk#210876A - **\$25,980**



2019 Chevy Silverado 1500
4Dr, 2WD, RST Pkg., 26k Miles, Stk#210501B - **\$46,980**



2019 Toyota Tacoma
4WD, 42k miles, TRD Offroad Pkg., Stk#210848A - **\$41,880**



1134 U.S. Hwy. 431, Boaz, AL 35957

1-800-531-4253

Call to insure all incentives are applied.

Commercial rebate requires qualifications. Prices plus tax, title & license and \$199 admin. fee. Incentives Subject to Change.



WOOD MASTER OUTDOOR WATER FURNACES, heat your home or shop, EPA approved clean burning, parts in stock, financing available. In TN call **Harold**, (931)484-8890; in KY call **Dave**, (859)265-0793.

Announcements

Place your ad: 800-247-7318

MILLER FARMS, Angus Beef from the farm. 100% natural, non GMO, hormone and antibiotic free. Whole, halves or by the pound. Slaughtered and packaged. (931)593-3702.

DECALS & DECAL SETS FOR HEAVY CONSTRUCTION & AG EQUIPMENT

Affordable Decals and Safety Decals. Prompt. Knowledgeable Reliable Service. www.QuipCal.com; Call, (215)536-5339; email:info@customersvicescompany.com.

TOO BUSY TO CALL US? List your items 24/7 at www.FarmersExchange.com.

Thank You for Saying You Saw It in the Farmers' Exchange!



36 HEAD HERD for sale, 18 mamas, \$15,000. (256)337-0097.

THIS LITTLE PIGGY went to market, but this little piggy found a new home! Sell your animals in Farmers Exchange. Call, 1-800-247-7318.

16' CASE DISK, \$400. (256)708-5303.

THREE NICE LIMOUSIN BULLS for sale, no more until mid Summer. Service age, purebred, outstanding bloodline, medium tight. Twenty-two years of breeding them. Bred to grow with less feed. Once you've seen them, you will go away with one. Ferrell Farms, Tullahoma, TN. Call, (931)455-4978; (931)571-0807.

16' CASE DISK, \$400. (256)708-5303.



PREMIUM WAGYU/ANGUS BULL. Mild mannered bull for sale, half Wagyu and half black angus, 17 months old, \$2,500. Our ranch will be sad to see this bull go. (615)504-9784.

REGISTERED HEREFORD BULLS for sale, gentle disposition, great bloodlines, polled and horned, service age, starting at \$1,500. (931)703-7573, leave message.

Building Products

Place your ad: 800-247-7318

SELL YOUR USED EQUIPMENT IN THE FARMERS' EXCHANGE WORD ADS.

CUSTOM TARPS FOR hoop buildings, available in 11 different colors. We also offer hay tarps and pond liners. Cover your investment, (859)375-5268.

Dave's Sawmill Sales

Ask Us About Our New Patriot Mill



HUD-SON SAWMILLS, FOR THE WORK YOU DO.

We manufacture a number of sawmills, starting with our Sawyer Model at just

\$2,595

UNIFOREST WINCHES

Starting at **\$2,795**



For more information or a free brochure, call:

In Kentucky Call Dave in Lawrenceburg **859-265-0793**

In Tennessee Call Harold in Crossville **931-484-8890**



Getting a NEW BUILDING? We have the DOORS!

Sales - Service - Installation Residential, Commercial, Industrial

Bill Smith Overhead Door, Inc.

26685 5th St., P.O. Box 8 • Ardmore, AL 35739

Donnie Martin (256) 423-6938 Bill Smith II

hm. (256) 423-4490 Fax: (256) 423-2897 hm. (931) 427-6456

HUGE FARM & CONSTRUCTION AUCTION

Saturday, January 29th, 2022

1000 Southern Celebration Blvd., Robinsonville, MS 38664

Selling Tractors, Combines, Platforms & Corn Heads, Planters and Drills, Tillage Tools, Hay Equipment; Rotary Cutters, Construction Equipment, Grain Feed and Material Handling, Sprayers and Applicators, and Much More

 **LEVEL** Online bidding at www.uselevel.com or www.proxibid.com  proxibid.



Visit www.crenshawauctionllc.com for complete listings

CONDUCTED BY:

CRENSHAW AUCTION LLC



William Crenshaw • 901-486-6828
Michael Crenshaw • 901-383-0051
Jamie Payne • 901-461-9038

1000 Southern Celebration Blvd., Robiinsville, MS, U.S.
Email: crenshawauction@yahoo.com MS Lic. #620

All new customers of Crenshaw Auction Company must submit payment by cash, cashier's check, personal or company check with bank letter of guarantee - No Exceptions!

REGISTER BARN



40'x60'x12' - Installed

Roof only, closed gables, or Roof only, open gables.

\$11,000 + freight & tax

30'x40'x10' - Installed

Roof only, open gables

\$7,000 + freight & tax

JEFF REGISTER BUILDINGS & TRUSS

321 Madison Ave., Wiggins, MS 39577
601-928-5309 or 601-928-5308 - www.registerbarns.com

Components

Place your ad: 800-247-7318

C A L L
1-800-247-7318. It's where all the Farmers place their ads!

WESTFIELD MK1071 AUGER, 4 years old, \$12,500. (931)409-0121.

Construction Equipment

Place your ad: 800-247-7318

DECALS & DECAL SETS FOR HEAVY CONSTRUCTION & AG EQUIPMENT

Affordable Decals and Safety Decals. Prompt. Knowledgeable Reliable Service. www.QuipCal.com; Call, (215)536-5339; email: info@customerservicescompany.com.

TWO HORSE WOODEN wheel wagon, \$1,650; Adams horse drawn large road grader, \$2,250. (931)446-1675.

INVITE 21,000+ people to look at your equipment at one time when you advertise in Farmers' Exchange.

Fencing and Cattle Equipment

Place your ad: 800-247-7318



WE HAVE THE BEST MADE HAY FEEDER PANELS AVAILABLE, 2x3 construction and built to last a lifetime. Available in 6' to 16' long, good inventory in stock. FandPLivestock.com; (615)653-8913.

FOR SALE, MiraFount livestock waterers. New units at big savings. Installation available. (931)675-3260.

GRASS FED OR grain fed Angus beef for sale, \$1 per pound on the hoof. Morrison, TN area. (931)728-5490; (931)728-4277.

MF 1835, 4WD, loader, 6 months old, 40 hours, \$22,500. 8 a.m. - 5 p.m. (931)939-4999.

Chemical Applicators

Place your ad: 800-247-7318



609 BRADCO BACKHOE, for skid steer loader, less than 100hrs, 18" bucket, used 7 times, \$5,000 or make offer. (859)734-9380.



JOHN BLUE 500 gallon ground driven sprayer, 30' spray width, foam marker, excellent condition, \$4,900. (256)566-8227.

WANT TO BUY, FJ40 Toyota, in model years from 1975 to 1980. Call, (931)607-9737.

FOR SALE, 300 GALLON LOW profile boomless pasture sprayer, like new condition, \$3,500. (731)697-4024.



TAEP APPROVED PASTURE SPRAYERS, TAEP deadline April 1st, 150 gallon, 3pt, \$3,300; 300 gallon, \$3,800; 500 gallon, \$4,200; hand wand, \$150. Call, (615)542-6157. Parker Farms Cattle and Equipment Co.

HARDI NAVIGATOR 3000 pull sprayer, 800 gallons, flush tank, chemical induction system, foam marker, heavy duty piston pump, 60' booms, adjustable axle, triple nozzles, almost like new. Pics and delivery available. (931)808-8095.

Attachments

Place your ad: 800-247-7318

FORREST CITY 4 ROW DO-ALL with hydraulic cylinder, \$1,500. (256)753-2318.

WAGYU HEIFERS for sale. (256)714-6182.



Wood or Steel Trusses

40x60x10 Top & Gable ~ Call
40x40x10 Top & Gable ~ Call

Price includes materials and labor within 100 mile radius

Owner
Kevin Andrews

256-531-3635



All Types Buildings For Farms

A & A CONTRACTING

P.O. Box 158 • Addison, AL 35540

FOWLER AUCTION

Turning Your Assets Into Cash

**INDUSTRIAL, CONSTRUCTION & FARM EQUIPMENT · TRACTORS
VEHICLES · CLASSIC CARS · TRUCKS · TRACKHOES · DOZERS & MORE**
ANNIVERSARY OPEN CONSIGNMENT AUCTION

FOWLER AUCTION CENTER · 8719 HIGHWAY 53 · TONEY, AL
ONLINE BIDDING ONLY: CLOSES MONDAY, FEBRUARY 7TH · 7 PM
BID AT WWW.FOWLERAUCTION.COM

**Consign
Your
Items
NOW**

NOW ACCEPTING ITEMS UNTIL THURSDAY JANUARY 27 AT 12 NOON



ALREADY CONSIGNED

City Of Huntsville

- 1999 GMC TC7H Tandem Dump Truck
- 1993 GMC TC7H Herbicide Truck
- Crown Victorias (2005 - 2011)
- 2012 Gravely Treker Utility Vehicle
- 2008 Ford F-450
- 2004 Ford F-350
- 1997 Ford F-150
- 1995 Ford F-150
- 1988 ALTEC Trailer
- 1994 Ford Backhoe

Local Estate

- John Deere 9870 STS Combine
- KINZE 3500 Planter
- (2) John Deere 4760 Tractors
- Allis-Chalmers 7080 Tractor
- John Deere 893 Corn Head
- KILLBROS 590 Grain Cart
- John Deere HX15 Wing Fold Rotary Cutter
- John Deere 630F Auger Head
- (2) International 496 Discs
- (2) Do-alls
- Rope Harrow
- Header Trailer

MUCH MORE TO COME

For more information contact:
Andrew Heard; (931) 638-5499
andrew@fowlerauction.com
Greg Bottom; (256) 777-4497
greg@fowlerauction.com

BID ONLINE FROM ANYWHERE AT WWW.FOWLERAUCTION.COM

CUSTOMER APPRECIATION DAY: FRIDAY, FEBRUARY 4TH

JOIN US FOR COMPLIMENTARY CHICKEN STEW & DOOR PRIZES FROM 10 AM - 1 PM

FOWLER AUCTION · 8719 HIGHWAY 53 IN TONEY, AL

· DROP BY ANY TIME DURING THE WEEK TO REGISTER ·



SEE ALL AUCTIONS AT WWW.FOWLERAUCTION.COM

"The Preferred Auction Company"

Fowler
Auction & Real Estate
SERVICE, INC.

8719 HIGHWAY 53 • TONEY, ALABAMA 35773
A MARKNET ALLIANCE MEMBER

44
Years
OF SERVICE

MICKEY FOWLER, CAI, AARE, CES, AMM, ALSL466,
TNSL1442, TN FIRM2315, MSSL718F, GASL1394
DANIEL CULPS, CAI, ALSL5070, TNSL5890
GREG BOTTOM, AA2959
ROYCE HORNSBY, AA2974
ANDREW HEARD, ALSL5567 · AARON SPENCER, AA3060

Toney: (256) 420-4454
Ardmore: (256) 423-4454
Athens: (256) 232-7788
Huntsville: (256) 859-5682





Livestock Auctions

United Producers, Inc.

LIVESTOCK MARKETING

CREDIT

RISK MANAGEMENT

United Producers Inc

www.uproducers.com

Fayetteville, Tenn.

(931) 433-5256 or (931) 433-4962

Weekly Auction Every Tuesday at 1 p.m.

Graded Feeder Cattle Every Tuesday,
Weaned/Vac Feeder Sale - Featured Weekly Tuesdays

Columbia, Tenn.

(931) 223-8323

Weekly Auction Every Wednesday at Noon

Weaned/Vac Feeder Sale - Featured Wednesdays

Columbia Sheep and Goat Sale - 2nd and 4th Monday at 1 p.m.

**holiday exceptions, visit website for full schedule*



HWY. 43 AUCTION

4402 Hwy. 43 North • Ethridge, TN 38456

Horse Sales

January 15th

Tack • 5:00 PM

Horse Sale • 8:00 PM

Mike Tibbs 931-993-4886
Dave Roberts 931-993-3127

**Weekly Sale
each Wednesday
12:00 NOON**



Friday, January 7
Friday, January 14

Premium & Regular Feeder Calf Sale
Holstein Steer Sale

All Friday sales will begin at 7:00 PM

Family owned & operated since 1962
2121 Hwy. 11 North | Sweetwater, TN 37874
(433) 337-6186 | (877) 652-9017 | (423) 337-8485
EastTennesseeLivestock.com



Cattle Auction

Sale every Tuesday at 12:00 Noon

Trucking Available
Video Load Auctions

New owners:

Tim Gibbs 205-456-1200 • Matt Gibbs 256-504-4782
Perry Gibbs 256-399-1978

302 Airport Road West • Fort Payne, AL 35968 • 256-845-1028 • www.fortpaynelivestock.com

Northwest Alabama Livestock Auction

Russellville, AL • nwalivestock.com

Stockholder owned & operated since 1976

Trucking, Feed & Portable Catch Pens Available

Sale each Monday at 10:00 A.M. • Hogs • Goats • Sheep • Cattle

Upcoming Special Goat Sales - 2022

Feb. 12 • May 14 • August 13 • Nov. 12

Upcoming Special Feeder Calf Sales - 2022

Mar. 7 • June 6 • Sept. 5 • Nov. 7

All sales begin at 11:00 A.M.

Rickie Behel Manager

256-740-9457 • Barn: 256-332-3323





Livestock Auctions

Mid-South Regional Livestock Center

Hwy. 41-A, Unionville, TN 37180 • 931-294-5101
Tim Riley (615)714-8090 • Carly Garner (931)698-7510



Sale every Monday • 11:00 A.M.
Begin receiving cattle on Sunday 1:00-6:00 P.M. & on Monday from 7:00 A.M.

www.midsouthlivestock.com

Sand Mountain Stockyard, LLC

Corner of Hwy's 68 & 168, Kilpatrick, AL
256-561-3434

Sale at 11:30 A.M.
Every Wednesday & Saturday

Full Service Facility

Owners:

Jon Hamilton • 256-506-9947
Eric Wilburn • 256-506-2525



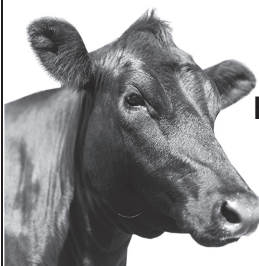
Arab Livestock Market, Inc.

Hwy. 231 South, Arab, AL

Cattle Auction
Every Tuesday at 10:00 A.M.
256-586-4212

Video Auctions
www.arablivestock.com

Robbie Gibbs: 256-490-2583 • 205-589-6236



KY-TN LIVESTOCK MARKET

Hwy. 79N • Guthrie, KY
Thursday Sale 2:00 P.M.

I-65 Exit 112 • Cross Plains, TN
Monday Sale 1:30 P.M.

Check kytnlivestock.com for Special Sales

OFFICE: 270-483-2504
Tom Barnett • 931-624-7376

Nash Livestock

"Your direct slaughter cow & bull outlet"

Farm to packinghouse, we work to bring you
the most for your cull cows and bulls.

We pick up in TN & KY

Steve Nash
(800) 599-2784
(931) 261-3525



Hardin County Stockyard, Inc.

3350 Hwy 226, Savannah, TN 38372

731-925-3287

Goats & Hogs Sale - Wednesday 11:30 A.M.

Cattle Sale - Wednesday 1:00 P.M.

Begin receiving livestock on Tuesday 8:00 A.M. - DARK

Full-Service Stockyard Offering:

Trucking, Feed, Appraisals, & Video Sales

Order buying service through Harry Floyd Livestock, Inc.

Harry Floyd (home): 931-722-9200

Harry Floyd (cell): 931-224-2247

Rob Floyd: (cell) 931-224-2248 • Donnie Welch: 731-607-9196

Main Office: 931-722-3100 • www.floydandsonslivestock.com



Tennessee Valley Livestock

620 S. Poplar, Florence, AL 35630

256-766-0281

Cattle Sale • Monday 12:00 NOON

Begin receiving cattle on Sunday 10:00 A.M. - dark

Full-Service Stockyard Offering:

Trucking, Feed, Appraisals, & Video Sales

Order buying service through Harry Floyd Livestock, Inc.

Harry Floyd (home): 931-722-9200

Harry Floyd (cell): 931-224-2247

Rob Floyd: (cell) 931-224-2248 • Jim Martin: 256-366-3519

Main Office: 931-722-3100 • www.floydandsonslivestock.com



Livestock Auctions

2 Locations To Better Serve You!

Valley Stockyard

13130 AL Hwy. 157, Moulton, AL 35650

Regular Sale Every Wednesday • 11:00 A.M.

Trucking Available

Country Buying & Bluegrass Video Sales

"Serving our regions cattle producers for 66 years & many more!"

More info: 256-974-5900 • Billy Wallace: 256-303-7097
Nick Lovell 256-777-3363

Pulaski Stockyard

"Striving To Be Your Full Service Stockyard"

607 West Shoal St., Pulaski, TN 37478

Regular Sale Every Tuesday • 12:30 P.M.

Special Cow Sale First Friday of Every Month • 6:00 P.M.

Special Goat Sale Every 3rd Friday Each Month • 6:00 P.M.

Office 931-424-8389 • www.pulaskistockyard.com

Billy Wallace (Cell) 256-303-7097 • Derek Black 931-638-5392

Nick Lovell 256-777-3363



RIGSBY FARMS Horse Auctions

10598 Hwy 35 N Mize, MS 39116

Horse Sales 3rd & 5th Saturdays • Tack 10:00AM • Horses 1:00PM
Full Service Facility



Jerry Rigsby (850) 634-8867 • Blake Rigsby (765) 865-5770 • Office (601) 733-2231

Advertise Your Livestock Auction Here!

Call 800-247-7318 today!



TADLOCK STOCKYARDS INC.

SALE EVERY MONDAY AT 12:00PM

1100 Hwy. 35 S. • Forest, MS • (601) 469-3642

Check In Stations:

Bay Springs, MS - (601) 764-4134

Canton, MS - (662) 571-9342

Purvis, MS - (601) 543-7688

Family owned & operated since 1924. A family who knows & cares

FOR SALE, Pressure treated pine fence boards, square posts and round posts. 1x6x14' and 1x6x16' boards; 4x4x7' square post; several sizes of round post. (931)675-3260.



BOW GATES, 4' through 12', good inventory in stock. FandPLivestock.com; (615)653-8913.

JOHN DEERE 4 PAN 16" TURNING PLOW, \$250. (256)708-5303.

CO-OP CALF FEEDER on wheels, with calf creeper attachments, holds three tons, \$2,800. (615)319-4613.

FOUR 350 GALLON CONCRETE WATER TROUGHS, \$150 each; One 600 gallon, \$200. (256)708-5303.



BULL GATES, 51" and 63" tall x 4'-20' long, good inventory in stock. FandPLivestock.com; (615)653-8913.

HUNDREDS OF PRESSURE TREATED ROUND AND SQUARE FENCE POSTS, in stock, 4, 5 and 6 inch sizes available. (931)675-3260.

REGISTERED POLLED HEREFORD BULLS for sale. Lynnville, TN area. (931)527-3392.

THE CHARLES PRINCE ESTATE

AUCTION



651 HALBROOKS ROAD-HARTSELLE, AL



TRACTORS & LOADERS:

JOHN DEERE 7400 CAB 4WD, JOHN DEERE 5525 W/ 542 LOADER 4WD, JOHN DEERE 6400 W/ 640 LOADER 4WD, IH 1086 CAB, IH 1086 CAB PARTS TRACTOR, GEHL 6640 TURBO SKID STEER, GEHL 6635 SKT SKID STEER, JOHN DEERE 740 CLASSIC FRONT END LOADER



LIVESTOCK & FEEDING EQUIPMENT:

JAY-LOR 5650 VERTICAL MIXER WAGON TWIN AUGER LIKE NEW, JAY-LOR 3650 VERTICAL MIXER WAGON TWIN AUGER, KNIGHT 8032 SIDE DISCHARGE MANURE SPREADER, SI FEEDERS FEED WAGON, APACHE FEED WAGON, SI FEEDERS FEED WAGON, PEQUEA FEED WAGON, FOR-MOST MODEL 30 SQUEEZE CHUTE, ASSORTMENT FEED BUNKS, SEMI LOADING CHUTE, ASSORTMENT CALF HUTCHES

MISC EQUIPMENT:
KATO LIGHT PTO GENERATOR, GENERIC GENERATOR, INGERSALL RAND AIR, COMPRESSOR W/ HONDA ENGINE, MILLER 2256 PORTABLE WELDER, ASSORTMENT FUEL TANKS, 6000 GAL UPRIGHT PLASTIC TANK, (2) 2600 GAL UPRIGHT PLASTIC TANK, ASSORTMENT CYLINDERS, ASSORTMENT PLOW & DISC PARTS, ASSORTMENT DRILL PARTS, BOLT BINS, ASSORTMENT TOOLS, SKID STEER TIRES, MORE ITEMS ON PALLETS

FIELD EQUIPMENT:
JOHN DEERE 1590 15FT GRAIN DRILL, BRILLION 14FT FOLDING CULTIPACKER, JOHN DEERE 13FT DISC, MASSEY FERGUSON 14FT FOLDING DISC, JOHN DEERE FIELD CULTIVATOR W/ BASKETS & DRAG, JOHN DEERE FIELD CULTIVATOR, MASSEY FERGUSON CULTIVATOR, 3PT 1 SHANK RIPPER, 12FT CHISEL PLOW, AERWAY AWS150 FIELD AERATOR, (2) 3PT CONE SEEDERS, ADAMS 1000 GAL SPRAYER, 500 GAL SPRAYER W/ BOOMS

TERMS & CONDITIONS: ALL BIDDERS MUST REGISTER WITH PHOTO I.D. PERSONAL PROPERTY-PAYMENT IN FULL WITH CASH OR CHECK DAY OF AUCTION. 10% BUYERS PREMIUM ON PERSONAL PROPERTY. ALL PERSONAL PROPERTY SOLD AS IS WHERE IS WITH NO WARRANTY EXPRESSED OR IMPLIED. ALL ANNOUNCEMENTS MADE DAY OF AUCTION TAKE PRECEDENCE OVER ALL ADVERTISEMENTS. SELLERS NOR AGENT RESPONSIBLE FOR ACCIDENTS.

FOR MORE INFO VISIT OUR WEBSITE



HAY EQUIPMENT:
MASSEY FERGUSON HESSTON 1840 INLINE HAY BALER, KRONE SWADRO 38 HAY RAKE, KRONE Kw550 HAY TEDDER, PEQUEA 710 HAY FLUFFER/TEDDER, KUHN'S AF10 HAY ACCUMULATOR SYSTEM, JOHN DEERE MO CO 635 CENTER PIVOT DISCBINE, OGDEN HAY RUNNER RCR 812 10 WHEEL HAY RAKE, VEMEER T190 3PT HAY TEDDER RAKE, 3PT HAY SPEARS, FRONT HAY SPEARS, KUHN'S QUICK ATTACH HAY ACCUMULATOR GRAPPLE, FLEXIBAL QUICK ATTACH BALE SQUEEZE

TRUCKS & TRAILERS:
1997 DODGE 3500 DULLY EXT CAB DIESEL 4WD 213K, 1994 DODGE 3500 DIESEL FLAT BED DULLY (NO TITLE), TRAIL MASTER 35FT DUAL TADEM GOOSENECK TRAILER W/ DOVE TAIL

MILKING EQUIPMENT:
DELAVAL 2X6 MILKING PARLOUR, MULLER 2700 MILK TANK W/ COOLING FAN, MULLER 2500 MILK TANK W/ COOLING FAN

MILLS
REAL ESTATE & AUCTION CO. LLC
SCOTTSVILLE - GAMALIEL - GLASGOW
270-618-7800
Russell Mills
Al Auctioneer Lic. #5586
270-237-7625
Sandy Mills
Broker/Realtor
270-618-9560

...88 BLACKWOOD DRIVE...
Homestead
REALTY & AUCTION
Chris Hensley
Realtor Auctioneer
EST. 2019
HARTSELLE, AL
AL Auctioneer Lic. #5201

The Ultimate Arena and Ground Prep Tool



REGULAR



HEAVYWEIGHT



SHORT MODEL



WATER KIT



WHEEL MODEL



LASER MODEL

CAPABILITIES

- Smooth It Out
- Fluff It Up
- Pack It Tight
- Level It Constantly
- Dig It Up
- Roll It Down
- Pull It Back From Edges
- Pulverize Clods
- Fill In Holes
- Horse Arenas
- Driveways
- Agricultural
- Erosion Repair
- Ballfield Maintenance
- Landscaping
- Waterways

Call us today!
(937) 444-2609

Reveal4-n-1.com

REVEAL 4-N-1

the Original... Still the Best

15686 Webber Rd., Mt. Orab, OH 45154



CATTLE SWEEP SYSTEMS. HEAVY DUTY GALVANIZED 8 BAR 6' TALL CATTLE SWEEP SYSTEM, 90 DEGREE WITH 10' OF ALLEY STARTS AT \$1,480; 180 DEGREE W/20' OF ALLEY STARTS AT \$2,475; 10'X20' HOLDING PEN IS \$975. WE CAN ADD PALPITATION CAGE, SLIDING ALLEY GATES, PANELS AND BOW GATES AS NEEDED TO CUSTOMIZE YOUR SYSTEM. PRICE IS PLUS TAX OR FARM TAX CARD. CALL FARM SERVICE SOLUTIONS IN LEOMA, TN. (931)446-9935; OR VISIT US ON THE WEB AT FARMSERVICESOLUTIONS.COM. PHONE, (931)242-7675.

2 TON FEEDER with creep gates and jacks. Fasse valve (lets you add hydraulic valve to tractor). Branding irons, 3" electric, #1-10. Western Kentucky area. (270)977-1009.

FOR SALE, Tarter gates, cattle panels, T-post, barbed wire, smooth high tensile 4,000' rolls, brace wire, staples, etc. for livestock fencing. (931)675-3260.

16' CASE DISK, \$400. (256)708-5303.

FOR SALE, High tensile, class 3 live-stock fencing. Over 500 rolls of premium brand fencing material for goats, sheep, horses and cattle in stock. (931)675-3260.

WANT TO BUY, 1940's-1950's pickup truck, any condition. Columbia, TN. (931)446-1675.

FOR SALE, 2x4x48" horse wire and 4x4x48" goat wire. High tensile, class 3 premium wire. (931)675-3260.

WESTFIELD MK1071 AUGER, 4 years old, \$12,500. (931)409-0121.

FEED STORAGE BIN, corrugated steel, 6' diameter x 13' high, 5 ton capacity, great condition, \$750 or best offer. (719)640-0677.

FOR SALE, pressure treated round fence posts. Five sizes available for any fencing project. Meets all NRCS cost-share requirements. (931)675-3260.



SQUEEZE CHUTES. WE CARRY TARTER BRAND SERIES 3 AND SERIES 6 SQUEEZE CHUTES WITH BOTH AUTO-MATIC AND MANUAL HEAD GATES. SERIES 3 \$2,500 AND SERIES 6 \$3,995 PLUS TAX OR FARM TAX NUMBER. CALL FARM SERVICE SOLUTIONS IN LEOMA, TN AT (931)446-9935; OR VISIT US ON THE WEB AT FARMSERVICESOLUTIONS.COM. PHONE, (931)242-7675.



CORRAL PANELS, 16 gauge, 16 gauge, 6' tall, 3-pin hookup, 8'/10'/12'/14'/16' long, good inventory in stock. FandPlivestock.com; (615)653-8913.

Harvest Equipment

Place your ad: 800-247-7318



Wood Trusses
40x60x10 Top & Gable ~ Call
40x40x10 Top & Gable ~ Call

Price includes materials and labor

ADDISON AGRI-BUILDERS

POULTRY HOUSES • BARNs • SHEDS

256-747-3444

Craig Pigg, Owner



All types buildings for farms
Steel Trusses Available

P.O. Box 455 • 2661 Co. Rd. 39
Addison, AL 35540

Brent Dollar - Sales Representative

Fax: **256-747-9002**

REGISTERED BLACK ANGUS BULLS for sale, fully TAEP qualified, A-I sired out of great cow families, gentle, good EPD's. Cedar Ridge Angus, Pulaski, TN. (256)508-2874. See Cedar Ridge Angus on Facebook.

LOOKING FOR SOMETHING? Ask over 25,000 people when you run a want to buy ad in Farmers Exchange.

LOOKING FOR SOMETHING? Ask over 21,000 people when you run a Want To Buy ad in Farmers' Exchange.

Cold Formed Pre-Engineered Steel Buildings



- Design while you wait!
- Delivered in 10 working days after drawing approval.
- 20-25% savings over red iron.

Come in and let us design a building for you!



Manufacturer Of Quality Steel Buildings & Roofing Products.

We Offer Steel Trusses

Precision Metal Forming, Inc.

17713 Hwy. 72, West • Athens, AL 35611

256-232-8080

www.precisionmetalforming.net

"Professional Industry Staff To Assist You In Your Design & Application"



Equipment For Every Need!



Kinze 3600 - 16/31, hydro driven, good cond., field ready - **\$47,500**



Hay Wagons
3 sizes in stock
Call



Bush Whacker Cutter
12' In Stock, TN River Cutters In Stock - **Call**



Ogden Pasture Harrow
20' - 24' In stock
Call



Grain Augers
13/36, In Stock
Call

New Items Available!

Cattle Trailer, 16', bumper pull..... **\$1,500**
Buhler Augers, 10x60, 10x70 swing arounds, 10x31 auger, 10x36, 1080, in stock..... **Call**
Enorossi Rake, used, 12'3..... **Call**
Enorossi Tedders, 4 basket..... **Call**
Farm King Finish Mowers, 6' & 7'..... **Call**
Hay Express, 4 bale, individual dump..... **\$2,500**
Hay Wagon, 6-7-8 Bale, bumper hitch & gooseneck..... **Call**
New Farm King Grader Blades & Tillers..... **Call**

New Enorossi Tedders, 4 basket..... **Call**
REM Grain Vac, in stock..... **Call**
Rotary Tillers, 5' & 6'..... **In Stock**
TN River Brand Cutters, 6' or 7', pull type available, 3 pt. In stock..... **Call**
New & Used Enorossi Tedder, 4 basket, 17'..... **Call**
New Ogden Chain Harrow, 24'..... **Call**
Used Grain Vacs..... **Call for Prices**

Straw For Sale - 5' Round Bales, net wrapped or small square bales

Chandler's Farm Equipment

270-586-6653

Marty 270-392-0359 • Lloyd 270-535-6653
 2529 Salem Road • Franklin, KY
 Going Strong Since 1944



CYCLONE SEEDER, \$500. Columbia, TN. (931)224-1796.

CAN'T FIND THAT PART YOU NEED? Ask over 21,000 people when you run a Want To Buy ad for FREE in Farmers' Exchange. 1-800-247-7318.

Harvesters

Place your ad: 800-247-7318

FOR SALE, NEW IDEA 1-ROW CORN PICKER, model 309, \$1,200. Petersburg, TN area. (931)675-0669. tab

IF YOU LIKE OUR BOOK, you're gonna love our website! Visit www.FarmersExchange.com.

750 MASSEY FERGUSON COMBINE, with corn and bean heads, \$5,000. (256)708-5303.

Hay and Forage Equipment

Place your ad: 800-247-7318

1470 GEHL ROUND HAY BALER, \$3,500. Vermeer 605 hay baler, \$6,000. Will trade for cattle. (205)388-7369.

Thank You for Saying You Saw It in the Farmers' Exchange!

INVITE 21,000+ people to look at your equipment at one time when you advertise in Farmers' Exchange.

LEINBACH HAY UNROLLER for 4x5 rolls, good shape, \$750. (931)964-3135.



TAEP APPROVED DISC MOWER CADDIES, TAEP is doing a cost share on Disc Mower Caddies this year. Offset, \$4,400; In-line, \$3,900. Call today to place order. Deadline April 1st. (615)542-6157. Parker Farms Cattle and Equipment Co.

#725 MASSEY FERGUSON haybine for sale, good shape, \$850. Cumberland Furnace, TN area. (615)763-2926.



TAEP APPROVED DISC MOWER CADDIES, TAEP is doing a cost share on Disc Mower Caddies this year. Offset, \$4,400; In-line, \$3,900. Call today to place order. Deadline April 1st. (615)542-6157. Parker Farms Cattle and Equipment Co.

KUHN SPEEDRAKE SR 112, G11 wheel rake, 2017, 12 reel with kicker, like new, very little use. Pictures available, can deliver. (931)808-8095.



2019, STOLTZFUS 10 ROLL bale wagon, slip hitch, new trailer tires, \$3,750. Bowling Green, KY. (270)202-3666.

Farmers' Exchange

Bill Thomas
 Founder (1940-2010)

Will Thomas
 Publisher / CEO

Katie McNabb
 Director of Magazines

Evan Dawson
 Marketing Director

Janet Mullins
 Business Development
 (931) 993-0026

Tim Ashley
 Business Development
 (931) 205-0644

Bob Barger
 Business Development
 (931) 428-7231

Shelli Fuller
 Customer Service

Barb Hargrove
 Customer Service

Tracey Pollock
 Customer Service

Tim Weir
 Customer Service

Chase Perryman
 Creative Director

Melissa Davis
 Layout Artist

Will Kelly
 Art Director

Todd Pitts
 Art Production Manager

Cameron Dangerfield
 Distribution

Steve Seiler
 Distribution

(800) 247-7318

404 Main Ave. South
 Fayetteville, TN 37334

FarmersExchange.com

Mats, cuts, negatives, art work or other copy submitted for publication is considered to be the property of the advertiser. Advertising is accepted with the understanding that all liability for copyright violation is the sole responsibility of the advertiser.

The Exchange will make every effort to see that advertising copy is correctly printed, but shall not be liable for failure to publish an ad or for typographical errors.

The Exchange will gladly reprint, without charge, that part of an advertisement in which an error occurs, provided a claim is made within three (3) days of the first publication of the ad.

© 2022 Exchange Media Group
 All Rights Reserved

We Can Make Hydraulic Hoses While You Wait

Hydraulic Hoses (Up To 1 Inch) • Ag. Filters
 Tractor Oils • Bearings • Seals

We sell DEF fluid and RV Antifreeze

B&B Auto Parts, Inc.

4936 Winchester Rd. N.E. • New Market, AL
 2 miles North of Buckhorn High School

256-379-4733

Owners: Kent Bentley & Denita Bentley Sharpe

Hours: Mon. - Fri. 7:00 A.M. - 5:30 P.M.; Sat. 7:00 A.M. - Noon



2 DAY PRE SEASON ABSOLUTE AUCTION

Friday, February 4th • at 9:00AM Saturday, February 5th • at 9:00AM

Construction Equipment Dozers, Excavators, Mini Excavators, Skid Steers, Dump Trucks and Service Trucks.
Tractors, Farm Equipment, Attachments, ATVs, UTVs, Mowers and Support Equipment.

We will be running 2 rings each day. Bring a bidding partner.

1733 Garden Village Dr. White Pine, TN 37890

Inspection days: Wednesday, February 2nd & Thursday, February 3rd (8:00AM-5:00PM EST)

No Minimums • No Reserves • Highest Bidder Wins • Bid Live and Online



Largest Equipment Auction in East Tennessee Near The Foothills of the Smoky Mountains! This 2 Day Auction Will Feature a Variety Of Heavy Construction Equipment, Farm Tractors & Machinery, Excavators, Backhoes, Dozers & Loaders, Graders, Pavers, Rollers, Forklifts, Boom & Scissor Lifts, Wheel Loaders, Track Loaders, Cranes, Trenchers, Chippers, Service Trucks, Trailers, Mowers, ATVs, RTVs, Farm Equipment, Golf Carts, Farm and Garden Implements & Attachments.

Bid Live and Online

proxibid.

Equipmentfacts

The full catalog will be available on
Monday, January 31st

www.Proteamauction.com

Accepting Equipment Consignments Now! Come Sell With A Winning Team!

Often Duplicated, Never Replicated. Proven Results.

Large Inventory - Selling Worldwide!

0% Seller's Fee - Call Today

Selling For Individuals, Contractors, Rental & Leasing Companies, Lending Institutes, Farmers, Dealers, And More!

Also Don't Miss The Collectible Farm Toys and Antique Tractors Auction On Dec.11th! Bid Live and Online.

1-87PROTEAM1

1715 Garden Village Drive
White Pine, TN 37890
(865) 674-7002
Fax: (865) 674-0727



Follow Us
On Facebook
facebook.com/proteambid/



Great Deals On Farm Equipment!

Tractors

IH 464, gas, runs good	\$3,500
IH 5488, CHA, 2WD.....	\$11,900
IH 1456.....	\$14,500
Kubota L3410, HST, 900 hrs., MFWD.....	\$9,000
Kubota L3301 HST, 85 hrs, 5' cutter, box, loader..	\$23,000
Kubota B2650 HST, 5' cutter, box, loader, 300 hrs.....	\$19,000
Kiotti CK20, 700 hrs., 4' Woods Cutter	\$11,500
NHTS100, CHA	\$15,000

Other Equipment

Case IH RS551	\$6,500
Case IH 1020 Head, 17 1/2.....	\$11,500
Case IH 1063, 6RN, rough	\$3,500
Case IH 1083 Corn Head, 8 row	\$5,000
Case IH 1440, 4WD	\$4,995
Case IH 2020, 25'	\$16,900
Case IH 5088, 1190 sep hrs., 2WD.....	\$92,000
Case IH 3162, 2014, 30' draper.....	\$38,500
Case IH 7140, 1800 sep. hrs., 2200 eng. hrs.....	\$149,500
Case IH 8460 Round Baler	\$5,000
Header Wagons, Grain Carts & Seed Wagons.....	In Stock
JD Disc, 23'	\$1,595
JD 456, twine only.....	\$5,500
JD 457, twine, very clean, 1 owner	\$10,500
JD 558, 6000 bales.....	\$15,000
Kubota Zero Turn Mowers.....	In Stock
Schaben ESF6500 Sprayer, 60' boom, 1000 gal.....	\$11,000
Stoltzfus Feed Wagons	In Stock
Used RTVs, 900's & 1100's.....	Call
White 6606 Planter	\$9,750
Used Rakes & Tedders In Stock.....	Call
Bac Blade.....	\$500
Vermeer 664, 4000 bales	\$19,000
NH 460, twine & net, 8,000 bales.....	\$18,500

www.brothersimplement.com



Hwy. 41 - Hillsboro, TN
(931) 596-2749



INTERNATIONAL SIDE DELIVERY RAKE for sale, good condition, \$650. Lawrenceburg, TN area. (931)629-0138.

HAY EQUIPMENT for sale, too many items to list. Call for information, (256)758-2244.

FOR SALE, International Harvester horse drawn hay baler, \$600. Columbia, TN area. (931)446-1675.

271 NEW HOLLAND SQUARE HAY BALER, \$600. (256)708-5303.

256 NEW HOLLAND HAY RAKE, \$300. (256)708-5303.

Always A Great Selection



Lane Shark L52 11
Cutting positions, hyd. powered
Call for price



2020 Kubota T2290
still under factory warranty, only
12 hrs., 48" cutting deck
\$4,800



2016 Kubota MX5800
4WD, 369 hrs., HST
\$23,900



2017 MF 2606 H
comes with MF 911X loader,
578 hrs.
\$25,900



2019 Kubota BX23S,
Backhoe, 4WD, with Landpride 4'
cutter, bucket & grapple &
18' Trailer & ramps
all For \$23,900



2004 Kubota M6800
2WD, 2103 hrs.,
dual rear remotes
\$26,900

www.bctractor.com

BLOUNT COUNTY TRACTOR, INC.

Highway 75 North, Oneonta, AL 35121

Bus: 205-625-5381



Fax: 205-274-8795



SELL YOUR ITEMS for FREE! Limit one item selling for \$1,000 or less. No animals, please. 1-800-247-7318.



NEW HOLLAND 256 factory dolly rake, nice, \$2,550. Bowling Green, KY. (270)202-3666.

JD 468 ROUND BALER, 4'x6' bales, mega wide pickup, silage special, twine or net wrap, bale kicker, good condition, pictures available, can deliver. (931)808-8095.

Hay and Grain

Place your ad: 800-247-7318

ADVERTISE IT AND SELL IT FAST in Farmers Exchange! 1-800-247-7318.

4,000 BALES OF ORCHARD GRASS HAY, 12-14% protein, \$7 per bale. Hohenwald, TN area. (931)628-0529.



MIXED GRASS HAY FOR SALE. Middle Tennessee area. 5x5 rolls and a few 4x5 rolls. Some barn stored and others are tarped. Still have some rolls from 2020 available at a lower price. (615)533-8168.

TOO BUSY TO CALL US? List your items 24/7 at www.FarmersExchange.com.

ADVERTISE IT AND SELL IT FAST in Farmers Exchange! 1-800-247-7318.

SALVAGING

Salvaging Agco 2270 Square Balers

- Round Balers
- Swathers
- Combines
- Tractors



Call Us For New & Used John Deere Row Head Parts!

Over 800 Machines Parted Out!

Mike's Equip. Co.

Buhler, KS

mikesequipment.com
sales@mikesequipment.com

620-543-2535

HAY for sale, 4x5 rolls, net wrapped, \$35 per roll. Delivery available with 10 or more with extra charge. (256)509-8991.

ALFALFA SQUARE BALES, \$8 per bale; orchard grass, \$7 per bale, horse quality. Fayetteville, TN area. (256)975-0653.

EAR CORN for sale, crushed or whole, \$5.50 non crushed per bushel. (931)993-1074; vanhooserk@fcsboe.org

STRAW! 21 Bale bundles, single bales to semi loads, \$5 per bale, quantity discount available. (931)607-3992.

KENTUCKY 31 FESCUE SEED for sale, with Orchard grass. Middle Tennessee. (931)244-0063.

Odds and Ends

Place your ad: 800-247-7318

1986 VOLKSWAGEN CABRIOLET for sale, convertible, \$1,350. Columbia, TN area. (931)446-1675.

Bring a Bidding
Partner - 2 Auctioneers
will be Selling

AUCTION

Saturday, January 15th, 2022 • 9:00AM CST

1714 Hartsville Pike-Gallatin, TN

Cattle-Farm Equipment-Hay-Personal Property

Seller-Branham



FURNITURE - Sleep Number full split king, king bed with 2 night stands, Lane cedar chest, Crescent dining room table w/2 captain chairs and 4 regular chairs, table cover, 1 leaf, lighted china cabinet, buffet, & silverware chest, sugar chest, game table/poker table w/4 chairs, office desk, office chairs, craft table, patio tables w/4 chairs, reclining love seats, coffee tables, end tables, and more.

ANTIQUES & GLASSWARE - Ramsey grandfather clock, Ramcraft mantle clock, old wall clock, Samsung washer & dryer, Yamaha Clavinova piano, Truetone antique radio (works), Fender, quilts, afghans, Noritaki Colburn 8 place setting (dinner plate, salad plate, dessert plate, saucer, & cup), vegetable bowl, gravy boat, platter, cream and sugar, Noritaki Regency 12 pc setting w/cream and sugar, covered butter dish, vegetable bowls, platter, soup bowl, & covered soup bowl, pitcher w/6 glasses, covered dish, covered sugar bowl, 2 sugar bowls (1 broken on rim), & creamer, hand-painted 6 pc setting dishes-only 5 bowls, large bowl, small platter, Towle sterling silver "El Grandee" silverware, Elite flat screen tv, doilies, tablecloths, placemats, punch bowl set, decanters, cookbooks, glasses, Cuthbertson Christmas dishes, Longeburger baskets, Boyd's Bears figurines, picnic basket, sheet music, card table, kitchenware, Pyrex, vacuum, craft supplies, lamps, shelving, neon clock, kitchen appliances (toaster, bread machine, food processor, and more), kerosene lamps, crock, butter churn, telegraph machine, Nippon pitcher, creamer, & sugar bowl, blue Ball jars, old wood advertising boxes, Singer sewing machine, Cricut and cartridges, CDs, VHS tapes, enamelware bowls and pot, books, Christmas decorations, and much more.

JEWELRY - train pocket watch, men's Timex Indiglo wrist watch w/gold and silver colored band, men's Timex Indiglo wrist watch w/gold colored band, men's Timex wrist watch w/gold colored band, men's Wyler wrist watch w/gold colored band, men's Seiko Railroad Approved wrist watch w/gold colored band, tie tacks, and cuff links.

TOYS - Joal compactor, Caterpillar pipe dozer, Caterpillar dump truck, Caterpillar dirt pan, Caterpillar track hoe (no tracks), Caterpillar graders, JD dozer, Volvo Yuk dump truck, metal cat, small ceramic dolls

MONEY - Wheat pennies-uncirculated and circulated, Eisenhower dollars, Kennedy half dollars, foreign money, \$2 bills, \$2 red seal bill

CATTLE - 18 cows, 3 calves, 4 year old Charolais bull.

All cattle will be pregnancy checked and aged before sale. Cattle will sell at 9:00 A.M. sharp and must be removed the day of sale.

TRACTORS-FARM EQUIPMENT-TOOLS - NH TS110 tractor w/front end weights, CHA, hyd remotes w/approx 1489 hrs, NH TS100 diesel tractor w/front end weights, CHA, hyd remotes, & approx 986 hrs, 2 NH 6640 tractor w/front end weights, CHA, hyd remotes, w/approx 1407 hrs, Ford 5610 tractor CHA, hyd remotes, Ford 4610 tractor diesel, ps, hyd remotes, Bushhog 2400 loader w/approx 1905 hrs (one owner), NH TN75 tractor w/hyd remotes, Ford 555C backhoe (good condition), 1995 Wil-Ro 20' cattle trailer (needs a floor/nice trailer) (VIN-1W9L202G5T1012146), 24' flatbed gooseneck trailer, NH 7090 hay roller (approx 2500 rolls), Diablo MP Bigdog zero-turn lawn mower, Priefert squeeze chute w/palpa-tion cage, Land Pride 15' bushhog (like new), bushhogs, NH 145 manure spreader (like brand new), NH hay rake, Field Master post hole digger, Kuhn speed rake, universal hay spear, grader box, creep feeder, 2 bottom plow, tool boxes, bench grinder, Reddy heater, IR air compressor, engine hoist, and more.

VEHICLE - 2005 Chevy Silverado 3500 w/Duramax, 4 wheel drive, Wil-Ro flatbed, approx 5600 miles VIN-1GBJK34D96E152095

DIRECTIONS - From Gallatin Hartsville Pike (Hwy 25) to sale site on the right.

TERMS - Cash, check, credit/debit card, or Venmo day of sale.

Credit/debit cards will be charged a 3.5% convenience fee and Venmo a 2% convenience fee.



Wally Gilliam
Realty & Auction

406 N. Broadway - PO Box 7926 - Portland, TN
(615) 325-4597 • www.GilliamRealtyandAuction.com

Announcements made day of sale take precedent over all prior advertising.

Private & Auction
Sales

TNFL #2621
KYFL #RP2749



40' x 60' x 14'6"
Complete Building Package - \$16,842⁰⁰

With 25 year warranty galvalume roof, 40 year warranty painted sides, 1 walkdoor, 1 - 12x12 sliding door.

Roof Only - \$9,319⁰⁰

*Other sizes and styles to choose from

JANUARY SPECIALS!

40 yr. warranty painted panels - \$3.47/lf
 20 yr. warranty galvalume panels - \$3.23/lf

Metal Roofing For Your Home & Farm

DISCOUNT METAL ROOFING

"Quality Building Components At Discount Prices"

257 Anthony Lane • Shelbyville, TN
931-680-0001 • (888) 992-0005

Open Monday - Friday • www.discountmetalroofing.com



30' x 36' x 10'6"
Complete Building Package - \$8,958⁰⁰

With 25 year warranty galvalume roof, 40 year warranty sides, 1 - 10x8 sliding door, 1 - walkdoor. **Roof Only \$4,715⁰⁰**

36' x 48' x 12'6" - \$12,569⁰⁰
Roof Only - \$6,989⁰⁰

Pricing subject to change without notice. All prices plus tax.

FOR SALE, HORSE power, \$350; Jack Daniels' whiskey barrels, \$125 each. (931)446-1675.

BEEF SPLITTING SAW, with counter balancing, slaughter house, \$250. (256)708-5303.

PRE-SEASON SALE, order now! Bale wrap, twines, net wrap, bunker covers, ag bags. Quantity discounts! (731)316-5835.

PELLET STOVE USERS, Oak hardwood pellets, \$5 per 40lb. bag or \$235 per ton plus tax, Smithville, TN. (931)261-3369.

4 MICHELIN TIRES, 225/50R17. Six 225/70R19.5. Two 225/75R16. Three 95/24 tractor tires. (931)728-5490; or, (931)728-4277.

WANT TO BUY, FJ40 Toyota, in model years from 1975 to 1980. Call, (931)607-9737.

SELL YOUR ITEMS FOR FREE! Limit one item selling for \$1,000 or less. No animals, please. 1-800-247-7318.

CHIAPPA, model 1911, .22 semi-auto pistol, wood grips, excellent condition, \$250 or best offer. (615)347-3187.



WOODMASTER OUTDOOR WATER FURNACES, heat your home or shop, EPA approved clean burning, parts in stock, financing available. In TN call Harold, (931)484-8890; in KY call Dave, (859)265-0793.

TOO BUSY TO CALL US? List your items 24/7 at www.FarmersExchange.com.

HAS YOUR WIFE HAD ENOUGH OF YOUR CLUTTER IN THE SHED? Call the Farmers Exchange and advertise your unused equipment. 1-800-247-7318.

DECALS & DECAL SETS FOR HEAVY CONSTRUCTION & AG EQUIPMENT

Affordable Decals and Safety Decals. Prompt. Knowledgeable Reliable Service. www.QuipCal.com; Call, (215)536-5339; email:info@customservicescompany.com.

Other Equipment
 Place your ad: 800-247-7318

YOUR WIFE SAID SELL IT! Place your ad in the Farmers Exchange. 1-800-247-7318.

FOR SALE, 50 gallon iron kettle with stand-\$450; two industrial fire extinguishers-\$375 each; 40 gallon iron kettle-\$375; upright International corn sheller - \$300. (931)446-1675.

Thank You for Saying You Saw It in the Farmers' Exchange!

FOR SALE, SINGLE PHASE - THREE PHASE generator type converter, 200amp. capacity, \$700. (256)353-1895; (256)566-2895.

Planting Equipment
 Place your ad: 800-247-7318

BOX SCRAPER BLADE, \$250; 6' finishing mower, \$500; 10' four wheel trailer, \$600; 6' rooter, \$400. (615)319-4613.

CHECK OUT OUR WEBSITE! Visit www.FarmersExchange.com.

Bull Development and Evaluation Program Sale

January 13, 2022 • 12:00 PM

University of Tennessee



Selling 60+ Lots of Performance Tested Bulls

- Angus
- Hereford
- Sim-Angus
- TAEP Cost Share Eligible
- Video Auction Via DVAAuction
- Bid in person at Middle TN Research and Education Center - Spring Hill
- Auctioneer - Tommy Barnes

Matt Backus
 (865) 363-1576
 wbackus1@utk.edu

Justin Rhinehart
 (615) 946-9598
 jrhinehart@utk.edu

Kevin Thompson
 (931) 797-6642
 kthomp44@utk.edu

For More information visit
 animalscience.tennessee.edu/bull-test-program

Sale Day Address:
 Middle Tennessee Research and Education Center
 1000 Main Entrance Drive
 Spring Hill, TN 37174

EQUIPMENT REPAIRS



• FARM TRACTORS
 • DIESEL FUEL
INJECTION SERVICE

StanaDyne - CAV-Roosamaster - Pump & Injectors

Call Lewis 931-607-3031 • 931-596-3644

34 Medley Ln., Estill Springs, TN

Open on Saturdays

AUCTION SATURDAY

January 22nd @ 10 AM
258 Lagniappe Ln. McMinnville
FARM EQUIPMENT & GUNS FROM

JOANNE TURNER & THE LATE AUBREY TURNER



John Deere 5525 MFWD



KRONE DISC MOWER FRONTIER 8 WHEEL RAKE



JD 450E HAY ROLLER 5' CANNON GUN SAFE



S & W .38 SPECIAL



TAURUS 9 MM SEMI-AUTO

BROWNING .380 SEMI-AUTO RUGER REDHAWK .44 MAGNUM

GUNS SELLING AT 10 AM SHARP: H & R 12 ga. Pardner Pump, S & W .357 Magnum Mod. 66-2 nickel plate, S & W .357 Magnum Mod. 19-5 blued finish w/holster, Taurus 9 mm semi-auto, S & W .38 Special blued finish w/leather holster, S & W .38 Special Mod. 10-7 nickel plate snub nose w/leather zipper case, S & W .38 Special Mod. 15-3 nickel plate, Rossi .38 Special, S & W .38 Special Mod. 10-5 nickel plate w/leather holster, Ruger Redhawk .44 Magnum w/case, Browning .380 semi-auto w/case, 6 ft. Cannon gun safe, 5 ft. Cannon gun safe, rolling metal cabinet with 6 drawers.

Farm Equipment: John Deere 5525 MFWD w/cab and loader, John Deere 450E hay roller, Krone 5.52/4x7 Tedder, Frontier 8 wheel rake, John Deere 6 ft. 3 pt. hitch rotary cutter, Leinbach 8 ft. 3 pt. hitch disc, antique steel wheel sub-soiler, yard aerator, 3 pt. hitch cyclone spreader, John Deere hay spear, John Deere pallet forks, Krone AMR 280 disc mower, John Deere 3 pt. hitch grader, PowerFast Pro-Series portable generator 161 hours 10000 watt 20 hp Honda motor.

Antiques & Collectibles: pair of cast iron gargoyles, John Deere wagon wheel bench, miniature buckboard wagon, carved wooden tiger scene.

Directions: From the Hwy. 56 and Hwy. 70S intersection in McMinnville head north on TN-56N for 5 miles. Turn right onto Lagniappe Ln.

Terms: Cash or check day of sale. Gun purchases will be subject to FFL regulations and will be handled by Fully Loaded Firearms, 494 Old Shelbyville Rd., McMinnville, TN 37110. There will be a \$10 fee per background check and a \$15 processing fee per gun. Guns will be available for pickup on Tuesday, January 25th between the hours of 10 AM and 5 PM.

S.D.M. SIMPSON

REALTORS AND AUCTIONEERS
(931) 473-LAND
www.dmsimpson.com 5263

David M. Simpson,
Broker, Auctioneer **931-273-5253**

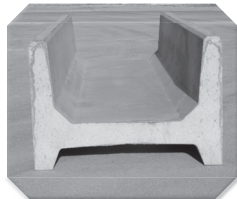
Tiffany Simpson
Co-Owner, Broker **931-808-7080**

John Kyle Simpson
Aff. Auctioneer, Aff. Broker **931-212-3843**
303 W. Main St. McMinnville, TN 37110

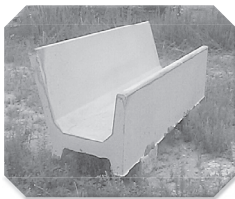
All printed information believed to be correct, announcements made auction date take precedence over all printed material.

We Have All Your Concrete Needs!

- 8' Feed Troughs • Fence Line or Center Line
 - Stock Guards, 12' & 16', 7' deep • Water Troughs, 6' Round • Storm Shelters
- ALL PRODUCTS STEEL REINFORCED**



8' (26" or 60" wide) H Feeder
Eat From Both Sides



8' (34" wide) J Feeder
Eat From One Side



Water Tank
350 Gallons



WE DARE YOU TO COMPARE!

Our concrete Cattle Gaps are superior because of the amount of steel reinforcement, all double matted and correctly placed for durability. This allows us to be better than the competition. Available in 12' & 16' long and 12" or 20" tall. Call for pricing & specs on gaps.

Don't settle for less than the best!

Life Protector Partial Bury

(80"x64"x142") Not converted septic tank



- Strong steel reinforced precast 4500 psi concrete with fiber mesh
- Partial bury sheltered unit/easy to install
- Easy entrance access (steps not ladder)
- Outside measurements: 5'4" wide, 11'10" long 6'8" tall

Above Ground Storm Shelters

Sizes: 6'x10'x7'; 6'x6x7'/wheelchair accessible.
Anchors Kits available

Tankersley Concrete Co., Inc.

1630 Rock Crusher Rd., Lewisburg, TN 37091 • **931-359-3112**

Owners: *Bubba & Lynn Tankersley* • **In Business Since 1946**

Check out our website @ www.tankersleyconcrete.com

16' CASE DISK, \$400.
(256)708-5303.

JD 1590 no-till drill, almost like new, little use, 15', 7.5" row spacing, 18" blades, gang lockup, small seed box, heavy-duty dolly and tires. Pictures available, can deliver. (931)808-8095.

CYCLONE SEEDER, \$500. Columbia, TN. (931)224-1796.

JOHN DEERE 8300 grain drill, double disc openers, 21 row on 7-1/2" spacing, rear hitch, large seed box, good condition. Pics and delivery available. (931)808-8095.

Real Estate

Place your ad: 800-247-7318

HOUSE FOR SALE, 5BD, 3 full baths, two 1/2 baths, four car garage, corner lot, 1911 Haynes Drive, Murfreesboro, TN, \$ 5 9 5 , 0 0 0 . (615)714-6666.

BUY, SELL, TRADE with Farmers Exchange, over 25 years experience.

Recreational Vehicles

Place your ad: 800-247-7318

LOG LOADER, SLICK Stick brand on 1977 Ford F-660E. Loader works, truck runs, \$4,300. (205)240-8740.

6x4 JOHN DEERE GATOR, \$3,800. (256)708-5303.

Services

Place your ad: 800-247-7318



FOR RENT, 2017 KUBOTA SVL95 SKID STEER ENCLOSED, WITH HEAT AND AIR. ATTACHMENTS AVAILABLE, STANDARD BUCKET, STUMP BUCKET, AUGER, TRENCHER, GRAPPLE, HARLEY RAKE, FORKS. DAILY, WEEKLY, MONTHLY RENTAL. CALL R I C K , (931)619-0421.

DAY WORK - CATTLE/FARM WORK. Broad farm experience. Give me a call and see if I can be of service. Located in Harvest, AL. Will travel - 1 hour. Call for price. (256)520-4727.



ROBINSON ENVIRONMENTAL LAND CLEARING, forestry mulching, boom mower bushhogging, agricultural stump grinding and skid loader work. Call David, (615)631-0638.

EXCAVATOR WORK. Custom excavator, bushhogging, fence row clearing, stump removal. Call for free estimate. Insured. (931)580-0240.



DO IT YOURSELF LAND CLEARING. 120HP DOZIER, \$350 PER DAY, \$1,600 PER WEEK. FREE PICK UP AND DELIVERY FOR MULTIPLE DAY RENTAL. EXCAVATOR ALSO AVAILABLE. CALL R I C K , (931)619-0421.



FOR RENT, 435 BOBCAT MINI EXCAVATOR, 16" and 36" BUCKETS-HYDRAULIC THUMB, ENCLOSED CAB, WITH HEAT AND AIR, \$300/DAY, \$1,000/WEEK, \$2,500/MONTH. CALL RICK, (931)619-0421.

Thank You for Saying You Saw It in the Farmers' Exchange!



WOODMASTER OUTDOOR WATER FURNACES, heat your home or shop, EPA approved clean burning, parts in stock, financing available. In TN call Harold, (931)484-8890; in KY call Dave, (859)265-0793.



KING'S
Tarps &
Covers

(270)466-5841
528 Seay Rd.
Trenton, KY 42286

Call us for all of your tarp needs!

Monday - Friday 8AM-5PM



- Semi Trailer Tarps
- Installation, Hardware & Pipes Available

Powell Farms Inc. Consignment Auction

January 14 & 15, 2022 • 9:00 A.M.

Location: 1/4 Mile North of I-71 exit 34 @ corner of Hwy. 421 North & Carmon Rd. Campbellsburg, KY 40011



Receiving & Load Out: Receiving equipment December 27-31, 2021 & January 3-10, 2022. Earlier by appointment. No vehicles or junk tires. Load out Sunday 12-6 and Monday-Saturday 8-6 please have items removed by January 22.

Commission rates: 10% per item, \$10.00 minimum, \$450.00 maximum, \$10.00 no sale fee per item. Checks will be mailed out January 25.

Terms: 3% Buyers premium for both on sight & online buyers. Payment cash, good check paid in full day of sale. Online buyers see terms on bid platforms. All items sell as-is where-is with no warranties or guarantees by Powell Farms Inc. or it's employees. Not responsible for accidents or theft.

Note: This will be a live auction unless covid-19 and CDC guidelines change. It will for sure be online with 1 ring selling each day.

Online bidding@ www.uselevel.com • www.proxibid.com

For more information Contact:

David Powell at 502-558-9491, powell.auctions@gmail.com

Larry Ryan at 502-648-5177 • Mason Powell 502-662-2332 • William Potts 502-220-0431

**Watch updates on AUCTIONZIP.COM • ID#18099
Equipment Auctions 3rd Saturday in January, May & August Annually**



Belarus 250AS - 2wd, diesel, runs good **\$3,000**



Ford 1978 C-600 Dump Truck - gas, 4 spd., runs great, metal bed, 2 spd. **\$3,000**



Kubota L3300 Tractor - 4x4, new rear R-4 tires, Kubota LA480LDR, w/ Bucket **\$9,500**



Kubota L4900 Tractor & Loader **\$12,500**



Kubota L5030 Tractor - 4x4, w/kubota loader, w/bucket, rep photo **\$11,500**

Ford Front End Loader, fits Ford 2600-3000 and other models	\$2,000	3 pt. 1 Row Cultivator	\$125
Belarus 250, PS. 253 hrs., diesel.....	\$3,000	Massey Ferguson 135 Tractor	\$3,750
Long Backhoe, 3 pt., outriggers, buckets 12" & 24" long reach	\$3,000	CF Power Line, 5' Box Blade w/ Ripper Teeth	\$500
20' Holeclaw HD Boat Trailer, new tires & wheels	\$350	2 Bottom Plow International.....	\$300
JD 208, w/belly mower, gas, "Classic"	\$750	Kubota 6' Finish Mower 3pt.....	\$1,000
JD 450 C Dozer - 6 way blade, ROPS, good UC	\$13,000	40'x18' Carport 3 Sides.....	\$2,500
Front Bale Spear.....	\$250	John Deere Cylinder for Implement.....	\$85
Plows - 1, 2, 3, 4 Bottoms	Call, \$300 down	CAT D3 Dozer, 6 way blade, Good UC, had a motor fire, needs some hoses & wiring	\$9,500
Finish Mowers, 4'-5'	\$500	International 424 Tractor, gas, spin-out wheels.....	\$2,200
Cultivators/Cub Complete.....	\$400	Ford 4000, needs motor build & grill.....	\$3,000
Used Backhoe Buckets.....	Call	Ford 2600 gas, needs battery & grill.....	\$3,000
IH Belly Mowers 5'	\$400	3pt. Seeder, cone shaped, needs PTO.....	\$200
JD Planter, 3 pt., 2 row	\$300	Round Bale Horse Feeder.....	\$110
3 pt. Spring Tooth Cultivator, 2 row.....	\$250	Truckman 5000 lb Forklift, gas, 16' reach, 42" forks.....	\$2,000



International 674 Tractor - Diesel, Power Steering, International 2500 Loader w/ Bucket, Excellent Tires, New Seat **\$7,500**



International 574 Tractor - diesel, power steering, new wide front tires, spin out rear bar tires, w/ Koyker 210 front loader w/ bucket, runs great **\$6,500**



MF 245 Tractor - new tires rollbar, canopy, bushhog 2346 loader, w/bucket, rep photo **\$10,000**

Call Rex 931-729-3320 1151 Hwy 48 S, Centerville, TN

The Ultimate Wood Heat.

More Comfort
Thermostatically controlled wood heart.

Peace of Mind
Keep the fire outside and eliminate the dangers associated with indoor wood heating.

Save Money
Wood is a renewable, inexpensive and often free energy source.

CLASSIC EDGE
TITANIUM HD SERIES
Outdoor Wood Furnace



Southern KY Wood Furnaces

8263 Glasgow Rd., Burkesville, KY 42717

(270) 459-1840 • SouthernKyWoodFurnaces.com

LOG LOADER, SLICK Stick brand on 1977 Ford F-660E. Loader works, truck runs, \$4,300. (205)240-8740.



Tractors

Place your ad: 800-247-7318

JOHN DEERE. JD2210HST, 4WD, 23hp diesel tractor, 62" belly mower, low hours, excellent, \$8,950 firm. (256)506-9495.

JOHN DEERE 620 tractor for sale, wide front end, 3 point hitch, power steering, good rubber, starts and runs good, \$5,800. (931)766-2094.

MF 1835, 4WD, loader, 6 months old, 40 hours, \$22,500. 8 a.m. - 5 p.m. (931)939-4999.

OLIVER 66 and Oliver 60, motors stuck, sheet metal is good, \$2,000 for both. (256)708-5303.



WRANGLER PARTS FOR SALE, Used machines wanted. Deutz engine parts. Martin's Maintenance. Monday-Friday, 8a.m.-5p.m. (270)265-5040.

MASSEY FERGUSON 5465 TRACTOR, front wheel assist, with loader, \$45,000; Vermeer 605M baler, field ready, \$10,000; Full blood registered Shiba Inu puppies, \$1,000/each and 5 year old female, \$350. (731)518-6184.

JD 870, 2WD, good running, low hours, PS, runs and looks good, \$7,900. 8 a.m. - 5 p.m., (931)939-4999.

1937 F20 FARMALL TRACTOR for sale, on steel, running, \$1,950. Columbia, TN. (931)446-1675.

CASE IH 95C, 95hp, cab, 4WD, loader, non-def, 10' HD121 bushwhacker cutter, 350 hours, \$75,000; 2005 JD5105, 45hp, 4WD, 6' Flail mower, 2,000 hours, \$19,500. (615)714-6666.

1370 CASE TRACTOR, 135hp, \$5,500. (256)708-5303.

INTERNATIONAL 674, starts and runs good, 60hp, diesel, PS, \$6,900. Call between, 8 a.m. - 5 p.m. (931)939-4999.

NH WORKMASTER 40, 4WD, loader, 268 hours, nice as you'll find, \$19,500. 8 a.m. - 5 p.m. (931)939-4999.

Thank You for Saying You Saw It in the Farmers' Exchange!

Tillage Equipment

Place your ad: 800-247-7318

SELL YOUR ITEMS for FREE! Limit one item selling for \$1,000 or less. No animals, please. 1-800-247-7318.

16' CASE DISK, \$400. (256)708-5303.

JOHN DEERE 4 PAN 16" TURNING PLOW, \$250. (256)708-5303.

RHINO AERATOR 3 PT. HITCH, 12' wide, excellent condition. Pictures available, can deliver. (931)808-8095.

Timber and Forestry

Place your ad: 800-247-7318

LEINBACH HAY UNROLLER for 4x5 rolls, good shape, \$750. (931)964-3135.

BUY, SELL, TRADE with Farmers Exchange, over 25 years experience.

Specializing in Rugged, Reliable and Reasonably Priced Flat Beds, Arm Beds and Spike Beds

RUGGED
TIME PROVEN, FARMER TESTED, HARD TO BEAT.

RELIABLE
PREMIUM COMPONENTS, SOLID WELDED, EASY TO MAINTAIN DESIGN.

REASONABLY PRICED
BEST BED FOR YOUR BUCK ON THE MARKET.

RRP TRUCK EQUIPMENT
SPARTA, TN (931) 761-3554

Deweze
DECADES OF DURABILITY

B Butler Beds



Southern INVITATIONAL INDOOR TRACTOR & TRUCK PULL



FEBRUARY 4TH & 5TH 2022

TENNESSEE MILLER COLISEUM - MURFREESBORO, TN

SESSION #1
FRIDAY NIGHT
(7:00 PM CST)

6200 Limited Lite Tractors
SS Diesel/Alcohol Tractors
8000 P.S. Diesel Trucks
9300 Super Farm Tractors
8500 Pro Farm Tractors

Session #1
Kids 10 & Under Free
Adults \$20

SESSION #2
SATURDAY MIDDAY
(11:00 AM CST)

6200 Limited Lite Tractors
9500 Limited Pro
10000 Hot Farm Tractors
6200 Pro Stock Trucks
5500 V8 Hot Rods

Session #2
Kids 10 & Under Free
Adults \$15

SESSION #3
SATURDAY NIGHT
(7:00 PM CST)

Finals All Classes
Kids 10 & Under Free
Adults \$25

**TICKETS
AVAILABLE
ON-LINE**

Join us on Facebook • www.southernmotorsports.net

Advance Tickets Available February 2nd - February 5th Coliseum Box Office

Joe Wamble (731) 697-3424 • David Holbrook (615) 406-0382 • Melissa Holbrook (615) 809-6154

For additional information email: info@southernmotorsports.net



Ford 6610S
2,183 hrs.
\$13,500

JD 5300
3,367 hrs., 4WD
\$22,500

JD 6215 - 4600 hrs., 4WD,
loader, good cond.
\$32,500

John Deere	Deutz 3006 Tractor, diesel, 3140, 4WD, cab \$10,500 wide front \$2,500
	6400, 7800 hrs., CHA, 2WD..... \$22,500 Enorossi Rakes, 8 wheel, new Special \$3,750
Kubota	Hyster Forklift \$2,100
L3250, 1862 hrs., 2WD, turf tires \$4,950	Komatsu DC138 Trackhoe \$40,000
BX2200, 4WD, belly mower, 478 hrs \$8,500	Komatsu 37 Dozer, 6 way blade..... \$21,500
	(3) Forklifts Call Cell
	(2) Semi Vans, 48' Call Cell
Massey Ferguson	Several Wheel Discs Call Cell
1030, 2WD \$4,250	Several Square Hay Balers Call
	(3) Used Cattle Trailers, GN..... Call
Misc.	Several Used Balers..... Call
AC 6080, 2WD, local owned \$5,900	Woods RM990, 7' 12" cut
Asphalt Packer, heavy duty, JD engine \$9,000	Finish Mower \$2,250
Bog Discs, 3 Bogg Call Cell	Int. 784, 2WD, loader \$8,250
Case IH C50, 2WD, loader \$8,500	Haybuster Drill, 10', pull type..... \$9,800
Case IH 485, 2WD, loader \$8,500	Vermeer 5420, 2500 bales, with monitor \$14,000
Cat D6D \$28,000	

Vermeer Hay Equipment in Stock

Culvert Pipe, 12" & up, Plastic & Metal • Head Gates • Corral Panels



Lynch Equipment Sales

Westover Drive, Columbia, TN
931-381-1839 • Cell: 931-619-1338



AUSTRALIAN SHEPHERD PUPPIES, AKC registered, blue eyes, ready to go, mom and dad on site, \$ 4 0 0 . (256)762-2190.

JOHN DEERE TRACTOR 2755, with cab, 4WD, front end loader, hay spear, bucket, \$17,500; 150 Massey Ferguson, front end loader, hay spear, \$3,500; one gas burner 560 International, \$1,800. (615)319-4613.

2004 JOHN DEERE 5520 for sale, 89hp, 4WD, left hand reverser, one owner, front weights and rear wheel weights, 2,800 hours, Westendorf #28 loader with extra large bucket and spear bought new with tractor, \$37K. (931)703-0808.

PRE-SEASON SALE, order now! Bale wrap, twines, net wrap, bunker covers, ag bags. Quantity discounts! (731)316-5835.

Trailers

Place your ad: 800-247-7318

WANTED, a black Chevy or GMC 1500 or Colorado pickup. (931)692-2484.

DON'T BE SEEN pulling that ugly trailer again this year! Sell it in Farmers Exchange. 1-800-247-7318.

18' GOOSENECK LIVESTOCK TRAILER for sale, with rails, needs tires, \$700. (931)655-6904.

GIVE US A CALL FOR ALL FOR AUCTION NEEDS
Now booking for fall auctions



REDLINE AUCTION SERVICE

2631 LeGrande Hwy.
Horse Cave, KY 42149
(270) 392-0285
redforddewayne@gmail.com

Dewayne Redford (270) 392-0285
Brandon Croghan (270) 537-4460
Brady Core (859) 256-1186
Garrett Judd (270) 670-7787

Trucks and Autos

Place your ad: 800-247-7318

1993 DODGE DAKOTA for sale, 4WD, runs good, \$1,600. Murfreesboro, TN area. (615)319-4613.

DON'T BE SEEN pulling that ugly trailer again this year! Sell it in Farmers Exchange. 1-800-247-7318.

1983 GMC SPREADER TRUCK, 16' bed, it's rough, \$1,500. (256)708-5303.

1984 GMC DUMP TRUCK, with 14' dump bed, \$2,500. (256)708-5303.

Thank You for Saying You Saw It in the Farmers' Exchange!



JAPANESE 4X4 MINI TRUCKS, great for farm use, hunting, recreation, available with A/C, PS, 5 speed and automatic, some with dump beds. Anderson, AL. Call for prices, (256)740-7287. www.berryhillminitrucks.com

Want to Buy

Place your ad: 800-247-7318

WANTED, crawler crane set-up for drag line work. (423)605-9520.

WANTED, iron wheel tractors; whiskey barrels. Columbia, TN. (931)446-1675.

WANTED, a black Chevy or GMC 1500 or Colorado pickup. (931)692-2484.

Thank You for Saying You Saw It in the Farmers' Exchange!

WANT TO LEASE 70 ACRES. I'm looking for land to lease in the Northern Alabama/Southern Tennessee area before Spring 2022. I want to background ~65 weaned calves. I'd like to live on the land and I have a camper and a horse. I'm wanting to practice regenerative ag and land healing practices. Existing exterior fence would be nice. (256)520-4727.

WANTED, no-till drill that plants Fescue and Clover. (931)433-7345.

WANT TO BUY, FJ40 Toyota, in model years from 1975 to 1980. Call, (931)607-9737.

WANT TO BUY, 1940's-1950's pickup truck, any condition. Columbia, TN. (931)446-1675.

WANTED, horse drawn wooden wheel wagon; horse drawn grader, 4-wheels. Columbia, TN. (931)446-1675.

WANT TO BUY, Goats, sheep, chickens and guineas. Call, (931)427-8477; (256)777-0065.

Need Cash??

We Buy Standing Timber

• Free Estimates
Call today to schedule a meeting.

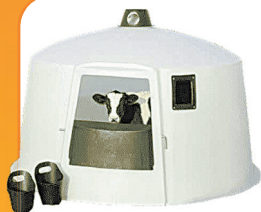
- We sell sawdust- pickup or delivery
- Selling custom log home & barn packages
- Kiln dry and tongue n groove lumber for sale

From A Few Acres Of Good Timber To A Large Forest. We Will Buy The Timber Or Even Land With Timber On It.

Sawmill - 931-937-8581
Peanut - 931-607-2126

Davie Ashley Sawmill
Elora, TN 37328

PolyDome Has the Unique and Specialty Ag Products You Are Looking For



CALF HUTS



FEED AND WATERING EQUIPMENT



MILK EQUIPMENT



OTHER ANIMAL SHELTERS

Over 40 years of experience in Animal Shelters and Agricultural Products



HUNTING



FARM PRODUCTS



OTHER LIVESTOCK PRODUCTS



LIVESTOCK WATERERS

PolyDome manufactures products to make your job on the farm easier.

Call 1-800-328-7659 to find a dealer near you!
For more products visit: www.polydome.com



WANTED, JOHN DEERE 435 net baler. (205)388-7369.

WANTED, 5'x6' round baler. Mt. Hermon, KY area. (270)427-2940.

WANT TO BUY, horse drawn sleigh. (931)446-1675.

WANTED, iron wheel tractors; whiskey barrels. Columbia, TN. (931)446-1675.

WANTED, OLD BARNs to tear down. Martin Barn Salvaging. (270)887-6522, leave message.

WANTED: Original wide front end for a WC Allis Chalmers tractor. (256)753-2318.

WANT TO BUY 80 BRANGUS HEIFERS, must be bred and docile. (256)636-2129.

IF YOU LIKE OUR BOOK, you're gonna love our website! Visit www.FarmersExchange.com.

WANTED New Holland L175 or L170 skid loader. Pembroke, KY area. (270)839-0642.

WANTED, one ton bucket truck with bad motor or transmission. (931)273-6757.

SELL YOUR ITEMS for FREE! Limit one item selling for \$1,000 or less. No animals, please. 1-800-247-7318.

EXCAVATOR WORK. Custom excavator, bushhogging, fence row clearing, stump removal. Call for free estimate. Insured. (931)580-0240.

GRASS FED OR grain fed Angus beef for sale, \$1 per pound on the hoof. Morrison, TN area. (931)728-5490; (931)728-4277.

1983 GMC SPREADER TRUCK, 16' bed, it's rough, \$1,500. (256)708-5303.

271 NEW HOLLAND SQUARE HAY BALER, \$600. (256)708-5303.

#725 MASSEY FER-GUSON haybine for sale, good shape, \$850. Cumberland Furnace, TN area. (615)763-2926.

FOR SALE, High tensile, class 3 livestock fencing. Over 500 rolls of premium brand fencing material for goats, sheep, horses and cattle in stock. (931)675-3260.

IF YOU LIKE OUR BOOK, you're gonna love our website! Visit www.FarmersExchange.com.

WANTED, no-till drill that plants Fescue and Clover. (931)433-7345.



FOR RENT, 435 BOBCAT MINI EXCAVATOR, 16" and 36" BUCKETS-HYDRAULIC THUMB, ENCLOSED CAB, WITH HEAT AND AIR, \$300/DAY, \$1,000/WEEK, \$2,500/MONTH. CALL RICK, (931)619-0421.

Thank You for Saying You Saw It in the Farmers' Exchange!





TV450B **SVL95**

73 YEARS STRONG

3 LOCATIONS AND GROWING

Lee Tractor | Biloxi, MS
12306 N. Oaklawn Ln - Biloxi, MS 39532
228-392-9922

Lee Tractor | Jackson, MS
158 Concourse Drive - Pearl, MS 39208
601-944-6120

Lee Tractor | Saint Rose, LA
10203 Airline Hwy - Saint Rose, LA 70087
504-467-6794

LETRACTOR.NET

THINKING AUCTION?

GIVE ME A CALL
MIKE VAUGHT
Apprentice Auctioneer #6387
Affiliate Broker

Specializing in Farms, Farm Dispersals,
Rural Homes & Acreage



PARKS AUCTION
CO. LLC FIRM 3984

615.396.7208
615.896.4600
www.parksauction.com



JOHN DEERE 620 tractor for sale, wide front end, 3 point hitch, power steering, good rubber, starts and runs good, \$5,800. (931)766-2094.

FOR SALE, 50 gallon iron kettle with stand-\$450; two industrial fire extinguishers-\$375 each; 40 gallon iron kettle-\$375; upright International corn sheller - \$300. (931)446-1675.

WE ARE THE MATCHMAKERS for your farm animals. Contact us to buy a companion for your cow, bull, goat, chickens. Every farm animal has a match. 1-800-247-7318.

THIS LITTLE PIGGY went to market, but this little piggy found a new home! Sell your animals in Farmers Exchange. Call, 1-800-247-7318.

NH WORKMASTER 40, 4WD, loader, 268 hours, nice as you'll find, \$19,500. 8 a.m. - 5 p.m. (931)939-4999.

Thank You for Saying You Saw It in the Farmers' Exchange!



2019, STOLTZFUS 10 ROLL bale wagon, slip hitch, new trailer tires, \$3,750. Bowling Green, KY. (270)202-3666.



BOW GATES, 4' through 12', good inventory in stock. FandPlivestock.com; (615)653-8913.



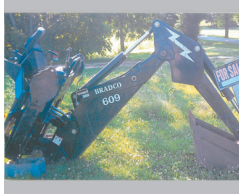
WOODMASTER OUTDOOR WATER FURNACES, heat your home or shop, EPA approved clean burning, parts in stock, financing available. In TN call Harold, (931)484-8890; in KY call Dave, (859)265-0793.

LOG LOADER, SLICK Stick brand on 1977 Ford F-660E. Loader works, truck runs, \$4,300. (205)240-8740.

WANT TO BUY, Goats, sheep, chickens and guineas. Call, (931)427-8477; (256)777-0065.



S A N T A GERTRUDIS, young bulls and heifers, polled, registered, gentle. Free ballcap. Quality cattle since 1977. (256)566-7878.



609 BRADCO BACKHOE, for skid steer loader, less than 100hrs, 18" bucket, used 7 times, \$5,000 or make offer. (859)734-9380.

4 MICHELIN TIRES, 225/50R17, 225/70R19.5. Two 225/75R16. Three 95/24 tractor tires. (931)728-5490; or, (931)728-4277.

SELL YOUR ITEMS for FREE! Limit one item selling for \$1,000 or less. No animals, please. 1-800-247-7318.

16' CASE DISK, \$400. (256)708-5303.



Chicken Litter For SALE

Kiln Dried Shavings For Sale

ORGANIC FERTILIZER

• DELIVERY AVAILABLE •

931-967-8699 • 931-607-8699

PRESSURE TREATED FENCE POSTS



- Excellent prices
- Pressure treated at our plant with CCA to the retention rate of .40
- 30 year warranty
- Dealer inquiries welcome
- Will protect established dealers territories



11029 Hwy. 132 E. | Sebree, KY 42455
 Kenny Miller (931)239-7962
 Family business since 1987

REGISTERED BLACK ANGUS BULLS for sale, fully TAEP qualified, A-I sired out of great cow families, gentle, good EPD's. Cedar Ridge Angus, Pulaski, TN. (256)508-2874. See Cedar Ridge Angus on Facebook.

FOR SALE REGISTERED BLACK ANGUS BULLS, 50k tested and will qualify for the full \$1,600 TAEP money, all are AI bred. Crawford Angus, Lewisburg, TN. (931)205-2450; or, (931)359-2633.

SELL YOUR ITEMS for FREE! Limit one item selling for \$1,000 or less. No animals, please. 1-800-247-7318.

PELLET STOVE USERS, Oak hardwood pellets, \$5 per 40lb. bag or \$235 per ton plus tax, Smithville, TN. (931)261-3369.

WANT TO LEASE 70 ACRES. I'm looking for land to lease in the Northern Alabama/Southern Tennessee area before Spring 2022. I want to background ~65 weaned calves. I'd like to live on the land and I have a camper and a horse. I'm wanting to practice regenerative ag and land healing practices. Existing exterior fence would be nice. (256)520-4727.

WANT TO BUY, Goats, sheep, chickens and guineas. Call, (931)427-8477; (256)777-0065.

PRE-SEASON SALE, order now! Bale wrap, twines, net wrap, bunker covers, ag bags. Quantity discounts! (731)316-5835.

6x4 JOHN DEERE GATOR, \$3,800. (256)708-5303.



FOUR REGISTERED ANGUS COWS, will have second calf in spring 2022, have been pregnancy checked by vet, bred to high EPD Enhance bull. FandPLivestock.com; (615)653-8913.



WOODMASTER OUTDOOR WATER FURNACES, heat your home or shop, EPA approved clean burning, parts in stock, financing available. In TN call Harold, (931)484-8890; in KY call Dave, (859)265-0793.



PREMIUM WAGYU/ANGUS BULL. Mild mannered bull for sale, half Wagyu and half black angus, 17 months old, \$2,500. Our ranch will be sad to see this bull go. (615)504-9784.



Energy Efficient • Stainless Steel Tanks
 Automatic Waterers • Keeps Ice Out • Now UL Listed

Cattle • Hogs • Horses • Sheep

Hoskins Livestock Waters PO Box 101 • Hoskins, NE 68740
 402-565-4420 • 800-658-4020 www.hoskins-mfg.com

Ritchie Water Tank
We Carry 2 and 4 Hole





Priefert
Farm, Ranch & Rodeo

Stocking Lots of Priefert Products

Ivermectin Pour On - 5L
Call For Prices



Priefert S04 Chute
Call For Prices



Hi- Mag
Call For Prices
50 lbs



Guntersville
FEED STORE LLC
& GARDEN CENTER
256-582-4411
1321 Blount Ave. Guntersville, AL
guntersvillefeedstore.com

Priefert 135 Sweep Tub Premier
Call For Prices



Bring In Copy Of Ad Prices Subject To Change.


TOO BUSY TO CALL US? List your items 24/7 at www.FarmersExchange.com.



LAKE AND POND FISH FOR STOCKING. Bass, Bluegill, Shell Cracker, Catfish, Grass Carp, Minnows and Other Species. Aerators and Fountains. We deliver! Call for prices!
(615)977-0752.

DECALS & DECAL SETS FOR HEAVY CONSTRUCTION & AG EQUIPMENT

Affordable Decals and Safety Decals. Prompt. Knowledgeable Reliable Service. www.QuipCal.com; Call, (215)536-5339; email: info@customservicescompany.com.



SANTA GERTRUDIS, young bulls and heifers, polled, registered, gentle. Free ballcap. Quality cattle since 1977.
(256)566-7878.

JD 1590 no-till drill, almost like new, little use, 15', 7.5" row spacing, 18" blades, gang lockup, small seed box, heavy-duty dolly and tires. Pictures available, can deliver.
(931)808-8095.

JD 468 ROUND BALER, 4'x6' bales, mega wide pickup, silage special, twine or net wrap, bale kicker, good condition, pictures available, can deliver.
(931)808-8095.

SELL YOUR ITEMS for FREE! Limit one item selling for \$1,000 or less. No animals, please.
1-800-247-7318.

256 NEW HOLLAND HAY RAKE, \$300.
(256)708-5303.

1983 GMC SPREADER TRUCK, 16' bed, it's rough, \$1,500.
(256)708-5303.

INTERNATIONAL 674, starts and runs good, 60hp, diesel, PS, \$6,900. Call between, 8a.m.-5p.m.
(931)939-4999.



609 BRADCO BACKHOE, for skid steer loader, less than 100hrs, 18" bucket, used 7 times, \$5,000 or make offer.
(859)734-9380.

FORREST CITY 4 ROW DO-ALL with hydraulic cylinder, \$1,500.
(256)753-2318.

WANTED, crawler crane set-up for drag line work.
(423)605-9520.

50 BLACK COWS for sale. Call for information,
(931)619-1338.

JD 870, 2WD, good running, low hours, PS, runs and looks good, \$7,900. 8a.m. - 5p.m.,
(931)939-4999.

Seed For Sale

<p>Wildlife Seed Deer & Turkey Plot Mixes Winter Peas Turnips - 7 Top - Purple Top Forage Turnips Forage Rape Chicory - Forage Mustards & Kale Diakon Radish</p>	<p>Clovers/Legumes Dixie Crimson Clover Advantage Ladino Clover Kenland Red Clover Durana Ladino Clover White Dutch Clover Alfalfa - Varieties Vetch</p>	 <p>UniSouth Genetics, Inc.</p>	<p>Certified Wheat USG 3539 SY Viper Saluda</p>
<p>Other-Misc. Parakeet/Budjje Food Feed Wheat Brassica Forage Mix (Forage Greens)</p>	<p>Grasses KY 31 Fescue with orchard grass KY 32 Fescue Shilo II Orchard Grass Timothy Marshall, Nelson Ryegrass Gulf Annual Ryegrass Max Q II Jesup Fescue</p>	<p>Small Grains Wrens Abruzzi Rye Triticale - Tricale 342 Bob Oats Barley</p>	<p>Cover Crop Blends</p>



Clemmons & Hamner Seed, Inc.
5578 County Rd. 34, Killen, AL 35645
www.clemmonshammerseed.com
Call **256-757-9996**
If you don't see what you're looking for, give us a call!

Thank You for Saying You Saw It in the Farmers' Exchange!



TAEP APPROVED DISC MOWER CADDIES, TAEP is doing a cost share on Disc Mower Caddies this year. Offset, \$4,400; In-line, \$3,900. Call today to place order. Deadline April 1st.
(615)542-6157.
Parker Farms Cattle and Equipment Co.
16' CASE DISK, \$400.
(256)708-5303.

INVITE 21,000+ people to look at your equipment at one time when you advertise in Farmers' Exchange.

YOUR WIFE SAID SELL IT! Place your ad in the Farmers Exchange.
1-800-247-7318.

HUNDREDS OF PRESSURE TREATED ROUND AND SQUARE FENCE POSTS, in stock, 4, 5 and 6 inch sizes available.
(931)675-3260.

Pool Farm Equipment

is now a Bush Hog Dealer! New equipment arriving daily! Call for prices.

We now carry Vermeer Feeding Solutions • Schuler is now owned by Vermeer

SCHULER EQUIPMENT IN STOCK NOW:

Schuler 5021 Mixer • Schuler BF175 Feed Wagon • Call for prices

Check out our website: www.PoolEquipment.com

0% For 60 Months on Select Balers



5021 Mixer - Call for price



Vermeer BF 300

USED EQUIPMENT:

Several Used Vermeer Mowers M6040, Field Ready	Call for prices
Tedder, 17'	\$6,500
Gehl 1470 Baler	\$3,500
Vermeer 6640 Baler, Net and Twine.....	Call for price
Vermeer 6650 Baler, Net and Twine.....	Call for price
Vermeer 5400 Baler, Twine only	Call for price
Schuler Mixer 6020, used	Call for price
Yanmar 3110 Tractor, used.....	Call for price
Vermeer 605K Baler	Call for price
BushHog & Taylorway Tillers	NOW IN STOCK
New Vermeer Equipment Arriving Daily	

McCormick Tractors Now In Stock Call for prices



Bush Hogs In Stock 5' - 15' Call for prices



If we don't have what you want, we'll go get it!

 **256-685-0556 Office**
256-476-3546 Chris Pool
256-565-7780 Owner, Norman Pool

Pool Farm Equipment Co.

23971 Hwy. 157 • Town Creek, AL 35672



TAEP APPROVED DISC MOWER CADDIES, TAEP is doing a cost share on Disc Mower Caddies this year. Offset, \$4,400; In-line, \$3,900. Call today to place order. Deadline April 1st. (615)542-6157. Parker Farms Cattle and Equipment Co.



DO IT YOURSELF LAND CLEARING. 120HP DOZIER, \$350 PER DAY, \$1,600 PER WEEK. FREE PICK UP AND DELIVERY FOR MULTIPLE DAY RENTAL. EXCAVATOR ALSO AVAILABLE. CALL R I C K , (931)619-0421.

NH WORKMASTER 40, 4WD, loader, 268 hours, nice as you'll find, \$19,500. 8 a.m. - 5 p.m. (931)939-4999.

4 MICHELIN TIRES, 225/50R17. Six 225/70R19.5. Two 225/75R16. Three 95/24 tractor tires. (931)728-5490; or, (931)728-4277.

EIGHT REGISTERED ANGUS HEIFERS, put with low birth weight Angus bull 11-5-21, will be pregnancy checked by vet, meets TAEP heifer program in TN. Get \$500 back per heifer. FandPLivestock.com; (615)653-8913.

CAN'T FIND THAT PART YOU NEED? Ask over 21,000 people when you run a Want To Buy ad for FREE in Farmers' Exchange. 1-800-247-7318.

#725 MASSEY FER-GUSON haybine for sale, good shape, \$850. Cumberland Furnace, TN area. (615)763-2926.

256 NEW HOLLAND HAY RAKE, \$300. (256)708-5303.

JOHN DEERE 8300 grain drill, double disc openers, 21 row on 7-1/2" spacing, rear hitch, large seed box, good condition. Pics and delivery available. (931)808-8095.

WANTED, OLD BARNs to tear down. Martin Barn Salvaging. (270)887-6522, leave message.

WANTED, JOHN DEERE 435 net baler. (205)388-7369.



CORRAL PANELS, 16 gauge, 16 gauge, 6' tall, 3-pin hookup, 8'/10'/12'/14'/16' long, good inventory in stock. FandPLivestock.com; (615)653-8913.

Thank You for Saying You Saw It in the Farmers' Exchange!

OVERSTOCKED!

- Retaining Wall Blocks
- Landscapers
- Farmers
- Industries
- Build Your Storage Bins!

\$40 Each
(You Haul)

Mid South Concrete Inc.

P.O. Box 1220 • 1750 Braley Ln. • Pulaski, TN 38478
2408 Hwy. 43 South • Leoma, TN 38468
931-363-0690 • 800-705-5326

www.midsouthconcrete.com



Circle W • Delta
Calico • Blazer
GPI • Homesteader

Thank you for all your business!
We are looking forward to
serving you in 2022!

Horse Utility Trailers Cargo, Dumps
Stock Carports Bike Trailers
Flat Beds Gates & Panels Tow Dollies

Parts - Sales - Service - Rentals

B&W Authorized Installer

Consignments Welcome

The Trailer Store

1021 New Lewisburg Hwy., Columbia, TN

Hours: Mon.-Fri. 8:00 A.M. - 5:00 P.M.; Sat. Closed

Mark Curry, Justin Curry, Becky Lynch

Office: 931-381-2795

Fax: 931-380-0337

JD 870, 2WD, good running, low hours, PS, runs and looks good, \$7,900. 8 a.m. - 5 p.m., (931)939-4999.



CORRAL PANELS, 16 gauge, 16 gauge, 6' tall, 3-pin hookup, 8'/10'/12'/14'/16', long, good inventory in stock. FandPlivestock.com; (615)653-8913.

1993 DODGE DAKOTA for sale, 4WD, runs good, \$1,600. Murfreesboro, TN area. (615)319-4613.

WANTED New Holland L175 or L170 skid loader. Pembroke, KY area. (270)839-0642.

Thank You for Saying You Saw It in the Farmers' Exchange!

TWO HORSE WOODEN wheel wagon, \$1,650; Adams horse drawn large road grader, \$2,250. (931)446-1675.

WANTED New Holland L175 or L170 skid loader. Pembroke, KY area. (270)839-0642.

CHIAPPA, model 1911, .22 semi-auto pistol, wood grips, excellent condition, \$250 or best offer. (615)347-3187.

BEEF SPLITTING SAW, with counter balancing, slaughter house, \$250. (256)708-5303.

RHINO AERATOR 3 PT. HITCH, 12' wide, excellent condition. Pictures available, can deliver. (931)808-8095.

HAS YOUR WIFE HAD ENOUGH OF YOUR CLUTTER IN THE SHED? Call the Farmers Exchange and advertise your unused equipment. 1-800-247-7318.

HOUSE FOR SALE, 5BD, 3 full baths, two 1/2 baths, four car garage, corner lot, 1911 Haynes Drive, Murfreesboro, TN, \$595,000. (615)714-6666.

CHIAPPA, model 1911, .22 semi-auto pistol, wood grips, excellent condition, \$250 or best offer. (615)347-3187.

OLIVER 66 and Oliver 60, motors stuck, sheet metal is good, \$2,000 for both. (256)708-5303.

WANTED New Holland L175 or L170 skid loader. Pembroke, KY area. (270)839-0642.



TAEP APPROVED DISC MOWER CADDIES, TAEP is doing a cost share on Disc Mower Caddies this year. Offset, \$4,400; In-line, \$3,900. Call today to place order. Deadline April 1st. (615)542-6157. Parker Farms Cattle and Equipment Co.



REGISTERED ANGUS BULLS, good EPD, several heifer bulls, 16 months-20 months old, passed GSE and meets TAEP bull program in TN. FandPlivestock.com; (615)653-8913.

Thank You for Saying You Saw It in the Farmers' Exchange!

Custom Hoop Bldg. Covers, Hay Tarps, & Pond Liners

11 Colors Available

All covers have 2" weld for Strong Waterproof Seams



Signature
T A R P

Cover Your Investment

3433 White Hall Road
Mackville, KY 40040
Fax: 859-375-5269

Agricultural • Industrial • Commercial

859-375-5268

Come Check These Great Deals!



JD 49 Backhoe Attachment like new - \$7,750



MF 135 runs good, 4 cyl., gas - \$4,500



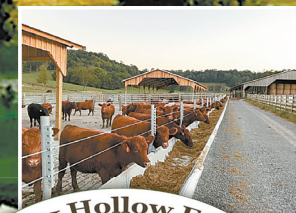
New Holland TS100 2WD, canopy, runs great - \$16,500

M&W No Til Drill, 7', shed kept, great condition.....\$5,500
New Holland Side Delivery Rake, like new.....\$1,000
Used Bushwacker Batwing Cutter, 15', good condition.....\$8,500
Case 695, with side mower, runs great.....\$8,500
Ford 4500, 2WD, DSL, PS, 3 pt. hitch, independent ITO, good tires.....\$4,000

256-773-8080

North Alabama Tractor Co.
Hwy. 31 South, Hartselle, Alabama 35640 • P.O. Box 1025

Red Angus, the beef industries preferred female. Bred and non-bred heifers, and breeding age bulls available.



Please call or text (281) 635-4591
for more information
1600 Trigg City Rd., Cornersville, TN 37046
bltppr@gmail.com



PREMIUM WAGYU/ANGUS BULL. Mild mannered bull for sale, half Wagyu and half black angus, 17 months old, \$2,500. Our ranch will be sad to see this bull go. (615)504-9784.

DAY WORK - CATTLE/FARM WORK. Broad farm experience. Give me a call and see if I can be of service. Located in Harvest, AL. Will travel - 1 hour. Call for price. (256)520-4727.

DECALS & DECAL SETS FOR HEAVY CONSTRUCTION & AG EQUIPMENT

Affordable Decals and Safety Decals. Prompt. Knowledgeable Reliable Service. www.QuipCal.com; Call, (215)536-5339; email:info@customservicescompany.com.

LEINBACH HAY UNROLLER for 4x5 rolls, good shape, \$750. (931)964-3135.

C A L L 1-800-247-7318. It's where all the Farmers place their ads!



TAEP APPROVED DISC MOWER CADDIES, TAEP is doing a cost share on Disc Mower Caddies this year. Offset, \$4,400; In-line, \$3,900. Call today to place order. Deadline April 1st. (615)542-6157. Parker Farms Cattle and Equipment Co.

CHIAPPA, model 1911, .22 semi-auto pistol, wood grips, excellent condition, \$250 or best offer. (615)347-3187.

TOO BUSY TO CALL US? List your items 24/7 at www.FarmersExchange.com.

16' CASE DISK, \$400. (256)708-5303.

1937 F20 FARMALL TRACTOR for sale, on steel, running, \$1,950. Columbia, TN. (931)446-1675.

OLIVER 66 and Oliver 60, motors stuck, sheet metal is good, \$2,000 for both. (256)708-5303.

REGISTERED POLLED HEREFORD BULLS for sale. Lynnville, TN area. (931)527-3392.

REGISTERED BLACK ANGUS BULLS, all qualify for maximum TAEP money. Call for price, (931)589-2759.

WANTED, no-till drill that plants Fescue and Clover. (931)433-7345.

WANT TO BUY, FJ40 Toyota, in model years from 1975 to 1980. Call, (931)607-9737.

16' CASE DISK, \$400. (256)708-5303.

OLIVER 66 and Oliver 60, motors stuck, sheet metal is good, \$2,000 for both. (256)708-5303.

1937 F20 FARMALL TRACTOR for sale, on steel, running, \$1,950. Columbia, TN. (931)446-1675.

WANTED: Original wide front end for a WC Allis Chalmers tractor. (256)753-2318.

CO-OP CALF FEEDER on wheels, with calf creeper attachments, holds three tons, \$2,800. (615)319-4613.

FOR SALE, HORSE power, \$350; Jack Daniels' whiskey barrels, \$125 each. (931)446-1675.

YOUR WIFE SAID SELL IT! Place your ad in the Farmers Exchange. 1-800-247-7318.

16' CASE DISK, \$400. (256)708-5303.

4,000 BALES OF ORCHARD GRASS HAY, 12-14% protein, \$7 per bale. Hohenwald, TN area. (931)628-0529.

CUSTOM STEEL BUILDINGS

LIFETIME METAL ROOFING, SHAKE SIDING, VINYL SIDING, WINDOWS, GARAGE DOORS



Clark's Home Solutions, LLC

Financing available! Check us out on Facebook!

Over 30+ Colors Available

Clark's Home Solutions, LLC

792 David Crockett Hwy. | Winchester, TN 37398



Call today!
(931)962-8859

271 NEW HOLLAND SQUARE HAY BALER, \$600. (256)708-5303.

WANTED, iron wheel tractors; whiskey barrels. Columbia, TN. (931)446-1675.

TOO BUSY TO CALL US? List your items 24/7 at www.FarmersExchange.com.

SELL YOUR ITEMS for FREE! Limit one item selling for \$1,000 or less. No animals, please. 1-800-247-7318.



SANTAGERTRUDIS, young bulls and heifers, polled, registered, gentle. Free ballcap. Quality cattle since 1977. (256)566-7878.



JAPANESE 4X4 MINI TRUCKS, great for farm use, hunting, recreation, available with A/C, PS, 5 speed and automatic, some with dump beds. Anderson, AL. Call for prices. (256)740-7287. www.berryhillminitrucks.com

16' CASE DISK, \$400. (256)708-5303.

THIS LITTLE PIGGY went to market, but this little piggy found a new home! Sell your animals in Farmers Exchange. Call, 1-800-247-7318.



CATTLE SWEEP SYSTEMS. HEAVY DUTY GALVANIZED 8 BAR 6' TALL CATTLE SWEEP SYSTEM, 90 DEGREE WITH 10' OF ALLEY STARTS AT \$1,480; 180 DEGREE W/20' OF ALLEY STARTS AT \$2,475; 10'X20' HOLDING PEN IS \$975. WE CAN ADD PALPITATION CAGE, SLIDING ALLEY GATES, PANELS AND BOW GATES AS NEEDED TO CUSTOMIZE YOUR SYSTEM. PRICE IS PLUS TAX OR FARM TAX CARD. CALL FARM SERVICE SOLUTIONS IN LEOMA, TN. (931)446-9935; OR VISIT US ON THE WEB AT FARMSERVICESOLUTIONS.COM. PHONE, (931)242-7675.



CATTLE SWEEP SYSTEMS. HEAVY DUTY GALVANIZED 8 BAR 6' TALL CATTLE SWEEP SYSTEM, 90 DEGREE WITH 10' OF ALLEY STARTS AT \$1,480; 180 DEGREE W/20' OF ALLEY STARTS AT \$2,475; 10'X20' HOLDING PEN IS \$975. WE CAN ADD PALPITATION CAGE, SLIDING ALLEY GATES, PANELS AND BOW GATES AS NEEDED TO CUSTOMIZE YOUR SYSTEM. PRICE IS PLUS TAX OR FARM TAX CARD. CALL FARM SERVICE SOLUTIONS IN LEOMA, TN. (931)446-9935; OR VISIT US ON THE WEB AT FARMSERVICESOLUTIONS.COM. PHONE, (931)242-7675.

Well Built™ to Handle Your Hay

Trust Your Most Important Forage Crop to Stoltzfus Mfg.

Well Built™ Round Bale Carriers



- Designed to load & unload with a 3 pt. hitch bale spear
- Reinforced cross members
- 9 models with 6, 8, or 10 bale capacities
- Heavy duty construction

Dealer Inquiries Invited! Several Locations Available!

Well Built - Feeders:

- Built tough for long life!
- Available in a variety of lengths
- Adjustable slant bar or self-locking head locks
- Ideal for cattle in either feedlots or meadows



Gates • Slant Bar Sections
Head Locks • Gutter Grates

For a free brochure or more information, call:

610-273-3603

Dealers located throughout TN & KY

Call for the one nearest you!

F.O.B. Cub Run, KY

Stoltzfus MFG

Cub Run, KY

DEALER INQUIRIES INVITED • CUSTOM WAGONS A SPECIALTY

FORREST CITY 4 ROW DO-ALL with hydraulic cylinder, \$1,500. (256)753-2318.

1370 CASE TRACTOR, 135hp, \$5,500. (256)708-5303.

INTERNATIONAL SIDE DELIVERY RAKE for sale, good condition, \$650. Lawrenceburg, TN area. (931)629-0138.

Thank You for Saying You Saw It in the Farmers' Exchange!

AGI SURETRACK

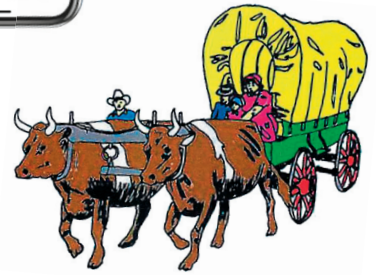
Smart storage for your hard work

SureTrack BinManager is the cornerstone of a system that integrates hardware, software and IoT sensors in order to constantly watch and manage moisture level and temperature changes inside your bins.



Watkins & Sons Mfg., Inc.

5734 Hwy 13 South, Linden, TN 37096
800-227-4631
www.watkinsandsons.com



DECALS & DECAL SETS FOR HEAVY CONSTRUCTION & AG EQUIPMENT

Affordable Decals and Safety Decals. Prompt. Knowledgeable Reliable Service. www.QuipCal.com; Call, (215)536-5339; email: info@customservicescompany.com.

IF YOU LIKE OUR BOOK, you're gonna love our website! Visit www.FarmersExchange.com.

JOHN DEERE 8300 grain drill, double disc openers, 21 row on 7-1/2" spacing, rear hitch, large seed box, good condition. Pics and delivery available. (931)808-8095.

Thank You for Saying You Saw It in the Farmers' Exchange!

SELL YOUR ITEMS for FREE! Limit one item selling for \$1,000 or less. No animals, please. 1-800-247-7318.

1470 GEHL ROUND HAY BALER, \$3,500. Vermeer 605 hay baler, \$6,000. Will trade for cattle. (205)388-7369.

CAN'T FIND THAT PART YOU NEED? Ask over 21,000 people when you run a Want To Buy ad for FREE in Farmers' Exchange. 1-800-247-7318.

RHINO AERATOR 3 PT. HITCH, 12' wide, excellent condition. Pictures available, can deliver. (931)808-8095.

RED ANGUS BULLS AND HEIFERS. Decherd, TN. (931)691-4864.

WANT TO BUY, horse drawn sleigh. (931)446-1675.

WANTED, a black Chevy or GMC 1500 or Colorado pickup. (931)692-2484.

16' CASE DISK, \$400. (256)708-5303.

CUSTOM TARPS FOR hoop buildings, available in 11 different colors. We also offer hay tarps and pond liners. Cover your investment, (859)375-5268.

WANTED, no-till drill that plants Fescue and Clover. (931)433-7345.



WOODMASTER OUTDOOR WATER FURNACES, heat your home or shop, EPA approved clean burning, parts in stock, financing available. In TN call Harold, (931)484-8890; in KY call Dave, (859)265-0793.

16' CASE DISK, \$400. (256)708-5303.

RHINO AERATOR 3 PT. HITCH, 12' wide, excellent condition. Pictures available, can deliver. (931)808-8095.

MF 1835, 4WD, loader, 6 months old, 40 hours, \$22,500. 8 a.m. - 5 p.m. (931)939-4999.

TOO BUSY TO CALL US? List your items 24/7 at www.FarmersExchange.com.

★ SCHWEISS
THE DOOR LEADER

DOORS
HYDRAULIC — OR — BIFOLD
ONE-PIECE DOORS STRAP LIFT DOORS

★ SCHWEISSDOORS.COM
507-426-8273

Selection • Service • Satisfaction

- Aerial Work Platforms
- Lawn- Landscape-Tree
- Compaction
- Material Handlers
- Skid Steers-Mini Excavators
- Generators and Accessories
- Construction Tools
- Concrete-Masonry



From Contractor To Homeowner, **We Can Help!**



WATSON'S Equipment Rental

290 Interstate Drive • Manchester, TN 37355
Mon.-Fri. 7:00 A.M. - 5:00 P.M. • Sat. 7:00 A.M. - NOON

931-954-5862



www.WatsonsEquipmentTN.com



FOR RENT, 2017 KUBOTA SVL95 SKID STEER ENCLOSED, WITH HEAT AND AIR. ATTACHMENTS AVAILABLE, STANDARD BUCKET, STUMP BUCKET, AUGER, TRENCHER, GRAPPLE, HARLEY RAKE, FORKS. DAILY, WEEKLY, MONTHLY RENTAL. CALL RIC K , (931)619-0421.



BULL GATES, 51" and 63" tall x 4'-20' long, good inventory in stock. FandPLivestock.com; (615)653-8913.

1983 GMC SPREADER TRUCK, 16' bed, it's rough, \$1,500. (256)708-5303.

CHECK OUT OUR WEBSITE! Visit www.FarmersExchange.com.

HAY for sale, 4x5 rolls, net wrapped, \$35 per roll. Delivery available with 10 or more with extra charge. (256)509-8991.

MASSEY FERGUSSON 5465 TRACTOR, front wheel assist, with loader, \$45,000; Vermeer 605M baler, field ready, \$10,000; Full blood registered Shiba Inu puppies, \$1,000/each and 5 year old female, \$350. (731)518-6184.

CYCLONE SEEDER, \$500. Columbia, TN. (931)224-1796.

WANTED: Original wide front end for a WC Allis Chalmers tractor. (256)753-2318.

KUHN SPEEDRAKE SR 112, G11 wheel rake, 2017, 12 reel with kicker, like new, very little use. Pictures available, can deliver. (931)808-8095.

BEEF SPLITTING SAW, with counter balancing, slaughter house, \$250. (256)708-5303.

WESTFIELD MK1071 AUGER, 4 years old, \$12,500. (931)409-0121.

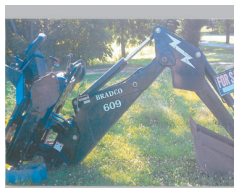
16' CASE DISK, \$400. (256)708-5303.



FOR RENT, 2017 KUBOTA SVL95 SKID STEER ENCLOSED, WITH HEAT AND AIR. ATTACHMENTS AVAILABLE, STANDARD BUCKET, STUMP BUCKET, AUGER, TRENCHER, GRAPPLE, HARLEY RAKE, FORKS. DAILY, WEEKLY, MONTHLY RENTAL. CALL RIC K , (931)619-0421.



SQUEEZE CHUTES. WE CARRY TARTER BRAND SERIES 3 AND SERIES 6 SQUEEZE CHUTES WITH BOTH AUTOMATIC AND MANUAL HEAD GATES. SERIES 3 \$2,500 AND SERIES 6 \$3,995 PLUS TAX OR FARM TAX NUMBER. CALL FARM SERVICE SOLUTIONS IN LEOMA, TN AT (931)446-9935; OR VISIT US ON THE WEB AT FARM SERVICESOLUTIONS.COM. PHONE , (931)242-7675.



609 BRADCO BACKHOE, for skid steer loader, less than 100hrs, 18" bucket, used 7 times, \$5,000 or make offer. (859)734-9380.

INVITE 21,000+ people to look at your equipment at one time when you advertise in Farmers' Exchange.

FOR SALE, 2x4x48" horse wire and 4x4x48" goat wire. High tensile, class 3 premium wire. (931)675-3260.

FOR SALE, SINGLE PHASE - THREE PHASE generator type converter, 200amp. capacity, \$700. (256)353-1895; (256)566-2895.



0%

FOR **36** SPECIAL RETAIL FINANCING MONTHS

ON SELECT NEW BUSH HOG EQUIPMENT

INCLUDING FLEX-WING AND MULTI-SPINDLE ROTARY CUTTERS, HAY TEDDERS, AND HAY RAKES

Trust in a company whose name has become synonymous with the task.
That's performance. That's reputation. That's Bush Hog®.





Dean Farm Supply

28739 U.S. Hwy. 72 • Hollywood, AL 35752
256-574-1112
www.DeanFarmSupply.com



CORRIENTE CATTLE for sale, bulls, heifers and roping cattle available. Call, (615)459-7773. Leave message, I do not have cell phone. Thank you.



5 REGISTERED RED ANGUS HEIFERS and 6 registered Red Factor black Angus heifers, 3 for \$2,200/each, 8 for \$1,700/each. Located in Rome, GA, 20 miles past Centre, AL. Joe Gibson, (706) 506-3026; Gibsoncattle.com.



NEW HOLLAND 256 factory dolly rake, nice, \$2,550. Bowling Green, KY. (270)202-3666.



WOODMASTER OUTDOOR WATER FURNACES, heat your home or shop, EPA approved clean burning, parts in stock, financing available. In TN call Harold, (931)484-8890; in KY call Dave, (859)265-0793.

1984 GMC DUMP TRUCK, with 14' dump bed, \$2,500. (256)708-5303.

Your Local FULL LINE KUBOTA DEALER!



ask about **LOW-RATE FINANCING DEALS!**



plus **WE ARE YOUR PARTS & SERVICE EXPERTS!**

H&R AGRI-POWER
THE POWER TO GET YOU MORE!

11 HIGHLAND RIM ROAD
FAYETTEVILLE, TN 37334
931-433-3516
WWW.HRAGRIPOWER.COM



FOR RENT, 2017 KUBOTA SVL95 SKID STEER ENCLOSED, WITH HEAT AND AIR. ATTACHMENTS AVAILABLE, STANDARD BUCKET, STUMP BUCKET, AUGER, TRENCHER, GRAPPLE, HARLEY RAKE, FORKS. DAILY, WEEKLY, MONTHLY RENTAL. CALL RICK, (931)619-0421.

1986 VOLKSWAGEN CABRIOLET for sale, convertible, \$1,350. Columbia, TN area. (931)446-1675.

REGISTERED BLACK ANGUS BULLS, all qualify for maximum TAEP money. Call for price, (931)589-2759.

PRE-SEASON SALE, order now! Bale wrap, twines, net wrap, bunker covers, ag bags. Quantity discounts! (731)316-5835.

TOO BUSY TO CALL US? List your items 24/7 at www.FarmersExchange.com.

HEREFORD BULLS, breeding age - 20-22 months, AI sired-Top blood lines, great EPDs, excellent disposition. Call for details. (931)668-9749.

WANTED, 5'x6' round baler. Mt. Hermon, KY area. (270)427-2940.

WANT TO BUY, FJ40 Toyota, in model years from 1975 to 1980. Call, (931)607-9737.

PRODUCE AUCTION
Every Monday • Wednesday • Friday
Sale Starts April - October at 11:00 A.M.
Call for additional info

931-829-1114 • 469 S. Brace Rd., Ethridge, TN 38456
www.PlowboyProduceAuctions.com

Muscle Shoals Diesel Service

Diesel Fuel Injection Sales and Service
Serving the Southeast Since 1975

Bosch Stanadyne Caterpillar Zexel Yanmar
Denso Delphi Cummins AMBAC Detroit

Turbocharger Sales & Service • Powerstroke Injectors • Performance Chips
Locally owned and operated • Many exchange units available



We want to make you glad you chose us for all your Diesel Fuel Injection Needs!



New Location! 1135 Hwy. 20, Tusculumbia, AL 35674

Toll Free 1-888-308-1203 • 256/381-0240



CATTLE SWEEP SYSTEMS. HEAVY DUTY GALVANIZED 8 BAR 6' TALL CATTLE SWEEP SYSTEM, 90 DEGREE WITH 10' OF ALLEY STARTS AT \$1,480; 180 DEGREE W/20' OF ALLEY STARTS AT \$2,475; 10'X20' HOLDING PEN IS \$975. WE CAN ADD PALPITATION CAGE, SLIDING ALLEY GATES, PANELS AND BOW GATES AS NEEDED TO CUSTOMIZE YOUR SYSTEM. PRICE IS PLUS TAX OR FARM TAX CARD. CALL FARM SERVICE SOLUTIONS IN LEOMA, TN. (931)446-9935; OR VISIT US ON THE WEB AT FARMSERVICESOLUTIONS.COM. PHONE, (931)242-7675.



ROBINSON ENVIRONMENTAL LAND CLEARING, forestry mulching, boom mower bushhogging, agricultural stump grinding and skid loader work. Call David, (615)631-0638.



TAEP APPROVED PASTURE SPRAYERS, TAEP deadline April 1st, 150 gallon, 3pt, \$3,300; 300 gallon, \$3,800; 500 gallon, \$4,200; hand wand, \$150. Call, (615)542-6157. Parker Farms Cattle and Equipment Co.

AUSTRALIAN SHEPHERD PUPPIES, AKC registered, blue eyes, ready to go, mom and dad on site, \$400. (256)762-2190.



BULL GATES, 51" and 63" tall x 4'-20' long, good inventory in stock. FandPLivestock.com; (615)653-8913.



WRANGLER PARTS FOR SALE, Used machines wanted. Deutz engine parts. Martin's Maintenance. Monday-Friday, 8a.m.-5p.m. (270)265-5040.

FOR SALE, Pressure treated pine fence boards, square posts and round posts. 1x6x14' and 1x6x16' boards; 4x4x7' square post; several sizes of round post. (931)675-3260.

4 MICHELIN TIRES, 225/50R17. Six 225/70R19.5. Two 225/75R16. Three 95/24 tractor tires. (931)728-5490; or, (931)728-4277.

WANTED, one ton bucket truck with bad motor or transmission. (931)273-6757.

CHECK OUT OUR WEBSITE! Visit www.FarmersExchange.com.

2004 JOHN DEERE 5520 for sale, 89hp, 4WD, left hand reverser, one owner, front weights and rear wheel weights, 2,800 hours, Westendorf #28 loader with extra large bucket and spear bought new with tractor, \$37K. (931)703-0808.

FOR SALE, 50 gallon iron kettle with stand-\$450; two industrial fire extinguishers-\$375 each; 40 gallon iron kettle-\$375; upright International corn sheller-\$300. (931)446-1675.



CORRIENTE CATTLE for sale, bulls, heifers and roping cattle available. Call, (615)459-7773. Leave message, I do not have cell phone. Thank you.

FOR SALE, 300 GALLON LOW profile boomless pasture sprayer, like new condition, \$3,500. (731)697-4024.

HAY EQUIPMENT for sale, too many items to list. Call for information, (256)758-2244.

RHINO AERATOR 3 PT. HITCH, 12' wide, excellent condition. Pictures available, can deliver. (931)808-8095.

SNEAD HYDRAULICS & REPAIR

New or Rebuild Pumps, Valves, Motors, Cylinders & Hydrostats • In House Machine Shop



87017 Hwy. 278
 P.O. Box 506
 Snead AL 35952
 Phone: 205-466-3105
 Fax: 1-866-372-0303
 info@sneadhydraulics.com

Craig Vaughn
 Owner/CEO
 256-470-0828

www.sneadhydraulics.com

WANT TO BUY, FJ40 Toyota, in model years from 1975 to 1980. Call, (931)607-9737.

1370 CASE TRACTOR, 135hp, \$5,500. (256)708-5303.

TOO BUSY TO CALL US? List your items 24/7 at www.FarmersExchange.com.

Thank You for Saying You Saw It in the Farmers' Exchange!

USG SEED

tested and proven
soybeans

high-yielding
wheat



THE NEW HORIZON FOR SEED

Clemmons & Hammer Seed Killen, AL 256-757-9996

Fuller Seed and Supply Poplar Grove, AR 870-829-3461

Cain-Bickley Chemicals LLC Marshallville, GA 478-967-2550

Hurt Seed Co., Inc. Halls, TN 731-836-7574

Faulk Bros. Seed Dublin, GA 478-609-1089

Sellers Seed Obion, TN 731-538-2990

Fandrich Supply Co. Belvidere, TN 931-967-3377

GreenPoint AG. LaVergne, TN 615-793-8011

Huffstetler & Sons Seed, Inc. Greenfield, TN 731-235-2167

Thomas Seed Arlington, KY 270-655-2121

MATTHEW 13:24 "THE KINGDOM OF HEAVEN IS LIKE A MAN WHO SOWED GOOD SEED IN HIS FIELD."

800.505.3133 + USGSEED.COM +  

FOR SALE, 2x4x48" horse wire and 4x4x48" goat wire. High tensile, class 3 premium wire. (931)675-3260.

WE ARE THE MATCHMAKERS for your farm animals. Contact us to buy a companion for your cow, bull, goat, chickens. Every farm animal has a match. 1-800-247-7318.

JOHN DEERE TRACTOR 2755, with cab, 4WD, front end loader, hay spear, bucket, \$17,500; 150 Massey Ferguson, front end loader, hay spear, \$3,500; one gas burner 560 International, \$1,800. (615)319-4613.

BUY, SELL, TRADE with Farmers Exchange, over 25 years experience.

REGISTERED BLACK ANGUS BULLS, all qualify for maximum TAEP money. Call for price, (931)589-2759.

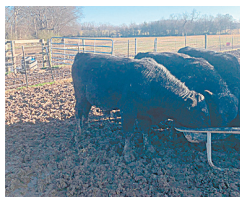
REGISTERED PURE-BRED LIMOUSIN BULLS and bred heifers, and open heifers, excellent EPD's, homo polled and homo black. Erwin, TN. (423)833-8889; (423)743-8686.



LAKE AND POND FISH FOR STOCKING. Bass, Bluegill, Shell Cracker, Catfish, Grass Carp, Minnows and Other Species. Aerators and Fountains. We deliver! Call for prices! (615)977-0752.

Thank You for Saying You Saw It in the Farmers' Exchange!

WANT TO BUY, horse drawn sleigh. (931)446-1675.



REGISTERED ANGUS BULLS, good EPD, several heifer bulls, 16 months-20 months old, passed GSE and meets TAEP bull program in TN. FandPLivestock.com; (615)653-8913.

DON'T BE SEEN pulling that ugly trailer again this year! Sell it in Farmers Exchange. 1-800-247-7318.

18' GOOSENECK LIVESTOCK TRAILER for sale, with rails, needs tires, \$700. (931)655-6904.

TOO BUSY TO CALL US? List your items 24/7 at www.FarmersExchange.com.

THIS LITTLE PIGGY went to market, but this little piggy found a new home! Sell your animals in Farmers Exchange. Call, 1-800-247-7318.

1937 F20 FARMALL TRACTOR for sale, on steel, running, \$1,950. Columbia, TN. (931)446-1675.



PREMIUM WAGYU/ANGUS BULL. Mild mannered bull for sale, half Wagyu and half black angus, 17 months old, \$2,500. Our ranch will be sad to see this bull go. (615)504-9784.

1984 GMC DUMP TRUCK, with 14' dump bed, \$2,500. (256)708-5303.



Brillion No Till Seeder - good cond. \$2,500



Ford 2,000 - DSL, runs good \$3,750



JD 5200 - Heat & Air, local trade \$14,500

MF GC 2300, w/Loader & Bucket, 4WD, Diesel.....\$12,000

We Sell New & Used Tractor Parts - Call For Details

ZACK'S TRACTORS & REPAIR

Hwy. 101, Rogersville, AL
256-483-3748
256-483-6681

WE DO MECHANIC WORK

We repair all types of tractors.
Call now to get your tractor work done!

We Sell Tractor Tires!

Aisles & Aisles & Aisles

of IH & CaseIH Tractor Parts
New, Used & Remanufactured



The Largest Exclusive
IH & CaseIH Used & Rebuilt
Parts Inventory in North America

Bates Corporation

12351 Elm Road Bourbon, IN 46504 www.batescorp.com

Call
1-800-248-2955

KUHN SPEEDRAKE SR 112, G11 wheel rake, 2017, 12 reel with kicker, like new, very little use. Pictures available, can deliver. (931)808-8095.

REGISTERED POLLED HEREFORD BULLS for sale. Lynnville, TN area. (931)527-3392.

SELL YOUR ITEMS for FREE! Limit one item selling for \$1,000 or less. No animals, please. 1-800-247-7318.

IF YOU LIKE OUR BOOK, you're gonna love our website! Visit www.FarmersExchange.com.

EIGHT REGISTERED ANGUS HEIFERS, put with low birth weight Angus bull 11-5-21, will be pregnancy checked by vet, meets TAEP heifer program in TN. Get \$500 back per heifer. FandPLivestock.com; (615)653-8913.

WANTED, 5'x6' round baler. Mt. Hermon, KY area. (270)427-2940.

MF 1835, 4WD, loader, 6 months old, 40 hours, \$22,500. 8 a.m. - 5 p.m. (931)939-4999.

LOOKING FOR SOMETHING? Ask over 25,000 people when you run a want to buy ad in Farmers Exchange.

CYCLONE SEEDER, \$500. Columbia, TN. (931)224-1796.

BOX SCRAPER BLADE, \$250; 6' finishing mower, \$500; 10' four wheel trailer, \$600; 6' rooter, \$400. (615)319-4613.

FORREST CITY 4 ROW DO-ALL with hydraulic cylinder, \$1,500. (256)753-2318.



FOR SALE, MiraFount livestock waterers. New units at big savings. Installation available. (931)675-3260.



WOODMASTER OUTDOOR WATER FURNACES, heat your home or shop, EPA approved clean burning, parts in stock, financing available. In TN call Harold, (931)484-8890; in KY call Dave, (859)265-0793.

JOHN BLUE 500 gallon ground driven sprayer, 30' spray width, foam marker, excellent condition, \$4,900. (256)566-8227.



36 HEAD HERD for sale, 18 mamas, \$15,000. (256)337-0097.

CAL 1-800-247-7318. It's where all the Farmers place their ads!

IF YOU LIKE OUR BOOK, you're gonna love our website! Visit www.FarmersExchange.com.

ALFALFA SQUARE BALES, \$8 per bale; orchard grass, \$7 per bale, horse quality. Fayetteville, TN area. (256)975-0653.

256 NEW HOLLAND HAY RAKE, \$300. (256)708-5303.

GRASS FED OR grain fed Angus beef for sale, \$1 per pound on the hoof. Morrison, TN area. (931)728-5490; (931)728-4277.

DON'T BE SEEN pulling that ugly trailer again this year! Sell it in Farmers Exchange. 1-800-247-7318.

DECALS & DECAL SETS FOR HEAVY CONSTRUCTION & AG EQUIPMENT

Affordable Decals and Safety Decals. Prompt. Knowledgeable Reliable Service. www.QuipCal.com; Call, (215)536-5339; email: info@customservicescompany.com.



TAEP APPROVED DISC MOWER CADDIES, TAEP is doing a cost share on Disc Mower Caddies this year. Offset, \$4,400; In-line, \$3,900. Call today to place order. Deadline April 1st. (615)542-6157. Parker Farms Cattle and Equipment Co.

EXCAVATOR WORK. Custom excavator, bushhogging, fence row clearing, stump removal. Call for free estimate. Insured. (931)580-0240.

Thank You for Saying You Saw It in the Farmers' Exchange!

ROBINSON ENVIRONMENTAL LAND CLEARING

Serving Middle Tennessee since 2007



We will clear your land to match your vision! We will work with excellence and efficiency to deliver your desired end results.

- Pasture clearing/restoration
- Timber stand improvement
- Lot clearing-residential and commercial
- Right-of-ways • Fire Prevention
- Wildlife habitat enhancement
- Food plot • Perk Sites • Survey Lines
- Real Estate tracts • Access roads
- Agricultural Stump Grinding

WWW.DROBINSONLANDCLEARING.COM
615-631-0638

Recently Salvaged Tractors

JD 1640	MF 135 DSI + MF 135 Gas
JD 2130	Ford 3000 + 900 w/ wide front
JD 1120	Ford 801 + 601 + 600
JD 950	Golden Jubilee
JD 850	Ford 801, gas, PS
Ford 8N	MF 235, Good Steering Box
Kubota 1500	Mahindra 3550
Formall SA-140-SC-Cub	Ford 2000, w/PS
IH 584 + IH 454	Yanmar 2500

Narrell Tractor 47 Years In Business Mark Narrell - Manager

7870 AL Hwy. 69 N., Cullman, AL 35058 **256-796-6445**
narrelltractor@att.net www.narrelltractorllc.com

WANT TO BUY,
horse drawn sleigh.
(931)446-1675.

DECALS & DECAL SETS FOR HEAVY CONSTRUCTION & AG EQUIPMENT

Affordable Decals and
Safety Decals.
Prompt. Knowledge-
able Reliable Service.
www.QuipCal.com;
Call, (215)536-5339;
email:info@customservicescompany.com.



WRANGLER PARTS
FOR SALE, Used ma-
chines wanted. Deutz
engine parts. Martin's
Maintenance.
Monday-Friday,
8a.m.-5p.m.
(270)265-5040.



BOW GATES, 4'
through 12', good in-
ventory in stock.
FandPLivestock.com;
(615)653-8913.



PREMIUM
WAGYU/ANGUS
BULL. Mild man-
nered bull for sale,
half Wagyu and half
black angus, 17
months old, \$2,500.
Our ranch will be sad
to see this bull go.
(615)504-9784.

HAS YOUR WIFE
HAD ENOUGH OF
YOUR CLUTTER IN
THE SHED? Call the
Farmers Exchange and
advertise your
unused equipment.
1-800-247-7318.



WE HAVE THE
BEST MADE HAY
FEEDER PANELS
AVAILABLE, 2x3
construction and
built to last a lifetime.
Available in 6' to 16',
long, good inventory
in stock.
FandPLivestock.com;
(615)653-8913.



WE HAVE THE
BEST MADE HAY
FEEDER PANELS
AVAILABLE, 2x3
construction and
built to last a lifetime.
Available in 6' to 16',
long, good inventory
in stock.
FandPLivestock.com;
(615)653-8913.

JAMES R CASH AUCTIONS

Coming Soon .. Unbelievable Like Quality
Nick Smith Farms - Golo, Kentucky
Near Mayfield - Benton - Murray, KY

Auction Highlights

Just A Glimpse Of The Many Items In This Auction...
Quality - Quality - Quality

TRACTORS

All Tractors Are Low Hours - Loaded with Accessories - See Website For Details!
JD 360R • JD 285R • JD 8200

Case IH 335 Magnum • Case IH 7130 Magnum • Case IH 585

COMBINES-HEADS-ACCESSORIES

'20 Case IH 7250 Combine With Less Than 200 Hours! Loaded With Accessories
35' Mac Don Grain Head • Case IH 4412 Corn Head, 12 Row

Nice Grain Carts - Including Unverferth 1000 Bushel • Grain Handling Equipment

Nice TRUCKS - TRAILERS

'11 Mack • IH • Ford Day Cabs • Dump Trailers • Hoppers - And Much More!

PLANTING - TILLAGE - LIVESTOCK - SUPPORT EQUIPMENT

Long Line Of Planting & Tillage Equipment ... Including

JD 16 Row Planter, Planted Only One Crop • Case IH 12 Row Early Rizer Planter •

Two • Case IH 30' Disc • Brillion Roller • Great Plains Verti Till

A Nice - Large Auction - Lots Of Items! Lots Of Livestock Equipment

Watch For Details On Our Website!

Jamesrcash.com For Details

Saturday, January 15th - 10:00 A.M.
Fayville Road, Olive Branch, Illinois

380 Acres ± - A Hunters Dream

A Fantastic Hunting Property
Nestled Between The Renowned Horse Shoe Lake
And The Mighty Mississippi River
jamesrcash.com For Details!

Jamesrcash.com For Details

Saturday, March 12TH, 2022 AT 9:00 A.M.
1107 Houseman ST MAYFIELD, KENTUCKY
Annual Huge Consignment Farm Machinery AUCTION

The Event Of The Year...
Rich In History...At The Fairgrounds

1000'S OF ITEMS WILL BE IN THIS AUCTION

JAMES R. CASH

THE AUCTIONEERS & REAL ESTATE BROKERS

JAMES R. CASH - JAMES R. CASH II "JAY"

FANCY FARM, KY- MURFREESBORO, TN

270-623-8466 • IL LIC # 441.001751



WOODMASTER
OUTDOOR WATER
FURNACES, heat
your home or shop,
EPA approved clean
burning, parts in
stock, financing
available. In TN call
Harold,
(931)484-8890; in KY
call Dave,
(859)265-0793.

49 HEAD OF
BLACK ANGUS
HEIFERS, bred to
calve end of January
and first of
February. Bred to
low birth weight
bulls from Branch
View Angus, \$1,950
each or best offer.
(270)221-1056.

ADVERTISE IT AND
SELL IT FAST in
Farmers Exchange!
1-800-247-7318.

FOR SALE, pressure
treated round fence
posts. Five sizes avail-
able for any fencing
project. Meets all
NRCS cost-share
requirements.
(931)675-3260.

WANT TO BUY,
FJ40 Toyota, in
model years from
1975 to 1980. Call,
(931)607-9737.

IF YOU LIKE OUR
BOOK, you're gonna
love our website!
V i s i t
[www.FarmersExchan-
ge.com](http://www.FarmersExchan-
ge.com).

16' CASE DISK, \$400.
(256)708-5303.

We Have The Right Trailer For You!



Austin Trailer Sales Florence, AL (256) 483-0744	Ferge Auction Somerville, TN (901) 412-1165
Latham Trailer Sales Flemingsburg, KY (606) 209-3939	Thornhill Equipment Hardinsburg, KY (270) 230-7276
The Trailer Store Columbia, TN (931) 381-2795	Wholesale Trailers Lebanon, TN (615) 714-3894

1470 GEHL ROUND HAY BALER, \$3,500. Vermeer 605 hay baler, \$6,000. Will trade for cattle. (205)388-7369.

WANTED, iron wheel tractors; whiskey barrels. Columbia, TN. (931)446-1675.

FOR SALE, Tarter gates, cattle panels, T-post, barbed wire, smooth high tensile 4,000' rolls, brace wire, staples, etc. for livestock fencing. (931)675-3260.

6x4 JOHN DEERE GATOR, \$3,800. (256)708-5303.

Where Do You Go When You Need Parts?

Russells Tractor Parts
1-800-248-8883

Ag & Industrial Parts • Free Quotes
Free Parts Locating Service
New & Used Parts

We stock & ship new after market parts.
Sparex, Tisco, Riverside, Temco Dealer

Russells Tractor Parts

We ship parts anywhere in the U.S.

Scottsboro, AL



Cowherd Equipment & Rental, Inc.



Penta 4030
Several Other Models In Stock



Penta 4030
Used - Call



Hoosierland 1450
Call for Prices



Patz 1100
In Stock - Call



Jay Lor 1600
Used - Call



Penta 6730
In Stock - Call

Numerous Used Mixers Available!

For more information:

Cowherd Equipment & Rental, Inc.

1483 Old Summersville Rd. • Campbellsville, KY 42718

270-465-2679 • 270-469-5095 • 270-469-0398



SQUEEZE CHUTES. WE CARRY TARTER BRAND SERIES 3 AND SERIES 6 SQUEEZE CHUTES WITH BOTH AUTOMATIC AND MANUAL HEAD GATES. SERIES 3 \$2,500 AND SERIES 6 \$3,995 PLUS TAX OR FARM TAX NUMBER. CALL FARM SERVICE SOLUTIONS IN LEOMA, TN AT (931)446-9935; OR VISIT US ON THE WEB AT FARMSERVICESOLUTIONS.COM. PHONE, (931)242-7675.

FOR SALE, MiraFount livestock waterers. New units at big savings. Installation available. (931)675-3260.

256 NEW HOLLAND HAY RAKE, \$300. (256)708-5303.

16' CASE DISK, \$400. (256)708-5303.



WRANGLER PARTS FOR SALE, Used machines wanted. Deutz engine parts. Martin's Maintenance. Monday-Friday, 8a.m.-5p.m. (270)265-5040.

#725 MASSEY FERGUSON haybine for sale, good shape, \$850. Cumberland Furnace, TN area. (615)763-2926.

2004 JOHN DEERE 5520 for sale, 89hp, 4WD, left hand reverser, one owner, front weights and rear wheel weights, 2,800 hours, Westendorf #28 loader with extra large bucket and spear bought new with tractor, \$37K. (931)703-0808.

750 MASSEY FERGUSON COMBINE, with corn and bean heads, \$5,000. (256)708-5303.

MF 1835, 4WD, loader, 6 months old, 40 hours, \$22,500. 8 a.m. - 5 p.m. (931)939-4999.

STRAW! 21 Bale bundles, single bales to semi loads, \$5 per bale, quantity discount available. (931)607-3992.

WESTFIELD MK1071 AUGER, 4 years old, \$12,500. (931)409-0121.

2 TON FEEDER with creep gates and jacks. Fasse valve (lets you add hydraulic valve to tractor). Branding irons, 3" electric, #1-10. Western Kentucky area. (270)977-1009.

WANT TO BUY, 1940's-1950's pickup truck, any condition. Columbia, TN. (931)446-1675.

BUY, SELL, TRADE with Farmers Exchange, over 25 years experience.

INTERNATIONAL 674, starts and runs good, 60hp, diesel, PS, \$6,900. Call between, 8a.m.-5p.m. (931)939-4999.

SALES - RENTAL - LEASE

DECATUR CONTAINER

5375 Marsha Ave. Decatur, AL 35603

256-751-3800

Providing Quality, Low-Cost Storage Solutions Since 1995



For Rent or Sale

Mobile Offices

- 8' widths
- 20'-40' lengths
- With or without AC
- Custom Built



Sale Or Rental

20'x8'x8½'



Sale Or Rental

40'x8'x8½'



Sale or Rental

40'x8½'x9½'

Used Shipping Storage Containers

Call Tommy St. John or Neal Sellers

Office (256) 751-3800 • Email: Sales@DecaturContainer.com



MIXED GRASS HAY FOR SALE. Middle Tennessee area. 5x5 rolls and a few 4x5 rolls. Some barn stored and others are tarped. Still have some rolls from 2020 available at a lower price. (615)533-8168.

2 TON FEEDER with creep gates and jacks. Fasse valve (lets you add hydraulic valve to tractor). Branding irons, 3" electric, #1-10. Western Kentucky area. (270)977-1009.

SELL YOUR USED EQUIPMENT IN THE FARMERS' EXCHANGE WORD ADS.

1984 GMC DUMP TRUCK, with 14' dump bed, \$2,500. (256)708-5303.

WANTED, a black Chevy or GMC 1500 or Colorado pickup. (931)692-2484.



FOR RENT, 435 BOBCAT MINI EXCAVATOR, 16" and 36" BUCKETS-HYDRAULIC THUMB, ENCLOSED CAB, WITH HEAT AND AIR, \$300/DAY, \$1,000/WEEK, \$2,500/MONTH. CALL RICK, (931)619-0421.



WOODMASTER OUTDOOR WATER FURNACES, heat your home or shop, EPA approved clean burning, parts in stock, financing available. In TN call Harold, (931)484-8890; in KY call Dave, (859)265-0793.

SELL YOUR ITEMS for FREE! Limit one item selling for \$1,000 or less. No animals, please. 1-800-247-7318.



JOHN DEERE 620 tractor for sale, wide front end, 3 point hitch, power steering, good rubber, starts and runs good, \$5,800. (931)766-2094.

JOHN DEERE 4 PAN 16" TURNING PLOW, \$250. (256)708-5303.



JOHN DEERE 620 tractor for sale, wide front end, 3 point hitch, power steering, good rubber, starts and runs good, \$5,800. (931)766-2094.

INVITE 21,000+ people to look at your equipment at one time when you advertise in Farmers' Exchange.

WANTED, 5'x6' round baler. Mt. Hermon, KY area. (270)427-2940.

MILLER FARMS, Angus Beef from the farm. 100% natural, non GMO, hormone and antibiotic free. Whole, halves or by the pound. Slaughtered and packaged. (931)593-3702.

16' CASE DISK, \$400. (256)708-5303.

CUSTOM TARPS FOR hoop buildings, available in 11 different colors. We also offer hay tarps and pond liners. Cover your investment, (859)375-5268.

750 MASSEY FER-GUSON COMBINE, with corn and bean heads, \$5,000. (256)708-5303.

The Easiest Way to Check Your Electric Fence!

- A new affordable Electric Fence Monitor
- Replaces manual testing
- Compatible with most posts & all wire
- Also serves as wildlife deterrent

Insulights .com **ELECTRIC FENCE MONITOR**

For more information or to order visit insulights.com or call Sue at (712) 568-3005

FREE BALER INSPECTION HATTIESBURG AND POPLARVILLE

BALER SERVICES INCLUDE:

- Adjust Drive Chain Tension & Sprockets for Wear
- Check Chain Idler & Idler Pivot Bushings for wear
- Remove any Wrapped Twine and/or net wrap
- Check pickup teeth, cam bearings, tooth mount bars, bolts & adjust cam track
- Check gearbox oil level & tractor drawbar adjustment

AND MORE



BVseries

Kubota **PARISH**
TRACTOR

Hattiesburg 601-264-5877 • Poplarville 601-795-4521

CK
10
25-40 HP

0% UP TO 60 MONTHS OR **UP TO \$3100 CASH BACK* (T-L-B)**

ELLISVILLE AUTO SUPPLY
704 Hill St., Ellisville, MS
www.ellisvilleautosupply.com

(601) 477-8577

KIOTI.com

*Offer available October 1, 2021 - December 31, 2021. Rebate and/or financing based on the purchase of eligible equipment defined in promotional program. Pricing and rebates in US dollars. Additional fees including, but not limited to, taxes, freight, setup and delivery charges may apply. Financing must be through 3rd party financing system. Financing is subject to credit approval. Customers must take delivery prior to the end of the program period. Some customers will not qualify. Some restrictions apply. Offer available on new equipment only. Prior purchase are not eligible. Offer valid only at participating Dealers. Offer subject to change without notice. See your dealer for details. 6 Year Warranty for Non-Commercial, residential use only. 6 Year Warranty applies to CK, CV, K, and M Model Kioti tractors and must be purchased and registered between September 1, 2016 - December 31, 2021. Offer valid only at participating Dealers. Offer subject to change without notice. See your dealer for details. © 2021 Kioti Tractor Company a Division of Daewoo USA, Inc.



NEW HOLLAND 256
factory dolly rake,
nice, \$2,550. Bowling
Green, KY.
(270)202-3666.

EXCAVATOR
WORK. Custom
excavator,
bushhogging, fence
row clearing, stump
removal. Call for free
estimate. Insured.
(931)580-0240.

WESTFIELD
MK1071 AUGER, 4
years old, \$12,500.
(931)409-0121.



PUREBRED GELB-
VIEH AND BAL-
ANCER BULLS,
HEIFERS, AND
COWS FOR SALE,
TOP BLOODLINES
AND EPDS. CALL
FOR PRICES,
(256)874-3488.

WANTED, OLD
BARNs to tear down.
Martin Barn
Salvaging.
(270)887-6522, leave
message.

DON'T BE SEEN
pulling that ugly
trailer again this year!
Sell it in Farmers
Exchange.
1-800-247-7318.

LOG LOADER,
SLICK Stick brand on
1977 Ford F-660E.
Loader works, truck
runs, \$4,300.
(205)240-8740.

WANTED, iron
wheel tractors;
whiskey barrels.
Columbia, TN.
(931)446-1675.



SQUEEZE
CHUTES. WE
CARRY TARTER
BRAND SERIES 3
AND SERIES 6
SQUEEZE CHUTES
WITH BOTH AU-
TOMATIC AND
MANUAL HEAD
GATES. SERIES 3
\$2,500 AND SERIES
6 \$3,995 PLUS TAX
OR FARM TAX
NUMBER. CALL
FARM SERVICE
SOLUTIONS IN
LEOMA, TN AT
(931)446-9935; OR
VISIT US ON THE
WEB AT
FARMSERVICESOL
UTIONS.COM.
PHONE,
(931)242-7675.

FOR SALE, Pressure
treated pine fence
boards, square posts
and round posts.
1x6x14' and 1x6x16'
boards; 4x4x7' square
post; several sizes of
round post.
(931)675-3260.



5 REGISTERED RED
ANGUS HEIFERS
and 6 registered Red
Factor black Angus
heifers, 3 for
\$2,200/each, 8 for
\$1,700/each. Located
in Rome, GA, 20
miles past Centre, AL.
Joe Gibson,
(706)506-3026;
Gibsoncattle.com.

CO-OP CALF
FEEDER on wheels,
with calf creeper
attachments, holds
three tons, \$2,800.
(615)319-4613.

ALFALFA SQUARE
BALES, \$8 per bale;
orchard grass, \$7 per
bale, horse quality.
Fayetteville, TN area.
(256)975-0653.

WANT TO BUY,
1940's-1950's pickup
truck, any condition.
Columbia, TN.
(931)446-1675.

BUY, SELL, TRADE
with Farmers
Exchange, over 25
years experience.

New & Used Tractor Parts

- All Makes & Models
- Free Tractor Parts Hotline
- Shipping Parts Daily
- We Buy Salvage Tractors

Cross Creek Tractor Co.

Hwy. 278 E. - Cullman, Alabama
(256) 739-0496

1-800-462-7335

E-Mail: info@crosscreektractor.com
www.crosscreektractor.com





Check out our full lineup of ASV Equipment!

ASV Posi-Track and skid-steer loaders are designed to help you work in more places and in more conditions so you can get more done every day. They are respected for their power, performance and serviceability. Each ASV machine gives you:

- Best in class traction, performance, and speed.
- Industry-leading ground clearance.
- Unparalleled performance in any condition.
- World-class operator stations.
- Industry-leading serviceability for the highest productivity.



All ASV machines are available with a full line of performance-matched attachments so you can handle a wide range of jobs, whether you work in construction, agriculture, land management, forestry or landscaping.

www.dixiediesel.com

DIXIE DIESEL

Authorized dealer for:



REPAIR & PERFORMANCE SPECIALISTS

- Ford Power Stroke
- Dodge Cummins
- GM Duramax

(800) 523-4621 • (931) 381-1647

200 E. 16th Street • Columbia, Tennessee 38401

JD 1590 no-till drill, almost like new, little use, 15', 7.5" row spacing, 18" blades, gang lockup, small seed box, heavy-duty dolly and tires. Pictures available, can deliver. (931)808-8095.

WANT TO BUY, horse drawn sleigh. (931)446-1675.

AUSTRALIAN SHEPHERD PUPPIES, AKC registered, blue eyes, ready to go, mom and dad on site, \$400. (256)762-2190.

WANT TO BUY, FJ40 Toyota, in model years from 1975 to 1980. Call, (931)607-9737.

REGISTERED PURE-BRED LIMOUSIN BULLS and bred heifers, and open heifers, excellent EPD's, homo polled and homo black. Erwin, TN. (423)833-8889; (423)743-8686.

Thank You for Saying You Saw It in the Farmers' Exchange!

HAY EQUIPMENT for sale, too many items to list. Call for information, (256)758-2244.

HAY for sale, 4x5 rolls, net wrapped, \$35 per roll. Delivery available with 10 or more with extra charge. (256)509-8991.

WANTED, OLD BARNs to tear down. Martin Barn Salvaging. (270)887-6522, leave message.

WANTED, iron wheel tractors; whiskey barrels. Columbia, TN. (931)446-1675.



NEW HOLLAND 256 factory dolly rake, nice, \$2,550. Bowling Green, KY. (270)202-3666.

MF 1835, 4WD, loader, 6 months old, 40 hours, \$22,500. 8 a.m. - 5 p.m. (931)939-4999.

FOUR 350 GALLON CONCRETE WATER TROUGHs, \$150 each; One 600 gallon, \$200. (256)708-5303.

Thank You for Saying You Saw It in the Farmers' Exchange!

FOR SALE, HORSE power, \$350; Jack Daniels' whiskey barrels, \$125 each. (931)446-1675.

1984 GMC DUMP TRUCK, with 14' dump bed, \$2,500. (256)708-5303.

Thank You for Saying You Saw It in the Farmers' Exchange!

EIGHT REGISTERED ANGUS HEIFERS, put with low birth weight Angus bull 11-5-21, will be pregnancy checked by vet, meets TAEP heifer program in TN. Get \$500 back per heifer. FandPLivestock.com; (615)653-8913.

BOX SCRAPER BLADE, \$250; 6' finishing mower, \$500; 10' four wheel trailer, \$600; 6' rooter, \$400. (615)319-4613.

18' GOOSENECK LIVE STOCK TRAILER for sale, with rails, needs tires, \$700. (931)655-6904.

TOO BUSY TO CALL US? List your items 24/7 at www.FarmersExchange.com.

WESTFIELD MK1071 AUGER, 4 years old, \$12,500. (931)409-0121.

SELL YOUR ITEMS for FREE! Limit one item selling for \$1,000 or less. No animals, please. 1-800-247-7318.

WAGYU HEIFERS for sale. (256)714-6182.

2004 JOHN DEERE 5520 for sale, 89hp, 4WD, left hand reverser, one owner, front weights and rear wheel weights, 2,800 hours, Westendorf #28 loader with extra large bucket and spear bought new with tractor, \$37K. (931)703-0808.

16' CASE DISK, \$400. (256)708-5303.

FOR SALE, NEW IDEA 1-ROW CORN PICKER, model 309, \$1,200. Petersburg, TN area. (931)675-0669. tab

FOR SALE, HORSE power, \$350; Jack Daniels' whiskey barrels, \$125 each. (931)446-1675.

GREAT SELECTION OF USED STEEL

In the need of steel? Come see us!

Used steel inventory changes weekly
\$100 Cash Entrance Fee

CFC Pick & Pull

54 Recycle Dr., Tullahoma, TN 37388
www.cfcpickandpull.com

Like us on Facebook UsedSteel@cfcrecycling.net • Mon. - Sat.

Over 50 Truck Beds in stock, newer & older Chevrolet, Ford, Ram & GMC Single & Dual-Wheel Trucks



Now carrying
Iron Bull Trailers
Call for prices!



Aluminum Beds
Call for Prices



Steel Beds
Call for Prices

We will trade for your used bed!
Used Flat Beds & Dually Beds Available!
Custom Orders Available!



Skirted Steel Beds - Call for Prices

Fast Installation on
In-Stock Inventory
Call Devin or Todd
931-738-9275



120 Auto Lane | Sparta, TN 38583
Hwy. 111 in Sparta



JASONLEWISAUTOMOTIVE.COM

*Price plus tax, installation hardware, & installation. Prices do not include applicable sales taxes. Installation hardware not included in advertised price. Limited quantities available. Due to advertising deadlines, some models may be sold out. **Financing available through Sheffield's on most models.

1370 CASE TRACTOR, 135hp, \$5,500. (256)708-5303.

HOUSE FOR SALE, 5BD, 3 full baths, two 1/2 baths, four car garage, corner lot, 1911 Haynes Drive, Murfreesboro, TN, \$595,000. (615)714-6666.

TOO BUSY TO CALL US? List your items 24/7 at www.FarmersExchange.com.

FOR SALE, SINGLE PHASE - THREE PHASE generator type converter, 200amp. capacity, \$700. (256)353-1895; (256)566-2895.

PELLET STOVE USERS, Oak hardwood pellets, \$5 per 40lb. bag or \$235 per ton plus tax, Smithville, TN. (931)261-3369.

RED ANGUS BULLS AND HEIFERS. Decherd, TN. (931)691-4864.



36 HEAD HERD for sale, 18 mamas, \$15,000. (256)337-0097.



FOR RENT, 2017 KUBOTA SVL95 SKID STEER ENCLOSED, WITH HEAT AND AIR. ATTACHMENTS AVAILABLE, STANDARD BUCKET, STUMP BUCKET, AUGER, TRENCHER, GRAPPLE, HARLEY RAKE, FORKS. DAILY, WEEKLY, MONTHLY RENTAL. CALL RICK, (931)619-0421.



CATTLE SWEEP SYSTEMS. HEAVY DUTY GALVANIZED 8 BAR 6' TALL CATTLE SWEEP SYSTEM, 90 DEGREE WITH 10' OF ALLEY STARTS AT \$1,480; 180 DEGREE W/20' OF ALLEY STARTS AT \$2,475; 10'X20' HOLDING PEN IS \$975. WE CAN ADD PALPITATION CAGE, SLIDING ALLEY GATES, PANELS AND BOW GATES AS NEEDED TO CUSTOMIZE YOUR SYSTEM. PRICE IS PLUS TAX OR FARM TAX CARD. CALL FARM SERVICE SOLUTIONS IN LEOMA, TN. (931)446-9935; OR VISIT US ON THE WEB AT FARMSERVICESOLUTIONS.COM. PHONE, (931)242-7675.

EAR CORN for sale, crushed or whole, \$5.50 non crushed per bushel. (931)993-1074; vanhooserk@fcsboe.org

SELL YOUR ITEMS for FREE! Limit one item selling for \$1,000 or less. No animals, please. 1-800-247-7318.

50 BLACK COWS for sale. Call for information, (931)619-1338.

FOR SALE, 300 GALLON LOW profile boomless pasture sprayer, like new condition, \$3,500. (731)697-4024.

BUY, SELL, TRADE with Farmers Exchange, over 25 years experience.

DECALS & DECAL SETS FOR HEAVY CONSTRUCTION & AG EQUIPMENT

Affordable Decals and Safety Decals. Prompt. Knowledgeable Reliable Service. www.QuipCal.com; Call, (215)536-5339; email:info@customservicescompany.com.

JOHN DEERE. JD2210HST, 4WD, 23hp diesel tractor, 62" belly mower, low hours, excellent, \$8,950 firm. (256)506-9495.

REGISTERED ANGUS BULLS, 15 months-3 years old, AI sired, TAEP approved, excellent bloodlines, good EPDs, good frame and length, very gentle, starting at \$2,500. (931)510-1104.

FOR SALE, High tensile, class 3 livestock fencing. Over 500 rolls of premium brand fencing material for goats, sheep, horses and cattle in stock. (931)675-3260.

THREE NICE LIMOUSIN BULLS for sale, no more until mid Summer. Service age, purebred, outstanding bloodline, medium tight. Twenty-two years of breeding them. Bred to grow with less feed. Once you've seen them, you will go away with one. Ferrell Farms, Tullahoma, TN. Call, (931)455-4978; (931)571-0807.

HAY for sale, 4x5 rolls, net wrapped, \$35 per roll. Delivery available with 10 or more with extra charge. (256)509-8991.

6x4 JOHN DEERE GATOR, \$3,800. (256)708-5303.

Come See Us!

We have all the building materials needed for

**Barns - Pole Barns
Sheds - Metal Roofing**

4x4's, 6x6's, Pressure Treated Lumber
We stock 24" 5V & Corrugated Tin



STIHL Sales & Service
1100 Winchester Hwy., Fayetteville, TN
931-433-1282
www.pendergrasssupply.com

Monday - Friday 7:00 AM - 4:30 PM • Saturday 7:00 AM - 12:00 Noon

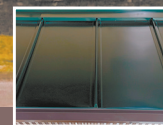
Thank You for Saying You Saw It in the Farmers' Exchange!

WATSON METALS

We Roll-Form and Manufacture Metal Roofing and Supplies, and we service all of Middle Tennessee and surrounding areas.

WHAT WE CARRY

- Tuff Rib Panel
- PBR Panel
- Watson Wave Panel
- 5V Panel
- Corrugated Panel
- Standing Seam Panels in 1", 1.5" & 2"
- Mechanical Seam panels
- Board & Patton Panels
- Metal Shingles
- Perforated Panels in 20+ Colors
- Custom Bent Trims
- Roll-Form Standard Trims
- Closures
- Screws For Wood & Metal
- Stock Screws 1" - 3"
- Over Size Screws
- Solar Seal All
- Colors & Clear



Over 20 Years Of Quality Service & Experience
 Monday thru Friday 7:00 AM - 5:00 PM
 238 Interstate Dr., Manchester, TN 37355

931-728-8185
www.watsonmetals.com



JAPANESE 4X4 MINI TRUCKS, great for farm use, hunting, recreation, available with A/C, PS, 5 speed and automatic, some with dump beds. Anderson, AL. Call for prices, (256)740-7287. www.berryhillminitrucks.com

MASSEY FERGUSON 5465 TRACTOR, front wheel assist, with loader, \$45,000; Vermeer 605M baler, field ready, \$10,000; Full blood registered Shiba Inu puppies, \$1,000/each and 5 year old female, \$350. (731)518-6184.

JOHN DEERE JD2210HST, 4WD, 23hp diesel tractor, 62" belly mower, low hours, excellent, \$8,950 firm. (256)506-9495.

JOHN DEERE 8300 grain drill, double disc openers, 21 row on 7-1/2" spacing, rear hitch, large seed box, good condition. Pics and delivery available. (931)808-8095.

FOR SALE, NEW IDEA 1-ROW CORN PICKER, model 309, \$1,200. Petersburg, TN area. (931)675-0669. tab

TWO HORSE WOODEN wheel wagon, \$1,650; Adams horse drawn large road grader, \$2,250. (931)446-1675.

FOR SALE, REGISTERED Black Angus bulls, 16-17 months old, good EPD's, frame, length, disposition, TAEP qualified. Fifty years of selection for the best. Turrentine Angus, Shelbyville. (931)607-8950.

LOOKING FOR SOMETHING? Ask over 21,000 people when you run a Want To Buy ad in Farmers' Exchange.

WANTED, no-till drill that plants Fescue and Clover. (931)433-7345.

CO-OP CALF FEEDER on wheels, with calf creeper attachments, holds three tons, \$2,800. (615)319-4613.

KENTUCKY 31 FESCUE SEED for sale, with Orchard grass. Middle Tennessee. (931)244-0063.

EIGHT REGISTERED ANGUS HEIFERS, put with low birth weight Angus bull 11-5-21, will be pregnancy checked by vet, meets TAEP heifer program in TN. Get \$500 back per heifer. FandPLivestock.com; (615)653-8913.

SELL YOUR USED EQUIPMENT IN THE FARMERS' EXCHANGE WORD ADS.

INTERNATIONAL 674, starts and runs good, 60hp, diesel, PS, \$6,900. Call between, 8a.m.-5p.m. (931)939-4999.

JD 468 ROUND BALER, 4'x6' bales, mega wide pickup, silage special, twine or net wrap, bale kicker, good condition, pictures available, can deliver. (931)808-8095.

WANTED: Original wide front end for a WC Allis Chalmers tractor. (256)753-2318.

IF YOU LIKE OUR BOOK, you're gonna love our website! Visit www.FarmersExchange.com.

TOO BUSY TO CALL US? List your items 24/7 at www.FarmersExchange.com.



JAPANESE 4X4 MINI TRUCKS, great for farm use, hunting, recreation, available with A/C, PS, 5 speed and automatic, some with dump beds. Anderson, AL. Call for prices, (256)740-7287. www.berryhillminitrucks.com

WANT TO BUY, Goats, sheep, chickens and guineas. Call, (931)427-8477; (256)777-0065.

Cub Cadet Gossett Farm Equipment, LLC

1624 Hwy. 100, Centerville, TN 37033 • 931-729-4515

Call Jo To Qualify For 12, 24, 36, 48 Month Zero Interest on Cub Cadet Mowers!
gossettfarmequipment@gmail.com • 931-729-4515 • Great Financing

Environmentally Friendly Brush Clearing

by Layne Construction

Remove unwanted vegetation. Cut & grind trees up to 6" & brush into mulch. No brush piles.



We Do All Of Types Dirt Work • Loader & Excavator

We can: Clear for wild game plots • Clear ATV trails • Shooting lanes
Pasture reclamation • Lot clearing • Fence lines • Field borders • Right of way

Call for free estimate: 256-975-4193 • 256-975-4296
www.land-clearing-services.com

LOOKING FOR SOMETHING? Ask over 25,000 people when you run a want to buy ad in Farmers Exchange.

HOUSE FOR SALE, 5BD, 3 full baths, two 1/2 baths, four car garage, corner lot, 1911 Haynes Drive, Murfreesboro, TN, \$ 5 9 5 , 0 0 0 . (615)714-6666.

CO-OP CALF FEEDER on wheels, with calf creeper attachments, holds three tons, \$2,800. (615)319-4613.

WANT TO BUY, Goats, sheep, chickens and guineas. Call, (931)427-8477; (256)777-0065.

STRAW! 21 Bale bundles, single bales to semi loads, \$5 per bale, quantity discount available. (931)607-3992.

SELL YOUR ITEMS FOR FREE! Limit one item selling for \$1,000 or less. No animals, please. 1-800-247-7318.

CUSTOM TARPS FOR hoop buildings, available in 11 different colors. We also offer hay tarps and pond liners. Cover your investment, (859)375-5268.

WANTED, one ton bucket truck with bad motor or transmission. (931)273-6757.

JD 468 ROUND BALER, 4'x6' bales, mega wide pickup, silage special, twine or net wrap, bale kicker, good condition, pictures available, can deliver. (931)808-8095.

HAY for sale, 4x5 rolls, net wrapped, \$35 per roll. Delivery available with 10 or more with extra charge. (256)509-8991.



BOW GATES, 4' through 12', good inventory in stock. FandPlivestock.com; (615)653-8913.

2 TON FEEDER with creep gates and jacks. Fasse valve (lets you add hydraulic valve to tractor). Branding irons, 3" electric, #1-10. Western Kentucky area. (270)977-1009.

Thank You for Saying You Saw It in the Farmers' Exchange!



Thinking of having an auction?
WE CAN HELP!

Real Estate of all Types • Assets • Estates

8719-A AL Hwy. 53, Toney, AL 35773
256-536-7497



HORTON
AUCTION & REAL ESTATE

Sales That Satisfy Since '65

Online Bidding Available • www.hortonauctions.com

DECALS & DECAL SETS FOR HEAVY CONSTRUCTION & AG EQUIPMENT

Affordable Decals and Safety Decals. Prompt. Knowledgeable Reliable Service. www.QuipCal.com; Call, (215)536-5339; email:info@customservicescompany.com.

16' CASE DISK, \$400. (256)708-5303.

ANGUS BULLS, by Enhance; LPF weigh up1, \$1,800-\$3,500. Discounts for multiples. Monterey, TN. (931)267-6813.

BEEF SPLITTING SAW, with counter balancing, slaughter house, \$250. (256)708-5303.



JAPANESE 4X4 MINI TRUCKS, great for farm use, hunting, recreation, available with A/C, PS, 5 speed and automatic, some with dump beds. Anderson, AL. Call for prices, (256)740-7287. www.berryhillminitrucks.com

TOO BUSY TO CALL US? List your items 24/7 at www.FarmersExchange.com.

WANTED, iron wheel tractors; whiskey barrels. Columbia, TN. (931)446-1675.



WE HAVE THE BEST MADE HAY FEEDER PANELS AVAILABLE, 2x3 construction and built to last a lifetime. Available in 6' to 16' long, good inventory in stock. FandPlivestock.com; (615)653-8913.

REGISTERED ANGUS BULLS, 15 months-3 years old, AI sired, TAEP approved, excellent bloodlines, good EPDs, good frame and length, very gentle, starting at \$ 2 , 5 0 0 . (931)510-1104.

FOR SALE, 2x4x48" horse wire and 4x4x48" goat wire. High tensile, class 3 premium wire. (931)675-3260.

WANTED: Original wide front end for a WC Allis Chalmers tractor. (256)753-2318.

LEINBACH HAY UNROLLER for 4x5 rolls, good shape, \$750. (931)964-3135.

CHECK OUT OUR WEBSITE! Visit www.FarmersExchange.com.

JEFF MARTIN AUCTIONEERS N.C.
AN AMERICAN AUCTION COMPANY
JeffMartinAuctioneers.com
#ExperienceTheDifference



Print your ad in the space below. Ads must be received no later than the 20th for publication in the following month's issue. Include your phone number as one word.

Free Ads: 1) **A single item priced below \$1,000 (excludes animals).**

Price must be in the ad.

2) **Want to Buy, Limit 10 Words.** Ad to run one (1) issue only!

Rates: 15 words or less - \$12.00 (Additional words 50¢ each per ad per month)

Placement Options

Better Descriptions = Better Results

1

1) Call 800-247-7318

2) Fax to 931-563-4477

3) Place online
www.FarmersExchange.com

4) Mail to Farmers' Exchange
P.O. Box 490
Fayetteville, TN 37334

Phone () _____

2 Options (circle)

Bold Type

Add \$2.00 per issue to base charge

ALL CAPS

Add \$2.00 per issue to base charge

Border Around Ad

Add \$4.00 per issue to base charge

3 Payment

- Cash, Check, M.O. Discover AmEx
 MasterCard Visa

Card Number

Expiration Date CVC #

4 Please Run Ad

- 1 Month 2 Months 3 Months

I have figured charges & options for the above ad & have enclosed:

Amount: \$ _____

Name: _____

Address: _____

Email: _____

Requested Delivery On or Before January 5, 2022

PRSR STD
US POSTAGE
PAID
MONROE, GA
Permit # 15

P.O. Box 490
Fayetteville, TN 37334

RUSSELL BARNETT

See Travis Searcy, The "Truck Specialist"
We're Better and We'll Prove It!

START SOMETHING NEW
SALES EVENT

WE ARE YOUR CAB & CHASSIS & DUALY HEADQUARTERS



New 2020 Ram 4500 Chassis Laramie
Crew Cab, 4WD, 6.4L auto
Stk#D11562N
MSRP \$83,865 **Sale Price \$83,365**



New 2021 Ram 3500 Chassis Laramie
Crew Cab, 4WD, 6.7L auto
Stk#D11737N
MSRP \$70,160 **Sale Price \$70,160**



New 2020 Ram 2500 Laramie
Crew Cab, 4WD, 6.7L auto
Stk. #D11684N
MSRP \$72,715 **Sale Price \$70,715**



New 2020 Ram 5500 Chassis Tradesman
Crew Cab, 4WD, 6.7L auto,
Stk#D11364N
MSRP \$61,145 **Sale Price \$60,045**



New 2021 Ram 4500 Chassis Tradesman
Crew Cab, 4WD, 6.7L auto
Stk#D11709N
MSRP \$61,050 **Sale Price \$60,550**



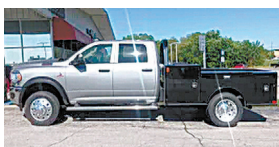
New 2020 Ram 3500 Chassis Tradesman
Reg. Cab, 4WD, 6.7L auto
Stk#D11556N
MSRP \$59,500 **Sale Price \$58,750**



New 2020 Ram 3500 Limited Crew Cab & Chassis
4WD, 6.7L, Auto, Remote Start
Stk#D11389N
MSRP \$78,885 **Sale Price \$75,135**



New 2021 Ram 3500 Chassis Laramie
Crew Cab, 4WD, 6.7L auto
Stk#D11739N
MSRP \$70,060 **Sale Price \$70,060**



New 2020 Ram 4500 Chassis Tradesman
Crew Cab, 4WD, 6.7L auto
Stk#D11535N
MSRP \$76,545 **Sale Price \$76,045**



New 2020 Ram 4500 Tradesman Crew Cab & Chassis
4WD, 6.7L, Auto, Tire Fill Alert,
Stk#D11525N
MSRP \$65,575 **Sale Price \$65,075**



New 2020 Ram 1500 Big Horn
Crew Cab, 4WD, 5.7L auto
Stk#D11383N
MSRP \$61,125 **Sale Price \$61,125**



New 2020 Ram 1500 Laramie
Crew Cab, 4WD, 5.7L auto
Stk#D11691N
MSRP \$57,775 **Sale Price \$57,775**

RUSSELL BARNETT

2756 Decherd Blvd., Winchester, TN
931-691-1712

FIVE STAR
Dealer

BUSINESS LINK

ON THE
JOB

CHRYSLER

DODGE

Jeep

RAM

See Travis Searcy, The "Truck Specialist"
We're Better and We'll Prove It!

Call
Travis Searcy
Today!
931-691-1712

www.russellbarnettchryslerdodgejeep.com

*All rebates applied. All prices plus tax, title & tag, \$399 processing fee included. Due to advertising deadline, all prices and incentives including employee pricing is subject to change by the manufacturer without notice. Customers must finance to obtain all Rebates.