

Mid-Michigan Buyers Guide

SUNDAY, MARCH 27, 2022

Serving Clare, Gladwin, Gratiot, Isabella, Montcalm, & Southern Roscommon Counties

Morning Star Publishing Company powered by digitalfirst

North Country Metals, LLP

Specializing in New Roofs & Reroofs!



Metal Roofing & Siding

989-386-3013

5139 Pere Marquette
Clare



everlastingroofing.com

CONTACT US FOR DELIVERY INQUIRIES:
Circulation Customer Service at customerservice@oakpress.com.

Home delivery:
888-349-4042

dmogollon@medianewsgroup.com



SURREY WELDING & REPAIR

Your Idea Is My Priority
Custom Welding • Steel Fabrication
Tire Mounting & Repair • General Repairs
Specializing in Trailer Repair
Including Trailer Brakes & Lights



5957 E. Surrey Rd. • Clare, MI 48617
Raymond Gingerich

989-487-4722

Central Eavestrouthing, LLC

LICENSED & INSURED • FREE ESTIMATES
Manufacturers of...
• 5" Seamless Gutter
• 6" Commercial Seamless Gutter
• Leaf Protectors



Quality & Service Are #1!

It's Gutter Cleaning Time!

.032 Gauge Aluminum Hidden Screw Hangers

QUALITY WORKMANSHIP FAST FRIENDLY SERVICE

Jeb Gilbert • (989) 828-6279 • Shepherd, MI

PAWN SHOP

CASH FOR GUNS
CASH FOR GOLD & MORE
3 MONTH PAWNS

GLADWIN TRADE & SALES

BUY - SELL - TRADE & PAWN

989-426-6811

1739 N. State Street (N. M-18) • Gladwin

Want fast cash?

Our Classified advertisers get great results.

If you have merchandise to sell, place a classified ad by calling **877-483-3450**

RABIES CLINIC

Special March Rates
Reg. \$2000
\$1500
By Appt. 426-0203
Flexible Hours
KELLY'S KRUISSING KRITTER KARE
Kelly Jo Kelley, DVM

DO YOU HAVE A CAR FOR SALE?
How about a boat? Or furniture? Any unwanted items?
Call to place a Classified Ad to sell your stuff FAST

Steve's Country Market

989-539-3110 3170 North Clare Ave., Harrison 44 Feet of Old Fashioned Meat Counter with Good Old Fashioned Service
Hours: Mon. - Sun. 8-8 Bridge Card & Wic Accepted Sale Dates March 28-April 3, 2022

Top Quality Meats At Rock Bottom Prices! 100% Satisfaction Guaranteed stevescountrymarket.com Michigan Lottery

FRESH MEAT AND SEAFOOD ITEMS	GROUND CHUCK FAMILY PACK \$369 LB.	FRESH GROUND ROUND \$469 LB.	USDA CHOICE BONELESS ENGLISH ROAST \$449 LB.	BLACK CANYON ANGUS DELMONICO RIBEYE STEAKS \$1099 LB.	CENTER CUT PORK CHOPS REGULAR OR STUFFED \$229 LB.	
	WHOLE NEW YORK STRIP LOINS SLICED FREE \$499 LB.	WHOLE RIBEYE LOINS SLICED FREE \$699 LB.	BONELESS PORK LOINS SLICED FREE \$199 LB.	STEVE'S OWN MARKET MADE BEEF PATTIES \$499 LB.	ECKRICH FRANKS OR BOLOGNA 12-14 OZ. 2/\$500	
	COD LOINS \$799 LB.	SALMON FILLETS \$899 LB.	WHOLEY BRAND COOKED SHRIMP 41/50 CT. 1 LB. BAG \$799 EA.	WHOLEY BRAND RAW SHRIMP 26-30 CT. 1 LB. BAG \$799 EA.		
	Deli		Fresh Produce		Fresh Dairy And Frozen	
	ECKRICH HARD SALAMI \$499 LB.	RED SEEDLESS GRAPES \$149 LB.	DUTCH FARMS SHREDDED CHEESE 8 OZ. 2/\$400	GATORADE 32 OZ. 3/\$500	BAREFOOT WINES 750 ML. \$799 EA.	
	ECKRICH HONEY HAM \$599 LB.	CLEMENTINES 3 LB. BAG \$599 EA.	PRAIRIE FARMS SHERBET QUART \$199 EA.	BUSCH OR BUSCH LIGHT 30 PK. CANS \$1899 PLUS DEPOSIT	BUD OR BUD LIGHT 24 PK. CANS \$1899 PLUS DEPOSIT	
COLBY OR COJACK CHEESE \$599 LB.	ASPARAGUS \$229 LB.	4 QUART PAIL ICE CREAM \$599 EA.				
GUGGISBERG BABY SWISS CHEESE \$599 LB.	BEEF STEAK TOMATOES \$149 LB.					



Here's the deal, our rates are surprisingly great. Get an Auto quote today.

Maury S Irwin, Agent
1011 N McEwan Street, Clare
Bus: 989-386-4141 • maury.irwin.l8gz@statefarm.com

JACK OF ALL TRADES COINS

1028 S. Mission (next to Jon's Country Burger)

I BUY ALL COINS Silver and Gold
FREE APPRAISALS we will come to your home to do free appraisals for your convenience.
Over 25 Years experience!

I BUY ALL COLLECTIONS FROM ONE COIN TO A DUMP TRUCK FULL

We are a Full Buy • Sell • Trade shop!
ANTIQUES • COINS
Jewelry • Collectibles & more!

Do not take your coins, jewelry, gold, & silver to the we buy gold places they are not experts! We are your only experts!
WE PAY YOU MORE THAN ANYONE!

Stop in or call Matt for your free appointment
517-204-0787

BUY • SELL • HUNT FOR A JOB CLASSIFIEDS WORK. CALL TODAY!

Holbrook Western Store Tack, Boots, Saddlery, & Apparel

We offer Western & Work Style Boots in Men's, Women's & Kid's

Stop by and pick up your Loyalty Coupon Card worth 10 percent off your purchases!

Mon-Fri 9:30-4:30
Sat 9:30-1:30
Sunday Closed

201 N. McEwan St.
Clare, MI

989-418-1611 • holbrooktackwesternstore



Get a great offer on a tractor that offers year-round comfort.

LX Series 24.8-30.8 HP Performance-matched attachments

Kubota Together we do more.

Save more on the comfortable LX Series. Optional Swift-Tach kit for fast loader removal. Large open-station platform. Kubota tractors under 100 HP are rated #1 for reliability. Stop in for a demo today.

\$0 DOWN 0% APR UP TO 60 MONTHS

VISIT US TODAY FOR THIS LIMITED-TIME OFFER

Capital EQUIPMENT

Capitol Equipment & Supply
12263 Old US 27
Dewitt, MI 48820
517.669.5533 www.cedealer.com

Capitol Equipment of Clare
302 North McEwan
Clare, MI 48617
989.386.2192

KubotaUSA.com

*2020 Progressive Farmer Reader Insights Award for Fewest Reported Problems Overall in the category of Small Tractor (Under 100 Horse Power). Award based on 2020 Progressive Farmer Readers Insights Tractors Study. © Kubota Tractor Corporation, 2022. \$0 Down, 0% APR, financing for up to 60 months on purchases of select new Kubota LX2610S/HD with R4 Tires at participating dealers in-stock inventory is available to qualified purchasers through Kubota Credit Corporation USA; subject to credit approval. Example: 60 monthly payments of \$16.67 per \$1,000 financed. Offer expires 6/30/22. Terms subject to change. For complete warranty, disclaimer, safety and product information see dealer or KubotaUSA.com.



Celebrating 50 Years of Successfully Serving Our Communities

GM Certified Pre-owned Vehicles = 2 Oil Changes & Tire Rotations in 2 years + 12 Month or 12,000 Mile Bumper to Bumper Warranty

USED SUVS	USED TRUCKS
2020 GMC ACADIA AWD SLE DK. Sky, 21,000 Miles, Certified..... \$39,900	2021 CHEVROLET SILVERADO DOUBLE CAB 4X4 Black, 5,000 Miles, 5.3 V8..... \$42,900
2019 GMC YUKON DENALI 4X4 Black, 63,000 Miles, Sunroof, Boards, Heated Cooled Seats, Certified..... \$64,900	2021 GMC SIERRA REG. CAB 4X4 DK. Blue, 1, 600 Miles, 5.3 V8..... \$41,900
2019 CADILLAC XT4 PREMIUM LUXURY Silver, 20,000 Miles, Awl, Sunroof..... \$43,900	2020 GMC SIERRA CREW CAB DENALI Black, 25,000 Miles, 5.3 V8..... \$56,900
2019 BUICK ENVISION AWD PREMIUM 27,000 Miles, Bronze..... \$34,900	2018 GMC SIERRA CREW SLT Burgundy, 4x4, 80,000 Miles, 5.3 V8..... \$39,900
2019 BUICK ENVISION AWD White, Essence, 32,000 Miles, Certified..... \$32,900	2017 CHEVY SILVERADO CREW CAB 2500 LT 4X4 Blue, 97,000 Miles, 6.0 V8..... \$40,900
2019 GMC TERRAIN AWD SLT Silver, 39,000 Miles, Certified..... \$31,900	2017 GMC SIERRA DOUBLE CAB Red, SLE, 4X4, 46,000 Miles, V6..... \$31,900
2019 BUICK ENVISION AWD Bronze, 49,000 Miles, 1-Owner, Certified..... \$30,900	2017 CHEVY SILVERADO DOUBLE CAB 2 Wheel, 72,000 Miles, White, 5.3 V8..... \$25,900
2019 JEEP GRAND CHEROKEE Burgundy, 4X4, 54,000 Miles, 1-Owner..... \$30,900	2016 GMC SIERRA CREW CAB LT 4X4 All Terrain, Black, 1-Owner, 125,000 Miles..... \$32,900
2019 BUICK ENCORE AWD Black, 34,000 Miles, Leather Loaded, Certified..... \$28,900	2016 CHEVY SILVERADO 4X4 LT DOUBLE CAB 82,000 Miles, 5.3 V8, Leather, Burgundy..... \$30,900
2019 BUICK ENCORE AWD Copper, 23,000 Miles..... \$25,900	2015 GMC CANYON 4X4 Silver, Crew Cab, 79,000 Miles, SLT..... \$27,900
2019 BUICK ENCORE Burgundy, FWD, 11,000 Miles, Certified..... \$24,900	USED VANS
2018 GMC ACADIA AWD SLT Black, V6, 33,000 Miles..... \$36,900	2019 DODGE GRAND CARAVAN SXT Grey, 60,000 Miles..... \$26,900
2018 CHEVY EQUINOX FWD PREMIER Burgundy, 51,000 Miles, Certified..... \$25,900	2019 DODGE GRAND CARAVAN SXT 60,000 Miles, Silver..... \$26,900
2017 GMC ACADIA AWD LIMITED DK. Blue, 68,000 Miles, V6..... \$29,900	
2017 CHEVY TRAVERSE 2LT Black, FWD, 78,000 Miles..... \$26,900	
2016 GMC ACADIA LIMITED AWD Pearl White, 97,000 Miles, Sunroof, Trailer Pkg..... \$26,900	
2016 BUICK ENCORE AWD Burgundy, 110,000 Miles..... \$15,900	

FOUR WAY STRUCTURES

1550 Wagarville Rd., Gladwin, 48624

RENT TO OWN 90 DAYS SAME AS CASH

SPECIALIZING IN PORTABLE STORAGE SHEDS, HORSE SHELTERS, SHE SHEDS AND MORE. CUSTOM BUILT TO YOUR SPECS.

 10X20 GABLE, 6X7 ROLL UP DOOR, 3 WINDOWS, 1 ENTRY DOOR, LOFT, \$7,367 RENT TO OWN \$435.92	 16X22 SPECIALTY CABIN, SPRAYFOAM INSULATION, KNOTTY PINE INTERIOR.	 12X24 GABLE, 3 WINDOWS, 2 SETS OF DOORS, \$7,435 RENT TO OWN \$439.94
 10X16 BASIC, 6X7 ROLL UP DOOR, \$4,075 RENT TO OWN \$241.12	 10X12 GABLE, \$4,370 RENT TO OWN \$258.58	 12X24 GABLE, 3 WINDOWS, SERVICE DOOR, 6X7 ROLL UP DOOR, LOFT, \$7,685 RENT TO OWN \$454.13
 12X32 BASIC, 2 SETS OF DOORS, \$6,995 RENT TO OWN \$413.91	 12X16 BASIC, \$4,875 RENT TO OWN \$288.46	 10X16, 2 WINDOWS, \$5,697 RENT TO OWN \$337.10
 12X16 GABLE, 6X7 ROLL UP DOOR, SERVICE DOOR, 3 WINDOWS, LOFT, \$7,469 RENT TO OWN \$441.95	 DEER BLINDS.	 10X16 GABLE, 2 SHELFs, 4 WINDOWS, CUPULA, \$6,925 RENT TO OWN \$409.76
 12X20 DOUBLE PANE WINDOWS, SPRAY FOAM INSULATION ON FLOOR, VINYL FLOOR, COMPOSITE DECKING, \$10,179 RENT TO OWN \$602.31	 10X12 GREENHOUSE, \$2895 RENT TO OWN \$165.68	 10X12 BASIC, \$3,130 RENT TO OWN \$185.21

We Use 28 gauge Everlast Metal and 40 Year Colorbond Paint. Delivery all over Michigan. Free delivery within 40 miles.

STOP BY OUR OFFICE TO CHECK OUT OUR SELECTION AND PLACE ORDERS!

Mon. - Fri. 7:30am - 6pm, Sat. by chance or appointment, No Sunday Sales
1550 Wagarville Rd., Gladwin, 48624

BENCHLEY BROS., INC.

1 Mile East of Doherty • US-10, Clare • Sales (989) 386-9900

For more info log on to: www.benchleybros.com

Parts & Service (989) 386-3197

HOURS 8-6 Mon-Fri 9-2 Sat

Specializing in GM Certified USED VEHICLES

VISIT US ON FACEBOOK AT WWW.FACEBOOK.COM/VALLEYMEATMARKET

Like us on  **Valley Meat Market**  Like us on

989-200-2071 • 101 E. SECOND • PINCONNING
WE ACCEPT THE BRIDGE CARD
NOT RESPONSIBLE FOR PRINTING ERRORS • ALL LOTTERY GAMES AND LOTTO HERE

NEW HOURS: WEDNESDAY-SUNDAY 10AM-6PM CLOSED MONDAY & TUESDAY • PRICES GOOD SUNDAY, MARCH 27TH THRU SATURDAY, APRIL 2ND

OUR BEST GROUND CHUCK	\$39.00 10LB BAG	Currently Closed on Monday's & Tuesday's due to the National Labor shortage. OPEN - Wednesday thru Sunday 10am to 6pm	WHOLE OR HALF CUT FREE!
HAMBURGER	\$36.00 10LB BAG	CHICKEN LEG 1/4'S 40LB BOX \$27.60 <small>69¢ LB.</small>	NEW YORK STRIP LOINS CHOICE *CUT FREE \$6.99 LB.
BULK SLICED BACON	\$5.49 LB. <small>OR \$4.99 10LBS OR MORE</small>	COUNTRY RIBS, LOIN END ROASTS OR END CUT CHOPS \$1.29 LB.	CHOICE RIBEYE LOINS \$9.99 LB.
SHAVED TURKEY	\$6.99 LB.	BONELESS PORK LOINS \$1.99	CHOICE SHORT LOINS \$6.99 LB.
SHAVED HAM	\$4.99 LB.	2-PACK PORK BUTTS \$1.59 LB.	SMOKED PORK LOINS \$3.99 LB.
50/50 GRIND PORK/BEEF	\$26.00 10LB BAG	PORK STEAK, PORK BUTT ROAST OR FINGER RIBS \$1.79 LB.	BONELESS BEEF ROAST OR SWISS, GRILL OR DENVER STEAK \$4.49 LB.
ECKRICH HARD SALAMI	\$5.99 LB.	HOMEMADE BULK SAUSAGE - 4 FLAVORS \$1.79 LB. <small>10LBS OR MORE</small>	ROUND STEAK OR ROUND ROAST \$4.49 LB.
BEEF BRISKET	\$3.99 LB.	BONELESS CHICKEN BREAST \$2.89 LB. <small>10LBS OR MORE</small>	BONE-IN PORK LOINS WHOLE OR HALF *CUT INTO CHOPS FREE \$1.79 LB.
SLAB SPARE RIBS	\$2.99 LB.	FRESH EASTER SAUSAGE \$2.79 LB. <small>10LBS OR MORE (NON-SPECIALTY)</small>	NO-ROLL STRIP LOINS \$5.99 LB.
CO-JACK, LONGHORN OR MOZZARELLA AND HOT PEPPER FIRE JACK CHEESE	\$3.99 LB. <small>ANY SIZE CHUNK</small>	WAYSIDE BACON \$28.90 10LB BAG	KOEDEL'S VIENNA'S 10# BOX \$37.00
FULLY COOKED SHRIMP	\$9.99 2LB BAG		24CT PKG VIENNAS \$10.99
UNCOOKED SHRIMP	\$14.99 2LB BAG		SKINLESS FRANKS 4# PKG \$12.99
CHICKEN NUGGETS	\$9.99 5LB BAG		BIG BOLOGNA OR RING BOLOGNA \$3.99 LB.
PARTY WINGS	\$12.99 4LB BAG		PICKLED BOLOGNA \$10.99 2.5# JAR

MEAT BUNDLES

PACKAGE 1: MIXED BUNDLE 5# BEEF STEAK 5# PORK RIBS 10# CHICKEN 5# BEEF ROAST 5# PORK ROAST 5# SAUSAGE 59#S FOR \$179.00 <small>*48 HOURS NOTICE PLEASE</small>	PACKAGE 2: BEEF BUNDLE 15# BEEF ROAST 15# BEEF STEAK 20# BURGER 50#S FOR \$199.00 <small>*48 HOURS NOTICE PLEASE</small>	PACKAGE 3: PORK BUNDLE 15# PORK RIBS 10# SAUSAGE 10# PORK ROAST 15# PORK CHOP 50#S FOR \$100.00 <small>*48 HOURS NOTICE PLEASE</small>	PACKAGE 4: BUDGET BUNDLE 20# SAUSAGE 10# CHOP 10# CHICKEN BREAST 10# LEG QUARTERS 50#S FOR \$99.00 <small>*48 HOURS NOTICE PLEASE</small>
--	---	--	---

WRAPPING IS AN ADDITIONAL \$10. EACH BUNDLE. CALL 989-200-2071.



Miller's Woodworking

STOP BY OUR LOT AND CHECK OUT THE GREAT SELECTION OF BUILDINGS ON THE LOT - READY TO GO!

INVEST YOUR TAX RETURN ON A BUILDING YOU CAN ENJOY FOR YEARS TO COME!!

	
12x16 Gable 4 Ft. Loft, 1 Window \$5,526 \$256/Month	12x20 Gable 24 Ft. Loft, 3 Windows \$5,712 \$265/Month
	
12x28 High Barn 7x7 Roll Up Door, 1 Window, 8 Foot Loft \$7,335 \$341/month	12x16 High Barn 2 - 4 Foot Lofts \$4,475 \$208/Month

Prices On Lot Models Only

Statewide Delivery - Free Delivery w/ in 70 miles!

Supplying Michigan with quality built portable buildings for over 25 yrs.

Miller's Woodworking

3209 E. Beaverton Road • Clare | (Voicemail) (989) 386-8110 | M-F 7:30-5 | Sat.-8:30-3:00

Old US 127 to Surrey West on Surrey to Grant 1 mile north on Grant

NEW BATH TODAY

Walk-In Bath & Shower Systems

BUY NOW & PAY LATER SALE

ASK ABOUT OUR **FREE 3D DESIGN SERVICE**

SEE WHAT IT WILL LOOK LIKE BEFORE YOU BUY!

KOHLER LuxStone

Work with your New Bath Today Guru to design your KOHLER LuxStone Walk-In system. Your Guru makes designing your dream shower or bath easy. They will help you create a space suited to your needs—with exquisite features all bearing the Kohler name—and install it hassle-free.

Walk-In System Guru

SET-UP YOUR FREE DESIGN-CONSULTATION TODAY!

248-720-6069

LIMITED-TIME SPECIAL OFFER

\$0 DOWN PLUS 0 PAYMENTS UNTIL 2023! PLUS 0% INTEREST PLUS \$1000 INSTANT REBATE

WITH YOUR COMPLETE BATH OR SHOWER PURCHASE!

*Cannot be combined with any other offer. Previous sales excluded. Good at initial presentation only. Financing available from GreenSky LLC for qualified buyers only who purchase with plan 3128. For deferred interest plans, interest accrues during the promotional period but all interest is waived if the purchase amount is paid in full before the end of the promotional period.

RE/MAX RIVER HAVEN, INC.
 Open Seven Days a Week to Serve You
 www.riverhavenhomes.com • Wayne R. Walts – Broker

Sugar Springs Office 1415 W. Sugar River Rd. • Gladwin 989-426-9239
Wixom Lake Office 1239 Estey Rd. • Beaverton, MI 48624 989-435-7755
Main Office 777 W. Cedar • Riverwalk Place 989-426-6893

Lake Lancer-Sugar Springs-Premier lake lot on main part of 750 acre all sports lake. 120+ ft of frontage w/million \$ view. **\$289,000** MLS#50064265
 Harrison area-2 bedroom, 2 bath full log home on 8+ acres. 2+ car garage, walkout basement. Close to Snow Snake Mt. Ski and Golf. **\$225,700** MLS#50067943
 Kerswill Lake access-3 bedroom ranch with fenced in yard, shed and large open deck. Move in condition. **\$110,000** MLS#50068162

Expanded Showroom
Rustic Furniture and Home Decor
 7265 Grant Ave. Clare • (989) 386-3778
 Hours: 8-5 M – Sat.
 Closed Wed. & Sunday • Evenings by Appt.

SHOP LOCALLY SAVE GAS!

C&R ELECTRIC
GENERAC
 SALES • SERVICE • INSTALLATION (989) 828-4020

SERVICING CENTRAL MICHIGAN FOR 32 YEARS
 NOW OFFERING SOLAR INSTALLATIONS! FINANCING AVAILABLE!

491 E. WRIGHT AVE. • SHEPHERD MI 48883 • www.candrelec.com

LOCAL Visit Your MERCHANTS

DEWEY'S TRADING POST
 Maple Rapids • 682-4158
 Monday-Saturday: 8am - 7pm, Closed Sunday
 Prices In This Ad Good for Week of March 28th – April 2nd, 2022
 Bridge Card • VISA • Mastercard • Discover
 American Express • Debit Card

Saturday Only! April 2nd Wedding 8am – 1pm	"Stocked on Fish" Swai, Breaded Pollock, Cod Loins, Cod Fillets, Frog Legs, Ocean Perch, Orange Roughy, Imitation Crab Chunks, Hush Puppies Reg & Jalapeno, Catfish, Shrimp, Tilapia, Salmon Fillets	"Select" Whole New York Strips \$5.49 LB.
"Our Own" Fresh Brats Pineapple - Dragon Breath - Blueberries \$4.99 LB.	"Our Own" "All Beef" Philly Steak Brats \$5.99 LB.	"Time to Order" Double Smoked Ham for Easter Whole or 1/2 \$3.99 LB.
Choice T-Bone Steak \$8.99 LB.	Our Own Roasted Sausage \$7.99 LB.	Fresh Breaded Pork Cutlets \$4.49 LB.
5# bags 80/20 Ground Chuck \$22.45 A BAG "FRESH"	Boneless Butterfly Chops \$2.99 LB.	We Are Now Carrying Fresh Salads!!
Our "Bulk" Spices 20% Off	"Everyday" Walnut Creek White Bread 20 oz. 2/\$4.00	"Everyday" Walnut Creek 8 pk Hot Dog or Hamburger Buns 2/\$4.00

DeweysTradingPost.biz
 LIKE us on Facebook & see our WEEKLY SPECIALS!

Lambert's Meat Market and Bakery

Taste the difference "FRESH" makes!
 624 E. Cedar Ave., Gladwin (next to Family Dollar) 989-246-1850
 Hours: Monday-Friday 8-6:30 • Saturday 8-6 • Sunday 8-4 • Sale Dates: March 28 - April 2, 2022

LAMBERT'S WILL BE CLOSING FROM 1-1:30 PM DAILY TO DO A THOROUGH DISINFECTING OF OUR STORE.

Over 40 Varieties of Bratwurst Available Every Day!

10 lbs. or More Sale!

Believe on the Lord Jesus Christ and thou shalt be saved....Acts 16:31

Whole NR Boneless Ribeye Loins CUT FREE! \$6.49 lb.	Whole USDA Select New York Strip Loins CUT FREE! \$5.99 lb.	Whole Boneless Pork Loins FREE! \$2.19 lb.	Family Pack Ground Beef from Chuck 80% Lean 5 lbs or more \$3.49 lb.	Pork Steak or Pork Strips 10 lbs or more \$1.99 lb.	Pork Shoulder Roast or Breakfast Sausage 10 lbs or more \$1.99 lb.	USDA Choice Denver Steak or English Roast 10 lbs or more \$4.49 lb.
2 pk Pork Shoulder Roast \$1.89 lb.	Center Cut Pork Chops 10 lbs or more \$2.19 lb.	Chicken Leg 1/4's \$7.90 10 lb. bag	Frozen Tray Pack Jumbo Split Chicken Breast \$1.79 lb.	French Fries \$6.99 5 lb.	Waffle Fries or Breaded Onion Rings \$9.99 5 lb.	Corn Dogs or Chicken Nuggets \$12.99 5 lb.
Marinated NY Strip Steaks \$6.99 lb.	USDA Choice Short Rib Pieces \$5.99 lb.	Lamberts Own BBQ or Unsauces Smoked Pulled Pork \$4.99 lb.	Lambert's Own Pulled Pork Honey BBQ or Honey BBQ Brats \$3.99 lb.	Extra Lean Ground Beef From Round \$4.49 lb.	Ocean Perch Fillets \$29.99 5 lbs.	DELI AND BAKERY DEALS
We are now taking orders for Dearborn Spiral Hams for Easter	Catfish Fillets \$34.99 5 lbs.	USDA Choice New York Strip Steaks \$7.99 lb.	Garlic Butter Sirloin Steak Bites \$8.99 lb.	Dearborn Breakfast Sausage Links \$22.99 5 lb. box	Dearborn Kielbasa \$15.99 3 lb. package	Kretchmar Hard Salami \$6.99 lb.
						Deli Provolone Cheese \$4.99 lb.
						4ct Jumbo Muffins \$4.99 ea.
						Deli Whole Colby Jack or Colby Mini Horn \$4.49 lb.

Sale prices subject to change based upon national emergencies and pandemics due to product shortages • No Rainchecks • Not Responsible for Printing Errors

AUCTION



PIONEER AUCTION SERVICE

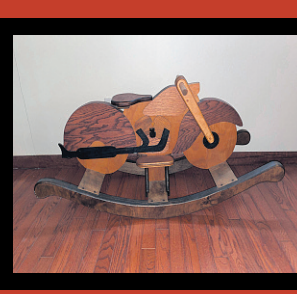
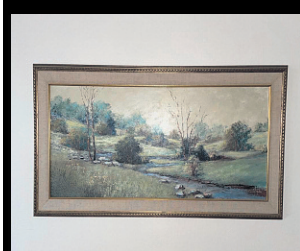
ONLINE AUCTION

Janice Bauman Estate

2611 N. Alger Rd., Alma, MI 48801

Item Preview: Monday, March 28th from 4pm - 6pm

Soft Closing: Wednesday, March 30th at 7:00pm



www.pioneerauctionservice.com

Questions Contact: Jason (989) 621-7194 or Amanda (989) 304-1574

JOHN PECK UPCOMING ONLINE AUCTIONS

ALL AUCTIONS ARE CURRENTLY OPEN FOR BIDDING. BID FROM THE COMFORT OF ANYWHERE!
OUR ONLINE AUCTION SYSTEM IS FAST & EASY TO USE.

SPRING "ONLINE ONLY" FIREARMS & AMMO AUCTION

BIDDING NOW OPEN!

Sale Features: 120+ Quality Firearms, 140+ Large Lots Of Ammunition, Knives & Accessories. If You're Looking For Quality Guns & Tons Of Ammo This Sale Is For You. We Offer The Absolute Best Hand Selected Choice Firearms Anywhere! Preview Is Available For These Fine Firearms.

GLADWIN, MI



HOLOWESKI "ONLINE ONLY" AUCTION

BIDDING NOW OPEN!

Sale Features: Like New EZ-GO Golf Cart, Coins, Currency, Jewelry, Guitars, Antiques, Primitives, Vintage Toys, Large Selection Of Pottery, Tools, Lawn, Garden & Much More! The Cleanliness & Quality Of Chuck & Stella's Merchandise Will Not Disappoint You.

GLADWIN, MI



OWOSSO "ONLINE ONLY" MOVING AUCTION

BIDDING NOW OPEN!

Sale Features: Quality Firearms, Ammunition, Accessories, Household, Tools, Lawn & Garden. The Quality & Cleanliness Of Kevin & Nancy's Merchandise Will Not Disappoint You.

OWOSSO, MI



NEAR "ONLINE ONLY" ESTATE AUCTION

EXCELLENT SALE BIDDING OPENS IN APRIL!

Sale Features: All Stored Inside & Climate Controlled (4) Fully Restored Ford Model T Roadsters, Chevy Corvette, MG TD Kit Car, Harley Motorcycle, (15) Hit N Miss Engines, (30) Maytag Kick Start Engines, Tool & More. Mark your calendars you rarely see this level of quality at one singular auction!

WHITTEMORE, MI



GREER "LIVE ONLY" MOVING AUCTION

SATURDAY MAY 7, 2022 10 AM

Sale Features: Like New Kubota B2320 4x4 Tractor With Backhoe, Snowblower, Mower Deck, 3 Pt. Equip., Kubota ZD25 Diesel Z-Turn Mower, Polaris Ranger 500 With 125 hours, Enclosed Trailer, Tools & Much More. Very nice live only auction in a great setting!

GLADWIN, MI



JOHN PECK AUCTIONS

AUCTIONEERS FOR OVER 40 YEARS

We Conduct Live & Online Auctions Statewide All Year Long!

For Complete Listings With 1,000's Of Photo's For All Our Upcoming Auctions Visit www.johnpeckauctions.com

"Auctioneers For Over 40 Years"

If interested in having an auction of your own, please call (989) 426-8061



LET HELMAN'S HELP MAKE YOUR HOLIDAY Less Stressful!

Call Today to Reserve your Easter Ham and Entree's!!

We are here to serve all of your fine meat needs

Helman's MARKET & DELI

122 E. Superior • Alma • 463-4891   

Tuesday thru Friday 8am-5:30pm, Saturday 8am-1pm

Where satisfied customers send their friends!



FIRESIDE
STOVES • FIREPLACES • OUTDOOR COOKING
(989) 386-8960



breeo
A SMOKELESS EXPERIENCE



GREEN MOUNTAIN GRILLS
WOOD FIRED PELLETT GRILLS



heco
SIMPLY HEAT



Blaze King
Ask about 26% tax credit!



HOME BOILERS



Portage & Main
outdoor boilers
A boiler that deserves a second look!



Big Green Egg
The Ultimate Cooking Experience



Hours: M-F 8-5 • Sat. 9-2
8989 Tobacco Dr., Clare • Located 1/4 mile from Benchley's Amish Furniture 

CHOOSE YOUR ARENA

Cheerleading • DANCING • Freerunning • GYMNASTICS • Pole Sports • PARKOUR • Air Sports • WINGSUIT FLYING • Gliding • PARACHUTING • Archery • BADMINTON • Table Tennis • TENNIS • Volleyball • WALLYBALL • Basketball • BASEBALL • Softball • CRICKET • Kickball • TEE-BALL • Skateboarding • SKISURFING • Scooter • STREETLUGE • Snowboarding • SURFING • Wakeboarding • PADDLEBOARDING • Dodgeball • FRISBEE • Quidditch • CLIMBING • Hiking • CYCLING • Unicycling •

BOOK NOW!

ALL STAR SPRING BREAK

MARCH 25TH 2022 APRIL 10TH

PICK YOUR EVENT

- VIRTUAL REALITY RACING
- VISIT WITH MARIO & LUIGI
- HALF TIME EXTRAVAGANZA
- CRYSTAL ENGRAVING
- NFL & MARIO KART E-GAMING
- CARICATURE DRAWINGS

and more!

SOARINGEAGLEWATERPARK.COM
or call 1.877.2EAGLE2 *Visit to book today!*

Soaring Eagle Waterpark and Hotel

Events vary daily, see our website for complete list of dates and times.
Management reserves the right to change or discontinue promotions and events without notice.

#1

JUDO • Judo • SUMO • Wrestling • BOXING • Karate • Kickboxing • Muay Thai • SHAO LIN KING FU • Taekwondo • MIXED MARTIAL ARTS • Ninjutsu • FENCING • Kendo • SWORD FIGHTING • Billiards • FOOTBALL • Horse Racing • RODEO • SHOW JUMPING • Steeplechase • E-SPORTS • Fishing • DISC GOLF • Frisbee • FOOTBALL • Soccer • RUGBY • Soccer • GOLF • Hunting • CURLING • Figure Skating • SPEED SKATING • Racquetball • SQUASH • Drone Racing • RC RACING • Robot Combat • SLOT CAR RACING • Track & Field • RUNNING • Windsurfing • SKIING • Sledding • LASER TAG • Paintball • SKATING • Hockey • LACROSSE • Polo • STRONGMAN • Hiking • CANOEING • Kayaking • RAFTING

SPRING 2022

ISABELLA CONSERVATION DISTRICT TREE AND SHRUB AND FRUIT TREE ORDER BLANK

5979 E. Broadway, Mt. Pleasant, MI 48858
Ph # (989) 772-5927 ext. 3



SEEDLINGS	SIZE	50	100	250	500	1000	QUANTITY	COST
Red Pine	10-12"	\$45.00	\$75.00	\$175.00	\$275.00	\$400.00		
White Pine	9-14"	\$45.00	\$65.00	\$165.00	\$240.00	\$355.00		
Blue Spruce	10-15"	\$65.00	\$90.00	\$185.00	\$325.00	\$525.00		
White Spruce	12-18"	\$45.00	\$75.00	\$175.00	\$275.00	\$400.00		
Norway Spruce	10-15"	\$45.00	\$65.00	\$165.00	\$240.00	\$355.00		

TRANSPLANTS	SIZE	EACH	5	10	25	50	QUANTITY	COST
White Pine	18-24"	\$4.00	\$18.00	\$35.00	\$80.00	\$140.00		
Red Pine	18-24"	\$4.00	\$18.00	\$35.00	\$80.00	\$140.00		
Blue Spruce	16-20"	\$3.75	\$17.50	\$32.50	\$75.00	\$137.50		
White Spruce	2'+	\$4.00	\$18.75	\$35.00	\$80.00	\$140.00		
Norway Spruce	2'+	\$4.00	\$18.75	\$35.00	\$80.00	\$140.00		
White Cedar	18-24"	\$4.50	\$21.25	\$40.00	\$95.00			
Larch	15-24"	\$4.50	\$21.25	\$40.00	\$95.00	\$140.00		
Balsam Fir	18-24"	\$7.50	\$36.25	\$65.00	\$156.25			
Balsam Fir	18-24"	\$6.00	\$28.75	\$55.00	\$131.25			
Hybrid Poplar	3-4'	\$4.00	\$18.00	\$35.00	\$80.00	\$140.00		
Bird & Butterfly Packet - Includes 1 each of the following: Butterfly bush, Lilac, Trumpet Vine, Rose of Sharon, and Rose Rugosa						\$10.00 each		

HARDWOODS	SIZE	EACH	5	10	25	50	QUANTITY	COST
Red Maple	2-3'	\$4.75	\$22.50	\$42.50	\$100.00	\$187.50		
Sugar Maple	2-3'	\$5.00	\$23.75	\$45.00	\$106.25	\$200.00		
White Oak	1-2'	\$3.75	\$17.50	\$32.50	\$75.00	\$137.50		
Red Oak	3-4'	\$4.75	\$22.50	\$42.50	\$100.00	\$187.50		
Tulip Tree	2-3'	\$4.50	\$21.25	\$40.00	\$103.75	\$185.00		
Mountain Ash	2'	\$3.75	\$17.50	\$32.50	\$75.00	\$137.50		
Sycamore	2-3'	\$5.50	\$26.25	\$50.00	\$143.00			
White/Paper Birch	3-4'	\$9.00	\$43.75	\$85.00	\$143.00			
American Chestnut	2-3'	\$4.50	\$21.25	\$35.00	\$81.25			
Black Walnut	2-3'	\$5.50	\$26.25	\$50.00	\$81.25	\$225.00		
Redbud	2-3'	\$5.00	\$23.75	\$45.00	\$118.75			
Dawn Redwood	2-3'	\$9.50	\$46.25	\$90.00	\$118.75			
Black Willow	2-3'	\$7.50	\$36.25	\$65.00	\$118.75			
Hazelnut	2-3'	\$7.75	\$37.50	\$72.50	\$175.00			
American Plum	18"	\$3.50	\$17.50	\$30.00				
Serviceberry	18"	\$3.50	\$17.50	\$30.00				

SHRUBS	SIZE	EACH	5	10	25	QUANTITY	COST
Silky Dogwood	1-2'	\$3.00	\$13.75	\$25.00	\$53.75		
Silky Dogwood	3'	\$4.25	\$20.00	\$37.50	\$86.25		
Red Osier Dogwood	2-3'	\$3.75	\$17.50	\$35.00	\$70.00		
Common Lilac	3-4'	\$4.25	\$20.00	\$37.50	\$86.25		
Rose Rugosa	2-3'	\$4.25	\$20.00	\$37.50	\$86.25		
Rose of Sharon	3-4'	\$4.25	\$20.00	\$37.50	\$86.25		
Fountain Grass Plugs		\$2.75	\$12.25	\$22.50	\$50.00		
Ninebark	3-4'	\$4.25	\$20.00	\$37.50	\$86.25		
Butterfly Bush -root stock		\$2.75	\$12.50	\$22.50	\$50.00		
Trumpet Vine -root stock		\$2.75	\$12.50	\$22.50	\$50.00		
Elderberry, black	2-3'	\$5.50	\$26.25	\$50.00			
Highbush Cranberry	3'	\$4.25	\$20.00	\$37.50			
Gray Dogwood	2-3'	\$3.50	\$16.25	\$30.00	\$65.00		
Forsythia	3-4'	\$4.25	\$20.00	\$37.50	\$96.25		
Blue Hydrangea	1-2'	\$3.50	\$16.25	\$30.00			
Pee Gee Hydrangea	2-3'	\$5.00	\$23.75	\$45.00			
Holly, Winterberry	2-3'	\$4.50	\$21.25	\$40.00	\$93.75		
Pussy Willow	1-2'	\$3.00	\$13.75	\$25.00	\$56.25		
Wisteria Vine	1-2'	\$4.00	\$18.75	\$35.00			

American Wildflower Mix - 1 oz. Covers 250 sq. ft.	\$5.00 oz.
POLLINATOR PACKETS - 1 for \$4.00 or 4 for \$13.00	
Common Milkweed - Approximately 100 seeds per packet	
Swamp Milkweed - Approximately 100 seeds per packet	
Prairie Milkweed - Approximately 50 seeds per packet	
Butterfly Weed - Approximately 100 seeds per packet	
Planting Gel - Mix 1 oz. with 1 gal of water. - Dips app. 50	\$3.00 oz.
Marking Flags	.20 ea.
PLANTSKYDD - DEER AND RABBIT REPELLENT	
Plantskydd - 1 lb. granular treats app. 600 sq. ft.	\$12.95
Plantskydd - 1 lb. powder treats app. 300 plants	\$29.95
Plantskydd - 2.2 lb. powder treats app. 600 plants	\$49.95
Plantskydd - 1 qt. pre-mixed treats app. 100 plants, 1 ft. high	\$21.95
Plantskydd - 3 lb. granular shaker bag treats up to 1800 sq. ft.	\$26.95
TOTAL	
ADD 6% SALES TAX	
TOTAL	

VARIETY	FRUIT MATURITY	EACH	2 or more Cost per tree	QUANTITY	TOTAL
APPLES					
Crimson Crisp - EMLA 7	September 10th - 25th	\$22.00	\$20.00		
Honeycrisp - BUD 9/EMLA 111	September 10th - 25th	\$22.00	\$20.00		
Gala - EMLA 7	September 5th - 20th	\$22.00	\$20.00		
Fuji -Axtec - EMLA 111	November 5th	\$22.00	\$20.00		
Golden Delicious - EMLA 111	Sept. 20th - Oct. 10th	\$22.00	\$20.00		
Granny Smith - EMLA 111	November 5th	\$22.00	\$20.00		
Enterprise - EMLA 7	October 15th	\$22.00	\$20.00		
Liberty - EMLA 111	Sept. 15th - Oct. 5th	\$22.00	\$20.00		
Royal Court - EMLA 7	Sept. 10th - 25th	\$22.00	\$20.00		

PEACHES - Self-pollinating					
Red Haven	August 5th	\$21.00	\$19.00		
F Fury	August 20th	\$21.00	\$19.00		
Contender	August 15th	\$21.00	\$19.00		
Reliance	July 25th - August 15th	\$21.00	\$19.00		
PEARS					
Bartlett	August 10th - 25th	\$21.00	\$19.00		
Harrow Sweet	September 5th - 20th	\$21.00	\$19.00		
CHERRY					
Montmorency	Late July-Early August	\$22.00	\$20.00		
Planting Gel - Root dip - 1 oz to 1 gallon of water		\$ 3.00 oz.			
SUB TOTAL					
Add 6% Sales Tax					
TOTAL					

FRUIT TREE INFO

These fruit trees were chosen for our climate because of hardiness. When they arrive they will be approximately 5/8" in diameter and 5-6' tall with lateral branches. They are expected to produce fruit in 2-4 years. They will grow best in full sun and in loamy, well drained soil. Many fruit tree varieties are not self-pollinating, it may be necessary to plant 2 different varieties of tree. Call our office at 989-772-5927 Ext. 3 for more info.

CREDIT CARD INFORMATION

Name _____ Phone _____
 Address _____
 City _____ State _____ Zip _____
 Card# _____ Exp _____
 Security Code _____ Email _____
 You can also email your completed order blank to:
crystal.beutler@mi.nacdnet.net

- Make checks or money orders payable to: **Isabella Conservation District or ICD**
- The District's liability ceases once trees and shrubs are picked up.
- You will be notified when and where to pick trees and shrubs up!
- Orders are confirmed when paid for. They are filled on first come first serve basis. Some species may be in short supply; Substitutions can be made with customer's approval.



The Isabella Conservation District Is hosting a Free Electronic Waste Collection Saturday, May 14, 2022 • 8:00AM—12:00PM

This collection is free to Isabella County and
Non-Isabella County Residents.
Sponsored and Funded by:



**At the Isabella County Fairgrounds
500 N. Mission Rd., Mt. Pleasant, MI**

Items that will be accepted:

Please note - This event is intended to take material from residential sources. Schools and large businesses should contact the electronic recycling program at EGLE for a list of recyclers that can take their material.

- | | | | |
|---------------------|-------------------------|---------------------------|--------------------|
| • Desktop Computers | • Televisions-all types | • Computer Keyboards/Mice | • Desktop Scanners |
| • Laptop Computers | • Desktop Printers | • Gaming Consoles | • Cell Phones |
| • Tablets | • Microwaves | • DVD Players | |
| • Computer Monitors | • Desktop Fax Machines | • VCRS | |

Please DO NOT bring vacuums, coffee makers, toasters, mixers, lamps, irons, blow dryers, curling irons, etc.

**ISABELLA CONSERVATION DISTRICT
5979 E. Broadway, Mt. Pleasant, MI 48858 • (989) 772-5927**

Thanks for Being There for Us!

BIG THANKS and a Round of Applause

for the **Neighbors, Businesses and Frontline Workers** who have gone above and beyond this year to help our community through uncertain times and unprecedented challenges.

Never has so much been owed to so few by so many!

Thank You to all our Essential Unsung Heroes

- ✦ Truck Drivers
- ✦ Delivery Drivers & Postal Workers
- ✦ Custodians
- ✦ Food Service Workers
- ✦ Grocery Workers
- ✦ Bank Tellers
- ✦ And many more

Thank you to all of the **Front Line WORKERS**

That have been battling through the Pandemic with dignity and grace. Due to your dedication we are moving toward a brighter tomorrow.



Call today! **888.376.8712**

Mt. Pleasant • 1290 E Broomfield St

Also located in:

Alma • 647 W Warwick Dr
Midland • 1504 Harcrest Dr, Ste 3

AlliedHearing.com AUBIGY



Join us in honoring our team members

that have been working tirelessly to ensure that we are able to care for our patients on a daily basis. Your compassion and dedication is what makes our practice so special.

(989) 463-2181

1335 N. Pine Ave., Alma, MI 48801
www.alfamilypractice.com



We at Maple Rapids Lumber would like to

THANK ALL OF THE ESSENTIAL WORKERS

that have been on the front lines this year. We would also like to thank all of our employees that have been the backbone of our businesses. We appreciate you very much and would have not been able to do it without you.



6366 N Forest Hill Rd
St Johns, MI 48879
www.maplerapidslumber.com

4610 W Saginaw Rd
Coleman, MI 48618
(989) 682-4225

We would like to thank all of the Super Hero's that have been on the front line keeping us safe over the past year and keeping us going under very difficult circumstances.

Alma Sewing Center

301 E. Superior, Alma, MI 48801

(989) 463-3200



Thank You, Caregivers



At MyMichigan Health, our purpose is Creating Healthy Communities – Together. Our team is passionate about providing high-quality health care to each and every patient, and we're incredibly proud of the work that our employees, staff, providers and volunteers have done, particularly during the last two years while fighting against COVID-19 and beyond. Our team works together to improve the lives of people within our communities and is dedicated to providing each patient with excellent care.



MyMichigan Health
UNIVERSITY OF MICHIGAN HEALTH

Interested in joining our team and making MyMichigan Health your Go-To Place?

Visit www.mymichigan.org to view our open positions and apply.

Thank you to all of our **Essential workers** that have been working for us on the Front-Lines during this **pandemic**. Without you we would not have been able to make it through the past year as well as we have.



103 W Washington Ave, St. Louis
989-681-6126



Children's Health Care
Healthy Kids Happy Kids

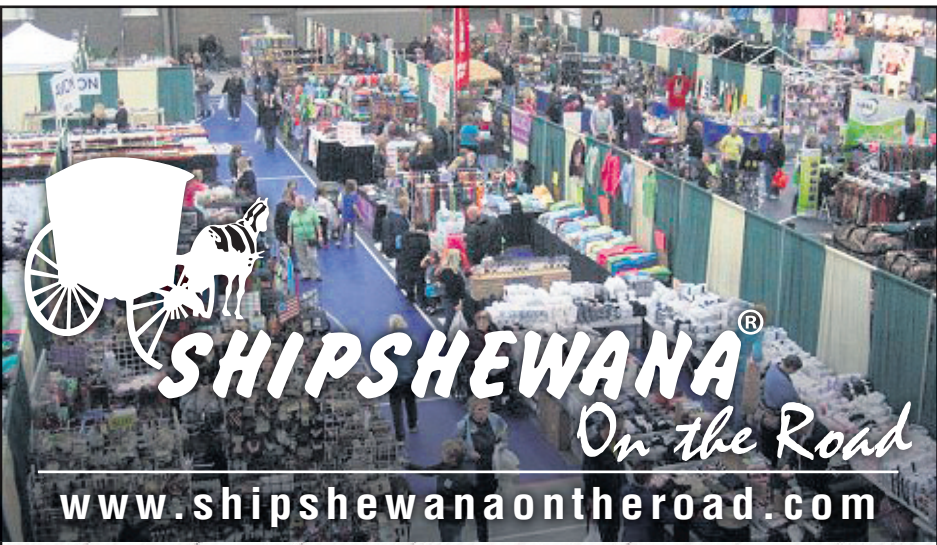
We would like to take a moment to thank all of the dedicated essential workers that have kept our community safe and functioning. Our staff has been instrumental in helping to keep the community healthy during this time. We would like to thank them for their service and dedication to serving our patients with heart.

Dr. Rumana Barodawalla, M. D.



989-772-7774
709 S. Adams Street
Mt. Pleasant

Mon. & Thurs. 9am - 6:30pm
Tues. 9am - 5pm
Wed. & Fri. 9am - 5:30pm



Coming to Soaring Eagle

Saturday, April 2nd 9-6

Sunday, April 3rd 10-5

Children 12 and under FREE, all others \$5.00 • FREE Parking!

**JEWELRY • CRAFTS • TOYS • CLOTHING
NEW MERCHANDISE
FOODS & MORE**

The first 200 adults each day will get Shipse bucks to spend at the show!

Come out and support over 200 small business vendors all in one place!



Soaring Eagle Casino,
Mt. Pleasant
(269) 979-8888

8793-466-02

**GET YOUR \$1.00 OFF
ADMISSION AT**

www.shipshewanaontheroad.com

HERSHBERGER'S

HARDWARE / LUMBER / BUILDING MATERIALS



**Your project headquarters!
BUILDING SUPPLIES
Serving You For 15 Years!**

**"OUR GOAL IS QUALITY PRODUCTS,
COMPETITIVE PRICES & OUTSTANDING SERVICE."**

New Homes, Garages, Pole Barns & Decks

Lumber, OSB, Treated Posts Trusses, Windows, Doors, Concrete Blocks, Mortar, Redi-mix Concrete



**DeWalt &
Milwaukee
Showroom**

10289 N. Leaton Rd., Clare
(989) 386-5338

Full Line of Hardware & Building Supplies



Business Card Directory

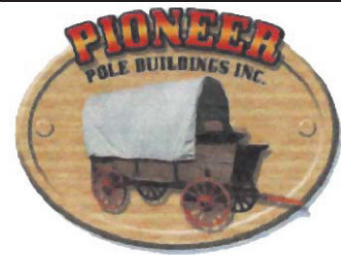
To place an ad contact the ad consultant in your area:

Marlene...Clare & Gladwin Counties
989-506-4647

Kindra...Clare & Midland Counties
989-506-4640

Carol...Isabella & Roscommon Counties
989-323-7044

Vonda...Gratiot County
989-506-4349



7400 S. Clare Ave. • Clare, Michigan 48617
800-292-0679
www.pioneerpole.com

"Our Customers are our Warmest Friends"
Guaranteed On Time and Certified
FREE TANK SETS
COYNE OIL & PROPANE
Clare • Harrison • Mt. Pleasant • Ewart • Gladwin
Cadillac • Breckenridge • Interlochen
800-386-7731 • 989-386-7731
RESIDENTIAL • COMMERCIAL
INDUSTRIAL • FARM

Natural Way Feeds LLC

NWF Non GMO Feeds
Complete line of livestock vitamins,
minerals and probiotic supplements.
Pine Valley County Store
Bulk Foods!

Mon.-Sat. 8-6 Closed Thurs. & Sunday
8181 S. Cornwell Ave. Clare

The Ultimate Wood Heat.

Set the thermostat where you want
for a more comfortable home

- More Comfort** - Thermostatically controlled wood heat.
- Peace of Mind** - Keep the fire outside and eliminate the dangers associated with indoor wood heating.
- Save Money** - Wood is a renewable, inexpensive and often free energy source.
- Durability** - Long-lasting, stainless steel firebox.



Beaverton Outdoor Wood Furnace
3032 Calhoun Rd.
Beaverton, MI 48612
989-435-9240
beavertonoutdoorwoodfurnace.com



Central Boiler outdoor furnaces adapt easily to new or existing heating systems. It's important that your outdoor furnace and system be properly sized and installed. See dealer for details.

CentralBoiler.com

Serving Mid-Michigan Since 1952



Clare/Midland
888-641-0087

FREE Hearing Screening & Consult

www.bierihearing.com

Buyer Of Hardwood Logs And Standing Timber



Business Card Directory

To place an ad contact the ad consultant in your area:

Marlene...Clare & Gladwin Counties • 989-506-4647

Kindra...Clare & Midland Counties • 989-506-4640

Carol...Isabella & Roscommon Counties • 989-323-7044

Vonda...Gratiot County • 989-506-4349



VALET AUTO CARE, INC. *Since 1983*

- A.R.E. Pickup Toppers
- Over 100 New & Used Toppers in Stock
- Truck Accessories
- Tonneau Covers

LEER **ARE** Because you love your truck

www.valetauto.com

James Motz - Owner (989) 773-3477
610 N. Mission (3 blocks S. of Meijer) Mt. Pleasant

KAPS ANA Member
KOINS LLC

located across from the Doherty Hotel

Silver & Gold Coins Bought & Sold

Integrity, Honesty & Peace of Mind.
That's what you deserve when it comes to your Coins & Currency!!!

Thomas Kapuscinski
611 N. McEwan St. Clare, MI 48617
231-357-2105 • 989-386-6500
tjkap@charter.net

Mon.-Fri. 9:30am-5:30pm
Sat. 10:00am-2:00pm
or by appointment


NOW BUYING Sterling Silverware & Scrap Gold

BBB ACCREDITED BUSINESS

MAST BROTHER HARDWOODS

BUYERS OF LOGS AND STANDING TIMBER

- Select Cutting Only
- Paying Top Prices
- Helping landowners improve forest quality for a lifetime
- With Little or No Damage



ALTON MAST, OWNER
(989) 487-5575

RAY'S REMODELING

★ Power Washing, Interior & Exterior Painting, Drywall Installation & Repair, Ceramic Tile Installation & Repair, Kitchen & Bathroom Remodeling, Roofing, Windows, Doors & Floors, House Leveling

HANDYMAN

2 YOUR RESCUE
989-533-1006

40 Years Experience - Free Estimates

Billsby LUMBER

BUYERS OF STANDING TIMBER and TIMBERLANDS
PURCHASING ALL SPECIES
PROFESSIONAL FOREST MANAGEMENT
SINCE 1972



FIREWOOD AVAILABLE BY THE TRUCKLOAD
CALL FOR INFO AND PRICING

2725 Larch Rd. Harrison, MI 48625
989-539-9842
billsbylumber.com • info@billsbylumber.com

TOM'S POLE BUILDINGS
Over 30 Years Experience

Special! POLE BUILDINGS & GARAGES
ROOFING & SIDING
CONCRETE FLOORS DRIVEWAYS & FENCING

24x40x10 10% Down Today Guarantees Prices

FEATURING ULTRA 2000 19 colors to choose from
And A 45 YEAR WARRANTY

From Beginning permit To Cleanup, We Do It All!
1-800-541-3974
We accept major credit cards. • email: tomspolebuildings@yahoo.com

St. Helen-Roscommon Monument, Inc

"Because every life deserves to be remembered"



Winter Hours - Tues-Wed-Thurs 10-3 or by appointment
Visit our indoor showroom at:
101 E. Federal Highway, Roscommon
www.shmonument.com - 989-389-4921
or email: shrmonument@gmail.com

E & K EXCAVATING

- SEPTIC SYSTEMS
- PONDS
- DRIVEWAYS AND ROADS
- LAND CLEARING

LICENSED
EDWIN STEINER



2239 EAST DENVER RD. ROSEBUSH, MI 48878
989-433-0004 or cell 989-430-2461

simple human sense

Burkhart-Presidio INSURANCE AGENCY
989-426-9278

Auto-Owners NSURANCE

ABC Auto Body 313 W. Knox Road, Beaverton, MI
1/2 Mile West of M-30
989-435-2707

We Take Pride In Your Ride!

- Quality Collision Repair
- Free Estimates
- Insurance Work Welcome
- Custom Color Matching & Painting
- We Repair All Makes and Models
- Car/Light Truck
- Genuine Original Equipment Parts

North Country Metals, LLP

Specializing in New Roofs & Reroofs!



Metal Roofing & Siding
989-386-3013
5139 Pere Marquette Clare

Everlast Roofing, Inc.
everlastroofing.com

NEW LOCATION
Come Check Out Our New Lot!

PRO CRAFT STRUCTURES, LLC
8657 S. Rodgers Ave., Clare
Mon, Wed & Fri 8 AM - 5 PM
Tues. & Thurs. by appointment
Closed Sundays
(989) 487-5173

Beat The Spring Rush! Order Now

New Buildings Arriving Weekly

Monthly Payment Options



'Customer satisfaction is our priority'

Call today for a free quote!
Custom Built Portable Buildings To Your Design!
Statewide Delivery

Mast Metal Roofing

Free Estimates
Specializing In Roofing
Standing Seam, Regular Steel, Shingles & More



Perry Mast
9780 E. Oak, Clare
Work (989) 418-2570
Home (989) 313-2176

Capital EQUIPMENT

Clare • 302 N. McEwan
989-386-2192

RENTAL EQUIPMENT:

Kubota Excavators



www.cedealer.com

POLE BARNS

James Morche Builders
WE BUILD ALL WINTER
garages • pole barns • concrete work
FREE estimates

James Morche Cell 989-429-3479 • 989-539-9126
Licensed & Insured

Big Or Small - We Do Them All!
FREE ESTIMATES

A & M
METAL ROOFING
989-487-9066



5023 Grass Lake Rd. - Clare

METAL ROOFING



Quality & Customer Satisfaction Is Our Goal!
William Byler • 9113 Washington Rd., Clare
Free Estimates • (989) 487-5665 Work • (989) 802-9506

Do you have a car for sale?

How about a boat?

Or maybe some furniture?

Call to place a classified ad with
one of our helpful representatives &
sell your no longer wanted items
FAST!



THE MOST ADVANCED RECRUITING
TECHNOLOGY

IN THE

WORLD.

TO HELP YOU FIND THE

BEST HIRE

IN TOWN.

FIND YOUR NEXT HIRE WITH MONSTER AND DIGITAL FIRST MEDIA

Finding great talent can be a challenge. Finding them nearby, even more so. Monster and Digital First Media have the technology and media solutions to help you reach, connect with and hire the best local talent. From social to mobile, print to the cloud, let us help you find the best hire, around the globe or around the corner. To learn more, visit www.theoaklandpress.com; www.heritage.com; www.dailytribune.com; www.macombdaily.com; and www.themorningsun.com

digitalfirst | MONSTER
M E D I A



"It's more than a ride, It's an Adventure"

Departs; Houghton Lake, Mt Pleasant, Ithaca & St Johns areas

Branson MO May 22-28

Cost: \$1169 per person/double occp



- 7 days/ 6 nights
- 2 nights Drury Inns with "Kick Back Meals Dinner & Breakfast"
- 4 nights Lodge of the Ozarks Branson MO
- 14 meals (6 breakfasts, 2 lunches, 6 dinners)
- 5 shows: Haygoods, Clay Cooper, SIX, All Hands on Deck, Showboat Belle
- Dogwood Canyon Tram Tour & Picnic Lunch
- College of the Ozarks Tour & lunch
- Visits to Gate Way Arch St Louis
- Visit to Anheuser Busch Brewery with tour

MACKINAC ISLAND LILAC FESTIVAL June 7-8 • \$275



- 2 days/ 1 night at Kewadin Casino The Shores Hotel St Ignace
- Round trip Ferry Ride on Shepler's Ferry
- Mackinac Island Carriage Tour
- Wings of Mackinac Butterfly House Admission
- Casino package of \$20 at Kewadin + \$10 Dinner + FREE Breakfast buffet
- Tram tour with lunch at Castle Farms Charlevoix

June 12-18 Chattanooga TN, Ruby Falls, Rock City & Lost Sea Adventure • \$1259



- 4 nights Fairfield Inn & Suites Chattanooga TN
- 2 nights KY area
- Admission to Ruby Falls, Rock City Botanical Gardens, Incline Mountain Railway
- Admission to TN Aquarium
- Dinner Cruise on Southern Belle
- Guided tour of Chickamauga Battlefield + Chattanooga Battlefield
- Admission to Lost Sea Adventure underground cavern boat ride w/lunch
- Visit to Chattanooga Choo Choo Historical Site & Trolley ride of Chattanooga
- 12 meals (6 breakfasts + 2 lunches + 4 dinners)

August 1-6 Twilight Riverboat Cruise & Taste of Dubuque Food Festival • \$999/double



- Twilight Riverboat cruise with 3 meals
- 2 nights Isle of Capri Casino with package & food coupons
- 3 nights Grand Harbor Hotel Dubuque IA
- Visit to Diamond Jo Casino with dinner & casino package
- Historical Trolley tour of Dubuque
- Admission to National Mississippi River Museum/Aquarium
- Admission Donation into Taste of Dubuque Food Festival
- Visit to Field of Dreams with Ghost Tour & Farmhouse Tour
- 8 meals + casino packages

VT/NH September 14-22 Autumn in Vermont & New Hampshire

Cost: \$1999 per person/ double occupancy
• 9 days/ 8 nights



- 18 meals (9 breakfasts + 2 lunches + 7 dinners)
- Lodging at Seneca Casino Niagara Falls NY with \$35 Freeplay & \$15 dinner
- Visit to Niagara Falls State Park NY
- Admission to Shelburne Museum
- Mt Mansfield Aerial Gondola Ride at Stowe Resort Lodge
- Lunch & History Tour at Von Trapp Lodge VT
- Factory Tour of Ben & Jerry's Ice Cream
- Tram excursion of Franconia Notch and Cannon Mountain
- Flume Gorge & Old Man Museum
- Castle in the Clouds Tour
- HOBO Railway Ride along Lake Winnepesaukee with lunch
- Cog Railway to Summit of Mt Washington
- Kancamagus Scenic Highway
- Indian Head Resort lodging in NH with nightly entertainment
- Cold Hollow Cider Mill

September 27-28 Thunderbay Resort, Hillman MI

Cost \$369 per person/double occp
• Lodging at Thunderbay Resort
• Hayride through private Elk Reserve
• Gourmet Dinner in Cabin in the Woods
• Shipwreck Tour in Alpena
• Scenic byway drive along Ausable River



Authentic Alaska - 14 day Land & Cruise Tour
July 25, 2023 - August 7, 2023

14 day Cost: Interior Room: \$4750 pp
Oceanview Lg Window: \$5005 pp
Balcony: \$5850 pp



All rates above are based on Per person (pp) double occupancy
Travel Insurance Options Available

Includes: Round Trip transportation to & from Detroit Metro Airport
Air Fare from Detroit Metro to Fairbanks Alaska; + Vancouver to Detroit
All Gov Tax, Port Fees, Air & Air taxes, Transfers, + Onboard Cruise Gratuities

Week 1: 7 night Land Portion includes:

- Overnights in Fairbanks, Denali, Anchorage & Homer
- Riverboat Cruise and city tour of Fairbanks, including a stop at the Trans-AK Oil Pipeline
- Explore Denali with a Tundra Wilderness Tour
- Deluxe Dome Railcar journey from Denali to Talkeetna
- Visits to Talkeetna, Homer & the AK Wildlife Conservation Center

Week 2: Cruise Portions Includes:

- 7 days/ 6 ports on Norwegian Jewell
- Seward, Endicott Arm & Dawes Glacier, Juneau, Skagway, Ketchikan, Inside Passage
- Includes \$100 on board credit per person

North Country Tours LLC
Tours@northcountrytours.net
888-396-9580

Deposit: \$350 non-refundable due@ sign up • Balance due: Feb 25, 2023



MI CASINO TRIPS
One night Island Casino, Escanaba PLUS 1 night Kewadin Casino St Ignace

May 3-5 Only \$199 per person/double
Departs St Johns, Ithaca, Mt Pleasant and Houghton Lake areas

North Country Tours LLC

"Central MI's Premier Travel Provider"

Lake City, MI 49651 • 888-396-9580 • Tours@northcountrytours.net



Park it in the CLASSIFIEDS



and watch it go fast!

GARAGE SALES

YARD, RUMMAGE & GARAGE SALES

CLEANING OUT Pole Barn- power woodworking tools, shapers, table saws, fuel oil furnace, rough sawn hard wood, new Anderson windows, etc. March 25 th-27th and April 1st-3rd. 10am-5pm 989-644-6882

HELP WANTED GENERAL

TAKING APPLICATIONS FOR MORNING SUN CARRIERS EARLY MORNING DELIVERY 7 DAYS A WEEK. MUST HAVE A DEPENDABLE VEHICLE ROUTES OPENING SOON IN ISABELLA COUNTY PLEASE CONTACT BRENDA AT 989-779-6156 OR RON AT 989-533-3106

HELP WANTED FULL TIME

GROUND PERSON wanted, must have valid drivers licenses, good pay and working conditions, Horizon Tree Service Clare 989-386-7067

ADOPTIONS

ADOPTION. CALIFORNIA couple promises newborn loving home, secure future. Devoted grandparents, best education, gentle pet. Generous living expenses paid. Andy/Erin 1(747)788-0260 or attorney 1(310)663-3467

IS YOUR CLOSET overflowing with odds and ends, this and that? Place a classified to help end the clutter.

AUCTIONS

Many great New, Returned, Scratch/Dent/Used Amazon items will be sold online Thursday, March 24th through Monday, March 28th. Details at www.NarhiAuctions.com Call Tim Narhi for your next auction. 810-266-6474

BARGAINS!

DENTAL INSURANCE from Physicians Mutual Insurance Company. Coverage for [350+] procedures. Real dental insurance - NOT just a discount plan. [Don't Wait!] Call now! Get your FREE Dental Information Kit with all the details! 1-877-253-3162 www.dental50plus.com/55#6258

PERSONALS

PAWN SHOP Buy, Sell, Pawn CASH FOR GUNS CASH FOR GOLD 3 Month Pawn 3% + \$3 Per Month Gladwin Trade & Sales 989-426-6811

GENERAL ANNOUNCEMENTS

Need help placing your classified ads in the Morning Sun OR the Mid Michigan Buyers Guide? I can help you with OBITUARIES, LEGALS, EMPLOYMENT, MEMORIAM'S, HOUSE FOR SALE OR RENT, ANYTHING YOU HAVE TO SELL, GARAGE SALES, ESTATE SALES. Call Cindy at 989-779-6115 or email her at cterwilliger@michigannewspapers.com If You Need Help Regarding Your Delivery, Call 888-349-4042

Need help placing your classified ads in the Morning Sun OR the Mid Michigan Buyers Guide? I can help you with OBITUARIES, LEGALS, EMPLOYMENT, MEMORIAM'S, HOUSE FOR SALE OR RENT, ANYTHING YOU HAVE TO SELL, GARAGE SALES, ESTATE SALES. Call Cindy at 989-779-6115 or email her at cterwilliger@michigannewspapers.com If You Need Help Regarding Your Delivery, Call 888-349-4042

BARGAINS!

DIRECTV for \$69.99/mo for 12 months with CHOICE Package. Watch your favorite live sports, news & entertainment anywhere. One year of HBO Max FREE. Directv is #1 in Customer Satisfaction (JD Power & Assoc.) Call for more details! (Some restrictions apply). Call 1-888-351-0154

COLLECTIBLES & MEMORABILIA

BUYING COINS, Sports Cards and Stamp Collections. Top \$\$\$ Paid. Call 248-471-4451

FIREWOOD

BLACK WALNUT Logs for sale, Various sizes, sage Twp, Gladwin Call (989) 256-3588

FURNITURE

AMISH LOG Beds, Dressers, Rustic Table and Chairs, Mattresses for Cabin or Home. Lowest price in Michigan! dandanthemattressman.com 989-923-1278

BEDS-BEDS-BEDS! MATTRESSES ANY size and any comfort. Delivery anywhere in Michigan. DanDantheMattressMan.com

LAWN & GARDEN

WILLIAMS LAWN CARE. (989) 239-0810

MOWING, TREE TRIMMING, LANDSCAPING

MISCELLANEOUS

ALOE CARE HEALTH, medical alert system. The most advanced medical alert product on the market. Voice-activated! No wifi needed! Special offer - call and mention offer code CARE20 to get \$20 off Mobile Companion. Call today 1-877-542-1384

BATH & SHOWER UPDATES in as little as ONE DAY! Affordable prices - No payments for 18 months! Lifetime warranty & professional installs. Senior & Military Discounts available. Call: 877-401-2404

Check out our weekly online auctions and upcoming spring firearms and April online coin auctions. Details at Bid.SherwoodAuctionServiceLLC.com For all your auction needs, call Joe Sherwood 1.800.835.0495

DISCOUNT AIR TRAVEL Call Flight Services for best pricing on domestic & international flights inside and from the US. Serving United, Delta, American & Southwest and many more airlines. Call for free quote now! Have travel dates ready! 866-314-9880

DISH Network. \$64.99 for 190 Channels! Blazing Fast Internet, \$19.99/mo. (where available.) Switch & Get a FREE \$100 Visa Gift Card. FREE Voice Remote. FREE HD DVR. FREE Streaming on ALL Devices. Call Today! 1-866-950-6757

IT'S THE CONVENIENCE that keeps people coming back to the great deals found in the classifieds.

ELIMINATE GUTTER cleaning forever! LeafFilter, the most advanced debris-blocking gutter protection. Schedule a FREE LeafFilter estimate today. 15% off Entire Purchase. 10% Senior & Military Discounts. Call 1-844-369-2501

EXPERIENCED Pole Barn Builders WANTED! Top pay, Very Reliable Company! Must have own tools and reliable transportation. Call Jim at 989-205-2534

GENERAL ANNOUNCEMENTS

MISCELLANEOUS

Live Motorsport Auction Saturday, April 2, 2022. Snowmobiles; Lawn equipment/mowers; ATVs; Watercraft; Boats; Trailers; Campers; Street & dirt motorcycles; Fishing equipment; Guns! www.SnowmobileAuction.com 671 West Chicago Rd., Bronson, MI. 517.369.1153

LOOKING FOR ASSISTED LIVING, memory care, or independent living? A Place for Mom simplifies the process of finding senior living at no cost to your family. Call 1-888-978-0584 today!

METAL ROOFING regular and shingle style, HALF OFF SPECIAL COLORS! Lifetime asphalt shingles. Licensed and insured builders. Pole Buildings. Quality work for 40 years! AMISH CREW 517-575-3695.

Prepare for power outages with a GENERAC home stand-by generator \$0 Money Down + Low Monthly Payment Options. Request a FREE quote. Call now before the next power outage: 1-855-922-0420

REPLACE YOUR ROOF with the best looking and longest lasting material - steel from Erie Metal Roofs! Three styles and multiple colors available. Guaranteed to last a lifetime! Limited Time Offer - \$500 Discount + Additional 10% off install (for military, health workers & 1st responders.) Call Erie Metal Roofs 1-888-718-1856

THE GENERAC PWRcell, a solar plus battery storage system. SAVE money, reduce your reliance on the grid, prepare for power outages and power your home. Full installation services available. \$0 Down Financing Option. Request a FREE, no obligation, quote today. Call 1-855-476-9698

TOP CASH PAID FOR OLD GUITARS! 1920-1980 Gibson, Martin, Fender, Gretsch, Epiphone, Guild, Mosrite, Rickenbacker, Prairie State, D'Angelico, Stromberg, and Gibson Mandolins / Banjos. 844-904-2336

WESLEY FINANCIAL GROUP, LLC Timeshare Cancellation Experts. Over \$50,000,000 in timeshare debt and fees cancelled in 2019. Get free informational package and learn how to get rid of your timeshare! Free consultations. Over 450 positive reviews. Call 855.473.7811

Winchester, Colt, Remington, Ruger, Military Firearms, Tons of Ammo, Golf Cart, Tools, Antiques, Pottery and much more! Open for bidding now. Participate from the comfort of home. Our auction platform is simple to use. Visit www.JohnPeckAuctions.com Looking to sell? We conduct auctions statewide. John Peck Auction 989-426-8061

APARTMENTS FOR RENT (UNFURNISHED)

1 TO 6 PERSON APTS. Furnished, Short & Long Term Leases, FREE WiFi. (989) 772-2222 www.LiveWithUnited.com

PASSENGER CARS

2022 Chevy Equinox LT only 7,000 miles, Every Option! Very Hard To Find! \$34,995 OR @ \$498. MONTH Dick Sovo Auto Sales (989) 828-6032 dicksovaautosales.com

FARM - HEAVY EQUIPMENT & PARTS

BUY FUEL DIRECT & SAVE DIESEL FUELS GASOLINE HOME HEATING OILS •Farm •Commercial •Industrial •Residential Call Scott Capen 989-620-7527 www.Fuel-Delivery.com Serving the entire Central Michigan Area

TRI-LAKES PETROLEUM

4WD & SUV

2019 Jeep Compass 4x4 only 7,000 miles, heated seats, power sunroof Like New Still! ONLY \$29,995 OR @ \$429./MONTH Dick Sovo Auto Sales (989) 828-6032 dicksovaautosales.com

2020 Ford F-150 Crew Cab XLT Premium only 9,000 miles, Eco Boost Engine, Indigo Blue Like New Still! ONLY \$47,995 OR @ \$679./MONTH Dick Sovo Auto Sales (989) 828-6032 dicksovaautosales.com

CLASSIFIEDS hold many, many opportunities. They give opportunity for you to buy items, meet people, sell unwanted items, find housing, save money, earn a couple bucks, and much, much more.

PICKUP TRUCKS

2018 Chevy Crew Cab 4x4 Z-71 only 24,000 miles, full power, V-8 motor You name it, it's got it! Very hard to find!! ONLY \$39,995 OR @ \$579./MONTH Dick Sovo Auto Sales (989) 828-6032 dicksovaautosales.com

2018 GMC Canyon 4x4 only 30,000 miles, full power, Spotless Inside and Out! Very Sharp and Very Nice!! ONLY \$34,995 OR @ \$498./MONTH Dick Sovo Auto Sales (989) 828-6032 dicksovaautosales.com

HOME SAFETY CHECKLIST

- Install New Batteries in Smoke Alarms
- Family Fire Drill
- Furnace Cleaning

NEED HELP? CALL A LOCAL PROFESSIONAL FROM OUR Professional Services Directory

HEALTH & FITNESS MICHIGAN'S POLE Barn Supplier for over 60 years. Supplying residential, agricultural and commercial projects statewide. Call today for a quote and ask about installation. 616-530-1154 **VIAGRA AND CIALIS USERS!** 50 Generic Pills SPECIAL \$99.00 100% guaranteed. 24/7 CALL NOW! 888-835-7273 Hablamos Espanol

KEEPING HEALTHY IS UP TO YOU!

Spend Your Pennies Close To Home!



Shopping Local keeps your Money Local

WANT FAST CASH?

Our Classified advertisers get great results. If you have merchandise to sell, place a classified ad.

HEAR and be HEARD.



HAVE YOU HAD YOUR ANNUAL HEARING CHECKUP?

Call us today to schedule your hearing screening **it's absolutely FREE***



CALL TOLL FREE 1-888-387-3068

With us, you're always heard.



- Over 70 Years of Expertise
- Exclusive Hearing & Lifestyle Assessment
- Free Lifetime Service & Aftercare
- Solutions for Every Lifestyle & Budget
- Miracle-Ear Foundation Gift of Sound
- Over 1,500 convenient Miracle-Ear hearing aid centers locally owned and operated

2 for \$895

Receive Miracle-Ear MINI™ 1 Hearing aids at \$895 for a limited time only.

Limit one coupon offer per patient at the promotional price during event dates only. Not valid with any other discount or offer. Does not apply to prior purchases. Valid on MINI Solution 1 only. Expires 3/31/2022.

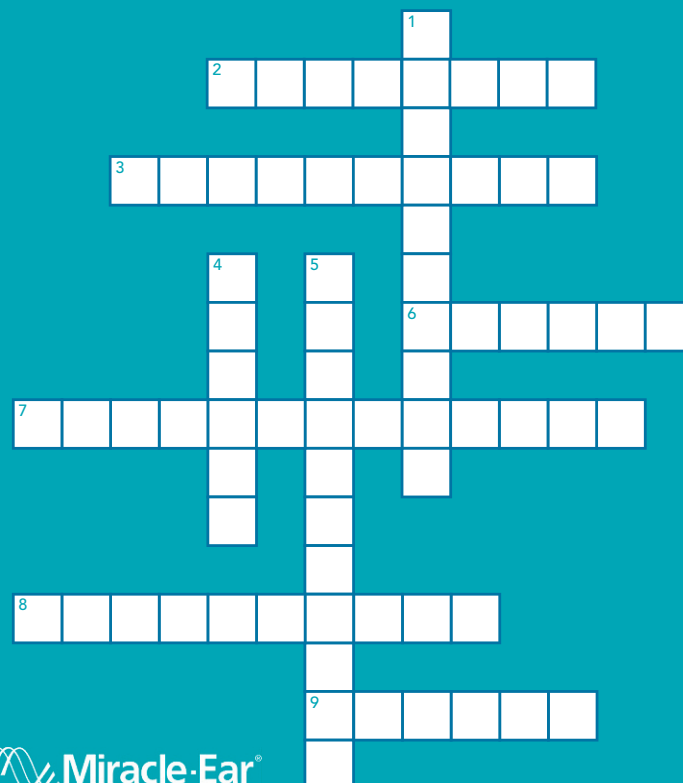
HEARING CROSSWORD

ACROSS:

2. affliction that causes ringing in the ears
3. how sound travels
6. material in the ear that may imitate hearing loss
7. how we talk to each other
8. device that makes hearing easier
9. hearing is just one of five

DOWN:

1. hearing aid company with over 70 Years of expertise
4. this can damage your hearing if it's too loud
5. Dr. that cares for your hearing health



Miracle-Ear®

MIRACLE-EAR HEARING AID CENTERS

MOUNT PLEASANT

100 S Mission St., Ste G
meoffer.me/mtpleasant-mi

PRUDENVILLE

828 W. Houghton Lake Dr.
meoffer.me/prudenville

CLARE

Carousel Mall, 1430 N. McEwan St.
meoffer.me/clare

ALMA

303 W. Superior Street, Ste 3
meoffer.me/alma

GLADWIN

Neeley Building, 127 N. Arcade, Ste 2
meoffer.me/gladwin

WEST BRANCH

Fairview Plaza, 511 E Houghton Ave., Ste D
meoffer.me/westbranch

*Hearing tests are always free. Hearing test is an audiometric test to determine proper amplification needs only, not medical exams or diagnoses.

CODE: SP173236

Seeley Auto Sales Inc.

101 HIDDEN OAKS DRIVE (M-46) • ST. LOUIS, MI 48880
989-463-AUTO (2886)



**Ask About Our
BUY HERE
PAY HERE PROGRAM**
Financing Available in Select Areas
Call For Details

seeleycars.com
989-463-AUTO (2886)



2008 PONTIAC GRAND PRIX
126,292 MILES, STOCK #: 16319
\$5,995



2013 FORD TAURUS SEL
192,848 MILES, STOCK #: 16272
\$6,995



2012 CHEVROLET IMPALA LT FLEET
123,442 MILES, STOCK #: 16277, FLEX-FUEL
\$7,995



2014 CHEVROLET IMPALA LIMITED
98,876 MILES, STOCK #: 16404, FLEX-FUEL
\$8,995



2014 CHEVROLET CRUZE 1LT AUTO
99,837 MILES, STOCK #: 16343
\$9,995



2016 FORD FOCUS SE
94,052 MILES, STOCK #: 16200, FLEX-FUEL
\$12,495



2014 VOLKSWAGEN CC SPORT PZEV
67,459 MILES, STOCK #: 16298
\$13,995



2015 FORD FUSION SE
89,116 MILES, STOCK #: 16280
\$13,995



2016 CHEVROLET CRUZE LT AUTO
33,957 MILES, STOCK #: 16301
\$15,995



2007 JEEP LIBERTY SPORT
149,113 MILES, STOCK #: 16456
\$5,495



2011 JEEP LIBERTY SPORT
159,194 MILES, STOCK #: 16446
\$7,495



2007 CHEVROLET SUBURBAN LT 1500
201,545 MILES, STOCK #: 15745, FLEX-FUEL
\$9,995



2013 FORD ESCAPE SEL
134,994 MILES, STOCK #: 16299
\$10,995



2014 JEEP PATRIOT LATITUDE
99,247 MILES, STOCK #: 16338
\$10,995



2017 CHEVROLET EQUINOX LS
180,396 MILES, STOCK #: 16268
\$11,495



2014 FORD EXPEDITION LIMITED
148,490 MILES, STOCK #: 16275, FLEX-FUEL
\$18,995



2014 JEEP GRAND CHEROKEE LIMITED
133,237 MILES, STOCK #: 16350
\$18,995



2017 FORD EXPEDITION XL FLEET SUV
111,234 MILES, STOCK #: 16334
\$19,995



1999 FORD F-150 XLT
179,622 MILES, STOCK #: 16429
\$4,995



2013 FORD F-150 STX
200,856 MILES, STOCK #: 15885, FLEX-FUEL
\$7,995



2009 FORD F-150 XLT
214,979 MILES, STOCK #: 15854, FLEX-FUEL
\$8,495



2007 DODGE RAM 1500 ST
106,585 MILES, STOCK #: 16435, FLEX-FUEL
\$10,995



2011 GMC SIERRA 2500 WORK TRUCK
217,092 MILES, STOCK #: 16122
\$12,995



2010 FORD F-150 LARIAT
154,126 MILES, STOCK #: 15659, FLEX-FUEL
\$13,995



2012 CHEVROLET SILVERADO LT
195,575 MILES, STOCK #: 15985, FLEX-FUEL
\$14,995



2014 FORD F-150 XLT TRUCK
178,439 MILES, STOCK #: 16359, FLEX-FUEL
\$15,495



2013 CHEVROLET SILVERADO 1500 LT
147,141 MILES, STOCK #: 16395, FLEX FUEL
\$16,995



2010 CHEVROLET SILVERADO 1500 LT
104,061 MILES, STOCK #: 15827, FLEX-FUEL
\$17,995



2013 CHEVROLET SILVERADO 1500 LTZ
173,710 MILES, STOCK #: 16312, FLEX-FUEL
\$19,995



2011 FORD F-350 SUPER DUTY XLT
204,839 MILES, STOCK #: 16154, BIODIESEL
\$20,995



2007 GMC SIERRA 2500 WORK TRUCK
124,946 MILES, STOCK #: 16092, DIESEL
\$22,995



2015 RAM 1500 OUTDOORSMAN
101,423 MILES, STOCK #: 16321
\$26,995



2012 CHRYSLER TOWN & COUNTRY TOURING-I
164,181 MILES, STOCK #: 16329, FLEX-FUEL
\$8,995



2010 CHRYSLER TOWN & COUNTRY LIMITED
113,750 MILES, STOCK #: 16431
\$8,995



2016 CHRYSLER TOWN & COUNTRY TOURING
173,660 MILES, STOCK #: 16260, FLEX-FUEL
\$9,995



2014 CHRYSLER TOWN & COUNTRY TOURING-I
118,391 MILES, STOCK #: 16443, FLEX-FUEL
\$12,995

Always Accepting Trade-Ins
See Many More At: www.seeleycars.com