

TO ADVERTISE IN THE HOMES ALMANAC CALL 440-954-7134

# HOMES ALMANAC



THURSDAY, APRIL 14, 2022

**FOR SALE signs of Spring  
are in BLOOM**



This JUST LISTED Willoughby Beauty priced in the MID \$200,000'S can be yours with Immediate Occupancy. Special feature updates include Newer white Kitchen and Appliances. Newer Furnace, Central air & Electric Panel. Trex front porch and Newer 2 car garage and drive. MUST SEE!!! Close proximity to Downtown Willoughby.

We have **PRE APPROVED BUYERS** waiting to purchase your Lake County Home. Contact us **SOON!!!!**



LORI PECJAK  
440-667-4877



BARB SABA  
216-215-2100



**AS FULL TIME AGENTS  
WE ARE ALWAYS AVAILABLE AND  
HERE TO HELP!!!!**



## Why hire a Senior Real Estate Specialist? I can:

- Guide seniors through the buying and selling of their home.
- Share information about Medicaid, Medicare, Social Security, etc.
- Explain and refer seniors to lenders utilizing the reverse mortgage.
- Connect seniors with decluttering experts and stagers.
- Recommend tax specialists who work with seniors.
- Help seniors who want to age in place.



**Sharon Flyter, Realtor**

Howard Hanna  
(440) 477-2676 Cell

Please call or text with any questions  
sharonflyter@howardhanna.com



Real Estate Services





**ANGELO  
MARRALI**

# THE MARRALI-DESANTIS GROUP

**CALL: 440-974-7846**

**JOHN  
DESANTIS**



## APRIL'S FEATURED LISTINGS

### LAKEFRONT LUXURY \$659,000



Totally remodeled inside and out while maintaining historical charm and character. New kitchen with granite counters and island, tile backsplash, beautiful cabinetry, stainless steel appliances, deluxe vinyl tile flooring.

Dining room with hearth room area, gas fireplace, great lake views with new sliding doors to new Trex deck with solar lighting to enjoy the beautiful sunsets. Great room is 28' wide with a second fireplace, a view of a grand staircase and two sets of authentic French doors opening to a charming 30' covered porch. First floor laundry. Two fully updated baths. First floor bedroom. Upstairs are 3 additional bedrooms with beautiful restored hardwood floors. New electrical panel, windows, siding, furnace and AC. Great opportunity for lakefront living!

### MADISON COLONIAL \$269,900

Located in the heart of Wine Country is this beautiful, old-world charm farmhouse that sits on just over an acre of scenic property. This colonial has 4 bedrooms and 2 bathrooms, featuring hardwood floors, and a cozy living room with stone fireplace. Conveniently located to Rt. 90 and the beautiful nearby wineries. Nearby amenities include Lake metroparks, the Grand River, golf courses, and the Hogback Ridge Park. Make this one home!



### SPACIOUS WILLOUGHBY HOME \$469,900



Awesome super sharp colonial in Willoughby's St. John's Bluff subdivision\* 3.5 baths\* 2-story foyer\* Fabulous great room w/fireplace\* Incredible spacious eat-in kitchen w/island and walk-in pantry opens to magnificent covered raised patio & porch\* 1st floor library/den\* Mud room off garage\* 2nd floor features super-sized bedrooms\* Master suite features large walk-in closet, bath w/dual sinks and a unfinished bonus room\* Fully finished basement features a theater room, full bath, & bar area\* Spacious yard features an outbuilding w/40 amp elec. service, perfect for workshop and invisible fence\* Cul-de-sac location\* Conveniently located to downtown Willoughby & Great Lakes Mall\*



Real Estate Services



Linda  
DeMell



Lisa  
DeMario



Barb  
Wascak



Louie  
Link



Kim  
Drew



Scott  
Parker



Gloria  
Daugherty



Melissa  
Murray



Paula  
Colocci



Gary  
Misch



Angela  
Paterniti



Andrea  
Kuntz



Karissa  
Aloisio





**ANGELO  
MARRALI**

Over **175 Years** of  
Combined Real Estate  
Experience



**JOHN  
DESANTIS**



**OPEN HOUSE EVERY SUNDAY FROM 1:00PM-4:00PM**

Stunning model home in the prestigious gated community,  
**Acacia Estates of Lyndhurst**

Beautiful floor plans and other options to pick from!  
Come meet with our agents and discuss your options!



**The Marrali-DeSantis Group listed and  
sold over 355 homes in 2021!**

Call: (440) 974-7846 | Visit: [www.BuyingClevelandHomes.com](http://www.BuyingClevelandHomes.com)



Real Estate Services  







# CARPET & FLOORING

**MILL OUTLET FLOORING SUPERSTORE!**  
**DIRECT FROM MILL... DEEP DISCOUNTS!**

**4520 Beidler Rd., Willoughby (440) 953-3567**

**COMPARE US... WE WILL NOT BE UNDERSOLD!**

*Spring*  **Savings Sale!**

**AMAZING IN STOCK SELECTIONS!**

**No need to wait! Stop in and see!**

**NEW TRUCKLOAD OF LUXURY VINYL TILE JUST ARRIVED!**

**24 PALLETS! \$1.99/SF AND UP! MUST SEE!!!**

## Luxury Vinyl Tile Sale!

### MANNINGTON

**Adura Max** \$5<sup>75</sup> sq ft

### CORETEC

**COREtec One** \$4<sup>69</sup> sq ft

**COREtec Plus** \$4<sup>99</sup> sq ft

**COREtec Plus XL** \$5<sup>89</sup> sq ft

**COREtec Plus HD** \$6<sup>25</sup> sq ft

**COREtec Plus Design** \$6<sup>69</sup> sq ft

**COREtec Plus XLE** \$6<sup>69</sup> sq ft

**Our MOST Popular!**  
**14 Colors to Choose**  
**From**

**\$23<sup>99</sup>** per yard

**IN STOCK & READY FOR IMMEDIATE INSTALLATION**

**Price includes: Carpet, 8 lb Moisture Barrier Pad & Professional Installation**

## 60 OZ. SILKY SOFT CARPET

**\$36<sup>99</sup>** per yard

**(4.11 per sq. ft.)**

**Available in 7 Wonderful Colors**  
**Price Includes - Carpet,**  
**8 lb Moisture Barrier Pad with**  
**Professional Installation**

**\*Available for Immediate Installation**  
**CARPET & FLOORING MILL OUTLET**  
**440-953-3567**

**Not valid with other offers. Exp 2/28/22**

## Select CARPET REMNANTS

**Installed with pad**

**Up to 12' x 12'**

**\$399<sup>00</sup>**

**CARPET & FLOORING MILL OUTLET**  
**440-953-3567**

**Not valid with other offers. Exp 2/28/22**

## CARPET, PADDING & INSTALLATION

### 2-ROOM SPECIAL

**\$578**

**Plush carpeting. 5 to Choose From.**  
**Valid for 2 rooms up to 144 sq. ft. each**

**CARPET & FLOORING MILL OUTLET**  
**440-953-3567**

**Not valid with other offers. Exp 2/28/22**

## CARPET, PADDING & INSTALLATION

### 3-ROOM SPECIAL

**\$864**

**Plush carpeting. 5 to Choose From.**  
**Valid for 3 rooms up to 144 sq. ft. each**

**CARPET & FLOORING MILL OUTLET**  
**440-953-3567**

**Not valid with other offers. Exp 2/28/22**

## DREAM WEAVER GLORY

**AVAILABLE IN**  
**24 COLORS**

**\$28<sup>99</sup>**

**(3.23 per sq. ft.)**

*per yard*

**Price Includes - Carpet, 8 lb Moisture Barrier Pad with Professional Installation**  
**\*Available for Immediate Installation**

**CARPET & FLOORING MILL OUTLET • 440-953-3567**

**Not valid with other offers. Exp 2/28/22**

## NYLON PRINT!

**IVORY COLOR**

**10,000 YARDS \$6<sup>99</sup> / yd.**

**Mon-Fri 8-5 • Sat 8-2 • Sun CLOSED**



## LANDLORD INSURANCE



Whether you're a professional landlord who manages multiple properties or you own one home that you rent out, Haas, Haas & Associates Landlord program can be tailored just for you. We understand this market and we know what's important to landlords.

### WHY USE AN INDEPENDENT AGENT?

There are so many ways to buy insurance today. A local agent understands the market and can provide personal care and follow-through you wouldn't receive online.

**Haas, Haas & Associates** will save you money, time and hassle and focus on what's most important to you.

### POLICY FEATURES

Our policies are customized to include the coverages that are right for your situation.

- **Loss of Rents** – applies to loss of actual rents if the dwelling is temporarily uninhabitable due to a covered loss.
- **Personal Property** – applies to items in a home, such as appliances, furniture and cabinetry, that are owned by the landlord and used by the tenant.
- **Liability** – applies if a claim or suit is brought against you for damages or injury caused by an accident on your premises.

### COVERAGE AND PACKAGE OPTIONS

We offer both a **Named Peril** policy and a broader **Comprehensive** policy.

### WHO QUALIFIES?

We insure one- to four-family homes; everything from apartments, condos and condo associations to house rentals. And there are no restrictions based solely on the age of a home.

**Haas, Haas & Associates** is the Landlord and Rental Property Insurance Specialist, representing trusted carriers such as **Travelers, Foremost, Safeco and Guard**.

**Call (440) 286-1263 to see how we can help protect your property and get a second opinion and FREE quote.**



**100 Seventh Avenue Suite #135  
Chardon, OH 44024  
haas-haasinsurance.com  
(440) 286-1263**





# MCDOWELL HOMES

## REAL ESTATE SERVICES

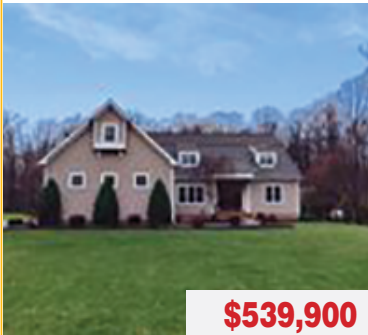


CALL US TODAY 440-205-2000 | [WWW.MCDHOMES.COM](http://WWW.MCDHOMES.COM)



*Call Us Today and Sell for Top Dollar!*

8120 Hermitage Rd,  
Concord



**\$539,900**

Rick Bocchieri (440) 227-1857

12110 Cora Ct,  
Concord



**\$525,000**

Kathy A. Fawcett (440) 821-4558

11370 Prouty Rd,  
Concord



**\$365,000**

Dave Bocchieri (440) 476-9279

6084 Clay St,  
Thompson



**\$359,000**

John Butala (440) 477-9582

4515 Springvale Ave SW,  
Canton



**\$234,900**

Melissa Kaufman (330) 415-5931

7930 Garfield,  
Mentor



**\$229,900**

Rick Bocchieri (440) 227-1857

34015 Beach Park Ave,  
Eastlake



**\$184,500**

Rick Bocchieri (440) 227-1857

4849 Presidential Dr,  
Geneva



**\$169,850**

John Butala (440) 477-9582

330 Roosevelt Dr,  
Geneva



**\$159,900**

Clorice L. Dlugos (440) 812-2542

759 State Route 307 E,  
Jefferson



**\$159,900**

Clorice L. Dlugos (440) 812-2542

497 N State St,  
Painesville



**\$159,900**

Melissa C. Lendvay (216) 970-2902

17308 Endora Rd,  
Cleveland



**\$154,900**

Anne M. Krauss (440) 478-4676

20685 Alameda,  
Highland Hills



**\$110,000**

Janice T. Johnson (216) 268-9410

821 N Market St,  
Lisbon



**\$105,000**

Melissa Kaufman (330) 415-5931

1923 Tillotson Rd,  
Ashtabula



**\$89,900**

Clorice L. Dlugos (440) 812-2542



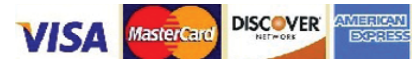


8001 Moving Way • Mentor, Ohio 44060  
**www.yourmovingsolutions.com**

Local – Long Distance Moving  
 Homes – Offices – Apartments – Certified Labor  
 Packing/Crating Service  
 Shredding – Computer Recycling  
 Climate Controlled Storage  
 Specializing in shipments to  
 Arizona, California, Florida, Georgia,  
 & The Carolinas

**Call for Free Moving Estimate Today**  
**440-946-9300**  
**WE SELL BOXES**

PUCO #770-HG  
 U.S. D.O.T. #070851



**THE SAMS TEAM** - "DEDICATED TO RESULTS"

**Michael Sams,**  
 Realtor  
**216-244-7335**

[michaelsams@howardhanna.com](mailto:michaelsams@howardhanna.com)



**Mary Sams,**  
 Realtor  
**440-897-HOME**

[marysams@howardhanna.com](mailto:marysams@howardhanna.com)



**Shannon Reglus**  
**440-983-1922**  
[shannonreglus@howardhanna.com](mailto:shannonreglus@howardhanna.com)



**Willoughby Rental**  
 3 bedrooms, 1 bath. Recently renovated!  
**\$1,200/month**

**YOUR HOME  
 COULD BE  
 WORTH  
 MORE NOW  
 THAN EVER.**

The market has never been better to get the most money for your home.

Contact me today to discuss your options and let me help you get more money for your home!



Buy and sell with  
**confidence.**  
 We guarantee it.







# Tree Talk

## 4 TIPS FOR PLANTING TREES

### FAMILY FEATURES

**T**rees are virtually everywhere you turn, from your own backyard to nearby parks and forests where you enjoy hiking. They provide shade and beauty, and some even bear fruit. Beyond all the immediate benefits, you may be surprised to discover trees are also a critical key to the future.

These facts and tips from the book “Now is the Time for Trees” offer practical insight on the importance of trees and how to nurture one from selection to planting and beyond.

A compelling and ever-growing body of evidence generated by scientists, health care professionals, conservationists, humanitarians and both public and private corporations supports the critical importance of trees and their impact on the human condition. Trees filter pollutants out of the air and water and provide protection for people and communities from dangerous heat and flooding. They lower urban temperatures, reduce energy bills and sequester carbon to slow the rate of climate change.

When you plant a tree in your yard or neighborhood, that tree goes to work filtering out pollutants, intercepting stormwater and capturing carbon. With proper placement, that tree can also help lower household energy use by as much as 20%.

You can engage in the tree planting movement and make a difference by planting trees around your home and surrounding community with these tips.

### Consider the Growing Region

Choosing a tree that will flourish in your growing region is fundamental to becoming a successful tree planter. Start by getting familiar with the growing conditions of your planting site, including factors like sunlight, soil condition and room to grow.

The amount of available sunlight at your planting location will determine which tree species will be successful. Most trees require full sunlight for

**SEE NEXT PAGE**



proper growth and flowering. Some do well in (or even prefer) partial or light shade, but few perform well in dense shade.

Before you plant, get your soil tested by a lab to evaluate what's happening underground. Test results, which are usually returned in a couple of weeks, provide a complete analysis of nutrients, possible contamination and pH (alkalinity or acidity), as well as directions for correcting problems.

Be conscious of overhead or underground utilities, pavement, buildings, other trees, traffic intersections and other factors that may impact your planting space.

### Shopping for a Tree

When choosing which kind of tree to plant, be conscious of details like size, flowering, color (including how colors may vary through the seasons) and your view from inside the house. While shopping, you can rely on plant labels to learn details about a tree's growth pattern, sun requirements, watering needs and soil requirements.

Two common styles of trees are container-grown trees, which spend their entire nursery lives growing in a container, and ball-and-burlap trees, which grow in the ground until they achieve a targeted size.

A well-tended container-grown tree has been carefully monitored and moved into larger containers as the plant grows. Be wary of a tree with roots that circle or twist within the container, which may cause roots to die. For a ball-and-burlap tree, look for a firm, securely tied root ball that is large enough to support the mature tree; it should be about 10-12 inches wide for every inch of trunk diameter.

### Prepare Your Planting Site

Properly preparing your planting site is one of the best things you can do to get your tree off to a strong start. Before you plant, make sure your tree is thoroughly hydrated by watering the container or root ball several hours before proceeding. When planting a tree into a lawn, remove a circle of grass at least 3 feet in diameter where the tree will go to reduce competition between turf and fine tree roots.

### Start Digging

Dig a broad, shallow planting hole with gently sloping sides 3-4 times wider than the diameter of the root mass and the same depth. Mound removed soil on a tarp for easy backfilling. Loosening the soil on the sides of the hole allows roots to easily expand and establish faster, but don't disturb soil at the bottom of the hole.

Once the tree is positioned, replace the soil while firmly but gently tamping the original soil around the base of the root ball to stabilize it. Create a water-holding basin around the tree by building up a ring of soil and water to settle roots. Spread protective mulch 2-4 inches deep in a 3-foot diameter around the base of the tree, but not touching the trunk.

Find more tips to successfully plant and care for your trees at [arborday.org](http://arborday.org).



## The Power of Trees

From backyards to tropical rain forests, trees provide the necessities of life. Trees clean air and water, provide habitats for wildlife, connect communities and support human health.

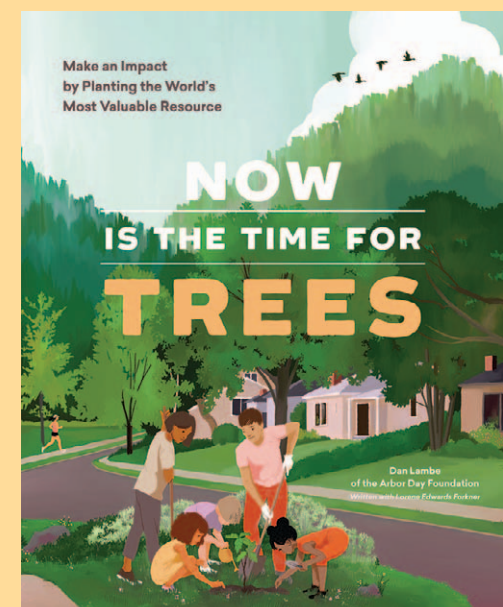
- Trees are a proven affordable, natural way to pull carbon dioxide out of the atmosphere.
- Trees filter water and slow storm surge and flooding in cities.
- Trees provide shade, cooling cities by up to 10 degrees, which can help prevent heat-related deaths.
- Neighborhood trees can reduce stress, improve overall health in children and encourage physical activity.
- Trees support wildlife and aquatic life by providing habitats and helping keep waterways healthy, which ensures ecosystem balance and promotes biodiversity.
- Trees and other forest life work together to ensure a clean source of drinking water, buffer against extreme weather, provide medicines, offer outdoor recreation and enrich human culture.

## A Handy Guide for Planting Trees

A rally cry against climate change, "Now is the Time for Trees" is an inspirational and informative guide that explains the important role trees can play in preserving the environment.

Author Dan Lambe, CEO of the Arbor Day Foundation, offers compelling reasons to plant more trees while providing simple, actionable steps to get involved, choose the right tree and achieve planting success. For each book sold, the foundation will plant a tree in a forest in need.

Pick up a copy wherever books are sold or visit [arborday.org/TimeforTreesBook](http://arborday.org/TimeforTreesBook).





# PROTECT YOUR HOME 365 DAYS A YEAR

**LeafFilter**  
GUTTER PROTECTION

BACKED BY A **YEAR-ROUND CLOG-FREE GUARANTEE**



**WE INSTALL YEAR-ROUND!**



**Stay Off The Ladder**  
Eliminates gutter cleaning for life - guaranteed.



**Keeps Out All Debris**  
Completely sealed system protects your gutters — and entire home — from damaging debris.

**EXCLUSIVE LIMITED TIME OFFER!**

**15% OFF + 10% OFF + 5% OFF**  
 YOUR ENTIRE PURCHASE\*    SENIORS & MILITARY!    MADE IN THE USA    TO THE FIRST 50 CALLERS ONLY!\*



**“LeafFilter was a great investment for our home.”**

–Bill & Jan M. ★★★★★

**CALL US TODAY FOR A FREE ESTIMATE**

**1-833-803-0034**

Mon-Thurs: 8am-11pm, Fri-Sat: 8am-5pm, Sun: 2pm-8pm EST

**FINANCING THAT FITS YOUR BUDGET!\***

**Promo Code: 285**

\*Subject to credit approval. Call for details.

\*For those who qualify. One coupon per household. No obligation estimate valid for 1 year. \*\*Offer valid at time of estimate only. †The leading consumer reporting agency conducted a 16 month outdoor test of gutter guards in 2010 and recognized LeafFilter as the #1 rated professionally installed gutter guard system in America. ‡Manufactured in Plainwell, Michigan and processed at LMT Mercer Group in Ohio. See Representative for full warranty details. CSLB# 1035795 DOPL #10783658-5501 License# 7656 License# 50145 License# 41354 License# 99338 License# 128344 License# 218294 WA UBI# 603 233 977 License# 2102212986 License# 2106212946 License# 2705132153A License# LEAFFNW822JZ License# WV056912 License# WC-29998-H17 Nassau HIC License# H01067000 Registration# 176447 Registration# HIC.0649905 Registration# C127229 Registration# C127230 Registration# 366920918 Registration# PC6475 Registration# IR731804 Registration# 13VH09953900 Registration# PA069383 Suffolk HIC License# 52229-H License# 2705169445 License# 262000022 License# 262000403 License# 0086990 Registration# H-19114



**Disaster could show up at YOUR doorstep.**

**Make a plan today.**

**Ready.gov/plan**



Ready  FEMA  ad COUNCIL 

# SMALL JOB WASTE REMOVAL

(9, 12, 15, 20 & 30 Yd. Containers)

Perfect for garage, basement & estate cleanups, roofers and do-it-yourselfers!

We drop off  
We pick container up.

**IN BUSINESS 28 YEARS**

 **CALL FOR OUR UNBEATABLE PRICES!** 

## AFFORDABLE ROLL-OFF, INC.

1-800-688-9592 • 440-417-1561

[www.affordablerolloffinc.com](http://www.affordablerolloffinc.com)





**BERKSHIRE HATHAWAY** | Professional Realty  
HomeServices



**Eileen Baur**  
216-536-8265  
ebaur@bhhspro.com



**\$124,900**  
**20231 Arbor Avenue**  
**Euclid, OH 44123**

Welcome home to this well taken care of bungalow! Kitchen has been updated with oak cabinets. Granite counters & newer fir. din. room that leads out to wooded fenced in backyard and oversized deck. Nice large liv. room with gas stone f. place but isn't hooked up. Plush carpeting and freshly painted throughout. Newer bath with shower. Upstairs bedroom has walk-in-closet and a bonus room, could be office, etc. Beautiful landscaping in summer. Has built in bookcase. Newer finished recreation room 27x12, glass block windows, c-air. Furn. about 9 yrs. & hw tank approx. 10 years. Must wear mask and prefers no children, sellers immune system compromised.

**Congratulations Eileen Baur**  
Top Selling and Listing Agent for Baur Team in 2018

**Want your home sold? Results speak louder than words!**

**Eileen Baur**  
100% of her listings sold in 2019 and 2020

# THE WINDSOR GREENHOUSE

7945 STATE ROUTE 534, WINDSOR, OHIO 44099  
(1/4 mile south of Rt. 322, 5 miles east of Huntsburg)



**We are open for the Season!**  
Hours are Monday through Friday  
8:00am - 8:00pm  
Saturdays 8:00am - 6:00pm  
Closed Sundays

**Become Self-Sufficient!  
Grow your own Food!  
It's easier than you think!**

**Fully stocked in a huge variety of Vegetable Plants and Seeds.**  
**Many varieties of Tomatoes!**

- Patio Tomatoes • Herb Planters
- Ornamental Trees. • Many Varieties of Shrubs

Fruit Trees  
Berry Bushes  
Strawberry Plants  
Rhubarb  
Herbs

**LOTS OF FLOWERS!**  
• Annuals • Perennials  
• Hanging Baskets • Cemetery Pots  
• Patio Planters

**In Business 29 Years!**

**NOTICE - We Don't Accept Credit Cards! Check or Cash Only!**





**PLATINUM**  
REAL ESTATE



*Call* (440)-974-SALE  
24/7 Home Info Line

**\$1,000,000**

Madison

**\$624,900**

Concord

**\$285,000**

Willoughby Hills

**\$240,000**

Madison

**\$89,500**

Cleveland

**\$74,900**

Cleveland

**\$150,000**

Eastlake

**CrossCountry**  
More than a Mortgage  
Call Today For Our Best Rate!

**440-773-5955**  
Tony Dobbert



**www.ContactPlatinum.com**

