

Mid-Michigan Buyers Guide

SUNDAY, APRIL 17, 2022

Serving Clare, Gladwin, Gratiot, Isabella, Montcalm, & Southern Roscommon Counties

Morning Star Publishing Company powered by digitalfirst

NORTHERN MAT



**Used Mats
For Sale -
Call For Deals**

Buyer of Hardwood Logs

- Access Mats
- Crane Mats
- Swamp Mats



**Buyer of
Hardwood Logs**
Ike Esh
(989) 339-6323

Ben Hertzler
(989) 802-2502
2495 Rock Rd., Clare

CONTACT US FOR DELIVERY INQUIRIES:
Circulation Customer Service at customerservice@oakpress.com.

**Home delivery:
888-349-4042**

dmgollon@medianewsgroup.com

A SPLASH OF COLOR GETS RESULTS
Color Classified Ads Now Available!!!

Show Local Businesses Some Love!



Expanded Showroom

Rustic Furniture and Home Decor
7265 Grant Ave. Clare • (989) 386-3778

Hours: 8-5 M - Sat.
Closed Wed. & Sunday • Evenings by Appt.



Largest Grilling Selection in Central Michigan!



Hours: M-F 8-5 • Sat. 9-2
8989 Tobacco Dr., Clare
Located 1/4 mile from Benchley's Amish Furniture
Division of Hershberger's Hardware



Steve's Country Market

989-539-3110 3170 North Clare Ave., Harrison 44 Feet of Old Fashioned Meat Counter with Good Old Fashioned Service
Hours: Mon. - Sun. 8-8 Bridge Card & Wic Accepted Sale Dates April 18 - April 24, 2022

Top Quality Meats At Rock Bottom Prices! 100% Satisfaction Guaranteed stevescountrymarket.com Michigan Lottery

FRESH MEAT AND SEAFOOD ITEMS	GROUND CHUCK FAMILY PACK \$3.99 LB.	FRESH GROUND ROUND \$4.99 LB.	THIS WEEK'S FEATURED BRAT ASPARAGUS BRAT \$3.99 LB.	USDA CHOICE BONELESS ENGLISH ROAST \$4.49 LB.	BLACK CANYON ANGUS NEW YORK STRIP STEAKS \$8.99 LB.	
	WHOLE RIBEYE LOINS SLICED FREE \$6.99 LB.	WHOLE BONELESS PORK LOINS SLICED FREE \$2.29 LB.	TOP ROUND LONDON BROIL \$4.99 LB.	MARKETMADE BEEF PATTIES \$4.99 LB.	ECKRICH FRANKS OR BOLOGNA 12-14 OZ. 2/\$5.00	
	COD LOINS \$7.99 LB.	TILAPIA FILLETS \$4.99 LB.	SALMON FILLETS \$8.99 LB.			
	Deli		Fresh Produce		Fresh Dairy And Frozen	
	Grocery					

ECKRICH HARD SALAMI \$5.99 LB.	RED OR GOLD POTATOES 5 LB. BAG \$5.99 EA.	DUTCH FARMS SHREDDED CHEESE 8 OZ. 2/\$5.00	GATORADE 32 OZ. 3/\$5.00	NUNN BETTER BIRD SEED 18 LB. BAG \$7.99 EA.
ECKRICH DELI HAM \$4.99 LB.	CARROTS 1 LB. BAG 99¢ EA.	PRAIRIE FARMS SMALL BATCH ICE CREAM 48 OZ. \$3.49 EA.	BUSCH OR BUSCH LIGHT 30 PK. CANS \$18.99 PLUS DEPOSIT	BUD OR BUD LIGHT 24 PK. CANS \$18.99 PLUS DEPOSIT
GUGGISBERG BABY SWISS CHEESE \$5.99 LB.	NEW CROP VIDALIA ONIONS \$1.49 LB.			

While supplies last. Prices subject to change due to national emergencies and product shortages. Not responsible for printing errors.

Cub Cadet



XT1 LT46
LAWN TRACTOR

- 23 HP+ Kohler 7000
- 46" Stamped Deck
- Tuff Torq® Transmission

STARTING AT:
\$2,399*



XT2 LX46
LAWN TRACTOR

- 23 HP+ Kohler 7000 HD
- 46" Fabricated Deck
- Tuff Torq® Transmission

STARTING AT:
\$3,199*



ZT1 42
ZERO-TURN RIDER

- 22 HP+ Kohler 7000 V-Twin
- 42" Stamped Deck
- Premium Seat

STARTING AT:
\$3,299*

www.genespowerequipment.com



ZT1 54P
ZERO-TURN RIDER

- 23 HP++ Kawasaki FR691V
- 54" Fabricated Deck
- Hydro-Gear EZT 2200

STARTING AT:
\$4,099*



ZT2 60
ZERO-TURN RIDER

- 24 HP++ Kawasaki FR730
- 60" Fabricated Deck
- Hydro-Gear EZT 2800

STARTING AT:
\$4,999*



PRO Z 760 L KW
COMMERCIAL ZERO-TURN Δ

- 31 HP++ Kawasaki® FX921v
- 60" Fabricated Deck
- 14cc Parker HTG, ROPS

STARTING AT:
\$12,199*

FOR FULL PRODUCT SPECS **Cub Cadet** VISIT CUBCADET.COM

YOUR INDEPENDENT CUB CADET DEALER—EXPERT SERVICE. LOCALLY OWNED.
THE ADVICE, SERVICE, SELECTION AND SUPPORT YOU NEED TO FIND THE RIGHT FIT FOR YOU.



**981 East Railway Street
Coleman, MI 48618
989-465-1521**

1 Restrictions apply. See store for details.
* Product Price - Actual retail prices are set by dealer and may vary. Taxes, freight, setup and handling charges may be additional and may vary. Models subject to limited availability. For full warranty details, visit cubcadet.com or see your local dealer. See your local dealer for limited warranty details and information. Certain restrictions apply. Specifications and programs are subject to change without notice. Images may not reflect dealer inventory and/or unit specifications.
† As rated by Kohler, all power levels are stated in gross horsepower at 3,600 RPM per SAE J1940 as rated by engine manufacturer.
‡ As rated by Kawasaki, horsepower tested in accordance with SAE J1995 and rated in accordance with SAE J2723 and certified by SAE International. Δ Commercial products are intended for Professional use. **EXCEPTIONAL FINANCING OFFERS AVAILABLE**

Miller's Woodworking

Over 100 Buildings
On The Lot!

**Invest Your Tax Return On A Building
You Can Enjoy For Years To Come!**



12x16 Gable
2 - 4 Ft. Lofts
\$5,167
\$240 Rent to Own



12x16 Bargain Barn
\$3,900
8 to Choose From



12x28 High Barn
12 Ft. Lofts,
3 Windows
\$7,161
\$332 Rent to Own



12x16 High Barn
1 Window, 8 Ft. Loft
\$4,590
\$213 Rent to Own



16x24 High Barn
2 Windows,
Entry Door, 8 Ft. Loft,
9x7 Roll Up Door
\$10,305
\$478 Rent to Own



16x40 4 Windows
9x7 Garage Door,
4 Windows, 6 Ft. Double
Doors, 3 Ft. Entry Door
\$13,180
\$610 Rent to Own



**Statewide Delivery -
Free Delivery w/ in
70 miles!**

Supplying Michigan with
quality built portable
buildings
for over 30 years

**3209 E. Beaverton Road • Clare
(Voicemail) (989) 386-8110**
Old US 127 to Surrey West on Surrey to Grant 1 mile north on Grant

Hours:
M-F 7:30-5
Sat. 8:30-3

Easter Greetings

great **BIG** \$\$\$ **ADS** great **BIG** RESULTS

Holbrook Western Store

Spring Boot Sale

April 25th - 30th

Get a **FREE** jar of leather conditioner and **25% OFF** your second pair of boots.

DON'T MISS THIS SALE!

We offer Western & Work Style Boots in Men's, Women's & Kid's

Mon-Fri 9:30-4:30
Sat 9:30-1:30
Sunday Closed

N. McEwan St.
W. 1st St.
201 N. McEwan
Clare, MI

989-418-1611 • holbrooktackwesternstore

Celebrating **50** Years of
Successfully Serving
Our Communities

GM Certified

Pre-owned Vehicles = 2 Oil Changes & Tire Rotations in 2 years + 12 Month or 12,000 Mile Bumper to Bumper Warranty

USED SUVS

2020 GMC ACADIA AWD SLE DK. Sky, 21,000 Miles, Certified.....	\$39,900
2020 GMC TERRAIN AWD Blue, 25,000 Miles, Heated Seats	\$31,500
2019 GMC YUKON DENALI 4X4 Black, 63,000 Miles, Sunroof, Boards, Heated Cooled Seats, Certified.....	\$64,900
2019 CADILLAC XT4 PREMIUM LUXURY Silver, 20,000 Miles, Awl, Sunroof.....	\$43,900
2019 GMC TERRAIN AWD SLT Silver, 39,000 Miles, Certified.....	\$31,900
2019 BUICK ENVISION AWD Bronze, 49,000 Miles, 1-Owner, Certified.....	\$30,900
2019 JEEP GRAND CHEROKEE Burgundy, 4X4, 54,000 Miles, 1-Owner.....	\$30,900
2019 BUICK ENCORE AWD Black, 34,000 Miles, Leather Loaded, Certified.....	\$28,900
2019 BUICK ENCORE AWD Copper, 23,000 Miles.....	\$25,900
2019 BUICK ENCORE Burgundy, FWD, 11,000 Miles, Certified.....	\$24,900
2018 GMC ACADIA AWD SLT Black, V6, 33,000 Miles.....	\$36,900
2018 CHEVY EQUINOX FWD PREMIER Burgundy, 51,000 Miles, Certified.....	\$25,900
2018 CHEVY EQUINOX AWD Silver, 123,000 Miles	\$19,900
2017 GMC ACADIA AWD LIMITED DK. Blue, 68,000 Miles, V6	\$29,900
2017 CHEVY TRAVERSE 2LT Black, FWD, 78,000 Miles.....	\$26,900
2016 GMC ACADIA LIMITED AWD Pearl White, 97,000 Miles, Sunroof, Trailer Pkg.....	\$26,900

2016 BUICK ENCORE AWD

Burgundy, 110,000 Miles..... **\$15,900**

2015 JEEP GRAND CHEROKEE LIMITED 4X4
Grey, 107,000 Miles..... **\$20,900**

USED TRUCKS

2021 CHEVROLET SILVERADO DOUBLE CAB 4X4
Black, 5,000 Miles, 5.3 V8..... **\$42,900**

2021 GMC SIERRA REG. CAB 4X4
DK. Blue, 1, 600 Miles, 5.3 V8..... **\$41,900**

2019 GMC SIERRA LIMITED DOUBLE CAB SLE 4X4
Stone Blue, 5.3 V8, 21,000 Miles..... **\$36,900**

2018 GMC SIERRA CREW SLT
Burgundy, 4x4, 80,000 Miles, 5.3 V8..... **\$39,900**

2017 CHEVY SILVERADO CREW CAB 2500 LT 4X4
Blue, 97,000 Miles, 6.0 V8..... **\$40,900**

2017 GMC SIERRA DOUBLE CAB SLT
Black, 135,000 Miles, New Transmission..... **\$28,900**

2017 CHEVY SILVERADO DOUBLE CAB
2 Wheel, 72,000 Miles, White, 5.3 V8..... **\$25,900**

2016 GMC SIERRA CREW CAB LT 4X4
All Terrain, Black, 1-Owner, 125,000 Miles..... **\$32,900**

2016 CHEVY SILVERADO 4X4 LT DOUBLE CAB
82,000 Miles, 5.3 V8, Leather, Burgundy..... **\$30,900**

USED VANS

2019 DODGE GRAND CARAVAN SXT
Grey, 60,000 Miles..... **\$26,900**

2019 DODGE GRAND CARAVAN SXT
60,000 Miles, Silver..... **\$26,900**

BENCHLEY BROS., INC.

1 Mile East of Doherty • US-10, Clare • Sales (989) 386-9900

For more info log on to: www.benchleybros.com

Parts & Service (989) 386-3197

HOURS
8-6 Mon-Fri
9-2 Sat



VISIT US ON FACEBOOK AT WWW.FACEBOOK.COM/VALLEYMEATMARKET

Like us on **Valley Meat Market** Like us on

989-200-2071 • 101 E. SECOND • PINCONNING
WE ACCEPT THE BRIDGE CARD
NOT RESPONSIBLE FOR PRINTING ERRORS • ALL LOTTERY GAMES AND LOTTO HERE

NEW HOURS: WEDNESDAY-SUNDAY 10AM-6PM CLOSED MONDAY & TUESDAY • PRICES GOOD SUNDAY, APRIL 17TH THRU SATURDAY, APRIL 23RD

WHOLE OR HALF CUT FREE!	Currently Closed on Monday's & Tuesday's due to the National Labor shortage. OPEN - Wednesday thru Sunday 10am to 6pm	OUR BEST GROUND CHUCK \$39.00 10LB BAG
NEW YORK STRIP LOINS CHOICE *CUT FREE \$6.99 LB.	HOMEMADE BULK SAUSAGE - 4 FLAVORS \$1.79 LB. (10LBS OR MORE)	HAMBURGER \$36.00 10LB BAG
CHOICE RIBEYE LOINS \$9.99 LB.	BONELESS CHICKEN BREAST \$3.19 LB. (10LBS OR MORE)	BULK SLICED BACON \$5.49 LB. (10LBS OR MORE)
CHOICE SHORT LOINS \$7.99 LB.	BONELESS CHICKEN THIGHS \$1.99 LB. (10LBS OR MORE)	SHAVED TURKEY \$6.99 LB.
SMOKED PORK LOINS \$3.99 LB.	FRESH GRILLING SAUSAGE \$2.99 LB. (10LBS OR MORE) \$2.79 LB. (NON-SPECIFICITY)	SHAVED HAM \$4.99 LB.
BONELESS BEEF ROAST OR SWISS, GRILL OR DENVER STEAK \$4.49 LB.	BONELESS CHICKEN TENDERLOINS \$5.99 3LB BAG *WHILE SUPPLIES LAST	50/50 GRIND PORK/BEEF \$26.00 10LB BAG
ROUND STEAK OR ROUND ROAST \$4.49 LB.	WAYSIDE BACON \$28.90 10LB BOX	ECKRICH HARD SALAMI \$5.99 LB.
BONE-IN PORK LOINS WHOLE OR HALF *CUT INTO CHOPS FREE \$1.79 LB.	CHICKEN LEG 1/4'S 69¢ 40LB BOX \$27.60	BEEF BRISKET \$3.99 LB.
NO-ROLL STRIP LOINS \$5.99 LB.	COUNTRY RIBS, LOIN END ROASTS OR END CUT CHOPS \$1.29 LB.	HAMBURGER PATTIES \$2.99 LB.
KOEGEL'S	BONELESS PORK LOINS \$1.99	SLAB SPARE RIBS \$2.99 LB.
VIENNA'S 10# BOX \$37.00	2-PACK PORK BUTTS \$1.59 LB.	CO-JACK, LONGHORN OR MOZZARELLA AND HOT PEPPER FIRE JACK CHEESE \$3.99 LB. ANY SIZE CHUNK
24CT PKG VIENNAS \$10.99	PORK STEAK, PORK BUTT ROAST OR FINGER RIBS \$1.79 LB.	FULLY COOKED SHRIMP \$9.99 2LB BAG
SKINLESS FRANKS 4# PKG \$12.99		UNCOOKED SHRIMP \$14.99 2LB BAG
BIG BOLOGNA OR RING BOLOGNA \$3.99 LB.		CHICKEN NUGGETS \$9.99 5LB BAG
PICKLED BOLOGNA 2.5# JAR \$10.99		PARTY WINGS \$12.99 4LB BAG

MEAT BUNDLES

PACKAGE 1: MIXED BUNDLE 5# BEEF STEAK 5# PORK RIBS 10# CHICKEN 5# BEEF ROAST 5# PORK ROAST 5# SAUSAGE 59#S FOR \$179.00 *48 HOURS NOTICE PLEASE	PACKAGE 2: BEEF BUNDLE 15# BEEF ROAST 15# BEEF STEAK 20# BURGER 50#S FOR \$199.00 *48 HOURS NOTICE PLEASE	PACKAGE 3: PORK BUNDLE 15# PORK RIBS 10# SAUSAGE 10# PORK ROAST 15# PORK CHOP 50#S FOR \$100.00 *48 HOURS NOTICE PLEASE	PACKAGE 4: BUDGET BUNDLE 20# SAUSAGE 10# CHOP 10# CHICKEN BREAST 10# LEG QUARTERS 50#S FOR \$99.00 *48 HOURS NOTICE PLEASE
---------------------------------------------------------------------------------------------------------------------------------------------------------------------------------------	----------------------------------------------------------------------------------------------------------------------------------------	---------------------------------------------------------------------------------------------------------------------------------------------------------	------------------------------------------------------------------------------------------------------------------------------------------------------------

WRAPPING IS AN ADDITIONAL \$10. EACH BUNDLE. CALL 989-200-2071.

Life insurance from a real-life person.

Maury S Irwin, Agent
1011 N McEwan Street, Clare
Bus: 989-386-4141
maury.irwin.l8gz@statefarm.com

Get life insurance that comes with someone local (me). I'm here to help you protect your family's financial future.
LET'S TALK TODAY.

State Farm

Do you have a car for sale?

How about a boat?
Or maybe some furniture?
Call to place a classified ad with one of our helpful representatives & sell your no longer wanted items **FAST!**

GRACO FCU SERVING GRATIOT COUNTY FOR 60 YRS...

Homegrown *IN* Gratiot County...
BY Gratiot County...
FOR Gratiot County...
Choose GraCo staff as your favorites...

835 W Warwick Dr - Alma
989-463-1247
www.gracofcu.org
NMLS # 493685, 501216, 1588387

If you live, work, worship, or attend school in Gratiot County, you are eligible to join!
M, T, TH 9:00 - 5:30 / W 10:00 - 5:30
F 9:00 - 7:00 / S 9:00 - 12:00

A Little Drop of Color Gets Your Ad Results



April Showers of Savings

Walk-In Safety & Designer Shower Systems

ASK ABOUT OUR **FREE 3D DESIGN SERVICE**

SEE WHAT IT WILL LOOK LIKE **BEFORE YOU BUY!**

LIMITED-TIME SPECIAL OFFER

FREE SHOWER DOOR

plus

\$500 OFF LUXSTONE WALLS

plus

12 mos. SAME AS CASH

*Cannot be combined with any other offer. Previous sales excluded. Good at initial presentation only. Financing available from GreenSky LLC for qualified buyers only who purchase with plan 3128. For deferred interest plans, interest accrues during the promotional period but all interest is waived if the purchase amount is paid in full before the end of the promotional period. Standard New Bath Today Sliding Door Installed with complete shower purchase. \$500 off installed luxstone walls purchase.

Customizable Accessories	Bath Options	Ultra-Low Step-In Height	Lifetime Finish
--------------------------	--------------	--------------------------	-----------------

- **Durable Materials** for Long-Lasting Beauty
- **Low-Maintenance** Shower Walls
- Quality You **Expect From Kohler**
- Accessories to **Personalize Your Shower**
- **Safety-Focused** Design Features
- **Quick, Professional** Installation
- **Lifetime** Warranty
- **Affordable** Financing

NEW BATH TODAY

SET-UP YOUR FREE DESIGN-CONSULTATION TODAY!

248-720-6069

WWW.NEWBATHTODAY.COM

ASK ABOUT OUR WALK-IN TUBS

SAFETY & ACCESSIBILITY FEATURES AVAILABLE

*Cannot be combined with any other offer. Previous sales excluded. Good at initial presentation only. Financing available from GreenSky LLC for qualified buyers only who purchase with plan 6124. For deferred interest plans, interest accrues during the promotional period but all interest is waived if the purchase amount is paid in full before the end of the promotional period.

RABIES CLINIC
Special April Rates
Reg. \$20⁰⁰
\$15⁰⁰

By Appt. 426-0203
Flexible Hours
KELLY'S KRUISSING KRITTER KARE
Kelly Jo Kelley, DVM



LOCAL BUYERS LOOK HERE

THE CLASSIFIEDS

RE/MAX RIVER HAVEN, INC.
Open Seven Days a Week to Serve You
www.riverhavenhomes.com • Wayne R. Walts – Broker

Sugar Springs Office 1415 W. Sugar River Rd. • Gladwin 989-426-9239
Wixom Lake Office 1239 Estey Rd. • Beaverton, MI 48624 989-435-7755
Main Office 777 W. Cedar • Riverwalk Place 989-426-6893

\$175,000 MLS#50054111 **\$140,000** MLS#50051245 **\$77,700** MLS#50047331



MID MICHIGAN PAIN P.L.L.C.
"Are you suffering from headaches, back pain, knee or hip pain??. I can help you to live a pain free life."

All insurance plans accepted. We guarantee to see you in 1 week.

SERVICES PROVIDED:

- Epidural injections
- Fascet blocks
- Nerve blocks
- Botox injections for migraine
- Laser microdiscectomy
- RFA rhizotomy
- Laser for hip and knee pain.
- Laser nerve ablations.

INASS
ADVANCING GLOBAL SPINE CARE

MID MICHIGAN PAIN PLLC
2305 Hawthorn Drive Suite:B
Mt. Pleasant, Michigan 48858
Phone: 989 317 8000 • 989 533 1037
Fax: 989 317 8536
Email: veinandpain@gmail.com
Web: www.midmichiganpain.com



GATEWAY STRUCTURES LLC
SPECIALIZING IN METAL CLAD STORAGE SHEDS

RENT TO OWN **90 Days Same as Cash**

CHECK OUT OUR SELECTION.

12X24 GABLE, 8X7 CARRIAGE HOUSE DOOR, 1 SERVICE DOOR, 1 WINDOW. \$9,090 RENT TO OWN \$446.08

12X16 GABLE, 7X7 ROLL UP DOOR, 2 WINDOWS. \$6,470 RENT TO OWN \$317.51

12X18 GABLE, 8X7 ROLL UP DOOR, 1 ENTRY DOOR. \$7,055 RENT TO OWN \$346.22

12X16 HIGH BARN, DOUBLE DOORS, 2 WINDOWS, 2 BENCHES & A LADDER. \$6,455 RENT TO OWN \$316.77

12X24 HIGH BARN, 8X7 ROLL UP DOOR, 2 WINDOWS, AN ENTRY DOOR AND WAINSCOTING. \$8,592 RENT TO OWN \$421.64

12X24 GABLE, 8X7 ROLL UP DOOR, DOUBLE DOORS, 3 WINDOWS. \$8,500 RENT TO OWN \$417.13

12X16 CLASSIC, 7X7 ROLL UP DOOR. \$4,925 RENT TO OWN \$241.69

12X20 HIGH BARN, 8X7 ROLL UP DOOR, ENTRY DOOR, 2 WINDOWS. \$7,560 RENT TO OWN \$371.00

12X16 HIGH BARN, 7X7 ROLL UP DOOR. \$6370 RENT TO OWN \$312.60

14X24 LOFTED CABIN, 3 WINDOWS. \$12,115 RENT TO OWN \$594.53

8X12 CLASSICS. \$3,125 EACH. RENT TO OWN \$153.36 EACH

10X12 CLASSICS. \$3,570 EACH. RENT TO OWN \$175.19 EACH

BUILDINGS DELIVERED STATEWIDE FREE DELIVERY WITHIN 70 MILES

ARE YOU NEEDING SOMETHING TO MATCH YOUR EXISTING HOME OR BUSINESS? STOP BY OUR OFFICE OR GIVE US A CALL!

40 YEAR PAINTED STEEL
Multiple Colors & Custom Sizes • Built to Order
3624 East Dover Rd. • Clare, MI 989-802-8000
Located 3 miles North of Clare • Hours: Mon.-Fri. 8-5 and Sat. 10-2
BRINGING YOU QUALITY STRUCTURES AT AFFORDABLE PRICES

Lambert's Meat Market and Bakery

Taste the difference "FRESH" makes!

624 E. Cedar Ave., Gladwin (next to Family Dollar)

989-246-1850



Hours: Monday-Friday 8-6:30 • Saturday 8-6 • Sunday 8-4 • Sale Dates: April 18 - April 23, 2022

LAMBERT'S WILL BE CLOSING FROM 1-1:30 PM DAILY TO DO A THOROUGH DISINFECTING OF OUR STORE.



Over 40 Varieties of Bratwurst Available Every Day!

10 lbs. or More Sale!

Believe on the Lord Jesus Christ and thou shalt be saved....Acts 16:31

Whole NR Boneless Ribeye Loins CUT FREE! \$6 ⁴⁹ lb.	Whole NR New York Strip Loins CUT FREE! \$4 ⁹⁹ lb.	Whole Boneless Pork Loins CUT FREE! \$2 ¹⁹ lb.	Family Pack Ground Beef from Chuck 80% Lean 5 lbs or more \$3 ⁹⁹ lb.	Pork Steak or Pork Strips 10 lbs or more \$2 ¹⁹ lb.	Pork Shoulder Roast or Breakfast Sausage 10 lbs or more \$2 ¹⁹ lb.	USDA Choice Denver Steak or English Roast 10 lbs or more \$4 ⁴⁹ lb.
2 pk Pork Shoulder Roast \$1 ⁹⁹ lb.	Center Cut Pork Chops 10 lbs or more \$2 ¹⁹ lb.	Chicken Leg 1/4's 10 lb. bag \$7 ⁹⁹	Frozen Tray Pack Jumbo Split Chicken Breast \$1 ⁷⁹ lb.	French Fries \$6 ⁹⁹ 5 lb.	Waffle Fries or Breaded Onion Rings \$9 ⁹⁹ 5 lb.	Corn Dogs or Chicken Nuggets \$12 ⁹⁹ 5 lb.
Marinated NY Strip Steaks \$6 ⁹⁹ lb.	Lamberts Own BBQ or Unsauces Smoked Pulled Pork \$4 ⁹⁹ lb.	Lambert's Own Southern Apple Whiskey or Philly Steak Beef Brat \$3 ⁹⁹ lb.	Extra Lean Ground Beef From Round \$4 ⁹⁹ lb.	Catfish Fillets \$34 ⁹⁹ 5 lbs.	DELI AND BAKERY DEALS	
USDA Choice New York Strip Steaks \$7 ⁹⁹ lb.	Garlic Butter Sirloin Steak Bites \$8 ⁹⁹ lb.	Garlic Butter or Pepper Steak Kabobs \$8 ⁹⁹ lb.	Garlic Butter or Teriyaki Chicken Kabobs \$6 ⁹⁹ lb.	Dearborn Breakfast Sausage Links \$22 ⁹⁹ 5 lb. box	Dearborn Kielbasa \$15 ⁹⁹ 3 lb. package	Kretschmar off the Bone Cajun Turkey \$6 ⁹⁹ lb.
						Deli Provolone Cheese \$4 ⁹⁹ lb.
						4ct Jumbo Muffins \$4 ⁹⁹ ea.
						Deli Whole Colby Jack or Colby Mini Horn \$4 ⁴⁹ lb.

AUCTIONS



HOME SAFETY CHECKLIST

- Install New Batteries in Smoke Alarms
- Family Fire Drill
- Furnace Cleaning

Don't Wreck Your Life!

Duperon Estate - Live Auction

Saturday, April 23, @ 10 a.m.

6305 Becker Road, Indiantown, Saginaw

From I-75 @ M-81 go east approximately 4-miles to Portsmouth, north 2miles on Portsmouth to Becker then east.

Huge antique & collectible auction featuring a wide variety of well kept merchandise including the following:

- (25) Pieces of antique & contemporary furniture including; china cabinets, cedar chests, cabinets & related *
- Several store display Hot Wheel, Matchbox, etc., point of sale promotional advertising pieces * Edison fireside phonograph
- w/wood horn * (50) Beautiful premium glass brides baskets * (50) Ceramic head vases * Computing scale store cheese
- wheel cutter * Dozens of vintage framed prints & pictures * (50) Diecast toy trucks (N.I.B.) * (2000) New in package Hot Wheels
- * (50) Model cars & trucks (in box) * (5) Oak last rights box sets * (100) Ceramic German beer mugs * (50) Toby mugs
- * (100) Cylinder records * Qty. hardcover books & manuals inc. Saginaw Directories from 1921-1966 * Ceramic
- & Pyrex mixing bowls * Early wooden snow sled * 4' Mini mannequin * 1000's of more nice antiques & collectibles.

See Website for photographs

Wegner Auctioneers (989)793-8689
Wegnerauctioneers.com

Marlette Livestock Auctions

NEW SPRING FLING ANIMAL AUCTION
Sat., April 23 @ 10 AM

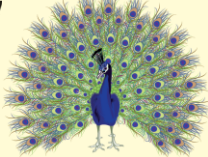
Featuring Unique, Unusual & Beautiful Breeds
WELCOME CONSIGNMENTS INCLUDE
Animal Related Equipment • Turkeys, Guineas, Pigeons, Peacocks, Quail, Chickens, Emus, Ducks & Other Water Fowl • Sheep & Goats • Llamas & Alpacas • Miniature & Full Size Cattle Including Bred Wagyu Cows, Belted Galloway Bull & Bred Cows, Watusi, Mini Zebu, Brahma, Longhorn, Dexters, Scottish Highlanders, Gyrs & More.

- Yaks, Water Buffalo, & Bison
- Ponies, Horses, Donkeys & More!

Consignments accepted on site

April 22 & 23.

Contact us for more information and to consign animals. Follow us on Facebook for pictures & updates!



6381 Euclid, St., Marlette, MI 48453
(989) 635-2183

PIONEER AUCTION SERVICE

ONLINE AUCTION

Eldine Cole Estate

3063 N. Royce Rd., Ithaca, MI 48847

Item Preview: Monday, April 18th from 4pm - 6pm

Soft Closing: Wednesday, April 20th at 6:00pm



www.pioneerauctionservice.com

Questions Contact: Jason (989) 621-7194 or Amanda (989) 304-1574

REAL ESTATE AUCTION

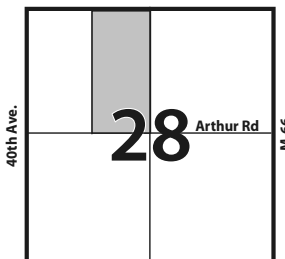
79 Acres Vacant Land * Barryton, MI * Mecosta County

FRIDAY, APRIL 22 *12:00 NOON*

(Auction Sale Held on Site at the Property)

- 79 Acres Vacant Land
- Overgrown, brushy, thickets, wooded
- Small old pond on the property
- Autumn Olive thickets
- Scattered pine trees from 2' - 40'
- Rowed Pine tree stands along perimeter
- EXTREMELY rolling terrain
- Superb Hunting property. Notorious "Big Buck Country"
- Paved Road frontage. Just west of M-66
- Gorgeous building sites. Nice homes in the area
- Adjacent to Chippewa Hills High School
- 2-track trails throughout
- 6 miles south of Barryton. 20 miles west of Mt. Pleasant.
- 4 miles North of Remus. 12 miles from Canadian Lakes

Section #28* Sheridan Twp
Mecosta County



*See www.PavlikLLC.com for all information, aerials And maps.

*DIRECTIONS TO THE PROPERTY:
From Remus, corner of M-20 & M-66. Turn north on M-66, 4 1/2 miles to Arthur Rd (Chip Hills High School). Turn west 1/2 mile to the property and Auction Site.

INSPECTIONS: Feel free to walk, drive, inspect the property at your convenience. Auctioneer will be on site for questions on Thursday, April 14 11AM-1PM

*REAL ESTATE TRANSACTION PAPER WORK: Randy Golden from RE/MAX Real Estate of Mt. Pleasant, Inc. will handle all purchase agreements and closing documents. Contact Mr. Golden at 989-773-3332

AUCTION TERMS & CONDITIONS

1.) TERMS: CASH OR BANK FINANCING. If seeking bank financing, must arrange PRIOR to sale. 2.) EARNEST DEPOSIT: Buyer must put \$3,000 down at conclusion of auction & sign Buy/Sell agreement. 3.) CONFIRMATION OF SALE: Subject to approval of sellers. 4.) REAL ESTATE TAXES: Taxes prorated for 2022. 5.) POSSESSION: Possession will be at closing. 6.) EVIDENCE OF TITLE: Sellers will furnish the insurance & deed to the buyer. 7.) CLOSING: Approximately 30 days from date of auction. 8.) OPENING BID: No minimum opening bid. Open to the public. 9.) ANNOUNCEMENTS: Any announcement made by auction company on date of auction take precedence over printed or oral statements.

Duane Taylor Estate, Jack Weaver PR

CALL AUCTION COMPANY FOR MORE INFORMATION 989-463-4903
JOHN PAVLIK & JOHN C. PAVLIK, SR.
AUCTIONEERS/REALTORS
Pavlik Auction & Real Estate, LLC., Alma, MI 48801 • www.pavlikLLC.com

LOCAL visit your MERCHANTS

Mike Doty Estate Online Only Auction

Bid now thru 4/20/2022

Preview Starts 4/18/2022 5:00 PM and Ends 4/18/2022 6:00 PM



2003 Toyota Tacoma 4wd, Bear Rug, Antique Curio Cabinet w/ Secretary Desk, WMG Flat Quilt Lighting Rod Ball, National Blue Glass Lightning Rod Ball, Fenton Green Glass Lightning Rod Ball, Purple Glass Lightning Rod Balls, Fenton W.C. Shinn Green Glass Lightning Rod Ball, BMG Chestnut Blue Lightning Rod Ball, JFG Blue Glass Lightning Rod ball, Yellow & Purple Glass "K" Lightning Rod Balls, Robbins Cast Iron Lightning Rod Arrow, Michigan Milk Bottles, Walt Disney Comics, Western Action, Collectable Vintage Glass Bottles, Ransbottom Brothers Pottery Co. 8 Gal Stoneware Crock, Beer Mirrors, Vintage Sportsman Items, Many Local Advertising Items, Universal Bird Launcher, Milk Bottle Caps, Coin Collection, Local Postcards, Lone Ranger III Portable Professional Audio System, Coin collecting supplies, Heavy duty welded steel shelf, John Deere HO Scale Precision Locomotives, Gas Mask & MUCH MORE!



For Details, photos and register to bid, visit:
www.SherwoodAuctionServiceLLC.com

SHERWOOD AUCTION SERVICE, LLC
Joe Sherwood, Owner/Auctioneer
1-800-835-0495

YODER BROTHERS LARGE SPRING 2-DAY CONSIGNMENT AUCTION

Farm Equipment • Shop • Outdoor Miscellaneous
Clare, MI

3 Auction Rings Selling Both Days!

CONSIGNMENTS WELCOME

Location: 1/4 mile north of Clare, Michigan on Business 27 to Colonville Rd. East 3/4 miles to sale site. 7656 E. Colonville Rd., Clare, Michigan. Follow Yoder Brothers Auction Signs.

Friday & Saturday, April 22nd & 23rd, 2022 @ 9:00 a.m.



DAY 1 - Friday, April 22nd @ 9:00 a.m.

- | | | |
|-------------------------------------------------------------------------------------------------------------------------------------------------------------------------------------------------------------------------------------------------------------------------------------------------------------------------------------------------------------------------------------------------------------------------------------------------------------------------------------------------------------------------------------------------------------------------------------|------------------------------------------------------------------------------------------------------------------------------------------------------------------------------------------------------------------------------------------------------------------------------------------------------------------------------------------------------------------------------------------------------------------------------|--------------------------------------------------------------------------------------------------------------------------------------------------------------------------------------------------------------------------------------------------------------------------------------------------------------------------------------------------------------------------------------------------------------------------------------------------------------------------------------------------------------------------------------------------------------------------------------------------------------------------------------------------------------------|
| <p>LAWN & GARDEN (Early Consignments)</p> <ul style="list-style-type: none"> • 2014 CUB CADET 160 Commercial Zero Turn Mower, 60" Cut, Rear Bagger, 1136 hrs. Clean Cond. • HUSQVARNA 6TH 52" Riding Mower, 550 Hrs • HUSQVARNA 6TH 2654 54" Riding Mower • JOHN DEERE W.H. 48-A Walk Behind Mower, Hydro Drive, 540 Hrs. • D.R. 36" Pull Behind Tiller w/Motor, Low Use • CUB CADET LTX 1040 1000 Series Riding Mower • CUB CADET LTX 1811 Riding Mower • CUB CADET LTX 1042 Riding Mower | <p>ANTIQUE & COLLECTIBLES (Early Consignments)</p> <ul style="list-style-type: none"> • 30+ ERTEL Toy Tractors - JOHN DEERE 4000 Precision Classic - JOHN DEERE 6030 Precision Elite - CASE I.H. 1256 16th Scale - BUDDEN 133 1b Anvil - JOHN DEERE J.R. Pedal Tractor w/Cart - Yankee Drivers - Dinner Bell - Wooden Wheels - Hand Crank Corn Sheller • MILLER Metro 250 D Welder w/cart | <p>DEWALT Milwaukee</p> <p>SHOP & CORDLESS TOOL ITEMS</p> <ul style="list-style-type: none"> • 175+ Lots of NEW DEWALT & MILWAUKEE: 18-20 & 60 Volt Tools Include: Table Saws, Chain Saws, Impact Drivers, Circular Saws, Planers, Impact Wrenches, Mitre Saws, Drywall Tools, Batteries and Chargers • BUILDING & BUILDING MISC. (Early Consignments) <ul style="list-style-type: none"> • 10x16 Screened Gazebo - New Chicken Houses - Garden Sheds - Mini Barns - Saw Mill Lumber - New & Used Metal Siding - New Screws & Nails • MANY MORE ITEMS TOO NUMEROUS TO LIST. |
|-------------------------------------------------------------------------------------------------------------------------------------------------------------------------------------------------------------------------------------------------------------------------------------------------------------------------------------------------------------------------------------------------------------------------------------------------------------------------------------------------------------------------------------------------------------------------------------|------------------------------------------------------------------------------------------------------------------------------------------------------------------------------------------------------------------------------------------------------------------------------------------------------------------------------------------------------------------------------------------------------------------------------|--------------------------------------------------------------------------------------------------------------------------------------------------------------------------------------------------------------------------------------------------------------------------------------------------------------------------------------------------------------------------------------------------------------------------------------------------------------------------------------------------------------------------------------------------------------------------------------------------------------------------------------------------------------------|

DAY 2 - Saturday, April 23rd @ 9:00 a.m.

- | | | | |
|--------------------------------------------------------------------------------------------------------------------------------------------------------------------------------------------------------------------------------------------------------------------------------------------------------------------------------------------------------------------------------------------------------------------------------------------------------------------------------------------------------------------------------------------------------------------------------------------------------------------------------------------------------------------------------------------------------------------------------------------------------------------------------------------------------------------------------------------------------------------------------------------------------------------------------------------------------------------------------------------------------------------------------------------------------------------------------------------------------------------------------------------------------------------------------------------------------------------------------------------------------------------------------------------------------------------------------------------------------------------------------------------------------------------------------------------------------------------------------------------------------------------|------------------------------------------------------------------------------------------------------------------------------------------------------------------------------------------------------------------------------------------------------------------------------------------------------------------------------------------------------------------------------------------------------------------------------------------------------------------------------------------------------------------------------------------------------------------------------------------------------------------------------------------------------------------------------------------------------------------------------------------------------------------------------------------------------------------------------------------------------------------------------------------------------------------------------------------------------------------------------------------------------------------------------------------------------------------------------------------------------------------------------------------------------------------------------------------------------------------------------------------------------------------------------------------------------------------------------------------------------------------------------------------|-------------------------------------------------------------------------------------------------------------------------------------------------------------------------------------------------------------------------------------------------------------------------------------------------------------------------------------------------------------------------------------------------------------------------------------------------------------------------------------------------------------------------------------------------------------------------------------------------------------------------------------------------------------------------------------------------------------------------------------------------------------------------------------------------------------------------------------------------------------------------------------------------------------------------------------------------------------------------------------------------------------------------------------------------------------------------------------------------------------------------------------------------------------------------------------------------------------------------------------------------------------------------------------------------------------------------------------------------------------------------------------------------------------------------|----------------------------------------------------------------------------------------------------------------------------------------------------------------------------------------------------------------------------------------------------------------------------------------------------------------------------------------------------------------------------------------------------------------------------------------------------------------------------------------------------------------------------------------------------------------------------------------------------------------------------------------------------------------------------------------------------------------------------------------------------------------------------------------------------------------------------------------------------------------------------------------------------------------------------------------------------------------------------------------------------------------------------------------------------------------------------------------------------------------------------------------------------------------------------------------------------------------------------------------------------------------------------------------------------------------------------------------------------------------------------------------------------------------------------------------------------------------------------------------------------------------------------------------------------------------|
| <p>TRACTORS & SKIDSTEERS (Early Listing - Expecting Approx 30+ Tractors)</p> <ul style="list-style-type: none"> • 2013 BOBCAT T590 PosiTrac, 2 Speed, Hyd. Aux., 2,970 Hrs., Cab Heat & Air, Good Condition, SN: A3NR13040 • 2001 BOBCAT 773-6 Skid Steer, Hyd. Aux., 66" Bucket, Hand Controls, Good Condition, SN: S17620441 • ALLIED Model 654F Tractor w/Loader, 4x4, Dual Remotes, 3 PT, PTO, 735 Hrs • NEW HOLLAND 12180a Tractor 4x4, 3 Pt., 876 Hrs. • MAHINDRA EMAX 22 Tractor w/Loader, 4x4, Diesel, 60" Mower Deck, 180 Hrs. • 1953 McCORMICK Super W-6 Tractor, Running Condition • CUB CADET 7284 Diesel Tractor w/Loader, 4x4, 3 Pt., 162 Hrs, SN: 2D20352 • CASE VAC 13 Tractor W/F, New Tires, 3 Pt, PTO, Great Cond. • FARMALL M N/V Tractor, Live Hyd., Runs Nice • OLIVER 1600 Tractor, W/F Gas, 3 PT • TRAILERS (Early Consignments) <ul style="list-style-type: none"> • 2017 BIG TEX 1400 GVW 16' Bumper Pull Trailer, w/Mega Ramps • 2017 MORITZ ELH-AR Series 18' Trailer, 16,000 GVW, Alum. Ramps, Hi Tensile Beam, Bumper Pull • GATOR 40' Gooseneck Trailer, 25,900 GVW, Mega Ramps, Elect/Hydr Brakes, Low Miles • HAY EQUIPMENT (Early Consignments) <ul style="list-style-type: none"> • NEW HOLLAND 1409 Discbine, Very Clean Cond., SN: 550302 • 2013 NEW HOLLAND Rollbelt 450 Utility | <ul style="list-style-type: none"> • ROUND Baler 4x5, Twine Tie, 1600 Bale Count, Very Clean Condition • 2012 NEW HOLLAND BR7070 Crop Cutter Round Baler, Net Wrap, 4x5 Ultra Good Cond. • 2005 CASE I.H. RBX 452 Round Baler, Twine Tie, 500 Bale Count • NEW HOLLAND HM235 7" Disc Mower • NEW HOLLAND 1465 Haybine, Nice Condition • 3 - NEW HOLLAND 488 Haybines, Good to Very Good Condition • NEW HOLLAND 492 Haybine • NEW HOLLAND 472 Haybine • JOHN DEERE 336 Square Baler • PEQUEA 4102 4 Basket Tedder, Hyd Fold, Low Use • PEQUEA Mid Cap 12 Wheel V Rake, Very Good Cond. • H-5 10 Wheel V Rake • GEHL 418 8 Wheel V Rake • EZ TRAILER Bale Wagon • NEW HOLLAND Tandem Rake Hitch • NEW HOLLAND 258 Hay Rake, Like New • NEW HOLLAND 260 Hay Rake • 6 - NEW HOLLAND Hay Rakes, Good to Very Good Condition • H-5 8' PTO Hay Fluffer • PEQUEA 710 Hay Fluffer • 4 - JOHN DEERE 1065 Wagon Gears • New Wagon Beds • 2 - NEW HOLLAND 166 Hay Mergers • I-J 8' Sickle Mower, Trail Type, PTO <p>TILLAGE EQUIPMENT (Early Consignments)</p> <ul style="list-style-type: none"> • KEWANEE 1020 Disc 20", 22" Discs, Hyd. Fold | <ul style="list-style-type: none"> • KROUSE 1404 20", 20" Discs, Hyd. Fold • JOHN DEERE 12" Wheel Disc - I.H. 9" Wheel Disc • JOHN DEERE 1010 32" Hyd. Field Field Cultivator • BRILLION 20" Danish Time Field Cultivator • JOHN DEERE 400 15" Rotary Hoe, Like New Spoons • FORD 6 Row Danish Time Cultivator • M-W 1160 Earth Master 5 Shank Disc, Chisel Plow • JOHN DEERE 2700, 5 Bot, 3 PT Plow • GLENCO 5 Shank Soil Saver • 8' Box Blade Pull Type • 10' Cultipackers - 6' Cultipackers <p>OTHER FARM EQUIPMENT (Early Consignments)</p> <ul style="list-style-type: none"> • PENTA 4110 Vertical Mixer w/Digital Scales • I.H. 800 8 Row Corn Planter, No Till, w/Transport • NEW HOLLAND 513 Manure Spreader w/Top Booter • KILL BROS Gravity Wagon w/13 Ton Gear • Variety of Other Gravity Wagons • NEW IDEA 323 1 Row Corn Picker, Very Clean, Under 100 Acres • JOHN DEERE Vanbrunt 20 Hole Dbl Disc Grain Drill, w/Seed Box • I.H. 40 Beet & Bean Drill • 7x14 Grim Barge Wagon w/J.D. Gear • NEW IDEA Flail Manure Spreader • NEW IDEA 3262 Manure Spreader • ELS Lagone Manure Pump, PTO Power, Low Use • JOHN DEERE 9 Row 22" Pull Type Soybean Planter | <ul style="list-style-type: none"> • McCORMICK 8' Reconditioned Lime Spreader <p>3 PT. FARM EQUIPMENT (Early Consignments)</p> <ul style="list-style-type: none"> • AMERICAN INDUST. 3 PT 12" Brush Hog, Like New - 3 PT 4" Tiller - 8 PT Prairie Dog Backhoe Attachment w/PTO Hyd. Pump - 3 PT 2 Bot. Plow - 3 PT 1 Bot. Plow - 3 PT 6" Disc - 3 PT Back Blades - 3 PT Sprayer - 3 PT 5" Brush Hog - 3 PT 6" Brush Hog - 3 PT 5 Time Cultivators - 4' Cultipackers - NEW Horst Quick Attach Pallet Forks, 8" & 12" Post Hole Augers, 6' Tiller Attach, Driveway Leveler Attach • A.C. 2 Row 3 PT Corn Planter - 3 PT Aerator <p>HORSE DRAWN FARM MACHINERY (Early Consignments)</p> <ul style="list-style-type: none"> • PIONEER 2 Wheel Power Cart • 40 HP KUBOTA EU32 Diesel, Stabilizer Bar, Raised Tongue, Hyd. Turn Wheels, 540 PTO, Runs Good • M.F.S. 2 Row Corn Planter, S.S. Fork Hopper, Dbl. Packer/Wheels, New Old Stock • NEW IDEA 10-A Manure Spreader, Original Condition, Air Tires • JOHN DEERE 1065 Hay Wagon, New Bed, Sides & Rack, Steel Wheels • McDEERING No 9 Hay Mower • McDEERING Grain Binder • OLIVER 2 Bot. Trip Plow, Good Condition • CASE 13 Hole Grain Drill w/Seed Box • I.H. 10" Disc - OLIVER 9" Disc <p>FARM MISC. ITEMS</p> <ul style="list-style-type: none"> • Semi Load 5' & 6' Treated Posts • New & Used Gates |
|--------------------------------------------------------------------------------------------------------------------------------------------------------------------------------------------------------------------------------------------------------------------------------------------------------------------------------------------------------------------------------------------------------------------------------------------------------------------------------------------------------------------------------------------------------------------------------------------------------------------------------------------------------------------------------------------------------------------------------------------------------------------------------------------------------------------------------------------------------------------------------------------------------------------------------------------------------------------------------------------------------------------------------------------------------------------------------------------------------------------------------------------------------------------------------------------------------------------------------------------------------------------------------------------------------------------------------------------------------------------------------------------------------------------------------------------------------------------------------------------------------------------|------------------------------------------------------------------------------------------------------------------------------------------------------------------------------------------------------------------------------------------------------------------------------------------------------------------------------------------------------------------------------------------------------------------------------------------------------------------------------------------------------------------------------------------------------------------------------------------------------------------------------------------------------------------------------------------------------------------------------------------------------------------------------------------------------------------------------------------------------------------------------------------------------------------------------------------------------------------------------------------------------------------------------------------------------------------------------------------------------------------------------------------------------------------------------------------------------------------------------------------------------------------------------------------------------------------------------------------------------------------------------------------|-------------------------------------------------------------------------------------------------------------------------------------------------------------------------------------------------------------------------------------------------------------------------------------------------------------------------------------------------------------------------------------------------------------------------------------------------------------------------------------------------------------------------------------------------------------------------------------------------------------------------------------------------------------------------------------------------------------------------------------------------------------------------------------------------------------------------------------------------------------------------------------------------------------------------------------------------------------------------------------------------------------------------------------------------------------------------------------------------------------------------------------------------------------------------------------------------------------------------------------------------------------------------------------------------------------------------------------------------------------------------------------------------------------------------|----------------------------------------------------------------------------------------------------------------------------------------------------------------------------------------------------------------------------------------------------------------------------------------------------------------------------------------------------------------------------------------------------------------------------------------------------------------------------------------------------------------------------------------------------------------------------------------------------------------------------------------------------------------------------------------------------------------------------------------------------------------------------------------------------------------------------------------------------------------------------------------------------------------------------------------------------------------------------------------------------------------------------------------------------------------------------------------------------------------------------------------------------------------------------------------------------------------------------------------------------------------------------------------------------------------------------------------------------------------------------------------------------------------------------------------------------------------------------------------------------------------------------------------------------------------|

For More Photos & Info See [gotoauction.com/2109](http://gotoauction.com/)

Yoder Brothers Auction Service
Specializing in Successful Auctions NAA
Auctioneers LeRoy and Willis Yoder
9484 S. Rodgers Ave., Clare, MI • PH: 989-386-9082

This is an early consignment list and only a fraction of what will be there. MANY MORE ITEMS TOO NUMEROUS TO MENTION!



Vote For Your Favorite Person, Place, Or Thing In Gratiot County & Win!

For completing and returning this entry, you will be entered into a drawing to win one of the following three prizes.
(Please, one entry per person).

1st Prize- \$100 2nd Prize- \$50 3rd Prize- \$25

ENTER ONLINE!
You can enter online at <http://themorningsun.com/contest> or go to www.themorningsun.com and click on the People's Choice logo on the lower left side of the home page

The winners of the People's Choice Awards will be published in a special edition of the Mid-Michigan Buyers Guide in June.

- | | | |
|----------------------------------------------------------|----------------------------------------------------------------------------------|----------------------------------------------|
| 1. Best Restaurant _____ | 32. Best Chiropractor _____ | 63. Best Lawn Maintenance _____ |
| 2. Best Restaurant for Good Service _____ | 33. Best Pharmacist _____ | 64. Best Appliance Repair _____ |
| 3. Best Fast Food Restaurant _____ | 34. Best Veterinarian _____ | 65. Best Computer Repair _____ |
| 4. Best Place for Breakfast _____ | 35. Best Insurance Agent _____ | 66. Best Funeral Home _____ |
| 5. Best Ethnic Food _____ | 36. Best Real Estate Agent _____ | 67. Best Elder Care Facility _____ |
| 6. Best Restaurant Burger _____ | 37. Best Real Estate Agency _____ | 68. Best Party Store/Convenience Store _____ |
| 7. Best Fast Food Burger _____ | 38. Best Accountant/CPA _____ | 69. Best Bakery _____ |
| 8. Best Salad Bar _____ | 39. Best Financial Advisor _____ | 70. Best Deli _____ |
| 9. Best Place for Pizza _____ | 40. Best Banker/Loan Officer & Name of Bank _____ | 71. Best Furniture Store _____ |
| 10. Best Cup of Coffee _____ | 41. Best Bank Teller & Name of Bank _____ | 72. Best Pharmacy _____ |
| 11. Best Ice Cream Shop _____ | 42. Best Auctioneer _____ | 73. Best Flower Shop _____ |
| 12. Best Sub/Hoagie/Grinder _____ | 43. Best Photographer _____ | 74. Best Hardware Store _____ |
| 13. Best Tavern _____ | 44. Best Administrative Assistant & Name of Business _____ | 75. Best Window Displays _____ |
| 14. Best Waiter/Waitress & Name of Restaurant _____ | 45. Best Barber _____ | 76. Best TV, Stereo, Electronics Store _____ |
| 15. Best Bartender & Name of Bar _____ | 46. Best Hairstylist & Name of Salon _____ | 77. Best Antiques/Collectibles _____ |
| 16. Best Restaurant for Cleanliness _____ | 47. Best Hair Salon _____ | 78. Best Lawn & Garden Store _____ |
| 17. Best Place for Pie _____ | 48. Best Place for a Massage _____ | 79. Pet Food & Supplies Store _____ |
| 18. Best New Car Dealership _____ | 49. Best Tanning Salon _____ | 80. Best Golf Course _____ |
| 19. Best Used Car Dealership _____ | 50. Best Place for Nail Care _____ | 81. Best Gym/Health Club _____ |
| 20. Best New Car Salesperson & Name of Dealership _____ | 51. Best Gift Shop _____
<small>(Not eligible for any other category)</small> | 82. Best Caterer _____ |
| 21. Best Used Car Salesperson & Name of Dealership _____ | 52. Best Pet Groomer _____ | |
| 22. Best Auto Service Department _____ | 53. Best Business for Customer Service _____ | |
| 23. Best Auto Body Shop _____ | 54. Best Local Website _____ | |
| 24. Best Auto Parts Store _____ | 55. Community Volunteer _____ | |
| 25. Best Quick Oil Change _____ | 56. Best Plumber _____ | |
| 26. Best Tire Store _____ | 57. Best Electrician _____ | |
| 27. Best Optometrist/Ophthalmologist _____ | 58. Best Contractor/Builder _____ | |
| 28. Best Dentist/Orthodontist _____ | 59. Best Painting Contractor _____ | |
| 29. Best Dental Hygienist & Name of Office _____ | 60. Best Place for Floor Covering _____ | |
| 30. Best Physician _____ | 61. Best Heating and Air Conditioning _____ | |
| 31. Best Nurse & Name of Office _____ | 62. Best Welding Shop _____ | |

Name _____
 Address _____
 Phone _____
 Signature _____

• One entry per person.
• No photocopies or facsimiles accepted.
• Must be 18 years or older to enter drawing.
• To be eligible for the drawing you must fill out at least 50% of the poll

**MSP employees and families are not eligible for the drawing.*

ENTRIES DUE BY: April 29, 2022.
 Mail entry to:
Mid-Michigan Buyers Guide
 Attn: People's Choice
 311 E. Superior St., Alma, MI 48801
 989-463-6071

WE ARE APRIL FOOLS at Needham's Home Center!



- 30 ordered carpet styles
 - 30 in stock carpet and vinyl remnants and short rolls
 - 30 water proof planks and tiles
- Plus every pattern and style of HunterDouglas window treatments*

ALL at FOOLISHLY LOW PRICES for ALL 30 DAYS of April!

I may go mad before then, but we will do our best to just be happy and foolish, and you can be giddy with your savings.

JUST REMEMBER WHERE

Gratiot County's Favorite Floor Store 21 Years in a row

NEEDHAM'S Home Center
 Real Floors for Your Real Life • Since 1977

945 W. Monroe Road (M-46), St. Louis, MI 48880
 Phone (989) 681-5393
www.needhamshomecenter.net

Trusted Member since 2013

63RD ANNUAL SHEPHERD MAPLE SYRUP FESTIVAL



The Village of Shepherd will hold its 63rd Maple Syrup Festival on April 21-24, 2022.

Started in 1958, the long running tradition will once again feature pancake and sausage meals flavored with Shepherd's own, locally produced syrup. Returning events will include a craft show, car show, parade, and more.

The long running tradition is completely dependent on volunteers who help out in everywhere, from tapping the trees, to making the pancakes and coordinating the festival's events.

Go to www.shepherdmaplesyrupfest.org for more information on the festival.

Thank you to our advertisers for sponsoring this page

Spring Open House

April 22, 23 & 24

9am to 6pm Friday and Saturday
12 Noon to 5pm on Sunday.

352 E Wright Ave, Shepherd, MI 48883

Discounts available on purchase of bulk items

Please call 989-828-5100 for details.



J&K's Four Seasons Floral & Greenhouse
www.4seasonsfloralandgreenhouse.com

Thursday, April 21, 2022

Helicopter Rides: 5 - 8 p.m.
Midway Carnival: 5 - 11 p.m.
Pony Rides: 10 a.m. - 7 p.m.
Talent Show: 6 p.m.

Friday, April 22, 2022

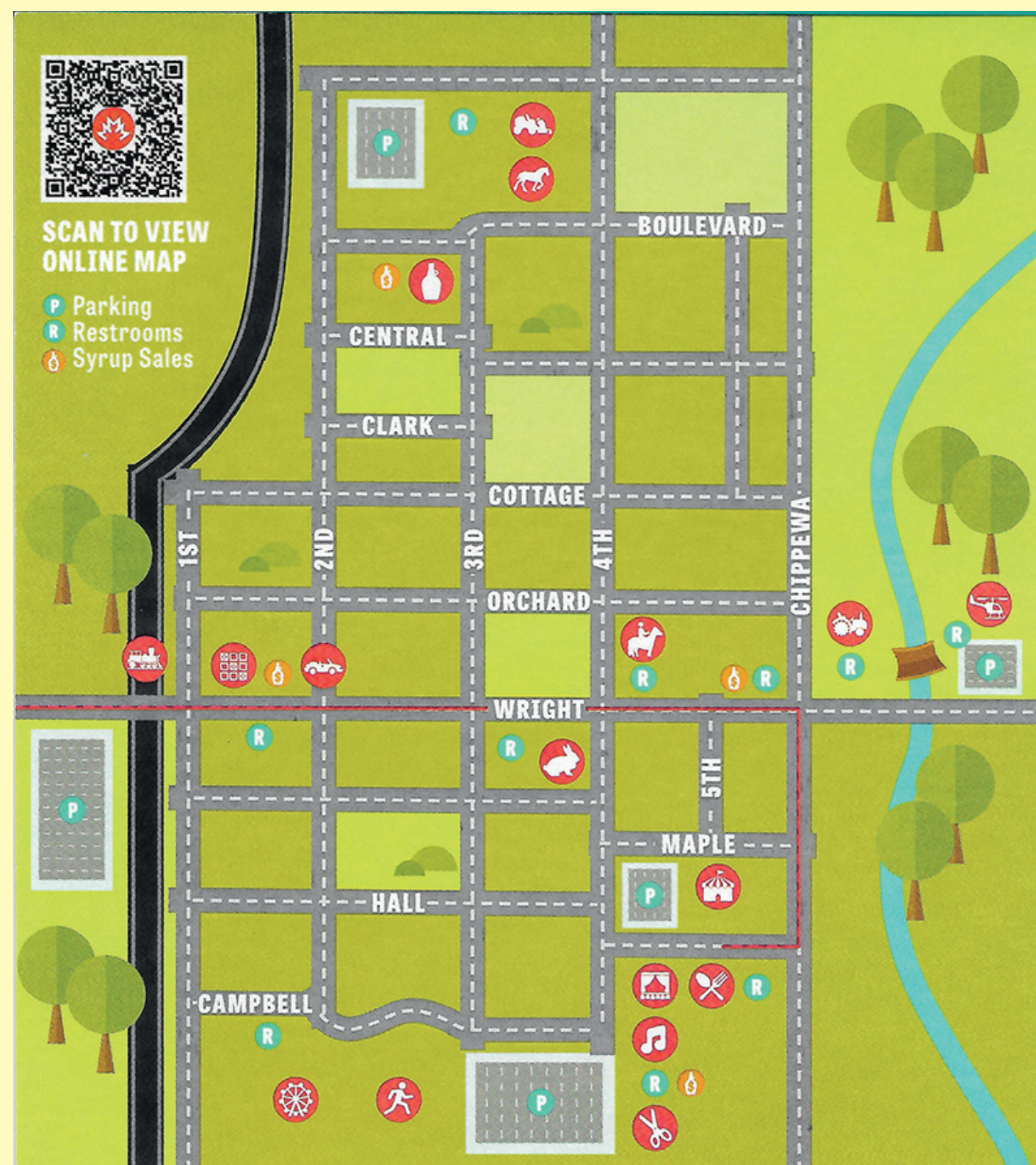
Arts & Crafts Show: 3 - 7 p.m.
Emergency Vehicle Parade: Dusk
Helicopter Rides: Noon - 8 p.m.
Lion's Club Bingo: 5 - 11 p.m.
Midway Carnival: 1 - 11 p.m.
Pancake & Sausage Meals: 3 - 7 p.m.
Pony Rides: 10 a.m. - 7 p.m.
Sugar Bush Open House & Syrup Sales: 4 - 8 p.m.

Saturday, April 23, 2022

5k Run/Walk: Race starts at 8 a.m.
Kids Fun Run at 9 a.m.
Arts & Crafts Show: 9 a.m. - 7 p.m.
Central Michigan Area Concert Band: 7 - 8:30 p.m.
Children's Village: 1 - 3 p.m.
Country Neighbors 4-H Petting Zoo: 10 a.m. - 2 p.m.
Classic Car & Truck Show 9 a.m. - 3 p.m.
Helicopter Rides: 10 a.m. - 8 p.m.
Horse Pull: 2 p.m.
Lion's Club Bingo: Noon - 11 p.m.
Midway Carnival: Noon - 11 p.m.
Pancake & Sausage Meals: 8 a.m. - 7 p.m.
Pony Rides: 10 a.m. - 7 p.m.
Sugar Bush Open House & Syrup Sales: 9 a.m. - 5 p.m.
Tractor Pull: 10 a.m.
Train Depot Museum: 10 a.m. - 2 p.m.

Sunday, April 24, 2022

Arts & Crafts Show: 9 a.m. - 2 p.m.
Garden Tractor Pull: Noon - 5 p.m.
Helicopter Rides: 9 a.m.
Maple Syrup Festival Parade: 2:30 p.m.
Midway Carnival: Noon - 8 p.m.
Pancake Eating Contest: 9 a.m.
Pancake & Sausage Meals: 8 a.m. - 2 p.m.
Pony Rides: 10 a.m. - 5 p.m.
Sugar Bush Open House & Syrup Sales: 9 a.m. - 2 p.m.
Train Depot Museum: 10 a.m. - 2 p.m.



SCAN TO VIEW ONLINE MAP

P Parking
R Restrooms
S Syrup Sales

Central Eavestroughing, LLC

LICENSED & INSURED • FREE ESTIMATES
Manufacturers of...
• 5" Seamless Gutter
• 6" Commercial Seamless Gutter
• Leaf Protectors
Quality & Service Are #1!
It's Gutter Cleaning Time!
QUALITY WORKMANSHIP FAST FRIENDLY SERVICE
Jeb Gilbert • (989) 828-6279 • Shepherd, MI



DO IT THE RITE-WAY...

New or Renew - We Can Do!
RITE-WAY ASPHALT PAVING, INC.
6562 East Pleasant Valley, Shepherd, MI 48883
(989) 828-6368

Berry Funeral Home

From Our Family to Yours



Ralph and Walter Berry
Directors

106 W. Wright Ave. • Shepherd
989-828-6400



FREE ESTIMATES
ANY MAKE OR MODEL
HASSLE FREE INSURANCE WORK

5598 S. Mission Rd., Mt. Pleasant, MI
989-317-0742
FAX 989-317-0505 • WWW.CLINTSBODYSHOP.COM

Powell FRAME & COLLISION
Professional Body Repairs
Foreign & Domestic Models
Hour & State Certified Technicians
Utilized Body & Frame Specialists
Insurance & Individual Work
Over 30 Years Experience
Direct Repair Shop
Free Estimates
COURTESY CARS AVAILABLE
Spraybake
828-6553
MONDAY-FRIDAY 8am-5pm
330 W. Wright Ave., Shepherd

C&R ELECTRIC

GENERAC

SALES • SERVICE • INSTALLATION
(989) 828-4020



491 E. WRIGHT AVE. • SHEPHERD MI 48883 • www.candrelec.com

SERVICING CENTRAL MICHIGAN FOR 32 YEARS

NOW OFFERING SOLAR INSTALLATIONS!
FINANCING AVAILABLE!



OLD FASHIONED
CANDY
AND SO MUCH MORE
DOWNTOWN ST. LOUIS
MOM & DAD'S
CANDY & ICE CREAM

Fas-Break AUTO GLASS

AUTO • HOME • BUSINESS • SCREENS
CONSTRUCTION & FARM EQUIPMENT
STORM WINDOWS • INSULATED UNITS

Shad Parks

Taking Care of Life's "Little Breaks"
MOBILE REPLACEMENT AND REPAIR

103 W. Washington Rd. | Bus. (989) 681-6126
St. Louis, MI 48880 | Fax (989) 681-4810

MID-MICHIGAN AGENCY INC.
Shepherd • Alma

Downtown Shepherd - stop in during the festival!

362 W. Wright Avenue • SHEPHERD, MI
(989) 828-5152
314 Gratiot • ALMA, MI
(989) 463-2450

We Sell Steel To The Public! Walk-In Customers Welcome!

BILL'S CUSTOM FAB, INC.
Estimator@billscustomfab.com • www.billscustomfab.com

See Us For All Your Steel Needs!

Residential • Agricultural • Industrial • High Definition Plasma Table
• Shear & Press Brake • Certified Welders • Portable Welding • Full Steel Inventory

Serving Central Michigan Since 1990

1836 Gover Parkway • Mt. Pleasant, MI 48858
(989) 772-5817 • Fax (989) 773-7704

Central Plumbing, Inc.

New Construction & Remodel Specialists
RESIDENTIAL - COMMERCIAL

- + Plumbing showroom with fixtures for kitchen and bath
- + Euro shower doors and installation
- + Water heater dealer
- + Sump pump and back-up systems
- + Installation of any plumbing need, old or new!

Experienced staff to service all your plumbing needs

989.772.9190
600 N. Mission St. • Mt. Pleasant, MI 48858
www.centralplumbinginc.com

HERSHBERGER'S

HARDWARE / LUMBER / BUILDING MATERIALS



Your project headquarters!
BUILDING SUPPLIES
Serving You For 15 Years!

"OUR GOAL IS QUALITY PRODUCTS, COMPETITIVE PRICES & OUTSTANDING SERVICE."

New Homes, Garages, Pole Barns & Decks

Lumber, OSB, Treated Posts Trusses, Windows, Doors, Concrete Blocks, Mortar, Redi-mix Concrete

Truckload Sale **WOOD PRIVACY FENCE** **\$49**
8X6 TREATED PANELS



New Dewalt & Milwaukee Showroom **Stop In For Some Great Deals!**

10289 N. Leaton Rd., Clare • (989) 386-5338

Full Line of Hardware & Building Supplies

JACK OF ALL TRADES COINS

1028 S. Mission
 (next to Jon's Country Burger)
I BUY ALL COINS
 Silver and Gold
FREE APPRAISALS
 we will come to your home to do free appraisals for your convenience.
Over 25 Years experience!

Do not take your coins, jewelry, gold, & silver to the we buy gold places they are not experts! We are your only experts! WE PAY YOU MORE THAN ANYONE!

I BUY ALL COLLECTIONS
 FROM ONE COIN TO A DUMP TRUCK FULL

We are a Full Buy • Sell • Trade shop!
ANTIQUES • COINS
 Jewelry • Collectibles & more!

Stop in or call Matt for your free appointment
517-204-0787



A Greener Approach to Affordable Housing

Heather Court 400 E. Warwick Dr., Alma
Tartan Terrace 423 Gratiot Ave., Alma

Heather Court & Tartan Terrace
 1 bedroom apartments for Elderly & Disabled
 Amenities include:

- * Laundry facility on site
- * Utilities included
- * Monthly Activities/Outings
- * Secured Building/Surveillance
- * 24 Hour Maintenance
- * Reduced Cable fee
- * Smoke-Free Policy

Rent is based on 30% of monthly gross income.

Hampton Park
 on Penrith Street, Alma
Forest Glen
 on Euclid Ave., Alma

Hampton Park & Forest Glen have 3 & 4 bedroom family apartments
 Must qualify under HUD guidelines as a low-income household.

Alma Housing Commission
 is accepting applicants for 1, 3 & 4 bedroom apartments.

989-463-4200

Downloadable application @ www.ci.alma.mi.us or stop in for an application

400 E. Warwick Dr; Alma
 Office Hours: Mon. - Fri., 9AM - Noon and 1:30 - 4pm



Housing Choice Voucher Program is now OPEN!
No application fee



Get two years of TV with a price that's guaranteed.

190 Channels
 America's Top 120

FX NEWS, FOX, food, Disney

Plus More!

\$69.99/mo.

190+ Channels
 America's Top 120 Plus

ESPN, BTN

Plus More!

\$15 more/mo.
 (Compared to America's Top 120).

BEST VALUE

240+ Channels
 America's Top 200

Disney Junior, div, Hallmark

Plus More!

\$25 more/mo.
 (Compared to America's Top 120).

290+ Channels
 America's Top 250

SPORTSMAN CHANNEL, STARZENCORE WESTERN

Plus More!

\$35 more/mo.
 (Compared to America's Top 120).

All packages include a 2-Year TV Price Guarantee, local channels, ESPN, FREE HD for Life®, FREE Standard Professional Installation, FREE Premium Channels for 3 months and 99% signal reliability.

dish \$200

Get better TV and a \$200 prepaid card.
 Courtesy of named DISH Authorized Retailer.

SHOP Local

Thanks for supporting us, your neighborhood Retailer.
 We give you the best entertainment experience, with a local touch.

Shop local for superior, local service today!



Xsell Communications
(989) 200-3351

4101 S Lincoln Rd Mt. Pleasant, MI 48858



Offer for new and qualifying former customers only. Important Terms and Conditions: Qualification: Advertised price requires credit qualification and 2-year commitment. Upfront activation and/or receiver upgrade fees may apply based on credit qualification. **Offer ends 07/13/2022. Offer requires 2 year commitment:** Early termination fee of \$20/mo. remaining applies if you cancel early. **Included in 2-year price guarantee at \$69.99 advertised price:** America's Top 120 programming package, local channels, HD service fees, and Hopper Duo Smart DVR for 1 TV. **Included in 2-year price guarantee for additional cost:** Programming package upgrades (\$84.99 for AT120+, \$94.99 for AT200, \$104.99 for AT250), monthly fees for upgraded or additional receivers (\$5-\$7 per additional TV, receivers with additional functionality may be \$10-\$15). **NOT included in 2-year price guarantee or advertised price (and subject to change):** Taxes & surcharges, add-on programming (including premium channels), DISH Protect, and transactional fees. **Premium Channels:** 3 Mos. Free: After 3 mos., you will be billed \$30/mo. for Showtime, Starz, and DISH Movie Pack unless you call or go online to cancel. **Remote:** The DISH Voice Remote with Google Assistant requires internet-connected Hopper, Joey, or Wally device. Customer must press Voice Remote button to activate feature. Google Assistant Smart Home features require Google account and compatible devices. Google is a trademark of Google LLC. **Other:** All packages, programming, features, and functionality and all prices and fees not included in price guarantee are subject to change without notice. After 6 mos., if selected, you will be billed \$9.99/mo. for DISH Protect Silver unless you call to cancel. After 2 years, then-current everyday prices for all services apply. For business customers, additional monthly fees may apply. Free standard professional installation only. Some features, including mobile alerts, remote control, video recording, video recording, control and custom schedules, require the Nest app, working internet and Wi-Fi, and Nest Connect or Nest Guard. Google, Nest Hello, Nest Thermostat, Nest Cam (battery) and other marks are trademarks of Google LLC.

Spend Your Tax Refund Here

"The Outlet Store That Saves You More"
West Branch Furniture

Coaster Wallaway Recliner



COASTER

\$249

Ashley Wallaway Recliner

Available in 3 colors



ASHLEY

Your Choice

\$349

Ashley Durapella Microfiber Rocker Recliner

7 Colors Available



ASHLEY

Ashley Power Recliner



ASHLEY

\$459

Rocker Recliner



ASHLEY

\$479

Accent Chair



\$279

Kelly Sofa

*2 colors available



\$599

5-Piece Dinette Set



\$599

Holland House Oak Glider Rocker



\$329

Ashley 4 Drawer Chest



\$249

Sofa with Reversible Chaise

*2 colors to choose from



\$699

Rustic Room Size Rugs

*your choice of designs

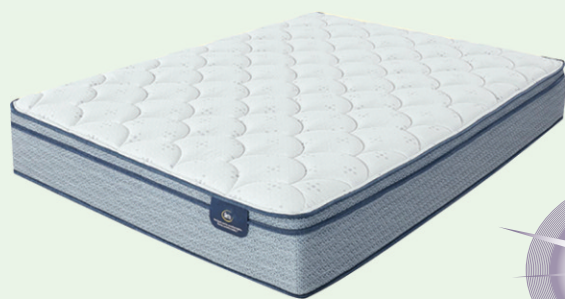


\$119

Antler Lamps



\$66



Queen Size Eurotop Mattress Set

\$399



2-PC SECTIONAL

\$1,199

ASK ABOUT OUR INTEREST FREE FINANCING PLANS

FREE 90-DAY LAYAWAY PLAN AVAILABLE

NO CREDIT NEEDED... \$0.00 DOWN TAKE IT HOME TODAY!

WEST BRANCH
Firm or Eurotop

TWIN MATTRESS.....\$319⁰⁰ QUEEN MATTRESS ..\$399⁰⁰
 FULL MATTRESS.....\$379⁰⁰ KING MATTRESS\$599⁰⁰

Erie Firm or Plush



TWIN MATTRESS..... \$349⁰⁰ QUEEN MATTRESS . \$449⁰⁰
 FULL MATTRESS..... \$399⁰⁰ KING MATTRESS \$679⁰⁰

Level 5 Firm or Eurotop



TWIN MATTRESS.....\$419⁰⁰ QUEEN MATTRESS ..\$549⁰⁰
 FULL MATTRESS.....\$499⁰⁰ KING MATTRESS\$749⁰⁰

Level 9 Extra Firm, Plush, or Eurotop



TWIN MATTRESS..... \$629⁰⁰ QUEEN MATTRESS . \$799⁰⁰
 FULL MATTRESS..... \$749⁰⁰ KING MATTRESS.. \$1,099⁰⁰



"The Outlet Store That Saves You More!"

136 S. Fifth St.

located one block south of Mercantile Bank off Houghton Ave.

989-345-5326

Sunday 11-3 • Mon.-Fri. 10-6 • Sat. 10-5
WEST BRANCH DOWNTOWN STORAGE





DEWEY'S TRADING POST
 Maple Rapids • 682-4158
 Monday-Saturday: 8am - 7pm, Closed Sunday
 Prices In This Ad Good for Week of April 18th - April 23rd, 2022
 Bridge Card • VISA • Mastercard • Discover
 American Express • Debit Card

Select New York Strips 13lb Avg \$5⁹⁹ LB. <small>CUT FREE!</small>	Fresh "Grobbels" Corned Beef Brisket \$6⁹⁹ LB.	"Bone In" Pork Chops \$2¹⁹ LB.
"Fresh" Breaded Pork Cutlets \$4⁴⁹ LB.	Stuffed Pork Chops \$3⁴⁹ LB.	5lb Bags Ground Chuck 80/20 \$1⁹⁹ A Bag!!
Boneless Arm Roast \$3⁴⁹ LB.	Boneless "Choice" Sirloin Steaks \$8⁹⁹ LB.	"Frozen" Individual Slab Ribs "Pork" \$2⁹⁹ LB.
Slabs of Pork Bellies Fresh - Frozen (Avg 2lb) \$4²⁹ LB.	Our Own Brats "Fresh" Bacon-n-Cheddar - Cheddar - Teriyaki Pineapple \$4⁹⁹ LB.	Our Own Smoked Roasted Sausage \$7⁷⁹ LB.
Smoked Pork Chops \$4⁴⁹ LB.	Our "Bulk" Yogurt Pretzels 20% OFF	

DeweysTradingPost.biz
 LIKE us on Facebook & see our WEEKLY SPECIALS!

PAWN SHOP

CASH FOR GUNS
CASH FOR GOLD & MORE
3 MONTH PAWNS

GLADWIN TRADE & SALES

BUY - SELL - TRADE & PAWN

989-426-6811

1739 N. State Street (N. M-18) • Gladwin



BUY - SELL - HUNT FOR A JOB
 CLASSIFIEDS WORK. CALL TODAY!

Business Card Directory

To place an ad contact the ad consultant in your area:

- Marlene...Clare & Gladwin Counties • 989-506-4647
- Kindra...Clare & Midland Counties • 989-506-4640
- Carol...Isabella & Roscommon Counties • 989-323-7044
- Vonda...Griot County • 989-506-4349

NORTHERNMAT
 Firewood For Sale
 Delivery Available
 Ben Hertzler or Nelson Stutzman
 (989) 802-2502
 2495 Rock Rd., Clare

The Ultimate Wood Heat.

Set the thermostat where you want for a more comfortable home

- More Comfort** - Thermostatically controlled wood heat.
- Peace of Mind** - Keep the fire outside and eliminate the dangers associated with indoor wood heating.
- Save Money** - Wood is a renewable, inexpensive and often free energy source.
- Durability** - Long-lasting, stainless steel firebox.

Beaverton Outdoor Wood Furnace
 3032 Calhoun Rd.
 Beaverton, MI 48612
 989-435-9240
 beavertonoutdoorwoodfurnace.com

CLASSIC EDGE
 TITANIUM HD SERIES
 Outdoor Wood Furnace

Central Boiler outdoor furnaces adapt easily to new or existing heating systems. It's important that your outdoor furnace and system be properly sized and installed. See dealer for details.
 CentralBoiler.com

CARROW CREEK SUPPLY
 ALL YOUR PRODUCE GROWING NEEDS

Irrigation • Pots
 Home Gardening Seeds
 Ground Cover/Plastics

Dealer for
 ISP technologies

Specialized Fertilizer For Produce

Jay & Irene Stutzman
 (989) 386-6876
 8783 S. Brand Ave, Clare
 Hours: Mon.-Fri. 8-5, 8-1 Sat.

MIDSTATE SPRAY FOAM INSULATION
 CLOSED AND OPEN CELL
 YOUR OPTIMAL SOLUTION FOR...

- Saving On Energy Costs
- Improved Air Quality
- Eliminating Hot And Cold Spots
- Adding Strength To The Building Structure
- Air and Moisture Control to Prevent the formation of Harmful Mold And Mildew

CALL US FOR A QUOTE TODAY
Daniel Coblentz - Licensed Builder Or **Eli Coblentz**
 (989) 386-8944 • 9493 S. Athey, Clare

Blooming Blessings GREENHOUSE

Planters, Potting, Bedding & Vegetable Plants, Perennials & Shrubs
 Hanging Baskets

Open: Monday, Tuesday, Wednesday & Friday 9-6 • Saturday 9-4
 Closed: Thursday & Sunday

11700 N. Summerton Rd, Clare
 (989) 386-4185

PIONEER POLE BUILDINGS INC.

7400 S. Clare Ave. • Clare, Michigan 48617
 800-292-0679
 www.pioneerpole.com

Serving Mid-Michigan Since 1952

bieri
 HEARING SPECIALISTS
 Clare/Midland
888-641-0087

FREE Hearing Screening & Consult
 www.bierihearing.com

Natural Way Feeds LLC
 NWF Non GMO Feeds

Complete line of livestock vitamins, minerals and probiotic supplements.
Pine Valley County Store
 Bulk Foods!

Mon.-Sat. 8-6 Closed Thurs. & Sunday
 8181 S. Cornwell Ave. Clare

Buyer Of Hardwood Logs And Standing Timber

NORTHERNMAT
 Used Access Mats For Sale - Call For Deals (989) 802-2502

Access Mats, Crane Mats & Swamp Mats
Log Buyer, Ike Esh • (989) 339-6323
 2495 ROCK Rd. Clare

Business Card Directory

To place an ad contact the ad consultant in your area:

Marlene...Clare & Gladwin Counties • 989-506-4647

Kindra...Clare & Midland Counties • 989-506-4640

Carol...Isabella & Roscommon Counties • 989-323-7044

Vonda...Gratiot County • 989-506-4349



POLE BARNs

James Morche Builders

YOUR BUILDER FROM START TO FINISH
garages • pole barns • concrete work
FREE estimates

James Morche Cell 989-429-3479 • 989-539-9126
Licensed & Insured

Big Or Small - We Do Them All!
FREE ESTIMATES

A & M

METAL ROOFING

989-487-9066

5023 Grass Lake Rd. - Clare

Mast Metal Roofing

Free Estimates
Specializing In Roofing
Standing Seam, Regular Steel, Shingles & More

Perry Mast
9780 E. Oak, Clare
Work (989) 418-2570
Home (989) 313-2176

North Country Metals, LLP

Specializing in
New Roofs & Reroofs!

Metal Roofing & Siding
(989) 386-3013
5139 Pere Marquette
Clare

Everlast Roofing, Inc.
everlastingroofing.com

NEW LOCATION
Come Check Out Our New Lot!

POD CRAFT STRUCTURES, LLC

8675 S. Rodgers Ave., Clare
Mon., Wed., Fri., & Sat. 8 AM - 5 PM
Tues. & Thurs. by appointment
Closed Sundays
(989) 487-5173

Beat The Spring Rush! Order Now | New Buildings Arriving Weekly | Monthly Payment Options

'Customer satisfaction is our priority'

Call today for a free quote!
Custom Built Portable Buildings To Your Design!
Statewide Delivery

Capital EQUIPMENT

Clare • 302 N. McEwan
989-386-2192

RENTAL EQUIPMENT:

Kubota Excavators
www.cedealer.com

METAL ROOFING

Quality & Customer Satisfaction Is Our Goal!
William Byler • 9113 Washington Rd., Clare
Free Estimates • (989) 487-5665 Work • (989) 802-9506

VALET AUTO CARE, INC.

Since 1983

- A.R.E. Pickup Toppers
- Over 100 New & Used Toppers in Stock
- Truck Accessories
- Tonneau Covers

LEER LIVE LARGER
P.R.E. Because you love your truck
www.valetauto.com

James Motz - Owner
610 N. Mission (3 blocks S. of Meijer) Mt. Pleasant (989) 773-3477

KAPS ANA Member KOINS LLC

located across from the Doherty Hotel

Silver & Gold Coins Bought & Sold

Integrity, Honesty & Peace of Mind.
That's what you deserve when it comes to your Coins & Currency!!!

Thomas Kapuscinski
611 N. McEwan St. Clare, MI 48617
231-357-2105 • 989-386-6500
tjkap@charter.net

Mon.-Fri. 9:30am-5:30pm
Sat. 10:00am-2:00pm
or by appointment

NOW BUYING Sterling Silverware & Scrap Gold

BBB ACCREDITED BUSINESS

MAST BROTHER HARDWOODS

BUYERS OF LOGS AND STANDING TIMBER

- Select Cutting Only
- Paying Top Prices
- Helping landowners improve forest quality for a lifetime
- With Little or No Damage

ALTON MAST, OWNER
(989) 487-5575

Billsby LUMBER

BUYERS OF STANDING TIMBER and TIMBERLANDS
PURCHASING ALL SPECIES
PROFESSIONAL FOREST MANAGEMENT
SINCE 1972

FIREWOOD AVAILABLE BY THE TRUCKLOAD
CALL FOR INFO AND PRICING

2725 Larch Rd. Harrison, M 48625
989-539-9842
billsbylumber.com • info@billsbylumber.com

TOM'S POLE BUILDINGS

Over 30 Years Experience

Special! POLE BUILDINGS & GARAGES
ROOFING & SIDING
CONCRETE FLOORS DRIVEWAYS & FENCING

FEATURING ULTRA 2000 19 colors to choose from
And A 45 YEAR WARRANTY

From Beginning permit To Cleanup, We Do It All!
1-800-541-3974
We accept major credit cards. • email: tompolebuildings@yahoo.com

Miller's CONTRACTING LLC

We build: Pole Barns, Garages, Metal Roofing

**All types of concrete work:
Specializing in Flatwork**

Marvin Miller
Licensed
(989) 487-4531

St. Helen-Roscommon Monument, Inc

"Because every life deserves to be remembered"

Spring Hours: Tues-Wed-Thurs 10-3
or by appointment
Visit our indoor showroom at:
101 E. Federal Highway, Roscommon
www.shmonument.com - 989-389-4921
or email: shrmonument@gmail.com

E & K EXCAVATING

- SEPTIC SYSTEMS
- PONDS
- DRIVEWAYS AND ROADS
- LAND CLEARING

LICENSED
EDWIN STEINER

2239 EAST DENVER RD. ROSEBUSH, MI 48878
989-433-0004 or cell 989-430-2461

simple human sense

Burkhart-Presidio INSURANCE AGENCY
989-426-9278

Auto-Owners INSURANCE

ABC Auto Body

313 W. Knox Road,
Beaverton, MI
1/2 Mile West of M-30
989-435-2707

WE TAKE PRIDE IN YOUR RIDE!

- Quality Collision Repair
- Free Estimates
- Insurance Work Welcome
- Custom Color Matching & Painting
- We Repair All Makes and Models
- CarLight Truck
- Genuine Original Equipment Parts

Park it in the CLASSIFIEDS *and watch it go fast!*



HELP WANTED GENERAL

TAKING APPLICATIONS

FOR MORNING SUN CARRIERS
EARLY MORNING DELIVERY 7 DAYS A WEEK. MUST HAVE A DEPENDABLE VEHICLE

ROUTES OPENING SOON IN ISABELLA COUNTY

PLEASE CONTACT BRENDA AT 989-779-6156

THE MID-MICHIGAN BUYERS GUIDE HAS ROUTES OPENING IN ALL AREAS. IF INTERESTED, PLEASE CONTACT: BRENDA AT 989-779-6156

ANTIQUES

ANTIQU SINGER Sewing Machine, manufacture #66, owners manual, all attachments, perfect condition. 1961 machine. Best Offer. 989-463-3581 or 212-499-1774.

AUCTIONS

Saturday, April 23, 2022 at 10:00 a.m. 14650 Dunn Rd., Haslett, MI. John Deere tractors; Kawasaki Mule; Desirable collectibles including Petrolina; Pedal cars; plane, tractors, more. Details/photos at www.NarhiAuctions.com 810-348-6442

BARGAINS!

DENTAL INSURANCE from Physicians Mutual Insurance Company. Coverage for [350+] procedures. Real dental insurance - NOT just a discount plan. [Don't Wait!] Call now! Get your FREE Dental Information Kit with all the details! 1-877-253-3162 www.dental50plus.com/55 #6258

DIRECTV for \$69.99/mo for 12 months with CHOICE Package. Watch your favorite live sports, news & entertainment anywhere. One year of HBO Max FREE. Directv is #1 in Customer Satisfaction (JD Power & Assoc.) Call for more details! (Some restrictions apply). Call 1-888-351-0154

CLASSIFIED - The one-stop shopping place! Convenience, Selection, Values. Classified - your complete marketplace.

COLLECTIBLES & MEMORABILIA

BUYING COINS, Sports Cards and Stamp Collections. Top \$\$\$ Paid. Call 248-471-4451

FURNITURE

BEDS-BEDS-BEDS! MATTRESSES ANY size and any comfort. Delivery anywhere in Michigan. DanDantheMattressMan.com

PERSONALS

PAWN SHOP Buy, Sell, Pawn

CASH FOR GUNS CASH FOR GOLD
3 Month Pawn 3% + \$3 Per Month

Gladwin Trade & Sales 989-426-6811

GENERAL ANNOUNCEMENTS

Need help placing your classified ads in the Morning Sun OR the Mid Michigan Buyers Guide?

I can help you with OBITUARIES, LEGALS, EMPLOYMENT, MEMORIUM'S, HOUSE FOR SALE OR RENT, ANYTHING YOU HAVE TO SELL, GARAGE SALES, ESTATE SALES.

Call Cindy at 989-779-6115 or email her at cterwilliger@michigannewspapers.com

If You Need Help Regarding Your Delivery, Call 888-349-4042

Need help placing your classified ads in the Morning Sun OR the Mid Michigan Buyers Guide?

I can help you with OBITUARIES, LEGALS, EMPLOYMENT, MEMORIUM'S, HOUSE FOR SALE OR RENT, ANYTHING YOU HAVE TO SELL, GARAGE SALES, ESTATE SALES.

Call Cindy at 989-779-6115 or email her at cterwilliger@michigannewspapers.com

If You Need Help Regarding Your Delivery, Call 888-349-4042

LAWN & GARDEN

WILLIAMS LAWN CARE. (989) 239-0810 MOWING, TREE TRIMMING, LANDSCAPING

MISCELLANEOUS

ADJUSTABLE BED New with Imcomfort gel memory foam mattress. Retail Cost \$3,995.00, sacrifice for \$875.00. Call for showing or delivery: 989-615-2951.

ALOE CARE HEALTH, medical alert system. The most advanced medical alert product on the market. Voice-activated! No wifi needed! Special offer - call and mention offer code CARE20 to get \$20 off Mobile Companion. Call today 1-877-542-1384

BATH & SHOWER UPDATES in as little as ONE DAY! Affordable prices - No payments for 18 months! Lifetime warranty & professional installs. Senior & Military Discounts available. Call: 877-401-2404

BRUSH HOG FOR SALE
 5 foot, Ex cond \$1000 OBO
 Call 989-643-5916 or 989-996-2207

BUILT BEST BARNS Michigan's Largest Pole Barn Company. Best Quality, Best Service, ORDER NOW for BEST PRICING! License/Insured. 989-205-2534

BUILT RITE POLE BUILDINGS State-wide, 24x40x10=\$20,400.00 30x40x10=\$23,300.00 Erected on your site. Call for price not shown on any size building or go to www.builtritepolebuildings.net 989-259-2015 Days 989-6001010 Evenings

DISCOUNT AIR TRAVEL Call Flight Services for best pricing on domestic & international flights inside and from the US. Serving United, Delta, American & Southwest and many more airlines. Call for free quote now! Have travel dates ready! 866-314-9880

DISH Network. \$64.99 for 190 Channels! Blazing Fast Internet, \$19.99/mo. (where available.) Switch & Get a FREE \$100 Visa Gift Card. FREE Voice Remote. FREE HD DVR. FREE Streaming on ALL Devices. Call Today! 1-866-950-6757

LOOKING FOR HELP? People everywhere read the want ads. Phone today to place the ad that people want to read.

ELIMINATE GUTTER cleaning forever! LeafFilter, the most advanced debris-blocking gutter protection. Schedule a FREE LeafFilter estimate today. 15% off Entire Purchase. 10% Senior & Military Discounts. Call 1-844-369-2501

FULL TIME Sale/Office Manager for a community newspaper located in Southwestern Michigan. Sales experience, excellent communication, computer & organizational skills are essential. Ability to work in a fast-paced deadline-oriented environment. Send Resume to: JackGuza@cpapersmi.com

Live Farm Auction Saturday, April 23, 2022, 10:00 a.m. 7149 Dodge Road, Mt. Morris, MI. Discs; 2 Cultipackers; Planters; Trailers; Hyd. car hoist; Brush hogs; Commercial mower, more! Thurlow Auction Service 810-686-1445

GENERAL ANNOUNCEMENTS

MISCELLANEOUS

LOOKING FOR ASSISTED LIVING, memory care, or independent living? A Place for Mom simplifies the process of finding senior living at no cost to your family. Call 1-888-978-0584 today!

METAL ROOFING regular and shingle style, HALF OFF SPECIAL COLORS! Lifetime asphalt shingles. Licensed and insured builders. Pole Buildings. Quality work for 40 years! AMISH CREW 517-575-3695.

Prepare for power outages with a GENERAC home stand-by generator \$0 Money Down + Low Monthly Payment Options. Request a FREE quote. Call now before the next power outage: 1-855-922-0420

REPLACE YOUR ROOF with the best looking and longest lasting material - steel from Erie Metal Roofs! Three styles and multiple colors available. Guaranteed to last a lifetime! Limited Time Offer - \$500 Discount + Additional 10% off install (for military, health workers & 1st responders.) Call Erie Metal Roofs 1-888-718-1856

Tape duplication! Transfer your old VHS, 8mm, film, photos, slides, audio tapes, and flash drives to DVD's!! Great gift! Local service! Main Street Audio/Video 989-773-7370

THE GENERAC PWRcell, a solar plus battery storage system. SAVE money, reduce your reliance on the grid, prepare for power outages and power your home. Full installation services available. \$0 Down Financing Option. Request a FREE, no obligation, quote today. Call 1-855-476-9698

TOP CASH PAID FOR OLD GUITARS! 1920-1980 Gibson, Martin, Fender, Gretsch, Epiphone, Guild, Mosrite, Rickenbacker, Prairie State, D'Angelico, Stromberg, And Gibson Mandolins / Banjos. 844-904-2336

Toyota Tacoma 4X4; Bear Rug; Antiques/Collectibles; Sound system, more - Doty online Estate Auction. Smith online auction features a 2017 Jeep Patriot; Cub Cadet rear engine riding mower, more. Bid.SherwoodAuctionServiceLLC.com 1.800.835.0495

VACATION CABINS for rent in Canada. Fish for abundant walleye, perch, northern pike. Boats, motors, gasoline included. For free brochure call Hugh 1-800-426-2550 www.CanadianFishing.com

IS YOUR CLOSET overflowing with odds and ends, this and that? Place a classified to help end the clutter.

Vehicles, Farm, Firearms, Collectibles, Recreational, Estates & More! To participate, visit johnpeckauctions.com Thinking of your own auction? We've been conducting successful statewide live & online auctions since 1979. Call John 989-426-8061

HOT! OFF THE PRESS
 For a complete listing of today's ads, check out our classified section

COLLECTIBLES & MEMORABILIA

BUYING COINS, Sports Cards and Stamp Collections. Top \$\$\$ Paid. Call 248-471-4451

MISCELLANEOUS

WESLEY FINANCIAL GROUP, LLC Timeshare Cancellation Experts. Over \$50,000,000 in timeshare debt and fees cancelled in 2019. Get free informational package and learn how to get rid of your timeshare! Free consultations. Over 450 positive reviews. Call 855.473.7811

BUILDING MATERIALS & SUPPLIES



BUILT BEST BARNS Michigan's Largest Pole Barn Company Best Quality, Best Service,

ORDER NOW for BEST PRICING!

License/Insured
 989-205-2534

CAN'T FIND what you're looking for? Find it the fast & easy, effective way by using the classifieds! Call and place a low cost classified ad under "Wanted To Buy" in next week's paper.

APARTMENTS FOR RENT (UNFURNISHED)

1 TO 6 PERSON APTS. Furnished, Short & Long Term Leases, FREE WiFi. (989) 772-2222 www.LiveWithUnited.com

PASSENGER CARS

2020 GMC Acadia

only 10,000 miles, V-6 Motor, All Wheel Drive, Power Sunroof, 3rd Row Seating, 7 Passenger.

Great color! 100% Mint Condition!

ONLY \$42,995 OR @579./MONTH

Dick Sovo Auto Sales (989) 828-6032 dicksovaautosales.com

FARM - HEAVY EQUIPMENT & PARTS

BUY FUEL DIRECT & SAVE

DIESEL FUELS GASOLINE HOME HEATING OILS

•Farm •Commercial •Industrial •Residential

Call Scott Capen 989-620-7527 www.Fuel-Delivery.com

Serving the entire Central Michigan Area



PASSENGER CARS

2021 Chevy Traverse LT

Captain's Chairs, 3rd Row Seating, 7 passenger, heated seats.

Beautiful Silver Ice Metallic!!

ONLY \$42,995 OR @579./MONTH

Dick Sovo Auto Sales (989) 828-6032 dicksovaautosales.com

REMEMBER - when placing a classified to get fast results be sure to include:
 1) all the details
 2) include the price
 3) be available to callers
 As easy as 1 - 2 - 3!

MOTORCYCLES

POND/LAKE WEED Removal Tools (The #1 alternative to chemicals.) Performs C.P.R. Cuts-Pulls-Rakes. Veteran invented and made in Michigan. Still \$150.00, no price increase! 989.529.3992 WeedgatorProducts.com



NEED HELP? CALL A LOCAL PROFESSIONAL FROM OUR

Professional Services Directory

HEALTH & FITNESS

VIAGRA AND CIALIS USERS! 50 Generic Pills SPECIAL \$99.00 100% guaranteed. 24/7 CALL NOW! 888-835-7273 Hablamos Espanol

Want fast cash?

Our Classified advertisers get great results.

If you have merchandise to sell, place a classified ad by calling 877-483-3450

Don't Drink & Drive

Do you have a car for sale? How about a boat? Or maybe some furniture?

Call to place a classified ad with one of our helpful representatives & sell your no longer wanted items **FAST!**



ESTATE SALES

ROBERT KRELL ESTATE SALE 615 FOREST AVE. CLARE, MI. 48617

FRI, APRIL 22, 9-5:00 SAT, APRIL 23, 9-4:00

DIRECTIONS: CLARE, MI. FROM NORTH MCEWAN ST. & WILCOX PKWY.TURN (RIGHT) EAST GO 3/4 MILE TO SALE!!!! FOLLOW SIGNS

AMISH OAK DINING TABLE/4 & 1 LEAF; ETHAN ALLEN HITCHCOCK STYLE BLACK STENCIL CONSOLE CABINET/MIRROR, ROCKER, PEDESTAL SIDE TABLE, CHAIR; OAK FARMHOUSE SQUARE TABLE/4 CHAIRS & 6 LEAVES; ANTIQUE OAK HOOSIER CABINET 5'9" X 42" W X 25" D; PINE QUEEN HEADBOARD & MATTRESS SET; (2) PINE CHEST OF DRAWERS; "KROEHLER" MAPLE & DRAWER DRESSER; FULL HEADBOARD & MATTRESS SET; TWIN MATTRESS; ROLLTOP DESK; 3 DRAWER SIDE CHEST; AMISH OAK ICE BOX CHEST CABINET; (3) OAK BAR STOOLS; OAK TABLE LAMP; CROSLY RADIO/RECORDER PLAYER; TV'S ; SAMSUNG SOUND BAR; PIONEER RECEIVER; BEOGRAM 2400 ; CHERRY ROCKER; CRYSTAL; FENTON; CARNIVAL GLASS; UCAGO CHINA SET "THERESA"; GOEBEL; COSTUME JEWELRY; "LOUIS L'AMOUR WESTERN BOOK SET; ADIRONDACK CHAIR; LINENS; LINENS & HOUSEHOLD "HIBBARD" BUTTER CHURN; CROCKS; LIGHTNING RODS; PORCELAIN GREEN 18" LAMP SHADES; BRIGGS & STRATTON SNOW BLOWER; SCROLL SAW/TABLE; LADDER; 2 TREE HUNTING STANDS; ICE AUGER; 12 WHITE STORM WINDOWS; 2 ANTIQUE CULTIVATORS; WHEELBARROW; ATV RAMS; HAND & POWER TOOLS AND MORE!!!!

CASH FOLLOW US ON "FACEBOOK

ALL ITEMS ARE PRICED! SALE INSIDE OF HOUSE WE OPEN AT 9:00!!!

GOSTOLA ESTATE SALES SERVICE



Did you hear?

Miracle-Ear's latest advanced digital hearing solution - **the Miracle-Ear Genius** - can help you enjoy a better quality of life. Are you really getting the best out of your *vintage* hearing aids?

*Discreet design! Comfort fit!
Natural sound quality!*



All wrapped up in our smallest hearing aid ever!

WE ARE HERE FOR YOU

Come in today and let us help you start your hearing journey.

FREE*

Hearing Evaluation & Otoscope Assessment

\$125 VALUE!

2 for \$895

Receive Miracle-Ear MINI™ 1 Hearing aids at \$895 for a limited time only.

Limit one coupon offer per patient at the promotional price during event dates only. Not valid with any other discount or offer. Does not apply to prior purchases. Valid on MINI Solution 1 only. Expires 4/30/2022

FREE \$20

Aldi Gift Card



One coupon per household. Must be 60 or older. Must complete a hearing test. Not valid with prior test/purchase in last 6 months. While supplies last. Not redeemable for cash. Expires 4/30/2022.

Financing Options Available through April 30th

100% FINANCING APPROVAL**



12 MONTHS INTEREST FREE FINANCING**

Did you know?

MIRACLE-EAR OFFERS HEARING AIDS AT NO COST TO BCBS FEDERAL EMPLOYEES

That's Right... No Co-Pay! No Exam Fee! No Adjustment Fee!

Federal employees with insurance codes #104, #105, #106, #111, #112 or #113 can receive 2 Solution 1 hearing aids COMPLETELY FREE! Basic plans and federal retirees may be covered. See store for details and accurate coverage.



CALL 1-888-387-3068

MIRACLE-EAR HEARING AID CENTERS

MOUNT PLEASANT

100 S Mission St., Ste G
meoffer.me/mtpleasant-mi

PRUDENVILLE

828 W. Houghton Lake Dr.
meoffer.me/prudenville

CLARE

Carousel Mall, 1430 N. McEwan St.
meoffer.me/clare

ALMA

303 W. Superior Street, Ste 3
meoffer.me/alma

GLADWIN

Neeley Building, 127 N. Arcade, Ste 2
meoffer.me/gladwin

WEST BRANCH

Fairview Plaza, 511 E Houghton Ave., Ste D
meoffer.me/westbranch

*Hearing test is always free. Hearing test is an audiometric test to determine proper amplification needs only, not a medical exam.**Financing options may not be combined. See stores for details. Available through 4/30/2022. Blue Cross Blue Shield is a registered trademark of Blue Cross Blue Shield. Blue Cross Blue Shield is not affiliated with, nor does it endorse or sponsor, the contents of this advertisement. Trademarks referring to specific providers are used by Miracle Ear for nominative purposes only: to truthfully identify the source of the services about which information is provided. Such trademarks are solely the property of their respective owners.

VanDrie

HOME FURNISHINGS

ENDS SATURDAY!

BUY MORE SAVE MORE **\$800 off!**
up to



Chaise Sofa
Compare At \$1999.95

\$798

super value!

WITH PURCHASES OF \$7000 OR MORE:

an extra \$800 off

Furniture, Mattresses or Flooring
\$400 Off Appliances

WITH PURCHASES OF \$4000 - \$6999: **an extra \$400 off**
Furniture, Mattresses or Flooring
\$200 Off Appliances

WITH PURCHASES OF \$2500 - \$3999: **an extra \$200 off**
Furniture, Mattresses or Flooring
\$100 Off Appliances

WITH PURCHASES OF \$1300 - \$2499: **an extra \$100 off**
Furniture, Mattresses or Flooring
\$50 Off Appliances

Plus!
6 MONTHS SPECIAL FINANCING AVAILABLE*



L A Z B O Y

Rocking Recliner
Compare At \$1199.95

\$598

super value!



super value!

Beautyrest.

Firm Queen Mattress
Compare At \$689.95

\$299

Compare at
Twin Size.....\$529.95.....\$229
Full Size.....\$649.95.....\$279



FRIGIDAIRE
Top-Freezer Refrigerator

\$719

FFTR1814TW
18 Cu. Ft. Capacity Fridge
Store-More™ Crisper Drawers
ADA Compliant
Reversible Door

super value!

SAVE UP TO 50% ON SELECT FLOORING

[invincible.]
VINYL PLANK with attached pad
\$389 sq. ft.
20 COLORS!

MIRROR LAKE WATERPROOF LAMINATE
\$389 sq. ft.
31 COLORS!

IN STOCK CARPET Starting At **88¢** sq. ft.
super value!

IN STOCK WATERPROOF PLANK with attached pad
\$299 sq. ft.
super value!

CADILLAC 7591 BUS 131 • (231) 775-8536
BIG RAPIDS 314 N. State • (231) 796-7667
HOUGHTON LAKE 6455 W. Houghton Lake Dr. • (989) 422-5734

TRVERSE CITY 657 N. US 31 South • (231) 943-7662
HOURS Mon - Fri 10am-8pm Saturday 10am-6pm

vandrie.com

You'll Like the Look...You'll Love the Price!

*With approved credit on our VanDrie Card receive special financing for six months, minimum monthly payments, and 25% down payment required on special orders. Interest will be charged to your account from the purchase date at the regular APR if the balance is not paid in full within the promotional period or if you make a late payment. Offer valid April 11-23, 2022. Financing excludes electronics, clearance items, super value, floor samples and previous purchase. Cash discount offer excludes electronics, extended service plans, mattress protectors, Tempur-Pedic bedding, labor, clearance items, super value, floor samples and previous purchases. Some quantities are limited and may not be available in every location. ©2022 Knorr Marketing VAND-6407 3/22

Making Homes Beautiful Since 1953!