

2022 **June
Pete**



**Fair and
Horse & Pony Show**

June 10 - 11 - 12

2990 Edge Hill Road, Huntingdon Valley, PA 19006



FOR THE BENEFIT OF JEFFERSON HEALTH - ABINGTON

Welcome from the FY22 June Fete Chair

Greetings from the offices of the June Fete Fair! Please mark your calendars. This exciting event makes its long-awaited return from Friday, June 10 through Sunday, June 12. For more than a century, our Jefferson Health – Abington supporters and neighbors have looked forward to this fun-filled weekend at the fairgrounds in Huntingdon Valley. We are so happy that we will be celebrating together once again after a two-year hiatus.

Please join us for amusement rides, carnival games, a wide variety of entertainment, delicious festival food and treats, and an exciting array of vendors for shopping. Don't miss the Horse & Pony Show on Saturday, June 11, featuring fun competition for local equestrians of all ages. Spectators are welcome!

We are pleased to offer several additions again this year that are designed to make the fair more inclusive and accessible to all members of the community. These include:

- **Laugh-N-Learn** – Jefferson College of Nursing will host a free, fun space for younger fairgoers with



kid-friendly games and activities that promote health and wellness.

- **Lactation Station** – A quiet, private space for nursing mothers to feed their infants.

- **Break Tent** – In partnership with the Jefferson Center for Autism and Neurodiversity, we will offer a place to rest and refresh for those who need a break from the sights and sounds of the fair. This haven will offer free, age-appropriate activities to foster quiet and calm.

We are also proud to host the NICU Reunion, which celebrates the special bond between our caregivers and our smallest patients who “graduated” from intensive care.

Proceeds from the fair benefit the Image Recovery Center (IRC) at the Sidney Kimmel Cancer Center’s Asplundh Cancer Pavilion. Make sure to check out the in-depth article in this insert to learn more about how the IRC brings the amenities of a luxury spa to patients inter-

ested in restoring their appearance before, during, and after experiencing the side effects of cancer treatment.

I extend my sincere appreciation and thanks to everyone, including our sponsors, local business partners, and volunteers who come together every year to support the fair and the mission of Jefferson Health – Abington. Women’s Board and Auxiliary members, neighbors, students, hospital employees, veterans and more volunteer countless hours

to bring this fun, family-friendly weekend to life. Together, we can continue the wonderful tradition of the June Fete Fair and ensure that the hospital will continue to provide comprehensive, compassionate, and cutting-edge care and treatment for the individuals, families, and community it serves.

I look forward to seeing you, your family, and neighbors at this year’s fair!

Michelle Neil

JUNE FETE 2022

HOURS:

Friday: 4 p.m. – 11 p.m.
Saturday: 11 a.m. – 10 p.m.
Sunday: 12 p.m. – 6 p.m.

PRICING:

General Admission: \$5
(Cash only; ATM available on the Fairgrounds)
Children 6 and under: Free
Free Parking

INFORMATION:

Amusement Rides

Mega Pass
Unlimited amusement rides all weekend and free re-entry to the fair.
Available for \$50 on Friday or \$40 on Saturday.

Daily Ride Specials

Unlimited amusement rides for \$20 per person during the hours listed below:

Saturday 11 a.m. – 4 p.m.
Sunday 12 p.m. – 6 p.m.

Ticket Prices

\$1 each; 24 for \$20, 64 for \$50. Rides will cost 2-5 tickets each, as posted on each ride.
Credit cards may be used for amusement rides.

The June Fete is a non-smoking event. Pets are not permitted.

For more information, visit us online at jefferson.edu/junefete

About the Abington Health Foundation Women’s Board

Our organization began with a community vision—the need for a local hospital in Abington. In 1912, there was a call to raise funds to establish the hospital, and women in the surrounding communities gathered together to answer that call. Three key founding members were instrumental in bringing this vision to life: Mrs. Charles Kruger, the first president of the Women’s Board, who worked diligently to create community sup-

port in all the surrounding neighborhoods of the hospital; Natalie Fox Elkins, the wife of Abington Memorial Hospital’s first president, George Elkins, Jr., who served as “the eyes and ears” for identifying hospital needs and was an honorary second Vice President of the Women’s Board throughout her lifetime; and Louise Elkins Sinkler, daughter of Abington Memorial Hospital founder George Elkins, Sr., who dedicated more than 60 years

of service to the Women’s Board. Through their skillful organization of early fundraising efforts and securing community donations, Abington Memorial Hospital opened in May of 1914 with all patient amenities in place.

The Abington Health Foundation Women’s Board financially supports the efforts of Jefferson Abington Hospital, Jefferson Lansdale Hospital, and their programs to benefit the health and well-being of our commu-

nity. The Women’s Board raises funds, furthers public relations and provides funding for educational opportunities.

The current fundraising focus of the Women’s Board is for cancer care at the Sidney Kimmel Cancer Center – Asplundh Cancer Pavilion. Our completed pledge of \$2 million supported the building of the Asplundh Cancer Pavilion. Our current pledge of \$3 million, over five years, supports the Image Recovery Center, which brings

the amenities of a luxury spa to patients interested in restoring their appearance before, during, and after experiencing the side effects of cancer treatment.

Through our Targeted Giving program, we support newborn care, the underserved community, our hospital community members through Safe Harbor and Safe Center, Healthcare Education and more.

For more information on the Women’s Board and

Auxiliaries visit jefferson.edu/ahfwomensboard. If you would like to make a donation in support of the Image Recovery Center, please use the QR code below.





SAVE UP TO \$2000*

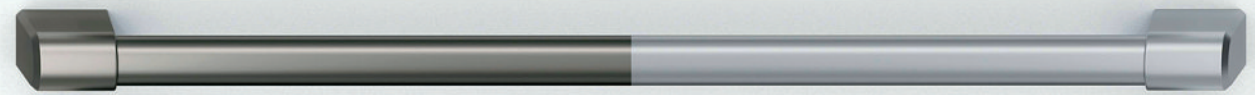
SHOP Local

Save BIG!



CUSTOMIZABLE APPLIANCES CAFE DISTINCT BY DESIGN™

WWW.GERHARDSAPPLIANCE.COM

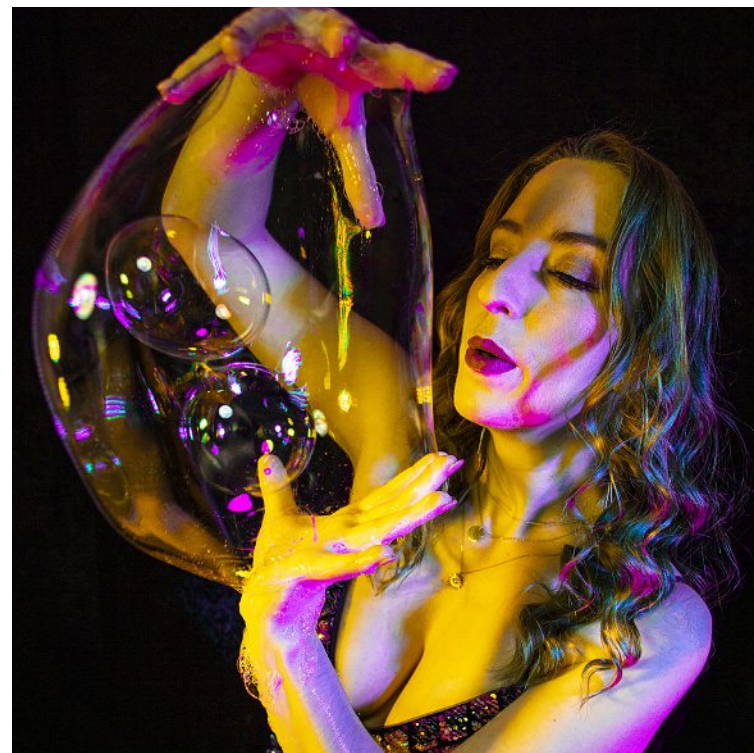


June Fete FY22 Featured Entertainment

Friday from
5pm – 8:30pm

Guests will be enchanted by a bubble magician, LED hula hoop artist, and stilt walkers.

Pick a Song. Grab a Ball. Push to the Beat. Surprise, you're learning CPR! Simon's Heart is bringing the CPR Jukebox to the June Fete. Simon's Heart is proud to partner with Jefferson Abington Hospital to launch the AHEAD (Abington Heart Early Assessment & Diagnostic Program to Protect Hearts and Save Lives.



Saturday at 1:30, 3:45, 6:00;
Sunday at 1:45

The Give & Take Jugglers have been a consistent hit with both children and adults for over 40 years. Their highly interactive comedic show uses traditions from vaudeville, circus, theater, and music to create a lively and wholesome performance that always feels fresh and contemporary. Full of audience participation, each show becomes unique and reflects the community they are in. Parents are always amazed that their children sit still for so long - and children are always just amazed!





Sunday at 12:30 and 3:30

Flippenout utilizes North America's top trampoline athletes to produce a world class heart pounding show. Olympic type routines, skis, snowboards, the wall, double flips, triple flips, and their world record belly drops come together to provide an amazing feat of acrobatic achievement. All of this takes place to a high energy toe tapping soundtrack with plenty of comedy intertwined!



Sunday at 1:15, 2:45, 4:15

The Dynamo Dogs Canine Variety Show performs all over the country with their entertaining dog variety act. The Dynamo Dogs are veteran performing dogs and they demonstrate everything from trick dog show routines to Frisbee® dog acrobatics. Through a unique combination of Gail Mirabella's circus and competitive disc dog experience she has built a truly one-of-a-kind canine variety show featuring her outstanding pups!

All information provided is subject to change.

Plan Your Day at the Fair

Besides great food, rides and games, the Fair offers wonderful free entertainment for families to enjoy.

On Friday, June 10:

- Learn a life-saving skill at the Simon's Heart CPR Jukebox
- Enjoying roaming entertainment: an LED Hula Hoop artist, Bubble Magician, and Stilt Walker
- The grand finale – fireworks at dusk!

On Saturday, June 11:

- Cheer for the riders at the Horse & Pony Show
- Watch the Give & Take Jugglers

On Sunday, June 12:

- Watch Flippenout Trampoline Show, The Dynamo Dogs Canine Variety Show, and the Give & Take Jugglers

Don't forget to visit the Marketplace Tent where you'll find a wide variety of vendors offering jewelry and accessories, clothing, pet products, gourmet food, and more!

Visit jefferson.edu/junefete for a complete list of activities and attractions happening all weekend long!



JUNE FETE FAIR

BENEFITS JEFFERSON HEALTH – ABINGTON

JUNE 10-12, 2022



2022 June Fete Fair and Horse & Pony Show

2990 Edge Hill Road, Huntingdon Valley, PA 19006

Special Events & Attractions

Friday, June 10 • 4pm – 11pm

4:00pm	Gates Open	
4:00pm – 11:00pm	Marketplace Tent Open	
4:00pm – 8:30pm	Simon's Heart CPR Jukebox	Kiddie Rides
5:00pm	Opening Ceremonies	Barn
	Flag Raising by Upper Moreland Police & National Anthem by Deb Gates	
5:00pm – 8:00pm	LED Hula Hoop Artist	Kiddie Rides
5:00pm – 8:00pm	Bubble Magician	Kiddie Rides
5:30pm – 6:15pm	Murray Avenue Middle School Jazz Band	Barn
6:30pm – 7:15pm	Abington High School Acapella Group	Barn
6:30pm – 8:30pm	Stilt Walker	Roaming
7:30pm – 9:15pm	Fools and Prophets	Barn
Dusk (around 9:15pm)	Fireworks	Dixon Ring
11:00pm	Fair Closes	

Saturday, June 11th • 11am – 10pm

11:00am	Gates Open	
11:00am – 10:00pm	Marketplace Tent Open	
Noon	Opening Ceremonies	Barn
	Flag Raising by Boy Scouts of America Troop 72 & National Anthem by Carl Ford	
12:30pm – 2:00pm	Plush Band	Barn
1:30pm – 2:15pm	The Give & Take Jugglers	Kiddie Rides
2:00pm – 2:45pm	Amerikick	Barn
3:00pm – 4:00pm	School of Rock Fort Washington House Band	Barn
3:45pm – 4:30pm	The Give & Take Jugglers	Kiddie Rides
5:00pm – 6:00pm	Upper Moreland High School	Barn
6:00pm – 6:45pm	The Give & Take Jugglers	Kiddie Rides

7:00pm – 9:30pm	Smooth Edge	Barn
10:00pm	Fair Closes	

Sunday, June 12th 12pm – 6pm

Noon	Gates Open	
Noon – 4:00pm	Marketplace Tent Open	
Noon	Opening Ceremonies	Barn
	Flag Raising by Girl Scout Troop National Anthem by Stephen Leonard	
12:30pm – 1:00pm	Flippinout Trampoline Show	Dixon Ring
1:00pm – 2:00pm	Germantown Academy Jazz Band	Barn
1:15pm – 1:45pm	The Dynamo Dogs Canine Variety Show	Pony Ring
1:45pm – 2:30pm	The Give & Take Jugglers	Kiddie Rides
2:00pm – 4:00pm	Chumley the Clown	Barn
2:15pm – 3:30pm	Hank's Cadillac	Barn
2:45pm – 3:15pm	The Dynamo Dogs Canine Variety Show	Pony Ring
3:30pm – 4:00pm	Flippinout Trampoline Show	Dixon Ring
4:15pm – 4:45pm	The Dynamo Dogs Canine Variety Show	Pony Ring
4:00pm – 5:30pm	309 Express	Barn
5:30pm	Closing Remarks – Farewell by Liz Leonard	Barn
6:00pm	Fair Closes	

* List as of 5/18/22 and is subject to change

Along the Midway

- | | |
|----------------------|-----------------------------|
| 1 Volunteer Check-In | 7 Beer |
| 2 Smoothie | 8 Burrito Bowl |
| 3 Jamaican D's | 9 Kids Crafts |
| 4 Ice Cream Shoppe | 10 Simply Delicious By Tina |
| 5 Le Bistro | A Lactation Station |
| 6 Laugh-N-Learn | B Break Tent |

Credit cards may be used for amusement ride purchases.



ON BEAUTY DUTY

Cancer patients find a sense of normalcy through spa and salon services at the Image Recovery Center

For Diane Schneider of Chalfont, Pennsylvania, sometimes the hardest

part of cancer treatment isn't the fear or feeling sick or even looking in the mirror. It's how others perceive you.

"It's devastating to lose all of your hair and you don't look the same,"

says Schneider. "And then when you see people, you don't want them to have this look like they are so shocked to see you."

Regaining a sense of self and self-esteem are the goals of the Sidney

Kimmel Cancer Center's Image Recovery Center in the Asplundh Cancer Pavilion. This serene salon brings the amenities of a luxury spa to people coping with the effects of cancer treat-

ment, from head to toe—from hair to skin to eyebrows to nails to what type of SPF they should be using," says Adderly. "The devil is really in the details when it comes to beauty care during can-

cer treatment." in Bristol Township. "It's relaxing, just being relaxed, forgetting about the stress. That hour, it's awesome."

According to Look Good Feel Better, a program of the American Cancer Society, 82 percent of female cancer patients experience changes to their physical appearance and 67 percent experience emotional changes. The center helps people fighting cancer see that they can still have a good quality of life while their body is changing and going through a transformation.

That transformation is sometimes deeper than outward appearance.

"It's like a therapy session," says Koryne Hill, retail product associate. "A lot of patients they feel comfortable to vent here because it's not so hectic and not just about giving bad news all the time. And then it's like when you go to the hair salon, you have girl talk."

Many medically necessary services in the Image Recovery Center are covered by insurance. However, it is philanthropy that powers the center. Generous benefactors, including many former patients, have paid it forward through gifts that help patients receive wigs and other personalized recovery services they may not be able to afford otherwise.

"It's extremely important for people to be able to look in the mirror and recognize themselves," says Adderly. "When they come here, they see that one of their biggest fears can be helped. It's huge."

Your Partner in Memory Care

ARTIS
SENIOR LIVING
Huntingdon Valley

THE ARTIS WAY

Ability to have a voice
Respecting and maintaining relationships
Treasuring each person's uniqueness
Integrity
Success and recognition

Schedule an in-person or virtual tour of our community!

TheArtisWay.com/HuntingdonTour
 267-723-7519

Artis Senior Living of Huntingdon Valley:
 2085 Lieberman Drive, Huntingdon Valley, PA 19006
 Check out our other nearby community in Yardley.

Your Partner
 in Memory
 Care™



It is about changing the perspective of what cancer is to people. They can walk out of here feeling as much like themselves as they did before treatment started. It gives them a sense of normalcy.

ELIZABETH ADDERLY
 Salon Coordinator

ment, from loss of hair to changes in the skin to having breasts surgically removed.

"It is about changing the perspective of what cancer is to people," says salon coordinator Elizabeth Adderly. "They can walk out of here feeling as much like themselves as they did before treatment started. It gives them a sense of normalcy."

The center is the first of its kind in Montgomery County and one of about 20 Image Recovery Centers nationwide. Complimentary services for patients include an initial head shaving; post-treatment haircuts; skin, makeup, and wig consultations; and a wig bank for those in need. Other services include post-mastectomy breast prosthesis fittings; lymphedema treatment; oncology massage therapy; nail, skin, and hair care services; and more.

"The consultation goes

cer treatment."

"We recognize that a cancer diagnosis can affect many aspects of an individual's life and that doesn't stop when treatment ends," says Steven J. Cohen, MD, chief of medical oncology and hematology at Jefferson Abington Hospital. "Our staff members are specially-trained to provide professional, high-quality services, with careful consideration for patients who may have a compromised immune system or low blood count stemming from cancer treatment."

Simple routines—like hair and makeup—can have a positive impact on patients, with beauty regimens being bright spots in what can be a dreary journey through radiation and other therapies.

"It just relieves some of that stress, that constant stress you have," says Mary Ellen Ruppert-Carroll, an elementary special education teacher

FY23 Women's Board Events

Save the Date for these future AHF Women's Board events:



AHF Golf Outing:
Wednesday,
September 28, 2022



AHF Gala:
Saturday, April 15, 2023



**Race to Reimagine
Cancer Care:**
TBD October, 2022



June Fete:
Friday June 9 –
Sunday June 11, 2023;
Horse & Pony Show:
Saturday, June 10, 2023

Abington pediatric associates

ABINGTON PEDIATRIC ASSOCIATES, LLP

Curt Parnes, MD	Pierre Chanoine, MD	Amanda Jones, MD	Amy Hersh, MD
Lisa Hutton, MD	Maria Stefurak, MD	Tisa Taylor, MD	Devon Laughlin, MD

www.abingtonpeds.com

<p>1047 Old York Road Abington, PA 19001 215-886-1240</p>	<p>.....</p>	<p>Commonwydds 2370 York Road (Suite A-8) Jamison, PA 18929 • 215-491-5100</p>
--	--------------	---

DURHAM FUND FOR NURSE WELLNESS

Currently, we are in the midst of a national crisis affecting our nursing workforce. COVID-19 has challenged us in unique ways and the cumulative effect of the stress to our nurses is manifesting quickly. As the primary caregivers of hospitalized patients, our nurses have exhibited exceptional care, courage, a fierceness of commitment, and true heroism in caring for the communities served by Jefferson Health—Abington.

Research shows that there is a direct correlation between nurse fatigue, stress, turnover

and negative patient outcomes. The effects that the pandemic has had on our workforce are irrefutable. Jefferson Health—Abington's nurse turnover rate is at an unprecedented 22%, with nurses leaving the bedside in record numbers for less stressful positions in the non-acute setting.

With the establishment of the Durham Fund for Nurse Wellness through a \$1 million challenge gift, the fund will provide the necessary resources to improve nurse ratios and enhance recruitment and retention. The Abington Health Foundation Wom-

en's Board has pledged \$500,000 in support of this vital fund.

The pandemic has strengthened our appreciation of the commitment, sacrifice, and selflessness of Abington's nurses in their mission to improve lives. In recognition of their dedication and hard work, leadership has allocated resources to enhance nurse ratios and improve the lives of those who continue to give their all to our patients.

If you are interested in making a contribution, please call 215-481-4438.



June Fete FY22 New Food Vendors

Jamaican D's

Dave Dawes is the owner of Jamaican D's restaurant, located in the West Oak Lane section of Philadelphia. He has been in business for over 18 years, beginning with a lunch truck that serves tasty traditional Caribbean cuisine as well as American dishes. The restaurant is known for its jerk chicken, oxtails, rice & peas, plantains, collard greens, fried whiting and fried chicken, just to name a few of their many offerings.

Simply Delicious by Tina

Simply Delicious by Tina.

Formerly Tapas on York, offers simple homemade food with a fresh and healthy approach. They use the freshest and highest quality ingredients, freshly prepared and sourced locally whenever possible. Their space in Jamison, PA is open for breakfast and lunch and can also be rented as a venue for small events. They also provide full service offsite catering or delivery for all types of events including weddings, birthdays, mitzvahs, showers, funerals, etc. and corporate luncheons & events.



Thank you to our Community Partners – we couldn't run the fair without you!

A to Z Party Rental	Lowes
Bestline	Med-Park Corporation
Carr & Duff	Second Alarmer's Resue Squad
Edward M. Adamow & Sons, Inc.	Skelly's Amusements Inc.
Fretz RV	Thome Electric
Galbally Landscaping, Inc.	Toll Brothers, Inc.
Gas Tec	Upper Moreland Township
George Allen Portable Toilets, Inc.	Waste Management
Grounds Vendor List	All of our dedicated volunteers!
Kampus Klothes	
Leuter and Son Sound, LLC	

THE BRAND YOU KNOW AND TRUST

Put a Property Makeover on Your Wish List

COMPARE OUR ADDED VALUES:

- Color-Coordinated, Fully-Featured Outdoor Rooms
- Patios • Poolsides
- Driveways • Walls
- Walkways

With ArmorTec®



Without ArmorTec®



Both Cambridge paving stones shown were installed in residential driveways in 2006 (Photos taken in January 2010).



Fully-Transferable Lifetime Warranty.
 Charles H. Gamarekian
 Founder / Chairman / CEO

www.CambridgePavers.com



711 N Country Line Road at Chestnut Street, Souderton, PA 18964
 215-723-5506 • www.landisbc.com • info@landisbc.com
 Store Hours: Monday - Friday 7am - 4pm, Saturday 7am - 12pm
 Visit our showroom. We are a Full Service Hardscape Supplier

STOP IN FOR PROFESSIONAL ADVICE & SEE THE SHOWROOM

Look For Us On



JEFFERSON ABINGTON HOSPITAL

— AMONG THE —

BEST

FOR MATERNITY CARE

1-800-JEFF-NOW

JeffersonHealth.org/Maternity



Jefferson Health[®]

HOME OF SIDNEY KIMMEL MEDICAL COLLEGE

