

Farmers' Exchange



Place unlimited items for sale:

FarmersExchange.com

Used and New Farm Equipment.
Equipment, Land and Livestock Auctions.

Call for Subscription **800.247.7318**

FARM EQUIPMENT SPECIALS

Give us a call today!



Case IH 5100, very rare, 6" spacing, small seed box, 23 hole, 12' wide, Stk#4027 **\$6,250**



Kinze 3500, 8/15, new no till coulters & seed disc **Call for price**



Kubota M6060, 4WD, 75 hrs., QA loader, like new, Stk#4004 **Call**



JD 4430, 1975, 2WD, 2 remotes, quad, 540/1000 PTO, Stk#3955 - **\$25,500**



Farm King 1060, swing away hopper, 540 PTO, new Stk#3943 **\$15,500**



EZ Trail 500, 500 bushel, new bottom auger, 1000 PTO, Stk#3948 **\$8,750**



JD 7200 Conservation, set on 30", easily changed, totally rebuilt, Stk#3973 **\$9,750**



JD 625F, hydra flex, good cutterbar, everything works, Stk#4045 **\$14,500**



Kinze 2000, 6/11, going thru shop now, rep photo, Stk#2901 **Call**



NI 5408, 8', good cutterbar, new blades, 3 pt., field ready, Stk#3862 **\$4,750**



Case IH 496, 24' disc, good blades, cylinders, hoses & bearings, Stk#4018 **\$9,650**



Case IH 1063 Corn Head, 6 row, 30" excellent rolls & chains, Stk#3982 **\$6,750**

Newman Farms

www.newmanfarms.net

Cleveland, TN

Call 423-595-5715
or 423-464-5303



1702 Highway 72 East • Athens, AL 35613

256-232-5850

LS Package Deals: Tractor, Loader, Trailer, Box Blade & Cutter



2021 LS Tractor MT122-21.5HP
4WD, Dual Pedal, 2 range HST
\$13,493



2021 LS Tractor MT122-21.5HP
4WD, Dual Pedal, 2 range HST
\$19,702



2021 LS Tractor MT125-24.7HP
4WD, Dual Pedal, 2 range HST
\$20,642



2021 LS Tractor MT125-24.7HP
4WD, Dual Pedal, 2 range HST
\$14,590



2021 LS Tractor MT225E-24.6HP
4WD, Independent PTO
\$18,590



2021 LS Tractor MT2E
Series MT 235E - 35 HP
\$27,200



2021 LS Tractor
MT3 Series MT 342 HC
\$36,190



2021 LS Tractor MT230E-30HP
4WD, Independent PTO
\$26,400



2021 LS Tractor MT240HE-40HP
4WD, Dual Pedal 3 range HST
\$29,450



2021 LS Tractor MT3 Series
MT 352 HC
\$42,242

VIEW OUR COMPLETE INVENTORY AT HANEYEQUIPMENT.COM



OUR SPECIALS OF THE MONTH!



JAY-LOR

D&E is Your **SOURCE**
for Mixers! Huge
IN STOCK Inventory!

H&S




TOP SHOT
5234 Spreader
\$46,200




MASCHIO
Entry 150
4x5 Dry or
Silage Bales
twine & net
\$23,500

HAYBUSTER



10' Drills in stock!
With Legume Box &
Lift Cylinder
Best \$\$ Around!

CLAAS



Balers, Tedders, Mowers
3550 Mower
11'2" Cut
\$16,800

STRETCH-O-MATIC
8400 ELITE



\$32,500

Dependable, Quality.
Other wrappers have
higher price tags.
Doesn't make 'em better,
only costs you more.

S.I. FEEDERS



24' Feeder Wagons
Heavy Duty
Arrow Front
\$7250
with New Tires!

Call Us... Save \$\$\$

GEHL



RT165 RT185 & RT320
Track Loaders
Fresh Inventory
Fully Loaded

R260
IN STOCK!

Bush-Whacker



12' MD144 &
15' ST180
IN STOCK

Poultry Specials



16' HD Hyd Endurance
Spreaders
& Pulvimasters
IN STOCK!

D&E
DON ALLISON EQUIP, INC.

www.donallisonequipment.com
800-669-6450
THE MIXER PLACE!

If you need quality products with non-stop support,
it's time to **TriGreen...**

New Year Savings on A New Krone!

Call Today!

EasyCut
Pull-Type Disc Mower

Swadro
Rotary Rake

KW/KWT
Rotary Tedders



Dependable cutting and professional quality.



Even and consistent windrows



Powerful rotors turning crops into high quality forage.

Krone machines are customer designed and German engineered for professional hay and forage producers. With their innovation comes efficiency, quality and technology to improve any operation. For a limited time take advantage of these discounts and experience equipment engineered for your performance.



www.krone-na.com

* Discount amount based on specific machine type & model. Discounts cannot be combined with low rate finance offers. Krone® is a registered trademark of Maschinefabrik Bernard Krone GmbH. 12121 Forest Park Dr., Olive Branch, MS 38654 • (662) 913-7171



KRONE

- Arab, AL
933 N. Brindlee Mt. Pkwy.
(256) 586-8304
- Athens, AL
131 US Hwy 31 S
(256) 232-2131
- Centre, AL
1050 Chestnut Bypass
(256) 927-2300
- Columbia, TN
2409 Pulaski Pk.
(931) 388-1557
- Cookeville, TN
1490 Interstate Dr.
(931) 526-8544
- Crossville, TN
269 N Main St.
(931) 340-1012
- Cullman, AL
3920 AL Hwy 157
(256) 739-5601
- Dickson, TN
707 Henslee Dr.
(615) 229-2400
- Fayetteville, TN
2894 Huntsville Hwy.
(931) 433-5620
- Florence, AL
3613 Florence Blvd.
(256) 757-9080
- Franklin, TN
340 9th Ave N
(615) 794-8187
- Ft. Payne, AL
12227 AL Hwy. 35
(256) 997-9089
- Gadsden, AL
1301 West Meighan Blvd.
(256) 456-5872
- Gunttsville, AL
2205 Henry St.
(256) 582-3217
- Hendersonville, TN
133 N. Shackle Island Rd.
(615) 824-9726
- Huntsville, AL
4550 Research Park Blvd.
(256) 830-4020
- Jasper, AL
3700 Industrial Pkwy.
(205) 384-3058
- Leighton, AL
1160 Sockwell Ln
(256) 446-5929
- Manchester, TN
812 Interstate Dr.
(931) 728-5400
- Mt Juliet, TN
10768 Lebanon Rd.
(615) 754-2600
- McMinnville, TN
305 Shangri La Ln.
(931) 668-1784
- Piedmont, AL
850 US Hwy. 278 Bypass
(256) 447-7211
- Pelham, AL
3311 Pelham Pkwy
(205) 605-0412
- Scottsboro, AL
26685 John T Reid Pkwy.
(256) 259-0704
- Winchester, TN
176 Blair Pond Rd.
(931) 967-5144



TAC ENTERPRISES • BUY • SELL • TRADE DAILY

Huge selection of big tractors selling each week on AuctionTime.
Check out our listings at www.tacenterprises.net and register to bid.



530 John Deere, factory wide front, power steering, 3pt and remote \$7,500



3901D Kubota, 4x4, LA525 ldr, 39 hp, LIKE NEW! Only 58 actual hrs. 2020 model \$22,900



TD7E Dresser dozer, 6 way blade, good undercarriage, \$14,900



Case 450 dozer, 6 way blade, good undercarriage, \$11,900



430 John Deere high crop with complete cultivator, older restoration, \$16,900



6230 John Deere, C/A, 4x4, 95 hp, PQ trans. with left hand reverser, 2010 model, 7,000 hrs. runs/works good \$37,500



2007 Jeep Wrangler Sahara, V6, 6 speed, A/C, 4x4, 240K miles, hard top, condition rusty but runs and drives out great \$6,500



330 U John Deere, very rare original yellow tractor, very low hour machine, starts and runs great \$24,500



TD7E Dresser dozer, 6 way blade, power shift, 14,200 lbs. good undercarriage 50%, starts, runs, works great, clean little machine, \$15,900



D3C series III, 78 hp, 15,600 lbs, 6 way blade, showing 2,200 hrs. runs and works the best. 25% undercarriage.(root rake available) \$26,500



5093E John Deere, 4x4, new tires, roll bar and canopy, dual remotes, power shuttle \$22,900



JANUARY SPECIAL!
Skid steer pallet forks, 3,000 lb. cap., 48" forks, reg. \$950 Special \$795



7130 John Deere, 121 hp, C/A, 4x4, PQ with left hand reverser, \$49,500



1979 Jeep CJ7, 304 V8, 4x4, automatic, power steering, power brakes, very good driver! \$9,850



E250 Ford ambulance, 6.0 diesel, automatic, runs/drives, 237K miles \$2,650



D4H Cat Dozer, 6 way, 95% undercarriage, low hours showing, \$27,500

Look for our auctions online at HiBid.com

TAC ENTERPRISES
www.tacenterprises.net
256-974-8588



3330 Alabama Hwy. 36, Moulton, AL 35650

Auctioneer: Ken Nelson, AL #1326 • Hours 8:00 A.M. - 5:00 P.M. Monday - Friday

Fayetteville, TN • 931-433-5620



Apache AS1220 - \$165,000



Rhino 3150-4 - \$16,500



JD 5085E - Call

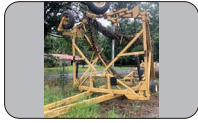
JD 930F \$7,500
Case IH 5500 \$6,500

JD 4630.....\$85,000
JD 450M.....\$35,000
Ogden Rake.....\$7,000
JD R4023.....\$215,000
Schulte FX1500.....\$8,000
JD 5065E, 2019, cab, loader, 295 hrs.....\$42,500
JD X380, 48", 293 hrs.....\$2,550
JD 3025E, 2022, 45 hrs.....\$19,995

Athens, AL • 256-232-2131



MF 231S - \$8,000



Phillips 4505 - \$18,900



JD 3043D - \$25,000



Ogden RCR812 - \$9,500



JD 3046R - \$29,000



JD 3025D - \$21,780

MF 231S, 2000, 2WD, 900 hrs..... \$9,000
MF 4243, 1999, cab/air, 2WD, loader, 820 hrs \$22,000
JD 5075E, 2020, cab, 4WD \$49,900
JD 3046R, 2019, 4WD, loader, Imatch Quick Hitch, 633 hrs., Stk# 1033700..... \$29,000
JD 4044M, 2021, 150 hrs., 4WD..... \$32,500
JD 865R GATOR, 2019, diesel, cab/air, 1340 hrs, Stk#1033559..... \$24,000

Cullman, AL • 256-739-5601



JD 3038E - \$17,900



JD BXX10052 - \$500



JD BW14144 - \$500



JD BW15896 - \$500

Frontier AB13D Hay Spears, fits 600 series, loaders.....\$725
MoCo Tow Bar\$995
Frontier LP1048, 2021\$1,275
Paladin TM4M-0052 Harley Rake, 2014, 4' \$4,900

Scottsboro, AL • 256-259-0704



Kubota M6060 - \$37,500



Geringhoff RD800 - \$32,500



JD Z930M - \$6,200



Case IH 900 - \$4,500

JD Z930M, 60" deck, 2021, 1020 hrs., Stk#1034513 \$6,200
Geringhoff RD800, 2008, 8 row, Stk#1032708 \$32,500
Kubota M6060, 2020, open station, PR, loader, Stk#1034918 \$37,500
JD 5065E, cab, MFWD, PRT, H240 Global loader, 385 hrs., Stk#1035202..... \$42,900
JD Z930M, 60" deck, 2019, 1832 hrs., Stk#1035169 \$4,795
JD Z930M, 60" deck, 2021, 1040 hrs., Stk#1034514 \$5,800
JD 1023E, no loader, 60" deck, 2021, 56 hrs., Stk#1032708 \$11,700
Case IH 900, 6 row, 30", Stk#1029578..... \$4,500

Cookeville, TN • 931-526-8544



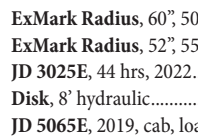
JD 2032R - \$16,000



JD Z540M - \$4,000



JD 3025E - \$17,950

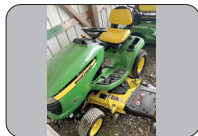


ExMark Radius, 60", 506 hrs, 2019.....\$7,000
ExMark Radius, 52", 55 hrs, 2021.....\$8,500
JD 3025E, 44 hrs, 2022.....\$19,995
Disk, 8' hydraulic.....\$2,600
JD 5065E, 2019, cab, loader, 295 hrs.....\$42,500
JD X380, 48" deck, 293 hrs.....\$2,550

Manchester, TN • 931-728-5400



JD 608C - \$39,000



JD X320 - \$3,495



J&M 525 - \$12,900



J&M 750 - \$49,500

JD 8300 Grain Drill..... \$3,999
Woods 990..... \$3,500
JD Z930M, 60", 300 hrs \$7,995
JD 893 Corn Head\$13,500
JD SF3000 GPS Receiver\$3,995
JD X324, 600 hrs., 48" \$2,999
JD 5055E, open station, 4WD, loader\$19,950
JD 5065E, open station, 4WD, loader, 100 hrs. \$39,900

Leighton, AL • 256-446-5929



JD 3320 - \$19,900



JD MX15 - \$10,500



JD 5090E - \$59,000



JD 558 - \$14,800



Ford 5610 - \$12,900

JD S690, 2013 \$279,000
JD R4038, 2017, self propelled, 767 hrs..... \$255,000
JD R4038, 2018, 623 hrs \$329,000
Hardi Sprayer, 3 pt., 350 gal, 60' boom.....\$4,900

Huntsville, AL • 256-830-4020



JD 5085E - \$49,500



JD 17D - \$21,900



JD 1025R - \$17,500



JD 4830 - \$128,500

JD 5085E, 2015, 973 hrs, cab, loader,
85 hp.....\$49,500
JD 612C, 2013, 30" rows\$45,000
JD 1025R, 2018, loader, 158 hrs., 25 hp....\$17,500
Phillips 4305A\$16,500
JD 4830, 2013, 2800 hrs., 100' boom,
1000 gal.....\$128,500

Frontier BB2048L, 2022, 48" box blade.....\$1,300 JD 17D, 2013, short arm, rubber tracks ...\$21,900

Columbia, TN • 931-388-1557



JD 6125M - \$65,000



JD 5100E - \$59,500



JD 5085E - \$55,000



JD 275 - \$7,950



J&M 812X - \$45,900

Kubota ZD21, Stk#1031232, 1620 hrs.,
60" cut, diesel.....\$5,500 JD X380, 48" deck, 335 hrs.....\$2,900 Krone SWTC 760, nice.....\$31,500
JD 830 MoCo, center pivot, 2015\$19,500 Vicon Disc Mower\$5,500 JD X758, 1034920, 2018, 290 hrs.\$11,500
NH BB960, shed kept.....\$22,900 JD Z960M, 2020, 890 hrs., 1035174.....\$8,499

Mt. Juliet, TN • 615-754-2600



Frontier FM2115R - \$16,500



JD 5085E - \$43,500



JD E12 - \$11,500



Frontier SS2067B - \$1,450



Mahindra 3550 - \$27,900



NH BR7080 - \$17,500

Winchester, TN • 931-967-5144



JD 4044R - \$31,950



Northstar Elite 1230 - \$50,000



Unverferth 8250 - \$28,500



JD R4038 - \$279,000



JD 5055E - \$34,950



NH BR750A - \$8,000

Used Lawn & Garden TractorsCALL Geringhoff RD1200.....\$25,000 Mahindra SD4 Rotary Cutter\$950
Commercial Zero Turn Mowers.....CALL Case IH DMX81 Disc Mower\$4,300 JD 625F Platform\$3,900
M&W Rake, 8 wheel\$1,750 JD 835M Gator, 2020\$17,500 NH BR750, 16,000 bales.....\$6,000
Claas C512-30, 2005\$15,000 JD WG36A, 230 hrs.....\$2,500
Self Propelled SprayersCall Killbros 575 Grain Cart.....\$7,500

Florence, AL • 256-757-9080



JD Z994 - \$10,000



JD 2025R - \$22,500



Road Runner - \$9,950



JD 6120E - \$87,000

JD 652R.....\$4,500 JD 652REFI\$3,500

JD 2025R, loader, 60" belly mower\$22,500
Vermeer WR20\$3,000
JD 6140R, 1500 hrs.\$125,000
JD Z930R\$8,399
JD TX 4x2 Gator\$10,000
Hustler X1, 54" cut, bagger\$6,500

McMinnville, TN • 931-668-1784



JD 560M - \$33,500



JD 855 - \$4,250



JD 1025R - \$15,900

JD 4100, 1999, 20 hp, 1999\$6,500
JD 3038E, loader, backhoe, 5 hrs\$36,500
Krone KW552-T Call for info

Arab, AL
933 N Brindlee Mt. Pkwy
(256) 586-8304

Crossville, TN
269 N. Main St.
(931) 340-1012

Fort Payne, AL
12227 Al Hwy 35
(256) 997-9089

Gadsden, AL
1301 West Meighan Blvd
(256) 456-5872

Jasper, AL
3700 Industrial Pkwy
(205) 384-3058

Piedmont, AL
850 US Hwy 278 Bypass
(256) 447-7211

Centre, AL
1050 Chestnut Bypass
(256) 927-2300

Dickson, TN
707 Henslee Dr
(615) 229-2400

Franklin, TN
340 9th Ave N
(615) 794-8187

Hendersonville, TN
133 N. Shackle Island Rd
(615) 824-9726

Murfreesboro, TN
464 Middle TN Blvd
(615) 890-6258

Pelham, AL
3311 Pelham Pkwy
(205) 605-0412

2023 New Year Kick-off Auction

Thursday January 19th | 9am

Auction Details and Lot Listings at:
www.HendersonAuctions.com



Live Auction w/Online Bidding Available | 800-850-2252

2-Day Spring Farm & Construction Auction Thursday & Friday | March 16th & 17th | 9am

Consign Now: 13340 Florida Blvd. Livingston, LA 70754

Buying or Selling Questions? Call: 225-686-2252



Find the Auction List at:
www.HendersonAuctions.com
New Listings Added Daily - Until Auction Day!

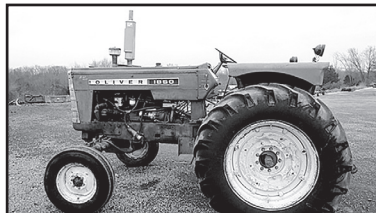
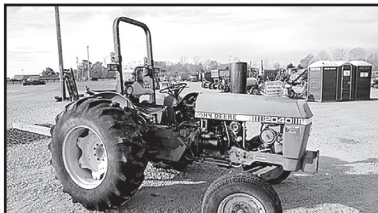
13340 Florida Blvd. Livingston, LA 70754 | 225.686.2252 | fax 225.686.0647
10% Buyer's Premium on each item purchased. | Auctioneer: J. Henderson LA-1160 | LA AB-459

Powell Farms Inc. Consignment Auction

January 20 & 21, 2023 • 9:00 A.M.

2-Day Auction With 1 Ring Each Day

Location: 1/4 Mile North of I-71 exit 34 @ corner of Hwy. 421 North & Carmon Rd. Campbellsburg, KY 40011



Receiving & Load Out: Receiving equipment January 2-16, 2023. Earlier by appointment. No vehicles or junk tires. Load out Sunday 12-6 and Monday-Saturday 8-6 please have items removed by January 28.

Commission rates: 10% per item, \$20.00 minimum, \$500.00 maximum, \$20.00 no sale fee per item. Checks will be mailed out January 31.

Terms: 3% In Person Buyers premium and 5% Online Buyers Premium. Payment cash, good check paid in full day of sale. Online buyers see terms on bid platforms. All items sell as-is where-is with no warranties or guarantees by Powell Farms Inc. or it's employees. Not responsible for accidents or theft.

Note: Auction will be open to live in person bidding and online bidding.

Online bidding@ www.uselevel.com • www.proxibid.com

For more information Contact:

David Powell at 502-558-9491, powell.auctions@gmail.com
Larry Ryan at 502-648-5177 • Mason Powell 502-662-2332 • Office 502-465-0041

Watch updates on AUCTIONZIP.COM • ID#18099
Equipment Auctions 3rd Saturday in January, May & August Annually

FOWLER AUCTION

Turning Your Assets Into Cash

**INDUSTRIAL, CONSTRUCTION & FARM EQUIPMENT · TRACTORS
VEHICLES · CLASSIC CARS · TRUCKS · TRACKHOES · DOZERS & MORE**

ANNIVERSARY OPEN CONSIGNMENT AUCTION

**FOWLER AUCTION CENTER · 8719 HIGHWAY 53 · TONEY, AL
ONLINE BIDDING ONLY: CLOSES MONDAY, FEBRUARY 13TH · 7 PM
BID AT WWW.FOWLERAUCTION.COM**

**Consign
Your
Items
NOW**

NOW ACCEPTING ITEMS UNTIL THURSDAY FEBRUARY 2ND AT 4 PM



For more information contact:
David Vess; (256) 426-0005; david@fowlerauction.com
Greg Bottom; (256) 777-4496; greg@fowlerauction.com



BID ONLINE FROM ANYWHERE AT WWW.FOWLERAUCTION.COM

CUSTOMER APPRECIATION DAY
FRIDAY, FEBRUARY 10TH
JOIN US FOR COMPLIMENTARY CHICKEN-STEW & DOOR PRIZES FROM 10 AM - 1 PM
FOWLER AUCTION · 8719 HIGHWAY 53 IN TONEY, AL
· DROP BY ANY TIME DURING THE WEEK TO REGISTER FOR DOOR PRIZES ·

SEE ALL AUCTIONS AT WWW.FOWLERAUCTION.COM

"The Preferred Auction Company"
Fowler
Auction & Real Estate
SERVICE, INC.
8719 HIGHWAY 53 • TONEY, ALABAMA 35773
A MARKNET ALLIANCE MEMBER

45
Years
OF SERVICE

MICKY FOWLER, CAI, AARE, CES, AMM, ALSL466,
TNSL1442, TN FIRM2315, MSSSL718F, GASL1394
DANIEL CULPS, CAI, ALSL5070, TNSL5890
GREG BOTTOM, AA2959
ROYCE HORNSBY, AA2974
DAVID VESS AA3068 · AARON SPENCER, AA3060

Toney: (256) 420-4454
Ardmore: (256) 423-4454
Athens: (256) 232-7788
Huntsville: (256) 859-5682





Southern INVITATIONAL INDOOR

TRACTOR & TRUCK PULL



FEBRUARY 3RD & 4TH 2023

TENNESSEE MILLER COLISEUM - MURFREESBORO, TN

SESSION #1
FRIDAY NIGHT
(7:00 PM CST)

6200 Limited Lite Tractors
SS Diesel/Alcohol Tractors
8000 P.S. Diesel Trucks
9300 Super Farm Tractors
8500 Pro Farm Tractors

Session #1
Kids 10 & Under Free
Adults \$20

SESSION #2
SATURDAY MIDDAY
(11:00 AM CST)

6200 Limited Lite Tractors
9500 Hot Farm Tractors
6200 Pro Stock Trucks
10000 Hot Farm Tractors
5500 V8 Hot Rods

Session #2
Kids 10 & Under Free
Adults \$20

SESSION #3
SATURDAY NIGHT
(7:00 PM CST)

Finals All Classes
Kids 10 & Under Free
Adults \$25

**TICKETS
AVAILABLE
ON-LINE**

Join us on Facebook • www.southernmotorsports.net
Advance Tickets Available February 1st - February 4th Coliseum Box Office

Joe Wamble (731) 697-3424 • David Holbrook (615) 406-0382 • Melissa Holbrook (615) 809-6154

For additional information email: info@southernmotorsports.net

ALWAYS BUYING *Quality* USED EQUIPMENT - CALL TODAY



JD 5065E 2020, 51 hrs, 4WD, 65 hp, 12/12 PR trans **\$43,900**



JD 9500 2245 sep. hrs., 3072 eng. hrs., 2WD **\$32,900**



JD 5090E 2020, 4WD, 90 hp, 2214 hrs., 2 set remotes **\$49,900**



Kubota M6800 2004, 1106 hrs., 2WD, syncro shuttle, 63 hp **\$18,900**



Lewis Brothers 3.5 Chicken House Cleaner, 540 PTO, shed kept, ready to go **\$13,900**



JD 5075M 2011, 629 hrs., pre-emissions, 2WD, 75 hp **\$49,500**



JD 5045E 4WD, 50 hp, 2018, 9/3 syncro trans **\$24,900**



JD 6105M 2015, 4WD, 2077 hrs., 105 hp, 16/16 PQ trans. **\$85,900**



JD 590M Gator 121 hrs., 2019, 4WD, windshield poly roof **\$15,900**



JD 5325 2006, 906 hrs., 2WD, 12/12 PR trans, 67 hp **\$43,900**



NH Boomer 45 2019, 45 hp, 4WD, 514 hrs., 16/16 syn shuttle **\$19,900**



JD 6415 2007, 108 hp., 2574 hrs., 2WD, 12/4 **\$29,500**



Kubota L2501D, 2019, 25 hp, 131 hrs., 8/4 trans, one owner **\$18,500**



JD 1025R 2021, 20 hrs., 4WD, 25 hp, hydro trans **\$20,900**



JD 2940 1982, 4WD, 91 hp, 16/8 trans. **\$19,500**



JD 4066R 2016, 1064 hrs., 4WD, 65 hp, eHydro trans **\$47,900**



JD 2025R 2021, 6 hrs., 4WD, 25 hp, hyd. trans. **\$27,500**



Int 9400 1994, 868k miles, 10 spd. Eaton, CAT engine **\$36,900**



JD 5085E 2018, 246 hrs., 2 set remotes, 3rd function **\$62,900**



JD 5100E - 2019, 1851 hrs., 12/12 PR trans, 4WD, 100 hp, **\$62,900**



JD 7830 - 2010, 6993 hrs., 4WD, 16/16 PQ Plus trans, 205 hp, **\$79,500**



Great Plains 1006NT Drill 10', pull type, small seed box, like new **\$34,900**



Aerway Pasture Aerator 20', pull type **\$8,950**



Int 1456 1971, 6404 hrs., 2 set remotes, 144 hp. **\$22,500**

Bush Hog Commercial & Mulicpality Discounts Available

www.eaglevilleimplement.com

Reasonable Delivery Available Anywhere!

Come See Why We Are The Largest Independent Bush Hog Dealer In The USA!

Reasonable Delivery Available Anywhere



12820 - 20' in stock, available in 20 or 21 spine PTO, 8 foam filled airplane tires - **Call**



1815 - 15' Flex Wing, dual center axles, deck rings, laminated tires - **Call**



12715L - used, 15', 1000 PTO, 1-3/8" shaft, deck rings, laminated tires - **\$18,900**



3510 - used, pull type, 540 PTO, 10.5' shed kept, front chains - **\$9,950**



BH116 - 72", 540 PTO, 3 pt., laminated tires, stump jumper - **\$2,250**



BCSS-60 LF
low flow - **\$7,950**



2310 - 10' MD, pull type, 540 PTO, laminated tires, front chains - **Call**



BH215 - 60", 3 pt, 540 PTO, 65 hp gear box, stump jumper - **\$3,650**



DSP10 Scraper - 10', 39" depth, 2-1/4 cu. yd. capacity, tilt axle - **\$7,650**



2215 - 15', 2022, 540 PTO, laminated tires, front & rear chains - **Call**



14815 - 15', 2023, in stock in both 20 & 21 spline shaft, 8 airplane tires available, 1000 pro - **Call**



1812 - 12', 540 PTO, laminated tires - **\$17,500**

Proud sponsors of:



Call Us Today! (615) 274-2200

775 South Main Street, Eagleville, TN 37060

Equipment Consignment Auction!

FRIDAY, FEBRUARY 10TH at 9:00AM

Held onsite at the "Oakland Gin" • 5 miles west of Florence, AL

**Tractors • Trucks • Trailers •
Harvest Equipment • Field & Farm Equipment**

Call to consign!

Terrell Phillips 256-710-8651 or Wayne Green 256-710-2270

UPCOMING AUCTIONS

**Check our website for dates at:
www.shanealbright.com**

• **Real Estate Auction ONLINE ONLY**

- 7.85 Acres+/- on Chisholm Rd., Florence, AL
- 4375 Chisholm Road, Florence, AL
- Call Shane Albright Auctions for more 2256-757-8898

• **Online Land Auction ONLINE ONLY**

- 20 Acres+/- located on County Road 61, Florence, AL
- North of Big Star in St. Florain
- Call Shane Albright Auctions for more 256-757-8898

www.shanealbright.com



SHANE ALBRIGHT AUCTIONS

6508 US-72 KILLEN, ALABAMA 35645

AL PHONE 256-757-8898 TN PHONE 931-762-5134

Shane Albright Owner/Broker/Auctioneer AL#1569 TN#5431
Ben Phillips Vice President/ Realtor/ Auctioneer 256-710-9683 AL#1331

AMISH AUCTION



9:AM Saturday, January 14th

67 Jap Lane, Ethridge, TN

Lunch - Tent- Restrooms Available

Auction Held Rain or Shine!

Partial Listing of Items:

17 y.o. Standard Bred Mare, 17 y.o. Standard Bred Gelding, 6 y.o. Spotty Standard Bred Walker Cross Mare (Buggy Broke), 9 y.o. Morgan Cross Gelding, 19 m.o. Standard Bred Stud Black & White Blaze (One White Sock), 8 m.o. Standard Bred Percheron Cross Stud, Jersey Beef Cross Heifer, Jersey Beef Cross Calf, 4 y.o. Jersey Cow, Hostetler Wagons, Grain Drills, No. 7 MC Hay Mower, Plows, Work & Buggy Harnesses, Bridles, Halters & Collars, Saddles, Pioneer Princess Cook Stove, Kerosene Lanterns, Wood Heaters & SO MUCH MORE!!! We never know until Auction day what will show up!

Load up the family & make plans to spend the day with us!

Seller: Mrs. Ben E. Yoder

For more info, call Shane Albright Auctions 256-757-8898

ONSITE LAND AUCTION

95 Acres+/- with 1 BR, 1 BA Home, Barn & Pasture Land

~ 2424 Cave Hollow Rd., Russellville, AL~

Keep checking website for dates @ www.shanealbright.com!



CALL BEN PHILLIPS FOR MORE INFORMATION, 256-710-9683



SHANE ALBRIGHT AUCTIONS

6508 US-72 KILLEN, ALABAMA 35645

AL PHONE 256-757-8898 TN PHONE 931-762-5134

Shane Albright Owner/Broker/Auctioneer AL#1569 TN#5431

Ben Phillips Vice President/ Realtor/ Auctioneer 256-710-9683 AL#1331

UPCOMING AUCTIONS

More information available at:
www.shanealbright.com

- **Furniture & Home Decor ONLINE ONLY**
 - Begins closing at 6:00PM Monday, January 2nd
 - Items located at 6508 US-72, Killen, AL
 - Call Shane Albright Auctions for more 2256-757-8898

- **2017 American Silver Dollar ONLINE ONLY**
 - Begins closing Monday, January 2nd
 - Coins located at 6508 US-72, Killen, AL
 - Call Shane Albright Auctions for more 256-757-8898

- **Vintage Collectibles Auction ONLINE ONLY**
 - Begins closing Thursday, January 5th
 - Items located at 6508 US-72, Killen, AL
 - Call Shane Albright Auctions for more 256-757-8898

Many more upcoming online auctions not listed above such as: Tools, Equipment, Household Items, Glassware, Furniture & Much, Much More!!!



SHANE ALBRIGHT AUCTIONS

6508 US-72 KILLEN, ALABAMA 35645
 AL PHONE 256-757-8898 TN PHONE 931-762-5134
 Shane Albright Owner/Broker/Auctioneer AL#1569 TN#5431
 Ben Phillips Vice President/ Realtor/ Auctioneer 256-710-9683 AL#1331

SHANE ALBRIGHT AUCTIONS

YOUR ONLINE AUCTION SPECIALISTS!

Let us sell for you!

Call us today at **256-757-8898** for a Free Auction Consultation!

Check Our Website for Weekly "Online" Only Auctions

www.shanealbright.com



SHANE ALBRIGHT AUCTIONS

6508 US-72 KILLEN, ALABAMA 35645

AL PHONE 256-757-8898 TN PHONE 931-762-5134

Shane Albright Owner/Broker/Auctioneer AL#1569 TN#5431

Ben Phillips Vice President/ Agent/ Auctioneer 256-710-9683 AL#1331

HWY 72 SALES



New Tires Every 3 Days
- Forestry
- Ag & Farm
- Commercial

Call Tim Thornton

256-366-9042

CHECK OUR PRICES BEFORE YOU BUY!

Absolute Online Estate AUCTION

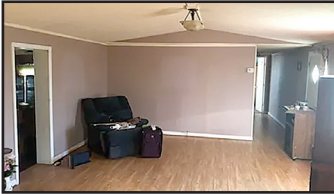


10 Acres ± - 2 Mobile Homes

Selling for the estate of the late Mr. Clarence Pigg, Jr.

Bidding Ends: Tuesday, January 3 • 7:00 PM

Location: 236 Flintville School Rd., Elora, TN 37328



Preview: Friday, December 30 • 1:00 PM - 3:00 PM

Both mobile homes need some work (one more than the other). One is 12x80.

The other is 12x76 w/addition and shop building.

Terms: 10% Buyer Premium Applies - 10% Down with balance due at closing within 30 days.

Register to Bid at VanMassey.com



Van Massey
Broker/Auctioneer

VanMassey

AUCTION & REALTY

www.vanmassey.com

"Serving The Southeast Since 1982"

31 Lynchburg Hwy.
Fayetteville, TN 37334
(931) 433-8686



Online Industrial Construction AUCTION

Location: 445 2nd Ave. North, Lewisburg, TN. **Bidding Ends:** Monday, January 16 • 6:00 PM



Heavy Equipment - Industrial & Commercial Equipment - Guns - Tools - Tractors, Etc.

Preview: Friday, January 14 • 2:00 PM - 4:00 PM • **Register to Bid at VanMassey.com**



Van Massey
Broker/Auctioneer

VanMassey

AUCTION & REALTY

www.vanmassey.com

"Serving The Southeast Since 1982"

31 Lynchburg Hwy.
Fayetteville, TN 37334
(931) 433-8686



West Tennessee Online Equipment Consignment AUCTION

Location: 60 Memory Lane (at Hwy. 45), Henderson, TN 38340 **Bidding Ends:** Monday, January 23 • 6:00 PM



All Types of Farm & Construction Equipment Selling.

To consign, call Jacob Hamilton at 731-798-0295 or Brian Massey at 931-703-2150

Receiving Equipment: January 2 thru 6 and January 9 - 10 • 9:00 AM to 4:00 PM every day

Preview: Thursday, January 19 & Friday January 20 • 10:00 AM - 4:00 PM

Register to Bid at VanMassey.com

This will be a great sale with
lots of good equipment
already consigned



Van Massey
Broker/Auctioneer

VanMassey

AUCTION & REALTY

www.vanmassey.com

"Serving The Southeast Since 1982"

31 Lynchburg Hwy.
Fayetteville, TN 37334
(931) 433-8686



Online Real Estate AUCTION

Location: 5841 Bay Hill Village Way, Athens, AL 35611. **Bidding Ends:** Tuesday, January 24 • 7:00 PM



Tennessee River Property!! Beautiful House & Lot

Preview: Friday, January 20 • 2:00 PM - 4:00 PM • **Register to Bid at VanMassey.com**

Selling fully furnished. This property is an income producer as an Air B and B



Van Massey
Broker/Auctioneer

VanMassey

AUCTION & REALTY

www.vanmassey.com

"Serving The Southeast Since 1982"

31 Lynchburg Hwy.
Fayetteville, TN 37334
(931) 433-8686



February Online Farm & Construction Equipment Consignment AUCTION

Location: 31 Lynchburg Hwy., Fayetteville, TN 37334. **Bidding Ends:** Monday, February 27 • 6:00 PM



Selling All Types of Construction and Farm Equipment

If you have equipment to sell. Call Joe Massey at 931-675-9606

Receiving Equipment: February 6 thru 10 • 9:00 AM - 4:00 PM each day.

Register to Bid at VanMassey.com

Our December Auction had over 1500 Registered Bidders from several states and Mexico. We can sell your equipment!



Van Massey
Broker/Auctioneer

VanMassey

AUCTION & REALTY

www.vanmassey.com

"Serving The Southeast Since 1982"

31 Lynchburg Hwy.
Fayetteville, TN 37334
(931) 433-8686



Online AUCTIONS - Every Thursday

Starting January 5 • 7:00 PM

Location: At our Auction Warehouse at 31 Lynchburg Hwy, Fayetteville, TN. We sell over 2000 items weekly!

**Tools - Vehicles - Equipment - Antiques - Old Collectibles - Guns
Liquidation and Estate Dispersals**

See what's selling this week at VanMassey.com



Van Massey
Broker/Auctioneer

VanMassey

AUCTION & REALTY

www.vanmassey.com

"Serving The Southeast Since 1982"

31 Lynchburg Hwy.
Fayetteville, TN 37334
(931) 433-8686



DELIVERY AVAILABLE - TEXT/CALL 256-777-7137



C&B FARM + OUTDOORS

13976 Hwy. 72 West, Athens, AL 35611

www.cbfarmoutdoors.com • 256-777-7137

Delivery Available On All Our Cattle Equipment We Sell



DELIVERY AVAILABLE - TEXT/CALL 256-777-7137



\$6,950

C&B Hereford Plus Squeeze
Chute Head Holder Brisket Bar
Backup Bar Neck Access Doors
Palp Cage Fully Mobile



\$5800

Custom Hydraulic
Squeeze Chute



\$3,200

C&B Angus Auto
Cattle Squeeze Chute

Custom 50 Head Cattle Working System - \$6,900



Includes 90 degree sweep tub with slide gate and 20' alleyway. Includes a 10x20 holding pen, attached 10x20 sorting pen with a main 30x30 catch pen.



C&B Hay Feeder Wagons

12' **\$3,600**

20' **\$4,900**

24' **\$5,700**



C&B Mobile Grain Bins

3,000 lb. **\$3,000**

5,000 lb. **\$3,500**

6,500 lb. **\$3,900**



C&B 160 Bushel

Creep Feeder

\$4,900



C&B FARM + OUTDOORS

13976 Hwy. 72 West, Athens, AL 35611

www.cbfarmoutdoors.com • 256-777-7137

Delivery Available On All Our Cattle Equipment We Sell





JD 310J Backhoe
\$52,750
 4 in 1 bucket, pilot control,
 4000 hrs



Kubota 105s
\$31,750
 4WD, shuttle shift



JD 8400 \$42,750
 4WD, good rubber, 10000
 hrs., runs good



CAT 12B - \$27,750
 quick attach, bucket &
 forks



97 Peterbilt
\$52,500
 N14 Cumming's Diesel



JD Backhoe 310G
\$32,750
 extend-a-hoe, 4WD,
 3900 hrs.



48' Fontane Trailer
\$13,750
 drop deck



Kubota M9000
\$29,500
 4WD, runs good



Kubota SVL 75-2
\$37,750
 1600 hrs., w/bucket



New Holland TN 65D
- \$22,750
 1300 hrs.



07 Mack
Call for Price
 460 eng., wet kit



JD 4020 - \$18,750
 1 owner, console,
 runs good



Palmer Dump Trailer
- \$13,250
 18', new liner



JD 455G - \$24,500
 runs good, 3900 hrs.



Pitts 50 Ton - \$45,500
 Triple axle with
 hydraulics



JD 700H - \$72,750
 good undercarriage, runs
 & operates good



RD Mack - \$28,750
 1993, 18 speed, wet line
 kit, 44 rear



JD 4240 \$27,500
 Bucket & Hay spear



JD 4450 - \$43,750
 6242 hrs., runs good,
 dual rear



Kubota M8580
\$29,750
 1 owner, 4x4, like new
 tires, call 256-710-1928



International 9200
 92k, series 60
\$42,750



JD 4240 - \$35,750
 1 owner, power shift,
 4700 hrs.



**40' Frontier Combine
 Header Trailer**
\$8,250



**Birmingham Lowboy
 w/Dovetail**
\$12,750



**500 Gallon Pull Type
 Fuel Tank - \$7,750**
 Pump Included, Det. Tank,
 Several To Choose



JD 6105E - \$63,750
 1600 hrs., 4x4, runs great



Trailboss - \$23,500
 2016, 20 ton, Pintle hitch,
 airbrakes, used very little,
 20' w/ 5' dovetail



**Lowboy 25 ton,
 w/dovetail**
\$13,750



CAT D6M - \$69,750
 w/ winch, root rake,
 1 owner



99 Peterbilt
\$21,500
 Heavy spec truck,
 400 Cummings, Stk#G-102

Lots More Farm Equipment For Sale (Most Used On My Farm)



Int 766
Koyker Loader, Bucket & Forks
\$12,750



JD 160LC
5300hrs
\$63,750



JD 700j
3500 hrs., Cab & Air, Root Rake
\$92,750



JD 6110 4WD, comes with
JD 460 loader, rear remotes
\$35,750



**Kinze Planter 6x30
w/Splitters - \$16,750**
No till w/row cleaners, corn meter w/monitor



Cat D5H Dozer
runs good
\$37,750



Talbert Detach Trailer
9' wide, state owned, in good shape
\$47,750



JD 444J - \$42,750
quick attach, 4WD, w/bucket



Komatsu PC 200LC
runs & operates good
\$53,750



CAT 247B - \$25,500
2200 hrs., runs good



JD 8310R - \$157,500
5400 hrs., w/duels



JD TC 544 H - \$45,750
grapple & bucket



JD 18C - \$43,750
Dirt Pan, good cond.



JD 5225 - \$16,750
good condition



Case 586E - \$21,750
4WD, 4800 hrs.,
Cummings Eng.



Int. 656 Farmall - \$10,500 (diesel)
2400 actual hrs., 2 to choose, 1 gas, 1
diesel, diesel has loader. \$7,500 (gas)



JD 4440 - \$30,750
5700 hrs., Quad Range, New front
tires



Pintle Hitch \$16,750
2002, 20 Ton Trailer, good cond., for
broker, 35 foot



**Freightliner Dumptruck -
\$14,750**
Cat eng., runs and operates good



2007 Dodge Ram 3500 HD
Cummings Diesel, Service Bed &
Crane Included
\$17,750

International Dump Truck, tandem axle	\$17,750	Westfield Grain Auger, 90', Hyd. Swing, 13"	\$7,500
Midland 6 yd. Dirt Scoop, very nice condition	\$6,850	Several 360 Hydroflex JD Headers	Call for Pricing
Cat 312B Trackhoe, w/ripper, good UC, runs good	\$42,250	Lowboy Triple Axle, 35 ton	\$16,750
Lull 644B-42, Cummings diesel, operates well	\$21,750	Great Plains ADC 2220, 36', Air Drill	\$34,705
Fruehauf Equipment Trailer, 48' w/5' dovetail, w/side toolboxes.....	\$18,750	MF 245, dsl, ps, 3000 hrs.....	\$5,750
JD Rubber Tire Loader, w/ bucket	\$21,700		
Move All Equipment Trailer, w/winch, hydraulic dove tail	\$12,750		

Call Gary 256-335-4919 Florence, Alabama
Used Trucks Plus TTL



SUMMERTOWN METALS LLC



Installed for
\$16,700*

40'x60'x14'

- Haybarn
- Steel Trusses
- 20-yr galvalume roof

- 40-yr 29 gauge painted metal walls
- 2x6 perlin's
- ID: BKFA406014-2



\$12,550*

Roof & Gable Only
ID: BKFA406014-1



Installed for
\$28,025*

30'x40'x12'

- Wood Trusses, no overhang
- 12'x40' side-shed
- 1-10'x10' garage door
- 4 windows
- 1-36" door
- Reflective insulation in roof
- 42'x40'x4" concrete pad
- ID: BKRG304012-3



Installed for
\$22,650*

24'x30'x10'

- Wood Truss with overhang and finished soffit
- 8'x30' porch
- 2-9'x8' garage door
- 1-36" walk in door
- 1-24" Cupola
- 32'x30'x4" concrete floor
- Building ID: BKRG243010-2

WE OFFER A HUGE ARRAY OF SIZES, STYLES AND OPTIONS!

Built on the traditions of hard work, ethical business, and commitment to quality, Summertown Metals has become a premier manufacturer and distributor of high-quality building products. We are committed to providing high quality materials and building solutions at the best possible prices resulting in an unbeatable value for our customers.

WWW.SUMMERTOWNMETALS.COM

931-796-1521

3864 Summertown Hwy. • Summertown, TN 38483

**Price includes all material and labor. Delivery and tax extra. Labor provided by independent contractor. Pad must be level. Any rock or changes will incur additional cost. Codes and permits are the responsibility of the buyer.*



40'x60'x14'

**Installed for
\$62,200***

- Steel trusses
- 2-10'x60' side sheds
- 2-12'x12' garage doors
- 2-36" doors
- 5 windows
- 36" cupola
- Reflective insulation
- 50'x60'x4" concrete floor
- Building ID: BKFA406014-4



30'x40'x12'

**Installed for
\$23,375***

- Wood Trusses, no overhang
- 2-10'x10' garage doors
- 1-36" doors
- 2-windows
- 40-yr 29 gauge painted metal
- 30'x40'x4" concrete floor
- ID: BKR304012-2



30'x50'x12'

**Installed for
\$26,725***

- Steel trusses
- 2-10'x10' garage doors
- 40-yr 29 gauge painted metal
- 1-36" door
- 30'x50'x4" concrete floor
- ID: BKR305012-2



30'x50'x14'

**Installed for
\$47,950***

- 1-12'x50' side shed with finished ceiling
- 2-12'x12' split slider doors
- 1-36" door
- 8 windows
- 1-30" cupola
- 42'x50'x4" concrete floor
- ID: BKR305014-1



WWW.ESTIMATOR.SUMMERTOWNMETALS.COM

Need an estimate on your next barn, shop or Ag building? Simply fill in your project specifications and the price will be calculated automatically! It's perfect for customers who are unsure what building sizes will fit in their budget. Once complete, a copy of the estimate will be emailed to you in minutes!



summertownmetals

summertownmetals

info@summertownmetals.com

Price may change without notice. See our website for latest pricing: www.summertownmetals.com

Come By To See Our Most Curent Inventory And Special Pricing



bluewater outdoor equipment

7711 hwy 72 • killen, al
bluewateroutdoorequipment@gmail.com

256.757.0400

0% Financing on Mowers Special Financing On Equipment



• made in u.s.a. • cutters from 4' to 15' • pallet forks 4400 lbs. capacity

bluewater outdoor equipment

open Tuesday thru Saturday 9:00 A.M. - 4:00 P.M.

- Located in Center Star, AL. - 7711 Hwy 72 killen, AL.
- On-site financing - 0% Financing on most equipment.

7711 hwy 72 • killen, al
bluewateroutdoorequipment@gmail.com

256.757.0400

FARM & CONSTRUCTION EQUIPMENT AUCTION

Saturday, January 28th, 2023 • Sale Starts at 8:45 AM

1000 Southern Celebration Blvd., Robinsonville, MS 38664

Selling For Andy Anderson Farms "Retirement". Plus several operational changes. Also lots of Government surplus including several high quality pieces from Yazoo Delta MS Levee Board and the Marshall County Road Department.

Highlighted Items

- (2) JD CP690 Bale Picker
- JD 7760 Bale Picker
- Case IH 3330 Sprayer
- Vector V300 Spreader
- Caterpillar 140M2 Grader
- Komatsu D65PX-15 Dozer, only 2200 hrs.
- JD S670 Combine
- (50) Tractors, all sizes
- (8) Cat & Case Backhoes

BRING A FRIEND!
2 lines going at once
for several hours!

**LARGEST SALE
OF THE YEAR!**

Terms: Cash or good check day of sale, no exceptions. Announcements made sale day take precedent over printed material. Mississippi state sales tax (7%) applies to all purchases. Dealers please bring a copy of your resale certificate. MISSISSIPPI FARMERS please bring your 2023 Commercial Farm permit for reduced tax. Buyers unknown to CAC must have bank letter guaranteeing check.

3% Internet Bidding fee applies to online bidders! 1% Buyers premium to all buyers. All Items Sell As-Is Where Is. No Warranties or Guarantees

Live & Online www.uselevel.com, www.equipmentfacts.com or www.proxibid.com



Equipmentfacts

proxibid.

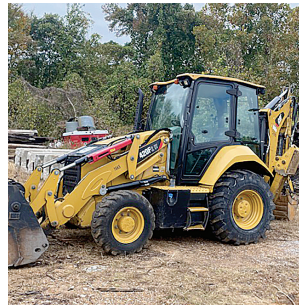
CONDUCTED BY:

**CRENSHAW
AUCTION LLC**



1000 Southern Celebration Blvd., Robiinsville, MS, U.S.
Email: crenshawauction@yahoo.com

MS Lic. #620 All new customers of Crenshaw Auction Company must submit payment by cash, cashier's check, personal or company check with bank letter of guarantee - No Exceptions!



Visit www.crenshawauctionllc.com for listing, updates & directions

**William Crenshaw • 901-486-6828 • Michael Crenshaw • 901-383-0051
Jamie Payne • 901-461-9038**

All new customers of Crenshaw Auction Company must submit payment by cash, cashier's check, personal or company check with bank letter of guarantee - No Exceptions!

KISSIMMEE ANNUAL WINTER PUBLIC AUCTION



**3 DAYS, 3 RINGS EACH DAY,
5,000 PLUS ITEMS!**
**#BIDYOURWAY LIVE,
IN PERSON & ONLINE!**



FEBRUARY 13TH-15TH, 2023

FEATURING CONSTRUCTION AND CONSTRUCTION SUPPORT EQUIPMENT, FORKLIFTS, AERIAL EQUIPMENT, GENERATORS, FARM EQUIPMENT, TRUCKS, TRAILERS, ENGINES, SPECIALTY ITEMS AND MORE!



SCAN FOR EVEN MORE UPCOMING AUCTIONS!



MSAL 1255, FL AU4483



JEFF MARTIN AUCTIONEERS N.C.

Experience the Difference!

844.450.6200 | JEFFMARTINAUCTIONEERS.COM

WE SELL WHAT YOU NEED!

JEFF MARTIN AUCTIONEERS, INC. IS THE FASTEST GROWING MULTI-PURPOSE AUCTION FIRM IN THE COUNTRY. WHETHER YOU ARE LOOKING TO BUY OR SELL, COME EXPERIENCE THE DIFFERENCE.



CHECK OUT OUR UPCOMING AUCTIONS!

- 02/28** North Myrtle Beach Construction Equipment & Truck Public Auction
1705 US Hwy 501, Conway, SC 29526
February 28th @ 9 AM EST
- 03/11** Early Spring Construction & Transportation Public Auction
2236 Hwy 49, Brooklyn MS 39425
March 10th-11th @ 9 AM CST
- 03/21** Houston Construction Equipment & Truck Auction
11998 Hwy 59, Cleveland, TX
March 21st @ 9 AM CST
- 03/23** Spring East Coast Const. & Transportation Auction
1618 Auction Dr., Pelzer, SC 29669
March 23rd @ 9 AM EST
- 03/28** 22nd Annual Turf, Golf & Construction Equipment Auction
2910 9th Street East, Glencoe, MN 55336
March 24th @ 9 AM CST



BUY LIVE & ONLINE

JEFF MARTIN AUCTIONEERS INC.

Experience the Difference!

**DON'T MISS THESE AUCTIONS!
CONSIGN NOW!**

MSAL 1255, TX 17188, MN - 43-12, SC 4283

844.450.6200 | JEFFMARTINAUCTIONEERS.COM

Red Angus, the beef industries preferred female. Bred and non-bred heifers, and breeding age bulls available.



Please call or text (281) 635-4591
for more information
1600 Trigg City Rd., Cornersville, TN 37046
bltppr@gmail.com



Animals

Chickens

EGG INCUBATOR UNIT, \$125, and 122' owner oxygen bottle, \$100. (931) 732-4401

Cows

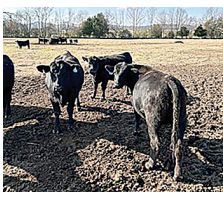
REGISTERED BLACK ANGUS BULLS fully TAEP qualified, A-I sired out of great cow families, gentle, good EPD's. Cedar Ridge Angus, Pulaski, TN. (256) 508-2874. See Cedar Ridge Angus on Facebook. (256) 508-2874 raycjordan@gmail.com

1 TO 25 REGISTERED Red Angus and registered Black Angus bulls, 11 months, +/-1,000lbs. Top bloodlines in both breeds! Starting at \$1,495 per bull, many are AI. Located in Rome, GA, 20 miles past Centre, Alabama. Joe Gibson, Gibsoncattle.com. (706) 506-3026



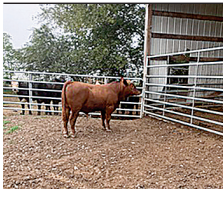
REGISTERED ANGUS BULLS, 12-18 months, all are AI Sired by Growth Fund, Optimum, Beard, Enhance, Beacon, all qualify for TAEP, good EPDs, calving ease and balanced bulls, good disposition. (931) 510-1104; (931) 287-7474.

PUREBRED NORMANDY BULLS, tame and family raised; AI sires: A2A2 genetics. 2yr old, \$1,600; 9 month old, \$900. No Sunday Sales Please. Smithville, TN. (931) 308-2128



FOR SALE, PUREBRED LIMOUSIN heifers, young bull and service age bull, good bloodlines. (931) 455-4978. (931) 409-9918

6 REGISTERED ANGUS HEIFERS, bred AI on 11/17/22 to Deer Valley Growth Fund Bull, 16 mo old, nice as you will find, 900-1,000lbs. Meets TAEP Heifer Program in TN. FandPLivestock.com. TAEP APPROVED. (615) 653-8913



TWO YOUNG BLACK ANGUS bulls for sale, \$1,750 each. Whiteville, TN area. (731) 518-6184

REGISTERED RED ANGUS BULL, 16mo old, passed BS exam. FandPLivestock.com. TAEP APPROVED. (615) 653-8913

REGISTERED SIMANGUS BULL, 3yrs. old, proven breeder, heifer safe, \$3,700. Phil Campbell, AL area. (256) 668-2290



SANTA GERTRUDIS, YOUNG BULLS SANTA GERTRUDIS, young bulls and heifers, polled, registered, gentle. Free ballcap. Quality cattle since 1977. (256) 566-7878 kelsoclo-ugh@aol.com

To Place A Classified Call 800-247-7318

Cold Formed Pre-Engineered Steel Buildings



- Design while you wait!
- Delivered in 10 working days after drawing approval.
- 20-25% savings over red iron.

Come in and let us design a building for you!



Manufacturer Of Quality Steel Buildings & Roofing Products.

We Offer Steel Trusses

Precision Metal Forming, Inc.

17713 Hwy. 72, West • Athens, AL 35611

256-232-8080

www.precisionmetalforming.net

"Professional Industry Staff To Assist You In Your Design & Application"



PRESSURE TREATED FENCE POSTS



- Excellent prices
- Pressure treated at our plant with CCA to the retention rate of .40
- 30 year warranty
- Dealer inquiries welcome
- Will protect established dealers territories



11029 Hwy. 132 E. | Sebree, KY 42455
 Kenny Miller (931)239-7962
Family business since 1987

CHAROLAIS BULL FOR SALE Service age Charolais bulls, gentle, registered, purebred and polled. Call, (931)967-8807; or, (931) 308-7212

REGISTERED RED ANGUS HEIFERS for sale, ready to breed. (931) 244-0376

CHAROLAIS BULL FOR SALE Service age Charolais bulls, gentle, registered, purebred and polled. Call, (931)967-8807; or, (931) 308-7212

FOR SALE, REGISTERED BLACK ANGUS BULLS, will qualify for the full TAEP money, all are by the top AI bulls in the breed. Crawford Angus. Lewisburg, TN. (931)205-2450; or, (931)359-2633. (931) 205-2450 crawfordangus@bell-south.net

FOR SALE, 16" and 16.5" eight hole wheels, \$20. (931) 732-4401

REGISTERED ANGUS BULLS Service age angus bulls out of top bloodlines. All bulls qualify for maximum TAEP money. (931) 589-2759

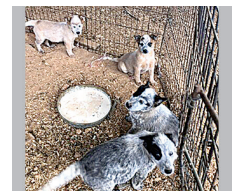
CHAROLAIS BULL FOR SALE Service age Charolais bulls, gentle, registered, purebred and polled. Call, (931)967-8807; or, (931) 308-7212

FOR SALE, 16" and 16.5" eight hole wheels, \$20. (931) 732-4401

REGISTERED ANGUS BULLS Registered Angus Bulls We have a good selection of yearling bulls from Growth Fund, Pay-weight 1682, Upward, Hometown, and Lone Pine Farms Sure Fire. Located in Putnam County, Tennessee For more information and pictures, contact me at (931) 267-6813; or, wtt@frontiernet.net.

WAGYU HEIFERS for sale. (256)714-6182.

Dogs



HEELER PUPS Heeler pups, 2 red and 2 blue, all females, 8 weeks, \$150. (931) 242-7868 lampleyd@goldmail.etsu.edu

PUPPIES FOR SALE, toy Australian Shepherds and toy Aussiedoodles will have shots/dewormed. Also, grown standard Australians and 2 grown male Poodles. John J. Gingerich, 146 Fox Hunters Lane, Morrison, TN 37357. Amish, no phone.



Energy Efficient • Stainless Steel Tanks
 Automatic Waterers • Keeps Ice Out • Now UL Listed

Cattle • Hogs • Horses • Sheep

Hoskins Livestock Waters PO Box 101 • Hoskins, NE 68740
 402-565-4420 • 800-658-4020 www.hoskins-mfg.com

REGISTERED HEREFORD BULLS REGISTERED HEREFORD BULLS, for sale, gentle disposition, great bloodlines, polled, service age, starting at \$1,500. Leave message (931) 703-7573

TAS Auction

GILLEY FARMS

Saturday, January 28th, 2022 • 9:00 A.M.

6085 Manchester Hwy., Manchester, TN



TRUCKS & TRAILERS

- Ford F150, 2013, 4x4, 5.0 Motor, 127,449 miles
- Ford F150, 2013, 4x4, 5.0 Motor, 172,458 miles
- Toyota Tacoma, 1998, 2WD, 186,045 miles
- Ford F450 flatbed, 1999, 4WD, 6 Spd., 98,234 miles
- Ford F350, single wheel pickup, 2005, auto, 250,040 miles
- Ford F250, flatbed, 2005, 253,415 miles
- Freightliner M21 Grain Truck, 2014, New KBH aluminum bed, 101,826 miles
- Freightliner M21 Grain Truck, 2014, New KBH aluminum bed, 183,001 miles
- Kodiak Grain Truck, 1993, 18' dump, 3116 Cat motor, 40,089 miles
- Kenworth T-800B Semi Truck, 2005, 321 miles
- Kenworth T-800B Semi Truck, 2005, 377,454 miles
- Ford F700, single axle dump truck, 1990, diesel, 39,501 miles
- Wilson, 2014, 39', hopper bottom, Viberator
- Wilson, 2014, 39', hopper bottom, Viberator
- Econline Tilt Trailer, 2006, 25'
- Hank Pintle Hitch Trailer, 2002, 20', 5' dove tail, ramps
- Hillsboro Aluminum Cattle Trailer, 1995, 20'
- Bumper Pull Lawn Mower Trailer, 16'



TRACTORS, SKID STEER, MINI EXCAVATOR & FORK LIFTS

- Case IH 450 Quadtrac, 3969 hrs.
- JD 8320R, 2092 hrs.
- JD 8410, 3229 hrs.
- JD 5125R, 540R loader, 446 hrs.
- JD 5090E, 4WD, canopy, left hand reverser, 330 hrs.
- JD 333G Skid Steer, cab, 128 hrs.
- JD 35G Mini Excavator
- Caterpillar DP-70 Forklift, 16k
- Komatsu FG30G-11 Forklift, propane



HARVEST EQUIPMENT

- JD S780, on tracks, 730 motor hrs., 420 separator hrs.
- JD S680, on tracks, 1969 motor hrs., 1160 separator hrs.
- JD 640FD, 40' header
- JD 640FD, 40' header
- JD 612C, 12 row header
- JD 612C, 12 row header
- (2) J&M Header Trailers
- Ja-Mar Mfg. Header Trailer



www.TraditionAuctions.com

See More On The Next Page >

AUCTIONEERS:

Lynn Lee
Dave Myrick
Joe McKee



www.facebook.com/thetraditionauction
www.traditionauctions.com

TRADITION AUCTION SERVICES, LLC

TRAINED BY THE BEST TO BE THE BEST!

APPRENTICE:
Bob Morton

Firm License No. 5762 • MURFREESBORO, TENNESSEE

Telephone:
615/869-0029

TAS Auction



HORST HEADER TRAILER

J&M 1250, grain Cart, on tracks, trap & scales

J&M 1110 Series, 1150 bushel grain cart, tarp & scales

Huskee 225 Gravity Wagon, hyd. auger

EZ Trail Model 3400 Gravity Wagon, tarp & hyd. auger

Westfield TF 100-31 Grain Auger

Westfield Grain Auger, 40', 8"

Walinga Agri-Vacc Model

6614 Deluxe

Neco Grain Dryer



TILLAGE & PLANTING EQUIPMENT

JD R4023 Sprayer, 1462 hrs.

JD R4038 Fert. Spreader, 1325 hrs.

Adams Tender Bed, self contained

JD 1790 Planter, 24 row

Great Plains 2220 Air Drill, 40'

JD 1590 No-Til Drill, 10'

JD 7000 Planter, 6 row no-til

JD 8000 Grain Drill, 18 hole

Case-IH Turbo Till 330, 25'

Case-IH 3950 Disc

Case-IH Crumbler

Case-IH 4200 Mulch Combo

JD 970 Cultipacker, 25'

JD915 Ripper, 7 Shank

JD KBA Wheel Disk, 10'

Hardi Boomless Sprayer

HAY EQUIPMENT

Mac Don R116 PT Discbine, 16'

Krone Tedder 7.2/6X7T, 6 basket

Krone Swadro 710/26T Rake

JD 460M Round Baler, net wrap, 1646 Bales

JD 348 Square Baler

JD 660 Hay Rake

EZ Trail Hay Basket

Haywagon, hyd. dump bed, 12'

(3) Worksaver Skid Steer Mount Bale Squeeze

(2) Worksaver JD Mount Bale Squeeze

(2) Worksaver 3 Pt Hitch To Skid Steer Adapters

Triple C Truck Bed Mount Round Bale Feeder

Leinbac Hitch Round Bale Unroller, 3 pt.

JD Front Bale Spears & Skid Steer Bale Spears

(3) Rear Bale Spears

Online Bidding
Through



Online Bidding Provided By
Equipmentfacts

Powered by TractorHouse.com, MachineryTrader.com, TruckPaper.com & MarketBook.com

GILLEY FARMS

Saturday, January 28th, 2022 • 9:00 A.M.

6805 Manchester Hwy., Manchester, TN



Camco 855 Dirt Pan
 Bradco SG30 Stump Grinder Skid Steer Mount
 Bradco 605 Trencher, 3 Pt.
 Edge Skid Steer Grapple Bucket
 Shaver Skid Steer Mount Post Driver
 JD HX 20 Bushog, 20'
 Bushog 2620 20'
 Great Plains Bushog 10'
 JD LX5 Bushog, 5'
 Frontier LP 1184 Arena Blade
 JD 115 5 Way Scraper Blade
 Box Blade, 8'
 JD 660 Roto Tiller, 3 pt.
 Maletti Trencher, 3 pt.
 The Hollow Seeder, 3 pt.
 Agri-Digger Post Hole Digger
 5th Wheel Semi Dolley
 (4) Feed Bins (1) 4 Ring, (2) 3 Ring, (1) 2 Ring
 Pasture Chain Drag
 WW Cattle Working Chute
 Pallet Forks For JD Loaders & Skid Steer



ATV'S, LAWN MOWERS & BOAT

Bass Tracker Panfish Special, 40 hp., Mariner, 16'
 JD 825I S4 Gator, hunting seat mounted on top, 62 hrs.
 JD XUV 835R Gator, cab, heat, air & radio 376 hrs
 JD 997Z Lawn Mower, 657 hrs.
 JD 915B Lawn Mower, 60" cut, 830 hrs.
 JD 915B Lawn Mower, 60" cut, 835 hrs.
 JD 272 Grooming Mower, 3 pt.



OTHER ITEM WILL BE ADDED CLEANING OUT BARN

Concrete Pavers
 Lumber
 North Star Steam Cleaner, mounted on trailer
 4 New LT 305/70R 17 Tires
 Building Materials, doors, windows, etc.
 Delta Band Saw
 Clarke Sand Blaster
 Yard Machine Tiller

OTHER EQUIPMENT

Galion T-500 Series L Diamond Boom Mower
 Diamond 3 Blade Brush Blade To Fit Galion
 Timberland C45 Powerline Clearing Saw
 Fami Forest Corp. Log Winch JL 501, 3 pt.
 Wood Mizer Hyd. Sawmill
 Valley Machine Works Planner, Kohler, 25 hp

For More Info, Call **Bob Morton 931-842-1234** or **Lynn Lee 615-390-6312**

AUCTIONEERS:

Lynn Lee
 Dave Myrick
 Joe McKee



www.facebook.com/thetraditionauction
www.traditionauctions.com

TRADITION AUCTION SERVICES, LLC
TRAINED BY THE BEST TO BE THE BEST!

APPRENTICE:
 Bob Morton

Firm License No. 5762 • MURFREESBORO, TENNESSEE

Telephone:
615/869-0029



Print your ad in the space below. Ads must be received no later than the 20th for publication in the following month's issue. Include your phone number as one word.

Free Ads: 1) **A single item priced below \$1,000 (excludes animals).**

Price must be in the ad.

2) **Want to Buy**, Limit 10 Words. Ad to run one (1) issue only!

Rates: 15 words or less - \$12.00 (Additional words 50¢ each per ad per month)

Placement Options

Better Descriptions = Better Results

1

1) Call 800-247-7318

2) Fax to 931-563-4477

3) Place online

www.FarmersExchange.com

4) Mail to Farmers' Exchange

P.O. Box 490

Fayetteville, TN 37334

Phone ()

2 Options (circle)

Bold Type

Add \$2.00 per issue to base charge

ALL CAPS

Add \$2.00 per issue to base charge

Border Around Ad

Add \$4.00 per issue to base charge

3 Payment

- Cash, Check, M.O. Discover AmEx
 MasterCard Visa

Card Number

Expiration Date

CVC #

4 Please Run Ad

- 1 Month 2 Months 3 Months

I have figured charges & options for the above ad & have enclosed:

Amount: \$ _____

Name: _____

Address: _____

Email: _____



TAS
Auction

**ANNUAL FARM & CONSTRUCTION
EQUIPMENT CONSIGNMENT SALE**

Saturday, February 25th, 2023 • 9:00 A.M.

BEDFORD COUNTY AGRICULTURE CENTER

2119 Midland Road • Shelbyville, Tennessee

From Hwy. 231 North of Shelbyville Turn on Peacock Lane ¼ mile to Midland Road.

EQUIPMENT CHECK-IN:

Wednesday, February 22nd from 8:00 A.M. - 5:00 P.M.

Thursday, February 23rd from 8:00 A.M. - 5:00 P.M.

Friday, February 24th from 8:00 A.M. - 5:00 P.M.

SELLERS: We reserve the right to refuse any item for sale. No Flea Market Items or worn out tires.

Bring your equipment to the areas LARGEST and MOST ACTIVE ANNUAL SALE.

If you will call in advance we will take photos of your equipment and advertise it on our website.

BUYERS: Selling Farm Tractors, Backhoes, Light Dozers and Industrial Equipment, Lawn and Garden Equipment. Livestock Feeding and Handling Equipment, Plows, Disk, Planters, Mowers, Haybines, Rakes, Balers (Round & Square), Choppers, Wagons, Bush Hogs, Post Hole Diggers and Much More.

NO BUYER'S PREMIUM

Two Auction Trucks Will Run

Note about Tractors selling: Due to sellers request, Tractors selling Absolute with Farm Sellouts will be lined up and sold in Machinery Line, Anytime during the day.



LUNCH SERVED BY THE BEDFORD COUNTY 4-H CLUB

SPONSORED BY:

FARM CREDIT SERVICES

SHELBYVILLE & MURFREESBORO, TENNESSEE

If you are interested in Credit, Contact Your Local Farm Credit Services Prior to Sale.



EVERYTHING SOLD "AS IS" AND "WHERE IS" NO CHARGE FOR NO SALES

COMMISSION RATES: 10% of first \$1500 - plus 5% of balance - \$350 maximum charge on any single item - \$15 minimum charge on large items, \$5 on small.

CHECKS WILL BE MAILED WITHIN 12 TO 15 DAYS

ALL ITEMS MUST BE PAID FOR ON SALE DAY. Loaders will be available to load out thru Monday, February 27th. Tradition Auction Services and Farm Credit Services are acting as Selling Agents only and are responsible only for money collected and guarantee no warranties made by Sellers.

NOT RESPONSIBLE FOR ACCIDENTS, THEFT OR DAMAGE TO EQUIPMENT

TERMS: CASH OR APPROVED CHECK. Buyers using personal or company check who are not financially established with Auction Company must have Letter of Credit guaranteeing payment of check.

For More Information Please Call: Bob Morton (931) 842-1234 • Lynn Lee (615) 390-6312 • Dave Myrick (615) 202-7349

AUCTIONEERS:

Lynn Lee
David Myrick
Joe McKee
Robert Smith

www.facebook.com/thetraditionauction
www.traditionauctions.com



TRADITION AUCTION SERVICES, LLC

TRAINED BY THE BEST TO BE THE BEST!

APPRENTICE:
Bob Morton

Firm License No. 5762 • MURFREESBORO, TENNESSEE

Telephone:
615/869-0029

Equipment For Every Need!



Mahindra 4540 with TRI Cutter, nice tractor and cutter, like new, 16.8 hrs., selling for neighbor due to health problems. **CALL**



Hay Wagons
3 sizes in stock
Call



JD 5320
2WD, loader, 65 hp
\$26,000



Farm King 1385
new, hydro mover
Call

New Items Available!

- Frontier WR3108, 8 wheel, like new \$5,500
- Farm King 1395 Augers, In Stock **Call**
- Ponderosa Horse Trailer, rubbermat, excellent shape \$3,000
- Buhler Augers, 10x70 swing arounds, 10x31 auger,
10x36, 1080, in stock, ready to go **Call**
- Enorossi Y8+3 Rake, **\$6,000**
- Enorossi Rake, used, 12'3" **Call**
- Enorossi Tedders, 4 basket **Call**
- Farm King Finish Mowers, 6' & 7' **Call**
- Hay Express, 4 bale, individual dump **\$2,500**
- Hay Wagon, 6-7-8 Bale, bumper hitch & gooseneck **Call**

- New Farm King Grader Blades & Tillers **Call**
- New Enorossi Tedders, 4 basket **Call**
- REM Grain Vac, in stock **Call**
- TN River Brand Cutters, 6' or 7', pull type, 3 pt. In stock **Call**
- New & Used Enorossi Tedder, 4 basket, 17" **Call**
- Used Grain Vacs **Call for Prices**
- New & Used Tedders **In Stock**
- TRI Box Blades, 6', in stock, new & used **Call**
- Kubota Disc Mower, like new **\$7,500**
- JD 5045D, 2WD, good shape, 550 hrs **\$16,000**
- Hydro Dump Wagons **Coming In Soon**

Straw For Sale - 5' Round Bales, net wrapped or small square bales

Chandler's Farm Equipment

270-586-6653

Marty 270-392-0359 • Lloyd 270-535-6653
2529 Salem Road • Franklin, KY
Going Strong Since 1944

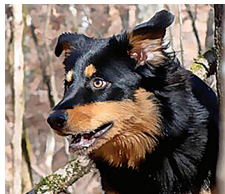


Attachments

Blades/Box Scraper



USA, 5' TO 10' PULL TYPE BOX BLADES REGULAR DUTY, HAVE A MANUAL TILT AND COME WITH HYDRAULIC LIFT. HEAVY DUTY, COME WITH HYDRAULIC TILT AND LIFT. 5' \$900; 6' \$1000; 7' \$1700; 8' \$1950; 10' \$2500; 8' HD \$3400; 10' HD \$3800. CALL FARM SERVICE SOLUTIONS IN LEOMA, TN. FARMSERVICESOLUTIONS.COM; (931) 242-7675



BLACK & TAN ENGLISH SHEPHERDS Natural Heelers. Eradicate vermin. Drive cattle. Protect Property. Blankenship bloodline. (615) 640-6161

Other

HONEY BEE NUCS \$170; \$20 payment with order, quantity discount, April pick-up. Joe N. Hostetler, 150 Mt. Horeb Rd., Ethridge, TN 38456.

BLACK & TAN ENGLISH SHEPHERDS Natural Heelers. Eradicate vermin. Drive cattle. Protect Property. Blankenship bloodline. (615) 640-6161

2021 VIOLETTE PIED PEACOCK, 2021 Violette black-shouldered peacock. He should be white-eyed, but can't guarantee, \$500/each. Cornersville, TN. If no answer, leave voicemail or text. I will respond ASAP. (931) 652-3164

WOODS, 4 FOOT BOX blade for sale, new teeth, good condition, \$475. Call/text, (931) 492-1013

Announcements

DECALS & DECAL SETS FOR HEAVY CONSTRUCTION & AG EQUIPMENT

AFFORDABLE DECALS AND SAFETY DECALS. Prompt. Knowledgeable Reliable Service. www.QuipCal.com; Call, (215) 536-5339; email:info@custom-servicescompany.com.



USA, 3 POINT BOX BLADE AND LAND PLANES NEW IN STOCK. CALL CHRIS AT FARM SERVICE SOLUTIONS IN LEOMA, TN. BOX BLADES 4' \$695; 5' \$765; 6' \$895; 6' HD \$1,000; 7' HD \$1,085; 8' HD \$1,165. LAND PLANES 6' \$1,400; 7' \$1,500. CALL FARM SERVICE SOLUTIONS IN LEOMA, TN. FARMSERVICESOLUTIONS.COM; (931) 242-7675



Wood Trusses
40x60x10 Top & Gable ~ **Call**
40x40x10 Top & Gable ~ **Call**

Price includes materials and labor



All types buildings for farms
Steel Trusses Available

MILLER FARMS Angus Beef from the farm. 100% natural, non-GMO, hormone and antibiotic-free. Whole, halves, or by the pound. Slaughtered and packaged. (931) 593-3702; (931) 593-2429.

ADDISON AGRI-BUILDERS

POULTRY HOUSES • BARNs • SHEDS

256-747-3444


Craig Pigg, Owner

P.O. Box 455 • 2661 Co. Rd. 39
Addison, AL 35540

Brent Dollar - Sales Representative

Office: 256-747-3444 • Fax: 256-747-9002

To Place A Classified Call
800-247-7318




T M Cattle Company

HEREFORDS & BLACK HEREFORDS


ANNUAL BULL & FEMALE SALE

FEBRUARY 4, 2023

Noon (CST) at the Ranch Sale Headquarters
Lawrenceburg, TN




J100

DOB: 9/16/21 Reg# P44324439 Homo Polled 


Sire: BF Leveler 776 ET MGS: TMG 8Y All Natural 4001 ET

CE: 1.0 BW: 3.0 WW: 60 YW: 84 Milk: 26

REA: 0.67 IMF: -0.023 SCHB: 97




J118

DOB: 9/23/21 Reg# 44324419 

Sire: BR Belle Air E126 ET MGS: TMG 8Y All Natural 4001 ET

CE: 7.8 BW: 1.9 WW: 49 YW: 83 Milk: 27

REA: 0.45 IMF: 0.057 SCHB: 123



J086

DOB: 9/6/21 73.75% Black Hereford Reg# HB022644

Homozygous Black & Homozygous Polled

Sire: JO Jack Hammer 7A ET MGS: RR Hats Off P606 R85B


CE: 9.7 BW: 1.3 WW: 53 YW: 66 Milk: 24 TM: 41

35 BLACK HEREFORD & HEREFORD BULLS


27 Registered Spring Pairs & Heavy Breds – Black Hereford & Hereford

5 Commercial Angus Spring Pairs & Heavy Breds

7 Commercial Angus Fall Pairs



118 Powdermill Hill Lane Lawrenceburg, TN
Jeremiah Malone **931.309.6805**
Jeremy Smith, Herdsman **706.424.1744**



LAYTON
AUCTION SERVICES, LLC

Dustin N. Layton **405.464.2455**
Chisolm Kinder **405.747.4683**
www.laytonauction.com

WOODS, 4 FOOT BOX blade for sale, new teeth, good condition, \$475. Call/text, (931) 492-1013

Building Products



12'X12' ROLLING STEEL DOOR, already taken down, good condition, \$500, Smithville, TN. No Sunday calls. (931) 308-2128

Other



NEW CREEP FEEDERS, VARIOUS 6 ton \$8,800; 3 ton \$4,400; 2 ton \$4,000. Parker Farms Cattle and Equipment Company. (615) 542-6157



WOODMASTER OUTDOOR WATER FURNACES, heat your home or shop, EPA approved clean burning, parts in stock, financing available. In TN call Harold, (931)484-8890; in KY call Dave, (859) 265-0793

Tires
TRACTOR TIRES AND WHEELS, 18.4X30 for sale, 80%, \$700 pair (256) 777-2513

Trusses

27 2 X 4 TRUSSES 4 - 12 / pitch, 32' long, 10 1/2" overhang, \$2,500. (615) 642-8735



Chemical Applicators and Chemicals

Sprayers

To Place A Classified Call
800-247-7318

NEW 1000 BOOMLESS PASTURE sprayer, \$9,500; 28' boom, \$1,200. All sizes available. Parker Farms Cattle and Equipment Company. (615) 542-6157

CUSTOM MADE PASTURE SPRAYER for sale, 200 gallon, cluster sprayer, boomless, on trailer, works great. (931) 637-7795

SNEAD HYDRAULICS & REPAIR

New or Rebuild Pumps, Valves, Motors, Cylinders & Hydrostats • In House Machine Shop



87017 Hwy. 278
P.O. Box 506
Snead AL 35952
Phone: 205-466-3105
Fax: 1-866-372-0303
info@sneadhydraulics.com

Craig Vaughn
Owner/CEO
256-470-0828

www.sneadhydraulics.com

REGISTER BARN



40'x60'x12' - Installed

Roof only, closed gables, or Roof only, open gables.

\$11,000 + freight & tax

30'x40'x10' - Installed

Roof only, open gables

\$7,000 + freight & tax

JEFF REGISTER BUILDINGS & TRUSS

Serving Mississippi, Alabama, Georgia and Louisiana

321 Madison Ave., Wiggins, MS 39577

601-928-5309 or 601-928-5308 - www.registerbarns.com

Farmers' Exchange

Bill Thomas

Founder (1940-2010)

Will Thomas

Publisher / CEO

Katie McNabb

Director of Magazines

Ken Holtzinger

Vice President of Sales

Janet Mullins

Business Development

(931) 993-0026

Tim Ashley

Business Development

(931) 205-0644

Bob Barger

Business Development

(601) 422-5064

Shelli Fuller

Customer Service

Barb Hargrove

Customer Service

Tracey Pollock

Customer Service

Tim Weir

Customer Service

Chase Perryman

Creative Director

Melissa Davis

Layout Artist

Todd Pitts

Art Production Manager

Ben Adams

Graphic Artist

Sarabeth Bray

Social Media
Community Manager

Steve Seiler

Distribution

(800) 247-7318

404 Main Ave. South
Fayetteville, TN 37334

FarmersExchange.com

Mats, cuts, negatives, art work or other copy submitted for publication is considered to be the property of the advertiser. Advertising is accepted with the understanding that all liability for copyright violation is the sole responsibility of the advertiser.

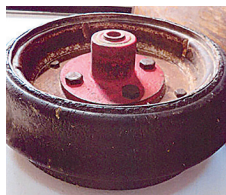
The Exchange will make every effort to see that advertising copy is correctly printed, but shall not be liable for failure to publish an ad or for typographical errors.

The Exchange will gladly reprint, without charge, that part of an advertisement in which an error occurs, provided a claim is made within three (3) days of the first publication of the ad.

© 2023 Exchange Media Group
All Rights Reserved



AG SPRAY EQUIPMENT 3-point and pull-type sprayers come with boomless nozzle. 3 point sprayers all have hand wands. 3 point 55 gal \$1,095; 110 gal 1,895; 150 gal \$2,095; 200 gal \$2,295; 300 gal \$3,200. Pull type with used tires 300 gal \$3,950; 500 gal \$4,300. Booms available. Call Farm Service Solutions in Leoma, TN. farmerservicesolutions.com; (931) 242-7675



GRAIN DRILL PRESS WHEELS 12" diameter by 4" wide, 5/8" center hole, Total width=5". \$100 for about 17. No Sunday Sales Please. Smithville, TN. (931) 280-1275

Wheel (Rim) Construction Equipment

FOR SALE, 16" and 16.5" eight hole wheels, \$20. (931) 732-4401



BUCYRUS-ERIE DYNAHOE 190-4 BACKHOE Runs/Operates Good, 126 hp Detroit 4-53 Diesel, rear axle power steering, 4x4, weighs 22,750 lbs, 1-3/4 yd front bucket, owned for 28 years, good machine, \$9,500 cash. (256) 766-0356 cgamble@eanelson.com

To Place A Classified Call
800-247-7318

Components

Other

FARMALL SUPER C hood and PTO belt pulley, \$150/both. (256) 577-5051



(270)466-5841
528 Seay Rd.
Trenton, KY 42286

Call us for all of your tarp needs!
Monday - Friday 8AM-5PM

- Semi Trailer Tarps
- Installation, Hardware & Pipes Available





www.watkinsandsons.com



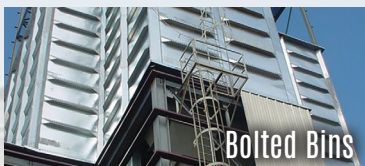
Spreaders

A spreader distributes fines of grain without compromising quality. It's gentle on grain and tough enough to handle fill rates up to 40,000 BPH (1016 MTH). Uniformly distributed fines eliminate the time and expense of coring and create a better environment for storage.



Grain Bins

From the initial site analysis to developing your custom grain storage plan to final completion of the project, GSI's established dealer and contractor network is with you every step of the way, committed to supporting you and your operation's growth.



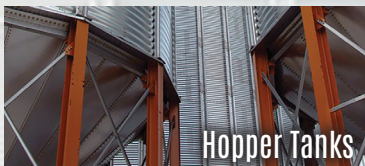
Bolted Bins

With a seemingly endless number of square and rectangular combinations, InterSystems' modular Bolted Bins offer the ultimate in flexibility for storage of batching ingredients or commodities.



X-Series Ladders

At GSI, your safety is our number one priority. That's why we have carefully designed the exclusive X-Series ladders and platforms specifically to meet OSHA guidelines to ensure the safest work environment possible.



Hopper Tanks

You need hopper tanks for several purposes, whether it's a simply gravity unload, the need for a complete cleanout, Wet Bins, load out bins, or feed bins. GSI has a complete line of hopper tanks and accessories to meet your needs.



Bin Unloads

Whether you are emptying a single bin or on the 5th turn of that bin this year, you need to move your grain gently and efficiently. GSI's unloads are hard at work on farms, grain elevators, and processing plants across the world.



Fans & Heaters

Keeping your grain in condition throughout its time spent in storage is the most vital aspect to any storage system. GSI designs and manufactures complete line of rugged aeration and grain conditioning systems to help maintain grain quality.

WATKINS & SONS MFG., INC.

5734 Hwy 13 South, Linden, TN 37096

800-227-4631

www.watkinsandsons.com



Grader

ADAMS HORSE DRAWN grader, 7' blade, \$1,450; Adams horse drawn large road grader, \$2,000; two horse wooden wheel wagon, \$1,475. Columbia, TN (931) 446-1675

HYDRAULIC PRESS, 30 ton, \$175 and drill press, \$125. (931) 732-4401

Fencing and Cattle Equipment



CATTLE SWEEP SYSTEMS HEAVY DUTY GALVANIZED 8 BAR 6' TALL. 90 DEGREE WITH 10' OF ALLEY STARTS AT \$1,480.180 DEGREE W/20' OF ALLEY STARTS AT \$2,475. WE CAN ADD AS NEEDED TO CUSTOMIZE YOUR SYSTEM. CALL FARM SERVICE SOLUTIONS IN LEOMA, TN, FARMERVICESOLUTIONS.COM; (931) 242-7675

LIVESTOCK FENCE WIRE for sale, Stay-Tuff brand, high tensile, class 3, very good prices. (931) 675-3260

GOAT WIRE AND HORSE WIRE fencing for sale, high tensile and class 3 galvanized. (931) 675-3260

PRESSURE TREATED PINE FENCE BOARDS, for sale, 1x6x14' and 1x6x16' full 1" thick. (931) 675-3260

FENCE POSTS FOR SALE, pressure-treated square and round posts, several thousand available. (931) 675-3260

PRESSURE TREATED PINE, 2x6x16', full cut 2" thick, great for livestock working facilities. (931) 675-3260

MIRAFOUNT LIVESTOCK WATERERS, 2 ball and 4 ball available. (931) 675-3260

FOR SALE, 20' heavy pipe gate, \$100. (931) 732-4401



BOW GATES 16 GAUGE, 6' tall, good inventory, 4' up to 12' combo bow gates-example 12' with 4' wt. FandPLivestock.com. TAEP APPROVED. (615) 653-8913

DECALS & DECAL SETS FOR HEAVY CONSTRUCTION & AG EQUIPMENT

DECALS AFFORDABLE DECALS AND SAFETY DECALS. Prompt. Knowledgeable Reliable Service. www.QuipCal.com; Call, (215)536-5339; email:info@customservicescompany.com.

Need Cash?? We Buy Standing Timber

Davie Ashley Sawmill
Elora, TN 37328

Free Estimates

- Call today to schedule a meeting.
- We sell sawdust - pickup or delivery
- Selling custom log home & barn packages
- Kiln dry and tongue n groove lumber for sale

From A Few Acres Of Good Timber To A Large Forest. We Will Buy The Timber Or Even Land With Timber On It.

Sawmill - 931-937-8581
Peanut - 931-607-2126

The Ultimate Arena and Ground Prep Tool

Harvesting Equipment

INTERNATIONAL UPRIGHT CORN SHELLER, \$300. Columbia, TN. (931) 446-1675

Hay and Forage Equipment

HESSTON STACK HAND; New Holland bar type rake; assortment of metal rollers and troughs; much more. (629) 395-4558

Rakes and Tedders



JOHN DEERE 702, 8 WHEEL HDAY RAKE Rebuilt cylinder, good condition, shed kept, \$2,000. (205) 764-3850 jessebigham29@gmail.com

Rotary Mowers



BUSH HOG 3 POINT CUTTERS HEAVY 11 GAUGE DECK, 90 HP GEARBOXES WITH SLIP CLUTCH. 6' \$1600; 7' \$1900; 10' \$3750. CALL FARM SERVICE SOLUTIONS IN LEOMA, TN. FARMSERVICES-OLUTIONS.COM; (931) 242-7675

CAPABILITIES

- Smooth It Out
- Fluff It Up
- Pack It Tight
- Level It Constantly
- Dig It Up
- Roll It Down
- Pull It Back From Edges
- Pulverize Clods
- Fill In Holes
- Horse Arenas
- Driveways
- Agricultural
- Erosion Repair
- Ballfield Maintenance
- Landscaping
- Waterways



REGULAR



HEAVYWEIGHT



SHORT MODEL



WATER KIT



WHEEL MODEL



LASER MODEL

Call us today! (937) 444-2609

15686 Webber Rd., Mt. Orab, OH 45154

Reveal4-n-1.com

REVEAL 4-N-1

the Original... Still the Best



SQUEEZE CHUTES TARTER SERIES 3 FOR \$2,800 AND SERIES 6 FOR \$4,500 WITH EITHER AUTOMATIC OR MANUAL HEAD GATES. CALL FARM SERVICE SOLUTIONS IN LEOMA, TN. FARMSERVICES-OLUTIONS.COM; (931) 242-7675



CORRAL HAY FEEDER PANELS, 16 GAUGE, 6' tall, good inventory, 8' up to 16' long. FandPLivestock.com. TAEP APPROVED. (615) 653-8913



CONSTRUCTION and built to last a lifetime, 16ga, 4' up to 16' long. FandPLivestock.com. TAEP APPROVED. (615) 653-8913

Harvesters

Combines

CASE AND GLEANER COMBINES, one Case 1688 axial-flow, 4WD; two Gleaners, 2WD. Must sell. (256) 200-4288

To Place A Classified Call 800-247-7318



Specializing in Rugged, Reliable and Reasonably Priced Flat Beds, Arm Beds and Spike Beds



RRP TRUCK EQUIPMENT
SPARTA, TN (931) 761-3554



BULL GATES-16 GAUGE, 51" and 63" tall, 4'-20' long, good inventory. FandPLivestock.com. TAEP APPROVED (615) 653-8913

Call Now - New Vermeer Equipment In Stock Now!



5021 Mixer - Call for price

0% On Select Pieces Thru January 6, 2023

We now carry Vermeer Feeding Solutions • Schuler is now owned by Vermeer

SCHULER EQUIPMENT IN STOCK NOW:

Schuler 5021 Mixer • Schuler BF175 Feed Wagon • Call for prices

Check out our website: www.PoolEquipment.com



Vermeer BF 300

ALL USED VERMEER EQUIPMENT Sold Field Ready

USED EQUIPMENT:

Vermeer 5420 net/twine.....	\$17,000
Vermeer 5410 twine only.....	\$12,500
Vermeer 605K, twine only.....	\$6,500
Vermeer 5400, twine only.....	\$7,500
John Deere 466, net/twine.....	\$8,500
New Holland 650.....	\$3,500
New Holland 570 Square Baler.....	\$4,500
New Holland 565 Square Baler.....	\$7,500
Vermeer M7050 Mower.....	\$8,500
(3) Schuler 6050 Mixers.....	CALL

John Deere 4040 Cab, 4x4.....	\$10,000
McCormick X5.35 Cab, 4x4, Loader, 130 hrs. 4 years of warranty left.....	\$65,000
(2) 4 basket Tedders.....	CALL
New McCormick tractor in stock now!!	
New Vermeer Hay Equipment in stock now!!	
New Bush Hog Cutters 5'-15' IN STOCK NOW!!	
42'-37' Hayliner In Stock Now!!	
Taylor-way 7' cutter 15' cutter IN STOCK NOW!!	

McCormick Tractors Now In Stock Now!! Call for prices

New McCormick x6.50 cab, 4x4, loader.....	Call
(2) New McCormick x4.080.....	Call
New McCormick x1.55, cab, 4x4, loader.....	Call
New McCormick x1.55, rops, 4x4, loader.....	Call

Bush Hogs In Stock Now!

BH 2415.....	Call	BH 115.....	Call
BH 317.....	Call	BH 3510.....	Call
BH 215.....	Call	BH 216.....	Call
BH 1812.....	Call	Bush Hog Tillers, 6', 7'.....	Call
BH 2107.....	Call	Hayliner, 42' and 37'.....	Call

If we don't have what you want, we'll go get it!  **256-685-0556 Office**
256-476-3546 Chris Pool
256-565-7780 Owner, Norman Pool

Pool Farm Equipment Co.

23971 Hwy. 157 • Town Creek, AL 35672



JOHN DEERE 566 WINTER SPECIAL! round baler, net or twine, new \$1,000 worth of chains and bearings, \$8,000. (256) 483-3487

NEW HOLLAND 565 SQUARE BALER, excellent condition, good paint, ready for field, \$6,500. (270) 206-0628

4,000 BALES OF ORCHARD GRASS HAY, 12-14% protein, \$7 per bale. Hohenwald, TN area. (931)628-0529.

STRAW! 21 bale bundles, single bales to semi loads, \$5 per bale, quantity discount available. (931)607-3992.

BUSH-WHACKER ST-180 ELITE B A T W I N G BUSHHOG 15', very good condition, \$6,800. (256) 657-6872

INTERNATIONAL HARVESTER HORSE DRAWN hay baler, \$600. Columbia, TN. (931) 446-1675

Hay and Grain For Sale

HAY FOR SALE, 3x3, Alfalfa and Orchard Grass mixed, good horse hay. Call, (931)808-8490; (931)728-5490. (931) 728-5490

HAY FOR SALE, 4x5 rolls, fertilized and baled with no rain, \$45 per roll. (256) 509-7417

To Place A Classified Call 800-247-7318

Odds and Ends



Round Balers



NEW 11 ROLL HAY HAULERS, \$4,400. Parker Farms Cattle and Equipment Company. (615) 542-6157

Square Balers



JOHN DEERE 336 SQUARE BALER shed kept, new knives, wagon hitch, other spare parts, ready for field, \$3,500. (205) 764-3850 jesse-bigham29@gmail.com

Great Deals on Gently Used Equipment!



New Holland T4040 4WD, 2 sets remotes, 72 hp, shuttle shift **\$24,900**



Kubota L2900 4WD, 32 hp, shuttle shift **\$13,900**



LSXR 4040 4WD, 2 sets remotes, 40 HP, 900 hrs. **\$15,900**

D & D Equipment

Heavy Equipment & Farm Tractor Sales

1635 Hwy. 50 East, Centerville, TN 37033 - 931-729-2320

Owners: Jerry Davidson & Steve Davidson

See our pics on Nashville Craigslist!

Great Deals On Farm Equipment!

Tractors

- Ford 3930, very clean\$12,250
- New Holland 3010S, with loader\$15,750
- IH 464, gas, runs good\$3,500
- Int 656, narrow nice\$7,500
- IH 5488, CHA, 2WD\$11,900
- IH 1456\$14,500
- Ford 8n\$2,500

Other Equipment

- Case IH RS551\$6,500
- Case IH 1063, 6RN, nice.....\$8,500
- Case IH 1083 Corn Head, 8 row\$5,000
- Case IH 1440, 4WD\$4,995
- Case IH 2020, 20', nice\$7,500
- Case IH 3020, 20'\$13,500
- Case IH 3020, 25'\$16,900
- Case IH 3162, 2014, 30' draper\$38,500
- Case IH 5400 Drill, soybean special, 15'\$10,000
- Case IH DC103, one season\$23,500
- Header Wagons, Grain Carts & Seed Wagons..... In Stock
- JD Disc, 23'\$1,595
- Kubota Zero Turn Mowers In Stock
- Used Rakes & Tedders In Stock..... Call
- Bac Blade..... \$500
- Vermeer 664, 4000 bales\$18,500
- Vermeer WR20\$1,850
- Case RB455A, one owner\$12,500
- Case IH DC102\$10,950
- New Holland H7230, 2014.....\$9,000

www.brothersimplement.com



Hwy. 41 - Hillsboro, TN
(931) 596-2749






TWO 15 TON FEED BINS; (three ring bins auger/motor included), \$1,000 each. Belvidere, TN. No Sunday calls. (931) 308-2128

FOR SALE, 25 GALLON cast iron pot, \$150; 15 gallon cast iron pot, \$125. (931) 732-4401

WANT TO BUY FJ40 Toyota, in model years from 1975 to 1980. (931) 607-9737

TWO INDUSTRIAL FIRE extinguishers for sale, \$375 each. Columbia, TN area. (931) 446-1675

(2) Kubota L3130, 4WD \$8,750 ea. Case IH JX75, 4WD, loader, CHA - \$28,500 Kubota M110, CHA, 4WD, 4400 hrs. - \$28,000

<p>Case IH</p> <p>430.....\$2,750</p> <p>C70, diesel, ps\$8,750</p> <p>Ford</p> <p>4610.....\$8,500</p> <p>1920, 4WD, loader\$12,500</p> <p>4610, loader\$12,500</p> <p>John Deere</p> <p>5410, C&A, 1800 hrs., 4WD, loader...\$28,500</p> <p>6215, 4WD, loader\$32,500</p> <p>6400, 7800 hrs., CHA, 2WD.....\$22,500</p> <p>International</p> <p>1086, 2WD, Cab\$6,000</p> <p>444, gas, ps.....\$2,800</p> <p>Cub, w/ cultivators\$1,500</p> <p>Super A, w/ cultivators.....Call</p> <p>Kubota</p> <p>BX2200, 4WD, belly mower, 478 hrs...\$8,500</p> <p>Massey Ferguson</p> <p>1010, diesel\$2,500</p> <p>231, loader\$10,500</p> <p>231, no loader\$5,750</p> <p>150.....\$3,750</p>	<p>Misc.</p> <p>2003 MacTruck, conv. cab\$28,000</p> <p>Asphalt Packer, HD, JD engine\$9,000</p> <p>Belarus 250AS\$2,500</p> <p>Bobcat 743\$12,500</p> <p>Bobcat 743 Skid Steer,\$12,500</p> <p>Bog Discs, 3 BoggCall Cell</p> <p>Dodge 1-ton, 2007, auto, flatbedCall</p> <p>Ford Dump Truck, 1975, 2 ton.....\$4,500</p> <p>Gehl 6635 SXT, turbo, new rubber, metal tracks\$22,500</p> <p>Gravity Wagons, 4 to choose starting @ \$850</p> <p>Honda 300, Four Trax\$3,500</p> <p>Honda 300\$3,250</p> <p>NH Feed Mill\$6,250</p> <p>Rhino 95 Backhoe, 3 pt, self contained\$7,500</p> <p>Severall Wheel DiscsCall Cell</p> <p>Severall Square Hay BalersCall</p> <p>Super A Farmall, w/ cultivators\$2,500</p> <p>Tye No-Till Drill.....\$4,850</p> <p>Woods MD315 Cutter\$6,250</p> <p>Polaris Ranger\$4,500</p> <p>Polaris 4 wheeler, 4WD\$3,500</p>
---	---

Vermeer Hay Equipment in Stock

Culvert Pipe, 12" & up, Plastic & Metal • Head Gates • Corral Panels



Lynch Equipment Sales

Westover Drive, Columbia, TN
931-381-1839 • Cell: 931-619-1338



WOODMASTER OUTDOOR WATER FURNACES, heat your home or shop, EPA approved clean burning, parts in stock, financing available. In TN call Harold, (931)484-8890; in KY call Dave, (859) 265-0793

WANT TO BUY FJ40 Toyota, in model years from 1975 to 1980. (931) 607-9737

TWO INDUSTRIAL FIRE extinguishers for sale, \$375 each. Columbia, TN area. (931) 446-1675

GIFFORD BROTHERS CONCRETE. Nothing too big or small. Free estimates. 50 years experience. Dale Gifford, (931)703-0925.

DECALS & DECAL SETS FOR HEAVY CONSTRUCTION & AG EQUIPMENT

AFFORDABLE DECALS AND SAFETY DECALS Prompt. Knowledgeable Reliable Service. www.QuipCal.com; Call, (215) 536-5339; email:info@customservicescompany.com.

TWO INDUSTRIAL FIRE extinguishers for sale, \$375 each. Columbia, TN area. (931) 446-1675

Other Equipment

Miscellaneous



NORWOOD PALLET FORKS \$750 AND UP. SKID STEER, JOHN DEERE 100-500 SERIES LOADER, AND GLOBAL EURO QUICK ATTACH AVAILABLE. FARM SERVICESOLUTIONS.COM. LEOMA, TN. CALL, (931) 242-7675

HONDA 16HP PRESSURE WASHER, \$600; wood furnace from central unit, \$250; Antique crank charcoal forge, \$75. (931) 732-4401

JOHN DEERE \$700.00 John Deere 272 grooming mower cuts very well (770) 877-1685 lbwaters@att.net

Planting Equipment

Drills



2022, ACCORD SAYA 505 NO TILL DRILL THESE 5' DRILLS ARE SET UP ON 7.5" SPACING AND WILL PLANT A VARIETY OF SEEDS FROM CORN, BEANS, AND WHEAT, TO FESCUE AND FERTILIZER, \$6,000 PLUS TAX. CALL FARM SERVICE SOLUTIONS IN LEOMA, TN. FARMSERVICESOLUTIONS.COM; (931) 242-7675

Recreational Vehicles

ATV

2003, CAMPER SHELL JAYCO DESIGNER 5TH WHEEL CAMPER 33 FOOT. 2 SLIDE OUTS. GREAT CONDITION. (615) 708-0042



THE ULTIMATE FARM TOOL.

KUBOTA TRACTORS ARE RATED #1 FOR DURABILITY



M SERIES TRACTORS

LIMITED-TIME FINANCING AVAILABLE!

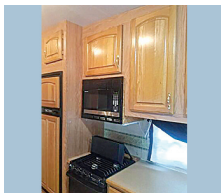
H&R AGRI-POWER
THE POWER TO GET YOU MORE!

11 HIGHLAND RIM ROAD
FAYETTEVILLE, TN 37334
931-433-3516

WWW.HRAGRIPOWER.COM



2012, POLARIS SPORTSMAN 400, runs good, 4WD, winch works, \$4,000. Morning calls until Noon please. (931) 703-0152



2003, CAMPER SHELL JAYCO DESIGNER 5TH WHEEL CAMPER 33 FOOT. 2 SLIDE OUTS. GREAT CONDITION. (615) 708-0042

Other

CAMPER SHELL for sale, fits L.W.B. truck, \$250 or best offer. Mulberry, TN area. (256)508-3320.

TWO 15 TON FEED BINS; (three ring bins auger/motor included), \$1,000 each. \$1,900 for both. Belvidere, TN. No Sunday calls. (931) 308-2128

TWO 15 TON FEED BINS; (three ring bins auger/motor included), \$1,000 each. \$1,900 for both. Belvidere, TN. No Sunday calls. (931) 308-2128

CALL US
for all your

AUCTION NEEDS!

S.D.M. SIMPSON
REALTORS AND AUCTIONEERS
(931) 473-LAND
5263
www.dmsimpson.com

David M. Simpson, Broker, Auctioneer 931-273-6253
Tiffany Simpson Co-Owner, Broker 931-808-7080
John Kyle Simpson Aff. Auctioneer, Aff. Broker 931-212-3843

303 W. Main St. McMinnville, TN 37110



JANUARY SPECIALS!



40' x 60' x 14'6"
Building Package - \$15,998

Roof Only - \$8,671

**Other sizes and styles to choose from*

30' x 36' x 10'6"
Building Package - \$8,501

Roof Only \$4,362

36' x 48' x 12'6"
Building Package - \$12,075

Roof Only - \$6,528

Metal Roofing For Your Home & Farm



257 Anthony Lane • Shelbyville, TN

931-680-0001 • (888) 992-0005

Open Monday - Friday • www.discountmetalroofing.com

Includes:

- 20-year Galvalume Roof,
- 40-year Painted Walls
- 1 - Sliding door
- 1 - Walkdoor
- 6x6 .60 CCA Posts
- 2x6 YP Purlins and Band Boards
- Trim and Fasteners

Pricing subject to change without notice. All prices plus tax.

Services

TRACTOR AND FARM EQUIPMENT REPAIRS, Engine and transmission rebuilding. All types of repairs. Steel and aluminum welding. N & A Equipment Services, 301 Lack Road, Elkton, KY, 42220. (270) 348-5187

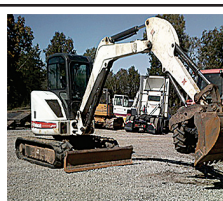


WOODMASTER OUTDOOR WATER FURNACES, heat your home or shop, EPA approved clean burning, parts in stock, financing available. In TN call Harold, (931)484-8890; in KY call Dave, (859) 265-0793

To Place A Classified Call
800-247-7318



FOR RENT TAKEUCHI SKID STEER ENCLOSED, WITH HEAT & AIR, ATTACHMENTS AVAILABLE STANDARD BUCKET, STUMP BUCKET, AUGER, TRENCHER, GRAPPLE, HARLEY RAKE, FORKS. (DAILY), (WEEKLY), (MONTHLY) RENTAL. CALL RICK, (931) 619-0421



FOR RENT 435 BOBCAT MINI EXCAVATOR, 16" & 36" BUCKETS - HYDRAULIC THUMB, ENCLOSED CAB, WITH HEAT & AIR, {DAY \$400}, {WEEK \$1,200}, {MONTH \$2,800}. CALL RICK, (931) 619-0421



DO IT YOURSELF LAND CLEARING 120 HP DOZIER, \$400 PER DAY, \$1,800 PER WEEK, FREE PICK UP & DELIVERY FOR MULTIPLE-DAY RENTAL, EXCAVATOR ALSO AVAILABLE. CALL RICK, (931) 619-0421

Quality Seeds

Open Pollinated Corn
Non-GMO
 Yellow Jarvis
 Mosebys Prolific
 Pencil Cob
 TN Wildlife GT Dwarf Corn
 Hickory King White

Summer Annuals
 Sorghum Sudan & BMR
 Hybrid Pearl Millets
 German & Browntop Millet
 Teff Grass
 Red River Crabgrass
 Piper Sudangrass

Cover Crop Blends

Registered Angus Cattle Available

Wildlife
 Purple Hull Peas
 Iron & Clay Mixed Pea
 Buckwheat • Chufa
 Japanese Millet
 Peredovik Sunflowers
 WGF Sorghum
 Chicory
 Spring Wildlife Mix

Bermudagrass
 Common
 Cheyenne II
 Sahara II
 Tierra Verde
 Mohawk

Lespedeza
 Korean
 A.U. Grazer Sericea
 Serala Sericea

Grass Seed
 KY-31 Fescue
 KY-32 Funguss Free
 Timothy
 Orchardgrass
 Max Q-II Jesup-II

Clovers - Legumes
 Kenland Red Clover
 Advantage Ladino
 Durana Ladino
 White Dutch
 Balansa Clover
 Berseem Clover
 Crimson Clover
 Alfalfa

Lawn Seed
 Turf Type Fescue
 Creeping Red Fescue
 Turf Bermudagrass



Soybeans
 • Extend Flex - USG 7392XFS 3.9 -
 • #1 TN Trials for 2 Year Average
 • Extend - USG 7496XTS 4.9
 3rd year 2nd place average TN
 Glyphosate Tolerant:
 • USG Allen 5.6
 • USG 7732nrr
Can check availability on any other soybean varieties

FOR SALE



ISUZU BOX TRUCK, 2014 Model, 218,975 Miles, Diesel, AC, Automatic, 16' Box, \$26,000

Call or text (931)607-9737 for more information



Clemmons & Hamner Seed, Inc.

5578 County Rd. 34, Killen, AL 35645
 www.clemmonshammerseed.com

Call **256-757-9996**

If you don't see what you're looking for, give us a call!

ONLINE AUCTION
CATES LANDING EQUIPMENT
BIDDING ENDS TUESDAY
JANUARY 10 - 12 NOON
4480 CATES LANDING
TIPTONVILLE, TN 38079



JOHN DEERE 7720 TURBO COMBINE - HYDROSTATIC, S/N 602470- 2,095 HRS.
 (6) WILSON & SHEPPARD STEEL TRAILERS - LIVE FLOORS • JOHN DEERE TIRES & EQUIPMENT
 (6) WILSON & SHEPPARD STEEL TRAILERS - LIVE FLOOR PICKUPS • TIRES & JOHN DEERE 480/80R46 RADIALS & RIMS
HEMP & IRRIGATION EQUIP. PENTAIR, COUNTRYLINE, PIUSI & SOTERA WATER & DIAPHRAM PUMPS • NETAFIM STREAMLINE DRIPLINE • RUIVULIS TAPELINE LAYFLAT HOSES WITH NOZZLES • PVC PIPE CONNECTIONS, TS GROW LIGHT • DIGITAL ULTRASONIC CLEANER • OPTO-EDU MICROSCOPE • TESTING EQUIP. • ALL AMERICAN PRESSURE 75X STERILIZER • PALLET OF BULK BAGS

ELECTRIC H.D. WIRE & CORDS - SHOP EQUIP.
 JOHN DEERE 480/80R46 RADIALS & RIMS • (2) JOHN DEERE QUICK HITCHES, UNVERFERTH HUB EXTENSION & HUBS • JOHN DEERE PARTS

COOKING EQUIP. FURNITURE, GLASSWARE

INSPECTIONS DATES
 DEC. 27th & JAN. 5th - 1:30 TO 4 P.M.
 10% Buyer's Premium Added
 Items must be picked up onsite Jan. 11-12-13th

REGISTER & BID AT
www.alexanderauctions.com

ALEXANDER
 AUCTIONS & REAL ESTATE SALES
 MARVIN E. ALEXANDER, CAI, Auctioneer - TL3 - APR. 2300-APR. 7201
 239 University St., Martin, TN 38237
 Office (731) 587-4244 Cell: (731) 225-7368
 Email: alexanderauctions@frontiernet.net

JAMES R CASH AUCTIONS
Saturday, Feb, 4th - 10:00 AM
 Hwy 534 And Dooms Chapel Roads
 Near Symsonia, Kentucky

108 Acres
 Offered In 10 Tracts And In Combination Of Tracts
Good Farmland - Homesites
Great Location - Lots Of Road Frontage
 {jamesrcash.com For Details}
Coming Soon Survey In Progress
 2275 Witty Lane
Hopkinsville, Kentucky


76 Acres
 Offered In Tracts And In Combination Of Tracts
Income Producing Farmland
Great Homesites
 jamesrcash.com For Details
Saturday, March 11th, 2023 AT 9:00 A.M.
1107 Houseman ST MAYFIELD, KENTUCKY
Annual Huge Consignment Farm Machinery AUCTION

**The Event Of The Year...
 Rich In History...At The Fairgrounds**

1000'S OF ITEMS WILL BE IN THIS AUCTION

WE NEVER KNOW WHAT WILL BE IN THIS AUCTION
 IF YOU NEED IT -- IT WILL PROBABLY BE HERE
TRACTORS - ALL SIZES - ALL BRANDS
DOZERS - BACKHOES - TRUCKS - IMPLEMENTS OF EVERY DESCRIPTION!!
BRING YOUR EQUIPMENT ON
Thursday - Friday March 9th or 10th
8:00 TO 6:00 P.M. EACH DAY
For More Than 50 Years A Great Auction!
 Please No Hand Tools, Worn Tires, Battered Fuel Tanks,
 OR Fence Row Items - Thank You!
We Only Accept Items That In Our Discretion Are Saleable

JAMES R. CASH
 THE AUCTIONEERS & REAL ESTATE BROKERS
 JAMES R. CASH II "JAY" • CYNTHIA L. CASH
 FANCY FARM, KY- MURFREESBORO, TN
270-623-8466



ALL TYPES CORRUGATED METAL, PLASTIC CULVERTS ALL TYPES OF METAL AND PLASTIC CULVERTS 8" THRU 36" IN STOCK, ALL OTHERS CAN BE ORDERED. QUANTITY DISCOUNTS, DELIVERY AVAILABLE IN OUR AREA. (931) 684-4847 CLANTONCO@BELLSOUTH.NET

Timber and Forestry

3PT. WOOD SPLITTER for sale, bought at Northern Tool and Equipment, sell for \$350. (931) 797-8746

JOURNEY LOGGING, LLC, buying standing timber: cedar and pine, within 100 miles radius of Pulaski, TN. 931-638-6441; jjourneylogging@gmail.com. (931) 309-8965 jjourneylogging@gmail.com

To Place A Classified Call
800-247-7318

Tractors

JOHN DEERE 1450 52hp, diesel, good sound clean machine, dual remotes, canopy, \$6,000 or best offer. Leave message, (931) 593-3007

2004, JOHN DEERE 5520 89hp, open station, 4WD, 2,800 hrs, left-hand power reverser, w/Westendorf loader, spear, and large bucket, bought new with tractor, always kept inside. (931) 703-0808

WANT TO BUY, lime or poultry litter spreader, any condition, (731) 968-5343

WANT TO BUY, used Pro-Lick tank (liquid feed tank). (615) 653-8913

WANTED, 16 GA SHOTGUN, single or double barrel. (931) 235-4899

LOOKING FOR OLD JEEP does not have to be running, decent body at a decent price. Call, (601) 632-1884

WANT TO BUY, lime or poultry litter spreader, any condition, (731) 968-5343

WANT TO BUY, JOHN DEERE TRACTOR, 420 OR 430. ONEONTA, AL AREA. (205) 353-2557

WANTED NH and JD SQUARE BALERS, running or for parts. (270) 206-0628

OLD TENNESSEE LICENSE PLATES wanted. Nolensville, TN area. (615) 879-1901

WATSON METALS

We Roll-Form and Manufacture Metal Roofing and Supplies, and we service all of Middle Tennessee and surrounding areas.

WHAT WE CARRY

- Tuff Rib Panel
- PBR Panel
- Watson Wave Panel
- 5V Panel
- Corrugated Panel
- Standing Seam Panels in 1", 1.5" & 2"
- Mechanical Seam panels
- Board & Patton Panels
- Metal Shingles
- Perforated Panels in 20+ Colors
- Custom Bent Trims
- Roll-Form Standard Trims
- Closures
- Screws For Wood & Metal
- Stock Screws 1" - 3"
- Over Size Screws
- Solar Seal All
- Colors & Clear



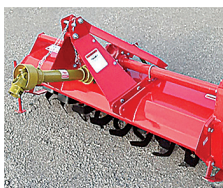
Over 20 Years Of Quality Service & Experience
 Monday thru Friday 7:00 AM - 4:30 PM
 238 Interstate Dr., Manchester, TN 37355

931-728-8185
www.watsonmetals.com

Material Handling



2022, ACTON ONLY 1 LEFT! NEW 14,000 GVWR 14' DUMP TRAILER WITH TITL. THE TRAILER IS SET UP NICELY WITH SLIDE IN RAMPS, TARP, AND TAILGATE THAT WILL OPEN BARN DOOR STYLE OR HINGE FROM THE TOP. OTHER HIGHLIGHTS ARE POWDER COAT PAINT, D RING HOLD DOWNS WELDED DOWN BOTH SIDES, AND AN EXTRA HEAVY 3/16 THICK FLOOR, \$10,900. FARM SERVICESOLUTIONS.COM, LEOMA, TN. CALL, (931) 242-7675



SMART-TILL CHEROKEE TILLERS. 50" AND 59" CHAIN DRIVE REGULAR DUTY. 71" GEAR DRIVE MEDIUM DUTY. 81" GEAR DRIVE HEAVY DUTY. 50" \$1600; 59" \$1700; 71" \$2200; 81" \$2700. PRICE IS IN CRATE. ASSEMBLY ADD \$50. CALL FARM SERVICE SOLUTIONS IN LEOMA, TN. FARM SERVICESOLUTIONS.COM; (931) 242-7675

Other

STEEL SIDE-BOARDS and gates for sale, fits 12' flatbed, \$300 or best offer. Mulberry, TN area (256)508-3320..

FLATBED/LIVE-STOCK LIVESTOCK & FLATBED TRAILERS for sale, must see, different sizes and options. Financing available. Wholesale Trailers, Lebanon, Tennessee. (615)714-3894.

Trucks

Medium Duty (GVW 14,000-26,000 lbs.)

1988 F450 1-TON TRUCK, Super Duty, SWB, new tires, 460 engine, 2WD. (931) 235-4899

2006 FORD F250 LARIAT, 4x4, Powerstroke, AT, crew cab, short bed, 276k miles, good tires. (931) 210-3400



JAPANESE 4X4 MINI TRUCKS, great for farm use, hunting, recreation, available with A/C, PS, 5 speed and automatic, some with dump beds. Anderson, AL. Call for prices, (256)740-7287. www.berryhillminitrucks.com (256) 740-7287

Want to Buy

WANT TO BUY, lime or poultry litter spreader, any condition, (731) 968-5343

WANT TO BUY, used Pro-Lick tank (liquid feed tank). (615) 653-8913

WANTED, 16 GA SHOTGUN, single or double barrel. (931) 235-4899

LOOKING FOR OLD JEEP does not have to be running, decent body at a decent price. Call, (601) 632-1884

WANT TO BUY, lime or poultry litter spreader, any condition, (731) 968-5343

OVERSTOCKED!

- Retaining Wall Blocks
- Landscapers
- Farmers
- Industries
- Build Your Storage Bins!

\$40 Each
 (You Haul)

Mid South Concrete Inc.

P.O. Box 1220 • 1750 Braley Ln. • Pulaski, TN 38478
 2408 Hwy. 43 South • Leoma, TN 38468
931-363-0690 • 800-705-5326

www.midsouthconcrete.com

WE HAVE A GOOD SUPPLY IN STOCK FOR SALE

DECATUR CONTAINER

5375 Marsha Ave. Decatur, AL 35603

256-751-3800

Providing Quality, Low-Cost Storage Solutions Since 1995



Mobile Offices

- 8' widths
- 20'-40' lengths
- With or without AC
- Custom Built



20'x8'x8½



40'x8'x8½



40'x8½'x9½

Used Shipping Storage Containers

Call Jason Cato or Neal Sellers

Office (256) 751-3800 • Email: Sales@DecaturContainer.com

WANT TO BUY, JOHN DEERE TRACTOR, 420 OR 430. ONEONTA, AL AREA. (205) 353-2557

WANTED NH and JD SQUARE BALERS, running or for parts. (270) 206-0628

OLD TENNESSEE LICENSE PLATES wanted. Nolensville, TN area. (615) 879-1901

WANT TO BUY, goats, sheep, chickens, and guineas. Ardmore, TN area. Call, (256)777-0065; (931) 427-8477

WANTED USED TRACTOR TIRES, 16/9/28. Voice mail, (941)341-9404; or Text, (931)306-3969.

NO TILL PLANTER wanted. Lincoln Co, TN area. (931)993-8723; (931) 433-7345

WANT TO BUY FJ40 Toyota, in model years from 1975 to 1980. (931) 607-9737

WANTED, used beehives for supplies. (270) 427-2940

WANTED, 1940'S TO 1950'S PICKUP truck, any condition; also, iron wheel tractors; and whiskey barrels. (931) 446-1675

WANTED HORSE DRAWN sleigh; horse drawn wooden wheel wagon; horse drawn grader, four wheels. (931) 446-1675

WANTED NH and JD SQUARE BALERS, running or for parts. (270) 206-0628

WANT TO LEASE 70+ ACRES I'm looking for pasture to lease near Harvest AL. I'd like to live on the land (I have a camper.) I'm wanting to practice regenerative ag and land healing practices. Existing exterior

fence would be nice. (256) 520-4727

WANTED ROME NEW GROUND harrow that fits D6. (423) 619-6416

WANTED NH and JD SQUARE BALERS, running or for parts. (270) 206-0628

Custom Hoop Bldg. Covers, Hay Tarps, & Pond Liners

11 Colors Available

All covers have 2" weld for Strong Waterproof Seams



Signature TARP

Cover Your Investment

3433 White Hall Road
Mackville, KY 40040
Fax: 859-375-5269

Agricultural • Industrial • Commercial

859-375-5268

GIVE US A CALL FOR ALL FOR AUCTION NEEDS
Now booking for fall auctions



REDLINE AUCTION SERVICE

2631 LeGrande Hwy.
Horse Cave, KY 42149
(270) 392-0285
redforddewayne@gmail.com

Dewayne Redford (270) 392-0285
Brandon Croghan (270) 537-4460
Brady Core (859) 256-1186
Garrett Judd (270) 670-7787

40th Annual Henderson Tennessee Open Farm and Construction Equipment Consignment Auction

January 28th at 9:00 AM CST

Location: Chester County Fairgrounds
425 E. 4th Street Henderson Tennessee

*Consignments will be taken Monday January 23rd- Thursday January 26th
from 8:00 am CST- 5:00 PM CST and Friday January 27th from 8:00AM CST till 1:00PM CST

*If you have any questions feel free to call Bryan Knight
at 931-216-4910 or Stan O'Neal at 731-608-4622*

Commission Rates will be 8% with a \$500.00 cap on the commission. There will not be a buyers premium charged. There will be loaders provided to unload and load equipment.



Stan O'Neal TN License # 1560
Bryan Knight Affiliate Auctioneer License # 7383

Animals

Chickens

EGG INCUBATOR UNIT, \$125, and 122" owner oxygen bottle, \$100. (931) 732-4401

FOR SALE, 16" and 16.5" eight hole wheels, \$20. (931) 732-4401

REGISTERED RED ANGUS HEIFERS for sale, ready to breed. (931) 244-0376

Cows

REGISTERED BLACK ANGUS BULLS fully TAEP qualified, A-I sired out of great cow families, gentle, good EPD's. Cedar Ridge Angus, Pulaski, TN. (256) 508-2874. See Cedar Ridge Angus on Facebook. (256) 508-2874 raycjordan@gmail.com

1 TO 25 REGISTERED Red Angus and registered Black Angus bulls, 11 months, +/-1,000lbs. Top bloodlines in both breeds! Starting at \$1,495 per bull, many are AI. Located in Rome, GA, 20 miles past Centre, Alabama. Joe Gibson, Gibsoncattle.com. (706) 506-3026

REGISTERED RED ANGUS HEIFERS for sale, ready to breed. (931) 244-0376

Where Do You Go When You Need Parts?

Russells Tractor Parts
1-800-248-8883

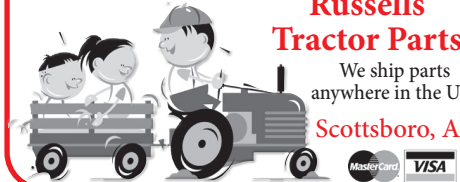
Ag & Industrial Parts • Free Quotes
Free Parts Locating Service
New & Used Parts

*We stock & ship new after market parts.
Sparex, Tisco, Riverside, Temco Dealer*

Russells Tractor Parts

We ship parts anywhere in the U.S.

Scottsboro, AL



REGISTERED ANGUS BULLS, 12-18 months, all are AI Sired by Growth Fund, Optimum, Upward, Enhance, Beacon, all qualify for TAEP, good EPDs, calving ease and balanced bulls, good disposition. (931)510-1104; (931)287-7474.

PUREBRED NORMANDY BULLS, tame and family raised; AI sires: A2A2 genetics. 2yr old, \$1,600; 9 month old, \$900. No Sunday Sales Please. Smithville, TN. (931) 308-2128

FOR SALE, PUREBRED LIMOUSIN heifers, young bull and service age bull, good bloodlines. (931)455-4978. (931) 409-9918

TWO YOUNG BLACK ANGUS bulls for sale, \$1,750 each. Whiteville, TN area. (731) 518-6184

FOR SALE, PUREBRED LIMOUSIN heifers, young bull and service age bull, good bloodlines. (931)455-4978. (931) 409-9918

6 REGISTERED ANGUS HEIFERS, bred AI on 11/17/22 to Deer Valley Growth Fund Bull, 16 mo old, nice as you will find, 900-1,000lbs. Meets TAEP Heifer Program in TN. FandPLivestock.com. TAEP APPROVED. (615) 653-8913

REGISTERED RED ANGUS BULL, 16mo old, passed BS exam. FandPLivestock.com. TAEP APPROVED. (615) 653-8913

REGISTERED SIMANGUS BULL, 3yrs. old, proven breeder, heifer safe, \$3,700. Phil Campbell, AL area. (256) 668-2290

SANTA GERTRUDIS, YOUNG BULLS SANTA GERTRUDIS, young bulls and heifers, polled, registered, gentle. Free ballcap. Quality cattle since 1977. (256) 566-7878 kelsoelough@aol.com

Y-C BRAND

SHELBY CATTLE CO. GENETICS
Registered Angus Cattle For Sale

Y-C BRAND

Bulls & Heifers For Sale

Your source for powerful, easy fleshing, beautifully uddered, maternally efficient Angus Cattle that "do it on Grass!"

YODER CATTLE CO.
Call Today! 731-414-1261
318 Bradford Hwy., Rutherford, TN 38369 • yoder6@daystar.io

4TH ANNUAL MARSHALL COUNTY CONSIGNMENT AUCTION

January 14th, 2023 at 9:00AM

Marshall County Fairgrounds • 1569 Hwy 7 N, Holly Springs, MS 38635



Interested in selling your equipment through Riles Auctions? We will work with you to determine the best course of action for your particular items.

Call us today to consign! 662-274-4708

Online Bidding powered by Equipment Facts

Potts Camp, MS 38659 • www.rilesauctions.com • facebook Riles Auctions



CHAROLAIS BULL FOR SALE Service age Charolais bulls, gentle, registered, purebred and polled. Call, (931)967-8807; or, (931) 308-7212

REGISTERED RED ANGUS HEIFERS for sale, ready to breed. (931) 244-0376

CHAROLAIS BULL FOR SALE Service age Charolais bulls, gentle, registered, purebred and polled. Call, (931)967-8807; or, (931) 308-7212

REGISTERED RED ANGUS HEIFERS for sale, ready to breed. (931) 244-0376

FOR SALE, REGISTERED BLACK ANGUS BULLS, will qualify for the full TAEP money, all are by the top AI bulls in the breed. Crawford Angus. Lewisburg, TN. (931)205-2450; or, (931)359-2633. (931) 205-2450 crawfordangus@bell-south.net

FOR SALE, 16" and 16.5" eight hole wheels, \$20. (931) 732-4401

REGISTERED ANGUS BULLS Service age angus bulls out of top bloodlines. All bulls qualify for maximum TAEP money. (931) 589-2759

REGISTERED ANGUS BULLS Service age angus bulls out of top bloodlines. All bulls qualify for maximum TAEP money. (931) 589-2759

CHAROLAIS BULL FOR SALE Service age Charolais bulls, gentle, registered, purebred and polled. Call, (931)967-8807; or, (931) 308-7212

FOR SALE, 16" and 16.5" eight hole wheels, \$20. (931) 732-4401

REGISTERED ANGUS BULLS Registered Angus Bulls We have a good selection of yearling bulls from Growth Fund, Pay-weight 1682, Upward, Hometown, and Lone Pine Farms Sure Fire. Located in Putnam County, Tennessee For more information and pictures, contact me at (931) 267-6813; or, wtt@frontiernet.net.

REGISTERED HEREFORD BULLS REGISTERED HEREFORD BULLS, for sale, gentle disposition, great bloodlines, polled, service age, starting at \$1,500. Leave message (931) 703-7573

WAGYU HEIFERS for sale. (256)714-6182.

FOR SALE, 16" and 16.5" eight hole wheels, \$20. (931) 732-4401

TANK COATINGS & ROOF COATINGS

Available for metal, composition shingles or Tar Roofs. Long lasting and easy to apply. We also manufacture Tank Coatings for Concrete, Rock, Steel, Galvanized and Mobile tanks.



Virden Perma-Bilt
806-352-2761

www.virdenproducts.com

Want to utilize all your property?

Let us explain the benefits of Forestry Mulching!



- Land Clearing
- Brush Clearing
- Trail Clearing
- Tower Site Clearing
- Utility Line Clearing
- Pasture Restoration
- Riding & Walking Trails
- Survey & Fence Line Clearing
- Clearing for Hunting Areas
- Home Site Clearing
- Access Roads
- Fire Breaks

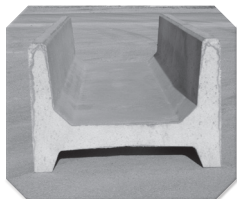
Located in Murfreesboro, TN

Burgess
Land Clearing

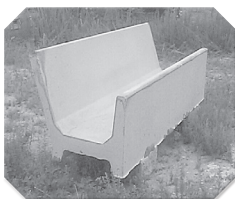
Not sure if we work in your area?
Give Us A Call!
(615) 598-0648

We Have All Your Concrete Needs!

- 8' Feed Troughs • Fence Line or Center Line
 - Stock Guards, 12' & 16', 7' deep • Water Troughs, 6' Round • Storm Shelters
- ALL PRODUCTS STEEL REINFORCED**



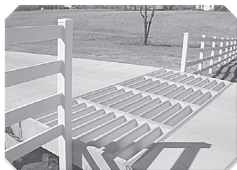
8' (26" or 60" wide) H Feeder
Eat From Both Sides



8' (34" wide) J Feeder
Eat From One Side



Water Tank
350 Gallons



WE DARE YOU TO COMPARE!

Our concrete Cattle Gaps are superior because of the amount of steel reinforcement, all double matted and correctly placed for durability. This allows us to be better than the competition. Available in 12' & 16' long and 12" or 20" tall. Call for pricing & specs on gaps.

Don't settle for less than the best!

Life Protector Partial Bury

(80"x64"x142") Not converted septic tank



- Strong steel reinforced precast 4500 psi concrete with fiber mesh
- Partial bury sheltered unit/easy to install
- Easy entrance access (steps not ladder)
- Outside measurements: 5'4" wide, 11'10" long 6'8" tall

Above Ground Storm Shelters

Sizes: 6'x10'x7'; 6'x6x7'/wheelchair accessible.
Anchors Kits available

Tankersley Concrete Co., Inc.

1630 Rock Crusher Rd., Lewisburg, TN 37091 • 931-359-3112

Owners: Bubba & Lynn Tankersley • In Business Since 1946

Check out our website @ www.tankersleyconcrete.com

Dogs

HEELER PUPS Heeler pups, 2 red and 2 blue, all females, 8 weeks, \$150. (931) 242-7868 lampleyd@goldmail.etsu.edu

BLACK & TAN ENGLISH SHEPHERDS Natural Heelers. Eradicate vermin. Drive cattle. Protect Property. Blankenship bloodline. (615) 640-6161

PUPPIES FOR SALE, BLACK & TAN toy Australian Shepherds and toy Aussiedoodles will have shots/dewormed. Also, grown standard Australians and 2 grown male Poodles. John J. Gingerich, 146 Fox Hunters Lane, Morrison, TN 37357. Amish, no phone.

WOODS, 4 FOOT BOX blade for sale, new teeth, good condition, \$475. Call/text, (931) 492-1013

BLACK & TAN ENGLISH SHEPHERDS Natural Heelers. Eradicate vermin. Drive cattle. Protect Property. Blankenship bloodline. (615) 640-6161

WOODS, 4 FOOT BOX blade for sale, new teeth, good condition, \$475. Call/text, (931) 492-1013

Other

HONEY BEE NUCS \$170; \$20 payment with order, quantity discount, April pick-up. Joe N. Hostetler, 150 Mt. Horeb Rd., Ethridge, TN 38456.

BLACK & TAN ENGLISH SHEPHERDS Natural Heelers. Eradicate vermin. Drive cattle. Protect Property. Blankenship bloodline. (615) 640-6161

2021 VIOLETTE PIED PEACOCK, 2021 Violette black-shouldered peacock. He should be white-eyed, but can't guarantee, \$500/each. Cornersville, TN. If no answer, leave voicemail or text. I will respond ASAP. (931) 652-3164

WOODS, 4 FOOT BOX blade for sale, new teeth, good condition, \$475. Call/text, (931) 492-1013

Announcements

AFFORDABLE DECALS AND SAFETY DECALS. Prompt. Knowledgeable Reliable Service. www.QuipCal.com; Call, (215) 536-5339; email: info@customerservicescompany.com.

MILLER FARMS Angus Beef from the farm. 100% natural, non-GMO, hormone and antibiotic-free. Whole, halves, or by the pound. Slaughtered and packaged. (931) 593-3702; (931) 593-2429.

HONEY BEE NUCS \$170; \$20 payment with order, quantity discount, April pick-up. Joe N. Hostetler, 150 Mt. Horeb Rd., Ethridge, TN 38456.

REGISTERED RED ANGUS HEIFERS for sale, ready to breed. (931) 244-0376

ROBINSON ENVIRONMENTAL LAND CLEARING

Serving Middle Tennessee since 2007



ECO-FRIENDLY FORESTRY MULCHING!

We will clear your land to match your vision!
We will work with excellence and efficiency to deliver your desired end results.

- Pasture clearing/restoration
- Timber stand improvement
- Lot clearing-residential and commercial
- Right-of-ways • Fire Prevention
- Wildlife habitat enhancement
- Food plot • Perk Sites • Survey Lines
- Real Estate tracts • Access roads
- Agricultural Stump Grinding

WWW.DROBINSONLANDCLEARING.COM

615-631-0638

We Can Make Hydraulic Hoses While You Wait

Hydraulic Hoses (Up To 1 Inch) • Ag. Filters
Tractor Oils • Bearings • Seals

Roller Chains Sold Here

B&B Auto Parts, Inc.

4936 Winchester Rd. N.E. • New Market, AL
2 miles North of Buckhorn High School

256-379-4733

www.bandbautopartsinc.com

Owners: Kent Bentley & Denita Bentley Sharpe

Hours: Mon. - Fri. 7:00 A.M. - 5:30 P.M.; Sat. 7:00 A.M. - Noon



Dixie Equipment & Rental

200 E 16th Street • Columbia, TN 38401 | 615-969-0118 or 931-381-1647

COME SEE US FOR ALL YOUR RENTAL NEEDS!

We sell and service ASV & Wacker Neuson Equipment.



DIXIE DIESEL

All ASV machines are available with a full line of performance-matched attachments so you can handle a wide range of jobs, whether you work in construction, agriculture, land management, forestry or landscaping.

www.dixiediesel.com

Authorized dealer for:



YANMAR



REPAIR & PERFORMANCE SPECIALISTS

• Ford Power Stroke • Dodge Cummins • GM Duramax

(800) 523-4621 • (931) 381-1647

200 E. 16th Street • Columbia, Tennessee 38401

BLACK & TAN ENGLISH SHEPHERDS Natural Heelers. Eradicate vermin. Drive cattle. Protect Property. Blankenship bloodline. (615) 640-6161

Attachments

Blades/Box Scrapper

USA, 5' TO 10' PULL TYPE BOX BLADES REGULAR DUTY, HAVE A MANUAL TILT AND COME WITH HYDRAULIC LIFT. HEAVY DUTY, COME WITH HYDRAULIC TILT AND LIFT. 5' \$900; 6' \$1000; 7' \$1700; 8' \$1950; 10' \$2500; 8' HD \$3400; 10' HD \$3800. CALL FARM SERVICE SOLUTIONS IN LEOMA, TN. FARMSERVICESOLUTIONS.COM; (931) 242-7675

USA, 3 POINT BOX BLADE AND LAND PLANES NEW IN STOCK. CALL CHRIS AT FARM SERVICE SOLUTIONS IN LEOMA, TN. BOX BLADES 4' \$695; 5' \$765; 6' \$895; 6' HD \$1,000; 7' HD \$1,085; 8' HD \$1,165. LAND PLANES 6' \$1,400; 7' \$1,500. CALL FARM SERVICE SOLUTIONS IN LEOMA, TN. FARMSERVICESOLUTIONS.COM; (931) 242-7675

WOODS, 4 FOOT BOX blade for sale, new teeth, good condition, \$475. Call/text, (931) 492-1013

Other

NEW CREEP FEEDERS, VARIOUS 6 ton \$8,800; 3 ton \$4,400; 2 ton \$4,000. Parker Farms Cattle and Equipment Company. (615) 542-6157

Tires

TRACTOR TIRES AND WHEELS, 18.4X30 for sale, 80%, \$700 pair (256) 777-2513

Building Products

12'X12' ROLLING

STEEL DOOR, already taken down, good condition, \$500, Smithville, TN. No Sunday calls. (931) 308-2128

WOODMASTER OUTDOOR WATER FURNACES, , shop, EPA approved clean burning, parts

available. In TN call Harold, (931)484-8890; in KY call Dave, (859) 265-0793

STEEL DOOR, already taken down, good condition, \$500, Smithville, TN. No Sunday calls. (931) 308-2128

Environmentally Friendly Brush Clearing by Layne Construction

Remove unwanted vegetation. Cut & grind trees up to 6" & brush into mulch. No brush piles.



We Do All Types Of Dirt Work • Loader & Excavator

We can: Clear for wild game plots • Clear ATV trails • Shooting lanes
Pasture reclamation • Lot clearing • Fence lines • Field borders • Right of way

Call for free estimate: 256-975-4193 • 256-975-4296
www.land-clearing-services.com



United Producers, Inc.

LIVESTOCK MARKETING

CREDIT

RISK MANAGEMENT

United Producers Inc

www.uproducers.com

Fayetteville, Tenn.

(931) 433-5256 or (931) 433-4962

Weekly Auction Every Tuesday at 1 p.m.

Graded Feeder Cattle Every Tuesday, Weaned/Vac Feeder Sale - Featured Weekly Tuesdays

Columbia, Tenn.

(931) 223-8323

Weekly Auction Every Wednesday at Noon

Weaned/Vac Feeder Sale - Featured Wednesdays

Columbia Sheep and Goat Sale - 2nd and 4th Monday at 1 p.m.

*holiday exceptions, visit website for full schedule

KY-TN LIVESTOCK MARKET

Hwy. 79N • Guthrie, KY

Thursday Sale 2:00 P.M.

I-65 Exit 112 • Cross Plains, TN

Monday Sale 1:30 P.M.

Check kytnlivestock.com for Special Sales

OFFICE: 270-483-2504

Tom Barnett • 931-624-7376

Arab Livestock Market, Inc.

Hwy. 231 South, Arab, AL



Cattle Auction

Every Tuesday at 10:00 A.M.

256-586-4212

Video Auctions

www.arablivestock.com

Robbie Gibbs: 256-490-2583 • 205-589-6236

Northwest Alabama Livestock Auction

Russellville, AL • nwalivestock.com

Stockholder owned & operated since 1976

Trucking, Feed & Portable Catch Pens Available

Sale each Monday at 10:00 A.M. • Hogs • Goats • Sheep • Cattle

Upcoming Special Feeder Calf Sales - 2023

March 6th, June 5th, August 7th & November 6th

Upcoming Goat Sales

February 11th, May 13th, August 12th & November 11th

All sales begin at 11:00 A.M.

Rickie Behel Manager

256-740-9457 • Barn: 256-332-3323



Sand Mountain Stockyard, LLC

Corner of Hwy's 68 & 168, Kilpatrick, AL

256-561-3434

Sale at 11:30 A.M. Every Wednesday & Saturday

Full Service Facility

Owners:

Jon Hamilton • 256-506-9947

Eric Wilburn • 256-506-2525



Nash Livestock

"Your direct slaughter cow & bull outlet"

Farm to packinghouse, we work to bring you the most for your cull cows and bulls.

We pick up in TN & KY

Steve Nash

(800) 599-2784

(931) 261-3525





Mid-South Regional Livestock Center

Hwy. 41-A, Unionville, TN 37180 • 931-294-5101
Tim Riley (615)714-8090 • Carly Garner (931)698-7510



Sale every Monday • 11:00 A.M.
Begin receiving cattle on Sunday 1:00-6:00 P.M. & on Monday from 7:00 A.M.

www.midsouthlivestock.com

Hardin County Stockyard, Inc.

3350 Hwy 226, Savannah, TN 38372

731-925-3287

Goats & Hogs Sale – Wednesday 11:30 A.M.

Cattle Sale – Wednesday 1:00 P.M.

Begin receiving livestock on Tuesday 8:00 A.M.-DARK

Full-Service Stockyard Offering:

Trucking, Feed, Appraisals, & Video Sales

Order buying service through Harry Floyd Livestock, Inc.

Harry Floyd (home): 931-722-9200

Harry Floyd (cell): 931-224-2247

Rob Floyd: (cell) 931-224-2248 • Donnie Welch: 731-607-9196

Main Office: 931-722-3100 • www.floydandsonslivestock.com



Tennessee Valley Livestock

620 S. Poplar, Florence, AL 35630

256-766-0281

Cattle Sale • Monday 12:00 NOON

Begin receiving cattle on Sunday 10:00 A.M. - dark

Full-Service Stockyard Offering:

Trucking, Feed, Appraisals, & Video Sales

Order buying service through Harry Floyd Livestock, Inc.

Harry Floyd (home): 931-722-9200

Harry Floyd (cell): 931-224-2247

Rob Floyd: (cell) 931-224-2248 • Jim Martin: 256-366-3519

Main Office: 931-722-3100 • www.floydandsonslivestock.com

2 Locations To Better Serve You!

Valley Stockyard

13130 AL Hwy. 157, Moulton, AL 35650

Regular Sale Every Wednesday • 11:00 A.M.

Trucking Available • Country Buying & Bluegrass Video Sales

“Serving our regions cattle producers for 66 years & many more!”

More info: 256-974-5900

Benji Mccafferty 256-740-9648 • Billy Wallace: 256-303-7097

Pulaski Stockyard

“Striving To Be Your Full Service Stockyard”

607 West Shoal St., Pulaski, TN 37478

Regular Sale Every Tuesday • 12:30 P.M.

Special Cow Sale First Friday of Every Month • 6:00 P.M.

Special Goat Sale Every 3rd Friday Each Month • 6:00 P.M.

Office 931-424-8389 • www.pulaskistockyard.com

Benji Mccafferty 256-740-9648 • Billy Wallace (Cell) 256-303-7097

Derek Black 931-638-5392

Advertise Here!



**Horse Sale Every 3rd Saturday & Also
On 5th Saturday Of A 5 Saturday Month**

Call 601.765.3530 or 601.733.2231

for any information about the sale.

Don't miss this one! It will be a good one!

Online Bidding through

Horse Auctions USA!

10598 Hwy 35N Mize, MS 39116

bid.horseauctionsusa.com

BACK UNDER THE OWNERSHIP OF LARRY & DIANE MEADOWS!

Ritchie Water Tank
We Carry 2 and 4 Hole



Priefert
Farm, Ranch & Rodeo



Cattle Rub
\$25⁹⁵



Kennel 10'x10'x6'
\$439⁹⁹

Priefert S04
Chute
Call For Prices



Priefert 12'
Corral Panel
\$215⁰⁰



Hydraulic Fluid
\$42⁹⁵
5 Gal

Bring In Copy Of Ad Prices
Subject To Change.

Guntersville
FEED STORE LLC
& GARDEN CENTER
256-582-4411
1321 Blount Ave. Guntersville, AL
guntersvillefeedstore.com



Priefert 135
Sweep Tub Primier
Call For Prices

SALVAGING

Salvaging Agco 2270
Square Balers

- Round Balers
- Swathers
- Combines
- Tractors



Call Us For
New & Used John Deere
Row Head Parts!

**Over 8000
Machines
Parted Out!**

Mike's Equip. Co.
Buhler, KS
mikesequipment.com
sales@mikesequipment.com

620-543-2535
since 1977

for 28 years, good machine, \$9,500 cash. (256) 766-0356 cgamble@eanelson.com

Grader

ADAMS HORSE DRAWN grader, 7' blade, \$1,450; Adams horse drawn large road grader, \$2,000; two horse wooden wheel wagon, \$1,475. Columbia, TN (931) 446-1675

HYDRAULIC PRESS, 30 ton, \$175 and drill press, \$125. (931) 732-4401

FOR SALE, 16" and 16.5" eight hole wheels, \$20. (931) 732-4401

Trusses

27 2 X 4 TRUSSES 4 - 12 / pitch, 32' long, 10 1/2" overhang, \$2,500. (615) 642-8735

NEW 1000 BOOM-LESS PASTURE sprayer, \$9,500; 28' boom, \$1,200. All sizes available. Parker Farms Cattle and Equipment Company. (615) 542-6157

CUSTOM MADE PASTURE SPRAYER for sale, 200 gallon, cluster sprayer, boomless, on trailer, works great. (931) 637-7795

Components

Other

FARMALL SUPER C hood and PTO belt pulley, \$150/both. (256) 577-5051

FOR SALE, 16" and 16.5" eight hole wheels, \$20. (931) 732-4401

GRAIN DRILL PRESS WHEELS 12" diameter by 4" wide, 5/8" center hole, Total width=5". \$100 for about 17. No Sunday Sales Please. Smithville, TN. (931) 280-1275

Wheel (Rim)

FOR SALE, 16" and 16.5" eight hole wheels, \$20. (931) 732-4401

Chemical Applicators and Chemicals

Sprayers

Quality Farm Equipment



Marliss 10 - no till, grass boxes, pull type or 3 pt. Stk#6397 - \$7,500



Amco Offset Disc - 12, blades worn but still very usable Stk#6387 - \$3,500



Ford 7000 - diesel, very good original, 540 PTO, 3 pt, works A-1! Stk#6569 \$12,000



Case 2290 - 1980, 128 hp, 12 spd. powershift starts, runs & drives good, Stk#6589 - \$13,800



Case 1370 - 1977, starts, runs & drives good, good tires, bucket, forks, Stk#6586 - \$14,000



IH 1486 - very nice, starts, runs & drives great, 145 hp, 8 spd. trans., Stk#6598 \$14,000

Construction Equipment

BUCYRUS-ERIE DYNAHOE 190-4 BACKHOE Runs/Operates Good, 126 hp Detroit 4-53 Diesel, rear axle power steering, 4x4, weighs 22,750 lbs, 1-3/4 yd front bucket, owned



Kubota L3560 - 2017, 4x4, 1480 hrs. \$20,500



Yanmar 1810 - Diesel, new rear tires, local trade in \$2,750

We Sell New & Used Tractor Parts - Call For Details

Zack's Tractors & Repair
Hwy. 101, Rogersville, AL
256-483-3748 256-483-6681

We Do Mechanic Work
We repair all types of tractors.
Call now to get your tractor work done!

We Sell Tractor Tires!

Powder Mills Farm Equipment

1555 Powder Mills Rd. • Magnolia, KY 42757 • 270-528-2583
www.powdermillsfarmequip.com • 5westons@scrtc.com



2007 Ford F-750 30K, new 16 ft dump bed, under 26k GVW, DSL, auto, Stk#E2007
Call for price



2005 Int 4300 CNC, 57K, DT466, air brakes, A/C, 31,000 GVW, auto, PTO, Stk#A2105
Call for price



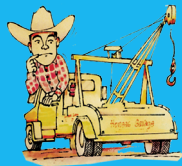
C8500 2006, C7 CAT, auto, PTO, walking beams, 47,000 GVW, 120K, Stk#I2006
Call for price



C6500 1990, 120K, 3/26 CAT, 6 speed, air brakes, hydraulic wrecker, Stk# 1322
Call for price



2012 Ford F-350 6.2 gas, auto, A/C, PS, long wheel base, 183k, Stk#B2212
Call for price



HONEA'S Garage

Celebrating 70 Years Serving Our Community
If you don't see what you need on my website, call me! I probably have it!

931-425-6176

Used Trucks : New, Rebuilt & Used Truck Parts HoneasGarage.com • BigHatCattle.com

CATTLE SWEEP SYSTEMS HEAVY DUTY GALVANIZED 8 BAR 6' TALL. 90 DEGREE WITH 10' OF ALLEY STARTS AT \$1,480.180 DEGREE W/20' OF ALLEY STARTS AT \$2,475. WE CAN ADD AS NEEDED TO CUSTOMIZE YOUR SYSTEM. CALL FARM SERVICE SOLUTIONS IN LEOMA, TN, FARMSERVICESOLUTIONS.COM; (931) 242-7675

LIVESTOCK FENCE WIRE for sale, Stay-Tuff brand, high tensile, class 3, very good prices. (931) 675-3260

GOAT WIRE AND HORSE WIRE fencing for sale, high tensile and class 3 galvanized. (931) 675-3260

PRESSURE TREATED PINE FENCE BOARDS, for sale, 1x6x14' and 1x6x16' full 1" thick. (931) 675-3260

FENCE POSTS FOR SALE, pressure-treated square and round posts, several thousand available. (931) 675-3260

PRESSURE TREATED PINE, 2x6x16', full cut 2" thick, great for livestock working facilities. (931) 675-3260

MIRAFOUNT LIVESTOCK WATERERS, 2 ball and 4 ball available. (931) 675-3260

FOR SALE, 20' heavy pipe gate, \$100. (931) 732-4401

FOR SALE, 20' heavy pipe gate, \$100. (931) 732-4401

BOW GATES 16 GAUGE, 6' tall, good inventory, 4' up to 12' combo bow gates-example 12' with 4' wt. FandPLivestock.com. TAEP APPROVED. (615) 653-8913

BULL GATES-16 GAUGE, 51" and 63" tall, 4'-20' long, good inventory. FandPLivestock.com. TAEP APPROVED (615) 653-8913

CORRAL PANELS, 16 GAUGE, 6' tall, good inventory, 8' up to 16' long. FandPLivestock.com. TAEP APPROVED. (615) 653-8913

HAY FEEDER PANELS, 2"x3" construction and built to last a lifetime, 16ga, 4' up to 16' long. FandPLivestock.com. TAEP APPROVED. (615) 653-8913



Chicken Litter For SALE

Kiln Dried Shavings For Sale

ORGANIC FERTILIZER

• DELIVERY AVAILABLE •

931-967-8699 • 931-607-8699

GREAT SELECTION OF USED STEEL

In the need of steel? Come see us!

Used steel inventory changes weekly
\$100 Cash Entrance Fee



CFC Pick & Pull

54 Recycle Dr., Tullahoma, TN 37388

www.cfcpickandpull.com

Like us on Facebook UsedSteel@cfcrecycling.net • Mon. - Sat.



\$3,500
Yanmar YM2000 Tractor - Yanmar 5' Tiller & 3 pt. Layoff Plow



\$9,500
Kubota L3300 - 4WD, w/loader



\$5,500
Ford 3600 Tractor - diesel power steering new tack, new seat, new paint



\$7,500
JD 350 B, crawler, loader, w/winch, good UC, needs battery



\$4,500
JD F1145 Front Mount, 60" commercial deck, 28 HP Diesel, 4x4, only 882 hours, needs tires

Used Equipment Arriving Weekly

20' Holeclaw HD Boat Trailer, new tires & wheels.....	\$350	Cannon Box Blade, 6', with ripper complete system.....	\$1,000
JD 208, w/belly mower, gas, "Classic".....	\$750	40'x18' Carport 3 Sides.....	\$2,500
JD 450 C Dozer - 6 way blade, ROPS, good UC.....	\$13,000	CAT D3 Dozer, 6 way blade, Good UC, had a motor fire, needs some hoses & wiring.....	\$9,500
Front Bale Spear.....	\$250	International 424 Tractor, gas, spin-out wheels.....	\$2,200
Plows - 1, 2, 3, 4 Bottoms.....	Call, \$300 down	Ford 4000, needs motor build.....	\$3,000
Finish Mowers, 4'-5'.....	\$500	Used Backhoe Buckets.....	Call
Cultivators/Cub Complete.....	\$400	IH Belly Mowers 5'.....	\$400
JD Planter, 3 pt., 2 row.....	\$300	JD Planter, 3 pt., 2 row.....	\$300
3 pt. Spring Tooth Cultivator, 2 row.....	\$250	3 pt. 1 Row Cultivator.....	\$125
Massey Ferguson 135 Tractor.....	\$3,750	2 Bottom Plow International.....	\$300
2 Bottom Plow International.....	\$300	Kubota 6' Finish Mower 3pt.....	\$1,000
Kubota 6' Finish Mower 3pt.....	\$1,000	3 pt. 6' Blade.....	\$200
		3 pt. 6' Finish Mower, 4 wheel.....	\$600



\$13,500
Kubota L5030 Tractor - 4x4 HST, Kubota LA854 loader, bucket



\$6,500
International 574 Tractor - Koyker 210 loader, spinout wheels



\$7,500
Int. 674 w/Loader, diesel, runs good

Call Rex 931-729-3320 1151 Hwy 48 S, Centerville, TN

Harvesters

Combines

CASE AND GLEANER COMBINES, one Case 1688 axial-flow, 4WD; two Gleaners, 2WD. Must sell. (256) 200-4288

CASE AND GLEANER COMBINES, one Case 1688 axial-flow, 4WD; two Gleaners, 2WD. Must sell. (256) 200-4288

HESSTON STACK HAND; New Holland bar type rake; assortment of metal rollers and troughs; much more. (629) 395-4558

Hay and Forage Equipment

HESSTON STACK HAND; New Holland bar type rake; assortment of metal rollers and troughs; much more. (629) 395-4558

Harvesting Equipment

INTERNATIONAL UPRIGHT CORN SHELLER, \$300. Columbia, TN. (931) 446-1675

HAY FOR SALE, 4x5 rolls, fertilized and baled with no rain, \$45 per roll. (256) 509-7417

Rakes and Tedders

JOHN DEERE 702, 8 WHEEL HDAY RAKE Rebuilt cylinder, good condition, shed kept, \$2,000. (205) 764-3850 jessebigham29@gmail.com

To Place A Classified Call 800-247-7318

Rotary Mowers

BUSH HOG 3 POINT CUTTERS HEAVY 11 GAUGE DECK, 90 HP GEARBOXES WITH SLIP CLUTCH. 6' \$1600; 7' \$1900; 10' \$3750. CALL FARM SERVICE SOLUTIONS IN LEOMA, TN. FARMSERVICESOLUTIONS.COM; (931) 242-7675

Come See Us!
We have all the building materials needed for
Barns - Pole Barns
Sheds - Metal Roofing
4x4's, 6x6's, Pressure Treated Lumber
We stock 24" 5V & Corrigated Tin

STIHL Sales & Service
1100 Winchester Hwy., Fayetteville, TN
931-433-1282
www.pendergrassupply.com
Monday - Friday 7:00 AM - 4:30 PM • Saturday 7:00 AM - 12:00 Noon

BUSH-WHACKER ST-180 ELITE
BATWING BUSH-HOG 15', very good condition,
\$6,800. (256) 657-6872

Square Balers

JOHN DEERE 336 SQUARE BALER shed kept, new knives, wagon hitch, other spare parts, ready for field, \$3,500. (205) 764-3850 jessebigham29@gmail.com

Round Balers

NEW 11 ROLL HAY HAULERS, \$4,400. Parker Farms Cattle and Equipment Company. (615) 542-6157

JOHN DEERE 566 WINTER SPECIAL! round baler, net or twine, new \$1,000 worth of chains and bearings, \$8,000. (256) 483-3487

INTERNATIONAL HARVESTER HORSE DRAWN hay baler, \$600. Columbia, TN. (931) 446-1675

NEW HOLLAND 565 SQUARE BALER, excellent condition, good paint, ready for field, \$6,500. (270) 206-0628

Hay and Grain For Sale

HAY FOR SALE, 3x3, Alfalfa and Orchard Grass mixed, good horse hay. Call, (931)808-8490; (931)728-5490. (931) 728-5490

SCHWEISS
DOORS
HYDRAULIC - OR - BIFOLD
ONE-PIECE DOORS STRAP LIFT DOORS
SCHWEISSDOORS.COM 507-426-8273
THE DOOR LEADER

We Have The Right Trailer For You!



Austin Trailer Sales Florence, AL (256) 483-0744	Ferge Auction Somerville, TN (901) 412-1165
Livingston Stockyard Livingston, AL (205) 499-6118	Lasseter Tractor Moultrie, GA (229) 985-1027
The Trailer Store Columbia, TN (931) 381-2795	Oak Ridge Rentals Hartselle, AL (256) 303-8574

4,000 BALES OF ORCHARD GRASS HAY, 12-14% protein, \$7 per bale. Hohenwald, TN area. (931)628-0529.

STRAW! 21 bale bundles, single bales to semi loads, \$5 per bale, quantity discount available. (931)607-3992.

Odds and Ends

HAY FOR SALE, 4x5 rolls, fertilized and baled with no rain, \$45 per roll. (256) 509-7417

FOR SALE, 20' heavy pipe gate, \$100. (931) 732-4401

TWO 15 TON FEED BINS; (three ring bins auger/motor included), \$1,000 each. \$1,900 for both. Belvidere, TN. No Sunday calls. (931) 308-2128

FOR SALE, 25 GALLON cast iron pot, \$150; 15 gallon cast iron pot, \$125. (931) 732-4401

WANT TO BUY FJ40 Toyota, in model years from 1975 to 1980. (931) 607-9737

TWO INDUSTRIAL FIRE extinguishers for sale, \$375 each. Columbia, TN area. (931) 446-1675

FOR SALE, 20' heavy pipe gate, \$100. (931) 732-4401

WOODMASTER OUTDOOR WATER FURNACES, heat your home or shop, EPA approved clean burning, parts in stock, financing available. In TN call Harold, (931)484-8890; in KY call Dave, (859) 265-0793

WANT TO BUY FJ40 Toyota, in model years from 1975 to 1980. (931) 607-9737

FOR SALE, 20' heavy pipe gate, \$100. (931) 732-4401

TWO INDUSTRIAL FIRE extinguishers for sale, \$375 each. Columbia, TN area. (931) 446-1675

GIFFORD BROTHERS CONCRETE. Nothing too big or small. Free estimates. 50 years experience. Dale Gifford, (931)703-0925.

TWO 15 TON FEED BINS; (three ring bins auger/motor included), \$1,000 each. \$1,900 for both. Belvidere, TN. No Sunday calls. (931) 308-2128

FOR HIRE OR RENT!

Cat D5 Dozer

100hp., 6-way blade, hydrostatic, \$400 day, \$1,600 week.

Kubota track loader, SVL 75-2, cab with AC/heat, no DEF, \$325 day, \$1,300 week.



All prices include pickup and delivery.
Leoma, TN

Call Chris - 931-629-8299

GLEBURNE FARM SUPPLY

1485 Bear Creek Pike
Columbia, TN 38401
931-388-7273



www.cleburnefarmsupply.com

Square Bale Handing Made Easier!



The Bale Baron Model 4250T & Model 5250T

- Trails Behind Baler
- Isobus Compatible
- Load Sensing System

Both Models Can Make A 21 Pack & An 18 Pack Bundle

Equipment For Sale.

(3) MF 4700 Tractors, New Call for price	MF 1840 Baler.....\$24,000
MF 5710 Tractor..... Call for price	MF 1363 Mower Conditioner..... Call

CUSTOM STEEL BUILDINGS

LIFETIME METAL ROOFING, SHAKE SIDING, VINYL SIDING, WINDOWS, GARAGE DOORS



Clark's Home Solutions, LLC

Financing available! Check us out on Facebook!

Over 30+ Colors Available

Clark's Home Solutions, LLC

792 David Crockett Hwy. | Winchester, TN 37398



Call today!
(931)962-8859

AFFORDABLE DECALS AND SAFETY DECALS Prompt. Knowledgeable Reliable Service. www.QuipCal.com; Call, (215) 536-5339; email: info@custom-servicescompany.com.

TWO INDUSTRIAL FIRE extinguishers for sale, \$375 each. Columbia, TN area. (931) 446-1675

Miscellaneous

NORWOOD PALLET FORKS \$750 AND UP. SKID STEER, JOHN DEERE 100-500 SERIES LOADER, AND GLOBAL EURO QUICK ATTACH AVAILABLE. FARM SERVICESOLUTIONS.COM. LEOMA, TN. CALL, (931) 242-7675

HONDA 16HP PRESSURE WASHER, \$600; wood furnace from central unit, \$250; Antique crank charcoal forge, \$75. (931) 732-4401

JOHN DEERE \$700.00 John Deere 272 grooming mower cuts very well (770) 877-1685 lbwaters@att.net

HONDA 16HP PRESSURE WASHER, \$600; wood furnace from central unit, \$250; Antique crank charcoal forge, \$75. (931) 732-4401

Planting Equipment

Recreational Vehicles

Drills

ATV

2022, ACCORD SAYA 505 NO TILL DRILL THESE 5' DRILLS ARE SET UP ON 7.5" SPACING AND WILL PLANT A VARIETY OF SEEDS FROM CORN, BEANS, AND WHEAT, TO FESCUE AND FERTILIZER, \$6,000 PLUS TAX. CALL FARM SERVICE SOLUTIONS IN LEOMA, TN. FARMSERVICESOLUTIONS.COM; (931) 242-7675

2003, CAMPER SHELL JAYCO DESIGNER 5TH WHEEL CAMPER 33 FOOT. 2 SLIDE OUTS. GREAT CONDITION. (615) 708-0042

2012, POLARIS SPORTSMAN 400, runs good, 4WD, winch works, \$4,000. Morning calls until Noon please. (931) 703-0152

Other

CAMPER SHELL for sale, fits L.W.B. truck, \$250 or best offer. Mulberry, TN area. (256)508-3320.

CAMPER SHELL for sale, fits L.W.B. truck, \$250 or best offer. Mulberry, TN area. (256)508-3320.

HONDA 16HP PRESSURE WASHER, \$600; wood furnace from central unit, \$250; Antique crank charcoal forge, \$75. (931) 732-4401

Dave's Sawmill Sales

Come See Us At

The National Farm Machinery Show
in Louisville, KY • February 15-18
West Hall Booth 1123 - 1125

Ask Us About Our New Patriot Mill



HUD-SON SAWMILLS, FOR THE WORK YOU DO.

We manufacture a number of sawmills, starting with our Sawyer Model at just

\$2,595

UNIFOREST WINCHES

Starting at
\$3,995



For more information or a free brochure, call:

In Kentucky Call Dave
in Lawrenceburg
859-265-0793

In Tennessee Call Harold
in Crossville
931-484-8890

PRODUCE AUCTION

Every Monday • Wednesday • Friday
Sale Starts April - October at 11:00 A.M.

Call for additional info



931-829-1114 • 469 S. Brace Rd., Ethridge, TN 38456

www.PlowboyProduceAuctions.com

EXCELLENT USED TRACTORS & EQUIPMENT



JD 1790 Planter
2004, Call Ben
\$85,000



Z45 Gehl Excavator Cab
AC and heat, 2 buckets 12"-24" size, hyd thumb and hyd 4' cutter size. Call Ben 256-744-8914
\$59,000



2021 M7060HD12 Kubota
4WD with Kubota loader, 400hrs. Hydraulic shuttle 12 speed transmission
Call Ben 256-744-8914
\$36,500



STX450 HD Case IH Tractor
4X4, 4 remote valves. Over size tires. 450Hp with 300hrs on complete rebuilt engine. Transmission was replaced two years ago. Call Sale 205-466-3500
Call

Snead Equipment

www.sneadequip.com



U.S. Hwy. 278 East, Snead, AL 35952

205-466-3500

2003, CAMPER SHELL JAYCO DESIGNER 5TH WHEEL CAMPER 33 FOOT. 2 SLIDE OUTS. GREAT CONDITION. (615) 708-0042

CAMPER SHELL for sale, fits L.W.B. truck, \$250 or best offer. Mulberry, TN area. (256)508-3320.

TWO 15 TON FEED BINS; (three ring bins auger/motor included), \$1,000 each. \$1,900 for both. Belvidere, TN. No Sunday calls. (931) 308-2128

TWO 15 TON FEED BINS; (three ring bins auger/motor included), \$1,000 each. \$1,900 for both. Belvidere, TN. No Sunday calls. (931) 308-2128

Services

TRACTOR AND FARM EQUIPMENT REPAIRS, Engine and transmission rebuilding. All types of repairs. Steel and aluminum welding. N & A Equipment Services, 301 Lack Road, Elkton, KY, 42220. (270) 348-5187

WOODMASTER OUTDOOR WATER FURNACES, heat your home or shop, EPA approved clean burning, parts in stock, financing available. In TN call Harold, (931)484-8890; in KY call Dave, (859) 265-0793

FOR RENT TAKEUCHI SKID STEER ENCLOSED, WITH HEAT & AIR, ATTACHMENTS AVAILABLE STANDARD BUCKET, STUMP BUCKET, AUGER, TRENCHER, GRAPPLE, HARLEY, RAKE, FORKS. (DAILY), (WEEKLY), (MONTHLY) RENTAL. CALL RICK, (931) 619-0421

FOR RENT 435 BOBCAT MINI EXCAVATOR, 16" & 36" BUCKETS - HYDRAULIC THUMB, ENCLOSED CAB, WITH HEAT & AIR, {DAY \$400}, {WEEK \$1,200}, {MONTH \$2,800}. CALL RICK, (931) 619-0421

DO IT YOURSELF LAND CLEARING 120 HP DOZIER, \$400 PER DAY, \$1,800 PER WEEK, FREE PICK UP & DELIVERY FOR MULTIPLE-DAY RENTAL, EXCAVATOR ALSO AVAILABLE. CALL RICK, (931) 619-0421

Over 50 Truck Beds in stock, newer & older Chevrolet, Ford, Ram & GMC Single & Dual-Wheel Trucks



Now carrying
Iron Bull Trailers
Call for prices!



Aluminum Beds
Call for Prices



Steel Beds
Call for Prices

We will trade for your used bed!
Used Flat Beds & Dually Beds Available!
Custom Orders Available!

Skirted Steel Beds - *Call for Prices*



Fast Installation on
In-Stock Inventory
Call Devin or Todd
931-738-9275



Thinking of having
an auction?
WE CAN HELP!

Real Estate of all Types • Assets • Estates

8719-A AL Hwy. 53, Toney, AL 35773
256-536-7497



Sales That Satisfy Since '65



Online Bidding Available • www.hortonauctions.com

120 Auto Lane | Sparta, TN 38583
Hwy. 111 in Sparta



JASONLEWISAUTOMOTIVE.COM

*Price plus tax, installation hardware, & installation. Prices do not include applicable sales taxes. Installation hardware not included in advertised price. Limited quantities available. Due to advertising deadlines, some models may be sold out. **Financing available through Sheffield's on most models.

Muscle Shoals Diesel Service

Diesel Fuel Injection Sales and Service
Serving the Southeast Since 1975

Bosch Stanadyne Caterpillar Zexel Yanmar
Denso Delphi Cummins AMBAC Detroit

Turbocharger Sales & Service • Powerstroke Injectors • Performance Chips
Locally owned and operated • Many exchange units available



We want to make you glad you chose us for all your Diesel Fuel Injection Needs!



New Location! 1135 Hwy. 20, Tuscumbia, AL 35674

Toll Free 1-888-308-1203 • 256/381-0240

Trucks

Medium Duty (GVW 14,000-26,000 lbs.)

1988 F450 1-TON TRUCK, Super Duty, SWB, new tires, 460 engine, 2WD. (931) 235-4899

2006 FORD F250 LARIAT, 4x4, Powerstroke, AT, crew cab, short bed, 276k miles, good tires. (931) 210-3400

JAPANESE 4X4 MINI TRUCKS, great for farm use, hunting, recreation, available with A/C, PS, 5 speed and automatic, some with dump beds. Anderson, AL. Call for prices, (256)740-7287. www.berryhillminitrucks.com (256) 740-7287

Want to Buy

WANT TO BUY, lime or poultry litter spreader, any condition, (731) 968-5343

WANT TO BUY, used Pro-Lick tank (liquid feed tank). (615) 653-8913

WANTED, 16 GA SHOTGUN, single or double barrel. (931) 235-4899

ALL TYPES CORRUGATED METAL, PLASTIC CULVERTS ALL TYPES OF METAL AND PLASTIC CULVERTS 8" THRU 36" IN STOCK, ALL OTHERS CAN BE ORDERED. QUANTITY DISCOUNTS, DELIVERY AVAILABLE IN OUR AREA. (931) 684-4847 CLANTONCO@BELLSOUTH.NET

Timber and Forestry

3PT. WOOD SPLITTER for sale, bought at Northern Tool and Equipment, sell for \$350. (931) 797-8746

JOURNEY LOGGING, LLC, buying standing timber: cedar and pine, within 100 miles radius of Pulaski, TN. 931-638-6441; jjourneylogging@gmail.com. (931) 309-8965 jjourneylogging@gmail.com

Tractors

JOHN DEERE 1450 52hp, diesel, good sound clean machine, dual remotes, canopy, \$6,000 or best offer. Leave message, (931) 593-3007

2004, JOHN DEERE 5520 89hp, open station, 4WD, 2,800 hrs, left-hand power reverser, w/Westendorf loader, spear, and large bucket, bought new with tractor, always kept inside. (931) 703-0808

Material Handling

Other

STEEL SIDEBOARDS and gates for sale, fits 12' flatbed, \$300 or best offer. Mulberry, TN area (256)508-3320..

FLATBED/LIVE-STOCK LIVESTOCK & FLATBED TRAILERS for sale, must see, different sizes and options. Financing available. Wholesale Trailers, Lebanon, Tennessee. (615)714-3894.

2004, JOHN DEERE 5520 89hp, open station, 4WD, 2,800 hrs, left-hand power reverser, w/Westendorf loader, spear, and large bucket, bought new with tractor, always kept inside. (931) 703-0808



The Crown For Your Home

Residential • Agricultural • Commercial

Increase the value & beauty of your home with our maintenance free metal roofing!
 Available in many styles:

Slate, Clay Tile, Shake, Stone Coated Shingle, Thatch & Standing Seam

We manufacture the 3 ft. wide metal panels at our location, plus we use an in-house computerized custom trim machine, for better and faster service!

Plateau Metal Sales

www.plateaumetalsalestn.com

103 Randolph Rd. • Crossville, TN
 Mon. - Fri. 7 to 5 • Sat. 8 to 12

931-277-3586
 1-800-468-0149

• 2nd location to serve you better. •

2448 Buttermilk Road W. • Lenoir City, TN

1-866-988-7670
 865-376-0528

YOUR METAL ROOFING HEADQUARTERS



Getting a NEW BUILDING? We have the DOORS!

Sales - Service - Installation
 Residential, Commercial, Industrial

Bill Smith Overhead Door, Inc.

26685 5th St., P.O. Box 8 • Ardmore, AL 35739

Donnie Martin (256) 423-6938 Bill Smith II

hm. (256) 423-4490 Fax: (256) 423-2897 hm. (931) 427-6456



Circle W • Delta
Calico • Blazer
GPI • Homesteader

Thank you for your business
& support in 2022!

Horse Utility Trailers Cargo, Dumps
Stock Carports Bike Trailers
Flat Beds Gates & Panels Tow Dollies

Parts - Sales - Service - Rentals

B&W Authorized Installer

Consignments Welcome

The Trailer Store

1021 New Lewisburg Hwy., Columbia, TN

Hours: Mon.-Fri. 8:00 A.M. - 5:00 P.M.; Sat. Closed

Mark Curry, Justin Curry, Becky Lynch

Office: 931-381-2795

Fax: 931-380-0337

LOOKING FOR OLD JEEP does not have to be running, decent body at a decent price. Call, (601) 632-1884

WANT TO BUY, lime or poultry litter spreader, any condition, (731) 968-5343

WANT TO BUY, JOHN DEERE TRACTOR, 420 OR 430. ONEONTA, AL AREA. (205) 353-2557

WANTED NH and JD SQUARE BALERS, running or for parts. (270) 206-0628

OLD TENNESSEE LICENSE PLATES wanted. Nolensville, TN area. (615) 879-1901

WANT TO BUY FJ40 Toyota, in model years from 1975 to 1980. (931) 607-9737

WANT TO BUY, goats, sheep, chickens, and guineas. Ardmore, TN area. Call, (256)777-0065; (931) 427-8477

WANTED USED TRACTOR TIRES, 16/9/28. Voice mail, (941)341-9404; or Text, (931)306-3969.

NO TILL PLANTER wanted. Lincoln Co, TN area. (931)993-8723; (931) 433-7345

WANT TO BUY FJ40 Toyota, in model years from 1975 to 1980. (931) 607-9737

WANTED, used beehives for supplies. (270) 427-2940

WANTED, 1940'S TO 1950'S PICKUP truck, any condition; also, iron wheel tractors; and whiskey barrels. (931) 446-1675

Alabama's Branson Dealer

Call For Specials, Deals and Incentives.



New Clipper Zero Turn In Stock
Call for Pricing



International 785 \$3,500



Kubota M108 \$21,500



McCormick C80 \$19,750



Kubota SVL75 Call for Pricing



2023 Bushhog 1812 \$17,350



2021 Bushhog 2215 Call for Pricing



Ford F700, 5 Spd. \$8,750



New Holland 1033 Barrel Wagon - \$3,750

We Carry Bushhog Mowers - Call For Info
Several Used Round & Square Balers For Sale

HUDDLESTON EQUIPMENT

Bush-Whacker® 29233 Hwy. 431 Wedowee, AL 36278



256-363-1132

huddlestonequipment.com

CLAAS

Branson TRACTORS

WANTED HORSE DRAWN sleigh; horse drawn wooden wheel wagon; horse drawn grader, four wheels. (931) 446-1675

WANTED NH and JD SQUARE BALERS, running or for parts. (270) 206-0628

WANT TO BUY FJ40 Toyota, in model years from 1975 to 1980. (931) 607-9737

WANT TO LEASE 70+ ACRES I'm looking for pasture to lease near Harvest AL. I'd like to live on the land (I have a camper.) I'm wanting to practice regenerative ag and land healing practices. Existing exterior fence would be nice. (256) 520-4727

WANTED ROME NEW GROUND harrow that fits D6. (423) 619-6416

WANTED NH and JD SQUARE BALERS, running or for parts. (270) 206-0628

WANTED HORSE DRAWN sleigh; horse drawn wooden wheel wagon; horse drawn grader, four wheels. (931) 446-1675

BUNK FEEDERS

CATTLE GUARDS



Concrete Water Troughs

With or Without Legs
Open or Closed Ends

Delivery Available

8' • 12' • 16' Widths
Rounded Top Design Keeping Livestock From Crossing



River City Concrete

9160 Hwy. 128 | Savannah, TN, 38372 | 731-925-0271

www.rivercity-concrete.com

Selection • Service • Satisfaction

- Aerial Work Platforms
- Lawn- Landscape-Tree
- Compaction
- Material Handlers
- Skid Steers-Mini Excavators
- Generators and Accessories
- Construction Tools
- Concrete-Masonry



From Contractor To Homeowner, **We Can Help!**



WATSON'S Equipment Rental

290 Interstate Drive • Manchester, TN 37355
Mon.-Fri. 7:00 A.M. - 5:00 P.M. • Sat. 7:00 A.M. - NOON



931-954-5862

www.WatsonsEquipmentTN.com

TWO YOUNG BLACK ANGUS bulls for sale, \$1,750 each. Whiteville, TN area. (731) 518-6184

FOR SALE, PURE-BRED LIMOUSIN heifers, young bull and service age bull, good bloodlines. (931)455-4978. (931) 409-9918

6 REGISTERED AN-GUS HEIFERS, bred AI on 11/17/22 to Deer Valley Growth Fund Bull, 16 mo old, nice as you will find, 900-1,000lbs. Meets TAEP Heifer Program in TN. FandPLivestock.com. TAEP APPROVED. (615) 653-8913

REGISTERED RED ANGUS BULL, 16mo old, passed BS exam. FandPLivestock.com. TAEP APPROVED. (615) 653-8913

REGISTERED SI-MANGUS BULL, 3yrs. old, proven breeder, heifer safe, \$3,700. Phil Campbell, AL area. (256) 668-2290

CHAROLAIS BULL FOR SALE Service age Charolais bulls, gentle, registered, purebred and polled. Call, (931)967-8807; or, (931) 308-7212

FOR SALE, PURE-BRED LIMOUSIN heifers, young bull and service age bull, good bloodlines. (931)455-4978. (931) 409-9918

REGISTERED RED ANGUS HEIFERS for sale, ready to breed. (931) 244-0376

1 TO 25 REGISTERED Red Angus and registered Black Angus bulls, 11 months,+/-1,000lbs. Top bloodlines in both breeds! Starting at \$1,495 per bull, many are AI. Located in Rome,GA, 20 miles past Centre, Alabama. Joe Gibson, Gibsoncattle.com. (706) 506-3026

REGISTERED RED ANGUS HEIFERS for sale, ready to breed. (931) 244-0376

REGISTERED AN-GUS BULLS, 12-18 months, all are AI Sired by Growth Fund, Optimum, Upward, Enhance, Beacon, all qualify for TAEP, good EPDs, calving ease and balanced bulls, good disposition. (931)510-1104; (931)287-7474.

PUREBRED NORMANDY BULLS, tame and family raised; AI sires: A2A2 genetics. 2yr old, \$1,600; 9 month old, \$900. No Sunday Sales Please. Smithville, TN. (931) 308-2128

FOR SALE, PURE-BRED LIMOUSIN heifers, young bull and service age bull, good bloodlines. (931)455-4978. (931) 409-9918

Animals

Cows

Chickens

EGG INCUBATOR UNIT, \$125, and 122" owner oxygen bottle, \$100. (931) 732-4401

FOR SALE, 16" and 16.5" eight hole wheels, \$20. (931) 732-4401

REGISTERED RED ANGUS HEIFERS for sale, ready to breed. (931) 244-0376

REGISTERED BLACK AN-GUS BULLS fully TAEP qualified, A-I sired out of great cow families, gentle, good EPD's. Cedar Ridge Angus, Pulaski, TN. (256) 508-2874. See Cedar Ridge Angus on Facebook. (256) 508-2874 raycjordan@gmail.com

Well Built™ to Handle Your Hay

Trust Your Most Important Forage Crop to Stoltzfus Mfg.

Well Built™ Round Bale Carriers



- Designed to load & unload with a 3 pt. hitch bale spear
- Reinforced cross members
- 9 models with 6, 8, or 10 bale capacities
- Heavy duty construction



Well Built - Feeders:

- Built tough for long life!
- Available in a variety of lengths
- Adjustable slant bar or self-locking head locks
- Ideal for cattle in either feedlots or meadows



Gates • Slant Bar Sections
Head Locks • Gutter Gates

For a free brochure or more information, call: 610-273-3603

Dealers located throughout TN & KY
Call for the one nearest you!
F.O.B. Cub Run, KY

Stoltzfus MFG

Cub Run, KY

DEALER INQUIRIES INVITED • CUSTOM WAGONS A SPECIALTY

Cub Cadet Gossett Farm Equipment, LLC

1624 Hwy. 100, Centerville, TN 37033 • 931-729-4515



Call Jo To Qualify For 12, 24, 36, 48 Month Zero Interest on Cub Cadet Mowers!

gossettfarmequipment@gmail.com • 931-729-4515 • Great Financing

SANTA GERTRUDIS, YOUNG BULLS SANTA GERTRUDIS, young bulls and heifers, polled, registered, gentle. Free ballcap. Quality cattle since 1977. (256) 566-7878 kelso-clough@aol.com

CHAROLAIS BULL FOR SALE Service age Charolais bulls, gentle, registered, purebred and polled. Call, (931)967-8807; or, (931) 308-7212

REGISTERED RED ANGUS HEIFERS for sale, ready to breed. (931) 244-0376

CHAROLAIS BULL FOR SALE Service age Charolais bulls, gentle, registered, purebred and polled. Call, (931)967-8807; or, (931) 308-7212

REGISTERED RED ANGUS HEIFERS for sale, ready to breed. (931) 244-0376

CHAROLAIS BULL FOR SALE Service age Charolais bulls, gentle, registered, purebred and polled. Call, (931)967-8807; or, (931) 308-7212

FOR SALE, 16" and 16.5" eight hole wheels, \$20. (931) 732-4401

If We Don't Have It, We'll Be Glad To Build It



Livestock Trailers



Gooseneck Flatbed Trailers



Bumper Pull Car Haulers



Utility Trailers



Enclosed Trailers



Dump Trailers

CUSTOM BUILT TRAILERS

OF MISSISSIPPI LLC

1335 Highway 49 Seminary, MS 39479

(601) 722-9581

www.custombuilttrailersms.com

FOR SALE, REGISTERED BLACK ANGUS BULLS, will qualify for the full TAEP money, all are by the top AI bulls in the breed. Crawford Angus. Lewisburg, TN. (931)205-2450; or, (931)359-2633. crawfordangus@bell-south.net

FOR SALE, 16" and 16.5" eight hole wheels, \$20. (931) 732-4401

REGISTERED AN-GUS BULLS Service age angus bulls out of top bloodlines. All bulls qualify for maximum TAEP money. (931) 589-2759

REGISTERED AN-GUS BULLS Service age angus bulls out of top bloodlines. All bulls qualify for maximum TAEP money. (931) 589-2759

CHAROLAIS BULL FOR SALE Service age Charolais bulls, gentle, registered, purebred and polled. Call, (931)967-8807; or, (931) 308-7212

FOR SALE, 16" and 16.5" eight hole wheels, \$20. (931) 732-4401

REGISTERED RED ANGUS HEIFERS for sale, ready to breed. (931) 244-0376

CHAROLAIS BULL FOR SALE Service age Charolais bulls, gentle, registered, purebred and polled. Call, (931)967-8807; or, (931) 308-7212

REGISTERED RED ANGUS HEIFERS for sale, ready to breed. (931) 244-0376

CHAROLAIS BULL FOR SALE Service age Charolais bulls, gentle, registered, purebred and polled. Call, (931)967-8807; or, (931) 308-7212

FOR SALE, 16" and 16.5" eight hole wheels, \$20. (931) 732-4401

0% SPECIAL RETAIL FINANCING FOR **36 MONTHS** ON SELECT NEW BUSH HOG EQUIPMENT INCLUDING FLEX-WING AND MULTI-SPINDLE ROTARY CUTTERS, HAY TEDDERS, AND HAY RAKES

Trust in a company whose name has become synonymous with the task. That's performance. That's reputation. That's Bush Hog®

BUSH HOG Performance You Can Count On™ www.bushhog.com

Built Bush Hog Tough www.bushhog.com

EQUIPMENT REPAIRS

- FARM TRACTORS
- DIESEL FUEL INJECTION SERVICE

StanaDyne - CAV-Roosamaster - Pump & Injectors

Call Lewis 931-607-3031 • 931-596-3644
34 Medley Ln., Estill Springs, TN

Open on Saturdays

Dean Farm Supply

28739 U.S. Hwy. 72 • Hollywood, AL 35752
256-574-1112
www.DeanFarmSupply.com

Aisles & Aisles & Aisles

of IH & CaseIH Tractor Parts
New, Used & Remanufactured



The Largest Exclusive
IH & CaseIH Used & Rebuilt
Parts Inventory in North America

Bates Corporation Call 1-800-248-2955
12351 Elm Road Bourbon, IN 46504 www.batescorp.com

WOODS, 4 FOOT BOX blade for sale, new teeth, good condition, \$475. Call/text, (931) 492-1013

BLACK & TAN ENGLISH SHEPHERDS Natural Heelers. Eradicate vermin. Drive cattle. Protect Property. Blankenship bloodline. (615) 640-6161

WOODS, 4 FOOT BOX blade for sale, new teeth, good condition, \$475. Call/text, (931) 492-1013

Other

HONEY BEE NUCS \$170; \$20 payment with order, quantity discount, April pickup. Joe N. Hostetler, 150 Mt. Horeb Rd., Ethridge, TN 38456.

REGISTERED ANGUS BULLS Registered Angus Bulls We have a good selection of yearling bulls from Growth Fund, Pay-weight 1682, Upward, Hometown, and Lone Pine Farms Sure Fire. Located in Putnam County, Tennessee For more information and pictures, contact me at (931) 267-6813; or, wtt@frontiernet.net.

REGISTERED HEFORD BULLS REGISTERED HEFORD BULLS, for sale, gentle disposition, great bloodlines, polled, service age, starting at \$1,500. Leave message (931) 703-7573

WAGYU HEIFERS for sale. (256)714-6182.

FOR SALE, 16" and 16.5" eight hole wheels, \$20. (931) 732-4401

Dogs

HEELER PUPS Heeler pups, 2 red and 2 blue, all females, 8 weeks, \$150. (931) 242-7868 lampleyd@goldmail.etsu.edu

BLACK & TAN ENGLISH SHEPHERDS Natural Heelers. Eradicate vermin. Drive cattle. Protect Property. Blankenship bloodline. (615) 640-6161

PUPPIES FOR SALE, toy Australian Shepherds and toy Aussiedoodles will have shots/dewormed. Also, grown standard Australians and 2 grown male Poodles. John J. Gingerich, 146 Fox Hunters Lane, Morrison, TN 37357. Amish, no phone.

DONBAR USA

Works like a handrail, creating better balance.
with bucket holder \$144.95* or without \$94.95*

*does not include shipping.

NEW!
DB Deluxe
with bucket
holder



scan to purchase now!

Support Bar for Zero-Turn Mowers
Order online at www.dbmower.com • 763-785-1382

ELK VALLEY TRUCK & TRAILER SALES



2004 Sterling single axle, 12.7 Detroit, 10 spd., 339k miles
\$18,500



2013 Int Day Cab Maxforce DPE delete, 10 spd., 624k miles, alum wheels
\$19,900



2003 GMC 2500 Duramax diesel, 4WD, auto, SLE, power windows, low miles, 136k miles
\$23,900



2011 Vintage Cargo 44' 3-8k axles, 8' wide, 7.6' tall, ramp, generator door, extra jacks
\$23,900



2015 Ford F-250 4WD, crew, 6.2 gas, auto, power window & locks, 157k miles
\$18,900



2022 Sky Enclosed 24', 7' tall, 8' tall, used once
\$9,950

All Types Trailer Rental Available

Rocky - 931-703-6255 • Wayne - 931-993-8984
2983 Huntsville Hwy. • Fayetteville, TN • 931-433-6255

www.elkvalleytrailersales.com

BLACK & TAN ENGLISH SHEPHERDS Natural Heelers. Eradicate vermin. Drive cattle. Protect Property. Blankenship bloodline. (615) 640-6161

2021 VIOLETTE
PIED PEACOCK,
2021 Violette
black-shouldered
peacock. He should
be white-eyed, but
can't guarantee, \$500/
each. Cornersville,
TN. If no answer,
leave voicemail or
text. I will respond
ASAP. (931) 652-3164

WOODS, 4 FOOT
BOX blade for sale,
new teeth, good
condition, \$475. Call/
text, (931) 492-1013

Announcements

AFFORDABLE DECALS AND SAFETY DECALS. Prompt. Knowledgeable Reliable Service. www.QuipCal.com; Call, (215) 536-5339; email: info@customerservicescompany.com.

MILLER FARMS
Angus Beef from the farm. 100% natural, non-GMO, hormone and antibiotic-free. Whole, halves, or by the pound. Slaughtered and packaged. (931) 593-3702; (931) 593-2429.



 2021 Chevy 2500 HD Duramax DSL, Allison trans., 4x4, High Country Pkg., Only 11000 miles, Stk#3051 \$74,948	 2021 Chevy Z71 1500 4x4, LTZ Pkg., 13K, Stk#230027A \$51,972	
 2018 GMC Canyon Denali, 4x4, 71k, Stk#220640B \$34,987	 2021 Chevy Z71 4x4, 19K, LTZ Pkg., Stk#220535A \$52,990	 2019 Chevy Colorado Z71 pkg., 4x4, 59K, Stk#220553A \$35,883



Commercial rebate requires qualifications. Prices plus tax, title & license and \$199 admin. fee. Incentives Subject to Change.

1134 U.S. Hwy. 431, Boaz, AL 35957
1-800-531-4253
 Call to insure all incentives are applied.

HONEY BEE NUCS \$170; \$20 payment with order, quantity discount, April pick-up. Joe N. Hostetler, 150 Mt. Horeb Rd., Ethridge, TN 38456.

REGISTERED RED ANGUS HEIFERS for sale, ready to breed. (931) 244-0376

BLACK & TAN ENGLISH SHEPHERDS Natural Heelers. Eradicate vermin. Drive cattle. Protect Property. Blankenship bloodline. (615) 640-6161

WOODS, 4 FOOT BOX blade for sale, new teeth, good condition, \$475. Call/text, (931) 492-1013

AFFORDABLE DECALS AND SAFETY DECALS. Prompt. Knowledgeable Reliable Service. www.QuipCal.com; Call, (215) 536-5339; email: info@customerservicescompany.com.

MILLER FARMS
Angus Beef from the farm. 100% natural, non-GMO, hormone and antibiotic-free. Whole, halves, or by the pound. Slaughtered and packaged. (931) 593-3702; (931) 593-2429.

HONEY BEE NUCS \$170; \$20 payment with order, quantity discount, April pick-up. Joe N. Hostetler, 150 Mt. Horeb Rd., Ethridge, TN 38456.

REGISTERED RED ANGUS HEIFERS for sale, ready to breed. (931) 244-0376

Cowherd Equipment & Rental, Inc.

 Penta 4030 Several Other Models In Stock	 Jaylor 5425 new, single TMR Auger, Call	 Akron GTT 4010 Call for Prices
 Hoosierland 1450 In Stock - Call Several Used In Stock Also	 Meyer 2636 In Stock - Call	 Penta 5020SD Used - Call for Info.

Numerous Used Mixers Available!

For more information:

Cowherd Equipment & Rental, Inc.

1483 Old Summersville Rd. • Campbellsville, KY 42718
270-465-2679 • 270-469-5095 • 270-469-0398

THINKING AUCTION?

GIVE ME A CALL

MIKE VAUGHT

Apprentice Auctioneer #6387
Affiliate Broker

Specializing in Farms, Farm Dispersals,
Rural Homes & Acreage

 <p>PARKS AUCTION CO. LLC FIRM 3984</p>	<p>615.396.7208 615.896.4600 www.parksauction.com</p>
--	---

Environmentally Friendly Brush Clearing

by Layne Construction

Remove unwanted vegetation. Cut & grind trees up to 6" & brush into mulch. No brush piles.



We Do All Types Of Dirt Work • Loader & Excavator

We can: Clear for wild game plots • Clear ATV trails • Shooting lanes
Pasture reclamation • Lot clearing • Fence lines • Field borders • Right of way

Call for free estimate: 256-975-4193 • 256-975-4296
www.land-clearing-services.com

BLACK & TAN ENGLISH SHEPHERDS Natural Heelers. Eradicate vermin. Drive cattle. Protect Property. Blankenship bloodline. (615) 640-6161

WOODS, 4 FOOT BOX blade for sale, new teeth, good condition, \$475. Call/text, (931) 492-1013

BLACK & TAN ENGLISH SHEPHERDS Natural Heelers. Eradicate vermin. Drive cattle. Protect Property. Blankenship bloodline. (615) 640-6161

Attachments

USA, 5' TO 10' PULL TYPE BOX BLADES REGULAR DUTY, HAVE A MANUAL TILT AND COME WITH HYDRAULIC LIFT. HEAVY DUTY, COME WITH HYDRAULIC TILT AND LIFT. 5' \$900; 6' \$1000; 7' \$1700; 8' \$1950; 10' \$2500; 8' HD \$3400; 10' HD \$3800. CALL FARM SERVICE SOLUTIONS IN LEOMA, TN. FARM SERVICESOLUTIONS.COM; (931) 242-7675

USA, 3 POINT BOX BLADE AND LAND PLANES NEW IN STOCK. CALL CHRIS AT FARM SERVICE SOLUTIONS IN LEOMA, TN. BOX BLADES 4' \$695; 5' \$765; 6' \$895; 6' HD \$1,000; 7' HD \$1,085; 8' HD \$1,165. LAND PLANES 6' \$1,400; 7' \$1,500. CALL FARM SERVICE SOLUTIONS IN LEOMA, TN. FARM SERVICESOLUTIONS.COM; (931) 242-7675

Always A Great Selection



1999 Kubota B2400
60" mower, 547 hrs

\$9,900



Lane Shark L52
11 Cutting positions, hyd. powered

Call for price



2014 Kubota L4600
With Kubota LA 764 loader, 498 hrs.

\$23,900

www.bctractor.com

BLOUNT COUNTY TRACTOR, INC.

Highway 75 North, Oneonta, AL 35121

Bus: 205-625-5381

Fax: 205-274-8795



WOODS, 4 FOOT BOX blade for sale, new teeth, good condition, \$475. Call/text, (931) 492-1013

Other

NEW CREEP FEEDERS, VARIOUS 6 ton \$8,800; 3 ton \$4,400; 2 ton \$4,000. Parker Farms Cattle and Equipment Company. (615) 542-6157

Tires

TRACTOR TIRES AND WHEELS, 18.4X30 for sale, 80%, \$700 pair (256) 777-2513

Building Products

12'X12' ROLLING STEEL DOOR, already taken down, good condition, \$500, Smithville, TN. No Sunday calls. (931) 308-2128

WOODMASTER OUTDOOR WATER FURNACES, , heat your home or shop, EPA approved clean burning, parts in stock, financing available. In TN call Harold, (931)484-8890; in KY call Dave, (859) 265-0793

STEEL DOOR, already taken down,

A SPLIT ABOVE THE REST



Introducing The TM Warrior 30"



- 10 Different Skidder Loader Models to Choose From
- Models for Many Excavators
- Made in the USA
- No Brakes/No Bends

The strongest splitter for the money in the country. **PERIOD.**



TM MANUFACTURING
Making Wood Splitting Simple

25621 MN Hwy. 4 • Grove City, MN 56243 • 320-286-3077 • www.skidsplitter.com

good condition, \$500, Smithville, TN. No Sunday calls. (931) 308-2128

Trusses

27 2 X 4 TRUSSES 4 - 12 / pitch, 32' long, 10 1/2" overhang, \$2,500. (615) 642-8735

Chemical Applicators and Chemicals

Sprayers

NEW 1000 BOOMLESS PASTURE sprayer, \$9,500; 28' boom, \$1,200. All sizes available. Parker Farms Cattle and Equipment Company. (615) 542-6157

CUSTOM MADE PASTURE SPRAYER for sale, 200 gallon, cluster sprayer, boomless, on trailer, works great. (931) 637-7795

Components

Other

FARMALL SUPER C hood and PTO belt pulley, \$150/both. (256) 577-5051

FOR SALE, 16" and 16.5" eight hole wheels, \$20. (931) 732-4401

COURT AUCTION TO SETTLE AN ESTATE



Live Simulcast Online Bidding Only

New Holland Skid Steer, Mini-Excavators, Vermeer Mini Skid Steer, Dewalt Cordless Tools Attachments, Tools, Rais3d Pro2plus Printer Specialized Levo-E-Bike



Thursday, January 12th • 10:00 AM

100 Auction Way Nashville, TN. 37207

Directions: From Nashville Take I-24 West to Trinity Lane Exit # 87. Right on Trinity Lane to Dickerson Pk. Right on Dickerson Pk. 1 mile to Sale on Right.

Partial List of Equipment: New Holland C23 Loader (25 hours) , New Holland E17 C Mini Excavator, Cat 300 9D Mini Excavator, Vermeer S450TX Mini Skid steer, Mean Green electric Stalker stand on mower, Niftylift TD34TN Tract Drive access platform, Delta drill press, Millematic 211 welder, SHOPFOX Dust Collector, Black Max upright air compressor, and more.

Tools: Powermatic 54HH Jointer, DeWalt DCS690 Cut Off Saw 60v, cordless skill saws, DeWalt DCS371 Cordless Band Saw, Powermatic Belt / Disc sander, DeWalt corded planer, Milwaukee drain snake, Fieldpiece Digital Micron Gauge, Fieldpiece Pro Anemometer, DeWalt table saw, Miller 225 MIG wire welder, engine hoists and more.

Misc.: Specialized Levo SL Class1 E-Bike, Turner Mountain Bike, Fuji C10 Road Bike, RAISE3D Pro2Plus #D printer, TEMMA Laboratory DC Power Supply, Glass Suction Plate glass pullers, Round-up backpack sprayer, engine hoists, Little Giant Ladders, grinders, hoses, 64" Samsung TV, PC games, Anaheim Automation Stepper Drivers, Ridgid Pipe Threader, pressure washers, generators, Greenlee Cordless blower, and weed eater, Craftsman and US General, roll away toolboxes, US General 72" roller cabinet, hand tools, grinders, sanders, Delta and Milwaukee cordless tools shelving, cement mixer, press, shop supplies, shelving, SS racks, Colt 357 Python, S&W .38 and much more.

Terms: Cash, Visa, MasterCard, Discover. 15% Buyers Premium Online Bidding Only, Viewing at 100 Auction Way Nashville, TN. 37207. All this equipment is out of one estate and is in excellent condition.

BILL COLSON
AUCTION & REALTY, CO. INC.
615-292-6619 • 2012 Beech Ave, Nashville, TN 37204 • Lic. #68

Grant Cary Auctioneer Lic. #4773
615-262-5455 • 615-975-8414

www.colsonauctions.com to register and bid. To speed things up Day of Sale Please Pre-Register and Pre-Bid prior to sale day

GRAIN DRILL PRESS WHEELS 12" diameter by 4" wide, 5/8" center hole, Total width=5". \$100 for about 17. No Sunday Sales Please. Smithville, TN.(931)280-1275

sel, rear axle power steering, 4x4, weighs 22,750 lbs, 1-3/4 yd front bucket, owned for 28 years, good machine, \$9,500 cash. (256) 766-0356 cgamble@eanelson.com

CUSTOM MADE PASTURE SPRAYER for sale, 200 gallon, cluster sprayer, boomless, on trailer, works great. (931) 637-7795

Wheel (Rim)

FOR SALE, 16" and 16.5" eight hole wheels, \$20. (931) 732-4401

Construction Equipment

BUCYRUS-ERIE DYNAHOE 190-4 BACKHOE Runs/ Operates Good, 126 hp Detroit 4-53 Die-

Grader

ADAMS HORSE DRAWN grader, 7' blade, \$1,450; Adams horse drawn large road grader, \$2,000; two horse wooden wheel wagon, \$1,475. Columbia, TN (931) 446-1675

HYDRAULIC PRESS, 30 ton, \$175 and drill press, \$125. (931) 732-4401

FOR SALE, 16" and 16.5" eight hole wheels, \$20. (931) 732-4401

BUCYRUS-ERIE DYNAHOE 190-4 BACKHOE Runs/Operates Good, 126 hp Detroit 4-53 Diesel, rear axle power steering, 4x4, weighs 22,750 lbs, 1-3/4 yd front bucket, owned for 28 years, good machine, \$9,500 cash. (256) 766-0356 cgamble@eanelson.com

Used Tractors & Parts In Stock



Ford 3600
2Wd, total engine rebuilt
\$5,250



Ford 5640
Power Start w/dual power, 1 owner, 16 speed
\$13,500



Yanmar YM 3000
Dsl.
\$3,500

Recently Salvaged Tractors

JD 1640
JD 2130
JD 1120
JD 950
JD 850
Ford 8N

Kubota 1500
Formall SA-140-SC-Cub
IH 584 + IH 454
MF 135 DSI + MF 135 Gas
Ford 3000 + 900 w/ wide front
Ford 801 + 601 + 600

Golden Jubilee
Ford 801, gas, PS
MF 235, Good Steering Box
Mahindra 3550
Ford 2000, w/PS
Yanmar 2500

The Ultimate Wood Heat.

More Comfort
Thermostatically controlled wood heat.
Peace of Mind
Keep the fire outside and eliminate the dangers associated with indoor wood heating.
Save Money
Wood is a renewable, inexpensive and often free energy source.

CLASSIC EDGE
TRANSFORMER SERIES
Outdoor Wood Furnace



Southern KY Wood Furnaces
8263 Glasgow Rd., Burkesville, KY 42717
(270) 459-1840 • SouthernKYWoodFurnaces.com

Narrell Tractor

47 Years In Business
Mark Narrell - Manager

7870 AL Hwy. 69 N., Cullman, AL 35058 **256-796-6445**
narrelltractor@att.net www.narrelltractorllc.com

Requested Delivery On or Before January 4, 2023

PRSRT STD
US POSTAGE
PAID
MONROE, GA
Permit # 15

P.O. Box 490
Fayetteville, TN 37334

RUSSELL BARNETT

See Travis Searcy, The "Truck Specialist"
We're Better and We'll Prove It!

START SOMETHING NEW

SALES EVENT

We Are Your Cab & Chassis & Dually Headquarters



**NEW 2022 RAM
3500 LARAMIE**

Stk # D12088N **\$87,290**

Now Taking Orders For Your New Truck! Call Us Today!

RUSSELL BARNETT

2756 Decherd Blvd., Winchester, TN
931-691-1712

FIVE STAR
★ ★ ★ ★ ★
Dealer

BUSINESS LINK

ON THE
JOB

CHRYSLER

Jeep

DODGE



RAM

See Travis Searcy, The "Truck Specialist"
We're Better and We'll Prove It!

Call
Travis Searcy
Today!
931-691-1712

www.russellbarnettchryslerdodgejeep.com

*All rebates applied. All prices plus tax, title & tag. \$399 processing fee included. Due to advertising deadline, all prices and incentives including employee pricing is subject to change by the manufacturer without notice. Customers must finance to obtain all Rebates.