

# Farmers' Exchange



*Place unlimited  
items for sale:*

[FarmersExchange.com](https://FarmersExchange.com)

Used and New Farm Equipment.  
Equipment, Land and Livestock Auctions.

Call for Subscription **800.247.7318**

## BUILT FOR WHAT'S NEXT

### AS YOUR FARM GROWS, YOUR SYSTEM SHOULD TOO

If you're expecting record bushels or  
planning for more acres, you need  
a system that can keep up. We  
will design a system to fit  
your growing needs.



PROVEN & DEPENDABLE™ | [WWW.GRAINSYSTEMS.COM](http://WWW.GRAINSYSTEMS.COM)

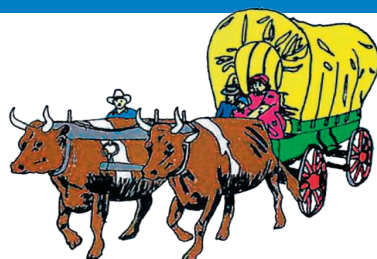


### Watkins & Sons Mfg., Inc.

67 Watkins Lane, Linden, TN 37096

**800-227-4631**

[www.watkinsandsons.com](http://www.watkinsandsons.com)







**WE HAVE MOVED!!**  
 NEW Location 1300 US 31 Athens AL 35611  
**256-232-5850**

**LS Package Deals: Tractor, Loader, Trailer, Box Blade & Cutter**

**Several LS Package Deals**



**Call For Details**



**2021 LS Tractor MT122-21.5HP**  
 4WD, Dual Pedal, 2 range HST  
**\$19,702**



**2021 LS Tractor MT125-24.7HP**  
 4WD, Dual Pedal, 2 range HST  
**\$20,642**



**2021 LS Tractor MT125-24.7HP**  
 4WD, Dual Pedal, 2 range HST  
**\$14,590**



**2021 LS Tractor MT225E-24.6HP**  
 4WD, Independent PTO  
**\$18,590**



**2021 LS Tractor MT2E**  
 Series MT 235E - 35 HP  
**\$27,200**



**2021 LS Tractor**  
 MT3 Series MT 342 HC  
**\$36,190**



**2021 LS Tractor MT230E-30HP**  
 4WD, Independent PTO  
**\$26,400**



**2021 LS Tractor MT240HE-40HP**  
 4WD, Dual Pedal 3 range HST  
**\$29,450**



**2021 LS Tractor MT3 Series**  
 MT 352 HC  
**\$42,242**

**VIEW OUR COMPLETE INVENTORY AT HANEYEQUIPMENT.COM**





# OUR SPECIALS OF THE MONTH!



**JAY-LOR**

**D&E** is Your **SOURCE**  
for Mixers! Huge  
**IN STOCK** Inventory!

**H&S**



**TOP SHOT**  
5234 Spreader  
\$46,200




**MASCHIO**  
Entry 150  
4x5 Dry or  
Silage Bales  
twine & net  
\$23,500

**HAYBUSTER**



10' Drills in stock!  
With Legume Box &  
Lift Cylinder  
**Best \$\$ Around!**

**CLAAS**



Balers, Tedders, Mowers  
3550 Mower  
11'2" Cut  
\$16,800

**STRETCH-O-MATIC**  
8400 ELITE



\$32,500

Dependable, Quality.  
Other wrappers have  
higher price tags.  
Doesn't make 'em better,  
only costs you more.

**S.I. FEEDERS**



24' Feeder Wagons  
Heavy Duty  
Arrow Front  
**\$7250**  
with New Tires!

# Call Us... Save \$\$\$

**GEHL**



RT165 RT185 & RT320  
Track Loaders  
Fresh Inventory  
Fully Loaded

**R260**  
**IN STOCK!**

**Bush-Whacker**



12' MD144 &  
15' ST180  
**IN STOCK**

**Poultry Specials**



16' HD Hyd Endurance  
Spreaders  
& Pulvimasters  
**IN STOCK!**

**D&E**  
**DON ALLISON EQUIP, INC.**

[www.donallisonequipment.com](http://www.donallisonequipment.com)  
**800-669-6450**  
**THE MIXER PLACE!**



If you need quality products with non-stop support,  
it's time to **TriGreen...**

**There's No Better Time Than  
Now To Get Your Krone &  
Be Ready For Spring!**



**KRONE**

**Call Today!**

**EasyCut**  
Pull-Type Disc Mower

**Swadro**  
Rotary Rake

**KW/KWT**  
Rotary Tedders



Dependable cutting and professional quality.



Even and consistent windrows



Powerful rotors turning crops into high quality forage.

Krone machines are customer designed and German engineered for professional hay and forage producers. With their innovation comes efficiency, quality and technology to improve any operation. For a limited time take advantage of these discounts and experience equipment engineered for your performance.



[www.krone-na.com](http://www.krone-na.com)

\* Discount amount based on specific machine type & model. Discounts cannot be combined with low rate finance offers. Krone® is a registered trademark of Maschinfabrik Bernard Krone GmbH. 12121 Forest Park Dr., Olive Branch, MS 38654 • (662) 913-7171



Arab, AL  
933 N. Brindlee Mt. Pkwy.  
(256) 586-8304

Athens, AL  
131 US Hwy 31 S  
(256) 232-2131

Centre, AL  
1050 Chestnut Bypass  
(256) 927-2300

Columbia, TN  
2409 Pulaski Pk.  
(931) 388-1557

Cookeville, TN  
1490 Interstate Dr.  
(931) 526-8544

Crossville, TN  
269 N Main St.  
(931) 340-1012

Cullman, AL  
3920 AL Hwy 157  
(256) 739-5601

Dickson, TN  
707 Henslee Dr.  
(615) 229-2400

Fayetteville, TN  
2894 Huntsville Hwy.  
(931) 433-5620

Florence, AL  
3613 Florence Blvd.  
(256) 757-9080

Franklin, TN  
340 9th Ave N  
(615) 794-8187

Ft. Payne, AL  
12227 AL Hwy. 35  
(256) 997-9089

Gadsden, AL  
1301 West Meighan Blvd.  
(256) 456-5872

Guntersville, AL  
2205 Henry St.  
(256) 582-3217

Hendersonville, TN  
133 N. Shackle Island Rd.  
(615) 824-9726

Huntsville, AL  
4550 Research Park Blvd.  
(256) 830-4020

Jasper, AL  
3700 Industrial Pkwy.  
(205) 384-3058

Leighton, AL  
1160 Sockwell Ln  
(256) 446-5929

Manchester, TN  
812 Interstate Dr.  
(931) 728-5400

Mt Juliet, TN  
10768 Lebanon Rd.  
(615) 754-2600

McMinnville, TN  
305 Shangri La Ln.  
(931) 668-1784

Piedmont, AL  
850 US Hwy. 278 Bypass  
(256) 447-7211

Pelham, AL  
3311 Pelham Pkwy  
(205) 605-0412

Scottsboro, AL  
26685 John T Reid Pkwy.  
(256) 259-0704

Winchester, TN  
176 Blair Pond Rd.  
(931) 967-5144





# TAC ENTERPRISES • BUY • SELL • TRADE DAILY

Huge selection of big tractors selling each week on AuctionTime.  
Check out our listings at [www.tacenterprises.net](http://www.tacenterprises.net) and register to bid.



530 John Deere, factory wide front, power steering, 3pt and remote \$7,500



D3C series II, 6 way blade, good undercarriage, lever steer \$25,900



TD7E Dresser dozer, 6 way blade, good undercarriage, \$14,900



Case 450 dozer, 6 way blade, good undercarriage, \$11,900



430 John Deere high crop with complete cultivator, older restoration, \$16,900



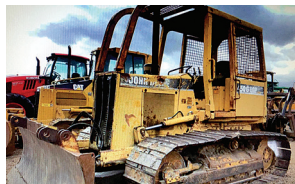
6230 John Deere, C/A, 4x4, 95 hp, PQ trans. with left hand reverser, 2010 model, 7,000 hrs. runs/works good \$37,500



2007 Jeep Wrangler Sahara, V6, 6 speed, A/C, 4x4, 240K miles, hard top, condition rusty but runs and drives out great \$6,500



330 U John Deere, very rare original yellow tractor, very low hour machine, starts and runs great \$24,500



450G LGP John Deere, 6 way blade, good undercarriage, lever steer, \$29,800



IHI 28N Mini-X, showing 2,204 hrs., push blade. original \$16,900



2004 Kubota KX41-3C Mini Excavator, push blade, showing 168 hrs. \$17,900



**FEBRUARY SPECIAL!**  
Skid steer pallet forks, 3,000 lb. cap., 48" forks, reg. \$950 Special \$795



7130 John Deere, 121 hp, C/A, 4x4, PQ with left hand reverser, \$49,500



1979 Jeep CJ7, 304 V8, 4x4, automatic, power steering, power brakes, very good driver! \$9,850



E250 Ford ambulance, 6.0 diesel, automatic, runs/drives, 237K miles \$2,650



55 Gal. Spray Rig, boomless nozzle, hand wand, 6 roller pump, NEW \$1,195

Look for our auctions online at [HiBid.com](http://HiBid.com)



**TAC ENTERPRISES**  
[www.tacenterprises.net](http://www.tacenterprises.net)  
**256-974-8588**



3330 Alabama Hwy. 36, Moulton, AL 35650

Auctioneer: Ken Nelson, AL #1326 • Hours 8:00 A.M. - 5:00 P.M. Monday - Friday



### Fayetteville, TN • 931-433-5620



Apache AS1220 - \$165,000



Rhino 3150-4 - \$16,500

JD 930F .....	\$7,500
Case IH 5500 .....	\$6,500
JD 4630 .....	\$85,000
Odgen Rake .....	\$7,000
Schulte FX1500 .....	\$8,000
JD X380, 48", 293 hrs .....	\$2,550

### Athens, AL • 256-232-2131



JD 5045E - \$25,000



JD 3043D - \$24,500



JD 5055E - \$38,500



JD MX7 - \$5,000

JD 5045E, 2WD, loader, Stk#1034623.....	\$25,000
JD 3043D, 60 hrs., 43 HP, Stk#1033607...	\$24,500
JD 5055E, 2022, 29 hrs., 55 HP, Stk#1034737 .....	\$38,500
JD MX7, 2017, ready to go, Stk#1034624 .....	\$5,000

### Cullman, AL • 256-739-5601



JD 3038E - \$17,900



JD BXX10052 - \$500



JD BW14144 - \$500



JD BW15896 - \$500

Frontier AB13D Hay Spears, fits 600 series, loaders.....	\$725
MoCo Tow Bar .....	\$995
Frontier LP1048, 2021 .....	\$1,275
Paladin TM4M-0052 Harley Rake, 2014, 4' .....	\$4,900

### Scottsboro, AL • 256-259-0704



Kubota M6060 - \$37,500



Geringhoff RD800 - \$32,500



JD Z930M - \$6,200



Case IH 900 - \$4,500

JD Z930M, 60" deck, 2021, 1020 hrs., Stk#1034513 .....	\$6,200
Geringhoff RD800, 2008, 8 row, Stk#1032708 .....	\$32,500

Kubota M6060, 2020, open station, PR, loader, Stk#1034918 .....	\$37,500
JD Z930M, 60" deck, 2019, 1832 hrs., Stk#1035169 .....	\$4,795

JD Z930M, 60" deck, 2021, 1040 hrs., Stk#1034514 .....	\$5,800
JD 1023E, no loader, 60" deck, 2021, 56 hrs., Stk#1032708 .....	\$11,700
Case IH 900, 6 row, 30", Stk#1029578.....	\$4,500
JD 5075E, open station, loader, MFWD, PR trans., 2021, 115 hrs., Stk#1035339 .....	\$43,300

### Cookeville, TN • 931-526-8544



JD 2032R - \$16,000



JD Z540M - \$4,000



JD MX8 - \$8,500



NH H7230 - \$17,500

ExMark Radius, 60", 506 hrs, 2019.....	\$7,000
ExMark Radius, 52", 55 hrs, 2021.....	\$8,500
JD 3025E, 44 hrs, 2022.....	\$19,995
JD X380, 48" deck, 293 hrs.....	\$2,550

### Manchester, TN • 931-728-5400



JD 5065 - \$39,900



NH 355 - \$11,900



JD 468 - \$21,900



JD 469 - \$26,900

JD 5065E, open station, 4WD, loader, 100 hrs. ....	\$39,900
Arts Way Grinder Mixer .....	\$7,900
Kuhn Trailmower .....	\$10,900

JD 8300 Grain Drill.....	\$3,999	JD Z930M, 60", 300 hrs.....	\$7,995
--------------------------	---------	-----------------------------	---------

### Leighton, AL • 256-446-5929



JD 3320 - \$19,900



JD MX15 - \$10,500



JD 5090E - \$59,000



JD 558 - \$14,800



Ford 5610 - \$12,900

JD S690, 2013 .....	\$279,000	JD R4038, 2018, 623 hrs .....	\$329,000
JD R4038, 2017, self propelled, 767 hrs.....	\$255,000	Hardi Sprayer, 3 pt., 350 gal, 60' boom.....	\$4,900



### Huntsville, AL • 256-830-4020



JD 1990 - \$79,000



JD S680 - \$235,500



JD 1025R - \$16,000



JD 8320R - \$175,000

JD 325G, 2019, 1575 hrs., cab,  
72" bucket.....\$53,500  
JD 1990, 2011, 40', 7.5" spacing, single  
shoot.....\$79,000  
JD S680, 2017, 2295 eng. hrs., 1836 sep.  
hrs., PRWD.....\$235,500  
JD 8320R, 2010, 5222 hrs., IVT, front  
duals.....\$175,000

Frontier BB2048L, 2022, 48" box blade.....\$1,000  
JD 612C, 2013, 30" rows.....\$45,000

JD 1025R, 2018, loader, 158 hrs., 25 hp.....\$16,000  
Phillips 4305A.....\$16,500

### Columbia, TN • 931-388-1557



Vermeer MC2800 - \$12,999



Vermeer RR140 - \$7,499



JD 5085E - \$55,000



JD 275 - \$7,950



J&M 812X - \$45,900



Vermeer TE170 - \$5,499

Kubota ZD21, Stk#1031232, 1620 hrs.,  
60" cut, diesel.....\$5,500  
JD 830 MoCo, center pivot, 2015.....\$19,500

JD X380, 48" deck, 335 hrs.....\$2,900  
Vicon Disc Mower.....\$5,500  
Ogden RCR12, 12 wheel, Stk#1035070.....\$10,500

Ogden RCR810, 10 wheel, Stk#1034989.....\$7,500  
JD 567 Baler, Stk#1035394.....\$12,500  
JD HX15, Stk#1035238.....\$9,500

### Mt. Juliet, TN • 615-754-2600



JD 5115M - \$77,500



JD 560M - \$29,000



Ogden HR12 - \$6,000



JD Z960M - \$6,499



Frontier SS2067B - \$1,450



Mahindra 3550 - \$27,900

### Winchester, TN • 931-967-5144



KMC Wall Cleaner - \$4,500



Northstar Elite 1230 - \$50,000



Unverferth 8250 - \$28,500



JD R4038 - \$279,000



NH BR750A - \$8,000

Used Lawn & Garden Tractors .....CALL Case IH DMX81 Disc Mower.....\$4,300 JD 460M, 2020, 5900 bales, silage special,  
Commercial Zero Turn Mowers.....CALL JD 835M Gator, 2020.....\$17,500 net wrap.....\$38,000  
Claas C512-30, 2005.....\$15,000 JD WG36A, 230 hrs.....\$2,500 JD X570, 54" deck, 323 hrs.....\$4,750  
Self Propelled Sprayers .....Call Mahindra SD4 Rotary Cutter.....\$950 Mahindra Rotary Cutter, 6',  
Geringhoff RD1200.....\$25,000 NH BR750, 16,000 bales.....\$6,000 medium duty.....\$1,500

### Florence, AL • 256-757-9080



JD Z994 - \$10,000



JD 2025R - \$22,500



Road Runner - \$9,950



JD 6120E - \$87,000

JD 2025R, loader, 60" belly mower.....\$22,500  
Vermeer WR20.....\$3,000  
JD 6140R, 1500 hrs.....\$125,000  
JD Z930R.....\$8,399  
JD TX 4x2 Gator.....\$10,000  
Hustler X1, 54" cut, bagger.....\$6,500

JD 652R.....\$4,500 JD 652REFI.....\$3,500

### McMinnville, TN • 931-668-1784



Durabilt 12 - \$7,750



JD 50G - \$74,500



JD 1025R - \$14,900



JD 3025E - \$18,900



Krone KW552-T - \$5,500

JD 3038E, loader, backhoe, 5 hrs.....\$36,500 JD 535.....\$7,500

Arab, AL  
933 N Brindlee Mt. Pkwy  
(256) 586-8304

Crossville, TN  
269 N. Main St.  
(931) 340-1012

Fort Payne, AL  
12227 Al Hwy 35  
(256) 997-9089

Gadsden, AL  
1301 West Meighan Blvd  
(256) 456-5872

Jasper, AL  
3700 Industrial Pkwy  
(205) 384-3058

Piedmont, AL  
850 US Hwy 278 ByPass  
(256) 447-7211

Centre, AL  
1050 Chestnut ByPass  
(256) 927-2300

Dickson, TN  
707 Henslee Dr  
(615) 229-2400

Franklin, TN  
340 9th Ave N  
(615) 794-8187

Hendersonville, TN  
153 N. Shackle Island Rd  
(615) 824-9726

Murfreesboro, TN  
464 Middle TN Blvd  
(615) 890-6258

Pelham, AL  
3311 Pelham Pkwy  
(205) 605-0412





**2007 Ford F-750** 30K, new 16 ft dump bed, under 26k GVW, DSL, auto, Stk#E2007  
**Call for price**



**2005 Int 4300** CNC, 57K, DT466, air brakes, A/C, 31,000 GVW, auto, PTO, Stk#A2105  
**Call for price**



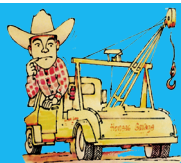
**C8500** 2006, C7 CAT, auto, PTO, walking beans, 47,000 GVW, 120K, Stk#I2006  
**Call for price**



**C6500** 1990, 120K, 3/26 CAT, 6 speed, air brakes, hydraulic wrecker, Stk# 1322  
**Call for price**



**2012 Ford F-350** 6.2 gas, auto, A/C, PS, long wheel base, 183k, Stk#B2212  
**Call for price**



# HONEA'S Garage

**Celebrating 70 Years Serving Our Community**  
If you don't see what you need on my website, call me! I probably have it!

**931-425-6176**

Used Trucks : New, Rebuilt & Used Truck Parts    HoneasGarage.com • BigHatCattle.com

## Chickens

**GOLDEN COMET PULLETS** for sale, available in March. (931) 692-3333

**EGG INCUBATOR UNIT** and brooder unit, \$125, 122' owner oxygen cylinder, \$100. (931) 732-4401

## Cows

**25 LONGHORN COWS** for sale. (931) 619-1338



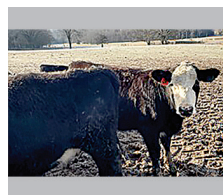
**1 TO 25 REGISTERED Red Angus** and Registered Black Angus bulls, 11 months, +/- 1,000lbs. Top bloodlines in both breeds! Starting at \$1,495 per bull, many are AI. Located in Rome, GA, 20 miles past Centre, Alabama. Joe Gibson, Gibsoncattle.com. (706) 506-3026



**REGISTERED RED ANGUS BULL**, 16mo old, passed BS exam. FandPLivestock.com. TAEP APPROVED. (615) 653-8913



**6 REGISTERED ANGUS HEIFERS**, bred AI on 11/17/22 to Deer Valley Growth Fund Bull, 16 mo old, nice as you will find, 900-1,000lbs. Meets TAEP Heifer Program in TN. FandPLivestock.com. TAEP APPROVED. (615) 653-8913



**COW REPLACEMENT HEIFER REGISTERED F1 Great replacement Heifer.** Sire JM Hutton Launch 669 9116, 10 months old, \$925 Bargain. (703) 789-1510 europe0220@yahoo.com

**To Place A Classified Call**  
800-247-7318

**To Place A Classified Call**  
800-247-7318



# Chicken Litter For SALE

# Kiln Dried Shavings For Sale

## ORGANIC FERTILIZER

• DELIVERY AVAILABLE •

**931-967-8699 • 931-607-8699**

## The Ultimate Wood Heat.

**More Comfort**  
Thermostatically controlled wood heat.

**Peace of Mind**  
Keep the fire outside and eliminate the dangers associated with indoor wood heating.

**Save Money**  
Wood is a renewable, inexpensive and often free energy source.

**CLASSIC EDGE**  
TITANIUM HD SERIES  
Outdoor Wood Furnace



**Southern KY Wood Furnaces**  
8263 Glasgow Rd., Burkesville, KY 42717  
(270) 459-1840 • SouthernKyWoodFurnaces.com



**TAS**  
**Auction**

**ANNUAL FARM & CONSTRUCTION  
EQUIPMENT CONSIGNMENT SALE**

**Saturday, February 25<sup>th</sup>, 2023 • 9:00 A.M.**

**BEDFORD COUNTY AGRICULTURE CENTER**

2119 Midland Road • Shelbyville, Tennessee

From Hwy. 231 North of Shelbyville Turn on Peacock Lane ¼ mile to Midland Road.

**EQUIPMENT CHECK-IN:**

**Wednesday, February 22<sup>nd</sup> from 8:00 A.M. - 5:00 P.M.**

**Thursday, February 23<sup>rd</sup> from 8:00 A.M. - 5:00 P.M.**

**Friday, February 24<sup>th</sup> from 8:00 A.M. - 5:00 P.M.**

**SELLERS:** We reserve the right to refuse any item for sale. No Flea Market Items or worn out tires.

Bring your equipment to the areas LARGEST and MOST ACTIVE ANNUAL SALE.

*If you will call in advance we will take photos of your equipment and advertise it on our website.*

**BUYERS:** Selling Farm Tractors, Backhoes, Light Dozers and Industrial Equipment, Lawn and Garden Equipment, Livestock Feeding and Handling Equipment, Plows, Disk, Planters, Mowers, Haybines, Rakes, Balers (Round & Square), Choppers, Wagons, Bush Hogs, Post Hole Diggers and Much More.

**NO BUYER'S PREMIUM**

**Two Auction Trucks Will Run**

**Note about Tractors selling:** Due to sellers request, Tractors selling Absolute with Farm Sellouts will be lined up and sold in Machinery Line, Anytime during the day.



LUNCH SERVED BY THE BEDFORD COUNTY 4-H CLUB

SPONSORED BY:

**FARM CREDIT SERVICES**

SHELBYVILLE & MURFREESBORO, TENNESSEE

*If you are interested in Credit, Contact Your Local Farm Credit Services Prior to Sale.*



**EVERYTHING SOLD "AS IS" AND "WHERE IS" NO CHARGE FOR NO SALES**

COMMISSION RATES: 10% of first \$1500 - plus 5% of balance - \$350 maximum charge on any single item - \$15 minimum charge on large items, \$5 on small.

**CHECKS WILL BE MAILED WITHIN 12 TO 15 DAYS**

ALL ITEMS MUST BE PAID FOR ON SALE DAY. Loaders will be available to load out thru Monday, February 27<sup>th</sup>. Tradition Auction Services and Farm Credit Services are acting as Selling Agents only and are responsible only for money collected and guarantee no warranties made by Sellers.

**NOT RESPONSIBLE FOR ACCIDENTS, THEFT OR DAMAGE TO EQUIPMENT**

TERMS: CASH OR APPROVED CHECK. Buyers using personal or company check who are not financially established with Auction Company must have Letter of Credit guaranteeing payment of check.

*For More Information Please Call: Bob Morton (931) 842-1234 • Lynn Lee (615) 390-6312 • Dave Myrick (615) 202-7349*

**AUCTIONEERS:**

Lynn Lee  
David Myrick  
Joe McKee

[www.facebook.com/thetraditionauction](http://www.facebook.com/thetraditionauction)  
[www.traditionauctions.com](http://www.traditionauctions.com)

**APPRENTICE:**

Bob Morton

**TRADITION AUCTION SERVICES, LLC**  
**TRAINED BY THE BEST TO BE THE BEST!**

Firm License No. 5762 • MURFREESBORO, TENNESSEE

Telephone:

615/869-0029



# A SPLIT ABOVE THE REST



## Introducing The TM Warrior 30"



- 10 Different Skidder Loader Models to Choose From
- Models for Many Excavators
- Made in the USA
- No Brakes/No Bends

The strongest splitter for the money in the country. **PERIOD.**



**TM MANUFACTURING**  
Making Wood Splitting Simple

25621 MN Hwy. 4 • Grove City, MN 56243 • 320-286-3077 • www.skidsplitter.com

**REGISTERED HEREFORD HEIFERS** - ages 7-9 months. Excellent bloodlines and will make great cows. Hopkins Ranch Winchester, TN. Call, (931) 636-7521 hopkins4795@bellsouth.net

**FOUR PUREBRED BLACK ANGUS** heifers for sale, 12-14 months. (931) 675-0669

**WAGYU HEIFERS** for sale. (256)714-6182.

**REGISTERED HEREFORD BULLS** Polled and Horned Hereford Bulls for sale, ages 7-17 months old. Great dispositions and Excellent bloodlines. Easy calving with good growth. (931) 636-7521

**FOUR PUREBRED BLACK ANGUS** bulls for sale. 14-18 months old. (931) 675-0669

**REGISTERED BLACK ANGUS BULLS** for sale, 15-17 months old, good EPD's, frame, length, disposition, TAEP qualified. Fifty years of selection for the best. Turrentine Angus, Shelbyville. (931) 607-8950 aturrentine@cafes.net

**FOUR PUREBRED BLACK ANGUS** bulls for sale. 14-18 months old. (931) 675-0669

**REGISTERED BLACK ANGUS BRED HEIFERS**, 1100lbs, late bred, gentle, long, fancy, \$1,800-\$2,100. (931)994-2813.

**REGISTERED BLACK ANGUS BULLS** for sale, 15-17 months old, good EPD's, frame, length, disposition, TAEP qualified. Fifty years of selection for the best. Turrentine Angus, Shelbyville. (931) 607-8950 aturrentine@cafes.net

## SALVAGING

Salvaging Agco 2270 Square Balers

- Round Balers
- Swathers
- Combines
- Tractors



Call Us For New & Used John Deere Row Head Parts!

**Over 8000 Machines Parted Out!**

### Mike's Equip. Co.

Buhler, KS  
mikesequipment.com  
sales@mikesequipment.com

**620-543-2535**  
since 1977

**REGISTERED BLACK ANGUS BULLS** fully TAEP qualified, A-I sired out of great cow families, gentle, good EPD's. Cedar Ridge Angus, Pulaski, TN. (256)508-2874. See Cedar Ridge Angus on Facebook. (256) 508-2874 raycordan@gmail.com

To Place A Classified Call  
800-247-7318

# 22<sup>nd</sup> Annual Farm Equipment Auction



**March 4<sup>th</sup> @ 9:00 A.M.**  
Held inside Holder's Tobacco Warehouse  
Hartsville, TN

Conducted by  
Ron C. Paschal Auction, FL 1941  
(615) 574-0931

For consignment inquiries, contact:  
Jason, Blake, or Stanley at  
(615) 374-3100 or (615) 633-8663

**Don't miss this sale!!!!**

## Where Do You Go When You Need Parts?

**Russells Tractor Parts**  
1-800-248-8883

Ag & Industrial Parts • Free Quotes  
Free Parts Locating Service  
New & Used Parts

We stock & ship new after market parts.  
Sparex, Tisco, Riverside, Temco Dealer

### Russells Tractor Parts

We ship parts anywhere in the U.S.

Scottsboro, AL





# Farm Equipment Specials



**Kinze 3500**, 8/15, KPM3 Monitor, new seed disc, field ready, Stk#3906 **\$47,500**



**Case IH 5100**, soybean special, 21 hole, 7" spacing, new hoses, Stk#4015 **\$4,450**



**Woods 121**, 10', 540 PTO, aircraft tires, like new blades, Stk#4034 **\$4,450**



**Brillion 4 Axle**, 16', very good, 18" rollers, easy to move, Stk#4091 **\$3,250**



**Farm King 1070**, swing away hopper, new, 540 PTO, Stk#3944 **\$17,000**



**Case IH RB465**, 2015, 8500 bales, 4x6 bale, 540 RPM, net & twine, Stk#4033- **\$28,500**



**JD 7000**, 4 row, 36" no-till, liquid fert. new seed disc, ready to go, Stk#4064 **\$6,250**



**EZ Trail 500**, 500 bushel, new bottom auger, good tires, nice, ready to go, Stk#3948 - **\$8,750**



**Unverferth HT12**, up to 25' head, will hold corn or bean head, Stk#4102 **\$3,450**



**Taylor-Way 200196**, 9' offset, excellent blades & bearings, not broken up, Stk#4113 - **\$6,250**



**Case IH 1020**, 15', flex head, very good head, very low use, Stk#4104 **\$10,500**



**Case IH 1020**, 25', grain head, good floor & auger, very good shape, Stk#4092 - **\$9,450**



**NI 215**, very good shape, wood is solid, has top beater, Stk#4072 **\$4,850**



**Int. 370**, 9', scallop front blades, smooth rear blades, new hoses, Stk#4037 - **\$3,850**



**NI 5408**, 8' cut, good cutterbar, new blades, 3 pt., field ready, Stk#3862 **\$4,750**



**Kubota M6060**, 75 hrs., 4WD, LA1154 loader, QA, like new, Stk#4004 **Call**



**Kinze 2000**, 6/11, going thru shop now, Stk#2901 **Call**



**JD 625F Grain Head**, 25', hydra flex, good cutterbar, Stk#4045 **\$14,500**



**JD 915 Grain Head**, flex, very good poly on bottom, good hand to find size, Stk#4009 - **\$6,750**



**NI 5406**, 4 disc, 6', very good cutter, good curtain, 3 pt., 540 PTO, Stk#4040 - **\$4,250**

Farm King 1070, swing away hopper, new, Stk#3944.....	\$17,000	Unverferth HT25, good tight tongue, Stk#4093 .....	\$3,650
Unverferth HT30, up to 30' head, very good shape, Stk#3937.....	\$4,250	Case IH 1063, 6 row, 30", very nice, Stk#3982.....	\$6,750
Vermeer TD200, 4 basket, 17.5' width, Stk#3756 .....	\$5,950	J&M 250-7, on J&M 8 ton running gear, Stk#4085.....	\$1,850
Hesston 3717, 4 basket, hyd fold, 17', Stk#3819 .....	\$3,750	EZ Flow 300, EZ Trail 1074 running gear, Stk#3920.....	\$3,250
JD 756, 4 basket, 17' hydr fold, Stk#3856 .....	\$5,250	Kewanee 140, 9', good bearings & blades, Stk#3927 .....	\$1,950
JD 693, 6 row, 30", runs smooth, Stk#3508 .....	\$9,250	JD 672, 5 bar, 9', very straight, Stk#3978.....	\$2,450
Cast IH 1044, Stk#3191 .....	Call	NH 256, new tires, all teeth, smooth, Stk#3752 .....	\$2,450
Case IH 1020, 20' grain head, flex, Stk#3934.....	\$7,250	Kuhn GA300GM, 3 pt., 9', good, Stk#3691.....	\$3,450
Killbros 25, 25', good straight tongue, Stk#4056 .....	\$3,650	JD 643, 30" Corn Head, field ready, Stk#3926.....	\$5,450
Int. 5100, 21 hole, 7" spacing, field ready, Stk#4047.....	\$7,450	JD 643 Corn Head, 6 row, 30", Stk#3922.....	\$4,950



**Killbros 350**, on Killbros 1072, 10 ton running gear, very nice, Stk#4083 **\$4,450**

**Newman Farms**  
[www.newmanfarms.net](http://www.newmanfarms.net)  
 Cleveland, TN  
 Call 423-595-5715 or 423-464-5303



# ALWAYS BUYING *Quality* USED EQUIPMENT - CALL TODAY



**JD 5065E** 2020, 51 hrs, 4WD, 65 hp, 12/12 PR trans **\$43,900**



**JD 9500** 2245 sep. hrs., 3072 eng. hrs., 2WD **\$32,900**



**JD 5090E** 2020, 4WD, 90 hp, 2214 hrs., 2 set remotes **\$49,900**



**Kubota M6800** 2004, 1106 hrs., 2WD, syncro shuttle, 63 hp **\$18,900**



**Lewis Brothers** 3.5 Chicken House Cleaner, 540 PTO, shed kept, ready to go **\$13,900**



**JD 5075M** 2011, 629 hrs., pre-emissions, 2WD, 75 hp **\$49,500**



**JD 5045E** 4WD, 50 hp, 2018, 9/3 syncro trans **\$24,900**



**JD 6105M** 2015, 4WD, 2077 hrs., 105 hp, 16/16 PQ trans. **\$85,900**



**JD 835M Gator** 2020, 94 hrs, 290 mi, 4WD, power steering **\$21,500**



**JD 5325** 2006, 906 hrs., 2WD, 12/12 PR trans., 67 hp **\$43,900**



**NH Boomer 45** 2019, 45 hp, 4WD, 514 hrs, 16/16 syn shuttle **\$19,900**



**JD 6415** 2007, 108 hp., 2574 hrs., 2WD, 12/4 **\$29,500**



**Kubota L2501D**, 2019, 25 hp, 131 hrs., 8/4 trans., one owner **\$18,500**



**JD 1770NT Planter** 16 row, 30" spacing, field ready **\$57,500**



**JD 2940** 1982, 4WD, 91 hp, 16/8 trans. **\$19,500**



**JD 4066R** 2016, 1064 hrs., 4WD, 65 hp, eHydro trans **\$47,900**



**Kinze 2600 Planter** 8/15 split row, 18"/36" spacing **\$36,500**



**Int 9400** 1994, 868k miles, 10 spd. Eaton, CAT engine **\$36,900**



**JD 5085E** 2018, 246 hrs., 2 set remotes, 3rd function **\$62,900**



**JD 5100E** - 2019, 1851 hrs., 12/12 PR trans, 4WD, 100 hp, **\$62,900**



**JD 7830** - 2010, 6993 hrs., 4WD, 16/16 PQ Plus trans, 205 hp, **\$79,500**



**Great Plains 1006NT Drill** 10', pull type, small seed box, like new **\$34,900**



**Aerway Pasture Aerator** 20', pull type **\$8,950**



**Int 1456** 1971, 6404 hrs., 2 set remotes, 144 hp. **\$22,500**

Bush Hog Commercial & Mulicity Discounts Available

**[www.eaglevilleimplement.com](http://www.eaglevilleimplement.com)**

Reasonable Delivery Available Anywhere!



# Come See Why We Are The Largest Independent Bush Hog Dealer In The USA!

## Reasonable Delivery Available Anywhere



**12820** - 20' in stock, available in 20 or 21 spine PTO, 8 foam filled airplane tires - **\$37,500**



**1815** - 15' Flex Wing, dual center axles, deck rings, laminated tires - **\$20,900**



**12715L** - used, 15', 1000 PTO, 1-3/8\" shaft, deck rings, laminated tires - **\$18,900**



**3510** - used, pull type, 540 PTO, 10.5' shed kept, front chains - **\$9,950**



**BH116** - 72\", 540 PTO, 3 pt., laminated tires, stump jumper - **\$2,250**



**BCSS-721 Brush Cutter**  
HD, 6' - **\$7,500**



**2310** - 10' MD, pull type, 540 PTO, laminated tires, front chains - **Call**



**BH215** - 60\", 3 pt, 540 PTO, 65 hp gear box, stump jumper - **\$3,650**



**DSP10 Scraper** - 10', 39\" depth, 2-1/4 cu. yd. capacity, tilt axle - **\$7,650**



**2215** - 15', 2022, 540 PTO, laminated tires, front & rear chains - **\$24,500**



**New 3510** - 10.5' pull type, 540 PTO - **\$15,500**



**14815** - 15', 2023, in stock in both 20 & 21 spline shaft, 8 airplane tires available, 1000 pro - **\$34,900**

Proud sponsors of:



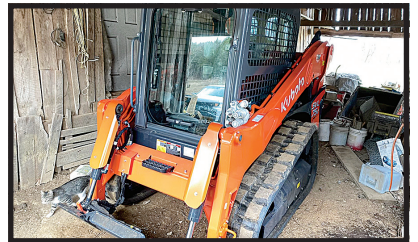
**Call Us Today! (615) 274-2200**

775 South Main Street, Eagleville, TN 37060



# Online Equipment Consignment AUCTION

**Location:** 31 Lynchburg Hwy., Fayetteville, TN 37334



## Calling for Consignments - One Sellout Already Consigned.

**Receiving Equipment:** February 6 thru 10 • 9:00 AM - 4:00 PM each day.

All Types Farm and Construction Equipment will be selling. No small or low valued items will be accepted.

*If you have equipment to consign, call Joe Massey at (931) 675-9606 to have it advertised early.*



## Register to bid at [vanmassey.com](http://vanmassey.com)

Working hard to get you Top Dollar for your property and equipment, as we have for over 40 years!



Van Massey  
Broker/Auctioneer

**VanMassey**  
AUCTION & REALTY

[www.vanmassey.com](http://www.vanmassey.com)

*"Serving The Southeast Since 1982"*

31 Lynchburg Hwy.  
Fayetteville, TN 37334  
**(931) 433-8686**

**NAA**  
Auctioneer  
AL Lic. #1289  
**ITPA**  
TN Lic. #1711  
MS Lic. #1609

# Online Estate AUCTION

**Location:** 254 Rutledge Rd., Shelbyville, TN (In Moore County, 4 miles from Lynchburg, TN.)

**Bidding Ends:** Tuesday, February 21 • 7:00 PM



## Tractors, Equipment, Household Furniture, Appliances, Old Collectibles

**Preview:** Monday, February 20 • 2:00 PM - 4:00 PM only • **Register to Bid at [VanMassey.com](http://VanMassey.com)**

Selling for the estate of the late Lilburn and Juanita Rutledge

**Several Hundred  
Items Selling!**



Van Massey  
Broker/Auctioneer

# VanMassey

**AUCTION & REALTY**

[www.vanmassey.com](http://www.vanmassey.com)

*"Serving The Southeast Since 1982"*

31 Lynchburg Hwy.  
Fayetteville, TN 37334  
**(931) 433-8686**



# Online Firearm Consignment AUCTION

**Location:** 31 Lynchburg Hwy., Fayetteville, TN 37334

**Taking Consignments Now thru March 1<sup>st</sup>**

**Shotguns, Handguns, Rifles, Ammunition, Knives, Hunting Gear, Etc.**

Call John Thorpe to consign (931) 993-6157



Van Massey  
Broker/Auctioneer

# VanMassey

**AUCTION & REALTY**

[www.vanmassey.com](http://www.vanmassey.com)

*"Serving The Southeast Since 1982"*

31 Lynchburg Hwy.  
Fayetteville, TN 37334  
**(931) 433-8686**



# REAL ESTATE FOR SALE

\* 88 Acre Farm in Moore County, TN. 3 BR Brick Home, Barns, Quiet, Dead-end road location. 4 miles NE of Lynchburg, TN

\* Beautiful newly renovated home located at 603 Wanda Ln., Tullahoma, TN. See pics at [www.vanmassey.com](http://www.vanmassey.com)

\* Custom built 1 1/2 story, brick home on 6.34± acres located at 497 Sims Spring Rd., Lewisburg, TN

\* 122 Acre Farm in Moore Co., TN on Charity Rd. Excellent livestock farm. Very nice home sites.



Jacob & Fallon Massey

**To sell your property at Auction or to list it, call Jacob or Fallon Massey today!**  
**Jacob - (931) 607-2771 • Fallon (931) 580-1145**

*Members of Middle TN and North Alabama multiple listing services.*



# FOWLER AUCTION

Turning Your Assets Into Cash

**INDUSTRIAL, CONSTRUCTION & FARM EQUIPMENT · TRACTORS  
VEHICLES · CLASSIC CARS · TRUCKS · TRACKHOES · DOZERS & MORE**

## ANNIVERSARY OPEN CONSIGNMENT AUCTION

**FOWLER AUCTION CENTER · 8719 HIGHWAY 53 · TONEY, AL  
ONLINE BIDDING ONLY: CLOSES MONDAY, FEBRUARY 13TH · 7 PM  
BID AT [WWW.FOWLERAUCTION.COM](http://WWW.FOWLERAUCTION.COM)**

**Consign  
Your  
Items  
NOW**

**NOW ACCEPTING ITEMS UNTIL THURSDAY FEBRUARY 2ND AT 4 PM**



For more information contact:  
David Vess; (256) 426-0005; david@fowlerauction.com  
Greg Bottom; (256) 777-4496; greg@fowlerauction.com



**BID ONLINE FROM ANYWHERE AT [WWW.FOWLERAUCTION.COM](http://WWW.FOWLERAUCTION.COM)**

# FOWLER AUCTION

Turning Your Assets Into Cash

**ONLINE ONLY AUCTION  
VEHICLES, JOHN DEERE GATOR & MISCELLANEOUS  
CULLMAN, ALABAMA**

**BIDDING CLOSES MONDAY, FEBRUARY 27TH · 7 PM  
BID NOW FROM ANYWHERE AT [WWW.FOWLERAUCTION.COM](http://WWW.FOWLERAUCTION.COM)  
PREVIEW: MONDAY, FEBRUARY 27TH · 11 AM - 1 PM**



For more information,  
call David Vess  
at (256) 426-005.



**SEE MORE & BID AT [WWW.FOWLERAUCTION.COM](http://WWW.FOWLERAUCTION.COM)**

"The Preferred Auction Company"

**Fowler**  
Auction & Real Estate  
SERVICE, INC.  
8719 HIGHWAY 53 • TONEY, ALABAMA 35773  
A MARKNET ALLIANCE MEMBER

**45**  
Years  
OF SERVICE

MICKY FOWLER, CAI, AARE, CES, AMM, ALSL466, TNSL1442,  
TN FIRM2315, MSSSL718F, GASL1394  
DANIEL CULPS, CAI, ALSL5070, TNSL5890  
GREG BOTTOM, AA2959  
AARON SPENCER, AA3060  
DAVID VESS, AA3068



**Toney: (256) 420-4454  
Ardmore: (256) 423-4454  
Athens: (256) 232-7788  
Huntsville: (256) 859-5682**





Auction Details and Lot Listings at: [www.HendersonAuctions.com](http://www.HendersonAuctions.com)



**Live Auctions w/Online Bidding Available | 800-850-2252**

## 2-Day Spring Truck, Farm, & Construction Auction Thursday & Friday | March 16th & 17th | 9am

Consign Now: 13340 Florida Blvd. Livingston, LA 70754

Deliver Monday - Friday (8am-4pm) Buying or Selling Questions? Call: 225-686-2252



SCAN ME



Find the Auction List at:  
[www.HendersonAuctions.com](http://www.HendersonAuctions.com)  
New Listings Added Daily - Until Auction Day!

13340 Florida Blvd. Livingston, LA 70754 | 225-686-2252 | [info@hendersonauctions.com](mailto:info@hendersonauctions.com)  
10% Buyer's Premium on each item purchased. | Auctioneer: J. Henderson LA-1160 | LA AB-459

Download our Mobile App!  
Search "Henderson Auctions"







# EQUIPMENT CONSIGNMENT AUCTION! FRIDAY, FEBRUARY 10TH at 9:00 A.M.



Held onsite at "The Oakland Gin" • 24050 Co. Rd. 14 • Florence, AL

Call Terrell Phillips (AL 1898) 256-710-8651 or Wayne Green 256-710-2270 to consign!



## ONSITE AUCTION!



## ANNUAL SALE!



## HUGE AUCTION!



## CONSIGNMENTS ACCEPTED THROUGH FEB. 9TH!



## FLORENCE, ALABAMA



# SHANE ALBRIGHT AUCTIONS

6508 US-72 KILLEN, ALABAMA 35645

AL PHONE 256-757-8898 TN PHONE 931-762-5134

Shane Albright Owner/Broker/Auctioneer AL#1569 TN#5431

Ben Phillips Vice President/ Realtor/ Auctioneer 256-710-9683 AL#1331



# SHANE ALBRIGHT AUCTIONS

*YOUR ONLINE AUCTION SPECIALISTS!*

**Let us sell for you!**

**Call us today at 256-757-8898 for a Free Auction Consultation!**

**Check Our Website for Weekly "Online" Only Auctions**

**www.shanealbright.com**



## SHANE ALBRIGHT AUCTIONS

6508 US-72 KILLEN, ALABAMA 35645

AL PHONE 256-757-8898 TN PHONE 931-762-5134

Shane Albright Owner/Broker/Auctioneer AL#1569 TN#5431

Ben Phillips Vice President/ Agent/ Auctioneer 256-710-9683 AL#1331

# HWY 72 SALES



**New Tires Every 3 Days**

- Forestry
- Ag & Farm
- Commercial

**Call Tim Thornton**

**256-366-9042**

**CHECK OUR PRICES BEFORE YOU BUY!**



# C&B "The Tribble" Cattle Squeeze Chute



**\$8,900 Stationary | \$9,900 Mobile**



**TEXT OR CALL CHAD 256-777-7137**



## **C&B FARM + OUTDOORS**

13976 Hwy. 72 West, Athens, AL 35611

[www.cbfarmoutdoors.com](http://www.cbfarmoutdoors.com) • 256-777-7137

*Delivery Available On All Our Cattle Equipment We Sell*





# DELIVERY AVAILABLE - TEXT/CALL 256-777-7137



**\$6,950**

C&B Hereford Plus Squeeze  
Chute Head Holder Brisket Bar  
Backup Bar Neck Access Doors  
Palp Cage Fully Mobile



**\$5800**

Custom Hydraulic  
Squeeze Chute



**\$3,200**

C&B Angus Auto  
Cattle Squeeze Chute

## Custom 50 Head Cattle Working System - \$6,900



Includes 90 degree sweep tub with slide gate and 20' alleyway. Includes a 10x20 holding pen, attached 10x20 sorting pen with a main 30x30 catch pen.



C&B Hay Feeder Wagons

12' **\$3,600**

20' **\$4,900**

24' **\$5,700**



C&B Mobile Grain Bins

3,000 lb. **\$3,000**

5,000 lb. **\$3,500**

6,500 lb. **\$3,900**



C&B 160 Bushel  
Creep Feeder

**\$4,900**



# C&B FARM + OUTDOORS

13976 Hwy. 72 West, Athens, AL 35611

[www.cbfarmoutdoors.com](http://www.cbfarmoutdoors.com) • 256-777-7137

Delivery Available On All Our Cattle Equipment We Sell







**JD 310J Backhoe**  
**\$52,750**  
 4 in 1 bucket, pilot control,  
 4000 hrs



**Kubota 105s**  
**\$31,750**  
 4WD, shuttle shift



**JD 4730 Sprayer**  
**\$97,500**  
 100' Booms, w/flotation  
 tires, 4640 monitor wit  
 star fire 6000, newer tires



**CAT 12B - \$27,750**  
 quick attach, bucket &  
 forks



**97 Peterbilt**  
**\$52,500**  
 N14 Cumming's Diesel



**JD Backhoe 310G**  
**\$32,750**  
 extend-a-hoe, 4WD,  
 3900 hrs.



**JD 4455**  
**Call for More Info  
 & Price**  
 1 owner, quad range



**Kubota M9000**  
**\$29,500**  
 4WD, runs good



**Kubota SVL 75-2**  
**\$37,750**  
 1600 hrs., w/bucket



**New Holland TN 65D**  
**- \$22,750**  
 1300 hrs.



**07 Mack**  
**Call for Price**  
 460 eng., wet kit



**JD 4020 - \$18,750**  
 1 owner, console,  
 runs good



**Palmer Dump Trailer**  
**- \$13,250**  
 18', new liner



**JD 455G - \$24,500**  
 runs good, 3900 hrs.



**Pitts 50 Ton - \$45,500**  
 Triple axle with  
 hydraulics



**JD 700H - \$72,750**  
 good undercarriage, runs  
 & operates good



**RD Mack - \$28,750**  
 1993, 18 speed, wet line  
 kit, 44 rear



**JD 4240 \$27,500**  
 Bucket & Hay spear



**JD 4450 - \$43,750**  
 6242 hrs., runs good,  
 dual rear



**Kubota M8580**  
**\$29,750**  
 1 owner, 4x4, like new  
 tires, call 256-710-1928



**International 9200**  
 92k, series 60  
**\$42,750**



**JD 4240 - \$35,750**  
 1 owner, power shift,  
 4700 hrs.



**40' Frontier Combine  
 Header Trailer**  
**\$8,250**



**JD 650J - \$73,750**  
 5189 hrs., nice dozer



**500 Gallon Pull Type  
 Fuel Tank - \$7,750**  
 Pump Included, Det. Tank,  
 Several To Choose



**JD 6105E - \$63,750**  
 1600 hrs., 4x4, runs great



**Trailboss - \$23,500**  
 2016, 20 ton, Pintle hitch,  
 airbrakes, used very little,  
 20' w/ 5' dovetail



**Lowboy 25 ton,  
 w/dovetail**  
**\$13,750**



**CAT D6M - \$69,750**  
 w/ winch, root rake,  
 1 owner



**99 Peterbilt**  
**\$21,500**  
 Heavy spec truck,  
 400 Cummings, Stk#G-102



# Lots More Farm Equipment For Sale (Most Used On My Farm)



**Int 766**  
Koyker Loader, Bucket & Forks  
\$12,750



**JD 160LC**  
5300hrs  
\$63,750



**JD 700j**  
3500 hrs., Cab & Air, Root Rake  
\$92,750



**JD 6110 4WD**, comes with JD 460 loader, rear remotes  
\$35,750



**Kinze Planter 6x30 w/Splitters** - \$16,750  
No till w/row cleaners, corn meter w/monitor



**Cat D5H Dozer**  
runs good  
\$37,750



**Talbert Detach Trailer**  
9' wide, state owned, in good shape  
\$47,750



**JD 444J** - \$42,750  
quick attach, 4WD, w/bucket



**Komatsu PC 200LC**  
runs & operates good  
\$53,750



**CAT 247B** - \$25,500  
2200 hrs., runs good



**JD 4450**  
**Call For Price**  
2WD, runs great, 1 owner



**JD TC 544 H** - \$45,750  
grapple & bucket



**JD 18C** - \$43,750  
Dirt Pan, good cond.



**JD 5225** - \$16,750  
good condition



**Case 586E** - \$21,750  
4WD, 4800 hrs., Cummings Eng.



**Int. 656 Farmall** - \$10,500 (diesel)  
2400 actual hrs., 2 to choose, 1 gas, 1 diesel, diesel has loader. \$7,500 (gas)



**JD 4440** - \$30,750  
5700 hrs., Quad Range, New front tires



**Pintle Hitch** \$16,750  
2002, 20 Ton Trailer, good cond., for broker, 35 foot



**Freightliner Dumptruck** - \$14,750  
Cat eng., runs and operates good



**2007 Dodge Ram 3500 HD**  
Cummings Diesel, Service Bed & Crane Included  
\$17,750

International Dump Truck, tandem axle .....	\$17,750	Westfield Grain Auger, 90', Hyd. Swing, 13" .....	\$7,500
Midland 6 yd. Dirt Scoop, very nice condition .....	\$6,850	Several 360 Hydroflex JD Headers .....	Call for Pricing
Cat 312B Trackhoe, w/ripper, good UC, runs good .....	\$42,250	Lowboy Triple Axle, 35 ton .....	\$16,750
Lull 644B-42, Cummings diesel, operates well .....	\$21,750	Great Plains ADC 2220, 36', Air Drill .....	\$34,705
Fruehauf Equipment Trailer, 48' w/5' dovetail, w/side toolboxes.....	\$18,750	MF 245, dsl, ps, 3000 hrs .....	\$5,750
JD Rubber Tire Loader, w/ bucket .....	\$21,700		
Move All Equipment Trailer, w/winch, hydraulic dove tail .....	\$12,750		

**Call Gary 256-335-4919** Florence, Alabama  
Used Trucks Plus TTL





# SUMMERTOWN METALS LLC



Installed for  
**\$16,700\***

**40'x60'x14'**

- Haybarn
- Steel Trusses
- 20-yr galvalume roof

- 40-yr 29 gauge painted metal walls
- 2x6 perlin's
- ID: BKFA406014-2



**\$12,550\***

**Roof & Gable Only**  
ID: BKFA406014-1



Installed for  
**\$28,025\***

**30'x40'x12'**

- Wood Trusses, no overhang
- 12'x40' side-shed
- 1-10'x10' garage door
- 4 windows
- 1-36" door
- Reflective insulation in roof
- 42'x40'x4" concrete pad
- ID: BKRG304012-3



Installed for  
**\$22,650\***

**24'x30'x10'**

- Wood Truss with overhang and finished soffit
- 8'x30' porch
- 2-9'x8' garage door
- 1-36" walk in door
- 1-24" Cupola
- 32'x30'x4" concrete floor
- Building ID: BKRG243010-2

## WE OFFER A HUGE ARRAY OF SIZES, STYLES AND OPTIONS!

*Built on the traditions of hard work, ethical business, and commitment to quality, Summertown Metals has become a premier manufacturer and distributor of high-quality building products. We are committed to providing high quality materials and building solutions at the best possible prices resulting in an unbeatable value for our customers.*

**WWW.SUMMERTOWNMETALS.COM**

**931-796-1521**

3864 Summertown Hwy. • Summertown, TN 38483

*\*Price includes all material and labor. Delivery and tax extra. Labor provided by independent contractor. Pad must be level. Any rock or changes will incur additional cost. Codes and permits are the responsibility of the buyer.*





**40'x60'x14'**

**Installed for  
\$62,200\***

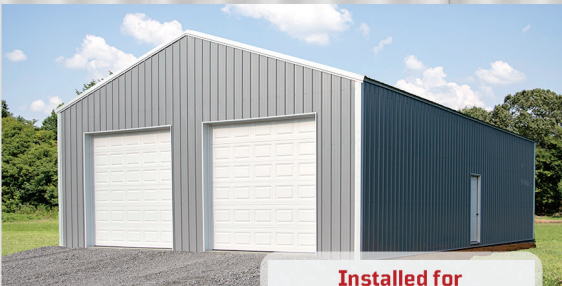
- Steel trusses
- 2-10'x60' side sheds
- 2-12'x12' garage doors
- 2-36" doors
- 5 windows
- 36" cupola
- Reflective insulation
- 50'x60'x4" concrete floor
- Building ID: BKFA406014-4



**30'x40'x12'**

**Installed for  
\$23,375\***

- Wood Trusses, no overhang
- 2-10'x10' garage doors
- 1-36" doors
- 2-windows
- 40-yr 29 gauge painted metal
- 30'x40'x4" concrete floor
- ID: BKR304012-2



**30'x50'x12'**

**Installed for  
\$26,725\***

- Steel trusses
- 2-10'x10' garage doors
- 40-yr 29 gauge painted metal
- 1-36" door
- 30'x50'x4" concrete floor
- ID: BKR305012-2



**30'x50'x14'**

**Installed for  
\$47,950\***

- 1-12'x50' side shed with finished ceiling
- 2-12'x12' split slider doors
- 1-36" door
- 8 windows
- 1-30" cupola
- 42'x50'x4" concrete floor
- ID: BKR305014-1



**[WWW.ESTIMATOR.SUMMERTOWNMETALS.COM](http://WWW.ESTIMATOR.SUMMERTOWNMETALS.COM)**

Need an estimate on your next barn, shop or Ag building? Simply fill in your project specifications and the price will be calculated automatically! It's perfect for customers who are unsure what building sizes will fit in their budget. Once complete, a copy of the estimate will be emailed to you in minutes!



**summertownmetals**

**summertownmetals**

**info@summertownmetals.com**

*Price may change without notice. See our website for latest pricing: [www.summertownmetals.com](http://www.summertownmetals.com)*



# ONLINE CONSIGNMENT AUCTION

**ACCEPTING CONSIGNMENTS FROM THE PUBLIC ON FEB. 20TH - 22ND FROM 9AM - 4PM OR BY APPOINTMENT!**

**SALE TO BE HELD ONLINE ONLY ON MARCH 9TH @ 6PM**

**BRING YOUR VEHICLES, FARM EQUIPMENT, INDUSTRIAL MACHINERY, TRACTORS, ATVS, RVS, BOATS, AND TRAILERS TO OUR FARM ON THE BYPASS IN WINCHESTER!**

***Intersection of Bypass Rd & Peter Turney Ln, Winchester, TN 37398***

*Directions: From The Square in Winchester take Dinah Shore Blvd towards Decherd. Turn right onto Bypass Rd by Citizens Community Bank and continue for approximately 1.25 miles and display lot is on the right at the corner of Peter Turney Ln and Bypass Rd next to The Waters of Winchester nursing home.*



**Call Us at 931-967-3650 For More Information on This Sale or to Schedule an Appointment**

**Consign Early For More FREE Advertisement! TURN YOUR UNNEEDED ITEMS INTO CASH!!**

**\*BIDDING WILL BE ONLINE ONLY AT [www.wintonauction.com](http://www.wintonauction.com)\***

**Seller Must Have Title in Hand or Proof of Payoff Amount To Sell Any Vehicle With a Title.**

**If seller Refuses the Final Bid On Any Consigned Items, a 1% No Sale Fee Will Be Charged Not to Exceed \$350. Commission to be 10% of the Final Bid, Not to exceed \$700. 10% Buyers Premium Will Be Charged.**

**Everything Sold As Is With No Warranties Expressed or Implied.**

Contents of this ad were derived from sources believed to be correct but not guaranteed. Terms and conditions posted on [www.wintonauction.com](http://www.wintonauction.com) take precedence over any printed material.

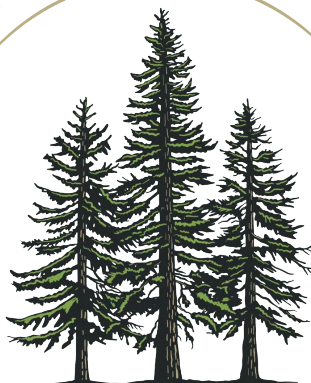


## **Winton Auction & Realty**

931-967-3650 | [WintonAuction.com](http://WintonAuction.com)



# A Wholesale Supplier of Pressure Treated Fence Products



EST.

2021

## OLD SOUTH WOOD

Preserving, LLC

Call us today! **931-762-9663** [eric@oldsouthwood.com](mailto:eric@oldsouthwood.com)



# Cold Formed Pre-Engineered Steel Buildings



- Design while you wait!
- Delivered in 10 working days after drawing approval.
- 20-25% savings over red iron.

*Come in and let us design a building for you!*



**Manufacturer Of Quality Steel Buildings & Roofing Products.**

**We Offer Steel Trusses**

## Precision Metal Forming, Inc.

17713 Hwy. 72, West • Athens, AL 35611

**256-232-8080**

[www.precisionmetalforming.net](http://www.precisionmetalforming.net)

"Professional Industry Staff To Assist You In Your Design & Application"





# A Farm Machinery AUCTION

**THURSDAY, FEBRUARY 16, 2023** **SALE TIME: 10:00 A.M.**

**HARVEST, ALABAMA** **OWNER: MOON FARMS**



**AUCTIONEER'S NOTE:** Mr. Rodney Moon has retired from farming and commissioned DeWitt Auction Co. and Garner Auctions, Inc. to sell his very clean equipment at public auction.

**DIRECTIONS:** From Alabama Highway 53 just North of Huntsville take Kelly Spring Road/Bob Wade Lane East 2.2 miles to auction site on the left. Physical Address: 2379 Bob Wade Ln. Harvest, AL 35749



### TRACTORS

- 1-8270R John Deere, 2010 yr., MFWD, 480/80R46 rear duals, 420/ 85R34 fr duals, 1500 fr, P/S, 2178 hrs., SN 1RW8270RCAP010291
- 1-8270R John Deere, 2010 yr., MFWD, 480/80R50 rear duals, 420/85R34 fr, 1300 fr, P/S, 3061 hrs., SN 1RW8270REAP012808
- 1-8270R John Deere, 2010 yr., MFWD, 480/80R46 rear duals, 420/90R30 fr, 1300 fr, P/S, 5485 hrs., SN 1RW8270RVAP009403

### COTTON PICKER, SPRAYER

- 1-CP690 John Deere cotton picker, 2017 yr., 6 row, Pro 16 heads, 520/85R42 fr duals, 580/80/34 rear duals, 1413 fan/1921 eng. hrs., SN 1N0C690 PTH4065241
- 1-R4030 John Deere sprayer, 2015 yr., 420/80R46, 100' boom, 2622 hrs., SN 1N04030R CF0006964



### FIELD EQUIPMENT

- 1-1720 John Deere stack fold planter, 40" spac., 12 row, 2005 yr., 1.6 bu. hoppers, SN A01720R710376 1-120 John Deere flail shredder
- 1-KBH water trailer, 2025gal.
- 1-Speed King seed tender 160 bu.



### TRAILER

- 1-P&T cotton module trailer, 2019 yr., VIN 5JTAU 1017K080974



**For more information, contact: Rodney Moon (256) 651-6918 or Ken Garner 256-651-6117 or DeWitt Auction Co. 800-533-9488**



- 1-7200R John Deere 2013 yr., MFWD, 480/80R46 rear duals, 380/85R34 fr, 540/1000 shift PTO, 20/20SP AQ Plus, 1067 hrs., SN 1RW7200R PDA011284
- 1-7230R John Deere, 2012 yr., MFWD, 480/80R46 rear duals, 420/90R30 fr, 1300 fr, 20/20SP CQ Plus, 2939 hrs., SN 1RW7230RCCC005154
- 1-6170R John Deere, 2012 yr., MFWD, 480/80R36 rear duals, 420/90R30 fr, AQ Plus ECO 20/20, 540/1000 rear PTO, 3713 hrs, SN 1RW6170RC-CA001471
- 1-8220 John Deere, 2004 yr., MFWD, 520/85R42 rear duals, 420/90R30 fr, w/2-275 gal. Patriot Heli-copter Tanks, 3840 hrs., SN RW8220P020767



AUCTION CONDUCTED BY:

## DeWitt Auction Co.

Member Mo. & Miss. Auctioneer Assoc. - Lic. Nos: MO 14 & 85, AR 390 & 404, AL 611 & 1317, LA 239; Phil DeWitt MS 292; IL Firm No. 444000276; MS Firm No. 410F; TX 6538 & 10982; TN Firm No. 2422; KY 6028; FL 1535; Brandon DeWitt AR 2535, MS 1471, IL 441002267, KY 4216, TN 6941; Jack Holifield TN 6847, AL 5350, LA 19365

220 DeWitt Drive • Sikeston, MO 63801 • 573-471-1060 • 800-533-9488  
Visit our website: [www.dewittauction.com](http://www.dewittauction.com) "Your Attendance Always Appreciated"

Note: DeWitt Auction Co. does not guarantee the hours or condition of any item sold in this auction. Announcements made auction day take precedence over printed material.

**LOADER AVAILABLE • LUNCH AVAILABLE • NO BUYER PREMIUM ADDED**

## Garner Auctions, Inc.

Member CAI, NAA, TAA, AAA, AARE, Miss. Realty 22673, Miss. Realty 22622, Miss. Auction 1557, Fla. Auction au5001, Ga. Auction au2912, Ken Garner CAI, AARE Pres. ALISL 1002, TNSL 2034, TN Firm 4293, LK Garner Appr. Lic. 3071

10334 Paradise Shores Drive • Athens, Alabama 35611  
(256) 233-5699 or (877) 914-SOLD • Email: [garnerauctionsinfo@gmail.com](mailto:garnerauctionsinfo@gmail.com)

FOLLOW US ON





# Lynn Denton Retirement Auction

SATURDAY, FEBRUARY 11, 2023 - 10:00 AM

80 Milligan Cole Rd., Trenton, TN 38382



**Tractors:**

2011 Case Magnum 315, Serial Number ZBRD0611, 4036 hrs., Firestone 480/ 80 R50 Front Duals 380/80 R38, AFSPRO 700, monitor, 4 Remotes Big 1000 PTO full Guidance, 18 speed, powershift luxury cab high capacity hydraulic pump suspended, cab 18 front weights rear wheel weights class 4.75, suspended axle.  
 2011 Case Magnum 305, Serial Number ZARZ06636, 4254 hrs. 520/85 R46, Front Duals 480/ 70 R34 AFSPRO 700 monitor, 4 Remotes, Big 1000 PTO full guidance, 18 speed powershift transmission, deluxe cab high-capacity hydraulic pumps class 5 suspended front axle.  
 1991 JD 4455, Serial Number RWG045012085, Showing 423 hrs., 3000+/- hours Quad Range, 3 Hyd Remotes - interchangeable, PTO 8 front weights.

**Combine and Heads:**

2020 Case IH 8250 Axial Flow Combine Serial Number 242637, Engine hrs. 575 Separator hrs. 395 AFS Pro 700 Harvest Command, chrome cone, in cab cage vanes, STD wear rotor, auto clean fan, in cab pre-sieve, 1- 5/8 sieves, hydraulic cover grain tank, pivoting spout, led light package with distance lights, 620/70, R42 duals, 750/65 R26 rears, emissions, warranty of 11/22/2025.  
 2012 Case IH 2162 35ft Draper Head Serial Number YDZN35590  
 Adapter for 88/10/20/30/40/50 series CIH Combine, small 1000 PTO stabilizer wheels.  
 Clarke 1238 Corn Head 12 row 38in Clarke Corn head with John Deere Poly case IH adapter, Serial Number 0720101238 Clarke Built  
 J&M Trial Baler High speed Header Trailer Serial Number 3021  
 2019 Horst CHC F45 Header Trailer 4wheel steer with road lights.

**Cotton Equipment:**

JD 9965 Cotton Picker Serial Number N09965X006926

JD 9965 Cotton Picker Serial Number N09965X002106  
 KBH Module Builder  
 Crust Buster Module Builder  
 Crust Buster Boll Buggy

**Sprayer & Support Equipment**

2011 Case IH 3330 Patriot Sprayer, Serial Number YBT031258 AFS PRO 700 monitor, 1000 gallon stainless steel tank. 90 ft boom with 6 section 20in spacing 5 way nozzle bodies, aim command deluxe cab active suspension halogen lights, 380/90R 46, 3377 hrs. chemical educator. Full Guidance, Set of 650/65/R38 Floaters - sells separate.  
 2015 Knize 3600 Planter 12/23 38/19in split planter, box fill with extensions, KPM III monitor, finger pick up corn meters, 60 cell soybean plates, HD down force springs, spike and rubber closing wheels, 3/4 inch coulters all the way across, half inch rate drive package, row cleaners., Serial Number 107081 Markers Corn Bean Cotton  
 2019 Case IH 335VT Serial Number YK0087107 380/60R 16.5 walking tandems, single point depth control, hydraulic tiger paw crumbler.  
 2015 Unverferth 1225 Double Basket Crumbler 31ft. 15ft main frame and wing wheels.  
 Crust Buster 4030 30ft Drill 7.5in double disk drill with markers.  
 Case RMX 340 Disk 9 in spacing 28ft crumbler ready Will -Rich 1400 8 Row Scratcher DO-ALL  
 KBH-ST 350 Seen Tender Honda Motor Belt Conveyor  
 2018 J&M 875 Grain Cart Scales Serial Number 1801359 pivoting spout and R1 tires  
 Scales tarp Nice!!!  
 Woods BW 15 Serial Number 10006955446001 Like New Small 1000 PTO  
 Adams1600 Nurse Tank - Chemical Rank - Nice  
 Reynold 8 Yard Dirt Pan  
 800 Gallon Nurse Tank  
 (2) Case 14ft Roller Harrows  
 Case 6 Bottom Semi Mount Plow  
 Aerway 14ft Pull Type Aerator

Case 4 Row 38 Planter 3 pt Hitch  
 Case 900 9 Row 18in Bean Planter 3 pt Hitch  
 New Crouch 40ft pull type pasture sprayer Never used.  
 IH 12 ft cutting disk  
 JD 3PH HYD Blade 8ft  
 Killbros Gravity Wagon  
 Tyler 5-ton Fertilizer Buggy  
 Root Rake 3PH  
 9 Shank Ripper  
 Ford 4 Bottom Breaking Plow  
 Case 4 Row Cultivator  
 Birch 12ft Disk  
 Case 11 Shank Chisel Plow  
 Pallet Fork EURO hook up  
 Hay Fork EURO hook up  
 Glen Co- Ditcher Big 1000 PTO  
 Ag Co- Ditcher Big 1000 PTO

**Truck & Trailers**

2012 Dodge Ram 3500 VIN 3C7WDTC16CG176317, 97,345 Miles 4Door  
 4x4 6 spd manual  
 1999 Volvo VIN 4VG7DAUF0XN782926 Cummins ISM 330HP  
 1989 Freightliner Sleeper Eaton  
 Big Tex 20GN 24 plus 5 ramps  
 CTS Hopper Bottom Tarp Like New  
 Hopper Bottom 36ft  
 30 Ton Low Boy  
 Dodge Ram Charger

**Hay & Cattle**

IH 1150 Feed Mill  
 Artsway 325A Feed Mill  
 New Holland 678 Round Baler 5x5 String Tie  
 Vermer VR820 Rake NICE  
 Krone 283 S Disk Mower 10 FT  
 Kuhn 4 Basket Tedder HYD Fold  
 40 FT Cotton Wagon  
 2 Ton Dump Trailer Homemade  
 4 Wheel Hay Wagon



www.TopTierAuctions.com

Call today! 731.364.5368

Lynn Denton (731) 225-5325 - Brent Croom, Principal Broker (731) 414-8757

224 S Lindell Street | Martin, TN 38237

Firm #1761 FFL #1-62-183-01-4F-12754



# QUARTERLY EQUIPMENT AUCTION

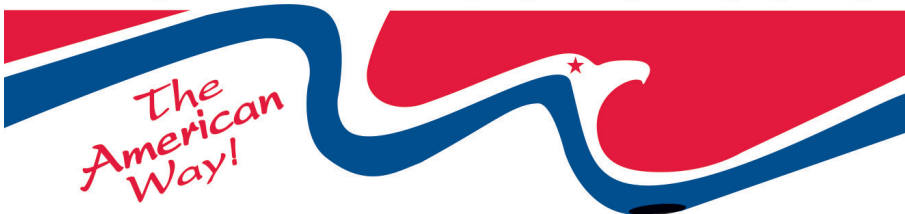
Saturday ★ March 4, 2023 ★ 9:00 A.M. CST

## Calhoun Stockyard

2270 Rome Road SW, Calhoun, Georgia  
Contact Chipper Shell for more info: 256-913-6688



## American Auctioneers®



*The American Way!*



ONLINE BIDDING POWERED BY  
**Proxibid & Equipmentfacts**

**866.789.5169 ★ american-auctioneers.com**



**Keith Baldwin, CAI**  
AL 1416, ALRE 64960,  
GAL AUNR2860, GARE 247207



# ABSOLUTE AUCTION!

**3 Bedroom Modular Home, Barns & 39.72 +/- Acres in 2 Tracts, 1999 Mercury Grand Marquis  
Property of the Sharon Ann Harris**

**1485 Mount Herman Rd • Shelbyville, TN**

From Shelbyville: Take 231 South, left onto to Mount Herman Rd at top of Ridge, property on the right. **LOOK FOR SIGNS**

## Saturday February 25<sup>th</sup> - NOON



**TRACT #1** - 15.18 Acres - Nice Building site w/gently Rolling Farm tract, Nice tract with large trees. Large 15,404 square foot soil site and new survey



1999 Mercury Grand Marquis, 80K miles, VIN# 2mefm75w3xx659771



**TRACT #2** - House & 24.54 Acres - 3 bedroom Modular Home & several barns and outbuildings. Scenic Views! Hardwoods & hunting abound. New survey available. Great Mini Farm

**NEW SURVEY AVAILABLE!!**

FOR PRE-AUCTION INSPECTION OR FURTHER INFORMATION CONTACT BEN CRAIG, LISTING AGENT 931-639-0694

**NO BUYER'S PREMIUM....WHAT YOU BID IS WHAT YOU PAY!!**

Terms: 20 % CASH Day of Sale, Balance within 30 days. Car cash or check day of sale  
RESERVE THE RIGHT TO RE-GROUP.

## FEATURED PROPERTIES

**3 Building Lots with Creek**



Take a look at these scenic 1+ acre building lots close to Shelbyville in a country setting with 3 bedroom soil sites areas.

**Hawthorne Hill Rd.  
Lot 1, 2, & 3, Shelbyville,  
\$89,900 Per Lot**

**Location! Location! Location!**



Situated on the northern side of Bedford County, this 108+/- acre farm has row crops in the backside of the property, nice open pastures and hay ground, a solid brick home with 3 bedrooms, 2 full baths, barns, equipment sheds, spring and city water, creek runs thru the farm and much more. Adjacent to the new Tennessee Downs Racetrack

**152 Eady Rd., Shelbyville, TN  
\$1,790,000**

**Ultimate Getaway of 144+/- Beautiful Secluded Acres!**



This property offers some of the best recreational opportunities in the county with incredible wildlife as well as income producing row crop & possible hay producing acreage! The property's valuable timber species along with food plot locations provided excellent forage for trophy deer & numerous turkey flocks that utilize this property! The pond on the property ensures a year around water source for wildlife helping create a perfect habitat for holding hunting & managing the awesome wildlife.

**1 Coffee Rd., Shelbyville, TN  
\$1,194,900**

**125+/- Beautiful Rolling Acres**



This land has many features including a pole barn, 3 Richie water wells for animals and over an 8th of a mile of creek frontage, Fall Creek. County water is at the road and there are endless possibilities with this tract of land!

**2440 Highway 41A N  
Shelbyville, TN  
\$1,675,000**

**CRAIG & WHEELER**  
1973 • 2023  
REALTY & AUCTION, LLC  
*Celebrating 50 years!*  
since 1973

Considering an auction? Call us today to consult with our professional auctioneer team!

Real Estate • Farms • Machinery • Investment Property • Land • Lots

(931) 684-9112 • [CraigWheeler.com](http://CraigWheeler.com)  
508 Cannon Blvd • Shelbyville, TN 37160

Craig & Wheeler Realty & Auction, LLC is an equal opportunity employer.





# ONLINE AUCTION

**300 acres on Bobs Ln, Mt Pleasant, TN**

**Begins January 27th at 8am and ends February 17th at noon**

**Register and bid at [mcewengroup.com](http://mcewengroup.com)**



This 300-acre farm is ideal for grazing livestock, hunting, and enjoying a private, quiet setting 8 minutes from downtown Mt. Pleasant and 20 minutes from Columbia.

Currently used for cattle and hay production, this gently rolling property is divided by several patches of hardwoods with a pond and spring.

The farm has excellent fencing and a newly constructed barn that houses a cattle working area and ample hay storage.

Farm equipment to be auctioned separately including:  
(Lot 2) 97-horsepower Massey Ferguson tractor Model 2680 plus loader, pallet forks, hay spear, and bucket,  
(Lot 3) 10-foot Taylor Way bush hog and (Lot 4) International 4-row planter.



---

## MCEWEN GROUP

---

LAND IS YOUR LEGACY

**Office 931.381.1808 Cell 931.698.8338**



**Kyle Thomas**  
Licensed Auctioneer #5016



# PRESSURE TREATED FENCE POSTS



- Excellent prices
- Pressure treated at our plant with CCA to the retention rate of .40
- 30 year warranty
- Dealer inquiries welcome
- Will protect established dealers territories



11029 Hwy. 132 E. | Sebree, KY 42455  
 Kenny Miller (931)239-7962  
 Family business since 1987

REGISTERED AN-GUS BULLS, 12-18 months, all are AI Sired by Growth Fund, Optimum, Upward, Enhance, Beacon, all qualify for TAEP, good EPDs, calving ease and balanced bulls, good disposition. (931)510-1104; (931)287-7474.

REGISTERED AN-GUS BULLS Service age angus bulls out of top bloodlines. All bulls qualify for maximum TAEP money. (931) 589-2759



SANTA GERTRUDIS, YOUNG BULLS SANTA GERTRUDIS, young bulls and heifers, polled, registered, gentle. Free ballcap. Quality cattle since 1977. (256) 566-7878 kelsoclough@aol.com

CHAROLAIS BULL FOR SALE Service age Charolais bulls, gentle, registered, purebred and polled. Call, (931)967-8807; or, (931) 308-7212

REGISTERED ANGUS BULLS Service age angus bulls out of top bloodlines. All bulls qualify for maximum TAEP money. (931) 589-2759

FOR SALE, REGISTERED BLACK ANGUS BULLS, will qualify for the full TAEP money, all are by the top AI bulls in the breed. Crawford Angus. Lewisburg, TN. (931)205-2450; or, (931)359-2633. (931) 205-2450 [crawfordangus@bell-south.net](mailto:crawfordangus@bell-south.net)

REGISTERED AN-GUS BULLS Service age angus bulls out of top bloodlines. All bulls qualify for maximum TAEP money. (931) 589-2759

REGISTERED HEREFORD BULLS REGISTERED HEREFORD BULLS, for sale, gentle disposition, great bloodlines, polled, service age, starting at \$1,500. Leave message (931) 703-7573

## Dogs

PUPPIES FOR SALE, toy Australian Shepherds and toy Aussiedoodles will have shots/dewormed. Also, grown standard Australians and 2 grown male Poodles. John J. Gingerich, 146 Fox Hunters Lane, Morrison, TN 37357. Amish, no phone.

GREAT PYRENEES/ ANATOLIAN SHEPHERD PUPS for sale, three months old, \$200 each. (931) 692-3333

GREAT PYRENEES PUPS for sale, born 10-25-22, wormed with sheep, \$100 each. (731) 968-5021

GREAT PYRENEES PUPS for sale, born 10-25-22, wormed with sheep, \$100 each. (731) 968-5021

**We Can Make Hydraulic Hoses While You Wait**  
 Hydraulic Hoses (Up To 1 Inch) • Ag. Filters  
 Tractor Oils • Bearings • Seals  
*Roller Chains Sold Here*  
**B&B Auto Parts, Inc.**  
 4936 Winchester Rd. N.E. • New Market, AL  
 2 miles North of Buckhorn High School  
**256-379-4733**  
[www.bandbautopartsinc.com](http://www.bandbautopartsinc.com)  
 Owners: Kent Bentley & Denita Bentley Sharpe  
 Hours: Mon. - Fri. 7:00 A.M. - 5:30 P.M.; Sat. 7:00 A.M. - Noon





# Place a Word Ad

Print your ad in the space below. Ads must be received no later than the 20th for publication in the following month's issue. Include your phone number as one word.

Free Ads: 1) **A single item priced below \$1,000 (excludes animals).**

Price must be in the ad.

2) **Want to Buy, Limit 10 Words. Ad to run one (1) issue only!**

Rates: 15 words or less - \$12.00 (Additional words 50¢ each per ad per month)

## Placement Options

*Better Descriptions = Better Results*

### 1

1) Call 800-247-7318

2) Fax to 931-563-4477

3) Place online  
www.FarmersExchange.com

4) Mail to Farmers' Exchange  
P.O. Box 490  
Fayetteville, TN 37334

\_\_\_\_\_  
\_\_\_\_\_  
\_\_\_\_\_  
\_\_\_\_\_  
\_\_\_\_\_  
\_\_\_\_\_  
Phone (     ) \_\_\_\_\_

## 2 Options (circle)

**Bold Type**

*Add \$2.00 per issue to base charge*

**ALL CAPS**

*Add \$2.00 per issue to base charge*

**Border Around Ad**

*Add \$4.00 per issue to base charge*

## 3 Payment

- Cash, Check, M.O.    Discover    AmEx  
 MasterCard    Visa

\_\_\_\_\_  
Card Number  
\_\_\_\_\_  
Expiration Date                      CVC #

## 4 Please Run Ad

- 1 Month    2 Months    3 Months

I have figured charges & options for the above ad & have enclosed:

Amount: \$ \_\_\_\_\_

Name: \_\_\_\_\_

Address: \_\_\_\_\_

Email: \_\_\_\_\_



# ABSOLUTE AUCTION

**Saturday, February 18th  
10:00 AM**

## Attention Investors - Handyman Special

**1446 HIGHWAY 64 WEST, SHELBYVILLE**



### Brick Home Ready for your personal touch.

3 Bedrooms, 2 full baths, large den with fireplace, large kitchen with bar and built-in appliances, dining room, and laundry room. Lots of hardwood and tile. CHA, carport, patio, & aggregate concrete driveway.

This home is in need of some remodeling and repair but has excellent potential. It is beautifully situated on a very nice 7+/- acres, mostly open and fenced. The property is also improved with a 24' x 60' shop.

**Great location, just minutes from town.**

**ATTENTION REALTORS: 1% Broker Referral**

Realtors must register 48 hrs. in advance and attend auction. See website for details.



**AUCTIONEER:**

**REX BICKNELL 931-580-0116** Lic #1970

REFERRED BY: KAY PETTY

**DIRECTIONS:** From Shelbyville, take Hwy. 64 West (Lewisburg Hwy). Property is on the right. **TERMS:** 10% down day of sale, balance due in 30 days. 10% Buyer's Premium added to bid to determine final sale price.

**TAXES:** Prorated **POSSESSION:** With Deed  
SPECIAL NOTE: Homes built prior to 1978 are subject to have lead-base paint. In accordance with federal law, all potential buyers will be allowed 10 days prior to sale to have the home inspected at their expense.

ALL ANNOUNCEMENTS MADE DAY OF SALE TAKE PRECEDENCE OVER PREVIOUS ADVERTISING. ALL INFORMATION DEEMED RELIABLE BUT NOT GUARANTEED.



**PARKS AUCTION**  
CO. LLC FIRM 3984

**615-896-4600** or TOLL FREE 1.877.465.4600

FIRM #3984



[www.parksauction.com](http://www.parksauction.com)

### Donkeys/ Mules

FOR SALE, TWO MAMMOTH Jenny colts, one sorrel and one black, year old in summer. (256) 738-3921

### Goats



SPANISH DOELINGS FOR SALE, born April of 2022, located in Buhler, KS. Call Mike, (620) 727-5009

### Other

HONEY BEE NUCS \$170; \$20 payment with order, quantity discount, April pick-up. Joe N. Hostetler, 150 Mt. Horeb Rd., Ethridge, TN 38456.

HONEY BEE NUCS \$170; \$20 payment with order, quantity discount, April pick-up. Joe N. Hostetler, 150 Mt. Horeb Rd., Ethridge, TN 38456.

### Announcements

**DECALS & DECAL SETS FOR HEAVY CONSTRUCTION & AG EQUIPMENT**

AFFORDABLE DECALS AND SAFETY DECALS. Prompt. Knowledgeable Reliable Service. [www.QuipCal.com](http://www.QuipCal.com); Call, (215) 536-5339; email: [info@custom-servicescompany.com](mailto:info@custom-servicescompany.com).

**MILLER FARMS**  
Angus Beef from the farm. 100% natural, non-GMO, hormone and antibiotic-free. Whole, halves, or by the pound. Slaughtered and packaged. (931) 593-3702; (931) 593-2429.

### Attachments

**Blades/Box Scraper**

## SNEAD HYDRAULICS & REPAIR

*New or Rebuild Pumps, Valves, Motors, Cylinders & Hydrostats • In House Machine Shop*



87017 Hwy. 278  
P.O. Box 506  
Snead AL 35952  
Phone: 205-466-3105  
Fax: 1-866-372-0303  
[info@sneadhydraulics.com](mailto:info@sneadhydraulics.com)

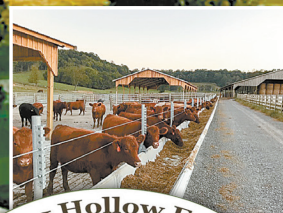
Craig Vaughn  
Owner/CEO  
256-470-0828

[www.sneadhydraulics.com](http://www.sneadhydraulics.com)

**To Place A  
Classified Call  
800-247-7318**



# Red Angus, the beef industries preferred female. Bred and non-bred heifers, and breeding age bulls available.



Please call or text (281) 635-4591  
for more information  
1600 Trigg City Rd., Cornersville, TN 37046  
bltppr@gmail.com



USA, 5' TO 10' PULL TYPE BOX BLADES REGULAR DUTY, HAVE A MANUAL TILT AND COME WITH HYDRAULIC LIFT. HEAVY DUTY, COME WITH HYDRAULIC TILT AND LIFT. 5' \$900; 6' \$1000; 7' \$1700; 8' \$1950; 10' \$2500; 8' HD \$3400; 10' HD \$3800. CALL FARM SERVICE SOLUTIONS IN LEOMA, TN. FARMSERVICESOLUTIONS.COM; (931) 242-7675



USA, 3 POINT BOX BLADE AND LAND PLANES NEW IN STOCK. CALL CHRIS AT FARM SERVICE SOLUTIONS IN LEOMA, TN. BOX BLADES 4' \$695; 5' \$765; 6' \$895; 6' HD \$1,000; 7' HD \$1,085; 8' HD \$1,165. LAND PLANES 6' \$1,400; 7' \$1,500. CALL FARM SERVICE SOLUTIONS IN LEOMA, TN. FARMSERVICESOLUTIONS.COM; (931) 242-7675



BESTWAY, FIELD PRO IV 2009 BESTWAY FIELD PRO IV SPRAYER VERY GOOD CONDITION, FIELD READY \$15,500. 1000 GALLON TANK, 15 GALLON INDUCTION TANK AND 50 GALLON RINSE TANK. 60 FOOT BOOMS, RAVEN 440 CONTROLLER. SEVERAL PARTS. (931) 580-8889 JOHNSON - FARMS 2121@GMAIL.COM

## Other

## Tires



GOODYEAR, 12.5L-15 TIRES AND RIMS FOR SALE, 8 ply, 6 bolt, new take-offs, have several, \$250 each, Buhler, KS. (620) 727-5009

STUD WHEEL, 8 16" 8 stud wheel for Ford truck, \$20; 16.5" 8 stud wheel w/mounted tire for Ford truck, \$35. (931)732-4401.

To Place A Classified Call  
800-247-7318

## Building Products

### Other

CUSTOM TARPS FOR hoop buildings, available in 11 different colors. We also offer hay tarps and pond liners. Cover your investment, (859) 375-5268



WOODMASTER OUTDOOR WATER FURNACES, heat your home or shop, EPA approved clean burning, parts in stock, financing available. In TN call Harold, (931)787-3547; in KY call Dave, (859)265-0793. (931) 787-3547



# Call Now - New Vermeer Equipment In Stock Now!



5021 Mixer - Call for price

0% On Select Pieces Thru January 6, 2023

We now carry Vermeer Feeding Solutions • Schuler is now owned by Vermeer

**SCHULER EQUIPMENT IN STOCK NOW:**

Schuler 5021 Mixer • Schuler BF175 Feed Wagon • Call for prices

Check out our website: [www.PoolEquipment.com](http://www.PoolEquipment.com)



Vermeer BF 300

## ALL USED VERMEER EQUIPMENT Sold Field Ready

### USED EQUIPMENT:

Vermeer 5420 net/twine.....	\$17,000	John Deere 4040 Cab, 4x4.....	\$10,000
Vermeer 5410 twine only.....	\$12,500	McCormick X5.35 Cab, 4x4, Loader, 130 hrs.	
Vermeer 605K, twine only.....	\$6,500	4 years of warranty left.....	\$65,000
Vermeer 5400, twine only.....	\$7,500	(2) 4 basket Tedders.....	CALL
John Deere 466, net/twine.....	\$8,500	New McCormick tractor in stock now!!	
New Holland 650.....	\$3,500	New Vermeer Hay Equipment in stock now!!	
New Holland 570 Square Baler.....	\$4,500	New Bush Hog Cutters 5'-15' IN STOCK NOW!!	
New Holland 565 Square Baler.....	\$7,500	42'-37' Hayliner In Stock Now!!	
Vermeer M7050 Mower, like new.....	\$8,500	Taylor-way 7' cutter	
(3) Schuler 6050 Mixers.....	CALL	15' cutter IN STOCK NOW!!	

### McCormick Tractors Now In Stock Now!! Call for prices

New McCormick x6.50 cab, 4x4, loader.....	Call
(2) New McCormick x4.080.....	Call
New McCormick x1.55, cab, 4x4, loader.....	Call
New McCormick x1.55, rops, 4x4, loader.....	Call

### Bush Hogs In Stock Now!

BH 2415.....	Call	BH 115.....	Call
BH 317.....	Call	BH 3510.....	Call
BH 215.....	Call	BH 216.....	Call
BH 1812.....	Call	Bush Hog Tillers, 6', 7'.....	Call
BH 2107.....	Call	Hayliner, 42' and 37'.....	Call

*If we don't have what you want, we'll go get it!*  **256-685-0556 Office**  
**256-476-3546 Chris Pool**  
**256-565-7780 Owner, Norman Pool**

## Pool Farm Equipment Co.

23971 Hwy. 157 • Town Creek, AL 35672



### Sprayers



AG SPRAY EQUIPMENT 300-gallon boomless sprayer - shed kept and cleaned after each use, \$1,800. (615) 533-8168 samfarms4875@gmail.com



2016, AG SPRAY EQUIPMENT 300-gallon boomless sprayer, shed kept and cleaned after each use, \$3,000. (615) 533-8168 samfarms4875@gmail.com

AG SPRAY EQUIPMENT Sprayer, 3 pt hitch, 20' booms, 200 gallon tank, \$400. (615) 904-4306



AG SPRAY EQUIPMENT 3-point and pull-type sprayers come with boomless nozzle. 3 point sprayers all have hand wands. 3 point 55 gal \$1,095; 110 gal 1,895; 150 gal \$2,095; 200 gal \$2,295; 300 gal \$3,200. Pull type with used tires 300 gal \$3,950; 500 gal \$4,300. Booms available. Call Farm Service Solutions in Leoma, TN. farmservicesolutions.com; (931) 242-7675



CUSTOM MADE PASTURE SPRAYER for sale, 200 gallon, cluster sprayer, boomless, on trailer, works great. (931) 637-7795

To Place A Classified Call 800-247-7318

### Components Construction Equipment

#### Other

FARMALL SUPER C hood and PTO belt pulley, \$150/both. (256) 577-5051

#### Wheel (Rim)

FOR SALE, 16" and 16.5" eight hole wheels, \$20. (931) 732-4401

#### Grader

ADAMS HORSE DRAWN grader, 7' blade, \$1,450; Adams horse drawn large road grader, \$2,000; two horse wooden wheel wagon, \$1,475. Columbia, TN (931) 446-1675

### BUNK FEEDERS

### CATTLE GUARDS



Concrete Water Troughs

With or Without Legs  
Open or Closed Ends

Delivery Available

8' • 12' • 16' Widths  
Rounded Top Design Keeping Livestock From Crossing



### River City Concrete

9160 Hwy. 128 | Savannah, TN, 38372 | 731-925-0271  
[www.rivercity-concrete.com](http://www.rivercity-concrete.com)



# 28<sup>TH</sup> ANNUAL SUGARLAND AUCTION

## February 17<sup>th</sup> & 18<sup>th</sup>, 2023 • Both days start at 9:00 A.M.

**For more info visit us at**  
**[weeksauction.com](http://weeksauction.com)**

If your need to sell were to arise Weeks Auction Company is a consistent buyer of equipment, be it one piece or a complete operation Weeks Auction Company will be glad to make you an offer.

**Contact:** Grady Weeks

**Cell:** 352-895-4060

**Email:** [grady@weeksauction.com](mailto:grady@weeksauction.com)

Tim Weeks

**Cell:** 352-209-9939

**Email:** [tim@weeksauction.com](mailto:tim@weeksauction.com)



**Auction Conducted By:**

**WEEKS AUCTION COMPANY, INC.**

4851 West Hwy. 40, Ocala, FL 34482

FL Lic. #AB82 • Auctioneer Grady Weeks, FL Lic. #AU110

**352-351-4951 • fax: 352-351-8455**



### Other

**DECALS & DECAL SETS FOR HEAVY CONSTRUCTION & AG EQUIPMENT**

DECALS AFFORDABLE DECALS AND SAFETY DECALS. Prompt. Knowledgeable Reliable Service. [www.QuipCal.com](http://www.QuipCal.com); Call, (215)536-5339; email:[info@customservicescompany.com](mailto:info@customservicescompany.com).

### Fencing and Cattle Equipment



HAY FEEDER PANELS, 2"x3" construction and built to last a lifetime, 16ga, 4' up to 16' long. [FandPLivestock.com](http://FandPLivestock.com). TAEP APPROVED. (615) 653-8913



CORRAL PANELS, 16 GAUGE, 6' tall, good inventory, 8' up to 16' long. [FandPLivestock.com](http://FandPLivestock.com). TAEP APPROVED. (615) 653-8913



BULL GATES-16 GAUGE, 51" and 63" tall, 4'-20' long, good inventory. [FandPLivestock.com](http://FandPLivestock.com). TAEP APPROVED (615) 653-8913

**To Place A Classified Call 800-247-7318**



BOW GATES 16 GAUGE, 6' tall, good inventory, 4' up to 12' combo bow gates-example 12' with 4' wt. [FandPLivestock.com](http://FandPLivestock.com). TAEP APPROVED. (615) 653-8913

LIVESTOCK FENCE WIRE for sale, Stay-Tuff brand, several sizes available, some with factory coated black finish. (931) 675-3260

FENCE POSTS FOR SALE, pressure treated, several sizes available, round and square, thousands in stock. (931) 675-3260

PRESSURE TREATED PINE FENCE BOARDS, for sale, 1x6x14' and 1x6x16'; 2x6x16'. (931) 675-3260

MIRAFOUNT LIVESTOCK WATERERS, for sale. (931) 675-3260

LIVESTOCK FENCE WIRE for sale, Stay-Tuff brand, several sizes available, some with factory coated black finish. (931) 675-3260

## OVERSTOCKED!

- Retaining Wall Blocks
- Landscapers
- Farmers
- Industries
- Build Your Storage Bins!

**\$40 Each (You Haul)**

*Mid South Concrete Inc.*

P.O. Box 1220 • 1750 Braley Ln. • Pulaski, TN 38478  
2408 Hwy. 43 South • Leoma, TN 38468

**931-363-0690 • 800-705-5326**

[www.midsouthconcrete.com](http://www.midsouthconcrete.com)



# Equipment For Every Need!



**Mahindra 4540 with TRI Cutter**, nice tractor and cutter, like new, 16.8 hrs., selling for neighbor due to health problems. **CALL**



**Hay Wagons**  
3 sizes in stock  
**Call**



**JD 5320**  
2WD, loader, 65 hp  
**\$26,000**



**Farm King 1385**  
new, hydro mover  
**Call**

### New Items Available!

- Frontier WR3108, 8 wheel, like new ..... \$5,500
- Farm King 1395 Augers, In Stock ..... Call
- Ponderosa Horse Trailer, rubbermat, excellent shape ..... \$3,000
- Buhler Augers, 10x70 swing arounds, 10x31 auger,  
10x36, 1080, in stock, ready to go ..... Call
- Enorossi Y8+3 Rake, ..... \$6,000
- Enorossi Rake, used, 12'3" ..... Call
- Enorossi Tedders, 4 basket ..... Call
- Farm King Finish Mowers, 6' & 7' ..... Call
- Hay Express, 4 bale, individual dump ..... \$2,500
- Hay Wagon, 6-7-8 Bale, bumper hitch & gooseneck ..... Call

- New Farm King Grader Blades & Tillers ..... Call
- New Enorossi Tedders, 4 basket ..... Call
- REM Grain Vac, in stock ..... Call
- TN River Brand Cutters, 6' or 7', pull type, 3 pt. In stock ..... Call
- New & Used Enorossi Tedder, 4 basket, 17' ..... Call
- Used Grain Vacs ..... Call for Prices
- New & Used Tedders ..... In Stock
- TRI Box Blades, 6', in stock, new & used ..... Call
- Kubota Disc Mower, like new ..... \$7,500
- JD 5045D, 2WD, good shape, 550 hrs ..... \$16,000
- Hydro Dump Wagons ..... Coming In Soon

**Straw For Sale** - 5' Round Bales, net wrapped or small square bales

## Chandler's Farm Equipment

**270-586-6653**

Marty 270-392-0359 • Lloyd 270-535-6653  
2529 Salem Road • Franklin, KY  
Going Strong Since 1944



## Hay and Forage Equipment

### Other

HESSTON STACK HAND; New Holland bar type rake; assortment of metal rollers and troughs; much more. (629) 395-4558

## Rotary Mowers



**BUSH HOG 3 POINT CUTTERS HEAVY 11 GAUGE DECK, 90 HP GEARBOXES WITH SLIP CLUTCH. 6' \$1600; 7' \$1900; 10' \$3750. CALL FARM SERVICE SOLUTIONS IN LEOMA, TN. FARMSERVICESOLUTIONS.COM; (931) 242-7675**



**CATTLE SWEEP SYSTEMS HEAVY DUTY GALVANIZED 8 BAR 6' TALL. 90 DEGREE WITH 10' OF ALLEY STARTS AT \$1,480.180 DEGREE W/20' OF ALLEY STARTS AT \$2,475. WE CAN ADD AS NEEDED TO CUSTOMIZE YOUR SYSTEM. CALL FARM SERVICE SOLUTIONS IN LEOMA, TN, FARMSERVICESOLUTIONS.COM; (931) 242-7675**



**SQUEEZE CHUTES TARTER SERIES 3 FOR \$2,800 AND SERIES 6 FOR \$4,500 WITH EITHER AUTOMATIC OR MANUAL HEAD GATES. CALL FARM SERVICE SOLUTIONS IN LEOMA, TN. FARMSERVICESOLUTIONS.COM; (931) 242-7675**

## Harvesters Combines

CASE IH 1420 with headers, shedded, field ready, \$12,500; John Deere 530 round baler, \$3,500. (731) 968-5343

CASE AND GLEANER COMBINES, one Case 1688 axial-flow, 4WD; two Gleaners, 2WD. Must sell. (256) 200-4288

## Harvesting Equipment

### Other

INTERNATIONAL UPRIGHT CORN SHELLER, \$300. Columbia, TN. (931) 446-1675

To Place A Classified Call  
800-247-7318

## Muscle Shoals Diesel Service

**Diesel Fuel Injection Sales and Service**  
Serving the Southeast Since 1975

Bosch Stanadyne Caterpillar Zexel Yanmar  
Denso Delphi Cummins AMBAC Detroit

Turbocharger Sales & Service • Powerstroke Injectors • Performance Chips  
Locally owned and operated • Many exchange units available



**We want to make you glad you chose us for all your Diesel Fuel Injection Needs!**



**New Location! 1135 Hwy. 20, Tuscumbia, AL 35674**

**Toll Free 1-888-308-1203 • 256/381-0240**

To Place A Classified Call  
800-247-7318



**WE HAVE A GOOD SUPPLY IN STOCK FOR SALE**

# DECATUR CONTAINER

5375 Marsha Ave. Decatur, AL 35603

## 256-751-3800

Providing Quality, Low-Cost Storage Solutions Since 1995



### Mobile Offices

- 8' widths
- 20'-40' lengths
- With or without AC
- Custom Built



20'x8'x8½



40'x8'x8½



40'x8½'x9½

## Used Shipping Storage Containers

Call Jason Cato or Neal Sellers

Office (256) 751-3800 • Email: Sales@DecaturContainer.com

### Round Balers

INTERNATIONAL HARVESTER HORSE DRAWN hay baler, \$600. Columbia, TN. (931) 446-1675

HESSTON 945 hay or silage twine baler. (931) 619-4301

JOHN DEERE 566 WINTER SPECIAL! round baler, net or twine, new \$1,000 worth of chains and bearings, \$8,000. (256) 483-3487

KENTUCKY 31 FESCUE SEED for sale, with Orchard grass. Middle Tennessee. (931) 244-0063

**4,000 BALES OF ORCHARD GRASS HAY, 12-14% protein, \$7 per bale. Hohenwald, TN area. (931)628-0529.**

HAY FOR SALE, 4x5 rolls, fertilized and baled with no rain, \$45 per roll. (256) 509-7417

### Odds and Ends

BICYCLE EXERCISE MACHINE for sale, \$50. Wildersville, TN. (731) 968-5343



RACK-EM-UP FLAME ROASTED DEER FEED, roasted whole grains, aroma that deer love, grain will not sprout, molds are greatly reduced. rackemupdeerfeed.com. (605) 351-9084

TWO INDUSTRIAL FIRE extinguishers for sale, \$375 each. Columbia, TN area. (931) 446-1675

FOR SALE 25 GALLON cast iron pot, \$150; 15 gallon cast iron pot, \$125. (931) 732-4401

JD DISC HARROW BEARINGS, with 2 piece plastic sleeve 2 inch. Call Tony at APC Bearings. (909) 545-5054 tony@apc-bearings.com

### Square Balers

NEW HOLLAND 565 SQUARE BALER, excellent condition, good paint, ready for field, \$6,500. (270) 206-0628

### Hay and Grain For Sale

HAY FOR SALE, 40 rolls of hay, \$50 per roll, Fayetteville, TN. (931)433-6891.

## Used Tractors & Parts In Stock



**Ford 3600**  
2Wd, total engine rebuilt  
**\$5,250**



**Ford 5640**  
Power Start w/dual power, 1 owner, 16 speed  
**\$13,500**



**Yanmar YM 3000**  
Dsl.  
**\$3,500**

### Recently Salvaged Tractors

- |         |                               |                           |
|---------|-------------------------------|---------------------------|
| JD 1640 | Kubota 1500                   | Golden Jubilee            |
| JD 2130 | Formall SA-140-SC-Cub         | Ford 801, gas, PS         |
| JD 1120 | IH 584 + IH 454               | MF 235, Good Steering Box |
| JD 950  | MF 135 DSI + MF 135 Gas       | Mahindra 3550             |
| JD 850  | Ford 3000 + 900 w/ wide front | Ford 2000, w/PS           |
| Ford 8N | Ford 801 + 601 + 600          | Yanmar 2500               |

**Narrell Tractor** 47 Years In Business  
Mark Narrell - Manager  
7870 AL Hwy. 69 N., Cullman, AL 35058 **256-796-6445**  
narrelltractor@att.net [www.narrelltractorllc.com](http://www.narrelltractorllc.com)



WOODMASTER OUTDOOR WATER FURNACES, heat your home or shop, EPA approved clean burning, parts in stock, financing available. In TN call Harold, (931)787-3547; in KY call Dave, (859)265-0793, (859) 265-0793



# ELK VALLEY TRUCK & TRAILER SALES



**2004 Sterling**

single axle, 12.7 Detroit, 10 spd., 339k miles  
**\$18,500**



**2013 Int Day Cab Maxforce**

DPE delete, 10 spd., 624k miles, alum wheels  
**\$19,900**



**2003 GMC 2500 Duramax**

diesel, 4WD, auto, SLE, power windows, low miles, 136k miles  
**\$23,900**



**2018 Ford F-250**

Crew cab, 4WD, all power, 6.7 diesel, auto,  
 Stk#223 **\$29,900**



**2016 Ford F-250**

4x2, 6.2 gas auto, utility bed, Stk#332  
**\$14,900**



**GN Brand Stock Trailer**

24' 2 cut gates, escape door, new floor  
**\$6,500**

## All Types Trailer Rental Available

Rocky - 931-703-6255 • Wayne - 931-993-8984 • 2983 Huntsville Hwy. • Fayetteville, TN • 931-433-6255

[www.elkvalleytrailersales.com](http://www.elkvalleytrailersales.com)

WANT TO BUY FJ40 Toyota, in model years from 1975 to 1980. (931) 607-9737

GIFFORD BROTHERS CONCRETE. Nothing too big or small. Free estimates. 50 years experience. Dale Gifford, (931)703-0925.



AFFORDABLE DECALS AND SAFETY DECALS Prompt. Knowledgeable Reliable Service. www.QuipCal.com; Call, (215) 536-5339; email: info@customerservicescompany.com.

GIFFORD BROTHERS CONCRETE. Nothing too big or small. Free estimates. 50 years experience. Dale Gifford, (931)703-0925

## Other Equipment

SNAP-ON YA205 Snapon, YA205 mig welder, good condition, \$800. (256) 352-4553 (256) 352-4553

JOHN DEERE 7000 4-row planter, no-till, 38" corn and bean meters, insecticide box with dry fertilizer boxes, \$3,500. (615) 904-4306

GIFFORD BROTHERS CONCRETE. Nothing too big or small. Free estimates. 50 years experience. Dale Gifford, (931)703-0925



NORWOOD PALLET FORKS \$750 AND UP. SKID STEER, JOHN DEERE 100-500 SERIES LOADER, AND GLOBAL EURO QUICK ATTACH AVAILABLE. FARMSERVICESOLUTIONS.COM. LEOMA, TN. CALL, (931) 242-7675

## Planting Equipment

### Other

CLIPPER CLIPPER SEED SCREENS for sale, approximately 100 screens. Delivery available. (931) 808-8095

To Place A Classified Call 800-247-7318

## Farmers' Exchange

**Bill Thomas**  
 Founder (1940-2010)

**Will Thomas**  
 Publisher / CEO

**Katie McNabb**  
 Director of Magazines

**Ken Holtzinger**  
 Vice President of Sales

**Janet Mullins**  
 Business Development  
 (931) 993-0026

**Tim Ashley**  
 Business Development  
 (931) 205-0644

**Bob Barger**  
 Business Development  
 (601) 422-5064

**Shelli Fuller**  
 Customer Service

**Barb Hargrove**  
 Customer Service

**Tracey Pollock**  
 Customer Service

**Tim Weir**  
 Customer Service

**Chase Perryman**  
 Creative Director

**Melissa Davis**  
 Layout Artist

**Todd Pitts**  
 Art Production Manager

**Ben Adams**  
 Graphic Artist

**Sarabeth Bray**  
 Social Media  
 Community Manager

**Steve Seiler**  
 Distribution

(800) 247-7318

404 Main Ave. South  
 Fayetteville, TN 37334

FarmersExchange.com

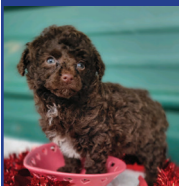
Mats, cuts, negatives, art work or other copy submitted for publication is considered to be the property of the advertiser. Advertising is accepted with the understanding that all liability for copyright violation is the sole responsibility of the advertiser.

The Exchange will make every effort to see that advertising copy is correctly printed, but shall not be liable for failure to publish an ad or for typographical errors.

The Exchange will gladly reprint, without charge, that part of an advertisement in which an error occurs, provided a claim is made within three (3) days of the first publication of the ad.

© 2023 Exchange Media Group  
 All Rights Reserved

## FOR SALE - Leighanne (931) 993-4858



### Toy Poodle Puppies

Very small, great lap dogs and do not shed. Raised with small children.

**\$500 each**

### F2 Goldendoodle Puppies

Very curly apricot, Farm Raised with Children.

**\$600 each**



# Dixie Equipment & Rental

200 E 16th Street • Columbia, TN 38401 | 615-969-0118 or 931-381-1647

## COME SEE US FOR ALL YOUR RENTAL NEEDS!

We sell and service ASV & Wacker Neuson Equipment.



# DIXIE DIESEL

All ASV machines are available with a full line of performance-matched attachments so you can handle a wide range of jobs, whether you work in construction, agriculture, land management, forestry or landscaping.

[www.dixiediesel.com](http://www.dixiediesel.com)

Authorized dealer for:



**YANMAR**



**REPAIR & PERFORMANCE SPECIALISTS**

• Ford Power Stroke • Dodge Cummins • GM Duramax

**(800) 523-4621 • (931) 381-1647**

200 E. 16th Street • Columbia, Tennessee 38401

### Planters

FORD 2-BOTTOM PLOW FOR SALE, 3-pt, has coulters, Buhler, KS. (620) 727-5009

JOHN DEERE 7000 4-row planter, no-till, 38" corn and bean meters, insecticide box with dry fertilizer boxes, \$3,500. (615) 904-4306

### Services



ALL TYPES CORRUGATED METAL, PLASTIC CULVERTS ALL TYPES OF METAL AND PLASTIC CULVERTS 8" THRU 48" IN STOCK, ALL OTHERS CAN BE ORDERED. QUANTITY DISCOUNTS, DELIVERY AVAILABLE IN OUR AREA. (931) 684-4847 CLANTONCO@BELL-SOUTH.NET



ROBINSON ENVIRONMENTAL LAND CLEARING forestry mulching, boom mower bush-hogging, agricultural stump grinding and skid loader work. Call David, (615) 631-0638

TRACTOR AND FARM EQUIPMENT REPAIRS, Engine and transmission rebuilding. All types of repairs. Steel and aluminum welding. N & A Equipment Services, 301 Lack Road, Elkton, KY, 42220. (270) 348-5187



WOOD MASTER OUTDOOR WATER FURNACES, heat your home or shop, EPA approved clean burning, parts in stock, financing available. In TN call Harold, (931)787-3547; in KY call Dave, (859)265-0793. (859) 265-0793

### Recreational Vehicles

CAMPER SHELL for sale, fits L.W.B. truck, \$250 or best offer. Mulberry, TN area. (256)508-3320.

## Quality Seeds

**Open Pollinated Corn**  
Non-GMO  
Yellow Jarvis  
Mosebys Prolific  
Pencil Cob  
TN Wildlife GT Dwarf Corn  
Hickory King White

**Wildlife**  
Purple Hull Peas  
Iron & Clay Mixed Pea  
Buckwheat • Chufa  
Japanese Millet  
Peredovik Sunflowers  
WGF Sorghum  
Chicory  
Spring Wildlife Mix

**Grass Seed**  
KY-31 Fescue  
KY-32 Fungus Free  
Timothy  
Orchardgrass  
Max Q-II Jesup-II



**Summer Annuals**  
Sorghum Sudan & BMR  
Hybrid Pearl Millets  
German & Brown Top Millet  
Teff Grass  
Red River Crabgrass  
Piper Sudangrass

**Bermudagrass**  
Common  
Cheyenne II  
Sahara II  
Tierra Verde  
Mohawk

**Clovers - Legumes**  
Kenland Red Clover  
Advantage Ladino  
Durana Ladino  
White Dutch  
Balansa Clover  
Berseem Clover  
Crimson Clover  
Alfalfa

**Soybeans**  
• Extend Flex - USG 7392XFS 3.9 -  
• #1 TN Trials for 2 Year Average  
• Extend - USG 7496XTS 4.9  
3<sup>rd</sup> year 2<sup>nd</sup> place average TN  
Glyphosate Tolerant:  
• USG Allen 5.6  
• USG 7732nrr

Cover Crop Blends  
Registered Angus  
Cattle Available

**Lespedeza**  
Korean  
A.U. Grazer Sericea  
Serala Sericea

**Lawn Seed**  
Turf Type Fescue  
Creeping Red Fescue  
Turf Bermudagrass

Can check availability on any other soybean varieties

## FOR HIRE OR RENT!

### Cat D5 Dozer

100hp., 6-way blade, hydrostatic, \$400 day, \$1,600 week.

Kubota track loader, SVL 75-2, cab with AC/heat, no DEF, \$325 day, \$1,300 week.



All prices include pickup and delivery.  
Leoma, TN

**Call Chris - 931-629-8299**



## Clemmons & Hamner Seed, Inc.

5578 County Rd. 34, Killen, AL 35645  
[www.clemmonshammerseed.com](http://www.clemmonshammerseed.com)

Call **256-757-9996**

If you don't see what you're looking for, give us a call!



**Ritchie Water Tank**  
We Carry 2 and 4 Hole



**Priefert**  
Farm, Ranch & Rodeo

**Stocking Lots of Priefert Products**



Cattle Rub  
**\$25<sup>95</sup>**



Kennel 10'x10'x6'  
**\$439<sup>99</sup>**

Priefert S04 Chute  
**Call For Prices**



Priefert 12' Corral Panel  
**\$215<sup>00</sup>**

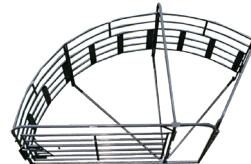


Hydraulic Fluid  
**\$42<sup>95</sup>**  
5 Gal



Bring In Copy Of Ad Prices  
Subject To Change.

**Guntersville**  
**FEED STORE** LLC  
& GARDEN CENTER  
**256-582-4411**  
1321 Blount Ave. Guntersville, AL  
[guntersvillefeedstore.com](http://guntersvillefeedstore.com)



Priefert 135 Sweep Tub Primier  
**Call For Prices**

JOHN DEERE 1025R 4WD, loader, 5' belly mower, \$14,500. Call between 8a.m.-5p.m., (931) 939-4999



2015, JOHN DEERE 5055E One owner, shed kept and regularly serviced, fluid in rear tires, \$17,500. (615) 533-8168 [sam-farms4875@gmail.com](mailto:sam-farms4875@gmail.com)



**Disks**

JOHN DEERE AW 12' disk, \$600. (615) 904-4306

**Plows and Rippers**

JOHN DEERE 1250 4 bottom 16" plow, \$800. (615) 904-4306

**Timber and Forestry**

JOURNEY LOGGING, LLC, buying standing timber: cedar and pine, within 100 miles radius of Pulaski, TN. 931-638-6441; [jjourneylogging@gmail.com](mailto:jjourneylogging@gmail.com). (931) 309-8965 [jjourneylogging@gmail.com](mailto:jjourneylogging@gmail.com)

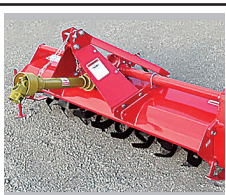
**Tractors**

FARMALL C Tractor, rebuilt motor, transmission gone through, \$2,000. (731) 358-1679

MASSEY FERGUSON 20C, loader, new rubber, looks excellent, \$9,800. Call between 8a.m.-5p.m., (931) 939-4999

2020, MAHINDRA 4045, 234 hours, runs and looks like new, \$23,500. Call between 8a.m.-5p.m., (931) 939-4999

**Other**



SMART-TILL CHEROKEE TILLERS. 50" AND 59" CHAIN DRIVE REGULAR DUTY. 71" GEAR DRIVE MEDIUM DUTY. 81" GEAR DRIVE HEAVY DUTY. 50" \$1600; 59" \$1700; 71" \$2200; 81" \$2700. PRICE IS IN CRATE. ASSEMBLY ADD \$50. CALL FARM SERVICE SOLUTIONS IN LEOMA, TN. [FARM-SERVICESOLUTIONS.COM](http://FARM-SERVICESOLUTIONS.COM); (931) 242-7675

**Row Crop Cultivators**

JOHN DEERE 4 row cultivator, \$800. (615) 904-4306

JOHN DEERE 1250 4 bottom 16" plow, \$800. (615) 904-4306

JOHN DEERE 1250 4 bottom 16" plow, \$800. (615) 904-4306



**0% SPECIAL RETAIL FINANCING FOR 36 MONTHS**  
ON SELECT NEW BUSH HOG EQUIPMENT  
INCLUDING FLEX-WING AND MULTI-SPINDLE ROTARY CUTTERS, HAY TEDDERS, AND HAY RAKES  
Trust in a company whose name has become synonymous with the task.  
That's performance. That's reputation. That's Bush Hog.<sup>®</sup>

**BUSH HOG**  
Performance You Can Count On™  
[www.bushhog.com](http://www.bushhog.com)

1951 2017 CELEBRATING 66 Years

Built BUSH HOG TOUGH

**Dean Farm Supply**

28739 U.S. Hwy. 72 • Hollywood, AL 35752  
256-574-1112  
[www.DeanFarmSupply.com](http://www.DeanFarmSupply.com)

1984, JOHN DEERE 1450 52hp, diesel, dual remotes, canopy, good sound clean machine, 6,500 hours, 1984 model, \$6,000 or best offer. Leave message and we will return your call. (931) 593-3007



1972, MASSEY FERGUSON 135 diesel, starts good, runs good, no mechanical problems, good sheet metal and paint, 80% rubber. Greenhill, \$4,500. (256) 762-0404

CUB FARMALL TRACTORS, two tractors completely restored to showroom finish, one w/belly mower, cost over \$8,000 to restore, take \$5,000/both. Calvert City, KY. (270) 519-1273



# WATSON METALS

We Roll-Form and Manufacture Metal Roofing and Supplies, and we service all of Middle Tennessee and surrounding areas.

## WHAT WE CARRY

- Tuff Rib Panel
- PBR Panel
- Watson Wave Panel
- 5V Panel
- Corrugated Panel
- Standing Seam Panels in 1", 1.5" & 2"
- Mechanical Seam panels
- Board & Patton Panels
- Metal Shingles
- Perforated Panels in 20+ Colors
- Custom Bent Trims
- Roll-Form Standard Trims
- Closures
- Screws For Wood & Metal
- Stock Screws 1" - 3"
- Over Size Screws
- Solar Seal All
- Colors & Clear



Over 20 Years Of Quality Service & Experience  
 Monday thru Friday 7:00 AM - 4:30 PM  
 238 Interstate Dr., Manchester, TN 37355

**931-728-8185**  
[www.watsonmetals.com](http://www.watsonmetals.com)

## Trailers

CUSTOM MADE TRAILERS, utility, livestock, enclosed, gooseneck flatbed, bumper pull car haulers. If we don't have it, we'll be glad to build it! [www.custombuilt-trailersms.com](http://www.custombuilt-trailersms.com) (601) 329-9222

GOOSENECK 20' GOOSENECK EQUIPMENT TRAILER with Dove Tail, good condition, needs a tire, \$4,000. (256) 352-4553

STEEL SIDEBOARDS and gates for sale, fits 12' flatbed, \$300 or best offer. Mulberry, TN area (256)508-3320..

## Trucks

### Accessories

CROSSOVER TOOL-BOX for sale, fits Ford Ranger or similar, like new, \$250; also, ladder rack for Ford Ranger long base, \$150. (931) 536-5552

TWO STORAGE BOXES all aluminum, 4'x2' wide 30" tall, with stainless steel door latches, \$400 firm. (931) 242-4821

ALL ALUMINUM FLAT BED truck body, 8'x10' no g/n, with 36" under boxes, \$2,500. (931) 242-4821

**Heavy Duty (GVW over 26,000 lbs.)**



2019 RAM 3500 AISIN TRANSMISSION \$59,000, one owner, 2019 Ram 3500 Tradesman Crew Cab 4x4 Long Box, 3.73 Axle Ratio, Transmission: Aisin 6-Speed Automatic Transmission, Engine: 6.7L I6 Cummins HO Turbo Diesel Engine, Miles: 85,825. (256) 472-4310

1964 DODGE 1/2 TON PICKUP for sale, step-side bed, six cylinder, not running. (931) 446-1675

**Light Duty (GVW under 14,000 lbs.)**

1987 DODGE RAM 50 4x4, automatic transmission, good body, needs minor work, \$1,400. (706) 247-6240

**Medium Duty (GVW 14,000-26,000 lbs.)**



JAPANESE 4X4 MINI TRUCKS, great for farm use, hunting, recreation, available with A/C, PS, 5 speed and automatic, some with dump beds. Anderson, AL. Call for prices, (256)740-7287. [www.berryhillminitrucks.com](http://www.berryhillminitrucks.com) (256) 740-7287

To Place A Classified Call 800-247-7318



(270)466-5841  
 528 Seay Rd.  
 Trenton, KY 42286

Call us for all of your tarp needs!  
 Monday - Friday 8AM-5PM

- Semi Trailer Tarps
- Installation, Hardware & Pipes Available





**JAMES R CASH AUCTIONS**

**Thursday, Feb. 23rd - 6:00 PM**  
**2275 Witty Lane - Hopkinsville, KY**

**76 Acres**

**Offered In 6 Tracts And In Combination Of Tracts**

**Income Producing Farmland**  
**Great Homesites**

Jamesrcash.com For Details!

**Saturday, March 4th - 10:00 AM**  
**The Late Prentice Duncan Estate - 3235 Hwy 1483**  
**Almo, KY - 5 Miles NE Of Murray, KY**

**Auction Highlights**

**TRACTORS - DOZER - LOADER - COMBINE - RTV**  
 New Holland TL100A Tractor, Cab, 4WD, 2 Remotes, 18.4-34 Rrs, 14.9R24  
 Fronts "Good Rubber" SN HJS076223 w/Woods LU132 Loader • JD 4430 Tractor, 8640 Hrs, Snap On Duals, 2 Remotes SN 055928R • JD 4430 Tractor, 4WD, 2 Remotes, Quad, 5264 Hrs, SN 085131R w/740 Loader • JD 4620 Tractor, Dis, Frt Wts, 2 Remotes, SN 012999Q • IH 806 Tractor, Cab, 2 Remotes, SN 39443 • Case 995 Tractor • AC 220 Tractor • Ford 2110 Tractor, SN 00844 • Ford 5000 Tractor, 4928 Hrs • Case W20B Loader, 8' Bucket, SN 9139002 • Case W11 Wheel Loader, Forks, Bucket, SN 9135431 • Case 580 Super K, Tractor Loader Backhoe, SN 0160485 • Cat D6D Dozer, 10' Blade, 24" Pads, SN 9P2442 • JD (Number Missing )Dozer, 6 Way 6.5' Blade, Winch, SN DR71858 • JD 540-B Skidder, 7642 Hrs  
 Polaris Ranger 900HP, Gas, 27 Miles, 10.7 Hours, Tilt Bed "NEW!  
 JD 7720 Turbo, 4WD, 3861 Hours, w/218 Grain Platform

**EQUIPMENT - FARM MISCELLANEOUS**  
 JD 328 Square Baler • NH 477 Haybine • NH 855 Round Baler • ST170 Tedder • HM 2009 Disc Mower • NI 4150 Dollie Wheel Rake • Landpride 3PT Post HoleDigger • Landscaper 12' Land Leveler • Rhino 15' Bushhog • JD 230 Disc • JD 235 Disc • Kewanee 1010 Flat Fold Disc w/Harrow • JD 6' Bucket • Seed Sowers • JD 4 Row Planter • JD 3Pt Bushhog • 3 Pt Ripper • Rotary Hoes • Unverferth Tale Gate Auger • IH 2 Row Planter • Brillion Fold Cultipacker • NI 1 Row Picker • DB 75 Manure Spreader • 7' Box Blade • 8' Box Blade • 4 & 2 Row Cultis • IH 470 Disc • Gravity Wagons • EZE Trail Bale Wagons • H&S 8 Bale Wagon • Pan Plow • PTO Ditcher • Post Hole Digger • Grader Blades • 4 Wheeler Mower • Huskee 35 Ton Wood Splitter • Puma Air Compressor • Head Chute • Cattle Panels • Livestock Scales • Wagons • 32' Aluminum Boat • Farm And Barnyard Misc

**TRUCKS - CARS - TRAILERS**  
 '20 MAX HD Bumper Trailer, 6x16', Tilt, "Very Nice" • Big Tex Gooseneck Trailer, 102", 24' w/4' Dove and Ramps • '01 Featherlite Cattle Trailer, 102"-16' • King Goose 5th Wheel Grain Trailer Hyd Dump, Hyd Jack, Dual Tandem • Load Trail Bumper Trailer, 18' w/2' Dove • '77 Phelan Lo Boy, 23.5' • 16' Bumper Trailer • Gooseneck Dump Trailer • '99 Dodge Ram 3500, Cummins Diesel, 5 Spd, 111,405 Miles • '92 Int 4900 Log Truck, 6x4 • '85 Mack Single Stack, Twin Screw • '85 Int 2276, Gravel Dump Bed • '84 Ford Bucket Truck, Altec • Int F9370 Semi • GMC 7000 Grain Truck w/16' Bed • GMC 1.5 Ton Grain Truck • Ford F700 Knuckle Boom Truck • Ford 600 Gravel Dump Truck • '83 Int Truck, 18' Flat Dump Bed • '03, '93, '80 Cadillac Deville's • Two - '01 Jaguars • '85 El Camino • Trucks & Cars For Parts

**COMPLETE SETTLEMENT DAY OF SALE!! CURRENT BANK LETTERS A MUST!!**

**Saturday, March 11TH, 2023 AT 9:00 A.M.**  
**1107 Houseman ST MAYFIELD, KENTUCKY**  
**Annual Huge Consignment Farm Machinery AUCTION**

**The Event Of The Year....**  
**Rich In History...At The Fairgrounds**

**1000'S OF ITEMS WILL BE IN THIS AUCTION**

WE NEVER KNOW WHAT WILL BE IN THIS AUCTION  
 IF YOU NEED IT -- IT WILL PROBABLY BE HERE

**TRACTORS - ALL SIZES - ALL BRANDS**  
**DOZERS - BACKHOES - TRUCKS - IMPLEMENTS OF EVERY DESCRIPTION!!**  
**BRING YOUR EQUIPMENT ON**

**Thursday - Friday March 9th or 10th**  
**8:00 TO 6:00 P.M. EACH DAY**

**For More Than 50 Years A Great Auction!**  
**Please No Hand Tools, Worn Tires, Battered Fuel Tanks,**  
**OR Fence Row Items - Thank You!**  
**We Only Accept Items That In Our Discretion Are Saleable**

**JAMES R. CASH**  
**THE AUCTIONEER & REAL ESTATE BROKER**  
**FANCY FARM, KY- MURFREESBORO, TN**  
**270-623-8466**

**ROBINSON ENVIRONMENTAL**  
**LAND CLEARING**

*Serving Middle Tennessee since 2007*

We will clear your land to match your vision!  
 We will work with excellence and efficiency to deliver your desired end results.

Pasture clearing/restoration  
 Timber stand improvement  
 Lot clearing-residential and commercial  
 Right-of-ways • Fire Prevention  
 Wildlife habitat enhancement  
 Food plot • Perk Sites • Survey Lines  
 Real Estate tracts • Access roads  
 Agricultural Stump Grinding

**WWW.DROBINSONLANDCLEARING.COM**  
**615-631-0638**

**Want to Buy**

**WANT TO LEASE**  
**70+ ACRES** I'm looking for pasture to lease near Harvest AL. I'd like to live on the land (I have a camper.) I'm wanting to practice regenerative ag and land healing practices. Existing exterior fence would be nice. (256) 520-4727

**WANTED, IRON WHEEL TRACTORS;** whiskey barrels; 1940's to 1950's pickup truck, any condition. (931) 446-1675

**WANTED HORSE DRAWN** sleigh; horse drawn wooden wheel wagon; horse drawn grader, four wheels. (931) 446-1675

**WANTED, 1940'S TO 1950'S PICKUP** truck, any condition; iron wheel tractors; and whiskey barrels. (931) 446-1675

**WANTED,** 1998-2005 Astro Chevy van, all wheel drive, doesn't have to be great. (931) 692-3333

**WANTED,** cultivator for Farmall Cub and a back cultivator for a Allis-Chalmers model G. (256) 758-1471

**WANTED, I AM** looking to buy cows and/or cattle. (931) 307-9839

**WANT TO BUY,** lime or poultry litter spreader, any condition, (731) 968-5343

**WANTED, 16 GA** SHOTGUN, single or double barrel. (931) 235-4899

**LOOKING FOR OLD** JEEP does not have to be running, decent body at a decent price. Call, (601) 632-1884

**WANT TO BUY,** JOHN DEERE TRACTOR, 420 OR 430. ONEONTA, AL AREA. (205) 353-2557





# HUGE JOHN DEERE AUCTION

February 17<sup>th</sup>, 2023 at 9:00AM

Scruggs Farms • 365 Mt. Vernon Rd., Tupelo, MS 38804

Late Models and Big Selection of JD Antique Tractors.

Consignments will be welcome at this sale!

**JD FINANCING AVAILABLE**

## UPCOMING AUCTION

March 4<sup>th</sup>, 2023 at 9:00AM

Lots of International and Case Equipment



Interested in selling your equipment through Riles Auctions? We will work with you to determine the best course of action for your particular items.

**Call us today to consign! 662-274-4708**

Online Bidding powered by Equipment Facts

Potts Camp, MS 38659 • [www.rilesauctions.com](http://www.rilesauctions.com) • facebook Riles Auctions



WANTED NH and JD SQUARE BALERS, running or for parts. (270) 206-0628

OLD TENNESSEE LICENSE PLATES wanted. Nolensville, TN area. (615) 879-1901

WANT TO BUY, goats, sheep, chickens, and guineas. Ardmore, TN area. Call, (256)777-0065; (931) 427-8477

WANTED USED TRACTOR TIRES, 16/9/28. Voice mail, (941)341-9404; or Text, (931)306-3969.

NO TILL PLANTER wanted. Lincoln Co, TN area. (931)993-8723; (931) 433-7345

WANT TO BUY FJ40 Toyota, in model years from 1975 to 1980. (931) 607-9737

### Chickens

GOLDEN COMET PULLETS for sale, available in March. (931) 692-3333

EGG INCUBATOR UNIT and brooder unit, \$125, 122' owner oxygen cylinder, \$100. (931) 732-4401

### Cows

25 LONGHORN COWS for sale. (931) 619-1338

1 TO 25 REGISTERED Red Angus and Registered Black Angus bulls, 11 months,+/- 1,000lbs. Top bloodlines in both breeds! Starting at \$1,495 per bull, many are AI. Located in Rome,GA, 20 miles past Centre, Alabama. Joe Gibson, Gibsoncattle.com. (706) 506-3026

REGISTERED RED ANGUS BULL, 16mo old, passed BS exam. FandPLivestock.com. TAEP APPROVED. (615) 653-8913

6 REGISTERED ANGUS HEIFERS, bred AI on 11/17/22 to Deer Valley Growth Fund Bull, 16 mo old, nice as you will find, 900-1,000lbs. Meets TAEP Heifer Program in TN. FandPLivestock.com. TAEP APPROVED. (615) 653-8913

COW REPLACEMENT HEIFER REGISTERED F1 Great replacement Heifer. Sire JM Hutton Launch 669 9116, 10 months old, \$925 Bargain. (703) 789-1510 europe0220@yahoo.com

REGISTERED HEREFORD HEIFERS - ages 7-9 months. Excellent bloodlines and will make great cows. Hopkins Ranch Winchester, TN. Call, (931) 636-7521 hopkins4795@bellsouth.net

## Upcoming Machinery Auctions!

Saturday, March 4th @ 10 am \* Robertson County Fairgrounds Farm & Construction Equip Open Consignment Auction

Saturday, April 1st @ 10 am \* 1921 Rossview Rd, Clarksville Farm & Construction Equip Open Consignment Auction



[www.ptauctionteam.com](http://www.ptauctionteam.com) 931-320-4150 931-320-4151 5% b.p.

To Place A Classified Call 800-247-7318



# GLEBURNE FARM SUPPLY

1485 Bear Creek Pike  
Columbia, TN 38401  
931-388-7273

www.cleburnefarmsupply.com



## Square Bale Handing Made Easier!



### The Bale Baron Model 4250T & Model 5250T

- Trails Behind Baler
- Isobus Compatible
- Load Sensing System

**Both Models Can  
Make A 21 Pack &  
An 18 Pack Bundle**

### Equipment For Sale.

(3) MF 4700 Tractors, New .... Call for price      MF 1840 Baler.....\$24,000  
MF 5710 Tractor..... Call for price      MF 1363 Mower Conditioner.....\$19,500

FOUR PUREBRED BLACK ANGUS bulls for sale. 14-18 months old. (931) 675-0669

FOUR PUREBRED BLACK ANGUS heifers for sale, 12-14 months. (931) 675-0669

WAGYU HEIFERS for sale. (256)714-6182.

REGISTERED HEREFORD BULLS Polled and Horned Hereford Bulls for sale, ages 7-17 months old. Great dispositions and Excellent bloodlines. Easy calving with good growth. (931) 636-7521

REGISTERED BLACK ANGUS BULLS for sale, 15-17 months old, good EPD's, frame, length, disposition, TAEP qualified. Fifty years



Circle W • Delta  
Calico • Blazer  
GPI • Homesteader

### RV Parts Now Available

Horse      Utility Trailers      Cargo, Dumps  
Stock      Carports      Bike Trailers  
Flat Beds      Gates & Panels      Tow Dollies

Parts - Sales - Service - Rentals

**B&W Authorized Installer**

Consignments Welcome

## The Trailer Store

1021 New Lewisburg Hwy., Columbia, TN

Hours: Mon.-Fri. 8:00 A.M. - 5:00 P.M.; Sat. Closed

Mark Curry, Justin Curry, Becky Lynch

Office: 931-381-2795

Fax: 931-380-0337

of selection for the best. Turrentine Angus, Shelbyville. (931) 607-8950 aturrentine@cafes.net

FOUR PUREBRED BLACK ANGUS bulls for sale. 14-18 months old. (931) 675-0669

FOUR PUREBRED BLACK ANGUS heifers for sale, 12-14 months. (931) 675-0669

BLACK ANGUS REGISTERED AND COMMERCIAL BRED HEIFERS, 1100lbs, late bred, gentle, long, fancy, \$1,800-\$2,100. (931)994-2813.

FOUR PUREBRED BLACK ANGUS heifers for sale, 12-14 months. (931) 675-0669

FOUR PUREBRED BLACK ANGUS bulls for sale. 14-18 months old. (931) 675-0669



Energy Efficient • Stainless Steel Tanks  
Automatic Waterers • Keeps Ice Out • Now UL Listed

**Cattle • Hogs • Horses • Sheep**

Hoskins Livestock Waters PO Box 101 • Hoskins, NE 68740  
402-565-4420 • 800-658-4020 www.hoskins-mfg.com

To Place A  
Classified Call  
800-247-7318



# EXCELLENT USED TRACTORS & EQUIPMENT



**MF 1723HST**  
4WD, Loader, Backhoe,  
12' Bucket, Call Sales  
**Cash \$21,900**  
**Finance \$22,900**  
plus taxes



**Case 75A  
Demo Tractor**  
Cab, Loader, 4WD,  
2022, 60 hrs., Call Sales  
**Cash \$48,000**  
**Finance \$50,000**  
plus taxes



**Case 120A**  
2019, 310 hrs.,  
120 hrs., Cab,  
4WD, Call Sales  
**\$48,500**



**Kubota L5030HSTC**  
2005, 50HP, 4WD, Cab, Loader with Bucket, A/C,  
Heat, Radio, Defrost Wiper, 1700 hrs., runs good,  
Call Ben 256-744-8914  
**Call for price**



**STX450 HD Case IH Tractor**  
4X4, 4 remote valves. Over size tires.  
450Hp with 300hrs on complete rebuilt  
engine. Transmission was replaced two  
years ago. Call Sale 205-466-3500  
**\$110,000**

**Snead Equipment**  
www.sneadequip.com



U.S. Hwy. 278 East, Snead, AL 35952  
**205-466-3500**

**REGISTERED BLACK ANGUS BULLS** for sale, 15-17 months old, good EPD's, frame, length, disposition, TAEP qualified. Fifty years of selection for the best. Turrentine Angus, Shelbyville. (931) 607-8950 aturrentine@cafes.net

**REGISTERED AN-GUS BULLS**, 12-18 months, all are AI Sired by Growth Fund, Optimum, Upward, Enhance, Beacon, all qualify for TAEP, good EPDs, calving ease and balanced bulls, good disposition. (931)510-1104; (931)287-7474.

**REGISTERED BLACK ANGUS BULLS** fully TAEP qualified, A-I sired out of great cow families, gentle, good EPD's. Cedar Ridge Angus, Pulaski, TN. (256)508-2874. See Cedar Ridge Angus on Facebook. (256) 508-2874 raycordan@gmail.com

**REGISTERED AN-GUS BULLS** Service age angus bulls out of top bloodlines. All bulls qualify for maximum TAEP money. (931) 589-2759

**SANTA GERTRUDIS, YOUNG BULLS** SANTA GERTRUDIS, young bulls and heifers, polled, registered, gentle. Free ballcap. Quality cattle since 1977. (256) 566-7878 kelsoclough@aol.com

**CHAROLAIS BULL FOR SALE** Service age Charolais bulls, gentle, registered, pure-bred and polled. Call, (931)967-8807; or, (931) 308-7212

**REGISTERED ANGUS BULLS** Service age angus bulls out of top bloodlines. All bulls qualify for maximum TAEP money. (931) 589-2759

**FOR SALE, REGISTERED BLACK ANGUS BULLS**, will qualify for the full TAEP money, all are by the top AI bulls in the breed. Crawford Angus. Lewisburg, TN. (931)205-2450; or, (931)359-2633. (931) 205-2450 crawfordangus@bell-south.net

**To Place A Classified Call**  
**800-247-7318**

## Custom Hoop Bldg. Covers, Hay Tarps, & Pond Liners

**11 Colors Available**

All covers have 2" weld for  
Strong Waterproof Seams



Cover Your Investment

Agricultural • Industrial • Commercial



3433 White Hall Road  
Mackville, KY 40040  
Fax: 859-375-5269

**859-375-5268**

### TANK COATINGS & ROOF COATINGS

Available for metal, composition shingles or Tar Roofs. Long lasting and easy to apply. We also manufacture Tank Coatings for Concrete, Rock, Steel, Galvanized and Mobile tanks.



Virden Perma-Bilt  
**806-352-2761**

www.virdenproducts.com



# Alabama's Branson Dealer

Call For Specials, Deals and Incentives.



New Clipper Zero Turn  
In Stock

Call for Pricing



International 785  
\$3,500



Kubota M108  
\$21,500



McCormick C80  
\$19,750



Kubota SVL75  
\$32,500



2023 Bushhog 1812  
\$17,350



2021 Bushhog 2215  
\$24,800



Ford F700, 5 Spd.  
\$8,750



New Holland 1033  
Barrel Wagon - \$3,750

**We Carry Bushhog Mowers - Call For Info**  
Several Used Round & Square Balers For Sale

## HUDDLESTON EQUIPMENT

Bush-Whacker® 29233 Hwy. 431 Wedowee, AL 36278



**256-363-1132**  
huddlestonequipment.com

**CLAAS**



REGISTERED AN-GUS BULLS Service age angus bulls out of top bloodlines. All bulls qualify for maximum TAEP money. (931) 589-2759

REGISTERED HEREFORD BULLS, for sale, gentle disposition, great bloodlines, polled, service age, starting at \$1,500. Leave message (931) 703-7573

### Dogs

PUPPIES FOR SALE, toy Australian Shepherds and toy Aussiedoodles will have shots/dewormed. Also, grown standard Australians and 2 grown male Poodles. John J. Gingerich, 146 Fox Hunters Lane, Morrison, TN 37357. Amish, no phone.

GREAT PYRENEES/ ANATOLIAN SHEPHERD PUPS for sale, three months old, \$200 each. (931) 692-3333

GREAT PYRENEES PUPS for sale, born 10-25-22, wormed with sheep, \$100 each. (731) 968-5021

## We Have The Right Trailer For You!



<b>Austin Trailer Sales</b> Florence, AL (256) 483-0744	<b>Ferge Auction</b> Somerville, TN (901) 412-1165
<b>Livingston Stockyard</b> Livingston, AL (205) 499-6118	<b>Lasseter Tractor</b> Moultrie, GA (229) 985-1027
<b>The Trailer Store</b> Columbia, TN (931) 381-2795	<b>Oak Ridge Rentals</b> Hartselle, AL (256) 303-8574

GREAT PYRENEES PUPS for sale, born 10-25-22, wormed with sheep, \$100 each. (731) 968-5021

### Donkeys/ Mules

FOR SALE, TWO MAMMOTH Jenny colts, one sorrel and one black, year old in summer. (256) 738-3921

3 YEAR OLD JENNY red gray with gray points, 54" tall; son born 7-25-22, black with gray points, 41" tall, out of Henry/Leo bloodlines, vaccinated, \$2,200 or best offer. (423)309-1316.

### Goats

SPANISH DOELINGS FOR SALE, born April of 2022, located in Buhler, KS. Call Mike, (620) 727-5009

### Other

HONEY BEE NUCS \$170; \$20 payment with order, quantity discount, April pickup. Joe N. Hostetler, 150 Mt. Horeb Rd., Ethridge, TN 38456.

HONEY BEE NUCS \$170; \$20 payment with order, quantity discount, April pickup. Joe N. Hostetler, 150 Mt. Horeb Rd., Ethridge, TN 38456.

**SCHWEISS**

**DOORS**

HYDRAULIC — OR — BIFOLD

ONE-PIECE DOORS      STRAP LIFT DOORS

**SCHWEISSDOORS.COM**

**THE DOOR LEADER**

**507-426-8273**

To Place A Classified Call  
800-247-7318

### Announcements



# We Have All Your Concrete Needs!

## ALL PRODUCTS STEEL REINFORCED



Catch Basins

Headwalls

Manholes

### Life Protector Partial Bury (80"x64"x142") Not converted septic tank



- Strong steel reinforced precast 4500 psi concrete with fiber mesh
- Partial bury sheltered unit/easy to install
- Easy entrance access (steps not ladder)
- Outside measurements: 5'4" wide, 11'10" long 6'8" tall

### Above Ground Storm Shelters

Sizes: 6'x10'x7'; 6'x6'x7' / wheelchair accessible  
Anchors Kits available

## Tankersley Concrete Co., Inc.

1630 Rock Crusher Rd., Lewisburg, TN 37091 • 931-359-3112 • Owners: Bubba & Lynn Tankersley • In Business Since 1946

Check out our website @ [www.tankersleyconcrete.com](http://www.tankersleyconcrete.com)

AFFORDABLE DECALS AND SAFETY DECALS. Prompt. Knowledgeable Reliable Service. [www.QuipCal.com](http://www.QuipCal.com); Call, (215) 536-5339; email: [info@custom-servicescompany.com](mailto:info@custom-servicescompany.com).

**MILLER FARMS**  
Angus Beef from the farm. 100% natural, non-GMO, hormone and antibiotic-free. Whole, halves, or by the pound. Slaughtered and packaged. (931) 593-3702; (931) 593-2429.

USA, 5' TO 10' PULL TYPE BOX BLADES REGULAR DUTY, HAVE A MANUAL TILT AND COME WITH HYDRAULIC LIFT. HEAVY DUTY, COME WITH HYDRAULIC TILT AND LIFT. 5' \$900; 6' \$1000; 7' \$1700; 8' \$1950; 10' \$2500; 8' HD \$3400; 10' HD \$3800. CALL FARM SERVICE SOLUTIONS IN LEOMA, TN. [FARMSERVICESOLUTIONS.COM](http://FARMSERVICESOLUTIONS.COM); (931) 242-7675

USA, 3 POINT BOX BLADE AND LAND PLANES NEW IN STOCK. CALL CHRIS AT FARM SERVICE SOLUTIONS IN LEOMA, TN. BOX BLADES 4' \$695; 5' \$765; 6' \$895; 6' HD \$1,000; 7' HD \$1,085; 8' HD \$1,165. LAND PLANES 6' \$1,400; 7' \$1,500. CALL FARM SERVICE SOLUTIONS IN LEOMA, TN. [FARMSERVICESOLUTIONS.COM](http://FARMSERVICESOLUTIONS.COM); (931) 242-7675

### Other

BESTWAY, FIELD PRO IV 2009 BESTWAY FIELD PRO IV SPRAYER VERY GOOD CONDITION, FIELD READY \$15,500. 1000 GALLON TANK, 15 GALLON INDUCTION TANK AND 50 GALLON RINSE TANK. 60 FOOT BOOMS, RAVEN 440 CONTROLLER. SEVERAL PARTS. (931) 580-8889 [JOHNSONFARMS2121@GMAIL.COM](mailto:JOHNSONFARMS2121@GMAIL.COM)

### Tires

GOODYEAR, 12.5L-15 TIRES AND RIMS FOR SALE, 8 ply, 6 bolt, new take-offs, have several, \$250 each, Buhler, KS. (620) 727-5009

STUD WHEEL, 8 16" 8 stud wheel for Ford truck, \$20; 16.5" 8 stud wheel w/mounted tire for Ford truck, \$35. (931) 732-4401.

### Attachments

#### Blades/Box Scraper

To Place A Classified Call  
800-247-7318

## Well Built™ to Handle Your Hay

Trust Your Most Important Forage Crop to Stoltzfus Mfg.

### Well Built™ Round Bale Carriers



### Heavy Duty

- Designed to load & unload with a 3 pt. hitch bale spear
- Reinforced cross members
- 9 models with 6, 8, or 10 bale capacities
- Heavy duty construction

Dealer Inquiries Invited!  
Several Locations Available!

### Well Built - Feeders:

- Built tough for long life!
- Available in a variety of lengths
- Adjustable slant bar or self-locking head locks
- Ideal for cattle in either feedlots or meadows



Gates • Slant Bar Sections  
Head Locks • Gutter Grates

For a free brochure or more information, call:  
610-273-3603

Dealers located throughout TN & KY  
Call for the one nearest you!  
F.O.B. Cub Run, KY

## Stoltzfus MFG

Cub Run, KY

DEALER INQUIRIES INVITED • CUSTOM WAGONS A SPECIALTY

**PRODUCE AUCTION**  
Every Monday • Wednesday • Friday  
Sale Starts April - October at 11:00 A.M.  
Call for additional info

931-829-1114 • 469 S. Brace Rd., Ethridge, TN 38456  
[www.PlowboyProduceAuctions.com](http://www.PlowboyProduceAuctions.com)



# Great Deals On Farm Equipment!

## Tractors

- Ford 3930, very clean .....\$12,250
- New Holland 3010S, with loader .....\$15,750
- IH 464, gas, runs good .....\$3,500
- IH 5488, CHA, 2WD .....\$11,900
- IH 1456.....\$14,500
- Ford 8n.....\$2,500

## Other Equipment

- Case IH RS551 .....\$6,500
- Case IH 1063, 6RN, nice.....\$8,500
- Case IH 1083 Corn Head, 8 row .....\$5,000
- Case IH 1440, 4WD .....\$4,995
- Case IH 2020, 20', nice .....\$7,500
- Case IH 3020, 20' .....\$13,500
- Case IH 3020, 25' .....\$16,900
- Case IH 3162, 2014, 30' draper .....\$38,500
- Case IH 5400 Drill, soybean special, 15'.....\$10,000
- Case IH DC103, one season .....\$23,500
- Header Wagons, Grain Carts & Seed Wagons..... In Stock
- JD Disc, 23' .....\$1,595
- Kubota Zero Turn Mowers..... In Stock
- Used Rakes & Tedders In Stock..... Call
- Bac Blade.....\$500
- Vermeer 664, 4000 bales .....\$18,500
- Vermeer WR20 .....\$1,850
- Case RB455A, one owner .....\$12,500
- Case IH DC102.....\$10,950
- NH BR750.....\$9,500

[www.brothersimplement.com](http://www.brothersimplement.com)



Hwy. 41 - Hillsboro, TN  
(931) 596-2749



## Building Products

CUSTOM TARPS FOR hoop buildings, available in 11 different colors. We also offer hay tarps and pond liners. Cover your investment, (859) 375-5268

WOODMASTER OUTDOOR WATER FURNACES, , heat your home or shop, EPA approved clean burning, parts in stock, financing available. In TN call Harold, (931)787-3547; in KY call Dave, (859)265-0793. (931) 787-3547



**Rex A. Bicknell**  
REALTOR/AUCTIONEER

# Call Me For All Your Auction Needs!

*"Let me put my 40 years experience to work for you."*

**Cell: 931-580-0116**

1535 W Northfield Blvd. Suite 17  
Murfreesboro, TN 37129  
Office: 615-896-4600  
rex.bicknell@gmail.com



**PARKS AUCTION**  
CO. LLC TN FIRM 3984  
AL FIRM 82

Serving Southern Middle Tennessee & Northern Alabama

**[parksauction.com](http://parksauction.com)**

## Sprayers

AG SPRAY EQUIPMENT 300-gallon boomless sprayer - shed kept and cleaned after each use, \$1,800. (615) 533-8168 samfarms4875@gmail.com

2016, AG SPRAY EQUIPMENT 300-gallon boomless sprayer, shed kept and cleaned after each use, \$3,000. (615) 533-8168 samfarms4875@gmail.com

AG SPRAY EQUIPMENT Sprayer, 3 pt hitch, 20' booms, 200 gallon tank, \$400. (615) 904-4306

AG SPRAY EQUIPMENT 3-point and pull-type sprayers come with boomless nozzle. 3 point sprayers all have hand wands. 3 point 55 gal \$1,095; 110 gal 1,895; 150 gal \$2,095; 200 gal \$2,295; 300 gal \$3,200. Pull type with used tires 300 gal \$3,950; 500 gal \$4,300. Booms available. Call Farm Service Solutions in Leoma, TN. [farmerservicesolutions.com](http://farmerservicesolutions.com); (931) 242-7675

CUSTOM MADE PASTURE SPRAYER for sale, 200 gallon, cluster sprayer, boomless, on trailer, works great. (931) 637-7795

## Components

### Other

FARMALL SUPER C hood and PTO belt pulley, \$150/both. (256) 577-5051

## Wheel (Rim)

FOR SALE, 16" and 16.5" eight hole wheels, \$20. (931) 732-4401

## Construction Equipment

### Grader

ADAMS HORSE DRAWN grader, 7' blade, \$1,450; Adams horse drawn large road grader, \$2,000; two horse wooden wheel wagon, \$1,475. Columbia, TN (931) 446-1675

### Other

DECALS AFFORDABLE DECALS AND SAFETY DECALS. Prompt. Knowledgeable Reliable Service. [www.QuipCal.com](http://www.QuipCal.com); Call, (215)536-5339; email:info@custom-servicescompany.com.

**To Place A Classified Call 800-247-7318**

**To Place A Classified Call 800-247-7318**





# FEBRUARY SPECIALS!



**40' x 60' x 14'6"**  
Building Package - \$15,998

Roof Only - \$8,671

\*Other sizes and styles to choose from

**30' x 36' x 10'6"**  
Building Package - \$8,501

Roof Only \$4,362

**36' x 48' x 12'6"**  
Building Package - \$12,075

Roof Only - \$6,528

Metal Roofing For Your Home & Farm



257 Anthony Lane • Shelbyville, TN

931-680-0001 • (888) 992-0005

Open Monday - Friday - [www.discountmetalroofing.com](http://www.discountmetalroofing.com)

## Includes:

- 20-year Galvalume Roof,
- 40-year Painted Walls
- 1 - Sliding door
- 1 - Walkdoor
- 6x6 .60 CCA Posts
- 2x6 YP Purlins and Band Boards
- Trim and Fasteners

Pricing subject to change without notice. All prices plus tax.

## Fencing and Cattle Equipment

HAY FEEDER PANELS, 2"x3" construction and built to last a lifetime, 16ga, 4' up to 16' long. FandPLivestock.com. TAEP APPROVED. (615) 653-8913

CORRAL PANELS, 16 GAUGE, 6' tall, good inventory, 8' up to 16' long. FandPLivestock.com. TAEP APPROVED. (615) 653-8913

BULL GATES-16 GAUGE, 51" and 63" tall, 4'-20' long, good inventory. FandPLivestock.com. TAEP APPROVED (615) 653-8913

BOW GATES 16 GAUGE, 6' tall, good inventory, 4' up to 12' combo bow gates-example 12' with 4' wt. FandPLivestock.com. TAEP APPROVED. (615) 653-8913

LIVESTOCK FENCE WIRE for sale, Stay-Tuff brand, several sizes available, some with factory coated black finish. (931) 675-3260

FENCE POSTS FOR SALE, pressure treated, several sizes available, round and square, thousands in stock. (931) 675-3260

PRESSURE TREATED PINE FENCE BOARDS, for sale, 1x6x14' and 1x6x16'; 2x6x16'. (931) 675-3260

MIRAFOUNT LIVESTOCK WATERERS, for sale. (931) 675-3260

LIVESTOCK FENCE WIRE for sale, Stay-Tuff brand, several sizes available, some with factory coated black finish. (931) 675-3260

CATTLE SWEEP SYSTEMS HEAVY DUTY GALVANIZED 8 BAR 6' TALL. 90 DEGREE WITH 10' OF ALLEY STARTS AT \$1,480.180 DEGREE W/20' OF ALLEY STARTS AT \$2,475. WE CAN ADD AS NEEDED TO CUSTOMIZE YOUR SYSTEM. CALL FARM SERVICE SOLUTIONS IN LEOMA, TN, FARMSEVICESOLUTIONS.COM; (931) 242-7675

SQUEEZE CHUTES TARTER SERIES 3 FOR \$2,800 AND SERIES 6 FOR \$4,500 WITH EITHER AUTOMATIC OR MANUAL HEAD GATES. CALL FARM SERVICE SOLUTIONS IN LEOMA, TN. FARMSEVICESOLUTIONS.COM; (931) 242-7675

## Harvesters Combines

CASE IH 1420 with headers, shedded, field ready, \$12,500; John Deere 530 round baler, \$3,500. (731) 968-5343

CASE AND GLEANER COMBINES, one Case 1688 axial-flow, 4WD; two Gleaners, 2WD. Must sell. (256) 200-4288

## Dave's Sawmill Sales

Come See Us At  
The National Farm Machinery Show  
in Louisville, KY • February 15-18  
West Hall Booth 1123 - 1125

Ask Us About Our New Patriot Mill



**HUD-SON SAWMILLS,  
FOR THE WORK YOU DO.**

We manufacture a number of sawmills, starting with our Sawyer Model at just

**\$2,595**

**UNIFOREST  
WINCHES**

Starting at  
**\$3,995**



For more information or a free brochure, call:

In Kentucky Call Dave  
in Lawrenceburg  
859-265-0793

In Tennessee Call Harold  
in Crossville  
931-787-3547

**GIVE US A CALL  
FOR ALL FOR AUCTION NEEDS**  
Now booking for fall auctions



**REDLINE AUCTION SERVICE**

2631 LeGrande Hwy.  
Horse Cave, KY 42149  
(270) 392-0285  
redforddewayne@gmail.com

Dewayne Redford (270) 392-0285  
Brandon Croghan (270) 537-4460  
Brady Core (859) 256-1186  
Garrett Judd (270) 670-7787

# APC Industries Co.

**Agricultural Parts Manufacturer and Distributor**  
**Ag Bearings & Units - Pillow Blocks**  
**Stainless Steel Bearings & Inserts - Custom Orders**  
**Farmer Truck & Tensioners - Trunnion Assemblies**  
**Tecno Poultry Hex Shaft Bearings**



APC produces all varieties of nut sweeper bearings **IN STOCK** now including ARU-WIR68912HD which replaces Flory and Weiss McNair style bearings



13660 Redwood Court, Chino, CA - **909-545-5054**  
 tony@apcbearings.com • www.apcbearings.com

## Harvesting Equipment

INTERNATIONAL UPRIGHT CORN SHELLER, \$300. Columbia, TN. (931) 446-1675

## Hay and Forage Equipment

HESSTON STACK HAND; New Holland bar type rake; assortment of metal rollers and troughs; much more. (629) 395-4558

## Rotary Mowers

BUSH HOG 3 POINT CUTTERS HEAVY 11 GAUGE DECK, 90 HP GEARBOXES WITH SLIP CLUTCH. 6' \$1600; 7' \$1900; 10' \$3750. CALL FARM SERVICE SOLUTIONS IN LEOMA, TN. FARMSERVICESOLUTIONS.COM; (931) 242-7675



Getting a **NEW BUILDING?**  
 We have the **DOORS!**

Sales - Service - Installation  
 Residential, Commercial, Industrial

## Bill Smith Overhead Door, Inc.

26685 5th St., P.O. Box 8 • Ardmore, AL 35739

Donnie Martin (256) 423-6938 Bill Smith II

hm. (256) 423-4490 Fax: (256) 423-2897 hm. (931) 427-6456

## Round Balers

INTERNATIONAL HARVESTER HORSE DRAWN hay baler, \$600. Columbia, TN. (931) 446-1675

HESSTON 945 hay or silage twine baler. (931) 619-4301

JOHN DEERE 566 WINTER SPECIAL! round baler, net or twine, new \$1,000 worth of chains and bearings, \$8,000. (256) 483-3487

HAY FOR SALE, 4x5 rolls, fertilized and baled with no rain, \$45 per roll. (256) 509-7417

## Odds and Ends

BICYCLE EXERCISE MACHINE for sale, \$50. Wildersville, TN. (731) 968-5343

R A C K - E M - U P FLAME ROASTED DEER FEED, roasted whole grains, aroma that deer love, grain will not sprout, molds are greatly reduced. rackemupdeerfeed.com. (605) 351-9084

## Square Balers

NEW HOLLAND 565 SQUARE BALER, excellent condition, good paint, ready for field, \$6,500. (270) 206-0628

TWO INDUSTRIAL FIRE extinguishers for sale, \$375 each. Columbia, TN area. (931) 446-1675

FOR SALE 25 GALLON cast iron pot, \$150; 15 gallon cast iron pot, \$125. (931) 732-4401

## Hay and Grain For Sale

HAY FOR SALE, 40 rolls of hay, \$50 per roll, Fayetteville, TN. (931)433-6891.

JD DISC HARROW BEARINGS, with 2 piece plastic sleeve 2 inch. Call Tony at APC Bearings. (909) 545-5054 tony@apcbearings.com

KENTUCKY 31 FESCUE SEED for sale, with Orchard grass. Middle Tennessee. (931) 244-0063

WOODMASTER OUTDOOR WATER FURNACES, heat your home or shop, EPA approved clean burning, parts in stock, financing available. In TN call Harold, (931)787-3547; in KY call Dave, (859)265-0793, (859) 265-0793

**4,000 BALES OF ORCHARD GRASS HAY, 12-14% protein, \$7 per bale. Hohenwald, TN area. (931)628-0529.**

To Place A Classified Call  
**800-247-7318**

## Great Deals on Gently Used Equipment!



**New Holland T4040** 4WD, 2 sets remotes, 72 hp, shuttle shift **\$23,900**



**Kubota 5140** 4x4, remotes, 3700 hrs. **\$26,900**



**Case C60** 2WD, w/loader 50 HP, remotes **\$14,900**

## D & D Equipment

Heavy Equipment & Farm Tractor Sales

1635 Hwy. 50 East, Centerville, TN 37033 - **931-729-2320**

Owners: Jerry Davidson & Steve Davidson

See our pics on Nashville Craigslist!



# CUSTOM STEEL BUILDINGS

LIFETIME METAL ROOFING, SHAKE SIDING, VINYL SIDING, WINDOWS, GARAGE DOORS



Clark's Home Solutions, LLC

Financing available! Check us out on Facebook!

Over 30+ Colors Available

**Clark's Home Solutions, LLC**

792 David Crockett Hwy. | Winchester, TN 37398



Call today!  
**(931)962-8859**

WANT TO BUY  
FJ40 Toyota, in mod-  
el years from 1975 to  
1980. (931) 607-9737

GIFFORD BROTH-  
ERS CONCRETE.  
Nothing too big or  
small. Free estimates.  
50 years experi-  
ence. Dale Gifford,  
(931)703-0925.

AFFORDABLE DE-  
CAL AND SAFETY  
DECALS Prompt.  
Knowledgeable Re-  
liable Service. www.  
QuipCal.com; Call,  
(215)536-5339;  
email:info@custom-  
servicescompany.  
com.

GIFFORD BROTH-  
ERS CONCRETE.  
Nothing too big or  
small. Free estimates.  
50 years experi-  
ence. Dale Gifford,  
(931)703-0925

To Place A  
Classified Call  
800-247-7318

## Other Equipment

SNAP-ON YA205  
Snapon, YA205 mig  
welder, good condi-  
tion, \$800. (256) 352-  
4553 (256) 352-4553

JOHN DEERE 7000  
4-row planter, no-till,  
38" corn and bean  
meters, insecticide  
box with dry fertiliz-  
er boxes, \$3,500. (615)  
904-4306

GIFFORD BROTH-  
ERS CONCRETE.  
Nothing too big or  
small. Free estimates.  
50 years experi-  
ence. Dale Gifford,  
(931)703-0925

**NORWOOD PAL-  
LET FORKS \$750  
AND UP. SKID  
STEER, JOHN  
DEERE 100-500  
SERIES LOADER,  
AND GLOBAL  
EURO QUICK AT-  
TACH AVAILABLE.  
FARMSERVICES-  
OLUTIONS.COM.  
LEOMA, TN. CALL,  
(931) 242-7675**

## Planting Equipment

### Other

CLIPPER CLIPPER  
SEED SCREENS for  
sale, approximately  
100 screens. Delivery  
available. (931) 808-  
8095

## Planters

FORD 2-BOTTOM  
PLOW FOR SALE,  
3-pt, has coulter,  
Buhler, KS. (620) 727-  
5009

JOHN DEERE 7000  
4-row planter, no-till,  
38" corn and bean  
meters, insecticide  
box with dry fertiliz-  
er boxes, \$3,500. (615)  
904-4306

## Recreational Vehicles

CAMPER SHELL for  
sale, fits L.W.B. truck,  
\$250 or best offer.  
Mulberry, TN area.  
(256)508-3320.

To Place A  
Classified Call  
800-247-7318



(2) Kubota L3130, 4WD  
\$8,750 ea.



Case IH JX75, 4WD,  
loader, CHA - \$28,500



Kubota M110, CHA,  
4WD, 4400 hrs. - \$28,000

**Case IH**  
430.....\$2,750  
C70, diesel, ps.....\$8,750  
550E Dozer, long track, 6 way blade...\$24,000

**Ford**  
4610.....\$8,500  
1920, 4WD, loader.....\$12,500

**John Deere**  
5410, C&A, 1800 hrs., 4WD, loader....\$28,500  
6215, 4WD, loader.....\$32,500  
6400, 7800 hrs., CHA, 2WD.....\$22,500  
450, late model.....Coming In

**International**  
1086, 2WD, Cab.....\$6,000  
444, gas, ps.....\$2,800  
Cub, w/ cultivators.....\$1,500  
Super A, w/ cultivators.....Call

**Kubota**  
BX2200, 4WD, belly mower, 478 hrs...\$8,500  
4030, loader, new engine, 2WD.....\$12,500

**Massey Ferguson**  
1010, diesel.....\$2,500  
1085, 81 hp.....\$8,500  
231, loader.....\$10,500  
231, no loader.....\$5,750  
150.....\$3,750

**Misc.**  
2003 MacTruck, conv. cab.....\$28,000  
Asphalt Packer, HD, JD engine.....\$9,000  
Belarus 250AS.....\$2,500  
Bobcat 743.....\$12,500  
Bobcat 743 Skid Steer.....\$12,500  
Bog Discs, 3 Bogg.....Call Cell  
Dodge 1-ton, 2007, auto, flatbed.....Call  
Ford Dump Truck, 1975, 2 ton.....\$4,500  
Gehl 6635 SXT, turbo, new rubber,  
metal tracks.....\$22,500  
Gravity Wagons,  
4 to choose.....starting @ \$850  
Honda 300, Four Trax.....\$3,500  
Honda 300.....\$3,250  
NH Feed Mill.....\$6,250  
Rhino 95 Backhoe, 3 pt,  
self contained.....\$7,500  
Severall Wheel Discs.....Call Cell  
Severall Square Hay Balers.....Call  
Super A Farmall, w/ cultivators.....\$2,500  
Tye No-Till Drill.....\$4,850  
Woods MD315 Cutter.....\$6,250  
Polaris 4 wheeler, 4WD.....\$3,500  
Gehl 6640.....\$21,500  
JD 320 Skid Steer, 66 hp.....\$22,500  
(2) Manure Spreaders.....Call

Vermeer Hay Equipment in Stock

Culvert Pipe, 12" & up, Plastic & Metal • Head Gates • Corral Panels



## Lynch Equipment Sales

Westover Drive, Columbia, TN  
931-381-1839 • Cell: 931-619-1338



**JEFF MARTIN AUCTIONEERS**  
AN AMERICAN AUCTION COMPANY  
JeffMartinAuctioneers.com  
#ExperienceTheDifference



United Producers, Inc.

LIVESTOCK MARKETING CREDIT

RISK MANAGEMENT

United Producers Inc

www.uproducers.com

Fayetteville, Tenn. (931) 433-5256 or (931) 433-4962

Weekly Auction Every Tuesday at 1 p.m.

Graded Feeder Cattle Every Tuesday, Weaned/Vac Feeder Sale - Featured Weekly Tuesdays

Columbia, Tenn. (931) 223-8323

Weekly Auction Every Wednesday at Noon

Weaned/Vac Feeder Sale - Featured Wednesdays

Columbia Sheep and Goat Sale - 2nd and 4th Monday at 1 p.m. \*holiday exceptions, visit website for full schedule

KY-TN LIVESTOCK MARKET

Hwy. 79N • Guthrie, KY Thursday Sale 2:00 P.M.

I-65 Exit 112 • Cross Plains, TN Monday Sale 1:30 P.M.

Check kytnlivestock.com for Special Sales

OFFICE: 270-483-2504 Tom Barnett • 931-624-7376

Arab Livestock Market, Inc.

Hwy. 231 South, Arab, AL



Cattle Auction Every Tuesday at 10:00 A.M. 256-586-4212

Video Auctions www.arablivestock.com

Robbie Gibbs: 256-490-2583 • 205-589-6236

Northwest Alabama Livestock Auction

Russellville, AL • nwalivestock.com

Stockholder owned & operated since 1976

Trucking, Feed & Portable Catch Pens Available

Sale each Monday at 10:00 A.M. • Hogs • Goats • Sheep • Cattle

Upcoming Special Feeder Calf Sales - 2023 March 6th, June 5th, August 7th & November 6th

Upcoming Goat Sales February 11th, May 13th, August 12th & November 11th All sales begin at 11:00 A.M.

Rickie Behel Manager

256-740-9457 • Barn: 256-332-3323



Sand Mountain Stockyard, LLC

Corner of Hwy's 68 & 168, Kilpatrick, AL 256-561-3434

Sale at 11:30 A.M. Every Wednesday & Saturday

Full Service Facility

Owners:

Jon Hamilton • 256-506-9947 Eric Wilburn • 256-506-2525



Nash Livestock

"Your direct slaughter cow & bull outlet"

Farm to packinghouse, we work to bring you the most for your cull cows and bulls.

We pick up in TN & KY

Steve Nash (800) 599-2784 (931) 261-3525







# Mid-South Regional Livestock Center

Hwy. 41-A, Unionville, TN 37180 • 931-294-5101  
Tim Riley (615)714-8090 • Carly Garner (931)698-7510



Sale every Monday • 11:00 A.M.  
Begin receiving cattle on Sunday 1:00-6:00 P.M. & on Monday from 7:00 A.M.

[www.midsouthlivestock.com](http://www.midsouthlivestock.com)

## Hardin County Stockyard, Inc.

3350 Hwy 226, Savannah, TN 38372

**731-925-3287**

Goats & Hogs Sale – Wednesday 11:30 A.M.

Cattle Sale – Wednesday 1:00 P.M.

Begin receiving livestock on Tuesday 8:00 A.M.-DARK

Full-Service Stockyard Offering:

Trucking, Feed, Appraisals, & Video Sales

Order buying service through Harry Floyd Livestock, Inc.

Harry Floyd (home): 931-722-9200

Harry Floyd (cell): 931-224-2247

Rob Floyd: (cell) 931-224-2248 • Donnie Welch: 731-607-9196

Main Office: 931-722-3100 • [www.floydandsonslivestock.com](http://www.floydandsonslivestock.com)



## Tennessee Valley Livestock

620 S. Poplar, Florence, AL 35630

**256-766-0281**

Cattle Sale • Monday 12:00 NOON

Begin receiving cattle on Sunday 10:00 A.M. - dark

Full-Service Stockyard Offering:

Trucking, Feed, Appraisals, & Video Sales

Order buying service through Harry Floyd Livestock, Inc.

Harry Floyd (home): 931-722-9200

Harry Floyd (cell): 931-224-2247

Rob Floyd: (cell) 931-224-2248 • Jim Martin: 256-366-3519

Main Office: 931-722-3100 • [www.floydandsonslivestock.com](http://www.floydandsonslivestock.com)

## 2 Locations To Better Serve You!

### Valley Stockyard

**13130 AL Hwy. 157, Moulton, AL 35650**

Regular Sale Every Wednesday • 11:00 A.M.

Trucking Available • Country Buying & Bluegrass Video Sales

“Serving our regions cattle producers for 66 years & many more!”

More info: 256-974-5900

Benji Mccafferty 256-740-9648 • Billy Wallace: 256-303-7097

### Pulaski Stockyard

“Striving To Be Your Full Service Stockyard”

607 West Shoal St., Pulaski, TN 37478

Regular Sale Every Tuesday • 12:30 P.M.

Special Cow Sale First Friday of Every Month • 6:00 P.M.

Special Goat Sale Every 3rd Friday Each Month • 6:00 P.M.

Office 931-424-8389 • [www.pulaskistockyard.com](http://www.pulaskistockyard.com)

Benji Mccafferty 256-740-9648 • Billy Wallace (Cell) 256-303-7097

Derek Black 931-638-5392

## Advertise Here!



**Horse Sale Every 3<sup>rd</sup> Saturday & Also  
On 5<sup>th</sup> Saturday Of A 5 Saturday Month**

Call 601.765.3530 or 601.733.2231

for any information about the sale.

Don't miss this one! It will be a good one!

Online Bidding through

Horse Auctions USA!

10598 Hwy 35N Mize, MS 39116

[bid.horseauctionsusa.com](http://bid.horseauctionsusa.com)

**BACK UNDER THE OWNERSHIP OF LARRY & DIANE MEADOWS!**



**\$6,500**  
International 574 Tractor - Koyker 210 loader, spinout wheels



**\$7,500**  
Int. 674 w/Loader, diesel, runs good



**\$7,500**  
JD 350 B, crawler, loader, w/winch, good UC, needs battery



**\$9,500**  
Kubota L3300 - 4WD, w/loader



**\$4,500**  
JD F1145 Front Mount, 60" commercial deck, 28 HP Diesel, 4x4, only 882 hours, needs tires

**Used Equipment Arriving Weekly**

20' Holeclaw HD Boat Trailer, new tires & wheels.....	\$350	Kubota 6' Finish Mower 3pt.....	\$1,000
JD 208, w/belly mower, gas, "Classic".....	\$750	Cannon Box Blade, 6', with ripper complete system.....	\$1,000
JD 450 C Dozer - 6 way blade, ROPS, good UC.....	\$13,000	40x18' Carport 3 Sides.....	\$2,500
Front Bale Spear.....	\$250	CAT D3 Dozer, 6 way blade, Good UC, had a motor fire, needs some hoses & wiring.....	\$9,500
Plows - 1, 2, 3, 4 Bottoms.....	Call, \$300 down	International 424 Tractor, gas, spin-out wheels.....	\$2,200
Finish Mowers, 4'-5'.....	\$500	Ford 4000, needs motor build.....	\$3,000
Cultivators/Cub Complete.....	\$400	3pt. Seeder, cone shaped, needs PTO.....	\$200
Used Backhoe Buckets.....	Call	Truckman 5000 lb Forklift, gas, 16' reach, 42" forks.....	\$2,000
IH Belly Mowers 5'.....	\$400	Ford 2600, new seat, P.S., gas, new paint.....	\$3,500
JD Planter, 3 pt., 2 row.....	\$300	3 pt. 6' Blade.....	\$200
3 pt. Spring Tooth Cultivator, 2 row.....	\$250	3 pt. 6' Finish Mower, 4 wheel.....	\$600
3 pt. 1 Row Cultivator.....	\$125		
Massey Ferguson 135 Tractor.....	\$3,750		
2 Bottom Plow International.....	\$300		



**\$13,500**  
Kubota L5030 Tractor - 4x4 HST, Kubota LA854 loader, bucket



**\$3,500**  
Yanmar YM2000 Tractor - Yanmar 5' Tiller & 3 pt. Layoff Plow



**\$5,500**  
Ford 3600 Tractor - diesel power steering new tack, new seat

Call Rex 931-729-3320 1151 Hwy 48 S, Centerville, TN

**Services**

ALL TYPES CORRUGATED METAL, PLASTIC CULVERTS ALL TYPES OF METAL AND PLASTIC CULVERTS 8" THRU 48" IN STOCK, ALL OTHERS CAN BE ORDERED. QUANTITY DISCOUNTS, DELIVERY AVAILABLE IN OUR AREA. (931) 684-4847 CLANTONCO@BELLSOUTH.NET

ROBINSON ENVIRONMENTAL LAND CLEARING forestry mulching, boom mower bush-hogging, agricultural stump grinding and skid loader work. Call David, (615) 631-0638

To Place A Classified Call 800-247-7318

TRACTOR AND FARM EQUIPMENT REPAIRS, Engine and transmission rebuilding. All types of repairs. Steel and aluminum welding. N & A Equipment Services, 301 Lack Road, Elkton, KY, 42220. (270) 348-5187

WOODMASTER OUTDOOR WATER FURNACES, heat your home or shop, EPA approved clean burning,

**RACK-EM-UP**  
FLAME ROASTED FEEDS

- Roasted Whole Grains
- Aroma that deer love
- Grain will not sprout
- Molds are greatly reduced

229-319-6343  
rackemupdeerfeed.com

Thinking of having an auction?  
**WE CAN HELP!**

Real Estate of all Types • Assets • Estates

8719-A AL Hwy. 53, Toney, AL 35773  
**256-536-7497**

**HORTON**  
AUCTION & REAL ESTATE  
Sales That Satisfy Since '65

Online Bidding Available • [www.hortonauctions.com](http://www.hortonauctions.com)

parts in stock, financing available. In TN call Harold, (931)787-3547; in KY call Dave, (859)265-0793. (859) 265-0793

JOHN DEERE 1250 4 bottom 16" plow, \$800. (615) 904-4306

**Disks**

JOHN DEERE AW 12' disk, \$600. (615) 904-4306

**Timber and Forestry**

JOURNEY LOGGING, LLC, buying standing timber: cedar and pine, within 100 miles radius of Pulaski, TN. 931-638-6441; jjourneylogging@gmail.com. (931) 309-8965 jjourneylogging@gmail.com

**Other**

SMART-TILL CHEROKEE TILLERS. 50" AND 59" CHAIN DRIVE REGULAR DUTY. 71" GEAR DRIVE MEDIUM DUTY. 81" GEAR DRIVE HEAVY DUTY. 50" \$1600; 59" \$1700; 71" \$2200; 81" \$2700. PRICE IS IN CRATE. ASSEMBLY ADD \$50. CALL FARM SERVICE SOLUTIONS IN LEOMA, TN. FARMSERVICESOLUTIONS.COM; (931) 242-7675

JOHN DEERE 1250 4 bottom 16" plow, \$800. (615) 904-4306

**Tractors**

FARMALL C Tractor, rebuilt motor, transmission gone through, \$2,000. (731) 358-1679

MASSEY FERGUSON 20C, loader, new rubber, looks excellent, \$9,800. Call between 8a.m.-5p.m., (931) 939-4999

2020, MAHINDRA 4045, 234 hours, runs and looks like new, \$23,500. Call between 8a.m.-5p.m., (931) 939-4999

**Plows and Rippers**

JOHN DEERE 1250 4 bottom 16" plow, \$800. (615) 904-4306

JOHN DEERE 1025R 4WD, loader, 5' belly mower, \$14,500. Call between 8a.m.-5p.m., (931) 939-4999

**Row Crop Cultivators**

JOHN DEERE 4 row cultivator, \$800. (615) 904-4306

2015, JOHN DEERE 5055E One owner, shed kept and regularly serviced, fluid in rear tires, \$17,500. (615) 533-8168 samfarms4875@gmail.com



1984, JOHN DEERE 1450 52hp, diesel, dual remotes, canopy, good sound clean machine, 6,500 hours, 1984 model, \$6,000 or best offer. Leave message and we will return your call. (931) 593-3007

1972, MASSEY FER-GUSON 135 diesel, starts good, runs good, no mechanical problems, good sheet metal and paint, 80% rubber. Greenhill, \$4,500. (256) 762-0404

CUB FARMALL TRACTORS, two tractors completely restored to showroom finish, one w/belly mower, cost over \$8,000 to restore, take \$5,000/both. Calvert City, KY. (270) 519-1273

**Trailers**

CUSTOM MADE TRAILERS, utility, livestock, enclosed, gooseneck flatbed, bumper pull car haulers. If we don't have it, we'll be glad to build it! [www.custombuilt-trailersms.com](http://www.custombuilt-trailersms.com) (601) 329-9222

GOOSENECK 20' GOOSENECK EQUIPMENT TRAILER with Dove Tail, good condition, needs a tire, \$4,000. (256) 352-4553

STEEL SIDEBOARDS and gates for sale, fits 12' flatbed, \$300 or best offer. Mulberry, TN area (256)508-3320..

**Accessories**

CROSSOVER TOOLBOX for sale, fits Ford Ranger or similar, like new, \$250; also, ladder rack for Ford Ranger long base, \$150. (931) 536-5552



**THE ULTIMATE FARM TOOL**

**KUBOTA TRACTORS ARE RATED #1 FOR DURABILITY**



**M SERIES TRACTORS**

**LIMITED-TIME FINANCING AVAILABLE!**

**H&R AGRI-POWER**  
THE POWER TO GET YOU **MORE!**

11 HIGHLAND RIM ROAD  
FAYETTEVILLE, TN 37334  
**931-433-3516**

[WWW.HRAGRIPOWER.COM](http://WWW.HRAGRIPOWER.COM)



TWO STORAGE BOXES all aluminum, 4'x2' wide 30" tall, with stainless steel door latches, \$400 firm. (931) 242-4821

ALL ALUMINUM FLAT BED truck body, 8'x10' no g/n, with 36" under boxes, \$2,500. (931) 242-4821

**Heavy Duty (GVW over 26,000 lbs.)**

2019 RAM 3500 AISIN TRANSMISSION \$59,000, one owner, 2019 Ram 3500 Tradesman Crew Cab 4x4 Long Box, 3.73

Axle Ratio, Transmission: Aisin 6-Speed Automatic Transmission, Engine: 6.7L I6 Cummins HO Turbo Diesel Engine, Miles: 85,825. (256) 472-4310

1964 DODGE 1/2 TON PICKUP for sale, step-side bed, six cylinder, not running. (931) 446-1675

**Light Duty (GVW under 14,000 lbs.)**

1987 DODGE RAM 50 4x4, automatic transmission, good body, needs minor work, \$1,400. (706) 247-6240

**Medium Duty (GVW 14,000-26,000 lbs.)**

JAPANESE 4X4 MINI TRUCKS, great for farm use, hunting, recreation, available with A/C, PS, 5 speed and automatic, some with dump beds. Anderson, AL. Call for prices, (256)740-7287. [www.berryhillminitrucks.com](http://www.berryhillminitrucks.com) (256) 740-7287

**To Place A Classified Call 800-247-7318**

**Want to Buy**

WANT TO LEASE 70+ ACRES I'm looking for pasture to lease near Harvest AL. I'd like to live on the land (I have a camper.) I'm wanting to practice regenerative ag and land healing practices. Existing exterior fence would be nice. (256) 520-4727

WANTED, IRON WHEEL TRACTORS; whiskey barrels; 1940's to 1950's pickup truck, any condition. (931) 446-1675



## Parker Farms Cattle and Equipment Co.

8400 Manchester Pike, Murfreesboro, TN  
 Kyle Parker | 615-542-6157



### Registered Angus Bull For Sale Starting At \$3,000



**180 Degree Complete Sweep System with 7 Bow Gates \$7,400**



**Hay Haulers  
 11 Roll \$4,400  
 8 Roll \$4,000**



**Disc Mower Caddies Offset and In-line \$4,600**



**Feed Bin on Wheels  
 2 Ton \$3,400  
 3 Ton Tandem Axle \$3,950  
 4 Ton Tandem Axle \$4,100**



**Pasture Sprayers  
 150 gal \$3,600 • 300 gal \$4,100  
 500 gal \$4,400  
 500 gal Tandem Axle \$5,200  
 1000 gal Tandem Axle \$9,500  
 28' Boom \$1,200  
 Hand Wand \$150**



**Creep Feeders 12 gauge bottom  
 14 gauge sides  
 2 Ton \$4,000  
 3 Ton \$4,400  
 6 Ton Tandem Axle \$8,600**

### Like us on FB at Parker Farms Cattle and Equipment Company

Bull Gates, Bow Gates, Pasture Gates, Hay Rings, Feeder & Creep Panels, Corral Panels, Mineral Feeders, Metal Feed Bunks, Creep Feeders, Feeder Wagons, Fence line Feeder, Bunk Feeders on wheels, Grain Bins. We can customize to fit your needs on most all of our products. Price may change without notice due to unforeseen cost increase in steel and raw materials.

WANTED HORSE DRAWN sleigh; horse drawn wooden wheel wagon; horse drawn grader, four wheels. (931) 446-1675

WANTED, 1940'S TO 1950'S PICKUP truck, any condition; iron wheel tractors; and whiskey barrels. (931) 446-1675

WANTED, 1998-2005 Astro Chevy van, all wheel drive, doesn't have to be great. (931) 692-3333

WANTED, cultivator for Farmall Cub and a back cultivator for a Allis-Chalmers model G. (256) 758-1471

WANTED, I AM looking to buy cows and/or cattle. (931) 307-9839

WANT TO BUY, lime or poultry litter spreader, any condition, (731) 968-5343

WANTED, 16 GA SHOTGUN, single or double barrel. (931) 235-4899

LOOKING FOR OLD JEEP does not have to be running, decent body at a decent price. Call, (601) 632-1884

WANT TO BUY, JOHN DEERE TRACTOR, 420 OR 430. ONEONTA, AL AREA. (205) 353-2557

WANTED NH and JD SQUARE BALERS, running or for parts. (270) 206-0628

OLD TENNESSEE LICENSE PLATES wanted. Nolensville, TN area. (615) 879-1901

WANT TO BUY, goats, sheep, chickens, and guineas. Ardmore, TN area. Call, (256)777-0065; (931) 427-8477

WANTED USED TRACTOR TIRES, 16/9/28. Voice mail, (941)341-9404; or Text, (931)306-3969.

NO TILL PLANTER wanted. Lincoln Co, TN area. (931)993-8723; (931) 433-7345

WANT TO BUY FJ40 Toyota, in model years from 1975 to 1980. (931) 607-9737

### Cows

25 LONGHORN COWS for sale. (931) 619-1338

1 TO 25 REGISTERED Red Angus and Registered Black Angus bulls, 11 months,+/- 1,000lbs. Top bloodlines in both breeds! Starting at \$1,495 per bull, many are AI. Located in Rome,GA, 20 miles past Centre, Alabama. Joe Gibson, Gibsoncattle.com. (706) 506-3026

REGISTERED RED ANGUS BULL, 16mo old, passed BS exam. FandPLivestock.com. TAEP APPROVED. (615) 653-8913

6 REGISTERED ANGUS HEIFERS, bred AI on 11/17/22 to Deer Valley Growth Fund Bull, 16 mo old, nice as you will find, 900-1,000lbs. Meets TAEP Heifer Program in TN. FandPLivestock.com. TAEP APPROVED. (615) 653-8913

To Place A Classified Call 800-247-7318

WE ARE YOUR FULL SERVICE DEALER FOR



SPARTAN  
MOWERS &  
INTIMIDATOR  
UTV'S



Spartan Zero Turn Mowers starting at **\$3,999**

SOUTHERN MIDDLE TN LAWN & UTV

3915 Hwy 43, Ethridge, TN 38456 (Next to Chapman Tire) • 931-829-3324 • 931-829-2155



COW REPLACE-  
MENT HEIFER  
REGISTERED F1  
Great replace-  
ment Heifer.  
Sire JM Hutton  
Launch 669 9116,  
10 months old,  
\$925 Bargain.  
(703) 789-1510  
europe0220@ya-  
hoo.com

**REGISTERED  
HEREFORD  
HEIFERS - ages  
7-9 months. Ex-  
cellent bloodlines  
and will make  
great cows. Hop-  
kins Ranch Win-  
chester, TN. Call,  
(931) 636-7521  
hopkins4795@  
bellsouth.net**

FOUR PUREBRED  
BLACK ANGUS bulls  
for sale. 14-18 months  
old. (931) 675-0669

FOUR PUREBRED  
BLACK ANGUS  
heifers for sale, 12-14  
months. (931) 675-  
0669

WAGYU HEIFERS  
for sale. (256)714-  
6182.

**REGISTERED  
HEREFORD  
BULLS Polled and  
Horned Hereford  
Bulls for sale, ages  
7-17 months old.  
Great dispositions  
and Excellent  
bloodlines. Easy  
calving with good  
growth. (931) 636-  
7521**

REGISTERED  
BLACK ANGUS  
BULLS for sale, 15-  
17 months old, good  
EPD's, frame, length,  
disposition, TAEP  
qualified. Fifty years  
of selection for the  
best. Turrentine  
Angus, Shelbyville.  
(931) 607-8950 atur-  
rentine@cafes.net

# FARM MACHINERY AUCTION

## Saturday, February 11<sup>th</sup>, 2023 • 10:00AM CST

1731 Frey Ford Road-Springfield  
Tractors-Trailers-Farm Equipment



**TRACTORS** - John Deere 2750 w/loader, Allis 180, John Deere D, John Deere A, Farmall H (pulling tractor), IH 886, John Deere 4040

**FARM EQUIPMENT** - New Holland Model 67 square baler, 2017 Case IH DC102 mower w/new shafts/new gear box and rubber rollers, Case IH RV564 hay roller (8000 rolls), New Holland BR 7090 hay roller w/tank for preservative app. (9000 rolls), fertilize buggy, Kirschan seed drill, Gehl silage chopper, Kasten silage wagons, Marliss Pasture King 10 no-till drill, 300 gallon boomless sprayer, one-row corn picker, 10' bog disk, gravity wagon, irrigation set up pipe, pump sprayer nozzle wagon, two-row corn planter, 5' bushhog, 6' bushhog, pasture drag, hay forks, John Deere bar rake, Morra hay rake, New Holland bar rake, 3 pt. quick hitch, 4-bottom plow, 8', 10', and 12' disks, finish mowers, 7 shank rebreaker, boom pole, 2-row tobacco seeder, 2-row mechanical tobacco setter, Kuhn disc mower (for parts), 3pt. spreader, 500 gallon boom sprayer w/controller hydraulic driver, single wheel service bed, metal racks, wheels & tires, lumber, cattle loading chute, 580 backhoe buckets, Apache creep feeders w/creeps (3 ton), Feed King 6 ton feeder, and more.

**TRUCKS** - 2011 F550 Cab & Chassis (no bed) 2 WD w/approx 231,000 miles, 2000 F450 4x4 flatbed 7.5 turbo new rubber, 91 Volvo single-axle w/L-10 Cummins, 9-speed Eaton

**TRAILER** - 16' combo stock trailer, 24' S&H cattle trailer

**TERMS** - Cash, check, or credit/debit cards day of sale. Cards will be charged a 3.5% convenience fee. Online bidders only will have a 10% Buyers Premium.

**DIRECTIONS** -From Springfield, Hwy 41S, right on Greer Road, right on Betts Road, left on Tom Austin Hwy (US 431), right on Old US 431, right on Old Coopertown Road, left on Alvin Head Road, left on Martin Chapel Road, left on Frey Ford Road to sale site



# Wally Gilliam

Realty & Auction

Private & Auction  
Sales

406 N. Broadway - PO Box 7926 - Portland, TN  
(615) 325-4597 • [www.GilliamRealtyandAuction.com](http://www.GilliamRealtyandAuction.com)

TNFL #2621  
KYFL #RP2749

Announcements made day of sale take precedent over all prior advertising.

Like & Follow Us On Facebook

FOUR PUREBRED  
BLACK ANGUS  
bulls for sale. 14-18  
months old. (931)  
675-0669

FOUR PUREBRED  
BLACK ANGUS  
heifers for sale, 12-14  
months. (931) 675-  
0669

BLACK ANGUS  
REGISTERED AND  
COMMERCIAL  
BRED HEIFERS,  
1100lbs, late bred,  
gentle, long, fan-  
cy, \$1,800-\$2,100.  
(931)994-2813.

FOUR PUREBRED  
BLACK ANGUS  
heifers for sale, 12-14  
months. (931) 675-  
0669

FOUR PUREBRED  
BLACK ANGUS bulls  
for sale. 14-18 months  
old. (931) 675-0669

REGISTERED  
BLACK ANGUS  
BULLS for sale,  
15-17 months old,  
good EPD's, frame,  
length, disposition,  
TAEP qualified. Fif-  
ty years of selection  
for the best. Turren-  
tine Angus, Shel-  
byville. (931) 607-  
8950 aturrentine@  
cafes.net

FOUR PUREBRED  
BLACK ANGUS  
heifers for sale, 12-14  
months. (931) 675-  
0669

## FOR SALE



2010 Great Dane, 53'



2003 Chevy 2500 HD, 4WD, 6.6 Duramax  
Diesel, w/Allison Trans, 198K miles

Call Or Text For Additional Info 254-205-1826

## Always A Great Selection



**1999 Kubota B2400**  
60" mower, 547 hrs  
**\$9,900**



**Lane Shark L52**  
11 Cutting positions, hyd. powered  
**Call for price**



**2014 Kubota L4600**  
With Kubota LA 764 loader, 498 hrs.  
**\$23,900**



**2019 Kubota MX5200**  
HST, w/LA 1065 Loader, only 379 hrs.  
**\$29,500**

[www.bctractor.com](http://www.bctractor.com)

## BLOUNT COUNTY TRACTOR, INC.

Highway 75 North, Oneonta, AL 35121

Bus: 205-625-5381  
Fax: 205-274-8795



REGISTERED BLACK ANGUS BULLS fully TAEP qualified, A-I sired out of great cow families, gentle, good EPD's. Cedar Ridge Angus, Pulaski, TN. (256)508-2874. See Cedar Ridge Angus on Facebook. (256) 508-2874 raycjo-rdan@gmail.com

FOUR PUREBRED BLACK ANGUS heifers for sale, 12-14 months. (931) 675-0669

REGISTERED AN-GUS BULLS, 12-18 months, all are AI Sired by Growth Fund, Optimum, Upward, Enhance, Beacon, all qualify for TAEP, good EPDs, calving ease and balanced bulls, good disposition. (931)510-1104; (931)287-7474.

REGISTERED AN-GUS BULLS Service age angus bulls out of top bloodlines. All bulls qualify for maximum TAEP money. (931) 589-2759

CHAROLAIS BULL FOR SALE Service age Charolais bulls, gentle, registered, purebred and polled. Call, (931)967-8807; or, (931) 308-7212

REGISTERED ANGUS BULLS Service age angus bulls out of top bloodlines. All bulls qualify for maximum TAEP money. (931) 589-2759

FOUR PUREBRED BLACK ANGUS heifers for sale, 12-14 months. (931) 675-0669

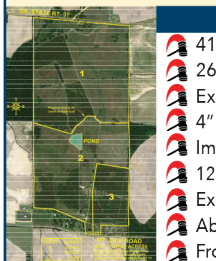
## AUCTION

**THURSDAY, FEBRUARY 9 • 4 PM**

### 700 ± Acres | Farming & Cattle Production

Grady & Mitchell County, GA

**414± ACRES | GA HWY 37 | MITCHELL COUNTY**



- 414± Acres | 3 Tracts | Offered Divided & As A Whole
- 260± Acres of Cultivation
- Excellent Soil Types | Tift, Duplin, Goldsboro & Norfolk
- 4" Well (Tract 3) | 3± Acre Pond
- Improved for Cattle Production | Fenced & Cross-Fenced
- 120± Acres of Longleaf Pines | Income Producing Straw Opportunity
- Excellent Road System Throughout
- Abundant Wildlife | Deer & Turkey
- Frontage on GA Hwy 37 & Mt. Zion Road

**286± ACRES | WHIGHAM ROAD | GRADY COUNTY**



- 2 Tracts | Offered Divided & As A Whole
- Diversified Farming Opportunity
- 100± Irrigated Acres | 10" Irrigation Well
- Improved for Cattle Production
- Excellent Soils | Tift & Carnegie Soils
- Fishing & Recreation Opportunities
- Abundant Wildlife | Deer, Turkey & Fish
- 10± Acre Lake | Lake Whigham
- 4 & 5 Tower Valley Pivots
- New Perimeter Fencing
- Fenced & Cross-Fenced

[www.RowellAuctions.com](http://www.RowellAuctions.com)

P.O. Box 3428 Moultrie, GA 31776 • (800) 323-8388  
A MarkNet Alliance Member GAL AU-C002594



## Dogs

FOR SALE, REGISTERED BLACK ANGUS BULLS, will qualify for the full TAEP money, all are by the top AI bulls in the breed. Crawford Angus. Lewisburg, TN. (931)205-2450; or, (931)359-2633. (931) 205-2450 [crawfordangus@bell-south.net](mailto:crawfordangus@bell-south.net)

REGISTERED AN-GUS BULLS Service age angus bulls out of top bloodlines. All bulls qualify for maximum TAEP money. (931) 589-2759

REGISTERED HEREFORD BULLS, for sale, gentle disposition, great bloodlines, polled, service age, starting at \$1,500. Leave message (931) 703-7573

FOUR PUREBRED BLACK ANGUS heifers for sale, 12-14 months. (931) 675-0669

PUPPIES FOR SALE, toy Australian Shepherds and toy Aussiedoodles will have shots/dewormed. Also, grown standard Australians and 2 grown male Poodles. John J. Gingerich, 146 Fox Hunters Lane, Morrison, TN 37357. Amish, no phone.

GREAT PYRENEES/ANATOLIAN SHEPHERD PUPS for sale, three months old, \$200 each. (931) 692-3333

GREAT PYRENEES PUPS for sale, born 10-25-22, wormed with sheep, \$100 each. (731) 968-5021

GREAT PYRENEES PUPS for sale, born 10-25-22, wormed with sheep, \$100 each. (731) 968-5021

GREAT PYRENEES/ANATOLIAN SHEPHERD PUPS for sale, three months old, \$200 each. (931) 692-3333



## SHELBY CATTLE CO. GENETICS

Registered Angus Cattle For Sale



Bulls & Heifers For Sale

Your source for powerful, easy fleshing, beautifully uddered, maternally efficient Angus Cattle that "do it on Grass!"

## YODER CATTLE CO.

Call Today! 731-414-1261

318 Bradford Hwy., Rutherford, TN 38369 • [yoder6@daystar.io](mailto:yoder6@daystar.io)



## Donkeys/ Mules

FOR SALE, TWO MAMMOTH Jenny colts, one sorrel and one black, year old in summer. (256) 738-3921

3 YEAR OLD JENNY red gray with gray points, 54" tall; son born 7-25-22, black with gray points, 41" tall, out of Henry/Leo bloodlines, vaccinated, \$2,200 or best offer. (423)309-1316.

## Goats

SPANISH DOELINGS FOR SALE, born April of 2022, located in Buhler, KS. Call Mike, (620) 727-5009

## Other

HONEY BEE NUCS \$170; \$20 payment with order, quantity discount, April pick-up. Joe N. Hostetler, 150 Mt. Horeb Rd., Ethridge, TN 38456.

HONEY BEE NUCS \$170; \$20 payment with order, quantity discount, April pick-up. Joe N. Hostetler, 150 Mt. Horeb Rd., Ethridge, TN 38456.


## Announcements

### Chapman Land and Cattle & Woolfolk Farms


# Genetic Source BULL & FEMALES Sale

Saturday, February 25, 2023 • Noon (CST) • 2090 Old Airport Road • Nunnely, Tennessee 37137

Selling 86 Lots: **BULLS, BRED & OPEN HEIFERS, PAIRS, EMBRYOS, BLACK BALDIES**



**LOT 4 - GTN WF CLC 87G The Man 903 2J, registration # P44338835**



**LOT 36 - CLC 1857 Tested G406 23J, registration # P44266220**

**CATALOGS UPON REQUEST**

<p>Dale Slith, Auctioneer TN License #5782 918-760-1550</p>	<p><b>CHAPMAN LAND &amp; CATTLE</b> Ryan Chapman 615-335-3187 John Thomas Woolfolk 731-345-1585 Cody Morgan 931-994-9215 chapmanlandandcattle.com</p>	<p><b>WOOLFOLK FARMS</b> Scott Woolfolk 731-571-7399 John Woolfolk 731-225-2620 wtherefords.com on facebook @Woolfolk Farms</p>
---	---	---

AFFORDABLE DECALS AND SAFETY DECALS. Prompt. Knowledgeable Reliable Service. www.QuipCal.com; Call, (215) 536-5339; email: info@customerservicescompany.com.

**MILLER FARMS**  
Angus Beef from the farm. 100% natural, non-GMO, hormone and antibiotic-free. Whole, halves, or by the pound. Slaughtered and packaged. (931) 593-3702; (931) 593-2429.

# To Place A Classified Call

## 800-247-7318

## EQUIPMENT REPAIRS



- FARM TRACTORS
- DIESEL FUEL INJECTION SERVICE

StanaDyne - CAV-Roosamaster - Pump & Injectors

**Call Lewis 931-607-3031 • 931-596-3644**  
34 Medley Ln., Estill Springs, TN

Open on Saturdays



*Buster Beds*



*Freedom*  
QUALITY TRAIL BEDS

Specializing in Rugged, Reliable and Reasonably Priced Flat Beds, Arm Beds and Spike Beds



*DewEze*



*CM*  
TRUCK BEDS

**RRP TRUCK EQUIPMENT**  
SPARTA, TN ☎ (931) 761-3554

# Cowherd Equipment & Rental, Inc.



**Penta 4030**

Several Other Models In Stock



**Taylor 5425**

new, single TMR Auger, Call



**Akron GTT 4010**

Call for Prices



**Hoosierland 1450**

In Stock - Call  
Several Used In Stock Also



**Meyer M350**

In Stock - Call



**Roto Grind 760**

In Stock - Call

## Numerous Used Mixers Available!

For more information:

# Cowherd Equipment & Rental, Inc.

1483 Old Summersville Rd. • Campbellsville, KY 42718

**270-465-2679 • 270-469-5095 • 270-469-0398**

## Blades/Box Scaper

USA, 5' TO 10' PULL TYPE BOX BLADES REGULAR DUTY, HAVE A MANUAL TILT AND COME WITH HYDRAULIC LIFT. HEAVY DUTY, COME WITH HYDRAULIC TILT AND LIFT. 5' \$900; 6' \$1000; 7' \$1700; 8' \$1950; 10' \$2500; 8' HD \$3400; 10' HD \$3800. CALL FARM SERVICE SOLUTIONS IN LEOMA, TN. FARMSERVICESOLUTIONS.COM; (931) 242-7675

USA, 3 POINT BOX BLADE AND LAND PLANES NEW IN STOCK. CALL CHRIS AT FARM SERVICE SOLUTIONS IN LEOMA, TN. BOX BLADES 4' \$695; 5' \$765; 6' \$895; 6' HD \$1,000; 7' HD \$1,085; 8' HD \$1,165. LAND PLANES 6' \$1,400; 7' \$1,500. CALL FARM SERVICE SOLUTIONS IN LEOMA, TN. FARMSERVICESOLUTIONS.COM; (931) 242-7675

## Other

BESTWAY, FIELD PRO IV 2009 BESTWAY FIELD PRO IV SPRAYER VERY GOOD CONDITION, FIELD READY \$15,500. 1000 GALLON TANK, 15 GALLON INDUCTION TANK AND 50 GALLON RINSE TANK. 60 FOOT BOOMS, RAVEN 440 CONTROLLER. SEVERAL PARTS. (931) 580-8889 JOHN-SONFARMS2121@GMAIL.COM



Wood Trusses  
40x60x10 Top & Gable ~ Call  
40x40x10 Top & Gable ~ Call

Price includes materials and labor



All types buildings for farms  
Steel Trusses Available

## Come See Us!

We have all the building materials needed for

**Barns - Pole Barns  
Sheds - Metal Roofing**

4x4's, 6x6's, Pressure Treated Lumber  
We stock 24" 5V & Corrugated Tin



**STIHL** Sales & Service  
1100 Winchester Hwy., Fayetteville, TN  
**931-433-1282**  
www.pendergrasssupply.com

Monday - Friday 7:00 AM - 4:30 PM • Saturday 7:00 AM - 12:00 Noon

## Tires

GOODYEAR, 12.5L-15 TIRES AND RIMS FOR SALE, 8 ply, 6 bolt, new take-offs, have several, \$250 each, Buhler, KS. (620) 727-5009

STUD WHEEL, 8 16" 8 stud wheel for Ford truck, \$20; 16.5" 8 stud wheel w/mounted tire for Ford truck, \$35. (931)732-4401.

GOODYEAR, 12.5L-15 TIRES AND RIMS FOR SALE, 8 ply, 6 bolt, new take-offs, have several, \$250 each, Buhler, KS. (620) 727-5009

## Building Products

CUSTOM TARPS FOR hoop buildings, available in 11 different colors. We also offer hay tarps and pond liners. Cover your investment, (859) 375-5268

WOODMASTER OUTDOOR WATER FURNACES, heat your home or shop, EPA approved clean burning, parts in stock, financing available. In TN call Harold, (931)787-3547; in KY call Dave, (859)265-0793. (931) 787-3547

## Sprayers

AG SPRAY EQUIPMENT 300-gallon boomless sprayer - shed kept and cleaned after each use, \$1,800. (615) 533-8168 samfarms4875@gmail.com

2016, AG SPRAY EQUIPMENT 300-gallon boomless sprayer, shed kept and cleaned after each use, \$3,000. (615) 533-8168 samfarms4875@gmail.com

To Place A Classified Call  
800-247-7318

**ADDISON AGRI-BUILDERS**

POULTRY HOUSES • BARNS • SHEDS

256-747-3444

Craig Pigg, Owner

P.O. Box 455 • 2661 Co. Rd. 39  
Addison, AL 35540

Brent Dollar - Sales Representative

Office: 256-747-3444 • Fax: 256-747-9002



AG SPRAY EQUIPMENT Sprayer, 3 pt hitch, 20' booms, 200 gallon tank, \$400. (615) 904-4306

**AG SPRAY EQUIPMENT** 3-point and pull-type sprayers come with boomless nozzle. 3 point sprayers all have hand wands. 3 point 55 gal \$1,095; 110 gal 1,895; 150 gal \$2,095; 200 gal \$2,295; 300 gal \$3,200. Pull type with used tires 300 gal \$3,950; 500 gal \$4,300. Booms available. Call Farm Service Solutions in Leoma, TN. [farm-servicesolutions.com](http://farm-servicesolutions.com); (931) 242-7675

# If We Don't Have It, We'll Be Glad To Build It



Livestock Trailers



Gooseneck Flatbed Trailers



Bumper Pull Car Haulers



Utility Trailers



Enclosed Trailers



Dump Trailers

## CUSTOM BUILT TRAILERS

OF MISSISSIPPI LLC

1335 Highway 49 Seminary, MS 39479  
(601) 722-9581

[www.custombuilttrailersms.com](http://www.custombuilttrailersms.com)

**CUSTOM MADE PASTURE SPRAYER** for sale, 200 gallon, cluster sprayer, boomless, on trailer, works great. (931) 637-7795

### Components

### Other

FARMALL SUPER C hood and PTO belt pulley, \$150/both. (256) 577-5051

### Wheel (Rim)

FOR SALE, 16" and 16.5" eight hole wheels, \$20. (931) 732-4401

### Construction Equipment

### Grader

ADAMS HORSE DRAWN grader, 7' blade, \$1,450; Adams horse drawn large road grader, \$2,000; two horse wooden wheel wagon, \$1,475. Columbia, TN (931) 446-1675

### Other

DECALS AFFORDABLE DECALS AND SAFETY DECALS. Prompt. Knowledgeable Reliable Service. [www.QuipCal.com](http://www.QuipCal.com); Call, (215)536-5339; email: [info@custom-servicescompany.com](mailto:info@custom-servicescompany.com).

### Fencing and Cattle Equipment

HAY FEEDER PANELS, 2"x3" construction and built to last a lifetime, 16ga, 4' up to 16' long. [FandPLivestock.com](http://FandPLivestock.com). TAEF APPROVED. (615) 653-8913

CORRAL PANELS, 16 GAUGE, 6' tall, good inventory, 8' up to 16' long. [FandPLivestock.com](http://FandPLivestock.com). TAEF APPROVED. (615) 653-8913

BULL GATES-16 GAUGE, 51" and 63" tall, 4'-20' long, good inventory. [FandPLivestock.com](http://FandPLivestock.com). TAEF APPROVED (615) 653-8913

BOW GATES 16 GAUGE, 6' tall, good inventory, 4' up to 12' combo bow gates-example 12' with 4' wt. [FandPLivestock.com](http://FandPLivestock.com). TAEF APPROVED. (615) 653-8913

LIVESTOCK FENCE WIRE for sale, Stay-Tuff brand, several sizes available, some with factory coated black finish. (931) 675-3260

FENCE POSTS FOR SALE, pressure treated, several sizes available, round and square, thousands in stock. (931) 675-3260

PRESSURE TREATED PINE FENCE BOARDS, for sale, 1x6x14' and 1x6x16'; 2x6x16'. (931) 675-3260

To Place A Classified Call  
800-247-7318

## Environmentally Friendly Brush Clearing

by Layne Construction

Remove unwanted vegetation. Cut & grind trees up to 6" & brush into mulch. No brush piles.



### We Do All Types Of Dirt Work • Loader & Excavator

We can: Clear for wild game plots • Clear ATV trails • Shooting lanes  
Pasture reclamation • Lot clearing • Fence lines • Field borders • Right of way

Call for free estimate: 256-975-4193 • 256-975-4296  
[www.land-clearing-services.com](http://www.land-clearing-services.com)

# Selection • Service • Satisfaction

- Aerial Work Platforms
- Lawn- Landscape-Tree
- Compaction
- Material Handlers
- Skid Steers-Mini Excavators
- Generators and Accessories
- Construction Tools
- Concrete-Masonry



From Contractor To Homeowner, **We Can Help!**



## WATSON'S Equipment Rental

290 Interstate Drive • Manchester, TN 37355  
 Mon.-Fri. 7:00 A.M. - 5:00 P.M. • Sat. 7:00 A.M. - NOON



**931-954-5862**

www.WatsonsEquipmentTN.com

### Harvesting Equipment

INTERNATIONAL UPRIGHT CORN SHELLER, \$300. Columbia, TN. (931) 446-1675

### Hay and Forage Equipment

HESSTON STACK HAND; New Holland bar type rake; assortment of metal rollers and troughs; much more. (629) 395-4558

MIRAFOUNT LIVE-STOCK WATERERS, for sale. (931) 675-3260

LIVESTOCK FENCE WIRE for sale, Stay-Tuff brand, several sizes available, some with factory coated black finish. (931) 675-3260

**CATTLE SWEEP SYSTEMS HEAVY DUTY GALVANIZED 8 BAR 6' TALL. 90 DEGREE WITH 10' OF ALLEY STARTS AT \$1,480.180 DEGREE W/20' OF ALLEY STARTS AT \$2,475. WE CAN ADD AS NEEDED TO CUSTOMIZE YOUR SYSTEM. CALL FARM SERVICE SOLUTIONS IN LEOMA, TN, FARMSERVICESOLUTIONS.COM; (931) 242-7675**

**SQUEEZE CHUTES TARTER SERIES 3 FOR \$2,800 AND SERIES 6 FOR \$4,500 WITH EITHER AUTOMATIC OR MANUAL HEAD GATES. CALL FARM SERVICE SOLUTIONS IN LEOMA, TN. FARMSERVICESOLUTIONS.COM; (931) 242-7675**

INTERNATIONAL UPRIGHT CORN SHELLER, \$300. Columbia, TN. (931) 446-1675

### Harvesters Combines

CASE IH 1420 with headers, shedded, field ready, \$12,500; John Deere 530 round baler, \$3,500. (731) 968-5343

CASE AND GLEANER COMBINES, one Case 1688 axial-flow, 4WD; two Gleaners, 2WD. Must sell. (256) 200-4288

### Rotary Mowers

BUSH HOG 3 POINT CUTTERS HEAVY 11 GAUGE DECK, 90 HP GEARBOXES WITH SLIP CLUTCH. 6' \$1600; 7' \$1900; 10' \$3750. CALL FARM SERVICE SOLUTIONS IN LEOMA, TN. FARMSERVICESOLUTIONS.COM; (931) 242-7675

To Place A Classified Call 800-247-7318

## TRACTOR/FARM MACHINERY CONSIGNMENT AUCTION

“ONLINE ONLY” February 12<sup>th</sup>-18<sup>th</sup>

*Powder Mills Farm Equipment, LLC*

Magnolia, KY • www.PowderMillsFarmEquip.com

OLSON AUCTION INC. WINAMAC, IN  
 AUCTIONEER HI BID AUCTIONS

Consignments received January 17<sup>th</sup> – February 3<sup>rd</sup>  
 Monday –Friday 8:00 AM to 4:00 PM (CDT)

Call 270-528-2583 or 270-528-1805  
 for more information and terms

To Place A Classified Call 800-247-7318

## REVEAL 4-N-1

**THE ULTIMATE ARENA AND GROUND PREP TOOL**



The Original... Still the Best



- Grading & Leveling Driveways
- Ballfield Maintenance
- Horse Arenas
- Waterways
- Agricultural
- Erosion Repair

www.REVEAL4-N-1.com • (937) 444-2609 • Mt. Orab, OH



## Round Balers

INTERNATIONAL HARVESTER HORSE DRAWN hay baler, \$600. Columbia, TN. (931) 446-1675

HESSTON 945 hay or silage twine baler. (931) 619-4301

JOHN DEERE 566 WINTER SPECIAL! round baler, net or twine, new \$1,000 worth of chains and bearings, \$8,000. (256) 483-3487

## Square Balers

NEW HOLLAND 565 SQUARE BALER, excellent condition, good paint, ready for field, \$6,500. (270) 206-0628

## Hay and Grain For Sale

HAY FOR SALE, 40 rolls of hay, \$50 per roll, Fayetteville, TN. (931) 433-6891.

KENTUCKY 31 FESCUE SEED for sale, with Orchard grass. Middle Tennessee. (931) 244-0063

**4,000 BALES OF ORCHARD GRASS HAY, 12-14% protein, \$7 per bale. Hohenwald, TN area. (931) 628-0529.**

HAY FOR SALE, 4x5 rolls, fertilized and baled with no rain, \$45 per roll. (256) 509-7417

## Odds and Ends

BICYCLE EXERCISE MACHINE for sale, \$50. Wildersville, TN. (731) 968-5343

RACK-EM-UP FLAME ROASTED DEER FEED, roasted whole grains, aroma that deer love, grain will not sprout, molds are greatly reduced. rackemupdeerfeed.com. (605) 351-9084

TWO INDUSTRIAL FIRE extinguishers for sale, \$375 each. Columbia, TN area. (931) 446-1675

FOR SALE 25 GALLON cast iron pot, \$150; 15 gallon cast iron pot, \$125. (931) 732-4401

JD DISC HARROW BEARINGS, with 2 piece plastic sleeve 2 inch. Call Tony at APC Bearings. (909) 545-5054 [tony@apc-bearings.com](mailto:tony@apc-bearings.com)

WOODMASTER OUTDOOR WATER FURNACES, heat your home or shop, EPA approved clean burning, parts in stock, financing available. In TN call Harold, (931) 787-3547; in KY call Dave, (859) 265-0793, (859) 265-0793

WANT TO BUY FJ40 Toyota, in model years from 1975 to 1980. (931) 607-9737

GIFFORD BROTHERS CONCRETE. Nothing too big or small. Free estimates. 50 years experience. Dale Gifford, (931) 703-0925.

AFFORDABLE DECALS AND SAFETY DECALS Prompt. Knowledgeable Reliable Service. [www.QuipCal.com](http://www.QuipCal.com); Call, (215) 536-5339; email: [info@custom-servicescompany.com](mailto:info@custom-servicescompany.com).

# ONLINE ABSOLUTE AUCTION

\* BIDDING ENDS FEB 14 @ 10am CT\*

FARM EQUIPMENT • VEHICLES • TRAILERS • TOOLS & MORE

TAYS AUCTION FACILITY: 620 Maxwell St - Cookeville, TN (2 1/2 Mi. from I-40)

**BID AT TAYSAUCTIONS.COM**

**TAYS** Realty & Auction LLC

Nate Houser, Auctioneer TN Lic #6622 (423) 605-7511 / [nate@taysauctions.com](http://nate@taysauctions.com)

TERMS: 10% Buyers Premium. See full terms on the website.

(931) 526-2307

GIFFORD BROTHERS CONCRETE. Nothing too big or small. Free estimates. 50 years experience. Dale Gifford, (931) 703-0925

## Other Equipment

SNAP-ON YA205 Snapon, YA205 mig welder, good condition, \$800. (256) 352-4553 (256) 352-4553

JOHN DEERE 7000 4-row planter, no-till, 38" corn and bean meters, insecticide box with dry fertilizer boxes, \$3,500. (615) 904-4306

GIFFORD BROTHERS CONCRETE. Nothing too big or small. Free estimates. 50 years experience. Dale Gifford, (931) 703-0925

NORWOOD PALLET FORKS \$750 AND UP. SKID STEER, JOHN DEERE 100-500 SERIES LOADER, AND GLOBAL EURO QUICK ATTACH AVAILABLE. [FARMSERVICESOLUTIONS.COM](http://FARMSERVICESOLUTIONS.COM). LEOMA, TN. CALL, (931) 242-7675

## Planting Equipment

### Other

CLIPPER CLIPPER SEED SCREENS for sale, approximately 100 screens. Delivery available. (931) 808-8095

## Planters

FORD 2-BOTTOM PLOW FOR SALE, 3-pt, has coulters, Buhler, KS. (620) 727-5009

**Need Cash??**

**We Buy Standing Timber**

**Davie Ashley Sawmill**  
Elora, TN 37328

- **Free Estimates**
- Call today to schedule a meeting.
- We sell sawdust - pickup or delivery
- Selling custom log home & barn packages
- Kiln dry and tongue n groove lumber for sale

**From A Few Acres Of Good Timber To A Large Forest. We Will Buy The Timber Or Even Land With Timber On It.**

Sawmill - 931-937-8581  
Peanut - 931-607-2126



# REGISTER BARN



**40'x60'x12' - Installed**

Roof only, closed gables, or Roof only, open gables.

**\$11,000 + freight & tax**

**30'x40'x10' - Installed**

Roof only, open gables

**\$7,000 + freight & tax**

## JEFF REGISTER BUILDINGS & TRUSS

*Serving Mississippi, Alabama, Georgia and Louisiana*

321 Madison Ave., Wiggins, MS 39577

601-928-5309 or 601-928-5308 • [www.registerbarns.com](http://www.registerbarns.com)

hogging, agricultural stump grinding and skid loader work. Call David, (615) 631-0638

TRACTOR AND FARM EQUIPMENT REPAIRS, Engine and transmission rebuilding. All types of repairs. Steel and aluminum welding. N & A Equipment Services, 301 Lack Road, Elkton, KY, 42220. (270) 348-5187

WOODMASTER OUTDOOR WATER FURNACES, heat your home or shop, EPA approved clean burning, parts in stock, financing available. In TN call Harold, (931)787-3547; in KY call Dave, (859)265-0793. (859) 265-0793

JOHN DEERE 7000 4-row planter, no-till, 38" corn and bean meters, insecticide box with dry fertilizer boxes, \$3,500. (615) 904-4306

forestry mulching, boom mower bush-hogging, agricultural stump grinding and skid loader work. Call David, (615) 631-0638

ROBINSON ENVIRONMENTAL LAND CLEARING forestry mulching, boom mower bush-hogging, agricultural stump grinding and

skid loader work. Call David, (615) 631-0638

ROBINSON ENVIRONMENTAL LAND CLEARING forestry mulching, boom mower bush-hogging, agricultural stump grinding and skid loader work. Call David, (615) 631-0638

ROBINSON EN-

VIRONMENTAL LAND CLEARING forestry mulching, boom mower bush-hogging, agricultural stump grinding and skid loader work. Call David, (615) 631-0638

ROBINSON ENVIRONMENTAL LAND CLEARING forestry mulching, boom mower bush-

### Recreational Vehicles

CAMPER SHELL for sale, fits L.W.B. truck, \$250 or best offer. Mulberry, TN area. (256)508-3320.

### Services

ALL TYPES CORRUGATED METAL, PLASTIC CULVERTS ALL TYPES OF METAL AND PLASTIC CULVERTS 8" THRU 48" INSTOCK, ALL OTHERS CAN BE ORDERED. QUANTITY DISCOUNTS, DELIVERY AVAILABLE IN OUR AREA. (931) 684-4847 CLANTONCO@BELLSOUTH.NET

ROBINSON ENVIRONMENTAL LAND CLEARING

### Disks

JOHN DEERE AW 12' disk, \$600. (615) 904-4306

### Other

SMART-TILL CHEROKEE TILLERS. 50" AND 59" CHAIN DRIVE REGULAR DUTY. 71" GEAR DRIVE MEDIUM DUTY. 81" GEAR DRIVE HEAVY DUTY. 50" \$1600; 59" \$1700; 71" \$2200; 81" \$2700. PRICE IS IN CRATE. ASSEMBLY ADD \$50. CALL FARM SERVICE SOLUTIONS IN LEOMA, TN. FARMSERVICESOLUTIONS.COM; (931) 242-7675

## The Crown For Your Home

**Residential • Agricultural • Commercial**

Increase the value & beauty of your home with our maintenance free metal roofing!  
Available in many styles:

**Slate, Clay Tile, Shake, Stone Coated Shingle, Thatch & Standing Seam**

We manufacture the 3 ft. wide metal panels at our location, plus we use an in-house computerized custom trim machine, for better and faster service!

**Plateau Metal Sales** [www.plateaumetalsalestn.com](http://www.plateaumetalsalestn.com)

103 Randolph Rd. • Crossville, TN **931-277-3586**  
Mon. - Fri. 7 to 5 • Sat. 8 to 12 **1-800-468-0149**

• 2nd location to serve you better. • **1-866-988-7670**  
2448 Buttermilk Road W. • Lenior City, TN **865-376-0528**

**YOUR METAL ROOFING HEADQUARTERS**

To Place A Classified Call 800-247-7318



### Plows and Rippers

JOHN DEERE 1250  
4 bottom 16" plow,  
\$800. (615) 904-4306

### Row Crop Cultivators

JOHN DEERE 4 row  
cultivator, \$800. (615)  
904-4306

JOHN DEERE 1250  
4 bottom 16" plow,  
\$800. (615) 904-4306

### Timber and Forestry

JOURNEY LOG-  
GING, LLC, buying  
standing timber: cedar  
and pine, within  
100 miles radius of  
Pulaski, TN. 931-  
638-6441; jjourney-  
logging@gmail.com.  
(931) 309-8965 jjour-  
neylogging@gmail.com

JOHN DEERE 1250  
4 bottom 16" plow,  
\$800. (615) 904-4306

### Tractors

FARMALL C Trac-  
tor, rebuilt motor,  
transmission gone  
through, \$2,000.  
(731) 358-1679

JOHN DEERE 1250  
4 bottom 16" plow,  
\$800. (615) 904-4306



2015 JD 204K New eng. with  
warranty, 2000 hrs., great condition  
**\$30,800**



2018 GMC Canyon  
Denali, 4x4, 71k, Stk#220640B  
**\$34,987**

## CHEVROLET OF BOAZ Commercial Trucks



2020 Chevy 25000 HD  
4x4, 24K, 6.6 V8 gas, Stk#230205A  
**\$47,865**



2022 Chevy 3500 HD  
Duramax DSL, w/Allison trans, only 3k  
miles, 4x4, Stk#13 **\$74,850**



2021 Chevy 3500 HD  
4x4, 13k, High Country Edition, Duramax  
DSL, Allison trans., Stk#3202  
**\$77,885**



Commercial rebate requires qualifications. Prices plus tax, title & license and \$199 admin. fee. Incentives Subject to Change.

1134 U.S. Hwy. 431, Boaz, AL 35957

**1-800-531-4253**

Call to insure all incentives are applied.

MASSEY FERGU-  
SON 20C, loader,  
new rubber, looks ex-  
cellent, \$9,800. Call  
between 8a.m.-5p.m.,  
(931) 939-4999

2020, MAHINDRA  
4045, 234 hours,  
runs and looks like  
new, \$23,500. Call  
between 8a.m.-5p.m.,  
(931) 939-4999

JOHN DEERE 1025R  
4WD, loader, 5' belly  
mower, \$14,500. Call  
between 8a.m.-5p.m.,  
(931) 939-4999

2015, JOHN DEERE  
5055E One owner,  
shed kept and regu-  
larly serviced, fluid  
in rear tires, \$17,500.  
(615) 533-8168 sam-  
farms4875@gmail.  
com

JOHN DEERE 1250  
4 bottom 16" plow,  
\$800. (615) 904-4306

1984, JOHN DEERE  
1450 52hp, diesel,  
dual remotes, canopy,  
good sound clean ma-  
chine, 6,500 hours,  
1984 model, \$6,000  
or best offer. Leave  
message and we will  
return your call. (931)  
593-3007

1972, MASSEY FER-  
GUSON 135 diesel,  
starts good, runs  
good, no mechanical  
problems, good sheet  
metal and paint, 80%  
rubber. Greenhill,  
\$4,500. (256) 762-  
0404

## Over 50 Truck Beds in stock, newer & older Chevrolet, Ford, Ram & GMC Single & Dual-Wheel Trucks



Now carrying  
**Iron Bull Trailers**  
Call for prices!



Aluminum Beds  
Call for Prices



Steel Beds  
Call for Prices

We will trade for your used bed!  
Used Flat Beds & Dually Beds Available!  
Custom Orders Available!

Skirted Steel Beds - Call for Prices



Fast Installation on  
In-Stock Inventory  
Call Devin or Todd  
931-738-9275



## New & Used Tractor Parts

- All Makes & Models
- Free Tractor Parts Hotline
- Shipping Parts Daily
- We Buy Salvage Tractors

# Cross Creek Tractor Co.

Hwy. 278 E. - Cullman, Alabama  
(256) 739-0496

**1-800-462-7335**

E-Mail: info@crosscreektractor.com  
www.crosscreektractor.com



120 Auto Lane | Sparta, TN 38583  
Hwy. 111 in Sparta



EST 1973  
Wil-Ra, Inc.  
TRUCK BODIES



CHRYSLER | DODGE | JEEP | RAM  
SPARTA, TN

**JASONLEWISAUTOMOTIVE.COM**

\*Price plus tax, installation hardware, & installation. Prices do not include applicable sales taxes. Installation hardware not included in advertised price. Limited quantities available. Due to advertising deadlines, some models may be sold out. \*\*Financing available through Sheffield's on most models.

# FARM MACHINERY & CONSTRUCTION CONSIGNMENT

# AUCTION

**2 DAY →  
AUCTION:**

**FRIDAY~FEBRUARY 18th &  
SATURDAY~FEBRUARY 19th  
@ 9:00 (cst)**

8380 NEW GLASGOW ROAD - SCOTTSVILLE, KY 42164

---

OVER 1,000 LOTS EXPECTED! LIVE & ONLINE BIDDING





---

WE WILL BE RECEIVING CONSIGNMENTS:  
MON. to FRI / 8AM to 4PM / JAN 30th thru FEB 14th  
\* NO CONSIGNMENTS WILL BE ACCEPTED AFTER FEBRUARY 14th \*

**DIRECTIONS:** FROM SCOTTSVILLE TAKE HWY 31-E NORTH 6 MI. TO AUCTION SITE. FROM GLASGOW TAKE HWY 31-E SOUTH 12 MI. FROM CUMBERLAND PARKWAY TO AUCTION SITE. 50 MILES NORTH OF NASHVILLE--25 MILES EAST OF BOWLING GREEN--12 MILES SOUTH OF GLASGOW

**2023 DATES**  
**APRIL 14th & 15th**  
**JUNE 16th & 17th**  
**SEPTEMBER 15 & 16th**  
**NOVEMBER 17th & 18th**  
**DECEMBER 28th (ONLINE)**



**270-618-7710**  
**BUY - SELL - TRADE**

**proxibid** Live Online Bidding

FOR MORE INFO PLEASE CALL: TYLER HARPER 304-993-5738

Cub Cadet

## Gossett

Cub Cadet

### Farm Equipment, LLC

1624 Hwy. 100, Centerville, TN 37033 • 931-729-4515



Call Jo To Qualify For 12, 24, 36, 48 Month Zero Interest on Cub Cadet Mowers!  
 gossettfarmequipment@gmail.com • 931-729-4515 • Great Financing

STEEL SIDE-BOARDS and gates for sale, fits 12' flat-bed, \$300 or best offer. Mulberry, TN area (256)508-3320..

### Accessories

CROSSOVER TOOL-BOX for sale, fits Ford Ranger or similar, like new, \$250; also, ladder rack for Ford Ranger long base, \$150. (931) 536-5552

TWO STORAGE BOXES all aluminum, 4'x2' wide 30" tall, with stainless steel door latches, \$400 firm. (931) 242-4821

ALL ALUMINUM FLAT BED truck body, 8'x10' no g/n, with 36" under boxes, \$2,500. (931) 242-4821

### Heavy Duty (GVW over 26,000 lbs.)

2019 RAM 3500 AISIN TRANSMISSION \$59,000, one owner, 2019 Ram 3500 Tradesman Crew Cab

4x4 Long Box, 3.73 Axle Ratio, Transmission: Aisin 6-Speed Automatic Transmission, Engine: 6.7L I6 Cummins HO Turbo Diesel Engine, Miles: 85,825. (256) 472-4310

1964 DODGE 1/2 TON PICKUP for sale, step-side bed, six cylinder, not running. (931) 446-1675

### Light Duty (GVW under 14,000 lbs.)

1987 DODGE RAM 50 4x4, automatic transmission, good body, needs minor work, \$1,400. (706) 247-6240

### Medium Duty (GVW 14,000-26,000 lbs.)

**To Place A Classified Call  
800-247-7318**

CUB FARMALL TRACTORS, two tractors completely restored to showroom finish, one w/belly mower, cost over \$8,000 to restore, take \$5,000/both. Calvert City, KY. (270) 519-1273

### Trailers

CUSTOM MADE TRAILERS, utility, livestock, enclosed, gooseneck flatbed, bumper pull car haulers. If we don't have it, we'll be glad to build it! www.custombuilt-trailersms.com (601) 329-9222

GOOSENECK 20' GOOSENECK EQUIPMENT TRAILER with Dove Tail, good condition, needs a tire, \$4,000. (256) 352-4553

To Place A Classified Call  
800-247-7318



**Kubota L3560**  
2017, 4x4, 1480 hrs.  
\$20,500



**JD 2210 - 2004, 4WD,**  
hydrostat, 180 original hrs.  
\$12,000



**New Holland 4630**  
shuttle shift, 2000 hrs.  
\$13,250



**Kubota L2850**  
4x4, rollbar, 1800 hrs.  
\$10,900

**We Sell New & Used Tractor Parts - Call For Details**

## ZACK'S TRACTORS & REPAIR

Hwy. 101, Rogersville, AL  
**256-483-3748 256-483-6681**

**WE DO MECHANIC WORK**  
 We repair all types of tractors.  
*Call now to get your tractor work done!*

We Sell Tractor Tires!

CALL US  
for all your  
AUCTION NEEDS!

**S.D.M. SIMPSON**  
 REALTORS AND AUCTIONEERS  
**(931) 473-LAND 5263**  
 www.dmsimpson.com

David M. Simpson, Broker, Auctioneer  
 Tiffany Simpson, Co-Owner, Broker  
 John Kyle Simpson, Aff. Auctioneer, Aff. Broker

931-273-6253  
 931-808-7080  
 931-212-3843

303 W. Main St. McMinnville, TN 37110



**JAPANESE 4X4 MINI TRUCKS**, great for farm use, hunting, recreation, available with A/C, PS, 5 speed and automatic, some with dump beds. Anderson, AL. Call for prices, (256)740-7287. [www.berryhillminitrucks.com](http://www.berryhillminitrucks.com) (256) 740-7287

**Want to Buy**

**WANT TO LEASE 70+ ACRES** I'm looking for pasture to lease near Harvest AL. I'd like to live on the land (I have a camper.) I'm wanting to practice regenerative ag and land healing practices. Existing exterior fence would be nice. (256) 520-4727

**WANTED, IRON WHEEL TRACTORS**; whiskey barrels; 1940's to 1950's pickup truck, any condition. (931) 446-1675

**WANTED HORSE DRAWN** sleigh; horse drawn wooden wheel wagon; horse drawn grader, four wheels. (931) 446-1675

**WANTED, 1940'S TO 1950'S PICKUP** truck, any condition; iron wheel tractors; and whiskey barrels. (931) 446-1675

**WANTED, 1998-2005** Astro Chevy van, all wheel drive, doesn't have to be great. (931) 692-3333

**WANTED, cultivator** for Farmall Cub and a back cultivator for a Allis-Chalmers model G. (256) 758-1471

**HUGE INVENTORY IN STOCK!**



- **10 Different Styles of Net Wire Fencing**  
- hundreds of rolls in stock
- **8 Sizes of Pressure-Treated Fence Posts**  
- thousands of posts in stock  
- round and square posts for farm use all CCA treated
- **1x6x14' and 1x6x16' Pressure Treated Pine Fence Boards**  
- full 1" thick and full 6" width
- **MiraFount livestock waterers**  
- 2 and 4 hole models in stock  
- geo-textile fabric in stock
- **2 sizes of barbed wire**  
- class 3, high tensile
- **T-posts and Tarter gates**  
- 13 sizes of gates in stock  
- American made T-posts

**Finley Fence Supply LLC**

Your one stop shop for posts, boards, wire, gates, fencing hardware, advice and installation. Cornersville, TN

Call us for solutions to all your livestock fencing needs.

(931) 675-3260 Marlin Finley • (931) 607-5941 Tod Finley

**WANTED, I AM** looking to buy cows and/or cattle. (931) 307-9839

**WANT TO BUY,** lime or poultry litter spreader, any condition, (731) 968-5343

**WANTED, 16 GA SHOTGUN,** single or double barrel. (931) 235-4899

**LOOKING FOR OLD JEEP** does not have to be running, decent body at a decent price. Call, (601) 632-1884

**WANT TO BUY,** JOHN DEERE TRACTOR, 420 OR 430. ONEONTA, AL AREA. (205) 353-2557

**WANTED NH and JD SQUARE BALERS,** running or for parts. (270) 206-0628

**OLD TENNESSEE LICENSE PLATES** wanted. Nolensville, TN area. (615) 879-1901

**WANT TO BUY,** goats, sheep, chickens, and guineas. Ardmore, TN area. Call, (256)777-0065; (931) 427-8477

**WANTED USED TRACTOR TIRES,** 16/9/28. Voice mail, (941)341-9404; or Text, (931)306-3969.

**NO TILL PLANTER** wanted. Lincoln Co, TN area. (931)993-8723; (931) 433-7345

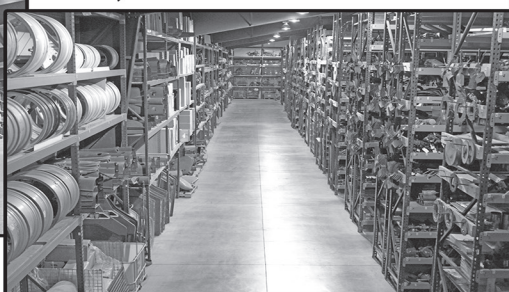
**WANT TO BUY** FJ40 Toyota, in model years from 1975 to 1980. (931) 607-9737

**WANTED, IRON WHEEL TRACTORS;** whiskey barrels; 1940's to 1950's pickup truck, any condition. (931) 446-1675

**WANTED HORSE DRAWN** sleigh; horse drawn wooden wheel wagon; horse drawn grader, four wheels. (931) 446-1675

**Aisles & Aisles & Aisles**

of IH & CaseIH Tractor Parts  
New, Used & Remanufactured



**The Largest Exclusive IH & CaseIH Used & Rebuilt Parts Inventory in North America**

**Bates Corporation**

Call 1-800-248-2955

12351 Elm Road Bourbon, IN 46504 [www.batescorp.com](http://www.batescorp.com)



Requested Delivery On or Before February 1, 2023

PRSRT STD  
US POSTAGE  
PAID  
MONROE, GA  
Permit # 15

P.O. Box 490  
Fayetteville, TN 37334

# RUSSELL BARNETT

## PRESIDENTS' DAY SALES EVENT

See Travis Searcy, The "Truck Specialist"  
We're Better and We'll Prove It!



**New 2022 Ram 3500**, chassis, Laramie, 4WD, crew cab, Auto, Stk#D12165N .....**Sale Price \$77,545**

### We Are Your Cab & Chassis & Dually Headquarters!!



**New 2022 Ram 2500**, Laramie, 4WD, crew cab, Auto, Stk#D12152N .....**Sale Price \$79,895**



**New 2022 Ram 3500**, Tradesman, 4WD, reg. cab, Auto, Stk#D12182N .....**Sale Price \$63,715**



**New 2022 Ram 2500**, Laramie, 4WD, crew cab, Auto, Stk#D12163N .....**Sale Price \$79,095**



**New 2022 Ram 3500**, Laramie, chassis, 4WD, Auto, Stk#D12117N .....**Sale Price \$81,525**



**New 2022 Ram 3500**, chassis, Laramie, 4WD, crew cab, Auto, Stk#D12177N .....**Sale Price \$77,240**

### Now Taking Orders For Your New Truck!

### Call Us Today!



**New 2022 Ram 3500**, chassis, Tradesman, 4WD, reg. cab, Auto, Stk#D12148N .....**Sale Price \$64,605**

## RUSSELL BARNETT

2756 Decherd Blvd., Winchester, TN  
**931-691-1712**

FIVE STAR Dealer

BUSINESS LINK

ON THE JOB



Jeep



See Travis Searcy, The "Truck Specialist"  
We're Better and We'll Prove It!

Call Travis Searcy Today!  
**931-691-1712**

[www.russellbarnettchryslerdodgejeep.com](http://www.russellbarnettchryslerdodgejeep.com)

\*All rebates applied. All prices plus tax, title & tag. \$399 processing fee included. Due to advertising deadline, all prices and incentives including employee pricing is subject to change by the manufacturer without notice. Customers must finance to obtain all Rebates.