



Elkhart Lake Depot Dispatch

*****ECRWSEDDM*****
Postal Customer

PRESORTED STANDARD
U.S. Postage Paid
Elkhart Lake, WI 53020
Permit No. 14
ECRWSS

March 2023

www.depotdispatch.com

www.elkhartlakechamber.com

FREE

Published by the Elkhart Lake Chamber of Commerce to support and promote its members and provide a service to the community.



Congratulations! 2023 AWARD WINNERS



Back Row (L to R): Todd Montaba, Rachel Montaba, Mary Jo Vollrath, Ann Buechel Haack, Lynn Chisholm, Lee Gentine, Laura Ebbers, Kathleen Eickhoff Front Row (L to R): Emily Hein, Cheri Hau, Jacqueline Jarvi

2023 Award Winners

Nonprofit of the Year
Plymouth Advancement
Association

Elkhart Lake Area Impact
ElkhartCares

Chamber Champion
Elkhart Lake Tourism

Tourism Business of the Year
The Paddock Club

Rising Star
Hot Dishes Street Food

Business of the Year
Quit Qui Oc Golf Club

**The Legendary
Elk "Heart" Award**
Dr. Ann Buechel Haack

Photo credit to LesTension Photography



GOOD TIMES had by all! SCHNEE DAYS January 27-29 Elkhart Lake | 2023

Why I Volunteer for Glacial Lakes Conservancy

by Sister Susan Seeby, CSA

Growing up in the early 1960's my family rented a home from a farmer. Located on the outskirts of the far southside of the Milwaukee area, we were surrounded by farmland and relatively untouched

habitat. I spent many hours climbing trees, exploring woodlands, and playing along (and in) a creek that ran through the property. Some years later after we moved, and the farmer had passed away, the land was sold to developers. The last time I visited the place that nurtured my love of

nature and creatures, it was a sprawling sub-division named "Creekside", although it would be extremely difficult to find what remains of the creek. Fast forward to 2023, I am participating in a pollinator walk with members of Glacial Lakes Conservancy and others on one of the many land trust events sponsored by Glacial Lakes during Wisconsin Land Trust days. We are walking near a spring that runs through our Congregation of St. Agnes property. The Congregations' 230 acres on the Niagara Escarpment on the northwest side of Fond du Lac is protected by a Conservation Easement held by Glacial Lakes Conservancy. As we make our way on the walk, I am totally immersed in the running commentary of our guide. Suddenly we see it! The Rusty Patch Bumble Bee! This Bee is extremely rare in Wisconsin and is considered both state and globally imperiled. Yet here it is, right in front of us, quietly humming around the beautiful Jewel weed that grows on our land. The sound of the springs bubbling in the background, the warm sun, and the excitement of everyone on the walk at seeing this tiny creature affirmed for me our decision as a Congregation to place our land under protection forever. In my mind, I can envision another young child learning to love nature and creatures because this land will be there for them. I volunteer with Glacial lakes because land conservation, education about nature, and the peace and joy that come from being connected with the land are truly a birthright of future generations. The simple act of watching a tiny bee moving



from flower to flower is a priceless gift for anyone graced to experience it. Without entities like Glacial Lakes, the memories of future generations will be devoid of these experiences. I am grateful for the small part that I am able to play in assisting Glacial Lakes in its' mission.



elkhartlakechamber.com

Keep in Touch with the Elkhart Lake Chamber of Commerce

Visit us online...

- Chamber Member Directory
- Farmers Market Information
- Renew & Pay Membership
- Chamber Events
- Register & Join Events
- Member Press Releases
- Member Job Postings



Rachel Montaba of Quit Qui Oc Golf Club is the winner of the Van Horn Chevrolets Pay It Forward donation. Rachel picked her favorite charity Angel Hugs to receive the check for \$1000.

ELKHART LAKE CHAMBER OF COMMERCE
Annual Awards Dinner

February 9th, 2023

Grace Lutheran Church
Community *Lenten Supper*

Thursday, March 30
Chicken Pot Pie

Available for Inside Dining from 5pm-6:30pm
All meals are free-will offering and include roll, dessert and beverage

210 N Lincoln Street • Hwy 67, Elkhart Lake

Buying or Selling Your Home?

Put a realtor with over 35 years of experience to work for you.

Bill Cain
Realtor/Auctioneer
Bill@AvenueRET.com
920-980-2588

AVENUE REAL ESTATE

ELKHART LAKE LOCATION
Wed-Sat 12-5 • 99B Lake Street

PLYMOUTH LOCATION
Mon-Fri 8-5 • 410 S Milwaukee Street
*Or by Appointment

920-893-3001 | AvenueRET.com

HomeReview Inspection Services, Inc.
RESIDENTIAL AND COMMERCIAL INSPECTION

SERVICES

- Winter Caretaking Inspections
- Residential Inspections
- Commercial Inspections
- New Construction Inspections
- Phase Inspections
- Warranty Inspections
- Radon Screening

Serving Sheboygan, Manitowoc, Ozaukee, Washington and Fond du Lac Counties

Bob Turicik
920-892-7654
www.HomeReview.biz
www.facebook.com/HomeReviewWI

Mystery Photo Contest

Can You Identify Our March Mystery Photo?



Take a look at the March mystery photo. Do you know anything about it? Where is/was the location? What year was this photo taken?

If you know, let us know!

To enter the March contest, send an email to depotdispatch@elkhartlake.com or a letter with as many details as you can to the Elkhart Lake Chamber, P.O. Box 425, Elkhart Lake, WI 53020, or drop off at the Chamber Office, 41 E. Rhine Street.

The person with the best submission will receive a finely matted, quality enlarged print of the original, courtesy of Schamberger Gallery in Elkhart Lake.

Please share your guesses and help us keep the contest up to date.

answer February Mystery Photo

Thank you to everyone who submitted an entry for this photo. The winner of the print is Charlie Kaufman. Please contact the Elkhart Lake Chamber at 920-876-2922 to arrange pick-up.

appears to be only for walking, since the automobile was not in common use.

Thanks for sharing.

Charlie Kaufmann

The subject is vintage 1909ish Reigh's Resort on the big island of Crystal Lake. This was prior to Stark's Resort. The resort appears huge in size compared to the island. The winter storm shot is incredible. There are two men shoveling off the roof. The bridge

I am guessing this was the resort on the Crystal Lake island. I currently live on the island.

Lori Baus



WISCONSIN'S Elkhart Lake Chamber of Commerce

Our Mission

The Elkhart Lake Area Chamber of Commerce supports its member businesses and promotes the opportunity for sustainable economic growth and development.

Your Membership Working for You

DEPOT DISPATCH

March 2023 - No. 437

Published 12 times yearly by the Elkhart Lake Area Chamber of Commerce, to support and promote its members and provide a service to the community

© 2023 Depot Dispatch
All Rights Reserved

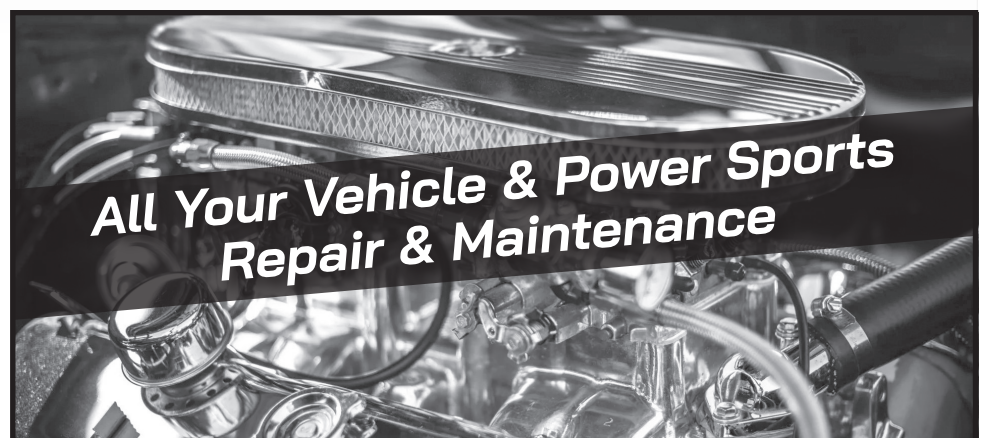
Publisher, **Pam Mathes and the Wisconsin Media Group staff**
Executive Director, **Melissa Koehler**
Membership Representatives,
Rachel Montaba, Branden Boerner and Mark Grasse
Contributor, **Marcia Schamberger**

Accounting, **Megan Martin-Rohr**
Distribution, **Abbey Hau**
and **Wisconsin Media Group**
Contributing Sponsors
Cleveland State Bank,
Friends of the Library,
Sargento
and **Sohn Mfg.**

Subscriptions
\$23.00/year (First Class)

Address correspondence or questions to
DEPOT DISPATCH, P.O. Box 425, Elkhart Lake, WI 53020
or call (920-876-2922) between 9 a.m. and 4 p.m.
For advertising questions, please call and ask for
Pam Mathes (920-894-2828)
E-mail address: depotdispatch@elkhartlake.com

The Depot Dispatch accepts non-member advertisements. It encourages and welcomes story contributions, press releases and event promotions from all members. Materials submitted for consideration will be reviewed by the editor, who reserves the right to adapt, as necessary. Submitted materials will not be returned unless specifically requested at the time of submission and accompanied by a stamped, self-addressed envelope.



Wolf Motorsports



All Things Automotive
Import & Domestic
Vintage & Classic Cars

- Oil Changes
- Brake Repairs
- Tire Replacements
- Shocks
- Carburetor Work
- Suspension
- Air Conditioning
- Computerized 4-Wheel Alignment
- Computer Diagnostics
- Exhaust Systems
- Transmission Rebuilds
- Engine Rebuilds
- Performance Upgrades
- Restoration
- Road Force Tire Balancing
- And More...



- ATVs
- UTVs
- Jet Skis
- Mopeds
- Motorcycles
- Golf Carts
- Snowmobiles
- Shock Rebuild
- Computer Shock Dyno



CHAMBER SPOTLIGHT

Suttner Accounting



March's Chamber Member spotlight is Suttner Accounting. Suttner Accounting has teams in Chilton, Sheboygan & Oshkosh. They believe in the value of relationships. They view every client relationship like a partnership, and truly believe that their success is a result of your success.

They are committed to providing close, personal attention to their clients. They

take pride in giving you the assurance that the personal assistance you receive comes from years of advanced training, technical experience and financial acumen. Their continual investment of time and resources in professional continuing education, state-of-the-art computer technology and extensive business relationships is indicative of their commitment to excellence.

To learn more about Suttner Accounting and their services, please visit www.suttnercpa.com



SOHN has meant **QUALITY** for over

60 years



- custom pressure sensitive labels
- custom rotary converting equipment
- flexographic label printing machines

SOHN

MANUFACTURING INC.

Elkhart Lake, WI

email: sohn@sohnmanufacturing.com

920-876-3361

Stay in touch with the Elkhart Lake Chamber of Commerce

Visit www.elkhartlakechamber.com often for...

- Chamber member directory
- Farmers Market information
- Renew & pay your membership
- Chamber events
- Register & pay for events
- Member press releases
- Member job postings

We Are Having Record High Sales In Elkhart Lake!!

Contact Our Team Today and Find Out What This Means for Your Property!

"Key to the Market"

AVENUE

Real Estate



FEATURED PROPERTIES

NEW LISTING!



281 Victorian Village Drive - Unit 23

Elkhart Lake is ready for you! Life is better by the lake in this Lakeside Suites 3 bdrm 3 bath condo! MOVE IN READY! Remodeled kitchen with open concept to the LR. Granite countertops, updated flooring, remodeled BRs, in-unit laundry on-suite! LL of the unit walks out to patio with views of the water! Being sold with a GARAGE- BONUS! Walk right into this one, no steps to the unit! **Price: \$559,000**

NEW LISTING!



266 Victorian Village Drive - Unit 227

2nd floor condo being sold fully furnished! Enjoy the indoor and outdoor pool, hot tub, tiki bar, beach, courtyard views (vs parking lot), private balcony, arcade, workout facility and more! Walking distance to all of Elkhart Lakes restaurants and entertainment! Water sports on-site at The Shore Club! Property not in the rental pool. Keep it that way or put it into rentals and make some money! Parking space included! Pet friendly too. Do not wait, preview this one today! **Price: \$129,400**

NEW LISTING!



281 Victorian Village Drive - Unit 33

Enjoy this corner unit with its own private balcony. LAKE VIEW! Completely remodeled! BR has a partial wall with a barn door for privacy! Full bath updated! Vaulted ceilings & walls of windows and doors offering natural light! Enjoy club amenities + walking distance to other destinations! The unit is NOT currently in the rental pool so you can PICK YOUR DAYS! Inquire today and do not wait, ENJOY LAKE LIFE! Parking gets two deeded spots. **Price: \$279,500**

NEW LISTING!



266 Victorian Village Unit 249

Own property and have access to Elkhart Lake! Welcome to the Shore Club! Second floor, corner unit located in the building with indoor pool, workout facility, lounge and arcade! Access to beach, outdoor pools, hot tub, water sports and more! 1 BR can sleep many w/pull-out couches! Only unit with eat-in KIT and LRI! Remodeled BA with walk-in tiled shower. Private balcony! Property can be added to the rental pool! Split is 50/50 if you rent with Shore Club. Fully furnished. **Price: \$179,000**

BEAUTIFUL SETTING



N8055 Little Elkhart Lake Rd., Elkhart Lake

Wilderness Log home built 1993 on 6 acre plus wooded setting. 4 bedrooms, 3 baths, detached garage, detached Building 77'x56' with pool, deck area, shower, full bath, propane gas heat for the home, natural gas serves to the pool building. Total home living area 3291 sq.ft. per assessor.

Are you looking to find out about properties for sale?
Connect with a team member for property updates!



Katy Cain
Katy@AvenueRET.com
920.980.9302



Bill Cain
Bill@AvenueRET.com
920.980.2588



Jamie Ausloos
Jamie@AvenueRET.com
920.980.9133



Jim Haucke
Jim@AvenueRET.com
920.838.1175

ELKHART LAKE LOCATION
99B Lake Street
PLYMOUTH LOCATION
1000 Eastern Avenue
By Appointment

[f](https://www.facebook.com/avenueret) [i](https://www.instagram.com/avenueret) [y](https://www.youtube.com/avenueret) [in](https://www.linkedin.com/avenueret) 920-893-3001 | AvenueRET.com

NEW! CD Rate Special

4.00% APY* | 37 Month

Limited Time Offer • Fixed Rate • \$10,000 Minimum

274 Osthoff Avenue | 920-876-2700

* Annual percentage yield effective February 15, 2023. Rate subject to change. Personal money only. Substantial penalty for early withdrawal. At least 50% new money.



National Exchange
Bank & Trust™

nebat.com/locations

Member FDIC

ELG School District Open Enrollment

The open-enrollment period for public schools in Wisconsin takes place February 6th through April 28th. Students and parents will be researching area schools and making their selections for the 2023-2024 school year. During the 2022-2023 school year, families of 148 students chose to attend the Elkhart Lake-Glenbeulah schools from their home districts. We are hoping to continue growing the number of open-enrolled students who choose us as their first educational option. The Elkhart Lake-Glenbeulah School District is a great place to be. We thought this would be a great time to remind everyone of all the positives the Elkhart Lake-Glenbeulah School District provides students and families.

Small Class Sizes: The student/teacher ratio in the Elkhart Lake-Glenbeulah School District is 11:1. Teachers and staff really get to know each student to best meet their learning needs.

College Credit Opportunities: Classes are offered at the high school to allow students to earn college credits and high school credits simultaneously. The high school currently offers students the opportunity to take eighteen (18) dual-credit course options classes in nine departmental areas. Students have the opportunity to leave high school with fifty-two (52) college credits from classes taught by our teachers in our building.

Graduation Rates: Elkhart Lake-Glenbeulah students consistently graduate a higher-level percentage of students (100%) than the state average (91.2%).

ACT Scores: ACT testing provides a college readiness benchmark for students. The ACT is given as a state assessment to all 11th grade students. These scores may help college acceptance and may lead to scholarship and financial aid opportunities. Elkhart Lake-Glenbeulah students consistently score higher than the state average.

Fine Arts Participation: Data supports participating in fine arts (art/ music) is a key component in learning throughout all academic areas. 68.7% of Elkhart Lake-Glenbeulah students are regularly involved in fine arts activities.

Co-Curricular Activities: Co-curricular activities are one of the best investments a school can provide to promote student achievement, student engagement, and create a positive school culture. Participation promotes building positive relationship, collaboration, cooperation, work ethic, commitment and routines that may lead to a successful and productive future. The Elkhart Lake-Glenbeulah School District offers thirty-three (33) activities for students to be involved which appeal to a wide variety of interests. 93.3% of students participate

in co-curricular activities throughout the school year.

Youth Apprenticeship | Work Study Opportunities: The District has worked with local and area businesses to provide students with real life, hands-on career experiences. Students are able to accelerate their knowledge and experience in their careers with opportunities in healthcare, business, agriculture, manufacturing, welding, construction, retail, hospitality, electrical, plumbing, childcare, and finance.

Mental Health Initiatives: The Elkhart Lake-Glenbeulah School District is committed to fostering a healthy, safe, and supportive learning environment for all students and staff. Part of this commitment includes providing counseling services at each school and grade level. Students have access to mental health services directly in the school buildings each week through a school-based mental health community impact initiative partnership with the United Way.

School Safety: The Elkhart Lake-Glenbeulah School District has been a leader in school safety. Safety drills and

secure facilities have been a practice in the schools for years. The District partners with the community to provide a police liaison officer who is present in the buildings. The staff are trained in threat assessments, practice safety plans, and commit to providing a safe environment.

Successful Referendums: Residents have a positive history of passing referendums for the School District. Passed referendums allow the District to continue offering small class sizes, providing current technology for students to use, and maintaining the facilities to provide safe, clean, and attractive learning environments.

21st Century Learning Skills: The Elkhart Lake-Glenbeulah School District is preparing students to be career and college ready. Students are issued personal computing devices issued to interact in classroom activities. Students participate in creative thinking, flexible problem solving, collaboration, and innovative activities which prepare them for situations found in work and life.

If you would like to set up a tour of our District, please contact us at: (920) 876-3381 **Go Resorters!!**

ACT Scores		
Year	Wisconsin Average	Elkhart Lake-Glenbeulah
2019-2020	19.8	20.6
2020-2021	19.1	22.3
2021-2022	19.3	20.1



A ribbon cutting was held on Tuesday, January 31st at Mental Health America Lakeshore's new office located at 410 S. Milwaukee St. in Plymouth. Congrats

Coursework That Fits Around Busy Lives Makes Earning a College Degree Possible

If the ophthalmic medical assistant program was not being delivered through Lakeshore Technical College's competency-based education (CBE) model, recent program graduate Jessika Mata would not have succeeded like she did. The delivery model offered Mata the flexibility she needed to enroll and stay in college.

"I feel very blessed the ophthalmic program is CBE. Though school is stressful on its own, it's so great that I got to learn at my own pace and not feel rushed," says Mata, who spends a lot of her time taking care of family. She also manages social media and teaches children's ministry for her church. She wanted to continue doing those things and go to college, but the rigid, inflexible structure of a traditional semester where students learn at a pace dictated by the academic calendar made that difficult.

Mata also hit a rough patch filled with family health issues that might otherwise have caused her to drop out of college during her second semester. Because of the assistance and support offered by her instructor and advisor, she was able to find classes and continue moving forward in her program during that difficult time.

The learning model is also appreciated by faculty. "What I love most about CBE is we have the ability to meet students where they are in life. We can speed things up or slow things down like we did with Jessika. Students can receive instruction virtually, online, face-to-face, or a combination of all three," says Lakeshore Ophthalmic Medical Assistant Instructor Dr. Cori Wicklund.

Mata's Path to a Career in Eye Care

Due to health issues experienced prior to enrolling at Lakeshore, Mata was unemployed other than driving for Door Dash at times. Her husband encouraged her to go back to school, but nothing sparked her interest until going with him to an appointment to get his glasses repaired. Mata, who also wears glasses, realized while waiting that she always had great experiences going to the eye doctor. It was then she decided to explore a career in eye care. She found the ophthalmic medical assistant program nearby at Lakeshore Technical College.

Lakeshore shifted its ophthalmic medical assistant program from a rigid, traditional semester structure where all students were forced to learn at the same pace to CBE in June 2021. Mata had her choice of

multiple start dates and chose August that year. Students can start programs delivered in the CBE model almost any month of the year rather than only at the beginning of a semester, as is the case for programs delivered in traditional ways. Before moving to CBE, students could only start in the ophthalmic medical assistant program in August or January.

CBE Provides Greater Flexibility

"CBE provides individualized, flexible learning that allows us to impact more learners and make a greater impact on the quality of healthcare in our communities," says Wicklund.

CBE focuses on knowledge and competence rather than time spent in classrooms. Because students demonstrate mastery of skills and knowledge when they are ready, they have the flexibility to move through coursework at their own pace. Students also have flexibility as to when they study and practice skills, so they can schedule coursework around their work and family commitments.

The increased flexibility not only provides busy individuals the opportunity to attend college, but also allows them to complete courses sooner than courses offered in traditional formats with specific start and end dates. If needed, CBE students can also take more time to master competencies.

Putting Learning Into Action

Mata says she loved the hands-on portion of her program and enjoyed taking things home to practice on her family and friends, who were very cooperative. She also liked putting her education into action while working as an optician at 20/20 Visions in Plymouth, where she continues to enjoy styling patients in fun frames.

"I can tell in my work environment how much having this background education means not only to the doctors but to the opticians and technicians," says Mata.

Mata's enthusiasm for the program and CBE drew interest from her sister, Genesis Mata. Jessika brought Genesis to Lakeshore's Cleveland campus to meet Wicklund and see hands-on classroom activities. Genesis liked what she saw and how she could fit it around her schedule. She began the program in January.

Lakeshore currently offers seven programs in the CBE model and plans to continue adding more each year. For information



about the ophthalmic medical assistant program or any others, visit gotoltc.edu/programs-and-courses.

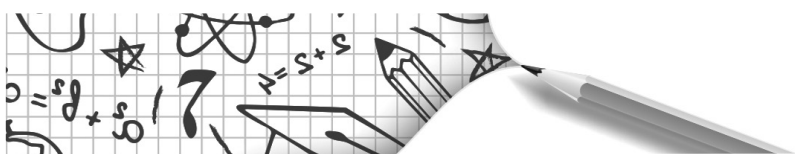
While a student, Jessika Mata, right, practiced skills she needed to master through instruction from Dr. Cori Wicklund, left, Lakeshore Technical College's ophthalmic medical assistant instructor.

About Lakeshore Technical College

Each year more than 8,000 people enroll in courses at Lakeshore Technical College. They rely on Lakeshore for job preparation, to earn a degree, upgrade a specialized skill, train as an apprentice, or seek a high school equivalency. Lakeshore faculty and staff meet students where they are in life and help them get one step closer to achieving their goals.

Lakeshore Technical College is a nationally recognized technical college. The college was ranked the #2 two-year college in the nation for adult learners by Washington Monthly, #4 in the nation for two-year college educational outcomes by WalletHub.com, a top-150 two-year college by the Aspen Institute, a top 10 Bellwether Award finalist three out of the last four years, and the 2021 Large Business/Industry of the Year by the Chamber of Manitowoc County.

Approximately 800 students graduate from Lakeshore Technical College each year, and associate degree graduates earn a median salary of \$54,048 per year. In addition to the Cleveland campus, Lakeshore serves students in Manitowoc and Sheboygan, and offers classes at additional sites throughout the district. Visit Lakeshore at gotoltc.edu.



Lakeshore Technical College Students Named to Dean's List

Lakeshore Technical College named 548 students to its fall 2022 dean's list. To make the list, students must have completed six or more credits and earned a GPA of at least 3.5 on a 4.0 scale for the fall term. The 310 students earning presidential honors, which require a 4.0 GPA, are indicated with an asterisk.

Elkhart Lake - Glenbeulah Students are listed by their hometown.

Elkhart Lake

Carrie Bender*, Corey Butters*, Joseph Ebert*, Desiree Hart*, Kaylee Heim, Nicole Loritz, Carter Lutzke, Dylan Ninmer*, Grace Ruh*, Matthew Zorn*

Glenbeulah

Devin Jankuski*



New Dam at Sheboygan Marsh to Enhance Wetland Health

The \$3.8 million project will include the installation of two gates at the dam so water levels can be better managed during storm surges

Ducks Unlimited (DU) is partnering with the Wisconsin Department of Natural Resources (DNR), Sheboygan County, and the Sheboygan County Conservation Association among others

knows that. They know how important this marsh is so that the next generation has a place to enjoy the outdoors. It's time to finally get this thing done."

of water that can be released from the marsh."

DU has been working with partners over the past five years conducting a feasibility study and engineering analysis to address the marsh's issues and created a design plan for this ambitious project. Based on our findings, the most viable and ecologically responsible option is to remove the old concrete dam and install a new dam with more effective water management capability.

The design plan includes a 25-foot-wide crest gate that will manage large flow events and reduce the likelihood of significant water level fluctuations from small storms during drawdowns. Two 8-foot-wide stainless steel slide gates will also be installed to manage water level fluctuations during low flow. The new dam will maximize water level management and achieve habitat goals while providing superior ecological services and mitigate costs.

"With this new dam we will be able to conduct various degrees of drawdowns and hold stable water levels to promote vegetation that will benefit numerous species of waterfowl, shorebirds, and other wetland species," said Wisconsin DNR Wildlife Biologist Tanner Klein.

Sheboygan Marsh is an ecologically diverse wetland, supporting numerous plant and bird species. Located in northwest Sheboygan County, the 14,000-acre emergent wetland is part of the Sheboygan River Watershed and the Lake Michigan Basin. With 8,166 acres cooperatively owned and managed by the Wisconsin DNR and Sheboygan County, it's the largest managed wetlands complex in Wisconsin's Lake Superior and Lake Michigan watersheds.

many wetland complexes throughout North America, the marsh was drained in the early 1900s to establish agriculture practices. This experiment was unsuccessful, and the dam was constructed to hold water on the landscape once again. The current dam structure—which mimicked the former natural limestone impoundment—built in 1938 was, at the time, the largest wetlands restoration project in Wisconsin's Lake Michigan and Superior basins. The existing water control system is nearing the end of its lifespan, making now the perfect time to reinvest and improve the performance of the dam.

"This project is yet just another example of a great collaboration between public and private entities in Sheboygan County," said Aaron Brault, Sheboygan County's Planning and Conservation Director.

For more information, visit www.ducks.org, and be sure to Follow DU's Twitter feed – @DucksUnlimited and @DUConserve – to get the most up-to-date news from Ducks Unlimited.

About Ducks Unlimited

Ducks Unlimited Inc. is the world's largest nonprofit organization dedicated to conserving North America's continually disappearing waterfowl habitats. Established in 1937, Ducks Unlimited has conserved more than 15 million acres thanks to contributions from more than a million supporters across the continent. Guided by science and dedicated to program efficiency, DU works toward the vision of wetlands sufficient to fill the skies with waterfowl today, tomorrow and forever. For more information on our work, visit www.ducks.org.



Sheboygan Marsh includes 21 miles of the Sheboygan River and channels. Like



to enhance 14,000 acres of wetland habitat at Sheboygan Marsh Wildlife Area by replacing an outdated dam structure.

Sheboygan County and the Wisconsin DNR have had longstanding problems managing water levels at Sheboygan Marsh, particularly during rain events, which have caused a myriad of issues, including an overabundance of invasive cattail mats that threaten the marsh's biodiversity and infrastructure.

"We have raised over \$3.2 million for the project and need about \$460,000 more to replace the dam and make access improvements," said Stan Strub, a DU volunteer and life-long Sheboygan resident. "The marsh is a wonderful gem that is unrivaled in the state of Wisconsin—there is nothing like it anywhere else. And our community

Incoming water flows often exceed the capacity of the Marsh's water control system and leave it susceptible to fast-rising water during storms. The rapid water rise dislodges large cattail mats and sends them downstream to the dam where they clog the outlet and slow the flow of water. The cattail mats can only be removed with heavy equipment, which comes at a high cost to the County and DNR. The water rises also halt beneficial wetland plant growth and negatively impact water quality and other biological goals that are achieved by effective water level management.

"Even when there is a relatively small rain event, this marsh will spike in water elevation and it will uproot these cattail bogs," said DU Regional Biologist Brian Glenzinski. "They come down and clog up the dam, which slows the amount



D&D Carpentry

"Our name stands for quality"

OUR SPECIALTIES INCLUDE:
Additions • Remodel Work
Masonry • New Homes


General Contractors
36 years of Serving our Community
1324 Eastern Ave., Plymouth • (920) 526-3648
www.ddcarpentry.com

Follow us on: facebook.

SHOP LOCAL

Buy Elkhart Lake Chamber Cash and help support your community!

Available at the
Elkhart Lake Chamber of Commerce
41 E. Rhine St., 920-876-2922
www.depotdispatch.com
www.elkhartlakechamber.com



Cutting With Style

Dyanna Muldoon and her father Willie Mueller provide haircuts, styles, colors and perms for men and women.

You will like our haircuts and love our price!

Mueller's Barber & Styling

325 Fremont St. • Kiel • 894-3939

BUSINESS HOURS: Tues.-Fri. 8 a.m. - 5:30 p.m. • Sat. 8 a.m. - Noon

NO BLARNEY!

Free Pair of Earrings!

With your purchase of \$50 or more. Entire month of March.

- Estate Jewelry
- Unique Clothing S-3x
- Amazing Jewelry
- Gift Certificates

Shipping and curbside pick-up available

Alléchant Boutique LLC

217 East Mill Street • Plymouth • 920-893-9888

We Buy Gold & Silver

Open Most Days 10am to 5pm
Extra Hours by Appointment



Elkhart Lake Chamber Calendar of Events

NOW THROUGH APRIL 1

John Michael Kohler Art Center

Applications to exhibit at the July 15-16 Midsummer Festival of the Arts are being accepted.

NOW THROUGH MARCH 193

John Michael Kohler Art Center-Exhibit: Sarah Zapata: A Resilience of things not seen

NOW THROUGH APRIL 2

John Michael Kohler Art Center-Exhibit: Youth Art Month

NOW THROUGH APRIL 16

John Michael Kohler Art Center-Exhibit: Angela U. Drakeford: In bloom at the end of the world

NOW THROUGH MAY 19

John Michael Kohler Art Center-Exhibit: Creative! Growth!

NOW THROUGH JULY 7

John Michael Kohler Art Center (at the Art Preserve)-Exhibit: Otis Houston Jr.: My Name is My Word (in response to Jesse Howard)

NOW THROUGH OCTOBER 1

John Michael Kohler Art Center-Exhibit: Andrea Chung: if they put an iron circle around your neck I will bite it away

MARCH 7-JULY 16

John Michael Kohler Art Center-Exhibit: Morehshin Allahyari: Moon-faced

MARCH 11-SEPTEMBER 17

John Michael Kohler Arts Center-Exhibit: Moisés Salazar Tlatenchi: A Quién le Importa

MARCH 15, APRIL 19

SPARK! Presentations designed for individuals with early-to mid-stage Alzheimer's disease or dementia (can be adapted to the needs of other groups).

MAY 17, JUNE 21,

Ceramics Open Studio for 5 days a month from January-May for makers who want to work independently. Must register.

For all of the previous listngs visit website: jmkac.org for details and/or registration.

NOW THROUGH APRIL 28

Plymouth Arts Center-Exhibit: Celebrating Larry Basky: A Lifetime of Paintings, www.plymoutharts.org.

MARCH 1

John Michael Kohler Arts Center-Storming Caesars Palace by Hazel Gurland-Pooler, 12 PM. Storming Caesars Palace chronicles the life of Ruby Duncan, a cotton picker who fights the welfare system and ends up a White House advisor. Storming Caesars Palace will premiere on Milwaukee PBS on March 20, 2023. Registration encouraged. Visit website: jmkac.org for details.

MARCH 2

Grace Lutheran Church Community Lenten Supper, menu: meatloaf, cheesy hash browns, green beans. Available for inside dining from 5-6:30 PM. Free-will offering. Visit website: graceserves.org.

MARCH 3

Stephanie Weill Center-Movie: Finding Dory, 7 PM. Friendly but forgetful blue tang Dory begins a search for her long-lost parents and everyone learns a few things about the real meaning of family along the way. Visit website: weillcenter.com for details/tickets.

MARCH 4

Road America Winter Autocross Series-registration open-drive or spectate, 8 AM-4 PM. From the novice driver to the experienced autocrosser, Road America's Winter Autocross Series has a little something for everyone. Visit website: roadamerica.com for details.

Wade House-Hearthside Dinner, 11 AM-3 PM - Enjoy a delicious hearth-cooked meal, prepared with your own hands, in the historic Wade House stagecoach hotel. This meal's theme is the Yankee menu. Must be age 13 or older. Advanced registration required. Visit website: wadehouse.wisconsinhistory.org for details.

Hermitage Conservation Club-Hermitage-Forest Sportsman's 26th Annual Banquet-doors open 5 PM, dinner 7 PM Millhome Supper Club. For advance tickets: Josh McDole, (920) 980-8185 or jlmcdole@hotmail.com.

MARCH 4-5

Camp Y-Koda-Teen Retreat Weekend-ages 14-16. Forge new friendships, learn leadership/life skills, camp activities, etc. Register online at sheboygancountyyymca.org/camp-y-koda.

MARCH 10

Kohler Foundation-Mariachia Herenci de Mexico | HEREDEROS, 8 PM, Kohler Memorial Theater. Latin Grammy-nominated Mariachi Herencia de México presents one night of vibrant mariachi music. Visit website: kohlerfoundation.org for details.

Plymouth Arts Center - Celebrating Larry Basky: A Lifetime of Paintings, 5-7 PM. A commemorative art show featuring the artwork of the late Larry Basky, all for sale. Visit website: plymoutharts.org or call 920-892-8409.

MARCH 10-12

The Osthoff Resort Big Band Gala. Weekend includes elegant dining, luxurious accommodations, professional dance instruction and ballroom dancing. Visit website: osthoff.com for details.

MARCH 11

Stefanie Weill Center-SSO presents a lyrical evening, 7:30 PM. Todd Levy of the MSO performs Mozart's Clarinet Concerto in A Major. Visit website: weillcenter.com for details.

Big Brothers Big Sisters-THE BIG DRAFT - Bowl for Kids' Sake 2023. Teaming up with the NFL's Inspire Change initiative to launch "The Big Draft" campaign. Odyssey Lanes, Sheboygan Falls. Visit website: bbbswishoreline.org/events for details.

MARCH 16

John Michael Kohler Arts Center-Embellished Pillow Covers with Patty Aker (first of 2-part workshop), 5-7:30 PM. Create a silk-top pillow cover using silk-painting techniques. Age 13 and up. Visit website: jmkac.org for details and registration.

Grace Lutheran Church Community Lenten Supper, menu: casserole and salad. Available for inside dining from 5-6:30 PM. Free-will offering. Visit website: graceserves.org for details.

MARCH 17

Stefanie Weill Center-Llama Llama Live, 6 PM. This hilarious new musical based on the bestselling books by Anna Dewdney will warm every Llama and Llama Mama's heart. Recommended for Ages 3-6. Visit website: weillcenter.com for details.

MARCH 17-19

Plymouth Arts Center Presents "A Wee Bit Irish" Concert: An evening of traditional and contemporary Irish music and some good old fashion' Irish humor. Special guests to appear with Celtic Folk vocalists. Evening shows at 7:30, matinees at 2:30 PM. For tickets, call 920-892-8409, email info@plymoutharts.org, order online at plymoutharts.org, or purchase in person.

MARCH 18

Stefanie Weill Center-Killer Queen-A Tribute to Queen, 7:30 PM. KILLER QUEEN pays tribute to Queen like no other band. Theatrical and musical artistry are second to none! Visit website: weillcenter.com for details.

MARCH 23

John Michael Kohler Arts Center-Embellished Pillow Covers With Patty Aker (second of 2-part workshop), 5-7:30 PM. Create a silk-top pillow cover using silk-painting techniques as well as quilting, felting, beading, and embroidery for a one-of-a-kind art piece. Age 13 and up. Visit website: jmkac.org for details and registration.

John Michael Kohler Arts Center-Grief Keepers: Celebrating Lives and Learning to Live with Loss, 6-7:30 PM, all ages. Dorothy McElroy will discuss her practice as a grief support specialist and death doula. Held in gallery featuring the exhibit of Angela U. Drakeford: In bloom at the end of the world. Visit website: jmkac.org for details/registration.

Regularly Scheduled Meetings & Events

ELKHART LAKE CHAMBER OF COMMERCE BOARD MEETING

Held at 8:30 a.m. the third Tuesday of each month

VILLAGE BOARD MEETINGS

The Board of Trustees meets at the Grashorn Civic Center (84 N. Lake St.) on the first and third Mondays of the month at 6 p.m. most months.

Agendas for all board and committee meetings are posted 24 hours in advance of the meeting at the Post Office, National Exchange Bank & Trust, Civic Center and our website. In order to be on a board agenda you must notify the village clerk by the Wednesday before the board meeting.

VISITOR CENTER

Located at 41 E. Rhine St. in the heart of the downtown. Stop in to pick up some information on area businesses and attractions. Monday, Tuesday, Thursday & Friday 9 a.m. to 4 p.m. Phone: 1-877-355-4278 or 920-876-2385 Email: tourism@elkhartlake.com Website: www.elkhartlake.com

AA MEETINGS

Held every Tuesday at 10 a.m. and Thursdays at 7 p.m. at Community United Church of Christ, 174 N. East St.

ELKHART LAKE STUDY CLUB

Meetings are held the first Monday of the month at noon and on the second Monday in September. Meetings are not held in January, July, and August at the Grashorn Civic Center. Elkhart Lake Cutting Edge Quilters—first Wed. each mo. 1 p.m. Bridge Improvement—Tues. 1 p.m. Book Group—second Mon. ea. mo. 1 p.m.

SPEAKERS 2023

March 6, 2023 -Valarie Elzinga Raising a family in Africa. April 3, 2023 -Kate Baer, Sheboygan County United Way (meeting at St. Thomas Aquinas Church) All meetings are held at the Grassham Center unless otherwise indicated. Bring a bag lunch and beverage. Presentations begin at 1:00 with a business meeting to follow.

CALENDAR SPONSOR



Providing financial options that are always in the best interest of our clients' success and the future of our communities.

CLEVELAND OFFICE: 1250 W. Washington Ave. Ph: 920.693.8256 • F: 920.693.8344 • TF: 833.321.9854

HOWARDS GROVE OFFICE: 502 S. Wisconsin Dr. Ph: 920.565.6000 • F: 920.565.6205

ELKHART LAKE OFFICE: 91 E. Rhine St., PO Box 548 Ph: 920.646.3150 • F: 920.781.5060

www.clevelandstate.bank



MARCH 24

The Osthoff Resort - One of These Nights-A tribute to the Eagles, 7:30 PM (doors open at 7 PM). Visit website: osthoff.com for details/tickets.

MARCH 24-25

Plymouth Arts Center Presents "A Wee Bit Irish" Concert: An evening of traditional & contemporary Irish music and some good old fashion' Irish humor. Special guests to appear with Celtic Folk vocalists. Evening shows at 7:30, matinees at 2:30 PM. For tickets, call 920-892-8409, email info@plymoutharts.org, or purchase in person.

MARCH 25

Wade House-Hearthside Dinner, 11 AM-3 PM - Enjoy a delicious hearth-cooked meal, prepared with your own hands, in the historic Wade House stagecoach hotel. This meal's theme is the German menu. Must be age 13 or older. Advanced registration required. Visit website: wadehouse.wisconsinhistory.org for details.

Vintage Elkhart Lake - Crystals & Wine Pairing Workshop, 4:30-5:30 PM. Interactive workshop where you will learn how to pair crystals in healing and at home. Visit website: elkhartlake.com for details/tickets.

The Osthoff Resort - 90's Rock Circus-A tribute to 90's rock icons, 7:30 PM (doors open 7 PM). Visit: osthoff.com for details/tickets.

MARCH 27-31

Camp Y-Koda-Spring Break Day Camp, ages 4-13. Week-long and daily options. Special themed dress-up days. Visit website: sheboygancountyyymca.org/camp-y-koda for details/registration.

MARCH 30

Grace Lutheran Church Community Lenten Supper, menu: chicken pot pie. Available for inside dining from 5-6:30 PM. Free-will offering. Visit website: graceserves.org for details.

MARCH 31

Stefanie Weill Center-"The Beat Goes On" features American singer/actress Lisa McClowry as Cher, the Goddess of Pop, in her one-woman Broadway-style live stage show, 7:30 PM. Visit website: weillcenter.com for details.



Scan QR code to stay up to date with our Member Events.

ROCK YOUR WEEKEND



March 24th

One of These Nights - A tribute to historic rock icons, the Eagles, will take place in the Grand Libelle Ballroom and will feature famous songs from the famous band that spanned multiple decades.



March 25th

Rock Circus will perform a concert in the Grand Libelle ballroom paying tribute to 90's rock icons such as Foo Fighters, Stone Temple Pilots, Metallica, Ozzy, Sheryl Crow, Rob Zombie and more!

7:00pm - doors open

7:30pm - show starts



\$45 each show
Reserve for both shows and save \$10!





The Intuitive Balance officially opened with a ribbon cutting on Saturday, February 11th in downtown Elkhart Lake. Welcome to Elkhart Lake Intuitive Balance!



ELKHART LAKE CHAMBER OF COMMERCE

Annual Awards Dinner



IMPRESS
FLOOR CARE

Fully Insured
Local Family Owned
IICRC Certified Technician

STEAM CLEANING 920.564.4278
◆ Carpet ◆ Tile ◆ Furniture

www.impressfloorcare.com

KRAUS
CONSTRUCTION
Inc.

Our
Commitment
to You...

Relationships
Integrity • Trust

510 Belitz Drive • Kiel
920-894-7008
www.krausconstruction.biz

Stardus
LIMOUSINE, LLC

Interior of 14
Passenger Limo Coach

14 Passenger SUV

Kiel 773-2270 • Sheboygan (920) 452-5696
www.stardustlimousine.com • Mike Hartmann, Owner

Farmers & Artisans Market
ELKHART LAKE

**2023 Vendor Registration
Opens March 1st**

Visit elkhartlakechamber.com/farmers-market
for information and materials.

Produce/Food Vendors
Wanted for 2023 Farmers & Artisans Market

WISCONSIN'S
Elkhart Lake
Chamber of Commerce

Optometry Practice Joins Elkhart Lake Chamber

Joining the Elkhart Lake Chamber of Commerce is Advanced Eyecare, located at 300 E. Mill St., Plymouth.

Under the partnership of Drs. Cheryl and Tim Ziegler, Advanced Eyecare just finished their 25th anniversary and recently began their 26th year of business in Plymouth.

"The time went so fast. It seems unbelievable," Dr. Cheryl Ziegler said. "I

really, truly love my work. I love to help people and that has really made the time fly by. We have been really lucky to have such wonderful patients over the years. We've also been blessed with a great team, which I know is not easy these days."

The Zieglers purchased Plymouth Eyecare from Dr. Richter in 1996 and changed the name to Advanced Eyecare. In 2010, they purchased their current location on East Mill Street in Plymouth's historic

downtown. The building itself was built in 1895 and was a bank when purchased. Upon the purchase, the Zieglers kept the safe that was in the building and tried to refurbish the safe to some of its original glory when they renovated the building.

When it comes to their patients, Ziegler says Advanced Eyecare has a specific niche: they try to treat their patients like family. "People have a lot of choices when it comes to eye care and I think they

recognize the difference. We are resourceful, spend time, and try to solve problems. We do our best to take care of our patients' needs beyond warranties. We follow through and follow up. We have a varied age range of patients, and we always make our senior patients feel extra comfortable coming in."

**Elkhart Lake Chamber
NEW MEMBER
Advanced Eyecare**

With their state of the art diagnostic equipment, Advanced Eyecare is able to provide thorough eye care to their patients including lenses and frames, contacts and fitting for specialty contacts, advanced dry eye therapy, and treating patients with eye disease and eye emergencies. Another specialty they offer is aesthetic optometry, the newest technology to treat fine lines and wrinkles and restore a more youthful look to aging skin. They also carry a medical-grade skin line.

"I think sometimes people don't know that if they have an eye emergency like loss of vision, pain in an eye, or need something removed from an eye, they can absolutely come in. They think we're just a glasses shop."

The mom and pop optometry practice offers a full scope service to its patients and welcomes new patients as well. According to Ziegler, anyone is welcome to come in and check out their huge selection of glasses and sunglasses.



Staff at Advanced Eyecare

MARSH MADNESS

3 Guys & a Grill at the Marsh

OPEN 6 DAYS A WEEK!

Serving Lunch & Dinner
Tuesday 4pm-8pm
Wednesday-Thursday 11am-8pm
Friday-Saturday 11am-9pm
Sunday 11am-7pm

Accepting and fulfilling all your catering needs!

Three Guys and a Grill
At Marsh Lodge
 Elkhart Lake, WI

W7039 CO RD S R • ELKHART LAKE • 920.876.2535

Dine in only. No substitutions. No other offers can be combined.

WEEKLY SPECIALS

TUESDAYS
 3 Beef Tacos **\$5.99**
 3 Fish Tacos **\$6.99**
 Add Rice & Beans **\$2.50**

WEDNESDAYS
 1/4 lb. Hamburger **\$3.00**
 add Cheese **50¢**
 add Chips or Fries **\$2.00**
\$3.00 Rail Tub
 Old Fashioneds

THURSDAYS
 1/2 Rack of BBQ Ribs **\$11.99**
 served with Fries, Coleslaw & Dinner Roll

SUNDAYS
 BBQ Pulled Pork Sandwich **\$5.00**
 add Coleslaw **50¢**
 add Chips or Fries **\$2.00**

SHOP LOCAL

Buy Elkhart Lake Chamber Cash and help support your community!

Available at the
Elkhart Lake Chamber of Commerce
 41 E. Rhine St., 920-876-2922
www.depotdispatch.com
www.elkhartlakechamber.com

Bob Schoenborn's JEWELRY

DIAMONDS • JEWELRY • WATCHES • CLOCKS • GIFTS

www.bobschoenbornsjewelry.com

307 Fremont Street • Kiel • 920-894-2772

Hours: Mon, Tues, Thurs 9am-5:30pm • Wed & Fri 9am-6pm • Sat 9am-1pm

Culver's - Plymouth

2318 Eastern Ave • Plymouth
920-893-2663
 Open 10 am until 10 pm daily

\$1 Off Any Seafood Dinner Entree

North Atlantic Cod Dinner

Northwoods Walleye Dinner

All dinners served with your choice of two sides: real mashed potatoes, fries, salad, coleslaw or broccoli and a dinner roll.
 Expires 4/8/23. GOOD ONLY AT THE PLYMOUTH, WI LOCATION WITH COUPON.

Elkhart Lake-Glenbeulah School District

Open Enroll Now

Be a Resorter Today!



11:1

Student | Teacher Ratio



2023-2024
Application Dates:
Monday, February 6th –
Friday, April 28th

Apply Online at:
<http://www.dpi.wi.gov/open-enrollment>

Questions? Please call:
(920) 876-3381

Visit: www.goresorters.com to learn more about joining our caring and innovative learning environment!

Where Will Your Savings Take You?

At Cleveland State Bank, we offer a range of savings deposit accounts, including Certificate of Deposits and Money Market Accounts, to help you make your money grow and reach your financial goals. Our team will provide you with the necessary tools, including instant issue debit cards, to access your accounts with ease.

Cleveland, WI | Howards Grove, WI | Elkhart Lake, WI

Member
FDIC



Showing We Care for Our Communities Since 1907

Contact us at
clevelandstate.bank or scan the
QR code to learn more.



WISCONSIN'S
Elkhart Lake



PURPOSE

The Elkhart Lake Tourism Department works to enhance the community's Quality of Life by expanding the benefits of the Visitor Economy while preserving our quaint resort town culture.



VISION

Elkhart Lake is recognized as a globally preeminent brand and destination.



MISSION

Share and deliver authentic experiences which inspire people to fall in love with Elkhart Lake.

Elkhart Lake Tourism Strategic Plan Initiative

Elkhart Lake Tourism would like to thank everyone who supported our recent tourism strategic planning initiative. We truly appreciate the resident participation in the Elkhart Lake Community Survey and the many businesses and Village staff members who participated in focus group or one-on-one stakeholder conversations. We truly appreciated the robust and honest feedback.

Our consultants gathered your thoughts, concerns, and ideas about how the tourism economy benefits and/or hampers resident life and affects business stability in our Village. Your feedback provided 22 insightful discussion topics which were prioritize and combined into three broad goals:

- **Broaden Elkhart Lake's appeal in all seasons**

- **Advocate for enhancements to Elkhart Lake's tourism infrastructure**
- **Build the Tourism Department's capacity to have an even greater impact on the community**

Within each of these broad goals, there are numerous objectives and tactics which the Tourism Commission and staff will work toward completion in the next three years.

This process has provided a strong framework to work towards greater collaboration within our community. It also addresses the need for respect and preserving Elkhart Lake's quaint resort town culture.

*By Kathleen Eickhoff,
Elkhart Lake Tourism*

THANK YOU 2023 SCHNEE DAYS SPONSORS!

The generosity of our sponsors makes our community a better place. Thank you for making Schnee Days 2023 a successful weekend!

With gratitude - The Elkhart Lake Chamber of Commerce



Follow Elkhart Lake Chamber of Commerce on Social Media





**CONGRATULATIONS TO
JACOB GANGA
ON REACHING 1,000 POINTS!
AMAZING!**

Great job to Jacob, his teammates at Elkhart Lake-Glenbeulah High School, and all the other teams in the conference!

Studios, Galleries, and Boutiques Open for 2023 “Northern Moraine Spring Art Tour”

The Plymouth Arts Center is pleased to present its 9th Annual Northern Moraine Spring Art Tour, Friday and Saturday, June 9-10, 2023. Join us for this fantastic two-day self-guided tour of the greater Sheboygan County area artist's private studios, galleries, and boutiques. Spend a day or the weekend! It's a rare opportunity to meet artists in their studios, as some of the private studios are only open to the public during this once-a-year special event. Admission is free courtesy of our generous sponsors! Tour hours on Friday are 10 am to 6 pm and Saturday from 10 am to 5 pm. Be sure to visit all 15 venues where you'll have a chance to meet over 35 artists who are painters, potters, furniture makers; fiber, wood, metal, jewelry, and leather artists, photographers, and more. There will be demos and door prizes, and the opportunity to purchase original, fine art directly from the artists who created it. Look for the colorful Spring Art Tour signs at all locations!

The Plymouth Arts Center (Stop #1) is the presenting organization and will serve as the tour headquarters as well as hosting eight artists in its greatroom. The Spring Art Tour is sponsored by Riverstone Wealth Management, Plymouth Furniture, Huberty, Sargento, and additional support from PAC season sponsors Masters Gallery, the Sartori Company, Cow Country Radio Station, and the Wisconsin Arts Board. The Plymouth Arts Center is located at 520 East Mill Street, in beautiful, historic, downtown Plymouth, WI, the “Cheese Capital of the World.” More information and maps may be found on our website: www.plymoutharts.org, or call (920) 892-8409.

The Plymouth Arts Center initiated this premier event in 2015 to increase the visibility of the many fine artists working and living in the greater Sheboygan County area and to encourage an appreciation for the role that artists play in the vitality of our communities. Spring Art Tour guides may be found at all participating venues and throughout the greater area. Visitors may also request a copy by calling the Arts Center. The PAC website includes a full description of the event, maps, links to the artists' studios, and to supporting area restaurants and lodging facilities.

Participating Art Venues:

***Stop #1 Plymouth Arts Center Art Tour Headquarters**
520 East Mill, Downtown Plymouth.

The 8 Artist Studios at the PAC are:
Phyllis Brillowski, Evie Grasse, Dennis Nimmer, Donna Rittorno, Kris Morse, Lyn Chevier, Robert Hagen, John & Trudie Hechel

NORTHERN MORAINES



***Daniel Rizzi Studio**
Daniel Rizzi
& Julia Showers
N5575 Kathryn Drive, Plymouth

***Lori Beringer Fine Art Studio**
Lori Beringer & Cheryl Galloway
N6880 Star Rd., Plymouth

***Chrysalis Bronk Art Studio**
Pam & Richard Bronk,
Barbara Hollenback, Pat Reiher
N7202 Highview Rd., Plymouth

Seranya Studios at Laack's Hall
Susan Radke
W4302 Cty. Rd. M, Johnsonville,
Sheboygan Falls

***Two Fish Gallery**
Patrick and Karen Robison
244 E. Rhine St., Elkhart Lake

Heart to Heart Studio
Shari Grenzow Mauer
119 Persnickety Place, Kiel

***Village Art and Created Goods**
Robert Burkhard & Richard Rooker
1202 W. Washington Avenue, Cleveland

***Prairie Path Studio**
Patricia Baker Ellis & Jacquelyn Beaupre
W6829 S. County Road A, Adell

***Second Act Furniture and Wood Works**
Bob Gluck & Lauren Braaksma
N1388 Hwy 28, Adell

Bowl Dog Woodturning
Dick Bemis
N1614 Hwy. 28, Adell (in Batavia)

***Redemption Cove Studio**
Linda Boehlke, Irene Schmitz,
Eugene Schmitz
N152 Camp Awana Road, Random Lake

Eagle Feather Artisan Studio
Dave and Bonnie Horn
W6714 State Hwy 144, Random Lake

***Silver Creek Pottery & Forge**
Mark and Sylvia Mondloch,
Jeremiah Backhaus, & Shelby Haber
W6725 Hwy 144, Random Lake

***Old Town Hall Studio/Gallery**
Eileen and Don Urness
814 Main Street, Belgium

*Indicates Multiple Artists at this location

The Plymouth Arts Center is a 501(c)3 non-profit arts organization solely supported through membership dues, sponsorships, corporate and private donations, grants, and through fundraising events. Gallery 110 North, our stunning art gallery, features rotating art exhibitions showcasing Wisconsin artists. A wide variety of art workshops and education programs for both adults and youth, are offered year-round as well as a performing arts-musical and theatrical series, a gallery gift shop and a host of special events such as the “Cheese Capital Jazz & Blues Crawl,” “Paint the Towns in Fall Color,” “Sartori Big Cheese Drop” and New Year's Eve party, and more. The Northern Moraine Spring Art Tour helps to fulfill the Plymouth Arts Center's mission which is.....to enliven the spirit of our community and to enrich the lives of all by providing diverse experiences in the Arts.

Gallery 110 North and Member's Gift Shop hours are: Tuesday-Friday 10:00am - 4:00pm, Saturday and Sunday, Noon to 3:00pm. We are closed on Mondays and Holidays. Admission to the Gallery is always FREE!



The Osthoff Resort's Aspira Spa Ranks as Top Spa in US



Spas of America has ranked Wisconsin's own Aspira Spa #39 in their Top 100 Spas in the US for 2022. Aspira Spa is the only spa from Wisconsin to receive this honor, and one of just three in the Midwest.

This annual award is given to spas and wellness experiences shown to be consumer favorites by Spas of America, a health and wellness website promoting healthy living and travel by showcasing the best spa and wellness centers in the United States, Mexico and Canada.

Aspira Spa, located at The Osthoff Resort, is nestled on the shores of Elkhart Lake. They offer a natural approach to the spa experience. Created with the intention of giving and receiving from the earth, this resort spa offers a place to ground, connect and rejuvenate. Their goal is to provide solutions for all guests to take a proactive approach to their natural wellness.

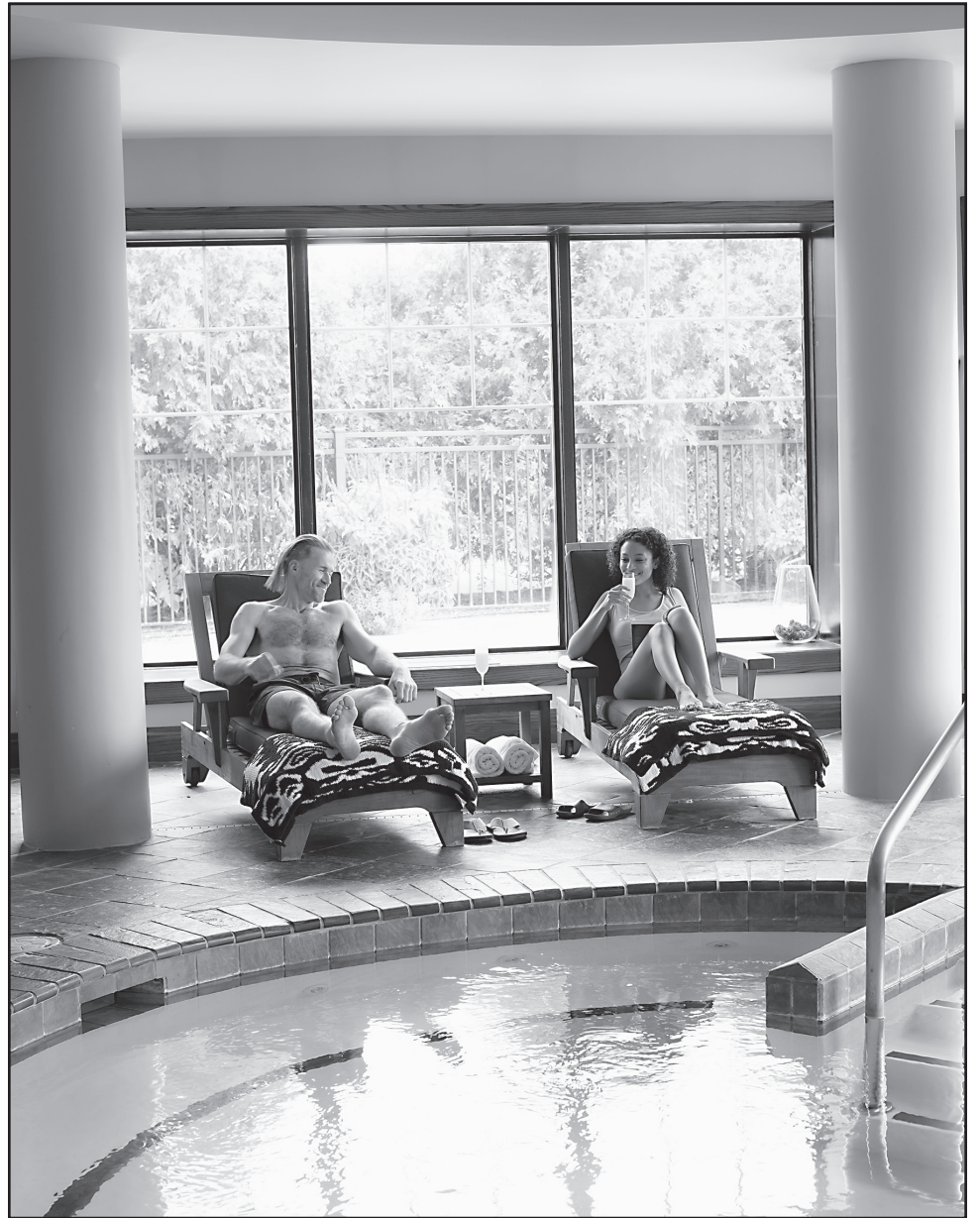
Since receiving this award, Aspira Spa has opened a new treatment room—the Salt Room Experience. They encourage their guests to start their new year of

wellness with the healthy benefits of salt therapy, which can reduce symptoms of respiratory illness, sinus and skin conditions, while also strengthening the immune system.

Halotherapy, or salt therapy, might be new to Aspira Spa, but it's been around since 1843. That year, Polish physician Feliks Boczkowski noticed that salt mine workers did not experience respiratory issues or lung disease unlike other miners. The naturally occurring salt caves in Poland have been used as therapeutic centers for asthma sufferers since the 1950s.

After World War II, where the residents of Ennepetal, Germany hid in karst salt caves to escape the heavy bombing, German physician Karl Hermann Spannagel noticed that those patients' health improved after their exposure to the caves.

To reserve a time in the Aspira Spa Salt Room Experience, call (844) 566-4392 or visit their website at <https://osthoff.com/aspira-spa/salt-room>.



SHOP MARCH CLEARANCE

APPAREL | BARWARE | FAN CAVE DECOR | TOYS



ROAD AMERICA
ELKHART LAKE • WI

shop.roadamerica.com



PADDOCK SHOP

WEEKDAYS 10-4

JUST ARRIVED:
SPRING!

wreathfactoryonline.com
 @wreathfactoryplymouth
 @thewreathfactory



Open Tuesday-Saturday 9am to 5pm

T H E



SPRING PREVIEW!
\$5 OFF
YOUR \$25 PURCHASE!

Valid with this coupon. Expires 3/31/23.
Limit one per customer. Not valid with other offers.

I N C

N6625 STATE ROAD 57 • PLYMOUTH
920-893-8700 (2 Miles North of Hwy. 23)

CHILI COOK-OFF

SCHNEE DAYS

Elkhart Lake | 2023



Mark Novitovic
Licensed Massage Therapist
Intuitive Massage, LLC
262-237-4719

Intuitive Massage, LLC
located at:
Charlene's of Elkhart
511 East Rhine
Elkhart Lake, WI 53020

- Highly skilled and compassionate massage therapy in Elkhart Lake since 2008.
- Customized massage using traditional and myofascial release techniques.
- Chair massage for your next event.
- Gift certificates available!

www.massageintuitive.com

Stay in touch with the Elkhart Lake Chamber of Commerce

Visit www.elkhartlakechamber.com often for...

- Chamber member directory
- Farmers Market information
- Renew & pay your membership
- Chamber events
- Register & pay for events
- Member press releases
- Member job postings

Paceline Construction

New Custom Homes
Remodeling & Additions

(920) 876-4020
PacelineConstruction.com

DESIGN SHOWROOM BY APPOINTMENT:
101 N. Lincoln St, Elkhart Lake

Huge Selection of Used Tires

14" - 20"

Over 2000 Tires In-Stock!

Buying scrap vehicles.
Call for current price. Must be delivered.
Buying batteries. \$5 each

Rhine Auto, Inc.

W5695 Garton Road
Plymouth • 876-2779
Mon - Fri 7:30 - 5:00
www.rhineauto.com

WISCONSIN'S
Elkhart Lake
Chamber of Commerce

Welcome! New Chamber Members

Pilates LIVING FREE by MARY LEE
627 Fremont St., Kiel • 920-203-6896 • maryleepilates@gmail.com

MODERN WOODMEN of AMERICA
Gregory Schoemer • 920-918-5979 • gregory.d.schoemer@mwarep.org
reps.modernwoodmen.org/g schoemer

Kindergarten Raises \$100 for Elkhart Cares



“Never doubt that a small group of thoughtful, committed citizens can change the world; indeed, it’s the only thing that ever has” (Margaret Mead) As part of their 100th Day of School celebration, Ms. Feltes (AM and PM Junior Kindergarten Teacher), Mrs. Wagner (Kindergarten Teacher), and Mrs. Jadin (Kindergarten Teacher) of Elkhart Lake-Glenbeulah Elementary School challenged their Junior Kindergarten and Kindergarten students to bring in spare change from home so they could raise at least \$100 for ElkhartCares. Their classes exceeded their expectations, and their generosity was tremendous! They were able to raise \$488.93 to help those that need it in our community. “We would like to donate the money we collected to you because we admire your beliefs and commitment to our families and community. We hope that this money will be able to help a few more families

that live right here in our hometown. Thank you so much for all you do to support those around us”, the classrooms wrote in their letter to ElkhartCares.

ElkhartCares is deeply grateful for contributions like this one. Continuing ElkhartCares services and programs for the community would not be possible without the kindness and generosity of donors.

ElkhartCares is a community-based nonprofit organization, serving the families and individuals within the Elkhart Lake - Glenbeulah School District.

ElkhartCares offers such programs and assistances in the areas of:

1. School lunch meals and summer reading programs
2. Internet services for school-aged children for their school work

3. Working with the Elkhart Lake - Glenbeulah School District, offering assistance in earning college credit courses, financial assistance for uniforms and equipment in order for students to participate in athletics, band equipment, before and after school activities, and grants for teachers that help support learning and engagement in the classroom and beyond

Family assistance programs such as:

1. Fuel assistance for parents commuting to and from work, and taking their children to and from school
2. Child care assistance for working families and single parents
3. Holiday meals, Christmas presents for children of struggling families, and aiming to alleviate some of the financial

stress the season can bring with Santa’s Village--a family-friendly offering, free for the community to come together and enjoy holiday cheer

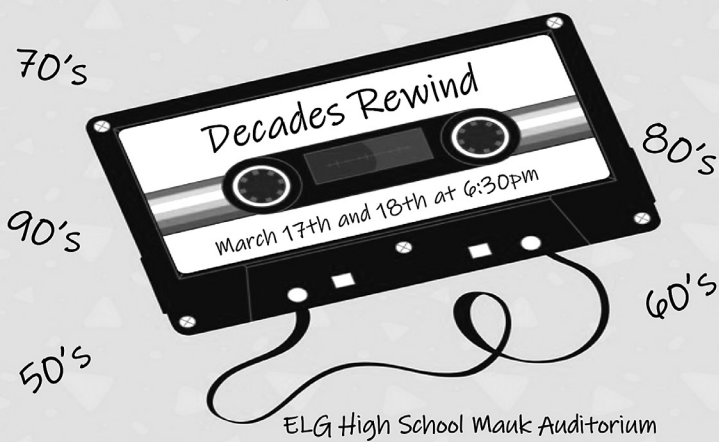
4. Pet supplies
5. Medical financial support
6. Appropriate clothing for winter and summer needs
7. Food support for families

These are but a few of the services and examples of support that make up the offerings provided by ElkhartCares. ElkhartCares is a 501c3 organization, and all contributions are tax-deductible. Those interested in helping, please donate online by visiting www.elkhartcares.org/ donate, or by check via mail to P.O. Box 537, Elkhart Lake, WI 53020.



ELG Pops Concert “Decades Rewind”

Elkhart Lake-Glenbeulah Music Department Presents



ELG High School Mauk Auditorium
Tickets: \$5 at the door or from a music department student.

Members of the Elkhart Lake-Glenbeulah High School Band and Choir take you on a musical journey when they present a “Decades Rewind” Pops Concert on Friday and Saturday March 17th and 18th at 6:30p.m in the high school’s Mauk Auditorium.

Enjoy an evening featuring a host of popular songs from the 1950’s through the 1990’s by members of the band, choir and jazz band. Spruce up your

game show knowledge and join us for a fun evening of light-hearted competition.

The event offers entertainment for the entire family. Tickets go on sale in the high school office March 1st; or, you can buy them at the door. Tickets are \$5.00. For more information call (920) 876-3381.



LOST SOCK LAUNDROMAT

OPEN 24 HOURS

Full Service Laundromat

- Fluff & Fold
- Commercial Laundry
- Ironing

Imogene’s Dry Cleaning Service

Drop off & Pick up done on **WEDNESDAYS**

Sippel’s Lost Sock Laundromat

510B East Rhine Street • Elkhart Lake • 920-946-1750

VINTAGE of ADA

Vintage Furnishings For Home & Garden

Worth the Trip!

OPEN for the SEASON!

March 3-5

Friday & Saturday 10am-5pm

Sunday Noon-4pm

VINTAGE Shop Hop™

March 3&4

500+ Vintage Shops & Boutiques in Illinois & Wisconsin

W4024 State Hwy. 32 in the Village of Ada • 920-207-2319

Between Howards Grove & Kiel See pictures on Vintage of Ada

ALSO OPEN BY APPOINTMENT

SHOP LOCAL

Buy Elkhart Lake Chamber Cash and help support your community!

Available at the
ELKHART LAKE CHAMBER OF COMMERCE
 41 E. Rhine St., 920-876-2922
www.depotdispatch.com • www.elkhartlakechamber.com

Elkhart Lake-Glenbeulah Middle School Spelling Bee

On Wednesday, January 18th, Elkhart Lake-Glenbeulah Middle School held their annual Scripps National Spelling Bee. This year's bee was again held in the middle school gym and was live streamed on the school's Youtube channel. Big thanks to our technology department as we were able to once again live stream the bee to all classrooms and families watching from home. Congratulations to Joseph Ebertz, a 4th grade student from Mrs. Kossman's class who was the school's champion in

Round 7 with the word "kumkum". Our first runner up was Lexie Weiss, an 8th grade student in Mrs. Wagner's class; and the second runner up was Brayden Smith, a 7th grade student in Mrs. Well's class. Great job to all who qualified and participated. Joseph will represent Elkhart Lake-Glenbeulah at the National Scripps Regional Bee on February 2, 2023 which will be held at Acuity Insurance in Sheboygan. Congratulations, once again, to all students who represented their homeroom classes!



Center: ELGS Spelling Champion, Joseph Ebertz with second runner up Brayden Smith on the left, and to the right is first runner up, Lexie Weiss.



Original Art to Enrich Homes Gardens and Lives

Patrick and Karen Robison
 244 E. Rhine Street
 Elkhart Lake, WI 53020

March Hours
 Saturdays 10-5
 and by appointment

920-876-3192
www.twofishgallery.net
www.facebook.com/twofishelkhartlake

Grace Lutheran Church

Sunday Divine Service.....8 & 10:15 am
 Thursday Divine Service.....7 pm
 Bible Class
 • Wednesday..... 9 am
 • Sunday..... 9:15 am

Hwy 67, Elkhart Lake

For all your labeling needs

SOHN Manufacturing, Inc.

544 Sohn Drive, Elkhart Lake, WI 53020

920-876-3361

email: sohn@sohnmanufacturing.com
www.sohnmanufacturing.com

FREE Weekday Lunch Delivery!*

Check Out ALL OUR MEMBERSHIPS!

- Full Golf Memberships
- Glacial Nine Memberships starting at \$685
- Associate Membership - 28 9-hole rounds for starts at \$495
- Social Membership \$200
- Junior and College Student Memberships available



Serving our famous **FRIDAY FISH FRY** 4:30-8:30pm

SUNDAY BREAKFAST 9am-1pm

SERVING EVENINGS Monday thru Thursday (May-September)

RIB NIGHT March 16

SERVING LUNCH DAILY 11am-2pm

See our website for updates
 Closed Tuesdays thru March.
 Open 7 days a week April thru November.

Rib Night Thursday, March 16



Call for more information

500 Quit Qui Oe Lane • Elkhart Lake • 920-876-2833 • www.quitquiocgolf.com | www.facebook.com/quitquioc



Photo credit to LesTension Photography

Schwaller's Painting & Staining

High quality interior & exterior, residential & commercial painting & staining



Fully Insured • FREE Estimates

Serving Elkhart Lake, Crystal Lake and the Surrounding area since 2004



www.schwallerpainting.com • (920) 876-4020



Village of Elkhart Lake Updates

**MARCH 2023
APRIL ELECTION**

The ballot is set for the April 4, 2023, election. This will include the local elections, as well as the State Supreme Court race. The following submitted papers to run for village offices.

VILLAGE PRESIDENT: (VOTE FOR ONE)

RICHARD SADIQ

**BOARD OF TRUSTEES:
(VOTE FOR THREE)**

GEOFFREY BRAY

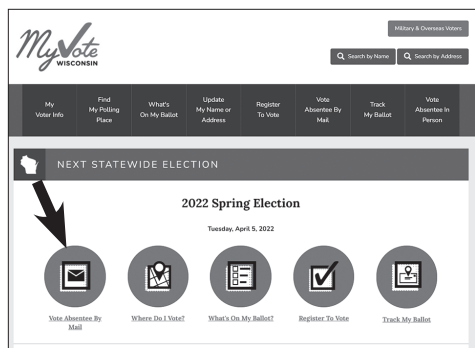
PAUL RUDNICK

MICHAEL WOLF

If you need to register to vote you can do it in person at the Village offices between 8:00 am and 4:00 pm Monday-Friday, or you can go online to <https://myvote.wi.gov/en-us/> and register and receive voting information including polling locations and sample ballots.

**ABSENTEE VOTING
FOR APRIL 4, 2023**

If you would like to request an absentee ballot for the April 4th elections, you can go to <https://myvote.wi.gov/en-us/>. Please allow at least a week for the ballot to go each way.



If you do not have access to the internet or cannot get the website to work, please call the Village offices (920-876-2122) and request an absentee request form. You will need to provide that form and a copy of your photo ID to our office. We anticipate the ballots going out in the mail around March 15th.

In-person absentee voting for the April 5th election will begin 2 weeks before the election (March 21st through March 31st). We are open

from 8 am to 4:00 pm on those days for in-person absentee voting.

BUILDING PERMIT REQUIRED

The Planning Commission would like to remind you that if you are planning a construction project on your home or business, you must apply for a building permit. Permits must be obtained prior to commencement of work. We have had a few people looking to install patios and doing some work and then finding out they cannot have one. We want to prevent this from happening. It is best if you call the Clerk's Office at 920-876-2122 to find out if your project will require a permit. Failure to do so will result in double the permit fees, potentially tearing out of what has been done, and could even result in a fine of up to \$1,000.

**THANK YOU KIM PURKEY &
WELCOME DANNETTE WIGEN**

We would like to thank Kim Purkey for her years of service to the Village of Elkhart Lake. She will be retiring in March. She started at the Village in 2023 and has been working in the Administrator/Clerk-Treasurer's Office, Police Department, and serves as the Clerk of Courts. Her personality and sense of humor have provided colleagues and the public with an entertaining and enjoyable work environment. She will be greatly missed, but she has graciously agreed to be a poll worker for future elections and we are thrilled with that.

We would also like to welcome Dannette Wigen to the Village of Elkhart Lake. She started with the Village in November, and she has been training with Kim for the last few months. We are thrilled to add her to the team. Please stop in, introduce yourself and say hello.

**DOG LICENSES
DUE BY MARCH 31**

Please stop in at the Village Hall to license your dog by March 31st. You need to provide a proof of rabies vaccination and pay the fee (\$7.00 per spayed or neutered dog and \$14.00 per dog if not spayed or neutered). A late charge will be assessed to all dogs not licensed by March 31st.

**HOUSEHOLD
HAZARDOUS WASTE**

Sheboygan County has established three (potentially four) periodic collection sites for disposing of hazardous wastes. The majority of the program is funded with County tax dollars, so be prepared to show proof of residency. When those funds are depleted, the sites will be closed until funds are again available. The fees are: \$15 – Vehicles with hazardous waste only, \$40 – Vehicles with household size electronics only (for each 6 items), and \$40 – Vehicles with both hazardous waste and household size electronics (for each 6 electronic items). The first date is set for April 9th at the Highway Department on County J and Highway 67 from 8 am until 11 am. For more information on the days, times, and locations please visit <https://www.sheboygancounty.com/>

**GARBAGE COLLECTION
HOLIDAY SCHEDULE**

Just a reminder that the garage pickup date only changes if the Holiday falls on the Monday. Below are the pickup days for 2023.

**MEMORIAL DAY
Tuesday, May 30th, 2023**

**INDEPENDENCE DAY
Normal Monday Pick up**

**LABOR DAY
Tuesday, September 5th, 2023**

**THANKSGIVING DAY
Normal Monday Pick up**

**CHRISTMAS DAY
Tuesday, December 26th, 2023**

**NEW YEAR'S DAY
Tuesday, January 2, 2024**

AUTO PAY YOUR WATER BILL

The Village of Elkhart Lake accepts Automatic Clearing House (ACH) payments for your water/sewer bills. If you are interested in having your water/sewer bill automatically debited from your bank account, please contact the Village at 920-876-2122 or email clerk@elkhartlakewi.gov and we will work to set you up on the program.

Elkhart Lake Village Board Members

If you have concerns or questions call any of our Village Trustees

PRESIDENT: Richard Sadiq, Pres.
(POB 188)—920-207-4888
Email: rsadiq@elkhartlakewi.gov

TRUSTEE: Geoffrey Bray
(POB 736)—920-452-5397
Email: gbray@elkhartlakewi.gov

TRUSTEE: Terri Knowles
(POB 35)—920-876-3448
Email: tknowles@elkhartlakewi.gov

TRUSTEE: Paul Rudnick
(POB 304)—(920) 946-8644
Email: prudnick@elkhartlakewi.gov

TRUSTEE: John Schott
913 Grasse Lane—(920) 876-2436
Email: jschott@elkhartlakewi.gov

TRUSTEE: Lynn Shovan
(POB 682)—(920) 207-4561
Email: lshovan@elkhartlakewi.gov

TRUSTEE: Mike Wolf
(POB 506)—876-3100
Email: mwolf@elkhartlakewi.gov

**PRESCRIPTION DRUG
DROP OFF BOX**

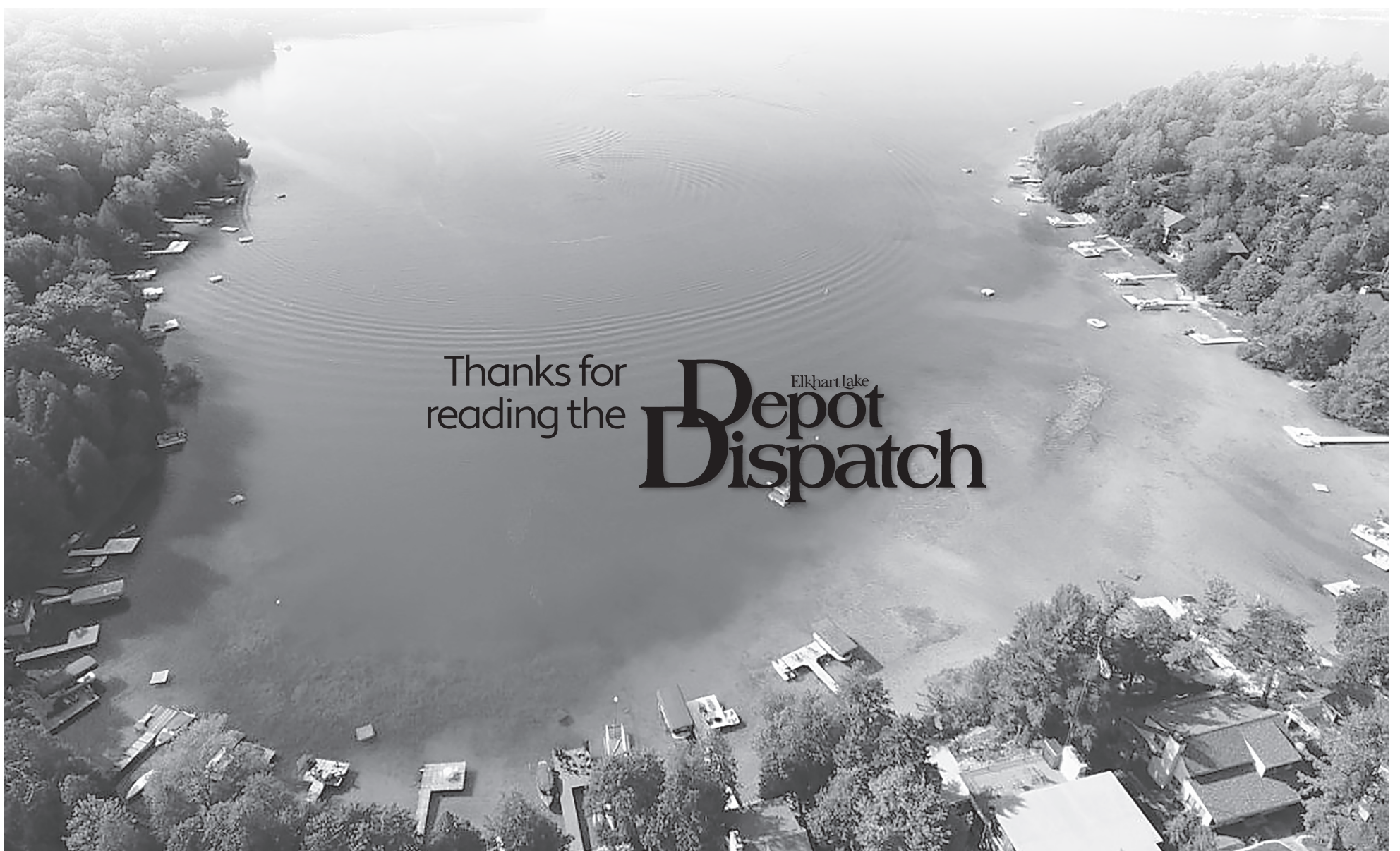
As you do your spring cleaning please make sure you safely dispose of your old prescription drugs. The collection box is located outside the police department. Please take your medications out of their containers and just drop the pills in the box. We do not accept liquids.

Drop off anytime Monday through Friday from 9:00 AM to 4:00 PM.

For more information, contact the Elkhart Lake Police at 920-876-2244.

Think Spring!!

Thanks for reading the
Elkhart lake
Depot Dispatch



A Wee Bit Irish Musical Concert



A Wee Bit IRISH

Concert Featuring Celtic Folk



6 Performances
 4 EVENING SHOWS:
 FRI. & SAT. MAR. 17-18
 and MAR. 24-25
7:30PM
 2 SUNDAY MATINEES:
 MAR. 19 and MAR. 26
2:30PM

Special Guest Performers on Select Dates...

Schauer Center Irish Dance Troupe Sat. March 18 & 26	Bagpiper Bruce McFarlane Fri. Mar. 24	52 Stafford Wed. Nite Session Players Sat. Mar. 25
--	---	--

ENJOY AN IRISH COFFEE EXPERIENCE WITH



Tickets: \$15 PAC Members
 \$17 Non Members (tax inc.)

PH. 920.892-8409 ~ PLYMOUTHARTS.ORG

Thank You to Plymouth Arts Center Sponsors:



DAN & BARB GARTON



The Plymouth Arts Center proudly presents "A Wee Bit Irish," a live musical concert in an Irish Coffee House setting featuring the group Celtic Folk, March 17-19 & 24-26, 2023. Celebrate the "Wee Bit of Irish" in you with traditional and contemporary Irish tunes to help celebrate St. Patrick's Day. Along with Celtic Folk, enjoy special performances by the Schauer Irish Dance Troupe, Sat. March 18 at 7:30 pm and Sun. March 26 at 2:30 pm; Bagpiper Bruce McFarlane, Friday, March 24; and the 52 Stafford Wednesday Evening Session Players on Saturday, March 25th. Irish Coffee experience courtesy of Moxie Coffee Café and Catering. Celtic Folk includes vocalists and musicians: Tom Clegg, Julie Henze, Kerrylynn Kraemer, Vincent Reysen, Roy Schwab, Rachel Stoyke, Ramona Tritz, and Steve Vogt.

Mastercard are accepted.

The show is sponsored by Daniel and Barbara Garton, Sargento, and Masters Gallery, with additional support by the Wisconsin Arts Board.

The group Celtic Folk originated in 2013 at the Plymouth Arts Center under the direction of co-creators/directors, Kraemer and Clegg. Their first production was "Celtic Christmas" in 2013. The success of this show encouraged the directors to design additional shows: Celtic Christmas in 2014, 2017, 2019, 2020, 2021, and 2022; "Memories" in 2017; "History" in 2019; and "Sentimental Journey in Song" in 2021. Upcoming concerts include: "Musical Memories" Oct. 6-8 & 13-15, 2023 and "Celtic Christmas" December 8-10 & 15-17, 2023.

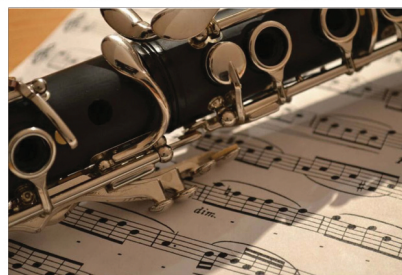
Evening show dates are Friday – Saturday, March 17-18 & 24-25, 2023 at 7:30pm. Matinee performances will be presented on Sunday, March 19 & 26, 2023 at 2:30pm. Tickets are \$15 PAC Member and \$17 Non-Member tax included. To purchase tickets please visit the Plymouth Arts Center, 520 East Mill Street, Downtown Plymouth, WI. Tuesday-Friday, 10am to 4pm, or call: 920-892-8409; email: info@plymoutharts.org. Tickets may also be conveniently ordered online at: www.plymoutharts.org. Visa and

The Plymouth Arts Center is a 501(c)3 charitable non-profit organization solely supported through memberships, fundraisers, business and individual donations, grants and sponsorships. The mission of the PAC is...to enliven the spirit of our community and to enrich the lives of all, by providing diverse experiences in the arts. For more information or a full schedule of events, please visit the PAC at 520 E. Mill Street, downtown Plymouth, WI or the website: www.plymoutharts.org

WEILL CENTER UPCOMING EVENTS



FINDING DORY (PG)
 Friday, Mar. 3, 7:00 PM



SHEBOYGAN SYMPHONY PRESENTS A LYRICAL EVENING
 Saturday, Mar. 11, 7:30 PM



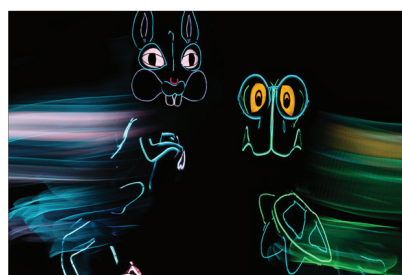
LLAMA LLAMA LIVE!
 Friday, Mar. 17, 6:00 PM



KILLER QUEEN A TRIBUTE TO QUEEN
 Saturday, Mar. 18, 7:30 PM



THE BEAT GOES ON A TRIBUTE TO CHER
 Friday, Mar. 31, 7:30 PM



THE ADVENTURES OF TORTOISE AND HARE
 Friday, Apr. 7, 2:00 PM



Downtown, Delicious.

21 S Lake Street
 Elkhart Lake, WI
 (920) 876-2142



BUY TICKETS
 826 N 8th Street
 www.weillcenter.com • (920) 208-3243

LIBRARY HOURS

Monday-Thursday
9am-7pm
Friday 9am-5pm
Saturday 9am-2pm

March 2023 Depot Dispatch

**ELKHART LAKE
Public Library News**

ANNOUNCEMENTS

We have a **NEW Self-Check Machine** at the library!
TRY IT TODAY!

Grashorn Civic Center | 40 Pine Street, P. O. Box 387 | Elkhart Lake, Wisconsin 53020 | 920-876-2554 | elkhartlakepubliclibrary.org

ANNOUNCEMENTS

Self-Check Machine - We have a new self-check machine at the library! Don't worry, this machine will not replace our friendly staff, who are happy to help you with all your library needs, including checkout. However, if you are the do-it-yourself type or do not have time to wait for assistance, our self-check is ready to go and super easy to use. Just scan your card, key in your 4-digit pin number, and scan the barcode of each item for checkout.

**3RD ANNUAL
PEEPS SHOW CONTEST**

(Submit by March 31st, all ages) - Create a book-themed diorama using Peeps as your characters. All dioramas should fit inside a shoebox and the theme must be family friendly. Prizes will be awarded for each age group, including adults! Voting will take place from April 1 - 15th.

KIDS

**STORY TIME
THURSDAYS AT 9:30AM**

Stories, songs, and activities for toddlers and preschoolers (babies welcome). No registration required. Please skip Story Time if you or your child are unwell.

**MUSIC & MOVEMENT
SATURDAYS AT 9AM**

February 25th through April 1st - Songs, dancing, instruments and more for babies, toddlers, preschoolers, and their caregivers. This six-week session is free and does not require registration. Come when you can! February 25, March 4, March 11, March 18th, March 25th & April 1st at 9am at the library.

**READ ACROSS AMERICA
CHALLENGE**

This year's theme is "Reading is the passport to endless adventures". Pick up a passport booklet at the library, complete the challenges, and turn it in by March 31st to be entered into a prize drawing.

LEPRECHAUNS ON THE LOOSE - OH, NO!

There are leprechauns on the loose at the library! Help us round them up before things get out of hand. Scavenger sheets available at the circulation desk.

TUESDAY LEGOS (AGES 5+)

Tuesday, March 14th from 3-5pm (drop in)
Come build with us at the library! We will have a theme for inspiration, but you are welcome to construct whatever you want. Lego creations will remain on display at the library until the following month.

ORIGAMI (5TH GRADE & UP)

Monday, March 27th at 1pm - On your day off of school, explore the art of paper folding at the library.

ADULTS

**GETTING STARTED WITH LIBBY:
HOW TO BORROW DIGITAL BOOKS
AND AUDIOBOOKS**

Wednesday, March 8th at 6pm OR Friday, March 17th at 1pm

Learn how to borrow digital books and audiobooks with your personal device (smartphone, tablet, Kindle* or laptop) using the Libby app. This workshop is for people who:

Have never borrowed digital books or audiobooks and want to learn?

Have been using the Overdrive app and need to transition to Libby?

Have borrowed eBooks or eAudiobooks but need a refresher?

*Bring your devices with you to the workshop. (Kindle users: bring your Kindle, a Smartphone (if possible), and your Amazon user name & password).

UKULELE CLUB

Thursday, March 2nd at 1pm, Grashorn Civic Center. Play Ukulele with us! All levels welcome, no registration required. For more information and to get on our contact list (and to obtain music), please email rmontes@monarchlibraries.org. Don't have a ukulele? Check out our Ukulele Kit at the library to give it a try.

NEW @ ELPL

ADULT FICTION

Applicant, Nazli Koca

At the Hour Between Dog and Wolf, Tara Ison

Best Served Hot, Amanda Elliot

Birthday Party, Laurent Mauvignier

Calder at Heart, Janet Dailey

Cliff's Edge, Charles Todd

Code Name Sapphire, Pam Jenoff

Encore in Death, J.D. Robb

Essex Dogs, Dan Jones

Every Man a King, Walter Mosley

Heart Bones, Colleen Hoover

House Guest, Hank Phillippi Ryan

Lives of the Wives, Carmela Ciuraru

Walk the Blue Line, James Patterson

LARGE PRINT

House at the End of the World, Dean Koontz

Spare, Prince Harry

YOUNG ADULT

All My Rage, Sabaa Tahir

Wildblood, Lauren Blackwood

**KIDS CHAPTER BOOKS
& GRAPHIC NOVELS (GN)**

Agents of S.U.I.T, John Patrick Green (GN)

Nat for Nothing, Maria Scrivan (GN)

Super Pancake 1, Megan Lloyd (GN)

Whale Done, Stuart Gibbs

**KID'S EASY READERS
& EARLY CHAPTER BOOKS**

Berenstain Bear's Blast Off, Mike Berenstain

Miss Banks Pulls Lots of Pranks, Dan Gutman

New Friend, Kyle Lukoff

Pete the Cat and the Easter Basket Bandit, James Dean

Sunshine Magic, Wanda Coven

CHILDREN'S NON-FICTION

Abandon Ship: the True..., Michael Tougias

Destiny Finds Her Way, Margarita Engle

Emperor of the Ice, Nicola Davies

Who is Megan Rapinoe, Stefanie Loh

PICTURE BOOKS & BOARD BOOKS

Beneath, Cori Doerrfeld

Bunnies in a Boat, Philip Ardagh

In Every Life, Marla Frazee

Once Upon a Book, Grace Lin

Rabbit, Duck, and Big Bear, Nadine Brun-Cosme

DVD'S & BLU-RAYS

All Creatures Great and Small, Season 2

Black Panther : Wakanda Forever+

Fabelmans

Honk

Miss Scarlet and the Duke, Season 2

Miss Scarlet and the Duke, Season 3

Smurfs: Season 1, Volume 3

Strange World

+ Blu-ray & DVD; * Lucky Day; ^ Also in Large Print; # Also in Audio CD or Playaway

Receive a complete list of new library materials every month by subscribing to our e-newsletter. Go to www.elkhartlakepubliclibrary.org, click on the CONNECT tab and select NEWSLETTER. We will only use this information for sending out our monthly newsletter.



BOOK CLUB

Friday, March 10th at 1pm, Grashorn Civic Center. Join us in a discussion of the book Such a Fun Age by Kiley Reid. "A striking and surprising debut novel from an exhilarating new voice, Such a Fun Age is a page-turning and big-hearted story about race and privilege, set around a young black babysitter, her well-intentioned employer, and a surprising connection that threatens to undo them both." Order your copy on monarchcatalog.org. To be placed on our book club list, email Angela Ruh at aruh@monarchlibraries.org.

**COMMON THREAD: NEEDLEWORK
AND FIBER ARTS CRAFTING CIRCLE**

Tuesday, March 21st at 10:30am, Library. Bring your own project and join us for some crafting camaraderie. All fiber crafts welcome! Share patterns, get ideas, and just enjoy the company of fellow crafters.

**BLOOD HOUNDS:
GENEALOGY WORK GROUP**

Tuesday, March 28th at 2pm. Meet with other family historians and learn some tips and strategies to build your family tree with Ancestry Library Edition and other resources. Share your knowledge, ask questions, and learn from each other.

COFFEE HOUR AND BOOK CHAT

Wednesdays at 10am, Library. Come for a little coffee, a lot of conversation, and a sneak peek at this week's new releases. All welcome, no registration required.

Hungry Ghosts, Kevin Jared Hosein

I Have Some Questions for You, Rebecca Makkai

Iron Curtain: a Love Story, Vesna Goldsworthy

It's One of Us, J.T. Ellison

Last Orphan, Gregg Hurwitz

Last Tale of the Flower Bride, Roshan Chokshi

Laughter, Sonora Jha

Looking for Jane, Heather Marshall

Lying Beside You, Michael Robotham

Night Letter, Sterling Watson

Our Share of Night, Maria Enriquez

Secretly Yours, Tessa Bailey

Someone Else's Shoes, JoJo Moyes

Spell of Good Things, Ayobami Adebayo

Sun Walks Down, Fiona McFarlane

Twyford Code, Janie Hallett

Unnatural History, Jonathan Kellerman

Varina Palladino's Jersey... , Terri-Lynne DeFino

Victory City, Salman Rushdie

When Trying to Return Home, Jennifer McCauley

Writing Retreat, Julia Bartz

ADULT NON-FICTION

Great Displacement: Climate change..., Jake Bittle

PLUMBING & HEATING
NEUMANN
Plumbing & HVAC
Residential, Commercial,
Industrial & Remodeling

Residential Homes • Apartments • Hotels • Multi-Unit Buildings • Restaurants • Assisted Living Facilities

Call Neumann for ALL Your Plumbing and HVAC Needs

24 Hour Emergency Service
920-565-3345
neumannplumbing.com

Carrier
Turn to the experts

1114 Millersville Ave
Howards Grove

OVER 50 YEARS OF QUALITY WORKMANSHIP

SteffeS
Builders, Inc.

Full Service General Contractor
Family owned & operated since 1949

810 Church Street, St. Cloud • (920) 999-2091
steffesbuilders@charter.net • www.steffesbuilders.com



How to Care for Wild Birds This Winter

The arrival of winter forces everyone to confront the changes synonymous with the season, and local wildlife is no exception. Low temperatures, harsh winter storms and a scarcity of food can make it challenging for wildlife, including birds, to thrive throughout the winter.

Even though several species of birds are migratory and travel to warmer climates to wait out winter, many others stay put. The Audubon Society says that keeping close to home helps some species of birds maintain their territories.

Some birds will puff up to retain heat; others will seek shelter in dense foliage or cavities to avoid the elements. Many birds will huddle together to share warmth.

Another way of keeping warm is building up fat as an insulator and energy source. The Audubon Society says more than 10 percent of some birds' winter body weight may be fat. That can be challenging to maintain when common sources of food, such as insects and berries, disappear as winter wears on. This is when some human intervention can prove handy, advise ornithologists. A few simple efforts may benefit birds and other wildlife that may not hibernate winter away or escape to the tropics.

Choose feeders that will keep seed dry; otherwise, it will be prone to bacterial and fungal growth.

Don't discard fallen leaves or any downed twigs or pruned boughs from trees. This will give birds material for creating shelter or hiding away when the weather gets especially brutal. When the Christmas tree is finished for the season, place it in the yard as a windbreak for birds.

Put shallow water sources around so birds can drink. Replace them frequently if water freezes.

Wild birds can benefit from some help when the temperatures start to drop in winter.

Have a supply of food, bird feeders, houses, and any other bird-related gear at the ready before the storms really rev up.

Invest in nutritious food, such as black oil sunflower seeds or blends that are high in black oil sunflower seeds. You also can make available more foods that are high in fat, such as suet, peanut butter or even whole peanuts. Mother Nature Network also suggests adding meal worms if they can be found.



YOUR LAKE LIVING CONNECTION!
Best Properties In The Best Locations

the Krieg CONNECTION
Elkhart Lake Resident
President's Circle Member
15 Years of Client Satisfaction per Milwaukee Magazine 5 Star Award



FIRSTWEBER REALTORS
a Berkshire Hathaway affiliate

17 Years Working and Enjoying Local Real Estate Sales!
Call Me For A Free Market Value Assessment Of Your Home!
Chris Krieg
414-840-8486
ckrieg@firstweber.com




Have you pushed your cart at Tietz's Yet!



COUPON PLU 29901

\$10⁰⁰ off **Your order totaling \$75 or more**
(excludes spirits)

With coupon. Good only at Tietz's Piggly Wiggly. One coupon per person. Valid through 3-31-23.

Authorized WIC Vendor

714 S. Wisconsin Dr, Howards Grove, 920-565-4421 • 1411 Eastern Ave, Plymouth, 920-893-0741



LYNN SCHWESOW
"YOUR EXPERIENCED REALTOR"
Cell/text: 920-946-4054
lynn@movesre.com
C21 MOVES!



HAPPY ST. PATRICKS DAY!
Let me bring a little LUCK
and a lot of EXPERTISE to
your next purchase or sale!
CONTACT ME TODAY!

The First Day of Spring is March 20
and the Market is HOT! NOW is
the Time to BUY or SELL! CALL!



May you have warm words on a cold
evening, a full moon on a dark night,
and the road downhill all the way to
YOUR NEW FRONT DOOR!

920-946-4054

Hungry! We've got you covered...



VISIT OSTHOFF.COM/DINING
FOR MORE INFORMATION ON OUR SPECIALS!

CONCOURSE
Restaurant & Lounge

Otto's
RESTAURANT

TUNA POKE NACHOS - \$16



Open Daily at 2PM for Appetizers
Dinner Starts at 5PM

Weekly
Breakfast Specials

Monday
Baked Berry Pancake - \$13

Tuesday
Breakfast Pizza - \$14

Wednesday
Breakfast Burrito - \$11

Thursday
Stuffed French Toast - \$14

Friday
Breakfast Sliders - \$11
Served Fresh 6AM - 11AM