



IMPACT

Postal Customer Local
PRSR
STD
US Postage Paid
IMPACT
ECRWSS



Calendar of Events ...page 4

JSCD Superintendent honored by American Cancer Society...page 16

Laurel • 601.649.1129
www.impact360.ms

Volume 39, No. 32 • August 5, 2015

45,684 total circulation
#1 in Advertising

Serving Jones, Jasper, Smith, Wayne and Washington & Choctaw County, AL

Almost finished - Presley's cross-country cycling tour

By Linda Cranford

Josh "Snowy" Presley is only days from completing his cross-country cycling journey to raise funds for the Semper Fi Fund. By this Sunday, August 9, he and his traveling companions should be wading in the waters of the Atlantic Ocean on the sandy beaches of Virginia Beach, Virginia.

Presley first began his journey in April at Astoria, Oregon with the plans to follow cycling routes that would take him almost 5,000 miles from Oregon to Maine. After one month on the trail and a little over 1,000 miles, unforeseen circumstances had Presley change his route and plans, and basically start over.

On June 9, after hooking up with three former AT Thru-Hikers that he met while thru-hiking the Appalachian Trail in 2011, Presley started out again, this time from San Francisco, California.

The four have followed the Western Express route which has taken them through California, Nevada, Utah, and half of Colorado to Pueblo, Colorado, where they joined the Trans America Trail route and have traveled through the eastern half of Colorado, Kansas, Missouri, Illinois, and Kentucky. By Saturday, August 1, they were in Damascus, Virginia, and took a full day of rest before starting out on the final leg of the tour to Yorktown, Virginia, the official end of the Trans America Trail Route. However, the four have decided they wanted to end their tour on the shores of the Atlantic, and will continue on for another 20 to 25 miles to Virginia Beach, Virginia.

"We're almost done, Mrs. Linda," exclaimed Presley, over the phone last Wednesday. "It's been challenging, and a rewarding experience, but, I'm ready to see the Atlantic." When asked how this jour-



Monday, August 3, starting on the Creeper Trail in Virginia - L-R George, Claudia, Bill McMullan, Josh, Lindsey, and Seth. Photo/Debbie McMullan

ney compared to his journey to thru-hike the Appalachian Trail, Presley said, "The AT was a life changing experience, I would say this was more of a life challenging experience. It's a different physical and mental challenge than the AT. I'm always on the trail." See PRESLEY, page 2

KaRock's CHIK ONA STIK

coupon

\$3.49 plus tax **KABOB** *make It a Kombo for \$6.99

\$4.99 plus tax **SHRIMP POBOY** *make It a Kombo for \$7.99

OR

Open Monday-Friday 10-8 p.m.
Limit 2 each per coupon. Expires 9-15-15
www.karocksfood.com

814 Highway 11 South, Next to JCJC Ellisville, MS • 601-477-9956

DERKSEN PORTABLE BUILDINGS

BUY OR RENT TO OWN starting at... **\$69²¹** PER MONTH

NO CREDIT CHECK!

- FREE DELIVERY & SET-UP
- NO SECURITY DEPOSIT • NO SLAB NEEDED

ALL STYLES AVAILABLE • CABINS • BARN • UTILITY/SIDE UTILITY • GARAGES • CARPORTS

AS SHOWN \$292 MONTH Rent to Own

www.ellisvillemotors.com **601-323-0464**

12 Months SAC *wac 303 HWY. 11 S. ELLISVILLE, MS • LOCATED BETWEEN PIZZA HUT & JCJC

Back to SCHOOL!

Little Caesars

- ✓ Pencils, Pens, Calculator
- ✓ Soccer Practice
- ✓ **PICK UP DINNER!!!**

2 Pepperoni, 1 Italian Cheese Bread, 1 Two Liter Pepsi Product **\$15⁹⁹**

1 Pepperoni, 1 Three Meat Treat, 1 Italian Cheese Bread, 1 Two Liter Pepsi Product **\$19⁴⁹**

3 MEAT TREAT LARGE PIZZA

ITALIAN CHEESE BREAD

500 Hill St. • ELLISVILLE • 601-817-4040

SANDRA HANCOCK MINISTRIES

Free Admission! All are Welcome!

"Come Expecting Your Miracle"

Saturday • August 8, 2015 • 10:30 AM - 12:30 PM

VICTORY CONFERENCE

- ANOINTED TEACHING
- PRAISE & WORSHIP

THE GATHERING PLACE

3227 AUDUBON DR. • LAUREL • OVERFLOW PARKING IN REAR

Ladies Groups & Church Groups Welcome For more information:
1.800.579.7350 • Sandra Hancock Ministries • sandrahancock.org

AUGUST FURNITURE SPECIAL

FUSION 3 PIECE GROUP
SOFA, OTTOMAN, SWIVEL GLIDER CHAIR

ONLY \$1399

Alexander's FURNITURE

LARGEST SELECTION OF FURNITURE IN THE PINE BELT.

Bay Springs
601-764-2161

OVER \$1,000,000 WORTH OF QUALITY NAME BRAND HOME FURNISHINGS AND MORE!

1/2

ALL FURNITURE IS 50% OFF LIST PRICES!

YES! For A Very Limited Time. It's The Easiest Bargain Shopping In Laurel.

PRICE SALE

HURRY IN AND SAVE!

Doors Open Thursday, Friday, Saturday & Monday 9 a.m. - 6 p.m.
SEE THE INSERT INSIDE IMPACT FOR MORE DETAILS!

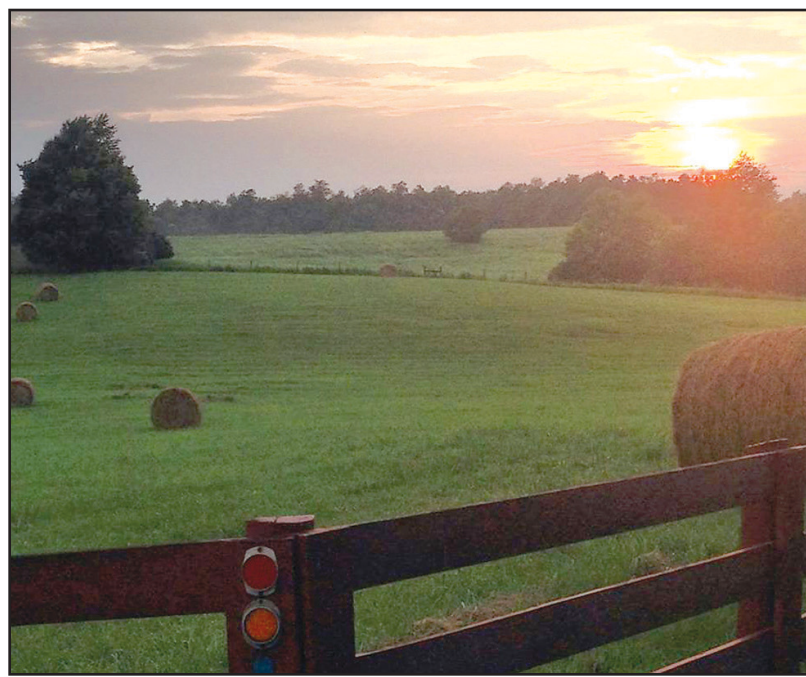
SOUTHERN FURNITURE AND MATTRESS
2909 Wheeler Drive • Laurel, MS 601-649-0733

Next to Bob Palmer's Chancellor Motor Group
Website: www.southernfurnitureonline.com • See us on Facebook and Instagram at Southern Furniture & Mattress

PRESLEY, continued from page 1

Classified Index

- Antiques 5
- Apartments for Rent 10
- Appliances 5
- Attorneys 3
- ATVs 11
- Autos - Cars 10
- Auto Services 10
- Autos - Motorcycles 11
- Autos - Sports 11
- Autos - SUVs 11
- Autos - Trucks 11
- Boats 7
- Buildings 7
- Campers 7
- Carports 11
- Commercial 10
- Farm 3
- Financial and Loans 5
- Fish 7
- Furniture 5
- Garage Sales 5
- General 3
- Handyman 6
- Help Wanted 8
- Houses for Rent 10
- Houses for Sale 9
- Land 3
- Lawn and Garden 5
- Mobile Home for Rent 9
- Mobile Home Lots 9
- Mobile Homes 8
- Musical 7
- Pets 5
- Portable Buildings 7
- Produce 5
- Services Offered 6
- Social Security Disability 3
- Tanning Beds 5
- Timber and Lumber 7
- Trailers 3
- Wanted to Buy 5
- Wedding 5



Sunset in Kentucky. Photo/submitted



Chester Illinois the Home of Popeye – L-R Lindsey, Josh, Claudia, and Seth. Photo/submitted

bike, and engaged all day. I stay hyper aware, and on edge the whole time. I'm watching the hundreds of cars whisk by, the rumble strips on the side of the road, the guard rails, and any rocks or other objects in the road." He said on the AT, although challenging, he was more relaxed. "By the end of the day, I'm exhausted both mentally and physically."

Presley is cycling with his AT friends, Seth, "Bear Bag," who married Lindsey, "Hover," after meeting her on the AT in 2011, and Seth's dad, George. By the end of their tour, they will have cycled approximately 3800 miles, and crossed nine states. However, Presley, all together, will have cycled over 4800 miles by the time he reaches Virginia Beach, when you add his first 1,000 plus miles.

Presley said that Kansas was the most challenging state. "I would welcome having to ride in pouring rain as opposed to the wind. All across Kansas there was a constant head wind," explained Presley. He said the terrain was flat, and he was constantly peddling with no breaks. "There was no shade, and no scenery, just a monotonous scenery of nothing but corn and soy bean fields, and rough roads."

"Mrs. Linda, I have met some amazing people along the way," exclaimed Presley, "and, a number of invaluable Trail Angels." Trail Angels are people who go out of their way to help cyclists, and hikers, by providing food, snacks, and/or drinks, or a place to stay for the night. Throughout the tour, the four have been fortunate to meet several of these people.

"One day, in Utah, a couple of motorcyclists from Czechoslovakia passed us, turned around, and came back to check on us," said Presley. "About 30 minutes after they left, they came back again, and brought all four of us a bottle of Gatorade. These guys rode 10 to 15 miles to the next town, and then 10 to 15 miles back, just to give us the Gatorade, and they paid for it, too. We've had dozens of experiences like this, where people have gone out of their way to befriend us, and/or help us. It's renewed my faith in the goodness of people. People in general are not as bad as the main stream media portrays them to be. All you ever hear in the news is the negative aspects of people, you never hear about all the good that a majority of people do."

While at a trail hostel (an established dormitory-style place, which provides accommodations for travelers - usually backpackers and cyclists), in Newton, Kansas, Presley met Claudia, a cross-country cyclist from Italy, who was following the same routes, and she joined Presley and his companions.

"Claudia is an avid cyclist," said Presley. "She has a lot of followers in Italy, is sponsored by several prominent Italian companies, and has made lots of tours in Italy and France. She rides at the same pace as I do, and I've enjoyed learning about her culture. However, she speaks very little English, so every day we've been teaching each other different words."

Presley and the group were in Kentucky when I spoke to him, and are



Josh Presley – Hanging out in Illinois. Photo/submitted

enjoying the beautiful scenery of the blue grass of Kentucky, and its rolling hills of green. He said that Claudia separated from the group a day or so before we spoke to detour to the Mammoth Cave National Park in south central Kentucky, and should catch back up with them in Damascus, Virginia to finish the tour with them.

Also meeting Presley in Damascus are his mother, Debbie, and his step-father, Bill McMullan, who will take turns driving and riding with him the last 100 miles or so to Virginia Beach.

Presley assured me that there are many other stories that can be told, and another article may be forthcoming once he returns to Laurel.

"This has been a rewarding experience, and I will continue to raise funds for the Semper Fi Fund once I return to Mississippi," said Presley.

Our conversation ended with a discussion in sharing life experiences with others, and one of Presley's favorite quotes is from Christopher McCandles, who wrote "Into the Wind" – "Happiness is only real when shared."

"It's one thing to do something on your own, but it's so much more enriching and invaluable to share it with others," added Presley.

IMPACT

#1 in Advertising

Ronnie Buckley
Publisher

Ryan Griffin
Manager

Jerry Clark
Circulation Supervisor

Bob Barger
National Sales Consultant

Betty Busby
Laurel Sales Representative

Kim Willbanks
Laurel Sales Representative

Jennifer Clark
Graphic Production Manager

Trish Irwin
Graphic Artist

Terica Roberson
Graphic Artist

Cortney Hodge
Graphic Artist

Russ Farris
Graphic Artist

Megan McMullan
Administrative Assistant

Linda Cranford
Writer/Photographer

WHILE THE IMPACT makes every effort to verify the offerings made in these ads, we cannot guarantee the integrity of every advertiser. We strongly recommend that readers investigate the companies involved before sending them any money.

Classified and ROP Ad Deadline
Sunday Edition -
Wednesday at 12:00 Noon
Wednesday Edition -
Friday at 12:00 Noon

IMPACT
1010 N. 16th Ave
Laurel, MS 39441
Ph. 601.649.1129
Fax: 601.649.0424
Email:
production@laurelimpact.com
admin@laurelimpact.com

Circulation Audited By
CIRCULATION VERIFICATION COUNCIL

IFPA **EDA**
of Jones County

Family Flea Market & Flooring

Meridian's Largest
In-Door Flea Market

With Over 180 Vendors!

MON. - SAT. 9A.M. - 6 P.M. • CLOSED ON SUNDAYS

1107 B Street
Meridian 601-286-3521


OLD SOUTH FARM SUPPLY

AMDRO QUIK KILL Reg. \$16.99 **BLOW OUT PRICE \$10.99**
FOR SEASON LONG CONTROL
10 Lb. Bag treats 5,000 Sq.Ft. • Kills Over 50 listed Insects including: Ants, Ticks, Fleas, Chinch Bugs, Mole Crickets and many more! while supplies last!

DOVE SEASON 50 LB. BAGS		EARLY DEER SEASON	
• BIRD WHEAT.....	\$8.95	• 12 Lb. Trophy Rocks.....	\$12.95
• BIRD MILLET.....	\$17.50	• 25 Lb. Purina Deer Mineral.....	\$9.95
• WHITE PROSO MILLET.....	\$15.95	• 33 LB. Country Acres Deer Blks.....	\$13.95
• CHOPPED CORN.....	\$8.50	• 20 Lb. Purina Quick Draw Deer Blks.....	\$12.95

Bo Welborn-Owner • Mickey Holloway-Manager
244 E. Hickory Street • Laurel • 601-428-7447

Your protection is personal.
Patricia A. Goldin - Rayborn
 The Rayborn Agency, LLC
 601-765-4060 • Cell: 601-307-6132
 203 Main Street, Collins, MS



Nationwide® Insurance
 Auto. Home. Life. Business.

Nationwide Mutual Insurance Company and Affiliated Companies. Home office: Columbus, Ohio 43215-2220. Nationwide Life Insurance Company, Nationwide, the Nationwide Framemark and On Your Side are service marks of Nationwide Mutual Insurance Company. Subject to underwriting guidelines, review and approval. Nationwide, Nationwide Insurance, the Nationwide Framemark, Nationwide is On Your Side and Join the Nation are service marks of Nationwide Mutual Insurance Company. © 2013 Nationwide Mutual Insurance Company. All rights reserved. NPO-0194M1 (01/15)

GENERAL

Antique 1928 Stark Upright Grand Piano. Rebuilt, new strings, hammers, and bushings. Excellent condition, collector's item with bench. \$2500 obo. 601-763-3696.

12x20 portable building. Great for business or office building. Only 1 year old. Fully wired, insulated, sheetrocked, has nice closet with shelves, includes AC, ceiling fan, skirting & lighting. \$7500 firm must be moved. Call 601-520-5918.

Flooring, all types. Remodeling, all types, decks-cabinets. For all your home improvement needs. No job too small. Commercial and residential. Licensed and insured, references available. Wilson 8:21. Painting, remodeling and more. II Corinthians 8:21. 601-268-7603.

School Uniform Headquarters. Tax Free Holiday! July 31st and August 1st, 7am-10pm. Da Remix, 215 Broadway Drive, Suite 30, Hattiesburg, MS. 601-582-2323. Layaway available! *5 tops and 5 bottoms starting at \$59.99. *5 tops and 5 bottoms pricing on good on Galaxy Brand. Flare legs, Bermuda shorts, Capris, Jumpers and more. Men, women, children sizes 2T to 50. Stain release, wrinkle resistant, expandable waist, Scotchguard, double reinforced knee, backpacks girls Jr. and ladies, flare bottoms, Jr. and girls stretch Polos, Polos (red, black and navy) boys and mens sizes regular, slim and husky, belts. *Girls' Capris, skinny and flare pants, \$10 extra per set.

Divorce, Criminal Defense, Death Claims, Personal Injury, Bankruptcy, DUI Defense, Offshore, 18 wheeler accidents. Call for your consultation today. Jones Law Office. 2219 Columbia Avenue, Prentiss, MS. 601-582-9177

94 Toyota extended cab, for parts, no motor or transmission. Good body. \$350, call 601-580-0391.

Voice (beginner thru advanced) and piano lessons (beginner thru intermediate) are being scheduled now for the new school year. Call Glenn Padgett @ 601-649-4799.

Automobile accidents, bankruptcy, divorce, off-shore boat accidents, 18-wheeler accidents, criminal defense and more. For all your legal needs, contact a professional. Jones Law Firm 601-582-9177. Let me know you saw my ad in IMPACT.

Double Metal Carports starting at \$795 choose your colors. Quick turnaround. Ask about our 12 months same as cash option. Call Shayna 601-270-2277.

Lawncare: Serving Hattiesburg, Lumberton, Laurel, Sumrall, Petal, Brooklyn, Ellisville, Purvis and Moselle areas. Reasonable rates. 601-325-5008. www.fullserviceawncarems.com

Lonnie LOFTON
Roofing Contracting
 Since 1968
 Free Estimates
 All Work Guaranteed
 Laurel, MS PHONE (601) 425-4484

Holly's Party Jumps: Inflatable bouncers, combo's, slides, tables/chairs, snowcones, cotton candy machines, dunk tanks. We deliver, set-up & pick-up. book online, now accepting credit/debit cards, Call 601-763-8851. www.hollyspartyjumps.com.

Need Prayer? Sick? Depressed? Financial Problems? (21) I tell you the truth, if you have faith and do not doubt. (22) If you believe, you will receive whatever you ask for in prayer. Matthew 21:21-22. Call us anytime free of charge. 24/7. We are here for you. Elder McDaniel. Amazing Grace Prayer Ministries: 662-207-2936

New Paint! Fresh Paint! The season has changed! Time to change those colors! Need an accent wall? Call us for all your painting needs. Indoor & Outdoor. Licensed & Insured. Commercial and Residential. References available. Wilson 8:21 Painting & More. II Corinthians 8:21. 601-268-7603.

Flagpole Super Sale Get Our 24ft Tall Liberty Deluxe Double Flyer. Reg. \$299 NOW \$199. American Flagpole Company: 601-649-0748

Advertise for Free! Online classifieds are free at www.impact360.ms. Just go to the Impact Web site and click on the button at the top

LOW COST DENTURES SINCE 1978
DENTAL SERVICES OF SOUTH MS. P.A.
GENERAL DENTISTS
 2019 Hardy Street • Hattiesburg, MS



• Dentures • Reline
 • Partial • Repair

Call Toll Free Within 55 Mile Radius
 (601) 545-1905
 (877) 545-1905

LISTING OF THESE PREVIOUSLY MENTIONED AREAS OF PRACTICE DOES NOT INDICATE ANY CERTIFICATION OF EXPERTISE THEREIN.

right hand side of the page that says "Place a Free Online Only Classified."

Painting, Drywall, Pressure Washing and more! Licensed, Insured, Affordable, honest, dependable Christian company. Quality, professional work. Over 20 years experience. Call for a free estimate. If no answer, please leave a message. We will return your call. Painting & More. II Corinthians 8:21. 601-268-7603.

ATTORNEYS

Bankruptcy & Social Security, Tracy A. Walley, 1616 West 3rd Street, Laurel, 601-651-2186

Automobile accidents, bankruptcy, divorce, off-shore boat accidents, 18-wheeler accidents, criminal defense and more. For all your legal needs, contact a professional. Jones Law Firm 601-582-9177. Let me know you saw my ad in IMPACT.

Divorce, personal injury, custody, DUI, adoption, will disputes, Worker's Comp, wrongful termination, land & property disputes. Call Sam Creel 601-498-8968.

SOCIAL SECURITY DISABILITY

Social Security denied? Internship-Supreme Court Justice. Many years experience winning cases. No fee unless approved. Call Legal Eagles 601-649-6125

FARM

8 Wheel V-Rakes, 8ft. Hay Mowers and 2 & 4 Row Hay Tedders. Cheapest prices in state. Harold Knight Tractor, 601-425-2220.

Covington County area, 4 house active broiler farm, immaculate condition with ALL the upgrades. Just under 30 acres of pasture land suitable for cattle. Serious inquiries only. Call Shawn with Southern Coastal Realty @ 601-408-3570.

Hay for sale, 4x5 roll. \$30 per roll loaded. 601-498-7875.

Bantam rooster, beautiful colors, \$8 each. 601-319-0865.

Dayton PTO Generator For Sale: Dayton PTO Generator, 25,000 KW, with 3 point tractor hookup. good condition, kept in shop, \$1400.00. Price is negotiable. Contact Wayne Beasley @ 251-846-2187, located in Millry AL.

6ft. Tuffline disc, \$750. 601-433-8787.

Farm Barns. 40x30x16-\$9500. 30x30x10-\$7500. Metal roof and sides. Price includes labor. 601-296-0550.

Chapman Tractor Company: 1510 Azalea Drive, Waynesboro. Phone 1-800-816-2826. Massey Ferguson and Kubota tractors and equipment sales. 601-735-3103, 601-735-3104 or 601-735-4461

TRAILERS

We take trade ins. Custom built trailers of MS. LLC. Mississippi's largest inventory of Gooseneck flatbeds, heavy duty, stock trailers, cattle and horse trailers, aluminum cargo trailers, and more. If we don't have it, we'll be glad to build it. Over 500 units in stock. 0 percent financing, 12 months same as cash, w.a.c. 1-866-564-4422.

LAND

I buy timber and timberlands. Call Shawn at 601 408 3570.

20 acre farm/ranch in Janice, Ms. With custom built home, wrap around porch, Pond, horse stalls, fenced and cross fenced, huge shop. Bordered on two sides by National Forest lands. Lots of wildlife call Shawn, Southern Coastal Realty, LLC 601-408-3570.

15 acres, this tract is located a few miles from the Ellisville city limits. Priced to sell at \$48,000. This timbered (16 year pine plantation) tract

NOW OPEN

Patty's Cool Stuff Market

Second hand store with the lowest prices in town!
MONDAY - SATURDAY • 9 A.M. - 6 P.M.
138 Beacon St. • Laurel • 601.434.9444

offers a nice country setting for a home or mini-farm. ID#J015 www.walleyproperties.com, 601-248-4396.

40 acres of 3 year old planted longleaf pine. This property is located in southeast Jasper County. The property has been well managed and has an excellent stand of longleaf pines that are beginning to come out of the grass stage. \$58,000. For more information call Marc at 601-670-5429. www.walleyproperties.com.

32+/- acres South Jones School District. Excellent home site with mature hardwood and Pine plantation. Leaf river borders the property for 1000 feet. \$84,800 ID#J032 www.walleyproperties.com. 601-248-4396.

DON'T GIVE YOUR TIMBER AWAY!
 Call Mike West 601-270-6066
 BUYING PINE & HARDWOOD
RICHTON TIE & TIMBER LLC
 Timber Procurement • Forestry Consulting • Real Estate

+/-84 Acres. High upland pastures with mature pine/hardwoods on crystal clear running creek. Great lake site with nice upland homes sites. Off New Hope Road. Gorgeous access road winding through 16 year old pine plantations. Very secluded and approximately 5 miles south of Ellisville, near Howards Tech Park and 159 Moselle exit 80. Jones County Economic Development (EDA) joins property on the north side. \$360,000. 601-408-0615, McCraw Forest Management, www.mfmland.com.

ISO property on the Pearl River to purchase, prefer an acre or 2. Call 601-270-2216.

+/-57 acres located in the heart of Jones County, this property has roots dating back to the early 1900's. A beautiful 2/2 cypress lodge, originally built in 1908 and renovated in 2010, sits under the offering shade of mature pecan trees. Large back porch looks over 50 acres of pristine pasture for cattle and horses to graze. Several detached buildings

for storage and shelter sit on the property. Property has a five stall barn with hay loft and tack room. Has nice size pond and lake site with several high vista views looking over the property. A wood slat fence runs around the entire property along with cross fences and a circle arena. This is a hard to find paradise. Call today and set up an appointment to view the "One of a Kind" property. \$395,000, call 601-408-0615. McCraw Forest Management Inc. www.mfmland.com

"Acreage For Sale" Dixie Community and Jones Community, Private gated entrance, limited parcels from 4.5-10.54 acres in the Dixie Community. 1-10 acre parcels available in Jones County. Call 601-543-5098 or 985-951-0187 for more information.

Water front lot on Lake Eddins. Unit 12, lot 1, assessed \$21,000, asking \$18,000 obo. 601-735-1568.

New Classified Deadline: Effective May 28 (for the June 3 edition of Impact), the deadline to submit a classified ad for the Hattiesburg Impact is 4:00 p.m. on Thursday.

22+/- acres West Jones School District \$94,600. Joins Fox Hollow subdivision. Owner is willing to divide property into 2-11 acre parcels. ID#J022 www.walleyproperties.com. Call 601-670-5429.

65 +/- acres Wayne County \$172,250. This property features an excellent home site overlooking a pasture with an 11 ac pond, and 48 unthinned Pin plantation (utilities are in place) ID#WA65. www.walleyproperties.com, 601-670-5429.

83 acres South Jones, minutes from Ellisville, County Home Road, 15 acre lake, unthinned pine plantation (\$348,600) http://www.walleyproperties.com or call 601-477-3014.

11.5 acres 1/8 mile south of Tucker's Crossing on Hwy 15. \$2500 per acre. 601-433-9023.

Continued on ... Page 5

CHATHAM ENTERPRISES METAL FORMING
 Call Chatham Enterprises For Guaranteed Best Quality and Lowest Prices on: Metal Roofing (Painted or Bare Galvalume)
Compare These Prices:
 29 Gauge Bare Galvalume..... \$1.39/ft.
 29 Gauge Painted..... \$1.49/ft.
 29 Gauge Painted (w/ 40 Year Warranty)..... \$1.79/ft.
 Prices Are Subject To Change.
 Located In Rose Hill, MS

END-OF-SEASON AIR CONDITIONER SPECIALS

WESTPOINT AIR CONDITIONER 8,000 BTU'S W/ Remote, Energy Star
 •115 Volt
 •One Touch Remote Control
 •Cools Up To 350 Sq. Ft.
 MWWK-08RN1-BJ8 **\$249**

WESTPOINT AIR CONDITIONER 15,000 BTU'S W/Remote, Energy Star
 •115 Volt
 •One Touch Remote Control
 •Cools Up To 700 Sq. Ft.
 MWDUK-15CRN1-BK2 **\$439**

CROSELY AIR CONDITIONER 18,000 BTU'S W/Remote, Energy Star
 •230 Volt
 •Electronic Controls
 •Cools Up To 1050 Sq. Ft.
 CAE18EH2 **\$499**

ALL SIZES IN STOCK!
 •5,000 •8,000
 •10,000 •12,000
 •15,000 •18,000
 •25,000 •29,000 BTU'S

HEAT & COOL UNITS
 8,000 - 12,000
 18,000 - 25,000 BTU'S

Alexander's
 Bay Springs 601-764-2161
 Ellisville 601-477-3312
 SELECTION • SERVICE • VALUE

49th Anniversary Celebration

SAVINGS THROUGHOUT OUR 23,000 SQ FT SHOWROOM

SOFA/LOVE SEAT STARTING AT \$499.99

PILLOW TOP MATTRESS SETS STARTING AT \$299.99 QUEEN

DINING ROOM STARTING AT 5 Pc Set \$175.99 3 Pc Set \$149.99

SECTIONAL STARTING AT \$599.99
BEDROOM SETS STARTING AT \$499.99
RECLINERS STARTING AT \$199.99

SHOP OUR CASH AND CARRY DEPARTMENT FOR EVEN BIGGER SAVINGS

• QUALITY BRAND NAME FURNITURE • LOW EVERYDAY PRICES

TODAY'S FURNITURE
 Like us
 www.TODAYSFURNITUREONLINE.COM

106 Beacon Street • Laurel
601-425-1551
 Hours: Mon. - Thurs. 9-5:30
 Fri. 9-5 & Sat 9-12

Hand Crafted  Hand Picked

THE HIGH COTTON MARKET

A Vintage Market

- Antiques • Collectibles
- Vintage Furniture • Fashion Accessories

Open: August 6th, 7th, 8th & 9th

Open the first Thursday, Friday, Saturday 10 AM- 6 PM & Sunday 1 PM-5 PM of every month.

911 ROBINSON ST. • WAYNESBORO
601-671-1742

REDUCED PRICES! ASSORTED STYLES

\$99⁹⁹ to \$119⁹⁹

Regular \$189.00
STEEL TOE
Mens Sizes 6 to 15



Red Wings
*Factory Seconds

Ellis-Chapman Co.
716 Station St. Waynesboro, MS
8-5 MON-SAT 601-735-2256

RUSTIN METAL BUILDINGS AND CONSTRUCTION

Laurel, Mississippi
Rustin Construction Since 1933
COMMERCIAL • RESIDENTIAL

26 Gauge Colored Panels
Licensed General Contractor

NO JOB TOO BIG OR SMALL

CALL FOR CURRENT PRICES!
601-649-9949 • TOLL FREE 1-888-293-7742

August 5
Southern Pines Spay & Neuter Clinic is hosting a special month-long spay/neuter event in August just for pit bull terrier-type dogs. Pit bull terriers and pit bull mixes are the most euthanized dogs in animal shelters across the country, so we are offering spay/neuter surgery for only \$20 for any pit bull terrier type dog during the month of August. (We're also throwing in a free nail trim!)

August 6
Dads please join The Salvation Army, Laurel, in hosting a "Dad & Kids" back to school rally August 6. We will meet and greet you this day outside of Laurel and Jones Elementary, Middle and High Schools. Meet your kid's teachers, walk them to their classrooms, attend PTA meetings, review their grades, help them with their homework and learn together with your child. RSVP to Veronica Fleeton @ 601-428-4232.

The Lauren Rogers Museum of Art education staff has planned pottery classes for the month of August for middle school to adult ages. Adult pottery will be offered on Thursday evenings beginning August 6 through the 27 from 5:30 until 7:30 p.m. in the LRMA Carriage House Studio. Participants will create hand-built and wheel-thrown pottery. No experience necessary! The cost for LRMA members is \$60 and \$75 for non-members. All supplies are included for the class. To sign up or for more information, call the Museum at 601.649.6374 or email mbuchanan@LRMA.org.

August 7
MSU Extension is partnering with Superior Wellness Consultants to offer a free annual wellness visit for Medicare Recipient's. Participates will need to fill out a form showing current list of medications and physicians. You must pre-register by August 7th by calling the Jones County Extension office at 601-428-5201. The annual wellness visit will be scheduled for Friday, August 21 between the hours of 8:00a.m. and 12:00p.m. at the Jones County Extension Office.

Mt. Olive UM Church, located on Hwy 29, south of Ellisville, in the Whitfield Community of Ovet, will be holding our Revival August 7th and 8th with the services starting at 7:00p.m. Pastor Jason Bird will be the speaker.

Register by August 7th for Springhill MB Church, Ellisville "Annual Community-Wide Back to School Kick-off Weekend". You don't want to miss this special event with free food & prizes. Friday, August 14 @ 7:00p.m (Special Concert, Guest Speaker & Comedy Show); Saturday, August 15 @ 8:00a.m.-3:00p.m. (Youth Conference & Picnic); Sunday, August 16 @ 10:30a.m. (Morning Worship Service).

Come join the fun at American Legion Post II, 1108 North 9th Avenue, Laurel, Friday, August 7th at 9:00p.m. 84 West Band, Deuces Wild Band, and Eric Welford will be playing; there will be a \$10 cover charge. For more info call 601-580-0243 or 601-425-5554.

August 8
There will be a gospel sing Saturday, August 8th, beginning at 6:30p.m. at the Sanford Community Center located at 663 Old Hwy 49, Sanford. The featured guest will be "Shallow Creek", "Leaf River" and "Faithway Singers". Admission is free; a love offering will be received. For more info call 601-765-6485.

Sandra Hancock Ministries will be holding a Victory Conference Saturday August 8, 2015 from 10:30 am to 12:30 pm at "The Gathering Place" 3227 Audubon Dr. in Laurel. God has given Sandra a powerful word of hope and encouragement. Amanda Jones and the praise band will lead worship. Bring your ladies and church groups to this dynamic event! Come expecting your miracle! There are no admission costs! For more information call 1-800-579-7350 or see our webpage at www.sandrahancock.org.

The Annual Hutchinson Reunion will be held Saturday, August 8 at 10:00a.m. at the old Shady Grove Cafeteria. Bring your favorite dish and come enjoy the food, fun and fellowship. Call 601-755-0155, Buster.

The Jones County Sheriff's Department will be hosting a School Supplies Giveaway on Saturday, August 8, 2015 at the Jones County Sheriff's Department's Training Center Annex (115 N. 12th Avenue in Laurel) from 10am until 2pm, or while supplies last. Backpacks filled with school supplies will be given away for any Jones County school child. An adult must accompany children receiving a backpack. If you would like more information, please contact the Jones County Sheriff's Public Relations' Office at 601-428-3151.

There will be a "Southern Gospel Concert" at Stuart Memorial Auditorium, 939 Old Salt Road, Sumrall, Saturday night, August 8 at 7:30p.m. Featured guests for the evening shall be Matt Cowart, McClain, MS "The Pearl Quartet", Pearl, MS and other local artists. Concessions available, love offering accepted. For more information call 601-467-7311.

August 9
New Life Apostolic Church, Laurel, invites you and your congregation to our revival August 9-11th at 7:30p.m. nightly. The guest speaker will be Pastor Thomas Spencer from Greater Praise Sanctuary of Bay Springs. For more info call 601-577-0838 or 601-433-7283.

Sharon MB Church, Laurel, invites everyone to our Revival August 9-12. Sunday morning services will begin at 10:30a.m. and will be followed by lunch and then a 1:00p.m. service. Monday-Wednesday services will begin at 7:00p.m. The speaker for the revival will be Brother Harold Floyd.

Christian Valley MB Church, Women's Mission, invites you to our annual day, August 9th at 3:00p.m. The speaker will be our own Associate Minister Annie Walker. Your presence will be greatly appreciated.

The Nicholson Family Reunion, descendants of William E. and Alice Nicholson is set for August 9 at Dixie Electric Power Association at 10:00a.m. Please bring a well filled basket along with any old photos to share. For more information call Sheila Sullivan at 601-498-8990, Debbie Ingram 601-425-5404, or Roger Knight 601-425-1277.

Fellowship Baptist Church, 1609 Ovet Moselle Rd., Ellisville, will be holding our annual Homecoming on Sunday, August 9 at 10:00a.m. There will be a special music and luncheon afterwards. Rev. Cecil Hawthorne will be speaking. Please join us as we celebrate our 167th Anniversary.

New Zion MB Church of Bay Springs invites you to our revival Sunday, August 9 at 11:30a.m. with Rev. Darren Thomas of Pleasant Grove Baptist Church, Shubuta bringing the afternoon message. Rev Darnell Moffett of Calvary Baptist Church, Magee, will be the speaker August 10-14 beginning at 7:00p.m. nightly.

Mt. Olive Baptist Church, 116 Custom Avenue, Laurel, invites you to our Annual Fall Revival beginning Sunday, August 9 with Pastor W.E. Bridges as the afternoon speaker. The speaker for the week will be the Rev. Jaymar Jackson.

Friendship MB Church will celebrate their Men and Women Day on Sunday, August 9 at 3:00p.m. The speaker for this occasion is Rev. Jeremy Gavin, pastor of St. Mary Baptist Church, Decatur.

August 10
Powers Chiefs will be holding football signups for flag, pee-wee, and youth August 10th, and 11th from 6:00p.m.-7:00p.m. at EJE gym. Bring physical, birth certificate, and one proof of residency. Contact Erin Flynt with questions 601-498-8224.

August 10, 2015 at 5:30pm we will be having a wildlife food plot workshop at Boondock Eddie's. Mr. Don Bales, MSU Extension Associate will be conducting this workshop on enhancing your food plots for the upcoming hunting season. This workshop and meal will be provided by the Wayne County Board of Supervisors using Title III Funds from the Secure Rural Schools and Community Self-Determination Act of 2000. We ask that you please call the MSU-ES Wayne County Office at 601-735-2243 to pre-register your party for this evening.

August 11
Join The Salvation Army, 205 North 13th Avenue, Laurel, on August 11 at 6:00p.m. for a "Community Prayer Day". As a community of believers we will lift our prayer petitions before the Lord God Almighty. For more information contact Veronica Fleeton at 601-428-4232 or email Veronica_Fleeton@uss.salvationarmy.org.


Greater Faith MB Church, 6200 Hwy 84 West, Laurel, will hold its Annual Revival Tuesday thru Friday, August 11-14 with services beginning at 7:15p.m. nightly. The speaker will be Pastor Sammy Newton of Pineville Church, Waynesboro.

There will be a free community class on Diabetes Awareness at Wayne General Hospital Classroom on August 11th at 4:00p.m. This class is open to community individuals and/or family members concerned about diabetes. The speaker will be Kay Jones, MSN, RN, Certified Diabetes Educator.

Powers Water Association will hold our Annual Membership Meeting, August 11 at 7:00p.m. at the Powers Water Association Office. Voting for new board members can be done on the day of the meeting from 7:30am to 12:00pm, 1:00pm to 4:30pm and 7:00pm till 7:15pm at the office. If you have any questions please call 601-428-0294.

August 20
Get to know your neighbors and your local political candidates at the next North Hoy Neighborhood Watch meeting on Thursday, August 20, 6:00 PM at the Shady Grove Community Center on County Barn Road. Immediately following a brief meeting, candidates running for election in Beat 1 are invited to speak for five minutes each. Candidates should be there by 6:30 p.m. If you would like to address our group, please contact Becky Sherman at 601-577-8640 to get on the agenda. We will have a donation bucket with all donations going to the Mission at the Cross.

Hubbert Dental Clinic General Dentistry



Tooth decay is the 2nd most common disease in the U.S. after the common cold.

New Patients & Children Welcome! Call for appointment and let us help you have a healthy life.

WE ACCEPT: Medicaid (Magnolia & United HealthCare) C.H.I.P.S. and Private Insurance.
• Exams, Cleanings and X-Rays are covered every 6 months. • Financing Available.

99 Highway 511 E. Quitman, MS 39355 Dr. Michael W. Hubbert D.M.D.
601-776-3370 Hours: Mon.-Thurs. 8-11am & 1-4pm Tanya Barnett R.D.H.

LAUREL A-1 TIRE CENTER

Right behind the Laurel Police Department

LIMITED TIME OFFER

FREE ALIGNMENT WITH PURCHASE OF 4 TIRES MOST VEHICLES

• P225/60R16 • P215/60R16
Free Tire Rotation **\$79⁹⁵** +tax
MUST PRESENT COUPON

OIL CHANGE \$19⁹⁹ most vehicles
UP TO 5 QTS
MUST PRESENT COUPON
*PRICE SUBJECT TO CHANGE WITHOUT NOTICE
BY APPOINTMENT ONLY
MOST VEHICLES

RADIATOR FLUSH & FILL \$69⁹⁹ MOST VEHICLES
MUST PRESENT COUPON

219 Ellisville Blvd., Laurel, MS
M-F 7:30 A.M.-5:00 P.M. SAT. 7:30 - NOON
601.425.4616

The Jones County School District

Will host an IDEA (Individuals with Disabilities Education Act) public budget hearing

Tuesday, August 11, 2015
Jones County School District Administrative Office
5204 Hwy 11 North • Ellisville, MS
from 9:00-10:00 AM

The Jones County School District is seeking input on the proposed Individuals with Disabilities Education Act (IDEA) Budget for School Year 2015-2016.

RENT ALL OF LAUREL, INC.

601.425.3856

ARE YOU PREPARED?

We Sale Pumps and Generators





1518 Bush Dairy Road • Laurel
7:30a.m. - 5:00 p.m. • Monday - Friday

WALLEY FORESTRY
TIMBER
 • LAND • SALES
 • MANAGEMENT
 www.walleyforestry.com
 601-477-3014

Land sales: Let us assist you with your land sale or purchase. We provide full service forestry consulting and land brokerage. Call McCraw Forest Management for a free consultation. 601-498-9143

Clarke Co. 120+/- acres \$199,200. This unique investment tract is a Hunter's Paradise offering various ages of pine plantations, planted hardwood and natural timber. ID#CL120, www.walleyproperties.com. 601-670-5429.

80 acres just outside of Ellisville. Great development potential. Can be bought 80 acres, 40, 20, or down to ten acres. Great upland home sites with 13 year old pines. Super secluded only a few miles from Ellisville city limits. Access road under construction off Spur Line Road crosses a branch with nice hardwoods. Price is negotiable. 3600/ac to 4,000/acre depending upon size purchased. 601-498-9143 McCraw Forest management

48+/- acres Wayne County. This tract is mostly pine timber with frontage on Johnson Brother Drive and Patton Creek. Perfect for development or country residential setting in town. \$115,000. ID# WA48. 601-248-4396. www.walleyproperties.com.

+/- 171 acres Wayne County Strengthford Myrick Road \$346,275. This property offers 1/2 mile paved road frontage with excellent interior road system. This unique tract will make for an excellent recreational timber investment or cattle/chicken farm. ID# WA171 www.walleyproperties.com. 601-477-3014.

+/-106 Acres. Located on CR31 South Jasper County, MS. Tract consist of +/-20 acres of Mature Pole Pine Timber, +/-35 acres of 28 yr Pine Plantation, +/-35 acres of 15 yr old unthinned Pine Plantation. Has creek and pond for fishing. Great hunting. Power/water available. Several great home/camp sites. Great timber investment and hunting tract. Don't miss this one!!!!!! \$279,000. 601-408-0615, McCraw Forest Management, www.mfmland.com.

20 Acres of land for sale, Wayne County, between Clara and Buckatunna, \$55,000. 601-381-1082, 601-381-1081.

+/- 48.5 acre tract is located a few miles from the Ellisville city limits on Busby road. This timbered (16 year pine plantation) tract offers a nice country setting for a home or mini-farm. \$128,769. ID# J048.5 www.walleyproperties.com., 601-248-4396.

Land Management. Home Builder selling land. S.W. Jones County, FHA parcels available. *1-acre parcels, residential, *1-acre parcels, mobile homes, *10-50 acre parcels. Forrest County. *Dixie 2-10 acres, gated, private, rebate for first to build. *North 40th, 4 lots, zoned R-3 Apts. *Woodhaven Circle, 1 lot residential. Covington County. *Collins, 80 acres, timber. Lauderdale County, *187 acres prime land. I20/I59 Hwy 80 frontage. For more information: 601-543-5098, 985-951-0187.

FURNITURE

Lazy Boy Recliner, excellent condition, \$65; rocking chair, excellent condition, \$40. Call 601-550-1920.

Propane Industrial Gases
RESIDENTIAL COMMERCIAL INDUSTRIAL
TANK SET SPECIAL
 Ellisville: 601-477-3462
 Collins: 601-765-6800
 Hattiesburg: 601-583-6269
 Taylorsville: 601-785-4789
 Mon. - Fri. 7 A.M. - 4 P.M.

Let us help with all your **Back to School** needs!
 Come see Tiffany
CITY PAYDAY LOANS
 Loans up to \$410
CAR TITLE LOANS
 \$100 up to \$2500
 601-735-5353
 716 Spring Street • Waynesboro

Mama's Mattress Max!!! 20 different styles to try out. Sets start at twin \$135, full \$155, queen \$195, king \$335. Will split sets. Blackwell's Furniture 5222 Hwy 84 West at Calhoun 601.649.6111

Dinnette set with 4 chairs and captain chair. \$200 obo. 601-410-4029.

For sale full size mattress set for \$50. Sweetwater Ministries Thrift Store. 601-722-9517.

APPLIANCES

White wall oven, like new, excellent condition. \$250. 601-452-0643.

Reduced 220 17100 BTU window air conditioner, needs freon.\$125. 601-470-1625 or 601-498-2526.

PRODUCE

Open Air Market: From our freezer to yours. Garden fresh peas and beans at unbeatable quality and prices! Place your order today for Fresh peas, canning tomatoes, okra, peaches, etc. Call 601-399-4877, follow us on facebook, 605 Cross Street, Laurel.

Humphrey U-Pick Garden Tomatoes, Peppers, and Eggplants, \$15.00 5 Gallon Bucket, 601-722-9802 Seminary

Pinkeye purple hull peas for sale, \$24 a bushel. Butter beans \$26.00 a bushel. EBT and debit cards welcome. Call 764-8991 or 601-739-3515.

Peas, Peas \$7 Okra \$10, Sweet Corn \$20 per 100ears U-pick.

Smith Xmas Tree Farm, 793 Sanford Rd Exit 78 off I-59. Open 6am, Mon.,Wed., & Fri.. Call 601-582-2642 or 601-699-9033.

FINANCIAL AND LOANS

Summit Financial Services: Cash advance; check cashing; title loans. Call us in Laurel at 601-682-0212. Call us in Hattiesburg at our Oak Grove location, 601-336-7577 or at our Broadway location, 601-602-4383.

PETS

Free to good home. Young cat, grey, very friendly, 601-428-2205.

TANNING BEDS

Commercial/Home Unit. Tanning Beds. Financing, delivery, lamps, parts, repairs for all bed types. All lotions 50% off. 32 years of excellence. Jamie's Hair and Tan. United w/Tropi Tanna Distributor. 2122 Oak Grove Rd., Hattiesburg, 601-264-1300 or toll free, 1-888-321-8266. www.tropitannadistributor.com

ANTIQUES

Calico Antiques-Hattiesburg Antiques, recently featured in the movie The Historian & located in the heart of historical downtown Hattiesburg. We have a great selection of quality antiques and fun collectibles for the entire family. Largest selection of post cards in Ms. Leaded glass, fine glass china, furniture, prints, light fixtures, jewelry, lots of

WWW.TRACTORSUNLIMITEDMS.COM
McCORMICK™ August Special!
 ALL IN-STOCK McCORMICK TRACTORS
 0% APR FOR UP TO 72 MONTHS W.A.C.
 MONDAY - FRIDAY 7:30AM - 4:30 PM, SATURDAY 8:00AM - 4:00PM
TRACTORS UNLIMITED, LLC
 601-583-6453 1507 N. MAIN STREET HATTIESBURG, MS 800-321-2701

books, historic items, huge selection of dolls, large selection of civil war books & more. Come see for yourself. We are near the train depot 309 East Pine Street, Hattiesburg, Ms. 601-582-4351.

GARAGE SALES

Rummage sale, August 8th, 53 Bush Road in Glade community. Lots of stuff, too much to list. 6 families, call 601-319-2068 for directions and more information on all the things we have. Cheap, come and see. 7am until.

August 8th, 7am-12pm, 703 West 29th Street, Laurel. Furniture, kitchen and baby items, plus clothing.

Garage sale Thursday, Friday, and Saturday. 1567 Hwy 11S, Ellisville, MS

MOVING SALE Aug 8, 7am-noon. Furniture, clothes-baby boy 18mo and under, small women's, medium men's, other baby and household items, Jeep accessories, 15 Blackberry Drive, Laurel

Rummage sale! Come shop clothes, books, household items, and more at 1615 Old Amy Road. 8am-2:30pm, August 1st, no early sales.

907 Florence Church Rd., Sandersville. Open Thurs.-Sat., 8am-12pm every week. Nails, pvc fittings, gloves, books, couch and chair, antiques, and much much more. 601-422-5914.

172 Tom Windam Road, plus size clothes, furniture, what knots, Thursday, Friday, Saturday, 7am-2pm, 601-651-2914, Karen.

Backyard sale: One day/Saturday August 8, 8am-4pm, 1833 N. 5th Ave. 40 years of treasures, furniture, clothes, glassware, lots of collectables, too much to list. Come see! D.P. Sister.

Rummage sale! Saturday August 1st at 203 South 14th Avenue, Laurel. Name brand womens clothes, shoes & purses, dishes, home decor, appliances, and more!! 7am until.

Huge Rummage Sale Huge Multi Family Rummage Sale: Household goods, furniture, linens, books, clothes and baby items. Too many to list! Saturday, August 8th. 7-3. 16 Country Club Dr. Laurel NO EARLY BIRD SALES!!!!

Estate/Garage Sale: Estate Sale items will be inside. Garage sale items outside under carport. Items too numerous to mention. No tools at this time. Location at 119 Victory Road Laurel Ms. Phone 334-612-9425.

8-8-2015, Sharon Road at Walters Septic Service. Furniture, and miscellaneous items. 8am-until.

Multi-family rummage sale, Friday, Aug. 7th, at Circle 3 Self Storage, 1199 Hwy 15 South, 7:00a.m. until. Very nice name brand clothes boy, girl, and adult, 3x and 4x men's clothes. Dresser, what-nots, too

much to list. Come check us out before school starts. 601-649-0479.

WEDDING

Let Collins Florist design your dream wedding. Our professional design team can make your every wish come true. Call (601) 765-8630.

Now booking for weddings, receptions, and rehearsal dinners. We have the perfect setting for all occasions! 601-765-8812, email: woodlandtrails4@yahoo.com, website: Woodlandtrails-ms.com

WANTED TO BUY

I buy junk cars, buses and heavy equipment. U Call. We Haul! We pickup 24/7. Call 601-297-2778.

Need extra cash? I buy junk cars. Call 601-543-6583. Buses, metals, heavy equipment. Free pickup.

Cash Today For Junk Cars Free Pickup Auto Repairs Call 601-467-4164

LAWN AND GARDEN

Attention: Lawn Care Professionals. Come see Dixie Tractor for all your supplies. We have a huge selection of belts, blades, and trimmer line at very low prices. If it's not in stock, we'll get it for you. Open M-F, 7:30 a.m. to 4:30 p.m. Call 601-649-7470.

Continued on ... Page 6

DON'T RENT IT OWN IT!
 320 Front Street • Downtown Laurel
LOTT FURNITURE CO.
 Complete Home Furnishers Since 1919
 Need financing? We do our own.*
 *SEE STORE FOR DETAILS
 601-428-5782

EAGLE CARPORTS & BUILDINGS
 GARAGES STARTING AT \$2,215
 HORSEBARNS STARTING AT \$5,070
 MANY OPTIONS, PLANS AND SIZES AVAILABLE • FINANCING AVAILABLE *WAC
 CALL JOHN 601-323-0464
 WWW.ELLISVILLEMOTORS.COM • 303 HWY. 11 S. ELLISVILLE, MS • LOCATED BETWEEN PIZZA HUT & JGJC

Ellisville Medical Clinic in Ellisville Welcomes



Kelly Shoemake, M.D.

Dr. Kelly Shoemake, a native of Mize, MS, completed medical school at University of Mississippi Medical Center (UMC) in Jackson. She completed her residency in Family Medicine at the University of Alabama in Tuscaloosa, AL. Dr. Shoemake looks forward to treating patients of all ages at Ellisville Medical Clinic.

Ellisville Medical Clinic is accepting new patients.

Open Monday through Friday 8 a.m. - 5 p.m.
 1203 Avenue B | Ellisville, MS 39437 | 601.477.8553 | scrmc.com
Ellisville Medical Clinic
 A South Central Clinic

SERVICE DIRECTORY

Where the Pine Belt goes to get things done!

WE'RE BACK!
1/2 Price STUMP REMOVAL
 5 or more Avg. size with Truck Access
\$15 EACH
601-371-8733
 EXP: 9/15/15
The Tree Barber
 Matthew 16:26

Kimble Coats Owner
K CONSTRUCTION
 • New Construction
 • Remodeling
 • Decks
 • Vinyl Siding
 • General Construction
 • Foundations & Slabs
601-433-6996

FARRIS
Mobile Home TRANSPORT
 Statewide Moving
 Licensed & Insured
 Transporting since 1979
 Tony Farris
601-422-4144

OPEN AIR MARKET
 Now Taking Orders for Local Grown CANNING TOMATOES, PEAS, ETC...
 • FRESH FROZEN SHELLED PEAS, BUTTERBEANS, ETC...
 • SMITH CO. WATERMELONS
 • HOT TAMALES
 • PLANTS AND BLOOMING POTS
 • LOCALLY MADE SAUSAGE & SPECIALTY MEATS
 "Always the freshest hand selected Fruits & Vegetables"
605 CROSS ST. • LAUREL
601-399-4877

DYKES BUSHHOGGING & LAWN CARE SERVICES
 COMMERCIAL OR RESIDENTIAL
 • Pastures • Right of Ways
 • Grade Driveways
 • Spray Fields or Pastures
 • Food Plots for Deer Season
 CALL FOR FREE ESTIMATE
601.470.5932

HAIGLER
Roofing & Repairs
 • New Construction • Leak
 • Repairs • Shingles • Metal
 • Flat Roofs • Chimneys
All Types Roofing and Repair!
FREE ESTIMATES
 25 Yrs. Experience
601-319-2522

DANIELS PLUMBING SERVICES
 Your plumbing problem now has a solution
Call Day or Night
735-1827
381-1040
 Owner: Michael Daniels
 Waynesboro

SOUTHLAND SERVICES
 SMALL ENGINE REPAIR

 • 4 Wheelers • Lawn Mowers
 • Chainsaws • Etc.
601-804-9729
 7 Magnolia Rd.
 5 Miles East of Laurel

16TH AVENUE CHECK CASHING
 • We hold your check for 30 days
 • Get up to \$400 Cash for 30 days
601-428-1650
 124 N. 16th Ave. • Laurel

Kubota MASSEY FERGUSON
Chapman Tractor Co., Inc.
 1510 Azalea Drive • Waynesboro
1-800-816-2826
 JAY CHAPMAN
 Sales
 (601) 735-3103
 (601) 735-3104
 (601) 735-4461

Are you ready for hurricane season?
TOP TEN ways to prepare
 1. Emergency food, drinking water
 2. Flashlights and batteries
 3. Cash and credit cards
 4. Medicine/prescriptions
 5. First aid kit
 6. Personal identification
 7. Matches and lighters
 8. Gas for generator or vehicle
 9. Radio (battery-operated)
 10. Cooler (with ice)
 11. Update my phone number with Dixie Electric!
 Visit prepared.dixieepa.com for tips and outage information.



Stringer's Land Clearing Service
 Forestry & Residential
 Brush Clearing
 Dirt Work
 Stump Removal
601-919-7970
 For Free Estimates Call David Stringer



HANDYMAN
Sherman's Handyman Services.
 Painting, carpentry, plumbing, electrical, home remodeling, vinyl siding, metal roofing, trailer skirting. No job too small. 601-649-7187 or 601-422-8307.
Handy Man & Home Maintenance
 Ceramic, Hardwood flooring, sheet rock finishing, painting, pressure washing, plumbing and electrical. Call Erik at 601-433-2499.

Handyman, carpentry, painting, plumbing, electrical, remodeling, additions, porches, interior, exterior, and more, no job too small, Laurel and surrounding area, call 601-433-3592.
Handyman, carpentry, painting, plumbing, electrical, remodeling, additions, porches, interior, exterior, and more, no job too small, Laurel and surrounding area, call 601-935-0144.

SERVICES OFFERED
Flooring, all types. Remodeling, all types, decks-cabinets. For all your home improvement needs. No job too small. Commercial and residential. Licensed and insured, references available. Wilson 8:21. Painting, remodeling and more. II Corinthians 8:21. 601-268-7603.
Henderson's Courier Service, everyday errands, residential & commercial, drop off, pick up. Call 601-498-3076, Monday-Saturday from 8am-10pm.

Painting, Drywall, Pressure Washing and more! Licensed, Insured, Affordable, honest, dependable Christian company. Commercial and Residential. Quality, professional work. Over 20 years experience.

TOTAL REMODELING
 Commercial • Residential • Insurance Claims
 • Additions • Storm Damage Specialists • Kitchens • Baths
 • Garage Enclosures • Decks • Porches • Patio Covers
 • Siding • Painting • Drywall • Roofing • Flooring
 • Pressure Washing • Termite Damage • Carpentry
STATE LICENSED • BONDED • INSURED
"Our Pride Is Your Pride In Our Work"
 Established in 1989 • Locally Owned & Operated
601-337-3825
 Check out our webpage at www.garcohomeimprovements.com



KOUNTRY PROPANE
 Propane and Appliance Center
PRE-BUY YOUR PROPANE NOW FOR THE UPCOMING WINTER
LOWEST GAS PRICES IN 5 YEARS!
 good thru August 31, 2015
 Call or Come By Our Office For Details
104 Turner Street (Hwy. 63 S) Waynesboro 601-671-0757



AUTO & EQUIPMENT AUCTION
 Taking consignments thru Wed., August 5th
SATURDAY, AUGUST 8TH • 9:00 AM
 Autos, Pickups, Trucks, Equipment
Turning Point Auctions
 34 Chester Brown Road, Hattiesburg • (601) 336-6637
 www.turningpointauctions.com MS LIC #1176 & 1226

ence. Call for a free estimate. If no answer, please leave a message. We will return your call. Wilson 8:21 Painting & More. II Corinthians 8:21. 601-268-7603.

B&B Tree Service: call the best for less, fully insured, senior citizen discount, 38 years experience, we do all tree work and clean up at your request, bucket truck also available, call day or night, free estimates, may God bless you, Proverbs 11:30. 601-433-5257

Blakeney Lawn Care Services: mowing, raking, weed eating and more. Call for free estimate, Brian Blakeney, 601-410-4240.

MISSISSIPPI WATER WELL DRILLING AND SERVICE
 OVER 36 YEARS EXPERIENCE
 Nelson Cain - Owner
601-344-1005
662-285-7046
 Overt, MS 39464



Thames Concrete Finishing: Set forms, patios, slabs, driveways, pool decks, and blocks. Tear out and haul, so the job is finished right the first time. Percy Thames. 601-543-8712.

Miller Tree Service, bucket truck, professional, 30 years experience, insured; bob cat - dump truck and chipper available, senior citizen discount, free estimates, 601-498-3836, 601-649-0174.

Dozer, trackhoe, Dirt hauling Residential/commercial site work/land clearing, trailer/house pads, roads, ponds, dozer/trackhoe work. We haul clay gravel, rock, fill dirt, topsoil, sand and mulch. For estimate call 601-498-8485.

Quality Painting at affordable prices. Licensed, Insured, Affordable,

Professional, Christian company. Free Estimates. Commercial and Residential. References available. Wilson 8:21 Painting & More. II Corinthians 8:21. 601-268-7603

Thrash Pressure Washing: churches, steeples, concrete, residents and we now trim trees. Call 601-470-2296 or 601-344-8353.

I buy junk cars, buses and heavy equipment. U Call. We Haul! We pickup 24/7. Call 601-297-2778.

Kool-Seal Mobile homes, travel trailers, campers, sheds, etc. Energy efficient, 10% reduction. Pressure washing available. Call Craig or leave message, 601-544-9614

House Leveling Foundation Repairs. Replace bad sills, floor joist, or flooring. Sagging or shaky floor or dragging door, we can fix this. Let us make your foundation safe. Insured. 601-543-7007

Tom's Trees: Professional bucket truck service. 30 years experience in the Pine Belt area. We do precision take down, shaping, trimming, and dead limbing. Free estimates, fully insured. Call cell: 601-433-0518 or 601-787-4783

PINE BELT GUTTERS & REMODELING
 Specializing in seamless gutters, vinyl siding, patio covers, replacement windows & doors.
 We also offer gutter cleaning. 55647
WE WILL BEAT ANY COMPETITOR'S PRICE!
FREE ESTIMATES 601-265-6010

Russell's Heating A/C & Appliance Repair LLC: Call for all your A/C and Appliance needs. Sales and Service 30 years experience. Call 601-425-5486 or 601-763-5486.

16th Avenue Check Cashing: we hold your check for 30 days, get up to \$400 cash for 30 days. 124 North 16th Avenue, Laurel, 601-428-1650.

Crescent dirtwork, land clearing, mobile home set up, tree removal, yard cleaning, bush-hogging, call 601-323-4147.

Quality Pressure Washing at affordable prices. Licensed, Insured, Affordable, Professional, Christian company. Free Estimates. References available Commercial and Residential. Wilson 8:21 Painting & More. II Corinthians 8:21. 601-268-7603

Grand Opening of New Law Office in Prentiss, MS. Divorce, Criminal Defense, Death Claims, Personal Injury, Bankruptcy, DUI Defense, Offshore, 18 wheeler accidents. Call for your consultation today. Jones Law Office, 2219 Columbia Avenue, Prentiss, MS. 601-582-9177

TopSoil/Bobcat Service Available Lawncare, Hedges, gutters, dirt work, debris removal. 601-543-6583.

J&H Mobile Home Service we do any repair or replacement, windows, doors, plumbing, skirting, koolseal, call 601-433-9793.

Daniels Plumbing Services, Waynesboro, Your plumbing problem now has a solution, call day or night, 601-735-1827, 601-381-1040

Purser's Power Wash
 Free Estimates
 Residential • Commercial • Industrial
 MOBILE PRESSURE WASHING
601-517-0315



Flowers, Sand & Gravel: We now install septic systems, grinder pumps and spray systems. We deliver all types of gravel, fill material, sand, rock and topsoil, soil mix and mulch. Dozier and track-hoe service available. Foundations, roads, ponds, etc. Give us a call. 601-498-5983 or 601-477-2767.

Custom Vinyl Siding, 15 years experience, affordable prices, free estimates. Contact Mike at 601-433-6803.

New Paint! Fresh Paint! The season has changed! Time to change those colors! Need an accent wall? Call us for all your painting needs. Indoor & Outdoor. Licensed & Insured. Commercial and Residential. References available. Wilson 8:21 Painting & More. II Corinthians 8:21. 601-268-7603.

Lawncare: Serving Hattiesburg, Lumberton, Laurel, Sumrall, Petal, Brooklyn, Ellisville, Purvis and Mosselle areas. Reasonable rates. 601-325-5008. www.fullservicelawnca-rems.com

C. Kelly Concrete Services, house slab, parking space, patios, driveway, etc. All jobs considered. Quality work. Home 601-776-3045 or Cell 601-951-4311, Pachuta. Free estimates, please call any time.

Junk Cars: Get rid of those snake dens and rat dens. Bring 'em to us, or we'll pick 'em up! Springer Auto Salvage. Call 601-649-4238.

Roofing & Repair, new construction, leak repairs, shingles, metal, flat roofs, chimneys, all types roofing and repair, free estimates, 25 years experience, call Dennis Haigler. 601-319-2522

KC Construction, Kimble Coats owner, 601-433-6996, new construction, remodeling, decks, vinyl siding, foundations, slabs.

Dozer, trackhoe, backhoe, bush-hogging work, fill dirt, clay, gravel, sand, delivered, mobile home pads, ponds, driveways built, repaired, clearing, site prep, Mark Butler, 601-433-6459 or 601-425-1747

Bostick Tree Service: tree removal, stump and root grinding with precision for easy mowing and tree health, fully insured, free estimates, serving Pine Belt area, 601-283-8667

1/2 price stump removal 5 or more average size with truck access. \$15 each. Expires 9/15/15, 601-371-8733. The Tree Barber, Matthew 16:26.

Grant's Lawn Service: Mowing, weed-eating, general yard work, gutters cleaned, pressure washing, and window cleaning. Licensed and Insured, 601-519-5363.

Continued on ... Page 7

NEED CASH?
 Call Verna She will hold your personal check and give you **CASH!**



Loans from \$50 to \$410
LAUREL CHECK CASHING
 134 Beacon St., Ste. C
 Laurel • 601-426-2432

TIMBER AND LUMBER

Know the value of your timber before you sell. We provide timber appraisals and help landowners market their timber for the highest value. www.walleyproperties.com. 601-477-3014.

J and R Timber, Heidelberg, MS. 30 years experience in timber. Small and large tracts. Call cell: 601.319.3261 or 601.335.2107

Cypress Lumber for sale. Rough or planed. T&G&V and beaded. Beveled and log siding, white and yellow pine and Poplar. T&G&V. Cypress beams, cut up to 32 foot long. Open 7:00AM-3:30PM, Monday-Friday, Saturday, 7:00AM-12PM. 601-315-5533, fax 601-344-0950. frankssawmill.com

MUSICAL

Lynn Evans Piano Service: Registered craftsman with Piano Technicians Guild. Used pianos for sale. B.M.E. USM. 601-729-2823

BUILDINGS

Portable Storage Buildings, Rent to own with no credit check. 24,36,48 & 60 Month plans available. Call Shayna 601-270-2277.

12x20 portable building, Great for business or office building. Only 1 year old. Fully wired, insulated, sheetrocked, has nice closet with shelves, includes AC, ceiling fan, skirting & lighting. \$7500 firm must be moved. Call 601-520-5918.

Farm Barns. 40x30x16-\$9500. 30x30x10-\$7500. Metal roof and sides. Price includes labor. 601-296-0550.

Carports and Buildings: Financing Available! 18x21 carport \$695; includes installation! All sizes available. We also offer storage buildings & barns. Call John at 601-323-0464, 303 Hwy 11 South, Ellisville MS (between Pizza Hut and JCJC)

PORTABLE BUILDINGS

30x30 Tubing Building: Includes 2 Roll-Up Doors, 1 Walk-Through Door, Insulation, Cement Slab, and Installation. \$9,995. Call 601-727-4951.

FISH

Brewer Fishery. Coppernose, Shellcracker and Hybrid Bream, Black Crappie, Channel Catfish fingerlings, Bass, Fathead Minnows, Grass Carp, and Gold Fish. State licensed and delivery available. www.istockponds.com 601-270-1268, 601-989-2466.

Slade Channel Catfish Fingerlings, Bass, Bream, Grass Carp, KOI fathead-tuffy Minnows, Electro-fishing, etc. Free water analysis. State licensed. Randall Slade 601-796-2000 www.sladesfish.com

CAMPERS

2013 Jayco Premier Fifth Wheel, 39ft., 4 slides with king sized bed. J shaped sofa makes into bed. Fireplace, 48in. retractable TV, side by side freezer fridge. Garage kept, used 9 times. List price \$65,000, paid \$56,000. \$30,000 firm. Call 601-727-9042 for appointment.

BOATS

17ft. Bass Tracker 170 w/40hp motor, trolling motor and depth finder. Never been on water. \$11,500. Call 601-410-2427 or 601-735-0322.

Continued on ... Page 8

QUALITY DENTISTRY MADE AFFORDABLE

- No Waiting Period
- No Benefit Limitations
- No Cap on Services
- No Hidden Fees
- Immediate Treatment
- Enjoy Ongoing Savings
- Available to Groups and Businesses
- Pay only for services needed

QDP
Quality Dental Plan.com **601-735-1103**

79751

Premium Protection

Are you paying a premium price for low-grade service? Call Alfa®. With new rates and discounts, Alfa® could save you a tankful. Plus, you'll get personal service from our friendly, hometown team. Even if you've tried Alfa before, give us a call for a fast, hassle-free quote. The savings could surprise you.



Ben Cole, III
7 N. 5th St.
Bay Springs, MS 39422
Bus: (601) 764-2532
bcole@alfains.com



Call Alfa®. The best agents in the business.

RENT TO OWN! **NO CREDIT CHECK!**

COUNTRY FOLKS
PORTABLE BUILDINGS
OF HATTIESBURG

Storage *From Antiques to Hay, Lark Is the Way!*



12X30 **NEW LOWER PRICE!**
Smaller & Larger Sizes Available
ON DISPLAY - COME SEE
AS LOW AS \$750⁰⁰ DOWN
\$214⁰⁰ MO.

12X30 **NEW LOWER PRICE!**
Smaller & Larger Sizes Available
AS LOW AS \$750⁰⁰ DOWN
\$214⁰⁰ MO.

12X16 **NEW LOWER PRICE!**
AS LOW AS \$283⁰⁰ DOWN
\$141⁰⁰ MO.

8X12 **NEW LOWER PRICE!**
AS LOW AS \$157⁰⁰ DOWN
\$79⁰⁰ MO.

10X16 **NEW LOWER PRICE!**
AS LOW AS \$252⁰⁰ DOWN
\$126⁰⁰ MO.

10X12 **NEW LOWER PRICE!**
AS LOW AS \$204⁰⁰ DOWN
\$102⁰⁰ MO.

- Choose Your Colors (15 to choose from)
 - Choose Your Size (Too many to list)
 - Choose Your Design (Custom orders welcome)
 - Delivered & Set Up at NO Charge!
- GREAT FOR STORAGE, WORKSHOPS, OFFICE**
- SUITABLE FOR RESIDENTIAL NEIGHBORHOODS & MOBILE HOME PARKS

RENT to own

NO CREDIT CHECK!



8X8 **NEW LOWER PRICE!**
AS LOW AS \$107⁰⁰ DOWN
\$54⁰⁰ MO.

MONTHLY PAYMENTS BASED ON THE 60 MONTH PROGRAM. 24, 36 AND 48 MO. PROGRAMS ALSO AVAILABLE.

FINANCING AVAILABLE

TWELVE 12 MONTHS SAME AS CASH

BUILT ON YOUR LEVEL GROUND. QUICK TURNAROUND.

HOMELAND OUTDOOR
BUILDINGS OF ALL SIZES
METAL BUILDINGS, METAL CARPORTS, RV & BOAT COVERS, GARAGES, BARNs & MORE

RENT TO OWN PROGRAM NOT AVAILABLE FOR CARPORTS. CALL OR COME BY FOR PRICES.

FINANCING AVAILABLE

Smaller & Larger Sizes Available

24X36X10 ONLY \$8974⁰⁰

Maintenance Buildings

BUILT ON YOUR LEVEL GROUND. QUICK TURNAROUND.

W.A.C. RENT TO OWN NOT AVAILABLE FOR THIS BUILDING

RENT TO OWN • PURCHASE • FINANCE
12 MONTHS SAME AS CASH - WITH APPROVED CREDIT

4885 US HWY 49 SOUTH HATTIESBURG, MS
601-270-2277
601-520-5918 • 601-297-0203

18335 US HWY 49 SAUCIER, MS
228-832-7946
IN BUSINESS FOR OVER 40 YEARS!

ON THE RIGHT JUST PAST BILLY McGEE LAW ENFORCEMENT COMPLEX, ACROSS HWY FROM DAN'S DINER TRUCK STOP

*PHOTO FOR ILLUSTRATION PURPOSES ONLY

Pizza Inn OF WAYNESBORO

New Buffet Hours

Beginning July 31st, our New Buffet Times Will Be:

Sunday through Friday: 11 a.m. until 2 p.m.

&

Tuesday, Thursday, Friday and Sunday: 5 p.m. until 8:30 p.m.

 Pizza Inn of Waynesboro 2 Buffets for \$14.95 plus tax Drink Included Must present coupon Expires 9/30/15	 Pizza Inn of Waynesboro 3 Medium Topping Pizzas \$5.00 each plus tax Must present coupon Expires 9/30/15
--	--

902A Mississippi Drive Waynesboro, MS

601-735-5600
Monday - Sunday 11 a.m. - 10 p.m.

79759

\$750

DRIVERS

Class A CDL

\$500 SIGN ON BONUS FLATBED DRIVERS

GREAT HOMETIME!

- MOSTLY HOME DAILY
- SAFETY BONUS
- PAID BY THE LOAD
- PAID ORIENTATION
- MEDICAL & DENTAL AVAILABLE

6 Day Refresher Course Available
Forest Products Transports EOE

800-925-5556



HAS IMMEDIATE OPENINGS FOR GOOD

OTR Truck Drivers and Owner Operators

HIRING ALL DIVISIONS

Benefits include:

- Health Insurance • Vision Insurance
- Dental Insurance • Paid Vacation

NOW OFFERING SIGN ON BONUS

- SAFETY BONUS • REVENUE BONUS
- RETENTION BONUS

If You Want To Work For A Great
Company With Great Benefits

call us at 601-342-2314 today!

Located in Ellisville, MS



POSITIONS AVAILABLE

MS Care Center of Raleigh

is now taking applications for

LPN's

3-11 & 11-7 shifts.

Please apply in person
Monday - Friday
between the hours of 9am - 4pm.

MS CARE CENTER OF RALEIGH

309 Magnolia Drive, Raleigh, MS
601-782-4244

We are an equal opportunity employer.

HELP WANTED

Accounting Clerk - South MS
Electric Power, Hattiesburg, MS
Position Summary & Essential Job
Functions: Responsible for processing expense reports, preparing miscellaneous billings and scanning accounting documents. Education and Experience: High school graduate or equivalent. Undergraduate college courses in accounting desirable. Minimum of five (5) years of experience in bookkeeping or accounting involving advanced record keeping. Recent experience utilizing Accounts Payable software is required, with 3-way matching Accounts Payable software preferred. To apply go to company website @ www.smepa.coop, choose the Careers Page and "Jobs" for company's current openings. You must complete an online application at the company website to be considered for this position.

ter Mix Design Technician. Candidate must be well versed with mix designs, as well as procedures to ensure compliance with all federal, state, and local regulations. Position offers competitive pay and excellent benefits. Please email resumes to clint@southeastern-concrete.com or fax 601-544-5202.

Local supermarket seeking Market Manger and Meat Cutters. Competitive pay and benefits. 601-671-1120.

Needed temporary Customer Service Rep. Must have computer skills and general office knowledge and work well with the general public. Apply in person between 9 a.m. and 12 p.m. No Phone Calls. Kountry Propane, 104 Turner St., Waynesboro, MS. Equal Opportunity Employer. Deadline to submit application is August 12 at 12 p.m.

Impact Cannot Guarantee the integrity of every advertiser. We

strongly recommend that readers investigate the advertiser before sending them any money.

Laurel medical office position available. Insurance billing and collection a must, also includes other administrative duties. Mail resumes: Resume, PO Box 270, Quitman, MS, 39355.

OWNER / OPERATORS
Unbelievable High Pay %!
Plenty of Home on
Weekends!
Hiring in SW, MS.
100% Flatbed o/o Company.
Loggins Logistics: 870-336-9051

Looking for an experienced pipe layer. Must be familiar with water & sanitary sewer. Work will be in town & out of town. Call 601-544-4188 or 601-520-1525.

Now taking applications for lube bay technicians. Apply in person. Spee Dee Midas, Highway 98, Hattiesburg. No phone calls please.

Contractor position available, parking lot sweeping. Nights and some weekends. Valid drivers license, drug test a must. 601-580-6600.

Southeastern Concrete Company is seeking an experienced concrete pump truck driver. Job offers competitive pay and excellent benefits. Salary \$18+/HR DOE. Please call 601-544-7000, or come by and fill out an application.

MOBILE HOMES

Used Doublewide. 3bed., 2ba., new carpet, new paint, central A/C included. 601-408-4347, 601-296-7960.

"Sweet Lil Home", 14x52, 2bd., 2ba., with new carpet and vinyl flooring, new paint, delivered and set up, for only \$13,888.00. 601-520-0710.

New singlewides starting at \$275 per month, includes delivery, set up, appliances, skirting, & a/c. 601-408-4347

"Just arrived" (2) 16x80's, with 3bd., 2ba., new paint, new flooring throughout home, this home is total electric, ready to go for only \$17,888.00. 601-520-0710.

2011 16x80 2bed + 2bath, great condition. Payments starting at \$250 per month. 601-340-3335.

**GOOD CREDIT. BAD CREDIT.
NO CREDIT. NO PROBLEM!**
NEW, USED & REPO HOMES AVAILABLE.
I even have no credit check loans
and over 100 homes to choose from.
Payments starting at \$250 per month
For more info, call Howard at
601-447-4538

2003 Cavalier double wide, 4 bed, 2 bath, plus office and fireplace, in great condition, \$33,900. 601-421-8727, 601-310-9262.

Used triplewides, giant 3 bedroom, 2 bath, fireplace, central heat and A/C, delivery, set-up and tie down. Only \$39,995. 601-408-4347, 601-261-6005.

1st Time Home Buyer Program. Singlewides & doublewides available for financing! Call 601-340-3335.

Pre-Owned doublewide, 3 bedroom, 2 bath, new carpet, delivered/ setup. \$33,500. 601-408-4347.

2010 River Birch 16x80, newly remodeled and move in ready! \$25,900. Financing available! Call David 601-340-3335.

"End of Summer Sale": 28x80, 4bd., 2ba., vinyl sided, shingle roof, dbl wide with fireplace, dining room, living room and game room, very large bedrooms and master bath wit separate tub and shower for only \$42,888.00. 601-520-0710.

Used, 16x80, 3bed., 2ba., central A/C included, only \$19,900. 601-447-4538, 601-261-6005.

Huge Selections. All used homes, all the best prices at TB Sales in Hattiesburg. Been serving Mississippi for over 10 years. We have single wide and double wides from 2 bedroom to 5 bedrooms, we have what you want, prices starting at \$5K to \$40K. Give us a try and call 601-520-0710.

Looking to Sell?? I buy mobile homes and mema cottages cash on the spot. Call Brett @ 601-672-9481

Continued on ... Page 9

SIMCO, LLC

Now has an immediate opening for:

WELDER

- Fit
- Tig

PLUMBER

- Read Blue Prints
- Install Underground
- Top Out • Set Fixtures

CALL 601-422-3555 TO APPLY

MAGIC CITY
MOBILE HOMES

2015
28x80 • 4BR / 2BA
\$59,900
7628 Hwy. 49 N • Hattiesburg
601-726-9210

Norman's Food Outlet

#209 Waynesboro Food Outlet
PRICES EFFECTIVE AUGUST 5 - AUGUST 11, 2015

USDA FRESH PORK RIBLETS

\$1.26 LB.

Plus 10% at Checkout

4 LB. BOX HEARTLAND CATFISH FILLETS

\$15.00 EA.

Plus 10% at Checkout

48 OZ. SHURFINE VEGETABLE OIL

\$1.97 EA.

Plus 10% at Checkout

10 LB. BAG USDA, GRADE A FRESH FRYER LEG QUARTERS

\$3.40 EA.

Plus 10% at Checkout

24 PK- 16.9 OZ. SHURFINE WATER

\$1.96 EA.

Plus 10% at Checkout

FRESH GOLDEN RIPE BANANAS

38¢ LB.

Plus 10% at Checkout

WE'VE APPRECIATED YOUR BUSINESS OVER THE LAST 9 YEARS AND WE WILL CONTINUE TO STRIVE IN THE FUTURE TO HELP YOUR FAMILY BY LOWERING YOUR GROCERY BILL.

GREAT PRICES • GREAT TASTE • GREAT SAVINGS
OPEN 7 DAYS A WEEK
MONDAY - SATURDAY 7 A.M. - 7:30 P.M. / SUNDAY 8 A.M. - 6 P.M.

Located in the Azalea Mart Shopping Center
Waynesboro, MS **601-735-4344**

IMMEDIATE OPENINGS FOR:

- **Diesel Mechanic:** must have minimal 5yr experience, CDL & Welding preferred but not required. Must be able to work on gas and diesel equipment, with minimal supervision.
- **CDL-Drivers:** Must have at least 5yrs of experience with a safe driving record.

Competitive Pay, Paid Vacations, 401-K,
Vision, Medical, Dental, plus other benefits

Mar-Jac Poultry, MS LLC
237 Marshall Durbin Dr, Waynesboro, MS 39367
Phone 601.735.4861 Fax 601.735.3264

Stockstill Trucking, Inc.



158 Central Industrial Row
Purvis, MS
601.794.5577
800.794.5578

ELLISVILLE HOME CENTER

NOW OPEN

- Large selection of New & Used Homes
- We Sale Mobile Home Parts
- EZ Finance Options

IN ELLISVILLE ON HWY 11

5485 HWY 11 N. • Ellisville
Mon. - Fri. 8 am-6 pm, Sat. 9 am-4 pm

601-340-3335

Farris MOBILE HOMES

GREAT DEALS ON 2015's MAKING ROOM FOR 2016's



Locally owned and operated by Tony & Sandy Farris
CALL TODAY! Located at Intersection of Hwy. 84 and 28 in Calhoun

601-422-4144

Southern HENS INC.

EMPLOYMENT OPPORTUNITIES

NOW HIRING MAINTENANCE

Industrial Experience

Benefits include Life/Health Insurance, Paid Holidays, Paid Vacations, 401K Retirement Plan, Dental/Cancer Insurance Available.

• Applications taken Mon.-Fri at 7:30 AM • EOE

601-584-4735 • 329 Moselle-Seminary Rd. • Moselle, MS

Repo double wide, Patriot, 28x70, 3+2, \$19,900. 601-310-9262, 601-421-8727.

"Best DBLwide Ever", 32x64, 3bd., 2ba., vinyl sided, shingle roof, home has brand new flooring, new counter tops, walk in pantry, fireplace, huge master bath with separate tub and shower for only \$32,888.00. 601-520-0710.

Assumable Payments. 3bed., S/W, \$249 per mo. 3bed., 2ba. D/W, \$349 per mo. 4bed., 2ba. D/W, \$399 per mo. 601-447-4538.

Used Double wide for sale. 28x60 3+2 for only \$19,900. Call Chase today at 601-310-9262

Land and home deals. All over south and central Mississippi. Call 601-307-2114.

Repo Liquidation sale, everything must go, call for pics and prices, 601-421-8727, 601-310-9262.

2006 Southern 28x68 newly remodeled and move in ready! \$38,000. Financing available. 601-340-3335.

0% Down with land on all 2014 mobile homes in stock. Call now: 601-726-9210. Magic City Mobile Homes, Laurel.

Need an Office Here it IS!!!! Doublewide Office Unit for sale. 2006 model 28x56. 15K. Call Brett 601-672-9481.

Low Priced Home! Older single-wides in great shape starting at 10k. Call Brett @ 601-672-9481.

Singlewides & Doublewides!!! I have New Single-wides and Doublewides MH that I'm selling for cost straight from manufactures. Call Brett @ 601-672-9481

New New New!!! New Doublewides starting at 49K with approved credit or cash. Call Brett @ 601-672-9481.

Used double wide, 2000 model, 32x60, in great condition, \$23,900. 601-310-9262, 601-421-8727.

New-used homes, whatever you are looking for I probably have and if not I can get it. Call 601-307-2114.

EZ financing for credit scores under 600. Call 601-340-3336.

Used singlewide, 3 bedroom, 2 bath, \$15,000. Call Tony at 601-408-4347, or 601-296-7960.

Repo Special!! 2011 Cavalier 16x80 Windzone II 3+2 for only \$29,900. Call Chase today at 601-310-9262.

Use your tax return as a down payment, low monthly payments, easy financing. Call Tony: 601-408-4347.

Here it is!!! Owner Financing!!! Owner Financing on new single-wides MH with downpayment. Call Brett @ 601-672-9481.

NO CREDIT CHECK!

I FINANCE NEW SINGLEWIDES. 2 OR 3 BEDROOMS WITH DOWNPAYMENT.

For more info, call Howard at **601-447-4538**

Land home package, no credit check, owner financing. 601-408-4347 or 601-261-6005.

Used single wide, 2 bedroom, 2 bath, only \$7950. 601-447-4538 or 601-261-6005.

Foreclosures, repos, used, land home packages, and New mobile homes. Call Chase today for details 601-310-9262

Cash Paid. We buy used mobile homes. 601-261-6005.

Land Home packages all over Mississippi. Call Tiny, 601-307-2114.

"Huge selections" All used homes, all the best prices at TB Sales in Hattiesburg, been serving Mississippi for over 10 years. We have single wides and double wides from 2 bedrooms to 5 bedrooms. We have what you want, prices starting at \$5 to \$40k. Give us a try and call 601-520-0710.

Farris Mobile Home Transporting: Statewide moving, licensed & insured. Transporting since 1979. Tony Farris 601-422-4144.

MOBILE HOMES FOR SALE

Singlewide \$10,000.00 cash. Call 601-271-7355.

Doublewides from \$49,900 Call 601-271-7355.10 Doublewides on clearance. Call 601-271-7355.

Trade-ins wanted all types. Call 601-271-7355.

Paying cash for used homes 2000 models and newer 601-271-7355.

4 bedroom doublewide for sale. Call 601-271-7355.

12 Doublewides and 14 Singlewides on sale! Call 601-271-7355.

Doublewide with acreage \$39,900 Hurry! Call 601-271-7355.

New 2 Bedroom \$29,900 Call 601-271-7355.

New 3 Bedroom 2 Bath Singlewide \$37,167 Del, set, A/C, Skirt, Steps. Ask for Josh 601-212-5663.

Discounts up to \$18,000 off new Single and doublewides. Ask for Josh 601-212-5663.

New 2 Bedroom 1 bath Singlewide \$29,667 Del, Set, A/C, Skirt, Steps Ask for Josh 601-212-5663.

Trade up. Trade in any model mobile home for new home. 601-271-7355 ask for Bo.

New Singlewide Mobile Homes \$29,900. 601-271-7355 ask for Bo.

We buy and sell used Mobile Homes. 601-271-7355 ask for Bo.

Trade in your old home for a new home. ANY CONDITION!!! Ask for Joel 601-212-5663.

Used homes for sale!!! Call Joel 601-212-5663.

Forclosed Mobile Homes For Sale, Some With Land. Call 601-271-7355.

Used 16x80, 3br/2ba, Only \$21,900. Set up, skirted, ac. Call Magic City Mobile Homes. 601-729-9210.

2006 Sunshine, 16x80. Three bedroom, two bath. Call 601-307-2114.

Largest used home selection in the South. Call 601-307-2114.

Guaranteed financing on new and used singlewides. No credit checks. Call Tony at 601-408-4347, or 601-296-7960.

Land Home Pkgs! On the Coast. I have 5 mobile home and land packages on Ms Gulfcoast. Call Brett @ 601-672-9481. Owner Financing available with down payment.

I guarantee approval with \$8,000 down and payments of \$575/month for only 13 years. I don't care if you are in a bankruptcy, you are automatically approved when you put \$8,000 down on a Brand new single wide mobile home. Call Tiny, 601-307-2114.

Porch model doublewide, 3 bedroom, 2 bath, central A/C, delivery, set up, and tie down included, only \$44,900. 601-447-4538, 601-261-6005.

New 16x80 3bed + 2bath, sheet-rock walls in living room, 8ft. ceilings, huge utility room, large master bath w/garden tub and separate 48 inch shower. \$39,900 includes: Delivery and set up, ac installed, skirting installed, and steps. Call today 601-340-3335.

Reduced, Stringer School District, 2003 nice mobile home, move in ready, 3/2, c/h/a, \$14,000 pulled (on 1 acre \$26,000) (on 2 acres, \$30,000). Beautiful 2014 doublewide, kitchen isle, working fireplace, extras, move in today \$78,000; Mobile home for \$55,000 pulled or on 1acre \$67,000, Stringer School District. 601-498-2526 or 601-470-1625.

LOT MODEL SALE!

ALL 2014 & 2015 MODELS MUST GO!

NEW 2016s ON THE WAY!

LARGE SELECTION OF NEW, USED & REPO HOMES

SINGLE & DOUBLE WIDES

FINANCING AVAILABLE

- LOW DOWN PAYMENTS
- LOW MONTHLY PAYMENTS

ASK ABOUT OUR LAYAWAY PLAN

GUARANTEED CREDIT APPROVAL! TRADE-INS WELCOME

HATTIESBURG HOME CENTER

7756 US HWY 49 HATTIESBURG, MS **601-261-6005** AFTER 6PM CALL 601-447-4538

Single wide, \$350 a month and double wides around \$550 a month. Call Chase today at 601-310-9262

"Sell your mobile home." Will give you the best price possible for your mobile home. 601-520-0710.

Used singlewides & doublewides. Financing available! Call 601-340-3335.

Used 2000 model 4 bedroom, 2 bath double wide, \$18,900. Must go quick. 601-310-9262, 601-421-8727.

2001 Oakwood 16x60 3bed/2bath. \$9500 obo. 601-340-3336.

Need Zone II or III home? Call 601-307-2114.

Used Mobile Homes. Doublewides, and singlewides, will deliver and set up, owner financing, 601-261-6005.

Repo, single wide, Clayton, 16x80, 3+2. 601-310-9262.

1998 28x64 doublewide, 3br/2ba, all electric, c/h/a, South Jones area, Burnt Bridge Road. \$650, \$300 deposit, in trailer park, 601-498-2488.

1998 16x80 3br/2ba, all electric, c/h/a, West Jones area, in a trailer park. \$450/mth. and \$250/dep. Rhonda 601-498-2488.

MOBILE HOME LOTS

Four months free space rent. Move your mobile home in with us! Spaces available at Bellecrest. Nicest mobile home park in Hattiesburg. Bellecrest Mobile Home Park 63 Sullivan Kilrain Road Hattiesburg, MS. 601-545-1300

HOUSES FOR SALE

Ranch style 2br/2ba, approximately 1100sq.ft., .5 acre, fenced back yard, w/three out buildings, one w/electricity, in Moselle area. Assumable loan, payment \$368.54 with good credit, low closing cost. \$72,000, 601-818-3648.

Continued on ... Page 10

WHOLESALE HOME CENTER

LARGEST REPO DEALER IN SOUTH MISSISSIPPI

NEW • USED • REPOS

Large selection of **SINGLE & DOUBLEWIDE REPOED MOBILE HOMES!**

Starting at **\$12,500 FOR SINGLES**

\$29,000 FOR DOUBLES

GUARANTEED CREDIT APPROVAL

Come see how easy it is to own your own home!

7389 US Hwy 49, Hattiesburg • 601-296-7960

Bon Vie HOME BUILDERS, LLC

Building Custom Homes Since 1974

View our homes at bonviehomebuildersms.com

Custom Built Homes as low as **\$64 PER SQ. FT.**

"At Bon Vie you are NOT just another number, you are Family."

The Bon Vie Difference

- We are a local builder with over 40 years experience.
- We build quality homes at affordable prices
- We offer a wide variety of floor plans to choose from or we can help you design your own.

We help make dreams come true.

Come visit us at **5317 Old Hwy 11, Suite 12, Hattiesburg**

601-544-6007

The Good Life Home Builders LICENSED • BONDED • INSURED

Back to SCHOOL SAVINGS

2014 Ford F150 Crew Cab \$31,995 4x4

2013 Ford F150 Crew Cab \$24,995

2014 GMC Acadia \$33,995

2012 Lincoln MKZ \$19,995

2014 Nissan Altima \$17,995

2008 Ford F350 Crew Cab \$26,995 4x4 6.4 Diesel

COOLEY MOTOR COMPANY

HWY 45 NORTH • WAYNESBORO

601-35-4323 OR 1-800-748-8838

COOK AVENUE APARTMENTS

Now Accepting Application for Low Income Apartments for Persons 50 Years or Older Disabled or Handicapped

• Central Heat & Air • Stove • Refrigerator

For More Information Call 649-4204
Office Located 415 Sorrell Dr., Laurel, MS
Hours: 8 a.m. • 5 p.m., Mon. - Fri.

75454

Hunter's Dream: 3 bedroom/2 bathroom mobile home located on 15+ acres in the Blue Ridge community outside of Laurel, MS. Asking \$80,000. Call 601-543-2479 or 601-543-9918

New To Market, motivated to sale, 3br/2.5ba, approximately 2200sq. ft., bonus room 378sq.ft., brick, fireplace, a/c, large yard, beautiful trees, West Jones School District, \$105,900, 601-447-8770.

3BR/2BA Brick Home w/2.5 Acres approx. 2500sf, built in 2006, WJ school district, nice neighborhood on dead-end road, \$199,000, 601-323-0991.

Beautiful executive home at a sacrifice price, \$225,000 obo, for quick sale. 5200sq.ft. brick home, 3 lots, Heatherwood Subdivision, West Jones or city schools. 6br/5ba, custom kitchen, breakfast room, family room w/tp, 2 laundry rooms, sun room, formal living/dining, office with full bath, downstairs great room w/

J & J JUMPS

www.jandjpartyjumps.com
601-543-2928
Find us on FACEBOOK

67942

fp, exercise room. Attached 3 car garage w/possible 2nd floor apartment. 16x24ft. storage building. Appraised value, \$312,000, but home is in need of interior paint and updating. Call Marcelle Harwell, 601-498-2425.

3br/2ba on 2.2 acres, Northeast Wayne Co. Military style shop 32x68. More details, 601-381-6603.

1 acre of land, 2br/1ba brick home in Glade community, \$66,000. 601-649-3760, 601-498-8503.

Home in Petal for Sale. Very Nice 2B/1B for Sale in Petal, MS. Hardwood & Tile Flooring throughout. Newly Remodeled Kitchen & Bathroom. Great for Starter Home or an Investor's Dream (rents very easily). Call (228) 282-0212 for Price.

Reduced 3/1 brick home with guest cottage, carport, approximately 1ac. in downtown Bay Springs. \$49,900. Move in ready. 601-498-2526 or 601-470-1625.

Home for sale 4 BR, 2 Ba home on 2 acres in Soso community. Fenced yard in back with deck, and includes a large workshop. Priced at \$122,900. 407-608-8600, 407-608-8767

EMPLOYMENT OPPORTUNITIES

NOW HIRING

PRODUCTION WORKERS

Benefits include Life/Health Insurance, Paid Holidays, Paid Vacations, 401K Retirement Plan, Dental/Cancer Insurance Available.

• Applications taken Mon.-Fri at 7:30 AM • EOE

329 Moselle-Seminary Rd. • Moselle, MS
601-582-2262

77078

HOUSES FOR RENT

1, 2, 3, and 4 bedroom houses and mobile homes. Hattiesburg and Oak Grove. Call for list. 601-336-5808.

3-4br/2ba located 44 Bay Circle, very nice, wood floors. \$950/mth, 601-310-4132.

3br/1.5ba, brick home, in Glade/Northeast Jones area on large fenced lot. \$725 month plus deposit. Call Joe 498-5020.

Brick home in Northeast Jones School District, beautiful private lot. For more information call 601-577-0739.

3br/1ba house, 31 Sanderson Road, Ellisville. \$500/mth, \$500/dep. 601-438-4388.

4 bedroom house in Ellisville. Newly renovated, c/h/a, \$850/mth plus deposit. No pets. Section 8 accepted with reference. 601-323-2830, 601-729-8201.

Brick 3br/1ba a/c, porch front, vaulted ceilings, w/d hook-up, West Jones Schools, \$600/mth, \$600/dep. 210-478-6492.

APARTMENTS FOR RENT

(2) 2br apartments for rent in Soso at the Shady Oak School Apartments. 601-729-8758.

COMMERCIAL

Convenience store, bait store and beauty shop, all on same lot to be sold as one business. Located in Waynesboro. Serious inquiries only, 601-735-2045.

AUTO SERVICES

Hartfield's Auto Repair 25 years experience Located in Stringer MS open Mon-Fri 8-5 601-470-3220

AUTOS - CARS

2009 Chevrolet Cobalt, LS, 2dr coupe, cloth interior, automatic, blue/black, low miles 79k, \$6999. Warranty Available. 601-323-0464 or 601-580-0358. See more at www.EllisvilleMotors.com.

2003 Buick Regal LS, \$5,995. 601-310-1403.

Continued on ... Page 11

SANFORD VEHICLES INC.

LARGE SELECTION OF VEHICLES

Down Payments as low as... \$1,000

WE FINANCE!
BUY HERE
PAY HERE

WE NOW ACCEPT DEBIT/CREDIT CARDS

96 HOUSTON ROAD
Laurel, MS 39443

601.649.8300

67934

Designed to make the toughest work easy.

Husqvarna

PAYMENTS AS LOW AS \$68.99 MONTH

Husqvarna Z246

- Engine manufacturer: Briggs & Stratton
- Engine Name: Endurance series V-Twin
- Endurance V-Twin Engine

Price: \$2,699.95

www.husqvarna.com
copyright © 2013 Husqvarna AB (publ). All rights reserved.

ELLISVILLE AUTO SUPPLY INC
704 HILL STREET • ELLISVILLE
601-477-8577
WWW.ELLISVILLEAUTOSUPPLY.COM

68069

2009 Chevrolet Cobalt, LS, 2dr coupe, cloth interior, automatic, blue/black, low miles 79k, \$6999. Warranty Available. 601-323-0464 or 601-580-0358. See more at www.EllisvilleMotors.com.

2003 Buick Regal LS, \$5,995. 601-310-1403.

Continued on ... Page 11

SUMMIT FINANCIAL SERVICES CORP.

- Cash Advance
- Check Cashing
- Title Loans

1228 W. 5th St. • Laurel
(ACROSS FROM COMCAST)
601-682-0212

68037

SHOP 24/7 AT WWW.WOOLWINEFORD.COM

WOOLWINE

SUMMER TRUCK SAVINGS\$

2015 FORD XLT F-150'S \$8,000 OFF IN DEALER DISCOUNTS & REBATES *WAC

15 PROGRAM 2013 & 2014 F-150'S IN STOCK, XLT, LARIAT & FX4 STARTING AT \$33,995

UP TO \$12,500 OFF ON SUPER DUTY TRUCKS WAITING FOR YOU*

0% FOR 60 MONTHS ON 2015 NEW LINCOLNS + \$2,500 OWNER LOYALTY REBATES W.A.C

0% STILL AVAILABLE ON THE 2015 EXPEDITION, EXPLORER, FOCUS, FIESTA, FUSION, AND ESCAPE FOR 60 MONTHS W.A.C

254 **PRE-OWNED AND PROGRAM CARS IN STOCK AND READY TO CHOOSE FROM**

2009 CHEVROLET IMPALA STK#UA0545.....\$10,990	2013 FORD FOCUS SE STK#U7181X.....\$12,990
2010 CHRYSLER 300 SERIES STK#UA5650.....\$13,455	2013 FORD FUSION SE STK#F1103.....\$17,990
2010 FORD TRUCK E-350 STK#U5555.....\$11,465	2013 FORD ESCAPE SEL STK#F2085.....\$23,990
2010 FORD F-150 SUPERCREW STK#F0774.....\$26,990	2014 FORD MUSTANG V6 STK#F2557.....\$22,555
2011 FORD TAURUS SEL STK#UA2318.....\$14,885	2014 CHEVROLET SONIC LT STK#U7035.....\$13,339
2011 FORD EDGE SE STK#U3507.....\$15,995	2015 CHEVROLET TRAVERSE LT STK#UA5453.....\$30,255
2011 GMC TERRAIN STK#U6947X.....\$17,965	2015 FORD ESCAPE SE STK#UA0753.....\$25,990
2012 CHEVROLET MALIBU LT STK#F3010.....\$15,699	2015 NISSAN ALTIMA SV STK#U0207.....\$19,990
2012 FORD FUSION SE STK#UA1697.....\$13,998	AND MANY MANY MORE! TOO MANY TO LIST!

907 Herbert's Mart Shopping Center Waynesboro, MS

Save a lot

Wed., August 5, 2015 - Tues., August 11, 2015

OPEN 7 DAYS A WEEK - 8 A.M. - 8 P.M.

WE RESERVE THE RIGHT TO LIMIT QUANTITIES

SAVE ON YOUR FOOD BILL... SHOP SAVE A LOT

16 Oz. Package CONECUH SAUSAGE \$3.48 Ea. We don't add 10% at the register	Family Pack Select PORK CHOPS \$1.28 Lb. We don't add 10% at the register	Family Pack Split FRYER BREAST \$1.15 Lb. We don't add 10% at the register
16 Lb. Bag KINDLE CHARCOAL \$4.97 We don't add 10% at the register	30 Oz. Jar PORTMAN'S MAYONNAISE \$1.87 We don't add 10% at the register	48 Oz. Bottle CRISCO VEGETABLE OR CANOLA OIL 2/\$5 We don't add 10% at the register

ONE DAY ONLY - FRIDAY AUGUST 7, 2015

40 Lb. Box LEG QUARTERS \$14.98 We don't add 10% at the register	24 Oz. HUNTS KETCHUP 67¢ We don't add 10% at the register	18 Oz. Bottle KRAFT BBQ SAUCE 79¢ We don't add 10% at the register
---	--	---

WOOLWINE FORD 1-800-319-0340
3080 HIGHWAY 49 • COLLINS, MS **601-765-4461**

*\$2,500 certificate from Ford with ownership of a 6.0 diesel engine required. *Woolwine is not responsible for typographical errors. *Photos for illustration purposes only *plus tax, title, and fees W.A.C.

LU432

2000 Chevy Lumina, \$4,995. 601-310-1403.

2013 Mini Cooper, Coupe, \$16,595. 601-544-2430.

2012 Ford Fiesta SE, \$10,999. 334-730-3248.

2006 Mercury Grand Marquis, GS, \$9,995. 601-270-0805.

2006 Honda Ridgeline RTL, w/ moonroof, \$10,999. 334-730-3248.

2007 Toyota Sienna LE, \$10,995. 769-223-3922.

2000 Buick LeSabre LTD, \$6,995. 601-543-7359.

2010 Pontiac G6, \$10,995. 601-544-2430.

2000 Lexus RX 300, \$6,995. 601-543-7359.

2013 Honda CR-V, EX-L \$22,995. 601-544-2430.

1999 Mercury Grand Marquis LS, \$5,995. 601-310-1403.

2002 Ford Lincoln Executive Series, good condition, \$2,500. 601-764-2821.

2002 Dodge Stratus SE, Plus/SXT, \$4,995. 601-580-9020.

2013 Acura TL, loaded, leather seats, sunroof, 26,000 miles. \$25,000, 601-433-2451.

2012 Fiat 500 Pop, \$10,955. 769-223-3922.

2003 Chevrolet Cavalier, \$5995. 601-580-9020.

2003 Toyota Corolla S, \$7,999. 601-498-9731.

05 Grand Prix, clean, cold ac, \$3500; 03 Ford Explorer, 4wd, 3rd row, leather, \$2300; 05 PT Cruiser, clean, cold ac, has power steering leak, \$1600. 601-433-3346, 601-498-6944, 601-455-6944.

2007 Nissan Quest, \$7,995. 601-498-9731.

2012 Toyota Camry SE, \$14,995. 601-544-2430.

2000 Lincoln Town Car, signature series, one owner, 86k miles, new air bags, beige/beige, new mats, \$5,500. Warranty. 601-498-6335 or 601-580-0358. See more at EllsvilleMotors.com

2004 Chevrolet Monte Carlo, 2dr coupe, silver/black, leather seats, 160k, alloy wheels, \$3,599. Warranty Available. 601-323-0464 or 601-580-0358. See more at www.EllsvilleMotors.com.

2010 Chrysler Town & Country, mini van, \$11,995. 601-544-2430.

1998 Ford Taurus SE, \$4,995. 601-310-1403.

2011 Toyota Camry LE, \$14,595. 601-544-2430.

2009 Mercury Grand Marquis, LS, \$10,999. 334-730-3248.

2012 Dodge Avenger \$11,995 601-544-2430

2006 Toyota Sienna LE, \$7,995. 601-498-9731.

2006 Ford Five Hundred LTD, \$6,996. 601-543-7359.

AUTOS - MOTORCYCLES

2006 Kawasaki 900cc custom, \$2,400. 601-283-9540.

2005 Harley Davidson Sportster XL, 1200c, 8400 miles, extra accessories, excellent condition, \$4999, contact Roy 601-319-6342.

2008 Kawasaki KLR650 Dual-Sport Motorcycle 15,780 miles \$3750. Call 601-270-0286 For Details.

AUTOS - SUVs

2002 GMC Yukon XL, SLT, \$8,995. 601-270-0805.

1994 Blazer for sale, in perfect condition. 601-381-3005.

2004 Ford Expedition, Eddie Bauer, \$9,999. 601-270-0805.

2007 Chevrolet HHR LT, \$7,995. 601-543-7359.

2004 Chevrolet Avalanche, \$10,995. 769-223-3922.

2005 Chevrolet Suburban, LS, One Owner, 5.3Li V8, white/gray, nice cloth interior, good tires, fresh service, \$8,400. Warranty. 601-580-0358 or 601-498-6335. See more at www.EllsvilleMotors.com.

AUTOS - SPORTS

2006 Jeep Wrangler, right hand drive, \$10,995. 601-544-2430.

2010 Jeep Sport Wrangler \$23,642: 18371 MI, 2D, 4WD, 6SPD, Custom tow, wheels, bumpers, lights. Call 601-428-1871

AUTOS - TRUCKS

2006 GMC Sierra crew cab, SLT, \$13,900. Call 601-765-1828.

2006 Ford Explorer XLT, \$7,995. 601-580-9020.

2005 Chevrolet Trailblazer LS, \$9,999. 601-270-0805.

1977 Chevy Scottsdale, \$8,995. 601-270-0805.

2002 Chevy Silverado 1500 LS, \$6,995. 601-543-7359.

2002 Chevrolet Silverado, LS, ext cab, beige/tan, V6, upgraded wheels, 142k. \$7,775. Warranty available. 601-580-0358 or 601-498-6335. See more at www.EllsvilleMotors.com.

2007 GMC Yukon Denali, 6.2Li V8, navigation, dvd, beige leather interior, \$20,000. 601-580-0358 or 601-498-6335. See more at EllsvilleMotors.com.

2010 Toyota Tacoma, \$9,999. 769-223-3922.

2010 Toyota Tacoma, \$10,995. 334-730-3248.

2008 Ford F150, XLT, One Owner, crew cab, 5.4Li V8, white/charcoal, cloth interior, tonneau cover, extra clean, \$14,999. Warranty available. 601-580-0358 or 601-498-6335. See more at www.EllsvilleMotors.com.

2006 Dodge Ram Laramie, automatic, gas, white, 4-door, leather, runs great \$9,000 OBO. 601-596-2703

2001 Ford F150 Lariat, \$7,995. 601-498-9731.

2012 Chevrolet Silverado, Crew-cab, \$22,995.. 601-544-2430.

2006 GMC 4 door SLT. \$12,900. Call 601-765-1828.

2003 Ford F150 King Ranch. \$8,995. Call 601-765-1828.

1988 Jeep Comanche Pickup, I4, new interior, 133k, 4 speed manual, ac, maroon/beige, \$4,500. Warranty Available. 601-580-0358 or 601-498-6335. See more at www.EllsvilleMotors.com.

2013 Toyota Tacoma, 4x4 V-6, \$30,995. 601-544-2430.

2008 Chevy Colorado LT, \$8,995. 601-498-9731.

2010 Chevy Colorado Extended Cab LTD 2WD 57,700 miles power windows, cruise control, cd player, bedliner, \$14,000 OBO 601-520-1261

2007 Ford F150, XLT, One Owner, crew cab, 5.4Li V8, white/charcoal, cloth interior, very clean, \$14,999. Warranty Available. 601-580-0358 or 601-498-6335. See more at www.EllsvilleMotors.com.

2008 Chevrolet Siverado, crew cab, 5.3Li V8, cloth interior, brown/black, 20" wheels, extra clean, 132K, \$18,100. Warranty. 601-580-0358 or 601-498-6335. See more at www.EllsvilleMotors.com.

ATVS

2008 Honda Foreman, fully rigged w/wench, new outlaw tires, p/s, like new. \$4500. 601-433-8787.

07 Artic Cat 4-wheeler, excellent condition, perfect for children. Automatic transmission, \$1250. 601-698-4633.

CARPORTS

Carports and Buildings: Financing Available! 18x21 carport \$695; includes installation! All sizes available. We also offer storage buildings & barns. Call John at 601-323-0464, 303 Hwy 11 South, Ellsville MS (between Pizza Hut and JCJC)

Southern HENS INC.
EMPLOYMENT OPPORTUNITIES NOW HIRING
PRODUCTION SUPERVISOR
 Benefits include Life/Health Insurance, Paid Holidays, Paid Vacations, 401K Retirement Plan, Dental/Cancer Insurance Available.
 • Applications taken Mon.-Fri. • EOE
 329 Moselle-Seminary Rd. • Moselle, MS
601-582-2262

almost time...
BACK TO SCHOOL
Get Your Loan Today!
MONEY LENDERS FINANCE COMPANY, INC.
 call *Dot, Steve or Shelly* **601-426-7600**
 134 Beacon St. • Laurel

FARRIS
MOBILE HOME TRANSPORTING
 Statewide moving, licensed & insured.
Transporting since 1979
Tony Farris
601-422-4144

Butler Dental
 Across from Court House, Butler, Alabama
 Julie Utsey, D.M.D.P.C.
 General Dentistry
 205-459-2700 1-888-851-8512
 Tuesday thru Friday 8 a.m. - 5 p.m.

- ONE DAY DENTURES
- PARTIALS AND EXTRACTIONS
- FREE CONSULTATIONS

	Single	Set
Set Standard Dentures.....	\$200.00	\$300.00
Set Deluxe Dentures.....	\$350.00	\$600.00
*Reline Included: Savings of \$130.00 per unit		
Set Custom Deluxe Dentures	\$550.00	\$1,000.00
*Reline Included: Savings of \$130.00 per unit		
Cast Metal Partial -	\$625.00	Acrylic Partial - \$200.00
• Extractions -	\$100.00	• X-Rays Included
• Simple Extraction -	\$70.00	• Surgical - \$100.00

HOME MEDICAL EQUIPMENT
SCRUBS
 BY MED COUTURE
 Healthcare & Daycare providers receive 10% discount with your ID badge
 special order available
 & peaches UNIFORMS
I-RUNNER
Shoes for Ladies & Men
 • Neuropathy Friendly
 Toe Box
 • Breathable
 • Rocker Sole

LAB DISCOUNT DRUGS
601-735-4444
923 Wayne Street • Waynesboro



NUTS
Neat Used Things for Sale
 a different kind of resale store
 Affordable Fun Fashion, Home Decor, Books, Furniture and Much More!
Have a Donation? Call us for a Pick-up!
Monday - Saturday 9 am - 6 pm
Sunday 1 pm - 6 pm
 Parkside Plaza Shopping Center (down from Roses, Next to Plaza Bingo)
 986 North 16th Avenue • Laurel, MS 39440
 (601) 425-2666
 facebook.com/nutslaurel

BF Goodrich Tires
For Play Time or Anytime...

OIL CHANGE SPECIAL
Exxon UP TO 5 QUARTS
 Most vehicles, excludes diesels
\$24⁹⁸
 MUST PRESENT COUPON Expires 08/31/15

4 WHEEL ALIGNMENT
 Most Vehicles **\$59⁹⁵**
 MUST PRESENT COUPON Expires 08/31/15

Southern Tire Mart
 Best in Class Service on America's Favorite Brands
 2926 Ellisville Blvd., Laurel
 stntires.com
601-428-4375
 M-F: 7a-5p Sat: 8a-12p

JCSD Superintendent honored by American Cancer Society



Pictured left to right is Kelly Doss, Executive Vice President of the American Cancer Society for the Mid South Division; Peggy Parker, wife of Mr. Parker, Cancer Survivor, and one of the 2015 Relay For Life of Jones County Honorary Chairmen; and Parker, Superintendent for the Jones County School District. *Photosubmitted*

Submitted

Tommy Parker, Superintendent of the Jones County School District was recently honored by the American Cancer Society Mid South Division Board of Directors at their annual Mid South Division Board Meeting in New Orleans, LA. The Jones County School District is the #1 Fundraising School District in the State of Mississippi and also has

led the Division in its innovative fundraising efforts for the Relay For Life of Jones County event, which is the second largest event in the state. Mr. Parker was given the "Outstanding Volunteer Award" given only to select volunteers from around the Division who show leadership, dedication and passion for the American Cancer Society.

Parker Named South MS Ag Teacher of Year

South Jones Vocational-Agriculture Instructor/FFA Advisor Kenneth R. Parker was recently named the 2015 South Mississippi Agriculture Education Teacher of the Year. Sponsored by ICEV Multimedia, the award is presented during the annual Mississippi Association of Vocational Agriculture Teachers Conference. A graduate of Mississippi State University, Parker taught Agriculture Education and served as FFA Advisor at Northeast Jones High School for a several years before transferring to South Jones High School.



Photosubmitted

Pine Belt United Way holds Pacesetter Breakfast



United Way of the Pine Belt held their Pacesetter Breakfast last week recognizing the companies that kick off their annual campaign early, helping to jump start the fundraising year. Pictured on front row, left to right, Barbara Johnson, United Way of the Pine Belt Executive Director; Ann Brown, City of Laurel; Danielle Posey, Sanderson Farms Inc.; Brenda Jones, Sanderson Farms Inc.; Hope Gray, Sanderson Farms Inc.; Ginger Hicks, Regions Bank. Back row: Ryan Griffin, 2015 Regional Campaign Chair; Dara Stockman, Southern Pine EPA; Mike Bryant, Southern Pine EPA; Pollyanna Magee, Dixie EPA; Stacy Hutto, First State Bank; Mayor Johnny Magee, City of Laurel; Terrie Cooke, Sanderson Farms Inc.; Captain Bert Lind, Salvation Army; Jim Woodyear, Regions Bank; Captain Christy Lind, Salvation Army; Lillie Sullivan, Salvation Army; Ben, ALFA Insurance, 2015 UWPBR Board President. Pacesetter companies not pictured are: Bancorp South Bank, Economic Development Authority of Jones County, Jones County School District, Mississippi Power Company, South Central Regional Medical Center and Trustmark National Bank. *Photosubmitted*

August is National "Happiness Happens" Month



Happiness Happens when you shop at...

Lorrie's FURNITURE



\$1799

Happiness Happens when you receive this **RECLINER FREE** with the purchase of the matching reclining Sofa and Loveseat



Happiness Happens when you receive the **NIGHT STAND FREE** with the purchase of any Queen Bedroom Group



Happiness Happens when you purchase any Recliner and receive a **CHAIR SIDE END TABLE FREE!**



\$99 VALUE!



Happiness Happens when you purchase this Sofa and Loveseat for only **\$799**

0% Financing UP TO 48 months*
*SAC *WAC
NO CREDIT CHECK OPTION

601-342-2570
5247 US. Hwy 84 W. • Laurel
WWW.LORRIESFURNITURE.COM