

Mid-Michigan Buyers Guide

SUNDAY, MARCH 26, 2023

Serving Clare, Gladwin, Gratiot, Isabella, Montcalm, & Southern Roscommon Counties

Morning Star Publishing Company powered by digitalfirst

Great Lakes Pavilions



10x12 • Reg. Price \$3,700
Sale Price \$3,515

12x16 • Reg. Price \$6,500
Sale Price \$6,175



12x12 • Reg. Price \$4,500
Sale Price \$4,275

Built With Cedar Timbers

(989) 386-9305

6787 Grant Ave., Farwell

CONTACT US FOR DELIVERY INQUIRIES:
Circulation Customer Service at customerservice@oakpress.com.

Home delivery:
888-349-4042

dmgollon@medianewsgroup.com



SPRING has SPRUNG!
SUPPORT YOUR LOCAL RETAILERS

Listening & understanding, available here.

Maury S Irwin, Agent
1011 N McEwan Street
Clare
Bus: 989-386-4141
maury.irwin.8g@statefarm.com

As your local agent, I'm here to help life go right.® That's why I take the time to get to know you and understand what you really need.
LET'S TALK TODAY.

State Farm

State Farm
Bloomington, IL

1706841

18 MONTHS SAME AS CASH*
AVAILABLE

REPLACE YOUR OLD LEAKY WINDOWS

Call Us Today!
(989) 633-0000

Another Happy Customer...
CLEAR VISION WINDOWS
"Clearly the Best Choice"
SIDING & ROOFING
FREE ESTIMATES

WINDOWS • SIDING • ROOFING

\$75 Trade In
For Each of Your Old Windows
3 Windows - Get \$225
6 Windows - Get \$450
9 Windows - Get \$675
Must Present Coupon. Expires 4.2.23.

\$500 OFF
A Whole House of Vinyl Siding
Complete Tear Off
Call Store for Details!
Must Present Coupon. Expires 4.2.23.

\$500 OFF
Complete Tear Off
Call Store for Details!
Must Present Coupon. Expires 4.2.23.

GET MORE BANG FOR YOUR BUCKS

GOOD, CLEAN, QUALITY PRE OWNED MERCHANDISE

Jewelry **TVs** **WII**

XBox One PS4

Firearms **Musical Instruments**

Muzzle Loader Gear **Tools**

Paintball Equipment

DIRT CHEAP • CAR AUDIO • NEW & USED

Tested & Inspected. Why Pay New Prices?

GLADWIN TRADE & SALES

1-989-426-6811 • 1739 N. State St. • Gladwin

Steve's Country Market

989-539-3110 3170 North Clare Ave., Harrison 44 Feet of Old Fashioned Meat Counter with Good Old Fashioned Service

Hours: Mon. - Sun. 8-8 Bridge Card & Wic Accepted Sale Dates March 27 - April 2, 2023

Top Quality Meats At Rock Bottom Prices! 100% Satisfaction Guaranteed **stevescountrymarket.com** Michigan Lottery

FRESH MEAT AND SEAFOOD ITEMS

GROUND CHUCK FAMILY PACK 5 LBS. OR MORE \$3.99 LB.	BABY BACK RIBS \$2.99 LB.	BONELESS CHICKEN BREAST \$1.99 LB.	PLATTER BACON \$3.99 LB.	WHOLE NEW YORK STRIP LOINS \$4.99 LB.	WHOLE RIBEYE LOINS \$5.99 LB.
WHOLE BONELESS PORK LOINS \$2.29 LB.	MARINATED CHICKEN BREAST \$3.49 LB.	STEVE'S OWN MARKET MADE BRAT OF THE WEEK BACON CHEDDAR \$4.49 LB.	BONELESS HOLLYWOOD RIBS \$2.99 LB.	BAR S HOT DOGS 1 LB. PKG. 2/\$3.00	ECKRICH 6-1 GRILLING SAUSAGE 16 OZ. 2/\$6.00
COD LOINS \$7.99 LB.	TILAPIA FILLETS \$4.99 LB.	SALMON FILLETS \$9.99 LB.	WHOLEY BRAND COOKED SHRIMP 41/50 CT. 1 LB. BAG \$7.99 EA.		

ECKRICH DELI HAM \$3.99 LB.	CLEMENTINES 3 LB. BAG \$4.99 EA.	PRAIRIE FARMS SOUR CREAM 24 OZ. \$2.79 EA.
ECKRICH HARD SALAMI \$4.99 LB.	BROCCOLI CROWNS \$2.49 LB.	DUTCH FARMS SHREDDED CHEESE 8 OZ. 2/\$5.00
GUGGISBERG BABY SWISS \$6.99 LB.	RUSSET POTATOES 5 LB. BAG \$2.99 EA.	DUTCH FARMS BUTTER 1 LB. \$3.99 EA.
AMERICAN CHEESE WHITE OR YELLOW \$5.99 LB.	SWEET ONIONS \$1.29 LB.	HUDSONVILLE PREMIUM ICE CREAM 48 OZ. \$3.99 EA.

While supplies last. Prices subject to change due to national emergencies and product shortages. Not responsible for printing errors.

Now Is The Time To Shop Local



VISIT US ON FACEBOOK AT WWW.FACEBOOK.COM/VALLEYMEATMARKET • www.valleymeatmarketmi.com

Like us on  **Valley Meat Market**
 989-200-2071 • 101 E. SECOND • PINCONNING
 WE ACCEPT THE BRIDGE CARD
 NOT RESPONSIBLE FOR PRINTING ERRORS • ALL LOTTERY GAMES AND LOTTO HERE

All Meat Products USA Raised & Inspected

NEW HOURS: WEDNESDAY-SUNDAY 10AM-6PM CLOSED MONDAY & TUESDAY • PRICES GOOD SUNDAY, MARCH 26TH THRU SATURDAY, APRIL 1ST

KOEGEL'S	2-PACK PORK BUTTS \$1.49 LB.	OUR BEST GROUND CHUCK \$3.90 10LB BAG
VIENNA'S 10# BOX \$39.99	PORK STEAK, PORK BUTT ROAST OR FINGER RIBS \$1.59 LB.	HAMBURGER \$3.60 10LB BAG
24CT PKG VIENNAS \$11.99	HOMEMADE BULK SAUSAGE - 4 FLAVORS \$1.59 LB. (10LBS OR MORE)	BULK SLICED BACON \$3.99 LB. (\$3.69 10LBS OR MORE)
SKINLESS FRANKS 4# PKG \$13.99	50/50 GRIND PORK/BEEF \$2.60 10LB BAG	SHAVED TURKEY \$6.99 LB.
BIG BOLOGNA OR RING BOLOGNA \$3.99 LB.	COUNTRY RIBS, LOIN END ROASTS OR END CUT CHOPS \$1.49 LB.	SHAVED HAM \$4.99 LB.
PICKLED BOLOGNA 2.5# JAR \$10.99	STARTING APRIL 1ST WE WILL BE OPEN TUESDAY THRU SATURDAY 9AM TO 7PM AND SUNDAYS 9AM TO 6PM. CLOSED MONDAYS	ECKRICH HARD SALAMI \$5.99 LB.
WHOLE OR HALF CUT FREE!		CO-JACK, LONGHORN OR MOZZARELLA AND HOT PEPPER FIRE JACK CHEESE \$3.99 LB. ANY SIZE CHUNK
NEW YORK STRIP LOINS CHOICE *CUT FREE \$6.99 LB.		FULLY COOKED SHRIMP \$11.99 2LB BAG
SELECT RIBEYE LOINS \$9.99 LB.	BEEF BRISKET \$3.49 LB.	BREADED ALASKAN POLLOCK PATTIES \$5.97 31LB BAG
CHOICE SHORT LOINS - T-BONES /PORTERHOUSE \$8.99 LB.	WAYSIDE BACON \$1.99 10LB BOX	POLLOCK FILLETS \$3.99 LB.
SMOKED PORK LOINS \$3.99 LB.	APPLEWOOD SMOKED BACON \$3.99 LB. OR \$5.35 15 LB. BOX (\$3.69 LB)	TALAPIA \$3.99 LB.
BONELESS BEEF ROAST OR SWISS, GRILL OR DENVER STEAK \$3.99 LB.	NEW YORK STRIP LOINS WHOLE OR HALF \$5.99 LB. *CUT FREE	COD LOINS \$8.99 LB.
ROUND STEAK OR ROUND ROAST \$4.49 LB.	BONELESS PORK LOINS \$1.99 LB.	ZANDER PERCH \$9.99 LB.
BONE-IN PORK LOINS WHOLE OR HALF *CUT INTO CHOPS FREE \$1.79 LB.		SALMON FILLETS \$10.99 LB.
		UNCOOKED SHRIMP \$14.99 2LB BAG
		CHICKEN NUGGETS \$10.99 5LB BAG
BABY BACK RIBS \$2.99 LB.	FRESH EASTER SAUSAGE \$1.99 LB. 10 LBS OR MORE AND \$2.49 LB LESSER QUANTITIES	
SLAB SPARE RIBS *TWIN PACK \$1.99 LB.		
CHICKEN LEG 1/4'S 69¢ 10LBS OR MORE \$27.60 40LB BOX	BONELESS CHICKEN BREAST \$1.69 LB. 10LBS OR MORE	

Do you have a car for sale?
How about a boat?
Or maybe some furniture?

Call to place a classified ad with one of our helpful representatives & sell your no longer wanted items **FAST!**



LOCAL Visit Your MERCHANTS

Quality Built. Quality Features.

STOP BY OUR LOT AND CHECK OUT THE GREAT SELECTION OF BUILDINGS ON THE LOT - READY TO GO!
INVEST YOUR TAX RETURN ON A BUILDING YOU CAN ENJOY FOR YEARS TO COME!!

 12X16 Gable 1 Window \$4,590 \$213.00 Rent To Own	 10X14 Gable 1 Window \$3,560 \$165.00 Rent To Own	 10X14 Quaker \$4,040 \$188.00 Rent To Own
 16x36 High Barn 8 Ft. Loft, 4 Window, 9X7 Roll Up, 6 Ft. Double Doors \$11,900 \$551.00 Rent To Own	 12x24 High Barn 8x7 Rollup Door, 8 Ft. Loft \$6,640 \$308.00 Rent To Own	 12x16 High Barn 8 Ft. Loft \$4,605 \$214.00 Rent To Own



Statewide Delivery - Free Delivery w/ in 70 miles!
 Supplying Michigan with quality built portable buildings for over 25 yrs.
 Miller's Woodworking

3209 E. Beaverton Road • Clare (Voicemail) (989) 386-8110 | M-F 7:30-5 Saturday 8:30-3
 Old US 127 to Surrey West on Surrey to Grant 1 mile north on Grant

LS TRACTOR Spring SALE

MODEL MT235
 • 35 HP Tier 4 Diesel Engine
 • 3 Range Hydrostat Trans
 • 4WD
 • FREE FRONT LOADER
as low as \$269/month*



MODEL XJ2025
 • 24.4 HP Diesel
 • Hydrostat Trans
 • 4WD
 • FREE FRONT LOADER
as low as \$239/month*



MODEL MT125
 • 24.7 HP Diesel
 • Hydrostat Trans
 • 4WD
 • SUBCOMPACT
as low as \$215/month*



1946 77th 2023
NAGY'S TRACTOR SALES, INC.
 Family owned since 1946
 1980 W. US-23, OMER, MI
989-653-3173
 www.nagytractor.com
 *Limited Time Offer
 *With approved credit - See store for details
 *Free Delivery! 6 Year Engine/Drive Warranty
 Promo Code GCR 0323

KOHLER®

Walk-In Bath & Shower Systems



NEW BATH TODAY



ASK ABOUT OUR FREE 3D DESIGN SERVICE



Designer Showers



Standard Baths



Walk-in Baths



After



Before

SEE WHAT IT WILL LOOK LIKE BEFORE YOU BUY!

\$0
DOWN

PLUS

0

PAYMENTS

PLUS

0%

INTEREST



UNTIL

2024!



Bonus **\$1000 INSTANT REBATE**

CALL NOW TO SAVE

248-720-6069

www.newbath.com

*Cannot be combined with any other offer. Previous sales excluded. Good at initial presentation only. Financing available from GreenSky LLC for qualified buyers who purchase with plan 3128. For deferred interest plans, interest accrues during the promotional period but all interest is waived if the purchase amount is paid in full before the end of the promotional period.



New Arrivals



Expanded Showroom

Rustic Furniture and Home Decor
7265 Grant Ave. Clare • (989) 386-3778

Hours: 8-5 M - Sat.
Closed: Thursday & Sunday • Evenings by Appt.



Now Open At Our

NEW LOCATION

6060 E. Beaverton Rd.

COMPLETE LINE OF NON GMO
FEEDS & MINERAL SUPPLEMENTS FOR LIVESTOCK



HARMONIZING WITH NATURE

**CREATING HEALTH
AND PERFORMANCE NATURALLY,
ONE ANIMAL AT A TIME**

NATURAL WAY MINERALS

6060 E. BEAVERTON RD. • CLARE

989-386-3664

HOURS: MON, TUES, WED, FRI 8-5, SAT 8-NOON



SAVE A LIFE. DON'T DRIVE HOME BUZZED.
BUZZED DRIVING IS DRUNK DRIVING.



U.S. Department of
Transportation



**Pre-order
your Dearborn
Hams for
Easter**

'Believe on the Lord Jesus Christ'
Acts 16:31

**Closed
12:55-1:30
Daily**

624 E. Cedar Avenue | Gladwin | 989-246-1850

Hours: Mon-Fri 8-6:30 • Sat 8-6 • Sun 8-4

WE ACCEPT BRIDGE CARDS!

No Rainchecks • Not responsible for printing errors

\$500 OFF PURCHASE OF
\$50.00
OR MORE
Expires 4/30/23



10 LBS OR MORE SALE!

**SALE DATES:
MAR 27-APR 1**



CHECK OUT MORE
SALE ITEMS AT

www.lambertsmeatmarket.com • Like us on Facebook



AUCTION

★ MILLER ★ FARMAUCTION

We are moving out of state and will offer the following at Public Auction. LOCATED: 5 miles West of Fremont, MI on 82 to Skeels Rd, Continue west 1 mile to Brickyard Rd., South 1/3 mile to Sale Site: 11606 BRICKYARD ROAD - HOLTON, MI 49425. Follow Yoder Bros. Auction Signs!

SATURDAY, APRIL 1ST, 2023 @ 9:30 a.m. • HOLTON, MI



TRACTORS and WHEEL LOADERS

- KUBOTA M6030 PT Tractor w/Westendorf TA-25 Loader, Canopy, 4x4, 3 PT Hyd outlets, 9150 Hrs, Nice Cond. • **2011 TAKEUCHI TW50** Articulating Wheel Loader, 4x4, 3500 Lb. Lift, 3650 Hrs, 1200 Hrs on New Engine. SN#151111E105400 Nice Cond. • **CAT IT-14** Articulating Wheel Loader w/Bucket, Approx. 10,000 Hrs. SN#CAT114GEKZNO0558
- DITCH WITCH** 400 LD Wheel Loader • **J.L.G.** Mod. 35E Batter, Elect Manlift, 500 Lb Cap, SN#709264030382 • **MASSEY FERGUSON** Dozer, 6 Way Blade w/4 cyl Perkins Diesel, Work Good • **1959 ALLIS CHALMERS** HD9 Dozer w/471 Detroit Diesel, Running Cond.

TRAILERS

- AMERICAN HAULER** 14'x7' Red Enclosed Tandem Axle Trailer w/Drop Down Door
- APPALATION** 20' 14,000 GVW Flatbed Trailer w/Ramps, New Deck • Custom Built Tandem Axle, Dual Equipment Trailer, Open Deck, Pinto Hitch • 53' Semi Storage Trailer • 6x12 Single Axle Trailer

HAY EQUIPMENT

- JOHN DEERE** 326 SD, BALER, MINT COND., SN#0032X985092 • **2012 MASSEY FERGUSON/HESSTON** 1459 9' Haybine, Low Acres, Very Clean Cond. • **CLAAS** 330 Haybine Rotary Rake 9' • **CLAAS VOLTA** 750 6 Basket Hay Tedder • **NEW IDEA** 5 Bar Rake • **3 E.Z. TRAIL** Bale Basket Wagons • 2 - Hay Wagons • 40' Hay & Grain Elevator Hyd Powered & Self Propelled • 14' Hay Elevator • **A.G. WRAP** Single Bale Wrapper, Quick Attach or 3 PT • **HLA** Quick Attach Round Bale Grabber • Pull Type 7' Sickle Mower

OTHER FARM EQUIPMENT

- IVA** 40' Field Sprayer w/Rinse Tank, Foam Markers & Gas Engine • **BRILLION** 10' Seeder w/ Esch Box Dbl. Packers • **STOLTZBUS** Single Axle Lime Spreader • S.S. Single Axle Lime Spreader • **NEW HOLLAND** 357 Grinder Mixer w/Manual Auger • **72" BEFCO** 3 PT Tiller • **BRILLION** Pull Type Old Style Tiller • 7' Off Set Disc • **2020 PIONEER** Tine Weeder, Like New, Less than 10 acres • **PIONEER** Fore Cart • I-J 3 Fore Cart w/Breaks & Steering • I-J 3 PT Fore Cart Hitch • I-J 3 PT Plow, Single Bot. Plow • I-J 3 PT Drag & Cultivator • **HOWE** 7' Pull Type Brush Hog • 6' KING CUTTER Brush Hog • Small 2 Wheel Thrash Machine w/Wisc Engine • J.D. VanBrunt 17 Hole Grain Drill Dbl. Disc • OK Champion 1 Row Potato Planter • 1 Horse Potato Plow • 6' Spring Tooth Harrow • **PIONEER** 16" Single Bottom Plow • **OLIVER** 14" Single Bottom Plow • **PEACHY** 6' Cultimulcher • **MCDEERING** 1 Row Cultivator • Small Field Sprayer • Small Field Sprayer • **JET** 3 PT Post Driver • 1 Ton Vertical Mixer

MOTOR and SHOP ITEMS

- NRP JONES** Hydraulic Hose Crimper w/ Bins of Hyd Hose Fittings & Coils of Hyd Hose • Hyd Motors & Pumps • **15 HP QUINCY** Air Compressor • **POWERMATIC** Table Saw w/Air Motor • **POWERMATIC** 13" Planer w/**HONDA** MILLER Welder w/Wire Feed SUTcase & Engine • Banding Cart w/Air Operated Banding Tool • **ZENA** Belt Drive Welder • **OMGA** Hyd. Chop Saw • Air Compressor w/Skill Windmill Head • 3 Air Skill Saws • **RYOBI** Gas Hammer Drill • **NEW RED MAX** Gas Hammer Drill • **NEW Air Barrel Pump** • 4 Pallets Air Cylinders • 10,000 Gal Air Tank • Like New • **KOHLER** 9.5 HP Engine w/Reduction Gear • **NEW** 9 HP Vanguard • **NEW** 6.5 HP BRIGGS w/Reduction Gear • Brilliant 6 HP w/Reduction Gear • Assorted Air Tools & Drills • Floor Scrubber w/LP Engine • Assorted **JONSRED & EFCO** Chain Saws • **NEW USA** 29 Pc. Drill Bit Sets • **NEW** Hand Tools & Wrenches • **NEW V** Belts • A Sizes New Roller Chains • H.D. Drill Press • **NEW** Wrench Straps • **NEW** Brooms • Cases of New Gloves

SAWMILL EQUIPMENT

- 2018 WOODMILLER** LT15 - 625W Bandsaw Mill w/Trailer Package, 20' Power Feed, **KOHLER** 25 HP Motor, Low Hrs • **WOODMIZER** EP11 Single Blade Edger • Cant Hooks • Live Edge Slabs
- WALK BEHIND 48" BRUSH B.C.S. TILLERS and OTHER LAWN and GARDEN ITEMS**
- PECO** Brush Blazer 48" Walk Behind Brush Mower on Rubber Tracs, Hydro Drive, 102 Hrs
- PECO** Brush Blazer 48" Walk Behind Brush Mower on Rubber Tracs, Hydro Drive • **NEW B.C.S. 722 HARVESTER** w/26" to 20" Tiller, Display Model • B.C.S. 749 w/30" Like New Tiller • B.C.S. 750 w/33" Tiller • B.C.S. 710 w/18" Tiller • B.C.S. 28" Snow Blower attachment • B.C.S. 24" Snow Blower Attachment (**NEW**) • B.C.S. 32" Power Harrow • **WOR!** Lawn 48" Walk Behind Mower • **EFCO** Back Pack Blower w/mister • 2 - **EFCO** Weed Eaters • **MAKITA** Cordless Weed Eater • **RYAN TETRON** MATAWAY Seeder • 44" Pull Behind Mower

MISCELLANEOUS ITEMS

- Large Square Bale Feeder • Hay Saver Feeder • Misc Round Bale Feeders • Drinking Post Waterers • Cedar Posts • 175' Rail Treated Fence • **TREE CARE** 742 - 4 Spade Tree Transplanter w/Quick Attach • Chicken Nesting Boxes • 250 Gal. Totes • Log Splitter • **SEVERAL MISC GOODIE WAGONS**
- HORSES, CARRIAGES**
- WOOD BOX WAGON**
- BRIAN** 18 yr old Belgian Gelding very well broke to farm machinery • **JERRY** 21 yr old Percheron Gelding, Grey, Very well broke • **CLIPPER** 11 yr old Standardbred Gelding T.S.S. • **NORWAY** 13 yr old Standardbred Gelding • **STAR** 16 yr old Small Pony Gelding, Very good

- babysitter • **DUNATHAN & HARD** by Birdsell Wooden Wheel Box Wagon • Yoder's Black Smith Single Buggy • Ind. Style Surrey Style Single Buggy • **PIONEER** 3 Seat Buckboard • 2 - A-J Welding Road Cart • Mill Creek Pony Wagon • Wood Wheel Road Cart • Pony Cart • 1 Horse Cutter Sleigh • Leather Draft Harness Sets • Pony Harness • Assorted Horse Tack

BUILDINGS and SHELTERS

- 16'x32' Gambrel Style Cabin, insulated and finished, w/2 Lofts • 10'x12' Chicken Shelter • 4'x8' Chicken Shelter • 12'x12' Horse Shelter w/ Tack Room • 10'x10' and 10'x20' Quanset Huts • 12'x20' Insulated Metal Building • 40'x80' Tent - No Sides • 12'x18' Greenhouse Frame • 20'x8' Metal Shipping Container • 20'x10' Canopy

SPORTING ITEMS

- STARCRAFT** 14' Alum. Boat w/Trailer, Fish Finder, Trolling Motor • Autopilot Trolling Motor • 12' Alum. Boat • Fiberglass Canoe • **MARLIN** 30-30 Cal. Lever Act. Rifle • 12 Ga. Single SHot • **BARNETT** Crossbow • 6'x6' Deer Blind on Gear • 6'x6' Deer Blind • Pop-Up Blind • 3 - Ladder Tree Stands • Climber Tree Stands • Assorted Trapping Supplies

BUTCHERING EQUIPMENT

- BIRO** 52# w/Table Plates & Knife • **TOLEDO** Meat Band Saw w/Air Motor • **LEM** 25" S.S. Sausage Stuffer w/**MAKITA** Battery • **LEM** 30# S.S. Battery Powered Sausage Stuffer • **LEM** 10# Hand Crank S.S. Sausage Stuffer • **FEDERAL** Elect. Meat Slicer • 25 Gal. Kettle w/ Base • 60 Gal. S.S. Kettle w/Stand • **HOBART** Mixer & Shredder w/Air Motor

ANTIQUES and COLLECTIBLES

- W.C. MEADOWS** 1800's Flour Mill w/24" Stone, Very clean cond. • Mini Size The Clipper Fanning Mill, Great Cond. • **O&R** 1 HP Mini Gas Motor, Excellent Cond. • Hand Braces & Drills • Buck Saw • Sithe-Letz Burr Mill • **COLEMAN** Lanterns • Bench Top Hand Crank Cream Separator • **BUNN-O-MATIC** Lantern
- HOUSEHOLD RELATED ITEMS**
- Grandmothers Clock w/German Clockworks • German Made Anniversary Clock • Session Mantle Clock • Pellet Stove • Wood Stove • Treadle Sewing Machine Cabinet • Oak Dry Sink • Oak Kitchen Cabinet • Oak Kneehole Desk • Oak Changing Table • 2 Couches • Recliner • Bookshelves • Chest of Drawers • End Tables • Desk w/Wing • 2 - **WINGARDS** Decorative Windmills • **NEW** Immergood Hand Crank 6 Qt. Ice Cream Freezer • **NEW** Immergood 6 Qt. Ice Cream Freezer w/**DEWalt** & Milwaukee Battery • Bros. 12 Volt Typewriter • Cannon 110 Battery Typewriter • Wash Tubs • Folding Table • Other Assorted Household Related Items

LUNCH AND BAKE SALE
ON THE GROUNDS

SYKORAAUCTIONS.COM PRESENTS!

ONLINE FARMLAND AUCTION BETTY & WAYNE BOGE

7935 S. NOTTAWA RD. MT. PLEASANT, MI 48858

WE ARE SELLING OUR FARM VIA "ONLINE ONLY AUCTION" - FARMLAND IS LOCATED 8 MI. WEST OF SHEPHERD, MI. (OR) 2 EAST OF WINN, MI. ON BLANCHARD RD. THEN NORTH 1/4 MI. TO 7935 S. NOTTAWA RD. MT. PLEASANT, MI. 48858 (ISABELLA COUNTY, MICHIGAN)

TUESDAY, APRIL 11, 2023 CLOSING AT 7 PM EST.
93+/- Acres In 3 Prime/Tillable Farmland Parcels & 1 Farmstead Parcel
Located in the SW1/4 of Section 12, Fremont Twp. Isabella County

Live Online Bidding Powered By: **proxibid**

Parcel 1: Frontage W. Blanchard Road Mt. Pleasant, Mi 37+/- Acres
Mostly Tillable and of Prime Soil Types

Parcel 2: 7501 S. Nottawa Road, Mt. Pleasant, Mi. 31+/- Acres Mostly
Tillable and of Prime Soil Types

Parcel 3: 7935 S. Nottawa Road, Mt. Pleasant, Mi. 22+/- Acres Mostly
Prime Tillable Acres

Parcel 4: 7935 S. Nottawa Road, Mt. Pleasant, Mi. 1.5 Story 4 Bedroom
1 Bathroom House with Natural Gas & 200 Amp Service
-5,500+/- & 3,200+/- Sq. Ft. Barns-Approx. 3.25+/- Acres.



SYKORA AUCTION SERVICE INC.
Scott Sykora, Auctioneer • (989) 386-9694
John McConnell, Auctioneer • (989) 429-0444
Colt Johnson, Auctioneer
Clare, Michigan • Visit our website www.sykorauctions.com

Wertz Estate - Live Auction

Saturday, April 8 @ 10 a.m.

9495 E. Jefferson Road, Wheeler, MI

From M-46 @ Barry Road, just east of Wheeler, proceed north 2-miles to Jefferson, then east 1/2-mile to sale.

Auction Highlights

Tractor & Outdoor Equipment: **Oliver 1600 Wheatland Diesel Tractor** - 4.3L engine, hydro powerdrive, 3-pt., 2-sets of remote hyd's, p.t.o., 15.5x38" rears 0990 verified hours, #128-102 (1963), very good original condition, sold w/Oliver #1610 hyd. Loader & 5' bucket • **2018 Cub Cadet RZT L ZTR Mower** - 24 H.P., 52" mower deck w/bagger @ 250 hrs. very good condition • Massey 6' 3 pt. back blade • Craftsman 6.5 H.P., 17" rear tine tiller • Toro #1028 10 H.P., 28" 2-stage snowblower (excellent)

Recreational & Jobsite Trailers: **2002 Keystone Laredo 28' 5th wheel Travel Trailer** - Model 28RE roof, A/C, 20' electric slide & awning, all systems functioning well, stored inside, very good condition • **1990 Mark Line 32x8' Jobsite Trailer** - 8x10' office, 2-entrance doors, Model#832DA, very good condition
Contractor/Shop Tools: Olson 9x12' horizontal metal cutting bandsaw • 175# horned anvil • Dewalt 12" metal chopsaw • Industrial pedestal grinder • 2 H.P. port. Air comp. • Oxy/acet torch outfit • Lincoln 180 amp arc welder • woodworkers table w/wood vise • 6" jointer on stand • 50 amp port. electric distribution unit • Bil-Jax scaffolding inc. 3-section w/4-wheels & plank • qty. hand tools & hardware • 4' Portable drum fan • Yard & garden tools • 6, 8, & 10' fiberglass step ladders • 2 1/2" thick black walnut wood

Antiques & Collectibles: Star mercerized 4-drawer thread cabinet • Simplex alum. R.R. jack • Vintage Arcade Oliver Model 70 cast iron toy tractor • Jennison Hardware. Morse cutting tool tin sign • Thermometers • 25 gal. cast iron footed kettle • Milk cans w/implement seats • Costume jewelry • (100) Green & clear glass insulators • Fisher Price toys c. 1950's • Disney figurines • Many more related smalls

Clean Furniture, Appliances & Household: Flexsteel sofa • Schwieger loveseat • Newer electric lift chair • (2) Duncan Phylfe style dropleat dining sets • General household merchandise • Craft supplies inc. knitting, beading & buttons • 9-piece stretch metal patio set (stored inside)



Wegner Auctioneers (989) 793-8689
wegnerauctioneers.com

PLEASE RECYCLE THIS NEWSPAPER

ANDRICK "LIVE" MOVING AUCTION

Due To The Passing Of My Husband (Jim) & Selling My Farm, I Will Sell The Following At Live Public Auction. **Located:** 8 Miles North Of Midland On Eastman Rd. To Baker Rd., Then West 2 Miles. **OR** 3 Miles South Of Edenville On M-30 To Baker Rd., Then East 1 1/2 Mile To Hope Rd., Then South 1/2 Mile To Hull Rd., Then East 1 Mile To Wendt Rd., Then North 1/2 Mile To Baker Rd., Then East 1 1/2 Mile.

Hope, MI

Saturday April 1, 2023 • 10:00 A.M.



Sale Features: (8) Tractors, Shop Tools, Antiques, Collectibles, Coin Collection, Farm Primitives & Household Furnishings. **This Is A Partial Listing!** **Auctioneers Note:** Make Plans To Attend This "Live Public Auction" At The Andricks Beautiful Centennial Farm. Large Barns Available In Case Of Inclement Weather. Your Attendance Is Appreciated. **Terms Of Sale:** Cash, Check Or Credit Cards Are Accepted. Lunch On Grounds.

JOHN PECK AUCTIONS
AUCTIONEERS FOR OVER 40 YEARS

TO VIEW A COMPLETE LISTING WITH PHOTO'S VISIT
JOHNPECKAUCTIONS.COM
Betty (Jim) Andrick, Owner
2035 E. Baker Rd., Hope MI
We Conduct Live & Online Auctions Statewide
All Year Long!
For Complete Listings With 1,000's Of Photo's
For All Our Upcoming Auctions Visit
www.johnpeckauctions.com
"Auctioneers For Over 40 Years"
If interested in having an auction of your own, please call (989) 426-8061



SOLD!

KP AUTOBODY LIVE AUCTION
Saturday, April 1 @ 10:00 am
4129 S. Old U.S. 27 St. Johns, MI 48879



**Vehicles * Shop Tools * Paint Booth
* Trailers * Lawn Tractor * Lifts
* Air Compressor and more!**

Complete Listing, Photos and Details at:
www.MerrittAuctionService.com

Merritt Auctions
616-754-9437

RABIES CLINIC
Special March Rates

Reg. \$20⁰⁰

\$15⁰⁰

By Appt. 426-0203
Flexible Hours

**KELLY'S KRUISSING
KRITTER KARE**
Kelly Jo Kelley, DVM

Central Eavestrouthing, LLC
LICENSED & INSURED • FREE ESTIMATES

Manufacturers of...
• 5" Seamless Gutter
• 6" Commercial Seamless Gutter
• Leaf Protectors

Quality & Service Are #1!
It's Gutter Cleaning Time!
.032 Gauge Aluminum Hidden Screw Hangers

QUALITY WORKMANSHIP FAST FRIENDLY SERVICE

Jeb Gilbert • (989) 828-6279 • Shepherd, MI

**HOPE FOR THE FUTURE
SUICIDE LOSS SURVIVORS
SUPPORT GROUP**

2nd & 4th Tuesdays Every Month
Starting in April, 2023
6:30-8:00 PM

Quality Inn Conference Room
10318 S. Clare Ave., Clare
(behind Wendy's & Ponderosa)
Message Maxine Lago
on Facebook for further info

EAT DRINK & be local

Dawn Fresh Catering **EBELS** General Store

A Family Tradition Since 1920

Falmouth 231-826-3333 • Reed City 231-791-7777
www.ebelsgeneralstore.com
Reed City hours, Monday through Saturday 7 AM – 7 PM • Falmouth Hours 8 AM – 6 PM. Both Locations Closed Sunday
We reserve the right to limit quantities and are not responsible for printing errors. We gladly accept cash, check, Discover, Mastercard, Visa, American Express, Debit, WIC & EBT Cards
Prices Effective March 27 through April 1, 2023 All Items are while they last, no rain checks

\$10 DEAL! WHEN YOU SPEND **\$50** GET 2 **HORMEL FLAVORED PORK TENDERLOINS** FOR **\$10!**

Local Whole Hog Sale \$1.69Lb. Hanging Weight. Cut and Vacuum Packed to Order.

Local Beef Sale \$3.59Lb. Hanging Weight. Wholes, halves, or quarters. Cut and Vacuum Packed to order.

HOT BUYS!

USDA Choice English Roast \$3.99 Lb.	USDA Whole Top Sirloins \$3.99 Lb.	Little Town Shaved Ribeye Steak Fully Cooked Family Pack: Philly Subs!! \$8.99 Lb.	L TJ Whole Old Fashion Rind On Hams \$1.99 Lb.	L TJ Half Old Fashion Rind On Hams \$2.49 Lb.	IQF Chicken Wings 5Lb/\$10	Williams SAVE Cheeses 24oz. Block \$7.99 save \$2.00 on 1!
--	--	---	--	---	--------------------------------------	--

FRESH MEATS

Smoked Pork Chops
\$2.99 Lb.

Prime Rib Fully Cooked, RARE
\$8.99
Great for Easter!

USDA Whole New York Strips
\$5.99 Lb.

USDA Whole Choice Bone-In Ribeye
\$9.99 Lb.
Great for Easter!

USDA Whole Beef Shortloins
\$8.49 Lb. *Contains Porterhouse and T-Bones*

Family Pack Bone-In Pork Chops
\$1.59 Lb.

LITTLE TOWN MEATS

L TJ Whole Legend Ham
\$4.99 Lb.

L TJ Half Football Hams
\$4.99 Lb.

L TJ Half Semi Boneless Hams
\$2.99 Lb.

Little Town Brats 14oz. Packs
BUY 3 GET 1 FREE!

L TJ Smoked Pork Butts
\$5.99 Lb. *Great for Pulled Pork!*

L TJ Smoked Jumbo Grillers
Buy One Get One FREE

GROCERY

Ritz Cracker Chips Thin 7.1oz.
2/\$3

Betty Crocker Brownie Mix 17.4-19.1oz. asst. kinds
2/\$5 *Save \$2.90 on 2!*

Old Orchard Strawberry Lemonade 64oz.
2/\$3

Our Family Brown and Powdered Sugar 2Lb.
\$1.99 each *Save \$1.10*

Our Family Baking Chips 12oz. asst. kinds
2/\$5 *Butterscotch Chips*

Cheez-it Crackers Original and White Cheddar 21.5oz.
\$4.99 each *Save \$4.00*

Pace Mild Salsa 24oz.
2/\$5

Frito Lays Potato Chips and Kettle Chips
2/\$5

Aunt Millies Stadium White Hamburger and Hotdog Buns
2/\$5

Aunt Millies Honey Wheat, Texas Toast, and Artisan White Bread 22oz.
2/\$5

Our Family White and Wheat Bread 20oz.
\$1.59 each

FROZEN MEATS

RTC Ebels Chicken Fries
4Lb/\$10

RTC Ebels Chicken Nuggets
5Lb/\$12

Ebels 1Lb. Roll Sausage Sold in 10Lb. quantities
\$2.79 Lb. *Regular Flavor*

IQF Marinated Seasoned Chicken Breast
\$2.49 Lb.

Oscar Mayer Center Cut Bacon 17oz.
10/\$39.90

IQF Chicken Breast
\$2.49 Lb.

Johnsonville Breakfast Sausage Fully Cooked 9.6 oz.
2/\$3

Square Hashbrown Patties 5Lb. avg. bags
\$1.99 Lb.

Fully Cooked Layout Bacon 150 slices per bag
\$12.99 each

PRODUCE

Fresh Asparagus
\$2.99 Lb.

Sunset Flavor Bomb Tomatoes 12oz.
\$4.99 each

Fresh Avocados 48size
2/\$3

Fresh Raspberries 6 oz.
2/\$7

DAWN FRESH CATERING DELI SPECIALS - ALL HOMEMADE, ALL THE TIME!

DFC Peas and Peanut Salad
\$4.79 Lb.

DFC Raspberry Fluff
\$5.79 Lb.

Williams Colby, Co-Jack and Pepper Jack Long Horn Cheese
\$4.99 Lb. *DELI SLICED*

DFC Original Potato Salad
\$4.59 Lb.

L TJ Deli Sliced Bologna, Regular Summer Sausage, and Jalapeno Summer Sausage
\$2.99 Lb.

DAIRY & FROZEN

Our Family 8oz. Chunks and Shredded Cheeses
2/\$4 *save \$2.78 on two*

Our Family Butter Quarters
\$3.99 each *save \$1.50*

Coffeemate Creamers 32oz.
2/\$7 *Save \$3.98 on two!*

Deans 48oz. Ice Cream and Kemps 48oz. Frozen Yogurt
2/\$7 *mix or match*

EBELS CLOTHING DEPARTMENT
EST. 1920

231-826-3333 • Falmouth
Mon.-Sat. 8 am-6 pm, Closed Sun.
231-791-7777 • Reed City
Mon.-Sat. 9 am-6 pm, Closed Sun.
www.ebelsclothing.com

SPRING BREAK SALES

RAFTERS SANDALS | COLUMBIA CLOTHING

20% OFF | **20% OFF**

carhartt T-SHIRTS **BUY ONE GET 1/2 OFF**

NEW SPRING CLOTHING

20% OFF

EXCLUDES SILVER, JAG, UNDER ARMOUR, GREEN STICKER ITEMS

2022 Water Quality Report for the City of Alma

Water Supply Serial Number: 0140

This report covers the drinking water quality for the City of Alma for the 2022 calendar year. This information is a snapshot of the quality of the water that we provided to you in 2022. Included are details about where your water comes from, what it contains, and how it compares to United States Environmental Protection Agency (USEPA) and state standards.

Your water comes from six groundwater wells, depths ranging from 105 to 162.5 feet and the Pine River as necessary. The Gratiot Area Water Authority (GAWA) treats and softens the well water prior to pumping into the city's water distribution system. The State performed an assessment of our source water to determine the susceptibility or the relative potential of contamination. The susceptibility rating is on a seven-tiered scale from "very-low" to "very-high" based on geologic sensitivity, well construction, water chemistry and contamination sources. Well #7 was ranked moderately low. Well #1 was ranked as having a high degree of sensitivity to potential contamination. Newer wells #8, #9, #10, and #11 were installed after the assessment was completed and are currently not ranked.

There are no significant sources of contamination to the well field. GAWA has a well head protection program and is in the beginning stages of a major update to the well head protection program.

The Pine River is susceptible to contamination by illegal dumping and runoff and has a susceptibility rating of very high. The Pine River currently serves only as a back-up source in case of emergency. No water was taken from the Pine River for treatment in 2022.

If you would like to know more about this report, please contact our Water Department Staff at 525 E. Superior St, (989-463-8349), or waterplant@myalma.org.

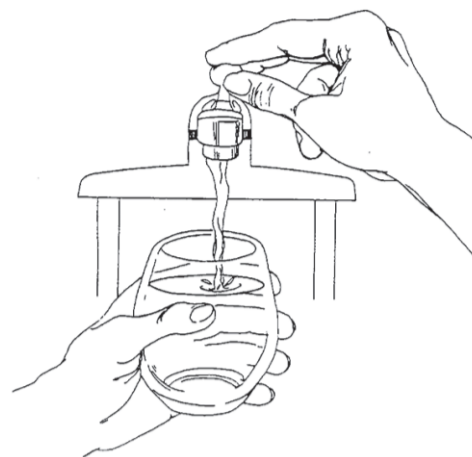
Contaminants and their presence in water: Drinking water, including bottled water, may reasonably be expected to contain at least small amounts of some contaminants. The presence of contaminants does not necessarily indicate that water poses a health risk. More information about contaminants and potential health effects can be obtained by calling the USEPA's Safe Drinking Water Hotline (800-426-4791).

Vulnerability of sub-populations: Some people may be more vulnerable to contaminants in drinking water than the general population. Immuno-compromised persons such as persons with cancer undergoing chemotherapy, persons who have undergone organ transplants, people with HIV/AIDS or other immune system disorders, some elderly, and infants can be particularly at risk from infections. These people should seek advice about drinking water from their health care providers. USEPA/Center for Disease Control guidelines on appropriate means to lessen the risk of infection by Cryptosporidium and other microbial contaminants are available from the Safe Drinking Water Hotline (800-426-4791).

Sources of drinking water: The sources of drinking water (both tap water and bottled water) include rivers, lakes, streams, ponds, reservoirs, springs, and wells. Our water comes from wells. As water travels over the surface of the land or through the ground, it dissolves naturally occurring minerals and, in some cases, radioactive material, and can pick up substances resulting from the presence of animals or from human activity.

Contaminants that may be present in source water include:

- **Microbial contaminants**, such as viruses and bacteria, which may come from sewage treatment plants, septic systems, agricultural livestock operations, and wildlife.
- **Inorganic contaminants**, such as salts and metals, which can be naturally occurring or result from urban stormwater runoff, industrial or domestic wastewater discharges, oil and gas production, mining, or farming.
- **Pesticides and herbicides**, which may come from a variety of sources such as agriculture and residential uses.
- **Radioactive contaminants**, which can be naturally occurring or be the result of oil and gas production and mining activities.
- **Organic chemical contaminants**, including synthetic and volatile organic chemicals, which are by-products of industrial processes and petroleum production, and can also come from gas stations, urban stormwater runoff, and septic systems.



To ensure that tap water is safe to drink, the USEPA prescribes regulations that limit the levels of certain contaminants in water provided by public water systems. Federal Food and Drug Administration regulations establish limits for contaminants in bottled water which provide the same protection for public health.

Water Quality Data

The table below lists the drinking water contaminants that were detected during the 2022 calendar year. The presence of these contaminants in the water does not necessarily indicate that the water poses a health risk. Unless otherwise noted, the data presented in this table is from testing done January 1 through December 31, 2022. The State allows us to monitor for certain contaminants less than once per year because the concentrations of these contaminants are not expected to vary significantly from year to year. All the data is representative of the water quality, but some are more than one year old.

Terms and abbreviations used below:

- **MCLG:** Maximum Contaminant Level Goal - The level of a contaminant in drinking water below which there is no known or expected risk to health. MCLGs allow for a margin of safety.
- **MCL:** Maximum Contaminant Level - The highest level of a contaminant that is allowed in drinking water. MCLs are set as close to the MCLGs as feasible using the best available treatment technology.
- **MRDL:** Maximum Residual Disinfectant Level - The highest level of a disinfectant allowed in drinking water. There is convincing evidence that addition of a disinfectant is necessary for control of microbial contaminants.
- **MRDLG:** Maximum Residual Disinfectant Level Goal - The level of a drinking water disinfectant below which there is no known or expected risk to health. MRDLGs do not reflect the benefits of the use of disinfectants to control microbial contaminants.
- **TT:** Treatment Technique - A required process intended to reduce the level of a contaminant in drinking water.
- **N/A:** Not Applicable
- **ND:** Not Detectable at testing limit
- **ppm:** Parts Per Million or milligrams per liter
- **ppb:** Parts Per Billion or micrograms per liter
- **ppt:** Parts Per Trillion or nanograms per liter
- **AL:** Action Level - The concentration of a contaminant which, if exceeded, triggers treatment or other requirements that a water system must follow.

Regulated Contaminant	MCL, TT, or MRDL	MCLG or MRDLG	Level Detected	Range	Year Sampled	Violation Yes / No	Typical Source of Contaminant
Arsenic (ppb)	10	0	1.775	1.6 - 2.0	2022	No	Erosion of natural deposits; Runoff from orchards; Runoff from glass and electronics production wastes
Fluoride (ppm)	4	4	0.46	N/A	2022	No	Erosion of natural deposits; Water additive which promotes strong teeth; Discharge from fertilizer and aluminum factories
Nitrate (ppm)	10	10	0.028	N/A	2022	No	Runoff from fertilizer use; Leaching from septic tanks, sewage; Erosion of natural deposits.
Sodium ¹ (ppm)	N/A	N/A	45	N/A	2022	No	Erosion of natural deposits
TTHM Total Trihalomethanes (ppb)	80	N/A	27	N/A	2022	No	Byproduct of drinking water disinfection
HAA5 Haloacetic Acids (ppb)	60	N/A	5.1	N/A	2022	No	Byproduct of drinking water disinfection
Chlorine ² (ppm)	MRDL	MRDLG	1.16	0.75 - 1.63	2022	No	Water additive used to control microbes
	4	4					
Total Organic Carbon	TT	N/A	44% Removal (15% is Required)	36%-58% Removal	2022	No*	Naturally present in the environment
Nephelometric Turbidity Units (NTUs)	95% of 4 hour compliance periods must be less than 0.34 NTUs		100% <0.34 NTUs	0.06 - 0.17	2022	No	Measure of the cloudiness of water due to soil runoff. Used to monitor effectiveness of filtration system.

* It has been determined there was no Treatment Technique violation through an alternate compliance criteria (ACC)

¹ Sodium is not a regulated contaminant.

² The chlorine "Level Detected" was calculated using a running annual average.

Per- and polyfluoroalkyl substances (PFAS)

Regulated Contaminant	MCL, TT, or MRDL	MCLG or MRDLG	Level Detected	Range	Year Sampled	Violation Yes/No	Typical Source of Contaminant
Hexafluoropropylene oxide dimer acid (HFPO-DA) (ppt)	370	N/A	<2	N/A	2022	No	Discharge and waste from industrial facilities utilizing the Gen X chemical process
Perfluorobutane sulfonic acid (PFBS) (ppt)	420	N/A	<2	N/A	2022	No	Discharge and waste from industrial facilities; Stain-resistant treatments
Perfluorohexane sulfonic acid (PFHxS) (ppt)	51	N/A	<2	N/A	2022	No	Firefighting foam; Discharge and waste from industrial facilities
Perfluorohexanoic acid (PFHxA) (ppt)	400,000	N/A	<2	N/A	2022	No	Firefighting foam; Discharge and waste from industrial facilities
Perfluorononanoic acid (PFNA) (ppt)	6	N/A	<2	N/A	2022	No	Discharge and waste from industrial facilities; Breakdown of precursor compounds
Perfluorooctane sulfonic acid (PFOS) (ppt)	16	N/A	<2	N/A	2022	No	Firefighting foam; Discharge from electroplating facilities; Discharge and waste from industrial facilities
Perfluorooctanoic acid (PFOA) (ppt)	8	N/A	<2	N/A	2022	No	Discharge and waste from industrial such as stain-resistant treatment facilities
Inorganic Contaminant Subject to ALs	AL	MCLG	Your Water	Range of Results	Year Sampled	Samples Above AL	Typical Source of Contaminant
Lead (ppb)	15	0	0	0	2020	0	Lead service lines, corrosion of household plumbing including fittings and fixtures; Erosion of natural deposits
Copper (ppm)	1.3	1.3	0	0	2020	0	Corrosion of household plumbing systems; Erosion of natural deposits

Information about lead: If present, elevated levels of lead can cause serious health problems, especially for pregnant women and young children. Lead in drinking water is primarily from materials and components associated with service lines and home plumbing. City of Alma is responsible for providing high quality drinking water but cannot control the variety of materials used in plumbing components. When your water has been sitting for several hours, you can minimize the potential for lead exposure by flushing your tap for 30 seconds to 2 minutes before using water for drinking or cooking. If you have a lead service line, it is recommended that you run your water for at least 5 minutes to flush water from both your home plumbing and the lead service line. If you are concerned about lead in your water, you may wish to have your water tested. Information on lead in drinking water, testing methods, and steps you can take to minimize exposure, is available from the USEPA's Safe Drinking Water Hotline or at <http://www.epa.gov/safewater/lead>.

Our water supply has no known lead service lines. Out of a total of 3,088 water service lines in the City of Alma distribution system, there are 2,528 water services lines that are of unknown materials. The City is working to identify these unknown service line materials over the next two years. If necessary, replacements of these lines will be over the next 19 years.

Monitoring and Reporting to the Michigan Department of Environment, Great Lakes, and Energy (EGLE) Requirements: The State of Michigan and the USEPA require us to test our water on a regular basis to ensure its safety. We met all the monitoring and reporting requirements for 2022.

We will update this report annually and will keep you informed of any problems that may occur throughout the year as they happen. Copies are available at City of Alma Water Department (989-463-8349) or City Hall (989-463-8336). The report may also be viewed on the city website at www.myalma.org. This report will not be sent to you unless requested.

We invite public participation in decisions that affect drinking water quality. City of Alma commission meetings are held the 2nd and 4th Tuesdays of each month at 6:00pm in City Hall. Additionally, the Gratiot Area Water Authority meets the 2nd Friday of each month at noon in the Library. Please check the city's web page for possible date/time changes prior to the meeting date. For more information about safe drinking water, visit the USEPA at <http://www.epa.gov/safewater>.

MICHIGAN

TIRE & WHEEL

AUTOMOTIVE SERVICE CENTER

102 Michigan Ave., St. Louis, MI 48880
(989) 681-4100

ST. LOUIS • FULL SERVICE AUTOMOTIVE REPAIR

GOODYEAR • MICHELIN • BF GOODRICH • KELLY • COOPER • BRIDGESTONE • FIRESTONE • HANKOOK

COOLANT FLUSH
STARTING AT \$59.95

OIL CHANGE
STARTING AT \$37.95

GRATIOT COUNTY
PEOPLE'S CHOICE
WINNER
TIRE STORE!

FREE TIRE ROTATION ★ FREE BRAKE INSPECTION

GOODYEAR
PROMOTION
REBATES UP TO \$100

BRIDGESTONE
PROMOTION
REBATES UP TO \$100

Firestone
PROMOTION
REBATES UP TO \$90

MICHELIN
PROMOTION
REBATES UP TO \$110

UNIROYAL
PROMOTION
REBATES UP TO \$60



APPLY NOW
6 MONTHS
0% FINANCING



FREE ALIGNMENT WITH
FOUR TIRE PURCHASE!

#1 IN BRAKES

Free Inspections & Best Prices Guaranteed

989-681-4100

Spring into Savings at Northwoods!



Store Hours: Monday-Thursday 6am-7pm | Friday, Saturday, Sunday 6am-9pm
Closed Easter Sunday
www.Northwoodsoutlet.com



<p>Adams Adult Adirondack Chairs</p> <p>\$24.99 Each</p> <p>Multiple Colors</p>	<p>Director's Chair w/Side Table or Hard Arm Folding Chair</p> <p>Your Choice \$39.99 Each</p> <p>Multiple Colors</p>	<p>Large Selection of Gerson Stepping Stones</p> <p>Starting at \$7.99</p>	<p>Old Town Vapor 10 Kayak</p> <p>\$499.99 Free Paddle & Life Jacket</p>	<p>solo stove</p> <p>Michigan's Largest Retailer</p> <p>The World's most unique SMOKELESS FIRE PIT</p>
<p>Regal Rocking Eagle on Stake</p> <p>\$179.99 12960</p>	<p>Succulents Asst. Styles</p> <p>Starting at \$3.99 S0015-6</p>	<p>Celebrate the Season LED Lantern</p> <p>\$9.99 08412909788 Each</p>	<p>Spring Summer Flower Assortments</p> <p>Starting at \$2.99</p>	<p>Huge Selection of Garden Meadow Solar Animals!</p> <p>Starting at \$19.99 58226</p>
<p>Time to get your lawns ready for Spring!</p> <p>From Grass Seed to Weed & Feed, we have you covered!</p>	<p>Miracle-Gro Garden Soil 1 Cubic ft.</p> <p>\$5.99 735019</p>	<p>Mossy Oak Men's Fishing Shirt w/Gaiter</p> <p>\$9.99 Each 3 Colors Available</p>	<p>Muck Forager Tall Rain Boot</p> <p>\$39.99 FOR901</p>	<p>Mister Twister 3" Meeny Curly Tail Grub</p> <p>\$4.99 50pk 6 Colors Available</p>
<p>We carry the full line of Black Bear Farm Implements!</p>	<p>Large Selection of Food Plot Seed!</p>	<p>MOULTRE MOBILE</p> <p>Delta Base 24mp Cellular Game Camera</p> <p>\$49.99 MCG-14061 Verizon</p>	<p>2023 Crossbows in stock!</p> <p>Test shoot one today!</p> <p>R500 Flatline 460</p>	

229 W. 5th St. Pinconning, MI 48650 (989) 879-1110

"I came to New York to be a dancer, but I knew that was a short-lived career. So I got my real-estate license and started selling houses. And turned out, I love it."

- Charles Murray, Real Estate Agent

Search LOCATION NAME jobs and find the one that's right for you at COBRAND URL





RE/MAX RIVER HAVEN, INC.
 Open Seven Days a Week to Serve You
 www.riverhavenhomes.com • Wayne R. Walts – Broker

Sugar Springs Office 1415 W. Sugar River Rd. • Gladwin 989-426-9239
Wixom Lake Office 1239 Estey Rd. • Beaverton, MI 48624 989-435-7755
Main Office 777 W. Cedar • Riverwalk Place 989-426-6893

Smallwood Lake-Recently updated 2 bedroom with 29x11 addition, 2.5 car garage, 149 ft of canal frontage on 7 mile long all sports lake. **REDUCED TO: \$104,900** MLS#50075395
 Elk Lake deeded access-3 bedroom ranch with 1/3rd ownership in lakefront lot across the street. **\$99,900** MLS#50103633
 Harrison area-40 acres, mostly wooded. **\$89,900** MLS#50077449

Order Today - Ready Tomorrow

Royal Oak Metal Sales, LLC

FAST SERVICE • HIGH QUALITY • GREAT PRICES

Service & Quality is our #1 Priority!
AND Premium 29 Gauge Metal Roofing & Siding Panels!
 Available in 29 Colors • 40 Year Warranty
 Please call for a NO-COST hassle-free quote!

231-829-3244
 Open Monday - Friday 7:30am - 4:30pm
 8767 N. Lakola Rd, Tustin, MI
WE DELIVER STATEWIDE

NOVAFLEX When You Want The Seal to Last
 ST SEALTITE BUILDING FASTENERS
 valspar if it matters, we're on it!

C&R ELECTRIC

GENERAC
 SALES • SERVICE
 INSTALLATION
 989-828-4020

Solar
 • Sales
 • Service
 • Installation
 • Financing Available

491 E. WRIGHT AVE., SHEPHERD, MI 48883
 www.candrelec.com

Do you have a car for sale?

How about a boat? Or maybe some furniture?
 Call to place a classified ad with one of our helpful representatives & sell your no-longer-wanted items FAST!

HERSHBERGER'S
 HARDWARE / LUMBER / BUILDING MATERIALS

Your project headquarters!
BUILDING SUPPLIES
Serving You For 15 Years!

"OUR GOAL IS QUALITY PRODUCTS, COMPETITIVE PRICES & OUTSTANDING SERVICE."
New Homes, Garages, Pole Barns & Decks
 Lumber, OSB, Treated Posts Trusses, Windows, Doors, Concrete Blocks, Mortar, Redi-mix Concrete

Check out our great prices!

DeWalt & Milwaukee Showroom

10289 N. Leaton Rd., Clare
(989) 386-5338
 Full Line of Hardware & Building Supplies

SHIPSHEWANA®
 On the Road
 www.shipshewanaontheroad.com

Coming to New Location
Morey Courts
 Saturday, April 1st • 9-6
 Sunday, April 2nd • 10-5
 Children 12 and under FREE, all others \$5.00 • FREE Parking!

JEWELRY • CRAFTS • TOYS • CLOTHING
NEW MERCHANDISE
FOODS & MORE

The first 200 adults each day will get Shipse bucks to spend at the show!
 Come out and support over 200 small business vendors all in one place!

New Location
Morey Courts
 Mt. Pleasant
 (269) 979-8888

GET YOUR \$1.00 OFF ADMISSION AT
 www.shipshewanaontheroad.com

Business Card Directory

To place an ad contact the ad consultant in your area:

- Marlene...Clare & Gladwin Counties • 989-506-4647**
- Kindra...Clare & Midland Counties • 989-506-4640**
- Carol...Isabella & Roscommon Counties • 989-323-7044**
- Vonda...Gratiot County • 989-506-4349**



Serving Mid-Michigan Since 1952

bieri
HEARING SPECIALISTS

Clare/Midland
888-641-0087

FREE Hearing Screening & Consult

www.bierichearing.com

KAPS ANA Member
KOINS LLC

located across from the Doherty Hotel

Silver & Gold Coins Bought & Sold

Integrity, Honesty & Peace of Mind.
That's what you deserve when it comes to your Coins & Currency!!!

Thomas Kapuscinski
611 N. McEwan St. Clare, MI 48617
231-357-2105 • 989-386-6500
tjkap@charter.net

Mon.-Fri. 9:30am-5:30pm
Sat. 10:00am-2:00pm
or by appointment

NOW BUYING Sterling Silverware & Scrap Gold

BBB ACCREDITED BUSINESS

313 W. Knox Road,
Beaverton, MI
1/2 Mile West of M-30
989-435-2707

We Take Pride In Your Ride!

- Quality Collision Repair
- Free Estimates
- Insurance Work Welcome
- Custom Color Matching & Painting
- We Repair All Makes and Models
- Car/Light Truck
- Genuine Original Equipment Parts

BUYERS OF STANDING TIMBER and TIMBERLANDS
PURCHASING ALL SPECIES
PROFESSIONAL FOREST MANAGEMENT
SINCE 1972

FIREWOOD AVAILABLE BY THE TRUCKLOAD
CALL FOR INFO AND PRICING

2725 Larch Rd. Harrison, M 48625
989-539-9842
billsbylumber.com • info@billsbylumber.com

RAY'S REMODELING

- ★ Power Washing, Interior & Exterior Painting, Drywall Installation & Repair, Ceramic Tile Installation & Repair, Kitchen & Bathroom Remodeling, Roofing, Windows, Doors & Floors, House Leveling

HANDYMAN

2 YOUR RESCUE
989-533-1006

40 Years Experience - Free Estimates

St. Helen-Roscommon Monument, Inc
"Because every life deserves to be remembered"

989-389-4921

Spring Hours thru Memorial Day - Tues-Wed-Thurs 10-3
or by appointment
Visit our indoor showroom at:
101 E. Federal Highway, Roscommon
www.shmonument.com - 989-389-4921
or email: shrmonument@gmail.com

simple human sense

Burkhart-Presidio
INSURANCE AGENCY

989-426-9278

Auto-Owners
NSURANCE

Capital EQUIPMENT

Clare • 302 N. McEwan
989-386-2192

RENTAL EQUIPMENT:

Kubota
Excavators

www.cedealer.com

TOM'S POLE BUILDINGS

Over 30 Years Experience
POLE BUILDINGS & GARAGES
ROOFING & SIDING
CONCRETE FLOORS DRIVEWAYS & FENCING

Special! FEATURING ULTRA 2000 19 colors to choose from
And A 45 YEAR WARRANTY

From Beginning permit To Cleanup, We Do It All!
1-800-541-3974
We accept major credit cards. • email: tomspolebuildings@yahoo.com

24x40x10 10% Down Today Guarantees Prices

"Our Customers are our Warmest Friends"
Guaranteed On Time and Certified
FREE TANK SETS

COYNE OIL & PROPANE

Clare • Harrison • Mt. Pleasant • Ewart • Gladwin
Cadillac • Breckenridge • Interlochen
800-386-7731 • 989-386-7731

RESIDENTIAL • COMMERCIAL
INDUSTRIAL • FARM

Built Rite Pole Buildings

- Family Owned & Operated
- 70 Years Combined Experience
- From Contract to Completion You Will Deal With Owners Only
- We Build the Best Barns at the Best Prices

Licensed and Insured
Call **989-600-1010** or **989-259-2015**
builtritepolebuildings.net

YOU LOOKED HERE AND YOUR CUSTOMERS WILL, TOO!

CALL ONE OF THE NUMBERS ABOVE.

NORTHERNMAT

Used Mats For Sale - Call For Deals

Buyer of Hardwood Logs
• Access Mats • Crane Mats • Swamp Mats

Buyer of Hardwood Logs **Ben Hertzler**
Ike Esh (989) 339-6323 (989) 802-2502
2495 Rock Rd., Clare

North Country Metals, LLP

Specializing in New Roofs & Reroofs!

Metal Roofing & Siding
(989) 386-3013
5139 Pere Marquette
Clare

Everlast Roofing, Inc.
everlastroofing.com

POLE BARN

James Morche Builders

YOUR BUILDER FROM START TO FINISH
garages • pole barns • concrete work
FREE estimates

James Morche Cell **989-429-3479** • **989-539-9126**
Licensed & Insured

VALET AUTO CARE, INC.
Since 1983

- A.R.E. Pickup Toppers
- Over 100 New & Used Toppers in Stock
- Truck Accessories
- Tonneau Covers

LEER **PRE** Because you love your truck
www.valetauto.com

James Motz - Owner
610 N. Mission (3 blocks S. of Meijer) Mt. Pleasant (989) 773-3477

Welcome Spring with a New Pavilion or a Gazebo!

- Painted or Stained
- Fully Screened Option
- Metal or Shingled Roof
- Customizing Available

DELIVERED STATEWIDE TO YOUR LOCATION

CENTRAL CARPENTRY

CALL OR STOP BY FOR FREE QUOTE

7341 S Athey Ave • Clare
(989) 386-3009

Freeman Yoder
Owner

YOU LOOKED HERE AND YOUR CUSTOMERS WILL, TOO!

CALL ONE OF THE NUMBERS ABOVE.

SUPERIOR METAL ROOFING AND DECKS

QUALITY AND CUSTOMER SATISFACTION IS OUR GOAL

WILLIAM BYLER **FREE ESTIMATES**
9113 WASHINGTON RD. WORK: 989-487-5665
CLARE, MI 48617 HOME: 989-802-9506

SPRING 2023

ISABELLA CONSERVATION DISTRICT TREE AND SHRUB AND FRUIT TREE ORDER BLANK

5979 E. Broadway, Mt. Pleasant, MI 48858
Ph # (989) 772-5927 ext. 3



SEEDLINGS	SIZE	25	50	100	250	500	1000	QUANTITY	COST
Red Pine	10-14"	\$35.00	\$60.00	\$105.00	\$215.00	\$340.00	\$510.00		
White Pine	10-14"	\$40.00	\$65.00	\$110.00	\$220.00	\$345.00	\$510.00		
Blue Spruce	9-12"	\$30.00	\$55.00	\$90.00	\$185.00	\$310.00	\$445.00		
White Spruce	10-15"	\$30.00	\$55.00	\$90.00	\$185.00	\$310.00	\$445.00		
Norway Spruce	10-15"	\$30.00	\$55.00	\$90.00	\$185.00	\$310.00	\$445.00		
Douglas Fir	10-15"	\$30.00	\$55.00	\$90.00	\$185.00	\$310.00	\$445.00		

TRANSPLANTS	SIZE	EACH	5	10	25	50	QUANTITY	COST
White Pine	15-20"	\$4.75	\$23.00	\$44.50	\$107.50	\$205.00		
Red Pine	18-24"	\$4.00	\$19.00	\$35.50	\$81.25	\$147.50		
Blue Spruce	2'+	\$4.25	\$20.25	\$38.50	\$91.25	\$170.00		
White Spruce	2'+	\$4.25	\$20.25	\$38.50	\$91.25	\$170.00		
Norway Spruce	2'+	\$4.25	\$20.25	\$38.50	\$91.25	\$170.00		
White Cedar	2-3'	\$6.25	\$30.00	\$57.50	\$137.50	\$262.50		
Hybrid Poplar	3-4'	\$5.00	\$24.00	\$46.00	\$110.00	\$207.50		

DECIDUOUS TREES	SIZE	EACH	5	10	25	50	QUANTITY	COST
Red Maple	2-3'	\$5.50	\$26.50	\$51.00	\$122.50	\$232.50		
Sugar Maple	2-3'	\$6.25	\$30.00	\$57.50	\$137.50			
White Oak	2-3'	\$6.25	\$30.00	\$57.50	\$137.50			
Red Oak	3'+	\$6.00	\$29.00	\$55.50	\$132.50	\$252.50		
Tuliptree	2-3'	\$5.50	\$26.25	\$50.00	\$118.75			
Mountain Ash	2'	\$3.75	\$17.50	\$32.50	\$75.00	\$137.50		
Sycamore	2-3'	\$6.25	\$30.00	\$57.50	\$137.75			
White/Paper Birch	2-3'	\$7.00	\$33.75	\$65.00	\$156.25			
River Birch	2-3'	\$9.00	\$43.75	\$85.00	\$206.25			
Hazelnut	18"	\$4.50	\$21.25	\$40.00	\$93.75			
Black Walnut	2-3'	\$6.25	\$30.00	\$57.50	\$137.50			
Cherry, Wild Black	2-3'	\$6.25	\$30.00	\$57.50	\$137.50			
Magnolia, Sweetbay	18-2"	\$5.50	\$26.25	\$50.00				

DECIDUOUS TREES	SIZE	EACH	5	10	25	50	QUANTITY	COST
Redbud	2-3'	\$4.50	\$21.25	\$40.00	\$93.75			
Dawn Redwood	18-24"	\$11.00	\$53.75	\$105.00				
Hybrid Willow	2-3'	\$5.00	\$23.75	\$45.00	\$106.25			
Hazelnut	2-3'	\$6.25	\$30.00	\$57.50				
American Plum	2-3'	\$6.25	\$30.00	\$57.50	\$137.50			
Serviceberry	18"	\$3.50	\$17.50	\$30.00				

SHRUBS	SIZE	EACH	5	10	25	50	QUANTITY	COST
Silky Dogwood	3'+	\$4.50	\$21.25	\$40.00	\$93.75	\$175.00		
Red Osier Dogwood	3'+	\$4.50	\$21.25	\$40.00	\$93.75	\$175.00		
Gray Dogwood	3'+	\$4.50	\$21.25	\$40.00	\$93.75	\$175.00		
Common Lilac	2'+	\$4.25	\$20.00	\$37.50	\$87.50			
Rose Rugosa	18-24"	\$4.00	\$18.75	\$35.00	\$81.50			
Rose of Sharon	2-3'	\$5.75	\$27.50	\$52.50	\$125.00			
Fountain Grass Plugs	Plugs	\$3.25	\$15.00	\$27.50	\$62.50			
Ninebark	2-3'	\$4.00	\$18.75	\$35.00	\$81.25			
Pussy Willow	18-24"	\$4.25	\$20.00	\$37.50	\$87.50			
Butterfly Bush - root stock		\$4.00	\$18.75	\$35.00	\$81.50			
Trumpet Vine - root stock		\$3.50	\$16.50	\$31.00	\$72.50			
Forsythia	3'+	\$5.00	\$24.00	\$46.00	\$108.75			
Elderberry, black	2-3'	\$5.50	\$26.50	\$51.00	\$122.50			
Highbush Cranberry	2'+	\$4.25	\$20.00	\$37.50	\$87.50			
Gray Dogwood	2'+	\$4.25	\$20.00	\$37.50	\$87.50			
Blue Hydrangea	2'+	\$4.25	\$20.00	\$37.50	\$87.50			
Hydrangea - PeeGee	2-3'	\$6.00	\$28.75	\$55.00	\$131.25			
American Wildflower Mix - 1 oz. Covers 250 sq. ft.					\$5.00 oz.			
POLLINATOR PACKETS - 1 for \$5.00 or 2 for \$9.00								
Common Milkweed - 100 seeds per packet - hardy & easiest to establish								
Swamp Milkweed - 100 seeds per packet - monarch & Swallowtail with a vanilla fragrance								
Planting Gel - Mix 1 oz. with 1 gal of water. - Dips app. 50								
Marking Flags .25 ea.								
PLANTSKYDD - DEER AND RABBIT REPELLENT								
Plantskydd - 1 lb. granular treats app. 600 sq. ft. \$12.95								
Plantskydd - 1 lb. powder treats app. 300 plants \$29.95								
Plantskydd - 2.2 lb. powder treats app. 600 plants \$49.95								
Plantskydd - 1 qt. pre-mixed treats app. 100 plants, 1 ft. high \$21.95								
Plantskydd - 3 lb. granular shaker bag treats up to 1800 sq. ft. \$26.95								
TOTAL								
ADD 6% SALES TAX								
TOTAL								

VARIETY	FRUIT MATURITY	EACH	2 or more Cost per tree	QUANTITY	TOTAL
APPLES					
Crimson Crisp - Bud 9/EMLA 111	September 10th - 25th	\$24.00	\$22.00		
Honeycrisp - BUD 9/EMLA 111	September 10th - 25th	\$24.00	\$22.00		
Gala - EMLA 7	September 5th - 20th	\$24.00	\$22.00		
Fuji - Aztec - EMLA 7	November 5th	\$24.00	\$22.00		
Golden Delicious - EMLA 7	Sept. 20th - Oct. 10th	\$24.00	\$22.00		
Granny Smith - Bud 9/ EMLA 111	November 5th	\$24.00	\$22.00		
Enterprise - EMLA 111	October 15th	\$24.00	\$22.00		
Liberty - EMLA 111	Sept. 15th - Oct. 5th	\$24.00	\$22.00		
RubyMac - EMLA 7	Mid-September	\$24.00	\$22.00		
Wolfriver -	Mid-September	\$24.00	\$22.00		

PEACHES - Self-pollinating					
Red Haven	August 5th	\$23.00	\$21.00		
Contender	August 15th	\$23.00	\$21.00		
Reliance	July 25th - August 15th	\$23.00	\$21.00		
PEARS					
Bartlett	August 10th - 25th	\$23.00	\$21.00		
Harrow Sweet	September 5th - 20th	\$23.00	\$21.00		
CHERRY					
Montmorency	Late July-Early August	\$26.00	\$24.00		
Benton - Dark Sweet	Mid-June	\$26.00	\$24.00		
Montmorency	Mid-July	\$26.00	\$24.00		
Planting Gel - Root dip - 1 oz to 1 gallon of water \$3.50 oz.					
SUB TOTAL					
Add 6% Sales Tax					
TOTAL					

FRUIT TREE INFO

These fruit trees were chosen for our climate because of hardiness. When they arrive they will be approximately 5/8" in diameter and 5-6' tall with lateral branches. They are expected to produce fruit in 2-4 years. They will grow best in full sun and in loamy, well drained soil. Many fruit tree varieties are not self-pollinating, it may be necessary to plant 2 different varieties of tree. Call our office at 989-772-5927 Ext. 3 for more info.

CREDIT CARD INFORMATION

Name _____ Phone _____
Address _____
City _____ State _____ Zip _____
Card# _____ Exp _____
Security Code _____ Email _____
You can also email your completed order blank to:
crystal.beutler@mi.nacdnet.net

- Make checks or money orders payable to: **Isabella Conservation District or ICD**
- The District's liability ceases once trees and shrubs are picked up.
- You will be notified when and where to pick trees and shrubs up!
- Orders are confirmed when paid for. They are filled on first come first serve basis. Some species may be in short supply; Substitutions can be made with customer's approval.



DATES TO REMEMBER

ALL EVENTS ARE HELD AT THE ISABELLA COUNTY FAIRGROUNDS

ELECTRONIC WASTE RECYCLING AND HOUSEHOLD HAZARDOUS WASTE COLLECTIONS

SATURDAY, MAY 20TH FROM 8:00 AM - 12:00 PM AND SATURDAY, SEPTEMBER 9TH FROM 8:00 AM - 12:00 PM

TIRE RECYCLING COLLECTION*

SATURDAY, MAY 13TH - 8:00 AM - 12:00 PM AND SATURDAY, SEPTEMBER 30TH - 8:00 AM - 12:00 PM
OR UNTIL TRAILERS ARE FULL. PLEASE HAVE TIRES CLEAN. WE WILL NOT ACCEPT TIRES THAT ARE PACKED WITH MUD.

*WE WILL TAKE UP TO 20 TIRES PER VEHICLE. YOU CAN RECYCLE TIRES UP TO 42" IN DIAMETER AND SMALLER. THEY CANNOT BE MORE THAN 12" WIDE. THEY CAN HAVE RIMS ATTACHED. WE WILL NOT TAKE TIRES THAT ARE THICKER THAN 12 PLY OR AGRICULTURAL TIRES. THERE WILL BE A \$2.00 PER TIRE FEE IF YOU RECYCLE MORE THAN 20 TIRES.

HAZARDOUS ACCEPTABLE ITEMS

AUTOMOTIVE LIQUIDS/PRODUCTS	OIL BASED PAINTS/STAINS	BATTERIES - VEHICLE/HOUSEHOLD	HERBICIDES	THERMOMETERS
AEROSOLS	PHOTOGRAPHY CHEMICALS	BUG SPRAYS	INSECTICIDES	THERMOSTATS (ROUND/NON-PROGRAMMABLE)
HOUSEHOLD CLEANERS	POOL/HOT TUB CHEMICALS	PESTICIDES	RODENTICIDES	UNIDENTIFIED LIQUIDS
ACIDS	FLUORESCENT LIGHTS (CFLS)	FUNGICIDES	MERCURY	PHARMACEUTICALS

****WE WILL NOT TAKE LATEX/WATER BASED PAINT AT THE HOUSEHOLD HAZARDOUS WASTE COLLECTION.****

Park it in the CLASSIFIEDS *and watch it go fast!*



AUCTIONS

Guns, Ammo, Sporting, TV's, Collectibles, Farm, Estate items. Multiple auctions happening. To bid & view 1,000's of photos, johnpeckauctions.com
Shipping/inspection available. Selling?
Call John 989.426.8061
Award winning auctions since 1979

Multiple Online Estate Sales. Enclosed trailer, Tools, Snowblower, Household, Collectibles, Lawn & Garden, Furniture, much more. View complete listings, photos and bid at:
Bid.SherwoodAuctionService.com
Now taking consignments for spring sporting goods.
1.800.835.0495

IT'S THE QUICK response that keeps people coming back to classifieds. Call today to place your fast-action ad.

BARGAINS!

PAWN SHOP
Buy, Sell, Pawn

CASH FOR GUNS
CASH FOR GOLD
3 Month Pawn
3% + \$3 Per Month

Gladwin Trade & Sales
989-426-6811



NEED HELP? CALL A LOCAL PROFESSIONAL FROM OUR
Professional Services Directory

HEALTH & FITNESS

VIAGRA AND CIALIS USERS! 50 Generic Pills SPECIAL \$99.00 100% guaranteed. 24/7 CALL NOW! 888-835-7273 Hablamos Espanol

BARGAINS!

Get DIRECTV for \$84.99/mo for 24 months with CHOICE Package. NEW 2 YEAR PRICE GUARANTEE. First 3 months of HBO Max, Cinemax, Showtime, Starz and Epix included! Directv is #1 in Customer Satisfaction (JD Power & Assoc.) Some restrictions apply. Call 1-888-351-0154

SAVING JUST GOT EASIER with EarthLink Internet. Get up to \$30 off your monthly bill and unlimited data with the Affordable Connectivity Program. Apply without credit checks. Call 877.381.4064 now.

COLLECTIBLES & MEMORABILIA

BUYING COINS, Sports Cards and Stamp Collections. Top \$\$\$ Paid. Call 248-471-4451

MISCELLANEOUS

ADJUSTABLE BED Brand New with mattress. Made in U.S.A., in plastic, with warranty. Retail Cost \$3,995.00, sacrifice for \$875.00. Call for showing or delivery:
DanDanTheMattressMan.com
989-832-1866

AMISH BUILT storage sheds and mini cabins delivered to your site anywhere in Michigan! Starting at \$2500.00
mynextbarn.com
989-832-1866

BATH & SHOWER UPDATES in as little as ONE DAY! Affordable prices - No payments for 18 months! Lifetime warranty & professional installs. Senior & Military Discounts available. Call: 877-401-2404

CLASSIFIED - The one-stop shopping place! Convenience, Selection, Values. Classified - your complete marketplace.

MISCELLANEOUS

MISCELLANEOUS

BUILT RITE POLE BUILDINGS State-wide, 24X40X10=\$17,700 30X40X10=\$19,900. Erected on your site. Call for price not shown on any size building or go to www.builtritepolebuildings.net 989.259.2015 Days 989.600.1010 Evenings

DISH Network: Only from Dish - 3 year TV Price Guarantee! 99% Signal Reliability, backed by guarantee. Includes Multi-Sport with NFL Redzone. Switch & Get a FREE \$100 Gift Card. Call Today!
1-866-950-6757

FREE HIGH SPEED INTERNET for those that qualify. Government program for recipients of select programs incl. Medicaid, SNAP, Housing Assistance, WIC, Veterans Pension, Survivor Benefits, Lifeline, Tribal. 15 GB internet service. Bonus offer: Android tablet FREE with one-time \$20 copay. Free shipping & handling. Call Maxisp Telecom today! 1.866.783.0224

METAL ROOFING regular and shingle style, HALF OFF SPECIAL COLORS! Lifetime asphalt shingles. Steel and vinyl siding. Licensed and insured builders. Pole Buildings. Quality work for 40 years! AMISH CREW 517-575-3695.

Prepare for power outages today with a GENERAC home standby generator \$0 Money Down + Low Monthly Payment Options. Request a FREE quote. Call now before the next power outage:
1-855-922-0420

SAY HELLO to the most mobile marketplace in the area - the Insider Classifieds.

MISCELLANEOUS

MISCELLANEOUS

REPLACE YOUR ROOF with the best looking and longest lasting material - steel from Erie Metal Roofs! Three styles and multiple colors available. Guaranteed to last a lifetime! Limited Time Offer - \$500 Discount + Additional 10% off install (for military, health workers & 1st responders.) Call Erie Metal Roofs
1-888-718-1856

THE GENERAC PWRcell, a solar plus battery storage system. SAVE money, reduce your reliance on the grid, prepare for power outages and power your home. Full installation services available. \$0 Down Financing Option. Request a FREE, no obligation, quote today. Call 1-855-476-9698

APARTMENTS FOR RENT (UNFURNISHED)

1 TO 6 PERSON APTS FURNISHED OR UNFURNISHED Free Gym & WiFi (989) 772-2222
www.LiveWithUnited.com

VACATION & RESORT RENTALS

ATTENTION COTTAGE, Condo, Vacation Homeowners. Advertise your Vacation Rental Properties with Community Papers of Michigan's Michigan MegaMarket Classified Network. Reach over 1.2 Million households per-week with your in-state or out-of-state vacation rental ad. Call 1.800.783.0267 Ext.1 for details.

HOUSING WANTED

NOTICE wanting to buy a home, up to 10 acres within a 6 mile radius from the Riverdale area. Contact 641-242-2828

VACATION AND REAL ESTATE SERVICES

VACATION CABINS for rent in Canada. Fish for abundant walleye, perch, northern pike. Boats, motors, gasoline included. For free brochure call Hugh 1-800-426-2550 Website at www.CanadianFishing.com

LOOKING FOR HELP? People everywhere read the want ads. Phone today to place the ad that people want to read.

4WD & SUV

2021 FORD BRONCO SPORT
only 8,000 miles, full power!
Sharp, Sharp Bronco!
ONLY \$37,995
Dick Sovo Auto Sales (989) 828-6032
dicksovaautosales.com

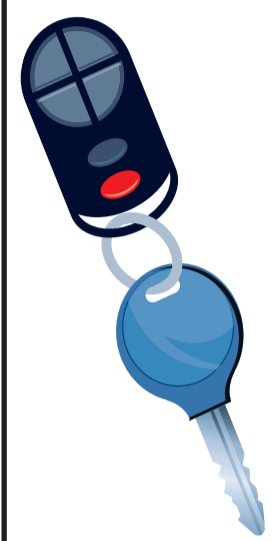
2022 GMC ACADIA
only 8,000 miles, V-6 engine, all wheel drive, Captain chairs!
Beautiful Vehicle!
ONLY \$39,995
Dick Sovo Auto Sales (989) 828-6032
dicksovaautosales.com

PICKUP TRUCKS

2021 CHEVY SILVERADO CREW CAB 4X4
only 8,000 miles, full power, Sapphire Rd Metallic!
Absolute Beautiful Truck!
ONLY \$49,995
Dick Sovo Auto Sales (989) 828-6032
dicksovaautosales.com

2022 GMC CREW CAB 4X4
only 9,000 miles, every option, bucket seats, beautiful satin steel metallic!
Like Brand New Still!
ONLY \$49,995
Dick Sovo Auto Sales (989) 828-6032
dicksovaautosales.com

Do you have a car for sale?



How about a boat? Or maybe some furniture? Call to place a classified ad with one of our helpful representatives & sell your no-longer-wanted items FAST!

ANNOUNCE • SELL • ADVERTISE

The image shows a collage of various classified advertisements from a newspaper. Overlaid on the ads is a large, 3D-style graphic of the numbers '24/7'. To the left of the '24/7' is a smiling sun with a face, and to the right is a smiling moon with a face. The background consists of several columns of text from different ads, including 'HELP WANTED GENERAL', 'A/C SERVICE MECHANIC', 'BARTENDER', 'CHA...', 'CORPORATE SECURITY', 'POST YOUR RESUME', and 'SITUATIONS WANTED'.

CLASSIFIEDS WORK ALL DAY • ALL NIGHT

EXPERIENCE BETTER HEARING

with one of the
Smallest Custom Fit Hearing Aids Ever Made!



Now
You
See It...



Now
You
Don't!



- 48 channel digital signal processing
- Digital engineering allows 1,000's of custom settings
- Controlled by state-of-the-art software

CALL 1-888-387-3068 TO BOOK YOUR

FREE* Comprehensive Hearing Evaluation

AND RECEIVE A FREE** \$20 GIFT CARD FOR COMPLETING YOUR EXAM!



Take advantage of our limited-time specials!

NOW ONLY!



\$495

Prescription Hearing Aid

Valid on MEMINI Solution 1 only, one aid only. Expires 03/31/2023.

BUY ONE, GET ONE

50% OFF

GENIUS TECHNOLOGY

One coupon per purchase. Discount does not apply to prior sales. Offer valid on ME Level 2 Solutions when first aid is purchased at regular list price, excluding rechargeable products. Cannot combine with other offers. Expires 03/31/2023.

Additional Miracle-Ear offers include:

- ① Affordable financing options ② Benefits for federal workers† ③ Participating with most insurance plans

CALL TODAY 1-888-387-3068

MOUNT PLEASANT

100 S. Mission St., Ste. G
 meoffer.me/mtpleasant-mi

GLADWIN

Neeley Building
 127 N. Arcade St., Ste. 2
 meoffer.me/gladwin

PRUDENVILLE

828 W. Houghton Lake Dr.
 meoffer.me/prudenville

WEST BRANCH

Fairview Plaza
 511 E. Houghton Ave., Ste. D
 meoffer.me/westbranch

CLARE

Carousel Mall
 1430 N. McEwan St.
 meoffer.me/clare

ALMA

303 W. Superior St., Ste. 3
 meoffer.me/alma

*Hearing test is always free. Hearing test is an audiometric test to determine proper amplification needs only, not a medical exam.
 **Once you complete your hearing test, you will receive an email from our third-party supplier with the opportunity to choose a gift card from the available retailers. Please note gift cards are not supplied at your hearing test. Limit one card per customer. Must be 55 or older. Must not have been tested or made a purchase in the last 6 months. While supplies last. Expires 03/31/2023. †See store for details on available financing and benefit options.

CODE: SP246250

Seeley Auto Sales Inc.

101 HIDDEN OAKS DRIVE (M-46) • ST. LOUIS, MI 48880
989-463-AUTO (2886)

SALES FINANCING

SERVICE PARTS

**Ask About Our
BUY HERE
PAY HERE PROGRAM**
Financing Available in Select Areas
Call For Details

seeleycars.com
989-463-AUTO (2886)



2004 PONTIAC GRAND PRIX GT2
SEDAN
179,376 MILES, STOCK #: 16387

\$3,995



2011 CHEVROLET IMPALA LT
194,910 MILES, STOCK #: 16973, FLEX-FUEL

\$4,995



2016 CHEVROLET CRUZE
LIMITED 1LT
191,442 MILES, STOCK #: 16846

\$6,995



2012 CHEVROLET CRUZE ECO
137,517 MILES, STOCK #: 16988

\$6,995



2017 CHEVROLET SONIC LT
115,449 MILES, STOCK #: 16926

\$9,995



2016 FORD FUSION SE
130,931 MILES, STOCK #: 16935

\$10,995



2019 NISSAN VERSA SV
62,405 MILES, STOCK #: 16900

\$12,995



2019 FORD FIESTA SE
52,856 MILES, STOCK #: 16838

\$13,495



2016 FORD FUSION SE
75,124 MILES, STOCK #: 16642

\$13,595



2015 CHRYSLER 300 SERIES S
101,583 MILES, STOCK #: 16917

\$14,995



2018 FORD FOCUS SEL
59,251 MILES, STOCK #: 16631

\$14,995



2019 LINCOLN MKZ
34,103 MILES, STOCK #: 16945

\$25,995



2009 FORD ESCAPE XLT
132,431 MILES, STOCK #: 16939

\$5,995



2009 MERCURY MARINER 14
140,346 MILES, STOCK #: 16976

\$5,995



2011 FORD FLEX SEL
186,845 MILES, STOCK #: 16986

\$6,995



2011 FORD ESCAPE XLT
135,699 MILES, STOCK #: 16933, FLEX-FUEL

\$7,995



2011 FORD ESCAPE XLT
88,230 MILES, STOCK #: 16960, FLEX-FUEL

\$8,995



2013 LINCOLN MKX
135,286 MILES, STOCK #: 16957

\$12,995



2015 FORD EXPLORER XLT
137,339 MILES, STOCK #: 16991

\$13,995



2017 JEEP PATRIOT SPORT
88,663 MILES, STOCK #: 16725

\$13,995



2011 JEEP WRANGLER
UNLIMITED SAHARA
172,479 MILES, STOCK #: 16714

\$14,995



2014 FORD EXPEDITION LIMITED
148,490 MILES, STOCK #: 16275, FLEX-FUEL

\$15,995



2009 GMC SIERRA 1500
152,943 MILES, STOCK #: 16968

\$8,495



2010 FORD F-150 XL
139,429 MILES, STOCK #: 16726

\$9,995



2011 FORD RANGER XL
93,471 MILES, STOCK #: 16672

\$9,995



2010 FORD F-150 FX4
151,651 MILES, STOCK #: 16894

\$10,995



2012 FORD F-150 FX4
173,851 MILES, STOCK #: 16956, FLEX-FUEL

\$12,995



2010 FORD F-150 XLT
123,601 MILES, STOCK #: 15166

\$12,995



2011 FORD F-150 XLT
103,915 MILES, STOCK #: 16786, FLEX-FUEL

\$15,995



2011 FORD F-250 SUPER
DUTY XLT
179,245 MILES, STOCK #: 16716, FLEX-FUEL

\$15,995



2015 FORD F-350 SUPER
DUTY XLT
185,988 MILES, STOCK #: 16916, FLEX-FUEL

\$15,995



2015 GMC SIERRA 1500
124,710 MILES, STOCK #: 16989, FLEX-FUEL, 2WD

\$15,995



2008 CHEVROLET SILVERADO 2500
120,742 MILES, STOCK #: 16855

\$19,995



2007 GMC SIERRA 2500 SLE EXTENDED
CAB
DIESEL, 124,946 MILES, STOCK #: 16092

\$20,995



2014 GMC SIERRA 3500 SLE
DIESEL, 257,293 MILES, STOCK #: 16607

\$23,995



2016 GMC SIERRA 1500 SLE
125,593 MILES, STOCK #: 16757

\$25,995



2016 FORD F-350 SUPER DUTY XL
106,319 MILES, STOCK #: 16842, FLEX-FUEL

\$26,995



2017 FORD F-150 XLT SPORT
114,431 MILES, STOCK #: 16980

\$27,995



2018 RAM 1500 BIG HORN
107,917 MILES, STOCK #: 16570

\$29,995



2005 CHRYSLER TOWN &
COUNTRY LIMITED
115,618 MILES, STOCK #: 16655

\$5,995



2012 CHRYSLER TOWN &
COUNTRY TOURING-L
171,980 MILES, STOCK #: 16969, FLEX-FUEL

\$6,495



2006 FORD E-SERIES WAGON
E-350 SD XL
129,065 MILES, STOCK #: 16596

\$7,495



2016 FORD TRANSIT CONNECT
CARGO XL
180,942 MILES, STOCK #: 16821

\$10,995



2016 DODGE GRAND CARAVAN SE
131,649 MILES, STOCK #: 16965, FLEX-FUEL

\$10,995



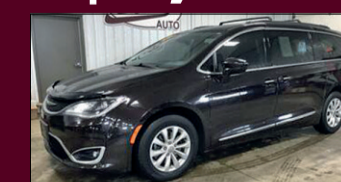
2012 TOYOTA SIENNA LE
7-PASSENGER
140,003 MILES, STOCK #: 16610

\$11,995



2017 DODGE GRAND CARAVAN SE
70,752 MILES, STOCK #: 16599
LICENSE PLATE: WE HAVE, FLEX-FUEL

\$15,995



2017 CHRYSLER PACIFICA
TOURING-L
98,028 MILES, STOCK #: 16884

\$17,995



2021 NISSAN NV200 S
29,304 MILES, STOCK #: 16632

\$22,995



2007 CHRYSLER PACIFICA
TOURING
141,278 MILES, STOCK #: 16765

CALL FOR PRICE

Always Accepting Trade-Ins
See Many More At: www.seeleycars.com

MARCH 2023

SPRING FLING

Morning Sun

Mid-Michigan Buyers Guide



MT PLEASANT
2705 S. Isabella Street

**Most Cost
Efficient**



Sound a Sleep

SLEEP DIAGNOSTIC LAB

(989) 792-2792

www.Soundasleeplab.com

Mt. Pleasant • Midland • Bay City • Saginaw

Budget-friendly ways to freshen up your home's exterior

As any homeowner knows, renovation projects tend to cost a lot of money. The average cost of a home renovation is difficult to gauge, as such endeavors run the gamut from complex projects like a kitchen overhaul to simpler ones like painting a room inside a home. Indeed, the National Association of the Remodeling Industry notes that scope is what drives the cost of a renovation project.

Though there might not be an "average cost" of a renovation project, homeowners can expect to spend thousands of dollars on projects that are not very small in scale. Navigating such an expense at a time when inflation remains high might be difficult for some homeowners looking to maintain the appearance of their home exteriors. However, there are many budget-friendly ways homeowners can tend to the exterior of their properties.

Power washing:

Power washing won't break the bank but it can revive the look of a home. Power washing removes dirt and grime from the siding of a home and a power washing can be used to clean porches, walkways and patios as well. Hardware chains like Home Depot and Lowes typically rent power washers, but homeowners who don't want to do it themselves can hire a professional for a few hundred dollars, if not less. Power washing after winter can be a good idea, as the elements can take a toll on a home's exterior. A good power washing before spring and summer entertaining season can thus give a home a fresh, clean look without breaking the bank.

Furnished front porch: A furnished front porch can serve as a welcome sign to neighbors and provide a great place to relax with a morning cup of coffee and a good book. Homeowners with a small porch won't need to bust their budgets to upgrade their front porch furnishings. Some small chairs with bright cushions, a small table and a rug underfoot can revamp an entryway at low cost.

Window box installation: Installing window box planters is another cost-effective way to brighten up a home's exterior. Homeowners can hang window boxes outside windows on the front of their homes and then fill them with brightly colored flowers to add an inviting pop of color to their home exteriors. The experts at Better Homes & Gardens urge homeowners to take weight into consideration before buying window planters. Keep in mind that soil and developed plants can be heavy, so look for a sturdy box as well as one that has drainage holes.

Replace hardware: Another simple way to freshen up a stale exterior is to replace hardware. Door knobs, knockers, house numbers, and even the mailbox can appear dated after a while. Replacing these items is inexpensive and quick but can have a profound impact on how the exterior of a home appears to residents and visitors.

Exterior renovations need not break the bank. Various simple and inexpensive tweaks can quickly revitalize the exterior of a home.

*Story courtesy of
Metro Creative Connection*



Revitalize your landscape on a budget

Many homeowners think they have to spend tons of green to get green in their landscape, but that isn't necessarily so. Homeowners can improve their landscapes without digging themselves into financial holes. These strategies can help anyone save some cash and still end up with attractive gardens and more.

- Use stones or gravel for a walkway. If commercially installed pavers or cement walkways are not within your budget, there are some affordable alternatives. Flagstone or individually purchased and spaced pavers and pea gravel can be used to create pathways. Some construction sites even offer free stones when asked. Soften the look with moss or other plants on the perimeter.

- Remove some lawn. Lawns can require hours of upkeep that may involve the application of expensive fertilizers and weed-killing products that are not always so eco-friendly. Reduce the size of a lawn by putting in a mixed planting bed of perennials or ornamental grasses, or use landscape fabric and mulch.

- Look for free mulch. Municipal recycling centers may offer residents access to free mulch made from grinding up leaves, branches and other plant debris collected throughout the town. Simply bring a few containers to the recycling center and spread the mulch for an ornamental look or to insulate landscapes over winter and protect against weeds.

- Repurpose old items into planters. Old wheelbarrows, barrels, watering cans, and other items can be repurposed into container gardening vessels. Figure out if items marked for the garbage bin can be incorporated into garden features instead.

- Invest in plants that are easy to propagate. Perennials are the gardener's friend when it comes to saving money. These plants sprout anew each year, and many, such as sedum, catmint, ferns, hostas, and black-eyed Susans, can propagate by division. Figure out the best times of year to divide the plants and start growing them in individual containers before planting the sturdy new shoots in the ground. A single variety of plants grouped together in mass plantings is affordable and easy.

- Shop end-of season sales. Garden centers may begin to make room for holiday items come the fall. Take advantage of reduced costs on remaining plants and landscape accessories during this time of year. Plants can be covered or allowed to thrive indoors until they can be planted in the spring.

- Pool your resources. Homeowners planning on a big landscaping or revitalization project may want to speak with neighbors to see if they're interested in doing the same. Contractors guaranteed business from a few homes in the same neighborhood may be willing to negotiate lower prices for the volume of work on things like driveway repaving, deck- or fence-building, or installation of paver patios.

Some handy ideas can help homeowners transform landscapes without spending too much.



Spring activities for families to enjoy together



Spring is one of the most popular seasons of the year. After several months of chilly temperatures in many regions, spring provides a welcome reprieve from the cold.

Moderate temperatures makes it much more comfortable and inviting to venture outdoors, particularly for families with children who might not adapt to the cold as well as adults. The following are some family-friendly activities that make the most of spring renewal.

Visit botanic gardens

If there's a botanical garden nearby, a visit in spring is a great time to soak in the beauty of nature. That's because an abundance of flowers bloom during the spring, meaning a garden will be in peak form. Visitors can meander through rows of rose bushes or tour the labyrinth of trimmed hedges. Beautiful, flowering cherry trees, with their delicate pink or white petals, also are sights to behold in spring.

Prepare a home garden

Visiting a garden is one thing, creating one at home is another. In addition to planning a vegetable garden to enjoy tasty pickings throughout summer, you can devote some property to flowers that will attract wildlife. Check with a garden center about which flowers and plants attract butterflies and other beneficial insects. Many garden centers sell

butterfly and hummingbird mixes to attract wildlife.

Go animal watching

Flowers are not the only thing on display come the spring. Many animals, including birds, are born this time of year. Baby animals are not only adorable, they can be entertaining to watch grow. Families can spend time viewing the animals that visit their yards or surrounding parks, being careful to keep their distance. Adults may be quite protective of their young, so it's better to watch from the lens of a camera or with binoculars. Always resist the urge to help a baby animal who seems like it was abandoned. The parent may be a short distance away gathering food or trying to avoid drawing attention to the young to deter predators.

Get out on the water

A bright, warm day is an ideal time to enjoy the open water. Spring is a season when many marinas reopen and avid boaters put their vessels back into the water. You also can venture into streams or lakes aboard kayaks or canoes, getting exercise and seeing the scenery in the process. Bring a fishing pole along and cast it into the water for a few hours of recreation.

Make wind chimes

Enhance the garden or decor around the home by making wind chimes or other percussion items that can create beautiful music when spring breezes blow. Commercially available kits are sold, but wind chimes also can be made from items like bamboo or even strung shells. These are just a few family-friendly activities to enjoy this spring.

BRAD MALLEY WELL DRILLING



24 HOUR ON-CALL EMERGENCY SERVICE

*No Automated Phone, Real Person, Real Time

Call Today!

- ▶ **COMMERCIAL & RESIDENTIAL**
- ▶ **SPECIALIZING IN 5" PVC WATER WELLS**
- ▶ **3 - LICENSED DRILLERS (100 years combined experience)**
- ▶ **5 - YEAR MANUFACTURER WARRANTY**
- ▶ **INSTALLATION OF PUMP, TANKS & WELL CHLORINATION**
- ▶ **WATER FILTERS & CONDITIONING AVAILABLE**
- ▶ **COMPLETE SERVICE 2" - 12" WATER WELLS**

1565 S Park Place St., Mt. Pleasant, MI 48858
 (989) 772-2765 | www.bradmalleywelldrilling.com 

House powerwashing tips

Powerwashing, also known as pressure-washing, utilizes a high-velocity water spray to remove dirt and residue from the exterior surfaces of a home. It is frequently used on vinyl siding, concrete and sometimes wood decks to treat mildew and other growth that accumulates over time.

Powerwashing can be a great way to remove grime without having to scrub by hand. But it requires a delicate touch to get it right. Sometimes it is best to leave the job to professionals. But homeowners willing to give it a go can try powerwashing themselves, as various stores rent power washers.

The home improvement website ImproveNet says that, until very recently, pressure washers were almost exclusively commercial machines sold to professionals or rented to do-it-yourselfers. Lately manufacturers have targeted homeowners looking to buy with lightweight options. For those who see powerwashing as a routine venture, purchasing a unit may be worth the investment.

It is important to exercise caution when operating a powerwashing machine. The high-velocity spray can tear through skin. It is key to get a feel for the washer, and try less pressure first to get a handle on the magnitude of the tool.

Don safety gear prior to using a pressure washer. Gloves, eye protection and ear protection can be handy. Most units will connect to a standard garden hose. Choose old clothing and expect to get wet. Never point a powerwasher hose at anyone and do not attempt to rinse feet or hands in the spray.

The renovation resource The Family Handyman suggests starting with a wide-degree nozzle to test out the spray on the surface that needs to be cleaned. A 15- or 25-degree nozzle is usually the wand for general cleaning

and paint stripping without damaging the surface of the home. Experiment with an optimal distance of the washer wand to get the desired cleaning effects without causing any damage. Work using a horizontal and slightly downward angle to avoid driving water up under the siding of a home.

Avoid spraying any electric wires or components on the home. Also, try not to spray upward, and angle the spray away from doors, windows and vents.

Some washers have reservoirs that will hold a detergent solution. Choose the right detergent for the job. Keep in mind that cleansers containing bleach can damage surrounding plants, so they may need to be covered while the washing takes place.

Avoid the use of ladders when operating a powerwasher. The push-back from the wand can cause falls. Instead, opt for an extension wand to address the upper reaches of a home.

Powerwashing a home is an effective way to remove stubborn grime and refresh the look of a home's exterior.



QUALITY HEIRLOOM FURNITURE TO LAST FOR GENERATIONS



Solid Oak and Cherry Furniture.
Tables, Chairs, Hutches, Bedroom Sets, Sofas, Recliners, Mattresses and more



DOVER ROAD FURNITURE



William & Mattie Byler

2985 E. Dover Rd. Farwell, MI 48622
 (3 miles North of Clare on Old 27, 1 Mile west on Dover Road.)

(989) 386-4164 Let it Ring
Hrs: Mon~Sat – 10:00~5:30

NORTHERN MAT

Used Access Mats For Sale - Call For Deals

Buyer of Hardwood Logs

- Access Mats
- Crane Mats
- Swamp Mats

Nelson Stutzman
 (989) 802-2502
Ike Esh
 (989) 339-6323
 2495 Rock Rd., Clare

Suites Available Starting at \$3,400/mo

Mt. Pleasant Comfort Care Senior Living is under new management. We are very excited about the new renovations and upgrades along with special rates being offered.

If you are seeking a home like environment, come join our pleasant staff and allow us to introduce you to the comfort of Mt. Pleasant Comfort Care. Consider our private suites today!!

1945 Churchill Boulevard, Mt. Pleasant, Michigan 48858
 Phone: 989-773-7001

On-Site Care

- All private suites with private restrooms
- Pleasant friendly staff with 25 years longevity
- Direct TV included
- 24-hour Care Staff
- Manage mail, bills, and letters
- Answer Phone Calls & take messages
- Physical, Occupational, Speech Therapists Available
- Assistance to get to meals and activities
- Three home-style meals served daily in a social setting along with nightly snack cart & fresh fruit
- Planned Daily activities
- Enjoy your fireside setting while visiting with family and friends
- Short term respite care
- On-Site Resident Care Specialists
- Home Health Care & Hospice Affiliations

www.comfortcaresl.com Find us on Facebook

How to create more privacy on your property

An inviting backyard can serve as a welcome retreat from the hustle and bustle of daily life. After a long day at the office or an exhausting day spent transporting kids to and fro, it's hard to resist the allure of a peaceful outdoor space in which to unwind.

Privacy is a key component of any backyard oasis. Some homes may be so remote that privacy isn't an issue. But many suburban homeowners recognize they might need to tweak their landscapes if they hope to create a private oasis outside.

Fencing or planting?

Most homeowners looking to create more privacy on their property will have to choose between fencing and planting. Fencing provides immediate privacy because, once it's installed, no one can see into the yard. Fencing also doesn't require watering or other immediate upkeep, which will be necessary when planting to ensure tree roots can establish themselves.

But planting has its benefits as well. Planting for privacy is essentially creating a living fence that can grow over time and provide even more privacy as trees reach maturity. Plants also tend to be less costly than fencing. The home renovation experts at BobVila.com estimate that fencing projects typically cost between \$1,667 and \$4,075. However, fencing projects can cost considerably more than \$4,000, especially for homeowners with large properties they want to enclose. Large, mature trees can be expensive, though it's unlikely they will cost as much as fencing. In addition, fencing requires more maintenance and will potentially need to be replaced, while native trees won't re-

quire much upkeep and can last for generations.

Planting

Homeowners who choose to plant for privacy will next have to decide which type of plants to add to their properties. Evergreens provide year-round privacy because they don't shed their leaves, so these are the ones most often chosen when creating a living fence. A number of varieties of evergreen trees can do the job, but it's important that homeowners consult with a landscape architect prior to choosing trees so they can ensure the trees will thrive when faced with the growing conditions on their properties. During such a consultation, homeowners may discuss the following popular privacy trees.

- **Leyland cypress:** The Arbor Day Foundation® notes that the Leyland cypress is popular for hedges and boundaries, likely because a typical tree reaches a mature height of 60'-70' and can spread as wide as 25'. The Leyland cypress grows fast, which may appeal to homeowners who don't want to wait to establish privacy.

- **Green Giant Arborvitae:** There are different varieties of the arborvitae, but the Green Giant tends to be the go-to option for privacy. The ADF notes that Green Giants will grow up to three feet per year until they reach maturity, providing a fast-growing option for privacy planters. The Green Giant can spread as wide as 20 feet at maturity, which is another attribute that makes it so popular among home-

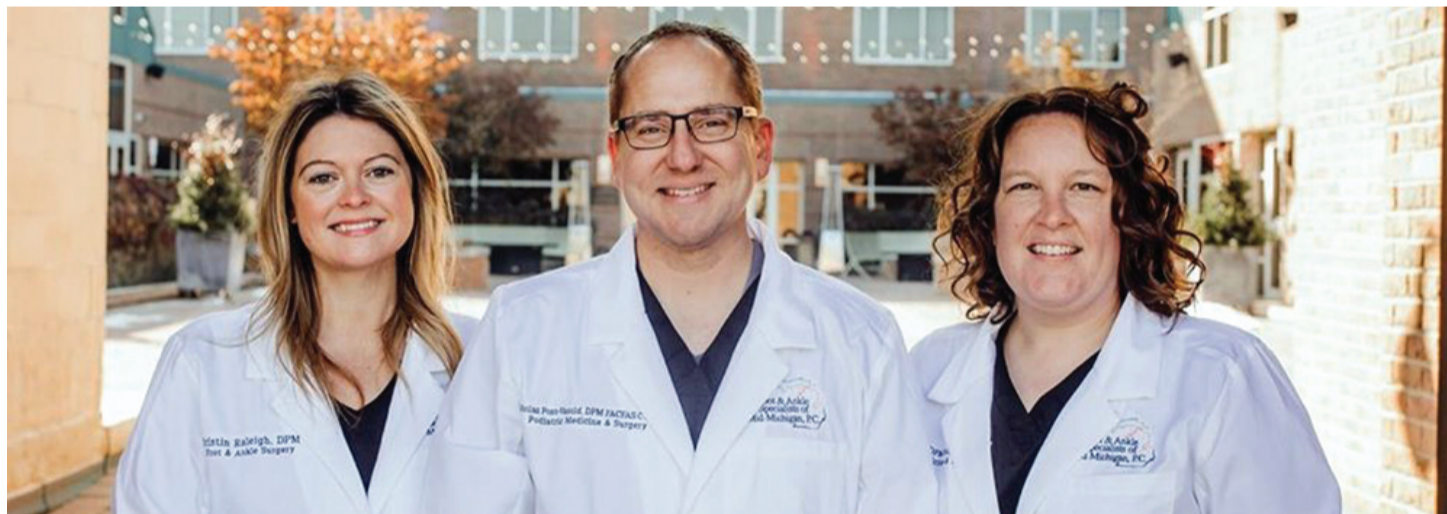
owners desiring privacy.

- **Eastern White Pine:** The ADF notes that the eastern white pine, which can reach heights as high as 80 feet, is favored in spacious yards. That's likely due to its height and its potential spread, which can reach 40 feet. Homeowners who choose the eastern white pine might like it for its resemblance to a Christmas tree, and in fact it is widely used for that purpose. The privacy provided by the eastern white pine is significant, but it might be best suited to especially large properties.

Whether it's fencing or planting, homeowners have many options to consider as they seek to create more privacy on their properties.



Accepting New Patients at both Midland & Mt. Pleasant Locations



Kristin Raleigh
DPM, FACFAS, CWS-P

Nicholas Post-Vasold
DPM, FACFAS, CWS-P

Heidi Monaghan
DPM, FACFAS, CWS-P

YOUTH SPORTS INJURIES



Sports Injuries

Youth safety when playing sports should be of utmost importance for the athletes, parents and coaches. Young athletes should not play or practice through the pain of a sports-related injury. Continuing to stress the injury can cause even more damage and may even end an athletic career.

TEACH YOUR CHILD TO REPORT AN INJURY

Teens and children should be coached on the limits of their bodies. Teach them to speak up when they feel pain and that it's okay to sit on the bench until fully healed.

Be alert to signs of pain or injury including an unusual gait; limping; favoring a foot. Stop the activity and visit your foot doctor for professional help.

PREVENTING YOUTH SPORTS INJURIES

- Make sure that coaches are trained in their sports as well as CPR and first aid.
- Equip your child with the right equipment and footwear for each sport.
- Encourage adequate hydration before, during and after workouts.
- Coach your child on the importance of stretching, warming up and cooling down.

Midland Location
111 E. Wackerly St., Suite B
Midland



Mt. Pleasant Location
4851 E. Pickard, Suite 2400
Mt. Pleasant

**Call Now for an appointment. • Mon.-Fri. 8-5 • www.midlandfeet.com
Phone: 989-488-6355 • Find us on Facebook**

How to corral spring allergies

Spring is synonymous with re-birth. Each spring, flowers begin to bloom again, grass starts to grow and people from all walks of life re-kindle their love affair with the great outdoors. Spring also marks the return of a familiar foe: allergies.

Seasonal allergies can put a damper on even the most welcoming spring day. After all, a day soaking up the sun isn't so relaxing when it's also spent sneezing and confronting allergy symptoms like congestion, runny nose and watery eyes. Thankfully, it's possible for seasonal allergy sufferers to have their spring and enjoy it, too.

- Pay attention to seasonal allergy trackers. Seasonal allergies are now easier to track than ever. For example, Pollen.com is an easily accessible and free site that allows visitors to type in their ZIP codes and access daily allergy reports for their towns and cities. Visitors also can see five-day forecasts that can help them plan trips and other outdoor excursions. Weather.com also offers free allergy reports and forecasts. Individuals with seasonal allergies can make use of these sites and plan their activities based on the information they provide.

- Stay indoors when allergen levels are especially high. The Mayo Clinic notes that there are several things individuals can do to reduce

their exposure to seasonal allergy triggers. That includes staying indoors on dry, windy days. This doesn't mean individuals need to lock themselves indoors all spring. But it's important that seasonal allergy sufferers recognize that some days might be too much to handle. Rain helps clear pollen from the air, so individuals who are avoiding the outdoors on days when pollen counts are high should be able to get outside after a good rain without triggering an attack.

- Maintain clean air indoors. The great outdoors is not the only place where allergens percolate. The Asthma and Allergy Foundation of America notes that improving air quality in a home can reduce allergy triggers. Air conditioners can prevent outdoor allergens from entering a home, so utilize units on warm spring days when you might otherwise open the windows. Open windows and screen doors provide easy entry points for allergens like pollen, so turning on the AC when outdoor allergen counts are high can make seasonal allergies more manageable.

- Consider treatments. Over-the-counter treatments like antihistamines, nasal sprays and decongestants provide most individuals with sufficient relief from their seasonal allergies. If OTC remedies are ineffective, treatments such as allergen immunotherapy and a consultation with an allergen may be necessary. Seasonal allergies can spoil an otherwise welcoming spring day. But there are many ways for individuals to corral their seasonal allergies and still enjoy spring sun.

6 ways to make your garden more successful

Homeowners enjoy gardening for many different reasons. In addition to adding beauty to a property, gardens can offset grocery costs by yielding tasty produce. They also offer important habitats and food sources for both insects and animals. While growing a vegetable or flower garden can turn into a rewarding hobby, or even a passion, gardening also can be overwhelming — particularly when the results are less than stellar. Novice gardeners have scores of resources at their disposal, including the advice of gardeners who have made mistakes and learned from them. The following guidance can make home gardens that much more successful.

1. Start small.

You may have visions of an expansive garden growing rows of crops or acres of flowers. But it is smart to start small and build on what you find successful, which includes plants that thrive in your lawn and garden.

This also is beneficial if you are unsure of vegetable yields. Several blooming plants producing bushels of crops can be overwhelming, especially if you can't get to harvesting or cooking them in a timely fashion.

2. Assess the soil.

Plants need nutrient-rich soil to encourage extensive root systems and produce strong, hardy plants, according to the gardening resource GrowVeg. Nourish soil with organic matter, such as manure, compost, shredded leaves, and natural mulch. Add this organic matter in the off-season to give it enough time to be incorporated into the ground before spring. You can have your soil tested for pH and other characteristics that make it friendly or averse to

plants at a local garden center.

3. Arm yourself with knowledge.

Do you know how deeply to plant seeds and how far apart to space plants? Are you aware of the sunlight needs of certain flowers or plants? If not, read the packaging and do your research so your plants have the best chance of not only sprouting, but also surviving. Many people prefer to start seedlings indoors in late winter and then transfer those plants outdoors when they are stronger and more established.

4. Sit in your yard and observe.

Watch the way the sunlight dances over areas of your landscape. Take note of which areas get the most sun and shade. This will help you plan what to plant and where to plant it. Vegetable gardens tend to need ample sunlight to bear pick-worthy produce. You can give plants a leg up by growing them in optimal conditions.

5. Choose hardy varieties.

Certain plants have been bred to thrive in your climate, including heat-tolerant plants for climates with sweltering summer sun. Consult with a local gardening center to figure out which plant zone you are in and which plants will do best within that zone.

6. Use rainwater.

Rainwater contains fewer contaminants and additives than tap water, which can benefit garden plants. Collect rainwater in rain barrels and use irrigation systems to deliver it to the garden.

Home gardens can yield many gifts, from flowers to fruit. Beginners can utilize some time-tested strategies to increase their chances of planting a successful garden.



**WELCOME TO HARRISON
SINCE 1912**



LUMBER!

**Friendly,
Helpful
Staff**



- **Small Tools (for sale or rent)**
- **Lawn Chairs**
- **Glass & Screen Repair**
- **Paint**
- **Lawn & Garden**
- **Grills**
- **Building Materials**
- **Pet Supplies**
- **Stihl Chains**
- **Wolverine Boots and Apparel**

Much Much more!

**HARRISON
DO IT BEST LUMBER**

201 E. Beech St., Harrison
989-539-7136
Visit us at harrisonlumber.com

Hours:
Mon-Fri 8-5
Sat 8-4
Sun 9-1

**HAVE POTHOLES CAUSED DAMAGE TO YOUR TIRES?
WE CAN HELP YOU!**



BOB'S TIRE STORE

(989) 386-2604 • 528 W. 5th, Clare

DRIVELINE SPECIALIST

Spring cleaning pointers

Spring is a season of renewal. When the flowers are blooming and the trees are budding and the weather is pleasantly warm, people often feel inspired to make changes around their homes. Work may begin with culling belongings and organizing essentials.

There is debate regarding where the practice of "spring cleaning" originated. Some researchers link it to certain religious groups. It has long been an ancient Jewish custom to thoroughly clean a house in preparation for the springtime feast of Passover. The house is scoured to remove any yeast bread, or chametz, from the home. Similarly, members of the Greek Orthodox church celebrate "Clean Week," which is a week of cleaning before Lent. In Iranian culture, families spend days cleaning prior to the Persian New Year, which begins on the spring equinox.

Spring cleaning also has some secular roots. For instance, in the 1800s, Londoners routinely cleared their homes of grime and soot that accumulated over the winter.

Spring cleaning is still a ritual for many today. As people embark on their plans to tidy up, these tips can help them along.

Tackle one big task a day

Who hasn't started one project only to be distracted into moving along to another room? This often occurs when people discover something out of place in one space and then move that item where it belongs, only to find a new cleaning task at hand in that space. Inefficiency can make you give up on spring cleaning prematurely. Agree to address one room/task a day. Keep a basket or box handy to store errant items

until you move on to the next room. **Stock up on supplies** Prepare all of the cleaning supplies in advance. Put together a tool kit of sorts with the equipment you need, including mops, brooms, rags, cleansers, and the like. Organization can keep you on course.

Harness your strengths and weaknesses

Some people clean because they are stressed or angry, others do so to avoid other tasks. Keep personality in mind when establishing a cleaning schedule. For example, clean at night if you're a night owl, or wait until you are feeling antsy before embarking on a "calm down cleaning."

Tackle seasonal chores first

Some tasks need to get done to prepare for the spring and summer season. These may include cleaning the grill and sorting through outdoor furniture and decor. Spring cleaning may involve readying the pool for another year of use, or cleaning out rain gutters to prepare for spring storms. Tackle time-dependent tasks first and then move on to others that are less time-sensitive.

Spread out the work

Some people like to devote full weekends to spring cleaning, but that can be overwhelming for others. Breaking down cleaning tasks into 15- to 30-minute intervals each day can make the job more tolerable.

Spring cleaning season has arrived, and certain tips can make the job more efficient and manageable.

Story courtesy of Metro Creative Connection



FIRESIDE
STOVES • FIREPLACES • OUTDOOR COOKING
(989) 386-8960

Largest Grilling Selection in Central Michigan!



breeo
A SMOKELESS EXPERIENCE



Meadow Creek®
Cooker/Smoker



Big Green Egg
The Ultimate Cooking Experience™



GREEN MOUNTAIN GRILLS
WOOD FIRED PELLETT GRILL

Pellet Grill



Cajun Fryer
2 Basket - 4 Gallon
Cooker w Stand
Available 2.5, 4 & 6 Gallon In Stock

THE ORIGINAL
Cajun Fryer



Portage & Main
outdoor boilers
A boiler that deserves a second look!

 **Hours: M-F 8-5 • Sat. 9-2** 

8989 Tobacco Dr., Clare
Located 1/4 mile from Benchley's Amish Furniture
Division of Hershberger's Hardware



ICCU Isabella Community Credit Union



Not a Member?
Let's Change That!

Free checking? Check.

Mobile banking? Check.

Quick loan applications? Check.

Supporting local? Check.

Youth accounts? Check.

With ICCU, you can bank locally without sacrificing your financial needs. Whether you are searching for a place to start saving, build your credit, or apply for a loan there is a lot you can do with ICCU.

ICCUonline.com
(989) 773-5927



Get started with ICCU

Federally Insured by NCUA



We Sell Steel To The Public!

BILL'S CUSTOM FAB, INC.

www.billscustomfab.com • estimator@billscustomfab.com

**Check Out
Our 50% Off
Steel Drop
Rack**

- Decorative & Ornamental Steel
 - Railings & Gates
 - Structural Steel
- Equipment Repair
 - Hi-Definition Plasma Table
- Shear & Press Brake
 - Certified Welders
 - Portable Welding

Serving Central Michigan Since 1990

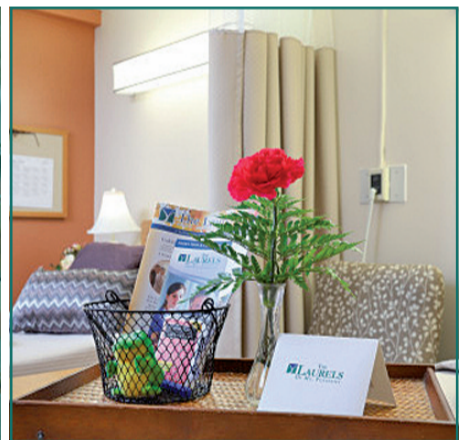
WE STOCK THE FOLLOWING

- Flat Bar
 - Square Bar
 - Round Bar
 - Angle Iron
 - Rectangle & Square Tube
- Pipe
 - Channel
 - Plate & Sheet
 - Aluminum
 - Stainless Steel
- Expanded Metal
 - Diamond Plate
 - Beams
 - Bar Grating



1836 Gover Parkway • Mt. Pleasant, MI 48858 • (989) 772-5817 • Fax (989) 773-7704

Quality Service & Compassionate Care



Rehab and Long Term Care available • Most Insurances Accepted
Specializing in complex medical care • Respite Care and Direct Admits accepted
Veterans Affairs contracts accepted

THE LAURELS OF MT. PLEASANT

A Skilled Nursing and Rehabilitation Center

STOP IN FOR A TOUR

400 S. Crapo, Mt Pleasant, MI 48858
989-773-5918 • www.laurelsofmountpleasant.com

Homegrown *in* Gratiot County...



by Gratiot County...

for Gratiot County...

Enjoy the sunny season with an RV loan from GraCo FCU!

Boats



Campers



Trailers



Motorcycles

UTVs

835 W Warwick Dr - Alma
989-463-1247
www.gracofcu.org
NMLS # 493685, 501216, 1588387

If you live, work, worship,
or attend school in Gratiot County,
you are eligible to join!

M, T, TH 9:00 - 5:30 / W 10:00 - 5:30
F 9:00 - 7:00 / S 9:00 - 12:00



CENTRAL MICHIGAN CARPET CLEANING

989-773-3130

Call the professionals at
Central Michigan Carpet Cleaning
today.

*Satisfaction
guaranteed.*

*3 Rooms of
Carpet*
\$169

Expires 4/30/23
Central Michigan Carpet Cleaning
989-773-3130

Sofa Cleaning
\$25 OFF
with Carpet Cleaning

Expires 4/30/23
Central Michigan Carpet Cleaning
989-773-3130

*Tile and Grout
Cleaning*
\$35 OFF
2 or more areas

Expires 4/30/23
Central Michigan Carpet Cleaning
989-773-3130



Steam Cleaning • Deodorizing
Shampooing • Stain Guard
Strip & Wax Tile Floors
Clean Ceramic Tile & Grout
Motor Homes!

Licensed & Insured

*24 Hour
Emergency
Water Damage
Restoration*

**WE BEAT ALL
COMPETITORS
PRICING!**

Fun and educational ways to celebrate Earth Day

Earth Day is an annual holiday that has been celebrated since 1970. Despite somewhat humble beginnings, much of the globe now celebrates Earth Day, which this year takes place on Saturday, April 22.

Earth Day has long drawn attention to issues affecting the planet and its climate. The effects of those issues have grown increasingly noticeable in recent years, which makes this Earth Day and all subsequent celebrations an ideal opportunity to celebrate the planet while learning about the many challenges it faces in the years to come. The following are some unique, fun and educational ways to celebrate the planet this April.

- Leave the car at home. Winter weather is a distant memory by late April in many places, making Earth Day an ideal time to travel by foot or by bicycle instead of by car. That's not only fun, but also a great opportunity to learn about carbon emissions. The United States Environmental Protection Agency reports that a typical passenger vehicle emits about 4.6 metric tons of carbon dioxide each year. Vehicles also emit a substantial amount of methane and nitrous oxide. This is why gas-powered vehicles are so often linked to climate change, much of which is driven by greenhouse gas emissions. A car-free Earth Day can be fun and serve as a catalyst for conversation about the effects of gas-powered vehicles on the health of the planet.

- Volunteer with a local environmental organization. Environmental organizations are committed to the ideals behind Earth Day all year long. However, each Earth Day many of these organizations spon-

sor eco-conscious efforts to help the planet and raise awareness about issues like climate change. Volunteering with a local beach or park clean-up or signing up to walk and raise money for a local environmental charity makes for a fun and educational way to spend your Earth Day.

- Get your hands dirty and plant. The National Forest Foundation notes that planting trees can have a profound and positive impact on the planet. According to the NFF, planting more trees helps forests to sequester carbon, which can have a significant effect on climate change. The NFF estimates that 100 mature trees can remove 50 metric tons of carbon dioxide equivalent and 430 pounds of pollution from the atmosphere. Even if you can't work with a local forestry organization to plant more trees in a nearby forest, planting native trees on your own property can help combat climate change.

- Involve children in your efforts to combat climate change. Today's adults likely won't be the ones forced to confront the more challenging consequences of climate change. Unfortunately, that cost is likely to be passed on to future generations. That makes this Earth Day a great time to involve kids more directly in efforts to combat climate change. Explain the significance of avoiding the car, volunteering or planting trees in terms that kids can understand, emphasizing that the future of the planet could very well be in their hands.

Earth Day takes on greater significance each year as the effects of climate change become more noticeable. This year the holiday can be celebrated in various ways that are both enjoyable and educational.

Have An Ugly Stump?



Our state of the art stump grinders can turn those ugly tree stumps to a pile of sawdust without damaging your yard.

Residential & Commercial • Insured
Senior/Veterans Discount
Free Estimates • Open 7 Days A Week
Credit Cards Accepted

Call, Text or Email Brad Beach, Owner

989-309-0105

bradsstumps@gmail.com



Serving Michigan
www.bradsstumps.com



H Husqvarna VIKING®

- 60 stitch functions /16 stitches
- Adjustable Stitch Length and Width
- Up to 5 mm Stitch Width
- Up to 4 mm Stitch length
- Snap-on Presser Feet
- Built-in handle for portability
- Adjustable Presser Foot Pressure
- Thread cutter
- One-step buttonhole
- Built-in Needle threader
- Built-in Ruler
- Sewing Guide Reference Chart
- Hard cover
- Drop feed
- Rotary Hook System
- Electronic
- Accessory kit with bobbins, screwdriver, seam ripper, set of needles and 8 presser feet and a quilting guide.

EMERALD™ 116



\$299

Alma Sewing Center

301 E. Superior, Alma, MI 48801
(989) 463-3200








SHOP WITH CONFIDENCE

We Look Forward to Seeing You!

There's a reason why Comfort Center Furniture has been serving this area since 1975—it's customer satisfaction. The moment you step into our store, our committed staff is ready to provide knowledgeable support. Our goal has been to deliver the best brands at the best possible price with outstanding friendly customer service. We will work with you to find something that fits your needs, budget and lifestyle.

The Finest FURNITURE for Every Room in Your House

Comfort & Quality



Living Room



Bedroom



Dining Room



Mattresses



Gaylord
2701 S. Otsego Ave.
I-75 Exit 279
(989) 732-6465

Prudenville
2462 S. Gladwin Rd.
(989) 366-3808

Grayling
6351 West M-72,
(989) 348-2961

www.comfortcentersfurniture.com

ALL STORES OPEN SUNDAYS!

Monday-Friday 9am-5pm, Saturday 9am-5pm, Sunday 11am-3pm

Simple landscaping strategies that can transform a home's exterior

The interior of a home may be where homeowners and their families spend the majority of their time, and there's no denying that a well-planned interior goes a long way toward making a house a home. However, the exterior of a home, including its landscaping, can serve as a source of pride and catch the eye of prospective buyers when the home hits the market.

It's easy to walk past a home with an eye-catching exterior and assume the homeowner has a green thumb or has spent lots of time and money working on the landscaping. Though that may be true, oftentimes it's the simplest strategies that make all the difference. Homeowners can keep these strategies in mind as they look to transform the exterior of their homes.

- Dress up the walkway. A longer

walkway can give guests a strong first impression of a home and won't break the bank. Create new planting beds and plant bright plants and flowers along each side of the walkway. If it's necessary and within budget, lengthen the walkway to create the feel of a more grandiose entryway.

- Make things more symmetrical. A messy landscape can give a poor first impression, even if the area features some beautiful plants. In such instances, a little effort to make things more symmetrical, with equal parts grass and vegetation, can create a cleaner, more inviting look.

- Mulch your flower and tree beds. Mulch is a relatively inexpensive but effective way to add aesthetic appeal to a landscape. Freshly mulched beds beneath trees and flowers creates a clean and or-

ganized look, and the mulch also serves a practical purpose, as it reduces weed growth and helps the soil retain moisture so plants stay healthy and look better throughout the warmer months when rainfall may not be steady or significant.

- Plant shade trees. Shade trees can be especially useful when selling a home. The shade provided by trees can shield grass from blistering summer sun, potentially helping it stay green. A lush green lawn appeals to buyers and gives the impression the home has been well maintained. In addition, shade trees can be used to create the look of a backyard oasis. A well-placed bench beneath a large shade tree can entice buyers who want a relaxing spot to enjoy warm summer days outdoors without getting a sunburn.

- Consider maintenance. The

more exotic an exterior landscape is, the more maintenance it's likely to require. Lawn and garden enthusiasts may not be turned off by landscape features that require steady maintenance, but homeowners who don't have much time for such work should keep things simple. A poorly maintained landscape, even if it includes exotic plants and elaborate designs, will adversely affect curb appeal. Another feather in the cap of low-maintenance landscape features is they could prove more appealing to prospective buyers, who may view elaborate, exotic landscaping as a lot of extra work they won't want to do.

Some simple landscaping strategies can help homeowners transform their home exteriors without requiring a significant investment of time or money.



"WARD'S"
FLEXSTEEL
SPRING GALLERY SALE
NOW thru APRIL FIRST
SAVE ON SELECT FLEXSTEEL PRODUCTS

The Frank E. Ward Co.
"WARD'S"
120 W. Cedar St. • Gladwin
989-426-9421

Choose from Our Large In-Stock Selection of:
Sofas, Loveseats, Sectionals, Sleep Sofas, Chairs, Swivel Gliders, End Tables, Coffee Tables & Bedroom Reclining Sofas, Loveseats, Console Loveseats and Sectionals, Recliner Chairs in Wall Savers, Rockers and Swivel Gliders.
All in POWER or MANUAL!
Or Special Order the Exact Style and Color You Want!

Since 1935 offering Fine Quality Furniture & Gifts from Four Generations of Family
Open Tue-Sat 10am to 5pm
Call for Monday Appointments
DELIVERY AVAILABLE

Snap Finance
Special Cash or Check Pricing



COMPLEX SPINE SURGERY MADE SIMPLE

- Quicker Recovery • 24 Hour Hospital Stay
- Minimally Invasive • Innovative Technology

NEW LOCATION
in Mt. Pleasant 600
W. Pickard St.

Meet The Doctor.....



Timothy Spencer, DO, is a minimally invasive spine surgeon at Greater Michigan Spine & Neurosurgery. At the practice in Battle Creek, Michigan, Dr. Spencer specializes in minimally invasive spine surgery for complex spinal surgeries, malformations, tumors, dislocations, and other spine-related conditions. Dr. Spencer graduated with his Bachelor of Arts in biological sciences and mathematics, under the pre-medicine track from Western Colorado University in Gunnison. He then earned his Doctor of Osteopathy from the A.T. Still University Kirksville College of Osteopathic Medicine in Missouri before completing his residency in neurosurgery at Ohio University in Athens. He completed his fellowship in neurovascular and skull base surgery with the Neurosurgical Foundation in Illinois.

Upon completing his education, Dr. Spencer worked as a neurosurgeon at Brooke Army Medical Center, the United States Army's premier medical institution in San Antonio, Texas. While there, he focused on minimally invasive spine surgery, neurosurgery, trauma surgery, spine surgery research, and neurosurgical and spine surgery product development. He then relocated to Michigan, working at Sheridan Community Hospital before establishing Greater Michigan Spine & Neurosurgical Institute in 2006. In 2019, he opened Greater Michigan Spine & Neurosurgery.

At Greater Michigan Spine & Neurosurgery, Dr. Spencer and the team offer minimally invasive techniques, laser, and regenerative medicine treatments for back pain, neck pain, sciatica, spinal stenosis, and herniated discs. The team takes a conservative approach to care and turns to surgery as a last resort. If surgery is needed, Dr. Spencer is experienced in minimally invasive procedures and focuses on shorter hospital stays so patients can return to work quicker.

Dr. Spencer is a member of the North American Spine Society and the Society of Minimally Invasive Spine Surgery. He is currently a neurosurgeon at Oaklawn Hospital in Marshall, Michigan.

Outside of work, Dr. Spencer enjoys coaching hockey and soccer.

Phone (989) 214-2166 • Fax (989) 214-2163
600 W. Pickard St. • Mount Pleasant, MI
Web: MichiganNeuroSpine.com

Fun activities to enjoy this spring

With its increased sunshine and warmer temperatures, spring is a beloved time of year. For those who live in areas where the weather changes dramatically throughout the year, spring can be a respite from the snow and also a chance to enjoy the outdoors prior to the arrival of the muggy, hot days of summer.

Families can create a bucket list of entertaining and perhaps educational spring activities. Those who want to try something new can explore these ideas.

• **Check out a cherry blossom showcase.** Cherry trees are popular and beautiful trees that flower in the spring. Their masses of pink and white blossoms are one of the first signals that winter has ended. Cherry tree varieties bloom over the course of several weeks, and climate will dictate how early or late these trees will showcase their spectacular flowers. Visit public gardens and

other areas known for their dramatic cherry blossom displays.

• **Watch a sunrise or sunset.** Take advantage of longer days by enjoying nature's light show. Wake up extra early and start the day with the sunrise. If you're not a morning person, then wait until the last of the amber and red streaks light the sky and watch the sun drop below the horizon.

• **Fly a kite.** There is a reason why the adage "March goes in like a lion and comes out like a lamb" is so fitting. Early spring weather can be gusty and unpredictable. Take advantage of windy conditions by flying a kite by the coast or in an open field.

• **Head to a farm.** Spring is not only about the rebirth of trees and flowers, but also a prime time for various animals to give birth to their young. A visit to an area farm or petting zoo can be a great way to catch a

glimpse of some of these adorable little as they enter and adapt to their new environments.

• **Check out a small town.** Take a road trip to an out-of-the-way hamlet. Spend the entire day there shopping, dining and supporting a small town community.

• **Enjoy al fresco dining.** While outdoor dining during the pandemic may have been done as a necessity, do not forget how it also can be a relaxing way to enjoy a meal. Find a

restaurant with a particularly scenic backdrop and dine outdoors.

• **Visit a thrift shop or flea market.** Spring cleaning can serve as the catalyst for people to put items on sale. One person's trash is another person's treasure. Spring can be a great time to shop for antiques as well.

• **Go horseback riding.** Enjoy the scenery on the back of a majestic mare or spectacular stallion.

Spring is a perfect season to enjoy various activities.



**Glass Repair • New Construction Windows
Replacement Windows • Doors
Contractor Pricing Available**



NEW LOCATION
200 W. Main St., Farwell, MI 48622
www.greatwaywindow.com
989-433-2282

Now Open At Our
NEW LOCATION

6060 E. Beaverton Rd.

COMPLETE LINE OF NON GMO
FEEDS & MINERAL SUPPLEMENTS FOR LIVESTOCK



HARMONIZING WITH NATURE

**CREATING HEALTH
AND PERFORMANCE NATURALLY,
ONE ANIMAL AT A TIME**

NATURAL WAY MINERALS

6060 E. BEAVERTON RD. • CLARE

989-386-3664

HOURS: MON, TUES, WED, FRI 8-5, SAT 8-NOON



COMPLEX SPINE SURGERY MADE SIMPLE

- Quicker Recovery
- Minimally Invasive
- 24 Hour Hospital Stay
- Innovative Technology

Timothy E. Spencer, D.O.

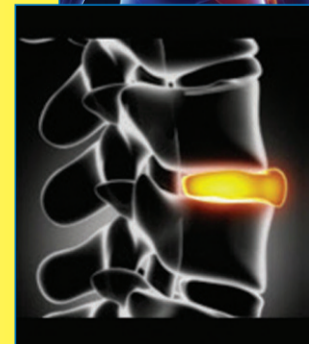
- Board Certified Neurosurgeon
- Doctor of Osteopathic Medicine, Kirksville College of Osteopathic Medicine, MO
- Fellowship in Neurovascular/Skull Base Surgery Neurosurgical Foundation, IL
- Chief of Neurosurgery, Brooke Army Medical Center, TX
- Neurological Surgery Residency, Ohio University

Why Dr. Spencer?

- Specializes and Focused on Minimally Invasive Spine Surgery
- Patients return to normal activities faster
- 99% of MIS patients only stay in the hospital for 24 hours or less
- Patients can be seen quickly
- Accepts most insurance plans
- Only surgeon in the area performing mostly MIS surgeries
- Comprehensive approach to treating spinal pathology
- Large town treatment with a hometown feel

Services Offered:

General Neurosurgical Care: Complex Spinal Surgery, Malformations, Tumors, Dislocations, Fractures, Degenerative Conditions, etc.
A comprehensive approach to surgical treatment - from minimally to maximally invasive.
Regenerative Medicine



The guiding philosophy is to always reserve invasive procedures as a last resort, but when they become necessary, to apply the procedure that is most suited for that patient's specific problem in order to enhance outcome.

Call for an appointment. Accepting New Patients and most Insurance plans

Phone (989) 214-2166 • Fax (989) 214-2163

600 W. Pickard St., Mount Pleasant, MI

Web: MichiganNeuroSpine.com

How to protect your car from sun damage

People know to protect their skin and eyes from the sun. Sun exposure can be dangerous for the body, but the sun's rays also can damage automobiles.

Leaving a vehicle exposed to sunlight for extended periods of time increases the risk of damage to its interior and exterior. It's important that car and truck owners recognize this so they can mitigate the potential problems sun and heat may cause. Testing conducted at the State Farm® Vehicle Research Facility found interior vehicle air temperatures have been recorded well in excess of 145 F. Interior surfaces exposed to direct sunlight have been recorded at temperatures in excess of 195 F.

The automotive repair service Fix Auto says the sun's ultraviolet rays can cause the vehicle's paint to peel and fade over time. UV rays break down the molecules in the paint and

make it appear dull. The company says red paint is particularly susceptible because red paint molecules deteriorate faster in the sun than other paint colors.

To prevent potential sun-related damage, take these precautions.

- Avoid direct sunlight. Park in the shade as much as possible.
- Crack a window. If it is safe to do so, lower interior air temperature and equalize air pressure by opening up car windows a little.
- Use a windshield protector. Reflect sunlight away and keep the vehicle cool with a windshield sun protector that unfolds and slides into place.
- Use a protectant wax. A layer of wax can offer another layer of protection against the sun's ultraviolet rays.
- Wash the car frequently. Washing and hand-drying the vehicle helps to remove dirt and other debris which can cause micro-scratches in the paint.

• Install seat covers. Seat covers can protect leather and fabric upholstery. A leather conditioner can help prevent cracks and tears from sunlight and heat.

These easy steps are simple preventative measures that protect vehicles against sun damage.



Chad Malley Well Drilling

Residential - Commercial - Environmental - Industrial - Farm



**New 5" PVC Water Wells
Complete Service & Repair
Submersible & Jet Pumps
Pressure Tanks
Well Chlorination & Abandonment
Geothermal Heating & Cooling
Water Filters & Conditioners**

**Irrigation Wells
Cathodic & Corrosion Protection
Monitoring Wells
Excavating
Basements & Crawl Spaces
Septic & Drainfields
Directional Drilling**

LICENSED & INSURED

989-433-5498

2626 E. Weidman Rd - Rosebush, MI 48878

www.ChadMalleyWellDrilling.com



OLSON TIRE SERVICE

**FREE
INSPECTIONS AND
ALIGNMENT CHECKS**



We
PRICE MATCH
Tires!

Honored with the
**PEOPLE'S CHOICE
AWARD FOR 18 YEARS!**



704 E. Pickard St., Mt. Pleasant, MI

989-773-7978

M-F: 8:00 a.m. - 6:00 p.m.

Sat - Sun: Closed

Road trip safety tips

Road trips are great ways to get away from home and see the country. Such excursions enable travelers to get up close and personal with various attractions and afford them a chance to travel at their own pace.

No matter where the road may take you, safety should always be a priority. The home and travel safety resource Safewise reports that car accidents are the No. 1 cause of death in America among people between the ages of one and 54. The Canadian Transportation Safety Board estimates that there are 160,000 car accidents each year in Canada.

When planning your next road trip, these tips can ensure everyone stays safe.

Plan where to get gas

Even the most fuel-efficient vehicle will need to be filled up during long road trips. To ensure you're not running on "E" with no fuel station on the horizon, plan in advance where you will take breaks to get gas. Try not to run under one-quarter tank of gas, and coordinate gas stops with opportunities to recharge and visit restrooms.

Stock the car

Breakdowns happen, even with well-maintained vehicles. Stock an emergency roadside kit and keep it in the car at all times. Kits should include:

- Mobile phone and charger
- Flashlight
- First aid kit
- Jumper cables
- Jack and tire-changing tools
- Flares
- Water and nonperishable foods
- Paper maps
- Emergency blankets, towels and changes of clothes

Keep the number of a roadside service, and phone num-

bers for emergency contacts in the glove compartment just in case cell phone service is spotty.

Take frequent breaks

Driving while tired is just as dangerous as driving while intoxicated. According to the Centers for Disease Control and Prevention, after being awake for 18 hours, the human body functions like someone with a blood alcohol content of 0.05 percent. After being awake for 24 hours, it's equal to 0.10 percent, or the equivalent of a 160 pound man drinking five beers in an hour.

Don't wait to feel tired to pull over. Make frequent stops or switch drivers to give everyone breaks.

Keep weather in mind

Let the season and the forecast dictate your route. Ensure windshield wipers are working and blades are effective. Consult weather forecasts to determine if thunderstorms will be in the area or if it will be especially windy. Never drive through flooded roadways.

Don't forget masks and sanitizer

Traveling during the era of COVID-19 requires taking extra precautions. Wear masks and sanitize your hands during bathroom breaks and rest stop visits.

Road trips are an exciting way to travel. Safety should be part of the planning process.



VALET AUTO CARE, INC.

Serving Central Michigan since 1983

- Truck Toppers and Accessories
- Vehicle Detailing
- Ceramic Coating
- Rustproofing
- Paintless Dent Repair



(989) 773-3477

610 N. Mission St., Mount Pleasant
valetauto.com • sales@valetauto.com

SPRING FLING SALES EVENT

at West Branch Furniture

Kennedy sofa
2 colors available



\$499

End Tables with USB Ports
Multiple finishes available



\$119

Ashley Power Chair



\$499

Ashley reclining Sofa
*Your choice of colors



\$799

2-Piece Sectional



\$1199

Antler Lamp



\$89

58" TV Console



\$199

Sofa with Reversible Chaise
*2 colors to choose from



\$649

Rustic Room Size Rugs
*your choice of designs



\$119

Recliners



Starting at \$299

Holland House Oak Glider Rocker



\$329



Queen Size Eurotop Mattress Set

\$399

WEST BRANCH Firm or Eurotop

TWIN MATTRESS\$319⁰⁰ QUEEN MATTRESS ..\$399⁰⁰
FULL MATTRESS\$379⁰⁰ KING MATTRESS\$599⁰⁰

Classic Firm or Plush

TWIN MATTRESS\$369⁰⁰ QUEEN MATTRESS ..\$479⁰⁰
FULL MATTRESS\$449⁰⁰ KING MATTRESS\$659⁰⁰

Level 5 Firm or Eurotop

TWIN MATTRESS\$419⁰⁰ QUEEN MATTRESS ..\$549⁰⁰
FULL MATTRESS\$499⁰⁰ KING MATTRESS\$749⁰⁰

Level 9 Extra Firm or Plush

TWIN MATTRESS\$629⁰⁰ QUEEN MATTRESS ..\$799⁰⁰
FULL MATTRESS\$749⁰⁰ KING MATTRESS ..\$1,099⁰⁰

ASK ABOUT OUR INTEREST FREE FINANCING PLANS

FREE 90-DAY LAYAWAY PLAN AVAILABLE

NO CREDIT NEEDED... \$0.00 DOWN TAKE IT HOME TODAY!



"The Outlet Store That Saves You More!"

136 S. Fifth St.

located one block south of Mercantile Bank off Houghton Ave. • 989-345-5326
Sunday 11-3 • Mon.-Fri. 10-6 • Sat. 10-5 • WEST BRANCH DOWNTOWN STORAGE



The basics of fertilizing a lawn

Spring marks the return of lawn and garden season. Lawns often bear the brunt of winter's wrath, so spring is a great time to nurse them back to health, and fertilizing can be an essential component of that process.

Fertilizing a lawn can be intimidating. An array of fertilizers, with each seemingly designed to address a different issue, can make homeowners' heads spin when visiting their local lawn and garden center. However, fertilizing is a very simple task that any homeowner can tackle. In fact, fears about fertilizing are often unfounded and can be overcome with some basic knowledge of the process.

- Identify which type of grass is in the yard. The home improvement experts at HGTV note that turf-grass is divided into two categories: cool-season grass and warm-season grass. A local lawn and garden center can help homeowners identify which type of grass is in the yard, and this often depends on location. Fescue, bluegrass and perennial ryegrass are some examples of cool-season grasses, while Bermuda, bahia, St. Augustine, and zoysia are considered warm-season grasses. Identifying which type of grass is in the lawn is important because that will indicate when to fertilize. Cool-season grasses are typically best fertilized in early spring, while warm-season lawns can benefit from an application just before especially warm temperatures arrive.

- Survey the lawn to identify which spreader to use. A small yard or a thriving lawn with only a few bald or unsightly patches may not need a full application of fertilizer. In such instances, a

hand spreader can suffice. For larger lawns and areas, a broadcast spreader is the ideal option. Spreaders have multiple settings, and the fertilizer package will indicate which setting to utilize when using the product.

- Test the soil prior to purchasing fertilizer. The lawn experts at Pennington® note that a simple soil test can reveal soil pH and phosphorous and potassium levels. Soil tests can be purchased at most home improvement stores and lawn and garden centers, and they can help homeowners determine which fertilizer will most benefit their lawns.

- Water the lawn prior to fertilizing. The experts at Scotts® recommend a good watering a few days prior to fertilizing a lawn. Such an approach ensures the soil is ready to accept the fertilizer once it's applied.

- Follow the instructions carefully. Detailed instructions are typically provided on fertilizer product packaging. Once homeowners have identified and purchased the product they need, they can simply follow the instructions on the packaging, including how and when to water after application, which can make fertilizing less intimidating.

Fertilizing in spring can help a lawn recover from the previous summer and winter, ensuring it's lush and green when summer entertaining season arrives.





GATEWAY STRUCTURES LLC
SPECIALIZING IN METAL CLAD STORAGE SHEDS

RENT TO OWN

90 Days Same as Cash



CHECK OUT OUR SELECTION OF NEW BUILDINGS ON THE LOT - READY TO GO!

 <p>10X14 HI BARN 6X7 ROLL UP DOOR. RENT TO OWN \$239.24</p>	 <p>12X24 GABLE 8X7 ROLL UP DOOR, 1 SERVICE DOOR, WAINSCOTING. RENT TO OWN \$392.39</p>	 <p>12X18 GABLE 8X7 ROLL UP DOOR, 1 ENTRY DOOR. RENT TO OWN TO \$317.75</p>
 <p>12X16 GABLE DOUBLE DOORS, 2 WINDOWS, TRANSOM WINDOW. RENT TO OWN TO \$288.80</p>	 <p>14X28 GARAGE 9X7 CARRIAGE HOUSE DOOR, 3 WINDOWS, SERVICE DOOR. RENT TO OWN TO \$548.16</p>	 <p>12X16 GABLE 8X7 ROLL UP DOOR, SERVICE DOOR. RENT TO OWN TO \$299.35</p>
 <p>10X12 CLASSIC 6X7 ROLL UP DOOR. RENT TO OWN \$178.88</p>	 <p>12X24 CLASSIC 8X7 ROLL UP DOOR, CLEAR RIDGE CAP, SERVICE DOOR. RENT TO OWN \$295.48</p>	 <p>12X16 HIGH BARN 7X7 ROLL UP DOOR. RENT TO OWN PRICE TO \$280.95</p>
 <p>14X24 LOFTED CABIN 3 WINDOWS. RENT TO OWN \$594.53</p>	 <p>12X20 CLASSIC 8X7 ROLL UP DOOR, CLEAR RIDGE CAP. RENT TO OWN \$273.83</p>	 <p>12X20 GABLE 8X7 ROLL UP DOOR, 1 SERVICE DOOR. RENT TO OWN TO \$338.61</p>

BUILDINGS DELIVERED STATEWIDE FREE DELIVERY WITHIN 70 MILES

40 YEAR PAINTED STEEL

Multiple Colors & Custom Sizes • Built to Order
3624 East Dover Rd. • Clare, MI • 989-802-8000
 Located 3 miles North of Clare • Hours: Mon.-Fri. 8-5 and Sat. 10-2
BRINGING YOU QUALITY STRUCTURES AT AFFORDABLE PRICES

ARE YOU NEEDING SOMETHING TO MATCH YOUR EXISTING HOME OR BUSINESS? STOP BY OUR OFFICE OR GIVE US A CALL!



AT NEEDHAM'S HOME CENTER

We May Look Foolish, but We are not Fools!

And this ad is NO APRIL FOOLS JOKE!!

FOR ALL OF APRIL,
 Save 30 % off every carpet and vinyl Remnant
 And, over 30 ordered carpet styles are
ON SALE for this event!

These are Hand Picked styles from MOHAWK, Shaw, and DreamWeaver.

Lastly, save **10%** off any pad, when you purchase equal amount of pad with your on sale carpet order.

Or save **30%** off your pad, when you purchase any regular priced carpet.

All this for just the **30 DAYS** of **APRIL**,
and only at

Gratiot County's Favorite floor store for 23 straight years



Where you'll always find a real floor for your real life! • Since 1977

945 W. Monroe Road (M-46), St. Louis, MI 48880
 Phone (989) 681-5393
 www.needhamshomecenter.net

Trusted Member since 2013





BISHOP
BUICK - GMC, INC.
CLARE, MICHIGAN



www.bishopbuickgmc.com
(989) 386-9900

Investing in the children of our community one backpack at a time!



Left:
Alicyn Johnson,
Bonnie Rae
Walter, Lisa Poet

Right:
Shane Gentle - General
Manager Bishop Buick,
Rebecca Cook,
Becky Murphy &
Julia Shilling



PASQUALI LAW OFFICES

Mid-Michigan's source for elder law, trust, and estate services



Our team at Pasquali Law Offices is looking forward to warmer temperatures and getting outside and enjoying everything Michigan has to offer. You can rely on our team to handle all of your planning needs so you can spend more time doing the things you love. Whether it is tailoring an estate plan unique to your family, assisting with administrative duties following the death of a loved one, protecting your savings from the cost of long term care, or protecting our most vulnerable disabled adults and children, trust that you can rely on us to navigate through life's most difficult times. Our firm focuses exclusively on the issues each family experiences as they grow, mature, and age, and has the experience and expertise to achieve your goals. If you are going through challenging times, don't hesitate to count on Pasquali Law Offices to be in your corner.

- ◆ **Wills & Trusts**
- ◆ **Disability & Special Needs Planning**
- ◆ **Probate/Trust Administration**
- ◆ **Medicaid Planning**
- ◆ **Long Term Care**
- ◆ **Powers of Attorney**
- ◆ **Nursing Home Planning**
- ◆ **Retirement Wealth Preservation**
- ◆ **Special Needs Trusts**
- ◆ **Guardianships & Conservatorships**

*Attorney Mark R. Pasquali
Attorney Cody Black*



OFFICE #1

405 S. Mission St, Ste. E,
Mt. Pleasant, MI

OFFICE #2

7062 9 Mile Rd., Ste. D
Mecosta, MI

CONTACT

(989) 400-4646
www.pasquali.law