



IMPACT

Postal Customer Local
PRSR
STD
US Postage Paid
IMPACT
ECRWSS



Skeet shooters join Uncle Si to raise money for children...page 12

LRMA Spring Break Festival photospage 14

Laurel • 601.649.1129 Volume 40, No. 11 • March 16, 2016
www.impact360.ms 45,684 total circulation
Serving Jones, Jasper, Smith, Wayne and Washington & Choctaw County, AL #1 in Advertising

Laurel wins 5A title in dominant 71-47 victory over Wayne County

By Zac Chamblee

Led by Dontario Drummond's 23 points, the Laurel Golden Tornadoes captured the 5A Championship Friday night, dominating rival Wayne County 71-47.

In previous seasons, the Golden Tornadoes (27-5) were held back in the playoffs, primarily by Malik Newman's Callaway Chargers.

This year was different though, not just because Newman graduated and Callaway moved up to 6A.

This Laurel team was truly a team of destiny. "It was just a great, great team victory," Laurel head coach Marcus Price said after the game. "We were a team of destiny, and it was just our time. I feel very blessed and humble. And like I said, all things are possible through our lord Jesus Christ. Without him, nothings possible. But through him, all things are possible."

Price dedicated the win and championship in part to his mother, who passed away from colon cancer nine years ago. The third-year Laurel coach kept one of her scarves on him during the game.

See CHAMPIONSHIP, page 2



The Golden Tornadoes celebrate after capturing the championship. Photos/Zac Chamblee



10% OFF \$15 & Under
with coupon • Exp. 4/30/16

15% OFF Over \$20
with coupon • Exp. 4/30/16
not good with any other coupons or discounts

310 S. 16th Ave. Laurel
601-651-2259

OPEN 24 HOURS



coupon

\$349 KABOB plus tax **make it a Kombo for \$6.99*

OR

\$449 SHRIMP POBOY plus tax **make it a Kombo for \$7.49*

Open Monday-Friday 10-8 p.m.
Limit 2 each per coupon. Expires 4-15-16
www.karocksfood.com

814 Highway 11 South, Next to JCJC Ellisville, MS • 601-477-9956

EAGLE CARPORTS & BUILDINGS



GARAGES STARTING AT \$2,215

HORSEBARNS STARTING AT \$5,070

MANY OPTIONS, PLANS AND SIZES AVAILABLE • FINANCING AVAILABLE *WAC
CALL JOHN 601-323-0464

WWW.ELLISVILLEMOTORS.COM • 303 HWY. 11 S. ELLISVILLE, MS • LOCATED BETWEEN PIZZA HUT & JCJC

The Laurel Gun Show

AT THE **MAGNOLIA CENTER**

Mar. 19th • 9 AM - 5 PM / Mar. 20th • 10 AM - 5 PM

Laurel Fairgrounds • 1457 Ellisville Blvd. Laurel, MS • Exit 93, I-59

BUY • SELL • TRADE

NO FLEA MARKET ITEMS

for more information contact:
David Chancellor 601.498.4235
BIGPOPFIREWORKS@GMAIL.COM
PRESENTED BY: BIGPOPGUNSHOWS.COM

HOURLY DOOR PRIZES / FREE PARKING / CONCESSIONS AVAILABLE
GRAND DOOR PRIZE AT 4:00 P.M. SAT. & SUN., 10/22 RIFLE
MUST BE PRESENT TO WIN

Admission \$7 • Kids 6-11-\$1 • Kids 5 & under FREE

EXHIBITS INCLUDE:
GUNS, MILITARY, HUNTING & KNIVES
• GUN ENTHUSIASTS • DEALERS • COLLECTORS

All Federal, State and Local Laws Must be Observed
Tie downs required and no loose ammo. **NO LOADED GUNS**

Clip this coupon for
\$1.00 Off ADULT ADMISSION
Limit One Coupon Per Person (Not Valid With Other Offers)



HOWARD JOHNSON PROPERTIES, LLC

www.hojopro.com
1525 Parker Drive • Laurel, MS 39440
O: 601-649-2356 C: 601-573-8686
E: jjohn55607@gmail.com

JIM JOHNSON - REALTOR
24/7/365

Professionalism in Real Estate Services

South Ridge Family Clinic

Hometown Healthcare with a Human Touch



Marlane P Hedgepeth, FNP Jenna Cole, FNP

Monday - Friday 8 a.m. - 5 p.m.
Same Day Appointments or Walk-ins accepted

Most Insurances Accepted • Commercial • Medicare • Medicaid

80 Hal Crocker Road Ellisville **601-477-2221**

Wilks Insurance Agency

INVEST YOUR TAX REFUND IN SECURITY!

CALL FOR A FREE QUOTE!

HOME • AUTO • FARM
MOBILE HOMES • ATVS
• CAMPERS • BOATS

Hwy. 11 South • Laurel, MS • 601-426-3350

Come Fill Your Basket This Spring

Get \$500 for as low as \$96⁹¹* for 6 months
*subject to credit approval



JONES COUNTY FINANCE

607 Choctaw St. • Laurel
Next to Sawmill Square Mall
MONDAY - FRIDAY 8:30 - 5:30

601-649-1944

CHAMPIONSHIP, continued from page 1

Classified Index

Apartments for Rent	10
Appliances	5
Attorneys	3
ATVs	11
Auto Parts	10
Autos - Cars	10
Auto Services	10
Autos - SUVs	10
Autos - Trucks	11
Boats	11
Buildings	8
Campers	7
Carports	11
Commercial	8
Estate Sale	7
Farm	3
Fish	7
Furniture	5
Garage Sales	7
General	3
Handyman	5
Help Wanted	8
Houses for Rent	10
Houses for Sale	10
Land	3
Massage	5
Mobile Home for Rent	9
Mobile Home Lots	10
Mobile Homes	8
Musical	7
Pets	5
Portable Buildings	8
Services Offered	6
Tanning Beds	5
Timber and Lumber	5
Vacation	5
Wanted to Buy	5



THANK YOU

To the voters of Beat 3, I want to say thank you for the humbling vote of support that you gave me on November 3rd in the General Election. I believe that working together, we will continue to make BEAT 3 A GREAT PLACE TO LIVE!

Barry Saul

I SINCERELY AND HUMBLY THANK YOU FOR YOUR VOTE.

BARRY SAUL

SUPERVISOR BEAT 3

Paid for by Barry Saul

“My mother died of colon cancer nine years ago. That was the reason why I moved back home and the reason why I ultimately became the head coach at Laurel High School,” Price said.

The game would be close for about one quarter. At the end of one, Wayne County held a 14-11 lead. No one could have predicted what happened next, except maybe Price.

The Golden Tornadoes put together a 45-15 scoring run in the second and third quarter. Wayne County put together a better fourth, but it would be to no avail.

“My guys stayed the course,” Price said. “The funny part is my daily devotion today was about not giving up, staying the course and being disciplined by your father. We’ve had a lot of discipline through my individual players, and it all payed off tonight.”

As previously mentioned, Dontario Drummond led the way for Laurel with a game-high 23 points. Drummond, also a star wide receiver on the football team, is only a junior and quickly becoming the face of Laurel athletics.

“Dontario Drummond is a machine,” Price said. “He’s probably going to be an NFL wide receiver, but he is a machine. He can play anything with a ball. Basketball, baseball and football. He actually has a 85+ mph fastball in baseball. He can do anything with a ball, and he’s just an incredible talent.”

The Golden Tornadoes also got consistent scoring from JeVah Jones (14 points), Charles Winston (12 points) and Troymain Crosby (10 points) on the night.

Quentin Pough (10 points) and William Gaines (9 points) were the leading scorers for Wayne County, who finish with an overall record of 22-10.



DIXIE TRACTOR

SALES & SERVICE

SPRING OPEN HOUSE

March 21st through March 25th

HUGE DISCOUNTS ON ALL MAKES AND MODELS

Thursday, March 24th

Scag Rep will be here along with

with

Mahindra and Gravely

THURSDAY ONLY

Hot Dogs

COCKTAILS

BIG TEX TRAILERS

ECHO

RedMax

SCAG POWER EQUIPMENT

GRAVELLY

shindaiwa

246 E. Hickory Street • Exit 96B • Hwy 15 South • Laurel

next door to Old South Farm Supply

601-649-7470

www.dixietractor.com

99 YEARS OF THE BEST CASH DEALS!

LOTT

Celebrating 99 Years

FURNITURE CO.

Complete Home Furnishers Since 1917

601-428-5782

320 Front St. Downtown Laurel

f FACEBOOK.COM/LOTTFURNITURE

COOK AVENUE APARTMENTS

Now Accepting Application for Low Income Apartments for Persons 50 Years or Older Disabled or Handicapped

•Central Heat & Air •Stove •Refridgerator

For More Information Call 649-4204 Office Located 415 Sorrell Dr., Laurel, MS Hours: 8 a.m. • 5 p.m., Mon. - Fri.

Quality Aluminum Fencing & Automated Security Systems

Commercial & Residential Many Styles

TONY THORNSBERRY

601.577.0927

CLARKE - WAYNE Tax Service

“THE TAX EXPERTS”

Serving This Area for Over 53 Years

1600 East Azalea Dr. • Waynesboro

JENNIFER RABOURN ANGI TYNES

OFFICE 601-735-4211

FAX 601-735-4410

IMPACT

#1 in Advertising

Ronnie Buckley Publisher
Ryan Griffin Manager
Jerry Clark Circulation Supervisor
Bob Barger National Sales Consultant
Betty Busby Laurel Sales Representative
Kim Willbanks Laurel Sales Representative
Jennifer Clark Graphic Production Manager
Trish Irwin Graphic Artist
Terica Roberson Graphic Artist
Cortney Hodge Graphic Artist
Russ Farris Graphic Artist
Megan McMullan Administrative Assistant
Linda Cranford Writer/Photographer

WHILE THE IMPACT makes every effort to verify the offerings made in these ads, we cannot guarantee the integrity of every advertiser. We strongly recommend that readers investigate the companies involved before sending them any money.

Classified and ROP Ad Deadline

Sunday Edition - Wednesday at 12:00 Noon

Wednesday Edition - Friday at 12:00 Noon

IMPACT

1010 N. 16th Ave
Laurel, MS 39441
Ph. 601.649.1129
Fax: 601.649.0424
Email:
production@laurelimpact.com
admin@laurelimpact.com



**KITH
BEDROOM GROUP**
•Queen Bed With LED Lights
•Night Stand •Dresser & Mirror

REG. \$899
SALE \$699

SPRING SAVINGS
Going On Now!

Alexander's
FURNITURE
BAY SPRINGS
601-764-2161

GENERAL

Reduced! Hot Springs Hot Tub Model Prodigy 2013. Cradle top, steps, 5 person. Like new, hardly used. \$3800. 601-649-5957.

Flagpole Super Sale: Get Our 24ft Tall Liberty Deluxe Double Flyer. Reg. \$299. Now \$199. American Flagpole Company: 601-649-0748

Train Like a Pro with NFL veteran Jeff Posey. Boys and girls 8 and up. Cardio. Fitness. Speed. Agility, 601-620-7363.

Pink Nintendo 3DS hardly used with 15 games. \$150. 601-735-8996.

Need Prayer? Sick? Depressed? Financial Problems? (21) I tell you the truth, if you have faith and do not doubt. (22) If you believe, you will receive whatever you ask for in prayer. Matthew 21:21-22. Call us anytime free of charge. 24/7. We are here for you. Elder McDaniel. Amazing Grace Prayer Ministries: 662-207-2936

FLAGPOLES!
\$199 Installed
601-649-0748

Holly's Party Jumps: Inflatable bouncers, combo's, slides, tents, tables/chairs, snowcones, cotton candy machines, dunk tanks. We deliver, set-up & pick-up. book online, now accepting credit/debit cards, Call 601-763-8851. www.hollyspartyjumps.com.

Lawncare: Serving Hattiesburg, Lumberton, Laurel, Sumrall, Petal, Brooklyn, Ellisville, Purvis and Moselle areas. Reasonable rates. 601-325-5008. www.fullservicelawnca-rems.com

Fertilizer for Pecan Trees for sale. Must come to Donald Bryant Farms to pick up, 56 Donald Bryant Road, Moselle, MS. Call Donald for prices. 601-545-2215 or 601-402-1370.

Mausoleum space for two. Marker and opening and closing included. Forest Memorial Garden, Centerville Road, Petal. \$3000. 601-735-7884.

Divorce, Criminal Defense, Death Claims, Personal Injury, Bankruptcy, DUI Defense, Offshore, 18 wheeler accidents. Call for your consultation today. Jones Law Office. 2219 Columbia Avenue, Prentiss, MS. 601-582-9177

Automobile accidents, bankruptcy, divorce, off-shore boat accidents, 18-wheeler accidents, criminal defense and more. For all your legal needs, contact a professional. Jones Law Firm 601-582-9177. Let me know you saw my ad in IMPACT.

Laurel gun show presented by Big Pop Gun Shows will be March 19 & 20, Saturday 9am-5pm and Sunday 10am-4pm, at the Laurel Fairgrounds, I-59 exit 93. Hourly door prizes/free parking/concessions available. Grand Prize drawing at 4:00p.m. both days (Ruger 10/22 Rifle). Admission: Adults \$7, Children 6-11 \$1. Clip this add for \$1 off admission, not valid with other discount. For more information visit www.bigpopgunshows.com or like us on facebook Big Pop Gun Shows.

ATTORNEYS

Divorce, personal injury, custody, DUI, adoption, will disputes, Worker's Comp, wrongful termination, land & property disputes. Call Sam Creel 601-498-8968.

No Fault Divorce \$500. Law Offices in Hattiesburg, Laurel & Prentiss. Court cost not included. Call for your appointment today. 601-582-9177.

Automobile accidents, bankruptcy, divorce, off-shore boat accidents, 18-wheeler accidents, criminal defense and more. For all your legal needs, contact a professional. Jones Law Firm 601-582-9177. Let me know you saw my ad in IMPACT.

FARM

Chapman Tractor Company: 1510 Azalea Drive, Waynesboro. Phone 1-800-816-2826. Massey Ferguson and Kubota tractors and equipment sales, 601-735-3103, 601-735-3104 or 601-735-4461

Ford 2000 tractor in good condition. New paint job, good tires, etc. \$3500. Call 601-425-5328.

Hay for sale. Bahai grass 5.5x5 for \$45. 601-490-0962.

For Sale: Service Age - Simmental & Sim-Angus Bulls. Calving ease, high Growth with excellent EPD's and Blood Lines. Semen Checked; Ready to Go!! Call 601-543-3042 or 601-408-4186.

Lonnie LOFTON
Roofing Contracting
Since 1968
Free Estimates
All Work Guaranteed
Laurel, MS PHONE (601) 425-4484

For Sale: 1-row Covington planter, mounted on steel shank cultivation with extra steel shank cultivator. Great shape. \$1,200. Call 601-606-7872

Farm Barns. 40x30x16-\$9500. 30x30x10-\$7500. Metal roof and sides. Price includes labor. 601-296-0550.

LAND

+/- 219 Acres Located just outside of Topton, AL, and one hour from Mobile, AL. Has road frontage on CR 19 along with power and water available. Has great secluded House/Camp Site, Bilbo Creek runs through the property. Has Lake. \$306,600. Call McCraw Forest Management for a free consultation, 601-408-0615, www.mfmland.com.

Jones County- 29+/- acres. Only minutes south of Ellisville on Bucks Drive. Beautiful rolling terrain with mixed pine/hardwood timber. Perfect small farm or residential property. Priced at \$87,000.00. Property can be divided. For more info call Bennett 601-913-0340 at Walley Properties, LLC. walleyproperties.com

Highlands. Finance a lot, \$1500 down, pay for your lot over 3 years - then use your lot as down payment at your bank. Call: 601-649-9459.

For Sale: 110 Acres, Large Camp: 2 bedrooms/kitchen, Large barn, Creek/river frontage, located on the Okatoma River, Seminary. Asking \$650,000. Call: 601-517-2770

DON'T GIVE YOUR TIMBER AWAY!
Call Mike West 601-270-6066
BUYING PINE & HARDWOOD
RICHTON TIE & TIMBER LLC
Timber Procurement • Forestry Consulting • Real Estate

Jones County- 15 +/- Acres. Rolling terrain, with multiple house sites only 5 miles south of the Ellisville city limits. Approximately 975 feet of paved frontage on Busby Road. Utilities available. Excellent country setting for a home or mini-farm. \$48,000. For more information call Bennett at 601-913-0340. Walley Properties, LLC. walleyproperties.com.

Jones County 57+/- Acres. Only 5 miles south of Ellisville on Busby Road. Rolling terrain with pine plantation. Perfect for farm or tree farm as well as hunting opportunity. Priced at \$150,000. For more information contact Bennett 601-913-0340 at Walley Properties LLC, or visit walleyproperties.com.

2 acres, Northeast Jones, owner financing available. 601-426-3696/601-470-7772

+/- 140 Acres Located in North Jasper County on County Rd 2424 in Garlandville, MS. 5 Bedroom/3 Bath with huge den/game room and large deck overlooking a pond with pier and gazebo. Large Metal Shop with skinning station. RV Hook Up. Property is fenced all with a 60 foot clearing all the way around the property boundaries. +/- 70 acres of pre-merchantable pine plantation, +/-40 acres of Hardwood, and +/-25 acres of Merchantable Pine/Hwd. \$371,000. Call McCraw Forest Management for a free consultation, 601-408-0615, www.mfmland.com.

Jones County 50+/- Acres- NEW LISTING- South Jones County fronting on Hwy 29. Improved pasture with ranch style brick home. Home is approximately 1900 square feet with 3 bedrooms and 2 baths. Two additional outbuilding for storage. Excellent small farm or country estate. Priced at \$205,000.00. For more info call Walley Properties, LLC at 601-477-3014. walleyproperties.com

20 acre farm/ranch in Janice, Ms. With custom built home, wrap around porch, Pond, horse stalls, fenced and cross fenced, huge shop. Bordered on two sides by National Forest lands. Lots of wildlife call Shawn, Southern Coastal Realty, LLC 601-408-3570.

Price reduced: Wayne County 65 +/- acres Willie Varner Road. The property would make an excellent home site or recreational property. Underground power and water are in place. The property consist of 6 acres pasture, an 8 acre pond, and 51 acres of 15 year old pines that are ready to thin. Price reduced to

WALLEY FORESTRY
TIMBER
• LAND • SALES
• MANAGEMENT
www.walleyforestry.com
601-477-3014

\$149,500. Property offered by Walley Properties LLC, contact Marc at 601-670-5429 or email marcavary@walleyforestry.com.

2.1 Acre cleared lot with unobstructed view of beautiful Lake Heritage in Laurel. 972-765-7472.

+/- 20 Acres Located in McLain, MS on the beautiful Leaf River. Has Duck Slough along with an abundance of wildlife. \$72,000. Call McCraw Forest Management for a free consultation, 601-408-0615, www.mfmland.com.

Jones County- 35 +/- Acres. 35 +/- acre property with developmental potential located minutes from

Ellisville in South Jones County. This property has road frontage on County Home Road and Slayton Road. Property features a pond, pine plantation and 2,500 foot of road frontage. \$140,000. Walley Properties, LLC. For more info call Bennett at 601-913-0340. walleyproperties.com.

Jones County- 68+/- acres. Located just north of Springhill Road/Hwy 15 intersection. This property can be divided into two parcels. Parcel A- 20+/- acres, Parcel B- 48+/- acres. Survey is required. This is a project ready industrial site over 1/4 mile of frontage on Hwy 15 North. Approximately 29 acres of this site

is open with 14 acres on grade with minimal site work. The balance of the acreage is a small natural lake creek area that would offer excellent recreational opportunities. Priced at \$184,000.00. Walley Properties, LLC. For more information contact Marc Avary at 601-670-5429. walleyproperties.com.

2-choice Cemetery Lots, Hickory Grove Addn. City of Laurel. Near intersection of Old Bay Springs Road & W. 15th St. Secure location near 3 Street Lights. Look for the American Flags under the tree. \$500 per lot. 601-573-8686.

Continued on ... Page 5

LAURELWOOD APARTMENTS
Experience the Difference
NO APPLICATION FEE when you bring this ad
601-426-0212 3017 Old Amy Rd. • Laurel

HILL STREET BAKERY
601-800-8153
PLACE YOUR EASTER ORDER EARLY!

Casseroles
• Broccoli & Cheese Casserole
• Squash Dressing
• Cornbread Dressing
• Lasagna • Tallerine
• Rotel Chicken
• Chicken Tetrizzini

Breads
• Yeast Rolls • White • Sour Dough
• Wheat • Sun Dried Tomato

Cakes
• Italian Cream
• Red Velvet • Coconut
• Strawberry
• German Chocolate
• Hummingbird
• Carrot Cake

EASTER
• CAKES
• CUPCAKES
• ASSORTED COOKIES

DELICIOUS IS OUR BUSINESS
Hours: Tue - Fri 9 a.m. - 5:30 p.m. Saturday: 9 a.m. - 1 p.m.
53 Hal Crocker Road • Ellisville

MARCH MADNESS HOT BUYS

50" SAMSUNG 1080p Smart LED TV REG. \$799 SALE \$579

55" SAMSUNG 1080p Smart LED TV REG. \$999 SALE \$699

60" SAMSUNG 1080p Smart LED TV REG. \$1199 SALE \$849

Alexander's
Bay Springs 601-764-2161
Ellisville 601-477-3312
SELECTION • SERVICE • VALUE
TV's In Bay Springs Only

HURRY WHILE SUPPLIES LAST!

2016 RELAY FOR LIFE EVENTS

- March 19** - Family Dental Center Color Run 5K and 1 mile fun run at Howard Technology Park
Registration begins at 7:30 a.m., race at 8 a.m.
Contact Carmen Rowzee at Carmen.howell87@yahoo.com or sign up online at 2ND ANNUAL COLOR RUN
- March 28** - Team Captain meeting - Monday - March 28 at noon and 5:30 p.m. at Life Church, Hwy 84 West, Laurel
- March 30** - Ellisville United Methodist Church - Dinner Theater-Sound of Music
Sandra Clay - 601.988.5480
- March 31** - America Cancer Society Golf Tournament with Dixie Electric Power Association, Laurel Country Club - 2011 Hwy 84 West
Entry form and more info available at <http://www.dixieepa.com/>
- April 6** - Highland Baptist Church - lunch with desert auction. Contact Cindy at cindy@highlandchurch.net
- April 8** - Jefferson Medical Associates - Corn dogs
Contact Cynthia Graves at cynthiag@jeffersonmedical.net
Jefferson Medical is also selling raffle tickets for a full-size handmade quilt- \$5 or 2 for \$10-drawing to be held the night of Relay.
Contact Cynthia Graves at cynthiag@jeffersonmedical.net
- April 25** - Survivor Dinner - Sponsored by Laurel Cancer Care.
Call 601.425.2999 for more information
- April 29** - Relay for Life of Jones County, Laurel Fairgrounds.
Opening Ceremonies at 6 p.m.



Marion Guice Yeager Jr.
March 13, 1967
February 20, 2006

Well Darlin Son, Happy Birthday! This is your 10th birthday with God! But we still miss you every day. I know you sure like it better and would never come back here, who would? Sure would like to see you at the age of 49. But I am sure you would have been just as handsome as at the age of 36. God has really blessed us since you and your dad left us – Your Daughter (Jena) sure has a lot of you in her blood. Smart as a whip and likes her own way – But she has worked since she was old enough. Domestic (not so much) but keeps her place clean and cooks pretty good to be eighteen. I was no cook at 18. Am proud of her.
Miss you so much.
We all miss you and your Dad both.
Always Love You
Jena, Mom, Ruby, Hylma, Georgia, Gil and Janice

Janet Lee Carter Scholarship Fund, “4th Annual Mother/Daughter Breakfast” will be held Saturday, March 19th 9:00a.m.-11:00a.m. at Eucutta Volunteer Fire Department, Eucutta. The guest speaker will be Bobby Jones, Superintendent of Education, Wayne County School District. Cost is \$15 for tickets. Contact Darlene Horne at 601-381-1011 for ticket information.

Friendship Baptist Church, 116 Custom Avenue, Laurel, invites you to the presentation of “From Chains to Changed” an Easter Play by Lorenzo Bridges II on March 19th at 6:00p.m. For more info, call 601-498-1833.

First Baptist Church, Ovett, invites you to our “Spring Fling”, Saturday, March 19th from 3:00p.m. – 6:00p.m. Free games, obstacle course, silent auction and bake sale. Easter egg hunt at 4:00p.m. Fish plates and chicken tender plates will be for sale. All sales benefit the youth of the church.

Live Pro Wrestling event at the Sandersville Gym, Sandersville, MS on Saturday, March 19th. Main Event Blade Boudreaux & Calvin Rose & “Old School” Steve Starr vs Monty Warbucks & Lukas Frost & “Prince of Pain” Joe Kane. Ringside \$10, Adult general admission \$8, kids (6-12) \$6. Under 6 free (general admission only). Fundraiser for the Sandersville Fire Department.

March 20
East Pleasant Grove MB Church, 407 Eastview Drive, Laurel, will be celebrating our own Pastor Sidney L. Tucker Sr. and wife Victoria’s Seventy-year Anniversary on Sunday, March 20th at 2:30p.m. The guest speaker will be Rev. A.G. McSwain Jr., of Morning Star MB Church, Laurel, MS.

Pleasant Valley MB Church invites you to attend our Annual Usher Day Program on March 20th at 3:00p.m. Our special guest speaker will be Rev. Russell Jones of First Baptist Church, Heidelberg.

Springhill MB Church, Ellisville, invites you to our Easter Program on Sunday, March 20th at 4:30p.m. Then our Annual Spring Revival will be held March 21st -25th at 7:00p.m. nightly.

Union Baptist Church, Laurel, invites you to our Old Fashion Day event on Sunday, March 20th at 11:00a.m. Men put on your overalls and straw hats and ladies put on your bonnet and aprons. Children put on your old fashion apparel and come see a little bit of history. It will be a day of fellowship, food and fun.

The Mississippi National Baptist State Convention Revival will be held at Sweet Hope Baptist Church, 925 South 6th Avenue, Laurel on March 20th -22nd at 7:00p.m. nightly. The guest preacher will be Dr. Timothy J. Woods of Hopewell Baptist Church, Birmingham, AL. There will be a different lecturer each night.

March 21
Mt. Pleasant MB Church, 22 Andy Knight Rd., Soso, invites you to our Annual Spring Revival Services March 21st-25th at 7:00p.m. nightly. There will be a different guest speaker each night.

March 23
Rock of Ages Apostle Church invites you to our Spring Revival March 23-25 at 7:00p.m. nightly. The church is located at 2609 North 5th Avenue.

March 24
Ellisville Public Library - Easter Egg Hunt. Come join us for our annual Easter Egg Hunt on Thursday, March 24th at 3:30 p.m. We will have Story Time, hunt Easter eggs and have refreshments. This event is sponsored by the Friends of the Ellisville Public Library. Children will need to bring their Easter basket and be accompanied by an adult. For more information, please call 601-428-4313 ext. 106. You can also visit our website www.laurel.lib.ms.us or look us up on Facebook.

March 25
New Jerusalem FG Church invites you to Good Friday “Power of the Cross” service, Friday, March 25th at 7:00p.m. Our Easter Resurrection Service will be Sunday, March 27th at 6:15a.m. Breakfast will be served 5:30a.m. to 6:00a.m. For more information, call 601-283-0163.

Pleasant Valley Baptist Church is sponsoring a Good Friday Program March 25th at 4:00p.m. This will be the event of the year. The theme of the event is “He Speaks from Golgotha”, The Seven Last Words from the Cross. The program will consist of seven dynamic speakers. Each speaker will speak for seven minutes on one of the last seven words spoken from the cross during the crucifixion.

On Friday, March 25, Evergreen Baptist Church will present “He’s Alive” in a unique drive thru Easter drama. This Good Friday presentation will include seven scenes from the days surrounding the crucifixion of Jesus Christ. The public is invited to gain a deeper understanding of the Lord’s Supper, the Garden of Gethsemane, the trial before Pilate, the beating of Jesus, the crucifixion of Jesus, the empty tomb, and the Risen Lord. The drama will take place directly off of Hwy 84 near Buddy’s Food and Fuel beginning at 7 pm and will be viewed from the comfort of your car. Evergreen Baptist Church would like to invite everyone to join us in this unique worship experience as we celebrate the resurrection of Jesus. Call 601-433-3739 or 601-498-2645 for more information.

March 26
Make a Wish Mississippi Chapter, “Magnolia Cruisers Cruising for a Wish” 17th Annual Spring Car Show will be held March 26th at South Central Place, Hwy 15 North, Laurel, MS. Registration will be held from 8:00a.m.-10:30a.m. with drivers meeting at 10:45 a.m. There is a \$20 entry fee and insurance is required. For more information, contact Danny Shows at 601-270-7723.

There will be a “Benefit Singing Concert” for Cecelia ‘Cel’ Martin on Saturday, March 26th at Spring Hill Church, Paulding, MS at 7:00p.m. ‘Cel’ is presently battling breast cancer. Groups appearing on program: “Taylor Family”, “Sons of God”, “Sunset Jubilees”, “Wings of Faith”, “Gospel Upsetters”, “Jr. Angels”, “Marin Singers” and “Restoration”. Please come out and support this great program. For more info call Richard Pollet at 601-319-9375.

March 27
Springhill MB Church, Ellisville, invites you to our Easter Sunrise Services on Sunday, March 27th at 6:30a.m.

Highland Baptist Church, in Laurel, invites you and your family to our Easter Celebration Sunday, March 27th. Celebration services will be at 8:00 a.m. and 10:30 a.m. We will host a FREE Community Pancake Breakfast in our Activities Center from 9:00-11:00 a.m. Join our family for breakfast and to Worship our risen Savior! For more information, contact 601-428-8493.

Jerusalem M.B. Church of Bay Springs/Lake Como cordially invite you to their Annual Sisterhood Program to be held on Sunday, March 27, 2016. beginning at 1:00 p.m. The scripture comes from Mark 5: 25-29 with the Theme being: WHAT’S YOUR ISSUE? The featured speaker is Evangelist, Sis Stephanie Jones of Jerusalem M.B. Church where Rev. Anthony Watts, is the pastor.

April 1
The 17th annual Jones County Junior College Alumni Association Golf Tournament will be held April 1 at Laurel Country Club. The event will be a four-person scramble. Entry fee is \$100 per player. Corporate sponsorships are available for \$500 and social sponsorships are \$250. Lunch will be served at 11 a.m. and there will be a shotgun start at 12:30 p.m. Proceeds from the tournament fund eight scholarships at JCJC – one student from each of the eight counties served by Jones. For more information, contact Alumni Coordinator JoAnna Newcomb at 601-477-4049 or email her at joanna.newcomb@jcc.edu.

March 16
LLT Kids’ Camp registration period is now open, and continues until the camp max is reached and registration is closed about a month from now. Absolute deadline to register is May 10th (if the camp hasn’t filled and closed before then) - that allows time for all materials to arrive to the students. The registration will be done on-line this year. You can find a link to that page from the LLT website LaurelLittleTheatre.com. If you have any problems with the on-line registration, drop a line to LLTLaurelMS@aol.com or camp director Angie Hodge at AngieDHodge@yahoo.com. Camp is open to students that will be entering grades 1 through 9 next fall.

Powers Water Association, Inc. will be increasing their flat rate for water from \$14 to \$17 and then add \$3 for the Powers Volunteer Fire Dept., which has already been approved by the association membership. This will make a total amount of \$20. This increase will take effect on May 1st 2016. If you have any questions you may contact the water office at 601-428-0294.

March 17
New Life Apostolic Church, 774 East 17th Street, Laurel, invites you to come to our “Spirit Awakening Conference”, March 17-18 at 7:00p.m. nightly. The guest speaker is Pastor Michael Graham of Louisville, MS.

March 19
Hebron Baptist Church, 16 Hebron Church Road in Soso, invites you to a dramatic presentation of “The Day He Wore My Crown.” The presentation will take place on March 19-20 at 6:00 p.m. Call 601-763-3445 for more information.

Come join us at the YWCO Saturday, March 19th, 3:30 - 5:00 CHILDREN’S HIGH TEA - Come dressed to celebrate Spring and enjoy tea in all your finery. Hats and gloves are encouraged. Learn tea etiquette. For girls and their female adult companions only. Space is limited. Reservations being taken at 601-428-5694.

8TH ANNUAL

Art of Healing

A LIVE & SILENT AUCTION

LIVE MUSIC
FEATURING
CHARLES
CARTER

DINNER
DANCING
OPEN BAR

Free State Garden
& Laurel Rogers
Museum
Lindsey Wellisville
Laurel Wagon
Laurel Hometown

**TICKETS ARE ON
SALE NOW \$35**
SATURDAY, MARCH 19TH
SANDERSON FARMS
6:30 p.m. 601.399.0503

Community Partners for 2016
BancorpSouth, City of Laurel, Community Bank,
ENT Surgical Services, First State Bank, Ghoson, Burson,
Entrekin & Orr, P.A., IMPACT of Laurel, Jefferson Medical Associates,
Joiner-Sigler Insurance, Laurel Leader-Call, Radiology Associates,
Sanderson Farms, SouthGroup Insurance, State Farm Insurance - John
David Jefcoat, The Chronicle, The First Trustmark National Bank,
Wayne Farms, Wm. F. Horne & Co., PLLC

Proceeds Benefit the South Central Health Care Foundation.

**Buy Direct
and Save!**

REED'S METALS, INC.

Metal Roofing & Metal Building Manufacturer

601-823-6516

www.reedsmetals.com

SERVING THE SOUTHEASTERN U.S.

Metal Roofing • Pre-Engineered Metal Buildings • Pole Barns

WE HAVE AN EYE FOR THE BOTTOM LINE!

HAWKEYE TAX SERVICES

HAWKEYE TAX SERVICE
144 Buford Gandy Rd. • Waynesboro, MS 39367
601-671-3779
HAWKEYETAXSERVICES.COM

HILLS METAL BUILDING AND CONSTRUCTION
601-580-3905 LICENSED AND INSURED

Get your **BODY** ready for Summer!

• Spin • Yoga • Zumba

NEW HOT BULBS!!
Start your Spring Tan!

1705 Parker Drive • Laurel
601.342.2948

Your **24/7 FITNESS CENTER & TANNING**
your247fitnessandtanning.com

Perry County 40+/- Acres. NEW LISTING! This property is located just off Whitfield Road on Hancock Road near the Bogue Homo creek. Property contains a 1/4 of a mile of road frontage and would make for great hunting and recreational opportunity. Priced at \$70,000. For more information contact Bennett 601-913-0340 at Walley Properties LLC. or visit walleyproperties.com.

tation, 601-408-0615, www.mfmland.com.

24 acres in Runnells town. Lots of mature timber and wildlife. Unbelievable hunting!! May subdivide. Call Shawn with Southern Coastal Realty at 601-408-3570.

Reasonable priced home sites, mobile home sites, and large parcels. 7 miles north of Hattiesburg. Owner financing possible. Contact 601-543-5098 or 985-951-0187.

+/- 40 Acres Located on CR 511,15 miles East of Quitman, MS this tract has Bucatunna Creek running through the property. REDUCED \$60,000. Call McCraw Forest Management for a free consultation, 601-408-0615, www.mfmland.com.

20 acres or larger, paved road frontage, near G.E. plant, Dacetown Rd, Ellisville, great homesite, \$2,995 per acre 601-466-2267.

Land for sale 18 acres in Shubuta near boat landing includes road frontage. Call #601-381-1712 or #601-744-6197.

I buy timber and timberlands. Call Shawn at 601 408 3570.

+/-83 acres located 5 miles south of Ellisville, MS with road frontage on both Augusta Road and Kitchens Loop. Clear Creek running through the property. Several great lake sites. Merchantable mixed pine/hwd timber and good road system. Power and water available.\$207,500. +/-42 acres Jones County, MS. Frontage road on Claiborne Road, mature Red Oak timber, wildlife plots. Nice yard with camp-house. Set up nicely for all season hunting. \$115K. Call McCraw Forest Management for a free consul-

Lab puppies, beautiful rust and yellow. \$45. 601-319-0865.

Puppies for sale Three cream colored chiweenie mix. One charcoal. Will be 8 lbs max. \$50 each. Call 601.678.9032.

FURNITURE

2 Leather Electric Recliners, King Size Sofa Bed, Misc. dishes. 601-735-0451

Computer desk and printer. \$200. 601-433-0907.

Mama's Mattress Max!!! 20 different styles to try out. Sets start at twin \$145, full \$165, queen \$185, king \$295. Will split sets. Blackwell's Furniture 5200 Hwy 84 West at Calhoun. 601.649.6111.

and Poplar. T&G&V. Cypress beams, cut up to 32 foot long. Open 7:00AM-3:30PM, Monday-Friday, Saturday, 7:00AM-12PM. 601-315-5533, fax 601-344-0950. frankssawmill.com

TANNING BEDS

Commercial/Home Unit. Tanning Beds. Financing, delivery, lamps, parts, repairs for all bed types. All lotions 50% off. 32 years of excellence. Jamie's Hair and Tan. United w/Tropi Tanna Distributor. 2122 Oak Grove Rd., Hattiesburg, 601-264-1300 or toll free, 1-888-321-8266. www.tropi-tannadistributor.com

Sunquest Pro 16 SE: been used very little, will need new bulbs,

\$800.00 or best offer. 601-402-6965, leave a message if no answer

WANTED TO BUY

I buy junk cars, buses and heavy equipment. U Call. We Haul! We pick-up 24/7. Call 601-297-2778.

15 passenger Van, less than 90,000 miles and 8 years old. For local church. 601-527-8005.

VACATION

Gulf Shores Condos, \$125/nights. Houses, \$250/nights. Weekly specials available. Connie Daughdrill 1.251.510.3090.

HANDYMAN

Handy Man & Home Maintenance Ceramic, Hardwood flooring, sheet rock finishing, painting, pressure washing, plumbing and electrical. Call Erik at 601-433-2499.

General home repairs electrical, remodeling, painting, porches, interior, exterior, and more. No job too small. Laurel and surrounding area. Call 601-577-6264.

Sherman's Handyman Services. Painting, carpentry, plumbing, electrical, home remodeling, vinyl siding, metal roofing, trailer skirting. No job too small. 601-649-7187 or 601-422-8307.

MASSAGE

Enjoy a 1 & half hour Massage session, for \$65.00, massage by Robert Lowe LMT#1362. Call now to book yours. 601-447-4640 or 601-466-2199. Your Body will thank you! www.massageone.us

PETS

Free puppies to a good home. 601-549-2320.

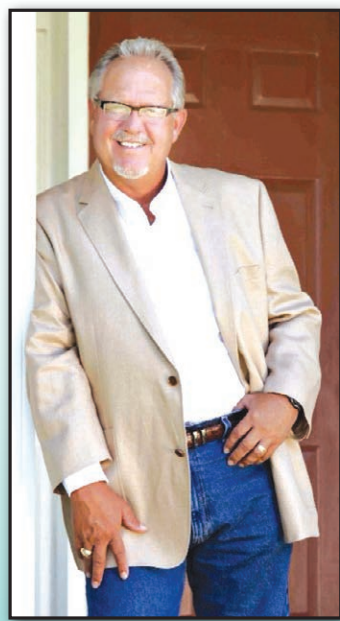
APPLIANCES

Nestle Ice Cream Freezer/Vendor 2 sliding glass doors, \$250. 601-319-1069.

TIMBER AND LUMBER

Cypress Lumber for sale. Rough or planed. T&G&V and beaded. Beveled and log siding, white and yellow pine

America's "Minister of Encouragement" Dr. Dennis Swanberg



Wild Game Dinner
Saturday • April 2 • 6:00 p.m.
Adults - \$10 • Children 10 & Under \$5
Tickets available in Church Office
(601) 296-8000
www.mainstreetbaptistchurch.org

"Day of Encouragement"
Sunday • April 3 • 11 a.m. & 6 p.m.

Main Street Baptist Church
11 Main Street Blvd. • Hattiesburg, MS 39402

A CONTINUED QUEST FOR EXCELLENCE.

0% Financing Available
For Qualified Applicants

FREE SPRAYER
with every riding mower purchased
*Offer must be presented at time of purchase. Model # 403. Retail Value \$79. Limited Time Only.

STARTING AT \$2,699
Based on QTE452CEM42200

0% monthly interest for 42 MONTHS*
*On Purchases of \$1500 or more on Exmark Equipment with your Exmark credit card made between now and 10/31/2016. A \$125 Promotion Fee will be charged. 42 Equal Monthly Payments required. Limited time offer. See dealer for complete details.

It's not complicated. If you want professional-grade cut quality and performance in a residential mower, you've got to use what the pros use. Exmark® Quest™ mowers give you more professional-grade features. More comfort. And, more value. For a perfectly mowed lawn in no time. Every time.

34-, 42- or 50-inch cutting width • 452cc or 708cc Exmark engine
• Ground speeds up to 7.0 mph • 3-Year Consumer Warranty

exmark.com

WAYNESBORO SALES & SERVICE
721 Court St. • Waynesboro, MS
601-735-0201

TAYLOR'S SMALL ENGINE SERVICE, INC.
2135 Ellisville Blvd. • Laurel, MS
601-649-1082

You Gotta Play to Win!
SATURDAY, MARCH 19TH
SUPER AWESOME SATURDAY

Five HUGE \$1000 Big Pack Games!
Can you say AWESOME!
Only \$10 for your shot at \$5000 plus in cash!

Mark your Calendar!
FIRE PIT SET GIVEAWAY
THURSDAY, MARCH 31ST

Plaza BINGO
Pull-Tabs and Electronic Gaming Machines Available

IT'S NOT YOUR GRANDMA'S BINGO ANYMORE!

Parkside Plaza Shopping Center
(down from Roses)
986 North 16th Avenue • Laurel, MS 39440
Hotline: 601-425-1795

See our website for game times!
WWW.PLAYPLAZABINGO.COM

Plaza Bingo is a fundraiser for The Good Samaritan Center, operating Laurel's only Community Soup Kitchen!

Nutrena

TOUR D'CLUCK
Nutrena

THE CLUCK STOPS HERE.

LEARN MORE ABOUT YOUR FLOCK
FREE, INTERACTIVE POULTRY SEMINAR

- >> Feeding & Nutrition
- >> Care & Husbandry
- >> Seasonal Info & Tips
- >> Flock Management
- >> Q & A Session

Tuesday at 5:30pm
March 29, 2016
Old South Farm Supply
244 E Hickory | Laurel, MS
601.428.7447

FUN FOR THE WHOLE FAMILY!
All knowledge levels welcome - something for everyone.
To find out more, visit www.nutrenapoultryfeed.com.

©2015 Cargill, Incorporated. All Rights Reserved.

Nature Smart ORGANIC
Nature Wise COUNTRY FEEDS

SERVICE DIRECTORY

Where the Pine Belt goes to get things done!

NEW TO YOUR AREA!

FedEx
SHIPPING SERVICE

MedSouth MANAGEMENT

418 HWY 11N
Ellisville, MS
601-477-2800

COMPLIANT TO ALL BUILDING CODES

FREE ESTIMATES

Affordable Home Improvements LLC

- Siding • Trim
- Roofs • Fences
- Paint • Walls
- Floors • Electrical
- Iron Works

601-804-9567
601-778-1615 Laurel

THOMPSON LAWN CARE

- Lawn Care
- Pressure Washing
- Fence Cleaning
- Small Home Repair

FREE ESTIMATES

Bobby Dain Thompson
601-519-3477

•MOBILE HOME PADS

•DRIVE WAY/ROADS

•LAND CLEARED •PONDS

•TOPSOIL, SAND & GRAVEL

•FREE ESTIMATES

BOLIVAR'S
DOZER • TRACKHOE
601-580-9900

Kimble Coats Owner

KE CONSTRUCTION

- New Construction
- Remodeling
- Decks
- Vinyl Siding
- General Construction
- Foundations & Slabs

601-433-6996

Right at Home
In Home Care & Assistance

The Right Care---Right at Home
Locally Owned

In Home Care & Assistance

Do you or someone you know need help with:

- Transportation to Appointments
- Grocery Shopping/Hair Appointments
- Light Housekeeping
- Recovering from a Hospital Stay
- Basic Companionship
- And Much More!

FREE CONSULTATIONS
601.426.6333

DANIELS PLUMBING SERVICES

Your plumbing problem now has a solution

Call Day or Night

735-1827
381-1040

Owner: Michael Daniels
Waynesboro

BLAKENEY Lawn Care Services

601-410-4240

- Mowing
- Raking
- Weed Eating and more

FREE ESTIMATE

HAIGLER ROOFING & REPAIR

- New Construction • Leaks
- Repairs • Shingles • Metal
- Flat Roofs • Chimneys

FREE ESTIMATES
30 Yrs. Experience

Call Dennis Haigler
601-319-2522

WE'RE BACK!

1/2 Price STUMP REMOVAL

5 or more Avg. size with Truck Access

\$15 EACH

601-371-8733
EXP: 3/31/16

The Tree Barber
Matthew 16:26

16TH AVENUE CHECK CASHING

- We hold your check for 30 days
- Get up to \$400 Cash for 30 days

601-428-1650
124 N. 16th Ave. • Laurel

REED'S METALS, INC.

601-823-6516

Buy direct from the manufacturer & SAVE!

- Metal Roofing
- Metal Buildings
- Pole Barns

www.reedsmetals.com

Kubota MASSEY FERGUSON

Chapman Tractor Co., Inc.

1510 Azalea Drive • Waynesboro
1-800-816-2826

JAY CHAPMAN
Sales

(601) 735-3103
(601) 735-3104
(601) 735-4461

FARRIS Mobile Home TRANSPORT

Statewide Moving
Licensed & Insured
Transporting since 1979

Tony Farris
601-422-4144

NEED CASH?

Call Verna She will hold your personal check and give you **CASH!**

Loans from \$50 to \$410

LAUREL CHECK CASHING
134 Beacon St., Ste. C
Laurel • 601-426-2432

SERVICES OFFERED

Lawn Care: mowing, weedeating, trimming. 50+ years experience. 601-580-0286, 601-426-2368.

Painting, Remodeling, Drywall, Pressure Washing, Decks, Cabinets and more! Licensed, Insured, Affordable, honest, dependable Christian company. Commercial and Residential. Quality, professional work. Over 20 years experience. References available. Call for a free estimate. If no answer, please leave a message. We will return your call. Wilson 8:21 Painting & More. II Corinthians 8:21. 601-268-7603.

Thompson Lawn Care: Lawn care, Pressure washing & Fence cleaning. Small home repairs. Free Estimates. Bobby Dain Thompson. 601-519-3477.

PINE BELT GUTTERS & REMODELING

Specializing in seamless gutters, vinyl siding, patio covers, replacement windows & doors. We also offer gutter cleaning. 55647

WE WILL BEAT ANY COMPETITOR'S PRICE!

FREE ESTIMATES **601-265-6010**

Dozer, trackhoe, backhoe, bush-hogging work, fill dirt, clay, gravel, sand, delivered, mobile home pads, ponds, driveways built, repaired, clearing, site prep, Mark Butler, 601-433-6459 or 601-425-1747

16th Avenue Check Cashing: we hold your check for 30 days, get up to \$400 cash for 30 days. 124 North 16th Avenue, Laurel, 601-428-1650.

Junk Cars: Get rid of those snake dens and rat dens. Bring 'em to us, or we'll pick 'em up! Springer Auto Salvage. Call 601-649-4238.

Propane Industrial Gases

RESIDENTIAL COMMERCIAL INDUSTRIAL

TANK SET SPECIAL

Ellisville: 601-477-3462
Collins: 601-765-6800
Hattiesburg: 601-583-6269
Taylorsville: 601-785-4789
Mon. - Fri. 7 A.M. - 4 P.M.

Ben Cole, III
Agent
87 Hal Crocker Road
Ellisville, MS 39437
bcole@alfains.com
www.alfains.com/bencole
601-477-4999

ALFA INSURANCE
Auto • Home • Life
alfainsurance.com

NOW SERVING ELLISVILLE AND JONES COUNTY

Audiology Services

Hearing Health Care

DeAnne Harris, M.S., CCC-A
Certified Audiologist

Credentials & Service Make the Difference

- ♦ Bachelor's Degree in Communicative Disorders
- ♦ Master's Degree in Audiology
- ♦ Certified with American Speech & Hearing Association
- ♦ Private Practice in Newton for 17 years

601.683.3086 Newton, MS
TheAudiologyServices.com

NEWSOM'S PORTABLE BUILDINGS

Free Delivery within 30 Miles

COMPARE OUR QUALITY

- 2X6 CEILING JOIST
- FOAM FILLED SEAMS
- SHUTTERS • DEADBOLT
- 2X6 TREATED FLOOR JOIST

12 Months Same As Cash! *wac

Azalea Mart • Waynesboro 601-735-3300

Example Pricing:
10x20 \$2299
8x10 \$1172

1/2 price stump removal 5 or more average size with truck access. \$15 each. Expires 3/31/16. 601-371-8733. The Tree Barber, Matthew 16:26.

LAND CLEARING AND STUMP GRINDING will clear lots, fence/property lines, etc.. will also grind stumps. we can offer lawn service please contact Ken at 601-300-9828 or email me at kwbyrd2015@gmail.com with your land clearing and lawn work needs

Looking to sit with patients in home or at hospital 3 or 4 days a week. Call for details 601-735-0451

Stump Busters Stump Grinding: End of summer special starting @ \$10 a stump. Since 1994. Keith: 601-498-9080.

Bostick Tree Service: tree removal, stump and root grinding with precision for easy mowing and tree health, fully insured, free estimates, serving Pine Belt area, 601-283-8667

Guitar, piano, tuba, and trombone lessons! \$100 monthly. Four lessons per month. Call 601-319-9782.

Sonny's Lawncare: God grows it, mow it. Call 601-580-2880. Reasonable rates.

Right At Home: In home care & assistance. Do you or someone you know need help with: Transportation to appointments; grocery shopping/hair appointments; light housekeeping; recovering from a Hospital stay; basic companionship and much more. For a free consultation call 601-426-6333.

Lawn Care Services for Petal/ Hattiesburg area. Affordable prices. Call 601-544-8781

Quality Pressure Washing at affordable prices. Licensed, Insured, Affordable, Professional, Christian company. Free Estimates. References available Commercial and Residential. Wilson 8:21 Painting & More. II Corinthians 8:21. 601-268-7603

House Leveling Foundation Repairs. Replace bad sills, floor joist, or flooring. Sagging or shaky floor or dragging door, we can fix this. Let us make your foundation safe. Insured. 601-543-7007

Daniels Plumbing Services, Waynesboro, Your plumbing problem now has a solution, call day or night, 601-735-1827, 601-381-1040

Flooring, all types. Remodeling, all types, decks-cabinets. For all your home improvement needs. No job too small. Commercial and residential. Licensed and insured,

references available. Wilson 8:21. Painting, remodeling and more. II Corinthians 8:21. 601-268-7603.

Flowers, Sand & Gravel: We now install septic systems, grinder pumps and spray systems. We deliver all types of gravel, fill material, sand, rock and topsoil, soil mix and mulch. Dozier and track-hoe service available. Foundations, roads, ponds, etc. Give us a call. 601-498-5983 or 601-477-2767.

Hawkeye Tax Service, 144 Buford Gandy Rd., Waynesboro, MS 39367. 601-671-3779, hawkeyetaxservices.com.

MISSISSIPPI WATER WELL DRILLING AND SERVICE

OVER 36 YEARS EXPERIENCE
Nelson Cain - Owner
601-344-1005
662-285-7046
Ovett, MS 39464

Bolivar's Dozer-Trackhoe: mobile home pads; driveway/roads; land cleared/ ponds; topsoil, sand & gravel. Free estimates. Call 601-580-9900.

L and L Lawn Care Service Quality Work at Affordable Prices! Mowing, Weedeating, Trimming, Pressure Washing, General Services. 16 Years Experience. Fall and Winter Clean Up. Fully Insured! Call Lewis for a FREE ESTIMATE today! We also offer concrete benches and bird baths for your landscaping needs. (601)433-1531 or (601)477-3862.

Dependable Christian Man: cuts grass, trims, pressure washing. Gas Prices Dropped and So Did Mine. Call for estimates 601-583-9996

Quality Painting at affordable prices. Pressure washing and more. Licensed, Insured, Affordable, Professional, Christian company. Free Estimates. Commercial and Residential. References available. Wilson 8:21 Painting & More LLP II Corinthians 8:21. 601-268-7603

B&B Tree Service: call the best for less, fully insured, senior citizen discount, 38 years experience, we do all tree work and clean up at your request, bucket truck also available, call day or night, free estimates, may God bless you, Proverbs 11:30. 601-433-5257

Roofing & Repair, new construction, leak repairs, shingles, metal, flat roofs, chimneys, all types roofing and repair, free estimates, 25 years experience, call Dennis Haigler. 601-319-2522

Kool-Seal Mobile homes, travel trailers, campers, sheds, etc. Energy efficient, 10% reduction. Pres-

sure washing available. Call Craig or leave message, 601-544-9614

Offering senior care with light housekeeping. Lots of experience and references available. Call Danielle. 601-470-5889.

Dozer, trackhoe, Dirt hauling Residential/commercial site work and land clearing, trailer/house pads, roads, ponds, all dozer/trackhoe work. We haul clay gravel, rock, fill dirt, topsoil, sand and mulch. For estimate call 601-498-8485.

Thames Concrete Finishing: Set forms, patios, slabs, driveways, pool decks. Tear out and haul, True Finishing. Percy Thames. 601-543-8712.

Grant's Lawn Service: Mowing, weed-eating, general yard work, gutters cleaned, pressure washing, window cleaning and parking lot stripping. Licensed and Insured, 601-519-5363.

Looking to sit with patients in home or at hospital 3 or 4 days a week. Call for details: 601-735-0451

I buy junk cars, buses and heavy equipment. U Call. We Haul! We pickup 24/7. Call 601-297-2778.

Blakeney Lawn Care Services: mowing, raking, weed eating and more. Call for free estimate, Brian Blakeney, 601-410-4240.

Reed's Metals, Inc. Metal roofing, metal buildings, pole barns. Buy direct from the manufacturer and save! 601-823-6516. www.reedsmetals.com

Roofing, Construction, Remodeling, Ceramic Tile: new roofs or fix leaks, home repairs, general construction, remodeling, painting, pressure washing, electrical, etc. Small or large, 25 years experience, references, Raybourn Construction Co. 601-649-0780, 601-580-7540 State Licensed Contractor.

Tom's Trees: Professional bucket truck service. 30 years experience in the Pine Belt area. We do precision take down, shaping, trimming, and dead limbing. Free estimates, fully insured. Call cell: 601-433-0518 or 601-787-4783

Lawncare: Serving Hattiesburg, Lumberton, Laurel, Sumrall, Petal, Brooklyn, Ellisville, Purvis and Mosselle areas. Reasonable rates. 601-325-5008. www.fullservicelawnca-rems.com

Miller Tree Service, bucket truck, professional, 30 years experience, insured; bob cat - dump truck and chipper available, senior citizen discount, free estimates, 601-498-3836, 601-649-0174.

Continued on ... Page 7

FAITH TAX SERVICE

You've Tried The Rest...
Now Try The Best!

Come to Faith Tax Service
new clients receive
up to **50% Off** competitors
tax prep fees

1132 HWY 15 N. • 601-649-6040

TOTAL REMODELING

Specializing in Custom Showers and Bathroom Remodels

GARCO INC.
HOME IMPROVEMENT CO.
TOTAL REMODELING

Commercial • Residential • Insurance Claims

- Additions • Storm Damage Specialists • Kitchens • Baths
- Garage Enclosures • Decks • Porches • Patio Covers
- Siding • Painting • Drywall • Roofing • Flooring
- Pressure Washing • Termite Damage • Carpentry

STATE LICENSED • BONDED • INSURED

"Our Pride Is Your Pride In Our Work"
Established in 1989 • Locally Owned & Operated

601-337-3825

Check out our webpage at www.garcohomeimprovements.com

NOW OPEN
84 East FLEA MARKET
MISSISSIPPI DELTA TAMALAES FOR SALE
 All Interested Vendors **CALL TODAY!**
662-616-0279



"Cowboy"


LOW COST DENTURES SINCE 1978
DENTAL SERVICES OF SOUTH MS. P.A.
GENERAL DENTISTS
 2019 Hardy Street • Hattiesburg, MS

- Dentures • Reline
- Partial • Repair

Call Toll Free
 Within 55 Mile Radius
(601) 545-1905
(877) 545-1905



LISTING OF THESE PREVIOUSLY MENTIONED AREAS OF PRACTICE DOES NOT INDICATE ANY CERTIFICATION OF EXPERTISE THEREIN.



MAGNOLIA STORAGE BUILDINGS, INC.

244 E. Hickory St.
 Exit 96B / Hwy. 15 S.
 Laurel

- Utility
- Storage
- Office
- Workshop
- Barns
- Custom Outbuildings of all types...

Tony Thornsberry
 Cell: **(601)577-0927**

Affordable Home Improvements, LLC., Laurel. Siding, roofs, paint, floors, trim, fences, walls, electrical and iron works. Free Estimates. Compliant to all building codes. 601-804-9567, 601-778-1615.

Flooring Hardwood floors, ceramic tile, linoleum. For all your flooring needs. Quality work, references available. Licensed & Insured. Wilson 8:21 LLP II Corinthians 8:21. 601-268-7603.

Grand Opening of New Law Office in Prentiss, MS. Divorce, Criminal Defense, Death Claims, Personal Injury, Bankruptcy, DUI Defense, Offshore, 18 wheeler accidents. Call for your consultation today. Jones Law Office, 2219 Columbia Avenue, Prentiss, MS. 601-582-9177

Repair it, build it, fix it: kitchens, baths, sun rooms, decks. Free estimates, licensed and insured. Call 601-310-3473.

FISH

Slade Channel Catfish Fingerlings, Bass, Bream, Grass Carp, KOI fathead-tuffy Minnows, Electro-fishing, etc. Free water analysis. State licensed. Randall Slade 601-796-2000 www.sladesfish.com

Brewer Fishery. Coppernose, Shellcracker and Hybrid Bream, Black Crappie, Channel Catfish fingerlings, Bass, Fathead Minnows, Grass Carp, and Gold Fish. State licensed and delivery available. www.istockponds.com 601-270-1268, 601-989-2466.

CAMPERS

1990 28' Glacier Tow Behind Camper. Clean. Stored under shed. New 20' awning, tires, and frig. Gas stove. \$4250 OBO. Sandersville, MS. Call 601-577-8867 between 8am-5pm.

Camper Shell fits 80's, 90's & some 2000 Silverado F150. \$75. 601-323-6031.

2014 28.5ft. Heritage Glen RV by Forrest River. Used 5 times. Ideal for a couple, sleeps 4. Front bedroom, central bath, rear kitchen. One large slide out. Outside kitchen and grill. \$29,000. 601-477-8301.

2008 32' Wildwood Camper for sale by Owner Bumper hitch with one pull out. Sleeps four comfortably. Great floor plan with ample storage. Four new tires. Very roomy and cozy. Flat screen t.v. with dvd player. Non-smoker owners. \$11,000. Call 601.701.7974.

ESTATE SALE

Estate Sale: 536 North 6th Avenue, beautiful historic downtown Laurel, March 18th 7:00am to 5:30pm, March 19th 8:00am to 3:00pm. You don't want to miss this wonderful sale. There is something for everyone. House has been sold, everything must go! This house is filled with items collected during decades of marriage and travels across the world. Included in this sale are French provincial chairs, Everett French provincial piano and china

cabinet, lamps, Prince Albert bone china tea sets, tapestries, linens, curtains, mirrors, framed art, camel back sofa, dishes, multiple china sets, etched and crystal glasses, wooden tea cart, pots, pans, kitchen wares, mixers, microwave, recliners, occasional tables, bookshelves, vintage books, coffee table books, coffee tables, side tables, vintage mid-century Broyhill Sculptra credenza buffet and china cabinet, Mahogany king size bed with mattress and box spring, dresser, side tables, chest of drawers, cedar hope chest, vintage purses and clothing, computer desk, albums and cabinet, desks, electric typewriter, file cabinets, vintage suitcases and lingerie, French provincial dresser, rocker, two twin headboards

with mattresses and box springs, chest of drawers, side tables, dressing tables, sewing machine with cabinet, autoharp, encyclopedias, microscope and much much more! Check out the pictures on estate-sales.net

GARAGE SALES

Rummage house, 3160 Ellisville Blvd., Laurel. Clothes all sizes, shoes, odds & ends, appliances, furniture. 601-433-9856. Mon-Fri 9-5, Sat. 7-2.

The Mission Store, 5445 Hwy 11N, Laurel. 601-394-3507. Open-Tues.-Fri., 9am-5pm, Sat. 9am-3pm. Gen-

tly used name brand clothing and household items.

Huge Rummage Sale March 19th, 5259 Hwy. 84W. Plus size through medium women, children, men. Toys, what-nots, small appliances, table w/chairs. Chevron Parking lot.

Make an offer sale, 907 Florence Church Road, Sandersville. Thursday & Friday 9am-4pm and Saturday 9am-12pm. Two new vendors. 601-422-5914.

Friday & Saturday, March 18th & 19th, 7am-until, 4427 Indian Springs Rd. Lots of everything. Two rocker recliners, curio cabinet, rug, com-

forters, x-box, wii, and clothes of all sizes and much, much more.

MUSICAL

Lynn Evans Piano Service: Registered craftsman with Piano Technicians Guild. Used pianos for sale. B.M.E. USM. 601-729-2823

Continued on ... Page 8

Woodland Trails

EASTER LUNCH MARCH 27TH
FIRST SUNDAY LUNCH
APRIL 3RD

Lunch Served Every Wednesday 11-1

27 DAN & JOYCE LANE, SEMINARY
 (1 MILE OUTSIDE COLLINS)

601-765-8812

WOODLANDTRAILS4@YAHOO.COM

CHURCH FURNITURE

Does your church need?

- Pews • Pulpit Seats
- Baptistry • Steeple
- Windows • Pulpit set
- Cushions

BIG SALE

on New Cushion Pews and Upholstery for Hard Pews

1-800-231-8360
 www.pews1.com

INCOME TAX

Don't Monkey Around.... Get Sylvia to Figure Your Taxes!!!



SYLVIA CRANE TAX SERVICE

601-648-2286
 Tuesday, Wednesday, & Thursday
 8:00 a.m. - 5:00 p.m.
 Buckatunna, MS

Get ready for spring!

New Arrivals Happy Easter!

- Living Room
- Bedroom
- Distressed Furniture

CRAZY QUILT TWIN..... \$129.99
 MATTRESS FULL..... \$149.99
 SETS QUEEN... \$189.99

U Load • U Haul • U Save

HOEFLICH
 WHOLESALE FURNITURE CO.

710 STATION ST. • WAYNESBORO
601.735.6050

OPENING MARCH 18th • NEW LOCATION!!

Shirley's

213 CLAY ST. • ELLISVILLE
 601-477-9641
 Friday & Saturday
 March 18th & 19th
 9 A.M. - 5 P.M.

Located at the end of Howell Street

\$50 Give-A-Way!
 \$50 worth of merchandise to be given away every hour Friday & Saturday!
REGISTER FOR DOOR PRIZES!!



Good Selection of Children's Clothes
 Reg. \$2.99 to \$6.99 **\$1 EACH**

Ladies Blessed Girl T-Shirts Reg. \$8.99 1/2 Price!
\$4.50 EACH

Ladies Brand Name Casual Pants **\$1 EACH**

Select Group of Shoes **1/2 PRICE**

Great Buys on Brand Name Underwear (Some Packages Damaged)

Select Group of Spring Wreaths
 REG \$29.99 **\$14.99**

Silk Sunflower Garlands
 REG \$2.99 **\$1.00**

Check Out Our **FABRIC DEPARTMENT!**

Grograin Ribbon by the yard 1/2 Price
 Mesh Ribbon 1/2 Price

HOME MEDICAL EQUIPMENT

SCRUBS

BY MED COUTURE & peaches UNIFORMS

Healthcare & Daycare providers receive 10% discount with your ID badge

special order available

I-RUNNER Shoes for Ladies & Men

- Neuropathy Friendly Toe Box
- Breathable
- Rocker Sole

LAB DISCOUNT DRUGS
601-735-4444
 923 Wayne Street • Waynesboro




Electric Guitar and Amplifier New condition, great starter set, \$125. Call 601-283-9927

HELP WANTED

Full time mechanic, some experience needed. Paid vacation, paid holidays, some insurance. Call Jeff at Magnolia Tire. 601-651-2043.

Forklift Operators Needed \$11 - \$13/hr. Immediate openings for warehouse and manufacturing positions. 601-264-9060. www.expresspros.com

Diesel Mechanic experienced diesel mechanic. Qualifications include: 3+ years of diesel mechanic experience, Diagnostic experience with engine, transmission, electrical, etc., Must have valid driver's license; Class A or B preferred, A/C and brake certifications are a plus, MUST have own tools. Salary: DOE. Benefits include: insurance, 401K,

vacation, bonuses, etc. Call 601-544-7000

Local Drivers Wanted Ready Mix Concrete Drivers Home Everyday Great Pkg. insurance, bonuses, 401k, Class A or B CDL REQ EOE call 601-354-3801

Drivers needed - Southeastern Concrete in Hattiesburg is seeking Ready-Mix truck drivers. Candidates must possess class A or B CDL. Clean driving record. 2+ Years of Driving Experience. Starting pay is \$13.50+/hr DOE. Benefits: insurance, 401K, vacation pay, bonuses, etc. Call 601-544-7000.

Mr. Rooter Plumbing seeks highly motivated individuals for drain cleaner plumber, plumbers technician, pump truck driver, septic system cleaning technician, csr dispatcher and office personnel (must have good computer skills). Join a growing company, a family environment.

We offer bonuses based on performance. Company supplied van, equipment, and uniform. Candidates must have a clean driving record. This winning team maintains a drug free environment. Call 601-671-3444 or 251-846-2565.

Asphalt Foreman - Seeking an experienced Asphalt Paving Foreman to supervise and coordinate activities of workers engaged in spreading, rolling, tamping, and patching asphalt. Salary: DOE. Benefits include: insurance, 401K, vacation pay, bonuses, etc. Call 601-544-7000.

Quadriplegic needs help night and day. 12 hour shifts, 7-7. Must pay for background check, TB test, have auto insurance, etc. 601-335-5855.

Join Our Team: 8 Week Challenge, Thrive by Level Mental Clarity, Check out our website www.chadpolk20.level.com. 601-441-1274.

BUILDINGS

Carpports and Buildings: Financing Available! 18x21 carport \$795; includes installation! All sizes available. We also offer storage buildings & barns. Call John at 601-323-0464, 303 Hwy 11 South, Ellisville MS (between Pizza Hut and J.C.JC)

Farm Barns. 40x30x16-\$9500. 30x30x10-\$7500. Metal roof and sides. Price includes labor. 601-296-0550.

PORTABLE BUILDINGS

30x30 Tubing Building: Includes 2 Roll-Up Doors, 1 Walk-Through Door, Insulation, Cement Slab, and Installation. \$9,995. Call 601-727-4951.

MOBILE HOMES

As the rainy season approaches, there's nothing like the sound of rain on an after-market tin roof. Come see this 2000 Capparet, 16x80, 3BR/2BA. recently remodeled with new vinyl, carpet and paint, \$19,000. Call 601-520-0710.

2014 Buccaneer Rooster 16x88 3/2. All appliances, partially furnished. Like new, many extras. \$43,000. obo. 601-319-6819.

0% Down with land on all homes in stock. 601-340-3335, ask for Steve.

Used doublewide, 5 bedroom, 3 bath, central A/C, delivery, set up and tie down. 601-447-4538, 601-261-6005.

ASSUME PAYMENTS!
3BR/SW \$249 PER MO.
3BR/DW \$349 PER MO.
3BR/DW \$399 PER MO.
601-447-4538

Assume Payments. 3bed., S/W, \$249 per mo. 3bed., 2ba. D/W, \$349 per mo. 4bed., 2ba. D/W, \$399 per mo. 601-447-4538.

Porch model doublewide, 3 bedroom, 2 bath, central A/C, delivery, set up, and tie down included, only \$44,900. 601-447-4538, 601-261-6005.

Five bedroom doublewide. 5 bedrooms, 3 baths, like new condition,

only \$499 per month. 601-447-4538, 601-261-6005.

Deer Camp special. 16x80, 3BR/2BA., perfect for a deer camp or a starter home. In need of a little work, but it's a steal for the price. \$4900. Call 601-520-0710.

5 bedrooms, 3 bath double as low as \$500.00 a month. Call 601-307-2114.

Farris Mobile Home Transporting: Statewide moving, licensed & insured. Transporting since 1979. Tony Farris 601-422-4144.

GOOD CREDIT. BAD CREDIT. NO CREDIT. NO PROBLEM!
NEW, USED & REPO HOMES AVAILABLE. NO CREDIT CHECK. OVER 100 HOMES TO CHOOSE FROM. Payments starting at \$250 per month
 For more info, call Howard at **601-447-4538**

Here at TB Sales our prices are falling with the season. This one is a must see to believe. A 2010 Southern 3BR/2BA. special order home, complete with a 4 ton a/c, fridge, stove, washer and dryer, \$15,500. call 601-520-0710.

Continued on ... Page 9

MEDICAL CLINIC FULL-TIME OPENING
Medical clinic in Laurel has an immediate full-time opening for efficient, dedicated, cheerful employees.
Clinic hours:
Monday-Friday • 8:00 a.m. – 5:00 p.m.
The ideal applicant will have:
 • LPN credentials
 • IV certification is required.
 • 2-5 years of experience (however, we are always willing to train exceptional candidates)
Please email your resume to:
hr@mms-ms.com
or fax to 601-898-7577

COMMERCIAL

5.20 acres, 660ft. 4-lane frontage across from Community Bank, Hwy 84W of Laurel. Text 210-478-6492. \$230,000.

Express EMPLOYMENT PROFESSIONALS
FORKLIFT OPERATORS NEEDED
 Immediate openings for warehouse and manufacturing positions.
 \$11-\$13/hr
601-264-9060
www.expresspros.com

Stockstill Trucking, Inc.

 158 Central Industrial Row
 Purvis, MS
601.794.5577
800.794.5578


SEEKING EXPERIENCED TRUCK STOP MANAGER!
 For Laurel MS
 We Offer Competitive
 • Wages
 • Benefits
 • 401K
 • Bonus Potential
 Contact human resources
219-576-4664


MAGIC CITY MOBILE HOMES
The MAGIC is gone... Magic City is now on HWY 49 NORTH HATTIESBURG
601-726-9210

PARISH TRANSPORT
HAS IMMEDIATE OPENINGS FOR GOOD OTR Truck Drivers and Owner Operators
HIRING ALL DIVISIONS
Benefits include:
 • Health Insurance • Vision Insurance
 • Dental Insurance • Paid Vacation
NOW OFFERING SIGN ON BONUS
 • SAFETY BONUS • REVENUE BONUS
 • RETENTION BONUS
 If You Want To Work For A Great Company With Great Benefits
call us at 601-342-2314 today!
 Located in Ellisville, MS

Taylor HAULING, LLC
 EMPLOYMENT OPPORTUNITY
EXPERIENCED FLATBED DRIVERS
CDL Required, Tarping experience preferred, Service area is SE United States
Our drivers are home most every weekend and some nights during the week.
We offer competitive pay for this area.
All interested persons should apply in person:
MONDAY - FRIDAY
28 Taylors Circle • Laurel
NO PHONE CALLS PLEASE

Taylor READY MIX, LLC
 28 TAYLOR CIRCLE • LAUREL, MS
STRAIGHT TRUCK CONCRETE DRIVERS WANTED FOR WAYNESBORO LOCATION
 • Must hold a class B or better commercial driver's license with a good driving record.
 • At least 3 years driving experience.
 • We offer competitive pay for this area.
Apply in person
 Monday thru Friday 8 a.m. to 5 p.m.
 No interviews will be given without a completed employment application.
 NO PHONE CALLS PLEASE.

Job Openings

 Dart Container is currently seeking:
WAREHOUSE MANAGER
 The Warehouse Manager is responsible for directing, controlling, delegating and supervising approximately 25 -30 warehouse personnel and 18 - 20 truck drivers, to include taking daily attendance, discipline when needed and general conflict resolution. Follow all other oral and written directions of Plant Manager.
REQUIREMENTS & QUALIFICATIONS:
 • Two years warehouse supervisory experience required.
 • Previous warehouse inventory skills required
 • Five plus years supervisory experience desirable
 • Responsible for accurate and detailed reports of all warehouse, maintenance and personnel problems
 • Ability to handle several things at one time – multi task
 • Computer skills: MS Word and MS Excel
 • Implement, support and enforce all plant policies and procedures
 • Demonstration of minimum proficiency with the English language in order to ensure effective new hire training and on-going communication about safety and quality issues.
 • Share overall responsibility for product safety, legality, regulatory compliance, and quality systems.
 Dart offers a competitive wage and an excellent benefit package including 401(k). To apply for this position, submit an application on line at www.dart.jobs.
 Dart Container Corporation is an equal opportunity employer and will consider all candidates for employment without regard to race, color, religion, sex, national origin, age, marital status, disability status, protected veteran status or any other characteristic protected by law.
 Review all Dart job opening at www.dart.jobs EOE M/F/D/V

Job Openings

 Dart Container is currently seeking:
Warehouse Worker / Shuttle Driver
 The Warehouse Worker-Shuttle Driver is responsible for using yard truck to spot trailers. When not spotting trailers, the Warehouse Worker/Shuttle Driver is responsible for loading and unloading product.
REQUIREMENTS & QUALIFICATIONS:
 • At least 6 months previous tractor/trailer driving experience and/or professional truck driving school certification from an accredited school.
 • CDL (Class A) required
 • Good driving record
 • Physically qualified under U.S. Department of Transportation (Part 391)
 • At least 6 months experience loading and unloading trailers required
 • 6 months forklift experience preferred
 • Demonstration of minimum proficiency with the English Language in order to ensure effective new hire training and on-going communication about safety and quality issues.
 Dart container embodies "The Industry Standard of Excellence." Dart offers a competitive wage and an excellent benefit package including 401(k). To apply for this position, submit an application on line at www.dart.jobs.
 Dart Container Corporation is an equal opportunity employer and will consider all candidates for employment without regard to race, color, religion, sex, national origin, age, marital status, disability status, protected veteran status or any other characteristic protected by law.
 Review all Dart job opening at www.dart.jobs EOE M/F/D/V

State of Mississippi

State Veterans Affairs Commission
NOW ACCEPTING APPLICATIONS FOR Recreation Assistant, Social Worker LSW, RN'S, LPN'S, CNA'S, and Restorative RN
APPLY IN PERSON AT:
Ms State Veterans Home
3261 Hwy 49 South
Collins, MS 39428
Covington County, MS
 Apply on the MS State Personnel Board website:
WWW.MSPB.MS.GOV
Equal Opportunity Employer

ELLISVILLE HOME CENTER

LARGE INVENTORY OF • NEW • USED • REPO'S

5485 HWY 11 N. • Ellisville
Mon. - Fri. 8 am-6 pm, Sat. 9 am-4 pm

601-340-3335

CALL MAGIC STEVE!

Need a Mobile Home - Bad credit, slow credit? No Problem! Call Magic Steve. 601-402-1139.

JOIN US FOR open house

ALL HOMES ON SALE. SAVE THOUSANDS!

MAR 18-19

HATTIESBURG HOME CENTER
7756 US HWY 49 HATTIESBURG, MS **601-261-6005**
AFTER 6PM CALL 601-447-4538

TRADE-INS WELCOME

LARGE SELECTION OF NEW, USED & REPO HOMES SINGLE & DOUBLE WIDES GUARANTEED APPROVAL

- Low Down Payments
- Low Monthly Payments
- Ask About Our Layaway Plan

Repo, single wide, Clayton, 16x80, 3+2. 601-310-9262.

trailer in Buckatunna. \$8500. 601-410-0297.

Used single wide, 2 bedroom, 2 bath, only \$7950. 601-447-4538 or 601-261-6005.

New-used homes, whatever you are looking for I probably have and if not I can get it. Call 601-307-2114.

Stop renting and own your own home now. Single wides for \$400.00 a month and double wides for \$600.00 a month. Call 601-307-2114.

Bad Credit. No Problem. New, Used and Repo Homes. Call Magic Steve. 601-402-1139.

Foreclosures, repos, used, land home packages, and New mobile homes. Call Chase today for details 601-310-9262

Used Doublewide. 3bed., 2ba., new carpet, new paint, central A/C included. 601-408-4347, 601-296-7960.

2015 MODELS MUST GO! NEW DOUBLEWIDES AS LOW AS \$399 PER MO. 601-296-7960

hattiesburgmobilehomecenter.com

Need Zone II or III home? Call 601-307-2114.

The Price is Right. 28x52 doublewide, 3BR/2BA., vinyl siding, shingle roof, new carpet and vinyl flooring throughout home, large kitchen and living for only \$17,888. Call 601-520-0710.

1997 Cavalier 28x70 doublewide, 3br/2ba, new a/c unit inside and out, new service pole, new service lines. 601-748-0344 or 601-764-4203. \$34,000.

NEED A HOME? PAST CREDIT PROBLEMS? We have new, used, & repos with low monthly payments 601-296-7960

Used, 16x80, 3bed., 2ba., central A/C included, only \$19,900. 601-447-4538, 601-261-6005.

Used Mobile Homes. Doublewides, and singlewides, will deliver and set up, guaranteed approval, 601-261-6005.

Home for the Holidays. Beautiful, 16x80, 3BR/2BA., completely remodeled with new carpet, paint and vinyl throughout. Full of upgrades, including a fireplace in the living room and a sliding glass back door. \$18,888. Call 601-520-0710.

Check this Big Boy out. 28x80, 4BR/3BA. with an office. This home has a large kitchen, laundry room, dining room, living room, with spacious master bed and bath for only \$38,888. Call 601-520-0710.

Single and Available, 14x70, 3BR/2BA., spacious home with new carpet, paint and vinyl flooring for only \$13,888. Call 601-520-0710.

14x80 3br/1.5ba. Kitchen and hall has nice hardwood floor. Very nice

Largest used home selection in the South. Call 601-307-2114.

Used singlewide, 3 bedroom, 2 bath, \$15,000. Call Tony at 601-408-4347, or 601-296-7960.

Pre-Owned doublewide, 3 bedroom, 2 bath, new carpet, delivered/ setup. \$33,500. 601-408-4347.

Single wide, \$350 a month and double wides around \$550 a month. Call Chase today at 601-310-9262

\$29,900. Call Chase today at 601-310-9262.

Magic City Mobile Homes has moved to Hattiesburg. Big sale on 2015's! Hwy 49 North. 601-729-9210.

New singlewides starting at \$275 per month, includes delivery, set up, appliances, skirting, & a/c. 601-408-4347

Used singlewide, 3 bedrooms, 2 baths, delivery, setup, and tie down. Only \$299 per month. 601-447-4538, 601-261-6005.

2012 16x80 Southern Energy mobile home. 3br/2ba, vinyl siding and shingle roof. \$24,000. Phone 601-580-1740.

Foreclosure's, Repo's, Used and New Mobile Homes. Call Magic Steve Today. 601-402-1139.

MOBILE HOME FOR RENT

Cash Paid. We buy used mobile homes. 601-261-6005.

Fixer Upper, 16x80, 3BR/2BA., home needs some paint and a little TLC. Own this home today for only \$6500. Call 601-520-0710.

3BR and 2BR mobile homes. Weekly payments available. Pent-dorf area. West Jones School District. \$150/deposit, rent starting \$250 up. 601-577-7385, 601-577-2055.

2010 32x80 Platinum Sterling mobile home. \$54,000. 601-787-3431.

Used Double wide for sale. 28x60 3+2 for only \$19,900. Call Chase today at 601-310-9262

1998 16x80 3br/2ba, all electric c/h/a, water included. \$500/mth \$200/dep. 23 Burnt Bridge Rd., Lot #11. South Jones area. 601-498-2488, Rhonda.

Used 16x80, 3 bedroom, 2 bath, central heat and A/C, delivery, set up and tie down included. \$19,995. 601-447-4538, 601-261-6005.

Repo Special!! 2011 Cavalier 16x80 Windzone II 3+2 for only

Continued on ... Page 10

NEED CASH FAST?

COME SEE TIFFANY

CITY PAYDAY LOANS

CAR TITLE LOANS

716 SPRING STREET WAYNESBORO

601-735-5353

TALL OAKS Mobile Home Village

1818 Frontage Rd. Heidelberg, MS 39439

Spacious Lots starting at \$100 Month RV's Welcome

Next door to Recreation Area with Ball Park & Walking Track

Drug Free / Crime Free Neighborhood

Within 1 mile of:

- Public School
- Supermarket
- Restaurants
- Fast Food

For More Information **601-470-1187**

CALL US TODAY & GET A FAST, EASY QUOTE WITHOUT LEAVING THE WOODS.

CALL US OR GO ONLINE FOR MORE INFORMATION:

WAYNESBORO • 601-735-2871

LAUREL • 601-649-1127

WWW.JOINER-SIGLER.COM

JS JOINER-SIGLER INSURANCE
Home • Auto • Business Since 1954

Laurel Care Center of LAUREL

****\$750.00 Nurse Sign on Bonus****

****New Pay Rate for PRN Nurses****

Is currently accepting applications for **Licensed Practical Nurses** 3P.M. - 11P.M. • 11 P.M. - 7A.M. or **Registered Nurses**

All Shifts / Full Time, Part Time or PRN

Applicants must submit an application online at carecenterlaurel.com or in person

Mon. - Fri. 8:00 am - 4:00 pm

EQUAL OPPORTUNITY EMPLOYER

IMPORTANT INFORMATION ABOUT YOUR DRINKING WATER Tests Show Coliform Bacteria in BUCKATUNNA WATER ASSOCIATION

Our water system recently violated a drinking water standard. Although this is not an emergency, as our customers, you have a right to know what happened, what you should do, and what we are doing to correct this situation. We routinely monitor for the presence of drinking water contaminants. We took 7 samples for coliform bacteria during February 2016. Two (2) of those samples showed the presence of coliform bacteria. The standard is that no more than 1 sample per month of our samples may do so.

- What should I do?**
- You do not need to boil your water or take other corrective actions. However, if you have specific health concerns, consult your doctor.
 - People with severely compromised immune systems, infants, and some elderly may be at increased risk. These people should seek advice about drinking water from their health care providers. General guidelines on ways to lessen the risk of infection by microbes are available from EPA's Safe Drinking Water Hotline at 1 (800) 426-4791.

What does this mean?

This is not an emergency. If it had been, you would have been notified immediately. Total coliform bacteria are generally not harmful themselves. Coliforms are bacteria which are naturally present in the environment and are used as an indicator that other, potentially-harmful, bacteria may be present. Coliforms were found in more samples than allowed and this was a warning of potential problems. Usually, coliforms are a sign that there could be a problem with the treatment or distribution system (pipes). Whenever we detect coliform bacteria in any sample, we do follow-up testing to see if other bacteria of greater concern, such as fecal coliform or E. coli, are present. We did not find any of these bacteria in our subsequent testing, and further testing shows that this problem has been resolved.

What happened? What was done to correct the 'Violation?'

The following specifies corrective actions this water supply has taken in response to this violation; Resampled the following day and all samples were good. We have increased sampling for total coliformbacteria to catch the problem early if it recurs.

For more information, please contact WILLIE WILLIAMS, Operator or KEARY MCDONALD, Legally Responsible Official, at 601-648-2532 or PO BOX 242 BUCKA TVNNA, MS. 39322. Please share this information with all the other people who drink this water, especially those who may not have received this notice directly (for example, people in apartments, nursing homes, schools, and businesses). You can do this by posting this notice in a public place or distributing copies by hand or mail. This notice is being sent to you by BUCKATIJNNA WATER ASSOCIATION. PWS ID#: 0770001. Date distributed 3/16/16.

EMPLOYMENT OPPORTUNITIES NOW HIRING

FOR ALL POSITIONS NEW & HIGHER WAGES

Benefits include Life/Health Insurance, Paid Holidays, Paid Vacations, 401K Retirement Plan, Dental/Cancer Insurance Available.

• Applications taken Mon.-Fri at 7:30 AM

EOE

329 Moselle-Seminary Rd. • Moselle, MS

601-584-4752

U-SAVE
CAR & TRUCK RENTAL

HATTIESBURG
1510 West Pine Street
601.545.9555

LAUREL
114 North 16th Avenue
601.428.4405

COLLINS
3049 Highway 49
601.765.3333

THREE LOCATIONS TO SERVE YOU BETTER!

"If you reserve it from us, we guarantee to have it there!"

U-SAVE
CAR SALES • LAUREL

Come See Me Today!
TOM SYKES, SALESMAN
114 N 16th Avenue • Laurel
601-428-4405
tscars52@yahoo.com

EZ FINANCING

Several homes for sale in Collins, Bay Springs, Laurel, Taylorsville and the surrounding area.

LOW MONEY DOWN and FIXED INTEREST RATES AVAILABLE with approved credit. We have fixer-uppers all the way to move in ready!

CALL HAROLD 855-847-6808 STOP PAYING RENT! OWN YOUR OWN HOME TODAY!

WE BUY HOUSES!

FAST - QUICK - CASH SALE
FAIR PRICE

470-208-2946
www.WEED.net

MOBILE HOME LOTS

Four months free space rent. Move your mobile home in with us! Spaces available at Bellecrest. Nicest mobile home park in Hattiesburg. Bellecrest Mobile Home Park 63 Sullivan Kilrain Road Hattiesburg, MS. 601-545-1300

HOUSES FOR SALE

3br/2ba brick house on 1 acre lot, NEJ School District, fenced yard, burglar bars, concrete driveway. Serious inquiries only. Shown by appointment only. Asking \$75,000. Call 601-580-2709.

20 Pine St. Ext., Ellisville- 3br/1.5ba located in a great neighborhood. This property has new flooring, carport and large deck. Priced at \$99,500. Additional acreage available. Broker/Owner. For more info call Walley Properties, LLC at 601-498-3014.

\$49,900 4br/2ba, fixer upper. 1 acre. West Jones Schools, Big Creek neighborhood. Will owner finance w/\$8,000 deposit. Toni Moreno, 850-207-3444.

House for sale Calhoun Community. 1.3 miles from West Jones Elem-

etary, 8 miles from West Jones High School. Ranch style, 3 bedrooms, 2.5 baths. 601-729-4652, 601-477-7128.

2450 sq.ft. 3bd/2.5ba, and bonus room upstairs, plus 16x32 guest house w/toilet & sink. 1.6 acres. \$205,000. 601-422-9697 or 601-335-2988.

4.5 miles from Waynesboro, 3br/2ba, living room, den, kitchen, all furniture included, double carport, 18ac. more or less, mostly pasture, some timber. Two free standing carports with lots of storage amenities, farm equipment, Kubota tractor 50hp, with front end loader. Will take bids on this with the right reject any or all bid's, minimum bid \$165,000.00, 601-381-2745 or 601-735-6632.

Nice 3br/2ba 2-story log home with beautiful great room at Lake Eddins. \$141,000. Owner financing available. Call 601-498-9945.

HOUSES FOR RENT

1, 2, 3, and 4 bedroom houses and mobile homes. Hattiesburg. Call for list. 601-336-5808.

Glade area, 1br/1ba, no pets. Garage furnished. \$415/mth, \$400/dep. 601-498-4574.

1000 sq. ft. 3br/1ba, all electric c/h/a, Thiac Rd., West Jones District. Water provided. \$600, \$300 deposit. 601-498-2488. Rhonda.

Completely remodeled, great location, 3br/2ba central ac Sharon Community. 20x30 roll-up door cement floored outside building included, fenced back yard. 2 children max. no pets. 1yr. lease. \$900/mth, \$850/deposit. 601-428-7545, 601-319-9960.

3br/1.5 ba, in North Laurel. Appliances included. Large fenced yard. Interior just painted and new light fixtures installed. \$900 a month + \$900 deposit. 954-294-4945.

2br/1ba brick home \$450 a month \$150 deposit, Stringer School District. Zone Edon Community. 12 month lease required. No pets. Call 601-850-0586.

2/1 bath apartment. Petal, w/d hook up, water included, \$575 month/\$500 deposit, 2/1 bath house for rent, Petal/Sunrise Community, \$600.00 per month/\$600 deposit. (Owner/Agent) [NO SEC 8 Available]. Call Eagle Realty & Property

Mgt., LLC. 601-270-2546 for a viewing appointment.

2/3 bedroom homes for rent 601-649-4075

812 West 12th Street, 2br/2ba. \$600/mth, \$600/dep. 601-438-4388.

APARTMENTS FOR RENT

Beautiful spacious two bedroom apartment in downtown Laurel. Enjoy great views, stainless steel appliances and washer-dryer. Call June at 601-498-9389.

Senior male needs to rent room to share expenses with someone in their home or apartment. Call or text 601-699-2793.

Highlands. Paying Rent?? A house payment could be less. Call us today and see how you can build your dream home. Call: 601-649-9459.

AUTO PARTS

For sale - 305 Chevy Engine, used. \$400. 601-426-7647.

AUTO SERVICES

Hartfield's Auto Repair 25 years experience Located in Stringer MS. Open Mon -Fri 8-5. 601-470-3220

AUTOS - CARS

For Sale: 2001 Nissan Sentra, 2003 Ford Taurus, 2008 Toyota Camry, 1996 Chevrolet Camaro. Call 601-426-7600 for details.

Looking for a dependable vehicle but have less than perfect credit? Don't give up! give me a call, I may can get you financed. Matt Dilmore, new & used sales. 601-450-1777 mdilmore@ryanauto.com.

Everybody rides. 2006 West Pine St., Hattiesburg, MS. 39401. 769-390-7975. Financing for everybody. All you need is utility bill, down payment, bank statement, last check stub.

2007 Chevy Impala, Super Clean. Asking \$5,500. Call 601-818-3597.

2006 Toyota Camry, LE, 2.3 I4, Sedan, Desert Sand/Beige, 109k miles, Extra Clean, \$8,250. Warranty. 601.580.0358. See more at www.EllisvilleMotors.com.

One Owner 2008 Toyota Camry, LE, Sedan, Silver/Charcoal, Clean Car, Asking \$8,250. Warranty Available. 601.580.0358. See more at www.EllisvilleMotors.com.

1999 Honda Civic, LX, 2 Door, Hatchback, Gas Saver, Great Mechanical Condition, \$3,250. Warranty Available, 601-580-0358. See more at www.EllisvilleMotors.com.

97 BMW, needs small repairs. \$2500. 601-577-0838.

Need a ride? Credit not so good? I can help. Good credit. bad credit, no credit. Give Tom a call. 601-428-4405.

Affordable Auto Insurance, especially if you don't have any now. Call 601-765-4060

1998 Lincoln Town Car, 165K miles, black. Asking \$3,995. Call 601-394-9313

In the market for a new or quality preowned vehicle? We have plenty of inventory available, new vehicles arriving daily. Concerned about less than perfect credit? I have many years of experience. Give me a call let me see if I can help you. William Hickman 601-520-1354.

2011 Nissan Sentra, silver, 6spd., 77,209 miles. \$10,599. Auto Express, 1397 Ellisville Blvd. 601-335-4075.

2005 and 2001 Taurus wagons. Both excellent. Your choice. Owner cannot afford insurance for both. 601-785-6839, 601-355-5814.

2008 Nissan Altima, 2.5SL, Leather, Heated Seats, Sunroof, Good Tires, Nice Paint, \$9,575. Warranty. 601.580.0358. See more at EllisvilleMotors.com.

2009 Ford Mustang, red coupe, 110,911 miles. \$9,999. Auto Express, 1397 Ellisville Blvd. 601-335-4075.

AUTOS - SUVs

2007 Buick Terraza CXL, 4-dr Mini-Van, 157K Miles. \$5,995. Call 601-818-3597.

2008 Chevrolet Suburban, LT, 5.3L V8, Black Leather, Silver Paint, 20" Alloy Wheels, Great Truck! \$15,450. Warranty. 601.580.0358. See more at www.EllisvilleMotors.com.

2003 Jeep Liberty Renegade. \$5,800. Call 601-394-9313.

Continued on ... Page 11

H&F AUTO SALES, INC.

Next to Sanford Body Shop on Houston Rd.
Many Great Selections **BUY HERE/PAY HERE**
We Finance!!! "Y'all know me!!! Come see Miss Rhonda"
601.649.8300

We accept Debit/Credit Cards

Truck Sale!!!

2014 Ford F-150 SuperCrew XLT \$32,995 4x4

2009 Ford F-150 Lariat SuperCrew 4x4

2013 Ford F-150 SuperCrew 25k miles!!

2003 Chevrolet Tahoe \$23,995

2008 Ford F-350 SuperCrew \$23,995

2003 Chevrolet Tahoe \$8,995

2008 Ford F-350 SuperCrew 4x4 6.4 Diesel \$27,995

Coolley Motor Company

Since 1928

Hwy 45 North • Waynesboro, MS

601-735-4323 or 1-800-748-8838

LAUREL A-1 TIRE CENTER

Right behind the Laurel Police Department

TRUCK LOAD SALE

TIRE SPECIAL

- P225/60R16
- P205/55R16

\$59.95 Each PLUS TAX, MOUNTING & BALANCING

219 Ellisville Blvd., Laurel, MS
M-F 7:30 A.M.-5:00 P.M. SAT. 7:30 - NOON

601.425.4616

Aaron Williams Auto Sales

True In-House Financing On The Spot!
Come See Our Selection!

Invest Your Income Tax Refund Wisely

- LUXURY
- SPORTS
- SUV'S
- TRUCKS

Serving our Customers for over 20 years

1428 MS Dr. • Waynesboro • Deal on the Hill **601-735-3916**

FARRIS

MOBILE HOME TRANSPORTING

Statewide moving, licensed & insured.
Transporting since 1979

Tony Farris
601-422-4144



McDONALD'S STORE
Established 1967
Hot Coffee Mississippi

- Covington County Homemade Jellies & Jams
- Old Fashioned Hoop Cheese
- Fresh Cut Deli Meat
- Much More!

WORLD FAMOUS

2543 Hwy 532 • Collins • 601.785.4343

RUSTIN METAL BUILDINGS AND CONSTRUCTION

Laurel, Mississippi
Rustin Construction Since 1933
COMMERCIAL • RESIDENTIAL

26 Gauge Colored Panels
Licensed General Contractor

NO JOB TOO BIG OR SMALL

CALL FOR CURRENT PRICES! **601-649-9949**

2009 Chevrolet Suburban, LTZ 1500, automatic, black, 166,987 miles. \$16,999. Auto Express, 1397 Ellisville Blvd. 601-335-4075.

2011 GMC Yukon Denali, 110K Miles, Flex fuel. \$26,995. Call 601-606-5769.

2006 Ford F150 King Ranch Crew-cab. \$12,900. Call 601-394-9313.

2013 Ford F150 Super Crew, 4WD, Limited only, 70K miles. Asking \$34,900. Call 601-606-4096 or 601-765-4402.

2011 Chevrolet Silverado 1500, LTZ, leather/4x4/crew-cab, 126K miles. \$22,900. Call 601-606-4096.

ATVS
EML Motorsports, 2116 North Frontage Road, Meridian, MS, authorized dealer for HiSun & Linhai ATVs/UTVs. Great deals on motorcycles, scooters and go-carts. We service Harley Davidson, Victory and Indian Motorcycles. info@eml-motorsports.com. 601-270-5058.

ONE OWNER 2004 Kia Sorento, Leather, Alloy Wheels, Sunroof, 96k miles, Nice SUV! \$5,795. Warranty. 601.580.0358. See more at EllisvilleMotors.com.

2007 F150 XLT Crew-cab, 157K miles. \$10,900. Call 601-394-9313.

2006 Toyota Tundra, SR5, Crew Cab, Black/Gray, Upgraded Wheels, 104k Miles, Clean Truck! \$13,995. Warranty Available. 601.580.0358. See more at www.EllisvilleMotors.com.

ONE OWNER 2006 Chevrolet Silverado, LS, Crew Cab, 4.8Li V8, Silver/Gray, 122k Miles, Extra Clean, Local Purchase, \$12,775. Warranty, 601.580.0358. See more at www.EllisvilleMotors.com.

2007 Jeep Wrangler Sahara, 101K Miles. Asking \$15,900. Call 601-606-4096.

CARPORTS
Carports and Buildings: Financing Available! 18x21 carport \$795; includes installation! All sizes available. We also offer storage buildings & barns. Call John at 601-323-0464, 303 Hwy 11 South, Ellisville MS (between Pizza Hut and JCJC)

2013 Kia Soul, white, 6spd., 52,032 miles. \$11,999. Auto Express, 1397 Ellisville Blvd. 601-335-4075.

2005 Chevrolet Silverado, WT, Extended Cab, 5.3Li V8, White/Beige, 158k Miles, Alloy Wheels, \$8,995. Warranty, 601.580.0358. See more at www.EllisvilleMotors.com.

One Owner 2004 Nissan Frontier, Ex Cab, Automatic, Power Windows and Locks, Alloy Wheels. \$7500. Warranty, 601.580.0358. See more at www.EllisvilleMotors.com.

2007 Chevy Z71 1500. Asking \$8,995. Call 601-394-9313.

2010 Chevy Silverado, 129K miles, 1500, 4WD, LT. Asking \$18,995. Call 601-606-5769.

BOATS
2012 Bass Tracker 175TF 2 live wells, 60hp motor, trolling motor electric anchor, fish finder, shed kept with cover. \$12,000 obo. 601-310-2402.

DERKSEN PORTABLE BUILDINGS

BUY OR RENT TO OWN starting at... **\$69²¹** PER MONTH
NO CREDIT CHECK!

- FREE DELIVERY & SET-UP
- NO SECURITY DEPOSIT • NO SLAB NEEDED

ALL STYLES AVAILABLE • CABINS • BARNES
UTILITY/SIDE UTILITY • GARAGES • CARPORTS

AS SHOWN \$292 MONTH Rent to Own

WWW.ELLISVILLEMOTORS.COM **601-323-0464**
12 Months SAC *wac 303 HWY. 11 S. ELLISVILLE, MS • LOCATED BETWEEN PIZZA HUT & JCJC

Ellisville Annual Easter Eggstravaganza

Saturday • March 26th
Ellisville Courthouse

Festival begins at 10 a.m.

EASTER EGG HUNT AT 11:00

City Wide Garage Sale
Booths \$25 each
Deadline March 23
Set up 7 a.m. Sale at 8 a.m.

For More information call 601-477-8111

JANIE BOLEWARE, LLC

Tax & ACCOUNTING
Tax & Accounting Services for
• Farms • Corporations
• Book Keeping Services
• Small Businesses • Audit Assistance

\$750 Up Front Money*

104 Jessamine St. West • Ellisville • **601 • 477 • 3050**

janiebolewaretax@gmail.com
http://prep.1040.com/getmoney

LET US FILE YOUR TAX RETURN FOR YOU
REFER A FRIEND—
GET \$25 OFF YOUR TAX PREP FEE

FREE VACATION
WITH TAX PREP - RETAIL VALUE UP TO \$400
*SEE OFFICE FOR DETAILS

LAB DISCOUNT DRUGS

"YOUR HOMETOWN PHARMACY"

EASTER SPECIALS

Easter is Sunday, March 27

Kodak Digital Processor

New Shipment Collegiate Items
• Mossy Oak Wallets

Inspirational Mugs

Glory Haus PHOTO FRAMES

Easter Coke Packs

- SPRING WREATHS
- MAILBOX BOWS
- BIRD HOUSES
- PLUSH ANIMALS

Victoria Cross Jewelry

- BEADS.....\$6.99
- BRACELETS.... \$12.99
- NECKLACES...\$19.99

Buy 4 Beads GET 1 FREE!*
Buy 7 Beads GET FREE BRACELET!*

Custom Designed Easter Baskets

Victory Cross Jewelry

- CANDLES BY CIRCLE E
- HEAVENLY LIGHTS (MADE IN MISSISSIPPI)

Southern Pride & Sassy Frass Shirts

NOW OPEN

Soso Pawn & Gun

1051 Hwy 28 West • Across from Post Office

BUY • SELL • TRADE • PAWN

See our selection of Concealed Carry Firearms

Licensed **FFL** GUN DEALER

We Buy

- Guns
- Jewelry
- Electronics

If we don't have what you need...
We can order it for you!

Monday • Tuesday • Thursday • Friday • Saturday 9 a.m. - 5 p.m.
Wednesday • 9 a.m. - Noon

Come see us today! **601-729-4867**

HOME MEDICAL SCRUBS & MORE

Easter Special

- 25% OFF Spirit Jersey
- Selected Scrubs - 50% OFF
- Cherokee Workwear Scrubs

923 WAYNE STREET
WAYNESBORO • 601-735-4444

Skeet shooters join Uncle Si to raise money for children

By Linda Cranford

The sound of shotgun fire reverberated through the tall pine trees of the Boots Smith Ranch in Laurel all day Friday, March 4, as skeet shooters from near and far joined Uncle Si Robertson of "Duck Dynasty," for the First Annual Si Robertson Sporting Clay Shoot Tournament to benefit Homes of Hope for Children.

Teams of five shooters from throughout Mississippi, and as far away as Oklahoma, competed on the tournament course which was designed by a professional target setter. Each station on the course simulated a real life hunting situation. Entry fees included 100 clays per shooter, a team photo with Uncle Si, lunch and drink throughout the tournament, and a trick shot show performed by Mossberg Exhibition Shooter Micah McMillan.

The Homes of Hope for Children campus is a vision of Executive Director Dr. Michael Garrett who, along with his two sisters, grew up in a Christian Children's home. His vision began to take form in 2007 when a 42 acre piece of land was purchased in Purvis, Ms. Phase I of a three-phase plan has been completed to date and the campus is home for 14 boys and girls. The campus presently consists of five brick buildings which include one home for up to seven girls, one home for up to seven boys, a staff duplex, an administration and counseling building, and a commissary. A playground with gazebo can also be found on the campus grounds.

Garrett's goal is to provide homes with a faith based environment for up to 42 disadvantaged boys and girls in need of safe, stable homes. The funds raised Friday will go toward meeting operations needs and the construction of a third home that will house up to seven more boys or girls when completed.

"Si has been a big supporter of our mission," said Garrett. "This was actually Si's idea. And, we partnered up with Venture Oil and Boots Smith here in Laurel. Boots Smith has gone out of their way to make this a success. We have 350 shooters and will raise over \$100,000 today. That money will go toward the direct care needs of the children. We have 14 boys and girls on our campus right now, and we try to keep sibling groups together. They are living and growing up on our campus. A majority of them have been with four and five years. These kids are here to stay. We are their home. We have Christian couples who model to them what a family is supposed to look like."



Si Robertson loads his gun for a practice round of clay shooting before heading to the tournament course. Photos/Linda Cranford



Homes of Hope for Children Executive Director Dr. Michael Garrett helps his son, Caleb, shoot for the first time.



The Robertson Team – L-R, Phillip McMillan, Robertson, Jon Gimber, Jay Stone, and not pictured Micah McMillan.

Robertson said he helps the Homes of Hope for Children several times a year, and said, "They are the only ones that will go to court and fight for the children. "Anything for the kids, I'm all for the kids," exclaimed Robertson. "I tell people all the time, I am a kid. I'm never going to grow up. I tell kids to look into my eyes, and what do you see? When they say an old white bearded dude, I tell them to look deeper. Can't you see the ten year old trying to get out? Anything to do with kids, I'm for it."

Robertson and his team, Phillip McMillan, Jon Gimber, Jay Stone, and Micah McMillan, also competed in the tournament.



Mossberg Exhibition Shooter Micah McMillan, performed trick shots for the tournament participants.

Butler Dental

Across from Court House, Butler, Alabama

Julie Utsey, D.M.D.P.C.

General Dentistry

205-459-2700 1-888-851-8512

Tuesday thru Friday 8 a.m. - 5 p.m.

- ONE DAY DENTURES
- PARTIALS AND EXTRACTIONS
- FREE CONSULTATIONS

	Single	Set
Set Standard Dentures.....	\$200.00	\$300.00
Set Deluxe Dentures.....	\$350.00	\$600.00
*Reline Included: Savings of \$130.00 per unit		
Set Custom Deluxe Dentures	\$550.00	\$1,000.00
*Reline Included: Savings of \$130.00 per unit		
Cast Metal Partial - \$625.00	• Acrylic Partial - \$200.00	
• Extractions - \$100.00	• X-Rays Included	
• Simple Extraction - \$70.00	• Surgical - \$100.00	

77407

South Central Behavioral Health Services Welcomes



Franklin Golden, PMHNP

Franklin Golden is a Psychiatric Nurse Practitioner who treats children, adolescents and adults. He is a native of Mississippi and received his Bachelor of Science Degree in Nursing from the University of Southern Mississippi. He received his Master's Degree in Psychiatric Mental Health Nursing from the Mississippi University for Women in Columbus.

He is accepting new patients. Medicare, Medicaid and most commercial insurance plans are accepted.



South Central Behavioral Health Services

A South Central Clinic

Open Monday through Friday 8 a.m. - 5 p.m.

5 Dunbar St., Ste. 1 | Laurel, MS 39440 | 601.426.9614 | scrmc.com

BUY IT...
SELL IT...
TRADE IT...

THE MOST
COVERAGE FOR
YOUR MONEY!
CALL TODAY
601.649.1129



Mayor proclaims March Intellectual Disabilities Awareness Month

Submitted

The ARC Pine Belt Region Officers and Board of Directors met with Mayor Johnny Magee as he signed a proclamation declaring March as Intellectual Disabilities Awareness Month in the City of Laurel. The Arc was chartered in 1962 and has been a fixture in the community ever since as a non-profit, family and service oriented organization. The goal of The Arc is to assist individuals with intellectual and developmental disabilities to be as independent as possible.

Year round, The Arc works to promote and protect the rights of people with intellectual and developmental disabilities to live, learn, work and play as valued and contributing members of their communities. They advocate for legislation to remove barriers to full participation and inclusion and have been successful on many fronts. But sometimes the barrier has nothing to do with the width of a doorway or an employer's hiring practices. Sometimes the barrier is as subtle as a nervous glance from an uninformed person in line at the market. The first step to addressing those challenges is raising awareness. So, this month is dedicated to breaking down social barriers. Help be an advocate and personally help raise awareness just



Pictured L-R, back row – Viola Harkless, Office Supervisor; Annette Johnson, DCW Laurel Day Services; Ruth Dykes, DCW Laurel Day Services; Dessi Loftin, At-Large Director; Madelyn Parker, Director; James Masters, President; Betty Busbea, Vice-President. L-R, front – Daniel, Jessica, Mayor Magee and Chris. *Photosubmitted*

by being yourself and participating in the things you enjoy alongside others in your community with disabilities.

Visit The Arc's website at <http://www.arcpinebeltregion.com> and find out more about Intellectual Disabilities Awareness Month and things you can do join in. Spread the word using the hashtag #IDAware on social media during the month of March.

Jimmy Bass receives Service to Mankind Award



"We all should look for ways to serve others," exclaimed Jimmy Bass after receiving the Laurel Sertoma Club's Service to Mankind Award. *Photosubmitted*

**BUY IT . . .
SELL IT . . .
TRADE IT . . .**
The most coverage for your money.
Call Today - 601-649-1129
IMPACT

QUINN PHARMACY & GIFTS
Find something for every bunny!

Monogrammed Easter Baskets Let us Custom Design your Special Easter Basket

- Spirit Shirts
- Comfort Color Tanks & Tees
- Summer Beach Bags
- Plush Animals
- Gifts
- Sterling Silver Jewelry
- Candles
- Estralles by A LA Lura Jewelry
- Gourmet Food Items

601-428-0688
3160 AUDUBON DRIVE NORTH LAUREL SHOPPING CENTER

WWW.CHATHAMENTERPRISESINC.COM
CHATHAM ENTERPRISES
Portable Buildings & Metal Roofing
Guaranteed Best Quality and Lowest Prices on:

- Portable Building • Carports
- On Site Steel Buildings • Custom Covers
- Metal Roofing (Painted or Bare Galvalume)

30x30 TUBING BUILDING
Includes:
• 2 Roll Up Doors
• 1 Walk Through Door
• Insulation
• Cement Slab
Installation Included!
\$9,995

COMPARE THESE PRICES:

Portable Buildings		Metal Roofing	
10x12	\$1,395	12x20	\$2,195
12x12	\$1,545	12x24	\$2,395
12x16	\$1,845	12x28	\$2,595
		29 Gauge Bare Galvalume.....	\$1.20/ft.
		29 Gauge Painted.....	\$1.49/ft.
		29 Gauge Painted (w/ 40 Year Warranty).....	\$1.69/ft.

Prices are Subject to Change.

WE HAVE RENT TO OWN AVAILABLE FOR THE PORTABLE BUILDINGS! **601-727-4951**
Located in Rose Hill, MS

Save a lot

**907 Herbert's Mart Shopping Center
Waynesboro, MS**
Wed., March 16 - Tues., March 22, 2016
OPEN 7 DAYS A WEEK - 8A.M. - 8P.M.
WE RESERVE THE RIGHT TO LIMIT QUANTITIES

SAVE ON YOUR FOOD BILL. SHOP SAVE A LOT

Easter Eggstravaganza!
Through March 26th

Choose an Eggstra saving discount out of our Easter Basket from 5% - 50% OFF in the Gift Gallery!

HUTTO INC. FURNITURE & GIFT GALLERY
601-735-2037
713 Azalea Dr. • Waynesboro

(limit 1 egg per purchase, savings must be redeemed immediately in the Gift Gallery)

Family Pack Select PORK CHOPS \$1.38 Lb. We don't add 10% at the register	Family Pack Fresh GROUND BEEF \$1.88 Lb. We don't add 10% at the register	Family Pack Boneless CHICKEN BREAST \$1.68 Lb. We don't add 10% at the register
Assorted 28 Oz. Cans DIANNE TOMATOES 5/\$5 We don't add 10% at the register	3 Lb. Bag Rice RICE ON THE SIDE 2/\$3 We don't add 10% at the register	24 Pack CRYSTAL O WATER 4/\$10 We don't add 10% at the register
1 DAY SALE - GOOD FRIDAY MARCH 18, 2016 ONLY!		
10 Lb. Bag RUSSET POTATOES \$1.97 We don't add 10% at the register	4 Lb. Bag GINGER EVANS SUGAR \$1.67 We don't add 10% at the register	Shank or Butt Portion SUGARDALE HAMS \$1.18 Lb. We don't add 10% at the register

Register for LLT'S Summer Kids' Camp - "Peter Pan, JR"

Submitted

LLT Kids' Camp registration period is now open, and continues until the camp max is reached and registration is closed about a month from now. Absolute deadline to register is May 10th (if the camp hasn't filled and closed before then)- that allows time for all materials to arrive to the students.

The annual camp always fills up in advance and is closed off at some point, so make sure you get your student registered soon so you don't hear the dreaded "sorry, but we're full."

The registration will be done on-line this year. You can find a link to that page from the LLT website Laurel-LittleTheatre.com

If you have any problems with the on-line registration, drop a line to LLTLaurelMS@aol.com or camp director Angie Hodge at AngieDHodge@yahoo.com.

Camp is open to students that will be entering grades 1 through 9 next fall.

Director Katelyn Bryant will hold auditions for a few of the lead roles on Sunday, April 10, at 3 p.m. and on Monday, April 11, at 5:30 p.m. Auditions are open only for registered students. Some supporting roles will not be cast until the first day of camp, but all leads will be decided from this early audition. Everyone registered will be in the production.

The students will attend ten days of workshops, and production performances run May 26 - June 5. The first seven days of workshops and rehearsals are in the afternoons from 1 p.m. to 5 p.m. (including over the weekend). Performances are June 2-3, at 7:30 p.m., June 4, at 4 p.m. and 7:30 p.m. and on June 5, at 2 p.m.



HEY KIDS!

COME ON OVER



www.sawmillsquarecenter.com

Have Your Picture Taken with the Easter Bunny!

SAWMILL SQUARE MALL



**910 Sawmill Road
601-426-6320**

AUTO EXPRESS

AutoExpressOnline.com

**Auto Sales & Repair Center
Financing for Everyone!**

Next to Fairgrounds • Laurel

Sales Team

601.342.2435

67765

SPRING CLEARANCE BLOWOUT!

2009 CHRYSLER 300 HERITAGE EDITION



STK #15199A
WAS **\$16,595** NOW **\$13,995**

2015 DODGE DART



STK #PC880
WAS **\$14,495**

2015 DODGE JOURNEY SXT



STK #PT1632
WAS **\$22,595** NOW **\$19,995**

2015 DODGE CHARGER SE



STK #PC874
WAS **\$22,995** NOW **\$20,495**

2015 DODGE CHARGER SE



STK #PC876
WAS **\$22,995** NOW **\$20,995**

2014 DODGE CHALLENGER SXT



STK #PC875
WAS **\$23,995** NOW **\$21,995**

2012 DODGE DURANGO CREW



STK #15330B
WAS **\$26,995** NOW **\$25,495**

2015 DODGE DURANGO LIMITED



STK #PT1633
WAS **\$34,995** NOW **\$30,995**

2014 FORD EXPEDITION XLT



STK #16017A
WAS **\$33,995** NOW **\$30,995**

2015 DODGE DURANGO LIMITED



STK #PT1641
WAS **\$33,995** NOW **\$30,995**

2011 DODGE RAM 2500 LARAMIE LONGHORN



STK #15229B
WAS **\$38,995** NOW **\$36,495**

2015 RAM 2500 4X4



STK #PT1649
WAS **\$44,995** NOW **\$42,995**

BEST DEALS PERIOD

2011 CHEVROLET TRAVERSE



STK #16005A
\$14,995

2011 CHRYSLER TOWN & COUNTRY LIMITED



STK #15453A
\$16,995

2010 CHRYSLER 300C HEMI



STK #PC878
\$17,995

2007 JEEP WRANGLER SAHARA UNLIMITED



STK #16140A
\$17,995

2013 TOYOTA CAMRY SE



LTHR, NAV, SUNROOF, STK #15402A
\$18,995

2013 NISSAN PATHFINDER



STK #16085A
\$22,995

2012 JEEP WRANGLER SPORT



STK #PT1639
\$22,995

2010 CHEVROLET SILVERADO Z-71 4X4



STK #16071B
\$23,995

2015 JEEP WRANGLER UNLIMITED SPORT



STK #15268B
\$33,995

2015 JEEP GRAND CHEROKEE LIMITED



STK #PT1650
\$35,595

2015 JEEP GRAND CHEROKEE LIMITED



STK #PT1656
\$35,995

2015 JEEP GRAND CHEROKEE LIMITED



STK #PT1657
\$35,995

2014 JEEP WRANGLER UNLIMITED SAHARA



STK #PT1549
\$36,995

2015 RAM 3500 CREW CAB DUALY



6.7L DSL, STK #15411AA
\$44,795

certified pre-owned
CHRYSLER | DODGE | JEEP | RAM



2015 DODGE DART SXT
STK #PC879
\$14,495



2015 DODGE CHARGER SE
STK #PC872
WAS **\$23,995** NOW **\$20,995**



2015 DODGE CHALLENGER SXT
STK #PC871
WAS **\$24,590** NOW **\$21,595**



2015 CHRYSLER TOWN & COUNTRY TOURING
STK #PT1658
\$22,995



2015 CHRYSLER TOWN & COUNTRY TOURING
STK #PT1659
\$23,995



2014 RAM 1500 4X4 SLT BIG HORN
STK #PT1660
\$33,995



BEST DEALS PERIOD



PLUS TAX, TITLE & FEES. SEE DEALER FOR DETAILS.

McMullan Motors 601-544-2430

401 Broadway Dr, Hattiesburg, MS www.mcmullanmotors.com

Laurel Mayor proclaims March Desk and Derrick Awareness Month



Photo/submitted

LRMA promises outstanding exhibitions in 2016

By Holly Green, Director of Development

Lauren Rogers Museum of Art has planned another outstanding year of arts programming for our community, state, region, and for visitors who will enter our doors this year from all corners of the globe. In addition to festivals, classes, educational events, and musical offerings, I want to specifically highlight the extraordinary slate of exhibitions on the horizon for 2016 at your art museum.

Seeking out and providing quality exhibits is always a



Holly Green

top priority for a fine arts institution like LRMA but I believe this year may prove the strongest exhibition schedule we have put forward in recent years. Dale Chihuly: Venetians, a truly beautiful exhibit, opened to the public Jan. 30 and visitors have been pouring in ever since. The opening lecture by Jutta Annette-Page, PhD, Curator of Glass and Decorative Arts at the Toledo Museum of Art, was a "standing room only" event, and the reception following was held in the gallery which showcases one of Chihuly's spectacular Chandeliers, purchased in 2013 in celebration of the Museum's 90th anniversary. The exhibition consists of colorful and effervescent vessels featuring sculptures of putti and mythological creatures, bottle stoppers, and drawings inspired by time the artist spent in Venice, Italy in 1988. It will be here until June 5, so come as often as you like and enjoy these exquisite wonders of glass.

On the heels of this stunning display, will be another "don't miss" exhibition - America the Beautiful: The Monumental Photographs of Clyde Butcher. This exhibit will feature 56 of Clyde Butcher's large-scale black and white photographs showing off the grandness and beauty of this country's treasured National Parks. The significance of Butcher's photography has resulted in museum exhibits in the United States, as well as in galleries outside the U.S. The photographer has been named Humanitarian of the Year by the International University and received the Lifetime Achievement Award from the North American Nature Photography Association, as well as the Sierra Club's Ansel Adams Conservation Award. This will be a breathtaking and captivating display of scenes familiar to us all. See it between June 6 and Sept. 4.

Fall of 2016 will bring to the Museum's walls a painterly show sure to have broad appeal to visitors - American Impressionism: The Lure of the Artists' Colony, on display Sept. 6 through Nov. 13. The Reading Public Museum's collection of lyrical landscapes is made up of more than 100 works, including 75 oil paintings and nearly 30 works on paper dating from the golden age of American Impressionism (the 1880s through the 1940s). Featured will be the work of renowned artists William Merritt Chase, Childe Hassam, Ernest Lawson, John Twachtman, Frank W. Benson, William Paxton, Abbott Thayer, Guy Wiggins, Charles Webster Hawthorne, and Edward Redfield, as well as American expatriate artists Mary Cassatt and John Singer Sargent. LRMA has in its permanent collections works by several of these artists, so please take time to locate them while you are viewing this lovely traveling exhibit.

SHOP ONLINE 24/7 @ HANKINSMOTORS.COM



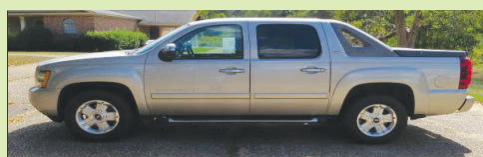
2005 CHEVROLET AVALANCHE
POWER SEAT, LOCAL TRADE, 5.3L, V-8
STOCK# U-3886

"N.A.D.A. Retail" "Your No Hassle Price"
~~\$11,150*~~ **\$8,333***



2002 GMC 2500 HD CREW 4WD
1 OWNER, DURMAX DIESEL, GOOSE NECK HITCH
STOCK# U-3850

"N.A.D.A. Retail" "Your No Hassle Price"
~~\$13,275*~~ **\$11,333***



2008 CHEVROLET AVALANCHE
3LT, 4WD, LEATHER, POWER SUNROOF, 97K MILES
STOCK# U-3858

"N.A.D.A. Retail" "Your No Hassle Price"
~~\$20,925*~~ **\$18,833***



2012 GMC YUKON SLT
1-OWNER, 65K MILES, POWER SUNROOF,
NAVIGATION RADIO STOCK# U-3889

"N.A.D.A. Retail" "Your No Hassle Price"
~~\$32,400*~~ **\$31,333***



2013 CHEVROLET TAHOE LT
1-OWNER, REAR ENTERTAINMENT SYS.,
LEATHER, CENTER ROW BUCKETS, STOCK# U-3890

"N.A.D.A. Retail" "Your No Hassle Price"
~~\$30,950*~~ **\$28,333***



2013 CHEVROLET TRAVERSE LT
1 OWNER, 36K MILES, 7 PASSENGER SEATING
STOCK# U-3900

"N.A.D.A. Retail" "Your No Hassle Price"
~~\$23,875*~~ **\$22,833***



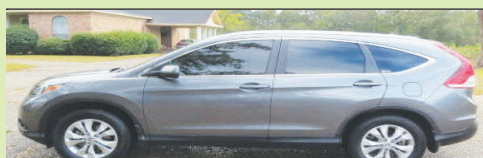
2013 CHEVROLET EQUINOX LT
1 OWNER, LEATHER, 71K MILES
STOCK# U-3896

"N.A.D.A. Retail" "Your No Hassle Price"
~~\$18,100*~~ **\$16,333***



2010 FORD EXPLORER XLT
POWER SUNROOF, LEATHER, 3RD ROW SEAT
STOCK# U-3881

"N.A.D.A. Retail" "Your No Hassle Price"
~~\$12,875*~~ **\$11,333***



2012 HONDA CR-V EX-L
LOCAL TRADE, LEATHER, 56K MILES
STOCK# U-3862

"Your No Hassle Price"
\$19,333* OR **\$333.33*** MONTH



2014 CHEVROLET CAPTIVA LTZ
2 TO CHOOSE STOCK# U-3883
POWER SUNROOF, LEATHER, BLUETOOTH FOR PHONE

Starting at
\$16,333



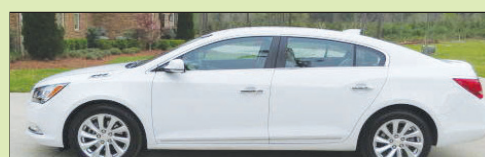
2015 BUICK ENCLAVE
23K MILES, LEATHER, POWER SUNROOF
STOCK# U-3893

"N.A.D.A. Retail" "Your No Hassle Price"
~~\$36,875*~~ **\$34,333***



2013 KIA OPTIMA SXL TURBO
20K MILES, LOCAL TRADE, NAVIGATION SYSTEM
STOCK# U-3898

"N.A.D.A. Retail" "Your No Hassle Price"
~~\$23,050*~~ **\$21,333***



2015 BUICK LACROSSE CXL
V-6 ENGINE, 18K MILES, LEATHER
STOCK# U-3802

"N.A.D.A. Retail" "Your No Hassle Price"
~~\$26,475*~~ **\$24,333***



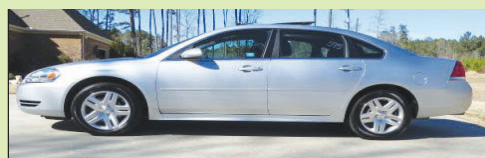
2015 CHEVROLET MALIBU LTZ
LEATHER, POWER SEAT, 22K MILES
STOCK# U-3836

"N.A.D.A. Retail" "Your No Hassle Price"
~~\$20,500*~~ **\$17,933***



2015 BUICK VERANO
2 TO CHOSE, REAR VISION CAMERA, REMOTE
KEYLESS ENTRY & START, 19K TO 22K MILES

"Your No Hassle Price"
\$16,733* OR **\$233.33*** MONTH



2014 CHEVROLET IMPALA LT
LTD, 24K MILES, POWER SUNROOF, POWER SEAT
STOCK# U-3786

"N.A.D.A. Retail" "Your No Hassle Price"
~~\$17,850*~~ **\$14,933***



2015 CHEVROLET IMPALA LTZ
2 TO CHOOSE STOCK# U-3894
V-6 ENGINE, LEATHER, REAR VISION CAMERA

Starting at
\$25,933



2014 CHEVROLET CRUZE
3 TO CHOOSE STOCK# U-3806 & U-3859
LEATHER, RS PKG, REMOTE KEYLESS START

Starting at
\$14,833



All Prices Plus Tax, Title & Fees. See Dealer For All Details. Pictures for Illustration Purposes Only. MPG=HWY WAC - With Approved Credit



Come See Us At Hwy 15 South Bay Springs, Ms. or visit our website at www.hankinsmotors.com

Harris Hankins Motors
Your No Hassle Dealer

HWY. 15 SOUTH BAY SPRINGS, MS
www.hankinsmotors.com

601-764-4552

LU898