

# CELEBRATE Shelbyville

## Celebrating Women-owned Chamber businesses

Local entrepreneurs share their secrets to success

**Chamber Guide  
and Relocation Guide**

**Chamber  
Membership Directory**



**NATIONWIDE  
EXPRESS**

**IS NOW**

**ONE OF**

**JONES**



**Jones**  
LOGISTICS

**Dedicated | Brokerage | Warehousing | Waste Management**

**NEW NAME. SAME SOLUTIONS.**

Jones Logistics, formerly Nationwide Express, is now providing clever solutions across the United States.

**Connect with Us: [JoLo.com](http://JoLo.com) |    **

# HONEST HOMETOWN SERVICE

Local Employees Serving  
Reliable High-Speed Internet  
For Your Home or Business

## Industry Leading Customer Satisfaction

- ▶ **Network Reliability** – outstanding 99.99%
- ▶ **No Data Caps** – unlimited usage
- ▶ **No Contract** – our pledge of satisfaction
- ▶ **Wi-Fi 6** – an unrivaled experience with your devices
- ▶ **UControl App** – feature-rich app that puts you in control of your Wi-Fi

800-779-2227 | [united.net](http://united.net)

United Communications is a service of Middle Tennessee Electric Membership Corporation.



# Serving Middle Tennessee for 50 Years



**Ben Craig**  
(931) 639-0694



**Tad Craig**  
(931) 639-0914



**Michael Hix**  
(931) 607-7969



**Camille Bell**  
(931) 224-5719



**Tyler Gill**  
(931) 580-0360



**Gene Ray**  
(931) 224-7101



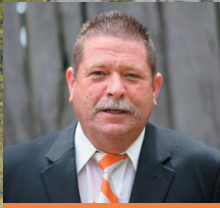
**Josh Hammonds**  
(931) 703-7884



**Asa Kelly**  
(931) 703-2040



**David Andrews**  
(931) 703-6364



**Steve Huddleston**  
(931) 309-1457



**Tre Stewart**  
(931) 492-0834



**Scott Hall**  
(615) 542-4610



**Dean Pugh**  
(931) 580-4860



**Lisa Curl**  
(931) 224-1071



**Andrew Curl**  
(931) 312-0300



**Paul Myers**  
(615) 347-1576



**Kerrie Upchurch**  
(931) 703-5375



**Mike Matthews**  
(615) 971-1573



**Jason Boyette**  
(931) 580-4413



**Lea McGee**  
(931) 639-5012



**Jody Hayes**  
(561) 401-2162



**Al Cook**  
(931) 703-8622



**Michael Cook**  
(931) 580-8179



**Belinda Craig**  
(931) 639-0691



**Carissa Craig**  
(931) 224-0231



**Lana Craig**  
(931) 684-9112



**Brooklyn Richardson**  
Office Manager

Call your preferred agent today!



**(931) 684-9112 • CraigWheeler.com**

508 Cannon Blvd • Shelbyville, TN 37160

*Craig & Wheeler Realty & Auction, LLC is an equal opportunity employer.*



# BANK LOCAL GET MORE

A SHELBYVILLE **COMMUNITY** BANK



When our customers bank local, they get more. More empowered. More informed. Local banking gets them closer to their goals and dreams because they work directly with bankers who know them. With less layers and more personal connection, we're a local bank brand that goes the distance to get customers where they want to be.

  
FirstBank

[FirstBankOnline.com](http://FirstBankOnline.com)

508 Madison Street, Shelbyville, TN | 931-680-7580

Member  
**FDIC**

# Welcome

to the City of **Shelbyville**  
and **Bedford County**



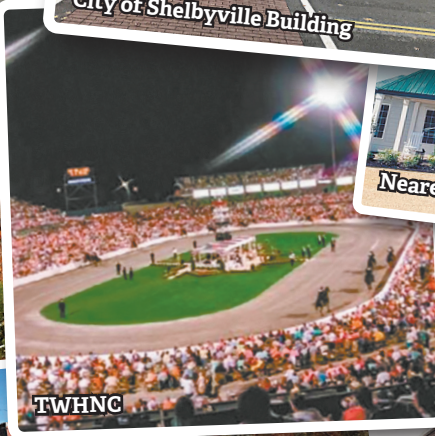
**Bedford County Courthouse**



**City of Shelbyville Building**



**Normandy**



**TWHNC**



**Nearest Green Distillery**



**Wartrace**



**Bell Buckle**



**Historic Downtown Shelbyville**

## **Bedford County**

1 Public Square, Suite 101  
Shelbyville, TN 37160  
(931) 684-7944  
[www.bedfordcountyttn.gov](http://www.bedfordcountyttn.gov)



## **City of Shelbyville**

201 N. Spring St.  
Shelbyville, TN 37160  
(931) 684-2691  
[www.shelbyvilletn.org](http://www.shelbyvilletn.org)



# Making Health Care Personal In Bedford County

Vanderbilt Bedford Hospital is proud to bring the strength and resources of Vanderbilt Health to Shelbyville and the surrounding region. From the day our doors opened, we have been focused on making health care personal for each member of this wonderful community.

Accredited by The Joint Commission and certified by the American Heart Association, Vanderbilt Bedford Hospital offers inpatient and outpatient medical and surgical care, including primary care, general surgery, orthopaedics, women's health, emergency care and more.

**For more information, please visit [VanderbiltBedfordHospital.com](http://VanderbiltBedfordHospital.com)**

## Vanderbilt Bedford Hospital

VANDERBILT  HEALTH

2835 Highway 231 N • Shelbyville, TN 37160 • 931-685-5433

# Table of Contents

# CELEBRATE Shelbyville

- 12.** **Bedford County And Its Towns**  
They Invite People, Progress, And Perspective.
- 
- 20.** **Chamber Relocation Guide**
- 
- 32.** **Third Thursday With The  
Shelbyville-Bedford County Chamber**  
Show Up, Network, And Grow Your Connections
- 
- 44.** **Women-Owned Chamber Businesses**  
Local Entrepreneurs Share Their Secrets To Success
- 
- 56.** **M•A•C Daddies Food Truck  
Is Going Brick-And-Mortar**  
Coming Soon: Glass Hollow Table & Tavern
- 
- 66.** **The Webb Difference**  
Webb Graduates Equipped To Thrive And Lead
- 
- 70.** **A Promise Kept**  
Vanderbilt Bedford Hospital Is Here To Stay
- 
- 74.** **National Celebration Grounds  
Makes Major Announcement**  
Cooper Steel Breathes New Life Into Calsonic Arena
- 
- 92.** **Tennessee Whiskey**  
The Best Whiskey This Side Of The Mississippi.
- 
- 94.** **Chamber Membership Directory**



# Auctions, Buying, or Selling--We're with you every step of the way.



Adam Johnson (931) 703-6081



Amelia Weaver (615) 636-3942



Amie Lee Marks (931) 703-2643



Brent Patterson (931) 842-8000



Brooke Burgess (931) 581-6286



Bryan Bannister (931) 619-8575



Christy Brown (931) 315-0792



Donnie Smith (931) 580-2510



Greg Sitz (931) 703-5479



Jacob Davidson (931) 205-0740



Jamie Warren (615) 390-2105



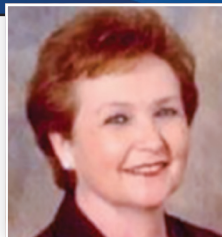
Jason Finney (931) 703-3196



Jennifer Jarrell (931) 703-0667



Leann Uselton (931) 273-8096



Melba Carr (931) 580-9068



Mitchell Boyce (931) 639-3345



Mitchell Butler (931) 639-1218



Todd Davidson (931) 205-3294



Troy Stacy (931) 607-4413

**PARKS** | **P**

**931-685-2010**

[www.ParksAtHome.com](http://www.ParksAtHome.com)



[www.ParksAuction.com](http://www.ParksAuction.com)



**INFLATION!**  
**Let Us Help!**



***Call us for a review  
of your policies.***

**Call Us (931) 680-1011**  
**younginsur.com**

**1500 Madison St.**  
**Shelbyville, TN 37160**

**Se habla Español.**

# CELEBRATE Shelbyville

**PUBLISHER** Will Thomas

**DIRECTOR OF MAGAZINES** Katie McNabb

**VP OF PARTNER DEVELOPMENT** Chase Perryman

**MANAGING EDITOR** Wesley Bryant

**LAYOUT ARTISTS** Ben Adams, Brianna Brubaker, Melissa Davis

**PHOTOGRAPHERS** Brooke Snyder, Ashleigh Newnes

**WRITERS** Amanda West, Jeriah Brunfield, Tina Neeley, Kali Bradford

**PROOFREADER** Michelle Harwell

**ART PRODUCTION MANAGER** Todd Pitts

**PRINT AD DESIGNER** Ben Adams

**VP OF SALES** Ken Holtzinger

**BUSINESS DEVELOPMENT** Lorri Allen, Tim Ashley, Faith Cashion,  
Janet Mullins, Sissy Smith, Sandra Thomas

**VP OF MARKETING** Gabby Denny

**DIGITAL ASSISTANTS** Ginger Jones, Marisa Thornton

**DIGITAL STRATEGIST** Taylor Bagby

**NATIONAL ACCOUNTS SPECIALIST** Bob Barger

**HUMAN RESOURCES** Tracey Pollock

**CUSTOMER SERVICE** Shelli Fuller, Barb Hargrove, Tim Weir

**DISTRIBUTION** Steve Seiler

**DIGITAL DESIGN DIRECTOR** Clinton George

**WEBSITE DESIGNERS** Crystal Melhaff, Ashley McMurry

**SEO CONTENT LEAD** Anna Sharp

**SOCIAL MEDIA COMMUNITY MANAGER** Sarabeth Bray

P.O. Box 490, Fayetteville, TN 37334 | (800) 247-7318 | exchange-inc.com

Art work or other copy submitted for publication is considered to be the property of the advertiser. Advertising is accepted with the understanding that all liability for copyright violation is the sole responsibility of the advertiser. Exchange Media Group will make every effort to see that advertising copy is correctly printed, but shall not be liable for failure to publish an ad or for typographical errors. The advertiser assumes full liability for his/her advertisements and agrees to hold Exchange Media Group unaccountable for the content of all advertisements authorized for publication and any claims that may be made against the Exchange Media Group. Exchange Media Group will gladly reprint, without charge, that part of an advertisement in which an error occurs, provided a claim is made within three (3) days of the first publication of the ad. Exchange Media Group will not knowingly accept any advertisement that is defamatory, promotes academic dishonesty, violates any federal, state or local laws or encourages discrimination against any individual or group on the basis of race, sex, sexual orientation, color, creed, religion, national origin or disability. Exchange Media Group reserves the right to reject ads considered distasteful or defamatory. All real estate advertised herein is subject to the Federal Fair Housing Act, which makes it illegal to advertise any preference, limitation, or discrimination because of race, color, religion, sex, handicap, familial status, or national origin, or intention to make any such preference, limitation, or discrimination. Exchange Media Group will not knowingly accept any advertising for real estate which is in violation of the law. All persons are hereby informed that all dwellings advertised are available on an equal opportunity basis.

© 2023 Exchange Media Group, Inc. All Rights Reserved.



FIRST  
COMMUNITY  
BANK

# *Celebrating 35 Years*

## Providing Community Banking



**Main Office**

207 Elm St.  
Shelbyville, TN 37160



**Madison Street**

1051 Madison St.  
Shelbyville, TN 37160



**Airport Branch**

2841 Hwy. 231 N.  
Shelbyville, TN 37160

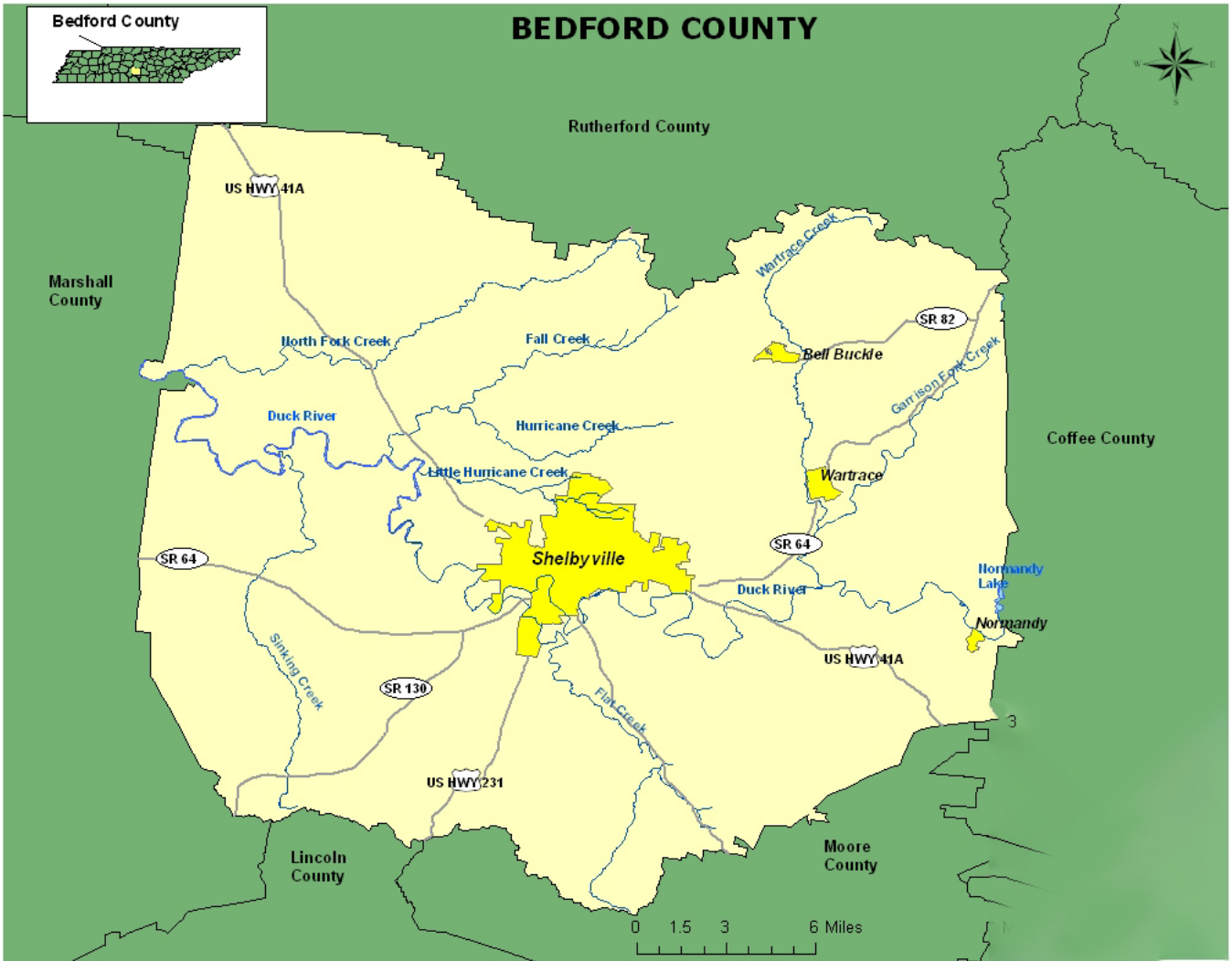


**Moore County Branch**

535 Majors Blvd.  
Lynchburg, TN 37352

**Office Hours**

Monday - Thursday 8:00 AM - 4:00 PM | Friday 8:00 AM - 5:00 PM | Saturday 8:00 AM - 12:30 PM



# Bedford County and its Towns

They invite people, progress, and perspective.

By Tina Neeley

Bedford County’s landscape will invite you; its wildlife enchant you, and its people welcome you. Economically diverse and committed to better tomorrows, Bedford County has been evolving since it was established in 1807 when the governor split Rutherford County into two counties, at residents’ request. Rich in history, education, agriculture,

and tourism, everything you need is nearby. The Nashville and St. Louis Railway carried the county into a new era, establishing depot towns to attract trade, tourism, and traditions. Continuing the momentum, the county has become home to a new distillery, festivals, small businesses, and residents seeking a more gentle way of life.



# Shelbyville

Named for Major General Isaac Shelby of the Revolutionary War, Shelbyville is at the heart of good living. Float or fish the Duck River, tour Nearest Green Distillery, or take in a horse show. Better yet, make Shelbyville your home! Enjoy small-town life where family, community, and forward thinking connect.



## Wartrace

Foundational to Bedford County's walking horse industry, the breed's first celebration was held in 1939 on the town's square. Historical homes and buildings testify to the town's heritage. Approximately 140 of them are on the National Register of Historic Places. Life at a slower pace, and interstate access offers the best of both worlds.



## Bell Buckle

Once the largest livestock shipping depot between Nashville & Chattanooga, Bell Buckle's early days were characterized by economics and education. According to [tennesseencyclopedia.net](http://tennesseencyclopedia.net), Bell Buckle is one of the most visited railroad towns in Tennessee. The Webb Art and Craft Festival, shops and restaurants on its square draw year-round crowds.



## Normandy

Incorporated in 1858, Normandy is a town shaped in its formative years by the Nashville & Chattanooga railroad expansion in Bedford County. The 1976 completion of Normandy Dam, and the opening of the fish hatchery transformed Normandy from a railroad town to a favorite stop for recreational camping, fishing, and watersports.



## Unionville

Founded in approximately 1827 and home to more than 2,100 residents, Unionville is a tight-knit community where everyone knows your name. The birthplace of Tennessee's Governor Jim Nance McCord, Unionville's name resulted from uniting two different post offices into one. Its schools, appropriately named Community, further unite the small town.







119

Nail Service  
Salon

Nail Service  
Salon

OPEN

3CR-2N8

# Demographics

Bedford County by the numbers

## Nearby Neighbors

**59 mi.**

BEDFORD COUNTY TO NASHVILLE

**179 mi.**

BEDFORD COUNTY TO KNOXVILLE



**230 mi.**

BEDFORD COUNTY TO ATLANTA

**58 mi.**

BEDFORD COUNTY TO HUNTSVILLE

**98 mi.**

BEDFORD COUNTY TO CHATTANOOGA

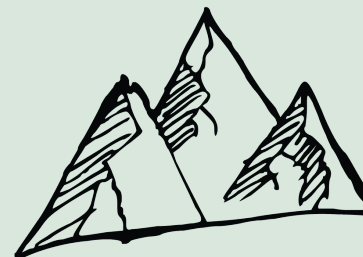
The county seat is the City of Shelbyville (cir. 1810) which was named for Major General Isaac Shelby of Revolutionary War fame and also the State of Kentucky's first Governor.



ELEVATION

**222m.**

**728ft.**



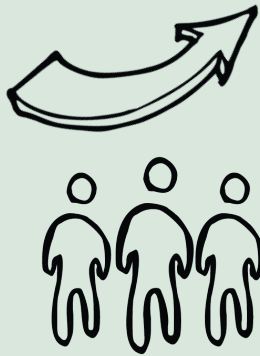
Source: [elevation.maplogs.com](http://elevation.maplogs.com)

**Cities within Bedford County**



**BELL BUCKLE  
NORMANDY  
SHELBYVILLE  
UNIONVILLE  
WARTRACE**

# Population



**50,237**

TOTAL POPULATION  
OF BEDFORD COUNTY

**37.9** +/- 0.6

MEDIAN AGE IN  
BEDFORD COUNTY

**19,685**

TOTAL HOUSING UNITS  
IN BEDFORD COUNTY

Bedford County had a population of **45,058** residents at the 2010 census.  
Bedford County had a population of **51,950** people at the 2022 census.

Shelbyville had a population of **20,335** residents at the 2010 census.  
Shelbyville had a population of **23,743** people at the 2021 census.

Source: data.census.gov



The Bedford County landscape is comprised of 475 square miles of beautiful rolling pastured lands mixed with high elevation hills and flat river bottoms.



LONGITUDE

**-86.4425**

LATITUDE

**-35.5594**



ANNUAL HIGH  
TEMPERATURE

**71°F**



ANNUAL LOW  
TEMPERATURE

**48°F**



AVERAGE ANNUAL  
PRECIPITATION

**56.28in**



AVERAGE ANNUAL  
SNOWFALL

**3in**



Source: bedfordcountyttn.gov

# Relocation Guide

The names & numbers you need for moving to Bedford County.

## Airports

Shelbyville Municipal Airport  
(931) 684-1669

## Animal Control

Shelbyville Animal Control  
(931) 684-6552

Bedford County Animal Control  
(931) 685-1130

## Auto Tags & Titles / Records

Bedford County Clerk  
(931) 684-1921

## Basic Needs

Good Samaritan Association  
(931) 684-1189

Shelbyville Community Soup Kitchen  
(931) 684-2535

## Bedford County Emergency Management Agency (EMA)

(931) 684-5974

## Bedford County Emergency Medical Services (EMS)

(931) 684-4403

## Bedford County Mayor / Courthouse

(931) 684-7944

## Better Business Bureau

(615) 242-4222

## Building Permits

Shelbyville Building & Codes  
(931) 684-9001

Bedford County Zoning  
(931) 685-1336

## Burning Permits

Inside City Limits  
(931) 684-6241

Outside City Limits  
Bedford County Fire Department  
(931) 684-9223

Forestry Department  
(877) 350-2876

## Business License

(931) 684-2691 City\*

(931) 684-1921 County

*\*businesses located within city limits must apply at both city and county offices*

## Cable Television

Entersource  
(800) 683-8172

Spectrum  
spectrum.net

AT&T  
(800) 683-8172

United Communications  
united.net

## Chamber of Commerce

Shelbyville (931) 205-2730

Bell Buckle (931) 389-9663

Wartrace (931) 240-0300

## Election Commission Administrator

(931) 684-0531

## Emergency Services

Emergency Only Dial 911  
Non Emergency (931) 684-5811

Middle TN Poison Center  
(800) 222-1222

### Fire Defense System

Emergency Calls 911  
Shelbyville Fire Dept  
(931) 684-6241

Bedford County Fire Dept.  
(931) 684-9223

### Family Services

Dept of Human Services  
(931) 685-5006

Child Support  
(931) 438-1909

### Garbage / Recycling Convenience Centers & Hours

El Bethel

- Monday - Friday 6:30 a.m. - 4:30 p.m.
- Saturday 6:30 a.m. - 4:30 p.m.

All other locations

- Mon., Wed., Fri. 6:30 a.m. - 4:30 p.m.
- Saturday 6:30 a.m. - 4:30 p.m.

Recycle materials:

Aluminum cans, oil, newspaper, batteries, scrap  
metal, cardboard

\*Electronics and televisions accepted only  
at El Bethel

Deason Waste (931) 437-2527

El Bethel Waste (931) 685-9158

Normandy Waste (931) 857-9490

Tire Center (931) 684-4651

*Open Wednesday only 7:30 a.m. - 2:30 p.m.*

Tollgate Waste (931) 684-4651

Unionville Waste (931) 294-5157

Wartrace Waste (931) 389-6864

Wheel Waste (931) 685-1036

### Public Works

Shelbyville (931) 684-2644

Bell Buckle (931) 389-6926

DCS Sanitation (931) 684-5635

### Ground Water - Environmental

Soil Perc Tests  
(931) 380-3371

### Health Department

(931) 684-3426

### Health & Disability

Vanderbilt Bedford Hospital  
(931) 685-5433

Multi-County Cancer Support Network  
(931) 967-0904

Social Security Disability (Tullahoma)  
(931) 455-3795 | (800) 772-1213

### Highway Department / Garage

Shelbyville  
(931) 684-2644

Bedford County  
(931) 684-4651

### Humane Society / Animal Shelter

Shelbyville-Bedford County  
Humane Association  
(931) 684-5463

### Industrial Recruiter

(931) 735-6925

### Law Enforcement Agencies

Bedford County Sheriff  
(931) 684-3232

Shelbyville Police  
(931) 684-5811

## Pet Laws

The ordinance regarding pet laws within the city limits of Shelbyville states that all dogs must be confined or controlled by a leash, and all pets should be given rabies shots and must wear tags indicating they have had these shots. If, for any reason, an animal needs to be picked up off the street, one can call the Animal Control Office number, (931) 684-6552. Rabies clinics are sponsored by Middle Tennessee Spay & Neuter Clinic during the fall of each year and are announced in the newspaper and on the local radio stations. Rabies shots are given by any of the veterinarians in the city throughout the year.

## Marriage License

(931) 684-1921

## Mental Health & Counseling

Family Counseling Center of Middle Tennessee, Inc.  
(931) 723-0380

Centerstone - Tennessee  
(877) 467-3123

First Choice Pregnancy Counseling Center  
(931) 680-0066

## Local Publications

Shelbyville Times-Gazette  
(931) 684-1200

Good News Shelbyville  
(931) 433-9737

Walking Horse Report  
(931) 684-8123

The Scoop Walking Horse Publication  
(931) 680 - 5696

## Local Radio Stations

WLIJ 1580 AM and 98.7 FM  
(931) 684-1514

WZNG 1400 AM  
(931) 684-1214

## Public Defender

(931) 685-5029

## Senior Services

(931) 684-0019

## Shelbyville / Bedford County Museum

Located inside The Fly Arts Center  
(931) 684-8359

## Shelbyville-Bedford County Public Library

(931) 684-7323

## Shelbyville City Hall

(931) 684-2691

## Shelbyville Mayor

(931) 684-2691

## Shelbyville Recreation Center

(931) 684-9780

## Small Business Information Center

(877) 898-3900

## Property Taxes | City (931) 684-2691 County (931) 684-4303

Property taxes are due on the first day of October of each year and are delinquent as of the first day of March. There is a 1.5% (County) and 1.0% (City) interest rate per month and a penalty charged to any

delinquent taxes. City taxes are payable at City Hall on the square in Shelbyville. County property taxes are payable in the Trustee's Office, Suite 102, at the Bedford County Courthouse Annex.

### Social Security Administration

(Tullahoma)  
(931) 455-3795 | (800) 772-1213

### Social Services

Department of Human Services  
(931) 685-5006

Department of Children Services  
(931) 685-5006

Junior's House Child Advocacy Center  
(931) 438-3233

### Tennessee Do Not Call Register

(877) 872-7030

### Tennessee National Guard Armory

(931) 685-5022

### United States Postal Service

Shelbyville (931) 684-2812  
Bell Buckle (931) 389-9312  
Normandy (931) 857-9220  
Wartrace (931) 389-6636  
Unionville (931) 294-5208

### UT Extension Office

(931) 684-5971

### Veterans Service Office

(931) 685-4838

### Voter Registration

(931) 684-0531

### Utility Companies

Shelbyville Power, Water & Sewerage  
(931) 684-7171

Bedford County Utility District  
(931) 684-1667

Duck River Electric  
Membership Corp.  
(931) 684-4621

### Workforce Development

(931) 735-6925

### Bedford County Zip Codes

Shelbyville .....37160  
Bell Buckle .....37020  
Normandy .....37360  
Unionville .....37180  
Wartrace .....37183

### Automobile Tag & Title | (931) 684-1921

If you have moved to this area from outside of the state, you need to apply for a title and a Tennessee license plate. You should make the purchase as soon as possible. These licenses may be obtained from the County Court Clerk's Office,

Room 104, in the Bedford County Courthouse Annex on the square. The office is open Monday - Friday 8 a.m. - 4 p.m., and Saturday from 8 a.m. to noon. Registration and proof of insurance must be in the glove box of the vehicle at all times.

### Voting Laws

Newcomers to the city and County may register to vote after living in the state of Tennessee as soon as they become residents. Tennessee is the only state that has no durational requirement for becoming a resident. The Election Commissioner's Office is located in the basement of the Bedford County Annex. Anyone who is 18 years of age or who will be 18 on the day of the next election, can register to vote. The books for voter registration are closed 30 days before an election. The hours of the Election Commission Office are 8 a.m. until 4 p.m. Monday through Friday. Any registered voter can vote early.

# SERVING ALL OF YOUR REAL ESTATE NEEDS

BUYING • SELLING • NEW CONSTRUCTION • RESIDENTIAL • COMMERCIAL • LAND, LOTS & FARMS

**HP REALTY COMPANY, LLC**  
931-492-9090

*Put HP to work for YOU!*

|                                      |                                      |  |
|--------------------------------------|--------------------------------------|--|
| <b>Steven Flippo</b><br>931-703-7790 | <b>Michael Allen</b><br>931-580-5282 | <b>Benita Caldwell</b><br>931-703-6167 |
| <b>Kris Gagnon</b><br>615-939-1537   | <b>Jenny Burris</b><br>931-703-4793  | <b>Brandi Dye</b><br>931-580-1835      |

**HP REALTY COMPANY, LLC** 931-492-9090



306 Bethany Lane, Shelbyville, TN



Proud to be a part  
of the Bedford County  
Community



Asphalt Sealing • Striping • Curbing • Excavation

931 • 389 • 9671 WWW.HawkinsPaving.COM

Let Us Handle  
Your Next Project!



- Underground Utilities
- Site Excavation
- Commercial/Industrial & Residential Building
- Electrical
- Trenching • Boring
- Grading
- STEP Systems
- Mechanical
- Plumbing

**Hawkins & Price, LLC**

6015 Hwy. 64E | Wartrace, TN 37183 • 931-389-0909

[hawkinsandprice.info](http://hawkinsandprice.info)





**NEW HOMES IN THE 300'S**

# WHEATFIELD

MIDDLE TENNESSEE'S BEST NEW HOME VALUES ARE NOW IN SHELBYVILLE. WHEATFIELD IS A TRANQUIL, PEACEFUL SETTING JUST A SHORT DRIVE FROM EVERYTHING THAT MIDDLE TENNESSEE HAS TO OFFER.



**Ole South**

Tennessee's Favorite Home Builder

OleSouth.com

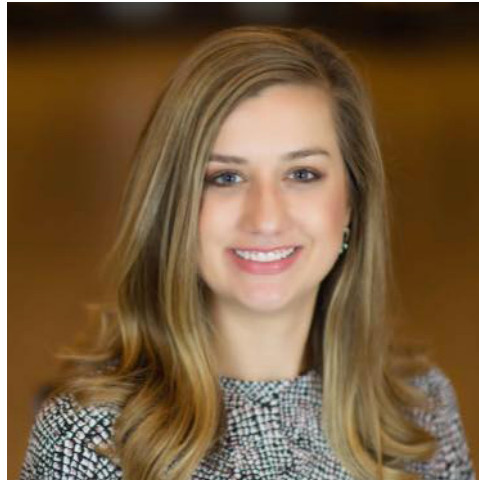
**SELLING QUICKLY!**



*Directions: From Interstate 24, exit Highway 231 South to Shelbyville. Turn right on Colloredo Blvd. Follow Colloredo Blvd to right on Union Street (Hwy 41A). Follow Union Street to left turn on Cloverdale Road. Follow Cloverdale past Laurelwood Drive to neighborhood entrance on left.*

**CALL/TEXT 615-219-5644 OR VISIT  
WWW.OLESOUTH.COM FOR MORE INFORMATION**

# Chamber Board of Directors



**Elisabeth Thompson**  
*Duck River Electric  
Membership Corporation*



**Daniel Watson**  
*First Community Bank*



**Warren Wells**  
*TWHNC*



**Shannon Dowden**  
*TCAT Shelbyville*



**Ashley House**  
*Enchanted Bridal Boutique*



**Ashley Rowland**  
*Cooper Steel*



**Charlie Williams**  
Edward Jones Financial Services



**Faye Buckingham**  
Skills Development Services



**Aaron Melhorn**  
Newell Rubbermaid



**Maleah Claxton**  
Shelter Insurance



**Yolanda Flick**  
SBC Chamber CEO

# Member Benefits

Shelbyville-  
Bedford  
County  
Chamber of  
Commerce

## New ideas, new concepts

Your chamber is involved in the community. We support, donate, and volunteer at events.

We market your business and your events. We create advertising materials on behalf of our members.

We offer member-to-member deals.

The average consumer is **44% more likely** to think highly of your business and **63% will buy your products** just for being a local chamber member.

## Plus:

- Website listing with a link to your business. Members only portal where you can update weekly, add coupons, post events and job openings.
- Listing in Celebrate Shelbyville. Available at chamber office, state welcome centers, visitor attractions and throughout our community.
- Up-to-date membership mailing information.
- Recognition as new member in monthly newsletter, at luncheons, and website.
- Business referrals to visitors and residents.
- Bedford-specific Lunch and Learns
- Ribbon Cuttings!

# Membership Levels

## PLATINUM **\$10,000**

- Membership dues
- Four primary contacts
- Logo featured on new website
- Four email blasts annually
- Ad in monthly newsletter
- Named sponsor annual meeting with eight tickets
- Sponsor of Duck River Clean Up, Holiday Mixer, one luncheon
- Featured in Visitor Guide - Full Page
- Digital advertising on website-12 Months

## GOLD **\$5,000**

- Membership dues
- Two primary contacts
- Logo featured on new website
- Two email blasts annually
- Logo in monthly newsletter
- Sponsor of annual meeting with four tickets, one luncheon sponsorship
- Featured in Visitor Guide
- 1/2 page digital ad on website - six months

## SILVER **\$2,500**

- Membership dues
- Logo featured on website
- Two email blasts annually
- Table sponsor- annual meeting featured in Visitor Guide
- 1/4 page digital advertising on website - three months

**NOW OFFERING annual tiered sponsorship packages.**

The chamber, with support from the Tennessee State Chamber of Commerce, has negotiated special group pricing on medical insurance through Aetna for our members.

### Celebrate and Elevate

Your Membership  
Your Chamber  
Your City  
Your Community



Shelbyville-Bedford  
County Chamber of  
Commerce

[shelbyvilletn.com](http://shelbyvilletn.com)

# Chamber Ambassadors



**Brad Whitaker**  
*The Waters of Shelbyville*



**Charlie Williams**  
*Edward Jones Investment Services*



**Jennifer Insell**  
*Lou Lou's Private Care Home*



**Linda Nichols**  
*First Community Bank*

The Ambassador team is comprised of professionals who are the diplomats of the chamber, welcoming new members, contacting existing members, and attending chamber events. They are the front-facing component that makes the chamber successful. We consider them the 'Rock Stars' of our chamber delegation.



**Liz Pitmon**  
United Communications



**Lori Johnson**  
Mobile Living TN



**Whitney Collier**  
Vanderbilt Beford Hospital



**Allen Moorehead**  
Cook's Pest Control

## Become a Chamber Ambassador

Consumers are 63% more likely to buy and do business with those associated with a chamber of commerce.

Call (931) 205-2730  
or visit [shelbyvilletn.com](http://shelbyvilletn.com)

# Third Thursday with the Shelbyville-Bedford County Chamber



Show up, network, and grow your connections.

By Amanda E. West



**A**re you seeking networking opportunities to promote yourself and your business?

Look no further than Third Thursday with the Shelbyville-Bedford County Chamber of Commerce at the Fly Cultural Arts Center located at 204 South Main Street beginning at 8 a.m. Co-hosted by the Shelbyville-Bedford County Chamber of Commerce and Third Thursday Together, this is the place to enjoy coffee and refreshments while making connections to grow your company with other local business professionals.

“Attendees enhance their network, promote themselves, and enjoy a casual setting. This monthly event is open to

members and non-members of the chamber. There are no fees to attend. I want to personally invite you to join us at The Fly for this month’s Third Thursday,” said Yolanda Flick, CEO of the Shelbyville-Bedford County Chamber of Commerce.

“I really like that the group is more of a support network,” said co-host Mandy Mitchell. “I’ve met people with different backgrounds than mine and made connections that helped each of us grow. I like that Third Thursday is a local and free means to meet other small-business folks within our community. Just show up, network, and grow your connections!”

*For more info, check out: [www.shelbyvilletn.com](http://www.shelbyvilletn.com)*





# Quarterly luncheons with the chamber

Network, Lunch, and Learn

By Amanda E. West



**D**o you want to go behind the scenes and be “in the know” regarding all things Shelbyville-Bedford County?

Hosted by the chamber’s platinum sponsors, quarterly luncheons offer a catered meal and opportunities to learn from our most influential community leaders. “Every speaker hits on the most important topics that affect this place we call home,” said Yolanda Flick, CEO of the Shelbyville-Bedford County Chamber of Commerce.

“These luncheons allow leaders within the community to gather and discuss topics that impact us the most. Each speaker brings a wealth of information from their specific occupation to share with those who attend. When Warren Wells spoke, we not only learned about the Celebration Grounds, but we also learned about other exciting events hosted here in Shelbyville. Laura Monks updated us on the Tennessee College of Applied Technology (TCAT), but we also heard about new education opportunities happening across Bedford County. Shane Hooper, who is over the Shelbyville-Bedford Partnership, gave us a very thorough update on economic development and new industries coming our way when he spoke.”

We’d love for you to join us at this quarterly event at The Fly Cultural Arts Center. The cost is \$15. Find more information at [www.shelbyvilletn.com](http://www.shelbyvilletn.com)

# Ribbon Cuttings Celebrations

The chamber is happy to introduce the people of Shelbyville to newly opened, renovated, or relocated businesses in our community. By focusing on these businesses, the chamber is able to familiarize Shelbyville with the new products and services. We're happy to celebrate these businesses this year.



**Soaky Suds Care Wash**



**Adoration Home Health**



**Cutting Edge Optical**



**Heritage Realty Group**



**Lay It Up Thrift Store**



**Mama's House**



**Elam Real Estate**



**Brooks Healing Center**



**Mooville Cookies and Cream**



**Open Hands Shelter**



# Chamber Holiday Mixer Recap

Members share their experiences



By Amanda E. West

**T**he 25th Annual Holiday Mixer held at the Blue Ribbon Circle in November was a hit! With an Old Hollywood theme, the event featured door prizes. Giveaways included a 43" TV donated by Badcock Furniture, a sign donated by Family Fabrication, tickets to Glass Hollow Table and Tavern, and a Lotto Cake donated by the Shelbyville-Bedford County Chamber of Commerce. Other donations included gift cards provided by Arosa Care and Southern Energy Gas. M·A·C Daddies catered the event. Eric Stephens provided music, Dixie Em's Event Bartending provided drinks, and Nearest Green Distillery provided tastings.

"I'm honored we were able to offer this first-class event to our members," said Yolanda Flick, executive director. "I'd like to thank the businesses that provided items for our raffles, the 52 sponsors who gave so generously, and those who invested their time and talents to ensure the success of others here in Bedford County. I look forward to more years working for the chamber and many more Holiday Mixers."



**Quotes from members:**

“One of my favorite events in Bedford County! It’s a FUN way to celebrate community connections with good food and great friends while kicking off the holiday season,”  
 - Dawn Hobbs, United Communications

“Great event to dress up, network, and enjoy good food and music, which help kick off the holiday season.”  
 - Whitney Collier, Vanderbilt Bedford Hospital

“This was my first year working on the Holiday Mixer committee, and I greatly enjoyed it! This tradition is a great time to get together and network with one another before the holiday season really kicks off.”  
 - Ashley House, Enchanted Bridal & Boutique

“A great chamber tradition that kicks off the holiday season.” - Mai George, Atmos Energy

“The Chamber Holiday Mixer is the event that gets me ready and excited for the Christmas holidays. It’s the Chambers’ gift back to its members and community. When you arrive at the event, you see the beautiful decorations, and the music sets the festive mood as people arrive in their holiday attire to mix and mingle with friends. It is a come-and-go event and the one event I don’t want to miss.”  
 - Linda Nichols, First Community Bank





# Leadership Bedford

By Amanda E. West

**W**hen the leaders of today disciple our leaders of tomorrow, all of us reap the benefits.

Leadership Bedford is a class for adults wanting to become more involved in their community. It's for long-time citizens who want to dig deep and discover every facet of how and why their city functions the way it does. Business owners can expand their networks, and newcomers can settle into the community with greater awareness of "home."

"Each month is a different emphasis," said this year's adult class president, Toby Sneed. "During the month we studied government, we went to the Tennessee State Capitol. While there, we met Secretary of State Tre Hargett, visited with Representatives Pat Marsh and Shane Reeves, and took

pictures with Governor Bill Lee. Classes also focused on Bedford County Emergency Medical Service (EMS), law enforcement at both the city and county levels, the court system, and local economic development. We also spent time in public schools. We toured nonprofit organizations and the banks and credit unions to help us better understand what makes them vital to our community."

Shelbyville-Bedford County Chamber of Commerce accepts applications through the summer months, and new classes begin each September, with graduation held each April. Classes meet on the second Wednesday of each month. The cost is \$500 per applicant, but scholarships may be available. This year the service project for the adult class





involved raising \$15,000 to upgrade the Skills Development Center. “We had three or four possible projects, but we narrowed it down. We enhanced security by adding security lights, renovated some plumbing, painted, and completed several beautification projects for them.”

When asked who would benefit most from joining a Leadership Bedford class, Sneed said, “Newcomers who are interested in getting plugged in, business owners and entrepreneurs who are interested in strengthening their network, and current citizens who just want to become more involved. I’ve met a ton of people, so my network, both personal and professional, has really exploded beyond anything I would have imagined.”

Leadership Bedford also has a youth program led by Carol Garrette, Jonathan Boyce, and Tammy Pirtle. On April 15,

they hosted the Benefit For Hope to bring awareness to the mental health issues many face. Donations will fund a grant for anyone 21 or younger who seeks professional counseling services but cannot afford them. Garrette said, “Youth Leadership Bedford is an incredible experience for our seniors in high school. Not only do they learn about many organizations, but they also gain networking opportunities, communication skills, project management skills, and other skills critical for being an effective leader. I’m so proud of this year’s class for taking on a project that is so important. This mental health awareness campaign and Benefit for Hope have the potential to help many people; it’s an incredible legacy these young people will leave behind as they graduate from Leadership Bedford, Class of 2023.”

To apply: [www.shelbyvilletn.com/leadership-bedford](http://www.shelbyvilletn.com/leadership-bedford)





“One thing that motivates me is that this event is going to help others. The money from the event could not only help people but could also save a life. I have gone through losing classmates, and it’s not something I want anyone else to go through. Mental Health is not something we need to take lightly; it’s a tough topic to talk about but necessary. I believe that’s what motivates me to work on this project daily. If that one donation — or one sponsor I get — makes a difference in someone’s life, it’s worth working daily to do it. I’m glad to be part of this great effort to bring awareness to mental health,”

- Daniel Craig, Cascade High

“I was inspired to pick mental health as our focus because I felt the overwhelming need in our county. I feel passionate about our project because I want to help create change. While working through the details of this project and maintaining my high school education, I’m motivated by hearing feedback. I’ve received so many positive, bone-chilling messages about how proud and grateful the people of our county are to join our event and support what is needed so greatly here in Bedford County,”

- Kara Swain, Shelbyville Central High

**VEHICLE UPFITTING**

# MOBILELIVING

TRUCK • VAN • JEEP • RV



- Camper Shells
- Bed Covers
- Bed Protection
- Hitches
- Steps
- Lighting
- Tool Boxes
- Racks
- Jeep Accessories
- Van Equipment
- Much More



931-488-4999 // [www.MobileLiving.us](http://www.MobileLiving.us) // [mobilelivingtn@yahoo.com](mailto:mobilelivingtn@yahoo.com)  
1104 Madison St. // Shelbyville, TN 37160

# my best friend

... a Tennessee Walking Horse.



See our best friends, Tennessee Walking Horses,  
at shows & farms around Shelbyville and across Tennessee (*& the country*).

**VISIT: [MYBESTFRIENDTWH.COM](http://MYBESTFRIENDTWH.COM)**

Tennessee Walking Horse Breeders' and Exhibitors' Association



# Women-owned Chamber businesses



## Local entrepreneurs share their secrets to success

By Amanda E. West

**W**hen it comes to women, we roll up our sleeves, set our chins with sheer determination, and plunge into whatever obligation needs us most. During World War II, women entered the workforce in droves and have been a staple there ever since. Over the last few decades, women have been transitioning from the role of the employee to the role of the employer. According to statistics, women-owned businesses accounted for 49% of new businesses in 2021. But most female entrepreneurs say they face barriers to starting

and owning a business, including a lack of funding for their businesses, biases due to their gender, a lack of support from others, and the struggle to find the balance between work and family.

The Shelbyville-Bedford County Chamber is proud to highlight several women-owned businesses: Jennifer Jordan Thompson, J Jordan Boutique; Lori Johnson, Mobile Living; Maleah Claxton, Shelter Insurance; and The Skin Project, Nikki Turner, Lynette Womble, and Jessica Parham.



SHELTER  
INSURANCE

MAY

# Maleah Claxton

## Shelter Insurance



**W**hen I worked for the Shelter Insurance agent in Lawrenceburg, I was hired part time to file paperwork. About a month into the job, the agent sat me down and said, 'This isn't working out how I planned.' With that statement, I started talking, 'How can you say that? I have brought in business, and I'm doing a great job.' She replied, 'Calm down, Tiger. I want you to get your license and work for me full time.' My next statement was, 'I take back what I said!'"

Claxton has now been with Shelter Insurance for a total of 21 years. Seventeen of those have been in Shelbyville. "I currently hold licenses in four states," said Claxton.

"Talk to others in the business you want to get into because they can tell you the good, the bad, and the ugly. Owning your own business isn't easy. However, it is

very rewarding. My mother has always told me I can do anything I set my mind to and has supported me in every endeavor. My husband also believes in me way more than I believe in myself."

As a member of the rotary club, a board member for the Bedford County Cancer Foundation, chairman of the United Way, an appointed member of the election commission, a member of the Shelbyville Women's Club, and vice chairman of the Bedford County Republican Party, Claxton believes strongly in giving back to the community that has given her so much. "The people here in Shelbyville-Bedford County are amazing. They have embraced my family and me and have shown us love and grace during hard times."



VEHICLE FITTING  
CABLE KINING  
TRUCK • VAN • JEEP • RV

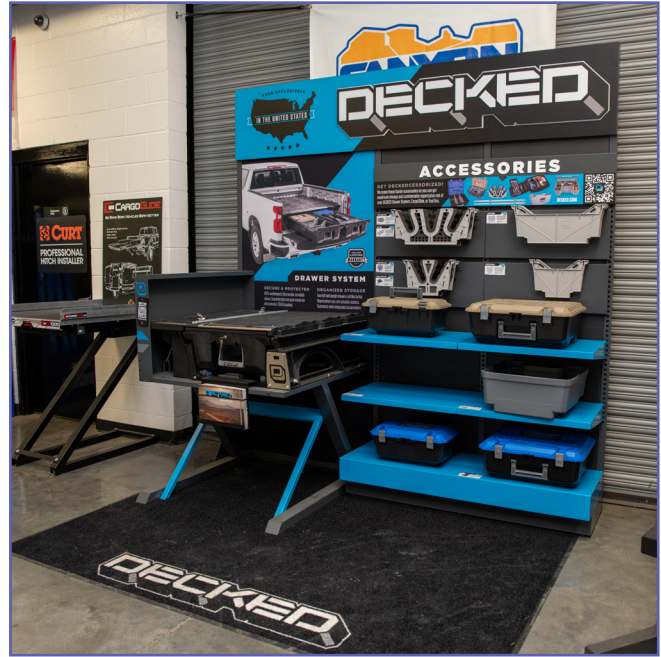
RN

RED



# Lori Johnson

## Mobile Living



**W**hen Johnson relocated to Shelbyville three years ago, she brought 14 years of experience with her. “The dream was to open and start a new business and be involved in all aspects from the ground up. I saw an opportunity to provide Bedford County with an automotive aftermarket up-fitting business. Residents no longer have to travel outside the county for their aftermarket needs. I want to see this business grow and evolve by serving our current customer base. I want to bring in more customers and keep up with new trends and products. Whether it be a truck, trailer, horse trailer, Jeep, RV, van, or UTV, our name represents a shop that caters to all of your automotive aftermarket lifestyle needs.”

Johnson encourages female entrepreneurs to create a team of people around them who have different abilities and skills that they can lean on. She says her biggest cheerleader is her husband. “Scott sees the very best in me and always has. He always tells me I can do anything I set my mind to. Moving to Tennessee was my plan, but Scott was willing to relocate himself and our family here. He has commuted to our California location for the past 4 1/2 years. His devotion and love have been such a rock for me.”

“As a woman, operating a storefront business in a male-dominated industry challenges me daily. Keeping a 'can do' attitude is extremely important.”



# Jennifer Jordan Thompson

## J Jordan Boutique



**W**hen I moved back to Shelbyville in 2004, I combined my previous retail and finance experience with my love of fashion and opened the boutique. My mother encouraged me. She recognized that I had been dancing around this dream for years. So, if you're dreaming of starting your own business, do it," said Thompson. "It takes some planning, but don't wait until you're too old. You'll look back and wish you had done it when you were younger."

For the last 18 years, Thompson has been driven by her desire for J Jordan Boutique to be known as a destination for women seeking the latest fashions and styles that make them feel confident. "We enjoy helping women pick out what they will wear to a wedding, a

class reunion, a horse show, or to work. We are known for our customer service, but that's easy to do when you love your customers."

"I think it's important to be involved in local organizations. I'm a member of the Shelbyville Women's Club and have enjoyed getting to know women through this organization. Each year that I've been in business, I've presented a fashion show and loved featuring the latest looks and styles. I'm also a member of the chamber of commerce and served as an ambassador several years ago. I have enjoyed being here in Shelbyville and plan to stay in business for many years to come. I believe God has been with me through every step of this journey."



the skin project

the skin project

the skin project

# The Skin Project:

Jessica Parham, PA-C; Nikki Turner, FNP-BC; Lynette Womble APRN-BC



**N**ikki Turner says, “We chose to bring The Skin Project to Shelbyville because there was a need. Patients were traveling outside of town to receive skin care treatments, and we wanted to offer a safe and comfortable space to receive these aesthetic treatments. We are very invested in supporting local and energizing our economy here.”

“I would advise any woman thinking of starting her own business to connect with as many other female entrepreneurs as possible,” says Turner. “Try to find a mentor to bounce questions and ideas off because learning how to own and operate a business can have a steep learning curve. Don’t let the trivial things stop you, and never lose sight of that vision or compromise it. It can be one of the most rewarding things you do in this life.”

“My husband and our entire families have been incredibly supportive of us. You don’t realize how important that is until you need a ‘village.’ There is no way I could do my job at The Skin Project or my job as a primary care provider without the help of our village,” says Jessica Parham. “When you commit to medicine, you commit to being a life-long learner. I think this field is a particularly exciting area of medicine that has endless learning opportunities and advancements.”

“I’ve been a healthcare provider for 28 years. Owning your own business is very challenging because it is more than just seeing the patients that go into it,” says Lynette Womble. “But that’s the part that keeps you coming back for more. It has been one of my greatest achievements.”



**JOIN THE TEAM MAKE A DIFFERENCE**

**NOW HIRING!**



1209 Madison Street  
 Shelbyville, TN 37160  
[www.albea-group.com](http://www.albea-group.com)



**New Name.  
 Same Great Care.**

*Experience Elevated Care with Arosa:*

Arosa is the premier provider of integrated care management and caregiving services. Our compassionate care professionals are supported and celebrated as they care for our clients and provide peace of mind for the whole family.



Care Elevated  
 Formerly Family Staffing Solutions



**Amanda Lankford**  
 Area Director

1121 1/2 N Main St., Shelbyville, TN 37160 • (931) 680-2771

[www.arosacare.com](http://www.arosacare.com)



**BEDFORD COUNTY FAIR**

**COUNTY FAIR WITH A SILVER FLAIR  
 CELEBRATING  
 25 YEARS**

**LIVE ENTERTAINMENT | LIVESTOCK SHOWS | AG EXHIBITS | MUCH MORE!**  
**JULY 17-22, 2023 | BEDFORD COUNTY AG CENTER**

**Big G Express  
Family of  
Companies**

Big G Express

Big G Warehousing

Big G Logistics

Ike Transportation



Flatbed Carrier

880 Butler Drive  
Murfreesboro, TN 37127

615-867-1325  
www.iketrans.com



**Big G Express  
Corporate Headquarters**  
190 Hawkins Drive  
Shelbyville, TN 37160  
931-684-9140  
www.bigexpress.com

**100% EMPLOYEE OWNED**

Share in the rewards  
and responsibilities of  
ownership!



*The Extra Mile.  
It's On Our Way.*

A Name You've Trusted for Over 45 Years

**Lowery Jewelers**



loweryjewelers.com

- Expert Jewelry Repair
- Excellent Customer Service
- Free Gift Wrap



**Visit Emmy's Restaurant  
Northmain Marketplace**

Now With 20 Vendors Under One Roof

768 North Main St., Shelbyville, TN  
931-684-8623

**Merchant's Walk On Main**

Upscale Shops... Down Home Charm.



First Month Rent  
**FREE!**\*

\*Certain restrictions apply. Present this offer.



1703 Green Lane  
Shelbyville, TN 37160  
**(931) 263-0990**

**RESERVE ONLINE TODAY!**  
CompassSelfStorage.com



# M·A·C Daddies food truck is going brick-and-mortar

Coming soon: Glass Hollow Table & Tavern

By Amanda E. West

**A**s the official “Purveyors of Good Eats,” M·A·C Daddies wins the trophy for the most outrageous, tastiest burger! The specialty burger and dawg joint on wheels began in 2022. Available for corporate events and catering, they pop up all over Middle Tennessee. To find their food truck, follow the tantalizing aroma of perfectly seasoned ground beef “smash patties” seared on the flat top. If you’re feeling adventurous, try the smash patties slathered in creamy pepper jack cheese, candied jalapenos, and pepper jelly, crowned with a brioche bun. They named it “Bad Hombre” for a reason.

The M·A·C Daddy of all M·A·C Daddies features two smash patties, topped with panko-fried macaroni and cheese “puck,” house-made M·A·C sauce held together by a

brioche bun. They also offer baskets of fried M·A·C Pucks, Cheeseburger Egg Rolls paired with M·A·C Sauce, Big Daddy Dawgs, Patty Melts, and a variety of kid-friendly favorites like Grilled Cheese on Sourdough Bread. M·A·C Daddies serves its revolving culinary creations alongside piping hot tots.

Jeb House owns M·A·C Daddies, and he and his mother, Chavigny Beasley, will be co-owners of Shelbyville’s newest dining establishment, Glass Hollow Table & Tavern. The duo is revitalizing the Antiques, Arts & Collectibles, and Knox Pitts Hardware on the historic Shelbyville public square near the courthouse. Beasley owned the Currant Thyme restaurant and The Antique

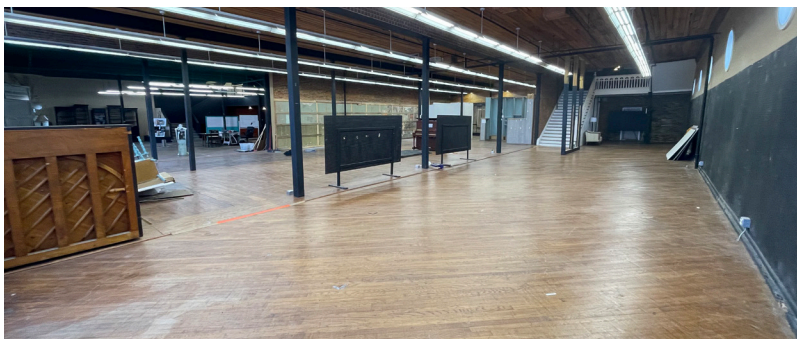




Marketplace at the old Coca-Cola building. House said, “Our dream is to be a staple in Shelbyville. We want to bring great jobs to our area and provide an experience not available right now to our customers. We are very proud of where we live and hope to be able to show that to the world. There are some great local businesses, not only on the square but around Shelbyville-Bedford [County], so we hope to be able to draw more folks here. We can all rise together. We’ve had nothing but support from our small town and are so grateful for it.”

“As a society, we’ve drifted toward fast food — having it now, then moving on to the next thing. We want to create a space where folks can come spend time with friends

and family over a great meal,” House adds. “We will be a family-owned and -operated steakhouse and tavern. We’ll have 270 seats in ‘The Table’ and 120 seats in ‘The Tavern.’ The Table will be a traditional steakhouse, and The Tavern will be in the oldest part of the building. Here, we will serve elevated bar foods. We have plans for live music there. We’ve dedicated around 1,000 square feet of retail space, which will include merchandise to promote Shelbyville-Bedford County, our great local distilleries, and lots of culinary delights. We will be at the center of the ‘Whiskey Triangle’ of Uncle Nearest, Jack Daniels, and George Dickel, and hope to be a stopping place for the 40,000 visitors that come through our area for the Whiskey Trail.”





# The state of industry

According to the Shelbyville-Bedford Partnership

By Amanda E. West

## **231 North Industrial Park**

Duksan Industry is the first major industrial announcement since 1984. Duksan will manufacture electrolytes for the electric vehicle industry, creating more than 150 high-paying jobs in science, technology, engineering, and mathematics. Electrolytes are a required component of the electric vehicle battery.

“The Partnership looks forward to recruiting other industries. We have a potential project list with 15 active opportunities representing 1,400 jobs and over \$500 million in capital investments. Advanced manufacturing jobs give graduates essential employment opportunities and a chance to earn higher incomes,” said Shane Hooper, president and CEO of the Shelbyville-Bedford Partnership area for the Whiskey Trail.”



As [local contractors] and lifelong residents of Bedford County, we feel it is important for us to be a part of the inevitable growth that is coming to our community. Our 25 years of experience enable us to bring together the resources and people that allow us to [contribute] to the future growth of Shelbyville-Bedford."

Curl Properties LLC, partnering with Jody Lambert.

### **Commercial Business Updates:**

"We celebrate and support our local developers," said Hooper. "They create solutions tailored to our community and play an essential role in growth. They understand the community and invest their private capital, giving us a better retail destination, which builds a better quality of life." "The people are the best part of Shelbyville-Bedford. We have an opportunity to grow this community with a focus on expanding opportunities in employment, education, and

quality of life and place. When higher-paying jobs enter the workforce, they positively impact wages for everyone. A valued workforce is a higher compensated workforce." Hooper said local developers, such as Greg Curl's construction project near Walmart, provide regional and national brands opportunities to acquire those spaces. With brands such as Chick-fil-A in open discussions with the Shelbyville-Bedford Partnership, a boom in both retail and dining options is just over the horizon.

# PROUDLY SERVICING YOU

With a 14,000 square foot showroom and our professional customer service, we can help you find what you need.

**APPLIANCES • FURNITURE  
ELECTRONICS • BEDDING**

*Delivery & Financing Available*

**KINCAID  
SERVICE CO.**



MARK KINCAID,  
OWNER





(931) 684-5662 | WWW.KINCAIDSERVICE.COM 400 MADISON STREET, SHELBYVILLE, TN

## J Jordan Boutique



104 Public Sq E  
Shelbyville, TN  
931-684-9695  
M-F 10-5  
Sat 10-4

www.JJordanBoutique.com  

the shops at  
**Main & McGrew**



**REAL ANTIQUES AND PRIMITIVES  
IN A LOCAL HISTORIC LANDMARK**

**\$1.00 ice cream served every day**      **Just off the Historic Shelbyville Square**

**VOTED BEST ANTIQUE STORE**  
in Bedford County for 2022

**ALEX'S ROCK SHOP**  
Explore our impressive selection of rocks, fossils, crystals, minerals, artifacts and more.

**OPEN WED-SAT 10-5 & SUN 12-5**

100 S Main St  
Shelbyville, TN 37160        931-536-1626  
MainAndMcGrew.com

## A Balanced Approach To Health



### Our Services

- Adult Primary Care
- Annual Physicals
- Sleep Apnea Screening
- Preventive Health Care
- Pre-operative Clearance



**Chris Marasco, M.D.**  
A Balanced Approach to Your Health  
**Blake Feldhaus, APN, NP-C**

**(931) 680-6360**

112 Airport Business Park Rd, Suite H, Shelbyville, TN 37160 | ChrisMarascoMD.com



*We Sell the Best & Fix the Rest!*



- Hepa Air Purifiers
- Repairs
- Upright And Canister Vacuums
- Central Vacuums

**Sales • Service • Repair**

**Commercial & Residential • Upgrade With Your Trade!**

1960 North Washington Street • Tullahoma, TN • (931) 434-7180  
Mon. - Fri. 9:00 A.M. - 5:00 P.M. • Sat. 9:00 A.M. - 12:00 P.M.

PROVIDING HIGH QUALITY  
CARE FOR

*Over 70 Years*

- |                               |                            |                                    |
|-------------------------------|----------------------------|------------------------------------|
| Allergy & Immunology          | Infusion Services          | Pediatrics                         |
| Comprehensive Breast Center   | Internal & Family Medicine | Plastic Surgery                    |
| Comprehensive ENT Specialists | Laboratory Services        | Podiatry                           |
| <i>Hearing Aids</i>           | MMC Now Walk-In Clinics    | Radiology                          |
| <i>The Voice Center</i>       | Neurology                  | Rheumatology                       |
| Dermatology                   | Obstetrics & Gynecology    | Spine, Joint & Pain Center         |
| Endocrinology                 | Ophthalmology              | Vascular Surgery & The Vein Center |
| Gastroenterology              |                            | Weight Loss & Wellness             |
| General Surgery               |                            |                                    |

**Your health is our mission.**



## MMC AT WESTLAWN

Opening summer 2023, MMC at Westlawn in the Blackman Community off Veterans Pkwy, near I-840. This location will offer premier healthcare services including, primary care for adults and children, gastroenterology services, a dedicated endoscopy center, rheumatology, infusion, otolaryngology, laboratory, and radiology services.





Governor Bill Lee and the Tennessee Department of Education (TDOE) recently awarded each high school in Bedford County \$1 million and each middle school \$500,000 from state funds from the Innovative School Models Grant. According to the TDOE, “Funds are designed to eliminate structural barriers between middle [school] and high school, workforce, and postsecondary opportunities. These models allow students the ability to seamlessly make connections earlier and graduate high school prepared to successfully complete a postsecondary career pathway of their choice.”

Lori Sexton, director of career technical education for Bedford County Schools (BCS), said these funds would create opportunities for unconventional learn-

ing, giving students greater exposure to career exploration. “We are starting innovative programs of study at Shelbyville Central High by adding culinary arts and aviation maintenance. At Cascade High School, we’re adding office management, STEM engineering, and transitioning our human studies program to culinary arts. Community High School will be implementing cosmetology, adding teaching as a profession, and criminal justice.”

“At the middle schools,” Sexton said, “We plan to outfit each school with a simulator that will allow our students to practice real-life, hands-on experiences so they can get a taste of what it’s like to work in the field they’re exploring.”

# The future is today

Grants fund innovative education for high school students

By Amanda E. West



TCAT-Shelbyville was awarded a \$260,000 Governors Investment in Vocational Education (G.I.V.E.) grant to support rural workforce development through technical education. Funds were used to build a high-tech allied health lab at Community High School with the hope of students entering the TCAT Practical Nursing Program. “The other schools are benefiting from the partnerships that have developed because of this grant,” said Sexton. “We have much closer connections with Middle Tennessee Pharmacy Services and the Vanderbilt-Bedford Hospital Community Clinic.”

BCS broke ground at Cartwright Elementary School, located at 1753 Fairfield Pike, and will open in the fall of 2024. According to the assistant superintendent, Tim Harwell, the school will be accessible from the Fairfield Pike

entrance but will have a gated entrance off Calsonic Way usable during specific hours during the school day. BCS will rezone portions of Shelbyville, alleviating the need for portable classrooms at East Side and Eakin. The \$40 million, two-story construction project will hold over 800 students from pre-K through fifth grade. “This school will have a unique look,” said Harwell.

Thomas Magnet School added a sixth-grade level during the 2022 – 2023 school year and will continue to add two additional grade levels over the next two years, topping out at eighth grade. Over the next five years, BCS plans to expand the facilities at Liberty and Thomas Magnet, and they have a goal to rebuild, expand, or renovate East Side and Southside schools.

# TCAT: Pipeline to a highly skilled workforce



## New expanded facility to open Fall 2024

By Amanda E. West

**T**ennessee College of Applied Technology (TCAT) Shelbyville campus will be relocating from its current location at 1405 Madison Street to 231 North Business Park. The new state-of-the-art facility is expected to be completed in late 2024. It will provide space and parking for up to 700 students, guests, faculty, and staff. The current facility on Madison Street serves approximately 350 students and 40 faculty and staff.

According to TCAT President Laura Monks, this facility will be an integral part of recruiting industries to Bedford County (and the surrounding regions) and will serve as the pipeline to educate the highly-skilled workforce needed to fill the jobs of tomorrow here in Middle Tennessee.

“When the new campus opens, we will offer our current programs minus the Truck Driving program that will remain at its current location on Eagle Boulevard, and our Information Technology and Infrastructure Management program will remain at the MTEC location. However, the new campus will allow us to expand the enrollment capacity in all our current programs and to have classrooms for other higher education partners like Motlow State Community College and Middle Tennessee State University. It will allow us to have land to build four new buildings for future programs. These future programs include cosmetology, construction trades, diesel mechanics, and supply chain/logistics,” said Monks.

This expanded campus will have far-reaching impacts





on upcoming high school graduates and those currently in the workforce who want to increase their skills, earn a degree or certification, or switch to a different field entirely. With evening classes available for certifications in Industrial Maintenance Automation, HVAC repair, and residential, commercial, and industrial electricity, the door of opportunity for skills advancement is open to everyone. When combined with Federal Pell Grants, state aid programs like Tennessee Promise, Tennessee Reconnect, the Wilder Naifeh Grant, and dual enrollment grants offered to high school students, the costs to attend can drop to zero. Within the next five years, TCAT Shelbyville plans to increase its enrollment by 50%.

“The new TCAT facility will allow larger program enrollments enabling those currently in the workforce to enter our programs without the wait-list delay,” states Monks. “We will also have flexible training space for current industry partners to provide short-term training. This facility will provide a higher education technical training option close to home in a facility where students will be proud to attend.”

Monks recommends that high school students or others interested in returning to class to further their education tour their program of interest before applying. More information can be found at: [www.tcatshelbyville.edu](http://www.tcatshelbyville.edu) under “Future Student.”

A grand opening for the facility, located at 231 North Business Park, is planned for Spring 2025.

# The Webb Difference



**B**efore The Webb School closed its 153rd year, which saw the largest enrollment in school history and the most diverse student body with students from five continents, 22 countries, and 12 states, plans were already underway to exceed expectations in the next school year.

During 2022-2023, Webb continued an intentional focus on the school's firm foundations of honor and character, along with the pursuit of the three A's — academics, arts, and athletics. At the same time, a path for the future in the form of a strategic plan emerged to equip the school and Webb students for what Head of School Ken Cheeseman said are "the greatest challenges and opportunities they will face in the future."

"The Webb School is in a strong position to continue to be both relevant and sustainable long into the future," said Cheeseman, completing his third year as head of school.

"Webb has powerful programs and performances in the three A's — academics, arts, and athletics — under the direction of a dynamic leadership team, faculty and staff, and board of trustees, along with strong support from our parent associations, alumni, donors, and friends."

In comments to the Webb community, Cheeseman related key ideas from a recent conference he attended in England with heads of schools from all over the U.S., the U.K., and for-profit and not-for-profit leaders from both sides of the Atlantic.

"In our discussions, we grappled with the observation that there has been a tectonic shift in how much of our world operates. It was insightful to hear so many perspectives."

Cheeseman explained that most of the conversations centered on several central questions:

Webb graduates will be equipped to thrive and lead in every corner of the globe.



1. Amid these tectonic shifts in how our world operates, what will the future demand of our students and us?
2. For what ends are we preparing our students?
3. What processes, assessments, and student showcases should we use to equip students to be their very best, competing most favorably in a changing world while being agents of goodness?

Continuing to think about these questions, Cheeseman noted the significant advantages students gain from a Webb personalized education with small class sizes, small advisories, and small grade levels, where every student is known and valued.

“Our size allows for the formation and growth of deep, healthy relationships between outstanding faculty and staff and our students in which they are both nurtured and chal-

lenged to know their passions and gifts and develop them with character above all else.”

Cheeseman also pointed to other aspects of the “Webb Difference,” emphasizing honor, character, and personalized education. Included are the Emerging Voices Program, which stresses writing across the curriculum and public speaking; a global education to prepare students to live and work in a globally connected world; and the Wilderness Instruction and Leadership Development (WILD) program to provide extensive training in outdoor skills, leadership, and confidence.

“Being one of the most diverse schools in Tennessee, with a powerful honor code and college-preparatory standards, we are a microcosm of the world our graduates will inherit. I am confident that Webb graduates will be equipped to thrive and lead in every corner of the globe.”

# GET PAID TO TRAIN

Earn your CDL in 20 days A job is waiting for YOU!

We now have a training center in Shelbyville, TN for individuals wanting to start a new career and/or change careers.



# TITAN<sup>®</sup>

TRANSFER, INC.

If becoming a CDL-A Truck Driver is something you are considering, Titan can't wait to help you start your career! Join our Family so we can help you take care of yours.

**CALL NOW TO GET STARTED! (866) 329-4521**

## DOUBLE DUTY BEAUTY

BEAUTIFUL COVERAGE WITH SPF PROTECTION



Protect and perfect in one step! Light to full-coverage foundations in a variety of formulas provide year-round sun protection.

Merle Norman of Shelbyville (931) 684-8728

105 South Side Square  
Shelbyville, TN 37160

Mon. - Fri. 9 AM - 5:30 PM  
Sat. 9 AM - 4:30 PM

**MERLE NORMAN<sup>®</sup>**  
cosmetics

© 2020 Merle Norman Cosmetics Inc.



REAL SKILLS.

REAL JOBS.

Education to  
career in less  
than two years.

Need more Information?  
**931-685-5013**  
[tcatshelbyville.edu](http://tcatshelbyville.edu)

Follow us for updates!  
**@TCATShelbyville**  
f @ t

 **TENNESSEE COLLEGE  
OF APPLIED TECHNOLOGY**  
SHELBYVILLE

The Tennessee College of Applied Technology is an AA/EEO employer and does not discriminate on the basis of race, color, religion, creed, ethnic or national origin, sex, sexual orientation, gender identity/expression, disability, age (as applicable), status as a covered veteran, genetic information, and any other category protected by federal or state civil rights law with respect to all employment, programs and activities sponsored by the College.

## Stay Independent With A Helping Hand!

Rita's Care at Home LLC is a family-owned, non-medical home care agency dedicated to providing the highest quality care and companionship in Tennessee. We are a reputable agency licensed by the state of Tennessee, and fully insured. Whether it be in your home or in another setting such as a hospital, assisted living, or skilled care facility, you can count on Rita's to provide you with personal assistance the way you want it.

You may contact us day or night. We are always available to talk with you about your concerns and needs.



**RITA'S**  
CARE AT HOME LLC®

**(615) 298-3826**

[ritahuffer@ritascareathome.com](mailto:ritahuffer@ritascareathome.com)

[www.ritascareathome.com](http://www.ritascareathome.com)

**Eat Local**  
**Shop Local**  
**Enjoy Local**  
**Celebrate Local**

**SBC**  
Chamber of Commerce



# A POSITIVE DIFFERENCE THROUGH PROFESSIONAL ACCOUNTING SERVICE



Dean Blount  
CPA/Partner



Katybeth Beasley  
Bobo - Partner



Kaye Reynolds



Lori McCarrall



Melinda Milton



Laura Jones



Jolie Richardson



Jackson Wisener



Brianna Davis



**H A Beasley & Company, PLLC**  
Certified Public Accountants

- Bookkeeping Services
- Individual & Business Tax Returns
- Gift, Inheritance & Other Tax Returns
- State Returns
- Business Consultation
- Payroll Services
- Quickbooks Consulting & Training
- Financial Statements
- Audit & Review Service
- Free Consultation

**Call us today for all of your tax and accounting needs.**

109 E. Holland St., Shelbyville • 931-680-0660 • [www.habeasley.net](http://www.habeasley.net)



# A promise kept

Vanderbilt Bedford Hospital is here to stay

By Amanda E. West

**V**anderbilt University Medical Center (VUMC), which consistently ranks in the top 20 best hospitals in the nation, has brought its medical expertise and ironclad commitment home to Bedford County. When Vanderbilt promised “they were here to stay” during the acquisition of Shelbyville Tennova Hospital, VUMC meant every word.

In the first nine months, Vanderbilt added six new providers, replaced lab equipment with state-of-the-art equipment, added 3D mammography for enhanced imaging, and most recently launched a reconstructive plastic surgery clinic. Dr. Parrish, a physician specializing in adult care, will join the Integrated Primary Care practice at 1612 North Main Street in June 2023. General surgeon Dr. Navid Monajjem will continue as a staple at the surgical center and has begun

offering a no-scalpel procedure called transoral incisionless fundoplication (TIF), which corrects gastroesophageal reflux disease (GERD).

The economic impact on our community during the 2021 fiscal year exceeded \$25 million, along with \$23.1 million in charity and uncompensated care. With over 350 total employees and a payroll of \$13.5 million, Vanderbilt Bedford provides stability in health care and employment.

“Our goal is to keep Bedford County inside Bedford County,” said Bill Rich, president. “That’s part of the reason Vanderbilt acquired our hospital.” Rich, who served as the chief executive officer under Tennova Healthcare Shelbyville for four years before the acquisition, said he’s most excited about the continued growth of the Vanderbilt network.



“Since 2021, our emergency room volume is up by 30%, and our clinic volume is up by 20%. Patients are choosing Vanderbilt providers for primary care and surgery. Inpatient volume has also increased by 6%. These patients were historically choosing a hospital outside of Bedford County, but now we’re seeing these patients staying here and coming to our hospital.” Because of the increase in usage, Vanderbilt Bedford extended employment opportunities to 50 additional workers, and, according to Rich, most of these employees live in Bedford County.

“The change in our emergency room providers, plus changing our hospital program to Anova Medical Associates, which partners with Vanderbilt and all regional hospitals, we’re starting to see more patients in our ER. We’re improving

our capabilities to keep patients here and transferring fewer patients out of Bedford County,” said Rich.

The Leapfrog Group, a nonprofit watchdog organization that has been assigning grades to medical institutions for over a decade, recently issued an “A” safety rating to Vanderbilt Bedford based on protocols in place that decrease medical errors and increase patient safety. As the nation’s premier advocate for transparency in healthcare, the rating by The Leapfrog Group speaks volumes to the quality of care provided right here in Bedford County.

Rich said he’s focused on keeping our community here for their healthcare services and looking ahead — there’s more to come!



**Find the Program**  
*Right* for **YOU**

Explore Motlow's powerful Program Finder:  
**Motlow.edu/ProgramFinder**

Finding the perfect fit for your future is **fast and easy**. Search by program, degree type, campus, day/evening, online/traditional, and more.

Not sure what you want to do? Use our **interest exploration tool** to discover your hidden potential.



**Motlow.edu/ProgramFinder**  
 Motlow State is an EEO/AA/Title VI/Title IX/Sections 504/ADA Institution | [motlow.edu/nondiscrimination](http://motlow.edu/nondiscrimination) | MOT-1040-23



**JACK DANIEL**  
 DISTILLERY  
 LYNCHBURG  
 TENN.

PLEASE DRINK RESPONSIBLY

**TRAVEL ENTHUSIASTS,  
 MEET WHISKEY ENTHUSIASTS.**



Come on through to Lynchburg, Tennessee to visit the Jack Daniel Distillery and see how we make our Tennessee Whiskey. We'd love to show you around the place and share a story or two. Go to [JackDaniels.com](http://JackDaniels.com) to book a tour.

JACK DANIEL'S AND OLD NO. 7 ARE REGISTERED TRADEMARKS. ©2023 JACK DANIEL'S TENNESSEE WHISKEY 40% ALCOHOL BY VOLUME (80 PROOF). DISTILLED AND BOTTLED BY JACK DANIEL DISTILLERY, LYNCHBURG, TENNESSEE. [JACKDANIELS.COM](http://JACKDANIELS.COM)





How you recover is your choice. Ask your provider about our personalized outpatient therapy services.



Call to schedule a personal tour.

931.759.6000

40 Nursing Home Rd. • Lynchburg, TN 37352  
[LynchburgNursingCenter.com](http://LynchburgNursingCenter.com)

149516

**HEAL**  
*your way*

# EXCELLENCE IN PLASTICS MOLDING SOLUTIONS



Century Mold designs, engineers and manufactures best-in-class products servicing the Automotive market.

- Engine Cooling
- Engine & Transmission
- E-Mobility
- Front End Module
- Fuel & Emission
- HVAC/ Climate Control
- Wire Channels

(931) 684-1665  
[CENTURYMOLD.COM](http://CENTURYMOLD.COM)

508 Blue Ribbon Pkwy  
 Shelbyville, TN 37160





# National Celebration Grounds makes a major announcement

Cooper Steel breathes new life into Calsonic Arena

By Amanda E. West

**T**he Calsonic Arena, located at the Celebration Grounds, has a new identity — the Cooper Steel Arena. Soon, the exterior and the interior will receive much-needed updates after this major announcement. This multimillion-dollar renovation is a corporate partnership between Cooper Steel Fabrications and the Celebration Grounds. “We’ve been looking for someone to purchase the naming rights of the arena for several years now,” said Warren Wells, CEO of the Celebration Grounds. “I can’t think of a better company to partner with us than Cooper Steel. They started locally here in Shelbyville and have been tremendously successful around the country. They are a family-owned business and great cooperation for our community.”

Boasting 52-foot ceilings, a 150 feet by 300 feet show floor with an additional 125 feet by 250 feet indoor warm-up area, permanent seating for up to 4,500 spectators, and additional seating for up to 7,000, the massive indoor arena has served as the hub for national and community events since its completion in 1989. According to Wells, plans aren’t finalized for the entire renovation but will include a facelift for the whole arena. “This will be great for the Tennessee Walking Horse industry; we have a lot of Walking Horse shows that call this arena home. This is also good for our community. We are recruiting new events for Shelbyville, and these upgrades will only help us bring in more. In 2021, we brought in just under \$50 million to the local economy. We’ve had a





good bit of growth since then, and this will only compound that growth.”

The annual Tennessee Walking Horse National Celebration will celebrate its Diamond Anniversary of 85 years this year. Beginning August 3 and continuing through September 2, this year’s Walking Horse Celebration is a must to add to your calendar of events. “The board and I have a vision that I think will be tremendously successful for the Celebration and our community,” said Wells. “Our World Grand Championship show has seen steady growth over the last few years, and that should continue. We have struggled to be profitable for the last 15 years, but we have seen success over the last two fiscal years. The arena renaming is very exciting. We are working on a master long-term plan, and that gets me really excited for the future of our 105-acre facility. I’m excited about the future of the Celebration.”

The Celebration Grounds will also host several exciting family-friendly events such as a motocross competition, various 4-H events, dog shows, rodeos, circuses, monster truck wars, a demolition car derby, and of course, its crown jewel, the World Grand Championship for the Tennessee Walking Horse. “My oldest son really loves when the monster trucks and the Lone Star Rodeo come to town,” said Wells. “He is crazy about dirt bikes, so we are working with a producer to get Arena Cross back to Shelbyville. That arena is so personally special to me. I was in the Shelbyville Tennessee Army National Guard that deployed to Iraq in 2005-2006. When we returned, the community threw us a welcome home event in what will now be called the Cooper Steel Arena. That was the first time I saw my friends and family since returning home. As you can imagine, I [have] great memories in that arena, not to mention all the events I attended there as a kid.”

Wells, a native of Bedford County, believed success



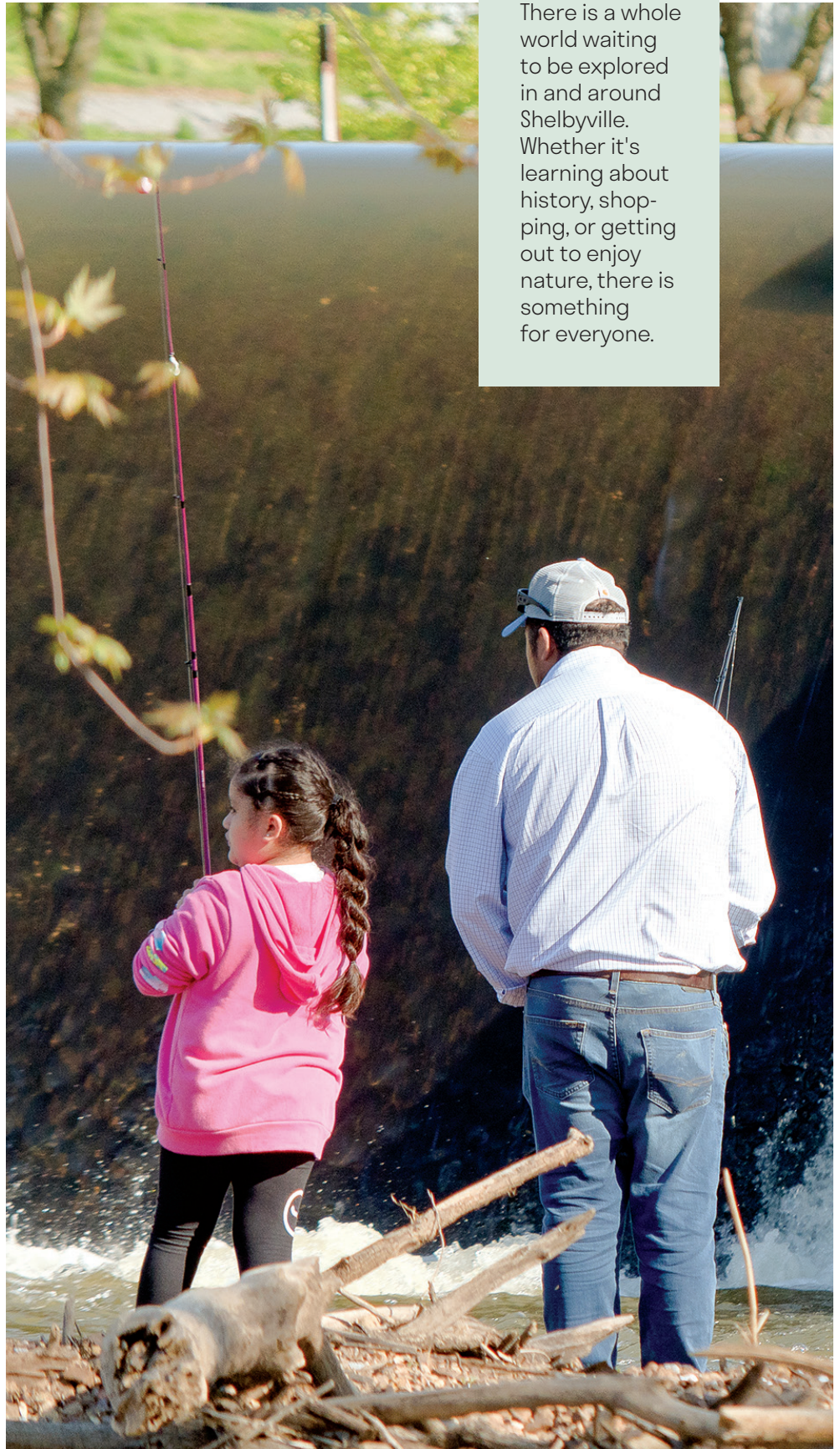
was found elsewhere, so he left to pursue a career in the professional sector away from home but ultimately chose to return to his first love. “Bedford County is special, as well as the people. We have so many great stories and history. I am obviously biased since we are the home of a breed of horse that bears our state’s name around the world. I like best that Shelbyville is my home. It is who I am to the core. I love that my son now wears the same school sports uniforms that I did as a kid. I believe that the best days for Bedford County are before us, and I am excited to be here and play a role in our future success. I hope the next generation doesn’t have the same outlook on Bedford County that I did, and I will work diligently to make them realize they can have a successful career right here at home.”

*For more information on events and employment opportunities or to host your event at the Celebration Grounds, go to [www.twhnc.com](http://www.twhnc.com)*



# Get outside and **Explore**

There is a whole world waiting to be explored in and around Shelbyville. Whether it's learning about history, shopping, or getting out to enjoy nature, there is something for everyone.



## **River Bottom Park**

---

A beautiful little riverside walkway located at 390 S Main Street in Shelbyville.

## **Take a flight**

---

Get a birds-eye-view of Bedford County with the Shelbyville Flight Academy at the Shelbyville Airport.

## **Follow the Civil War Trail**

---

Blockade Runner Civil War Store & Museum in Wartrace

## **Go horseback riding**

---

Clearview Horse Farm offers riding lessons or a trail ride.

## **Play frisbee golf**

---

Enjoy a new hobby at HV Griffin Park. The park has an 18-hole disc golf course. It's golf without the clubs but adding a frisbee.

## **Try geocaching**

---

Go on a geocache treasure hunt on the Jack Trail.

## **Float the river or go fishing**

---

Float down the Duck River, described in National Geographic as one of the most ecologically diverse rivers in North America.

## **Try some fresh vegetables and fruits**

---

Shelbyville Farmers Market, Bell Buckle Farmers Market

## **Henry Horton State Park**

---

Offers 10½ miles of hiking trails and is less than 30 minutes from Shelbyville.

## **Three great fishing spots**

---

Duck River, Normandy Lake, and Tim's Ford Lake

## **Go shopping**

---

Shelbyville's Historic Uptown Square, Downtown Bell Buckle Railroad District, The Shops at Main & McGrew

## **Learn About TN Walking Horses**

---

Attend an event at the Tennessee Walking Horse National Celebration in Shelbyville, visit the Walking Horse Museum in Wartrace, or visit the gravesite of Tennessee Walking Horse Strolling Jim in Wartrace.

## **Go for a drive**

---

Drive the scenic Hwy. 231 to Fayetteville, take a picnic lunch out to Normandy Lake, or take the Flat Creek Highway (Hwy. 82) to Lynchburg.

## **Explore the TN Whiskey Trail**

---

Nearest Green Distillery in Shelbyville, Cascade Hollow Distillery in Normandy, Prichard's Distillery in Kelso, Jack Daniel Distillery in Lynchburg, Southern Pride Distillery in Fayetteville

## **Take an art class**

---

Express yourself through art. Classes are available at Artsy All The Time studio right off the square.

## **Attend a play, see an art exhibit, or catch a movie**

---

Fly Arts Center in Shelbyville, Capri Theatre in Shelbyville

## **Have a delicious treat**

---

Satisfy your sweet tooth, and visit La Monita, Shelbyville's very own gourmet popsicle and ice cream shop.

# A closer look into Bedford County

With its rolling hills and lush countryside, Bedford County is a popular destination for outdoor enthusiasts. Whether you enjoy hiking, fishing, or bird-watching, the county's scenic landscapes provide plenty of opportunities to get out and explore. But there's more to do here than just

enjoy nature - the county is also home to a variety of cultural and historical sites, as well as charming towns and local businesses that offer unique shopping and dining experiences. So pack your bags and get ready for a fun-filled adventure in Bedford County!





# The Old Red Barn Farm and Bake Shop

**D**rizzled chocolate over luscious strawberries, champagne truffles crowned with edible pearls, strawberry cake, and decadent truffles in assorted flavors and colors, are just a few of the custom home-baked goodies lovingly crafted by Mandy Mitchell of The Old Red Barn Farm and Bake Shop. “I love being able to help people celebrate. I do a lot of baking for holidays, parties, and birthdays,” says Mitchell.

“My goal is to make others smile.” Mitchell also specializes in Buttermilk Sheet Cake with Caramel Icing, Pumpkin, Red Velvet, and Chocolate Espresso Rolls, assorted fruit and chocolate cobbler, Strawberry Kabobs, Buckeyes, and gourmet pies.

*<https://www.facebook.com/theoldredbarnfarmbakeshop>*



# Bell Buckle RC Cola MoonPie Festival

Come on out and celebrate three Southern traditions all at once: RC Colas, MoonPies, and Bell Buckle, Tennessee. The annual 10 Mile and 5K run will kick off the festivities at 7:00 AM, followed by live music and entertainment, performances by the Midstate Cloggers, a parade at noon complete with a King and Queen, RC Cola and MoonPie games, crafts provided by your favorite vendors, and loads of prizes awarded to visitors throughout the day. This year's festival will conclude with the World's Largest MoonPie in a flavor never made before! For more information go to:

[www.BellBuckleChamber.com](http://www.BellBuckleChamber.com)



# The Celebration



Photography by James Jordan

**B**elieve it or not, Shelbyville is home to the largest event facility in Tennessee. While most people only associate Shelbyville's arenas with the world-famous walking horse shows, the Celebration has much more to offer. It hosts many different events throughout the year, including demolition derbies, monster truck shows, softball tournaments, rodeos, motorcycle races, golf shootout tournaments, bluegrass festivals, dog shows, and disc golf tournaments. Events can be held indoors at the Calsonic Arena, the Hall of Fame Club, or the Blue Ribbon Club. Events better suited for the outdoors can be held either at the Celebration arena, the Champions arena, or the Celebration campground.

For information on upcoming events, please visit [twhnc.com](http://twhnc.com).

# Real Estate's Dynamic Duo



With this duo comes 37 years of experience in the Real Estate Business and tech savvy youth. Whether **buying or selling** we will provide our greatest commitment in making your needs our first priority. We are the ones to work exclusively for you.

***Call us today!***



**Dianne Arnold**  
931-703-5104  
[diannearnold@charter.net](mailto:diannearnold@charter.net)  
**Madison Arnold**  
615-603-0077  
[madisonarnoldsales@gmail.com](mailto:madisonarnoldsales@gmail.com)

**HOMETOWN SPECIALISTS**

Office: 931-684-6522

1708 North Main St., Shelbyville, TN 37160

**FARMS | HOMES | LAND**

[WWW.COLDWELLBANKER.COM](http://WWW.COLDWELLBANKER.COM)



Each office is independently owned and operated



*Templeton & Associates  
Insurance*

GET THE  
**Coverage**  
YOU NEED!

- Auto • Home
- Life • Commercial



**Kay & Jennifer**  
108 East Depot Street • 931-684-4380



**THANK YOU**  
For Trusting Us For  
Over 50 Years!

*Family Owned & Operated*



**bryant**  
Heating & Cooling Systems

704 Blue Ribbon Pkwy.  
Shelbyville, TN

**WHATEVER  
IT TAKES:** (931) 684-0339  
[reddsheatingandair.com](http://reddsheatingandair.com)



**Landers Tires**  
**931-684-TIRE**

Tires • Front-End Alignment • Brakes • Mufflers

*Serving Middle Tennessee Since 1954*

401 S. Cannon Blvd, Shelbyville, TN 37160

**You don't buy life insurance for yourself.**



Ask me how life insurance can be a valuable resource for your kids and grandkids!



**Maleah Claxton**  
1301 N. Main St., Ste. A • Shelbyville  
**931-680-0064**  
[MClaxton@ShelterInsurance.com](mailto:MClaxton@ShelterInsurance.com)

We're your Shield. We're your Shelter.  
Shelter Life Insurance Company • Columbia, Missouri



The wins. losses. stats.  
The comics. coupons. crossword.  
The truth. politics. police blotter.

Subscribe in Print or Online Today!  
Publishing Tuesday & Saturday



Our Town.  
Our Lives.  
Our News.

**SHELBYVILLE**  
**TIMES-GAZETTE**  
931-684-1200  
t-g.com  
323 E. Depot St., Shelbyville

*We are proud to be your hometown newspaper.*

Lamb Counseling Services

Will be seeing women, adolescent girls  
and children 1st grade and up.




HOPE THROUGH HEALING

**Jan Lamb, LPC-MHSP**  
304 E. Depot St., Shelbyville, TN  
931.492.6889 | jan@lambcounseling.net [lambcounseling.net](http://lambcounseling.net)



**Clayton's**  
"The *True* FAMILY Shoe Store"

**Downtown Tullahoma** [claytonsshoes.com](http://claytonsshoes.com)  
108 West Lincoln Street, Tullahoma, TN **(931) 455-2722**

*Serving the area for over 122 years with service, quality and fit.*



Serving Food,  
Fun, and Our  
Community

**931-695-5646**  
2301 TN-82  
Shelbyville, TN 37160



# Why Waste? RECYCLE!

**Bedford County Convenience Centers**  
**931-684-4651**



## We Recycle

Cardboard • Newspaper • Aluminum  
Cans • Oil • Batteries • Scrap Metal

For Convenience Center locations, please see  
Relocation Guide in this publication.

El Bethel also accepts Electronics & TV's  
Tire Depot accepts Tires - \$2 per tire  
(No rims or heavy equipment tires)

### Composting - Nature's Recycling



**COMPOST THAT STUFF**  
FOOD TO FLOWERS

**Anything grown  
in the dirt  
will turn into dirt.**

To get started,  
visit [ISWArecycle.net](http://ISWArecycle.net)

### Speakers & Educational Programs




**Interlocal Solid  
Waste Authority**  
**931-703-2435**  
[ISWArecycle.net](http://ISWArecycle.net)

# Festivals & Events



## Daffodil Day

Bell Buckle

Third Saturday in March

---

A celebration of spring and Bell Buckle's green thumb. Mass plantings of daffodils began over 100 years ago resulting in fields of daffodils that burst forth in color every March. The event includes a daffodil flower show, vendors offering bulbs and spring plantings, speakers on beekeeping, honey, and gardening, and other activities. As the smallest town in Tennessee to have Tree City USA status, they also celebrate Arbor Day at the festival, offering free tree seedlings.



## TWH Spring Fun Show

Shelbyville

May

---

Ranked as one of the top horse shows in America after the Celebration, the Spring Fun Show takes place on Thursday, Friday, and Saturday before Memorial Day. The show offers fans a sneak preview of the horses which will perform at the Celebration later in the summer. Classes will be held at Calsonic Arena. Plan to visit the Fun Show Emporium on the concourse of Calsonic Arena. Vendors from all over will be set up for shopping.



## Strolling Jim 40 Ultra Marathon

Wartrace

May 6, 2023

For nearly four decades, the Strolling Jim 40-mile Ultra Marathon has taken place in Wartrace every May. The race is named after a legendary Tennessee Walking Horse. Road warriors from around the world return each year to compete in the race which winds through some of the most picturesque vistas in the South. In conjunction with the race, there is a standard 26.2 mile marathon and a 10K race for those not quite ready to take on the challenge of the big one.



## Color Dash

Historic Shelbyville Square

May 6, 2023

Enjoy this colorful event on the square in Shelbyville. Register to run at [shelbyvilletn.com](http://shelbyvilletn.com). Runners get a color dash t-shirt, dash decal and a winner basket. If you choose to walk, you get a t-shirt and decal! \$30 registration fee for adults and \$15 for children. For more information email [bedfordchamber@sbcchamber.com](mailto:bedfordchamber@sbcchamber.com).

**REEVES**  
STATE SENATE

Proud to be *your* Senator.

615.741.1066 | [sen.shane.reeves@capitol.tn.gov](mailto:sen.shane.reeves@capitol.tn.gov)  
[ReevesForTN.com](http://ReevesForTN.com)

Paid for by candidate

**C. Kelly Wilson**  
**Garrett D. Haynes**  
(931) 684-5424

[ckwilson@wilsonhayneslawfirm.com](mailto:ckwilson@wilsonhayneslawfirm.com)

100 Public Square E, Shelbyville, TN 37160 • 931-684-5425

*The Southern*  
CUP

**Coffee,  
Muffins  
and More!**

810 North Main St., Shelbyville, TN  
[www.thesoutherncup.com](http://www.thesoutherncup.com)

**Looking for home-made desserts?**  
Need something sugar-free or gluten free?

Call/text: **931-224-5191**

[f](https://www.facebook.com/theoldredbarn) [i](https://www.instagram.com/theoldredbarn) [p](https://www.pinterest.com/theoldredbarn) [t](https://www.tiktok.com/@theoldredbarn)

[theoldredbarn@outlook.com](mailto:theoldredbarn@outlook.com)

ESTD 1995  
**THE OLD RED BARN**  
FARM & BAKE SHOP



## RC Cola & MoonPie Festival

Bell Buckle

Third weekend in June

---

Celebrating two Southern favorites, RC Colas and MoonPies, this festival draws visitors from around the country each year. Highlights include a 10-mile run, parade, music, and food. The parade culminates in the crowning of the King and Queen, followed by games for all ages. The grand finale is the cutting of the world's largest MoonPie.



## Farmers Market

Bell Buckle

First Friday in June - Last Friday in September

---

The Farmers Market features locally grown vegetables, baked goods, gourmet coffees, and other various local homegrown products. held under the new pavilion beside The Findery.



## The Great Celebration Mule & Donkey Show

Shelbyville

Second weekend in July

---

Held each year at the Tennessee Walking Horse National Celebration grounds, the show brings three days of quality mules and donkeys from 25 states. Riders and exhibitors of all ages are welcome to come and show their prized animals. The festive atmosphere includes vendors with unique items for sale as well as great food.



## Bedford County Fair

Shelbyville

July 17-22, 2023

---

Held each year for six days at the Bedford County Agricultural Center and Fairgrounds. Events include a tractor pull, baking contests, carnival rides, music, livestock judging of all types, and great food. This is a great way to cap off the summer before school starts each year.





## 4th of July Celebrations

Bell Buckle & Shelbyville

July

---

Bell Buckle features fireworks and free music in the Bell Buckle Park. Shelbyville's celebration is held at H.V. Griffin Park and features games for the entire family, music, fireworks, and \$1 swimming at the pool from 10 a.m. until 4 p.m.



## First Square Fair & TN State Chili Cook-off

Shelbyville

July

---

Located in Historic Uptown Shelbyville. Events include state and regional chili cook-off, chili tasting, car show of the South, craft and product vendors, The Dog Days of Summer Dog and Mutt show, as well as chili dog eating contest and ice cream eating contest.



## Tour #13 Haunted History Tours

Shelbyville

---

This tour costs \$13 a person / \$35 for parents with children. This is a one hour walking tour of Historic Uptown Shelbyville. You will hear 13 stories of the ghosts and unusual activities that have taken place in the century-old buildings. The tour starts at 111 South Main Street in the 120-year-old building that was originally built as a doctor's office and ends in a local cemetery. Our Friday the 13th tours have a history of being very interesting. Start time for the tours is 8:13 p.m.



## TWH National Celebration

Shelbyville

August 23 - September 2, 2023

---

Beginning in 1939, this is the premier event in the industry with the World Grand Champion being crowned on the last Saturday night. Spectators and exhibitors from around the world assemble in Shelbyville at the Historic Tennessee Walking Horse National Celebration Grounds for the annual spectacle.

*Photo credit: Odinn Media*



## Juneteenth Celebration

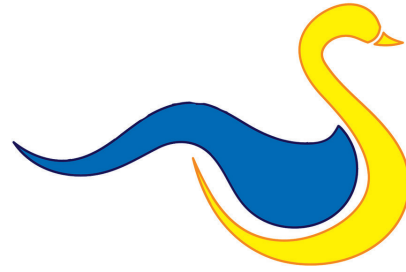
Shelbyville

June

---

Presented by the Gilliland House Resource Center and the Rosenwald Organization

- Bedford County Courthouse square
- Parade, program, entertainment, food trucks, arts & crafts vendors



## Edge of the Duck River Event

Shelbyville

September

---

Street festival celebrating Shelbyville's proximity to the Duck River. Vendors, music, activities for the family, as well as a Duck Walk for all ages! Event is held the fourth Saturday of September in conjunction with World River Day on the fourth Sunday. The month preceding, Trail of Ducks stickers are sold to raise money for The United Way & A Clean River Project.



## Boo & Brew 5

Shelbyville

October

---

Located in Historic Uptown Shelbyville. Events include live music, costume contests for all ages, Halloween car show, shopping, food vendors, beer and coffee specials, fun games, and much more!



## Old Fashioned Christmas

Bell Buckle

Saturdays in December before Christmas

---

Old fashioned decorations, twinkling Christmas lights, and festive greenery adorn the small town, stirring memories of simpler times. Santa and his old-fashioned sleigh offer free rides around the historic village. The first Saturday sports a free s'mores bar set up around a fire pit near Southern Charm. Many of the stores offer a taste of the holidays.



## Halls Mill Sorghum Squeeze

Unionville

First Saturday of October

---

Rural simplicity abounds! Craft vendors, music and clogging. Watch molasses making from the field to the table. Event is held on ground with several Pre-Civil War buildings to explore. Bring your lawn chairs, and have lunch while watching molasses being made.



## Webb School Arts & Crafts Festival

Bell Buckle

Third weekend in October

---

There are over 500 booths with unique and eclectic items from across the United States. Over 100,000 people attend this event each year. This festival includes live music, plenty of food vendors, health vendors, handmade furniture, photography, pottery, prints, clothing, purses, yard items, antiques, and so much more.



## Sip, Shop & Stroll

Shelbyville

December

---

Spend a festive evening walking around the candlelit Historic Shelbyville Square for the annual Wine Walk. Participating businesses offer tastings of different wines. The event is free, but with a \$10 donation you will receive an engraved commemorative wine glass. Donations benefit the Shelbyville-Bedford County Public Library.



## Wartrace Strawberry Festival

Wartrace

May 13, 2023

---

The Strawberry Festival is our annual celebration of spring and all things strawberry organized by the Wartrace Chamber of Commerce. Set in Historic Downtown Wartrace, we host a variety of vendors selling their arts & crafts, baked goods, decor, boutique clothing, pottery, canned goods, handmade items, direct sales products and each booth will have something strawberry-themed.

# Tennessee Whiskey

The best whiskey  
this side of the  
Mississippi.



## Cascade Hollow Distillery

The Cascade Hollow Distillery is surrounded by 600 protected acres of forest and crystal-fresh springs. Since 1870, the distillery has been faithful to the recipe George A. Dickel created. Today it is crafted just as it was then — Handmade the Hard Way. Take a one hour tour through the fully operational distillery and barrelhouse.

[georgedickel.com](http://georgedickel.com)

## Jack Daniel Distillery

The Jack Daniel Distillery is the oldest registered distillery in the United States. Make time for the 1.5-hour Angel's Share Distillery Tour where you will hear stories about the history and sample some of their limited-edition single barrel whiskeys.

[jackdaniels.com](http://jackdaniels.com)





## Pritchard's Distillery

Pritchard's Distillery is in Kelso, Tennessee in an old schoolhouse where the basketball hoops still hang on the wall. Their quality rums and whiskeys are distilled in copper pots and stored in 15-gallon to 53-gallon charred white oak barrels to allow for the best possible flavor.

[prichardsdistillery.com](http://prichardsdistillery.com)



## Southern Pride Distillery

If you like moonshine, Southern Pride Distillery is the place for you. Using an old family recipe, they mill locally grown corn on-site to produce their premium distilled spirits. On a beautiful farm outside of Fayetteville, the distillery produces seven flavors of distilled spirits and two Double Barrel Charred Shines.

[southernpridedistillery.com](http://southernpridedistillery.com)

## Nearest Green Distillery

In Lynchburg, the name Nearest Green has always meant something special. Hailing from Maryland, we don't know how or when Uncle Nearest made his way to Tennessee. What we can confirm is he is the first African-American master distiller on record in the U.S. and thought to be responsible for helping perfect the Lincoln County Process.

[unclenearest.com](http://unclenearest.com)



# Membership Directory

## Meet Your Chamber Members



**Eat Local**  
**Shop Local**  
**Enjoy Local**

**7 Springs Orthopedics**  
1114 North Main Street,  
Shelbyville, TN 37160  
855-255-1036

**A & S Heating & Cooling**  
830 N. Jefferson Street  
Shelbyville, TN 37160  
931-684-0502

**Adoration Home Health**  
323 East Lane Street  
Shelbyville, TN 37160  
931-224-2050

**Advance Financial**  
743 Madison St  
Shelbyville, TN 37160  
931-225-7999

**Albeas America/  
Alcan Company**  
1209 Madison Street  
P. O. Box 747  
Shelbyville, TN 37160  
931-684-4161

**Alex's Extreme Clean**  
1329 Longview Road  
Unionville, TN, 37160  
615-796-3880

**Aludyne**  
100 North Creek Drive  
Shelbyville, TN 37160  
931-684-2400

**Anita Teague**  
5413 Cliffstone Drive  
Smyrna, TN, 37167  
615-867-8647

**Arosa**  
768 N Main St  
Shelbyville, TN 37160  
931-680-2771

**AT&T**  
333 Commerce St  
Nashville, TN, 37201  
615-214-4150

**Atmos Energy**  
321 Lane Parkway  
Shelbyville, TN 37160  
931-388-9136

**Badcock Home  
Furnishing Center**  
761 Madison St  
Shelbyville, TN 37160  
931-685-9644

**Banner Music**  
723 Mapleview Drive  
Shelbyville, TN 37160  
931-680-1932

**Bedford Builds  
Habitat for Humanity**  
209 E Depot St  
Shelbyville, TN 37160  
931-684-4300

**Bedford Cancer  
Foundation, Inc.**  
P. O. Box 1523  
Shelbyville, TN 37162  
931-684-5800

**Bedford County  
Democratic Party**  
200 Peebles Rd  
Shelbyville, TN 37160

**Bedford County  
Farm Bureau**  
P. O. Box 82  
Shelbyville, TN 37162  
931-684-3161

**Bedford County  
Imagination Library**  
915 Adams Drive  
Shelbyville, TN 37160  
931-212-4133

**Bedford County  
Property Assessor**  
106 N Side Square  
Shelbyville, TN 37160  
931-684-6390

**Bedford County  
Utility District**  
P. O. Box 2755  
Shelbyville, TN 37162  
931-684-1667

**LET OUR TEAM WORK FOR YOU!**



**HERITAGE**  
Realty Group



2737 Hwy. 231 N. Shelbyville TN • 931-680-1680

WWW.HERITAGEREALTYGROUPTN.COM

**Bedford Vision & Eye Clinic, PLLC**  
915 Colloredo Blvd.  
Shelbyville, TN 37160  
931-684-2197

**Bell Buckle Banquet Hall**  
29 Railroad Sq  
Bell Buckle, TN 37020  
931-389-0223

**Bell Buckle Cafe**  
16 Railroad Square St E  
Bell Buckle, TN 37020  
931-389-9693

**Bell Buckle Coffee Shop & Book Swap**  
2 Railroad Square.  
Bell Buckle, TN 37020  
931-813-3333

**Bell Buckle Guest House**  
963 Liberty Pike  
Bell Buckle, TN 37020  
615-554-9451

**Ben Craig**  
508 Cannon Blvd.  
Shelbyville, TN 37160  
931-684-9112

**BEST WESTERN PLUS  
Celebration Inn & Suites**  
724 Madison St.  
Shelbyville, TN 37160  
931-684-2378

**Big G Express**  
190 Hawkins Dr  
Shelbyville, TN 37160  
931-684-9140

**Black & Blue Sports**  
114 E. Highland Street  
Shelbyville, TN 37160  
931-680-9898

**Bobo, Hunt, & White**  
P. O. Box 169  
Shelbyville, TN 37160  
931-684-4611

**Bookkeeping Plus**  
635 North Main St.  
Shelbyville, TN 37160  
931-685-0503

**Boxdrop Shelbyville**  
118 Public Square E  
Shelbyville, TN 37160  
629-251-7650

**Boys & Girls Club  
of Bedford County**  
P. O. Box 486  
Shelbyville, TN 37162  
931-735-6525

**Branches Counseling  
Center**  
304 East Depot St.  
Shelbyville, TN 37160  
931-685-2013

**Brooks Healing Center**  
1100 Cortner Rd  
Normandy, TN 37360  
931-740-1087

**Budget Blinds of Shelbyville  
& Winchester**  
1362 W. College St  
Murfreesboro, TN 37129  
931-488-4033

**Burger King**  
1100 North Main Street  
Shelbyville, TN 37160  
931-684-9570

**Burt Landers**  
309 Greenbriar Ave  
Shelbyville, TN 37160  
931-684-7142

**Caregiver Relief Program**  
500 Elm Street  
Shelbyville, TN 37160  
931-685-9039

**Carrols Corporation/  
Popeyes**  
1101 N Main St  
Shelbyville, TN 37160  
901-616-7622

**Cassady's Tree Service**  
750 Lower Halls Mill Rd  
Shelbyville, TN 37160  
931-224-9914

**Castle Ministries**  
206 Madison  
Shelbyville, TN 37160  
931-773-3004

**Cedar Recovery**  
2839 HWY 231 North  
Shelbyville, TN 37160  
800-799-1450

**Celebration City  
Region Car Club, Inc.**  
P. O. Box 502  
Shelbyville, TN 37160  
931-703-8158

**Celebration Travel**  
931-684-2111

**Celebration Way**  
895 Union Street  
Shelbyville, TN 37160  
931-685-6900

**CFC Recycling, Inc.**  
54 Recycle Drive  
Tullahoma, TN 37388  
931-454-2222

**Christopher Equipment**  
1198 Madison Street  
Shelbyville, TN 37160  
931-684-0505

**Cindy Barnes, Realtor for  
Heritage Realty Group**  
Shelbyville, TN 37160  
931-703-3738 cell

**Cinnamon Ridge Bed &  
Breakfast**  
799 Whitthorne Street  
Shelbyville, TN 37160  
931-580-7883

**Clanton Pipe and Supply**  
904 Madison Street  
Shelbyville, TN 37160  
931-703-8158

**Clearview Horse Farm**  
2291 Hwy 231 South  
Shelbyville, TN 37160  
931-684-8822

**Scott Cocanougher**  
535 Gaither Road  
Shelbyville, TN 37160  
931-680-1023

**Buying or Selling? I Can Help!**  
**Your LOCAL Professional Realtor**

**CRAIG & WHEELER**  
REALTY & AUCTION, LLC

**(931) 684-9112**  
**CraigWheeler.com**  
508 Cannon Blvd • Shelbyville, TN 37160

**CAMILLE BELL REALTOR**  
931-224-5719  
cbell@craigwheeler.com



**Coldwell Banker Segroves  
Neese Real Estate**  
1708 North Main Street  
Shelbyville, TN 37160  
931-684-5605

**Collins & Miller  
Insurance Agency**  
1608 North Main Street  
Shelbyville, TN 37160  
931-684-1955

**Community Clinic of  
Shelbyville & Bedford  
County, Inc.**  
200 Dover Street, Suite 202  
Shelbyville, TN 37160  
931-684-6772

**Community Development  
Center / CDC**  
111 Eaglette Way  
Shelbyville, TN 37160  
931-684-8681

**Compass Self Storage**  
1703 Green Lane  
Shelbyville, TN 37160  
931-684-8585

**Compassus Hospice &  
Palliative Care**  
1805 North Jackson Street,  
Suite 11  
Tullahoma, TN 37388  
931-4559118

**Cook's Pest Control**  
1405 Madison Street  
Shelbyville, TN 37160  
931-684-5941

**Cooper Christian Academy**  
309 Madison Street  
Shelbyville, TN 37160  
931-488-5111

**Cooper Steel  
Fabricators, Inc.**  
P. O. Box 149  
Shelbyville, TN 37162  
931-684-7962

**Craig & Wheeler Realty &  
Auction, LLC**  
508 S. Cannon Boulevard  
Shelbyville, TN 37160  
931-684-9112

**CTRC Shelbyville**  
1618 Railroad Ave  
Shelbyville, TN 37160  
931-313-4819

**Custom Creations by  
Land Design**  
107a Northside Park Dr  
Shelbyville, TN 37160  
931-492-4068

**Cutting Edge Optical**  
875 Union Street  
Shelbyville, TN 37160  
931-488-5778

**D & R Contractors**  
2320 Hwy 41A South  
Shelbyville, TN 37160  
931-684-1685

**Dabora, Inc.**  
730 Madison Street  
Shelbyville, TN 37162  
931-684-8123

**Davis Dental, PLLC**  
401 Deery Street  
Shelbyville, TN 37160  
931-684-1882

**Davis Estates Apartments**  
238 Anthony Lane  
Shelbyville, TN 37160  
931-685-1888

**Dawn Hobbs**  
184 Halls Mill Rd  
Shelbyville, TN 37160  
931-703-2292

**Dawning Design Studio,  
PLLC**  
208 Richdale Lane  
Shelbyville, TN 37160  
615-521-9789

**Defenders of Freedom &  
Liberty**  
105 Diane St  
Shelbyville, TN 37160  
931-703-3755

**Dennis Young Insurance  
Agency, Inc.**  
1500 Madison Street  
Shelbyville, TN 37160  
931-680-1011

**DIXIE Em's Event Bartending**  
PO Box 5013  
Bell Buckle, TN 37020  
615-556-0505

**Doak-Howell Funeral Home  
& Cremation Svc**  
739 North Main Street  
Shelbyville, TN 37162  
931-684-5011

**Donna Thomas, Bedford  
County Clerk**  
104 Northside Square  
Shelbyville, TN 37160  
931-684.1921

**Duck River Electric  
Membership Corp.**  
1411 Madison Street  
Shelbyville, TN 37160  
931-684-4621

**Dunkin'**  
1735 N. Main Street  
Shelbyville, TN  
931-735-6557

**Econolodge Inn and Suites**  
1607 N Main St.  
Shelbyville, TN 37160  
931-680-1030

**Edward Jones**  
609 N Main St  
Shelbyville, TN 37160  
931-684-4373

**Edward Jones**  
1608 N. Main St., Suite D  
Shelbyville, TN 37160  
931-684-4972

**Edwards Oil Co./QuikMart**  
105 Helton Drive  
Lawrenceburg, TN 38464  
931-762-9600

**Elaborate Images**  
995 Longview Road  
Shelbyville, TN 37160  
931-703-5410

**Elam Real Estate Shelbyville**  
300 N Brittain St  
Shelbyville, TN 37167  
615-890-1222

**Elite Physical Therapy**  
1116 N. Main St., Suite A  
Shelbyville, TN 37160  
931-684-0027

**Elite Property Solution**  
505 N Main St  
Shelbyville, TN 37160  
931-639-5223

**Emmy's Resturant**  
764 North Main Street  
Shelbyville, TN 37160  
931-488-7840

**Enchanted Bridal &  
Boutique**  
2345 Highway 231 N  
Shelbyville, TN 37160  
931-580-5215

**Entersource**  
710 Blue Ribbon  
Shelbyville, TN 37160  
931-680-0068

**COME GROW YOUR MIND**

220 S. Jefferson St., Shelbyville, TN  
**931-684-7323**  
[www.sbcplibrary.org](http://www.sbcplibrary.org)



**Exchange, Inc.**  
404 Main Avenue South  
Fayetteville, TN 37334  
931-433-9737

**Fair Association of Bedford County, Inc.**  
P.O. Box 2206  
Shelbyville, TN 37160  
931-684-0760

**Faith Family Wellness Clinic, PLLC**  
2012 N. Main St  
Shelbyville, TN 37160  
931-492-5290

**Family Counseling Ctr. of Middle Tennessee/Access Hope**  
611 Del Ray Street  
Shelbyville, TN 37160  
931-409-3885

**Family Fab, LLC**  
225 Temple Ford Road  
Shelbyville, TN 37160  
615-289-7541

**Farm Bureau.**  
**Jeff Floyd Agency**  
1735 North Main  
Shelbyville, TN 37160  
931-575-5050

**Farm Credit Mid-America**  
1908 Madison Street  
Shelbyville, TN 37160  
931-684-3291

**Farmers Home Furniture**  
108 Lane Parkway  
Shelbyville, TN 37160  
931-684-8041

**Farrar Rental Properties**  
513 Madison Street  
Shelbyville, TN 37160  
931-684-5803

**Farris & Associates III Inc.**  
101 Palmer Drive  
Shelbyville, TN 37160  
931-962-2431

**Feldhaus Investor Services**  
712 N. Main Street  
Shelbyville, TN 37160  
931-684-4530

**Feldhaus Memorial Chapel, LLC**  
2022 North Main Street  
Shelbyville, TN 37160  
931-684-8356

**Ferrous Processing and Trading**  
106 Cedar King Drive  
Shelbyville, TN 37160  
931-536-7171

**First Baptist Church**  
304 E. Depot St.  
Shelbyville, TN 37160  
931-684-1634

**First Choice Pregnancy Counseling Center**  
1102 Madison Street  
Shelbyville, TN 37160  
931-680-0066

**First Christian Church**  
309 Madison Street  
Shelbyville, TN 37160  
931-684-7467

**First Community Bank**  
P O Box 1027  
Shelbyville, TN 37160  
931-684-5800

**First Community Mortgage**  
605 Del Ray Street  
Shelbyville, TN 37160  
931-685-1005

**First Mutual Insurance Group**  
805 S Church St  
Murfreesboro, TN 37130  
800,831-2958

**First National Bank of Middle Tennessee**  
200 East Main Street  
McMinnville, TN 37110  
931-473-4402

**FirstBank**  
508 Madison Street  
Shelbyville, TN 37160  
931-680-7580

**Fogarty & Roberson Orthodontics**  
635 North Main Street  
Suite B  
Shelbyville, TN 37160  
800,227-2237

**Fox Quarry Farm**  
1855 Courtner Road  
Wartrace, TN, 37183  
615-849-2740

**Funderburk Management dba McDonald's**  
763 Madison Street  
Shelbyville, TN 37160  
931-537-2221

**Gateway Tire & Service Center**  
1011 N. Main St.  
Shelbyville, TN 37160  
931-685-8181

**Philip Gentry**  
P. O. Box 619  
Wartrace, TN 37183  
931-389-9399

**Gill Appraisal Service**  
103 Creighton Place  
Shelbyville, TN 37160  
931-684-8304

**Glass Hollow Table & Tavern**  
P.O. Box 1050  
Shelbyville, TN 37160  
931-607-1563

**Great Clips of Shelbyville**  
1832 N. Main Street  
Shelbyville, TN 37160  
931-680-7400

**Great White Pools**  
1405 N MAIN ST  
Shelbyville, TN  
931-580-0721

**Guaranteed Rate**  
5409 Maryland Way Ste 140  
Brentwood, TN 37027  
615-905-0012

**PAT MARSH**  
STATE REPRESENTATIVE

*"I am honored to represent the people of the 62<sup>nd</sup> district of Tennessee."*

**TENNESSEE 62<sup>ND</sup> LEGISLATIVE DISTRICT**  
**(615) 741-6824**  
rep.pat.marsh@capitol.tn.gov

**Locally Grown Plants**  
since 1979

- Retail Greenhouse & Nursery
- Landscape Services
- Deliveries to Hospitals & Funeral Homes

**M&L Greenhouse**  
Richard Davis (931) 684-5850  
199 Benford Rd, Shelbyville, TN

**WE DELIVER**

**H. B. Cowan & Company**  
710 North Brittain Street  
Shelbyville, TN 37160  
931-684-3323

**HA Beasley & Company**  
109 E. Holland Street  
Shelbyville, TN 37160  
931-680-0660

**Hardison Moving**  
127 Maupin Circle  
Shelbyville, TN 37160  
931-455-4445

**Hawkins Asphalt Paving, LLC**  
6015 Hwy 64 E.  
Wartrace, TN 37183  
931-389-9671

**Hawkins Partnerships**  
5096 Highway 64 East  
Wartrace, TN 37183

**Hayes Instrument Company**  
502 South Cannon Blvd.  
Shelbyville, TN 37160  
931-684-0555

**Haynes Brothers Lumber**  
795 Colloredo Blvd.  
Shelbyville, TN 37160  
931-685-9977

**Healthmarkets - Will Prater**  
206 N Collins Street  
Tullahoma, TN, 37388  
931-588-1885

**Henegar Law Office**  
923 N. Main St.  
Shelbyville, TN 37160  
931-492-4288

**Henry & Lynn Hulan**  
P. O. Box # 290  
Shelbyville, TN 37160  
931-684-4473

**Heritage Jewelers**  
108 Public Square East  
Shelbyville, TN 37160  
931-684-3115

**Heritage Realty Group**  
2737 U.S. 231  
Shelbyville, TN 37160  
931-680-1680

**Heritage South Community  
Credit Union**  
763 N Main St  
Shelbyville, TN 37160  
931-680-1400

**Hilltop Antiques**  
12 Railroad Square E  
Bell Buckle, TN 37020  
931-813-3091

**Hilltop Bed & Breakfast  
Cottage and Gardens**  
310 Crest Drive  
Shelbyville, TN 37160  
931-607-3800

**Homes of Hope of Bedford  
County, Inc.**  
P.O. Box 2239  
Shelbyville, TN 37162  
931-205-6869

**Howser & Associates**  
1500 Medical Center Pkwy  
Murfreesboro, TN 37129  
615-801-8602

**Interlocal Solid Waste  
Authority**  
419 Joyce Ln  
Winchester, TN 37398  
931-7032435

**J. Jordan Boutique**  
104 Public Square East  
Shelbyville, TN 37160  
931-684-9695

**J. B. & Nancy M. Cox**  
2739 Lewisburg Highway  
Petersburg, TN 37144

**JGX Construction LLC**  
2545 Highway 41A North  
Shelbyville, TN 37160  
931-580-0631

**Joel's Tire & Repair**  
923 Colloredo Blvd  
Shelbyville, TN 37160  
931-684-9000

**Jon English Antique  
Sports & Cards**  
204 E Depot St  
Shelbyville, TN 37160  
931-492-4304

**Jones Medical Consulting**  
600 N Main St, Suite 2054  
Shelbyville, TN 37160  
847,287-8422

**Josh Young- Agent, New  
York Life Insurance  
Company**  
P.O. Box 2856  
Shelbyville, TN 37160  
931-492-9095

**Jostens**  
P. O. Box 208  
Shelbyville, TN 37160  
931-685-6500

**Junior's House, Inc.**  
210 S. Main Street  
Shelbyville, TN  
931-438-3233

**K. Ellen Boutique**  
716 North Main Street  
Shelbyville, TN 37160  
352-536-4364

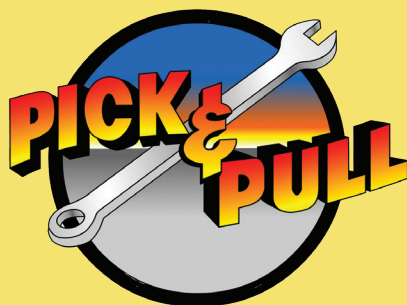
**Kelly Wilson Law Office**  
P O Box 103  
Shelbyville, TN 37160  
931-684-5424

**Kincaid Service Company**  
400 Madison Street  
Shelbyville, TN 37160  
931-684-5662

**Kingdom Acres CBD  
and Hemp**  
1705 Kingdom Rd  
Bell Buckle, TN 37020  
615-663-1517

**Kroger**  
1010 N Main St  
Shelbyville, TN 37160

**Krystal**  
712 Madison Street  
Shelbyville, TN 37160  
256-453-1971



**CFC AUTO SALVAGE**

**NEED CAR PARTS?**

COME SEE US AT PICK & PULL!

*We have over 800 vehicles on our lot to choose from!*

54 Recycle Dr., Tullahoma, TN 37388

8:00 A.M. - 4:00 P.M. (Fall/Winter hours) • 8:00 A.M. - 4:30 P.M. (Spring/Summer hours)

Check out our entire inventory at: [www.cfcpickandpull.com](http://www.cfcpickandpull.com)

We do NOT inventory individual parts. Just vehicles by YEAR, MAKE, and MODEL!

**Lamb Counseling Services**

PO Box 1621  
Shelbyville, TN 37160  
931-205-9677

**Joe M. Lambert, Jr.****Law Office**

100 N. Side Sq. Suite 3  
Shelbyville, TN 37160  
931-684-9600

**Landers Drilling**

102 Ashe Rd.  
Shelbyville, TN 37160  
931-684-5689

**Landers Tires**

401 S. Cannon Blvd.  
Shelbyville, TN 37160  
931-684-4743

**Lee Adcock Construction**

826 N. Jefferson St  
Shelbyville, TN 37160  
931-684-1771

**Legends Restaurant**

1609 N. Main St.  
Shelbyville, TN 37160  
931-680-7473

**Linda Yockey**

560 Moore Road  
Shelbyville, TN 37160  
931-857-3171

**Lowery Jewelers**

768 N. Main St.  
Shelbyville, TN 37160  
931-684-8623

**Luttrell Staffing Group**

1731 N. Main St. Unit F  
Shelbyville, TN 37160  
931-488-6861

**Lynchburg Nursing Center**

40 Nursing Home Road  
Lynchburg, TN 37352  
931-759-6000

**M & L Greenhouse**

199 Benford Road  
Shelbyville, TN 37160  
931-684-5850

**Mac Daddies**

P.O. Box 2813  
Shelbyville, TN 37160  
931-224-8487

**Madison Self Storage**

1115 Madison St  
Shelbyville, TN 37160  
931-684-1683

**Main Street Minor Medical**

742 North Main Street  
Shelbyville, TN 37160  
931-735-6003

**Mama's House**

876 Union Street  
Shelbyville, TN 37160  
931-224-7916

**McGee's Prescription Shop, Inc.**

842 Union Street  
Shelbyville, TN 37160  
931-684-7936

**McKamey Inc.****Heating & Cooling**

113 W. Cedar St  
Shelbyville, TN 37160  
931-684-3488

**Merle Norman****Cosmetics & Gifts**

105 Public Square South  
Shelbyville, TN 37160  
931-684-8728

**Hasty Realty, LLC**

1404 North Main Street  
Shelbyville, TN 37160  
931-684-4000

**Michelle Murray, Circuit Court Clerk**

108 North Creek  
Shelbyville, TN 37160  
931-684-3223

**Microtel Inn & Suites By Wyndham**

1207 North Main Street  
Shelbyville, TN 37160  
931-684-8343

**Middle Tennessee Assoc. of Realtors**

311 Butler Dr.  
Murfreesboro, TN 37127  
615-893-2242

**Middle Tennessee Hearth and Home, LLC**

206 Deery Street  
Shelbyville, TN 37160  
931-492-5115

**Middle Tennessee****Pharmacy Services**

661 E. Lane Street  
Shelbyville, TN 37160  
931-684-9987

**Mobile Living Tn**

1104 Madison Street  
Shelbyville, TN 37160  
931-488-4999

**MooVille Cookies & Cream, LLC**

Robin DeMaio  
Shelbyville, TN 37160  
931-492-9773

**Motlow State Community College**

P O Box 8500  
Lynchburg, TN 37352  
931-393-1500

**MTSU University College**

503 East Bell St  
Murfreesboro, TN 37130  
615-494-7714

**Mullins Insurance Agency**

208 N Main St.  
Shelbyville, TN 37160  
931-684-7436

**Murfreesboro Medical Clinic**

1272 Garrison Drive  
Murfreesboro, TN, 37129  
615-867-7852

**Musgrave Pencil Company**

701 W Lane St  
Shelbyville, TN 37160  
931-684-3611

**WE BUY SCRAP METAL!**

Aluminum, Cans, Appliances, Farm Equipment, Steel, Brass, Copper  
*AND We buy ANY Vehicle - Running or Not!*

**(931) 454-2222**

54 Recycle Dr., Tullahoma, TN 37388

Mon. - Fri. 8:00 A.M. - 4:30 P.M. • Sat. 8:00 A.M. - 11:30 A.M.

[www.cfcrecycling.net](http://www.cfcrecycling.net)

**Nash Family Farms**  
3983 41A North  
Chapel Hill, TN 37034  
559-269-0133

**Nationwide Express**  
P. O. Box 1800  
Shelbyville, TN 37160

**Navigation Advertising, LLC**  
416 Medical Center Pkwy  
Murfreesboro, TN 37129  
615-898-1496

**Nearest Green Distillery**  
Shelbyville, TN 37160  
931-773-3070

**Nerren Homes**  
213 Idle Drive  
Shelbyville, TN 37160  
931-703-5162

**Nesco Resource**  
635 North Main Street, Suite  
C1  
Shelbyville, TN  
931-735-6777

**Newell Brands**  
1660 Railroad Avenue  
Shelbyville, TN 37160

**Newton Chevrolet GMC**  
2006 North Main Street  
Shelbyville, TN 37160  
931-269-0100

**Newton Ford South**  
2811 US Highway 231 N  
Shelbyville, TN 37160  
931-303-0963

**Newton Nissan South**  
2801 Hwy 231 North  
Shelbyville, TN 37160  
931-684-6811

**Bedford Veterinary Partners  
LLC dba Northpoint Animal  
Hospital**  
2422 Hwy 231 N  
Shelbyville, TN 37160  
931-684-1180

**Oak Knoll Apartments**  
1304 Union Street  
Shelbyville, TN 37160  
931-684-3104

**Oakwood Grove**  
1306 Bell Grimes Lane  
Nashville, TN 37207  
931-684-1444

**Oliver Foot Clinic Inc.**  
635 North Main St., Suite A  
Shelbyville, TN 37160  
931-684-8884

**O'Neal Insurance Group- An  
Allstate Insurance Agency**  
635 N. Main St. Suite G  
Shelbyville, TN 37160  
931-684-3230

**Palmer Foodservice**  
P. O. Box 1043  
Shelbyville, TN 37160  
931-684-7011

**Pat Marsh**  
2105 Highway 130 East  
Shelbyville, TN 37160  
615-741-6824

**Peoples Bank of Middle  
Tennessee**  
1122 North Main Street  
Shelbyville, TN 37160  
931-684-7222

**Pinnacle Financial Partners**  
604 North Main Street  
Shelbyville, TN 37160  
931-684-6166

**PF Growth Partners, LLC**  
108 Lane Parkway  
Shelbyville, TN 37160  
931-909-2900

**Premier Internal Medicine**  
600 South Cannon Blvd  
Shelbyville, TN  
931-735-6630

**Primary Care & Hope Clinic**  
1701 N. Main Street  
Shelbyville, TN  
931-685-9000

**Purdom's BBQ**  
410 Goose Creek Rd  
Shelbyville, TN  
931-703-1778

**State Farm Insurance**  
217 Lane Parkway  
Shelbyville, TN 37160  
931-684-6785

**Randstad**  
628 Madison Street  
Shelbyville, TN 37160  
931-684-7758

**Redd's Heating & Air**  
704 Blue Ribbon Parkway  
Shelbyville, TN 37160  
931-684-0339

**Regions Bank**  
101 Elm Street  
Shelbyville, TN 37160  
931-492-8560

**Republican Party of  
Bedford County**  
P. O. Box 1725  
Shelbyville, TN 37160  
931-639-1200

**ResourceMFG**  
204 N 2nd Ave Ste 110  
Lewisburg, TN, 37091  
931-270-7020

**Rita's Care At Home**  
4205 Hillsboro Pike  
Nashville, TN 37215  
615-298-3826

**River Bend Country Club**  
245 River Bend Country Club  
Road  
Shelbyville, TN 37160  
931-684-7300

**Riverbend Ranch &  
Retreat, Inc**  
239 Cortner Mil Road  
Normandy, TN 37360  
931-857-4000

**The Celebration**  
85TH ANNUAL  
TENNESSEE WALKING HORSE  
NATIONAL CELEBRATION

**UPCOMING EVENTS**  
SPRING FUN SHOW - MAY 25-27  
TWHNC - AUG. 23 - SEPT. 2  
CELEBRATION FALL CLASSIC - NOV. 2-4

Book your next event in  
one of our three arenas.  
1,000 stalls, 3 arenas,  
280 RV spots.

The Celebration Office  
**931-684-5915**

**Rogers Group Inc.**  
2540 US-41A S  
Shelbyville, TN 37160  
931-684-7411

**Rose Ramirez**  
1007 Highway 64 W  
Wartrace, TN 37183  
931-224-3060

**Sad Dog Games  
and Hobbies**  
1834 North Main Street  
Shelbyville, TN 37160  
931-735-0156

**Security Finance**  
1205 North Main Street  
Shelbyville, TN 37160  
931-685-5077

**Select Trailer Company**  
3181 US 231 North  
Shelbyville, TN 37160  
931-685-4040

**Senior Solutions Home Care**  
209 Ward Circle  
Brentwood, TN 37027  
615-624-1520

**Sew Sudberry**  
617 Parson Rd  
Shelbyville, TN 37160  
931-703-2427

**Shane Reeves**  
352 W Northfield  
Murfreesboro, TN 37129  
844,893-0012

**Shelbyville and Vicinity  
Club/NANBPW**  
306 Lucas Rd  
Shelbyville, TN 37160

**Shelbyville Auto Sales**  
2005 North Main Street  
Shelbyville, TN 37160  
931-684-3238

**Shelbyville Housing  
Authority**  
P. O. Box 560  
Shelbyville, TN 37160  
931-684-1341

**Shelbyville Jaycees**  
P. O. Box 361  
Shelbyville, TN 37160  
931-307-5285

**Shelbyville Lions Club**  
P. O. Box 202  
Shelbyville, TN 37160  
931-684-7152

**Shelbyville Lumber  
Company**  
917 North Main Street  
Shelbyville, TN 37160  
931-684-5731

**Shelbyville Pencil Co., Inc**  
723 Industrial Pkwy  
Shelbyville, TN 37160  
931-684-7700

**Shelbyville Power System**  
308 South Main Street  
Shelbyville, TN 37160  
931-684-7171

**Shelbyville Senior  
Citizens Center**  
111 J.G. Helton Drive  
Shelbyville, TN 37160  
931-684-0019

**Shelbyville Times-Gazette**  
P. O. Box 380  
Shelbyville, TN 37160  
931-684-1200

**Shelbyville Vapor**  
411 Thompson Street  
Shelbyville, TN 37160  
931-205-1676

**Shelbyville-Bedford County  
Public Library**  
220 South Jefferson Street  
Shelbyville, TN 37160  
931-684-7323

**Shelbyville-Bedford  
Humane Association**  
905 1/2 Madison Street  
Shelbyville, TN 37160  
931-684-5463

**Shelter Insurance**  
1301 N Main St  
Shelbyville, TN 37160  
931-680-0064

**Simmons Realty**  
104 East Depot  
Shelbyville, TN 37160  
931-703-3191

**Simplicity**  
6 Railroad Square E  
Bell Buckle, TN 37020  
931-607-3578

**Skills Development  
Services, Inc.**  
111 Prince Street  
Shelbyville, TN 37160  
931-684-6978

**Skin Solutions Dermatology**  
2509 Highway 231N  
Shelbyville, TN 37160  
615-771-7546

**Soaky Suds Car Wash**  
1013 Madison St.  
Shelbyville, TN 37160  
615-513-4536

**South Central Human  
Resource Agency**  
200 Dover Street  
Shelbyville, TN 37160  
931-488-3062

**Southern Energy  
Company, Inc.**  
P O Box 607  
Shelbyville, TN 37160  
931-684-5322

**Spry Enterprises**  
6999 Hwy 64E  
Wartrace, TN 37183  
615-295-3326

**Spotted Saddle Horse  
Breeders & Exhibitors  
Association**  
2519 Hwy 231 N  
Shelbyville, TN 37160  
931-684-7496

**STAR Physical Therapy**  
105 Northside Park Drive  
Shelbyville, TN 37160  
931-735-6451



**JOEL'S  
TIRE & BRAKE**

MON-FRI - 7-5  
SAT - 8-12

**HERCULES TIRES**  
RIDE ON OUR STRENGTH

joelstireandbrakes.com

- Tires
- Brakes
- Alignments
- AC Repair
- Tune-ups

*Joel Landers*

923 Coloredo Blvd, Shelbyville, TN - 931-684-9000



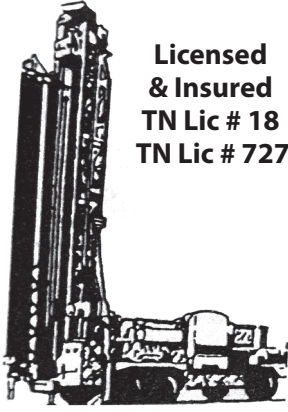
**A friend when you need one.  
We're here for you.**



**First  
Choice**  
Pregnancy Counseling Center

[www.firstchoicepregnancy.com](http://www.firstchoicepregnancy.com)  
1102 Madison St. 931.680.0066





Licensed  
& Insured  
TN Lic # 18  
TN Lic # 727

# LANDERS

DRILLING WELLS • PUMPS • WATER TREATMENT

FOR OVER 130 YEARS

Modern Fast Rotary Drill • Most Wells Completed in One Day • "Get the Best for Less"

102 ASHE RD., SHELBYVILLE

**684-5689**

Visit us online at  
[www.landersonwelldrilling.com](http://www.landersonwelldrilling.com)



## LANDERS WELL DRILLING PUMP SALES & SERVICE

### State Farm - Deb Insell

923 N. Main St.  
Shelbyville, TN 37160  
931-684-5274

### State Farm Andy Womack

1535 W. Northfield Blvd.  
Suite 5  
Murfreesboro, TN 37129  
615-890-0850

### State Farm Rob Gardner

1708 N Main Street  
Shelbyville, TN 37160  
931-685-2080

### Parks Realty

**Stephanie Hickerson**  
1535 W Northfield  
Murfreesboro, TN 37129  
615-796-3366

### Sunchaser Market

2301 TN-82  
Shelbyville, TN 37160  
931-695-5646

### Sylvia Pinson

219 Warren Circle  
Shelbyville, TN 37160  
931-580-9696

### Templeton & Associates Insurance

108 East Depot Street  
Shelbyville, TN 37160  
931-684-4380

### Tennessee College of Applied Technology

1405 Madison St.  
Shelbyville, TN 37160  
931-685-5013

### Tennessee Poultry Association

1404 North Main Street  
Shelbyville, TN 37160  
931-225-1123

### The Celebration, Inc.

1411 Madison Street  
Shelbyville, TN 37160  
931-684-5915

### The Fly Arts Center

204 South Main Street  
Shelbyville, TN 37160  
931-684-8359

### The Lock Shop

115 Quail Hollow Lane  
Shelbyville, TN 37160  
931-685-9344

### The Old Red Barn

510 Sinking Creek Road  
Petersburg, TN 37144  
931-224-5191

### The Pomegranate Shoppe

107 Public Square South  
Shelbyville, TN 37160  
931-684-3673

### The Ridge at Shelbyville

260 Anthony Lane  
Shelbyville, TN 37160  
931-735-6370

### The Shops at Main

**and McGrew**  
100 S Main Street  
Shelbyville, TN  
931-536-1626

### The Skin Project

1302 N. Main St.  
Shelbyville, TN 37160  
931-619-6493

### The Webb School

319 Webb Road East  
Bell Buckle, TN 37020  
931-389-9322

### Tidal Wave Auto Spa

111 N Side Circle  
Shelbyville, TN 37160  
706,938-0991

### TN Voices

500 Professional Park Dr  
Goodlettsville, TN 37072  
615-633-8868

### Tony Rice Center

1300 Railroad Avenue  
Shelbyville, TN 37160  
931-685-0957

### Town of Wartrace

29 Main St E  
Wartrace, TN 37183  
931-339-6144



**SPECIAL ORDERS AVAILABLE!**  
If it's made, we can get it!

- All types and sizes of corrugated metal and plastic culverts!
- We offer 10 ft pcs!

Contractors Call For Bid  
**931-684-4847**

904 Madison St. • Shelbyville  
[www.clantonpipeandsupply.com](http://www.clantonpipeandsupply.com)

*Clanton*  
**PIPE & SUPPLY**



1735 N. Main Street, Suite C-1  
P.O. Box 1330  
Shelbyville TN 37160 US

**931-575-5050**

[www.fbitn.com](http://www.fbitn.com)

Customer Service 1.877.876.2222



**Jeff Floyd**  
Agency Manager

[jeff.floyd@fbitn.com](mailto:jeff.floyd@fbitn.com)

**Traders Bank a Branch of  
Citizens Bank of Lafayette**  
1602 N. Main St.  
Shelbyville, TN 37160  
931-680-3500

**Trailhead Media**  
688 Wilshire Drive  
Jackson, TN 38301  
731-267-3121

**Tristar Metals**  
225 Anthony Lane  
Shelbyville, TN 37160  
931-773-3040

**Lisa L. Turner, CPA**  
171 North Point Circle  
Shelbyville, TN 37160  
931-684-3403

**Tyson Foods**  
P. O. Box 8  
Shelbyville, TN 37160  
931-684-8180

**United Communications**  
120 Taylor Street  
Chapel Hill, TN 37034  
800-779-2227

**Vanderbilt-Bedford Hospital**  
2835 Highway 231 N  
Shelbyville, TN 37160  
931-685-5433

**VannGo Luxury Mobile**  
Restrooms & Portable  
Solutions  
1784 W Northfield Blvd  
Murfreesboro, TN 37129  
615-398-2574

**Veterans, LLC**  
315 East Lane Street  
Shelbyville, TN 37160  
931-492-6444

**Walking Horse Trainers  
Assoc., Inc.**  
P O Box 61  
Shelbyville, TN 37160  
931-684-5866

**Wal-mart Distribution  
Center**  
285 Frank Martin Rd.  
Shelbyville, TN 37160  
931-680-3462

**Wayside Tech, LLC**  
103 Greenbriar Ave  
Shelbyville, TN 37160  
931-703-5954

**WDUC-FM Bowman  
Broadcasting**  
401 Wilson Avenue  
Tullahoma, TN, 37388  
931-393-3100

**White's Welding &  
Service, Inc.**  
3708 Hwy 41A North  
Unionville, TN 37180  
931-294-5968

**Wholesale Supply  
Group, Inc.**  
900 Colerado Blvd.  
Shelbyville, TN 37160  
931-685-4355

**Winnett Associates**  
514 Elm Street  
Shelbyville, TN 37160  
931-684-7142





# How much should a website cost?

After 350+ websites built, we want to help entrepreneurs evaluate the true investment of building a website.

[DOWNLOAD THE FREE GUIDE >](#)



GIVE US A CALL: **1-800-247-7318** or Visit us online: **bestwebsites.io**

# Advertiser's Index

Thanks to all of our local supporters who make this magazine possible!

|  |     |  |     |
|--|-----|--|-----|
| Albea Shelbyville.....                                   | 54  | Lowery Jewelers.....                                       | 55  |
| Arosa Care.....  | 54  | Lynchburg Nursing Center.....                              | 73  |
| Bedford County Fair.....                                 | 54  | M & L Greenhouse.....                                      | 98  |
| Bedford County Mayor's Office & City of Shelbyville..... | 6   | Merle Norman - Shelbyville.....                            | 68  |
| Big G Express.....                                       | 55  | Mobile Living TN.....                                      | 42  |
| Century Mold.....  | 73  | Motlow College.....  | 72  |
| CFC Recycling Inc.....                                   | 99  | Murfreesboro Medical Clinic and SurgiCenter.....           | 61  |
| CFC Recycling Inc.....                                   | 100 | Ole South Properties.....                                  | 25  |
| Clanton Pipe & Supply.....                               | 103 | Parks Realty & Auction OFFICE.....                         | 9   |
| Clayton's Shoes.....                                     | 85  | Pat Marsh Representative.....                              | 98  |
| Coldwell Banker Southern Realty Dianne Arnold.....       | 84  | Redds Heating and Air Conditioning.....                    | 84  |
| Compass Self Storage.....                                | 55  | Rita's Care at Home LLC.....                               | 69  |
| Craig and Wheeler Camille Bell.....                      | 96  | Shane Reeves Senator.....                                  | 87  |
| Craig and Wheeler Realty and Auction LLC.....            | 4   | Shelbyville Bedford County Chamber Of Commerce.....        | 69  |
| Dennis Young Insurance.....                              | 10  | Shelbyville Bedford County Public Library.....             | 97  |
| Dr. Marasco.....   | 61  | Shelbyville Times Gazette.....                             | 85  |
| Farm Bureau Jeff Floyd.....                              | 103 | Shelter Insurance Maleah Claxton.....                      | 84  |
| First Bank Shelbyville.....                              | 5   | Sunchaser Market.....                                      | 85  |
| First Choice Pregnancy Center.....                       | 102 | Templeton & Associates Insurance.....                      | 84  |
| First Community Bank of Tennessee.....                   | 11  | Tennessee College of Applied Technology - Shelbyville..... | 68  |
| HA Beasley & Company.....                                | 69  | Tennessee Walking Horse Breeders' & Exhibs.' Assn.....     | 43  |
| Hawkins Partnership.....                                 | 24  | Tennessee Walking Horse National Celebration.....          | 101 |
| Heritage Realty Group OFFICE.....                        | 95  | The Old Red Barn.....                                      | 87  |
| House of Vacuums.....                                    | 61  | The Shops at Main and McGrew.....                          | 60  |
| Interlocal Solid Waste Authority.....                    | 85  | The Southern Cup.....                                      | 87  |
| J Jordan Boutique.....                                   | 60  | The Webb School.....                                       | 107 |
| Jack Daniel's Visitor Center.....                        | 72  | Titan Transfer Inc.....                                    | 68  |
| Joel's Tire & Brake.....                                 | 102 | Uncle Nearest Premium Whiskey.....                         | 108 |
| Jones Logistics.....                                     | 2   | United Communications.....                                 | 3   |
| Kincaid Service Company.....                             | 60  | Vanderbilt Bedford Hospital.....                           | 7   |
| Lamb Counseling.....                                     | 85  | Wilson & Haynes Law Office.....                            | 87  |
| Landers Tires.....                                       | 84  |  |     |
| Landers Well Drilling.....                               | 105 |  |     |

# THE WEBB SCHOOL

---

## BELL BUCKLE



### FIND YOUR VOICE

The Webb School has a 152-year history of providing challenging academics with an emphasis on personal integrity in a small family-like setting. It is a place where young adults are not just expected to learn - they are encouraged to lead, helping to develop their own unique voices.

---

The Webb School is a co-ed, college preparatory day and boarding school for grades 6-12.

[www.thewebbschool.com](http://www.thewebbschool.com) - Bell Buckle, TN - 931-389-6003



★ EXPERIENCE ★  
**THE MOST AWARDED**  
BOURBON *or* AMERICAN WHISKEY *of* 2020, 2021 & 2022



SCAN TO BOOK TOUR

**BOOK YOUR TOUR AT UNCLENEAREST.COM**  
3125 US-231 NORTH, SHELBYVILLE, TN 37160

Uncle Nearest has won more than 520 awards in the last three years.  
Drink Honorably™ Uncle Nearest Premium Whiskey, 50%, 55.5%, 46.5%, and 59.2% Alc/Vol, Nearest Green Distillery, Shelbyville, TN. © 2023 Uncle Nearest, Inc.