



# Elkhart Lake Depot Dispatch

\*\*\*\*\*ECRWSEDDM\*\*\*\*\*  
Postal Customer

PRESORTED STANDARD  
U.S. Postage Paid  
Elkhart Lake, WI 53020  
Permit No. 14  
ECRWSS

February 2024      [www.elkhartlakechamber.com](http://www.elkhartlakechamber.com)      [www.elkhartlakechamber.com/depot-dispatch](http://www.elkhartlakechamber.com/depot-dispatch)      FREE

Published by the Elkhart Lake Chamber of Commerce to support and promote its members and provide a service to the community.

## Schnee Days 2024 • January 26, 27 & 28

All event information available at [www.elkhartlakechamber.com/schnee-days](http://www.elkhartlakechamber.com/schnee-days)

Join us for Vintage's

### 10TH ANNUAL SIP'N' SCHNEE

WINE TASTING  
FRI, JAN 26TH  
5-7PM

\$20 PER PERSON  
ADVANCE REGISTRATION RECOMMENDED  
SIGN UP AT [VINTAGEELKHARTLAKE.COM](http://VINTAGEELKHARTLAKE.COM)

PROCEEDS WILL BENEFIT THE PLYMOUTH FOOD PANTRY. DONATE CANNED GOODS & GET A RAFFLE TICKET FOR EACH ITEM!



*This event will have a limited capacity for the comfort of our volunteers & customers.*

### Cozy Crafts & Cocoa To-Go

Schnee Days  
Saturday, January 27th  
10am-2pm




Warm up at the library with snow-themed crafts for all ages and cocoa-to-go.




### WINTER OLYMPICS

Saturday, January 27th, 2024  
Noon - 3pm

Schnee Days Olympic Games | Food | 50/50 Raffle | Bloody Mary Bar & Drink Specials | Campfires

\$40 per team - 4 person teams  
Email [golfecrystalakegolfwi.com](mailto:golfecrystalakegolfwi.com) to register





Schedule of Events on Page 13



### CHILI DROP OFF

Siebkins Main Dining Room P.A.M.'s  
Sunday, January 28th  
between 8:30-9:30am  
Judging will begin at 9:45am



Saturday, January 27 - 10am  
2 mile/5K - FUN Run/Walk SchneeLauf Race Start at Quit Qui Oc Golf Club on Golf Course Road.



# SCHNEE DAYS SCHNEELAUF

Register Here



SCAN ME



# Why I Volunteer for Glacial Lakes Conservancy

By Karla and Dave Krueger

My husband Dave and I discovered Glacial Lakes Conservancy through the 2019 Land Trust Days. After enjoying a couple of events and learning more about conservation, we wondered how we could be a little part of the good things happening at GLC to support their mission for future generations. We started by volunteering. What could be better than spending time outside doing things that really matter, working with and learning from knowledgeable people whose passion for plants, animals, and the land is demonstrated time and time again? Over the years, we've done everything from planting trees, discouraging invasive plants, trapping turtles, counting amphibians, and helping to restore the Willow Creek bed habitat, to organizing events and decorating tables at fund raising parties using

local plants and natural wonders.

The staff at GLC work tirelessly to protect and preserve the unique and delicate ecosystems of the Glacial Lakes region, and volunteering provides us with a sense of personal fulfillment and a feeling of contributing to the greater good. Knowing that our contributions directly impact the protection of natural habitats and the species that call them home is immensely gratifying. It reinforces the belief that every small effort can make a big difference to our plant and animal friends and the future of our natural world.



## Grace Lutheran Church Gift Giving Tree



Grace Lutheran Church members would like to say Thank You to the communities of Elkhart Lake and Glenbeulah for their continued support of those in need especially during the Christmas season. With the help of Off The Rail Cafe, Vintage Elkhart Lake, National

Exchange Bank & Trust, Cleveland State Bank and Grace Lutheran Church and many private individuals, they received enough donations to provide 16 families with gift cards and 16 families with gas cards.

**WEST OF 57**  
PLYMOUTH | ELKHART LAKE | KIEL  
**RESTAURANT MONTH** FEBRUARY 2024

### ENJOY LOCAL RESTAURANTS & ENTER TO WIN FREE DINING FOR A YEAR!

**DINE IN EACH OF OUR 3 COMMUNITIES DURING THE MONTH OF FEBRUARY**  
for a chance to win FREE DINNER for a year  
(a gift card for each month of the year) and other prizes!

---

It's easy...eat in, take out, or order delivery once in each 3 communities during February and email a picture of all 3 receipts to [chamber@elkhartlake.com](mailto:chamber@elkhartlake.com) to be entered in the drawing

---

**Multiple entries are accepted.**  
\$10 minimum purchase required at each restaurant.  
Entries will be accepted until Friday, March 1  
**DRAWINGS WILL BE ON MONDAY, MARCH 4**  
\*No Purchase Necessary

---

Details & participating restaurants can be found at:  
[elkhartlakechamber.com/west-of-57-restaurant-month](http://elkhartlakechamber.com/west-of-57-restaurant-month)

**KRAUS CONSTRUCTION Inc.**

- Quality Custom Homes
- Commercial
- Additions
- Remodeling
- Decks
- Siding
- Roofing

Our **Commitment** to You...

Relationships Integrity • Trust

510 Belitz Drive • Kiel  
**920-894-7008**  
[www.krausconstruction.biz](http://www.krausconstruction.biz)

**Grace Lutheran Church**

Sunday Divine Service ..... 8 & 10:15 am  
Thursday Divine Service ..... 7 pm  
**BIBLE CLASS**  
Wednesday ..... 9 am  
Sunday ..... 9:15 am

920-781-5076 • Hwy 67, Elkhart Lake

*For all your labeling needs*

## SOHN Manufacturing, Inc.

544 Sohn Drive, Elkhart Lake, WI 53020  
**920-876-3361**  
email: [sohn@sohnmanufacturing.com](mailto:sohn@sohnmanufacturing.com)  
[www.sohnmanufacturing.com](http://www.sohnmanufacturing.com)





# Mystery Photo Contest



## Can You Identify Our February Mystery Photo?

Take a look at the February mystery photo. Do you know anything about it? Where is/was the location? What year was this photo taken?

If you know, let us know! To enter the February contest, send an email to [depotdispatch@elkhartlake.com](mailto:depotdispatch@elkhartlake.com) or a letter with as many details as you can to the Elkhart Lake Chamber, P.O. Box 425,

Elkhart Lake, WI 53020, or drop off at the Chamber Office, 41 E. Rhine Street.

The person with the best submission will receive a finely matted, quality enlarged print of the original, courtesy of Schamberger Gallery in Elkhart Lake.

Please share your guesses and help us keep the contest up to date.

## answer January Mystery Photo

Thank you to everyone who submitted an entry for our January photo. The winner of the print is **Gerri Nelson**. Please contact the Elkhart Lake Chamber at 920-876-2922 to arrange pick-up.

Dr. Marsho Medical Office before that, it was Walls Insurance. It started out as Launs Furniture Store. The picture has to be from the early 2000's. It looks like one of the first Christmas Banners on the light pole.

**Gerri Nelson**

The January Mystery Photo is the Wine Shop now. Before the Wine Shop it was



WISCONSIN'S  
**Elkhart Lake**  
 Chamber of Commerce

*Our Mission*  
 The Elkhart Lake Area Chamber of Commerce supports its member businesses and promotes the opportunity for sustainable economic growth and development.  
*Your Membership Working for You*

## Wolf Motorsports

**All Your Vehicle & Power Sports Repair & Maintenance**

**Safe Travels Start Here!**

Power Sports

Car Care

**All Things Automotive Import & Domestic Vintage & Classic Cars**

- Oil Changes
- Brake Repairs
- Tire Replacements
- Shocks
- Carburetor Work
- Suspension
- Air Conditioning
- Computerized 4-Wheel Alignment
- Computer Diagnostics
- Exhaust Systems
- Transmission Rebuilds
- Engine Rebuilds
- Performance Upgrades
- Restoration
- Road Force Tire Balancing
- And More...

**790 S. Lincoln Street, Elkhart Lake, WI 53020**  
 920-876-4211 • [www.wolfmotorsport.com](http://www.wolfmotorsport.com)

## DEPOT DISPATCH

**February 2024 - No. 448**  
 Published 12 times yearly by the Elkhart Lake Area Chamber of Commerce, to support and promote its members and provide a service to the community

© 2024 Depot Dispatch  
 All Rights Reserved

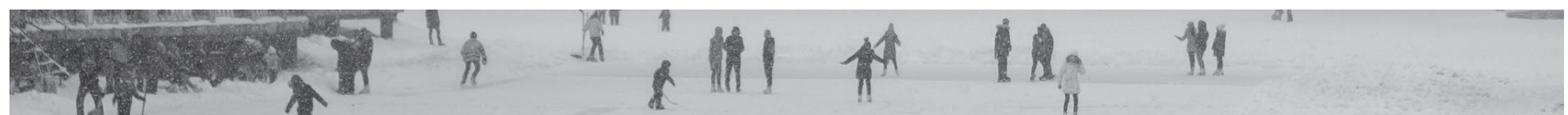
Publisher, **Pam Mathes and the Wisconsin Media Group staff**  
 Executive Director, **Melissa Koehler**  
 Membership Representatives, **Rachel Montaba and Branden Boerner**  
 Contributor, **Marcia Schamberger**

Accounting, **Megan Martin-Rohr**  
 Distribution, **Abbey Hau**  
 and **Wisconsin Media Group**  
 Contributing Sponsors  
**Cleveland State Bank,**  
**Friends of the Library,**  
**Sargento**  
 and **Sohn Mfg.**

Subscriptions  
**\$23.00/year (First Class)**  
 Address correspondence or questions to **DEPOT DISPATCH**, P.O. Box 425, Elkhart Lake, WI 53020 or call (920-876-2922) between 9 a.m. and 4 p.m. For advertising questions, please call and ask for Pam Mathes (920-894-2828) E-mail address: [depotdispatch@elkhartlake.com](mailto:depotdispatch@elkhartlake.com)

The Depot Dispatch accepts non-member advertisements. It encourages and welcomes story contributions, press releases and event promotions from all members. Materials submitted for consideration will be reviewed by the editor, who reserves the right to adapt, as necessary. Submitted materials will not be returned unless specifically requested at the time of submission and accompanied by a stamped, self-addressed envelope.

[www.elkhartlakechamber.com](http://www.elkhartlakechamber.com)  
[www.elkhartlakechamber.com/depot-dispatch](http://www.elkhartlakechamber.com/depot-dispatch)





# 75th Anniversary Milestone Steffes Builders, Inc.

Steffes Builders has reached a milestone to be proud of: the local, custom homebuilding business is celebrating 75 years.



over the years regarding technology advancements, construction has also faced a number of changes. Some of those changes include engineered lumber, advanced insulation techniques, low-maintenance material, green technologies and improved mechanicals just to name a few. The contractors have stayed current on the technology advances, while also still remaining true to proven methods for best results when servicing their clients.

Whether clients are first-time home buyers to clients looking to renovate their current homes, Steffes Builders has an array of services and homestyles within their repertoire. Services include general contracting, architectural drawings, handicap installation and accessible cabinetry, along with other services that can be found at their website, [www.steffesbuilders.com](http://www.steffesbuilders.com). Home styles that are included in Steffes Builders' list range from ranch and townhomes to victorian, split-level, lake homes and vacation homes.

Other items that the Steffes Builders team have experience with include additions, decks and porches, foundations, design services and many others. On the Steffes Builders website, a gallery is available to view past projects that were completed by the homebuilding business.

Those interested in utilizing the skills and experience Steffes Builders has to offer can call 920-999-2091 or email at [steffesbuilders@charter.net](mailto:steffesbuilders@charter.net).

Located at W402 River Ln. St. Cloud, Steffes Builders was founded by Roland Steffes in 1949. Through the years of building custom homes, the family-owned and run company is currently owned and operated by Charles Steffes following the recent retirement of his brothers Jerrold, Jerome and Allen.

The members of the Steffes Builders team are also dedicated to hard work and quality. Having built hundreds of homes in over five counties, their goal is to exceed expectations through diligent work in order to deliver value for their services while bringing their clients' designs to life.

Like many things in life that have changed



**Remodel by Steffes Builders, Inc.**  
Top photo Before addition/remodel project;  
Bottom photo Completed project in 2021.



# Steffes

*Builders, Inc.*

• YOUR STEFFES BUILT HOME IS UNIQUELY YOURS & DISTINCTLY STEFFES •

**For two generations, Steffes Builders has delivered quality and craftsmanship that is DISTINCTLY STEFFES**



1950



2013

**Family Owned & Operated since 1949**

*Make your residence stand out from the others on the block when you work with Steffes Builders Inc. for your custom home construction projects.*



**Full Service General Contractor**

*Transform your residence with the remodeling services from our general contractors. We offer assistance for additions, kitchens, bathrooms, roofing and siding. We are fully licensed, bonded, and insured.*

**Contact us about your home construction or building renovations.**

W402 River Lane | St. Cloud, Wisconsin | 920.999.2091 | [steffesbuilders@charter.net](mailto:steffesbuilders@charter.net) | [www.steffesbuilders.com](http://www.steffesbuilders.com)



# LTC & Western Governors University Announce New Transfer Agreement



## LAKESHORE TECHNICAL COLLEGE

Lakeshore students and employees gain another option to earn their bachelor's or master's degrees.

Lakeshore Technical College and Western Governors University announced a new agreement providing Lakeshore graduates and employees with a new affordable pathway to earning their bachelor's or master's degrees. Under terms of the agreement, students graduating with associate degrees from 10 different Lakeshore programs can now seamlessly transfer their credits to WGU. They, along with all Lakeshore graduates or employees, may also apply for the Community College Partner Scholarship, valued at up to \$2,500 each.

"Lakeshore is excited about this opportunity which expands higher education opportunities for our graduates and employees, and will help satisfy local workforce needs," said Lakeshore President Dr. Paul Carlsen. "This agreement provides another option for those completing their degree while continuing to work part time or full time. We appreciate WGU partnering with us to provide this flexible and affordable option."

Lakeshore Technical College is a comprehensive community and technical college educating more than 9,000 students annually. More than 70 programs are offered and approximately 800 students graduate each year. In addition to its Cleveland campus, Lakeshore has learning campuses in downtown Manitowoc and downtown Sheboygan.

WGU is a nonprofit, fully online university delivering instruction for more than 80 undergraduate and graduate degree programs in the fields of business, K-12 teacher education, information technology, and health professions including nursing. Instruction is delivered through a competency-based education model. The model, also in use at Lakeshore, allows students to use prior education and work-based experience to move through courses at their own pace and graduate quicker.

"We are pleased to provide continuing education options to graduating students and staff of Lakeshore Technical College," said Dr. Terrance Hopson, Regional Vice President of Western Governors University. "WGU values the important role community colleges play in upskilling the workforce and is pleased to offer an affordable and flexible pathway for

thousands of Lakeshore area residents who need postsecondary education and training to advance their careers and improve their lives."

For more information on the partnership between Lakeshore and WGU, visit [gotoltc.edu](http://gotoltc.edu)

### About Lakeshore Technical College

*Lakeshore Technical College is a comprehensive community and technical college educating more than 9,000 students annually. Students enroll at Lakeshore to master real-world, employable career skills and start their pursuit of a bachelor's degree. Lakeshore faculty and staff are focused on providing each student an individualized learning experience.*

*Lakeshore Technical College is a nationally recognized two-year college. The college was ranked #2 in the nation by Washington Monthly, #17 in the nation by Forbes, #20 in the nation by WalletHub.com, a top-150 two-year college by the Aspen Institute, a top 10 Bellwether Award finalist five out of the last six years, and named the 2021 Large Business/Industry of the Year by the Chamber of Manitowoc County.*

*Approximately 800 students graduate from Lakeshore each year, and associate degree graduates report earning a median salary of \$59,899 within six months of graduating. In addition to the Cleveland campus, Lakeshore educates students at learning campuses in downtown Manitowoc and downtown Sheboygan. Classes are also offered at additional sites throughout the district. Visit Lakeshore at [gotoltc.edu](http://gotoltc.edu)*



### About Western Governors University

*Established in 1997 by 19 U.S. governors with a mission to expand access to high-quality, affordable higher education, online, nonprofit WGU now serves more than 165,000 students nationwide and has more than 345,000 graduates in all 50 states. Driving innovation as the nation's leading competency-based university, WGU has been recognized by the White House, state leaders, employers and students as a model that works in postsecondary education. In less than 30 years, the university has become a leading influence in changing the lives of individuals and families, and preparing the workforce needed in today's rapidly evolving economy. WGU is accredited by the Northwest Commission on Colleges and Universities, has been named one of Fast Company's Most Innovative Companies, and has been featured on NPR, NBC Nightly News and CNN and in The New York Times. Learn more at [wgu.edu](http://wgu.edu) and [wgu.edu/impact](http://wgu.edu/impact).*

**DON'T WAIT FOR THE SHADOW, LIST NOW!**  
**LOW INVENTORY MEANS HIGH DEMAND**

**CALL US FOR A FREE MARKET ANALYSIS OF YOUR HOME**

**TODD**  
920.838.1770  
[Todd@PVRHomes.com](mailto:Todd@PVRHomes.com)

**RICH**  
262.573.1078  
[Rich@PVRHomes.com](mailto:Rich@PVRHomes.com)

**HEATHER**  
920.252.5621  
[Heather@PVRHomes.com](mailto:Heather@PVRHomes.com)

**PLEASANT VIEW REALTY**  
www.PleasantViewRealty.com

# #1 Practical Nursing Program in Wisconsin

According to PracticalNursing.org, which analyzed all practical nursing programs in the state, the practical nursing program at Lakeshore Technical College is the best in Wisconsin. Lakeshore received a perfect score of 100 based on an analysis of first-time licensing exam pass rates over the last three years, the number of students taking the exam, and the number of years pass rate data was available.

"This top ranking was earned by our dedicated, hardworking students and instructors," said Lakeshore President Dr. Paul Carlsen. "We are extremely proud to provide our community with the highly qualified graduates needed to help fill the growing demand for licensed practical nurses, as well as other nursing professionals."

To become an LPN in Wisconsin, individuals must complete a state-approved practical nursing program and pass the required National Council Licensure Examination for Practical Nurses. According to PracticalNursing.org, the average statewide NCLEX-PN

pass rate in 2022 was 92.3%. Lakeshore's pass rate was 100%.

The Board of Commissioners for the Accreditation Commission for Education in Nursing (ACEN) granted continuing accreditation to Lakeshore's practical nursing program earlier this year. At that time, the ACEN board recognized the NCLEX-PN pass rate among the college's practical nursing graduates as an "outstanding achievement."

For more information on Lakeshore's practical nursing and nursing associate degree programs, visit [gotoltc.edu](http://gotoltc.edu)



## LAKESHORE TECHNICAL COLLEGE



**Buy Elkhart Lake Chamber Cash & Help Support Your Community!**

Available at the Elkhart Lake Chamber of Commerce  
41 E. Rhine St. • 920-876-2922

[elkhartlakechamber.com](http://elkhartlakechamber.com)

WISCONSIN'S  
**Elkhart Lake**  
*A legendary getaway ~ Tourism*

**Follow Elkhart Lake Chamber of Commerce on Social Media**







KOHLER FOUNDATION

# 2023 Gingerbread Festival Winners

Exciting news from the 27th Annual Gingerbread Festival! The Kohler Foundation has tallied the votes, revealing the big winners. 50 entries were viewed and voted on by more than 4,600 visitors to the historic Waelderhaus. Securing the title of the festival's highest vote-getter is "Little House in the Big Woods" created by Viki Grunewald's kindergarten class from Lake Country Academy in Sheboygan. The class drew inspiration from the classic work Little House in the Big Woods; written by Laura Ingalls Wilder.

Prizes, based on tallied votes, are being awarded in seven categories.

**The first-place winners in each category were awarded \$500.**

**They include:**

**Pre-School:** St. John the Baptist Catholic School "Church: It Takes a Village"

**Grades K-2:** Lake Country Academy "Little House in the Big Woods"

**Grades 3-5:** St. John Lutheran School (Mrs. Konz) "Three Little Pigs and the Big Bad Wolf"

**Grades 6-8:** St. John Lutheran School (Mrs. MacGillis) "Ski Resort"

**Grades 9-12:** Cedar Grove Belgium High School "Taco Bell"

**Community Groups:** Christ Child Academy (Mrs. Mutsch) "Candy Land"

**Open:** Nourish Farms "Nourish Barn"

**Second-place winners earned a \$250 cash prize.**

**They include:**

**Pre-School:** John Michael Kohler Arts Center Preschool "Jolly Ranch House"

**Grades K-2:** St. John Lutheran School Plymouth (Miss Murphy) "2nd Grade Castle"

**Grades 3-5:** St. John Lutheran School Plymouth (Mrs. MacGillis) "The Farm"

**Grades 6-8:** St. John Lutheran School Plymouth (Mrs. MacGillis) "The Red Farm"

**Grades 9-12:** Elkhart Lake Glenbeulah High School "Barnyard Pals"

**Community Groups:** RCS Empowers "Butterfly Dreams"

**Open:** Jake's, A Lakeland Community "Jake's, A Lakeland Community"

**Third-place honorees and recipients of a \$100 award are:**

**Pre-School:** Kohler Elementary Junior Kindergarten "Barbie's Holiday Dream House"

**Grades K-2:** St. John Lutheran School Plymouth (Miss Rebekah Meyer) "Jesus is Born"

**Grades 3-5:** St. John the Baptist Catholic School "Santa's Reindeer Barn"

**Grades 6-8:** Christ Child Academy (Mrs. Terri Meyer) "Reindeer Games at Lambeau Field"

**Grades 9-12:** AFS Intercultural Exchange Program "Christmas in our Piece of the World"

**Community Groups:** Hub City 4H Club (Lori Schmid) "Dr. Seuss Christmas"

**Open:** Willing Workers 4H Club (Margo Howard) "Welcome to Whoville"

Everyone at Waelderhaus extends their biggest thanks to everyone who joined for the 27th year! Mark your calendars for the 28th Annual Gingerbread Festival, happening from November 29 to December 30, 2024. Stay in the loop about all things Waelderhaus, including Arts at the Waelderhaus, by visiting KohlerFoundation.org and follow Kohler Foundation on Instagram, Facebook, and X (formerly known as Twitter) for the latest updates!

*The Waelderhaus is managed by the Kohler Foundation, a private, non-profit foundation that supports the arts, education, and art preservation initiatives.*



▶  
Grades 3-5:  
St. John Lutheran School (Mrs. Konz) "Three Little Pigs and the Big Bad Wolf"



▶  
Grades 6-8:  
St. John Lutheran School (Mrs. MacGillis) "Ski Resort"



▶  
Grades 9-12:  
Cedar Grove Belgium High School "Taco Bell"



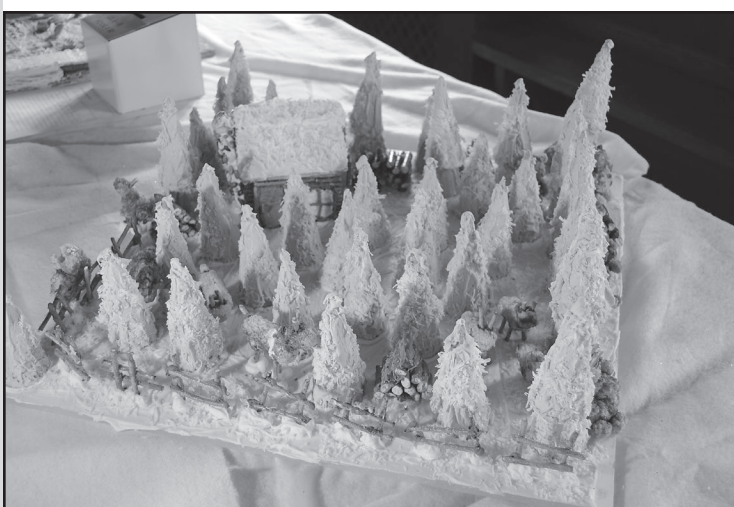
▶  
Community Groups:  
Christ Child Academy (Mrs. Mutsch) "Candy Land"



▶  
Open:  
Nourish Farms "Nourish Barn"



▶  
Pre-School:  
St. John the Baptist Catholic School "Church: It Takes a Village"



▶  
Winner - K-2:  
Lake Country Academy "Little House in the Big Woods"



# 2024 Elkhart Lake Travel Guide

By Kathleen Eickhoff, Elkhart Lake Tourism

There are many reasons people from around the globe are drawn to Elkhart Lake; the naturally beautiful setting, the small-town charm, and lively lake vibes are at the top of the list. When you layer on the genuine welcoming spirit of our residents and our locally owned businesses it's easy to see why Elkhart Lake offers a quintessential vacation experience people long for.

This is why Elkhart Lake Tourism is excited to unveil the new Travel Guide every year. It's truly a labor of love for Creative Advertising Coordinator, Laura Ebbers, creating a fresh new design with the most up-to-date business



Be sure to get your copy!



always been at the heart of Elkhart Lake's spirit. We encourage all who love Elkhart

of our destination. It's also about slowing our pace and being intentional with our time. We encourage everyone to dive deep into the rich and interesting history and discover the hidden gems in our vibrant resort community. We also know connecting with our residents and business owners is part of the Elkhart Experience. Insider advice on the best spot to catch fish or a favorite dish will always be shared with genuine passion and enthusiasm.

It's all about taking time to embrace the beauty of "community", our community, it's living The Elkhart Way.

Stop by the Welcome Center at 41 E. Rhine St. for your copy of the 2024 Elkhart Lake Travel Guide. It's also available at businesses throughout the Village.

information, and a carefully curated collection of fresh Elkhart Lake images and perspectives.

In addition to our beautiful landscapes, the 2024 Travel Guide highlights the shared community values we hold dear. Preserving our small-town charm along with the lush natural surroundings has

Lake to join us in being mindful with how we live, work, and play in our beloved resort village. We encourage our visitor and residents to join us in a community-wide mission called The Elkhart Way. This initiative encourages responsible stewardship of our public trails, cedar tree-lined shores, and most certainly the crystal-clear waters of our lake-the jewel

## Cedar Community Selects Buyer for Elkhart Lake Campus

Matter Development, together with its senior living operations partner Koru Health, proudly announces the successful acquisition of Cedar Community's Elkhart Lake assisted and independent living campuses – known as Cedar Bay and Cedar Landing. This strategic move signifies the companies' dedication to expanding their presence into Sheboygan County. In July of last year, Matter Development also received approval from the City of Sheboygan, alongside Froedtert Health, to develop a 187-unit senior living campus next to a new \$70M Froedtert community hospital.

Cedar Community, with a rich history dating back to 1953, has been a provider of award-winning care and services for seniors aged 55 and better in Elkhart Lake since 2007. Nicole Pretre, Chief Executive Officer of Cedar Community, remarked, "After many months of thoughtful consideration and deliberation, our board of directors and executive leadership team concluded that campus-based services and resident engagement activities would be increased by partnering with Matter Development, an organization who not only shares our values and commitment to quality, but who is also growing its footprint in the local community."

Matter Development focuses on developing and revitalizing purposeful,

lifestyle-forward, highly connected, and active housing. "While this acquisition is our first venture into Sheboygan County,

care, vibrant communities, and a future filled with exciting possibilities," said Matter Development CEO, Aaron Matter.

Health will oversee daily operations at the Elkhart Lake campuses, leveraging their expertise from managing over a dozen senior living communities in Wisconsin and Minnesota. Koru Health was recently recognized by BizTimes Media as a Future 50 company, and the 3rd fastest growing company in the region.

Andy Lange, President and Founder of Koru Health, stated, "This strategic partnership with Matter Development is one of many, and signifies a meaningful milestone for Koru Health. We are excited to bring our expertise in operating senior living communities to Elkhart Lake, and we look forward to enhancing the quality of life for residents at Cedar Bay and Cedar Landing."

Cedar Community CEO Nicole Pretre affirmed, "Ultimately, this transition marks the ongoing pursuit of intentional and thoughtful efforts to provide services that are excellent in their mission-driven, resident-focus. Aligning with Matter Development and Koru Health provides an extraordinary opportunity to ensure that our friends and neighbors in Elkhart Lake are served well in the years to come."

To learn more about Cedar Bay at Elkhart Lake and Cedar Landing at Elkhart Lake, visit [koruhealth.org](http://koruhealth.org).



it's just the beginning. We're proud to carry on the legacy Cedar Community set for this campus, and we are committed to making a lasting impact on the residents and the community through exceptional

Matter Development has a successful track record of developing, acquiring, and transitioning several other senior living communities alongside highly rated senior living operator, Koru Health. Koru

## FFA Alumni Association is Celebrating 40 Years

The Elkhart Lake-Glenbeulah FFA Alumni Association is celebrating 40 years as a local chapter. The organization was chartered in the 1983-1984 school year. The FFA Alumni is inviting past and current FFA members and FFA Alumni members to the celebration. The celebration will take place at our annual meeting on Thursday, March 14, 2024 at the Elkhart Lake-Glenbeulah High

School Library. Social hour will begin at 5:30 PM and will be followed by dinner with the annual meeting taking place after the meal. Please send an email to [elgffaalumni@yahoo.com](mailto:elgffaalumni@yahoo.com) or contact Ellen Cary, President of the Elkhart Lake-Glenbeulah FFA Alumni by calling 920-946-0693 to RSVP for this celebration. We are looking forward to seeing you at this celebration.



**Culvers - Plymouth**  
2318 Eastern Ave • Plymouth  
**920-893-2663**  
Open 10 am until 10 pm daily

**\$1 Off Any Seafood Dinner Entree**

All dinners served with your choice of two sides: real mashed potatoes, fries, salad, coleslaw or broccoli and a dinner roll.

Expires 2/29/24. GOOD ONLY AT THE PLYMOUTH, WI LOCATION WITH COUPON.



North Atlantic Cod Dinner  
Butterfly Jumbo Shrimp Dinner





# Elkhart Lake Chamber Calendar of Events

## JOHN MICHAEL KOHLER ARTS

### NOW-FEBRUARY 18, 2024

Exhibitions by Artist Bea Fremderman: Weeds Compared to Flowers in Arts Center. Through the re-presentation and re-creation of waste, the work visualizes human interconnection with disposable objects, the Earth, and our unknown future.

### NOW-MARCH 3, 2024

Exhibitions by Artist Bea Fremderman: Bea Fremderman and Grottoes in Art Preserve. Grottoes are composed of statues and structures in homage to faith and contemplation. Their surfaces are commonly adorned and formed with materials such as colored glass, gems, pottery, porcelain, minerals, and objects gathered by the maker(s).

### NOW-JUNE 16, 2024

Cloth as Land: HMong Indigeneity-HMong Indigeneity lives in textiles: vibrant, breathing pieces of cloth shaped by HMong hands to illustrate ancestral landmarks and homelands. All events visit [www.jmkac.org](http://www.jmkac.org)

### JANUARY 26 -28

Schnee Days-Elkhart Lake Chamber winter festival offers family friendly activities throughout the weekend like the 5k SchneeLauf run/walk, chili cook-off competition, spirits stroll, live music, ice cube hunt, snowshoeing, sledding activities, and snow much more! [www.elkhartlakechamber.com](http://www.elkhartlakechamber.com)

### JANUARY 28

Camp Y-Koda -Snowshoe Hike at the Sheboygan Marsh 12-3pm. . Come experience the magical season of our county Marsh in the winter! These hikes are designed for all levels of experience, from beginner to expert. Snowshoes are available to use with each registration, or you are welcome to bring your own! Following our hike we will provide warm refreshments and a campfire to relax and enjoy the seasons beauty. • Winter Clothing, water and waterproof boots are recommended. Poles will not be provided. • No snow? No Worries, as the we will plan a unique hike at the marsh.

(920) 467-6882 or [nbielski@sheboygancountyymca.org](mailto:nbielski@sheboygancountyymca.org)

### JANUARY 29

Hermitage Conservation Club-Free ice fishing day on Cedar Lake. [www.hermitageconservationclub.com](http://www.hermitageconservationclub.com)

### FEBRUARY 2

Stefanie Weill Center-Dinosaur World Live 6pm -Dare to experience the dangers and delights of Dinosaur World Live in this roarsome interactive show for all the family! Discover a pre-historic world of astonishing (and remarkably life-like) dinosaurs. Visit website: [weillcenter.com](http://weillcenter.com) for tickets/info

### FEBRUARY 9

Stefanie Weill Center-Movie-The Little Mermaid (2023) 6pm Visit website: [weillcenter.com](http://weillcenter.com) for tickets/info

### FEBRUARY 10, 2024

Laack's Tavern & Ballroom-Fasching, featuring the Dorf Kapelle and Gemütlichkeit, 5-10 PM. A joyful celebration based on the traditional event of Fasching - a carnival celebration which precedes Lent in German speaking countries. Visit The Hub Facebook site for information/tickets

Wade House- Over the River and Through the Woods 10am-4pm. Glide through fields and forests while snuggled under a warm blanket listening to the jingle of harness bells against a backdrop of the stately Wade House Stagecoach Inn and surrounding grounds. No snow? No problem! Wade House offers horse-drawn wagon rides without snow. Tickets: [boxoffice@wisconsinhistory.org](mailto:boxoffice@wisconsinhistory.org) or visit website: [wadehouse.wisconsinhistory.org](http://wadehouse.wisconsinhistory.org)

Camp Y-Koda -Father Daughter Dance 5:45-doors open; 6-dancing begins; 8pm departure. . Enjoy crafts, pictures, DJ, snacks and a table of desserts and kid-friendly light refreshments provided by Carbliss. Put on your dancing shoes and create memories that'll last a lifetime. • Please Note: This is not a dinner dance. • Though this event is advertised as a Father/Daughter Dance - ALL Family members are more than welcome to attend (Mothers/sons/grandparents/aunts/uncles/etc.) Registration required. Dani at [droscovius@sheboygancountyymca.org](mailto:droscovius@sheboygancountyymca.org) or Nick at [nbielski@sheboygancountyymca.org](mailto:nbielski@sheboygancountyymca.org)

### FEBRUARY 15, 2024

Stefanie Weill Center-Jesus Christ Superstar, 7:30 PM. Celebrating its 50th Anniversary, a new mesmerizing production of the iconic musical phenomenon returns to the stage. Visit website: [weillcenter.com](http://weillcenter.com) for tickets/info

### FEBRUARY 24

Wade House-Taproom Talks Speaker Series 1 - 2 p.m. Shipwrecks of the Great Lakes: Tragedies & Legacies from the Inland Seas It is estimated that there have been at least 6,000 shipwrecks on the Great Lakes. Join us to listen to harrowing tales featuring some of the worst maritime disasters to ever occur on the Great Lakes. Presenter Anna Lardinois is an award-winning tour guide and author of 12 books of regional history and lore. visit website: [wadehouse.wisconsinhistory.org](http://wadehouse.wisconsinhistory.org)

### MARCH 1

John Michael Kohler Arts Center - deadline for applications to exhibit at the Midsummer Festival of the Arts July 20 and 21. Acceptance notifications will be sent to artists April 4, 2024. In 2023, the Midsummer Festival of the Arts welcomed an estimated 13,000 people over a two-day period. For questions or more information, please email [midsummerfestival@jmkac.org](mailto:midsummerfestival@jmkac.org)

Stefanie Weill Center-Divas Through the Decades. 7:30pm A musical tribute to some of the most influential female vocalists in American pop music, featuring songs from the 40's, through today's current hits! Visit website: [weillcenter.com](http://weillcenter.com) for tickets/info

### MARCH 9, 2024

Stephanie Weill Center-SSO Presents Requiem, 7:30 PM. Farrenc: Symphony No. 3 and Mozart: Requiem. Visit website: [weillcenter.com](http://weillcenter.com) for tickets/info

### APRIL 4

Wade House -Taproom Talks Speaker Series 7-8pm Enslaved, Indentured, Free, 1800 to 1850 shines a light on five extraordinary Black women—Marianne, Mariah, Patsey, Rachel, and Courtney—whose lives intersected in Prairie du Chien, Wisconsin, during

## Regularly Scheduled Meetings & Events

### ELKHART LAKE CHAMBER OF COMMERCE BOARD MEETING

Held at 8:30am-third Tues each month

### VILLAGE BOARD MEETINGS

Board of Trustees meets at Grashorn Civic Center, 84 N. Lake St.- 6pm first and third Mon. each month. (most months)

Agendas for meetings are posted 24 hours in advance of the meeting at the Post Office, National Exchange Bank & Trust, Civic Center and our website. In order to be on a board agenda you must notify the village clerk by the Wed. before the board meeting.

### AA MEETINGS

Held every Tuesday at 10 a.m. and Thursdays at 7pm at Community United Church of Christ, 174 N. East St.

### ELKHART LAKE STUDY CLUB

Meetings held the first Mon. each month at noon and second Mon. in Sept. Meetings are not held in January, July, and August.

### ELKHART LAKE CUTTING EDGE QUILTERS

1pm first Wed. each month

### BRIDGE IMPROVEMENT Tues. 1pm

### BOOK GROUP

1pm second Mon each month

### VISITOR CENTER

41 E. Rhine Street Stop in to pick up information on area businesses and attractions.

Mon, Tues, Thurs & Fri 9 a.m. to 4 p.m. Phone: 1-877-355-4278 or 920-876-2385 Email: [tourism@elkhartlake.com](mailto:tourism@elkhartlake.com) Website: [www.elkhartlake.com](http://www.elkhartlake.com)



Scan QR code to stay up to date with our Member Events.

## CALENDAR SPONSOR



Providing financial options that are always in the best interest of our clients' success and the future of our communities.

CLEVELAND OFFICE: 1250 W. Washington Ave. Ph: 920.693.8256 • F: 920.693.8344 • TF: 833.321.9854

HOWARDS GROVE OFFICE: 502 S. Wisconsin Dr. Ph: 920.565.6000 • F: 920.565.6205

ELKHART LAKE OFFICE: 91 E. Rhine St., PO Box 548 Ph: 920.646.3150 • F: 920.781.5060 [www.clevelandstate.bank](http://www.clevelandstate.bank)



these seminal years. Join us as Mary Elise Antoine, of the Prairie du Chien Historical Society and former curator at Villa Louis, focuses on the five women listed above.

Visit website: [wadehouse.wisconsinhistory.org](http://wadehouse.wisconsinhistory.org)

### APRIL 20

Wade House -Taproom Talks Speaker Series 1-3pm Old Farm Country Cookbook Return to an era when all food was local and farming was a family-run affair! you'll take a culinary tour of life on a Wisconsin farm during the Depression and World War II. Susan Apps-Bodilly is the author of One Room Schools and coauthor with Jerry Apps of Old Farm Country Cookbook. Visit website: [wadehouse.wisconsinhistory.org](http://wadehouse.wisconsinhistory.org)

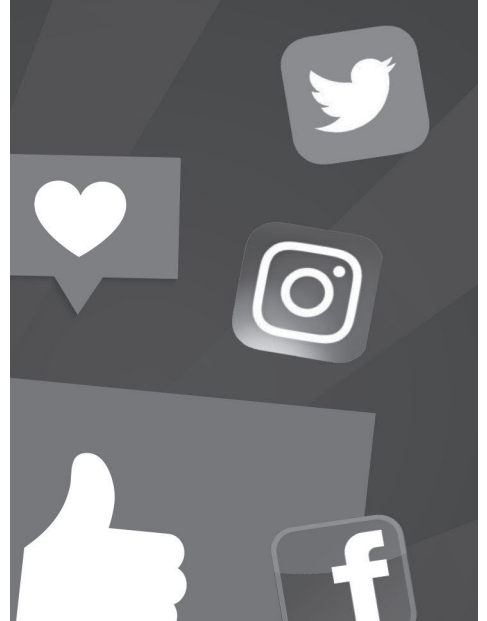
### MAY 3, 2024

Stephanie Weill Center-Little Women, 7:30 PM. The adventures of sisters Jo, Meg, Beth and Amy March are brought to musical life on stage. Visit website: [weillcenter.com](http://weillcenter.com) for tickets/info

### MAY 18, 2024

Stephanie Weill Center-SSO Presents Titan, 7:30 PM. Barber: Violin concerto and Mahler: Symphony No. 1, "Titan". Visit website: [weillcenter.com](http://weillcenter.com) for tickets/info

Follow Elkhart Lake Chamber of Commerce on Social Media





# CHAMBER SPOTLIGHT

## Tietz's Piggly Wiggly

Our January Chamber Member Spotlight is Tietz's Piggly Wiggly located at 714 S Wisconsin Drive in Howards Grove. At first glance, Tietz's Piggly Wiggly may seem like every other grocery store. They strive for something more. They are a family owned and operated full-service grocery, liquor and specialty store and God is their guide and CEO. They're small enough to get to know their customers and understand their needs and large enough to offer you low prices and great selection. They pride themselves on store cleanliness and fast friendly customer service. They have a passion for

eating healthy and try to make healthy, organic, natural, local, and gluten free items accessible to their customers. For more information, please visit [www.shopthepig.com](http://www.shopthepig.com).



Tietz's  
piggly wiggly



SHEBOYGAN COUNTY  
ECONOMIC DEVELOPMENT  
CORPORATION

DO MORE.

# Sheboygan County Addresses Shortage and Supports Workforce Growth



The Sheboygan County Economic Development Corporation (SCEDC) and Forward Fund are thrilled to announce that homes in the Founders' Pointe subdivision are now available for purchase. Recognizing the housing shortage in Sheboygan County and throughout Wisconsin, the SCEDC has taken proactive steps to address this issue by facilitating the development of new neighborhoods across the county.

The first project is the fifty-four home Founders' Pointe subdivision, which offers an exciting opportunity for individuals and families to secure quality housing and become part of the vibrant Sheboygan County community. The initial four homes are now available for purchase. Moving forward, interested buyers can expect approximately four (4) homes to be released for sale each month.

Located just minutes away from key amenities such as quality schools and major employers, the homes in Founders' Pointe offer a perfect blend of comfort, convenience, and community. These homes not only meet the immediate housing needs but also will contribute to filling the over 2,000 open high-paying production positions available in the County.

"We are thrilled to announce homes are ready for sale in Founders' Pointe subdivision along with the City of Sheboygan Falls providing up to a \$65,000 down payment program to support home ownership in this subdivision," said Brian Doudna, Executive Director of the SCEDC. "This and future developments

will provide entry-level housing options for those seeking to move into the county while enjoying high wages, low cost of living and the incredible amenities found in Sheboygan County."

Due to the anticipated demand and to accomplish the mission of the housing initiative, the SCEDC will implement a Home Buyer Selection Process based on various factors. Prospective buyers must be certified by a lender for mortgage approval to be eligible to purchase a home in Founders' Pointe. Detailed information regarding eligibility, home deed restrictions, financing options, and lender information can be found on [someplacebetter.org/homes](http://someplacebetter.org/homes).

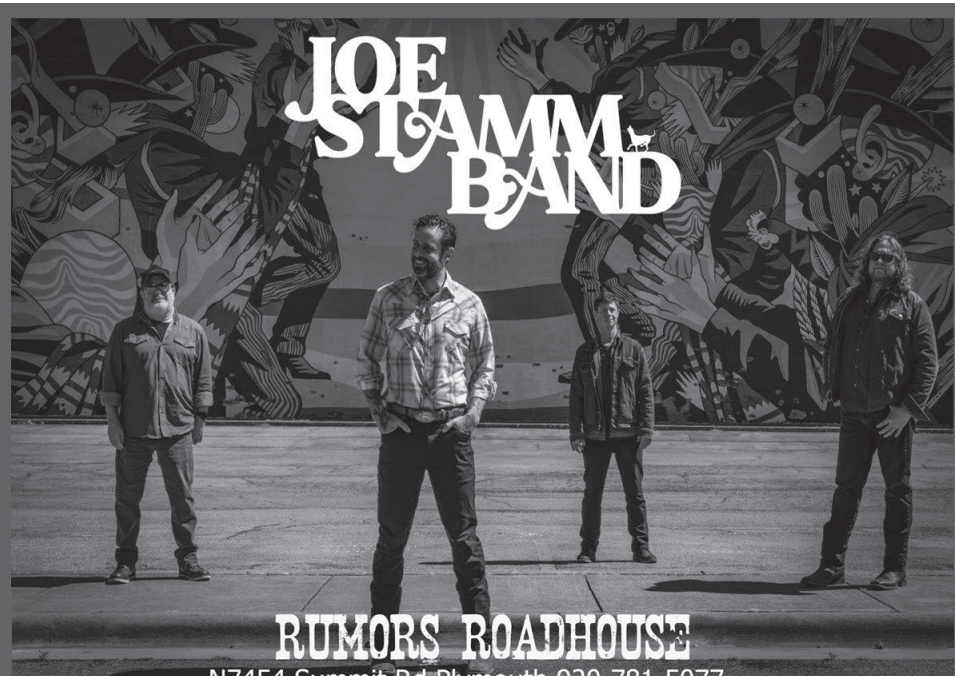
For those interested in learning more about Founders' Pointe or staying up to date on the release of future homes for purchase, please visit [someplacebetter.org/homes](http://someplacebetter.org/homes). Be sure to sign up for the newsletter to receive updates and be among the first to know.

The Sheboygan County Economic Development Corporation (SCEDC) is a public-private partnership leading economic, community, and workforce development efforts in Sheboygan County to improve the well-being and long-term prosperity of businesses, residents, and communities. Through technical assistance, the SCEDC leverages a variety of tools to encourage business growth, startups, investment, skill development, and talent attraction. By applying the appropriate resources, the SCEDC helps fulfill Sheboygan County's growing economic and business needs.

# Stay in touch with the Elkhart Lake Chamber of Commerce

Visit [www.elkhartlakechamber.com](http://www.elkhartlakechamber.com) often for...

- Chamber member directory
- Chamber events
- Farmers Market information
- Register & pay for events
- Renew & pay your membership
- Member press releases
- Member job postings



RUMORS ROADHOUSE

N7454 Summit Rd Plymouth 920-781-5077

2 - 25 - 2024

TANGO EN FUEGO OPENS AT 6PM

JOE STAMM BAND STARTS AT 6:45

\$10 PRESALE \$15 DOOR

1st BEV FREE WITH PURCHASE



SCAN ME  
TO PURCHASE TICKETS

LISTEN HERE  
JOE STAMM BAND TANGO EN FUEGO



JERRY'S  
DRYWALL

- Patch Work
- Texture Finish
- Smooth Finish
- Painting

Call for an estimate today!  
920-627-5376

Grace Lutheran Church

Community  
Lenten Supper

Thursday, February 22

Meatloaf, Cheesy Hashbrowns & Green Beans

Thursday, March 7 Chicken Pot Pie

Thursday, March 21 Casserole and Salad

Available for Inside Dining from 5pm-6:30pm

All meals are free-will offering and include roll, dessert and beverage

210 N Lincoln Street • Hwy 67, Elkhart Lake



4th Annual benefit for




Pick up Feb. 22

**Each \$40 package includes:**  
One quart of soup, salad for two, dinner rolls and desserts.

Select from a variety of soups!

Order your favorite by Feb. 18

Visit [FreshMealsOnWheels.org/Events](http://FreshMealsOnWheels.org/Events)

920-451-7011 • 1004 S. Taylor Dr. Sheboygan, WI

Come See What's New

Fresh & New for Winter!  
**SHOP LOCAL.**



**Elkhart Lake Chamber Cash**  
*Purchase yours and help support your community!*

Available at:  
Elkhart Lake Chamber of Commerce  
41 East Rhine Street, Elkhart Lake  
920-876-2922

[www.elkhartlakechamber.com](http://www.elkhartlakechamber.com)  
[www.elkhartlakechamber.com/depot-dispatch](http://www.elkhartlakechamber.com/depot-dispatch)

small neighborhood retail main street conize support local econ cooperati friendly mom and pop buy local business

**Bob Schoenborn's JEWELRY**



DIAMONDS • JEWELRY • WATCHES • CLOCKS • GIFTS

[www.bobschoenbornsjewelry.com](http://www.bobschoenbornsjewelry.com)

307 Fremont Street • Kiel • 920-894-2772

Hours: Mon, Tues, Thurs 9am-5:30pm • Wed & Fri 9am-6pm • Sat 9am-1pm

**DEVOUR**  
A WHOLE NEW FOOD EXPERIENCE

Serving Fish & Seafood Meals  
Friday Evenings During Lent  
5:00-Close



**Come DEVOUR Something Delicious!**  
Now Booking for Spring!

Catering Groups 10-100+  
(on/off site & at the racetrack)

Open for Breakfast & Lunch: Monday-Saturday | Tuesdays SENIORS 10% OFF  
1611 Eastern Avenue | Plymouth | 920-400-1241  
[devourwi@gmail.com](mailto:devourwi@gmail.com) | [www.devourwi.com](http://www.devourwi.com)

Shine a Light of Love in Our Community  
...love that comes from acts of kindness

Dear Valentine, we invite you to join ElkhartCares in spreading genuine love and kindness, making Elkhart Lake an even better place for everyone.

HAPPY  
**Valentine's**  
DAY

“  
"Love is not just a feeling, it's an action." - David O. McKay  
”



ElkhartCares is a local non-profit organization that assists individuals in need in our Elkhart Lake-Glenbeulah community. With a neighbors-helping-neighbors approach, donations go towards offering such opportunities as summer reading programs, grants for school projects, scholarships for students in need, and support for essential needs of struggling children and families. ElkhartCares is a 501(c)3 organization, and all donations are tax-deductible.

If you are moved to join hands with ElkhartCares by offering your support during this season of love:  
Please consider making a donation through our website  
[ElkhartCares.org/donate](http://ElkhartCares.org/donate)

To donate by mail, mail a check to PO BOX 537, Elkhart Lake, WI 53020. 920-226-0903 for more information.

*Happy Valentine's Day!*



# MARSH MADNESS 3 Guys & a Grill at the Marsh

**OPEN 6 DAYS A WEEK!**

Serving Lunch & Dinner

**Tuesday 4pm-8pm**

**Wednesday & Thursday**

**11am-8pm**

**Friday & Saturday**

**11am-9pm**

**Sunday 11am-8pm**

Accepting and fulfilling  
all your catering needs!



**Three Guys  
and a  
Grill**  
**At Marsh Lodge**  
Elkhart Lake, WI

W7039 CO RD S R • ELKHART LAKE • 920.876.2535

Dine in only. No substitutions. No other offers can be combined.

## WEEKLY SPECIALS

### TUESDAYS

3 Beef Tacos **\$5.99**

3 Fish Tacos **\$6.99**

Add Rice & Beans **\$2.50**

### WEDNESDAYS

1/4 lb. Hamburger **\$3.00**

add Cheese **50¢**

add Chips or Fries **\$2.00**

**\$3.25** Rail Tub

Old Fashioneds

### THURSDAYS

1/2 Rack of BBQ Ribs **\$11.99**

served with Fries, Coleslaw  
& Dinner Roll

### SUNDAYS

BBQ Pulled Pork

Sandwich **\$5.00**

add Coleslaw **50¢**

add Chips or Fries **\$2.00**

# Lions Club Peace Poster Contest

Elkhart Lake-Glenbeulah Middle School student, Nina Figueroa, won second place in the Lions Club Peace Poster Contest at the District Convention. This is the 14th year the Lions Club has sponsored this event at Elkhart Lake-Glenbeulah Middle School. This program gives children the opportunity to express their visions of peace and inspire the world through art and creativity.



# THEEL AUTO INC.

Your Full Service

## Auto Body & Repair Shop

LIKE US ON FACEBOOK: theel auto inc.

www.TheelAuto.com

N8348 CTH J • ELKHART LAKE • 800.588.4335 • 920.876.2703

Hours to 7am-4pm Monday-Friday

For more information, call 800-876-3399  
or visit [www.osthoff.com/dining](http://www.osthoff.com/dining).

## Otto's RESTAURANT

# SUNDAY BREAKFAST BUFFET 8AM - NOON



Fresh Fruit • Toast • Yogurt Parfait • Oatmeal • Danishes  
Bacon • Sausage • Quiche • Scrambled Eggs • French Toast  
Biscuits and Gravy • Potato Wedges

Menu is subject to change.

Adult \$18.95 • Child (under 10) \$11



Inside The Osthoff Resort • 101 Osthoff Ave, Elkhart Lake

## CONCOURSE Restaurant & Lounge

# Friday Fish Specials

**TEMPURA BATTERED FRIED COD**  
*with fries, cole slaw, and lemon remoulade*

28

**PRETZEL WALLEYE**  
*pretzel-crusted walleye served over vegetable rice pilaf, seasoned vegetables, and lemon butter sauce*

29





**LIBRARY HOURS**

Monday-Thursday  
9am-7pm  
Friday 9am-5pm  
Saturday 9am-2pm

February 2024 Depot Dispatch

**ELKHART LAKE  
Public Library News**

**ANNOUNCEMENTS**  
Design a Dragon Contest  
View & Vote - February 1-17

Grashorn Civic Center | 40 Pine Street, P. O. Box 387 | Elkhart Lake, Wisconsin 53020 | 920-876-2554 | elkhartlakepubliclibrary.org

**ANNOUNCEMENTS**

Design a Dragon Contest –View & Vote – February 1-17- See the creative designs submitted for our Design a Dragon Contest and vote for your favorite. Winning designs will be printed and added to our collection as “limited edition” cards for our Reading Dragons program.

**FOR KIDS**

**TODDLER/PRESCHOOL STORY TIME**

Thursdays at 9:30am – Stories, songs, and activities for toddlers and preschoolers (babies welcome). No registration required. Please skip Story Time if you or your child are unwell.

**FAMILY STORY TIME**

Saturday, February 10th at 9:30am – Join Ms. Katie for a special Saturday story time. This program is best suited for children aged five and under.

**VALENTINE CARDS**

Saturday, February 10th from 10am- 2pm. We’ll have all the supplies you need to make personalized valentines for your family and friends.

**LEGO CHALLENGE – MARBLE MAYHEM**

Tuesday, February 13th from 3:15-4:15pm. This month’s challenge is “Marble Mayhem”. The challenge will be briefly explained at 3:15 and then building will begin. At the end of the hour, kids will have the opportunity to show and explain their project. Younger kids are welcome with the help of an adult.

**BUTTON MAKING**

Tuesday, February 20th from 3:15-4:15pm (5th grade & up) Design and make your own 1 ½ inch buttons for your backpack or jacket. Small buttons are not suitable for younger children.

**BREAK-UP LETTER MADLIBS**

February 1st – 17th (5th grade & up)– Not in the mood to celebrate Valentine’s Day? Pick up a break-up letter madlib to complete with your friends. Share your original letter with the library staff for an after-school snack.

**ADULT PROGRAMS**

**BLIND DATE WITH A BOOK**

All February- For Valentine’s Day, we are bringing back an old favorite! Choose a wrapped book based only on a short bio. Check it out unwrapped, take it home, and give it an honest chance. If it doesn’t work out, no hard feelings! Return a completed “Rate Your Date” bookmark to be entered into a weekly drawing through the month of February.

**FIRST FRIDAY MATINEE (18+)**

Friday, February 2nd at 1pm- Enjoy a free movie and popcorn at the Grashorn Civic Center on the first Friday of every month. February’s movie is the critically acclaimed biopic “Oppenheimer”.

**UKULELE CLUB**

Thursday, February 8th at 1pm, Grashorn Civic Center. Whether you are just starting to learn or ready to take the stage, we’d love to have you join us. No registration required. For more information and to get on our contact list, please email rmontes@monarchlibraries.org. Don’t

have a ukulele? Check out our Ukulele Kit at the library to give it a try.

**BOOK CLUB**

Friday, February 9th at 1pm, Grashorn Civic Center. The February book club selection is The Flatshare by Beth O’Leary. “A joyful, quirky romantic comedy, Beth O’Leary’s The Flatshare is a feel-good novel about finding love in the most unexpected ways.” To be placed on the book club email list, email Angela at aruh@monarchlibraries.org.

**COMMON THREAD: NEEDLEWORK AND FIBER ARTS CRAFTING CIRCLE**

Tuesday, February 20th at 10:30am, Library. Bring your own project and join us for some crafting camaraderie. All fiber crafts welcome! Share patterns, get ideas, and just enjoy the company of fellow crafters.

**COFFEE HOUR AND BOOK CHAT**

Wednesdays at 10am, Library. Come for a little coffee, a lot of conversation, and a sneak peek at this week’s new releases. All welcome, no registration required.

**TECHNOLOGY HELP**

Call 920-876-2554 to schedule a time to come in for individualized assistance with technologies such as digital books, audiobooks, Libby, Hoopla, Kanopy, Ancestry and more. We are here to help!

Invisible Woman, Katia Lief  
Night Island, Jayne Ann Krentz  
No One Can Know, Kate Alice Marshall  
Radiant Heat, Sarah-Jane Collins  
Random in Death, JD Robb  
Wharton Plot, Mariah Fredericks  
Where You End, Abbott Kahler  
You Dreamed of Empires, Alvaro Enrigue

**ADULT NON-FICTION**

Cancer Factory: Industrial Chemicals..., Jim Morris  
Cooperative Co-Parenting for Secure Kids, Aurisha Smolarski  
Counterfeit Countess..., Elizabeth White  
Disillusioned: Five Families and the..., Benjamin Herold  
Five Ingredients Mediterranean, Jamie Oliver  
How to ADHD: An Insider’s Guide..., Jessica McCabe

**LARGE PRINT**

Bright Spot, Jill Shalvis

**YOUNG ADULT**

Ruthless Vows, Rebecca Ross

Fighting with Love: the Legacy of John Lewis, Cline-Ransom, Lisa

I am a Masterpiece... Down Syndrome, Mia Armstrong

**PICTURE BOOKS & BOARD BOOKS**

Bear Finds Eggs, Karma Wilson  
Hippos Remain Calm, Sandra Boynton  
Jump for Joy, Karen Ruelle  
Snail in Space, Rachel Bright  
Time to Make Art, Jeff Mack  
The Waters, Bonnie Campbell  
Who Laid These Eggs, Laura Gehl

**DVD’S & BLU-RAYS**

Earth  
Holdovers  
What Happens Later

Receive a complete list of new library materials every month by subscribing to our e-newsletter. Go to [www.elkhartlakepubliclibrary.org](http://www.elkhartlakepubliclibrary.org), click on the CONNECT tab and select NEWSLETTER. We will only use this information for sending out our monthly newsletter.

SPONSORED BY



**NEW MATERIALS AT ELPL**

**ADULT FICTION**

Ascent, Adam Plantinga  
Blizzard, Marie Vingtras  
Bullet Swallower, James Gonzalez  
Cold Victory, Karl Marlantes  
Dead Man’s Hand, Brad Taylor  
Diva, Daisy Goodwin  
Family Family, Laurie Frankel  
Friendship Club, Robyn Carr  
Fury, Alex Michaelides  
Goldenseal, Maria Hummel  
Goodbye Girl, James Grippando

**KIDS CHAPTER BOOKS & GRAPHIC NOVELS**

Break, Kayla Miller  
Courtesy of Cupid, Nashae Jones  
Emma and the Love Spell, Meredith Ireland  
Slugfest, Gordon Korman

**KID’S EASY READERS AND EARLY CHAPTER BOOKS**

Ellie Mae Dreams Big, Kristina McMorris  
Princess Kira’s Kiwi Jubilee, Sudipta Bardhan-Quallen

**CHILDREN’S NON-FICTION**

Big Babies, Patrick O’Brien  
Big Ideas That Changed the World, Don Brown

**1000 BOOKS BEFORE KINDERGARTEN**

We have our first reading star of 2024! Jordan Schmitt completed the 1000 Books before Kindergarten program at ELPL. The 1000 Books before Kindergarten program encourages parents to read to their preschool children. Reading together develops important pre-reading skills - a key to school and learning success. Each child receives a sheet to record the books that have been read to them. At each 100 books read the child receives a sticker and places a star on the 1000 Books before Kindergarten display. When completed, the child receives a prize and a trophy. A large star with the child’s name is displayed in the library.

**Congratulations to Jordan!**







## SCHNEE DAYS 2024 - Schedule of Events

### Thursday, January 25

**5:00pm - 7:00pm**

*Moonlight Snowshoe Stroll*  
Quit Qui Oc Golf Course

**6:00pm**

*J.Lohr Wine & Cheese Pairing Class*  
The Osthoff Resort

### Friday, January 26

**Noon - Close**

*Flannel Friday*  
SwitchGear Brewing Company

**5:00pm - 7:00pm**

*Sip 'n Schnee*  
Vintage Elkhart Lake

**4:00pm - 9:00pm**

*Schnee Days*  
The Hard Left Lounge - Siebkens Resort

**7:00pm - 10:00pm**

*Live Music at The Osthoff Resort*  
Elk Room - Abler Boys

**7:00pm - 11:00pm**

*Live Music at The Shore Club Theater*  
Liquid Courage

### Saturday, January 27

**8:00am - 9:00am**

*Soundbowl Healing with Serenity*  
The Intuitive Balance, 176 E. Rhine St.

**8:45am - 9:45am**

*2 mile/5K - FUN Run/Walk*  
*SchneeLauf Race Day*  
Registration at Quit Qui Oc Golf Club

**10:00am - 2:00pm**

*Cozy Crafts & Cocoa*  
Elkhart Lake Library

**10:00am - 4:00pm**

*Disc Golf Challenge at Road America*  
Registration at 9am

**10:00am**

*2 mile/5K - FUN Run/Walk*  
*SchneeLauf Race*  
Start at Quit Qui Oc Golf Club  
on Golf Course Road

**10:00am - 3:00pm**

*Snow Shoeing*  
Quit Qui Oc Golf Club  
(Snowshoe rental available at Quit Qui Oc)  
**For more info call 920.876.2833**

**10:00am - 2:00pm**

*Drive-Thru Brat Fry*  
Elkhart Lake - Glenbeulah High School  
Sponsored by the Boy Scouts

**11:00am - 2:00pm**

*Schnee Days Brunch*  
Lake Street Cafe

**10:00am - 5:00pm**

*Sledding at the school hill*  
and other outdoor activities around  
the village

**12:00pm - 3:00pm**

*Schnee Days Winter Olympics*  
Games, Food, Raffles, Drink Specials  
and Campfires  
Crystal Lake Golf Course

**2:00pm - 3:00pm**

*Cocktail Class*  
The Paddock Club  
**Call 920-876-3288 to Register**

**2:00pm - 6:00pm**

*Schnee Days*  
*Spirits Stroll*  
Various businesses  
around the area

**4:00pm - 6:00pm**

*All About Custards*  
The Osthoff Resort Cooking School

**4:00pm - 9:00pm**

*Schnee Days*  
The Hard Left Lounge - Siebkens Resort

**7:00pm - 10:00pm**

*Live Music*  
The Osthoff Resort-Elk Room  
Matt & Sadie

**7:00pm - 11:00pm**

*Live Music*  
The Shore Club Theatre  
MONRO

### Sunday, January 28

**8:30am - 9:30am**

*Chili Cook-Off DROP OFF*  
Siebkens Main Dining Room (P.A.M.S)

**10:00am**

*Snowga (bring your mat)*  
Shore Club Beachfront

**11:00am - 2:00pm**

*Chili Cook-Off*  
Siebkens Resort  
Grilled Cheese & Brats by ELGAA

**12:00pm**

*Children's Games & Ice Cube Hunt*  
The Shore Club front lawn

**12:00pm - 3:00pm**

*Snowshoe Hike*  
The Sheboygan County Marsh

# KIEL FIRE VICTIM FUNDRAISER



**SATURDAY, FEBRUARY 10**  
**11AM-2PM**

**All You Can Eat**  
**Chili & Hot Dog Dinner & Bake Sale**  
**See you There!!!**

**Grace Lutheran Church**  
210 N Lincoln Street, Hwy 67, Elkhart Lake  
Take Out Available

# SOHN

## MANUFACTURING INC.

# IS NOW HIRING

**1st shift**  
**Rewind Operator**  
5:00 AM-1:00 PM • Starting at \$16.50

**2nd shift**  
**Packer**  
1:00 PM-9:00 PM  
Starting at \$15.25



544 Sohn Drive  
Elkhart Lake, WI 53042  
920-876-3361 • [sohn@sohnmanufacturing.com](mailto:sohn@sohnmanufacturing.com)



## Welcome Collector's Cove Antiques Mall



Welcome New Members Collector's Cove Antiques Mall, 2195 Main Street, New Holstein, WI – **Ribbon Cutting** – from left, Dave Amel, Phil Kubichka, Tom Schneider, Becky and Mark Huibregtse, Pam Mathes, Missy Koehler, and Vickey Anhalt

## Semi Crashes into Cal & Gus Motors



The driver of a semi ran a stop sign on Highway 67 in Elkhart Lake on Wednesday morning, Jan. 10, before striking a vehicle and becoming lodged in a business. Two other parked vehicles were also struck. The wreck happened shortly before 11 a.m. Wednesday. Officials say the driver of the semi was not injured. However, the driver and two juveniles in the vehicle that was hit were hurt. They were taken to a hospital for treatment.

## Elkhart Lake-Glenbeulah Middle School Spelling Bee

On Wednesday, January 10th, the Elkhart Lake-Glenbeulah Middle School held their annual Scripps National Spelling Bee contest. This year's bee was again held in the middle school gym and was live streamed on the school's Youtube channel. Big thanks to our technology department as we were able to once again live stream the bee to all classrooms and families watching from home. Congratulations to Jocelyn Fogarty, a 7th grade student from Mrs. Roth's homeroom class who was the school's champion in Round 22 with the word "malnutrition". Our first runner up was Katherine Arbuckle, a 7th grade student in Mrs. Well's class; and the second runner up was Delia Dolezal, an 8th grade student in Mr. Kracht's class. Great job to all who qualified and participated. Jocelyn will represent Elkhart Lake-Glenbeulah at the National Scripps Regional Bee on February 1, 2024 which will be held at Acuity Insurance in Sheboygan with the winner going on to participate in the state spelling bee. Congratulations, once again, to all students who represented their homeroom classes!



Center: ELGS Spelling Champion, Jocelyn Fogarty on the left with first runner up, Katherine Arbuckle.

## Celebrating 1 Year!

HIGH QUALITY CRYSTALS!



GOLD & STERLING JEWELRY!

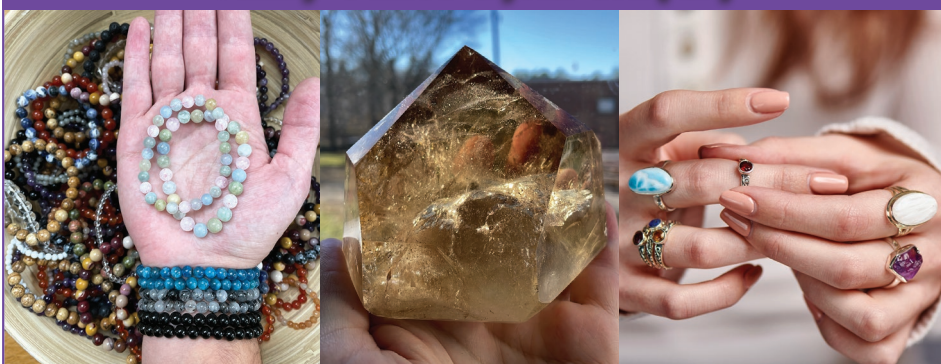
THE INTUITIVE BALANCE®

176 E Rhine St, Elkhart Lake, WI

## 1 Year Anniversary OPEN HOUSE Saturday, February 10 10am-5pm

- ◆ Palmstones, Display Pieces, Rare Collectibles & More
- ◆ Special Showing with Nugent Jewelry
- ◆ Hundreds of High Quality Crystals & Jewelry

Family-Owned Crystal Company



[www.theintuitivebalance.com](http://www.theintuitivebalance.com)



Eat, Drink, Shop  
**LOCAL**

Discover & Support  
Great Local Shops, Bars, Restaurants,  
Breweries & Coffee Shops!

WISCONSIN'S  
**Elkhart Lake**





**We Are Having Record High Sales In Elkhart Lake!!**  
 Contact Our Team Today and Find Out  
 What This Means for Your Property!

*"Key to the Market"*

# AVENUE

Real Estate

**FEATURED PROPERTIES**

**COUNTRY AWAITS!!**

NEW PRICE!

102 Wisconsin Street, Cascade

This property has over a 600 foot long driveway, newly resurfaced and home cannot be viewed from the road. Double lot, two tax key numbers, other lot is said to be buildable, buyer to check with Town of Lyndon. 3.5 car garage + an outdoor heated room! Property features a hot tub, gazebo, oversized deck & pool! Large eat-in kitchen, vaulted ceilings in LR, bdrm on main and 2 on upper! Walk out LL with a bar, game room and more! One of a kind location and seller can be out in 30 days or less!

**MILLION DOLLAR VIEW!!**

NEW LISTING!!!

101 Osthoff Ave, 348 Elkhart Lake

Enjoy an exquisite view of the waterfront and grounds from every room of this charming 2-bd, 2-bath unit. Overlooks the pool, pond, gazebo, grounds, and crystal clear Elkhart Lake. Includes beautiful, recent custom window treatments, and all stainless-steel appliances, rolling drawers. Exceptional location in the main building with easy access to amenities. Property can easily be added to the rental pool. **\$379,000**

**NEW LISTING - \$779,700**

SALE PENDING!!

101 Osthoff Avenue-#99, Elkhart Lake

First time on the market, one-owner condo on the ground level with panoramic views of Elkhart Lake! Property features on suite, 2 bdrms, 2 baths, open concept living room, dining kitchen, in unit laundry, ample storage, patio, 1 underground garage space + storage cage. Property has common amenities such as indoor/outdoor pools, hot tubs, saunas, workout facilities, beach access, Aspira Spa, places to eat, bars, watersports and entertainment all in one spot! Additional parking spot for outside too! Move-in fully furnished!

**BEAUTIFUL SETTING**

SOLD!

101 Osthoff Avenue-#99, Elkhart Lake

Wilderness Log home built 1993 on 6 acre plus wooded setting. 4 bedrooms, 3 baths, detached garage, detached Building 77'x56' with pool, deck area, shower, full bath, propane gas heat for the home, natural gas serves to the pool building. Total home living area 3291 sq.ft. per assessor. **\$499,900**

**ACCEPTED OFFER!!**

421 Stafford Street, Plymouth

Welcome home to this spacious main level featuring character and charm, built in china cabinet, crown moldings and more! Hardwood floors on the main level! Dining room open to the LR & kitchen. Kitchen is very spacious! UL features 3 bedrooms and attic access. LL offers great storage space. Detached garage plus additional off-street parking. Great location within walking distance to schools, parks, downtown and more!

**ACCEPTED OFFER & CLOSED IN 1 DAY!**

266 Victorian Village Drive-# 235, Elkhart Lake

Elkhart Lake property with lake access and all of the amenities of the Shore Club! Property is currently in the rental pool however, you do not have to keep it in the rental pool! GREAT CASH FLOWING INVESTMENT! Completely remodeled unit with all furnishings applicable for rental pool! Enjoy 90+ feet of sandy beach frontage, in and out pool(s) plus hot tub!

**COMMERCIAL BUILDING!!**

315 E. Mill Street, Plymouth

Downtown Plymouth! 3 offices on the sides of the wide open huge space in middle of building, plus a work room & main level bathrooms. Newer roof is huge and maintenance free exterior! Option for a lower rental office-additional income! Lower level kitchen and breakroom for all to use plus tons of storage! 10 parking places. **\$534,000**

Are you looking to find out about properties for sale?  
 Connect with a team member for property alerts!

**Katy Cain**  
Katy@AvenueRET.com  
920.980.9302

**Bill Cain**  
Bill@AvenueRET.com  
920.980.2588

**Jim Haucke**  
Jim@AvenueRET.com  
920.838.1175

ELKHART LAKE  
LOCATION  
99B Lake Street

PLYMOUTH LOCATION  
1000 Eastern Avenue  
*By Appointment*

920-893-3001 | AvenueRET.com

Fully Insured  
Local Family Owned  
IICRC Certified Technician

STEAM CLEANING 920.564.4278

◆ Carpet ◆ Tile ◆ Furniture

[www.impressfloorcare.com](http://www.impressfloorcare.com)

HomeReview  
Inspection Services, Inc.

RESIDENTIAL AND COMMERCIAL INSPECTION

**SERVICES**

- Winter Caretaking Inspections  
While you're away, I'll check your home to make sure heat, water, etc. are working. \$50 per visit.
- Residential Inspections
- Commercial Inspections
- New Construction Inspections
- Phase Inspections
- Warranty Inspections
- Radon Screening

Serving Sheboygan, Manitowoc, Ozaukee, Washington and Fond du Lac Counties

Bob Turicik

920-892-7654  
[www.HomeReview.biz](http://www.HomeReview.biz)  
[www.facebook.com/HomeReviewWI](https://www.facebook.com/HomeReviewWI)

Original Art  
to Enrich Homes  
Gardens and Lives

Patrick and Karen Robison  
244 E. Rhine Street • Elkhart Lake

FEBRUARY HOURS

by Appointment

920-876-3192  
[www.twofishgallery.net](http://www.twofishgallery.net)  
[facebook.com/twofishelkhartlake](https://facebook.com/twofishelkhartlake)

Elkhart Lake

Depot Dispatch

www.elkhartlakechamber.com/depot-dispatch

NEUMANN

Plumbing & HVAC  
Residential, Commercial,  
Industrial & Remodeling

1114 Millersville Ave  
Howards Grove

Residential Homes • Apartments • Hotels • Multi-Unit  
Buildings • Restaurants • Assisted Living Facilities

Call Neumann for ALL Your  
Plumbing and HVAC Needs

Carrier

Turn to the experts

24 Hour Emergency Service  
**920-565-3345**  
neumannplumbing.com

OVER 50 YEARS OF QUALITY WORKMANSHIP

Winter  
RESTAURANT HOURS

Serving **LUNCH DAILY**  
11am-2pm  
*Closed on Tuesdays until April*

**Friday Night FISH FRY**  
4:30pm-8:30pm

**Sunday BREAKFAST**  
9am-1pm (lunch until 2pm)

**RIB NIGHT & SPORTS  
NIGHT RAFFLE**  
Thursday, February 15  
5pm-8pm Raffle to benefit Junior Golf Program

**MOONLIGHT SNOWSHOE STROLL**  
Thursday, January 25  
5pm-7pm *Quit Qui Oc Golf Course*

Purchase Your  
Memberships Now!

**Full Membership**  
starting at \$1450

**Glacial Nine Membership**  
starting at \$775

**Range Membership**  
starting at \$280

**Junior and College  
Memberships also available**

500 Quit Qui Oc Lane • Elkhart Lake • 920-876-2833 • www.quitquiocgolf.com | www.facebook.com/quitquioc

You will like our haircuts and love our price!

Cutting  
With Style

Dyanna Muldoon and her father Willie Mueller provide haircuts, styles, colors and perms for men and women.

Mueller's

*Barber & Styling*

325 Fremont St. • Kiel • 894-3939

BUSINESS HOURS: Tues.-Fri. 8 a.m. - 5:30 p.m. • Sat. 8 a.m. - Noon



# Youth Ice Fishing Outing

## 2024 Between the Lakes Muskies Inc. & Wolf Pack Adventure Guide Service



**DATE:** Saturday, February 10, 2024  
(weekend before the super bowl)

**LOCATION:** Little Elkhart Lake

**TIME:** 8:00 AM- 2:00 PM

Any age is welcome, youth must have a parent/guardian present the entire day.

Lunch provided on the ice by the **Between the Lakes Muskies Inc**

On hand ice fishing demonstrations by **Muskies Inc Club** members and **Wolf Pack Guides** that will allow kids to get a firsthand experience of the sport of ice fishing.

Some fish shanties will be available.

Pre-sign up is requested by February for food ordering.

**TO SIGN UP CONTACT:** Muskies Inc. Between the Lakes Chapter 20 Facebook page and message us <https://www.facebook.com/profile.php?id=100069452044077>


Or Eric Kammerer (920) 254-9222 [ekammerer4@hotmail.com](mailto:ekammerer4@hotmail.com) or Rob Howe 920-254-8172 [howerob88@gmail.com](mailto:howerob88@gmail.com)

## Wolf Pack Adventures




4 Season Outdoor Adventures

# MUSKIES INC





**Mark Novitovic**  
Licensed Massage Therapist  
**Intuitive Massage, LLC**  
**262-237-4719**



**Intuitive Massage, LLC**  
located at:  
Charlene's of Elkhart  
511 East Rhine  
Elkhart Lake, WI 53020

- Highly skilled and compassionate massage therapy in Elkhart Lake since 2008.
- Customized massage using traditional and myofascial release techniques.
- Chair massage for your next event.
- Gift certificates available!

  [www.messageintuitive.com](http://www.messageintuitive.com)



## Schwaller's

Painting, Staining & Drywall

6-TIME WINNER RESIDENTIAL & COMMERCIAL

20 Years Serving Eastern Wisconsin

★★★★★



Call to Schedule your FREE Estimate!  
**920-876-4020**

**FULLY INSURED**

[www.SchwallersPainting.com](http://www.SchwallersPainting.com)  



**W5695 Garton Road**  
**Plymouth**

Rhine Auto is your source for premium used auto parts. We have a **6-month parts only warranty** on all of our parts!

Wide variety of used tires in stock. We purchase batteries and junk vehicles. Call or visit us today!

**920-876-2779 / Mon - Fri 7:30 a.m. - 5:00 p.m.**





## GOODFELLAS BARBERSHOP

"Cut the way you like it!"

- Men & Women Cut
- Special Pricing 12 & Under/65 & Over
- Shampoo & Cut
- Beard Trim

APPOINTMENTS APPRECIATED  
WALK-INS WELCOME

**RUSS HORNECK, Barber/Owner**  
**JUSTIN HORNECK, Barber**

894-HAIR or 894-4247  
630 Fremont St., Kiel  
Fades, Taper & Flat Tops  
Mon. 12-8 • Tues. 8:30-5:30 • Wed. 8:30-8  
Thurs. 8:30-5:30 • Fri. 8:30-5:30  
[goodfellasbarbershopinc.com](http://goodfellasbarbershopinc.com)



Quality hair care products to fit all your needs like Paul Mitchell & American Crew.

Requests accepted for special products.

Cash or check.



**New Custom Homes**  
**Remodeling & Additions**



(920) 876-4020

DESIGN SHOWROOM BY APPOINTMENT:  
101 N. Lincoln St, Elkhart Lake

[PacelineConstruction.com](http://PacelineConstruction.com)



Buy Elkhart Lake **Chamber Cash** & Help Support Your Community!

Available at the Elkhart Lake Chamber of Commerce

[www.elkhartlakechamber.com](http://www.elkhartlakechamber.com)  
[www.elkhartlakechamber.com/depot-dispatch](http://www.elkhartlakechamber.com/depot-dispatch)




**Be Your Own Valentine!**  
 Love Yourself *FIRST* at Allechant Boutique!

- Estate Jewelry
- Unique Clothing S-3x
- Amazing Jewelry
- Gift Certificates

**Allechant Boutique llc**  
 217 East Mill Street • Plymouth • 920-893-9888  
 We Buy Gold & Silver

Shipping and curbside pick-up available





**ZIP IT!**

QUARTER-ZIPS  
 FULL-ZIPS  
 JACKETS  
 VESTS

[shop.roadamerica.com](http://shop.roadamerica.com) **OPEN Weekdays 10-4**

**PADDOCK SHOP**



Follow Elkhart Lake Chamber of Commerce on Social Media



**Have you pushed your cart at Tietz's Yet!**



**Tietz's piggly wiggly**  
 Family Owned & Operated



**COUPON** PLU 29901

**\$10<sup>00</sup> off** Your order totaling \$75 or more (excludes spirits)

With coupon. Good only at Tietz's Piggly Wiggly. One coupon per person. Valid through 2-29-24

714 S. Wisconsin Dr, Howards Grove, 920-565-4421 • 1411 Eastern Ave, Plymouth, 920-893-0741

Authorized WIC Vendor





# Village of Elkhart Lake Updates

## DEPOT DISPATCH FEBRUARY 2024

### VILLAGE TAX COLLECTION

Tax Bills were mailed in December. Property taxes may be paid at the Village Offices at 40 Pine Street from 8:00 am to 4:00 pm Monday-Friday. We will be accepting payments until January 31st, after that date payments will need to be sent to Sheboygan County. If the Village office is closed, payments can be dropped in the drop box located to the left of the doors at the Pine Street entrance. You can also drop your payment off at National Exchange Bank & Trust or Cleveland State Bank in Elkhart Lake until January 31st. If you have any questions, please call the Clerk's office at 876-2122. The first installment of taxes is due by January 31, 2024. If you want to mail in your tax payment, please mail it to PO Box 143, Elkhart Lake, WI 53020. Receipts will not be mailed, unless a self-addressed stamped envelope is included.

### DOG LICENSES

Please stop in at the Village Hall to license your dog by March 31st. You need to provide a proof of rabies vaccination and pay the fee (\$7.00 per spayed or neutered dog and \$14.00 per dog if not spayed or neutered). A \$25 late charge will be assessed to all dogs not licensed by March 31st.

### OFFICER SCOTT NIEMI RETIRED

Officer Scott Niemi retired at the end of 2023. Our Board of Trustees would like to thank him for his years of service to the Village. The Board approved a commendation for Officer Niemi which follows:

RESOLUTION NINETEEN - 2023  
VILLAGE OF ELKHART LAKE  
RESOLUTION OF COMMENDATION

WHEREAS, Officer Scott Niemi, of the Village of Elkhart Lake will be retiring from his position in the Village of Elkhart Lake on December 31, 2023; and

WHEREAS, Officer Scott Niemi has been a dedicated public servant to the Village of Elkhart Lake for over twenty-six years; and

WHEREAS, Officer Scott Niemi's expertise and service have made the Village of Elkhart Lake a better and safer place to live for all its residents as well as a welcome place for visitors; and

WHEREAS, Officer Scott Niemi's efforts have been selfless and above and beyond the call of duty and have taken many hours of his personal time; and

WHEREAS, during Officer Scott Niemi's tenure, he started the school resource officer position at the Elkhart Lake-Glenbeulah School District and expanded it to the Howards Grove School District in recent years, and

WHEREAS, Officer Scott Niemi was instrumental in starting the Police Bike Patrol as well as the bike club at the Elkhart

Lake-Glenbeulah Schools; and

WHEREAS, Officer Scott Niemi worked with the Middle School crossing guards as well as starting and receiving funding for the paid crossing guard position for the elementary students crossing Highway 67; and

NOW THEREFORE, BE IT RESOLVED, that the Board of Trustees of the Village of Elkhart Lake publicly commend and thank Scott Niemi for his dedicated service and wish him well in his future endeavors and a long enjoyable retirement;

BE IT FURTHER RESOLVED, that a copy of this resolution be forwarded to Officer Scott Niemi.

Attest:  
Adopted and approved this 18th day of December, 2023

**Richard Sadiq, President**

**Jessica Reilly, Clerk**

**Lynn Shovan, Trustee**

### NEW VILLAGE FACEBOOK PAGE

For those of you on Facebook, the Village of Elkhart Lake now has its own page. We will provide updates on garbage collection, voting, office closures, and other related Village business. Please give our page a like.

### APRIL 2ND, 2024 PRESIDENTIAL PRIMARY AND GENERAL ELECTION

The Presidential Primary will be held at the same time as the Spring General election. There will also be a school operational referendum on the ballot in April.

The Village races are set for the April 2, 2024, election. The following submitted papers to run for village offices.

### Trustees: (Vote for Three)

**Village Trustee  
Terri Knowles**

**Village Trustee  
John Schott**

**Village Trustee  
Lynn Shovan**

If you need to register to vote you can do it in person at the Village offices between 8:30 am and 4:00 pm Monday-Friday or you can go online to <https://myvote.wi.gov/en-us/> and register and receive voting information including polling locations and sample ballots.

### ABSENTEE VOTING FOR APRIL 2ND, 2024.

If you would like to request an absentee ballot for the April election, you can go to <https://myvote.wi.gov/en-us/>. Please allow at least a week for the ballot to go each way.



If you do not have access to the internet or cannot get the website to work, please call the Village offices (920-876-2122) and request an absentee request form. You will need to provide that form and a copy of your photo ID to our office.

### VILLAGE ORDINANCE - 8.32 ANIMAL FECES

Any person owning or having control of any animal shall clean up the feces of such animal immediately and dispose of it in a sanitary manner when the animal has defecated on the property of another or on public property. Please be aware, the sidewalk, the area between the sidewalk and street (parkway), the street, lake street walkway, and all parks and parking lots are public property!!

### WINTER RULES BEGIN NOVEMBER 15TH

Winter parking regulations go into effect on November 15th. As a reminder, here is the ordinance.

Parking is allowed overnight in the N. East Street parking lot and the Square parking lot overnight until 8 am, at that time your vehicle must be moved so we can plow the lot.

### PARKING REGULATIONS

All Night Parking Regulated.

6.04(2) (a) No parking of any motor vehicle shall be permitted on either side of any Village street between the hours of 2 am. and 6 am, and no parking in the Square Street and N. East Street peaking lots from 8 am until 10 am commencing the fifteenth (15th) day of November and ending on the first (1st) day of April of every year.

(b) Any vehicle parked in violation of the provisions of this ordinance shall be removed from the streets and stored, and such removal and storage shall be at the expense of the owner of said vehicle.

Vehicles violating this ordinance will be ticketed.

### SNOW REMOVAL WARNING

As in past years, you will not be notified that snow needs to be removed. If you have not shoveled in the prescribed time, the Village will shovel your walk and bill the property owner. Also, the entire width of the sidewalk must be shoveled. A path is not sufficient, and you will be in violation.

### SNOW REMOVAL

Ordinance 10.03 Removing Snow from

## Elkhart Lake Village Board Members

If you have concerns or questions call any of our Village Trustees

**PRESIDENT:** Richard Sadiq, Pres. (POB 188)—920-207-4888  
Email: [rsadiq@elkhartlakewi.gov](mailto:rsadiq@elkhartlakewi.gov)

**TRUSTEE:** Geoffrey Bray (POB 736)—920-452-5397  
Email: [gbray@elkhartlakewi.gov](mailto:gbray@elkhartlakewi.gov)

**TRUSTEE:** Terri Knowles (POB 35)—920-876-3448  
Email: [tknowles@elkhartlakewi.gov](mailto:tknowles@elkhartlakewi.gov)

**TRUSTEE:** Paul Rudnick (POB 304)—(920) 946-8644  
Email: [prudnick@elkhartlakewi.gov](mailto:prudnick@elkhartlakewi.gov)

**TRUSTEE:** John Schott 913 Grasse Lane—(920) 876-2436  
Email: [jschott@elkhartlakewi.gov](mailto:jschott@elkhartlakewi.gov)

**TRUSTEE:** Lynn Shovan (POB 682)—(920) 207-4561  
Email: [lshovan@elkhartlakewi.gov](mailto:lshovan@elkhartlakewi.gov)

**TRUSTEE:** Mike Wolf (POB 506)—876-3100  
Email: [mwolf@elkhartlakewi.gov](mailto:mwolf@elkhartlakewi.gov)



Sidewalks: residents must clean snow and ice from sidewalks within 14 hours of any snowfall in a 24-hour period. Also, if you live at a corner intersection, remember you need to clear the sidewalk approaches to the streets.

Snow cannot be blown or plowed onto Village Streets. Residents must also shovel out any hydrants near their home.

**AUTO PAY YOUR WATER BILL**  
The Village of Elkhart Lake accepts Automatic Clearing House (ACH) payments for your water/sewer bills. If you are interested in having your water/sewer bill automatically debited from your bank account, please contact the Village at 920-876-2122 or email [clerk@elkhartlakewi.gov](mailto:clerk@elkhartlakewi.gov) and we will work to set you up on the program.

*Happy Schnee Days!*



## More Than a CARD

Be Rewarded. Feel Secure.  
Enjoy Convenience.

[nebat.com](http://nebat.com)

Member FDIC



**National Exchange**  
Bank & Trust

Conveniently located in  
Elkhart Lake





## “Over the River & Through the Woods” Sleigh Rides

Outdoor winter fun will be featured at Wade House this February. The excitement is planned for Saturday, February 17 from 10 a.m. to 3:30 p.m. when Wade House will host “Over the River and Through the Woods” sleigh rides. Horse-drawn sleigh rides will be offered every thirty minutes from 10 a.m. to 3:30 p.m. on Saturday, February 17.

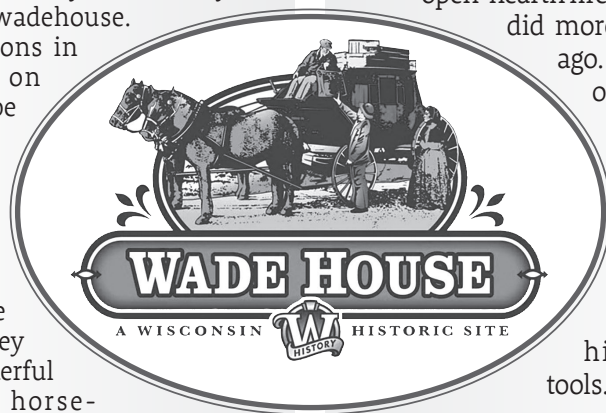
The sight of colorful sleighs and the sound of sleigh bells breaking the snowy silence were commonplace during cold winter months in the late 19th century. Sleigh rides were one of the joys of winter with sleighing parties often organized by family and friends for an opportunity to socialize.

At Wade House’s “Over the River and Through the Woods” sleigh ride event, guests will be invited to climb aboard a horse-drawn sleigh (or wagon) for a ride through the northern reaches of the Kettle Moraine State Forest. The cost for the sleigh rides are: \$15 for adults and teens; \$13 for seniors; \$8 for children; and free for children under 5 years of

age. Sleigh ride reservations are highly recommended and may be booked by visiting [www.wadehouse.org](http://www.wadehouse.org). Reservations in advance and on the day of will be accepted on a first come, first serve basis.

Besides going on a sleigh ride, guests will be able to see Wesley W. Jung’s wonderful collection of horse-drawn vehicles in our carriage museum. Also included in the fee for the sleigh rides is use of snowshoes to explore Wade House’s 240 acres. Snowshoes will be loaned on a first come, first serve basis.

The Wade House historic site is one of 12 Wisconsin Historical Society historic sites and museums. For more information, please call 920-526-3271 or visit [www.wadehouse.org](http://www.wadehouse.org).



## Hearthside Dinners at the Wade House

On Saturdays, February 17, March 9, April 13 and May 11, from 11 a.m. to 3 p.m., Wade House historic site in Greenbush will be hosting Hearthside Dinners, a foodways program in which participants will have the opportunity to enjoy a delicious hearth-cooked meal, prepared with their own hands, in the historic Wade House stagecoach hotel.

Hearthside Dinner guests will experience a link to culinary history by helping to prepare 19th-century dishes on a wood-burning stove and over an open-hearth fire just as Mrs. Wade did more than 150 years ago. A close gathering of up to 20 guests will be guided by costumed staff as they learn about historic food preparation, ingredients and historic cooking tools.

Authentic recipes from late-19th-century cookbooks will be referenced as guests chop and stir, season and roast, preparing their midday meal. When the dinner preparation chores are complete, guests receive a guided tour through the stately stagecoach hotel and learn about the respite which it offered to weary travelers along the plank road between Sheboygan and Fond du Lac in the 1850s and 1860s.

Once dinner is prepared, participants gather family style in the lovely Wade House dining room for a wonderful sit-down meal with lively conversation. The menus are themed and include a Wisconsin Winter menu, a Yankee menu and a German menu.

• **The Wisconsin Winter menu** includes wild rice soup, pork ragout, maple glazed sweet potatoes, baked macaroni and cheese, buttermilk biscuits, applesauce



with lemon and nutmeg, and cranberry apple cobbler.

• **The Yankee menu includes** corn chowder, Yankee pot roast with vegetables, ragout of French beans or succotash, brandied cranberry sauce, brethren cheddar bread, apple pandowdy, and Muster Day gingerbread.

• **The German menu includes** potato leek soup, sauerbraten (spiced beef roast), spaetzle (German noodles), Dutch beans/carrots, Pennsylvania style sauerkraut, apple bread, and krumkake (sour cream coffee cake).

This satisfying encounter with central Wisconsin’s past concludes with everyone pitching in to clear the table, wash dishes (19th-century style) and sweep the hearth.

Hearthside Dinners are \$75 per person, and reservations are required. If you have any questions about the program or would like to reserve your spot at the table, please visit our website at [wadehouse.org](http://wadehouse.org). Private Hearthside Dinners for groups of 10 to 20 may also be arranged.

The Wade House historic site is one of 12 Wisconsin Historical Society historic sites and museums. For more information, please call 920-526-3271 or visit [www.wadehouse.org](http://www.wadehouse.org)

# FUDGIENUCKLES

## Family Sports Pub & Grill

### Weekly Specials

**Tuesday**  
Tacos & Tequila  
\$2 Tacos 5-9pm  
Margarita Special  
15% off menu prices to 60 & older

**Wednesday**  
Wings Wednesday  
Traditional Chicken Wings 75¢ ea.  
Rail Old Fashioned Special

**Thursday**  
Double-Bubble  
7-10pm Ladies  
Rail Vodka Lemonade Special  
Bring in a Canned Good for FREE Fries

**Friday**  
Fish Fry Friday  
11am-9:30pm

**Saturday**  
Screwdriver Special  
11am-3pm  
**Sunday**  
Bloody Mary Bar

**Sunday**  
4-pc. Broasted Chicken Dinner  
served with mashed potatoes & gravy, veggie, coleslaw or applesauce

**FREE Pool & Darts**  
Pool: Friday 9pm-close  
Saturday 5pm-close  
Darts: Sunday 3pm-close

**Sheephead Tourney**  
Feb 10, Mar 9 @ 1pm

**Billiard Tournament**  
February 24  
Partners Sign-In 11am • Pre-Register \$25/team  
16 Team • Double Elimination  
Cash Prizes • 1st, 2nd & 3rd Place

**1st Annual Chili Cookoff**  
Saturday, March 2 • 1pm  
\$10 Tasting & Voting  
Trophies for 1st, 2nd & 3rd  
All proceeds to Glenbeulah Fire Department

Proudly Serving You for 31 Years!

Hours: Tuesday-Sunday Open at 11:00am  
920-526-3511 • 133 W. Main St. • Glenbeulah • [fudgienuckles.com](http://fudgienuckles.com)



## D&D Carpentry

“Our name stands for quality”

OUR SPECIALTIES INCLUDE:  
Additions • Remodel Work  
Masonry • New Homes

General Contractors  
36 years of Serving our Community  
1324 Eastern Ave., Plymouth • (920) 526-3648  
[www.ddcarpentry.com](http://www.ddcarpentry.com)

Follow us on:  facebook.



**OPEN 24 HOURS**

### Full Service Laundromat

- Fluff & Fold
- Commercial Laundry
- Ironing

### Imogene's Dry Cleaning Service

Drop off & Pick up done on **WEDNESDAYS**

## Sippel's Lost Sock Laundromat

510B East Rhine Street • Elkhart Lake • 920-946-1750





**Lynn Schwensow**  
 Voice Mail/Text: 920-946-4054  
 e-mail: [lynn@lynn-sells.com](mailto:lynn@lynn-sells.com)  
**I WANT TO WORK FOR YOU!**

**Spring is Right Around the Corner! Interest Rates are slowly going down. NOW is the Perfect Time to Purchase a Wonderful Place to Build, Buy Your Dream Home or Sell Your Current Home! I Would be Most Happy to Guide You Thru ALL Your Real Estate Endeavors! Please Contact ME! 920-946-4054 Century 21 Moves-Sheboygan**



**SHOP LOCAL** Buy Elkhart Lake Chamber Cash and help support your community!  
 Available at the Elkhart Lake Chamber of Commerce  
 41 E. Rhine St., 920-876-2922  
[www.depotdispatch.com](http://www.depotdispatch.com)  
[www.elkhartlakechamber.com](http://www.elkhartlakechamber.com)



**RESERVE A TABLE TODAY!**  
  
**LAKE STREET CAFE**  
 21 S LAKE STREET  
 ELKHART LAKE, WI  
 (920) 876-2142



*View the Elkhart Lake Depot Dispatch Online...Anytime!*

[www.elkhartlakechamber.com/depot-dispatch](http://www.elkhartlakechamber.com/depot-dispatch)  
  
**Elkhart Lake Depot Dispatch**