

Farmers' Exchange



Place unlimited items for sale:

FarmersExchange.com

Used and New Farm Equipment.
Equipment, Land and Livestock Auctions.

Call for Subscription **800.247.7318**

FARM EQUIPMENT SPECIALS

Give us a call today!



Peterbilt 377, 1993, live tandem, Cat engine, 9 spd., 20' dump, excellent tarp, Stk#4361
\$26,500



JD 7210, 2WD, PQ trans, 6500 hrs. good tires, very original, Stk#4376
\$49,500



Case IH 496, 18.5' disc, 20" front, 19" rear, 7 1/2" spacing, has all scrapers, Stk#4543
\$11,250



Case IH 1020 Grain Head, 16.5', late model, very straight, hard to find, Stk#4526
\$9,850



Kinze 2000, 6/11, 6-30" rows, 11-15" rows, totally rebuilt, new everything, Stk#4524
\$24,500



JD 750, 10' drill, factory JD caddy, low use, very rare, field ready, Stk#4583
Call



JD 693 Corn Head, all poly, good chains & rollers, field ready, Stk#4319
\$12,250



Haybuster 107C, 10', 18 hole, 7" spacing, hard to find, field ready, Stk#4570
\$22,750



Bush Hog 2815 Rotary Cutter, 15', one owner, low use, stump jumpers, Stk#4511
\$18,500



JD 7000, 4 row liquid, 36" rows, very nice, field ready, Stk#4534
\$8,250



JD 467, 4x6 bales, mega wide, bale kicker, excellent condition, Stk#4584
\$11,650



Case IH 1640, late model Cummins engine, lots of new parts, 3100 hrs., Stk#4525
\$11,750

Newman Farms
www.newmanfarms.net

Cleveland, TN

Call 423-595-5715
or 423-464-5303



ELK VALLEY

Truck and Trailer Sales

931-433-6255

elkvalleytrailersales.com

Equipment Trailers In Stock



6.5' x 10' - \$2,100

6.5' x 12' - \$2,200

20' Car Hauler - \$4,150

Other Sizes Available



\$8,900

2004 CM

4 horse, stock combo, 20', 2' dressing room, 6'8" tall



\$5,900

Lawrimore

2008, 20' 5" Equipment Trailer, 7k axles, new tires, chain box



\$15,900

2001 Sundowner

3 horse/stock combo, 4' dressing room, extra tall, new tires, ready to go, all alum.



\$14,900

EBY 20' Livestock Trailer

2 10' cuts, all alum, 7' wide, 6'8" tall



\$16,900

2004 Sterling

Single axle, 455 hp Detroit 60 Series, 10 spd. trans., only 339k miles, air ride seat



\$22,900

2004 Exiss

3 horse, full living quarters, 7' wide, 7' tall



\$16,900

Sudnowner ProStock

20', all alum, plex glass inserts, loading ramp, 6'8" wide, 7' tall, new tires



\$12,900

2001 Featherlite

2 horse, 7' tall, dressing room, saddle racks, new tires, rear ramp



\$18,900

Circle W 32' Stock Trailer

6'8" wide, LED lights, 14 ply tires, like new!



\$14,900

2012 Ford F-150 Platinum

ecoboost engine, after market wheels & tires, 212k miles

Cole - 931-993-8874 • Rocky - 931-703-6255

2983 Huntsville Hwy., Fayetteville, TN

931-433-6255

Call and Save \$\$\$



JAY-LOR

D&E is Your **SOURCE** for Mixers! Huge **IN STOCK** Inventory! **Winter Special Rebates!** Call Us!



VAI

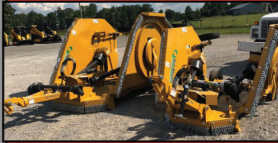
ART'S WAY

In Stock
\$63,500
Call!

HYUNDAI



HT100V & HS100V
LOADERS
starting at
\$65000



12' MD144
\$14,200
IN STOCK



Spreaders from
80 cf - 430 cf
IN STOCK!

STRETCH-O-MATIC

8400 ELITE

\$33,800



The Original Bale Wrapper

Dependable, Quality. Other wrappers have higher price tags. Doesn't make 'em better, only costs you more.

CLAAS Hay Season Specials - CALL!

GEHL



Special!
VT320, RT255, RT185,
RT105, V275 Machines In stock!

GEHL

BROWN

MANUFACTURING CORP.

416, 672
Rotary Cutters &
2505, 2605 & 2620
Tree Cutters
In Stock



Poultry Specials



BBI 16' HD Hyd
Litter Spreader \$37,800
New LVI Pulvimaster
72, 96 & 120's in Stock!

D&E

DON ALLISON EQUIP, INC.

www.donallisonequipment.com

800-669-6450

THE MIXER PLACE!



EasyCut
Rear-mounted Butterfly Mowers

Dependable cutting and professional quality.



KW/KWT
Rotary Tedders

Powerful rotors turning crops into high quality forage.



Swadro
Rotary Rake

Even and consistent windrows.

Take Advantage of the Best Deals of the Year!

6% discounts available on select models, April 1 - July 31, 2024



Krone® is a registered trademark of Maschinenfabrik Bernard Krone GmbH.
12121 Forest Park Dr. Olive Branch, MS 38654-(662)913-7171.



Cash discount offer expires 31 May, 2024 and applies to select Krone models. Some exclusions apply. See dealer for full details.

Arab, AL
933 N. Brindlee Mt. Pkwy
(256) 586-8304

Albertville, AL
5660 US 431
(256) 850-4679

Athens, AL
131 US Hwy 31 S
(256) 232-2131

Centre, AL
1050 Chestnut Bypass
(256) 927-2300

Columbia, TN
271 Theta Pike
(931) 388-1557

Cookeville, TN
1490 Interstate Dr
(931) 526-8544

Crossville, TN
269 N Main St
(931) 340-1012

Cullman, AL
3920 AL Hwy 157
(256) 739-5601

Dickson, TN
707 Henslee Dr
(615) 229-2400

Fayetteville, TN
2894 Huntsville Hwy
(931) 433-5620

Florence, AL
3613 Florence Blvd
(256) 757-9080

Franklin, TN
340 9th Ave N
(615) 794-8187

Ft. Payne, AL
12227 AL Hwy 35
(256) 997-9089

Gadsden, AL
1301 West Meighan Blvd
(256) 456-5872

Hendersonville, TN
133 N Shackle Island Rd
(615) 824-9726

Huntsville, AL
4550 Research Park Blvd
(256) 830-4020

Jasper, AL
3700 Industrial Pkwy
(205) 384-3058

Leighton, AL
1160 Sockwell Ln
(256) 446-5929

Manchester, TN
812 Interstate Dr
(931) 728-5400

Mt. Juliet, TN
10768 Lebanon Rd
(615) 754-2600

McMinville, TN
305 Shangri La Ln
(931) 668-1784

Pelham, AL
3311 Pelham Pkwy
(205) 605-0412

Scottsboro, AL
26685 John T Reid Pkwy
(256) 259-0704

Winchester, TN
176 Blair Pond Rd
(931) 967-5144

TAC ENTERPRISES • BUY • SELL • TRADE DAILY

Huge selection of big tractors selling each week on AuctionTime.
Check out our listings at www.tacenterprises.net and register to bid.



Club Car Inteltrak, 4WD, gas, enclosed cab w/heat, 1839 hrs. out of an estate **\$4,350**



Grove Man Lift MZ90, 5600 hrs., 2WD, diesel, 90' lift, runs/works great! **\$8,850**



New Holland D95WT Dozer, 6 way blade, C/A, 6425 hrs., full screens, limb risers, joy stick controls, **\$37,500**



JD 2040
40 hp, 4WD, w/loader, local trade-in **\$10,900**



Kubota BX1500, 4WD, power steering, 3pt, 540 pto, diesel **\$5,450**



JD 5065E
65 hp, 4WD, w/loader, 1893 hrs. **\$21,500**



JD 5090M, C/A, 4WD, power reverse, QA loader, 7651 hrs. checks out perfectly! original! **\$37,500**



JD CX15
15' HD cutter, Nice and loaded! **\$12,900**



Woods RC72 Rotary Cutters
instock **\$2,850**



Kubota M110GX
C/A, 4x4, 1573 hrs., like new **\$38,600**



New Gates
20', deer scene **\$1,395**



Landpride RCM5615 HD Cutter
15' good condition **\$11,500**



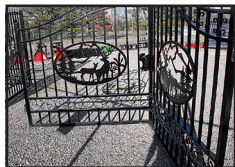
JD 4020 or 4230 High Crop
runs and drives **\$8,500**



Toro GTX Workman,
2018 fuel injected gas, nice! **\$4,850**



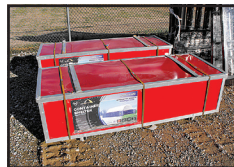
Ford Bronco, 1996, Eddie Bower, 4WD, 5.8 eng., auto, A/C, power everything and it all works, 217K, **\$14,800**



New Gates
14', deer scene, **\$1,195**



#500 New Spin Spreaders
3pt. **\$650**



Dome Container Shelter
20'x40' **\$995**



Kubota ZG222 Zero Turn
gas, 1331 hrs., 48" deck **\$3,500**



BW12 Woods Batwing, mowed less than 20 acres, front and rear chains, warranty **\$16,500**



New JCT Medium Duty Skid Steer, 72" brush cutter **\$1,950**



Kubota ZD1011 Zero Turn, diesel, 1056 hrs., good mower **\$6,500**



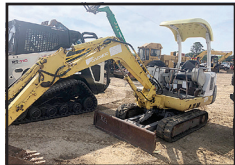
JD 5100M, 4WD, C/A, front and rear 3pt., 7K hrs. very clean, all new tires **\$34,500**



Chevy Silverado 2500HD
2001, ext. cab, diesel, 300K, runs drives good **\$5,950**



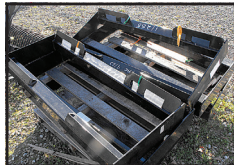
Kubota SL75-2 Skid Steer
joy stick controls, 2800 hrs. **\$26,000**



Daewoo D30 Mini-X, runs and works good, good sprockets and tracks **\$12,900**



Ironcraft Batwing Mower
15', front and rear chains, HD model **\$15,900**



Weld On Skid Steer Plates
heavy duty 4" tubing! **\$225**



3330 Alabama Hwy. 36
Moulton, AL 35650

www.tacenterprises.net • 256-974-8588

Auctioneer: Ken Nelson, AL #1326 • Hours 8:00 A.M. - 5:00 P.M. Monday - Friday

Columbia, TN • 931-388-1557



NH Workmaster 33 - \$11,999 JD 460M - \$48,500 JD 333G - \$85,000 Penta 4120 HD - \$16,000 Krone AMR320 - \$12,900 McHale V6750 - \$45,900

Kuhn CA 7301.....\$15,500 JD 5055E, 2021, cab, 4WD, loader, 110 hrs., Stk#1038279\$52,000 Ogden RCR10 Rake, very nice, Stk#1040244.....\$7,999
 Kuhn GA7501 Dual Rotary Rake, Stk#1040245...\$12,500 JD Weed Wiper, 14', Stk#1040173.....\$1,500

Athens, AL • 256-232-2131



JD 5075E, 2016, 75 hp, loader \$36,000
 JD 2320, loader, 24 hp, 2008 \$15,000
 Ogden HR8 Hay Rake..... \$4,750

JD 2025R - \$23,000 JD 6120M - \$119,000 JD MX8 - \$8,000 JD 8330 - \$135,000

Cullman, AL • 256-739-5601



Kubota ZD1011 - \$8,499 Gravely ZX52 - \$6,999 JD 4044M - \$31,000 Kubota MX6000 - \$39,900 JD 5075E - \$46,500 Titan RB-72 - \$550

Other Grapple, 2023, 3 pt.....\$2,599 Frontier AR10E-66 Rock Bucket, 2022\$2,495 Worksaver 832940-1W3 Bale Hugger, 2022 ...\$3,295

Scottsboro, AL • 256-259-0704



JD 5090M - \$42,500 JD 6430 - \$56,500 Case IH Magnum 315 - \$172,500 Case IH MX210 - \$85,000 JD 1890 Air Seeder - \$68,500 JD 612C - \$36,500

JD S670, 2014, 2473/1554, Stk#1035225 \$155,000 Case 4412F Corn Head, 12R/30, 2018, Stk#1037838 \$85,000 JD 550M, 6196 bales, 2019 \$34,500
 JD 5100E, low profile, open station, loader, 1060 hrs., Stk#1038136..... \$44,900 Case 1245 Planter, 16R/31, Protracker hitch, 2014, Stk#1039111 \$78,500 JD 5065E, cab, loader, 2022, 47 hrs..... \$49,500

Cookeville, TN • 931-526-8544



Durabilt Tedder - \$16,900 JD 569 - \$32,000 JD 560M - \$35,000 Kuhn GMD280HD - \$13,000 JD R280 - \$9,499

Land Pride RC50-15, 2002\$10,900 Kuhn SR112 Rake.....\$4,500

Florence, AL • 256-757-9080



JD 9660 - \$65,000 JD 893 Corn Head - 8,750 JD 5055E - \$46,900 Vermeer 6650 - \$32,900 JD 1023E - \$16,900 JD 648M - \$8,500

JD 8R280..... Call LandPride 100NT Drill \$32,500
 JD 5325, 2007 \$35,900 Cub Cadet Z Force 50.....\$500

Leighton, AL • 256-446-5929



Kubota M5111 - \$39,500 JD 4044M - \$35,500 JD 5210 - \$19,900 JD 6320 - \$65,000 JD 3032E - \$17,500 JD 1025R - \$24,995

JD S690, 2013 \$279,000 MF 451, 2004, 1047 hrs. \$19,000
 Hardi Sprayer, 3 pt., 350 gal, 60' boom.....\$4,900 JD 5075E, open station, 2019, 430 hrs., loader \$37,000
 Woods 3240 Batwing, 20' \$7,000 JD 5075E, cable, loader, 2018, 2195 hrs..... \$43,900
 JD 5075E, 2019, 430 hrs..... \$37,000 JD 5100M, 2016, 2252 hrs., loader, open station \$58,000
 NH T4.75, 2017, 970 hrs..... \$48,500

Huntsville, AL • 256-830-4020



JD 7230R - \$152,000



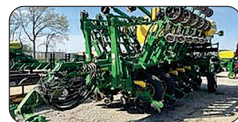
JD 6105E - \$57,500



JD 331G - \$68,000



JD R4038 - \$225,500



JD 1795 - \$171,495

JD R4038, 2019, 120' booms, 2565 hrs..... \$225,500 J&M 1000, 2011, roll tarp, no scales..... \$36,500 JD 331G, 2019, cab, EH controls, 750 hrs..... \$68,000
 JD 4940, 2013, 120' booms, stainless tank ... \$86,500 JD 1795, 2019, 16/31, central fill, row command \$171,495 JD 325E, 2023, cab, 2 spd., 78" bucket..... \$72,500
 Durabilt HCI-8 Rake, 8 wheel..... \$3,200 JD 640FD, 2016, Flex Draper \$69,000
 Krone AM323S, 2011 \$8,500

Fayetteville, TN • 931-433-5620



JD S690 - \$165,000



JD R4030 - \$145,000



JD 7200R - \$126,000



JD 6120E - \$105,000

JD 3046R, 187 hrs \$42,995

JD 466.....\$9,500

Case IH 330 \$34,000
 Rhino RC20.....\$11,500
 JD S690, 2014 \$165,000
 Case IH 330 Disk, 2015 \$34,000
 JD 5095M, loader, 200 hrs \$89,500
 JD 6105, 200 hrs..... \$96,000
 Ogden HR10 Rake, 10 wheel.....\$4,800

Mt. Juliet, TN • 615-754-2600



JD 5065E- \$37,500



JD 5075E- \$48,500



JD 3025E- \$19,500



JD 569- \$25,000



Frontier TD1316- \$4,995



JD 5120M- \$94,500

Winchester, TN • 931-967-5144



JD MX7 - \$3,750



Ogden HR8 - \$4,750



JD 1025R - \$16,500



JD 2305 - \$7,500



JD 5055E - \$36,000



JD 8251 - \$10,500

Commercial Zero Turn Mowers.....CALL Frontier LP1160 \$1,250 JD X380, 2020, 121 hrs \$3,500
 JD 1025R, 2022, 120 loader, 60" deck.....\$20,995 JD 5105M, 2022, 91 hrs\$105,000

Manchester, TN • 931-728-5400



JD 569 - \$31,900



JD 535 - \$5,999



Krone KW552T - \$4,900



JD 569 - \$16,900



Case IH RB465 - \$28,900



Case IH MX125 - \$84,900

McMinnville, TN • 931-668-1784



FFC PR90FFCH - \$13,500



Durabilt G4VI-5200 - \$7,950



Cat 239D - \$48,900



JD 4052M - \$28,950



JD 469 - \$22,000



JD 530 - \$2,500

Arab, AL
 933 N Brindlee Mt. Pkwy
 (256) 586-8304

Crossville, TN
 269 N. Main St.
 (931) 340-1012

Fort Payne, AL
 12227 Al Hwy 35
 (256) 997-9089

Gadsden, AL
 1301 West Meighan Blvd
 (256) 456-5872

Jasper, AL
 3700 Industrial Pkwy
 (205) 384-3058

Piedmont, AL
 850 US Hwy 278 ByPass
 (256) 447-7211

Centre, AL
 1050 Chestnut ByPass
 (256) 927-2300

Dickson, TN
 707 Henslee Dr
 (615) 229-2400

Franklin, TN
 340 9th Ave N
 (615) 794-8187

Hendersonville, TN
 133 N. Shackle Island Rd
 (615) 824-9726

Murfreesboro, TN
 464 Middle TN Blvd
 (615) 890-6258

Pelham, AL
 3311 Pelham Pkwy
 (205) 605-0412

2-Day Summer Contractor's AUCTION June 20th & 21st

13340 Florida Blvd.
Livingston, LA 70754



Construction Equipment



Industrial & Welding



Find the Complete Auction List at: www.HendersonAuctions.com

Farm Equipment



Vehicles & Trailers



HendersonAuctions.com



What can we sell for you? Deliver items Monday - Friday from 8am-4pm!



800.850.2252 | 225.686.2252 | info@hendersonauctions.com
10% Buyer's Premium on each item purchased. | Auctioneer: J. Henderson LA AB-459

Liquidations | Government Surplus | Marine
Industrial | Farm | Construction | Collector Cars

What can we sell for you? 225.686.2252



Farm Equipment Specials



JD 7000, 6 row, 30", dry fert. w/ double disc openers, been thru shop, Stk#4435 \$9,250



MF 33 Grain Drill, 10' 17 drops, 7" spacing, excellent, scrapers good, Stk#4541 \$3,450



Tonutti DM165 Disc Mower, 6', 3 pt., good curtain, runs smooth, Stk#4289 \$2,850



JD 756 Tedder, basket, 17.5', excellent shape, field ready, Stk#4392 \$6,250



NH 575 Baler, twine tie, manual tension, ready to bale, Stk#4244 \$8,700



NH 1411 Discbine, 10' 4" cut, rubber rollers, field ready, Stk#4588 \$9,250



Kinze 2100, 4 row, 30", 3 pt., row cleaners, totally rebuilt, Stk#4488 \$7,250



Kinze 2000, 6 row, 30", been thru shop, totally rebuilt, Stk#4402 \$12,500



Case IH 496, 22' disc, 7 1/2" spacing, 19" blades, has all scrapers, Stk#4449 \$9,850



Hay Master CBA10, 10 bale grapple, QA hookup, very low use, Stk#4498 \$3,250



Case IH MD93 Disc Mower, 9', low use, excellent, runs great, Stk#4533 \$12,500



Case IH 5100, 21 hole, 7" spacing, double disc, field ready, Stk#4257 \$5,850



Great Plains Solid Stand 10, 10' no-till, 1676 acres, been kept in dry, Stk#4571 \$16,500



Midland M86 Dirt Pan, 8 yard, pull type, good tires, works great, Stk#4494 \$10,500



Ford 309 Planter, 2 row, nicest around, excellent shape, 3 pt., Stk#4195 \$2,450



Brillion X20 Cultipacker, has all scrapers, very nice, like new, Stk#4418 \$24,900



Plotmaster System PM600, 3 pt., very good condition, has drag & roller, Stk#4254 \$4,750



NI 324 Corn Picker, runs smooth, field ready, Stk#4345 \$2,950



Woods 3180, 15', small 1000 PTO, aircraft tires, runs smooth, Stk#4477 \$8,750



Woods BW180, 15' Batwing, runs great, aircraft tires, Stk#4550 \$9,850

EZ Flow 300, EZ Trail 1074 running gear, Stk#3920.....	\$3,250	Bush Hog 1432, 8' Disk, 7" spacing, Stk#4043.....	\$4,750
NH 260, hard to find right hand rake, Stk#4255	\$4,850	MF 520 Disc, 12', 7 1/2" spacing, Stk#4433.....	\$4,250
NH 260, right hand delivery, Stk#4256.....	\$4,650	J&M 875-18, good tarp, scales, very low use, Stk#4377.....	\$34,750
NH 258 Rake, excellent condition, Stk#4209.....	\$11,500	Int. 415, 15' cultimulcher, has all scrapers, Stk#4452.....	\$7,450
EZ Trail 300, on EZ Trail 1074 running gear, Stk#4268.....	\$3,250	Case IH 1020, 25' grain platform, all fingers in reel, Stk#4475.....	\$11,500
Haymaster CBA8 Bale Accumator, very little wear, Stk#4261	\$6,500	Int. 370, 10' disc, good bales, Stk#4546	\$3,950
Case IH 1020, 15' grain head, Stk#4520	\$10,750	NH 254 Twin Rotor Rake, 3 pt., 10-13', Stk#4386.....	\$2,450
JD 625F, 25' grain head, Stk#4401	\$15,500	JD 672 Hay Rake, 5 bar, 9', Stk#3978.....	\$2,450
EZ Trail 672 Head Cart, 30', very nice, good tires, Stk#4493.....	\$4,350	EZ Trailer 672 Head Cart, 30', nice, Stk#4493.....	\$4,350
Case IH 1020, 15' Grain head, has all fingers, very nice head, Stk#4464.....	\$5,850	Taylor-Way 600002, 9 shank disc, Stk#4073.....	\$3,950



Kinze 3600, 12/23, new no-till seed disc, seed scrapers & closing wheels, Stk#4201 Call

Newman Farms

www.newmanfarms.net

Cleveland, TN

Call 423-595-5715 or 423-464-5303

QUARTERLY EQUIPMENT AUCTION

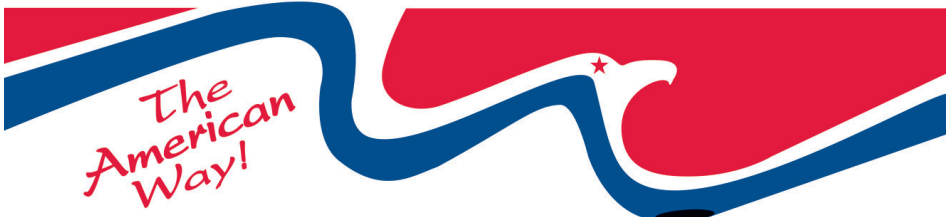
Saturday ★ June 8, 2024 ★ 9:00 A.M. EST

Calhoun Stockyard

2270 Rome Road SW, Calhoun, Georgia
Contact Chipper Shell for more info: 256-913-6688



American Auctioneers®



Keith Baldwin, CAI
AL 1416, ALRE 64960,
GAL AUNR2860, GARE 247207



ONLINE BIDDING POWERED BY
Proxibid & Equipmentfacts

866.789.5169 ★ american-auctioneers.com

“WHY BUY ANYWHERE ELSE?”
Russell Barnett




New 2024 Ford F-350 Platinum
 crew cab, 6.7L V8 Turbo diesel, 4WD, 10 spd. auto
 Stk#A6455N **MSRP: \$99,720**



New 2024 Ford F-350 Platinum
 crew cab, 4WD, 6.7L V8 Turbo diesel, 10 spd. auto
 Stk#A6421N **MSRP: \$92,745**



New 2024 Ford F-450 XL Cab & Chassis
 crew cab, 6.7L Power Stroke V8 Turbo diesel, 4WD
 Stk#A6457N **MSRP: \$73,495**



New 2024 Ford F-350 XL Cab & Chassis
 crew cab, 6.7L Power Stroke Turbo diesel, 4WD
 Stk#A6478N **MSRP: \$70,775**



New 2024 Ford F-350 XL crew cab, 6.7L Power Stroke V8 Turbo diesel, 4WD, 10 spd. auto
 Stk#A6473N **MSRP: \$70,775**



New 2024 Ford F-350 XL crew cab, 4WD, 6.7L Power Stroke V8 Turbo diesel, 10 spd. auto
 Stk#A6471N **MSRP: \$70,775**



New 2023 Ford F-350 XLT standard cab, 6.7L Power Stroke V8 Turbo diesel, 10 spd. auto
 Stk#A6309N **MSRP: \$68,225**



New 2023 Ford F-350 XLT standard cab, 6.7L Power Stroke V8 Turbo diesel, 10 spd. auto
 Stk#A6271N **MSRP: \$65,325**



Pre-owned 2023 Ford F-250 STX
 crew cab, 6.8L V8, 10 spd. auto, 4WD
 Stk#A10234P **MSRP: \$52,975**



Pre-owned 2020 GMC Savana Work Van
 118k miles, RWD, 6.0L V8
 Stk#A10304P **Price: \$26,980**



Pre-owned 2022 Ford Econoline Box Van
 78k miles, 6 spd. auto, RWD, gas
 Stk#A10276P **Price: \$34,978**



Pre-owned 2021 Chevrolet Silverado Work Truck
 ext. cab, 133k miles, 6 spd. auto, RWD, gas
 Stk#A10303P **Price: \$28,465**

Russell Barnett 

Call Lance
(931) 952-1122

1106 East Carroll St.
 Tullahoma, TN

DISCOVER THE
RUSSELL BARNETT
ADVANTAGE
WITH EVERY TRUCK YOU BUY!

*All rebates applied. All prices plus tax, title & tag. \$399 processing fee included. Due to advertising deadline, all prices and incentives including employee pricing is subject to change by the manufacturer without notice. Customers must finance to obtain all Rebates.

www.BarnettFordTullahoma.net

Largest Independent Bush Hog Dealer In The USA!

Huge Inventory • Parts & Service • Contractor & Municipality Discounts

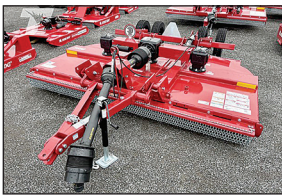
Reasonable Delivery Available To Anywhere



**Bush Hog
XLRR1226**
demo, 12 wheel,
kicker, like new
\$10,650



**New 14815
Flex Wing Cutters**
15', 1000 PTO,
Heavy Duty
\$34,900



New 3510 Pull-type Cutters
10.5', 540 PTO
\$14,500



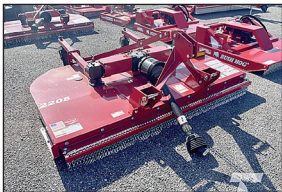
**New Bush Hog Box Scrapers &
Levelers All Sizes**
In Stock



New 1812 Flex Wing Cutters
12', hyd. fold, 540 PTO
\$16,500



New BH216 3 pt. Cutters
6', 540 PTO
\$4,150



New 2208 Pull-type Cutters
8', 540 PTO
\$8,750



**New Bush Hog
Mowers**
8' - 10'
In Stock



**HT417 Tedder - hyd. fold, 17'
width, manual tilt, 540 PTO**
\$7,250



New 2215 Flex Wing Cutters
15', 540 PTO
\$22,900



Bush Hog Rakes
8', 10' & 12'
In Stock



New Bush Hog Finish Mowers
5'-8' Rear Discharge
In Stock



**New Bush Hog Single
Spindle Cutters 4'-7'**
In Stock!



New 4115 Flex Wing Cutters
15', 540 PTO, Starting at
\$26,500 Many options available



**New Bush Hog Landscape
Rakes & Cultipackers**
In Stock



New 1815 Flex Wing Cutters
15', 540 PTO
\$18,900



Mower Caddy Combos
In Stock!



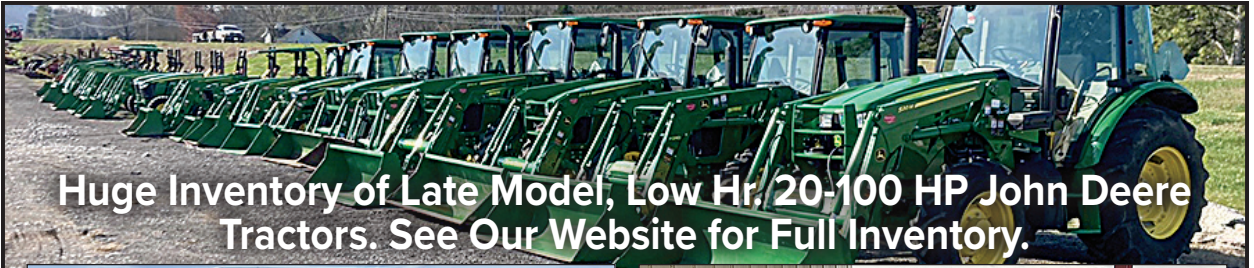
(615) 274-2200

775 South Main Street, Eagleville, TN 37060

www.eaglevilleimplement.com



BUSH HOG®



Huge Inventory of Late Model, Low Hr, 20-100 HP John Deere Tractors. See Our Website for Full Inventory.



JD Gators Many In Stock To Choose



Like New JD Zero Turn Mowers At Used Prices



JD 1770NT 2003, 16-30, bulk fill, one owner
\$56,900



JD R280 Disc Mower 9' cut, like new condition
\$11,500



2017 Big Tex 30' Gooseneck Trailer 10k axles Excellent Condition. **\$14,500**



(2) Two Ten Allis Chalmers all original, 3 pt. PTO, runs good
\$12,900 ea.



Kinze 2600 Planter 2004, 12/23, corn/bean, main frame no cracks or welds **\$27,500**



JD 450M Round Baler 3372 bales, twine & net wrap
\$34,500



JD 460M Silage Special 4x6, 4178 bales, net wrap & twine, only rolled dry hay **\$46,500**



JD 459 very nice, one owner, local, twine & net wrap, shed kept **\$32,500**



Clark 1000 Nitrogen Applicator 12 row, shed kept, local one owner **\$7,950**



NH BC5070 Like new, hyd. tension, applicator kit **\$21,900**



JD 7210 2 owner, 7100 hrs., PQ, nice local tractor
\$49,500



JD 7240 Planter 6/11, 30" spacing, Computrak 200 monitor
\$7,950



JD 4044R only 6 hrs., loaded with options, 2 sets rear remotes
\$52,500



JD 5090E open station, only 349 hrs., 12/12 PR trans, 2 sets remotes
\$58,500



JD 5020 Woods loader. Diesel, runs good. Use or restore
\$10,500



Pequea Manure Spreaders 25 bu-250 bu, PTO & ground drive **In Stock**



Pequea Hay Tedder 6 basket tedders, lift & caddy type **In Stock**



See Our Huge Inventory at
www.eaglevilleimplement.com

Reasonable Delivery Available Anywhere!



HUNTLAND TRUCK AND TRACTOR PULL

JULY 12TH & 13TH @ 7:00 P.M.
302 Cumberland Blvd Huntland TN



Classes:

Light Weight
Super Stock Tractors,
Limited Pro Tractors,
Mini rods,
4WD trucks and 2WD Trucks

Admission:

Adults: \$15
Kids 8 & Under: FREE

Contact: Tony Miller
(931) 607-9003



**Sponsors: Wreck-A-Mended, B&B Corner Stop,
Tall Pines Excavation, Russell Barnett Dodge**

All proceeds go to Huntland Recreation & Youth Activities



ARIENS

HILLS POWER-PRO



GRAVELY



shindaiwa



1711 Huntsville Hwy., Fayetteville TN 37334 • (931) 297-2066

200 Flowertown Rd., Tullahoma TN 37388 • (931) 393-6077

Check Out
Our Selection of
Gravely Mowers



We also have Side By Sides
& Skid Steers!



hillspower.com

FOWLER AUCTION

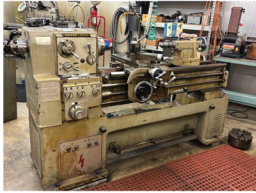
Turning Your Assets Into Cash

CNC MACHINE, INDUSTRIAL EQUIPMENT & TOOLS

197 Tipton Street • Paint Rock, Alabama

Online Bidding Closes Monday, June 10th • 7 PM

PREVIEW: Monday, June 10th Between 9 AM - 11 AM PICK UP: Tuesday, June 11th Between 9 AM - 3 PM



FOR MORE INFORMATION CONTACT:
DAVID VESS AT (256) 426-0005

LIVE & ONLINE AUCTION HEAVY DUTY TRUCKS, CONSTRUCTION EQUIPMENT, MOTORCYCLES, TRAILERS & MOTOR HOMES

Fowler Auction • 8719 Highway 53 in Toney, AL

FRIDAY, JUNE 14TH AT 10 AM



PREVIEW: Thursday, June 13th Between 9 AM - 4 PM
*All items may not be on site until auction morning.

FOR MORE INFORMATION CONTACT:
DAVID VESS AT (256) 426-0005

SEE ALL AUCTIONS AT WWW.FOWLERAUCTION.COM



"The Preferred Auction Company"

Fowler
Auction & Real Estate
SERVICE, INC.

8719 HIGHWAY 53 • TONEY, ALABAMA 35773
A MARKNET ALLIANCE MEMBER

46
Years
OF SERVICE

MICKEY FOWLER, CAI, AARE, CES, AMM, ALSL466,
TNSL1442, TN FIRM2315, MSSL701F, GASL1394
DANIEL CULPS, CAI, ALSL5070, TNSL5890
GREG BOTTOM, AA2959
ROYCE HORNSBY, AA2974
DAVID VESS AA3068

Toney: (256) 420-4454
Ardmore: (256) 423-4454
Athens: (256) 232-7788
Huntsville: (256) 859-5682



PACKAGE DEAL!

NEW MF 1835E Tractor
4-WD, 34 HP, Loader

With **NEW Woods 5' Rotary Cutter** *and* **NEW Woods 5' Box Scraper**

0% INTEREST FOR 60 MONTHS

NEW 2022 Massey Ferguson 4709, C/H/A, MFWD, Loader, 95 HP

0% FOR 60 MONTHS

NEW 2023 Massey Ferguson 2607H, MFWD, 74 HP, Loader

0% FOR 60 MONTHS

NEW 2023 Massey Ferguson 2850E, MFWD, Loader, 48 HP, 8x8 Synchro Shuttle

0% FOR 60 MONTHS

NEW 2023 Massey Ferguson 1835M, MFWD, Loader, 36 HP, Hydro

0% FOR 60 MONTHS

NEW 2024 Massey Ferguson 1745D Round Baler, 4x5 Bale, Min. 40 HP

0% FOR 48 MONTHS

NEW 2023 Massey Ferguson 1808 Wheel Rake, 8 Wheels, Center Wheel

0% FOR 48 MONTHS

NEW Can-Am Defender Limited HD10, C/H/A, Camo, 4-WD, Gas

SALE PRICE BELOW MSRP

NEW Can-Am Defender XMR HD10, Windshield, 4-WD Winch

SALE PRICE BELOW MSRP

NEW Can-Am Commander Max XT, 1000R, Gas, 4-WD, 4 Seater

SALE PRICE BELOW MSRP

NEW Kawasaki Mule Pro-FX 1000 HD, 4-WD, Gas, 1 Ton Cap.

SALE PRICE BELOW MSRP

NEW Kawasaki Mule Pro-FXT 1000 LE, Ranch Ed., Gas, 4-WD

SALE PRICE BELOW MSRP

NEW Kawasaki Mule Pro-MX, Camo, 4-WD, Gas

SALE PRICE BELOW MSRP

CALL US TODAY FOR ALL YOUR SCAG MOWER NEEDS!



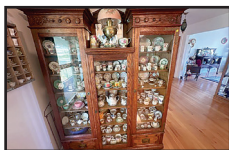
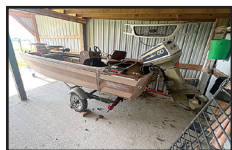
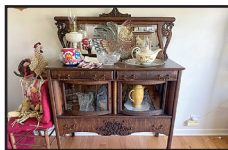
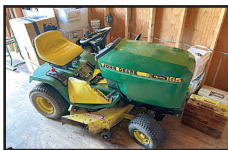
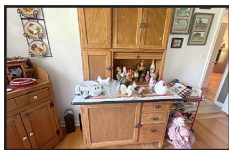
Massey Ferguson
Sales • Parts • Service
2212 N Main
Shelbyville, TN

931-735-6686
www.southboundpower.com

Online Living Estate AUCTION



Ends: Monday, June 17th • 7:00 PM
 Beautiful Home w/1.69 Acre Lot - Beautiful Antiques
 Ford Pickup, Boat, Tools, Nice Personal Property
Location: 660 Waco Rd., Lynnville, TN
Preview Day: Friday, June 14th • 2:00 PM - 4:00 PM



See More and Register To Bid At

vanmassey.com



VanMassey AUCTION & REALTY

(931) 433-8686

31 Lynchburg Hwy.
Fayetteville, TN 37334

TN Lic. 1711

AL Lic. 1289

MS Lic. 1609

FL Lic. 5344

Online AUCTION



Ends: Monday, June 10th • 7:00 PM
 Lawn Mowers - Tons of Contractor Tools - Old Collectibles & more!
Location: 126 Butch Circle, Hazel Green, AL
Preview: Friday, June 7th • 2:00 PM - 4:00 PM
Pickup Day: Tuesday, June 11th • 9:00 AM - 3:00 PM

Check this one out at vanmassey.com



VanMassey AUCTION & REALTY

(931) 433-8686

31 Lynchburg Hwy.
Fayetteville, TN 37334

TN Lic. 1711

AL Lic. 1289

MS Lic. 1609

FL Lic. 5344

Online Estate AUCTION



Ends: Tuesday, June 18 • 7:00 PM
Location: 1008 Lewisburg Hwy., Fayetteville, TN
Preview Day: Friday, June 14 • 2:00 PM - 4:00 PM

Very Nice Antiques, Home Furnishings & Decor, Old Collectibles, & More Selling For The Estate of the late Ray and Pam Parsley Steelman

[See More at vanmassey.com](http://vanmassey.com)



VanMassey AUCTION & REALTY

(931) 433-8686

31 Lynchburg Hwy.
Fayetteville, TN 37334

TN Lic. 1711

AL Lic. 1289

MS Lic. 1609

FL Lic. 5344

Online Equipment Consignment AUCTION

Location: 31 Lynchburg Hwy., Fayetteville, TN 37334

Ends: Monday, June 24th



All Types of Construction & Farm Equipment

Receiving Equipment: June 3rd - 7th • 9:00 AM - 4:00 PM

For More Info, Call Joe Massey at (931) 675-9606

vanmassey.com



VanMassey

AUCTION & REALTY

31 Lynchburg Hwy.
Fayetteville, TN 37334

(931) 433-8686

TN Lic. 1711

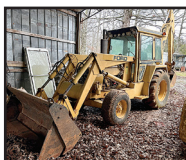
AL Lic. 1289

MS Lic. 1609

FL Lic. 5344

Online Estate AUCTION

Ends: Tuesday, June 11th • 7:00 PM



Location: 226 Rigsby Rd., Toney, AL
Backhoes - Tractors - Vehicles - Tools, etc.
Selling For the Wayne Fogg Estate

[See more at vanmassey.com](http://vanmassey.com)

Preview Day: Friday, June 7th • 2:00 PM - 4:00 PM • **Pickup Day:** Wednesday, June 12th • 10:00 AM - 3:00 PM



VanMassey

AUCTION & REALTY

31 Lynchburg Hwy.
Fayetteville, TN 37334

(931) 433-8686

TN Lic. 1711

AL Lic. 1289

MS Lic. 1609

FL Lic. 5344

Online Estate AUCTION

Ends: Monday, July 1st • 7:00 PM



3900 Sq. Ft. Home, Chevy Tahoe, Beautiful Home
Furnishings, Tools, Much More

[See More at vanmassey.com](http://vanmassey.com)

Location: 109 Sterling Dr., Huntsville, AL 35806 (In the Monrovia Area)

Preview Day: Friday, June 28th • 2:00 PM - 4:00 PM



VanMassey

AUCTION & REALTY

31 Lynchburg Hwy.
Fayetteville, TN 37334

(931) 433-8686

TN Lic. 1711

AL Lic. 1289

MS Lic. 1609

FL Lic. 5344



JD 1025R
280 hrs., bucket, belly
mower - **\$17,750**



Kubota 105s
4WD, shuttle shift
\$31,750



JD 5325
4WD, 1400 hrs.
\$43,750



JD 5225
2WD
\$14,750



JD 120C off the farm,
clean out bucket, reg.
bucket **\$47,750**



JD 4230
good tractor, 8200 hrs.
\$18,750



JD 4020, joystick, QA
bucket, straight as they come,
console - **\$18,750**



JD 550H
LGP, runs good
\$42,750



Kubota SVL 75-2
1600 hrs., w/bucket
\$37,750



Kubota L3301
750 hrs., 4WD
\$19,750



JD 160LC
5300hrs
\$63,750



JD 6120M
1700 hrs., new loader
Call



Palmer Dump Trailer
18', new liner
\$13,250



JD 455G
runs good, 3900 hrs.
\$24,500



JD 450H
6 way blade, 4200 hrs.
\$42,500



Hitachi 200 LC - good
machine, high hours
\$36,750



Takeuchi TB135
2000 hrs., hyd. thumb
\$26,750



JD 4240
Bucket & Hay spear
\$27,500



Lull 644B-4
good machine
\$26,750



LandPride Cutter
15' fold
\$9,750



JD CX15
15'
\$20,750



JD 8310R
2014, 5400 hrs., new engine,
off my farm - **\$158,500**



Takeuchi TL12
110 hp, 2100 hrs.
\$50,750



JD 9230
nice, 3 pt. hitch PTO,
6300 hrs. **\$129,750**



Cat D6T
2012, good machine,
13 1/2' **\$72,750**



JD 444J
quick attach bucket, spear,
good loader - **Call**



Trailboss - 2016, 20 ton, Pinter-
hitch, airbrakes, used very little, 20'
w/ 5' dovetail - **\$23,500**



JD 6430
4WD, loader, 5100 hrs.
\$58,750



Mack Dump
1998, good solid truck, 8U
trans, 350 eng. - **\$44,750**



JD Offset Disk
8', nice
\$7,750

Lots More Farm Equipment For Sale (Most Used On My Farm)



International
2004, Cat engine,
Adams 14 ton - \$17,750



**New 10'
Bog Disc 2432**
\$8,750



JD 700j
3500 hrs., Cab & Air, Root
Rake - \$92,750



JD 18C
Dirt Pan, good cond.
\$43,750



Takeuchi TB210R
Mini Excavator
\$13,750



Traverse Lift 8042
Cummins motor
\$24,750



Tanker
steel w/rubber coating
inside, 6000 gal - \$12,750



JD 8430
2006, good tractor
\$88,750



JD 450G winch,
5400 hrs., good machine
\$36,500



MF 243 600 hrs., one
owner, Perkins eng., 1032
loader \$18,750



Komatsu PC88MR
3828 hrs., w/42" Rut Cutter
and bucket - \$61,750



AMCO J42B Disk
offset, 15', used one time
\$24,750



JD 5603
99 hp, pre-def, 2200 hrs.
\$42,750



Int. 1566
\$16,750



JD 9870
used on farm
CALL

International Dump Truck, tandem axle \$17,750
Midland 6 yd. Dirt Scoop, very nice condition..... \$6,850
Lull 644B-42, Cummins diesel, operates well \$21,750
Fruehauf Equipment Trailer, 48' w/5' dovetail, w/side toolboxes \$18,750
JD 344E Rubber Tire Loader, w/ bucket..... \$21,700
Move All Equipment Trailer, w/winch, hydraulic dove tail \$12,750

Westfield Grain Auger, 90', Hyd. Swing, 13" \$7,500
Great Plains ADC 2220, 36', Air Drill \$34,705
MF 245, dsl, ps, 3000 hrs \$5,750
Log Grapple for JD Rubber Tire Loader..... \$3,750
Mack, 1989, 15' dump, good truck \$10,750
Detach Trailer, 3 axles, 2008, gas hydro, 30' web floor \$51,750



Midland Dirt Pan
6 shard, good shape
\$7,250



JD 4450
6242 hrs., runs good,
dual rear - \$43,750



Dump Trailer
20', good condition
\$15,500



JD 750K - 2014, 5400
hrs., w/ropes, good dozer,
rep photo - \$121,500



Cat D6T 016 - 5800
hrs., straight tilt, 2014, 11
1/2' blade - \$155,750



Kubota M6800
good tractor, 4WD, loader
\$21,750



Kenworth
2000, N14 Cummins, wet kit,
18 spd. - \$42,750



Komatsu 200PC
200 PC, JRB QA bucket w/
thumb, off the farm
\$76,500



JD 310SJ
ext. hoe, 4x4 bucket, pilot
control, county owned
\$46,750



Volvo EC160EL
new sprockets & rails, new
hyd. thumb
\$67,750

Call Gary 256-335-4919 Florence, Alabama
Used Trucks Plus TTL



SUMMERTOWN METALS LLC



12'x24'x10'-9'

- Free standing shed with slanted roof
- 3 - 4' Steel snoot trusses
- 3 - 12' Steel trusses
- 40-year, 29 gauge painted metal
- Reference ID: QO-0109435

~~\$6,525~~ **On Sale Now!**
\$6,225*

12'x36'x10'-9'

- Run-in/Loafing shed with slanted roof
- 4 - 4' Steel snoot trusses
- 4 - 12' Steel trusses
- 40-year, 29 gauge painted metal
- Reference ID: QO-0109893



~~\$7,400~~ **On Sale Now!**
\$7,100*

Contract must be signed and deposit made by June 31, 2024. Prices exclude tax and shipping. Installed exterior shell packages are installed by independent contractors and are limited to a 200-mile radius of our offices in Summertown, TN and Hyden, AL. Materials-only packages are limited to a 300-mile delivery radius of Summertown, TN & Hyden, AL.

SUMMERTOWN, TN & HAYDEN, AL (931) 500-1526

3864 Summertown Hwy Summertown, TN 38483 • 7760 County Hwy 5, Hyden, AL 35079

**Price includes material and labor. Delivery and tax extra. Labor provided by independent contractor. Pad must be level. Any rock or changes will incur additional cost. Codes and permits are the responsibility of the buyer.*



Installed for
40'x60'x14' \$28,780*

- Steel truss
- 1 - 12'x14' Garage door
- 1 - 36" Walk-in door
- 3 Windows
- 40-year, 29 gauge painted metal walls
- 25-year, 29 gauge galvalume roof
- ID: BKFA406014-3



Installed for
30'x60'x14' \$10,070*

- Steel trusses
- 40-year, 29 gauge painted metal gables
- 25-year, 29 gauge galvalume roof
- ID: BKFA306014-1



Installed for
30'x40'x12' \$49,519*

- Wood trusses w/overhang
- 2 - 10'x40' Side sheds
- 2 - 10'x10' Garage doors, insulated
- 2 - 36" Walk-in doors, half glass
- 4 - 3'x4' Windows
- 1 - 36" Cupola
- 4' Wainscoting
- Reflective insulation
- 50'x40'x4" Concrete pad
- ID: BKRG304012-6



Installed for
30'x50'x12' \$45,404*

- Wood trusses w/overhang
- 10'x50' side shed w/finished ceiling
- 1 - 10'x10' garage door
- 1 - 36" walk-in door
- 10 Windows
- 1-30" Cupola
- 40'x50'x4" Concrete pad
- ID: BKRG305012-1



Installed for
36'x24'x14'-12' \$10,975*

- Steel Truss
- 4' Snoot
- 18" Overhang
- 6" Ventilation along top front
- 4 - 4' Steel snoot trusses
- 4 - 24' Steel shed trusses
- 40-year, 29 gauge painted metal
- ID: BKFA24361412-1

MATERIAL-ONLY PACKAGE \$7,375*



WWW.SUMMERTOWNMETALS.COM

*Pricing may change without notice, and does not include tax or shipping**

DELIVERY AVAILABLE - TEXT/CALL 256-777-7137



C&B HD Cultipackers

6' 3-point hitch **\$2,900** • 8' 3-point hitch **\$3,500**

All sizes also available in hydraulic



C&B HD Roller Crimpers

6' pull type **\$2,400**

6' 3-point hitch **\$2,000**

8' 3-point hitch **\$2,200**

10' 3-point hitch **\$2,400**



Firminator G3 Food Plot Planter • Disks-Seeder- Cultipacker

3' ATV/UTV Unit **\$6,800**

6' 3-point Unit **\$9,700**

8' 3-point Unit **\$12,100**



C&B FARM + OUTDOORS

13976 Hwy. 72 West, Athens, AL 35611

www.cbfarmoutdoors.com • 256-777-7137

Delivery Available On All Our Cattle Equipment We Sell



Custom 50 Head Cattle Working System - \$6,900



Includes 90 degree sweep tub with slide gate and 20' alleyway. Includes a 10x20 holding pen, attached 10x20 sorting pen with a main 30x30 catch pen.



\$3,950

C&B Angus Cattle Squeeze
w/Built In Palp Cage



\$59 each

Econo 5x10 Corral Panels
Seconds #2



\$3,200

C&B Angus Auto
Cattle Squeeze Chute



\$4,900

C&B 160 Bushel Cattle
Creep Feeder w/Gates



C&B Mobile Grain Bins
3,000 lb. - \$3,000 • 5,000 lb. - \$3,500
6,500 lb. - \$3,900



\$3,950

C&B Hereford Auto Cattle
Squeeze Chute



C&B FARM + OUTDOORS

13976 Hwy. 72 West, Athens, AL 35611

www.cbfarmoutdoors.com • 256-777-7137

Delivery Available On All Our Cattle Equipment We Sell



LIVE ONSITE AUCTION!

9:AM Saturday, June 8th

7011 County Road 92, Rogersville, AL

The Carl & Jean Green Estate

4BR, 2BA Brick Home & 51.85 Ac+/-

Offered in 5 Tracts, Combinations & As A Whole

Also selling Tractors & Equipment!



CALL TERRELL PHILLIPS FOR MORE INFORMATION, 256-710-8651

UPCOMING AUCTIONS!

The Ewell Russell Estate

2 Properties & Equipment ~ June 2024

Check our website www.shanealbright.com for more info!

Call Ben Phillips for more information at 256-710-9683

Check Our Website for Weekly "Online" Only Auctions

www.shanealbright.com



SHANE ALBRIGHT AUCTIONS

6508 US-72 KILLEN, ALABAMA 35645

AL PHONE 256-757-8898 TN PHONE 931-762-5134

Shane Albright Owner/Broker/Auctioneer AL#1569 TN#5431
Ben Phillips Vice President/ Realtor/ Auctioneer 256-710-9683 AL#1331

UPCOMING AUCTIONS!

760 Acres +/- Farm

Highway 17, Sulligent, Alabama

Check our website www.shanealbright.com for more info!

Call Ben Phillips for more information at 256-710-9683

The Jimmy & Elizabeth Davis Estate

Begins closing at 6:PM Tues., June 11th

3BR,1BA Home & Personal Property • 420 Chilton Ave, Florence

Check our website www.shanealbright.com for more info!

LIVE AUCTION!

9:AM Friday, July 12th • 11444 US 278, Holly Pond, AL

Real Estate & Trucks, Trailers, Classic Cars, Equipment

Call Alex Pondick for more info at 256-757-8898

**Call us today at 256-757-8898 for a
Free Auction Consultation!**

Check Our Website for Weekly "Online" Only Auctions

www.shanealbright.com



SHANE ALBRIGHT AUCTIONS

6508 US-72 KILLEN, ALABAMA 35645

AL PHONE 256-757-8898 TN PHONE 931-762-5134

Shane Albright Owner/Broker/Auctioneer AL#1569 TN#5431

Ben Phillips Vice President/ Realtor/ Auctioneer 256-710-9683 AL#1331

ESTATE AUCTION SATURDAY

JUNE 15TH @ 10 AM

94 CHERRY LN. MORRISON, TN

ESTATE OF FRED BATTLES - PROPERTY OF MINNIE F. TUBBS

3 BR 2 BATH BRICK HOME & EXTRA LOT



0.465± AC LOT



REAL ESTATE SELLS AT 10 AM
VEHICLES, GUNS, EQUIPMENT, BOATS

Vehicles: 2016 Chevrolet Malibu LT turbo (10,392 mi.), 2002 GMC Sierra 4WD Extended Cab (158,364 mi.), 1998 Honda Four Trax, 1976 Ford Grand Torino 2 door **Guns:** Belgium Browning 22 cal. semi-auto long rifle, Volunteer Arms Commando Mark 45 semi auto "Tommy gun", Savage Model 93 bolt action 22 cal. WMR only, Gamo 45 cal. w/ Simmons 3-9x32 scope, Eastern Arms Comp. 16 ga. double barrel shotgun, Stevens Arms Comp. 12 ga. single shot, Ruger 22 LR cal. Model 10/22 w/ Leupold VX-11 scope, Savage Arms Revelation Model 350 Series P 20 ga. single shot, Remington 22 short/long TargetMaster Model 510, Winchester Model 67 22 cal. single shot, Marlin Stainless Model 60 22 cal. LR only, Winchester Model 1300 12 ga., Fred Bear F340 crossbow w/ Plano case. **Boats/Hunting/Fishing :** Hydro Sports LS175 w/ Mercury Optimax 150, Bass Tracker III w/ Mercury 35, ladder type tree stand, tree stand, deer antlers, several rods & reels, box of reels, 2 decoy owls, lifejackets, (2) coon hunter light, wooden canteen, deer head mount, Coleman lanterns, Warrior drone, Plano tackle box, several animal traps & cages, Hobart meat grinder, game dolly, plastic dog house **Equipment:** Yanmar YMG 1800D tractor, 2 wheel 5x8' trailer, 2 wheel 5x12' trailer, 4' tiller Reverse Flash 125, 4' rotary cutter, Yanmar RS1300 4' tiller, 5' grader blade, pair of John Deere front weights BM19780 32kg, 3' disc, Jaybar A10323 turning plow, Yanmar tiller, walk behind tiller, (7) steel posts, 18x21' carport, 7x10' metal storage building, 8 panel dog pen, 10x12' mini barn, roll of heavy duty chicken wire, (4) wooden posts **Tools:** poly ramps, metal ramps, 2 wheel yard cart, 3 ton floor jack, socket set, Craftsman leaf blower, Craftsman tool box w/ tools, creeper, Craftsman 39 piece tap & die set, Wizard soldering iron, ratchet drive set, Stihl FS44 weed eater, Highland ramps, Dewalt reciprocating saw, Stihl weed eater parts, Craftsman air impact gun 3/4", Craftsman air ratchet 1/2" drive, wire storehouse, Poulan Pro Pole Saw, Campbell Hausfeld air compressor 20 gal., Troy-Bilt push mower, Quantum 6.5 HP pressure washer, Briggs & Stratton classic push mower, Power Back 6000 watt generator, Troy-Bilt walk behind tiller, Stihl 041AV chainsaw, Black & Decker bench grinder, vice, Troy-Bilt XP pressure washer w/ Honda motor, 8' Werner stepladder, seeder, hand tools, shop vac **Misc.:** Whirlpool washer & dryer set, Frigidaire refrigerator, 2 chest height freezers, fans on stands, sombrero, cast iron skillet, clippers (Oster & others), Police motorcycle toy, clown lamp, (2) 3 piece bedroom suites, 2 sewing machines,

AND MANY MORE ITEMS TOO NUMEROUS TO MENTION!!!

Directions: In McMinnville head west on TN-55 W approx. 5 mi. Turn right onto Smartt Station Rd. .4 mi. Continue straight onto Hennessee Ave. .4 mi. Turn right onto Cherry Ln. Auction site on the right.
Real Estate Terms: Real estate sells first at 10 AM. 10% down day of sale. Balance due at closing within 30 days. Taxes to be prorated. Possession with deed. **Personal property:** Cash or check day of sale.

S.D.M.
SIMPSON
REALTORS AND AUCTIONEERS
(931) 473-LAND
5263
www.dmsimpson.com

David M. Simpson, Broker, Auctioneer Lic.# 4532 931-273-5253
Tiffany Simpson, Broker, Co-Owner 931-808-7080
Matthew Vandagriff, Aff. Broker, Aff. Auctioneer 931-212-8068

303 W. Main St. McMinnville, TN 37110

All printed information believed to be correct, announcements made auction date take precedence over all printed material.

AUCTION SATURDAY JUNE 22nd @ 9 AM 549 BILLY WEST RD. WOODBURY, TN

PROPERTY OF JOSEPH & ANNA LEID
4 BR 3 BA BRICK HOME W/ BASEMENT & 5.82± AC



REAL ESTATE SELLS AT 10 AM



KENNEL



OAK LIBRARY CABINET



DAVID BRADLEY

MINI TRACTOR



6X12' ALUM. TRAILER



TITAN 7' ROTARY CUTTER



12X36 INSULATED.BLDG.

SELLS SEPARATELY

FARM EQUIPMENT: David Bradley mini tractor w/ cultivator, harrow & turning plow, Kubota LA1154 loader, Titan 7' rotary cutter, Massey Ferguson 3 bottom turning plough, 2 wheel goat trailer, self-catching head catcher, Howse 7' disc w/ 8' drag, stainless steel post, (2) hay rings, Kilbros gravity wagon, (2) Troy Bilt walk behind tillers, lawn roller, grass catcher, ladders, Simpson 3200 PSI pressure washer, DR trimmer, Honda hydraulic self-propelled mower, 6x12' aluminum trailer, Polar trailer rubber, Echo chain saw, JW 3500i 3000w generator, iron picnic table, fire ring, garden boxes, large coolers, Craftsman shop vac, insulated hot bed, tea trough, John Deere wagon, 300-gallon fuel tank, 100-gallon fuel tank, portable, 42x80 dump trailer, portable chicken coop, North Star 20 ga. Trailer sprayer, Honda Powermate 7000w generator, Kubota pto driven vacuum

METAL WORKING: metal for fabricating, conduit & pipe, Speed air compressor, saw horses rated at 5K lbs., Rock Island vise, Hobart welder, Thermal Dynamics plasma cutter, welding tanks, Wilton vise, anvil w/ stand, welding table, plate steel, Continental 30 ton shop press, Vernon precision drill press, pallet jack, Marvel Model 8 band saw, metal chop saw, Clausing drill press, Powermatic drill press, Millermatic 250 mig welder (needs tune up), socket sets, shop tool chest, Fein magnetic drill press, Milwaukee cordless tools

WOOD WORKING: Jet 16" open stand planer, Ridgid spindle/edge sander, bench grinder, Makita miter saw, belt sander on stand, Jet JWL 1236 lathe, Kreg router table, Dewalt planer, Porter Cable pocket hole cutter, Delta band saw, Delta disk sander, Powermatic jointer 6", Jet drill press, Powermatic scroll saw Model 95, hand held routers & sanders, Makita cordless power tools, Hilti masonry drill, Makita Model Mac2400 air compressor, Powermatic 15" scroll saw Model 93

FURNITURE: queen sleigh bed, dresser, chest, glider, 4 pc. full size bedroom suite, oak sofa table, large desk, Minnesota Model C sewing machine, wooden office chair, oak library cabinet, oak slant top secretary desk, China cabinet, wall chime clock, saddle seat stool, 5' oak bench, oak queen size 4 post bed part of 4 pc. bedroom suite, marble top vanity, metal twin bed, baby bed, metal bunk bed (twin over full), full size sleeper sofa, school desks, cedar chest, teacher's desk, oak bunkbed, oak hat rack, full bed & dresser set, cherry chest, cow hide rug, 6' folding table, black wrought iron table & 4 chairs, painted pink wrought iron glass top table w/4 chairs, Ashley reclining sofa, reclining love seat, rocker glider w/ottoman, oak end table, oak coffee table, Howard Miller grandfather clock, reclining sofa, 4 pc. oak & marble queen size bedroom suite, chaise lounge, ceramic lamp, (2) French style chairs, drop leaf table, pair of side tables, cast iron dinner bell

MUSICAL INSTRUMENTS: Hamilton Chicago upright grand piano, Dulcimer (handmade by Jake Scott), Clemmer dulcimer, McSpadden dulcimer, accordion in case, pan flute, bowed psaltery

GUNS: Marlin .35 lever action w/Bushnell scope, Iver Johnson Champion 12 ga. Single shot

APPLIANCES: Electrolux washer & dryer, Maytag antique ringer washer, Whirlpool refrigerator, (2) Hisense dehumidifiers

FOOD PREPARATION: Criterion microwave, large Big Green Egg grill, Bunn coffee maker, Cuisinart grinder, Cosori food dehydrator, crockpots, 4-quart electric butter churn, cherry pitter, Deluxe food mill, Sanse Master food strainer, pasta machine, Wesco 6 qt. roaster, Pit Boxx cast iron roaster, large cast iron pizza griddle, SKG bread machine, Waring deep fryer, canned foods, canning jars, Meadow Creek PS120 smoker & chicken cooker, Traeger pellet grill, smoke houses, 60 gal. reverse flow smoker, apple grinder, (2) iron kettles, (2) kettle stands

LIVESTOCK: 5 goats and 1 hog

VEHICLES: 2003 Ford F250 4x4 7.3L diesel (201,095 mi), 1976 Chevy Malibu, 2007 Dodge Caliber (212,092 mi)

Directions: From the Hwy. 56 & 70S intersection in Woodbury head east on US-70S E 5.3 mi. Turn right onto Brady Higgins Rd. Turn right onto McMinnville Hwy. Turn right onto Billy West Rd. Property on the right.

Real Estate Terms: Real estate sells at 10 AM. 10% down day of sale. Balance due at closing within 30 days. Taxes to be prorated. Possession with deed. **NO BUYER'S PREMIUM!** **Personal property:** Cash or check day of sale.

S.D.M.
SIMPSON
REALTORS AND AUCTIONEERS
(931) 473-LAND
www.dmsimpson.com 5263

David M. Simpson, Broker, Auctioneer Lic.# 4532 931-273-5253

Tiffany Simpson, Broker, Co-Owner 931-808-7080

Matthew Vandagriff, Aff. Broker, Aff. Auctioneer 931-212-8068

303 W. Main St. McMinnville, TN 37110

All printed information believed to be correct, announcements made auction date take precedence over all printed material.

AT AUCTION! SATURDAY, JULY 6th @ 10AM

2 BUILDINGS ON THE SQUARE 108 & 110 1st AVE SE, WINCHESTER, TN 37398

INSPECTION DAY: SUNDAY, JUNE 30TH 1PM-4PM

BID NOW ONLINE AT <https://www.wintonauction.com> -OR- BID LIVE ONSITE DAY OF SALE



Downtown Winchester, TN has come to life in recent years thanks to the thousands of visitors at Tims Ford Lake each weekend and also because of the efforts of the Winchester City Government and support from the Winchester Downtown Program. The historic public square and downtown area is now home to a multitude of restaurants, boutiques, residential apartments, professional offices, and a classic movie theatre. On Saturday, July 6th @ 10am, two commercial buildings located right on the public square will be offered for sale at auction! These buildings are currently occupied by high quality tenants that operate high traffic businesses. Each building also has room to expand upstairs for either commercial or residential purposes. There is no question that downtown Winchester is on the map, and this is your chance to get in on all the action!



Terms on Real Estate: 10% down day of sale. Balance on or before 45 days after. Property Being Sold As Is With No Warranties Expressed or Implied. We Reserve the Right to Regroup as we see fit. NO BUYER'S PREMIUM! WHAT YOU BID IS WHAT YOU PAY!

Contents of this ad were derived from sources believed to be correct but not guaranteed. Sale day announcement take precedence. Principal Auctioneer: Thomas Ore TN Lic. #6839



Unmatched Strength, Unparalleled Design: Discover Cold-Formed Steel Structures Today!

-  **SHORTER LEAD TIMES**
Measured in Weeks...Not Months
-  **QUICKER INSTALLATION**
Start Using Your Building Sooner!
-  **20-25% LESS CONCRETE**
Cut Down on Site Preparation Costs!

-  **DRILL-IN ANCHORS**
NO Need For Pre-set Anchor Bolts!
-  **A CLEANER APPEARANCE**
Ideal for Building
-  **PRECISE COMPONENTS**
Tighter Tolerances = Easier Assembly!



17713 US-72
Athens, AL 35611
(256) 232 - 8080



METALMAXBUILDINGSYSTEMS.COM

ABSOLUTE ONLINE AUCTION

Large Collection of Guns, Knives, Coins, Crocks & Vintage Antiques

BIDDING PERIOD: May 28th-June 9th 5:00PM

Pick Up Time: June 12th 12:00-6:00pm. Pick Up Location: 508 S. Cannon Blvd. Shelbyville, TN 37160

FIREARMS ONLY PICKUP LOCATION: SLC Firearms LLC- 917 N. Main St- Shelbyville



For Registration & all details go to www.craigwheeler.hibid.com

ABSOLUTE ESTATE AUCTION

CUSTOM BUILT BRICK HOME & LOT- CAR-TRUCK-ANTIQUES-PERS.

Property of the Late Jim & Barbara (Ellis) Petty

207 Megan Circle - Shelbyville, TN

SATURDAY, JUNE 15th - 9:00 am

For all details & personal property list go to CraigWheeler.com



ABSOLUTE AUCTION

4,100 sq. ft. Home Overlooking Duck River, Building Lots & 4.91 Acres in 4 Tracts

613 Kingree Rd. - Shelbyville, TN

SATURDAY, JUNE 22ND - 12:00 NOON



See Website for Survey

For all details go to CraigWheeler.com



TERMS: go to CraigWheeler.com

ANNOUNCEMENTS MADE DAY OF SALE TAKE PRECEDENCE OVER ALL ONLINE ADVERTISING & PREVIOUS ADVERTISING HOMES BUILT PRIOR TO 1978 MAY CONTAIN LEAD BASED PAINT. THIS AD SERVES AS NOTICE TO ANYONE TO CONDUCT ASSESSMENT PRIOR TO AUCTION

CraigWheeler.com

931-684-9112



ONLINE ONLY CONSIGNMENT AUCTION

Sale Location is 1575 Jordan Rd., Huntsville, Alabama



Auction Starts: May 27th - Ends June 3rd

Preview: May 30th - June 1st or by appointment

We welcome consignments of All types of farming equipment, all types of construction equipment, cars, trucks, equipment trailers, cattle trailers, motorcycles, airplanes, lawn and garden equipment, and more.

Our slogan is "We know what we sell!"

Bid Online: **UnderwoodlandCompany.com**

Please call us to consign:

Brett Underwood (256) 655-9266 • Ricky Underwood (256) 679-2039

Ricky Underwood - Graduate of Nashville Auction School 1990 & Auction Market Institute
Bloomington, IN 1999

Auctions By

Buying or selling land please give us a call

Brett Underwood (256) 655-9266

Ricky Underwood (256) 679-2039

2806D Winchester Rd., New Market, AL 35761

ricky@underwoodlandcompany.com

brett@underwoodlandcompany.com



Underwood Land Company, Inc.

A Real Estate & Auction Company

ABSOLUTE ESTATE AUCTION

114 GOOSE CREEK ROAD
SHELBYVILLE, TN (FLAT CREEK COMMUNITY)

Saturday, June 15th
10:00 AM

Tractors, Farm Equipment, Tools & Personal Property

Selling for the Estate of Harold McGee

TRACTORS: Kubota M9960 - Cab & Air - 4WD w/ Kubota LA1353 Loader & Bucket (2,253 hrs), Ford 5030 - Canopy - w/ Woods LU126 Loader w/ Hay Spear (1,460 hrs), Ford 4630 w/ Canopy (1,471 hrs)

HAY EQUIPMENT: John Deere 458 Baler (4'x5' rolls) w/ monitor, 8 wheel V rake, hay tedder, Krone AM 243S 8' disc mower

OTHER EQUIPMENT: Bush Hog brand 286 - 6' 3pt. Bush Hog, 2 gang Ford Turning Plow, 2 row cultivator, J Bar Rock Rake, universal Ford bumper, Subsoiler / potato digger, 3 pt. Cyclone seed sower, (1) Front Quick Hitch Hay Spear, (2) 3pt hay spears, draw bar & top links, fence stretcher, 100 gal fuel tank w/ electric pump.

TRUCK: 2002 Chevrolet 3500 1 ton truck, automatic, 6 liter Vortec (348,599 miles)

TRAILER: Hank Williams, Hi-Tensile Gooseneck Trailer 25' w/ dovetail

FARM TOOLS, SHOP TOOLS, & MISC: Asst garden & farm tools (hole diggers, tamp bars, post driver, barb wire fence stretchers, shovels, rakes), used tractor tires, log chain, 3 ton floor jack, jack stands, craftsman toolbox, large asst of tools (including MAC, Snap on, Husky & Napa. Wrenches, rachets, & sockets etc.), Asst power tools, Stihl BG55 gas blower, Stihl Q26 chain saw, battery charger, 5 rolls baler twine, receiver hitches, 4 gallons performance plus 15W-40 Diesel oil, asst bolts, nuts, & screws, asst oil & lubricant, tarps, lumber, 2 Shelbyville Eaglettes Stadium seats.

Visit parksauction.com for more pictures!



AUCTIONEER: REX BICKNELL 931-580-0116 Lic #1970

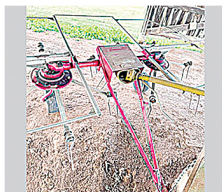
DIRECTIONS: From Shelbyville, take Hwy 82 S to Flat Creek Community. Turn right on New Center Church Rd, left on Goose Creek Rd, auction signs posted.
TERMS: Cash or Check ONLY day of sale.

ALL ANNOUNCEMENTS MADE DAY OF SALE TAKE PRECEDENCE OVER PREVIOUS ADVERTISING. ALL INFORMATION DEEMED RELIABLE BUT NOT GUARANTEED.



615-896-4600 or TOLL FREE 1.877.465.4600
FIRM #3984 www.parksauction.com

JOHN DEERE 5090E, open station, only 349 hours, 12/12 PR trans, 2 sets of remotes, \$58,500. (615)274-2200.



1998, BIG TEX TRAILER, 20'x5', dovetail, 20gn, tires like new, fold-out ramp, clear title, \$6,500. (931) 247-5900

PEQUEA TT4000 TEDDER, 18', \$7,950. (931) 722-8276

WANT TO BUY FJ40 Toyota, in model years from 1975 to 1980. (931) 607-9737

MASSEY-FERGUSON 1610 HAY TEDDER, good shape, barn kept, \$2,000. (256) 777-5346

WAYGU / BLACK ANGUS YOUNG BULLS, HEIFERS We have 3/4 Waygu and 1/4 Black Angus young bulls and heifers, 14 to 18 months old. Heifers are for \$2,000, and bulls are for \$2,000 to \$2,800. Bulls are old enough and ready for service. (615) 504-9784 roger.rgbuilders@gmail.com

JOHN DEERE 7400 tractor, with 725 John Deere loader, 9,965 hours, no third gear, runs good without engine, starts/runs good, still a good tractor, \$22,000. (615)464-7080.

1992 CHEVROLET KING CAB pickup for sale, 4WD, 350 automatic, runs good, good tires, blue exterior, \$4,000. (931)235-0179.

ONE SET OF, 13.6.28 of tractor tires on wheels, 90% tread, VGC, \$400. (931)314-5912.

ONE 18.4.34, TRACTOR tire, 75% rubber, \$200. (931)314-5912.

JOHN DEERE L341 for sale, 16,000 bales, 3x4 bales, ready to go! \$92,500. (615)274-2200.

BUSH HOG FOR SALE, 5' bush hog, \$600. Lebanon, TN. (615)714-3894.

INGERSOLL RAND 175 John Deere diesel air compressor, \$2,500. Also, 6,000lb. Heiser pneumatic forklift, \$2,850. (931)254-3522.

TWO MULE PLANTERS FOR SALE, \$350 for both. (256)435-4269.

HEAVY DUTY PALLET FORKS, LIKE NEW for sale, \$600. (615)569-0891.

2 NEW HOLLAND 258 rakes, with rubber teeth; also, New Holland 252 rake hitch, all in good condition, \$9,500. Pics and delivery available. (931)808-8095.



CORRAL PANELS, 16 GAUGE, 6' tall, good inventory, 8' up to 16' long. FandLivestock.com; (615) 653-8913

VERMEER TE170 TEDDER, 18', excellent, \$7,250. (931) 722-8276

TWO MULE PLANTERS FOR SALE, \$350 for both. (256)435-4269.

TWO 10' BUNK FEEDER TROUGHS for sale, with poly liner, \$200. (931)703-4404.

JOHN DEERE OFF-SET DISK, 8', nice, \$7,750. (256) 335-4919

10% DISCOUNT ON ALL Instock Trusses For The Month Of June

In Stock items are:



Wood Trusses

- 40' wood truss 2x6 top and bottom chord
- 30' wood truss 2x6
- 24' wood truss 2x6
- 24' wood truss 2x4



Steel Trusses

- 40' gable truss
- 30' gable truss
- 24' gable truss
- 24' side shed truss
- 20' side shed truss
- 16' side shed truss



3800 New Herman RD Fayetteville, TN

Phone: (931) 759-5178

Fax: (931) 759-5179



ONLINE ONLY

FARM & CONSTRUCTION EQUIPMENT CONSIGNMENT AUCTION

Ends Thursday June 20th at

6:00pm CST

On bid.uselevel.com

Consign Now

Live Online Bidding by



www.uselevel.com

Let Us Help You Turn Your Excess Equipment Into Cash

5755 Louise Rd
Cunningham, Tn 37052



Contact Us
931-216-4910

NTTALLC.com

Bryan Knight Tn License #7383

Give Us A Call To Set Up An Appointment To bring In Your Consignments



Last Day For Consignments Will Be June 15th

IS WILDLIFE EATING YOUR PROFITS?

Try penergetic b WV today!

PRODUCT
INFO:



Ask us about our small mammal
and bird deterrents!



**CALL OR EMAIL US FOR
MORE INFORMATION!**

361-771-2755

penergetic@bhgenetics.com
www.penergeticsolutions.com

WE HAVE A GOOD SUPPLY IN STOCK FOR SALE

DECATUR CONTAINER

5375 Marsha Ave. Decatur, AL 35603

256-751-3800

Providing Quality, Low-Cost Storage Solutions Since 1995



Mobile Offices

- 8' widths
- 20'-40' lengths
- With or without AC
- Custom Built



20'x8'x8½



40'x8'x8½



40'x8½'x9½

Used Shipping Storage Containers & Dry Van Rentals

Call Jason Cato (205) 529-2699.

Office (256) 751-3800 • Email: Jason@DecaturContainers.com

MIRAFOUNT LIVE-STOCK WATERERS for sale, Call for big savings. (931) 675-3260

JOHN DEERE OFF-SET DISK, 8', nice, \$7,750. (256) 335-4919

APPROXIMATELY 100 CLIPPER seed cleaning screens, 42"x34", all for \$500. Pics and delivery available. (931)808-8095.



22 REGISTERED BLACK ANGUS and Registered Red Angus, 15 month old bulls, 1,100lbs. plus \$1,850 and up. Superior fertility, calving ease and performance. Cow herd has excellent legs, feet and udders. All bulls developed hard on forage to work for you! Most all our bulls qualify for all 3 categories of TAEP. Located in Rome, GA, 20 miles past Centre, Alabama. Joe Gibson, www.gibsoncattle.com; (706)506-3026.

JOHN DEERE 459 round baler for sale, very nice, one owner, local, twine and net wrap, shed kept, \$32,500. (615)274-2200.



JOHN DEERE 2355 tractor for sale, runs and drives great, 9,356 hours, field ready, \$10,500. (931)759-5178; (931)675-8915.

WANT TO BUY, ARROWHEADS and Indian relics. (256)420-8075.

2004 FORD F-150 FOR SALE, extended cab, runs good, \$3,750. Call between 8a.m.-5p.m., (931)939-4999.

HEAVY DUTY PALLET FORKS, LIKE NEW for sale, \$600. (615)569-0891.



DIAMOND C MDT206 DUMP TRAILER, \$12,689. PowerQuip located in Albertville, AL. Call for more information and pricing. (256) 878-1631



CORRAL PANELS, 16 GAUGE, 6' tall, good inventory, 8' up to 16' long. FandP Livestock.com; (615) 653-8913

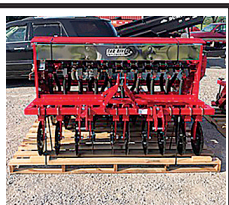
APPROXIMATELY 100 CLIPPER seed cleaning screens, 42"x34", all for \$500. Pics and delivery available. (931)808-8095.



2023, ACCORD Tar River SAYA conventional till drills. \$3,525 for 4' and \$3,895 for a 6'. In stock and ready to go. Call Chris at Farm Service Solutions in Leoma, TN, or visit farmservicesolutions.com; (931) 242-7675 stuttsjc@yahoo.com

TWO TRACTOR TIRES, 2 with tubes, nice tires, 18-4-34, very good condition, \$500 for both. (931)808-8490; (931)728-5490.

To Place A Classified Call 800-247-7318



2023, TAR RIVER SAYA NO TILL DRILL These 55" and 78" Drills are set up on 7.5" spacing and will plant a variety of seeds from corn, beans, and wheat, to fescue and clover. Stainless steel boxes let you drill fertilizer at the same time as you plant seed. \$5,900 for 55" and \$6,995 for a 78" plus tax. Call Chris at Farm Service Solutions in Leoma, TN; or, visit farmservicesolutions.com; (931) 242-7675

0% Financing on Vermeer Hay Equipment

ALL VERMEER EQUIPMENT Sold Field Ready



Pool Farm Equipment Is Proud to honor the 2024 TAEP

New Vermeer Equipment In Stock
We also carry Vermeer Feeding Solutions
Schuler is now owned by Vermeer

SCHULER EQUIPMENT IN STOCK NOW:

Schuler 5021 Mixer • Schuler BF175 Feed Wagon • Call for prices
Check out our website: www.PoolEquipment.com



Used Equipment:

- Vermeer 6650 Rancher, net/twine, around 10k bales Call For Price
- Vermeer M7050 Mower, 9'3" Call For Price
- Vermeer VR820 Rake, 8 wheel Call For Price
- Vermeer 505 Super I, nice, twine only Call For Price
- Kubota Trail Mower, 10' 5" cut Call For Price
- Schuler Mixer Call For Price

Bush Hogs In Stock Now! Ready To Go To Work!

- 2215, 15' Call For Prices
- 4115, 15' Call For Prices
- 1812, 12' Call For Prices
- 3308, 8' Call For Prices
- BH317, 7' Call For Prices
- BH316/BH216, 6' Call For Prices
- BH115/BH215, 5' Call For Prices
- Tillers, 5', 6', 7', In Stock Call For Prices

We Also Carry Tucker Milling Feed & Have Plenty Of Poultry Supplies In Stock

Hayliner 42' and 37', In Stock Now!!, Call For Price

If we don't have what you want, we'll go get it!  **256-685-0556 Office**
256-476-3546 Chris Pool
256-565-7780 Owner, Norman Pool

Pool Farm Equipment Co.
23971 Hwy. 157 • Town Creek, AL 35672 



TIG WELDER AND MAINTENANCE LABORERS 43 FABRICATION IS HIRING FOR A TIG WELDER AND MAINTENANCE LABORERS, 1st shift, 40 hours a week, some overtime from time to time. Pay based on experience. Call for information, (931)270-8389; or, send resume to service@43fabrication.com. (931) 270-8389

MIRAFOUNT LIVE-STOCK WATERERS for sale, Call for big savings. (931) 675-3260

43 FABRICATION Where Customers are our top priority! We are a multi-craft welding and machine shop that offers equipment rigging and installation. Offering welding, fabrication, manual and CNC machining, CNC plasma cutting, production fabrication services, custom fabrication, automation, industrial maintenance services, industrial equipment installation, project management, industrial door/dock service, industrial plumbing, industrial electric and more! Call or email us for all your commercial and industrial repair needs! (931)270-8389; or, service@43fabrication.com. (931) 270-8389

JOHN DEERE 4240, bucket and hay spear, \$27,500. (256) 335-4919

1963, JOHN DEERE 1010 tractor for sale, runs, 2WD, \$3,000. (931)235-0179.

FOR SALE, REGISTERED BLACK ANGUS BULLS, will qualify for the full TAEP money, all are by the top AI bulls in the breed. Crawford Angus. Lewisburg, TN. (931)205-2450; (931)359-2633. crawfordangus@bell-south.net

2004 FORD F-150 FOR SALE, extended cab, runs good, \$3,750. Call between 8a.m.-5p.m., (931)939-4999.



ADVANCED WIND REEL SYSTEM, 70" Heavy Duty Skid Steer Rock Picker. With rotating reel to sweep rocks and roots up in the slatted bucket, this picker does great gathering up of unwanted debris and leaving the dirt behind, \$6,000. Call Chris at Farm Service Solutions; or, visit farmservicesolutions.com; (931) 242-7675



INDUSTRIAS AMERICAN 3 POINT CUTTERS Heavy 11 gauge deck, 90 HP gearboxes with slip clutch. 6' \$1,600; 7' \$1,900; 10' \$3,750. Call Chris at Farm Service Solutions in Leoma, TN; or, visit farmservicesolutions.com; (931) 242-7675

2016, TRAILBOSS 20 TON TRAILER, Pintle-hitch, air brakes, used very little, 20' with 5' dovetail, \$23,500. (256) 335-4919

To Place A Classified Call 800-247-7318



JUNE SPECIALS!



40' x 60' x 14'6"
Building Package - \$13,642

Roof Only - \$7,332
 *Other sizes and styles to choose from

30' x 36' x 10'6"
Building Package - \$7,416

Roof Only \$3,758

36' x 48' x 12'6"
Building Package - \$10,329

Roof Only - \$5,611

Metal Roofing For Your Home & Farm



257 Anthony Lane • Shelbyville, TN
931-680-0001 • (888) 992-0005

Open Monday - Friday - www.discountmetalroofing.com

Includes:

- 20-year Galvalume Roof,
- 40-year Painted Walls
- 1 - Sliding door
- 1 - Walkdoor
- 6x6 .60 CCA Posts
- 2x6 YP Purlins and Band Boards
- Trim and Fasteners

Pricing subject to change without notice. All prices plus tax.

COVINGTON 2 ROW planter, 3pt. hitch, with extra plates, \$600. (731)617-0602.

OMC hay bine hay-master, shed kept, \$750. (615)691-0479.

WANT TO BUY, HONDA 300 four wheeler in any condition. Moulton, AL area. (256)974-3774.

8' PEG HARROW for sale, 3pt. hitch, \$450. (205)353-7540.

ROME 10' OFFSET bog disc for sale, very heavy duty, \$6,500. (931)629-1815.

1953, FORD JUBILEE tractor for sale, motor needs work, \$950. (256)577-5051.

OLD BARNS WANTED, we take down old barns. Call T&M Demolition at (270) 962-7058

KUBOTA M6800, 2WD, remotes, 1,500 hrs., \$15,900. (931) 729-2320.

JOHN DEERE 450M ROUND BALER for sale, 3,372 bales, twine and net wrap, \$34,500. (615)374-2200.

WANT TO BUY, ARROWHEADS and Indian relics. (256)420-8075.

2004 FORD F-150 FOR SALE, extended cab, runs good, \$3,750. Call between 8a.m.-5p.m., (931)939-4999.



IRON CRAFT flexwing cutters. These cutters have a 10 gauge smooth top deck, replaceable skids, spring suspension, safety chains, and solid tail wheels. Model 2512 12' \$13,995. Model 2515 15' \$16,995. Model 3515 Heavy-duty 15' \$19,995. Call Chris at Farm Service Solutions in Leoma, TN; or, visit farmservicesolutions.com; (931) 242-7675

1998 DODGE ONE TON 4x4, auto trans. flatbed, 4 tool boxes under, electric brake, wench, shed kept, 156k miles, \$26,000; D20P Komatsu dozer, 6-way blade, 90% u/c, new steer clutches, canopy, \$16,500. (931)242-0531.

KOMATSU 30 FORKLIFT, hard surface, propane, \$3,500. (256) 773-8080

WANT TO BUY, goats, sheep, chickens, and guineas. Ardmore, TN area. Call, (256)777-0065; (931) 427-8477

KUBOTA M6800, 2WD, remotes, 1,500 hrs., \$15,900. (931) 729-2320.

JOHN DEERE 5100M tractor for sale, 4WD, 2,600 hrs., shuttle shift, remotes, \$29,900. (931) 729-2320

BUSH HOG 3715 BATWING CUTTER, 15', \$8,000. (256) 773-8080

Cowherd Equipment & Rental, Inc.



Penta 4030
 Several Other Models In Stock



Jaylor 5575
 In Stock - Call



Hagedorn 5290
 In Stock - Call



Nuhn Lagoon Pump
 8'; Call for more info



Herd-Boss Feeders
 In Stock - Call



Dion Scorpion 300
 In Stock - Call

Numerous Used Mixers Available!

For more information:

Cowherd Equipment & Rental, Inc.

1483 Old Summersville Rd. • Campbellsville, KY 42718

270-465-2679 • 270-469-5095 • 270-469-0398

DONKEYS JENNYS JACKS GELDINGS
 We specialize in donkeys for many years. We also bring donkeys for church functions birthdays etc. We deliver! We also buy donkeys. (229) 305-0801 pam-farmlife@gmail.com

To Place A Classified Call
 800-247-7318



VALLEY ICON®

The Valley, ICON® series of smart panels gives you ultimate control of your pivots and time. This smart irrigation technology comes with an intuitive, full-color touchscreen and the option to program your pivots from the edge of your field*. Plus, it comes with AgSense® already built in and ready-to-use.

Easy to use and an easier decision to make. Contact us today!



VALLEY 

valleyirrigation.com

*Limitations based on field conditions.

LIFE JUST GOT EASIER.



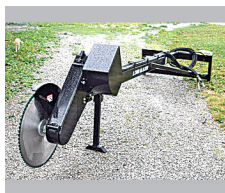
Rooted in Faith

EST. 2022

CA1105

1811 Wilson Parkway
Fayetteville, TN 37334
(931) 297-2697

Faith, Family, and Farm



CARBIDET tipped blade; ALSO large variety of skid steer attachments in stock, Elkton, KY. (270)886-1097.

JOHN DEERE 7210 for sale, 2 owner, 7,100 hours, PQ, nice local tractor, \$49,500. (615)274-2200.



ROBINSON ENVIRONMENTAL LAND CLEARING forestry mulching, boom mower bush-hogging, agricultural stump grinding and skid loader work. Call David, (615) 631-0638

CALF CREEP FEEDER for sale, 600lb. capacity, \$300. (931)703-4404.

DAIRY CATTLE 55 dairy cows, half are Holstein and half are Holstein/Jersey crosses. Two weeks to four months in milk. Three to five years old, square udders, low cell count. \$1,800 for 75% of herd or bid on complete herd. Case, Lafayette, Alabama. (334)755-5109.

JOHN DEERE 7210 for sale, 2 owner, 7,100 hours, PQ, nice local tractor, \$49,500. (615)274-2200.

WANT TO BUY 430 John Deere tractor, Oneonta, AL (205)353-2557.

VICON KM321 disc bine, \$7,500; Ford 6600 diesel, Ford loader, \$8,000; 52" Snapper mower, 23hp. Briggs, hydro drive, all like new and shed kept. (615)691-0479.

1953, FORD JUBILEE tractor for sale, motor needs work, \$950. (256)577-5051.

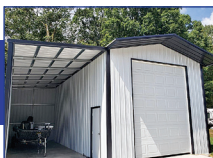
VICON BRAND NEW RAKE TEETH for sale, approximately 500 teeth. \$425 for all. (256)810-1153.

CALF CREEP FEEDER for sale, 600lb. capacity, \$300. (931)703-4404.

HBH COTTON WAGON, 26' long, no sideboards, used to haul hay, tandem rear axles, \$2,000. (256)753-2318; or, (256) 558-0812

CUSTOM STEEL BUILDINGS

LIFETIME METAL ROOFING, SHAKE SIDING, VINYL SIDING, WINDOWS, GARAGE DOORS



Financing available! Check us out on Facebook!

Over 30+ Colors Available



Clark's Home Solutions, LLC

792 David Crockett Hwy. | Winchester, TN 37398



Call today!
(931)962-8859

We Have All Your Concrete Needs!

ALL PRODUCTS STEEL REINFORCED



Catch Basins

Headwalls

Manholes

Life Protector Partial Bury (80"x64"x42") Not converted septic tank

- Strong steel reinforced precast 4500 psi concrete with fiber mesh
- Partial bury sheltered unit/easy to install
- Easy entrance access (steps not ladder)
- Outside measurements: 5'4" wide, 11'0" long 6'8" tall

Above Ground Storm Shelters

Sizes: 6'x10'x7'; 6'x6'x7' / wheelchair accessible
Anchors Kits available

Tankersley Concrete Co., Inc.

1630 Rock Crusher Rd., Lewisburg, TN 37091 • **931-359-3112** • Owners: *Bubba & Lynn Tankersley* • **In Business Since 1946**

Check out our website @ www.tankersleyconcrete.com

EZ-TRAIL NEW 37' header trailer for sale, 4 wheel steer, \$7,000. (615)464-7080.

OHN DEERE 1025R, 280 hours, bucket, belly mower, \$17,750. (256) 335-4919

PRESSURE TREATED PINE FENCE BOARDS for sale, 1x6x14ft; 1x6x16ft; 2x6x16ft available. (931) 675-3260



DEWEZE SUPERSLICER roll bale feeder, \$19,500. "The best way to feed what you need-Stop your hay loss. Give us a call, RRP Truck Equipment, Sparta, TN 38583. (931) 761-3554

BRIGGS AND STRATTON gas generator for sale, 5,000 watt, 110/220v, \$100. (931)698-6020.

WANT TO BUY, JOHN Deere 5310 tractor, 2WD. (270)881-2403.

WRANGLER PARTS FOR SALE, used machines wanted. Deutz engine parts. Martin's Maintenance, Monday-Friday, 8a.m.-5p.m. (270) 265-5040



CATTLE SWEEP SYSTEMS Heavy Duty galvanized 8 bar 6' tall. 90 degree with 10' of alley starts at \$1,480. 180 degree w/20' of alley starts at \$2,475. We can add as needed to customize your system. Call Chris at Farm Service Solutions in Leoma, TN; or, visit farmservicesolutions.com; (931) 242-7675



H&S Skid steer pallet forks 900 lb. capacity \$550, 2,000 lb. \$750, 4,000 lb. \$850, 5,500 lb. \$1,150. Skid Steer, John Deere 100-500 series loader, and Global Euro quick attach available. Call Chris at Farm Service Solutions in Leoma, TN; or, visit farmservicesolutions.com; (931) 242-7675

Winter Timber Outdoors Gun AUCTION

1124 US 72 East, Athens, AL 35611

SATURDAY, JUNE 29TH @ 10:07 am

Over 200 Brand New Firearms

Alexander Arms, Battlearms, Beretta, Bergara, BirdDog, Blueline, Browning, Century, Christianson, CZ Bren2, Diamonback, FN, GForce, Glock, G02, H&K, HM Wilson Combat, JTS, Kel-tec, Kimber LWRC, Northstar Arms, PoF, PTR, Radikal, Rossi, Ruger, Sar USA, Savage, SIG, Springfield, Stoeger, Taurus, Thompson Station, S&W, Springfield, Tikka, Walther, Wilson, Winchester, Workhorse, & Many More

TERMS: 10% Buyer's premium. Full payment auction day by cash or check accompanied by bank letter guaranteeing payment to Garner Auctions, Inc. Sales Tax will be collected.

Garner Auctions, Inc.

10334 Paradise Shores Drive • Athens, AL 35611

(256) 233-5699 or (877) 914-SOLD

Email: garnerauctionsinfo@gmail.com



Ken Garner ALSL 1002 • TNSL 2034
L.K. Garner AA3071 AL Real Estate 160158
Zac Garner AL Real Estate 148754

LIVESTOCK & FLATBED TRAILERS for sale, must see, different sizes and options. Financing available. Wholesale Trailers, Lebanon, TN. (615) 714-3894



MAHINDRA 5500 for sale, 50hp shuttle shift, loader, remote, \$17,900. (931)729-2320.

WRANGLER PARTS FOR SALE, used machines wanted. Deutz engine parts. Martin's Maintenance, Monday-Friday, 8a.m.-5p.m. (270) 265-5040

To Place A Classified Call
800-247-7318



WATSON METALS

We Roll-Form and Manufacture Metal Roofing and Supplies, and we service all of Middle Tennessee and surrounding areas.

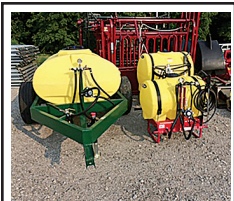
WHAT WE CARRY

- Tuff Rib Panel
- PBR Panel
- Watson Wave Panel
- 5V Panel
- Corrugated Panel
- Standing Seam Panels in 1", 1.5" & 2"
- Mechanical Seam Panels
- Board & Patton Panels
- Metal Shingles
- Perforated Panels in 20+ Colors
- Custom Bent Trims
- Roll-Form Standard Trims
- Closures
- Screws For Wood & Metal
- Stock Screws 1" - 3"
- Over Size Screws
- Solar Seals All Colors & Clear



Over 20 Years Of Quality Service & Experience
Monday thru Friday 7:00 AM - 4:30 PM
238 Interstate Dr., Manchester, TN 37355

(931) 728-8185
www.watsonmetals.com



AG SPRAY EQUIPMENT
3-point and pull-type sprayers come with boomless nozzle. 3 point sprayers all have hand wands. 3 point 65 gal \$1,450, 110 gal \$2,600, 150 gal \$2,950, 200 gal \$3,400. Pull-type with used tires 300 gal, \$3,950; 500 gal, \$4,300. Booms available. Call Chris at Farm Service Solutions; or, visit farmservicesolutions.com; (931) 242-7675



HAY EXPRESS
New MAXILATOR square bale Accumagrapple. Accumulate and load your square bales with ease and with one piece of equipment. Standard skid steer quick attach style in stock. 4800.00 Plus tax. Call Chris at Farm Service Solutions in Leoma, TN, or visit farmservicesolutions.com; (931) 242-7675 stuttsjc@yahoo.com



GATOR MADE GOOSENECK TRAILER, 25', \$11,700. PowerQuip located in Albertville, AL. Call for more information and pricing. (256) 878-1631

MAHINDRA 5500 for sale, 50hp shuttle shift, loader, remote, \$17,900. (931)729-2320.

To Place A Classified Call
800-247-7318

JOHN DEERE 1610 chisel plow, 10'W, 3 point, gauge wheels, good condition. Pics and delivery available, \$2,500. (931)808-8095.

DECALS & DECAL SETS FOR HEAVY CONSTRUCTION & AG EQUIPMENT

DECALS AFFORDABLE DECALS AND SAFETY DECALS. Prompt. Knowledgeable Reliable Service. www.QuipCal.com; Call, (215)536-5339; email:info@customservicescompany.com.

DECALS & DECAL SETS FOR HEAVY CONSTRUCTION & AG EQUIPMENT

AFFORDABLE DECALS AND SAFETY DECALS Prompt. Knowledgeable Reliable Service. www.QuipCal.com; Call, (215) 536-5339; email:info@customservicescompany.com.

JOHN DEERE 1025R, 280 hours, bucket, belly mower, \$17,750. (256) 335-4919

JOHN DEERE 5075E tractor, 4WD, loader, runs and looks like new, \$34,500. Call between 8a.m.-5p.m., (931)939-4999.

BRIGGS AND STRATTON gas generator for sale, 5000 watt, 110/220v, \$100. (931) 698-6020.

WE ARE YOUR FULL SERVICE DEALER FOR

SPARTAN MOWERS



Spartan Zero Turn Mowers starting at **\$3,999**

SOUTHERN MIDDLE TN LAWN

3915 Hwy 43, Ethridge, TN 38456 (Next to Chapman Tire) • 931-829-3324 • 931-829-2155



H&R AGRI-POWER

THE POWER TO GET YOU **MORE!**

FARMALL Does It all!



WE FINANCE!



VERMEER 7040 \$6,500, good condition. Also, selling NH 616 for \$2,500. Both run perfectly, and have rebuilt hydraulic cylinders and extra sets of blades. Call or text, (931) 247-2612 Conry510@yahoo.com

INTERNATIONAL 454, runs good, hydro works, PS, \$3,500. (256) 773-8080

KRONE 5.52/4X7T hay tedder, excellent condition, \$8,000. Pics and delivery available. (931)808-8095.

MASSEY FERGUSON 275 needs motor work, diesel, sell for \$2,500 or trade. (256) 293-8696



QUALITY LAWN CARE!! We do landscaping, lawn maintenance, mulch, tree trimming, tree removal, clean up. Licensed and insured. Free Estimates. Call for price, (931)625-6377.

KUBOTA 2601 4WD, loader, 5' belly mower, 4' tiller, runs and looks new, \$19,500. Call between 8a.m.-5p.m., (931)939-4999.

JOHN DEERE 9500 COMBINE, 4 wheel assist, 25' head, all shed kept. (256)565-1694.



11 HIGHLAND RIM RD • FAYETTEVILLE, TN 37334

931-433-3516

HRAGRIPOWER.COM



CASE II

PRESSURE TREATED PINE FENCE BOARDS for sale, 1x6x14ft; 1x6x16ft; 2x6x16ft available. (931) 675-3260

FOUR NEW IN BOX, Hoop buildings, 20'x30'x12' with 9'x13' door, \$2,500 each. (270)861-5527.

KAWASAKI 300 4x4 4-wheeler, just serviced, like new, \$4,000; new 14' trailer, \$3,000. (615)893-4551; (615)542-1715.

JOHN DEERE 4230, good tractor, 8,200 hours, \$18,750. (256) 335-4919

JOHN DEERE 460M SILAGE SPECIAL for sale, 4x6, 4,178 bales, net wrap and twine, only rolled dry hay, \$46,500. (615)274-2200.

WANTED, PASTURE DRAG, new or used. (270)529-9215.

GLENER MODEL K Combine, with 2-row cornhead, 10' and 13' grainheads, runs, not used in 2 years, \$1,500. (256)753-2318; or, (256) 558-0812

To Place A Classified Call 800-247-7318

TWO 1 ROW PTO POTATO DIGGERS, one Shoemaker, \$600; the other is Zaga, \$800. (256)453-1697.

TOMATO-PEPPER-MELON AND MANY MORE GREENHOUSE PLANTS. WILL BE AVAILABLE FROM MID-APRIL THROUGH JUNE, AT 40 LONG ROAD, ETHRIDGE, TN 38456.

POLLED JERSEY HEIFER for sale, due in August, tame, gentle. No Sunday calls, \$1,700. (931)254-2110.

UNKNOWN GOOSENECK TRAILER, 18', good trailer, \$4,000. (256) 773-8080

SO4 PRIEFERT SQUEEZE chute, with working system and sweep tub, \$6,500. (931)209-6870.

KOMATSU PC200U EXCAVATOR for sale, 3,200 hrs., 20hp, \$16,900. (931)729-2320.

EXCELLENT USED TRACTORS & EQUIPMENT



Krone Tedder KW
5.52 4 baskets \$12,100
Call Sales For Price



125 Case Maxxum
4WD Cab, 3 remote valves, air ride & Buddy Seats, 16 x 16 Power Shuttle Transmission - YES, Case Loader is available.
\$125,000



2022 JD 9R 590
Yes Has Duels, 4 remote valves, high flow, 2000+ hrs. Call 256-744-8914
\$375,000



90C Case Tractor
Cab, 4WD loader, 3rd function valve, air ride seat and buddy seat, 2 remove valves, brand new with 0% financing for 60 months



RB56 Challenger Baler
5x6 Bale Size, Field Ready
Call Sales For Price



2021 6640 Vermeer Baler
600 bales, 51/2x4 size.
Call Sales
\$39,000

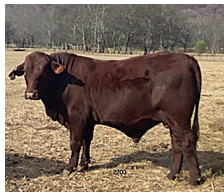
Snead Equipment
www.sneadequip.com



U.S. Hwy. 278 East, Snead, AL 35952
205-466-3500



KUBOTA RT-VXG850, \$19,299. PowerQuip located in Albertville, AL. Call for more information and pricing. (256) 878-1631



SANTA GERTRUDIS BULLS polled, registered, gentle. Happy Valley Ranch, Quality Cattle Since 1977. (256) 566-7878 lindadkelso@yahoo.com

NEW HOLLAND SUPER 55 Bar Rake, repainted, needs 1 new bar bearing, \$1,000. (931) 692-8486

HEAVY DUTY 5 POINT V RIPPER, with colters, dual gauge wheels, 3pt hitch. Pics and delivery available, \$1,750. (931)808-8095.

BERNESE MOUNTAIN PUPPIES, out of AKC registered stock, ready June 10, nice and fat, raised on farm, no vaccines, very affectionate, \$750 each or best offer. No text. Call, (931)254-3744.

2004, KINZE 2600 PLANTER for sale, 12/23, corn/bean, main frame no cracks or welds, \$27,500. (615)274-2200.



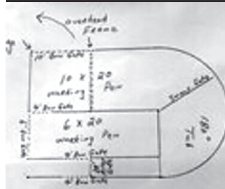
JOHN DEERE 4044R for sale, only 6 hrs., loaded with options, 2 sets rear remotes, \$52,500. (615)274-2200.

GOOSENECK TYPE cattle trailers for sale, 16' and 20' trailers, \$2,500 each. Lebanon, TN. (615)714-3894.

1998 MACK DUMP TRUCK, good solid truck, 8U transmission, 350 engine, \$44,750. (256) 335-4919

JOHN DEERE 9500 COMBINE, 4 wheel assist, 25' head, all shed kept. (256)565-1694.

JOHN DEERE 4100, 4WD, loader, belly mower, runs and looks excellent, \$11,900. Call 8a.m.-5p.m., (931)939-4999.



KOMATSU PC200U EXCAVATOR for sale, 3,200 hrs., 20hp, \$16,900. (931)729-2320.

WANTED, PASTURE DRAG, new or used. (270)529-9215.

180 DEGREE SWEEP TUB with 7' bow gates, 6' tall, heavy duty. (615)653-8913.

A SPLIT ABOVE THE REST



To Place A Classified Call
800-247-7318

- 10 Different Woodsplitter Styles to Choose From
- Models for Many Excavators
- Made in the USA
- No Brakes/No Bends

The strongest splitter for the money in the country. **PERIOD.**



TM MANUFACTURING
Making Wood Splitting Simple

260 Industrial Park Rd. SE, Cokato, MN 55321 • 320-286-3077 • www.skidsplitter.com



United Producers, Inc.

LIVESTOCK MARKETING CREDIT

RISK MANAGEMENT

United Producers Inc

www.uproducers.com

Fayetteville, Tenn. (931) 433-5256 or (931) 433-4962

Weekly Auction Every Tuesday at 1 p.m.

Graded Feeder Cattle Every Tuesday, Weaned/Vac Feeder Sale - Featured Weekly Tuesdays

Columbia, Tenn. (931) 223-8323

Weekly Auction Every Wednesday at Noon

Weaned/Vac Feeder Sale - Featured Wednesdays

Columbia Sheep and Goat Sale - 2nd and 4th Monday at 1 p.m. *holiday exceptions, visit website for full schedule

KY-TN LIVESTOCK MARKET

Hwy. 79N • Guthrie, KY Thursday Sale 2:00 P.M.

I-65 Exit 112 • Cross Plains, TN Monday Sale 1:30 P.M.

Check kytnlivestock.com for Special Sales

OFFICE: 270-483-2504 Tom Barnett • 931-624-7376

Arab Livestock Market, Inc.

Hwy. 231 South, Arab, AL



Cattle Auction

Every Tuesday at 10:00 A.M. 256-586-4212

Video Auctions www.arablivestock.com

Robbie Gibbs: 256-490-2583 • 205-589-6236

Northwest Alabama Livestock Auction

Russellville, AL • nwalivestock.com

Stockholder owned & operated since 1976

Trucking, Feed & Portable Catch Pens Available Sale each Monday at 10:00 A.M. • Hogs • Goats • Sheep • Cattle

Upcoming Special Feeder Calf Sales June 3rd, 2024 and August 5th, 2024

Upcoming Goat Sales August 10th, 2024 and November 9th, 2024

All sales begin at 11:00 A.M.

Rickie Behel Manager • 256-740-9457 • Barn: 256-332-3323



Sand Mountain Stockyard, LLC

Corner of Hwy's 68 & 168, Kilpatrick, AL 256-561-3434

Sale at 11:30 A.M. Every Wednesday & Saturday

Full Service Facility

Owner: Eric Wilburn • 256-506-2525



Nash Livestock

"Your direct slaughter cow & bull outlet"

Farm to packinghouse, we work to bring you the most for your cull cows and bulls.

We pick up in TN & KY

Steve Nash (800) 599-2784 (931) 261-3525





Mid-South Regional Livestock Center

Hwy. 41-A, Unionville, TN 37180 • 931-294-5101
Tim Riley (615)714-8090 • Carly Blackman (931)698-7510



Sale every Monday • 11:00 A.M.
Begin receiving cattle on Sunday 12:00-5:00 P.M. & on Monday from 7:00 A.M.

www.midsouthlivestock.com

Hardin County Stockyard, Inc.

3350 Hwy 226, Savannah, TN 38372

731-925-3287

Goats & Hogs Sale – Wednesday 11:30 A.M.

Cattle Sale – Wednesday 1:00 P.M.

Begin receiving livestock on Tuesday 8:00 A.M.-DARK

Full-Service Stockyard Offering:

Trucking, Feed, Appraisals, & Video Sales

Order buying service through Harry Floyd Livestock, Inc.

Harry Floyd (home): 931-722-9200

Harry Floyd (cell): 931-224-2247

Rob Floyd: (cell) 931-224-2248 • Donnie Welch: 731-607-9196

Main Office: 931- 722-3100 • www.floydandsonslivestock.com

Tennessee Valley Livestock

620 S. Poplar, Florence, AL 35630

256-766-0281

Cattle Sale • Monday 12:00 NOON

Begin receiving cattle on Sunday 10:00 A.M. - dark

Full-Service Stockyard Offering:

Trucking, Feed, Appraisals, & Video Sales

Order buying service through Harry Floyd Livestock, Inc.

Harry Floyd (home): 931-722-9200

Harry Floyd (cell): 931-224-2247

Rob Floyd: (cell) 931-224-2248 • Jim Martin: 256-366-3519

Main Office: 931- 722-3100 • www.floydandsonslivestock.com

2 Locations To Better Serve You!

Valley Stockyard

13130 AL Hwy. 157, Moulton, AL 35650

Regular Sale Every Wednesday • 11:00 A.M.

Trucking Available • Country Buying & Bluegrass Video Sales

“Serving our regions cattle producers for 66 years & many more!”

More info: 256-974-5900

Benji Mccafferty 256-740-9648 • Billy Wallace: 256-303-7097

Pulaski Stockyard

“Striving To Be Your Full Service Stockyard”

607 West Shoal St., Pulaski, TN 37478

Regular Sale Every Tuesday • 12:30 P.M.

Special Cow Sale First Friday of Every Month • 6:00 P.M.

Special Goat Sale Every 3rd Friday Each Month • 6:00 P.M.

Office 931-424-8389 • www.pulaskistockyard.com

Benji Mccafferty 256-740-9648 • Billy Wallace (Cell) 256-303-7097

Derek Black 931-638-5392

Advertise Here!

Call For Specials, Deals and Incentives.



Case 1494, 1983
2WD, 85 hp - \$4,950



Bush Hog SM60,
like new - \$6,500



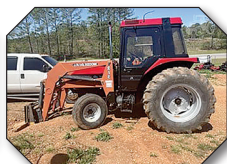
Delta Trailer, 32'
length - \$16,400



New Holland 4630
1999, 2600 hrs.
\$12,750



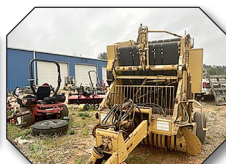
Country Clipper
Zero Turn
Call For Price



1997 Case IH 4240
\$17,950



International 250A
\$6,950



Vermeer 504F
\$2,750



2023 Bush Hog 1812
Call For Price

HUDDLESTON EQUIPMENT

29233 Hwy. 431 Wedowee, AL 36278



256-363-1132

www.huddlestonequipment.com



REGISTERED HEREFORD BULLS for sale, gentle disposition, great bloodlines, polled, service age, starting at \$1,500. Leave message, (931) 703-7573



MINI TRUCKS FOR SALE, 4x4, A/C, P/S, 5-speed, auto, dump and regular beds and vans. Delivery Available. Can Special Order. Berryhill Mini Trucks, LLC., 3499 Co. Rd. 93, Anderson, AL 35610. (256)740-7287; www.berryhill-minitrucks.com

KUBOTA L3301, 750 hours, 4WD, \$19,750. (256) 335-4919

2003, JOHN DEERE 1770NT for sale, 16-30, bulk fill, one owner, \$56,900. (615)274-2200.



TRUCK FLAT BEDS For All Your Needs. Give Us a call. (931)761-3554. RRP Truck Equipment, Sparta, TN 38583.

REGISTERED 2YR OLD Angus calving ease bull, \$4,500; also 5 black baldy cows with calves, \$3,500 each. (615)618-0541.

TWO WHITE POLY 2,500 gallon cone bottom tanks for sale, with stand, \$2,500 each. (270)861-5527.

FOR SALE, FACTORY 3-POINT for G John Deere tractor, rear wheel weights for this tractor. Price negotiable. (205)353-7540.

WANTED, JOHN DEERE 214 hay baler. (931) 210-7857

Where Do You Go When You Need Parts?

Russells Tractor Parts
1-800-248-8883

Ag & Industrial Parts • Free Quotes
Free Parts Locating Service
New & Used Parts

We stock & ship new after market parts.
Sparex, Tisco, Riverside, Temco Dealer



Russells Tractor Parts

We ship parts anywhere in the U.S.

Scottsboro, AL



WANTED, POCKET KNIVES and knife collections. (615)630-5251.

DANUSER, POST HOLE DIGGER for sale, 9" auger, heavy duty, \$850. (931)703-5239.

HEREFORD TWINS, healthy 10 month old male steer, female free martin, \$1,600 for pair. (931) 492-3720

CHEVY 2009 2500HD for sale, 2WD, diesel, 4 door, 131k miles, \$23,500. (931) 215-0124; (931)381-2795.

LAND PRIDE, RCR1260 5' Land Pride, Slip-Clutch, PTO-driven BUSH HOG in excellent condition, \$2,000. (260) 585-7327 reubenhilty88@gmail.com



STAY-TUFF BRAND LIVESTOCK FENCING for sale, 12 different sizes available. Hundreds of rolls in stock. (931) 675-3260

SQUEEZE CHUTES Tarter series 3 \$2,800. Tarter series 6 \$4,500 both available with either automatic or manual head gates. Call Chris at Farm Service Solutions in Leoma, TN; or visit farmservicesolutions.com; (931) 242-7675

JOHN DEERE INNER CAB ROOF, fits JD 4030, 4230, 4430, 4630, \$500. Murfreesboro, TN area. (615)427-8766.

JOHN DEERE MI 1949 tractor for sale, two cylinder, 3 point hitch, \$1,700. (931)698-6020.

USED CANOES, \$200 each. (256) 773-8080

JOHN DEERE MI 1949 tractor for sale, two cylinder, 3 point hitch, \$1,700. (931)698-6020.

JOHN DEERE 556 ROUND BALER for sale, electric tie with monitor, \$6,500. (931)446-7023.



1986, HONEY Motor Home, 27', 43,000 miles, warehouse kept, near new condition, \$9,600. (931)684-8178.

HATCHLINGS FOR SALE, Ducks, Geese, Chickens, Bantams, Turkeys, Guineas. Cullman, AL area. (256)930-8530.



ASV Skid steer quick attach equipment of all types. Grapples, Post Hole Diggers, Cutters, Sweeper Brooms, Forks, Stump Grinders, Boom Poles, etc. If you're looking for attachments give Chris a call at Farm Service Solutions in Leoma, TN or visit farm-servicesolutions.com (931) 242-7675

FOR SALE, Golden Comet pullets, ready to lay, \$18/each; 2-year-old spent hens, \$8/each; Great Pyrenees pups, \$150/each. Altamont, TN. No Sunday calls, please. (931) 692-3333

WAGYU HEIFERS for sale. (256)714-6182.

To Place A Classified Call 800-247-7318

ESTATE AUCTION

Charles Edward Hood Estate

Saturday, June 22nd, 2024 • 9:00 A.M.

Located at 2750 McLemore Road, Franklin, TN.

Take Highway 431 north of I-840 Exit #30 to left on McLemore to auction.

- 2 International Cub Lowboy Tractors
- International Super A Tractor
- Old Plows & Equipment
- Lincoln 225 Arc Welder
- Rear Tyne Tiller
- Air Compressor
- Anvil
- Bench Grinder
- Transits
- Blackhawk Corn Sheller
- Scales
- Well Bucket
- Double & Triple Trees
- Hay Needles
- Coke Cooler
- Blow Torches



- Boxes Of Old Tools
- Hand Saws
- Cross Cut Saws
- Lanterns
- Washboards
- Food Choppers
- Hammers & Hatchets
- Iron Kettle
- Seed Sower



- Cast Iron Skillets, Bean Pots,
- Corn Muffins
- 2 Wheel Feed Dolly
- Handmade Quilts
- Avon Cape Cod Glassware
- Household Furniture

To settle the Estate of the late Charles Edward & June Hood.

Terms are cash or check day of sale.

NO Buyer's Premium. Pictures & more info at www.garyauction.com (615) 302-2680. James Gary 1699

GARY REALTY & AUCTION

(615) 302-2680
FL 1899

www.garyauction.com

CASE IH 1083 CORN HEAD, 8 row, poly snouts with EZ Trail header wagon, \$8,500. (931)308-2128.

NEW HOLLAND BC5070 for sale, 540 PTO, hydro bale squeeze, clean pickup and knotters, \$21,900. (615)274-2200.

CUSTOM TARPS FOR hoop buildings, available in 11 different colors. We also offer hay tarps and pond liners. Cover your investment, (859) 375-5268

GOOD CORN SI-LAGE for sale, \$60 per ton, large orders negotiable. (931)256-0481.

JOHN DEERE 556 ROUND BALER for sale, electric tie with monitor, \$6,500. (931)446-7023.

TUCKER GEN II TRAIL SADDLE for sale, 17-1/2" seat with wide tree, excellent condition, \$1,150. (931)209-6870.

JOHN DEERE MI 1949 tractor for sale, two cylinder, 3 point hitch, \$1,700. (931)698-6020.

4,000 BALES OF ORCHARD GRASS HAY, 12-14% protein, \$8-\$10 per bale. Hohenwald, TN area. (931)628-0529.

REGISTERED 2YR OLD Angus calving ease bull, \$4,500; also 5 black baldy cows with calves, \$3,500 each. (615)618-0541.

TWO WHITE POLY 2,500 gallon cone bottom tanks for sale, with stand, \$2,500 each. (270)861-5527.

MILLER FARMS Angus Beef from the farm. 100% natural, non-GMO, hormone and antibiotic-free. Whole, halves, or by the pound. Slaughtered and packaged. (931)593-3702; (931)593-2429.

HAY FOR SALE, 4x5 rolls, orchard grass and fescue, \$45 per roll. (931)652-8123.

**NEED NEW BELTS?
WE SELL AMERICAN MADE BELTING ONLY!**

Largest Belting Dealer In U.S.

Original Belting for ABSOLUTELY ALL ROUND BALERS IN STOCK!! Save Hundreds

FREE SHIPPING On Belting

MC/VISA/DISCOVER OR COD NO 800# Just Best Prices!!



VERMEER HAY EQUIPMENT New & Used

We Have The Largest Vermeer Baler Parts Inventory In The South

We Fill Over 99% Parts Orders From Stock-Year Round!

Ship UPS Everyday.

PRESSURE TREATED PINE FENCE POSTS for sale, several sizes round and square available, 7', 8', 10' lengths available. (931) 675-3260



1979, FORD 7700 W/ FRONTLOADER This is a working Ford 7700 tractor with front loader. This tractor always starts and does what is needed making it a good addition to get farm things done without the complications of computers. It also comes with 5 suitcase weights, \$20,000.. (270) 945-4692 Mkemp98931@aol.com

CUB CADET 7625 for sale, 4WD, hydro loader, \$10,900. (931)729-2320.

JOHN DEERE 567 round baler, mega wide pickup, net wrap 1,000+, 540 PTO shafts 3,718 bales, \$19,000; M&W B78 10 wheel v-rake, \$4,500. (615)464-7080.

JOHN DEERE 4020, joystick, QA bucket, straight as they come, console, \$18,750. (256) 335-4919

WANTED, WINDROW GATHERING wheel assembly for John Deere 430 baler. (931)797-8458.

CHAPARRAL GOOSENECK STOCK TRAILER for sale, cut gate, 14' long, good condition, \$3,150. (615)708-9276.



JOHN DEERE 338 SQUARE BALER, excellent shape, barn kept, \$12,000. (256) 777-5346

BULL GATES-16 GAUGE, 51" and 63" tall, 4'-20' long, good inventory. FandPLivestock.com; (615) 653-8913

MAHINDRA 6500 for sale, 4WD, two remotes, 60hp., \$18,900. (931)729-2320.

1986 GMC SPREADER TRUCK for sale, 12' Chandler, hydraulic bed, very good condition, \$12,500. (678)231-8636.



BOW GATES 16 GAUGE, 6' tall, good inventory, 4' up to 12' combo bow gates-example 12' with 4' wt. FandPLivestock.com; (615) 653-8913

RIDING LAWN MOWER TRAILERS for sale, 5'x12' lawn mower trailer, \$850. Lebanon, TN. (615)714-3894.



CASE IH 885, 72hp, 2293hrs, \$24,500. Call 4-9 p.m., (931) 244-0535

To Place A Classified Call 800-247-7318

WANTED, Standing Tracts of Timber and Cedar to buy and cut; also, mulching services. Dwight Rogers, (931) 580-4816

NEW IDEA MODEL 324 four corn pickers, 2-row wide, for parts, price flexible with purchaser. (256)753-2318; (256) 558-0812

To Place A Classified Call 800-247-7318



Pressure Treated Fence Posts
Excellent Prices
Pressure treated at our plant with CCA to the retention rate of .40
25 year warranty against decay
Dealer Inquiries Welcome
Will Protect Established Dealers Territories
Family business since 1987
Green River Post

11029 Hwy. 132 E., Sebree, KY 42455 • Kenny Miller • (270) 772-0318



Bill Thomas
 Founder (1940-2010)

Will Thomas
 Publisher / CEO

Katie McNabb
 Director of Magazines

Ken Holtzinger
 VP of Sales

Gabby Denny
 VP of Marketing

Chase Perryman
 VP of Talent

Wesley Bryant
 Editor-in-Chief

Janet Mullins
 Business Development
 (931) 993-0026

Bob Barger
 Business Development
 (601) 422-5064

Shelli Fuller
 Customer Service

Barb Hargrove
 Customer Service

Tracey Pollock
 Customer Service

Todd Pitts
 Lead Print Ad Designer

Ben Adams
 Layout Artist

Jane Morrell
 Junior Print Ad Designer

Clinton George
 Digital Design Director

Dani Wilbert
 Digital Marketing Specialist

(800) 247-7318

404 Main Ave. South
 Fayetteville, TN 37334

FarmersExchange.com

Mats, cuts, negatives, art work or other copy submitted for publication is considered to be the property of the advertiser. Advertising is accepted with the understanding that all liability for copyright violation is the sole responsibility of the advertiser.

The Exchange will make every effort to see that advertising copy is correctly printed, but shall not be liable for failure to publish an ad or for typographical errors.

The Exchange will gladly reprint, without charge, that part of an advertisement in which an error occurs, provided a claim is made within three (3) days of the first publication of the ad.

AUCTION

SATURDAY, JUNE 15TH
10:00 A.M.
(Open House Sunday, June 9th 2-4 P.M.)

**Belonging to the late
 Jerry and Janie Owens Estate**
 Offering 14.9 acres +/-,
 in 2 tracts and as a whole to
 determine the sell price.

DIRECTIONS: From Lawrenceburg, Tennessee, take hwy. 64 west to West Point Rd. Take West Point Rd. To Granddaddy Rd. 2.7 miles to O.K. Rd. At O.K. Church, take O.K. Rd. To sale site.
 Watch for Eulan Hooper Realty and Auction Signs!



Tract 1: Consists of 9.06 acres +/-, mostly in woods.

Tract 2: Consists of 5.8 acres +/-, house and pool. As you enter this home through the front door into foyer, to left of foyer is a sunken living room & din combination, rock fireplace across 1 end of room. Over the fireplace mantle is a large rock in the shape of Tennessee. Also in the fireplace area is a door for loading wood from carport to

inside. This room has an outside entrance. To the right side of foyer is a formal dining area with a bay window. House has kitchen/ dining combination with Island. Kitchen has custom built oak cabinets, hardwood flooring, island with built in range and grill, also has other built ins such as garbage disposal, dishwasher and oven. Kitchen has 3 sinks. Exhaust fan in hallway. House has 3 bedrooms. Master bedroom with walk in closet. Deck off of master bedroom, walk through bath with jacuzzi, shower, linen closet and oak desk with bookshelves. House has utility room with exit door to outside, has a stainless steel sink and oak cabinets. House has pull down stairway to attic. House has full basement with garage door. House has back porch overlooking swimming pool and patio. House has nice 3 car carport attached and off of carport is an outside storage area all under roof. Gravel drive up to concrete turnaround. House is heated with electric air, has wood and gas heat and well water. City water at Road.

Personal property to sell: Tractors, Farming and hay equipment, zero turn mower, guns, household items, antiques and personal property

TERMS OF SALE: Personal property cash, card or good check day of sale. Real estate 10% down (non-refundable) day of sale, balance due on delivery of deed on or before July 15th, 2024. 2024 taxes prorated at closing.

1101 Fall River Road
Lawrenceburg, TN
931-242-3685
auctionzip.com-Eulan Hooper
 #22484 Real Estate Lic. #255927 Lic#TN. 1805

Mickey (M.J.) Leighton: 931-629-0434
Auctioneer
Lic. # 6939

Thomas Kobeck: 931-242-3685
Owner/Auctioneer/Broker
F#1085 • Lic. #1983

Robert Smith: 931-242-9582
App. Auctioneer
F#1805 • Lic. # 4114

Ricky C. Skillington: 931-637-2217
Aff. Auctioneer
Lic. # 7493



KUBOTA U10-5 EXCAVATOR, \$27,099. PowerQuip located in Albertville, AL. Call for more information and pricing. (256) 878-1631

PALMER DUMP TRAILER, 18', new liner, \$13,250. (256) 335-4919

FARMALL A 1948 cultivation tractor, with working power lift and pickup disk, \$1,948. (931)312-1448.

JOHN DEERE 5225, 2WD, \$14,750. (256) 335-4919

FUEL TANKS FOR SALE 250 and 300 gallon fuel tanks for sale, with stands, \$300 each; also Firestone bus tire for sale, 11R22.5, \$100. (615)542-1652.

REGISTERED BLACK ANGUS BULLS for sale, weaned bulls ready for selection.

A1 sires-Volunteer, Black Pearl, Stock Fund. From high-performance cow herd. Turrentine Angus, Shelbyville. (931)607-8950; aturrentine@cafes.net.

NEW HOLLAND TC30 for sale, 30hp., \$13,900. (931)729-2320

Equipment For Every Need!



Used Conveyor Grain Vac
Call



Hydraulic Dump Hay Wagons in stock
Call



Farm King Augers some in stock, some on the way
Call for sizes & Prices



Peterbilt 3406 Cat 1988, new 22' Scott Alum. bed, 3000 series Hoist \$50,000



Peterbilt 1999, wet kit, Cummins engine \$35,000

New Items Available!

Ponderosa Horse Trailer, rubber mat, excellent shape \$3,000
 Bush-Whacker Cutter, good used, 15' \$7,000
 Farm King Finish Mowers, 6' & 7' Call
 Hay Express, 4 bale, individual dump \$2,500
 Hay Wagon, 6-7-8 Bale, bumper hitch & gooseneck Call
 New Farm King Grader Blades & Tillers Call
 New Enorossi 4 Basket Tedders Call
 REM Grain Vac, in stock Call
 TN River Brand Cutters, 6', 7' or 8', pull type, 3 pt. In stock Call
 New & Used Enorossi Tedder, 4 basket, 17' Call

Used Grain Vacs Call for Prices
 New & Used Tedders In Stock
 TRI Box Blades, 6', in stock, new & used Call
 Kubota Disc Mower, like new \$7,500
 Hydro Dump Wagons In Stock
 (2) 1070 Swing Augers, used Call
 EZ Haul Low Pro, 20', 10' hydro dove tail \$25,000
 Enorossi Rakes, used, 3 in stock Call
 1070, 1080, 1385, 1395, 1031, 1036, 1336 Augers In Stock

Straw For Sale - 5' Round Bales, net wrapped or small square bales

Beef Steers For Sale - Can take to slaughter, sell 1/2 or whole

Chandler's Farm Equipment

270-586-6653

Marty 270-392-0359 • Lloyd 270-535-6653
 2529 Salem Road • Franklin, KY
 Going Strong Since 1944



WANT TO BUY Lovebird and Cockatiel males. (931)209-0876.



AG SPRAY EQUIPMENT 300 GALLON SPRAYER COMES WITH 20' OR 30' BOOMS, \$4,750; 30' BOOMS, ADD \$375. CALL CHRIS AT FARM SERVICE SOLUTIONS IN LEO-MA, TN. FARM-SERVICESOLUTIONS.COM; (931) 242-7675

STEFFEN SYSTEMS 6515 square bale grapple, holds 15 flat or 18 on edge, good condition, \$3,500. Pics and delivery available. (931)808-8095.

WANT TO BUY, 3 or 4, 24 ton feed bins. (270)881-2403.

WANT TO BUY HAY crimper. (629)395-4558.

WANT TO BUY FJ40 Toyota, in model years from 1975 to 1980. (931) 607-9737

VERMEER 554 XL BALER for sale, \$10,500; 8 wheel v rake, \$2,000. (931)619-5673.



1977, IH tractor for sale, diesel, very good tractor, \$6,000. Cumberland Furnace, TN. (615)569-0891.

JOHN DEERE 4020, joystick, QA bucket, straight as they come, console, \$18,750. (256) 335-4919

DECALS & DECAL SETS FOR HEAVY CONSTRUCTION & AG EQUIPMENT

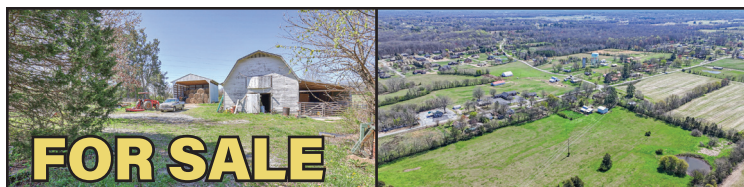
AFFORDABLE DECALS AND SAFETY DECALS. Prompt. Knowledgeable Reliable Service. www.QuipCal.com; Call, (215) 536-5339; email:info@customerservicescompany.com.

KELLY DUPLEX STATIONARY FEED MILL, cyclone, blower, mix bin (2 ton), \$3,000. (256) 453-1697

JOHN DEERE 855 compact tractor, 2WD, 60" deck, 99% ag tires, brand new gator engine, good working condition, \$6,000. (931) 692-8486

CUB CADET 7625 for sale, 4WD, hydro loader, \$10,900. (931)729-2320.

JOHN DEERE 567 round baler, mega wide pickup, net wrap 1,000+, 540 PTO shafts 3,718 bales, \$19,000; M&W B78 10 wheel v-rake, \$4,500. (615)464-7080.



Beautiful mini farm in the green belt just minutes away from Park City & Lincoln County square. This 3 BR 2 full BA features a spacious kitchen & inviting living areas. Behind the house there is a large hay barn 32x40x18, equipment barn 24x38x12, cow barn 24x34, & a pond providing ample space for equipment & animals. Enjoy the simple pleasures of country living as you tend to your garden, tend to your chickens or cows, or simply relax & take in the peaceful ambiance. This charming house is fully renovated with beautiful hardwood floors, custom oak kitchen cabinets, & kitchen granite countertops. This is a must-see!



Karen Davis - Martinez
 2754C Huntsville Hwy.
 Fayetteville, TN 37334
 (931) 433-8008 • Cell: (931) 6262-7224
 kmartinezgarcia2022@gmail.com



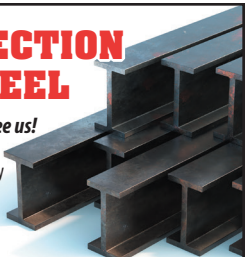
GREAT SELECTION OF USED STEEL

In the need of steel? Come see us!

Used steel inventory changes weekly
Used steel is \$0.35/lb



CFC Pick & Pull
 54 Recycle Dr., Tullahoma, TN 37388
 www.cfcpickandpull.com
 Like us on Facebook
 UsedSteel@cfcrcycling.net • Mon. - Sat.





SALVAGING
Salvaging Agco
2270 Square Balers

- Round Balers
- Swathers
- Combines
- Tractors

Call Us For New & Used John Deere Row Head Parts!

Over 8000 Machines Parted Out!

Mike's Equip. Co.
Buhler, KS
mikesequipment.com
sales@mikesequipment.com
620-543-2535
since 1977

MARSHALL COUNTY CONSIGNMENT AUCTION

Save The Date! June 22nd, 2024 at 9:00AM

Marshall County Fairgrounds • 1569 Hwy 7 N, Holly Springs, MS 38635

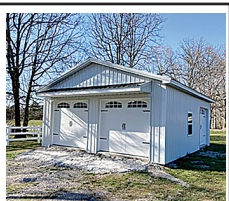


We Want To Work For You!
If Interested In Consigning
Call Garrett At (662) 274-4708



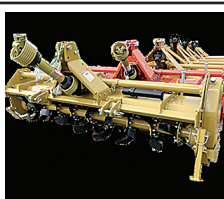
Live & Online Bidding Powered By Equipment Facts
Only A 1% Onsite Buyer's Premium
Firm # 1684F License# 1657

Potts Camp, MS 38659 • www.rilesauctions.com • facebook Riles Auctions



GARAGE DOOR INSTALLATION & REPAIR GARAGE DOORS & OPERATORS - NEW INSTALLATION & REPAIRS - WE USE ONLY TOP BRAND DOORS AND OPERATORS (DOORLINK/LIFTMASTER). CALL NOW FOR A FREE QUOTE! SERVING SOUTHERN TN AND NORTHERN AL. (931) 292-4889

JOHN DEERE 5090E, open station, only 349 hours, 12/12 PR trans, 2 sets of remotes, \$58,500. (615)274-2200.



SMART-TILL Cherokee Tillers. 50" and 59" Chain drive regular duty. 71" Gear drive medium duty. 81" Gear drive heavy duty. 50" \$1,650; 59" \$1,750; 71" \$2,250; 81" \$2,750. Plus tax Call Chris at Farm Service Solutions or visit farmservicesolutions.com; (931) 242-7675

WANT TO BUY FJ40 Toyota, in model years from 1975 to 1980. (931) 607-9737

ONE SET OF, 13.6.28 of tractor tires on wheels, 90% tread, VGC, \$400. (931)314-5912.

JOHN DEERE L341 for sale, 16,000 bales, 3x4 bales, ready to go! \$92,500. (615)274-2200.

INGERSOLL RAND 175 John Deere diesel air compressor, \$2,500. Also, 6,000lb. Heiser pneumatic forklift, \$2,850. (931)254-3522.

MASSEY-FERGUSON 1610 HAY TENDER, good shape, barn kept, \$2,000. (256) 777-5346

ONE 18.4.34, TRACTOR tire, 75% rubber, \$200. (931)314-5912.

BUSH HOG FOR SALE, 5' bush hog, \$600. Lebanon, TN. (615)714-3894.

To Place A Classified Call 800-247-7318

WAYGU/BLACK ANGUS YOUNG BULLS, HEIFERS We have 3/4 Wagyu and 1/4 Black Angus young bulls and heifers, 14 to 18 months old. Heifers are for \$2,000, and bulls are for \$2,000 to \$2,800. Bulls are old enough and ready for service. (615) 504-9784 roger.rgbuilders@gmail.com

Great Deals on Gently Used Equipment!



Kubota M6800 1500 hrs., 2WD, remotes \$15,900



Mahindra 6500 4WD, 2 remotes, 60 hp \$18,900



JD 5100M 4WD, 2600 hrs., shuttle shift, remotes \$29,900

Cub Cadet 7625 4WD, hydro loader.....\$10,900
Komatsu PC200U Excavator 3200 hrs., 20 hp\$16,900
NH TC30 30 hp\$13,900

Mahindra 5500 50 hp, shuttle shift, loader, remote\$17,900

D & D Equipment

Heavy Equipment & Farm Tractor Sales

1635 Hwy. 50 East, Centerville, TN 37033 • 931-729-2320

Owners: Jerry Davidson & Steve Davidson

See our pics on Nashville Craigslist!

HOOP BUILDINGS



ENTERPRISE LLC

8307 Glasgow Road Burkesville, KY 42717
270.853.5782

Peaked storage buildings with galvanized, double-truss frame and 22 oz. PVC fabric

20x40x16	12x10 door	\$5,850
30x40x20	14x13 door	\$7,750
30x60x20	14x13 door	\$9,600
40x60x21	13x13 door	\$13,500
40x80x21	13x13 door	\$16,250
40x100x21	13x13 door	\$19,500
40x120x21	13x13 door	\$23,000
50x80x23	18x16 door	\$23,000
50x100x23	18x16 door	\$26,750
50x120x23	18x16 door	\$30,500
50x200x23	18x16 door	\$49,750
60x80x25	18x16 door	\$27,500
60x100x25	18x16 door	\$32,000
60x120x25	18x16 door	\$38,500
70x100x28	18x16 door	\$42,000
70x200x28	18x16 door	\$76,000

ENDS & DOORS INCLUDED IN PRICE. Price does not include installation or delivery. Additional sizes and colors available. Custom buildings available. CALL FOR PRICING!



Round storage buildings with galvanized, single tube frame and 22 oz. PVC fabric

12x20x8	11x6 door	\$1,250
20x30x12	14x10 door	\$2,800
24x40x12	10x9 door	\$4,200
30x40x15	11x11 door	\$5,450
30x65x15	11x11 door	\$7,350
30x85x15	11x11 door	\$9,000

HEAVY DUTY PALLET FORKS, LIKE NEW for sale, \$600. (615)569-0891.

VERMEER TE170 TEDDER, 18', excellent, \$7,250. (931) 722-8276

1998, BIG TEX TRAILER, 20'x5', dovetail, 20gn, tires like new, fold-out ramp, clear title, \$6,500. (931) 247-5900

JOHN DEERE 7400 tractor, with 725 John Deere loader, 9,965 hours, no third gear, runs good without engine, starts/runs good, still a good tractor, \$22,000. (615)464-7080.

MIRAFOUNT LIVE-STOCK WATERERS for sale, Call for big savings. (931) 675-3260

2 NEW HOLLAND 258 rakes, with rubber teeth; also, New Holland 252 rake hitch, all in good condition, \$9,500. Pics and delivery available. (931)808-8095.

TWO MULE PLANTERS FOR SALE, \$350 for both. (256)435-4269.

PEQUEA TT4000 TEDDER, 18', \$7,950. (931) 722-8276

1992 CHEVROLET KING CAB pickup for sale, 4WD, 350 automatic, runs good, good tires, blue exterior, \$4,000. (931)235-0179.

CORRAL PANELS, 16 GAUGE, 6' tall, good inventory, 8' up to 16' long. FandPLivestock.com; (615) 653-8913

TWO 10' BUNK FEEDER TROUGHS for sale, with poly liner, \$200. (931)703-4404.

2023, TAR RIVER SAYA NO TILL DRILL These 55" and 78" Drills are set up on 7.5" spacing and will plant a variety of seeds from corn, beans, and wheat, to fescue and clover. Stainless steel boxes let you drill fertilizer at the same time as you plant seed. \$5,900 for 55" and \$6,995 for a 78" plus tax. Call Chris at Farm Service Solutions in Leoma, TN; or, visit farmservicesolutions.com; (931) 242-7675

New & Used Tractor Parts

- All Makes & Models
- Free Tractor Parts Hotline
- Shipping Parts Daily
- We Buy Salvage Tractors

Cross Creek Tractor Co.

Hwy. 278 E. - Cullman, Alabama
(256) 739-0496

1-800-462-7335

E-Mail: info@crosscreektractor.com
www.crosscreektractor.com



JOHN DEERE OFF-SET DISK, 8', nice, \$7,750. (256) 335-4919

APPROXIMATELY 100 CLIPPER seed cleaning screens, 42"x34", all for \$500. Pics and delivery available. (931)808-8095.

22 REGISTERED BLACK ANGUS and Registered Red Angus, 15 month old bulls, 1,100lbs. plus \$1,850 and up. Superior fertility, calving ease and performance. Cow herd has excellent legs, feet and udders. All bulls developed hard on forage to work for you! Most all our bulls qualify for all 3 categories of TAEP. Located in Rome, GA, 20 miles past Centre, Alabama. Joe Gibson, www.gibsoncattle.com; (706)506-3026.

JOHN DEERE 459 round baler for sale, very nice, one owner, local, twine and net wrap, shed kept, \$32,500. (615)274-2200.

JOHN DEERE 2355 tractor for sale, runs and drives great, 9,356 hours, field ready, \$10,500. (931)759-5178; (931)675-8915.

WANT TO BUY, ARROWHEADS and Indian relics. (256)420-8075.

2004 FORD F-150 FOR SALE, extended cab, runs good, \$3,750. Call between 8a.m.-5p.m., (931)939-4999.

DIAMOND C MDT206 DUMP TRAILER, \$12,689. PowerQuip located in Albertville, AL. Call for more information and pricing. (256) 878-1631

2023, ACCORD Tar River SAYA conventional till drills. \$3,525 for 4' and \$3,895 for a 6'. In stock and ready to go. Call Chris at Farm Service Solutions in Leoma, TN, or visit farmservicesolutions.com; (931) 242-7675 stuttsjc@yahoo.com

To Place A Classified Call
800-247-7318



REVEAL 4-N-1
THE ULTIMATE ARENA AND GROUND PREP TOOL

- Grading & Leveling Driveways
- Ballfield Maintenance
- Horse Arenas
- Waterways
- Agricultural
- Erosion Repair

The Original... Still the Best
REVEAL 4-N-1

www.REVEAL4-N-1.com • (937) 444-2609 • Mt. Orab, OH

TWO TRACTOR TIRES, 2 with tubes, nice tires, 18-4-34, very good condition, \$500 for both. (931)808-8490;(931)728-5490.

TIG WELDER AND MAINTENANCE LABORERS 43 FABRICATION IS HIRING FOR A TIG WELDER AND MAINTENANCE LABORERS, 1st shift, 40 hours a week, some overtime from time to time. Pay based on experience. Call for information, (931)270-8389; or, send resume to service@43fabrication.com. (931) 270-8389 service@43fabrication.com

2 NEW HOLLAND 258 rakes, with rubber teeth; also, New Holland 252 rake hitch, all in good condition, \$9,500. Pics and delivery available. (931)808-8095.

TWO MULE PLANTERS FOR SALE, \$350 for both. (256)435-4269.

VERMEER TE170 TEDDER, 18', excellent, \$7,250. (931) 722-8276

43 FABRICATION Where Customers are our top priority! We are a multi-craft welding and machine shop that offers equipment rigging and installation. Offering welding, fabrication, manual and CNC machining, CNC plasma cutting, production fabrication services, custom fabrication, automation, industrial maintenance services, industrial equipment installation, project management, industrial door/dock service, industrial plumbing, industrial electric and more! Call or email us for all your commercial and industrial repair needs! (931)270-8389; or, service@43fabrication.com. (931) 270-8389 service@43fabrication.com

JOHN DEERE 4240, bucket and hay spear, \$27,500. (256) 335-4919

1963, JOHN DEERE 1010 tractor for sale, runs, 2WD, \$3,000. (931)235-0179.

PEQUEA TT4000 TEDDER, 18', \$7,950. (931) 722-8276

Quality Farm Equipment



Bearcat Cultimulcher - 12', good working condition, w/hyd. cyl. - \$3,800



Brillion Cultimulcher - 15', good condition, few shanks missing, Stk#6859 - \$2,400



Kewanee 1020 Wheel Disc 20', 8" spacing, most blades very good, Stk#6881 - \$3,500



JD 4240 - CHA, very good condition, cold AC, good tires, Stk#6760 - \$29,500



Ford 3000 - diesel, starts runs & works very good, Stk#6764 \$6,800



Int. 37 Disc - 10 wheel, good blades, 7 1/2" spacing, hard to find, Stk#6655 - \$1,400



JD RWA Wheel Disc - needs hoses, front blades very good \$1,200



Gramegna EG360 - new, 16 hp, gas, elec. start, stand on rear, joystick, Stk#6760 - \$8,000



IH 1066 - starts runs & works good, dual hyd., fars tires, Stk#6916 - \$10,500



Ford L-8000 - 6 cyl. diesel, auto trans, excellent tires, excellent condition, Stk#6834 - \$7,500



IH 656 - gas, dual hyd. very nice tin, good T/A, very nice & original, Stk#MN6793 - \$7,500



Single Axle Lowboy Trailer - very nice, 3' dove, ramps, 18' deck, Stk#6835 - \$7,500

Powder Mills Farm Equipment

1555 Powder Mills Rd. • Magnolia, KY 42757 • 270-528-2583
www.powdermillsfarmequip.com • 5westons@scrtc.com

FOR SALE, REGISTERED BLACK ANGUS BULLS, will qualify for the full TAEP money, all are by the top AI bulls in the breed. Crawford Angus. Lewisburg, TN. (931)205-2450; (931)359-2633. crawfordangus@bell-south.net

PEQUEA TT4000 TEDDER, 18', \$7,950. (931) 722-8276

1992 CHEVROLET KING CAB pickup for sale, 4WD, 350 automatic, runs good, good tires, blue exterior, \$4,000. (931)235-0179.

ADVANCED WIND REEL SYSTEM, 70" Heavy Duty Skid Steer Rock Picker. With rotating reel to sweep rocks and roots up in the slated bucket, this picker does great gathering up of unwanted debris and leaving the dirt behind, \$6,000. Call Chris at Farm Service Solutions; or, visit farmservicesolutions.com; (931) 242-7675

INDUSTRIAS AMERICAN 3 POINT CUTTERS Heavy 11 gauge deck, 90 HP gearboxes with slip clutch. 6' \$1,600; 7' \$1,900; 10' \$3,750. Call Chris at Farm Service Solutions in Leoma, TN; or, visit farmservicesolutions.com; (931) 242-7675

2016, TRAILBOSS 20 TON TRAILER, Pintle-hitch, air brakes, used very little, 20' with 5' dovetail, \$23,500. (256) 335-4919

8' PEG HARROW for sale, 3pt. hitch, \$450. (205)353-7540.

Aisles & Aisles & Aisles

of IH & CaseIH Tractor Parts
New, Used & Remanufactured



The Largest Exclusive
IH & CaseIH Used & Rebuilt
Parts Inventory in North America

Bates Corporation Call 1-800-248-2955
12351 Elm Road Bourbon, IN 46504 www.batescorp.com

IRON CRAFT
flex-wing cutters. These cutters have a 10 gauge smooth top deck, replaceable skids, spring suspension, safety chains, and solid tail wheels. Model 2512 12' \$13,995. Model 2515 15' \$16,995. Model 3515 Heavy-duty 15' \$19,995. Call Chris at Farm Service Solutions in Leoma, TN; or, visit farmservicesolutions.com; (931) 242-7675

COVINGTON 2 ROW planter, 3pt. hitch, with extra plates, \$600. (731)617-0602.

2 OMC hay bine hay-master, shed kept, \$750. (615)691-0479.

WANT TO BUY, HONDA 300 four wheeler in any condition. Moulton, AL area. (256)974-3774.

8' PEG HARROW for sale, 3pt. hitch, \$450. (205)353-7540.

JOHN DEERE 5100M tractor for sale, 4WD, 2,600 hrs., shuttle shift, remotes, \$29,900. (931) 729-2320

BUSH HOG 3715 BATWING CUTTER, 15', \$8,000. (256) 773-8080

HAY EXPRESS
New **MAXILATOR** square bale Accumagrapple. Accumulate and load your square bales with ease and with one piece of equipment. Standard skid steer quick attach style in stock. 4800.00 Plus tax. Call Chris at Farm Service Solutions in Leoma, TN, or visit farmservicesolutions.com; (931) 242-7675 stuttsjc@yahoo.com

ROME 10' OFFSET bog disc for sale, very heavy duty, \$6,500. (931)629-1815.

1953, FORD JUBILEE tractor for sale, motor needs work, \$950. (256)577-5051.

OLD BARN WANTED, we take down old barns. Call T&M Demolition at (270) 962-7058

JOHN DEERE 450M ROUND BALER for sale, 3,372 bales, twine and net wrap, \$34,500. (615)374-2200.

WANT TO BUY, goats, sheep, chickens, and guineas. Ardmore, TN area. Call, (256)777-0065; (931) 427-8477

KUBOTA M6800, 2WD, remotes, 1,500 hrs., \$15,900. (931) 729-2320.

DONKEYS JENNYS JACKS GELDINGS
We specialize in donkeys for many years. We also bring donkeys for church functions birthdays etc. We deliver! We also buy donkeys. (229) 305-0801 pamfarmlife@gmail.com

1998 DODGE ONE TON 4x4, auto trans. flatbed, 4 tool boxes under, electric brake, wench, shed kept, 156k miles, \$26,000; D20P Komatsu dozer, 6-way blade, 90% u/c, new steer clutches, canopy, \$16,500. (931)242-0531.

KOMATSU 30 FORKLIFT, hard surface, propane, \$3,500. (256) 773-8080

H&S Skid steer pallet forks 900 lb. capacity \$550, 2,000 lb. \$750, 4,000 lb. \$850, 5,500 lb. \$1,150. Skid Steer, John Deere 100-500 series loader, and Global Euro quick attach available. Call Chris at Farm Service Solutions in Leoma, TN; or, visit farmservicesolutions.com; (931) 242-7675



Wood Trusses
40x60x10 Top & Gable ~ Call
40x40x10 Top & Gable ~ Call

Price includes materials and labor



All types buildings for farms
Steel Trusses Available

ADDISON AGRI-BUILDERS

POULTRY HOUSES • BARNs • SHEDS

256-747-3444

Craig Pigg, Owner

P.O. Box 455 • 2661 Co. Rd. 39
Addison, AL 35540

Brent Dollar - Sales Representative

Office: 256-747-3444 • Fax: 256-747-9002

GIVE US A CALL

FOR ALL FOR AUCTION NEEDS
Now booking for fall auctions



REDLINE AUCTION SERVICE

2631 LeGrande Hwy.
Horse Cave, KY 42149
(270) 392-0285
redforddewayne@gmail.com

Dewayne Redford (270) 392-0285
Brandon Croghan (270) 537-4460
Brady Core (859) 256-1186
Garrett Judd (270) 670-7787

TANK COATINGS & ROOF COATINGS

Available for metal, composition shingles or Tar Roofs. Long lasting and easy to apply. We also manufacture Tank Coatings for Concrete, Rock, Steel, Galvanized and Mobile tanks.



Virden Perma-Bilt
806-352-2761

www.virdenproducts.com

WANT TO BUY, goats, sheep, chickens, and guineas. Ardmore, TN area. Call, (256)777-0065; (931) 427-8477

KUBOTA M6800, 2WD, remotes, 1,500 hrs., \$15,900. (931) 729-2320.

JOHN DEERE 5100M tractor for sale, 4WD, 2,600 hrs., shuttle shift, remotes, \$29,900. (931) 729-2320

BUSH HOG 3715 BATWING CUTTER, 15', \$8,000. (256) 773-8080

CARBIDET tipped blade; ALSO large variety of skid steer attachments in stock, Elkton, KY. (270)886-1097.

AG SPRAY EQUIPMENT 3-point and pull-type sprayers come with boomless nozzle. 3 point sprayers all have hand wands. 3 point 65 gal \$1,450, 110 gal \$2,600, 150 gal \$2,950, 200 gal \$3,400. Pull-type with used tires 300 gal, \$3,950; 500 gal, \$4,300. Booms available. Call Chris at Farm Service Solutions; or, visit farmservicesolutions.com; (931) 242-7675

ROBINSON ENVIRONMENTAL LAND CLEARING forestry mulching, boom mower bush-hogging, agricultural stump grinding and skid loader work. Call David, (615) 631-0638

DAIRY CATTLE 55 dairy cows, half are Holstein and half are Holstein/Jersey crosses. Two weeks to four months in milk. Three to five years old, square udders, low cell count. \$1,800 for 75% of herd or bid on complete herd. Case, Lafayette, Alabama. (334)755-5109.

JOHN DEERE 7210 for sale, 2 owner, 7,100 hours, PQ, nice local tractor, \$49,500. (615)274-2200.

WANT TO BUY 430 John Deere tractor, Oneonta, AL (205)353-2557.

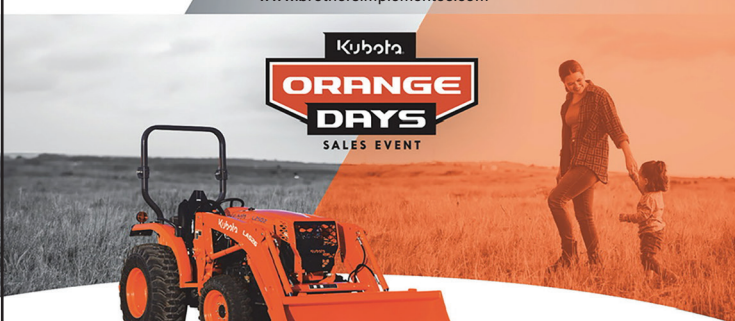
VICON KM321 disc bine, \$7,500; Ford 6600 diesel, Ford loader, \$8,000; 52" Snapper mower, 23hp. Briggs, hydro drive, all like new and shed kept. (615)691-0479.

To Place A Classified Call 800-247-7318



Brother Implement Co., Inc.
7593 Hillsboro Hwy.
Hillsboro, TN 37342
931-596-2749
www.brothersimplementco.com

Your hometown Kubota dealer of choice



L2502 SERIES

0% APR | UP TO 72 MOS

SAVE UP TO **\$2,300*** ON SELECT KUBOTA TRACTORS



KubotaUSA.com



**Based on EDA tractor sales data of under 40 horsepower models from 2018 to 2022. © Kubota Tractor Corporation, 2024. \$0 Down, 0% A.P.R. financing for up to 72 months on purchases of the new Kubota L2502 Series equipment from participating dealers' in-stock inventory is available to qualified purchasers through Kubota Credit Corporation, U.S.A., subject to credit approval. Example: 72 monthly payments of \$13,899 per \$1,000 financed. Each dealer sets their own price. Customer instant rebate includes Orange Plus Attachment Instant Rebate of \$1000 with purchase of the second-qualifying new implement and \$200 for the third new qualifying implement. Some exceptions apply. There is no rebate on the first implement purchased. Offer expires 06/30/24. Terms subject to change. Your Kubota Limited warranty gives you specific legal rights. You may have other rights which vary from state to state. 6 years limited powertrain warranty. Kubota Tractor Corporation does not authorize any person to create for KTC any obligation or liability other than that stated in the limited warranty. This material is for descriptive purposes only. Kubota disclaims all representations and warranties, express or implied, or any liability from the use of this material. For complete warranty, disclaimer, safety and product and incentive offer information, consult your local Kubota dealer and the Owner's Warranty Information Guide for the Kubota limited warranty on all products. Visit KubotaUSA.com for more information.



VICON BRAND NEW RAKE TEETH for sale, approximately 500 teeth. \$425 for all. (256)810-1153.

CALF CREEP FEEDER for sale, 600lb. capacity, \$300. (931)703-4404.

HBH COTTON WAGON, 26' long, no sideboards, used to haul hay, tandem rear axles, \$2,000. (256)753-2318; or, (256) 558-0812

EZ-TRAIL NEW 37' header trailer for sale, 4 wheel steer, \$7,000. (615)464-7080.

OLD BARN WANTED, we take down old barns. Call T&M Demolition at (270) 962-7058

DEWEZE SUPERLICER roll bale feeder, \$19,500. "The best way to feed what you need-Stop your hay loss. Give us a call, RRP Truck Equipment, Sparta, TN 38583. (931) 761-3554

BRIGGS AND STRATTON gas generator for sale, 5,000 watt, 110/220v, \$100. (931)698-6020.

WANT TO BUY, JOHN Deere 5310 tractor, 2WD. (270)881-2403.

JOHN DEERE 4240, bucket and hay spear, \$27,500. (256) 335-4919

1963, JOHN DEERE 1010 tractor for sale, runs, 2WD, \$3,000. (931)235-0179.

PEQUEA TT4000 TEDDER, 18', \$7,950. (931) 722-8276

CATTLE SWEEP SYSTEMS Heavy Duty galvanized 8 bar 6' tall. 90 degree with 10' of alley starts at \$1,480. 180 degree w/20' of alley starts at \$2,475. We can add as needed to customize your system. Call Chris at Farm Service Solutions in Leoma, TN; or, visit farmservicesolutions.com; (931) 242-7675

LIVESTOCK & FLATBED TRAILERS for sale, must see, different sizes and options. Financing available. Wholesale Trailers, Lebanon, TN. (615) 714-3894

Selection • Service • Satisfaction

- Aerial Work Platforms
- Lawn- Landscape-Tree
- Compaction
- Material Handlers
- Skid Steers-Mini Excavators
- Generators and Accessories
- Construction Tools
- Concrete-Masonry



From Contractor To Homeowner, **We Can Help!**



WATSON'S Equipment Rental

290 Interstate Drive • Manchester, TN 37355
Mon.-Fri. 7:00 A.M. - 5:00 P.M. • Sat. 7:00 A.M. - NOON



931-954-5862

www.WatsonEquipmentTN.com

WRANGLER PARTS FOR SALE, used machines wanted. Deutz engine parts. Martin's Maintenance, Monday-Friday, 8a.m.-5p.m. (270) 265-5040

JOHN DEERE 5075E tractor, 4WD, loader, runs and looks like new, \$34,500. Call between 8a.m.-5p.m., (931)939-4999.

G A T O R M A D E G O O S E N E C K TRAILER, 25', \$11,700. PowerQuip located in Albertville, AL. Call for more information and pricing. (256) 878-1631

MAHINDRA 5500 for sale, 50hp shuttle shift, loader, remote, \$17,900. (931)729-2320.

JOHN DEERE 1610 chisel plow, 10'W, 3 point, gauge wheels, good condition. Pics and delivery available, \$2,500. (931)808-8095.

DECALS AFFORDABLE DECALS AND SAFETY DECALS. Prompt. Knowledgeable Reliable Service. www.QuipCal.com; Call, (215)536-5339; email:info@customerservicescompany.com.

AFFORDABLE DECALS AND SAFETY DECALS Prompt. Knowledgeable Reliable Service. www.QuipCal.com; Call, (215) 536-5339; email:info@customerservicescompany.com.

JOHN DEERE 1025R, 280 hours, bucket, belly mower, \$17,750. (256) 335-4919

PRESSURE TREATED PINE FENCE BOARDS for sale, 1x6x14ft; 1x6x16ft; 2x6x16ft available. (931) 675-3260

FOUR NEW IN BOX, Hoop buildings, 20'x30'x12' with 9'x13' door, \$2,500 each. (270)861-5527.

KAWASAKI 300 4x4 4-wheeler, just serviced, like new, \$4,000; new 14' trailer, \$3,000. (615)893-4551; (615)542-1715.

JOHN DEERE 4230, good tractor, 8,200 hours, \$18,750. (256) 335-4919

JOHN DEERE 460M SILAGE SPECIAL for sale, 4x6, 4,178 bales, net wrap and twine, only rolled dry hay, \$46,500. (615)274-2200.

WANTED, PASTURE DRAG, new or used. (270)529-9215.

8' PEG HARROW for sale, 3pt. hitch, \$450. (205)353-7540.

GLENER MOD-EL K Combine, with 2-row cornhead, 10' and 13' grain-heads, runs, not used in 2 years, \$1,500. (256)753-2318; or, (256) 558-0812

TWO 1 ROW PTO POTATO DIGGERS, one Shoemaker, \$600; the other is Zaga, \$800. (256)453-1697.

TOMATO-PEPPER-MELON AND MANY MORE GREENHOUSE PLANTS. WILL BE AVAILABLE FROM MID-APRIL THROUGH JUNE, AT 40 LONG ROAD, ETHRIDGE, TN 38456.

POLLED JERSEY HEIFER for sale, due in August, tame, gentle. No Sunday calls, \$1,700. (931)254-2110.

UNKNOWN GOOSENECK TRAILER, 18', good trailer, \$4,000. (256) 773-8080

SO4 PRIEFERT SQUEEZE chute, with working system and sweep tub, \$6,500. (931)209-6870.

Dave's Sawmill Sales



HUD-SON SAWMILLS, FOR THE WORK YOU DO.

We manufacture a number of sawmills, starting with our Sawyer Model at just

\$2,495

UNIFOREST WINCHES

Starting at **\$3,995**



For more information or a free brochure, call:

In Kentucky Call Dave in Lawrenceburg
859-265-0793

In Tennessee Call Harold in Crossville
931-787-3547

To Place A Classified Call
800-247-7318



EK Auctioneers

Check our website for details
ekauctioneers.com
or call 865-607-6698.

ROBINSON ENVIRONMENTAL LAND CLEARING

Serving Middle Tennessee since 2007



ECO-FRIENDLY FORESTRY MULCHING!

We will clear your land to match your vision! We will work with excellence and efficiency to deliver your desired end results.

- Pasture clearing/restoration
- Timber stand improvement
- Lot clearing-residential and commercial
- Right-of-ways • Fire Prevention
- Wildlife habitat enhancement
- Food plot • Perk Sites • Survey Lines
- Real Estate tracts • Access roads
- Agricultural Stump Grinding

WWW.DROBINSONLANDCLEARING.COM
615-631-0638

VERMEER 7040 \$6,500, good condition. Also, selling NH 616 for \$2,500. Both run perfectly, and have rebuilt hydraulic cylinders and extra sets of blades. Call or text, (931) 247-2612 Con r y 510@yahoo.com

INTERNATIONAL 454, runs good, hydro works, PS, \$3,500. (256) 773-8080

KRONE 5.52/4X7T hay tedder, excellent condition, \$8,000. Pics and delivery available. (931)808-8095.

MASSEY FERGUSON 275 needs motor work, diesel, sell for \$2,500 or trade. (256) 293-8696

QUALITY LAWN CARE!! We do landscaping, lawn maintenance, mulch, tree trimming, tree removal, clean up. Licensed and insured. Free Estimates. Call for price, (931)625-6377.

KUBOTA 2601 4WD, loader, 5' belly mower, 4' tiller, runs and looks new, \$19,500. Call between 8a.m.-5p.m., (931)939-4999.

KUBOTA RT-VXG850, \$19,299. PowerQuip located in Albertville, AL. Call for more information and pricing. (256) 878-1631

JOHN DEERE 4100, 4WD, loader, belly mower, runs and looks excellent, \$11,900. Call 8a.m.-5p.m., (931)939-4999.

180 DEGREE SWEEP TUB with 7' bow gates, 6' tall, heavy duty. (615)653-8913.

SANTA GERTRUDIS BULLS polled, registered, gentle. Happy Valley Ranch, Quality Cattle Since 1977. (256) 566-7878 lindadkelso@yahoo.com

KOMATSU PC20UU EXCAVATOR for sale, 3,200 hrs., 20hp, \$16,900. (931)729-2320.



Tar River No-Till Drills, 5' & 7'
In Stock - Call

Case IH JX75, 4WD, CHA, 3859 hrs.
\$28,500

Iron Craft Cutters, 15' med & HD
In Stock - Call

Case IH	Massey Ferguson
430.....\$2,750	231, no loader.....\$5,750
C70, diesel, ps.....\$8,750	261, dual outlets.....\$9,250
	1085.....\$8,500
	285, Loader..... Call
John Deere	Misc.
1120, loader.....\$5,500	2003 MacTruck, conv. cab.....\$28,000
2355, CHA, loader.....\$18,500	Asphalt Packer, HD, JD engine.....\$9,000
6400, 7800 hrs., CHA, 2WD.....\$22,500	Bobcat 743 Skid Steer.....\$12,500
3033R, 665 hrs., tractor/backhoe, 4WD.....\$28,000	Bog Discs, 3 Bogg..... Call Cell
1025R, 4WD, Belly Mower.....\$7,500	Cub Farmall, w/ mower.....\$1,250
825 Gator, 1700 hrs, PS.....\$12,500	Farmall 140, w/ cultivators.....\$4,250
2150, 50 hp.....\$8,500	Gehl 6635 SXT, turbo, metal tracks.....\$22,500
3038E, 4WD, w/ loader, 1094 hrs.....\$18,500	Skid Steer.....\$21,500
M.....\$1,500	(5) Gravity Wagons..... Call
	JD 320 Skid Steer, 66 hp.....\$22,500
Kubota	Mahindra 7010.....\$25,000
BX2200, 4WD, belly mower, 478 hrs.....\$8,500	Olathe Model 12 Wood Chipper,
M4030, new engine, clean, loader.....\$12,500	3 pt. hitch, works good.....\$2,250
L2501, 4WD.....\$18,500	Several Wheel Discs..... Call Cell
	Several Square Hay Balers..... Call
Ford	Kuhn Feed Mixer, used about 100 loads.....\$22,000
3600 Trencher Tractor, front blade	Komatsu D3I Trackloader..... Call
back trencher.....\$5,250	Archway Feed Mill.....\$2,500
5600, 2WD, low hrs., ready to go.....\$13,900	NH 273 Square Baler.....\$2,250
3430.....\$5,750	Vermeer VR1022 Rake, 10 wheel like new...\$6,500
1720, 2WD, 1875 hrs., new brakes, new water pump, ready to go..... Call	(2) Vermeer 5420 Rebel, monitor....\$18,500 each
	DR Weedeater, 3pt, PTO driven.....\$1,500

Culvert Pipe, 12" & up, Plastic & Metal • Head Gates • Corral Panels



Lynch Equipment Sales

Westover Drive, Columbia, TN
931-381-1839 • Cell: 931-619-1338



NEW HOLLAND SUPER 55 Bar Rake, repainted, needs 1 new bar bearing, \$1,000. (931) 692-8486

HEAVY DUTY 5 POINT V RIPPER, with colters, dual gauge wheels, 3pt hitch. Pics and delivery available, \$1,750. (931)808-8095.

To Place A Classified Call
800-247-7318

BERNESE MOUNTAIN PUPPIES, out of AKC registered stock, ready June 10, nice and fat, raised on farm, no vaccines, very affectionate, \$750 each or best offer. No text. Call, (931)254-3744.

2004, KINZE 2600 PLANTER for sale, 12/23, corn/bean, main frame no cracks or welds, \$27,500. (615)274-2200.

ISUZU BOX TRUCK, 2014 model, 220,341 miles, diesel, A/C, automatic, 16' box, \$29,500. Call or text, (931)607-9737 for more information.

JOHN DEERE 4044R for sale, only 6 hrs., loaded with options, 2 sets rear remotes, \$52,500. (615)274-2200.

Come Check These Great Deals!



JD 535 new belts, good baler, new sprockets, field ready - \$5,500



Privateer Fish & Work Boat 24', good boat, Volvo outdrift \$8,500



JD 5105 good local tractor \$12,500

Bush Hog 3715 Batwing Cutter, 15'	\$8,000
Komatsu 30 Forklift , hard surface	\$3,500
Int. 454 , runs good, hydro works, PS	\$3,500
Gooseneck Trailer, 18' , good trailer	\$4,000
Canoes , used	\$200 each

North Alabama Tractor Co.

256-773-8080

Hwy. 31 South, Hartselle, Alabama 35640 • P.O. Box 1025

DONBAR USA

Works like a handrail creating better balance when climbing on and off a Zero-Turn mower.

new accessories!



phone cradle



bucket attachment



scan to purchase now!

Support Bar for Zero-Turn Mowers
Order online at www.dbmower.com • 763-785-1382

GOOSENECK TYPE REGISTERED HER-cattle trailers for sale, EFORD BULLS for 16' and 20' trailers, \$2,500 each. Lebanon, TN. (615)714-3894.

1998 MACK DUMP TRUCK, good solid truck, 8U transmission, 350 engine, \$44,750. (256) 335-4919

JOHN DEERE 9500 COMBINE, 4 wheel assist, 25' head, all shed kept. (256)565-1694.

REGISTERED HER-cattle trailers for sale, EFORD BULLS for sale, gentle disposition, great bloodlines, polled, service age, starting at \$1,500. Leave message, (931) 703-7573

WANTED, POCKET KNIVES and knife collections. (615)630-5251.

DANUSER, POST HOLE DIGGER for sale, 9" auger, heavy duty, \$850. (931)703-5239.



49th Annual Lions Super Pull of the South
July 19 & 20, 2024
Non-stop pulling action begins at 7 P.M. • Fri., July 19 & Sat., July 20
Super Stock Diesel Tractors • Pro Stock Tractors
Modified Minis • 6200# 4WD Trucks • Unlimited Modified Tractors

Ticket Prices	Reserved Seats
General Admission	Friday • Adults \$25.00
Friday • Adults \$20.00	Saturday • Adults \$30.00
Saturday • Adults \$25.00	Buy & Print Tickets Online!
Children (6-11) \$10.00	www.LionsSuperPull.com
Under 6 FREE	and click on Tickets

NO VIDEO EQUIPMENT PERMITTED • NO REFUNDS • NO RAIN DATES

For More Information Call: 1-800-364-4872 Email: tractorpull@united.net
or visit us online at: www.LionsSuperPull.com • NO COOLERS / BACKPACKS • BEER SALES ON-SITE

MINI TRUCKS FOR SALE, 4x4, A/C, P/S, 5-speed, auto, dump and regular beds and vans. Delivery Available, Can Special Order. Berryhill Mini Trucks, LLC., 3499 Co. Rd. 93, Anderson, AL 35610. (256)740-7287; www.berryhill-minitrucks.com

KUBOTA L3301, 750 hours, 4WD, \$19,750. (256) 335-4919

2003, JOHN DEERE 1770NT for sale, 16-30, bulk fill, one owner, \$56,900. (615)274-2200.

WANTED, JOHN DEERE 214 hay baler. (931) 210-7857

TRUCK FLAT BEDS For All Your Needs. Give Us a call. (931)761-3554. RRP Truck Equipment, Sparta, TN 38583.

GARAGE DOOR INSTALLATION & REPAIR GARAGE DOORS & OPERATORS - NEW INSTALLATION & REPAIRS - WE USE ONLY TOP BRAND DOORS AND OPERATORS (DOOR-LINK/LIFTMASTER). CALL NOW FOR A FREE QUOTE! SERVING SOUTHERN TN AND NORTHERN AL. (931) 292-4889

REGISTERED 2YR OLD Angus calving ease bull, \$4,500; also 5 black baldy cows with calves, \$3,500 each. (615)618-0541.

TWO WHITE POLY 2,500 gallon cone bottom tanks for sale, with stand, \$2,500 each. (270)861-5527.

FOR SALE, FACTORY 3-POINT for G John Deere tractor, rear wheel weights for this tractor. Price negotiable. (205)353-7540.

WANTED, JOHN DEERE 214 hay baler. (931) 210-7857

WANTED, POCKET KNIVES and knife collections. (615)630-5251.

DANUSER, POST HOLE DIGGER for sale, 9" auger, heavy duty, \$850. (931)703-5239.

HEREFORD TWINS, healthy 10 month old male steer, female free martin, \$1,600 for pair. (931) 492-3720

180 DEGREE SWEEP TUB with 7' bow gates, 6' tall, heavy duty. (615)653-8913.

BUNK FEEDERS



With or Without Legs
Open or Closed Ends

CATTLE GUARDS



Concrete Water Troughs

Delivery Available

8' • 12' • 16' Widths
Rounded Top Design Keeping Livestock From Crossing



River City Concrete
9160 Hwy. 128 | Savannah, TN, 38372 | 731-925-0271
www.rivercity-concrete.com

Cub Cadet Gossett Farm Equipment, LLC
 1624 Hwy. 100, Centerville, TN 37033 • 931-729-4515



Call Jo To Qualify For 12, 24, 36, 48 Month Zero Interest on Cub Cadet Mowers!
 gossettfarmequipment@gmail.com • 931-729-4515 • Great Financing

HILLBILLY EQUIPMENT
 931-729-3320



Ford 3600, runs good, DSL, P.S. **\$5,500**



Int. 674 - diesel, weights, extra hyd., PS, loader **\$7,500**



Kubota L2500, 1500 hrs., 4WD **\$8,000**



Kubota L3300 - 4WD, w/loader **\$9,500**



Deutz 3006, 6', 4' **\$3,500**

For Sale - Inventory, Parts, Buildings, Real Estate, Salvage Yards, House & Shop, Approx. 25 Acres

Front Bale Spear.....	\$250	International 424 Tractor, gas, spin-out wheels.....	\$2,200
Plows - 1, 2, 3, 4 Bottoms.....	Call, \$300 down	Ford 4000, needs motor build.....	\$3,000
Finish Mowers, 4'-5'.....	\$300	Truckman 5000 lb Forklift, gas, 42" forks.....	\$2,000
Cultivators/Cub Complete.....	\$400	Ford 2600, new seat, P.S., gas, new paint.....	\$3,500
Used Backhoe Buckets.....	Call	3 pt. 6' Blade.....	\$200
IH Belly Mowers 5'.....	\$400	3 pt. 6' Finish Mower, 4 wheel.....	\$600
JD Planter, 3 pt, 2 row.....	\$300	Kubota L5030 Tractor - 4x4 HST,	
3 pt. Spring Tooth Cultivator, 2 row.....	\$250	Kubota LA854 loader, bucket.....	\$13,500
Massey Ferguson 135 Tractor.....	\$3,750	Int. 674, loader, diesel, runs good.....	\$7,500
2 Bottom Plow International.....	\$300	Belarus 250AS - 253 hrs., BH, 6', finish mower.....	\$3,250
Kubota 6' Finish Mower 3pt.....	\$1,000	Int. 574, Koyker loader, bucket.....	\$6,500
Cannon Box Blade, 6', with ripper.....	\$1,000	Int. 484, BH loader.....	\$5,500
40'x18' Carport 3 Sides.....	\$2,500	Int. 424, gas.....	\$2,220



JD 208- w/belly mower, gas, "Classic" **\$750**



MF 165, diesel, PS **\$3,000**



JD F1145 Front Mount, 60" deck **\$4,500**

Call Rex 931-729-3320 1151 Hwy 48 S, Centerville, TN

SQUEEZE CHUTES Tarter series 3 **\$2,800.** Tarter series 6 **\$4,500** both available with either automatic or manual head gates. Call Chris at Farm Service Solutions in Leoma, TN; or visit farmservicesolutions.com; (931) 242-7675

JOHN DEERE MI 1949 tractor for sale, two cylinder, 3 point hitch, \$1,700. (931)698-6020.

USED CANOES, \$200 each. (256) 773-8080

1986, **HONEY** Motor Home, 27', 43,000 miles, warehouse kept, near new condition, \$9,600. (931)684-8178.

HATCHLINGS FOR SALE, Ducks, Geese, Chickens, Bantams, Turkeys, Guineas. Cullman, AL area. (256)930-8530.

ASV Skid steer quick attach equipment of all types. Grapples, Post Hole Diggers, Cutters, Sweeper Brooms, Forks, Stump Grinders, Boom Poles, etc. If you're looking for attachments give Chris a call at Farm Service Solutions in Leoma, TN or visit farmservicesolutions.com (931) 242-7675

2009 **CHEVY** 2500HD for sale, 2WD, diesel, 4 door, 131k miles, \$23,500. (931) 215-0124; (931)381-2795.

LAND PRIDE, RCR1260 5' Land Pride, Slip-Clutch, PTO-driven BUSH HOG in excellent condition, \$2,000. (260) 585-7327 reubenhilty88@gmail.com

STAY-TUFF BRAND LIVESTOCK FENCING for sale, 12 different sizes available. Hundreds of rolls in stock. (931) 675-3260

JOHN DEERE INNER CAB ROOF, fits JD 4030, 4230, 4430, 4630, \$500. Murfreesboro, TN area. (615)427-8766.

2003, **JOHN DEERE** 1770NT for sale, 16-30, bulk fill, one owner, \$56,900. (615)274-2200.

FOR SALE, Golden Comet pullets, ready to lay, \$18/each; 2-year-old spent hens, \$8/each; Great Pyrenees pups, \$150/each. Altamont, TN. No Sunday calls, please. (931) 692-3333

WAGYU HEIFERS for sale. (256)714-6182.

CASE IH 1083 CORN HEAD, 8 row, poly snouts with EZ Trail header wagon, \$8,500. (931)308-2128.

NEW HOLLAND BC5070 for sale, 540 PTO, hydro bale squeeze, clean pickup and knotters, \$21,900. (615)274-2200.

CUSTOM TARPS FOR hoop buildings, available in 11 different colors. We also offer hay tarps and pond liners. Cover your investment, (859) 375-5268

GOOD CORN SILAGE for sale, \$60 per ton, large orders negotiable. (931)256-0481.

To Place A Classified Call 800-247-7318

OVERSTOCKED!

- Retaining Wall Blocks
- Landscapers
- Farmers
- Industries
- Build Your Storage Bins!

\$60 Each (You Haul)

Mid South Concrete Inc.

P.O. Box 1220 • 1750 Braley Ln. • Pulaski, TN 38478
 2408 Hwy. 43 South • Leoma, TN 38468
931-363-0690 • 800-705-5326
 www.midsouthconcrete.com

Custom Hoop Bldg. Covers, Hay Tarps, & Pond Liners

11 Colors Available

All covers have 2" weld for
Strong Waterproof Seams



Agricultural • Industrial • Commercial



3433 White Hall Road
Mackville, KY 40040
Fax: 859-375-5269

859-375-5268

JOHN DEERE 556
ROUND BALER for
sale, electric tie with
monitor, \$6,500.
(931)446-7023.

TUCKER GEN II
TRAIL SADDLE for
sale, 17-1/2" seat with
wide tree, excellent
condition, \$1,150.
(931)209-6870.

JOHN DEERE 338
SQUARE BALER,
excellent shape, barn
kept, \$12,000. (256)
777-5346

**4,000 BALES
OF ORCHARD
GRASS HAY,
12-14% protein,
\$8-\$10 per bale.
Hohenwald, TN
area. (931)628-
0529.**

KELLY DUPLEX
STATIONARY FEED
MILL, cyclone, blow-
er, mix bin (2 ton),
\$3,000. (256) 453-
1697

**MILLER FARMS
Angus Beef
from the farm.
100% natural,
non-GMO, hor-
mone and an-
tibiotic-free.
Whole, halves,
or by the pound.
Slaughtered
and packaged.
(931)593-3702;
(931)593-2429.**

**To Place A
Classified Call
800-247-7318**

The Ultimate Wood Heat.

More Comfort
Thermostatically
controlled wood heat.

Peace of Mind
Keep the fire outside and
eliminate the dangers associated
with indoor wood heating.

Save Money
Wood is a renewable, inexpensive
and often free energy source.

**CLASSIC
EDGE**
TITANIUM HD SERIES
Outdoor
Wood Furnace



Southern KY Wood Furnaces

8263 Glasgow Rd., Burkesville, KY 42717

(270) 459-1840 • SouthernKyWoodFurnaces.com

HAY FOR SALE, 4x5
rolls, orchard grass
and fescue, \$45 per
roll. (931)652-8123.

WANTED, Standing
Tracts of Timber and
Cedar to buy and cut;
also, mulching ser-
vices. Dwight Rogers,
(931) 580-4816

NEW IDEA MODEL
324 four corn pickers,
2-row wide, for parts,
price flexible with
purchaser. (256)753-
2318; (256) 558-0812

RIDING LAWN
MOWER TRAIL-
ERS for sale, 5'x12'
lawn mower trailer,
\$850. Lebanon, TN.
(615)714-3894.

CASE IH 885, 72hp,
2293hrs, \$24,500.
Call 4-9 p.m., (931)
244-0535

JOHN DEERE 338
SQUARE BALER,
excellent shape, barn
kept, \$12,000. (256)
777-5346

BULL GATES-16
GAUGE, 51" and 63"
tall, 4'-20' long, good
inventory. Fand-
PLivestock.com; (615)
653-8913

MAHINDRA 6500
for sale, 4WD, two re-
motes, 60hp., \$18,900.
(931)729-2320.

1986 GMC SPREAD-
ER TRUCK for sale,
12' Chandler, hydrau-
lic bed, very good
condition, \$12,500.
(678)231-8636.

BOW GATES 16
GAUGE, 6' tall, good
inventory, 4' up to 12'
combo bow gates-ex-
ample 12' with 4' wt.
FandPLivestock.com;
(615) 653-8913

PRESSURE TREAT-
ED PINE FENCE
POSTS for sale, sev-
eral sizes round and
square available, 7', 8',
10' lengths available.
(931) 675-3260

1979, FORD 7700
W/ FRONTLOAD-
ER This is a working
Ford 7700 tractor
with front loader.
This tractor always
starts and does what
is needed making it
a good addition to
get farm things done
without the compli-
cations of computers.
It also comes with
5 suitcase weights,
\$20,000.. (270) 945-
4692 Mkemp98931@
aol.com

CUB CADET 7625
for sale, 4WD, hy-
dro loader, \$10,900.
(931)729-2320.

JOHN DEERE 567
round baler, mega
wide pickup, net wrap
1,000+, 540 PTO
shafts 3,718 bales,
\$19,000; M&W B78 10
wheel v-rake, \$4,500.
(615)464-7080.

JOHN DEERE 4020,
joystick, QA bucket,
straight as they come,
console, \$18,750.
(256) 335-4919



Chicken Litter For SALE

Kiln Dried Shavings For Sale

ORGANIC FERTILIZER

• DELIVERY AVAILABLE •

931-967-8699 • 931-607-8699

WANTED, WIND-ROW GATHERING wheel assembly for John Deere 430 baler. (931)797-8458.

CHAPARRAL GOOSENECK STOCK TRAILER for sale, cut gate, 14' long, good condition, \$3,150. (615)708-9276.

KUBOTA U10-5 EXCAVATOR, \$27,099. PowerQuip located in Albertville, AL. Call for more information and pricing. (256) 878-1631

PALMER DUMP TRAILER, 18', new liner, \$13,250. (256) 335-4919

FARMALL A 1948 cultivation tractor, with working power lift and pickup disk, \$1,948. (931)312-1448.

JOHN DEERE 5225, 2WD, \$14,750. (256) 335-4919

FUEL TANKS FOR SALE 250 and 300 gallon fuel tanks for sale, with stands, \$300 each; also Firestone bus tire for sale, 11R22.5, \$100. (615)542-1652.

REGISTERED BLACK ANGUS BULLS for sale, weaned bulls ready for selection. A1 sires-Volunteer, Black Pearl, Stock Fund. From high-performance cow herd. Turrentine Angus, Shelbyville. (931)607-8950; aturrentine@cafes.net.

NEW HOLLAND TC30 for sale, 30hp., \$13,900. (931)729-2320

Ritchie Water Tank
We Carry 2 and 4 Hole




Priefert 12' Corral Panel
\$220.00



Special 4 Mineral
\$16.00 per bag with this ad

Priefert
Farm, Ranch & Rodeo



Common Bermuda
\$250.00 per bag with this ad



Pellitized Lime
\$675 per 40# bag with this ad

Stocking Lots of Priefert Products

Priefert S04 Chute
Call For Prices



Priefert 135 Sweep Tub Premier
Call For Prices

Guntersville
FEED STORE LLC

& GARDEN CENTER

256-582-4411

1321 Blount Ave. Guntersville, AL

guntersvillefeedstore.com

STEFFEN SYSTEMS 6515 square bale grapple, holds 15 flat or 18 on edge, good condition, \$3,500. Pics and delivery available. (931)808-8095.

REGISTERED POLLED HEREFORD bulls and heifers, out of low bw bull, gentle, good EPDs. Lynnville, TN. (931) 215-6102

SMART-TILL Cherokee Tillers. 50" and 59" Chain drive regular duty. 71" Gear drive medium duty. 81" Gear drive heavy duty. 50" \$1,650; 59" \$1,750; 71" \$2,250; 81" \$2,750. Plus tax Call Chris at Farm Service Solutions or visit farmservicesolutions.com; (931) 242-7675

WANT TO BUY, 3 or 4, 24 ton feed bins. (270)881-2403.

WANT TO BUY HAY crimper. (629)395-4558.

WANT TO BUY FJ40 Toyota, in model years from 1975 to 1980. (931) 607-9737

VERMEER 554 XL BALER for sale, \$10,500; 8 wheel v rake, \$2,000. (931)619-5673.

1977, IH tractor for sale, diesel, very good tractor, \$6,000. Cumberland Furnace, TN. (615)569-0891.

CHAPARRAL GOOSENECK STOCK TRAILER for sale, cut gate, 14' long, good condition, \$3,150. (615)708-9276.

AFFORDABLE DECALS AND SAFETY DECALS. Prompt. Knowledgeable Reliable Service. www.QuipCal.com; Call, (215) 536-5339; email:info@customservicescompany.com.

KELLY DUPLEX STATIONARY FEED MILL, cyclone, blower, mix bin (2 ton), \$3,000. (256) 453-1697

WANT TO BUY Lovebird and Cockatiel males. (931)209-0876.

TUCKER GEN II TRAIL SADDLE for sale, 17-1/2" seat with wide tree, excellent condition, \$1,150. (931)209-6870.

AG SPRAY EQUIPMENT 300 GALLON SPRAYER COMES WITH 20' OR 30' BOOMS, \$4,750; 30' BOOMS, ADD \$375. CALL CHRIS AT FARM SERVICE SOLUTIONS IN LEOMA, TN. FARMSERVICESOLUTIONS.COM; (931) 242-7675

JOHN DEERE 855 compact tractor, 2WD, 60" deck, 99% ag tires, brand new gator engine, good working condition, \$6,000. (931) 692-8486

Specializing in Rugged, Reliable and Reasonably Priced Flat Beds, Arm Beds and Spike Beds



RRP TRUCK EQUIPMENT

SPARTA, TN (931) 761-3554





The Crown For Your Home

Residential • Agricultural • Commercial
 Increase the value & beauty of your home with our maintenance free metal roofing!
 Available in many styles:

Slate, Clay Tile, Shake, Stone Coated Shingle, Thatch & Standing Seam

We manufacture the 3 ft. wide metal panels at our location, plus we use an in-house computerized custom trim machine, for better and faster service!

Plateau Metal Sales www.plateaumetalsalestn.com
103 Randolph Rd. • Crossville, TN **931-277-3586**
 Mon. - Fri. 7 to 5 • Sat. 8 to 12 **1-800-468-0149**

• 2nd location to serve you better. • **1-866-988-7670**
2448 Buttermilk Road W. • Lenior City, TN **865-376-0528**

YOUR METAL ROOFING HEADQUARTERS

JOHN DEERE 5090E, open station, only 349 hours, 12/12 PR trans, 2 sets of remotes, \$58,500. (615)274-2200.

WANT TO BUY FJ40 Toyota, in model years from 1975 to 1980. (931) 607-9737

ONE SET OF, 13.6.28 of tractor tires on wheels, 90% tread, VGC, \$400. (931)314-5912.

JOHN DEERE L341 for sale, 16,000 bales, 3x4 bales, ready to go! \$92,500. (615)274-2200.

INGERSOLL RAND 175 John Deere diesel air compressor, \$2,500. Also, 6,000lb. Heiser pneumatic forklift, \$2,850. (931)254-3522.

MASSEY-FERGUSON 1610 HAY TEDDER, good shape, barn kept, \$2,000. (256) 777-5346

ONE 18.4.34, TRACTOR tire, 75% rubber, \$200. (931)314-5912.

BUSH HOG FOR SALE, 5' bush hog, \$600. Lebanon, TN. (615)714-3894.

WAYGU/BLACK ANGUS YOUNG BULLS, HEIFERS We have 3/4 Wagyu and 1/4 Black Angus young bulls and heifers, 14 to 18 months old. Heifers are for \$2,000, and bulls are for \$2,000 to \$2,800. Bulls are old enough and ready for service. (615) 504-9784 roger.rgbuilders@gmail.com

HEAVY DUTY PALLET FORKS, LIKE NEW for sale, \$600. (615)569-0891.

VERMEER TE170 TEDDER, 18', excellent, \$7,250. (931) 722-8276

To Place A Classified Call
800-247-7318



DIESEL PUMP REPAIR

- FARM TRACTORS
- DIESEL FUEL INJECTION SERVICE

StanaDyne - CAV-Roosamaster
 Pump & Injectors

Lewis Porter 931-607-3031 • 931-596-3644

34 Medley Ln., Estill Springs, TN

6 years pump experience

Open on Saturdays



Thinking of having an auction?
WE CAN HELP!

Real Estate of all Types • Assets • Estates

8719-A AL Hwy. 53, Toney, AL 35773
256-536-7497



HORTON
 AUCTION & REAL ESTATE
Sales That Satisfy Since '65

Online Bidding Available • www.hortonauctions.com

1998, BIG TEX TRAILER, 20'x5', dovetail, 20gn, tires like new, fold-out ramp, clear title, \$6,500. (931) 247-5900

JOHN DEERE 7400 tractor, with 725 John Deere loader, 9,965 hours, no third gear, runs good without engine, starts/runs good, still a good tractor, \$22,000. (615)464-7080.

2 NEW HOLLAND 258 rakes, with rubber teeth; also, New Holland 252 rake hitch, all in good condition, \$9,500. Pics and delivery available. (931)808-8095.

TWO MULE PLANTERS FOR SALE, \$350 for both. (256)435-4269.

PEQUEA TT4000 TEDDER, 18', \$7,950. (931) 722-8276

1992 CHEVROLET KING CAB pickup for sale, 4WD, 350 automatic, runs good, good tires, blue exterior, \$4,000. (931)235-0179.

CORRAL PANELS, 16 GAUGE, 6' tall, good inventory, 8' up to 16' long. FandPLivestock.com; (615) 653-8913

JOHN DEERE 4240, bucket and hay spear, \$27,500. (256) 335-4919

TWO 10' BUNK FEEDER TROUGHS for sale, with poly liner, \$200. (931)703-4404.

MIRAFOUNT LIVESTOCK WATERERS for sale, Call for big savings. (931) 675-3260

2023, TAR RIVER SAYA NO TILL DRILL These 55" and 78" Drills are set up on 7.5" spacing and will plant a variety of seeds from corn, beans, and wheat, to fescue and clover. Stainless steel boxes let you drill fertilizer at the same time as you plant seed. \$5,900 for 55" and \$6,995 for a 78" plus tax. Call Chris at Farm Service Solutions in Leoma, TN; or, visit farmservicesolutions.com; (931) 242-7675

JOHN DEERE OFFSET DISK, 8', nice, \$7,750. (256) 335-4919

APPROXIMATELY 100 CLIPPER seed cleaning screens, 42"x34", all for \$500. Pics and delivery available. (931)808-8095.

ONE 18.4.34, TRACTOR tire, 75% rubber, \$200. (931)314-5912.

PRODUCE AUCTION
Every Monday • Wednesday • Friday
Sale Starts April - October at 11:00 A.M.
Call for additional info




931-829-1114 • 469 S. Brace Rd., Ethridge, TN 38456
www.PlowboyProduceAuctions.com

22 REGISTERED BLACK ANGUS and Registered Red Angus, 15 month old bulls, 1,100lbs. plus \$1,850 and up. Superior fertility, calving ease and performance. Cow herd has excellent legs, feet and udders. All bulls developed hard on forage to work for you! Most all our bulls qualify for all 3 categories of TAEP. Located in Rome, GA, 20 miles past Centre, Alabama. Joe Gibson, www.gibsoncattle.com; (706)506-3026.

JOHN DEERE 459 round baler for sale, very nice, one owner, local, twine and net wrap, shed kept, \$32,500. (615)274-2200.

JOHN DEERE 2355 tractor for sale, runs and drives great, 9,356 hours, field ready, \$10,500. (931)759-5178; (931)675-8915.

WANT TO BUY, ARROWHEADS and Indian relics. (256)420-8075.

2004 FORD F-150 FOR SALE, extended cab, runs good, \$3,750. Call between 8a.m.-5p.m., (931)939-4999.

WANT TO BUY, ARROWHEADS and Indian relics. (256)420-8075.

DIAMOND C DUMP TRAILER, \$12,689. PowerQuip located in Albertville, AL. Call for more information and pricing. (256) 878-1631

2023, ACCORD Tar River SAYA conventional till drills. \$3,525 for 4' and \$3,895 for a 6'. In stock and ready to go. Call Chris at Farm Service Solutions in Leoma, TN, or visit farmservicesolutions.com; (931) 242-7675 stuttsjc@yahoo.com

TWO TRACTOR TIRES, 2 with tubes, nice tires, 18-4-34, very good condition, \$500 for both. (931)808-8490; (931)728-5490.

TIG WELDER AND MAINTENANCE LABORERS 43 FABRICATION IS HIRING FOR A TIG WELDER AND MAINTENANCE LABORERS, 1st shift, 40 hours a week, some overtime from time to time. Pay based on experience. Call for information, (931)270-8389; or, send resume to service@43fabrication.com. (931) 270-8389 service@43fabrication.com

Environmentally Friendly Brush Clearing

by Layne Construction

Remove unwanted vegetation. Cut & grind trees up to 6" & brush into mulch. No brush piles.



We Do All Types Of Dirt Work • Loader & Excavator

We can: Clear for wild game plots • Clear ATV trails • Shooting lanes
 Pasture reclamation • Lot clearing • Fence lines • Field borders • Right of way

Call for free estimate: 256-975-4193 • 256-975-4296
 www.land-clearing-services.com

43 FABRICATION Where Customers are our top priority! We are a multi-craft welding and machine shop that offers equipment rigging and installation. Offering welding, fabrication, manual and CNC machining, CNC plasma cutting, production fabrication services, custom fabrication, automation, industrial maintenance services, industrial equipment installation, project management, industrial door/dock service, industrial plumbing, industrial electric and more! Call or email us for

all your commercial and industrial repair needs! (931)270-8389; or, service@43fabrication.com. (931) 270-8389 service@43fabrication.com

JOHN DEERE 4240, bucket and hay spear, \$27,500. (256) 335-4919


1963, JOHN DEERE 1010 tractor for sale, runs, 2WD, \$3,000. (931)235-0179.

1998, BIG TEX TRAILER, 20'x5', dovetail, 20gn, tires like new, fold-out ramp, clear title, \$6,500. (931) 247-5900

FOR SALE, REGISTERED BLACK ANGUS BULLS, will qualify for the full TAEP money, all are by the top AI bulls in the breed. Crawford Angus. Lewisburg, TN. (931)205-2450; (931)359-2633. crawfordangus@bell-south.net


INGERSOLL RAND 175 John Deere diesel air compressor, \$2,500. Also, 6,000lb. Heiser pneumatic forklift, \$2,850. (931)254-3522.

PEQUEA TT4000 TEDDER, 18', \$7,950. (931) 722-8276




Y-C BRAND

SHELBY CATTLE CO. GENETICS
Registered Angus Cattle For Sale



Y-C BRAND



Bulls & Heifers For Sale

Your source for powerful, easy fleshing, beautifully uddered, maternally efficient Angus Cattle that "do it on Grass!"

YODER CATTLE CO.
Call Today! 731-414-1261
 318 Bradford Hwy., Rutherford, TN 38369 • yoder6@daystar.io

Well Built™ to Handle Your Hay

Trust Your Most Important Forage Crop to Stoltzfus Mfg.

Well Built™ Round Bale Carriers



Heavy Duty

- Designed to load & unload with a 3 pt. hitch bale spear
- Reinforced cross members
- 9 models with 6, 8, or 10 bale capacities
- Heavy duty construction

**Dealer Inquiries
Invited!
Several Locations
Available!**

Well Built - Feeders:

- Built tough for long life!
- Available in a variety of lengths
- Adjustable slant bar or self-locking head locks
- Ideal for cattle in either feedlots or meadows



Gates • Slant Bar Sections
Head Locks • Gutter Grates

For a free brochure or more information, call:
610-273-3603

Dealers located throughout TN & KY
Call for the one nearest you!
F.O.B. Cub Run, KY

Stoltzfus MFG

Cub Run, KY

DEALER INQUIRIES INVITED • CUSTOM WAGONS A SPECIALTY

ADVANCED WIND REEL SYSTEM, 70" Heavy Duty Skid Steer Rock Picker. With rotating reel to sweep rocks and roots up in the slated bucket, this picker does great gathering up of unwanted debris and leaving the dirt behind, \$6,000. Call Chris at Farm Service Solutions; or, visit farmservicesolutions.com; (931) 242-7675

To Place A
Classified Call
800-247-7318

INDUSTRIAS AMERICAN 3 POINT CUTTERS Heavy 11 gauge deck, 90 HP gearboxes with slip clutch. 6' \$1,600; 7' \$1,900; 10' \$3,750. Call Chris at Farm Service Solutions in Leoma, TN; or, visit farmservicesolutions.com; (931) 242-7675

2016, TRAILBOSS 20 TON TRAILER, Pintle-hitch, air brakes, used very little, 20' with 5' dovetail, \$23,500. (256) 335-4919

COVINGTON 2 ROW planter, 3pt. hitch, with extra plates, \$600. (731)617-0602.

H&S Skid steer pallet forks 900 lb. capacity \$550, 2,000 lb. \$750, 4,000 lb. \$850, 5,500 lb. \$1,150. Skid Steer, John Deere 100-500 series loader, and Global Euro quick attach available. Call Chris at Farm Service Solutions in Leoma, TN; or, visit farmservicesolutions.com; (931) 242-7675

OMC hay bine haymaster, shed kept, \$750. (615)691-0479.

WANT TO BUY, HONDA 300 four wheeler in any condition. Moulton, AL area. (256)974-3774.

8' PEG HARROW for sale, 3pt. hitch, \$450. (205)353-7540.

HAY EXPRESS New MAXILATOR square bale Accumagrapple. Accumulate and load your square bales with ease and with one piece of equipment. Standard skid steer quick attach style in stock. 4800.00 Plus tax. Call Chris at Farm Service Solutions in Leoma, TN, or visit farmservicesolutions.com; (931) 242-7675 stuttsjc@yahoo.com

ROME 10' OFFSET bog disc for sale, very heavy duty, \$6,500. (931)629-1815.

1953, FORD JUBILEE tractor for sale, motor needs work, \$950. (256)577-5051.

OLD BARN WANTED, we take down old barns. Call T&M Demolition at (270) 962-7058

JOHN DEERE 450M ROUND BALER for sale, 3,372 bales, twine and net wrap, \$34,500. (615)374-2200.

WANT TO BUY, goats, sheep, chickens, and guineas. Ardmore, TN area. Call, (256)777-0065; (931) 427-8477

IRON CRAFT flex-wing cutters. These cutters have a 10 gauge smooth top deck, replaceable skids, spring suspension, safety chains, and solid tail wheels. Model 2512 12' \$13,995. Model 2515 15' \$16,995. Model 3515 Heavy-duty 15' \$19,995. Call Chris at Farm Service Solutions in Leoma, TN; or, visit farmservicesolutions.com; (931) 242-7675

DONKEYS JENNYS JACKS GELDINGS We specialize in donkeys for many years. We also bring donkeys for church functions birthdays etc. We deliver! We also buy donkeys. (229) 305-0801 pam-farmlife@gmail.com

1998 DODGE ONE TON 4x4, auto trans. flatbed, 4 tool boxes under, electric brake, wench, shed kept, 156k miles, \$26,000; D20P Komatsu dozer, 6-way blade, 90% u/c, new steer clutches, canopy, \$16,500. (931)242-0531.

KOMATSU 30 FORKLIFT, hard surface, propane, \$3,500. (256) 773-8080

WANT TO BUY, goats, sheep, chickens, and guineas. Ardmore, TN area. Call, (256)777-0065; (931) 427-8477

KUBOTA M6800, 2WD, remotes, 1,500 hrs., \$15,900. (931) 729-2320.

We Make Hydraulic Hoses
Check with us for your Ag Bearings & Filters
Lawnmower Parts Sold Here Too
B&B Auto Parts, Inc.
4936 Winchester Rd. N.E. • New Market, AL
2 miles North of Buckhorn High School
256-379-4733
www.bandbautopartsinc.com
Owners: Kent Bentley & Denita Bentley Sharpe
Hours: Mon. - Fri. 7:00 A.M. - 5:30 P.M.; Sat. 7:00 A.M. - Noon

Over 50 Truck Beds in stock, newer & older Chevrolet, Ford, Ram & GMC Single & Dual-Wheel Trucks



Now carrying
Iron Bull Trailers
Call for prices!



Aluminum Beds
Call for Prices



Steel Beds
Call for Prices

We will trade for your used bed!
Used Flat Beds & Dually Beds Available!
Custom Orders Available!



Skirted Steel Beds - Call for Prices

Fast Installation on
In-Stock Inventory
Call Devin or Todd
931-738-9275



120 Auto Lane | Sparta, TN 38583
Hwy. 111 in Sparta



JASONLEWISAUTOMOTIVE.COM

*Price plus tax, installation hardware, & installation. Prices do not include applicable sales taxes. Installation hardware not included in advertised price. Limited quantities available. Due to advertising deadlines, some models may be sold out. **Financing available through Sheffield's on most models.

JOHN DEERE 5100M tractor for sale, 4WD, 2,600 hrs., shuttle shift, remotes, \$29,900. (931) 729-2320

BUSH HOG 3715 BATWING CUTTER, 15', \$8,000. (256) 773-8080

CARBIDET tipped blade; ALSO large variety of skid steer attachments in stock, Elkton, KY. (270)886-1097.

ROME 10' OFFSET bog disc for sale, very heavy duty, \$6,500. (931)629-1815.

1953, FORD JUBILEE tractor for sale, motor needs work, \$950. (256)577-5051.

OLD BARN WANTED, we take down old barns. Call T&M Demolition at (270) 962-7058

JOHN DEERE 450M ROUND BALER for sale, 3,372 bales, twine and net wrap, \$34,500. (615)374-2200.

AG EQUIPMENT SPRAY 3-point and pull-type sprayers come with boomless nozzle. 3 point sprayers all have hand wands. 3 point 65 gal \$1,450, 110 gal \$2,600, 150 gal \$2,950, 200 gal \$3,400. Pull-type with used tires 300 gal, \$3,950; 500 gal, \$4,300. Booms available. Call Chris at Farm Service Solutions; or, visit farmservicesolutions.com; (931) 242-7675

ROBINSON ENVIRONMENTAL LAND CLEARING forestry mulching, boom mower bush-hogging, agricultural stump grinding and skid loader work. Call David, (615) 631-0638

WANT TO BUY, ARROWHEADS and Indian relics. (256)420-8075.

DAIRY CATTLE 55 dairy cows, half are Holstein and half are Holstein/Jersey crosses. Two weeks to four months in milk. Three to five years old, square udders, low cell count. \$1,800 for 75% of herd or bid on complete herd. Case, Lafayette, Alabama. (334)755-5109.

JOHN DEERE 7210 for sale, 2 owner, 7,100 hours, PQ, nice local tractor, \$49,500. (615)274-2200.

PEQUEA TT4000 TEDDER, 18', \$7,950. (931) 722-8276

WANT TO BUY 430 John Deere tractor, Oneonta, AL (205)353-2557.

VICON KM321 disc bine, \$7,500; Ford 6600 diesel, Ford loader, \$8,000; 52" Snapper mower, 23hp. Briggs, hydro drive, all like new and shed kept. (615)691-0479.

8' PEG HARROW for sale, 3pt. hitch, \$450. (205)353-7540.



Circle W • Delta
Calico • Blazer
GPI • Homesteader

We will be exchanging Rippey's Auto Parts gas bottles

Horse Utility Trailers Cargo, Dumps
Stock Carports Bike Trailers
Flat Beds Gates & Panels Tow Dollies

Parts - Sales - Service - Rentals

RV Parts Now Available

Consignments Welcome

The Trailer Store

1021 New Lewisburg Hwy., Columbia, TN

Hours: Mon.-Fri. 8:00 A.M. - 5:00 P.M.; Sat. Closed

Mark Curry, Justin Curry, Becky Lynch

Office: 931-381-2795

Fax: 931-380-0337

VICON BRAND NEW RAKE TEETH for sale, approximately 500 teeth. \$425 for all. (256)810-1153.

CALF CREEP FEEDER for sale, 600lb. capacity, \$300. (931)703-4404.

To Place A Classified Call 800-247-7318

NEED AG TIRES?

We have tractor tires!

Ask for Belinda



Road Service & Delivery Available



KEEP TRUCKING TIRE SALES

New & Used Tire Sales
Big Truck & Ag Tires

(931) 242-1458 ★ (931) 242-6618

9021 Hwy. 43 • Killen, AL 35645

Dean Farm Supply

28739 U.S. Hwy. 72 • Hollywood, AL 35752
256-574-1112
www.DeanFarmSupply.com

BH COTTON WAGON, 26' long, no sideboards, used to haul hay, tandem rear axles, \$2,000. (256)753-2318; or, (256) 558-0812

EZ-TRAIL NEW 37' header trailer for sale, 4 wheel steer, \$7,000. (615)464-7080.

DEWEZE SUPERLICER roll bale feeder, \$19,500. "The best way to feed what you need-Stop your hay loss. Give us a call, RRP Truck Equipment, Sparta, TN 38583. (931) 761-3554

BRIGGS AND STRATTON gas generator for sale, 5,000 watt, 110/220v, \$100. (931)698-6020.

WANT TO BUY, JOHN Deere 5310 tractor, 2WD. (270)881-2403.

CATTLE SWEEP SYSTEMS Heavy Duty galvanized 8 bar 6' tall. 90 degree with 10' of alley starts at \$1,480. 180 degree w/20' of alley starts at \$2,475. We can add as needed to customize your system. Call Chris at Farm Service Solutions in Leoma, TN; or, visit farmservicesolutions.com; (931) 242-7675

LIVESTOCK & FLATBED TRAILERS for sale, must see, different sizes and options. Financing available. Wholesale Trailers, Lebanon, TN. (615) 714-3894

WRANGLER PARTS FOR SALE, used machines wanted. Deutz engine parts. Martin's Maintenance, Monday-Friday, 8a.m.-5p.m. (270) 265-5040

JOHN DEERE 5075E tractor, 4WD, loader, runs and looks like new, \$34,500. Call between 8a.m.-5p.m., (931)939-4999.

UNKNOWN GOOSENECK TRAILER, 18', good trailer, \$4,000. (256) 773-8080

AJ'S Sandblasting & Power Coating

- Patio Furniture
- Truck Beds
- New Steel Products
- Vehicle Rims & Frames

Your project not listed? Give us a call at (270) 427-4953!

1213 Bethlehem Church Rd., Mt. Hermon, KY, 42157

GATOR MADE GOOSENECK TRAILER, 25', \$11,700. PowerQuip located in Albertville, AL. Call for more information and pricing. (256) 878-1631

MAHINDRA 5500 for sale, 50hp shuttle shift, loader, remote, \$17,900. (931)729-2320.

JOHN DEERE 1610 chisel plow, 10'W, 3 point, gauge wheels, good condition. Pics and delivery available, \$2,500. (931)808-8095.

DECALS AFFORDABLE DECALS AND SAFETY DECALS. Prompt. Knowledgeable Reliable Service. www.QuipCal.com; Call, (215)536-5339; email:info@customerservicescompany.com.

AFFORDABLE DECALS AND SAFETY DECALS Prompt. Knowledgeable Reliable Service. www.QuipCal.com; Call, (215) 536-5339; email:info@customerservicescompany.com.

JOHN DEERE 1025R, 280 hours, bucket, belly mower, \$17,750. (256) 335-4919

JOHN DEERE 4230, good tractor, 8,200 hours, \$18,750. (256) 335-4919

PRESSURE TREATED PINE FENCE BOARDS for sale, 1x6x14ft; 1x6x16ft; 2x6x16ft available. (931) 675-3260

FOUR NEW IN BOX, Hoop buildings, 20'x30'x12' with 9'x13' door, \$2,500 each. (270)861-5527.

KAWASAKI 300 4x4 4-wheeler, just serviced, like new, \$4,000; new 14' trailer, \$3,000. (615)893-4551; (615)542-1715.

JOHN DEERE 4230, good tractor, 8,200 hours, \$18,750. (256) 335-4919

JOHN DEERE 460M SILAGE SPECIAL for sale, 4x6, 4,178 bales, net wrap and twine, only rolled dry hay, \$46,500. (615)274-2200.

WANTED, PASTURE DRAG, new or used. (270)529-9215.

GLENER MODEL K Combine, with 2-row cornhead, 10' and 13' grainheads, runs, not used in 2 years, \$1,500. (256)753-2318; or, (256) 558-0812

TWO 1 ROW PTO POTATO DIGGERS, one Shoemaker, \$600; the other is Zaga, \$800. (256)453-1697.

SNEAD HYDRAULICS & REPAIR

New or Rebuild Pumps, Valves, Motors, Cylinders & Hydrostats • In House Machine Shop



87017 Hwy. 278
P.O. Box 506
Snead AL 35952
Phone: 205-466-3105
Fax: 1-866-372-0303
info@sneadhydraulics.com

Craig Vaughn
Owner/CEO
256-470-0828

www.sneadhydraulics.com

Quality Seeds



Open Pollinated Corn
Non-GMO
 Yellow Jarvis
 Mosebys Prolific
 Pencil Cob
 TN Wildlife GT Dwarf Corn
 Hickory King White

Wildlife
 Purple Hull Peas
 Iron & Clay Mixed Pea
 Buckwheat • Chufa
 Japanese Millet
 Peredovik Sunflowers
 WGF Sorghum
 Chicory
 Spring Wildlife Mix

Grass Seed
 KY-31 Fescue
 KY-32 Funguss Free
 Timothy
 Orchardgrass
 Max Q-II Jesup-II

Clovers - Legumes
 Kenland Red Clover
 Advantage Ladino
 Durana Ladino
 White Dutch
 Balansa Clover
 Berseem Clover
 Crimson Clover
 Alfalfa

Soybeans
 • Extend Flex - USG
 7392XFS 3.9 -
 • #1 TN Trials for
 2 Year Average
 • Extend - USG
 7496XTS 4.9
 3rd year 2nd place average TN

Summer Annuals
 Sorghum Sudan & BMR
 Hybrid Pearl Millets
 German & Browntop Millet
 Teff Grass
 Red River Crabgrass
 Piper Sudangrass

Bermudagrass
 Common
 Cheyenne II
 Sahara II
 Tierra Verde
 Mohawk

Lawn Seed
 Turf Type Fescue
 Creeping Red Fescue
 Turf Bermudagrass

Glyphosate Tolerant:
 • USG Allen 5.6
 • NEW USG 7534 GT
Can check availability on any other soybean varieties

Cover Crop Blends
 Registered Angus
 Cattle Available

Lespedeza
 Korean
 A.U. Grazer Sericea
 Serala Sericea

Clemmons & Hamner Seed, Inc.

5578 County Rd. 34, Killen, AL 35645

www.clemmonshammerseed.com

Call **256-757-9996**

If you don't see what you're looking for, give us a call!



TOMATO-PEPPER-MELON AND MANY MORE GREENHOUSE PLANTS. WILL BE AVAILABLE FROM MID-APRIL THROUGH JUNE, AT 40 LONG ROAD, ETHRIDGE, TN 38456.

VERMEER 7040 \$6,500, good condition. Also, selling NH 616 for \$2,500. Both run perfectly, and have rebuilt hydraulic cylinders and extra sets of blades. Call or text, (931) 247-2612 Conry510@yahoo.com

INTERNATIONAL 454, runs good, hydro works, PS, \$3,500. (256) 773-8080

KRONE 5.52/4X7T hay tedder, excellent condition, \$8,000. Pics and delivery available. (931)808-8095.

MASSEY FERGUSON 275 needs motor work, diesel, sell for \$2,500 or trade. (256) 293-8696

QUALITY LAWN CARE!! We do landscaping, lawn maintenance, mulch, tree trimming, tree removal, clean up. Licensed and insured. Free Estimates. Call for price, (931)625-6377.

KUBOTA 2601 4WD, loader, 5' belly mower, 4' tiller, runs and looks new, \$19,500. Call between 8a.m.-5p.m., (931)939-4999.

KUBOTA RT-VXG850, \$19,299. PowerQuip located in Albertville, AL. Call for more information and pricing. (256) 878-1631

JOHN DEERE 4100, 4WD, loader, belly mower, runs and looks excellent, \$11,900. Call 8a.m.-5p.m., (931)939-4999.

180 DEGREE SWEEP TUB with 7' bow gates, 6' tall, heavy duty. (615)653-8913.

8' PEG HARROW for sale, 3pt. hitch, \$450. (205)353-7540.

KUBOTA RT-VXG850, \$19,299. PowerQuip located in Albertville, AL. Call for more information and pricing. (256) 878-1631

FARM EQUIPMENT FOR SALE



2013 JD 5075E
\$47,500



2012 JD 7130
\$72,500



2000 JD 7610
\$55,000



2002 JD 8420
\$87,500

- 2002 JD 7810 \$55,000
- 1995 JD 6400 \$30,000
- 2004 JD 7420 \$85,000
- 1998 JD 7410 \$37,500
- 2008 JD 6430 \$60,000

Also In Stock - Hay Forks, Pallet Forks, Grapples, Box Blades & Tillers

Commercial Vehicles

- 2009 Ford E-350 Van..... \$16,995
- 2019 Ford F-150..... \$27,500
- 2019 Chevy 2500 SD \$24,750
- 2012 Ford F-250..... \$15,500

Jim Rice Equipment

7422 US- 412 Friendship, TN 38034
 (731) 677-2400 • www.jimriceequipment.com

SANTA GERTRUDIS BULLS polled, registered, gentle. Happy Valley Ranch, Quality Cattle Since 1977. (256) 566-7878 lindadkelso@yahoo.com

KOMATSU PC200U EXCAVATOR for sale, 3,200 hrs., 20hp, \$16,900. (931)729-2320.

INTERNATIONAL 454, runs good, hydro works, PS, \$3,500. (256) 773-8080

NEW HOLLAND SUPER 55 Bar Rake, repainted, needs 1 new bar bearing, \$1,000. (931) 692-8486

HEAVY DUTY 5 POINT V RIPPER, with colters, dual gauge wheels, 3pt hitch. Pics and delivery available, \$1,750. (931)808-8095.

WANT TO BUY, JOHN Deere 5310 tractor, 2WD. (270)881-2403.

SCHWEISS

DOORS

HYDRAULIC — OR — BIFOLD

ONE-PIECE DOORS STRAP LIFT DOORS

THE DOOR LEADER

SCHWEISSDOORS.COM 507-426-8273

We Have The Right Trailer For You!



Austin Trailer Sales Florence, AL (256) 483-0744	Grandview Welding Thompsville, KY (270) 487-8813
Double D Trailer Parts Flemingsburg, KY (606) 748-9841	Lasseter Tractor Moultrie, GA (229) 985-1027
The Trailer Store Columbia, TN (931) 381-2795	Dustin Neat Enterprises Dunnville, KY (800) 346-4486

BERNESE MOUNTAIN PUPPIES, out of AKC registered stock, ready June 10, nice and fat, raised on farm, no vaccines, very affectionate, \$750 each or best offer. No text. Call, (931)254-3744.

2004, KINZE 2600 PLANTER for sale, 12/23, corn/bean, main frame no cracks or welds, \$27,500. (615)274-2200.

ISUZU BOX TRUCK, 2014 model, 220,341 miles, diesel, A/C, automatic, 16' box, \$29,500. Call or text, (931)607-9737 for more information.

JOHN DEERE MI 1949 tractor for sale, two cylinder, 3 point hitch, \$1,700. (931)698-6020.

JOHN DEERE 4044R for sale, only 6 hrs., loaded with options, 2 sets rear remotes, \$52,500. (615)274-2200.

GOOSENECK TYPE cattle trailers for sale, 16' and 20' trailers, \$2,500 each. Lebanon, TN. (615)714-3894.

1998 MACK DUMP TRUCK, good solid truck, 8U transmission, 350 engine, \$44,750. (256) 335-4919

JOHN DEERE 9500 COMBINE, 4 wheel assist, 25' head, all shed kept. (256)565-1694.

JOHN DEERE INNER CAB ROOF, fits JD 4030, 4230, 4430, 4630, \$500. Murfreesboro, TN area. (615)427-8766.

Attention Farmers!



Fertilizer Spreader
\$675



TRI Rotary Cutters
4' - 10'
Call For Prices



King Cutter Tillers
4' - 7'
Call For Prices



Utility Trailers
All Sizes
Call For Prices

BOWLEN FARM SALES

Complete Line Of Feed and Minerals • We Sell Ag Parts!

Mork Bowlen, Owner

2531 Old Alto Hwy., Decherd, TN 37324

Mon. - Fri. 7:30 A.M. - 5:00 P.M.; Sat. 7:30 A.M. - 12:00 P.M. • Lot: 931-967-7117

New Equipment

- Cattle Hay Rings
- Bunk Feeders
- Corral Panels
- Gates - All Sizes
- Horse Hay Rings
- Utility Trailers
- New & Used Farm Equipment
- Post Hole Diggers

REGISTERED HEREFORD BULLS for sale, gentle disposition, great bloodlines, polled, service age, starting at \$1,500. Leave message, (931) 703-7573

MINI TRUCKS FOR SALE, 4x4, A/C, P/S, 5-speed, auto, dump and regular beds and vans. Delivery Available, Can Special Order. Berryhill Mini Trucks, LLC., 3499 Co. Rd. 93, Anderson, AL 35610. (256)740-7287; www.berryhill-minitrucks.com

KUBOTA L3301, 750 hours, 4WD, \$19,750. (256) 335-4919

2003, JOHN DEERE 1770NT for sale, 16-30, bulk fill, one owner, \$56,900. (615)274-2200.

TRUCK FLAT BEDS For All Your Needs. Give Us a call. (931)761-3554. RRP Truck Equipment, Sparta, TN 38583.

STAY-TUFF BRAND LIVESTOCK FENCING for sale, 12 different sizes available. Hundreds of rolls in stock. (931) 675-3260

GARAGE DOOR INSTALLATION & REPAIR GARAGE DOORS & OPERATORS - NEW INSTALLATION & REPAIRS - WE USE ONLY TOP BRAND DOORS AND OPERATORS (DOOR-LINK/LIFTMASTER). CALL NOW FOR A FREE QUOTE! SERVING SOUTHERN TN AND NORTHERN AL. (931) 292-4889

REGISTERED 2YR OLD Angus calving ease bull, \$4,500; also 5 black baldy cows with calves, \$3,500 each. (615)618-0541.

TWO WHITE POLY 2,500 gallon cone bottom tanks for sale, with stand, \$2,500 each. (270)861-5527.

FOR SALE, FACTORY 3-POINT for G John Deere tractor, rear wheel weights for this tractor. Price negotiable. (205)353-7540.

WANTED, JOHN DEERE 214 hay baler. (931) 210-7857

WANTED, POCKET KNIVES and knife collections. (615)630-5251.

DANUSER, POST HOLE DIGGER for sale, 9" auger, heavy duty, \$850. (931)703-5239.

HEREFORD TWINS, healthy 10 month old male steer, female free martin, \$1,600 for pair. (931) 492-3720

SQUEEZE CHUTES Tarter series 3 \$2,800. Tarter series 6 \$4,500 both available with either automatic or manual head gates. Call Chris at Farm Service Solutions in Leoma, TN; or visit farmservicesolutions.com; (931) 242-7675

2009 CHEVY 2500HD for sale, 2WD, diesel, 4 door, 131k miles, \$23,500. (931) 215-0124; (931)381-2795.

CHEVROLET OF BOAZ

Commercial Trucks



2024 Chevy Silverado 2500 HD
Crew Cab, Stk#240724
\$56,620



2024 Chevy Silverado 2500 HD
LT Crew Cab, Stk#240692
\$70,066



2024 Chevy Silverado 3500 HD
LT DRW, Stk#240808
\$71,075



2024 Chevy Silverado 3500 HD
High Country DRW, Stk#240667
\$83,161



2024 Chevy Silverado 2500 HD
LTZ Crew Cab, Stk#240799
\$68,149



2024 Chevy Silverado 2500 HD
WT, Stk#240563
\$52,212



2024 Chevy Silverado 2500 HD
High Country Crew Cab, Stk#240716
\$72,351



2024 Chevy Silverado 2500 HD
High Country Crew Cab, Stk#240726
\$73,011



2024 Chevy Silverado 2500 HD
51 miles, 4WD, Stk#240541
\$63,400



2024 Chevy Silverado 2500 HD
LT Crew Cab, Stk#240805
\$59,155



2024 Chevy Silverado 3500 HD
10 miles, Stk#240528
\$81,807



2024 Chevy Silverado 3500 HD
Chassis Cab, Stk#240668M
\$70,940

www.chevroletofboaz.com



1134 U.S. Hwy. 431, Boaz, AL 35957

1-800-531-4253

Call to insure all incentives are applied.

Commercial rebate requires qualifications. Prices plus tax, title & license and \$199 admin. fee. Incentives Subject to Change.

Requested Delivery On or Before June 5, 2024

PRSR STD
US POSTAGE
PAID
MONROE, GA
Permit # 15

P.O. Box 490
Fayetteville, TN 37334

RUSSELL BARNETT



See Travis Searcy, The "Truck Specialist"
We're Better and We'll Prove It!

We Are Your Cab & Chassis &
Dually Headquarters



New 2024 Ram 3500 Laramie, crew cab, 4WD, 6.7L Cummins Turbo, 6 spd. auto, Stk#D12418N
MSRP: \$101,615 **Sale Price \$83,529**



New 2023 Ram 3500 Tradesman, crew cab, 4WD, 6.7L Cummins Turbo, 6 spd. auto, Stk#D12399N
MSRP: \$76,630 **Sale Price \$62,186**



New 2023 Ram 2500 Laramie, crew cab, 4WD, 6.7L Cummins Turbo, 6 spd. auto, Stk#D12400N
MSRP: \$89,575 **Sale Price \$73,601**



New 2025 Ram 1500 Big Horn, crew cab, 3.0L Hurricane 50 Twin Turbo, 4WD, Stk#D12683N
MSRP: \$64,265 **Sale Price \$64,265**



New 2024 Ram 3500 Tradesman, crew cab, 4WD, 6.7L Cummins Turbo, 6 spd. auto, Stk#D12530N
MSRP: \$68,320 **Sale Price \$63,221**



New 2024 Ram 2500 Laramie, crew cab, 4WD, 6.7L Cummins Turbo, 6 spd. auto, Stk#D12440N
MSRP: \$81,640 **Sale Price \$75,076**



2023 Ram 3500 Chassis Cab SLT, crew cab, 4WD, 6.7L Cummins Turbo, 6 spd. auto, Stk#D12412N
MSRP: \$71,145 **Sale Price \$63,995**



New 2023 Ram 3500 Laramie, crew cab, 4WD, 6.7L Cummins Turbo, 6 spd. auto, Stk#D12344N
MSRP: \$101,075 **Sale Price \$81,235**



2023 Ram 3500 Chassis Cab, SLT, crew cab, 4WD, 6.7L Cummins Turbo, 6 spd. auto, Stk#D12413N
MSRP: \$71,145 **Sale Price \$63,995**



2024 Ram 3500 Chassis Cab Tradesman, crew cab, 4WD, 6.7L Cummins Turbo, 6 spd. auto, Stk#D12449N
MSRP: \$75,090 **Price w/Bed \$80,663**



New 2025 Ram 1500 Big Horn, crew cab, 4WD, 3.0L Hurricane 50 Twin Turbo, Stk#D12683N
MSRP: \$64,265 **Sale Price \$64,265**



New 2024 Ram 2500 Power Wagon Rebel, crew cab, 4WD, 6.7L Cummins Turbo, 6 spd. auto, Stk#D12501N
MSRP: \$81,150 **Sale Price \$74,733**



2756 Decherd Blvd., Winchester, TN
931-691-1712



ON THE JOB

See Travis Searcy, The "Truck Specialist"
We're Better and We'll Prove It!

www.russellbarnettchryslerdodgejeep.com



*All rebates applied. All prices plus tax, title & tag. \$698 processing fee included. Due to advertising deadline, all prices and incentives including employee pricing is subject to change by the manufacturer without notice. Customers must finance to obtain all Rebates.