

Living here

2024



TIMES
DAILY

Florence • Muscle Shoals • Sheffield • Tuscumbia • Northwest Alabama

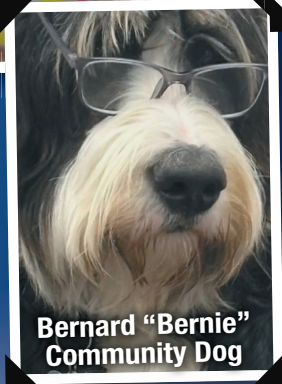
Tours Daily call 256-740-6999



The Renaissance of Florence

Assisted Living at its best!

Now leasing Studio, One Bedroom, & Two Bedroom Apartments!



Bernard "Bernie"
Community Dog



Why is the Renaissance the best Assisted Living?
Named by US News and World Report 2022, 2023 & 2024

- We offer the most spacious apartments in the area.
- Nurse practitioner in house visits made weekly.
- We provide scheduled Transportation to your doctor, and local weekly shopping trips.
- Nursing staff in house around the clock.



ASSISTED LIVING

3275 Co Rd 47, Florence, AL 35630 | PegasusSeniorLiving.com

A PEGASUS SENIOR LIVING COMMUNITY

600533-1



The Renaissance
of Florence



Window World[®]



"Simply the Best for Less"[®]

WINDOWS • DOORS • SIDING

Window World is the nation's leader in replacement windows, siding, and exterior doors. Our energy efficient products are the perfect enhancement for any home and are backed by the industry's strongest warranty. Contact us today to schedule your free in-home estimate!

Request a Free Estimate: 1-800 Get Windows

717 Michigan Ave., Muscle Shoals • (256) 383-8894 • WindowWorldMuscleShoals.com



ARE YOU LOOKING FOR A SCHOOL WHERE YOUR CHILD CAN BE ROOTED AND BUILT UP?

Are you ready for your child to experience a challenging, Christ-filled education resulting in extraordinary growth – mind, heart, body, and soul? Mars Hill Bible School provides a nurturing environment emphasizing spiritual, academic, physical, and social development. Come explore our spiritual, academic, and extracurricular programs!

Schedule a private tour at mhbs.org or by calling 256.767.1203 ext. 2007.



WHY MHBS? 2023 TimesDaily Readers' Choice #1 Private School in the Shoals • Daily Bible classes and chapel for all grade levels • Cognia STEM-Certified School • Small class sizes • A safe, healthy environment where love rules!



Welcome to the Shoals

Table of contents

Where we are
 Colbert CountyS1
 Franklin CountyS6
 Lauderdale CountyS8

Education
 Public schools.....S14
 Private schoolsS18
 Higher education.....S19

Things to do/Places to go
 CampingS21
 FishingS23
 Parks.....S25
 Outings.....S28
 The Arts.....S29
 DiningS31

Getting Involved
 Getting InvolvedS36

Economy
 IndustryS38

On the cover



Sarah Joyrce, left, holds up her 4-year-old son, Jasper, so he can meet Fancy, a rescue horse, June 7 outside of the Helen Keller Public Library to kick off the summer reading program. [DAN BUSEY/TIMESDAILY FILE]

Where we are: Colbert County



Colbert County is named for George and Levi Colbert, noted Chickasaw chiefs who lived in the area. Tusculumbia is the county seat. Other cities in Colbert County are Muscle Shoals and Sheffield and the incorporated towns of Cherokee, Leighton and Littleville. The iconic recording studios that produced the music that put the Shoals on the map are located within Colbert County, as is the Alabama Music Hall of Fame. Colbert County's U.S. Census population in 2020 was 57,227.

Unincorporated but recognized communities are Barton, Colbert Heights, Ford City, Locust Shores and New Bethel. Sheffield Utilities provides electricity for unincorporated communities and most other services may be located through Colbert County.

Useful numbers:

- County offices are at Colbert County Courthouse, 201 N. Main St., Tusculumbia; 256-386-8501; colbertcounty.org
- Colbert County Health Department: 1000 S. Jackson Highway, Sheffield; 256-383-1231

- Licenses: (auto, boat, business) courthouse; 256-386-8542; colbertprobatejudge.org
- Colbert County Board of Education: 425 U.S. 72 W., Tusculumbia, 256-386-8565; colbertk12.org
- Schools: Cherokee, Colbert Height, Hatton, Leighton and New Bethel elementary; Cherokee, Colbert County and Colbert Heights high schools
- Board of registrars (voter registration): 256-386-8535; first floor of the courthouse on Main Street in Tusculumbia
- Animal Control: 5010 Missouri St., Tusculumbia; 256-381-4073
- Northwest Alabama Regional Airport, 1729 T Ed Campbell Drive, Muscle Shoals; 256-381-2869 or 256-383-2270; flytheshoals.com

Muscle Shoals

Often referred to as the "Hit Recording Capital of the World," Muscle Shoals is home to Rick Hall's legendary FAME Recording Studios, which was featured in the popular documentary "Muscle Shoals." Artists such as Wilson Pickett, Etta James, Marty Stewart, Wet Willie, the Osmonds, The Civil Wars, Aretha

Franklin, Band of Horses and dozens of others recorded in Muscle Shoals.

Northwest Alabama Regional Airport (flytheshoals.com) is located here. The U.S. Census population in 2020 for Muscle Shoals was 16,275.

- Website: cityofmuscleshoals.com
- City Hall: 2010 Avalon Ave.; 256-383-5675
- Water: 2001 Wildwood St.; 256-386-9260; muscleshoalswater.org
- Electricity: 1015 Avalon Ave.; 256-386-9290; mseb.net
- Gas: North Alabama Gas District (natural gas): 602 Dearborn Ave., Muscle Shoals; 256-383-3306; nagd.com
- Sanitation: 256-386-9250
- Before renovating, contact Building, License & Zoning, 2010 E. Avalon Ave.; 256-386-9205
- Schools: Board of Education, 3200 S. Wilson Dam Highway; 256-389-2600; mscs.k12.al.us
- Howell Graves Preschool; McBride, Highland Park and Webster elementary; Muscle Shoals Middle School; Muscle Shoals High School; Muscle Shoals



The old railroad bridge in Sheffield has been recently added to the National Register of Historic Places. [PHOTOS BY DAN BUSEY/TIMESDAILY]

COLBERT COUNTY

From Page S1

Career Academy

- Muscle Shoals Public Library: 1918 E. Avalon Ave.; youseemore.com/muscleshoals/

Sheffield

Called “The Center of the Shoals,” Sheffield is the home to the legendary Muscle Shoals Sound Studio, Cypress Moon Studios, historic homes, a monument to President Franklin Delano Roosevelt and a unique elevated walkway over the Tennessee River. The U.S. Census population in 2020 for Sheffield was 9,403.

- Website: sheffieldalabama.net
- City Hall, 600 N. Montgomery Ave.; 256-383-0250
- Water, gas and electricity: Sheffield Utilities, 300 N. Nashville Ave. 256-389-2000; sheffieldutilities.org
- Street and Sanitation: (includes garbage and trash collection): 1916 W. 16th



SEE COLBERT COUNTY, S3 A pedestrian utilizes the crosswalk at Water Street in front of the Colbert County Courthouse.

COLBERT COUNTY

From Page S2

St.; 256-386-5610

- Before renovating, contact the Building and License Department, main floor, City Hall, 600 N. Montgomery Ave., 256-386-5606

- School: Board of Education, 300 W. Sixth St., 256-383-0400; scs.k12.al.us
- W.A. Threadgill Primary School; L.E. Willson Elementary School; Sheffield Junior High School; Sheffield High School

- Public library: 316 N. Montgomery Ave., 256-386-5633; <http://www1.you-seemore.com/sheffieldpl/>

- Helen Keller Hospital, 1300 S. Montgomery Ave., 256-386-4196; helenkeller.com

Tuscumbia

Tuscumbia, the county seat and oldest city in Colbert County, is the home to Ivy Green, which is the birthplace of Helen Keller, called “The First Lady of Courage.” Her childhood home is one of the area’s most popular attractions.

Tuscumbia’s historic downtown



SEE COLBERT COUNTY, S4 Sheffield Firefighter and Driver Tanner Maples, left, lowers the new tree as it is planted on Friday outside of Sheffield City Hall. [DAN BUSEY/TIMESDAILY]



*Where Dreams And
Imagination Come Together!*

380 Seville St., Florence (next to Kohl's)
256-767-6389 • www.woodfloorstore.net



“North Alabama’s #1 Full Service Flooring Store”

COLBERT COUNTY

From Page S3

district includes Spring Park, which offers a nightly water/light show and features a carousel, roller coaster and a small train that carries riders on a trip through the park. The city has a renovated railroad roundhouse that features railroad memorabilia and several railroad cars. The U.S. Census population in 2020 was 9,054.

- Website: cityoftuscumbia.org
- City Hall, 116 E. 6th St., 256-383-5463
- Water, gas and electricity: Tusculumbia Utilities Department, 202 E. Sixth St.; 256-383-0321
- Sanitation: 301-A E. 7th St., 256-386-5674
- School: Board of Education, 303 N. Commons St. East, 256-389-2900; tuscumbia.k12.al.us
- G.W. Trenholm Primary School; R.E. Thompson Intermediate School; Deshler Middle School; Deshler High School
- Helen Keller Public Library, 511 N. Main St., 256-383-7065; cityoftuscumbia.org/departments/helen-keller-public-library/

Incorporated towns

Cherokee

- Town Hall, 3780 Old Lee Hwy; 256-359-4959
- Water: 3780 Old Lee Highway, 256-359-4959
- Gas: 3780 Old Lee Highway, 256-359-4959
- Electricity: Cherokee is serviced by Sheffield Utilities, 300 N. Nashville Ave., 256-389-2000
- Sanitation: Household garbage is serviced by Colbert County, 256-383-9918
- Schools: Colbert County Board of Education, 425 U.S. 72 West, Tusculumbia, 256-386-8565; <http://www.colbert.k12.al.us/>
- Cherokee Public Library, 118 Church St., 256-359-4384

Leighton

Leighton is in eastern Colbert County mostly surrounded by farm and pasture land. It's best known as the birthplace of the late rhythm and blues/soul artist Percy Sledge, who is known for the hit song "When A Man Loves A Woman."

Pro Football Hall of Fame member and Baltimore Ravens General Manager and Executive Vice President Ozzie Newsome played at Colbert County High



Mayor Steve Stanley carries tools to cut English ivy as he walks along the Whippoorwill Trail from Riverfront Park in Sheffield. [PHOTOS BY DAN BUSEY/TIMESDAILY]



SEE COLBERT COUNTY, S5

From left, Zy Swopes, Jerimicah, Burney, Kaiden Burney and Paislee Roberson gather in front of the Percy Sledge mural in downtown Leighton.



Markers at the Coon Dog Cemetery. [COURTESY]

COLBERT COUNTY

From Page S4

School in Leighton. The U.S. Census population in 2020 was 665.

- Town Hall, 8900 Main St., 256-446-8477
- Water: 8900 Main St., 256-446-9330
- Gas: provided by North Alabama Gas District, 602 Dearborn Ave., Muscle Shoals, 256-383-3306; or 2711 Alabama 20, Town Creek, 256-685-2708
- Electricity: provided by Sheffield Utilities, 300 N. Nashville Ave., Sheffield; 256-389-2000
- Sanitation: Household garbage is serviced by Colbert County, 256-383-9918
- Schools: Colbert County Board of Education, 425 U.S. 72 West, Tuscumbia, 256-386-8565; colbert.k12.al.us/
- Leighton Public Library: 8740 Main St., 256-446-5380; includes a small museum featuring Native American and Civil War artifacts, and LaGrange College history

Littleville

Littleville is the youngest incorporated town in Colbert County, but it wasn't always a Colbert County town. It was in Franklin County until Chickasaw Indian Chief George Colbert's vast land ownership influenced the change from Franklin County to Colbert County. The town exists despite the fact it doesn't have its own ZIP code. Part of Littleville has Russellville addresses and ZIP code, while the rest have Tuscumbia addresses and ZIP code. The U.S. Census 2020 population was 1,038.

- Town Hall, 1810 George Wallace Hwy, Russellville; 256-332-3567
- Water: 1810 U.S. 43 (George Wallace Highway), 256-332-5211
- Gas: Russellville Utilities, 721 Jackson Ave., Russellville; 256-332-3850
- Electricity: provided by Sheffield Utilities, 300 N. Nashville Ave., Sheffield, 256-389-2000
- Sanitation: Household garbage is serviced by Colbert County, 256-383-9918
- Schools: Colbert County Board of Education, 425 U.S. 72 West, Tuscumbia, 256-386-8565; colbert.k12.al.us/



North Alabama
Neurosurgery

CLINICAL SPECIALTIES

- Neurological Spine Surgery
- Complex Spine
- Spinal Fusion
- Degenerative Spine Diseases
- Spine Tumors
- Cervical, Thoracic & Lumbar Spine Conditions
- Previous Fusion Revisions
- Minimally Invasive Spine Surgery



426 E Dr. Hicks Blvd.
Florence, AL 35630
256.980.6214

Durga Ram Sure, MD



SCAN ME

For more information,
visit www.northalabamedicalgroup.com/neurology-neurosurgery

Where we are: Franklin County

Franklin County takes its name from Founding Father Benjamin Franklin and was incorporated in 1818. The population was 32,113 in 2020, according to the U.S. Census Bureau. The county seat is Russellville. Incorporated towns are Hodges, Phil Campbell, Red Bay and Vina.

See Russellville for utilities services.

Here is useful information:

- Franklin County Courthouse, 410 N. Jackson Ave., Russellville; 256-332-8861; franklincountyal.org

- Board of Education, 500 Coffee Ave., NE, Russellville; 256-332-1360; franklin.k12.al.us

- Elementary schools, Phil Campbell and Tharptown middle school, East Franklin Junior High School

- High schools, Phil Campbell, Tharptown, and Franklin County Career

Technical School

- K-12 schools, Belgreen, Red Bay, and Vina

- Franklin County Sheriff's Office, 256-332-8811; franklinsheriff.org



SEE FRANKLIN COUNTY, S7

Mike Mitchell
CONSTRUCTION COMPANY, INC.
381-0655
"Quality Custom Building"



EJ King earned some long-awaited recognition for the Russellville boys basketball team. [DAN BUSEY/TIMESDAILY]



Phil Campbell's Mia Ambrosia (24) and Bradley McDaniel race to return a serve against Brindlee Mountain at the North Regional Oct. 24, 2023. [DEANGELO MCDANIEL/FOR THE TIMESDAILY FILE]



The Red Bay Museum features memorabilia from Tammy Wynette.

FRANKLIN COUNTY

From Page S6

- Probate office, 256-332-8801 (auto, boat, business licenses)
- Revenue Commissioner's Office, property, 256-332-8831; tags, 256-332-8832
- Board of Registrars, 256-332-8848
- Animal Control, 256-332-1217

Russellville

Nestled in a wooded valley, residents here can live near one of several lakes in the historic downtown district or in one of several subdivisions.

Russellville boasts several attributes, including one of the top school systems in the state and crime rates lower than the national average.

A 200-acre industrial park takes advantage of the expansion of Alabama 24, which has been four-laned to the Alabama-Mississippi state line from Decatur. Population is 10,855, according to the 2020 census.

City Hall, 304 N. Jackson Ave.; 256-332-6060; russellvilleal.org

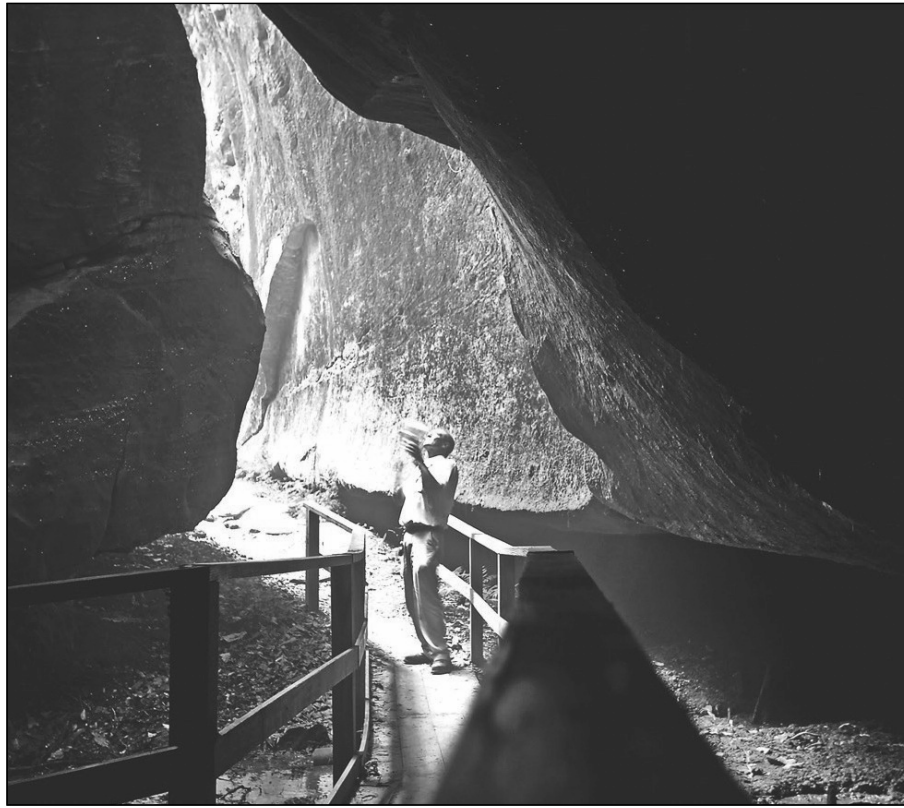
Before renovating, contact Building, License and Zoning department, 304 N. Jackson Ave.; 256-332-6060; russellvilleal.org/building-licensing-zoning

Utilities (gas, water, electricity and sewer), 721 S. Jackson Ave., Russellville; 256-332-3850; nights, weekends and holiday emergencies only, 256-332-2230; russellvilleutilities.com

Sanitation, 405 N. Jackson Ave.; 256-332-8812

Board of Education, 1945 Waterloo Road; 256-331-2000; rcs.k12.al.us

The city school system has two elementary schools, a middle school and a



Rock formations and waterfalls along the walking trail at the Dismals Canyon in Phil Campbell.

high school.

Public library, 110 Lawrence St., E.; 256-332-1535; russellvilleal.org/library; Monday-Friday, 10 a.m. to 5 p.m.

Russellville Hospital, 15155, U.S. 43; 256-332-1611; russellvillehospital.com

Hodges

Town Hall, 1942 Alabama 172; 205-935-3445; hodgesal.com

Water: call Town Hall

Electricity: provided by Alabama Power Co., 1-800-245-2244;

alabamapower.com/residential

Sanitation: 405 N. Jackson Ave., Russellville; 256-332-8812

Schools: Franklin County Board of Education, 256-332-1360; franklin.k12.al.us

Phil Campbell

City Hall, 580 Railroad St.: 205-993-5313

Water: 215 McClung St.; 205-993-5464

Gas: Northwest Alabama Gas District,

205-993-5313

Electricity: Alabama Power Co.; 1-800-245-2244; alabamapower.com/residential

Sanitation: 405 N. Jackson Ave., Russellville; 256-332-8812

Schools: Franklin County Board of Education, 500 Coffee Ave., NE, Russellville; 256-332-1360; franklin.k12.al.us

Northwest Shoals Community College, Phil Campbell campus, 2080 College Road; 256-331-6200; nwscc.edu

James A Glasgow Library, 2080 College Road; 256-331-6271

Red Bay

City Hall, 203 4th Ave., SE; 256-356-4473; cityofredbay.org

Water/gas: 302 4th Ave., SE; 256-356-8622

Electricity: Franklin Electric Cooperative, 904 4th St., NW, Red Bay; 256-356-4413

Sanitation: 405 N. Jackson Ave., Russellville; 256-332-8812

Schools: Franklin County Board of Education, 500 Coffee Ave., NE, Russellville; 256-332-1360; franklin.k12.al.us

Weatherford Public Library, 307 4th Ave. S; 256-356-9255

Vina

Town Hall, 7111 Alabama 19; 256-356-4996; vinaalabama.org

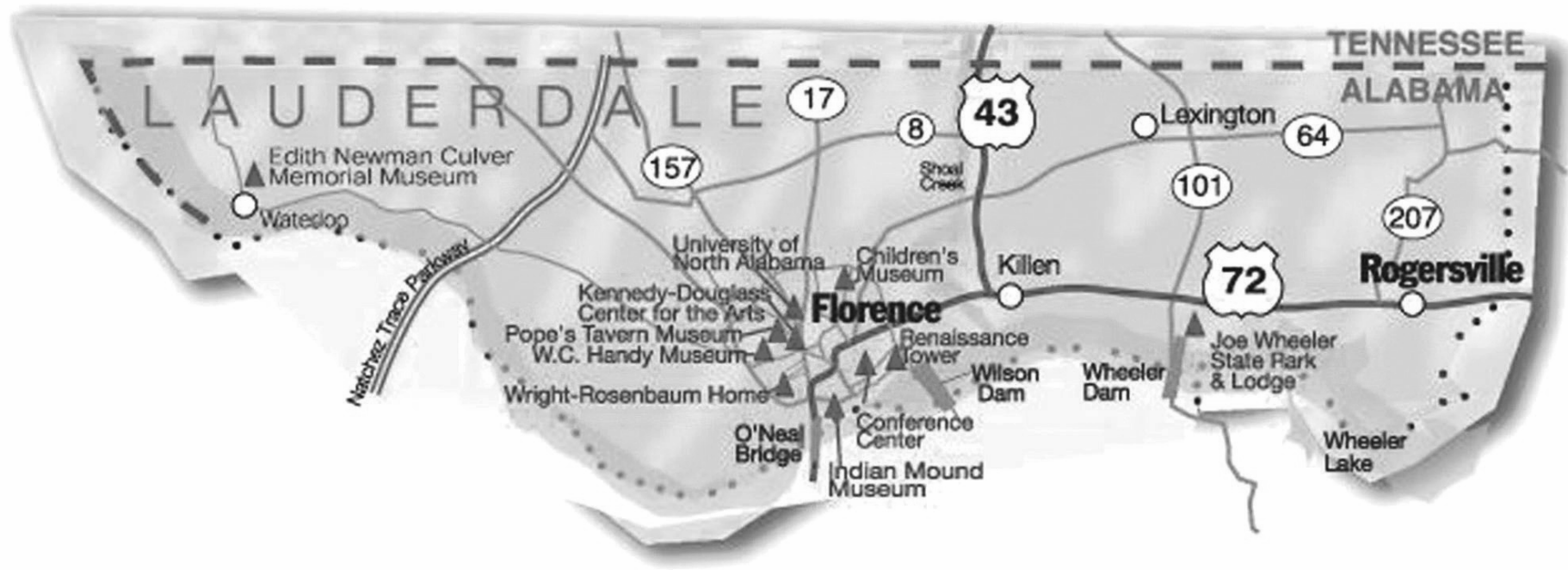
Water/natural gas: provided by town, 256-356-4996

Electricity: Alabama Power Co.; 1-800-245-2244; alabamapower.com/residential

Sanitation: 405 N. Jackson Ave., Russellville; 256-332-8812

Schools: Franklin County Board of Education, 500 Coffee Ave., Russellville; 256-332-1360; franklin.k12.al.us

Where we are: Lauderdale County



The county is named in honor of Col. James Lauderdale, who died while serving with Gen. John Coffee's volunteer cavalry in the War of 1812. Florence is the county's largest municipality and the county seat. It, too, was established in 1818. Historians said the Tennessee River, which separates Lauderdale and Colbert counties, was a major attraction in the early days and it remains a major attraction today. The county population estimate is 93,564, according to the U.S. Census Bureau.

Incorporated towns in Lauderdale County are Anderson, Killen, Lexington, St. Florian, Rogersville and Waterloo. Recognized communities include Center Star, Central Heights, Cloverdale, Elgin, Greenhill, Oakland, Underwood-Petersville and Zip City.

Useful information:

- Electricity, municipal water and natural gas provided through Florence Utilities.
- Lauderdale County Courthouse, 200 S. Court St., Florence; lauderdale-countyal.gov
- Garbage: Solid Waste Office, 5100 Alabama 157 (Cloverdale Road) N., Florence; 256-760-5878; lauderdale-countyal.gov/index.php/solid-waste/
- Voter registration: Board of



LAUDERDALE COUNTY

From Page S8

Registrars (courthouse); 256-760-5840

- Public Schools: Lauderdale County Board of Education, 355 Lauderdale 61, Florence; 256-760-1300; lcschools.org

- K-12 schools in district: Brooks Elementary and Brooks High (separate campuses); Central; Lauderdale County High School; Lexington, Rogers, Waterloo; Wilson, Underwood Elementary School, Allen Thornton Career Technical Center.

- Health Department, 4112 Chisholm Road, Florence; 256-764-7453; www.alabamapublichealth.gov/lauderdale/

- Auto and boat licenses/car tags - Florence-Lauderdale Government Building, 102 S. Court St., Florence; 256-760-5833; lauderdalecountyal.gov/index.php/license-commissioner/

- Animal control, 256-760-5713

Florence

The city was named by the Italian surveyor who laid out the town and celebrates its connection to Florence, Italy, every year. Florence is perhaps best



SEE LAUDERDALE COUNTY, S10 The Wilson Dam is spotted from the River Heritage Trail near River Heritage Park in Florence. [DAN BUSEY/TIMESDAILY FILE]



Healthy Smiles For a Lifetime.

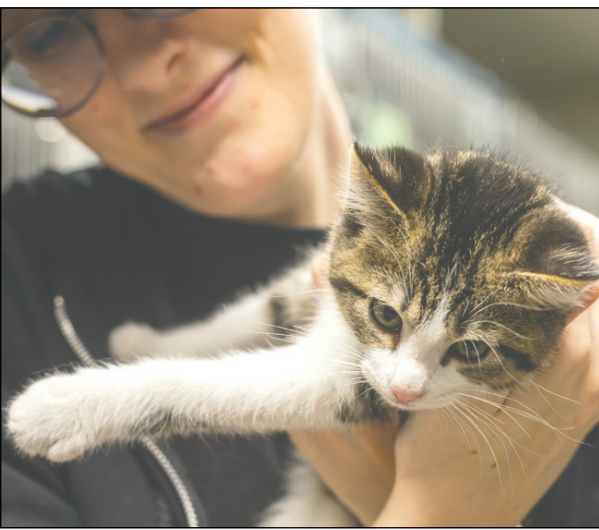


Singing River Dentistry

Tuscumbia | Muscle Shoals | Russellville | Florence
Florence Helton Dr. | Madison | Athens

Treehouse Children's Dentistry

Tuscumbia | Killen | Madison



Animal Caretaker Ren Crunk holds a kitten at Florence Lauderdale Animal Services. [IVY ROSE BALL/TIMESDAILY]



Ashliyah Mitchell, right, beats Lauderdale County High Assistant Principal Amanda Mathis at Rock, Paper, Scissors to earn her star necklace worth 5 points in Rogersville. [ALYSSA SUTHERLAND/TIMESDAILY FILE]



A member of the Lauderdale County marching band performs during halftime in November 2023, of their Class 3A first-round playoff game against Fayette County in Rogersville. [KEVIN TAYLOR/TIMESDAILY FILE]

LAUDERDALE COUNTY

From Page S9

known as the birthplace of W.C. Handy, “Father of the Blues” and hosts a week-long festival in his honor every summer, when the city is awash with live music. The city population estimate is 40,184, according to the U.S. Census Bureau.

- Website: florenceal.org
- City Hall: 110 W. College St.; 256-760-6300
- Water: 110 W. College St., Room 229; 256-760-6490; florenceal.org/utilities/florence_gas_&_water_department/index.php
- Gas: 650 Rickwood Road, 256-760-6490; florenceal.org/utilities/florence_gas_&_water_department/index.php
- Electricity: 110 W. college St., first floor; 256-760-6512; florenceal.org/utilities/florence_electricity_department/index.php
- Before renovating, contact the Building Department, 110 W. College St., Room 216; 256-760-6325
- Sanitation: 256-760-6495
- Curbside recycling: 256-760-6495; drop-off station, 1200 Terrace St.
- Animal Control: 3240 Roberson Road; 256-760-6676
- Schools: Florence Board of Education, 541 Riverview Dr., 256-768-3000; florencek12.org
- Schools in district: Forest Hills, Harlan and Weeden elementary schools; Florence and Hibbett middle schools; Florence High School and Florence Virtual School
- Florence-Lauderdale Public Library, 350 N. Wood Ave.; 256-764-6564; 10



Workers use rope to position the Singing River sculpture as it is installed July 8 at the corner of North Court and Bluff Streets. [DAN BUSEY/TIMESDAILY FILE]

a.m. to 7 p.m. Monday-Thursday, 10 a.m. to 5 p.m. Friday and Saturday and 1-5 p.m. Sunday

- Hospital: North Alabama Medical Center, 1701 Veterans Drive; 256-629-1000

Anderson

Anderson, a rural town with a 2020 U.S. Census Bureau population estimate of 282, is in the northeast corner

of Lauderdale County on Alabama 207.

- Town Hall, 7262 Alabama 207, Anderson; 256-247-3617.
- Water: East Lauderdale Water Authority; 256-247-1606
- Gas: Spire Inc., 2895 AL-101, Rogersville; 800-292-4008
- Electricity: provided by Florence; 256-760-6045; florenceal.org/utilities/
- Schools: Lauderdale County Board of Education, 355 Lauderdale 61, Florence;

256-760-1300; lcschools.org

Killen

Killen is northeast of Florence on the banks of Shoal Creek and is home to Brooks Elementary and Brooks High schools, as well as Legacy Christian Academy. The U.S. Census Bureau population in 2020 was 1,034.

- Website: killenal.org
- Town Hall: 319 JC Mauldin Hwy; 256-757-1246; killenal.org/town-hall
- Water/electricity: provided by Florence; 256-740-6490/ 256-760-6045
- Gas: Alagasco, 59 Patton St., Rogersville; 1-800-292-4008
- Schools: Lauderdale County Board of Education, 355 Lauderdale 61, Florence; 256-760-1300; lcschools.org
- Public library: 325 J.C. Mauldin Hwy; 256-5471; killenal.org/library

Lexington

This east Lauderdale County town is the home of the late U.S. Army Spc. Don Leslie Michael, who received the Congressional Medal of Honor for his actions in the Vietnam War. The Medal of Honor is the highest award given to an American soldier. The town also is home to Lexington High School. The U.S. Census Bureau population in 2020 was 726.

- Website: lexingtonal.org
- Town Hall, 11060 Alabama 101 (Don Michael Memorial Highway); 256-229-5221
- Water: 11090 Alabama 101; 256-229-5583
- Gas: Spire Inc., 2895 AL-101, Rogersville; 800-292-4008
- Electricity: provided by Florence;

LAUDERDALE COUNTY

From Page S10

256-760-6045

- Schools: Lauderdale County Board of Education, 355 Lauderdale 61; 256-760-1300; lcschools.org
- Public library: 11075 Alabama 101.; 256-229-5579

Rogersville

Rogersville is in the easternmost portion of Lauderdale County wedged between the Elk and Tennessee rivers. Joe Wheeler State Park, which has a 134-boat marina, 18-hole golf course, resort, lodge and camping facilities is there. The town is home to Lauderdale County High School. The U.S. Census Bureau population in 2020 was 1,286.

- Town Hall: 36 Wheeler St.; 256-247-5446
- Water: Lauderdale 77, Rogersville; 256-247-5435
- Gas: Spire Inc., 2895 AL-101, Rogersville; 800-292-4008
- Electricity: provided by Florence, 110 W. College St., first floor, municipal building; 256-760-6045

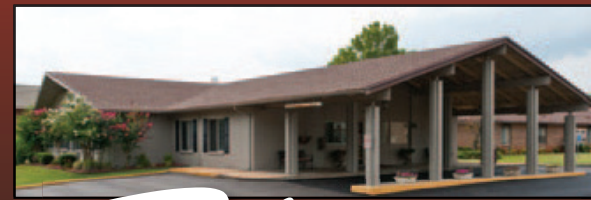


A Northwest Alabama Resource Conservation & Development Council grant allowed for six new tennis courts to be constructed at Killen Park. Three courts have been lined for pickleball. [DAN BUSEY/TIMESDAILY FILE]

SEE LAUDERDALE COUNTY, S12



Exceptional Short Term Rehab Stays



The Suites 
Short Term Rehab Center

Specializing In:

- Physical / Speech / Occupational Therapy
- Stroke Therapy
- Cardiovascular Therapy
- Respiratory Therapy
- IV Therapy
- Wound Care Services
- Comprehensive Recovery from Surgery or Illness
- Therapy Six Days a Week

Florence  2107 Cloyd Blvd.
Florence, AL 35630
Nursing and Rehabilitation Center, LLC
Tel: 256.766.5771 • FlorenceRehabCenter.com

Call for a Reservation Today!



The Shoals Shack is located just off Lauderdale County Road 47 in St. Florian. [COURTESY]

LAUDERDALE COUNTY

From Page S11

256-247-0151; rogersvillelibrary.org

St. Florian

German-Catholic farmers settled the town in 1860. It was incorporated in 1970. Its landmark of more than 130

- Schools: Lauderdale County Board of Education, 355 Lauderdale 61; 256-760-1300; lcschools.org
- Public library: 74 Bank St.;

SEE LAUDERDALE COUNTY, S13



Community members find their favorite dessert Sunday afternoon during the fourth annual Waterloo Community Thanksgiving in 2023. [COURTESY]

ROBBIE GASTON

REALTOR / BROKER

(256) 627-4451

BRITTANY GASTON

REALTOR / ASSOCIATE BROKER

(256) 394-4293

4415 Chisholm Road Florence, Alabama



Sold ON THE HOME SWEET SHOALS



Farmer Ronnie Behel of Greenhill, right, makes a sale of his sweet corn in July 2023 at the Florence-Lauderdale Farmer's Market. [DAN BUSEY/TIMESDAILY FILE]



The Buffer House in St. Florian after a snowstorm. [COURTESY]

LAUDERDALE COUNTY

From Page S12

years is St. Michael's Catholic Church. The town is named for the patron saint of firefighters and is on the northeast border of Florence. The U.S. Census Bureau population in 2020 was 584.

- Town Hall: 81 St Florian Rd.; 256-767-3690
- Water: provided by Florence, 256-760-6490
- Gas: provided by Florence, 650 Rickwood Road; 256-760-6490
- Electricity: provided by Florence, 110 W. College St., first floor of the Municipal Building; 256-760-6495
- Sanitation: Lauderdale County Solid Waste Department; (household garbage); 256-760-5878.
- Schools: Lauderdale County Board of Education, 355 Lauderdale 61, 256-760-1300; lcschools.org

Waterloo

Waterloo, 30 miles west of downtown Florence, is among the oldest incorporated towns in the state and is known for its tranquil surroundings and incredible natural beauty. It is home to Waterloo High School. The town hosts the Trail of Tears event every third Saturday in September. The U.S. Census Bureau population in 2020 was 181.

- Town Hall, 314 Main St.; 256-764-3237
- Water: West Lauderdale Water Department, 3353 Lauderdale 200; 256-766-8787
- Electricity: provided by Florence, 110 W. College St., first floor of Municipal Building; 256-760-6045
- Sanitation: Lauderdale County Solid Waste Department, 256-760-5878
- Schools: Lauderdale County Board of Education, 355 Lauderdale 61, 256-760-1300; lcschools.org



HERITAGE CHRISTIAN UNIVERSITY

www.hcu.edu



FIVE DEGREES.
ONE FOCUS.

ASSOCIATE OF ARTS
BACHELOR OF ARTS
MASTER OF ARTS
MASTER OF DIVINITY
MASTER OF MINISTRY

Thrive in your ministry.





Alexis Gomez, center, helps students as they work on constructing their "Forky," a fictional character from the film "Toy Story," at Kilby Laboratory School. [DAN BUSEY/TIMESDAILY FILE]

Public schools

Colbert County

Visit each school's website for school registration forms. The Board of Education is located at 425 U.S. 72 W., Tuscumbia; 256-386-8565; colbertk12.org

Elementary schools

Cherokee Elementary School, kindergarten through sixth grade, 1305 N. Pike, Cherokee; 256-359-6422; colbertk12.org/ces

Colbert Heights Elementary School, 2130 Hatton School Road, Leighton; 256-446-5679; colbertk12.org/hes

Leighton Elementary School, 8100 Old Highway 20, Leighton; 256-446-8351; colbertk12.org/les

New Bethel Elementary School, 900 New Bethel Road, Tuscumbia; 256-383-6471; colbertk12.org/nbes

High schools, seventh through 12th grade

Cherokee High School, 850 High School Drive, Cherokee; 256-359-4434; colbertk12.org/chs

Colbert Heights High School, 6825 Woodmont Drive, Tuscumbia; 256-383-7875; colbertk12.org/chhs

Colbert County High School, 2200 High School St., Leighton; 256-446-8214; colbertk12.org/cchs

Franklin County

Visit each school's website for school registration forms. The Board of Education is located at 500 Coffee Ave. NE, Russellville; 256-332-1360; franklin.k12.al.us

Elementary schools, kindergarten through sixth

Phil Campbell Elementary School, 148 Camp St.; 256-331-2170; franklin.k12.al.us/pces

Tharptown Elementary School, 145 Franklin 80, Russellville; 256-332-3404; franklin.k12.al.us/tes

High schools, seventh through 12th
Phil Campbell High School, 65 School Ave.; 256-331-2150; franklin.k12.al.us/

pchs

Tharptown High School, 255 County Rd. 80, Russellville; 256-332-6485; franklin.k12.al.us/thhs

Jr. high schools, kindergarten through ninth

East Franklin Junior High School, 1815 Highway 89, Phil Campbell; 256-331-2140; franklin.k12.al.us/efjh

High schools, kindergarten through 12th

Belgreen High School, 14220 Highway 187, Russellville; 256-332-1376; franklin.k12.al.us/bhs

Red Bay High School, 800 Eighth St.; 256-331-2270; franklin.k12.al.us/rbhs

PUBLIC SCHOOLS

From Page S14

Vina High School, 8250 Franklin 23; 256-331-2260; franklin.k12.al.us/vhs
Technical center

Franklin County Career/Technical Center, 85 Jail Springs Road, Russellville; 256-332-2127; franklin.k12.al.us/fctc

Lauderdale County

Contact individual schools or the central office for registration information. Board of Education offices are at 335 Lauderdale 61, Florence; 256-760-1300; lcschools.org

Elementary schools

Brooks Elementary School, prekindergarten through sixth grade, 100 School Lane, Killen; 256-757-2171; lcschools.org/bes

Underwood Elementary, kindergarten through sixth grade, 4725 Highway 157, Cloverdale Road; 256-764-8939; lcschools.org/ues

High school, seventh through 12th

Brooks High School, 4300 U.S. 72, Killen; 256-757-2115; lcschools.org/bhs



SEE PUBLIC SCHOOLS, S16 The Deshler Marching Tigers march during the 2024 Helen Keller Festival parade through downtown Tuscumbia. [DAN BUSEY/TIMESDAILY FILE]

WE OFFER

CARS, TRUCKS,
SUVS, PASSENGER
VANS & MORE!

WEEKLY RATES AVAILABLE



CALL US TODAY!!!!

Store hours
M-F
8AM-5PM
Sat
8AM-2PM





WWW.MCCURRYRENTALS.COM

256-230-0232

Athens

256-559-1003

Cullman

256-978-5906

Muscle Shoals

256-713-0575

Huntsville



T.J. CONSTRUCTION, INC.

Gas Pipeline & Maintenance

Florence, AL • Est. 1994



PUBLIC SCHOOLS

From Page S15

Kindergarten through 12th
 Central School, 3000 Lauderdale Road
 200, Florence; 256-764-2903; lcschools.
 org/ces and lcschools.org/chs
 Lauderdale County High School, 201
 Cedar St., Rogersville; 256-760-4051
 for elementary; 256-247-3414 for high
 school; lcschools.org/lces and lcschools.
 org/lchs
 Lauderdale County Virtual Academy,
 3356 Hough Rd., Florence; 256-760-
 1300; lcschools.org/lcvas
 Lexington School, 101 School St.;
 256-229-6622; lcschools.org/les and
 lcschools.org/lhs
 Rogers School, 300 Rogers Lane, U.S.
 43 North, Greenhill; 256-757-3106;
 lcschools.org/res and lcschools.org/rhs
 Waterloo School, 311 School House
 Lane; 256-766-3100; lcschools.org/wahs
 Wilson School, 7601 Alabama 17,
 Chisholm Road, Florence; 256-764-
 8470; lcschools.org/wes and lcschools.
 org/whs

Technical center
 Allen Thornton Career Technical

SEE PUBLIC SCHOOLS, S17



Students make their way to vehicles in the pick-up line during dismissal at the Rufus G. Hibbett Intermediate School in Florence. [DAN BUSEY/TIMES-DAILY FILE]

*Listen to Callie and Emery...
 "Come See My Papa...
 He's the Best!"*

Droke Hearing Aids, Inc.

Don't miss out on the conversations that matter the most.

Voted #1 TimesDaily Reader's Choice 2009, 2010, 2012, 2013, 2015, 2016, 2017, 2018, 2019, 2020, 2021, 2022, & 2023!

We accept most insurances including US DOL-OWCP

215 West Alabama St, Florence
 256-764-0888 or
 256-764-0896

116 E. 5th St, Tuscombua
 256-381-9444

2710 Darby Dr., Florence, AL
256-764-8200

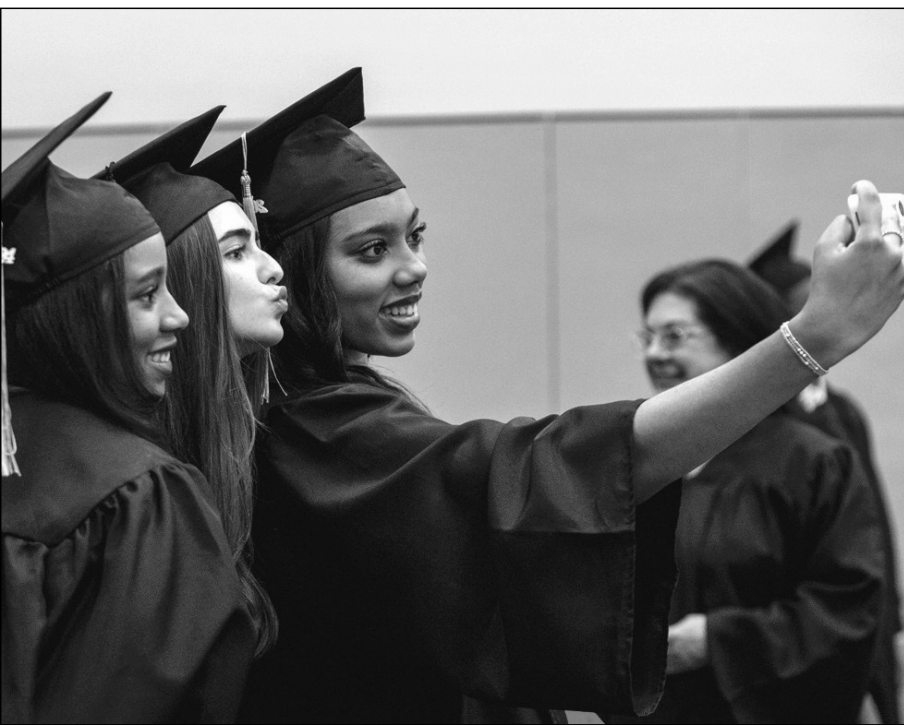
- AISA Blue Ribbon School for past twelve years
- Affordable Academic Excellence
- Area's only independent non-parochial school
- COGNIA Accredited STEAM Academy
- Nurturing atmosphere and hands-on learning
- Unique and exciting Enrichment Classes and Elective Classes
- Students have an "I-CAN-DO-IT" AND "I-CAN-MAKE-A-DIFFERENCE" attitude
- State-of-the-Art Security System and Ventilation System
- Built-in Safe Room
- Exciting Playgrounds and Regulation-sized Soccer Field

KALEIDOSCOPE Florist and *Designs*

Fresh Flowers, Plants, Baskets, Funeral Flowers and much more!

WE DELIVER TO ALL OF THE SHOALS AREA LAUDERDALE & COLBERT COUNTIES

1633 Darby Drive, English Village, Florence • 256-767-2056
 www.kaleidoscopeflorist.com • Monday-Friday 8am-5:00pm • Saturday 8am-1pm



Muscle Shoals High School graduates pose for pictures before the commencement ceremony at Grace Life Church of the Shoals on May 23. [IVY ROSE BALL/TIMESDAILY FILE]

PUBLIC SCHOOLS

From Page S16

Center, 7275 U.S. 72, Killen; 256-757-2102; lcschools.org/atctc

Florence

See central office or individual schools websites for registration forms. For information on Florence Academy of Fine Arts, go to florencek12.org/fafa

Board of Education offices, 541 Riverview Dr., Florence; 256-768-3000; florencek12.org

Pre-school

W.C. Handy School, 1100 Pruitt St., Florence; 256-768-3400; florencek12.org/wchandy

Elementary schools, kindergarten through fourth

Forest Hills Elementary School, 101 Stovall Drive; 256-768-2500; florencek12.org/foreshills

Harlan Elementary School, 2233 McBurney Drive; 256-768-2700; florencek12.org/foreshills

Weeden Elementary School, also serving pre-kindergarten, 400 Baldwin St.; 256-768-2900; florencek12.org/weeden

Middle schools

Florence Middle School, seventh and eighth grades, 648 N Cherry St.; 256-768-3100; florencek12.org/fms

Hibbett Middle School, fifth and sixth grades, 1601 Appleby Dr.;

256-768-2800; florencek12.org/hibbett
Freshman center, ninth grade Florence Freshman Center, 1203 Bradshaw Dr.; 256-768-2400; florencek12.org/ffc

High school, 10th-12th

Florence High School, 1201 Bradshaw Drive; 256-768-2200; florencek12.org/fhs

Muscle Shoals

See individual school websites for student registration forms. Board of Education, 3200 Wilson Dam Highway; 256-389-2600; mscs.k12.al.us

Pre-school and elementary

Highland Park Elementary School, first and second grades, 714 Elmhurst Ave.; 256-389-2620; mscs.k12.al.us/hpes

Howell Graves Preschool, 3201 Alabama Ave.; 256-389-2630; mscs.k12.al.us/hgps

McBride Elementary, third through fifth grade, 1400 Avalon Ave.; 256-389-2610; mscs.k12.al.us/mes

Webster Elementary School, first and second grade, 200 Webster St.; 256-389-2650; mscs.k12.al.us/wes

Middle school, sixth through eighth Muscle Shoals Middle School, 100 Trojan Drive; 256-389-2640; mscs.k12.al.us/mmsm

High school, ninth through 12th

Muscle Shoals High School, 1900 E Avalon Ave.; 256-389-2682; mscs.k12.al.us/mshs

Career academy

Muscle Shoals Career Academy, 321



Sheffield High students Tryston Brown, left, yellow, and Jaxon Campbell, center, red, are lead through a chemical reaction by Chemist Glauco Teixeira, far right, in April at the International Fertilizer Development Center. [DAN BUSEY/TIMESDAILY FILE]

Broad Street; 256-389-2660; mscs.k12.al.us/msca

Russellville

The system is comprised of four schools located in an educational park of 115 acres and includes a fine arts facility.

See the board of education website for enrollment information and links to individual schools. Board of Education offices, 1945 Waterloo Road, Russellville; 256-331-2000; rcs.k12.al.us

Elementary schools

Russellville Elementary School, grades third through fifth, 133 Chucky Mullins Memorial Drive; 256-331-2123; rcs.k12.al.us/res

West Elementary School, grades kindergarten through second, 1340 Clay Ave.; 256-331-2122; rcs.k12.al.us/wes

Middle school, sixth through eighth

Russellville Middle School, 765 Summit St.; 256-331-2120; rcs.k12.al.us/rms

High School, ninth through 12th Russellville High School, 1865 Waterloo Road; 256-331-2110; rcs.k12.al.us/rhs

Sheffield

See individual school websites for registration forms. Board of Education, 300 W. 6th St.; 256-383-0400; scs.k12.al.us

W.A. Threadgill Primary School, grades pre-kindergarten through second, 900 Annapolis Ave.; 256-386-5720; scs.k12.al.us/tps

L.E. Willson Elementary School,

grades third through sixth, 2200 31st St.; 256-386-5730; scs.k12.al.us/lew
Sheffield Junior High School, grades seventh and eighth, 1803 30th St.; 256-386-5735; scs.k12.al.us/sjhs

Sheffield High School, grades ninth through 12th, 2800 E. 19th Ave.; 256-383-6052; scs.k12.al.us/shs

Tuscumbia

See individual school websites for registration forms. Board of Education, 303 N. Commons St. E, Tuscumbia; 256-389-2900; tuscumbia.k12.al.us

G.W. Trenholm Primary School, grades kindergarten through second, 601 Joe Wheeler Drive; 256-389-2940; tuscumbia.k12.al.us/gwt

R.E. Thompson Intermediate School, grades third through fifth, 829

Frankfort Road; 256-389-2930; tuscumbia.k12.al.us/ret

Deshler Middle School, grades sixth through eighth, 598 N. High St.; 256-389-2920; tuscumbia.k12.al.us/dms

Deshler High School, grades ninth through 12th, 200 North Commons E.; 256-389-2910; tuscumbia.k12.al.us/dhs

Kilby Laboratory School

Housed on the campus of the University of North Alabama, Kilby serves as a clinical setting for teachers in training while serving students in kindergarten through sixth grade. 611 N. Pine St.; 256-768-3000; florencek12.org/kilby

Private schools

Mars Hill Bible School:

• 698 Cox Creek Parkway, 256-767-1203; tuition varies depending on number of children attending school; mhbs.org

Riverhill School (non-parochial):

• 2710 Darby Drive, Florence, 256-764-8200; riverhillschool.org

Shoals Christian School:

• 301 Heathrow Drive, Florence, 256-767-7070; shoalschristian.org

St. Joseph Regional Catholic School:

• 115 Plum St., Florence, 256-766-1923; catholichill.com

Victory Christian Academy:

• 2302 Hough Road, Florence, 256-767-1749; victoryyes.com

Legacy Christian Academy:

• First Baptist Church, 510 J.C. Mauldin Highway, 256-757-5345

Covenant Christian School:

• 1900 Covenant Drive, 256-383-4436; ccseagles.com



Mars Hill Bible School student Dylan Blackburn, right, makes his move while playing chess against Tate Barrier. [PHOTOS BY DAN BUSEY/TIMESDAILY FILE]



First-grader Drew Wallace explains his art piece inside Riverhill School.



Bronek Bustillos, right, shows his mother, Vanessa, his art one-by-one at St. Joseph Regional Catholic School.

Higher education

University of North Alabama

The University of North Alabama is a four-year public university located on more than 130 acres in Florence.

One interesting fact about UNA is it was designed by Frederick Law Olmsted, which is the same architectural firm that designed Central Park in New York City.

UNA offers a variety of undergraduate and graduate programs, an offering of majors so diverse that it attracts out-of-area residents as well as local residents who are pleased to attend college without having to move away from the Shoals.

Here are some important numbers to get you started. Also, visit UNA's website at una.edu.

Address: 1 Harrison Plaza, Florence, AL 35632

General information: 256-765-4100 or 1-800-TALK-UNA

Admissions: 256-765-4608



Students have their picture made with Leo and Una on Thursday during Light the Fountain at the University of North Alabama. [DAN BUSEY/TIMESDAILY FILE]

SEE HIGHER EDUCATION, S20

Do you
have
**LEG
PAIN?**
CALL US TODAY!



CARDIOVASCULAR
INSTITUTE
OF THE SHOALS
(256) 766-2310

CRAMPING

SWELLING

DISCOLORATION

ITCHING

VARICOSE VEINS

BURNING

SPIDER VEINS

HAIR LOSS

RESTLESS LEGS

OPEN SORES



Students Ernest Samuel and Grace Netherton partake in Lucky Dip tradition as they dip their pencils into the Harrison Fountain on the first day of the fall semester at the University of North Alabama. [DAN BUSEY/TIMESDAILY FILE]



Northwest Shoals Community College President Jeff Goodwin talks about the benefits of the FAME program for local businesses and students. [COURTESY]

HIGHER EDUCATION

From Page S19

Continuing studies and outreach:

256-765-4862

Distance learning: 256-765-4221

Registrar: 256-765-4849

Housing and residence life:

256-765-5558

Student financial services:

256-765-4278

Northwest Shoals Community College

Northwest Shoals Community College is a comprehensive two-year public college providing vocational, technical and academic classes. Its service area includes Colbert, Franklin, Lauderdale, Lawrence and the western portion of Winston counties and has campuses in Muscle Shoals and Phil Campbell. Visit the website at nwscc.edu.

The Muscle Shoals campus, also called the Shoals campus, is on 110 acres in Colbert County and offers academic and applied technology programs in addition to allied health programs, science labs, special programs such as adult basic education and the Alabama Technology Network's Environmental Technology Center.

Here are some numbers to get you started.

Address: 800 George Wallace Blvd.,



Derickus Williams gets some air as he makes a shot attempt while playing a slam dunk game against others during Spring Fling at Northwest Shoals Community College. [DAN BUSEY/TIMESDAILY FILE]

Muscle Shoals, AL 35662

General information: 256-331-5200

Career services: 256-331-8062

Dean of instruction: 256-331-5217

Distance education: 256-331-5263

Financial aid: 256-331-5364 or 256-331-5367

GED testing: 256-331-5440 and 256-331-8181

Phil Campbell campus

The Phil Campbell campus is approximately 30 miles south of the Shoals campus, accessible from either U.S. 43 or Alabama 5/Alabama 13. The campus is on approximately 100 acres one mile southwest of Phil Campbell. It offers academic and applied technology programs.

Here are some numbers to get you started.

Address: 2080 College Road, Phil Campbell, AL 35581

General information: 256-331-6200

Admissions: 256-331-6219

Career services: 256-331-6285

Dean of instruction: 256-331-5217

Distance education: 256-331-5395

Financial aid: 256-331-6232 or 256-331-65364

GED testing: 256-331-5440 and 256-331-8181

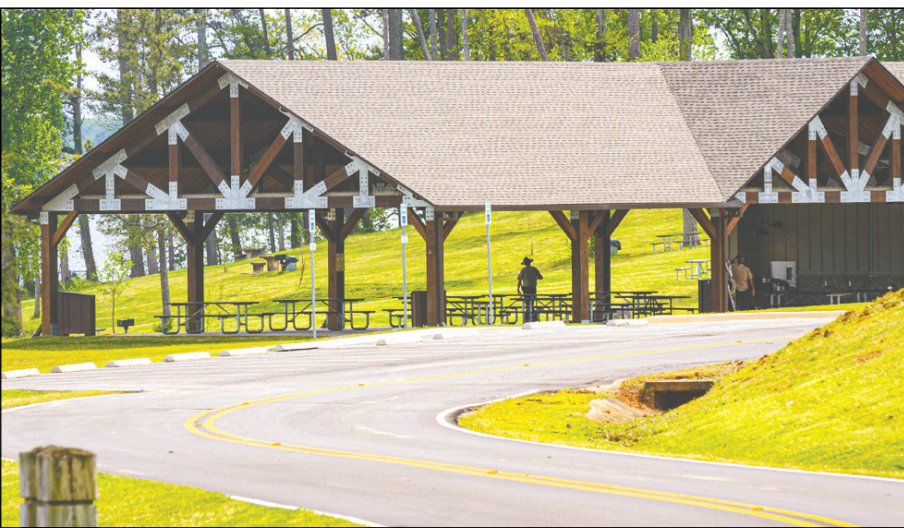
Student services: 256-331-5291 or 256-331-8178

Heritage Christian University

For 55 years, Heritage Christian University has stood as a beacon of excellence in Christian education. Accredited by the Association of Biblical Higher Education, the undergraduate and graduate programs are designed to equip students with a solid foundation in ministry, counseling, and biblical knowledge. HCU offers the following degree options: Associate of Arts in Biblical Studies, Bachelor of Arts in Biblical Studies, Master of Ministry, Master of Divinity, and Master of Arts.

HCU students can choose to complete their coursework online or on the HCU campus, which is centrally located off Helton Drive in Florence.

Call 256-766-6610 or visit www.hcu.edu



The new beach pavilion opened this year at Joe Wheeler State Park. [DAN BUSEY/TIMESDAILY FILE]



Camping

Here is a list of local campgrounds. Take a long weekend to enjoy them at your leisure.

Colbert Alloys Park and Campground

• 180 Alloys Park Lane, Muscle Shoals. Located on Wilson Lake, in Colbert County, this park has a RV park and campground and RV, tent and primitive camping; electricity; water; sewage and dump station; bathhouse; and boat ramp; walking trails, pier, archery range, kayak launch and rental. Park Manager: Michael Williams (256) 577-9619 or (256) 710-9468. Email: colbertalloyspark@gmail.com

Colbert Rose Trail

• 9395 Riverton Rose Trail, Cherokee. Located on Pickwick Lake, the grounds include RV, tent and primitive camping, electricity, water, dump station, piers, pavilion, bathrooms, showers and seasonal boat ramps. Contact: Park phone 246-360-2764; Email: rtpark@cherokeeetel.net

Heritage Acres RV Park

• 1770 Neil Morris Road, off U.S. 72, Tuscumbia. The park offers RV campsites with full hookups, coin laundry, bath house, free cable television, free wireless Internet service. Daily, weekly and monthly rates are available, and big rigs and pets are welcome. 256-383-7368; heritageacresrvpark.com

Rose Trail RV Park

• 9270 Riverton Rose Trail, Cherokee. Located across from the Colbert Boat Ramp on Bear Creek on the Tennessee River, it can accommodate 14 large RVs with full hookups with WiFi hot spot, hunting and fishing available. The Wildlife Management Area has a check-in station. 256-360-2393.

Tuscumbia RV Park

• 116 Florida Ln., Tuscumbia. A park with 39 RV spots located about 7 miles west of Tuscumbia. Full hookups with electricity, water, sewage, WiFi, free laundry and shower building. 866-930-7275 or 256-633-2970, or tuscumbiarvpark.com

Brush Creek Park

• Lauderdale 14, near Waterloo. Open from mid-March through late October with 50 acres of primitive camping. There are no electrical or water hookups, but bathroom facilities with cold showers and a dumping station are available. No fee to camp. Thirty-day maximum stay. 256-760-5878 or 256-760-5750

McFarland Park

• 200 James M Spain Dr., Florence. The park has 60 campsites open year round with electrical and water connections. It also has rest rooms, bathhouse and laundry facilities. The park is also conducive to tent camping. 256-740-8817.

Be Our
Guest

CITY OF
SHEFFIELD

— CENTER OF THE SHOALS —

(256) 383-0250

600 N. Montgomery Ave,
Sheffield, AL 35660

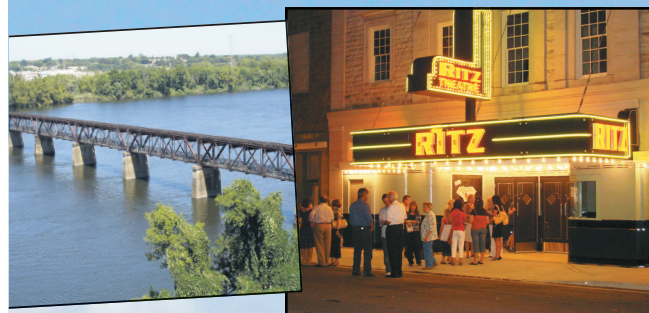
www.sheffieldalabama.org



300 N. Nashville Ave.,
Sheffield

(256) 389-2000

www.sheffieldutilities.org





Colbert County Rose Trail Park. T[MATT MCKEAN/TIMESDAILY FILE]

CAMPING

From Page S21

Joe Wheeler State Park

• 4401 McLean Dr., Rogersville. This state park offers resort facilities with a lodge, restaurant, fishing, golf, swimming, tennis, convention and banquet

facilities and boat slips and marina. The upgraded campsites offer all amenities and primitive sites as well. 1-800-544-5639; joewheeler.park@dcnr.alabama.gov

Wheeler Reservation Campground

• Alabama 101, east end of Wheeler Dam. Campground has 30 camping

sites open from mid-March through late October. With water and electrical connections, the park has a free dumping station, bathhouse and a fishing pier for campers. Camping fee charged.

First-come, first-served basis with a maximum 30-day stay. No reservations. 256-760-5878.



Mandy Fowler looks out over Pickwick Lake from the campground at Brush Creek Park in 2015. [JIM HANNON/TIMESDAILY FILE]

RUSSELLVILLE GAS BOARD

When the power goes out, you don't have to.

Most natural gas cooktops work, even when your electricity doesn't.

Natural Gas

Nothing Else Compares.



CALL (256) 332-2020

For Natural Gas Service

597886-1

Explore the Rhythm of the River...

MUSCLE SHOALS NATIONAL HERITAGE AREA

Experience our cultural, natural, historical, and scenic resources. Toe-tapping music, peaceful scenery, and charming downtowns are yours to **EXPLORE.**

MUSCLE SHOALS
NATIONAL HERITAGE AREA

msnha@una.edu • msnha.una.edu • Phone: 256-765-5028
Address: UNA Box 5231, Florence, AL 35632
Website for Roots of American Music Trail: musictrail.una.edu



597882-1



Garrett Martin slings his line during 'Fishing Days' at Deibert Park in Florence. [PHOTOS BY DAN BUSEY/TIMESDAILY FILE]



15-year-old Tanner Hayes prepares to place his recently caught 10.89 pound bass fish into the water to keep fresh during free fishing days at Deibert Park in Florence.

Fishing

Popular area lakes and creeks for fishing:

Pickwick Lake, Wilson Lake and Wheeler Lake on the Tennessee River.

- Bear Creek Lakes in Franklin, Wilson and Colbert counties: Cedar Creek, Little Bear, Upper Bear and Bear Creek.

Persons between the ages of 16 and 65 must have a user's permit to take advantage of the lakes and related facilities. A daily permit is available for a fee. For more information call 256-332-4392 or bearcreeklakes.com

- Shoal, Bluewater and Cypress creeks in Lauderdale County; Cane, Bear and Cedar creeks in Colbert County.

Area boat ramps and pier fishing opportunities:

There are boat ramps located on all area lakes.

Piers are on each of the Bear Creek Lakes, on Wheeler Lake at Joe Wheeler State Park in Rogersville, at Lock Six Park in Killen, Wilson Dam overlook on Wilson Lake, and Riverfront Park in Sheffield and McFarland Park in Florence.

Piers at Joe Wheeler State Park, Lock Six Park and at the Wilson Dam overlook on the upstream side of Wilson Dam, are accessible to anglers in wheelchairs.

For assistance in locating a fishing guide call the Colbert County Tourism and Convention Bureau at 256-383-0783 or the Florence-Lauderdale Tourism office at 256-740-4141.



Anglers work various spots on the Tennessee River near McFarland Park to prepare for A tournament.

Golf

If golf is your game, there a course for everyone, at every skill level with some of the most breathtaking views in the Tennessee Valley.

Colbert County

Cypress Lakes

- 1311 E. 6th St., Muscle Shoals. Municipal course; pro shop: 256-381-1232

Robert Trent Jones Golf Trail at the Shoals

- 990 SunBelt Parkway, Muscle Shoals. Public course; pro shop: 256-446-5111

Spring Creek Golf Club

- 800 Woodmont Drive, Tuscumbia. Public course. Pro shop: 256-386-5670

Lauderdale County

Blackberry Trail

- 112 Clubhouse Drive, Florence. Municipal course; pro shop: 256-740-8825

Joe Wheeler State Park

- 2670 Joe Wheeler State Park Road, Rogersville. Public course; Pro shop: 256-247-9308



Scott Arndt considers the 18th hole on Fighting Joe the best finishing hole on the RTJ Golf Trail. [MATT MCKEAN/TIMESDAILY FILE]



Doug Trousdale, right, watches his putt as it makes its approach to the cup while golfing with his grandson, Rhett Powers, left, at the Blackberry Trail Golf Course in Florence. [DAN BUSEY/TIMES-DAILY FILE]



Wilson Lake provides a picturesque backdrop for the 18th hole on Schoolmaster, which hosted the AHSAA championships in May. [CONTRIBUTED]

Parks

Child friendly parks

Deibert Park A 2.85-mile concrete walking trail winds through open areas, woods and three ponds in this urban park located in Florence.

The park offers a place for nature walks, jogging, biking and wildlife watching.

A variety of animals can be seen in the various habitats contained in the well-manicured park.

Dr. Kirk and Lillian Deibert donated the land for the park, which was dedicated May 25, 2000.

The park has a playground and picnic shelter. The Children's Museum of the Shoals is at the entrance to the park.

Pets are allowed but must be on leash.
Where: Darby Drive and Cox Creek Parkway, Florence

Cost: Free

Hours: Daylight

Contact: 256-760-6416

the Tennessee River lies McFarland Park, a favorite destination of boaters, anglers, campers, joggers, picnickers, bicyclists, disc golfers, bird watchers and other outdoors enthusiasts.

The park features playgrounds for children, lighted walking trails, a floating restaurant, lighthouse and beach area. There are also campsites that have electrical, water and sewer services, boat ramps, boat slips, baseball fields, an 18-hole disc golf course and fishing piers.

The park home to the Florence-Lauderdale Tourism Bureau office and visitors center.

Where: 200 James M Spain Dr., Florence

Hours: Daylight

Cost: Most services are free

Contact: 256-760-6416

Veterans Memorial Park

A veterans memorial is the showpiece



Mike and Doreen Hopperton walk along the field of flags at Deibert Park in June. [IVY ROSE BALL/TIMESDAILY FILE]

McFarland Park

Not far from downtown Florence on

SEE PARKS, S26

Real Life,
 Real Local Fun,
 Colbert County.

Come discover all the wonderful events taking place in Colbert County.

July 18-20, 2024
 (July of each year)

SADDLE UP
 for
ST. JUDE
 Tuscumbia, Alabama

ARTS CRAFTS MUSIC

June 26-29, 2025

Helen Keller Festival

(June of each year)

W.C. HANDY
 MUSIC FESTIVAL

THE SHOALS, ALABAMA
 JULY 19-28, 2024

July 18-28, 2024
 (July of each year)

MUSCLE SHOALS
 SONGWRITERS FOUNDATION
 BASS FISHING TOURNAMENT

MUSCLE SHOALS
 SONGWRITERS FESTIVAL
 NOVEMBER 1ST-3RD, 2024

Sledgefest
 June of each year
 Leighton, AL
 Music
 Art • Food

COLBERT COUNTY COMMISSION

- Tommy Barnes - District 1
- Jimmy Gardiner - District 3
- Darol Bendall - District 5
- W. Tyrus Mansell - District 2
- Tori Bailey - District 4
- David Isom - District 6



A portion of the River Heritage Trail is seen in Florence. A grand opening ceremony was held May 5 for the 1.2-mile path from Riverfront Park to the Singing River Bridge. [DAN BUSEY/TIMESDAILY FILE]



The fountains at Spring Park are back in working order after a milfoil removal in early June. [IVY ROSE BALL/TIMESDAILY]

PARKS

From Page S25

of Florence's Veterans Memorial Park, which overlooks the Tennessee River near Wilson Dam.

A veterans museum, a helicopter, large guns, a fighter jet, a missile and other military memorabilia are displayed.

In late 2012 the veterans memorial received an F-4D Phantom fighter plane that is displayed near the helicopter.

The park also features youth baseball fields.

Where: Just off Cox Creek Parkway near Veterans Drive, Florence

Hours: Varies

Cost: Mostly free, fees required for use of some facilities.

Contact: 256-760-6416

Cox Creek Park

This Florence park features a skateboard bowl along with various grind rails, quarter pipes and banked wedges.

The park also has lighted tennis courts.

The park is home to the Florence-Lauderdale Farmers Market.

Where: Fairgrounds Road off Chisholm Road

Hours: varies

Cost: mostly free

Contact: 256-760-6300

Riverfront Park

Sheffield's Riverfront Park overlooks Pickwick Lake and offers fishing piers, boat launches, docking facilities, a walking trail, gazebo, picnic facilities and rest



Easton Gilley, 10, and Taran Tally, 6, play in the Gattman Park Splash Pad in Muscle Shoals June 25 during a heat wave. [IVY ROSE BALL/TIMESDAILY FILE]

rooms. A handicapped-accessible playground is in the park, providing total access for all children.

The park is home to a 900-foot walkway along the bluffs over the Tennessee River.

Where: 1416 Alabama Ave., Sheffield

Cost: Free

Hours: Sunrise-10 p.m.

Contact: 256-386-5615

Spring Park

Located in the city's central business district, Spring Park is the main park in Tuscumbia.

The park gets its name from a large spring that forms a lake that supplies the

city's drinking water.

Spring Park features a two-story open air shelter, several single story pavilions with lights and electrical outlets, public rest rooms, a large playground area, open spaces and off-street parking. The park features a carousel, a child-sized roller coaster and a narrow-gauge train that offers rides through the park.

Inside the park is a man-made natural stone waterfall. Approximately 4.32 million gallons of water pass over the falls each day. The creek also boasts two lovely swans.

Not far from the falls is a fountain composed of 51 water jets that shoot water into the air choreographed to lights

and music. The center jet shoots water 100 feet into the air while the smaller jets shoot water 40-50 feet. The fountain is dedicated to the memory of Princess Im-Mi-Ah-Key, wife of Chief Tuscumbia, for whom the city is named.

Where: Spring Park Rd., Tuscumbia

Cost: mostly free; fees required for some features and attractions

Hours: varies

Contact: 256-383-0783

Gattman Park

Gattman Park in Muscle Shoals features many amenities that appeal to families.

There is a splash pad for the kids, picnic tables and pavilions, a playground, and gymnasiums with kitchens, meeting rooms and a walking track.

Pavilions and the splash pad can be rented for parties and other events.

The park has baseball fields, a tee ball field, a girls softball field and batting cages.

Where: 901 Gattman Park Drive

Cost: mostly free; fees required for use of some facilities

Hours: varies

Contact: 256-386-9270

Wildwood Park

Less than a mile from the University of North Alabama campus, this scenic, wooded Florence park offers opportunities for nature walks, mountain biking, fishing in Cypress Creek and picnicking.

A nature trail runs along Cypress Creek to the Nelson Starkey Memorial



Kevin McCarley bikes along the new trail in Wildwood Park east of the Cypress Creek bridge. [DAN BUSEY/TIMESDAILY FILE]

PARKS

From Page S26

Bridge then loops back to the parking lot. Another trail takes you along a bluff overlooking the creek.

Where: Waterloo Road, west of Florence

Hours: Daylight

Cost: Free

Contact: 256-760-6416

River Heritage Park

This family-friendly park is within sight of the magnificent Marriott Shoals Hotel. It features a large splash pad and playground equipment, as well as a large pavilion that can be rented for special events or just offer a cool place to sit when not rented. The splash pad operates from May to mid-September in good weather.

Where: 10 Hightower Place

Hours: Sunrise to 11 p.m.; fountain, 11:30 a.m. to 9 p.m.

Cost: Free, except for pavilion rental for special events

Contact: 256-760-6416

TVA Rockpile Recreational Area

This park was named “coolest”

playground in America by Play Across America website and iPhone app for the month of April in 2016.

The Rockpile Playground was applauded for its river theme, taking its inspiration from the Tennessee River it is situated next to Wilson Dam just a short walk away.

Children can slide down blue slides that mimic water flowing out of the Wilson Dam spillways; climb on a turtle and fish that pop out of the ground; climb and slide through a tree house; or swing on swings attached to poles fashioned to look like tree trunks.

An interactive soundboard that plays animal sounds is popular with children.

The board is decorated with animal tracks and pictures.

There is a paved pedestrian path that follows the river to the rockpile waterfall for a closer view of Wilson Dam.

The recreation area also has campsites, hiking trails and a boat launch. The 17 miles of paved and primitive hiking trails are Americans with Disabilities Act compliant.

Where: TVA Reservation, Muscle Shoals

Hours: Daylight

Cost: Free

FLORENCE | SHEFFIELD | TUSCUMBIA | MUSCLE SHOALS

The SHOALS

I'LL TAKE YOU *There!*



Book your tour today!

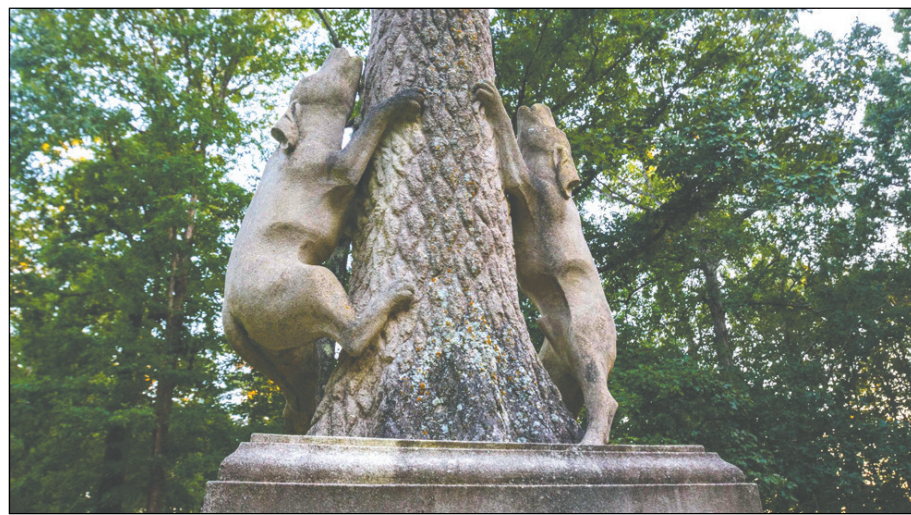


Have you ever wondered who the makers and shapers were for the City of Florence and The Shoals? Hop aboard the Mavis Tour Bus and take a ride back in time to hear some of the legendary stories of our area! She and her team will take you there!

TheShoalsAL.com



A sorority joins in during the Street Strut in downtown Florence, on July 29, 2023, during the W.C. Handy Music Festival. [DAN BUSEY/TIMESDAILY]



Part of the memorial statue at the Coon Dog Cemetery. [DAN BUSEY/TIMESDAILY FILE]

Outings

There are events galore to keep everyone entertained with plenty of opportunities for new residents to mingle with longtime residents and out-of-area visitors. Here's a sample of local events.

Monthly

- Florence First Fridays
Location: Court Street, downtown Florence. April-December. 5-8 p.m. Free.
Details: 877-290-8880

July

- W.C. Handy Festival Various places in the Shoals.
Details: wchandymusicfestival.org
- Annual Saddle Up for St. Jude
Location: Gardiner Farm, Tuscumbia
Details: www.SaddleUp4Kids.org

August

- Killen Founders Day
Location: Killen Park, Killen.
Time: TBA.
Admission: Free.
Details: facebook.com/killenfoundersday

September

- Coon Dog Cemetery Labor Day Celebration
Location: 4945 Coondog Cemetery Road, Cherokee. Free.
Details: 256-412-5970
- Shoals Area Labor Day Festivities
Location: Spring Park, 1 Spring Park Road, Tuscumbia. Free.

- Details:** 256-383-2758
- Oka Kapassa – Return to Cold Water – Native American Indian Festival
Location: Spring Park, 1 Spring Park Road, Tuscumbia. Free.
Details: 256-383-0783 or facebook.com/okakapassa
- Trail of Tears Commemorative Motorcycle Ride
Location: Waterloo.
Time: check website for schedule.
Details: al-tn-trailoftears.net
- North Alabama State Fair
Location: 65 Sportsplex Drive, Muscle Shoals.
Admission: charged.
Details: 256-383-3247 or northalabama-statefair.org

October

- Oktoberfest
Location: St. Florian City Park,
St. Florian. Time: TBA. Free.
Details: facebook.com/people/St-Florian-Oktoberfest/100068948613068/
- Alabama Renaissance Faire
Location: Wilson Park, downtown Florence. Free.
Details: 256-718-5020 or alarenfaire.org

December

- Winter Art Market
Location: Tennessee Valley Museum of Art, 511 N. Water St., Tuscumbia.
Admission: charged.
Details: 256-383-0533 or www.tennesseevalleyarts.org



Lyndon Alec, left, performs a hoop dance Friday for students and attendees during Oka Kapassa at Spring Park in Tuscumbia. [DAN BUSEY/TIMESDAILY FILE]



Reenactors take part in showing the art of dueling during the 37th Alabama Renaissance Faire in downtown Florence. [KEVIN TAYLOR/TIMESDAILY]

- Christmas at Ivy Green, 300 North Commons W, Tuscumbia.
Details: 256-383-4066
- “Dickens Christmas, Y’all”

- Location:** Downtown Tuscumbia. Various times.
Admission: charged for some events.
Details: 256-383-9797 or 256-383-0783

The arts

Our community offers local theaters that flourish with exceptional talent both on stage and behind the scenes, and museums that offer varied exhibits.

There are several opportunities to become involved with local choral groups, choirs and music groups, too.

Theater

Gingerbread Players: Children's division of the Shoals Community Theatre Group. Season tickets or general admission. 256-764-1700. theshoalstheatre.org

"The Miracle Worker," outdoor drama depicting the early life of Helen Keller and her initial association with her teacher, Anne Sullivan and based on the play by William Gibson. Performed annually since 1962 on the grounds of Ivy Green, birthplace of Helen Keller in Tusculumbia. Six weekends, June-July. 256-383-4066; themiracleworker.info/

Ritz School for the Performing Arts, The Ritz Theatre School for the Performing Arts is a high quality educational program for students in grades ninth through 12th that develops the whole person through a curriculum that enriches and provides



Marlee Sullivan as Alice, left, and Marianna Davis as the Red Queen for a production of "Alice in Wonderland" in April at The Ritz Theatre in Sheffield. [DAN BUSEY/TIMESDAILY]

practical application for the Alabama state standards for the performing arts.

Its mission is to provide opportunities for high school students who have a strong interest in, and aptitude for, the performing arts to receive training in acting, vocal performance and choreography. 256-383-0533.



Anna Bond Kelley portrayed Kate Keller in "The Miracle Worker" in 2022 and 2023, before she was thrust into the role of Annie Sullivan last July. [COURTESY OF MARY CARTON]

Summerstock: SummerStock at the Ritz is an educational theater arts training program that provides accomplished professional instruction to young people ages 16-29 who aspire to a higher level of performance in acting, singing, dance and technical theater. One production is presented each summer. 256-383-0533

Time Out For Theatre: A theater enrichment program for young audiences and young casts. Ritz Theater, Sheffield. 256-383-0533; tennesseevalleyarts.org

The Full Moon Players: A division of Cypress Moon Studios in Sheffield. The

SEE THE ARTS, S30

Greyhound

CONNECT

WE'RE SERVING YOUR COMMUNITY

BUS STOP IN FLORENCE

Go to **GREYHOUND.com** to purchase tickets.

ALABAMA'S RENAISSANCE CITY

FLORENCE

ALABAMA

2024

Mayor Andy Betterton
PO Box 98, Florence, AL 35631
256.760.6400 abetterton@florenceal.org



The outside of the W.C. Handy Home and Museum in Florence.
[FILE/TIMESDAILY]



The Florence Indian Mound Museum. [FILE/MATT MCKEAN/TIMESDAILY]



The Kennedy-Douglas Center for the Arts during heavy rain at the 2024 Arts Alive. [IVY ROSE BALL/TIMESDAILY]

THE ARTS

From Page S29

Players have productions throughout the year. 256-335-6961; cypressmoonstudios.org

Zodiac Players: Adult division of the Shoals Community Theatre Group. Season tickets or general admission. 256-768-5586. theshoalstheatre.org

Music

Shoals Chamber Singers: An adult ensemble for those who enjoy choral music and classically oriented literature.

Christmas and spring concerts; participation through audition. shoalschambersingers.org

Shoals Dulcimer and Folk Music Association: Folk music with emphasis on mountain dulcimer and other acoustic folk instruments. 256-764-2884.

Shoals Symphony at UNA: Four concerts from October through May, plus Young Artists competitions. Memberships welcome. Musicians by audition. 256-710-1623; shoalssymphony.org

Museums and attractions

FLORENCE

W.C. Handy Home and Museum: 620 W. College St. This log cabin served as home to the “Father of the Blues.” See the famous piano on which Handy wrote “St. Louis Blues and “Memphis Blues.”

The museum houses memorabilia, musical instruments and original manuscripts from some of Handy’s most famous works. 256-275-3128.

Pope’s Tavern Museum: 203 Hermitage Drive. Constructed more than 150 years ago, this facility has functioned as tavern, stage stop and Confederate hospital.

The building houses a city museum with antiques and Civil War memorabilia. 256-760-6439.

Indian Mound and Museum: 1028 S. Court St. This great mound, called “Wawmanona” by the American Indians, is the largest of a number found in the Tennessee Valley. 256-760-6427.

Frank Lloyd Wright’s Rosenbaum House: 601 Riverview Drive. 256-740-8899. An Alabama jewel, the Usonian style was created by Frank Lloyd Wright during the Great Depression as an affordable option for middle-class families. Here are interesting facts about the structure

- The Rosenbaum House was the second Usonian House built by Wright. The first was the Usonian prototype Jacobs House in Madison Wisconsin was the first, built in 1936. 256-718-5050.

- It is also the only structure designed by Frank Lloyd Wright in Alabama.

- The house was 1,540 square feet when it was built in 1939.

- After the Rosenbaum family had four sons, Wright designed an addition in 1948.

- 1,084 square feet was added to the home. Improvements included a larger kitchen, a guest bedroom, storage space and a room with four beds for the Rosenbaum children.

- Usonian’s base word is Usona, which is an anagram of United States of North America.

- Other Usonian homes are located in Madison, Wisconsin; Palo Alto, California; Mount Vernon, Virginia; Middleton, Wisconsin; Carmel, California; Ann Arbor, Michigan; Chattanooga, Tennessee; Seattle, Washington and Lake Dalton, Wisconsin.

- The Rosenbaum house was placed on the National Register of Historic Places in 1978.

- Mildred Rosenbaum lived in the Rosenbaum House longer than any other original Usonian home owner.

- The house was owned by the Rosenbaum family until 1999 when Mildred

Rosenbaum moved into a nursing home.

- The Rosenbaum family donated the house to the City of Florence and sold the furniture and contents of the house to the city for \$75,000.

- The city spent \$600,000 on repairs using original plans provided by the Wright Foundation.

- The home opened to the public as a museum in 2002.

- National and international visitors to the house are common and an estimated 5,000 people visit the home every year.

Kennedy-Douglass Center for the Arts: 217 E. Tuscaloosa St. The arts center is a home base and meeting space for cultural groups, a showcase and classroom for all arts disciplines, and the administrative offices for the city of Florence museum system. It features rotating exhibits by artists from across the Southeast, annual exhibits such as Arts Alive and workshops for all ages. 256-760-6379

Children’s Museum of the Shoals: 2810 Darby Drive. The Children’s Museum offers hands-on exhibits and programs geared specifically to the developmental stages and needs of children. Exhibits and activities will encourage children to imagine, make choices and create. These exhibits enable children to discover different cultures, values and occupations, as well as to demystify science, technology and the arts. Groups of 10 or more should call for reservations and discount rates. 256-284-7107; cmschoals.org/

MUSCLE SHOALS

Wilson Lock and Dam: Alabama 133. The highest single-lift lock east of the Rocky Mountains, this dam produces hydroelectric power for the Shoals as well as many other areas of the South. The lock is operated by the U.S. Army Corps of Engineers. The dam is maintained by the Tennessee Valley Authority. 256-764-5223

TUSCUMBIA

Helen Keller’s Birthplace: Ivy Green: 300 N. Commons West. This historic 1820s home is open for tours. See the famous water pump where Helen Keller formed her first word “w-a-t-e-r,” with the help of her teacher Anne Sullivan.

The home contains original furnishings and memorabilia. Tour includes the main house, birthplace home, separate kitchen and cook’s room. Stroll the grounds and see the international gifts placed there. Tour time is one hour. 256-383-4066.

Tennessee Valley Museum of Art: 511 N. Water St. The museum is the visual arts extension of the Tennessee Valley Arts Association, featuring various exhibitions throughout the year in each of its five galleries: the Mary B. Brown Gallery, Mildred & Edward Mauldin Gallery, Mary Settle Cooney Education Gallery, Colonnade Gallery, and the Martin Petroglyph Gallery (permanent exhibition).

The museum exhibits presented annually include touring exhibitions, fine art, craft art and other displays that provide informative and educational experiences for audiences. Other activities include guided tours, workshops, classes, camps and lectures. Daily admission and group rates vary according to exhibits. 256-383-0533.

Alabama Music Hall of Fame: One visit to the Alabama Music Hall of Fame and you’ll walk away with a better understanding of the renowned achievements of Alabamians who have been a part of the national and international music scene.

The legends are there as well as those who are making their mark in today’s music scene. There is a vast display of memorabilia from more than 1,000 musicians who represent all genres.

The world-famous music recorded here in the Shoals is there – you’ll learn just how far-reaching the Muscle Shoals sound was, and is, in the music industry.

Dining

Here's a sample list of local restaurants. For a longer listing of restaurants, check out tourism sites at colbertcountytourism.org and visitflorenceal.com

FAMILY

Big Bad Breakfast

315 N. Court St., Florence; 256-415-8545; bigbadbreakfast.com/locations/florence-alabama

7 a.m. to 2 p.m. seven days a week
The aprons were designed by renowned fashion icon Alabama Chanin, the sounds of Shoals-related music mingle with conversation and the tink of cutlery against plate, and there are so many breakfast combinations on the menu, you'll just camp out there - if they'd allow you. But if breakfast past 9 a.m. is not your thing, there are salads, sandwiches and wraps, too. Ingredients are locally sourced whenever possible and the chef overseeing Florence's newest eatery is passionate about laying a great table.

Box Car Café

220 N. Nashville Ave., Sheffield;



Esther's Eatery in Florence. [DAN BUSEY/TIMESDAILY FILE]

256-381-7437

5 a.m. to 2 p.m. Mon.-Fri.

Good variety on its breakfast menu. A recent sample of lunch, which is served beginning at 10 a.m., was meatloaf, salmon, grilled porkchop, chicken and dumplings, vegetables, salad and bread. Desserts served, too.

Café 222

256-284-7392

222 North Court Street
Florence, AL 35630

Mon.-Fri. 10 a.m.-2 p.m.

Offering cafeteria-style entrees and sides, as well as freshly prepared packaged salads and sandwiches. Specialty desserts, including fresh baked croissants, cakes, cupcakes, and cookies.

Champy's Famous Fried Chicken

120 2nd St, Muscle Shoals;
256-389-9985

Every day 10:30 a.m.-10 p.m.

The Chicago Café

106 E. Mobile St., Florence;



Chef Kyle Ogden stands inside Odette. [DAN BUSEY/TIMESDAILY FILE]

256-710-3607;

Mon.-Thur. and Sunday 11 a.m.-2 a.m. and Fri. and Sat. 11 a.m.-3 a.m.

11 a.m.-10 p.m. Sun.-Thur.; 11 a.m. to 11 p.m. Fri. and Sat.

The Chicago Cafe is located in downtown Florence. Its menu features all-natural black angus beef hot dogs, locally sourced organic bratwursts, flat-bread pizza that is made fresh to order,

SEE DINING, S32



ALABAMA MUSIC HALL OF FAME

The Alabama Music Hall of Fame honors Alabama's musical achievers and features memorabilia and information about the inductees from throughout the state of Alabama.

Self-Guided Tours Available.

Call Ahead for Booking Group, Private, or Guided Tours.

Banquet Facility Rentals & Museum Event Rentals Available.

617 Hwy 72, Tuscumbia, AL
256-381-4417 • alamhof.org
Tues - Fri 10am-5pm • Sat 10am - 4pm



DINING

From Page S31

and sandwiches that are toasted to perfection. The café will have a hot dog of the month like the “Big McDog” or the Currywurst Dog. It also serves up a special dog on certain holidays like the Bangers & Mash Dog on St. Patrick’s Day. You can dine in or take out dinners. It says it’s the best late-night food in town until 3 a.m. on Fridays and Saturdays.

Chicken Salad Chick

chickensaladchick.com/florence

256-257-0042

363 Cox Creek Parkway

Florence, AL 35630

Mon.-Sat. 10 a.m.-8 p.m.

Drive-Thru available

Claunch Café

400 S. Main St., Tuscumbia; 256-386-0222;

10:30 a.m. - 2 p.m. Sundays; 11 a.m.-2 p.m. Mon.-Thur.

Claunch Café specializes in down home Southern cooking. Diners can sit inside the glassed-in porch and look out at the beauty of Spring Park. In the summer months, the glass is removed and only the screens remain. The chicken salad plate is a must-try – it’s Claunch’s signature dish.

Coldwater Café

3810 Hatch Blvd., Sheffield; 256-381-9633

10:30 a.m. - 6 p.m. Mon.-Fri.

Esther’s Eatery

www.estherseatory.com

256-349-5231

1416 Huntsville Road

Florence, AL 35630

Mon.-Fri. 11 a.m.-5:30 p.m.; Sat. 11 a.m.-2 p.m.

Signature bowls, create your own, baked goods and more!

Garden Gate

701 Avalon Ave.

Muscle Shoals; 256-383-6905;

Mon.-Fri. 10:30 a.m. to 7 p.m.

Garden Gate serves home cooking in generous helpings that include fare like fried chicken, beef tips and rice, slow cooked pork roast, chicken and dumplings and home-style veggies like grandma used to cook: turnip greens, potatoes and gravy, green beans, corn, fried okra, purple hull peas or white beans.

Homeside Restaurant

3922 Cloverdale Rd, Florence; 256-768-1138;

Mon.-Fri. 7 a.m.-8 p.m.; Sat. & Sun. 7 a.m.-2 p.m.

Homeside Restaurant serves country



People and horses gather for food and drinks at Rattlesnake Saloon during the Chuckwagon Races at Seven Springs Lodge in Colbert County. [JIM HANNON/TIMESDAILY FILE]

cooking just like your grandmother used to make. The service is down home. They know you by name and treat you like family.

The restaurant has rotating meat specials Monday through Thursday and then offers all you can eat fish on Friday. In addition to the specialty meats, it serves various vegetables from cabbage to black eyed peas and green beans to broccoli & rice casserole. If a meat and vegetable option is not what you’re hungry for, it also offers breakfast all day, seafood, burgers, fresh made salads and steaks along with a wide variety of desserts.

Homeside Restaurant

4220 Huntsville Rd, Florence; 256-367-4953;

Mon.-Sun. 7 a.m.-2 p.m.

Homeside Restaurant serves country cooking just like your grandmother used to make. Bring the kids & stay awhile. The atmosphere is welcoming and kid-friendly. There is a party room available for reservations.

The restaurant has rotating meat specials Monday through Thursday and then offers all you can eat fish on Friday. In addition to the specialty meats, it serves various vegetables from fried okra to slaw and baked beans to macaroni & cheese. If a meat and vegetable option is not what you’re hungry for, it also offers breakfast all day, burgers and fresh made salads.

Nanny D’s Restaurant

3609 Cloverdale Rd, Florence; 256-766-6222;

Mondays 7 a.m.-8 p.m.; Tues.-Fri. 8 a.m.-8 p.m. Sun. 8 a.m.-3 p.m.

Nanny D’s, which used to be Momma Jean’s, is located in the Petersville

community. It serves Southern-style food six days a week. It offers Southern meats on various days like boneless fried chicken, meatloaf, chicken livers and fried pork chops with gravy. It offers several vegetables and breads as well as a wide variety of desserts.

Momma Jean’s Restaurant

2325 Highway 20, Tuscumbia; 256-381-7001;

Mon 7 a.m.-8 p.m. Tues-Fri 8 a.m.-8 p.m. Sun 8 a.m.-3 p.m.

Momma Jeans is family owned and operated. Three sisters started the Bread Basket in Cherokee in 1983, so there’s a lot of good ole country cooking under Momma’s belt. It serves Southern-style food six days a week. It offers Southern meats on various days like pork roast, country fried steak, meatloaf and fried chicken livers. It offers several vegetables and breads as well as a wide variety of desserts.

Odette

120 N. Court Street, Florence; 256-349-5219; odettealabama.com

Tues-Wed 5 p.m.-9:30 p.m.; Thurs & Fri 11 a.m.-2 p.m. and 5 p.m.-11 p.m.; Sat 11 a.m.-3 p.m. & 5 p.m.-11 p.m.

Odette bills itself as serving “elevated American fare with Southern and international influences.” Menu items feature locally- and sustainable-sourced ingredients. The atmosphere is contemporary and relaxed. It’s a local favorite

Rattlesnake Saloon

1292 Mount Mills Road, Tuscumbia; 256-370-7220; Reservations must be booked before 4:45 p.m. by calling 256-

370-7218; rattlesnakesaloon.net

11 a.m. to 10 p.m. Thursday through

Saturday (Feb.-Nov.); 11 a.m. to 3 p.m., Sunday (April-Sept.)

You’ve got to see this restaurant. There’s a reason it bills itself as “the watering hole under the rock.” This is a very popular restaurant. See the website for reservation rules.

Ray’s at the Bank

1411 Huntsville Road, Florence; 256-275-7716

Wed & Thurs 11 a.m.-3 p.m. and 5 p.m.-9 p.m.; Fri & Sat 11 a.m.-3 p.m. and 5 p.m.-10 p.m.

Good regional fare in this new restaurant in east Florence. The building has been renovated to expose brick walls that adds warmth and charm to the dining experience, which features sandwiches (smoked gouda pimiento cheese sounds good), slow smokes pork brisket, ribs and chicken, and soups and salads.

Stanfield’s Eatery

4838 Hatch Blvd, Sheffield; 256-446-5588; www.stanfieldseatory.com

Tues-Thurs 10:30 a.m.-9 p.m. and Fri-Sat 10:30 a.m.-10 p.m.

It specializes in homemade foods and baked goods to meet everyone’s taste buds.

Stanfield’s River Bottom Grille

Florence Harbor; 256-768-1721; riverbottomgrille.com

Tues-Thurs 11 a.m.-9 p.m. and Fri-Sat 11 a.m.-10 p.m.

It’s the only floating restaurant in the Shoals. The view of Florence Harbor surrounds you in this casual dining spot. When the weather permits, take a table on the deck and drink in the ambiance of the Tennessee River lifestyle. The menu is long and varied. The Stanfield’s Steamer Bucket of seafood is a favorite.

Stew Shack

4728 Hwy 207, Anderson; 256-247-7988

Tue.-Sun. 10:30 a.m.-9 p.m.

Superhero Chef’s

256-320-7349

104 S Main Street

Tuscumbia, Alabama 35674

www.superherochefs.com

Tue-Sat 7 a.m.-9 p.m. Sun 7 a.m.-5 p.m.

Superhero Chefs is the brainchild of celebrity chef Darnell Ferguson. Serving urban eclectic american dishes with a twist. From amazing Sub-Zero blueberry pancakes with lemon-marscapone cheese to 1-inch thick handcrafted burgers.

Sweet Basil Café

1627 Darby Drive, Florence; 256-764-5991; Facebook

DINING

From Page S32

10 a.m. to 3 p.m. Mon-Fri

Choose from an assortment of sandwiches or opt for the lunch plate special. Or order a “super foods salad” featuring kale, Brussels sprouts, cabbage and chicory, carrots, dried cranberries and all kinds of yummy ingredients with a hone-lime dressing. The eatery is also a market, so take advantage of its leisurely atmosphere and browse.

Swampers Bar and Grill

1 Hightower Place, inside the Marriott Shoals Hotel and Spa; 256-246-3600; 6:30 a.m. - 11 p.m. every day

This Florence eatery features casual dining in an elegant setting with a comfortable lounge and outdoor patio for diners to enjoy. Swampers serves breakfast, lunch and dinner featuring classic American fare. The interior honors Alabama’s rich cultural heritage.

BAR & GRILL

On the Rocks

110 N. Court St., Florence; 256-760-2212; florenceontherocks.com

4 p.m. to 2 a.m.

Full menu for lunch and dinner includes pub-like menu items like hot wings, nachos, burgers and sandwiches, grilled mahi mahi, and steak. It is a favorite spot for live music and for dining and late socializing in the heart of historic downtown Florence.

FloBama

311 N. Court St., Florence; 256-764-2225;

11 a.m. to 2 a.m. Tuesday through Saturday

Another of downtown Florence’s dining and late socializing venues, FloBama’s menu features hickory smoked beef and pork as well as chicken, salads, wraps. There’s Tuesday karaoke, open mic, and live music.

Mugshots Grill and Bar

321 N. Court St., Florence; 256-415-8335

mugshotsgrillandbar.com

11 a.m. - 9 p.m. Sundays through Thursdays; 11 a.m. - 10 p.m. Fridays and Saturdays

Located in the heart of downtown Florence, this restaurant will offer dine-in/out, take-out, curbside, pickup, catering, and delivery services. The menu consists of appetizers, burgers, sandwiches, pasta and more.

Sam’s Sports Grill

www.samssportsgrill.com

256-349-2300



Swampers Bar & Grille. [COURTESY]

339 Seville St, Florence, AL
Sun-Thur 11 a.m. - 10 p.m. Fri & Sat 11 a.m. - 11 p.m.

We took the philosophy “if we are going to do it, let’s do it right”. We apply this philosophy to all areas of the restaurant including food, service and sports. We know we are only as good as your last visit, that’s why our whole team is committed to your complete satisfaction and if we fall short please bring it to our attention. food, service and sports. Our hard work has paid off as we have been voted ‘best sports grill’ for 14 years by the readers of the Nashville Scene Magazine.

The Boiler Room

313 N. Court St., Florence; 256-693-0074; Mon-Thur 5 p.m. - 10 p.m. Fri & Sat 5 p.m. - 12 a.m.

This a place for people to come and be themselves with a collection of games as well as food & beverages to enjoy. Explore an evening filled with bowling, live music, shuffleboard, darts, skeeball, foosball and made-from-scratch dining.

Voodoo Wing Company

310 Cypress Mill Rd, Florence; 256-275-3710

voodoowingco.com

10:30 a.m. - 9 p.m. Mondays through Thursdays; 10:30 a.m. - 10 p.m. Fridays and Saturdays

Pick how many traditional or boneless wings you want, select your flavor and/or temperature and your favorite dipping sauce. You can also order a side or two. If

you still have room there are a few desserts to choose from.

Wildwood Tavern

108 E. Mobile St., Florence; 256-349-2139;

Mon-Sat 11 a.m. - 2 a.m. and Sunday Noon until 2 a.m.

Wildwood Tavern is an eclectic pub in downtown Florence. It serves all-natural beef hot dogs, locally sourced bratwurst, unique sandwiches, flatbread pizzas, seasonal microbrews and craft cocktails all paired with a hand selected jukebox, shuffleboard table, outdoor patio, good conversation and smiling faces. It offers a quick and affordable lunch. Happy Hour is from 3 p.m. until 7 p.m. every day and features \$1 off select drinks and food.

FINE DINING/STEAKS/SEAFOOD

360 Grille

10 Hightower Place, Florence; 256-246-3600;

Mon-Sat 11 a.m. - 10 p.m.; reservations are required

The 360 Grille, located atop the Renaissance Tower at the 4-star Marriott Shoals Hotel and Spa, offers spectacular views of the Tennessee Valley and hails as Alabama’s only revolving restaurant.

The menu features regional American cuisine with a commitment to locally grown produce, sustainable farming practices and seasonality. A five course chef’s tasting offers innovative takes on some classics, while the a la carte menu

presents refined renditions of Southern favorites.

George’s Steak Pit

1206 Jackson Hwy., Sheffield; 256-381-1531; georgessteakpit.com

Tue-Thur 4:30 p.m. - 9 p.m. Fri & Sat 4:30 p.m. - 10 p.m. (reservations are recommended)

Known throughout the Shoals, this establishment remains an area classic. Diners enjoy a selection of fine wines to complement their meal of choice. Menu appetizers include Oysters Rockefeller, Fried Calamari and the Greek Tray. Steaks are cooked over a wood-fire grill.

Jack’s Place

118 W. Mobile St., Florence; 256-349-5429; jacksplacebistro.com

11 a.m. to 2 p.m. Sundays, Tuesdays and Wednesdays; 11 a.m. - 2 p.m. and 5-9 p.m. Thursday-Saturday

You’ve seen Chef Jack White’s work. The actor turned food stylist has worked in more than 100 movies and TV shows including “The Girl with the Dragon Tattoo,” “Saving Grace,” and “The Hunger Games” series. For brunch or lunch, you’ll find mouth-watering selections that include Eggs Benedict three ways, frittata or quiche of the day, Belgian waffles and French toast, or maybe you would prefer a spinach salad or taragon chicken salad. “Sandwiches and such” include Panini, wraps, a meatball hoagie or burgers, with the “such” including brisket, panko encrusted pork tenderloin, pasta and flatbreads. The dinner menu includes main courses of hand-cut ribeye and braised pork shank among many dishes that will please all appetites.

Red Clay Table

307 N. Montgomery Ave, Sheffield, 256-320-5500

Mon-Wed 11 a.m. - 3 p.m. Thur 11 a.m. - 8 p.m. Fri 11 a.m. - 9 p.m. Sat 5 p.m. - 9 p.m.

Stanfield’s

4838 Hatch Blvd, Sheffield; 256-446-5588;

Tue-Thur 10:30 a.m. - 9 p.m. Fri & Sat 10:30 a.m. - 10 p.m.

Stanfield’s specializes in homemade foods and impeccable baked goods to meet everyone’s taste bud needs.

FISH

Curtis’

8050 Hwy 43, Florence, 256-757-9066
Tue. - Sun. 10am-9pm

Fish Creel

7810 Hwy 207, Anderson,

DINING

From Page S33

256-247-0969
Wed.-Sun. 10:30 a.m.-8 p.m.
Newbern's
3406 Florence Blvd., Florence;
256-766-6866
Wed-Sat 10 a.m.-8 p.m.
Known for the best catfish in North Alabama.
Walton's Restaurant
1205 Hwy 101, Rogersville,
256-247-0696
Tue.-Sat. 10 a.m.-8:30 p.m.

BARBEQUE

Big Man's Barbecue
1510 N. Pine St., Florence;
938-368-2502
10:30 a.m.-6 p.m. Wednesdays through Saturdays
This barbecue house offers a variety of meats from pulled pork to brisket. You can have it on a plate, a sandwich or just by itself. It also offers plenty of sides, salads, loaded potatoes and nachos. The restaurant has also been known to come up with some specialty sandwiches, so be on the lookout by checking out what's new on its Facebook page.

Bunyan's Barbecue
901 W. College St., Florence; 256-766-3522; bunyansbarbeque.com
This is a favorite among locals for pulled barbecue pork sandwiches and hotdogs with Bunyan's famous slaw, hot or mild. Chicken is also on the menu. Order ahead and pack a picnic lunch. Eat in or take out.

Dick Howell's BBQ
1350 N. Pine St. Florence;
256-767-5830;
10 a.m. to 7 p.m. Thursday through Saturday;
In addition to a smoked barbecue sandwich, try the rib plate, smoke turkey sandwich or stuffed baked potato with meat. The mouthwatering menu has something for every taste.

306 BBQ
322 N. Court St., Florence; 256-766-5665; 306bbq.com/Florence
11 a.m. to 10 p.m. Sunday through Thursday; 11 a.m. to 11 p.m. Friday and Saturday
Hickory wood smoked barbecue featuring pork, ribs, chicken, turkey, ham, and plates with a choice of sides. There are salad, potatoes and wings, too.

Rick's BBQ
www.ricksbbq.com
Alabama Locations
Muscle Shoals-2405 Woodward Ave,



Owner Shun Cunningham tends to his barbecue pit, Tuesday, Feb. 14, 2023, at Big Man's Barbecue in Florence. [DAN BUSEY/TIMESDAILY FILE]

Muscle Shoals, AL 35661
Florence-212 Cox Creek Pkwy, Florence, AL 35630
Sky Park-4260 Florence Blvd, Florence, AL 35634
Madison-7929 Hwy 72 W Madison, AL 35758
Wilson Dam-2408 S. Wilson Damn Rd, Muscle Shoals, AL 35661
Tennessee Locations
Lawrenceburg-1507 N. Locust Ave Lawrenceburg, TN 38464
Commissary-2366 Hwy 43 S. Leoma, TN 38469
Fayetteville-1419 Huntsville Hwy, Fayetteville, TN 37334
We won't go as far as saying that blood, sweat, and tears make us who we are — but a lot of time, hard work, and pure dedication goes into our process and we're beyond proud of the food we serve.
Serving you fresh-hickory smoked meats since 1979

ICE CREAM/SANDWICHES

Soul Wingery & Records
1055 Poplar St., Florence;
256-275-7434
Tues & Wed 11 a.m.-4 p.m.; Thurs-Sat 11 a.m.-7 p.m.
Love wings? Soul, as it's fondly referred to, is tucked in on a side street and has limited space, but you won't mind at all once you taste their wings. There are 10 flavors on the menu — you'll want to work your way through them all and start over again.
Trowbridge's
316 N. Court St., Florence;
256-764-1503
Mon-Sat 9 a.m.-5:30 p.m.

In the heart of historic downtown Florence, this shop features handmade shakes, sundaes, and sandwiches.

MEXICAN

Casa Mexicana
11000 Jackson Hwy., Sheffield; 256-381-5397; 550 Brighton Ave., Muscle Shoals, 256-383-4434; 2801 Mall Drive, Florence; 256-767-2750
Traditional Mexican food with starters of chips and salsa are served upon being seated. There is a wide variety of delicious Mexican fare. Popular dishes include taco salads and fajitas.

Don Taco
2901 Mall Road, Florence;
256-275-7252
11 a.m.-10 p.m. Sunday through Thursday; 11 a.m.-10:30 p.m. Friday and Saturday

El Pollito Loco-The Crazy Little Chicken
www.thecrazylittlechicken.com
256-275-3851
1403 Chisholm Road
Florence, AL 35630
Mon-Sat 11am-10pm
Sunday 11am-4pm

La Hacienda Mexican Restaurant
153 Cox Creek Parkway, Florence;
256-764-3532

Munch on chips and salsa as you choose a meal from the extensive list of offerings or order a drink from the full bar.

Fiesta Mexicana (several locations)
1550 Florence Blvd., 256-766-0100; 3364 Cloverdale Road, Florence, 256-178-6843; 3721 Florence Blvd., 256-272-8444; 41 Market Square, Rogersville, 256-247-6180; 517 Avalon Ave. E., Muscle Shoals; 256-389-8282;

4001 N. Jackson Hwy, Sheffield; 256-248-4279
Rosie's Mexican Cantina
302 N. Court St., downtown Florence;
256-767-5599; rosiesmexicancantina.com

Monday-Thursday, 11 a.m. to 9 p.m.; Friday and Saturday, 11 a.m. to 10 p.m.
The go-to for Mexican food and a fun atmosphere in historic downtown Florence. Create your own custom combo platter or order from the long and varied menu of traditional fare, or soup, salads and appetizers.

Taco Mama
Tacomamaonline.com
256-712-4434
121 Cherry Street, Florence, AL
Mon-Sat 11am-9pm; Sun 11am-8pm

At Taco Mama, we believe that our guests eat with all of their senses which is why we hand-pick the music you hear in the restaurant. So, it always made sense that Taco Mama would find a home in The Shoals. Whether it's the special sound of Fame Studios in Muscle Shoals, or W.C Handy's genre-defining blues, or Jason Isbell and The 400 Unit's brand of Americana-Southern Rock-Alt Country — Florence and The Shoals area has always kept the rhythm of its Southern Soul.

ASIAN

Ichiban
1207 Jackson Hwy., Sheffield; 256-389-9888; iloveichiban.com
Mon-Thur 11 a.m.-3 p.m. for lunch and 4:30 p.m.-9:30 p.m. for dinner; Fri & Sat 11 a.m.-10 p.m.; Sun 11 a.m.-9:30 p.m.

Japanese dishes featuring Sushi, a variety of rolls, soups, salads and appetizers.

Outlaw Sushi
123 N. Magnolia St., Florence; 256-275-7113; myoutlawsushi.com
11 a.m.-2 p.m. for lunch and 5 p.m.-9 p.m. for dinner Monday through Saturday

It redefines sushi with bold flavors and inventive combinations. The menu features a variety of delicious sushi rolls, sashimi, nigiri, and made-from-scratch noodle dishes, all crafted by skilled chefs using the freshest local ingredients.

Umi Japanese Steak House
201 N. Cox Creek Pkwy., Florence;
256-718-6868; umijapanesesteakhouse.com

11 a.m. to 2:30 p.m., then 4:30-10 p.m. Monday through Friday; 11 a.m. to 10:30 p.m. Saturday; 11 a.m. to 9:30 p.m. Sunday

DINING

From Page S34

Traditional and exotic Japanese cuisine including sushi, sashimi, teriyaki, tempura and hibachi food.

Rice Box
1529 N. Wood Ave., Florence; 256-767-6752

11 a.m. to 10 p.m. Sunday-Thursday, 11 a.m. to 11 p.m. Friday and Saturday. Asian cuisine in a casual setting, specializing in Chinese and Japanese food, the menu items reflect the tastes and traditions of both countries.

Yumm
117 N. Court St., Florence; 256-349-2074; yummathaisushiandbeyond.com

11 a.m. to 2 p.m., then 5-9 p.m. Mon.-Thu.; 11 a.m. to 2 p.m., then 5-10 p.m. Friday and Saturday. Sushi and Thai cuisine and everything beyond - mild or spicy and artistically prepared. Eat indoors or alfresco in historic downtown Florence.

CAJUN and CREOLE

Cajuns
4301 Jackson Hwy., Sheffield; 256-381-1573
Wed & Thur 3 p.m.-10 p.m. Fri & Sat 3 p.m.-11 p.m.

Cajun-flavored food in a relaxed environment, with delicacies such as fried oysters and shrimp, red beans and rice, frog legs, corn and potatoes. Menu also offers regular fare.

ITALIAN PIZZA & SPECIALTY

Hometown Pizza
104 W 6th St, Tuscumbia; 256-978-5507
Mon-Sat 10am-9pm, Sun 11am-8pm.

Lil Capone's Italian Bar & Grill
256-275-7603
www.lilcapones.com
3370 Cloverdale Road, Florence, AL
125 Cox Creek Pkwy South, Florence, AL

Pizza, Calzones, Subs, Pastas, Wings and More!

Low Carb menu options.
Lost Pizza Co.
201 N. Seminary St., Florence; 256-415-8693;

Every day 11 a.m.-9 p.m.
Lost Pizza Co. is a funky, laid-back joint with good music, great food made from scratch and some of the coldest beverages in town. You can sit inside or enjoy the fresh air out on the covered patio.

Milano's Italian Grill
120 S. Main St., Tuscumbia;



Turbo Coffee. [DAN BUSEY/TIMESDAILY FILE]

256-248-4484
11 a.m.-9 p.m. Tuesday-Sunday
Experience the taste of Italy in the heart of Tuscumbia. Indulge in its delicious pasta dishes, savory entrees, and don't forget to leave room for dessert.

Ricatoni's Italian Grill
107 N. Court Street, Florence; 256-718-1002

11 a.m. to 9 p.m. Sunday through Thursday, 11 a.m. to 10 p.m. Fri and Sat
The historic building has exposed brick walls and diners love the fresh bread and saucer of herbs and oil as a starter. Traditional Italian fare with handmade pizzas baked in a wood fire oven.

Roma Italian Bistro
4840 Hatch Blvd., Sheffield; 256-248-4729

11 a.m.-9 p.m. Sunday through Thursday; 11 a.m.-10 p.m. Friday and Saturday
Where authentic flavors and warm hospitality come together. Restaurant has lunch specials as well as a catering menu.

The Pie Factory
106 N. Court St., Florence; 256-275-3248; and 3312 Woodward Ave., Muscle Shoals; 256-314-2622; pizzapiefactory.com

11 a.m. to 10 p.m. Sunday through Thursday; 11 a.m. to 11 p.m. Fri and Sat
They make their own dough in house and you can choose from a variety of savory sauces, cheeses and toppings or choose one of their specialty pizzas and a craft beer brewed in Alabama.

COFFEE HOUSE /BISTRO

Alabama Bliss and Bistro
2108 S. Wilson Dam Rd., Muscle Shoals, 256-248-4530;

10:30 a.m. to 6 p.m. Monday-Friday
How about a picnic lunch while you're here? Try the grilled triple cheese pimento cheese and bacon, or the roasted chicken salad, or one of salads with a cup of soup or slice of homemade quiche. You can enjoy a Bliss meal there or take it with you knowing it has been prepared fresh

onsite. Staying with family or friends and want to contribute to the home meal? Bliss offers a variety of take-home dishes ready to just pop in the oven.

Banquet Patisserie
117 W. Tuscaloosa St., Florence 256-415-7015

7 a.m.-2 p.m. Monday through Friday; 9 a.m.-2 p.m. Saturday; 10 a.m.-3 p.m. Sunday

Family owned and operated bakery specializing in traditional European pastries, breads, bagels, specialty coffee, tea, and all-day breakfast and lunch.

Rivertown Coffee Company
117 N. Seminary St., Florence 765-7128; rivertowncoffee.co

7 a.m. to 10 p.m. Monday-Thursday, 7 a.m. to 11 p.m. Friday, 9 a.m. to 11 p.m. Saturday

Muffin or breakfast wrap with a cup of Mule Town Coffee shipped in weekly from Columbia Tennessee are favorites. Also serves lunch that includes their famous Panini and soup of the day.

Turbo Coffee
310 E. Tennessee St., Florence; 256-483-1501; Facebook page

Hours: 7 a.m. to 7 p.m. Monday through Friday; 8 a.m. to 5 p.m. Saturday
Coffee shop that also serves food and smoothies.

Tuscumbia

the Charm of the Shoals
Home of Helen Keller Birthplace
Investing in and Protecting Our Citizens

Cityoftuscumbia.org • 256-383-5463

Getting involved

Alcoholics Anonymous

Shoals Area AA (Lauderdale, Colbert, Franklin and Lawrence counties) has an up-to-date meeting schedule as well as local AA events on their website: www.shoalsaa.org and a 24-hour hotline: 256-415-7719.

To find AA meetings worldwide, get the AA Meeting Guide app here: <https://www.aa.org/meeting-guide-app>

Al-Anon

- Al-Anon meeting schedule: Hope Al-Anon Family Group, 6 p.m. Mondays, Highland Park Church of Christ, 600 Geneva Ave., Muscle Shoals, childcare provided; Florence Daytime Al-Anon Family Group, 11 a.m. Tuesdays, Magnolia Church of Christ, 2650 Vulcan Ave., Florence; Paths to Recovery, 7 p.m. Thursdays and 10 a.m. Saturdays, CrossPoint Church of Christ, 1350 Cox Creek Parkway, Florence, 256-764-4073. Shoals Al-Anon contact phone: 256-648-5777.

- Al-Anon, 6 p.m. Thursdays, First Baptist Church, Jackson Avenue, Russellville.

- Hope Al-Anon and Shoals Al-Teen (ages 12-18), 6 p.m., Monday, Highland Park Church of Christ, 600 Geneva Ave., Muscle Shoals.

- Florence Freedom AFG, 11 a.m., Tuesday, Mission of Mercy, 414 Tuscaloosa St., Florence.

Narcotics Anonymous

- Narcotics Anonymous Survival meets daily, noon and 7 p.m., 1614 State St., Florence. Nonsmoking. 256-500-8889

- Real Hope, 6-7 p.m., Tuesdays and Thursdays, New Beginning Church, 855 Florence Blvd., Florence. Nonsmoking. 800-239-5509

- Point of Freedom, 7 p.m. Mondays, Tuesdays, Thursdays and Saturdays, CrossPoint Church of Christ, 1350 Cox Creek Parkway, Florence. Nonsmoking.

Crisis lines

- Battered or abused women in need of counseling and/or emergency shelter may call Safeplace crisis line, 256-767-6210, 24 hours.

- Rape Crisis Line available 24 hours. 256-767-1100



Clockwise from bottom left, Jean Vandiver, Eva Jordan, Vernthia Garner, Pearlene Creasy and Ruby Hyde play cards as Becky Foster, not pictured, plays piano in June at the Florence Senior Citizen Center "The Club". [DAN BUSEY/TIMESDAILY FILE]



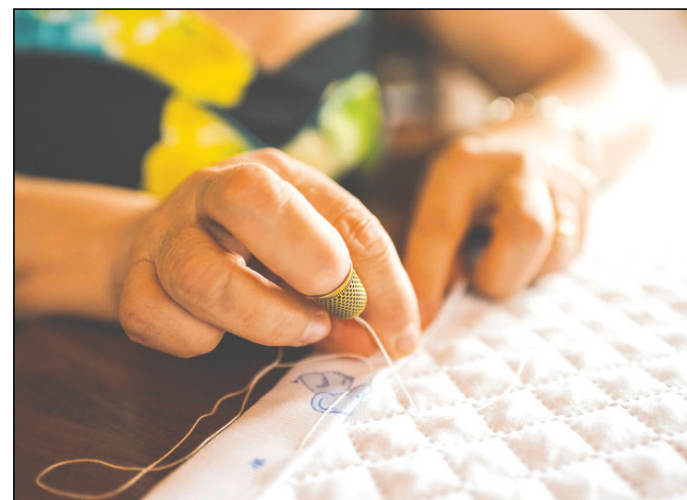
Ruth Ann Christopher, 5, left, is taught how to use a weaving machine during the 2024 Celtic Fest at Belle Mont Mansion. [DAN BUSEY/TIMESDAILY FILE]

Government

- Florence-Lauderdale Tourism board meeting, 9 a.m., first Thursday of each month, Visitor Center boardroom, 200 Jim Spain Drive, Florence. 256-740-4141

Senior adults

- The CLUB, Florence Senior Center, Monday-Friday, activities 9 a.m.-4 p.m., 450 Country Club Drive, Florence, 256-760-6642. Offers dance classes Mondays and Tuesdays.



Two quilt guilds meet the second Monday of each month in the Shoals. [PHOTO ILLUSTRATION/METRO]

Historical

- Sons of the American Revolution, Shoals Chapter, meets the second Sunday of each month (except June, July and August) at Helen Keller Library, 511 N. Main St., Tuscumbia. 256-324-2317

- North Alabama Civil War Round Table, meets third Tuesday, 6 p.m., Helen Keller Public Library, 511 N. Main St., Tuscumbia.

- Ivy Green, the Home of Helen Keller, 300 N. Commons W., Tuscumbia, is open for tours 8:30 a.m.-4 p.m. Monday-Saturday. Admission: \$10 adults; \$8 seniors 62

and older, AAA members, military (active and retired); \$7 for college; \$5 children. 256-383-4066

- Belle Mont Mansion, 1569 Cook Lane, Tuscumbia, open to public for tours 10 a.m. to 4 p.m. Wednesdays through Saturdays. Admission: \$8, adults; \$6, seniors, active military and college students; \$4, children ages 6-18; free for children younger than 6. 256-381-5052

- W.C. Handy Museum, 620 E. College



Members of the Muscle Shoals Amateur Radio Club participate in American Radio Relay League (ARRL) Field Day. [FILE/DAN BUSEY/TIMESDAILY]



From left, Lewis von Herrmann, Neal Jeter and George Walker stand inside the Shoals Model Railroaders Clubhouse. [DAN BUSEY/TIMESDAILY FILE]



Bethany Green and Jen Berry of Bear Creek Collaborative speak to the Rotary Club of Florence in June about the collaborative's mission. [IVY ROSE BALL/TIMESDAILY FILE]

GETTING INVOLVED

From Page S36

St., Florence, is open 10 a.m. to 4 p.m. Tuesday-Saturday. Admission: \$12 adults; \$6 students, children. 256-275-3128

- Red Bay Museum, in Red Bay, is open 1:30-4 p.m. Tuesday and Thursday. Other times are available for groups. 256-356-8758

- Indian Mound Museum is open 10 a.m.-4 p.m. Tuesday-Saturday and 1-4 p.m. Sunday. Admission is \$5 for adults and \$2 for students and children. The museum is at 1028 S. Court St., Florence. 256-760-6427

- LaGrange Living Historical Association, 2 p.m., first Sunday, Visitors Center, LaGrange College site, off Alabama 157, Colbert County. L.C. Lenz, 256-702-6953

- Rosenbaum House, 601 Riverview Drive, Florence, is open for tours from 10 a.m. to 4 p.m. Tuesday-Saturday and 1-4 p.m. Sunday. Tickets are typically \$10 for adults and \$5 for students and seniors. 256-718-5050

- LaGrange Welcome Center, 8 miles southeast of Muscle Shoals, off Alabama 157, open 1-4 p.m. Sundays, or by calling 256-446-9324.

Retirees

- UAW-Ford Retiree Chapter, business meeting, 9 a.m., first Wednesday, except January, July and September, Northwest-Shoals Community College, Hospitality House, 800 George Wallace Blvd., Muscle Shoals. Fellowship supper, 6 p.m., preceding Tuesday of business meeting, NW-SCC. Sonny Owens, 256-762-1846

Community centers

- Central Community Center breakfast, 4130 County Road 6, Florence, 7-9 a.m., third Saturday. To reserve center, call 256-760-9005, 256-764-2885

- Central Community Center RSVP lunch, 11:30 a.m., 4130 County Road 6, Florence, fourth Monday. Bring covered dish. 256-764-2885

- Zip City Community Center, 10511 Lauderdale 17, Florence, 11:30 a.m. third Thursday, covered-dish lunch.

- Elgin Senior Center, 2519 Alabama 101, Rogersville, 11 a.m., Ham and Bean Day, fourth Monday of the month; pancake breakfast, 7 a.m., second Monday of each month.

Newcomers

- Hi! Neighbors of the Shoals, a women's social group, meets at 10:30 a.m. first Tuesday at Florence-Lauderdale Public Library, 350 N. Wood Ave., Florence. The group welcomes all ladies who are residents of the Shoals. Berta Birch, 256-777-3119

Support Groups

- Alzheimer's Support Group, 2-3 p.m. third Mondays, Florence-Lauderdale Public Library, 350 N. Wood Ave. Adheres to CDC guidelines. 404-663-1544

- Religious Abuse Support Group of the Shoals will meet the first and last Sunday of every month. Time and location will vary. Check Facebook for details: <https://www.facebook.com/rags Shoals>

- CaringPlace Caregiver Support Group, second Monday of each month, 10-11 a.m., CaringPlace Center, 216 Marengo St., Suite I, Florence. Grief Group follows, 11-11:30 a.m. Information, Eileen Nunnally, 256-762-1166.

- Day by Day Grief Support Group, second Sunday of each month, 2 p.m., Woodmont Baptist Church, Darby Drive, Florence.

Hobbies

- TN River Bass Club fishes monthly on Tennessee River and Bear Creek lakes. Welcome boaters or non-boaters 16 or

older of all experience levels to join. Club is based in Sheffield. FMI contact Tommy 256-627-5662.

- Readers of the Lost Ark Book Club, 10 a.m., third Wednesday, Helen Keller Public Library, 511 Main St., Tuscumbia. nancy537481@yahoo.com

- Shoals Piecemakers Quilt Guild, 7 p.m., second Monday, Saint Bartholomew's Episcopal Church, Darby Drive, Florence.

- Batting Brigade Quilt Guild, 9:30 a.m., second Monday, Edgemont Methodist Church, 1330 Eau Claire Ave., Florence.

- Muscle Shoals Amateur Radio, 9 a.m., license testing and meeting, first Saturday, Underwood-Petersville Community Center basement, 840 County Road 7, Florence.

- Muscle Shoals Amateur Radio Club, 7 p.m. third Thursday, Colbert County EMA, annex basement, 120 W. Fifth St., Tuscumbia, info@msarc.org.

- Shoals Writer's Guild, 10 a.m. third Saturday, Florence-Lauderdale Public Library, 350 N. Wood Ave.

- The Florence Duplicate Bridge Club meets at the Royal Avenue Recreation Center, 420 N. Royal Avenue, Florence, every Monday and Wednesday (except holidays). Players new to duplicate should arrive early for guidance. Players must be fully vaccinated. 256-810-1107

- Shoals Artists Guild meeting, 10 a.m., third Friday, Southall-Moore House, next to Kennedy-Douglass Center, 217 E. Tuscaloosa St., Florence.

- Shoals Model Railroaders meeting, 6 p.m., first Tuesday, 206 W. Fifth St., Tuscumbia

- Quad Cities Photography Club, 6:30 p.m. second Tuesday, Kennedy-Douglass Center for the Arts, 217 E. Tuscaloosa St., Florence.

- Chess Club, 4 p.m. Monday, Sheffield Public Library, conference room, 316 N. Montgomery Ave., Sheffield. Beginners to advanced; all ages.

Civic groups

- Sheffield Kiwanis Club, noon Wednesday, Park Place, 500 N. Montgomery Ave., Sheffield.

- Florence Kiwanis Club, noon Fridays, Shoals Marriott Conference Center, 10 Hightower Place, Florence.

- Tuscumbia Kiwanis Club, noon Tuesdays, Helen Keller Public Library annex, 511 N. Main St., Tuscumbia. Lunch and speaker. Joel Parris, 256-577-6968

- Florence Rotary Club, noon, Mondays, Marriott Shoals Conference Center, 10 Hightower Place, Florence. Lunch: 11:30 a.m.

- Florence Exchange Club, noon, Tuesdays, Marriott Shoals Conference Center, 10 Hightower Place, Florence, for lunch and program. James Barnett, 256-443-3836

- Tuscumbia Civitan Club, noon Thursdays, Helen Keller Public Library Annex, 511 N. Main St., Tuscumbia. Lunch and speaker. Richard Sheridan, 256-381-2298.

- Washington Masonic Lodge No. 36, 207 W. Fifth St., Tuscumbia, meets the second and fourth Monday at 7 p.m.; practice at 7 p.m. Thursday. 256-856-3852

Military

- American Legion Post No. 31, 6:30 p.m., third Monday, Legion Hall, 110 1/2 N. Main St., Tuscumbia. Meal and program. Ardel Hollis, 256-710-7097

- Disabled American Veterans, 1409 W. 11th St., Sheffield, fourth Tuesday, 6 p.m. meal, 7 p.m. business. Veterans serving veterans, van scheduling for disabled American veterans 9 a.m. to 1:30 p.m. Monday-Wednesday, 256-381-8229.

Social/political

- Lauderdale County ADC (Alabama Democratic Conference), Florence Public Library room 1, 350 N. Wood Ave., Florence, second Saturday, 1 p.m. Chairwoman Joyce Nelson, 256-760-9236

Industry

Here's a list of some of the Shoals manufacturing companies, according to data from the Shoals Economic Development Authority and the most recent data from the Franklin County Development Authority.

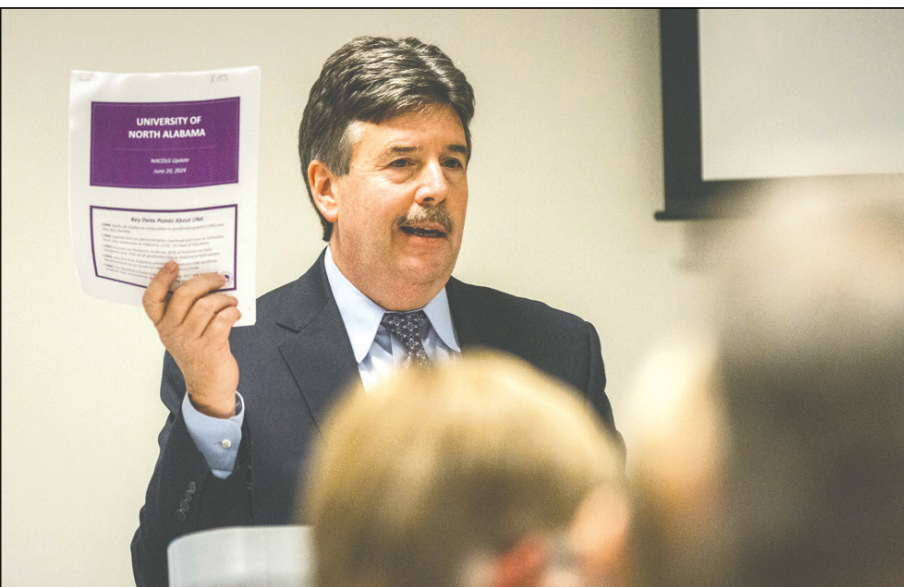
- North American Lighting – automotive lighting fixtures
- Constellium – aluminum can sheet and other alloy products
- Essity (SCA Tissue) – commercial paper products
- American Wholesale Book Co. – book distributor
- Southwire Company – commercial wiring
- Tarkett Alabama – vinyl flooring
- Gemstone Foods – poultry processing
- Monarch Tile – porcelain tile

- Other major employers include:
- Helen Keller Hospital, Sheffield
 - Lauderdale County Schools
 - University of North Alabama, Florence
 - Tennessee Valley Authority, Muscle Shoals
 - City of Florence
 - Northwest Shoals Community College, Muscle Shoals
 - Florence City Schools
 - Colbert County Schools
 - Shoals Hospital, Muscle Shoals
 - Muscle Shoals City Schools
 - Lauderdale County government
 - Colbert County government
 - Florence Electricity Department



Constellium. [FILE PHOTO]

- City of Muscle Shoals
- City of Tuscumbia
- Sheffield City Schools
- Norfolk Southern Rail
- United States Postal Service
- City of Tuscumbia
- City of Sheffield
- Franklin County Schools
- Russellville City Schools
- Russellville Hospital
- North Alabama Medical Center



UNA President Ken Kitts speaks during a meeting at the University of North Alabama. [DAN BUSEY/TIMESDAILY]



Construction continues in March for Southwire's expansion off Helton Drive in Florence. The expansion is expected to add 120 jobs at its location. [DAN BUSEY/TIMESDAILY]



Gemstone Foods. [MATT MCKEAN/TIMESDAILY FILE]

SHOP LOCAL AND SUPPORT THESE SHOALS AREA BUSINESSES

Bedford, Rogers, Bowling, and McReynolds, P.C.

Specific Areas of Practice for our Russellville office:

- Civil Litigation • Criminal Law
- Domestic Relations
- Commercial Litigation
- Personal Injury • Probate

303 Jackson Ave. N.,
Russellville, AL
256-332-2880



Let Mama feed your amigos!
dine in - take out - catering
www.tacomamadonline.com

597072-1

Local, Family-Owned Agency

ElderCare Services



Dee Mussleman,
Owner, CSA, CDP

1130 Bradshaw Drive,
Florence, AL 35630
256-740-8249
eldercareweb.com

597073-1

Your Real Estate Guide for Buying or Selling



Renee' Parnell

Associate Broker, ABR, GRI, CRS

256-335-4080

renee@reneeprnell.com

renee@reneeprnell.com • Renee.parnell@century21.com

CENTURY 21

Clement Realty, Inc.

598054-1

ECONOMY CARPETS

105 Avalon Ave., Muscle Shoals
Corner of Cox Blvd. & Avalon

256-383-6821

Toll Free 1-877-234-3741

Hours: Mon-Sat 8:30 am to 5:30 pm
Lewis Patterson and Ray Yocom

597218-1

Florence Federal Credit Union

Patty Beavers
LOAN MANAGER

- (256) 767 - 4700
- pbeavers@ffcuonline.com
- www.ffcunionline.com/rates
- NMLS ID # 1680074

597220-1

CARTER OIL CO.

(Since 1965)

We deliver diesel, gasoline, bulk oil, and kerosene all over Northwest Alabama.

604 E. 2nd St., Sheffield
256-383-0914

597726-1

DOCTORS DIET PROGRAM

Physician monitored weight loss program covering Northwest Alabama.

Weight loss supervised by Dr Josiah Daily.

256-978-5546 4105 Sportsplex Drive
Muscle Shoals, AL
Thursday's 11am-6pm • No appointment necessary

597282-1

T.J. CONSTRUCTION, INC.
Gas Pipeline & Maintenance

Florence, AL
Est. 1994

597281-1

BETHANY ELLISON, MALONE, ATTORNEY AT LAW

503 WEST MAIN STREET • TUSCUMBIA, AL 35674
256-383-9444
WWW.BETHANYELLISONMALONE.COM

- Wills
- Probate
- Estate Planning
- General Practice



597419-1

CATHEDRAL CAVERNS STATE PARK

"Alabama's Coolest Underground Adventure - 60 Degrees All Year Long"

OPEN YEAR ROUND

Call 256-888-0230 for tour times or visit www.alapark.com

637 Cave Road, Woodville, AL 35776

597421-1

CRC REALTY INC.
2134 Helton Drive • Florence

Jennifer McGee
Realtor®

256-412-1804
jennifermcgee.realtor@gmail.com

597423-1

Mike Mitchell
CONSTRUCTION COMPANY, INC.
"Quality Custom Building"

256-381-0655

597426-1

ANGELA NESBITT
REALTOR®
(256) 366-6152
1687 Highway 72
Killen, AL 35645
www.marmac.us

MARMAC REAL ESTATE

597430-1

MORRISON FUNERAL HOMES

Tuscumbia • 256-383-7311
Florence • 256-766-2001
Cherokee • 256-359-4033

597459-1

LEWIS ELECTRIC SUPPLY CO., INC.

1960 2023
63 YEARS

1306 Second Street Muscle Shoals, Alabama 35661
(256) 383-0681 Fax (256) 383-0834 Toll Free 1-800-239-0681
www.lesupply.com

597460-1

Julie Coan
256-710-4799
juliecoansellshomes@gmail.com

Riverside Realty Inc.

597719-1

Shoals ELECTRIC

Industrial / Commercial
Traffic Signal / Highway D.O.T.
704 Davison Avenue - Muscle Shoals
256-381-4146 Fax: 256-381-4147
www.shoalselectric.com
Licensed in Alabama, Mississippi, Tennessee

598055-1

542803-1

SHOP LOCAL AND SUPPORT THESE SHOALS AREA BUSINESSES



ALEXANDER
LAND SURVEYING, INC.

www.alexanderlandsurveying.com

602317-1

SIMMONS TIRE COMPANY

612 E. 2nd Street • Sheffield
256-381-2333

"Of course we're friendly!"

602315-1

BOB'S TIRE & ALIGNMENT

4200 N. Jackson Hwy.,
Sheffield
256-381-1199

602316-1

Tuscumbia
the Charm of the Shoals
Home of Helen Keller Birthplace
Investing in and Protecting
Our Citizens



WE ARE CLOSE TO EVERYTHING YOU NEED.
WE HAVE A VARIETY OF AMENITIES TO
MAKE YOUR STAY COMFORTABLE!!

KEYWEST
INNS • HOTELS • RESORTS

1800 HIGHWAY 72 E
TUSCUMBIA, AL 35674
256-383-0700
keywestinn59@gmail.com

604270-1

AKINS FUNERAL HOME
SERVING FRANKLIN COUNTY FOR 40 YEARS

PRE-PLANNING
Your survivors will not have
to worry about finalizing your
funeral.
You will have peace-of-mind
about your decision.
akinsfh@yahoo.com
Staff is always available, 24/7

13455 Hwy 43, Russellville • 256-332-1131

603611-1

Tamara Robinson
Realtor®

256-577-0662
talk2tamara@outlook.com
Talk2Tamara
Talk2Tamara.Realtor



CENTURY 21
Clement Realty, Inc.

603741-1



Cityoftuscumbia.org • 256-383-5463

599516-1

Dana Tank
256-412-2856
danatank.com
danatank@remax.net



RE/MAX TRI-STATE
Each Office Independently Owned and Operated
1661 S. Wilson Dam Rd.
Muscle Shoals, AL

604001-1

WINDOWS AGAIN
REPLACEMENT WINDOWS
SIDING and
REMODELING

Pat Murray • TVA Approved Contractor

256-366-8080



603604-1



Story & Lee
Since 1970 Furniture & Bedding

Store Hours: Monday thru Saturday 9 A.M. 'til 6 P.M.
Hwy 43, Leoma, TN
931-852-2111 • Toll Free: 1-800-345-2511

603061-1

TIMES DAILY

Get your
subscription
today and stay
informed.
Call 256-740-5760.

604669-1

Farmers & Merchants Bank **FMB**
SINCE 1914

Your hometown independent bank!

EACH DEPOSITOR INSURED TO
\$250,000 FEDERAL DEPOSIT
INSURANCE CORPORATION

Your Business Is Appreciated
Main St., Waterloo • 256-766-2579
Hwy. 20, Central Hts • 256-760-0909

604670-1

Come unwind in our spacious renovated hotel
with clean rooms and enjoy daily free Hot
Breakfast or relax in our outdoor pool.



**HAMPTON INN
FLORENCE MIDTOWN**
2281 Florence Blvd, Florence • 256-764-8888

604572-1

NOW MORE THAN EVER, SHOP LOCAL!



NOW HIRING

Starting rate is \$17.50/hour which includes incentive and goes up to \$20.25 again with incentive included



256-768-3707



pilgrims.com/pilgrims-jobs



**Medical, Dental &
Vision Insurance**



**Opportunities
For Advancement**



**College Tuition
Assistance Available**



Thank You Shoals Area

for voting us your **#1 day spa and hair salon!**



Massage | Facials | Pedicures | Dermaplane Facial | Microdermabrasion | Chemical Peels
Acoustic Lipo | Laser Hair Removal | Eyelashes | Full Service Hair Salon

 **OASIS**
DAY SPA & SALON

Mon - Fri 9 to 6 | Sat 9 to 5 | Gift Certificates Available



2471 Mall Road | Florence AL 35630 | 256-766-8085 | www.oasisflorence.com

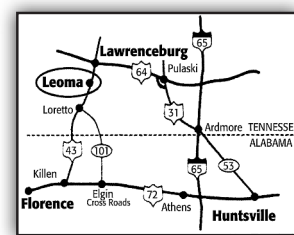


Sofas • Home Office • Entertainment • Sectionals • Leather • Dining Room • Bedroom • Recliners
 Mattresses • Clocks • Outdoor Living • Occasional Tables...And More

SINCE 1970 FREE DELIVERY! ONLY 3 MILES SOUTH OF LAWRENCEBURG ON HWY. 43



Story & Lee
Since 1970 *Furniture & Bedding*



Hwy. 43, Leoma, TN • Store Hours: Mon. thru Sat. 9 A.M. 'til 6 P.M. • (931) 852-2111 • Toll Free 1-800-345-2511 • www.storyandlee.com



Stellar

OASYS, INC.
Season Sponsor

2024/2025



HUNTSVILLE
PREMIERE!

Season Shows



HUNTSVILLE
PREMIERE!

2 HR 45 MIN INCLUDING INTERMISSION | RECOMMENDED FOR AGES 14+

1 HR 30 MIN NO INTERMISSION | RECOMMENDED FOR AGES 13+

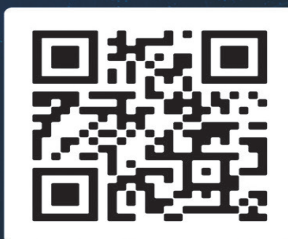
November 22-24, 2024

January 3-5, 2025



HUNTSVILLE
PREMIERE!

scan to



learn more



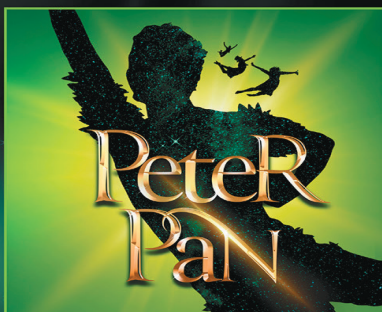
FEEL
GOOD
FAVE!

1 HR 20 MIN NO INTERMISSION | RECOMMENDED FOR AGES 10+

2 HR 35 MIN INCLUDING INTERMISSION | RECOMMENDED FOR AGES 10+

February 4-9, 2025

March 28-30, 2025



FAMILY
CLASSIC!



HUNTSVILLE
FAVORITE!

2 HR 5 MIN INCLUDING INTERMISSION | RECOMMENDED FOR AGES 8+

2 HR 55 MIN INCLUDING INTERMISSION | RECOMMENDED FOR AGES 12+

April 22-27, 2025

May 6-11, 2025

Broadway
Theatre
League.org

