



Elkhart Lake Depot Dispatch

*****ECRWSEDDM*****
Postal Customer

PRESORTED STANDARD
U.S. Postage Paid
Elkhart Lake, WI 53020
Permit No. 14
ECRWSS

October 2024 www.elkhartlakechamber.com www.elkhartlakechamber.com/depot-dispatch FREE

Published by the Elkhart Lake Chamber of Commerce to support and promote its members and provide a service to the community.

New Staff Members!

Elkhart Lake-Glenbeulah Schools 2024-25 School Year



Faculty Left to Right and their assignments: **Kelly Larson** - 2nd Grade; **Angie Wachter** - 2nd Grade; **Elizabeth Hill** - Math; **Kristie Webb** - Reading Specialist; **Sid Lucas** - Science, Biology; **Derek Radke** - Chemistry, Physics, Algebra
Photo courtesy of LesTension Photo



Explore the Beauty of Autumn in Elkhart Lake



AUTUMN IN ELKHART LAKE is one of my favorite times of the year! I love the summer-like daytime temperatures paired with crisp refreshing evenings. Many of our summer activities are more easily accessible as we move into a quieter season. Here are a few things you won't want to miss this season! **EXPLORE FALL COLOR** The vibrant hues of crimson, orange and gold set the stage for an outdoor adventure. Lace up your hiking boots and explore the colorful canopies along the Ice Age Trail, reveling in the crisp autumn air. Grab your bike, or a rental, and pedal through scenic routes, witnessing the changing leaves as you cruise through the crisp autumn air. For a serene experience, embark on a kayaking journey on the 119ft deep lake, surrounded by the rich palette of fall foliage. Whether you're hiking, biking, or paddling, Elkhart Lake in the fall promises a blend of nature's beauty and exhilarating outdoor activities. **A SEASONAL STINT INTO FALL** Immerse yourself in the vibrant autumn colors as you play through the well-maintained course. The cool breeze and the rustling leaves create a serene atmosphere, making each swing a delightful part of the seasonal experience. Fall golfing at Quit Qui Oc is a perfect fusion of skill and the beauty of nature, offering golf enthusiasts a truly enjoyable and scenic outing. **SEEK UNIQUE BOUTIQUES** Spend the day downtown as you explore the shops and galleries of Elkhart Lake. Discover one-of-a-kind artisan goods, art, clothing, food, wine, and more. Enjoy the warm, welcoming atmosphere and the rich sense of community that makes Elkhart Lake special. **SEASONAL FLAVORS** Embark on an exciting journey of seasonal flavors as we move into Autumn. Fall is flush with fresh produce adding flavor and texture to every dish. As the temperatures drop, these comfort foods layered with seasonal brews, wines and craft cocktails are always a welcomed change.

As the days get shorter, the evening skies to the west have offered magnificent shades of pink and crimson. The sunsets this autumn have truly been breathtaking. Be sure to catch them as often as you can!



Feature EVENTS

25
OCT

PUDDLES PITY PARTY

REGISTRATION BEGINS 6:00 PM
DOORS OPEN 7:00 PM
SHOW STARTS AT 7:30 PM

AS SEEN ON



26
OCT

PIFF THE MAGIC DRAGON

REGISTRATION BEGINS 6:00 PM
DOORS OPEN 7:00 PM
SHOW STARTS AT 7:30 PM

AS SEEN ON



05
DEC

Old World Christmas Market

DECEMBER 5 - DECEMBER 16
OPEN 10:00 AM - 5:00 PM DAILY
\$7 ADMISSION (Children 14 & under free)



101 OSTHOFF AVE | ELKHART LAKE, WI 53020 | 800.876.3399 | OSTHOFF.COM

TRANQUIL TUESDAYS



at The Osthoff Resort



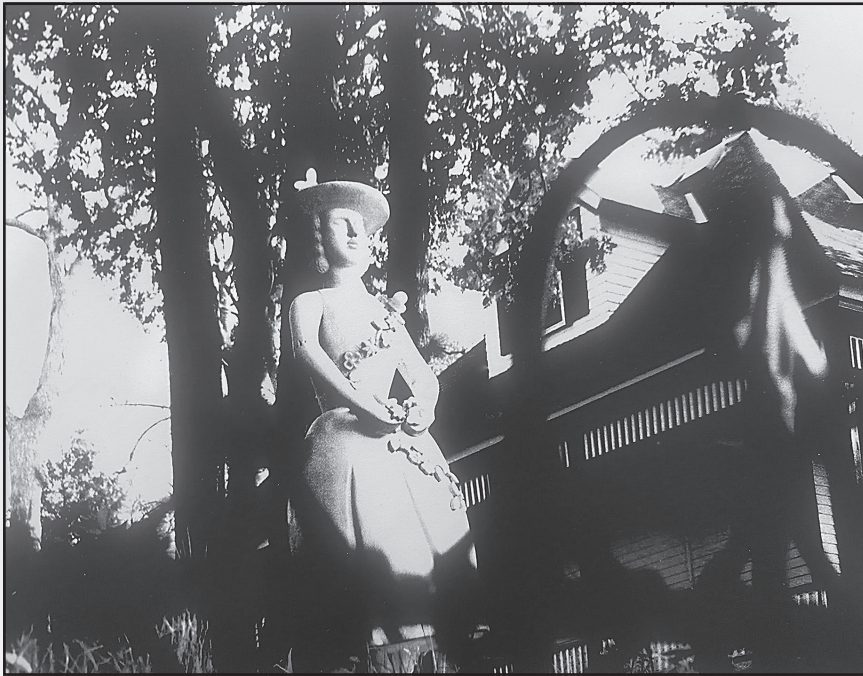
RECEIVE 20% OFF ANY
50- OR 80-MINUTE SPA SERVICE
EVERY TUESDAY

ADVANCED RESERVATIONS REQUIRED. CALL 855.211.7662 TO BOOK YOUR EXPERIENCE.



📷 **Mystery Photo Contest** 📷

Can You Identify Our October Mystery Photo?



Take a look at the October Mystery Photo. Do you know anything about it? Where is/was the location? What year was this photo taken?

If you know, let us know! To enter the October contest, send an email to depotdispatch@elkhartlake.com or a letter with as many details as you can to the Elkhart Lake Chamber, P.O. Box 425, Elkhart Lake, WI 53020,

or drop off at the Chamber Office, 41 E. Rhine Street.

The person with the best submission will receive a finely matted, quality enlarged print of the original, courtesy of Schamberger Gallery in Elkhart Lake.

Please share your guesses and help us keep the contest up to date.

answer September Mystery Photo

The winner of our September Down Memory Lane print comes from **Nancy Gellings**. She also shared this photo.



The mystery bridge is in St Cloud WI. It was built by my great grandfather Alphonse Halter in 1903 Alphonse came to the US from Switzerland after the death of his parents. He was sponsored by the family that operated the Mt Calvary Brewery. He became a citizen in 1895. He was a Mason contractor, designing not only this rare 9 arch bridge but also several churches in Fond du lac County. He married my great grandmother, Rosalie Schaub Halter. Together they had 11 children.

Submitted by Nancy Marie Gellings

We also want to thank Chad Christianson for this submission: This is a picture of The Palm Tree Road Bridge near St. Cloud. It was built around 1901 by Alphonse Halter along with other skilled workers and is listed on the State Register of Historic Places. It has

the most arches of any stone bridge in Wisconsin.

Submitted by Chad Christianson

The September Mystery Photo shows the Palm Tree Road Bridge over the Sheboygan River near St. Cloud.

The old bridge was built in 1901 by local stonemason Alphonse Halter. Its fine stone construction and classic Roman profile is notable for its odd number of arches, the center of which was the largest. It is then flanked by four spans of decreasing size on each side. There are few bridges in Wisconsin that employ the Roman profile as effectively as does the Palm Tree Road Bridge. It also has the most arches of any stone bridge remaining in the state.

This picturesque landmark is an example of arched stone bridges that could be found throughout Wisconsin. Measuring 16 feet wide and 154 feet long, it contains the largest number of spans of any surviving arched stone bridge in the state and has a classical Romanesque design unique to Wisconsin.

Replacing a wooden bridge on this site, the arched stone bridge endured for over a century as a thoroughfare for local residents who have always referred to it as "The Old River Bridge." The bridge was closed to all vehicular traffic in 2012 and now serves as a walking and biking path.

Its local intrigue has made the bridge a popular background for graduation and wedding pictures.

Submitted by Mike Crowley

WISCONSIN'S
Elkhart Lake
Chamber of Commerce

Our Mission

The Elkhart Lake Area Chamber of Commerce supports its member businesses and promotes the opportunity for sustainable economic growth and development.

Your Membership Working for You

DRIVE...
WITH CLEAR CONFIDENCE!

Wolf Motorsports

All Your Vehicle & Power Sports
Repair & Maintenance

WOLF
Car Care

WOLF
Power Sports

**All Things Automotive
Import & Domestic
Vintage & Classic Cars**

- Oil Changes
- Brake Repairs
- Tire Replacements
- Shocks
- Carburetor Work
- Suspension
- Air Conditioning
- Computerized 4-Wheel Alignment
- Computer Diagnostics
- Exhaust Systems
- Transmission Rebuilds
- Engine Rebuilds
- Performance Upgrades
- Restoration
- Road Force Tire Balancing
- And More...

- ATVs
- UTVs
- Jet Skis
- Mopeds
- Motorcycles
- Golf Carts
- Snowmobiles
- Shock Rebuild
- Computer Shock Dyno

790 S. Lincoln Street, Elkhart Lake, WI 53020
920-876-4211 • www.wolfmotorsport.com

DEPOT DISPATCH

October 2024 - No. 456

Published 12 times yearly by the Elkhart Lake Area Chamber of Commerce, to support and promote its members and provide a service to the community

© 2024 Depot Dispatch
All Rights Reserved

Publisher, **Pam Mathes and the Wisconsin Media Group staff**
Executive Director, **Melissa Koehler**
Membership Representatives, **Rachel Montaba and Branden Boerner**
Contributor, **Marcia Schamberger**

Accounting, **Megan Martin-Rohr**
Distribution, **Wisconsin Media Group**
Contributing Sponsors
**Cleveland State Bank,
Friends of the Library,
Sargento
and Sohn Mfg.**

Full Year Subscription
\$25.00/year (First Class)

Address correspondence or questions to
DEPOT DISPATCH, P.O. Box 425, Elkhart Lake, WI 53020
or call (920-876-2922) between 9 a.m. and 4 p.m.
For advertising questions, please call and ask for
Pam Mathes (920-894-2828)
E-mail address: depotdispatch@elkhartlake.com

The Depot Dispatch accepts non-member advertisements. It encourages and welcomes story contributions, press releases and event promotions from all members. Materials submitted for consideration will be reviewed by the editor, who reserves the right to adapt, as necessary. Submitted materials will not be returned unless specifically requested at the time of submission and accompanied by a stamped, self-addressed envelope.

www.elkhartlakechamber.com
www.elkhartlakechamber.com/depot-dispatch

WISCONSIN'S
Elkhart Lake
Chamber of Commerce

**Follow Elkhart Lake
Chamber of Commerce
on Social Media**

Keep Elkhart Blue: A Holistic Watershed Approach

From the reflections of clouds moving across the glassy surface on a calm day to the view of colorful Sunfish sails cutting through glittering waves when the wind kicks up, everyone who's experienced a day on Elkhart Lake agrees— there's no other body of water quite like it. The striking shade of blue is difficult even for lifelong residents to describe and the water clarity is stunning. All these qualities give the Village's namesake lake a legendary aura.

While Elkhart Lake appears to be nothing short of beautiful, maintaining water quality and the delicate ecosystem within the lake requires a lot of effort and care. Runoff from surrounding private land, excess amounts of phosphorus inside gullies, summer algae blooms, climate change, and invasive species are all issues that compromise the watershed's vitality. Boat usage and other recreational activities also take a toll on water quality and create human safety concerns.

Spearheading these concerns is the Elkhart Lake Improvement Association (ELIA). Known by many by their motto "Keep Elkhart Blue", ELIA has focused on preserving the lake's water quality and providing a safe recreational environment since 1964. Historically, the organization's efforts have focused on the lake's surface water and shoreline. In recent years, however, the volunteer-run non-profit is taking a new direction and approaching things from the larger picture, going beyond the shore and diving deeper than the lake's 119 feet depth.

Rather than considering Elkhart Lake as a solitary body of water, ELIA is now considering the more comprehensive watershed surrounding the lake. While it is common for many to consider Elkhart Lake as being connected to Crystal Lake and the Sheboygan County Marsh, there's a whole intricate Sheboygan River Basin system that Elkhart Lake is situated within. Elkhart Lake is also intimately connected to the groundwater system (70% groundwater fed) and vibrant ecosystems of surrounding land.

This new broadened lens of learning about the lake's water quality is what ELIA refers to as their "holistic" watershed approach. This approach has become the organization's guiding compass as they continue expanding their knowledge and identifying the most pressing threats to the lake. ELIA is currently in the midst of a ten-year project plan as defined in the 2023 Comprehensive Lake Management Plan. The goal of their ten-year plan is to continue their commitment to what has always been at the heart of their work—to ensure a healthy, resilient watershed for future generations.

With a focus on diligent data collection, public education and habitat restoration, ELIA is currently wearing many hats as they partner with other local and state organizations to coordinate multiple projects that address water quality issues. Through the Wisconsin DNR Citizen Lake Monitoring Program, ELIA partners with a crew of trusty volunteers who help gather lake water samples of nutrient content and key analytes that make up the lake water chemistry. The ongoing sample collection helps the organization better understand the lake ecology and what decisions to make when it comes to important management decisions.



While understanding Elkhart Lake's water chemistry has long been integral to ELIA's work, taking it a step further with the holistic watershed approach means that lake sediment has become a priority too. Reason being, phosphorus accumulates within the watershed's sediment and is a major culprit for fueling unhealthy levels of nutrients for aquatic invasive species such as Eurasian Watermilfoil and Curly-Leaf Pondweed, and native aquatic growth in the lake.

One of the strategies ELIA is using to address this phosphorus problem is by zeroing in on a gully area along Shoreland Road. By removing phosphorus-rich sediment and restoring the gully with native Wisconsin plant species, ELIA is helping to strengthen the lake's natural filtration system. The native plants are also an excellent tool for reducing and filtering high runoff prior to entering the lake during summer downpours.

targeted for harvesting and treatment.

Summer is always a busy time for the organization. One of the highlights this summer was their presentation of all the information in this article at the Annual ELIA Members Meeting at The Osthoff Resort in June. The Annual Meeting is free for Members and an excellent opportunity for locals to learn more about the issues the lake faces and how ELIA is stepping up to address those concerns. Looking beyond the summer season, ELIA is enthusiastic about building relationships with local people who are interested in preserving Elkhart Lake's wild ecosystems, natural beauty and recreational value.

Keeping Elkhart Blue is a year-round effort and the organization is always seeking new members. Those wanting to learn more about the projects outlined in this article and to learn more about

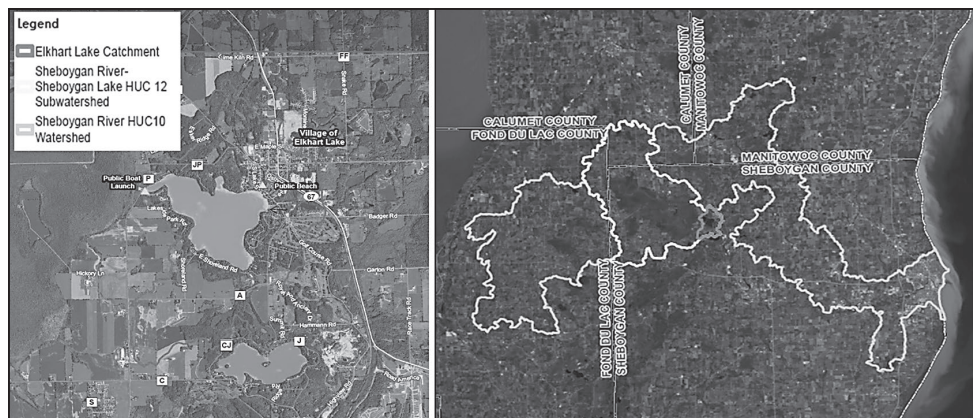


The power of native plants is also being harnessed for a local prairie project. Thanks to a partnership with the landowners, Pheasants Forever and the Natural Resources Conservation Service, 35 acres of agricultural land neighboring the lake has been converted to a native prairie ecosystem. Not only is the prairie aesthetically lovely, it serves as a nifty tool for reducing phosphorus-heavy runoff that can impact water quality.

becoming a member can visit www.keepekhartblue.org for. ELIA is a place for everyone who loves the lake.

ELIA is currently seeking two candidates who are interested in converting 350 sq. feet of their shoreline property into native garden areas that will help reduce erosion and runoff. Each garden project will receive up to \$1,000 through the WDNR Healthy Lakes Grant. Please contact contact@keepekhartblue.org for more information.

Submitted by the Elkhart Lake Improvement Association



When ELIA is not busy documenting water quality data and addressing runoff concerns, they are keeping a close eye on aquatic invasive species. At the Elkhart Lake boat launch visitors are greeted by "Clean Boats, Clean Water" signs to help educate boaters before they launch into the lake. ELIA has also partnered with Sheboygan County to install a boat wash station. In the water, weed areas are



Are you a Foodie?

Culinary creations perfectly paired with brewed beverages. Try each combination and vote for your favorite!

50/50 Raffles, Live Music, Games & More!

12-4 p.m. • Saturday, Nov. 2, 2024 at Acuity Insurance

Advanced tickets required
FreshMealsOnWheels.org/Events

Must be 21+ to attend

SIP & SAVOR

TREAT YOURSELF!

4.048 ROAD AMERICA

APPAREL
DRINKWARE
FAN CAVE DECOR
STICKERS

Paddock Shop

shop.roadamerica.com OPEN WEEKDAYS 9-4
920-892-8116

The Resorters Chester Challenge

The culinary classes at Elkhart Lake Glenbeulah High School are starting the semester with a fun new cooking challenge: The Resorter's Chester Challenge!

The students have been busy researching and creating unique sandwiches for the iconic Chesters Drive-In in Plymouth. Richard Sadiq, the owner, will be choosing his two favorite sandwiches from among student creations. The two sandwiches will then be placed on Chester's menu for 1 week (September 29th - October 7th).

We invite the community to stop in and order their favorite sandwich. Whichever sandwich sells the best will be the winner of our Chesters Challenge.

The goals of the challenge are for students to learn budgeting, menu creation, nutritional components, culinary skills and marketing. This challenge will be a fun and unique way to give our classes some real world experience.

Stop out September 29th through October 7th to try your favorite sandwich at Chesters to support the ELG HS culinary classes!



Leaves are falling, a new home is calling!



CONTACT THE TEAM TO FIND OUT WHY THIS IS A GREAT TIME TO BUY OR SELL!

PLEASANT VIEW REALTY
www.PleasantViewRealty.com



Heather Bassett 920.252.5621 | Todd Smith 920.838.1770 | Rich Ryan 262.573.1078



Plumbing & HVAC Residential, Commercial, Industrial & Remodeling

Residential Homes • Apartments • Hotels • Multi-Unit Buildings • Restaurants • Assisted Living Facilities

Call Neumann for ALL Your Plumbing and HVAC Needs



Turn to the experts

24 Hour Emergency Service
920-565-3345
neumannplumbing.com

1114 Millersville Ave
Howards Grove

OVER 50 YEARS OF QUALITY WORKMANSHIP

Fully Insured
Local Family Owned
IICRC Certified Technician

STEAM CLEANING 920.564.4278

◆ Carpet ◆ Tile ◆ Furniture

www.impressfloorcare.com

Paceline Construction

New Custom Homes
Remodeling & Additions

(920) 876-4020

DESIGN SHOWROOM BY APPOINTMENT:
101 N. Lincoln St, Elkhart Lake

FUDGIENUCKLES

Family Sports Pub & Grill

Meat Raffles!

Starting Saturday October 19 @ 1:00pm
Raffles held every 3rd Saturday of the Month

Weekly Specials

Tuesday

Tacos & Tequila

\$2 Tacos 5-9pm

Margarita Special

15% off menu prices to 60 & older

Wednesday

Wings Wednesday

Traditional Chicken Wings 75¢ ea.

Rail Old Fashioned Special

Thursday

Double-Bubble

7-10pm Ladies

Rail Vodka Lemonade Special

Bring in a Canned Good for FREE Fries

Friday

Fish Fry Friday

11am-9:30pm

Sunday

Bloody Mary Bar

Sunday
4-pc. Broasted Chicken Dinner

served with mashed potatoes & gravy, veggie, coleslaw or applesauce

FREE Pool & Darts

Pool: Friday 9pm-close
Saturday 5pm-close
Darts: Sunday 3pm-close

Packer Special
"Back the Pack at Fudgies!"
FREE halftime food, Free Packer touchdown shots and Happy Hour prices.

Proudly Serving You for 31 Years!

Hours: Tuesday-Sunday Open at 11:00am
920-526-3511 • 133 W. Main St. • Glenbeulah • fudgienuckles.com

Mark Novitovic
Licensed Massage Therapist
Intuitive Massage, LLC
262-237-4719

- Highly skilled and compassionate massage therapy in Elkhart Lake since 2008.
- Customized massage using traditional and myofascial release techniques.
- Chair massage for your next event.
- Gift certificates available!

Intuitive Massage, LLC
located at:
Charlene's of Elkhart
511 East Rhine
Elkhart Lake, WI 53020

www.messageintuitive.com

VINTAGE of ADA
Vintage Furnishings For Home & Garden

WE LOVE FALL!

Furniture • Home Decor • Pyrex
Fiesta Ware and More!

OPEN OCTOBER 4-6; OCTOBER 18-20
Friday & Saturday 10am-4pm • Sunday 12-4pm

W4024 State Hwy. 32 in the Village of Ada • 920-207-2319
Between Howards Grove & Kiel See pictures on Vintage of Ada

OPEN 1ST & 3RD WEEKENDS OF THE MONTH OR BY APPOINTMENT.



Elkhart Lake Chamber Calendar of Events

JOHN MICHAEL KOHLER ARTS CENTER:
See website for current exhibits
Now featuring: 50th Anniversary of Arts/Industry. www.jmkac.org

LIVE MUSIC IN ELKHART LAKE THIS SUMMER
The Osthoff Resort-see website for details: www.osthoff.com
Siebkens-see website for details: www.siebkens.com

The Shore Club/Tiki-see website for details: www.shoreclubwisconsin.com

THE TIME HOUSE IN NEW HOLSTEIN
Open on Saturdays and Sundays through the final weekend in September from 1 to 4 PM. www.newholsteinhistory.info

PLYMOUTH ARTS CENTER
On Exhibit Now-October 4
SCULPT..Form in 3 Dimensions, features the diverse works of 16 Wisconsin Artists.

SEPTEMBER 27
Stefanie Weill Center-Dirty Deeds-The AC/DC Experience celebrates the thunderous energy of the Bon Scott and Brian Johnson era delivering a power-packed performance that takes the audience on a journey through the story that is AC/DC.7:30pm.
Visit website: weillcenter.com/for/tickets/info

SEPTEMBER 28
Wade House-Harvest Moon Long Table Dinner 4-7pm Chef Tracey Leonhard will prepare a delightful dinner celebrating Wisconsin's agricultural heritage and incorporating vegetables, herbs and edible flowers from Wade House's own gardens. www.wadehouse.wisconsinhistory.org

SEPTEMBER 29
Walderhaus-VILLAGE OF KOHLER WALKING TOUR 2pm. Walk through Kohler and view the village history through historical photographs and stories from the Kohler Company Archives. We'll touch on some aspects of the Olmsted Brother's master plan from the 1920s as we visit stops between the Waelderhaus and Ravine Park, highlighting a balance of natural beauty and community spaces. www.kohlerfoundation.org/waelderhaus/arts-at-the-waelderhaus

OCTOBER 4
Stefanie Weill Center- Rodney Carrington, a multi-talented comedian, actor, singer and writer, brings his racy/raunchy content in a performance recommended for mature audiences 7pm www.weillcenter.com

Osthoff Resort-Singing Star 6-10pm Immerse yourself in an electrifying musical journey celebrating the iconic sounds of Earth, Wind, and Fire. www.osthoff.com

OCTOBER 4-6
Road America The Sports Car

Club of America returns to Road America in 2024 for the 61st running of the annual SCCA National Championship Runoffs, a gathering where the top SCCA racers in the country go head-to-head and prove who is best. www.roadamerica.com

Camp Anokijig- Falls Colors Weekend-Family Enjoy the last warm days of the season with the full-range of camp programming. The waterfront is open for boating, the horses are ready to ride, and the campfires are sure to warm your bones on the crisp fall evenings! Plus enter your creation in the Pumpkin carving contest right after you enjoy some halloween cookie decorating (and eating!). www.anokijig.com

OCTOBER 5
Hermitage Conservation Club-Zorn Family Memorial Shoot- Registration 10AM-3PM. 50 Bird Lewis Shoot.Ton of Raffles Public Welcome! hermitageconservationclub.com/

Osthoff Resort-Wonderlove: The Stevie Wonder Experience 6-10pm. Immerse yourself in the soulful and iconic sounds of Stevie Wonder as this extraordinary tribute show takes center stage. www.osthoff.com

OCTOBER 5 & 6
Campy Y-Koda 5th annual Scarecrow Festival 9am-4pm Scarecrows displayed along Lake Michigan Shoreline, on the private property.

CALENDAR SPONSOR



CLEVELAND STATE BANK

CLEVELAND OFFICE: 1250 W. Washington Ave.
Ph: 920.693.8256 • F: 920.693.8344 • TF: 833.321.9854

HOWARDS GROVE OFFICE: 502 S. Wisconsin Dr.
Ph: 920.565.6000 • F: 920.565.6205

ELKHART LAKE OFFICE: 91 E. Rhine St., PO Box 548
Ph: 920.646.3150 • F: 920.781.5060
www.clevelandstate.bank

Providing financial options that are always in the best interest of our clients' success and the future of our communities.




Includes train rides, story times, face painting, scarecrow drafts, scarecrow voting, fishing, lawn games, scavenger hunt and more. www.sheboygancountymmca.org/camp-y-koda/scarecrow-festival.html

OCTOBER 7
Elkhart Lake Study Club-Dana Elmzen/Elizabeth Wieland at Bookworm Gardens-Sheboygan. Tour of Gardens at 10am; lunch & Meeting at Town and Country with arrival/social hour 11am-noon; Lunch noon; Meeting 1pm. Coordinators: Barbara Gerlach & Vangi Nelson.

OCTOBER 11-NOVEMBER 15
Plymouth Arts Center-Paint the Towns in Fall Color Plein Air Competition and Exhibit. www.plymoutharts.org

Regularly Scheduled Meetings & Events

ELKHART LAKE CHAMBER OF COMMERCE BOARD MEETING
Held at 8:30am-third Tues each month

VILLAGE BOARD MEETINGS
Board of Trustees meets at Grashorn Civic Center, 84 N. Lake St.- 6pm first and third Mon. each month. (most months) Agendas for meetings are posted 24 hours in advance of the meeting at the Post Office, National Exchange Bank & Trust, Civic Center and our website. In order to be on a board agenda you must notify the village clerk by the Wed. before the board meeting.

AA MEETINGS
Held every Tuesday at 10 a.m. and Thursdays at 7pm at Community United Church of Christ, 174 N. East St.

ELKHART LAKE STUDY CLUB
Meetings held the first Mon. each month at noon and second Mon. in Sept. Meetings are not held in January, July, and August.

ELKHART LAKE CUTTING EDGE QUILTERS
1pm first Wed. each month
BRIDGE IMPROVEMENT Tues. 1pm

BOOK GROUP
1pm second Mon each month

VISITOR CENTER
41 E. Rhine Street
Stop in to pick up information on area businesses and attractions.

Mon, Tues, Thurs & Fri 9 a.m. to 4 p.m.
Phone: 1-877-355-4278 or 920-876-2385
Email: tourism@elkhartlake.com
Website: www.elkhartlake.com



Scan QR code to stay up to date with our Member Events.

OCTOBER 12
Stefanie Weill Center- Sheboygan Symphony Orchestra 7:30pm Beethoven's Pastorale Symphony, a delightful promenade through the Viennese countryside, alongside the world premiere of Jacob Bancks' The Healing Machine, an SSO commission drawing inspiration from the Kohler Art Preserve's treasures. www.weillcenter.com

family photos, a Halloween movie, and fun activities like trolley rides and vehicle displays. Admission per car, rain or shine. www.roadamerica.com

OCTOBER 25
Camp Y-Koda-Fall Slumber Party 5pm-2pm for ages 6-12. On Friday evening, arrive wearing your favorite costume for a pizza party, trick or treating, and a movie. On Saturday, we will spend the day participating in classic camp activities, crafts and games! All meals, snacks and beverages will be provided. www.sheboygancountymmca.org/camp-y-koda.com

Osthoff Resort- Piff the Magic Dragon 7:30-10pm for a show that's part magic, part comedy, and all awesome. www.osthoff.com

OCTOBER 26
Hermitage Conservation Club-Halloween 50 BIRD SHOOT - Registration 10am-3pm. Serving brats, hamburgers & refreshments. hermitageconservationclub.com

Mental Health America-Family photos w/photographer, Fall Crafts at Kohler-Andre State Park 9-11am www.mhalakeshore.org

Osthoff Resort- Puddles Pity Party, the 7-foot sad clown whose golden voice is compared to legends such as Tom Jones and Freddie Mercury, s with his interpretations of top hits and rock classic. 7-10pm www.osthoff.com

OCTOBER 27
Stefanie Weill Center-Movie-Hocus Pocus 2 (2022) 1pm www.weillcenter.com/for/tickets/info

NOVEMBER 2
Mental Health America-Fall Family Hike, Art Make & Take at Maywood Environmental Park 9:30-11am. www.mhalakeshore.org
Stefanie Weill Center Broadway's Rock of Ages Band® breathes new life into your favorite hits from the 80's. Visit website: weillcenter.com/for/tickets/info. \$

OCTOBER 12 & 13
Wade House-Autumn Celebration Weekend 10am-4pm. Try your hand at pumpkin or turnip carving, apple pressing and festive games like Snap Apple. T with spooky, family-friendly accounts of tales from the past. wadehouse.wisconsinhistory.org

OCTOBER 19
Stefanie Weill Center-FALL-ing with John McGivern Milwaukee actor and comedian returns to share stories of growing up and family connections to remind audiences we all share a universal human experience.7pm Visit website: weillcenter.com/for/tickets/info

Road America Get ready for a spooktacular time at Road America's Track & Treat 1:30-4:30 p.m. at the Briggs & Stratton Motorplex. Bring your little ghouls for a day of candy,

MARSH MADNESS

3 Guys & a Grill at the Marsh

We are Excited to Announce... We are serving BREAKFAST AGAIN!

Serving Breakfast, Lunch & Dinner
TUE 4pm-9pm
WED, THUR, FRI 11am-9pm
SAT 7:30am-9pm
SUN 7:30am-8pm

Accepting and fulfilling all your catering needs!



Three Guys and a Grill
at Marsh Lodge
 Elkhart Lake, WI

W7039 CO RD S R • ELKHART LAKE • 920.876.2535
Dine in only. No substitutions. No other offers can be combined.

WEEKLY SPECIALS

TUESDAY
 3 Beef Tacos **\$5.99**
 3 Fish Tacos **\$6.99**
 Add Rice & Beans **\$2.50**
\$3 Pints Tap Beer

WEDNESDAY
 1/4 lb. Hamburger **\$3**
 add Cheese **50¢** add Chips/Fries **\$2**
\$3.25 Rail Tub Old Fashioneds

THURSDAY
 1/2 Rack of BBQ Ribs **\$11.99**
 served with Fries, Coleslaw & Dinner Roll
\$3 Short Rail Mixers

FRIDAY & SATURDAY
 Happy Hour **2pm-5pm**

SUNDAY
 BBQ Pulled Pork Sandwich **\$5**
 add Coleslaw **50¢** add Chips/Fries **\$2**
\$3 Short Rail Screwdrivers
\$5 Tall Bloody Marys
\$5 Mimosas

Teeing Off Together in the 18th Annual

GOLF Challenge

to benefit
 Elkhart Lake-Glenbeulah Education Foundation
 and Athletic Association

Saturday, October 5, 2024

Quit Qui Oc Golf Club • Elkhart Lake, WI

Schedule of Events

Approximate Times

11:00 a.m.	Golf begins for 18 hole golfers
12:30 p.m.	Golf begins for 9 hole golfers
10:30 a.m. - 5:30 p.m.	Silent Auction/Raffles
3:00 - 6:00 p.m.	Cocktails/Appetizers




For more information visit www.elgef.org

Printed by your friends at FIFTH COLOR

Steffes

Builders, Inc.

• YOUR STEFFES BUILT HOME IS UNIQUELY YOURS & DISTINCTLY STEFFES •

For two generations, Steffes Builders has delivered quality and craftsmanship that is **DISTINCTLY STEFFES**



2007



2019

Family Owned & Operated since 1949

Make your residence stand out from the others on the block when you work with Steffes Builders Inc. for your new custom home construction projects.



Full Service General Contractor

Transform your residence with the remodeling services from our general contractors. We offer assistance for additions, kitchens, bathrooms, roofing, siding, decks and more. We are fully licensed, bonded, and insured.

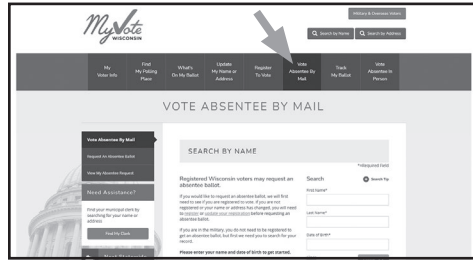
Contact us about your home construction or building renovations.

W402 River Lane | St. Cloud, Wisconsin | 920.999.2091 | steffesbuilders@charter.net | www.steffesbuilders.com



Village of Elkhart Lake Updates

DEPOT DISPATCH OCTOBER 2024 ABSENTEE VOTING



FOR NOVEMBER 5TH, 2024.

If you would like to request an absentee ballot for the November election, you can go to <https://myvote.wi.gov/en-us/>. Please allow at least a week for the ballot to go each way. If you want an absentee ballot mailed to you, we are now mailing them out. You just need to make your request.

If you do not have access to the internet or cannot get the website to work, please call the Village offices (920-876-2122) and request an absentee request form. You will need to provide that form and a copy of your photo ID to our office.

You can also register to vote on my <https://myvote.wi.gov/en-us/>

In-person absentee voting for the November 5th election will begin 2 weeks before the election (October 22nd through November 1st). We are open from 8 am to 4:00 pm Monday-Thursday and 8 am until noon on Fridays for in-person absentee voting during these weeks.

ROAD PROJECT UPDATE

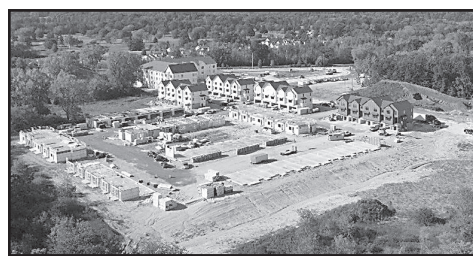
The Village will be working on completing the repaving project on Elkhart Lake Drive the first week of October. The Village will also be repaving parts of the 400 and 500 blocks of Moraine and Crestwood Drives in early October. Please know this could change due to weather conditions. We are aware that it is an inconvenience and appreciate your patience. This is part of an ongoing plan to keep Elkhart Lake looking and operating in top form.

VILLAGE OFFICE HOURS AND DAYS CLOSED

The Village office hours are 8 am until 4 pm – Monday through Thursday and 8 am until noon on Fridays. The Village offices will also be closed all day on Friday, October 4th, 2024 and until 1 pm on October 10th.

LEONARD'S WAY/ PATHWAY/ SIDEWALK ON HIGHWAY 67

Work continues along Highway 67 and Leonard's Way. The paving should be completed by the end of September. We are working at installing solar lights along the pathway. The new sidewalk/pathway will connect from Osthoff Avenue to Badger Road. If you have questions or comments on the project, please contact Jessica Reilly at 920-876-2122 or clerk@elkhartlakewi.gov.



GENERAL CAPITAL/ VAN HORN DEVELOPMENT

The Preserve at Elkhart Lake is expected to be available to rent in November. You can email thepreserve@oakbrookcorp.com for more information.



The first building of Whitetail Ridge, should receive occupancy at the end of October, with about one additional building becoming available each month. For more information, please email Leasing@northtownpartners.com.



FACILITY PLANNING

The Village continues to plan for future facilities, including a welcome center and a new Public Works facility. The Village is working with PRA architects with the designs of the buildings. The Village is also working with Jos. Schmitt on pricing and construction management.

DOGS NEED TO BE LEASHED AND ARE PROHIBITED FROM VILLAGE PARKS & THE BEACH

Lately there has been an increase in the number of complaints the Village has been receiving relating to dogs. This is a reminder that dogs need to be leashed when they are off your property. The dog must be under the control of an attendant holding a leash a maximum of 8 feet when off the owner's premise.

No person shall allow a dog to be on any public beach owned by the Village of Elkhart Lake. Also, no pets of any kind are permitted in Village Parks, except dogs for handicapped individuals, or in certain areas of June Vollrath Park, as the signage allows.

VILLAGE ORDINANCE - 8.32 ANIMAL FECES

Any person owning or having control of any animal shall clean up the feces of such animal immediately and dispose of it in a sanitary manner when the animal has defecated on the property of another or on public property. Please be aware, the sidewalk, the area between the sidewalk and street (parkway), the street, lake street walkway, and all parks and parking lots are public property!! If you see this happening, you can report it to the police. If you know the owner of the dog, you are able to make a statement to the police and the owner will be cited. Also, if you catch someone on video (doorbell cameras) not picking up animal waste you can turn the video to the police, who can then cite the owner of the animal. Please keep Elkhart Lake clean.

DOG REFUSE STATIONS

The Village has installed Dog Refuse Stations throughout the Village. We have installed two new ones along Victory Lane. These stations will dispense plastic bags to help in the cleanup effort. The dog stations are located at:

- S. End of Walkway

- N. End of Walkway
- Near Village Square Park
- S. Lake Street near Elm St.
- Osthoff Avenue
- Lions Park
- E. Rhine St. near Charlene's
- E. Rhine St. near Two Fish Gallery
- Victory Lane near Cedar Landing
- Victory Lane near Moraine Drive

HELP US REDUCE CHLORIDE LEVELS - SOFTENERS, SALT, AND YOU

BACKGROUND

It is estimated that most of the groundwater in the United States has some degree of hardness. Basic hardness is produced by the presence of calcium and magnesium dissolved in water. These minerals, if not removed from your water, may build up as scale on pipes and porcelain or metal fixtures. They coat water-heater elements. They may cause increased laundry detergent usage. This is way most people have water softeners.

THE PROBLEM

The chlorides discharged from the home water softeners end up at the wastewater treatment plant. The Wisconsin Department of Natural Resources (WDNR) is asking the Wastewater Treatment Plant (WWTP) to reduce these chloride levels.

WHAT CAN OUR CUSTOMERS DO ABOUT OUR CHLORIDE PROBLEM?

They can have their water softening equipment inspected and adjusted to make them more efficient reducing the chlorides going to the wastewater treatment plant. When replacing or upgrading old water softeners use a high efficiency softener that is metered demand. Our goal is to reduce the chlorides entering the environment by reducing the rate of salt used by our water softener, while still delivering continued quality water. This in turn, will simply help keep long-term sewer rates down. You may also see some reduction in your water and salt usage, thus saving you money!

BUILDING PERMIT REQUIRED

If you are planning a construction project on your home or business, you must apply for a building permit. Permits must be obtained prior to commencement of work. We have had a few people looking to install patios and doing some work and then finding out they cannot have one. We want to prevent this from happening. It is best if you call the Clerk's Office at 920-876-2122 to find out if your project will require a permit. Failure to do so will result in double the permit fees, potentially tearing out of what has been done, and could even result in a fine of up to \$1,000.

YARD WASTE DUMPSTER

The yard waste dumpster is unattended.

Elkhart Lake Village Board Members

If you have concerns or questions call any of our Village Trustees

PRESIDENT: Richard Sadiq, Pres. (POB 188)—920-207-4888
Email: rsadiq@elkhartlakewi.gov

TRUSTEE: Geoffrey Bray (POB 736)—920-452-5397
Email: gbray@elkhartlakewi.gov

TRUSTEE: Terri Knowles (POB 35)—920-876-3448
Email: tknowles@elkhartlakewi.gov

TRUSTEE: Paul Rudnick (POB 304)—(920) 946-8644
Email: prudnick@elkhartlakewi.gov

TRUSTEE: John Schott 913 Grasse Lane—(920) 876-2436
Email: jschott@elkhartlakewi.gov

TRUSTEE: Lynn Shovan (POB 682)—(920) 207-4561
Email: lshovan@elkhartlakewi.gov

TRUSTEE: Mike Wolf (POB 506)—876-3100
Email: mwolf@elkhartlakewi.gov

Please follow the signs about using the dumpster, you are on camera. If you require assistance, we ask that you set up an appointment with the public works department (920-876-2231), so someone can help you. The dumpster is provided at the Village garage from the end of May through October. This dumpster is for yard waste only, not lake waste. A truck for large brush or trees can be obtained by calling the Village garage at 920-876-2231.

EMAIL NOTIFICATION LIST

The Village would like to keep you informed of news and changes that may occur on occasion. We would like your email address. These will be kept confidential. We will remind you of changes in the garbage collection schedule and any other things that come up periodically.

Email Jessica Reilly at jreilly@elkhartlakewi.gov to be added to the list.

Summer is Sticking Around, but Fall is on its Way!

JERRY'S DRYWALL

- Patch Work
- Texture Finish
- Smooth Finish
- Painting

Call for an estimate today!
920-627-5376

Your beautiful autumn STARTS HERE!

- Mums
- Hardy Pansies
- Ornamental Kale
- Spring Bulbs

Millhome Nursery and Greenhouses, LLC

Landscaping & Garden Center

920-894-7877 • ELKHART LAKE
Mon-Fri 9-5 • Sat 9-4 • Closed Sun

REDUCED!
Perennials
Shrubs • Trees

www.millhomenursery.com

Get into the Spooky Spirit this Halloween

Come October 31, there is extra mischief in the air, and who knows what might be lurking around those dim corners? Halloween is a time when the line between having fun and being scared is easily blurred.

While trick-or-treating and attending parties are ways to enjoy the final day of October, there are plenty of other ways to make Halloween more fun.

- **Read some scary stories.** There's something to be said about reading scary stories or poems on Halloween. Readers' imaginations take over on Halloween as they envision scary characters and scenarios. Edgar Allen Poe, author of many notably macabre works, is a popular read come Halloween.

- **Go pumpkin picking.** Most people already make pumpkin picking an annual treat. Don't overlook mishappen pumpkins that can be carved into spooky jack-o'-lanterns. Also, enhance Halloween decor with pitted and warty gourds that lend that scary appeal.

- **Create a haunted house.** Instead of going elsewhere to get chills and thrills, transform your house or yard into a spooktacular vision and invite neighbors to explore.

- **Make creepy crafts.** Children can get a kick out of crafting Halloween decorations. Drape a piece of muslin over a beverage bottle and spray it with laundry starch. Let sit and the muslin will stiffen when it dries. Paint on black circles for eyes and hang your "ghost" from a string.

- **Whip up Halloween treats.** Candied apples, extra-rich brownies and mini hot



dogs wrapped in crescent rolls to look like mummies are just some of the ways to create a scary Halloween feast.

- **Have a costume theme.** Everyone in the household can get in on the fun by planning costumes to fit a theme. For example, everyone can dress like the Addams family.

- **Host a Halloween book club.** Those who love to read can ensure the October

gathering of a book club is one that features a discussion of a scary book. Those looking for a scare can explore horror authors like Stephen King, Anne Rice, Dean Koontz, Clive Barker, Shirley Jackson, and Tananarive Due.

- **Host an outdoor movie.** Projectors can now be hooked up to smartphones and tablets, so it's easier than ever to watch movies outside. Simply project a device onto a screen, white fence or even

a bedsheet. Since it gets dark somewhat early in October, the movie doesn't have to start very late. Depending on the audience, choose a movie that is very scary or only mildly so if children will be viewing.

- **Organize a Halloween treat exchange.** Similar to a Christmas "Secret Santa," participants put together a wrapped gift of homemade or store-bought foods and exchange with others.



LAKE STREET
Café

Goat Cheese Salad



21 S LAKE STREET
920-876-2142
MON 4PM-9PM
TUES - SAT 11AM - 9PM

GRAND OPENING SEPTEMBER 20TH



BESTORATION
ORCHARDS & MARKET

Focusing on
local & sustainable!

beverages, cheese

honey, jams, giftware

Pre-picked apples

Apple cider

fresh market

nuts, pretzels, decor

N6795 WILLOW RD. SHEBOYGAN FALLS
920-980-0803

Open Thursdays & Fridays 9-5 • Saturdays 9-4 • Sundays 11-3



Map NOT to scale!
Orchard on Willow Road
Restoration Gardens on JM





follow us → [Instagram](https://www.instagram.com/restorationorchards/) <https://www.instagram.com/restorationorchards/>

restorationgardens.com/orchards-and-market



Paint the Towns in Fall Color, Plein Air Competition & Exhibition

The Plymouth Arts Center invites Midwest Artists to register for its annual Paint the Towns in Fall Color, en Plein Air (outdoor painting) competition and exhibition. The painting days are Oct 2 - Oct 9 in the greater Plymouth area within the boundary map provided. Artists are encouraged to register in advance as

the first 45 artists to register will be accepted. The fee is \$45 if the registration form is received before September 23rd. After September 23rd the fee is \$50. The prospectus/guidelines and registration form are available on the PAC website. A public reception, awards ceremony, and silent auction will be held at the Plymouth Arts Center on Friday, October 11th. Cash awards totaling \$3000 along with non-cash merit awards will be presented at the awards ceremony. This year's judge is Michelle Richeson. The event is graciously coordinated by artist Dan Rizzi of Plymouth.



About the Judge Michelle Richeson:

"Art has been a special part of my life from an early age growing up in Appleton, Wisconsin. After graduation from Cardinal Stritch University in Milwaukee with a degree in Graphic Communications, I was fortunate to study with a number of well-known artists including: Ramon Kelley; Steve Quiller;

Daniel Greene; and Urania Christy Tarbet. I obtained inspiration and guidance from each of these internationally known artists, which allowed me to hone my own style of painting. From these artists, I enjoyed the opportunity to work in a variety of media: oil, watercolor, casein, pastel and sculpture."

The public is invited to view and bid on the "Paint the Towns" paintings at a festive reception and silent auction on Friday, October 11 from 6pm to 9pm. This is a free admission reception with live music by Zach Holzer and complimentary appetizers and desserts. It is a great opportunity to meet the participating artists and to bid on a favorite piece until 9:00pm. After the reception and silent auction, the unsold works will remain in the Arts Center's Gallery 110 North through November 15, 2024 and be for sale at a "Buy it Now" retail price. All proceeds of this event benefit the Plymouth Arts Center, a charitable 501c3 non-profit organization.



"I had the honor to serve as the Creative Director for Jack Richeson and Company, creating magazine ads and designs for the company's wide array of art supplies, instructional materials and artist's furniture. I also assisted in the production of videos for Jack Richeson's, "Famous Painter Films". This broad experience in the commercial art world augmented my career, enabling me to observe and experiment in a wide variety of styles and methods. To complete my art adventures, during my employment with the Richeson Company, I was fortunate to be able to visit and paint in many foreign countries. It allowed me to continue the development of my own technique and distinctive style executed in oil. Art was my life! The larger the canvas, the more joy I experience."

The event is sponsored by the Sartori Company, Sargento, and Van Horn Auto.

For more information, visit the Plymouth Arts Center, 520 East Mill Street, downtown Plymouth, WI. Office hours are Tuesday-Friday, 10am to 4pm, Saturday and Sunday, Noon to 3:00 pm. Call 920.892.8409 (voicemail 24/7) or visit our website: plymoutharts.org



Paint the Towns in Fall Color PUBLIC RECEPTION & SILENT AUCTION

FRIDAY, OCTOBER 11, 2024, 6 – 9PM

BID ON YOUR FAVORITES! ADMISSION IS FREE!

Unsold Paintings will remain at a "Buy It Now" Price to Nov. 15

**ENJOY LIVE MUSIC BY ZACH HOLZER
COMPLIMENTARY APPETIZERS & DESSERTS**



DAN RIZZI, Coordinator
Artists Paint in the Greater Plymouth Community: Oct. 2-9
This year's Judge: Michelle Richeson

CALL TO ARTISTS!
\$3000 CASH AWARDS
AND MERIT AWARDS
EARLY BIRD FEE: \$45
After Sept. 23: \$50



SHOP LOCAL Buy Elkhart Lake Chamber Cash and help support your community!

Available at the Elkhart Lake Chamber of Commerce
41 E. Rhine St., 920-876-2922
www.depotdispatch.com
www.elkhartlakechamber.com

YOUR LAKE LIVING CONNECTION!
Best Properties In The Best Locations

the Krieg CONNECTION
Elkhart Lake Resident
President's Circle Member
15 Years of Client Satisfaction per Milwaukee Magazine 5 Star Award

Chris Krieg
414-840-8486
ckrieg@firstweber.com

FIRST WEBER REALTORS®





SHORE CLUB

Stunning lake view condo overlooking beautiful blue Elkhart Lake, pool, and swim beach! 2 BR, 2 BA, in-unit laundry. Upscale main level condo has private walk out patio handy to the pool, beach and boat dock. "The Shore Club" offers year round enjoyment of this resort for all ages. It is walkable to all the local bars, restaurants, shops and ice cream parlor! Condo has heated floors, fireplace and a chef's kitchen for entertaining at home. Turn key easy living, furnishings included! 1 Car GA incl. \$635K - MLS#1884297




Eat, Drink, Shop
LOCAL

Discover & Support
Great Local Shops, Bars, Restaurants,
Breweries & Coffee Shops!

WISCONSIN'S
Elkhart Lake
Chamber of Commerce



Have you pushed your cart at Tietz's Yet!



Tietz's piggly wiggly
Family Owned & Operated

COUPON PLU 29901

\$10⁰⁰ off Your order totaling \$75 or more (excludes spirits)

With coupon. Good only at Tietz's Piggly Wiggly. One coupon per person. Valid through 10-31-24

Authorized WIC Vendor

714 S. Wisconsin Dr, Howards Grove, 920-565-4421 • 1411 Eastern Ave, Plymouth, 920-893-0741





Elk Help

Do you need help with Fall clean-up?
Elk Help is here to help!

A middle school student and adult will work for 2 hours to complete any job that you need done

Free will offering made directly to the student after completion of the job

*Profits benefit ELGMS traveling to Washington DC in June 2026

Saturday, October 12 & Saturday, October 26
9:00-11:00am & 1:00-3:00pm

Contact Heather Porath for availability
Email: hporath@goresorters.com
Phone: 920-980-4299



Bob Schoenborn's JEWELRY

DIAMONDS • JEWELRY • WATCHES • CLOCKS • GIFTS

www.bobschoenbornsjewelry.com

307 Fremont Street • Kiel • 920-894-2772

Hours: Mon, Tues, Thurs 9am-5:30pm • Wed & Fri 9am-6pm • Sat 9am-1pm



THEEL AUTO INC.

We Accept Extended Warranties!

Your Full-Service Auto Body & Repair Shop

LIKE US ON FACEBOOK: [theel auto inc.](https://www.facebook.com/theelautoinc)

www.TheelAuto.com

N8348 CTH J • ELKHART LAKE • 800.588.4335 • 920.876.2703
Hours to 7am-4pm Monday-Friday



Elkhart Lake Depot Dispatch

www.elkhartlakechamber.com/depot-dispatch

Follow Elkhart Lake Chamber of Commerce on Social Media











Culver's
BUTTERBURGERS &
FROZEN CUSTARD

Culvers - Plymouth
2318 Eastern Ave • Plymouth
920-893-2663
Open 10 am until 10 pm daily









80+ Vendors • 100% Handcrafted Items!
Cafe • Bake Sale • Live Holiday Music • Raffle Prizes

Saturday, November 23
9:00am - 4:00pm
Kohler Public School
333 Upper Rd, Kohler

Admission : \$5
KIDS FREE!

Complimentary shuttle
between Kohler School Fair,
American Club Market &
The Shops at Woodlake.
Parking is available in the
school parking lots or
The Shops at Woodlake.

Brought to you by
KOHLER ATHLETIC BOMBER BOOSTERS
& KOHLER SCHOOL FRIENDS PTO

For more information, visit:
ksfcraftfair.com



LIBRARY HOURS

Monday-Thursday
9am-7pm
Friday 9am-5pm
Saturday 9am-2pm

October 2024 Depot Dispatch

ELKHART LAKE Public Library News

ANNOUNCEMENTS

We welcome new members! For more information: Go to the library's website at elkhartlakepubliclibrary.org, click on the "Connect tab" and then choose Friends of the Library.

Grashorn Civic Center | 40 Pine Street, P. O. Box 387 | Elkhart Lake, Wisconsin 53020 | 920-876-2554 | elkhartlakepubliclibrary.org

SPECIAL EVENTS

2nd Annual Two-sentence Scary Story Contest– All ages – Can you write a bone-chilling story in just two sentences? Submit your 2-sentence scary story by October 31st to enter our contest. Stories will be put on display as they come in throughout the month. Vote for the scariest in November! Divisions for kids, teens, & adults.

3rd Annual Pumpkin Decorating Contest – All ages – Decorate a pumpkin with a theme (theme ideas: books, movies, animals, famous people, etc.) and bring it to the library by Saturday, October 19th for display and voting. Please, no carved pumpkins! Use a foam pumpkin OR decorate an uncarved pumpkin for your entry. Vote at the library from October 21st – 31st. Divisions for kids, teens, & adults.

KIDS PROGRAMS

TODDLERS/PRESCHOOLERS: STORY TIME

Thursdays at 9:30am – Join us for story time every Thursday. Stories, songs, and activities for toddlers and preschoolers.

MUSIC & MOVEMENT

Babies-Preschool – Saturdays in October @ 9am. Songs, dancing, instruments and more for babies, preschoolers, and their caregivers. Space is limited so registration is suggested- call 920-876-2554 or go to the Calendar of Events on our website to sign up.

KIDS

POTION ART

1st grade & up – Friday, October 4th at 10am Mix potions and turn them into works of art. Registration required- call 920-876-2554 or go to the Calendar of Events on our website to sign up.

5TH GRADE & UP PROGRAMS

FRANKENTOYS

5th grade & up – Tuesday, October 22nd at 3:15pm. Take apart old toys, use your imagination, and create something new and monstrous! Registration required-call 920-876-2554 or go to the Calendar of Events on our website to sign up.

ADULT PROGRAMS

FRIDAY MOVIE MATINEE "ARTHUR THE KING" (PG-13)

Friday, October 4th at 1pm, Grashorn Civic Center- Enjoy a free movie and popcorn at the Grashorn Civic Center on the first Friday of every month. Our October movie is Arthur the King starring Mark Wahlberg. "Over the course of ten days and 435 miles, an unbreakable bond is forged between pro adventure racer Michael Light and a scrappy street dog companion dubbed Arthur. Based on an incredible true story."

UKULELE CLUB

Thursday, October 10th at 1pm, Grashorn Civic Center - Play Ukulele with us! All levels welcome, no registration required. For more information and to get on our contact list (and to obtain music), please email rmontes@monarchlibraries.org. Don't have a ukulele? Check out our Ukulele Kit at the library to give it a try.

BOOK CLUB

Friday, October 11th at 1pm, Grashorn Civic Center. This October, the library book club will be reading *The Most Fun We Ever Had* by Claire Lombardo. "Covering 40 years of Sorenson family strengths and foibles, *The Most Fun We Ever Had* is a classy but juicy read that always has one more surprise up its sleeve." To be placed on our book club list, email Rachel Montes at rmontes@monarchlibraries.org.

COMMON THREAD: NEEDLEWORK AND FIBER ARTS CRAFTING CIRCLE

Tuesday, October 15th at 10:30am, Library. Bring your own project and join us for some crafting camaraderie. All fiber crafts

welcome! Share patterns, get ideas, and just enjoy the company of fellow crafters.

COFFEE HOUR AND BOOK CHAT

Wednesdays at 10am, Library. Come for a little coffee, a lot of conversation, and a sneak peek at this week's new releases. All welcome, no registration required.

ONE-ON-ONE TECHNOLOGY HELP

Call 920-876-2554 to schedule a time to come in for individualized assistance with technologies such as digital books, audiobooks, Hoopla, Kanopy, and more. We are here to help!

NEW @ ELPL

ADULT FICTION

Agony Hill, Sarah Taylor
Ashes Never Lie, Lee Goldberg
Bad Liar, Tami Hoag
Blue Graffiti, Calahan Skogman
Blue Sisters, Coco Mellors
The Book Swap, Tessa Bickers
The Break-up Pact, Emma Lord
Colored Television, Danzy Senna

Rosie Schaap
Something Lost Something Gained, Hilary Clinton
What Happens Next: A Traveler's Guide..., Max Lucado
Why We Love Football, Joe Posnanski
LARGE PRINT
Counting Miracles, Nicholas Sparks
Here One Moment, Liane Moriarty
House of Glass, Sarah Pekkanen
YOUNG ADULT
The Girl With No Reflection, Keshe Chow
Hemlock House, Katie Cotugno
How to Lose a Best Friend, Jordan Casomar
If Anything Happens to Me, Luanne Rice
Us in Ruins, Rachel Moore
Kids Chapter Books & Graphic Novels (GN)
Baby Sitters Club 16, Ann Martin
Big Nate: Remain Calm, Lincoln Peirce
Carter Avery's Tricky 4th Grade Year, Rob Buyea
Chronicles of a Lizard Nobody, Tim Miller
Clutch Time, Caron Butler

Leo's First Vote, Christina Soontornvat
Mr. Fox's Game of No, David Larochele
Peppa's Big Feelings, Lori Froeb
Pigs Dig a Road, Brian Biggs
The Strangest Fish, Katherine Arden
Towed By Toad, Jashar Awan
We Found a Hat, Jon Klassen
DVD's & Blu-Rays
Amazing Maurice
The Bikeriders
Horizon
Inside Out 2
One Piece: Collection 1
Watchmen: Chapter 1
Receive a complete list of new library materials every month by subscribing to our e-newsletter. Go to www.elkhartlakepubliclibrary.org, click on the CONNECT tab and select NEWSLETTER. We will only use this information for sending out our monthly newsletter.

FRIENDS OF THE ELKHART LAKE PUBLIC LIBRARY NEWS

How do the Friends help the library? The Friends are responsible for many of the new initiatives at the library, including the purchase of experience passes to places like Above & Beyond Children's Museum & Farm Wisconsin Discovery Center. Support from the Friends allowed the library to start a Library of Things collection that includes STEM kits, Tonie boxes, literacy kits, & more. To help people who lack reliable internet, the Friends support two mobile hotspots that can be checked out for a week. Without the Friends, the Summer Library Program would look very different. This year, the Friends paid for the performers at the Wednesday programs (Magician, Musician, Shipwreck Detectives, and the New Zoo). These programs are always a HUGE hit with kids and families. Additionally, the Friends paid for many of the level 1 prizes that were raffled off at the end of the summer. *Thank you to everyone who attended our annual meeting in September*



Counting Miracles, Nicholas Sparks
Creation Lake, Rachel Kushner
The Dark Wives, Ann Cleeves
The Empusium, Olga Tokarczuk
Entitlement, Rumaan Alam
An Eye for an Eye, Jeffrey Archer
The Forest of Lost Souls, Dean Koontz
A Happier Life, Kristy Woods Harvey
Here One Moment, Liane Moriarty
The Hitchcock Hotel, Stephanie Wrobel
Keep Your Friends Close, Lucinda Berry
The Mesmerist, Caroline Woods
The Night We Lost Him, Laura Dave
The Playground, Richard Powers
Red River Road, Anna Downes
Robert B. Parker's Buzz Kill, Alison Gaylin
Sacrificial Animals, Kailee Pedersen
Somewhere Beyond the Sea, T.J. Klune
Sunny Place for Shady People
Mariana Enriquez
Tell Me Everything, Elizabeth Strout
We Solve Murders, Richard Osman
Worst Case Scenario, T.J. Newman
ADULT NON-FICTION
America First: Roosevelt vs. Lindberg, H.W. Brands
The Barn: The Secret History of a Murder, Wright Thompson
The Bookshop: A History of the..., Evan Friss
By the Fire We Carry: Generations..., Rebecca Nagle
Circle of Hope: A Reckoning..., Eliza Griswold
Feeding the Machine: Hidden Human..., James Muldoon
Hiroshima: The Last Witness, M.G. Sheftall
Nat Turner: Black Prophet, Anthony Kaye
Nexus: A Brief History..., Yuval Harari
The Slow Road North: How I Found Peace...,

Disney the Never Girls, Amparo Ortiz
Impossible Creatures, Katherine Rundell
The Long Way Around, Anne Nesbet
The Sherlock Society, James Ponti
Splinter and Ash, Marieke Nijkamp
Taxi Ghost, Sophie Escabasse
When We Flew Away, Alice Hoffman
Kid's Easy Readers & Early Chapter Books
Big Dog and Little Dog, Dav Pilkey
Big Dog and Little Dog Going for a Walk, Dav Pilkey
Curious George Scavenger Hunt, H.A. Rey
The Frightened Puppy, Holly Webb
Lunch Buddies 2, Daniel Wiseman
The New Heroes, Stacia Deutsch
Pencil and Eraser 1, Jenny Alvarado
Pinkalicious: Lost in Paris, Victoria Kann
The Princess in Black and the Kitty Catastrophe, Shannon Hale
Trouble Brewing, Minecraft
Children's Non-Fiction
Arabic Picture Dictionary, Islam Farag
Explanatorium of Nature, Shaila Brown
Hello I'm a Quokka, Haley Rocco
I Am Stephen Hawking, Brad Meltzer
My First Book of Hockey, Beth Bugler
The Smell of Wet Dog and Other Dog Poems, Barney Saltzberg
Startup Squad: You're the Boss, Weisfeld, Brian
Why Encyclopedia: Brilliant Answers..., DK
PICTURE BOOKS & BOARD BOOKS
Best in Show, David Elliott
City Full of Santas, Joanna Ho
Daddy Robot, Penguin Young Readers
Duck Duck Goose, John Hare
Eeny and Her Sisters, Jane Yolen
El Pato Y Sus Zapatos, Juan Moreno
The Ghost Who Was Afraid of Everything, Nadia Ahmed

1000 BOOKS BEFORE KINDERGARTEN
We have three new reading stars who completed the 1000 Books Before Kindergarten program at ELPL.

Congratulations to Brayden, Everly, and Franklin!

www.elkhartlakechamber.com

Keep in Touch with the Elkhart Lake Chamber of Commerce

Visit us online...

- Chamber Member Directory
- Farmers Market Information
- Renew & Pay Membership
- Chamber Events
- Register & Join Events
- Member Press Releases
- Member Job Postings




Christmas
Elkhart Lake IN THE SQUARE
11.30.24

CHRISTMAS IN THE SQUARE WITH SANTA UNDER THE DEPOT - SPONSORED BY ElkhartCares
November 30, 4:00-6:30 PM, Downtown Elkhart Lake

Follow Elkhart Lake Chamber of Commerce on Social Media




PLYMOUTH FURNITURE

PlymouthFurnitureWI.com

20
Sectionals
ON DISPLAY FROM
\$899

175
Sofas & Loveseats
ON DISPLAY STARTING AT
\$339

200
Recliners
ON DISPLAY FROM
\$299

15
Lift Chairs
ON DISPLAY FROM
\$649

30
Bedroom Sets and Bunk Beds

40
Mattress Styles
ON DISPLAY FROM
\$99 - \$199
TWIN MATTRESS QUEEN MATTRESS

25
Dining Sets
ON DISPLAY FROM
\$225

50
TV Stands
ON DISPLAY FROM
\$269

PLYMOUTH FURNITURE CLEARANCE

NEXT TO PLYMOUTH FURNITURE
Open Mon.-Fri. 9-8 • Sat. 9-5 • Sun. 11-4

Fairfield Plaza • 2133 Eastern Ave. • Plymouth





New Froedtert & The Medical College of Wisconsin Center for Health Care Excellence Celebrates Opening at Lakeshore College

Capacity doubles for training in-demand health care and emergency services students.

Lakeshore College hosted a ribbon-cutting celebration marking the opening of its new Froedtert & the Medical College of Wisconsin Center for Health Care Excellence on Friday, Sept. 6. The 26,000 square foot health care instructional facility doubles Lakeshore’s potential annual training capacity to 1,500 in-demand health care and emergency services students. Over 250 guests attended the event.

Demand continues growing among area hospitals and clinics for thoroughly trained health care professionals in the fields of nursing, radiography, medical assistant, medical coding, ophthalmic assistant, and emergency services. Education and training was defined in the Governor’s Task Force on the Healthcare Workforce Report, released in August, as one of three strategies to focus on to address workforce shortages.

“Our new state-of-the-art facility provides opportunities for increased hands-on training experiences through the use of experiential learning, which is what our simulation labs offer, and is precisely what the Governor’s Task Force on the Healthcare Workforce Report is recommending,” said Lakeshore College President Dr. Paul Carlsen.

According to the task force’s report, the Department of Workforce Development estimates Wisconsin will need an additional 19,000 registered nurses by 2040, but lacks the capacity to train that many new nurses. Carlsen said Lakeshore’s expanded facility helps address that concern.

“The number one challenge in health care today is having a well-trained workforce coming into health care,” said Dr. Imran Andrabi, MD, FAAFM, president and CEO of Froedtert ThedaCare Health, Inc. Speaking directly to students, Andrabi told them they can learn through their mistakes, and the simulation labs are

where mistakes can be made.

The new facility supports a multi-disciplinary model of instruction for collaboration among students, providing them additional opportunities for more realistic, experiential training. Public safety students can begin training exercises in Lakeshore’s emergency services training complex and then move to dedicated emergency rooms in the new facility, where health science students engage in advanced care exercises.

The Lakeshore College Foundation raised \$3 million for the project, including \$1 million – the largest donation in the college’s history – from Froedtert Health and Franciscan Sisters of Christian Charity.

Elite Builds, Inc. was the general contractor for the project. Somerville, Inc. was the architect.

Information about Lakeshore’s health science and emergency services programs can be found at gotoltc.edu/programs-

and-courses.

Lakeshore College’s new Froedtert & the Medical College of Wisconsin Center for Health Care Excellence hosted over 250 guests at a ribbon-cutting celebration Sept. 6 on the college’s Cleveland campus.

Students will spend part of their hands-on training with patient simulators, including a pregnant female, at Lakeshore College’s new Froedtert & the Medical College of Wisconsin Center for Health Care Excellence.



Schwaller's
Painting, Staining & Drywall

6-TIME WINNER

20 Years Serving Eastern Wisconsin

★★★★★

Call to Schedule your FREE Estimate!
920-876-4020

FULLY INSURED

www.SchwallersPainting.com

BUY ONE 16" Pizza
& **GET ONE 12" Two-Topping Pizza** for only **\$10**

All Seasons Family Restaurant
510 E. Rhine St. • Elkhart Lake • 920-876-2839 • Next to R Store
OPEN 6am-3pm Monday-Sunday

SENIOR CITIZEN DINNERS AVAILABLE - 11 AM TO CLOSE

Free Wi-Fi

YOUR BUSINESS ISN'T COOKIE CUTTER

Why Should Your Loan Be?

Unconventional loans call for unconventional thinking.

nebat.com/specialty-loans

National Exchange
Bank & Trust

274 Osthoff Avenue
920.876.2700

Member FDIC | NMLS #411152

2024-25 Season A Balance Of Classic and Contemporary



The Sheboygan Symphony Orchestra (SSO) announces its 2024-25 season under the direction of Maestro Ernesto Estigarribia. The season's concerts will include a mix of classical works by renowned composers of the past and contemporary pieces by leading composers of today.

"This season will celebrate our connection to nature, our vibrant city, and the rich tapestry of our community through the transformative power of music," said Estigarribia.

The first concert on October 12 features the world premiere of *The Healing Machine*, inspired by treasured art installations at John Michael Kohler Arts Center and the Art Preserve. Illinois composer Jacob Bank's, whose work has been featured on

previous SSO programs, wrote the piece earlier this year as a commissioned work for the SSO.

Also on the October concert is Beethoven's *Pastorale Symphony*, which evokes a joyful stroll through the countryside.

Remaining Concerts include:

December 14: The SSO and the SSO Chorus, which is celebrating its 30th season this year, will perform Handel's *Messiah*. This timeless masterpiece and holiday favorite will engage the audience with opportunities to participate in song and celebration.

March 8, 2025: Two classical works are covered by Mozart's *Symphony No. 41 - Jupiter* and Tchaikovsky's *Variations*

on a Roccoco Theme. The first of two contemporary pieces is *Overture* by GRAMMY-award winning composer Jessie Montgomery. The second, *Fate Now Conquers*, is by GRAMMY-nominated composer Carlos Simon.

May 17, 2025: The concert pairs contemporary composer Ingrid Stolzel's *City Beautiful* with these masterworks: Rachmaninoff's *Piano Concerto No. 3* with returning pianist Fanya Lin, and Sibelius' *Symphony No. 2*.

All concerts will be held at the Weill Center for the Performing Arts in Sheboygan. Individual tickets are available for \$20-60, depending on seating tier. Student rush (day of performance) tickets are \$10. To purchase tickets, call The Weill Center at 920.208.3243 or go to sheboygansymphony.org.

About the SSO

The Sheboygan Symphony Orchestra, founded in 1918, is the longest continually active orchestra in the state of Wisconsin. Over the span of more than a century, extraordinary musical experiences have evolved into a legacy of old and new traditions. As a community-based professional orchestra, many SSO musicians call Sheboygan County home, but the ensemble brings together musicians from all over Wisconsin. The SSO holds multiple regular season performances, a yearly holiday concert, and an annual children's concert for grade school students. For more information, go to <https://sheboygansymphony.org>

SERVICES

- Winter Caretaking Inspections
While you're away, I'll check your home to make sure heat, water, etc. are working. \$50 per visit.
- Residential Inspections
- Commercial Inspections
- New Construction Inspections
- Phase Inspections
- Warranty Inspections
- Radon Screening

Serving Sheboygan, Manitowoc, Ozaukee, Washington and Fond du Lac Counties

Bob Turicik
920-892-7654
www.HomeReview.biz
www.facebook.com/HomeReviewWI

Read the Depot Dispatch online 24/7!
Go to... www.depotdispatch.com

**W5695 Garton Road
Plymouth**

Rhine Auto is your source for premium used auto parts. We have a **6-month parts only warranty** on all of our parts!

Wide variety of used tires in stock. We purchase batteries and junk vehicles. Call or visit us today!

920-876-2779 / Mon - Fri 7:30 a.m. - 5:00 p.m.

Grace Lutheran Church

Sunday Divine Service 8 & 10:15 am
Thursday Divine Service 7 pm
BIBLE CLASS
Wednesday 9 am
Sunday 9:15 am

920-781-5076 • Hwy 67, Elkhart Lake

For all your labeling needs

SOHN Manufacturing, Inc.

544 Sohn Drive, Elkhart Lake, WI 53020

920-876-3361

email: sohn@sohnmanufacturing.com
www.sohnmanufacturing.com

Original Art to Enrich Homes Gardens and Lives

Patrick and Karen Robison
244 E. Rhine Street • Elkhart Lake

OCTOBER HOURS

Friday Noon - 5
Saturday 10 - 5

920-876-3192
www.twofishgallery.net
facebook.com/twofishelkhartlake

Vintage Shop Hop

SPECIAL SAVINGS
WIN A Gift Certificate Basket

Visit us online for a list of participating merchants!

October 4th-5th

- Estate Jewelry
- Unique Clothing S-3x
- Amazing Jewelry
- Gift Certificates

Shipping and curbside pick-up available

Alléchant Boutique LLC

217 East Mill Street • Plymouth • 920-893-9888
We Buy Gold & Silver

Open Wed-Sun
Closed Mon & Tues
Extra Hours by Appointment

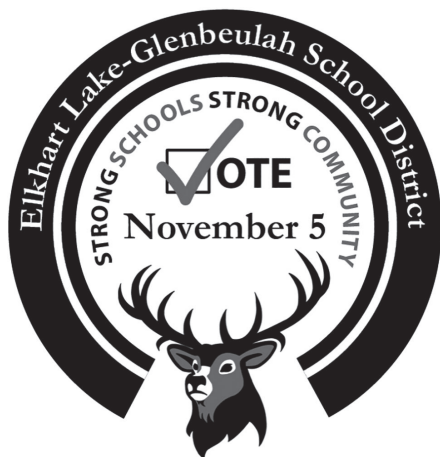
KRAUS CONSTRUCTION Inc.

Our Commitment to You...

Relationships Integrity • Trust

510 Belitz Drive • Kiel
920-894-7008
www.krausconstruction.biz

Community Prepares to Vote on School Capital Referendum



which are at or beyond their expected service life. For access to the complete facility study, please scan the following QR code:



Continued increases in operational and maintenance costs, safety concerns, and outdated systems are key reasons for the facility updates. The current elementary school, built in 1957 and 1958, is no longer equipped to handle the current educational space needed to provide best instructional practices in the classrooms.

Did you know it has been 36 years since the Elkhart Lake-Glenbeulah School District presented a capital referendum to voters? The last capital referendum occurred in 1988 and attached the middle school onto the elementary school. As shown in the chart below, other school districts in our area have gone for capital referenda between 2016 through 2022.

Parents and teachers have raised concerns over the state of the current facility, pointing out issues such as insufficient classroom space, inefficient heating and cooling systems, and worn, outdated building and classroom finishes.

“All children deserve a place that’s safe and conducive to learning,” said parent Kristin Schneider, whose children attend the elementary school, “We’re at a point where patching things just isn’t enough anymore.”

What’s Included in the Proposal?

- The new school would be designed with flexibility and future growth in mind, featuring:
 - Larger, collaborative learning spaces for group work and hands-on projects.
 - Energy-efficient systems to reduce long-term operational costs.
 - Enhanced security measures, including a single point of entry and modern surveillance technology.

■ New athletic facilities, including a gymnasium, locker rooms, and wrestling room.

■ Update existing high school locker rooms.

■ A new main office, a music room, and storage.

■ Update select finishes:

■ Select flooring, ceiling, paint, lighting, lockers, casework, and door / frame repair

■ Update traffic / safety patterns.

■ Refurbishment of the current middle school to become the elementary school would include:

■ Update ventilation, climate, and access control systems.

■ Update select finishes:

■ Select flooring, ceilings, paint, lighting, lockers / cubbies, casework

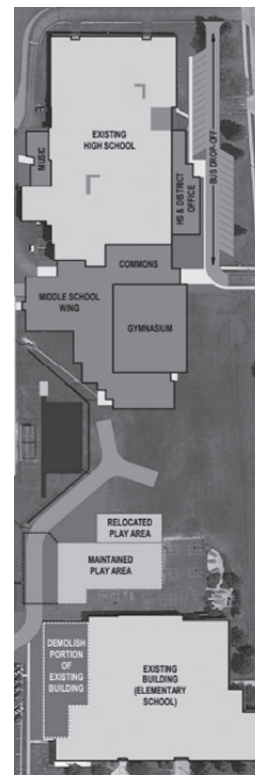
■ Removing the elementary wing.

These projects would allow the staff to create a learning environment that better supports today’s educational practices.

Community Response:

Two surveys took place in December 2023 and May 2024 to solicit community input on the plans the School Board reviewed to address the areas of focus and update the facilities. The first survey focused on the direction for updating the facilities. An average of 74% of survey respondents preferred building new facilities attached to the existing high school, compared to 10% of survey respondents preferring to refurbish the existing buildings. After months of planning, another community survey was sent to solicit community feedback as to the scope of a new building project. 53.4% of survey respondents supported consolidating the District under one roof in stages, by building a middle school onto the high school first.

As the referendum approaches, there are many opinions about the plan within the community. Many facility systems and components are at or past their service life, and investing in our educational facilities will benefit the entire community.



“The quality of our schools is directly tied to the strength of our community. Strong schools build strong communities,” said parent and community leader Melissa Koehler. “Better schools mean higher property values, a stronger local economy, and most importantly, better opportunities for our children.”

Referendum Finances:

As of April 1st, this year, our district is DEBT FREE. This allows us the financial opportunity to invest, pursue and providing our communities’ students, a high-quality education, in facilities they deserve.

The long-term benefits far outweigh the short-term financial burden. “This is about making sure our kids have the tools they need to succeed,” said Michael Meeusen, School Board President. “A new building isn’t just about bricks and mortar; it’s about creating opportunities for learning and growth.”

The \$39.6 million bond would be repaid over a 21-year period. According to the District’s financial projections, if approved, the referendum would result in an estimated property tax increase of \$2.37 per \$1,000 of property value.

School Board Treasurer, Grant Stecker, emphasizes that the district has worked hard to balance the need for improved facilities with the community’s economic realities. “We understand that any tax increase is a burden, but we believe this investment is essential for the future of our schools and our students,” Stecker said. “We carefully examined the community feedback on the survey, and crafted a plan we believe addressed our most pressing needs, while minimizing the financial impact on our residents.”

What Happens Next?

As the November 5th vote approaches, the district is hosting a series of informational sessions to ensure that residents have all the facts they need to make an informed decision. The sessions will provide details on the proposed plans, financial implications, and answer questions from the public. “Whether the referendum is approved or not, the challenges facing the district will remain. The vote is an opportunity for the community to come together and determine the best path forward for its students, staff, and buildings,” said Dr. Adam Englebretson, District Administrator.

For more information, voter registration deadlines, and polling locations, please visit: myvote.wi.gov. Polling hours are 7:00am – 8:00pm.

The outcome will determine whether the district moves forward with the project that could shape the educational landscape for years to come.

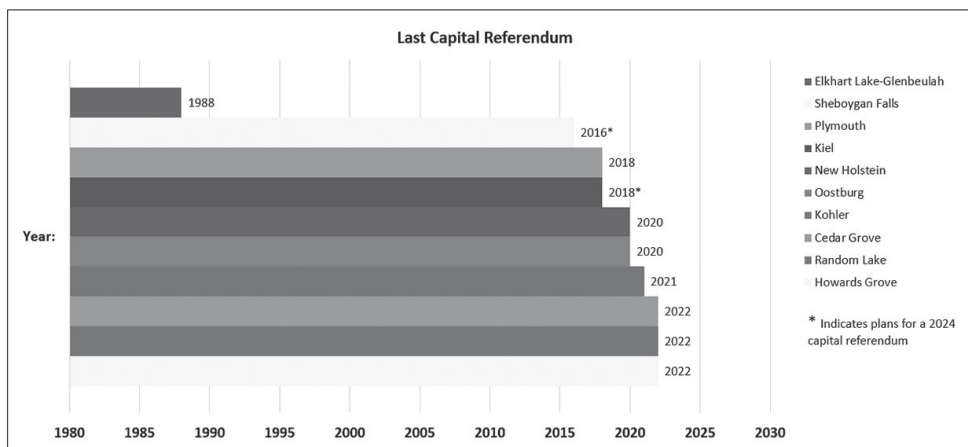
In just a few weeks, voters in the Elkhart Lake-Glenbeulah School District will head to the polls to decide on a capital referendum that will impact the current school buildings. The referendum seeks approval for a new middle school building to be connected to the high school, and to refurbish the existing middle school to become the elementary school. This move would create operational efficiencies with shared staff at the middle school level, and replace the aging elementary school, which no longer adequately meets the growing needs of students and staff.

The proposed building and refurbishment project, estimated to cost no more than \$39.6 million, would update classrooms, improve necessary school systems including electrical, plumbing, and ventilation systems, and modernize facilities for science, arts, and athletics.

What is the need for a new building?

The need for the new the project stems from the results of the facility study performed in 2022

Plunkett Raysich Architects, LLP (PRA) and Jos. Schmitt Construction conducted a thorough facility conditions and educational space adequacy assessment to determine the most critical issues that exist within and around District buildings. Of the six examined categories, the Elementary/ Middle School scored in the “fair-to-poor” condition in five categories, and “fair” condition in one category. It is certainly important for the school district to address focus areas



PUBLIC INFORMATIONAL MEETING SCHEDULE

Wednesday, September 11
Village of Glenbeulah @ 7:00pm

Monday, September 23
Town of Greenbush @ 7:00pm

Tuesday, October 1
Town of Rhine @ 6:30pm

Wednesday, October 2
Elkhart Lake-Glenbeulah Elementary/Middle School @ 6:00pm

Monday, October 7
Town of Russell @ 7:00pm

Wednesday, October 16
Elkhart Lake-Glenbeulah Elementary/Middle School @ 6:00pm

Monday, October 21
Village of Elkhart Lake @ 6:00pm

Diamond Vu Joins Chamber

"There is no better place to learn about agriculture than on a farm," states the website of a new member of the Elkhart Lake Chamber of Commerce, Diamond Vu Agricultural Center.

According to their website, Diamond Vu Agricultural Center is a non-profit organization located at N5480 STH 32 in Sheboygan Falls. Their mission is to provide academic and field-based agricultural opportunities through hands-on learning that fosters mental health, vocational and life skills instruction.

During an interview with co-owner Mike Butler, he said there are kids that

programs and corporate events. Through their experiences in the fields, individuals are able to experience animal agriculture by getting up close and personal with the animals at the center, learn what it takes to till, sow and harvest crops, walk through flower fields and take a bouquet of fresh-cut flowers home and other benefits.

Diamond Vu Agricultural Center will also be hosting the 5th annual Sundae on the Farm on Oct. 6 from 10 a.m. until 4 p.m. Community members are invited to bring the entire family for a fun filled day with hands-on experience for everyone. According to Mike, they are prepared for a busy day of visitors that are interested in learning where their food comes from.

According to the event information, there will be over 25 learning stations about Wisconsin agriculture. There will also be entertainment featuring Brent Bel and the Boys and an old-fashioned hog roast.

Admission is \$10 per car, which also includes free ice cream and milk at the event.

Those interested in learning more about Diamond Vu and what the agriculture center has to offer can contact Mike and Nicole Butler at diamondvufloral@gmail.com or at 920-728-2906 and can check out their website at www.diamondvu.com

**Elkhart Lake Chamber
NEW MEMBER
Diamond Vu**

do not know where their food comes from, and it is always a sight to see when the children's eyes light up during their experience at the agricultural center.

On the organization's website, the education center is created for students, families and individuals that want to learn about farming practices and the science behind it to provide food in a fun way. The farm can be experienced through open houses, field trips, featured





OPEN 24 HOURS

Full Service Laundromat


- Fluff & Fold
- Commercial Laundry
- Ironing

Imogene's Dry Cleaning Service

Drop off & Pick up done on **WEDNESDAYS**

Sippel's Lost Sock Laundromat

510B East Rhine Street • Elkhart Lake • 920-946-1750



Cutting With Style

Dyanna Muldoon and her father Willie Mueller provide haircuts, styles, colors and perms for men and women.

Mueller's Barber & Styling

325 Fremont St. • Kiel • 894-3939

You will like our haircuts and love our price!



BUSINESS HOURS: Tues.-Fri. 8 a.m. - 5:30 p.m. • Sat. 8 a.m. - Noon

CHAMBER SPOTLIGHT

Over Easy Flipping

Our September Chamber Member Spotlight is Over Easy Flipping. Located in Plymouth on 220 E. Mill Street this eclectic store has something for everyone. Up-cycled Furniture, Home Decor & Gifts, with talented artists to bring you unique and beautiful items for you and your home. Over Easy Flipping also offers classes such as rug painting, barn quilts and furniture painting.

To find out more about Over Easy Flipping please visit: www.oveasyflipping.com



D&D Carpentry

"Our name stands for quality"

OUR SPECIALTIES INCLUDE:
 Additions • Remodel Work
 Masonry • New Homes

General Contractors
 36 years of Serving our Community
 1324 Eastern Ave., Plymouth • (920) 526-3648
www.ddcarpentry.com

Follow us on: facebook.

New! FALL RESTAURANT HOURS

Monday Specials
 \$35 • 18 Holes with Cart
 \$19 • 9 Holes with Cart on Glacial Nine

Valid July 3rd after 1pm & Labor Day after 11am

Junior Golfers
 On Sundays after 3pm all summer long, juniors play for \$1 with a paid adult.

Sunday Packer Special
 On Sundays after 11am
 \$16 • 9 Holes
 \$24.50 • 9 Holes with Cart
 \$30 • 18 Holes
 \$45 • 18 Holes with Cart

Year End PRO SHOP Sale
OCTOBER 11-13
 Best prices of the season on all in stock merchandise.

Serving LUNCH DAILY
 11am-2pm
Dinner hours returning in May

Friday Night FISH FRY
 4:30pm-8:30pm

Sunday BREAKFAST
 9am-1pm (lunch until 2pm)

RIB NIGHT Thurs. Oct. 17
 5pm-8pm

Celebrate Your Birthday with Us!
 Receive a complimentary drink & glass on your Birthday.



500 Quit Qui Oe Lane • Elkhart Lake • 920-876-2833 • www.quitquioegolf.com | www.facebook.com/quitquioec

Make a Difference this Holiday Season with ElkhartCares

The holidays should be a time of joy, but for many in our community, they can also bring added stress and hardship. You can bring warmth and cheer to local families by making a donation to ElkhartCares, your local charitable organization.

This holiday season, ElkhartCares is offering vital support to struggling families, and we need your help! Your tax-deductible donation will go directly to providing:

- Warm winter clothing for children and family members, including scarves, boots, coats, and mittens.
- Utility support to help cover the rising cost of heating bills.
- Holiday gifts to ensure every child experiences the magic of the season.
- Thanksgiving and winter holiday hot meals for families in need.
- Free holiday cheer programs, promoting literacy and bringing our community together.

Join Us in Spreading Holiday Cheer!

Your contribution also supports special holiday events, including our partnership in the annual Christmas in The Square & Community Tree Lighting Ceremony, where Santa is under The Depot, handing out hundreds of books to children.

Whether you donate as a family or partner with a corporation, your generosity will directly impact the lives of local families.

Donate Today and Make the Holidays Magical for All!

Visit www.ElkhartCares.org/donate to donate online. Mailed checks can be sent to P. O. Box 537 Elkhart Lake, WI 53020.

Questions about corporate or personal donations can be directed to info@elkhartcares.org or (920)226-0903.

Together, we can make the holidays brighter for everyone!



November 30, 4:00-6:30 PM, Downtown Elkhart Lake



Lynn Schwensow
"Premier Property Specialist"
Cell: 920-946-4054
lynn@lynn-sells.com



WE ARE
1!

WHEN YOU PUT YOUR TRUST IN THE NUMBER 1 COMPANY TO SELL YOUR CURRENT HOME OR HELP PURCHASE A NEW HOME, YOU WILL GET NO TRICKS—JUST FANSASTIC SEVICE! I PROUDLY OFFER MY SERVICES AS A LONG TIME MEMBER OF THE CENTURY 21 MOVES TEAM. YOU DON'T JUST GET ME, YOU GET OUR FAMILY OF AGENTS WORKING FOR YOU. PLEASE CALL ME WHILE THE MARKET IS STILL HOT AND INTEREST RATES ARE LOW. I WANT TO HELP YOU!
CALL 920-946-4054 FOR EXTRA SPECIAL SERVICE TODAY!



the Goldsmith

SINCE 1974

CELEBRATING 50 YEARS

The Goldsmith has created a Custom 14k Gold or Sterling Silver Elkhart Lake Pendant. Your special spot on the lake is designated with a diamond!



ORDER YOURS TODAY!
Call 920.921.3113 or email thegoldsmith@tds.net

Mon-Fri 9am-5pm | Sat 9am-3pm
177 South Main Street | Fond du Lac

FALL PLANT SALE!



Potted Trees & Potted Shrubs*

30% OFF

Perennials*

50% OFF

Month of October

*no plant warranty on sale items

Join Us
Saturday, Oct. 5
PIES FOR PAWS

Take & Bake Pies and Raffles
All proceeds go to Sheboygan Humane Society



N6625 STATE ROAD 57 • PLYMOUTH (2 Miles North of Hwy. 23)



New Arrivals Daily • Open 7 days a week • 920-893-8700