

Farmers' Exchange

*Place unlimited
items for sale:*

FarmersExchange.com

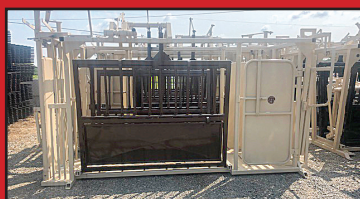
Used and New Farm Equipment.
Equipment, Land and Livestock Auctions.

Call for Subscription **800.247.7318**

Griffin 50 Head Cattle Working System - \$4,900



Made out of all #2/Seconds Panels. Includes 90 Degree Sweep Tub with 10x20 Holding Pen, Attached 20x20 Holding Pen with a Main 30x30 Catch Pen.



\$3,950

C&B Angus Cattle Squeeze
w/Built In Palp Cage



\$59 each

Econo 5x10 Corral Panels
Seconds #2



\$3,200

C&B Angus Auto
Cattle Squeeze Chute



**Firminator G3 Food
Plot Planter**

Disks-Seeder-Cultipacker
3' ATV/UTV Unit - \$6,800
6' 3-point Unit - \$9,700
8' 3-point Unit - \$12,100



C&B Mobile Grain Bins

3,000 lb. - \$3,000
5,000 lb. - \$3,500
6,500 lb. - \$3,900



**Genesis No-Till Drills
IN STOCK**

Genesis 3 - \$12,830
Genesis 5 - \$16,370
Genesis 8 - \$22,270



C&B FARM + OUTDOORS

13976 Hwy. 72 West, Athens, AL 35611

www.cbfarmoutdoors.com • 256-777-7137

Delivery Available On All Our Cattle Equipment We Sell



LOW rate financing or 5% CASH DISCOUNT on *KRONE* products you need to make hay while the sun shines!

0% FOR 36 MO
OR
1.9% FOR 60 MO

Swadro
Rotary Rake

Even and
consistent
windrows.



EasyCut
3pt Mounted Disc Mower

Dependable
cutting and
professional
quality.



KW & NEW
Vendro Rotary Tedders

Powerful rotors
turning crops
into high quality
forage.



TRIGREEN
EQUIPMENT

KRONE® is a registered trademark of Maschinenfabrik Bernard Krone GmbH.
12121 Forest Park Dr. Olive Branch, MS 38654-(662)913-7171.

Offers expire 31 July, 2025. Requires approved credit with DLL Financing. Offer applies to select KRONE product. Down payment may be required. 5% cash discount available in lieu of financing. See dealer for full details.

Arab, AL
933 N. Brindlee Mt. Pkwy
(256) 586-8304

Albertville, AL
5660 US 431
(256) 850-4679

Athens, AL
131 US Hwy 31 S
(256) 232-2131

Centre, AL
1050 Chestnut Bypass
(256) 927-2300

Columbia, TN
271 Theta Pike
(931) 388-1557

Cookeville, TN
1490 Interstate Dr
(931) 526-8544

Crossville, TN
269 N Main St
(931) 340-1012

Cullman, AL
3920 AL Hwy 157
(256) 739-5601

Dickson, TN
707 Henslee Dr
(615) 229-2400

Fayetteville, TN
2894 Huntsville Hwy
(931) 433-5620

Florence, AL
3613 Florence Blvd
(256) 757-9080

Franklin, TN
340 9th Ave N
(615) 794-8187

Ft. Payne, AL
12227 AL Hwy 35
(256) 997-9089

Gadsden, AL
1301 West Meighan Blvd
(256) 456-5872

Hendersonville, TN
133 N Shackle Island Rd
(615) 824-9726

Huntsville, AL
4550 Research Park Blvd
(256) 830-4020

Jasper, AL
3700 Industrial Pkwy
(205) 384-3058

Leighton, AL
1160 Sockwell Ln
(256) 446-5929

Manchester, TN
812 Interstate Dr
(931) 728-5400

Mt. Juliet, TN
10768 Lebanon Rd
(615) 754-2600

McMinnville, TN
305 Shangri La Ln
(931) 668-1784

Pelham, AL
3311 Pelham Pkwy
(205) 605-0412

Scottsboro, AL
26685 John T Reid Pkwy
(256) 259-0704

Winchester, TN
176 Blair Pond Rd
(931) 967-5144

Patriot Creep Feeders In Stock!



JAY-LOR

D&E is Your **SOURCE**
for Mixers!

Mixes Faster - More Thoroughly - using LESS HP

S. I. FEEDERS



24' Feeders \$7650

Best Feeder Around!

HYUNDAI



HT100V
\$59,500
3yr/3k hr
Warranty

H&S

9117
Grinder
Mixer



Summer
Specials!

Manure
Spreaders



\$59,800

S2280 80 bu \$7,100
S3123 230 bu \$20,500
S3231 310 bu \$28,500
S3237 370 bu \$31,300
SW3243 430bu
\$32,300

STRETCH-O-MATIC

8400 ELITE

Dependable, Quality.
Other wrappers have
higher price tags.
Doesn't make 'em better,
only costs you more.

\$37,500



The Original Bale Wrapper

LVI Litter Pulverizers 8 & 10' In Stock

GEHL

GEHL



VT320 **\$88,450**

BROWN
MANUFACTURING CORP.

415 \$3,650
416 \$5250
672 \$9450
TCO2505c \$10,650
TCO2620c \$12,550
TCO2605c \$11,300



Bush-Whacker



ST7210 \$5400
ST104 \$9150
MD180 \$18800
MD144 \$14,800
ST180 \$23,800

D&E

DON ALLISON EQUIP, INC.

www.donallisonequipment.com
800-669-6450
THE MIXER PLACE!

FOWLER AUCTION

Turning Your Assets Into Cash

UPCOMING AUCTIONS



HORSE-DRAWN FARM EQUIPMENT, TRACTORS, TOOLS & HOME FURNISHINGS

311 Bear Road, SW • Hartselle, AL
ONLINE Only Bidding Closes
Wednesday, July 2nd • 7 PM



SUMMER FIREARM CONSIGNMENT
Fowler Auction & Real Estate Service
8719 Highway 53 • Toney, AL
ONLINE Only Bidding Closes
Monday, July 7th • 7 PM



11 ACRES± AS A WHOLE
Minor Hill Highway • Goodspring, TN
ONLINE Only Bidding Closes
Tuesday, July 8th • 7 PM

SUMMER OPEN CONSIGNMENT AUCTION

**Industrial, Construction & Farm Equipment • Trackhoes •
Tractors • Trucks • Vehicles & More!**

Fowler Auction • 8719 Highway 53 in Toney, AL

ONLINE ONLY AUCTION

BIDDING CLOSES MONDAY, AUGUST 11TH • 3 PM & 7 PM

DEADLINE TO CONSIGN: FRIDAY, JULY 25TH • 4 PM

For assistance consigning items, call

David Vess at (256) 426-0005 or Greg Bottom at (256) 777-4496.

SEE ALL AUCTIONS AT WWW.FOWLERAUCTION.COM

"The Preferred Auction Company"



47
Years
OF SERVICE

8719 HIGHWAY 53 • TONEY, ALABAMA 35773

A MARKNET ALLIANCE MEMBER

DANIEL CULPS, CAI, CES

ALSL5070, TNSL5890, TN FIRM2315

DAVID VESS, CES: ALSL5653, TNSL7584

GASL AL004685, VAAL2907004949; FFL

Toney: (256) 420-4454

Ardmore: (256) 423-4454

Athens: (256) 232-7788

Huntsville: (256) 859-5682



FINANCING AVAILABLE - TEXT/CALL CHAD 256-777-7137



Griffin 50 Head Cattle Working System - \$4,900

Made out of all #2/Seconds Panels. Includes 90 Degree Sweep Tub with 10x20 Holding Pen, Attached 20x20 Holding Pen with a Main 30x30 Catch Pen.

Can also make this system out of #1 panels for \$5900 total

Nationwide Delivery Available



C&B FARM + OUTDOORS

13976 Hwy. 72 West, Athens, AL 35611

www.cbfarmoutdoors.com • 256-777-7137

Delivery Available On All Our Cattle Equipment We Sell

Like Us On
facebook 

Columbia, TN • 931-388-1557



JD 5075 - \$38,499



MacDon FD13D - \$69,999



JD 333G - \$58,000



JD 5075E - \$51,500



Scag Cheetah - \$6,750



Durabilt Box Scraper - \$3,900

Krone AMR320.....\$12,900
JD 9610, 1998, 4439 eng. hrs.,
3050 sep. hrs., Stk#1041847\$27,500
JD Z820A, 54" cut, 2009, 1541 hrs.,
Stk#1041524\$2,999

JD 5075, 2024, 47 hrs., Stk#1042396.....\$38,499
Rhino PT405H Tedder, Stk#1040621\$5,200
JD 6145M, Stk#1042673Call
JD Z970R, 72", 2022, 203 hrs.....\$13,900
JDX570, 2017, 54" deck\$3,599

Frontier RT3073 Tiller, 2022\$2,699
JD 1023E, 60" deck.....\$11,500
JD 5085E, cab, 845 hrs., 2016\$57,500

Athens, AL • 256-232-2131



JD S680 - \$75,000



JD 35G - \$49,950



JD 4052M - \$26,599



JD Z645 - \$4,500



Tonutti 8 Wheel - \$1,250

Cullman, AL • 256-739-5601



Worksaver 832940-1W3 - \$2,395



McHale 991BE - \$19,900



Genesis G8 - \$19,500



JD 35G - \$45,000

2022 Frontier GM1048E.....\$2,795
2022 Frontier GM4060E.....\$2,795
2023 Frontier TM1164 Disc.....\$1,995
2022 Spartan RZ148\$3,800

Scottsboro, AL • 256-259-0704



JD 6700 Sprayer - \$35,000



JD 4044M - \$29,000



RTR Genesis GB - \$19,000



JD 1025R - \$19,200



JD 1890 Air Seeder - \$68,500



JD 612C - \$36,500

Case IH 1250 Planter, 2012\$85,000
JD 6500 Sprayer, 1996.....\$15,000

Case IH 4412F, 2018.....\$54,900
JD 8R310, 2023.....\$399,900

JD 1025, 2024\$16,000

Cookeville, TN • 931-526-8544



JD S780 - \$515,000



JD 6105E - \$58,500



Brent 672 - \$8,500



Kinze 840 - \$8,500



AV20G - \$4,500

Florence, AL • 256-757-9080



JD 8310R - \$124,900



J&M 1051 - \$37,900



Kubota MX5400 - \$31,599



JD S790 - \$229,000



JD 275 - \$5,000



Snapper S200XT - \$3,599

JD 155 Blade.....\$3,350
Durabilt Cotton Spear\$5,499
Kubota SVL97-2 Skid Steer\$66,900
JD 325G Skid Steer\$55,900
JD 4044M, 70 hrs., 2022\$29,399
JD Z960\$5,499

Leighton, AL • 256-446-5929



JD C18R - \$133,900



Sitrex Rake - \$2,995



JD 5055E - \$42,000



JD DB60 - \$229,000



JD 1590 - \$29,900



JD 2623VT - \$42,300

Kubota M8540, Stk#1041639.....\$19,900
AG Spray Sprayer, 200 gal., Stk#1042149.....\$3,850
JD 640FD, 2012, Stk#1037587.....\$24,900
Frontier Tiller, 4'\$2,000
MacDon FD140, Stk#1041719\$56,900
JD 9750 Combine, Stk#1041138.....\$28,900
JD R4038 Wheel Shields.....\$1,500
Case IH 4408 Corn Head, 2014, Stk#1041604\$24,900

Huntsville, AL • 256-830-4020



JD 3039R- \$42,500 JD 8R-280 - \$378,500 JD 6105E - \$87,500 NH T5.110 - \$57,499 JD 30G - \$30,750 JD 331G - \$64,900

JD Z545R, 48", 2023, Stk#1041217..... \$6,049 Atlas TM-180 Tiller, 6', Stk#1037788 \$1,550

Fayetteville, TN • 931-433-5620



JD S690 - \$149,900 Kinze 3600 - \$53,500 JD 8R410 - \$510,000 JD 1025R - \$19,999 JD XUV 825i - \$13,000

JD 6105, 200 hrs \$87,700 Great Plains Drill, 30'\$23,500 JD Z930M.....\$5,700
Geringhoff RD800.....\$19,900 JD 608C Corn Head.....\$24,500

Mt. Juliet, TN • 615-754-2600



JD 6110M - \$148,000 JD 5075E - \$45,500 Ogden RCR812 - \$9,600 JD 1025E - \$17,000 JD 5075E - \$43,500 JD 7820 - \$78,500

Winchester, TN • 931-967-5144



JD XUV835M - \$29,500 Unverferth HT30 - \$4,500 JD 4830 - \$79,000 J&M 750 - \$32,000

Commercial Zero Turn Mowers..... CALL
Progressive 2400 Applicator, 12 row \$13,300
JD CP690 Cotton Picker\$535,000
Unverferth 1225 Harrow\$6,500
Hagie STS12\$385,000
JD 635 Moco, 1000 RPM, impeller\$13,500

Manchester, TN • 931-728-5400



JD 1590 - \$54,900 JD 1590 Drill - \$39,500 JD 6110M - \$144,900 JD 6145R - \$135,000

MacDon FD75, 35' \$65,000
JD R4023 Sprayer, 3 to choose from Call
JD 640FD, Stk#1037848..... \$28,000
JD 640FD, Stk1039772..... \$48,900
Frontier DM5070..... \$9,850

McMinnville, TN • 931-668-1784



JD 468 - \$18,900 JD 331G - \$42,900 JD 2025R - \$19,500 JD 50G - Call JD 6105E - \$86,000

| | | | | | | | |
|---|--|---|---|--|--|--|--|
| Albertville, AL 5660 US 431 (256) 850-4679 | Centre, AL 1050 Chestnut ByPass (256) 927-2300 | Dickson, TN 707 Henslee Dr (615) 229-2400 | Franklin, TN 340 9th Ave N (615) 794-8187 | Hendersonville, TN 133 N. Shackle Island Rd (615) 824-9726 | Leeds, AL 1450 TriGreen Way (205) 703-2525 | Oxford, AL 2208 AL Hwy. 21 (256) 832-1335 | Snead, AL 87221 US Hwy. 278 (205) 466-7163 |
| Arab, AL 933 N Brindlee Mt. Pkwy (256) 586-8304 | Crossville, TN 269 N. Main St. (931) 340-1012 | Fort Payne, AL 12227 Al Hwy 35 (256) 997-9089 | Gadsden, AL 1301 West Meighan Blvd (256) 456-5872 | Jasper, AL 3700 Industrial Pkwy (205) 384-3058 | Murfreesboro, TN 464 Middle TN Blvd (615) 890-6258 | Pelham, AL 3311 Pelham Pkwy (205) 605-0412 | |

16TH ANNUAL 3 DAY LATE SUMMER ABSOLUTE AUCTION**Thursday, August 7th • 9:00 AM****Friday, August 8th • 9:00 AM****Saturday, August 9th • 9:00 AM**

Construction Equipment Dozers, Excavators, Mini Excavators, Skid Steers, Dump Trucks and Service Trucks.
Tractors, Farm Equipment, Attachments, ATV's, UTV's, Mowers and Support Equipment.

We will be running multiple rings on Saturday - Bring a bidding partner!**DOWNLOAD OUR APP AND BID LIVE FROM YOUR PHONE!**

Find it on your Google Play store or Apple App Store

1733 Garden Village Dr., White Pine, TN 37890

Inspection days: Tuesday, August 5th & Wednesday, August 6th (8:00AM-5:00PM EST)**No Minimums • No Reserves • Highest Bidder Wins • Bid Live and Online**

Largest Equipment Auction in East Tennessee Near The Foothills of the Smoky Mountains! This 3 Day Auction Will Feature a Variety Of Heavy Construction Equipment, Farm Tractors & Machinery, Excavators, Backhoes, Dozers & Loaders, Graders, Pavers, Rollers, Forklifts, Boom & Scissor Lifts, Wheel Loaders, Track Loaders, Cranes, Trenchers, Chippers, Service Trucks, Trailers, Mowers, ATV's, RTV's, Farm Equipment, Golf Carts, Farm and Garden Implements & Attachments.

The full catalog will be available on Monday, August 4th at 5:00PM**Bid.ProTeamAuction.com****Accepting Farm Equipment Consignments Now!****Come Sell With A Winning Team! Often Duplicated, Never Replicated. Proven Results.****Large Inventory - Selling Worldwide!****0% Seller's Fee - Call Today****Selling For Individuals, Contractors, Rental & Leasing Companies, Lending Institutes, Farmers, Dealers, And More!****1-87PROTEAM1**Follow Us
On Facebook <https://www.facebook.com/proteambid/>

1733 Garden Village Dr., White Pine, TN 37890

Call (865) 674-7002 or Email Proteam@proteambid.com**Fax: (865) 674-0727**

Farm Equipment Specials



JD 9760 STS Combine, 2004, 2WD, 3 spd. hydro, 3385 eng., 2306 sep. very nice **\$54,500**



NI 5407 Disc Mower, 7', 540 PTO, runs smooth, field ready, Stk#4828 **\$4,250**



Kinze 2000 Planter, 6/11, 30"/>" 15" spacing, completely rebuilt, new no-tils, field ready, Stk#4804 **\$21,500**



Midland M86 6 Yard Dirt Pan, good solid box, good cutting edge, Stk#4726 **\$9,250**



JD 8200 Drill, 8', 14 hole, 7" spacing, excellent condition, hard to find size, Stk#4830 **\$6,950**



NH Rolabar 57 Hay Rake, has all teeth, 9', 540 PTO, nicest around, Stk#4835 **\$4,250**



NH 565 Square Baler, low use, excellent, field ready, Stk#4707 **\$11,500**



Brillion PT192-02 Cultipacker, 16', has all scrapers, good rollers, Stk#4811 **\$2,850**



JD 630 Disc, 20' width, has all scrapers, very good shape, Stk#4739 **\$13,500**



JD 435 Round Baler, 4x6, belts good shape, runs smooth, twine tie, Stk#4836 **\$6,450**



Brillion P14 Cultipacker, excellent shape, no breaks or welds, Stk#4794 **\$4,350**



IH 370 Disk, 10', pull type, good blades & bearings, no welds, nice, Stk#4740 **\$2,650**



Farm King 1050 Auger, 540 PTO, fighting in excellent condition, very little use, Stk#4799 **\$6,500**



NI 4217 Tedder, 4 basket, hyd. fold, manual tilt, has all shields, field ready, Stk#4856 **\$4,250**



JD 7000 Planter, 4RW, totally rebuilt, bare frame, ready to plant, Stk#4852 **\$5,850**



Case IH MD93 Disc Mower, 9', low use, runs great, excellent, Stk#4533 **\$12,500**



Timple Hopper Bottom 4062, electric roll tarp, excellent condition **Call for Price**



John Blue 400 Sprayer, 400 gal., 40' booms, excellent shape, new nozzles, Stk#4829 **\$5,450**



JD 7000 Conservation Planter, 4 row, 36", can move to 30", completely rebuilt, Stk#4814 **\$6,450**



JD 466 Round Baler, 4x6, net wrap/ twine, good belts, wide pickup, runs good, Stk#4855 **\$9,500**

| | | | |
|---|----------|--|----------|
| EZ Flow 300, EZ Trail 1074 running gear, Stk#3920..... | \$3,250 | NI 323 Corn Picker, 1 row, runs great, Stk#4703..... | \$3,850 |
| NH 258 Rake, excellent condition, Stk#4209..... | \$11,500 | Farm King 1370 Auger, Stk#4518..... | Call |
| EZ Trail 672 Head Cart, 30', very nice, good tires, Stk#4493..... | \$4,350 | Taylor Way 200101 Folding Disk, 16', 7.5" spacing, Stk#4767..... | \$4,750 |
| Case IH 1020, 25' grain platform, all fingers in reel, Stk#4475..... | \$11,500 | Int. 510 Grain Drill, 8', 7" spacing, Stk#4689..... | \$4,750 |
| EZ Trailer 672 Head Cart, 25', Stk#4487..... | \$4,150 | NI 324, 2RW, field ready, Stk#4652..... | \$6,250 |
| NH 513 Manure Spreader, excellent floor, Stk#4635..... | \$4,950 | Case IH 5300 Grain Drill, 7" spacing, Stk#4693..... | \$5,450 |
| Case IH MD93 Disc Mower, 9', low use, Stk#4533..... | \$12,500 | NH Rolabar 260, excellent condition, Stk#4269..... | \$11,500 |
| Case IH 1020 Grain Head, 25', field ready, Stk#4644..... | \$8,750 | JD 494 Corn Head, 38" row, good roller & chains, Stk#3678..... | \$4,850 |
| NI 5407 Disc Mower, 7' cut, good curtain, new blades, Stk#4725..... | \$4,750 | NI 309 Corn Picker, 1 row, Stk#4660..... | \$2,650 |
| EZ Trail 300 Gravity Wagon, EZ Trail 1074 running gear, Stk#4268..... | \$3,250 | EZ Trail 510 Grain Cart, 500 bu, Stk#4762..... | \$9,250 |



Woods 3180-2 Batwing Rotary Mower, 15', 1000 PTO, very smooth, Stk#4706 **\$8,450**

Newman Farms
www.newmanfarms.net
Cleveland, TN
Call 423-595-5715 or 423-464-5303

Parker Farms Cattle and Equipment Co.

8400 Manchester Pike, Murfreesboro, TN
Kyle Parker | 615-542-6157



Hay Feeder Wagon

20' - \$4,200

24' - \$4,700

28' - \$5,200

Call for information on custom sizes. Heavy Duty, 12 Gauge Bottom, Extendable Tongue for easy Hook-up



Disc Mower Caddy

Inline or Offset

\$4,600

Field Ready with Hydraulic Lift Cylinder and PTO Shaft. Heavy Duty and Built to Last



Mobile Feed Bin

2 Ton - \$3,450

3 Ton - \$3,750

3 Ton Tandem Axle - \$3,950

4 Ton Tandem Axle - \$4,150

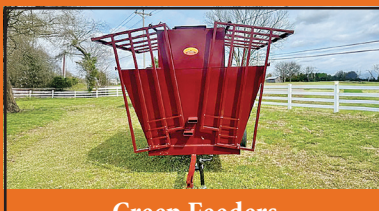


Fence Line Hay Feeders

20' - \$2,200

24' - \$2,400

Custom sizes available



Creep Feeders

1000# Creep Feeder - \$2,700

2 Ton Creep Feeder - \$4,000

3 Ton Creep Feeder - \$4,400

6 Ton Creep Feeder - \$7,000



Fence Line Hay Feeder

20' - \$4,500

16' - \$4,000

Custom sizes available



Pasture Sprayers

150 Gallon 3 Point Sprayer - \$3,750

300 Gallon Pull Behind Sprayer - \$4,450

500 Gallon Pull Behind Sprayer - \$4,650

500 Gallon Tandem Axle Sprayer - \$5,450

750 Gallon Tandem Axle Sprayer - \$7,250

Hand Wand Is Ad On at \$150

Sprayer Comes with Boom Jet Nozzle, 40'

Spraying Width, 8 Roller Pump

for Maximum Capacity



Cattle Working Systems, Corral Panels and Gates

\$7,450

180 Degree Complete Sweep Tub System Heavy Duty and Galvanized System Includes: 20' x 10' and 20'x7' Holding Pens. 180 Degree Tub with Spring Loaded Latch on Tub Gate. 20' Alley with a total of 7 bow gates with slam latches in this unit. Built in Palp Cage. All Panels are 6' tall galvanized and Heavy Duty



Hay Haulers - \$4,400



Bottomless hay feeder wagon

20' - \$4200

24' - \$4700

28' - \$5200



Covered hay feeder wagon

20' - \$6000

24' - \$6500

Like us on FB at Parker Farms Cattle and Equipment Company

Bull Gates, Bow Gates, Pasture Gates, Hay Rings, Feeder & Creep Panels, Corral Panels, Mineral Feeders, Metal Feed Bunks, Creep Feeders, Feeder Wagons, Fence line Feeder, Bunk Feeders on wheels, Grain Bins. We can customize to fit your needs on most all of our products. Price may change without notice due to unforeseen cost increase in steel and raw materials.

REGISTERED ANGUS BULLS FOR SALE

parkerfarmscattleandequipment.com • (615) 542-6157

Shipping Options to Anywhere. Credit Card Options Available.



Prices may change without notice due to unforeseen cost increase in steel & raw materials.

UPCOMING AUCTIONS!

ONLINE JULY LAND AUCTION!
DATE COMING SOON!

30 Acres+/- Open with Great Road Frontage
on County Road 33 near Greenhill, AL
Being Offered in 2 Tracts

Call Terrell Phillips (AL1898)

256-710-8651 for more information!

SUMMER ONLINE AUCTION

Rogersville Online Equipment Auction!

Begins closing at 6:00PM Thursday, July 17th

Tractors - Trucks - Trailers -

Construction - Farm Equipment & More!!!

• Open Consignment! - Call to Sell yours! •

We will be accepting items onsite by
appointment OR from 9:AM-4:PM

Monday, July 7th - Friday, July 11th

James Mackey Dr/ Hwy 72, Rogersville, AL

CALL TERRELL PHILLIPS (AL1898) FOR MORE INFO, 256-710-8651



SHANE ALBRIGHT AUCTIONS

6508 US-72 KILLEN, ALABAMA 35645

AL PHONE 256-757-8898 TN PHONE 931-762-5134

Shane Albright Owner/Broker/Auctioneer AL#1569 TN#5431

Ben Phillips Vice President/ Realtor/ Auctioneer 256-710-9683 AL#1331

UPCOMING AUCTIONS!

COUNTY ROAD 33, KILLEN, AL

Home on 6 Ac+/- joining 66 Ac+/- Farm

For more information, call Alex Pondick 256-458-4243



2657 County Rd136, Lexington, AL

145 Acres+/- with Brick Home

For more information, call Alex Pondick 256-458-4243



601 County Rd 411, Killen, AL

165 Acres+/- with Home & Buildings

For more information, call Alex Pondick 256-458-4243



SHANE ALBRIGHT AUCTIONS

6508 US-72 KILLEN, ALABAMA 35645

AL PHONE 256-757-8898 TN PHONE 931-762-5134

Shane Albright Owner/Broker/Auctioneer **AL#1569 TN#5431**

Ben Phillips Vice President/ Realtor/ Auctioneer 256-710-9683 **AL#1331**

Gardiner Farms • Tuscumbia, AL

29th Annual Saddle Up for St. Jude

Trail Ride, Auction & Concert

July 17- July 20, 2025



Shane Albright Auctions is proud to volunteer with Gardiner Farms for the 29th Annual Saddle Up for St. Jude Benefit Trail Ride, Auction & Concert!

We will be holding a **LIVE AUCTION** at **3:00PM** on the grounds of Gardiner Farms **Saturday, July 19th** with Easton Corbin following on stage at 8:00PM for a concert! ALL proceeds donated back to St. Jude!

Tickets are on sale now at saddleup4kids.org Private camping sites are also available, Contact (256) 446-5392.

Multiple Live & Online Auctions upcoming at the Shane Albright Auctions Facility. Keep watching our website at www.shanealbright.com for more info!



SHANE ALBRIGHT AUCTIONS

6508 US-72 KILLEN, ALABAMA 35645

AL PHONE 256-757-8898 TN PHONE 931-762-5134

Shane Albright Owner/Broker/Auctioneer AL#1569 TN#5431

Ben Phillips Vice President/ Agent/ Auctioneer 256-710-9683 AL#1331

ONLINE AUCTION

Bidding Ends: Thursday, July 17 • 5:00 pm CST

2390 Phillips Road, Lewisburg, TN 37091

Sale Preview Day: Saturday, July 12 • 9:00 am to 4:00 pm

Pickup Day: Saturday, July 19 & Monday, July 21 • 9:00 am to 3:00 pm

Register to Bid at **DeBerrysRockSolidAuction.HiBid.com**

15% Buyers Premium



Partial Listing

(12) Hit and Miss Engines

(9) Corn Shellers

#2, 4, 8, 10, 12, 15, 30 Cocks

(3) Western Horse Saddles

Horse Drawn New Idea Hay Rake

(2) Steel Wheels for a Tractor

Cowan & Gleason Corn Sheller

#32 - Corn Sheller, 2 hole

Horse Drawn Drill

1917 Black Eagle Corn Sheller

Hit & Miss Oilers

Leelyn Grifert 3 phase-3-headed

Drill Press

PTO Driven Corn Cracker

Economy 1 1/2 E 550 RPMs Hit & Miss

Yager 2 HP Hit & Miss

Stover 1 1/2k Double Tagged Hit & Miss

International M-Motor Pulley, 14"

Hit & Miss

Economy 5E 5 HP Hit & Miss on a stand

1911 Black Eagle Sheller

(4) Wooden Vintage Cheese Boxes

Upright Gris Meal

Meadows Gris Meal with Pan

Vintage Baler Tying Bell & Block

(3) Gris Meal Hoppers

Wooden Horse Drawn Planter

Jim White Hit & Miss on Engine Cart

2003 Spring Daie Camper

5.9 Cummings Pump Truck

Massey 50A Loader & Backhoe

JD 3 Point Hydro Post Driver

Much More

DeBerrys RockSolid Auction Co.



David DeBerry (256) 504-5450

AAL#5324

Gerald DeBerry (256) 601-0924

TN Lic#7276

Chady Johns Auction Service

5453 Tennessee Central Rd., Chapel Hill, TN

(615) 210-2669

Visit Auction Zip and Facebook

West TN Online Equipment AUCTION

Location: 60 Memory Lane (Hwy. 45), Henderson, TN 38340
Receiving Equipment: July 7 - 11 • 9:00 am - 4:00 pm
Jacob Hamilton (731) 798-0295
Brian Massey (931) 703-2150



VanMassey
AUCTION & REALTY
(931) 433-8686

31 Lynchburg Hwy.
Fayetteville, TN 37334

TN Lic. 1711

AL Lic. 1289

MS Lic. 1609

FL Lic. 5344

Online Estate AUCTION

Construction & Farm Equipment, Vehicles, Shop Equipment
Selling for the estate of the late Mr. Sidney D. Naymon
Location: 2135-B County Lake Rd., Gurley, AL 35748
Bidding Ends: Monday, August 11 • 7:00 pm
Preview Day: Thursday, August 7 • 3:00 pm - 5:00 pm
Pick-up Day: Tuesday, August 12 • 10:00 am - 3:00 pm

See More at vanmassey.com



VanMassey
AUCTION & REALTY
(931) 433-8686

31 Lynchburg Hwy.
Fayetteville, TN 37334

TN Lic. 1711

AL Lic. 1289

MS Lic. 1609

FL Lic. 5344

August Online Construction & Farm Equipment Consignment AUCTION

Location: 31 Lynchburg Hwy., Fayetteville, TN 37334
Receiving Equipment: August 4 - 8
Selling All Types of Farm & Construction Equipment
Please Note: No small, low-valued items, salvage items or worn-out tires will be accepted.

We work hard everyday (as we have for over 40 years) to maintain our reputation as one of the most respected Auction Companies anywhere to be found. If we've never had the privilege and opportunity to sell for you, we ask that you give us a try. We market your product to the world! You will like what our experience and dedication can do for you. That's our personal promise.



Call us today.

Joe Massey (931) 675-9606 or
Jacob Massey (931) 607-2771



VanMassey
AUCTION & REALTY
(931) 433-8686

31 Lynchburg Hwy.
Fayetteville, TN 37334

TN Lic. 1711

AL Lic. 1289

MS Lic. 1609

FL Lic. 5344

Retirement Collector Car Online AUCTION



Ends: Tuesday, July 8 • 7:00 pm
Location: 100 Vanntown Rd., Flintville, TN
Selling 13 vehicles plus 4 Garage Lift Racks
for Mr. Walter Szelich who is retiring
at 89 years young!



Preview Day: Tuesday, July 1 • 3:00 pm - 5:00 pm
Pickup Day: Wednesday, July 9 • 10:00 am to 2:00 pm

[See More at vanmassey.com](http://vanmassey.com)



VanMassey
AUCTION & REALTY
(931) 433-8686

31 Lynchburg Hwy.
Fayetteville, TN 37334

TN Lic. 1711

AL Lic. 1289

MS Lic. 1609

FL Lic. 5344

Online Real Estate AUCTION

Ends: Tuesday, July 8 • 8:00 pm
57 +/- Acres located near the beautiful Mimosa
Community in Lincoln County, TN
Location: 33 Lane Branch Rd., Fayetteville, TN 3734

[See More at
vanmassey.com](http://vanmassey.com)



Online Firearm, Knife and Ammo AUCTION

Ends: Tuesday, July 22 • 7:00 pm
Location: 31 Lynchburg Hwy., Fayetteville, TN 37334
Preview Day: Friday, July 18 • 2:00 pm - 4:00 pm

Over 500 Items Selling!



Online Estate AUCTION

Ends: Tuesday, July 29 • 7:00 pm
Preview: Thursday, July 24 • 2:00 pm - 4:00 pm
5 Acres, Nice Home, Large Shop
Location: 31 Luxor Lane, Fayetteville, TN
Selling for the estate of the late Mr. Raymond Dahlman

[See More at
vanmassey.com](http://vanmassey.com)



VanMassey
AUCTION & REALTY
(931) 433-8686

31 Lynchburg Hwy.
Fayetteville, TN 37334

TN Lic. 1711

AL Lic. 1289

MS Lic. 1609

FL Lic. 5344

Live Estate AUCTION

With Online Bidding Also Available

Saturday, July 19 • 10:00 am • 189 S. Fishing Ford Rd. & Twin Springs Rd., Petersburg, TN 37144

Very Nice Home, Barn, 124 Acres (in Tracts), Tractors, Equipment, More. Selling for the Family of the late Mr. Mike A. Brown.

Real Estate: One of the most beautiful homes and farms that you can find anywhere, located in the heart of Southern Middle TN. The house and barn will be sold with approx. 26 Acres. The remaining land will be offered in Tracts, ranging from approx. 5 to 15 Acres each. The farm is fenced and cross-fenced, paved road, public water.



Real Estate Sells At 12 Noon

Preview Day:

Saturday, July 5 • 10:00 am - Noon/
Friday July 11 • 3:00 pm - 5:00 pm

See More at vanmassey.com



Tractors: 2024 Kubota M6-131, 4x4, only 122 hrs., cab, 540 and 1000 PTO, w/LA225 Loader & Bucket; 2024 Kubota M6-111, 4x4, 637 hrs., cab, 540 and 1000 PTO, w/LA 1955 Loader & Bucket. (Both Tractors have 4 years transferable warranty).

Hay Equipment: 2021 McHale V6-750 Round Baler, 5002 bale count on monitor, 540 PTO, nice; 2024 Kuhn GMD-280 Disc Mower w/lights; Krone KW5.52 4x7T Tedder, nice; JD S-300 Mower/Conditioner w/Neoprene Rollers; Ogden RCR-812 V-Rake w/2 hydraulic Wheel Rack; Tubeline In-Line TL 50 LSV Hay Wrapper w/lights & steering, 2421 Bales; JD 3 prong Front Hay Spear; (2) Land Pride Front Hay Spears

Trailer: 2021 GPI 24' Gooseneck Dual Tandem Flat Trailer, 10k axles, adjustable dove-tail, nice.

Other Equipment: 2024 JD FC-15M Cutter, 15', 540 PTO, like new; 2021 H&S GM 170 Grinder Mixer; Ficklin Gravity Wagon with extensions; 5 Ton and 3 Ton Grain Bins, with Augers; 2024 Patriot 3 Ton Portable Creep Feeder; River Road Cattle Chute, with Palpation Cage and Foremost Head Catch; Several HD Hay Rings; (6) Tarter Metal Bunk Feeders; (5) 20' Continuous Fence Pieces; HD Cattle Panels; (2) Small Creep Feeders; 3 pt. 3 Gang Plow; 3 pt. 6' Box Blade; JD Draw Bar; Several Mineral Feeders & Tubs; 3 pt. Cone Seeder/Spreader; 200 Gallon 3 pt. Sprayer; 100 Gallon Fuel Tank; JD Zero-Turn Mower, 72"; JD Zero-Turn Mower, 54"; Daytona Generator/Farm Power Plant, 540 PTO; New Firman 3650 Generator; 1200 Watt Generator; Hobart Multi-Handler 200 Welder; New Chicago Electric Welder; and more.

Terms: 10% Buyers Premium Applies. Real Estate: 10% of purchase price required down day of sale with balance due at closing within 30 days. 2025 Taxes pro-rated. Possession of House given 21 days after closing. **All Equipment & Other:** Cash or Good Check w/Bank Letter of Approval Day of Sale.



VanMassey
AUCTION & REALTY
(931) 433-8686

31 Lynchburg Hwy.
Fayetteville, TN 37334

SUMMERTOWN METALS ®LLC



Land ✓ Equipment ✓ Now Get The Barn!



30'x72'x14'

3 SIDED HAY BARN

MATERIALS ONLY

\$11,426

INSTALLED

\$16,850

- Steel Trusses w/ 18" Overhang
- 40-year, 29 gauge painted metal
- 25-year, 29 gauge galvalume roof
- **ID: 0147037**

Questions? Give us a call!
931-500-1525

Follow us on social media
@SummertownMetals



Building Materials



Building Installation



Custom Design



40'x84'x14'

HAYBARN

- Steel trusses
- [2]-60'x14 sidewalls
- 40-year, 29 gauge painted metal
- 25-year, 29 gauge galvalume roof
- ID: BKFA08414-1

MATERIALS ONLY

\$11,709

INSTALLED

\$16,917



30'x72'x14'

THREE SIDED BARN

- Steel trusses
- 18" overhang on eaves
- 40-year, 29 gauge metal walls
- 25-year, 29 gauge galvalume roof
- ID: QO-0145180

MATERIALS ONLY

\$11,426

INSTALLED

\$16,850



40'x60'x14'

ENCLOSED SHOP

- Steel trusses
- [1] 12x12 Garage Door
- [1] 3068 Wak Door
- 40-year, 29 gauge painted metal gables
- 25-year, 29 gauge galvalume roof
- ID: QO-0145176

MATERIALS ONLY

\$18,149

INSTALLED

\$25,599



40'x60'x14'

THREE SIDED BARN

- Steel trusses
- [2]-40' walls enclosed
- [1]-60' wall enclosed
- 8" vent gap
- 40-year, 29 gauge painted metal gables
- 25-year, 29 gauge galvalume roof
- ID: QO-0137045

MATERIALS ONLY

\$14,139

INSTALLED

\$20,139



30'x50'x12'

GARAGE

- Steel trusses, no overhang
- [2]-10x10 garage doors
- [1]-36" walk-in door
- 40-year, 29 gauge painted metal
- ID: BKFA305012-1

Optional concrete is available for an additional \$15,800. Price may vary dependent upon location.

MATERIALS ONLY

\$15,195

INSTALLED

\$20,675



BROWSE ONLINE

Scan to view more buildings online or to book an appointment with a Building Specialist

SummertownMetals.com

Prices are subject to change without notice and do not include tax or shipping.

Installation by an independent contractor is available only within Tennessee or within a 200-mile radius of our Summertown Metals branch locations in Hopkinsville, KY, and Hayden, AL. Buyers are responsible for obtaining necessary codes and permits, which may require additional materials or costs depending on location. Material-only packages do not include concrete and can be delivered up to 300 miles from any Summertown Metals location. For deliveries beyond 300 miles, third-party shipping is available, with all arrangements being the buyer's responsibility.

ABSOLUTE ESTATE AUCTION!

Saturday, July 19th @ 10am

4 Bed 2 Bath Brick House & +/- 10.76 Acres
Mobile Home (To Be Moved), Furniture, and Household Items
3315 Eastbrook Rd, Estill Springs, TN 37330

Live On-Site Auction With Online Bidding Available For The Real Estate
Real Estate Sells at 11am



Don't miss this real estate auction—selling a 4-bedroom, 2-bathroom brick house on +/- 10.76 acres just 12 minutes from the Square in Winchester! This move-in ready property includes a barn, storage shed, covered front and back porches, and an attached carport. Inside, you'll find a spacious layout with a large utility room/pantry, nice kitchen, dining area, and large living room. Houses with acreage are getting harder to find, so don't miss this opportunity!

Selling for The Estate of James & Bonnie Brandon

Personal Property & Mobile Home Will Be Sold Live Onsite Only Beginning at 10am



TERMS ON REAL ESTATE: 10% down day of sale. Balance on or before 45 days.
TERMS ON PERSONAL PROPERTY: Cash, check, or credit/debit card due day of sale.
Everything sold as is with no warranties expressed or implied. Sale day announcements take precedence. Houses built prior to 1978 are subject to lead based paint. In accordance with Federal Law, buyers will be allowed 10 days prior to sale to have house inspected at their expense or a form will be signed day of sale waiving rights.
NO BUYER'S PREMIUM!



Winton Auction & Realty
931-967-3650|WintonAuction.com

ABSOLUTE AUCTION!

Saturday, August 2nd @ 10am

Brick House, Shop, Barn, & +/- 6.65 Acres in 3 Tracts
Furniture, Appliances, Tools, and More Personal Property
39 Sugar Cove Rd, Huntland, TN 37345

Live On-Site Auction With Online Bidding Available For The Real Estate
Real Estate Sells at 11am



Panoramic Mountain Views!!!

This property is selling to the highest bidder regardless of price and without reserve! Properties with a view like this do not hit the market too often. This property is being offered in three tracts with the option to regroup so whether you are looking to build your dream home or start your own mini farm, this is the auction for you!

Tract #1: Brick House, 26' x 52' 3 bay shop, and 20' x 36' barn on +/- 3.506 acres.

Tract #2: +/- 1.573 Acres, city water and power available, good soils for septic systems.

Tract #3: +/- 1.573 Acres, city water and power available, good soils for septic systems.

TERMS ON REAL ESTATE: 10% down day of sale. Balance on or before 45 days.

TERMS ON PERSONAL PROPERTY: Cash, check, or credit/debit card due day of sale.

Everything sold as is with no warranties expressed or implied. Sale day announcements take precedence. Houses built prior to 1978 are subject to lead based paint. In accordance with Federal Law, buyers will be allowed 10 days prior to sale to have house inspected at their expense or a form will be signed day of sale waiving rights.

NO BUYER'S PREMIUM!



Winton Auction & Realty
931-967-3650 | WintonAuction.com

Lots More Farm Equipment For Sale (Most Used On My Farm)



JD 450H
3100 hrs., nice machine
\$42,750



JD 4020, joystick, QA
bucket, straight as they come,
console - \$18,750



JD 120C off the farm,
clean out bucket, reg.
bucket \$47,750



Kubota 105s
4WD, shuttle shift,
4500 hrs. - \$31,750



JD 550H
LGP, runs good
\$42,750



Cat 312B
w/thumb
\$36,750



JD 8400
good tractor
Call



JD 4230
good tractor, 8200 hrs.
\$18,750



JD 8420
nice tractor
\$55,500



Mack Truck, 2000, 460
engine, wet kit, 600k
miles, 10 spd., off farm
\$28,750



JD 550H Dozer 4100
hrs., good machine
\$42,750



Hitachi 200 LC - good
machine, high hours
\$34,750



JD 4240
Bucket & Hay spear
\$27,500



JD 8430
5100 hrs.
\$132,750



JD 450G winch,
5400 hrs., good machine
\$36,500



JD 8520 IVT front end,
good tractor
\$62,750



JD 700j
3500 hrs., Cab & Air, Root
Rake - \$92,750



JD 455G 4100 hrs.,
good machine
\$27,500



2000 Mack 8LL 44 rears,
long frame, double frame
\$22,750



Komatsu MP88 - with
bush cutter, bush head never
used on trackhoe - \$59,750



Cat D6T
2012, good machine,
13 1/2' \$72,750

| | |
|---|-----------|
| Kubota Tractor L3301, 750 hrs., 4WD | \$16,750 |
| Palmer Dump Trailer, 18' | \$11,750 |
| DTatch Pitts Contender, 2018 MD, has hyd., 3 axle..... | \$48,570 |
| JD CX15 Cutter, 15', good..... | \$16,500 |
| JD Offset Bog Disk, 8'..... | \$6,850 |
| Amoco J42B Bog Offset Disc, 15', used one time | \$23,758 |
| KW Truck, N14 Cummins 2000, wet kit, nice truck | \$39,750 |
| Takeuchi TB210R Mini Excavator..... | \$12,750 |
| JD 750K, 2014, 5400 hrs. used on farm | \$121,500 |
| JD 4450 Tractor, 6242 hrs..... | \$39,750 |
| Dodge Service Truck, 2007, auto, Cummins | \$12,750 |
| MF 243, 600 hrs., one owner, Perkins eng., 1032 loader..... | \$18,750 |
| JD 650 HD Cutting Disk, 25', new blades..... | \$17,750 |
| JD 8310R, 5600 hrs., good tractor..... | \$127,750 |
| JD 637 Rock Disk 29.3' wide, 21 1/2" blades, good disk..... | \$16,750 |
| JD 8400 7th & 8th gear slips, duals, 12k hours..... | \$32,500 |



2001 Mack 8LL trans., 350
eng., double frame, good
tires, good truck \$35,750

Call Gary 256-335-4919

Florence, Alabama
Used Trucks Plus TTL

\$30 Rebate*
on the first 10 orders

FREE SHIPPING!*

Certified ROPS and Shade Canopies



John Deere



International

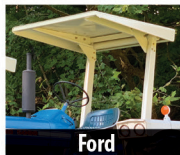


Oliver

Iron Bull also manufactures metal shade canopies and support frames for Massey-Ferguson, Ford and Allis-Chalmers tractors



Massey-Ferguson



Ford



Allis-Chalmers

- **Certified ROPS** for John Deere, International and Oliver Tractors
- **Canopies look like the Original**
- **100% Satisfaction Guarantee**

Optional Headliner



- Reduces tractor vibration noise
- Added summer heat protection
- Pre-installed in the canopy

"I recommend the Headliner option. I had noise transferring from my tractor to the canopy. Since installing the Headliner, it is quiet." Robert Mann, IL

NOW AVAILABLE!
Front Wheel Fenders.
Call for details.

*Orders must be placed by July 31, 2025



Call 765-597-2480

Animals

FOR SALE, REGISTERED BLACK ANGUS BULLS, will qualify for the full TAEP money, all are by the top AI bulls in the breed. Crawford Angus. Lewisburg, TN. (931)205-2450; (931)359-2633. crawfordangus@bell-south.net

REGISTERED BLACK ANGUS BULLS all yearling bulls sold, will have more in October. Turrentine Angus, Shelbyville. (931)607-8950; aturrentine@cafes.net.

WAGYU POLLED HEIFERS for sale. (256)714-6182.

REGISTERED BLACK HEREFORD BULLS, three 2-year-olds, several yearlings to choose from. Located in Murfreesboro, TN, big-framed and stout, ready for heavy service, \$3,500. (615) 207-9097 JLFELECTRIC@BELL-SOUTH.NET



YOUNG BULLS polled, registered, gentle. Quality Cattle Since 1977. Facebook: Happy Valley Ranch Santa Gertrudis (256) 566-7878 lindadkelso@yahoo.com



REGISTERED ANGUS BULLS, TAEP in TN & KY, big strong bulls with great EPDs, several heifer bulls available, Genomic tested for accuracy, BS exam. FandPLivestock.com; (615) 653-8913

REGISTERED POLLED HEREFORD bulls for sale. Lynnville, TN area. (931)527-3392.

PURE BRED POLLED HEREFORD BULLS for sale. (931) 363-0445

FOR SALE, small group of registered Black Angus cows. (931) 308-4939

Dogs

AUSTRALIAN SHEPHERD PUPPIES, 3 merle, 1 black tri, all females, born 3-20-25, ready to pick out, will have first shots/dewormed; also 2yr. old male Toy Poodle. John J. Gingerich, 146 Fox Hunters Lane, Morrison, TN 37357.

BORDER COLLIE PUPS 8 weeks old. Smart and loving- make excellent herd dogs. Parent dogs registered with American Border Collie Association. (615)542-9311; maryjthom1225@icloud.com.

Other

PEAFOWL, I HAVE A few high quality Peacocks and Peahens available for sale. Spalding, Yearling and Breeder age. White spalding yearling hens with Pied Spalding Yearling cock. Also breeder age Java Green hen. Serious calls please. (931)652-3164.

CHICKS, DUCKLINGS, GOSLINGS, Poult, and young goats for sale. Cullman, AL area. (256)930-8530.

Got Tools to Sell? We've Got Buyers!

Place your ad online at
www.FarmersExchange.com
or by calling 800-247-7318.

Ritchie Water Tank

We Carry 2 and 4 Hole



Priefert 12' Corral Panel
\$220⁰⁰



30% Protein Tub with Fly Control
225 lbs.
\$145⁰⁰
per tub with this ad

Priefert®

Farm, Ranch & Rodeo



Mineral with Fly Control **\$23⁵⁰** per bag with this ad

Guntersville

FEED STORE LLC

& GARDEN CENTER

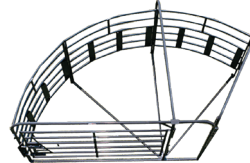
256-582-4411

1321 Blount Ave. Guntersville, AL

guntersvillefeedstore.com

Stocking Lots of Priefert Products

Priefert S04 Chute
Call For Prices



Priefert 135 Sweep Tub Primier
Call For Prices

All prices for advertised products with this ad

Building Products



Residential commercial agricultural building supplies. Fayetteville lumber & supply inc., Now available to serve you from two locations! 1404 Washington street west and 1100 winchester highway, fayetteville, tn 37334. (931)433-9126. *All types of building materials from rebar, sand, gravel, blocks, all types of lumber, and much more. *Huge selection of millwork, trim, interior/exterior doors, and windows. *All types of power tools and hardware. *Interior/exterior paint. We also have a laser color match machine that we can match any color. *All types of wood and wire fencing products, along with a huge selection of farm gates. *We sell building packages for all types of structures, including new homes, commercial buildings, and agricultural buildings. Please see attached photos for our labor and materials package deals on our agriculture buildings. *All types of plumbing, electrical, and hvac parts. (931) 433-9126 Englishservicecompany@gmail.com

PIGEONS, EIGHT BREEDS WHITE HOMERS, Fain Tails, B'ham Rollers, Archangel, Zitterhals Shakers, Lincoln, AL. (205)362-9480.

Pigs

PIGS FOR SALE, 3/4 Berkshire, 1/4 White; weaner pigs 8-12 weeks, BBQ pigs with deposit, Butcher pigs with deposit. Govern Livestock. (931)675-0898.

Got Livestock to Sell?

We've Got Buyers!

Place your ad online at www.FarmersExchange.com or by calling 800-247-7318.

Announcements

MILLER FARMS
Angus Beef from the farm. 100% natural, non-GMO, hormone and antibiotic-free. Whole, halves, or by the pound. Slaughtered and packaged. (931)593-3702.

STORAGE TRAILERS FOR RENT OR FOR SALE, Lebanon, TN area. (615)714-3894.

To Place A Classified Call
800-247-7318

Attachments

JOHN DEERE, 541 LOADER & BRACKETS for sale, \$3,800. (256) 773-8080

Fertilizer Applicators

ADAMS FERTILIZER BUGGY for sale, \$4,000. (256) 773-8080

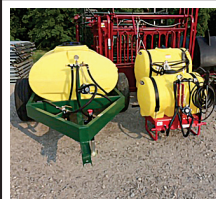
To Place A Classified Call
800-247-7318

Got Equipment to Sell?

We've Got Buyers!

Place your ad online at www.FarmersExchange.com or by calling 800-247-7318.

Sprayers



AG SPRAY EQUIPMENT
3-point and pull-type sprayers come with boomless nozzle. 3 point sprayers all have hand wands. 3 point 65 gal \$1,450, 110 gal \$2,550, 150 gal \$2,850, 200 gal \$3,300. Pull-type with used tires 300 gal, \$4,200; 500 gal, \$4,550. Booms available. Call Chris at Farm Service Solutions; or, visit farmservicesolutions.com; (931) 242-7675

Construction Equipment

JOHN DEERE 550H, LGP, runs good, \$42,750. (256) 335-4919

Got Tools to Sell? We've Got Buyers!

Place your ad online at www.FarmersExchange.com or by calling 800-247-7318.

Specializing in Rugged, Reliable and Reasonably Priced Flat Beds, Arm Beds and Spike Beds



RRP TRUCK EQUIPMENT

SPARTA, TN (931) 761-3554





6175R JD, C/A, 4x4,
85% tires, 3 sets
remotes, quick hitch
\$43,500



231 Massey Fergus-
son, P/S, 1,432 hrs.,
Bush Hog loader
w/spear **\$7,900**



T4.75 NH, C/A, 4x4,
1,563 actual hrs.,
super clean **\$39,500**



5100M JD, C/A, 4x4,
new tires, left hand
reverser **\$32,500**



BW12 Woods Mow-
er, like new, warranty
remaining, **\$14,900**



4320 JD 130 hp, 3pt,
dual remotes, 1972
model, not a high
hour tractor! **\$13,900**



7140 Case, C/A, 4x4,
Cummins diesel, runs
and operates great!
16 speed power
shift, duals included
\$38,500



7420 JD, C/A, 4x4,
135 hp, power-quad
trans. with left hand
reverser, OA loader w/
bucket, triple remotes,
7251 hrs. **\$53,500**



420 JD, 2 cyl. slant
steer, wide front, me-
chanics special, runs
but need tlc **\$1,800**



6200 JD, C/A, 4x4,
89hp, 20 speed pow-
ershift with right hand
reverser, 4,429 actual
hours, original, super
clean **\$34,500**



455D Ford 4x4 Loader
Tractor w/ boom and
original bucket. One of
our main loaders for over
10 years! Just don't need
anymore. **\$8,500**



Ford 9000, Cummins
350 (good), 5+2
trans., 28' rollback bed
with winch (works),
mechanics special,
needs tlc **\$4,000**



JCB 8029CTS Mini
Excavator, 1,515
hours, super nice!
\$19,800



3330 Alabama Hwy. 36, Moulton, AL 35650

Auctioneer: Ken Nelson, AL #1326

Hours 8:00 a.m. - 5:00 p.m. Monday - Friday



574 International, DSL,
power steering, good tires,
been sitting a while but turns
over, mechanics special **\$2,500**



JLG SkyTrak 8042,
runs and works nicely,
4,421 hrs. **\$21,500**

TAC ENTERPRISES • www.tacenterprises.net • (256) 974-8588

Dozer

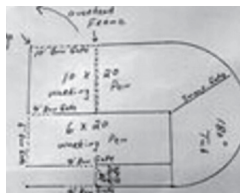
2012, CATERPIL-
LAR D6T good ma-
chine, 13.5', \$72,750.
(256) 335-4919

Fencing & Cattle Equipment

BEHLEN CREEP
FEEDER for sale,
excellent condition,
Scottsboro, AL area,
\$500. (256)259-1183.



PARKER FARMS
FENCE LINE FEED-
ERS, heavy duty, top
seller, 20' \$2,200; 24'
\$2,400; other custom
sizes available. We
appreciate your busi-
ness. Parker Farms.
[parkerfarmscattle-
andequipment.com](http://parkerfarmscattle-andequipment.com);
(615) 542-6157



180 DEGREE SWEEP
TUB with 7' bow
gates, 6' tall, heavy
duty. (615)653-8913.



BULL GATES-16
GAUGE, 51" and 63"
tall, 4'-20' long, good
inventory. Fand-
PLivestock.com;
(615)653-8913.



BOW GATES 16
GAUGE, 6' tall, good
inventory, 4' up to 12'
combo bow gates-ex-
ample 12' with 4' wt.
FandPLivestock.com;
(615)653-8913.

Other

**DECALS
& DECAL SETS
FOR
HEAVY
CONSTRUCTION
& AG EQUIPMENT**

DECALS AFFORD-
ABLE DECALS AND
SAFETY DECALS.
Prompt. Knowledge-
able Reliable Service.
www.QuipCal.com;
Call, (215)536-5339;
email:[info@custom-
servicescompany.com](mailto:info@custom-servicescompany.com).

**Got Livestock
to Sell?
We've Got Buyers!**

Place your ad online at
www.FarmersExchange.com
or by calling 800-247-7318.

**To Place A
Classified Call
800-247-7318**

**Got Equipment
to Sell?
We've Got Buyers!**

Place your ad online at
www.FarmersExchange.com
or by calling 800-247-7318.

**To Place A Classified Call
800-247-7318**

WE ARE YOUR FULL SERVICE DEALER FOR

**SPARTAN
MOWERS**



Spartan Zero Turn Mowers starting at **\$3,999**

SOUTHERN MIDDLE TN LAWN

3915 Hwy 43, Ethridge, TN 38456 (Next to Chapman Tire) • 931-829-3324 • 931-829-2155



• Farm Tire Service Truck, Available for On-Farm Service Calls – New & Repairs • Semi-Truck & Trailer Tires – New, Repairs & Balancing

Giles County's Oldest Tire Dealer, Locally Owned Since 1950

Total Tire Care for all Lawn Mower, Vehicle, ATV, Trailer, Semi-Trucks Tires & Agricultural Farm Tires



**FARM TIRE SERVICE TRUCK AVAILABLE
FOR SERVICE CALLS!**



Other Passenger Vehicle Shop Services

HUNTER TCX645 TIRE MACHINE

To More Efficiently, Quickly, & Safely Dismount & Mount Semi-Truck Tires & Agricultural Farm Tires

HUNTER HD ELITE BALANCER MACHINE

To Balance All Size Semi Truck Tires without having to use balancing beads



435 North 1st Street, Pulaski, TN 38478 • (931) 363-3516 • mckayfirestone@energize.net



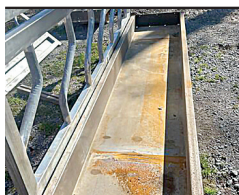
CORRAL PANELS, 16 GAUGE, 6' tall, good inventory, 8' up to 16' long. FandPLivestock.com; (615)653-8913.



PARKER FARMS CATTLE & EQUIPMENT. Call us today for quality farm equipment at reasonable prices. Check out our new website parkerfarmscattleandequipment.com. Located in Murfreesboro, TN. Shipping Available. (615) 542-6157



HAY FEEDER PANELS, 6' up to 16' long, 16 gauge, 2"x3" construction and built to last a lifetime, you will not find a better made panel, custom lengths available, TAEP item in Tennessee. FandPLivestock.com; (615)653-8913.



FENCE LINE FEEDERS, 10' long; troughs are 10-gauge metal, 30' wide and 7" deep. FandPLivestock.com; (615) 653-8913



PARKER FARMS CATTLE & EQUIPMENT. Call us today for quality farm equipment at reasonable prices. Check out our new website parkerfarmscattleandequipment.com. Located in Murfreesboro, TN. Shipping Available. (615) 542-6157

**To Place A
Classified Call
800-247-7318**

Got Tools to Sell? We've Got Buyers!

Place your ad online at
www.FarmersExchange.com
or by calling 800-247-7318.



ROUND PEN PANELS, 12' galvanized; 5' tall, \$120 each; 4' tall, \$120 each; 6' tall, \$140 each; available in economy medium duty-heavy duty. FandPLivestock.com; (615)653-8913.

CONTACT US FOR ADVICE, pricing, and options for your next farm fencing project. We offer a large variety of wood posts, both square and round, a big selection of barbed wire and net wire in black and galvanized. We have hundreds of Tarter gates in stock. We also have t-posts and high-quality fence boards 1x6x14 ft and 1x6x16 ft. Check out our prices for MiraFount livestock waterers. Finley Fence Supply, Cornersville, TN 37047. Contact us by phone (931)675-3260; or (931)607-5941; or email at finleyfence-supply@gmail.com.

**To Place A
Classified Call
800-247-7318**

Got Equipment to Sell? We've Got Buyers!

Place your ad online at
www.FarmersExchange.com
or by calling 800-247-7318.



PARKER FARMS FENCE LINE FEEDERS, heavy duty, top seller, 20' \$2,200; 24' \$2,400; other custom sizes available. We appreciate your business. Parker Farms. parkerfarmscattleandequipment.com; (615) 542-6157

Harvesting Equipment

FARM KING AUGERS, several sizes, overstocked, reduced prices. (270) 586-6653

**To Place A
Classified Call
800-247-7318**

Got Livestock to Sell? We've Got Buyers!

Place your ad online at
www.FarmersExchange.com
or by calling 800-247-7318.

Y-C BRAND

SHELBY CATTLE CO. GENETICS

Registered Angus Cattle For Sale

Y-C BRAND

**Bulls & Heifers
For Sale**

Your source for powerful, easy fleshing, beautifully uddered, maternally efficient Angus Cattle that "do it on Grass!"

YODER CATTLE CO.

Call Today! 731-414-1261
318 Bradford Hwy., Rutherford, TN 38369 • yoder6@daystar.io



Rowden & Sons
Dale Rowden
(706) 201-4106

2231 GLENOBEY RD.
JAMESTOWN, TN 38556

WWW.ROWDENANDSONS.COM

CONSUMER FINANCING AVAILABLE!

- NO MONEY DOWN!
- 90 DAYS NO PAYMENT!
- UP TO 84 MONTHS = LOW PAYMENTS



2006 JD 310G 2,369 hrs., Cab with A/C Heat; Deere 73 HP diesel; 13,800 lbs operating weight; Original paint, Extendahoe. "One Owner. Extra Nice" **\$26,500**



2012 Kut Kwick SSM38-72D 572 hrs., Yanmar 36 HP Industrial diesel engine; 3,320 lbs operating weight; 72" heavy duty deck; Operational braking; Hydrostatic steering; Good tires; Operates on slopes up to 40 degrees; "Starts, Runs And Operates Well" **\$13,500**



2017 Takeuchi TL12V2 2,626 hrs., Cab with A/C Heat; Kubota 111 horse power diesel; Hi Flow hydraulics; 4,107 lbs operating capacity; 11,737 lbs tipping load; Joystick controls; Good tracks; New heavy duty 80" smooth bucket and JBX 4000 lb forks. **\$39,500**



2006 Bobcat S185 2,693 hrs., Cab with A/C, Heat; Kubota 59 horse power diesel; Auxiliary hydraulics; 1,850 lbs operating capacity; 4,076 tipping load Original paint. "Job Ready!" **\$19,800**



2017 Yanmar VIO35-6A 2,608 hrs., Enclosed cab with cold A/C, Heat; 8,200 lbs operating weight; Quick coupler; 18" digging bucket; Aux hydraulics; 11" rubber tracks; Front dozer blade; 2 speed; Original paint. "Always Serviced. Pre Def. Job Ready!" **\$27,500**



2014 Case 580SN 739 hrs., Enclosed cab with cold A/C, Heat; 4x4; Extendahoe; 81" front bucket, 24" rear bucket; Ride control; Joystick controls; Original paint. "Pre Def. Extra Clean" **\$48,500**



2012 Bobcat T630 3,491 hrs., Cab with A/C Heat; Kubota 74 horse power diesel; Power Bobtach 78" bucket; Auxiliary hydraulics; 2,100 lbs operating load; 6,000 lbs tipping load; 8,500 lbs operating weight; Original paint. Comes with New JBX 4000 lb Forks, "Extra Nice!" **\$28,500**



2004 JLG G6-42A 2,878 hrs., Deere 99 HP 4.5 liter diesel; 20,400 lbs op weight; 4x4; 4 wheel steer; 6,600 lbs max lift capacity; 42' max lift height; 13-24 tires; Clean carriage with 6' forks; Work lights; Original paint. "Job Ready" **\$31,500**



1999 Cat D5M XL 8,864 hrs., CAT 3116T 121 Horse power turbo diesel; Powershift transmission; 9' 11" 6-Way blade; Limb risers; 65% CAT undercarriage; Light package; 22" single grouser tracks. "Extra Nice!" **\$47,500**

QUALITY USED EQUIPMENT FROM A NAME YOU CAN TRUST! Follow us on Facebook at Rowden And Sons

Grain Carts



PARKER FARMS MOBILE FEED BINS, 2 ton, \$3,450; 2 ton, \$3,450; 3 ton, \$3,750; 3 ton tandem, \$3,950; 4 ton tandem, \$4,150. Call today to get on our build list. We appreciate your business. Parker Farms. parkerfarms-cattleandequipment.com; (615) 542-6157

To Place A Classified Call
800-247-7318



PARKER FARMS MOBILE FEED BINS, 2 ton, \$3,450; 3 ton, \$3,750; 3 ton tandem, \$3,950; 4 ton tandem, \$4,150. Call today to get on our build list. We appreciate your business. Parker Farms. parkerfarms-cattleandequipment.com; (615) 542-6157

Hay & Forage Equipment

KUHN 7' DISC MOWER for sale, \$2,200. Readyville, TN area. (629)395-4558.



PARKER FARMS DISK MOWER C A D D I E S, heavy-duty, field-ready, hydraulic lift, PTO included. We appreciate your business. Parker Farms. parkerfarms-cattleandequipment.com; (615) 542-6157

Got Tools to Sell? We've Got Buyers!

Place your ad online at www.FarmersExchange.com or by calling 800-247-7318.

To Place A Classified Call
800-247-7318



PARKER FARMS DISK MOWER CAD-DIES, heavy-duty, field-ready, hydraulic lift, PTO included. We appreciate your business. Parker Farms. parkerfarms-cattleandequipment.com; (615) 542-6157

Mower Conditioners & Windrowers

FARM KING FINISH MOWERS, 6' and 7', call for pricing. (270) 586-6653

Got Livestock to Sell? We've Got Buyers!

Place your ad online at www.FarmersExchange.com or by calling 800-247-7318.

Got Equipment to Sell? We've Got Buyers!

Place your ad online at www.FarmersExchange.com or by calling 800-247-7318.

GREAT SELECTION OF USED STEEL

IN THE NEED OF STEEL? COME SEE US!
USED STEEL INVENTORY CHANGES WEEKLY
USED STEEL IS \$0.35/LB



54 RECYCLE DR., TULLAHOMA, TN 37388
CFCPICKANDPULL.COM USEDSTEEL@CFCRECYCLING.NET

#1 POLE BARN SOURCE

Customize Any Building, Steel and Wood Frame Options, Choose Any Garage Door, House Grade Windows and Doors



Vinyl Siding, Composite Siding, Windows, Doors, Handrails
Check us out on Facebook!

Over 30+ Colors Available

Clark's Home Solutions, LLC

792 David Crockett Hwy. | Winchester, TN 37398



Call today!
(931)962-8859

Other



Deweze Superslicer roll bale feeder, \$19,500. "The best way to feed what you need - Stop your hay loss." Give us a call, RRP Truck Equipment, Sparta, TN 38583. (931) 761-3554

KBH 4 WHEEL WAGON, 24' long, no sideboards, used for hay hauling, \$2,000. (256) 588-0812; (256)753-2318.

Rakes and Tedders

WALTON RAKE for sale, 3 point, 4 wheel, \$600. (615)569-0891.

Rotary Mowers



INDUSTRIAS AMERICAN 3 POINT CUTTERS heavy 11-gauge deck, 90 HP gear-boxes with slip clutch. 6' \$1,600; 7' \$1,900; 10' \$3,750; 10' pull-type \$5,500. Call Chris at Farm Service Solutions in Leoma, TN; or, visit farmservicesolutions.com; (931) 242-7675

BUSH HOG 15' CUTTER, like new, \$3,500. (270) 586-6653

Round Balers

2005, HESSTON 745 baler for sale, good condition, \$6,500. Scottsboro, AL area. (256)599-0591.



NEW HOLLAND 450 net and twine, \$15,500; **IH 1460** combine with low hours, \$5,000; **IH 464** tractor with new engine, \$3,500. (931)335-5557. (931) 335-5557

JOHN DEERE 435 ROUND BALER, net and twine wrap, \$7,500; and, **Vermeer 605 Super J** round baler, twine wrap, \$3,000. (205) 388-7369

Square Balers

JOHN DEERE 336 square hay baler; two **New Holland 9'** hay conditioners, two **JD** side delivery pull-type rakes, **RT 5200H** hydraulic fold tedder; four basket **Tonutti 8** wheel v-rake, super shape, all for \$10,000. (256) 588-0812; (256)753-2318.

Hay & Grain For Sale

GOOD CORN SILAGE for sale, \$60 per ton, large orders negotiable. (931)256-0481.

1ST CUTTING HAY, 21 rolls, in the shed, \$70 per roll or \$1,300 for all. (931)271-0164.

HAY FOR SALE, 3x3x8 bales of Alfalfa hay and mixed Alfalfa hay. Good horse hay. (931)808-8490; (931)728-5490.

Odds and Ends

IH AND CASEIH TRACTOR PARTS new, used and re-manufactured, the largest exclusive IH and CaseIH inventory in North America. 12351 Elm Road, Bourbon, IN 46504. www.batescorp.com; (800) 248-2955

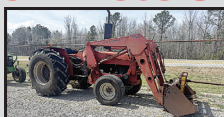
SALVAGING AGCO 2270 SQUARE BALERS, round balers, swathers, combines and tractors. Call us for new and used John Deere row head parts. Over 8,000 machines parted out. Mike's Equipment Co., Buhler, KS. mikesequipment.com; sales@mikes-equipment.com; (620) 543-2535

WOOD SPLITTERS, 10 different styles to choose from, models for many excavators, made in the USA, no brakes/no bends. TM Manufacturing. www.skidsplitter.com; (320) 286-3077

Come Check These Great Deals!



Kubota 9540, 4WD, C&A, local tractor, cold AC \$38,000



Case IH 885 loader, bucket, spear, new motor, good local tractor \$10,500



Ford 6640 CHA, local tractor \$10,500

| | | | |
|----------------------------------|---------|--|----------|
| Adams Fertilizer Buggy | \$4,000 | JD 541 Loader & Brackets | \$3,800 |
| 4 Wheel Gravity Feed Buggy | \$1,500 | JD 5105, local tractor | \$11,500 |
| MF 135, 4 cyl., gas | \$3,000 | Kubota 4030 | \$6,500 |
| MF 50, gas | \$2,000 | Farmtrac 665, 2WD, local tractor, good | \$6,500 |

(256) 773-8080

North Alabama Tractor Co.

Hwy. 31 South, Hartselle, Alabama 35640 • P.O. Box 1025

To Place A
Classified Call
800-247-7318

Got Tools to Sell? We've Got Buyers!

Place your ad online at
www.FarmersExchange.com
or by calling 800-247-7318.



2983 Huntsville Hwy., Fayetteville, TN • (931) 433-6255

Cole: (931) 993-8874 • Rocky: (931) 703-6255**2025 Top Hat**

- 14'
- dump
- 7k axles
- rock gate
- roll out tarp

**2025 Top Hat Low Pro**

- 24'
- 7k axles
- 102" wide
- drive over fenders
- dual jacks
- chain box

**2025 Top Hat UTC**

- side by side trailer
- 84" fender width
- spring assisted ramp
- boxed LED light mounts

**2025 Shadow Stable Mate**

- all alum
- 7' 6" tall
- 6' 9" wide
- 2 horse slant wide
- 4' dressing room
- swing out saddle rack
- on board water tank

**2025 Shadow Mate**

- all alum
- 2 horse straight load
- saddle rack
- 7' 6" tall
- 4.5' dressing room
- loading ramp

**2025 Shadow Stable Lite**

- 3 horse slant
- 7' 6" tall
- 5200 lb. axles
- 4' dressing room

**2026 Shadow**

- 2 horse
- straight load
- 7' 6" tall
- 4' dressing room
- loading ramp
- double escape doors

**2026 Shadow Pro Livestock**

- 4' dressing room
- 16' stock
- 7' tall
- LED lighting
- sliding calf gate
- rubber mats

7 Year Structural Warranty On All Shadow Trailers**Financing Available**

See our website for complete list

elkvalleytrailersales.com**Trade-Ins Welcome**

SIGNATURE TARP, custom hoop building covers, hay tarps, and pond liners, 11 colors available, all covers have 2" weld for strong waterproof seams. (859) 375-5268

SAND MOUNTAIN STOCKYARD LLC, sales starting at 11:30 a.m. every Wednesday and Saturday. Full service facility on the corner of Highways 68 and 168 in Kilpatrick, AL. (256) 561-3434

ARAB LIVESTOCK MARKET INC, cattle auction every Tuesday at 10 a.m. Highway 231 South, Arab, AL Video auctions at www.arablivestock.com Robbie Gibbs (256) 490-2583; (205) 589-6236; or, (256) 586-4212

NORTHWEST ALABAMA LIVESTOCK AUCTION, stockholder owned and operated since 1976. Sale each Monday at 10 a.m. hogs, goats, sheep and cattle. Call the barn at (256) 332-3323; or, Ricky Behel, Manager at (256) 740-9457

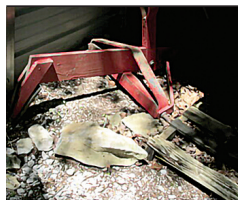
GOT TOOLS TO SELL? We have buyers! Place your ad online at www.FarmersExchange.com or by calling (800) 247-7318

GOT EQUIPMENT TO SELL? We have buyers! Place your ad online at www.FarmersExchange.com or by calling (800) 247-7318

GOT LIVESTOCK TO SELL? We have buyers! Place your ad online at www.FarmersExchange.com or by calling (800) 247-7318

WHITE PLASTIC FENCING for sale, it's a large trailer load, \$500. (931) 580-9010.

WANT TO BUY FJ40 Toyota, in model years from 1975 to 1980. (931) 607-9737



MIDDLE BUSTER 3-point, like new, \$125. (931) 364-5529 deanmar@united.net



3 POINT SPREADER used, 500-pound capacity, spreader with pto. shaft, great for liming food plots, \$325. (931) 364-5529 deanmar@united.net



3 POINT BOOM POLE lightly used, for a 3-point tractor, \$150. (931) 364-5529 deanmar@united.net

EQUIPMENT FOR SALE, WOODS CADET MD 172 BUSH-HOG, \$850; HAY BUGGY TUMBLE BUG, \$850; CATTLE RACKS METAL FIT FORD OR DODGE, \$225; PLASTIC WATER CARRY TANK, 300 GALLONS, \$225. (615) 289-7287.

FOR SALE 2 saddles, 2 bridles and 2 blankets, all for \$500. If interested leave a message at (931) 468-3004

ALUMINUM MOBILE CHICKEN COUP, 10'X12', about a year old, \$2,000. (931) 695-3538

USED 12'X16' STORAGE BARN, in good condition, delivery and setup available, \$2,000. (931) 695-3538

**Got Tools to Sell?
We've Got Buyers!**

Place your ad online at www.FarmersExchange.com or by calling 800-247-7318.

To Place A Classified Call 800-247-7318



Online Only Auction

www.mcnattliveauctions.com





29401 AL Hwy 251, Ardmore, AL 35749

Auction ends July 17, 2025

Selling this beautiful farm and personal property that consists of a lovely well kept Brick home with 12.55 +/- acres selling by Deed description. Home features 3 bedroom 2.5 bath, attached garage and detached garage. Enjoy the wildlife while sipping on your cup of coffee on your large covered private back patio.



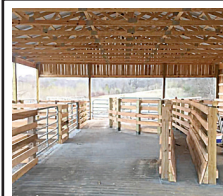
This property is a level 12.5 acres that borders both AL Hwy 251 as well as Brock Rd which gives a wonderful development potential! Call for your private tour of this property today.

More info contact Chris McNatt
Principal Auctioneer @ **(256) 874-3786**

Auction conducted by McNatt Real Estate & Auction
27802 Capshaw Rd Harvest AL 35749
ASL 1476 • TSL 5074 • Firm 2652



Services



FENCING BARN SHEDS AND MORE WE PROVIDE ALL TYPES OF CONSTRUCTION SERVICES: NEW HOMES, ADDITIONS, AGRICULTURAL BUILDINGS, FENCING, AND MUCH MORE! GIVE US A CALL TODAY TO SCHEDULE YOUR APPOINTMENT FOR YOUR FREE ESTIMATE. OVER 20 YEARS' EXPERIENCE. LICENSED AND INSURED. ENGLISH SERVICE COMPANY LLC, 1102 WINCHESTER HWY, FAYETTEVILLE, TN 37334. (931)438-1426. TN. LIC # 74705; AL LIC # 27951. WE APPRECIATE YOUR BUSINESS! (931) 438-1426 ENGLISHSERVICE-COMPANY@GMAIL.COM

WORM FARM EQUIPMENT for sale, Lincoln County, TN area. (931)685-1014.

FURNITURE FOR SALE, round claw foot oak table with 4 chairs, \$400; massage chair, \$75; Singer commercial sewing machine, \$250; electric hospital bed, \$125. Lincoln Co, TN area. (931)685-1014.

TWO TOBACCO DRYING TRAILERS for sale, \$150 each. Lincoln County, TN area. (931)685-1014.

NANO HEARING AIDS, with charger, never worn, \$175. New Market, AL. (256)859-4131.

TWO LIKE NEW RECLINERS, \$200 each. New Market, AL. (256)859-4131.

42" ROUND OAK KITCHEN TABLE, with 3 chairs on casters, \$200. New Market, AL. (256)859-4131.

Other Equipment

H E S S T O N STAKHAND for sale, \$2,000. Readyville, TN area. (629)395-4558.

Planting Equipment



ALLIS-CHALMERS 2 row no-till planter for sale, perfect condition, \$1,500. Morgantown, KY area. (270)991-0706.

Real Estate



FOR SALE 7,000 SQ. FT. FARM BUILDING ON 10 ACRES. 4,000 SQ. FT. SHOP AREA, 2 CAR GARAGE, 2,100 SQ. FT. LIVING QUARTERS, 2BEDROOMS, 2 1/2 BATHES. EAST MAURY COUNTY, POTTSVILLE COMMUNITY, \$867,000. CALL RICK, (931) 619-0421

Recreational Vehicles

2006, ALLEGRO BUS QDP 42', asking \$65,000 or best offer. (931) 580-1377

To Place A Classified Call
800-247-7318

Got Tools to Sell? We've Got Buyers!

Place your ad online at
www.FarmersExchange.com
or by calling 800-247-7318.

BUNK FEEDERS

CATTLE GUARDS



Concrete Water Troughs



With or Without Legs
Open or Closed Ends

Delivery Available

8' • 12' • 16' Widths
Rounded Top Design Keeping Livestock From Crossing



River City Concrete

9160 Hwy. 128 | Savannah, TN, 38372 | **731-925-0271**

River City Concrete www.rivercity-concrete.com

Got Livestock to Sell? We've Got Buyers!

Place your ad online at
www.FarmersExchange.com
or by calling 800-247-7318.

Selection • Service • Satisfaction

- Aerial Work Platforms
- Lawn- Landscape-Tree
- Compaction
- Material Handlers
- Skid Steers-Mini Excavators
- Generators and Accessories
- Construction Tools
- Concrete-Masonry



From Contractor To Homeowner, **We Can Help!**

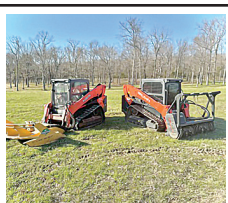
WATSON'S Equipment Rental

290 Interstate Drive • Manchester, TN 37355
Mon.-Fri. 7:00 A.M. - 5:00 P.M. • Sat. 7:00 A.M. - NOON



931-954-5862

www.WatsonsEquipmentTN.com



TN DIRT WORKS LLC Landscaping, brush cutting, forestry mulching, bush hogging and more! Providing services to middle TN since 2019. Call for your free custom quote! (615) 809-7556



WRANGLER PARTS FOR SALE, used machines wanted. Deutz engine parts. Martin's Maintenance, Monday-Friday, 8a.m.-5p.m. (270) 265-5040

To Place A Classified Call
800-247-7318



FOR RENT BOBCAT 435 MIDI EXCAVATOR OR KUBOTA 90HP SKIDSTEER. BOTH ENCLOSED CAB, HEAT & AIR. EXCAVATOR WITH THUMB, SKIDSTEER WITH GRAPPLE, BUCKETS, & OTHER ATTACHMENTS AVAILABLE. \$400 PER DAY, \$850 3 DAYS, \$1,300 PER WEEK, \$2,800 PER MONTH. FREE PICK-UP & DELIVERY. CALL RICK, (931) 619-0421

Tillage Equipment



ATLAS 18X20 DISK HARROWS. 3-point lift disk, for Cat 1or 2, original owner, only used a few times. Just don't use them anymore, good for putting in food plots! (931) 364-5529 deanmar@united.net

TAYLOR-WAY 8' DISC BOG for sale, w/cyl., \$600; 6' bush hog, \$600. (615) 569-0891.

JOHN DEERE OFF-SET BOG DISK, 8', \$6,850. (256) 335-4919

Got Livestock to Sell?

We've Got Buyers!

Place your ad online at www.FarmersExchange.com or by calling 800-247-7318.

To Place A Classified Call
800-247-7318

Other



SMART-TILL Cherokee Tillers, 50" and 59" chain drive regular duty; 48", 63", 71" tillers in gear drive medium duty; 84" gear drive heavy duty. 48" 1,825; 50" \$1,700; 59" \$1,800; 63" 1,925; 71" \$2,400; 84" \$2,800 plus tax. Call Chris at Farm Service Solutions; or, visit farmservicesolutions.com; (931) 242-7675

Tractors

1950, JOHN DEERE A TRACTOR, 1950 or 1951 model, kinda rough, \$650. (931) 622-2824.

1953, FORD JUBILEE tractor for sale, \$900. Florence, AL area. (256) 577-5051.

INTERNATIONAL 140, good strong tractor, needs tires. (615) 974-2333

JOHN DEERE 7420 tractor power quad, LHR, 6,300 hours, nice tractor, \$49,000. (615) 464-7080.

JOHN DEERE 4230, good tractor, 8,200 hours, \$18,750. (256) 335-4919

KUBOTA L33001 TRACTOR, 750 hours, 4WD, \$16,750. (256) 335-4919

JOHN DEERE 4240, bucket and hay spear, \$27,500. (256) 335-4919

Got Tools to Sell? We've Got Buyers!

Place your ad online at www.FarmersExchange.com or by calling 800-247-7318.

CATTLE NEED WATER? COME SEE US!

Miraco Cattle Waterers



- Fencing Supplies
- Tarter Dealer
- Well Pumps
- Canning Supplies
- Hardware
- Much More

JONES HARDWARE



103 Alabama St., Huntland, TN • (931) 469-7774 • www.doitbest.com



KUBOTA L-245
H with cultivators,
\$5,250. (615)569-
0891.

KUBOTA 105S,
4WD, 4,500 hours,
shuttle shift, \$31,750.
(256) 335-4919

JOHN DEERE 120C,
off the farm, clean out
bucket, reg. bucket,
\$47,750. (256) 335-
4919

2014, JOHN DEERE
750K, 5,400 hours,
used on farm,
\$121,500. (256) 335-
4919

INTERNATIONAL
684, 2WD, \$4,750.
(931) 381-1839; or,
(931) 619-1338

JOHN DEERE 2030,
loader, \$8,950. (931)
381-1839; or, (931)
619-1338



2002, JOHN DEERE
5105 40hp., one own-
er, only 1,380 low
hours, garage kept,
serviced regular w/
JD oil, summertime
mowing use only,
never in rain, snow,
or mud. Must see to
appreciate, \$15,000.
Western KY. Calls
only, (270)230-5596.

FORD 1910, 4WD, no
loader, \$6,250. (931)
381-1839; or, (931)
619-1338

JOHN DEERE 1120,
loader, \$5,500. (931)
381-1839; or, (931)
619-1338

THE 50TH ANNUAL LIONS Super Pull of the South

CHAPEL HILL, TENNESSEE

FRIDAY, JULY 18 & SATURDAY, JULY 19 • 7 P.M.

PRESENTED BY

SPONSORED BY

FOUR WHEEL DRIVE TRUCKS

MINI AND UNLIMITED MODIFIERS

SUPER STOCK DIESEL AND
PRO STOCK TRACTORS

AND A SPECIAL SUPER STOCK DIESEL
4X4 TRUCK EXPEDITION!

800-364-4872 • tractorpull@united.net • LionsSuperPull.com
NO COOLERS / BACKPACKS • BEER SALES ON-SITE • NO REFUND/RAIN DATES

General Admission (Reserved)

ADULTS: Friday \$20 (\$25) • Saturday \$25 (\$30) • Children 6 To 11: \$10 • UNDER 6: FREE!
Buy and print tickets online at LionsSuperPull.com starting in April

MASSEY-FERGU-
SON 231, no loader,
\$5,750. (931) 381-
1839; or, (931) 619-
1338

JOHN DEERE 640S,
4WD, loader, canopy,
\$28,500. (931) 381-
1839; or, (931) 619-
1338

JOHN DEERE 5310,
4WD, loader, \$19,900.
(931) 729-2320

MASSEY FERGU-
SON 471, 4WD, 2 sets
remotes, 60hp PTO,
\$14,900. (931) 729-
2320

**To Place A
Classified Call
800-247-7318**

MAHINDRA 8560,
70hp, 2,300 hours,
4WD, 2 remotes,
\$17,900. (931) 729-
2320

NEW HOLLAND
TC45, 45hp, diesel,
loader, 1,051 hours,
\$14,900. (931) 729-
2320

JOHN DEERE
5045E, 4WD, 1 re-
mote, \$20,900. (931)
729-2320

MASSEY FERGU-
SON 596, 2WD, cab,
85hp PTO, 2 remotes,
3,800 hours, \$22,900.
(931) 729-2320

INTERNATIONAL
574 TRACTOR, with
front-end loader and
hay spear, diesel, new
engine, very nice trac-
tor. (931)808-8490.

**CASE 2590 for
sale, rear axle
housing w/axles
and new brakes w/
less than 100 hours
on brakes, \$800.
Call, (931)209-
0040.**

JOHN DEERE 750,
one owner, 4WD,
5' JD tiller, starts
and runs excellent,
\$5,400. (931)939-
4999.

JOHN DEERE
1050 for sale, starts
and runs excellent,
\$6,400. (931)939-
4999.

KIOTI DK 4710 SE for
sale, cab, loader, like
new, 70 hours, 4WD,
\$34,000. (931)939-
4999.

MAHINDRA 4025
for sale, loader, 380
hours, runs and looks
like new, \$14,500.
(931)939-4999.

KUBOTA M5640,
2WD, roll bar, can-
opy, runs and looks
like new, local tractor,
\$15,400. (931)939-
4999.

Aisles & Aisles & Aisles

of IH & CaseIH Tractor Parts

New, Used & Remanufactured



**The Largest Exclusive
IH & CaseIH Used & Rebuilt
Parts Inventory in North America**

Bates Corporation

12351 Elm Road Bourbon, IN 46504

Call

1-800-248-2955

www.batescorp.com

FARMTRAC 665, 2WD, local tractor, good, \$6,500. (256) 773-8080

FORD 6640, CHA, local tractor, \$10,500. (256) 773-8080

JOHN DEERE 5105, local tractor, \$11,500. (256) 773-8080

JOHN DEERE 6200, C/A, 4x4, 89hp, 20 speed powershift with right hand reverser, 4,429 actual hours, original, super clean, \$34,500. (256) 974-8588.

JOHN DEERE 6175R, C/A, 4x4, 85% tires, 3 sets remotes, quick hitch, \$43,500. (256) 974-8588.

NEW HOLLAND T4.75, C/A, 4x4, 1,563 actual hours, super clean, \$39,500. (256) 974-8588.

CASE 7140, C/A, 4x4, Cummins diesel, runs and operates great! 16 speed power shift, duals included, \$38,500. (256) 974-8588.

JOHN DEERE 7420, C/A, 4WD, 135hp, power-quad trans with left hand reverser, OA loader with bucket, triple remotes, 7,251 hours, \$53,500. (256) 974-8588

MASSEY FERGUSON 231, P/S, 1,432 hours, Bush Hog loader with spear, \$7,900. (256) 974-8588

**Got Tools to Sell?
We've Got Buyers!**

Place your ad online at
www.FarmersExchange.com
or by calling 800-247-7318.

Trailers Hay & Forage Wagons

2015, BETTER BUILT trailer, 26' long, 6' tongue, pintle hook, three 7,000lb axles with brakes on each axle, loading ramps stored underneath bed, seller will furnish hook to vehicle, \$4,000. (256) 588-0812; (256) 753-2318.

OTHER HAY WAGONS, 6-7-8 bale, bumper hitch and gooseneck, call for pricing. (270) 586-6653

Livestock

TRAILMANN 8'X30' CATTLE TRAILER, with rubber floor. Call for details, (660) 424-3641

Other

GOOSENECK TYPE cattle trailer for sale, 16' trailer, new floor, \$2,500 each. Lebanon, TN. (615) 714-3894.

**Got Livestock
to Sell?**

We've Got Buyers!

Place your ad online at
www.FarmersExchange.com
or by calling 800-247-7318.

LIVESTOCK & FLATBED TRAILERS for sale, must see, different sizes and options. Financing available. Wholesale Trailers, Lebanon, TN. (615) 714-3894

RUBBER TIRE MULE WAGON \$1,000; mule disc, \$500; good ground slide, \$400. Muscle Shoals, AL area. (256) 443-8157.

PALMER DUMP TRAILER, 18', \$11,750. (256) 335-4919

Trucks Accessories

ROLLBACK TRUCK BED for sale, with pump and wheel lift, \$2,300. (731) 968-5183.

Heavy Duty (GVW over 26,000 lbs.)

1993 INTERNATIONAL SMALL ROAD TRUCK, Cummins 8 speed, single axle, \$8,500. (931) 381-1839; or, (931) 619-1338

1999 PETERBUILT, wet kit, Cummins engine, \$35,000. (270) 586-6653

1988 PETERBILT 3406 CAT, new 22' Scott aluminum bed, 3000 series hoist, \$50,000. (270) 586-6653

Light Duty (GVW under 14,000 lbs.)



MINI TRUCKS FOR SALE 4x4, A/C, P/S, 5-speed, auto, dump and regular beds and vans. Delivery Available, Can Special Order. Berryhill Mini Trucks, LLC., 3499 Co. Rd. 93, Anderson, AL 35610. (256) 740-7287; www.berryhill-minitrucks.com

CHEVROLET OF BOAZ, commercial trucks for sale. 1134 US Hwy 431, Boaz, AL 35957. www.chevroletofboaz.com; (800) 531-4253



TRUCK FLAT BEDS For All Your Needs. Give Us a call, (931) 761-3554. RRP Truck Equipment, Sparta, TN 38583.

1999 FORD F150, 4WD, runs good, body rough, good farm truck, \$975 firm. (931) 703-5239.

**we want
your
auction**

CONSIGN TODAY

**EK
Auctioneers**

Check our
website for details
ekauctioneers.com
or call 865-607-6698.

**To Place A Classified Call
800-247-7318**

1988 DODGE RAM
50 COMPACT PICK-
UP, automatic trans-
mission, 2.0L engine,
needs minor mechan-
ical work, \$1,200.
(706) 247-6240

200 FORD 25 PAS-
SENGER MINI-BUS,
turbo diesel, low
miles; 2001 Toyota
Sequoia; 2005 Toy-
ota Sequoia; and
2006 Chrysler Town
& Country; all very
good mechanically.
Call for details, (660)
424-3641

Medium Duty (GVW 14,000- 26,000 lbs.)

1947 RED INTER-
NATIONAL 1-1/2
ton truck, rad rod ma-
terial/yard art, \$850.
Free delivery within
75 miles of Waverly,
TN. (931)622-2824

1988 GMC 12'
CHANDLER, hy-
draulic litter body,
\$9,000 or best offer.
Call Willie, (678)231-
8636.

Want to Buy

WANTED, Standing
Tracts of Timber and
Cedar to buy and cut;
also, mulching ser-
vices. Dwight Rogers,
(931) 580-4816

OLD BARNS
WANTED, we take
down old barns. Call
T&M Demolition at
(270) 962-7058

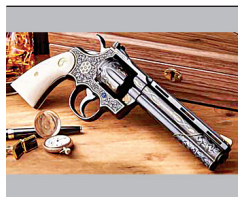
WANT TO BUY,
NEW HOLLAND
900 silage chop-
per and 2 Miller
Pro silage wagons.
(270)881-2403.

WANTED, BLOW-
ER (AIR BOX) for
Detroit 353 engine,
for left side of engine.
(931)622-2824.

TIG WELDERS AND
MAINTENANCE
LABORERS 43
FABRICATION IS
HIRING FOR TIG
WELDERS AND
MAINTENANCE
LABORERS, 1st shift,
40 hours a week,
some overtime from
time to time. Pay
based on experience.
Call for information
at (931)270-8389; or,
send resume to ser-
vice@43fabrication.
com.

Fabrication L.L.C.
43

WANT TO BUY
FJ40 Toyota, in mod-
el years from 1975 to
1980. (931) 607-9737



CASH FOR QUALI-
TY GUN COLLEC-
TIONS! BULLSEYE
GUN & RANGE,
MURFREESBORO,
TN. M.A. SMITTY
OR CALEB GREGO-
RY, (615) 900-1098

**To Place A
Classified Call
800-247-7318**

WANT TO BUY,
KAWASAKI engine,
between 20hp-25hp,
running or not.
(256)974-3774. (256)
974-3774

WANT TO BUY
OATS, endophyte
free fescue, triticale,
orchard and timothy
grass for fall planting.
(615)618-0541.

WANT TO BUY
SMALL herd or a
few cows and calves.
(931)307-9839.

WANT TO BUY,
CALF creep feeder.
(931)307-9839. (931)
307-9839

WANTED, 14 TON
or smaller feed bin
and auger; calf creep
feeder; and cake feed-
er box. (931)307-9839.

WANT TO BUY, two
12"x28" six loop rims,
good condition. (931)
593-3491

WANT TO BUY,
round bale shredder.
(931) 383-0653

WANTED, 8' TO 10'
bushhog. (931)307-
9839.

WANTED, 16.9-
18.4X28 industri-
al tread tires. Text
or leave message.
(931)306-3969.

54+/- ACRE FARM FOR SALE

Lake Village, Arkansas. Very good income producing cropland
with beautiful view of Lake Chicot. Beautiful home sites.

766+/- ACRE PROPERTY FOR SALE

Beautiful property located near Town Creek, Alabama. This
previously wooded property is being cleared and converted
to farm land, with approximately 300 acres already converted.
Very good soils for cotton, corn, and soybeans. Would also
make a spectacular cattle ranch. Excellent hunting with large
bucks and lots of turkeys. MORE LAND AVAILABLE!

280 ACRE FARM FOR SALE

Excellent 280 acres farm for sale in southeast Arkansas,
including very fertile, precision leveled, and irrigated farm
land, plus exceptional duck and deer hunting. Super location,
fronting on excellent paved highway.

Call Us For All Your Auction Needs In AL.

Brett Underwood (256) 655-9266

Ricky Underwood (256) 679-2039

2806D Winchester Rd., New Market, AL 35761

ricky@underwoodlandcompany.com

brett@underwoodlandcompany.com



Underwood Land Company, Inc.

A Real Estate & Auction Company

www.underwoodlandcompany.com

BEDFORD COUNTY FAIR PRESENTS
Truck & Tractor Pull
2025 Thursday, July 17th • 7:00 P.M.



CLASSES

4300 lb. Mini Trucks
 5250 lb. Economy Hot Rod Tractors
 6200 lb. LLSS Tractors
 6200 lb. Pro Stock Trucks
 8000 lb. Pro Street Diesel Trucks
 10,000 lb. Hot Rod Tractors
 12,500 Farm Stock Tractors w/6 MPH limit
 Bedford Co. Stock Gas Trucks
 Bedford Co. Stock Diesel Trucks

MTPA: Dale Hargis
 (931) 250-1166

One hook per tractor per class

Directors:
 Matt Ledbetter
 (931) 607-3786
 Carter Woodruff
 (615) 804-6009
 David Molder
 Kyle Robinson

CLASSES SUBJECT TO CHANGE

MTPA RULES APPLY www.midtnpullers.com

50/50 Raffle Held at the end of the night on July 17.

Purchase your raffle tickets for your chance to win some money during our Tractor Pull. The holder of the winning ticket will receive half of the money raised and the fair will receive the other half.

Sponsored by: Bell Precision Tool, LLC, Craig & Wheeler Realty & Auction, LLC, Doak Howell Funeral Home, Duck River Electric, Farm Credit Mid-America, First Community Bank, H&R AgriPower, Kincaid Service Co., Landers Well Drilling, Lincoln Bedford Moore Farmers Cooperative, Newell Brands, Newton Nissan, Redd's Heating & Air Conditioning, LLC, Rogers Group, Southbound Powersports, Templeton & Associates Insurance, TriGreen Equipment, Troy Stacy - Parks Realty

WANTED, 501
 FORD mowing machine, (931)210-7857.

WANT TO BUY, HAY conditioner, PTO driven. (931)580-5409.

Got Equipment to Sell? We've Got Buyers!

Place your ad online at www.FarmersExchange.com or by calling 800-247-7318.

Animals

FOR SALE, REGISTERED BLACK ANGUS BULLS, will qualify for the full TAEP money, all are by the top AI bulls in the breed. Crawford Angus, Lewisburg, TN. (931)205-2450; (931)359-2633. crawfordangus@bell-south.net

REGISTERED BLACK ANGUS BULLS all yearling bulls sold, will have more in October. Turrentine Angus, Shelbyville. (931)607-8950; aturrentine@cafes.net.

WAGYU POLLED HEIFERS for sale. (256)714-6182.

REGISTERED BLACK HERE-FORD BULLS, three 2-year-olds, several yearlings to choose from. Located in Murfreesboro, TN, big-framed and stout, ready for heavy service, \$3,500. (615) 207-9097 JLFELECTRIC@BELL-SOUTH.NET

REGISTERED POLLED HERE-FORD bulls for sale. Lynnville, TN area. (931)527-3392.

To Place A Classified Call 800-247-7318

Cowherd Equipment & Rental, Inc.



Penta 4040
 Several Other Models In Stock



Jaylor 5400
 In Stock - Call



Meyers VB160
 In Stock - Call



Anderson IFX720
 Wrapper - In Stock - Call



Cloverdale 420T Mixer
 In Stock - Call



Vermeer VSR440
 In Stock - Call

Numerous Used Mixers Available! • Free Demo On All Mixers

For more information:

Cowherd Equipment & Rental, Inc.

1483 Old Summersville Rd. • Campbellsville, KY 42718

270-465-2679 • 270-469-5095 • 270-469-0398

Dogs

AUSTRALIAN SHEPHERD PUPPIES, 3 merle, 1 black tri, all females, born 3-20-25, ready to pick out, will have first shots/dewormed; also 2yr. old male Toy Poodle. John J. Gingerich, 146 Fox Hunters Lane, Morrison, TN 37357.

BORDER COLLIE PUPS 8 weeks old. Smart and loving- make excellent herd dogs. Parent dogs registered with American Border Collie Association. (615)542-9311; maryjthom1225@icloud.com.

YOUNG BULLS polled, registered, gentle. Quality Cattle Since 1977. Facebook: Happy Valley Ranch Santa Gertrudis (256) 566-7878 lindadkelso@yahoo.com

REGISTERED ANGUS BULLS, TAEP in TN & KY, big strong bulls with great EPDs, several heifer bulls available, Genomic tested for accuracy, BS exam. FandPLivestock.com; (615) 653-8913

PURE BRED POLLED HERE-FORD BULLS for sale. (931) 363-0445

FOR SALE, small group of registered Black Angus cows. (931) 308-4939

Got Tools to Sell? We've Got Buyers!

Place your ad online at www.FarmersExchange.com or by calling 800-247-7318.

CALL US for all your

AUCTION NEEDS!

D.M. SIMPSON
 REALTORS AND AUCTIONEERS
 (931) 473-LAND 5263
www.dmsimpson.com

David M. Simpson, Broker, Auctioneer 931-273-6253
 Tiffany Simpson Co-Owner, Broker 931-808-7080
 John Kyle Simpson Aff. Broker 931-212-3843
 303 W. Main St. McMinnville, TN 37110

Other

PEAFOWL, I HAVE A few high quality Peacocks and Peahens available for sale. Spalding, Yearling and Breeder age. White spalding yearling hens with Pied Spalding Yearling cock. Also breeder age Java Green hen. Serious calls please. (931)652-3164.

CHICKS, DUCK-LINGS, GOSLINGS, Poults, and young goats for sale. Cullman, AL area. (256)930-8530.

PIGEONS, EIGHT BREEDS WHITE HOMERS, Fain Tails, B'ham Rollers, Archangel, Zitterhals Shakers, Lincoln, AL. (205)362-9480.

Pigs

PIGS FOR SALE, 3/4 Berkshire, 1/4 White; weaner pigs 8-12 weeks, BBQ pigs with deposit, Butcher pigs with deposit. Govern Livestock. (931)675-0898.

Announcements

MILLER FARMS Angus Beef from the farm. 100% natural, non-GMO, hormone and antibiotic-free. Whole, halves, or by the pound. Slaughtered and packaged. (931)593-3702.

To Place A Classified Call
800-247-7318

The Right Hay Tools For ANY Job!

Round Balers

Square Balers

Mower Conditioners

11 Highland Rim Road • Fayetteville, TN 37334
931-433-3516 www.hragripower.com

STORAGE TRAILERS FOR RENT OR FOR SALE, Lebanon, TN area. (615)714-3894.

Attachments

JOHN DEERE, 541 LOADER & BRACKETS for sale, \$3,800. (256) 773-8080

Fertilizer Applicators

ADAMS FERTILIZER BUGGY for sale, \$4,000. (256) 773-8080

Construction Equipment

JOHN DEERE 550H, LGP, runs good, \$42,750. (256) 335-4919

Dozer

2012, CATERPILLAR D6T good machine, 13.5', \$72,750. (256) 335-4919

Got Tools to Sell? We've Got Buyers!

Place your ad online at www.FarmersExchange.com or by calling 800-247-7318.

Got Equipment to Sell? We've Got Buyers!



Place your ad online at www.FarmersExchange.com or by calling 800-247-7318.

We Have The Right Trailer For You!



| | |
|---|---|
| Austin Trailer Sales Florence, AL (256) 483-0744 | Grandview Welding Thompkinsville, KY (270) 487-8813 |
| Double D Trailer Parts Flemingsburg, KY (606) 748-9841 | Lasseter Tractor Moultrie, GA (229) 985-1027 |
| The Trailer Store Columbia, TN (931) 381-2795 | Dustin Neat Enterprises Dunnville, KY (800) 346-4486 |

Other

DECALS AFFORDABLE DECALS AND SAFETY DECALS. Prompt. Knowledgeable Reliable Service. www.QuipCal.com; Call, (215)536-5339; email:info@custom-servicescompany.com.

Fencing & Cattle Equipment

BEHLEN CREEP FEEDER for sale, excellent condition, Scottsboro, AL area, \$500. (256)259-1183.

Got Livestock to Sell?

We've Got Buyers!

Place your ad online at www.FarmersExchange.com or by calling 800-247-7318.

To Place A Classified Call
800-247-7318

GIVE US A CALL
FOR ALL FOR AUCTION NEEDS
Now booking for fall auctions



REDLINE AUCTION SERVICE

2631 LeGrande Hwy.
Horse Cave, KY 42149
(270) 392-0285
redforddewayne@gmail.com

Dewayne Redford (270) 392-0285
Brandon Croghan (270) 537-4460
Brady Core (859) 256-1186
Garrett Judd (270) 670-7787

Jim Weaver
IRONWORK

GOT LOOSE PIVOTS ?

Line Boring & Boring Welding Services For Heavy Equipment

Excavators

Dozers

Articulating pivots

Also Doing Welding Repairs; Steel And Aluminum

270-810-5037

2650 PEMBROKE FAIRVIEW RD PEMBROKE KY 42266

PARKER FARMS FENCE LINE FEEDERS, heavy duty, top seller, 20' \$2,200; 24' \$2,400; other custom sizes available. We appreciate your business. Parker Farms. parkerfarmscattle-andequipment.com; (615) 542-6157

PARKER FARMS CATTLE & EQUIPMENT. Call us today for quality farm equipment at reasonable prices. Check out our new website parkerfarmscattle-andequipment.com. Located in Murfreesboro, TN. Shipping Available. (615) 542-6157

180 DEGREE SWEEP TUB with 7' bow gates, 6' tall, heavy duty. (615)653-8913.

BULL GATES-16 GAUGE, 51" and 63" tall, 4'-20' long, good inventory. FandPLivestock.com; (615)653-8913.

CONTACT US FOR ADVICE, pricing, and options for your next farm fencing project. We offer a large variety of wood posts, both square and round, a big selection of barbed wire and net wire in black and galvanized. We have hundreds of Tarter gates in stock. We also have t-posts and high-quality fence boards 1x6x14 ft and 1x6x16 ft. Check out our prices for MiraFount livestock waterers. Finley Fence Supply, Cornersville, TN 37047. Contact us by phone (931)675-3260; or (931)607-5941; or email at finleyfencesupply@gmail.com.

FENCE LINE FEEDERS, 10' long; troughs are 10-gauge metal, 30' wide and 7" deep. FandPLivestock.com; (615) 653-8913

To Place A Classified Call
800-247-7318

HAY FEEDER PANELS, 6' up to 16' long, 16 gauge, 2"x3" construction and built to last a lifetime, you will not find a better made panel, custom lengths available, TAEP item in Tennessee. FandPLivestock.com; (615)653-8913.

ROUND PEN PANELS, 12' galvanized; 5' tall, \$120 each; 4' tall, \$120 each; 6' tall, \$140 each; available in economy medium duty-heavy duty. FandPLivestock.com; (615)653-8913.

BOW GATES 16 GAUGE, 6' tall, good inventory, 4' up to 12' combo bow gates-example 12' with 4' wt. FandPLivestock.com; (615)653-8913.

CORRAL PANELS, 16 GAUGE, 6' tall, good inventory, 8' up to 16' long. FandPLivestock.com; (615)653-8913.



Convert to the best.



Control Panel Conversion



Oil Hydraulic Conversion



Tower Box Conversion



Gearbox Conversion



1811 Wilson Parkway, Fayetteville, TN 37334 • (931) 297-2697

Faith, Family, and Farm

PARKER FARMS CATTLE & EQUIPMENT. Call us today for quality farm equipment at reasonable prices. Check out our new website parkerfarmscattleandequipment.com. Located in Murfreesboro, TN. Shipping Available. (615) 542-6157

PARKER FARMS FENCE LINE FEEDERS, heavy duty, top seller, 20' \$2,200; 24' \$2,400; other custom sizes available. We appreciate your business. Parker Farms. parkerfarmscattleandequipment.com; (615) 542-6157

Got Equipment to Sell? We've Got Buyers!
Place your ad online at www.FarmersExchange.com or by calling 800-247-7318.

Sprayers

AG SPRAY EQUIPMENT 3-point and pull-type sprayers come with boomless nozzle. 3 point sprayers all have hand wands. 3 point 65 gal \$1,450, 110 gal \$2,550, 150 gal \$2,850, 200 gal \$3,300. Pull-type with used tires 300 gal, \$4,200; 500 gal, \$4,550. Booms available. Call Chris at Farm Service Solutions; or, visit farmservicesolutions.com; (931) 242-7675

Harvesting Equipment

FARM KING AUGERS, several sizes, overstocked, reduced prices. (270) 586-6653

Grain Carts

PARKER FARMS MOBILE FEED BINS, 2 ton, \$3,450; 3 ton, \$3,750; 3 ton tandem, \$3,950, 4 ton tandem, \$4,150. Call today to get on our build list. We appreciate your business. Parker Farms. parkerfarmscattleandequipment.com; (615) 542-6157

Hay & Forage Equipment

KUHN 7' DISC MOWER for sale, \$2,200. Readyville, TN area. (629)395-4558.

PARKER FARMS DISC MOWER CADDIES, heavy-duty, field-ready, hydraulic lift, PTO included. We appreciate your business. Parker Farms. parkerfarmscattleandequipment.com; (615) 542-6157

PARKER FARMS DISK MOWER CADDIES, heavy-duty, field-ready, hydraulic lift, PTO included. We appreciate your business. Parker Farms. parkerfarmscattleandequipment.com; (615) 542-6157

Mower Conditioners & Windrowers

FARM KING FINISH MOWERS, 6' and 7', call for pricing. (270) 586-6653

Other

DEWEZE SUPERLICER roll bale feeder, \$19,500. "The best way to feed what you need - Stop your hay loss." Give us a call, RRP Truck Equipment, Sparta, TN 38583. (931) 761-3554

KBH 4 WHEEL WAGON, 24' long, no sideboards, used for hay hauling, \$2,000. (256) 588-0812; (256)753-2318.

Got Livestock to Sell? We've Got Buyers!

Place your ad online at www.FarmersExchange.com or by calling 800-247-7318.



Thinking of having an auction? WE CAN HELP!

Real Estate of all Types • Assets • Estates

8719-A AL Hwy. 53, Toney, AL 35773
256-536-7497



HORTON
AUCTION & REAL ESTATE

Sales That Satisfy Since '65

Online Bidding Available • www.hortonauctions.com



Circle W • Delta
Calico • Blazer
GPI • Homesteader

We will be closed July 4th-13th.
Reopen on July 14th.

Horse Utility Trailers Cargo, Dumps
Stock Carports Bike Trailers
Flat Beds Gates & Panels Tow Dollies

Parts - Sales - Service - Rentals

RV Parts Now Available

Consignments Welcome

The Trailer Store

1021 New Lewisburg Hwy., Columbia, TN

Hours: Mon.-Fri. 8:00 A.M. - 5:00 P.M.; Sat. Closed

Mark Curry, Justin Curry, Becky Lynch

Office: 931-381-2795

Fax: 931-380-0337

Rakes and Teddies

WALTON RAKE for
sale, 3 point, 4 wheel,
\$600. (615)569-0891.

Rotary Mowers

INDUSTRIAS
AMERICAN 3
POINT CUTTERS
heavy 11-gauge
deck, 90 HP gear-
boxes with slip
clutch. 6' \$1,600;
7' \$1,900; 10'
\$3,750; 10' pull-
type \$5,500. Call
Chris at Farm
Service Solutions
in Leoma, TN; or,
visit farmservicesolutions.com; (931)
242-7675

BUSH HOG 15' CUT-
TER, like new, \$3,500.
(270) 586-6653

Round Balers

2005, HESSTON 745
baler for sale, good
condition, \$6,500.
Scottsboro, AL area.
(256)599-0591.

NEW HOLLAND
450 net and twine,
\$15,500; IH 1460
combine with low
hours, \$5,000; IH
464 tractor with
new engine, \$3,500.
(931)335-5557. (931)
335-5557

JOHN DEERE 435
ROUND BALER,
net and twine wrap,
\$7,500; and, Vermeer
605 Super J round
baler, twine wrap,
\$3,000. (205) 388-
7369

Square Balers

JOHN DEERE 336
square hay baler; two
New Holland 9' hay
conditioners, two JD
side delivery pull-
type rakes, RT 5200H
hydraulic fold tedder;
four basket Tonutti 8
wheel v-rake, super
shape, all for \$10,000.
(256) 588-0812;
(256)753-2318.

Hay & Grain For Sale

GOOD CORN SI-
LAGE for sale, \$60
per ton, large orders
negotiable. (931)256-
0481.

1ST CUTTING HAY,
21 rolls, in the shed,
\$70 per roll or \$1,300
for all. (931)271-0164.

HAY FOR SALE,
3x3x8 bales of Alfalfa
hay and mixed Al-
falfa hay. Good horse
hay. (931)808-8490;
(931)728-5490.

True Comfort Hunting Blinds

2730 Bells Chapel Rd. Trenton, KY 42286

Phone # 270-265-7397

Call for free brochure and price list.

Prices start at \$1750

Dealers Wanted



Odds and Ends

IH AND CASEIH
TRACTOR PARTS
new, used and re-
manufactured, the
largest exclusive IH
and CaseIH invento-
ry in North Ameri-
ca. 12351 Elm Road,
Bourbon, IN 46504.
www.batescorp.com;
(800) 248-2955

SALVAGING AGCO
2270 SQUARE BAL-
ERS, round balers,
swathers, combines
and tractors. Call
us for new and used
John Deere row head
parts. Over 8,000
machines parted
out. Mike's Equip-
ment Co., Buhler,
KS. mikesequipment.com;
sales@mikes-equipment.com; (620)
543-2535

WOOD SPLITTERS,
10 different styles to
choose from, models
for many excavators,
made in the USA,
no brakes/no bends.
TM Manufacturing.
www.skidsplitter.com;
(320) 286-3077

SIGNATURE TARP,
custom hoop build-
ing covers, hay tarps,
and pond liners, 11
colors available, all
covers have 2" weld
for strong waterproof
seams. (859) 375-5268

SAND MOUNTAIN
STOCKYARD LLC,
sales starting at 11:30
a.m. every Wednes-
day and Saturday.
Full service facili-
ty on the corner of
Highways 68 and 168
in Kilpatrick, AL.
(256) 561-3434

Got Equipment to Sell? We've Got Buyers!

Place your ad online at
www.FarmersExchange.com
or by calling 800-247-7318.

WE HAVE A GOOD SUPPLY IN STOCK FOR SALE**DECATUR CONTAINER****5375 Marsha Ave. Decatur, AL 35603****256-751-3800***Providing Quality, Low-Cost Storage Solutions Since 1995***Mobile Offices**

- 8' widths
- 20'-40' lengths
- With or without AC
- Custom Built

**20'x8'x8 1/2'****40'x8'x8 1/2'****40'x8 1/2'x9 1/2'****Used Shipping Storage Containers
& Dry Van Rentals**

Call Jason Cato (205) 529-2699.

Office (256) 751-3800 • Email: Jason@DecaturContainers.com

ARAB LIVESTOCK MARKET INC, cattle auction every Tuesday at 10 a.m. Highway 231 South, Arab, AL Video auctions at www.arablivestock.com Robbie Gibbs (256) 490-2583; (205) 589-6236; or, (256) 586-4212

NORTHWEST ALABAMA LIVESTOCK AUCTION, stockholder owned and operated since 1976. Sale each Monday at 10 a.m. hogs, goats, sheep and cattle. Call the barn at (256)332-3323; or, Ricky Behel, Manager at (256) 740-9457

GOT TOOLS TO SELL? We have buyers! Place your ad online at www.FarmersExchange.com or by calling (800) 247-7318

**Got Tools to Sell?
We've Got Buyers!**

Place your ad online at www.FarmersExchange.com or by calling 800-247-7318.

GOT EQUIPMENT TO SELL? We have buyers! Place your ad online at www.FarmersExchange.com or by calling (800) 247-7318

GOT LIVESTOCK TO SELL? We have buyers! Place your ad online at www.FarmersExchange.com or by calling (800) 247-7318

WHITE PLASTIC FENCING for sale, it's a large trailer load, \$500. (931)580-9010.

WANT TO BUY FJ40 Toyota, in model years from 1975 to 1980. (931) 607-9737

MIDDLE BUSTER 3-point, like new, \$125. (931) 364-5529 deanmar@united.net

3 POINT SPREADER used, 500-pound capacity, spreader with pto. shaft, great for liming food plots, \$325. (931) 364-5529 deanmar@united.net

3 POINT BOOM POLE lightly used, for a 3-point tractor, \$150. (931) 364-5529 deanmar@united.net

EQUIPMENT FOR SALE, WOODS CADET MD 172 BUSH-HOG, \$850; HAY BUGGY TUMBLE BUG, \$850; CATTLE RACKS METAL FIT FORD OR DODGE, \$225; PLASTIC WATER CARRY TANK, 300 GALLONS, \$225. (615)289-7287.

**To Place A
Classified Call
800-247-7318**

FOR SALE 2 saddles, 2 bridles and 2 blankets, all for \$500. If interested leave a message at (931) 468-3004

ALUMINUM MOBILE CHICKEN COUP, 10'X12', about a year old, \$2,000. (931) 695-3538

USED 12'X16' STORAGE BARN, in good condition, delivery and setup available, \$2,000. (931) 695-3538

WORM FARM EQUIPMENT for sale, Lincoln County, TN area. (931)685-1014.

FURNITURE FOR SALE, round claw foot oak table with 4 chairs, \$400; massage chair, \$75; Singer commercial sewing machine, \$250; electric hospital bed, \$125. Lincoln Co, TN area. (931)685-1014.

TWO TOBACCO DRYING TRAILERS for sale, \$150 each. Lincoln County, TN area. (931)685-1014.

NANO HEARING AIDS, with charger, never worn, \$175. New Market, AL. (256)859-4131.

**NEED
AG
TIRES?***Road Service & Delivery Available**We have
tractor tires!**Ask for Belinda***KEEP TRUCKING
TIRE SALES**

New & Used Tire Sales
Big Truck & Ag Tires

(931) 242-1458 • (931) 242-6618
9021 Hwy. 43 • Killen, AL 35645

LEVY COUNTY, FL

1,299± ACRES

online auction

SELLING AS A WHOLE OR DIVIDED IN TRACTS RANGING 8.8-254.9± AC
ONLINE BIDDING ENDS JULY 22ND NOON (EDT)

7HAUCTIONS.COM
800.742.9165

Seven Hills AUCTIONS

Selling in Association With
SAUNDERS LAND

Seven Hills Auctions, LLC; Broker: William C. Lee III Firm: FL-CQ1057830, Auction License: FL: AB3765

TWO LIKE NEW RECLINERS, \$200 each. New Market, AL. (256)859-4131.

42" ROUND OAK KITCHEN TABLE, with 3 chairs on casters, \$200. New Market, AL. (256)859-4131.

Other Equipment

H E S S T O N STAKHAND for sale, \$2,000. Readyville, TN area. (629)395-4558.

To Place A Classified Call
800-247-7318

Planting Equipment

ALLIS-CHALMERS 2 row no-till planter for sale, perfect condition, \$1,500. Morgantown, KY area. (270)991-0706.

Recreational Vehicles

2006, ALLEGRO BUS QDP 42', asking \$65,000 or best offer. (931) 580-1377

Got Equipment to Sell? We've Got Buyers!

Place your ad online at www.FarmersExchange.com or by calling 800-247-7318.

Real Estate

FOR SALE 7,000 SQ. FT. FARM BUILDING ON 10 ACRES. 4,000 SQ. FT. SHOP AREA, 2 CAR GARAGE, 2,100 SQ. FT. LIVING QUARTERS, 2BED-ROOMS, 2 1/2 BATHES. EAST MAURY COUNTY, POTTSVILLE COMMUNITY, \$867,000. CALL RICK, (931) 619-0421

To Place A Classified Call
800-247-7318

Services

43 FABRICATION Where Customers are our top priority! We are a multi-craft welding and machine shop that offers equipment rigging and installation. From one off obsolete parts fabrication to large industrial installs/repairs/maintenance, and more! Contact us for all your commercial and industrial needs! No job to big or small give us a call at (931)270-8389 or email us at service@43fabrication.com

ROBINSON ENVIRONMENTAL LAND CLEARING forestry mulching, boom mower bush-hogging, agricultural stump grinding and skid loader work. Call David, (615) 631-0638

A D D I S O N A G R I - B U I L D - E R S, poultry houses, barns, sheds, all types of buildings for farms, and wood and steel trusses. Owner Craig Pigg, (256) 747-3444

SCHWEISS DOORS, hydraulic one-piece doors or bifold strap lift doors. schweiss-doors.com; (507) 426-8273

LIMITLESS LAND MANAGEMENT Call for Price. Dozer Skid steer work, Bush hogging: 15ft/5ft brush cutter, skid steer mounted, cuts up 6 inches; fence/post drilling. Will beat anyone's price! (931) 625-3485

TN DIRT WORKS LLC Landscaping, brush cutting, forestry mulching, bush hogging and more! Providing services to middle TN since 2019. Call for your free custom quote! (615) 809-7556

FENCING BARN SHEDS AND MORE WE PROVIDE ALL TYPES OF CONSTRUCTION SERVICES: NEW HOMES, ADDITIONS, AGRICULTURAL BUILDINGS, FENCING, AND MUCH MORE! GIVE US A CALL TODAY TO SCHEDULE YOUR APPOINTMENT FOR YOUR FREE ESTIMATE. OVER 20 YEARS' EXPERIENCE. LICENSED AND INSURED. ENGLISH SERVICE COMPANY LLC, 1102 WINCHESTER HWY, FAYETTEVILLE, TN 37334. (931) 438-1426. TN. LIC # 74705; AL LIC # 27951. WE APPRECIATE YOUR BUSINESS! (931) 438-1426 ENGLISHSERVICE-COMPANY@GMAIL.COM

Moo Valley

Local Built Hay & Grain Feeding Equipment

Stainless Steel Options

Sparta TN
387 Redwood Ln

(931) 260-1450

Got Livestock to Sell? We've Got Buyers!

Place your ad online at www.FarmersExchange.com or by calling 800-247-7318.

WRANGLER PARTS FOR SALE, used machines wanted. Deutz engine parts. Martin's Maintenance, Monday-Friday, 8a.m.-5p.m. (270) 265-5040

FOR RENT BOB-CAT 435 MIDI EXCAVATOR OR KUBOTA 90HP SKIDSTEER. BOTH ENCLOSED CAB, HEAT & AIR. EXCAVATOR WITH THUMB, SKIDSTEER WITH GRAPPLE, BUCKETS, & OTHER ATTACHMENTS AVAILABLE. \$400 PER DAY, \$850 3 DAYS, \$1,300 PER WEEK, \$2,800 PER MONTH. FREE PICK-UP & DELIVERY. CALL RICK, (931) 619-0421

DOZER FOR RENT CASE 850G 100HP, 6-WAY BLADE, WIDE TRACK. \$500 PER DAY (PICKED UP), \$1,200 (3 DAYS), \$2,000 (PER WEEK 7 DAYS), \$4,500 (PER MONTH) WITH FREE PICK-UP & DELIVERY, EXCAVATOR & SKID-STEER ALSO AVAILABLE. CALL RICK, (931) 619-0421

To Place A
Classified Call
800-247-7318

Got Livestock to Sell? We've Got Buyers!

Place your ad online at
www.FarmersExchange.com
or by calling 800-247-7318.

Tillage Equipment

ATLAS 18X20 DISK HARROWS. 3-point lift disk, for Cat 1or 2, original owner, only used a few times. Just don't use them anymore, good for putting in food plots! (931) 364-5529 deanmar@united.net

TAYLOR-WAY 8' DISC BOG for sale, w/cyl., \$600; 6' bush hog, \$600. (615) 569-0891.

JOHN DEERE OFF-SET BOG DISK, 8', \$6,850. (256) 335-4919

Other

SMART-TILL Cherokee Tillers, 50" and 59" chain drive regular duty; 48", 63", 71" tillers in gear drive medium duty; 84" gear drive heavy duty. 48" 1,825; 50" \$1,700; 59" \$1,800; 63" 1,925; 71" \$2,400; 84" \$2,800 plus tax. Call Chris at Farm Service Solutions; or, visit farmerservicesolutions.com; (931) 242-7675

Tractors

1950, JOHN DEERE A TRACTOR, 1950 or 1951 model, kinda rough, \$650. (931) 622-2824.

1953, FORD JUBILEE tractor for sale, \$900. Florence, AL area. (256) 577-5051.

INTERNATIONAL 140, good strong tractor, needs tires. (615) 974-2333

JOHN DEERE 7420 tractor power quad, LHR, 6,300 hours, nice tractor, \$49,000. (615) 464-7080.

KUBOTA L-245 H with cultivators, \$5,250. (615) 569-0891.

JOHN DEERE 4230, good tractor, 8,200 hours, \$18,750. (256) 335-4919

KUBOTA L33001 TRACTOR, 750 hours, 4WD, \$16,750. (256) 335-4919

JOHN DEERE 4240, bucket and hay spear, \$27,500. (256) 335-4919

KUBOTA 105S, 4WD, 4,500 hours, shuttle shift, \$31,750. (256) 335-4919

JOHN DEERE 120C, off the farm, clean out bucket, reg. bucket, \$47,750. (256) 335-4919

2014, JOHN DEERE 750K, 5,400 hours, used on farm, \$121,500. (256) 335-4919

INTERNATIONAL 684, 2WD, \$4,750. (931) 381-1839; or, (931) 619-1338

JOHN DEERE 2030, loader, \$8,950. (931) 381-1839; or, (931) 619-1338

The flagship store for HIGH-QUALITY YANMAR EQUIPMENT



YT235 - 35 HP



YT347 - 47 HP



YM347 - 46 HP



SA325 - 23.9 HP



YM342 - 42 HP



EVO STORE

(770) 878-9101

5889 Old Alabama Rd., Acworth, GA • yanmarevostore.com

To Place A Classified Call 800-247-7318

Well Built™ to Handle Your Hay

Trust Your Most Important Forage Crop to Stoltzfus Mfg.

Well Built™ Round Bale Carriers



Heavy Duty

- Designed to load & unload with a 3 pt. hitch bale spear
- Reinforced cross members
- 9 models with 6, 8, or 10 bale capacities
- Heavy duty construction

**Dealer Inquiries
Invited!
Several Locations
Available!**

Well Built - Feeders:

- Built tough for long life!
- Available in a variety of lengths
- Adjustable slant bar or self-locking head locks
- Ideal for cattle in either feedlots or meadows



Gates • Slant Bar Sections
Head Locks • Gutter Grates

For a free brochure or more information, call:

610-273-3603

Dealers located throughout TN & KY

Call for the one nearest you!

F.O.B. Cub Run, KY

Stoltzfus MFG

Cub Run, KY

DEALER INQUIRIES INVITED • CUSTOM WAGONS A SPECIALTY

MASSEY-FERGU-
SON 231, no loader,
\$5,750. (931) 381-
1839; or, (931) 619-
1338

JOHN DEERE 1120,
loader, \$5,500. (931)
381-1839; or, (931)
619-1338

JOHN DEERE 6405,
4WD, loader, canopy,
\$28,500. (931) 381-
1839; or, (931) 619-
1338

FORD 1910, 4WD, no
loader, \$6,250. (931)
381-1839; or, (931)
619-1338

JOHN DEERE 5310,
4WD, loader, \$19,900.
(931) 729-2320

MASSEY FERGUSON 471, 4WD, 2 sets
remotes, 60hp PTO,
\$14,900. (931) 729-
2320

MAHINDRA 8560,
70hp, 2,300 hours,
4WD, 2 remotes,
\$17,900. (931) 729-
2320

NEW HOLLAND
TC45, 45hp, diesel,
loader, 1,051 hours,
\$14,900. (931) 729-
2320

JOHN DEERE
5045E, 4WD, 1 re-
mote, \$20,900. (931)
729-2320

**To Place A
Classified Call
800-247-7318**

MASSEY FERGUSON 596, 2WD, cab,
85hp PTO, 2 remotes,
3,800 hours, \$22,900.
(931) 729-2320

INTERNATIONAL
574 TRACTOR, with
front-end loader and
hay spear, diesel, new
engine, very nice trac-
tor. (931)808-8490.

2002, JOHN DEERE
5105 40hp., one own-
er, only 1,380 low
hours, garage kept,
serviced regular w/
JD oil, summertime
mowing use only,
never in rain, snow,
or mud. Must see to
appreciate, \$15,000.
Western KY. Calls
only, (270)230-5596.

**CASE 2590 for
sale, rear axle
housing w/axles
and new brakes w/
less than 100 hours
on brakes, \$800.
Call, (931)209-
0040.**

FORD 6640, CHA,
local tractor, \$10,500.
(256) 773-8080

JOHN DEERE 750,
one owner, 4WD,
5' JD tiller, starts
and runs excellent,
\$5,400. (931)939-
4999.

JOHN DEERE
1050 for sale, starts
and runs excellent,
\$6,400. (931)939-
4999.

KIOTI DK 4710 SE for
sale, cab, loader, like
new, 70 hours, 4WD,
\$34,000. (931)939-
4999.

MAHINDRA 4025
for sale, loader, 380
hours, runs and looks
like new, \$14,500.
(931)939-4999.

KUBOTA M5640,
2WD, roll bar, can-
opy, runs and looks
like new, local tractor,
\$15,400. (931)939-
4999.

FARMTRAC 665,
2WD, local tractor,
good, \$6,500. (256)
773-8080

JOHN DEERE 5105,
local tractor, \$11,500.
(256) 773-8080

JOHN DEERE 6200,
C/A, 4x4, 89hp, 20
speed powershift with
right hand reverser,
4,429 actual hours,
original, super clean,
\$34,500. (256)974-
8588.

JOHN DEERE
6175R, C/A, 4x4, 85%
tires, 3 sets remotes,
quick hitch, \$43,500.
(256)974-8588.

NEW HOLLAND
T4.75, C/A, 4x4,
1,563 actual hours,
super clean, \$39,500.
(256)974-8588.

CASE 7140, C/A, 4x4,
Cummins diesel, runs
and operates great! 16
speed power shift, du-
als included, \$38,500.
(256)974-8588.

JOHN DEERE 7420,
C/A, 4WD, 135hp,
power-quad trans
with left hand re-
verser, OA loader
with bucket, triple
remotes, 7,251 hours,
\$53,500. (256) 974-
8588

MASSEY FERGUSON 231, P/S, 1,432
hours, Bush Hog
loader with spear,
\$7,900. (256) 974-
8588

Trailers Hay & Forage Wagons

2015, BETTER
BUILT trailer, 26'
long, 6' tongue, pintle
hook, three 7,000lb
axles with brakes on
each axle, loading
ramps stored under-
neath bed, seller will
furnish hook to vehi-
cle, \$4,000. (256)588-
0812;(256)753-2318.

OTHER HAY WAG-
ONS, 6-7-8 bale,
bumper hitch and
gooseneck, call for
pricing. (270) 586-
6653

Livestock

TRAILMANN 8'X30'
CATTLE TRAILER,
with rubber floor.
Call for details, (660)
424-3641

Other

GOOSENECK TYPE
cattle trailer for sale,
16' trailer, new floor,
\$2,500 each. Leba-
non, TN. (615)714-
3894.

LIVESTOCK &
FLATBED TRAIL-
ERS for sale, must see,
different sizes and
options. Financing
available. Wholesale
Trailers, Lebanon,
TN. (615) 714-3894

**UNMATCHED STRENGTH,
UNPARALLELED DESIGN**

*Come see us for your post-frame &
cold-form steel structure building needs.*

MetalMax
ROOFING & SIDING

Call us for all your metal needs! (256) 232-8080
metalmxbuildingsystems.com -17713 US-72, Athens, AL 35611

Dave's Sawmill Sales



HUD-SON SAWMILLS, FOR THE WORK YOU DO.

We manufacture a number of sawmills,
starting with our Sawyer Model at just

\$2,495

UNIFOREST WINCHES

Starting at
\$3,995



For more information or a free brochure, call:

Dave in Lawrenceburg (859) 265-0793

RUBBER TIRE
MULE WAGON
\$1,000; mule disc,
\$500; good ground
slide, \$400. Mus-
cle Shoals, AL area.
(256)443-8157.

PALMER DUMP
TRAILER, 18',
\$11,750. (256) 335-
4919

Trucks Accessories

ROLLBACK
TRUCK BED for
sale, with pump
and wheel lift,
\$2,300. (731)968-
5183.

Heavy Duty (GVW over 26,000 lbs.)

1993 INTERNA-
TIONAL SMALL
ROAD TRUCK,
Cummins 8 speed,
single axle, \$8,500.
(931) 381-1839; or,
(931) 619-1338

1999 PETERBUILT,
wet kit, Cummins
engine, \$35,000. (270)
586-6653

1988 PETERBILT
3406 CAT, new 22'
Scott aluminum bed,
3000 series hoist,
\$50,000. (270) 586-
6653

Light Duty (GVW under 14,000 lbs.)

MINI TRUCKS FOR
SALE 4x4, A/C, P/S,
5-speed, auto, dump
and regular beds and
vans. Delivery Avail-
able, Can Special Or-
der. Berryhill Mini
Trucks, LLC., 3499
Co. Rd. 93, Anderson,
AL 35610. (256)740-
7287; www.berryhill-minitrucks.com

CHEVROLET OF
BOAZ, commercial
trucks for sale. 1134
US Hwy 431, Boaz,
AL 35957. www.chevroletofboaz.com;
(800) 531-4253

TRUCK FLAT BEDS
For All Your Needs.
Give Us a call,
(931)761-3554. RRP
Truck Equipment,
Sparta, TN 38583.

1999 FORD F150,
4WD, runs good,
body rough, good
farm truck, \$975 firm.
(931)703-5239.

1988 DODGE RAM
50 COMPACT PICK-
UP, automatic trans-
mission, 2.0L engine,
needs minor mechan-
ical work, \$1,200.
(706) 247-6240

200 FORD 25 PAS-
SENGER MINI-BUS,
turbo diesel, low
miles; 2001 Toyota
Sequoia; 2005 Toy-
ota Sequoia; and
2006 Chrysler Town
& Country; all very
good mechanically.
Call for details, (660)
424-3641

Medium Duty (GVW 14,000- 26,000 lbs.)

1947 RED INTER-
NATIONAL 1-1/2
ton truck, rad rod ma-
terial/yard art, \$850.
Free delivery within
75 miles of Waverly,
TN. (931)622-2824

1988 GMC 12'
CHANDLER, hy-
draulic litter body,
\$9,000 or best offer.
Call Willie, (678)231-
8636.

Want to Buy

WANTED, Standing
Tracts of Timber and
Cedar to buy and cut;
also, mulching ser-
vices. Dwight Rogers,
(931) 580-4816

To Place A
Classified Call
800-247-7318

AUCTIONS!!! AUCTIONS!!! AUCTIONS!!!

We Have Several Upcoming Auction Events
In The Next Couple Of Months.

Be Sure To Check Out All Of The Properties
We Are Selling Soon!

Just Go To garnerauctionsinc.com

Thursday Evening June 26th - 6:07 p.m.

Nice Commercial Property
Old Highway 20 Across From
Mazda/Toyota Plant

Saturday July 19th - 10:07 a.m.

House W/ Inground Pool And 77 Acres+/-
Ardmore, Tennessee

Saturday July 26th - 10:07 a.m.

House And Lot Pulaski, Tennessee

Saturday August 30th - 10:07 a.m.

Mobile Home, Shop And Vacant Lot East
Limestone Area

More Booking Weekly!

Be Sure To Check Our Website For Updates.



Garner Auctions, Inc.
10334 Paradise Shores Drive • Athens, AL 35611

(256) 233-5699 or (877) 914-SOLD

Email: garnerauctionsinfo@gmail.com



Ken Garner ALSL 1002 • TNSL 2034
L.K. Garner AA3071 AL Real Estate 160158
Zac Garner AL Real Estate 148754



United
Producers, Inc.

LIVESTOCK MARKETING

CREDIT

RISK MANAGEMENT

United Producers Inc

www.uproducers.com

Fayetteville, Tenn.

(931) 433-5256 or (931) 433-4962

Weekly Auction Every Tuesday at 1 p.m.

Graded Feeder Cattle Every Tuesday,
Weaned/Vac Feeder Sale - Featured Weekly Tuesdays

Columbia, Tenn.

(931) 223-8323

Weekly Auction Every Wednesday at Noon

Weaned/Vac Feeder Sale - Featured Wednesdays

Columbia Sheep and Goat Sale - 2nd and 4th Monday at 1 p.m.

**holiday exceptions, visit website for full schedule*

KY-TN LIVESTOCK MARKET

Hwy. 79N • Guthrie, KY

Thursday Sale 2:00 P.M.

I-65 Exit 112 • Cross Plains, TN

Monday Sale 1:30 P.M.

Check kytnlivestock.com for Special Sales

OFFICE: 270-483-2504

Tom Barnett • 931-624-7376

Arab Livestock Market, Inc.

Hwy. 231 South, Arab, AL



Cattle Auction

Every Tuesday at 10:00 A.M.

256-586-4212

Video Auctions

www.arablivestock.com

Robbie Gibbs: 256-490-2583 • 205-589-6236

Northwest Alabama Livestock Auction

Russellville, AL • nwalivestock.com

Stockholder owned & operated since 1976

Trucking, Feed & Portable Catch Pens Available

Sale each Monday at 10:00 A.M. • Hogs • Goats • Sheep • Cattle

Upcoming Special Feeder Calf Sales

August 4th, 2025 and November 3rd, 2025

Upcoming Goat Sales

August 9th, 2025 and November 8th, 2025

All sales begin at 11:00 A.M.

Rickie Behel Manager • 256-740-9457 • Barn: 256-332-3323



Sand Mountain Stockyard, LLC

Corner of Hwy's 68 & 168, Kilpatrick, AL

256-561-3434

Sale at 11:30 A.M.
Every Wednesday
& Saturday

Full Service Facility

Owner:

Eric Wilburn • 256-506-2525



**Advertise
Here!**



Mid-South Regional Livestock Center

Hwy. 41-A, Unionville, TN 37180 • 931-294-5101

Tim Riley (615)714-8090 • Carly Blackman (931)698-7510

Sale every Monday • 11:00 A.M.

Begin receiving cattle on Sunday 12:00-5:00 P.M. & on Monday from 7:00 A.M.



www.midsouthlivestock.com

Hardin County Stockyard, Inc.

3350 Hwy 226, Savannah, TN 38372

731-925-3287

Goats & Hogs Sale – Wednesday 11:30 A.M.

Cattle Sale – Wednesday 1:00 P.M.

Begin receiving livestock on Tuesday 8:00 A.M.-DARK

Full-Service Stockyard Offering:

Trucking, Feed, Appraisals, & Video Sales

Order buying service through Harry Floyd Livestock, Inc.

Harry Floyd (home): 931-722-9200

Harry Floyd (cell): 931-224-2247

Rob Floyd: (cell) 931-224-2248 • Donnie Welch: 731-607-9196

Main Office: 931- 722-3100 • www.floydandsonslivestock.com

Tennessee Valley Livestock

620 S. Poplar, Florence, AL 35630

256-766-0281

Cattle Sale • Monday 12:00 NOON

Begin receiving cattle on Sunday 10:00 A.M. - dark

Full-Service Stockyard Offering:

Trucking, Feed, Appraisals, & Video Sales

Order buying service through Harry Floyd Livestock, Inc.

Harry Floyd (home): 931-722-9200

Harry Floyd (cell): 931-224-2247

Rob Floyd: (cell) 931-224-2248 • Jim Martin: 256-366-3519

Main Office: 931- 722-3100 • www.floydandsonslivestock.com

2 Locations To Better Serve You!

Valley Stockyard

13130 AL Hwy. 157, Moulton, AL 35650

Regular Sale Every Wednesday • 11:00 A.M.

Trucking Available • Country Buying & Bluegrass Video Sales

“Serving our regions cattle producers for 66 years & many more!”

More info: 256-974-5900

Pulaski Stockyard

“Striving To Be Your Full Service Stockyard”

607 West Shoal St., Pulaski, TN 37478

Regular Sale Every Tuesday • 12:30 P.M.

Special Cow Sale First Friday of Every Month • 6:00 P.M.

Special Goat Sale Every 3rd Friday Each Month • 6:00 P.M.

Office 931-424-8389 • www.pulaskistockyard.com

Derek Black 931-638-5392 • Benji Mccafferty 256-740-9648

Advertise Here!

Environmentally Friendly Brush Clearing by Layne Construction

Remove unwanted vegetation. Cut & grind trees up to 6" & brush into mulch. No brush piles.



We Do All Types Of Dirt Work • Loader & Excavator

We can: Clear for wild game plots • Clear ATV trails • Shooting lanes
Pasture reclamation • Lot clearing • Fence lines • Field borders • Right of way

Call for free estimate: 256-975-4193 • 256-975-4296
www.land-clearing-services.com

OLD BARN WANTED, we take down old barns. Call T&M Demolition at (270) 962-7058

TIG WELDERS AND MAINTENANCE LABORERS 43 FABRICATION IS HIRING FOR TIG WELDERS AND MAINTENANCE LABORERS, 1st shift, 40 hours a week, some overtime from time to time. Pay based on experience. Call for information at (931)270-8389; or, send resume to service@43fabrication.com.

WANT TO BUY, NEW HOLLAND 900 silage chopper and 2 Miller Pro silage wagons. (270)881-2403.

WANTED, BLOWER (AIR BOX) for Detroit 353 engine, for left side of engine. (931)622-2824.

WANT TO BUY FJ40 Toyota, in model years from 1975 to 1980. (931) 607-9737

**Got Equipment
to Sell?
We've Got Buyers!**

Place your ad online at
www.FarmersExchange.com
or by calling 800-247-7318.

CASH FOR QUALITY GUN COLLECTIONS! BULLSEYE GUN & RANGE, MURFREESBORO, TN. M.A. SMITTY OR CALEB GREGORY, (615) 900-1098

WANT TO BUY, KAWASAKI engine, between 20hp-25hp, running or not. (256)974-3774. (256) 974-3774

WANT TO BUY OATS, endophyte free fescue, triticale, orchard and timothy grass for fall planting. (615)618-0541.

WANT TO BUY SMALL herd or a few cows and calves. (931)307-9839.

WANT TO BUY, CALF creep feeder. (931)307-9839. (931) 307-9839

WANTED, 14 TON or smaller feed bin and auger; calf creep feeder; and cake feeder box. (931)307-9839.

To Place your Word Ad, call 1-800-247-7318

WANT TO BUY, two 12"x28" six loop rims, good condition. (931) 593-3491

WANT TO BUY, round bale shredder. (931) 383-0653

WANTED, 8' TO 10' bushhog. (931)307-9839.

WANTED, 16.9-18.4X28 industrial tread tires. Text or leave message. (931)306-3969.

WANTED, 501 FORD mowing machine, (931)210-7857.

WANT TO BUY, HAY conditioner, PTO driven. (931)580-5409.

Animals

FOR SALE, REGISTERED BLACK ANGUS BULLS, will qualify for the full TAEP money, all are by the top AI bulls in the breed. Crawford Angus. Lewisburg, TN. (931)205-2450; (931)359-2633. crawfordangus@bell-south.net

REGISTERED BLACK ANGUS BULLS all yearling bulls sold, will have more in October. Turrentine Angus, Shelbyville. (931)607-8950; aturrentine@cafes.net.

WAGYU POLLED HEIFERS for sale. (256)714-6182.

REGISTERED POLLED HEREFORD bulls for sale. Lynnville, TN area. (931)527-3392.

REGISTERED BLACK HEREFORD BULLS, three 2-year-olds, several yearlings to choose from. Located in Murfreesboro, TN, big-framed and stout, ready for heavy service, \$3,500. (615) 207-9097 JLFELECTRIC@BELL-SOUTH.NET

YOUNG BULLS polled, registered, gentle. Quality Cattle Since 1977. Facebook: Happy Valley Ranch Santa Gertrudis (256) 566-7878 lindadkelso@yahoo.com

REGISTERED ANGUS BULLS, TAEP in TN & KY, big strong bulls with great EPDs, several heifer bulls available, Genomic tested for accuracy, BS exam. FandPLivestock.com; (615) 653-8913

PURE BRED POLLED HEREFORD BULLS for sale. (931) 363-0445

FOR SALE, small group of registered Black Angus cows. (931) 308-4939

Dogs

AUSTRALIAN SHEPHERD PUPPIES, 3 merle, 1 black tri, all females, born 3-20-25, ready to pick out, will have first shots/dewormed; also 2yr. old male Toy Poodle. John J. Gingerich, 146 Fox Hunters Lane, Morrison, TN 37357.

**Got Livestock
to Sell?
We've Got Buyers!**

Place your ad online at
www.FarmersExchange.com
or by calling 800-247-7318.

Happy 4th of July!

Extending my warm wishes to you and your family. Hope you have a fun, memorable, and safe 4th of July celebration!

Bob Barger - Farmers' Exchange Rep

To Place A Classified Call 800-247-7318

BORDER COLLIE PUPS 8 weeks old. Smart and loving- make excellent herd dogs. Parent dogs registered with American Border Collie Association. (615)542-9311; maryjthom1225@icloud.com.

Sprayers

AG SPRAY EQUIPMENT
3-point and pull-type sprayers come with boomless nozzle. 3 point sprayers all have hand wands. 3 point 65 gal \$1,450, 110 gal \$2,550, 150 gal \$2,850, 200 gal \$3,300. Pull-type with used tires 300 gal, \$4,200; 500 gal, \$4,550. Booms available. Call Chris at Farm Service Solutions; or, visit farmservicesolutions.com; (931) 242-7675

Other

PEAFOWL, I HAVE A few high quality Peacocks and Peahens available for sale. Spalding, Yearling and Breeder age. White spalding yearling hens with Pied Spalding Yearling cock. Also breeder age Java Green hen. Serious calls please. (931)652-3164.

CHICKS, DUCKLINGS, GOSLINGS, Poults, and young goats for sale. Cullman, AL area. (256)930-8530.

YOUR CHEVY DEALER FOR LIFE



2025 Silverado 3500 HD
Stk#250547 - \$76,658



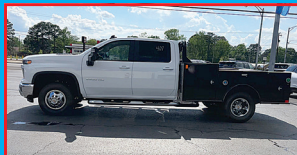
2025 Silverado 3500 HD
Stk#250635 - \$75,797



2025 Silverado 3500 HD
Stk#250319 - \$64,244



2025 Silverado 3500 HD LT
Stk#250743 - \$72,820



2025 Silverado 3500 HD
Stk# 250641 - \$79,913



2025 Silverado 3500 HD
Stk#250320 - \$64,073

www.chevroletofboaz.com

CHEVROLET OF BOAZ



1134 U.S. Hwy. 431, Boaz, AL 35957

1-800-531-4253

Call to insure all incentives are applied.

Commercial rebate requires qualifications. Prices plus tax, title & license and \$199 admin. fee. Incentives Subject to Change.

PIGEONS, EIGHT BREEDS WHITE HOMERS, Faintails, B'ham Rollers, Archangels, Zitterhals Shakers, Lincoln, AL. (205)362-9480.

Attachments

Pigs

PIGS FOR SALE, 3/4 Berkshire, 1/4 White; weaner pigs 8-12 weeks, BBQ pigs with deposit, Butcher pigs with deposit. Govern Livestock. (931)675-0898.

JOHN DEERE, 541 LOADER & BRACKETS for sale, \$3,800. (256) 773-8080

To Place A Classified Call
800-247-7318

Fertilizer Applicators

ADAMS FERTILIZER BUGGY for sale, \$4,000. (256) 773-8080

Construction Equipment

JOHN DEERE 550H, LGP, runs good, \$42,750. (256) 335-4919

Dozer

2012, CATERPILLAR D6T good machine, 13.5', \$72,750. (256) 335-4919

Got Tools to Sell? We've Got Buyers!

Place your ad online at www.FarmersExchange.com or by calling 800-247-7318.

Announcements

MILLER FARMS Angus Beef from the farm. 100% natural, non-GMO, hormone and antibiotic-free. Whole, halves, or by the pound. Slaughtered and packaged. (931)593-3702.



Chicken Litter For SALE

Kiln Dried Shavings For Sale

ORGANIC FERTILIZER

• DELIVERY AVAILABLE •

931-967-8699 • 931-607-8699

To Place A Classified Call 800-247-7318

Over 50 Truck Beds in stock, newer & older Chevrolet, Ford, Ram & GMC Single & Dual-Wheel Trucks



Now carrying
Iron Bull Trailers
Call for prices!



Aluminum Beds
Call for Prices



Steel Beds
Call for Prices

We will trade for your used bed!
Used Flat Beds & Dually Beds Available!
Custom Orders Available!



Skirted Steel Beds - Call for Prices

Fast Installation on
In-Stock Inventory
Call Devin or Todd
931-738-9275



120 Auto Lane | Sparta, TN 38583
Hwy. 111 in Sparta

norstar
EST. 1975
Wit-Ro, Inc.
TRUCK BODIES

JASON LEWIS
AUTOMOTIVE
CHRYSLER | DODGE | JEEP | RAM
SPARTA, TN

JASONLEWISAUTOMOTIVE.COM

*Price plus tax, installation hardware, & installation. Prices do not include applicable sales taxes. Installation hardware not included in advertised price. Limited quantities available. Due to advertising deadlines, some models may be sold out. **Financing available through Sheffield's on most models.

Other

DECALS AFFORDABLE DECALS AND SAFETY DECALS. Prompt. Knowledgeable Reliable Service. www.QuipCal.com; Call, (215)536-5339; email: info@custom-servicescompany.com.

Fencing & Cattle Equipment

BEHLEN CREEP FEEDER for sale, excellent condition, Scottsboro, AL area, \$500. (256)259-1183.

PARKER FARMS FENCE LINE FEEDERS, heavy duty, top seller, 20' \$2,200; 24' \$2,400; other custom sizes available. We appreciate your business. Parker Farms. parkerfarmscattleandequipment.com; (615) 542-6157

180 DEGREE SWEEP TUB with 7' bow gates, 6' tall, heavy duty. (615)653-8913.

BULL GATES-16 GAUGE, 51" and 63" tall, 4'-20' long, good inventory. FandPLivestock.com; (615)653-8913.

BOW GATES 16 GAUGE, 6' tall, good inventory, 4' up to 12' combo bow gates-example 12' with 4' wt. FandPLivestock.com; (615)653-8913.

CORRAL PANELS, 16 GAUGE, 6' tall, good inventory, 8' up to 16' long. FandPLivestock.com; (615)653-8913.

PARKER FARMS CATTLE & EQUIPMENT. Call us today for quality farm equipment at reasonable prices. Check out our new website parkerfarmscattleandequipment.com. Located in Murfreesboro, TN. Shipping Available. (615) 542-6157

CONTACT US FOR ADVICE, pricing, and options for your next farm fencing project. We offer a large variety of wood posts, both square and round, a big selection of barbed wire and net wire in black and galvanized. We have hundreds of Tarter gates in stock. We also have t-posts and high-quality fence boards 1x6x14 ft and 1x6x16 ft. Check out our prices for MiraFount livestock waterers. Finley Fence Supply, Cornersville, TN 37047. Contact us by phone (931)675-3260; or (931)607-5941; or email at finleyfencesupply@gmail.com.

FENCE LINE FEEDERS, 10' long; troughs are 10-gauge metal, 30' wide and 7" deep. FandPLivestock.com; (615) 653-8913

To Place A
Classified Call
800-247-7318

To Place A
Classified Call
800-247-7318

HAY FEEDER PANNELS, 6' up to 16' long, 16 gauge, 2"x3" construction and built to last a lifetime, you will not find a better made panel, custom lengths available, TAEP item in Tennessee. FandPLivestock.com; (615)653-8913.

ROUND PEN PANNELS, 12' galvanized; 5' tall, \$120 each; 4' tall, \$120 each; 6' tall, \$140 each; available in economy medium duty-heavy duty. FandPLivestock.com; (615)653-8913.

PARKER FARMS CATTLE & EQUIPMENT. Call us today for quality farm equipment at reasonable prices. Check out our new website parkerfarmscattleandequipment.com. Located in Murfreesboro, TN. Shipping Available. (615) 542-6157

PARKER FARMS FENCE LINE FEEDERS, heavy duty, top seller, 20' \$2,200; 24' \$2,400; other custom sizes available. We appreciate your business. Parker Farms. parkerfarmscattleandequipment.com; (615) 542-6157

Harvesting Equipment

FARM KING AUGERS, several sizes, overstocked, reduced prices. (270) 586-6653

To Place A
Classified Call
800-247-7318

Grain Carts

PARKER FARMS MOBILE FEED BINS, 2 ton, \$3,450; 3 ton, \$3,750; 3 ton tandem, \$3,950, 4 ton tandem, \$4,150. Call today to get on our build list. We appreciate your business. Parker Farms. parkerfarmscattleandequipment.com; (615) 542-6157

Hay & Forage Equipment

KUHN 7' DISC MOWER for sale, \$2,200. Readyville, TN area. (629)395-4558.

PARKER FARMS DISK MOWER CADIES, heavy-duty, field-ready, hydraulic lift, PTO included. We appreciate your business. Parker Farms. parkerfarmscattleandequipment.com; (615) 542-6157

PARKER FARMS DISK MOWER CADDIES, heavy-duty, field-ready, hydraulic lift, PTO included. We appreciate your business. Parker Farms. parkerfarmscattleandequipment.com; (615) 542-6157

Mower Conditioners & Windrowers

FARM KING FINISH MOWERS, 6' and 7', call for pricing. (270) 586-6653

Got Equipment
to Sell?
We've Got Buyers!

Place your ad online at
www.FarmersExchange.com
or by calling 800-247-7318.

Other

DEWEZE SUPERS-LICER roll bale feeder, \$19,500. "The best way to feed what you need - Stop your hay loss." Give us a call, RRP Truck Equipment, Sparta, TN 38583. (931) 761-3554

KBH 4 WHEEL WAGON, 24' long, no sideboards, used for hay hauling, \$2,000. (256) 588-0812; (256) 753-2318.

Rakes and Tedders

WALTON RAKE for sale, 3 point, 4 wheel, \$600. (615) 569-0891.

Rotary Mowers

INDUSTRIAS AMERICAN 3 POINT CUTTERS heavy 11-gauge deck, 90 HP gear-boxes with slip clutch. 6' \$1,600; 7' \$1,900; 10' \$3,750; 10' pull-type \$5,500. Call Chris at Farm Service Solutions in Leoma, TN; or, visit farmservicesolutions.com; (931) 242-7675

BUSH HOG 15' CUTTER, like new, \$3,500. (270) 586-6653

Round Balers

2005, HESSTON 745 baler for sale, good condition, \$6,500. Scottsboro, AL area. (256) 599-0591.

Got Livestock to Sell?**We've Got Buyers!**

Place your ad online at www.FarmersExchange.com or by calling 800-247-7318.

NEED NEW BELTS? WE SELL AMERICAN MADE BELTING ONLY!

Largest Belting Dealer In U.S.

Original Belting for ABSOLUTELY ALL ROUND BALERS IN STOCK!! Save Hundreds

FREE SHIPPING On Belting

MC/VISA/DISCOVER OR COD NO 800# Just Best Prices!!



VERMEER HAY EQUIPMENT New & Used

We Have The Largest Vermeer Baler Parts Inventory In The South

We Fill Over 99% Parts Orders From Stock-Year Round!

Ship UPS Everyday.

**HAMMOND EQUIPMENT**

Since 1973 • Faundsedale, AL 36738

(334) 627-3348

NEW HOLLAND 450 net and twine, \$15,500; IH 1460 combine with low hours, \$5,000; IH 464 tractor with new engine, \$3,500. (931) 335-5557. (931) 335-5557

JOHN DEERE 435 ROUND BALER, net and twine wrap, \$7,500; and, Vermeer 605 Super J round baler, twine wrap, \$3,000. (205) 388-7369

Square Balers

JOHN DEERE 336 square hay baler; two New Holland 9' hay conditioners, two JD side delivery pull-type rakes, RT 5200H hydraulic fold tedder; four basket Tonutti 8 wheel v-rake, super shape, all for \$10,000. (256) 588-0812; (256) 753-2318.

To Place A Classified Call 800-247-7318

Hay & Grain For Sale

GOOD CORN SI-LAGE for sale, \$60 per ton, large orders negotiable. (931) 256-0481.

1ST CUTTING HAY, 21 rolls, in the shed, \$70 per roll or \$1,300 for all. (931) 271-0164.

HAY FOR SALE, 3x3x8 bales of Alfalfa hay and mixed Alfalfa hay. Good horse hay. (931) 808-8490; (931) 728-5490.

To Place A Classified Call 800-247-7318

Odds and Ends

IH AND CASEIH TRACTOR PARTS new, used and re-manufactured, the largest exclusive IH and CaseIH inventory in North America. 12351 Elm Road, Bourbon, IN 46504. www.batescorp.com; (800) 248-2955

SALVAGING AGCO 2270 SQUARE BALERS, round balers, swathers, combines and tractors. Call us for new and used John Deere row head parts. Over 8,000 machines parted out. Mike's Equipment Co., Buhler, KS. mikesequipment.com; sales@mikesequipment.com; (620) 543-2535

Got Tools to Sell? We've Got Buyers!

Place your ad online at www.FarmersExchange.com or by calling 800-247-7318.

SCHWEISS

DOORS

HYDRAULIC — OR — BIFOLD

ONE-PIECE DOORS STRAP LIFT DOORS

SCHWEISSDOORS.COM

THE DOOR LEADER

507-426-8273



SALVAGING

Salvaging Agco 2270
Square Balers

- Round Balers
- Swathers
- Combines
- Tractors

Call Us For New &
Used John Deere
Row Head Parts!

**Over 8000
Machines
Parted Out!**

Mike's Equip. Co.

Buhler, KS

mikesequipment.com

sales@mikesequipment.com

620-543-2535

since 1977

WOOD SPLITTERS,
10 different styles to
choose from, models
for many excavators,
made in the USA,
no brakes/no bends.
TM Manufacturing.
www.skidsplitter.com;
(320) 286-3077

SIGNATURE TARP,
custom hoop build-
ing covers, hay tarps,
and pond liners, 11
colors available, all
covers have 2" weld
for strong waterproof
seams. (859) 375-5268

**Got Equipment
to Sell?**

We've Got Buyers!

Place your ad online at
www.FarmersExchange.com
or by calling 800-247-7318.

PRODUCE AUCTION
Every Monday • Wednesday • Friday
Sale Starts April - October at 11:00 A.M.

Call for additional info



931-829-1114 • 469 S. Brace Rd., Ethridge, TN 38456

www.PlowboyProduceAuctions.com

A SPLIT ABOVE THE REST



- 10 Different Woodsplitter Styles to Choose From
- Models for Many Excavators
- Made in the USA
- No Brakes/No Bends

The strongest splitter for the money in the country. **PERIOD.**



TM MANUFACTURING

Making Wood Splitting Simple

260 Industrial Park Rd. SE, Cokato, MN 55321 • 320-286-3077 • www.skidsplitter.com

SAND MOUNTAIN
STOCKYARD LLC,
sales starting at 11:30
a.m. every Wednes-
day and Saturday.
Full service facilit-
ity on the corner of
Highways 68 and 168
in Kilpatrick, AL.
(256) 561-3434

ARAB LIVESTOCK
MARKET INC, cattle
auction every Tues-
day at 10 a.m. High-
way 231 South, Arab,
AL Video auctions at
www.arablivestock.com
Robbie Gibbs
(256) 490-2583; (205)
589-6236; or, (256)
586-4212

NORTHWEST ALA-
BAMA LIVESTOCK
AUCTION, stock-
holder owned and
operated since 1976.
Sale each Monday at
10 a.m. hogs, goats,
sheep and cattle. Call
the barn at (256) 332-
3323; or, Ricky Behel,
Manager at (256) 740-
9457

**GOT TOOLS TO
SELL? We have
buyers! Place your
ad online at www.FarmersExchange.com
or by calling
(800) 247-7318**

**GOT EQUIPMENT
TO SELL? We have
buyers! Place your
ad online at www.FarmersExchange.com
or by calling
(800) 247-7318**

**GOT LIVESTOCK
TO SELL? We have
buyers! Place your
ad online at www.FarmersExchange.com
or by calling
(800) 247-7318**

WHITE PLASTIC
FENCING for sale,
it's a large trailer load,
\$500. (931) 580-9010.

WANT TO BUY
FJ40 Toyota, in mod-
el years from 1975 to
1980. (931) 607-9737

MIDDLE BUSTER
3-point, like new,
\$125. (931) 364-5529
deanmar@united.net

3 POINT SPREAD-
ER used, 500-pound
capacity, spreader
with pto. shaft, great
for liming food plots,
\$325. (931) 364-5529
deanmar@united.net

3 POINT BOOM
POLE lightly used,
for a 3-point tractor,
\$150. (931) 364-5529
deanmar@united.net

EQUIPMENT FOR
SALE, WOODS CA-
DET MD 172 BUSH-
HOG, \$850; HAY
BUGGY TUMBLE
BUG, \$850; CATTLE
RACKS METAL FIT
FORD OR DODGE,
\$225; PLASTIC WA-
TER CARRY TANK,
300 GALLONS,
\$225. (615) 289-7287.

FOR SALE 2 saddles,
2 bridles and 2 blan-
kets, all for \$500.
If interested leave a
message at (931) 468-
3004

ALUMINUM MO-
BILE CHICKEN
COUP, 10'X12', about
a year old, \$2,000.
(931) 695-3538

USED 12'X16' STOR-
AGE BARN, in good
condition, delivery
and setup available,
\$2,000. (931) 695-
3538

WORM FARM
EQUIPMENT for
sale, Lincoln County,
TN area. (931) 685-
1014.

**To Place A
Classified Call
800-247-7318**

FURNITURE FOR
SALE, round claw
foot oak table with
4 chairs, \$400; mas-
sage chair, \$75; Sing-
er commercial sew-
ing machine, \$250;
electric hospital bed,
\$125. Lincoln Co, TN
area. (931) 685-1014.

TWO TOBACCO
DRYING TRAILERS
for sale, \$150 each.
Lincoln County, TN
area. (931) 685-1014.

NANO HEARING
AIDS, with charger,
never worn, \$175.
New Market, AL.
(256) 859-4131.

TWO LIKE NEW
RECLINERS, \$200
each. New Market,
AL. (256) 859-4131.

42" ROUND OAK
KITCHEN TABLE,
with 3 chairs on cast-
ers, \$200. New Mar-
ket, AL. (256) 859-
4131.

Other Equipment

H E S S T O N
STAKHAND for sale,
\$2,000. Readyville,
TN area. (629) 395-
4558.

**Got Livestock
to Sell?
We've Got Buyers!**

Place your ad online at
www.FarmersExchange.com
or by calling 800-247-7318.

**Planting
Equipment**

ALLIS-CHALMERS
2 row no-till planter
for sale, perfect con-
dition, \$1,500. Mor-
gantown, KY area.
(270)991-0706.

Real Estate

FOR SALE 7,000
SQ. FT. FARM
BUILDING ON 10
ACRES. 4,000 SQ.
FT. SHOP AREA,
2 CAR GARAGE,
2,100 SQ. FT.
LIVING QUAR-
TERS, 2BED-
ROOMS, 2 1/2
BATHES. EAST
MAURY COUN-
TY, POTTSVILLE
COMMUNITY,
\$867,000. CALL
RICK, (931) 619-
0421

**Recreational
Vehicles**

2006, ALLEGRO
BUS QDP 42', asking
\$65,000 or best offer.
(931) 580-1377

Services

43 FABRICATION
Where Customers are
our top priority! We
are a multi-craft weld-
ing and machine shop
that offers equipment
rigging and instal-
lation. From one off
obsolete parts fabri-
cation to large indus-
trial installs/repairs/
maintenance, and
more! Contact us for
all your commer-
cial and industrial
needs! No job to big
or small give us a call
at (931)270-8389 or
email us at service@43fabrication.com

To Place A
Classified Call
800-247-7318

The Ultimate Arena and Ground Prep Tool



REGULAR



HEAVYWEIGHT



SHORT MODEL



WATER KIT



WHEEL MODEL



LASER MODEL

Call us today! (937) 444-2609

CAPABILITIES

- Smooth It Out
- Fluff It Up
- Pack It Tight
- Level It Constantly
- Dig It Up
- Roll It Down
- Pull It Back From Edges
- Pulverize Clods
- Fill In Holes
- Horse Arenas
- Driveways
- Agricultural
- Erosion Repair
- Ballfield Maintenance
- Landscaping
- Waterways

15686 Webber Rd., Mt. Orab, OH 45154

Reveal4-n-1.com

REVEAL 4-N-1

the Original... Still the Best

ROBINSON EN-
VIRONMENTAL
LAND CLEARING
forestry mulching,
boom mower bush-
hogging, agricultural
stump grinding and
skid loader work. Call
David, (615) 631-0638

A D D I S O N
A G R I - B U I L D -
ERS, poultry hous-
es, barns, sheds, all
types of buildings for
farms, and wood and
steel trusses. Owner
Craig Pigg, (256) 747-
3444

SCHWEISS DOORS,
hydraulic one-piece
doors or bifold strap
lift doors. schweiss-
doors.com; (507) 426-
8273

LIMITLESS LAND
MANAGEMENT
Call for Price. Dozer
Skid steer work, Bush
hogging: 15ft/5ft
brush cutter, skid
steer mounted, cuts
up 6 inches; fence/
post drilling. Will
beat anyone's price!
(931) 625-3485

TN DIRT WORKS
LLC Landscaping,
brush cutting, for-
estry mulching,
bush hogging and
more! Providing
services to middle
TN since 2019. Call
for your free cus-
tom quote! (615)
809-7556

**Got Tools to Sell?
We've Got Buyers!**

Place your ad online at
www.FarmersExchange.com
or by calling 800-247-7318.

**Got Equipment
to Sell?
We've Got Buyers!**

Place your ad online at
www.FarmersExchange.com
or by calling 800-247-7318.

**To Place A Classified Call
800-247-7318**

PRESSURE TREATED FENCE POSTS



Excellent Prices
Pressure treated at our plant with CCA to the retention rate of .40
25 year warranty against decay
Dealer Inquiries Welcome
Will Protect Established Dealers Territories
Family business since 1987

Green River Post

11029 Hwy. 132 E., Sebree, KY 42455 • Kenny Miller • (270) 772-0318

Upcoming Consignment SALE

Call For More Information

Benton County Fairgrounds
17136 Hwy 5, Ashland, MS 38603

Equipment coming from
area Farmers, Construction,
and Trucking Companies.
This will be a live onsite
and online auction. Online
bidding will be powered by
Equipment Facts.

License # 1684F • Firm# 1657



662-274-4708 www.rilesauctions.com

FOR RENT BOB-CAT 435 MIDI EXCAVATOR OR KUBOTA 90HP SKIDSTEER. BOTH ENCLOSED CAB, HEAT & AIR. EXCAVATOR WITH THUMB, SKIDSTEER WITH GRAPPLE, BUCKETS, & OTHER ATTACHMENTS AVAILABLE. \$400 PER DAY, \$850 3 DAYS, \$1,300 PER WEEK, \$2,800 PER MONTH. FREE PICK-UP & DELIVERY. CALL RICK, (931) 619-0421

DOZER FOR RENT CASE 850G 100HP, 6-WAY BLADE, WIDE TRACK. \$500 PER DAY (PICKED UP), \$1,200 (3 DAYS), \$2,000 (PER WEEK 7 DAYS), \$4,500 (PER MONTH) WITH FREE PICK-UP & DELIVERY, EXCAVATOR & SKIDSTEER ALSO AVAILABLE. CALL RICK, (931) 619-0421

To Place A
Classified Call
800-247-7318



0%

FOR 36 MONTHS

ON SELECT NEW BUSH HOG EQUIPMENT
INCLUDING FLEX-WING AND MULTI-SPINDLE ROTARY CUTTERS,
HAY TEDDERS, AND HAY RAKES

Trust in a company whose name has become synonymous with the task.
That's performance. That's reputation. That's Bush Hog®.

IF IT DOESN'T SAY
BUSH HOG®
IT JUST WON'T CUT IT™

www.bushhog.com

1951 2017
CELEBRATING
66
Years

Built
BUSH
HOG
TOUGH
in Tulsa, Oklahoma

E-STORE

Dean Farm Supply

28739 U.S. Hwy. 72 • Hollywood, AL 35752

256-574-1112

www.DeanFarmSupply.com

Got Tools to Sell? We've Got Buyers!

Place your ad online at
www.FarmersExchange.com
or by calling 800-247-7318.

WRANGLER PARTS
FOR SALE, used ma-
chines wanted. Deutz
engine parts. Martin's
Maintenance, Mon-
day-Friday, 8a.m.-
5p.m. (270) 265-5040

To Place A
Classified Call
800-247-7318

Got Equipment to Sell? We've Got Buyers!

Place your ad online at
www.FarmersExchange.com
or by calling 800-247-7318.

FENCING BARN
SHEDS AND
MORE WE PRO-
VIDE ALL TYPES
OF CONSTRU-
TION SERVICES:
NEW HOMES,
ADDITIONS,
AGRICULTUR-
AL BUILDINGS,
FENCING, AND
MUCH MORE!
GIVE US A
CALL TODAY
TO SCHEDULE
YOUR APPOINT-
MENT FOR YOUR
FREE ESTIMATE.
OVER 20 YEARS'
EXPERIENCE. LI-
CENSED AND IN-
SURED. ENGLISH
SERVICE COM-
PANY LLC, 1102
WINCHESTER
HWY, FAYETTE-
VILLE, TN 37334.
(931) 438-1426.
TN. LIC # 74705;
AL LIC # 27951.
WE APPRECIATE
YOUR BUSINESS!
(931) 438-1426 EN-
GLISHSERVICE-
COMPANY@
GMAIL.COM

Other

SMART-TILL
Cherokee Tillers,
50" and 59" chain
drive regular duty;
48", 63", 71" til-
lers in gear drive
medium duty; 84"
gear drive heavy
duty. 48" 1,825;
50" \$1,700; 59"
\$1,800; 63" 1,925;
71" \$2,400; 84"
\$2,800 plus tax.
Call Chris at Farm
Service Solutions;
or, visit farmerservicesolutions.com;
(931) 242-7675

Tillage Equipment

ATLAS 18X20 DISK
HARROWS. 3-point
lift disk, for Cat 1or
2, original own-
er, only used a few
times. Just don't use
them anymore, good
for putting in food
plots! (931) 364-5529
deanmar@united.net

To Place A
Classified Call
800-247-7318

Limb Blazer

24" Carbide
Tipped Blade



CALL: 270-886-1097 | Elktown KY

Buckets, Grapples, Pallet Forks, Bale Spears, Augers, Post Drivers, Concrete Breakers, Brush Cutters

Large
Variety of
Attachments
in Stock!

ROBINSON ENVIRONMENTAL LAND CLEARING

Serving Middle Tennessee since 2007



We will clear your land to match your vision!
We will work with excellence and efficiency to
deliver your desired end results.

Pasture clearing/restoration
Timber stand improvement
Lot clearing-residential and commercial
Right-of-ways • Fire Prevention
Wildlife habitat enhancement
Food plot • Perk Sites • Survey Lines
Real Estate tracts • Access roads
Agricultural Stump Grinding

WWW.DROBINSONLANDCLEARING.COM
615-631-0638

TAYLOR-WAY 8' DISC BOG for sale, w/cyl., \$600; 6' bush hog, \$600. (615)569-0891.

JOHN DEERE OFF-SET BOG DISK, 8', \$6,850. (256) 335-4919

Tractors

1950, JOHN DEERE A TRACTOR, 1950 or 1951 model, kinda rough, \$650. (931)622-2824.

1953, FORD JUBILEE tractor for sale, \$900. Florence, AL area. (256)577-5051.

INTERNATIONAL 140, good strong tractor, needs tires. (615) 974-2333

JOHN DEERE 7420 tractor power quad, LHR, 6,300 hours, nice tractor, \$49,000. (615)464-7080.

KUBOTA L-245 H with cultivators, \$5,250. (615)569-0891.

JOHN DEERE 4230, good tractor, 8,200 hours, \$18,750. (256) 335-4919

KUBOTA L33001 TRACTOR, 750 hours, 4WD, \$16,750. (256) 335-4919

JOHN DEERE 4240, bucket and hay spear, \$27,500. (256) 335-4919

KUBOTA 105S, 4WD, 4,500 hours, shuttle shift, \$31,750. (256) 335-4919

JOHN DEERE 120C, off the farm, clean out bucket, reg. bucket, \$47,750. (256) 335-4919

2014, JOHN DEERE 750K, 5,400 hours, used on farm, \$121,500. (256) 335-4919

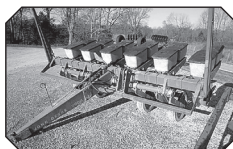
INTERNATIONAL 684, 2WD, \$4,750. (931) 381-1839; or, (931) 619-1338

JOHN DEERE 2030, loader, \$8,950. (931) 381-1839; or, (931) 619-1338

Quality Farm Equipment



IH 966 - 105 PTO hp, 8 spd. trans., starts & runs & works A1! Stk#6949 - **\$14,000**



JD 7000 - Conventional Planter, markers, 6 row, 30", good overall- **\$4,200**



Case IH 885 - 75 PTO hp, 4 cyl. diesel, dual hyd. runs & works A1, QA loader bucket, spear, Stk#6998 **\$9,850**



Ford 445D - diesel, industrial tractor, 3 pt., dual hyd. remotes, excellent condition, Stk#7106 - **\$8,500**



Fruehauf SA183 Lowboy single axle, 3' dove, ramps, 18' deck, Stk#6835 - **\$6,500**



GMC Brigadere - Cummins L10, 240 hp, 7 spd. spicer trans., Stk#6937 - **\$6,500**



JD 35 Silage Chopper - 1 row corn head, runs good, good condition, minor rust, Stk#7118 - **\$2,800**



Ford F700 S/A Dump Truck 5/2 spd., V8, gas, rough but starts, Stk#6776 - **\$3,500**



Dunham Lehr Culmulcher - 15', very good condition overall, Stk#7122 **\$3,750**

Powder Mills Farm Equipment

1555 Powder Mills Rd. • Magnolia, KY 42757 • **270-528-2583**

www.powdermillsfarmequip.com • 5westons@scrtc.com

MASSEY-FERGUSON 231, no loader, \$5,750. (931) 381-1839; or, (931) 619-1338

JOHN DEERE 1120, loader, \$5,500. (931) 381-1839; or, (931) 619-1338

JOHN DEERE 6405, 4WD, loader, canopy, \$28,500. (931) 381-1839; or, (931) 619-1338

FORD 1910, 4WD, no loader, \$6,250. (931) 381-1839; or, (931) 619-1338

JOHN DEERE 5310, 4WD, loader, \$19,900. (931) 729-2320

MASSEY FERGUSON 471, 4WD, 2 sets remotes, 60hp PTO, \$14,900. (931) 729-2320

**To Place A
Classified Call
800-247-7318**

MAHINDRA 8560, 70hp, 2,300 hours, 4WD, 2 remotes, \$17,900. (931) 729-2320

NEW HOLLAND TC45, 45hp, diesel, loader, 1,051 hours, \$14,900. (931) 729-2320

JOHN DEERE 5045E, 4WD, 1 remote, \$20,900. (931) 729-2320

OVERSTOCKED!

- Retaining Wall Blocks
- Landscapers
- Farmers
- Industries
- Build Your Storage Bins!

**\$60 Each
(You Haul)**

*Mid South
Concrete Inc.*

P.O. Box 1220 • 1750 Braley Ln. • Pulaski, TN 38478
2408 Hwy. 43 South • Leoma, TN 38468

931-363-0690 • 800-705-5326

www.midsouthconcrete.com

Custom Hoop Bldg. Covers, Hay Tarps, & Pond Liners

11 Colors Available

All covers have 2" weld for
Strong Waterproof Seams

Signature
T A R P

Cover Your Investment

Agricultural • Industrial • Commercial



3433 White Hall Road
Mackville, KY 40040
Fax: 859-375-5269

859-375-5268

MASSEY FERGUSON 596, 2WD, cab, 85hp PTO, 2 remotes, 3,800 hours, \$22,900. (931) 729-2320

INTERNATIONAL 574 TRACTOR, with front-end loader and hay spear, diesel, new engine, very nice tractor. (931)808-8490.

2002, JOHN DEERE 5105 40hp., one owner, only 1,380 low hours, garage kept, serviced regular w/ JD oil, summertime mowing use only, never in rain, snow, or mud. Must see to appreciate, \$15,000. Western KY. Calls only, (270)230-5596.

CASE 2590 for sale, rear axle housing w/axles and new brakes w/ less than 100 hours on brakes, \$800. Call, (931)209-0040.

**To Place A Classified Call
800-247-7318**

To Place your Word Ad, call 1-800-247-7318
JOHN DEERE 750, one owner, 4WD, 5' JD tiller, starts and runs excellent, \$5,400. (931)939-4999.

JOHN DEERE 1050 for sale, starts and runs excellent, \$6,400. (931)939-4999.

KIOTI DK 4710 SE for sale, cab, loader, like new, 70 hours, 4WD, \$34,000. (931)939-4999.

MAHINDRA 4025 for sale, loader, 380 hours, runs and looks like new, \$14,500. (931)939-4999.

KUBOTA M5640, 2WD, roll bar, canopy, runs and looks like new, local tractor, \$15,400. (931)939-4999.

FARMTRAC 665, 2WD, local tractor, good, \$6,500. (256) 773-8080

FORD 6640, CHA, local tractor, \$10,500. (256) 773-8080

JOHN DEERE 5105, local tractor, \$11,500. (256) 773-8080

JOHN DEERE 6200, C/A, 4x4, 89hp, 20 speed powershift with right hand reverser, 4,429 actual hours, original, super clean, \$34,500. (256)974-8588.

JOHN DEERE 6175R, C/A, 4x4, 85% tires, 3 sets remotes, quick hitch, \$43,500. (256)974-8588.

NEW HOLLAND T4.75, C/A, 4x4, 1,563 actual hours, super clean, \$39,500. (256)974-8588.

JOHN DEERE 7420, C/A, 4WD, 135hp, power-quad trans with left hand reverser, OA loader with bucket, triple remotes, 7,251 hours, \$53,500. (256) 974-8588

MASSEY FERGUSON 231, P/S, 1,432 hours, Bush Hog loader with spear, \$7,900. (256) 974-8588

Trailers Hay & Forage Wagons

2015, BETTER BUILT trailer, 26' long, 6' tongue, pintle hook, three 7,000lb axles with brakes on each axle, loading ramps stored underneath bed, seller will furnish hook to vehicle, \$4,000. (256)588-0812;(256)753-2318.

OTHER HAY WAGONS, 6-7-8 bale, bumper hitch and gooseneck, call for pricing. (270) 586-6653

Livestock

TRAILMANN 8'X30' CATTLE TRAILER, with rubber floor. Call for details, (660) 424-3641

Other

GOOSENECK TYPE cattle trailer for sale, 16' trailer, new floor, \$2,500 each. Lebanon, TN. (615)714-3894.

**To Place A Classified Call
800-247-7318**

Quality Seeds

Open Pollinated Corn

Non-GMO

Yellow Jarvis
Mosebys Prolific
Pencil Cob
TN Wildlife GT Dwarf Corn
Hickory King White

Summer Annuals

Sorghum Sudan & BMR
Hybrid Pearl Millets
German & Browntop Millet
Teff Grass
Red River Crabgrass
Piper Sudangrass

Cover Crop Blends

Registered Angus
Cattle Available

Wildlife

Purple Hull Peas
Iron & Clay Mixed Pea
Buckwheat • Chufa
Japanese Millet
Peredovik Sunflowers
WGF Sorghum
Chicory
Spring Wildlife Mix

Bermudagrass

Common
Cheyenne II
Sahara II
Tierra Verde
Mohawk

Lespedeza

Korean
A.U. Grazer Sericea
Serala Sericea

Grass Seed

KY-31 Fescue
KY-32 Funguss Free
Timothy
Orchardgrass
Max Q-II Jesup-II

Clovers - Legumes

Dynamite Red Clover
Advantage Ladino
Durana Ladino
White Dutch
Balansa Clover
NEW Q Red Clover
(2,4D Tolerant)
Crimson Clover
Alfalfa

Lawn Seed

Turf Type Fescue
Creeping Red Fescue
Turf Bermudagrass



Soybeans

• Extend Flex
- USG 7495XF
• Extend - USG
7496XTS 4.9
3rd year 2nd
place average TN

Glyphosate Tolerant:
• USG Allen 5.6

Can check availability
on any other
soybean varieties



Clemmons & Hamner Seed, Inc.

5578 County Rd. 34, Killen, AL 35645

www.clemmonshamnerseed.com

Call **256-757-9996**

If you don't see what you're looking for, give us a call!

LIVESTOCK & **FLATBED TRAILERS** for sale, must see, different sizes and options. Financing available. Wholesale Trailers, Lebanon, TN. (615) 714-3894

RUBBER TIRE MULE WAGON \$1,000; mule disc, \$500; good ground slide, \$400. Muscle Shoals, AL area. (256)443-8157.

PALMER DUMP TRAILER, 18', \$11,750. (256) 335-4919

Trucks Accessories

ROLLBACK TRUCK BED for sale, with pump and wheel lift, \$2,300. (731)968-5183.

Heavy Duty (GVW over 26,000 lbs.)

1993 **INTERNATIONAL SMALL ROAD TRUCK**, Cummins 8 speed, single axle, \$8,500. (931) 381-1839; or, (931) 619-1338

1999 **PETERBUILT**, wet kit, Cummins engine, \$35,000. (270) 586-6653

1988 **PETERBILT** 3406 CAT, new 22' Scott aluminum bed, 3000 series hoist, \$50,000. (270) 586-6653

To Place A Classified Call
800-247-7318

Light Duty (GVW under 14,000 lbs.)

MINI TRUCKS FOR SALE 4x4, A/C, P/S, 5-speed, auto, dump and regular beds and vans. Delivery Available, Can Special Order. Berryhill Mini Trucks, LLC., 3499 Co. Rd. 93, Anderson, AL 35610. (256)740-7287; www.berryhill-minitrucks.com

CHEVROLET OF BOAZ, commercial trucks for sale. 1134 US Hwy 431, Boaz, AL 35957. www.chevroletofboaz.com; (800) 531-4253

TRUCK FLAT BEDS For All Your Needs. Give Us a call, (931)761-3554. RRP Truck Equipment, Sparta, TN 38583.

1999 **FORD F150**, 4WD, runs good, body rough, good farm truck, \$975 firm. (931)703-5239.

1988 **DODGE RAM 50 COMPACT PICKUP**, automatic transmission, 2.0L engine, needs minor mechanical work, \$1,200. (706) 247-6240

200 **FORD 25 PASSENGER MINI-BUS**, turbo diesel, low miles; 2001 Toyota Sequoia; 2005 Toyota Sequoia; and 2006 Chrysler Town & Country; all very good mechanically. Call for details, (660) 424-3641

Call For Specials, Deals and Incentives.



Ford 8600, 4100 hrs.
\$7750



Kubota L2501, 4x4, loader, 360 hrs.
\$15,900



Bush-Wacker ST180, used, heavy duty, 15ft batwing \$9500



IH 1086
\$7750



Case 1494
\$4750



IH Hydro 70, high crop diesel
\$5500

HUDDLESTON EQUIPMENT

29233 Hwy. 431 Wedowee, AL 36278



256-363-1132

www.huddlestonequipment.com



Medium Duty (GVW 14,000-26,000 lbs.)

1947 **RED INTERNATIONAL 1-1/2 ton truck**, rad rod material/yard art, \$850. Free delivery within 75 miles of Waverly, TN. (931)622-2824

To Place A Classified Call
800-247-7318

1988 **GMC 12' OLD CHANDLER**, hydraulic litter body, \$9,000 or best offer. Call Willie, (678)231-8636.

Want to Buy

WANTED, Standing Tracts of Timber and Cedar to buy and cut; also, mulching services. Dwight Rogers, (931) 580-4816

WANTED, BLOWER (AIR BOX) for Detroit 353 engine, for left side of engine. (931)622-2824.

WANT TO BUY FJ40 Toyota, in model years from 1975 to 1980. (931) 607-9737

Got Equipment to Sell? We've Got Buyers!

Place your ad online at
www.FarmersExchange.com
or by calling 800-247-7318.

SNEAD HYDRAULICS & REPAIR

New or Rebuild Pumps, Valves, Motors, Cylinders
& Hydrostats • In House Machine Shop



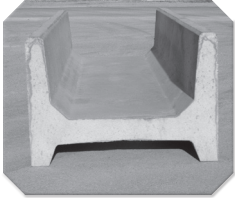
55231 State Hwy. 79S
Blountsville, AL 35031
Phone: 205-466-3105
Fax: 1-866-372-0303
info@sneadhydraulics.com

Craig Vaughn
Owner/CEO
256-470-0828

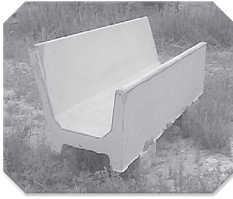
www.sneadhydraulics.com

We Have All Your Concrete Needs!

- 8' Feed Troughs • Fence Line or Center Line
 - Stock Guards, 12' & 16', 7' deep • Water Troughs, 6' Round • Storm Shelters
- ALL PRODUCTS STEEL REINFORCED**



8' (26" or 60" wide) H Feeder
Eat From Both Sides



8' (34" wide) J Feeder
Eat From One Side



Water Tank
350 Gallons



WE DARE YOU TO COMPARE!

Our concrete Cattle Gaps are superior because of the amount of steel reinforcement, all double matted and correctly placed for durability. This allows us to be better than the competition. Available in 12' & 16' long and 12" or 20" tall. Call for pricing & specs on gaps.

Don't settle for less than the best!

Life Protector Partial Bury

(80"x64"x142") Not converted septic tank



- Strong steel reinforced precast 4500 psi concrete with fiber mesh
- Partial bury sheltered unit/easy to install
- Easy entrance access (steps not ladder)
- Outside measurements: 5'4" wide, 11'10" long 6'8" tall

Above Ground Storm Shelters

Sizes: 6'x10'x7'; 6'x6x7'/wheelchair accessible.
Anchors Kits available

Tankersley Concrete Co., Inc.

1630 Rock Crusher Rd., Lewisburg, TN 37091 **931-359-3112**

Owners: Bubba & Lynn Tankersley • In Business Since 1946

Check out our website @ www.tankersleyconcrete.com

TIG WELDERS AND MAINTENANCE LABORERS 43 FABRICATION IS HIRING FOR TIG WELDERS AND MAINTENANCE LABORERS, 1st shift, 40 hours a week, some overtime from time to time. Pay based on experience. Call for information at (931)270-8389; or, send resume to service@43fabrication.com.

WANT TO BUY, NEW HOLLAND 900 silage chopper and 2 Miller Pro silage wagons. (270)881-2403.

CASH FOR QUALITY GUN COLLECTIONS! BULLSEYE GUN & RANGE, MURFREESBORO, TN. M.A. SMITTY OR CALEB GREGORY, (615) 900-1098

WANT TO BUY, KAWASAKI engine, between 20hp-25hp, running or not. (256)974-3774. (256) 974-3774

WANT TO BUY OATS, endophyte free fescue, triticale, orchard and timothy grass for fall planting. (615)618-0541.

WANT TO BUY SMALL herd or a few cows and calves. (931)307-9839.

To Place your Word Ad, call 1-800-247-7318

WANT TO BUY, CALF creep feeder. (931)307-9839. (931) 307-9839

WANTED, 14 TON or smaller feed bin and auger; calf creep feeder; and cake feeder box. (931)307-9839.

WANT TO BUY, two 12"x28" six loop rims, good condition. (931) 593-3491

WANT TO BUY, round bale shredder. (931) 383-0653

WANTED, 8' TO 10' bushhog. (931)307-9839.

WANTED, 16.9-18.4X28 industrial tread tires. Text or leave message. (931)306-3969.

WANTED, 501 FORD mowing machine, (931)210-7857.

WANT TO BUY, HAY conditioner, PTO driven. (931)580-5409.

Animals

FOR SALE, REGISTERED BLACK ANGUS BULLS, will qualify for the full TAEP money, all are by the top AI bulls in the breed. Crawford Angus. Lewisburg, TN. (931)205-2450; (931)359-2633. crawfordangus@bell-south.net

REGISTERED BLACK ANGUS BULLS all yearling bulls sold, will have more in October. Turrentine Angus, Shelbyville. (931)607-8950; aturrentine@cafes.net.

To Place A Classified Call
800-247-7318

WAGYU POLLED HEIFERS for sale. (256)714-6182.

REGISTERED BLACK HERE-FORD BULLS, three 2-year-olds, several yearlings to choose from. Located in Murfreesboro, TN, big-framed and stout, ready for heavy service, \$3,500. (615) 207-9097 JLFELECTRIC@BELL-SOUTH.NET

REGISTERED POLLED HERE-FORD bulls for sale. Lynnville, TN area. (931)527-3392.

YOUNG BULLS polled, registered, gentle. Quality Cattle Since 1977. Facebook: Happy Valley Ranch Santa Gertrudis (256) 566-7878 lindadkelso@yahoo.com

REGISTERED ANGUS BULLS, TAEP in TN & KY, big strong bulls with great EPDs, several heifer bulls available, Genomic tested for accuracy, BS exam. FandPLivestock.com; (615) 653-8913

PURE BRED POLLED HERE-FORD BULLS for sale. (931) 363-0445

FOR SALE, small group of registered Black Angus cows. (931) 308-4939

Dogs

AUSTRALIAN SHEPHERD PUPPIES, 3 merle, 1 black tri, all females, born 3-20-25, ready to pick out, will have first shots/dewormed; also 2yr. old male Toy Poodle. John J. Gin-gerich, 146 Fox Hunters Lane, Morrison, TN 37357.



DIESEL PUMP REPAIR

- FARM TRACTORS
- DIESEL FUEL INJECTION SERVICE

StanaDyne • CAV-Roosamaster
Pump & Injectors

Lewis Porter 931-607-3031 • 931-596-3644

34 Medley Ln., Estill Springs, TN

Open on Saturdays

6 years pump
experience

BORDER COL-LIE PUPS 8 weeks old. Smart and loving- make excellent herd dogs. Parent dogs registered with American Border Collie Association. (615)542-9311; mary-jthom1225@icloud.com.

Other

PEAFOWL, I HAVE A few high quality Peacocks and Peahens available for sale. Spalding, Yearling and Breeder age. White spalding yearling hens with Pied Spalding Yearling cock. Also breeder age Java Green hen. Serious calls please. (931)652-3164.

CHICKS, DUCK-LINGS, GOSLINGS, Poults, and young goats for sale. Cullman, AL area. (256)930-8530.

PIGEONS, EIGHT BREEDS WHITE HOMERS, Fain Tails, B'ham Rollers, Archangel, Zitterhals Shakers, Lincoln, AL. (205)362-9480.

Attachments

JOHN DEERE, 541 LOADER & BRACKETS for sale, \$3,800. (256) 773-8080

Got Tools to Sell? We've Got Buyers!

Place your ad online at
www.FarmersExchange.com
or by calling 800-247-7318.

Equipment For Every Need!



**Used Conveyair
Grain Vac
Call**



**Hydraulic Dump Hay
Wagons in stock
Call**



**Farm King Augers
Several Sizes Overstocked!
Reduced Prices! Call**



**Pintle Hitch Trailer,
20' + 5' dove, dual
tandem \$4,000**



**Peterbilt 3406 Cat 1988,
new 22' Scott Alum. bed,
3000 series Hoist \$50,000**

New Items Available!

Bush-Whacker Cutter, good used, 15' \$7,000
Farm King Finish Mowers, 6' & 7' Call
Hay Wagon, 6-7-8 Bale, bumper hitch & gooseneck Call
New Farm King Grader Blades & Tillers Call
REM Grain Vac, in stock Call
TN River Brand Cutters, 6', 7' or 8', pull type, 3 pt. In stock Call
New & Used Enorossi Tedder, 4 basket, 17' Call
Used Grain Vacs Call for Prices
New & Used Tedders In Stock
TRI Box Blades, 6', in stock, new & used Call

Straw For Sale - 5' Round Bales, net wrapped or small square bales

Hydro Dump Wagons In Stock
(2) 1070 Swing Augers, used Call
EZ Haul Low Pro, 20', 10' hydro dove tail \$25,000
Enorossi Rakes, used, 3 in stock Call
1070, 1080, 1385, 1395, 1031, 1036, 1336 Augers In Stock
Durabilt Rake, 10 wheel batwing \$2,500
Bush Hog Brand Cutter, 15', like new \$3,500
Peterbilt 1999, wet kit, Cummins engine \$35,000
NH Baler Hitch & Slides, complete with all bolts to install \$500
Pasture Harrows, In Stock Call

Beef Steers For Sale - Can take to slaughter, sell 1/2 or whole

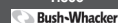
Chandler's Farm Equipment

270-586-6653

Marty 270-392-0359 • Lloyd 270-535-6653
2529 Salem Road • Franklin, KY
Going Strong Since 1944



bühler
Tisco



Pigs

PIGS FOR SALE, 3/4 Berkshire, 1/4 White; weaner pigs 8-12 weeks, BBQ pigs with deposit, Butcher pigs with deposit. Govern Livestock. (931)675-0898.

Announcements

STORAGE TRAILERS FOR RENT OR FOR SALE, Lebanon, TN area. (615)714-3894.

**To Place A
Classified Call
800-247-7318**

MILLER FARMS
Angus Beef from the farm. 100% natural, non-GMO, hormone and antibiotic-free. Whole, halves, or by the pound. Slaughtered and packaged. (931)593-3702.

**To Place A
Classified Call
800-247-7318**

Fertilizer Applicators

ADAMS FERTILIZER BUGGY for sale, \$4,000. (256) 773-8080

Construction Equipment

JOHN DEERE 550H, LGP, runs good, \$42,750. (256) 335-4919

Dozer

2012, CATERPILAR D6T good machine, 13.5', \$72,750. (256) 335-4919

Harvesting Equipment

FARM KING AUGERS, several sizes, overstocked, reduced prices. (270) 586-6653



Wood Trusses
40x60x10 Top & Gable ~ Call
40x40x10 Top & Gable ~ Call

Price includes materials and labor

**ADDISON
AGRI-BUILDERS**

POULTRY HOUSES • BARNs • SHEDS

256-747-3444

Craig Pigg, Owner



All types buildings for farms
Steel Trusses Available

P.O. Box 455 • 2661 Co. Rd. 39
Addison, AL 35540

Brent Dollar - Sales Representative

Office: 256-747-3444 • Fax: 256-747-9002



Tyre Stubble Drill,
10'
\$10,500



IronCraft 2510-IC-R
Cutter 10', pull type
flexwing \$12,750



SDJK Excavators, 30 hp,
w /thumb, grader blade,
Kubota engine \$30,900

| | |
|-----------------------------------|----------|
| John Deere | |
| 1120, loader..... | \$5,500 |
| 2355, CHA, loader..... | \$18,500 |
| 825 Gator, 1700 hrs, PS..... | \$12,500 |
| 420..... | \$2,500 |
| 6405, 4WD, loader, canopy..... | \$28,500 |
| Skid Steer 317, 1700 hrs..... | \$22,500 |
| Skid Steer 320, 66 hp..... | \$23,000 |
| 50, gas, 3 pt hitch..... | \$2,500 |
| 2130, loader..... | \$8,750 |
| 2040, CHA, loader..... | \$22,500 |
| 4620, 2WD, no loader, diesel..... | \$12,500 |
| 2030, loader..... | \$8,950 |
| 5200, 1400 hrs., 2WD..... | \$7,250 |

| | |
|---------------------------|---------|
| Ford | |
| 600..... | \$1,500 |
| 2000, gas..... | \$2,500 |
| 4000, PS, diesel..... | \$3,500 |
| 1910, 4WD, no loader..... | \$6,250 |

| | |
|----------------------------------|---------|
| Massey Ferguson | |
| 231, no loader..... | \$5,750 |
| 250, new loader, diesel, PS..... | \$9,800 |
| 261, dual outlets..... | \$9,250 |
| 165, gas, PS..... | \$3,250 |

| | |
|----------------------|---------|
| International | |
| 950 Feed Mill..... | Call |
| 684, 2WD..... | \$4,750 |

| | |
|--|-----------------|
| Misc. | |
| Archway Feed Mill..... | \$4,000 |
| Belarus 532, loader..... | \$4,000 |
| (2) Belarus 250AS, one PS, one no PS..... | \$2,500 ea. |
| Cat D6D Dozer..... | Call |
| Cultimulcher, 12'..... | \$3,750 |
| Farmall 140, w /cultivators..... | \$4,250 |
| Gehl 6635 SXT, turbo, metal tracks..... | \$22,500 |
| Iron Craft Cutters, 15' med & HD..... | In Stock - Call |
| JD Trackhoe, small..... | \$18,500 |
| Mahindra 7010..... | \$22,000 |
| Kuhn Feed Mixer, used about 100 loads..... | \$22,000 |
| LS MT 468, 160 hrs., 4WD, loader, C&A, 2024..... | \$38,500 |
| (3) Manure Spreaders, PTO driven, one int., one Ford..... | Call |
| NH 4000 Turbo, 2WD, C&A..... | \$10,500 |
| Polaris Ranger ETX, 4WD..... | \$5,750 |
| Several Wheel Discs..... | Call |
| Ferguson 46B Roller Packer, JD Running Gear..... | \$7,500 |
| Kubota RTV X1140, 4 seater, diesel..... | \$12,500 |
| (4) Manure Spreaders..... | Call |
| (3) Club Car Golf Carts..... | Call |
| Woods 750 Backhoe, 3 pt., self contained..... | \$2,500 |
| Int. Road Truck, 1993, Cummins 8 spd., single axle..... | \$8,500 |

Culvert Pipe, 12' & up, Plastic & Metal • Head Gates • Corral Panels



Lynch Equipment Sales

Westover Drive, Columbia, TN
931-381-1839 • Cell: 931-619-1338



Grain Carts

PARKER FARMS MOBILE FEED BINS, 2 ton, \$3,450; 3 ton, \$3,750; 3 ton tandem, \$3,950, 4 ton tandem, \$4,150. Call today to get on our build list. We appreciate your business. Parker Farms. parkerfarms-cattleandequipment.com; (615) 542-6157

Other

DECALS AFFORDABLE DECALS AND SAFETY DECALS. Prompt. Knowledgeable Reliable Service. www.QuipCal.com; Call, (215)536-5339; email: info@customerservicescompany.com.

**To Place A
Classified Call**
800-247-7318

Hay & Forage Equipment

KUHN 7' DISC MOWER for sale, \$2,200. Readyville, TN area. (629)395-4558.

**Got Livestock
to Sell?**

We've Got Buyers!

Place your ad online at
www.FarmersExchange.com
or by calling 800-247-7318.

To Place your Word Ad, call 1-800-247-7318

PARKER FARMS DISK MOWER CAD-DIES, heavy-duty, field-ready, hydraulic lift, PTO included. We appreciate your business. Parker Farms. parkerfarms-cattleandequipment.com; (615) 542-6157

PARKER FARMS FENCE LINE FEEDERS, heavy duty, top seller, 20' \$2,200; 24' \$2,400; other custom sizes available. We appreciate your business. Parker Farms. parkerfarmscattle-andequipment.com; (615) 542-6157

PARKER FARMS DISK MOWER CADDIES, heavy-duty, field-ready, hydraulic lift, PTO included. We appreciate your business. Parker Farms. parkerfarmscattleandequipment.com; (615) 542-6157

Sprayers

AG SPRAY EQUIPMENT 3-point and pull-type sprayers come with boomless nozzle. 3 point sprayers all have hand wands. 3 point 65 gal \$1,450, 110 gal \$2,550, 150 gal \$2,850, 200 gal \$3,300. Pull-type with used tires 300 gal, \$4,200; 500 gal, \$4,550. Booms available. Call Chris at Farm Service Solutions; or, visit farmservicesolutions.com; (931) 242-7675

Fencing & Cattle Equipment

BEHLEN CREEP FEEDER for sale, excellent condition, Scottsboro, AL area, \$500. (256)259-1183.

CONTACT US FOR ADVICE, pricing, and options for your next farm fencing project. We offer a large variety of wood posts, both square and round, a big selection of barbed wire and net wire in black and galvanized. We have hundreds of Tarter gates in stock. We also have t-posts and high-quality fence boards 1x6x14 ft and 1x6x16 ft. Check out our prices for MiraFount livestock waterers. Finley Fence Supply, Cornersville, TN 37047. Contact us by phone (931)675-3260; or (931)607-5941; or email at finleyfence-supply@gmail.com.

Got Equipment to Sell?
We've Got Buyers!

Place your ad online at
www.FarmersExchange.com
or by calling 800-247-7318.

Great Deals on Gently Used Equipment!



NH TC45 45 hp, diesel, loader, 1051 hrs. \$14,900



JD 5045E 4WD, 1 remote \$20,900



MF 596 2WD, cab, 85 hp PTO, 2 remotes, 3800 hrs. \$22,900

MF 471 4WD, 2 set remotes, 60 hp PTO..... \$14,900
JD 5310 4WD, loader..... \$19,900

Mahindra 8560 70 hp, 2 remotes, 4WD, 2300 hrs..... \$17,900

D & D Equipment

Heavy Equipment & Farm Tractor Sales

1635 Hwy. 50 East, Centerville, TN 37033 • 931-729-2320
Owners: Jerry Davidson & Steve Davidson

See our
pics on
Facebook
Marketplace!



The Crown For Your Home

Residential • Agricultural • Commercial
Increase the value & beauty of your home with our maintenance free metal roofing!
Available in many styles:
Slate, Clay Tile, Shake, Stone Coated Shingle, Thatch & Standing Seam
We manufacture the 3 ft. wide metal panels at our location, plus we use an in-house computerized custom trim machine, for better and faster service!

Plateau Metal Sales www.plateaumetalsalestn.com
103 Randolph Rd. • Crossville, TN **931-277-3586**
Mon. - Fri. 7 to 5 • Sat. 8 to 12 **1-800-468-0149**

• 2nd location to serve you better. • **1-866-988-7670**
2448 Buttermilk Road W. • Lenior City, TN **865-376-0528**

YOUR METAL ROOFING HEADQUARTERS

FENCE LINE FEEDERS, 10' long; troughs are 10-gauge metal, 30' wide and 7" deep. FandPLivestock.com; (615) 653-8913

HAY FEEDER PANELS, 6' up to 16' long, 16 gauge, 2"x3" construction and built to last a lifetime, you will not find a better made panel, custom lengths available, TAEP item in Tennessee. FandPLivestock.com; (615)653-8913.

ROUND PEN PANELS, 12' galvanized; 5' tall, \$120 each; 4' tall, \$120 each; 6' tall, \$140 each; available in economy medium duty-heavy duty. FandPLivestock.com; (615)653-8913.

180 DEGREE SWEEP TUB with 7' bow gates, 6' tall, heavy duty. (615)653-8913.

BULL GATES-16 GAUGE, 51" and 63" tall, 4'-20' long, good inventory. FandPLivestock.com; (615)653-8913.

BOW GATES 16 GAUGE, 6' tall, good inventory, 4' up to 12' combo bow gates-example 12' with 4' wt. FandPLivestock.com; (615)653-8913.

CORRAL PANELS, 16 GAUGE, 6' tall, good inventory, 8' up to 16' long. FandPLivestock.com; (615)653-8913.

PARKER FARMS CATTLE & EQUIPMENT. Call us today for quality farm equipment at reasonable prices. Check out our new website parkerfarmscattleandequipment.com. Located in Murfreesboro, TN. Shipping Available. (615) 542-6157

PARKER FARMS FENCE LINE FEEDERS, heavy duty, top seller, 20' \$2,200; 24' \$2,400; other custom sizes available. We appreciate your business. Parker Farms. parkerfarmscattleandequipment.com; (615) 542-6157

Mower Conditioners & Windrowers

FARM KING FINISH MOWERS, 6' and 7', call for pricing. (270) 586-6653

Other

DEWEZE SUPERLICER roll bale feeder, \$19,500. "The best way to feed what you need - Stop your hay loss." Give us a call, RRP Truck Equipment, Sparta, TN 38583. (931) 761-3554



Bill Thomas
Founder (1940-2010)

Will Thomas
Publisher / CEO

Katie McNabb
Director of Magazines

Gabby Denny
VP of Marketing

Wesley Bryant
Editor-in-Chief

Janet Mullins
Business Development
(931) 993-0026

Bob Barger
Business Development
(601) 422-5064

Shelli Fuller
Client Services Coordinator

Barb Hargrove
Senior Operations Coordinator

Tracey Pollock
Human Resources/Finance

Todd Pitts
Lead Print Ad Designer

Clinton George
Digital Design Director

 (800) 247-7318

 404 Main Ave. South
Fayetteville, TN 37334

 FarmersExchange.com

Mats, cuts, negatives, art work or other copy submitted for publication is considered to be the property of the advertiser. Advertising is accepted with the understanding that all liability for copyright violation is the sole responsibility of the advertiser.

The Exchange will make every effort to see that advertising copy is correctly printed, but shall not be liable for failure to publish an ad or for typographical errors.

The Exchange will gladly reprint, without charge, that part of an advertisement in which an error occurs, provided a claim is made within three (3) days of the first publication of the ad.

To Place A
Classified Call
800-247-7318

0% For 60 Mos. On Select Models of Vermeer

All Vermeer Hay Equipment Sold Field Ready



Pool Farm Equipment Is Proud to honor the 2025 TAEP

**New Vermeer Balers, Rakes & Mowers
In Stock and Ready to Work For You!**

Vermeer Now Has Litter Spreaders Small & Large

SCHULER EQUIPMENT IN STOCK NOW:

Schuler 5021 Mixer • Schuler BF175 Feed Wagon • Call for prices

Check out our website: www.PoolEquipment.com



Used Equipment:

| | |
|---|----------------|
| Vermeer 6640 Rancher, net/twine..... | Call For Price |
| Vermeer 6650 Rancher, net/twine..... | Call For Price |
| Vermeer 604R Premium, net only..... | Call For Price |
| Vermeer 555XL, twine only..... | Call For Price |
| Vermeer 504R Signature, twine only..... | Call For Price |
| Vermeer 504R Signature, net/twine..... | Call For Price |
| Vermeer 505 Super I, twine..... | Call for Price |
| Vermeer WR20, 8 wheel..... | Call for Price |
| Vermeer M6040 Mower, 8'..... | Call for Price |
| Vermeer TM135 Trailer Mower, 13'6"..... | Call for Price |
| Vermeer 505 MCL, net/twine..... | Call for Price |
| Vermeer 505 MCL, twine only..... | Call for Price |

Hayliner Trailers, 42' & 37', In Stock Ready to Work!! ... Call For Price

If we don't have what you want,
we'll go get it!



256-685-0556 Office
256-476-3546 Chris Pool
256-565-7780 Owner, Norman Pool

New Bush Hog In Stock Now!

| | |
|--------------------------------------|-----------------|
| 2215, 15' cut..... | Call For Prices |
| 4115, 15' cut, HD..... | Call For Prices |
| 1812, 12' cut..... | Call For Prices |
| BH3308, 8'..... | Call For Prices |
| BH 2107..... | Call For Prices |
| BH316, BH216, BH116 Cutters, 6'..... | Call For Prices |
| BH215, BH115 Cutters, 5'..... | Call For Prices |
| Tillers, 5', 6' and 7' In Stock..... | Call For Prices |

Ask About Warranty on used Balers

Call For Prices - Will Be Happy To Help You!

Call For Vermeer Vertical Mixer Prices

Pool Farm Equipment Co.

23971 Hwy. 157 • Town Creek, AL 35672



KBH 4 WHEEL
WAGON, 24' long, no
sideboards, used for
hay hauling, \$2,000.
(256) 588-0812;
(256)753-2318.

Rakes and Teddies

WALTON RAKE for
sale, 3 point, 4 wheel,
\$600. (615)569-0891.

To Place A
Classified Call
800-247-7318

Round Balers

2005, HESSTON 745
baler for sale, good
condition, \$6,500.
Scottsboro, AL area.
(256)599-0591.

To Place A
Classified Call
800-247-7318

Got Livestock
to Sell?
We've Got Buyers!

Place your ad online at
www.FarmersExchange.com
or by calling 800-247-7318.

NEW HOLLAND
450 net and twine,
\$15,500; IH 1460
combine with low
hours, \$5,000; IH
464 tractor with
new engine, \$3,500.
(931)335-5557. (931)
335-5557

JOHN DEERE 435
ROUND BALER,
net and twine wrap,
\$7,500; and, Vermeer
605 Super J round
baler, twine wrap,
\$3,000. (205) 388-
7369

Rotary Mowers

INDUSTRIAS
AMERICAN 3
POINT CUTTERS
heavy 11-gauge
deck, 90 HP gear-
boxes with slip
clutch. 6' \$1,600;
7' \$1,900; 10'
\$3,750; 10' pull-
type \$5,500. Call
Chris at Farm
Service Solutions
in Leoma, TN; or,
visit farmservicesolutions.com; (931)
242-7675

BUSH HOG 15' CUT-
TER, like new, \$3,500.
(270) 586-6653

Got Tools to Sell?
We've Got Buyers!

Place your ad online at
www.FarmersExchange.com
or by calling 800-247-7318.

Square Balers

JOHN DEERE 336
square hay baler; two
New Holland 9' hay
conditioners, two JD
side delivery pull-
type rakes, RT 5200H
hydraulic fold tedder;
four basket Tonutti 8
wheel v-rake, super
shape, all for \$10,000.
(256) 588-0812;
(256)753-2318.

Hay & Grain For Sale

GOOD CORN SI-
LAGE for sale, \$60
per ton, large orders
negotiable. (931)256-
0481.

HAY FOR SALE,
3x3x8 bales of Alfalfa
hay and mixed Al-
falfa hay. Good horse
hay. (931)808-8490;
(931)728-5490.

Weed Killer, Garden Sprayers, Ant Killer,
Hydraulic Hoses, Ag Bearings, Filters,
Lawnmower Parts & More!

B&B Auto Parts, Inc.

4936 Winchester Rd. N.E. • New Market, AL
2 miles North of Buckhorn High School

256-379-4733
www.bandbautopartsinc.com



Print your ad in the space below. Ads must be received no later than the 20th for publication in the following month's issue. Include your phone number as one word.

Free Ads: 1) **A single item priced below \$1,000 (excludes animals).**

Price must be in the ad.

2) **Want to Buy**, Limit 10 Words. Ad to run one (1) issue only!

Rates: 15 words or less - \$12.00 (Additional words 50¢ each per ad per month)

Placement Options

Better Descriptions = Better Results

1

- 1) Call 800-247-7318
- 2) Fax to 931-563-4477
- 3) Place online
www.FarmersExchange.com
- 4) Mail to Farmers' Exchange
P.O. Box 490
Fayetteville, TN 37334

Phone ()

2 Options (circle)

Bold Type

Add \$2.00 per issue to base charge

ALL CAPS

Add \$2.00 per issue to base charge

Border Around Ad

Add \$4.00 per issue to base charge

3 Payment

- ☐ Cash, Check, M.O.
- ☐ Discover
- ☐ AmEx
- ☐ MasterCard
- ☐ Visa

Card Number

Expiration DateCVC #

4 Please Run Ad

- ☐ 1 Month
- ☐ 2 Months
- ☐ 3 Months

I have figured charges & options for the above ad & have enclosed:

Amount: \$

Name:

Address:

Email:

Requested Delivery On or Before July 2, 2025

PRSRT STD
US POSTAGE
PAID
MONROE, GA
Permit # 15

P.O. Box 490
Fayetteville, TN 37334

RUSSELL BARNETT

See Travis Searcy, The "Truck Specialist"
We're Better and We'll Prove It!



We Are Your Cab & Chassis &
Dually Headquarters



New 2024 Ram 4500 Laramie, chassis cab, crew cab, 4WD, 6.7L Cummins, Stk#D12857N
MSRP: \$89,725 **Sale Price \$72,960**



2024 Ram 4500 Tradesman, chassis cab, crew cab, 6.7L Cummins, 4WD, Stk#D12867N
MSRP: \$81,700 **Sale Price \$65,820**



New 2025 Ram 3500 Tradesman, crew cab, 4WD, 6.7L Cummins, Stk#D12916N
MSRP: \$73,880 **Sale Price \$62,302**



New 2025 Ram 3500 Laramie, crew cab, 4WD, 6.7L Cummins, Stk#D12907N
MSRP: \$80,005 **Sale Price \$69,758**



New 2025 Ram 2500 Tradesman, crew cab, 6.7L Cummins, 4WD, Stk#D12909N
MSRP: \$70,000 **Sale Price \$59,549**



New 2025 Ram 2500 Laramie, crew cab, 4WD, 6.7L Cummins, Stk#D12910N
MSRP: \$85,810 **Sale Price \$73,932**



New 2025 Ram 3500 Tradesman, crew cab, 4WD, 6.7L Cummins, Stk#D12908N
MSRP: \$73,970 **Sale Price \$64,183**



New 2025 Ram 3500 Tradesman, crew cab, 4WD, auto, diesel, Stk#D12911N
MSRP: \$72,660 **Sale Price \$65,660**



2024 Ram 4500 Tradesman, chassis cab, crew cab, 6.7L Cummins, 4WD, Stk#D12865N
MSRP: \$81,700 **Sale Price \$65,820**



New 2024 Ram 4500 Laramie, chassis cab, crew cab, 4WD, 6.7L Cummins, Stk#D12822N
MSRP: \$93,450 **Sale Price \$78,275**



New 2025 Ram 3500 Tradesman, crew cab, 4WD, auto, diesel, Stk#D12917N
MSRP: \$73,920 **Sale Price \$66,920**



New 2025 Ram 2500 Tradesman, crew cab, 4WD, 6.7L Cummins, Stk#D12953N
MSRP: \$74,400 **Sale Price \$67,400**

**RUSSELL
BARNETT**

2756 Decherd Blvd., Winchester, TN
931-691-1712



**ON THE
JOB**



See Travis Searcy, The "Truck Specialist"
We're Better and We'll Prove It!

www.russellbarnettchryslerdodgejeep.com



*All rebates applied. All prices plus tax, title & tag. \$698 processing fee is not included. Prices include \$3,000 trade assistance & \$3,000 Ally Financial. Due to advertising deadline, all prices and incentives including employee pricing is subject to change by the manufacturer without notice. Customers must finance to obtain all Rebates.