

Farmers' Exchange



*Place unlimited
items for sale:*

FarmersExchange.com

Used and New Farm Equipment.
Equipment, Land and Livestock Auctions.

Call for Subscription **800.247.7318**

FARM EQUIPMENT SPECIALS

**Give us a
call today!**



JD 9760 STS Combine, 2004,
2WD, 3 spd. hydro, 3385 eng.,
2306 sep. very nice
\$54,500



Case IH 1020 Grain Platform,
25' SCH cutter bar, exc.
poly on bottom, very nice,
Stk#4475 \$9,500



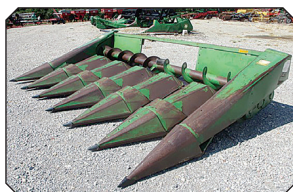
Case IH 5300 Grain Drill, 7"
spacing, 21 drop, 12' width,
solid box, no rust, field ready,
Stk#4693 \$5,450



EZ Trail 510 Grain Cart,
500 bushel, small 1000 PTO,
excellent augers, very nice,
Stk#4762 \$9,250



JD 625F Grain Head,
excellent poly on bottom,
everything works great,
Stk#4733 \$13,950



JD 643 Corn Head, 6 row, 30",
low tin, oil bath, good chains &
rollers, Stk#4883
\$4,850



JD 750 Drill, 15', 7.5" spacing,
small seed box, excellent
boots & blades, rebuilt last
spring, Stk#4723 \$17,500



JD 922 Grain Head, poly on
bottom, all fingers in auger &
reel, field ready, Stk#4884
\$9,850



JD 7000 Planter, 4RW, totally
rebuilt, bare frame, ready to
plant, Stk#4852
\$5,850



NH 717 Super Chopper, 1 row,
very low use, 540 PTO, still
has paint on chains & drum,
Stk#4901 \$5,450



NI 324 Corn Picker, 2RW,
new tires & hyd. hoses, low
use, field ready, Stk#4652
\$6,250



Woods 3180-3 Cutter 15',
stump jumpers, 1000 PTO,
runs & cuts smooth, Stk#4842
\$7,850

Newman Farms

www.newmanfarms.net

Cleveland, TN

**Call 423-595-5715
or 423-464-5303**

*LOW rate financing KRONE products
you need to make hay while the
sun shines!*

**0%
FOR
60 MONTHS**

Swadro
Rotary Rake

Even and
consistent
windrows.



EasyCut
3pt Mounted Disc Mower

Dependable
cutting and
professional
quality.



KW & NEW
Vendro Rotary Tedders

Powerful rotors
turning crops
into high quality
forage.



KRONE® is a registered trademark of Maschinenfabrik Bernard Krone GmbH.
12121 Forest Park Dr. Olive Branch, MS 38654- (662)913-7171.

Offers expire 30 November 2025. Requires approved credit with DLL Financing. Offer
applies to select KRONE product.ee dealer for full details.

Arab, AL
933 N. Brindlee Mt. Pkwy
(256) 586-8304

Albertville, AL
5660 US 431
(256) 850-4679

Athens, AL
131 US Hwy 31 S
(256) 232-2131

Centre, AL
1050 Chestnut Bypass
(256) 927-2300

Columbia, TN
271 Theta Pike
(931) 388-1557

Cookeville, TN
1490 Interstate Dr
(931) 526-8544

Crossville, TN
269 N Main St
(931) 340-1012

Cullman, AL
3920 AL Hwy 157
(256) 739-5601

Dickson, TN
707 Henslee Dr
(615) 229-2400

Fayetteville, TN
2894 Huntsville Hwy
(931) 433-5620

Florence, AL
3613 Florence Blvd
(256) 757-9080

Franklin, TN
340 9th Ave N
(615) 794-8187

Ft. Payne, AL
12227 AL Hwy 35
(256) 997-9089

Gadsden, AL
1301 West Meighan Blvd
(256) 456-5872

Hendersonville, TN
133 N Shackle Island Rd
(615) 824-9726

Huntsville, AL
4550 Research Park Blvd
(256) 830-4020

Jasper, AL
3700 Industrial Pkwy
(205) 384-3058

Leighton, AL
1160 Sockwell Ln
(256) 446-5929

Manchester, TN
812 Interstate Dr
(931) 728-5400

Mt. Juliet, TN
10768 Lebanon Rd
(615) 754-2600

McMinnville, TN
305 Shangri La Ln
(931) 668-1784

Pelham, AL
3311 Pelham Pkwy
(205) 605-0412

Scottsboro, AL
26685 John T Reid Pkwy
(256) 259-0704

Winchester, TN
176 Blair Pond Rd
(931) 967-5144

Patriot Creep Feeders In Stock!



JAY-LOR

**D&E is Your SOURCE
for Mixers!**

Mixes Faster - More Thoroughly - using LESS HP

S. I. FEEDERS



24' Feeders \$7950

Best Feeder Around!

PATRIOT



**Creep or
Cake
Feeders,
& Gravity Tenders
In Stock!**



H&S

**IN STOCK
Manure Spreaders!
80bu - 430 bu**



170 bu w/
Loading Auger
& Scales!
\$59,800

9117
Grinder
Mixer

STRETCH-O-MATIC

8400 ELITE

\$36,800



The Original Bale Wrapper

**Dependable, Quality.
Other wrappers have
higher price tags.
Doesn't make 'em better,
only costs you more.**

LVI Litter Pulverizers 8 & 10' In Stock

GEHL

GEHL



VT275 \$76,500

VT320

\$88,450

**BROWN
MANUFACTURING CORP.**

HD Cutters

415 \$3,650

416 \$4650

417 \$6450

672 \$9450

TCO2505c \$10,650

TCO2620c \$12,550

TCO2605c \$11,300

Bush-Whacker



ST7210 \$5500

ST104 \$8,950

MD144 \$15,300

MD180 \$18,500

ST180 \$24,200

D&E

DON ALLISON EQUIP, INC.

www.donallisonequipment.com

800-669-6450

THE MIXER PLACE!

ONLINE AUCTION

Ending September 9th, 2025

40 Used Zero Turn Mowers – Cat Skid Steer
917 Nashville Hwy., Columbia
at Columbia Outdoor Power - Inventory Reduction

- CAT 259B3 Skid Steer, 1535 hrs.

Hustler Raptor, 52"

(2) Badboy, 60"

Troy bilt, 46"

Toro Time cutter, 50"

Hustler Super Z, 54"

Exmark Quest, 60"
- Gravely Pro turn, 60"

Kubota, 60"

Bad Boy Maverick, 60"

Toro SW4200, 42"

Toro Z Master, 60"

JD Z950M, 60"

Bad Boy ZT Elite, 60"
- Ferris hydrowall Walk Behind, 48"

Bad Boy Rogue, 61"

Toro, 42"

Honda Big Red 3 Wheeler

Plus approx. 20 other mowers for projects or parts

Inventory reduction sale for Columbia Outdoor Power. Details at www.garyauction.com

ONLINE AUCTION

Ending September 16th, 2025

Farm Equipment
1815 Clara Mathis Rd., Spring Hill, TN

- IH 674 Tractor, 2 remotes, 5700 hrs.

Krone AM243S Disc Mower

Hesston 845 Round Baler

Hatmaker 10 Wheel Rake
- Panorama FT-170 Tedder, 4 basket

Gates

I beam, 30', 12"

Other items will be added



Details at www.garyauction.com

COMING IN OCTOBER

Wilson County Surplus Vehicles



Approx. (20) 10, 12, & 15 passenger vans
2014 & 2017 Ford & Nissan vans ranging
from 41,000 to 150,000 miles

GARY

(615) 302-2680
FL 1899



REALTY
&
AUCTION

www.garyauction.com

Farm Equipment Specials



JD 7000 Conservation Planter, 2 row, 30", completely rebuilt, field ready, Stk#4574 **\$3,450**



JD 8200 Drill, 8', 14 hole, 7" spacing, excellent condition, hard to find size, Stk#4830 **\$6,950**



JD 444 Corn Head, 36" row, good chains, rollers & sheet metal, Stk#4885 **\$1,750**



John Blue 400 Sprayer, 26' booms, 20" spacing, ground drive, field ready, Stk#4865 **\$4,250**



Case IH 1063 Corn head, 6 row, 30", good chains & rollers, straight auger, Stk#4818 **\$6,250**



JD 7000 Planter, 4 row, 36" spacing, totally rebuilt, ready to go, Stk#4822 **\$7,650**

EZ Flow 300, EZ Trail 1074 running gear, Stk#3920.....	\$3,250
NH 258 Rake, excellent condition, Stk#4209.....	\$11,500
EZ Trail 672 Head Cart, 30', very nice, good tires, Stk#4493.....	\$4,350
Case IH 1020, 25' grain platform, all fingers in reel, Stk#4475.....	\$11,500
EZ Trailer 672 Head Cart, 25', Stk#4487.....	\$4,150
NH 513 Manure Spreader, excellent floor, Stk#4635.....	\$4,950
Case IH 1020 Grain Head, 25', field ready, Stk#4644.....	\$8,750
NI 5407 Disc Mower, 7' cut, good curtain, new blades, Stk#4725.....	\$4,750
EZ Trail 300 Gravity Wagon, EZ Trail 1074 running gear, Stk#4268.....	\$3,250
Farm King 1370 Auger, Stk#4518.....	Call

Int. 510 Grain Drill, 8', 7" spacing, Stk#4689.....	\$4,750
NI 324, 2RW, field ready, Stk#4652.....	\$6,250
Case IH 5300 Grain Drill, 7" spacing, Stk#4693.....	\$5,450
NH Rolabar 260, excellent condition, Stk#4269.....	\$11,500
JD 494 Corn Head, 38" row, good roller & chains, Stk#3678.....	\$4,850
NI 309 Corn Picker, 1 row, Stk#4660.....	\$2,650
EZ Trail 510 Grain Cart, 500 bu, Stk#4762.....	\$9,250
JD 8300 Grain Drill, 7" spacing, field ready, Stk#4886.....	\$6,750
Brent 420 Grain Cart, 400 bu, Stk#4786.....	\$7,650
Ford 240 Disc, 8', 7.5" spacing, Stk#4035.....	\$1,950



Newman Farms

www.newmanfarms.net

Cleveland, TN

Call 423-595-5715 or 423-464-5303

Columbia, TN • 931-388-1557



JD 5075 - \$38,499



JD 1025R TLB - \$17,500



JD 333G - \$58,000



JD 5075E - \$51,500



JD 3035D - \$25,500



JD 5065E - \$35,500

Krone AMR320.....\$12,900

JD 9610, 1998, 4439 eng. hrs.,
3050 sep. hrs., Stk#1041847\$27,500

JD 5075, 2024, 47 hrs., Stk#1042396.....\$38,499

JD Z970R, 72", 2022, 203 hrs.....\$13,900

Frontier RT3073 Tiller, 2022\$2,699

JD 5085E, cab, 845 hrs., 2016\$57,500

JD 1023E, 60" deck.....\$11,500

JD Z930M, 2013, 1285 hrs., 60" MOD,
Stk#1043773\$4,500

Athens, AL • 256-232-2131



JD Cashels - \$7,495



JD 1025R - \$18,900



JD 835M - \$27,500



JD 2025R - \$18,500



Ogden RCR812 - \$7,000

Cullman, AL • 256-739-5601



JD 1023E - \$20,900



JD 4044M - \$29,000



JD 5060E - \$38,000



McHale V660 - \$29,900

Scottsboro, AL • 256-259-0704



JD 1023E - \$7,500



JD 4044M - \$29,000



RTR Genesis GB - \$19,000



JD 1025R - \$19,200



JD 1890 Air Seeder - \$68,500



JD 5105M - \$83,900

Case IH 1250 Planter, 2012.....\$85,000

JD 6500 Sprayer, 1996.....\$15,000

JD 8R310, 2023.....\$394,900

JD 1025, 2024\$16,000

JD 635, 2014.....\$11,800

JD 997, 2013.....\$9,500


Vicon Disc Mower, pull type\$6,250

JD W48 Walk Behind Mower, 2022.....\$3,250

JD W36 Walk Behind Mower, 2022.....\$3,000

JD Z930M, 2023\$83,900

Cookeville, TN • 931-526-8544



AV20G - \$4,500

JD 461M.....\$59,000

JD 6155M.....\$181,500

JD 6155M.....\$181,500

JD 1023E.....\$20,000

JD 6155M.....\$181,500

Florence, AL • 256-757-9080



JD 8310R - \$124,900



JD 4044M - \$29,399



JD R240 - \$11,900



JD S790 - \$229,000



JD FC20R - \$36,500



JD XUV 835R - \$31,699

JD 155 Blade.....\$3,350

Durabilt Cotton Spear.....\$5,499

Kubota SVL97-2 Skid Steer\$66,900

JD 325G Skid Steer.....\$55,900


JD 4044M, 70 hrs., 2022\$29,399

JD Z960\$5,499


Snapper S200XT\$3,599

J&M LC390, 2019.....\$46,399


Leighton, AL • 256-446-5929




JD C18R - \$133,900




J&M 875 - \$27,900




JD 5055E - \$42,000



JD DB60 - \$229,000



JD 1590 - \$29,900



JD 2623VT - \$42,300

Kubota M8540, Stk#1041639.....\$19,900

AG Spray Sprayer, 200 gal., Stk#1042149.....\$3,500

Frontier Tiller, 4'.....\$2,000

MacDon FD140, Stk#1041719\$56,900

JD R4038 Wheel Shields.....\$1,500

Case IH 4408 Corn Head, 2014, Stk#1041604.....\$24,900

JD 6155M.....\$191,000

JD 2680H\$78,500

Huntsville, AL • 256-830-4020



JD 3039R- \$42,500 JD 8R-280 - \$378,500 JD 6105E - \$87,500 NH T5.110 - \$57,499 JD 30G - \$30,750 JD 331G - \$64,900
JD Z545R, 48", 2023, Stk#1041217..... \$6,049 Atlas TM-180 Tiller, 6', Stk#1037788 \$1,550

Fayetteville, TN • 931-433-5620



JD 5085E - \$39,000 Kinze 3600 - \$53,500 Woods DS96 - \$4,900 JD 3038E - \$16,900 Krone KW550 - \$3,900
Great Plains Drill, 30'\$23,500 JD 750 Drill\$14,500 LP 1160\$750
JD Z920M.....\$7,500

Mt. Juliet, TN • 615-754-2600



JD 6110M - \$148,000 Ogden RCR12-10 - \$9,000 JD 6130R - \$80,000 Desertcross 800-3 - \$13,500 JD 6110M - \$148,000 JD 7820 - \$74,900

Winchester, TN • 931-967-5144



JD XUV835M - \$29,500 Unverferth HT30 - \$4,500 JD CP690 - \$535,000 J&M 750 - \$32,000 Hagie STS12 - \$349,900 JD 6145M - \$152,000

Manchester, TN • 931-728-5400



JD 1590 - \$38,900 JD 8R410 - \$439,000 Rhino TS12-3 - \$7,900 JD 6145R - \$135,000 J&M 875 - \$62,500 JD 635 MoCo - \$13,900
JD R4023 Sprayer, 3 to choose from Call J&M 875, Stk#354445, 2 available\$62,500 JD Z445 Mower..... \$2,500
Frontier DM5070.....\$9,850 JD X350 Mower.....\$2,500

McMinnville, TN • 931-668-1784



JD 835M - \$12,900 JD 325G - Call JD 50G - Call JD 6105E - \$86,000 JD 5090M, 16x16 trans., hay spear \$61,900

Albertville, AL 5660 US 431 (256) 850-4679	Centre, AL 1050 Chestnut ByPass (256) 927-2300	Dickson, TN 707 Henslee Dr (615) 229-2400	Franklin, TN 340 9th Ave N (615) 794-8187	Hendersonville, TN 133 N. Shackle Island Rd (615) 824-9726	Leeds, AL 1450 TriGreen Way (205) 703-2525	Oxford, AL 2208 AL Hwy. 21 (256) 832-1335	Snead, AL 87221 US Hwy. 278 (205) 466-7163
Arab, AL 933 N Brindlee Mt. Pkwy (256) 586-8304	Crossville, TN 269 N. Main St. (931) 340-1012	Fort Payne, AL 12227 Al Hwy 35 (256) 997-9089	Gadsden, AL 1301 West Meighan Blvd (256) 456-5872	Jasper, AL 3700 Industrial Pkwy (205) 384-3058	Murfreesboro, TN 464 Middle TN Blvd (615) 890-6258	Pelham, AL 3311 Pelham Pkwy (205) 605-0412	

Estate Online AUCTION

Ends: Monday, September 8 • 7:00 p.m.
13.1 Acres (In Two Tracts) with beautiful cabin style mobile home, very nice large 4 Bay Red Iron Shop, Collector Vehicles, Tractor, Equipment, Shop Tools, Carports, Motor Home, RTV, Auto Lift, Guns, Trailers, Car Parts, Outbuildings (to be moved) and much more.

Selling for the late Jimmy M Scott Estate

Location: 605 Cedar Hurst Ln., Pulaski, TN. Super-choice location, close to I-65

Preview Day: Friday, September 5 • 2:00 p.m. to 4:00 p.m. **Pick-up Day:** Tuesday, September 9 • 9:00 a.m. - 4:00 p.m. only!



See More (Over 500 Items) and Register To Bid At vanmassey.com



VanMassey
AUCTION & REALTY
(931) 433-8686

31 Lynchburg Hwy.
Fayetteville, TN 37334

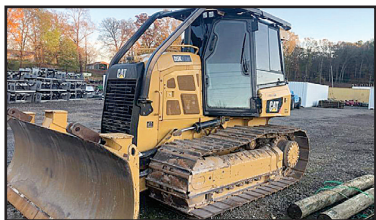
TN Lic. 1711

AL Lic. 1289

MS Lic. 1609

FL Lic. 5344

West TN Online Construction & Farm Equipment Online Consignment AUCTION



Location: 60 Memory Lane (Hwy. 45) Henderson, TN

Receiving Equipment: September 2 thru 8 • 9:00 a.m. - 4:00 p.m.

All Types of Farm and Construction Equipment Selling. Let us work for you.

Jacob Hamilton (731) 798-0295

Ben Hamilton (731) 798-8050



VanMassey
AUCTION & REALTY
(931) 433-8686

31 Lynchburg Hwy.
Fayetteville, TN 37334

TN Lic. 1711

AL Lic. 1289

MS Lic. 1609

FL Lic. 5344

Online Estate AUCTION

Very Nice Brick Home, 1.4 Acre Lot, w/
Pool, Nice Personal Property
Location: 27 Hildale Rd., Fayetteville, TN
Selling for the late James Johnson estate.
Bidding Ends: Tuesday, September 9
7:00 p.m.
Preview Day: Thursday, September 4
2:00 p.m. - 4:00 p.m.
Pick-up Day: Wednesday, September 10
10:00 a.m. - 3:00 p.m. ONLY



See More and Register To Bid At vanmassey.com



VanMassey
AUCTION & REALTY
(931) 433-8686

31 Lynchburg Hwy.
Fayetteville, TN 37334

TN Lic. 1711 AL Lic. 1289 MS Lic. 1609 FL Lic. 5344

Online Estate AUCTION

Nice Home on 1.3 Acre Lot, w/Nice Shop
Location: 1577 Harry Hill Rd.,
Lynchburg, TN
Selling for Mr. Danny Bobo
Bidding Ends: Tuesday, September 16
7:00 p.m.
Preview Day: Thursday, September 11
4:00 p.m. - 6:00 p.m.



Register To Bid At vanmassey.com



VanMassey
AUCTION & REALTY
(931) 433-8686

31 Lynchburg Hwy.
Fayetteville, TN 37334

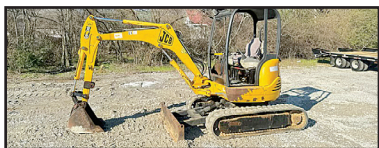
TN Lic. 1711 AL Lic. 1289 MS Lic. 1609 FL Lic. 5344

October Farm & Construction Equipment Online Consignment AUCTION

Location: 31 Lynchburg Hwy., Fayetteville, TN 37334



Receiving Equipment October 6 - 10 • 9:00 a.m. - 4:00 p.m.
Joe Massey - (931) 675-9606
Jacob Massey - (931) 607-2771
We Work Hard To Get You Top Dollar For Your Equipment!



VanMassey
AUCTION & REALTY
(931) 433-8686

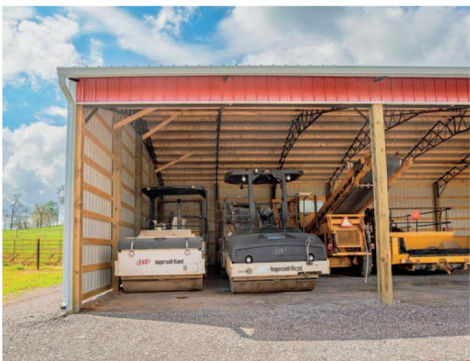
31 Lynchburg Hwy.
Fayetteville, TN 37334

TN Lic. 1711 AL Lic. 1289 MS Lic. 1609 FL Lic. 5344

SUMMERTOWN METALS ® LLC



Strength You Can See. Quality You Can Feel.



40x120x14



THREE SIDED HAY BARN

MATERIALS ONLY

\$23,838

INSTALLED

\$35,338

- Steel trusses
- (1) 120' side open w/ 20' openings
- 40-year, 29 gauge metal walls
- 25-year, 29 gauge galvalume roof
- **ID: Q0-0143093**



Questions? Give us a call!
931-500-1525



Follow us on social media
@SummertownMetals



Building Materials



Building Installation



Custom Design



40'x60'x14'

3 SIDED HAYBARN

- Steel trusses
- 40-year, 29 gauge painted metal
- 25-year, 29 gauge galvalume roof
- ID: QO-146932

MATERIALS ONLY

\$12,598

INSTALLED

\$18,598



40'x120'x14'

THREE SIDED BARN

- Steel trusses
- (1) 120' side open w/ 20' openings
- 40-year, 29 gauge metal walls
- 25-year, 29 gauge galvalume roof
- ID: QO-0143093

MATERIALS ONLY

\$23,838

INSTALLED

\$35,338



40'x60'x14'

ENCLOSED SHOP

- Steel trusses
- (1) 12x12 Garage Door
- (1) 3068 Wak Door
- 40-year, 29 gauge painted metal gables
- 25-year, 29 gauge galvalume roof
- ID: QO-0145176

MATERIALS ONLY

\$18,487

INSTALLED

\$26,687



40'x60'x14'

THREE SIDED BARN

- Steel trusses
- (2)-40' walls enclosed
- (1)-60' wall enclosed
- 8" vent gap
- 40-year, 29 gauge painted metal gables
- 25-year, 29 gauge galvalume roof
- ID: QO-0137045

MATERIALS ONLY

\$14,139

INSTALLED

\$20,139



30'x50'x12'

2 CAR GARAGE

- Steel trusses, no overhang
- (2)-10x10 garage doors
- (1)-36" walk-in door
- 40-year, 29 gauge painted metal
- ID: BKFA305012-1

MATERIALS ONLY

\$15,283

INSTALLED

\$20,733



BROWSE ONLINE

Scan to view more buildings online or to book an appointment with a Building Specialist

SummertownMetals.com

Prices are subject to change without notice and do not include tax or shipping.

Installation by an independent contractor is available only within Tennessee or within a 200-mile radius of our Summertown Metals branch locations in Hopkinsville, KY, and Hayden, AL. Buyers are responsible for obtaining necessary codes and permits, which may require additional materials or costs depending on location. Material-only packages do not include concrete and can be delivered up to 300 miles from any Summertown Metals location. For deliveries beyond 300 miles, third-party shipping is available, with all arrangements being the buyer's responsibility.

ONLINE AUCTION!

BEGINS CLOSING AT 2:PM TUES, SEPTEMBER 9TH

178 ACRES+/-

- 980 COUNTY ROAD 274, TOWN CREEK, ALABAMA -

For more information, call Ben Phillips 256-710-9683



ONLINE ESTATE AUCTION!

BEGINS CLOSING AT 6:PM TUES, SEPTEMBER 9TH

4BR, 3 BA BRICK HOME

- 413 RUSSELL STREET, FLORENCE, ALABAMA -

For more information, call Alex Pondick 256-458-4243



**Call us today at 256-757-8898 for a
Free Auction Consultation!**



SHANE ALBRIGHT AUCTIONS

6508 US-72 KILLEN, ALABAMA 35645

AL PHONE 256-757-8898 TN PHONE 931-762-5134

Shane Albright Owner/Broker/Auctioneer AL#1569 TN#5431

Ben Phillips Vice President/ Realtor/ Auctioneer 256-710-9683 AL#1331

LIVE AMISH AUCTION



9:AM Thursday, September 11th
182 Denson Rd, Lawrenceburg, TN
Lunch - Tent- Restrooms Available
Auction Held Rain or Shine!

Partial Listing of Items:

Team of Belgian Geldings 6 & 7 y.o., 14 y.o. Belgian Gelding, 13 y.o. Standardbred Mare, 6 y.o. 17 Hand Belgian-Percheron, 5 y.o. Standardbred Fresian, 4 y.o. Standardbred, 2 y.o. Standardbred, 5 m.o. 3/4 Standardbred Cross Colt, Black Percheron Filly, (2) Standardbred Mares in Foal for 2026, Friesan Standardbred Stud Colt, Morgan Quarter Cross born 3/10/24, New Idea Hay Loader, Large Hack Buggy, Produce Buggy, Spring Tooth Harrow, MC Corn Binders, Spike Tooth Harrow, Shop Machinery, Singer Sewing Cabinets, Wood King Stove, Breast Drills, Buggy Running Gear & SO MUCH MORE!!! We never know until Auction day what will show up!

Load up the family & make plans to spend the day with us!

Sellers: Abe Miller

For more info, call Shane Albright Auctions 256-757-8898

ONLINE ESTATE AUCTION!

BEGINS CLOSING AT 6:PM THURS, SEPTEMBER 18TH

3 BR, 2.5 BA HOME

- 295 COUNTY ROAD 172, FLORENCE, AL -

For more information, call Alex Pondick 256-458-4243



Drawing for Auction Advertising Purposes Only



SHANE ALBRIGHT AUCTIONS

6508 US-72 KILLEN, ALABAMA 35645

AL PHONE 256-757-8898 TN PHONE 931-762-5134

Shane Albright Owner/Broker/Auctioneer AL#1569 TN#5431

Ben Phillips Vice President/ Realtor/ Auctioneer 256-710-9683 AL#1331

LIVE ON-SITE EQUIPMENT & TOOL AUCTION

Saturday, September 20th @ 9am

**Tractors, Honda ATV, 94 F350 w/Dump Bed, Trailers,
Implements, Tools & More!**

200 Forest Lake Rd., Estill Springs, TN 37330

Selling a Lifetime Collection for Mr. Bob Whaley



Mr. Bob Whaley was in the construction industry for close to 55 years and as one might expect he has procured many fin tools and equipment during that time. But the time has come for him to let go of these items and we are honored to help him sell this fantastic collection! If you are in need of any tools, tractors, trailers, implements, fencing supplies, or if you just love coming to a live on-site personal property auction then come see us on Saturday, September 20th @ 9:00 a.m.!

BID. BUY. SELL. WIN WITH WINTON!



Winton Auction & Realty
931-967-3650 | WintonAuction.com



Scan The
QR Code to
view more pics
of items
being sold!



Directions: From downtown Estill Springs head north on Tullahoma Hwy. Turn right on Spring Creek Rd., continue straight on Taylor Rd., right on Cinder Path Rd., and left on Forest Lake Rd. Property is on the right.

TERMS ON PERSONAL PROPERTY: Cash, check, or credit card day of sale.

Everything sold as is with no warranties expressed or implied. Sale day announcements take precedence over any written material. NO BUYER'S PREMIUM!

EQUIPMENT AUCTION

Saturday, September 27 @ 10am

Construction & Farm Equipment

4 Tractors, 2 Balers, Trencher, Implements, & Furniture

SELLER: THE MORGAN FAMILY OF HUNTLAND, TN

The Morgan Family has accumulated their fair share of farm and construction equipment over the years and is ready to part ways with some of it. This auction will include a variety of equipment and household furniture. Come see us in downtown Huntland on Saturday, September 27th for a good old fashioned live auction!

**AUCTION HELD LIVE ON-SITE ONLY
IN DOWNTOWN HUNTLAND, TN!**
Auction Location: 600 Main Street, Huntland, TN 37345



PARTIAL LIST OF EQUIPMENT

Tractors

- John Deere 5603 (6600 hrs)
- Case C090
- MF 2705
- MF 1100 (4,900+ hrs)
- MF 250
- MF 65

Balers

- JD 468 (9,000+ bales)
- JD 566 (1,500 + bales)

Construction Equipment

- Galion Road Grader
- Case 360 Trencher
- Tow Motor

Other Equipment

- Honda Fourtrax 4-wheeler
- 8' Utility Trailer
- 6' Utility Trailer
- 6' Scraper Blade
- 16' Dual Axle Trailer
- Farm Gates
- 16' Hay Wagon
- EZ Flow Gravity Wagon
- Howse 6' Rotary Cutter
- Sickle Mower
- Four Winds Deck Boat
- Household furniture
- **AND MUCH MORE!**

TERMS: Cash, check, or credit card day of sale.

Property is being sold AS IS with no warranties expressed or implied. Contents of this ad were derived from sources believed to be correct but not guaranteed.

NO BUYER'S PREMIUM!

WHAT YOU BID IS WHAT YOU PAY!



Winton Auction & Realty

931-967-3650|WintonAuction.com



\$6,950

C&B Hereford Plus Squeeze
Chute Head Holder Brisket Bar
Backup Bar Neck Access Doors
Palp Cage Fully Mobile



\$5800

Custom Hydraulic
Squeeze Chute



\$3,200

C&B Angus Auto
Cattle Squeeze Chute

Roll Tide!

Custom 50 Head Cattle Working System - \$6,900



Includes 90 degree sweep tub with slide gate and 20' alleyway. Includes a 10x20 holding pen, attached 10x20 sorting pen with a main 30x30 catch pen.



C&B Hay Feeder Wagons

12' **\$3,600**

20' **\$4,900**

24' **\$5,700**



C&B Mobile Grain Bins

3,000 lb. **\$3,400**

5,000 lb. **\$3,900**

6,500 lb. **\$4,300**



C&B 160 Bushel

Creep Feeder

\$4,900



C&B FARM + OUTDOORS

13976 Hwy. 72 West, Athens, AL 35611

www.cbfarmoutdoors.com • **256-777-7137**

Delivery Available On All Our Cattle Equipment We Sell



www.cbfarmoutdoors.com

War Eagle!



Seconds 10' Corral Panels - \$59 each



Limited Stock

Call or Text Chad 256-777-7137



C&B FARM + OUTDOORS

13976 Hwy. 72 West, Athens, AL 35611

www.cbfarmoutdoors.com

256-777-7137

Delivery Available On All Our Cattle Equipment We Sell

Like Us On  **facebook**

THERE'S NO TIME LIKE

FAIR TIME

120 Years of Making Memories

September 13-20, 2025

Friday, September 12 • Gate Admission - FREE

Carnival Not Open	
4th Annual Lincoln County Fair Cruise-In	5:00 P.M.
Adult Cornhole Tournament	6:00 P.M.

Saturday, September 13

ARMBAND DAY, ALL YOU CAN RIDE 1:00 P.M. - Closing

Gate Admission \$22 - Includes admission to Fair, Derby, Armband

Myotonic Goat Registry Show	9:00 A.M. and 1:00 P.M.
Jr. Meat Goat Show	4:00 P.M.
Power Wheels Derby	Registration 5:00 P.M., Starts 6:00 P.M.
Demolition Derby	7:00 P.M.
Lawn Mower Derby during Intermission of Derby	

Sunday, September 14

Gate Admission - \$10

ARMBAND DAY, ALL YOU CAN RIDE \$20 1:00 P.M. - 5:30 P.M.

ARMBAND DAY, ALL YOU CAN RIDE \$25 1:00 P.M. - Close

Dairy Goat Show (4-H & FFA Open)	9:00 A.M.
Stick Horse Races (register 1:00 P.M. in area outside Fair Store)	1:00 P.M.
Quarter Horse Races, Pony Races & Mule Races	1:30 P.M.

Monday, September 15

Gate Admission - \$10

Commercial Heifers Showmanship Class and Show	5:00 P.M.
Market Hog and Swine Show	5:00 P.M.
Pageants - Fayetteville Lumber Stage	7:00 P.M.
Junior Miss • Miss Teen • Fairest of Fair	
Non-Sanctioned Truck & Tractor Pull - Grandstand	7:00 P.M.

Tuesday, September 16

Gate Admission - \$10

Harness Races	2:00 P.M.
Angus, Simmental, Simmental % Showmanship	
Class and Shows	5:00 P.M.
Pageants - Fayetteville Lumber Stage	6:00 P.M.
Tiny Miss • Little Miss • Young Miss	
Harness Races	7:00 P.M.

Wednesday, September 17

Gate Admission - \$10

Harness Races	2:00 P.M.
Jump & Run	7:00 P.M.
Pro Wrestling • Fayetteville Lumber Stage	7:30 P.M.

Thursday, September 18

FREE Admission for Everyone

Harness Races	2:00 P.M.
LCF SPONSORS COUPON NIGHT	
Senior Citizens Day - (Sponsored by Dan Holt Enterprises)	
Century Farms Recognition Day (Sponsored by Small & Small Oil)	
ARMBAND DAY, ALL YOU CAN RIDE	
\$15 w/coupon • \$20 w/o coupon	5:00 P.M. - Closing
Hereford/Polled Hereford, Shorthorn,	
Shorthorn Plus & Other Breeds Showmanship	
Class and Shows	5:00 P.M.
Side-by-side Jump & Run	7:00 P.M.

Friday, September 19

Gate Admission - \$10

ARMBAND DAY, ALL YOU CAN RIDE - \$25 3:00 P.M. - Closing

Harness Races	2:00 P.M.
Red Angus & Aberdeen Angus Showmanship Class & Shows	5:00 P.M.
Joel Ellett and the Eldorado Band - Fayetteville Lumber Stage	7:00 P.M.
Sanctioned Truck & Tractor Pull	7:00 P.M.

Saturday, September 20

Gate Admission - \$10 (Includes Concert)

ARMBAND DAY, ALL YOU CAN RIDE (1:00- 5:30 \$20 • 1:00 P.M.- closing \$30)

4-H Sheep Fun Class • Fayetteville Lumber Stage	10:00 A.M.
4-H Wool on Parade • Fayetteville Lumber Stage	10:30 A.M.
4-H Clover Collection • Fayetteville Lumber Stage	11:45 A.M.
4-H Fun with Fashion • Fayetteville Lumber Stage	12:30 P.M.
Harness Races	1:00 P.M.
Sheep Show (4-H, FFA & Open)	1:00 P.M.
Hot Dog Eating Contest • Fayetteville Lumber Stage	5:00 P.M.
Gravely Zero Turn Mower Giveaway*	7:00 P.M.
Power Wheels Truck & Rockin' S	
Gooseneck Trailer Giveaway	7:00 P.M.
Quilt Giveaway	7:00 P.M.
Concert - Drew Baldridge	8:00 P.M.

*Must be present to win.



Buy
Tickets
Online

Parking- \$10 Everyday When Available

Carnival Rides Start • Monday-Thursday at 5:00 P.M., Friday at 3:00 P.M., & Saturdays & Sunday at 1:00 P.M.

Gates open Saturday September 13 at 8:00 A.M.

Gates Open Saturday, September 20 & Sunday 11 A.M. • Monday 4 P.M. • Tuesday-Friday 12 P.M.

www.lincolncountyfairtn.com



FOWLER AUCTION

Turning Your Assets Into Cash

HORSE FARM IN WALKER COUNTY TO BE AUCTIONED

4-BEDROOM BRICK HOME ON 20 ACRES±

655 Reed Road • Jasper, AL

ONLINE ONLY AUCTION: BIDDING BEGINS TO CLOSE THURSDAY, SEPTEMBER 4TH • 7 PM



MOSTLY OPEN TERRAIN WITH SCATTERED TREES & NICE HORSE BARN!
CHARMING & ROOMY HOME WITH 4 BEDROOMS & 2.5 BATHS
CALL DANIEL TODAY AT (256) 603-1249 TO SCHEDULE VIEWING

COURT ORDERED: MULTIPLE PARCELS IN MARSHALL COUNTY, AL

97 ACRES±: King Cliffs in Union Grove

***20 ACRES± & *0.76 ACRE±: Highway 231 in Arab**

ONLINE ONLY AUCTION: BIDDING BEGINS TO CLOSE TUESDAY, SEPTEMBER 9TH • 7 PM

Ordered by Marshall County Circuit Court, Case #CV2022-000016.00. *Half interest of these parcels will be auctioned.

18 ACRES± ON HAPPY HOLLOW ROAD

Elk River In Limestone County, Alabama

ONLINE ONLY AUCTION: BIDDING BEGINS TO CLOSE TUESDAY, SEPTEMBER 16TH • 7 PM

★ 704 ACRES± IN TRACTS WITH 4 HOUSES ★
PLUS TRACTORS, SKID STEER EQUIPMENT & PERSONAL PROPERTY

Lincoln County, Tennessee

• LIVE AUCTION COMING SOON •

SEE ALL AUCTIONS AT WWW.FOWLERAUCTION.COM

"The Preferred Auction Company"

Fowler **47** Years OF SERVICE
Auction & Real Estate
SERVICE, INC.
8719 HIGHWAY 53 • TONEY, ALABAMA 35773
A MARKNET ALLIANCE MEMBER

DANIEL CULPS, CAI, CES
ALSL5070, TNSL5890, TN FIRM2315, GASL449014
GREG BOTTOM, AA2959
WILLIAM GRAY, CAI, CES ALSL5429, TNSL7583; FFL



Toney: (256) 420-4454 • Ardmore: (256) 423-4454
Athens: (256) 232-7788 • Huntsville: (256) 859-5682



ABSOLUTE AUCTION

AUCTION LOCATION : 11091 N JACKSON HWY (HWY 31-E) - CAVE CITY KY

**809.7 +/- ACRES PRIME BARREN CO & HART
CO FARMLAND 7 FARMS - 3 HOMES - 14 TRACTS**

SELLERS: RALPH DEPP JACKSON ESTATE & MICHAEL HOWELL
ONSITE & ONLINE BIDDING AVAILABLE

**THIS
ABSOLUTE
AUCTION IS BE
SOLD
PURSUANT TO
BARREN CO
CIRCUIT
COURT ORDER
24-CI-00664
& BARREN CO
DISTRICT
COURT ORDER
24-P-00161**

LOCATED ON: 7707 N. JACKSON HWY
FARM 4 - TRACT 2: 60.90+/- ACRES

LOCATED ON: 11091 N JACKSON HWY
FARM 1 - TRACT 1: 69.31+/- ACRES

LOCATED ON: 6489 N. JACKSON HWY
FARM 3 - TRACT 1: 4.93 +/- ACRES

LOCATED ON: 590 OLD LEXINGTON ROAD
FARM 5 - TRACT 1: 54.09+/- ACRES

MILLS
REAL ESTATE & AUCTION CO., LLC
870-610-7888

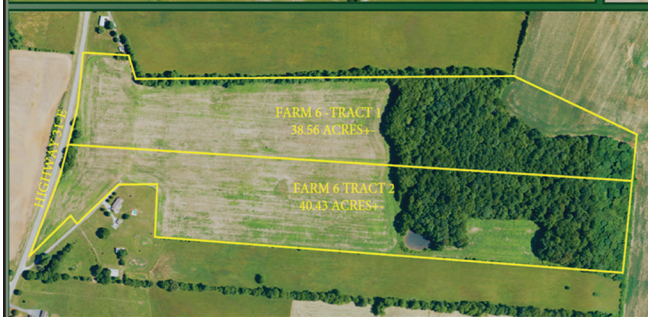
Russell Mills Auctioneer 270-237-7625

Sandy Mills Broker/Realtor 270-618-9560

FOR MORE INFO CALL AGENTS: RUSSELL MILLS 270-237-7625 OR JOE MURPHY 270-427-8364

WWW.RSMILLSAUCTIONS.COM

TERMS & CONDITIONS: ALL BIDDERS MUST REGISTER WITH PHOTO ID, 10% DOWN DAY OF AUCTION. BALANCE DUE ON OR BEFORE 45 DAYS. SELLER PROVIDES GENERAL WARRANTY DEED, POSSESSION WITH DEED, 1025% PROPERTY TAXES PAID BY SELLER, ALL HOMES BUILT BEFORE 1978 MAY CONTAIN LEAD BASE PAINT. PROSPECTIVE BUYERS ARE GIVEN 10 DAYS PRIOR TO AUCTION TO CONDUCT LEAD BASE PAINT TEST. BUYER WILL BE REQUIRED TO SIGN A WAIVER OF ALL POST SALE INSPECTIONS. ALL REAL ESTATE AND PERSONAL PROPERTY SOLD AS IS WHERE IS WITH NO WARRANTY EXPRESSED OR IMPLIED. **3% BUYERS PREMIUM ON ALL REAL ESTATE ALL ANNOUNCEMENTS MADE DAY OF AUCTION TAKE PRECEDENCE OVER ALL ADVERTISEMENTS. SELLERS NOT AGENT RESPONSIBLE FOR ACCIDENTS.**



WWW.RSMILLSAUCTIONS.COM

Lots More Farm Equipment For Sale (Most Used On My Farm)



JD 450H
3100 hrs., nice machine
\$42,750



JD 4020, joystick, QA
bucket, straight as they come,
console - \$18,750



JD 120C off the farm,
clean out bucket, reg.
bucket \$47,750



Kubota 105s
4WD, shuttle shift,
4500 hrs. - \$31,750



JD 550H
LGP, runs good
\$42,750



Cat 312B
w/thumb
\$36,750



JD 8400
good tractor
Call



JD 304K
quick attach
\$42,500



Ledwell Trailer 80K lb.,
winch, hyd. dove tail, hyd.
deck, manual or remote
control, 53' \$47,750



Mack Truck, 2000, 460
engine, wet kit, 600k
miles, 10 spd., off farm
\$28,750



JD 550H Dozer 4100
hrs., good machine
\$42,750



Hitachi 200 LC - good
machine, high hours
\$34,750



JD 4240
Bucket & Hay spear
\$27,500



JD 8430
5100 hrs.
\$132,750



JD 450G winch,
5400 hrs., good machine
\$36,500



JD XUV 835R 2018,
1000 hrs., new motor,
new tires \$38,750



JD 700j
3500 hrs., Cab & Air, Root
Rake - \$92,750



Mack Truck demolition bed,
8LL trans, 44 rears, nice, clean
truck, 350 engine \$38,750



2000 Mack 8LL 44 rears,
long frame, double frame
\$22,750



Komatsu MP88 - with
bush cutter, bush head never
used on trackhoe - \$59,750



Cat D6T
2012, good machine,
13 1/2' Call

Kubota Tractor L3301, 750 hrs., 4WD	\$16,750
Palmer Dump Trailer, 18'	\$11,750
DTatch Pitts Contender, 2018 MD, has hyd., 3 axle.....	\$48,570
JD CX15 Cutter, 15', good.....	\$16,500
JD Offset Bog Disk, 8'.....	\$6,850
Amoco J42B Bog Offset Disc, 15', used one time	\$23,758
KW Truck, N14 Cummins 2000, wet kit, nice truck	\$39,750
Takeuchi TB210R Mini Excavator.....	\$12,750
JD 4450 Tractor, 6242 hrs.....	\$39,750
Dodge Service Truck, 2007, auto, Cummins	\$12,750
MF 243, 600 hrs., one owner, Perkins eng., 1032 loader.....	\$18,750
JD 650 HD Cutting Disk, 25', new blades.....	\$17,750
JD 637 Rock Disk 29.3' wide, 21 1/2" blades, good disk.....	\$16,750
JD 8400 7th & 8th gear slips, duals, 12k hours.....	\$32,500
JD 8420, nice tractor.....	\$55,500
JD 8520, IVT frontend, good tractor	\$62,750
JD 455G 4100 hrs., good machine.....	\$27,500
Mack Truck, 1977, nice truck, 2 sticks, dump bed.....	\$15,750
JD 4440, PS, 5300 hrs., 2WD.....	Call



2001 Mack 8LL trans., 350
eng., double frame, good
tires, good truck \$35,750

Call Gary 256-335-4919

Florence, Alabama
Used Trucks Plus TTL

PLOWBOY PRODUCE AUCTION, LLC

20th Annual Consignment Auction
Saturday, October 11th, 2025 • 9:00 am

469 S. Brace Rd., Ethridge, TN 38456 • Office - 931-829-1114

Directions: From Hwy. 64 in Lawrenceburg, TN. Take Hwy. 43 North 6.7 miles to Brewer Rd. and Welcome Center. Turn left go to end of road, turn right onto South Brace Rd. Watch for auction on left.

No Buyers Premium

Taking Consignment Items on:
Tuesday, Thursday & Friday
7:00 A.M. - 7:00 P.M.
Household items on Friday only

- Horse-drawn Farm Equipment
- Shop Tools
- Hand Tools
- Hand-made Furniture
- Poultry
- Buggies
- Wagons
- Glassware
- Antique Clocks
- And Much, Much More!

9:00 A.M. in Ring 1 & 2 - Selling household items, furniture, cook stoves, glassware, cookware, clocks, watches, crocks, butter churns, lamps, lanterns, bows, old coins, antiques, etc.

9:00 A.M. in Ring 3, 4 & 5 - Selling shop equipment, wagon lots, tack, feed, at 11:00 A.M. will sell buggies, wagons and farm machinery.

10:00 A.M. in Ring 6 - Selling poultry, etc.

Terms of Use: Please obtain a buyers number upon arrival. **Payments:** Cash, credit cards or pre-approved checks. Pre-approved with a bank letter prior to day of sale, buyer must have a current letter of credit from his or her bank.

Settlement to Consignors: Checks will be available to pick up at the auction barn at noon until 2pm on Monday, October 20th, and on Wednesday, October 22nd. After Wednesday, October 22nd, the checks will be mailed. The auction barn will be closed after the 31st of October. All discrepancies should be settled on or before the 30th day of October. Please bring a self-addressed envelope to the barn with you if you would like your check mailed. Items not removed from the sale grounds within 14 business days will be property of Plowboy Produce Auction LLC.

Consignment Information: Consignment items may be delivered to sale site from 7:00 A.M. to 7:00 P.M. CST on Tuesday, Thursday and Friday prior to sale day. Consignors are responsible for making sure all items are properly registered in, tagged and/or numbered. Everything in cages or coops will sell by the head, times the count in the cage or coop. Neither buyer or consignor are allowed to split cage lots on the premises. All cage lot buyers will have to show proof of ownership before any cages can be moved. Commission rates are 15% on all items, with a \$1 charge for each lot. All items sold privately on the sale grounds are subject to commission. Vendors wishing to set up on the sale grounds should make prior arrangements with the sale management. The management reserves the right to refuse any consignment item. We are only accepting house hold items only on Friday. All sales errors must be corrected by October 31st 2025 or it will be null and void. No junk consignments, please! We will not sell any titled vehicles.

Notice: All out of state fowl MUST have health papers at time of check in. Deadline to consign and fowl, etc. is 8:00 A.M. Saturday, October 11th, 2025, CST. All household items, including bows, muzzle loaders, etc. will ONLY be excepted on Friday prior to sale day. Announcements made on sale day take precedence over advertising. Neither consignors nor agents will be responsible in case of accident, injury or theft. **Buyers must assume immediate responsibility for any purchases made at the sale site.** All guarantees are strictly between buyer and seller. Auction management acts as agent only.

The Amish ladies will have their baked and canned goods, confections, soaps and candles for purchase.

With six auctioneers, food trucks and a craft bazaar to complete this event, you will feel like you have been transported to a county fair of days gone by.

Absolute Auction



www.facebook.com/
plowboyproduceauction



@PPAEthridge

Jessy Kelley Auctioneer - TN LIC 6925
Susan Ayers-Kelley, Owner/Manager - Gallery #5175

Announcements made day of sale take precedence over all printed matter.
TERMS: Cash or Letter of Credit From Your Bank - Settlement In Full Day of Sale
 Checks accepted with bank letter approval.

www.plowboyproduceauctions.com

Parker Farms Cattle and Equipment Co.

8400 Manchester Pike, Murfreesboro, TN
 Kyle Parker | (615) 542-6157



Hay Feeder Wagon

20' - \$4,200

24' - \$4,700

28' - \$5,200

Call for information on custom sizes. Heavy Duty, 12 Gauge Bottom, Extendable Tongue for easy Hook-up



Disc Mower Caddy

Inline or Offset

\$4,600

Field Ready with Hydraulic Lift Cylinder and PTO Shaft. Heavy Duty and Built to Last



Mobile Feed Bin

2 Ton - \$3,450

3 Ton - \$3,750

3 Ton Tandem Axle - \$3,950

4 Ton Tandem Axle - \$4,150



Fence Line Hay Feeders

20' - \$2,200

24' - \$2,400

Custom sizes available



Creep Feeders

1000# Creep Feeder - \$2,700

2 Ton Creep Feeder - \$4,000

3 Ton Creep Feeder - \$4,400

6 Ton Creep Feeder - \$7,000



Fence Line Hay Feeder

20' - \$4,500

16' - \$4,000

Custom sizes available



Pasture Sprayers

150 Gallon 3 Point Sprayer - \$3,750

300 Gallon Pull Behind Sprayer - \$4,450

500 Gallon Pull Behind Sprayer - \$4,650

500 Gallon Tandem Axle Sprayer - \$5,450

750 Gallon Tandem Axle Sprayer - \$7,250

Hand Wand Is Ad On at \$150

Sprayer Comes with Boom Jet Nozzle, 40'

Spraying Width, 8 Roller Pump

for Maximum Capacity



Covered Hay Feeder On Skids

1 Roll - \$3,300

2 Roll - \$3,800



Horse or Horned Cattle Hay Feeder

1 Roll - \$3,500

2 Roll - \$4,000

Call for info on custom sizes



Bottomless hay feeder wagon

20' - \$4200

24' - \$4700

28' - \$5200



Covered hay feeder wagon

20' - \$6000

24' - \$6500

Like us on FB at Parker Farms Cattle and Equipment Company

Bull Gates, Bow Gates, Pasture Gates, Hay Rings, Feeder & Creep Panels, Corral Panels, Mineral Feeders, Metal Feed Bunks, Creep Feeders, Feeder Wagons, Fence line Feeder, Bunk Feeders on wheels, Grain Bins. We can customize to fit your needs on most all of our products. Price may change without notice due to unforeseen cost increase in steel and raw materials.

REGISTERED ANGUS BULLS FOR SALE

parkerfarmscattleandequipment.com • (615) 542-6157

Shipping Options to Anywhere. Credit Card Options Available.



Prices may change without notice due to unforeseen cost increase in steel & raw materials.

16TH ANNUAL 3 DAY LATE FALL ABSOLUTE AUCTION**Thursday, October 2nd • 9:00 AM****Friday, October 3rd • 9:00 AM****Saturday, October 4th • 9:00 AM**

Construction Equipment Dozers, Excavators, Mini Excavators, Skid Steers, Dump Trucks and Service Trucks.
Tractors, Farm Equipment, Attachments, ATVs, UTV's, Mowers and Support Equipment.

We will be running multiple rings on Saturday - Bring a bidding partner!**DOWNLOAD OUR APP AND BID LIVE FROM YOUR PHONE!**

Find it on your Google Play store or Apple App Store

1733 Garden Village Dr., White Pine, TN 37890

Inspection days: Tuesday, September 30th & Wednesday, October 1st (8:00AM-5:00PM EST)**No Minimums • No Reserves • Highest Bidder Wins • Bid Live and Online**

Largest Equipment Auction in East Tennessee Near The Foothills of the Smoky Mountains! This 3 Day Auction Will Feature a Variety Of Heavy Construction Equipment, Farm Tractors & Machinery, Excavators, Backhoes, Dozers & Loaders, Graders, Pavers, Rollers, Forklifts, Boom & Scissor Lifts, Wheel Loaders, Track Loaders, Cranes, Trenchers, Chippers, Service Trucks, Trailers, Mowers, ATVs, RTVs, Farm Equipment, Golf Carts, Farm and Garden Implements & Attachments.

The full catalog will be available on Monday, September 29th at 5:00PM**Bid.ProTeamAuction.com****Accepting Farm Equipment Consignments Now!****Come Sell With A Winning Team! Often Duplicated, Never Replicated. Proven Results.****Large Inventory - Selling Worldwide!****0% Seller's Fee - Call Today****Selling For Individuals, Contractors, Rental & Leasing Companies, Lending Institutes, Farmers, Dealers, And More!****1-87PROTEAM1**Follow Us
On Facebook <https://www.facebook.com/proteambid/>

1733 Garden Village Dr., White Pine, TN 37890

Call (865) 674-7002 or Email Proteam@proteambid.com**Fax: (865) 674-0727**



2983 Huntsville Hwy., Fayetteville, TN • (931) 433-6255

Cole: (931) 993-8874 • Rocky: (931) 703-6255**2025 Top Hat**

- 14'
- dump
- 7k axles
- rock gate
- roll out tarp

**2025 Top Hat Low Pro**

- 24'
- 7k axles
- 102" wide
- drive over fenders
- dual jacks
- chain box

**2025 Top Hat UTC**

- side by side trailer
- 84" fender width
- spring assisted ramp
- boxed LED light mounts

**2025 Shadow Stable Mate**

- all alum
- 7' 6" tall
- 6' 9" wide
- 2 horse slant wide
- 4' dressing room
- swing out saddle rack
- on board water tank

**2025 Shadow Mate**

- all alum
- 2 horse straight load
- saddle rack
- 7' 6" tall
- 4.5' dressing room
- loading ramp

**2025 Shadow Stable Lite**

- 3 horse slant
- 7' 6" tall
- 5200 lb. axles
- 4' dressing room

**2026 Shadow**

- 2 horse
- straight load
- 7' 6" tall
- 4' dressing room
- loading ramp
- double escape doors

**2026 Shadow Pro Livestock**

- 4' dressing room
- 16' stock
- 7' tall
- LED lighting
- sliding calf gate
- rubber mats

7 Year Structural Warranty On All Shadow Trailers**Financing Available**See our website for complete list
elkvalleytrailersales.com**Trade-Ins Welcome****Cows**

FOR SALE, REGISTERED BLACK ANGUS BULLS, will qualify for the full TAEP money, all are by the top AI bulls in the breed. Crawford Angus. Lewisburg, TN. (931)205-2450; (931)359-2633. crawfordangus@bell-south.net



YOUNG BULLS polled, registered, gentle. Quality Cattle Since 1977. Facebook: Happy Valley Ranch Santa Gertrudis (256) 566-7878 lindadkelso@yahoo.com



BEAUTIFUL BLACK STEERS, family raised, butcher ready, \$3 a pound of the hoof. No Sunday sales. (931)308-2128.

REGISTERED BLACK ANGUS BULLS, yearlings from high performance cowherd, bred AI to top performance Angus bulls, Genomic EPD's. Turrentine Angus, Shelbyville, TN., aturrentine@cafes.net, (931)607-8950.

REGISTERED BLACK ANGUS HEIFERS for sale, registered numbers 21294105 and 21294106. (931)993-7401.

NINE PUREBRED BLACK ANGUS BULLS for sale, 9-10 months old. (931)675-0669.

WAGYU POLLED HEIFERS for sale. (256)714-6182.

REGISTERED BLACK ANGUS BULLS fully TAEP qualified, A-I sired out of great cow families, gentle, good EPD's. Cedar Ridge Angus, Pulaski, TN. (619)876-7904. See Cedar Ridge Angus on Facebook.

To Place A
Classified Call
800-247-7318

To Place A
Classified Call
800-247-7318

PURE BRED POLLED HEREFORD BULLS for sale. (931) 363-0445

Got Livestock to Sell?
We've Got Buyers!

Place your ad online at www.FarmersExchange.com or by calling 800-247-7318.

To Place A
Classified Call
800-247-7318

Got Tools to Sell?
We've Got Buyers!

Place your ad online at www.FarmersExchange.com or by calling 800-247-7318.

Get Ready For Harvest Time!
Check with us for your Hydraulic Hoses, Ag Bearings, Filters & More!

B&B Auto Parts, Inc.
4936 Winchester Rd. N.E. • New Market, AL
2 miles North of Buckhorn High School
(256) 379-4733
www.bandbautopartsinc.com

Owners: Kent Bentley & Denita Bentley Sharpe
Hours: Mon. - Fri. 7:00 A.M. - 5:30 P.M.; Sat. 7:00 A.M. - Noon

FARM MACHINERY & CONSTRUCTION CONSIGNMENT

AUCTION

2 DAY →
AUCTION:

FRIDAY ~ SEPT 19TH &
SATURDAY ~ SEPT 20TH
@ 9:00 (CST)

8380 NEW GLASGOW ROAD - SCOTTSVILLE, KY 42164

OVER 1,000 LOTS EXPECTED!
LIVE & ONLINE BIDDING



WE WILL BE RECEIVING CONSIGNMENTS:
MON. TO FRI. / 8AM - 4PM / AUG 25TH THRU SEPT 16TH
***NO CONSIGNMENTS AFTER SEPT 16TH

2025 DATES
FEB 14TH & 15TH
JUNE 20TH & 19TH
JUNE 20TH & 21ST
SEPT 19TH & 20TH
NOV 14TH & 15TH
DEC 29TH



Harper
EQUIPMENT & AUCTIONS
270-618-7710
BUY - SELL - TRADE

DIRECTIONS: FROM SCOTTSVILLE TAKE HWY 31-E NORTH 6 MI. TO AUCTION SITE. FROM GLASGOW TAKE HWY 31-E SOUTH 12 MI. FROM CUMBERLAND PARKWAY TO AUCTION SITE. 50 MILES NORTH OF NASHVILLE--25 MILES EAST OF BOWLING GREEN--12 MILES SOUTH OF GLASGOW



**FOR MORE INFO PLEASE CALL:
TYLER HARPER 304-993-5738**

REGISTERED ANGUS BULLS, TAEP in TN & KY, big strong bulls with great EPDs, several heifer bulls available, Genomic tested for accuracy, BS exam. FandPLivestock.com; (615) 653-8913

Dogs

KOMONDOR PUPPIES FOR SALE, best guard dog for all livestock, ready to go July 31. Tanner, AL area. (256)232-2432; (607)345-4895.

FREE TO GOOD HOME, two small black dogs, 1/2 Jack Russell with 1/2 who knows what, one male and one female, they are very protective. (931) 993-5300

Pigs

WEANLING PIGS, very efficient grass eating type, great barbecue hogs, \$30 each. (931) 593-3128

Announcements

STORAGE TRAILERS FOR RENT OR FOR SALE, Lebanon, TN area. (615)714-3894.

MILLER FARMS
Angus Beef from the farm. 100% natural, non-GMO, hormone and antibiotic-free. Whole, halves, or by the pound. Slaughtered and packaged. (931) 593-3702; (931)994-9429.

Auger (Post Hole)

DANUSER, 3PT. HITCH post hole diggers, \$400. (931)703-5239.

FARM KING, 1070 auger for sale, with hydraulic swing out, \$9,500. Chapel Hill, TN area. (931)993-9390.

PTO

FORD 3930 PTO BELT, PULLEY for sale, \$125. (931)209-6870.

Components

CA ALLIS CHALMERS FOR SALE, motor completely rebuilt, new clutch, rear end, and PTO completely gone through and reworked, includes 5' pull-type bushhog, \$4,500. (256)454-0234.

Backhoe

NEW HOLLAND B95 BACKHOE, 2WD, 95hp, \$21,900. (931) 729-2320

Loader

JOHN DEERE 455G for sale, 4,100 hours, good machine, \$27,500. (256)335-4919.

Building Products

Residential commercial agricultural building supplies. Fayetteville lumber & supply inc., Now available to serve you from two locations! 1404 Washington street west and 1100 winchester highway, fayetteville, tn 37334. (931)433-9126. *All types of building materials from rebar, sand, gravel, blocks, all types of lumber, and much more. *Huge selection of millwork, trim, interior/exterior doors, and windows. *All types of power tools and hardware. *Interior/exterior paint. We also have a laser color match machine that we can match any color. *All types of wood and wire fencing products, along with a huge selection of farm gates. *We sell building packages for all types of structures, including new homes, commercial buildings, and agricultural buildings. Please see attached photos for our labor and materials package deals on our agriculture buildings. *All types of plumbing, electrical, and hvac parts. (931) 433-9126 English-servicecompany@gmail.Com

Great Deals on Gently Used Equipment!



Zetor P100SS cab, 4WD, 151 hrs., 85 hp PTO, 2 set remotes **\$36,900**



Kubota 4800SU 4WD, loader, remotes **\$17,900**



Case Farmall 120A cab, 4WD, 2 set remotes, 4100 hrs. **\$35,900**

JD 504SE 4WD, 1 remote.....**\$20,900**

NH B95 Backhoe 2WD, 95 hp.....**\$21,900**

Case C60 4WD, loader, remotes, 50 hp.....**\$17,900**

Kubota 8580 4WD, loader, 80 hp, remotes.....**\$22,900**

D & D Equipment
Heavy Equipment & Farm Tractor Sales
1635 Hwy. 50 East, Centerville, TN 37033 - **931-729-2320**
Owners: Jerry Davidson & Steve Davidson

See our
pics on
Facebook
Marketplace!

cattle time



IN TENNESSEE

SEPTEMBER 13, 2025 12:00 PM

HYDER-BURKS AG PAVILION
2390 Gainesboro Grade Cookeville, TN

50 ELITE LOTS OF
SIMMENTAL & ANGUS FEMALES



SIMMENTAL



ANGUS PAIR



GREG BURDEN
405.780.0372



JIM LIGON, SALE CONSULTANT
931.510.3328

JUNIOR JACKPOT SHOW FOR ANGUS & SIMMENTAL WITH SALE CATTLE ELIGIBLE FOR THE JACKPOT

Other

DECALS & DECAL SETS FOR HEAVY CONSTRUCTION & AG EQUIPMENT

DECALS AFFORDABLE DECALS AND SAFETY DECALS. Prompt. Knowledgeable Reliable Service. www.QuipCal.com; Call, (215)536-5339; email:info@custom-servicescompany.com.

Fencing and Cattle Equipment

BRAND NEW BARBED WIRE for sale, one full roll and one 3/4 roll, both for \$50. (256)259-1183. Scottsboro, AL area.



NO ONE WILL SELL YOU GATES FOR LESS, available in economy, medium, or heavy duty, exaple 10' economy is \$110, one or twenty give us a call! FandPLivestockEquipment.com. Shelbyville, TN. (615) 653-8913



CORRAL PANELS, 16 GAUGE, 6' tall, good inventory, 8' up to 16' long. FandPLivestock.com; (615)653-8913.



FENCE LINE FEEDERS, 10' long; troughs are 10-gauge metal, 30' wide and 7" deep. FandPLivestock.com; (615) 653-8913



HAY FEEDER PANELS, best that are available, built out of 2"x3" material and will last a lifetime, 6' up to 16' available, TAEP item in Tennessee. FandPLivestock.com; (615)653-8913.

To Place A Classified Call

800-247-7318

CATTLE NEED WATER? COME SEE US!

Miraco Cattle Waterers



"Originators of insulated poly waterers"

JONES HARDWARE | Do it Best.

103 Alabama St., Huntland, TN • (931) 469-7774 • www.doitbest.com

- Fencing Supplies
- Tarter Dealer
- Well Pumps
- Canning Supplies
- Hardware
- Much More

DISCOUNT METAL ROOFING

discountmetalroofing.com



Many Styles and
Sizes Available!

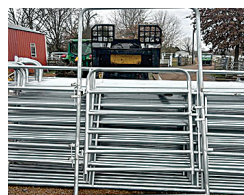


30' x 36' x 12'6" Building Package - \$7,616
Roof Only - \$3,762

40' x 60' x 14'6" Building Package - \$13,797
Roof Only - \$7,378

SEPTEMBER SPECIALS!

(931) 680-0001 • Shelbyville, TN • sales@discountmetalroofing.com



ROUND PEN PANELS, 12' galvanized; 5' tall, \$120 each; 4' tall, \$120 each; 6' tall, \$140 each; available in economy medium duty-heavy duty. FandPLivestock.com; (615)653-8913.



180 DEGREE SWEEP TUB with 7' bow gates, 6' tall, heavy duty. (615)653-8913.



BULL GATES-16 GAUGE, 51" and 63" tall, 4'-20' long, good inventory. FandPLivestock.com; (615)653-8913.

Combines

TWO 1460 IH COMBINES, good running older machines, one with bean header, \$6,500 and \$7,500 with header. (931)841-1016.

CASE IH 2166 COMBINE for sale, 2WD, \$18,500. Chapel Hill, TN area. (931)993-9390.

CASE IH 1020 25' grain head for sale, \$9,000. Chapel Hill, TN area. (931)993-9390.

To Place A
Classified Call
800-247-7318

IH 1460 COMBINE for sale, with low hours, \$5,000; IH 464 tractor with new engine, \$3,500. (931)335-5557.

Hay & Forage Equipment



DEWEZE SUPERSLICER roll bale feeder, \$19,500. "The best way to feed what you need - Stop your hay loss." Give us a call, RRP Truck Equipment, Sparta, TN 38583. (931) 761-3554

Grain Carts



FARM SERVICE SOLUTIONS Mobil Feed bins are a great option for getting bulk feed for your livestock or wild game. These bins come equipped with a large full-length lid for easy loading with a loader bucket if necessary. Heavy construction built with 13-gauge metal, 4" channel frame, and 6,000lb or bigger axles with spring suspension. Also equipped with lights and a 2" ball hitch, 2,200lb capacity \$2,600; 3,650lb \$2,800; 4,950lb \$3,000. Call Chris at Farm Service Solutions in Leoma, TN; or visit farmservicesolutions.com; (931) 242-7675

Got Equipment
to Sell?
We've Got Buyers!

Place your ad online at
www.FarmersExchange.com
or by calling 800-247-7318.

Dave's Sawmill Sales



HUD-SON SAWMILLS, FOR THE WORK YOU DO.

We manufacture a number of sawmills, starting with our Sawyer Model at just

\$2,495

UNIFOREST WINCHES

Starting at
\$3,995



For more information or a free brochure, call:
Dave in Lawrenceburg (859) 265-0793

WAGON HITCH FOR SQUARE BALE, \$50; new quick attach wagon tongue, \$40. (615)708-9276.

HAY EQUIPMENT FOR SALE, KM 321 Vicon disc bine with manual; OMC model 22 haybine haymaster with manual; Land Pride 8-wheel rake; 660 New Holland round baler; 6600 Ford diesel tractor, with loader, all for \$20,000. (615)691-0479.

0% For 60 Mos. On Select Models of Vermeer
All Vermeer Hay Equipment Sold Field Ready



Pool Farm Equipment Is Proud to honor the 2025 TAEP

New Vermeer Balers, Rakes & Mowers
In Stock and Ready to Work For You!

Vermeer Now Has Litter Spreaders Small & Large

SCHULER EQUIPMENT IN STOCK NOW:

Schuler 5021 Mixer • Schuler BF175 Feed Wagon • Call for prices

Check out our website: www.PoolEquipment.com



Used Equipment:

Vermeer 6650 Rancher, net/twine.....	Call For Price
Vermeer 604R Premium, net only.....	Call For Price
Vermeer 555XL, twine only.....	Call For Price
Vermeer 505 Super I, twine.....	Call for Price
Vermeer TM135 Trailer Mower, 13'6".....	Call for Price
Vermeer 505 MCL, net/twine.....	Call for Price
Vermeer 505 MCL, twine only.....	Call for Price
NH 575 Square Baler.....	Call for Price
JD 567, twine only.....	Call for Price
Vermeer M7040 Mower, 3 pt.....	Call for Price
Vermeer 5520, twine only, 4450 bales.....	Call for Price

Hayliner Trailers, 42' & 37', In Stock Ready to Work!! ... Call For Price

If we don't have what you want,  256-685-0556 Office
we'll go get it! 256-476-3546 Chris Pool
256-565-7780 Owner, Norman Pool

New Bush Hog In Stock Now!

2215, 15' cut.....	Call For Prices
4115, 15' cut, HD.....	Call For Prices
1812, 12' cut.....	Call For Prices
BH3308, 8'.....	Call For Prices
BH 2107.....	Call For Prices
BH316, BH216, BH116 Cutters, 6'.....	Call For Prices
BH215, BH115 Cutters, 5'.....	Call For Prices
Tillers, 5', 6' and 7' In Stock.....	Call For Prices

Ask About Warranty on used Balers

Call For Prices - Will Be Happy To Help You!

Call For Vermeer Vertical Mixer Prices

Pool Farm Equipment Co.

23971 Hwy. 157 • Town Creek, AL 35672



Rotary
Mowers



INDUSTRIAS
AMERICAN 3
POINT CUTTERS
heavy 11-gauge
deck, 90 HP gear-
boxes with slip
clutch. 6' \$1,600; 7'
\$1,900; 10' \$3,750;
10' pull-type
\$5,500. Call Chris
at Farm Service
Solutions in Leo-
ma, TN; or, visit
[farmservicesolu-
tions.com](http://farmservicesolu-
tions.com); (931)
242-7675

BUSH HOG 2215, 15'
cut. Call for pricing,
(256) 685-0556

BUSH HOG 4115, 15'
cut, HD. Call for pric-
ing. (256) 685-0556

BUSH HOG 1812, 12'
cut. Call for pricing.
(256) 685-0556

BUSH HOG BH3308,
8'. Call for pricing.
(256) 685-0556

BUSH HOG 2107.
Call for pricing. (256)
685-0556

Rakes and
Tedders

VERMEER 12' tedder
for sale, tedded about
20 acres, \$2,200.
(615)569-0891.

Got Livestock
to Sell?
We've Got Buyers!

Place your ad online at
www.FarmersExchange.com
or by calling 800-247-7318.

Other

35' HEADER WAG-
ON for sale, \$3,500.
Chapel Hill, TN
area. (931)993-9390.

Round Balers

2020, JOHN DEERE
459 MEGAWIDE
PLUS baler, 5,100
bales, twine and net
wrap, bales and looks
like new, \$31,000.
(931)580-0622.

Hay & Grain
For Sale

GOOD CORN SI-
LAGE for sale, \$60
per ton, large orders
negotiable. (931)256-
0481.

HAY FOR SALE,
round and square
bales of grass hay.
Manchester, TN area.
(931)607-3020.

To Place A
Classified Call
800-247-7318

4X5 ROLLS OF
GRASS HAY, this
year's hay, barn kept,
\$30 per roll. Leave
message if no answer,
(931) 467-3152

HAY FOR SALE, 5X5
round bales, \$30 per
bale; also 16' cattle
trailer. (931)993-1237.

FESCUE SEED FOR
SALE, germ tested,
cleaned, local grown
this year, \$1.20 per
pound. No Sunday
sales. (931)308-2128.



Road Service & Delivery Available



We have
tractor tires!

Ask for Belinda

KEEP TRUCKING
TIRE SALES

New & Used Tire Sales
Big Truck & Ag Tires

(931) 242-1458 ★ (931) 242-6618
9021 Hwy. 43 • Killen, AL 35645

JAMES R CASH AUCTIONS
COMING At Auction IN OCTOBER
Mr. John Sutton - 4316 Cloys Rd, Union City, TN
Watch Website For Exact Date
Auction Highlights
jamesrcash.com
For Pictures And Details!
Small But Nice Auction!!
 Case IH Steiger Tractor, Loaded w/Accessories, 4550 Hours
 JCB 320 Loader, Great Condition, Bought New - Only 140 Hours
 Genie 5519 Telehandler, 19', 550 Pound, 2424 Hours
 Artex SBX950 Spreader, Bought New, Very Nice
 '24 Mas Silage Trailer "Aero Tarp System" Very Nice
 Wilkins Walking Floor Trailer, Elec Roll Tarp, Nice, Ready to Work
 Stoughton Walking Floor Trailer, Slates In Good Shape
 Etnyre Belt Floor Trailer, Roll Tarp • Pequea Hi Flo Spreader • Priefert Fluffers
 Poultry House Cleaners • Lewis Poultry Housekeeper • KMC Poultry Wall Cleaner
 Landpride FDR2584 Finish Mower, Like New • 2000 Gal Fuel Tank
 Stinger RK80 Brush Bucket • 8' Buckets • BBI 22' Running Gear
 '07 Ford F650 Spreader Truck w/BBI 22' Spreader
 '21 IH HX520 Day Cab Truck, X15 Cummins, 10 Speed, Sharp!
 '99 IH 9900I Eagle, Less Than 100,000 Miles On Makeover
 '98 Ford 450 Flat Bed Service Truck • IH Pro Star For Parts • Volvo Salvage
 Miscellaneous Items Listed In Brochure
 Watch jamesrcash.com or CALL Us At 270.623.8466 For October Date Of Auction!
 For Info On The Equip Call *John Sutton* At **731-446-2907**
COMPLETE CASH SETTLEMENT DAY OF SALE!! CURRENT BANK LETTERS A MUST!!
 Select Items Will Be Offered Online And Live OnSite Details On Our Website

JAMES R. CASH AUCTIONS
JAY CASH THE AUCTIONEER & REAL ESTATE BROKER
 FANCY FARM, KY- MURFREESBORO, TN
270-623-8466
 TN LIC #6112

CRIMSON CLOVER SEED for sale, germ tested, cleaned, own-er grown, 80% clover, 20% turnip, \$1.20 per pound. No Sunday calls. (931)308-2128.

WHEAT FOR SALE, germ tested and cleaned, 15 cents per pound. No Sunday calls. (931)308-2128.

HAY FOR SALE, 3x3x8 bales of Alfalfa hay and mixed Alfalfa hay. Good horse hay. (931)808-8490; (931)728-5490.

HAY FOR SALE, 100 rolls, 4'x5', twine wrapped, stored outside, \$40/roll. (931) 433-6891

HAY FOR SALE Stored outside, 5 x 5 John Deere net wrapped rolls for sale. Middle TN area. (615) 533-8168
 samfarms4875@gmail.com

HAY FOR SALE, 4X5 rolls of mixed grass, fertilized and sprayed, \$40 per bale. (256)508-4492.

Got Tools to Sell?
We've Got Buyers!

Place your ad online at
www.FarmersExchange.com
 or by calling 800-247-7318.

To Place A Classified Call
800-247-7318



DIESEL PUMP REPAIR

- FARM TRACTORS
- DIESEL FUEL INJECTION SERVICE

StanaDyne • CAV-Roosamaster
 Pump & Injectors

Lewis Porter 931-607-3031 • 931-596-3644
 34 Medley Ln., Estill Springs, TN

Open on Saturdays

6 years pump
 experience

Consign Your Assets With
RILES AUCTIONS
 & Let Us Go To Work For You.



Call Garrett to discuss listing your items!
(662) 274-4708

Online Bidding powered by Equipment Facts

Potts Camp, MS 38659
www.rilesauctions.com
 facebook Riles Auctions

Odds and Ends

IH AND CASEIH TRACTOR PARTS new, used and re-manufactured, the largest exclusive IH and CaseIH inventory in North America. 12351 Elm Road, Bourbon, IN 46504. www.batescorp.com; (800) 248-2955

SALVAGING AGCO 2270 SQUARE BALERS, round balers, swathers, combines and tractors. Call us for new and used John Deere row head parts. Over 8,000 machines parted out. Mike's Equipment Co., Buhler, KS. mikesequipment.com; sales@mikes-equipment.com; (620) 543-2535

WOOD SPLITTERS, 10 different styles to choose from, models for many excavators, made in the USA, no brakes/no bends. TM Manufacturing. www.skidsplitter.com; (320) 286-3077

SIGNATURE TARP, custom hoop building covers, hay tarps, and pond liners, 11 colors available, all covers have 2" weld for strong waterproof seams. (859) 375-5268

SAND MOUNTAIN STOCKYARD LLC, sales starting at 11:30 a.m. every Wednesday and Saturday. Full service facility on the corner of Highways 68 and 168 in Kilpatrick, AL. (256) 561-3434

To Place A Classified Call
800-247-7318

Got Equipment to Sell?
We've Got Buyers!

Place your ad online at
www.FarmersExchange.com
 or by calling 800-247-7318.



Rowden & Sons
Dale Rowden
(706) 201-4106

2231 GLENOBEY RD.
JAMESTOWN, TN 38556

WWW.ROWDENANDSONS.COM

CONSUMER FINANCING AVAILABLE!

- NO MONEY DOWN!
- 90 DAYS NO PAYMENT!
- UP TO 84 MONTHS = LOW PAYMENTS



1996 Cat 6D6H XL 9,539 hrs., Enclosed cab with cold A/C, Heat; CAT 3306, 179 HP engine; CAT undercarriage at 75%; 10' 8" wide good dozer blade; 24" pads. "Pre Def, Pre Emissions. Starts, Runs And Operates The Best!" **\$44,500**



2006 Genie GTH-636 2,013 hrs., JD 74 HP engine; 3 way steering; 36' reach height; 6,000 lbs lift capacity; Pilot control boom; 72" wide fork frame; Tilt hill shift; 4 speed; Original paint; "Pre Def, Pre Emissions. Extra Nice!" **\$27,500**



2003 Deere 310G 5,221 hrs., Nice never smoked in, enclosed cab with cold A/C, Heat; 4x4; Deere 78 HP engine; Good rubber; Quick coupler; Auxiliary hydraulics; Original paint. "Pre Def, Pre Emissions. Always Serviced. Comes With Original Operators Manual. Job Ready!" **\$28,900**



2019 Toro Groundmaster 7200 1,251 hrs., Kubota 25 HP DSL; 72" cutting decks; Decking constructed of 7-gauge welded steel for long life; Cast iron spindle housing for longer spindle life; High strength 1/4" heat treated steel blades; Tight wheel base, individual steering, brakes. "Truly a top commercial mower!" **\$10,800**



2006 Bobcat S185 2,693 hrs., Cab with A/C, Heat; Kubota 59 horse power diesel; Auxiliary hydraulics; 1,850 lbs operating capacity; 4,076 tipping load Original paint. "Job Ready!" **\$17,500**



2004 JLG G6-42A 2,878 hrs., Deere 99 HP 4.5 liter diesel; 20,400 lbs op weight; 4x4; 4 wheel steer; 6,600 lbs max lift capacity; 42' max lift height; 13-24 tires; Clean carriage with 6' forks; Work lights; Original paint. "Job Ready" **\$31,500**



1999 Cat D5M XL 8,864 hrs., CAT 3116T 121 Horse power turbo diesel; Powershift transmission; 9' 11" 6-Way blade; Limb risers; 65% CAT undercarriage; Light package; 22" single grouser tracks. "Extra Nice!" **\$39,500**



2008 Kubota KX161-3 Super Series 3,657 hrs., Enclosed cab with cold A/C, Heat; Kubota 47 HP diesel; 4-way blade; Aux hydraulics; New tracks; Original paint. "Always Serviced. Extra Nice!" **\$33,800**

QUALITY USED EQUIPMENT FROM A NAME YOU CAN TRUST! Follow us on Facebook at Rowden And Sons

ARAB LIVESTOCK MARKET INC., cattle auction every Tuesday at 10 a.m. Highway 231 South, Arab, AL Video auctions at www.arablivestock.com Robbie Gibbs (256) 490-2583; (205) 589-6236; or, (256) 586-4212

NORTHWEST ALABAMA LIVESTOCK AUCTION, stockholder owned and operated since 1976. Sale each Monday at 10 a.m. hogs, goats, sheep and cattle. Call the barn at (256)332-3323; or, Ricky Behel, Manager at (256) 740-9457

GOT TOOLS TO SELL? We have buyers! Place your ad online at www.FarmersExchange.com or by calling (800) 247-7318

GOT EQUIPMENT TO SELL? We have buyers! Place your ad online at www.FarmersExchange.com or by calling (800) 247-7318

EQUIPMENT FOR SALE, WOODS CADET MD 172 BUSH-HOG, \$850; HAY BUGGY TUMBLE BUG, \$850; CATTLE RACKS METAL FIT FORD OR DODGE, \$225; PLASTIC WATER CARRY TANK, 300 GALLONS, \$225. (615)289-7287.

FOR SALE 2 saddles, 2 bridles and 2 blankets, all for \$500. If interested leave a message at (931) 468-3004

To Place A Classified Call
800-247-7318

GOT LIVESTOCK TO SELL? We have buyers! Place your ad online at www.FarmersExchange.com or by calling (800) 247-7318

WANT TO BUY FJ40 Toyota, in model years from 1975 to 1980. (931) 607-9737

TWO TOBACCO DRYING TRAILERS for sale, \$150 each. Lincoln County, TN area. (931)685-1014.

NANO HEARING AIDS, with charger, never worn, \$175. New Market, AL. (256)859-4131.

TWO LIKE NEW RECLINERS, \$200 each. New Market, AL. (256)859-4131.

42" ROUND OAK KITCHEN TABLE, with 3 chairs on casters, \$200. New Market, AL. (256)859-4131.

EBONITE 8LB. BOWLING BALL for sale, with bag and ladies' non-slip size 10 shoes, \$100. (931)468-2240; (931)309-2200.

GEHL 20" HAMMER MILL grinder, like new, \$1,000; also 8' wide bog disk, \$1,000. (931)203-7145.

Got Livestock to Sell? We've Got Buyers!

Place your ad online at www.FarmersExchange.com or by calling 800-247-7318.

OVERSTOCKED!

- Retaining Wall Blocks
- Landscapers
- Farmers
- Industries
- Build Your Storage Bins!

\$60 Each

(You Haul)

Mid South Concrete Inc.

P.O. Box 1220 • 1750 Braley Ln. • Pulaski, TN 38478
2408 Hwy. 43 South • Leoma, TN 38468

931-363-0690 • 800-705-5326

www.midsouthconcrete.com



Tye Stubble Drill,
10'
\$10,500



IronCraft 2510-IC-R
Cutter 10', pull type
flexwing \$12,750



SDJK Excavators, 30 hp,
w/ thumb, grader blade,
Kubota engine \$30,900

John Deere

2355, CHA, loader	\$18,500
825 Gator, 1700 hrs, PS	\$12,500
420	\$2,500
6405, 4WD, loader, canopy	\$28,500
Skid Steer 317, 1700 hrs.	\$22,500
Skid Steer 320, 66 hp	\$23,000
50, gas, 3 pt hitch	\$2,500
2130, loader	\$8,750
2040, CHA, loader	\$22,500
4620, 2WD, no loader, diesel	\$12,500
5200, 1400 hrs., 2WD	\$7,250
5085E, CHA	\$40,000

Ford

600	\$1,500
4600, loader, 2WD	\$8,900
7740, CHA, 2WD, loader	\$13,500
3000, PS	\$4,250

Massey Ferguson

231, no loader	\$5,750
261, dual outlets	\$9,250
165, gas, PS	\$3,250
285, loader, good tractor, bucket & spear	\$7,500

International

950 Feed Mill	Call
684	\$4,850

Culvert Pipe, 12' & up, Plastic & Metal • Head Gates • Corral Panels



Lynch Equipment Sales

Westover Drive, Columbia, TN
931-381-1839 • Cell: 931-619-1338



USED SHIPPING CONTAINERS & DRY VAN RENTALS, good supply in stock. Mobile offices, 8' widths, 20'-40' lengths, with or without AC, custom built. Decatur Container, 5375 Marsha Ave., Decatur, AL 35603. Call Jason at (205) 529-2699 or the office at (256) 751-3800

NEED AG TIRES? New and used tire sales, big truck and Ag tires, road service and delivery available. We have tractor tires! Keep Trucking Tire Sales, 9021 Hwy. 43, Killen, AL 35645. Ask for Belinda at (931) 242-1458; or, (931) 242-6618

270 STIHL CHAINSAW, for sale, like new, \$225. (931)308-0586.

LOCAL BUILT HAY & GRAIN FEEDING EQUIPMENT, stainless steel options. Moo Valley, 387 Redwood Ln., Sparta, TN 38583. (931) 260-1450

TUCKER GEN II TRAIL SADDLE for sale, 17-1/2" seat with wide tree, excellent condition, \$1,200. (931)209-6870.

To Place A Classified Call
800-247-7318

ROBINSON ENVIRONMENTAL LAND CLEARING

Serving Middle Tennessee since 2007



ECO-FRIENDLY FORESTRY MULCHING!

We will clear your land to match your vision!
We will work with excellence and efficiency to deliver your desired end results.

Pasture clearing/restoration
Timber stand improvement
Lot clearing-residential and commercial
Right-of-ways • Fire Prevention
Wildlife habitat enhancement
Food plot • Perk Sites • Survey Lines
Real Estate tracts • Access roads
Agricultural Stump Grinding

WWW.DROBINSONLANDCLEARING.COM
615-631-0638

GARVIN MOWER OR TRACTOR CANOPY, red in color, 53 3/8"x53 3/8", new partially assembled, fits ROPS 1 1/2"-2"; 2"x2"; or, 2"x3", high density, thermoplastic, \$200. (865) 321-0287



GENUINE KIMBELL PIANO for sale, walnut hardwood cabinet, excellent condition, \$1,100 or best offer. No Sunday sales. (931)308-2128.

FURNITURE FOR SALE, round claw foot oak table with 4 chairs, \$400; massage chair, \$75; Singer commercial sewing machine, \$250; electric hospital bed, \$125. Lincoln Co, TN area. (931)685-1014.

Drills



2023, TAR RIVER SAYA NO TILL DRILL These 55" and 78" Drills are set up on 7.5" spacing and will plant a variety of seeds from corn, beans, and wheat, to fescue and clover. Stainless steel boxes let you drill fertilizer at the same time as you plant seed. \$5,900 for 55" and \$6,995 for a 78" plus tax. Call Chris at Farm Service Solutions in Leoma, TN; or, visit farmservicesolutions.com; (931) 242-7675

Come Check These Great Deals!



Farmtrac 665, 2WD, local tractor
\$5,500



Case IH 885 loader, bucket, spear,
new motor, good local tractor \$10,500



JD 5105 local tractor
\$10,000

Adams Fertilizer Buggy	\$4,000
4 Wheel Gravity Feed Buggy	\$1,500
MF 135, 4 cyl., gas	\$2,700
MF 50, gas	\$1,700

JD 541 Loader & Brackets	\$3,500
Kubota 4030	\$6,500
Int. 384, local tractor	\$4,000
Int. 454	\$4,000

(256) 773-8080

North Alabama Tractor Co.

Hwy. 31 South, Hartselle, Alabama 35640 • P.O. Box 1025

To Place A Classified Call
800-247-7318



6175R JD, C/A, 4x4, 85% tires, 3 sets remotes, quick hitch \$43,500



7280R JD, C/A, 4x4, IVT transmission, 5 sets of remotes, clean unit \$98,500



6210R JD, C/A, 4x4, IVT transmission, 4 sets of remotes, nice unit \$81,800



5100M JD, C/A, 4x4, new tires, left hand reverser \$32,500



BW12 Woods Mower, like new, warranty remaining, \$14,900



630 JD, LP, 3pt, power steering, runs great! recently restored, all new tires \$5,000



630 JD, gas, NO 3p, power steering, older restoration but like new tires and nice \$5,000



400 JD 60 hp, 1976 year model, P/S, hydraulic shuttle, 540 live pto, 3pt and front loader, ugly but runs and operates very good! \$3,950



JLG G9-43 Telehandler 9000 lb. lift capacity, 4x4, 43' reach, nice machine \$22,500



236 MF Loader came off a 383 MF and was working \$2,200



644J JD, wheel loader w/ grapple, C/A, very nice and good working machine \$28,500



3330 Alabama Hwy. 36, Moulton, AL 35650

Auctioneer: Ken Nelson, AL #1326

Hours 8:00 a.m. - 5:00 p.m. Monday - Friday

TAC ENTERPRISES • www.tacenterprises.net • (256) 974-8588

Riding Lawn Mowers

JOHN DEERE X300 lawn tractor for sale, 42" deck, 390 hours, \$900. Lincoln County, TN area. (931)993-7401.

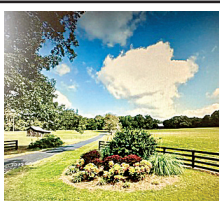
Planters



IH 800 PLANTER 12 row, 30" air planter; corn and soybean drums with sensor 1 population monitor, \$2,500. No Sunday sales. (931)308-2128.

To Place A Classified Call 800-247-7318

Homes



261.9 ACRES HENRY CO. TN. Call for Price on 2BR 3BA home near Buchanan with attached garage, separate cottage, work shop. Three additional sites with electric and wells. Over a mile of frontage on country road. Fenced pasture brings in monthly income from rental. 999 Hershel Sykes Road, Puryear, TN 38251 (724) 433-2996

Services

ADDISON AGRI-BUILDERS, poultry houses, barns, sheds, all types of buildings for farms, and wood and steel trusses. Owner Craig Pigg. (256) 747-3444

SCHWEISS DOORS, hydraulic one-piece doors or bifold strap lift doors. schweissdoors.com; (507) 426-8273



ROBINSON ENVIRONMENTAL LAND CLEARING forestry mulching, boom mower bush-hogging, agricultural stump grinding and skid loader work. Call David, (615) 631-0638



LIMITLESS LAND MANAGEMENT Call for Price. Dozer skid steer work, Bush hogging: 15ft/5ft brush cutter, skid steer mounted, cuts up 6 inches; fence/post drilling. Will beat anyone's price! (931) 625-3485

BUNK FEEDERS



With or Without Legs
Open or Closed Ends

CATTLE GUARDS



8' • 12' • 16' Widths
Rounded Top Design Keeping Livestock From Crossing

Concrete Water Troughs

Delivery Available

River City Concrete
9160 Hwy. 128 | Savannah, TN, 38372 | **731-925-0271**
www.rivercity-concrete.com



We Have All Your Concrete Needs!

- 8' Feed Troughs • Fence Line or Center Line
- Stock Guards, 12' & 16', 7' deep • Water Troughs, 6' Round • Storm Shelters

ALL PRODUCTS STEEL REINFORCED

WE DARE YOU TO COMPARE!

Our concrete Cattle Gaps are superior because of the amount of steel reinforcement, all double matted and correctly placed for durability. This allows us to be better than the competition. Available in 12' & 16' long and 12" or 20" tall. Call for pricing & specs on gaps.

Don't settle for less than the best!

Life Protector Partial Bury

(80"x64"x142") Not converted septic tank

- Strong steel reinforced precast 4500 psi concrete with fiber mesh
- Partial bury sheltered unit/easy to install
- Easy entrance access (steps not ladder)
- Outside measurements: 5'4" wide, 11'10" long 6'8" tall

Above Ground Storm Shelters

Sizes: 6'x10'x7'; 6'x6x7'/wheelchair accessible.
Anchors Kits available

Tankersley Concrete Co., Inc.

1630 Rock Crusher Rd., Lewisburg, TN 37091 **931-359-3112**
Owners: Bubba & Lynn Tankersley • **In Business Since 1946**
Check out our website @ www.tankersleyconcrete.com

Moo Valley

Sparta, TN

Custom Built Hay & Grain Feeding Equipment

Grain and Silage Troughs:
-Bunk style on skids
-Fence line options
-Trailer style for ATV & UTVs
20ft. and 25ft. models in stock

STAINLESS STEEL trough options also in stock for silage or mineral-based rations

Roundbale hay feeder with roof
Steel trough to feed grain on sides
Gate in one end to load or cleanout

8ft. Round J&L Haysaver on rubber tire

Marcus Diller
931-260-1450
(Voice calls or leave a voice message)

TN DIRT WORKS LLC

Landscaping, brush cutting, forestry mulching, bush hogging and more! Providing services to middle TN since 2019. Call for your free custom quote! (615) 809-7556

Got Tools to Sell?

We've Got Buyers!

Place your ad online at www.FarmersExchange.com or by calling 800-247-7318.

Specializing in Rugged, Reliable and Reasonably Priced Flat Beds, Arm Beds and Spike Beds

RRP TRUCK EQUIPMENT
SPARTA, TN (931) 761-3554

DewEze

Fabrication L.L.C.

43 FABRICATION

Where Customers are our top priority! We are a multi-craft welding and machine shop that offers equipment rigging and installation. From one off obsolete parts fabrication to large industrial installs/repairs/maintenance, and more! Contact us for all your commercial and industrial needs! No job to big or small give us a call at (931)270-8389 or email us at service@43fabrication.com

WILLMAR LOADER PARTS FOR SALE

used machines wanted. Deutz engine parts. Martin's Maintenance, Monday-Friday, 8a.m.-5p.m. Closed on Wednesday. (270)265-5040. (270) 265-5040

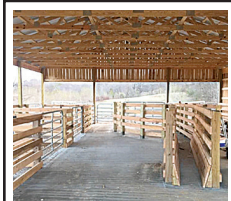
WRANGLER LOADER PARTS FOR SALE

used machines wanted. Deutz engine parts. Martin's Maintenance, Monday-Friday, 8a.m.-5p.m. Closed on Wednesday. (270)265-5040

Got Tools to Sell? We've Got Buyers!

Place your ad online at www.FarmersExchange.com or by calling 800-247-7318.

NEED A BARN TAKEN DOWN? We take down old barns. Call T & M Demolition, (270)348-7988.



FENCING BARN SHEDS AND MORE WE PROVIDE ALL TYPES OF CONSTRUCTION SERVICES: NEW HOMES, ADDITIONS, AGRICULTURAL BUILDINGS, FENCING, AND MUCH MORE! GIVE US A CALL TODAY TO SCHEDULE YOUR APPOINTMENT FOR YOUR FREE ESTIMATE. OVER 20 YEARS' EXPERIENCE. LICENSED AND INSURED. ENGLISH SERVICE COMPANY LLC, 1102 WINCHESTER HWY, FAYETTEVILLE, TN 37334. (931)438-1426. TN. LIC # 74705; AL LIC # 27951. WE APPRECIATE YOUR BUSINESS! (931) 438-1426 ENGLISHSERVICE-COMPANY@GMAIL.COM

To Place A Classified Call
800-247-7318

Got Equipment to Sell?
We've Got Buyers!

Place your ad online at www.FarmersExchange.com or by calling 800-247-7318.

H&R AGRI-POWER

THE POWER TO GET YOU **MORE!**

THERE'S A KUBOTA FOR EVERY JOB!



M Series Tractors

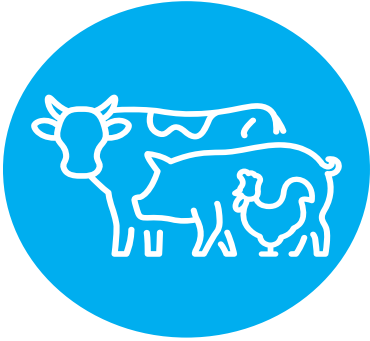
WE FINANCE!
SCAN HERE TO SEE OUR OFFERS!



11 HIGHLAND RIM ROAD • FAYETTEVILLE, TN 37334
931-433-3516 WWW.HRAGRIPOWER.COM

Got Livestock to Sell?

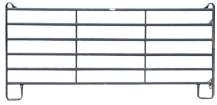
We've Got Buyers!



Place your ad online at www.FarmersExchange.com or by calling 800-247-7318.

Ritchie Water Tank

We Carry 2 and 4 Hole



Priefert 12' Corral Panel
\$220.00



28% PROTEIN TUB 225#
\$118.99
per tub with this ad

Priefert®

Farm, Ranch & Rodeo



Marshall Ryegrass
\$35.00
per bag with this ad

Guntersville FEED STORE LLC

& GARDEN CENTER

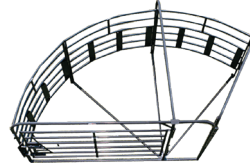
256-582-4411

1321 Blount Ave. Guntersville, AL

guntersvillefeedstore.com

Stocking Lots of Priefert Products

Priefert S04 Chute
Call For Prices



Priefert 135 Sweep Tub Primier
Call For Prices

All prices for advertised products with this ad

Tractors

CASE 2590 for sale, rear axle housing w/axles and new brakes w/less than 100 hours on brakes, \$800. Call, (931)209-0040.

CASE 585, 5420 Rebel electric tie; WR20 rake; MW disc cutter; all low usage, all goes for \$20,000. (931)759-4936.

1957, JOHN DEERE 720 antique gas tractor, 3pt. hitch, excellent tires, very good condition, from Threet Farm Collection. Call Eric, (931)724-2399; or text, (256)870-9050.



DOZER FOR RENT CASE 850G 100HP, 6-WAY BLADE, WIDE TRACK. \$500 PER DAY (PICKED UP), \$1,200 (3 DAYS), \$2,000 (PER WEEK 7 DAYS), \$4,500 (PER MONTH) WITH FREE PICK-UP & DELIVERY, EXCAVATOR & SKIDSTEER ALSO AVAILABLE. CALL RICK, (931) 619-0421



FOR RENT BOBCAT 435 MIDI EXCAVATOR OR KUBOTA 90HP SKIDSTEER. BOTH ENCLOSED CAB, HEAT & AIR. EXCAVATOR WITH THUMB, SKIDSTEER WITH GRAPPLE, BUCKETS, & OTHER ATTACHMENTS AVAILABLE. \$400 PER DAY, \$850 3 DAYS, \$1,300 PER WEEK, \$2,800 PER MONTH. FREE PICK-UP & DELIVERY. CALL RICK, (931) 619-0421

Disks

TAYLOR-WAY 8' DISC BOG for sale, w/cyl., \$600; 6' bush hog, \$600. (615)569-0891.



Other



SMART-TILL Cherokee Tillers, 50" and 59" chain drive regular duty; 48", 63", 71" tillers in gear drive medium duty; 84" gear drive heavy duty. 48" \$1,825; 50" \$1,700; 59" \$1,800; 63" \$1,925; 71" \$2,400; 84" \$2,800 plus tax. Call Chris at Farm Service Solutions; or, visit farmservicesolutions.com; (931) 242-7675

IH 1083 CORN-HEAD 8 row, 30" corn head with nice poly, foldable snouts and EZ Trail header wagon, \$5,950 or best offer. No Sunday sales. (931)308-2128.

IH 1486 TRACTOR for sale, with duals and cab, \$11,900. Chapel Hill, TN area. (931)993-9390.

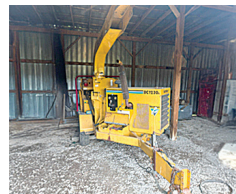
SUPER A FARMALL TRACTOR for sale, with cultivators, \$1,200. Chapel Hill, TN area. (931)993-9390.

1998, MASSEY FERGUSON 281 \$25,000; WITH FRONT END BUCKET. (256) 566-7948 cristee75@yahoo.com

JOHN DEERE 7420 tractor power quad, LHR, 6,300 hours, nice tractor, \$48,000. (615)464-7080.

JOHN DEERE 660R, like new, loader 8' bucket, \$15,000. (615) 464-7080

Timber and Forestry



2006 VERMEER BRUSH CHIPPER 1230A, low hours, garage kept, Caterpillar 112hp engine, great working order, \$17,900. (931) 306-9062

Got Livestock to Sell?
We've Got Buyers!

Place your ad online at www.FarmersExchange.com or by calling 800-247-7318.

To Place A Classified Call
800-247-7318

To Place A Classified Call
800-247-7318

CALL US
for all your

AUCTION NEEDS!

D.M. SIMPSON
REALTORS AND AUCTIONEERS
(931) 473-LAND 5263
www.dmsimpson.com

David M. Simpson, Broker, Auctioneer 931-273-6253
Tiffany Simpson Co-Owner, Broker 931-808-7080
John Kyle Simpson Aff. Auctioneer, Aff. Broker 931-212-3843
303 W. Main St. McMinnville, TN 37110



SALVAGING

Salvaging Agco 2270
Square Balers

- Round Balers
- Swathers
- Combines
- Tractors

Call Us For New &
Used John Deere
Row Head Parts!

**Over 8000
Machines
Parted Out!**

Mike's Equip. Co.
Buhler, KS
mikesequipment.com
sales@mikesequipment.com
620-543-2535
since 1977

FORD 3000
PARTS for sale,
2 diesel motors
(need building),
2 rear ends with
trans sheet met-
al, all for \$500.
(931)242-0531.

JOHN DEERE 4020
for sale, new seat,
starter, alt. 12V water
pump and hydrau-
lic pump coupler,
with new paint, no
blow by, only used
to cut hay, \$12,000.
(931)242-0531.

M FARMALL TRAC-
TOR for sale or trade,
restored, many new
parts, has seized up
bearing. Tullahoma,
TN area. (931)581-
7406.

KUBOTA L-245
H with cultivators,
\$5,250. (615)569-
0891.

FORD 3000 DIESEL
for sale, completely
rebuilt engine, new
rear tires, \$5,500.
(931)593-3491.

54+/- ACRE FARM FOR SALE

Lake Village, Arkansas. Very good income producing cropland with beautiful view of Lake Chicot. Beautiful home sites.

766+/- ACRE PROPERTY FOR SALE

Beautiful property located near Town Creek, Alabama. This previously wooded property is being cleared and converted to farm land, with approximately 300 acres already converted. Very good soils for cotton, corn, and soybeans. Would also make a spectacular cattle ranch. Excellent hunting with large bucks and lots of turkeys. MORE LAND AVAILABLE!

280 ACRE FARM FOR SALE

Excellent 280 acres farm for sale in southeast Arkansas, including very fertile, precision leveled, and irrigated farm land, plus exceptional duck and deer hunting. Super location, fronting on excellent paved highway.

Call Us For All Your Auction Needs In AL.

Brett Underwood (256) 655-9266
Ricky Underwood (256) 679-2039

2806D Winchester Rd., New Market, AL 35761
ricky@underwoodlandcompany.com
brett@underwoodlandcompany.com

Underwood Land Company, Inc.
A Real Estate & Auction Company

www.underwoodlandcompany.com

JOHN DEERE 3025E 4x4 tractor for sale, 22.3 hours, hydro-static F&R, garage kept, brush guard, D160E loader, canopy, \$24,000. (256)777-0845.

CASE IH 885, loader, bucket, spear, new motor, good local tractor, \$10,500. (256) 773-8080

FARMTRAC 665, 2WD, local tractor, \$5,500. (256) 773-8080

JOHN DEERE 5105, local tractor, \$10,000. (256) 773-8080

INTERNATIONAL 384, local tractor, \$4,000. (256) 773-8080

CASE C60, 4WD, loader, remotes, 50hp, \$17,900. (931) 729-2320

ZETOR P100SS cab, 4WD, 15hrs, 85hp PTO, 2 set remotes, \$36,900. (931) 729-2320

KUBOTA 8580, 4WD, loader, 80hp, remotes, \$22,900. (931) 729-5893

FORD 7740, CHA, 2WD, loader, \$13,500. (931) 381-1839; or, (931) 619-1338

JOHN DEERE 2355, CHA, loader, \$18,500. (931) 381-1839; or, (931) 619-1338

MASSEY-FERGUSON 231, no loader, \$5,750. (931) 381-1839; or, (931) 619-1338

JOHN DEERE 6405, 4WD, loader, canopy, \$28,500. (931) 381-1839; or, (931) 619-1338

JOHN DEERE 2130, loader, \$8,750. (931) 619-1338

JOHN DEERE 4450 for sale, 6,242 hours, \$39,750. (256)335-4919.

KUBOTA 105S FOR SALE, 4WD, shuttle shift, 4,500 hours, \$31,750. (256)335-4919.

Trailers

GOOSENECK TYPE cattle trailer for sale, 16' trailer, new floor, \$2,500 each. Lebanon, TN. (615)714-3894.

LIVESTOCK & FLATBED TRAILERS for sale, must see, different sizes and options. Financing available. Wholesale Trailers, Lebanon, TN. (615) 714-3894

#1 POLE BARN SOURCE

Customize Any Building, Steel and Wood Frame Options, Choose Any Garage Door, House Grade Windows and Doors



Vinyl Siding, Composite Siding, Windows, Doors, Handrails
Check us out on Facebook!

Over 30+ Colors Available

Clark's Home Solutions, LLC
792 David Crockett Hwy. | Winchester, TN 37398



Call today!
(931)962-8859

FRUEHAUF 28' DUMP TRAILER, roll tarp, \$15,000. (615) 464-7080

JJN GOOSENECK TRAILER for sale, 16' with dovetail, good condition, new tires, \$2,495. (615)708-9276.

LEDWELL TRAILER FOR SALE 80k lb., winch, hyd. dove tail, hyd. deck, manual or remote control, 53', \$47,750. (256)335-4919. (256) 335-4919

2022, CIRCLE W TRAILER 7 1/2'x28', canvas top, two 10k single axles, \$19,900. (931) 381-2795

Heavy Duty Trucks (GVW over 26,000 lbs.)

1993 INTERNATIONAL ROAD TRUCK, Cummins 8 speed, single axle, \$8,500. (931) 381-1839; or, (931) 619-1338

Light Duty Trucks (GVW under 14,000 lbs.)

CHEVROLET OF BOAZ, commercial trucks for sale. 1134 US Hwy 431, Boaz, AL 35957. www.chevroletofboaz.com; (800) 531-4253



TRUCK FLAT BEDS For All Your Needs. Give Us a call, (931)761-3554. RRP Truck Equipment, Sparta, TN 38583.

2025 RAM 2500 TRADESMAN, crew cab, 4WD, 6.7L Cummins, stock #D12924N, MSRP \$71,355, sale price \$58,755. (931) 691-1712

2024 RAM 4500 TRADESMAN chassis cab, crew cab, 4WD, 6.7L Cummins, stock #D12867N, MSRP \$81,700, sale price \$65,820. (931) 691-1712

2025 RAM 4500 TRADESMAN, chassis cab, crew cab, 4WD, 6.7L Cummins, stock #D12932N, MSRP \$80,020, sale price \$78,634. (931) 691-1712

2025 RAM 3500 TRADESMAN, crew cab, 4WD, diesel, stock #D12938N, MSRP \$73,675, sale price \$60,920. (931) 691-1712

2025 RAM 2500 TRADESMAN, crew cab, 4WD, 6.7L Cummins, stock #D12909N, MSRP \$70,000, sale price \$59,549. (931) 691-1712

2025 RAM 3500 BIG HORN, crew cab, 4WD, 6.7L Cummins, stock #D12983N, MSRP \$79,425, sale price \$78,425. (931) 691-1712

2007 DODGE SERVICE TRUCK for sale, auto, Cummins, \$12,750. (256)335-4919.

Medium Duty Trucks (GVW 14,000-26,000 lbs.)

FOR SALE, 2001 MACK 8LL trans., 350 engine, double frame, good tires, good truck, \$35,750. (256)335-4919.

MACK TRUCK FOR SALE, demolition bed, 8LL trans, 44 rears, nice, clean truck, 350 engine, \$38,750. (256)-335-4919.

1977 MACK TRUCK FOR SALE, nice truck, 2 sticks, dump bed, \$15,750. (256)335-4919

Got Tools to Sell? We've Got Buyers!

Place your ad online at www.FarmersExchange.com or by calling 800-247-7318.

Seed For Sale

Wildlife Seed

Deer & Turkey Plot Mixes
Winter Peas
Turnips - 7 Top - Purple Top
Forage Turnips - Jack Pot
Forage Rape
Chicory - Forage
Mustards & Kale
Diakon Radish

Other-Misc.

Parakeet/Budjie Food
Brassica Forage Mix
(Forage Greens)

Lawn Grasses

Southern Supreme Turf Fescue
Perennial Turf-Ryegrass
Creeping Red Fescue

Clovers/Legumes

Dixie Crimson Clover
Advantage Ladino Clover
Kenland Red Clover
Durana Ladino Clover
White Dutch Clover
Alfalfa - Varieties
Vetch

Registered Angus Cattle

Grasses

KY 31 Fescue
KY 32 Fescue
Shilo II Orchardgrass
Timothy
Marshall, Nelson Ryegrass
Gulf Annual Ryegrass
Max Q II Texoma Fescue



Certified Wheat

SY VIPER
CH Forage
NEW USG 3354
SALUDA

Small Grains

Wrens Abruzzi Rye
Bob Oats
Barley

Cover Crop Blends



Clemmons & Hamner Seed, Inc.

5578 County Rd. 34, Killen, AL 35645
www.clemmonshamnerseed.com

Call **256-757-9996**

If you don't see what you're looking for, give us a call!

WE HAVE A GOOD SUPPLY IN STOCK FOR SALE

DECATUR CONTAINER

5375 Marsha Ave. Decatur, AL 35603

256-751-3800

Providing Quality, Low-Cost Storage Solutions Since 1995



Mobile Offices

- 8' widths
- 20'-40' lengths
- With or without AC
- Custom Built



20'x8'x8 1/2'



40'x8'x8 1/2'



40'x8 1/2'x9 1/2'

Used Shipping Storage Containers & Dry Van Rentals

Call Jason Cato (205) 529-2699.

Office (256) 751-3800 • Email: Jason@DecaturContainers.com

2000 MACK FOR SALE 8LL 44 rears, long frame, double frame, \$22,750. (256)335-4919.

2000 MACK TRUCK for sale, 460 engine, wet kit, 600k miles, 10 spd., off farm, \$28,750. (256)335-4919.

Want to Buy

Fabrication L.L.C.

TIG WELDERS AND MAINTENANCE LABORERS 43 FABRICATION IS HIRING FOR TIG WELDERS AND MAINTENANCE LABORERS, 1st shift, 40 hours a week, some overtime from time to time. Pay based on experience. Call for information at (931)270-8389; or, send resume to service@43fabrication.com.

WANT TO BUY FJ40 Toyota, in model years from 1975 to 1980. (931) 607-9737



CASH FOR QUALITY GUN COLLECTIONS! BULLSEYE GUN & RANGE, MURFREESBORO, TN. M.A. SMITTY OR CALEB GREGORY, (615) 900-1098

WANT TO BUY, round bale shredder. (931) 383-0653

WANTED, 8' TO 10' bushhog. (931)307-9839.

WANTED, 16.9-18.4X28 industrial tread tires. Text or leave message. (931)306-3969.

WANT TO BUY, HAY conditioner, PTO driven. (931)580-5409.

WANT TO BUY, ROUND bale hay unroller. (931)304-3755.

WANT TO BUY, JD "B" or LA tractor, Oneonta, AL area. (205)353-2557.

WANTED, THORNLESS HONEY LOCUST, Butternut, Slippery Elm, Fringe tree, Quince. Text or leave message, (931)306-3969.

WANT TO BUY JOHN Deere forage chopper, (931)314-1110.

WANT TO BUY TRIP Hopper cake feeder. (931)307-9839.

WANT TO BUY, CALF creep feeder on wheels. (931)307-9839.

WANT TO BUY, 2 Massey Ferguson 165 tractor fenders, need left and right, Lebanon Tennessee area. (731)695-5658

WANT TO BUY, KAWASAKI lawn mower engines, between 20hp-25hp, running or not. (256)974-3774. (256) 974-3774

Got Equipment to Sell? We've Got Buyers!

Place your ad online at www.FarmersExchange.com or by calling 800-247-7318.



Wood Trusses
40x60x10 Top & Gable ~ Call
40x40x10 Top & Gable ~ Call

Price includes materials and labor

**ADDISON
AGRI-BUILDERS**

POULTRY HOUSES • BARNs • SHEDs

256-747-3444

Craig Pigg, Owner



All types buildings for farms
Steel Trusses Available

P.O. Box 455 • 2661 Co. Rd. 39
Addison, AL 35540

Brent Dollar - Sales Representative

Office: 256-747-3444 • Fax: 256-747-9002

Aisles & Aisles & Aisles

of IH & CaseIH Tractor Parts
New, Used & Remanufactured



The Largest Exclusive
IH & CaseIH Used & Rebuilt
Parts Inventory in North America

Bates Corporation

12351 Elm Road Bourbon, IN 46504

Call

1-800-248-2955

www.batescorp.com

LOOKING FOR
SOMEONE TO
WORK ON FARM,
20-30 hours a week,
must know how to
operate a tractor, fix
fencing and handle
cattle, would prefer
someone semi-retired
that just needs extra
income, good pay.
(615) 653-8913

Cows

FOR SALE, REGISTERED BLACK ANGUS BULLS, will qualify for the full TAEP money, all are by the top AI bulls in the breed. Crawford Angus. Lewisburg, TN. (931)205-2450; (931)359-2633. crawfordangus@bell-south.net

WAGYU POLLED
HEIFERS for sale.
(256)714-6182.

YOUNG BULLS
polled, registered,
gentle. Quality Cattle
Since 1977. Facebook:
Happy Valley Ranch
Santa Gertrudis (256)
566-7878 lindadkel-
so@yahoo.com

PURE BRED
POLLED HERE-
FORD BULLS for
sale. (931) 363-0445

Got Equipment to Sell?

We've Got Buyers!

Place your ad online at
www.FarmersExchange.com
or by calling 800-247-7318.

REGISTERED
BLACK ANGUS
BULLS fully TAEP
qualified, A-I sired
out of great cow fam-
ilies, gentle, good
EPD's. Cedar Ridge
Angus, Pulaski, TN.
(619)876-7904. See
Cedar Ridge Angus
on Facebook.

BEAUTIFUL BLACK
STEERS, fami-
ly raised, butcher
ready, \$3 a pound of
the hoof. No Sunday
sales. (931)308-2128.

REGISTERED
BLACK ANGUS
HEIFERS for sale,
registered num-
bers 21294105 and
21294106. (931)993-
7401.

NINE PUREBRED
BLACK ANGUS
BULLS for sale, 9-10
months old. (931)675-
0669.

REGISTERED
BLACK ANGUS
BULLS, yearlings
from high perfor-
mance cowherd,
bred AI to top per-
formance Angus
bulls, Genomic
EPD's. Turrentine
Angus, Shelbyville,
TN., aturrentine@
cafes.net, (931)607-
8950.

REGISTERED AN-
GUS BULLS, TAEP
in TN & KY, big
strong bulls with
great EPDs, several
heifer bulls available,
Genomic tested for
accuracy, BS exam.
FandPLivestock.com;
(615) 653-8913

Dogs

KOMONDOR PUP-
PIES FOR SALE,
best guard dog for all
livestock, ready to go
July 31. Tanner, AL
area. (256)232-2432;
(607)345-4895.

FREE TO GOOD
HOME, two small
black dogs, 1/2 Jack
Russell with 1/2 who
knows what, one male
and one female, they
are very protective.
(931) 993-5300

Pigs

WEANLING PIGS,
very efficient grass
eating type, great bar-
becue hogs, \$30 each.
(931) 593-3128

Got Livestock to Sell?

We've Got Buyers!

Place your ad online at
www.FarmersExchange.com
or by calling 800-247-7318.





**0%
FOR 36**

**SPECIAL RETAIL
FINANCING
MONTHS**

ON SELECT NEW BUSH HOG EQUIPMENT
INCLUDING FLEX-WING AND MULTI-SPINDLE ROTARY CUTTERS,
HAY TEDDERS, AND HAY RAKES

Trust in a company whose name has become synonymous with the task.
That's performance. That's reputation. That's Bush Hog®.





www.bushhog.com

Dean Farm Supply

28739 U.S. Hwy. 72 • Hollywood, AL 35752

256-574-1112

www.DeanFarmSupply.com



**UNMATCHED STRENGTH,
UNPARALLELED DESIGN**

*Come see us for your post-frame &
cold-form steel structure building needs.*

MetalMax
— ROOFING & SIDING —

Call us for all your metal needs! (256) 232-8080

metalmxbuildingsystems.com • 17713 US-72, Athens, AL 35611

Announcements

STORAGE TRAILERS FOR RENT OR FOR SALE, Lebanon, TN area. (615)714-3894.

MILLER FARMS
Angus Beef from the farm. 100% natural, non-GMO, hormone and antibiotic-free. Whole, halves, or by the pound. Slaughtered and packaged. (931)593-3702; (931)994-9429.

Auger (Post Hole)
DANUSER, 3PT. HITCH post hole diggers, \$400. (931)703-5239.

FARM KING, 1070 auger for sale, with hydraulic swing out, \$9,500. Chapel Hill, TN area. (931)993-9390.

PTO
FORD 3930 PTO BELT, PULLEY for sale, \$125. (931)209-6870.

Components
CA ALLIS CHALMERS FOR SALE, motor completely rebuilt, new clutch, rear end, and PTO completely gone through and reworked, includes 5' pull-type bushhog, \$4,500. (256)454-0234.

Backhoe
NEW HOLLAND B95 BACKHOE, 2WD, 95hp, \$21,900. (931) 729-2320

To Place A Classified Call
800-247-7318

Equipment For Every Need!



Used Conveyor Grain Vac Call



Hydraulic Dump Hay Wagons in stock Call



Farm King Augers Several Sizes Overstocked! Reduced Prices! Call



Pintle Hitch Trailer, 20' + 5' dove, dual tandem \$4,000



Peterbilt 3406 Cat 1988, new 22' Scott Alum. bed, 3000 series Hoist \$50,000

New Items Available!

Bush-Whacker Cutter, good used, 15'	\$7,000	Hydro Dump Wagons	In Stock
Farm King Finish Mowers, 6' & 7'	Call	(2) 1070 Swing Augers, used	Call
EZ Haul Hay Wagons, 7 & 8 Bale	In Stock	EZ Haul Low Pro, 20', 10' hydro dove tail	\$25,000
New Farm King Grader Blades & Tillers	Call	Enorossi Rakes, used, 3 in stock	Call
REM Grain Vac, in stock	Call	1070, 1080, 1385, 1395, 1031, 1036, 1336 Augers	In Stock
TN River Brand Cutters, 6', 7' or 8', pull type, 3 pt. In stock	Call	Durabilt Rake, 10 wheel batwing	\$2,500
New & Used Enorossi Tedder, 4 basket, 17'	Call	Peterbilt 1999, wet kit, Cummins engine	\$35,000
Used Grain Vacs	Call for Prices	NH Baler Hitch & Slides, complete with all bolts to install	\$500
New & Used Tedders	In Stock	Pasture Harrows, In Stock	Call
TRI Box Blades, 6', in stock, new & used	Call		

Straw For Sale - 5' Round Bales, net wrapped or small square bales

Beef Steers For Sale - Can take to slaughter, sell 1/2 or whole

Chandler's Farm Equipment

270-586-6653
Marty 270-392-0359 • Lloyd 270-535-6653
2529 Salem Road • Franklin, KY
Going Strong Since 1944



bühler
Tisco
Bush-Whacker

Loader

JOHN DEERE 455G for sale, 4,100 hours, good machine, \$27,500. (256)335-4919.

Other

DECALS AFFORDABLE DECALS AND SAFETY DECALS. Prompt. Knowledgeable Reliable Service. www.QuipCal.com; Call, (215)536-5339; email: info@custom-servicscompany.com.

Fencing and Cattle Equipment

BRAND NEW BARBED WIRE for sale, one full roll and one 3/4 roll, both for \$50. (256)259-1183. Scottsboro, AL area.

NO ONE WILL SELL YOU GATES FOR LESS

available in economy, medium, or heavy duty, exaple 10' economy is \$110, one or twenty give us a call! FandPLivestock Equipment. Shelbyville, TN. (615) 653-8913

CORRAL PANELS

16 GAUGE, 6' tall, good inventory, 8' up to 16' long. Fand-PLivestock.com; (615)653-8913.

FENCE LINE FEEDERS

10' long; troughs are 10-gauge metal, 30' wide and 7" deep. FandPLivestock.com; (615) 653-8913

HAY FEEDER PANELS

best that are available, built out of 2"x3" material and will last a lifetime, 6' up to 16' available, TAEP item in Tennessee. FandPLivestock.com; (615)653-8913.

ROUND PEN PANELS

12' galvanized; 5' tall, \$120 each; 4' tall, \$120 each; 6' tall, \$140 each; available in economy medium duty-heavy duty. FandPLivestock.com; (615)653-8913.

180 DEGREE SWEEP TUB

with 7' bow gates, 6' tall, heavy duty. (615)653-8913.

BULL GATES

16 GAUGE, 51" and 63" tall, 4'-20' long, good inventory. Fand-PLivestock.com; (615)653-8913.

To Place A Classified Call

800-247-7318

Got Equipment to Sell?

We've Got Buyers!

Place your ad online at www.FarmersExchange.com or by calling 800-247-7318.




DOORS

HYDRAULIC — OR — BIFOLD

ONE-PIECE DOORS STRAP LIFT DOORS

SCHWEISSDOORS.COM

THE DOOR LEADER



507-426-8273

Selection • Service • Satisfaction

- Aerial Work Platforms
- Lawn- Landscape-Tree
- Compaction
- Material Handlers
- Skid Steers-Mini Excavators
- Generators and Accessories
- Construction Tools
- Concrete-Masonry



From Contractor
To Homeowner, **We Can Help!**

WATSON'S Equipment Rental

290 Interstate Drive • Manchester, TN 37355
Mon.-Fri. 7:00 A.M. - 5:00 P.M. • Sat. 7:00 A.M. - NOON



931-954-5862

www.WatsonsEquipmentTN.com

Combines

TWO 1460 IH COMBINES, good running older machines, one with bean header, \$6,500 and \$7,500 with header. (931)841-1016.

CASE IH 2166 COMBINE for sale, 2WD, \$18,500. Chapel Hill, TN area. (931)993-9390.

CASE IH 1020 25' grain head for sale, \$9,000. Chapel Hill, TN area. (931)993-9390.

**To Place A
Classified Call**
800-247-7318

IH 1460 COMBINE for sale, with low hours, \$5,000; IH 464 tractor with new engine, \$3,500. (931)335-5557.

Other

35' HEADER WAGON for sale, \$3,500. Chapel Hill, TN area. (931)993-9390.

Hay & Forage Equipment

WAGON HITCH FOR SQUARE BALE, \$50; new quick attach wagon tongue, \$40. (615)708-9276.

DEWEZE SUPERSLICER roll bale feeder, \$19,500. "The best way to feed what you need - Stop your hay loss." Give us a call, RRP Truck Equipment, Sparta, TN 38583. (931) 761-3554

HAY EQUIPMENT FOR SALE, KM 321 Vicon disc bine with manual; OMC model 22 haybine haymaster with manual; Land Pride 8-wheel rake; 660 New Holland round baler; 6600 Ford diesel tractor, with loader, all for \$20,000. (615)691-0479.

Rakes and Tedders

VERMEER 12' tedder for sale, tedded about 20 acres, \$2,200. (615)569-0891.

Rotary Mowers

INDUSTRIAS
AMERICAN 3
POINT CUTTERS
heavy 11-gauge
deck, 90 HP gear-
boxes with slip
clutch. 6' \$1,600;
7' \$1,900; 10'
\$3,750; 10' pull-
type \$5,500. Call
Chris at Farm
Service Solutions
in Leoma, TN; or,
visit farmservicesolutions.com; (931)
242-7675

BUSH HOG 2107.
Call for pricing. (256)
685-0556

Grain Carts

FARM SERVICE SOLUTIONS Mobil Feed bins are a great option for getting bulk feed for your livestock or wild game. These bins come equipped with a large full-length lid for easy loading with a loader bucket if necessary. Heavy construction built with 13-gauge metal, 4" channel frame, and 6,000lb or bigger axles with spring suspension. Also equipped with lights and a 2" ball hitch, 2,200lb capacity \$2,600; 3,650lb \$2,800; 4,950lb \$3,000. Call Chris at Farm Service Solutions in Leoma, TN; or visit farmservicesolutions.com; (931) 242-7675

Round Balers

2020, JOHN DEERE 459 MEGAWIDE PLUS baler, 5,100 bales, twine and net wrap, bales and looks like new, \$31,000. (931)580-0622.

Hay & Grain For Sale

GOOD CORN SILAGE for sale, \$60 per ton, large orders negotiable. (931)256-0481.

HAY FOR SALE, round and square bales of grass hay. Manchester, TN area. (931)607-3020.

BUSH HOG 2215, 15' cut. Call for pricing, (256) 685-0556

BUSH HOG 4115, 15' cut, HD. Call for pricing. (256) 685-0556

BUSH HOG 1812, 12' cut. Call for pricing. (256) 685-0556

BUSH HOG BH3308, 8'. Call for pricing. (256) 685-0556

PRESSURE TREATED FENCE POSTS

Excellent Prices
Pressure treated at our plant with CCA to the retention rate of .40
25 year warranty against decay
Dealer Inquiries Welcome
Will Protect Established Dealers Territories
Family business since 1987

Green River Post

11029 Hwy. 132 E., Sebree, KY 42455 • Kenny Miller • (270) 772-0318

4X5 ROLLS OF GRASS HAY, this year's hay, barn kept, \$30 per roll. Leave message if no answer, (931) 467-3152

HAY FOR SALE, 5X5 round bales, \$30 per bale; also 16' cattle trailer. (931)993-1237.

FESCUE SEED FOR SALE, germ tested, cleaned, local grown this year, \$1.20 per pound. No Sunday sales. (931)308-2128.

CRIMSON CLOVER SEED for sale, germ tested, cleaned, owner grown, 80% clover, 20% turnip, \$1.20 per pound. No Sunday calls. (931)308-2128.

WHEAT FOR SALE, germ tested and cleaned, 15 cents per pound. No Sunday calls. (931)308-2128.

HAY FOR SALE, 3x3x8 bales of Alfalfa hay and mixed Alfalfa hay. Good horse hay. (931)808-8490; (931)728-5490.

HAY FOR SALE, 100 rolls, 4'x5', twine wrapped, stored outside, \$40/roll. (931) 433-6891

HAY FOR SALE Stored outside, 5 x 5 John Deere net wrapped rolls for sale. Middle TN area. (615) 533-8168 samfarms4875@gmail.com

HAY FOR SALE, 4X5 rolls of mixed grass, fertilized and sprayed, \$40 per bale. (256)508-4492.

YOUR CHEVY DEALER FOR LIFE



New 2025 Chevy Silverado 2500 HDR ZR2, Stk#250868 - \$86,165



New 2025 Chevy Silverado 3500 HD Chassis, Stk#250648 - \$66,113



Pre-Owned 3500 HD Dump Bed, Stk#250319A - \$34,580



New Chevy Silverado 3500 HD DRW, Stk#250743 - \$72,820



New 2025 Chevy Silverado 3500 HD LT, Stk#250672 - \$56,658



New 2025 Chevy Silverado 3500 HD LT, Stk#250687 - \$56,658

www.chevroletofboaz.com



1134 U.S. Hwy. 431, Boaz, AL 35957

1-800-531-4253

Call to insure all incentives are applied.

Commercial rebate requires qualifications. Prices plus tax, title & license and \$199 admin. fee. Incentives Subject to Change.

Odds and Ends

IH AND CASEIH TRACTOR PARTS new, used and remanufactured, the largest exclusive IH and CaseIH inventory in North America. 12351 Elm Road, Bourbon, IN 46504. www.batescorp.com; (800) 248-2955

SALVAGING AGCO 2270 SQUARE BALERS, round balers, swathers, combines and tractors. Call us for new and used John Deere row head parts. Over 8,000 machines parted out. Mike's Equipment Co., Buhler, KS. mikesequipment.com; sales@mikesequipment.com; (620) 543-2535

WOOD SPLITTERS, 10 different styles to choose from, models for many excavators, made in the USA, no brakes/no bends. TM Manufacturing. www.skidsplitter.com; (320) 286-3077

SIGNATURE TARP, custom hoop building covers, hay tarps, and pond liners, 11 colors available, all covers have 2" weld for strong waterproof seams. (859) 375-5268

Got Livestock to Sell?

We've Got Buyers!

Place your ad online at www.FarmersExchange.com or by calling 800-247-7318.

SAND MOUNTAIN STOCKYARD LLC, sales starting at 11:30 a.m. every Wednesday and Saturday. Full service facility on the corner of Highways 68 and 168 in Kilpatrick, AL. (256) 561-3434

ARAB LIVESTOCK MARKET INC, cattle auction every Tuesday at 10 a.m. Highway 231 South, Arab, AL Video auctions at www.arablivestock.com Robbie Gibbs (256) 490-2583; (205) 589-6236; or, (256) 586-4212

NORTHWEST ALABAMA LIVESTOCK AUCTION, stockholder owned and operated since 1976. Sale each Monday at 10 a.m. hogs, goats, sheep and cattle. Call the barn at (256)332-3323; or, Ricky Behel, Manager at (256) 740-9457

GOT TOOLS TO SELL? We have buyers! Place your ad online at www.FarmersExchange.com or by calling (800) 247-7318

To Place A Classified Call 800-247-7318

Got Tools to Sell? We've Got Buyers!

Place your ad online at www.FarmersExchange.com or by calling 800-247-7318.

SNEAD HYDRAULICS & REPAIR

New or Rebuild Pumps, Valves, Motors, Cylinders & Hydrostats • In House Machine Shop



55231 State Hwy. 79S
Blountsville, AL 35031
Phone: 205-466-3105
Fax: 1-866-372-0303
info@sneadhydraulics.com

Craig Vaughn
Owner/CEO
256-470-0828

www.sneadhydraulics.com

ONLINE FIREARM CONSIGNMENT AUCTION

ACCEPTING CONSIGNMENTS BY APPOINTMENT FROM WED., AUG 27TH - FRI., SEPT. 5TH!
CHECK IN LOCATION: 116 1ST AVE SE, WINCHESTER, TN 37398

**WINTON AUCTION & REALTY IS SEEKING CONSIGNMENTS OF
FIREARMS, AMMO, KNIVES, COLLECTABLE COINS, SILVER, AND GOLD!**



**Call Ty Prince at 931-308-3366
to Schedule an Appointment to
Consign Your Items!**

**From Safe to Sold! The Hassle
Free Way to Sell Your Guns,
Ammo, Knives, & Coins for Top
Dollar!**

**All Firearms Will Be Held at
Tri Star Target & Gun LLC**



Winton Auction & Realty

931-967-3650 | WintonAuction.com

Everything Sold As Is With No Warranties Expressed or Implied. All State & Federal Firearms Regulations will be strictly enforced. Seller commission to be 10% of the Final Bid. 10% Buyers Premium Will Be Charged. Back ground checks for firearms will be done at Tri Star Target & Gun LLC in Winchester. \$40 Background check for the first firearm then \$10 for any additional firearm purchase will be paid for by buyer. Out of state buyer transactions must be shipped by a local FFL dealer to your state FFL. Buyer will pay all fees and postage.

**GOT EQUIPMENT
TO SELL?** We have
buyers! Place your
ad online at www.FarmersExchange.com
or by calling
(800) 247-7318

**GOT LIVESTOCK
TO SELL?** We have
buyers! Place your
ad online at www.FarmersExchange.com
or by calling
(800) 247-7318

WANT TO BUY
FJ40 Toyota, in mod-
el years from 1975 to
1980. (931) 607-9737

**To Place A
Classified Call
800-247-7318**

**EQUIPMENT FOR
SALE, WOODS CA-
DET MD 172 BUSH-
HOG, \$850; HAY
BUGGY TUMBLE
BUG, \$850; CATTLE
RACKS METAL FIT
FORD OR DODGE,
\$225; PLASTIC WA-
TER CARRY TANK,
300 GALLONS,
\$225. (615)289-7287.**

**FOR SALE 2 saddles,
2 bridles and 2 blan-
kets, all for \$500.
If interested leave a
message at (931) 468-
3004**

**Got Equipment
to Sell?
We've Got Buyers!**

Place your ad online at
www.FarmersExchange.com
or by calling 800-247-7318.

**TWO TOBACCO
DRYING TRAILERS**
for sale, \$150 each.
Lincoln County, TN
area. (931)685-1014.

**NANO HEARING
AIDS, with charger,
never worn, \$175.
New Market, AL.
(256)859-4131.**

**TWO LIKE NEW
RECLINERS, \$200
each. New Market,
AL. (256)859-4131.**

**42" ROUND OAK
KITCHEN TABLE,
with 3 chairs on cast-
ers, \$200. New Mar-
ket, AL. (256)859-
4131.**

**To Place A
Classified Call
800-247-7318**

**EBONITE 8LB.
BOWLING BALL** for
sale, with bag and la-
dies' non-slip size 10
shoes, \$100. (931)468-
2240; (931)309-2200.

**GEHL 20" HAM-
MER MILL grind-
er, like new, \$1,000;
also 8' wide bog disk,
\$1,000. (931)203-7145.**

**USED SHIPPING
STORAGE CON-
TAINERS & DRY
VAN RENTALS,
good supply in
stock. Mobile offic-
es, 8' widths, 20'-40'
lengths, with or with-
out AC, custom built.
Decatur Container,
5375 Marsha Ave.,
Decatur, AL 35603.
Call Jason at (205)
529-2699 or the office
at (256) 751-3800**

**To Place A
Classified Call
800-247-7318**

NEED AG TIRES?
New and used tire
sales, big truck and
Ag tires, road service
and delivery avail-
able. We have tractor
tires! Keep Trucking
Tire Sales, 9021 Hwy.
43, Killen, AL 35645.
Ask for Belinda at
(931) 242-1458; or,
(931) 242-6618

**LOCAL BUILT HAY
& GRAIN FEEDING
EQUIPMENT,** stain-
less steel options.
Moo Valley, 387 Red-
wood Ln., Sparta, TN
38583. (931) 260-1450

**TUCKER GEN II
TRAIL SADDLE** for
sale, 17-1/2" seat with
wide tree, excellent
condition, \$1,200.
(931)209-6870.

**GARVIN MOWER
OR TRACTOR CAN-
OPY, red in color,
53 3/8"x53 3/8", new
partially assembled,
fits ROPS 1 1/2"-2";
2"x2"; or, 2"x3", high
density, thermoplas-
tic, \$200. (865) 321-
0287**

**GENUINE KIM-
BELL PIANO** for sale,
walnut hardwood
cabinet, excellent
condition, \$1,100 or
best offer. No Sunday
sales. (931)308-2128.

**Got Tools to Sell?
We've Got Buyers!**

Place your ad online at
www.FarmersExchange.com
or by calling 800-247-7318.



**Chicken Litter
For SALE**

**Kiln Dried
Shavings For Sale**

ORGANIC FERTILIZER

• DELIVERY AVAILABLE •

931-967-8699 • 931-607-8699

GIVE US A CALL

FOR ALL FOR AUCTION NEEDS

Now booking for fall auctions



REDLINE AUCTION SERVICE

2631 LeGrande Hwy.
Horse Cave, KY 42149
(270) 392-0285
redforddewayne@gmail.com

Dewayne Redford (270) 392-0285
Brandon Croghan (270) 537-4460
Brady Core (859) 256-1186
Garrett Judd (270) 670-7787

FURNITURE FOR SALE, round claw foot oak table with 4 chairs, \$400; massage chair, \$75; Singer commercial sewing machine, \$250; electric hospital bed, \$125. Lincoln Co, TN area. (931)685-1014.

270 STIHL CHAINSAW, for sale, like new, \$225. (931)308-0586.

Riding Lawn Mowers
JOHN DEERE X300 lawn tractor for sale, 42" deck, 390 hours, \$900. Lincoln County, TN area. (931)993-7401.

Drills
2023, TAR RIVER SAYA NO TILL DRILL These 55" and 78" Drills are set up on 7.5" spacing and will plant a variety of seeds from corn, beans, and wheat, to fescue and clover. Stainless steel boxes let you drill fertilizer at the same time as you plant seed. \$5,900 for 55" and \$6,995 for a 78" plus tax. Call Chris at Farm Service Solutions in Leoma, TN; or, visit farmservicesolutions.com; (931) 242-7675

Planters
IH 800 PLANTER 12 row, 30" air planter; corn and soybean drums with sensor 1 population monitor, \$2,500. No Sunday sales. (931)308-2128.

FINLEY FENCE SUPPLY LLC

Cornersville, TN

Your Full-Service Supplier For All Your Farm Fencing Needs

Low Overhead + Big Volume = SAVINGS
High Quality, Big Selection

We Stock Only High Quality Name Brand Material

- Stay-Tuff Fencing
- Tarter Gates
- Mirafount Water Tanks
- Round and Square Pressure Treated Post
- Gallagher Electric Chargers
- American-Made T-Posts
- Pressure Treated Fence Boards

We can do a consultation to determine your needs.
Need installation too? We can do that also!

(931) 675-3260 • (931) 607-5941 • finleyfencesupply@gmail.com

Homes
261.9 ACRES HENRY CO. TN. Call for Price on 2BR 3BA home near Buchanan with attached garage, separate cottage, work shop. Three additional sites with electric and wells. Over a mile of frontage on country road. Fenced pasture brings in monthly income from rental. 999 Hershel Sykes Road, Puryear, TN 38251 (724) 433-2996

Services
ROBINSON ENVIRONMENTAL LAND CLEARING forestry mulching, boom mower bush-hogging, agricultural stump grinding and skid loader work. Call David, (615) 631-0638

43 FABRICATION Where Customers are our top priority! We are a multi-craft welding and machine shop that offers equipment rigging and installation. From one off obsolete parts fabrication to large industrial installs/repairs/maintenance, and more! Contact us for all your commercial and industrial needs! No job to big or small give us a call at (931)270-8389 or email us at service@43fabrication.com

A D D I S O N A G R I - B U I L D - ERS, poultry houses, barns, sheds, all types of buildings for farms, and wood and steel trusses. Owner Craig Pigg, (256) 747-3444
LIMITLESS LAND MANAGEMENT Call for Price. Dozer Skid steer work, Bush hogging: 15ft/5ft brush cutter, skid steer mounted, cuts up 6 inches; fence/post drilling. Will beat anyone's price! (931) 625-3485

SCHWEISS DOORS, hydraulic one-piece doors or bifold strap lift doors. schweissdoors.com; (507) 426-8273
TN DIRT WORKS LLC Landscaping, brush cutting, forestry mulching, bush hogging and more! Providing services to middle TN since 2019. Call for your free custom quote! (615) 809-7556
Got Livestock to Sell? We've Got Buyers!
Place your ad online at www.FarmersExchange.com or by calling 800-247-7318.

WE ARE YOUR FULL SERVICE DEALER FOR

SPARTAN MOWERS



Spartan Zero Turn Mowers starting at **\$3,999**

SOUTHERN MIDDLE TN LAWN

3915 Hwy 43, Ethridge, TN 38456 (Next to Chapman Tire) • 931-829-3324 • 931-829-2155



United Producers, Inc.

LIVESTOCK MARKETING

CREDIT

RISK MANAGEMENT



www.uproducers.com

Fayetteville, Tenn.

(931) 433-5256 or (931) 433-4962

Weekly Auction Every Tuesday at 1 p.m.

Graded Feeder Cattle Every Tuesday,
Weaned/Vac Feeder Sale - Featured Weekly Tuesdays

Columbia, Tenn.

(931) 223-8323

Weekly Auction Every Wednesday at Noon

Weaned/Vac Feeder Sale - Featured Wednesdays

Columbia Sheep and Goat Sale - 2nd and 4th Monday at 1 p.m.

**holiday exceptions, visit website for full schedule*

KY-TN LIVESTOCK MARKET

Hwy. 79N • Guthrie, KY

Thursday Sale 2:00 P.M.

I-65 Exit 112 • Cross Plains, TN

Monday Sale 1:30 P.M.

Check kytnlivestock.com for Special Sales

OFFICE: 270-483-2504

Tom Barnett • 931-624-7376

Arab Livestock Market, Inc.

Hwy. 231 South, Arab, AL



Cattle Auction

Every Tuesday at 10:00 A.M.

256-586-4212

Video Auctions

www.arablivestock.com

Robbie Gibbs: 256-490-2583 • 205-589-6236

Northwest Alabama Livestock Auction

Russellville, AL • nwalivestock.com

Stockholder owned & operated since 1976

Trucking, Feed & Portable Catch Pens Available

Sale each Monday at 10:00 A.M. • Hogs • Goats • Sheep • Cattle

Upcoming Special Feeder Calf Sales

November 3rd, 2025 and March 2nd, 2026

Upcoming Goat Sales

November 8th, 2025 and February 14th, 2026

All sales begin at 11:00 A.M.

Rickie Behel Manager • 256-740-9457 • Barn: 256-332-3323



Sand Mountain Stockyard, LLC

Corner of Hwy's 68 & 168, Kilpatrick, AL

256-561-3434

Sale at 11:30 A.M.
Every Wednesday
& Saturday

Full Service Facility

Owner:

Eric Wilburn • 256-506-2525

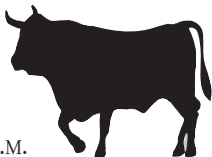


**Advertise
Here!**



Mid-South Regional Livestock Center

Hwy. 41-A, Unionville, TN 37180 • 931-294-5101
Tim Riley (615)714-8090 • Carly Blackman (931)698-7510



Sale every Monday • 11:00 A.M.
Begin receiving cattle on Sunday 12:00-5:00 P.M. & on Monday from 7:00 A.M.

www.midsouthlivestock.com

Hardin County Stockyard, Inc.

3350 Hwy 226, Savannah, TN 38372

731-925-3287

Goats & Hogs Sale – Wednesday 11:30 A.M.

Cattle Sale – Wednesday 1:00 P.M.

Begin receiving livestock on Tuesday 8:00 A.M.-DARK

Full-Service Stockyard Offering:

Trucking, Feed, Appraisals, & Video Sales

Order buying service through Harry Floyd Livestock, Inc.

Harry Floyd (home): 931-722-9200

Harry Floyd (cell): 931-224-2247

Rob Floyd: (cell) 931-224-2248 • Donnie Welch: 731-607-9196

Main Office: 931- 722-3100 • www.floydandsonslivestock.com

Tennessee Valley Livestock

620 S. Poplar, Florence, AL 35630

256-766-0281

Cattle Sale • Monday 12:00 NOON

Begin receiving cattle on Sunday 10:00 A.M. - dark

Full-Service Stockyard Offering:

Trucking, Feed, Appraisals, & Video Sales

Order buying service through Harry Floyd Livestock, Inc.

Harry Floyd (home): 931-722-9200

Harry Floyd (cell): 931-224-2247

Rob Floyd: (cell) 931-224-2248 • Jim Martin: 256-366-3519

Main Office: 931- 722-3100 • www.floydandsonslivestock.com

Valley Stockyard

**** UNDER NEW OWNERSHIP! ** (256) 974-5900**

13130 AL Hwy. 157, Moulton, AL 35650

Regular Sale Every Wednesday • 11:00 am

Special Cow Sale: Seasonal on Fridays at 6:00 pm

Rooted in tradition. Driven by competition.

Powered by marketing. PROVEN BY PRICES!

Portable catch pens & goosenecks available. We would love to come out & catch your cattle!

Blake Hunter: (256) 708-7876 • Casey Hunter: (256) 869-3172

Pulaski Stockyard

**** Under New Ownership! ****

607 West Shoal St., Pulaski, TN 37478

Regular Sale: Every Tuesday • 12:30 pm

Special Goat Sale: Third Friday of Every Month 6:00 pm

Special Cow Sale: Seasonal Friday Night 6:00 pm

Office: (931) 424-8389 • office@pulaskitnstockyard.com

We appreciate your business!

Blake Hunter: (256) 708-7876 • Casey Hunter: (256) 869-3172

Advertise Here!

Over 50 Truck Beds in stock, newer & older Chevrolet, Ford, Ram & GMC Single & Dual-Wheel Trucks



Now carrying
Iron Bull Trailers
Call for prices!



Aluminum Beds
Call for Prices



Steel Beds
Call for Prices

We will trade for your used bed!
Used Flat Beds & Dually Beds Available!
Custom Orders Available!



Skirted Steel Beds - Call for Prices

**Fast Installation on
In-Stock Inventory
Call Devin or Todd
931-738-9275**



120 Auto Lane | Sparta, TN 38583
Hwy. 111 in Sparta



JASONLEWISAUTOMOTIVE.COM

*Price plus tax, installation hardware, & installation. Prices do not include applicable sales taxes. Installation hardware not included in advertised price. Limited quantities available. Due to advertising deadlines, some models may be sold out. **Financing available through Sheffield's on most models.

WILLMAR LOADER FOR SALE, used machines wanted. Deutz engine parts. Martin's Maintenance, Monday-Friday, 8a.m.-5p.m. Closed on Wednesday. (270)265-5040. (270) 265-5040

WRANGLER LOADER PARTS FOR SALE, used machines wanted. Deutz engine parts. Martin's Maintenance, Monday-Friday, 8a.m.-5p.m. Closed on Wednesday. (270)265-5040

**To Place A
Classified Call**
800-247-7318

**NEED A BARN
TAKEN DOWN?** We take down old barns. Call T & M Demolition, (270)348-7988.

Disks

TAYLOR-WAY 8' DISC BOG for sale, w/cyl., \$600; 6' bush hog, \$600. (615)569-0891.

Other

IH 1083 CORN-HEAD 8 row, 30" corn head with nice poly, foldable snouts and EZ Trail header wagon, \$5,950 or best offer. No Sunday sales. (931)308-2128.

SMART-TILL Cherokee Tillers, 50" and 59" chain drive regular duty; 48", 63", 71" tillers in gear drive medium duty; 84" gear drive heavy duty. 48" \$1,825; 50" \$1,700; 59" \$1,800; 63" \$1,925; 71" \$2,400; 84" \$2,800 plus tax. Call Chris at Farm Service Solutions; or, visit farmservicesolutions.com; (931) 242-7675

Timber and Forestry

2006 VERMEER BRUSH CHIPPER 1230A, low hours, garage kept, Caterpillar 112hp engine, great working order, \$17,900. (931) 306-9062

**Got Equipment
to Sell?**
We've Got Buyers!

Place your ad online at
www.FarmersExchange.com
or by calling 800-247-7318.

GREAT SELECTION OF USED STEEL

IN THE NEED OF STEEL? COME SEE US!
USED STEEL INVENTORY CHANGES WEEKLY
USED STEEL IS \$0.35/LB



54 RECYCLE DR., TULLAHOMA, TN 37388
CFCPICKANDPULL.COM USEDSTEEL@CFCRECYCLING.NET

Tractors

CASE 2590 for sale, rear axle housing w/axles and new brakes w/less than 100 hours on brakes, \$800. Call, (931)209-0040.

CASE 585, 5420 Rebel electric tie; WR20 rake; MW disc cutter; all low usage, all goes for \$20,000. (931)759-4936.

1957, JOHN DEERE 720 antique gas tractor, 3pt. hitch, excellent tires, very good condition, from Threet Farm Collection. Call Eric, (931)724-2399; or text, (256)870-9050.

IH 1486 TRACTOR for sale, with duals and cab, \$11,900. Chapel Hill, TN area. (931)993-9390.

SUPER A FARMALL TRACTOR for sale, with cultivators, \$1,200. Chapel Hill, TN area. (931)993-9390.

1998, MASSEY FERGUSON 281 \$25,000; WITH FRONT END BUCKET. (256) 566-7948 cristee75@yahoo.com

JOHN DEERE 7420 tractor power quad, LHR, 6,300 hours, nice tractor, \$48,000. (615)464-7080.

JOHN DEERE 660R, like new, loader 8' bucket, \$15,000. (615) 464-7080

FORD 3000 PARTS for sale, 2 diesel motors (need building), 2 rear ends with trans sheet metal, all for \$500. (931)242-0531.

JOHN DEERE 4020 for sale, new seat, starter, alt. 12V water pump and hydraulic pump coupler, with new paint, no blow by, only used to cut hay, \$12,000. (931)242-0531.

M FARMALL TRACTOR for sale or trade, restored, many new parts, has seized up bearing. Tullahoma, TN area. (931)581-7406.

KUBOTA L-245 H with cultivators, \$5,250. (615)569-0891.

FORD 3000 DIESEL for sale, completely rebuilt engine, new rear tires, \$5,500. (931)593-3491.

**To Place A
Classified Call**
800-247-7318

Gossett Farm Equipment, LLC

1624 Hwy. 100, Centerville, TN 37033 • 931-729-4515



Call

Cub Cadet



Mahindra 4005

gosssettfarmequipment@gmail.com • 931-729-4515

JOHN DEERE 3025E 4x4 tractor for sale, 22.3 hours, hydrostatic F&R, garage kept, brush guard, D160E loader, canopy, \$24,000. (256)777-0845.

CASE IH 885, loader, bucket, spear, new motor, good local tractor, \$10,500. (256) 773-8080

FARMTRAC 665, 2WD, local tractor, \$5,500. (256) 773-8080

JOHN DEERE 5105, local tractor, \$10,000. (256) 773-8080

INTERNATIONAL 384, local tractor, \$4,000. (256) 773-8080

CASE C60, 4WD, loader, remotes, 50hp, \$17,900. (931) 729-2320

ZETOR P100SS cab, 4WD, 15hrs, 85hp PTO, 2 set remotes, \$36,900. (931) 729-2320

KUBOTA 8580, 4WD, loader, 80hp, remotes, \$22,900. (931) 729-5893

FORD 7740, CHA, 2WD, loader, \$13,500. (931) 381-1839; or, (931) 619-1338

JOHN DEERE 2355, CHA, loader, \$18,500. (931) 381-1839; or, (931) 619-1338

MASSEY-FERGUSON 231, no loader, \$5,750. (931) 381-1839; or, (931) 619-1338

JOHN DEERE 6405, 4WD, loader, canopy, \$28,500. (931) 381-1839; or, (931) 619-1338

JOHN DEERE 2130, loader, \$8,750. (931) 619-1338

NEED NEW BELTS? WE SELL AMERICAN MADE BELTING ONLY!

**Largest Belting
Dealer In U.S.**

**Original Belting for
ABSOLUTELY ALL
ROUND BALERS
IN STOCK!!
Save Hundreds**

**FREE SHIPPING
On Belting**

**MC/VISA/DISCOVER
OR COD
NO 800#
Just Best Prices!!**



**VERMEER HAY
EQUIPMENT
New & Used**

**We Have The
Largest Vermeer
Baler Parts Inventory
In The South**

**We Fill
Over 99%
Parts Orders From
Stock-Year Round!**

Ship UPS Everyday.



HAMMOND EQUIPMENT

**Since 1973 • Faundsedale, AL 36738
(334) 627-3348**

JOHN DEERE 4450 for sale, 6,242 hours, \$39,750. (256)335-4919.

KUBOTA 105S FOR SALE, 4WD, shuttle shift, 4,500 hours, \$31,750. (256)335-4919.

Trailers

GOOSENECK TYPE cattle trailer for sale, 16' trailer, new floor, \$2,500 each. Lebanon, TN. (615)714-3894.

LIVESTOCK & FLATBED TRAILERS for sale, must see, different sizes and options. Financing available. Wholesale Trailers, Lebanon, TN. (615) 714-3894

FRUEHAUF 28' DUMP TRAILER, roll tarp, \$15,000. (615) 464-7080

JJN GOOSENECK TRAILER for sale, 16' with dovetail, good condition, new tires, \$2,495. (615)708-9276.

LEDWELL TRAILER FOR SALE 80k lb., winch, hyd. dove tail, hyd. deck, manual or remote control, 53', \$47,750. (256)335-4919. (256) 335-4919

2022, CIRCLE W TRAILER 7 1/2'x28', canvas top, two 10k single axles, \$19,900. (931) 381-2795

Want to Buy

CASH FOR QUALITY GUN COLLECTIONS! BULLSEYE GUN & RANGE, MURFREESBORO, TN. M.A. SMITTY OR CALEB GREGORY, (615) 900-1098

TIG WELDERS AND MAINTENANCE LABORERS 43 FABRICATION IS HIRING FOR TIG WELDERS AND MAINTENANCE LABORERS, 1st shift, 40 hours a week, some overtime from time to time. Pay based on experience. Call for information at (931)270-8389; or, send resume to service@43fabrication.com.

WANT TO BUY FJ40 Toyota, in model years from 1975 to 1980. (931) 607-9737

WANT TO BUY, round bale shredder. (931) 383-0653


WANTED, 8' TO 10' bushhog. (931)307-9839.

WANTED, 16.9-18.4X28 industrial tread tires. Text or leave message. (931)306-3969.

WANT TO BUY, HAY conditioner, PTO driven. (931)580-5409.


WANT TO BUY, ROUND bale hay unroller. (931)304-3755.


**To Place A
Classified Call
800-247-7318**



SHELBY CATTLE CO. GENETICS

Registered Angus Cattle For Sale





*Your source for powerful, easy
fleshing, beautifully uddered,
maternally efficient Angus
Cattle that "do it on Grass!"*

YODER CATTLE CO.

Call Today! 731-414-1261
318 Bradford Hwy., Rutherford, TN 38369 • yoder6@daystar.io

**Bulls & Heifers
For Sale**



Circle W • Delta
Calico • Blazer
GPI • Homesteader

**We will be closed October 6th-10th.
We will reopen on October 13th.**

Horse Utility Trailers Cargo, Dumps
Stock Carports Bike Trailers
Flat Beds Gates & Panels Tow Dollies

Parts - Sales - Service - Rentals

RV Parts Now Available

Consignments Welcome

The Trailer Store

1021 New Lewisburg Hwy., Columbia, TN

Hours: Mon.-Fri. 8:00 A.M. - 5:00 P.M.; Sat. Closed

Mark Curry, Justin Curry, Becky Lynch

Office: (931) 381-2795

Fax: (931) 380-0337

**WANT TO BUY,
JD "B" or LA tractor,
Oneonta, AL
area. (205)353-
2557.**

**WANTED, THORN-
LESS HONEY LO-
CUST, Butternut,
Slippery Elm, Fringe
tree, Quince. Text
or leave message,
(931)306-3969.**

**WANT TO BUY
TRIP Hopper cake
feeder. (931)307-9839.**

**WANT TO BUY
JOHN Deere forage
chopper, (931)314-
1110.**

**WANT TO BUY,
CALF creep feeder
on wheels. (931)307-
9839.**

**WANT TO BUY, 2
Massey Ferguson 165
tractor fenders, need
left and right, Leba-
non Tennessee area.
(731)695-5658**

**LOOKING FOR
SOMEONE TO
WORK ON FARM,
20-30 hours a week,
must know how to
operate a tractor, fix
fencing and handle
cattle, would prefer
someone semi-retired
that just needs extra
income, good pay.
(615) 653-8913**

**Heavy Duty
Trucks
(GVW over
26,000 lbs.)**

**1993 INTERNATIONAL ROAD
TRUCK, Cummins
8 speed, single axle,
\$8,500. (931) 381-
1839; or, (931) 619-
1338**

**Got Livestock
to Sell?
We've Got Buyers!**

Place your ad online at
www.FarmersExchange.com
or by calling 800-247-7318.

Environmentally Friendly Brush Clearing by Layne Construction

Remove unwanted vegetation. Cut & grind trees up to 6" & brush into mulch. No brush piles.



We Do All Types Of Dirt Work • Loader & Excavator

We can: Clear for wild game plots • Clear ATV trails • Shooting lanes
Pasture reclamation • Lot clearing • Fence lines • Field borders • Right of way

**Call for free estimate: 256-975-4193 • 256-975-4296
www.land-clearing-services.com**

**WANT TO BUY, KA-
WASAKI lawn mower
engines, between
20hp-25hp, running
or not. (256)974-3774.
(256) 974-3774**

**Light Duty
Trucks
(GVW under
14,000 lbs.)**

**CHEVROLET OF
BOAZ, commercial
trucks for sale. 1134
US Hwy 431, Boaz,
AL 35957. www.chevroletofboaz.com;
(800) 531-4253**

**TRUCK FLAT BEDS
For All Your Needs.
Give Us a call,
(931)761-3554. RRP
Truck Equipment,
Sparta, TN 38583.**

**2025 RAM 2500
TRADESMAN,
crew cab, 4WD, 6.7L
Cummins, stock
#D12924N, MSRP
\$71,355, sale price
\$58,755. (931) 691-
1712**

**2024 RAM 4500
TRADESMAN chas-
sis cab, crew cab,
4WD, 6.7L Cummins,
stock #D12867N,
MSRP \$81,700, sale
price \$65,820. (931)
691-1712**

**2025 RAM 4500
TRADESMAN, chas-
sis cab, crew cab,
4WD, 6.7L Cummins,
stock #D12932N,
MSRP \$80,020, sale
price \$78,634. (931)
691-1712**

**2025 RAM 3500
TRADESMAN, crew
cab, 4WD, diesel,
stock #D12938N,
MSRP \$73,675, sale
price \$60,920. (931)
691-1712**

**2025 RAM 2500
TRADESMAN,
crew cab, 4WD, 6.7L
Cummins, stock
#D12909N, MSRP
\$70,000, sale price
\$59,549. (931) 691-
1712**

**2025 RAM 3500 BIG
HORN, crew cab,
4WD, 6.7L Cummins,
stock #D12983N,
MSRP \$79,425, sale
price \$78,425. (931)
691-1712**

**2007 DODGE SER-
VICE TRUCK for
sale, auto, Cummins,
\$12,750. (256)335-
4919.**

Happy Labor Day!

May your
hard work and
dedication always
be rewarded!

Bob Barger - Farmers' Exchange Rep

Medium Duty Trucks (GVW 14,000-26,000 lbs.)

FOR SALE, 2001 MACK 8LL trans., 350 engine, double frame, good tires, good truck, \$35,750. (256)335-4919.

MACK TRUCK FOR SALE, demolition bed, 8LL trans, 44 rears, nice, clean truck, 350 engine, \$38,750. (256)-335-4919.

1977 MACK TRUCK FOR SALE, nice truck, 2 sticks, dump bed, \$15,750. (256)335-4919

2000 MACK FOR SALE 8LL 44 rears, long frame, double frame, \$22,750. (256)335-4919.

2000 MACK TRUCK for sale, 460 engine, wet kit, 600k miles, 10 spd., off farm, \$28,750. (256)335-4919.

Cows

FOR SALE, REGISTERED BLACK ANGUS BULLS, will qualify for the full TAEP money, all are by the top AI bulls in the breed. Crawford Angus. Lewisburg, TN. (931)205-2450; (931)359-2633. crawfordangus@bell-south.net

WAGYU POLLED HEIFERS for sale. (256)714-6182.

REGISTERED BLACK ANGUS HEIFERS for sale, registered numbers 21294105 and 21294106. (931)993-7401.

The Ultimate Arena and Ground Prep Tool



REGULAR



HEAVYWEIGHT



SHORT MODEL



WATER KIT



WHEEL MODEL



LASER MODEL

Call us today! (937) 444-2609

15686 Webber Rd., Mt. Orab, OH 45154

Reveal4-n-1.com

REVEAL 4-N-1

the Original... Still the Best

CAPABILITIES

- Smooth It Out
- Fluff It Up
- Pack It Tight
- Level It Constantly
- Dig It Up
- Roll It Down
- Pull It Back From Edges
- Pulverize Clods
- Fill In Holes
- Horse Arenas
- Driveways
- Agricultural
- Erosion Repair
- Ballfield Maintenance
- Landscaping
- Waterways

YOUNG BULLS polled, registered, gentle. Quality Cattle Since 1977. Facebook: Happy Valley Ranch Santa Gertrudis (256) 566-7878 lindadkelso@yahoo.com

PURE BRED POLLED HEREFORD BULLS for sale. (931) 363-0445

REGISTERED BLACK ANGUS BULLS fully TAEP qualified, A-I sired out of great cow families, gentle, good EPD's. Cedar Ridge Angus, Pulaski, TN. (619)876-7904. See Cedar Ridge Angus on Facebook.

BEAUTIFUL BLACK STEERS, family raised, butcher ready, \$3 a pound of the hoof. No Sunday sales. (931)308-2128.

NINE PUREBRED BLACK ANGUS BULLS for sale, 9-10 months old. (931)675-0669.

REGISTERED BLACK ANGUS BULLS, yearlings from high performance cowherd, bred AI to top performance Angus bulls, Genomic EPD's. Turrentine Angus, Shelbyville, TN., aturrentine@cafes.net, (931)607-8950.

REGISTERED ANGUS BULLS, TAEP in TN & KY, big strong bulls with great EPDs, several heifer bulls available, Genomic tested for accuracy, BS exam. FandPLivestock.com; (615) 653-8913

Dogs

KOMONDOR PUPPIES FOR SALE, best guard dog for all livestock, ready to go July 31. Tanner, AL area. (256)232-2432; (607)345-4895.

FREE TO GOOD HOME, two small black dogs, 1/2 Jack Russell with 1/2 who knows what, one male and one female, they are very protective. (931) 993-5300

Pigs

WEANLING PIGS, very efficient grass eating type, great barbecue hogs, \$30 each. (931) 593-3128

Announcements

STORAGE TRAILERS FOR RENT OR FOR SALE, Lebanon, TN area. (615)714-3894.

MILLER FARMS
Angus Beef from the farm. 100% natural, non-GMO, hormone and antibiotic-free. Whole, halves, or by the pound. Slaughtered and packaged. (931)593-3702; (931)994-9429.

To Place A Classified Call
800-247-7318

Brush Cutters Grapples

Large Variety of Attachments in Stock!

ZECO
ZIMMERMAN EQUIPMENT COMPANY
CALL: 270-886-1097 | Elktion KY
Buckets, Grapples, Pallet Forks, Bale Spears, Augers, Post Drivers, Concrete Breakers, Brush Cutters

We Have The Right Trailer For You!

Austin Trailer Sales
Florence, AL
(256) 483-0744

Grandview Welding
Thompskinsville, KY
(270) 487-8813

Double D Trailer Parts
Flemingsburg, KY
(606) 748-9841

Lasseter Tractor
Moultrie, GA
(229) 985-1027

The Trailer Store
Columbia, TN
(931) 381-2795

Dustin Neat Enterprises
Dunnville, KY
(800) 346-4486

Auger (Post Hole)

DANUSER, 3PT. HITCH post hole diggers, \$400. (931)703-5239.

FARM KING, 1070 auger for sale, with hydraulic swing out, \$9,500. Chapel Hill, TN area. (931)993-9390.

To Place A Classified Call
800-247-7318

Components

CA ALLIS CHALMERS FOR SALE, motor completely rebuilt, new clutch, rear end, and PTO completely gone through and reworked, includes 5' pull-type bushhog, \$4,500. (256)454-0234.

Got Tools to Sell? We've Got Buyers!

Place your ad online at www.FarmersExchange.com or by calling 800-247-7318.

Fall 2 Day Auction

Wed., Sept. 10th & Thurs., Sept. 11th

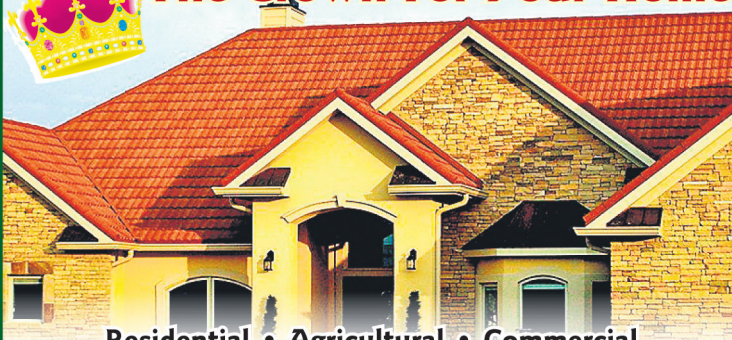
1234 Hwy. 68, Sweetwater, TN 37874

Day 1 - Sept. 10th @ 9:00 am Live & Online

Day 2 - Sept. 11th @ 5:00 pm Online Only

EK Auctioneers

Check our website for details
ekauctioneers.com
or call 865-607-6698

**The Crown For Your Home****Residential • Agricultural • Commercial**

Increase the value & beauty of your home with our maintenance free metal roofing!

Available in many styles:

Slate, Clay Tile, Shake, Stone Coated Shingle, Thatch & Standing Seam

We manufacture the 3 ft. wide metal panels at our location, plus we use an in-house computerized custom trim machine, for better and faster service!

Plateau Metal Sales

www.plateaumetalsalestn.com

103 Randolph Rd. • Crossville, TN
Mon. - Fri. 7 to 5 • Sat. 8 to 12

931-277-3586

1-800-468-0149

• 2nd location to serve you better. •

2448 Buttermilk Road W. • Lenior City, TN

1-866-988-7670

865-376-0528

YOUR METAL ROOFING HEADQUARTERS**PTO**

FORD 3930 PTO BELT, PULLEY for sale, \$125. (931)209-6870.

Backhoe

NEW HOLLAND B95 BACKHOE, 2WD, 95hp, \$21,900. (931) 729-2320

Loader

JOHN DEERE 455G for sale, 4,100 hours, good machine, \$27,500. (256)335-4919.

Other

DECALS AFFORDABLE DECALS AND SAFETY DECALS. Prompt. Knowledgeable Reliable Service. www.QuipCal.com; Call, (215)536-5339; email:info@custom-servicescompany.com.

To Place A Classified Call
800-247-7318

Fencing and Cattle Equipment

BRAND NEW BARBED WIRE for sale, one full roll and one 3/4 roll, both for \$50. (256)259-1183. Scottsboro, AL area.

NO ONE WILL SELL YOU GATES FOR LESS, available in economy, medium, or heavy duty, exaple 10' economy is \$110, one or twenty give us a call! FandPLivestock Equipment. Shelbyville, TN. (615) 653-8913

BOW GATES 16 GAUGE, 6' tall, good inventory, 4' up to 12' combo bow gates-exaple 12' with 4' wt. FandPLivestock.com; (615)653-8913.

CORRAL PANELS, 16 GAUGE, 6' tall, good inventory, 8' up to 16' long. FandPLivestock.com; (615)653-8913.

FENCE LINE FEEDERS, 10' long; troughs are 10-gauge metal, 30' wide and 7" deep. FandPLivestock.com; (615) 653-8913

HAY FEEDER PANELS, best that are available, built out of 2"x3" material and will last a lifetime, 6' up to 16' available, TAEP item in Tennessee. FandPLivestock.com; (615)653-8913.

ROUND PEN PANELS, 12' galvanized; 5' tall, \$120 each; 4' tall, \$120 each; 6' tall, \$140 each; available in economy medium duty-heavy duty. FandPLivestock.com; (615)653-8913.

180 DEGREE SWEEP TUB with 7' bow gates, 6' tall, heavy duty. (615)653-8913.

BULL GATES-16 GAUGE, 51" and 63" tall, 4'-20' long, good inventory. FandPLivestock.com; (615)653-8913.

Cowherd Equipment & Rental, Inc.



Penta 4040
Several Other Models In Stock



Dion F64
In Stock - Call



Meyers VB160
In Stock - Call



JD 3975 Chopper
used, pull type - Call



Cloverdale 420T Mixer
In Stock - Call



Vermeer VSR440
In Stock - Call

Numerous Used Mixers Available! • Free Demo On All Mixers

For more information:

Cowherd Equipment & Rental, Inc.
1483 Old Summersville Rd. • Campbellsville, KY 42718
270-465-2679 • 270-469-5095 • 270-469-0398

Combines

TWO 1460 IH COMBINES, good running older machines, one with bean header, \$6,500 and \$7,500 with header. (931)841-1016.

CASE IH 2166 COMBINE for sale, 2WD, \$18,500. Chapel Hill, TN area. (931)993-9390.

CASE IH 1020 25' grain head for sale, \$9,000. Chapel Hill, TN area. (931)993-9390.

IH 1460 COMBINE for sale, with low hours, \$5,000; IH 464 tractor with new engine, \$3,500. (931)335-5557.

Other

35' HEADER WAGON for sale, \$3,500. Chapel Hill, TN area. (931)993-9390.

Hay and Forage Equipment

DEWEZE SUPERLICER roll bale feeder, \$19,500. "The best way to feed what you need - Stop your hay loss." Give us a call, RRP Truck Equipment, Sparta, TN 38583. (931) 761-3554

WAGON HITCH FOR SQUARE BALE, \$50; new quick attach wagon tongue, \$40. (615)708-9276.

HAY EQUIPMENT FOR SALE, KM 321 Vicon disc bine with manual; OMC model 22 haybine haymaster with manual; Land Pride 8-wheel rake; 660 New Holland round baler; 6600 Ford diesel tractor, with loader, all for \$20,000. (615)691-0479.

Rakes and Tedders

VERMEER 12' tedder for sale, teded about 20 acres, \$2,200. (615)569-0891.

Rotary Mowers

INDUSTRIAS AMERICAN 3 POINT CUTTERS heavy 11-gauge deck, 90 HP gear-boxes with slip clutch. 6' \$1,600; 7' \$1,900; 10' \$3,750; 10' pull-type \$5,500. Call Chris at Farm Service Solutions in Leoma, TN; or, visit farmservicesolutions.com; (931) 242-7675

BUSH HOG 2215, 15' cut. Call for pricing, (256) 685-0556

BUSH HOG 4115, 15' cut, HD. Call for pricing. (256) 685-0556

Got Equipment to Sell?
We've Got Buyers!

Place your ad online at www.FarmersExchange.com or by calling 800-247-7318.



Bill Thomas
Founder (1940-2010)

Will Thomas
Publisher / CEO

Katie McNabb
Director of Magazines

Gabby Denny
VP of Marketing

Wesley Bryant
Editor-in-Chief

Janet Mullins
Business Development
(931) 993-0026

Bob Barger
Business Development
(601) 422-5064

Shelli Fuller
Client Services Coordinator

Barb Hargrove
Senior Operations Coordinator

Tracey Pollock
Finance & HR Administrator

Todd Pitts
Lead Print Ad Designer

Clinton George
Digital Design Director

 (800) 247-7318

 404 Main Ave. South
Fayetteville, TN 37334

 FarmersExchange.com

Mats, cuts, negatives, art work or other copy submitted for publication is considered to be the property of the advertiser. Advertising is accepted with the understanding that all liability for copyright violation is the sole responsibility of the advertiser.

The Exchange will make every effort to see that advertising copy is correctly printed, but shall not be liable for failure to publish an ad or for typographical errors.

The Exchange will gladly reprint, without charge, that part of an advertisement in which an error occurs, provided a claim is made within three (3) days of the first publication of the ad.

"Keepin Kind"

Bred Heifer Sale Selling 350 Head

Sat., Sept. 6, 2025
10:30 AM CST

225 Head Black & Black Baldies
Bred to low birth weight Angus Bulls

25 Head Red Baldies
Bred to low birth weight Angus Bulls

100 Head 1st Calf Pairs
Black & Black Baldies

Cullman Stockyard

75 County Road 1339
Cullman, AL 35058
I-65 Exit 310 • 2 miles East of I-65



Office: (256) 734-4531
Callahan Parrish: (256) 339-6664

BUSH HOG 1812, 12' cut. Call for pricing. (256) 685-0556

BUSH HOG BH3308, 8'. Call for pricing. (256) 685-0556

BUSH HOG 2107. Call for pricing. (256) 685-0556

Round Balers

2020, JOHN DEERE 459 MEGAWIDE PLUS baler, 5,100 bales, twine and net wrap, bales and looks like new, \$31,000. (931)580-0622.

Hay & Grain For Sale

GOOD CORN SILAGE for sale, \$60 per ton, large orders negotiable. (931)256-0481.

HAY FOR SALE, round and square bales of grass hay. Manchester, TN area. (931)607-3020.

4X5 ROLLS OF GRASS HAY, this year's hay, barn kept, \$30 per roll. Leave message if no answer, (931) 467-3152

HAY FOR SALE, 5X5 round bales, \$30 per bale; also 16' cattle trailer. (931)993-1237.

FESCUE SEED FOR SALE, germ tested, cleaned, local grown this year, \$1.20 per pound. No Sunday sales. (931)308-2128.

**Got Livestock
to Sell?**
We've Got Buyers!

Place your ad online at
www.FarmersExchange.com
or by calling 800-247-7318.

Custom Hoop Bldg. Covers, Hay Tarps, & Pond Liners

11 Colors Available

All covers have 2" weld for
Strong Waterproof Seams



Agricultural • Industrial • Commercial



3433 White Hall Road
Mackville, KY 40040
Fax: 859-375-5269

859-375-5268

CRIMSON CLOVER SEED for sale, germ tested, cleaned, own-er grown, 80% clover, 20% turnip, \$1.20 per pound. No Sunday calls. (931)308-2128.

WHEAT FOR SALE, germ tested and cleaned, 15 cents per pound. No Sunday calls. (931)308-2128.

HAY FOR SALE, 3x3x8 bales of Alfalfa hay and mixed Alfalfa hay. Good horse hay. (931)808-8490; (931)728-5490.

HAY FOR SALE, 100 rolls, 4'x5', twine wrapped, stored outside, \$40/roll. (931) 433-6891

HAY FOR SALE
Stored outside, 5
x 5 John Deere net
wrapped rolls for
sale. Middle TN
area. (615) 533-8168
s a m f a r m s 4 8 7 5 @
gmail.com

**To Place A
Classified Call**
800-247-7318

HAY FOR SALE, 4X5 rolls of mixed grass, fertilized and sprayed, \$40 per bale. (256)508-4492.

Odds and Ends

IH AND CASEIH TRACTOR PARTS new, used and re-manufactured, the largest exclusive IH and CaseIH inventory in North America. 12351 Elm Road, Bourbon, IN 46504. www.batescorp.com; (800) 248-2955

SALVAGING AGCO 2270 SQUARE BALERS, round balers, swathers, combines and tractors. Call us for new and used John Deere row head parts. Over 8,000 machines parted out. Mike's Equipment Co., Buhler, KS. mikesequipment.com; sales@mikes-equipment.com; (620) 543-2535



Thinking of having
an auction?
WE CAN HELP!

Real Estate of all Types • Assets • Estates

8719-A AL Hwy. 53, Toney, AL 35773

256-536-7497



HORTON
AUCTION & REAL ESTATE

Sales That Satisfy Since '65

Online Bidding Available • www.hortonauctions.com



Print your ad in the space below. Ads must be received no later than the 20th for publication in the following month's issue. Include your phone number as one word.

Free Ads: 1) **A single item priced below \$1,000 (excludes animals).**
Price must be in the ad.

2) **Want to Buy**, Limit 10 Words. Ad to run one (1) issue only!

Rates: 15 words or less - \$12.00 (Additional words 50¢ each per ad per month)

Placement Options

Better Descriptions = Better Results

1

- 1) Call 800-247-7318
- 2) Fax to 931-563-4477
- 3) Place online
www.FarmersExchange.com
- 4) Mail to Farmers' Exchange
P.O. Box 490
Fayetteville, TN 37334

Phone ()

2 Options (circle)

Bold Type

Add \$2.00 per issue to base charge

ALL CAPS

Add \$2.00 per issue to base charge

Border Around Ad

Add \$4.00 per issue to base charge

3 Payment

- ☐ Cash, Check, M.O.
- ☐ Discover
- ☐ AmEx
- ☐ MasterCard
- ☐ Visa

Card Number

Expiration DateCVC #

4 Please Run Ad

- ☐ 1 Month
- ☐ 2 Months
- ☐ 3 Months

I have figured charges & options for the above ad & have enclosed:

Amount: \$ _____

Name: _____

Address: _____

Email: _____

Requested Delivery On or Before September 3, 2025

PRSRT STD
US POSTAGE
PAID
MONROE, GA
Permit # 15

P.O. Box 490
Fayetteville, TN 37334

RUSSELL BARNETT

LABOR DAY SALES EVENT



See Travis Searcy, The "Truck Specialist"
We're Better and We'll Prove It!

We Are Your Cab & Chassis &
Dually Headquarters



New 2025 Ram 2500 Tradesman, crew cab, 4WD, 6.7L Cummins, Stk#D12924N
MSRP: \$71,355 **Sale Price \$58,755**



2024 Ram 4500 Tradesman, chassis cab, crew cab, 6.7L Cummins, 4WD, Stk#D12867N
MSRP: \$81,700 **Sale Price \$65,820**



New 2025 Ram 4500 Tradesman, chassis cab, crew cab, 4WD, 6.7L Cummins, Stk#D12932N
MSRP: \$80,020 **Sale Price \$78,634**



New 2025 Ram 3500 Tradesman, crew cab, 4WD, diesel, Stk#D12938N
MSRP: \$73,675 **Sale Price \$60,920**



New 2025 Ram 2500 Tradesman, crew cab, 6.7L Cummins, 4WD, Stk#D12909N
MSRP: \$70,000 **Sale Price \$59,549**



New 2025 Ram 3500 Big Horn, crew cab, 4WD, 6.7L Cummins, Stk#D12983N
MSRP: \$79,425 **Sale Price \$78,425**



New 2025 Ram 3500 Tradesman, chassis cab, 4WD, diesel, crew cab, Stk#D12945N
MSRP: \$74,125 **Sale Price \$60,520**



New 2025 Ram 3500 Tradesman, chassis cab, crew cab, 4WD, diesel, Stk#D12944N
MSRP: \$73,880 **Sale Price \$60,302**



New 2025 Ram 2500 Tradesman, crew cab, 4WD, diesel, Stk#D12950N
MSRP: \$70,395 **Sale Price \$57,901**



New 2025 Ram 2500 Tradesman, crew cab, 4WD, 6.7L Cummins, Stk#D12954N
MSRP: \$74,155 **Sale Price \$61,247**



New 2025 Ram 2500 Laramie, crew cab, 4WD, 6.7L Cummins, Stk#D12959N
MSRP: \$86,310 **Sale Price \$72,368**



New 2025 Ram 2500 Laramie, crew cab, 6.7L Cummins, 4WD, Stk#D12964N
MSRP: \$80,260 **Sale Price \$71,323**

RUSSELL BARNETT

2756 Decherd Blvd., Winchester, TN

931-691-1712

FIVE STAR
★★★★★
Dealer



ON THE
JOB



Jeep



See Travis Searcy, The "Truck Specialist"
We're Better and We'll Prove It!

www.russellbarnettchryslerdodgejeep.com

*All rebates applied. All prices plus tax, title & tag. \$698 processing fee is not included. Prices include \$3,000 trade assistance & \$3,000 Ally Financial.
Due to advertising deadline, all prices and incentives including employee pricing is subject to change by the manufacturer without notice. Customers must finance to obtain all Rebates.

Call
Travis Searcy
Today!
931-691-1712