

SAVING FOR COLLEGE?
I am a registered IA
529 Plan Advisor,
I CAN HELP!

Tax Exempt Earnings/Iowa Tax Deduction

Bradford T. Martin, CLTC
Financial Advisor
Office: 641-664-2169
Cell: 641-799-4770

Ameriprise
Financial

- Professional investment manager 401K/IRA
- Retirement & tax strategy specialist
- Financial Planning

Tri-County SHOPPER

EARTH DAY

APRIL 22

STANDARD
MAIL
U.S. POSTAGE
PAID
TRI-COUNTY
SHOPPER, INC.
POST OFFICE BOXHOLDER
LOCAL RURAL BOXHOLDER
OCCUPANT
CIRCULATION
OVER 11,750
THIRD CLASS

P.O. Box 168 • Bloomfield, IA 52537 • www.tri-countyshopper.com
Phone 641-664-1333 • Fax 641-664-3761 • Email shopper@netins.net



Vol. 44, No. 16
Wednesday, April 20, 2016



SPRINGTIME ROUND-UP OF GREAT USED VEHICLES!



2011 SILVERADO CREW
4x4 LT



2012 ESCAPE XLT



2015 GMC TERRAIN
AWD, SLT, 19k



2013 SILVERADO
4x4, LT1 PKG.

DIESELS



2011 SILVERADO
EXT, LT, 4x4

2013 SILVERADO
Crew, LTZ, 4x4



2014 SILVERADO LTZ
4x4, Crew, 36k



2014 SILVERADO
High Country, 4x4, Crew, 25k



2011 CHEVY EQUINOX LS
Auto, AC



2013 CHEVY AVALANCHE
LTZ, Black Diamond, 4x4



2015 SUBURBAN LTZ
4x4



2014 TRAVERSE LTZ
AWD



2004 GMC ENVOY
4x4, 85k, CLEAN!



2014 FORD F150
Crew, 4x4, Lariat



2014 FORD F150
Crew, 4x4, Blue



2011 GMC ACADIA DENALI
AWD



2016 BUICK ENCLAVE
CXL, AWD



2015 FORD EDGE LIMITED
AWD



2014 FORD FLEX SEL
Leather



2014 FORD ESCAPE
4 x 4, SE, 8k Miles



2013 FORD ESCAPE
Blue



2011 CHEVY EQUINOX
Leather



2013 FORD F150
Crew, Lariat, 4x4



2008 BUICK ENCLAVE CXL
AWD



2015 IMPALA LTZ
Leather



2007 BUICK LUCERNE CXL
Now \$8,595



2007 CHEVY TAHOE
4x4, Good Miles



2013 FORD FUSION SE



2012 TOYOTA CAMRY
Nice!



2013 CHEVY CRUZE
Auto, Clean



2012 FORD EXPLORER
4 x 4, XLT



2014 FORD FOCUS
Good MPG

FESLER AUTO MALL

Hwy 34 West, Fairfield • 641-472-3121 • 800-422-5269 • www.feslerautomall.com
OPEN: Monday - Friday 8:00 AM - 5:00 PM • Saturday 8:00 AM - 3:00 PM

The Ottumwa Radio Sports Network
is looking for the next voice of

DAVIS COUNTY BASEBALL!

We need someone who's professional, energetic, positive, & loves sports!!

DC plays 33 regular season games (last week in May to end of July). The play-by-play announcer earns \$40/game (roughly \$20/hour). Plus 40¢/mile for travel expenses. You'll also have the chance to call Mustang football in the fall & basketball in the winter.

Bring your resume to:
416 East Main St.
Ottumwa, IA

Or email us at:
info@ottumwaradio.com

GYM SETS!
STARTING AT \$799

SHREDDED CHEESE
8 OZ. PKGS
2/\$4.00

PREMIUM WATERMELONS
\$4.79

PINEAPPLE
\$1.29

MILK \$2.65/GAL.

Village Market

Rt. 3 Box 168-A (Hwy 136 & Hwy 15)
Memphis, MO 63555 • 660-465-7307
Mon. - Fri. 8:30 - 6:00 • Sat. 8:30 - 5:00 • Sun. Closed

EBT WELCOMED!

[Like us on facebook](#)

FOR SALE: John Deere 1780 12/23 row planter. Brand new openers, vacuum, 1/2 width shutoff, Keeton seed firmers, Yetter row cleaners, heavy down force springs, flex frame, insecticide, 250 monitor. Planter is in excellent shape, always shedded, well maintained. \$25,000 OBO or trade for tractor.
PH: 641-799-0200

BARBECUE SEASON HAS ARRIVED! FOR SALE: All stainless steel Ducane Gas Grill with five burners, plus side burner, rotisserie and cover. Excellent shape, ideal for family, large or small or civic gatherings. Priced to sell.
Call 641-208-0043

T R U C K L O A D TUPPERWARE SALE! Discontinued, unadvertised specials! \$25. Grab bags. \$3.00, \$5.00 bins. Thurs. April 28 8:00 AM - 7:00 PM. Party hours with local consultant 1:00 - 3:00 PM. Detweilers 19852 Harvest Ave., Bloomfield.

HELP WANTED

CITY OF DOWNING IS SEEKING A CITY CLERK

Hours are 8-12 & 1-4 Mon. - Fri. at \$7.65/hour. Duties will be assigned at the Board of Alderman's discretion.

IF INTERESTED DROP OFF RESUME AT:
CITY OF DOWNING
P.O. BOX 24 • DOWNING, MO 63536

All resumes must be returned by: April 25th, 2016 at 4:00pm

We'll Get You On The Road With Our...

Complete Trailer Repair & Accessories.

Wood Rot, Rubber Roofs, Siding Repairs, Insurance Work.



Boat Repairs • Boat Accessories • Pickup Accessories

Whitney RV & Marine



641-684-8284

9418 151st Ave., Ottumwa
Mon. - Fri. 8 a.m. - 5 p.m.

LANDSCAPE SPECIALS

8 FT. RAILROAD TIES!
Check them out at...

Spilman's Auto Parts
20311 Old Hwy. 2 • Bloomfield, IA
641-664-2463

NOW OPEN



Do your laundry in the comfort and convenience of our facility. We have fast and efficient machines.

Dale's Launderette

112 S. Washington • Bloomfield, IA
7AM - 11PM • ENTRANCE ON SIDE



FOR SALE: 2007 Harley Davidson Softail custom black, 3,500 miles, saddle bags; 1949 Allis Chalmers WD wide front, 3 point, new front tires, new battery, 12 volt, with 6' brush cutter; 2 BF Goodrich radial TA P215/70SR14; 6 walnut cane bottom chairs (antique); small Clarke sandblaster, almost new.
PH: 641-459-3329

17

We'll Put Collision Damage in Reverse

Let our certified technicians quickly restore your vehicle to pre-accident condition with a satisfaction guarantee.

Walker Motors
COLLISION REPAIR, INC.
660-465-2159
Shop phone/fax
375 S. Main St.
Memphis, MO

RENTAL CARS AVAILABLE FOR ALL OCCASIONS
Great Rates Unlimited Miles

Hertz

NOTICE!

TAKING BIDS!

The City of Drakesville is accepting bids for the 30'x60' addition to the fire station building. All bids need to be submitted by Monday, May 2nd. For details & plans contact...

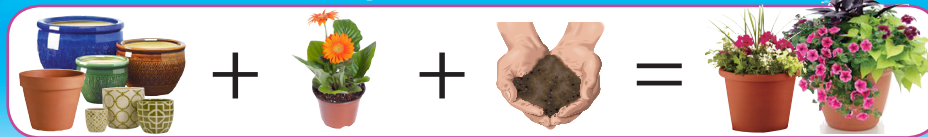
Mayor Bob Sampson
636-887-5367



NEW THIS YEAR
Shrubs * Hydrangea
Rhododendron
Azalea * Weigela
Viburnum * Lilac
Knock Out Roses

FRIDAY & SATURDAY APRIL 22ND & 23RD

JOIN US AND BRING YOUR FAVORITE PLANTER (OR PICK FROM OUR GREAT SELECTION) & WE'LL HELP YOU DESIGN & PLANT!



Not available these days? Don't worry you can call and make an appointment!

25957 US Hwy 136 • Lancaster, MO

BETWEEN DOWNING & LANCASTER

SHOP EARLY FOR BEST SELECTIONS!

Curtis
Yard

Sales & Service of Outdoor
Power Equipment

641-664-2784
502 E. Franklin • Bloomfield, IA

Summer technician

Citizens Mutual has an opening for a summer technician. Position is 40 hours per week with occasional overtime.

Pick up an application at:

Citizens Mutual

114 W. Jefferson St., Bloomfield
EOE

FOR SALE: 2006 Bison Stratus 4 horse trailer, 8' wide, 14' LQ, 6' slide out, loaded, very clean, \$30,000 OBO. Glenwood, MO.
PH: 660-342-1445 18

FOR SALE: 4 SS black Angus cow calf pairs, \$1700. Drakesville.
PH: 641-208-6959 18

Psalms 7:11 (KJV)
God judgeth the righteous, and God is angry with the wicked every day.

FOR SALE!
REG LIMOUSIN,
LIM-FLEX BULLS,
1-2 YR. OLD BLK
Polled, AI sired, docile, low-moderate BW, excellent growth, performance & semen tested.
FREE DELIVERY!

Schrock Cattle Co.
660-988-1163



Kuntryside Cabinets, LLC

Kitchen Cabinets
Custom Furniture
Millwork
Stairways

15641 175th St.
Drakesville, IA 52552
641-664-1677
Kenneth Yoder, Owner



Benge, Davis, Harris
306 East Main Floris, IA

Thurs., April 21 • 5-8pm
Fri., April 22 • 5-8pm
Sat., April 23 • 8am-?

NAME BRAND KIDS CLOTHES

Girls: 2T up to 10
Boys: Newborn up to 16
slims & reg.

LADIES CLOTHES
Size small - 3xl

HOME DECOR
X-Mas Tree & Decor
Misc. Holiday Decor

TOYS

BOATING
Accessories

Wii Console
Games & Accessories

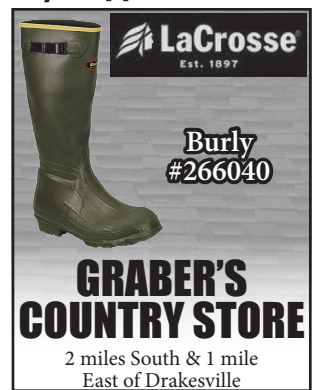


Poly Lawn Furniture



VM: 641-664-0207
1 Mile East of Drakesville
on Jade Ave.
Mon.-Sat. 9:00 AM - 5:00 PM

FOR SALE: 10' Brillion seeder with trailer, \$550.
PH: 641-664-1585 18



FOR SALE: 1976 C-4 automatic transmission. 70's FMX automatic transmission. 2006 Poulen Pro Lawn Tractor, 25HP, Kohler command engine, 54" deck, excellent condition, \$1,500.
PH: 641-722-3581 18

FOR SALE: Firewood at RJ Lumber, \$15 a pickup load. 18989 160th St., Drakesville, IA 52552. TF

NEW MATTRESSES FOR SALE!
Selling individually or in sets. Factory warranty.
TWIN - FULL - QUEEN - KING
641-664-3060

Slayton Polaris

Authorized Polaris dealer since 1988

New & Used Polaris ATVs & Rangers

BLOOMFIELD, IA
660-328-6627
8 mi. S. & W. from Pulaski or 6 mi. W of Memphis then 13 mi. N. on Route B

ATTENTION

Farmer's Country Market, a bulk food and salvage grocery store needs a NEW OWNER! If you are interested in this opportunity, leave a message.

FARMER'S COUNTRY MARKET

641-664-1956 ext. 2

FARMER'S COUNTRY MARKET

YOGURT!
Assorted Sizes & Flavors!

LARGE SUPPLY OF DRINKS!
Water - Fruit Nectars - Propel
Joint Juice - Teas - Gatorade
Perrier - Apple Juice - Monkey Juice
Sodas - Mineral Water - Energy Drinks

BAGGED ENERGY BARS!
7 1/2¢/ea.
Lrg. Supply

Check out our 50¢ table!
Lots of health items & food supplements!

Breaded Tilapia Fish 10 lb. box \$15.00 or \$1.69/lb.	PRICE REDUCED! Cracker Jack Peanut Butter Crunch Snacks was \$2.90/box of 6 NOW \$1.80 BUY 2 GET 1 FREE!	BULK Cream Cheese 90¢/lb.
--	---	-------------------------------------

18786 200th St. • Bloomfield, IA
VM: 515-830-2971
Open Monday-Saturday 8-5, Closed on Sundays

L&M Country Store

1 1/2 miles south of west Hwy 2 & 63 jct.
Mon-Sat. 8am-5pm **CLOSED SUNDAYS**
VM: 641-664-1936



WASHINGTON, PINK LADY & GOLDEN DELICIOUS APPLES!

2 lbs. Shredded Co-Jack Cheese \$3.99
2 lbs. Kraft Velveeta..... \$3.99
20 oz. Tomato Ketchup 79¢
30 oz. Valu Time Salad Dressing \$1.09
Frozen Boneless Carving Ham 99¢/lb.
21 oz. Cherry Pie Filling..... \$1.89

Refreshing Deals

2013 CHEVY LT, 4WD, CREW CAB, 30,000 MILES, CLOTH	2013 GMC SLE, 4WD, CREW CAB, 36,000, MILES, CLOTH
---	---

Kollision Korner

504 South Drake St. • Bloomfield, IA 52537
PH: 641-664-2648 Fax: 641-664-2948
"Like us on Facebook!"
for more pictures.
facebook

EARTH DAY IS FRIDAY, APRIL 22

FRIENDS OF THE BLOOMFIELD LIBRARY SOUP SUPPER & LIVE AUCTION

SATURDAY, APRIL 23RD
SOUP SUPPER 4:30 PM

AUCTION 6:30 PM, ALEX LYNCH - AUCTIONEER

Bloomfield United Methodist Church
401 E. North, Bloomfield, IA

Partial Listing of items: (4) tix M-Th games, HyVee view seats Kansas City Royals; (2) reserved tix M-Th (no cubs) games St. Louis Cardinals; (2) Iowa St. vs W. Virginia football tix 11/26; (2) U of I vs N. Dakota St. 50 yd. line football tix 9/17; Numerous zoo passes, hotel stays, museum passes, etc.

SOMETHING FOR EVERYONE!

FOR MORE ITEMS GO TO:
www.Facebook.com/BloomfieldLibrary

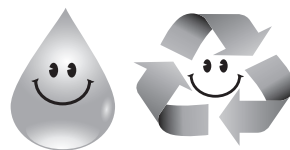
IOWA THEATER BLOOMFIELD, IOWA

*"Batman V
Superman"*



Friday, April 22
Saturday, April 23
7:00 PM
Sunday, April 24
4:00 PM
PG-13

Coming Soon: "God's Not Dead 2"
Elementary Art on Display!



VENDORS NEEDED

Bloomfield Main
Street will sponsor

Bloomfield Farmer's Market

Starting May 7

Saturdays

8:30-11:30 a.m.

Tuesdays

3:00 -6:00 p.m.

Locally grown and produced vegetables, fruits, jams and jellies, eggs, honey, noodles, baked goods, herbs, plants, flowers and handmade craft items are welcome. No second hand items.

*Rules and sign-up sheets
available at Bloomfield
Main Street Office.*

**For more
information contact
Market Manager
Patsy Boas
641-459-3387**



Friday, April 22nd

Jumbo Shrimp

with sides Serving at 6:00 P.M.

Dine
In

722-3355

Carry
Out

RAY'S LONGBRANCH

Drakesville, IA

HELP WANTED!

**MUST BE AVAILABLE:
DAYS - NIGHTS - WEEKENDS!**

**RAY'S LONGBRANCH
DRAKESVILLE, IA**

Schuyler County Jr. Livestock

HORSE & ATV POKER RIDE

Saturday, April 30th

TIME: Starts at noon **LOCATION:** Danny Murphy's
DIRECTIONS: Turn East on Rt. 0 at Queen City until
the end of the blacktop & turn right on the gravel road
then turn left at the next gravel road & Danny's house is
the first one on the right.

*This is a fundraising event for Schuyler County Junior
Livestock, Schuyler County 4-H Clubs & the Schuyler
County FFA Chapter. We appreciate all your support &
look forward to seeing you there & having some fun!*



**\$10 PER HAND FOR
THE POKER RIDE**

Everyone
welcome!

* NOT RESPONSIBLE IN CASE OF ACCIDENTS *
COGGINS TEST REQUIRED

Jr. Livestock Contacts:
Jennifer Laws 660-342-5564
Jennie Droste 660-341-8389

Horse Ride Contact:
Danny Murphy
660-216-7408

ATV Ride Contact:
Mark Bushnell
660-626-3901

2ND ANNUAL PAPA D'S SCHOLARSHIP BENEFIT

in memory of Dennis Small

SATURDAY, APRIL 23RD

Co-Ed Pool Tournament

Sign Up 12 • Break 1pm

Silent Auction

All Day

**Homemade Cinnamon Rolls (AM)
Chicken Strips, Home Fries,
Coleslaw, Texas Toast (Lunch)
BBQ with all the fixins (Supper)**



**JAM
SESSION &
OPEN MIC
8PM**

Call for details & to sign up!

**North Side of
Lancaster, MO • 660-457-3223**

**DRINK &
DRAFT
SPECIALS!**

**50/50 Raffle
Quilt Raffle**

Tri-County Shopper
P.O. Box 168
Bloomfield, IA 52537

GET IT
SOLD
FAST!

Tri-County SHOPPER

GET IT
SOLD
FAST!

PH: (641) 664-1333
shopper@netins.net
tri-countyshopper.com

PERSONAL CLASSIFIED ADS

Fill in the form below as you want your ad to appear. We must receive this
by Friday at 5:00 PM to appear in the following week's Shopper. This rate is
for 20 words or less, with each additional word being 10¢ extra.

BUSINESS EXEMPT

1ST WEEK **Only!** **\$8²⁵** **2ND WEEK** **+\$1⁰⁰** **\$9²⁵** **3RD WEEK** **Wow!** **FREE**

									51
									10
									15
									20
1 WK - \$8.35	3 WK - \$9.35	1 WK - \$8.45	3 WK - \$9.45	1 WK - \$8.55	3 WK - \$9.55	1 WK - \$8.65	3 WK - \$9.65	1 WK - \$8.75	3 WK - \$9.75
									25
1 WK - \$8.85	3 WK - \$9.85	1 WK - \$8.95	3 WK - \$9.95	1 WK - \$9.05	3 WK - \$10.05	1 WK - \$9.15	3 WK - \$10.15	1 WK - \$9.25	3 WK - \$10.25
									30
1 WK - \$9.35	3 WK - \$10.35	1 WK - \$9.45	3 WK - \$10.45	1 WK - \$9.55	3 WK - \$10.55	1 WK - \$9.65	3 WK - \$10.65	1 WK - \$9.75	3 WK - \$10.7
									35
1 WK - \$9.85	3 WK - \$10.85	1 WK - \$9.95	3 WK - \$10.95	1 WK - \$10.05	3 WK - \$11.05	1 WK - \$10.15	3 WK - \$11.15	1 WK - \$10.25	3 WK - \$11.25
									40
1 WK - \$10.35	3 WK - \$11.35	1 WK - \$10.45	3 WK - \$11.45	1 WK - \$10.55	3 WK - \$11.55	1 WK - \$10.65	3 WK - \$11.65	1 WK - \$10.75	3 WK - \$11.75
									45

Name: _____ Address: _____

City: _____ State: _____ Zip: _____ Phone: _____ Run my ad _____ times.



All Ads Are Placed On Our Online Edition FOR FREE!

www.Tri-CountyShopper.com

Vinyl Windows
Replacement & New Construction

Window Features...
Fusion Welded
Triple Weather Strip
Aluminum Reinforced

Sliding/Swinging
Patio Doors

Gerkin
"Quality products since 1932"

FREE ESTIMATES

Yoder Glass & Window
641-722-3667
19467 Driftwood Blvd.
Bloomfield, IA 52537

WANTING TO BUY:
Round Sweetheart table;
Deer sheds and skulls;
Clear glass cake stands and
platters. Text or call.
PH: 651-270-0991 18

FREE TO GOOD HOME:
2 year old Chesapeake
Bay Retriever dog, super
friendly and loves children.
Memphis area.
PH: 660-341-3601 17

Hilltop Greenhouse
11049 Hwy 2, Moulton, IA

SEED SALE!
10% OFF!

BUSHES!
Burning Bushes,
Private Hedge, Rose
of Sharon

TREES!
Magnolias
Forsythia
Maple
Japanese Maple
Fruit Trees

BUSHES
Weigela
Spirea
Barberry

LAWN SEED
Sun & Shade Mix!

Mon.-Sat.
8:00 A.M.-5:00 P.M.

641-929-3036

FOR SALE: 30x96
greenhouse, good condition,
needs to be removed after
May 15. Drakesville area.
Call Herman Gingerich.
VM: 641-722-3444 18

FOR SALE: 6.3 acres, 32x48
walk out basement, main
floor & upstairs. Wash house
& patio attached, 12x12
sewing room attached.
Basement new in 2006, rest
of the house new in 2012.
24x36 barn, 20x36 shop,
20x40 hoop building. More
acres available if needed.
James Helmuth.
VM: 641-664-1740 17

Central Boiler E-Classic
OUTDOOR WOOD
FURNACE. Limited time
big savings offer. Instant
rebate up to \$1000. Call
today! Backyard Depot 641-
722-3641 16

SUNSHINE HILL GREENHOUSE
KEITH & ALMA HIGH
**17TH ANNIVERSARY
CELEBRATION!**
SAT., APRIL 30TH
9 AM - 6 PM

*FLOWERING TREES
*FRUIT TREES
*BLUEBERRY &
RASPBERRY PLANTS
*PROVEN WINNER
SHRUBS
*PERENNIALS & HERBS

FREE DONUTS & COFFEE
REGISTER FOR FREE
FLOWERING CRAB TREE & BASKETS

**OVER 50 VARIETIES
OF TOMATOES!**
SHEPHERDS HOOKS

641-656-4203
641-208-7609
1 MILE EAST OF MILTON ON HWY. 2

**MEMPHIS
MERCANTILE**
EST 2010

115 E. MONROE • MEMPHIS, MO
South Side of the Square
660-465-2102
M-F: 8am-6pm;
SAT.: 8am-3pm; CLOSED SUNDAY

**JOIN THE FUN DURING THE
NEMO FABRIC SHOP HOP!**

**ALL FABRICS
10-15% OFF!**

One of 7 stores participating!
**Thursday - Saturday
April 21st - 23rd**

Door Prizes
& Snacks!

**Rustic Acres
Greenhouse & Produce**

- Full Line of Bedding Plants
- Geraniums
- Variety of Herbs
- Foliage Plants
- Asparagus
- Strawberry Plants
- Rose Bushes
- Perennials
- Baskets & Planters

NEW FOR 2016
Different colors
of Crazytunia

- Onion Sets
- Onion Plants
- Seeds
- Seed Potatoes

We custom plant your planters or baskets.
OPEN HOUSE APRIL 30th * Free Plant with purchase

On Hwy. 2,
West Grove **641-929-3056**

Large Selection of Proven Winners!

Flower Plants & Shrubs
Week's Roses
Fruit Trees, Rhubarb, Berry Plants, Grapevines

Garden Goodies
Bulk Garden Seeds, Onion Sets & Plants
Great Variety of Pepper Plants
Over 40 varieties of Tomatoes!
Gardening Tools, Hoes, Rakes, Shovels & Seeders

Lawn & Garden Care Products
Grass Seed & Fertilizer

Gingerich Greenhouse
1 mile East & 1/2 mile North of Drakesville on Jade Ave. **PW**
PROVEN WINNERS

**Davis County
MEDICAL ASSOCIATES**
Dedicated. Compassionate. Healthcare.

**HALEIGH SKAGGS
NURSE PRACTITIONER**

NOW SEEING PATIENTS

SPECIALIZING IN:
Well Child Care
Preventative Medicine
Comprehensive Care for the Entire Family

To schedule an appointment call 641-664-3832.

509 N. Madison • Bloomfield, Iowa 52537
www.DavisCountyHospital.org

GARMAN? FLOWERS

660-328-6318 • 660-341-9586
Located at BP Station Gas N' More
Memphis, MO
Open on the farm only by appointment

- Large Selection of Very Nice Perennials
- Early Garden Vegetables
- Large Selection of Bedding Plants
- New Shipment of Nursery Plants
- Large Selection of Hanging Baskets
- Blackberry Plants
- Strawberry Plants
- Raspberry Plants
- Grape Plants

FOR SALE: 2005 Sears
Craftsman riding tractor
lawn mower GT 5000 has
a 23 HP V-twin Briggs &
Stratton, brand new motor
off of the shelf. 54" cut, also
have wheel weights and
snow plow. Have a cover
for mower. Garage kept.
Completely serviced and
ready to mow and go, have
all receipts. Sale price \$1,700
OBO. Ask for Charlie.
PH: 641-208-2270 or 641-
208-1099 16

Burkholder's Greenhouse

Rose Bushes **Lots of Perennials**

JUST ARRIVED!
Large Shipment of Shrubs
Hydrangeas, Butterfly Bush, Lilacs, Barberry,
Spirea, Weigela, Viburnum, Knock Roses,
Evergreens, and more...

Asparagus Crowns,
Strawberry Plants,
Rhubarb Plants,
Vegetable Plants

Large Selection of
Shade Trees,
Fruit Trees and
Ornamental Trees.

LOTS OF HERBS!

**CUSTOMER
APPRECIATION DAY!**

Saturday, April 30th
Giving away hanging baskets!!
FREE FOOD ALL DAY!

SPRING HOURS
Mon-Sat 8 am to 5:30 pm

660-397-4115
660-341-5777
4 Miles North
of Edina, MO

See Our Catalog at
www.burkholdergreenhouse.com

STYLE TIPS
From Terri

Terri Baird
My Chic
Boutique

Dressing for Success...
Good dressing doesn't
require a huge outlay
of money or access to
designer duds. Instead,
it requires a basic desire
to set one's best foot
forward. Taking five
minutes to press a shirt,
polish shoes or de-fuzz
a sweater. Throw on
some jewelry, a scarf or
accessory to enhance the
look. Dispose of clothing
that's too tight or doesn't
look right and please
always bathe. Come
check out my consigned
clothes.

Come see me at...

**My Chic
BOUTIQUE**
2110 N. Court, Ottumwa
641-682-1393
Facebook/My Chic Boutique Ottumwa

FOR RENT: 1 or 2 bedroom
apartments Milton, IA.
Kitchen appliances & heat
furnished. Very reasonable
rent.
PH: 641-757-0201 17

Saturday, April 23rd

Scotland County & Schuyler County

PROM 2016

S&S Mechanical

Ryan Groseclose
Lancaster, MO
660-216-7441

North Side Insurance

106 E. Jefferson
Bloomfield, IA
641-664-2362



Ron McElhinney, Agent
202 W. Washington
Lancaster, MO
660-457-3748

Walker Motors

COLLISION REPAIR, INC

Memphis, MO
PH/FAX
660-465-2159



Memphis, MO
660-465-2603 or
660-341-1422

Beeler Motor Co.

Lancaster, MO
660-457-3718

Casey's General Store

Lancaster, MO
660-457-2140
Queen City, MO
660-766-2788



115 S. Main
Memphis, MO
660-465-8579

Kay Eggleston Bookkeeping & Tax

Memphis, MO
660-465-2684

Feeds & Needs

1 mile N. of Downing
Mon-Fri. 8-5
660-379-2055



Memphis Auto & Truck Parts

300 S. Market
Memphis, MO
660-465-2470

Memphis Lumber Co.

Memphis, MO
660-465-8595

M's Place Brock

Hwy 15 N.
Brock, MO
660-328-6649



8 mi. S. & W. from Pulaski or
6 mi. W. of Memphis then
13 mi. N. on Route B
660-328-6627



Lancaster, MO
660-457-3728
Kirksville, MO
660-665-4695

Western's Smokehouse

1978 Western Dr.
Greentop, MO
660-949-2445

PAPA D'S



North Side of
Lancaster, MO
660-457-3223

Judd Motors

Curly & Kevin Judd
Hwy. 63 North
Lancaster, MO
660-457-3700

Tallman Auto Parts

Lancaster, MO
660-457-2191



Bradley Insurance

Tonya Bradley, Owner
226 S. Market St.
Memphis, MO
660-465-2764

Chuck's Body Shop & Garage

Hwy 63
Queen City, MO
660-766-2312

Norman Funeral Home

402 W. Washington
Lancaster, MO
660-457-3137

Schuyler County Nursing Home

Hwy 63 N.
Queen City, MO
660-766-2291

The Cheese Post

Downing, MO
660-379-2626

Tri-County SHOPPER

Hwy. 63 N
Bloomfield, IA
641-664-1333

fredWRECKS Collision Repair

Memphis, MO
PH/FX:
660-465-2114

Tri-County Electric Cooperative

Lancaster, MO
660-457-3733
888-457-3734



Queen City, MO
660-766-2325
Memphis, MO
660-328-6211

**STAND OUT
WITH THE
RIGHT PARTS!**

**We'll Find What
You Need!**



**SPILMAN
AUTO PARTS**

20311 Old Hwy. 2 • Bloomfield, IA
641-664-2463 • 1-800-477-1367
M-F 8AM-5PM • Sat. 8AM-12Noon
www.SpilmanAuto.com

FOR SALE: 1997 JD 345 V-twin 18 HP Kawasaki liquid cooled 54" cut riding lawn tractor. Sale price \$800 FIRM. Completely serviced, ready to mow and go - have all receipts. Ask for Charlie. PH: 641-208-2270 or 641-208-1099 16

FOR SALE: Butcher hogs 70¢ pound will haul to MFA Lancaster to settle. PH: 660-457-2153 18

FOR SALE: (15) 1st calf heifer pairs - black. \$2,700/each. PH: 660-216-0356 18

**YODER
EQUIPMENT**
BLOOMFIELD, IOWA

**CONTINUOUS
FENCING**

EXTRA HEAVY 10 GAUGE
BALE RINGS & HAY
SAVERS

SOUTHERN YELLOW PINE
30 YR. WOOD POSTS
7-9 FT.

19887 Jade Ave
2 1/2 Miles W of Bloomfield
V.M. 641-664-2797

TILLERS FOR SALE: 6-Foot King Kutter Tiller \$1500 and 8-Foot Lexi Tiller \$2400. Both in good working condition. Call: 641-208-2679 16

FOR SALE: Cow manure compost. 7-Foot tractor loaded. Full bucket for \$10 per bucket. Possible delivery available. Call: 641-208-2679 16

FOR SALE: Like new 1976 mobile home, 910 sq. ft., 1 owner, 2 bedroom, brick fireplace, hasn't been lived in for 11 years. \$6,000 or make offer. PH: 641-680-3082 16

FOR SALE: 1967 4-5,000 diesel tractor, complete fresh overhaul on engine; No. 8 shaver hydraulic post driver; F8 Danhauser digger, 12" bit \$7,500. 2005 Ford diesel pickup, 4WD, 4 door, silver, 267,000 miles, \$10,900. PH: 641-777-7712 18

FOR SALE: Dearborn model 11.1, 3 point disc and model 1100, 7 ft. sickle bar mower with extra sickles. All in working condition. PH: 641-919-5283 16

**MAST
VINYL
WINDOWS**

THERMO-PRO WINDOWS

Custom Size Is Our Specialty
Professional
Installation Available

**THERMA-TRU
DOORS**

**FREE
ESTIMATES**

22172 Hwy. 63
Bloomfield, IA 52537
800-206-9949

OPEN 6 DAYS: MONDAY-SATURDAY

**LOTS OF EXCELLENT QUALITY BABY ITEMS!
KIDS ENTERTAINMENT & EDUCATIONAL TOYS!**
LARGE VARIETY OF NAME BRAND ITEMS!

Convertible boosters, car seats,
bouncer seats, bassinets & strollers!

**LOTS OF NEW (OR LIKE NEW)
ITEMS FOR 1/2 OF
REGULAR PRICE!**

**\$URPLUS
BARGAIN
BARN**

CAMPING?
TENTS • TENTS • TENTS

**GREAT VARIETY OF
STYLES & ALL SIZES!**

BLOOMFIELD, IA
2 1/2 MILES W. OF BLOOMFIELD ON HWY. 2
MON. - FRI. 9AM - 5PM • SAT. 9AM - 4PM

**Highway
2
DI\$COUNT
Groceries
LLC.**

dōTERRA
Wellness Advocate


Serenity

Used to help calm and soothe feelings of stress, excitement and anxiety.

Used for: Mood Swings, Teeth Grinding, Sleep, ADD/ADHD.

Put in bathwater. Apply to navel, feet or back of neck for insomnia.

Wear as perfume or cologne.



19686 Hwy. 2, Bloomfield, IA • Approx. 2 miles west of Bloomfield • Mon. - Sat. 8:00 - 5:00 • VM: 641-664-1187

2015 MIDWEST FREE COMMUNITY PAPER AWARDS PRESENTED TO THE TRI-COUNTY SHOPPER TEAM!

1ST PLACE:

**Best Ad Series
Best Holiday Promotion
Best Classified Promotion**

2ND PLACE:

**Best Auto Ad
Best Ag Ad**

3RD PLACE:

Best Grocery Ad

If you call it your pet,
we call it our patient.



15 years of
trusted service
with any size
of pet!

Jones Veterinary Clinic
225 Main St. | Anytown, IA 55555
800-554-PETS (7387)

**Natalie
Hall**

**2015 Ad
Creation
Contest
Winner**

C O N G R A T U L A T I O N S

**MOVE IN
READY!**

NEW LISTING!

305 W. WALNUT • BLOOMFIELD • LISTING #20160848

Try to find a home cuter than this one! Move in ready! 3 bedroom, 1 bath home. Open layout, quiet neighborhood. Check out the pictures for proof!


Lynch
REALTY, INC.

641-664-2275
lynchrealtyinc.com

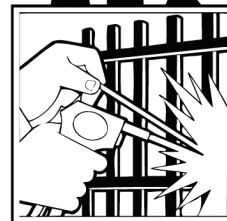
 103 E. Franklin
Bloomfield, IA
Licensed in Iowa
Stephanie Lynch, Broker


MARK YOUR
CALENDARS!
ANNUAL SPRING
PERSONAL PROPERTY
CONSIGNMENT
AUCTION Sat., April 30,
2016 at 10 AM. Location
608 South West Street,
Bloomfield, Iowa. Nice
assortment of clean
furniture, office items,
antiques, household,
and LOTS of Coca-Cola
Collectibles! See next weeks
Tri-County Shopper for an
auction flier, or see photos
on our web page at www.
qualitymarkllc.com. If you
have questions, write me
at qualitymarkllc@gmail.
com or call my cell at 641-
208-6453.

FOR SALE: Gazelle
Supra Pro, \$20; bike: DP
airgometer, "silent rider"
Bionix programable, \$25;
Older portable Paul Scale
for livestock, \$200.
PH: 641-208-6010 18

Wortmann Machine & Welding

- Large Steel Inventory
 - Lathe Work
 - Mill Work
- Shear Capacity
8x10 Ga.
- Press Work
- Oxygen & Welding
Gases (Rent or Lease)
- S. J. Smith &
Midwest Airgas

**910 W. Walnut
Bloomfield, IA
Ph: 641-664-1300**
**Affordable
Country
Acreage!**

NEW LISTING!

31914 155TH ST • FLORIS • LISTING #20160881

16 acres M/L livestock
barn, 40x70 machine
shed, 2 ponds one pond
featuring a small cabin
overlooking, 4 bedroom
1 bath 2 story home. If
your looking for country
living in Davis County
you wont find a better
rural set up.


Lynch
REALTY, INC.

641-664-2275
lynchrealtyinc.com

 103 E. Franklin
Bloomfield, IA
Licensed in Iowa
Stephanie Lynch, Broker


Old-Time VALUE


WOW! \$3.99
Kraft® Velveeta Cheese
2 lb.

99¢
1 lb. Roll
**Smithfield® All Natural
Pork Sausage**
99¢
per lb.
**Shiely Fully Cooked Links
Smoked Sausage**
99¢
per lb.
sold as a 10# box for
\$9.95 Fully Cooked
Chopped - Angus
Beef Steak Patties
99¢
per dozen
**Weiler's
All Natural
Brown Eggs**
\$1.39
per lb.
sold as a 5# bag for
\$6.95 **Bold
Sausage Links**
\$6.99
Gallon
**Kraft®
Miracle
Whip**
\$6.99
Gallon
**Kraft®
Ranch
Dressing**
\$1.99
per lb.
**Butterball® Oil Browned
Turkey Breast**
Martin
Roast Beef
\$4.99 lb.

\$1.99
9 oz.
**Dieffenbach's
Old Fashion
Kettle Chips**
99¢ pint
Grape Tomatoes
99¢
1 pound
Bar S Bologna
79¢
8 oz. pack
60/80z. case \$38.70
**White Cheddar
Cheese Cubes**
\$1.59
per lb.
• Pepper Jack Cheese
• White Muenster Cheese

\$10.95
25 plant bunch
**Grown Your Own!
Fresh Asparagus**
99¢
plus deposit
2 Liter Bottles
7up Products

\$1.99
gallon
**HEINZ
Bread & Butter
Pickle Chips**
88¢
18 oz.
Malt O Meal®
**Berry
Colossal
Crunch
Cereal**
Spring Fabric SALE
Flannel - \$2.99 yd.
Cotton Prints \$4.99 yd
All other Fabrics 10% OFF

DUTCHMAN'S STORE Division Street - CANTRIL, IA - (319) 397 2322

SALE PRICES April 20-26, 2016
STORE HOURS • Weekdays, 8a.m. - 6 p.m. • Saturday 8a.m. - 5 p.m. • Sunday Closed

 View our specials at - www.DutchmansStore.com

Garages • Pole Barns
Commercial

Free
Estimates

LAN-DOW
BUILDINGS

We Stock a
Complete Line
of Building
Materials

**Lancaster
Lumber, Inc.**

Complete
Buildings or
Packages
Available

Toll Free 800-424-5071 Fax 660-457-3133

Ron Oliver, Owner Lancaster, MO 63548
www.lancasterlumber.com

**SPRING
OPEN
HOUSE**

**SATURDAY
APRIL 30TH
8AM - 5PM**

SAVE THE DATE



Shady Lane Variety
1 mi. East of Drakesville on Jade Ave.
641-664-0207
STOREWIDE SPECIALS

Rhythm Clocks • Toys
• Home Decor
Books • Cookware

**Snacks
& Drinks**

**GREAT
SAVINGS!**

**Door
Prizes**

**Highway
2
DISCOUNT
Groceries
L.L.C.**

**Big
Green
Egg**

The Ultimate Cooking Experience™

FREE*

**CAST IRON
DUTCH OVEN
\$60.00 VALUE!**

***WHEN YOU
PURCHASE A LARGE
OR EXTRA LARGE
GRILL FROM HWY. 2**




19686 Hwy. 2, Bloomfield, IA
Approx. 2 miles west of Bloomfield
Mon. - Sat. 8:00 - 5:00 • VM: 641-664-1187

FAIRWAY VINYL RAILING!

**FAIRWAY
Vinyl Systems**

**CENTRAL
STATES
MANUFACTURING, INC.**
METAL BUILDING COMPONENTS

**WE SELL CENTRAL STATES
METAL ROOFING & SIDING**

**OWENS
CORNING**

**VARIETY OF
OWENS CORNING
SHINGLES IN
STOCK!**

CALL US TODAY FOR GREAT PRICING!!

Cantril Lumber & Hardware
319-397-2351 • Mon-Fri 7-5 & Sat 7-12



**HELLO
BABY**

**FALL IN LOVE WITH
YOUR NEW BABY**

at Ottumwa Regional
Health Center



We really deliver!

At Ottumwa Regional Health Center, our trusted team of women and family health professionals include the area's only group of Board Certified OB/GYN and Pediatricians available to you, along with a host of advantages that deliver the very best in compassionate, quality care and safety for both mother and baby.

In fact, we safely deliver more babies than any other hospital in Southeast Iowa, and feature the area's only Level II nursery.

To learn more or to make an appointment with the finest Women and Family Care Team, visit our website or call us today.

✓ The Ottumwa Advantage

Board Certified Professionals
Available 24/7

Breast Feeding Consultants*

Skilled, Knowledgeable
Nursing Professionals

High Risk Pregnancy Care

Level II Nursery

Advance Care
Fetal Heart Monitoring

Hugs® Infant Protection System

Specialty Newborn Screenings

Mother Baby Care with a Focus
on Family Bonding

All Private All the Time

Birthing and Breast Feeding Classes

Women and Family Center Tours

Celebratory Dinner
and Room Service Options.

*Support continues after discharge.



**641.682.8761
or 641.684.2626**

1001 Pennsylvania Avenue • Ottumwa, Iowa 52501
ottumwaregionalhealth.com



While supplies last

SMOKIN' DEALS



**BONE-IN
SPIRAL SLICED HAM**
79¢/LB.



**BETTY
CROCKER
DECORATING
DECORS**
2 OZ. • REG 25¢
5/\$1



**PILLSBURY
FUNFETTI MIXES**
VARIETY OF COLORS
8.25 OZ. • REG 45¢
**BUY 1 GET 1
FREE**



**PORK SAUSAGE
PATTIES**
10 LB. BOX 40-4 OZ. PATTIES
BUY 1 GET 1 FREE



**PRAIRIE BRAND
CORNEED BEEF**
32 OZ. PKG.
\$2.98



**APPLEWOOD
SMOKED HAM**
PRIMO
SHAVED, 16 OZ.
99¢



**CLEAR VALUE
PORK SAUSAGE**
MILD FLAVOR
10.5 OZ.
99¢/LB.

19686 Hwy. 2, Bloomfield, IA • Approx. 2 miles west of Bloomfield • Mon. - Sat. 8:00 - 5:00 • VM: 641-664-1187



SPRING FEVER

Call us today for your
building needs!



- Metal Roofing
- FREE estimates!
- Crews available
- Call today!

WAGLER METALS

19049 Ice Ave., Bloomfield, IA
641-722-3692 • M-F 7:30-5; Sat. 8-11:30

FOR RENT: 2 bedroom duplex apartment with utilities and cable tv included for \$650. At 401 N. Pine St., Bloomfield.
PH: 641-208-0285

18

FOR SALE: John Deere 7800, 2WD tractor, 8900 hours, 18.4x42 tires, front weights and all options - cab and air. New batteries & good rubber. \$38,750; Krone 3 pt. 10' disc mower, excellent shape, \$5,250; Vermeer R23 twin basket rake, \$3,500; New Holland big round baler with net wrap, \$4,000.
PH: 641-895-2535

17

FOR SALE: 3 Mallard ducks. Banty chickens, lots to choose from, very colorful.

VM: 641-664-3453 ext. 1

18

FOR SALE: (2) P185/60R15 Hankook, good 50%. (1) P185/60R15 Firestone, good 50%. (1) P185/65R14 Goodyear on 4 bolt cast rim, tire fair. (1) 14" cast rim, 4 bolt. (1) P185/70R14 Kuma tire, good 50%, 4 bolt steel rim. (1) P185/70R14 Cooper tire, good 50% on 4 bolt steel rim. (2) 14" steel wheels with tires on them. (5) 7-14.5 trailer wheels. (1) P185/60R15 multi mile. (1) P165/60R15 Kenda, fair. (2) P205/65R15 General, fair. (2) P205/65R15 Hankook, fair. (1) 600-16 LT Radial Michelin.
PH: 641-722-3581

18

FOR SALE: 10' Brillion seeder with trailer, \$550.
PH: 641-664-1585

18

FOR SALE: Hammond organ, dual keyboard, bench & music. Make offer.

PH: 641-459-2246

17

FOR SALE! Angus & Charolais Bulls Trojan Hill Farms



Phil Archer
641-675-3769 - Home
641-680-6769 - Cell



Hook a Deal



**CULVERT
& FIELD
TILE**



SIoux CALVING PEN

FOR-MOST
CHUTES



**SPRING
GARDENING
TOOLS**

Garden Gloves
Garden Seeder
Weed Preventer

Grub Beater
Grass Seed
Watering Cans

Hoses
Rakes
Weed Killer

Hamilton Produce Co.

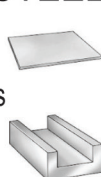
641-664-2459 or 1-800-469-7749
105 W. Franklin • Bloomfield, IA 52537

SIoux FEEDER

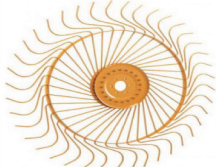


WE SELL NEW STEEL

- Sheets
- Plates
- Channels
- Rounds
- Angles



HAY RAKE WHEELS



Keep your farm operating at
maximum efficiency with the
help of Crop Services.



See them for your seed, feed &
fertilizer needs.

CROP SERVICES, INC

John & Kathy Bos, Owners
Drakesville, IA
641-722-3293



ATTENTION BOAT OWNERS

It is time to RENEW your
BOAT REGISTRATION.
Deadline to renew is APRIL 30, 2016.

Any questions, call 641-664-2321

DAVIS COUNTY RECORDER'S OFFICE
Megan Clyman, Davis County Recorder

SWITCH & SCORE

\$19.99 per mo.
BEST VALUE
SELECT™ Package
 OVER 145 channels
 HD at no additional cost

\$29.99 per mo.
MORE SPORTS
CHOICE™ Package
 OVER 175 channels
 HD at no additional cost

\$39.99 per mo.
MORE SPORTS & MOVIES
ULTIMATE Package
 OVER 240 channels
 including 11 movie channels
 HD at no additional cost

Ask me how to Bundle and save. CALL TODAY!

IVS 800-269-4217 **DIRECTV** AUTHORIZED DEALER

SPECIAL OFFER Get a **\$100** Visa Prepaid Card with new DIRECTV service* with qualifying package.

FOR SALE IRRIGATED NEBRASKA ALFALFA
 4th cutting, 217 RFV, 26% protein, 3x3 square bales, 900 lbs. approximately, 23 ton per load, \$6,500/load.
 Mike Christensen.
 PH: 641-777-7815 16

FOR SALE: 20' Gooseneck
 3 horse slant trailer. Tack in back, dressing room in front with driver's side door. Red, gold striped. Good shape. Bloomfield, IA. \$2,500.
 PH: 319-371-4974 after 5 or leave message 17

SCHUYLER COUNTY NURSING HOME

HELP WANTED:

FULL & PART TIME CERTIFIED NURSE AIDES, CERTIFIED MED TECH, REGISTERED NURSE, & LICENSED PRACTICAL NURSE
 Apply at Schuyler County Nursing Home, Queen City, Missouri. An equal opportunity employer; services provided on a non-discriminatory basis.
CALL 660-766-2291
 or stop by and pick up an application.
 We are located on Hwy. 63 north in Queen City, MO

FOR SALE: MTD push mower 3.5 HP Briggs & Stratton, 20" cut, oil changed, new blade, completely serviced, ready to mow and go. sale price \$65. Ask for Charlie.
 PH: 641-208-2270 or 641-208-1099 16

FOR SALE: Limited supply of black dirt, \$3/ton. 203 160th St. Bloomfield, IA.
 VM: 515-830-3786 17

FOR SALE: Purebred Dutch belted dairy heifer, 1 year old, ready to breed, \$850.
 PH: 641-208-0466 17

Scotland County Care Center

434 E. Sigler Ave., Memphis, MO

Seeking kind, compassionate individuals to fill the following positions:

C.N.A./N.A. - Full Time & Part Time - All Shifts
DIETARY AIDE - Part Time, could lead to Full Time
Long term care experience preferred, but not required
Paid time off. Must be able to pass a drug test. Must be 18. We will certify N.A.'s on-site. Weekend option (Friday, Saturday, Sunday) for C.N.A's pays an extra \$2.00/hour

Apply in the Business Office
Monday-Friday 8:00 a.m.-4:00 p.m.
or online at www.scotlandcountycarecenter.com

For more information contact
Tammy Kirchner, H.R.
(660) 465-7221 E.O.E.

Miller Contracting

Driveway - Parking Lot - City Road/Lanes
 Asphalt Paving - Seal Coating - Tar, Chip & Seal
 Pothole & Crack Repair
 Flatwork - Walls - Dust Control
 All Types of Concrete Construction

660-342-6617
 • Free Estimates • Insured • References

FOR SALE

4 wheels of off a 2007 Dodge Truck

Arbela, MO area
Call & Make Offer
660-342-2657

Hawkins - Harrison Insurance

Trusted Choice®

SHOPPER ADS CAN BE DROPPED OFF HERE!

Proud to be your partner.

P.O. Box 365
 Lancaster, MO 63548
 660-457-3020

103 W. Monroe St.,
 Memphis, MO 63555
 660-465-8533

FOR SALE: Winchester model 1400 12 gauge semi auto shot gun with poly choke, \$300 OBO.
 PH: 641-895-0145 16

BLOOMFIELD MINI STORAGE. Serving you from 2 safe, convenient locations.
 PH. 641-664-1066. TF

BLOOD DRIVE: Floris Baptist Church will host a community blood drive from 3:00pm to 6:30pm on Monday, April 25th at 502 S. Allen St., inside Fellowship Hall. To donate, please contact Pastor Gordon Hawkins at 641-459-3840 or visit www.bloodcenterimpact.org and use code 5290 to locate the drive.

FOR SALE: International 990 mower/conditioner, new cycle bar, blades, guards, rubber on metal rolls, new wobble box, ready for the field.
 PH: 641-208-6437 16

FOR SALE: JD 535 round baler, net wrap - kicker, nice one. **WANTED:** Good grain drill, 10'-15'. Milton, IA.
 PH: 515-419-1232 16

FOR SALE ANGUS BULLS

Yearling Registered Black Angus Bulls
 Large selection
 Pick now & we'll hold until May 1

HENDERSON FARMS
David:
641-799-3857

Cantril Feed & Grain

GALLAGHER FENCE™

PowerPlus Hi-Tensil Wire
 1/2 Mile

Solar Fence Energizer

- * Powers 14 Acres
- * 12 Volt Battery
- * Safe, Powerful
- * Easy to Use

610 West North St. Cantril, Iowa
319-397-2215

BIG GAIN

HOURS

8:00 A.M. to 5:00 P.M.
DAILY EXCEPT SUNDAY

Zimmerman's Store

Rutledge, MO
660-883-5766

Our Everyday Low Prices!

FABRIC SALE • FABRIC SALE • FABRIC SALE
APRIL 21ST, 22ND & 23RD
10% OFF ON FABRIC & SEWING NOTIONS
EMPTY A BOLT 5 YARDS OR LESS & RECEIVE 20% OFF

CLEARANCE ON RED PONTIAC & RED NORLAND SEED
POTATOES - REDUCED TO \$7.95/50# BAG
REDUCED - RED OR SWEET ONIONS 50¢/LB.

SAVE ON BULK GARDEN SEEDS
VEGETABLE & FLOWER SEEDS - BUY 2 GET 1 FREE

Frozen Pollock Fish	\$2.00/lb.
Frozen Tilapia Fillets.....	\$3.08/lb.
Frozen Cod Tail	\$5.25/lb.
Frozen 2# 16/20 CenSea Shrimp	\$19.35
5# Frozen Small, Medium & Large Frog Legs.....	\$19.25-\$19.55
10# Bag Diced Potatoes.....	ONLY \$2.19 (Out of Code)

MORE YOGURT BY THE CASE

100% Concord Grape Juice Concentrated..... \$20.35/gal.
Directions: Mix 1 to 1 1/2 cup concetrate to a gallon of water

Pure Wisconsin's Maple Syrup.....	\$43.80/gal. or \$12.39/qt.
Sugar Free Hershey's Milk Chocolate Bars.....	ONLY \$2.29/lb.

10# Ambrosia Aged Basmati Rice **\$11.85**
5# Ambrosia Aged White Quinoa..... **\$24.29**
5# Savor Red Quinoa **\$23.89**
5# Savor Black Quinoa **\$23.25**
3# Kosher Salt Pure Natural..... **\$2.59**
1# Plain Salt..... **.45¢**

125 Ct. 6 Compartment Serving Trays	\$11.25
100 Ct. Sturdy Soak Proof Foam Plates.....	\$2.98
16 Ct. Plastic Cups.....	.95¢

PULASKI LUMBER Co.

We provide materials & expertise for all building projects.

OWENS CORNING

**New Homes
Remodels
Decks
Kitchens
ICF Basements
Pole Buildings**

Josh & Emily Hill
218 S. 2nd St. • Pulaski, IA

641-675-3405

This Year Join Us in the Fight to Protect Gas Grills from Abuse and Neglect.

Standard gas grills only last a few years. The elements wreak havoc on them, the burners clog, and in a short time they don't look or perform like they did when they were new. You might even be guilty of giving your gas grill a swift kick to try to get a burner to work out of frustration. Eventually, it sits unused and neglected in your backyard.

An entry level gas grill will run you about \$400, and the cost really mounts up over time. In 20 years, you could spend well over \$2,500 on a fleet of "so so" grills.

For a fraction of the cost you can get a Primo Ceramic Grill, and it could easily be the last grill you ever buy. It gives food an organic "wood fire" flavor, and works as a grill, an oven, and a smoker, making it great value in the long run. A Primo performs as well on the 1000th cook as it does on the first, not to mention looking beautiful for a lifetime.

Best-in-Category Limited Lifetime Warranty Backed by a 20-Year Guarantee.

Primo is the only ceramic grill company that backs its Limited Lifetime Warranty with a 20-Year Guarantee. Surprisingly, a "lifetime warranty" is defined by each state, not the company offering it. It can be as little as a few years in some states. Primo guarantees that your new grill is covered for many years of enjoyment.



**GINGERICH
STOVES and
PLUMBING**

**19091 180th St
Drakesville, IA
VM 641-664-2814**

3/4 miles east of Drakesville, south side



BLOOD DRIVE: Community 1st Credit Union will host a community blood drive from 9:00am to 12:30pm on Friday, April 22 at 301 E. Franklin, inside MVRBC Donor Bus. To donate, please contact member of Bloomfield Staff at 641-664-2885 or visit www.bloodcenterimpact.org and use code 5116 to locate the drive.

CATTLEMEN

Are you interested in
"Longrange" wormer this
summer?

Call us today to discuss
advantages & net dollar
returns.

**Competitive Pricing!
Cash & Carry Only**

*A Full Lines of Flea & Tick
products for your pets!*



ANIMAL HEALTH CENTER Lancaster, MO 660-457-3086

BCS **ONE TRACTOR DOES IT ALL.**

Why buy a separate power unit for every piece of seasonal outdoor power equipment? With BCS, you can power dozens of quality attachments with one two-wheel tractor! **All Gear Drive** means power and performance and **Rotating Handlebars** allow for front & rear mount attachments.

HANDLES ROTATE 180° **BEST WARRANTY** **ALL GEAR DRIVE**

Brush Mower

Log Splitter

Chipper/Shredder

Homestead Valley Sales

22271 Ice Avenue, Bloomfield, IA 52537 (641) 664-1209

Premier Ag Solutions

BECK'S Ag Leader Technology

**Supplying your seed
and precision farming needs**

Bloomfield, Iowa
Office: 641-664-3412

Gene Joos: 641-777-5997 • Lincoln Joos: 641-777-2968
premieragsolution@gmail.com

Good Shepherd Lutheran Church to host Community Blood Drive Monday, May 2nd from 3:00 to 6:30 pm at 19419 Lilac Ave., inside Fellowship Hall. To donate, please contact Shirley Arndt at 641-664-1776 or visit www.bloodcenterimpact.org and use code 5265 to locate the drive.

West Grove to host Community Blood Drive Wednesday, April 27th from 1:00 to 6:00 pm at 22050 Eden Ave., Bloomfield, IA inside Community Hall. To donate, please contact the Blood Center at 800-452-1097 or visit www.bloodcenterimpact.org and use code 5336 to locate the drive.

FREE CLOTHING: Bethany Baptist Church on Minneopa, Ottumwa. April 20th & April 27th 1-3pm. April 27th will be our last day of clothing. PH: 641-684-6445 17

LakeWood RV Sales & Rentals



2006 COACHMEN
CHAPARRAL FIFTH
WHEEL, 2 SLIDE-OUTS,
VERY NICE, SLEEPS
4, TABLE 'N CHAIRS,
LARGE CORNER
SHOWER IN THE KING
BEDROOM!
COME SEE IT TODAY!

2006 COACHMEN
• Model 277DS • Clear Title • 2 Slides

\$13,500 CALL TODAY!

Hwy. 136 E., Downing, MO
9 miles W. of Memphis or
1 1/2 miles E. of Downing
www.lakewoodrvsales.com

Tues. - Fri. 8-5 • Sat. 8-Noon,
Closed Sundays & Mondays
Phone: 660-379-2763
Cell: 660-341-1927
Fax: 660-379-2792

LINE-X OF OTTUMWA



Brad Lisk • Kevin Webster
15514 Blackhawk Rd., Ottumwa, IA

Gift Cards Available!



**KEEP YOUR RIDE
IN GREAT SHAPE!
PROTECT IT WITH A LINE-X COATING!**

Bring it in and we can LINE-X® it!

641-683-9334

HUFF'S POLLED HEREFORD BULLS FOR SALE

Raising Hereford Cattle Since 1915

• Sires are selected for calving ease, maternal traits, calm dispositions, & rapid growth. Superior EPD's!!

• Raised on a diet that encourages growth not fat, they are ready to work!

• Docile & easy to handle - the disposition you always wanted.

• 2015: inducted into the Missouri Hereford Hall of Fame.



**These bulls
represent the
best genetics
of the breed!**

HUFF'S POLLED HEREFORDS

RR1 BOX 192 • RUTLEDGE, MO 63563

LeRoy & Jane Huff, Home: 660-883-5684 or Cell: 660-341-6392
Sean & Nichole Huff, Home: 660-883-5383 or Cell: 417-499-3639

GIVE US A CALL & VISIT OUR FARM TO SEE FOR YOURSELF THE QUALITY DESCRIBED!



Handyman Home Improvements

Decks, Porches, Siding, Drywall, Windows, Roofing, New or Remodel - No job too small!

Joe Rohrer Free Estimates
Bloomfield, IA 641.208.6930



FOR SALE

Larry Drake • Centerville, IA
641-895-9422 or 641-658-2613

Black White Face, Black or Red Simmental and Sim-Angus bulls. All wts. and EPDs, calving ease, performance and eye appeal; half blood to purebred. Reasonably priced.

JOE'S BARBER SHOP
Hours: Thursday & Friday
8:00-5:00 & Saturday 8:00-
Noon. 210 E. Franklin St.,
Bloomfield, IA. PH: 641-
664-2020, 641-208-5561 TF

FOR SALE: Used garden
tillers rear & front tine. All
sizes and makes includes
Troy-Bilt & Mantis tillers.
Kahoka, MO
PH: 660-216-1809 21

**YODER'S INDIAN
CREEK FURNITURE** We
have furnishings for every
room in your home. Large
selection of styles and wood
species to choose from.
Custom orders welcome.
Delivery available. Also
available Martin houses
and gourd racks complete
with pole and winch. Great
selection of outdoor poly
furniture. **Located 4 miles
North of Cantril on RT.
V64, 22769 Rt. V64 Milton,
Iowa.** TF

FOR SALE: Rossi single
shot 223 rifle with heavy
barrel, sling, & TruGlo red-
green dot sight, 590 rounds
of Federal American Eagle
varmit tip ammo, like new ,
only shot 10 rounds to sight
scope, \$475 with scope, \$435
without scope. 100 rounds
(10 boxes) of Winchester
PDXI 410 shotgun defense
rounds, 2 1/2 inch, \$70.
Ottumwa.
PH: 641-680-3876 16

FOR SALE: 1997 JD LX 176
riding lawn tractor V-twin
21 HP Briggs & Stratton 38"
cut. Completely serviced,
ready to mow and go.
Sale price \$1,000. Have all
receipts. **Ask for Charlie.**
PH: 641-208-2270 or 641-
208-1099 16

FOR SALE: Bundles of slab
firewood, \$20/bundle. Will
load. Bloomfield, IA.
PH: 641-722-3020 18

WOODRUFF

ANGUS

BULLS for SALE

AT THE FARM
Milton, IA



WOODRUFF CHEROKEE 34

2015 SHOW BULL of the YEAR

Roy 641-799-6912

Randy 319-470-6999



Fox Valley Welding

No matter what size the project customer satisfaction is always our first priority.

Tig & Aluminum Welding Milwork **Lathe New Steel** **Fabricating CNC Machining CNC Cutting**

Hours: M-F 8-5:30
641-656-4684 • 12190 East Hwy. 2 • Milton, IA

Are you in BIG trouble with the IRS? Stop wage & bank levies, liens & audits, unfiled tax returns, payroll issues, & resolve tax debt FAST. Call 888-606-6673 (MCN)

STUDENT LOAN PAYMENTS got you down? We can help reduce payments and get finances under control, call: 866-871-1626 (MCN)

\$14.99 SATELLITE TV. Includes free installation. High speed internet for less than \$.50 a day. Low cost guarantee. Ask about our FREE IPAD with Dish Network. Call today 1-855-331-6646 (Not available in NE) (MCN)

DISH NETWORK - \$19 Special, includes FREE Premium Movie Channels (HBO, Showtime, Cinemax, and Starz) and Blockbuster at home for 3 months. Free installation and equipment. Call NOW! 1-866-820-4030 (MCN)

NEW ARRIVAL - Modular 1,404 square feet, three bedrooms, two baths, great open floor plan, huge walk-in closet, very nice utility room. Delivered and set on your foundation for \$96,600 (\$68.80 per square foot) CENTURY HOMES OF OSKALOOSA 1-877-241-3621 (MCN)

Free Pills! Viagra!! Call today to find out how to get your free Pills! Price too low to Mention! Call today 1-877-560-0997 (MCN)

Our Hunters will Pay Top \$\$\$ To hunt your land. Call for a Free Base Camp Leasing info packet & Quote. 1-866-309-1507 www.BaseCampLeasing.com (MCN)

A UNIQUE ADOPTIONS, LET US HELP! Personalized Adoption Plans. Financial Assistance, Housing, Relocation and More. Giving the Gift of Life? You Deserve the Best. 1-888-637-8200. 24HR Hotline. (VOID IN IL) (MCN)

ALL THINGS BASEMENTY! Basement Systems Inc. Call us for all of your basement needs! Waterproofing, Finishing, Structural Repairs, Humidity and Mold Control. FREE ESTIMATES! Call 1-800-640-8195 (MCN)

HELP WANTED

Experienced Log Cutter/ Skidder Driver



Must be willing to travel.

Marengo, IA area

CALL DAN
319-721-2149

FOR SALE



Yearling & One 2 year old Angus Bulls

SELECT NOW

WE'LL KEEP UNTIL MAY

Doug Davis 641-777-5200

HOT DIGGITY!



TRI-COUNTYSHOPPER.COM

FOR SALE: 12 GA. Benelli super black Eagle, camo, extras. 12 GA. Remington 870 express, 3". 20 GA. Winchester model 1200. PH: 319-494-7733 18

FOR SALE: 44" pull from behind Swisher Trail mower. 11.5 hp, Briggs & Stratton engine, finish cut. Runs well \$750. 5'x10' 2 wheeled trailer. Good condition \$600. PH: 641-208-3645 17

FOR SALE: Like new elliptical trainer, purchased in October 2015 for \$280, used very little. Asking \$180 FIRM. Call between 6am-8pm. PH: 641-919-2906 17

MAINTENANCE PERSON WANTED: Must have carpentry, plumbing, some electrical, dry wall skills. Call Charles: 931-200-4681 or 931-200-1522. 18

SINGLE WHITE FEMALE SEEKING MALE: Caucasian or Oriental, age 29-40. Call Queenie: 931-200-4681 or 931-200-1522. 17

Large Estate Auction

To settle the Estate of Marjorie L. Savage I will sell at Public Auction: Real Estate, Car and Pickup, Guns, Household Goods and Collectibles at the farm located six miles east of Bloomfield, Iowa, at 21603 Peach Avenue. Watch for auction signs east of Bloomfield, Iowa off of Hwy. 2 on

Saturday, May 21, 2016
starting at 10:00 a.m. Sharp.



110 acres m/l land selling in 2 Tracts at 12 Noon.

Tract I: 10 acres with an all modern 2-bedroom home with finished basement, covered deck, attached garage, forced air gas furnace, CA, utility room, has 24x32 metal pole barn, open front shed. The 10 acres consists of pastureland, rural water and pond. Very nice acreage for horses or livestock.

Tract II: 100 acres m/l just across the road from Tract I. Excellent hunting ground and timber pasture with an abundance of deer, turkey, etc. Rural water, electricity and ponds on premises.

To view the home prior to sale date contact Auction Company at 641-208-0254.

Marjorie L. Savage Estate

21603 Peach Ave, Bloomfield
Vindy Johnson, Executor for Estate, Bloomfield, Iowa
Rick Lynch, Attorney for Estate, Bloomfield, Iowa

Terms: Cash or good check. \$35.00 returned check fee. Not responsible in case of accident. The information in this sale brochure was obtained from the best reliable sources available to us. However, the Auctioneers or their employees will not be held liable should the above information be incorrect. Any announcement made day of sale will take precedence over any previous advertising.

SALE CONDUCTED BY
Don Horn Auctioneering Service
209 East Jefferson, Bloomfield, IA
Phone: 641-664-1385 • 641-722-3796 -Home
• 641-208-0254 -Cell
"We don't talk service, we give it."
Auctioneers:
Don Horn • Jerry Bish
Rodney Lawson • Josh Williams • Trevor Nightingale

AUCTION

Monterey Auction House

Sunday, April 24th, 11:00 am

Located 10 miles S. of Bloomfield on 63
then 4 miles W. on J51 or 10 mi. N. of
Lancaster, then 4 mi. W. on J51

New Hotpoint washer and electric dryer, 3 antique small wood stoves, kitchen cabinet with tin on sides needs work, cement lawn ornaments, round oak table, weights for platform scales, mining picks, 30" buzz saw blade, hand hay cutter, lawn mower trailer with tilt bed, 400 pcs. green glassware, wood pulleys, pitcher pump, 3 old rug beaters, sad irons, 3 bee smokers, oak coat hangers, old hand grinder, wire egg basket, 5 gallon glass jug, green fruit jars, 2 buckets R.R. spikes, 18 volt cordless circular saw and drill, hand garden plow, hoes, rakes, milk glass kerosene lamp, auto lite spark plug case hangs on wall, auto manuals, 10 small doors from old barn, 10 cages various sizes, old pop bottles, electric fence post, 5 10 ft. older wood cattle feed bunks, rubbermaid cooler, Truguard 1/2 HP garage door opener, aluminum extension ladder, 2 wheel trailer with wood box, 10 boxes of new fabric all lengths, 12 antique grinding stones off the old pedal grinder, patio heater, 90 amp flux wire welder still in box, shelving, stepping stones, 2 wash boards, dresser with mirror, Balkamp timing light, charcoal grill.

All Consignments Welcome!
Announcements made day of sale take precedence over any advertising. Not responsible in case of accidents.

LAWSON AUCTION SERVICE
For More Info.: John Lawson 641-895-3852

SURPLUS AUCTION

There will be a Public Auction of Surplus Equipment and Furniture for Truman State University at the Dulaney/Baldwin Building #4 on LaHarpe Street in Kirksville, Missouri on:

Saturday, April 23, 2016 at 9:00 a.m.

Announcements made the day of the sale take precedence over all other advertising.

Computer Equipment: Misc Dell & Gateway Computers, Monitors, Keyboards, Monitor Stand, Power Adapters, (2)Asus Netbook, (5) Apple PowerMac G5, Apple iMac Z0CX, Gateway Laptop 600lb, Apple iPad MB292LL/A, (4) Apple Mac Mini, (2) Apple MacBook Pro MD318LL/A, IBM ThinkPad 750, IBM laptop, Apple MacBook Z0G4; **Computer Misc:** Tripplite 5000va UPS System, Tripplite 1500va UPS System, (2) Tripplite Battery Pack, Cisco 2800 Power Supply, QDAXS CATV Amplifier, DirectTV Receiver, Cisco 1702 Access Point, Cisco 1242 Access Point, Cisco 1131 Access Point, (14) 2U Wire Managers, (2) 3U Wire Managers, (4) 20U Vertical Managers, (31) Cisco Air-ANT2465P-R antenna, (44) Cisco Air-ANT2012 antenna, (3) Cisco Air-Ant2485P-R antenna, Targus USB Port Replicator, (2) Wyse Thin Client, HP Jetdirect Connectivity Card, HP Jetdirect 175x print server, Netgear ProSafe 5 Port Switch, Cubex Autoview Commander, (2) laptop docking station, Iomega Zip Drive, Cybex KVM Switch, smart board, (6) Power Vault 2205 chassis; **Printers:** HP DJ 5940, HP LJ P1505, HP DJ 3940, Canon Pixma IJ, HP LJ 4650n, (3) HP LJ 4050, HP LJ 500 M551, HP DJ 2460, HP DJ 720C, HP DJ 880C, HP DJ 6940, HP LJ 4100n, HP 4250n, HP LJ 4000n; **Office Equipment:** Aurora AS662C paper shredder, Fellows Powershredder 370, GBC Shredmaster Shredder, Destroy-It 2402 shredder, Swingline shredder, HP C6260A Scanner, (2) Laminator, fax machine, IBM Selectric Typewriter; **Electronics:** (11) Toshiba VCR/DVD player, misc speakers and audio equipment, , Toshiba DVD player, Sportstar Fax Modem, (3) NEC LT280 Digital Projector, NEC LT380 Digital Projector, Toshiba VCR player2) DVD/VCR, (5) Sony VCR, 3M Transparency Overhead projector, (4) NEC monitor, Mag LT7655 Monitor, Elmo Visual Projector, Elmo slide Projector, Samsung VCR/DVD, Nikon Nikkor 18-105mm lens, B800 photo flash, Yamaha stereo cassette deck, Sony tuner/amplifier, (4) JVC video cassette recorder, JVC editing control unit, (2) JVC audio mixer, JVC color video monitor, Sony beta max portable tape player, Setchell Carolson dual video monitors, Heath Kit Decade Resistance, Heath Kit Decade capacitor, TTC XLFM 2 power supply, General Instrument diplex filter, Bonder Tongue output combiner/amplifier, Video DA, Apex Systems compeller stereo compressor/limiter, (2) Grass Valley video DA, Prime Image Frame sync/time base corrector, Scientific Atlanta Agile modulator, Sigma Electronics A/V switcher, (2) Drake video modulator, FM systems audio level master audition AGC, Moseley STL transmitter, VLX video media, Sentinel signal generator sync test, signal generator DPS-285, Prime Image TBC freeze frame, Denon CD player, (2) CRT video monitors, Alpha General magic box character generator, Inovonics FM modulation analyzer, Marti STL transmitter, Marti STL receiver, Monfrotto Pantograph studio light hangers, ATI Encore series dual distribution amplifier, Audioarts power supply, Blonder tongue agile demodulator, Brogen FM/AM tuner, CADCo agile modulator, Carvin 1/3rd octave equalizer, Telecaster 1 character generator, Circuit panel with punch buttons, Clear-com Universal Interface, (2) Crown Broadcast FM Transmitter, DA Amp adtech Inc, Denon cassette player/recorder, Denon compact disc player, DX antenna modulator, Hi-8 video camera, Halo powertrack lighting lamp units, Inline 2000 universal analog digital video interface, Iris technologies video commander rackmounted unit, Kramer 1.5 composite video distribution amplifier, Mosley STL receiver, Olson Technologies 12-port combiner, Panasonic S-VH video cassette player, Panasonic video switcher, Rapco power center rack mount, Scientific Atlanta video modulator, Shure Professional microphone, sliding rack shelf, Sony Handycam, Sony Mini-disc player, recorder, (3) Sony Trinitron monitors, (2) Sony u-matic video cassette editing recorder/player, Tascam 112 digital cassette player/recorder, VAC video line isolator, Xenon discharge lamp; **Cameras:** Smart Document Camera SCD280, Flip Video Camera Ultra HD, Olympus FE-360 Digital Camera, Philips Webcam SPC1300NC, Smart Document Camera SDC330, (3) Panasonic VHS Camcorder; **Furniture & Supplies:** Misc chairs, desks, shelves and tables, (6) Chests/Dressers, (3) Night Stands, couch, microwave stand, sleigh bed headboard and footboard, (16) student desk chairs with tablet arm, wooden bookcase, metal cabinet, supply cabinet, (2) wooden end tables, (3) coffee table, wardrobe, trophy case, (4) wooden framed mirrors; **Athletic Equipment:** Whirlpool, Whirlpool tub, several Schutt softball helmets; **Misc:** (2) keyboard desk shelf, (3) dry erase board, numerous criminal justice VHS tapes, lamp, (3) slide cabinet, (9) slide carousel, slides, canvas material, artificial tree, coat rack, (2) chalkboards 7' x 30'; (6) Orion Electrode, (2) Share Plus Data Signed Transfer device, Unisonic Answering machine, Isco UA-6 Absorbance Detector, Isco UA-6 Type II Control & Connectors, Isco Density Gradient Flow Cell, Isco Retriever 500 Fraction Collector, Isco Tube Holder & Piercer, GTC-1 Genetic Thermalcyler, wooden therapy table, (7) telephone, (3) collapsible easel, 2 drawer filing cabinet, 4 drawer lateral filing cabinet, (2) Whirlpool refrigerator, Jensen subwoofer, Projector screen, Juliet Braille, Northwestern Microform reader, (2) Canon microfilm reader/printer/cabinet, (3) Jamex coin box, 10 drawer microfilm cabinet; **Guns:** (4) Remington Model 1100 shotguns; **Vehicles:** 1999 Plymouth Grand Voyager, 2006 Chevy Impala, 1999 Ford E-450 Super Duty Diesel 20 passenger mini-bus, 1996 Genie Z60/34 Lift to be sold with a minimum bid of \$5,500.

This is a partial list of items being offered for sale.

Guns will be sold at 9:00 am and require a background check. All Federal FFL Laws and NICS Background Checks will be adhered to Iowa and Illinois permits to purchase firearms will not be accepted. A NICS Background will have to be done on each purchaser unless they can provide us with a signed in ink copy of their (not someone else's) FFL Firearms Dealer License. No exceptions. If the person wanting to bid does not think they can clear a NICS Background Check, they should not bid. If a successful bidder does not pass the background check, we will turn around and immediately re-sell the firearm.

All items will be sold "as is, where is" with no guarantees stated or implied. All sales are final and the high bidder is to pay for and **remove** the items from the property on the day of the sale. **(No exceptions)**

Terms of payment are cash, personal check, MasterCard, Visa, American Express, Discover, or purchase order (if prior arrangements have been made). Sales tax will be collected unless the buyer has a tax number on file with the University. The University will not be liable for accidents or lost and stolen merchandise.

Guest Auctioneers

Jerry McMain
Truman State University
(660) 665-9380

Bob Jones
Truman State University
(660) 785-4418

View the Shopper's FREE digital edition now!
www.Tri-CountyShopper.com



Tell Them You Saw It In The
**Tri-County
SHOPPER**

FRIESEN CONSTRUCTION

New Houses
Remodeling
Garages Electrical
Plumbing
Custom Cabinets

Arlen 664-3270
Cell 641-208-0170
Bloomfield, Iowa

SUMMER IS COMING!
GET YOUR AC CHECKED



B&W RECEIVER
TOW & STOW HITCHES
Variety of Styles & Sizes



WINDOW WASHER
FARMER'S DUST
CARS



TRAIL FX
STEP BARS
3" Round to 6" Oval

ZIMMERMAN
AUTO LLC
TRAILER INC.

101 North St. • Cantril, IA • 319-397-2406

FOR SALE: Miniature pony.
Broke to ride and drive,
\$150. West Grove/Moulton
area.

VM: 641-929-3036 18

FOR SALE: Dark brown
leather loveseat with
recliners. In like new
condition, \$600.

Lancaster, MO
PH: 660-457-3596 17

FOR SALE: Case IH 5140
with loader, 6,085 hours,
4x4, \$22,500. NH 1411
disc bine, used very little,
\$12,750. Generators 30-60
KW, low hours, like new.

PH: 301-730-9114 17

FOR SALE: Case IH 1660
combine rear wheel assist,
fore & aft, auto reel speed,
always shedded, well
maintained. \$19,000 OBO or
trade for tractor

PH: 641-799-0200 17

FOR SALE: 10x20 kennel
building, 24 outside pens.
Also sink, hot water heater,
coated wire. \$6,500.

PH: 660-341-9987 17

2015 SPRING BULL
CALVES FOR SALE: Out
of Dateline, Aberdeen
& Hoover Dam sires.

Whittington Angus.
PH: 641-208-6010 18

ANNUAL LAWN & GARDEN AUCTION

Saturday, April 23rd, 2016
Starting at 10:00 AM

Mowers selling at 12:00 noon

Sale will be held at The Jackson Auction House on the
North West corner of the Memphis Square, in Memphis,
MO. Watch for auction signs.

Lawnmowers and Tractors: 445 John Deere with 60
inch Deck and Power Steering Riding Lawn Mower,
Grizzly Dixon Zero Turn Riding Lawn Mower with 60
inch Deck and New Motor, 318 John Deere with 48
inch Deck and Power Steering Riding Lawn Mower,
Cub Cadet Zero Turn Riding Lawn Mower with 50 inch
Deck, 2012 EX Mark Zero Turn Riding Mower with 72
inch Deck and 38 HP Motor, Husky Supreme Riding
Lawn Mower with 42 inch Deck and Hydro, AGCO Allis
1617 Hydro Riding Lawn Mower with 44 inch Deck,
John Deere 345 Power Steering with 48 inch Hydraulic
Lift Deck, GT 235 John Deere with 48 inch Deck, 1250
Woods with 50 inch Front Deck Zero Turn Riding Lawn
Mower, Dynamaric with 39 inch Deck, Cub Cadet 2042
with 42 inch Deck, M and W Riding Mower with 60
inch Front Deck Zero Turn, Walker With 42 inch Front
Deck Zero Turn with Grass Handling System, F925
John Deere With 60 inch Front Deck Diesel Zero Turn
Riding Mower, Wright Stander Walk Behind Mower with
48 inch Deck, Gravely Zero Turn with 40 inch Deck,
John Deere 165 Hydro with 42 in Deck, Simplicity 9020
Garden Tractor with 60 in Deck, Selling Separate 3 Ft
Disk, 3 Ft Cultivator and 1 Bottom Plow, MT John Deere
Tractor.

Tillers, Small Machinery, and Miscellaneous Items:

Troy Bilt Bronco Tiller, Troy Bilt Horse Tiller, Airen's
Front Tine Tiller Like New, Wizard Front Tine Tiller, 21
inch Lawn Boy Push Mower, Bush Hog 48 inch Pull
Behind Brush Cutter with 13 HP Motor, Water Pump
with Hose, Power Craft Arc Welder, Set of New 42 inch
Pallet Forks for Skid Loader, 3 pt Dirt Scoop

Flowers and Plants: Several Variety of Tomato Plants,
Peppers, Lettuce, and other vegetable plants Petunias,
Marigolds, Pansy, Geraniums, And other variety of
Flowers, Several Varieties of Trees and Bushes,
Hosta, Lilies and More. All Plants come from a local
greenhouse.

Consignments Taken Up until Sale Time. Please call for
more information. Announcements day of Auction Holds
Precedence over any Advertising. Lunch will be Served.
Terms Cash, Check with Proper ID or Major Credit Card.



Sale Conducted by:
Jackson Auction Service
David and Jodie Jackson
Memphis, MO

For more information call or E-mail us at: auctions@nemr.net
David Jackson David's Cell Jodie's Cell
660-883-5627 660-341-1762 660-216-3750

The Car Spa
Auto Body Shop • Auto Glass
Automotive Restoration • Hand Detailing Service

**KARR COLLISION CENTER
& AUTO DETAILING**
Shawn Scott, Owner • 701 Karr Ave. • Bloomfield, IA • 641-664-1024

KEOSAUQUA SALE CO. 205 I I Hwy. I, Keosauqua, IA

Results from April 16th

Butchers \$40.00-\$46.00/cwt
Sows \$27.00-\$42.00/cwt
Lambs
under 80 lbs \$200.00-\$260.00/cwt
over 110 lbs. \$125.00-\$135.00/cwt

STEERS

BLK 335 237.50
BLK 410 222.00
MIX 495 201.00
BWF 559 188.00
BWF 605 175.0
BLK 673 167.85

Ewes \$60.00-\$87.00/cwt

Kid Goats 40-70 lbs. \$75.00-\$175.00/hd
Cull Nannies.. \$52.00-\$175.00/hd

HEIFERS

RED 295 200.00
BWF 355 191.00
BLK 427 199.00
BLK 537 171.00
BLK 610 151.00
BLK 708 154.00
MIX 799 143.00

Pound Cows

Low yielding..... \$57.00-\$76.00/cwt High yielding... \$74.00-\$81.00/cwt
Pound bulls..... \$85.00-\$103.00/cwt

SPECIAL GREEK EASTER LAMB SALE Saturday, April 26th

50 hd 3-6yr w face & speckle face ewes bred to Minot Hamp
Bucks, Due April 25, R Clingan

SPECIAL CATTLE SALE Saturday, April 30th

REGULAR SALE Saturday, May 7th

Thank You For Your Business!

Selling Times

Hogs 9:30 a.m.
Sheep & Goats 10:00 a.m.
Outside Merch 11:00 a.m.
Cattle Noon

For More
Information Contact:

Keosauqua Sale Co.
319-293-3508
Bill Goehring
641-919-9365

www.keosauquasaleco.com

MAST OVERHEAD DOORS, INC.

105 S. Dodge St., Bloomfield, IA 52537



GARAGE DOORS

Residential & Commercial
Doors & Operators

641-680-2016

CALL FOR AN
APPOINTMENT

Quality Products
+ Quality Workmanship
= Quality Customers

Free Estimates We Fix Doors

West Grove Township:

Is offering an opportunity to bid on 15x24
ADA compliant restroom project in the
West Grove Township Park. Plans and
specifications may be picked up on or after

Friday, April 1st, 2016.

Bids are due by 5PM on

Friday, April 29th, 2016.

Contact: Fran Harris
West Grove Township Clerk
641-929-3379

Township has the right to reject any or all bids.

Scotland County LIVESTOCK AUCTION

P.O. Box 111 • Hwy 15 North • Memphis, MO
660-465-7213 • Jerry & Barb Blomme
660-341-0069 • Grant Blomme

SPECIAL CATTLE SALE Sat., April 23rd at 12:30 PM

RESULTS OF SALE, SAT., APRIL 16TH: Steers: 320 lbs. \$200; Bulls:
325 lbs. \$194, 360 lbs. \$180; Heifers: 265 lbs. \$190, 382 lbs.
\$180, 423 lbs. \$170; Cow/Calf Pairs: \$1500 to \$2500; Fall Calf
Cows: \$2050, Young P3 Cows \$2100; Mid-Age Cows: \$2050; Angus
Breeding Bulls: \$3250, SS/P3 Cows: \$1625; LB Cows: \$60 to \$85;
LB Bulls: \$90 to \$108.

www.ScotlandCountyLivestock.com

BLOOMFIELD LIVESTOCK MARKET

Wed., April 27th Special Feeder Sale 11:00 AM

Wed., May 4th NO SALE

Wed., May 11th..... Special Feeder Sale 11:00 AM

TUESDAY POUND COW SALE EVERY WEEK
10:30 a.m. Fat Cattle, Butcher Cows, Bulls, Veals

SALE BARN OPEN UNTIL 9:00 PM
EVERY MONDAY TO RECEIVE LIVESTOCK

Top Consignor's Report For April 11th, 2016. Selling 258 head.

BRED COW HEIFER

Glen Harter	11 BLK	1017 lbs	\$2,050.00 H	Fall Bred
Glen Harter	14 BLK	1017 lbs	\$2,000.00 H	Fall Bred
Dennis Beane	5 BLK	1138 lbs	\$1,950.00 H	Fall Bred

BRED COW YOUNG

Arvid Goettsche	4 BLK	1385 lbs	\$2,550.00 H	3P
Garry Poe	13 BLK	1072 lbs	\$2,075.00 H	Fall Bred
Dennis Beane	3 RED	1768 lbs	\$2,075.00 H	3P

C/C PAIR

Mike Moothart	13 BLK	1234 lbs	\$3,175.00 H	2 Yrs
Mike Moothart	12 BLK	1158 lbs	\$3,150.00 H	2 Yrs
Matt Sorensen	7 BLK	1175 lbs	\$3,150.00 H	2 Yrs
Matt Sorensen	7 BLK	1188 lbs	\$3,150.00 H	2 Yrs
Matt Sorensen	6 BLK	1189 lbs	\$3,150.00 H	2 Yrs
Mike Moothart	11 BLK	1187 lbs	\$3,050.00 H	2 Yrs
Seth Mitchell	6 BLK	1229 lbs	\$3,025.00 H	2 Yrs
Marcus Moothart	13 BLK	1104 lbs	\$2,975.00 H	2 Yrs
Dalton Lynch	10 BLK	1174 lbs	\$2,750.00 H	3 Yrs
Dalton Lynch	6 BLK	1132 lbs	\$2,700.00 H	3 Yrs

Phil Schooley 641-664-3450

Ron Schooley 641-777-0302

Roman Schooley 515-450-3685

We appreciate your business!

Tyler Schooley 641-208-5442

Barn Phone 641-664-2435

HWY. 63 NORTH • BLOOMFIELD, IA

GELBVIEH REGISTERED YEARLING BULLS
excellent quality, semen tested & gentle. **Hobbs Gelbvieh.**

PH: 641-766-6779 or 641-203-0863 18

FOR SALE: Banty hens \$5, roosters \$1. West Grove/Moulton area.

VM: 641-929-3036 16

FOR SALE: Top Gun brand grill guard, heavy duty, black, fits 2008-2010 Ford F-250.

Call: 641-208-6458 18

FOR SALE: Red yearling bulls, 5/8 Red Angus, 3/8 Red Simmental. Loonan breeding - both parents. \$2,500 each. **Donnie Martin.**

PH: 641-664-3324 18

FOR SALE: AC model 7020, Koyker loader model 600, hay stabber, radials, 85% rubber, A/C, transmission sync-shift, field ready! Asking \$12,000.

PH: 641-799-0058 18

FOR SALE: Craftsman rear tine tiller, in good condition. \$500.

VM: 641-664-1061 18

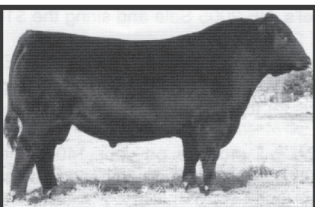
FOR SALE: Young Red Heeler. All shots, wormed and ready to go. \$50.

PH: 641-777-4949 16

A FEW PACKAGE BEES LEFT FOR SALE: Delivery late April. \$40 deposit. Individual Queens available.

PH: 641-682-8333 or 641-799-9266. 16

ANGUS BULLS YEARLINGS & 2 YR. OLDS



Sired by Musgrave Reachout 530

- ★ CALVING EASE
- ★ GROWTH
- ★ THICK
- ★ GOOD DISPOSITION

SELECT YOUR BULL NOW

DORAN BOLLMAN
PULASKI, IOWA
641-675-3467

WD 63 PIPE & STEEL

NEW PIPE, NO RUST!

RAILROAD TANKERS & BOX CARS

PIPE SIZES
3/4" - 60"
any size or thickness

PLATE THICKNESS
1/8" - 1"
anything in between

BIG SALE ON ALL CORRAL PIPE & CORRAL PANELS!!

Installation available - call for estimate!

660.216.9061 OR 660.341.4753

Just south of Lancaster, MO off Hwy. 63

CABLE 1/2" - 9/16" • LIVESTOCK HANDLING EQUIPMENT

Post Frame Building Kits



- Buy Direct & Save
- Fast Service
- Premium Products
- Professional Contractors Available

A W Metal LLC
Metal Roofing Headquarters

641-664-3990 • awmetal.net

FOR SALE: 2005 Case-IH 2206 6 row cornhead, hydraulic deck plates, excellent condition, \$18,000. IH 863 6 row cornhead, \$2,750. Westfield MK 80-61 grain auger with swing hopper, \$2,500. Danuser post hole digger with 9", 12", & 16" augers with extension, \$1,600 OBO.

PH: 641-799-0200 17

FOR SALE: JD SXT-46 riding lawn mower, a good one, \$650; also Cub Cadet for parts only, \$250.

PH: 641-459-3435. 17

FOR SALE: JD steel wheel 4 bar side delivery rake.

PH: 641-660-6555 17

WORK WANTED: Scent rows cleaned out, brush cutting, property cleaning up, and old buildings torn down, etc. **Call 660-956-2177.** **FOR SALE:** Wedding dress size small, \$100; Wedding dress size small, lots of beading, long train, \$85 OBO; Tan and black Rocky Lace boots, size 5 mens, thermolite, waterproof, \$15; Wilson black leather coat, medium, \$50 OBO.

PH: 660-651-8383 18

FOR SALE: Hesston 5540 big round baler. Average condition. New belts, 2 seasons ago. Asking \$2,000.

PH: 641-208-7162 17



Bring your plans in for a FREE ESTIMATE



Trusses Engineered and Designed to Your Specs

Complete building packages for:



- Commercial • Agriculture •
- Residential •

17893 212th Street • Bloomfield, IA 52537
641-722-3605 • Mon.-Fri. 7 AM to 5 PM