

THE METROPOLITAN BUILDER

Greater Houston Edition

themetropolitanbuilder.com

CELEBRATING THE CLASSICS

Explore kitchen and bath products
that embody luxury at its finest!

Building on Strength:
Alenrock Construction Sets a
Solid Foundation in Montgomery County

Keechi Creek Builders
Where Dreams Meet Design

A New Generation of Vision
Olivia Bufalini and
Collaborative Design Group



A Higher Standard



*Your future kitchen starts with Sub-Zero, Wolf, and Cove,
purchased at*



3005 W Loop S, Suite 150
Houston, TX 77027
713-572-2284(BATH)

No Appointment Necessary. Walk-ins Welcome.

www.bathsofamerica.com

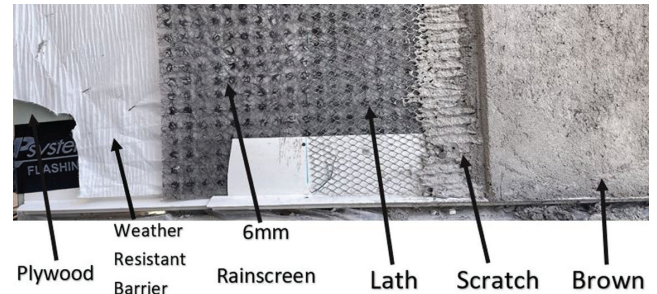
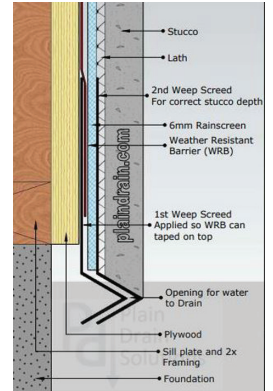


Plain Drain 6mm Rainscreen
Your Solution to New Building Codes

Stucco Isn't the Problem!
Your Lack of Moisture Management Is
Keep it Plain and let it Drain!

Weep Scream Detail

At the base of the system, it is important that we allow a gap for the water to exit the system. This can be accomplished by installing a double weep screed detail. The first is wrapped behind our WRB. Then we install Plain Drain rainscreen and ensure we backlap it for the built in bug screen. Next, we install our 2nd weep screed to ensure we have the correct depth thickness.



What Sets Us Apart?

Experience, Passion and Determination

Contact Us: tel (281) 830-1308 | bruce3@plaindrain.com | www.plaindrain.com



*Quality, Technology
and Customer Service
is what sets us Apart
from the Competition.*

Family Owned and Operated since 1989

- Passionate and Dedicated Team
- Detail-Oriented Approach
- Effective Communication
- Trustworthy and Reliable

Our Specialities:

- Cast Stone and Cut Limestone (material and install)
- Stucco, Brick, CMU and Stone

PRECISION DEVELOPMENT

Bruce Honore and Howell Mallory

www.pdcaststone.com

713-667-1310

Stucco@pdcaststone.com



THE METROPOLITAN BUILDER

An Industry Trade Publication | October 2025



On The Cover

08 CELEBRATING THE CLASSICS

Explore kitchen and bath products that embody luxury at its finest!

By Linda Jennings

03 Publisher's Note

A Time For Winding Down And Reflection

04 Building on Strength:

Alenrock Construction Sets a Solid Foundation in Montgomery County

By Kathy Bowen Stolz

12 Where Dreams Meet Design

By Lesley Bercegeay

16 Baths of Americal

17 Hardwood Products

18 A New Generation of Vision

Olivia Bufalini Leads

Collaborative Design Group into the Future

For Local Information Contact:

themetropolitanbuilder@yahoo.com

832-317-4505

www.themetropolitanbuilder.com

2206 Paso Rello Drive

Houston, Texas 77077

832-317-4505

Owner/Publisher

Giselle Bernard

Editor

Kathy Bowen Stolz

Magazine Layout & Design

Pamela Larson

Website

www.themetropolitanbuilder.com

Printed in the USA

by Seaway Printing

The Metropolitan Builder is a local trade publication published monthly in an informative and positive manner. Copies are mailed, free of charge, to building professionals throughout the greater Houston area. The opinions and facts expressed in The Metropolitan Builder magazine are those of the authors or columnist and do not necessarily reflect the views of the publisher, nor do they constitute an endorsement of products or services herein. The Metropolitan Builder strives to ensure the accuracy of the magazine's contents. However, should inaccuracies or omissions occur, we do not assume responsibility. The Metropolitan Builder reserves the right to refuse any advertisement. This publication may not be reproduced, in whole or in part, without the expressed prior written permission of the publisher.

Proud member
of the GHBA.



PUBLISHER'S *note*

Giselle Bernard,
Publisher



A Time For Winding Down And Reflection

As the year winds down, I always find it's a natural time to pause and reflect—not just on what we've accomplished, but on the relationships that made it possible. At The Metropolitan Builder, our mission has always been to bring builders, remodelers, designers, and vendors together in a way that strengthens everyone's business. This year, I've been reminded again and again that the real success of our industry lies in the trust, collaboration, and integrity we build with one another.

Winding down the year is about more than closing out projects—it's about finishing strong, tying up loose ends, and taking a moment to appreciate the people we've walked alongside. For me, that means thanking our builders for opening their doors and sharing their stories, our vendors for their commitment and support, and our readers for continuing to place their confidence in this publication. You're the reason this community thrives.

And then—it's time to rev up. A new year means fresh opportunities to connect, new stories to tell, and more ways to grow together. I encourage each of you to take the time now to review your goals, set your sights higher, and think about how you can leverage the relationships you've built through The Metropolitan Builder. The connections you make here are designed to carry you into a stronger, more successful year ahead.

Here's to closing out this year with gratitude, and stepping boldly into the next with renewed purpose and energy. I can't wait to see what we build together in the year to come.



Photo by Alysha rosly



Building on Strength: Alenrock Construction Sets a Solid Foundation in Montgomery County

By Kathy Bowen Stolz

When Jack Allan set out to name his company, he knew he wanted a name that evoked strength, stability and longevity—the very qualities he strives to deliver in every project. “Rock” felt right to him, representing both a literal and figurative foundation. The result was Alenrock Construction, a blend of his own family roots and the company’s guiding principle.

“Alenrock Construction is a full-service real estate investment and construction firm based in Montgomery County,” the owner explained.

“Whether we’re creating high-end custom residences for homeowners or delivering exceptional spec homes for investors seeking solid market opportunities, our mission is the same—build homes that endure and relationships that last.”

Jack began his career in the commercial insurance industry, where he understood the importance of listening,

communicating, and resolving client concerns. Those skills now are his approach to construction. “Understanding challenges and building trust are crucial,” he said. “I take the time to listen, so clients know they’ll be taken care of.”

The company chose Montgomery County as the base for Alenrock Construction because of the area’s remarkable trajectory.

“Montgomery County is one of the fastest-growing regions in the country, with robust economic development, a thriving real estate market and a quality of life that attracts families and professionals alike,” he noted.

For now, Alenrock Construction is focused on Lake Conroe’s premier communities—Bentwater, Grand Harbor, Windmill Cove, Clearwater Cove and Blue Heron Bay. These locations align with the company’s signature

Continued on page 7







Continued from page 5

offering: luxurious, fully customized residences tailored to each client's vision.

Although new construction is its core business, Alenrock Construction also provides architectural design, 3-D renderings, renovations, additions and even commercial building projects—delivering a seamless experience from concept to completion.

After five years of hands-on experience in the building industry, Jack Allan through Alenrock Construction has already overseen and delivered more than \$5.3 million in construction value. Its investor base spans Texas, Mexico and Brazil.

The company's five-year plan includes expanding beyond Montgomery County as its owner anticipates growth in new north Houston areas.

"More people are working remotely and looking for more land than the older sections of Houston can offer," Allan said. "Montgomery County will continue to be a focus, but we're also preparing to grow beyond it."

With a strong foundation and a clear vision, Jack Allan and Alenrock Construction are poised to set a new standard for quality and client care in the region.

***For more information, contact Jack Allan at
Alenrock Construction
936-276-8970
build@alenrock.com
www.alenrock.com***

***The company is located at
96 Beach Walk Blvd., #1263, Conroe, TX 77304***



12902 Mula Lane
Stafford, TX 77477
P. 281.495.2800
www.wrwatson.com
wwatson@wrwatson.com

COUNTERTOPS

Laminate | Solid Surface | Granite | Quartz



**W.R. Watson's
State-of-the-Art
Granite & Quartz
Fabrication Plant**

Utilizing
Computerized/Robotic
Saws,
Water Jet Cutting,
Edge Profilers,
Crane and Vacuum Lifts



CELEBRATING THE CLASSICS

Explore kitchen and bath products that embody luxury at its finest!

By Linda Jennings

Here's a magnificent mix of new product designs and decorating ideas that caught our eye due to their elegant simplicity. With exceptional features and a dedication to bespoke quality design that celebrates the classics, these new kitchen and bath fixtures and fittings are sure to suit any style. From an ergonomic concrete tub to a

gorgeous English vanity, the style for new builds and renovations is serene and luxurious. Add instant value to home projects with products that will deliver years of enjoyment, giving the living space a classic design that never goes out of style.



The Stamford Washstand by Sterlingham Company

Artisan Quality Meets English Charm

British manufacturer, The Sterlingham Company Ltd. has introduced a new sleek washstand named Stamford. Handcrafted in England from solid brass, these artisan-quality washstands feature a linear and horizontal knurling detail in the tubing. The new Stamford Washstands come in either a wall-mount two-leg, or a wall-mount three-leg design, both with the option of a glass shelf or rack for added storage. Custom sizes are also available, and all stands include a support angle for supporting the marble slab against the wall. The washstand combines the best of traditional design with an innovative style, creating a remarkable fixture. Standard finishes for the washstand include polished gold, polished chrome, polished nickel,

antique gold, brushed brass, gun metal, matte white and matte black, and various shades of bronze. Available at a height, width, and depth to any specification, custom finishes are also offered for a truly luxurious home design. Discover the Stamford Collection at sterlingham.co.uk.



Bello's Brunswick Bath Vanity

Beauty And Functionality

The Brunswick Collection is a celebration of balance—where the warmth of natural wood meets the clean strength of metal, and timeless American design takes on a modern, architectural twist. With its tailored lines, premium materials, and thoughtful detailing, Brunswick brings understated sophistication to the bath with a bold, transitional spirit. Handcrafted from kiln-dried hardwoods, furniture-grade plywood, and rich wood veneers, it comes in three nature-inspired finishes—White Oak, Natural Oak, or Walnut. Three refined hardware options of Black,

Polished Chrome, or Brushed Gold are offered. Brunswick also features visible dovetail joints, premium soft-close glides and hinges, and a removable drawer organizer. Two marble composite tops, either a classic white or striking black marble composite, a matching backsplash and a pre-installed, cUPC-certified sink complete the vanity configuration. Visit bellousa.com to see more of Bello's new collection of bath vanities.

A Refreshing Experience

The TOTO NEOREST LS Dual Flush is the pinnacle of bathroom luxury and modernity. The TOTO NEOREST comfort features begin as you approach the wash closet. The seat automatically opens hands-free to welcome you in. A nightlight illuminates your path. When you take your rightful place upon the seat, you can feel the warmth of the heated seat. An automatic air deodorizer activates to hide unpleasantness. As your journey comes to a close, you can access the remote control and start the cleanse process. A self-cleaning wand will appear to wash your nether-regions. You are in total control as you can select a front cleanse, soft rear cleanse, rear cleanse, oscillating cleanse, pulsating cleanse, and the warmth and volume of the spray. An air dryer reduces the moisture left behind from the cleaning. The automatic flush will begin as soon as you rise. The lid automatically closes as if it is saying Goodbye, as you marvel at the beauty and technology behind this luxury



The Neorest LS from TOTO

toilet experience. See the entire NEOREST Collection at totousa.com.

Two-Tone Cabinetry

This beautiful kitchen space showcases a kitchen and island featuring Covered Bridge Cabinetry's Hudson Door Style, with the kitchen and island finished in SW6201 Thunderous, while the fridge wall is painted in BM-OC-25 Cloud Cover. The pantry is finished in SW7036 Accessible Beige, and the bar area, like the kitchen and island, is also coated in Thunderous. This stunning Covered

Continued on page 10

Family Owned & Serving the Market for over 30 Years says it all.



- Custom Milling
- Hardwood Plywood
- Decorative Woods
- Wood Appliques



- Hardwood
- Exotics
- Hardware
- Moulding

HARDWOOD

PRODUCTS

1585 W. Sam Houston Pkwy N. Bldg. A | Houston, TX 77043
713-984-8904 | www.hwp.us

Delivery Services Available





Covered Bridge Cabinetry's Hudson Door style

Continued from page 9

Bridge project is packed with thoughtful, functional details, including double fridge drawers, double dishwashers, and sleek appliance panels. The towering wall cabinets make smart use of the space, elevating both the kitchen and pantry. But perhaps the standout feature is the island, with its elegant void toe treatment, reeded end panel, and inset cabinets, all working together to create an heirloom-quality look. Discover the entire Collection of Luxury Cabinetry at coveredbridgecabinetry.com.

Minimalist Luxury

Handmade bespoke luxury bathtubs and sinks made right in Los Angeles combine unique features like deep soaking



Vast Studios Bathtub I

and ergonomic design. Rising majestically, this oversized tub reaches its crescendo in a smooth, asymmetric lip that hints at overflowing bounty. Inspired by naturally occurring ovoid forms of the plant and animal kingdoms, its expansive roundness speaks to rebirth and rejuvenation, a reawakening of the primal soul through the ritual of bathing. Made from a proprietary lightweight high strength concrete, the Bathtub I is offered in any color you can imagine and comes with a choice of a smooth plaster look, textured concrete or bespoke metal (exterior) finishes. See the entire Vast Studio collections at vaststudio.com.



Flusso's Serie 230

Transitional Treasure

Inspired by the brilliance of emerald-cut diamonds, the Serie 230 Collection from Flusso Kitchen & Bath offers a versatile design that complements a wide range of décors, from traditional to modern. The gracefully arched faucet spout flows smoothly, mirroring the water it dispenses, and pairs beautifully with the simple lever handles. Each

faucet features striking detailing on the handles and at the base of the spout, which adds a touch of style and infuses elegance and luxury into the bathroom. Serie 230 is a fully complete collection featuring plumbing options in a variety of sizes and styles for sinks, showers, and tubs, as well as accessories to create a truly cohesive design space. Each element of the collection is made from premium Eco-Brass to meet stringent national and state lead-content standards. The shower control trims can be ordered vertically or horizontally, offering design flexibility without a bulky control plate. Explore the Serie 230 Collection at flussofaucets.com



Strong First Impressions Start Here

With over 30 years of experience, TS Metal Doors & Services crafts quality front doors that make a lasting first impression—built with trust, style, and strength.



METAL DOORS & SERVICES

832-371-3050
Sales@Texsalv.com

To find out more about the brands featured here visit their websites at:

*sterlingham.co.uk • bellousa.com • totousa.com
comcoveredbridgecabinetry.com
vaststudios.com • flussofaucets.com*

Plumbing You Can Count On. Service You'll Remember.

Proudly Serving Houston Builders, Remodelers, and Property Owners.



Let's build something great together

When it comes to building or remodeling, the last thing you need is a plumbing partner who cuts corners. At Daily Plumbing Solutions, LLC, we believe in doing the job right the first time—on schedule and to the highest standards.

Whether you're breaking ground on a new custom home, upgrading a kitchen or bath, or developing a light commercial space, we bring unmatched experience, professionalism, and reliability to every job.

Our team works closely with builders, remodelers, and property owners to deliver tailored plumbing solutions that stand the test of time. From underground to trim-out, we manage every phase with attention to detail, transparent communication, and a commitment to excellence.

At Daily Plumbing Solutions, we're not just plumbers—we're your plumbing partner.



- ✓ New Residential Construction – Complete plumbing systems for custom homes, townhomes, and subdivisions
- ✓ Remodeling & Renovations – Kitchen, bath, and whole-home plumbing upgrades
- ✓ Light Commercial Construction – Offices, retail spaces, restaurants, and tenant build-outs
- ✓ Code-Compliant Installations – All work meets or exceeds local and state plumbing codes
- ✓ Experienced, Licensed Team – Insured, professional, and trusted by Houston builders
- ✓ Builder-Focused Service – On-time scheduling, clean job sites, and responsive communication
- ✓ Warranty-Backed Workmanship – We stand behind our work with integrity and pride

Daily Plumbing Solutions, LLC

Because every great build starts below the surface.

Call 281-235-0328 or visit www.DailyPlumbingSolutions.com



Where Dreams Meet Design



By Lesley Bercegeay

Imagine walking into a home that feels unmistakably yours—a place where every corner reflects your lifestyle, every detail speaks to your taste, and every space is designed with intention. That is the experience Houston homeowners discover when they choose Keechi Creek Builders, a luxury design/build firm specializing in custom homes, outdoor living spaces, and high-end remodels.

At Keechi Creek Builders, the journey begins with conversation. The team takes time to understand what homeowners want and why they want it. During an initial consultation, clients share their ideas, explore design possibilities, and review budget considerations. From there, Keechi Creek develops detailed plans and digital renderings, offering a clear view of the finished project

before construction begins. This collaborative approach ensures the design feels right from day one.

Every Keechi Creek home is a balance of elegance and innovation. The company combines classic architectural details with modern conveniences like energy-efficient systems and smart technologies. Each design is tailored to the way clients live today while anticipating needs for the future. Spacious kitchens for entertaining, serene master suites for retreat, or multi-functional family spaces are all crafted with durable materials and meticulous attention to detail.

Keechi Creek Builders believes that a home's story extends beyond its walls. Outdoor living spaces are carefully



designed as extensions of the interior, offering comfort and function year-round. Outdoor kitchens, shaded patios, and fire features create ideal spots for gatherings, while custom pools transform backyards into personal oases. Whether it's a family-friendly environment or a sophisticated retreat, these outdoor designs redefine what it means to live at home in Houston.

For homeowners who want to stay in the location they love, Keechi Creek offers expert remodeling and addition services. From room expansions to full second stories, the company designs additions that look and feel as though they were always part of the original home. Kitchens, bathrooms, and specialty rooms are tailored to each client's lifestyle, while exterior renovations breathe new life into

existing structures.

Keechi Creek Builders uses only the highest-quality materials, ensuring that every project is built to last. But quality today means more than durability—it also means sustainability. The company integrates eco-friendly features and energy-efficient technologies that enhance comfort while reducing long-term costs. As Houston's first Green Built Gulf Coast certified remodeler, Keechi Creek sets the standard for environmentally responsible luxury building.

Education and innovation are woven into Keechi Creek's DNA. The team holds nationally recognized certifications, including Graduate Master Builder and Certified Graduate

Continued on page 15





Continued from page 13

Remodeler. Specialists in aging-in-place design, they also create spaces that are as accessible as they are beautiful. With over 60 years of combined experience, the team blends proven expertise with fresh, forward-thinking ideas that reflect the latest in design and construction practices.

Homebuilding can be complex, but Keechi Creek simplifies the process. Clients receive personal attention at every stage, from design and permitting to material selection and construction. The result is a seamless experience where homeowners feel guided, informed, and confident. At completion, a detailed walkthrough ensures every detail meets expectations, and the project closes with the peace of mind that comes from knowing the home was built with care.

Keechi Creek Builders has left its mark on neighborhoods across Houston, from The Heights to Cypress and beyond. Their work has been recognized with numerous industry awards, but the greatest measure of success comes from the homeowners who trust them to bring their visions to life. For those ready to create a home that is more than just a place to live, Keechi Creek Builders offers a partnership built on listening, craftsmanship, and innovation. In every project, the team proves that when dreams meet design, the result is a home that stands the test of time.

*For more information about
Keechi Creek*

(281) 914-4951

Email: info@keechicreekbuilders.com

www.keechicreekbuilders.com



When looking for appliances, plumbing, and hardware for a project, we assure you of a great selection, outstanding installations, and service.

Baths of America • 713-572-2284



Sales Professionals



Jeff Steiner -

jsteiner@bathsofamerica.com

Jeff has always enjoyed working with people and being able to offer them his exceptional services. No matter the size of the job, Jeff makes sure that the customer is satisfied and that the job he started gets his full attention until completion. After sales, Jeff also follows up with clients to ensure they are aware of the functions of the products they have purchased and if he can assist in any product demo in person. Jeff, along with his assistant, Hillary Ratliff, started the appliance builder sales division at Baths of America. He has been in the appliance industry for 30 years now and has led Baths of America to one of the largest appliance dealers in Houston, TX.



Hillary Ratliff -

hratliff@bathsofamerica.com

Hillary has been in appliance builder sales for the past four years and has no plans to go to another industry. Assisting Jeff with his builders, Hillary makes sure that products are ordered, scheduled for installation and the logistics of jobs are handled sufficiently. Hillary enjoys the appliance category as it is a very niche, and the relationships that she's made in this industry. Helping builders and meeting new clients and industry partners has become a reason why Hillary plans to keep continuing her plans to grow in the appliance industry.



Chadney Alvarez-

chadney@bathsofamerica.com

Chadney has been in plumbing and hardware sales for 25 years now. Starting as a bookkeeper at EXPO Design Center at age 18, she has developed herself into one of the leading salespersons in the plumbing and hardware industry. Developing customer relationships is very important to Chadney and a key reason why she's been very successful in maintaining her business. Starting from the beginning, when plans are just on paper, making selections, and seeing the final projects come to fruition a year or so later makes me love what I do.

Customer Reviews

Brian Phillips - Cayson Graye/Alair Homes

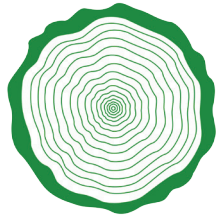
As a custom home builder, we have specific needs when it comes to appliances for our projects. Jeff and his team offer not only the selection we need for our clients, but also the expertise, competitive pricing and professional installs. Baths of America is a vendor with whom we are very proud to partner.

Rosenberg + Gibson Designs

After having a horrible experience at another appliance dealer, we Baths of America has been Rosenberg + Gibson Design's go to bath and kitchen gallery since 2018. They offer an extensive range of top-tier products, all conveniently available under one roof, which makes the purchasing process seamless. But their best asset is the exceptional customer service experience. Their entire team is knowledgeable and friendly. It's always a pleasure to work together on design projects and we are grateful to have them as an industry partner.

Missy Stewart Designs

Baths of America is a key partner for sourcing plumbing, appliances, and hardware for my interior design company. Working with Baths of America has been an advantageous experience, thanks to their exquisite showroom and a team of knowledgeable staff dedicated to providing top-notch service. The showroom at Baths of America is nothing short of inspiring, showcasing a diverse range of high-quality products that align perfectly with my projects' aesthetic and functional requirements. The variety and sophistication of their offerings have significantly contributed to the success of my interior design ventures, allowing me to curate spaces that exceed my client's expectations.



HARDWOOD

PRODUCTS

We provide you with the wood products and services that make your projects demand attention.

Hardwood Products • 713-984-8904



Sales Professionals



Kenny Francis -
kfrancis@hwp.us

Kenneth has 32 years of experience in the building industry from 1990 to present. He started at Wilsonart in 1990-2001 in the Houston area. He was employed as the operations manager of over 27 employees.

He decided to take his sales knowledge & expertise to Hardwood Products 2001 - present. Kenny enjoys working with companies & building relationships. From commercial millwork shops and remodelers to Custom Builders. Every day is a challenge, from supply & demand to rising costs. Providing innovation & service for the customer is the bottom line. Kenny has lived in Houston his entire life & knows the area well. His hobbies are anything outdoors, from hunting and exercise to sports. He has a wife of 17 years & two beautiful daughters.



Customer Reviews

Cullen Franz - Savannah Grace Homes

"Hardwood Products has gone over and above to source the best quality materials for the best price to help me grow my business. Kenny Francis and the HWP team has provided me with outstanding customer services that leaves other competitors in the dust. I can't say enough about the value that I have received in partnering with HWP. My custom homes have never looked so good !! Thank you Kenny and HWP !!"

Matt Sneller - Sneller Custom Homes and Remodeling

"I have known and worked with Kenny/Hardwood Products for over 15 years. We consider them to be one of our most loyal and trusted trade partners. We are a custom builder/remodeler and use them for a lot of our interior and exterior trimwork/materials. Their pricing is fantastic, but even better than that is their customer service. Kenny is always easy to get a hold of and super

responsive to any issue that arises. We would highly recommend using them!"

Rick Davis - DC Kitchens & Remodeling

I can't say enough about working with Hardwood Products. I've been in business for about 35 years and have been working with Hardwood products for as long as I can remember. I find their entire staff trustworthy and extremely professional, especially Kenny and Laura. The entire staff has a full understanding of their extensive line of hardwood products. I find that they are extremely dependable, and their customer service is outstanding. They always go out of their way in providing the very best in high-quality materials and for the best price. Not only that, I find them to be very dependable. I can trust that they will always be on top of things. I feel more comfortable working with them than anyone else.

A New Generation of Vision



Olivia Bufalini Leads Collaborative Design Group into the Future

For Olivia Bufalini, design isn't just a career—it's a calling shaped by a lifelong exposure to creativity, architecture, and the transformative power of well-designed spaces. As Principal Interior Designer at Collaborative Design Group Architecture & Interiors, LLC, Olivia now leads one of Houston's most respected architecture and interior design firms with a forward-thinking approach grounded in decades of trusted expertise.

The firm's reputation was built on a legacy of thoughtful, client-focused design, and Olivia is expanding that legacy with fresh energy and a deep respect for what makes a home truly personal. Under her leadership, Collaborative Design Group remains dedicated to turning a client's vision into a space that

feels both meaningful and functional.

Headquartered in Houston, the firm is composed of a talented team consisting of five interior designers, two architects, and dedicated support staff. Their comprehensive service offering allows clients to move through every phase of design and construction with clarity and confidence—from the foundation to the final accessory.

What makes Collaborative Design Group exceptional is their refusal to impose a "signature look." Instead, Olivia and her team act as interpreters of each client's lifestyle, preferences, and aspirations—delivering highly tailored homes that reflect the people who live in them. "A great design isn't about our stamp—it's about creating a space that feels like home to the client," Olivia explains. "Our job



is to listen deeply and design with intention.”

This personalized approach resonates across the building industry. Builders and remodelers appreciate the firm’s ability to bridge the gap between architecture and interiors, bringing cohesion and clarity to even the most complex projects. With extensive experience in construction documentation and material specification, Olivia’s team ensures selections are not only aesthetically aligned, but also feasible, functional, and budget-aware.

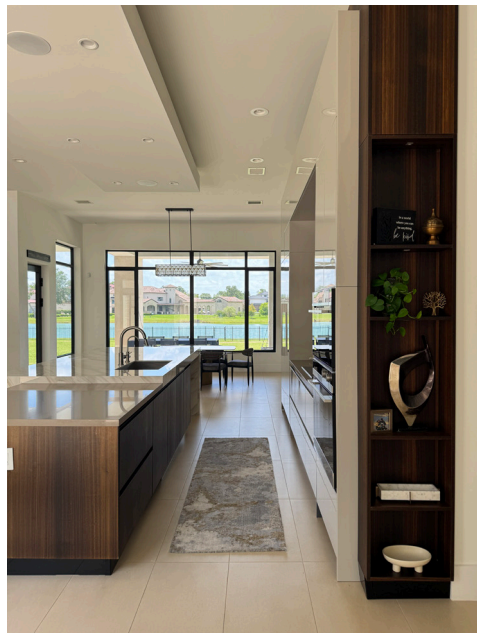
For new construction, the firm begins by establishing exterior finishes such as roofing, windows, doors, and masonry before transitioning to interiors—flooring, cabinetry, tile, plumbing, lighting, hardware, and furnishings. For remodeling, the team applies the same rigorous attention to detail, guiding clients through every choice with transparency. Collaborative Design Group’s proprietary documentation tools and itemized cost menus help clients and builders avoid costly missteps and last-minute changes.

A cornerstone of Olivia’s process is the belief that thoughtful planning is everything. Rather than offering fixed budget menus, she works closely with clients to gather multiple builder bids and collaborates with builders to align the project with each client’s budgetary goals. “Too many projects lose momentum when funds run out before the

most important details are completed,” Olivia explains. “By prioritizing early and planning thoroughly, we help our clients achieve the impact they’re dreaming of—without regrets.”

For homeowners looking to refresh their space without embarking on a full-scale renovation, the firm also offers a unique one-day service called Interior Transformations. Using only the client’s existing furnishings, Olivia’s team reimagines layouts and accessories to create a completely

Continued on page 20



Continued from page 19

new experience of the home. It's a fast, affordable, and powerful reminder of what design can do—with nothing new but a designer's eye.

At every level of service, the firm's goal is the same: to create homes that function effortlessly, feel deeply personal, and look timeless. Whether it's a large-scale custom build or a simple room refresh, each project is handled with the same precision, creativity, and care.

Olivia's leadership is marked by her natural talent for balancing beauty and functionality, and by her ability to connect with clients in a way that makes the design journey enjoyable—not overwhelming. Her work is rooted in empathy, planning, and the belief that great homes are built not just with materials, but with meaning.

Collaborative Design Group's process starts not with a style, but with a conversation—about how the family lives, what brings them joy, and how they want their space to feel. That real-world understanding informs every design decision, from lighting placement and traffic flow to the choice of finishes and furnishings. The result is a space that

doesn't just look right—it feels right.

With a multi-disciplinary team, a refined process, and Olivia's hands-on leadership, Collaborative Design Group is more than a design firm. It's a collaborative partner to builders, remodelers, and homeowners alike—one that brings vision, order, and creativity to every step of the journey.

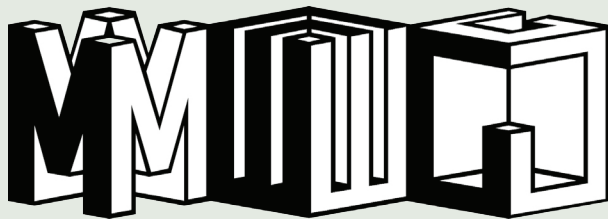
For those looking to build new, renovate, or simply see their home in a whole new light, Collaborative Design Group offers the structure, insight, and artistry to make it happen. Olivia Bufalini is leading the way—designing not just beautiful homes, but better ways of living

For more information about
Collaborative Design Group
Architecture & Interiors

Contact Olivia Bufalini at

713.263.8311

info@cdgai.com • www.cdgai.com



METAL WOOD GLASS
INNOVATIONS

Residential & Commercial

Experience, Expertise, Passion

We commit to high-quality work in every project we undertake providing you with tailor-made solutions for your custom designs. Show us the Space and we will create to meet your needs.....

CUSTOM:

- Shower Doors • Mirrors • Metal Framed Mirrors
- Grid and Cage Doors • Backpainted Backsplashes
- Cabinet Glass • Glass Walls & More

713-834-4627

esvin@mwginnovatoins.com | www.mwginnovations.com



THE METROPOLITAN BUILDER

The Metropolitan Builder
2206 Paso Rello Drive
Houston, Texas 77077

Leading With Integrity:

