

Mid-Michigan Buyers Guide

SUNDAY, FEBRUARY 28, 2016

Serving Clare, Gladwin, Gratiot, Isabella, Montcalm, & Southern Roscommon Counties

Morning Star Publishing Company powered by digitalfirst

TAX TIME

INVENTORY REDUCTION EVENT

Lifetime Engine Warranty
"You Deserve Peace of Mind"

• LIFETIME ENGINE WARRANTY • LIFETIME ENGINE WARRANTY • LIFETIME ENGINE WARRANTY • LIFETIME ENGINE WARRANTY •



2015 GMC SIERRA ULTIMATE CREW CAB
Leather, Heated Seats, Back up Camera, 4x4, Loaded 8,000 Miles, 1 Owner
Stk. #7026
\$43,995



2015 CHEVY SILVERADO CREW CAB LTZ 4WD
1 Owner, Pwr Moonroof, Leather, Heat Seats, Heated Steering Wheel, 271, Tow Pkg, Loaded, 15k Miles
Stk. #7005
\$41,995



2011 GMC SIERRA 2500HD DENALI DURAMAX DIESEL
4WD, Heated & Cooled Seats, Back up Camera, Navigation, Power Moonroof, 58K Miles
Stk. #7002
\$42,995 **NADA \$46,850**



2015 FORD F350 XLT CREW CAB FX4 SUPERDUTY
6.2L, Tow Pkg, Pwr Windows, Lock, 16,000 Miles
Stk. #6942
\$36,995 **NADA \$39,900**



2013 FORD F150 SUPERCREW LARIAT
4WD, 1-Owner, Eco Boost, Leather, Syn, Premium Audio, Navigation, Tow Pkg, Pwr Moonroof, Backup Camera, Heated Seats, 33,000 Miles
Stk. #7010
\$35,995 **NADA \$39,425**



2015 FORD EDGE TITANIUM AWD
1-Owner, 24,000 miles, Leather Heated Seats, Eco Boost, Premium Audio, Sync, Backup Camera
Stk. #6793
\$31,995 **NADA \$34,900**



2014 RAM 1500 BIG HORN CREW CAB
1-Owner, 4WD, 5.76 HEMI, Navigation, heated seats, Dual Exhaust, Tow Pkg, Pwr Seat, 28,000 Miles
Stk. #6970
\$31,995 **NADA \$33,625**



2014 FORD F150 SUPERCREW XLT 4WD
1-Owner, 5.0L, 23K Miles, Back up Camera, Pwr Pedals, Sync, Pwr Drive Seat, Tow Pkg, Running Boards
Stk. #7021
\$30,995 **NADA \$33,625**



2013 GMC SIERRA SLT CREW CAB 4WD
1-Owner, Z71, Tow Pkg, Spray in Bed liner, Leather, Heated Seats, Pwr Seats, Pwr Pedals, Navigation, Dual Climate, Loaded
Stk. #7051
\$30,995 **NADA \$34,375**



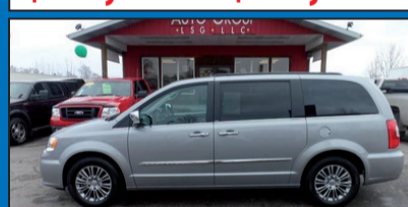
2012 FORD F150 SUPERCREW LARIAT 4WD
Premium Audio, Leather Heated and Cooled Seats, Eco Boost, Navigation, Pwr Pedals, Pwr Seats, Pwr Moonroof, Tow Pkg, 49K Miles
Stk. #7031
\$30,995 **NADA \$36,050**



2010 FORD FLEX SEL AWD
58k Miles, Leather, Heated Seats, Pwr Pedals, Pwr Seats, Pwr Moonroof, Pwr Rear XXXX, Sync, Third Row
Stk. #7046
\$17,995



2012 FORD F150 SUPERCREW XLT 4WD
1-Owner, 48K Miles, Back up Camera, Pwr Pedals, Pwr Driver Seat, Sync, Tow Pkg, Running Boards
Stk. #7035
\$26,995 **NADA \$29,550**



2014 CHRYSLER TOWN & COUNTRY TOURING L
1-Owner, 19K Miles, Back up Camera, Heated Seats, Leather, Navigation, Pwr Pedals, Pwr Seats, DVD, Pwr Sliders
Stk. #7001
\$25,995



2011 FORD EXPEDITION LIMITED EL 4WD
Leather, Navigation, Heated And Cooled Seats, Pwr Pedals, Pwr Moonroof, Pwr Third Row, Tow Pkg Loaded
Stk. #7018
\$23,995 **NADA \$27,250**



2010 RAM 1500 LARAMIE CREW CAB 4WD
5.7L Hemi, DVD, Leather, Heated & Cooled Seats, navigation, Pwr Moonroof, Pwr Pedals, Tow Pkg, Back up Camera, Loaded
Stk. #6990
\$24,995 **NADA \$28,225**



2012 GMC SIERRA 1500 SLE 4WD
1-Owner, 5.3L, Z71, Dual Zone Temp, Pwr Seat, Fiberglass XXXX, Tow Pkg, 34K Miles, Running Boards
Stk. #6982
\$25,995 **NADA \$29,650**



2009 FORD F150 SUPERCREW LARIAT
1-Owner, 4WD, Leather Heated & Cooled Seats, Pwr Pedals, Pwr Seats, Tow Pkg, Pwr Moonroof, Premium, Audio Sync, Loaded, 55K Miles
Stk. #7033
\$23,995 **NADA \$26,250**



2010 RAM 1500 SPORT CREW CAB 4WD
5.7L Hemi, Pwr Drive Seat, Pwr Pedals, Chrome Wheels, Tow Pkg
Stk. #6968
\$24,995



2014 FORD EXPLORER XLT 4WD
1-Owner, 40K Miles, Back up Camera, Pwr Seats, Sync, Leather, Heated Seats, Navigation
Stk. #6947
\$28,995 **NADA \$30,650**



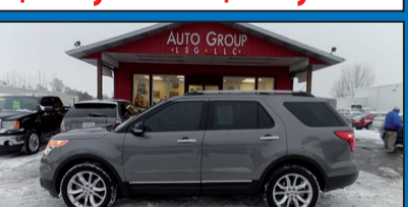
2011 FORD RANGER XLT SUPERCAB 4WD
1-Owner, XXX, Cruise, Pwr Windors, Pwr Locks, Pwr Mirrors, Tow Pkg, Bedliner, CD Player, 34K Miles
Stk. #7048
\$19,995



2013 NISSAN ROGUE S AWD
46K Miles, Pwr Windows, Pwr Locks, Pwr Mirros
Stk. #6918A
\$15,995



2012 CHEVY SILVERADO 1500 CREW CAB 4WD
1-Owner, 55K Miles, Tow Pkg, Running Boards, Pwr Windows, Pwr Locks, Bedliner
Stk. #7007
\$22,995 **NADA \$24,575**



2012 FORD F150 SUPERCREW
6.5ft Box, 4WD, 5.0L, Pwr Seat, Spray in Bedliner, Step in tailgate, Running Boards, Tow Pkg, Very Nice
Stk. #7039
\$22,995 **NADA \$25,775**



2013 GMC SIERRA 1500 CRW CAB SLT
1-Owner, 77k Miles, 5.3L V8, Z71, Bose, Leather, Heated Setas, Pwr Seats, Tow Pkg, Chrome Wheels, Running Boards
Stk. #6981
\$26,995 **NADA \$31,075**

• LIFETIME ENGINE WARRANTY • LIFETIME ENGINE WARRANTY • LIFETIME ENGINE WARRANTY • LIFETIME ENGINE WARRANTY •

EVERYONE IS APPROVED!!! Regardless Of Your Credit History!
Let Our In-House Finance Experts Help Get You Into The Vehicle Of Your Dreams!

AUTO GROUP

4720 E. Pickard (M-20) • Mt. Pleasant, MI

877-772-1113 OR 989-772-1113

All prices plus tax, title, plate & doc fees.

VIEW ALL OF OUR INVENTORY AT

www.theautogroup.biz

PRESENTED BY
Home Builders Association
of Midland



MIDLAND HOME & GARDEN SHOW

March 4, 5 & 6 - 2016

EXHIBITORS

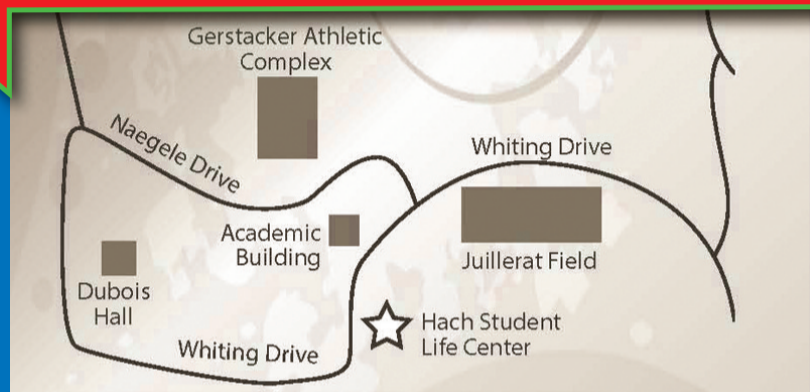
A+ Plumbing LLC	16,17
Alina's Drapery Studio	79
All Phaze Painting	83
All-Weather Seal Co., Inc	65
American Metal Roofs	64
Answer Heating & Cooling, Inc	73,74
Artisans Landscaping & Design, Inc	38
Bailey Agency, Inc	31
Bay Landscaping	22
Bilt on Demand Seamless Gutter Solutions, Inc	25
Bossman Construction	150
Brubaker Plumbing, Heating, Air, Fireplaces	118,119
B-Squared Design Studio	82
C & L Ward Brothers	68,69
Capital Equipment Clare	153
Capital Granite	81,98
Century 21 Signature Realty	97
Chemical Bank	49,50
Clear Vision Siding, Windows, Roofing	42,154
Cobblestone Homes, LLC	63,80
Coldwell Banker Professionals	54
College Pro Painters	149
Colvin's Heating & Cooling	127,128
Comfort Guard Home Improvements, Inc	77,78
Creative Rebuilding Co	35
D & R Floor Covering	51
D & W Windows & Sunrooms	110,111
DeShano Companies, Inc	135
Designed by Julie LLC Kitchen & Bath Studio	95
Designers' Touch Decorating Center, Inc	55
DeWitt Lumber Company	139,140,147,148
Dow Chemical Employees' Credit Union	112
Edward Jones	23
Energy Plus Home Improvements	109
ESCON Group, Inc	89,90
Everdry Waterproofing	75
Foundation Systems of MI	129,130
Four Seasons Windows & Remodeling	107,108
Garage Floor Coating of MI	41
Garpiel Group	132
Greystone Homes/Greystone Kitchen & Bath	14,15
Griggs Building and Design Group	39,40
Home Depot	11-13
Homes American Made Co	76
Isabella Bank	66
Jeffco Painting & Coatings LLC	117
JT & Associates LLC	156
KJP Sales, Inc	3,145
Klean Gutter of MI	155
Landscape Craftsman	52,53
Laurence Smith Window Door	99-102/113-116
Leaf Filter North of MI, Inc	32
LeBeau Cabinets, Inc	59
Lifestyle Home Builders & Design LLC	21
Living Landscapes	5
Lloyd's Cabinet Shop	126
Lowe's	27-30
Lush Lawn	151
Mag Insulation, Inc	133
Majestick Sky Link	134
Maple Hill	45,46
Midland County Habitat for Humanity	44
Midland Mulch Supply	136
Midland Roofing & Remodeling	43
Morgan Stanley	87
Neat and Green Lawn Care	124
O'Connors Carpet One Decorating Center	104-106
Owen's Soft Water, Inc	56,57
Parson's Family Flooring LLC	146
Paul Davis Restoration of Central MI	96
Preferred Chiropractic of Midland	26
Premier Tile and Stone Co., LLC	125
ProBuild	92,93
Ratti Builders	70,71
Reeder Landscaping, Inc	85,94
Renewal by Andersen of Greater MI	86
Retrofoam of MI, Inc	88
Rustic Hardwood Flooring LLC	33,34
ServiceMaster of the Tri-Cities	4
Servinski Sod Service, Inc	61,62
Sherwin-Williams Co	84
Shetler's Lawn Furniture & Gazebo	141,142
Shine Window Care & Holiday Lighting	60
Simmons Specific Chiropractic P.C	103
Sleep Number	6
Space, Inc	58
Stephen Flora Builders, Inc	121
Stone Specialists, Inc	137,138
Storm Master Exteriors LLC	120,131
Sullivan Fence Company	18-20
360 Painting	37
Tri City Remodeling/Nowak Cabinets	7-10
Tri-City Blinds, Inc	36
Vinyl Sash of Flint, Inc	143,144
Wallinda Vinyl Fence	122,123
Walton Heating and Cooling, Inc	67
Waskevich Contracting LLC	24
Wilds Heating & Cooling	152
Wolverine Bank	47,48
Wright Builders, Inc	1,2
Yeager Asphalt	72
Yeager Roofing	91

Hach Student Activity Center
Northwood University • 4000 Whiting Drive

Admission:
\$4.00 per Adult
\$3.00 Seniors
Children under 17 FREE

Hours:
Friday 4-8 pm
Saturday 9 am - 6 pm
Sunday 11 am - 4 pm

OVER 100 EXHIBITORS SPECIALIZING IN
HOME IMPROVEMENT PRODUCTS
AND SERVICES



OFFICIAL SPONSORS:



YOU CAN WIN!

A Stainless Steel
Gas Grill
Sponsored by:



A 32" Flat
Screen TV
Sponsored by:



\$500 Gift
Certificate
Sponsored by:



Prize sponsored by:



Home & Garden Show 2016 Seminar Schedule

All located in Room 113 of Entrance Hallway

**SATURDAY, MARCH 5
(9:00 AM - 6:00 PM)**

9:30 - IDEAS for your Basement Remodel.
Sponsor - Wright Builders, Inc.

10:30 - Be Ready to Sell; Things to do
that will Enhance your Home's Appraisal.
Sponsor - Peterson & Watson Appraisers

11:30 - New Windows; What Benefits will I see?
Sponsors - Laurence Smith Window & Door

12:30 - Do I need a Whole House Generator?
Sponsor - ESCON Group, Inc.

1:30 - Gas Fireplaces, Inserts, Log Kits
& Accessories What's New, What to Know.
Sponsor - Brubaker Plumbing,
Heating, Air & Fireplaces

2:30 - H.G.T.V. is Not Reality.
Sponsor - Designed by Julie, LLC
Kitchen & Bath Studio

3:30 - How to Reduce Energy Costs and
Increase your Comfort with a Home Energy Audit.
Sponsor - Creative Rebuilding Company

4:30 - Revamping your Roofing, Siding & Windows.
Sponsor - Home Depot of Midland

**SUNDAY, MARCH 6
(11:00 AM - 4:00 PM)**

12:30 - Make the most of your Cabinets;
Accessories to Increase your Organization
Sponsor - Tri City Remodeling/Nowak Cabinets

1:30 - How to Design Your Own Custom Floor Plan
Sponsor - Greystone Homes/
Greystone Kitchen & Bath

2:30 - The Basics of Landscape Pruning
Sponsor - Reeder Landscaping, Inc.

For More Information Call (989) 835-2562
www.hbamidlandmi.com



Renovation LIQUIDATION

FURTHER MARKDOWNS TAKEN

SATURDAY, 9 A.M. TO 9 P.M. SUNDAY, 11 A.M. TO 9 P.M.

EVERYTHING MUST GO!

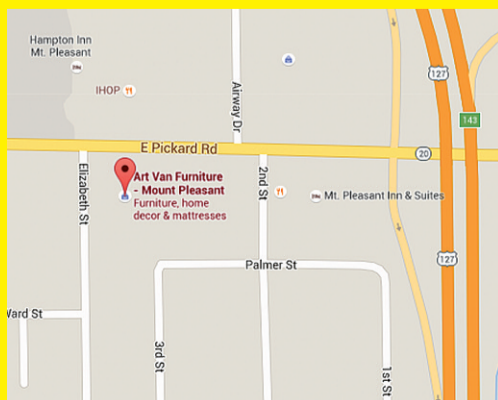
Save up to 80% off

on Living Rooms, Bedrooms, Dining Rooms, Recliners, Mattresses, Lamps and Accessories.

- | | |
|------------------------------------|------------------------------------|
| • Twin Matt \$99 | • 5 X 8 Rugs \$48 |
| • King Matt \$397 | • Decorator Pillows \$10 |
| • Queen Set \$399 | • Sofa \$298 |
| • Comforter Sets \$50 | • Recliner \$147 |
| • Bed Frame out of box \$15 | • Floral Center Pieces \$20 |

GET HERE WHEN THE DOORS OPEN AT 9 A.M. "YOU WON'T BELIEVE THE DEALS!"

**ART VAN
MT. PLEASANT
STORE ONLY**
ART VAN MT. PLEASANT
5260 East Pickard Street, Mt Pleasant, MI
(989) 772-2914



FREE GIFTS
TO THE FIRST 75 CUSTOMERS
NO PURCHASE NECESSARY.
SATURDAY AT 9 A.M.!

Clearance **Cub Cadet**
Sales On Snowblowers

Come in and Check out Sales on 2015 Models
Service. Knowledge. Selection. Financing. Delivery.

Check Us Out!
GRATIOT OUTDOOR EQUIPMENT
Commercial-Industrial-Residential
"We Service All Makes of Outdoor Equipment"
On M-46 in Breckenridge • **842-3844**

*See dealer for details

Winter's here be ready!

FREE Winter Inspection

Oil Change \$15.95 most cars & trucks (some restrictions apply)

Wiper Program Free installation!

Economy \$7.95 All Plastic Construction

Profile \$17.95 No Linkage To Ice Up! One Piece spring steel design Lifetime Warranty

FREE Brake & Safety Inspection

Dagwood's Auto Repair
"Common Sense Auto Repair"
30 Years Experience

524 W. Fifth St. Clare 989-386-8000 M-F 8-5, Sat. 9-12 After Hours by Appt.

1001 N. Fancher Mt. Pleasant 989-772-9500 M-F 8-5

Renaissance Public School Academy Presents

Kindergarten ROUNDUP

- K-8, tuition free Michigan public school academy authorized by Central Michigan University
- Small class sizes
- Individualized instruction for all students
- Literacy rich classrooms
- Enrichment classes include music, art, physical education and technology on a weekly basis
- Free before school supervision beginning daily at 7:30 a.m.
- After school program available until 5:30 p.m. each school day
- Free hot lunch for all students

Who: Families with children who will be 5 years old before September 1, 2015

When: Thursday, March 3rd or Tuesday, March 8th from 5:30-7:00 p.m.

What to expect:

- Informational meeting for adult family members
- Student activities while adults meet the teachers
- Tour of the school
- Learn what makes the RPSA Kindergarten program unique

*Free transportation is available to and from RoundUp. Simply schedule while making your appointment.

*Free childcare will be available for other young children during round up.

To schedule an evening to attend, call Renaissance PSA at (989)773-9889

Address: 2797 S. Isabella Road, Mt. Pleasant, MI 48858



BYLER FARM AUCTION

We have sold our farm and will offer the following at Public Auction.
Located: 1 mile north of Cid's Marathon, Clare, MI on old 27 to Surrey Rd. East 2-1/2 miles to Sale.
6531 E. Surrey Rd, Clare, MI 48617. Follow Yoder Bros. Auction Signs!

FRIDAY, March 4th, 2016 @ 10:00 a.m. - Clare

43 HEAD HOLSTEIN DAIRY CATTLE

- 22 Head lactating Holstein Dairy Cattle, 18 head are in their 1st and 2nd lactation. In various stages of lactation, 2 Springer Heifers due by Sale Day, 7 Short bred Heifers bred 4 mo. or less, 9 Open Heifers 250 to 450 lbs., 3 Heifer calves 2 to 3 mo. old, 2 Bull calves. Herd is currently milked and housed in tie stall operation. Approx. 1/2 of the herd was also parlor milked. Feed includes grain, 2nd cut hay and corn silage. Herd avg. 57 lbs., S.C.C. 140, BFT 3.7, PT 3.1. Herd is vac. with Cattle Master Gold & Bar Vac 7. Herd will be vet checked by Ron Morrison. Catalogs and more info sale day. Don't miss this nice young herd with good udders and feet.

HORSES, HARNESSES and COLLARS

- Trisa & Geana, 10 and 11 yr old team Reg. Belgian mares, Sorrel, Very well broke.(excellent farm or pleasure team)
- Judy, 4 yr old Sorrel, Reg. Belgian Mare, well broke to farm machinery
- Jody, 3 yr old Blonde Reg. Belgian Mare, broke to work
- Sue, 11 yr old Sorrel Reg. Belgian Mare. Broke to farm machinery
- Maple, 15 yr old Dark Sorrel Mare, buggy broke.
- 3 Sets Leather Draft Harnesses, Assorted Horse Collars, 2-3 and 4 Horse Eveners, Neck Yokes and Jockey Sticks

FARM MACHINERY

- 2008 Gateway 2 Wh. Power Cart w/30 hp Kohler, Hyd Steer & Brakes, 4 Hyd Outlets
- New Holland 273 Hay Baler, Org. Cond.
- New Holland 488 9' Haybine
- Sunset 32' Skeleton Hay Elevator
- Pequea H-R 930 Haymaker Rotary Hay Rake w/ Honda Engine or Pto
- McDeering Corn Binder
- Lancaster 4 Wh. Manure Spreader w/End Gate

- 3 Farm Built Hay Wagons, Good Cond.
- John Deere Hay Wagon
- 2008 Lower Valley 8' Cultimulcher
- Brillion 10' Cultipacker
- 26' Field Sprayer w/Honda Engine & Pump
- 2 John Deere Vanbrunt 15 Hole Grain Drills
- Pioneer Fore Cart
- Pioneer 14" 2 Bot. R.H. Riding Plow
- Oliver 12" 2 Bot. Plow
- Oliver 14" 2 Bot Plow
- 2 - Oliver 12" & 14" 2 Bot. Plows, Need Repair
- 2 - Gravity Wagons

FEED

- 117 Round Bales 1st Cut Hay Balage Wrapped
- Approx. 1500+ Bales Good First Cut Hay
- Approx 1000 Bales Good 2nd Cut Hay

MISC FARM EQUIPMENT

- Straw Chopper w/ Honda Motor • 4 Poly Calf Hutches • Diamond Bar Round Bale Feeder • Water Trough • 7 Rubber Dairy Mats • 750 lbs. Byron Seeds Triticale Plus • 2- 55 Gal. Barrels Biological Soil Activator • Hay Tarp • 275 Gal. Fuel Tank • MISC GOODIE WAGON! - MANY MORE ITEMS TOO NUMEROUS TO MENTION!

OWNERS: DAVID and BARBARA BYLER
6531 E. SURREY RD., CLARE

Yoder Brothers Auction Service
Specializing in Successful Auctions
Auctioneers LeRoy and Willis Yoder
9484 S. Rogers Ave., Clare, MI
PH: 989-386-9082

AAUCTIONEERS NOTE: Sale order. Misc Goodie Wagon followed by Farm machinery and Hay. 12:00 Noon Dairy Cattle followed by Horses. Plan on attending this nice clean auction. Attend on time, not many small items.

LAUCTION TERMS: Cash or approved check with proper I.D. Nothing to be removed until settled for. Not responsible for accidents. Lunch on grounds. All announcements made day of sale take precedence over all printed materials. Out of state buyers must have bank letter of credit.

Steve's Country Market

989-539-3110 3170 North Clare Ave., Harrison 44 Feet of Old Fashioned Meat Counter with Good Old Fashioned Service

Hours: Mon. - Sun. 8-8 Bridge Card & Wic Accepted

Michigan Lottery and ATM Machine

Top Quality Meats At Rock Bottom Prices! 100% Satisfaction Guaranteed

stevescountrymarket.com

FRESH GROUND ROUND 95% LEAN \$3.99 LB.	BONELESS CHICKEN BREAST \$1.99 LB.	GROUND CHUCK 80% LEAN FAMILY PACK \$2.79 LB.	BONELESS ENGLISH ROAST \$3.49 LB.	OLD FASHIONED HAM PORTIONS 99¢ LB.	COMBINATION PORK & BEEF ROAST \$2.99 LB.	BONELESS PORK CHOPS \$2.69 LB.			
POLLOCK FILLETS 10 LB. BOX \$15.99 EA.	TILAPIA FILLETS \$3.49 LB.	COD LOINS \$5.99 LB.	CHECK OUT OUR GREAT DEALS ON OUR MEAT BUNDLES!		ECKRICH HARD SALAMI \$4.49 LB.	ECKRICH HONEY OR VIRGINIA HAM \$4.99 LB.	MICHIGAN RUSSET POTATOES 10 LB. \$1.99 EA.	MICHIGAN APPLES 3 LB. BAG 2/\$5.00	
HYDRO TOMATOES \$1.99 LB.	BANANAS 49¢ LB.	PRAIRIE FARMS GREEK YOGURT 5.3 OZ. 88¢ EA.	TOTINO PIZZA ROLLS 19.8 OZ. 2/\$6.00	PRAIRIE FARMS ICE CREAM 1/2 GAL. \$2.99 EA.	HILLBILLY BREAD 20 OZ. \$1.69 EA.	AUNT MILLIE'S HOMESTYLE HOT DOG OR HAMBURG BUNS 8 CT. \$1.69 EA.	POWERADE 32 OZ. 79¢ EA.	BUSCH OR BUSCH LIGHT 12 PK. CANS \$6.49 PLUS DEPOSIT	BAREFOOT WINES 750 ML. \$5.99 EA.

While supplies last. Not responsible for printing errors.

BE READY *spring* IS COMING!

efco • Chain saws
• Trimmers
• Blowers

our power, your passion

5 YEAR NO FEAR WARRANTY

MT4400 CHAINSAW DS 2400 S TRIMMER SA 3000 BLOWER

10% OFF REGULAR RETAIL PRICES

Building Materials for Your Projects:

Lumber, OSB, Treated Posts
Trusses, Windows, Doors,
Concrete Blocks, Mortar,
Redi-mix Concrete

See us for Your Drainage Needs

4' to 6' Corrugated Tile
8' - 15' Poly Culverts
Big Inventory

COMPLETE OUTDOOR COOKER

Welcome to the Big Green Egg®
the Original American Designed Ceramic Cooker
A Smoker • A Grill • An Oven

HERSHBERGER'S PRO HARDWARE
10289 N. Leaton Rd., Clare, MI 48617-9107
(989) 386-5338
Full Line of Hardware & Building Supplies
Stove & Furnaces All Fuel Chimneys

You can reach across Michigan with **Community Papers of Michigan**

STATEWIDE CLASSIFIED NETWORK

Ads placed in Michigan Mega Market Classified Network appear in free circulation community papers and shopping guides reaching the grass roots of Michigan. Your advertising can be delivered weekly to more than **1,600,000** households throughout the state.

ONLY \$249

Call this paper to place a classified ad of 25 words or less and reach across the state.

mifreeads.com
Ph. 1-800-783-0267

Amish Furniture

AN AMISH LOG HEADBOARD and Queen Pillow Top Mattress Set. Brand new-never used, sell all for \$275. Call anytime 989-832-2401.

WALLEYE AND YELLOW PERCH FISHING CHARTERS ON LAKE ERIE. Call Captain Bruce 517-740-5295. email: payableguideservice@comcast.net www.payableguideservice.com

Auctions

SNOWMOBILE AND MOTORSPORTS AUCTION SAT, MARCH 5, 2016 9 a.m. Buy or sell! Information at www.snowmobileauction.com 517-369-1153 White Star Motorsports Auction US 12 Bronson, MI.

SPORTSMAN'S AUCTION MARCH 5TH, 2016 AT 10 A.M. Selling over 450 firearms, ammunition, hunting and fishing supplies in Coldwater, MI. Go to www.belcherauction.com.

Medical

VIAGRA!! 52 PILLS FOR ONLY \$99.00. Your #1 trusted provider for 10 years. Insured and Guaranteed Delivery. Call today 1-800-404-1282

STOP OVERPAYING FOR YOUR PRESCRIPTIONS! Save up to 93%! Call our licensed Canadian and International pharmacy service to compare prices and get \$15.00 off your first prescription and FREE Shipping. 1-800-697-1808

Employment

NOW HIRING. WELL-SPRING LUTHERAN SERVICES is hiring: RNs, LPNs, CNAs, Caregivers, Social Work/Counseling and Support Staff. Please visit our website to apply: https://wellspringlutheran.com/careers, 989-652-3470.

Financial

SOCIAL SECURITY DISABILITY BENEFITS. Unable to work? Denied benefits? We Can Help! WIN or Pay Nothing! Contact Bill Gordon & Associates at 1-800-731-5703 to start your application today!

Fishing

VACATION CABINS FOR RENT IN CANADA. Fish for abundant wall-eye, perch, northern pike. Boats, motors, gasoline included. For free brochure call Hugh 1-800-426-2550 www.bestfishing.com

Miscellaneous

LIFE ALERT. 24/7. ONE PRESS OF A BUTTON sends help FAST! Medical, Fire, Burglar. Even if you can't reach a phone! FREE Brochure. CALL 800-619-7057

Community Papers

COMMUNITY PAPERS provide a valuable service to your community!

Readers: THIS PUBLICATION DOES NOT KNOWINGLY ACCEPT advertising which is deceptive, fraudulent, or which might otherwise violate the law or accepted standards of taste. However, this publication does not warrant or guarantee the accuracy of any advertisement, nor the quality of the goods or services advertised. Readers are cautioned to thoroughly investigate all claims made in any advertisements, and to use good judgment and reasonable care. (particularly when dealing with persons unknown to you who ask for money in advance of delivery of the goods or services advertised.)

Largest Selection of Clean Used Cars in Central Michigan

GM Certified Pre-owned Vehicles = 2 Years of Oil Changes & Tire Rotations + 12 Month or 12,000 Mile Bumper to Bumper Warranty

USED CARS	
2015 BUICK VERANO Crystal Red, 16,000 Miles, 4 Cyl.	\$18,900
2014 BUICK REGAL Quicksilver, W/ Leather, 18,000 Miles	\$20,900
2014 CHEVROLET IMPALA LT Silver Ice, 17,000 Miles, Great MPG	\$18,900
2013 BUICK LACROSSE CXL Mocha Bronze, 22,000 Miles, Leather, V6	\$22,900
2013 BUICK LACROSSE Champagne Silver, 72,000 Miles, Leather	\$15,900
2012 VOLKSWAGEN PASSAT Black, 61,000 Miles, Leather, Sunroof, Diesel, 40+MPG	\$19,900
2012 BUICK LACROSSE CX Carbon Black, With E/Assist, 36,000 Miles	\$19,900
2012 BUICK LACROSSE Mocha Steel, 4 Cyl., Cloth, 51,000 Miles	\$17,900
2012 CHEVROLET IMPALA LT Goldmist, V6, Black, 51,000 Miles	\$15,900
2012 BUICK LACROSSE CXL FWD, Summit White, 68,000 Miles, 1-Owner	\$15,900
2012 HONDA FIT Turquoise, 24,000 Miles, Great Mileage	\$12,900
2011 BUICK LUCERNE CXL Cyber Gray, V6, Leather, 64,000 Miles	\$15,900
2011 CHEVROLET IMPALA LT Burgundy, V6, 68,000 Miles, Great Mileage	\$13,900
2011 CHEVY MALIBU Silver Ice, 63,000 Miles, 4 Cyl.	\$10,900
2011 CHEVROLET IMPALA LT Silver, 152,000 Miles, Excellent Condition	\$9,900
2010 CHEVROLET IMPALA LT Silver, 99,000 Miles	\$11,900
2002 BUICK CENTURY Bronze Mist, V6, 122,000 Miles	\$1,900

2012 GMC TERRAIN AWD SLT White, V6, 83,000 Miles	\$19,900
2012 GMC TERRAIN FWD White, 4 Cyl., SLE-2, 53,000 Miles	\$18,900
2012 GMC TERRAIN SLE FWD Burgundy, 71,000 Miles	\$17,900
2011 BUICK ENCLAVE CX Gray Green, FWD, 95,000 Miles	\$18,900
2011 GMC TERRAIN Mocha Steel, FWD, 92,000 Miles, SLT, 4cyl.	\$15,900
2010 JEEP WRANGLER UNLIMITED 4X4 4 Dr., White, 93,000 Miles	\$20,900
2010 BLACK CADILLAC SRX Black, V6, 94,000 Miles	\$18,900
2009 BUICK ENCLAVE CXL FWD 92,000 Miles, Silver	\$16,900
2007 TAHOE LT 4WD Amber Bronze, Leather, Sunroof, 168,000 Miles, 1-Owner	\$18,900

USED SUVs	
2015 BUICK ENCLAVE CXL AWD, Silver Ebony, Leather, 20,000 Miles	\$38,900
2015 CHEVROLET TRAVERSE AWD White, 17,000 Miles, V6	\$29,900
2015 BUICK ENCORE AWD Silver, 12,000 Miles	\$23,900
2014 GMC ACADIA SLT Iridium, 22,000 Miles, Leather	\$31,900
2013 GMC TERRAIN SLE AWD Black, 33,000 Miles	\$21,900
2013 GMC TERRAIN FWD SLE 23,000 Miles, Atlantis Blue	\$21,900
2013 GMC TERRAIN FWD SLE 29,900 Miles, White, 4 Cyl.	\$21,900
2013 GMC TERRAIN SLE-1 FWD 4 Cyl, 26,000 Miles, Asher Grey	\$19,900
2013 CHEVROLET CAPTIVA SPORT Burgundy, 26,000 Miles	\$15,900
2013 CHEVROLET CAPTIVA LT White, 47,000 Miles, Well Equipped	\$14,900
2013 CHEVROLET EQUINOX LT AWD, Atlantis Blue, 156,000 Miles	\$11,900
2012 GMC ACADIA SLE FWD Cyber Gray, 29,900 Miles, V6	\$26,900
2012 CHEVROLET EQUINOX Crystal Red, 34,000 Miles, FWD	\$19,900

USED TRUCKS	
2013 CHEVROLET SILVERADO CREW CAB 4X4 LTZ Mocha Steel, 29,000 Miles, Rear Camera/Remote Start	\$32,900
2013 CHEVROLET SILVERADO CREW CAB Fire Red, 5.3 V8, 33,000 Miles	\$32,900
2013 CHEVROLET EXT. CAB 4X4 LTZ Burgundy, 5.3 V8, 35,000 Miles	\$32,900
2013 CHEVROLET SILVERADO EXT. CAB 4X4 Graystone, 42,000 Miles, 5.3 V8	\$25,900
2012 FORD SUPER DUTY F350 6.7 V8 TURBO DIESEL Black leather loaded	\$37,900
2012 GMC CREW CAB STEALTH Grey, Duramax, Diesel, 156,000 Miles, SLT loaded, 1-owner	\$32,900
2012 GMC SIERRA EXT. CAB SLT Black, 28,000 Miles, 5.3 V8, 1-owner	\$30,900
2012 GMC SIERRA EXT. CAB SLE 5.3 V8, White, 60,000 Miles	\$24,900
2012 GMC EXT. CAB SLE 4X4 Black, 5.3 V8, Trailer Pkg, 73,000 Miles	\$23,900
2012 CHEVROLET 1500 2WD REG. CAB V6, 9,000 Miles, White	\$17,900
2010 GMC SIERRA CREW CAB 1500 SLT White, 89,000 Miles, Loaded	\$25,900
2010 GMC EXT CAB SLE 4X4 White, 5.3 V8, 134,000 Miles	\$17,900
2010 TOYOTA TUNDRA DOUBLE CAB 4X4 White, 112,000 Miles, V8	\$20,900
2009 GMC SIERRA EXT. CAB 4X4 SLE Black, 46,000 Miles, 5.3 V8	\$22,900
2009 CHEVROLET EXT. CAB 4X4 Silver Birch, 112,000 Miles, 5.3 V8	\$17,900
2008 CHEVROLET EXT. CAB LT Gray, 5.3 V8, Trailer Package, 162,000 Miles	\$15,900
2008 GMC SIERRA EXT. CAB SLE 4X4 Burgundy nerfbars, Fiberglass lid, 45,000 Miles, 5.3 V8	\$19,900
2007 CHEVROLET CREW CAB 4X4 5.3 V8, 137,000 Miles, Brown, Trailer Pkg., LTZ	\$15,900
2006 GMC SIERRA EXT. CAB 4X4 75,000 Miles, Silver Birch	\$15,900

USED VANS	
2009 DODGE GRAND CARAVAN Dk. Green 132,000 Miles, Stow & Go Seating	\$8,900
2008 CHEVY UPLANDER Burgundy, 175,000 Miles, Good Shape	\$5,900
2006 PONTIAC MONTANA SV6 Brown, 115,000 Miles	\$7,900

BENCHLEY BROS., INC.

1 Mile East of Doherty • US-10, Clare • Sales (989) 386-9900

For more info log on to: www.benchleybros.com Parts & Service (989) 386-3197

Voted Clare Counties #1 Dealership

HOURS: 8-6 Mon-Fri, 9-2 Sat

Specializing in GM Certified USED VEHICLES

Lambert's Meat Market

Taste the difference "FRESH" makes!
 624 E. Cedar Ave., Gladwin (next to Family Dollar)
 989-246-1850
 New Hours: Monday-Friday 9:00a-6:30p, Saturday 9:00a-6:00p, Sunday 9:00a-4:00p
 Sale Dates Monday, February 29 through Saturday, March 5, 2016



10lb or More Sale

Boneless Skinless Chicken Breast (lesser amounts 1.99lb) \$1.49 lb.	Pork Steak or Pork Strips \$1.39 lb.	Pork Shoulder Roast or Breakfast Sausage \$1.39 lb.	USDA Denver Steak or English Roast \$3.99 lb.
Whole New York Strip Loins \$3.89 lb.	Whole Boneless Pork Loins \$1.69 lb.	Family Pack Ground Beef Hamburger (73% lean) \$2.49 lb.	Family Pack Ground Beef from Chuck (80% lean) \$2.89 lb.

Baked Fresh in Store!

Italian or White Bread \$1.49 lb.	Nutty, Iced or Strawberry Cream Cheese Cinnamon Rolls \$4.99 (6ct)
--	---

DON'T FORGET LAMBERT'S HAS A GREAT SELECTION OF MEAT BUNDLES!
 Like us on Facebook! Lambertsmeatmarket.webs.com
 No Rainchecks • Not Responsible for Printing Errors

Visit us on Facebook at www.facebook.com/ValleyFoodCenter

Valley Food Center

"OUR ONE AND ONLY LOCATION IN PINCONNING"
 989-879-3311 • 101 E. SECOND • PINCONNING
 WE WELCOME THE BRIDGE CARD, GIFT CERTIFICATES
 NOT RESPONSIBLE FOR PRINTING ERRORS • ALL LOTTERY GAMES AND LOTTO HERE

MON.-SAT. 8-8, SUN. 8-6 • PRICES GOOD MONDAY, FEBRUARY 29TH THRU SATURDAY, MARCH 5TH, 2016

SHAVED HAM, TURKEY \$2.99 LB.	FRESH POLISH SAUSAGE \$1.89 LB.	CO-JACK, LONGHORN OR MOZZARELLA CHEESE \$2.99 LB.
SMOKED PORK LOINS \$3.99 LB.	CHICKEN NUGGETS 5# OR MORE \$1.99 LB.	BONE IN BEEF SHOULDER ROAST \$2.99 LB.
KOEGEL PRODUCTS	HOMEMADE BULK SAUSAGES REG. ITALIAN 99¢ LB.	ROLL YOUR OWN TOBACCO
VIENNAS 10# BOX \$33.50	BONELESS PORK LOIN MAKES GREAT ROAST SEASONED AND CUT FREE \$1.89 LB.	KENTUCKY SELECT \$4.79 6 oz. \$1.19
SKINLESS FRANKS 4# PKG. \$11.69	PORK STEAK BUTT ROAST OR FINGER RIBS OLD FASHIONED 1/2 HAMS \$1.39 LB.	AUSABLE RIVER TOBACCO 12 oz. bag \$1.50
BIG OR RING BOLOGNA \$3.19	PORK LOIN ROAST COUNTRY STYLE RIBS \$1.09 LB.	BUSCH BEER REG OR LITE 30 PK CANS \$16.49
PICKLED BOLOGNA \$9.99	BLUE RIBBON HAMS \$2.49 LB.	RED RIVER \$4.25 6 oz. \$2.99
VIENNAS 24 CT. PK. \$10.99	HAMBURGER 10 LB. BAG \$31.90	DENVER SWISS OR GRILL STEAK \$2.99 LB.
NUBBINS 10# BOX \$29.00	WAYSIDE BACON 10# BOX \$17.99	Leg 1/4's 39¢ LB.
BONE IN PORK LOIN WHOLE OR HALF CUT INTO CHOPS FOR FREE \$1.39 LB.	OUR BEST GROUND CHUCK 10 LB. BAG \$35.90	BULK SLICED BACON 10 LB. OR MORE \$3.99 LB.
DAIRY FRESH SHREDDED 3/5 LB. OR CHUNK CHEESE 8 OZ. \$3.39	HAMBURGER PATTIES 10 LBS. OR MORE \$2.99 LB.	SHORT LOIN = T-BONE \$5.99 LB.
REAL BUTTER 1 LB. PKG. \$3.39	3PK BABY BACK RIBS 10# OR MORE \$1.99 LB.	BIG BAG FRENCH FRIES \$4.50
HAMBURGER 10 LB. BAG \$31.90	FRESH BONELESS CHICKEN BREASTS 10# OR MORE \$1.29 LB.	SELECT RIB EYE LOINS WHOLE OR HALF \$8.99 LB.
WAYSIDE BACON 10# BOX \$17.99	50/50 GRIND 10# OR MORE PORK & BEEF SAME USE AS BURGER \$2.99	HOMEMADE BACON SAUSAGE \$1.99 LB.
OUR BEST GROUND CHUCK 10 LB. BAG \$35.90		
HAMBURGER PATTIES 10 LBS. OR MORE \$2.99 LB.		
3PK BABY BACK RIBS 10# OR MORE \$1.99 LB.		
FRESH BONELESS CHICKEN BREASTS 10# OR MORE \$1.29 LB.		
50/50 GRIND 10# OR MORE PORK & BEEF SAME USE AS BURGER \$2.99		

SUPPORT OUR LOCAL Shops & Restaurants



Business Card Directory

25% off
 All Used and Reconditioned Sewing Machines and Vacuums
 Expires: Feb. 29, 2016



FREE ESTIMATES WITH SERVICE

1900 S. SAGINAW RD., MIDLAND IN THE KMART PLAZA
(989)-839-0800

To Reserve space in this directory that reaches 66,585 homes
 Call 989-779-6000 Mt. Pleasant
 989-463-6071 Alma
 We will be glad to help you get your print and digital message to the largest audience in Mid Michigan.

HunterDouglas DUETTE ARCHITELLA HONEYCOMB SHADES



ENERGY SMART STYLE Make the smart choice today.
 Save energy year-round.

JANUARY 30 - APRIL 11, 2016

Keep your home warmer in winter and cooler in summer with insulating Hunter Douglas window fashions. They're the smart and beautiful way to help lower your energy bills.

\$100 REBATE*
 on either of the following purchases of insulating Hunter Douglas window fashions from January 30 - April 11, 2016:

4 Duette® Honeycomb Shades (PLUS \$25 REBATE EACH ADDITIONAL UNIT)	4 Solera® Soft Shades (PLUS \$25 REBATE EACH ADDITIONAL UNIT)
--	---

HANDYMAN BILL LEONARD

- General Carpentry
- Repair • Maintenance
- Home Improvement Projects

E-mail: yourhandymanbill@yahoo.com
 Licensed • References • Economical
(989) 681-2516

Pole Barn Kits



FREE ESTIMATES **Now Available**

THE BLIND GUYS
 CUSTOM WINDOW TREATMENT CENTER

2677 N. Eastman Rd., Suite 200 Midland, Michigan 48642
 Phone: 989.832.5172 • Toll Free: 800.832.5172
 Fax: 989.832.1894 • Email: blindguysmidland@yahoo.com
WWW.BLIND-GUYS.COM

Colonville Canvas
 Quality Detailed Craftsmanship



We Have You Covered!

- Marine Upholstery & Carpet
- Bimini Tops • Boat Covers • Awnings

Custom Fit **William Miller**
 989-802-9083 Leave Message

Luthy Metal Sales

5145 N Mission, Rosebush
(989)433-5705

Opening Memory Care Soon Taking Deposits

Leisure Living MANAGEMENT 2378 S. Lincoln Rd., Mt. Pleasant (989)772-2183
crestwoodvillageassistedliving.com



COUNTRYSIDE CABINETS

LEROY MILLER
 7563 S. Rodgers Clare
 989-386-6952
 Open 8-5:30 M-S
 Closed Sunday



Water and Flood Damage Repairs

Hammer Restoration, Inc.
 Respond. Recover. Rebuild.

989-773-3473
HammerRestoration.com

24 HOUR EMERGENCY SERVICE
 Like us!

Brad Malley Well Drilling, Inc.

Mid Michigan's Most Experienced Well Drillers!

MALLEY CONSTRUCTION INCORPORATED

The One Contractor That Can Do It All!
AFFORDABLE WELL PACKAGES
 All Major Pump Brands Available

FREE ESTIMATES
 SERVING ALL OF MID MICHIGAN
 LICENSED WELL DRILLER
 LICENSED CONTRACTOR
 MT. PLEASANT
WWW.BRADMALLEYWELLDILLING.COM
989.772.2765 / 800.717.6022

digitalfirst MEDIA

Kindra Norlander
 Account Executive

The Morning Sun • The Mid-Michigan Buyers Guide

knorlander@michigannewspapers.com Cell: 989-506-4640

Business Card Directory

Shop these local Professionals

BURKHART - PRESIDIO
INSURANCE AGENCY
Auto • Home • Life • Business • Amenities

"Over 60 Years of Professional Insurance Service"

222 W. Cedar Ave. • Gladwin
989-426-9278 • www.burkhart-presidio.com
Dirk Presidio Michael Murray Jim Jacobs

Auto-Owners Insurance

ECOWATER SYSTEMS Lindsay Soft Water Co.

1209 Michigan Ave. P.O. Box 401
St. Louis, MI 48880 Gladwin, MI 48624

(989) 681-5436 (989) 426-4220
1-800-244-3464 Cell (989) 620-1263
www.ecowater.com

GABE EAREGOOD
Water Specialist

Whole Body Health Yoga Tue. & Sat
Ease Tension with Reiki

Upcoming Events
Meditation Made Easy 3/10
Crystal Healing 3/17
Aura Photos/Iridology/Oneness Blessings 3/24
FREE Reiki Share 3/16 and 3/30

Please call or see our website for more info on events

215 W. Cedar, Gladwin
wholebodyhealthstore.com **989.246.1550**

MARTIN HEATING & COOLING

Installation • Service • Parts • Free Estimates

546 W. 5th street, Clare
Amana 989-386-3791
LASTS AND LASTS AND LASTS: Ask about Geothermal Systems and heat pumps

FREE ESTIMATES TREE REMOVAL Speedy Service

Steve's Tree Service & Stump Grinding
Serving Mid Michigan
Call Steve
989-802-4725

CERTIFIED CLIMBER Fully Insured

SNOWSNAKE.NET • 989-539-6583

Snow Snake

SKI BOARD TUBE

\$1000 off any in-stock & non-sale pair of shoes
Expires 3.10.16

CIRCLE QUALITY SHOES

Specializing in hard to fit sizes-100's of styles to pick from
• Birkenstock • Clarks • Merrell • SAS
208 Cambridge St. 835-4853 • circlequalityshoes.com

ABC Auto Body 313 W. Knox Road, Beaverton, MI
1/2 Mile West of M-30
989-435-2707

We Take Pride In Your Ride!

- Quality Collision Repair
- Free Estimates
- Insurance Work Welcome
- Custom Color Matching & Painting
- We Repair All Makes and Models
- Car/Light Truck
- Genuine Original Equipment Parts

HENRY EXCAVATING CONCRETE & TREE SERVICE LLC

POURED WALLS • CRAWL SPACES • BASEMENTS
OVER 30 YEARS EXPERIENCE • LICENSED & INSURED

COMMERCIAL & RESIDENTIAL

- Excavation
- Site Clearing
- Back hoe & Dozing
- Flat Work
- Demolition
- Driveways
- Tree Service

989-539-7542 • 3620 N. Clare Ave., Harrison
James Henry Cell 989-429-1175 Michael Henry (Tree Service) Cell 989-339-4377

TOM'S POLE BUILDINGS
Over 30 Years Experience
Special! POLE BUILDINGS & GARAGES
ROOFING & SIDING
CONCRETE FLOORS DRIVEWAYS & FENCING

FEATURING ULTRA 2000 19 colors to choose from
And A 45 YEAR WARRANTY

From Beginning permit To Cleanup, We Do It All!
1-800-541-3974
We accept major credit cards. • email: tomspolebuildings@yahoo.com

Newcombe's Family Restaurant
27 S Coldwater Rd Lake Isabella, MI 48893
(989) 644-8380

FOOD SO GREAT YOU'LL SCRAPE YOUR PLATE

Sunday 7am-8pm
Mon.-Thurs. 7am-9pm
Fri & Sat 7am-10pm

Pioneer Metal Roofs
Residential Steel Roofing

7325 S. Clare Ave.
Clare, MI 48617
(989) 386-4444 (Office)
(800) 292-0679

www.pionermetalroofs.com

DEBRIS HAULING

- Clean Outs
- Basements Attics & Garages
- Tear Downs Sheds & Garages
- Scrap Metal
- Commercial Buildings

Free Estimates

DEBRIS HAULING
Good & Fast Service
MOUNT PLEASANT AREA
No One Does It For Less, NO ONE!!!
Less than the price of a dumpster!

989-773-0735 10 Yards \$285 Dan Syzak

Adam Breault Auctions

Next Auction
March 11th @ 6 pm
Accepting Consignments
Now Booking
2016 Auctions

Adam Breault Auctions
963 N. M-18 Gladwin, MI
(989) 329-0399

Visit adambreault.com for complete details.

Tag's Auto Repair 2 yr. 25,000 mile warranty nationwide on parts & labor

- Computer Diagnostic Service
- 2 and 4 Wheel Alignment
- BRAKES & FRONT END REPAIR!**

Receive a \$25 VISA prepaid card on qualifying purchase of \$250 or more made on Drive Card

FREE Roadside Assistance Program Towing, Flats, Lockouts, More!
Call Us For Details!

3780 N. Clare Ave. Harrison
Hours M-F 8-5, Sat 10-2
989-539-1986

Gilboe's LOCK & SAFE

Commercial • Residential • Industrial • Auto SALES AND SERVICE

Lock Outs • Rekey • New Locks • Deadbolts • Safes (Record, Gun, Cash)
Hardware • Special Finishes & Textures • Access Control • Keyless Entry • Digital Video Surveillance

24 Hour Emergency Mobile Service
Serving Central MI Since 1956

8529 E. PICKARD RD., MT. PLEASANT
www.gilboes.com **773-1470 • 800-459-3336**

MARTI'S ROLLER RINK
Completely Remodeled and Ready for Some Fun!

FRIDAY 7:00-10:30 PM **OPEN SKATING**
SATURDAY 7:00-10:30 PM **OPEN SKATING**
SUNDAY **CLOSED**

Complete Snack Bar

\$5.50 Admission Includes Skate Rental
Call for Birthday Parties Friday and Saturday only

Owner Marti Miller
989-426-6734
4861 W. M-18 Gladwin, MI 48624

Family Barber Shop
Formerly in Downtown Clare

Moved North of Downtown on West side of the Road

2 Barbers on duty (except Mondays)

\$10 HAIRCUTS Any Style

Hours: Mon-Fri 9-5 • Sat 8-2
989-533-8197
Walk-Ins Welcome!

Gladwin Hobby Shop
Stay Fit & Have Fun

Sales & Services Now Carrying **Huffy Bicycles**

- Radio Control
- Plastic Model Kits
- Testors Paints
- ESTES Rockets
- Pinewood Derby
- Puzzles, Rock Polishers,
- Balsa & Bass Woods, and more.

\$ CASH for Old Coins & Currency!
WE BUY OLD TRAINS
Gift Certificates Available
Visit us on Facebook

400 E. Cedar Ave. Gladwin, MI • 989-426-7300

STORAGE SPACE AVAILABLE 420 Units

Paved Driveway Security Gate

FOR ALL YOUR RENTAL NEEDS

5'x12', 10'x12', 10'x20' Stalls
MIDSTATE RENTAL AND STORAGE, INC.
1 MILE EAST OF GLADWIN ON M-61
426-2981 MON.-SAT. 8AM-5PM

FREE Hearing Test & Consult

bieri HEARING SPECIALISTS

888-641-0087
Clare and Midland Locations
www.bierihearing.com

PIONEER POLE BUILDINGS INC.

7400 S. Clare Ave. • Clare, Michigan 48617
800-292-0679
www.pioneerpole.com

digitalfirst MEDIA

Call for Quotes on digital advertising, print & deliver, pre prints and print advertising

Marlene Bennett
Account Executive
The Morning Sun • The Mid-Michigan Buyers Guide
mbennett@michigannewspapers.com
For Advertising call 989-506-4647 or 989-779-6119
For Circulation call 989-779-6000 Press 3

O-ink WE CUT THE FAT OUT OF INK PRICES

600 S. Mission St. Mt. Pleasant, MI 48858
989-779-7227
989-772-5009

Printer Ink & Toner, Cartridge Refilling & Recycling, Desktop & Laptop Repair, Virus/Malware Removal

"Our Customers are our Warmest Friends" Guaranteed On Time Certified

FREE TANK SETS
COYNE OIL & PROPANE
Clare • Gladwin • Harrison • Evart
800-386-7731 • 989-386-7731

RESIDENTIAL • COMMERCIAL INDUSTRIAL • FARM

If your walls could talk, they'd thank you.

Great home insurance.
Protect your home with the best. And do it at a price that will have your wallet saying "thanks" too.
Like a good neighbor, State Farm is there.®
CALL ME TODAY.

Maury Irwin, Agent
305 S McEwan Street
Clare, MI 48617
Bus: 989-386-4141
maury.irwin@statefarm.com

State Farm

GRINDLE
Concrete & Masonry
CHIMNEY REPAIR & SWEEP
4747 N. M-30 • Gladwin, MI 48624
FREE ESTIMATES
989-246-0230 Dennis Grindle

JACK OF ALL TRADES COINS

1028 S. Mission
(next to Jon's Country Burger)

I BUY ALL COINS
Silver and Gold
FREE APPRAISALS
we will come to your home to do free appraisals for your convenience.

Over 25 Years experience!

Do not take your coins, jewelry, gold, & silver to the we buy gold places they are not experts! We are your only experts!
WE PAY YOU MORE THAN ANYONE!

I BUY ALL COLLECTIONS
FROM ONE COIN TO A DUMP TRUCK FULL

We are a Full Buy • Sell • Trade shop!
ANTIQUES • COINS
Jewelry • Collectibles & more!

Stop in or call Matt for your free appointment
517-204-0787

Hay for Sale

1st, 2nd and 3rd Cutting Available - Alfalfa
4x5 Round Bales

1st Cut - \$45 • 2nd and 3rd Cut - \$55
Delivery w in 15 Miles Of Clare!

989-429-3736

Thank You

Rev. and Mrs. Mundt
Mr. Evitts

for joining the Culligan family and becoming valued customers.

Culligan Worldwide
Celebrating 75 years

Ken's Culligan • Alma

great **BIG** ADS

great **BIG** RESULTS

FREEZE! FREEZE! FREEZE!



UIA

Find out how to keep your skilled workers when layoffs are on the horizon.

For information about Michigan's Work Share program, visit

michigan.gov/uia

or call 1-844-WORKSHR (967-5747)

WorkShare A Smart Alternative to Layoffs

SHOP CLARE COUNTY

The City of Clare is centrally located in the heart of Michigan's beautiful Lower Peninsula on US Route 127 at the junction of Business 10 and M-115 and minutes from 1-75 and US Route 131. Clare, is home of Senator Debbie Stabenow, State Athletic Champions, and has more Irish spirit than you can shake a shillelagh at Clare is the place to be! Clare is an industry hub. StageRight, Filcon Rogers Athletic, ALRO Steel, Letherer Truss, JD Metalworks, Northern Logistics, Mid Michigan Industries, and many small businesses call Clare their city. Filcon, a slitter and converter of plastic films, supplies over 80% of the plastic wrap used in the United States. StageRight, at the forefront in platform design and application, supplied the risers for the Grammy® Awards. A destination in its own right, Clare boasts, seven parks including a campground, acres of state land to explore, lakes and rivers for all water sports, is a Trailhead for the Michigan Rails to Trails, and is the perfect city to call your own with many affordable housing options including waterfront property. Clare's public schools accredited by the North Central Association of Colleges and Schools, are known throughout the State for their award winning programs. The City of Clare boasts top-notch police, fire and public works departments, as well as a business-friendly city government. In addition, the Pere Marquette District Library is conveniently located in downtown Clare, offering all the amenities you would expect including classes on technology implementation. Clare is centrally located, is nationally recognized through its programs and people, maintains strong existing infrastructures, committed to its youth, creates leaders, and invests in sustainable growth efforts.

2016 FEEDER CATTLE SALES
Clare

Clare County Livestock Auction, LLC
David Clark, Owner/Auctioneer
Contact: 810-441-6191
Sale Barn: 989-386-9256

ALL SALES ON THURSDAY AND START AT 1:00PM
ALL CATTLE WEIGHED AT SALE TIME
ACCEPTING CATTLE ON WEDNESDAY ALL DAY!!
OVERNIGHT CATTLE WILL BE FED & WATERED!!
COLORED AND HOLSTEIN STEERS, HEIFERS & CALVES
(SOME CATTLE PRE-CONDITIONED, INFO AVAILABLE AT TIME OF SALE)

MARCH 17, APRIL 14, MAY 5

GO TO WWW.DAVIDCLARKAUCTION.COM
FOR MORE INFORMATION!!
"SALE EVERY MONDAY AT 3:00PM"

30% OFF
Gift Lines

Benchley's Amish Furniture
Clare

for the Largest Selection of Amish Furniture in Michigan!

(989) 386-7951
Open Mon. - Sat. 10 a.m. - 5 p.m. • Sunday 12 p.m. - 5 p.m.

COYNE OIL & PROPANE

"Our Customers are our Warmest Friends"
Guaranteed On Time and Certified
FREE TANK SETS

Clare • Gladwin • Harrison • Ewart
800-386-7731
989-386-7731

RESIDENTIAL • COMMERCIAL
INDUSTRIAL • FARM

BENCHLEY BROS, INC.

Your Buick & GM Dealer
Serving Clare for Over 35 years



Tune Ups
Brake Work
Wheel Alignment
Transmission Service

GM Goodwrench.
BECAUSE WHO KNOWS WHAT'S DOWN THE ROAD

East US-10 • Clare • benchleybros.com
Service Department **989-386-3197**

Winter Clearance

AN EXTRA **20% OFF**
 ALL SALE PRICES
STORE WIDE

ALL LIVING ROOM, DINING ROOM, BEDROOM
 ALL BEST BUYS AND ALL CLEARANCE MERCHANDISE

EXAMPLE

Power Lift Recliner

5Yr Mechanism Warranty
 Dark Gray, Chocolate, Tan,
 Charcoal, Brick or Taupe
\$1149.00 Retail

~~\$599.00 Sale~~
Less 20% \$479.20



**Queen Headboard/
 Footboard/Rails**

Dresser, Mirror, Chest & Night Stand
 Large English Front & Back Dovetail Drawers
 Felt Lined Top Drawers
 Solid Hardwood & Solid Poplar
 Antique Oak Embossed & Black

\$4,099.00 Retail

~~\$1,899.00 Sale~~
Less 20% \$1,519.20
62% Savings



**Our Most Popular
 Rocker Recliner**

7 Colors & Fabric to Choose From
\$699.00 Retail

~~\$349.00 Sale~~
Less 20% \$279.20



AN EXTRA **20% OFF**
EVERYTHING

***Layaway Available * Up to 36mth No Interest Financing *Delivery Available**

EXAMPLE

**Shelton-Plush or Firm
 High Profile 460 Verti-Coil
 4" Foam Encased**

10yr Non Prorated Warranty
 Queen Set
\$1099.00 Retail

~~\$499.00 Sale~~
Less 20% \$399.20



Oval Table

w/Choice of White, Teal, Blue or Mint
 Spindle Back Windsor Chairs
 60" x 42" Table White

\$999.00 Retail

~~\$529.00 Sale~~
Less 20% \$423.20
58% Savings



Serta Sofa Sale

This Popular Set in 2 Colors
 Chocolate, Mocha

Loveseat \$899.00 Retail \$449.00 Sale Less 20% \$359.20	Chair \$799.00 Retail \$399.00 Sale Less 20% \$319.20	Sofa \$999.00 Retail \$499.00 Sale Less 20% \$399.20
--	---	--



***Up To 36 Months NO INTEREST Financing**
 Minimum Monthly Payment Required...Minimum purchase required

Check out our Clearance Selection on our website
www.StateStreet-Furniture.com

UP TO 80% OFF "PLUS AN EXTRA 20% OFF"



318 N State St • Alma, MI 48801
 (989) 463-1037 • Hours: 9-6 M-F • 9-5 Sat.
www.StateStreet-Furniture.com
 *See Store for Details



DEWEY'S TRADING POST

Maple Rapids • 682-4158

Monday-Saturday: 8 am - 7 pm, Closed Sunday

Prices In This Ad Good for week of February 29th - March 5th 2016

WIC • Bridge Card • VISA • Mastercard • Discover • American Express • Debit Card & Chamber Bucks Gift Certificates.

Time to be ordering your Double Smoked Ham for Easter

"We Have in Stock"

Our Homemade Ground Chuck Patties 1/3lb Reg, Mush & Swiss, Bacon Cheddar, Hot Pepper, Blue Cheese & Bacon

 "Whole" Select New York Strips 13 lb Avg \$369 LB <small>CUT FREE!!</small>	 Koegel's Slicing Bologna \$349 LB	 "Our Own" Smoked Cheddar Sausage 3 flavors \$699 LB
 "Our Own" Homemade Honey Loaf or Big Bologna \$699 LB	 "Our Own" Philly Steak Brats "All Beef" \$399 LB	 "Our Own" Regular Brats \$299 LB
 Pollock 10 lb Box \$1899 BOX	 Ocean Perch 5 lb Bag \$1799 BAG	 Frog Legs 2 lb Box \$799 BOX
 Scallops 1 lb Bag \$699 BAG	 Cooked Shrimp (31-40 ct) 1 lb Bag \$799 BAG	 Bone In Pork Chops \$199 LB
 Bone In Loin End Pork Roast \$189 LB	 Stuffed Pork Chops \$299 LB	 Boneless & Skinless Thigh Meat 99¢ LB
 Smokehouse Daddy's Wing Portion 4 oz \$499 BAG	 USDA Choice T-Bone Steak \$799 LB EVERYDAY!!	 Boneless Choice Arm Roast \$349 LB
 Boneless "Choice" Patio Steak \$399 LB	Come Check out all of our Bulk Food Selection!	

www.deweystradingpost.com
LIKE us on facebook & see our WEEKLY SPECIALS!



Country Corner MARKET

Bulk Food • Deli

2 Miles South of Rosebush • 2020 North Mission Mt. Pleasant • 989-433-8200
8:30am-5:30pm, Monday-Thursday
8:30am-7:00pm, Friday • 8:30am-4pm, Saturday

SPECIALS OF THE WEEK!!! Great Selection of Bulk Foods We Accept Bridge Cards & All Major Credit Cards

 Walnut Creek Colby Cheese Sale \$2.79 lb. Reg. \$3.99 lb.	 Walnut Creek Beef Pastrami or Corned Beef Sale \$5.29 lb. Reg. \$6.29 lb.
---	---

MORE SPECIALS!!!

 Rebecca's Tomato Soup 32.9 oz. Sale \$4.59 Reg. \$5.99	 Cheese Bars or Cheese Spreads 8 oz. Sale 2/\$5.00 or \$2.59 ea. Reg. \$2.89
 Walnut Creek Beef Sticks all varieties 75¢ ea.	 Goetze's Cow Tails all varieties 4/\$1.00

Coffee of the week: Mocha Java

GET MORE BANG FOR YOUR BUCKS

GOOD, CLEAN, QUALITY PRE OWNED MERCHANDISE

Jewelry



TVs



Wii Xbox 360 PS3



Firearms



Musical Instruments



Tools



SPECIAL GUITAR & AMP \$100

DIRT CHEAP • CAR AUDIO • NEW & USED
Tested & Inspected. Why Pay New Prices?
GLADWIN TRADE & SALES
1-989-426-6811
1739 N. State St. • Gladwin

SYKORAAUCTIONS.COM PRESENTS!

FARM AUCTION

FOUR D FARMS 4584 W. GARFIELD RD. MIDDLETON, MICHIGAN. 48856
LOCATED APPROX. 25 MI. NORTHWEST OF LANSING, MI. ON US-127 FREEWAY
THURSDAY MARCH 3, 2016 @10:00 AM

CAN'T MAKE IT SALE DAY? ABSENTEE & LIVE BIDDING FROM THE CONVENIENCE OF YOUR HOME OR OFFICE
PRE-REGISTRATION REQUIRED. SYKORAAUCTIONS.COM

FOR INFO CALL: KELVIN DUFLU AT 989-289-7520

TRACTORS 2004 JD 8420 MFWD TRACTOR-1989 CASE/IH 7120 MAGNUM MFWD DSL. TRACTOR- 1977 IH 986 DSL. 2WD TRACTOR - 1977 IH 674 DSL TRACTOR, W/ IH 2050 HYD. LOADER - COMBINE & HEADS 2001 9550 4X4 COMBINE-2011 JD 630F HYDROFLEX GRAIN PLATFORM -2002 JD 693 6 ROWX30" POLY CORN HEAD - TRUCKS 2000 IH 9100 TRACTOR - 1993 KENWORTH T-800 TRACTOR - 1997 FREIGHTLINER FDL TRACTOR- 2004 REIGHTLINER FDL. TRACTOR - DUMP TRAILERS 3 BENSON 32' ALUM. DUMP TRAILERS- 48'DROP DECK -2000 WARREN 36' ALUMINUM 24 TON BULK FEED TRAILER - JAMESWAY ULTRA-TRAC 7400 GAL. TRIPLE AXLE LIQUID MANURE SPREADER -2, 1980 POLAR 9000 GAL. ALUM. MANURE TANKERS -2012 MF/WHITE AGCO 8800 16X30" AIR PLANTER - J&M 500-14 GRAIN -2000 SUNFLOWER 5034-29' CULTIVATOR - 2011 UNVERFERTH 222 31' ROLLING HARROW - 1997 SUNFLOWER 4212-14 11 SHANK SOIL SAVER - UNVERFERTH 7 LEG ZONE BUILDER - 28% 60K GAL TANK FARM & EQUIPMENT -MISC ITEMS- FUEL TANKS

REGISTER TO BID LIVE ONLINE AT SYKORAAUCTIONS.COM

INSPECTION KELVIN DUFLU AT 989-289-7520 (OR) BY APPT. * LOADING/STORAGE AVAILABLE SALE DAY!

FOUR D FARMS, LLC. 4584 W. GARFIELD RD. MIDDLETON, MI. 48856
FOR INFO CALL: KELVIN DUFLU AT 989-289-7520

SYKORA AUCTION SERVICE INC.

Scott Sykora, Auctioneer John McConnell, Auctioneer
989-386-9694 • Fax 989-386-2246 989-588-9591
Clare, Michigan • Visit our Web Site www.sykorauctions.com

Home • Lifestyles • Leisure

Home Show

2016

Home Show Dates

March 11, 12, & 13

IAC- CMU Campus Mt. Pleasant, MI

Featuring **Pete Nelson**
Animal Planet's Treehouse Masters



ANIMAL PLANET

We will be holding seminars on the Energy Credits available this year on New Home Construction and Remodeling Projects.

Sponsors of the 2016 Home Show



HOME BUILDERS ASSOCIATION OF CENTRAL MICHIGAN

Isabella Bank

Mr. Electric

DeWitt Lumber

DTE Energy & The Home Builders Association

Enter "House of Nails" contest to win an overhead Garage Door from Johnson Door!









Visit our many Exhibitor Booths

FRIDAY	SATURDAY	SUNDAY	PETE NELSON
March 11	March 12	March 13	Saturday
5pm-9pm	10am-7pm	11am-4pm	Noon & 3pm

Adults \$5. Children under 12 FREE if accompanied by an adult.

Spend Your Pennies Close To Home



Shopping Local keeps your Money Local

NORTH COUNTRY TOURS PRESENTS
Garden of the Gods, the Royal Gorge & Colorado Springs

INCREDIBLE PRICE INCLUDES:

- Motorcoach transportation
- 8 nights lodging including 4 consecutive nights in scenic Colorado
- 14 meals: 8 breakfasts and 6 dinners
- Tour of the GARDEN OF THE GODS
- Visit to the UNITED STATES AIR FORCE ACADEMY
- Visit the ROYAL GORGE BRIDGE and PARK
- Visit HISTORIC MANITOU SPRINGS at the foot of famous PIKES PEAK
- Guided Tour of COLORADO SPRINGS
- Visit the U.S. OLYMPIC TRAINING CENTER

\$822*

9 DAYS 8 NIGHTS

PER PERSON, DOUBLE OCCUPANCY

(Sat - Sun) June 18 - 26, 2016

Departure: Houghton Lake, MI @ 8 am, then Mt. Pleasant, MI, then St. Johns, MI

FOR INFORMATION & RESERVATIONS CONTACT:
 Cynthia Ashley @ (888) 396-9580
 820 Stevens Rd, Lake City, MI 49651



RE/MAX RIVER HAVEN, INC. Open Seven Days a Week to Serve You!
www.riverhavenhomes.com
 Wayne R. Walts - Broker

DeShazo MICHIGAN CUSTOM HOMES COMPANIES

<p>Main Office 777 W. Cedar Riverwalk Place 989-426-6893</p> <p>Wixom Lake Office 1239 Estey Road, Beaverton 989-435-7755</p> <p>Sugar Springs Office 1415 W. Sugar River Rd. Gladwin, MI 48824 989-426-9239</p>	 Farwell area-White Birch Lakes-3 bedroom chalet w/2 out buildings for storage. Enjoy all the amenities that the development has to offer. \$79,000 MLS#165057	 Pratt Lake-2 bedroom cottage/home with 2 car garage. Sandy beach on all sports lake, Fabulous view. \$124,900 MLS#165054	 Close to Sugar Springs-6 bedroom, 3 bath ranch with finished walkout lower level. Nearly 4000 sq ft heated, 2+ car att garage, 30x40 pole barn. All this and more on 31 acres of land. \$375,000 MLS#165051
---	--	---	--

INCOME TAX???
NO CREDIT NEEDED
\$40⁰⁰ Takes It Home
90-Day Cash Option

*Subject to approval. See store for details

136 S. Fifth St. West Branch
 located block south of Firstbank off Houghton Ave.
989-345-5326 Sunday 11-3 Mon.-Fri. 10-6 Sat. 10-5

WEST BRANCH FURNITURE - MATTRESS OUTLET

*12 Months No Interest

LIFESTYLE

"The Outlet Store That Saves You More!"

HELMAN'S MARKET & DELI

122 E. Superior • Alma • 463-4891
 Monday-Friday 8am - 5:30pm • Saturday 8am-1pm
 Prices Valid February 29th-March 5th

Meat

USDA Choice TOP SIRLOIN STEAK \$4 ⁹⁹ lb	Fresh Boneless CHICKEN BREAST \$1 ⁹⁹ lb
Bone In PORK CHOPS Thick Thin or Stuffed \$1 ⁹⁹ lb	Market Made BRATWURST Assorted Frozen \$4 ⁹⁹ lb
Baby Back PORK RIBS \$4 ⁹⁹ lb	Farmland SMOKED PORK CHOPS \$3 ⁹⁹ lb

Frozen Seafood

WALLEYE	MUSSELS
CODFISH	SCALLOPS
ORANGE ROUGHY	SOCKEYE SALMON
WHITEFISH	SASHIMI TUNA STEAKS
KING CRAB	CATFISH
LOBSTER TAILS	SHRIMP
SHRIMP	SWORDFISH

Doug's Deli Lunch

Market Made COLESLAW & COTTAGE CHEESE \$1 ⁹⁹	HOT SOUP
COLBY OR COJACK CHEESE \$3 ⁹⁹ lb	SUB SANDWICHES
Koegel's ASSORTED COLD CUTS "Bulk Loaves" \$4 ⁸⁹ lb	

BRIAN'S FRUIT & MEAT MARKET

2167 S. M-76 • West Branch (Across from Kmart)

While Supplies Last • Not responsible for printing errors
 Prices good Sunday, February 28th thru Friday, March 4th, 2016
 New store hours: Open Sundays 8am - 6pm • Mon.-Sat. 7am-7pm

WE ARE A PACKAGED LIQUOR DEALER

We accept all major credit cards & EBT card

BRIAN'S MEATS: 989-345-3709 LIKE US ON FACEBOOK WWW.BRIANSFRUITANDMEATMARKET.COM

Winter's Brand SLICED PREMIUM CORNED BEEF \$6 ⁹⁹ lb.	Great Lakes Brand SLICED SWISS CHEESE \$5 ⁹⁹ lb.	Great On The Grill BEEF LOIN PORTERHOUSE STEAKS \$8 ⁹⁹ lb.	Beef It's What's For Dinner BONELESS BEEF DENVER STEAKS & ENGLISH ROAST \$3 ⁹⁹ lb.	X-tra Lean BONELESS STEWING BEEF \$4 ⁹⁹ lb.	Store Ground FRESH GROUND BEEF FROM CHUCK \$3 ⁶⁹ lb.	Pork The Other White Meat LEAN & MEATY PORK STEAKS \$1 ⁴⁹ lb.
BBQ Time PORK COUNTRY STYLE SHOULDER STRIPS \$1 ⁴⁹ lb.	Assorted Varieties BRIAN'S HOMEMADE FRESH BRATS \$3 ⁹⁹ lb.	Fresh or Smoked BRIAN'S FRESH HOMEMADE POLISH SAUSAGE \$2 ⁹⁹ lb.	Breakfast Time BRIAN'S OWN BULK BREAKFAST SAUSAGE \$1 ⁹⁹ lb.	Fresh Never Frozen FRESH BONELESS SKINLESS CHICKEN BREAST \$1 ⁷⁹ lb.	Grabbel's Brand CORNED BEEF BRISKET FLAT CUT \$4 ⁹⁹ lb.	EASTER HAM SPECIALS
Dearborn Brand SPIRAL SLICED TORCH GLAZED HAM \$4 ⁹⁹ lb.	Wholes or Halves SEMI-BONELESS DEARBORN CLASSIC HAMS \$3 ⁴⁹ lb.	Hickory Smoked BONELESS DEARBORN HAMS \$3 ⁴⁹ 15 lb. avg.	Daisyfield Brand SMOKED PICNIC HAMS \$1 ⁹⁹ lb.	Little Town Jerky Brand SMOKED 1/2 PICNIC HAMS \$1 ⁹⁹ lb.	Brian's Own SPIRAL SLICED HAMS \$3 ⁹⁹ lb.	Jamestown Brand BUTT & SHANK HALF HAMS \$1 ⁶⁹ lb.

BRIAN'S PRODUCE: 989-345-2891

BAREMAN'S DAIRY MILK GAL. WHOLE & 2% \$2 ⁴⁹ GAL. 1% & SKIM \$2 ²⁹	PRAIRIE FARMS COTTAGE CHEESE 16 oz. tubs 2/\$3 ⁰⁰	DUTCH FARMS BUTTER QUARTERS 1 lb. quarters 2/\$5 ⁰⁰	HILLBILLY WHEAT BREAD 2/\$3 ⁰⁰	WILLIAM'S BRAND CHEESE SPREADS & CHUNKS 8 oz. \$2 ⁰⁹	BILL KNAPP'S NUTTY DUNKERS 13 oz. 2/\$5 ⁰⁰	FARM FRESH LARGE EGGS Dozen \$1 ²⁹
VINE RIPE TOMATOES 99¢ lb.	BROCCOLI 89¢ each	CABBAGE 49¢ lb.	LETTUCE 89¢ each	STRAWBERRIES 2/\$4 ⁰⁰ 1 lb. package	BLUEBERRIES 2/\$4 ⁰⁰ pints	TEXAS RUBY RED GRAPEFRUIT 2/\$5 ⁰⁰ 8 lb. bag
SEEDLESS RED OR GREEN GRAPES \$1 ⁹⁹ lb.	THISTLE SEED \$9 ⁹⁹ 10 lb. bag	MICHIGAN APPLES 99¢ lb.	WILD BIRD SEED \$12 ⁹⁹ 50 lb. bag	SUNFLOWER SEEDS \$17 ⁹⁹ 50 lb. bag	COCA-COLA PRODUCTS 4/\$10 ⁰⁰ 6 pk. bottles +dep.	BUSCH & BUSCH LIGHT \$15 ⁹⁹ 30 pk. cans +dep. +tax

LENTEN SPECIALS

6oz. Portions ATLANTIC COD LOINS \$4 ⁹⁹ lb. OR \$45 ⁰⁰ 10lb box	4 to 6oz. Portions ALASKAN POLLOCK FILLETS \$2 ⁹⁹ lb. OR \$19 ⁰⁰ 10lb box	1# pkgs. TILAPIA FILLETS \$4 ⁹⁹ lb.	6 to 7oz. portions YELLOW FIN TUNA STEAKS \$7 ⁴⁹ lb.	31/40 ct. COOKED, PEELLED & DEVEINED SHRIMP \$8 ⁹⁹ lb.	26/30 ct. RAW, PEELLED & DEVEINED SHRIMP \$8 ⁹⁹ lb.	1# pkgs. SALMON FILLETS \$6 ⁹⁹ lb.	1# pkgs. CLEANED LAKE SMELT \$5 ⁹⁹ lb.
--	--	---	--	--	---	--	--

HELP WANTED GENERAL

Small company is taking applications for **1st Shift General Labor**. Must be able to lift 50 lbs. and be punctual and dedicated to the job. Apply in person 309 N Fremont St, Remus, MI, 49340

HELP WANTED SEASONAL

Crop Production Services is looking for **PT SEASONAL HELP** in the Chemical Warehouse for the 2016 Spring Season. Job includes heavy lifting, loading and unloading of customers, also the ability to operate a forklift. Stop in person at 8263 N. Ransom Road, Breckenridge, MI or send resume to PO Box 157, Breckenridge, MI 48615

Crop Production Services is looking for **PT SEASONAL TRUCK DRIVERS** with A or B CDL endorsements for the 2016 Spring Season. Stop in person at 8263 N. Ransom Road, Breckenridge, MI or send resume to PO Box 157, Breckenridge, MI 48615

DIRECT CARE

Bay Human Services is currently interviewing **DIRECT SUPPORT PROFESSIONALS** to work with adults and/or children with developmental disabilities in the Alma area. Persons interested in applying for this position should submit a complete resume including references to: <http://bayhs.applicantpro.com> or apply in person at 1115 Woodmere in Alma.

Bay Human Services is hiring for part time **DIRECT SUPPORT PROFESSIONALS** for our AFC homes in the Alma/St. Louis/Ithaca area. Must be caring, compassionate, and dependable. Training provided. Must have valid drivers license. Starting pay \$9.75/hr. Applicants may apply at <http://bayhs.applicantpro.com>.

CLASSIFIED is where the Action is.

EDUCATION/TRAINING

(PART-TIME) ADMINISTRATIVE ASSISTANT

MID MICHIGAN COMMUNITY COLLEGE is seeking qualified candidates to apply for a part-time Administrative Assistant at the Morey Technical Center in Mount Pleasant. For a detailed list of position qualifications and application requirements visit Jobs at MMCC at www.midmich.edu. EEO/AA

PLACING AN ad in classified is the way to go!



NEED HELP?
CALL A LOCAL PROFESSIONAL FROM OUR
Professional Services Directory

LANDSCAPE & TREE MAINTENANCE

ARBOR TREE Service. Storm Damage, Landscaping, Tree Trimming & Removing. Call 866-557-5848, call 989-763-3830

REMODELING & REPAIR

HOME IMPROVEMENT Interior/Exterior Painting, Roof & Drywall Repair, Power Washing, Kitchen/Bath Special, Tile, House Leveling, Windows, Doors, Flooring. Call 989-533-1006

FIREWOOD

HARD FIREWOOD \$50/ Cord. 4 X 8 Face Cord. Seasoned & Delivery Available. 989-418-8087

MISCELLANEOUS

Eliminate high heating costs. Central Boiler's all-new Classic Edge **OUTDOOR WOOD FURNACE**. Call today! Beaverton Outdoor Wood Furnace 989-435-9240

HAY FOR SALE: Excellent alfalfa, net wrapped, round dry bales, and baleage \$40. (989) 426-7725

MERCHANDISE WANTED

45 RPM Records Wanted (the small ones w/big hole) 50's-60's-70's. 517-775-3989

BUILDING MATERIALS & SUPPLIES

BUILT BEST BARN'S HIRING BUILDING CREWS!!! Michigan Largest Pole Barn Company Best Quality, Best Service, Since 1963 Over 7500 buildings in Michigan. Save \$500. on any Pole Barn with this ad.

Let us Build Your Pole Barn WE BUILD ALL WINTER License/Insured 1-877-802-9591 989-205-2534

CAN'T FIND what you're looking for? Find it the fast & easy, effective way by using the classifieds! Call and place a low cost classified ad under "Wanted To Buy" in next week's paper.

MERCHANDISE WANTED

CASH FOR OLD COINS & CURRENCY

Paying book price. Will look up each coin with you. 989-426-7300.

FARM - HEAVY EQUIPMENT & PARTS

BUY FUEL DIRECT & SAVE Home Heating Oils *Farm *Commercial *Industrial Gasoline-Diesel Fuels

Tri Lakes Petroleum, LLC

Call Scott Capen 989-620-7527 Toll Free 877-857-4567 Locally Owned & Operated trilakesllc.com

WOODWORKING

WALNUT BOARDS. Kiln dried, stored inside, various sizes up to 11" wide 11' long. \$3000 OBO. 989-560-3638

RESIDENTIAL SALES

FARWELL AREA: 3 bdrm., 2 bath, natural gas, 5" well, 2 lots, 28x40 garage, \$75,500. John W. Lavery Real Estate. 62 W. Ludington Dr., Farwell, MI 48622. 989-588-9702 or 989-429-0733

IS YOUR CLOSET overflowing with odds and ends, this and that? Place a classified to help end the clutter.

MISCELLANEOUS

PAWN SHOP Buy, Sell, Pawn

3 Month Pawn 3% + 1.00 Storage Firearms, Gold & More

Gladwin Trade & Sales 989-426-6811

RESIDENTIAL SALES



PUBLIC OPEN HOUSE Saturday, 11:00 -2:00

129 Valley Alma

Refreshments will be served. Stop by and look this over!

Price \$64,900

New Horizons Realty 989-463-4633 Larry D. Mott Cell: 989-560-0800 larry@centralmichiganhomes.com

LOTS & LAND

32 ACRES tillable farmland for sale in N. W. Isabella County. 614-949-8482 or 989-339-0035

PASSENGER CARS

2013 FORD F-150 Supercrew, 4x4, only 28,000 miles, full power, beautiful granite black, spotless condition.

ONLY \$29,995 or about \$398/mo!

Dick Sovo Auto 989-828-6032 dicksovaautosales.com

REMEMBER - when placing a classified to get fast results be sure to include:

- 1) all the details
 - 2) include the price
 - 3) be available to callers
- As easy as 1 - 2 - 3!

YOU GET QUICK action at a low cost when you advertise in the Insider classifieds.

Do you have a car for sale?



How about a boat? Or maybe some furniture? Call to place a classified ad with one of our helpful representatives & sell your no-longer-wanted items **FAST!**



800 Products **18** States **57M** Americans



Your Career Begins Now

Digital First Media, a leading provider of local news and information, is recruiting Account Executives to join our fun, fast-paced, professional team. You will have an opportunity to sell to a growing audience across an expanding network of digital platforms.

Please forward your resumé to tgoodrich@digitalfirstmedia.com

Digital First Media is an EEO Employer, M/F/D/V

digitalfirst MEDIA

www.digitalfirstmedia.com and www.adtaxinetworks.com

RABIES CLINIC
Special January Rates

\$15⁰⁰
Reg \$20.00

By Appt. 426-0203
Flexible Hours

KELLY'S KRUISSING
KRITTER KARE
Kelly Jo Kelley, DVM



Samuel
Mancino's
ITALIAN EATERY

LENT SPECIALS AVAILABLE
THROUGHOUT THE WHOLE LENT
SEASON DINE IN OR CARRY OUT

SPECIAL COD FISH BASKET WITH
FRENCH FRIES AND COLESLAW
\$6.95

8-INCH TUNA GRINDER \$5.95 **8 INCH CRAB GRINDER \$5.95**

LOCATED IN INDIAN HILLS PLAZA. 989-775-6666

Get Your Taxes DONE RIGHT!!
You Don't Have to Pay an Arm & a Leg
Switch to Tax Pros and SAVE!!!

Bring in your last year's return and we will prepare your 2015 Taxes for
50% OFF
For new clients only.

2074 E. Surrey Road Farwell, Michigan 48622 989-386-4554 989-386-0777 Fax: 989-386-4890
5800 E. Pickard Street Mt. Pleasant, Michigan 48858 989-953-7171 Fax: 989-953-7170

hscott@taxproslc.com

Short on CASH?

\$500

Refund Advance Loans*
Available at Tax Pros LLC

*There are eligibility requirements

2074 E. Surrey Road Farwell, Michigan 48622 989-386-4554 989-386-0777 Fax: 989-386-4890
5800 E. Pickard Street Mt. Pleasant, Michigan 48858 989-953-7171 Fax: 989-953-7170

hscott@taxproslc.com

KEEPSAKE COLLECTION
Spring Art & Craft Show

Featuring over 80 Exhibitors!
Horizon Conference Center
6200 State Street • Saginaw, MI
Saturday, March 5, 2016
9:00am - 3:00pm
S2 admission • 10 & younger free

www.keepsakecollectionshows.com
For More Information: 989-681-4023 • 989-781-9165

SVSU Show April 9



Mid-Michigan Buyers Guide

Display Advertising
989-463-6071 or 989-779-6000

Classified Advertising
1-877-483-3450

For Delivery
1-888-349-4042

Morning Star Publishing Company powered by digitalfirst MEDIA

Notice:
TO ALL RESIDENTS OF
Sherman Township,
Coldwater Township &
S.W. Gilmore Township:

In March of 2015, Isabella County officials seriously degraded fire & rescue radio communications in your area. This reduction in radio service could result in injury or death to firefighters, or to you, the citizens they serve.

For more information, visit <http://www.bennsci.com> and click on the **Digital Radio Fiasco** link.

CUSTOM DESIGNS
Etchings by our in-house artist
Buy Direct & Save Up To 50%

Also Available
Caskets, Cremation Vaults and Urns.

Brewer Bouchey Monument Co.
Family Owned Since 1895
211 N. Mill St. • Downtown St. Louis
989-681-3300 • Toll Free 888-362-2920
Hours: Mon.-Fri. 9-5; Sat. By Appt.
www.brewer-bouchey.com

Indoor Showroom



Evans Eye Centers

Are you suffering from cataracts?

Get Started today. Call for an Evaluation.

120 Warwick Alma, MI 48801 989-463-Eyes (3937)
1203 S. Mission Mt Pleasant, MI 48858 989-775-Eyes (3937)



ICE-COLD SAVINGS

"I came to New York to be a dancer, but I knew that was a short-lived career. So I got my real-estate license and started selling houses. And turned out, I love it."
- Charles Murray, Real Estate Agent

Search LOCATION NAME jobs and find the one that's right for you at COBRAND URL





seeleycars.com
989-463-AUTO (2886)

Seeley Auto Sales Inc.

7625 N. Alger Rd. • Alma - Across from new Wal-Mart

Ask About Our **BUY HERE PAY HERE PROGRAM**
SPECIALIZING IN CUSTOMERS WITH SSI, DISABILITY AND SOCIAL SECURITY INCOME.
Financing Available in Select Areas
Call For Details



1997 CHEVROLET MONTE CARLO LS
A/C, P/S, Daytime Running Lights
\$2,295



1998 GMC SONOMA LS SPORT
AM/FM, Daytime Running Lights, Tinted Glass
\$1,995



2000 FORD EXCURSION LIMITED
Front/Rear A/C, Roof Rack, AM/FM, CD, Keyless Entry, Running Boards, Hitch
\$5,995



2004 FORD EXPLORER SPORT TRAC XLS
4x4, V6, A/C, CD, P/W, P/L, P/M, Alloys, 4 Dr
\$6,995



2004 CHEVY SILVERADO 1500
4 Dr, V8, A/C, Ext Cab, p/l, Tow Pkg, Work Truck
\$6,995



2001 CHEVROLET MALIBU LS
A/C, AM/FM, CD, Cruise, P/S
\$2,995



2008 CHEVY SILVERADO 1500
V8, A/C, CD, Rubber Floor, Tow pkg, Wide bed, Work truck
\$7,595



2001 CHEVROLET MONTE CARLO SS COUPE
Front A/C Zones, AM/FM, Keyless Entry, OnStar
\$4,295



2001 CHEVROLET SILVERADO 2500
P/S, Daytime Running Lights, Steel Wheels
\$4,995



2001 FORD RANGER EDGE
P/S, AM/FM, Steel Wheels
\$5,595



2008 DODGE RAM 1500 ST
4x4, V8, Good Miles, A/C, CD, Tow Pkg, P/W, P/L, P/M
\$15,995



2002 CHEVROLET S-10 LS
P/S, Daytime Running Lights
\$5,595



2002 CHEVROLET SILVERADO 1500
A/C, P/S, Daytime Running Lights, Steel Wheels
\$3,595



2002 DODGE STRATUS R/T COUPE
A/C, Cruise, Keyless Entry, CD, Alloys
\$5,995



2003 CHEVROLET BLAZER LS
A/C, CD Player, Roof Rack, Alloys
\$3,595



2003 CHEVROLET CAVALIER
A/C, AM/FM, Daytime Running Lights, Steel Wheels
\$2,995



2003 CHEVROLET S-10 LS CREW CAB
A/C, Keyless Entry, CD, AM/FM, Daytime Running Lights, Alloys
\$6,995



2003 CHEVROLET SILVERADO 1500 LS CREW CAB
Dual Front A/C Zones, CD, AM/FM, Keyless Entry
\$10,995



2003 DODGE RAM 2500 ST REG CAB
A/C, AM/FM, P/S
\$9,995



2003 PONTIAC GRAND AM SE
A/C, Daytime Running Lights, AM/FM, CD, P/S
\$2,995



2004 CHEVROLET CLASSIC SEDAN
A/C, Cruise, Keyless Entry, P/S, P/W
\$4,995



2004 CHEVY VENTURE PLUS
A/C, Cruise, Tilt, P/W, P/L, P/M, Only 120K Miles
\$3,295



2006 CHRYSLER TOWN & COUNTRY
V6, Good Miles, A/C, CD, Cruise, Tilt
\$5,995



1996 MERCURY GRAND MARQUIS
V8, A/C, Cruise, Tilt, P/L, P/W, P/M
\$2,995



2001 CHRYSLER SEBRING TOURING
V6, A/C, CD, Cruise, Tilt, Full Power
\$3,995



2004 CHEVROLET TRAILBLAZER LS
Dual Front A/C Zones, P/S, AM/FM, CD, Alloy Wheels
\$5,995



2000 BUICK LESABRE CUSTOM
V6, A/C, Cruise, Tilt, P/W, P/W, Good Miles
\$4,995



2002 CHEVY MONTE CARLO IV6
Good miles, A/C, Cruise, Tilt, P/L, P/W, P/M
\$5,595



2004 DODGE DAKOTA SPORT TRUCK
P/S, P/B, Alloy Wheels
\$6,995



2008 PONTIAC G6
A/C, CD, Cruise, P/L, P/W
\$5,995



2004 FORD F-150 LARIAT SUPERCREW
A/C, AM/FM, CD, Keyless Entry
\$8,995



2004 JEEP LIBERTY SPORT
AM/FM, CD, P/S, Cloth
\$6,495



2009 PONTIAC G6 SP
A/C, Cruise, Tilt, CD, P/W, P/L
\$8,995



2010 FORD FUSION SE
V6, A/C, Cruise, Tilt, CD, P/L, P/W, P/M
\$9,995



2005 CHEVROLET IMPALA SEDAN
AC, AM/FM, Daytime Running Lights, OnStar
\$5,995



2005 CHEVROLET UPLANDER
A/C, Cruise, P/S, AM/FM, CD
\$4,995



2005 FORD F-350 SUPER DUTY LARIAT
4W/ABS, P/S, Wheel locks
\$9,995



2005 FORD FOCUS ZXW SE
A/C, AM/FM, CD, MP3, Remote door locks
\$4,995



2005 JEEP CHEROKEE LIMITED
AM/FM, CD, MP3, Dual Front A/C Zones, P/S
\$8,595



2006 CHEVROLET IMPALA LT
AM/FM, Daytime Running Lights
\$5,595



2006 CHRYSLER TOWN & COUNTRY
A/C, AM/FM, CD, All season tires
\$2,995



2006 DODGE GRAND CARAVAN
AM/FM, CD, Privacy Glass, Cruise, P/S
\$4,995



2006 FORD RANGER SPORT
Front Power Outlet, P/S, RWD
\$5,595



2006 JEEP GRAND CHEROKEE LAREDO
AM/FM, CD, P/S, 4WD
\$6,995



2006 JEEP LIBERTY SPORT
AC, AM/FM, CD, Part Time 4WD
\$7,495



2007 FORD F-150 FX4
Part Time 4WD, A/C, AM/FM, CD, MP3
\$13,995



2007 FORD TAURUS SE
Front A/C Zones, P/L
\$5,995



2007 KIA SPORTAGE LX
AM/FM, CD, On Demand 4WD
\$6,995



2008 CHEVROLET MALIBU LT
AC, AM/FM, CD, MP3, Daytime Running Lights
\$6,295



2008 CHEVROLET MALIBU CLASSIC LT
A/C, AM/FM, CD, Daytime Running Lights
\$5,595

2008 CHEVROLET MALIBU LT
AC, AM/FM, Daytime Running Lights, 1 touch windows
\$5,995

Always Accepting Trade-Ins
See Many More At: www.seeleycars.com