

# Mid-Michigan Buyers Guide

SUNDAY, APRIL 10, 2016

Serving Clare, Gladwin, Gratiot, Isabella, Montcalm, & Southern Roscommon Counties

Morning Star Publishing Company powered by digitalfirst

## Gladwin City Housing Commission

Low Income Housing • Community Development Program

**NO  
SMOKING  
FREE HEAT  
AND RENT BASED  
ON INCOME**

989-426-5721



Gladwin City  
**HOUSING  
COMMISSION**  
989-426-5721  
www.gladwinhc.net

**GA**  
COUNCIL ON AGING  
Serving Gladwin County  
989-426-5450  
www.gladwincoa.org

Equal Opportunity  
Employer and Service  
Organization

Like us on Facebook



If you or a family member is in need of an apartment, the Gladwin City Housing Commission has smoke-free affordable apartments in downtown Gladwin and Beaverton. Seniors and disabled citizens can rent a one bedroom apartment for 30% of their income. This includes appliances, gas, electric and water. Small pets are welcome.

You'll also have access to a laundry room, arts & crafts room and lounge. Other services available include curb side pickup from the City County Transit and lunch at the Council on Aging dining centers. You do not have to live in Gladwin or Beaverton to qualify for this low income housing. So contact the Gladwin City Housing Commission at 426-5721 to see if you qualify. An Equal Housing Opportunity

### **LOW OR NO INTEREST LOANS AVAILABLE** to Gladwin County residents for home repairs.

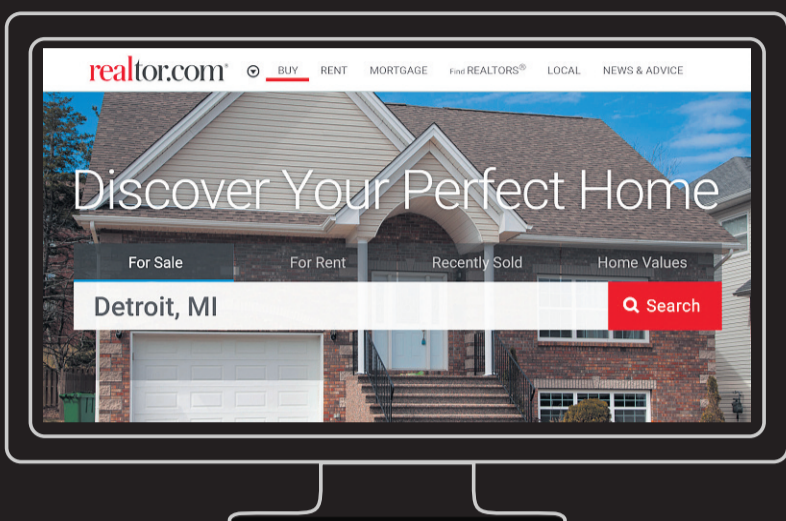
- Roof • Windows • Furnace • Water Heater • Insulation • Electrical • Plumbing • Well
- Septic Tank • Drain Field • Ramp • And More
- Must be income eligible
- Own your home or purchasing it through a mortgage or land contract
- Be your principal residence for minimum of 1 year
- All property taxes must be paid up to date
- Current homeowner's insurance is required

**For more information call Karen at (989) 426-5721  
Gladwin City Housing Commission.**

An Equal Housing Opportunity!



# LATEST LISTINGS OF HOMES FOR SALE



LISTINGS UPDATED EVERY 15 MINUTES

visit [realtor.com/morehomes](http://realtor.com/morehomes)

## realtor.com®

"Every 15 minutes" claims are based on the frequency of listings updating on realtor.com®. For-sale listings are updated on realtor.com® at least every 15 minutes on average in most areas.

© 2016 Move Sales, Inc. All rights reserved. 12770CA

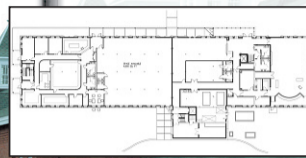
## PROFESSIONAL OFFICE SPACE AVAILABLE

*Located In the Prestigious and Historic*

### Borden Creamery Building

For Further Information Call (989) 835-6671 ext. 1218

- Will Build to Suit
- 4,900 sq. ft. Available
- In the Heart of the Central Business District
- Prestige Location
- Office or professional space
- \$10 S.F.



## Thank You

Mr. and Mrs. O'Neil  
Mr. and Mrs. Lambeth  
for joining the Culligan family and becoming valued customers.

Culligan Worldwide  
Celebrating 75 years

Ken's Culligan • Alma



## "Bright Beginnings" Begin at Beaverton Elementary

### Kindergarten Round-up

(Must be 5 on or before Sept. 1, 2016)

April 20<sup>th</sup> and April 21<sup>st</sup>, 2016

- A caring & qualified staff
- A full day program
- Positive behavior support
- Parent involvement



Call 246-3020 for a Round-up appointment

800 Products    18 States    57M Americans



## Your Career Begins Now

Digital First Media, a leading provider of local news and information, is recruiting Account Executives to join our fun, fast-paced, professional team. You will have an opportunity to sell to a growing audience across an expanding network of digital platforms.

# digitalfirst

MEDIA

[www.digitalfirstmedia.com](http://www.digitalfirstmedia.com) and [www.adtaxinetworks.com](http://www.adtaxinetworks.com)

Please forward your resumé to [tgoodrich@digitalfirstmedia.com](mailto:tgoodrich@digitalfirstmedia.com)

Digital First Media is an EEO Employer, M/F/D/V



# Steve's Country Market

989-539-3110 3170 North Clare Ave., Harrison 44 Feet of Old Fashioned Meat Counter with Good Old Fashioned Service

Hours: Mon. - Sun. 8-8 Bridge Card & Wic Accepted

Sale Dates: April 11 - April 17, 2016

Top Quality Meats At Rock Bottom Prices!

100% Satisfaction Guaranteed

Michigan Lottery and ATM Machine [stevescountrymarket.com](http://stevescountrymarket.com)

GROUND CHUCK FAMILY PACK 81% LEAN <b>\$2.49</b> LB.	BONELESS PORK LOINS <b>\$1.69</b> LB. SLICED FRESH	BONELESS ENGLISH ROAST <b>\$3.29</b> LB.	CENTER CUT PORK CHOPS <b>\$1.99</b> LB.	PORK STEAK OR WESTERN STRIPS <b>\$1.39</b> LB.	STEVE'S OWN MARKET-MADE BULK PORK SAUSAGE <b>\$1.39</b> LB.	USDA CHOICE T-BONE STEAKS <b>\$6.99</b> LB.	ECKRICH ALL MEAT FRANKS 14 OZ. <b>2/\$3.00</b>	BONELESS CHICKEN BREASTS <b>\$1.79</b> LB.
FLORIDA SWEET CORN <b>3/\$2.00</b>	SEEDLESS GRAPES RED OR GREEN <b>\$1.99</b> LB.	SUPER SELECT CUCUMBERS <b>2/\$1.00</b>	ECKRICH HARD SALAMI <b>\$4.49</b> LB.	ECKRICH DELI HAM <b>\$3.99</b> LB.	8 PC. BROASTED CHICKEN <b>\$6.99</b> EA.	POLLOCK FILLETS 10 LB. BOX <b>\$15.99</b> EA.	TILAPIA FILLETS <b>\$3.49</b> LB.	COD LOINS <b>\$5.99</b> LB.
MICHIGAN RUSSET POTATOES 5 LB. BAG <b>\$1.49</b> EA.	BANANAS <b>49¢</b> LB.	PRAIRIE FARMS COTTAGE CHEESE 24 OZ. <b>2/\$5.00</b>	YODER'S SHREDDED OR BAR CHEESE 8 OZ. <b>2/\$4.00</b>	4 QT. PAIL ICE CREAM <b>\$4.99</b> EA.	MAXWELL HOUSE COFFEE 28-30.6 OZ. <b>\$7.99</b> EA.	GENERAL-MILLS CEREALS SELECT VARIETIES 8.9-12 OZ. <b>2/\$4.00</b>	AUNT MILLIE'S HONEY HOT DOG OR HAMBURG BUNS 8 CT. <b>2/\$3.00</b>	LAY'S POTATO CHIPS 9.5-10 OZ. <b>BUY 1 GET 1 FREE</b>

White supplies last. Not responsible for printing errors.

# Spring Sale!

**MASSIVE STOREWIDE SAVINGS**

**OUR BIGGEST SAVINGS EVENT OF THE YEAR**

ALL OUR ALREADY LOW SALE PRICES AN EXTRA  
**20% OFF ALL SALE PRICES STORE WIDE**

EXAMPLE

## Serta Sofa Group

Sofa \$1199 Retail <del>\$599 Sale</del> <b>\$479.20 @ 20% off</b>	Love \$1099 Retail <del>\$549 Sale</del> <b>\$439.20 @ 20% off</b>	Chair \$999 Retail <del>\$499 Sale</del> <b>\$399.20 @ 20% off</b>
---	---	---



## Elevation Queen Electric Adjustable Bed

\$1699 Retail  
~~\$999 Sale~~  
**\$799.20 @ 20% off**



## Serta Recliner Sectional

Choice of Jessie Khaki or Jessie Cinnamon

\$2699 Retail  
~~\$1349 Sale~~  
**\$1079.20 @ 20% off**



<i>Cavalier Plush or Firm</i>	<b>Retail</b>	<b>Sale</b>	<b>@20% Off</b>
	Twin \$799	<b>\$349</b>	<b>\$279<sup>20</sup></b>
	Full \$899	<b>\$399</b>	<b>\$319<sup>20</sup></b>
	Queen \$999	<b>\$449</b>	<b>\$359<sup>20</sup></b>
King \$1,499	<b>\$699</b>	<b>\$559<sup>20</sup></b>	



## Facts About Symbol Mattress

- \* Symbol Mattress is the 3rd largest manufacturer in the Midwest and 12th largest in the United States out of 600.
- \* Symbol Mattress has a higher customer satisfaction rating than both Serta & Sealy
- \* Symbol Mattress sets normally sell for 20-30% less than the equivalent Serta or Sealy model

<i>Cavalier Pillow Top</i>	<b>Retail</b>	<b>Sale</b>	<b>@20% Off</b>
	Twin \$899	<b>\$399</b>	<b>\$319<sup>20</sup></b>
	Full \$999	<b>\$449</b>	<b>\$359<sup>20</sup></b>
	Queen \$1,099	<b>\$499</b>	<b>\$399<sup>20</sup></b>
King \$1,599	<b>\$749</b>	<b>\$599<sup>20</sup></b>	

<i>Carlton Plush or Firm</i>	<b>Retail</b>	<b>Sale</b>	<b>@20% Off</b>
	Twin \$1,099	<b>\$499</b>	<b>\$399<sup>20</sup></b>
	Full \$1,199	<b>\$549</b>	<b>\$439<sup>20</sup></b>
	Queen \$1,299	<b>\$599</b>	<b>\$479<sup>20</sup></b>
King \$1,899	<b>\$899</b>	<b>\$719<sup>20</sup></b>	

<i>Shelton Plush or Firm</i>	<b>Retail</b>	<b>Sale</b>	<b>@20% Off</b>
	Twin \$899	<b>\$399</b>	<b>\$319<sup>20</sup></b>
	Full \$999	<b>\$449</b>	<b>\$359<sup>20</sup></b>
	Queen \$1,099	<b>\$499</b>	<b>\$399<sup>20</sup></b>
King \$1,699	<b>\$799</b>	<b>\$639<sup>20</sup></b>	

<i>Carlton Pillow Top</i>	<b>Retail</b>	<b>Sale</b>	<b>@20% Off</b>
	Twin \$1,199	<b>\$549</b>	<b>\$439<sup>20</sup></b>
	Full \$1,299	<b>\$599</b>	<b>\$479<sup>20</sup></b>
	Queen \$1,399	<b>\$649</b>	<b>\$519<sup>20</sup></b>
King \$1,999	<b>\$949</b>	<b>\$759<sup>20</sup></b>	

<i>Shelton Pillow Top</i>	<b>Retail</b>	<b>Sale</b>	<b>@20% Off</b>
	Twin \$999	<b>\$449</b>	<b>\$359<sup>20</sup></b>
	Full \$1,099	<b>\$499</b>	<b>\$399<sup>20</sup></b>
	Queen \$1,199	<b>\$549</b>	<b>\$439<sup>20</sup></b>
King \$1,799	<b>\$849</b>	<b>\$679<sup>20</sup></b>	

<i>Carlton 2 Sided Plush or Firm</i>	<b>Retail</b>	<b>Sale</b>	<b>@20% Off</b>
	Twin \$1,299	<b>\$599</b>	<b>\$479<sup>20</sup></b>
	Full \$1,499	<b>\$699</b>	<b>\$559<sup>20</sup></b>
	Queen \$1,599	<b>\$749</b>	<b>\$599<sup>20</sup></b>
King \$2,299	<b>\$1,099</b>	<b>\$879<sup>20</sup></b>	

AN EXTRA **20% OFF EVERYTHING** Layaway and Delivery Available

EXAMPLE

## Wall Hugger Recliner

Choice of Light Brown, Chocolate or Sage Microfiber

\$499.00 Retail  
~~\$249.00 Sale~~  
**Less 20%**  
**\$199.20**



## 5Pc Dinette Set

Table Approx 48" x 36" w/4 Padded Chairs  
 Dark or Medium Brown Finish

\$799.00 Retail  
~~\$449.00 Sale~~  
**Less 20%**  
**\$359.20**



## 5Pc Bedroom Outfit

Queen Bed Assembly, Night Stand  
 Dresser, Mirror and Chest Embossed Resin Design Finished in Brown Chrome Drawer Pulls and Pin Constructed Drawers

\$3,699.00 Retail  
~~\$1,699.00 Sale~~  
**Less 20%**  
**\$1,359.20**



**\*Up To 36 Months NO INTEREST Financing**

Minimum Monthly Payment Required...Minimum purchase required

Check out our Clearance Selection on our website

**www.StateStreet-Furniture.com**

**New Items Added Weekly, All Clearance Items Have Been Lowered in Price**

**Now with 20% OFF Savings up to 84%**



318 N State St • Alma, MI 48801  
 (989) 463-1037 • Hours: 9-6 M-F • 9-5 Sat.

**www.StateStreet-Furniture.com**

\*See Store for Details



# April Showers of Savings

## HEARTWORM CLINIC

April 11 and April 15  
4:00-6:00 pm

No Appointment Necessary  
**POL VETERINARY SERVICES**  
3959 W. Jordan Rd.  
Weidman, MI 48893  
**989-644-5044**

### NURSING HOME ADMINISTRATOR:

Gladwin Pines, a 110 bed Skilled Nursing & Rehabilitation Center located in Gladwin MI, has an opportunity for an experienced Nursing Home Administrator.

**General qualifications include:** Current Michigan license, ability to demonstrate skills and experience related to fiscal management, planning, quality improvement, and regulatory knowledge. The successful candidate will join an experienced interdisciplinary team. A comprehensive benefit package is offered.

Please send resume in confidence to  
[www.employment.peplinskigroup.com](http://www.employment.peplinskigroup.com)

Gladwin Pines Nursing & Rehabilitation Center is accepting applications for potential employment opportunities in the following departments:

**Environmental Service Manager,  
Certified Nursing Assistants,  
Licensed Nurses,  
Certified Dietary Manager,  
Housekeeping,  
Dietary Aides and Cooks.**

Successful candidates will complement existing team members. For immediate consideration submit your application to  
[www.employment.peplinskigroup.com](http://www.employment.peplinskigroup.com)

# Income Tax Pay Day

**Celebrate Responsibly**  
Please Don't Drink and Drive

**Buy!  
Sell!  
Trade!**



**MOHAWK**  
LOVE YOUR FLOOR  
**SALE**  
April 8 - May 23, 2016

# SAVE UP TO \$500\*

\*\$100 to \$500 rebate, based on purchase quantity

**TAKE 0%**  
DEFERRED INTEREST FINANCING  
UNTIL JANUARY 2019  
(with approved credit, and monthly payments)

**OR**

**PAY IN FULL TO  
SAVE THE SALES TAX**  
(materials only)  
(by cash, check, or your credit card)

**-AND-**

**ENTER TO WIN A FREE  
Bissell - SoniClean Vacuum**  
\*\*Best vac for soft yarn carpets!\*\*

**Buy it Now, for \$259. (reg. \$349.)**  
(if you win it, we'll refund your cost)

Additional sales on many other styles  
Carpet, Laminate, Ceramic and Wood.

**MOHAWK**  
SmartStrand  
FOREVER CLEAN Silk

**ARMORMAX  
FINISH**

ArmorMax finish technology offers proven protection that is up to 5x more resistant to wear than other similar extended wear finishes.

Gratiot County's favorite floor store 16 straight years!

# NEEDHAM'S Home Center

**Real Floors for Your Real Life • Since 1977**  
945 W. Monroe Road (M-46), St. Louis, MI 48880  
**Phone (989) 681-5393**  
Hours: Mon - Fri 8:30am - 5:30pm; Saturday 9am - 3pm; Evenings by appointment

**Matress Sale!**

**Want the Health Benefits of America's Top Rated Mattress, But Don't Know Where To Start?**

**Serta**  
perfect sleeper

Kubin's Sleep Experts Can lead You to the Perfect Serta Mattress and Save You Money. Guaranteed.



**Andora Twin Mattress \$99**

5 reasons to never count sheep again.

**Helps reduce tossing & turning**  
Comfort Right<sup>®</sup> Layers

**Encourages proper back support & alignment**  
Custom Support<sup>®</sup> System

**Promotes a balanced sleep temperature**  
Cool Balance<sup>®</sup> Technology

**Minimize impact from partner movement**  
TrueSense<sup>®</sup> Design

**Resists sagging & edge roll-off**  
Comfort Last<sup>®</sup> Construction

It's time to put your sleep problems to rest.

**Add a Pivot Head Up Box for \$544 on most models**

**Guaranteed Lowest Prices ON ALL SERTA MATTRESSES!**

TWIN 2pc set FULL 2pc Set QUEEN 2pc Set KING 3pc set

	TWIN 2pc set	FULL 2pc Set	QUEEN 2pc Set	KING 3pc set
<b>Majestic Davey</b> Gentle Eurotop	\$299 Sale Compare At \$449	\$379 Sale Compare At \$569	\$399 Sale Compare At \$599	\$599 Sale Compare At \$899
<b>Majestic Gallion</b> Support Firm or Support Eurotop	\$349 Sale Compare At \$529	\$449 Sale Compare At \$679	\$499 Sale Compare At \$749	\$799 Sale Compare At \$1199
<b>Majestic Raftery</b> Premium Choice Plush or Firm	\$449 Sale Compare At \$679	\$549 Sale Compare At \$829	\$599 Sale Compare At \$899	\$899 Sale Compare At \$1349
<b>Majestic Stowcroft</b> Choice of Super Pillowtop or Firm	\$649 Sale Compare At \$979	\$749 Sale Compare At \$1129	\$799 Sale Compare At \$1199	\$1099 Sale Compare At \$1649
<b>Serta Perfect Sleeper Bookert Trace</b> Choice of Elite Plush or Firm	\$699 Sale Compare At \$1049	\$779 Sale Compare At \$1169	\$799 Sale Compare At \$1199	\$1099 Sale Compare At \$1649
<b>Serta Perfect Sleeper Swan Harbor</b> Choice of Luxury Pillowtop or Firm	\$899 Sale Compare At \$1349	\$969 Sale Compare At \$1459	\$999 Sale Compare At \$1499	\$1299 Sale Compare At \$1949
<b>Serta Perfect Sleeper Hatters</b> Evercool & Gel Memory Foam	\$899 Sale Compare At \$1349	\$969 Sale Compare At \$1459	\$999 Sale Compare At \$1499	\$1299 Sale Compare At \$1949

**All New 2016 Models have Arrived!**



Experience Serta's Most Advanced Sleep System - Ever!

**50% Off Select Framed Art Over 100 Pieces to Choose From!**

**12 Months Interest Free Financing Available With Approved Credit.**  
\$300 Minimum purchase, monthly payments required.

**LARGEST RECLINER SELECTION IN MICHIGAN! SEE FOR YOURSELF!**



**IN STOCK AND ON SALE NOW:**

**Power Recliners ■ Leather Recliners ■ Big Mans Recliners ■ Ladies Recliners ■ Gliding Recliners ■ Swivel Rocker Recliners ■ Wing Chair Recliners ■ Heat & Massage Recliners ■ Life Chair Recliners ■ Reclining Loveseats ■ Reclining Sofas ■ Children's Recliners**



**Over 10 Different Lift Chairs IN STOCK!**



**Kubin's Furniture & Mattresses**  
101 N Mill St, Corner of M46, St. Louis, Michigan, (989) 681-5043  
Hours: Mon-Thurs: 9-6, Fri: 9-8, Sat: 9-5, Closed Sunday  
Sign up Your Email at: <http://www.kubins.com/signup.htm>



\*SEE STORE FOR DETAILS

**800** Products      **18** States      **57M** Americans



## It's Time For Change

Digital First Media, a leading provider of local news and information, is recruiting Account Executives to join our fun, fast-paced, professional team. You will have an opportunity to sell to a growing audience across an expanding network of digital platforms.

Please forward your resumé to  
tgoodrich@digitalfirstmedia.com

**digitalfirst**  
M E D I A

www.digitalfirstmedia.com and  
www.adtaxinetworks.com

*Digital First Media is an EEO Employer, M/F/D/V*



### Vote For Your Favorite Person, Place, Or Thing In **Gratiot County & Win!**

For completing and returning this entry, you will be entered into a drawing to win one of the following three prizes.  
(Please, one entry per person).

**1st Prize- \$100 2nd Prize- \$50 3rd Prize- \$25**

**The winners of the People's Choice Awards will be published in a special edition of the Mid-Michigan Buyers Guide, June 26, 2016.**

1. Best Restaurant _____	36. Best Real Estate Agency _____	71. Best Deli _____
2. Best Restaurant for Good Service _____	37. Best Accountant/CPA _____	72. Best Furniture Store _____
3. Best Fast Food Restaurant _____	38. Best Financial Advisor _____	73. Best Pharmacy _____
4. Best Place for Breakfast _____	39. Best Banker/Loan Officer _____	74. Best Flower Shop _____
5. Best Ethnic Food _____	40. Best Bank Teller _____	75. Best Hardware Store _____
6. Best Restaurant Burger _____	41. Best Auctioneer _____	76. Best Window Displays _____
7. Best Fast Food Burger _____	42. Best Photographer _____	77. Best TV, Stereo, Electronics Store _____
8. Best Salad Bar _____	43. Best Secretary _____	78. Best Antiques and Collectibles _____
9. Best Place for Pizza _____	44. Best Barber _____	79. Best Lawn & Garden Store _____
10. Best Cup of Coffee _____	45. Best Hairstylist _____	80. Pet Food & Supplies Store _____
11. Best Ice Cream Shop _____	46. Best Hair Salon _____	81. Best Golf Course _____
12. Best Sub/Hoagie/Grinder _____	47. Best Place for a Massage _____	82. Best Gym/Health Club _____
13. Best Tavern _____	48. Best Tanning Salon _____	83. Best Caterer _____
14. Best Waiter/Waitress _____	49. Best Place for Nail Care _____	
15. Best Bartender _____	50. Best Specialty Shop (Not eligible for any other category) _____	
16. Best Restaurant for Cleanliness _____	51. Best Pet Groomer _____	
17. Best Place for Pie _____	52. Best Business for Customer Service _____	
18. Best New Car Dealership _____	53. Best Local Website _____	
19. Best Used Car Dealership _____	54. Community Volunteer _____	
20. Best Car Salesperson _____	55. Best Plumber _____	
21. Best Auto Service Department _____	56. Best Electrician _____	
22. Best Auto Body Shop _____	57. Best Contractor/Builder _____	
23. Best Auto Parts Store _____	58. Best Painting Contractor _____	
24. Best Quick Oil Change _____	59. Best Place for Floor Covering _____	
25. Best Tire Store _____	60. Best Heating and Air Conditioning _____	
26. Best Optometrist/Ophthalmologist _____	61. Best Welding Shop _____	
27. Best Dentist/Orthodontist _____	62. Best Lawn Maintenance _____	
28. Best Dental Hygienist _____	63. Best Appliance Store _____	
29. Best Physician _____	64. Best Appliance Repair _____	
30. Best Nurse _____	65. Best Computer Repair _____	
31. Best Chiropractor _____	66. Best Funeral Home _____	
32. Best Pharmacist _____	67. Best Elder Care Facility _____	
33. Best Veterinarian _____	68. Best Gas Station _____	
34. Best Insurance Agent _____	69. Best Party Store/Convenience Store _____	
35. Best Real Estate Agent _____	70. Best Bakery _____	

Name \_\_\_\_\_  
Address \_\_\_\_\_  
Phone \_\_\_\_\_  
Signature \_\_\_\_\_

- One entry per person.
- No photocopies or facsimiles accepted.
- Must be 18 years or older to enter drawing.
- To be eligible for the drawing you must fill out at least 50% of the poll

*\*MSP employees and families are not eligible for the drawing.*

**ENTRIES DUE BY: May 6, 2016.**

Return to:

**Mid-Michigan Buyers Guide**

Attn: People's Choice  
311 E. Superior, Alma, MI 48801

**989-463-6071**

# April Showers of Savings

**Clare Automotive Inc.**  
 214 W. Fourth St. Clare  
**(989) 386-7200**  
 www.clareauto.com

**BUMPER TO BUMPER**  
 Auto Parts Specialists  
 Clare Automotive Inc.

**Marine - Starting Batteries Starting @ \$54.95**  
**Deep Cyle - Starting @ \$69.95**  
**Mower Batteries - Starting @ \$22.95**

**Central Eavestrouthing, LLC**  
 LICENSED & INSURED • FREE ESTIMATES  
 Manufacturers of...  
 • 5" Seamless Gutter • 6" Commercial Seamless Gutter  
 • Leaf Protectors

Quality & Service Are #1! Get Your Gutters Ready for Spring! .032 Gauge Aluminum Hidden Screw Hangers

QUALITY WORKMANSHIP • FAST FRIENDLY SERVICE  
 Job Gilbert • (989) 828-6279 • Shepherd, MI

**MEADOWS MOBILE HOME PARK**  
 ENJOY COUNTRY LIVING WITHIN THE CITY LIMITS OF ALMA  
 VACANT LOTS AVAILABLE  
 MOVE IN YOUR MOBILE HOME AND GET TWO MONTHS FREE RENT  
 WE ARE ALSO TAKING APPLICATIONS ON A 2 BEDROOM MOBILE HOME  
**PH: 989-463-5187**  
 TERESA & JIM DAVIDSON  
 RESIDENT MANAGERS  
 411 S. GROVER, #31  
 ALMA, MI 48801

**Evans Eye Centers**

Are you suffering from cataracts?

Get Started today. Call for an Evaluation.

120 Warwick Alma, MI 48801 989-463-Eyes (3937)  
 1203 S. Mission Mt Pleasant, MI 48858 989-775-Eyes (3937)

**Samuel Mancino's ITALIAN CATERING**

Any size party give us a call, we cater to all.  
**989-775-6666**

Sandwich Platters, Chicken Wings, Nachos, Lasagna, Spaghetti and Meatballs, Salad etc.  
 Located in Indian Hills Plaza

**AmeriGas**  
 Reliable, Safe, Responsive In Your Community

**April Pet Food Drive**  
 All proceeds will go to the Clare County Animal Shelter  
 We will take \$5.00 off your AmeriGas bill for every 10 lbs of pet food you bring to our 3860 N. Clare Ave, Harrison Office  
 Monday - Friday • 8:00AM - 4:30PM

**AmeriGas**  
**Harrison**  
 800.527.9125 | amerigas.com

**CUSTOM DESIGNS**  
 Etchings by our in-house artist  
**Buy Direct & Save Up To 50%**

Also Available Caskets, Cremation Vaults and Urns.

**Brewer Bouchey Monument Co.**  
 Family Owned Since 1895  
 211 N. Mill St. • Downtown St. Louis  
 989-681-3300 • Toll Free 888-362-2920  
 Hours: Mon.-Fri. 9-5; Sat. By Appt.  
 www.brewer-bouchey.com

**JACK OF ALL TRADES COINS**

1028 S. Mission (next to Jon's Country Burger)  
**I BUY ALL COINS** Silver and Gold  
**FREE APPRAISALS**  
 we will come to your home to do free appraisals for your convenience.  
**Over 25 Years experience!**

Do not take your coins, jewelry, gold, & silver to the we buy gold places they are not experts! We are your only experts!  
**WE PAY YOU MORE THAN ANYONE!**

**I BUY ALL COLLECTIONS**  
 FROM ONE COIN TO A DUMP TRUCK FULL  
**We are a Full Buy • Sell • Trade shop!**  
 ANTIQUES • COINS  
 Jewelry • Collectibles & more!

Stop in or call Matt for your free appointment  
**517-204-0787**

**Wolverine Optical**

EYE EXAMS • GLASSES • CONTACTS • BIFOCALS • REPAIRS • TINTING

DOCTORS APPOINTMENTS AVAILABLE MONDAY AFTERNOON, TUESDAY MORNING, THURSDAY AFTERNOON

MONDAY - THURSDAY 8:00AM - 5:00PM  
 CLOSED FRIDAY  
 AND 12:00PM - 1PM DAILY

BCBS, VSP, EYE MED & DAVIS, VISION INSURANCE, MCLAREN, MERIDIAN AND STRAIGHT MEDICAID

**463-1838 • 7314 ALGER RD., ALMA, MI 48801**

**Sell! Shop! Hunt for a job!**

And there's so much more! Call now and the Classified Department can help you place your ad today!

**Lambert's Meat Market**  
 Taste the difference "FRESH" makes!  
 624 E. Cedar Ave., Gladwin (next to Family Dollar)  
**989-246-1850**  
 New Hours: Monday Thru Friday 9:00-7:00, Saturday 9:00-6:00; Sunday 9:00-4:00  
 Sale Dates Monday, April 11 through Saturday, April 16, 2016

**10lbs or more Sale!!**

<b>Pork Steak or Strips</b> \$1.49 lb.	<b>Boneless Chicken Breast</b> \$1.59 lb.	<b>Family Pack Ground Beef from Chuck</b> \$2.69 lb.	<b>Ground Beef Hamburger</b> \$2.29 lb.
---	--	---	--

**APRIL 11-16 TAKE AN ADDITIONAL 10% OFF MEAT BUNDLE PRICES**

<b>Mixed Bundle</b> 10 lbs Ground Chuck 5 lbs English Roast 5 lbs Denver Steak 10 lbs Pork Steak 10 lbs Boneless Chicken Breast 5 lbs B.I. Center Pork Chops <b>\$129.00</b>	<b>Beef Bundle</b> 10 lbs Ground Chuck 5 lbs English Roast 10 lbs Denver Steak 5 lbs Stew Meat 5 lbs Cubed Steaks <b>\$165.00</b>	<b>Pork Bundle</b> 10 lbs Pork Steak 10 lbs Bone-In Center Chops 10 lbs Bratwurst 10 lbs Pork Shoulder Roast 5 lbs Platter Bacon <b>\$109.00</b>	<b>Budget Bundle</b> 10 lbs Ground Chuck 10 lbs Pork Steak 10 lbs Chicken Leg Quarters 10 lbs Hot Dogs <b>\$80.00</b>	<b>Economy Bundle</b> 5 lbs Ground Chuck 5 lbs Boneless Breast 5 lbs Denver Steak 5 lbs B.I. Pork Chops 5 lbs Platter Bacon <b>\$80.00</b>
---	---	--	--	--

Bundles are sold in bulk, and absolutely no changes may be made to the bundles listed above. Weights for each item are approximated; however, the bundle package will have a combined weight of 40 lbs. (excludes the Economy Bundle). Vacuum pack \$16

Like us on Facebook! [Lambertsmeatmarket.webs.com](http://Lambertsmeatmarket.webs.com)  
 No Rainchecks • Not Responsible for Printing Errors

**Country Corner MARKET**

**Bulk Food • Deli**  
 2 Miles South of Rosebush • 2020 North Mission Mt. Pleasant • 989-433-8200  
 8:30am-5:30pm, Monday-Thursday  
 8:30am-7:00pm, Friday • 8:30am-4pm, Saturday

Large Selection of Freezer Food at Discounted Prices

**SPECIALS OF THE WEEK!!!**

Walnut Creek Colby Cheese **Sale \$2.99** Reg. \$3.99 lb.

Walnut Creek Off the Bone Ham **Sale \$2.99** Reg. \$4.29 lb.

**MORE SPECIALS!!!**

Walnut Creek Meltz Cheesy 2 lb. **Sale \$3.89** Reg. \$4.89

Walnut Creek Pizza Crust 2 pk. **Sale \$2.49** Reg. \$2.99

Walnut Creek Cheese Dips 7 oz. all varieties **\$2.39 ea.**

Walnut Creek Twist All Varieties **\$1.39 ea.**

**Coffee of the week: Honduras Don Lencho**



## DEWEY'S TRADING POST

**Maple Rapids • 682-4158**

Monday-Saturday: 8 am - 7 pm, Closed Sunday

Prices In This Ad Good for week of April 11th - April 16th 2016

WIC • Bridge Card • VISA • Mastercard • Discover • American Express • Debit Card & Chamber Bucks Gift Certificates.

<p>Select "Whole" New York Strips 14 lb Avg</p> <p><b>\$4.49</b> LB</p> <p>Check out our "everyday" Low on Choice Steaks</p> <p><b>CUT FREE!</b></p>	<p>Koegel's Bulk Pickle, Mac &amp; Cheese, Olive</p> <p><b>\$3.99</b> LB</p>	<p>Boneless Pork Sirloin Chops</p> <p><b>\$1.79</b> LB</p>
<p>Fresh Pork Cutlets</p> <p><b>\$2.99</b> LB</p>	<p>Rolled Pork Roast</p> <p><b>\$1.79</b> LB</p>	<p>"Boneless" Choice Arm Roast</p> <p><b>\$2.99</b> LB</p>
<p>"Boneless" Choice Patio Steak</p> <p><b>\$3.99</b> LB</p>	<p>"Boneless" Petite Steak or BBQ Ribs</p> <p><b>\$3.99</b> LB</p>	<p>5LB Bag Fresh Ground Hamburger</p> <p><b>\$14.95</b> BAG</p>
<p>"Our Own" Bacon Ranch Brats</p> <p><b>\$2.99</b> LB</p>	<p>"Our Own" Honey Mustard Brats</p> <p><b>\$2.99</b> LB</p>	<p>"Our Own" Smoked Polish Sausage</p> <p><b>\$3.99</b> LB</p>
<p>5LB Bags of Chicken Drumsticks "Jumbo"</p> <p><b>\$3.99</b> BAG</p>	<p>Bulk Breakfast Sausage "Reg or Spicy"</p> <p><b>\$2.49</b> LB</p>	

**Feature Bundle:**  
**Camper's BBQ Bundle \$85.99**  
 16 ct Patties \* 5LB Brats \* 5LB B&S Chicken Breast  
 5LB Babyback Ribs \* 5LB Chicken Leg 1/4's

Check out our large selection of Bulk Foods!  
We have a Large selection of frozen Seafood.

[www.deweystradingpost.com](http://www.deweystradingpost.com)  
 LIKE us on facebook & see our WEEKLY SPECIALS!

You can get our local news in many ways but you can only get the full story with a subscription.



No need to zoom in or out to find the whole story. Our new bigger, better local newspaper will give you more in-depth, expanded local content. Subscribe today.

## MORNING SUN

[www.themorningsun.com](http://www.themorningsun.com)  
 Bigger. Better. Local news.

To Subscribe Call: (888) 349-4042  
or go to [www.themorningsun.com/newstart](http://www.themorningsun.com/newstart)



# BRIAN'S FRUIT & MEAT MARKET

CLOSED  
EASTER SUNDAY

## 2167 S. M-76 • West Branch (Across from Kmart)

While Supplies Last • Not responsible for printing errors  
Prices good Sunday, April 10th thru Friday, April 15th, 2016  
New store hours: Open Sundays 8am - 7pm • Mon.-Sat. 7am-8pm

WE ARE A PACKAGED LIQUOR DEALER

We accept all major credit cards & EBT card

BRIAN'S MEATS: 989-345-3709    LIKE US ON FACEBOOK    [WWW.BRIANSFRUITANDMEATMARKET.COM](http://WWW.BRIANSFRUITANDMEATMARKET.COM)

<p>Butterball Brand</p> <p>SLICED OVER ROASTED TURKEY BREAST</p> <p><b>\$5.99</b> lb.</p>	<p>Old Time Deli</p> <p>SLICED PEPPERJACK CHEESE</p> <p><b>\$4.99</b> lb.</p>	<p>Family Packs</p> <p>NEW YORK STRIP STEAKS</p> <p><b>\$5.99</b> lb.</p>	<p>Beef It's What's For Dinner</p> <p>BONELESS BEEF RUMP ROAST</p> <p><b>\$3.99</b> lb.</p>	<p>Store Ground</p> <p>FRESH GROUND BEEF FROM ROUND</p> <p><b>\$3.99</b> lb.</p>	<p>Fresh Ground</p> <p>FRESH GROUND PORK</p> <p><b>\$2.69</b> lb.</p>
<p>Family Packs</p> <p>BONELESS CENTER CUT PORK CHOPS</p> <p><b>\$2.99</b> lb.</p>	<p>Pork The Other White Meat</p> <p>BONELESS PORK CENTERLOIN ROAST</p> <p><b>\$2.69</b> lb.</p>	<p>Assorted Varieties</p> <p>BRIAN'S HOMEMADE FRESH BRATS</p> <p><b>\$3.99</b> lb.</p>	<p>Dearborn Brand</p> <p>HICKORY SMOKED KIELBASA</p> <p><b>\$4.49</b> lb.</p>	<p>X-tra Lean</p> <p>BONELESS PORK TENDERLOINS</p> <p><b>\$2.99</b> lb.</p>	<p>Fresh Never Frozen</p> <p>FRESH BONELESS SKINLESS CHICKEN BREAST</p> <p><b>\$1.79</b> lb.</p>

BRIAN'S PRODUCE: 989-345-2891

<p>BAREMAN'S DAIRY MILK</p> <p><b>\$2.49</b> 2% &amp; Whole GAL.    <b>\$2.29</b> 1% &amp; skim GAL.</p>	<p>PRAIRIE FARMS COTTAGE CHEESE</p> <p><b>\$1.99</b> 24 oz. tub</p>	<p>DUTCH FARMS ORANGE JUICE</p> <p><b>\$1.29</b> 1/2 gallon</p>	<p>BILL KNAPP'S NUTTY DUNKERS</p> <p><b>2/\$5.00</b> 13 oz.</p>	<p>FAMILY PAK ICE CREAM</p> <p><b>\$5.99</b> 5 qt. pail</p>
<p>RED • YELLOW • ORANGE PEPPERS</p> <p><b>99¢</b> ea.</p>	<p>FRESH GREEN BEANS</p> <p><b>99¢</b> lb.</p>	<p>ROMAINE OR LEAF LETTUCE</p> <p><b>89¢</b> ea.</p>	<p>BROCCOLI</p> <p><b>99¢</b> ea.</p>	<p>SWEET GRAPE TOMATOES</p> <p><b>2/\$3.00</b></p>
<p>RED &amp; GREEN SEEDLESS GRAPES</p> <p><b>\$1.99</b> lb.</p>	<p>WALNUT MEATS</p> <p><b>\$3.99</b> lb.</p>	<p>LARGE FARM FRESH EGGS</p> <p><b>99¢</b> doz.</p>	<p>BLACK OIL SUNFLOWER SEEDS</p> <p><b>\$16.99</b> 50 lb. bag</p>	<p>12-12-12 FERTILIZER</p> <p><b>\$10.99</b> 40 lb.</p>
<p><b>ONION SETS &amp; SEED POTATOES NOW AVAILABLE</b></p>	<p>BUD &amp; BUD LIGHT</p> <p><b>\$15.99</b> 24 pk. cans + tax + dep.</p>	<p>BELL'S OBERON ALE</p> <p><b>\$7.99</b> 6 pk. bottles + tax + dep.</p>	<p>LINDEMAN'S TABLE WINE</p> <p><b>2/\$10.00</b> 750 ml.</p>	<p>GARDEN LIME</p> <p><b>\$4.99</b> 40 lb.</p>
				<p>TOP SOIL PEAT MOSS</p> <p><b>\$1.79</b> 40 lb.</p>
				<p>POTTING SOIL COW MANURE</p> <p><b>\$1.99</b> 40 lb.</p>



# ALMA

**10th ANNIVERSARY GREAT DEALS ALL MONTH LONG!**

**SALE!**

**UNBELIEVABLE SAVINGS ON REMAINING NEW 2015 AND SELECT 2016 VEHICLES!**



## 2016 CHEVY SPARK

**MSRP**  
**\$16,660**

**OVER \$3900**  
**IN DISCOUNTS**  
**AND REBATES**  
**AVAILABLE\*\*\***



## 2016 CHEVY CRUZE LTD

**OVER \$4,000\*\***  
**IN SAVINGS**

**LEASE FOR**  
**AS LOW AS**  
**\$126/MONTH**  
**plus tax\***



## 2015 GMC SIERRA DOUBLE CAB

**OVER \$12,000\*\*\***  
**IN DISCOUNTS**

**AND REBATES**  
**AVAILABLE\*\*\***

**EVERYONE QUALIFIES FOR THESE 2015 BLOWOUT PRICES!!**



## 2015 CHEVY EXPRESS LT

**MSRP**  
**\$25,995**

**SALE PRICE**  
**\$21,316\*\***

2 TO CHOOSE FROM INCLUDES NAV/BLUETOOTH/REAR VISION CAMERA



## 2015 CHEVY MALIBU LTZ

**MSRP**  
**\$33,880**

**SALE PRICE**  
**\$27,781\*\***

PREMIUM AUDIO SYSTEM/POWER SUNROOF, LTZ PREMIUM PACKAGE, ADVANCED SAFETY PACKAGE

\* Lease is GM Employee pricing with lease conquest on approved credit with 10000 miles per year through GM Financial.  
\*\*Must take delivery by 4/18/2016. Tax, title, doc fee extra. \*\*\*Tax, title, plate, doc fee extra. See dealer for details.



[www.almachevybuickgmc.com](http://www.almachevybuickgmc.com)

Home of the **\$9.95 Oil Change**  
See Dealer for Details



Find us on Facebook  
facebook.com/AlmaChevyBuickGmc  
**FIND NEW ROADS**



ALMA CHEVY BUICK GMC is now a drop off center for Cell Phones for Soldiers. Recycle your old cellphones to provide pre-paid phone cards for our deployed service members.

7440 North Alger Rd., Alma  
**989-463-2161**

# Business Card Directory

## Shop these local Professionals

**TOM'S POLE BUILDINGS**  
 Over 30 Years Experience  
**Special!** POLE BUILDINGS & GARAGES  
 ROOFING & SIDING  
 CONCRETE FLOORS DRIVEWAYS & FENCING  
**FEATURING ULTRA 2000 19 colors to choose from**  
**And A 45 YEAR WARRANTY**  
 From Beginning permit To Cleanup, We Do It All!  
**1-800-541-3974**  
 We accept major credit cards. • email: tomspolebuildings@yahoo.com

24x40x10  
10% Down  
Today  
Guarantees  
Prices

**Newcombe's Family Restaurant**  
 27 S Coldwater Rd Lake Isabella, MI 48893  
 (989) 644-8380  
**FOOD SO GREAT YOU'LL SCRAPE YOUR PLATE**  
 Sunday 7am-8pm  
 Mon.-Thurs. 7am-9pm  
 Fri & Sat 7am-10pm

Like us on Facebook

**PIONEER POLE BUILDINGS INC.**  
 7400 S. Clare Ave. • Clare, Michigan 48617  
**800-292-0679**  
 www.pioneerpole.com

**DEBRIS HAULING**  
 • Clean Outs  
 Basements Attics & Garages  
 • Tear Downs Sheds & Garages  
 • Scrap Metal  
 • Commercial Buildings

Free Estimates

**DEBRIS HAULING**  
 Good & Fast Service  
 MOUNT PLEASANT AREA  
 Less than the price of a dumpster!

989-773-0735 10 Yards \$285 Dan Syzak

Adam Breault Auctions  
 Upcoming Auctions  
 April 15th @ 6 pm  
 April 29th @ 6 pm

Now Accepting Firearm Consignments!  
 Now Booking 2016 On-Site Auctions!

Adam Breault Auctions  
 963 N. M-18 Gladwin, MI  
 (989) 329-0399

Visit adambreault.com for complete details.

**Tag's Auto Repair**  
 2 yr. 25,000 mile warranty nationwide on parts & labor

• Computer Diagnostic Service • 2 and 4 Wheel Alignment  
**BRAKES & FRONT END REPAIR!**

Receive a \$25 VISA prepaid card on qualifying purchase of \$250 or more made on Drive Card

**FREE** Roadside Assistance Program Towing, Flats, Lockouts, More!  
 Call Us For Details!

**Auto Value** SERVICE CENTER  
 3780 N. Clare Ave. Harrison  
 Hours M-F 8-5, Sat 10-2  
**989-539-1986**

**HODGINS ASPHALT PAVING INC.**  
**COMMERCIAL & RESIDENTIAL**  
 PARKING LOTS • DRIVEWAYS • SUBDIVISIONS  
 EXCAVATING  
 • Trucking • Concrete & Stump Removal • Installation of Catch Basin & Drainage Systems  
 • Culvert Installation • Septic System • Insured / Bonded  
**Call Now for pothole repair.**  
**FROM THE GRADING TO THE FINISHED JOB!**  
 989-345-0326 • 1-800-309-3303  
 Donald Hodgins, Owner • 1659 Dow Road • West Branch, MI 48661  
 www.hodginsasphalt.com

**MARTI'S ROLLER RINK**  
 Completely Remodeled and Ready for Some Fun!!  
 FRIDAY 7:00-10:30 PM **OPEN SKATING**  
 SATURDAY 7:00 - 10:30 PM **OPEN SKATING**  
 Complete Snack Bar **SUNDAY CLOSED**

**\$5.50 Admission**  
 Includes Skate Rental

Call for Birthday Parties Friday and Saturday only

**Owner Marti Miller**  
**989-426-6734**  
 4861 W. M-18 Gladwin, MI 48624

**Family Barber Shop**  
 Formerly in Downtown Clare  
**Moved North of Downtown on West side of the Road**  
 2 Barbers on duty (except Mondays)  
**\$10 HAIRCUTS**  
 Any Style

Hours: Mon-Fri 9-5 • Sat 8-2  
**989-533-8197**  
 Walk-Ins Welcome!

**Gladwin Hobby Shop**  
 Stay Fit & Have Fun

**Sales & Services** Now Carrying **Huffy Bicycles**

- Radio Control
- Plastic Model Kits
- Testors Paints
- ESTES Rockets
- Pinewood Derby
- Puzzles, Rock Polishers, Balsa & Bass Woods, and more.

**\$ CASH for Old Coins & Currency!**  
**WE BUY OLD TRAINS**  
 Gift Certificates Available  
 Visit us on Facebook

400 E. Cedar Ave. Gladwin, MI • 989-426-7300

**STORAGE SPACE AVAILABLE**  
 420 Units

Paved Driveway Security Gate

FOR ALL YOUR RENTAL NEEDS

5'x12', 10'x12', 10'x20' Stalls  
**MIDSTATE RENTAL AND STORAGE, INC.**  
 1 MILE EAST OF GLADWIN ON M-61  
**426-2981**  
 MON.-SAT. 8AM-5PM

**FREE Hearing Test & Consult**

**bieri** HEARING SPECIALISTS  
**888-641-0087**  
 Clare and Midland Locations  
 www.bierihearing.com

**Pioneer Metal Roofs**  
 Residential Steel Roofing

7325 S. Clare Ave.  
 Clare, MI 48617  
 (989) 386-4444 (Office)  
 (800) 292-0679

www.pionermetalroofs.com

**digitalfirst MEDIA**  
 Call for Quotes on digital advertising, print & deliver, pre prints and print advertising

**Marlene Bennett**  
 Account Executive  
 The Morning Sun • The Mid-Michigan Buyers Guide  
 mbennett@michigannewspapers.com  
 For Advertising call 989-506-4647 or 989-779-6119  
 For Circulation call 989-779-6000 Press 3

**Pole Barn Kits**  
**Now Available**

CALL OR STOP BY **FREE ESTIMATES**

"Our Customers are our Warmest Friends"  
 Guaranteed On Time Certified  
**FREE TANK SETS**  
**COYNE OIL & PROPANE**  
 Clare • Gladwin • Harrison • Evart  
**800-386-7731 • 989-386-7731**

**RESIDENTIAL • COMMERCIAL INDUSTRIAL • FARM**

Talk to your neighbors, then talk to me.

See why State Farm® insures more drivers than GEICO and Progressive combined. Great service, plus discounts of up to 40 percent.\*

Like a good neighbor, State Farm is there.®  
**CALL FOR QUOTE 24/7.**

**State Farm**

Maury Irwin, Agent  
 305 S McEwan Street  
 Clare, MI 48617  
 Bus: 989-386-4141  
 maury.irwin@statefarm.com

1001174.1 \*Discounts vary by states. State Farm Mutual Automobile Insurance Company State Farm Indemnity Company, Bloomington, IL

**Luthy Metal Sales**  
 Manufacturing, Roofing, Siding & Accessories  
**989.433.5705**  
 5145 N. Mission Rd. Rosebush

**BURKHART - PRESIDIO INSURANCE AGENCY**  
 Auto • Home • Life • Business • Amenities  
 "Over 60 Years of Professional Insurance Service"  
 222 W. Cedar Ave. • Gladwin  
 989-426-9278 • www.burkhart-presidio.com  
 Dirk Presidio Michael Murray Jim Jacobs

**Auto-Owners Insurance**

**ECOWATER SYSTEMS** **Lindsay Soft Water Co.**  
 SINCE 1925.

1209 Michigan Ave. St. Louis, MI 48880  
 (989) 681-5436 1-800-244-3464  
 P.O. Box 401 Gladwin, MI 48624  
 (989) 426-4220 Cell (989) 620-1263  
 www.ecowater.com

**ISO 9001**

**GABE EAREGOOD**  
 Water Specialist

**Gilboe's LOCK & SAFE**  
 Commercial • Residential • Industrial • Auto  
**SALES AND SERVICE**

Lock Outs • Rekey • New Locks • Deadbolts • Safes (Record, Gun, Cash)  
 Hardware • Special Finishes & Textures • Access Control • Keyless Entry • Digital Video Surveillance  
**24 Hour Emergency Mobile Service**

**VISA** Serving Central MI Since 1956

8529 E. PICKARD RD., MT. PLEASANT  
**773-1470 • 800-459-3336**  
 www.gilboes.com

**CONLAY'S POWER WASHING**

Concrete Siding • Decks Deck Staining Tractor • Trailer Store Fronts Snow Plowing Lawn Care

Farm Equipment Acid Washing 210' Water

Over 18 Years Experience  
 Business & Residential  
**989-429-9211** Farwell  
 Experience You Can Trust • www.conlayspowerwashing.com

**Poochie Paradise**  
 Small dog boarding in my home  
 Providing a safe and loving environment  
 Fenced-in yard  
 Excellent references

Call Sharon at **989-426-4815**

**O-ink** WE CUT THE FAT OUT OF INK PRICES

600 S. Mission St. Mt. Pleasant, MI 48858  
 989-779-7227  
 989-772-5009

Printer Ink & Toner, Cartridge Refilling & Recycling, Desktop & Laptop Repair, Virus/Malware Removal

**\$10.00 off** any in-stock & non-sale pair of shoes  
 Expires 5.13.16

**CIRCLE QUALITY SHOES**

Specializing in hard to fit sizes-100's of styles to pick from  
 • Birkenstock • Clarks • Merrell • SAS  
 208 Cambridge St. 835-4853 • circlequalityshoes.com

**ABC Auto Body**  
 313 W. Knox Road, Beaverton, MI  
 1/2 Mile West of M-30  
**989-435-2707**

**VISA** We Take Pride In Your Ride! **MasterCard**

- Quality Collision Repair
- Free Estimates
- Insurance Work Welcome
- Custom Color Matching & Painting
- We Repair All Makes and Models
- Car/Light Truck
- Genuine Original Equipment Parts

**HENRY EXCAVATING CONCRETE & TREE SERVICE LLC**  
 POURED WALLS • CRAWL SPACES • BASEMENTS  
 OVER 30 YEARS EXPERIENCE • LICENSED & INSURED

**COMMERCIAL & RESIDENTIAL**

- Excavation
- Site Clearing
- Septic Systems
- Back hoe & Dozing
- Flat Work
- Demolition
- Driveways
- Tree Service

989-539-7542 • 3620 N. Clare Ave., Harrison  
 James Henry Cell 989-429-1175 | Michael Henry (Tree Service) Cell 989-339-4377

# Business Card Directory

**25% off**  
All Used and Reconditioned Sewing Machines and Vacuums  
Expires: April 30, 2016

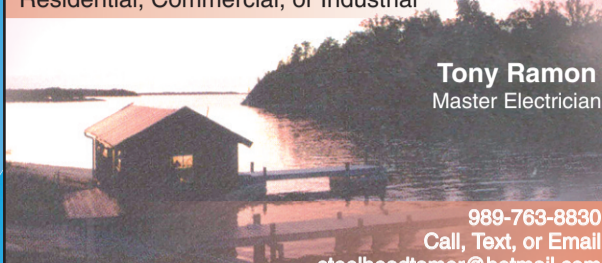


**FREE ESTIMATES WITH SERVICE**

1900 S. SAGINAW RD., MIDLAND  
IN THE KMART PLAZA  
**(989)-839-0800**

**Call (989) 506-4640 if you would like your business to be displayed on this page!!**

**Lakeside Electric and Consulting**  
Residential, Commercial, or Industrial



Tony Ramon  
Master Electrician

989-763-8830  
Call, Text, or Email  
steelheadtamer@hotmail.com

**Stutzman's Metal Roofing Sales**



Quick Turnaround  
Ask about our **HEAT-Formed Metal Roofing**

Complete Pole Barn and Roof Packages Available!

Be sure to price accessories, we will save you money!

**NORTH STAR METALS MFG. CO.**

**Special: Lifetime Warranty 20 Steel Colors To Choose From \$1.85 Lin. Ft.**

Farmers Contractors Homeowners  
Check out our prices, you will be AMAZED!

**Everlast Roofing, Inc.**  
Authorized Dealer

**Statewide Delivery**

Installation Available

Reuben & Lydia Stutzman • 9736 Tobacco Dr., Clare, MI • 989-386-3013

**Water and Flood Damage Repairs**



**Hammer Restoration, Inc.**  
Respond. Recover. Rebuild.

**989-773-3473**  
**HammerRestoration.com**

**24 HOUR EMERGENCY SERVICE**

**f Like us!**

**VALET AUTO CARE, INC.**  
Since 1983



- A.R.E. Pickup Toppers
- Over 100 New & Used Toppers in Stock
- Truck Accessories
- Tonneau Covers
- Detailed Car Cleaning

**ARE**  
Because you love your truck

www.valetauto.com

**James Motz - Owner**  
610 N. Mission  
(3 blocks S. of Meijer)  
Mt. Pleasant  
**(989) 773-3477**

**CAL'S PAINTING**



Over 30 Years Experience  
**COMMERCIAL & RESIDENTIAL**

- Interior & Exterior • Power Washing & Deck Care
- Window Washing & Gutter Cleaning
- Drywall Repair • Cleaning and Refinishing Log Homes
- Cabinet, Woodwork, Door & Furniture Refinishing

**GO CALL TODAY!**  
**(989) 258-9638**

• Free Estimates • Work Guaranteed • Insured  
Winter Rates Available

NO JOB TOO BIG OR SMALL

**Colonville Canvas**  
Quality Detailed Craftsmanship



We Have You Covered!

- Marine Upholstery & Carpet
- Bimini Tops • Boat Covers • Awnings

Custom Fit **William Miller**  
**(989)802-9083** Leave Message

**Brad Malley Well Drilling, Inc.**

Mid Michigan's Most Experienced Well Drillers!



**MALLEY CONSTRUCTION INCORPORATED**

The One Contractor That Can Do It All!  
**AFFORDABLE WELL PACKAGES**  
All Major Pump Brands Available

**FREE ESTIMATES**  
SERVING ALL OF MID MICHIGAN  
LICENSED WELL DRILLER  
LICENSED CONTRACTOR  
MT. PLEASANT

WWW.BRADMALLEYWELLDRIILLING.COM  
**989.772.2765 / 800.717.6022**

**Colonville Bike Shop**



We Repair All Makes & Models

We Sell Sun & Fuji Bikes

**Spring Tune-Up**  
Selling New & Used Bikes

**10% off Parts and accessories**  
(Now thru April 30th. 2016)

Mon., Tues., Wed., Fri., & Sat. 7902 Colonville Rd  
8AM - 5PM Clare, MI 48617  
Thurs. & Sun. - CLOSED 989-386-4990

Allen Yoder, Owner

**PROPANE SOLD HERE**

**SALE!!**  
20 LB. CYLINDER FILL  
**\$9.99**  
**GPC**



We make custom hoses & fittings!

PROPANE • HVAC • REFRIGERATION  
8512 E. M-46 - VESTABURG  
800-991-7477  
gasproductioncompany.com

**Clare Automotive Inc.**

214 W. Fourth St. Clare  
**(989) 386-7200**  
www.clareauto.com



**BUMPER TO BUMPER**  
Auto Parts Specialists  
Clare Automotive Inc.

Marine - Starting Batteries Starting @ \$54.95  
Deep Cyle - Starting @ \$69.95  
Mower Batteries - Starting @ \$22.95

**CLHE**  
County Line Heavy Equipment  
Welding & Repair



Construction and Farm Insured

**(989) 588-4223**  
Lake, Michigan

**COUNTY WIDE SEPTIC TANK CLEANING**

- Septic Tank Cleaning
- Tank Risers & Filters
- Portal Toilet / Sink Rental
- Drain Line Cleaning & Camera
- New Septic System Installation
- Existing Septic System Repairs
- Gravel / Sand / Stone / Topsoil

State Licensed & Fully Insured  
Residential & Commercial

**"#1 IN A #2 BUSINESS"**

Tom Schunk, Manager  
Phone #: (989) 588-4140 • Cell #: (989) 429-6191  
Fax #: (989) 588-6718  
E-mail: cwseptic@hughes.net

**digitalfirst MEDIA**

**Kindra Norlander**  
Account Executive

The Morning Sun • The Mid-Michigan Buyers Guide

knorlander@michigannewspapers.com Cell: 989-506-4640

**HANDYMAN BILL LEONARD**

- General Carpentry
- Repair • Maintenance
- Home Improvement Projects

E-mail: yourhandymanbill@yahoo.com  
Licensed • References • Economical

**(989) 681-2516**

# BE READY *spring* IS COMING!

**ORGANIC GARDENING** • **Compost** • **Potting Soils** • **Seed Starter** • **Plant Mixes & More!**

**dairy-doo™**

**efco**  
our power, your passion

- Chain saws
- Trimmers
- Blowers

MT4400 CHAINSAW      DS 2400 S TRIMMER      SA 3000 BLOWER

**10% OFF REGULAR RETAIL PRICES**

Large Selection of Oregon Lawn Mower Blades In-Stock  
Starting at **\$8.95** **OREGON**

## Building Materials for Your Projects:

**Lumber, OSB, Treated Posts**

**Trusses, Windows, Doors,**

**Concrete Blocks, Mortar,**

**Redi-mix Concrete**

## COMPLETE OUTDOOR COOKER

Welcome to the Big Green Egg®  
the Original American Designed Ceramic Cooker

**A Smoker • A Grill • An Oven**

**HERSHBERGER'S PRO HARDWARE**  
10289 N. Leaton Rd., Clare, MI 48617-9107  
**(989) 386-5338**  
Full Line of Hardware & Building Supplies  
Stove & Furnaces All Fuel Chimneys

You can reach across Michigan with **Community Papers of Michigan**

STATEWIDE CLASSIFIED NETWORK

Ads placed in Michigan Mega Market Classified Network appear in free circulation community papers and shopping guides reaching the grass roots of Michigan. Your advertising can be delivered weekly to more than **1,600,000** households throughout the state.

**ONLY \$249**

Call this paper to place a classified ad of 25 words or less and reach across the state.

**mifreads.com**  
Ph. 1-800-783-0267

**Amish Furniture**  
AN AMISH LOG HEADBOARD and Queen Pillow Top Mattress Set. Brand new never used, sell all for \$275. Call anytime 989-832-2401.

**AMISH LOG BEDS, DRESSERS, RUSTIC TABLE AND CHAIRS.** Mattresses for Cabin or Home. Lowest price in Michigan! dandanthemattressman.com 989-923-1278.

**Mattress Sets**  
A TEMPERPADC/STYLE MEMORY FOAM MATTRESS SET QUEEN, never used, as seen on TV, with warranty. Cost \$1,800, sell \$475. 989-832-2401.

**Medical**  
STOP OVERPAYING FOR YOUR PRESCRIPTIONS! Save up to 93%! Call our licensed Canadian and International pharmacy service to compare prices and get \$15.00 off your first prescription and FREE Shipping. 1-800-697-1808

**VIAGRA!! 52 PILLS FOR ONLY \$99.00.** Your #1 trusted provider for 10 years. Insured and Guaranteed Delivery. Call today 1-800-404-1282

**Auctions**  
MOVING/ESTATE AUCTION SAT., APRIL 16, 2016. 10:30 AM, 1007 Cass Ave. Fairgrounds In Vassar, MI. Woodworking tools; glassware, coins and more! Visit [Timsauctionservice.com](http://Timsauctionservice.com) 989-912-8701.

**SPORTSMAN'S AUCTION APRIL 23RD, 2016 AT 10 A.M.** Selling over 450 firearms, ammunition, hunting and fishing supplies in Dimondale, MI. Go to [www.belcherauction.com](http://www.belcherauction.com) or call 269-781-7100

**COMPLETE SAM'S CLUB LIQUIDATION AUCTION**  
495 Summit Dr. Waterford, MI 48328 Wed., April 20 @ 10:00 A.M. Bid on-site live or online at [CrossBid.com/StoreClosings](http://CrossBid.com/StoreClosings). Hundreds of items. Visit website above for complete list and photos or call 616-608-8411 for details.

**Employment**  
NOW HIRING. WELL-SPRING LUTHERAN SERVICES IS HIRING: RNs, LPNs, CNAs, Caregivers, Social Work/Counseling and Support Staff. Please visit our website to apply: <https://wellspringlutheran.com/careers> 989-652-3470.

**US POSTAL SERVICE NOW HIRING.** 1-800-228-0216 \$21/hr avg. w/ Fed. Ben. incl. to start. FT/PT. Not affiliated w/USPS.

**Financial**  
SOCIAL SECURITY DISABILITY BENEFITS. Unable to work? Denied benefits? We Can Help! WIN or Pay Nothing! Contact Bill Gordon & Associates at 1-800-731-5703 to start your application today!

**Fishing**  
VACATION CABINS FOR RENT IN CANADA. Fish for abundant walleye, perch, northern pike. Boats, motors, gasoline included. For free brochure call Hugh 1-800-426-2550 [www.bestfishing.com](http://www.bestfishing.com)

**WALLEYE AND YELLOW PERCH FISHING CHARTERS ON LAKE ERIE.** Call Captain Bruce 517-740-5295. email: [payableguideservice@comcast.net](mailto:payableguideservice@comcast.net) [www.payableguideservice.com](http://www.payableguideservice.com)

**AT&T U-VERSE INTERNET STARTING AT \$15/MONTH** or TV & Internet starting at \$49/month for 12 months with 1-year agreement. Call 1-800-906-1524 to learn more.

**A PLACE FOR MOM.** The nation's largest senior living referral service. Contact our trusted, local experts today! Our service is FREE/no obligation. CALL 1-800-520-3521

**KILL BED BUGS & THEIR EGGS!** Buy Harris Bed Bug Killers/KIT Complete Treatment System. Available: Hardware Stores, The Home Depot, homedepot.com

**PIONEER POLE BUILDINGS FREE ESTIMATES LICENSED AND INSURED.** 2x6 Trusses. 45 Year Warranty Galvalume Steel-19 Colors. Since 1976 #1 in Michigan Call Today 1-800-292-0679

**SWITCH TO DIRECTV AND GET A \$300 GIFT CARD.** FREE Whole-Home Genie HD/DVR upgrade. Starting at \$19.99/mo. New Customers Only. Don't settle for cable. Call Now 1-800-917-3607

**POLE BARN DESIGNS MICHIGAN'S CUSTOM POLE BARN EXPERTS.** Pre-Season Specials Now Available! Call for details! Rapid Quotes and VERY Competitive pricing. Build NOW and SAVE! Call toll free: 1-800-549-1240 or online at [www.polebarndesigns.com](http://www.polebarndesigns.com).

**ACORN STAIRLIFTS.** The AFFORDABLE solution to your stairs! \*\*Limited time - \$250 Off Your Stairlift Purchase! \*\*Buy Direct & SAVE. Please call 1-800-280-1897 for FREE DVD and brochure.

**MEET SINGLES RIGHT NOW!** No paid operators, just real people like you. Browse greetings, exchange messages and connect live. Try it free. Call now: 877-710-7001

**SAVE ON INTERNET AND TV BUNDLES!** Order the best exclusive cable and satellite deals in your area! If eligible, get up to \$300 in Visa Gift Cards. CALL NOW! 1-800-807-1095

**BUILT RITE POLE BUILDINGS STATE-WIDE.** 24x40x10=\$10,100.00 30x40x10=\$12,900.00. Erected on your site. Call for price not shown on any size building or go to [www.builtritepolebuildings.net](http://www.builtritepolebuildings.net) 989-832-1866.

**AMISH BUILT STORAGE SHEDS AND HUNTING/Recreation Cabins** delivered to your site anywhere in Michigan! Starting under \$1,000.00. 989-832-1866.

Readers: THIS PUBLICATION DOES NOT KNOWINGLY ACCEPT advertising which is deceptive, fraudulent, or which might otherwise violate the law or accepted standards of taste. However, this publication does not warrant or guarantee the accuracy of any advertisement, nor the quality of the goods or services advertised. Readers are cautioned to thoroughly investigate all claims made in any advertisements, and to use good judgment and reasonable care, (particularly when dealing with persons unknown to you who ask for money in advance of delivery of the goods or services advertised.)

## A-1 MOBILE ROOF SYSTEM

White enameled aluminum stops any and all leaks for the full life of your mobile — GUARANTEED!  
Thick Layer of foam insulation drastically reduces winter heating by 35% or more — GUARANTEED!  
Over-hang at eaves eliminates stains and streaking. No more coating and caulking.

Made in Good Old USA!  
**START TO FINISH**  
We MANUFACTURE Your Roof We INSTALL Your Roof

12X60 **\$3,280** INSTALLED 14X70 **\$3,980**

GET YOUR FREE ESTIMATE TODAY!  
BANK FINANCING AVAILABLE!  
1-800-872-2089

## RABIES CLINIC

Special April Rates

**\$15.00**

Reg \$20.00

By Appt. 426-0203  
Flexible Hours

**KELLY'S KRUISSING**  
**KRITTER KARE**  
Kelly Jo Kelley, DVM

**WANT FAST CASH?**  
CLASSIFIEDS GET RESULTS. IF YOU HAVE SOMETHING TO SELL, PLACE YOUR AD TODAY!

**Husky METAL ROOFS INC.**  
CLARE, MI 855-386-5100

**Made in Michigan! Spring Pricing for a Limited Time**

**855-386-5100**

- Residential
- Commercial
- Cabins
- Contractors
- Do-It-Yourself
- Materials Only Sales

**METAL ROOFING IS ALL WE DO!**  
Standing Seam • Steel Shingles • Barn Steel • Expert Installation  
Material Only Sales • Custom Trim • On-Site Roll Forming

[www.huskyroofs.com](http://www.huskyroofs.com)

## We're ALWAYS Hiring!

Assembly • Clerical • Manufacturing • Skilled Trades  
Warehousing • General Labor Welder  
Packaging • Line Workers

**- What To Do -**

- 1.) Visit [manpowerjobs.com](http://manpowerjobs.com)
- 2.) Create An Account
- 3.) Include Your Resume
- 4.) Call To Set Up Your Interview!

**We LISTEN to Understand Your Skills, Interests, and Goals. You CHOOSE Opportunities That Fit Your Work Style and Lifestyle.**

**Manpower.**  
Walk-ins Welcome!  
Office Hours: M-F, 8am - 5pm

**989-772-7720**  
4585 Pickard St. Mt. Pleasant

A World Leader in employment Services for Over 60 Years!  
Recognized as Fortune World's Most Admired Companies in 2015

Visit us on Facebook at [www.facebook.com/ValleyFoodCenter](http://www.facebook.com/ValleyFoodCenter)

**SHAVED HAM, TURKEY \$2.99 LB.**

**SMOKED PORK LOINS \$3.99 LB.**

**Valley Food Center**  
989-879-3311 • 101 E. SECOND • PINCONNING  
WE WELCOME THE BRIDGE CARD, GIFT CERTIFICATES  
NOT RESPONSIBLE FOR PRINTING ERRORS • ALL LOTTERY GAMES AND LOTTO HERE

MON. - SAT. 8-8, SUN. 8-6 • PRICES GOOD MONDAY, APRIL 11TH THRU SATURDAY, APRIL 16TH, 2016

<b>KOEGEL PRODUCTS</b> VIENNAS 10# BOX \$33.50 SKINLESS FRANKS 4# PKG. \$11.69 BIG OR RING BOLOGNA \$3.19 LB. PICKLED BOLOGNA \$9.99 2.5# JAR VIENNAS 10# BOX \$10.99 HUBBINS 10# BOX \$29.00	<b>FRESH POLISH SAUSAGE \$1.89 LB.</b> <b>CHICKEN NUGGETS \$1.99 LB.</b> 5# OR MORE <b>HOMEMADE BULK SAUSAGES \$1.19 LB.</b> REG, ITALIAN <b>BONELESS PORK LOIN \$1.89 LB.</b> MAKES GREAT ROAST SEASONED AND CUT FREE <b>PORK STEAK, BUTT \$1.29 LB.</b> ROAST OR FINGER RIBS <b>OLD FASHIONED \$99¢ LB.</b> 1/2 HAMS <b>NEW YORK STRIP \$3.69 LB.</b> CUT FREE WELL TRIMMED <b>STUFFED PORK CHOPS \$1.99 LB.</b> <b>ROUND STEAK \$2.99 LB.</b> <b>BOTTOM ROUND ROAST \$3.99 LB.</b> <b>BONELESS BUTT ROAST \$1.99 LB.</b>	<b>CO-JACK, LONGHORN ANY SIZE CHUNK OR MOZZARELLA \$2.99 LB. CHEESE</b> <b>BONE IN BEEF SHOULDER ROAST \$2.99 LB.</b> <b>ROLL YOUR OWN TOBACCO</b> <b>KENTUCKY \$1.19 16 oz.</b> SELECT \$4.79 6 oz. <b>AUSABLE RIVER TOBACCO \$1.15 12 oz. bag</b> <b>BUSCH BEER REG \$16.49 OR LITE 30 PK CANS \$9.75 16 oz.</b> <b>RED RIVER \$4.25 6 oz.</b> <b>DENVER, SWISS OR GRILL STEAK \$2.99 LB.</b> <b>Leg 1/4's \$4.99 LB.</b> 10 LB. OR MORE \$3.79 LB. <b>SHORT LOIN = T-BONE \$6.99 LB.</b> <b>BIG BAG FRENCH FRIES \$4.50 5 LBS. 24 MONTHS</b> <b>SELECT RIB EYE LOINS \$8.99 LB.</b> WHOLE OR HALF Cut Free! <b>HOMEMADE BACON SAUSAGE \$1.99 LB.</b> HARDWOOD SMOKED SMITHFIELD HAMS 69¢ LB.
---	---	---

**HAMBURGER \$30.90** 10 LB. BAG less than 10lbs. \$3.19lb

**WAYSIDE BACON \$1.79 10# BOX**

**OUR BEST GROUND CHUCK \$29.90** 10 LB. BAG 10lbs or less \$3.49lb

**HAMBURGER PATTIES \$2.99** 10 LBS. OR MORE

**3PK BABY BACK RIBS \$1.99 LB.**

**FRESH BONELESS CHICKEN BREASTS \$1.39 LB.** 10# OR MORE Less than 10# \$1.99lb

**50/50 GRIND 10 lbs. OR MORE \$25.90** PORK & BEEF SAME USE AS BURGER \$2.99lb 10lbs. or less

Spend Your Pennies Close To Home



**Shopping Local keeps your Money Local**

**BUCKLE-UP!**

**300+ Head Sell**

**MARION April Dairy Sale**

Friday, April 15, 2016  
11:00 AM

UPI Dairy Arena  
M-66 Marion, MI

**Lost Creek Dairy Dispersal**

50 Cows Avg 60# SCC-Under 150K,  
15 Dry Cows, Parlor Freestall Herd,  
Vaccinated, Individual Milk & SCC Info

Also selling several groups of Fresh Holstein Cows & Heifers, Springers, Shortbreds, Open Heifers, & Bulls

**Dairy Equipment Selling**

Equipment will sell at 11 AM at Marion but is Located in Fowler, MI

MUELLER HI-PERFORM 1500 Gal Tank  
Sells with washer and compressor unit SURGE Mod#80715 1500 Gal Bulk Tank Sells with washer and compressor unit ALFA-LAVAL / SUTORBILT 10 HP Pump

Pictures, Videos, & More Info at [www.uproducers.com/dairy/sales/](http://www.uproducers.com/dairy/sales/)  
Trucking & Lunch Available  
Call For More Information or to Consign

**United Producers, Inc**  
Dairy Cattle Marketing Services  
Paul Warner 614-296-5038  
Chad Kreeger 517-294-3484

# HAVE YOU HEARD!



Check out the most advanced invisible hearing aids available. Custom fit to your exact needs and unique ear canal shape.

## You want SoundLens Synergy delivers

- **An invisible and custom fit**

Hearing aids fit deep inside your ear canal and are personally customized to you for all-day comfort.

- **To easily adapt to new sounds**

Our new feature speeds your transition to hearing aids by gradually adjusting settings to allow your brain to get used to new sounds.

- **Better wireless streaming**

Technology that provides consistent wireless performance while streaming TV, music and other media with SurfLink® Mobile 2 and other SurfLink accessories.

- **A comfortable, personalized listening experience**

Sound comfort technology designed to provide distortion-free listening comfort for loud sounds while ensuring ultimate clarity for soft sounds.

- **No buzzing or whistling**

Our best-in-class feedback cancellation system providing feedback-free, comfortable listening all day long.

- **Music the way it was meant to be heard**

Designed to allow you to experience music in a whole new way. Now you can hear every note the way the artist intended – with pure, refined sound quality.

- **Customizable tinnitus relief**

Advanced Multiflex Tinnitus Technology integrated into the hearing aids brings relief to those who suffer from ringing in the ears.



SoundLens  
[Synergy]

## CALL US TODAY FOR AN APPOINTMENT!!

### Z Series wireless hearing aids are designed to:

- Help you hear and understand conversations better in noisy environments like restaurants
- Make loud sounds more comfortable while boosting soft sounds
- Stream TV, phone calls and more, directly to your Z-Series hearing aids



Z series

**0% Interest! JUST 1/2 DOWN and LOW Monthly Payments WITH NO INTEREST!**

## Long's Hearing Care Systems

[www.longshearingcare.com](http://www.longshearingcare.com)

**CADILLAC LOCATION • CALL TOLL FREE 1-800-286-1378**

**1027 N. Mitchell St. • 231-779-0400**

PRUDENVILLE • 1070 W. Houghton Lake Dr.

CALL TOLL FREE 1-800-286-1378

(located in the TDM Realtors North Bldg.)

TRAVERSE CITY • 4000 Eastern Sky Drive

CALL TOLL FREE 1-800-286-1378

(Off Silver Lake Road and Copper Ridge)

Rudyard Michigan Upper Peninsula Community Center



We accept most insurance plans. Payment plans also available



**2016 FEEDER CATTLE SALES**  
**Clare**  
 Clare County Livestock Auction, LLC  
 David Clark, Owner/Auctioneer  
 Contact: 810-441-6191  
 Sale Barn: 989-386-9256

**ALL SALES ON THURSDAY AND START AT 1:00PM**  
**ALL CATTLE WEIGHED AT SALE TIME**  
**ACCEPTING CATTLE ON WEDNESDAY ALL DAY!!**  
**OVERNIGHT CATTLE WILL BE FED & WATERED!!**  
**COLORED AND HOLSTEIN STEERS, HEIFERS & CALVES**  
 (SOME CATTLE PRE-CONDITIONED, INFO AVAILABLE AT TIME OF SALE)

**APRIL 14, MAY 5**  
**GO TO [WWW.DAVIDCLARKAUCTION.COM](http://WWW.DAVIDCLARKAUCTION.COM)**  
**FOR MORE INFORMATION!!**  
**"SALE EVERY MONDAY AT 3:00PM"**

**The New 2016 Models are Arriving!**

# Cub Cadet

Sales On Snowblowers

**Come in and Check out Sales on 2015 Models**  
 Service. Knowledge. Selection. Financing. Delivery.

**Check Us Out!**  
**GRATIOT OUTDOOR EQUIPMENT**  
 Commercial-Industrial-Residential  
 "We Service All Makes of Outdoor Equipment"  
 On M-46 in Breckenridge • **842-3844**

\*See dealer for details

**GET MORE BANG FOR YOUR BUCKS**

GOOD, CLEAN, QUALITY PRE OWNED MERCHANDISE

- Jewelry
- Firearms
- Muzzle Loader Gear
- Paintball Equipment
- TVs
- Musical Instruments
- Wii Xbox 360 PS3
- Tools

**SPECIAL GUITAR & AMP \$100**

**DIRT CHEAP • CAR AUDIO • NEW & USED**  
 Tested & Inspected. Why Pay New Prices?  
**GLADWIN TRADE & SALES**  
**1-989-426-6811**  
 1739 N. State St. • Gladwin

# Quality Built. Quality Features.

Stop By & Check Out Our Fresh New Selection Of Buildings On The Lot Ready To Go!

If It's A Garden Shed, Guest House, Work Shop Or Just Some Extra Storage Space You Need,

## COME SEE US, WE GOT YOU COVERED

10x14 8' Loft, 2 Windows  
**\$2,250**

12x24 3- Windows, Side Door, Workbench, Small Loft  
**\$5,090**

12x20 5- Windows,  
**\$4,500**

12x16 2 - 4' Lofts, 3- Windows  
**\$3,412**

**Place Your Order Now & Beat The Spring Rush!**  
 Supplying Michigan With Quality Built Portable Building For Over 25 Years.

# Miller's Woodworking

3209 E. Beaverton Road • Clare, MI 48617  
 (Voicemail) 989-465-8172  
 Old US 127 to Surrey West on Surrey to Grant 1 mile north on Grant

7:30am-5:00pm Evening by Chance or Appointment  
 Closed Sunday

**YODER BROS. LARGE SPRING 2-DAY CONSIGNMENT AUCTION**  
 ★ CONSIGNMENTS WELCOME ★

CLARE, MI Location: 1/4 mile north of Clare, Michigan on Business 27 to Colonville Rd. East 3/4 miles to sale site. 7656 E. Colonville Rd., Clare, Michigan. Follow Yoder Brothers Auction Signs.

**FRIDAY & SATURDAY, April 15 and 16 @ 9:00 am**

**Friday, April 15 - Day 1 - 9:00 A.M.**  
**SHOP ANTIQUES AND OUTDOOR MISCELLANEOUS**

**LAWN and GARDEN ITEMS • HUSTLER SUPER Z 60"** Zero Turn Mower SN 901649, 24 hp Honda & Bagger  
 • 2008 J.D. 520 Zero Turn Mower 25 hp 52", 550 hrs • J.D. LA175 54" 26 hp Riding Mower • **Cub Cadet M-72** Tank 72" Zero Turn Mower, 31 hp Generac • **Cub Cadet 2145** Riding Mower • **Troy Bilt 46"** Riding Mower w/Bagger • **Ford LGT 50"** Riding Mower 12 hp • **Snapper LT180 48"** Riding Mower 18hp • **Dixon M-4516K** 16hp Kohler Riding Mower 45" • J.D. 647 Stand on 48" Mower 19hp Hydro Drive • J.D. 48" Walk Behind Mower w/Honda Engine • J.D. Walk Behind Mower w/54" and 36" Decks • **Troy Bilt** Horse Tiller • **GOLF CARTS and ORV • 2008 Yamaha D-S** Battery Golf Cart w/2012 Batteries • **2005 Club Car Percident** 48 Volt w/Lift Kit, Rear Seat, Good Batteries • (Expecting more not listed) **OTHER MISC. ITEMS •** Semi Load Treated Fence Posts • Semi Load R-R Ties • Semi Load Various Size Treated Lumber 4x6x18 - 4x6x16 - 1x6x6 Dog Ear Fence Board • 6x9 New Play House • Like New Forest 30 Ton Gas Log Splitter • 2-500 Gal Air Tanks • 2-250 Gal Air Tanks • 250 Gal. Water Totes • Thermo King Unit • 30" Galv Culvert • Misc Other Tile Culverts • Misc Lumber and Sheet Metal • **ANTIQUES •** Hand Corn Shellers • Barrel Butter Churn • Wooden Wagon Wheels • Steel Wheels • Wagon Load Nice Antiques and Collectables

**Saturday, April 16 - Day 2 - 9:00 A.M.**  
**FARM MACHINERY AND RELATED ITEMS**

**TRACTORS, SKIDSTEERS, LOADERS AND FORKLIFT** (Expecting Approx. 30+ Tractors and Skidsteers)  
 • 2007 Gehl 5640 E Series Skidsteer, 2 Speed, Hydro Glide, Heat • **John Deere 70 N/F** Tractor, 716 Org. Hrs w/Snow Blade SN7013151 • **John Deere 60 N/F** Tractor, 2 Hyd. Outlets SN 6023808 • **John Deere A N/F** Tractor, Good Cond. SN 606165 • I.H. B-414 Tractor Diesel W/F 43hp, Good Cond. • **Deutz 6006** Tractor Diesel, Good Cond. • **Allis Chalmers 540** Articulating Wheel Loader, L.P. w/Shop Built Quick Attach Bucket SN 1408 • **Ford 9N** Tractor • **Cat GP25K** Forklift L.P. 3 Stage, 4500 lbs. Runs Good • 32" Side Shift Attach. For Forklift • **HAY AND FORAGE EQUIPMENT - EARLY CONSIGNMENTS**  
 • **New Holland 575** Sq. Baler w/ Hyd Tension SN 901649, Very Clean • **New Holland 1441** Discbine, Center Pivot, Hydro Swing, Swivel Hitch SN 1230258 • 2- **New Holland 1465** 9' Haybines, Clean Cond. • **New Holland 1411** 9' Discbine, Good Cond. • **New Holland 411** 7' Discbine • 2008 New Holland 488 9' Haybine • 3- **New Holland 488** 9' Haybines, Good to Very Good Cond. • 3- **New Holland 489** 9' Haybines, Clean Cond. SN 68881 • **New Holland 648** Round Baler Netwrap, Silage Spec. • **New Holland 640** Round Baler • 2013 **Vermeer Rebel 5420** Round Baler Netwrap, Low Bale Ct. • **Vermeer Rebel 5400** Round Baler, Good Cond. • **Vermeer 505** Super I Round Baler • **Case I.H. 8520** Inline Sq. Baler, Nice Cond. • **Case I.H. 8330** 9' Haybine • **McDon 14'** Haybine, Center Pivot, Hydro Swing • **John Deere 337** Sq. Baler • **John Deere 336** Sq. Baler • **John Deere 24T** Sq. Baler • **New Holland 315** Baler • **New Holland 275** Baler w/Engine • **New Holland 273** Baler • **New Holland 268** Baler • **New Holland** Hay Inverter • **H-S 744** Forage Wagon • **EZ Trail 20'** Round Bale Feeder Wagon • Round Bale Wagon 30" w/Hoist Gear • **SIPMA 7500** 3 pt Round Bale Wrapper • **EZ Trail 872** Wagon Gear • 5 - J.D. Wagon Gears • **Pequea 7'** Pto Tedder • **Conutti 4** Basket Pto Tedder • **G-4 LT 4** Basket Tedder • **N.H. 256** Rake w/Dolley Wheels • **First Choice 8** Wheel V Rake • **Sitrex 10** Wheel V Rake • 2- **N.H. 258** Rakes • **N.H. 55-56** Rakes • **J.D. 640** 5 Bar Rake • **J.D. 200 85"** Barn Mow Elevator • **TRAILERS • Delta 28'** 1400 lb Tandem Axle Goose Neck Trailer w/Beaver Tail • **1999** Anderson 20' Dual Tandem Axle Gooseneck Trailer w/5' Beaver Tail • **Expecting more trailers not listed. OTHER FARM EQUIPMENT**  
**MANURE SPREADERS:** N.H. 213 Pto Manure Spreader, Less than 20 Loads • **H-S 175** 2 Speed Pto Manure Spreader, Clean Cond. • **N.H. 165** Manure Spreader w/End Gate • **N.H. 1230** Side Slinger Manure Spreader • **N.H. 518** Pto Manure Spreader • **N.H. 145** Pto Manure Spreader w/Poly Floor • **DRILLS & PLANTERS:** J.D. 8300

16' Grain Drill Dbl. Disc Openers & Roll Packers, Sharp • **Case I.H. 5100** Grain Drill 21 Hole Dbl Disc Openers & Roll Packers, Clean Cond. • **I.H. 510** 16 Hole Grain Drill • **J.D. VanBrunt 15** Hole Grain Drill • **J.D. 13** Hole Grain Drill • **J.D. 7000** 4 Row Planter w/ Finger Pickup • **J.D. 495-A** 4 Row Corn Planter • **OTHER EQUIPMENT:** **N.H. 822** 2 Row Corn Head • **N.I. 310** 1 Row Corn Picker • **EZ Trail 3400** Gravity Wagon w/1074 Gear • **Farm King 31'** Grain Auger • Several Grain Wagons • **J.D. Pto Corn Sheller • J.D. 331** 25' Tandem Foldup Disc • **J.D. 330** 20' Tandem Foldup Disc • **J.D. 16'** Wheel Disc • **Oliver 15'** Tandem Disc • **Oliver 241** 10' Wheel Disc, Rebuilt • **Miller Offset** Disc 12", Rebuilt • **Allis 8'** Wheel Disc, Rebuilt • 22' Foldup Field Digger • 13' Shank Chisel Plow • 48' Field Sprayer • **J.D. Danish** Tine 6 Row Cultivator • **Billion 12'** Crow Cultipacker • **Dunham 8'** Cultimulcher • 1 Bot. Trail Plow • **Allis 3pt**, 2 Row Corn Planter • **J.D. 3** Bot Plow • 2 Bot. Plows • **Farm King 605** 6' 3pt Disc • 3 pt 8' **Triple K** w/Rolling Baskets • 3 pt. 7' Disc • 3 pt. Post Auger • **Farm King 6'** 3 pt. Brush Hog • 8 pt. Dirt Scoop • 2-1/2 Ton New Steer Feeder • **Bush Hog M446** 72" Loader Bucket • **Jamesway 500** L.H. Gutter Chain 75% Cond. • **HORSE DRAWN FARM MACHINERY**  
**Gateway 2** wh. 26 hp Honda Power Cart w/Live Hyd. 3 Outlets • **J.D. 6059** Powerunit on Gear 110 hp w/Clutch • **V-M 4** cyl 1054U on Gear w/540 Reduction Clutch • **Detroit Power** unit w/Clutch • **McDeering 7'** Grain Binder, Very Good Cond. • **McDeering 6'** and 8' Grain Binders, Canadian e.d. Field Ready • **McDeering** Corn Binder • **McDeering 22"** Thrashing Machine • **J.D. 22x36"** Thrashing Machine w/Weighers • **McDeering** Green Crop Hay Loader, Field Ready • 2- **McDeering** Hay Loaders, Restored Cond. • **New Idea No. 10** Manure Spreader, Restored Cond. • 2- **New Idea No. 8** Manure Spreaders, Restored Cond. • **New Idea No. 8** Manure Spreader, Org. Cond. • **J.D. L** Manure Spreader • **McDeering No. 9** Trailer Gear Hay Mower, Mint Cond. • 3- **McDeering No. 9** Hay Mowers, Rebuilt Cond. w/Dolley Wheels • **McDeering No. 9** Hay Mower w/Rubber Tires • **McDeering No. 7** Hay Mower, Rebuilt • 2- **J.D. Big 4 7'** Hay Mower w/Dolley Wheels, Rebuilt • **Miller 2** Row Cultivator, Like New • **Oliver 44** 2 Row Corn Planter • **Oliver A-8 14"** Riding Plow • **Oliver 2** Bot Trail Plow • **Dunham 8'** Cultimulcher • 8' Wheel Disc • 7' Tandem Disc • 12' Spring Tooth Harrow • 9' Cultipacker • **Wards 14"** Hammer Mill • **Pioneer 1** Hi Flow Produce Wagon • Field Sprayer w/5 hp Honda & Hi Flow Pump • **McDeering** Field Cultivator • 2- **McDeering 1** Row Cultivators •

**Yoder Brothers Auction Service**  
 Specializing in Successful Auctions NAA  
 Auctioneers LeRoy and Willis Yoder  
 9484 S. Rodgers Ave., Clare, MI • PH: 989-386-9082

**CONSIGNMENT INFORMATION**  
 We Will Start Taking Consignments on Saturday, April 9th, 2016 at 8:00 am to 5:30 pm until Thursday evening, April 14th, 2016 at 5 pm Sharp! Closed on Sundays. Notice: We will not be accepting any vehicles. Note: We will not be accepting any equipment Friday or Saturday morning. Only usable items. NO JUNK! Auction staff reserves the right to reject any items that do not reach this standard. No household, glass, or tires. Loader tractors will be available for unloading and loading.

# All 2015 Double Cabs Clearly Marked As Low As \$31,853 w/ Trade In

## Largest Selection of Clean Used Cars in Central Michigan

GM Certified Pre-owned Vehicles = 2 Years of Oil Changes & Tire Rotations + 12 Month or 12,000 Mile Bumper to Bumper Warranty

USED CARS	
<b>2014 CHEVROLET IMPALA LT</b> Silver Ice, 17,000 Miles, Great MPG	\$18,900
<b>2013 BUICK LACROSSE CXL</b> Mocha Bronze, 22,000 Miles, Leather, V6	\$22,900
<b>2013 BUICK REGAL PREMIUM</b> Silver, 6,000 Miles, Loaded, Certified	\$19,900
<b>2013 BUICK LACROSSE</b> Champagne Silver, 72,000 Miles, Leather	\$15,900
<b>2012 VOLKSWAGEN PASSAT</b> Black, 61,000 Miles, Leather, Sunroof, Diesel, 40+MPG	\$19,900
<b>2012 BUICK LACROSSE CX</b> Carbon Black, With E/Assist, 36,000 Miles, Certified	\$19,900
<b>2012 BUICK LACROSSE</b> Mocha Steel, 4 Cyl., Cloth, 51,000 Miles	\$17,900
<b>2012 BUICK LACROSSE CXL</b> FWD, Summit White, 68,000 Miles, 1-Owner	\$15,900
<b>2012 CHEVROLET IMPALA LT</b> Goldmist, V6, Black, 51,000 Miles	\$15,900
<b>2011 BUICK LUCERNE CXL</b> Cyber Gray, V6, Leather, 64,000 Miles	\$15,900
<b>2011 CHEVROLET IMPALA LT</b> Burgundy, V6, 68,000 Miles, Great Mileage	\$13,900
<b>2011 CHEVY MALIBU</b> Silver Ice, 63,000 Miles, 4 Cyl.	\$10,900
<b>2011 CHEVROLET IMPALA LT</b> Silver, 152,000 Miles, Excellent Condition	\$9,900
<b>2010 CHEVROLET IMPALA LT</b> Silver, 99,000 Miles	\$11,900
<b>2007 BUICK LUCERNE CXL</b> Dk. Blue, 3800 V6, 127,000 Miles, Leather	\$10,900

USED SUVS	
<b>2015 BUICK ENCLAVE CXL</b> AWD, Silver Ebony, Leather, 20,000 Miles	\$38,900
<b>2015 CHEVROLET TRAVERSE AWD</b> White, 17,000 Miles, V6, Certified	\$29,900
<b>2015 BUICK ENCORE AWD</b> Silver, 12,000 Miles, Certified	\$23,900
<b>2013 GMC TERRAIN</b> Champagne Silver, 4cyl, AWD, 25,000 Miles SLE-2	\$22,900
<b>2013 GMC TERRAIN SLE AWD</b> Black, 33,000 Miles	\$21,900
<b>2013 GMC TERRAIN FWD SLE</b> 29,900 Miles, White, 4 Cyl.	\$21,900

USED TRUCKS	
<b>2013 CHEVROLET SILVERADO CREW CAB 4X4 LTZ</b> Mocha Steel, 29,000 Miles, Rear Camera/Remote Start	\$32,900
<b>2013 GMC SIERRA CREW CAB ALL TERRAIN</b> Black w/ Leather, 5.3 V8, 62,000 Miles	\$30,900

USED VANS	
<b>2013 CHRYSLER TOWN &amp; COUNTRY</b> Stow n' Go, Black, 62,000 Miles	\$19,900
<b>2009 DODGE GRAND CARAVAN</b> Dk. Green 132,000 Miles, Stow & Go Seating	\$8,900
<b>2008 CHEVROLET UPLANDER</b> Burgundy, 175,000 Miles, Good Shape	\$5,900
<b>2006 PONTIAC MONTANA SV6</b> Brown, 115,000 Miles	\$7,900

USED CARS	
<b>2013 GMC TERRAIN FWD SLE</b> Atlantis Blue, 23,000 Miles	\$21,900
<b>2013 GMC TERRAIN SLE-1 FWD</b> 4 Cyl, 26,000 Miles, Asher Grey	\$19,900
<b>2013 CHEVROLET CAPTIVA SPORT</b> Burgundy, 26,000 Miles	\$15,900
<b>2013 CHEVROLET CAPTIVA LT</b> White, 47,000 Miles, Well Equipped	\$14,900
<b>2013 CHEVROLET EQUINOX LT</b> AWD, Atlantis Blue, 156,000 Miles	\$11,900
<b>2012 GMC ACADIA AWD SLT</b> White, 90,000 Miles	\$21,900
<b>2012 CHEVROLET EQUINOX</b> Crystal Red, 34,000 Miles, FWD	\$19,900
<b>2011 CHEVROLET TRAVERSE AWD</b> Grey, 70,000 Miles, New Tires	\$17,900
<b>2012 GMC TERRAIN AWD SLT</b> White, V6, 83,000 Miles	\$19,900
<b>2012 GMC TERRAIN FWD</b> White, 4 Cyl., SLE-2, 53,000 Miles	\$18,900
<b>2012 GMC TERRAIN SLE FWD</b> Burgundy, 71,000 Miles	\$17,900
<b>2007 GMC ACADIA FWD</b> Goldmist, 54,000 Miles	\$22,900
<b>2011 BUICK ENCLAVE CX</b> Gray Green, FWD, 95,000 Miles	\$18,900
<b>2011 GMC TERRAIN FWD SEL</b> Goldmist, 4cyl, 32,000 Miles	\$16,900
<b>2011 GMC TERRAIN</b> Mocha Steel, FWD, 92,000 Miles, SLT, 4cyl.	\$15,900
<b>2007 GMC ACADIA FWD</b> Dk. Blue, 83,000 Miles, Locally Owned	\$11,900
<b>2010 JEEP WRANGLER UNLIMITED 4X4</b> 4 Dr., White, 93,000 Miles	\$20,900
<b>2010 BLACK CADILLAC SRX</b> Black, V6, 94,000 Miles	\$18,900
<b>2010 CHEVROLET EQUINOX FWD</b> Cardinal Red, 107,000 Miles	\$10,900
<b>2010 CHEVROLET EQUINOX FWD</b> Silver Ice, 80,000 Miles	\$11,900
<b>2009 BUICK ENCLAVE CXL FWD</b> 92,000 Miles, Silver	\$16,900
<b>2007 TAHOE LT 4WD</b> Amber Bronze, Leather, Sunroof, 168,000 Miles, 1-Owner	\$18,900
<b>2007 JEEP WRANGLER BLACK 5 SPEED 4X4</b> Black, 4 door, 89,000 miles, hard top & soft top available	\$14,900

# BENCHLEY BROS., INC.

1 Mile East of Doherty • US-10, Clare • Sales (989) 386-9900

For more info log on to: [www.benchleybros.com](http://www.benchleybros.com)

Parts & Service (989) 386-3197

Voted Clare Counties #1 Dealership

HOURS  
8-6 Mon-Fri  
9-2 Sat



# A Frame Auto



**2009 FORD FUSION**  
\$7,995

TAN, AWD, 133k miles



**2010 SCION XB**  
\$9,000

PURPLE, cute, 86k Miles



**2008 SATURN VUE**  
\$9,995

WHITE, AWD, 81k Miles, XR, V6



**2005 FORD F150**  
\$10,900

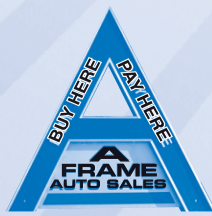
RED, Local Trade, 5.4L, supercab, 165k miles

## Good Credit Bad Credit No Credit WE FINANCE!

Large inventory of Autos/SUV's/Vans/Pick-ups on our Sales Lot, including large selection of 4X4 SUV'S. Completely serviced, quality used vehicles!

CARS		SUV		TRUCK		VAN	
<b>1991 CADILLAC DEVILLE</b> WHITE, V8, 4 Door, Blue leather, 108k Miles	\$3,400	<b>1998 CHEVROLET BLAZER</b> GREEN, 4WD 185k Miles	\$3,995	<b>1994 FORD F350 (with camper)</b> WHITE, Diesel Truck W/ Camper, 112k Miles	\$5,994	<b>1999 FORD WINDSTAR</b> GREEN, Leather, 155k miles	\$3,200
<b>2001 CHRYSLER PT CRUISER</b> SILVER, Local Car, 185k Miles	\$4,000	<b>2005 SATURN VUE</b> RED, FWD, 147k Miles, Manual Transmission	\$5,495	<b>2007 GMC SIERRA</b> RED, Single Cab Work Truck, 2WD, V8, Awesome Truck, 124k Miles	\$9,495	<b>2007 CHRYSLER TOWN AND COUNTRY</b> GRAY, 81k Miles, Sto-N-Go Seating, Sharp Van	\$7,995
<b>2002 PONTIAC GRAND AM</b> GREEN, Sedan, V6, REDUCED, 137k Miles	\$4,300	<b>2002 TOYOTA HIGHLANDER</b> RED, 4WD, 187k Miles, Rides Beautifully	\$5,995	<b>2009 FORD RANGER</b> GRAY, 2WD, Topper, 92k Miles, Supercab	\$10,000		
<b>2001 CHRYSLER 300</b> BLUE, Leather, Loaded, Local Trade, REDUCED 125k Miles	\$4,500	<b>2007 FORD FREESTYLE</b> SILVER, 3rd Row, 91k Miles, FWD	\$7,995	<b>2005 FORD F150</b> RED, Local Trade, 5.4L, Supercab, 165k Miles	\$10,900		
<b>2004 CHRYSLER SEBRING</b> WHITE, FWD, Leather, Loaded, 150k Miles	\$4,500	<b>2008 GMC ENVOY</b> BLUE, 4WD, 120k Miles, Awesome	\$9,495	<b>2009 FORD RANGER</b> WHITE, 24k Miles, 2WD, Like Brand New, Topper	\$12,495		
<b>2000 PONTIAC BONNEVILLE</b> BLACK, 3.8 V6, Leather Loaded, 114k Miles	\$4,850	<b>2006 FORD EXPLORER</b> BLACK, 4WD, Virginia car, trade-in, third row EDDIE BAUER	\$9,500	<b>2007 FORD F150</b> BROWN, 4WD, Supercrew Lariat, Leather, Loaded, 172k Miles	\$12,900		
<b>2005 SATURN ION</b> BURGUNDY, Manual, 108k Miles, Great Gas Mileage	\$5,495	<b>2008 SATURN OUTLOOK</b> BLUE, FWD, third row, 136k miles	\$9,995				
<b>2005 BUICK LESABRE</b> GRAY, 145k Miles, Big Safe Sedan.	\$5,495	<b>2008 JEEP PATRIOT</b> GRAY, 4WD, 81k Miles, Tan	\$9,995				
<b>2005 CHEVROLET COBLAT</b> RED, 121k Miles, Fuel Efficient, Sharp Color	\$5,995	<b>2008 SATURN VUE</b> WHITE, AWD, 81k Miles, XR, V6	\$9,995				
<b>2001 LEXUS ES300</b> SILVER, Local Trade, Leather Loaded, 173k Miles, Well Maintained	\$5,995	<b>2008 FORD ESCAPE</b> BLUE, FWD, 132k miles, Sharp Blue	\$10,000				
<b>2008 PONTIAC G5</b> YELLOW, Coupe, Flashy Color, 95k Miles, Great Gas, REDUCED	\$6,700	<b>2009 FORD EDGE</b> BLACK, FWD, 109k Miles, Sharp Black	\$10,995				
<b>2009 CHEVROLET AVEO</b> RED, Great Gas Mileage, Hatchback, 58k Miles	\$6,995	<b>2008 JEEP COMPASS</b> GREEN, 4WD, 76k Miles, Fun Jeep	\$11,500				
<b>2009 FORD FUSION</b> SILVER, VERY SHARP, Leather Loaded, 141k Miles, Black Rims	\$6,995						
<b>2007 CHEVROLET IMPALA</b> BLACK, 3.5 V6, Sedan, 116k Miles	\$7,000						
<b>2005 PONTIAC GRAND PRIX</b> SILVER, 3.8L V6, 110k Miles, Sharp Silver, Leather Loaded, REDUCED	\$7,000						
<b>2009 CHEVROLET IMPALA</b> RED, Local Trade, Bright Red, Beautiful, 133k Miles	\$7,400						
<b>2005 PONTIAC BONNEVILLE</b> RED, 3.8L V6, Sharp, Fun, 116k Miles	\$7,500						
<b>2008 HONDA ACCORD</b> BLACK, 118K Miles, Rides Beautiful, FWD	\$7,995						
<b>2009 FORD FUSION</b> TAN, AWD, 133k Miles	\$7,995						
<b>2009 MITSUBISHI GALANT</b> BLUE, Clean, Local Trade, 75k Miles	\$8,200						
<b>2006 PONTIAC G6 GT</b> SILVER, GT, Sporty, 83k Miles	\$8,821						
<b>2008 MERCURY MILAN</b> BLUE, Leather, FWD, Cool blue, 89k Miles	\$8,998						
<b>2010 TOYOTA SCION</b> PURPLE, Cute, 86k Miles	\$9,000						
<b>2009 HONDA CIVIC</b> GRAY, 4 Door, Great Gas, Sunroof, Alloy Wheels. 92k Miles	\$9,650						
<b>2009 SATURN AURA</b> GRAY, 82k Miles, Sharp Ride, Sedan	\$9,960						
<b>2008 BUICK LACROSSE</b> WHITE, 64k Miles, Comfortable, Sharp Color	\$9,995						
<b>2010 DODGE CALIBER</b> RED, 52k Miles, Like New	\$10,000						
<b>2011 CHEVROLET MALIBU</b> SILVER, 72k Miles, 4 Cyl, FWD, Sharp	\$10,500						
<b>2011 CHEVROLET IMPALA</b> BURGUNDY, Only 40k Miles, Comfortable, FWD	\$10,995						
<b>2011 CHEVROLET CRUZE</b> BLACK, 36K Miles, Great Gas Mileage, 6 Speed Auto Transmission	\$10,998						
<b>2009 BUICK LACROSSE</b> GRAY, 67k Miles, 3800 V6, Very Sharp	\$11,000						
<b>2010 FORD FUSION</b> GRAY, Hybrid, 81k Miles, FWD	\$11,000						
<b>2011 BUICK LUCERNE</b> WHITE, Beautiful Pearl, 93k Miles, CXL Loaded	\$11,400						
<b>2011 HONDA CIVIC</b> WHITE, 44k miles, great gas mileage, sedan, lasts forever	\$11,500						

All Inventory & more information can be found at [www.aframeauto.com](http://www.aframeauto.com) !



Now Offering In-House Financing With Only PL/PD Insurance

989-681-4000  
Sales Rep - Bradly Mott

1984 W. Monroe Road St. Louis  
1 mile east of US-127 on M-46

East end of  
**Miller Auto Sales**  
Mon.-Fri. 8-6 Sat 9-2 or by appointment

**RE/MAX** <sup>®</sup> **RIVER HAVEN, INC.** **Open Seven Days a Week to Serve You!**  
 www.riverhavenhomes.com Wayne R. Walts - Broker

**Main Office**  
777 W. Cedar  
Riverwalk Place  
989-426-6893

**Wixom Lake Office**  
1239 Estey Road,  
Beaverton  
989-435-7755

**Sugar Springs Office**  
1415 W. Sugar River Rd.  
Gladwin, MI 48824  
989-426-9239

Gladwin City-2 bedroom, 2 bath, 2 car att garage, sun room, stand along condo near the hospital.  
**\$94,999**  
MLS#165268

Lake Lancelot-Sugar Springs-3 bedroom, 3 bath, 2 car att garage, sandy beach on all sports lake.  
**\$229,900**  
MLS#165271

Secord Lake-2 bedroom plus sleeping loft, over 1500 sq. ft. 2+ car garage, over 220 ft on 2000 acre all sports lake. Covered porch, log exterior.  
**\$249,800**  
MLS#165250

**West Branch Furniture**  
**NO CREDIT NEEDED**  
**\$40<sup>00</sup> Takes It Home**  
**90-Day Cash Option**

\*Subject to approval. See store for details

**136 S. Fifth St. West Branch**  
located block south of Firstbank off Houghton Ave.  
**989-345-5326**

**www.westbranchfurnitureoutlet.com**

**\*12 Months No Interest** **LIFESTYLE**

Sunday 11-3 Mon-Fri. 10-6 Sat. 10-5

"The Outlet Store That Saves You More!"

**Think Spring**  
**\$15.95 Oil Change**  
**FREE Brake & Safety Inspection**

Most cars & trucks (some restrictions apply)

**BUMPER TO BUMPER**

**Dagwood's Auto Repair**

WIFI **ASE CERTIFIED**

524 W. Fifth St. Clare  
 989-386-8000  
 M-F 8-5, Sat. 9-12  
 After Hours by Appt.

"Common Sense Auto Repair" 30 Years Experience

1001 N. Fancher Mt. Pleasant  
 989-772-9500  
 M-F 8-5

**30 YEARS EXPERIENCE**

Another Happy Customer... **CLEAR VISION WINDOWS**  
 "Clearly the Best Choice"  
**SIDING & ROOFING**  
 Toll Free (888) 834-0542

**SPRING SAVINGS EVENT**  
 Hurry Offers Expire 4.24.16

Free Estimates **f** (989)633-0000

**18 MONTHS SAME AS CASH\***  
\*AVAILABLE

**Siding • Windows • Roofing**

- \$500 OFF** on Whole House of Vinyl Siding  
Expire on: 4.24.16
- \$7500 TRADE IN** FOR EACH OF YOUR OLD WINDOWS  
 3 windows - \$225  
 6 windows - \$450  
 9 windows - \$675  
 Expire on: 4.24.16
- \$500 OFF** on Complete Tear Off  
Expire on: 4.24.16

**HELP WANTED GENERAL**

A small company in Remus seeks afternoon/evening **DELIVERY DRIVER**. Must have a chauffers lic and pass DOT physical / drug / alcohol test. Friendly with customers and willing to work Sun - Fri. /afternoon/ eves. Apply in person 309 N Fremont St, Remus, MI, 49340

**HELP WANTED PART TIME**

Compass Coach of Mt Pleasant is hiring **BUS WASHERS**. Hours vary but are normally M-Sunday, 9 pm -3 am. Must have valid drivers licence and reliable transportation. 9.50 Hr. This is a part time position. Apply in person Monday - Friday 9:00 am - 4:30 pm - @ 5902 Venture Way, Mt Pleasant. Compass is a substance free company.

**DRIVERS**

**ANDERSEN BROTHERS** is hiring people for truck driving and field workers needed for potato planting season. No CDL or experience necessary. Call 989-427-3476 or stop by at 2583 Schmeid Rd Blanchard MI 49310

**HAIR & BEAUTY**

**IN NEED OF A MAKEOVER?** Volunteer to be a **HAIR MODEL** for our 27th Annual Spring Show! To receive your FREE cut &/or color come to the Soaring Eagle Hotel lobby Friday April 15th - 6pm or Sat. April 16th at 10am Up to a \$200 value Must be available April 17th and/or 18th. You must attend Fri or Sat to qualify. For more info 800-638-8576

**IS YOUR CLOSET** overflowing with odds and ends, this and that? Place a classified to help end the clutter.

**RESTAURANT FOOD SERVICE**

Pine River Country Club is now hiring 3-4 part time **SERVERS/BARTENDERS** for our 2016 season. Must be available April-November and willing to work nights and weekends. Must be customer oriented, friendly, and hardworking. Please send resume to Sumer Hoffman at [sumer.hoffman78@gmail.com](mailto:sumer.hoffman78@gmail.com) or call (989) 463-4610 for more information.

**SKILLED LABOR**

**IMMEDIATE NEED FOR EXPERIENCED MARINE MECHANIC. BENEFITS INCLUDED. 989-821-5692**

**ELECTRONICS**

**HUGE SALE! FRIDAY, APRIL 15th!**  
 Used DVD'S -**2.00 off!** (from 99 cents)  
 Used Blu-Ray movies! **\$1.00 VHS MOVIES - 1,000's in stock!**  
 Used Games—**PS3, XBOX, 360, Wii**—\$5.00 off!  
 Used Players: Wii/360/ Nintendo!  
 C.D.'s—\$2.00 off!  
**NEW-TV'S! TV'S! TV'S!**  
**\$25 OFF HOME SPEAKERS**—Paradigm!  
**Surround sound systems— ALL PRICE RANGES!**  
 Also—USED TV'S & STEREO!  
**Karaoke** discs/equipment—rent/for sale!  
 Alpine Car stereo/Remote Starters/  
 Sirius radio/Installation available!

Main Street Audio/Video, 701 N. Mission, Mt. Pleasant **989-773-7370. FREE LAYAWAY!**

**MISCELLANEOUS**

**KILL BED BUGS & THEIR EGGS!** Buy Harris Bed Bug Killers/ KIT Complete Treatment System Hardware Stores, The Home Depot, homedepot.com

**ESTATE SALES**

**LIVING ESTATE SALE Thursday & Friday April 14-15 9:00 a.m. 706 E. Crapo, Mt. Pleasant.** Hide-a-bed, table & four chairs, microwave, recliner, love seat & matching chair, three beds, dressers, linens, some sm/med women's clothing, small desk, garden and garage items, U.S. & foreign coins, post cards, Kennedy & Franklin half dollar collections, State quarter collection, assorted glass, coke bottles, small appliances, cooler chests, record albums, 8-tracks, cassettes, porcelain dolls, costume jewelry, two 35mm cameras with extra lenses, stained glass, Christmas decorations, art prints, CMU year books, lamps, end tables, table saw, step ladders, extension ladder, oak table, patio table & chairs, card table with 4 chairs, walkers, Isabella, Midland, Clare, Merrill milk bottles, vintage quilt, crocks, vintage electric sewing machine, shelving, power and hand tools, electric mower, baskets, linens, books, games, paper shredder, many interesting collectible items. All items are pre-priced. Sale by On Target Estate Sales. Pictures and sale bill: [yardsale24.com](http://yardsale24.com)

**BUILDING MATERIALS & SUPPLIES**

**BUILT BEST BARN** Michigan's Largest Pole Barn Company Best Quality, Best Service, Spring Specials Sale Ends Soon  
 24'x24'x8'=\$6995.00  
 24'x32'x8'=\$7995.00  
 24'x40'x10'=\$9495.00  
 30'x40'x10'=\$10,995.00  
 32'x48'x12'=\$15,495.00  
 Completely Built License/Insured  
 1-877-802-9591 (Office)  
 989-205-2534 (Cell)

**YOU GET QUICK** action at a low cost when you advertise in the Insider classifieds.

**MISCELLANEOUS**

**PAWN SHOP Buy, Sell, Pawn**

3 Month Pawn  
 3% + 1.00 Storage  
 Firearms, Gold & More

Gladwin Trade & Sales  
**989-426-6811**

**MERCHANDISE WANTED**

**CASH FOR OLD COINS & CURRENCY**

Paying book price. Will look up each coin with you.  
**989-426-7300.**

**BUILDING MATERIALS & SUPPLIES**

**PIONEER POLE BUILDINGS** Free Estimates Licensed and Insured. 2x6 Trusses. 45 Year Warranty Galvalume Steel-19 Colors. Since 1976 #1 in Michigan Call Today 1-800-292-0679

**FARM - HEAVY EQUIPMENT & PARTS**

**BUY FUEL DIRECT & SAVE Home Heating Oils \*Farm \*Commercial \*Industrial Gasoline-Diesel Fuels**

**Tri Lakes Petroleum, LLC**

Call Scott Capen 989-620-7527  
 Toll Free 877-857-4567  
 Locally Owned & Operated [trilakesllc.com](http://trilakesllc.com)

**CATS**

**BARN CATS.** 989-539-1274

**FARM FEED & SUPPLIES**

**ALFALFA:** 4th Cutting, \$10/ bale 2nd Cutting \$8; Straw, \$4/Bale; Cracked Corn \$12/100, Shelled-Corn \$10/100, Cob-Corn \$5/Bag, Rye, Barley, Wheat, Oats \$12/ bag. Delivery-Available. (989)433-5418 Cell# (989)965-1391

**HIGH YIELDING** seed oats, year out \$6. / bushel. 989-965-1391 or 989-433-5418

**APARTMENTS FOR RENT (UNFURNISHED)**

**ROCKWAY VILLAGE Apartments**

Shepherd, MI Just off freeway

10 minutes from Alma or Mt. Pleasant

1,2 & 3 bedrooms starting at \$450

Quiet Family Atmosphere  
 989-828-7100

**VACATION & RESORT PROPERTY**

**HOUGHTON LAKE** Canal front home, 1100 sq. ft., 2 bdrm, brick fireplace w/ insert, C/A, 2 car insulated & dry walled attached garage, nice size rooms, new seawall, SE side, close to everything. \$129,000. (989) 329-3508 - Evenings

**PASSENGER CARS**

**2011 CHEVY TRAVERSE LT**

Full power, captains chairs, heated seats, excellent shape.

**ONLY \$11,995** or \$198/mo.

**Dick Sovo Auto**  
 989-828-6032  
[dicksovaautosales.com](http://dicksovaautosales.com)

**SELL YOUR...** unwanted items in the classifieds.

**PASSENGER CARS**

**2014 CHEVY EQUINOX LT**

Only 17,000 miles, heated leather, power lift gate, every option, gorgeous color.

**ONLY \$21,995** or \$319/mo.

**Dick Sovo Auto**  
 989-828-6032  
[dicksovaautosales.com](http://dicksovaautosales.com)

**PASSENGER CARS**

**2014 FORD F-150 CREW CAB 4X4**

Leather interior, chrome package, 100% show room new!

**ONLY \$32,995** or \$459/mo.

**Dick Sovo Auto**  
 989-828-6032  
[dicksovaautosales.com](http://dicksovaautosales.com)

**PASSENGER CARS**

**2015 FORD TAURUS SEL**

Only 7,000 miles, heated seats, premium wheels, absolutely beautiful!

**ONLY \$23,995** or \$329/mo.

**Dick Sovo Auto**  
 989-828-6032  
[dicksovaautosales.com](http://dicksovaautosales.com)

**PASSENGER CARS**

**2015 GMC ACADIA SLE-2**

Only 7,000 miles, AWD, full power, captains chairs, double sunroof

**ONLY \$32,995** or \$459/mo.

**Dick Sovo Auto**  
 989-828-6032  
[dicksovaautosales.com](http://dicksovaautosales.com)

**SAY HELLO** to the most mobile marketplace in the area - the Insider Classifieds.

**PASSENGER CARS**

**\*SPECIAL\* 2015 FORD EDGE SEL**

Heated leather, only 8,000 miles, dual power seats, eco-boost engine.

**ONLY \$27,995** or \$389/mo.

**Dick Sovo Auto**  
 989-828-6032  
[dicksovaautosales.com](http://dicksovaautosales.com)

**PARTS & SERVICE**

**AUTO REPAIR** mechanical & body, auto parts, used & new, mostly mopower 989 835 8987 [partsmostlymopower@gmail.com](mailto:partsmostlymopower@gmail.com)

Spend Your Pennies Close To Home

**Shopping Local keeps your Money Local**

**GARAGE SALES**

**YARD, RUMMAGE & GARAGE SALES**

**ESTATE GARAGE SALE.** Many collectibles, glasswares, household items. Rain or shine. April 13-15, 8-6. 620 Wright St Breckenridge.

**GARAGE SALE,** April 14-16, 9am-5pm. 10155 E. Broomfield Rd., Shepherd. Several families.

**GARAGE SALE:** 227 N. Union St., Shepherd April 17, 10-2pm. Huge model horse sale, Hall china, Christian fiction, new men's LLB shirts, XXI, railroad and other paper ephemera. CASH ONLY!

**LARGE GARAGE SALE-** 11020 S. Harrison Ave., Farwell, (just south of US 10). Many household items, exercise equipment, clothing, small appliances, beauty supplies. Thursday-Saturday, April 14-16, 9am-5pm.

**CLASSIFIEDS WIN!** When it comes to saving time, energy and money. Classifieds are in first place! Place your classified and see how easy it is to be a winner!

**YARD, RUMMAGE & GARAGE SALES**

**MEGA Mom2Mom Sale** Saturday, April 16th, 9:00am to 1:00pm **TWO** locations in Alma \$2 admission, includes both locations **Youth For Christ** (2550 W Cheesman Rd) AND Alma Middle School (1700 N Pine Ave) **SPONSORED BY:** Youth For Christ and Child Advocacy

**MOVING & GARAGE SALE** Saturday 4/16, 8-3pm Tools, shop equipment, toys, furniture, beds, dressers, child & adult clothing. All must GO!

**McGuirk Sand-Gravel** 510 W. Pickard St. Mt Pleasant Look for our signs, Maroon building in rear.

**MT. PLEASANT,** 1209 EASTWOOD DR, April 15, 9-4pm, April 16, 9-noon. Housewares, electronics, tools, ladies clothing, 1x-2x, small battery operated lawn mower, books, etc.

**NEED HELP? CALL A LOCAL PROFESSIONAL FROM OUR Professional Services Directory**

**LANDSCAPE & TREE MAINTENANCE**

**ARBOR TREE SERVICE.** Storm Damage, Landscaping, Tree Trimming & Removing. Call 989-763-3830

**LOOKING FOR HELP?** People everywhere read the want ads. Phone today to place the ad that people want to read.

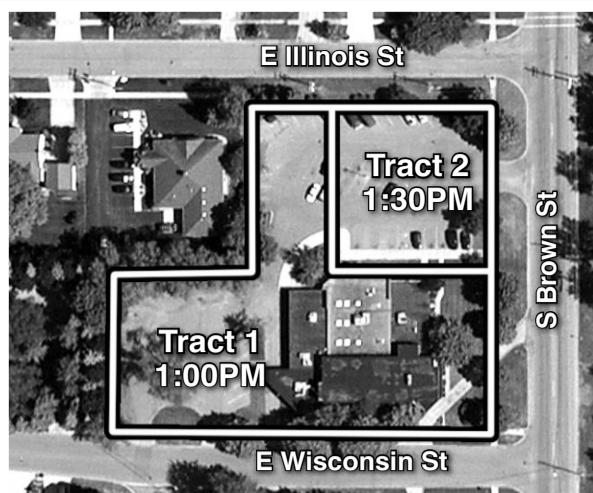
**REMODELING & REPAIR**

**HOME IMPROVEMENT** Interior/Exterior Painting, Roof & Drywall Repair, Power Washing, Kitchen/ Bath Special, Tile, House Leveling, Windows, Doors, Flooring. Call 989-533-1006



**Sell!**  
**Shop!**  
**Hunt**  
**for**  
**a job!**

And there's so much more!  
Call and the Classified Department can help you place your ad today!



**Former Medical Clinic**

TRACT 1: 10,398sf, 2-floor comm. bldg. on 1.156 acres & 42+ parking spots  
TRACT 2: .0412 acres & 60+ spot parking lot  
314 S Brown St, Mt. Pleasant, MI

Located across from hospital, near elementary school, within 2 miles of 127 exit

**ONLINE AUCTION**  
**Wednesday, April 20**

Inspections: Wednesday, March 30 and Monday, April 18 (3-6pm)



**Consignment Auction**

**Sunday April 17 @ 12:00pm**  
6507 Greenville Rd, Greenville, MI

2 miles north of m57 on m91 (inside the kaleidoscope of times antique mall)

The following articles are from several area consignors. Antiques, Tools, Furniture, Collectibles. Plus many surprises coming in as we get closer to sale day. 3 auctioneers selling. **10% Buyer's Premium.** Please check website for pictures and details. If you would like to add articles to our exciting auctions please call. A Great Way is the Auction Way!



616-754-9437

www.MerrittAuctionService.com



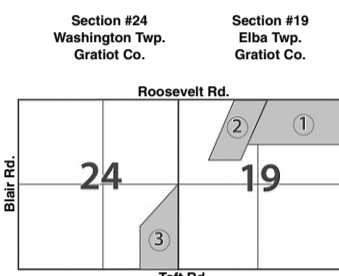
**REAL ESTATE AUCTION**

**155 Acres \* Farmland & Hunting Property • Gratiot Co.**

Sale held at Ithaca Community Center, ITHACA, MICHIGAN. Located at 120 N. Maple Street. One block west of traffic light, downtown Ithaca, then turn north back of Fire Hall, Gratiot County.

**WEDNESDAY, APRIL 20 \*6:00PM\***

PARCEL #1	PARCEL #2	PARCEL #3
<ul style="list-style-type: none"> <li>60 Acres Vacant Farmland</li> <li>51 Tillable Acres</li> <li>Small pocket of woods</li> <li>Good mixture of soils</li> <li>Random tile</li> <li>Good drain outlets</li> <li>Not in PA-116</li> <li>Farm NOT rented for 2016</li> </ul>	<ul style="list-style-type: none"> <li>37.5 Acres vacant farmland</li> <li>Approx. 25 tillable acres</li> <li>Nice woodlot at back of farm</li> <li>Good mixture of soils</li> <li>Random tile</li> <li>Good drainage outlets</li> <li>Not in PA-116</li> <li>Not rented for 2016</li> </ul>	<ul style="list-style-type: none"> <li>58 Acres hunting property</li> <li>Big trees and cut over areas</li> <li>Property surrounded by woods</li> <li>Bear Creek &amp; Maple River on the property</li> <li>Notorious Big Buck Country</li> <li>Deeded Easement access</li> </ul>



Directions to the Properties: East of Ashley on M-57 to McClelland Rd. Turn south 1 mile to the properties. Please see www.PavlikLLC.com for all maps, aerials & information.

**PAULINE HANUS TRUST, OWNER**

CALL AUCTION COMPANY FOR MORE INFORMATION 989-463-4903



**JOHN PAVLIK & JOHN C. PAVLIK, SR.**  
AUCTIONEERS/REALTORS

Pavlik Auction & Real Estate, LLC, Alma, MI 48801  
www.pavlikLLC.com

WWW.SYKORAAUCTIONS.COM PRESENTS!

**LIVE FARM AUCTION**

RICHARD RUHNAU ESTATE  
MIDLAND, MI. 48642

THE FOLLOWING DESCRIBED FARM ITEMS WILL SELL AT A LIVE PUBLIC AUCTION HELD ON THE FARM LOCATED WEST OF BAY CITY, MI. ON US-10 FREEWAY TO EXIT#126 WALDO RD. @ MIDLAND, MI. - THEN NORTH 5 MILES ON WALDO RD. TO PARISH RD. AND EAST 1 1/2 MILES TO 2862 W. PARISH RD. (BAY CO.)

**THURSDAY APRIL 14, 2016 10:00 AM SHARP!**

RAIN OR SHINE! BE ON TIME!  
INSPECTION WEEK OF SALE ONLY!

6 FARM TRACTORS	PLANTING	TILLAGE & MISC. MACHINERY
1974 JD 4430 2WD DSL. TRACTOR, 5804 HRS 1974 JD 4430 2WD DSL. TRACTOR, 9379 HRS 1973 JD 4430 2WD DSL. TRACTOR, 8823 HRS 1964 JD 4020 DSL. TRACTOR, CAB, 6594 HRS 1963 JD 4010 DSL. TRACTOR, CAB, NON-RUNNING 1946 FARMALL M GAS TRACTOR, NON-RUNNING JD 158 HYD. LOADER W/ 8' MATERIAL BUCKET	JD 7000 8 ROW PLANTER W/ RAWSON NO- TILL PKG. LIQUID FERTILIZER, MONITOR JD 8250 21 HOE GRAIN DRILL 1000 GAL. HORIZONTAL POLY RIBBED NURSE TANK 8 TON WOOD PORTA-BOX	KONGSKILDE 18' HYD. FOLD SWEDISH TINE FIELD CULTIVATOR W/ DBL. BASKET LEVELER, JD 8 ROW 3 PT. CULTIVATOR, KEWANE 180 HD 8' 3 PT. BAWK BLADE W/ TILT & ANGLE. TSC 6' 3 PT. YORK RAKE, 2 KILBROS 350 GRAVITY BOX ON KB #1072 GEAR, BOX EXTS., IHC 2X14' FAST HITCH PLOW, JD 4X16' SEMI MTD. PLOW, JD 85 8 ROW S-TINE CULTIVATOR, JD 15' 3 PT. FIELD CULTIVATOR, JD 4X16' SEMI MTD. PLOW, JD 15' PULL TYPE FIELD CULTIVATOR, W/ HAND PUMP - WATER 8 HP. TRANSFER PUMP - JD RWA 12' WHEEL DISC, JD 4X16' SEMI MTD. PLOW, JD 20' SPRING FOLD WHEEL DISC, (NEW) 6' UNIVERSAL 6' STONE BUCKET, JD WAGON GEAR W/ WOOD 16' RACK
<b>5 JD COMBINES &amp; 8 ASST. HEADS</b> 1978 JD 7700 TURBO RWA DSL. COMBINE 1977 JD 7700 TURBO DSL. 2WD COMBINE 1976 JD 7700 TURBO DSL. 2WD COMBINE	<b>GOOSENECK GRAIN TRILER</b> 2000 D&K 3002 GOOSENECK 300 BU. REAR DUMP GRAIN TRAILER, DUAL TANDEM	<b>HONDA GOLD WING 1100 MOTORCYCLE, FULL</b> DRESS, 65K MILES - 500 GAL. STEEL FUEL TANK W/ HAND PUMP - WATER 8 HP. TRANSFER PUMP - W/ RWA 12' WHEEL DISC, (NEW) 6' UNIVERSAL PLOW, JD 20' SPRING FOLD WHEEL DISC, (NEW) 6' UNIVERSAL 6' STONE BUCKET, JD WAGON GEAR W/ WOOD 16' RACK RELOADING SUPPLIES - MISC. FARM/SHOP ITEMS ON JEWELRY WAGON!

RICHARD RUHNAU ESTATE  
2862 W. PARISH RD.  
MIDLAND, MI. 48642



**SYKORA AUCTION SERVICE INC.**  
Scott Sykora, Auctioneer  
989-386-9694 • Fax 989-386-2246  
John McConnell, Auctioneer  
989-588-9591  
Clare, Michigan • Visit our Web Site www.sykorauctions.com

**SAUCTION**

ADDRESS OF RESIDENCE: 403 S. Main St., Crystal MI  
Real Estate and Personal Property to be sold at the intersection of Main St. & Division St. Downtown Crystal MI.

**Saturday, April 16<sup>th</sup> at 10 am**

**FURNITURE & HOUSEHOLD**

- Patio Sts
- Desk
- Dressers
- Canister Sets
- Kitchen Table & Chairs
- Plant Stands
- Vacuums
- Decanters
- Canisters
- Upperware
- Dishes
- Glassware
- Picnic Baskets
- Bread Pans
- Muffin Tins
- Electric Can Openers
- Pyrex
- Milk Glass

**RESTAURANT SUPPLIES**

- Plastic Storage Bins
- First Aid Kit
- Copper Ware
- Crockpots
- Christmas Decoration
- Mugs
- Screw Guns
- Hand Tools
- Revere Ware
- Miracle Blade Knife Set
- Flange Craft ots and Pans
- Condiment Holders
- Salt and Pepper Dispensers
- Vinyl Storage Bins
- Hamilton Beach Countertop Convection Oven
- Oster 3 Place Warmer
- Titanium Professional Knife Set



Private tours to be conducted by Lee Aldrich 989-763-1042 or Richmar Realty 989-775-334. Additional listing photos may be viewed on www.Richmar.com



CONCESSION & PORTA JOHNS ON SITE!  
FOR MORE PICTURES AND INFORMATION PLEASE VISIT www.sherwoodauctionservice.com  
Gary & Linda Gallagher Living Estate

Find us on Facebook  
TERMS: CASH, PERSONAL CHECK or CREDIT CARDS with a 3% charge for use with proper I.D. All property to be settled for day of the sale. Not responsible for accidents or goods before, during or after sale. Auctioneers and Sale Personnel are acting as selling agents only and assume no liabilities or guarantees. Announcements day of sale take precedence over printed matter.

**SHERWOOD AUCTION SERVICE, LLC**  
JOE SHERWOOD - OWNER/AUCTIONEER  
JERRY HECHT Associate Auctioneer  
HOME (989) 681-7653 • OFFICE (989) 763-3101 • email: sherwoodauctioninfo@yahoo.com

SYKORAAUCTIONS.COM PRESENTS!

**LIVE FARM AUCTION - ROY & JANICE PIOTROWSKI @ LINWOOD, MI. 48634**

WE ARE RETIRING FROM FARMING AND WILL SELL THE FOLLOWING AT LIVE PUBLIC AUCTION HELD @ OUR FARM LOCATED 6 WEST OF LINWOOD, MI. ON LINWOOD RD., THEN 1 MILE NORTH ON GARFIELD RD. TO DOWNTOWN CRUMP, MI. (BADER & SONS JD ) THEN 2 MILES WEST ON ANDERSON RD. AND 2 1/2 MILES NORTH TO 1778 N. CARTER RD. (BAY CO.)

**SATURDAY APRIL 16, 2016 @ 10:00 SHARP!**

JD TRACTORS & 10 ATTACHMENTS INCL, 2006 JD 5225 MFWD DSL. TRACTOR W/ JD 542 SL LOADER - 1972 JD 4320 DSL. TRACTOR - AC D-17 TRACTOR - FRONTIER RT-1170 3 PT. ROTOTILLER - JD 6600 COMBINE/7000 PLANTER & TILLAGE EQUIP. - HAY EQUIPMENT - FARM ITEMS & OUTDOOR ITEMS - JET & POWERMATIC WOODWORKING & SHOP TOOLS - HOME & GARDEN ITEMS



ROY & JANICE PIOTROWSKI  
1778 N. CARTER RD. LINWOOD, MI. 48634  
PLEASE NOTE! ON-SITE INSPECTION WEEK OF SALE ONLY!



**SYKORA AUCTION SERVICE INC.**  
Scott Sykora, Auctioneer  
989-386-9694 • Fax 989-386-2246  
John McConnell, Auctioneer  
989-588-9591  
Clare, Michigan • Visit our Web Site www.sykorauctions.com

**QUALITY FIREARMS AUCTION**

(110) FIREARMS WILL SELL AT PUBLIC AUCTION TO THE HIGHEST BIDDERS WITH NO RESERVE'S. NO BUYER PREMIUM'S. LOCATED: 1 MILE SOUTH OF GLADWIN ON M-18 TO THE KNIGHTS OF COLUMBUS HALL.

**Thursday Evening, April 14, 2016 • 6:00 P.M.**

(23) HANDGUNS • (73) RIFLES & (14) SHOTGUNS

(23) HANDGUNS: S&W SS .357 MAG. (NEW) • S&W AIRWEIGHT 38 SPL. (NEW) • S&W VIC SEMI AUTO .22 PISTOL (NEW) • S&W 9MM SEMI AUTO • SIG #P229 40 S&W LAW ENFORCE MOD (LN) • SIG #P226 SEMI AUTO 9MM • RUGER SUPER REDHAWK SATIN GRAY .480 RUGER W/ 9.5" BL (LN) • RUGER 22/45 TARGET .22 SEMI AUTO • TAURUS #PT92AF SEMI AUTO 9MM • TAURUS .380 SEMI AUTO (NEW) • MAGNUM RESEARCH BFR 5 SHOT .500 S&W W/ 10 3/4" BL (LN) • BOND ARMS SNAKE SLAYER IV 45LC/410 DERRINGER W/LEATHER HOLSTER • SAVAGE #1907 32 ACP (LN) • COLT MUSTANG XSP .380 ACP (NEW) • BROWNING #1910 .380 ACP (LN) • WALTHER SEMI AUTO 9MM (NEW) • SPRINGFIELD ARMORY XD-9 MOD2 SEMI AUTO 9MM (NEW) • GLOCK 26 GEN 3 SEMI AUTO 9MM (NEW) • STAR #1921 SEMI AUTO 9MM • EAA PAVONA SEMI AUTO 9MM (NEW) • CHIAPPA SEMI AUTO .22 (NEW) • ROSSI #351 38 SPL (NEW) • H&R HAMMERLESS 38 S&W REVOLVER • (73) RIFLES: WIN #1894 LEVER ACTION 32-40 S/N 505492 • WIN #1894 LEVER ACTION SADDLE RING CAR. 32 SPL. (MFG 1901) • WIN #1894 LEVER ACTION SADDLE RING CAR. 30 WCF (MFG 1926) • WIN #94 LEVER ACTION 32 SPL. (MFG. 1949) • WIN #94 LEVER ACTION 30-30 W/ SCOPE • WIN #1905SL 32 WIN. S/N 17464 • WIN #341 BOLT ACTION .22 WIN/S/N 23895 • WIN #1905SL 35 WIN. S/N 27644 • WIN #1910SL .401 WIN/S/N 5968 • WIN #490 SEMI AUTO .22 W/ SCOPE • WIN XPR BOLT ACTION 30-06 MFG. BY BROWNING (NEW) • REM #700 CLASSIC BOLT ACTION 7X57 MAUSER RIFLE • REM #700 BDL SSDM BOLT ACTION 260 REM W/ SCOPE • REM #700 BDL VARMINT EXPRESS BOLT ACTION 22-250 (NICE) • (2) REM #700 BDL BOLT ACTION 30-06 RIFLES • (2) REM #700 ADL BOLT ACTION 30-06 RIFLES • (2) REM. #760 PUMP ACTION 30-06 RIFLES W/ SCOPES • REM #597 SEMI AUTO .22 W/ OD GREEN STOCK (NEW) • REM #341 BOLT ACTION .22 • REM #572 PUMP ACTION .22 W/ SCOPE • SAVAGE #170 PUMP ACTION 30-30 • HENRY BIG BOY LEVER ACTION .357 MAG. BRASS FRAME (NEW) • HENRY GOLDENBOY LEVER ACTION .22 MAG. (NEW) • HENRY GOLDENBOY LEVER ACTION .22 S/L/LR (NEW) • MARLIN #336 LEVER ACTION 30-30 W/ SCOPE • MARLIN #336SC LEVER ACTION 30-30 EARLY MOD. • MARLIN #XT22M BOLT ACTION .22 WMR W/ 2 MGS/ACCU TRIGGER (NEW) • MARLIN #XT-17 BOLT ACTION 17 HMR W/ SS BBL & LAMINATE STOCK (NEW) • WBY MARK V BOLT ACTION 340 WBY MAG W/ MUZZLE BRAKE • WBY ACCUMARK V BOLT ACTION 30-378 RIFLE W/ ACCUBRAKE SS FLUTED BBL • WBY VANGUARD DLX. BOLT ACTION 300 WIN MAG W/ WBY SCOPE • SAKO #855M FINNLIGHT 300 WSM BOLT ACTION W/ S.S. FLUTED BBL & LEUPOLD SCOPE (LN) • SAKO #85 FINNLIGHT BOLT ACTION 7MM REM MAG W/ S.S. FLUTED BBL & RINGS (LN) • SAKO #75 FINNLIGHT 270 WSM BOLT ACTION W/ SS FLUTED BBL & SCOPE RINGS • RUGER M77 HAWKEYE BOLT ACTION 300 RCM W/ SS BBL • RUGER M77/44 BOLT ACTION .44 MAG. W/ WALNUT STOCK (NEW) • RUGER 10/22 SEMI AUTO .22 CAR. W/ WOOD STOCK (NEW) • RUGER #1 LEVER FALLING SINGLE SHOT .458 LOTT (LN) • RUGER MINI-30 7.62X39MM SEMI AUTO RIFLE W/ SS BBL (NEW) • BROWNING BAR MAG .338 WIN MAG. SEMI AUTO (BELGIUM MFG.) • BROWNING BAR GRADE II SEMI AUTO 30-06 W/ SCOPE (BELGIUM MFG.) • SAVAGE #10 BOLT ACTION 243 W/ SCOPE, ACCUTRIGGER & FULL CAMO • SAVAGE AXIS BOLT ACTION 25-06 W/ SCOPE (NEW) • SAVAGE #110 PREMIER GRADE BOLT ACTION 30-06 • SAVAGE #416 BOLT ACTION .22 • SAVAGE #24 O/U 22 LR/20 GA COMBO GUN • H&R #150 SEMI AUTO .22 • H&R SINGLE SHOT 35 WHELAN W/ SCOPE • H&R SINGLE SHOT 7MM-08 (NEW) • BUSHMASTER #XM-15 E2S SEMI AUTO 6.8 SPC RIFLE • YUGOSLAVIAN SKS M59/66 7.62X39MM SEMI AUTO W/ SCOPE • C.A.I. VZ2008 SPORTER 7.62X39MM SEMI AUTO W/ SIDE FOLDING STOCK • C.A.I. M74 SPORTER 5.45X39MM SEMI AUTO RIFLE W/ MAGPUL STOCKS • C.A.I. M74 SPORTER 5.45X39MM SEMI AUTO W/ WOODEN STOCK • NORINCO SKS 7.62X39MM SEMI AUTO • NORINCO HUNTER 7.62X39MM SEMI AUTO (VERY NICE) • CHIAPPA M1 9 MM CAR. • NATIONAL ORDNANCE M1 .30 CAR. SEMI AUTO RIFLE • WIN #94 EASTERN CAR. 30 WCF • ROMANIAN #1944 BOLT ACTION 7.62X54R CAR. • ROMANIAN BOLT ACTION .22 TRAINING RIFLE • US SPORTING #MP94-MP O/U 22 L.R./410 COMBO GUN (NEW) • HOWA #1500 BOLT ACTION 22-250 W/ HOGUE OD GREEN STOCK & SCOPE (NEW) • CZ-USA #CZ512 SEMI AUTO .22 WMR TAKEDOWN (NEW) • ROSSI #62SA PUMP ACTION .22 CAL. TAKEDOWN • UBERTI #1873 LEVER ACTION .357 MAG., OCT. BBL, (LN) • (4) 50 CAL. MUZZLE LOADERS • (14) SHOTGUNS: ITHACA SKB #600 SKEET O/U 12 GA. W/ 26" BL (NICE) • REM #1100 SEMI AUTO 20 GA. (NICE) • BERETTA #391 URIKA SEMI AUTO 20 GA. (LN) • FOX MODEL B SBS 20 GA W/ 26" BL • ITHACA #37 FEATHERLIGHT 16 GA PUMP ACTION • WIN #1912 PUMP ACTION 16 GA (MFG. 1914) • WIN #1500 SEMI AUTO 12 GA • MOSSBERG #835 ULTI MAG 12 GA PUMP ACTION • MOSSBERG #835 ULTI MAG 12 GA PUMP ACTION • MOSSBERG #500 PUMP ACTION 12 GA • MOSSBERG PUMP ACTION 12 GA • KRESGE #151 SINGLE SHOT 12 GA SHOTGUN • H&R SINGLE SHOT 20 GA W/ SS BBL • TERMS OF SALE: CASH, MI CHECK OR CREDIT CARDS ACCEPTED. ALL FFL RULES APPLY. DINNER SERVED BY THE K OF C.

TO VIEW A COMPLETE LISTING WITH PHOTO'S VISIT JOHNPECKAUCTIONS.COM  
Gladwin Gun Vault, Seller  
SALE LOCATION: 751 S. M-18 @ K Of C Hall, Gladwin, MI. 48624  
JOHN PECK AUCTIONS LLC  
Gladwin, MI (989) 426-8061



# Renovation LIQUIDATION

## FINAL WEEK

SATURDAY, 9 A.M. TO 9 P.M. | SUNDAY, 11 A.M. TO 9 P.M.

**WE STILL HAVE INVENTORY LEFT...**

**EVERYTHING MUST GO!**

**WE NEED TO MAKE ROOM**

**FOR THE FINAL TOUCHES.**

**SAVE ON EVERYTHING  
IN STORE.**

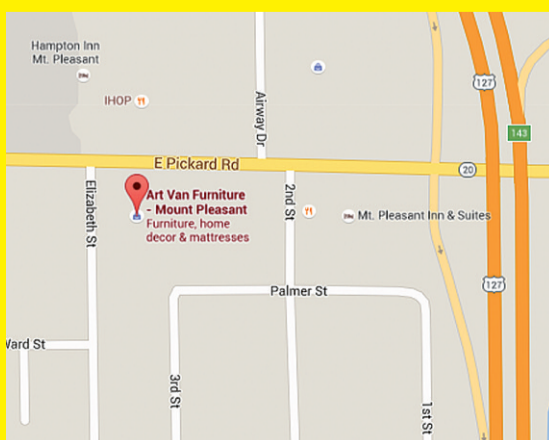
### SAMPLE OF THE SAVINGS

- Sheet Sets \$47
- Queen Matt/Box \$199
- Mattress Protector \$ 25
- TempurPedic Matt 1/2 OFF
- Bed Pillows \$25
- Comforter Sets \$47
- Fireplace \$97
- Sofa \$399
- Desk \$97
- 5-Drawer Chest \$139
- Recliner \$158
- 5-Piece Outdoor \$299

**GET HERE WHEN THE DOORS OPEN AT 9 A.M.  
"YOU WON'T BELIEVE THE DEALS!"**

**ART VAN  
MT. PLEASANT  
STORE ONLY**

ART VAN MT. PLEASANT  
5260 East Pickard Street, Mt Pleasant, MI  
(989) 772-2914



**FREE GIFTS**  
TO THE FIRST 75 CUSTOMERS  
NO PURCHASE NECESSARY.  
**SATURDAY AT 9 A.M.!**