



New leadership for an established legacy

Submitted
 Magnolia State Bank is pleased to announce the promotion of Kris Mangum to Chief Executive Officer, Lillous Ann Shoemaker to President and Barbara Brown to Chairman of the Board. Mangum, Shoemaker and Brown will assume their new responsibilities effective May 1. Mangum joined the management team

of Magnolia State Bank in 2009. As CEO, Kris will oversee the direction and administration of products and services provided by Magnolia State Bank, as well as building relationships within the bank's coverage area. Mangum graduated from the University of Mississippi in 1996 with a Bachelor of Science in public administration. At Ole Miss he received All-Southeastern Confer-



Kris Mangum


ence and All-America honors. He was drafted by the Carolina Panthers in 1997, where he still ranks fifth in all-time games played and fifth in all-time receiving in Panther's history.

In 2003 Mangum played in Super Bowl XXXIII as the NFC champion Panthers narrowly lost to the Patriots. He retired from the NFL in 2007. Mangum maintains active involvement in several community service organizations, and he currently serves as Past Chair for the Petal Area Chamber of Commerce. He is married to Mary Ellen Coleman of Petal and they have four children: Ally, Molly, Macy, and Kristofer Jr.

Shoemaker started at Magnolia State Bank in March 2014 as a general counsel and compliance officer. She was appointed secretary of the board and holding company on July 10, 2014. In February 2015, Shoemaker was appointed to the Board of Directors. As president, Shoemaker will carry out the bank's vision and establish new goals and opportunities. Shoemaker has practiced law for over 12 years, focusing on such areas as real estate, corporate law, estate and trust planning, and family law. Shoemaker, a native of Bay Springs, graduated from the University of Southern Mississippi, and obtained her Juris Doctorate from the University of Mississippi School of Law

See MAGNOLIA STATE BANK, page 2

PAYNE PORTABLE BUILDINGS 601-426-9484
 601-319-3555



Office located at 342 Maxey Rd. • Hwy. 84 W, Laurel
 12 MO. SAME AS CASH or RENT TO OWN FINANCING AVAILABLE. WAC

Celebrate Memorial Day with CASH!
 We will BUY your
 • Gold • Silver • Platinum
 • Diamonds • Coins

105 S. 16TH AVE., STE F, LAUREL
 MON. - FRI. 9:00 A.M. - 6:00 P.M.
 601-342-2490 • 601-467-0690

The Gold Shop

Let Little Caesars of Ellisville be your party central for your end of school and VBS!


Little Caesars HOT-N-READY PIZZA

Buy 10 Pizzas
 Get 2 Crazy Bread Combos
FOR FREE!

STUFFED CRUST DEEP! DEEP! DISH

50¢ OFF any DEEP! DEEP! DISH
 expires 6/30/16

South Ridge Family Clinic
 Hometown Healthcare with a Human Touch



• Acute Illness or Injury
 • Chronic Illness
 • Wellness Exams
 • DOT Physicals

Monday - Friday 8 a.m. - 5 p.m.
 Same Day Appointments or Walk-ins accepted
 Most Insurances Accepted • Commercial • Medicare • Medicaid

80 Hal Crocker Road • Ellisville **601-477-2221**

CHATHAM ENTERPRISES PORTABLE BUILDINGS
 SHOP Chatham Enterprises, Inc. at: www.ChathamEnterprisesInc.com or on FACEBOOK

Call today for honest, reliable service. We DO NOT bait and switch!

Call Chatham Enterprises For Guaranteed Best Quality and Lowest Prices on: •Portable Buildings •Carports •On Site Steel Buildings •Custom Covers •Metal Roofing

Compare These Prices:

10x12	\$1,395	12x20	\$2,195
12x12	\$1,545	12x24	\$2,395
12x16	\$1,845	12x28	\$2,595

30x30 TUBING BUILDING Includes 2 Roll Up Doors, 1 Walk Through Door, Insulation, Cement Slab, and Installation. **\$10,995**

601-727-4951 We have rent to own available for the portable buildings!

Total Foot Care Clinic of Laurel
 NOW OPEN EVERY THURSDAY AND FRIDAY

Specializing in conservative and surgical treatment of foot problems.
Diabetic Foot Care

Diabetes effects sensation within the foot causing burning, tingling and numbness. Diabetics develop ulcers and wounds that have difficulty healing. Painful conditions including corns, calluses, thick and ingrown toenails require treatment and special shoe gear.

Dr. Michael Zaleski, Diplomat Board Certified

Dr. Gachavis M. Green, Board Qualified Foot Doctor

• Medicare • Medicaid • BlueCross BlueShield & most insurances accepted

601.268.0400
 30 Circle J Drive • Laurel

SANDRA HANCOCK MINISTRIES
 Free Admission! All are Welcome!
 "Come Expecting Your Miracle"

Saturday • May 14, 2016 • 10:30 AM - 12:30 PM

This One Is For You
Ladies CONFERENCE

• ANOINTED TEACHING
 • PRAISE & WORSHIP

IN HONOR OF MOTHERS
 DOOR PRIZES

THE GATHERING PLACE
 3227 AUDUBON DR. • LAUREL • OVERFLOW PARKING IN REAR
 Ladies Groups & Church Groups Welcome For more information:
 1.800.579.7350 • Sandra Hancock Ministries • www.sandrahancock.com

Classified Index

Apartments for Rent	8
Attorneys	3
ATVs	12
Autos - Cars	9
Auto Services	9
Autos - Motorcycles	11
Autos - Sports	12
Autos - SUVs	11
Autos - Trucks	12
Boats	12
Buildings	9
Business Opportunities	6
Campers	7
Carports	12
Child Care	6
Commercial	8
Estate Sale	6
Farm	3
Fish	7
Flea Market	6
Furniture	6
Garage Sales	6
General	3
Handyman	5
Help Wanted	7
Houses for Rent	8
Houses for Sale	8
Land	3
Lawn and Garden	6
Massage	5
Mobile Home for Rent	8
Mobile Home Lots	8
Mobile Homes	7
Musical	6
Pets	6
Pools	9
Portable Buildings	9
Services Offered	5
Timber and Lumber	9
Vacation	6
Wanted to Buy	8
Wedding	6

Arkansas cowboy rides through Jones County for charity

Submitted

Tye Sturgeon, a singer/songwriter/cowboy from Batesville, Arkansas, is riding 48 states continuously to raise awareness for children's charities, including Western Wishes. For more information about Tye and his current horse Rudy, visit www.americanwishride.com. Sturgeon and his horse rode through Jones County this past weekend.

Tye and Rudy's journey is made possible by their sponsors, merchandise sales and donations from the public along the trail. For information on sponsoring Tye's ride, contact rafter48management@gmail.com.

You may "like" his Facebook page (Tye Sturgeon) and share his posts to help him find a place to stay each night. He is dependent on, and grateful to, local families to provide sleeping arrangements as he travels from county to county and state to state. Tye's goal with the ride is to raise awareness and funds for children's charities by putting on various events (trail rides, barrel races, etc.) as he travels through the United States. All of the proceeds from these events will go directly to children's charities, both national and



Paige Farve, Payton Bishop and Michaela Betts (not pictured) visiting with Tye and Rudy, the horse he has been riding on a little over 200 miles so far. Tye and Rudy stayed at the home of Joe and Debra Betts for the weekend. *Photos/submitted*



NUTS

Neat Used Things for Sale

a different kind of resale store

**Affordable Fun Fashion,
Home Decor, Books,
Furniture and Much More!**

**Have a Donation?
Call us for a Pick-up!**

**Sunday & Monday 1 pm - 6 pm
Tuesday - Saturday 9 am - 6 pm**

Parkside Plaza Shopping Center
(down from Roses, Next to Plaza Bingo)
986 North 16th Avenue • Laurel, MS 39440
(601) 425-2666

[facebook.com/nutslaurel](https://www.facebook.com/nutslaurel)

NUTS is a fundraiser for The Good Samaritan Center, operating Laurel's only Community Soup Kitchen!



Tye Sturgeon with brothers Paydon and Wyatt Thornton after his visit with them at Oakland Grove Baptist Church in the Rustin Community, which is located six miles East of Sandersville. *Photos/submitted*

local, to the area in which the event takes place. There are several charities that hold a special place in Tye's heart, such as New Horizons Ranch in Rantoul, Kansas, which provides therapeutic riding to a broad range of children and Western Wishes. Tye and Rudy have been blessed to meet and spend time with many children along their way.

DIXIE TRACTOR

SALES & SERVICE

**THE WORLD'S NUMBER 1
SELLING TRACTOR.**



**5 YEAR
POWERTRAIN
WARRANTY**



• MILITARY DISCOUNTS • OWNER LOYALTY DISCOUNTS • POWER PACKAGE REBATES UP TO \$1,200
• FIRST RESPONDERS APPRECIATION REBATE • TEACHER APPRECIATION REBATE

**0.0% for 36 months / 2.99% for 60 months / 3.99% for 84 Months
PLUS \$3000 CIL REBATES OR • \$0 Down • 0% Interest • \$0 Payment
ON ALL MODELS Until January 1, 2017 *WAC**

0% for 60 Months on Select Tractors or up to \$4,000 Cash Rebate

246 E. Hickory Street • Exit 96B • Hwy 15 South • Laurel
next door to Old South Farm Supply
601-649-7470
www.dixietractor.com

MAGNOLIA STATE BANK, continued from page 1

with Magna Cum Laude honors. After graduating from law school, she attended New York University School of Law, where she completed her Master of Laws in Taxation (LL.M.). She is admitted to practice law in Mississippi, Florida, Connecticut and New York. Shoemaker is a member of Bay Springs United Methodist Church, where she teaches Sunday school, is a member of the finance committee, and is the assistant treasurer and trustee of BSUMC. Shoemaker has two sons, Noah and Wells Grayson.



**Lillous Ann
Shoemaker**

The Board unanimously voted Barbara Brown as Chairman of the Board. Brown will guide the board with her experience and knowledge of bank history.



Barbara Brown

Magnolia State Bank is a state chartered community bank with assets of \$315 million. Magnolia State Bank is located in Bay Springs, Flowood, Hattiesburg, Heidelberg, Laurel, Petal and Taylorsville.



Is currently accepting applications for
Certified Nursing Assistants
7-3, 3-11 and 11-7

Applicants must submit an application
online at carecenterlaurel.com
or in person
Mon. - Fri. 8:00 am - 4:00 pm

EQUAL OPPORTUNITY EMPLOYER

IMPACT
#1 in Advertising

- Ronnie Buckley
Publisher
- Kevin Williamson
Manager
- Jerry Clark
Circulation Supervisor
- Ryan Griffin
National Sales Consultant
- Betty Busby
Laurel Sales Representative
- Kim Willbanks
Laurel Sales Representative
- Jennifer Clark
Graphic Production Manager
- Trish Irwin
Graphic Artist
- Terica Roberson
Graphic Artist
- Candice Pittman
Graphic Artist
- Russ Farris
Graphic Artist
- Sherry Hearn
Administrative Assistant
- Linda Cranford
Writer/Photographer


WHILE THE IMPACT makes every effort to verify the offerings made in these ads, we cannot guarantee the integrity of every advertiser. We strongly recommend that readers investigate the companies involved before sending them any money.

Classified and ROP Ad Deadline
Sunday Edition -
Wednesday at 12:00 Noon
Wednesday Edition -
Thursday at 3:00

IMPACT
1010 N. 16th Ave
Laurel, MS 39441
Ph. 601.649.1129
Fax: 601.649.0424
Email:
admin@laurelimpact.com



FLAGPOLES!
\$199
Installed
 Reg. \$299
 American Flagpole Co.
601-649-0748
 God Bless America



MAGNOLIA
 STORAGE BUILDINGS, INC.
 244 E. Hickory St.
 Exit 96B / Hwy. 15 S.
 Laurel

- Utility
- Storage
- Office
- Workshop
- Barns
- Custom Outbuildings of all types...

Tony Thornsberry
 Cell: (601)577-0927

AUTO & EQUIPMENT AUCTION
 Taking consignments thru Wed., May 11th
SATURDAY, MAY 14TH • 9:00 AM
 Autos, Pickups, Trucks, Equipment
Turning Point Auctions
 34 Chester Brown Road, Hattiesburg • (601) 336-6637
 www.turningpointauctions.com MS LIC #1176 & 1226

WALLEY PROPERTIES LLC.
LAND?
BUYING OR SELLING
 www.walleyproperties.com
601-477-3014

GENERAL

Captain's Amish Country Store in Marion, MS (outside of Meridian) features fresh Amish cheeses, butter, jams, jellies, pies and cakes and breads. 7966 Hwy 45 North in Marion, MS. Open M-Sat 10 a.m.-5 p.m. 601.479.5615. Visit us on Facebook!

Stylist Spaces For Rent, Kitchen Rental, 2 Electric Deep fryers New in Box, Snow Cone Shaver used 2 times, Office Space. 601-270-5008

Advertise for Free! Online classifieds are free at www.impactads.com. Just go to the Impact Web site and click on the button at the top right hand side of the page that says "Place a Free Online Only Classified."

Mausoleum space for two. Marker and opening and closing included. Forest Memorial Garden, Centerville Road, Petal. \$3000. 601-735-7884.

Lawncare: Serving Hattiesburg, Lumberton, Laurel, Sumrall, Petal, Brooklyn, Ellisville, Purvis and Mosselle areas. Reasonable rates. 601-325-5008. www.fullservicelawnca-rems.com

Flagpole Super Sale: Get Our 24ft Tall Liberty Deluxe Double Flyer. Reg. \$299, Now \$199. American Flagpole Company: 601-649-0748

Free saw logs for barn or shed. Pretty pine wood; Pine beetles killed it. 601-428-5608.

Carports and Buildings: Financing Available! 18x21 carport \$695; includes installation! All sizes available. We also offer storage buildings & barns. Call John at 601-323-0464, 303 Hwy 11 South, Ellisville MS (between Pizza Hut and JCJC)

Need Prayer? Sick? Depressed? Financial Problems? (21) I tell you the truth, if you have faith and do not doubt. (22) If you believe, you will receive whatever you ask for in prayer. Matthew 21:21-22. Call us anytime free of charge. 24/7. We are here for you. Elder McDaniel. Amazing Grace Prayer Ministries: 662-207-2936

Automobile accidents, bankruptcy, divorce, off-shore boat accidents, 18-wheeler accidents, criminal defense and more. For all your legal needs, contact a professional. Jones Law Firm 601-582-9177. Let me know you saw my ad in IMPACT.

Divorce, Criminal Defense, Death Claims, Personal Injury, Bankruptcy, DUI Defense, Offshore, 18 wheeler accidents. Call for your consultation today. Jones Law Office. 2219 Columbia Avenue, Prentiss, MS. 601-582-9177

Holly's Party Jumps: Inflatable bouncers, combo's, slides, tents, tables/chairs, snowcones, cotton candy machines, dunk tanks. We deliver, set-up & pick-up. book online, now accepting credit/debit cards. Call 601-763-8851. www.hollyspartyjumps.com.

Samsung video security system, 8 channel, 3 camera, \$200. 601-319-1069.

Carports and Buildings: Financing Available! 18x21 carport \$695; includes installation! All sizes available. We also offer storage buildings & barns. Call John at 601-323-0464, 303 Hwy 11 South, Ellisville MS (between Pizza Hut and JCJC)

Antique Singer peddle type sewing machine, great condition, still works. \$100. 601-649-4706.

ATTORNEYS

Evans Law Firm, PLLC, General Practice, Attorney Amanda Glover Evans, 2324 Front Street, Meridian, MS 39301. Free Consultations. Free Background Information Available Upon Request. Meridian (601)575-0096 Laurel (601)283-2110 www.msattorneyatlaw.com

No Fault Divorce \$500. Law Offices in Hattiesburg, Laurel & Prentiss. Court cost not included. Call for your appointment today. 601-582-9177.

Automobile accidents, bankruptcy, divorce, off-shore boat accidents, 18-wheeler accidents, criminal defense and more. For all your legal needs, contact a professional. Jones Law Firm 601-582-9177. Let me know you saw my ad in IMPACT.

Divorce, personal injury, custody, DUI, adoption, will disputes, Worker's Comp, wrongful termination, land & property disputes. Call Sam Creel 601-498-8968.

FARM

Good quality square bales Bahai hay \$4, mulch hay \$3.50. No Sunday sales. 601-428-0901.

Bantam chicks, 25 bb reds, \$3.00 each. 601-319-0865.

CUSTOM HAY BALING CUT • FLUFF • BALE
 Your Hay in 4x5 Round Bales Quality Work & Dependable
 Call Chantry Robertson
 601-335-2488

Piney Woods Native sheep. Ram, 1 year old, intact. Needs country home, pasture. Hope use him to breed Not eat. Make offer. 601 270 6015.

1990 F350, 7.3 deisel 5sp., ext. cab, lwb, \$3500 obo; 1971 880A David Brown tractor, 3cyl diesel, good tires, runs good, \$3000 obo; IH Cub disc, \$50, obo; Glen's Tractor Repair, South Jones area, 75hp and under. 601-422-7513.

Chapman Tractor Company: 1510 Azalea Drive, Waynesboro. Phone 1-800-816-2826. Massey Ferguson and Kubota tractors and equipment sales, 601-735-3103, 601-735-3104 or 601-735-4461

Farm Barns. 40x30x16-\$9500. 30x30x10-\$7500. Metal roof and sides. Price includes labor. 601-296-0550.

For Sale: Service Age - Simmental & Sim-Angus Bulls. Calving ease, high Growth with excellent EPDs and Blood Lines. Semen Checked; Ready to Go!! Call 601-543-3042 or 601-408-4186.

For sale farm equipment. Bush hog, disk, box blades, etc. 601-545-2215, 601-402-1370.

LAND

24 acres in Runnells town. Lots of mature timber and wildlife. Unbelievable hunting!! May subdivide. Call Shawn with Southern Coastal Realty at 601-408-3570.


DON'T GIVE YOUR TIMBER AWAY!
 Call Mike West
 601-270-6066
 BUYING PINE & HARDWOOD
RICHTON TIE & TIMBER LLC
 Timber Procurement • Forestry Consulting • Real Estate

20 acre farm/ranch in Janice, Ms. With custom built home, wrap around porch, Pond, horse stalls, fenced and cross fenced, huge shop. Bordered on two sides by National Forest lands. Lots of wildlife call Shawn, Southern Coastal Realty, LLC 601-408-3570.

Highlands. Finance a lot, \$1500 down, pay for your lot over 3 years - then use your lot as down payment at your bank. Call: 601-649-9459.

I buy timber and timberlands. Call Shawn at 601 408 3570.

Graduate to Savings
 Congratulations graduates. As you reach this milestone and prepare for the future, Alfa Insurance® can help make sure you're protected. Let our hometown Alfa® team show you how easy protecting your cars, possessions and loved ones can be. You'll get great rates and personal service for every stage of life. Call Alfa® today.



Ben Cole, III
 87 Hal Crocker Road
 Ellisville, MS 39437
 Bus: (601) 477-4999
 bcole@alfains.com

ALFA INSURANCE
 Auto Home Life
 www.Alfainsurance.com
 Call Alfa®. The best agents in the business.

REED'S METALS, INC.
601-823-6516
 Buy direct from the manufacturer and SAVE!
 •Metal Roofing
 •Metal Buildings
 •Pole Barns
www.reedsmetals.com

STRETCH YOUR TAX DOLLARS
FAMILY FLEA MARKET & Flooring
 Meridian's Largest In-Door Flea Market
 With Over 190 Vendors!
 MON. - SAT. • 9A.M. - 6 P.M.
 CLOSED ON SUNDAYS
 1107 B Street
601-286-3521

Tutoring Club
 A Class Above. Guaranteed.
 2002 HWY 15 N. • Laurel
601-425-0065




WHAT'S ON YOUR SUMMER SCHEDULE?
 • SWIMMING? • RELAXING? • VACATIONING?
 • LOSING 3- 6 MONTHS OF MATH SKILLS?
 • FALLING BEHIND IN READING?
LET US HELP!
 http://www.tutoringclub.com
 laurelms@tutoringclub.com

BUILT BETTER TO LAST LONGER!
 See the full line of Speed Queen Washers & Dryers Today!
 There's never been laundry equipment that's built tougher to last longer than SPEED QUEEN washers and dryers. They're built using metal where others use plastic. They're rigorously tested to insure reliable performance. And they're designed to last 25 YEARS in your home.



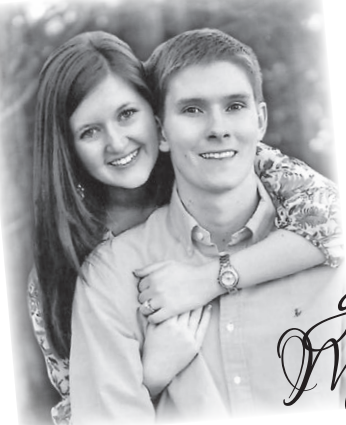

AWNE82SP WASHER FEATURES:
 •Time remaining display
 •Full Tub Wash & Rinse
 •No Lid Lock
 •210° Agitation With 68 Strokes Per Minute
 •Commercial Grade Steel Cabinet
\$899.99

ADEE8RGS DRYER FEATURES:
 •End Of Cycle Indicator
 •Moisture Sensors & Moisture Level Selection
 •Time Remaining Display
 •Reversible Door
 •Interior Light
 •Up front Lint Filter
 •Commercial Grade Steel Cabinet
\$799.99

Speed Queen.

***INDUSTRY BEST 5 YEAR WARRANTY**
 Covers All Parts & In Home Labor On All Electronic Control Models

Alexander's
 Bay Springs 601-764-2161
 Ellisville 601-477-3312
 SELECTION • SERVICE • VALUE



Megan & Cole are getting Married!

Chief Warrant Officer Ronald Jr. and Anna Grafton of Laurel announce the engagement of their daughter *Megan Colleen Grafton* of Laurel to *Cole Wayne Pitts* of Laurel. He is the son of Wayne and Donna Pitts of Laurel.

The bride graduated from West Jones High School, and will graduate from Jones County Junior College this spring. She will transfer to the University of Southern Mississippi in the fall to pursue her Bachelor's degree in Elementary Education. Megan is a member of First Baptist Church of Sharon.

The groom graduated from Northeast Jones High School and Jones County Junior College. He is currently studying at the University of Southern Mississippi where he is pursuing his Bachelor's degree in Polymer Engineering. He is a member of Mill Creek Church, Laurel.

Cole and Megan met in September 2012 and became formally engaged September 4, 2015.

The ceremony will be officiated by Bro. Jeff Weathers of Munford, Alabama at 4 p.m. June 4, 2016 at Rasberry Greene, Soso, MS.

PB120



BILLY BARNETT

April 24, 1934
July 27, 2014

**Screaming up to the Heavens,
Happy Birthday, Dad!
Yes, I still miss you,
but I am no longer sad.**

**God had a plan for you, this I know,
there's a reason why
he took you two years ago.**

**Your work here on earth was done,
you finished your race,
your next step was Heaven,
where He prepared a place.**

**Thank God for the memories
you instilled in us all,
thank you for being
the greatest father of them all.**

**Happy Birthday Dad,
We love you!**

*Ashley, Quan, Octavia, Rhonda, Shawn,
Teddy, Harrell, and the grandkids*

PB117

Lake Congregational Methodist Church, 2645 Hwy 84 East in Laurel, invites you to our revival (May 14-18). Service times Sunday are 11:00 a.m. and 6:00 p.m.; Monday thru Wednesday services begin at 7:00 nightly. The evangelist for the week is Rev. Daniel Smith of Louin, Miss.

The Laurel High School select choir will hold a live recording at St. John's Episcopal Church in downtown Laurel on May 14 beginning at 5 p.m. The free event is open to the public.

Gospel Sing Saturday, May 14 beginning at 6:30 p.m. at the Sanford Community Center, located at 663 Old Hwy 49, Sanford. The featured guests will be "Mechelle Duckworth & The Bouie Creek Bluegrass Band," "The Trustys of Davo Crossing" and "Faithway Singers." Admission is free; a love offering will be received. For more information, call 601-765-6485.

Southern Cross Animal Rescue will hold a rummage sale Saturday, May 14 from 7 a.m. - 1 p.m. at the Jitters Coffeehouse and Bookstore parking lot, which is located at 705 North 16th Avenue, Laurel. There will be clothes of all sizes, TVs, bikes, toys, kitchenware, pet items, furniture, and much more. All proceeds go toward helping animals. For more information, or to donate items to the sale, call the rescue at 601-433-5807.

May 15
East Pleasant Grove M.B. Church, 407 Eastview Drive in Laurel, will be celebrating our 140th year church anniversary at 2:30p.m. The guest speaker for this glorious occasion will be Rev. John Buxton, pastor of Mt. Olive Baptist Church of Laurel.

Chapel Hill Baptist Church Cemetery, Washington Co., Alabama, will be having our Annual Homecoming May 15. Pastor Mike Chatham will bring the morning message and "True Heart" will be the guest singers. Sing will start at 10:00 a.m.; worship at 11:00 a.m.; business meeting at 11:45 am. Lunch will be served at noon.

May 16
Coast Community Church of Biloxi, Mississippi, is a non-denominational ministry which will be bringing a 40+ member mission team to Laurel and the surrounding areas from June 20-24. We desire to work for the handicapped, the impoverished, the elderly, those in dire financial situations and single parents. We are able to accomplish a variety of projects. We provide the tools and the labor absolutely free. All we ask is that those for whom we work provide all the necessary supplies, paints and/or materials to complete the particular projects. We ask the community to please remember we are a volunteer group and are not professionals. We cannot be held liable or responsible for work accomplished, and there are no guarantees given. We simply desire to minister to people in need to the best of our abilities. Please fill out and return all applications through fax to (228) 392-5685, no later than Monday, May 16. Applications may be obtained and faxed at these locations: City Clerk's Office in City Hall, 401 North 5th Avenue, Laurel, MS, (601) 428-6444; Magnolia Baptist Church, 1040 Wansley Road, Laurel, MS, (601) 649-5660.

May 21
Please join singing groups from around the area in giving voice to their "Love for Jesus Christ our Lord and Savior." This event will be May 21 at 1:00 p.m. at the Pavilion located in the Old Neco Parking Lot (Smith Park - junction Hwy 15/ Hwy 528). This event is a support program for the CUSP (Community Unity Scholarship Program). Donated funds will be used to assist area students with their college needs. Please bring a chair. For more information, call Dr. Peyton at 601-764-7109 or Teresa Bender at 601-935-2810.

May 12

Donate blood at Wal-Mart in Laurel on Thursday from 10:00 a.m. to 3:00 p.m. and you will be entered to win a pair of tickets to see Selena Gomez in concert in New Orleans on June 14 (winner will be pulled on May 16). All donors will also receive a "Share the Beat" T-shirt, while supplies last. To make an appointment to donate, go to www.bloodhero.com or call 601-264-0743. For more information on donating blood, visit www.UnitedBloodServices.org.

Youth tent revival to be held May 12-14 at 1832 Monroe Road, Moselle. Thursday services will be led by Bro. Tim Byrd and Bro. Allan Smith; 6:00-9:00 p.m. Friday services will be led

by Bro. Larry King and Bro. Hunter Phillips; 6:00 - 9:00 p.m. Saturday services will be led by Bro. Josh Hollingsworth, Bro. Jonathan Williamson, Bro. Justin McNew and Bro. Greg Wells; 3:00 - 9:00 p.m. Dinner served on Saturday at 6 p.m. Area churches are invited to bring your youth group for praise & worship, Christian karaoke, food, fun & fellowship. Contact Eric Atkinson for additional details or to register your youth at 601-520-2428.

May 14

Join us for Sandra Hancock Ministries' "This One Is For You" ladies conference from 10:30 a.m. to 12:30 p.m. at "The Gathering Place," 3227 Audubon Dr. in Laurel. God has given Sandra a word just for you! The SHM Praise Band will lead worship. Bring your friends and come help us honor mothers! There will door prizes and no admission costs! For more information, call 1-800-579-7350 or see our webpage at www.sandrahancock.org.

DISCOUNT CENTER

Opening Friday • May 13th 8 9:00 -5:30

Save 30% - 80% on BRAND NAME MERCHANDISE

SALE!



- COMFORTERS
- KITCHEN ITEMS
- BABY ITEMS
- STOOLS
- DISHES
- BOOK SHELVES
- GIFT ITEMS
- RUGS
- OUTDOOR PATIO ITEMS

LOTS OF DIFFERENT THINGS!!

**Downtown Ellisville
Former Shirley's Building**

203 S.Front St. - Ellisville

Norman's Food Outlet
#209 Waynesboro Food Outlet
PRICES EFFECTIVE MAY 11- MAY 17, 2016

12 OZ. PACK BRYAN WIENERS  96¢ EA. Plus 10% at Checkout	12 OZ. PACK BRYAN REG. OR THICK CUT BOLOGNA  96¢ EA. Plus 10% at Checkout
SHURFRESH REG., 2% OR SKIM GALLON MILK  \$2.65 EA. Plus 10% at Checkout	USDA FRESH CUT QUARTER-LOIN PORK CHOPS  \$1.45 LB. Plus 10% at Checkout
USDA FRESH CUT BREAKFAST PORK CHOPS  \$2.15 LB. Plus 10% at Checkout	8 LB. BAG US #1 RUSSET POTATOES  \$1.68 EA. Plus 10% at Checkout

WE'VE APPRECIATED YOUR BUSINESS OVER THE LAST 9 YEARS AND WE WILL CONTINUE TO STRIVE IN THE FUTURE TO HELP YOUR FAMILY BY LOWERING YOUR GROCERY BILL

GREAT PRICES • GREAT TASTE • GREAT SAVINGS

OPEN 7 DAYS A WEEK
MONDAY - SATURDAY 7 A.M. - 7:30 P.M. / SUNDAY 8 A.M. - 6 P.M.

LOCATED IN THE AZALEA MART SHOPPING CENTER
WAYNESBORO, MS **601-735-4344**

BAB651

NEWSOM'S PORTABLE BUILDINGS
 Free Delivery within 30 Miles

COMPARE OUR QUALITY

- 2X6 CEILING JOIST
- FOAM FILLED SEAMS
- SHUTTERS • DEADBOLT
- 2X6 TREATED FLOOR JOIST

12 Months Same As Cash! *wac Azalea Mart • Waynesboro 601-735-3300

Example Pricing:
 10x20 \$2299
 8x10 \$1172



Bostick Tree Service: tree removal, stump and root grinding with precision for easy mowing and tree health, fully insured, free estimates, serving Pine Belt area, 601-283-8667

If you're needing bush hogging work done, residential or commercial, contact Ronnie Clark at 601-433-6952. \$65 hr. with a 2-hr. minimum.

KC Construction, Kimble Coats owner. New construction, remodeling, decks, vinyl siding, foundations, slabs. 601-433-6996

Raybourn Construction: Roofing and repairs, general construction, remodeling, painting, heating & a/c service, and more. 30 years experience, insured State Licensed Contractor. Call 601-580-7540 or 601-649-0780.

Lawn care: Serving Hattiesburg, Lumberton, Laurel, Sumrall, Petal, Brooklyn, Ellisville, Purvis and Mosselle areas. Reasonable rates. 601-325-5008. www.fullservicelawnca-rems.com

Flooring, all types. Remodeling, all types, decks-cabinets. For all your home improvement needs. No job too small. Commercial and residential. Licensed and insured, references available. Wilson 8:21. Painting, remodeling and more. II Corinthians 8:21. 601-268-7603.

Tom's Trees: Professional bucket truck service. 30 years experience in the Pine Belt area. We do precision take down, shaping, trimming, and dead limbing. Free estimates, fully insured. Call cell: 601-433-0518 or 601-787-4783

Thrash Pressure Washing: Residential, Commercial & Concrete. Call 601-470-2296.

Reed's Metals, Inc. Metal roofing, metal buildings, pole barns. Buy direct from the manufacturer and save! 601-823-6516. www.reedsmetals.com

Deep South Lawn Services. Reliable service with quality results. Austin McCardle, owner. Mowing service, edging services, leaf blowing and weed prevention services.

Free estimates. Call 228-219-5199 or 601-344-8013. Deepsouthlawn-services/Facebook.

Tom's Trees: Professional bucket truck service. 30 years experience in the Pine Belt area. We do precision take down, shaping, trimming, and dead limbing. Free estimates, fully insured. Call cell: 601-433-0518 or 601-787-4783

Painting, Remodeling, Drywall, Pressure Washing, Decks, Cabinets and more! Licensed, Insured, Affordable, honest, dependable Christian company. Commercial and Residential. Quality, professional work. Over 20 years experience. References available. Call for a free estimate. If no answer, please leave a message. We will return your call. Wilson 8:21 Painting & More. II Corinthians 8:21. 601-268-7603.

Thames Concrete Finishing: Set forms, patios, slabs, driveways, pool decks. Tear out and haul, True Finishing. Percy Thames. 601-543-8712.

J&J JUMPS

www.jandjpartyjumps.com
601-543-2928
 Find us on FACEBOOK



Lawn Care Services for Petal/ Hattiesburg area. Affordable prices. Call 601-544-8781

L and L Lawn Care Service: Quality Work at Affordable Prices! Mowing, Weedeating, Trimming, Pressure Washing, General Services. 16 Years Experience. Fall and Winter Clean Up. Fully Insured! Call Lewis for a Free Estimate today! We also offer concrete benches and bird baths for your landscaping needs. 601-433-1531 or 601-477-3862.

CHILD CARE
 Tired of paying high cost off day care? I will come to your home and babysit, M-F from 12pm-6pm. 601-335-5743.

WEDDING
 Now booking for weddings, receptions, and rehearsal dinners. We have the perfect setting for all occasions! 601-765-8812, email: woodlandtrails4@yahoo.com, website: Woodlandtrails-ms.com

PETS
Jack Russell puppies, born 2/11/16, S&W. Jimmy Cotton, Chatham, AL. 251-591-9801.

Piney Woods Native sheep. Ram, 1 year old, intact. Needs country home, pasture. Hope use him to breed Not eat. Make offer. 601 270 6015.

Part Wolf/Akita puppies for sale. Will be large dogs. Call 601-422-8482.

MUSICAL
Lynn Evans Piano Service: Registered craftsman with Piano Technicians Guild. Used pianos for sale. B.M.E. USM. 601-729-2823

FURNITURE
Computer desk and printer. \$200. 601-433-0907.

NEED CASH?

Call Verna She will hold your personal check and give you **CASH!**

Loans from \$50 to \$410
LAUREL CHECK CASHING
 134 Beacon St., Ste. C
 Laurel • 601-426-2432



King Size Bed, New. Posted king size bed. \$400. Please call 601-735-2649.

Complete office full of furniture, desk, chairs, filing cabinets, bookshelves, and more. \$1000. 601-649-4706.

Mama's Mattress Max!!! 20 different styles to try out. Sets start at twin \$145, full \$165, queen \$185, king \$295. Will split sets. Blackwell's Furniture 5200 Hwy 84 West at Calhoun. 601.649.6111.

King size mattress, no box springs, \$100. 601-470-2296.

Office Furniture: 1 packaged deal includes: 3-desks & chairs, 3-computers, 4-dividers, 12-guest chairs, 4 phones and 2-stand-free dividers. Please call 601-735-2649.

FLEA MARKET
Family Flea Market and Flooring open Monday-Saturday 9:00am-6:00pm. 52,000 Sq Feet of space. 3 buildings to explore with over 170 Vendors to visit. 1107 B Street, Old Hulett Warehouse, Meridian. 601-286-3521.

VACATION
Gulf Shores Condos, \$125/nights. Houses, \$250/nights. Weekly specials available. Connie Daughdrill 1.251.510.3090.

LAWN AND GARDEN
Murry riding mower, 14.5hp motor, 40" cutting deck. \$250 obo. 601-649-1834.

ESTATE SALE
Estate Sale: 1808 N 7th Ave., Laurel, MS, May 13-14th 2016, Friday & Saturday; 7:00-5:30 Friday & 8:00-1:00, Saturday. Dining table w/6 Chippendale chairs, Winterling Bavaria China, 2 leather recliners, 2 upholstered sofas, 4 upholstered chairs, 2 vintage stereos/radios, antique harp mahogany drop leaf table, buffet mahogany, maple round table w/6 chairs, lamps, pictures, mirrors, vintage clothing and shoes, cameras, new watches, linens, antique sewing machine, full bed, chest of drawers, 2 refrigerators, freezer, microwave, pots, pans, stone glass ware, silver-plate, books antique clock, hospital bed, televisions, wooden office desk, leather desk chair, many chatzkes, ladders, fans, heaters, and many other finds. Bring help to load heavy items. We accept cash and personal checks with proper ID.

Giant Estate Sale, May 13-14, 8:00a.m. until. Located at 621 Norton Road in the Myrick Community, 2nd house on the right. 53 years of anything you might want or need. Just too much to list.

GARAGE SALES
Huge Rummage Sale: May 14, 5259 Hwy. 84W. Plus size through medium women, children, men. Toys, what-nots, small appliances, table w/chairs. Chevron Parking lot.

Rummage house, 3160 Ellisville Blvd., Laurel. Clothes all sizes, shoes, odds & ends, appliances, furniture. 601-433-9856. Mon-Fri 9-5, Sat. 7-2.

Southern Cross Animal Rescue will hold a rummage sale Saturday, May 14 from 7 a.m. - 1 p.m. at the Jitters Coffeehouse and Bookstore parking lot, which is located at 705 North 16th Avenue, Laurel. There will be clothes of all sizes, TVs, bikes, toys, kitchenware, pet items, furniture, and much more. All proceeds go toward helping animals. For more information, or to donate items to the sale, call the rescue at 601-433-5807.

BUSINESS OPPORTUNITIES
Jackie's Women's & Children's Boutique is going out of business. All inventory and fixtures are for sale. Located at 28 Market Court, Suite 20, Hattiesburg. Call for more information, 769-390-7107.

eXmark
THE DEFINITION OF VALUE.



SAVE \$1,000
\$8,499
 REGULAR CSP \$9,499
 LZE732GKC524A2 • Kohler CV732 engine • 52" UltraCut Series 4 cutting deck • Suspension Seat

SAVE \$1,000
\$8,999
 REGULAR CSP \$10,099
 LZE742GKC604A3 • Kohler CV742 engine • 60" UltraCut Series 4 cutting deck • Suspension Seat

Limited time offer. See dealer for complete details.

WAYNESBORO SALES & SERVICE
 721 Court St.
 Waynesboro, MS
601-735-0201

TAYLOR'S SMALL ENGINE SERVICE, INC.
 2135 Ellisville Blvd.
 Laurel, MS
601-649-1082

exmark.com

FARRIS
MOBILE HOME TRANSPORTING
 Statewide moving, licensed & insured.
Transporting since 1979
Tony Farris
601-422-4144

DIPLOMA
Congratulations to all area Graduates!
Let Money Lenders help make this occasion special for your graduate.
MONEY LENDERS FINANCE
 Call Dot, Shelly or Steve
 134 Beacon Street • Laurel
601-426-7600

ACCEPTING NEW PATIENTS



Franklin Golden, PMHNP
 Franklin Golden is a Psychiatric Nurse Practitioner who treats children, adolescents and adults. He is a native of Mississippi and received his Bachelor of Science Degree in Nursing from the University of Southern Mississippi. He received his Master's Degree in Psychiatric Mental Health Nursing from the Mississippi University for Women in Columbus.

He is accepting new patients. Medicare, Medicaid and most commercial insurance plans are accepted.

South Central Behavioral Health Services
 A South Central Clinic

Open Monday through Friday 8 a.m. - 5 p.m.
 5 Dunbar St., Ste. 1 | Laurel, MS 39440 | 601.426.9614 | scrmc.com

Laurelwood Community Living Center * Open Position: Laurelwood Community Living, provider of Therapy Rehab needs and Skilled LTC needs. Has the following Full-Time position: * License Practical Nurse - 3-11pm. Requirements: Dependable - Coachable - Good Customer Service. Contact: Lynn Smith, Director of Nursing: 601-425-3191 Ext. 2410. 1036 West Drive, Laurel, MS 39440.

HELP WANTED

Impact Cannot Guarantee the integrity of every advertiser. We strongly recommend that readers investigate the advertiser before sending them any money.

Estamos aceptando aplicaciones para las siguientes posiciones: Piso de la matanza , Cortador, Espiral , Envios , y Empacadores Para aplicar con Heartland Catfish Los Lunes, Miercoles, Jueves, y Viernes venga a: Recursos Humanos 55001 Hwy 82 West Itta Bena, MS 38941 662-254-7100

Farm Hand Wanted Hourly Rate. Call 601-428-0803 or 601-433-6669

West Laurel Baptist Church is accepting applications for full time (40hrs/week) custodial position. Rate of pay is \$10/hour. Applications may be picked up from the church office at 1400 West 5th Street, Laurel. 9:00 a.m. - 4:00 p.m. Monday-Thursday.

Now taking applications for lube bay technicians. Apply in person. Spee Dee Midas, Highway 98, Hattiesburg. No phone calls please.

Immediate opening for small Engine mechanic, especially experienced in trimmer & saw repairs. Must have own tools & own trans-

portation, must be able to pass drug test. Salary depends on experience. No phone calls please. Apply at Elisville Auto Supply.

OTR Drivers Needed: Stockstill Trucking is now hiring CDL class A OTR drivers. Insurance, Vacation and Bonuses! For more information call 601-794-5577, M-F, 7-5

Drivers needed - Mid-Coast Inc. Magee, MS. Part time or full time, short haul or long haul and dedicated short haul run. We have a job for you. Please call 601-797-3090 or 601-382-1397.

We are accepting applications for the following positions: Kill Floor, Trimmer, Spiral, Shipping, and Packers To apply with Heartland Catfish on Monday, Wednesday, Thursday, and Friday come to: Human Resources 55001 Highway 82 West Itta Bena, MS 38941 EOE 662-254-7100

Impact Cannot Guarantee the integrity of every advertiser. We strongly recommend that readers investigate the advertiser before sending them any money.

OTR Drivers Needed: Stockstill Trucking is now hiring CDL class A

OTR drivers. Insurance, Vacation and Bonuses! For more information call 601-794-5577, M-F, 7-5

FISH

Brewer Fishery. Coppernose, Shellcracker and Hybrid Bream, Black Crappie, Channel Catfish fingerlings, Bass, Fathead Minnows, Grass Carp, and Gold Fish. State licensed and delivery available. www.istockponds.com 601-270-1268, 601-989-2466.

Slade Channel Catfish Fingerlings, Bass, Bream, Grass Carp, KOI fathead-tuffy Minnows, Electrofishing, etc. Free water analysis. State licensed. Randall Slade 601-796-2000 www.sladesfish.com

CAMPERS

1996 Airstream Land Yacht Motor home. 454 gas engine, 45,000 miles. Great condition. Several new upgrades, also 2005 Chev. Cavalier tow car & even brake supp. brake system. Selling due to health reasons. 601-319-0387.

1996 Sportsmaster trailer, AC and Heat. Great condition, great for deer

hunters. \$4900. New fence w/gate also for sale, \$1000. All for \$5900 or can sale separately. Located in Sandersville. Call 601-543-2418 or 601-649-5593, leave phone number and message.

2001 Wind Sport Class A motor home manufactured by Thor. 35 ft. Centennial Model. 27K miles. New tires, excellent condition! Super Nice! Valued and insured at \$55,000. Make offer. 601.917.7661. Can be viewed at 7807 Espey Road, Meridian MS 39305.

MOBILE HOMES

Foreclosures, repos, used, land home packages, and New mobile homes. Call Chase today for details 601-310-9262

I buy used mobile homes for cash, call 601-425-5078

Home for the Holidays. Beautiful, 16x80, 3BR/2BA., completely remodeled with new carpet, paint and vinyl throughout. Full of upgrades, including a fireplace in the living room and a sliding glass back door. \$18,888. Call 601-520-0710.

Repo Special!! 2011 Cavalier 16x80 Windzone II 3+2 for only \$29,900. Call Chase today at 601-310-9262.

2001 Wind Sport Class A motor home manufactured by Thor. 35 ft. Centennial Model. 27K miles. New tires, excellent condition! Super Nice! Valued and insured at \$55,000. Make offer. 601.917.7661. Can be viewed at 7807 Espey Road Meridian, MS 39305

GOOD CREDIT. BAD CREDIT. NO CREDIT. NO PROBLEM! NEW, USED & REPO HOMES AVAILABLE. NO CREDIT CHECK. OVER 100 HOMES TO CHOOSE FROM. Payments starting at \$250 per month. For more info, call Howard at **601-447-4538**

Repo, single wide, Clayton, 16x80, 3+2. 601-310-9262.

Farris Mobile Home Transporting: Statewide moving, licensed & insured. Transporting since 1979. Tony Farris 601-422-4144.

As the rainy season approaches, there's nothing like the sound of rain on an after-market tin roof. Come see this 2000 Capparet, 16x80, 3BR/2BA. recently remodeled with new vinyl, carpet and paint, \$19,000. Call 601-520-0710.

Stop renting and own your own home now. Single wides for \$400.00 a month and double wides for \$600.00 a month. Call 601-307-2114.

Continued on ... Page 8

DRIVERS
Class A
\$1,500 SIGN ON BONUS
►HOME DAILY◀
AVG. \$550 - \$600 PER WEEK

- SAFETY BONUS
- PAID ORIENTATION
- MEDICAL & DENTAL AVAIL.

6 Day Refresher Course Available
Forest Products Transports EOE

855-795-7598
Apply online at www.kllm.com

DRIVERS, are you tired of having to jump through hoops, such as gimmicky revenue and retention bonuses? Do you want to earn what you are worth?
At Baggett Transportation, we pay you what you are worth, without the hassle!

We offer the best benefits in town, which include
• Health Insurance • Company Matching 401-K Plan • Paid Vacation

Now paying 27% for qualified, experienced drivers!

Now leasing Owner Operators! Flats or Vans. Call for details.

601-426-3462
Call for more information or apply in person at: 2815 Industrial Blvd. • Laurel, MS

Stockstill Trucking, Inc.



158 Central Industrial Row
Purvis, MS
601.794.5577
800.794.5578

PARISH TRANSPORT

HAS IMMEDIATE OPENINGS FOR GOOD OTR Truck Drivers and Owner Operators
HIRING ALL DIVISIONS

Benefits include:
• Health Insurance • Vision Insurance
• Dental Insurance • Paid Vacation

NOW OFFERING SIGN ON BONUS
• SAFETY BONUS • REVENUE BONUS
• RETENTION BONUS

If You Want To Work For A Great Company With Great Benefits

call us at 601-342-2314 today!
Located in Ellisville, MS

NOW HIRING

- PART TIME LPN'S (ALL SHIFTS)
- PART TIME CNA'S (ALL SHIFTS)
- MEDICAL RECORDS DIRECTOR (RN PREFERRED)
- MAINTENANCE DIRECTOR (LONG TERM CARE EXP.)
- FULL TIME CNA'S (7-3 & 3-11)



PLEASE APPLY AT
Hillcrest Nursing Center
1401 1ST AVENUE N. EAST • MAGEE
NO PHONE CALLS PLEASE

LCare Center of LAUREL

****\$750.00 Nurse Sign on Bonus****
****New Pay Rate for PRN Nurses****

Is currently accepting applications for

Licensed Practical Nurses
3P.M. - 11P.M. • 11 P.M. - 7A.M.

RN Supervisor
Weekend

Applicants must submit an application online at carecenterlaurel.com or in person
Mon. - Fri. 8:00 am - 4:00 pm
EQUAL OPPORTUNITY EMPLOYER

Southern HENS EMPLOYMENT OPPORTUNITIES

NOW HIRING

FOR ALL POSITIONS NEW & HIGHER WAGES

Benefits include Life/Health Insurance, Paid Holidays, Paid Vacations, 401K Retirement Plan, Dental/Cancer Insurance Available.

• Applications taken Mon.-Fri at 7:30 AM
EOE

329 Moselle-Seminary Rd. • Moselle, MS

Resumes for
Management & Supervisory Positions:
recruiting@southernhens.com

601-584-4752

POSITIONS AVAILABLE

MS CARE CENTER OF RALEIGH
New TRANSTIONAL CARE UNIT

Is Now Taking Applications For
LPN'S • 3-11 or 11-7
Shifts

Please apply in person
Monday - Friday from 9 am - 4 pm.

MS CARE CENTER OF RALEIGH
309 Magnolia Drive • Raleigh, MS

We are an equal opportunity employer.

HELP WANTED

Bob Palmer's Chancellor Motor Group is looking for sales professionals. We have a very high retention rate which can result in a substantial amount of passive income. We have limited positions available for motivated people with sales skills and longevity. You have the ability to make a very lucrative income. Training and materials are provided. If you are dedicated, hard-working and ready to take on a life style changing opportunity, we just might be the right fit for you! You must be outgoing as well as possess a willingness to stick through until the end. Only committed people, who will put forth their full potential, need apply!

APPLY IN PERSON
BOB PALMER'S
CHANCELLOR MOTOR GROUP
2820 HWY 15N • LAUREL
(601) 649-7911

RUSTIN METAL BUILDINGS AND CONSTRUCTION

Laurel, Mississippi
Rustin Construction Since 1933
COMMERCIAL • RESIDENTIAL

26 Gauge Colored Panels
Licensed General Contractor

NO JOB TOO BIG OR SMALL

CALL FOR CURRENT PRICES! **601-649-9949**

Want to buy a good used, low mileage 2010-2014 Nissan Altima from an individual. Please call 601-342-2348, if no answer leave message.

POOLS

Be cool in your own pool. Selling affordable family fun for over 35 years. Many sizes to choose from. Denson's Above Ground Pools, Hattiesburg, 601-582-9541.

TIMBER AND LUMBER

Know the value of your timber before you sell. We provide timber appraisals and help landowners market their timber for the highest value. Walley Forestry Consultants, Inc., www.walleyforestry.com, 601-477-3014.

Cypress Lumber for sale. Rough or planed. T&G&V and beaded. Beveled and log siding, white and yellow pine and Poplar. T&G&V. Cypress beams, cut up to 32 foot long. Open 7:00AM-3:30PM, Monday-Friday, Saturday, 7:00AM-12PM. 601-315-5533, fax 601-344-0950. frankssawmill.com

BUILDINGS

Best Rent-to-Own deal around! Call us for all your building needs. Chatham Enterprises 601-727-4951

Best Rent-to-Own deal around! Call us for all your building needs. Chatham Enterprises 601-727-4951

Commercial building for sale or Lease located at 17 Perry Road, Laurel, Ms, 1.5 miles from city limits in a small industrial park on victory road. It has 22,600 sq ft on 2.4 acres completely fenced with 3 gates. It has 6-8 inch concrete slab floors, 3 phase electrical service, 6 roll up doors, 5 walk thru doors, 1 full bathroom with shower, and a half bath, 14 ft eaves, 2 Inside Offices with a Separate Office Building Outside that also has 2 offices inside it. Priced at ONLY \$455,000.00 For more information call Oliver Joyner with CrossRoads Realty at 601-917-2781

Carports and Buildings: Financing Available! 22Wx26Lx9T- \$5,050, 24Wx31Lx9T- \$6,010 Fully Enclosed with two 9X8 Roll-up Doors. Price includes installation. We also offer storage buildings and barns. Call John @ 601-323-0464, 303 Hwy 11 S, Ellisville (between Pizza Hut & JCJC)

Farm Barns. 40x30x16-\$9500. 30x30x10-\$7500. Metal roof and sides. Price includes labor. 601-296-0550.

PORTABLE BUILDINGS

Best Rent-to-Own deal around! Call us for all your building needs. Chatham Enterprises 601-727-4951

For Lease: 40/50 Metal building located in Seminary on Cranford Drive. 2000 SQ FT, Commercial Grade. Double roll up doors, extra re-enforced concrete slab, and mul-

U-SAVE CAR & TRUCK RENTAL

HATTIESBURG
1510 West Pine Street
601.545.9555

LAUREL
114 North 16th Avenue
601.428.4405

COLLINS
3049 Highway 49
601.765.3333

THREE LOCATIONS TO SERVE YOU BETTER!

*If you reserve it from us, we guarantee to have it there!

multiple electrical outlets on interior. For more information; or to schedule a walk thru call 601.517.7222

AUTO SERVICES

Hartfield's Auto Repair. 25 years experience Located in Stringer MS. Open Mon -Fri. 8-5. Call 601-470-3220

We service all makes and models. Bring in your non-Toyota vehicle and receive 10% off of any service. Call Meghan today to schedule your appointment. 855-221-8310.

We sell Tires! For all makes and models. Call Mike Shirley today. For the best price in town. 855-221-8310.

It's getting Hot outside. Let us tint your windows. 2 windows \$109.99, 4 windows and back glass \$189.99. Call Mike Shirley today to schedule your appointment, 855-221-8310.

AUTOS - CARS

2008 Toyota Prius, \$8999, at Toyota of Hattiesburg. Call our local toll free number 855-221-8310 or text AWE8 to 27414. See more at Cars601.com

1998 Dodge Caravan, \$1111, at Ryan Chevrolet. Call our local toll free number 855-534-3769 or text N3GV to 27414. See more at Cars601.com

2006 Toyota Camry, LE, 2.3 I4, Sedan, Desert Sand/Beige, 109k miles, Extra Clean, \$8,250. Limited Warranty. 601.580.0358. See more at www.EllisvilleMotors.com.

2015 Nissan Altima, \$15,200, at Southern Motor Co. Call our local toll free number 855-215-1918 or text LX9C to 27414. See more at Cars601.com

One Owner, 2008 Toyota Camry LE, Sedan, Silver/Charcoal, 133K miles, Clean Car, Asking \$8,250. Limited warranty. 601.580.0358. See more at www.EllisvilleMotors.com.

2015 Hyundai Sonata, \$13,950, at Southern Motor Co. Call our local toll free number 855-215-1918 or text SZ6V to 27414. See more at Cars601.com

2013 Hyundai Accent, \$10,500, at Kim's Chevrolet/Nissan. Call 601-649-4800 or text E0CC to 27414. See more at Cars601.com

2009 Toyota Camry - \$8490 - at Mack Grubbs Hyundai. Call our Local toll free number 844-373-0806 or text G9ZJ to 27414. See more at Cars601.com

U-SAVE CAR SALES • LAUREL

Come See Me Today!
TOM SYKES, SALESMAN
114 N 16th Avenue • Laurel
601-428-4405
tscars52@yahoo.com

2005 Saturn Ion: \$4988, at Petro Nissan. Call 601-264-4411 or text DL5W to 27414. See more at Cars601.com

2008 Nissan Quest: \$8500, at Carter Motors. Call 601-428-8400 or text JV8W to 27414. See more at Cars601.com

Affordable Auto Insurance, especially if you don't have any now. Call 601-765-4060

2009 Honda Accord EX-L \$11,500, Aaron Williams Auto Sales. Call our Local toll free number 855-637-1021 or see more at Cars601.com

2015 Chevy Sonic, \$12,777, at Ryan Chevrolet. Call our local toll free number 855-534-3769 or text 1Z25 to 27414. See more at Cars601.com

2008 Toyota Prius - \$7995 - at Hattiesburg Cars. Call our Local toll free number 855-242-0775 or text UO35. See more at Cars601.com

2012 Chevrolet Malibu LTZ \$10,585. Stephen's Auto. 844-376-0195. See more at Cars601.com

2007 Scion TC, 5 Speed, manual transmission, 165K miles, good condition, \$4800 or will trade for right vehicle. Call 228-233-8919.

2008 Toyota Camry, \$9999, at Toyota of Hattiesburg. Call our local toll free number 855-221-8310 or text AV4W to 27414. See more at Cars601.com

2008 Chrysler Town & Country Limited \$10,500. Aaron Williams Auto Sales. 855-637-1021. See more at Cars601.com

2015 Ford Fiesta, \$11,440, at Kim's Toyota. Call 601-425-4701 or text AEO8 to 27414. See more at Cars601.com

2010 Toyota Camry: \$11,800, at Carter Motors. Call 601-428-8400 or text COH1 to 27414. See more at Cars601.com

1999 Honda Civic: \$4490, at Woolwine Ford. Call 601-255-1815 or text E9H9 to 27414. See more at Cars601.com

2007 Mercedes Benz - \$10,777 - at Ryan Chevrolet. Call 844-373-0806 or text G214 to 27414. See more at Cars601.com.

Continued on ... Page 10

SPRING SELLATHON

Financing for Everyone!

AutoExpressOnline.com
Auto Sales & Repair Center

2012 Altima \$11,999



Text TC2T to 27414

2009 Camry \$12,500



Text QA36 to 27414

2011 Sentra \$10,599



Text TB10 to 27414

NEXT TO FAIRGROUNDS • LAUREL

Sales Team
844-402-3154

MAY TITLE LOAN SPECIAL

WHY PAY 25% WHEN YOU CAN PAY 10%

- CASH ADVANCE
- CHECK CASHING
- TITLE LOANS



SUMMIT
FINANCIAL SERVICES, CORP.

1228 W. 5th St. • Laurel
(ACROSS FROM COMCAST)
601-682-0212

103 Hwy 11S • Ellisville
601-800-8218

LAUREL A-1 TIRE CENTER

Right behind the Laurel Police Department

CAR MAINTENANCE SPECIAL

On Most Vehicles Specials Expire May 31st

<p>BRAKES</p> <p>Reg \$149.95</p> <p>25% OFF</p>	<p>ROTATION</p> <p>Reg \$16.00</p> <p>25% OFF</p>
<p>ALIGNMENT</p> <p>Reg \$59.95</p> <p>25% OFF</p>	<p>BALANCE</p> <p>Reg \$40.00</p> <p>25%</p>
<p>DIAGNOSTICS</p> <p>Reg \$59.95</p> <p>25% OFF</p>	<p>A/C SERVICE AVAILABLE</p>

219 Ellisville Blvd., Laurel, MS
M-F 7:30 A.M.-5:00 P.M. SAT. 7:30 - NOON **601.425.4616**

907 Herbert's Mart Shopping Center Waynesboro, MS

Wed., May 11 - Tues., May 17, 2016

OPEN 7 DAYS A WEEK - 8A.M. - 8P.M.

WE RESERVE THE RIGHT TO LIMIT QUANTITIES

SAVE ON YOUR FOOD BILL. SHOP SAVE A LOT

<p>Family Pack Boneless PORK CHOPS</p> <p>\$1.98 Lb.</p> <p>We don't add 10% at the register</p>	<p>Family Pack Fresh GROUND BEEF</p> <p>\$1.88 Lb.</p> <p>We don't add 10% at the register</p>	<p>Family Pack Small FRYER WINGS</p> <p>\$1.98 Lb.</p> <p>We don't add 10% at the register</p>
<p>Gallon Red HAWAIIAN PUNCH</p> <p>\$1.87</p> <p>We don't add 10% at the register</p>	<p>Assorted 11.25 Oz. LITTLE DEBBIE SNACK CAKES</p> <p>2/\$5</p> <p>We don't add 10% at the register</p>	<p>Assorted 7.25 Oz. Box SUDDENLY SALADS</p> <p>87¢</p> <p>We don't add 10% at the register</p>

1 DAY SALE - GOOD FRIDAY MAY 13, 2016 ONLY!

<p>2 to 3 Pack Small PORK SPARE RIBS</p> <p>\$1.98 Lb.</p> <p>We don't add 10% at the register</p>	<p>5 Lb. Bag RUSSET POTATOES</p> <p>98¢</p> <p>We don't add 10% at the register</p>	<p>Assorted 24 O. MANTIAS PASTA SAUCE</p> <p>77¢</p> <p>We don't add 10% at the register</p>
--	---	--





MZ61 Zero Turn \$5,999.95
545 Chainsaw \$ 509.95
HU800AWD Mower \$ 499.95
525L Trimmer \$ 299.95

Total MSRP \$7,309.80
Discount \$ 584.78

Package Price \$ 6,725.02*

See dealer for other packages!
Financing as low as 0%!!!**

*Tax Not included. **W.A.C.

COOLEY MOTOR COMPANY
 since 1928
HWY 45 North • Waynesboro
601-735-4323 or 1-800-748-8838

EAGLE CARPORTS & BUILDINGS

GARAGES STARTING AT \$2,215
HORSEBARNS STARTING AT \$5,070

MANY OPTIONS, PLANS AND SIZES AVAILABLE • FINANCING AVAILABLE *WAC
CALL JOHN 601-323-0464

WWW.ELLISVILLEMOTORS.COM • 303 HWY. 11 S. ELLISVILLE, MS • LOCATED BETWEEN PIZZA HUT & JC/JC

Looking for a dependable vehicle but have less than perfect credit? Don't give up! Give me a call, I may get you financed. Matt Dilmore, new & used sales. 601-323-1620. mdilmore@ryanauto.com.

2013 Nissan Altima SL Fully Loaded, 44K miles. Only \$19,900. Call 601-606-4096 or 601-606-8457.

2015 Chevrolet Cruze 1LT \$15,999. Auto Express. Call our LOCAL toll free number 844-402-3154 or text TBP6 to 27414. See more at CARS601.com

2007 Toyota Camry - \$8995 - at Hattiesburg Cars. Call our Local toll free number 855-242-0775 or text UO3V to 27414. See more at Cars601.com

2014 Ford Focus, \$12,777, at Ryan Chevrolet. Call our local toll free number 855-534-3769 or text 1XW6 to 27414. See more at Cars601.com

2015 Nissan Altima, \$14,900, at Southern Motor Co. Call our local toll free number 855-215-1918 or text LX92 to 27414. See more at Cars601.com.

2011 Nissan Altima, \$9995, at Toyota of Hattiesburg. Call our local toll free number 855-221-8310 or text 1YDH to 27414. See more at Cars601.com

In the market for a new or quality preowned vehicle? We have plenty of inventory available, new vehicles arriving daily. Concerned about less than perfect credit? I have many years of experience. Give me a call let me see if I can help you. William Hickman 601-520-1354.

2006 Infiniti G35, \$9200, at Carter Motors. Call 601-428-8400 or text 18VV to 27414. See more at Cars601.com

2011 Hyundai Sonata, \$11,463, at Mack Grubbs Hyundai. Call our Local toll free number 844-373-0806 or text 8YJ3 to 27414. See more at Cars601.com

2015 Nissan Altima \$15,200 at Southern Motor Co. Call our Local toll free number 855-215-1918 or text LX9C to 27414. See more at Cars601.com

It's getting Hot outside. Let us tint your windows. 2 windows \$109.99, 4 windows and back glass \$189.99. Call Mike Shirley today to schedule your appointment, 855-221-8310.

Continued on ... Page 11

FARM & CONSTRUCTION AUCTION
 Taking Consignments Now!
FRI. & SAT. * MAY 20-21, 2016 * 9:00 a.m.
HOLLINGSWORTH ENTERPRISES, INC.
 2749 Hwy 21 * Forest, MS 39074 * 601-469-2705 day 601-954-4230 cell

Selling Dozers, Backhoes, 50-75 Farm Tractors, Skid Steers, Forklifts, Wheel Loaders, Aerial Equipment, Trucks, Autos, Trailers, Hay Equipment, Bush-hogs, Disks, Plows, Shop Tools, Compressors, ATVs, Etc.

Onsite: 10% Buyers Premium per item with \$250.00 max. per item * Online terms differ; see terms upon registration. * All announcements made auction day supersede all printed materials. Visit website for terms and conditions. * MS Lic.#142
 Visit our website for listing and online bidding: www.hollingsworthauction.com
 Consignment Deadlines: Internet Participation—May 17, 5 PM * Live Only—May 18, 5 PM

GM Certified USED VEHICLES

2015 CHEVROLET SONIC LTZ
 • 2 Years Maintenance Included
 • XM Radio Subscription
 • 3 Years **FREE** OnStar
 • 12/12 Bumper to Bumper **FREE**

Several to choose from
\$0 DOWN \$149 PER MO.**

2015 CHEVROLET CRUZE LT
 Automatic, STK #16U143
\$0 DOWN \$229 PER MO.**

2015 CHEVROLET MALIBU LS
 Automatic, STK #16U123
\$0 DOWN \$249 PER MO.**

2015 BUICK REGAL
 Premium I, STK #16U118
\$0 DOWN \$279 PER MO.**

2015 CHEVROLET IMPALA
 Limited, Automatic, STK #16U165
\$0 DOWN \$299 PER MO.**

SOUTH MISSISSIPPI'S LARGEST CERTIFIED PRE-OWNED DEALER

PAST CREDIT PROBLEMS? THE SALES TEAM AT RYAN MOTORS CAN MAKE IT HAPPEN!

YOUR CHOICE \$13,900

2015 CHEVROLET IMPALA LTD
 1 Owner! Nice! STK #16U17 **\$13,900***

2015 HYUNDAI VELOSTER
 Custom Coupe, Loaded, STK #16U101 **\$13,900***

2014 HYUNDAI SONATA
 35 MPG! STK #16U39 **\$13,900***

YOUR CHOICE \$23,900

2012 FORD EXPEDITION XLT
 Loaded, Leather STK #16UT10 **\$23,900***

2015 DODGE RAM 1500 SLT
 Low Miles STK #16UT31 **\$23,900***

2013 TOYOTA HIGHLANDER LTD
 1 Owner! STK #16UT69 **\$23,900***

CASH DEALS!

1997 PONTIAC BONNEVILLE SE
 144K Miles STK #16U295 **\$2,950***

2004 CHRYSLER PACIFICA
 V6, Automatic STK #16UT252 **\$4,950***

2007 CHEVROLET SILVERADO
 Loaded, Leather, Nice STK #16UT59 **\$7,950***

YOUR CHOICE \$39,995

2015 CHEVROLET TAHOE LT
 Automatic STK #16UT28 **\$39,995***

2015 CHEVROLET TAHOE
 GM Certified STK #15UT866 **\$39,995***

JOHN STRENGTH WILLIAM HICKMAN TONY GUY ROBERT WARRICK
 JACK BAILEY JONEE CLARK STEVE LETT REGI GRACE BOB SMITH
 MARC KUBICKI BILLY MILLER MATT DILMORE JONATHAN GASPER

RYAN CREDIT DOCTOR
 ALL APPLICATIONS ACCEPTED!
 www.ryancreditdr.com

Since 1956 **RYAN CHEVROLET** #1 GM Certified Used Car Superstore in Mississippi

1501 W. Pine Street, Hattiesburg
1-855-534-3769
601-584-8451

CREDIT DOCTOR
 24 HOUR ON STANDBY
 www.ryancreditdr.com

FIND NEW ROADS  **WWW.RYANAUTO.COM**

2004 Toyota Avalon XL \$7999. Auto Express. Call our Local toll free number 844-402-3154 or text TC0Q to 27414. See more at Cars601.com

03 Toyota Camry, 120k, \$4800; 07 Accord, 4 door, 150k, 6cyl, AT, \$6800; 07 Ford Fusion, 140k, \$4600; 02 Honda Civic, 4dr, 4cyl, AT, 220k, runs great, \$2900; 01 Dodge Neon, 4cyl, AT, 118k, \$2600; 01 Maxima, loaded, 130k, \$3400. ALL + tax OBO. 601-455-6944, 601-498-6944.

We service all makes and models. Bring in your non-Toyota vehicle and receive 10% off of any service. Call Meghan today to schedule your appointment. 855-221-8310.

2006 Nissan Altima. \$9990, at Auto World in Petal. Call our local toll free number 855-973-4210 or text J7FA to 27414. See more at Cars601.com

2014 Chevrolet Impala Limited. \$13,500 at Southern Motor Co. Call our Local toll free number 855-215-1918 or text SZ6K to 27414. See more at Cars601.com

1999 Honda Civic, LX, 2 Door, Hatchback, Gas Saver, Great Mechanical Condition, \$3,250. Warranty Available, 601-580-0358. See more at www.EllisvilleMotors.com.

2004 Pontiac Grand AM: \$3995. at Woolwine Ford. Call 601-255-1815 or text MWE9 to 27414. See more at Cars601.com

2007 Lincoln MKZ. \$7990 Auto World in Petal. Call our Local toll free number 855-973-4210. See more at Cars601.com

Need a ride? Credit not so good? I can help. Good credit. bad credit, no credit. Give Tom a call. 601-428-4405.

2010 Dodge Caliber, \$10,278, at Kim's Toyota. Call 601-425-4701 or text 951Z to 27414. See more at Cars601.com

2012 Toyota Camry. \$15,500 at Aaron Williams Auto Sales. Call our Local toll free 855-637-1021. See more at Cars601.com

We sell Tires! For all makes and models. Call Mike Shirley today. For the best price in town. 855-221-8310.

For Sale: 2001 Nissan Sentra, \$1800; 2008 Toyota Camry; 01 Ford Expedition. Call 601-426-7600 for details.

2014 Kia Soul \$12,575 at Southern Motor Co. Call our Local toll free number 855-215-1918 or text LX9J to 27414. See more at Cars601.com

2012 Chevrolet Malibu, \$10,585, at Stephen's Auto in Seminary. Call our local toll free number 844-376-0195 or text 473W to 27414. See more at Cars601.com

2005 Nissan Altima 2.5S \$6999 Auto Express. Call our Local toll free number 844-402-3154 or text TBP6 to 27414. See more at CARS601.com

Ad Upgrades: [highlight]Cars601.com Find the best deals from the area's Top Local Dealers at Cars601.com

com. Shop Smarter, Shop Local, Shop Cars601.com

1997 Pontiac Bonneville, \$1755, at Ryan Chevrolet. Call our local toll free number 855-534-3769 or text H5EO to 27414. See more at Cars601.com

2004 Pontiac Vibe \$4999 at Auto Express. Call our LOCAL toll free number 844-402-3154 or text TBP6 to 27414. See more at CARS601.com

2011 Ford Ranger, \$9450, at Mack Grubbs Hyundai. Call our local toll free number 844-373-0806 or text 8ZCQ to 27414. See more at Cars601.com

2011 Hyundai Sonata, \$11,463 at Mack Grubbs Hyundai. Call our Local toll free number 844-373-0806 or text 8YJ3 to 27414. See more at Cars601.com

2012 Dodge Charger 4Dr Sdn SXT, RWD. Color: Redline Pearl. 3.6L V-6, 31 MPG, Only 41,600 Miles. 1 Owner. Very Nice Ride. Only \$18,488. Call Dean @ 601-433-0796.

2008 Buick Lucerne CXL, V6, 107K, Leather. \$8,900. Call 601-641-3400.

2010 Toyota Camry, \$5999. Toyota of Hattiesburg. Call our Local toll free number 855-221-8310 or text GC7G to 27414. See more at Cars601.com

AUTOS - MOTORCYCLES

2005 Honda Goldwing Trike by Mototrike, maroon with custom trailer, matching helmets with intercom and CB radio. Heated suite by Gerbing. \$17,500. 601-498-5159.

AUTOS - SUVS

2001 Toyota Sequoia Limited. \$5990 at Auto World in Petal. Call our Local toll free number 855-973-4210 or see more at Cars601.com

2008 Jeep Wrangler Unlimited. Asking \$14,900. Call Mark @ 601-765-4402.

free number 855-242-0775 or text UO2Q. See more at Cars601.com

2007 Dodge Nitro, \$9500, at Kim's Chevrolet/Nissan. Call 601-649-4800 or text 6HX to 27414. See more at Cars601.com

2005 Buick Rainier CXL \$7999 Auto Express. Call our Local toll free number 844-402-3154 or text TBP6 to 27414. See more at CARS601.com

03 Tahoe, extra clean, 3 row seats, cold air. Drive great. \$5500. 601-678-6644.

2007 Toyota Highlander, \$10,999, at Toyota of Hattiesburg. Call our local toll free number 855-221-8310 or text AZ2B to 27414. See more at Cars601.com

Continued on ... Page 12

LAUREL A-1 TIRE CENTER
Right behind the Laurel Police Department

TIRE SPECIAL
225/60R16

COOPER TIRES
AMERICAN MADE

\$55.95 Each
PLUS TAX, MOUNTING & BALANCING

219 Ellisville Blvd., Laurel, MS
M-F 7:30 A.M.-5:00 P.M. SAT. 7:30 - NOON **601.425.4616**

JUST ARRIVED!

New Shipment of Living Room Groups!

springme picks

CRAZY QUILT	TWIN.....	\$129.99
MATTRESS	FULL.....	\$149.99
SETS	QUEEN...	\$189.99

U Load • U Haul • U Save

HOEFLICH
WHOLESALE FURNITURE CO.

710 STATION ST. • WAYNESBORO
601.735.6050

Wayne County Household Hazardous Waste Collection Day

Reduce Reuse Recycle
One Day Free Proper Disposal Turn-In Event
SATURDAY • MAY 14TH
8A.M. UNTIL 12 P.M.
At the Wayne County Courthouse Parking Lot

ITEMS ACCEPTED

PAINT, Aerosols, Cleaners, Ammonia, Anti-Freeze, Auto Cleaners, Batteries, Brake Fluid, Chlorine Bleach, Pool Chemicals, Glass Cleaner, Disinfectants, Drain Opener, Furniture Polish, Gasoline, Herbicides, Insecticides, Pesticides, Rodent Poisons, Rubber Cement, Silver Polish, Tub & Tile Cleaner, Water Seal, Wood Finish, Detergents, Fertilizers, Lighter Fluid, Glues, Oven Cleaner, Paint Thinner, Photographic Chemicals, Tires, Old Appliances, Fluorescent Light Bulbs, Electronic Waste

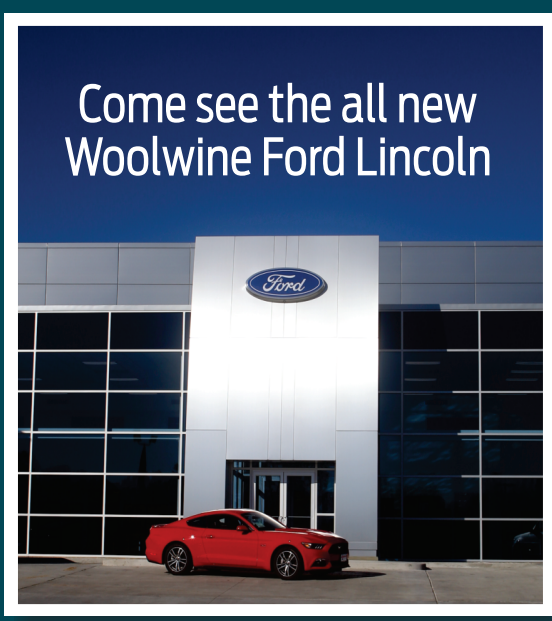
DO NOT BRING THESE ITEMS

Explosives, Radioactive Materials, PCB's, Medical Waste, Syringes, Ammunition, Laboratory Chemicals

Absolutely NO commercial waste will be accepted, only household hazardous waste

For more information
Please call **601-410-3673**

www.woolwineford.com



Come see the all new Woolwine Ford Lincoln

Remaining 2015 F-150's **0% APR-72 Months**

New 2016 F-150s

\$8,000 OFF

0% APR 60 Available

New 2016 Super Duty
F-250 and F-350!

~~\$8,000 OFF~~
\$10,000 OFF

THIS WEEK 230 Pre-owned & Program Vehicles!

0% APR FINANCING
For 60 Months



U4277	2000 Ford Focus	\$5,465	UA4939	2015 Nissan Altima	\$17,990
U0451	2006 GMC Savana Cargo Van	\$5,990	UA4640	2013 Toyota Camry	\$17,990
U7681	1998 Ford Cargo Van	\$5,990	U9622	2010 Chevrolet Tahoe	\$17,990
U4431X	2007 Lincoln Town Car	\$6,465	U6062	2011 Ford F-150	\$19,995
U8321	2002 Chevy Silverado 1500	\$8,965	U6931X	2015 Chrys Town & Country	\$20,222
HC6172	2009 Chevrolet HHR	\$8,990	U5832X	2009 Ford F-150	\$20,965
U8259	1994 GMC Yukon	\$8,995	R9639	2015 Ford Taurus	\$20,989
U2193	2011 Chevrolet Cruze	\$9,577	F3606	2014 Ford Escape	\$23,990
U7642	2009 Honda CR-V	\$10,988	UC7645	2004 Ford Super Duty F-450	\$23,990
U8099	2005 Ford Expedition	\$10,990	F7203	2015 Ford Mustang	\$23,990
U5395	2008 Chevrolet Impala	\$10,990	F7152	2015 Lincoln MKZ	\$28,490
U4542X	2011 Chevy Silverado 1500	\$10,990	R4457	2014 Ford F-150	\$28,855
U2944	2012 Toyota Prius v	\$13,990	R5737	2015 Ford F-150	\$28,888
UA6902	2012 Toyota Camry	\$13,990	F1758	2013 Ford F-150	\$36,900
U1564X	2014 Ford Focus	\$13,990	F2418	2015 Lincoln MKX	\$36,990
U4501	2011 Buick Lucerne	\$13,990	UA6063	2016 Ford Explorer	\$36,990
U8990X	2004 GMC Sierra 3500	\$13,995	F9483X	2014 Ford F-150	\$41,990
UA3611	2013 Chevrolet Equinox	\$15,989	F8722X	2015 Ford F-150	\$43,223
			F8713	2015 Ford F-150	\$43,533



WOOLWINE
Ford
3040 HWY49 • Collins, MS



"Where we'll treat you, like we want to be treated... Thank you!"

Call now **601-651-4811**

