



2016 Hellfighters God & Country Rally

Submitted

The 2016 Hellfighters God & Country Rally brought in people from across America, coast to coast. Also attending were members of the Hellfighter Ministry from Central America. The rally's events started off Thursday night with a meet and greet time for everyone coming in for the event. This was hosted by the Hellfighters Motorcycle Bike Shop. On Friday morning, Jeff Sundell kicked the morning off with an intense "Harvest Training Session". During the training, Jeff demonstrated how people can share their faith with others in the community, and that afternoon they put their training to action on the streets of Laurel.



Friday night was the Wild Horse Ministry exhibition which was held at the Laurel Fairgrounds. There were standing room only in the arena where Paul Daily and his family presented the gospel through a unique way using a horse that had never been broke. By the end of the 2 hour presentation, Paul's daughter, Lenora was riding the horse around the arena.

Saturday morning the streets were filled with motorcycles rolling in and lining up for the Hellfighters Freedom Ride. Approximately 151 bikes showed up to participate in the ride. The ride this year was an eighty mile ride through some of the prettiest scenery this area has to of-



fer. Journey Church blessed the riders by providing an awesome lunch after the ride concluded. Saturday night's God and Country Rally finale was kicked off by God's Praise, a Christian band from Huntsville, Alabama that has performed at several events for the Hellfighters Ministry. Special guests from Syria discussed the events that are happening in their country as well as what is happening right here in our land. Then the praise and worship team from Springhill Missionary Baptist Church from Ellisville, MS took the stage. During their praise and worship time the crowd was led in a tribute to our veterans that were present at the event. A "card board" testimony along with a banner presentation finishing out that section of the night. Bailey Smith, an evangelist from Atlanta, Georgia brought the message to the group that evening.

DERKSEN PORTABLE BUILDINGS

BUY OR RENT TO OWN starting at... **\$69²¹** PER MONTH

NO CREDIT CHECK!

- FREE DELIVERY & SET-UP
- NO SECURITY DEPOSIT • NO SLAB NEEDED

ALL STYLES AVAILABLE • CABINS • BARNES
• UTILITY/SIDE UTILITY • GARAGES • CARPORTS



AS SHOWN \$292 MONTH
Rent to Own

WWW.ELLISVILLEMOTORS.COM **601-323-0464**

12 Months SAC *wac 303 HWY. 11 S. ELLISVILLE, MS • LOCATED BETWEEN PIZZA HUT & JCJC

coupon

KaRazy Kones



50¢

OFF ANY SIZE KONE OR DOLE WHIP

Limit 2 each per coupon. Expires 7-16-16

Located next to KaRocks • Ellisville • Across from JCJC

Introducing our new NO CREDIT CHECK Loan Program

• Bad Credit • Repo Credit • No Credit
Everybody Is Approved... **IN A SNAP!**



Laurel, MS

 601-342-2809 \$1800 DOWN SNAPANDDRIVE.COM	 601-342-2809 \$1700 DOWN SNAPANDDRIVE.COM	 601-342-2809 \$1800 DOWN SNAPANDDRIVE.COM
---	--	--

Apply online or call **601-342-2809**

NEW LOCATION! HWY.15 N Across from Kroger

LAUREL CANCER CARE

Compassionate care...Close to Home

Dr. Cameron Pimperl, Radiation Oncologist
601-425-2999

127 South 13th Avenue • Laurel, MS 39440
Laurelcancercare.com

GIVE DAD WHAT HE WANTS!



Remember Father's Day June 19th!

Big Green Egg
The Ultimate Cooking Experience™

GRILL • BAKE • ROAST • SMOKE

We carry the full line of Big Green Egg Grills, Charcoal and Accessories. Come See us TODAY and find out why the BIG GREEN EGG is truly the BEST GRILL EVER!

Alexander's

Bay Springs 601-764-2161 SELECTION • SERVICE • VALUE
Ellisville 601-477-3312

MEMORIAL DAY SALES EVENT

Final Day Of Sale is Saturday, June 4th!

- ✓ ALL Recliners On Sale
- ✓ ALL Motion Sofas On Sale
- ✓ ALL Mattresses On Sale

COMFY RECLINER \$139

DOUBLE RECLINING SOFA \$599

QUEEN MATTRESS SET \$199



Don't miss this Special Sales Event!
The deals are too good to pass up!
WE HAVE 24 MONTHS FINANCING! wac

HEADBOARDS.....\$49
DINING TABLE AND SIX CHAIRS.....\$499

SOUTHERN FURNITURE AND MATTRESS

2909 Wheeler Drive • Laurel, MS 601-649-0733
Next to Bob Palmer's Chancellor Motor Group

Classified Index

- Apartments for Rent 8
- Attorneys 2
- ATVs 10
- Autos - Cars 9
- Auto Services 9
- Autos - Motorcycles 10
- Autos - Sports 10
- Autos - SUVs 10
- Autos - Trucks 10
- Boats 10
- Buildings 5
- Business Opportunities 8
- Campers 6
- Carports 10
- Commercial 8
- Estate Sale 5
- Farm 2
- Fish 3
- Flea Market 5
- Furniture 3
- Garage Sales 5
- General 2
- Handyman 5
- Help Wanted 8
- Houses for Rent 8
- Houses for Sale 8
- Land 2
- Massage 3
- Mobile Home for Rent 8
- Mobile Home Lots 8
- Mobile Homes 7
- Musical 5
- Pets 3
- Pools 3
- Portable Buildings 5
- Produce 3
- Services Offered 6
- Timber and Lumber 3
- Vacation 5
- Wanted to Buy 3
- Wedding 3

WALLEY PROPERTIES LLC.
LAND? BUYING OR SELLING
 www.walleyproperties.com
 601-477-3014

CUSTOM HAY BALING
CUT • FLUFF • BALE
 Your Hay in 4x5 Round Bales
 Quality Work & Dependable
 Call Chantry Robertson
 601-335-2488

DON'T GIVE YOUR TIMBER AWAY!
 Call Mike West
 601-270-6066
 BUYING PINE & HARDWOOD
RICHTON TIE & TIMBER LLC
 Timber Procurement • Forestry Consulting • Real Estate

GENERAL

Need Prayer? Sick? Depressed?
 Financial Problems? (21) I tell you the truth, if you have faith and do not doubt. (22) If you believe, you will receive whatever you ask for in prayer. Matthew 21:21-22. Call us anytime free of charge. 24/7. We are here for you. Elder McDaniel. Amazing Grace Prayer Ministries: 662-207-2936

Lawncare: Serving Hattiesburg, Lumberton, Laurel, Sumrall, Petal, Brooklyn, Ellisville, Purvis and Moselle areas. Reasonable rates. 601-325-5008. www.fullservicelawncarems.com

Carports and Buildings: Financing Available! 18x21 carport \$695; includes installation! All sizes available. We also offer storage buildings & barns. Call John at 601-323-0464, 303 Hwy 11 South, Ellisville MS (between Pizza Hut and JCJC)

Mausoleum space for two. Marker and opening and closing included. For-

est Memorial Garden, Centerville Road, Petal. \$3000. 601-735-7884.

Divorce, Criminal Defense, Death Claims, Personal Injury, Bankruptcy, DUI Defense, Offshore, 18 wheeler accidents. Call for your consultation today. Jones Law Office. 2219 Columbia Avenue, Prentiss, MS. 601-582-9177

Captain's Amish Country Store in Marion, MS (outside of Meridian) features fresh Amish cheeses, butter, jams, jellies, pies and cakes and breads. 7966 Hwy 45 North in Marion, MS. Open M-Sat 10 a.m.-5 p.m. 601.479.5615. Visit us on Facebook!

Holly's Party Jumps: Inflatables bouncers, combo's, slides, tents, tables/chairs, snowcones, cotton candy machines, dunk tanks. We deliver, set-up & pick-up. book online, now accepting credit/debit cards, Call 601-763-8851. www.hollyspartyjumps.com.

ATTORNEYS

Evans Law Firm, PLLC, General Practice, Attorney Amanda Glover Evans, 2324 Front Street, Meridian, MS 39301. Free Consultations. Free Background Information Available Upon Request. Meridian (601)575-0096 Laurel (601)283-2110 www.msattorneylaw.com

Automobile accidents, bankruptcy, divorce, off-shore boat accidents, 18-wheeler accidents, criminal defense and more. For all your legal needs, contact a professional. Jones Law Firm 601-582-9177. Let me know you saw my ad in IMPACT.

FARM

4ft. King Kutter finish mower, \$700; 4ft. bush hog, good condition, \$500; 2 axle trailer, heavy duty, needs ramps, \$550; 2002 Chevrolet pickup, 1500 series, good transportation or farm truck, \$1850. 601-698-4633.

For sale farm equipment. Bush hog, disk, box blades, etc. 601-545-2215, 601-402-1370.

For Sale: Service Age - Simmental & Sim-Angus Bulls. Calving ease, high Growth with excellent EPD's and Blood Lines. Semen Checked; Ready to Go!! Call 601-543-3042 or 601-408-4186.

Chapman Tractor Company: 1510 Aza-lea Drive, Waynesboro. Phone 1-800-816-2826. Massey Ferguson and Kubota tractors and equipment sales, 601-735-3103, 601-735-3104 or 601-735-4461

Farm Barns. 40x30x16-\$9500. 30x30x10-\$7500. Metal roof and sides. Price includes labor. 601-296-0550.

LAND

Lake Eddins: A Great Place to be!! Small offwater lots up to 5.5 acre lots. Waterfront lots, Camps and Homes. Call CrossRoad Realty for more info: 601-727-7653.

Wayne County 194 +/- Acres. Excellent timber investment and recreational property in south Wayne County with frontage on Smithtown-Chicora Road. Mixed aged pine plantation and hardwood along the scenic Big Creek. \$445,230 For more information call Marc @ 601-670-5429 at Walley Properties LLC or visit walleyproperties.com.

+/-83 acres located 5 miles south of Ellisville, MS with road frontage on both Augusta Road and Kitchens Loop. Clear Creek running through the property. Several great lake sites. Merchantable mixed pine/hwd timber and good road system. Power and water available. \$207,500. +/-42 acres Jones County, MS. Frontage road on Claiborne Road, mature Red Oak timber, wildlife plots. Nice yard with camp-house. Set up nicely for all season hunting. \$115K. Call McCraw Forest Management for a free consultation, 601-408-0615, www.mfmland.com.

For Sale: 110 Acres, Large Camp: 2 bedrooms/kitchen, Large barn, Creek/river frontage, located on the Okatoma River, Seminary. Asking \$650,000. Call: 601-517-2770

Jones County +/- 8 Acres. Beautiful Home/Mobile Home site with power and water in place. Located on the corner of Overtt Moselle Road and Beech Cemetery Road. Property contains road frontage to the north, south, and west,

and 16th section land to the east. Scenic landscape with area to build a pond. \$30,000. Call Bennett 601-913-0340 at Walley Properties, LLC

4 3/4 acre homesite, South Jones County, Blueberry Lane off Jordan Rd. between Ellisville and Moselle. Heavily wooded. No trailers allowed. 601-310-6525.

Highlands. Finance a lot, \$1500 down, pay for your lot over 3 years - then use your lot as down payment at your bank. Call: 601-649-9459.

Jones County- 29+/- acres. Only minutes south of Ellisville on Bucks Drive. Beautiful rolling terrain with mixed pine/hardwood timber. Perfect small farm or residential property. Priced at \$87,000.00. Property can be divided. For more info call Bennett 601-913-0340 at Walley Properties, LLC. walleyproperties.com

+/- 219 Acres Located just outside of Topton, AL, and one hour from Mobile, AL. Has road frontage on CR 19 along with power and water available. Has great secluded House/Camp Site, Bilbo Creek runs through the property. Has Lake. \$306,600. Call McCraw Forest Management for a free consultation, 601-408-0615, www.mfmland.com.

20 acre farm/ranch in Janice, Ms. With custom built home, wrap around porch, Pond, horse stalls, fenced and cross fenced, huge shop. Bordered on two sides by National Forest lands. Lots of wildlife call Shawn, Southern Coastal Realty, LLC 601-408-3570.

Continued on ... Page 3

EAGLE CARPORTS & BUILDINGS
GARAGES STARTING AT \$2,215
 NOW OFFERING RENT TO OWN NO CREDIT CHECK
 CALL JOHN FOR DETAILS 601-323-0464
 MANY OPTIONS, PLANS AND SIZES AVAILABLE • FINANCING AVAILABLE *WAC
 WWW.ELLISVILLEMOTORS.COM • 303 HWY. 11 S. ELLISVILLE, MS • LOCATED BETWEEN PIZZA HUT & JCJC

Deer Hunters
 Its time to put out minerals for Horn Mass and overall health of your deer herd.

25# Record Rack Deer Minerals \$12 ⁹⁵	25# Antlermax Deer Minerals \$9 ⁹⁵	50# Iron Clay Peas \$39 ⁹⁵
50# Pennington Spring & Summer Game Mix \$39 ⁹⁵	50# Perodovik Sunflower for planting \$30 ⁰⁰	50# Soybean Seed \$29 ⁹⁵

Safechoice Feeds are **\$2⁰⁰ Off** per bag

The Greenhouse is still open and its time to spray herbicides on yards, pasture and Gardens.

Old South Farm Supply COME SEE THE FRIENDLY STAFF AT OLD SOUTH, WE CAN'T WAIT TO SEE YOU!
 244 E. Hickory St. Laurel | 601-428-7447 Bo Welborn-Owner • Mickey Holloway-Manger

Hand Crafted Hand Picked
THE HIGH COTTON MARKET
 A Vintage Market
 •ANTIQUES •VINTAGE FURNITURE
 •COLLECTIBLES •FASHION ACCESSORIES
DOLLAR DAYS June 2nd, 3rd, 4th & 5th
 Select items \$1 each throughout the market.
 Open the first Thursday, Friday, Saturday 10 AM- 6 PM & Sunday 1PM-5 PM of every month.
 911 ROBINSON ST. • WAYNESBORO
 601-671-1742

LAUREL A-1
 Right behind the Laurel Police Department
TIRE CENTER
CAR MAINTENANCE SPECIAL
 On Most Vehicles Specials Expire June 4th

BRAKES
 Reg \$149.95 **25% OFF**

ROTATION
 Reg \$16.00 **25% OFF**

BALANCE
 Reg \$40.00 **25%**

ALIGNMENT
 Reg \$59.95 **25% OFF**

DIAGNOSTICS
 Reg \$59.95 **25% OFF**

A/C SERVICE AVAILABLE

219 Ellisville Blvd., Laurel, MS
 M-F 7:30 A.M.-5:00 P.M. SAT. 7:30 - NOON
601.425.4616

IMPACT
#1 in Advertising
 Ronnie Buckley Publisher
 Kevin Williamson Manager
 Jerry Clark Circulation Supervisor
 Ryan Griffin National Sales Consultant
 Betty Busby Laurel Sales Representative
 Kim Willbanks Laurel Sales Representative
 Jennifer Clark Graphic Production Manager
 Trish Irwin Graphic Artist
 Terica Roberson Graphic Artist
 Candice Pittman Graphic Artist
 Russ Farris Graphic Artist
 Sherry Hearn Administrative Assistant
 Linda Cranford Writer/Photographer

WHILE THE IMPACT makes every effort to verify the offerings made in these ads, we cannot guarantee the integrity of every advertiser. We strongly recommend that readers investigate the companies involved before sending them any money.

Classified and ROP Ad Deadline
 Sunday Edition - Wednesday at 12:00 Noon
 Wednesday Edition - Thursday at 3:00

IMPACT
 1010 N. 16th Ave
 Laurel, MS 39441
 Ph. 601.649.1129
 Fax: 601.649.0424
 Email: admin@laurelimpact.com

VISA MasterCard DISCOVER AMEX

Circulation Audited by CIRCULATION VERIFICATION COUNCIL

IFPA EDA of Jones County

catnapper
LIVING ROOM GROUP

WITH LATEST COMFORT TECHNOLOGY

Comfort Control Panel
 Power Recline/Power Headrest Feature
 Comfort Control Panel Technology
 Lay Flat Reclining
 Comfort Coil Seating Featuring Comfort-Gel

Alexander's FURNITURE
 Bay Springs 601-764-2161

LOW COST DENTURES SINCE 1978
DENTAL SERVICES OF SOUTH MS. P.A.
GENERAL DENTISTS
 2019 Hardy Street • Hattiesburg, MS

- Dentures
- Reline
- Partial
- Repair

Call Toll Free
 Within 55 Mile Radius
 (601) 545-1905
 (877) 545-1905



LISTING OF THESE PREVIOUSLY MENTIONED AREAS OF PRACTICE DOES NOT INDICATE ANY CERTIFICATION OF EXPERTISE THEREIN.

AUTO & EQUIPMENT AUCTION

SATURDAY, JUNE 11TH • 9:00 AM
Autos, Pickups, Trucks, Equipment

Turning Point Auctions
 34 Chester Brown Road, Hattiesburg • (601) 336-6637
 www.turningpointauctions.com MS LIC #1176 & 1226

Taking consignments thru Wed, June 8th

Quality Aluminum Fencing & Automated Security Systems



Commercial & Residential
 Many Styles

TONY THORNSBERRY
601.577.0927

Jones County- 62+/- acres. Only 5 minutes southwest of Ellisville on Slayton Road. This property has recently thinned pine plantation. Best suited for timber investment, mini farm or residential. Can be divided. \$235,600. For more info call Bennett 601-913-0340 at Walley Properties LLC, walleyproperties.com.

0615. McCraw Forest Management, www.mfmland.com.

601-466-2199 www. MassageOne.us
 May your days be stress free!

Lakes Mall) Meridian, 601-701-0300. 1722 Veterans Blvd., (Edgewood Mall) McComb, 601-250-4800. *see store for details.

Hendry's Catfish Farm: Channel Catfish, Catfish Fingerlings, all sizes, Grass Carp, Koi (Japanese Goldfish), Coppemose Bream, Red Ear Native Bream, Florida Bass, Large Mouth Bass, Pond Management. 601-735-9870, 601-818-3182, Waynesboro, State Licensed Hatchery, a private enterprise.

WANTED TO BUY
 I buy junk cars, buses and heavy equipment. U Call. We Haul! We pickup 24/7. Call 601-297-2778.

+/- 35 Acres Located South of Quitman, MS on CR 276 just off of CR 250 in the Hale Community, this tract has Mixed Hwd/Pine Timber. Great Home or Camp Sites. Great Hunting. Power/Water Available. Don't miss this GOOD DEAL!! \$49,000. Call us for a free consultation. 601-408-0615. McCraw Forest Management, www.mfmland.com.

Jones County 50+/- Acres- NEW LISTING- South Jones County fronting on Hwy 29. Improved pasture with ranch style brick home. Home is approximately 1900 square feet with 3 bedrooms and 2 baths. Two additional outbuilding for storage. Excellent small farm or country estate. Priced at \$205,000.00. For more info call Walley Properties, LLC at 601-477-3014. walleyproperties.com

PRODUCE

Mama's Mattress Max!!! 20 different styles to try out. Sets start at twin \$145, full \$165, queen \$185, king \$295. Will split sets. Blackwell's Furniture 5200 Hwy 84 West at Calhoun. 601.649.6111.

Slade Channel Catfish Fingerlings, Bass, Bream, Grass Carp, KOI fathead-tuffy Minnows, Electrofishing, etc. Free water analysis. State licensed. Randall Slade 601-796-2000 www.sladesfish.com

POOLS

Be cool in your own pool. Selling affordable family fun for over 35 years. Many sizes to choose from. Denson's Above Ground Pools, Hattiesburg, 601-582-9541.

+/- 140 Acres Located in North Jasper County on County Rd 2424 in Garlandville, MS. 5 Bedroom/3 Bath with huge den/game room and large deck overlooking a pond with pier and gazebo. Large Metal Shop with skinning station. RV Hook Up. Property is fenced all with a 60 foot clearing all the way around the property boundaries. +/- 70 acres of pre-merchantable pine plantation, +/-40 acres of Hardwood, and +/-25 acres of Merchantable Pine/Hwd. \$371,000. Call McCraw Forest Management for a free consultation, 601-408-0615, www.mfmland.com.

I buy timber and timberlands. Call Shawn at 601 408 3570.

PETS

For sale very nice desk for home use. \$150. 601-649-0021.

WEDDING

TIMBER AND LUMBER

Cypress Lumber for sale. Rough or planed. T&G&V and beaded. Beveled and log siding, white and yellow pine and Poplar. T&G&V. Cypress beams, cut up to 32 foot long. Open 7:00AM-3:30PM, Monday-Friday, Saturday, 7:00AM-12PM. 601-315-5533, fax 601-344-0950. frankssawmill.com

+/- 40 Acres Located on CR 511,15 miles East of Quitman, MS this tract has Bucatunna Creek running through the property. REDUCED \$60,000. Call McCraw Forest Management for a free consultation, 601-498-9143, www.mfmland.com.

Small CKC Chocolate Chihuahua puppies, 6 weeks old, first shots. Female \$300; males \$250. Please call 601-600-6836 or 601-818-3314, anytime.

FISH

Now booking for weddings, receptions, and rehearsal dinners. We have the perfect setting for all occasions! 601-765-8812, email: woodlandtrails4@yahoo.com, website: Woodlandtrails-ms.com

Land sales: Let us assist you with your land sale or purchase. We provide full service forestry consulting and land brokerage. Call McCraw Forest Management for a free consultation. 601-498-9143

FURNITURE

Brewer Fishery. Coppemose, Shell-cracker and Hybrid Bream, Black Crappie, Channel Catfish fingerlings, Bass, Fathead Minnows, Grass Carp, and Gold Fish. State licensed and delivery available. www.istockponds.com 601-270-1268, 601-989-2466.

MESSAGE

2 Coaster dressers, almost new, \$100 each. Call 601-622-9479.

Computer desk and printer. \$200. 601-433-0907.

Message One. \$45.00 Introductory 1 Hr. Massage session. By Robert Lowe L.M.T.#1362. Call to book yours today!

25% Storewide* Plus 12 months no interest* Plus 6 years no interest* Hyland 5-piece dining room, now only \$899. Cloverfield sofa, now only \$699. Ashley Homestore, 6143 US Hwy 98, (Turtle Creek Crossing), Hattiesburg, 601-602-0200. 1187 Bonita Lakes Circle, (Bonita

Jones County- 48 +/- Acres. Located just north of Springhill Road/Hwy 15 intersection. Great Homesite With excellent recreational Opportunities. \$144,000. Walley Properties, LLC. For more information contact Marc Avary at 601-670-5429. walleyproperties.com.

Tutoring Club
 A Class Above. Guaranteed.SM
 2002 HWY 15 N. • Laurel
 601-425-0065




WHAT'S ON YOUR SUMMER SCHEDULE?
 • SWIMMING? • RELAXING? • VACATIONING?
 • LOSING 3- 6 MONTHS OF MATH SKILLS?
 • FALLING BEHIND IN READING?

LET US HELP!
<http://www.tutoringclub.com>
laurelms@tutoringclub.com

Total Foot Care Clinic of Laurel
 NOW OPEN EVERY THURSDAY AND FRIDAY



Dr. Michael Zaleski, Diplomat Board Certified



Dr. Gachavis M. Green, Board Qualified Foot Doctor

FOOT PROBLEMS?? WE REMEDY THEM ALL!!!

• Medicare • Medicaid • BlueCross BlueShield & most insurances accepted

601.268.0400
 30 Circle J Drive • Laurel

Price reduced: Wayne County 65 +/- acres Willie Varner Road. The property would make an excellent home site or recreational property. Underground power and water are in place. The property consist of 6 acres pasture, an 8 acre pond, and 51 acres of 15 year old pines that are ready to thin. Price reduced to \$149,500. Property offered by Walley Properties LLC, contact Marc at 601-670-5429 or email marcavary@walley-forestry.com.

Jones County +/- 57 Acres Must See! Only 5 miles south of Ellisville on Busby Road. This Property has recently been chipped, leaving residential/shade trees which would make for the perfect homestead, or Chicken/ Cattle Farm. \$150,000. For more information call Bennett 601-913-0340 at Walley Properties LLC or visit walleyproperties.com



JAY SWINDLE
 Senior Vice President | Lending

47 acres Wayne Co., Maynor Creek Reservoir Road. Good timber, barn, (2) water wells, pond/lake, good hunting, road frontage. 601-735-9553 or 601-671-1099.

+/- 120 Acres Located 3 miles South of Waynesboro off Hwy 63 in Clara, 13 Year old pine plantation, Rolling Topography. Suitable for Timber Management, Recreation or Development. \$330,000. Call us for a free consultation. 601-408-

NO ONE LIKES TO IRON!
 — LET US HANDLE IT FOR YOU! —
LAUREL QUICK IRON
 Come by and see: Angie Creel & Sandy Anderson



PRESS PANTS \$2.50 each

We offer a Clean Facility in a Safe Location, with a Friendly Attendant Available 7:30 am - 5:30 pm

WASH & DRY COIN LAUNDRY

SIDE BY SIDE AT... MONDAY - SUNDAY 6AM - 11PM
3105 HWY. 15 NORTH, LAUREL 601.498.5898

First State BANK

POULTRY LOAN SOLUTIONS

- New Construction
- Facility Improvements
- Purchase
- Expansion
- Refinancing
- Real Estate

301 S Court Street | Ellisville, MS 39437
 OFFICE 601-477-9490 | FAX 601-477-2724
 NMLS #415383 | jswindle@firststatebnk.com

Member FDIC

LAUREL A-1 TIRE CENTER
 Right behind the Laurel Police Department

TIRE SPECIAL
 225/60R16

\$55.95 Each

COOPER TIRES
 AMERICAN MADE

PLUS TAX, MOUNTING & BALANCING

219 Ellisville Blvd., Laurel, MS
 M-F 7:30 A.M.-5:00 P.M. SAT. 7:30 - NOON

601.425.4616

Woodland Trails

FIRST SUNDAY LUNCH
 June 5th

Lunch Served Every Wednesday 11-1

27 DAN & JOYCE LANE, SEMINARY
 (1 MILE OUTSIDE COLLINS)

601-765-8812

WOODLANDTRAILS4@YAHOO.COM

RUSTIN METAL BUILDINGS AND CONSTRUCTION

Laurel, Mississippi
 Rustin Construction Since 1933
 COMMERCIAL • RESIDENTIAL

26 Gauge Colored Panels
 Licensed General Contractor

NO JOB TOO BIG OR SMALL

CALL FOR CURRENT PRICES! **601-649-9949**

June 1
 The Laurel Housing Authority will participate in its 10th year of the Summer Food Service Program partnered through the Mississippi Department of Education-Office of Child Nutrition. Meals will be provided to all children ages 18 and under without charge and are the same for all children regardless of race, color, national origin, sex, age or disability, and there will be no discrimination in the course level of the meal service. The program is held from June 1- July 29 and closed July 4. For more information concerning the program, please contact Felicia Jackson or Barbara Gavin at 601-425-4651.

June 2
 Jones County Junior College women's basketball will host a Fundamental Camp and Team Shootout in June. The Fundamental Camp will be June 1-2 from 9-11:30 a.m. The camp is for girls in grades 4-9 and cost is \$45. The Team Shootout will be June 11 and June 17. The cost is \$200 per day per team. For more information, contact JCJC women's basketball coach Missy Bilderback at 601-606-3623 or missy.bilderback@jcjc.edu.

June 2
 Jones County Junior College football will host three 7-on-7 team camps in June. There will be an Open Tournament on June 2; 1A-3A classification on June 9; and 4A-6A classification on June 16. Cost is \$175 per team, cash or check only. Teams will be guaranteed four games each. There will be pool play in the morning with a bracketed, double-elimination tournament in the afternoon. Coaches will be responsible for lunch and concessions will be available for purchase. The 7-on-7 team camps will be limited to 16 teams each date. To register, please contact JCJC Director of Football Operations Tara Weisshaar at 601-477-1189 or tara.weisshaar@jcjc.edu.

The North Hoy Neighborhood Watch will meet on Thursday, June 2 at 6:00 p.m. at the Trace Community Center on County

Barn Road in Shady Grove. Anyone in the area is invited to attend.

The final production of Laurel Little Theatre's 55th Season of "A Year Of Thrills & Chills" runs next week with Disney's thrilling "Peter Pan Jr" under the direction of Brenda. Show performances are: Thurs., June 2, 7:30 p.m.; Fri., June 3, 7:30 p.m.; Sat., June 4, 4:00 p.m. and 7:30 p.m.; Sun, June 5, 2:00 p.m. This is LLT's annual summer Kids' Camp production that features a cast of 100 kids, and you can get a single ticket or use a punch on your LLT season ticket to see the performance. Laurel Little Theatre's reservation line for "Peter Pan Jr" answers 24 hours a day at 601.428.0140.

June 3
 Hills Chapel MB Church, 105 SCR 1860 in Louin, invites you to our "Women's Conference 2016" on Friday at 7:00 p.m. The theme is "Transitioning Women for God's Plan and Purpose." The speaker for the occasion is Minister Kajsa Cole of Kajsa Cole Ministry, Inc., Meridian. Also, psalmist Billy Johnson and God's Creation will be guest for this event.

Lauren Rogers Museum of Art will hold its annual Blues Bash Friday from 6:30-10:30 p.m. on the Museum's front lawn. The Bash will feature music by Johnny Sansone. Tickets are \$25 each and include barbecue by Hog Heaven of Laurel and beverages by Southern Beverages, Slowboat Brewing Co. and Coca-Cola of Laurel. Tickets may be purchased at the LRMA front desk or by contacting 601-649-6374 or info@LRMA.org. Tickets may also be purchased online by visiting www.LRMA.org.

June 4
 Stringer High School class of 1964 will be having their class reunion at Charlie's Catfish in Ellisville at 1:00 p.m. Any questions, call Lena at 601-764-8869.

The annual Pryor reunion will be Saturday at Pleasant Grove Baptist Church, family life center, Wayne County, from 10:30 a.m. until. Bring your favorite food and enjoy the day. All relatives and friends are invited.

PEO (non-profit organization that provides educational opportunities, scholarships and awards for women) will be having a rummage sale on Saturday from 7:00 a.m.-1:00 p.m. at St. John's Episcopal Church Parish Hall, 541 North 5th Avenue. There will be lots of everything for everyone. Clothing, furniture, toys, household items, decorative pieces, electronics and so much more. Please use back entrance.

Oakland Grove Baptist Church, 2475 Pleasant Grove Road in Laurel, will kick off VBS on Saturday from 3:00 - 4:00 p.m.; come enjoy the playground and pre-register. VBS will be June 6 - 9 from 5:45 - 8:30 p.m. Please drop off children in the front parking lot of the church and pick them up at the drive thru on the cemetery side.

The 5th Annual Jason Campbell FCA Football Camp is set for Saturday at JCJC. Youngsters aged 7 to 17 are invited to the annual FCA camp, where area coaches teach and reinforce the fundamentals of football. Admission is free. All campers will receive a t-shirt & lunch. Campbell, a former Taylorsville and Auburn standout, played 12 years in the NFL as quarterback. Two-time Super Bowl running back Brandon Jacobs will also be in attendance along with several other former NFL players. All campers must sign a release form. All information can be found at pinebeltfca.org, click on camps. Or email FCA Multi-Area Director Mitchell Williams at mitchellwilliams@fca.org.

June 5
 Bluegrass Gospel Music by The Harper Family, will be in concert at Trinity Baptist Church Hwy 15 N in the Shady Grove Community Sunday at 6:00 p.m. Everyone is invited. A love offering will be received. A nursery will be provided.

Eucutta Independent Church, 126 Springhill Church Road in

Shubuta (Wayne County) invites you to our homecoming service on June 5. Morning worship will begin at 11:00 a.m., followed by lunch and singing in the afternoon featuring "Master's Voice." For more information, call 601-735-0064 or 601-577-9023.

June 6
 Glade Baptist Church, 72 Triangle Drive in Laurel, will be having Vacation Bible School from June 6-10 from 8:30 a.m. - 12:00 p.m. The theme this year is "Submerged: Finding Truth Below the Surface." This will be for kindergarten-6th grade. For more information, call the church office at 601-649-4246.

The Smith County Republicans will meet Monday, June 6, 2016, 7:00 pm at the Chancery Court Building in Raleigh. Anyone interested in building a strong, conservative Republican Party in the county is invited to join us.

June 7
 East Laurel Pentecostal Church will be holding its annual rummage sale on Saturday, June 4 in the parking lot next to Sonic from 8:00 a.m. until 2:00 p.m.

June 10
 Jones County Junior College football will host a Combine/Instruction Camp at Bobcat Stadium/Sim Cooley Field. The camp will include pro testing as well as position specific instruction and drills. Players must bring a current physical and cleats. Cost is \$20 per athlete - cash or check only. Registration begins at 8 a.m. and the camp starts at 9 a.m. For more information, contact JCJC Director of Football Operations Tara Weisshaar at 601-477-1189 or tara.weisshaar@jcjc.edu.

June 12
 Southern Cross Animal Rescue will hold its inaugural Brews for Bullies event June 12 at Slowboat Brewing Company in Laurel. All monies raised throughout the day will go toward SCAR's vet bills. Fundraisers include pulled pork plates, t-shirts, a special event glass created for the event, and several raffles. One raffle is for the chance to win one of two guns: a Henry Classic Lever Action .22 or a 9 mm Smith & Wesson M&P Shield. Gun raffle tickets are \$10 each, and the drawing will be held at the event (Winner must complete a background check before receiving the gun). In addition to the fundraisers, live music will play throughout the day with guest musicians and bands donating their time and talent to the cause. The lineup includes Chad Knight, Ryan Hughes & AmyLynn, Phat Alley and The Strays. Slowboat Brewing Company will provide tours of the brewery. Samples of all Slowboat beer (to those of legal drinking age) and a special event glass will be provided for a small donation to SCAR. The day's events will be held from noon - 6 p.m., and is open to all ages. Slowboat, Mississippi's artisan brewery, is located at 318 W. 5th Street in Laurel. For more information, contact Slowboat at slowboatbrewco@gmail.com or SCAR at 601-433-5807.

Brady-Evans Reunion June 12th at Tucker's Crossing Community Center. Come see your relatives, bring food to share at lunch and old photos, if you have them. For more information call 601-426-9834.

June 13
 Evergreen Baptist Church (Eucutta) will have VBS starting June 13th to June 16th from 5pm to 8pm. Ending with Family Night on June 17th at 6:30. Need a ride call 601-687-9946.

June 14
 Free Community-wide Summer children's musical, "Kidz Under Construction," will be hosted by Highland Baptist Church in Laurel. Rehearsals will be on Tuesdays and Thursdays 10:00 a.m. Noon beginning June 14 thru July 28. Musical performance is July 29. Children who have completed Kindergarten thru 6th Grade are welcome to join us for this great event. For more information and registration for this free event go to highlandchurch.net and click on "music ministry."

Miscellaneous
 On the last Tuesday of each month, Covington County Hospital hosts a cancer support group at 5:30p.m. in the hospital's classroom. For more information, visit www.facebook.com/covingtoncountyhospital or call 601-765-6711.

DRIVERS
 Class A

\$1,500 SIGN ON BONUS

► HOME DAILY ◀
 AVG. \$550 - \$600 PER WEEK

- SAFETY BONUS
- PAID ORIENTATION
- MEDICAL & DENTAL AVAIL.

6 Day Refresher Course Available
 Forest Products Transports EOE

855-795-7598

Apply online at www.kllm.com

ABSOLUTE AUCTION
 SELLING PERSONAL PROPERTY OF THE LATE HALEVANS OF MOSS

1564 County Rd. 8 • Moss, MS 39460
 SATURDAY • JUNE 11, 2016 • 10:00AM

Follow Auction Signs. Terms: 10% buyer's premium on purchases
 • MS Sales Tax applies • Full payment day of sale.

Auction items can be inspected beginning at 8:00 a.m. June 11, 2016

- Blue Max 8000E Generator, 13 HP • Coleman 2000 Watt Generator • Coleman 2500 Watt Generator
- Yellow Inverter Generator • 8 Ladders, 6-4to6ft Step, 2 Long Ladders • Gas Ryobi Weed Eater
- Acetylene Welding Kit • Small Air Compressor • Whirlpool Stand Up Freezer
- Kenmore Kitchen Refrigerator • Kenmore Washer and Dryer • 2 Eden Pure Quartz Heater
- Kitchen Table and 4 Chairs • Box of Pots, Pans, Kitchen Wares • Wheel Chair • Chest of Drawers
- Two Bedroom Side Tables • Bed and Box spring, frame, new condition in bag • Delong Heater
- 2 Vacuum Cleaners • 4 Battery Operated Small Lanterns • 3 Skihl, other Drills- 12 volt, 18 volt
- Skill Saws • 2 Misc. Tool Boxes, Tools • Troy Built Super Bronco Riding Lawn Tractor 60TG
- 1998 GMC Suburban V8 • 2 Briggs and Stratton Push Mowers, used and one new 4.5 HP in box
- Covered 5x8 Utility Trailer • Northern Tool 5x9 Flat Bed Folding Utility Trailer
- Trailer Towing Bar new condition • 1985 14.5 ft. Sears Game fisher Fiberglass Boat • 1982 Cox Boat Trailer, Spare Tire • 12 Rolls new barbed wire • 12 sheets 4x8 ply-board • Small 3x4 Trailer for Lawn Tractor
- Swords • Portable Blow Forge Equip. • Rifles • Shotgun • Metal Gun Cabinets --MUCH MORE!!

LARRY SIMS AUCTIONS
 LICENSE NUMBER 231
 601-319-9959 • 601-426-9950
 FAX: 601-426-9959

Butler Dental
 Across from Court House, Butler, Alabama
 Julie Utsey, D.M.D.P.C.
 General Dentistry
 205-459-2700 1-888-851-8512
 Tuesday thru Friday 8 a.m. - 5 p.m.

- ONE DAY DENTURES
- PARTIALS AND EXTRACTIONS
- FREE CONSULTATIONS

	Single	Set
Set Standard Dentures.....	\$200.00	\$300.00
Set Deluxe Dentures.....	\$350.00	\$600.00
*Reline Included: Savings of \$130.00 per unit		
Set Custom Deluxe Dentures	\$550.00	\$1,000.00
*Reline Included: Savings of \$130.00 per unit		
Cast Metal Partial - \$625.00	• Acrylic Partial - \$200.00	
• Extractions - \$100.00	• X-Rays Included	
• Simple Extraction - \$70.00	• Surgical - \$100.00	

DS CONCRETE CONSTRUCTION SERVICES
 No job too LARGE or small
 • FINISHING • SET-UP • FOUNDATIONS
 • PATIOS • SIDEWALKS • DRIVEWAYS

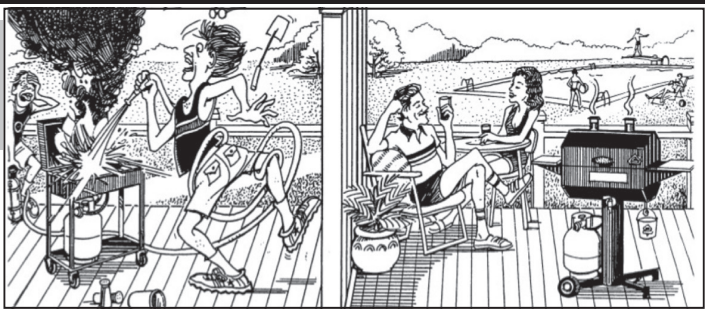
DARREL SPEED-Owner
 601.433.1073 Cell
 601.729.8228 Home

NEED CASH FAST?

COME SEE TIFFANY
 CITY PAYDAY LOANS
 CAR TITLE LOANS

716 SPRING STREET
 WAYNESBORO

601-735-5353



Desperation! Relaxation.
The only grill **GUARANTEED** not to flare -up! Accept No Imitations!



MAKE DAD HAPPY!
Remember **Father's Day** June 19th

We Carry the Full Line of Holland Grills
Alexander's
SELECTION • SERVICE • VALUE
Holland Grills In Bay Spring Only

Bay Springs 601-764-2161
Ellisville 601-477-3312

Know the value of your timber before you sell. We provide timber appraisals and help landowners market their timber for the highest value. Walley Forestry Consultants, Inc., www.walleyforestry.com, 601-477-3014.

FLEA MARKET
Family Flea Market and Flooring open Monday-Saturday 9:00am-6:00pm. 52,000 Sq Feet of space. 3 buildings to explore with over 170 Vendors to visit. 1107 B Street, Old Hulett Warehouse, Meridian. 601-286-3521.

VACATION
Gulf Shores Condos, \$125/night. Houses, \$250/night. Weekly specials available. Connie Daughdrill 1.251.510.3090.

ESTATE SALE
Estate Sale: Saturday, June 4th. 1050 Cold Springs Road, Collins MS. (The first house on the right off Hwy 49 S) furniture, glass, china, children's toys, clothing & more. Cash preferred.

GARAGE SALES

207 Pineview Drive, Friday & Saturday, June 3-4. Downsizing, some furniture, clothes ladies sizes 2x-12. Household and kitchen items. Queen mattress & springs, queen metal bed frame. New items both days.

June 3-4, 20 Devereaux Dr., off Hwy 29 N toward Soso. Patio table & chairs, dog house, baby items & clothes, linens, small furniture, clothes, glassware, some old glassware, lamps, odds & ends.

Multifamily garage sale 5/10-11 7am 2096 HWY 528 baysprings. Baby items TV clothes pooltable(500)

Huge Rummage Sale: June 4, 5259 Hwy. 84W. Plus size through medium women, children, men. Toys, what-nots, small appliances, table w/chairs. Chevron Parking lot.

Rummage house, 3160 Ellisville Blvd., Laurel. Clothes all sizes, shoes, odds & ends, appliances, furniture. 601-433-9856. Mon-Fri 9-5, Sat. 7-2.

366 CR 1521. Friday, June 3 from 8:00-5:00 and Saturday, June 4 from 11:00-3:00. Baby items, outside toys, books, bottles, car seats, home decor, bedding and more.

Huge-Moving, Estate, Rummage Sale. Friday-Saturday, June 3rd-4th, 7am-until. 631 Claiborne Road (Sharon-Sandersville Rd. turn by break-a-way campers, go 2 miles north). Fishing, hunting, golf clubs, tools, treadmill, medical equipment, small appliances, kitchen items, retail clothes racks, furniture, knives, decorative items, more. Also bake sale.

MUSICAL

Gibson Electric Guitar ES-137, sunburst finish. Like new. Fender Blues

Jr. tube amp. \$1200 for both. 601-428-1401.

Lynn Evans Piano Service: Registered craftsman with Piano Technicians Guild. Used pianos for sale. B.M.E. USM. 601-729-2823

BUILDINGS

Commercial building for sale or Lease located at 17 Perry Road, Laurel, Ms, 1.5 miles from city limits in a small industrial park on victory road. It has 22,600 sq ft on 2.4 acres completely fenced with 3 gates. It has 6-8 inch concrete slab floors, 3 phase electrical service, 6 roll up doors, 5 walk thru doors, 1 full bathroom with shower, and a half bath, 14 ft eaves, 2 Inside Offices with a Separate Office Building Outside that also has 2 offices inside it. Priced at ONLY \$455,000.00 For more information call Oliver Joyner with CrossRoads Realty at 601-917-2781

Carports and Buildings: Financing Available! 22Wx26Lx9T- \$5,050 , 24Wx-31Lx9T- \$6,010 Fully Enclosed with two 9X8 Roll-up Doors. Price includes installation. We also offer storage buildings and barns. Call John @ 601-323-0464, 303 Hwy 11 S, Ellisville (between Pizza Hut & JJC)

Best Rent-to-Own deal around! Call us for all your building needs. Chatham Enterprises 601-727-4951

Farm Barns. 40x30x16-\$9500. 30x30x10-\$7500. Metal roof and sides. Price includes labor. 601-296-0550.

PORTABLE BUILDINGS

Best Rent-to-Own deal around! Call us for all your building needs. Chatham Enterprises 601-727-4951

For Lease: 40/50 Metal building located in Seminary on Cranford Drive. 2000 SQ FT, Commercial Grade. Double roll up doors, extra re-enforced concrete slab, and multiple electrical outlets on interior. For more information; or to schedule a walk thru call 601.517.7222

Continued on ... Page 6

ELLISVILLE FARMERS MARKET
TUESDAY
JUNE 7 THROUGH AUGUST 9
4:00 - 6:00 PM
Community Bank Park
601-477-3323

Audiology Services
Hearing Health Care
DeAnne Harris, M.S., CCC-A
Certified Audiologist
Credentials & Service Make the Difference

- ◆Bachelor's Degree in Communicative Disorders
- ◆Master's Degree in Audiology
- ◆Certified with American Speech & Hearing Association
- ◆Private Practice in Newton for 19 years

601.683.3086 Newton, MS
TheAudiologyServices.com

FISH DAY!
IT'S TIME TO STOCK YOUR POND!
Delivery Will Be:
Wednesday, June 15
Taylorsville 3:30-4:15 pm
At Taylorsville Farm Supply
Thursday, June 16
Ellisville 12:45-1:30 p.m.
At Ellisville Farm & Garden
Bay Springs 2:15-3:00 p.m.
At Circle L Farm Supply

"LIKE" us on Facebook!
FISH WAGON
To Place an Order Call
1-800-643-8439
WWW.FISHWAGON.COM

CATTLE BUYING YARD
Buying All Classes of Yearlings & Calves
NO COMMISSION & NO SHRINK
Every Monday: 7 a.m. - 12 p.m.
Or By Appointment
CALL FOR DIRECTIONS
Levi Rogers: 601-315-1009
REASONABLE TRUCKING IS AVAILABLE...CALL FOR A QUOTE
Hwy 28, 7 Miles West of Magee, Mississippi

COMING TO HATTIESBURG SUMMER 2016!
UPDOWN
INDOOR TRAMPOLINE PARK
101 SOUTH 41ST AVENUE

9 a.m. - 1 p.m.
Thursday
June 2, 2016
South Central Place
2260 Hwy 15 N
Laurel, Mississippi
NO ADMISSION FEE

I-59 JOB FAIR

Meet employers with job opportunities in many different fields.

For listings, visit jobfairs.ms.gov.

For additional information or help with your resume, contact your local WIN Job Center. For locations, visit us online at mdes.ms.gov.

WEIGHT LOSS SURGERY NOW IN HATTIESBURG!

SOUTHERN SURGERY BARIATRICS OFFERS:

- Laparoscopic Sleeve Gastrectomy
- Laparoscopic Gastric Banding

Don't go elsewhere for Weight Loss Surgery
Dr. Wesley Girod offers Weight Loss Surgery RIGHT HERE IN HATTIESBURG!

Greg lost **200 lbs**

•FREE monthly informational seminars!
•Very competitive Cash Price Packages!

139 FAIRFIELD DR. HATTIESBURG, MS 601-450-2418

SERVICE DIRECTORY

Where the Pine Belt goes to get things done!

Kubota
MASSEY FERGUSON

Chapman Tractor Co., Inc.

1510 Azalea Drive • Waynesboro
1-800-816-2826

JAY CHAPMAN
Sales
(601) 735-3103
(601) 735-3104
(601) 735-4461

Loving Care

Elderly Services

We offer a variety of elderly care services at home and the hospital

- 24/7 AVAILABILITY
- IN HOME & HOSPITAL

601-498-0005

Bonded Sarah Livingston owner

HAIGLER ROOFING & REPAIR

- New Construction • Leaks
- Repairs • Shingles • Metal
- Flat Roofs • Chimneys

FREE ESTIMATES
30 Yrs. Experience

Call Dennis Haigler
601-319-2522

WE'RE BACK!

1/2 Price STUMP REMOVAL

5 or more Avg. size with Truck Access

\$15 EACH

601-371-8733

EXP: 6/30/16

The Tree Barber
Matthew 16:26

PINE BELT GROUND CONTROL

- Mowing
- Lawn & Bed Edging
- Hedge Trimming
- Clean Up

601-577-4480

FARRIS

Mobile Home TRANSPORT

Statewide Moving
Licensed & Insured
Transporting since 1979

Tony Farris
601-422-4144

D & M LAWN SERVICES

- Tree Services
- Free Estimates
- Insured

Santana - 601-470-4562
Michael - 601-699-0912

Kimble Coats Owner

CONSTRUCTION

- New Construction
- Remodeling
- Decks
- Vinyl Siding
- General Construction
- Foundations & Slabs

601-433-6996

Right at Home
In Home Care & Assistance

The Right Care---Right at Home
Locally Owned

In Home Care & Assistance
Do you or someone you know need help with:

- Transportation to Appointments
- Grocery Shopping/Hair Appointments
- Light Housekeeping
- Recovering from a Hospital Stay
- Basic Companionship
- And Much More!

FREE CONSULTATIONS
601.426.6333

DANIELS PLUMBING SERVICES

Your plumbing problem now has a solution

Call Day or Night

735-1827
381-1040

Owner: Michael Daniels
Waynesboro

BOLIVAR'S

Mobile Home Delivery & Setup

Statewide Moving

- Licensed
- Insured

Nathan Bolivar
601-580-9900

16TH AVENUE CHECK CASHING

- We hold your check for 30 days
- Get up to \$400 Cash for 30 days

601-428-1650
124 N. 16th Ave. • Laurel

CITY WAREHOUSE & STORAGE

WE NOW HAVE OFFICE SPACE AVAILABLE
\$150 MONTHLY
SECURITY SUSTEM & WI-FI INCLUDED

For more info:
601-433-9062

1213 N. 1st Ave.
Units range from:
5x10 to 10x20
\$25 - \$80

Office: Mon - Fri / 8-4:30
Gate Open Sat / 8-11.30

HANDYMAN

Sherman's Handyman Services. Painting, carpentry, plumbing, electrical, home remodeling, vinyl siding, metal roofing, trailer skirting. No job too small. 601-649-7187 or 601-422-8307.

SERVICES OFFERED

Painting, Remodeling, Drywall, Pressure Washing, Decks, Cabinets and more! Licensed, Insured, Affordable, honest, dependable Christian company. Commercial and Residential. Quality, professional work. Over 20 years experience. References available. Call for a free estimate. If no answer, please leave a message. We will return your call. Wilson 8:21 Painting & More. II Corinthians 8:21. 601-268-7603.

Lonnie LOFTON

Roofing Contracting

Since 1968

Free Estimates
All Work Guaranteed

Laurel, MS PHONE (601) 425-4484

Loving Care Elderly Services. We offer a variety of elderly care services at home and the hospital. 24/7 availability in home and hospital. 601-498-0005. Bonded, Sarah Livingston owner.

Quality Painting at affordable prices. Pressure washing and more. Licensed, Insured, Affordable, Professional, Christian company. Free Estimates. Commercial and Residential. References available. Wilson 8:21 Painting & More LLP II Corinthians 8:21. 601-268-7603

Flowers, Sand & Gravel: We now install septic systems, grinder pumps and spray systems. We deliver all types of gravel, fill material, sand, rock and topsoil, soil mix and mulch. Dozier and track-hoe service available. Foundations, roads, ponds, etc. We also have Above Ground Precast Storm Shelters, several sizes available. Give us a call. 601-498-5983 or 601-477-2767.

Lawn Care Services for Petal/ Hattiesburg area. Affordable prices. Call 601-544-8781

Pine Belt Ground Control. Mowing, Lawn & Bed Edging, Hedge Trimming, Clean Up. 601-577-4480.

Deb's Cleaning Service. House cleaning. 10 yrs experience. Free estimates. 601-686-3313.

Bobcat skid steer 100hp high flow with forestry mulcher head. \$125 p/hr. Land clearing pine plantation, hedgebushes,

etc... 601-580-3927 and/or 601-729-2344.

Lawncare: Serving Hattiesburg, Lumberton, Laurel, Sumrall, Petal, Brooklyn, Ellisville, Purvis and Moselle areas. Reasonable rates. 601-325-5008. www.fullservicelawncarems.com

Deep South Lawn Services. Reliable service with quality results. Austin McCordle, owner. Mowing service, edging services, leaf blowing and weed prevention services. Free estimates. Call 228-219-5199 or 601-344-8013. Deep-southlawnservices/Facebook.

16th Avenue Check Cashing: we hold your check for 30 days, get up to \$400 cash for 30 days. 124 North 16th Avenue, Laurel, 601-428-1650.

Reed's Metals, Inc. Metal roofing, metal buildings, pole barns. Buy direct from the manufacturer and save! 601-823-6516. www.reedsmetals.com

J & J Bush Hogging, Disking, Tilling - \$35.00 per hr., 4 hrs. minimum. Jimmy 601-408-6746, John 601-580-8413.

Purser's Power Wash

Free Estimates
Residential • Commercial • Industrial

MOBILE PRESSURE WASHING
601-517-0315

I buy junk cars, buses and heavy equipment. U Call. We Haul! We pickup 24/7. Call 601-297-2778.

Dozer, trackhoe, backhoe, bushhogging work, fill dirt, clay, gravel, sand, delivered, mobile home pads, ponds, driveways built, repaired, clearing, site prep, Mark Butler, 601-433-6459 or 601-425-1747

Flooring, all types. Remodeling, all types, decks-cabinets. For all your home improvement needs. No job too small. Commercial and residential. Licensed and insured, references available. Wilson 8:21. Painting, remodeling and more. II Corinthians 8:21. 601-268-7603.

Repair it, build it, fix it: kitchens, baths, sun rooms, decks. Free estimates, licensed and insured. Call 601-310-3473.

Tom's Trees: Professional bucket truck service. 30 years experience in the Pine Belt area. We do precision take down, shaping, trimming, and dead limbing. Free estimates, fully insured. Call cell: 601-433-0518 or 601-787-4783

Daniels Plumbing Services, Waynesboro, Your plumbing problem now has

TOTAL REMODELING

Specializing in Custom Showers and Bathroom Remodels

GARCO INC.
HOME IMPROVEMENT CO.
TOTAL REMODELING

Commercial • Residential • Insurance Claims

- Additions • Storm Damage Specialists • Kitchens • Baths
- Garage Enclosures • Decks • Porches • Patio Covers
- Siding • Painting • Drywall • Roofing • Flooring
- Pressure Washing • Termite Damage • Carpentry

STATE LICENSED • BONDED • INSURED

"Our Pride Is Your Pride In Our Work"
Established in 1989 • Locally Owned & Operated

LIKE US ON **facebook** **601-337-3825** We Accept All Major Credit Cards

Check out our webpage at www.garcohomeimprovements.com

FISH DAY
NOW IS THE TIME FOR STOCKING

- Channel Catfish • Bluegill (Reg. & Hybrid)
- Redear • Largemouth Bass • 6-11" Grass Carp
- Black Crappie (If Available)
- Fathead Minnows • Koi (If available)

Thursday • June 9, 2016

The Feed Store, INC in Waynesboro, MS • 1 p.m. - 2 p.m.

TO PRE-ORDER CALL ARKANSAS PONDSTOCKERS 870-578-9773
WALK UPS ARE WELCOME

a solution, call day or night, 601-735-1827, 601-381-1040

Bostick Tree Service: tree removal, stump and root grinding with precision for easy mowing and tree health, fully insured, free estimates, serving Pine Belt area, 601-283-8667

Dozer, trackhoe, Dirt hauling Residential/commercial sitework and landclearing, dozer/trackhoe work, trailer/house pads, roads, ponds. We haul clay gravel, rock, fill dirt, topsoil, sand and mulch. For estimate call 601-498-8485.

MISSISSIPPI WATER WELL DRILLING AND SERVICE

OVER 36 YEARS EXPERIENCE
Nelson Cain - Owner
601-344-1005
662-285-7046
Ovett, MS 39464

Portable Sawmill Service: .20 to .25 bf. 1000 bf minimum. Bull dozier service: \$65hr 5hr min. Call 601-433-3573 or 601-649-0744.

Tom's Trees: Professional bucket truck service. 30 years experience in the Pine Belt area. We do precision take down, shaping, trimming, and dead limbing. Free estimates, fully insured. Call cell: 601-433-0518 or 601-787-4783

Land clearing and stump grinding: will clear lots, fence/ property lines, etc.. will also grind stumps. we can offer lawn service please contact Ken at 601-300-9828 or email me at kwbyrd2015@gmail.com with your land clearing and lawn work needs

L and L Lawn Care Service: Quality Work at Affordable Prices! Mowing, Weedeating, Trimming, Pressure Washing, General Services. 16 Years Experience. Fall and Winter Clean Up. Fully Insured! Call Lewis for a Free Estimate today! 601-433-1531 or 601-477-3862.

Junk Cars: Get rid of those snake dens and rat dens. Bring 'em to us, or we'll pick 'em up! Springer Auto Salvage. Call 601-649-4238.

Grand Opening of New Law Office in Prentiss, MS. Divorce, Criminal Defense, Death Claims, Personal Injury, Bankruptcy, DUI Defense, Offshore, 18 wheeler accidents. Call for your consultation today. Jones Law Office, 2219 Columbia Avenue, Prentiss, MS. 601-582-9177

1/2 price stump removal 5 or more average size, 24in. diameter, 6in. tall with truck access. \$15 each. Expires 6/22/16. 601-371-8733. The Tree Barber, Matthew 16:26.

Thames Concrete Finishing: Set forms, patios, slabs, driveways, pool decks. Tear out and haul, True Finishing. Percy Thames. 601-543-8712.

B&B Tree Service: call the best for less, fully insured, senior citizen discount, 38 years experience, we do all

tree work and clean up at your request, bucket truck also available, call day or night, free estimates, may God bless you, Proverbs 11:30. 601-433-5257

Kool-Seal Mobile homes, travel trailers, campers, sheds, etc. Energy efficient, 10% reduction. Pressure washing available. Call Craig or leave message, 601-544-9614

KC Construction, Kimble Coats owner. New construction, remodeling, decks, vinyl siding, foundations, slabs. 601-433-6996

Flooring Hardwood floors, ceramic tile, linoleum. For all your flooring needs. Quality work, references available. Licensed & Insured. Wilson 8:21 LLP II Corinthians 8:21. 601-268-7603.

Miller Tree Service, bucket truck, professional, 30 years experience, insured; bob cat - dump truck and chipper available, senior citizen discount, free estimates, 601-498-3836, 601-649-0174.

Thrash Pressure Washing: Residential, Commercial & Concrete. Call 601-470-2296.

House Leveling Foundation Repairs. Replace bad sills, floor joist, or flooring. Sagging or shaky floor or dragging door, we can fix this. Let us make your foundation safe. Insured. 601-543-7007

Roofing & Repair, new construction, leak repairs, shingles, metal, flat roofs, chimneys, all types roofing and repair, free estimates, 25 years experience, call Dennis Haigler. 601-319-2522

PINE BELT GUTTERS & REMODELING

Specializing in seamless gutters, vinyl siding, patio covers, replacement windows & doors. We also offer gutter cleaning. 55647

WE WILL BEAT ANY COMPETITOR'S PRICE!

FREE ESTIMATES 601-265-6010

Quality Pressure Washing at affordable prices. Licensed, Insured, Affordable, Professional, Christian company. Free Estimates. References available Commercial and Residential. Wilson 8:21 Painting & More. II Corinthians 8:21. 601-268-7603

Seamless Gutters. 5 & 6 inch K-style, 6 inch half round, assorted colors, gutter covers, french drains, retaining walls, aluminum, copper and steel. Free estimates. Dan Beeson Enterprises, LLC. MSBOC Licensed and Insured. d.beeson@yahoo.com 601-447-8767.

CAMPERS

1996 Sportsmaster trailer, AC and Heat. Great condition, great for deer hunters. \$4900. New fence w/gate also for sale, \$1000. All for \$5900 or can sale separately. Located in Sandersville. Call 601-543-2418 or 601-649-5593, leave phone number and message.

Continued on ... Page 7

Hubbert Dental Clinic General Dentistry

June is National Men's Health Month!
Start at the top with your mouth and become healthier for yourself.

New Patients & Children Welcome!
Call for appointment and let us help you have a healthy life.

WE ACCEPT: Medicaid (Magnolia & United HealthCare) C.H.I.P.S. and Private Insurance.
• Exams, Cleanings and X-Rays are covered every 6 months. • Financing Available.

99 Highway 511 E. Quitman, MS 39355 Dr. Michael W. Hubbert D.M.D.
601-776-3370 Hours: Mon.-Thurs. 8-11am & 1-4pm Tanya Barnett R.D.H.

Buy Direct and Save!

REED'S METALS, INC.

Metal Roofing & Metal Building Manufacturer
601-823-6516

Metal roofs can save 25% on annual energy costs!

www.reedsmetals.com

Propane Industrial Gases

RESIDENTIAL COMMERCIAL INDUSTRIAL TANK SET SPECIAL

Ellisville: 601-477-3462
Collins: 601-765-6800
Hattiesburg: 601-583-6269
Taylorsville: 601-785-4789
Mon. - Fri. 7 A.M. - 4 P.M.

If Yours Is A Chiropractic Case Nothing Else Will Help You!
Make An Appointment With Us And Find Out!

We Accept Blue Cross Blue Shield, United Health Care, Medicaid and most other insurance.

DR. A. R. OLSON
134 Russell Dr. • Waynesboro, MS
Phone 601-735-9373

OFFICE HOURS: MON., WED., & FRI.: 8a.m. - 12p.m. 1p.m. - 5p.m.
Tues. & Sat. 8a.m. - 11a.m.

J&J JUMPS
 www.jandjpartyjumps.com
601-543-2928
 Find us on FACEBOOK

2001 Wind Sport Class A motor home manufactured by Thor. 35 ft. Centennial Model. 27K miles. New tires, Excellent Condition! Super Nice! Valued and insured at \$55,000. Make offer. 601.917.7661. Can be viewed at 7807 Espey Road, Meridian MS 39305.

MOBILE HOMES
 Largest used home selection in the South. Call 601-307-2114.

William Scotsman 14x80 Office Trailer. This is a 1998 top of the line office trailer. Four office, waiting area, handicapped bathroom, two porches, awning, power pole, central heat and

MAGIC CITY MOBILE HOMES
 The MAGIC is gone... Magic City is now on HWY 49 NORTH HATTIESBURG
601-726-9210

air, all axles, tires. This would make a great office, deer, fish camp or could be converted to a residence. Can be seen at 202 Mason St. (Southern Motor Co) Laurel, MS. Call Dickie Byrd at 601-319-5603. Price Reduced \$8000 or best offer.

1995 Crimson singlewide, 16x80, 3+2, move in ready, delivered for only \$16,900. Call 601-307-2114.

ASSUME PAYMENTS!
3BR/SW \$249 PER MO.
3BR/DW \$349 PER MO.
3BR/DW \$399 PER MO.
601-447-4538

Trade in Today 4 a new home!! Call Robbie 601-674-2643.

As the rainy season approaches, there's nothing like the sound of rain on an after-market tin roof. Come see this 2000 Capparet, 16x80, 3BR/2BA. recently remodeled with new vinyl, carpet and paint, \$19,000. Call 601-520-0710.

Stop renting and own your own home now. Single wides for \$400.00 a month and double wides for \$600.00 a month. Call 601-307-2114.

HELP FOR VICTIMS OF DOMESTIC ABUSE
DAFS
24-Hour Crisis Line
1-800-649-1092
 Toll Free in Forrest, Lamar, Marion, Jones, Covington, Wayne, Greene, Perry, Jasper, Smith, and Jefferson Davis Counties.
 • Temporary Shelter
 • Information, Referral, Advocacy
 • Support Groups
 • Counseling Service for Victims and Abusers
 • Community Education

Check this Big Boy out. 28x80, 4BR/3BA. with an office. This home has a large kitchen, laundry room, dining room, living room, with spacious master bed and bath for only \$38,888. Call 601-520-0710.

Bad Credit. No Problem. New, Used and Repo Homes. Call Magic Steve. 601-402-1139.

NEED A HOME? PAST CREDIT PROBLEMS?
 We have new, used, & repos with low monthly payments
601-296-7960

Foreclosure's, Repo's, Used and New Mobile Homes. Call Magic Steve Today. 601-402-1139.

Used Double wide for sale. 28x60 3+2 for only \$19,900. Call Chase today at 601-310-9262

Used doublewide, new roof, new paint, new flooring. \$24,900. Call Tony at 601-408-4347.

Magic City Mobile Homes has moved to Hattiesburg. Big sale on 2015's! Hwy 49 North. 601-726-9210.

Single wide, \$350 a month and double wides around \$550 a month. Call Chase today at 601-310-9262

Good, bad or no credit. Call Tiny today at 601-296-7960 to get a new, used or repo mobile home.

Wholesalehomecenter.com has new, used and repo singlewides and doublewides. Lowest prices in the state. Check us out on the web or call 601-296-7960.

2015 MODELS MUST GO! NEW DOUBLEWIDES AS LOW AS \$399 PER MO.
601-296-7960
 hattiesburgmobilehomecenter.com

Foreclosures, repos, used, land home packages, and New mobile homes. Call Chase today for details 601-310-9262

Single and Available, 14x70, 3BR/2BA., spacious home with new carpet, paint and vinyl flooring for only \$13,888. Call 601-520-0710.

Factory Direct pricing. Nobody beats our prices. wholesalehomecenter.com 601-296-7960.

MAGNOLIA STORAGE BUILDINGS, INC.
 244 E. Hickory St.
 Exit 96B / Hwy. 15 S.
 Laurel

- Utility
- Storage
- Office
- Workshop
- Barns
- Custom Outbuildings of all types...

Tony Thornsberry
 Cell: (601)577-0927

Upgrade Now!! We take trades. Call Robbie 601-674-2643.

Deer Camp special. 16x80, 3BR/2BA., perfect for a deer camp or a starter home. In need of a little work, but it's a steal for the price. \$4900. Call 601-520-0710.

TNT. Trade in Today!! We will give you maximum \$\$ for your trade on a new home. Call Robbie: 601-674-2643.

GOOD CREDIT. BAD CREDIT. NO CREDIT. NO PROBLEM!
 NEW, USED & REPO HOMES AVAILABLE. NO CREDIT CHECK. OVER 100 HOMES TO CHOOSE FROM. Payments starting at \$250 per month
 For more info, call Howard at **601-447-4538**

Single, low as \$375 month, doublewide, low as \$550 month. Call 601-307-2114.

Here at TB Sales our prices are falling with the season. This one is a must see to believe. A 2010 Southern 3BR/2BA. special order home, complete with a 4 ton a/c, fridge, stove, washer and dryer, \$15,500. call 601-520-0710.

2004, Zone 2, 16x80, total remodeled job, delivered for \$22,900. Call 601-307-2114.

Repo, single wide, Clayton, 16x80, 3+2. 601-310-9262.

Repo Special!! 2011 Cavalier 16x80 Windzone II 3+2 for only \$29,900. Call Chase today at 601-310-9262.

Used, 28x50 doublewide, must be moved. Only \$7,000. Call 601-307-2114.

Need Zone II or III home? Call 601-307-2114.

Home for the Holidays. Beautiful, 16x80, 3BR/2BA., completely remodeled with new carpet, paint and vinyl throughout. Full of upgrades, including a fireplace in the living room and a sliding glass back door. \$18,888. Call 601-520-0710.

We have Lenders that offer programs using land as down payment! Call Robbie 601-674-2643.

I buy used mobile homes for cash, call 601-425-5078

2001 16x80 Fleetwood, gray, 3br/2ba, c/h/a, total electric. Asking \$16,000, negotiable. Call 9am-5pm, 601-452-1840, 601-470-6129.

Continued on ... Page 8



NUTS
Neat Used Things for Sale
 a different kind of resale store
 Affordable Fun Fashion, Home Decor, Books, Furniture and Much More!
50% Off Clothing Sale on Sunday ONLY!
Monday - Saturday 9 am - 6 pm
Sunday 1 pm - 6 pm
 Parkside Plaza Shopping Center
 (down from Roses, Next to Plaza Bingo)
 986 North 16th Avenue • Laurel, MS 39440
 (601) 425-2666
 facebook.com/nutslaurel

NUTS is a fundraiser for The Good Samaritan Center, operating Laurel's only Community Soup Kitchen!

A CONTINUED QUEST FOR EXCELLENCE.

0% Financing Available
FREE SPRAYER
 with every riding mower purchased
 Model # 433. Retail Value \$799. Limited Time Only.
STARTING AT \$2,699
 Based on QTE452CEM42200
0% monthly interest for 42 MONTHS*
 On Purchases of \$1500 or more on Exmark Equipment with your Exmark credit card made between now and 10/31/2016. A \$125 Promotion Fee will be charged. 42 Equal Monthly Payments required. Limited time offer. See dealer for complete details.
 exmark.com

WAYNESBORO SALES & SERVICE
 721 Court St. • Waynesboro, MS
601-735-0201

TAYLOR'S SMALL ENGINE SERVICE, INC.
 2135 Ellisville Blvd. • Laurel, MS
601-649-1082

Summer Get A Way... with a little help from us...
LAUREL LOANS, INC.
601-649-7121
 744 West 5th • Laurel
CALL TONYA, SAVANNAH OR TERESE TODAY!
for EMERGENCY CASH call 601-649-3106

Norman's Food Outlet
#209 Waynesboro Food Outlet
 PRICES EFFECTIVE JUNE 1- JUNE 7, 2016

USDA FRESH CUT WESTERN STYLE RIBS \$1.28 LB. Plus 10% at Checkout	SHURFRESH MEDIUM DOZEN EGGS 48¢ EA. Plus 10% at Checkout
7.7 LB. BAG CHARCOAL BRIQUETS \$2.74 EA. Plus 10% at Checkout	USDA FRESH FAMILY PACK GROUND BEEF \$1.98 LB. Plus 10% at Checkout
2 LITER ALL FLAVORS COCA-COLA PRODUCTS 98¢ EA. Plus 10% at Checkout	8 LB. BAG US #1 RUSSET POTATOES \$1.67 EA. Plus 10% at Checkout

WE'VE APPRECIATED YOUR BUSINESS OVER THE LAST 9 YEARS AND WE WILL CONTINUE TO STRIVE IN THE FUTURE TO HELP YOUR FAMILY BY LOWERING YOUR GROCERY BILL
GREAT PRICES • GREAT TASTE • GREAT SAVINGS
 OPEN 7 DAYS A WEEK
 MONDAY - SATURDAY 7 A.M. - 7:30 P.M. / SUNDAY 8 A.M. - 6 P.M.
 LOCATED IN THE AZALEA MART SHOPPING CENTER
 WAYNESBORO, MS
601-735-4344

We have Lenders that offer programs for first time home buyers! Call Robbie: 601-674-2643.

Lowest prices in the state. 601-296-7960. wholesalehomecenter.com

5 bedrooms, 3 bath double as low as \$500.00 a month. Call 601-307-2114.

Used singlewide under \$400 with taxes and insurance included. Call Tony today at 601-408-4347.

2001 Wind Sport Class A motor home manufactured by Thor. 35 ft. Centennial Model. 27K miles. New tires, excellent condition! Super Nice! Valued and insured at \$55,000. Make offer. 601.917.7661. Can be viewed at 7807 Espey Road Meridian, MS 39305

The Price is Right. 28x52 doublewide, 3BR/2BA., vinyl siding, shingle roof, new carpet and vinyl flooring throughout home, large kitchen and living for only \$17,888. Call 601-520-0710.

Fixer Upper, 16x80, 3BR/2BA., home needs some paint and a little TLC. Own this home today for only \$6500. Call 601-520-0710.

Farris Mobile Home Transporting: Statewide moving, licensed & insured. Transporting since 1979. Tony Farris 601-422-4144.

New-used homes, whatever you are looking for I probably have and if not I can get it. Call 601-307-2114.

BUSINESS OPPORTUNITIES

2-Washateria's for sale. Real good investment for a young person. Reason for selling, health problems. Call after 12:00p.m., number to call 601-763-7503.

HELP WANTED

Impact Cannot Guarantee the integrity of every advertiser. We strongly recommend that readers investigate the advertiser before sending them any money.

Drivers Needed-Southeastern Concrete in Hattiesburg is seeking Ready-Mix truck drivers. Candidates must possess class A or B CDL, clean driving record, 2+ Years of Driving Exp. Start-

ing pay is \$13.50+/hr DOE. Benefits: insurance, 401K, vacation pay, bonuses, etc. Call 601-544-7000.

Now taking applications for lube bay technicians. Apply in person. Spee Dee Midas, Highway 98, Hattiesburg. No phone calls please.

Now hiring cashiers Apply in person at alliance energy. 1604 hwy 84 W Laurel, MS

We are a small trucking company that has need for long haul or short haul drivers and we recently started a driver bonus program. If interested, please call 601-797-3090 or 601-382-1397.

Cosmetologists Needed Serious Inquiries Only! Newly opened Salon seeking additional Professional Hair and Nail professionals. -We will pay for your license exam fee or renewal fee. -We will pay for business license or renewal fee. -We will assist you with initial marketing. -1st Month (Rent Free). -At least 1yr lease agreement required. (Serious Inquires Only) -Start Now: Move-In Ready!! Start your cosmetology career or grow your existing one: -Be your own boss. -Make your own hours. -Stress free partnership. Contact Angie for inquiries & interviews: (601) 340-5870 Or email us: laurelsalon601@gmail.com

OTR Drivers Needed: Stockstill Trucking is now hiring CDL class A OTR drivers. Insurance, Vacation and Bonuses! For more information call 601-794-5577, M-F, 7-5

MOBILE HOME FOR RENT

1BR small mobile home. Completely furnished. All utilities on and included+garbage. \$350/mth. For 55 years old or older 601-381-5390.

3BR and 2BR mobile homes. Weekly payments available. Pendorff area. West Jones School District. \$150/dep. rent starting \$250 up. 601-577-7385,601-577-2055.

1999 28x64 Doublewide all electric c/h/a. Water provided. In trailer park, South Jones Area, 23 Burnt Bridge Road. \$650/mth, \$300 deposit. 601-498-2488, Rhonda.

1996 14x80 3br/2ba all electric, c/h/a, water provided, South Jones Area, Burnt Bridge Rd.. \$480/mth \$300/dep. in trailer park. 601-498-2488, Rhonda.

MOBILE HOME LOTS

Four months free space rent. Move your mobile home in with us! Spaces available at Bellecrest. Nicest mobile home park in Hattiesburg. Bellecrest

Mobile Home Park 63 Sullivan Kilrain Road Hattiesburg, MS. 601-545-1300

HOUSES FOR SALE

4 Bedrooms, 3 Full and 1 Half Bath. 5,311 Sq. Ft. \$55/Sq. Ft. Beautiful high-grade, wood-grain vinyl flooring. Garage workshop, basement concrete storm shelter. Small pond in backyard. 3 hot water heaters. 5'x39' front porch. Covered 9'x39' back porch. 2.0 Acres. 46 Mar Ree Drive, Laurel. Contact Jim Johnson at Howard Johnson Properties, LLC 601-573-8686. www.hojopro.com

All Brick, 2 Story. 4-4-2 in Timberton. \$229,000. No Realtors Please. Call 601-584-6027

20 Pine St. Ext Ellisville-Price Reduced! 3br/1.5ba located in a great neighborhood. This property has new flooring, carport and large deck. Priced at \$92,500. Additional acreage available. Broker/Owner. For more info call Walley Properties, LLC at 601-498-3014.

3br/2ba house in Taylorsville. Call 601-466-7385, leave message.

For Sale by Owner: West Jones Schools, 4br/2.5ba, office/bonus space, 2808sqft., large den, open floor plan, tile, carpet, privacy patio, shop. By appointment only. Ready for owner relocation. \$190,900. 601-498-1972.

3br/2ba, 9 miles south of Hickory in Newton Co. 60 acres. \$159,000. Call 601-646-5613.

5000 sq.ft. 2 story, 4br/3.5ba, open kitchen, living and dining areas. Fire place w/insert. Garage, double carport, large deck & patio. w/1acre, \$300,000 or 7 acres w/forest and creek, \$315,000. Covington, 1147 Hwy 84E, Collins. 601-641-0571.

Qualified buyers, nice 3br/1ba brick home, new roof, double carport, separate bldg. efficiency suite, +/-acre, Bay Springs, nice area, \$51,000; Stringer Schools, beautiful double-wide, working fireplace, immaculate, 1 acre,

EZ FINANCING

Several homes for sale in Collins, Bay Springs, Laurel, Taylorsville and the surrounding area.

LOW MONEY DOWN and FIXED INTEREST RATES AVAILABLE with approved credit. We have fixer-uppers all the way to move in ready!

CALL HAROLD 855-847-6808 STOP PAYING RENT! OWN YOUR OWN HOME TODAY!

\$67,000. Will sell mobile home separate. 601-498-2526, 601-470-1625.

5BR/3BA Brick Home w/5 Acres. 3100 SF, Large Shop, Nice Yard w/Big Trees, Good School District, Additional acreage available. \$199,000. Call 601-917-4530

For Sale by Owner: Rarely available 5br/3ba home in desirable Lake Heritage Estates. Well maintained home sits on a corner lot of 2.5 acres. Act fast and move in before the new school year begins. Call 601-729-2323 today to arrange a private showing.

HOUSES FOR RENT

**** Secluded executive 3br/2.5ba brick home for rent.** Ranch layout on 10 acres, 2 Car Garage, Ex-large Open floor plan family room, Huge master bedroom with private make-up area & expansive closet space throughout. Must See! Northeast Schools 719-459-9161. Serious renters only. \$1,200 plus deposit

1, 2, 3, and 4 bedroom houses and mobile homes. Hattiesburg. Call for list. 601-336-5808.

For rent: 3 or 4 bedroom 1.5 bath house located in South Jones School district minutes from the school on County Home Road. Has huge covered carport, 38 acres of land, and a pond. \$800/month plus \$800 deposit. Call 601-310-4132 or 601-425-5357 for more information.

APARTMENTS FOR RENT

Quitman, Newly remodeled 1 or 2 bedroom apartments available now \$500-\$450 rent \$400 deposit, laundry on site. Half off the 1st months rent. Accept HUD voucher, HUD transfers. Call or text for photos 601-678-1974.

Highlands. Paying Rent?? A house payment could be less. Call us today and see how you can build your dream home. Call: 601-649-9459.

2 bed, 1 bath, upstairs Apt near Kamper Park. 1711 Eva St unit B, H'burg off S. 17th Ave. Frig., Stove, DW included. \$500 rent. \$350 dep. 601-408-1232.

2br apartment off Feedmill Rd., Soso, refrigerator, water, garbage included. Electricity receipt required with Dixie Electric. \$450/mth; \$200/dep. 601-729-8758.

Soso - Fully furnished 2br apartment, even dishes, stove, refrigerator. Water, garbage and up to \$150 monthly electricity included. No washer/dryer hook up. 3 month lease. \$550/mth; \$300/dep. No pets. 601-729-8758.

COMMERCIAL

5.20 acres, 660ft. 4-lane frontage across from Community Bank, Hwy 84W of Laurel. E-mail, laurelrite40@gmail.com. \$230,000.

Convenience store, bait store and beauty shop, all on same lot to be sold as one business. Located in Waynesboro. Serious inquiries only, 601-735-2045.

William Scotsman 14x80 Office Trailer. This is a 1998 top of the line office trailer. Four office, waiting area, handicapped bathroom, two porches, awning, power pole, central heat and air, all axes, tires. This would make a great office, deer, fish camp or could be converted to a residence. Can be seen at 202 Mason St. (Southern Motor Co) Laurel, MS. Call Dickie Byrd at 601-319-5603. Price Reduced \$8000 or best offer.

For sale: Paint and Body Shop in Taylorsville, MS, 60x120 building with a 90x150 fenced in storage area, Blow-Therm micro presser controlled bake on paint booth. Also, a paint mixing booth. Excellent filtration system, \$85,000, for more information call 601-785-4924

Continued on ... Page 9

TRI-COUNTY READY MIX, INC.
NOW HIRING TRUCK DRIVERS
for Jasper and Simpson County areas.
Must have a clean MVR and required drug testing.
Must have a least a class B CDL.
We do offer vacation and paid holidays.
FOR MORE INFORMATION CALL
601-847-6686, 1-866-563-6686
or 601-649-2887

Stockstill Trucking, Inc.

158 Central Industrial Row
Purvis, MS
601.794.5577
800.794.5578

PARISH TRANSPORT
HAS IMMEDIATE OPENINGS FOR GOOD OTR Truck Drivers and Owner Operators
HIRING ALL DIVISIONS
Benefits include:
• Health Insurance • Vision Insurance
• Dental Insurance • Paid Vacation
NOW OFFERING SIGN ON BONUS
• SAFETY BONUS • REVENUE BONUS
• RETENTION BONUS
If You Want To Work For A Great Company With Great Benefits
call us at 601-342-2314 today!
Located in Ellisville, MS

Southern HENS EMPLOYMENT OPPORTUNITIES
NOW HIRING
FOR ALL POSITIONS NEW & HIGHER WAGES
Benefits include Life/Health Insurance, Paid Holidays, Paid Vacations, 401K Retirement Plan, Dental/Cancer Insurance Available.
• Applications taken Mon.-Fri at 7:30 AM
EOE
329 Moselle-Seminary Rd. • Moselle, MS
Resumes for Management & Supervisory Positions: recruiting@southernhens.com
601-584-4752

DRIVERS, are you tired of having to jump through hoops, such as gimmicky revenue and retention bonuses? Do you want to earn what you are worth? At Baggett Transportation, we pay you what you are worth, without the hassle!
We offer the best benefits in town, which include
• Health Insurance • Company Matching 401-K Plan • Paid Vacation
Now paying 27% for qualified, experienced drivers!
Now leasing Owner Operators! Flats or Vans. Call for details.
601-426-3462
Call for more information or apply in person at: 2815 Industrial Blvd. • Laurel, MS

State of Mississippi

State Veterans Affairs Commission

NOW ACCEPTING APPLICATIONS FOR
• RN Weekend Supervisors
• RN Unit Managers
• RN Restorative Nurse
• LPN's • CNA's
• MDS LPN
APPLY IN PERSON AT:
Ms State Veterans Home
3261 Hwy 49 South • Collins
Covington County, MS
Apply on the MS State Personnel Board website:
WWW.MSPB.MS.GOV
Equal Opportunity Employer

NOW HIRING
• PART TIME LPN'S (ALL SHIFTS)
• PART TIME CNA'S (ALL SHIFTS)
• MAINTENANCE DIRECTOR (LONG TERM CARE EXP.)

PLEASE APPLY AT
Hillcrest Nursing Center
1401 1ST AVENUE N. EAST • MAGEE
NO PHONE CALLS PLEASE

Taylor HAULING, LLC
EMPLOYMENT OPPORTUNITY
EXPERIENCED FLATBED DRIVERS
CDL Required, Tarping experience preferred, Service area is SE United States
Our drivers are home most every weekend and some nights during the week.
We offer competitive pay for this area.
All interested persons should apply in person:
MONDAY - FRIDAY
8a.m. - 4 p.m.
28 Taylors Circle • Laurel

NEED CASH?



Call Verna She will hold your personal check and give you **CASH!**

Loans from \$50 to \$410
LAUREL CHECK CASHING
 134 Beacon St., Ste. C
 Laurel • 601-426-2432

FARRIS
MOBILE HOME TRANSPORTING

Statewide moving, licensed & insured.
Transporting since 1979
Tony Farris
601-422-4144

ELLISVILLE HOME CENTER

CALL MAGIC STEVE!

LARGE INVENTORY OF • NEW • USED • REPO'S

5485 HWY 11 N. • Ellisville
Mon. - Fri. 8 am-6 pm, Sat. 9 am-4 pm

601-340-3335

Church for sale, best offer. Call 601-577-0838 or 601-433-1852.

AUTO SERVICES

Hartfield's Auto Repair. 25 years experience Located in Stringer MS. Open Mon -Thurs. 8-5 and Friday 8-3. Call 601-470-3220

AUTOS - CARS

2009 Nissan Altima \$9995 at Bob Palmer's Chancellor Motor Group. Call 844-743-8208 or text O2DB to 27414. See more at Cars601.com

2004 Ford Ranger \$6995 at Hattiesburg Cars. Call 855-242-0775 or text 9BWF to 27414. See more at Cars601.com

2007 Cadillac CTS \$7200 at Bob Palmer's Chancellor Motor Group. Call 844-743-8208 or text 805C to 27414. See more at Cars601.com

06 Mini Cooper Convertible, 122,000 miles - auto. \$6500. New front & rear brakes. 601-319-1583.

2013 Toyota Corolla \$11,888 at Bellevue Motors. Call 855-713-0084 or text RTON to 27414. See more at Cars601.com

2015 Subaru Legacy 2.5i Premium PZEV . Only 31,220 miles . Twilight Blue Metallic in color . Beautiful Ride . Sale Price \$22,942 . Call Dean @ 601-433-0796.

2006 Volkswagon Jetta \$7465 at Woolwine Ford. Call 844-332-1854 or text FH6T to 27414. See more at Cars601.com

2012 Chrysler 200 limited, fully loaded, GPS, leather, heated seats, 87k miles, asking \$8500; 2004 clean black Dodge Ram 1500 Hemi motor, cold air intake chip, good condition, adult driven, \$6400. 601-498-2526, 601-470-1625.

2013 Chevy Sonic \$12,150 at Kim's No Bull. Text 50X6 to 27414. See more at Cars601.com

03 Toyota Camry 120k, \$4600. 07 Accord, 4 door, 150k, 6cyl, AT, \$6600. 07 Ford Fusion, 140k, \$4200. 02 Honda Civic, 4dr, 4cyl, AT, 220k, runs great, \$2500. 01 Maxima loaded, 130k, \$3200.

ALL + tax OBO. 601-455-6944, 601-498-6944.

Advertise for Free! Online classifieds are free at www.impactads.com. Just go to the Impact Web site and click on the button at the top right hand side of the page that says "Place a Free Online Only Classified."

Chevrolet Impala \$7299 at Auto Express. Call 844-402-3154 or text UB73 to 27414. See more at cars601.com.

For sale: 2006 Jeep Wrangler, 4WD, \$104,000 miles. Very neat/clean, runs well. \$15,500. Call 601-342-9916

2000 Pontiac Grand Am, 4dr, looks like new, clean, engine noise. \$500. 601-319-0865.

2008 Dodge Caliber \$7999 at Auto Express. Call 844-402-3154 or text S8KT to 27414. See more at cars601.com.

2000 Mercedes-Benz CLK \$9975 at Mack Grubbs Hyundai. Call 844-373-0806 or text 7EQ7 to 27414. See more at cars601.com.

2007 Nissan Altima \$6988 at Petro Automotive. Text IX5V to 27414. See more at Cars601.com

2009 Hyundai Sonata \$7999 at Auto Express. Call 844-402-3154 or text TBK5 to 27414. See more at cars601.com.

2008 Buick Lucerne CXL, V6, 107K, Leather. \$8,900. Call 601-641-3400.

2011 Nissan Cube \$9990 at Kim's Chevrolet/Nissan. Text 6DN7 for more information. See more at Cars601.com

2014 Chrysler 300 4 Dr Sdn AWD . Only 38,170 miles . Color : Pewter Gray Pearlcoat . Ride in Luxury! Beautiful Ride . Only \$22,912 . Call Dean @ 601-433-0796 .

2009 Chevy Malibu \$11,900 at Bob Palmer's Chancellor Motor Group. Call 844-743-8208 or text 8PV4 to 27414. See more at Cars601.com

2008 Chevy Malibu \$5121 at Ryan Chevrolet. Call 855-534-3769 or text 79QR to 27414. See more at Cars601.com

2005 Buick LaCrosse \$7996 at Hattiesburg Cars. Call 855-242-0775 or text F4RZ to 27414. See more at Cars601.com

2002 Lexus LS 430 \$8500 at Bellevue Motors. Call 855-713-0084 or text RT01 to 27414. See more at Cars601.com

2008 Hyundai Sonata at Auto Express. Call 844-402-3154 or text UB70 to 27414. See more at cars601.com.

2004 Toyota Camry \$7299 at Auto Express. Call 844-402-3154 or text S9DG to 27414. See more at cars601.com.

2008 Mercury Milan \$6490 at Woolwine Ford. Call 844-332-1854 or text 64YR to 27414. See more at Cars601.com

2009 Ford Focus \$7965 at Woolwine Ford. Call 844-332-1854 or text 72D5 to 27414. See more at Cars601.com

2013 Dodge Avenger, \$10,500, at Aaron Williams Auto. Call 855-637-1021 or text 67VB to 27414. See more at cars601.com.

2009 Chevy hhr at Woolwine Ford. Call 844-332-1854 or text 72J9 to 27414. See more at Cars601.com

2006 Chevy Malibu \$7465 at Woolwine Ford. Call 844-332-1854 or text 1Q32 to 27414. See more at Cars601.com

2011 Chevy Malibu \$8995 at Bob Palmer's Chancellor Motor Group. Call 844-743-8208 or text O29T to 27414. See more at Cars601.com

2007 Ford Five Hundred \$5995 at Hattiesburg Cars. Call 855-242-0775 or text FY12 to 27414. See more at Cars601.com

In the market for a new or quality pre-owned vehicle? We have plenty of inventory available, new vehicles arriving daily. Concerned about less than perfect credit? I have many years of experience. Give me a call let me see if I can help you. William Hickman 601-520-1354.

2014 Nissan Versa \$11,495 at Kim's No Bull. Text OQB3 to 27414. See more at Cars601.com

2009 Mazda3 \$8465 at Woolwine Ford. Call 844-332-1854 or text uO1A to 27414. See more at Cars601.com

2012 Dodge Charger 4Dr Sdn SXT, RWD. Color: Redline Pearl. 3.6L V-6, 31 MPG, Only 41,600 Miles. 1 Owner. Very Nice Ride. Only \$18,488. Call Dean @ 601-433-0796.

2012 Nissan Maxima, \$14,900 at Aaron Williams Auto. Call 855-637-1021 or text 21L8 to 27414. See more at cars601.com.

2014 Nissan Sentra \$11,575 at Southern Motor Co. Call 855-215-1918 or text K7D9 to 27414. See more at cars601.com.

2014 Fiat Sport, 10,000 miles, automatic, under warranty. \$11,500. 601-527-6555.

Affordable Auto Insurance, especially if you don't have any now. Call 601-765-4060

2014 Nissan Altima \$13,777 at Ryan Chevrolet. Call 855-534-3769 or text 20JJ to 27414. See more at Cars601.com

2013 Hyundai Sonata \$13,777 at Ryan Chevrolet. Call 855-534-3769 or text 1XXK to 27414. See more at Cars601.com

2005 Nissan Altima \$6999 at Auto Express Call 844-402-3154 or text UB70 to 27414. Call cars601.com.

1999 Honda Civic, LX, 2 Door, Hatchback, Gas Saver, Great Mechanical Condition, \$3,250. Warranty Available, 601-580-0358. See more at www.EllisvilleMotors.com.

2013 Nissan Altima \$13,777 at Ryan Chevrolet. Call 855-534-3769 or text A8OB to 27414. See more at Cars601.com

2008 Nissan Sentra 4dr Sdn I4 2.0S . Color: Black . Only 79,300 miles . Very

clean ride . 30+ MPG . Only \$8,975 Call Dean @ 601-433-0796.

Upgraded 2003 Toyota Corolla, automatic, a/c, power windows/doors, runs good. \$4995. 601-729-8466.

2015 Chevy Sonic \$12,777 at Ryan Chevrolet. Call 855-534-3769 or text PHX0 to 27414. See more at Cars601.com

2013 Ford Fiesta \$10,543 at Kim's No Bull. Text HH71 to 27414. See more at Cars601.com

2015 Kia Forte \$13,777 at Ryan Chevrolet. Call 855-534-3769 or text N2W9 to 27414. See more at Cars601.com

2014 Nissan Versa \$11,600 at Southern Motor Co. Call 855-215-1918 or text P4AD to 27414. See more at cars601.com.

Chevrolet Impala, \$8599, at Auto Express. Call 844-402-3154 or text UB77 to 27414. See more at cars601.com.

2015 Dodge Dart \$12,777 at Ryan Chevrolet. Call 855-534-3769 or text H5JN to 27414. See more at Cars601.com

2004 Infinity G35 \$7995 at Bellevue Motors. Call 855-713-0084 or text RTOW to 27414. See more at Cars601.com

Looking for a dependable vehicle but have less than perfect credit? Don't give up! give me a call, I may can get you financed. Matt Dilmore, new & used sales. 601-323-1620. mdilmore@ryanauto.com.

Continued on ... Page 10

VACUUM CLEANER REPAIR

- We Repair All Makes
- Free Estimates
- Complete Line of Parts & Bags
- Kirby • Electrolux
- Eureka • Hoover • Compact
- Filter Queen • Many Others

TAYLOR'S Sewing Machine Center
 Parkside Plaza Shopping Center
 Next Door To Roses Store - Laurel, MS
425-1832

MCDONALD'S STORE
Old Fashioned Dipped

10 We have Flavors
 New Blueberry Cheesecake!!!
 Also Strawberry Cheesecake, Black Walnut, Lemon, just to name a few!

ICE CREAM

PERFECT for a Sunday outing with the kids!

2543 Hwy 532 • Collins • 601.785.4343

STORE HOURS: MON-THURS 8A-5:30P; FRI & SUN 8A-5P

COOK AVENUE APARTMENTS

Now Accepting Application for Low Income Apartments for Persons 50 Years or Older Disabled or Handicapped

•Central Heat & Air •Stove •Refridgerator

For More Information Call 649-4204
 Office Located 415 Sorrell Dr., Laurel, MS
 Hours: 8 a.m. • 5 p.m., Mon. - Fri.

XG3032 LS Tractor with Front End Loader

- 32hp
- 4wd
- Shuttle Shift
- Synchro-mesh Transmission
- 5' Disc
- 5' Brush Cutter
- 18' Utility Trailer with tube top

TRACTORS UNLIMITED, LLC
 1507 N. MAIN, HATTIESBURG
601-583-6453
800-321-2701
 MON-FRI 7:30-4:30, SAT 8:00-4:00

LS Tractor
Excel in Your Field™

\$21,899 + TAX

FINANCING AVAILABLE WITH APPROVED CREDIT

FREE YETI COOLER "35 QUART" WITH PACKAGE PURCHASE

WWW.TRACTORSUNLIMITEDMS.COM

907 Herbert's Mart Shopping Center Waynesboro, MS

Save a lot

Wed., June 1 - Tues., June 7, 2016

OPEN 7 DAYS A WEEK - 8A.M. - 8P.M.

WE RESERVE THE RIGHT TO LIMIT QUANTITIES

SAVE ON YOUR FOOD BILL. SHOP SAVE A LOT

<p>Family Pack PORK STEAKS</p> <p>\$1.58 Lb.</p> <p>The Price You See Is The Price You Pay</p>	<p>3 Lb. Box POPCORN CHICKEN</p> <p>\$3.48</p> <p>The Price You See Is The Price You Pay</p>	<p>Family Pack T-BONE STEAKS</p> <p>\$5.88 Lb.</p> <p>The Price You See Is The Price You Pay</p>
<p>48 Oz. Bottle WESCOTT VEGETABLE OIL</p> <p>2/\$4</p> <p>We don't add 10% at the register</p>	<p>Assorted 12.6 Oz. KEEBLER CHIPS DELUX</p> <p>\$1.97</p> <p>We don't add 10% at the register</p>	<p>Gallon SUNNY DELIGHT DRINK</p> <p>\$1.97</p> <p>We don't add 10% at the register</p>

www.ChathamEnterprisesInc.com

CHATHAM ENTERPRISES
 Portable Buildings & Metal Roofing

Guaranteed Best Quality and Lowest Prices on:

- Portable Building • Carports
- On Site Steel Buildings • Custom Covers
- Metal Roofing (Painted or Bare Galvalume)

COMPARE THESE PRICES:

Portable Buildings	Metal Roofing
10x12 \$1,395	29 Gauge Bare Galvalume..... \$1.20/ft.
12x12 \$1,545	29 Gauge Painted..... \$1.49/ft.
12x16 \$1,845	29 Gauge Painted (w/ 40 Year Warranty)..... \$1.69/ft.

Prices are Subject to Change.

WE HAVE RENT TO OWN AVAILABLE FOR THE PORTABLE BUILDINGS!

601-727-4951
 Located in Rose Hill, MS

1 DAY SALE - GOOD FRIDAY JUNE 3, 2016 ONLY!

<p>5 Lb. Bag SHRIMP</p> <p>\$19.98</p> <p>Our competitors add 10% at the register</p>	<p>Assorted 32 Oz. Bottle GATORADE</p> <p>88¢</p> <p>Our competitors add 10% at the register</p>	<p>18 Oz. Asst. Large Bags JHIGGINS POTATO CHIPS</p> <p>\$1.97</p> <p>Our competitors add 10% at the register</p>
---	--	---

U-SAVE
CAR & TRUCK RENTAL

HATTIESBURG
1510 West Pine Street
601.545.9555

LAUREL
114 North 16th Avenue
601.428.4405

COLLINS
3049 Highway 49
601.765.3333

THREE LOCATIONS TO SERVE YOU BETTER!

*If you reserve it from us, we guarantee to have it there!

2005 Pontiac G6 \$6999 at Auto Express. Call 844-402-3154 or text TB5W to 27414. See more at cars601.com.

2014 Chevy Cruze \$13,777 at Ryan Chevrolet. Call 855-534-3769 or text PHX0 to 27414. See more at Cars601.com

2002 Ford Taurus \$6500 at Bob Palmer's Chancellor Motor Group. Call 844-743-8208 or text 8QRC to 27414. See more at Cars601.com

2004 Toyota Sienna \$7995 at Hattiesburg Cars. Call 855-242-0775 or text UO2M to 27414. See more at Cars601.com

2011 Hyundai Sonata \$11,463 at Mack Grubbs Hyundai. Call 844-373-0806 or text 8YV to 27414. See more at cars601.com.

2006 Toyota Camry LE, 2.3 I4, Sedan, Desert Sand/Beige, 109k miles, Extra Clean, \$8,250. Limited Warranty. 601.580.0358. See more at www.EllisvilleMotors.com.

2007 Toyota Camry \$6800 at Bob Palmer's Chancellor Motor Group. Call 844-743-8208 or text O2E4 to 27414. See more at Cars601.com

2008 Chevy Impala \$8499 at Aaron Williams Auto. Call 855-637-1021 or text 5P8A to 27414. See more at cars601.com.

Need a ride? Credit not so good? I can help. Good credit, bad credit, no credit. Give Tom a call. 601-428-4405.

2006 Chevy Cobalt \$5995 at Petro Automotive. Text 6KHP to 27414. See more at Cars601.com

2013 Kia Forte Koup \$11,653 at Mack Grubbs Hyundai. Call 844-373-0806 or text OB3I to 27414. See more at cars601.com.

2014 Kia Rio \$10,870 at Kim's Chevrolet, Nissan. Text E1YG to 27414 for more information

One Owner, 2008 Toyota Camry LE, Sedan, Silver/Charcoal, 133K miles, Clean Car, Asking \$8,250. Limited warranty. 601.580.0358. See more at www.EllisvilleMotors.com.

2007 Pontiac Solstice \$7,499 at Aaron Williams Auto. Call 855-637-1021 or text 1A13 to 27414. See more at cars601.com.

2015 Hyundai Veloster \$14,777 at Ryan Chevrolet. Call 855-534-3769 or text 1WA4 to 27414. See more at Cars601.com

2007 Chevy Impala \$7465 at Woolwine Ford. Call 844-332-1854 or text 8UB2 to 27414. See more at Cars601.com

2008 Toyota Prius \$8999 at Toyota of Hattiesburg. Call 855-221-8310 or text 27414. See more at cars601.com.

AUTOS - MOTORCYCLES

98 HD Road King, 23,600 miles, \$4750. 601-319-1583.

AUTOS - SUVs

2005 Gmc yukon xl, SLT, 5.3L V8, Leather, Sunroof, DVD, Nav, Rear Buckets, Bose, Red/Grey, 145k miles, \$11,250. Limited Warranty, 601.580.0358. See more at www.EllisvilleMotors.com.

2007 Lexus RX350, Silver/Gray, Nice Leather, Clean Paint, 117k miles, Good History, Exceptional Quality, \$13,350. Limited Warranty, 601.580.0358. See more at www.EllisvilleMotors.com.

2007 Dodge Nitro \$9500 at Kim's Chevrolet/Nissan. Text 6IHx for more information. See more at Cars601.com

2005 Chevy TrailBlazer \$7459 at Woolwine Ford. Call 844-332-1854 or text IVH9 to 27414. See more at Cars601.com

2006 Hummer H3 \$13,995 at Stephen's Auto in Seminary. Call 844-376-0195

NO CREDIT NEEDED

LOTT
Celebrating 99 Years
FURNITURE CO.
Complete Home Furnishers Since 1917

601-428-5782
FACEBOOK.COM/LOTTFURNITURE

320 Front St.
Downtown Laurel

or text P4YS to 27414. See more at Cars601.com

2006 Toyota 4Runner \$8999 at Toyota of Hattiesburg. Call 855-221-8310 or text B9CF to 27414. See more at cars601.com.

2014 Kia Soul \$12,575 at Southern Motor Co. Call 855-215-1918 or text LX9J to 27414. See more at cars601.com.

2009 Saturn Vue \$8125 at Auto World in Petal. Call 855-973-4210 or text M9IP to 27414. See more at Cars601.com

2006 Land Rover LR3 \$14,499 at Bellevue Motors. Call 855-713-0084 or text RTOR to 27414. See more at Cars601.com

2005 Gmc envoy at Woolwine Ford. Call 844-332-1854 or text #4RI to 27414. See more at Cars601.com

2001 Jeep Wrangler SE, Auto, 2DR, Soft top. New Tires. Asking \$12,900. Call 601-641-3400.

2006 Nissan Pathfinder \$8963 at Mack Grubbs Hyundai. Call 844-373-0806 or text 7IDQ. See more at cars601.com.

2002 Ford Explorer \$6495 at Bob Palmer's Chancellor Motor Group. Call 844-743-8208 or text O2BJ to 27414. See more at Cars601.com

2003 Toyota Highlander \$7999 at Toyota of Hattiesburg. Call 855-221-8310 or text 6D2G to 27414. See more at cars601.com.

2006 Honda Element \$9963 at Mack Grubbs Hyundai. Call 844-373-0806 or text 5P2M to 27414. See more at cars601.com.

2008 Chevy Suburban \$18,588 at Stephen's Auto in Seminary. Call 844-376-0195 or text M9OE to 27414. See more at Cars601.com

2008 Ford Edge \$9995 at Bob Palmer's Chancellor Motor Group. Call 844-743-

8208 or text 8QCR to 27414. See more at Cars601.com

2006 Jeep Wrangler \$8999 at Auto Express. Call 844-402-3154 or text TB40 to 27414. See more at cars601.com.

2006 GMC Envoy, slt, 4.2L I6, Leather, Power Seats, Bose Sound, Towing Package, Silver/Grey, 127k miles, \$8,999. Warranty Available, 601.580.0358. See more at www.EllisvilleMotors.com.

2007 Chevrolet Trailblazer \$7999 at Toyota of Hattiesburg. Call 855-221-8310 or text 6CY9 to 27414. See more at cars601.com.

2012 Toyota rav4, 4wd, 3.5L V-6, (Natl) Sand Beige is the Color. Only 61K Miles. Very Clean Ride. Asking \$15,865. Call Dean @ 601-433-0796

2007 Chevrolet Avalanche LT, 5.3 L V8, Silver Birch/Grey, Heated Leather, Bose, Good Tires, 139k miles, \$15,525. Limited Warranty. 601.580.0358. See more at www.EllisvilleMotors.com.

Cash Special! 1999 GMC Jimmy \$2244 at Ryan Chevrolet. Call 855-534-3769 or text G21F to 27414. See more at Cars601.com

AUTOS - SPORTS

2001 Jeep Wrangler \$6990 at Auto World in Petal. Call 855-973-4210 or text S4UD to 27414. See more at Cars601.com

AUTOS - TRUCKS

1994 Toyota Pickup \$5999 at Toyota of Hattiesburg. Call 855-221-8310 or text 6MOY to 27414. See more at cars601.com.

2000 F250 4wd 7.3 Diesel, crew cab, 300K miles, call 601-394-9313.

2005 Ford F150, \$17,900 at Aaron Williams Auto. Call 855-637-1021 or text 5DVJ to 27414. See more at cars601.com.

2012 Chevy pickup truck 2012 Chevy pickup truck; \$23,000; candy apple red; four door; full back seat; 80,000 miles; 8 cylinder; call 601-319-3166 or 601-428-1321 and leave a message for a return call

U-SAVE
CAR SALES • LAUREL

Tom Sykes, SALESMAN
114 N 16th Avenue • Laurel
601-428-4405
tscars52@yahoo.com

2007 Ford, XLT, Crew Cab, 4.6L V8, Vermillion Red/Charcoal, Clean Cloth Interior, 115k miles, Extra Clean, \$13,850. Limited Warranty, 601.580.0358. See more at www.EllisvilleMotors.com.

2012 Chevy Silverado Z71, 67,000 miles. Very clean. \$26,000. 601-335-1871.

2004 Ford F150 \$7750 at Auto World in Petal. Call 855-973-4210 or text M9DP to 27414. See more at Cars601.com.

One owner, 2004 Chevrolet, 2500HD LS, Crew Cab, 4x4, 6.6L V8 Diesel, Allison, Nice Clean Truck, 184k miles, \$17,950. Limited Warranty, 601.580.0358. See more at www.EllisvilleMotors.com.

2005 Chevrolet Silverado 1500 \$7999 at Auto Express. Call 844-402-3154 or text OHF6 to 27414. See more at cars601.com.

2009 Chevy Silverado \$18,855 at Stephen's Auto in Seminary. Call 844-376-0195 or text RQO4 to 27414. See more at Cars601.com

2007 Ford, XLT, Crew Cab, 4.6L V8, Vermillion Red/Charcoal, Clean Cloth Interior, 115k miles, Extra Clean, \$13,850. Limited Warranty, 601.580.0358. See more at www.EllisvilleMotors.com.

2000 GMC Sonoma \$6900 at Bellevue Motors. Call 855-713-0084 or text RTOG to 27414. See more at Cars601.com

2008 Ford F150 \$16,995 at Stephen's Auto in Seminary. Call 844-376-0195 or text RQO8 to 27414. See more at Cars601.com

2008 Chevrolet Silverado, LT, Crew Cab, 5.3L V8, Coco/Black, Extra Sharp Leather, 20" Wheels, 133k miles. \$17,750. Limited Warranty. 601.580.0358. See more at www.EllisvilleMotors.com.

08 Pathfinder, 3rd row, 180k, \$6200 obo. 04 Trailblazer LT, loaded, 120k, \$3900. 03 Trailblazer, 128k, \$3700. 03 Escape, 140k, \$2700. 03 Explorer, 160k, \$2900. 03 Kia Sorento, loaded, 150k, \$2800. 06 Ranger, ext cab, sport, \$5000. ALL +tax OBO. 601-455-6944, 601-498-6944.

2006 Chevy 1500 HD, 4WD, 175K miles, 6.0. Super clean, new tires. Call 601-394-9313.

2012 Ford F150 \$19,959 at Stephen's Auto in Seminary. Call 844-376-0195 or text M9O4 to 27414. See more at Cars601.com

2004 Chevy Silverado \$5999 at Petro Automotive. Text 8WKD to 27414. See more at Cars601.com

2011 Chevrolet LT Ext Cab 4 Wheel Drive W/Leather. Only 27,853 miles on it. Very Clean Ride. Black in Color. Asking 27,900. Call Dean @ 601-433-0796. It won't be here long!

BOATS

1994 Rinker boat & trailer. 18 foot fiberglass boat. 135 In/Out. Good Shape! Valued and insured at \$6,500. Make offer. 601.917.7661. Can be viewed at 7807 Espey Road Meridian, MS.

New 2015 Weldcraft 14ft/48" bottom boat with Magic Tilt Trailer. Asking \$2,900. Call 601-606-4096

Meridian Outboard is "The Boat Repair Shop" We service outboard engines of ALL makes and models. Mercury, Mariner, Johnson, Evinrude, Yamaha, Honda, Suzuki, two and four stroke engines. Come see us! 8000 Highway 45 North in Meridian 601-483-5858.

ATVS

2014 Yamaha Grizzly 350, 4x4, camouflage. Call 601-410-4240.

EML Motorsports, 2116 North Frontage Road, Meridian, MS, authorized dealer for HISUN & Linhai ATVs/UTVs. Great deals on motorcycles, scooters and go-carts. We service Harley Davidson, Victory and Indian Motorcycles. info@emlmotorsports.com. 601-207-5058.

CARPORTS

Carports and Buildings: Financing Available! 18x21 carport \$795; includes installation! All sizes available. We also offer storage buildings & barns. Call John at 601-323-0464, 303 Hwy 11 South, Ellisville MS (between Pizza Hut and JCJC)

2005 Chevrolet Z-71 Extended Cab
\$11,995

2014 Ford F-150 SuperCrew XLT, 4x4
\$32,995

2009 Ford F-150 Lariat SuperCrew 4x4
\$23,995

2013 Ford F-150 SuperCrew 25k miles!!
\$23,995

2003 Chevrolet Tahoe
\$8,995

STEP UP YOUR WEEKEND ADVENTURE

MICHELIN

Brake Job Special \$119.95
Included:
Premium Pads and Turning Rotors
Most vehicles
Expires 6/7/16

OIL CHANGE SPECIAL \$29.95
Castrol UP TO 5 QUARTS
Most vehicles, excludes diesels
MUST PRESENT COUPON Expires 6/7/16

4 WHEEL ALIGNMENT \$59.95
Most Vehicles
MUST PRESENT COUPON Expires 6/7/16

Request quotes and schedule service • www.stmtires.com

Southern Tire Mart
Best in Class Service on America's Favorite Brands

2926 Ellisville Blvd., Laurel
stmtires.com
601-428-4375
M-F: 7a-5p Sat: 8a-12p

COOLEY MOTOR COMPANY
since 1928
HWY 45 North • Waynesboro
601-735-4323 or 1-800-748-8838



CARS601.com

Auto Showcase

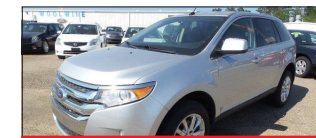
Call the toll-free number or text the red 4 digit code to 27414 for photos and details.



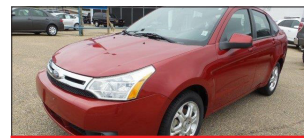
TEXT 2VWL TO 27414
2012 CHEVROLET CRUZE
 Woolwine Ford
 (844) 332-1854 **\$12,775**



TEXT LC36 TO 27414
2011 CHRYSLER 200
 Woolwine Ford
 (844) 332-1854 **\$11,649**



TEXT M0CR TO 27414
2011 FORD EDGE
 Woolwine Ford
 (844) 332-1854 **\$16,888**



TEXT 72D5 TO 27414
2009 FORD FOCUS
 Woolwine Ford
 (844) 332-1854 **\$7,965**



TEXT L4YV TO 27414
2013 FORD FUSION
 Woolwine Ford
 (844) 332-1854 **\$14,350**



TEXT MX97 TO 27414
2014 FORD TAURUS
 Woolwine Ford
 (844) 332-1854 **\$14,995**



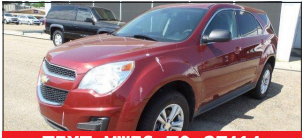
TEXT DJY0 TO 27414
2009 LINCOLN TOWN CAR
 Woolwine Ford
 (844) 332-1854 **\$12,965**



TEXT KH8R TO 27414
2015 FORD F-150
 Woolwine Ford
 (844) 332-1854 **\$39,214**



TEXT E40E TO 27414
2012 TOYOTA TUNDRA
 Woolwine Ford
 (844) 332-1854 **\$29,990**



TEXT MW55 TO 27414
2010 CHEVROLET EQUINOX
 Woolwine Ford
 (844) 332-1854 **\$14,990**



TEXT A306 TO 27414
2010 TOYOTA RAV4
 Toyota of Hattie.
 (855) 221-8310 **\$12,999**



TEXT 6C9N TO 27414
2009 TOYOTA VENZA
 Toyota of Hattie.
 (855) 221-8310 **\$13,999**



TEXT AWE8 TO 27414
2008 TOYOTA PRIUS
 Toyota of Hattie.
 (855) 221-8310 **\$8,999**



TEXT 6D1R TO 27414
2010 NISSAN MURANO
 Toyota of Hattie.
 (855) 221-8310 **\$9,999**



TEXT AZ2B TO 27414
2007 TOYOTA HIGHLANDER
 Toyota of Hattie.
 (855) 221-8310 **\$10,999**



TEXT M904 TO 27414
2012 FORD F-150
 Stephen's Auto
 (844) 376-0195 **\$19,959**



TEXT K70Y TO 27414
2012 JEEP GRAND CHEROKEE
 Stephen's Auto
 (844) 376-0195 **\$19,995**



TEXT 08N6 TO 27414
2013 JEEP WRANGLER
 Stephen's Auto
 (844) 376-0195 **\$34,599**



TEXT F1UM TO 27414
2009 CHEVROLET SILVERADO 1500
 Stephen's Auto
 (844) 376-0195 **\$24,995**



TEXT R004 TO 27414
2009 CHEVROLET SILVERADO 1500
 Stephen's Auto
 (844) 376-0195 **\$18,855**



TEXT 20HI TO 27414
2016 MAZDA MAZDA6
 Ryan Chevrolet
 (855) 534-3769 **\$17,777**



TEXT A80B TO 27414
2013 NISSAN ALTIMA
 Ryan Chevrolet
 (855) 534-3769 **\$13,777**



TEXT 1Y81 TO 27414
2014 TOYOTA CAMRY
 Ryan Chevrolet
 (855) 534-3769 **\$15,777**



TEXT 7D9K TO 27414
2014 VOLKSWAGEN BEETLE
 Ryan Chevrolet
 (855) 534-3769 **\$14,777**



TEXT KY2L TO 27414
2009 CHEVROLET MALIBU
 Ryan Chevrolet
 (855) 534-3769 **\$8,777**



TEXT PHL4 TO 27414
2015 CHEVROLET SONIC
 Ryan Chevrolet
 (855) 534-3769 **\$13,777**



TEXT 8WTT TO 27414
2016 CHEVROLET SPARK
 Ryan Chevrolet
 (855) 534-3769 **\$16,186**



TEXT N2W9 TO 27414
2015 KIA FORTE
 Ryan Chevrolet
 (855) 534-3769 **\$13,777**



TEXT 20RP TO 27414
2015 KIA OPTIMA
 Ryan Chevrolet
 (855) 534-3769 **\$15,777**



TEXT 1YYL TO 27414
2010 LINCOLN MKS
 Ryan Chevrolet
 (855) 534-3769 **\$18,777**



TEXT 542M TO 27414
2013 HYUNDAI ELANTRA
 Mack Grubbs Hyundai
 (844) 373-0806 **\$13,963**



TEXT 73G8 TO 27414
2012 HYUNDAI SONATA
 Mack Grubbs Hyundai
 (844) 373-0806 **\$14,990**



TEXT 0B3I TO 27414
2013 KIA FORTE KOUP
 Mack Grubbs Hyundai
 (844) 373-0806 **\$11,653**



TEXT 7E07 TO 27414
2000 MERCEDES-BENZ CLK
 Mack Grubbs Hyundai
 (844) 373-0806 **\$9,975**



TEXT 826K TO 27414
2010 JEEP LIBERTY
 Mack Grubbs Hyundai
 (844) 373-0806 **\$13,659**



TEXT 5DVJ TO 27414
2005 FORD F-150
 Aaron Williams Auto
 (855) 637-1021 **\$17,900**



TEXT U03V TO 27414
2007 TOYOTA CAMRY
 Hattiesburg Cars
 (855) 242-0775 **\$8,995**



TEXT EC0A TO 27414
2004 DODGE DAKOTA
 Hattiesburg Cars
 (855) 242-0775 **\$8,995**



TEXT U02Q TO 27414
2004 FORD EXPEDITION
 Hattiesburg Cars
 (855) 242-0775 **\$9,995**



TEXT U03R TO 27414
2002 TOYOTA SEQUOIA
 Hattiesburg Cars
 (855) 242-0775 **\$8,995**



TEXT U02M TO 27414
2004 TOYOTA SIENNA
 Hattiesburg Cars
 (855) 242-0775 **\$7,995**



TEXT 3BRC TO 27414
2007 GMC YUKON
 Aaron Williams Auto
 (855) 637-1021 **\$14,500**



TEXT 8NK2 TO 27414
2013 BUICK LACROSSE
 Bob Palmer's CMG
 (844) 743-8208 **\$19,995**



TEXT 9XN0 TO 27414
2015 CHEVROLET CRUZE
 Bob Palmer's CMG
 (844) 743-8208 **\$16,795**



TEXT S44A TO 27414
2015 CHEVROLET CRUZE
 Bob Palmer's CMG
 (844) 743-8208 **\$16,995**



TEXT 8PE3 TO 27414
2001 CHEVROLET IMPALA
 Bob Palmer's CMG
 (844) 743-8208 **\$3,500**



TEXT 8PNG TO 27414
2015 CHEVROLET MALIBU
 Bob Palmer's CMG
 (844) 743-8208 **\$18,197**



TEXT 8S3N TO 27414
2013 MAZDA MAZDA3
 Bob Palmer's CMG
 (844) 743-8208 **\$15,495**



TEXT 8SPF TO 27414
2015 NISSAN ALTIMA
 Bob Palmer's CMG
 (844) 743-8208 **\$18,995**



TEXT 8TD3 TO 27414
2012 VOLKSWAGEN EOS
 Bob Palmer's CMG
 (844) 743-8208 **\$16,995**



TEXT 9XQC TO 27414
2015 GMC TERRAIN
 Bob Palmer's CMG
 (844) 743-8208 **\$24,495**



TEXT 8SCU TO 27414
2014 JEEP CHEROKEE
 Bob Palmer's CMG
 (844) 743-8208 **\$24,395**



TEXT RT0V TO 27414
2009 BMW X3
 Bellevue Motors
 (855) 713-0084 **\$14,750**



TEXT RT29 TO 27414
2008 SATURN VUE
 Bellevue Motors
 (855) 713-0084 **\$10,995**



TEXT RT0D TO 27414
2012 INFINITI G37 SEDAN
 Bellevue Motors
 (855) 713-0084 **\$24,888**



TEXT RT0I TO 27414
2002 LEXUS LS 430
 Bellevue Motors
 (855) 713-0084 **\$8,500**



TEXT RT0Y TO 27414
2008 MERCEDES-BENZ E
 Bellevue Motors
 (855) 713-0084 **\$14,900**



TEXT TC0Q TO 27414
2004 TOYOTA AVALON
 Auto Express
 (844) 402-3154 **\$7,999**



TEXT Q0S1 TO 27414
2006 GMC SIERRA 1500
 Auto Express
 (844) 402-3154 **\$8,999**



TEXT TB6D TO 27414
2005 BUICK RAINIER
 Auto Express
 (844) 402-3154 **\$7,999**



TEXT S9D7 TO 27414
2008 KIA AMANTI
 Auto Express
 (844) 402-3154 **\$8,800**



TEXT UB70 TO 27414
2005 NISSAN ALTIMA
 Auto Express
 (844) 402-3154 **\$6,999**



TEXT 67VB TO 27414
2013 DODGE AVENGER
 Aaron Williams Auto
 (855) 637-1021 **\$10,500**



TEXT 39HM TO 27414
2005 NISSAN 350Z
 Aaron Williams Auto
 (855) 637-1021 **\$8,499**



TEXT D9PB TO 27414
2006 JEEP COMMANDER
 Aaron Williams Auto
 (855) 637-1021 **\$9,499**



TEXT K7D9 TO 27414
2014 NISSAN SENTRA
 Southern Motor Co.
 (855) 215-1918 **\$11,575**



TEXT M90T TO 27414
2007 LINCOLN MKZ
 Auto World, Inc.
 (855) 973-4210 **\$6,025**



TEXT 2015 BUICK VERANO
 Harris Hankins
 (866) 833-4964 **\$16,555**



2014 CHEVROLET CAPTIVA
 Harris Hankins
 (866) 833-4964 **\$16,555**



2005 GMC YUKON XL
 Harris Hankins
 (866) 833-4964 **\$7,995**



2015 CHEVY CRUZE
 Harris Hankins
 (866) 833-4964 **\$15,555**



2010 CHEVROLET SILVERADO
 Harris Hankins
 (866) 833-4964 **\$17,555**

Text the red 4 digit code to 27414 for photos and details to your phone



LIGHTHOUSE BAPTIST CHURCH OF ELLISVILLE

CELEBRATES
PASTOR CHARLES JEFFERSON'S 3RD YEAR ANNIVERSARY
 Saturday • June 4, 2015 at 6:30 p.m.
 with special guest:
 •Grammy Award Winner •Sunday Best Award Winner
 •Stellar Gospel Music Award Winner

Le'Andria Johnson LIVE!

Also Appearing:
 • Glennis Cooley
 • Krista McKenzie
 • Wings of Faith
 • Unity in Praise *featuring* Min. Kensley Waller

tickets available at the church
 • \$20 ADVANCED
 • \$25 AT DOOR
 • \$30 V.I.P.



5212 HWY 11 N • ELLISVILLE, MS • I59 - Exit 90

now open! PRICE SLASHERS

DISCOUNT SALVAGE GROCERY

SPEND \$25

SUMMER SPECIAL

GET 10% OFF YOUR ENTIRE PURCHASE Mon.- Sat. 8:30 am - 6 pm



68515 NOW ACCEPTING EBT

SLASH OF THE WEEK

15.7 Lbs **KINGSFORD CHARCOAL** \$5⁵⁰

5 Lbs **FRENCH FRIES** \$2⁹⁹

32 Oz. **GATORADE** 2/\$1

601-340-3821

3105 HWY 15 N, STE B • LAUREL
 Next to Laurel Quick Iron • Wash & Dry

VISIT US ONLINE AT WWW.RAPIDRTO.COM

Rapid Rentals

Rental Purchase

TEXT RAPID TO 51660 TO RECEIVE **\$20 OFF** FIRST RENTAL TERM
 Cannot be combined with any other offers. Exp: 6-30-16

COOL ZONE

NOW IN STOCK!

AIR CONDITIONERS FROM 5,000 BTU TO 25,000 BTU

WHILE SUPPLIES LAST!

FRIGIDAIRE 5 CU FT CHEST FREEZER FFFC05MIQW

\$44 Per 12 Months OR **\$10⁹⁵** Per Week

FRIGIDAIRE 15 CU FT REFRIGERATOR FFTR1514RW

\$76 Per 18 Months OR **\$18⁹⁵** Per Week

NEW 55" SAMSUNG 4K UHD CURVED TV UN55JU6700

\$132 Per 24 Months OR **\$32⁹⁵** Per Week

Haier 32E3000 32" LED HDTV **\$40** Per 12 Months OR **\$9⁹⁵** Per Week

SAMSUNG UN48J5200AF 48" LED SMART HDTV **\$80** Per 18 Months OR **\$19⁹⁵** Per Week

LG 60LF6100 60" LED SMART HDTV **\$108** Per 24 Months OR **\$26⁹⁵** Per Week

Amana WASHER & DRYER PAIR

\$88 Per 24 Months OR **\$21⁹⁰** Per Week

2 PIECE LIVING ROOM GROUP BLADEN COFFEE - SOFA & LOVESEAT

\$84 Per 18 Months OR **\$20⁹⁵** Per Week

ASHLEY B178 5 PIECE QUEEN BEDROOM GROUP DRESSER, MIRROR, SLEIGH HEADBOARD & FOOTBOARD, RAILS

\$76 Per 18 Months OR **\$18⁹⁵** Per Week

ASHLEY KAVARA CTR HGT 6 PC DIN RM GROUP D469 - TABLE, 4 BARSTOOLS, DOUBLE BARSTOOL

\$80 Per 18 Months OR **\$19⁹⁵** Per Week

We Have All Your Favorite Brands To Choose From!

ASHLEY FURNITURE INDUSTRIES INC. | FRIGIDAIRE | Crosley | GE | SHARP | SAMSUNG | LG

BAY SPRINGS LOCATION
 9 BAY AVENUE (JUST DOWN FROM PIGGLY WIGGLY)
 601.764.9805

CARTHAGE 601.298.0999 | **COLLINS** 601.765.4181

NEWTON 601.683.7800 | MORTON 601.732.2151

Ask Us About Our **50% off** Payoff Option