

# Mid-Michigan Buyers Guide

SUNDAY, JUNE 5, 2016

Serving Clare, Gladwin, Gratiot, Isabella, Montcalm, & Southern Roscommon Counties

Morning Star  
Publishing Company powered by digitalfirst

## WANTED:

31 People to TRY

a revolutionary hearing device never before available

### DON'T MISS THIS OPPORTUNITY!

We need 31 people with difficulty hearing, especially in noisy situations, to evaluate the latest in digital technology from NuEar™. We will perform thorough Hearing Consultations FREE of charge to ALL callers. We will then choose 31 qualified candidates for this program. Candidates selected that wish to purchase the instruments may do so at tremendous savings of up to **50% OFF MSRP with 0% Interest Free Financing\***!

Candidates will be selected:

June 28<sup>th</sup>, 29<sup>th</sup> & 30<sup>th</sup>

Tuesday, Wednesday & Thursday

**CALL TODAY: (855) 628-0418**

\*Invisible  
Solutions  
as low as  
\$750

**miniscopic** 2

Introducing  
**miniscopic** 2  
hearing aids  
with  
Synergy  
Technology

**NUEAR**™  
people helping people

WE MATCH  
COMPETITIVE  
PRICES!



Dynamic Hearing Care Systems

**SERVING OUR COUNTRY**  
  
**SERVING YOU**



**David Graham**  
Nationally Known  
Hearing Aid Expert

9091 W Lake City Road, Suite B  
Houghton Lake, MI 48629

Nationally Known Hearing Aid Expert - AT NO CHARGE!  
Along with Dynamic Hearing Care Systems, David Graham has over 15 years of professional experience in the hearing healthcare industry that together gives us insight into the challenges that accompany hearing loss and access to the latest and most advanced technological developments in hearing sciences.

To schedule your preferred appointment please call:

**(855)628-0418**

\*Individual results may vary. Invisibility may vary based on your ear's anatomy.



# Largest Selection of Clean Used Cars in Central Michigan

**GM Certified Pre-owned Vehicles = 2 Years of Oil Changes & Tire Rotations + 12 Month or 12,000 Mile Bumper to Bumper Warranty**

USED CARS	USED SUVS	USED TRUCKS
<b>2016 CHEVROLET MALIBU LTZ</b> Silver, 11,000 Miles, 4 Cyl..... <b>\$21,900</b>	<b>2015 BUICK ENCLAVE CXL</b> AWD, Silver Ebony, Leather, 20,000 Miles..... <b>\$36,900</b>	<b>2014 CHEVROLET CREW CAB LT SILVERADO 1500</b> Silver, 21,000 Miles..... <b>\$33,900</b>
<b>2016 CHEVROLET CRUZE LT</b> Dk. Gray, 13,000 miles, 4cyl..... <b>\$18,900</b>	<b>2014 BUICK ENCLAVE CXL</b> Premium Package, Mocha, FWD..... <b>\$31,900</b>	<b>2014 FORD F150 CREW CAB XLT</b> Burgundy, 4X4, 35,000 Miles..... <b>\$29,500</b>
<b>2014 CHEVROLET IMPALA LT</b> Silver Ice, 17,000 Miles, Great MPG..... <b>\$18,900</b>	<b>2014 GMC TERRAIN SLE FWD</b> Ashen Gray, 20,000 Miles, 4 Cyl..... <b>\$21,900</b>	<b>2013 CHEVROLET SILVERADO CREW CAB 4X4 LTZ</b> Mocha Steel, 29,000 Miles, Rear Camera/Remote Start..... <b>\$32,900</b>
<b>2013 BUICK LACROSSE</b> Crystal Red, 34,000 Miles, CXL..... <b>\$21,900</b>	<b>2013 CHEVROLET EQUINOX AWD LT</b> Crystal Red, 29,000 Miles..... <b>\$22,900</b>	<b>2013 GMC SIERRA CREW CAB ALL TERRAIN</b> Black w/ Leather, 5.3 V8, 62,000 Miles..... <b>\$30,900</b>
<b>2013 BUICK REGAL PREMIUM</b> Diamond White, 24,000 Miles, Loaded..... <b>\$18,900</b>	<b>2013 GMC TERRAIN FWD SLE</b> 29,900 Miles, White, 4 Cyl..... <b>\$21,900</b>	<b>2012 FORD F350 SUPER DUTY</b> 6.7 V8 Turbo Diesel Black leather loaded, 90,000 miles..... <b>\$37,900</b>
<b>2013 BUICK LACROSSE CXL</b> 41,000 Miles, Champagne Silver..... <b>\$18,900</b>	<b>2013 FORD ESCAPE FWD</b> Med Red, 57,000 Miles, Locally Owned..... <b>\$17,900</b>	<b>2012 GMC SIERRA EXT. CAB SLT</b> Black, 28,000 Miles, 5.3 V8, 1-owner..... <b>\$30,900</b>
<b>2013 BUICK LACROSSE</b> Champagne Silver, 72,000 Miles, Leather..... <b>\$15,900</b>	<b>2012 GMC TERRAIN AWD SLT</b> 27,000 miles, Gray Green..... <b>\$25,900</b>	<b>2012 CHEVY SILVERADO LT CREW CAB 4X4</b> Gray, 107,000 Miles, 5.3, V8, ..... <b>\$23,900</b>
<b>2012 BUICK LACROSSE CX</b> Carbon Black, With E/Assist, 36,000 Miles, Certified..... <b>\$19,900</b>	<b>2012 BUICK ENCLAVE CXL</b> Cocoa Metallic, FWD, 69,000 miles, 7 passenger..... <b>\$23,900</b>	<b>2011 CHEVROLET SILVERADO</b> Grey, 4x4, 107,000 Miles..... <b>\$20,900</b>
<b>2011 BUICK REGAL CXL</b> Majestic Blue, 69,000 Miles..... <b>\$14,900</b>	<b>2012 BUICK ENCLAVE CXL</b> Cocoa Tan Interior, 87,000 miles, FWD..... <b>\$20,500</b>	<b>2010 GMC EXT CAB SLE 4X4</b> White, 5.3 V8, 134,000 Miles..... <b>\$17,900</b>
<b>2010 BUICK LUCERNE CXL</b> Opal White 66,000 Miles..... <b>\$13,900</b>	<b>2012 GMC TERRAIN SLE FWD</b> Burgundy, 71,000 Miles..... <b>\$17,900</b>	<b>2009 CHEVROLET EXT. CAB 4X4</b> Silver Birch, 112,000 Miles, 5.3 V8..... <b>\$17,900</b>
<b>2010 PT CRUISER</b> Burgundy, 90,000 Miles, Locally Owned, 4 Cyl..... <b>\$7,900</b>	<b>2012 CHEVROLET EQUINOX LT FWD</b> 102,000 Miles, Goldmist..... <b>\$13,900</b>	<b>2007 GMC SIERRA CREW CAB SLE</b> 5.3 V8, 170,000 Miles..... <b>\$15,900</b>
<b>2009 BUICK LUCERNE CXL</b> Goldmist, 50,000 Miles..... <b>\$13,900</b>	<b>2011 GMC TERRAIN FWD SEL</b> Goldmist, 4cyl, 32,000 Miles..... <b>\$16,900</b>	<b>2007 GMC SIERRA CREW CAB SLE</b> 170,000 miles, Silver Birch, 5.3 V8..... <b>\$14,900</b>
<b>2009 CHEVROLET MALIBU LT</b> Burgundy, 115,000 Miles..... <b>\$8,900</b>	<b>2011 GMC TERRAIN</b> Mocha Steel, FWD, 92,000 Miles, SLT, 4cyl..... <b>\$15,900</b>	<b>USED VANS</b>
<b>2007 BUICK LUCERNE CXL</b> Dk. Blue, 3800 V6, 127,000 Miles, Leather..... <b>\$10,900</b>	<b>2010 BLACK CADILLAC SRX</b> Black, V6, 94,000 Miles..... <b>\$18,900</b>	<b>2014 CHRYSLER TOWN &amp; COUNTRY</b> White, 43,000 Miles, Stow & Go..... <b>\$19,900</b>
<b>2007 CHEVY IMPALA LT</b> Silver, 152,000 Miles..... <b>\$6,900</b>	<b>2009 BUICK ENCLAVE CXL FWD</b> 92,000 Miles, Silver..... <b>\$16,900</b>	<b>2012 CHRYSLER TOWN &amp; COUNTRY</b> Dk. Gray, 54,000 Miles, Stow & Go..... <b>\$18,900</b>
	<b>2009 FORD ESCAPE XLT</b> Med Red, FWD, 109,000 Miles, Clean..... <b>\$9,900</b>	<b>2009 DODGE GRAND CARAVAN</b> Dk. Green 132,000 Miles, Stow & Go Seating..... <b>\$8,900</b>
	<b>2008 BUICK ENCLAVE</b> Burgundy, FWD, CX V6, Locally Owned, 110,000 Miles..... <b>\$12,900</b>	<b>2002 HONDA ODYSSEY</b> Silver, 175,000 Miles..... <b>\$4,900</b>
	<b>2007 TAHOE LT 4WD</b> Amber Bronze, Leather, Sunroof, 168,000 Miles, 1-Owner..... <b>\$18,900</b>	

## BENCHLEY BROS., INC.

1 Mile East of Doherty • US-10, Clare • Sales (989) 386-9900

For more info log on to: [www.benchleybros.com](http://www.benchleybros.com)

Parts & Service (989) 386-3197

Voted Clare Counties #1 Dealership

HOURS  
8-6 Mon-Fri  
9-2 Sat



Specializing in  
**GM Certified**  
USED VEHICLES



## Steve's Country Market

989-539-3110 3170 North Clare Ave., Harrison

44 Feet of Old Fashioned Meat Counter with Good Old Fashioned Service



Hours: Sun. - Mon. 8-8 Bridge Card & Wic Accepted

Sale Dates: June 6 – June 12, 2016

Top Quality Meats At Rock Bottom Prices!

100% Satisfaction  
Guaranteed

Michigan Lottery and ATM Machine  
[stevescountrymarket.com](http://stevescountrymarket.com)

Fresh Meat, Seafood & Deli Items

GROUND CHUCK  
FAMILY PACK

**\$2.79**  
LB.

BONELESS  
CHICKEN  
BREAST

**\$1.79**  
LB.

WHOLE  
BONELESS  
PORK LOINS

**\$1.79**  
LB.

SLICED  
FREE!

BLACK CANYON  
ANGUS DELMONICO  
RIBEYE STEAKS

**\$9.99**  
LB.

BEEF CUBED  
STEAKS

**\$3.99**  
LB.

FRESH GROUND  
ROUND

**\$3.99**  
LB.

USDA CHOICE  
T BONE  
STEAKS

**\$7.99**  
LB.

MARINATED  
CHICKEN  
BREAST

**\$2.69**  
LB.

STEVE'S OWN  
MARKET/MADE  
BRATS

**\$3.69**  
LB.

ECKRICH  
ALL MEAT  
FRANKS  
14 OZ.

**4/\$5.00**

ECKRICH  
SMOKED OR  
POLISH SAUSAGE  
42 OZ.

**\$4.99**  
EA.

SOCKEYE SALMON  
FILLET

**\$6.99**  
LB.

TILAPIA  
FILLET

**\$3.49**  
LB.

COD LOINS

**\$5.99**  
LB.

ECKRICH  
DELI HAM

**\$3.99**  
LB.

ECKRICH  
HARD  
SALAMI

**\$4.49**  
LB.

COLBY OR  
COJACK  
CHEESE

**\$4.49**  
LB.

SANDWICH  
SWISS  
CHEESE

**\$4.49**  
LB.

### Fresh Produce

RED OR GREEN  
SEEDLESS GRAPES



**\$1.99**  
LB.

IDAHO POTATOES  
10 LB. BAG



**\$2.99**  
EA.

SLICING  
TOMATOES



**99¢**  
LB.

BANANAS



**49¢**  
LB.

### Fresh Dairy & Frozen

PRAIRIE FARMS  
COTTAGE CHEESE  
24 OZ.



**2/\$5.00**

YODER'S SHREDDED  
OR BAR CHEESE  
8 OZ.



**2/\$4.00**

FLORIDA NATURAL  
ORANGE JUICE  
59 OZ.



**2/\$6.00**

YODER'S  
POTATO OR  
MACARONI SALAD  
32 OZ.



**2/\$6.00**

OLD RECIPE  
PREMIUM  
ICE CREAM  
56 OZ.



**\$3.99**  
EA.

### Grocery

BUSH'S BEST  
BAKED BEANS  
21.5-28 OZ.



**3/\$5.00**

AUNT MILLIE'S  
HOMESTYLE  
BREAD  
22-24 OZ.



**2/\$3.00**

JIF PEANUT  
BUTTER  
15.5-16 OZ.



**\$1.99**  
EA.

AUNT MILLIE'S  
DELUXE  
HAMBURG OR  
HOT DOG BUNS  
8 CT.



**\$1.69**  
EA.

RAGU  
PASTA SAUCE  
23.9-24 OZ.



**\$1.89**  
EA.

SWEET  
BABY RAY'S  
BBQ SAUCE  
18 OZ.



**2/\$3.00**

POST CEREALS  
SELECT VARIETIES  
15.5-20 OZ.



**2/\$6.00**

DASANI  
WATER  
24 PK.



**\$3.99**  
EA.

DORITOS  
10-11 OZ. OR  
RUFFLES  
POTATO CHIPS  
9-13 OZ.



**2/\$5.00**

COKE  
1/2 LITER  
6 PK.



**2/\$5.00**  
PLUS DEPOSIT

While supplies last. Not responsible for printing errors.



# DEWEY'S TRADING POST

Maple Rapids • 682-4158

Monday-Saturday: 8 am - 7 pm, Closed Sunday

Prices In This Ad Good for week of June 6th - June 11th 2016

WIC • Bridge Card • VISA • Mastercard • Discover • American Express • Debit Card & Chamber Bucks Gift Certificates.

## Feature Bundle: Campers Bundle \$85.99

16ct Ground Beef Patties -  
5lb Brats - Boneless/Skinless Chicken Breast  
- 5lb Baby Back Ribs - 5lb Chicken Leg 1/4's  
(Great for Family BBQ's)

"Whole"  
New York Strips  
13 lb Avg

**\$4.49**  
LB

CUT  
FREE!!

"Choice"  
T-Bone Steak

**\$8.99**  
LB

"Whole" Fresh  
Beef Brisket

**\$3.99**  
LB

Our Own Onion  
Garlic Brats

**\$2.99**  
LB

Our Own  
Sassy  
BBQ Brats

**\$2.99**  
LB

"Our Own"  
New Chicken Smoked  
Cheddarwurst  
(Made with  
Chicken Breast)

**\$6.99**  
LB

"Our Own"  
New Bacon  
Cheddarwurst

**\$6.99**  
LB

2 1/2 Jar Pickled  
Bologna or  
Red Hots

**\$9.99**  
JAR

Koegel's  
Ring Bologna

**\$3.69**  
LB

Boneless Pork  
Sirloin Chops

**\$1.89**  
LB

Fresh  
Pork Cutlets

**\$2.99**  
LB

Rolled Pork  
Sirloin Roast

**\$1.89**  
LB

Choice  
Patio Steaks

**\$3.99**  
LB

Choice  
Arm Roast

**\$3.49**  
LB

Choice  
Boneless  
Sirloin Steak

**\$6.99**  
LB

"Bone In"  
Chicken  
Fryer Breast

**\$1.39**  
LB

5lb Bag Jumbo  
Drum Sticks

**\$3.99**  
BAG

Our Own  
Bulk  
Breakfast  
Sausage  
2 Flavors

**\$2.69**  
LB

Our Own  
Bulk Potato  
Sausage

**\$2.69**  
LB

[www.deweystradingpost.com](http://www.deweystradingpost.com)

LIKE us on facebook & see our WEEKLY SPECIALS!



# SUMMER IS HERE

**efco**

our power, your passion

5  
YEAR  
WARRANTY

10% OFF REGULAR RETAIL PRICES

- Chain saws
- Trimmers
- Blowers



MT4400 CHAINSAW

DS 2400 S TRIMMER

SA 3000 BLOWER

Large Selection  
of Oregon  
Lawn Mower Blades  
In-Stock

Starting at  
**\$8.95**

OREGON

## Building Materials for Your Projects:

**Lumber, OSB, Treated Posts**

**Trusses, Windows, Doors,**

**Concrete Blocks, Mortar,**

**Redi-mix Concrete**



- Compost • Potting Soils
- Seed Starter • Plant Mixes & More!

## COMPLETE OUTDOOR COOKER



Welcome to the Big Green Egg®  
the Original American Designed Ceramic Cooker

**A Smoker • A Grill • An Oven**

**HERSHBERGER'S PRO HARDWARE**

10289 N. Leaton Rd., Clare, MI 48617-9107

**(989) 386-5338**

Full Line of Hardware & Building Supplies  
Stove & Furnaces All Fuel Chimneys

# Get Ready for Spring...

Full Service  
and Parts  
Department

AJ Rental & Equipment Repair is Your Full-Line  
Hustler Mower Dealer.

**0% Interest on all Hustler Mowers**



**Hustler Fastrak 60"**  
24hp, Fab Deck, Kawasaki Engine  
**Only \$6399**



**Hustler Raptor 54"**  
Kohler Engine, Electric Flip Up  
**Only \$5299**



**Hustler X-One 60"**  
27hp, Kawasaki Engine Full Commercial  
**Only \$8499**



**Hustler Raptor SD 54"**  
Kawasaki Engine  
**Only \$3999**



**Hustler Fastrak SDX 60"**  
Kawasaki FX Engine  
**Only \$7999**



**Hustler Raptor 52"**  
Kohler Engine  
**Starting At: \$2999**

**AJ Rental & Equipment Repair Co., Inc.**

4433 S. Huron Rd. • Standish, MI 48658

**989-846-4588**



**HUSTLER**

# SPRING LS TRACTOR SALE

REG. \$21,200  
**SALE \$17,200**

SHOW WITH  
OPTIONAL  
BACKHOE

**XG3025**  
24.4 HP, HYDRO, 4 WD WITH LOADER  
AS LOW AS **\$146** PER MONTH\*

**XR3135**

REG. \$26,900  
**SALE \$22,600**

35 HP, HYDRO, 4 WD  
WITH LOADER  
AS LOW AS **\$169** PER MONTH\*

**XJ2025**

REG. \$17,200  
**SALE \$14,425**

24.4 HP, HYDRO, 4 WD  
WITH LOADER  
AS LOW AS **\$129** PER MONTH\*

\*With approved credit. See store for details.

**ALL LS TRACTORS HAVE A 5 YEAR  
ENGINE/DRIVETRAIN WARRANTY!**



**Nagy's**

**TRACTOR  
SALES, INC.**

Family Owned Since 1946

1980 W. US-23, Omer, MI • 989-653-3173

**WWW.NAGYSTRACTOR.COM**





# BRIAN'S FRUIT & MEAT MARKET

**CLOSED  
EASTER SUNDAY**

**2167 S. M-76 • West Branch  
(Across from Kmart)**

**While Supplies Last • Not responsible for printing errors**

**Prices good Sunday, June 5th thru Friday, June 10th, 2016**

**New store hours: Open Sundays 8am - 7pm • Mon.-Sat. 7am-8pm**

**WE ARE A PACKAGED LIQUOR DEALER**

**We accept all major credit cards & EBT card**

**BRIAN'S MEATS: 989-345-3709**

**LIKE US ON FACEBOOK**



**WWW.BRIANSFRUITANDMEATMARKET.COM**

<b>Butterball Brand</b> <b>SLICED OVEN-ROASTED TURKEY BREAST</b> <b>\$5.99</b> lb.	<b>Dairy Fresh Brand</b> <b>SLICED FIRECRACKER JACK CHEESE</b> <b>\$3.99</b> lb.	<b>Eckrich Brand</b> <b>SLICED PREMIUM DELI HAM</b> <b>\$3.49</b> lb.	<b>Fire Up The Grill</b> <b>BEEF LOIN PORTERHOUSE STEAKS</b> <b>\$8.79</b> lb.	<b>Beef It's What's For Dinner</b> <b>BONELESS BEEF ENGLISH ROAST &amp; DENVER STEAKS</b> <b>\$3.99</b> lb.	<b>Heart Smart</b> <b>FRESH GROUND BEEF FROM SIRLOIN</b> <b>\$3.99</b> lb.	<b>Great For Grilling</b> <b>BONE-IN CENTER CUT PORK CHOPS</b> <b>\$2.69</b> lb.
<b>Great For Pulled Pork</b> <b>SEMI BONELESS PORK BOSTON BUTT ROAST</b> <b>\$1.89</b> lb.	<b>BBQ Time</b> <b>FROZEN BABY BACK RIBS</b> <b>\$2.99</b> lb. frozen 3 pks.	<b>Asst. Varieties</b> <b>BRIAN'S HOMEMADE FRESH BRATS</b> <b>\$3.99</b> lb.	<b>Honey BBQ</b> <b>BRIAN'S OWN MARINATED PORK TENDERLOINS</b> <b>\$3.99</b> lb.	<b>Breakfast Time</b> <b>BRIAN'S HOMEMADE BULK BREAKFAST SAUSAGE W/ BACON</b> <b>\$2.99</b> lb.	<b>Fresh Never Frozen</b> <b>FRESH BONELESS SKINLESS CHICKEN BREAST</b> <b>\$1.79</b> lb. or <b>\$1.59</b> 10 lb. or more	<b>Potato, Mustard Potato, Mac &amp; Slaw</b> <b>YODER'S 2 LB. PREMIUM DELI SALADS</b> <b>2/\$7.00</b>

**BRIAN'S PRODUCE: 989-345-2891**

<b>BAREMAN'S DAIRY MILK</b> <b>\$2.39</b> 1% & Skim Gal. <b>\$2.49</b> 2% & Whole Gal.	<b>PRAIRIE FARMS YOGURT</b> <b>5/\$2.00</b> 6 oz.	<b>PRAIRIE FARMS COTTAGE CHEESE</b> <b>\$1.99</b> 24 oz. tubs	<b>SOFT N' GOOD BREAD</b> <b>2/\$3.00</b>	<b>GREENHOUSE BUYS</b> <b>CUT GERANIUMS AND PROVEN WINNER FLOWERS</b> <b>3/\$10.00</b> <b>ALL BEDDING &amp; VEGETABLE FLATS</b> <b>\$12.99</b> <b>HANGING BASKETS</b> <b>\$12.99 &amp; up</b> <b>12-12-12 FERTILIZER</b> <b>\$12.99</b> 50 lb. bag <b>12-12-12 FERTILIZER</b> <b>\$10.99</b> 40 lb. bag <b>GARDEN LIME</b> <b>\$4.99</b> 40 lb. bag <b>TOP SOIL &amp; PEAT MOSS</b> <b>\$1.79</b> 40 lb. bag <b>POTTING SOIL - COW MANURE</b> <b>\$1.99</b> 40 lb. bag <b>ALL COLORS OF MULCH</b> <b>3/\$10.00</b> 2 cu. ft. bag <b>LARGE SELECTION OF POTTED COMBINATION FLOWERS!</b>	
<b>FIRST OF THE SEASON PEACHES AND NECTARINES</b> <b>99¢</b> lb.	<b>LETTUCE</b> <b>99¢</b> ea.	<b>FRESH RASPBERRIES AND BLACKBERRIES</b> <b>\$1.99</b> pkg.	<b>SEEDLESS CUCUMBERS</b> <b>79¢</b> ea.		
<b>VIDALIA ONIONS</b> <b>69¢</b> lb.	<b>LARGE FARM FRESH EGGS</b> <b>2/\$1.00</b> dozen	<b>BLUEBERRIES</b> <b>2/\$5.00</b> pint	<b>BANANAS</b> <b>49¢</b> lb.		
<b>FRESH SWEET CORN</b> <b>5/\$1.99</b>	<b>MILLER LITE AND COORS LIGHT BEER</b> <b>\$11.99</b> 18 pk. cans + tax + dep.	<b>HAMM'S BEER</b> <b>\$12.99</b> 30 pk. cans + tax + dep.			

# A Frame Auto



**2001 SAAB SAAB**  
**\$6,000**  
BLACK, Convertible, Florida Car, 75k Miles



**2009 MITSUBUSHI GALANT**  
**\$7,995**  
BLUE, 75k Miles, Clean, Local Trade,



**2010 CHEVROLET IMPALA**  
**\$8,495**  
GOLD, 99k Miles, Sharp, Rides Beautiful



**2009 NISSAN CUBE**  
**\$9,000**  
SILVER, 76k Miles, Great Gas Mileage

**Good Credit Bad Credit No Credit WE FINANCE!**

**Large inventory of Autos/SUV's/Vans/Pick-ups on our Sales Lot, including large selection of 4X4 SUV'S. Completely serviced, quality used vehicles!**

CARS			TRUCK		
<b>1991 CADILLAC DEVILLE</b>	<b>\$3,000</b>	<b>2008 MERCURY MILAN</b>	<b>2006 FORD EXPLORER</b>	<b>\$8,995</b>	
WHITE, 108k Miles, V8, 4 door, Blue Leather		BLUE, 89k Miles, Leather, FWD, Cool Blue	BLACK, 4WD, Virginia Car, Trade-in, Third Row EDDIE BAUER		
<b>2002 BUICK REGAL</b>	<b>\$3,500</b>	<b>2009 MITSUBUSHI GALANT</b>	<b>2009 NISSAN CUBE</b>	<b>\$9,000</b>	
WHITE, 3.8 V6, 4 Door		BLUE, 75k Miles, Clean, Local Trade,	SILVER, 76k Miles, Great Gas Mileage		
<b>2004 CHRYSLER SEBRING</b>	<b>\$3,995</b>	<b>2006 PONTIAC G6 GT</b>	<b>2007 FORD EXPEDITION</b>	<b>\$9,995</b>	
WHITE, FWD, Leather Loaded, 150k Miles		SILVER, GT, 83k Miles, Sporty	MAROON, Eddie Bauer, Leather, 4WD, 160k Miles		
<b>2002 PONTIAC GRAND AM</b>	<b>\$4,300</b>	<b>2010 CHEVROLET IMPALA</b>	<b>2008 JEEP COMPASS</b>	<b>\$9,995</b>	
GREEN, Sedan, 137k Miles, V6, REDUCED		GOLD, 99k Miles, Sharp, Rides Beautiful	GREEN, 4WD, 76k Miles, Fun Jeep		
<b>2001 CHRYSLER 300</b>	<b>\$4,500</b>	<b>2007 SATURN AURA</b>	<b>2008 JEEP PATRIOT</b>	<b>\$9,995</b>	
BLUE, Leather Loaded, 125k Miles, Local Trade, REDUCED		RED, 78k Miles, FWD, Sharp Red Color	GRAY, 4WD, 81k Miles, Tan		
<b>2000 PONTIAC BONNEVILLE</b>	<b>\$4,850</b>	<b>2009 SATURN AURA</b>	<b>2008 SATURN VUE</b>	<b>\$9,995</b>	
BLACK, 114k Miles, 3.8 V6, Leather Loaded		GRAY, 82k Miles, Sharp Ride, Sedan	WHITE, AWD, 81k Miles, XR, V6		
<b>2005 BUICK LESABRE</b>	<b>\$5,495</b>	<b>2008 BUICK LACROSSE</b>	<b>2010 DODGE CALIBER</b>	<b>\$10,000</b>	
GRAY, Big Safe Sedan, 145k Miles		WHITE, Comfortable, Sharp Color, 64k Miles	RED, 52k Miles, Red, Like New		
<b>2005 SATURN ION</b>	<b>\$5,495</b>	<b>2011 CHEVROLET CRUZE</b>	<b>2007 JEEP COMMANDER</b>	<b>\$10,900</b>	
BURGUNDY, Manual, 108k Miles, Great Gas Mileage		BLACK, 36k Miles, Great Gas Mileage, 6 Speed Auto Transmission	RED, 4WD, Sport, V6, 100k Miles		
<b>2005 CHEVROLET COBALT</b>	<b>\$5,995</b>	<b>2009 BUICK LACROSSE</b>	<b>2007 DODGE NITRO</b>	<b>\$10,995</b>	
RED, 121k Miles, Fuel Efficient, Sharp Color		GRAY, 3800, V6, Very Sharp, 67k Miles	SILVER, Local Trade, 95k Miles, 4WD		
<b>2001 SAAB SAAB</b>	<b>\$6,000</b>	<b>2010 FORD FUSION</b>	<b>2011 CHEVROLET EQUINOX</b>	<b>\$10,995</b>	
BLACK, Convertible, Florida Car, 75k Miles		GRAY, Hybrid, 81k Miles, FWD	BLACK, FWD, 105k Miles, Great Car		
<b>2005 PONTIAC GRAND PRIX</b>	<b>\$6,495</b>	<b>2011 BUICK LUCERNE</b>			
SILVER, 3.8 V6, 110k Miles, Sharp Silver, Leather Loaded, REDUCED		WHITE, Beautiful Pearl, CXL Loaded, 93k Miles			
<b>2009 CHEVROLET IMPALA</b>	<b>\$6,995</b>				
RED, Bright Red, Local Trade, 133k Miles, Beautiful					
<b>2009 FORD FUSION</b>	<b>\$6,995</b>				
SILVER, VERY SHARP, Leather Loaded, 141k Miles, Black Rims					
<b>2007 CHEVROLET IMPALA</b>	<b>\$7,000</b>				
BLACK, 116k Miles, 3.5 V6, Sedan					
<b>2005 PONTIAC BONNEVILLE</b>	<b>\$7,295</b>				
RED, 3.8L V6, 116k Miles, Sharp, Fun					
<b>2009 FORD FUSION</b>	<b>\$7,995</b>				
TAN, AWD, 133k Miles					
<b>2008 HONDA ACCORD</b>	<b>\$7,995</b>				
BLACK, 118K Miles, Rides Beautiful, FWD					

**All Inventory & more information can be found at [www.aframeauto.com](http://www.aframeauto.com) !**



**Now Offering In-House  
Financing With Only  
PL/PD Insurance**

**989-681-4000**  
Sales Rep - Bradly Mott

**1984 W. Monroe Road St. Louis**

**1 mile east of US-127 on M-46**

**East end of  
Miller Auto Sales**

**Mon.-Fri. 8-6 Sat 9-2 or by appointment**



# Kubin's *Mattress Sale!*



## Helps reduce tossing and turning

### ComfortRight™ Layers

This advanced system of foams and fluffy fibers is designed to provide instant comfort. This helps reduce the pressure points that can cause tossing and turning so you can sleep more comfortably through the night.

## Minimize impact from partner movement

### TrueSense® Design

Serta's exclusive design helps minimize the impact of partner movements, working to isolate motion at its source so you can enjoy a peaceful night's sleep with fewer disruptions.

## Encourages proper back support & alignment

### Custom Support® System

Every Perfect Sleeper features a system of durable, yet flexible carbon steel coils that work to promote proper support and alignment across the entire body.

## Resists sagging & edge roll-off

### ComfortLast® Construction

Designed to enhance durability of the mattress and is thoroughly tested beyond industry standards to make sure it can resist sagging and edge roll-off. This enhanced durability can help extend the comfort life of your mattress.

## Promotes a balanced sleep temperature

### CoolBalance® Technology

A unique combination of high-performance heat and moisture-regulating fabric and an overall mattress design that helps promote airflow. Together, these help provide a comfortable, balanced sleep temperature.

**5 reasons**  
to never count  
sleep again.



**Andora Twin  
Mattress \$99**

**Add a  
Pivot Head Up Box  
for \$544 on  
most models**

## Guaranteed Lowest Prices ON ALL SERTA MATTRESSES!

	TWIN 2pc set	FULL 2pc Set	QUEEN 2pc Set	KING 3pc set
<b>Majestic Davey</b> Gentle Eurotop	<b>\$299</b> Sale Compare At \$449	<b>\$379</b> Sale Compare At \$569	<b>\$399</b> Sale Compare At \$599	<b>\$599</b> Sale Compare At \$899
<b>Majestic Gallion</b> Support Firm or Support Eurotop	<b>\$349</b> Sale Compare At \$529	<b>\$449</b> Sale Compare At \$679	<b>\$499</b> Sale Compare At \$749	<b>\$799</b> Sale Compare At \$1199
<b>Majestic Raftery</b> Premium Choice Plush or Firm	<b>\$449</b> Sale Compare At \$679	<b>\$549</b> Sale Compare At \$829	<b>\$599</b> Sale Compare At \$899	<b>\$899</b> Sale Compare At \$1349
<b>Majestic Stowcroft</b> Choice of Super Pillowtop or Firm	<b>\$649</b> Sale Compare At \$979	<b>\$749</b> Sale Compare At \$1129	<b>\$799</b> Sale Compare At \$1199	<b>\$1099</b> Sale Compare At \$1649
<b>Kubin's Exclusive, Perfect Sleeper Regal Suite, 2 Sided flipable mattress</b> Choice of Plush or Extra Firm	<b>\$549</b> Sale Compare At \$829	<b>\$699</b> Sale Compare At \$1049	<b>\$799</b> Sale Compare At \$1199	<b>\$1099</b> Sale Compare At \$1649
<b>Serta Perfect Sleeper Swan Harbor</b> Choice of Luxury Pillowtop or Firm	<b>\$899</b> Sale Compare At \$1349	<b>\$969</b> Sale Compare At \$1459	<b>\$999</b> Sale Compare At \$1499	<b>\$1299</b> Sale Compare At \$1949
<b>Serta Perfect Sleeper Hatters</b> Evercool & Gel Memory Foam	<b>\$899</b> Sale Compare At \$1349	<b>\$969</b> Sale Compare At \$1459	<b>\$999</b> Sale Compare At \$1499	<b>\$1299</b> Sale Compare At \$1949

**12 Months Interest  
Free Financing Available  
With Approved Credit.**

\$300 Minimum purchase,  
monthly payments required.

**LARGEST RECLINER  
SELECTION IN MICHIGAN!  
SEE FOR YOURSELF!**

**IN STOCK AND ON SALE NOW:**

**Power Recliners ▪ Leather Recliners ▪ Big Mans Recliners ▪ Ladies Recliners ▪ Gliding Recliners ▪ Swivel Rocker Recliners ▪ Wing Chair Recliners ▪ Heat & Massage Recliners ▪ Life Chair Recliners ▪ Reclining Loveseats ▪ Reclining Sofas ▪ Children's Recliners**

**People's Choice #1  
Furniture Store #1  
Customer Service #1  
Web Site**



**L A Z B O Y®**

**Flexsteel®**  
America's Seating Specialist

**Best**  
Home Furnishings

**catnapper**

**FURNITURE  
LIFESTYLE**  
BRAND SOURCE® NATIONAL BUYING POWER



**Kubin's Furniture & Mattresses**

101 N Mill St, Corner of M46, St. Louis, Michigan, (989) 681-5043

Hours: Mon-Thurs: 9-6, Fri: 9-8, Sat: 9-5, Closed Sunday

Sign up Your Email at: <http://www.kubins.com/signup.htm>



\*SEE STORE FOR DETAILS



# BRADY MOVING AUCTION

HAVING SOLD OUR HOME, WE WILL SELL THE FOLLOWING AT PUBLIC AUCTION. **LOCATED:** 3 MILES SOUTH OF BEAVERTON ON M-18 TO GUERNSEY RD., THEN EAST 3 1/2 MILES.

**Beaverton, MI**

**Saturday, June 11, 2016 • 10:00 A.M.**

**SELF CONTAINED TRUCK CAMPER, FORD 3000 TRACTOR, SHOP RELATED TOOLS & MISC. ITEMS: ELKHORN 8 1/2" SELF CONTAINED PICKUP CAMPER W/ REFRIG., FURNACE, H.W. HEATER & OUTSIDE SHOWER (LIKE NEW) • FORD 3000 TRACTOR, 3 PT., 2 HYD. OUTLETS (EXCELLENT COND.) • FORD HYD. FRONT BLADE • FORD 3 PT. HYD. FORK LIFT • GOOD SELECTION OF SHOP TOOLS TO INCLUDE: DELTA #DJ-15 FLOOR MOD. JOINER • DELTA 12" SIDEKICK COMPOUND MITER SAW ON A STAND (LIKE NEW) • DELTA 10" FLOOR MOD. CONTRACTORS TABLE SAW W/ UNIFENCE • DELTA COMMERCIAL FLOOR MOD. DRILL PRESS • AIRCO 300 AMP HELI WELDER • IRON-MAN AIR COMPRESSOR • RAMCO MOD. 5000 CHERRY PICKER • KAWASAKI 4300 WATT GENERATOR • 6500 WATT HONDA POWERED GENERATOR • RIDGID MITER SAW UTILITY VEHICLE • MAC ROLL AROUND TOOL CABINET W/ TOOL CHEST & QUAN. OF GOOD AMERICAN MADE TOOLS • CRAFTSMAN 12" FLOOR MODEL BAND SAW • CRAFTSMAN 8" & 10" BENCH TOP BAND SAWS • (3) JOINER/PLANERS • (2) CRAFTSMAN 16" SCROLL SAWS • CRAFTSMAN SHAPER • 3/4" PNEUMATIC IMPACT WRENCH • ASST. AIR TOOLS • DEWALT ROTARY POWER TOOL • DEWALT CIRCULAR SAW, DRILL MOTORS, GRINDERS, ETC. • HITACHI SIDE GRINDER • NUMEROUS SANDERS • PEDESTAL BENCH GRINDER • 16 PC. FORSTNER BIT SET • ROUTER BITS • NUMEROUS WRENCH SETS, RATCHETS & IMPACT, DEEP WELL & STANDARD SOCKETS • BLUE POINT SNAP-RING PLIERS • NUMEROUS ASST. OTHER PLIERS • SET OF TAPER SHANK DRILLS 1/2" TO 1" • MANY OTHER DRILL BITS, TAPS, DIES, THREAD CHASERS, E-Z OUTS, HAND STAMPS, ETC. • CENTER PUNCH & BROACH SETS • KENNEDY MACHINIST TOOL BOX W/ ASST. TOOLING • NUMEROUS HAND & POWER TOOLS • ASST. GEAR PULLERS • PIPE DIE'S • PIPE VISE • NUMEROUS PIPE FITTINGS • 1/2 TON CHAIN FALL • ELEC. CHAIN FALLS • WELDING BENCH • DAYTON SHOP VAC • JACKS & JACK STANDS • METAL CABINETS & SHELVING • MISC. ELECTRICAL ITEMS • 150 GAL. FUEL TANK ON A STAND • ASST. ROUGH SAWN LUMBER • 4 TO 6 FARM WAGON LOADS OF SHOP TOOLS & RELATED ITEMS FROM THE BUILDINGS • **LAWN & GARDEN ITEMS:** POWER RAKE W/ HONDA ENGINE • PULL TYPE LAWN CART • PULL TYPE LAWN SPRAYER • GARDEN WAGON • BRINLEY LAWN AERATOR • 8 H.P. & 5 H.P. B&S ENGINES • SNAPPER 3 H.P. LAWN EDGER • (2) B&D HEDGE TRIMMERS • EARTHWAY GARDEN PLANTER W/ PLATES • (2) ECHO STRAIGHT SHAFT GAS WEED WHACKERS • ECHO GAS LEAF BLOWER • (3) CHAIN SAWS • POLE SAW TRIMMER • (4) LIVE TRAPS • QUAN. OF YARD TOOLS • **FIREARMS & SPORTING COLLECTIBLES:** REMINGTON 30-06 RIFLE W/ LEOPOLD VARIABLE SCOPE • 22 .CAL RIFLE • 20 GA. SHOTGUN • 50 CAL. MUZZLE LOADER • OAK GUN CABINET • (4) GUN CASES • HARD SIDE 4 GUN TRAVELING CASE • ASST. ELK, TURKEY & DEER GAME CALLS • GUN REST • (4) PAIR OF SHOOTING STICKS • GUN CLEANING SUPPLIES • SPOTTING SCOPE W/ WINDOW MOUNT & TRIPOD • RANGE FINDER • SHIP TO SHORE HANDHELD RADIO • PROGRAMMABLE SCANNER • BINOCULARS • LANTERNS • LIKE NEW HUNTING & SNOWMOBILE SUITS • SLEEPING BAGS & BACK PACK • SEVERAL FISHING RODS, TACKLE & NETS • PULL TYPE WATER TUBE • MANY MORE SPORTING RELATED ITEMS • **HOUSEHOLD & COLLECTIBLE ITEMS:** MAYTAG WASHER & GAS DRYER • OFFICE DESK • (2) SEWING MACHINES • VACUUM CLEANER • LOTS OF CHRISTMAS DECORATIONS • MANY MORE ITEMS • LOTS OF BOX TOYS • NASCAR MEMORABILIA • FLYING ACES PINBALL MACHINE • **THIS IS A PARTIAL LISTING! AUCTIONEERS NOTE:** PLAN TO ATTEND THIS **GOOD CLEAN AUCTION**. YOUR ATTENDANCE AT THE BRADY MOVING AUCTION IS APPRECIATED.**

**TERMS OF SALE:** CASH, CHECK OR CREDIT CARDS ACCEPTED.

**TO VIEW A COMPLETE LISTING WITH PHOTO'S VISIT [JOHNPECKAUCTIONS.COM](http://JOHNPECKAUCTIONS.COM)**

**Joe & Bonnie Brady, Owners**  
**1243 Guernsey Rd., Beaverton, MI 48612**  
**JOHN PECK AUCTIONS LLC**  
**Gladwin, MI (989) 426-8061**

**Sale on  
2016**

# Cub Cadet



**Great Financing**

**Come in and Check out Sales on 2015 Models**

**Service. Knowledge. Selection. Financing. Delivery.**

**Check Us Out!**

**GRATIOT OUTDOOR EQUIPMENT**

**Commercial-Industrial-Residential**

*"We Service All Makes of Outdoor Equipment"*

**On M-46 in Breckenridge • 842-3844**

\*See dealer for details

**LOCAL Visit Your MERCHANTS**

**VANOMEN ESTATE AUCTION**

IN ORDER TO SETTLE THE ROGER VANOMEN ESTATE, THE FOLLOWING WILL SELL AT PUBLIC AUCTION. **LOCATED:** FROM THE LIGHT IN PRUDENVILLE (M-18/M-55) TAKE MAIN STREET (BEHIND WALGREENS) EAST 1 MILE TO SALE (MAIN ST. TURNS IN TO SILVERWOOD DR.)

**Prudenville, MI**

**Sunday, June 12, 2016 • 12:00 Noon**

**PONTOON, PADDLE BOATS, KAYAKS, SNOWMOBILES, GARAGE RELATED & MISC. ITEMS: SMOKER CRAFT 18' PONTOON BOAT W/ MERCURY 25 H.P. MOTOR • (2) PADDLE BOATS • (2) KAYAKS W/ PADDLES • POLARIS 550 TOURING 2 UP SNOWMOBILE, GARAGE KEPT (ONLY 1958 MILES ONE OWNER MILES & LIKE NEW) • POLARIS INDY SNOWMOBILE, GARAGE KEPT 3,809 ONE OWNER MILES • (7) SNOWMOBILE/MOTORCYCLE HELMETS W/ FACE SHIELDS & CHIN GUARDS • SNOWMOBILE & HUNTING SUITS • **SNAPPER 9 H.P. RIDING LAWN TRACTOR W/ 28" MOWER DECK • CRAFTSMAN 3 H.P. SNOW BLOWER W/ 20" CUTTING PATH • CRAFTSMAN PUSH LAWN MOWER • CORDLESS DREMEL TOOL • RYOBI 18 V. CORDLESS MULTIPUR POWER TOOL SET • CIRCULAR SAWS & SANDERS • CRAFTSMAN TOOL BOX • MITER SAW • MISC. HAND TOOLS • CRAFTSMAN 16 GAL. SHOP VAC. • NUMEROUS ASST. YARD TOOLS • SEVERAL EXT. CORDS • FERTILIZER SPREADER • ELEC. HEDGE TRIMMER • ELEC. LEAF BLOWER • SQUARE TILE TOP PATIO TABLE W/ 6 CHAIRS • ROUND GLASS TOP PATIO TABLE • RESIN PATIO FURNITURE • PICNIC TABLE • PROPANE OUTDOOR GRILL • SEVERAL GAS JUGS • SEVERAL SNOWMOBILE DOLLIES • 10 SPD. MOUNTAIN BIKE • NUMEROUS FISHING RODS & TACKLE • (2) BOAT GAS TANKS • LAKE TOYS & GAMES • COOLERS • LOTS OF GARDEN HOSE • PORTABLE PET KENNEL • LIVE RATT • **MANY MORE ITEMS • HOUSEHOLD FURNISHINGS, DUCKS UNLIMITED PRINTS & COLLECTIBLES: SOLID OAK DOUBLE PEDESTAL DINING TABLE W/ 2 LEAVES & 6 CHAIRS • ROUND DINNING TABLE W/ 2 LEAVES & 4 CHAIRS • MAPLE SECRETARY • 3 PC. QUEEN SIZE BEDROOM SUITE • PINE QUEEN SIZE BED • FULL SIZE BOOKCASE BED • 9 DRAWER CHEST OF DRAWERS • 8 DRAWER CHEST OF DRAWERS • RATTAN CHAIR • HIDE A BED • 32" TELEVISION • TELEVISION STAND • TAN LEATHER COUCH & LOVESEAT (WORN) • MAGIC CHEF REFRIGERATOR • 2 DRAWER FILE CABINET • (3) 2 DRAWER METAL FILE CABINETS • (2) COMPUTER WORK CENTERS • FAX MACHINE, COMPUTER, ELEC. TYPE WRITER, ETC. • BOOKCASES • ROWING EXERCISE MACHINE • SEVERAL END TABLES • FLOOR & TABLE LAMPS • POTS & PANS • SMALL ELECTRICAL KITCHEN ITEMS • LOTS OF NICE DISHES & GLASSWARE • MICROWAVE STAND • STEREO BOOM BOX • **APPROX. (12) BEAUTIFUL SIGNED DUCKS UNLIMITED PRINTS W/ FRAMES** (SEE WEB SITE FOR NAMES & SIGNED ARTIST) • (4) WOODEN DUCKS UNLIMITED DECOYS • DUCKS UNLIMITED BUCK STATUE • LARGE COPPER WALL PLAQUE (BY VAT) • ANTIQUE TABLE LAMP • NUMEROUS GOOD BOX LOTS • **MANY MORE ITEMS • THIS IS A PARTIAL LISTING! AUCTIONEERS NOTE:** PLAN TO ATTEND THIS **GOOD CLEAN AUCTION** AT THIS BEAUTIFUL HOME ON LAKE JAMES. YOUR ATTENDANCE AT THE VANOMEN ESTATE AUCTION IS APPRECIATED.******

**TERMS OF SALE:** CASH, CHECK OR CREDIT CARDS ACCEPTED.

**TO VIEW A COMPLETE LISTING WITH PHOTO'S VISIT [JOHNPECKAUCTIONS.COM](http://JOHNPECKAUCTIONS.COM)**

**The Roger VanOmen Estate**

**1871 Silverwood Dr. (Lake James) Prudenville, MI. 48651**

**JOHN PECK AUCTIONS LLC**

**Gladwin, MI (989) 426-8061**

# BECK'S AUCTION

Undersigned, John's Propane & Trailer Sales will sell the following items at public auction on site at their location.  
**7607 N. US-127, ST. JOHNS, MICHIGAN.** Or 5 miles north of St. Johns on US-127, or 5 miles south of M-57 on US-127.  
Watch for auction sale direction signs. Clinton County.

## FRIDAY, JUNE 10 ★ \*10:00 AM\*

### TRAILERS

- \*Legend 6'x15' Deluxe V-nose enclosed, s/a
- \*Legend 7x8 open ATV trailer, s/a
- \*Load Trail ss4x8 open utility trailer, HD s/a
- \*Load Trail 5x8 open utility trailer, s/a
- \*Load Trail 36' Gooseneck implement Trailer, 10k t/a, single wheels
- \*Thunder Snow 7x17 Enclosed aluminum trailer, s/a
- \*United Express 7x22 Enclosed trailer, t/a
- \*Load Trail 32' implement trailer, pintle hitch, 10k t/a
- \*Legend 7x14 Enclosed cargo trailer t/a
- \*Thunder Cyclone 8x21 Enclosed cargo, 5200# t/a
- \*United Express 5x10 enclosed cargo s/a
- \*Load Trail 5x8 open utility
- \*Legend 7x16 open Aluminum utility trailer
- \*Load Trail 5x12 utility trailer, s/a
- \*Load Trail 15-5 Gooseneck 7k t/a

### PROPANE TANKS

- \*1992 Thompson 250 gal.
- \*1992 Thompson 120 gal.
- \*2001 Metsa 500 gal.
- \*1990 American 325 ga.
- \*1992 Steel Pipe Co. 250 gal.
- \*1992 Steel Pipe Co. 325 gal.
- \*1990 Trinity 320 gal.
- \*2000 Trinity 120 Gal.

### TRUCK & TRACTOR

2000 Freightliner 70 Semi tractor 5.9 Cummins, 6speed manual, 260k miles, single axle drive wheels  
Ford 2600 utility tractor, 2WD, 3pt & PTO, rollover bar.

### RV & TRAILER PARTS

RV hitch inserts—seat belts/buckles—RV electrical connectors—Aluminum propane tank holder—large assortment of new/used RV & Trailer tires & rims—RV counter top stove & burners—many diamond plate wheel fenders—Shower Hauler mud flaps—roll wood grain RV linoleum—large assortment of RV trim pieces—4" x 20' length aluminum trim pieces—trailer floor bows—laser cut diamond plate wheel fenders—18' awning—diamond plate trim pieces—roll 4' diamond plate—trailer entry doors—trailer Cam door hinges—**(2) 30' L x 8' H RV work platform** stand, hydraulic lift, used for RV roof repair—plastic trailer boxes—trailer & RV windows-60' semi truck van box w/ axles, as is

### EQUIPMENT & SHOP ITEMS, MISC ITEMS

nice 6' King Kutter 3pt tiller—large upright Saylor Beall air compressor—3 sets pallet forks—overhead furnaces—250 gal fuel tank—Heat More wood burning furnace—Oliver 3ph. exhaust system for shop—24 x 8 flat bed wood wagon w/ mounted roof cover—qty chain link fencing, gates & rails—several rolls new 4" & 6" plastic field tile—large aluminum sign—pile gage, guard rails—24" plastic tile—wood fencing—axes & hubs—set tractor doors & rims—steel wall racks—large qty of metal shelving—tie down straps—4 commercial car vacuum/scrub machines—motorcycle parts—mercury lights on poles—6" x 9" steel pieces—220 hydraulic press—hand dock dolly—large rooftop A/C unit—**40-80' pavilion roof, completely built with steel roof & gambrel ends**—commercial battery charger—propane tanks stands—large electrical panels—pallets of full sheet

plywood—misc dimensional lumber—large qty of aluminum dock cross members—misc steel & aluminum—flourescent lighting & bulbs—portable pressure washer tank—(3)—large square liquid bulk tanks—push mower—gas ice auger—large commercial poly trash receptacle—oak wardrobe—office wall cubicle partitions, desks & work stations

### Auctioneer's Note:

Large selection of useful items. The majority of the trailers are "new" old stock. Inspection of items week of sale during business hours. For information call: 1-888-729-2325, ask for Luke Thrush. Letter of credit required for purchase over \$10,000. Trailers will be released sale day. Titles will be released on cash sale. If paying by check, titles will be released w/in 10 days of auction. No credit card sales. Visit [www.PavlikLLC.com](http://www.PavlikLLC.com) for full line of photos.

### Auction Terms & Conditions: CASH OR PERSONAL CHECK.

Register for buyer number w/ driver license ID. Nothing removed until settled for. Everything sold "as is" & to be settled for sale day before leaving sale area. Not responsible for accidents or goods after sold. Auctioneers & sales liabilities or guarantees. Announcements made sale day take precedence over printed matter.

## Beck's Trailer Store, Owner 1-888-SAY-BECKS

CALL AUCTION COMPANY FOR  
MORE INFORMATION 989-463-4903

## PAVLIK AUCTION SERVICE



## JOHN PAVLIK & JOHN C. PAVLIK, SR. AUCTIONEERS/REALTORS

Pavlik Auction & Real Estate, LLC., Alma, MI  
48801 • [www.PavlikLLC.com](http://www.PavlikLLC.com)



# KAPS

ANA Member

# KOINS

LLC

**located across  
from the  
Doherty Hotel**

**Silver & Gold Coins  
Bought & Sold**


**Integrity, Honesty & Peace of Mind.  
That's what you deserve when it  
comes to your Coins & Currency!!!**

Thomas Kapuscinski  
611 N. McEwan St. Clare, MI 48617  
231-357-2105 • 989-386-6500  
tkjap@charter.net

Mon.-Fri. 9:30am-5:30pm  
Sat. 10:00am-2:00pm  
or by appointment

**NOW  
BUYING  
Sterling  
Silverware  
& Scrap  
Gold**





# Spring Sale!

**MASSIVE STOREWIDE SAVINGS**

**FREE**

**Pillow, Frame, Sheet Set  
& Mattress Pad  
on 10Yr Warranty Sets  
Up to \$208.00 Value FREE**

**FREE**

**Pillow & Frame  
on 1 and 5 Year Warranty Sets  
up to \$80 Value  
FREE**

**FREE**

**Pillow, Frame, Sheet Set  
& Mattress Pad  
on 10 Yr Warranty Sets  
Up to \$208.00 Value FREE**

	Retail	Sale
<b>Shelton Plush or Firm</b> Twin	\$899	<b>\$399</b>
Full	\$999	<b>\$449</b>
Queen	\$1,099	<b>\$499</b>
King	\$1,699	<b>\$799</b>

	Retail	Sale
<b>6" Foam</b> Twin	\$499	<b>\$199</b>
Full	\$599	<b>\$249</b>
Queen	\$699	<b>\$299</b>
King	\$999	<b>\$499</b>

	Retail	Sale
<b>Carlton 2 Sided Plush or Firm</b> Twin	\$1,299	<b>\$599</b>
Full	\$1,499	<b>\$699</b>
Queen	\$1,599	<b>\$749</b>
King	\$2,299	<b>\$1,099</b>

	Retail	Sale
<b>Shelton Pillow Top</b> Twin	\$999	<b>\$449</b>
Full	\$1,099	<b>\$499</b>
Queen	\$1,199	<b>\$549</b>
King	\$1,799	<b>\$849</b>

	Retail	Sale
<b>Promotion Innerspring</b> Twin	\$599	<b>\$249</b>
Full	\$699	<b>\$299</b>
Queen	\$799	<b>\$349</b>
<b>1 Year Warranty</b>		

	Retail	Sale
<b>Carlton 2 Sided Pillow Top</b> Twin	\$1,399	<b>\$649</b>
Full	\$1,599	<b>\$749</b>
Queen	\$1,699	<b>\$799</b>
King	\$2,399	<b>\$1,149</b>

	Retail	Sale
<b>Carlton Plush or Firm</b> Twin	\$1,099	<b>\$449</b>
Full	\$1,199	<b>\$549</b>
Queen	\$1,299	<b>\$599</b>
King	\$1,899	<b>\$899</b>

	Retail	Sale
<b>Cavalier Plush or Firm</b> Twin	\$799	<b>\$349</b>
Full	\$899	<b>\$399</b>
Queen	\$999	<b>\$449</b>
King	\$1,499	<b>\$699</b>

	Retail	Sale
<b>Stafford Plush or Firm</b> Twin	\$1,299	<b>\$599</b>
Full	\$1,499	<b>\$699</b>
Queen	\$1,699	<b>\$799</b>
King	\$2,299	<b>\$1,099</b>

	Retail	Sale
<b>Carlton Pillow Top</b> Twin	\$1,199	<b>\$549</b>
Full	\$1,299	<b>\$599</b>
Queen	\$1,399	<b>\$649</b>
King	\$1,999	<b>\$949</b>

	Retail	Sale
<b>Cavalier Pillow Top</b> Twin	\$899	<b>\$399</b>
Full	\$999	<b>\$449</b>
Queen	\$1,099	<b>\$499</b>
King	\$1,599	<b>\$749</b>
<b>5 Year Warranty</b>		

	Retail	Sale
<b>Stafford 2 Sided Plush or Firm</b> Twin	\$1,499	<b>\$699</b>
Full	\$1,799	<b>\$849</b>
Queen	\$1,999	<b>\$949</b>
King	\$2,699	<b>\$1,299</b>

	Retail	Sale
<b>Freedom II Gel Foam</b> Twin	\$2,299	<b>\$1,099</b>
Full	\$2,499	<b>\$1,199</b>
Queen	\$2,699	<b>\$1,299</b>
King	\$3,699	<b>\$1,799</b>
<b>10 Year Warranty</b>		



	Retail	Sale
<b>Signature Pillow Top</b> Twin	\$2,599	<b>\$1,249</b>
Full	\$2,899	<b>\$1,399</b>
Queen	\$3,099	<b>\$1,499</b>
King	\$3,899	<b>\$1,899</b>
<b>10 Year Warranty</b>		

## Facts About Symbol Mattress

- \* Symbol Mattress is the 3rd largest manufacturer in the Midwest and 12th largest in the United States out of 600.
- \* Symbol Mattress has a higher customer satisfaction rating than both Serta & Sealy
- \* Symbol Mattress sets normally sell for 20-30% less than the equivalent Serta or Sealy model

**Buy any 2pc Sofa Set and  
Receive an extra \$100 off Set**



**Buy any 3 pc Sofa Set and  
Receive an extra \$200 off Set**



**SERTA  
RECLINER  
SALE**

**Buy any 2 Serta Recliners and  
Receive an extra \$100 off Pair**

**\*Up To 36 Months NO INTEREST Financing**

Minimum Monthly Payment Required...Minimum purchase required

**Check out our Clearance Selection on our website**


**www.StateStreet-Furniture.com**

**STATE ST  
FURNITURE**

318 N State St • Alma, MI 48801  
(989) 463-1037 • Hours: 9-6 M-F • 9-5 Sat.  
[www.StateStreet-Furniture.com](http://www.StateStreet-Furniture.com)  
\*See Store for Details







**Wolverine Optical**

EYE EXAMS • GLASSES • CONTACTS • BIFOCALS • REPAIRS • TINTING

DOCTORS APPOINTMENTS AVAILABLE MONDAY AFTERNOON, TUESDAY MORNING, THURSDAY AFTERNOON

**MONDAY – THURSDAY 8:00AM – 5:00PM**  
**CLOSED FRIDAY**  
**AND 12:00PM – 1PM DAILY**

BCBS, VSP, EYE MED & DAVIS, VISION INSURANCE, MCLAREN, MERIDIAN AND STRAIGHT MEDICAID

**463-1838 • 7314 ALGER RD., ALMA, MI 48801**



visit our website!



**WHITMER ESTATE AUCTION**

**(TO SETTLE THE ESTATE OF 91 YEAR OLD LLOYD WHITMER)**

The following will be offered at Public Auction. Located in: Lakeview, MI. On the corner of 46 & Lincoln by the stop light, go north 1.3 miles. then left, West on Park St. Follow Yoder Bros. Auction Signs!

**SATURDAY, JUNE 11th, 2016 @ 9:00 a.m. - Lakeview, MI**

*Order of Auction: Swords and Knives 10:00 am  
 Followed by Marble, Hatchet and Knives Collections  
 - Miniature Steam Engines Collection.  
 Car and Guns at Approximately 12:00 Noon*

- Guns - 100 Plus Guns Includes Old BB Guns
- Marbles Hatchets, Axe & Knife Collection
- Good Assortment of over 100 Old Fishing Lures
  - Mini Steam Engines
- Large Assortment of Collectable Toys
- Antiques & Collectables

*For complete auction listings and additional photos, go to:  
[www.auctionzip.com](http://www.auctionzip.com) - Id# 2701*

**PERSONAL REPRESENTATIVES:**  
**DEBRA EMERY and ELIZABETH HUESTED**  
**LAKEVIEW, MI**

**Yoder Brothers Auction Service**  
**LeRoy Yoder**  
**(989)386-9082**

**Willis Yoder**  
**(260)768-8007 ext. 2**

**AUCTIONEERS NOTES:** Lloyd Whitmer was an avid collector for many decades and enjoyed collecting higher end unusual hard to find items, which presents a Rare Opportunity as these unique items hit the Auction Block. This Auction is not for the faint at heart as it is expected to raise blood pressures above normal levels. There are corners that have not yet been gone thru yet. Bring your Trailers. Come on out and enjoy the Excitement. Several Auction Rings selling at the same time. See Ya There.

**AUCTION TERMS:** Cash or approved check with proper I.D. Nothing is to be removed until settled for. Everything is sold as is, there is no warranties or guarantees, and not responsible for items after sold. Statements made day of auction take precedence over printed matter. Not responsible for accidents. Visa and Mastercard accepted with a 3% handling fee.

**DO YOU HAVE A CAR FOR SALE?**

How about a boat? Or furniture? Any unwanted items?

Call to place a **Classified Ad** to sell your stuff **FAST**



**FISH DAY!!!**

NOW IS THE TIME FOR STOCKING!

- Channel Catfish • Largemouth Bass
- Redear • Bluegill (Bream) • Minnows
- Black Crappie (If Avail) • Koi (If Avail)

**Wednesday, June 15**

**Ithaca Feed Center in Ithaca , MI**

**From: 1:00-2:00 pm**

**TO PLACE AN ORDER CALL 1-870-578-9773**

ARKANSAS PONDSTOCKERS, INC.



**Evans Eye Centers**

*Are you suffering from cataracts?*

**Get Started today. Call for an Evaluation.**

120 Warwick  
Alma, MI 48801  
**989-463-Eyes (3937)**

1203 S. Mission  
Mt Pleasant, MI 48858  
**989-775-Eyes (3937)**



discover more @ [kmart.com](http://kmart.com)

DISCOUNTS AT THIS STORE ONLY

**HOUGHTON LAKE**

8171 W HOUGHTON LAKE DRIVE

**STORE CLOSING**

**EVERYTHING MUST GO!**

**All Fashion Clothing**  
for the entire family

**30% OFF**

**UP TO 50% OFF**

**All Toys, Games & Dolls**

**30% OFF**

**Great Grad & Dad Gift Ideas!**

**JEWELRY** All Fine Gold, Silver, Diamond & Gemstone\*

**60% UP TO 70% OFF**

\*10K gold unless otherwise specified.

**SPECIAL SELECTION OF DESIGNER WATCHES**



MSRP \$350 to \$750

**Special Buy Price**

**\$69<sup>99</sup> to \$149<sup>99</sup>**

**PLUS 30% OFF Sale Discount**

**You Pay 48<sup>99</sup> to 104<sup>99</sup>**

**Great Grad & Dad Gift Ideas!**


**SHOP NOW FOR BEST SELECTION!**

ALL SALES FINAL. NO REFUNDS OR EXCHANGES. WE ACCEPT CASH, CHECKS, VISA, MASTERCARD, DISCOVER, AMERICAN EXPRESS, K MART AND SEARS CARDS. DISCOUNTS DO NOT APPLY TO PHARMACY, TOBACCO, ALCOHOL, PREPAID PHONE AND GIFT CARDS. SOME FOOD ITEMS ARE EXCLUDED AS REQUIRED BY LAW. INVENTORY IS LIMITED TO STOCK ON HAND. 10K GOLD JEWELRY UNLESS OTHERWISE SPECIFIED. THIS STORE IS NOT PARTICIPATING IN CURRENT K MART CIRCULARS.

**kmart | A SHOP YOUR WAY® PARTNER**

NOT A MEMBER? JOIN TODAY-IT'S FREE! [kmart.com/shopyourway](http://kmart.com/shopyourway)

**We're ALWAYS Hiring!**




Assembly • Clerical • Manufacturing • Skilled Trades  
Warehousing • General Labor Welder  
Packaging • Line Workers

**- What To Do -**

- 1.) Visit [manpowerjobs.com](http://manpowerjobs.com)
- 2.) Create An Account
- 3.) Include Your Resume
- 4.) Call To Set Up Your Interview!

We **LISTEN** to Understand Your Skills, Interests, and Goals. You **CHOOSE** Opportunities That Fit Your Work Style and Lifestyle.



**Manpower.**

Walk-ins Welcome!  
Office Hours: M-F, 8am - 5pm

*A World Leader in employment Services for Over 60 Years!*

*Recognized as Fortune World's Most Admired Companies in 2015*

**989-772-7720**  
4585 Pickard St. Mt. Pleasant



**Hats Off to our Grads**

**NIELSON MOVING AUCTION**

**SAT. JUNE 11 @ 10 AM**

AUCTION FEATURES FORD 660 TRACTOR, CUB CADET Z-FORCE ZERO TURN MOWER, CUSTOM PINE FURNITURE, LAWN & GARDEN, SHOP TOOLS, COLLECTIBLES, ELECTRONICS, OUTDOOR ITEMS, HOUSEHOLD & MORE!

LOCATED 4116 DUTCHER ROAD, GLADWIN, MI.

JOHN & GLENDA NIELSON OWNERS

**Adam Breault Auctions**  
**(989) 329-0399 • [www.adambreault.com](http://www.adambreault.com)**

**CUSTOM DESIGNS Buy Direct & Save**

*Indoor Showroom*



**Also Available Cremation Vaults and Urns**

**Brewer Bouchey Monument Co.**  
*Family Owned Since 1895*  
**211 N. Mill St. • Downtown St. Louis**  
**989-681-3300 • Toll Free 888-362-2920**  
 Hours: Mon.-Fri. 9-5; Sat. By Appt.  
[www.brewer-bouchey.com](http://www.brewer-bouchey.com)



# Get Ready for Summer Travels

**Front End Alignment**  
Special  
**\$59.95** Plus tax  
Most Vehicles w/Coupon  
Reg. \$59.95  
Expires 8-31-16

**4-WHEEL**  
**\$89.95** Plus tax  
Most Vehicles w/Coupon  
Reg. \$103.58  
MMBG

**Two Great Services for ONE Great Price!**  
Get Your Tires... ROTATED  
Plus...

**LUBE, OIL & FILTER SPECIAL**  
Change Oil, Change Oil Filter Check  
All Fluid Levels and Lubricate Fittings

**ALL FOR \$39.95**  
plus tax  
Most Vehicles w/Coupon - 5 qt. Max  
Dexos Extra  
Expires 8-31-16

**Dexos Lube, Oil, Filter Special**  
Change Oil, Change Oil Filter  
Check All Fluid Levels & Lubricate Fittings  
**\$35.00** + Tax  
Up to 5 qts. - Additional oil  
or fluids extra  
Expires 8-31-16

**COOLING SYSTEM FLUSH**  
**\$109.00 plus tax**  
Regular \$129.95  
Most Vehicles w/Coupon  
Expires 8-31-16

**Automatic Transmission Service All Fluid Flush**  
**SPECIAL \$121.00**  
Regular \$150.00 Plus tax  
Change All Fluids - 12 qts.  
2005 & Older Fluid Dexron VI Extra  
Most Vehicles w/Coupon  
Expires 8-31-16

**Any Repair**  
**10% OFF**  
Most Vehicles w/Coupon  
Not valid with any other coupon offer  
Expires 8-31-16

## Stutzman's Metal Roofing & Feed and Farm Supply

**Quick Turnaround**  
Ask about our **HEAT-Formed Metal Roofing**

**Complete Pole Barn and Roof Packages Available!**

Be sure to price accessories, we will save you money!

**NORTH STAR METALS MFG CO**

**Special: Lifetime Warranty**  
20 Steel Colors To Choose From  
**\$1.85 Lin. Ft.**

Farmers Contractors Homeowners | Check out our prices, you will be AMAZED! | **Installation Available** | Feeds for: Rabbits • Chickens Dogs • Cats • Dairy • Horses

Saving you money on the brand you love  
**"Plus a whole lot more"**  
Don't miss this opportunity to save money on your house roof or new building project!

**Everlast Roofing, Inc.**  
OUR NAME SAYS IT ALL  
Authorized Dealer

**Statewide Delivery**

Reuben & Lydia Stutzman • 9736 Tobacco Dr., Clare, MI • 989-386-3013

## Lambert's Meat Market

Taste the difference "FRESH" makes!

624 E. Cedar Ave., Gladwin (next to Family Dollar)

VISA MasterCard Discover American Express **989-246-1850**

New Hours: Monday-Thursday 7-7, Friday 7-8,  
Saturday 7-6, Sunday 8-4

Sale Dates Monday, June 6 through Saturday, June 11, 2016

**10lbs or more Sale!!**

**USDA Choice Denver Steaks or English Roast**  
**\$3.29 lb.**

**Boneless Skinless Chicken Breast**  
**\$1.49 lb.**

**Pork Steak or Pork Strips**  
**\$1.69 lb.**

**Pork Shoulder Roast or Country Style Sausage**  
**\$1.69 lb.**

**Family Pack Ground Beef from Chuck**  
**\$2.69 lb.**

**Whole New York Strip Loins**  
**\$4.49 lb.**

**Whole Ribeye Loins**  
**\$4.69 lb.**

**73% Lean Ground Beef Hamburger**  
**\$2.29 lb.**

**From our Bakery**

**Glazed Ring Donuts**  
**\$3.99 dz.**

**Pecan Cinnamon Rolls**  
6 ct  
**\$5.49 ea.**

**Lambert's own Old World Polish or Double Cheeseburger brats**  
**\$3.69 lb.**

**DON'T FORGET LAMBERT'S HAS A GREAT SELECTION OF MEAT BUNDLES!**  
Like us on Facebook! [Lambertsmeatmarket.webs.com](http://Lambertsmeatmarket.webs.com)

No Rainchecks • Not Responsible for Printing Errors

# SURREY DISCOUNT FOODS

8989 Tobacco Drive Clare • (989) 802-1245  
Mon.-Sat. 8-5

**FROZEN BONELESS HAM**

**99¢**  
/lb.

**BONELESS SKINLESS THIGHS**

**\$1.39**  
/lb.

**JIMMY DEAN HOT ROLL SAUSAGE**

**89¢**  
16 oz.

**BALL PARK BEEF FRANKS**

**99¢**  
14 oz.

**SMOKED GOUDA CHEESE**

**\$2.60**  
/lb.

**EDY'S FROZEN CUSTARD SNICKERDOODLE**

**\$1.19**  
1 Quart or  
**\$5.94**  
6-1 Quart

**\* WHILE SUPPLIES LAST**

# AmeriGas

**OPEN HOUSE**

**June 10, 2016**  
from 10 am to 3 pm  
3860 N. Clare Ave., Harrison

**ENTER TO WIN A GAS GRILL**

**SPECIAL ON 20# CYLINDER FILLS ONLY \$5.00**

Come meet the Local Staff, have some **FREE food** and enter to win prizes!

- World-Class Safety
- 24/7 Emergency Service
- "Live" Customer Care
- Dedicated, Local Employees
- Automatic Delivery
- Guaranteed Price Programs
- Flexible Payment Options
- Customer Referral Awards



AmeriGas Propane Harrison, MI • 800-527-9125 • [www.amerigas.com](http://www.amerigas.com)



## Bulk Food • Deli

2 Miles South of Rosebush • 2020 North Mission  
Mt. Pleasant • 989-433-8200

8:30am-5:30pm, Monday-Thursday  
8:30am-7:00pm, Friday • 8:30am-4pm, Saturday

Large Selection of Freezer Food at Discounted Prices

**SPECIALS OF THE WEEK**

Great Selection of Bulk Foods  
We Accept Bridge Cards & All Major Credit Cards

**Walnut Creek Mozzarella Cheese**

**Sale \$2.69 lb.**  
Reg. \$3.69 lb.



**Walnut Creek Smoked Ham**

**Sale \$2.79**  
Reg. \$3.79 lb.



**MORE SPECIALS**

**Walnut Creek Cream Cheese**  
8 oz. bar

**Sale \$1.19 ea.**

**Walnut Creek String Cheese**

**Sale \$2.59 ea.**

**Walnut Creek Sweet Potato Butter or Pumpkin Butter**  
16 oz. bar

**\$2.49 ea.**

**Frozen Custard**  
Salted Caramel Pretzel, Snickerdoodle or Peanut Butter Pie

**Just \$1.19 ea.**  
or 6 pack for \$5.99 !!  
Super deal just in time for your summer enjoyment!!!

**Let us help plan your event this summer!!**  
We have a large variety of meat and cheese  
To help create your special meal!!  
**Let the work up to us! Call for info. 989-433-8200**

**Coffee of the week: Costa Rican Supremo**

**RE/MAX RIVER HAVEN, INC.**

Open Seven Days a Week to Serve You!  
[www.riverhavenhomes.com](http://www.riverhavenhomes.com)  
Wayne R. Walts - Broker

Michigan Custom Homes Companies  
DeShano

**Main Office**  
777 W. Cedar  
Riverwalk Place  
989-426-6893

**Wixom Lake Office**  
1239 Estey Road,  
Beaverton  
989-435-7755

**Sugar Springs Office**  
1415 W. Sugar River Rd.  
Gladwin, MI 48824  
989-426-9239



Rural Harrison-3 bedroom,  
2 bath ranch with 3 car garage.  
Close to Muskegon River.  
ONLY  
**\$67,000**  
MLS#165740



Harrison area-2 bedroom home  
on 4 acres directly across street  
from Blue Gill Lake. Has 2+ car  
pole barn garage, stone fireplace,  
covered porch and more.  
**\$83,500**  
MLS#165781



Sugar Springs Golf Course Condo-2  
bedroom, 2 bath, 2 car att garage,  
come furnished and is "like new"  
condition. Overlooks the 13th tee.  
**\$98,500**  
MLS#165750



Be Smart, Grads:  
**DON'T DRINK & DRIVE!**

**GAMBLE'S REDI-MIX**

**36M Concrete Pump**



**HARRISON: 539-6460 • 800-539-6460**  
1415 N. Clare • HARRISON

**Gamble's Redi-Mix,**  
Your neighbor since 1947

No Fly Ash In Our Mix RESULTS IN:

- MORE CEMENT PER YARD IN MIX
- BETTER SET TIME
- BETTER FINISHABILITY
- BETTER CONCRETE

**SHOP LOCALLY SAVE GAS!**





# Business Card Directory

## Shop these local Professionals

**HODGINS**  
**ASPHALT PAVING INC.**  
**COMMERCIAL & RESIDENTIAL**  
 PARKING LOTS • DRIVEWAYS • SUBDIVISIONS  
**EXCAVATING**  
 • Trucking • Concrete & Stump Removal • Installation of Catch Basin & Drainage Systems  
 • Culvert Installation • Septic System • Insured / Bonded  
**Call Now for pothole repair.**  
**FROM THE GRADING TO THE FINISHED JOB!**  
 989-345-0326 • 1-800-309-3303  
 Donald Hodgins, Owner • 1659 Dow Road • West Branch, MI 48661  
[www.hodginsasphalt.com](http://www.hodginsasphalt.com)

**GOODWIN EXCAVATING & SEPTIC TANK SERVICE**  
*Serving the Gladwin and Beaverton areas since 1957*  
 Septic Tanks Cleaned & Installed  
  
 Licensed & Bonded  
 Excavating, Driveways  
 Sand • Gravel • Black Dirt  
 Water Lines, Ponds, Sewer Lines  
 Demos, Roads  
 967 N. Shearer Rd. • Gladwin  
**989-426-7263**

  
**WD ROBERTS CONCRETE & MASONRY**  
 concrete, masonry and excavation construction  
  
 Wade Roberts  
 Owner  
 (989) 492-4190

  
**Gladwin Hobby Shop**  
*Stay Fit & Have Fun*  
**RADIO CONTROL AND BICYCLES' SALES AND SERVICE**  
**\$ CASH**  
 • Plastic Model Kits  
 • Testors Paints  
 • ESTES Rockets  
 • Pinewood Derby  
 • Puzzles, Rock Polishers,  
 Balsa & Bass Woods, and more.  
**for Old Coins & Currency!**  
**WE BUY OLD TRAINS**  
 Gift Certificates Available  
 Visit us on Facebook  
**400 E. Cedar Ave. Gladwin, MI • 989-426-7300**

**STORAGE**  
**SPACE AVAILABLE**  
  
 420 Units  
 Paved Driveway Security Gate  
 5'x12', 10'x12', 10'x20' Stalls  
**MIDSTATE RENTAL AND STORAGE, INC.**  
 1 MILE EAST OF GLADWIN ON M-61  
**426-2981**  
 FOR ALL YOUR RENTAL NEEDS  
 MON.-SAT. 8AM-5PM

**FREE**  
**Hearing Test & Consult**  
  
**888-641-0087**  
**Clare and Midland Locations**  
[www.bierihearing.com](http://www.bierihearing.com)

**Pioneer Metal Roofs**  
 Residential Steel Roofing  
  
 7325 S. Clare Ave.  
 Clare, MI 48617  
 (989) 386-4444 (Office)  
 (800) 292-0679  
[www.pionermetalroofs.com](http://www.pionermetalroofs.com)

**digitalfirst** MEDIA  
 Call for Quotes on digital advertising, print & deliver, pre prints and print advertising  
**Marlene Bennett**  
 Account Executive  
 The Morning Sun • The Mid-Michigan Buyers Guide  
 mbennett@michigannewspapers.com  
 For Advertising call 989-506-4647 or 989-779-6119  
 For Circulation call 989-779-6000 Press 3

**SECORD LAKE MARINA ON THE WATER**  
**989-426-7700**  
 2631 Lakeshore Dr. • Gladwin, MI 48624  
 secordlakemarina.com  
 email secordlakemarina@gmail.com  
  
 Sales • Service • Parts • Storage  
 Bennington Pontoons  
 Mercury, Yamaha, Outboard Motors  
 Pontoon Rentals • Boat Lift & Docking  
 Scott Grattopp Sales Manager/Owner  
 Fax 989-426-5493

  
 "Our Customers are our Warmest Friends"  
 Guaranteed On Time Certified  
**FREE TANK SETS**  
**COYNE OIL & PROPANE**  
 Clare • Gladwin • Harrison • Evart  
**800-386-7731 • 989-386-7731**  
**RESIDENTIAL • COMMERCIAL INDUSTRIAL • FARM**

**I've got service yes i do...**  
  
**And, I am ready to prove it.**  
**CALL FOR A QUOTE 24/7**  
 Maury Irwin, Agent  
 305 S McEwan Street  
 Clare, MI 48617  
 Bus: 989-386-4141  
 maury.irwin.lsgz@statefarm.com  
 P097276.1  
  
**State Farm**  
 State Farm Fire and Casualty Company • Bloomington, IL

**Pole Barn Kits**  
  
**Now Available**  
**CALL OR STOP BY FREE ESTIMATES**  
**Luthy Metal Sales**  
 Manufacturing, Roofing, Siding & Accessories  
**989.433.5705**  
 5145 N. Mission Rd. Rosebush

**BURKHART - PRESIDIO**  
**INSURANCE AGENCY**  
 Auto • Home • Life • Business • Amenities  
 "Over 60 Years of Professional Insurance Service"  
 222 W. Cedar Ave. • Gladwin  
 989-426-9278 • [www.burkhart-presidio.com](http://www.burkhart-presidio.com)  
 Dirk Presidio Michael Murray Jim Jacobs  
**Auto-Owners Insurance**

**ECOWATER SYSTEMS**  
  
**Lindsay Soft Water Co.**  
 1209 Michigan Ave. St. Louis, MI 48880  
 P.O. Box 401 Gladwin, MI 48624  
 (989) 681-5436 (989) 426-4220  
 1-800-244-3464 Cell (989) 620-1263  
[www.ecowater.com](http://www.ecowater.com)  
 ISO 9001  
**GABE EAREGOOD**  
 Water Specialist

**CONLAY'S POWER WASHING**  
  
 Concrete Siding • Decks Deck Staining Tractor • Trailer Store Fronts Snow Plowing Lawn Care  
 Farm Equipment Acid Washing  
 210° Water  
 Over 18 Years Experience  
 Business & Residential  
**989-429-9211** Farwell  
 Experience You Can Trust • [www.conlaypowerwashing.com](http://www.conlaypowerwashing.com)

**Weidman Business Association Bingo**  
 Every Wednesday. First game at 6:30.  
**\$1000**  
 Jack Pot on Big Game this week. In the Community Building  
 Located behind Baumanns Food Pride grocery store and Isabella bank.

**O-ink**  
  
 WE CUT THE FAT OUT OF INK PRICES  
 600 S. Mission St. Mt. Pleasant, MI 48858  
 989-779-7227  
 989-772-5009  
 Printer Ink & Toner, Cartridge Refilling & Recycling, Desktop & Laptop Repair, Virus/Malware Removal

**\$10.00 off** any in-stock & non-sale pair of shoes  
 Expires 7.1.16  
**CIRCLE QUALITY SHOES**  
 Specializing in hard to fit sizes-100's of styles to pick from  
 • Birkenstock • Clarks • Merrell • SAS  
 208 Cambridge St. 835-4853 • [circlequalityshoes.com](http://circlequalityshoes.com)

**ABC Auto Body**  
 313 W. Knox Road, Beaverton, MI  
 1/2 Mile West of M-30  
**989-435-2707**  
  
**We Take Pride In Your Ride!**  
  
 • Quality Collision Repair • Custom Color Matching • Car/Light Truck  
 • Free Estimates • & Painting • Genuine Original  
 • Insurance Work • We Repair All Makes and Models • Equipment Parts  
 Welcome

**HENRY EXCAVATING CONCRETE & TREE SERVICE LLC**  
 POURED WALLS • CRAWL SPACES • BASEMENTS  
 OVER 30 YEARS EXPERIENCE • LICENSED & INSURED  
**COMMERCIAL & RESIDENTIAL**  
 • Excavation • Flat Work  
 • Site Clearing • Demolition  
 • Septic Systems • Driveways  
 • Back hoe & Dozing • Tree Service  
 989-539-7542 • 3620 N. Clare Ave., Harrison  
 James Henry Michael Henry (Tree Service)  
 Cell 989-429-1175 Cell 989-339-4377

  
**TOM'S POLE BUILDINGS**  
 Over 30 Years Experience  
**Special!** POLE BUILDINGS & GARAGES ROOFING & SIDING  
 CONCRETE FLOORS DRIVEWAYS & FENCING  
**FEATURING ULTRA 2000 19 colors to choose from And A 45 YEAR WARRANTY**  
 From Beginning permit To Cleanup, We Do It All!  
**1-800-541-3974**  
 We accept major credit cards. • email: [tompolebuildings@yahoo.com](mailto:tompolebuildings@yahoo.com)

**Newcombe's Family Restaurant**  
 27 S Coldwater Rd Lake Isabella, MI 48893  
 (989) 644-8380  
**FOOD SO GREAT YOU'LL SCRAPE YOUR PLATE**  
 Sunday 7am-8pm  
 Mon.-Thurs. 7am-9pm  
 Fri & Sat 7am-10pm  
 Like us on Facebook

  
 7400 S. Clare Ave. • Clare, Michigan 48617  
**800-292-0679**  
[www.pioneerpole.com](http://www.pioneerpole.com)

**DEBRIS HAULING**  
 • Clean Outs  
 Basements Attics & Garages  
 • Tear Downs Sheds & Garages  
 • Scrap Metal  
 • Commercial Buildings  
 Free Estimates  
  
**DEBRIS HAULING**  
 Good & Fast MOUNT PLEASANT AREA  
 Less than the price of a dumpster!  
**989-773-0735 10 Yards \$285 Dan Syzak**

  
**ADAM BREault Auctions**  
**AUCTION HOUSE**  
 JUNE 10TH @ 6 PM  
 JUNE 24TH @ 6 PM  
 Adam Breault Auctions  
 963 N. M-18 Gladwin, MI  
 (989) 329-0399  
 Visit [adambreault.com](http://adambreault.com) for complete details.

**Tag's Auto Repair**  
 • Computer Diagnostic Service • 2 and 4 Wheel Alignment  
**BRAKES & FRONT END REPAIR!**  
 Receive a \$25 VISA prepaid card on qualifying purchase of \$250 or more made on Drive Card  
**FREE** Roadside Assistance Program Towing, Flats, Lockouts, More!  
 Call Us For Details!  
 3780 N. Clare Ave. Harrison  
 Hours M-F 8-5, Sat 10-2  
**989-539-1986**  
  
  




# Bike Night

## Wed., June 1

### 6-9 pm



**All You Can Eat Buffet \$9**

*Wings, Sloppy Joes,  
Scalloped Potatoes & Salads*

## Loomis Lounge

**10615 N Loomis Rd,  
Clare**

**(989)386-2131**

## Stutzman's Metal Roofing Sales

**Quick Turnaround**  
Ask about our **HEAT-Formed Metal Roofing**

Be sure to price accessories, we will save you money!

**Complete Pole Barn and Roof Packages Available!**

Farmers Contractors Homeowners

Check out our prices, you will be **AMAZED!**

**Special: Lifetime Warranty**  
20 Steel Colors To Choose From  
**\$1.85 Lin. Ft.**

**Everlast Roofing, Inc.**  
Authorized Dealer

**Statewide Delivery**

**Installation Available**

Reuben & Lydia Stutzman • 9736 Tobacco Dr., Clare, MI • 989-386-3013

**Pink Day May 28<sup>th</sup>, 2016 10 to 4pm.**  
We will have hot dogs, baked goods and silent action. When you Purchase one of these pink items a portion of the proceeds will go to the MidMichigan Medical Center-Midland Breast Health fund.

Pink- 4 1/2" geranium - \$4.49  
**\$1.00 donated**

Pink Hanging baskets - \$20.00  
**\$5.00 donated**

**Spectacular Rewards savings with Roy Kutchev reward card this weekend.**  
New Hours: May 30<sup>th</sup> hours will be 9 to 6 and 10 to 4.

**Roy Kutchev GREENHOUSES**

SERVING MIDLAND AND THE SURROUNDING AREAS SINCE 1971

3515 N. Eastman Rd.  
(4 Miles N. of Midland Mall)  
835-2546  
Hours: M-S 9-7  
Sunday 10-6

## PROFESSIONAL ROOF CLEANING

### BY J.B. ENTERPRISE

**Safe, Soft Wash Cleaning**



Does your home's roof look like the left or right side of these roofs? The left side of these roofs were cleaned with our non-pressure washer system.

**We also clean...** • Decks • Patios • Siding

**Handy Man:**  
Fix Up, Repair, Reside,  
Reroof Homes and Garages

**CALL TODAY**

**John Brenneman • 989-386-8024**

**PRICE REDUCED!  
MOTIVATED SELLER!**



3 BEDROOM 2 BATH TOP OF LINE MANUFACTURED HOME WITH  
LARGE 30 X 48 POLE BARN ON 14.4 WOODED ACRES

**ONLY \$102,000**

FARWELL AREA. **MLS # 1811521** 5755 W. HERRICK RD.

**COLDWELL BANKER**  
MT. PLEASANT  
REALTY & ASSOC.

Call  
Kathy Routheaux  
(989) 289-1025  
kathy@MPR.net

**MLS**



**CLHE**  
County Line Heavy Equipment  
Welding & Repair  
Construction and Farm  
Insured  
**(989) 588-4223**  
Lake, Michigan

*Colonville Bike Shop*

**New Bikes 10% OFF**  
until May 31, 2016

Sun Bikes  
& Fuji Bikes



New & Used Bikes

It's time to go cheaper no need for Gas

**START BIKING**

We Repair Bikes and Have Parts in Stock  
Heavy Duty Pony Cart Wheels in Stock

**Allen Yoder Owner**

7902 Colonville Rd. Clare, MI 48617

**989-386-4990**

Mon., Tues., Wed., Fri. & Sat. 8AM-5PM  
Thurs. & Sun. - CLOSED

## Water and Flood Damage Repairs

**Hammer**  
Restoration, Inc.

*Respond. Recover. Rebuild.*

**989-773-3473**

**HammerRestoration.com**

**24 HOUR  
EMERGENCY SERVICE**

**f Like us!**

**Brad Malley  
Well Drilling, Inc.**

**Mid Michigan's  
Most Experienced Well Drillers!**

**MALLEY  
CONSTRUCTION  
INCORPORATED**

**The One Contractor That Can Do It All!  
AFFORDABLE WELL PACKAGES  
All Major Pump Brands Available**

**FREE ESTIMATES**  
SERVING ALL OF MID MICHIGAN  
LICENSED WELL DRILLER  
LICENSED CONTRACTOR  
MT. PLEASANT  
**WWW.BRADMALLEYWELLDRIILLING.COM**  
**989.772.2765 / 800.717.6022**

## Colonville Canvas

Quality Detailed  
Craftsmanship  
• Marine Upholstery  
• Bimini Tops  
• Boat Covers  
• Awnings



William Miller, Owner-Operator  
6723 E. Colonville Rd. Clare, MI 48617  
**989-802-9083**



## Miller's Greenhouse

**10253 Rogers Ave, Clare**  
**(989) 386-4189**

**Hanging Baskets,  
Planters, Containers,  
Flower Flats, & Vegetables**

**M-Sat 8-8 Closed Sundays**

*The* **NEW  
WOOD STORE**

**READY TO FINISH FURNITURE**

**Closing June 18  
for Retirement!**  
**Select Items on Sale**

**M-F 10-5 • SAT. 11-4**

[www.newwoodunfinishedfurniture.com](http://www.newwoodunfinishedfurniture.com)

1 mile East of US 27 on Colonville Rd. • Clare

**989-386-2951**

**C.W. GORDON**  
SALES & SERVICE  
COLEMAN, MI

Proudly Serving Central Michigan Since 1972

115 Railway St. Coleman

Auto Sales • Parts • Service

**989-465-1301**



## VALET AUTO CARE, INC.

Since 1983



- A.R.E. Pickup Toppers
- Over 100 New & Used Toppers in Stock
- Truck Accessories
- Tonneau Covers
- Detailed Car Cleaning

**A.R.E.**  
Because you love your truck

[www.valetauto.com](http://www.valetauto.com)

**James Motz - Owner**

610 N. Mission  
(3 blocks S. of Meijer)  
Mt. Pleasant

**(989) 773-3477**

## CAL'S PAINTING



**Over 30 Years Experience**  
**COMMERCIAL & RESIDENTIAL**  
• Interior & Exterior • Power Washing & Deck Care  
• Window Washing & Gutter Cleaning  
• Drywall Repair • Cleaning and Refinishing Log Homes  
• Cabinet, Woodwork, Door & Furniture Refinishing

**GO CALL TODAY!**  
**(989) 258-9638**

• Free Estimates • Work Gauranteed • Insured  
Winter Rates Available

**PROPANE  
SOLD  
HERE**

**SALE!!**  
20 LB. CYLINDER FILL

**\$9.99**

**GPC**



We make custom hoses & fittings!

PROPANE • HVAC • REFRIGERATION  
8512 E. M-46 - VESTABURG  
800-991-7477  
[gasproductioncompany.com](http://gasproductioncompany.com)

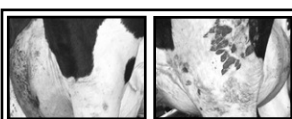
## COUNTY WIDE SEPTIC TANK CLEANING

- Septic Tank Cleaning
- Tank Risers & Filters
- Portal Toilet / Sink Rental
- Drain Line Cleaning & Camera
- New Septic System Installation
- Existing Septic System Repairs
- Gravel / Sand / Stone / Topsoil

**State Licensed & Fully Insured  
Residential & Commercial**

**"#1 IN A #2 BUSINESS"**  
**(989) 588-4140**





## Elder Creek Farms Dispersal Auction

Friday June 10, 2016  
11:00 AM  
Springport, MI

Directions: From I-69, Exit at Olivet, MI Go East In to Olivet, Turn Left on Old US 27, Take North 1/4 Mile to W. Bellevue Hwy, Turn Right Go 7 Miles to Narrow Lake Rd, Turn Right 2 1/2 Miles to W Drive North, Turn Left 1 1/2 Miles to The Farm at 28354 W Drive North

### 160 Holsteins & Swiss Sell

\*100 Cows Avg **80#** 3.7 3.3  
\*SCC-165000 \*Several 100#  
Cows \*Parlor / Freestall /  
Headlock \*51 1st Lact, 40 2nd  
Lact \*30+ Fresh in the last 90  
Days \*Vaccinated & Complete  
Herd Health  
\*40 Holstein Bred Heifers  
\*12 Select Holstein Calves  
\*ALL The BROWN SWISS  
20 Cows & 20 Heifers  
\*Everything is A.I. Sired By  
Top Bulls

Videos, Catalog  
& more info at  
[www.uproducers.com/dairy-sales/](http://www.uproducers.com/dairy-sales/)

Owners: The Heisler Family  
Duane 517-857-3856  
Ray 517-9178-2774

Sale Managers & Auctioneers

United Producers, Inc.  
Dairy Cattle Marketing Services  
Paul Warner 614-296-5038  
Chad Kreeger 517-294-3484

## JACK OF ALL TRADES COINS

1028 S. Mission  
(next to Jon's Country Burger)  
**I BUY ALL COINS**  
Silver and Gold  
**FREE APPRAISALS**  
we will come to your home  
to do free appraisals for  
your convenience.

Over 25 Years experience!

Do not take your coins,  
jewelry, gold, & silver to  
the we buy gold places  
they are not experts! We  
are your only experts!  
**WE PAY YOU MORE  
THAN ANYONE!**

**I BUY ALL  
COLLECTIONS**  
FROM ONE COIN TO A  
DUMP TRUCK FULL  
**We are a Full  
Buy • Sell • Trade shop!**  
**ANTIQUES • COINS**  
Jewelry • Collectibles & more!  
Stop in or call Matt for  
your free appointment  
**517-204-0787**



**MEADOWS MOBILE HOME PARK**  
ENJOY COUNTRY LIVING WITHIN  
THE CITY LIMITS OF ALMA  
VACANT LOTS AVAILABLE  
MOVE IN YOUR MOBILE HOME AND GET  
TWO MONTHS FREE RENT  
WE ARE ALSO TAKING APPLICATIONS FOR PART TIME  
MAINTENANCE HELP. PLEASE APPLY AT OFFICE.  
**PH: 989-463-5187**

TERESA & JIM DAVIDSON  
RESIDENT MANAGERS

411 S. GROVER, #31  
ALMA, MI 48801

## Crafters Wanted

**Weidman Days Festival**

July 8-9, 2016

At the Weidman Elementary School

8x10 spot \$25 • 16x20 spot \$45

To reserve your space or ask questions please contact  
Amber Loomis via email to [amber.loomis@cmich.edu](mailto:amber.loomis@cmich.edu)



## Thank You

Mr. and Mrs. Peterson

Mr. and Mrs. Wolfe

for joining the Culligan  
family and becoming  
valued customers.

**Culligan Worldwide**  
**Celebrating 75 years**

Ken's Culligan • Alma

## GOODWIN EXCAVATING & SEPTIC TANK SERVICE

Serving the Gladwin and Beaverton areas since 1957  
Septic Tanks Cleaned & Installed



Licensed & Bonded  
Excavating, Driveways  
Sand • Gravel • Black Dirt  
Water Lines, Ponds, Sewer Lines  
Demos, Roads  
967 N. Shearer Rd. • Gladwin

**989-426-7263**

## SUMMER CAMP at HIS PLACE



### HIS PLACE BASKETBALL

**JUNE 13-16 (M-Th)**

7-9yrs. 9:00-11:00am.

10yrs. & up 12:00-2:00pm.

Camps are held at:

**HIS PLACE**

200 W. Superior St. Alma  
(across from Mancinos)  
989-463-1676

### "ARTrageous Kids"

**June 20-23 (M-Th)**

7-9yrs. 9:00-11:00am. (limit 25)

10-12yrs. 12:00-2:00pm. (limit 25)



### Registration forms:

Available at His Place, Alma First Church of God and Schools:  
(Luce Rd., Hillcrest, Pine Ave, Middle School and St. Mary's)

**FREE**

## A-1 MOBILE ROOF SYSTEM



- White enameled aluminum stops any and all leaks for the full life of your mobile — GUARANTEED!
- Thick Layer of foam insulation drastically reduces winter heating by 35% or more — GUARANTEED!
- Over-hang at eaves eliminates stains and streaking. No more coating and caulking.

Made in Good Old USA!

**START TO FINISH**

We MANUFACTURE Your Roof

We INSTALL Your Roof

12X60  
**\$3,280**

**INSTALLED**

14X70  
**\$3,980**

GET YOUR FREE ESTIMATE TODAY!

BANK FINANCING AVAILABLE!

**1-800-872-2089**



**RE/MAX**  
River Haven  
Each Office Independently Owned and Operated  
777 W. Cedar Ave. • Gladwin, MI 48624  
[Lowes4realestate@gmail.com](mailto:Lowes4realestate@gmail.com)



**Chris Lowes**  
Associate Broker®  
Cell: 989-741-3989  
Call or Text



**6046 Gopher Trail - \$19,900**  
Small cottage or home with 2 BR 2 bath, washer & dryer hookups. Sets on Crawl Space. Newer water heater, 5' well, forced air furnace. Shed. Close to state land and lakes. Large, level lot, treed neighborhood.



**4131 Gayla - \$40,000**  
2+BR Cottage. Double-door pole building allows pull-thru access. Split rail fenced yard. Family Room could be converted to 3rd Bedroom. Wall furnace with woodstove for those chilly nights. Patio Door opens to back yard.



**190 Hillcrest - \$122,500**  
2 BR Home with Walk-out Basement Family Room on 264 acre All-Sport Crooked Lake. Sandy Frontage. Fantastic Views. NG. Wall AC. Home Warranty. Vinyl siding. Gutters. Seawall. 32' Aluminum dock. 2 sheds.



[www.Lowes4realestate.com](http://www.Lowes4realestate.com)

## Heart Worm Test Special May Rates



**Reg \$35.00**

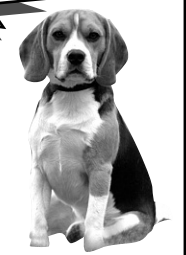
By Appt. 426-0203

Flexible Hours

**KELLY'S KRUISING**

**KRITTER KARE**

Kelly Jo Kelley, DVM



## Public Auction

**LIVE AUCTION - 2 RINGS**

DIRECTIONS: From intersection of M-20 & M-30 go South 3 miles to Gordenvill Rd. Go left on Gordenvill to Homer Rd, turn left and drive 2 miles to 1550 Stewart Rd. (Midland County) Watch for Auction signs.

**Sunday, June 12, 2016 - 11:00 AM**

**ANTIQUE TRACTORS TOY TRACTORS MISC. FARM ITEMS**  
(Antique Tractors to sell at approx. 1:30 pm)

List Includes: 3 Antique Tractors; Several Hit & Miss Engines; Large Assortment of Collectible Tractors and other toys; D.R. Lawn Vacuum; Large Assortment of tools; Craftsman double tool chest; Hoosier cupboard; Patio set; Anvil; (2) Shaker Rockers; Air Compressor; Cherry Picker; Plus... much... much more. For more information and pictures, go to [Auctionzip.com](http://Auctionzip.com) ID#23629.

2 Auction Rings • LUNCH WAGON & PORTA JOHNS ON SITE DAY OF SALE • 2 Auction Rings  
TERMS: Cash or good checks w/proper I.D. All property to be settled for day of sale. Not responsible for accidents or goods after sale. Auctioneers and sale personnel are acting as selling agents only. Announcements day of sale take precedence over printed matter.

**ESTATE OF ROBERT CORNELIUS**  
**ALLEN CORNELIUS, Personal Representative**

**CAGA**  
CERTIFIED  
APPRAISER

**Clark Auction Service**  
Bill Clark - Auctioneer  
989-330-4355

Serving Central Michigan for over 35 years.

SEE MORE PICTURES AT [AUCTION.ZIP.COM](http://AUCTION.ZIP.COM) ID#23629



## WWW.SYKORAAUCTIONS.COM PRESENTS!

### LIVE FARM AUCTION

LARRY GARRETT FARMS  
HUBBARD LAKE, MI. 49747

DUE TO HEALTH ISSUES, WE HAVE DECIDED TO RETIRE FROM FARMING & THE FOLLOWING DESCRIBED ITEMS WILL SELL AT LIVE PUBLIC AUCTION HELD ON THE FARM LOCATED 8 MILES S.W. OF ALPENA, MI. ON WERTH RD, THEN 2 MILES SOUTH ON HUBBARD LAKE RD. AND WEST 1 1/4 MILES TO 8171 SCHULTZ RD. (OR) 5 MILES NORTH OF HUBBARD LAKE, MI. ON HUBBARD LAKE RD. THEN WEST 1 1/4 MILES ON SCHULTZ RD. TO FARM (ALPENA CO.)

**SATURDAY JUNE 11, 2016 @ 10:00 AM SHARP!**

RAIN OR SHINE! BE ON TIME! VERY FEW SMALL ITEMS!

CALL LARRY FOR ALL INFO @ 989-727-4356

**8 TRACTORS/COMBINE & HEAD/3 TRUCKS & TRAILERS/HAY & FORAGE/GOOD SELECTION OF TILLAGE & MISC. FARM MACHINERY**  
1976 JD 8630 4X4 DSL. TRACTOR - 1972 JD 7520 4X4 DSL. TRACTOR - 1982 WHITE 2-155 2WD DSL. TRACTOR - 1986 WHITE 2-110 2WD DSL. TRACTOR - 1978 WHITE 2-70 MFWD DSL. TRACTOR - 1967 M-MOLINE 670 SUPER GAS TRACTOR - 1967 M-MOLINE 670 SUPER GAS TRACTOR - M-MOLINE 670 GAS TRACTOR, 4-PARTS - COMBINE & HEAD 1988 JD 8820 TITAN II 2WD COMBINE - 3 TRUCKS & TRAILERS 2000 PETERBILT 377 T/A ROAD TRACTOR - 2002 53'X102' FLAT BED SEMI TRAILER - TRANSCRAFT 50'X102' FLAT BED SEMI TRAILER - 1994 DODGE 1/2 TON 4X4 PICKUP HAY & FORAGE 2002 HESSTON 8450 SELF-PROPELLED 14' HAYBINE - 2008 JD 467 ROUND HAY BALER - 2001 H&S HI-CAPACITY DBL. 6 HYD. FOLD WHEEL RAKE - CRUSTBUSTER 25' #4000 AL PLANT NO-TILL GRAIN DRILL - GOOD SELECTION OF TILLAGE & MISC. FARM MACHINERY - SUNFLOWER 1443-29' HYD. FOLD WHEEL DISC, CENTER & CUSHION FLEX - KEWANEE #1010 20' HYD. FLAT FOLD WHEEL DISC AND MORE! MISC. FARM ITEMS - MISC. SHOP & FARM & TOOL GOODIES! - SALE ORDER: FARM SMALLS, TRACTORS, COMBINE, TRUCK, HAY & FORAGE, TILLAGE ATTEND ON TIME!

AUCTIONEER'S NOTE: SYKORAAUCTIONS.COM WOULD LIKE TO THANK THE GARRETT'S FOR THIS AUCTION OPPORTUNITY!  
- MAKE PLANS TO ATTEND THIS QUALITY SYKORA AUCTION, AND AS ALWAYS, FREE LOADING SALE DAY AND LIMITED 2 WEEK STORAGE AVAILABLE. BE THERE!!!

### LARRY & BEV GARRETT - OWNERS

8171 SCHULTZ RD. • HUBBARD LAKE, MI. 49747 • CALL LARRY FOR ALL INFO @ 989-727-4356



### SYKORA AUCTION SERVICE INC.

Scott Sykora, Auctioneer (989) 386-9694 • Fax (989) 386-2246  
John McConnell, Auctioneer (989) 429-0444  
Clare, Michigan • Visit our website [www.sykorauctions.com](http://www.sykorauctions.com)

## WWW.SYKORAAUCTIONS.COM PRESENTS!

### MEARS GROUP, INC. ANNUAL SURPLUS AUCTION

5127 N. MISSION RD. ROSEBUSH, MI. 48878



## FRIDAY JUNE 10, 2016

10:00 AM EST. SHARP!

**TRADITIONAL LIVE ON SITE AUCTION + LIVE SIMULCAST ONLINE**  
**BIDDING FOR THE BEST OF BOTH WORLDS!**

VISIT [www.sykorauctions.com](http://www.sykorauctions.com) FOR ONLINE BIDDING & REGISTRATION APPROX. 70 MILES NORTH OF LANSING, MI. ON US-127

(50+) 2008 & 2010 FORD SUPER DUTY 4X4 F-250 to F-550 PICKUP TRUCKS\* 2- CAT 315 EXCAVATORS \* CAT 312 and KUBOTA KX 161-3 MINI EXCAVATOR\* 2 ASV 100 TRACK SKIDSTEERS \* PETERBILT & HD MACK ROAD TRACTORS \* 3, FORD F-750 TRUCKS \* IR 1600 CFM AIR COMPRESSOR\* DRESSER TD-20E DOZER W/ HD WINCH \* 4 AMERICAN AUGER DIRECTIONAL DRILL RIGS\* CHEVY 4X4 SUV'S \*CAT 416 4X4 BACKHOE/LOADER \*IR AIR COMPRESSOR W/BLAST POT MTD. ON F-750\* TAG TRAILERS \*FLAT BED FLOAT TRAILERS\* VAN TRAILERS\* ENCLOSED TRAILERS \* TRASH PUMPS \* 100'S OF SUPPORT TOOLS & MISC. ITEMS FUEL TANKS & ALUM. PICKUP BOXES\* \*MANY PALLETS LOADED & FULL OF SUPPORT ITEMS! NOTE: THIS IS A ESTIMATED LIST OF INVENTORY MORE TO BE ADDED BY SALE DAY. MEARS WILL BE CONTINUING THEIR REGULAR BUSINESS & OPERATIONS; THIS AUCTION IS ANNUAL SYKORA AUCTIONS. COMEVENTO LIQUIDATE EXCESS EQUIPMENT & MATERIALS NO LONGER NEEDED IN ITS OPERATIONS & DIVISIONS. SYKORAAUCTIONS.COM WOULD LIKE TO THANK MEARS GROUP, AND YOU THE BUYERS FOR MAKING THIS ANNUAL AUCTION A YEARLY SUCCESS. CHECK SYKORA AUCTIONS. COMFOR COMPLETE LIST IF INVENTORY!

CHECK SYKORAAUCTIONS.COM FOR COMPLETE LIST IF INVENTORY!

### MEARS GROUP, INC.

5127 N. MISSION RD. ROSEBUSH MI 48878  
A QUANTA SERVICES CO.



### SYKORA AUCTION SERVICE INC.

Scott Sykora, Auctioneer (989) 386-9694 • Fax (989) 386-2246  
John McConnell, Auctioneer (989) 429-0444  
Clare, Michigan • Visit our website [www.sykorauctions.com](http://www.sykorauctions.com)

Another Happy Customer...  
**CLEAR VISION**  
"Clearly the Best Choice"  
**WINDOWS**  
SIDING & ROOFING  
Toll Free (888) 834-0542

## MEMORIAL DAY SAVINGS EVENT

Hurry Offers  
Expire 6.18.16

Free Estimates

(989) 633-0000

**18 MONTHS SAME AS CASH\***

\*AVAILABLE



## Siding • Windows • Roofing

**\$500 OFF**

on Whole House  
of Vinyl Siding  
Expire on: 6.18.16

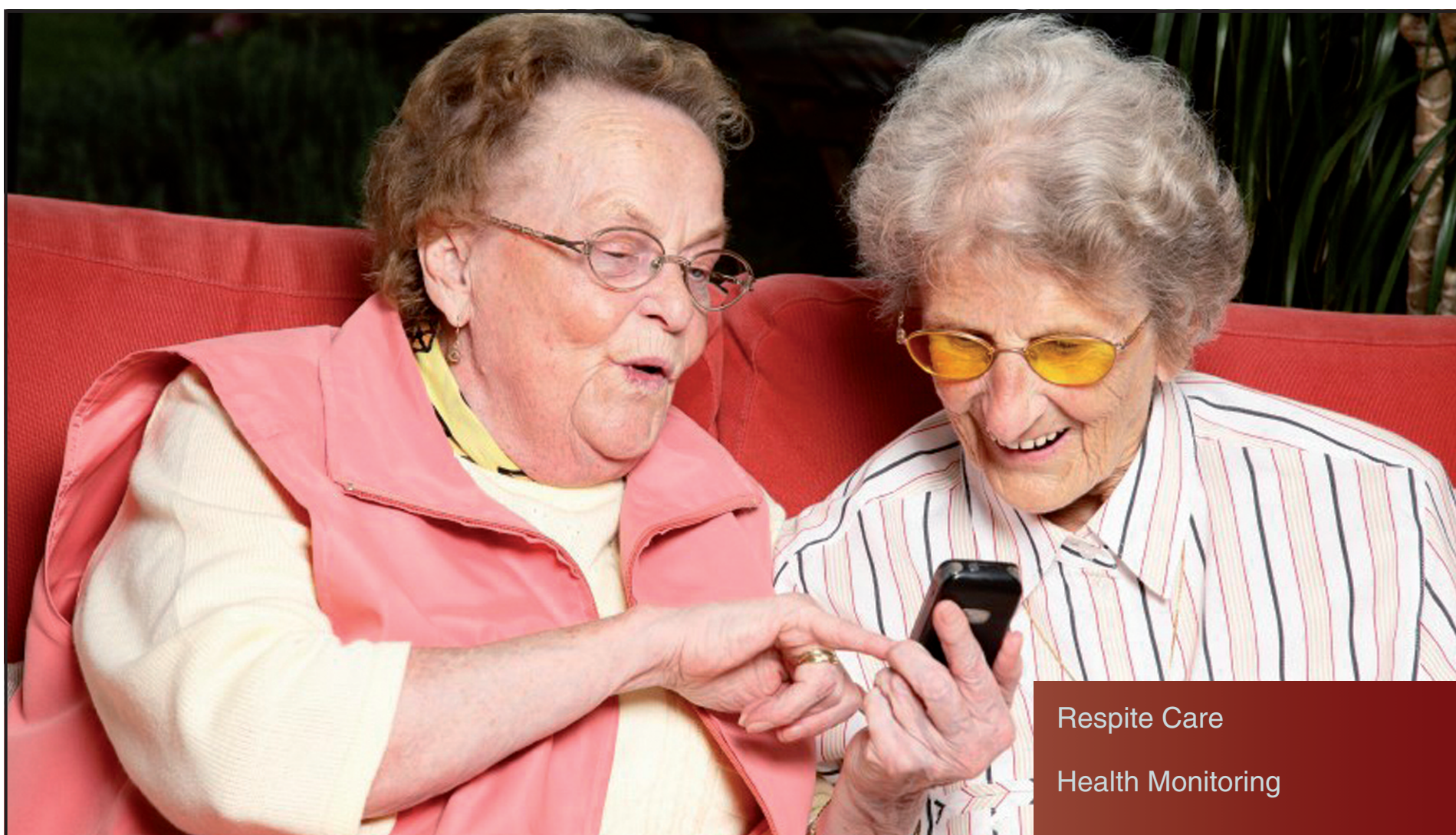
**\$7500 TRADE IN**

FOR EACH OF YOUR OLD WINDOWS  
3 windows - \$225  
6 windows - \$450  
9 windows - \$675  
Expire on: 6.18.16

**\$500 OFF**

on Complete  
Tear Off  
Expire on: 6.18.16





Respite Care

Health Monitoring

Recreation &amp; Exercise

Socialization

Intergenerational Activities

## We're just a phone call away.

The **Isabella County Adult Day Program** offers aging adults the opportunity to socialize and enjoy peer support in a homelike setting. Specially designed activities promote a sense of accomplishment and maintain current levels of cognitive and physical functioning. **Transportation and funding available to qualifying Gratiot County residents.**



**Isabella County  
Adult Day Program**

*Socialization and Respite Care*

1222 North Drive, Mt. Pleasant, MI 48858  
www.isabellacounty.org  
(989) 779-5558 phone | (989) 772-3669 fax  
dnartker@isabellacounty.org email

For more information, contact Deb Nartker,  
Program Manager at (989) 779-5558.

**Free Half-Day Trials | (989) 779-5558**

## AUCTION

### Wayne Whitmore Estate Auction

**Thursday, June 9, 2016 At 10:00 am**

**9720 E Deerfield, Shepherd, MI 48883**

Direction: From Mt. Pleasant 4 Miles East on M-20 to Wise Road,  
3 Miles South on Wise to Deerfield Road, 1 1/2 West to Sale Site.



#### Motorcycles

1998 WHIZZER MOTORBIKE

#### Tractors & Farm Equipment

MASSEY-FERGUSON 65, Diesel, 3pt  
1952 FORD FERGUSON TRACTOR  
ALLIS-CHALMERS B  
FORD 9-N  
MASSEY HARRIS-FERGUSON 40  
FARMALL IH A  
YORK RAKE ARPS  
BACK BLADE  
TWO ROW CULTIVATOR  
DUMP RAKE  
JOHN DEERE 614 PLOW  
MCCORMICK DEERING TWO ROW  
CULTIVATOR  
JOHN DEERE 1 ROW CULTIVATOR  
JOHN DEERE 1 ROW PLOW  
KILBROS 350 GRAVITY WAGON  
KILBROS 350 GRAVITY WAGON  
(3) GRAVITY WAGONS  
12' CULMULCHER  
15' SPRING TOOTH DRAG  
BUSHHOG CHISEL PLOW  
CASE 8' HAY RAKE  
HAY WAGON  
INTERNATIONAL 4 ROW PLANTER, Model 56  
BEAN WINDROWER  
JOHN DEERE 10' CULTIVATOR  
5 BOTTOM PLOW



#### Tools, Shop Items & Support Equipment

BUSHHOG FREEMAN 3000 LOADER  
JOHN DEERE 25 GALLON SPRAYER  
CABELL HAUSFIELD FLUX CORE 80  
SNYDER TANK  
BERGER TRANSIT INSTRUMENTS  
GRAY WHEEL JACK  
JOHN DEERE 3 POINT ARMS  
CENTER LINKS FOR TRACTOR  
SUITCASE WEIGHTS  
1" DRIVE SOCKET SET  
ASSORTED LUMBER  
CONTINENTAL HV100 SHOP PRESS  
3 GALLON SAND BLASTER  
ASSORTMENT OF GASKETS FOR TRACTORS  
RHEEM POWER VENT WATER HEATER  
(2) 100LB PROPANE TANKS  
HORSE HARNESS EVENER  
(2) M-2-28 TIRES

#### Lawn Mowers & Yard Items

KUBOTA T1760 LAWN MOWER  
JOHN DEERE 110  
JOHN DEERE WOODEN CART

#### Antiques & Collectibles

ANTIQUE CORN SHELLER  
ANTIQUE SEWING MACHINE  
ANTIQUE ROCKING CHAIR

#### Household & Miscellaneous

WHITE SEWING MACHINE  
GIBSON COMMERCIAL UPRIGHT FREEZER



**mifreeads.com**  
**Ph. 1-800-783-0267**

You can reach across Michigan with  
**Community Papers of Michigan**

STATEWIDE  
CLASSIFIED NETWORK

Ads placed in Michigan Mega Market Classified Network appear in free circulation community papers and shopping guides reaching the grass roots of Michigan. Your advertising can be delivered weekly to more than **1,600,000** households throughout the state.

**ONLY \$249**

Call this paper to place a classified ad of 25 words or less and reach across the state.

### Amish Furniture

**AN AMISH LOG HEAD-BOARD** and Queen Pillow Top Mattress Set. Brand new-never used, sell all for \$275. Call anytime 989-832-2401.

**AMISH LOG BEDS, DRESSERS, RUSTIC TABLE AND CHAIRS**, Mattresses for Cabin or Home. Lowest price in Michigan! 989-923-1278 dandanthemattressman.com

### Auctions

**LIVE AUCTION SAT., JUNE 11, 2016 10 AM** 8523 E. Madison Rd., Wheeler, MI. Tractors; Shop & Tools; Household; Antiques & Collectibles. Large sale! Details at: Sherwoodauctionservicellc.com 989-681-7653

**ONLINE ONLY AUCTION ST. LOUIS, MI** Auction ends Sun., June 12, 2016. Dutchman 5th wheel camper; tools; collectibles; rototiller. Much more! For details and to register visit: Sherwoodauctionservicellc.com 989-681-7653

### Farm Equipment

**OUR HUNTERS WILL PAY TOP \$\$\$** to hunt your land. Call for a Free Base Camp Leasing info packet & Quote. 1-866-309-1507 www.BaseCampLeasing.com

### Financial

**SOCIAL SECURITY DISABILITY BENEFITS.** Unable to work? Denied benefits? We Can Help! WIN or Pay Nothing! Contact Bill Gordon & Associates at 1-800-731-5703 to start your application today!

### Fishing

**VACATION CABINS FOR RENT IN CANADA.** Fish for abundant wall-eye, perch, northern pike. Boats, motors, gasoline included. For free brochure call Hugh 1-800-426-2550 www.bestfishing.com

### Mattress Sets

**A TEMPERPAC/STYLE MEMORY FOAM MATTRESS SET QUEEN**, new-never used, as seen on TV, with warranty. Cost \$1,800, sell \$475. 989-832-2401.

### Medical

**STOP OVERPAYING FOR YOUR PRESCRIPTIONS!** Save up to 93%! Call our licensed Canadian and International pharmacy service to compare prices and get \$15.00 off your first prescription and FREE Shipping. 1-800-697-1808

**VIAGRA!! 52 PILLS FOR ONLY \$99.00.** Your #1 trusted provider for 10 years. Insured and Guaranteed Delivery. Call today 1-800-404-1282

### Miscellaneous

**BUILT BEST BARN'S MICHIGAN'S LARGEST POLE BARN COMPANY.** Best Quality, Best Service, Spring Specials 24'x24'x8'=\$6995.00; 24'x32'x8'=\$7995.00; 24'x40'x10'=\$9995.00; 30'x40'x10'=\$10,995.00; 32'x48'x12'=\$15,995.00. Completely Built, (Concrete Floor Optional) License/Insured 1-877-802-9591 (Office) 989-205-2534 (Cell)

**SAVE ON INTERNET AND TV BUNDLES!** Order the best exclusive cable and satellite deals in your area! If eligible, get up to \$300 in Visa Gift Cards. CALL NOW! 1-800-807-1095

**ACORN STAIRLIFTS.** The AFFORDABLE solution to your stairs! \*\*Limited time - \$250 Off Your Stairlift Purchase! \*\*Buy Direct & SAVE. Please call 1-800-280-1897 for FREE DVD and brochure.

**FREE PILLS! VIAGRA!! CALL TODAY** to find out, how to get your free Pills! Price too low to Mention! Call today 1-877-602-0194.

**AT&T U-VERSE INTERNET STARTING AT \$15/MONTH** or TV & Internet starting at \$49/month for 12 months with 1-year agreement. Call 1-800-906-1524 to learn more.

**MEET SINGLES RIGHT NOW!** No paid operators, just real people like you. Browse greetings, exchange messages and connect live. Try it free. Call now: 877-710-7001

**Readers: THIS PUBLICATION DOES NOT KNOWINGLY ACCEPT** advertising which is deceptive, fraudulent, or which might otherwise violate the law or accepted standards of taste. However, this publication does not warrant or guarantee the accuracy of any advertisement, nor the quality of the goods or services advertised. Readers are cautioned to thoroughly investigate all claims made in any advertisements, and to use good judgment and reasonable care, (particularly when dealing with persons unknown to you who ask for money in advance of delivery of the goods or services advertised.)

**LUNG CANCER? AND 60 YEARS OLD?** If So, You And Your Family May Be Entitled To A Significant Cash Award. Call 800-871-9061 To Learn More. No Risk. No Money Out Of Pocket.

**FAST INTERNET! HUGHESNET SATELLITE INTERNET.** High-Speed. Avail Anywhere. Speeds to 15 mbps. Starting at \$59.99/mo. Call for Limited Time Price! 1-800-491-8935

**AMISH BUILT STORAGE SHEDS AND HUNTING/Recreation Cabins** delivered to your site anywhere in Michigan! Starting under \$1,000.00. 989-832-1866.

**A PLACE FOR MOM.** The nation's largest senior living referral service. Contact our trusted, local experts today! Our service is FREE/no obligation. CALL 1-800-520-3521

**PIONEER POLE BUILDINGS FREE ESTIMATES LICENSED AND INSURED.** 2x6 Trusses. 45 Year Warranty Galvalume Steel-19 Colors. Since 1976 #1 in Michigan Call Today 1-800-292-0679

**DISH TV 190 CHANNELS PLUS HIGHSPEED INTERNET** Only \$49.94/mo! Ask about a 3 year price guarantee & get Netflix included for 1 year! Call Today 1-800-930-8959

**KILL BED BUGS & THEIR EGGS!** Buy Harris Bed Bug Killers/KIT Complete Treatment System. Available: Hardware Stores, The Home Depot, homedepot.com

**BUILT RITE POLE BUILDINGS STATE-WIDE.** 24'x40'x10'=\$10,100.00 30'x40'x10'=\$12,900.00. Erected on your site. Call for price not shown on any size building or go to www.builttritepolebuildings.net Toll Free 1-877-296-6802

**ULTIMATE BUNDLE FROM DIRECTV & AT&T.** 2-Year Price Guarantee -Just \$89.99/month (TV/fast internet/phone) FREE Whole-Home Genie HD-DVR Upgrade. New Customers Only. Call Today 1- 800-917-3607



**Darell Dunkle & Associates**  
**Auctioneers, Inc.**

**For More Information go to**  
**www.dunkleauctioneers.com**  
**Email: info@dunkleauctioneers.com**  
**Office: 800-433-6670**  
**Darell Dunkle: 989-429-6670**



**CLERICAL/  
ADMINISTRATIVE**

Immediate opening for a full time **RECEPTIONIST** in Alma medical office. Competitive wages and benefits, pleasant work environment, computer literate, team player, dependable, work can be fast paced. Also accepting applications for experienced opticians. Please respond in confidence to ssprague@greatlakeseyein.com

**DIRECT CARE**

**HOME HEALTH AIDE/CNA**  
We are looking for part-time, flexible, in-home caregivers in the Harrison, Coleman, Beaverton and Mt. Pleasant areas. We're an agency that appreciates our staff and are seeking experienced, trustworthy, individuals who are willing to accept work at various times to join our team. Please download the application from [www.a-dhomecare.com](http://www.a-dhomecare.com). Resumes/Applications can be mailed or delivered to: **A & D Home Health Care Inc.** 2100 E. Remus Rd, Suite B Mt. Pleasant, MI 48858 Email resume [efox@a-dhomecare.com](mailto:efox@a-dhomecare.com) or fax to 989-401-7518 EOE

**FIREWOOD**

**BUDD LOGGING LLC**  
Hardwood, slab wood or logs (989)329-1578

**HARD FIREWOOD** \$50/ Cord. 4 X 8 Face Cord. Seasoned & Delivery Available. 989-418-8087

**FURNITURE**

**2 TWIN BEDS FOR SALE**  
Asking \$100/each 989-544-291

**MISCELLANEOUS**

**KILL BED BUGS & THEIR EGGS!**  
Buy Harris Bed Bug Killers/ KIT Complete Treatment System Hardware Stores, The Home Depot, homedepot.com

**MERCHANDISE  
WANTED**

**45 RPM Records Wanted**  
(the small ones w/big hole) 50's-60's-70's. 517-775-3989

**MERCHANDISE  
WANTED**

**CASH FOR OLD COINS  
& CURRENCY**

Paying book price. Will look up each coin with you. 989-426-7300.

**GARAGE  
SALES**

**YARD, RUMMAGE &  
GARAGE SALES**

**ABANDON UNIT SALE**  
Mini Mac Storage, 8100 N. Begole Rd., St. Louis (new location). June 6th-10th and 13th-17th.

**ALMA: HUGE MULTI-FAMILY "CLEAN IT OUT" SALE!** Kitchen, household, hardware, jogging stroller, 4-wheeler, garage items & clothes. Something for everyone. 4203 W. Harrison Rd. Thurs./Fri., June 9-10, 9-5; Sat., June 11, 9-12,

Beal City - 3119 W. Jordan Rd. June 10-11, 9am-3pm. Washer/Dryer (Like New), Jewelry, Clothing, Odds & Ends. Rain or Shine! Multi-Family

**COLEMAN: MULTI-FAMILY SALE.** Antiques, clothing, furniture, much misc. June 9-11, 9am-? Pole Barn on Moore Lane, off Sheler Street.

**HIAWATHA DRIVE**  
Neighborhood Garage Sale! Saturday, June 11th, 8:30-3. Baby furniture, Antiques, Household goods, Clothing

**HUGE SALE-** 209 N. Pine St., St. Louis. June 9,10, 11, 9am-4pm. Furniture, desk, lamps, mini fridge, loft, clothing, some antiques.

**JUNE 10TH, 8-4,** 1/4 mile south of M-46, 7636 Warner Rd, Elwell. Box of crochet patterns, cutting table, quilt templates, cutting mats, old hand cultivator, scythe, pickup step daddy ladder, books & misc items.

**MT. PLEASANT CITY WIDE GARAGE SALES**  
Friday & Saturday June 24-25, 2016 [www.gsallr.com](http://www.gsallr.com) [www.garagesalefinder.com](http://www.garagesalefinder.com) [www.centralmich.craigslist.org](http://www.centralmich.craigslist.org)

**RAINBOW LAKE WIDE GARAGE SALES. SEVERAL HOMES PARTICIPATING.** FRI. JUNE 17 & SAT. JUNE 18. 8AM-5PM.

**ST. LOUIS, 711 N Union St.** Located north of St Louis Middle School. June 9 & 10, 9-5pm. Nice, clean variety of items.

**ESTATE SALES**

**BUILDING MATERIALS  
& SUPPLIES**

**BUILT BEST BARN**

Michigan's Largest Pole Barn Company Best Quality, Best Service, Spring Specials 24'x24'x8'=\$6995.00 24'x32'x8'=\$7995.00 24'x40'x10'=\$9995.00 30'x40'x10'=\$10,995.00 32'x48'x12'=\$15,995.00 Completely Built, (Concrete Floor Optional) License/Insured 1-877-802-9591 (Office) 989-205-2534 (Cell)

**PIONEER POLE BUILDINGS**  
Free Estimates Licensed and Insured. 2x6 Trusses. 45 Year Warranty Galvalume Steel-19 Colors. Since 1976 #1 in Michigan Call Today 1-800-292-0679

**FARM - HEAVY  
EQUIPMENT & PARTS**

**BUY FUEL DIRECT & SAVE**  
Home Heating Oils  
\*Farm \*Commercial  
\*Industrial  
Gasoline-Diesel Fuels

**Tri Lakes Petroleum, LLC**

**Call Scott Capen**  
989-620-7527  
Toll Free 877-857-4567  
Locally Owned & Operated  
[trilakesllc.com](http://trilakesllc.com)

**FARM FEED  
& SUPPLIES**

**ALFALFA:** 4th Cutting, \$10/ bale 2nd Cutting \$8; Straw, \$4/Bale; Cracked Corn \$12/100, Shelled-Corn \$10/100, Cob-Corn \$5/Bag, Rye, Barley, Wheat, Oats \$12/bag. Delivery-Available. (989)433-5418 Cell# (989)965-1391

**FURNITURE  
& FIXTURES**

**TWIN SIZE LOG BED FRAME,** exc condition, complete w/ 3 drawers, Must disassemble and move. \$100 989-424-1809

**APARTMENTS FOR  
RENT (UNFURNISHED)**

**NOW LEASING**

**SHEPLEY APARTMENTS**

1-2 Bedrooms Includes water, sewer and trash removal. Rate based on Income. Starting at \$360 (1-bedroom) \$395 (2-bedroom) Barrier Free Units Call 989-463-2586 or apply at 2050 Bridge Ave. Bldg J, Alma, MI TDD# 711 Security deposit required This Institution is an Equal Opportunity Provider and Employer

**HOUSES FOR  
RENT (UNFURNISHED)**

**GLADWIN:** fully remodeled 1 bedroom home, very efficient, \$350/mo, \$300/sec. dep. Income & references required. (989)426-0839

**PASSENGER CARS**

**2012 FORD ESCAPE**

XLT, 4x4, only 46,000 miles, excellent shape.

**ONLY \$14,995** or \$239/mo.

**Dick Sova Auto**  
989-828-6032  
[dicksovaautosales.com](http://dicksovaautosales.com)

**2014 BUICK ENCLAVE**

Leather premium, chrome wheels, double sunroof, captains chairs, absolutely beautiful inside and out, pure luxury.

**ONLY \$31,995** or \$439/mo.

**Dick Sova Auto**  
989-828-6032  
[dicksovaautosales.com](http://dicksovaautosales.com)

**YOU'LL NEVER KNOW** how effective a classified ad is until you use one yourself! Reach the entire area without leaving the comfort of your home. Call and place your classified today to sell those unwanted items.

**SHOP FROM** your easy chair. Shopping the classifieds is easy, relaxing and you don't have to worry about parking.

**ESTATE SALES**

**PASSENGER CARS**

**2014 BUICK ENCORE**

Only 14,000 miles, beautiful brilliant blue, spotless condition.

**ONLY \$19,995** or \$289/mo.

**Dick Sova Auto**  
989-828-6032  
[dicksovaautosales.com](http://dicksovaautosales.com)

**2014 FORD ESCAPE**

4x4, SE package, only 8,000 miles, show room new still.

**Save thousands!!!**

**ONLY \$20,995** or \$298/mo.

**Dick Sova Auto**  
989-828-6032  
[dicksovaautosales.com](http://dicksovaautosales.com)

**2015 ALL NEW  
GMC CANYON**

4 door- 4x4, only 12,000 miles, full power, beautiful emerald green.

**ONLY \$32,995** or \$459/mo.

**Dick Sova Auto**  
989-828-6032  
[dicksovaautosales.com](http://dicksovaautosales.com)

**2015 CHEVY  
EQUINOX**

Only 6,000 miles, power lift gate, heated seats, absolutely beautiful.

**ONLY \$23,995** or \$329/mo.

**Dick Sova Auto**  
989-828-6032  
[dicksovaautosales.com](http://dicksovaautosales.com)

**2015 GMC TERRAIN**

Only 12,000 miles, indigo blue, special chrome package, must see!

**ONLY \$23,995** or \$329/mo.

**Dick Sova Auto**  
989-828-6032  
[dicksovaautosales.com](http://dicksovaautosales.com)

**2015 GMC TERRAIN**

Only 12,000 miles, special appearance package, must see! It's beautiful!

**ONLY \$23,995** or \$339/mo.

**Dick Sova Auto**  
989-828-6032  
[dicksovaautosales.com](http://dicksovaautosales.com)

**RECREATIONAL  
VEHICLES (RVs)**

**2004 SUNNYBROOK** 5th wheel, 32 ft., exc cond., special order, loaded, island kitchen, 3 slides, no kids, non smokers, always housed when not in use w/ hitch, new tires. Call: (989) 763-6543

**WATERCRAFT**

**FOR SALE: 1998 20' Manitou Pontoon.** 50 horse Evenrude motor w/ 2015 float on trailer. Excellent condition. \$7800 for pontoon or \$9300 for both. 989-866-2367 or 231-944-3569

**CAN'T FIND** what you're looking for? Find it the fast & easy, effective way by using the classifieds! Call and place a low cost classified ad under "Wanted To Buy" in next week's paper.

**REMEMBER -** when placing a classified to get fast results be sure to include:  
1) all the details  
2) include the price  
3) be available to callers As easy as 1 - 2 - 3!



NEED HELP?  
CALL A LOCAL PROFESSIONAL  
FROM OUR

**Professional  
Services  
Directory**

**LANDSCAPE &  
TREE MAINTENANCE**

**ARBOR TREE SERVICE.** Storm Damage, Landscaping, Tree Trimming & Removing. Call 989-763-3830

**REMODELING &  
REPAIR**

**HOME IMPROVEMENT** Interior/Exterior Painting, Roof & Drywall Repair, Power Washing, Kitchen/Bath Special, Tile, House Leveling, Windows, Doors, Flooring. Call 989-533-1006

**PAWN SHOP**  
*Buy, Sell, Pawn*

3 Month Pawn  
3% + 1.00 Storage  
Firearms, Gold  
& More

Gladwin Trade & Sales  
989-426-6811



**Caught Ya Lookin'  
Classifieds Work!**

**PAINTBALL SUPPLIES**

**PAINTBALL  
2000 CASE  
\$30.95**  
**CO<sub>2</sub> FILLS, HPA FILLS**  
**FREE FILL w/purchase**  
**of CO<sub>2</sub> or HPA Tank**  
**GUNS, MASKS, TANKS**

**GLADWIN TRADE & SALES**  
**989-426-6811**

**Get More Bass For Your Bucks**  
**CAR AUDIO**

**\*\*Pre-Owned & New\*\***  
• Amplifiers • Speakers & Speaker Boxes  
• Subwoofers • Amp Kits  
• Woofer Boxes • Install Kits

**GLADWIN  
TRADE & SALES**  
989-426-6811 • 1739 N. State St. • Gladwin

*great*  
**BIG  
ADS**

*great*  
**BIG  
RESULTS**



**Quality Built.  
Quality Features.**

**Stop By & Check Out Our Fresh New Selection  
Of Buildings On The Lot Ready To Go!**

**DON'T WASTE YOUR SUMMER  
VACATION TRYING TO BUILD YOUR OWN  
STORAGE BUILDING. COME SEE US,  
WE WILL BUILD IT FOR YOU!!**



10x12 1 window 6' loft,  
**\$2,035**



12x24 Side Entry Door, 3  
Windows, 8' Loft, **\$4,729**



12x20 4' Loft,  
**\$3,458**



10x20 Quaker,  
**\$3,610**

**Free Delivery w/ in 70 miles • Statewide Delivery Available**

**Miller's Woodworking**

3209 E. Beaverton Road • Clare, MI 48617  
(Voicemail) 989-465-8172

Old US 127 to Surrey West on Surrey to Grant 1 mile north on Grant

7:30am-5:00pm Evening by Chance or Appointment  
Closed Sunday

**ESTATE SALE**  
*Friday & Saturday, June 10-11th*  
*214 Railway St., Coleman, MI*  
Tools, Household items, Antiques and Collectibles, Guns and Sporting Goods. Many new things being added daily.  
To inquire with questions phone  
**989.400.7063**



# Epic Savings On NEW Technology!



## Amazing Miracle-Ear® Quality For \$1295. Why Wait?

Hearing is believing! Right now for a very limited time, you can get a fully digital, genuine Miracle-Ear® hearing aid for less than \$1300. This is one of our smallest, most discrete hearing solutions. Complete with Miracle-Ear sound quality, custom fitting and a comprehensive service and warranty program.

**Getting  
Started.  
It's Free  
& Easy.**

**FREE Hearing Screening**

**FREE Ear Canal Inspection**

**Fully Covered Insurance Options**

**Affordable Financing Available**

## GENIUS™ TECHNOLOGY!

Clears away distracting background noise and helps you focus in on what's important. GENIUS technology lets you and your hearing care professional customize your experience, so you can find a hearing solution that works for your individual needs. GENIUS features available even in our smallest, nearly invisible model!

**HURRY! SPECIAL PRICING THIS WEEK ONLY!**

**BIG SAVINGS ON ONE OF OUR  
SMALLEST CUSTOM DIGITAL HEARING AIDS!**

**\$1295**

**Valid on  
Model  
Audiotone  
Pro Only**



Valid at participating Miracle-Ear locations only. Limit one coupon per purchase. May not be combined with any other offer and does not apply to prior sales. Hurry! Offer Expires 6/30/16

**Hearing Aid Charger**

**FREE**



With purchase of Me1, 2 or 3 Solutions, and when you present this ad. Valid at participating Miracle-Ear locations only. Limit one coupon per purchase. May not be combined with any other offer and does not apply to prior sales. Hurry! Offer Expires 6/30/16

**Experience your FREE Demonstration of the incredible GENIUS® Technology today at these Miracle-Ear® location. Call Today! Savings will not last!**

**Miracle-Ear Alma**  
116 W. Superior  
Heritage Towne Sq.

**Miracle-Ear Clare**  
1430 N. McEwan - Carousel Mall  
(Across from Woods & Patches)

**Miracle-Ear Gladwin**  
127 N. Arcade, Suite 2  
In the Neely Building  
Call Kim to schedule an  
appointment for the  
center nearest you



**Miracle-Ear Prudenville**  
828 W. Houghton Lake Dr.  
(Corner of M55 and M18)

**Miracle-Ear Mt. Pleasant**  
100 S. Mission, Suite G  
Just south of Rite Aid

**(888) 381-0571**

\*Hearing screening is always free. Not a medical exam. Audiometric test to determine proper amplification needs only. \*\*Hearing aids do not restore natural hearing ability. Individual experiences vary depending on severity of hearing loss, accuracy of evaluation, proper fit and ability to adapt to amplification. ^See your Miracle Ear representative for complete details.



# SAVE!

UP TO 65% OFF STOREWIDE

PLUS AN EXTRA

## 20% OFF\*\*

OR 0% FOR  
48 MONTHS\*

# URBAN

## BIGGER

Urban Collection  
Motion Collection  
Leather Collection

## WIN!

# \$10,000

### HOME MAKEOVER!

No purchase necessary.  
Must be 18+ to enter.

## BIGGER

SHOWROOM,  
WAREHOUSE,  
SELECTION &  
DISCOUNTS!

## BIGGER

Clearance Center,  
Pure Sleep,  
Wendels Design  
Studio

MT. PLEASANT



5260 E PICKARD RD  
MT PLEASANT