

**LELAND SENIOR
ATHENNA CROSBY
NAMED MISS
CALIFORNIA TEEN
2016 - PAGE 4**



Happy Holidays
FROM THE STAFF OF THE ALMADEN TIMES

DEC. 18-DEC. 31, 2015 ■ VOL. 28, NO. 25

YOUR BEST
SOURCE OF
COMMUNITY
NEWS FOR

OVER
29
YEARS

Almaden Times

SERVING ALMADEN VALLEY SINCE 1986 ■ ALMADENTIMES.COM

THE 'BUCK' STARTS HERE



Ryan Teeple, a fifth grader at Simonds Elementary, poses with a toy representing "Young Buck," the character he voices in Pixar's latest film "The Good Dinosaur." Above: Teeple poses with **Peter Sohn**, the director of "The Good Dinosaur." Photos used courtesy of the Teeple family.



HOLIDAY LIGHTS AND FESTIVE NIGHTS Almaden sparkles for the holidays

The holidays always bring out cheerful displays, such as extravagant Christmas lights outlining homes in our neighborhoods and festive exhibitions in local stores. One such display is this festive collection of ornaments and decorative trees at Bloomsters Floral Design, located at 5945 Almaden Expressway, #170.

For more holiday features, see pages 19-21 of this week's issue of the Almaden Times.

Almaden's Ryan Teeple lends his voice to Pixar's 'The Good Dinosaur'

By Jeff Baham
Special to the Times

Becoming one of Disney's animated characters is a goal to which nearly all movie stars aspire. In fact, Tom Hanks has said that he's the "luckiest man in the world" for voicing a Pixar character.

But for 10-year-old Almaden resident Ryan Teeple, becoming the voice of an animated character for Pixar's latest film "The Good Dinosaur" was just another successful venture along life's journey.

"I've been auditioning and acting since I was five," Teeple explained. "Pixar calls people from everywhere to try out, and it just so happened that I was the person they wanted for this role."

The role in question is a dinosaur hatch-

ling by the name of "Young Buck," an Apatosaurus who, along with his siblings Libby and Arlo, lives in an alternate universe in which the asteroid that caused the extinction of the dinosaurs passes Earth in a near-miss, allowing the dinosaurs to flourish and establish civilizations.

While Teeple's character only appears in the movie's early scenes, his vocalization was used to portray the foundation for the older version of Apatosaurus Buck. But for such a young actor, thinking and acting like a reptile couldn't have come easily – or could it have?

"I thought about it like he was a kid," said Teeple, who himself is a fifth-grader at Simonds Elementary School. "They showed

See DINOSAUR, page 10

SEE OUR LISTINGS OF LOCAL REALTORS, CLASSIFIED ADVERTISING AND HOME IMPROVEMENT ADVERTISEMENTS INSIDE THE BACK COVER

MAY
 Your days
 BE
 MERRY
 AND
 Bright

Happy Holidays from the Yost Group

Almaden Valley's #1 Agent

Top 1%

Nobody has sold more Almaden Valley homes than Margaret and David Yost



THE YOST GROUP

"Your neighborhood is our neighborhood too."



Margaret Yost

408.306.3992
 margaret@yostgroup.com
 DRE License # 00947936
 MargaretYost.com
for all Almaden listings



David Yost

408.757.9678
 david@yostgroup.com
 DRE License # 01450671
 DavidYost.com
for all Almaden listings

HAPPY HOLIDAYS

FROM SERENO GROUP



LOS GATOS (408) 335-1400
SARATOGA • WILLOW GLEN • LOS ALTOS • PALO ALTO
WESTSIDE SANTA CRUZ • SANTA CRUZ • APTOS

WWW.SERENOGROUP.COM
WWW.SERENOGROUP.COM/ONEPERCENT

 facebook.com/serenogroup

 twitter.com/serenogroup



Green Business
Santa Clara County



This Week:

SPORTS

Cuevas earns All-American 2015 Field Hockey honors: **PAGE 6**

LOCAL NEWS

County news: land for parks acquired in South County: **PAGE 8**

LOCAL NEWS

Pipes and Drums of the Sheriff's Office receive Board of Supervisors commendation: **PAGE 15**



↑ FEATURE

'Moving Messages' bring hope, joy to Almaden Valley: **PAGE 21**

ALSO

Realtor Guide: **PAGE 22**

Worship Guide: **PAGE 17**

Almaden Times

Times Media, Inc. / (408) 494-7000

PUBLISHER / CEO: WILLIAM BELLOU
williamb@timesmediainc.com

SR. ACCOUNT EXECUTIVE: BRIGITTE JONES
brigitte@timesmediainc.com

ACCOUNT EXECUTIVE: STEPHEN HARR
steve@timesmediainc.com

STAFF WRITERS: MARSALI HANCOCK,
FRANK SHORTT, GINA TSOURIS,
NIRBAN SINGH, SEAN EASTWOOD

ART DIRECTOR: JEFF BAHAM

CHIEF FINANCIAL OFFICER: SANDY BELLOU

Copyright © 2015 Times Media, Inc. All rights reserved. The Almaden Times prefers letters to the editor and submissions of guest articles and columns for possible publication to be sent by email to editorial@timesmediainc.com. All submitted materials become the property of Times Media, Inc., and receipt of unsolicited materials cannot be acknowledged.

Valley Currents

cur·rent (adj.) Present, topical, timely, newsworthy. (n.) Movement in a definite direction, a flow.

PERSONAL PLATFORM: AUTISM AWARENESS

Leland senior wins Miss California Teen 2016

By William Bellou
Times Publisher

Athena Crosby, a senior at Leland High School, has been crowned 2016 Miss California Teen at the Long Beach Convention Center on Dec. 6.

Athena now moves on to compete at the 2016 Miss USA Teen competition to be held next August. She previously won the title Miss Jr. Teen California while attending Bret Harte Middle School in 2012.

"When they called my name I dropped down and put my hand over my mouth I was so shocked, but at the same time so happy," said Athena. "I saw girls all around me applauding but I was so emerged in the moment that I didn't even hear them," she said in an exclusive interview with the *Almaden Times*.

This year was Athena's fourth year competing in the pageant. "When I first competed in 2013, I placed in the Top 20 finalists," she said. "The next year, I placed in the Top 10. Last year, I placed in the Top 5 and this year I finally won!"

Athena said it was a gradual process, but she improved each time. "I know exactly what people mean when they say that the journey to reaching a goal is so important, she said. "I am so glad I have been able to learn and have my hard work eventually pay off."

With a passion for music, Athena is an accomplished saxophone player in the Leland High School Band and attends drama classes. When not studying, she works at Plato's Closet, a slightly used fashion recycling store, and also works as a part-time model. She is also an accomplished singer and has her own updated rendition of the song *Santa Baby* currently playing on YouTube.

Athena's career ambitions include becoming a disability rights attorney and to one day run for public office. She recently completed an internship in State Senator Jim Beal's office. "I learned a great deal about the running of the state by attending senate sessions in Sacramento," said Athena. "I also toured the state capitol and got the chance to meet some very interesting people there."



Before returning to Almaden Valley, Athena Crosby, Miss California Teen 2016, visited with patients at the Miller Children's Hospital in Long Beach. Athena and Miss California USA, Nadia Mejia, presented a \$6,000 check to the hospital that was raised from the People's Choice Award at the pageant. Athena and Nadia are pictured below with a young cancer patient.



Athena is the web show host for Picture the Possibilities (PTP) empowering youth globally with the tools and inspiration to create their dreams from art to science. Athena is also a reporter for Eco

Company, seen on FOX and Discovery TV channels, to encourage teens to preserve the planet. The independently produced news show is seen on KRON-4 TV on Saturday mornings, and Athena is one of the hosts. News stories focus on the environment in the Bay Area and feature teens that are working to improve and save the planet.

Athena said pageants allow you to have a platform, which she says is so awesome.

"My personal platform is Autism Awareness, as I have a younger brother on the Autism Spectrum," explained Athena. "Over the course of this year I plan to spread the word about what it's like to have a disability and how we as a society can be more accepting and understanding of those that have the malady," she said.

Athena said she plans on going state-wide with her platform and work closely with organizations such as *Autism Speaks* and *Best Buddies*, in hopes of getting teens excited to learn about mental disabilities.

When Athena won Miss California Jr. Teen in 2012, it was for an organization called National American Miss. This year, having won Miss California Teen USA, she will go on to compete at the national Miss Teen USA pageant, the most prestigious pageant which is owned by the Miss Universe Organization and IMG | WMG.

"The Miss California Teen USA Pageant is an incredible opportunity that unlocks doors in several industries, including entertainment and even politics," explained Athena. "With a title as prestigious as this one, I will be able to network with individuals I would have otherwise never met, and I get to grow as a person along the way."

On Athena's first day as 2016 Miss California Teen, Athena presented the Miller Children's Hospital along with 2016 Miss California USA, Nadia Mejia, in Long Beach with more than \$6,000 that was raised from the People's Choice Award at the pageant. "Spending the afternoon with the patients were moments we will cherish forever," she said.

Times **Community News**

Girl shot after confronting car thief

A gunman is still at large after shooting a 17-year-old girl was shot in the shoulder close to her neck at the Coleman Rd. and Winfield intersection near Almaden Lake Park.

The incident happened at 6:29 p.m. Monday evening Dec. 14.

The area was closed for two hours as part of the police investigation and shocked neighbors who consider the Almaden Lake area a peaceful area to walk and ride bikes.

The confrontation began when a man wearing a "hoodie" broke into the victim's late model Toyota idling near Westfield Oakridge Mall in South San Jose. "She was with a group of friends and they saw the man breaking into the car," Said Sgt. John Boren of the San Jose Police Dept.

According to police, the girl and her friend drove after the thief after witnessing him stealing the car. When they caught up to him, the girl walked up to him and after exchanging a few words, she was shot in her upper shoulder.

"This is a quiet, beautiful area, and we don't hear about carjackings happening around here," said a Coleman Rd. condo resident. "Most people around here are in shock after the shooting," she said.

As for the car thief, police say he got away and abandoned the vehicle in a neighborhood nearby with the driver's side window smashed in. Police towed the vehicle away so that detectives can probe for clues.



ADVICE

What to do when wood stove smoke enters home

Q: After I start a fire and have been burning awhile, I open the door for heat or to put wood in, it starts to smoke from the top of the door. Any help on this matter on what to do will be grateful. — **Ken M.**

A: An airtight stove will have a different pressure in the stove than your room and if you open the door too fast, your unit will back draft and hit you in the face. When you have an established fire you will need to equalize the pressures before you open the stove door fully. First, open damper controls/air control, second, open the door a crack - about 1/4-1/2 inch - to allow room air in and once you see the smoke drift out and then drift back, open the door. — **Chimney Pros**



ALMADEN LAW GROUP

Amy L. Horowitz Attorney at Law

Almaden Law Group provides estate planning and probate services.

Amy is committed to delivering high value services at a reasonable price. She establishes a comfortable, compassionate and trusting relationship with her clients.

Contact Almaden Law Group to schedule a free initial office consultation.

Almaden Law Group

6501 Crown Boulevard, Suite 200

Phone: 408-268-8530

Email: amy@almadenlawgroup.com

www.almadenlawgroup.com

Now accepting all major credit cards



MARK, MADELINE & JENNIFER CHIAVETTA

Coldwell Banker International Presidents Premier, Top 1%



Coming Soon!

20765 Monte Sunset

Graystone Hills Contemporary Home
5 bedrooms, 3 full baths, 2 half baths
5800 square feet of living space on a 2.5 acre lot
Price upon request



Open House Sunday 1:30 to 4:30

1105 Sterling Gate Drive

Elegant Almaden Springs Home
5 bedrooms, 4 baths
3,643 square feet of living space on a 10,500 sq. ft. lot
Offered at \$1,795,000



WE PUT THE "FULL" IN FULL SERVICE!

Mark's Mobile: 408.425.2848

Madeline's Mobile: 408.506.5393

Email: info@thechiavettas.com ■ Webpage: www.thechiavettas.com

410 N. Santa Cruz Avenue - Los Gatos, CA 95030

Madeline CaBRE# 01238932 Mark CaBRE# 013764000

Times Feature

Open doors.

Open eyes.

Open minds.

Open House!

Saturday, January 9, 10 a.m.-noon

AlmadenCountrySchool.org/OpenHouse

Independent • Co-educational • Non-sectarian
 Preschool (4-year-olds)–8th grade • Accredited by CAIS
 (408)997-0424 • 6835 Trinidad Drive, San Jose, CA 95120



Leland High School Alumna **Molly Cuevas** has earned All-American honors, as announced by the National Field Hockey Coaches' Association (NFHCA) on Dec. 7.

LELAND ALUMNA STARTS MASTER'S DEGREE PROGRAM

Cuevas earns All-American 2015 Field Hockey honors

Molly Cuevas has earned All-American honors, as announced by the National Field Hockey Coaches' Association (NFHCA) on Dec. 7. Cuevas is a Leland High School Alumna.

Cuevas, captain of the field hockey team at Adelphi University in New York, is the offensive leader starting all 20 games, totaling 14 goals and 14 assists for a total of 42 points.

Adelphi's lone representative on the First Team, Cuevas was instrumental in helping Adelphi win its first Northeast-10 Conference regular season title and its second straight appearance in the NCAA Championship.

"I was lucky enough to have a strong team and coaching staff behind me all four years at Adelphi," said Cuevas. "I truly could not have accomplished these athletic achievements without them. The program improves year after year; I can't wait to see what successes are ahead."

This season, Cuevas became the program's all-time leader in points (130), assists (52) while ranking second in goals (39). She was one of five NE-10 players to land on the First Team. She is the first ever Adelphi Rookie of the Year, 4 time 1st team All Northeast 10 Conference and 3 time All American. She also is an Academic All American and was just accepted to the University's Master's Degree program.

"Molly Cuevas is that one in a million student athlete that came through our doors at Adelphi University with a vision quest both academically and athletically," said Head Field Hockey Coach, Gloria O'Connor. "Her work ethic, leadership and genuine love of competition put her in a different category...one that many will try to emulate...however few will succeed."



Cuevas is Adelphi's first two-time First Team NFHCA All-American and she is also a four time Academic All-American. For the second year in a row she placed first in assists in the NCAA.

O'Connor said Cuevas has broken just about every Field Hockey record at Adelphi. "I am pleased that Molly will earn her Masters while working aside with me to Coach our team next year," said O'Connor. "Her Parents, Manny and Jillian should be proud of the fine young woman that Molly has become!"

First Team

- Anna Behm (Kutztown, Pa./Kutztown), Kutztown University
- Kiley Colucci, Assumption College
- Molly Cuevas, Adelphi University (Leland High School Alumna)**
- Kayla Denlinger (Manheim, Pa./Hempfield), Kutztown University
- Jill Funkhouser, Limestone College
- Lauren Gerhart, Millersville University
- Olivia Hershey, Millersville University
- Emily Howell, East Stroudsburg University
- Erika Kelly, Stonehill College
- Desiraye Mack, East Stroudsburg University
- Sarah Morse, Stonehill College
- Dayle Paustian, West Chester University
- Ally Rot,h East Stroudsburg University
- Krisina Scherer, West Chester University
- Alexis Versak, West Chester University
- Kristine Zubkus, Merrimack College

ALMADEN VALLEY LAWYERS®

Donald J. DeVries ■ Attorney at Law

www.almadenvalleylawyers.com

LIVING TRUSTS, WILLS & ESTATE PLANNING
 Preparation
 Administration
 Litigation

ESTATES
 Probate
 Will Contests
 Guardianships
 Conservatorships
 Litigation

DURABLE POWER OF ATTORNEYS
 Health Care
 Asset Management

SPOUSAL PROPERTY PETITIONS

DIVORCE & FAMILY LAW
 Property Division
 Custody - Support
 Restraining Orders

PERSONAL INJURY
 Auto Accidents
 Wrongful Death Suits

CIVIL LITIGATION

REAL ESTATE

GENERAL BUSINESS

NOTARY SERVICES
 By Appointment

LOW COST INITIAL OFFICE CONSULTATION

In Almaden Since 1970 ■ Serving San Jose and the South Bay
 Thousands of Cases Handled Successfully... Personal, Professional, Aggressive
 Over 43 Years Experience ■ Member, U.S. Supreme Court, State Bar of California

6475 Camden Ave., Suite 200
 (At Almaden Expressway/Trinidad)
 San Jose, CA 95120
 (408) 268-9500

Attractive Office Space Available

Coming Soon!



Welcome home! This beautiful home offers approximately 2,019 square feet of living space boasting 4 bedrooms and 2.5 bathrooms. Enjoy entertaining in the naturally bright living, dining and family rooms, wonderful eat-in kitchen and spacious backyard. The home is situated on a 5,663 square foot lot located near schools, shopping, restaurants and freeways. Offered at \$1,198,000



Jackie Jones

MY REAL ESTATE EXPERIENCE IS YOUR ADVANTAGE



408.491.1620 | jjones@cbnorcal.com | jackiejonesells.com | www.NorthernCaliforniaConnection.com

Times **Local News**

Mt. Umunhum's Tower Needs Your Help!
SOS - Save Our Skyline!

South Bay History
South Bay Landmark
The last remnant of the former Almaden Air Force Station
Protected us during the Cold War
Will be demolished without your help!

Urgent!
Donations made before December 31 will be matched!
Donate today and the power of your support is doubled!
See website for details.

Learn more ... donate today!
www.umunhumconservancy.org

The Umunhum Conservancy is a 501(c)(3) nonprofit founded by local citizens who want to preserve the historic tower. Contributions are tax deductible to the full extent of the law. EIN 46-1438547.

Land for parks acquired in South County

By Ken Yeager
Special to the Times

I have long been an advocate for increasing access to trails and parks throughout the County. This is why I am proud the Board of Supervisors took action last month to eventually link three parks and open up 170,000 acres of continuous open space.

The Board voted unanimously on agreements that will allow County Parks to buy 2,748 acres just southeast of Morgan Hill. Based on the location of the land, it will serve to link Coyote Lake-Harvey Bear Ranch and Anderson Lake County Parks to each other and to Henry Coe State Park.

The purchase will form the largest recreational land holding in the California Park System, adding to a total of more than 170,000 acres of publicly owned and protected open space along the Diablo range. This move by the Board opens the way for a trail network linking the vast state park with two of the County's premiere parks.

Elevation across the property ranges from 600 to 2,200 feet, offering spectacular views of Santa Clara Valley, Coyote, and Anderson reservoirs and locally known Finley, Palassou, Sheep, and Timber Ridges. The land also contains a natural wildlife sanctuary for black tailed deer, mountain lions, rabbits, coyotes, bobcats, and a variety of small birds and other mammals.

I am excited by this acquisition, and I look forward to a greatly expanded trail system throughout this beautiful and rugged corner of the County. For more information, contact County Parks at 408-355-2215.

EL NIÑO FLOOD PREPARATION

Longtime County residents may associate the "El Niño" forecast with memories of dangerous floods in San Jose and other parts of the region. With what is believed to be an unusually strong El Niño on its way, now is the time to begin preparing for the possibility of flooding this winter and spring.

The first step recommended by federal and state officials is for homeowners to acquire flood insurance. Flood damage is not covered by traditional homeowners' insurance and is only available through the National Flood Insurance Program. There is a 30 day waiting period before policies become effective, meaning, residents should act quickly to be insured in the event of flooding.

Beyond obtaining flood insurance, these are the primary ways in which residents can prepare for the possibility of flooding:

1.) Safeguard your possessions. Create a personal flood file containing information about all your possessions and keep it in a secure place,

such as a safe deposit box or waterproof container.

2.) Prepare your house. Make sure your sump pump is working and install a battery-operated backup in case of a power failure. Move furniture, valuables, and important documents to a safe place.

3.) Develop a family emergency plan. This can include creating safety kits, teaching children how to use emergency numbers, and planning and practicing a flood evacuation route.

I encourage all residents to take the necessary steps to make sure you, your loved ones, and your possessions are safe during this El Niño season. To learn more about these steps and for more information on flood protection, visit www.floodsmart.gov/floodsmart/.

HUMAN TRAFFICKING AWARENESS CAMPAIGN LAUNCHED

The upcoming Super Bowl at Santa Clara's Levi's Stadium is expected to bring an enormous influx of visitors to the County, increasing the threat of human trafficking throughout the region. In order to help residents identify and report signs of this horrendous crime, the County recently launched a countywide Human Trafficking Awareness Campaign.

The campaign focuses on spreading awareness of the issue with multiple images and messages in busy public spaces. These are displayed in light rail cars, buses, and bus shelters throughout the county to show residents how to effectively play a role in preventing human trafficking.

The messaging for the campaign is provided by Andrew "A.J." Wassell, winner of the District Attorney's "Justice for All" high school poster contest, and the National Human Trafficking Resource Center. Led by Supervisor Cindy Chavez, Valley Transit Authority, and the County Offices of Women's Policy, the Sheriff, and the District Attorney, this campaign was launched last week and will continue through the New Year.

The more that residents and visitors play an active role in combating human trafficking, the more equipped we are to identify perpetrators, break down criminal networks, and empower survivors. For more information on human trafficking in Santa Clara County, visit www.southbayendtrafficking.org.

I had a blast at the 11th Annual Silicon Valley Turkey Trot. In what has become a Thanksgiving tradition, I joined 26,000 runners from around the world in a 10k through beautiful downtown San Jose. Much like the Turkey Trot, the Santa Run also brings our community together in the spirit of giving.

Ken Yeager represents County District 4.



County Report

Ken Yeager, County Supervisor

Caspian Village Restaurant
 DINING & CATERING
Mediterranean Cuisine
 DINING • TAKE OUT • CATERING • DELIVERY

Seekh Kabob
Beef Gyro
BAKED LAMB SHANK

Kebobs
Baked Lamb Shank
Sicilian Lasagna
Moussaka
Butter Chicken
Gyros & Falafel
& Many More

OPEN 7 DAYS A WEEK
HOURS: 11:00AM to 9:00PM
PHONE: 408-528-8500
2881 Villages Parkway,
San Jose, California, 95135
Visit us at: www.Caspianvillage.com

Caspian Village

10% OFF
YOUR ENTIRE PURCHASE!
 Expires 12/31/15
 Not Valid with any other promotion, special or offer. Limit one per table per visit. Maximum discount \$10 USD.

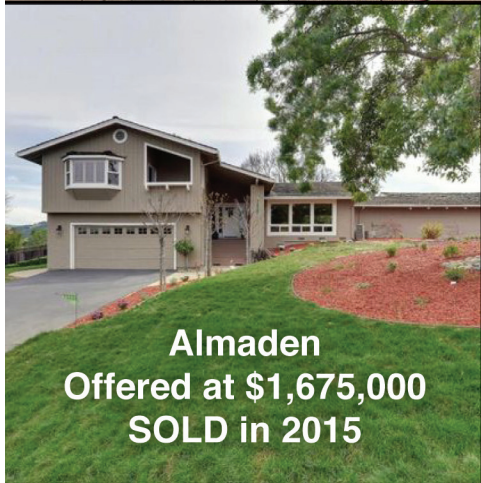
GIRLS SOFTBALL SIGN-UPS
AGES 4 to 14
 2016 Almaden Valley Girls Recreational Softball
 Registration is **OPEN!**
 Everyone is Welcome in Our League!
SIGN-UP TODAY at:
WWW.AVGSL.ORG



Almaden
On Market
Offered at \$3,425,000



Almaden
On Market
Offered at \$2,095,000



Almaden
Offered at \$1,675,000
SOLD in 2015



Almaden
Offered at \$2,498,000
SOLD in 2015



Almaden
Offered at \$1,680,000
SOLD in 2015



Almaden
Offered at \$2,995,000
SOLD in 2015



Almaden
Offered at \$2,998,000
SOLD in 2015



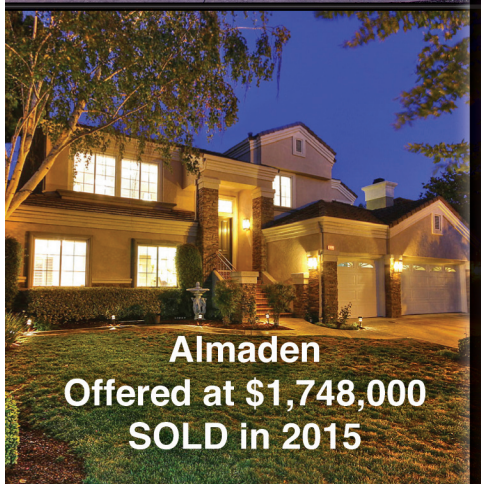
Almaden
Offered at \$1,455,000
SOLD in 2015



Almaden
Offered at \$2,400,000
SOLD in 2015



Almaden
Offered at \$2,698,000
SOLD in 2015



Almaden
Offered at \$1,748,000
SOLD in 2015

Is 2016 the year for a new place to call home? Call Amy for your customized marketing plan.

Amy McCafferty
Broker Associate
(408) 387-3227
amccafferty@apr.com
www.amccafferty.com
CalBRE# 00967324

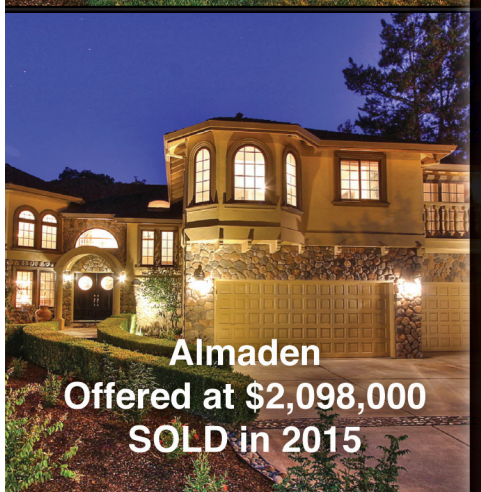


Experience you can trust . . .
Attention you deserve

ALAIN PINEL
REALTORS



Almaden
Offered at \$1,628,000
SOLD in 2015



Almaden
Offered at \$2,098,000
SOLD in 2015



Almaden
Offered at \$1,899,000
SOLD in 2015

Times Cover Story



Ryan Teeple poses above with some of the swag he received for voicing a dinosaur in Pixar's latest film, "The Good Dinosaur." The international release one sheet is pictured above right. (© Pixar/Disney)

Dinosaur

Continued from page 1

me a picture of the dinosaurs and told me which one I was and I could see that I was supposed to be the 'tough' dinosaur, while Arlo (around whom the story is based) was more sensitive."

As a professional actor, Teeple performed alongside Kate Bosworth at the ripe young age of five, in the role of her son in the film "Big Sur" which premiered at Sundance in 2013. Talent runs in the family; his older sister Erica has also worked in the industry, and can be heard screaming in Pixar's "Monsters University," for which she was part of a "loop group" of actors performing background voices and sounds.

For his role as "Young Buck," Teeple had to trek up to the Pixar Studios in Emeryville to try out and record his lines. "For your first audition, you read a couple of lines to see if you're the voice they want, and then they might call you back for you to read more of the lines. After that they might want you for the job, or they might want you to keep coming back," Teeple explained. "But the second time I went, they had me read all the lines for the character, and the third time we went to Pixar, we found out that I was cast in the movie," Teeple said. Director Peter Sohn knew he liked Teeple's voice, so the process was streamlined. Sohn has a lot of experience in discovering Pixar voices, since before he directed a Pixar film, he also voiced characters himself, including Emile in "Ratatouille" and Squishy in "Monsters University."

Sohn knew how to help Teeple discover his inner dino. "Peter is really nice," Teeple said. "We had to do many takes, but Peter told me



Ryan Teeple poses above with his sister Erica, who has also worked as a voice for Pixar. They are leaning on a giant Pixar ball, which is located on the Pixar campus in Emeryville, CA. Photo courtesy the Teeple family

how he wanted each one, and he had a really good process for getting it done. I think he was perfect for directing this movie."

Back in real life, as opposed to his "reel" life, Teeple plays the piano, drums and trumpet, though he only brings the trumpet out

occasionally ("because I don't really practice it a lot," Teeple admitted.) He might be forgiven that slip, however, since he also plays a lot of soccer and baseball, makes a mean paper airplane, and swims three days a week (but "I get the day off on Wednesdays," Teeple said,

which he uses with his own discretion, often playing his favorite video games or building extravagant LEGO models and kits.)

When asked about his future acting plans, Teeple demurs humbly. "I haven't really thought about that much," he said. "I don't think I

As a professional actor, Teeple performed alongside Kate Bosworth at the ripe young age of five, in the role of her son in the film "Big Sur" which premiered at Sundance in 2013. Talent runs in the family; his older sister Erica has also worked in the industry.

would want to become an actor when I grow up, but it's always a possibility." Teeple enjoys math in school, and due to his experience with LEGO toys and similar pursuits, also is considering a future in engineering or architecture.

And why not? As Tom Hanks might even admit, once you've voiced a Pixar character as an actor, you're at the top of your game. Whatever else the world may have in store for this accomplished fifth grader is anyone's guess.

"The Good Dinosaur" is now playing in theaters nationwide.

californiamoves.com

**COLDWELL
BANKER**

RESIDENTIAL BROKERAGE

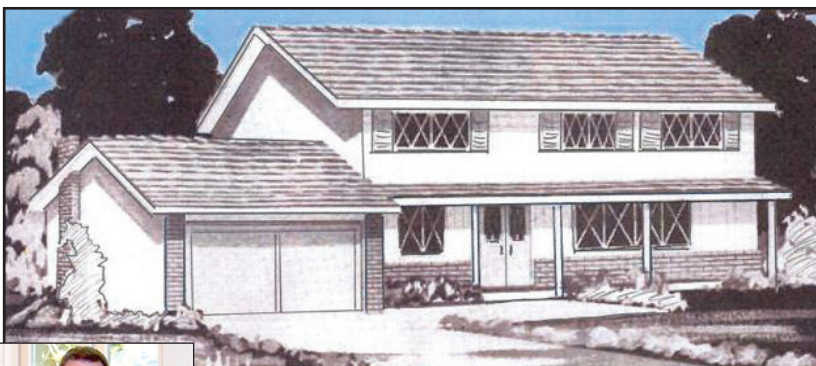
Coldwell Banker #1 IN CALIFORNIA



ALMADEN VALLEY **\$3,999,000**
6 BR 7.5 BA Exceptional Craftsmanship! Exquisitely Finished. Nothing compares to the commanding presence of this Mediterranean-Styled luxury home!
Margaret Yost & David Yost, CalBRE #00947936 & 01450671
408-445-5133 & 408-757-9678



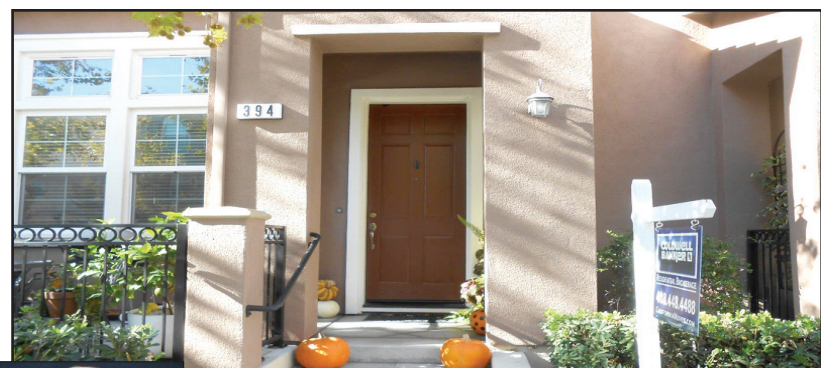
ALMADEN VALLEY **\$1,695,000**
4 BR 3 BA Must see! Excellent open flowing floor plan with large attractive bonus room, 1 bed/full bath located downstairs. Outstanding schools!
Margaret Yost & David Yost, CalBRE #00947936 & 01450671
408-445-5133 & 408-757-9678



LOS GATOS/MONTE SERENO **\$1,399,000**
4 BR 3 BA Incredible Opportunity in Belwood of Los Gatos. Separate Living, Dining, and Family Room on a 10,000 Sqft lot
Ted Toffey,
CalBRE #01134829
408-398-3110



ALMADEN VALLEY **\$847,000**
Imagine the possibilities. Rare opportunity to own 3.5 acres in Almaden. Remodel existing home or build the home of your dreams.
Stacy Seymour, CalBRE #01725983
408.960.9416



WILLOW GLEN **\$625,000**
2 BR 2.5 BA Fabulous home located on the Willow Glen side of Communication Hill with easy access to Hwy 87.
Kim Nicholson,
CalBRE #01799950
408-506-5447



BLOSSOM VALLEY **\$319,900**
2 BR 1 BA A Fantastic # 1 unit, with a great location in Blossom Valley! A winner for the 1st time buyer or investor!
Bob Mackey,
CalBRE #00708107
408-930-5788



SAN JOSE ALMADEN
1096 BLOSSOM HILL ROAD, SUITE 200 **408.448.4488**

JOY

KW Bay Area Estates wishes you all the happiness of home for the holidays. Now and always, we welcome the opportunity to help you find your way home.

Boutique Service |
Global Reach



kw BAY AREA
ESTATES
KELLERWILLIAMS®

NOW OPEN

5671 Santa Teresa Blvd., San Jose 95123 | 408.960.9950 | kwbae.com

THE GOSS REAL ESTATE GROUP PRESENTS

FOR SALE



7295 Via Brezzo, Almaden Valley

Enjoy privacy & panoramic views of Almaden Valley from this wonderful custom home! Situated on over 3 acres, this home is perfect for entertaining with 5,866 square feet of living space, 6 bedrooms, 7 full baths & 2 half baths, gourmet kitchen, spacious family room, formal living room & dining room, 270 bottle wine cellar, master bedroom suite with retreat, office and remodeled dual baths, pool & spa with waterfall, 5 car garage & so much more! Award winning schools: Williams Elementary, Bret Harte Middle & Leland High. A unique opportunity to own one of the showcase homes in Almaden Valley!

Offered At \$2,799,000

PENDING



17411 Serene Drive, Morgan Hill
5 Bedroom / 4.5 Bath / 3,814 SF
Offered At \$1,249,000

COMING SOON - LOS GATOS
220 HOLLYWOOD AVENUE

Elegant 10,526 SF Country Victorian home on a picture perfect one acre lot close to downtown Los Gatos with 6 bedrooms, 7 full baths & 3 half baths, finished attic & basement, gated entry, swimming pool, 4 car garage, spectacular views & more!

Offered At \$6,490,000

PENDING



4221 Briarglen Drive, Cambrian
4 Bedroom / 2.5 Bath / 2,176 SF
Offered At \$975,000

Thinking of selling? Let us show you how we get the highest price possible for our clients! Call us today at 408-267-4663 for a complimentary detailed valuation of your home, or go online to TheGossRealEstateGroup.com for a quick, no obligation online valuation!

Serving Almaden Valley for over 21 years - The Goss Real Estate Group - Over 800 Homes Sold In Our Area!



DOUG GOSS

PRINCIPAL/BROKER ASSOCIATE
CRS, CRP, GRI, ABR
408-267-4663 / 800-591-1911
DOUG@AGENTSDIRECT.COM
THEGOSSREALESTATEGROUP.COM
CalBRE #01182111



KELLER WILLIAMS REALTY

BAY AREA ESTATES

16185 LOS GATOS BLVD, SUITE 205
LOS GATOS, CA 95032

EACH OFFICE IS INDEPENDENTLY OWNED AND OPERATED

TERESE FERRARA

REAL ESTATE PROFESSIONAL
408-761-8120 / 800-591-1911
TFERRARA@KW.COM
THEGOSSREALESTATEGROUP.COM

CalBRE #01949191



www.SouthCountyCDJR.com • www.SouthCountyCDJR.com • www.SouthCountyCDJR.com

SOUTH COUNTY

CHRYSLER DODGE Jeep RAM

THE YEAR END BLOCKBUSTER

SALES EVENT

DRIVE A LITTLE-SAVE A LOT™ WWW.SOUTHCOUNTYCDJR.COM • 888-470-4578

SEE WHAT OUR CUSTOMERS ARE SAYING ABOUT US:

<p>"AMAZING CUSTOMER SERVICE & EXPERIENCE!" Nick, Los Gatos</p>	<p>"I RECOMMEND SOUTH COUNTY CDJR" Melanie, San Leandro</p>	<p>"HAPPY JEEP BUYER!" Joe, Fremont</p>	<p>"THE WAY IT SHOULD BE!" Jesus, San Jose</p>	<p>CHALLENGER HELLCATS IN OUR SHOWROOM NOW!</p>	<p>"I LOVE MY RUBICON!" Dewey, Union City</p>	<p>"GOT MY HELLCAT!" Ozzie, Redwood City</p>	<p>"EXCEPTIONAL, BY FAR!" Guy, Berkeley</p>	<p>2015 CHARGER SRT® IN STOCK NOW!</p>	<p>Thank you for making us #1 again! Based on Chrysler Sales Report YTD.</p>
--	--	--	---	--	--	---	--	---	---

<p>2016 JEEP PATRIOT SPORT 4 DOOR SUV</p> <p style="text-align: right; color: blue;">56 OTHERS TO CHOOSE FROM</p> <table style="width: 100%; font-size: small;"> <tr><td>MSRP</td><td>\$18,290</td></tr> <tr><td>DEALER DISCOUNT</td><td>-\$2,902</td></tr> <tr><td>SALE PRICE</td><td>\$15,388</td></tr> <tr><td>CHRYSLER CALIF. 2016 BC CONSUMER CASH</td><td>-\$2,000</td></tr> <tr><td>CHRYSLER CALIF. 2016 CA RETAIL BONUS CASH</td><td>-\$1,000</td></tr> <tr><td>CHRYSLER CAPITAL CASH*</td><td>-\$500</td></tr> </table> <p style="text-align: center;">NET PRICE AFTER DISCOUNTS AND REBATES</p> <h2 style="color: red; text-align: center;">\$11,888</h2> <p style="font-size: x-small; text-align: center;">3 AT THIS NET PRICE #502501, 502407, 502503 *MUST FINANCE THROUGH CHRYSLER CAPITAL, SUBJECT TO CREDIT APPROVAL.</p>	MSRP	\$18,290	DEALER DISCOUNT	-\$2,902	SALE PRICE	\$15,388	CHRYSLER CALIF. 2016 BC CONSUMER CASH	-\$2,000	CHRYSLER CALIF. 2016 CA RETAIL BONUS CASH	-\$1,000	CHRYSLER CAPITAL CASH*	-\$500	<p>2016 DODGE GRAND CARAVAN AVP/SE 4 DOOR VAN W/MULTI-SPEED AUTOMATIC</p> <p style="text-align: right; color: blue;">25 OTHERS TO CHOOSE FROM</p> <table style="width: 100%; font-size: small;"> <tr><td>MSRP</td><td>\$22,990</td></tr> <tr><td>DEALER DISCOUNT</td><td>-\$3,491</td></tr> <tr><td>SALE PRICE</td><td>\$19,499</td></tr> <tr><td>CHRYSLER CALIF. 2016 BC CONSUMER CASH</td><td>-\$1,000</td></tr> <tr><td>CHRYSLER CALIF. 2016 BC RETAIL BONUS CASH</td><td>-\$1,000</td></tr> <tr><td>CHRYSLER CAPITAL CASH*</td><td>-\$500</td></tr> </table> <p style="text-align: center;">NET PRICE AFTER DISCOUNTS AND REBATES</p> <h2 style="color: red; text-align: center;">\$16,999</h2> <p style="font-size: x-small; text-align: center;">5 TO CHOOSE AT THIS NET PRICE! *MUST FINANCE THROUGH CHRYSLER CAPITAL, SUBJECT TO CREDIT APPROVAL.</p>	MSRP	\$22,990	DEALER DISCOUNT	-\$3,491	SALE PRICE	\$19,499	CHRYSLER CALIF. 2016 BC CONSUMER CASH	-\$1,000	CHRYSLER CALIF. 2016 BC RETAIL BONUS CASH	-\$1,000	CHRYSLER CAPITAL CASH*	-\$500	<p>2016 RAM PROMASTER CITY WAGON 4-DOOR, AUTOMATIC & MORE!</p> <p style="text-align: right; color: blue;">20 OTHERS TO CHOOSE FROM</p> <table style="width: 100%; font-size: small;"> <tr><td>MSRP</td><td>\$25,035</td></tr> <tr><td>DEALER DISCOUNT</td><td>-\$5,647</td></tr> <tr><td>SALE PRICE</td><td>\$19,388</td></tr> <tr><td>RAM CALIF. 2015 BC CONSUMER CASH</td><td>-\$1,000</td></tr> <tr><td>RAM UPFIT REBATE*</td><td>-\$500</td></tr> </table> <p style="text-align: center;">NET PRICE AFTER DISCOUNTS AND REBATES</p> <h2 style="color: red; text-align: center;">\$17,888</h2> <p style="font-size: x-small; text-align: center;">1 AT THIS NET PRICE #B06258 *PURCHASER MUST UPFIT FOR BUSINESS USE THROUGH DEALERSHIP SEE DEALER FOR DETAILS.</p>	MSRP	\$25,035	DEALER DISCOUNT	-\$5,647	SALE PRICE	\$19,388	RAM CALIF. 2015 BC CONSUMER CASH	-\$1,000	RAM UPFIT REBATE*	-\$500
MSRP	\$18,290																																			
DEALER DISCOUNT	-\$2,902																																			
SALE PRICE	\$15,388																																			
CHRYSLER CALIF. 2016 BC CONSUMER CASH	-\$2,000																																			
CHRYSLER CALIF. 2016 CA RETAIL BONUS CASH	-\$1,000																																			
CHRYSLER CAPITAL CASH*	-\$500																																			
MSRP	\$22,990																																			
DEALER DISCOUNT	-\$3,491																																			
SALE PRICE	\$19,499																																			
CHRYSLER CALIF. 2016 BC CONSUMER CASH	-\$1,000																																			
CHRYSLER CALIF. 2016 BC RETAIL BONUS CASH	-\$1,000																																			
CHRYSLER CAPITAL CASH*	-\$500																																			
MSRP	\$25,035																																			
DEALER DISCOUNT	-\$5,647																																			
SALE PRICE	\$19,388																																			
RAM CALIF. 2015 BC CONSUMER CASH	-\$1,000																																			
RAM UPFIT REBATE*	-\$500																																			

<p>2016 CHRYSLER 200 LIMITED 9-SPEED AUTOMATIC</p> <p style="text-align: right; color: blue;">23 OTHERS TO CHOOSE FROM</p> <table style="width: 100%; font-size: small;"> <tr><td>MSRP</td><td>\$25,485</td></tr> <tr><td>DEALER DISCOUNT</td><td>-\$3,286</td></tr> <tr><td>SALE PRICE</td><td>\$21,999</td></tr> <tr><td>CHRYSLER CALIF. 2016 BC CONSUMER CASH</td><td>-\$2,500</td></tr> <tr><td>CHRYSLER CALIF. 2016 BC RETAIL BONUS CASH</td><td>-\$1,000</td></tr> <tr><td>CHRYSLER CAPITAL CASH*</td><td>-\$1,000</td></tr> </table> <p style="text-align: center;">NET PRICE AFTER DISCOUNTS AND REBATES</p> <h2 style="color: red; text-align: center;">\$16,999</h2> <p style="font-size: x-small; text-align: center;">2 AT THIS NET PRICE #149306, 149648 *MUST FINANCE THROUGH CHRYSLER CAPITAL, SUBJECT TO CREDIT APPROVAL.</p>	MSRP	\$25,485	DEALER DISCOUNT	-\$3,286	SALE PRICE	\$21,999	CHRYSLER CALIF. 2016 BC CONSUMER CASH	-\$2,500	CHRYSLER CALIF. 2016 BC RETAIL BONUS CASH	-\$1,000	CHRYSLER CAPITAL CASH*	-\$1,000	<p>2016 JEEP CHEROKEE SPORT FWD AUTOMATIC</p> <p style="text-align: right; color: blue;">65 OTHERS TO CHOOSE FROM</p> <table style="width: 100%; font-size: small;"> <tr><td>MSRP</td><td>\$24,290</td></tr> <tr><td>DEALER DISCOUNT</td><td>-\$4,013</td></tr> <tr><td>SALE PRICE</td><td>\$20,277</td></tr> <tr><td>CHRYSLER CALIF. 2016 BC CONSUMER CASH</td><td>-\$1,000</td></tr> <tr><td>CHRYSLER CALIF. 2016 BC RETAIL BONUS CASH</td><td>-\$1,000</td></tr> <tr><td>CHRYSLER CALIF. 2016 BONUS CASH</td><td>-\$500</td></tr> </table> <p style="text-align: center;">NET PRICE AFTER DISCOUNTS AND REBATES</p> <h2 style="color: red; text-align: center;">\$17,777</h2> <p style="font-size: x-small; text-align: center;">2 AT THIS NET PRICE VIN #138120, 138121</p>	MSRP	\$24,290	DEALER DISCOUNT	-\$4,013	SALE PRICE	\$20,277	CHRYSLER CALIF. 2016 BC CONSUMER CASH	-\$1,000	CHRYSLER CALIF. 2016 BC RETAIL BONUS CASH	-\$1,000	CHRYSLER CALIF. 2016 BONUS CASH	-\$500
MSRP	\$25,485																								
DEALER DISCOUNT	-\$3,286																								
SALE PRICE	\$21,999																								
CHRYSLER CALIF. 2016 BC CONSUMER CASH	-\$2,500																								
CHRYSLER CALIF. 2016 BC RETAIL BONUS CASH	-\$1,000																								
CHRYSLER CAPITAL CASH*	-\$1,000																								
MSRP	\$24,290																								
DEALER DISCOUNT	-\$4,013																								
SALE PRICE	\$20,277																								
CHRYSLER CALIF. 2016 BC CONSUMER CASH	-\$1,000																								
CHRYSLER CALIF. 2016 BC RETAIL BONUS CASH	-\$1,000																								
CHRYSLER CALIF. 2016 BONUS CASH	-\$500																								

<p>2015 DODGE DURANGO FRONT & REAR A/C, 8-SPD AUTOMATIC AND MORE!</p> <p style="text-align: right; color: blue;">34 OTHERS TO CHOOSE FROM</p> <table style="width: 100%; font-size: small;"> <tr><td>MSRP</td><td>\$31,490</td></tr> <tr><td>DEALER DISCOUNT</td><td>-\$3,352</td></tr> <tr><td>SALE PRICE</td><td>\$28,138</td></tr> <tr><td>CHRYSLER CALIF. 2015 BC RETAIL BONUS CASH</td><td>-\$1,250</td></tr> </table> <p style="text-align: center;">NET PRICE AFTER DISCOUNTS AND REBATES</p> <h2 style="color: red; text-align: center;">\$26,888</h2> <p style="font-size: x-small; text-align: center;">4 TO CHOOSE AT THIS NET PRICE #232560, 232559, 155974, 155971</p>	MSRP	\$31,490	DEALER DISCOUNT	-\$3,352	SALE PRICE	\$28,138	CHRYSLER CALIF. 2015 BC RETAIL BONUS CASH	-\$1,250	<p>2015 RAM 1500 EXPRESS 4 DOOR TRUCK QUAD CAB 8-SPEED AUTOMATIC</p> <p style="text-align: right; color: blue;">56 OTHERS TO CHOOSE FROM</p> <table style="width: 100%; font-size: small;"> <tr><td>MSRP</td><td>\$37,810</td></tr> <tr><td>DEALER DISCOUNT OFF MSRP</td><td>-\$5,922</td></tr> <tr><td>SALE PRICE</td><td>\$31,888</td></tr> <tr><td>CHRYSLER CALIF. 2015 BC CONSUMER CASH</td><td>-\$2,500</td></tr> <tr><td>RAM TRUCK SELECT RETAIL BONUS CASH</td><td>-\$2,000</td></tr> <tr><td>CHRYSLER CAPITAL CASH*</td><td>-\$500</td></tr> <tr><td>RAM TRADE-IN CASH**</td><td>-\$1,000</td></tr> </table> <p style="text-align: center;">NET PRICE AFTER DISCOUNTS AND REBATES</p> <h2 style="color: red; text-align: center;">\$25,888</h2> <p style="font-size: x-small; text-align: center;">1 AT THIS NET PRICE #760535 *MUST FINANCE THROUGH CHRYSLER CAPITAL, SUBJECT TO CREDIT APPROVAL. **MUST TRADE-IN ANY PASSENGER CAR OR LIGHT DUTY TRUCK.</p>	MSRP	\$37,810	DEALER DISCOUNT OFF MSRP	-\$5,922	SALE PRICE	\$31,888	CHRYSLER CALIF. 2015 BC CONSUMER CASH	-\$2,500	RAM TRUCK SELECT RETAIL BONUS CASH	-\$2,000	CHRYSLER CAPITAL CASH*	-\$500	RAM TRADE-IN CASH**	-\$1,000	<p>2015 JEEP GRAND CHEROKEE 4-DOOR SUV- LOADED!</p> <p style="text-align: right; color: blue;">68 OTHERS TO CHOOSE FROM</p> <table style="width: 100%; font-size: small;"> <tr><td>DEALER DISCOUNT OFF MSRP</td><td>-\$6,088</td></tr> <tr><td>CHRYSLER CALIF. 2015 BC CONSUMER CASH</td><td>-\$1,000</td></tr> </table> <p style="text-align: center;">NET SAVINGS OFF MSRP AFTER DISCOUNTS AND REBATES</p> <h2 style="color: red; text-align: center;">\$7,088</h2> <p style="font-size: x-small; text-align: center;">5 TO CHOOSE AT THIS NET SAVINGS!</p>	DEALER DISCOUNT OFF MSRP	-\$6,088	CHRYSLER CALIF. 2015 BC CONSUMER CASH	-\$1,000
MSRP	\$31,490																											
DEALER DISCOUNT	-\$3,352																											
SALE PRICE	\$28,138																											
CHRYSLER CALIF. 2015 BC RETAIL BONUS CASH	-\$1,250																											
MSRP	\$37,810																											
DEALER DISCOUNT OFF MSRP	-\$5,922																											
SALE PRICE	\$31,888																											
CHRYSLER CALIF. 2015 BC CONSUMER CASH	-\$2,500																											
RAM TRUCK SELECT RETAIL BONUS CASH	-\$2,000																											
CHRYSLER CAPITAL CASH*	-\$500																											
RAM TRADE-IN CASH**	-\$1,000																											
DEALER DISCOUNT OFF MSRP	-\$6,088																											
CHRYSLER CALIF. 2015 BC CONSUMER CASH	-\$1,000																											

<p>2015 DODGE CHARGER SE W/8-SPEED AUTOMATIC</p> <p style="text-align: right; color: blue;">39 OTHERS TO CHOOSE FROM</p> <table style="width: 100%; font-size: small;"> <tr><td>MSRP</td><td>\$28,990</td></tr> <tr><td>DEALER DISCOUNT</td><td>-\$3,502</td></tr> <tr><td>SALE PRICE</td><td>\$25,488</td></tr> <tr><td>CHRYSLER CALIF. 2015 BC CONSUMER CASH</td><td>-\$1,500</td></tr> <tr><td>CHRYSLER CALIF. 2015 BC RETAIL BONUS CASH</td><td>-\$1,000</td></tr> </table> <p style="text-align: center;">NET PRICE</p> <h2 style="color: red; text-align: center;">\$22,988</h2> <p style="font-size: x-small; text-align: center;">1 AT THIS NET PRICE #886837</p>	MSRP	\$28,990	DEALER DISCOUNT	-\$3,502	SALE PRICE	\$25,488	CHRYSLER CALIF. 2015 BC CONSUMER CASH	-\$1,500	CHRYSLER CALIF. 2015 BC RETAIL BONUS CASH	-\$1,000	<p>2016 DODGE DART SE 4 DOOR SEDAN W/6-SPEED AUTOMATIC, A/C, UCONNECT, BLUETOOTH, KEYLESS ENTRY AND MORE!</p> <p style="text-align: right; color: blue;">30 OTHERS TO CHOOSE FROM</p> <table style="width: 100%; font-size: small;"> <tr><td>MSRP</td><td>\$20,135</td></tr> <tr><td>DEALER DISCOUNT</td><td>-\$3,886</td></tr> <tr><td>SALE PRICE</td><td>\$16,249</td></tr> <tr><td>CHRYSLER CALIF. 2016 BC CONSUMER CASH</td><td>-\$1,250</td></tr> </table> <p style="text-align: center;">NET PRICE AFTER DISCOUNTS AND REBATES</p> <h2 style="color: red; text-align: center;">\$14,999</h2> <p style="font-size: x-small; text-align: center;">3 TO CHOOSE AT THIS NET PRICE VINS #625597, 625598, 625603</p>	MSRP	\$20,135	DEALER DISCOUNT	-\$3,886	SALE PRICE	\$16,249	CHRYSLER CALIF. 2016 BC CONSUMER CASH	-\$1,250	<p>2016 DODGE CHALLENGER SXT 2 DOOR COUPE W/8-SPEED AUTOMATIC</p> <p style="text-align: right; color: blue;">16 OTHERS TO CHOOSE FROM</p> <table style="width: 100%; font-size: small;"> <tr><td>MSRP</td><td>\$27,990</td></tr> <tr><td>DEALER DISCOUNT</td><td>-\$3,502</td></tr> <tr><td>SALE PRICE</td><td>\$24,488</td></tr> <tr><td>CHRYSLER CALIF. BC 2016 RETAIL BONUS CASH</td><td>-\$500</td></tr> </table> <p style="text-align: center;">NET PRICE AFTER DISCOUNTS AND REBATES</p> <h2 style="color: red; text-align: center;">\$23,988</h2> <p style="font-size: x-small; text-align: center;">1 TO CHOOSE AT THE NET PRICE #101918</p>	MSRP	\$27,990	DEALER DISCOUNT	-\$3,502	SALE PRICE	\$24,488	CHRYSLER CALIF. BC 2016 RETAIL BONUS CASH	-\$500
MSRP	\$28,990																											
DEALER DISCOUNT	-\$3,502																											
SALE PRICE	\$25,488																											
CHRYSLER CALIF. 2015 BC CONSUMER CASH	-\$1,500																											
CHRYSLER CALIF. 2015 BC RETAIL BONUS CASH	-\$1,000																											
MSRP	\$20,135																											
DEALER DISCOUNT	-\$3,886																											
SALE PRICE	\$16,249																											
CHRYSLER CALIF. 2016 BC CONSUMER CASH	-\$1,250																											
MSRP	\$27,990																											
DEALER DISCOUNT	-\$3,502																											
SALE PRICE	\$24,488																											
CHRYSLER CALIF. BC 2016 RETAIL BONUS CASH	-\$500																											

<p>2016 JEEP WRANGLER UNLIMITED SPORT 4X4 4 DOOR SUV</p> <p style="text-align: right; color: blue;">70 OTHERS TO CHOOSE FROM</p> <p style="text-align: center;">SALE PRICE</p> <h2 style="color: red; text-align: center;">\$25,888</h2> <p style="font-size: x-small; text-align: center;">2 TO CHOOSE AT THIS SALE PRICE #147653, 145026</p>	<p>2015 CHRYSLER 300 S 4 DOOR SEDAN 8-SPEED AUTOMATIC</p> <p style="text-align: right; color: blue;">10 OTHERS TO CHOOSE FROM</p> <table style="width: 100%; font-size: small;"> <tr><td>MSRP</td><td>\$41,680</td></tr> <tr><td>DEALER DISCOUNT OFF MSRP</td><td>-\$6,500</td></tr> <tr><td>CHRYSLER CALIF. 2015 BC CONSUMER CASH</td><td>-\$2,500</td></tr> <tr><td>CHRYSLER CALIF. 2015 BC RETAIL CASH</td><td>-\$1,000</td></tr> </table> <p style="text-align: center;">NET SAVINGS OFF MSRP AFTER DISCOUNTS AND REBATES</p> <h2 style="color: red; text-align: center;">\$10,000</h2> <p style="font-size: x-small; text-align: center;">1 AT THIS NET SAVINGS #797562</p>	MSRP	\$41,680	DEALER DISCOUNT OFF MSRP	-\$6,500	CHRYSLER CALIF. 2015 BC CONSUMER CASH	-\$2,500	CHRYSLER CALIF. 2015 BC RETAIL CASH	-\$1,000
MSRP	\$41,680								
DEALER DISCOUNT OFF MSRP	-\$6,500								
CHRYSLER CALIF. 2015 BC CONSUMER CASH	-\$2,500								
CHRYSLER CALIF. 2015 BC RETAIL CASH	-\$1,000								

<p>EXPRESSLANE FAST OIL CHANGES & MORE</p> <p>WE SERVICE ALL MAKES AND MODELS! FAST OIL CHANGES & MORE! NOW OPEN!</p> <p style="font-size: x-small;">NO APPOINTMENT NECESSARY</p>	<p>BUSINESS LINK The fast lane for small business.</p> <p>We Want Your Trade Business Owner's You May Qualify for Additional Rebates - ASK!</p>	<p>ALL ROADS LEAD TO SOUTH COUNTY CDJR</p> <p style="font-size: large; color: red;">888-470-4578</p> <p>455 AUTOMALL DR. (FORMERLY STUTZ WAY)</p> <p style="font-size: x-small;">Photos are for illustration purposes only, vehicles may differ slightly in color. † Factory consumer cash rebate in lieu of discount financing on approved credit. *Must finance through Chrysler Capital, not all customers may qualify. All prices exclude government fees and taxes, any finance charges, any dealer document processing charge, any electronic filing charge and any emission testing charge. Residency restrictions apply. See dealer for complete details. Vehicles pictured use for display purposes only and may vary slightly from the actual vehicle. All vehicles subject to prior sale. Not responsible for typographical errors. Sale prices end 12/21/15.</p>
---	---	--

www.SouthCountyCDJR.com • www.SouthCountyCDJR.com • www.SouthCountyCDJR.com

Times Features



The Pipes and Drums of the Santa Clara County Sheriff's Office marched to the podium playing a tune to receive their commendation from the Santa Clara County Board of Supervisors. Pictured (l-r) are: **Dave Maich**, side drum; **Fred Cormier**, pipes; **Lettie Smith**, Pipe Major; Supervisor **Mike Wasserman**; **Susan Schultz**, tenor drummer; **Dennis Ward**, piper; and Santa Clara County Sheriff **Laurie Smith**.

Pipes and Drums of the Santa Clara County Sheriff's Office receive Board of Supervisors commendation

Dressed in uniform shirts with full Scottish regalia, including kilts and sporrans, members of the Pipes and Drums of the Santa Clara County Sheriff's Office received a commendation from the County Board of Supervisors at its Dec. 15 meeting.

Band members partnered this fall with the Santa Clara County Parks and Recreation Department to further its program to bring music "Bach to Nature" by offering exceptional musicians to perform outdoor concerts in County parks.

The 20-member band is an all-volunteer group, and it plays at more than 50 commu-

nity events annually. This year's highlights include the memorial service for San Jose Police Dept. Officer Michael Johnson, *Every 15 Minutes* presentations at local high schools, the *Rose White and Blue Parade* on Independence Day, and escorting WWII vets returning from an Honor Flight at San Francisco International Airport.

Sponsored by the Sheriff's Advisory Board, the Deputy Sheriffs' Association of Santa Clara County and the Peace Officers Research Association of California, band members have logged 892 hours of volunteer time so far this year.

Pianist Sandra Wright Shen to perform Bach, Beethoven and Debussy Jan. 10

Internationally acclaimed concert pianist Sandra Wright Shen will perform Sunday, January 10 at 2 p.m. at Le Petit Trianon Theatre in San Jose.

Shen has thrilled audiences at prestigious concert halls such as Washington's Kennedy Center, the Chicago Cultural Center, Monte Carlo Opera House, Frankfurt Cultural Center, Forbidden City Concert Hall (Beijing), and Taiwan's National Concert Hall.

In 2012, she won First Prize at the International Piano Competition of France, and earlier at the Hilton Head International Piano Competition, the Mieczyslaw Munz Piano Competition, and the Taiwan National Piano Competition.

Ms. Shen was graduated from the Peabody Conservatory, where she studied under Ann Schein. She is a Distinguished Visiting Professor at Furman University and a piano faculty member at the Brevard Music Festival and Masterworks Festival. Her discography includes Rachmaninoff's



Sandra Wright Shen

Piano Concerto No. 3.

Program: Chaconne in D Minor, BWV 1004, Bach/Busoni; Sonata No. 32 in C Minor, Op. 111, Beethoven; Los Requiebros, from Goyescas, Granados; Quejas, ó La Maja y El Ruiseñor, from Goyescas, Granados; El Pelele, from Goyescas, Granados; "Pi Huang," Moments of Peking Opera, Zhao Zhang; Préludes: Debussy.

About Steinway Society The Bay Area

Steinway Society The Bay Area is a non-profit

organization, based in Silicon Valley. Now in its 21st season, this dedicated group of area musicians, pianists, teachers and arts lovers promote excellence in piano performance and music education. Each season the group presents a series of classical music piano concerts featuring international, award-winning classical pianists, and works with students and school leaders to bring musical performances to the schools.

Editor's note: Le Petit Trianon Theatre is located at 72 North 5th Street in San Jose. Tickets: \$35-\$60, students \$10 at the door. www.steinwaysociety.com.

PIPPIN

“★★★★★”

Daily News Time Out NY

WINNER! BEST MUSICAL REVIVAL

2013 TONY AWARD

JANUARY 5 - 10

SAN JOSE CENTER FOR THE PERFORMING ARTS

TICKETMASTER.COM

OR CHARGE BY PHONE: 800-982-ARTS

GROUPS OF 10 OR MORE CALL: 408-792-4131

ASL performance - Saturday matinee

Audio Described performance - Sunday evening

For ADA seating call 408-792-4131

BROADWAY

sanjose.com

■ A NEDERLANDER PRESENTATION

FEMA releases severe El Niño disaster response plan

The FEMA Region 9 office, in Oakland, CA has established an El Niño task force charged with preparing the regional office and its partners for the impacts of El Niño.

The agency released its Severe El Niño, Disaster Response plan and will convene a regional interagency steering committee meeting in Northern California to exercise the plan. The task force has evaluated the core

capabilities needed to prepare for, respond to, recover from and mitigate against any El Niño related incident that occurs across the office's area of responsibility.

The task force has also developed an Executive Decision Support Guide, or response plan, and an interactive flood decision support tool to enhance the regional office's ability to respond to potential El Niño flood events during the winter of 2015-2016. The plan seeks to align actionable decision points that provide critical information that leaders need to make informed decisions by determining the hazard level potentially impacting lives, public health, safety, property, and critical infrastructure.

The objectives of the task force developed in the plan:

Establish actionable processes and procedures to identify the location, potential impacts, and probability of occurrence of natural hazards

Identify key at-risk populations, critical facilities and natural/cultural resources

Identify gaps in core capabilities needed to overcome the threat

Develop key messages to motivate partners to prepare and act

The task force consists of subject matter experts from the FEMA Region 9 office as well as other federal, state, local, tribal and community partners.

"California is at risk for many types of disasters," said Mark Ghilarducci, Director of the Governor's Office of Emergency Services. "These joint exercises with our partners allow

us to prepare for and respond to emergencies."

"Utilizing a 'whole community' approach to emergency management reinforces the fact that FEMA is only one part of our nation's emergency management team," said Bob Fenton, FEMA Region 9 Administrator. "The exercise gives us an opportunity to learn from each other, and from the experts in the areas where solutions will come from."

"There aren't many types of disasters capable of impacting all Arizonans, but a strong El Niño could cause flooding, evacuations and power outages anywhere (and everywhere) in the state," said Arizona Department of Emergency and Military Affairs Deputy Director Wendy Smith-Reeve. "It takes a team effort to plan for, respond to and recover from the kinds of widespread consequences being talked about, which is why we're invested in the education and training of and outreach to the whole community."

FEMA recognizes that a government-centric approach to emergency management is not adequate to meet the challenges posed by a catastrophic incident. Utilizing a "whole community" approach to emergency management reinforces that FEMA is only one part of our nation's emergency management team.

The El Niño task force has focused on interpreting data in areas of California, Arizona and Nevada that have proved historically vulnerable in order to develop risk projections of current El Niño events. It is through this assessment the task force seeks to determine the critical decision points needed by senior leaders during all phases of an incident from pre-incident, incident onset, through response and recovery.

Mr. Peabody's

The Most Powerful Green Cleaning On the Planet



10% DISCOUNT:
Mention this ad!

Carpet & Upholstery Cleaning

Complete Carpet Cleaning,
Stone Polishing and Repair
(408) 444-9437

Serving Almaden Valley since 1995

Give a little TENDERNESS[®]



Send our world-famous, exquisitely tender Omaha Steaks[®] Filet Mignons, Top Sirloins and more. 100% guaranteed and delivered right to their door, save 76% when you order the Happy Family Celebration.

Happy Family Celebration

- 2 (5 oz.) Filet Mignons
- 2 (5 oz.) Top Sirloins
- 2 (4 oz.) Boneless Pork Chops
- 4 Boneless Chicken Breasts (1 lb. pkg.)
- 4 (4 oz.) Omaha Steaks Burgers
- 4 (3 oz.) Gourmet Jumbo Franks
- 16 oz. pkg. Omaha Steakhouse[®] Fries
- 4 Caramel Apple Tartlets
- Omaha Steaks Seasoning Packet

47222VXD Reg. \$209.91 | **Now Only \$49⁹⁹**



Perfect Gifts
GUARANTEED

PLUS, 4 more
Burgers
FREE!



Limit 2 pkgs. at this price. Your 4 free burgers will be sent to each shipping address that includes the Happy Family Celebration 47222. Limit of 1 free box of 4 (4 oz.) Omaha Steaks Burgers per shipment. Standard S&H will be added per address. Not valid with other offers. Expires 12/31/15. ©2015 OCG | 510B120 | Omaha Steaks, Inc.

1-800-969-0583 ask for 47222VXD | www.OmahaSteaks.com/mbfave42



CONGREGATIONAL CHURCH OF ALMADEN VALLEY, UCC
 6581 Camden Ave., San Jose, CA 95120. Pastor, Rev. Dr. Michele Rogers Brigham. 408 268-0243
www.AlmadenCongregational.org
 We are a welcoming Church engaged in progressive approach to faith, worship and giving to our local community. We are proud to be UCC, Open and affirming (O&A) and welcome members of the LGBT community. We support local Invision Shelter Feedings once a month, San Francisco Night Ministry, Second Harvest Food Bank, Church World Service, and Communities Responding to End Poverty.
 Worship 9:00AM, Sunday School 10:00 AM Sundays. 1st Sundays in Worship: Holy Communion; 2nd Sunday in Worship: Folk Choir; 3rd Sundays at Coffee Hour: Round Table Disc.
 4th Sundays in Worship: Blessing of Birthdays/Anniversaries/other "joy" Occasions. Tuesday, AA Meetings, 8:15-9:15 PM. Wednesday, 9:30 AM., Women's Study Group

CHURCH OF CHRIST
 5351 Carter Ave., San Jose 95118 408.265.5837
www.bibleroad.org
 We strive to be a group of Christians that love and honor God and Jesus Christ in our daily lives. We assemble each Sunday to encourage each other through singing, studying, praying and sharing in the Lord's supper. Simple—just like what one reads about in the New Testament. Bible class at 9:30 AM
 Worship at 10:30 AM
 Located in south San Jose near Kooser Rd. and Camden Ave. (behind the Almaden Valley Athletic Club). Come make new Christian friends!

EAST VALLEY CHURCH
 We are a Multicultural Christian Community committed to making Christ known to our Neighbors, Community and World.
 Sunday Schedule: Worship 10am, Sunday School for all ages 8:30am, Coffee and Conversation 9:30am
 Childcare is provided for all our Sunday Services. Uplifting music, Biblical teaching, ministries for Children, Youth, College & Career, Small Groups for all adults, Ministries to Men, Women, Seniors, Celebrate Recovery (Please see website for details and meeting times www.eastvalleychurch.com)
 Community-Life Pastor (Youth/College & Career) – Pastor Pat Boyd, Community Life Pastor (Small Groups/Christian Education) – Pastor Alvin Lin, Children's Ministry Director – Julie Garcia, Celebrate Recovery Leader – Anne Friend. We are located at 2827 Flint Ave (Between Tully & Norwood) San Jose, CA 95148, Phone 408-238-0231, e-mail info@eastvalleychurch.com We are associated with Converge Worldwide www.convergeworldwide.org

THE EPISCOPAL CHURCH IN ALMADEN
 6581 Camden Ave. San Jose, CA 95120. The Rev. Shelley Booth Denney, Rector. Phone:408-268-0243
 Web:www.eca-sj.org
 At the Episcopal Church in Almaden (ECA), we are joyful followers of Jesus Christ. Through worship, study, fellowship and outreach, we strive to nurture and grow a strong faith community of believers, a family of all ages, where each member feels welcomed, loved, valued and empowered to serve. Children are especially welcomed and cherished as an important part of God's family. All junior high and senior high students are welcome to participate in

our Youth Groups. During the school year we have joint Sunday School with our sister church, the Congregational Church of Almaden Valley, UCC. The Episcopal Church in Almaden offers the following regular opportunities for worship: Sunday at 7:30AM and 10:30AM, Holy Communion service. Each Sunday service is followed by a coffee hour for friendship and conversation.

EVERGREEN VALLEY CHURCH
 Visit our Web Site at www.evcsj.com
 2750 Yerba Buena Rd. San Jose, CA 95121. Phone: 408-274-7422. Saturday worship is at 5 pm. Sunday worship services at 9 am and 11 am. Excellent contemporary Christian music and Bible-based teaching. Nursery care and Children's Sunday School programs at 9 am and 11 am. Junior High students meet at 9am and High School students meet at 11am. Nuevo Comienzo: Servicio en español, Domingo 4pm.

FIRST CHURCH DOWNTOWN
 Worshipping at 55 N. 7th Street, in downtown San Jose. (Horace Mann school) firstchurchdowntown.com
 Telephone: (408) 294-7254 x310. We are a community serving the Christ from the heart of the City, working to know Jesus and make Jesus known by serving, worshipping, and learning together. Worship services are at 10:00 AM at the Horace Mann Community Center (7th and Santa Clara Streets). Worship includes both contemporary and traditional music, a message that is relevant to real life, based in the Bible, and meaningful to people of all ages and backgrounds. We work in our community to provide real assistance and long-term, life-saving solutions: food, housing, counseling, and spiritual direction. Our children's & families' ministries include

Sunday classes, outdoor family activities such as bike rides and fishing trips. Come, Make a Difference and feel the difference God can make in your life!

HOLY SPIRIT CATHOLIC CHURCH
 Faith. Knowledge. Community - this is our promise to our members. If you are looking for an active Christian faith community, we invite you to experience Holy Spirit Parish Community. All are welcome! We are located at 1200 Redmond Avenue, San Jose, CA 95120. Mass is celebrated at 8:30 a.m. Monday - Friday. Our weekend Mass schedule is Saturday 5 p.m., Sunday 8 a.m., 9:30 a.m., 11:30 a.m. and 6 p.m. Rite of Reconciliation is every Saturday at 4 p.m. or by appointment. Our Parish Office is open Monday - Thursday 8:30 a.m. - 4:30 p.m. and Friday 9:00 a.m. - 3:00 p.m. Call 408-997-5100 for recorded information or 408-997-5101 to speak with someone in our parish office. Information on Faith Formation for children and adults can be obtained by calling our Catechetical Office at 408-997-5115. Get in the loop with our Sixty High School Youth Ministry by calling 408-997-5106. Holy Spirit School serves grades Pre-K through 8th, and is located at 1198 Redmond Avenue. You can reach the school office at 408-268-0794.

SAINT ANTHONY CATHOLIC CHURCH
 We invite you to become a part of our hospitable, intimate Catholic parish. We are a caring community, promoting spiritual growth, reaching out to people in need and where you get to know people by name. We offer children's religious education (CREATE); Youth Ministry (BLAST & X-STATIC); Scripture Study (day & evening); Senior's Group and many other adult ministries as well. Saint Anthony parish is located in

Almaden Valley at 20101 McKean Road, San Jose, 95120. Our weekend Masses are at 4 p.m. on Saturday at our historic church at 21800 Bertram Road in New Almaden, CA 95042 and on Sunday at 8:30 a.m., 10:30 a.m., and 5:30 p.m. at the McKean Road location. Our Parish Office is open Monday 9 a.m. - 12 p.m. and Tuesday thru Thursday, 9 a.m. - 12 p.m. and 1 - 4 p.m. For more information, stop by the Parish Office or call 1+(408) 997-4800, or visit our website at www.churchstanthony.com. Fr. Larry Hendl, Pastor.

ST. FRANCIS OF ASSISI CATHOLIC CHURCH
 5111 San Felipe Rd., San Jose, CA 95135. 408-223-1562.
www.stfrancisofassisi.com
www.stfrancisofassisi-preschool.org
 We invite you to join our community of faith located in the Evergreen area of San Jose. We are an inclusive diverse community striving to serve as Disciples of Jesus Christ in the footsteps of St. Francis, offering prayerful and joyful liturgies; evangelization, fellowship, and service opportunities to the community. We offer spiritual opportunities for all ages, including children's liturgy, dynamic E.C.H.O - Jr. High, IGNITE - High School and North Star -Young Adult Ministries, along with small faith communities and opportunities to help the poor and marginalized of San Jose. Our Preschool is the only Catholic Preschool offering quality family oriented service in the Evergreen and Silver Creek areas. Our Chapel, Gathering Hall, Parish Office, Mission Center, Parish Gift Shop, Memorial Garden and Preschool are all located at 5111 San Felipe Rd. Please come join us to worship at one of the following times and locations: St. Francis of Assisi Chapel

Saturday 5:00PM, Sunday 8:30 AM, 10:30 AM, 12:30 PM, 4:00 PM (Mass in Vietnamese), 6:00 PM Youth Mass
 St. Francis of Assisi Gathering Hall
 Sunday 9:00 AM, Sunday 11:00AM, Igbo Mass - Second Sunday of the month 12:30 PM
 Mt. Hamilton Grange - 2840 Aborn Road: Sunday 9:30 AM
 The Villages Gated Community (Cribari Auditorium):
 Sunday 8:15 AM
 For more information, please call or visit us at the Parish Mission Center open M-F 9:00 AM -12:00 PM; 1:00 PM - 4:00 PM. Come join us and share your presence with us so that together we may grow and share our gifts to help build God's Kingdom!

THE POINT CHURCH
www.ThePoint.Church
 3695 Rose Terrace Circle. San Jose CA 95148. Located at the top of Aborn Rd and Murillo Ave. Come be inspired and build your faith as we worship together this Sunday @ 10:30 AM. KidsPoint is our children's ministry, serving infants through 5th grade. It is a fun and safe experience for kids as they grow in their walk with God. ONE is our student ministry, serving 6th through 12th grades. We help lead students into a growing relationship with Jesus through conversations, fun and service. Because of the diversity of Evergreen we offer church services in 5 languages, each with their own auditorium and pastor. 10:30 AM English, Mandarin, Cantonese and Cambodian. Spanish at 1:00 PM.

Worship listing advertisements are \$495 annually. Please call Brigitte at (408) 558-3623.

Massage Therapy Holiday Special

Expires 1/15/15

Voted
Best of ET

**\$35 special
with this ad**



Swedish Massage
Deep Tissue Massage

Please call
(408) 393-1099
to schedule an
appointment

Professional Staff
Rosario Espinoza, CMT
Leticia Espinoza, CMT

Healing Touch Chiropractic Clinic
 2724 Aborn Road, San Jose, CA 95121
 * Introductory Price Available for First Time Clients *
 Ask About Our Discount Massage Package!



Al Olseen
State Farm Agent
3267 S White Road,
San Jose, CA 95148
Phone: (408) 274-4900
Hours: 9 am – 6 pm
(Lunch 1-2 pm)

Drive home the savings.

Car and home combo.
 Combine your homeowners and car policies and save big-time.
Like a good neighbor, State Farm is there.®
CALL ME TODAY.



State Farm Mutual Automobile Insurance Company
 State Farm Indemnity Company, State Farm Fire and Casualty Company
 State Farm General Insurance Company
 Bloomington, IL

Times **Community News**

Gift yourself a fit and healthy life

With a minimum time commitment...
JUST 20 MINUTES ONCE- TWICE A WEEK.



Start now, and get your second month **1/2 off**
408.578.ZONE (9663)

First time clients only. Not to be combined with other offers. Exp. 12/31/15

- No Membership Fees
- By Appointment Only
- 1-on- Training with a Certified SuperSlow® Instructor
- Just 20 minutes once-twice a week



SuperSlow Zone Silver Creek
5988 Silver Creek Valley Rd. • Suite 55
San Jose, CA 95138
(Corner of Silver Creek Valley Rd and Fontanosa, by 101)
408.578.ZONE (9663)
www.szsilvercreek.com

SuperSlow Zone Pleasanton
6654 Koll Center Parkway, Ste. 100
Pleasanton, CA 94566
(Across from Mexico Lindo Restaurant in the Bernal Plaza)
925-523-3551
www.szpleasanton.com

Children's Discovery Museum opens holiday workshop

The Children's Discovery Museum is offering *Adventures in Light: A Holiday Workshop* which runs Dec. 19 - Jan. 4.

This year's spectacular offering encourages children and adults to engage with light in all its brilliant forms. Admission to *Adventures in Light: A Holiday Workshop* is included in the price of a museum ticket.

The Workshop is created by a nationally recognized theatre artist, two local visual artists, the Santa Clara University Art Club, and museum staff.

The immersive exhibition throughout the museum is being partially built by employees from high-tech firms including VMware, LinkedIn, PwC, Adobe Systems and Samsung whom are eager to give back during the holidays.

"Children's Discovery Museum has always excelled at addressing the changing needs of children and families," said Marilee Jennings, the museum's executive director. "As formal arts education has diminished from public schools, we've increased our arts programming."

About Children's Discovery Museum

With over 150 interactive exhibits and programs, *Children's Discovery Museum of San Jose (CDM)* is one of the largest museums of its kind in the nation. Since opening its doors in 1990, CDM has welcomed over 7 million visitors and has offered new exhibits each year that respond to children's diverse educational needs.

The striking 52,000 square foot purple building was designed by Mexico City-based architect Ricardo Legorreta and is a beacon of discovery. Encompassing the broad themes of community, connections and creativity, hands-on exhibits invite self-directed, open-ended explorations. The *Children's Discovery Museum* is located at 180 Woz Way in San Jose. For more information about the Museum, visit www.cdm.org.

OP ED: A CHRISTMAS POEM God With Us

By Frank Shortt

Years before, prophesies went forth
Of One who would sacrifice all,
To save wandering mankind from
The devastation of the fall.

Great-great-grandfathers spoke of Him,
Calling him Almighty God, and
E'erlasting Father, Counselor,
A Prince of peace, and names, so grand!

A virgin would conceive a child,
This would be a sign unto you.
He would eat butter and honey
Choosing good but evil eschew.

When He came, mankind was surprised!
Instead of heavens opening,
Stairs let down, emitting a king,
Only humbleness was flowing.

Instead of a glowing, white robe
Swaddling cloth of an oxen.
For his bed, a manger of hay,
Atop smelly stench of toxins.

Emmanuel, kicking His feet,
Crying for Mary's soothing milk,
While angels rejoiced at his birth,
Kings lay on beds of gentle silk!

It's easy & FREE to recycle your junk.

- Make an appointment.
- Set out.
- We'll pick up.



Visit sjenvironment.org/largeitems

One FREE large item pickup per single-family household. Up to 3 items.
Only \$27 for additional pickups.

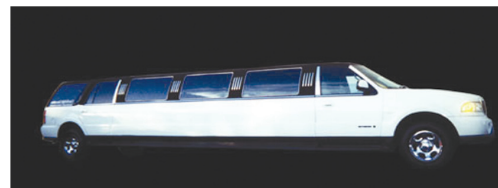
Help keep your neighborhood clean!
Report illegal dumping: 408-535-3500.



West Coast Limousine

"BEST IN THE WEST!"

West Coast Limousine is based in San Jose, California and has served the community since 1987. Our **Sedans, Limousines, Vans and Buses** are clean, comfortable and luxurious. Our drivers are professional, courteous, knowledgeable and trained to make every trip a special occasion.



The Membership Trading Community
408.565.8569
www.itexSV.com

No matter what the occasion...graduation, prom, wedding, a night out on the town, a trip to the wine county...we want our customers to arrive in the style that they deserve.

(408) 255-9601 • (800) 934-LIMO
www.westcoastlimousine.com

Times Features

JOY TO THE WORLD: A miracle takes place at Hayfork

By Terry Denevan
Special to the Times

Isolated in the beautiful northern California woodlands is a small logging community named Hayfork.

In the fall of 1964, during my eighth week as a beginning teacher, I was recruited by my elementary school principal to help the music teacher put on the annual Christmas program. It was to include students from kindergarten through grade 12 from the town's two schools.

Before rehearsals began, I asked the science teacher who the audience would be. His answer surprised me: "The whole town and everyone beyond. There aren't many events in Hayfork."

The fairly ambitious undertaking would depict the origin of Christmas customs that are practiced by several cultures around the world. It called for an orchestra, a choir, and a dozen or so actors. Production staff members consisted of a few parents, the music teacher, his wife (who played the piano), and me, overseeing lighting.

The number of students who signed up to participate was disappointing, and the few who turned out showed little interest, but we forged ahead anyway.

During the next six weeks, after-school rehearsals took place almost daily. Not one went smoothly. Attendance was erratic, and students were more inclined to socialize than to listen to instructions.

As an example, Bill Thompson, a high school senior, found time to attend only about half of the choir rehearsals. His voice was better suited to chatting and laughing than to singing, and he had trouble remembering the words to the songs. He put the bulk of his energy into cutting up and getting the attention of the girls. Even I could sense his charm, but it did not enhance either his attitude or his musical ability.

Blonde Emma Gillespie, a freshman, had been chosen to play the Virgin Mary in one of

our program's pivotal scenes. The quiet decorum of a silent, holy night seemed utterly beyond her reach whenever Bill was around because our "Mary" was in the grip of an unabashed teenage crush.

Solemn Susan Eisner, a gifted sixth-grader, played the clarinet. Despite the intensity of her focus, she simply lacked the skill to deliver a mature, melodious performance on the complex instrument.

As the night of the performance approached, student participation picked up, but attendance continued to be inconsistent. Most disheartening was that the kids' cooperation with the music teacher, one another, and me never did improve. Disaster loomed, but the faculty had no alternative except to soldier on.

Finally, we ran out of practice days. We held the first and only dress rehearsal on the morning of the performance. There were no surprises. The orchestra sounded terrible, the choir wasn't much better, and most of the student actors couldn't remember their lines. Our entire teaching staff was ready for the worst.

Almost unobserved, the principal stood silently just outside the hall's back doorway, watching the rehearsal with mounting dismay. Should he just call the whole thing off? He didn't tell us so at the time, but that's what he was thinking. It was too late, though: parents would start arriving in a few hours.

If the performers were short on team spirit, there was no lack of enthusiasm on the part of the spectators. The audience that gathered in our school gymnasium to see *The History of Christmas Throughout the World*, looked larger than the population of the town. Every seat was taken. People stood three and four deep along the walls. Stoodees filled the back of the room. The crowd hummed with excitement

and anticipation.

Risers were in place for the choir. Behind them on the wall wide strips of muslin displayed "Merry Christmas" colorfully stenciled in a dozen languages. The only other stage scenery was half a dozen bales of fresh golden straw positioned to suggest a manger.

A large Christmas tree dominated the center of the performance area. It glowed with blue lights and sparkled with decorations made by the students. On both sides of the stage area, white picket fences stretched the width of the room, topped by white cotton to simulate snow and lit with two dozen strings of green lights. The setting was not meant to dazzle but to create an inviting mood for what was to follow.

At the back of the hall was the school's kitchen. The student performers crowded within it, nervously awaiting their call. Many stood on the lawn outside the doorway.

Muffled chatter mingled with quiet laughter.

Shoulder to shoulder with the refrigerator, the stove, and too many rambunctious youngsters, the principal, the music teacher, and I tried our best to maintain order.

The house lights flickered twice—the signal to begin. Silence followed. The kitchen door opened and the actors, all in simple costumes, entered with the orchestra and the choir and formed a ragged procession down the room's single aisle toward the stage. The music teacher and I followed close behind. Next to us stood our principal wearing a fixed grin, braced for whatever might happen.

As the house lights dimmed, orchestra members took their positions alongside their instruments at stage right. The choir filled the

risers at stage left. Some actors remained on the stage; all the others took their places behind the muslin-covered scenery flats. A student narrator, program in hand, stood before one of two microphones.

Seeming to hold their breath, students awaited their cues. Ready or not, the program was about to begin.

The principal welcomed the assembled parents and guests and followed with a few introductions. The house lights went down. After a moment's pause, spotlights came up to illuminate the makeshift stage. A solemn hush blanketed the hall as family, friends, and peers focused their expectations on the front of the room. Performers and audience alike were stilled in one, long moment of suspense.

Positioned at the lighting controls in the dark behind the scenery flats, I mentally followed the action I'd seen in rehearsal.

With a slight bow, the music director acknowledged the audience and then turned and gave a nod to the waiting narrator.

And then the program began. The narrator stepped forward and adjusted her microphone. Casting a confident smile across the room, she spoke the opening lines of the evening's presentation.

The success of the program rested primarily with the music director; but as his assistant, I felt a shared responsibility. The burden of our undertaking had kept me awake nights, and by the day of the performance I had come to feel that neither the director nor I possessed the necessary experience to pull off this production. Despite our respective degrees in music and drama, we did not have practical production experience. Maybe all we'd succeeded in doing was setting our kids up for a massive disaster.

The best I could do now was attend to my duties. Working alongside a parent, I fulfilled my tasks as lighting technician. Although I could hear everything, much of what went on was hidden from my view.

Several minutes into the program, my anxiety turned to confusion. Voices were blending in on-pitch harmony. Orchestral music was soaring in perfection. Lines were being delivered clearly and without mistakes. This performance couldn't be from our kids!

"What's going on?" I whispered to the parent assisting me. "No one notified me!"

"What do you mean?" She asked.

"Listen to that! The music teacher must have decided to use prerecorded Christmas music at the last minute."

"No," she replied with a big smile. "That's our kids! Aren't they great?"

See JOY TO THE WORLD, page 21



VTA January 2016 Fare Program Modifications

When will Day Passes change?

Effective 1/1/2016, Day Passes will generally only be available for customers using Clipper®; riders will no longer be able to purchase a Day Pass from bus fareboxes or at light rail ticket vending machines.

Paper Day Passes will continue to be issued only for riders using Day Pass Tokens distributed through public agencies and social services.

What is Clipper®?

Clipper is the all-in-one transit card for the Bay Area. Besides VTA, transit agencies accepting Clipper cards include BART, Caltrain, AC Transit, Muni and others. For a complete listing go to www.ClipperCard.com.



Where can I obtain a Clipper Card?

During a limited period of time and while supplies lasts, a limited number of Clipper cards will be distributed without charge during VTA Community Outreach activities at various cities and at the VTA Downtown Customer Service Center and River Oaks Administrative Office Lobby.

Riders may also purchase a Clipper card from:

- VTA River Oaks Administrative Office – 3331 N. First St., San Jose 95134
- VTA Downtown Customer Service Center – 55-A W. Santa Clara St., San Jose 95113
- Most Walgreens – call your local Bay Area Walgreens to confirm
- Other Retailers – visit www.ClipperCard.com for a full listing

How does the Clipper Card Accumulator Feature work?

A Clipper user's fares will accumulate for that day up to the Day Pass amount, then once reached the Clipper user may continue to ride with no additional fare charges for the remainder of the day.

By having a daily fare cap, there is no longer a need to stop at a ticket vending machine or feed cash into a bus farebox. Just tap the Clipper card once for every ride.

Where can I find out more information?

Visit www.VTA.org/Clipper.



Times Features

MOVIE REVIEW: 'In the Heart of the Sea' a whale of a tale of survival

By Steven Leonard
Special to the Times

In *the Heart of the Sea* is a 2015 American biographical adventure thriller film based on Nathaniel Philbrick's 2000 non-fiction book of the same name.

The story is about the sinking of the American whaling ship *Essex* in 1820 that inspired the tale of *Moby-Dick*.

The film, directed by Ron Howard, stars Chris Hemsworth, Benjamin Walker, Cillian Murphy, Tom Holland, Ben Whishaw, and Brendan Gleeson. It was released in the United States on December 11, 2015.

Chris Hemsworth is an Australian actor. He is best known for his roles as Thor in the Marvel Cinematic Universe films *Thor* (2011), *The Avengers* (2012), *Thor: The Dark World* (2013) and *Avengers: Age of Ultron* (2015).

In 1820, the whaling ship *Essex* is crewed by the Captain George Pollard, Jr., first officer Owen Chase, second officer Matthew Joy, and cabin boy Thomas Nickerson. During their voyage, the ship is sunk when it is rammed and split in half by a very large and enraged bull sperm whale, ultimately leaving its crew shipwrecked at sea for 90 days and more than a thousand miles from land. After the attack, the crew sails for South America and is forced to resort to cannibalism.

It's not a bad film. Ultimately a bleak tale of survival, *In the Heart of the Sea* seems to make all the right moves in spinning this yarn



Chris Hemsworth stars in Ron Howard's "In the Heart of the Sea."

but never touches the heart of the viewer. A good cast and a formidable white whale can't overcome that.

"In the Heart of the Sea" explains in great details of the trials and tribulations the crew went through. The film is more of a survival story rather than an action-packed whale-fighting film.

This movie is not for the queasy or feint heart. I've been in situations like this where there was no way out of the mess we put ourselves in. My friends and I were once stuck out in the middle of a lake with no food or water and it rained hard all night. We had to

stay in the water holding on to our boat all night to keep warm. Boats passed by and ignored us as we screamed to them for help. They just waved at us. Fortunately, we were able to get our flooded motor to work the next day and we were able to survive the

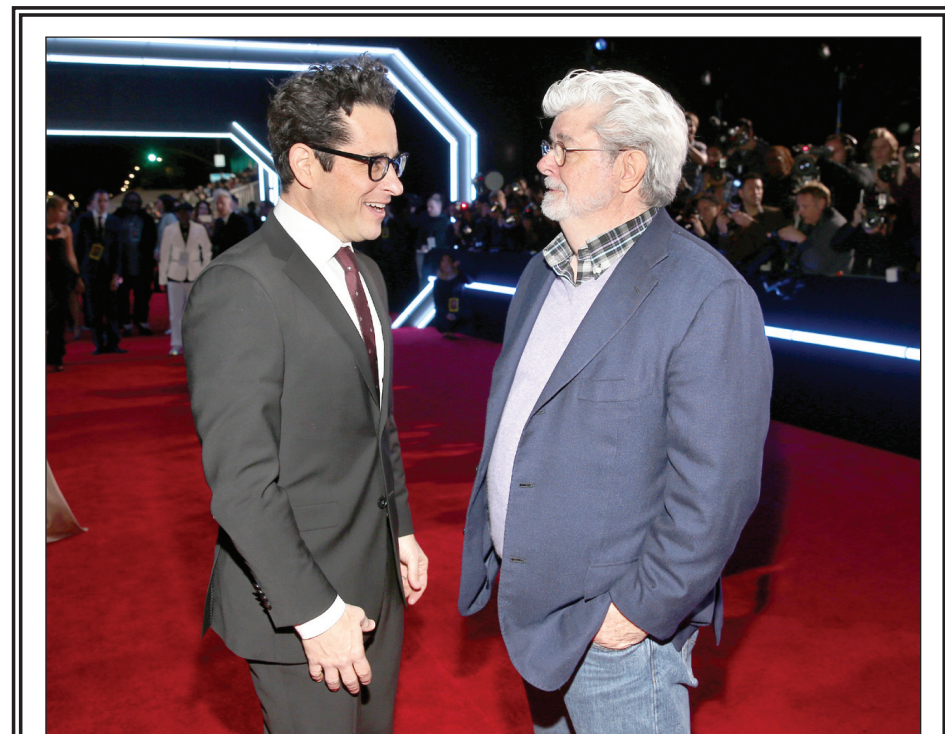
ordeal. Unfortunately, the survivors "In the Heart of the Sea" were thousands of miles from land, little food and water, cold at night, and sunburned during the day. During most of the film I felt like they completely forgot to bring along a full supply of cyanide.

They risked their lives to pursue oil from whales to light their candles. I thought that it was amusing that by the end of the film that one of the sailors was told that they found oil in the ground in America.

What a waste of lives to risk everything to hunt whales for oil to light lamps.

Eventually new technology found a way to extract oil from the ground to light lamps. This new technology ended the Whale Industry. Because of this new technology there was no longer a need for men to risk their lives to convert oil into energy except for the millions that have lost their lives in the middle east.

In the future alternative energy will free us from the need for men to forfeit their lives to convert oil into energy. Unfortunately, humanity will always find a reason to kill and destroy the environment over natural resources.



'Star Wars' breaks every movie record ever

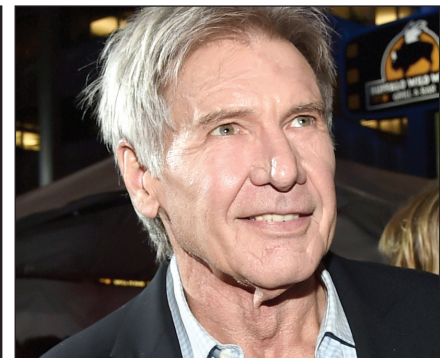
Okay, so we're making an educated guess on that headline, since we go to press the night before "Star Wars" opens wide in the United States. But judging by the hoopla on social media as well as the national news and print media, it's not such a long shot.

Pictured above are "Star Wars: The Force Awakens" director **J.J. Abrams** with original "Star Wars" director **George Lucas** at the film's world premiere in Hollywood on December 14.

The event, which Abrams called "incredibly low key" in a wry speech, closed down four full city blocks in the heart of Tinsel Town, with a Disney-designed party that hosted the "whoest" who's who of Hollywood.

Disney paid \$4 billion for Lucasfilm in 2012, and expects to make up to \$2.5 billion from the box office receipts for the newest Star Wars film alone, and possibly \$5 billion or more on merchandise. The force is strong with this mouse.

Planning on seeing the film? San Jose's "The Tech Museum of Technology" is showing the



Harrison "Han Solo" Ford at the premiere

film in its incredible Hackworth IMAX Dome Theater, which is one of only eight theaters in our entire solar system that will screen the film on a rare 70MM projector, and the only one west of Des Moines. Tickets are available at thetech.org. —**Jeff Baham**

Photos: Getty Images / Disney

When business goes Green everyone benefits.

To have your business added to the diverse and growing list of **Certified Green Businesses**, call **408-282-3180** and learn how your business can help reduce its environmental impact in the community it serves!

BAY AREA GREEN BUSINESS

Times **Features**

Isabella Rio beautifully printed "Merry Christmas" on a car window to bring hope and joy to Almaden Valley during this year's holiday season.

'Moving Messages' bring hope, joy to Almaden

By **Sean Eastwood**
Staff Writer

Almaden's Saint Anthony Catholic Church is spreading Christmas joy this season by sharing *Moving Messages* throughout Almaden Valley.

Parishioners are using window markers to create holiday wishes on their rear and side car windows, accompanied by creative art decorations such as Christmas trees, stars and holly.

Many residents have seen the cars traveling up and down Almaden Expressway and in their local neighborhoods and are responding positively to the inspirational messages.

The *Moving Messages* have not only brought smiles to those that read them, but have started engaging dialogues with neighbors who

have seen the messages and are intrigued by the new form of "rolling social media."

In parking lots, friendly residents enjoy the messages, which are a natural conversation starter. While the purpose was initially meant to bring a holiday message to our neighborhood, it has spurred peace, joy and hope!

"It is a simple way to communicate our thoughts to the wider community that Catholics have a message to share," said Father Larry Handel, Saint Anthony Pastor. "Our aspiration is that our messages bring hope and joy in this special season."

Moving Messages seems to have brought out the Christmas spirit in Almaden, providing a community connection bringing each other together during this year's holiday season.

Joy to the World

Continued from page 19

"Great" hardly began to describe the grandeur of their performance. Beautiful notes rose from Susan Eisner's lone clarinet. Bill Thompson sent forth the right lyrics in an exquisite baritone that seemed to come from somewhere celestial. Emma Gillespie played her crucial part with tender reverence. Love and appreciation radiated from the audience. Our principal beamed.

For the next two hours, the children acted, played, and sang like angels, with unrestrained exuberance. I kept busy with our primitive lighting system, shifting the emphasis to follow the onstage action.

The stage lighting dimmed, and a single spotlight shown upon the narrator. As she spoke the evening's concluding lines, I put two extension cord plugs into wall sockets, creating a magnificent spectacle. The blue and green lights on the tree and fences were augmented with an additional two hundred multicolored lights. Instantly, a kaleidoscope of festive brilliance illuminated the entire hall.

The music director smiled broadly and raised his baton. He swept the choir and orchestra with a glance that seemed to connect with every single member. On the exaggerated down-thrust, the evening's closing music began.

Silently, I slipped out a doorway and headed to the opposite side of the building. The last part of my evening's work was to turn on the house lights the instant the music stopped playing.

Beyond the interior of the hall was a different world, still and quiet and dark. Faintly but clearly, I heard the music of the grand finale, a heavenly rendition of "Joy to the World." The sound could not have been more glorious if the Mormon Tabernacle Choir and the New York Philharmonic Orchestra had come to our little town. I felt myself choke up. Glancing up into the black sky I saw snowflakes for the first time falling gently like a perfect Christmas card.

I could have lingered a long while and savored the moment, but I had one more duty to perform. I hurried around the outside of the building to the rear door.

Just as the music reached its last crescendo, I eased the door open, reached into the electrical box, and threw the switch. The house lights came up. The audience rose to their feet, grinning and beating their hands in vigorous applause. The music director motioned for me to join the others at the front and receive the joyous ovation.

The crowd's obvious pleasure in our performance was gratifying. But no external reward could exceed my privately cherished delight in the small miracle that I had witnessed that winter's night in Hayfork.



Mrs. Santa Claus (**Amy Jewett**) welcomes guests to the annual Southside Community Center Holiday Steak Lunch for nearly 200 seniors.

Southside Community Center hosts holiday steak lunch

The Holiday Steak Lunch held last week at the Southside Community Center was a great success. Nearly 200 seniors were served lunch, according to Amy Jewett, Recreation Specialist for the City of San Jose. The Rotary Club of Almaden Valley provided steak and lunch provider Bateman provided the sides and dessert. The Rotary Club provided 20 volunteers to help cook and serve. The Athenour Elementary School choir performed, providing a festive ambiance.

HOLIDAY TRAVELERS REJOICE

Gas prices continue to decline

27.1 cents per gallon lower than this time last year

Average retail gasoline prices in San Jose this week have fallen 1.6 cents per gallon, averaging \$2.61/g, according to GasBuddy's daily survey of 427 gas outlets in San Jose. This

compares with the national average that has fallen 1.7 cents per gallon in the last week to \$2.01/g.

Including the change in gas prices in San Jose during the past week, prices yesterday were 27.1 cents per gallon lower than the same day one year ago and are 14.5 cents per gallon lower than a month ago. The national average has decreased 15.8 cents per gallon during the last month and stands 53.3 cents per gallon lower than this day one year ago.

"We are going to end this year with the lowest gas prices since 2008, and people want to know can it get even lower? Yes, it can," says Jeff Pelton, senior petroleum analyst for GasBuddy. "There is simply too much crude oil out there for gas prices not to decline."

WWW.AONESTUMP.COM

LOCAL STUMP REMOVAL AND TREE SERVICE

NO JOB TOO
BIG OR SMALL

INSURED BONDED
WORKERS COMP

STUMP GRINDING
TREE TRIMMING
TREE REMOVAL

COMPETITIVE RATES



ANDREW FROST
OWNER AND OPERATOR

24 HOUR
EMERGENCY
TREE SERVICE

BORN AND RAISED
IN WILLOW GLEN!
CONTACT YOUR LOCAL TREE SERVICE AT
A1 STUMP NOW!



701 HARRISON ST.
SAN JOSE CA 95125

408.439.6975

ANDREW@AONESTUMP.COM

LICENSE #930660



WINGS

BUFFALO WILD WINGS
GRILL & BAR

859 Blossom Hill Rd, San Jose, CA 95123

Times Classifieds Work!

Call now to place your ad by phone: (408) 494-7000

AlmadenTimes Real Estate Guide



**GLORIA
ASHDOWN**



(408) 398-1516
gloriaashdown@aol.com



**DAN
WALKER**

Alain Pinel
Realtors

(408) 892-4813
Dwalker@apr.com



**DAVID & VICKI
HARRIS**



2921 Villages Parkway,
San Jose
(408) 754-1572

GET LISTED!

Call the Almaden Times today:

(408) 494-7000

brigitte@timesmediainc.com



**CAROL CAMILLI-
MONTGOMERY**



www.camillihomes.com
carolcamilli@kw.com
(408) 209-7809



6505 Kingsland
Court
\$1,095,000
3 bed 2 bath
1,643 +/- sq ft
**Marbella
Barragan**
408.427.1900



**LUCY MARIE
RAMOS**



Alain Pinel Realtors
lramos@apr.com
(408) 529-8826



20777 Mountain
Drive
\$1,300,000
4 bed 3 bath
3756 +/- sqft
Therese Swan
408.656.8240

CALENDAR OF UPCOMING EVENTS

Fantasy of Lights

What: Experience the largest holiday light show in Northern California. Please bring a donation of canned food to benefit Second Harvest Food Bank. Pre-paid tickets are required. The Fantasy of Lights Drive-Thru is open nightly through the rest of the month.

When: Nightly through December 31 from 6 to 9 p.m.

Where: Vasona Lake County Park, 333 Blossom Hill Rd., Los Gatos

More Information: Call (408) 355-2201 or visit www.parkhere.org.

Hanukkah at Santana Row

What: The Jewish Federation of Silicon Valley invites all to celebrate the Jewish Festival of Lights. In Santana Row's Park Valencia

there will be dreidel decorating, Jewish story time, arts and crafts, and the lighting of the Menorah. Also featured will be live music from Lior Ben Hur.

When: Sunday, December 13 from 3 to 5 p.m.

Where: Park Valenica, Santana Row, Olin Avenue, San Jose

More Information: Visit www.jvalley.org.

Super Guadalupe River Run

What: All are invited to take part in the Guadalupe River Park Conservancy's annual benefit run. The event includes a 10k and a 5k, both of which will use the park's trails for courses. All proceeds go to the Conservancy and its many programs throughout the year.

When: Sunday, February 7 at 9 a.m.

Where: Guadalupe Gardens, 438 Coleman Avenue, San Jose

More Information: Visit www.grpg.org.

PROFESSIONAL PHOTOGRAPHY
 ENGAGEMENT OFFSITE SHOOT
 BIRTHDAY CELEBRATION
 SPECIAL EVENTS
 WEDDING

Ken Ta Impressions

TEL: 408-234-0823
 EMAIL: KENTAIMPRESSIONS@YAHOO.COM

www.kentaimpressions.com
 facebook.com/kentaimpressions

Classifieds Call (408) 494-7000

Times Classifieds Work... for You!

Employment

DIRECTV is currently recruiting for the following position in Castroville:

Designated System Trainer

If you are not able to access our website, DIRECTV.com, mail your resume and salary requirements to:
 DIRECTV, Attn: Talent Acquisition, 161 Inverness Drive West, Englewood, CO 80112. To apply online, visit: www.directv.com/careers. EOE.

HOME IMPROVEMENT

Handyman & Painting

- Dry Rot Wood Repairs
- Carpentry & Stucco
- Fence & Decking
- Sheet Rock & Texture
- Painting & Match Touch-ups
- 25 Years Experience

FREE ESTIMATES
408.317.8052



Place your ad by phone: Call (408) 494-7000



YOUR NUMBER ONE NEIGHBORHOOD NEWS SOURCE. The Almaden Times.

Employment

DIRECTV is currently recruiting for the following position in San Jose:

Warehouse Assistant

If you are not able to access our website, DIRECTV.com, mail your resume and salary requirements to:

DIRECTV, Attn: Talent Acquisition, 161 Inverness Dr. West, Englewood, CO 80112. To apply online, visit: www.directv.com/careers EOE.

Cleaning



Jose Magana Cleaning Service

10+ Years Experience!

We provide the following services:

Housecleaning - Commercial Cleaning
 Move out / Move in Cleans- for Residential Customers, Realtors, Apartment Management Companies, etc.

CLOSETS, GARAGES ORGANIZER, WINDOWS CLEANING
 SAN JOSE - MORGAN HILL - SARATOGA - LOS GATOS

Contact: Jose Magana
408-401-8422
Jmcleaningservice7@gmail.com



Handyman



ANDRES JOVEN, HANDYMAN

15+ Years Experience!

As a handyman, Andres offers a wide range of home repair services and general handyman work. Call today!

(408) 722-2837
andresjoven49@yahoo.com



Almaden Valley...

The Home We Love



Just Listed!

5830 CHAMBERTIN DRIVE

Open Saturday & Sunday 1pm to 4pm

Beautifully updated approximately two years ago, this corner unit has 3 bedrooms (one currently used as an office) and 2.5 baths with approximately 1,573+/-sf of living space in the desirable Old Almaden Winery Neighborhood. Central air conditioning, dual pane windows, newer screens, phantom screen, newer plush carpet, security alarm system available, plus much more.

Offered at \$999,000



1037 ALAMITOS CREEK DRIVE *Just Listed!*

Open Saturday & Sunday 1pm to 4pm

Almaden Valley, two-level, 1470+/-sf home on an approximately 2614sf lot. Three bedrooms, two-and-one-half baths. Granite slab counter and backsplash, plenty of cabinetry, limestone tile floor, recessed lights, stainless appliances, high peaked ceilings. Close to Almaden Quicksilver County Park, restaurants, shops, schools, parks and more. Top Almaden Schools.

Offered at \$830,000

Sale Pending!

5940 STERLING OAKS

Amazing, 4724+/-sf, Almaden Valley home with 5 bedrooms, 4.5 baths and a bonus room. Kitchen has new quartz slab counters and backsplash, center island, plenty of cabinetry plus a separate pantry with built-in shelves. Spacious master bedroom suite with high-peaked ceiling, Jacuzzi-style tub, and a large closet/dressing room. Three-car garage. Right across the street from Guadalupe Oak Grove Park. Nearby Jeffrey Fontana Park.

Offered at \$1,749,000



Just Sold! 707 Briar Ranch Lane 4bd/3ba, 2806+/-sf home with Top Almaden Valley schools. **Effective Sales Price \$1,275,000**



Therese Swan

408.656.8240

tswan@apr.com

AlmadenValleyRealEstate.com

License #01355719



**LUXURY
PORTFOLIO**
INTERNATIONAL® **APR.COM**

ALAIN PINEL
REALTORS

Square footage, acreage, and other information herein, has been received from one or more of a variety of different sources. Such information has not been verified by Alain Pinel Realtors. If important to buyers, buyers should conduct their own investigation.