

**FREE QUOTES
FREE PUMPKIN***
(while supplies last)



AMERICAN FAMILY INSURANCE
American Family Mutual Insurance Company and its Subsidiaries
 American Family Insurance Company
 Home Office - Madison, WI 53783
 ©2012 006441 - 9/12

Office Hours:
 Mon. - Fri. 8:30-5:00
 Sat. 10:00-1:00

Colleen Frentzel Agency
 4407 Milton Ave Ste 110
 Janesville, WI 53546
 Bus: (608) 302-4101
 colleenfrentzelagency.com

186103

SUNDAY

fyi

COVER STORY

Making the move to Milton



SPORTS

UW-Rock County volleyball program bounces back

PAGE 12

BUSINESS

Fitness training that's personalized

PAGE 4

LocalLife



PAGE 2

What does voter ID mean for you this fall?



Alan Hulick has immersed himself in his new job as Milton city administrator. Hulick previously worked in economic development for the city of Janesville and says that experience is beneficial in his new post.

TERRY MAYER/STAFF

New administrator aims to balance progress with preservation in his adopted city

By DENNIS HINES
STAFF WRITER

MILTON — When Alan Hulick moved to Milton about a year ago, he didn't realize that he would soon be helping to lead the city into the future.

Hulick recently was named Milton's new city

administrator. He began his new job Sept. 16. Hulick replaces Jerry Schuetz, who left the position during the summer to accept a job with the Milton School District.

"It's great. I'm from Janesville, but I live in Milton now, so it was a very unique opportunity for me to move into a position to have such a good impact on the community that I live in and

that I've made my home in," Hulick said. "It's a very unique opportunity, one that I'm very excited about and honored to be chosen in this capacity."

As city administrator, Hulick will be responsible for overseeing the general operations of the

See Milton, page 8

"I own the process so YOU can own the house!"

"I want you to truly enjoy your home-buying experience - from shopping with confidence for the ideal home, to getting the keys. No surprises, costly delays, or worse, a deal that falls apart at closing."



Blackhawk Bank's One-Of-A-Kind Mortgage Guarantee:
**We commit, you close.
 Guaranteed,
 or we'll give you \$1,000.00**
 Everyone wins - You, the Seller, your Realtor.



- Pre-approvals for greater bargaining power
- Competitive Rates, Easy Terms
- Fast Approvals & Local Service

Contact me:
Tamara Kolovitz
 Mortgage Planner NMLS# 680699
[Linked in](#)
608.713.1996
tkolovitz@blackhawkbank.com

Blackhawk Bank
 Mortgage & Commercial Loan Center
 200 W. Milwaukee St., Janesville WI
Blackhawkbank.com [f](#)
MEMBER FDIC EQUAL HOUSING LENDER

More in the MESSENGER

News digest 2
 Local Life 2
 Business 4
 Calendar 5
 Perspectives 6
 Home 10
 Crossword 11
 Sports 12
 Entertainment . . 13
 Classifieds 14

IN BRIEF

JANESVILLE

■ **Two homes near future fire station to be saved:** Two homes located near the site of Janesville's future fire station will be saved. The city received three bids for two of the homes from people who are interested in moving them to another location. The winning bidders will have until the end of the year to move them. Earlier this year, the city purchased 10 other homes located near the future fire station.

MILTON

■ **Milton police seek robbery suspects:** The Milton Police Department is looking for two thieves who allegedly robbed the Junction Pub, 130 Merchant Row, during the early morning hours of Oct. 4. Police said a male and a female were involved in an altercation before the man demanded a bottle of liquor from the bartender. The pair then left the pub through the back door with the bottle of liquor. Anyone with information is asked to call the Milton Police Department at 608-757-2244 or Janesville Area Crime Stoppers at 608-756-3636.

TOWN OF HARMONY

■ **Town of Harmony to receive funding for water retention project:** The town of Harmony is set to receive \$40,000 from a state trust fund loan. The funding was approved by the Board of Commissioners of Public Lands. The money will be used to excavate a stormwater retention pond. The board of commissioners recently awarded more than \$2 million to six other municipalities for community projects.

MESSENGER ONLINE



Locally grown heirloom variety apples preserve historically tasty flavors. Read the story at CommunityShoppers.com.

WEB POLL RESULTS

Question: The city of Elkhorn, Wisconsin, is considering strictly limiting where convicted sex offenders can live when they are released. Should your community?

Yes 71 percent
No 29 percent

To vote or comment on polls, go to:

WWW.CommunityShoppers.com



VOTER ID: HERE'S WHAT YOU NEED TO KNOW

Be prepared to prove your identity to cast ballot in Nov. 4 election

BY MARGARET PLEVAK
WALWORTHCOUNTYTODAY.COM

DELANAVAN — With barely more than three weeks until the Nov. 4 election, some Wisconsin voters still are wondering what they need to bring to the polls in light of the state's new voter photo identification law.

That confusion reflects the twists and turns the law has taken since its inception. Act 23, requiring voters to present a government-issued ID with a photo identification to cast a ballot, was signed into law by Gov. Scott Walker in 2011. Proponents called it a means of preventing voter fraud, although opponents point out there have been few documented cases of in-person voter fraud in the state.

The law was in effect only once in the state during a 2012 primary before being blocked by a state judge, then struck down last April by a federal judge who said it violated both the Voting Rights Act and the U.S. Constitution.

On Oct. 6, a federal appeals court ruled that the voter ID law was constitutional, allowing Wisconsin to enforce it in the upcoming election.

Meanwhile, on Oct. 2, opponents of the law — including the American Civil Liberties Union — requested emergency action from the U.S. Supreme Court to block it, arguing that putting the law into place on such short notice before an election could cause chaos and disenfranchise voters who aren't able to obtain an ID in time. However, as of press time on Oct. 9, the law still stands.

Here are the basics of what voters need to know:

"First off, there is no special 'voter ID' (card)," according to Mukwonago Clerk-Treasurer Steve Braatz in an email. "Many of us clerks, and the Government Accountability Board, have been getting calls from voters asking if their driver's license is fine or do they need to get a special ID. If you're a registered voter, a driver's license that's valid as of Nov. 6, 2012, is an acceptable form of ID and (you won't) need to get anything else."

Your driver's license doesn't have to be current, and you can use it even if your license has been suspended or revoked.

Other photo IDs acceptable for voting include a U.S. passport and a photo student ID from an accredited college or university, along with a document proving enrollment.

If you don't have an accept-



FILE PHOTO

Voters cast ballots in the 2012 election at First Lutheran Church in Janesville. This November, voters will have to show an approved photo ID when they check in.

able photo ID, a free, Department of Transportation-issued photo identification card can be obtained from a Division of Motor Vehicles service center. You will need a birth certificate, Social Security card and a utility or cell phone bill when applying.

In Rock County, there are two centers: at the Shopko Plaza, 2727 Prairie Ave. in Beloit, and at 645 S. Wright Road in Janesville. Both centers are open from 8:30 a.m. to 4:45 p.m. Monday through Friday, and are closed Saturday and Sunday.

If you're not registered to vote in the municipality you live in, have moved or changed your name since the last time you voted, contact your municipal clerk. Check the county's website listing of municipalities to find information for your city or town at www.co.walworth.wi.us/muni/munilocations.aspx.

If you're registering on Election Day, you'll need to bring not only a photo ID, but also proof of your address, such as your latest utility bill.

Voters who come to the polls without an approved ID will be issued provisional ballots, but they have until Friday, Nov. 7, to return to the clerk's office with proper ID in order for their vote to be counted.

Voters using absentee ballots need to send a copy of an acceptable photo ID with their ballot.

Those currently serving in the military, living overseas, or who are permanent absentee voters who are indefinitely confined to their homes or a nursing home do not require a photo ID to vote.

If you still have questions, contact your municipal clerk or check out three websites that provide plenty of general voting information, including which forms of identification and proof of residence are acceptable, where your polling location is located and even what's on the ballot:

• Bring It to the Ballot:

www.bringit.wi.gov/

- MyVote Wisconsin: myvote.wi.gov
- Government

Accountability Board/State of Wisconsin: gab.wi.gov/voters

Voters also can call 866-VOTE-WIS for information. Because of the late reinstatement of the law, some legislators are concerned that not every voter who needs a state-issued photo ID card will receive one by Nov. 4, especially since a number of DMV centers operate under restricted hours or days.

State Rep. Andy Jorgensen of Milton and 34 other Assembly Democrats have asked Wisconsin Department of Transportation Secretary Mark Gottlieb to offer extended night and weekend hours for centers and provide mobile DMV units for those who aren't able to get to the centers — a service that's offered in states like Indiana and Texas, which already have voter ID laws.

"We know that 300,000 registered voters in Wisconsin lack the ID cards now necessary," Jorgensen said in a Sept. 29 news release.

"Without better DMV service hours and more convenient DMV locations, I'm convinced

Need an ID?

■ Members of Asbury United Methodist Church in Janesville will provide rides for people to obtain an ID to vote.

■ To arrange a ride to the Janesville Division of Motor Vehicles, call the church office at 608-752-7961. Rides will be offered on Monday, Wednesday and Friday afternoons through Monday, Nov. 3.

many of these people will be shut out of the November elections."

Terry Walsh, a spokeswoman for Wisconsin DMV's public affairs department in Madison, said service centers haven't had a "major surge" in business so far, nor has there been an increase in the number of ID cards issued.

People applying for the ID cards have to wait seven to 10 business days to receive them by mail, but Walsh said the DMV-issued receipts for the cards are valid for 45 days, and serve, with the photo, as an acceptable ID. For more information, see www.dot.wisconsin.gov/drivers/drivers/apply/petition-process.htm.

We Know You Best.

Annette Isenberger, R.N.

"We know exactly what patients need — because we are just like you."

Watch Annette's story at **TheyKnowMeBest.com**

Beloit Health System **NorthPointe** a health & wellness campus

608.364.5011 • 1969 West Hart Road, Beloit, WI 53511

186107

STS
Steponkus Tax Service
 Barb Steponkus
 Owner Since 1982
 "The Tax Lady"
 114 W. Fulton
 Edgerton
 (608) 884-6436
 508 Campus Lane
 Milton
 (608) 868-4641
 15 W. Main
 Evansville
 (608) 882-6301

John FREEMAN
Alignment
 Complete Brake &
 Suspension Service
 259 South River St.
 Janesville, WI 53545
 John Freeman
 (608) 752-5872

Rock County
Muffler & Brake
 "QUALITY WITHOUT COMPROMISE"
 BRAKES / C.V. JOINTS / AXLES
 EXHAUST / CUSTOM PIPE BENDING
 SHOCKS / SPRINGS / STRUTS
JEFFREY SCHULTZ
 2920 Milton Ave.
 Janesville, WI 53545
 (608) 741-6000

Paratech
 AMBULANCE SERVICE
 ...help is on the way.
 Your Partner In
 Health Care
 (608) 758-1113
 Rock Co.
 Nationwide
 Toll Free
 1-866-525-8888

THE BEST CARE...
POSSIBLE

Agrace
 Hospice & Palliative Care
 800-553-4289
 Care & Support Through the
 Stages of Serious Illness
 agrace.org

OCTOBER IS

**BREAST
 CANCER
 AWARENESS
 MONTH**

Breast cancer is the most common cancer in women in the United States, aside from skin cancer. According to the American Cancer Society (ACS).

Male breast cancer is very rare. Less than one percent of all breast cancer cases develop in men, and only one in a thousand men will ever be diagnosed with breast cancer.



Breast cancer in men is usually detected as a hard lump underneath the nipple and areola. Men carry a higher mortality than women do, primarily because awareness among men is less and they are less likely to assume a lump is breast cancer, which can cause a delay in seeking treatment.

Early Detection is the Key.

One of the earliest signs of breast cancer can be an abnormality that shows up on a mammogram before it can be felt. The most common signs of breast cancer are a lump in the breast; abnormal thickening of the breast; or a change in the shape or color of the breast. Finding a lump or change in your breast does not necessarily mean you have breast cancer. Additional changes that may also be signs of breast cancer include:

- Any new, hard lump or thickening in any part of the breast
- Change in breast size or shape
- Dimpling or puckering of the skin
- Swelling, redness or warmth that does not go away
- Pain in one spot that does not vary with your monthly cycle
- Pulling in of the nipple
- Nipple discharge that starts suddenly and appears only in one breast
- An itchy, sore or scaling area on one nipple

Mammogram Screening

Mammography screening remains the best available method to detect breast cancer early. However, no medical test is always 100 percent accurate, and mammography is no exception. Research is under way to improve the technology to lead to better accuracy and to create new technologies.

- Obtain regular mammography screening starting at the age of 40
- Obtain annual clinical breast exams
- Perform monthly breast self exams
- Obtain a risk assessment from a physician.

For more information about mammography screening, please refer to American Cancer Society's Website http://nbcam.org/disease_mammogram_screening.cfm



The Dragonfly Yarn Shop
 • Beautiful Novelty Yarns
 • Crystal Palace Bamboo
 • A full selection of Books & Magazines • Premium Wool
 • Addie Turbo Knitting Needles
 Mon., Wed., Thurs., Fri. 10-5
 Sat. 10-4; Sun. 12-4
 CLOSED TUESDAY
 1327 N. Wright Rd.
 Janesville, WI 53546
 (608) 757-9228

A THERAPEUTIC TOUCH
BY TAMI LLC
 CERTIFIED IN CRANIOSACRAL THERAPY & THERAPEUTIC MASSAGE
 AUTHOR OF "COMING THROUGH THE FOG"
 1513 NEWPORT AVE.
 JANESVILLE, WI 53545
 (608) 931-9488

CENTERWAY AUTO REPAIR
 SPECIALIZING IN:
 • FUEL INJECTION SYSTEMS
 • BRAKE WORK • TUNE-UPS
 • AIR CONDITIONING
 • GENERAL AUTO REPAIR
 ELECTRONIC TESTING EQUIPMENT
 ASE
 Certified Master Auto Technicians
 (608) 757-2070
 or (608) 752-4417
 Monday - Friday 7:30 am - 5:30 pm
 509 West Centerway • Janesville

Limestone Bjoin inc.
 CRUSHED STONE
 DRIVEWAYS
 PARKING LOTS
 AG LIME SPREADING
 (608) 876-6959
 toll free (888) 837-6518
 7308 W. State Rd. 11, Janesville
 www.bjoinlimestone.com

BRG
 thebriggsrealty/group.com
 "Experience The Tradition"
 (608) 755-5400
 1353 Excalibur Dr.
 Janesville, WI

P.J.s All About You
Salon Spa
 • Hair & Nail Care for All Occasions
 • Facials • Waxing
 (608) 882-5500
 11 S. Madison St., Evansville, WI

SUPPORT GROUPS, SERVICES & PROGRAMS
 Your doctor, hospital or treatment center can recommend a support network to assist you and your family in dealing with breast cancer.
 The YWCA has a "Feeling Good Again" breast cancer support group available. For more information call 608-752-5445.
 The Breast Cancer Network of Strength provides assistance to anyone touched by breast cancer through YourShoes 24/7 by calling 1-800-221-2141.

Culver's
 FROZEN CUSTARD BUTTERBURGERS
JANESVILLE
 2633 Milton Ave. (608) 758-8916 2421 W. Court St. (608) 756-2611
EDGERTON
 571 E. Richardson Springs Road (608) 884-1800

EVERYTHING BADGER!
 Janesville Mall
 608-758-8023
 uwbookstore.com
 the university book store

Farmers & Merchants Bank

 Serving the Orfordville Community Since 1901
 Orfordville, WI 53576
 (608) 879-2911
 MEMBER FDIC

Milton Senior Living, LLC

 The Security of Home that Encourages Independence and Socialization while Maintaining Privacy
 • 1 Bedroom & 2 Bedroom • State Certified
 Apartments with refrigerator and • 24 hour Trained Professional Staff
 microwave
 600 W. Sunset Dr., Milton
 (608) 868-3000 • www.miltonseniorliving.com

BioLife **GIVE BACK. GET MORE.**
 Donate life-saving plasma.
 RECEIVE UP TO \$240 PER MONTH!
 444 Midland Rd • Janesville WI 53546
 608.741.1705
 SCHEDULE AN APPOINTMENT AT BIOLIFEPLASMA.COM
\$150
 NEW DONORS OR DONORS WHO HAVEN'T DONATED IN SIX MONTHS OR MORE PRESENT THIS COUPON AND RECEIVE \$150 IN JUST THREE DONATIONS
Must present this coupon prior to the initial donation to receive a total of \$50 on your first, a total of \$50 on your second and a total of \$50 on your third successful donation. Initial donation must be completed by 10.31.14 and subsequent donations within 30 days. Coupon redeemable only upon completing successful donations. May not be combined with any other offer. Only at participating locations. 0230-1210

Garden Court Senior Housing
 Age 55+
 208 N. Main Street
 Janesville, WI 53545
 Stop in Monday-Thursday, 9:00 a.m. to 3:00 p.m.
 or call for Private Showing
 (608) 755-1755

csi Media, LLC
 JANESVILLE MESSENGER
 333 S. Wuthering Hills Dr.
 Janesville, WI 53546
 (608) 752-0777
 www.communityshoppers.com

Advanced Disposal
 Providing Superior Waste Removal
 *Residential *Commercial *Construction
 *Recycling *Roll Off Rentals
 800-248-2373
 1215 Klement St.
 Ft. Atkinson, WI
 Locally Operated
 www.advanceddisposal.com

Kennedy Apartments
 2920 Kennedy Rd.
 Janesville
Now Renting
 (608) 754-4201



JASON ALDERMAN
BUSINESS AND FINANCE

FLEX YOUR FINANCIAL MUSCLE

Put pretax money to work for health, commuter costs

For millions of Americans, 2015 open enrollment for employer-provided benefits is right around the corner. Find out if your employer offers flexible spending accounts. They let you pay for eligible out-of-pocket health care and/or dependent care expenses on a pre-tax basis, before federal, state, local and Social Security taxes have been deducted from your paycheck.

Also look for a commuter benefit plan, where you can pay for certain workplace mass transit and parking expenses with pretax dollars. By contributing to an FSA or commuter plan to cover expenses you would have paid for anyway, you reduce your taxable income by that amount, which in turn lowers your tax bill.

Here's how it can add up: Say you're married, jointly earn \$90,000 a year and contribute 5 percent to a 401(k). If you contribute \$2,000 to a health care FSA and \$4,000 for dependent care, your resulting net income, after taxes, would be roughly \$1,700 more than if you had paid for those expenses on an after-tax basis. Use the FSA calculator at www.dinkytown.net to evaluate your own situation.

And with a commuter plan, you can use pretax dollars to pay for up to \$130 a month in transit

expenses (bus, train, vanpool, etc.) and \$250 a month in qualified parking expenses and reap the same kind of tax benefit.

You can use a health care FSA to pay for any Internal Revenue Service-allowed medical expenses not covered by your medical, dental or vision plans. This includes deductibles, copayments, orthodontia,

glasses, prescription drugs, chiropractic, smoking cessation programs and more. Over-the-counter medications, except for insulin, require a doctor's prescription to be eligible.

Dependent care FSAs let you use pre-tax dollars to pay for eligible expenses related to care for your child, spouse, parent or other dependent incapable of self-care. Eligible expenses include:

- Fees for licensed day care and adult care facilities.
- Amounts paid for services provided in or outside your home so that you and your spouse can work, look for work or attend school full time.
- Before- and after-school programs for dependents under age 13.
- Baby-sitting by relatives over age 19 who aren't your dependent.

For some lower-income families, the federal income tax dependent care tax credit is more advantageous than an FSA.

Keep in mind these FSA restrictions:

- The IRS limits employee contributions to health care FSAs to \$2,500 a year.
- The dependent care FSA contribution limit is \$5,000 if you're single or married filing jointly.
- Health care and dependent care account contributions are not interchangeable.
- Outside of open enrollment, you can only make mid-year FSA changes after a major life or family status change.
- You must re-enroll in FSAs each year.
- You'll also need to estimate planned health care FSA expenses carefully or risk having to forfeit your unused account balance.

Jason Alderman is a financial expert with Visa Inc. who directs Practical Money Skills for Life, a free, award-winning financial education program available at www.practicalmoneyskills.com.

IN THE SPOTLIGHT

Fitness training that's personalized

Boutique businesses expand, complement each other in Fairview Mall

Business name: SOL Fitness and Personal Training joining with Fab Girl Fitness

Owners: Connie Udell and Jade Hanus

Address: 2100 E. Milwaukee St. in Janesville, inside Fairview Mall

Website: SolPersonalFitness.com and FabGirlFit.com

Phone: 608-302-7088 and 608-295-2521

Hours: By appointment and specialty classes

Type of business: Personal training, small group training, nutrition, wellness coaching and specialty classes.

When did business open? SOL Fitness opened in 2009 and Fab Girl Fitness opened in 2014.

How did you get into this line of work? SOL Fitness and Personal Training was started after I lost my job in 2009. Jobs were scarce, so I took the gamble to start the business and continue to do what I loved to do — work with people who had a goal and desire to be fit and healthy. I was a certified trainer with a background in marketing. The business started out in the trunk of my car going to homes, businesses and active older adult apartments. Competition is tough in this area, but SOL Fitness grew and continues to grow with its expansion this year inside the Fairview Mall with the addition of Fab Girl Fitness.

Fab Girl Fitness was started by Hanus, who became a certified personal trainer after she successfully lost 70 pounds by incorporating a healthier lifestyle, including better nutrition and exercise, while keeping it realistic to maintain as a young mother. She specializes in young mothers and women as she provides a different, relatable perspective having lost a significant amount of weight while being a young woman in today's world of high stress, pressure and multitasking. She is excited to help others reach for their goals and make changes in their lives that can produce healthy habits for the future.

We are considered "boutique" studios, which means we are smaller with more intimate, colorful spaces that shun the traditional male-dominated décor of red, gray and chrome. SOL likes tropical and Fab Girl likes glitz, glam and fun.

SOL has a higher percentage of women and senior clients, but men assure us we definitely can "kick butt" with them.



DENNIS HINES/STAFF

Connie Udell, left, and Jade Hanus show off some of the equipment they use with their fitness programs. Udell operates SOL Fitness and Personal Training, and Hanus owns Fab Girl Fitness, both located at 2100 E. Milwaukee St. in Janesville, inside the Fairview Mall. Both businesses offer training programs to help people meet their fitness goals. For more information, go to Solpersonalfitness.com or Fabgirlfit.com.

What types of products or services does your business offer? SOL Fitness offers personal and small group training, special events for women, "lunch and learns" in businesses and a 5K run in the summer. Udell is a certified health coach who now offers weight loss programming for individuals and a healthy lifestyle marathon class. Udell has specialty training in working with those who have Parkinson's disease. Her mother had Parkinson's and she had a desire for her to teach a class to this population. Through the winter, Udell teaches a water class at CSA Kids.

Fab Girl Fitness offers personal, partner and small group training, special fitness/weight loss challenges, dance fitness and boot camp classes. Hanus is excited to be working with Udell on new events and classes.

What is the biggest challenge you face in your business? One challenge is educating people that we are not a big-box health club or gym trying to fill treadmills for \$10 a month. We specialize and personalize our services to make all clients feel like they are receiving a unique experience, because they are.

Of course, a bigger challenge is staying up-to-date with trends. We have to make decisions as to whether or not it makes sense to compete with other businesses or take a gamble with something new.

What aspect of the business do you enjoy the most? The wonderful group of people we have the pleasure of working with and developing positive relationships with. It is very rewarding to work with our clients and see their progress and how we can share our commitment to health and fitness with them. Although owning a small business is a lot of hard work, the satisfaction of creating a successful business that makes an impact on people's lives is worth it.

From what cities do the majority of your customers come? Our customers are local as well as from surrounding counties and northern Illinois. We also will travel to their locations.

What are your plans for the business? In the works is a toddler program called Monkeys Jumpin' on the Bed and a fast-paced tabata class. We want to invite other health and fitness professionals into our studios to offer exciting programs.

BUSINESS BRIEFLY

■ Hospital's cardiac rehab program receives recertification:

Edgerton Hospital recently received re-certification by the American Association of Cardiovascular and Pulmonary Rehabilitation for its cardiac rehabilitation program. Edgerton Hospital, which has maintained its certification since 2011, was recognized for its commitment to improving the quality of life by enhancing standards of care.

Cardiovascular and pulmonary rehabilitation programs are designed to help people with cardiovascular problems and pulmonary problems recover faster and improve their quality of life. Both programs include exercise, education, counseling and support for patients and their families.

"We are pleased to have achieved this certification and to be able to offer our patients quality cardiac care locally," Susan Kindschi, Edgerton Hospital's manager of cardiopulmonary diagnostics and rehabilitation, said in a news release. "Our patients' health, happiness and

zest for life are our top priorities, and working with our cardiac rehab patients allows us to see the value of this exceptional program firsthand."

AACVPR program certification is valid for three years. For more information, go online to EdgertonHospital.com.

■ Historical society expands staff:

The Rock County Historical Society staff is expanding this month with the addition of Meghan Walker as marketing and outreach coordinator and Nathan Fuller as educational curator.

Walker, of Janesville, has a bachelor's degree in English from the University of Wisconsin-Madison and has varied marketing and outreach experience while working as a marketing coordinator at Chambers & Owens and being a former team member at the Rock County Historical Society.

Fuller, of Sharon, has a master's degree in secondary education, a bachelor's degree in history and teaching certifications in Wisconsin and

Illinois. He previously worked as an interpreter at Old World Wisconsin and as an educational coordinator at the Vintage Wings and Wheels Museum in Poplar Grove, Illinois.

"The first step in our newly created strategic plan was to develop these positions to strengthen the society's message and educational programming," Michael Reuter, RCHS executive director, said in a news release. "Both Meghan and Nathan are veterans of their respective fields and have a strong passion for the work that the RCHS is trying to accomplish ..."

Walker will be responsible for continuing to grow the marketing reach of the society via print, digital and social media. She also will be responsible for promoting and growing the site's rental business.

Fuller will serve as the organization's educational liaison, growing the relationships between RCHS and local teachers, administrators and students. He also will lead RCHS educational programs, such as the Frances Willard School and the annual history camp.

CALENDAR

HURRY! OFFER ENDS SOON!!



SAVE \$20.00
Furnace Tune & Clean
Gas or Oil

Arch Heating & Cooling, Inc.

Janesville 758-1522 Beloit 362-4090 Elkhorn 742-2333

"LOVE my HEARING AID!"
Everyone at Beloit Hearing has been wonderful."



Sharlene Morello, BELOIT

Services Offered: • Hearing Aids • Hearing Tests
Wax Removal • Custom Molds • Repair

Dr. Shayla D. Crays Smith
Audiologist

Ronda
Beloit Hearing's
Office Manager



1406 Willowbrook Rd.
Suite 106, Beloit, WI (608) 364-4400

Saturday-Sunday, Oct. 11-12:
Magical Happenings
Psychic Fair, Oct. 11-12, 10 a.m. to 5 p.m. at Earthsong Books & Gifts, 2214 Kennedy Road, Janesville.

EDGERTON CITY RESIDENTS
If you are not receiving a copy of
JANESVILLE MESSENGER
or are having trouble with our delivery service, please call our Agent.
MIKE LONG
Toll Free 1-800-484-4775, Pin 9032 167341

MILTON CITY RESIDENTS
If you are not receiving a copy of
JANESVILLE MESSENGER
or are having trouble with our delivery service, please call our Agent.
MIKE LONG
Toll Free 1-800-484-4775, Pin 9032 167340

For more information, call 608-754-3933 or go to EarthSongBooksandGifts.com.

Sunday, Oct. 12:
Fall Bridal Show, Oct. 12, 10 a.m. to 2 p.m. at Pontiac Convention Center, 2809 N. Pontiac Drive, Janesville. Event will include information about gowns, tuxedos, flowers, photos, wedding and reception venues, decorations, vacation destinations and samples of catered food and wedding cakes.

Rock River Threshere
haunted train rides, Oct. 12, 3 p.m. to 9 p.m. at Threshere Park, 51 E. Cox Road, Edgerton. Spooky train runs from 3 p.m. to 6 p.m.; train of terror runs from 6 p.m. to close.

Ruby Project WI
October Picnic and Resource Fair, Oct. 12, 1 p.m. to 4 p.m. at Rock County Courthouse Amphitheater in downtown Janesville. Program is to raise awareness about bullying against homosexuals, bisexuals and transgenders. The event will include information booths, candy hunts, face paintings and live music.

Special Lincoln church service, Oct. 12, 10 a.m. at First Congregational Church, 54 S. Jackson St. in Janesville. The Rev. Gene Van Galder will give a message of "Lincoln's Enduring Legacy" to commemorate Lincoln's visit to the church on Oct. 2, 1858.

Family concert, Oct. 12, 2 p.m. at Hedberg Public Library, 316 S. Main St., Janesville. Featuring Jose-Luis Orozco.

Sunday individual hand-

icap disc golf league, Oct. 12 at Lustig Park, 1500 Riverside Drive, Janesville. Check-in is at 10 a.m. and event starts at 10:30 a.m.

Sunday-Monday, Oct. 12-13:
"It's a Wonderful Life" auditions, Oct. 12-13, 6 p.m. at the Janesville Performing Arts Center, 408 S. Main St., Janesville. Roles available include 12 men, 10 women, two boys and two girls. For more information, call 608-346-5509.

Monday, Oct. 13:
Story Makers program, Oct. 13, 3:30 p.m. at Eager Free Library, 39 W. Main St., Janesville. Program is for children in kindergarten through fifth grade and will include writing activities and art projects.

American Red Cross blood drive, Oct. 13, 1 p.m. to 6 p.m. at Peace Lutheran Church, 1550 S. Osborne St., Janesville. Call 608-752-0258.

Janesville City Hall dedication, Oct. 13, 5 p.m. at city hall building, 18 N. Jackson St., Janesville.

WP&L Retirees meeting, Oct. 13, 8:30 a.m. at Citrus Cafe, 208 S. Main St., Janesville. Call 608-752-8492 or 608-756-2443.

Tuesday, Oct. 14:
Stride for Health mall walking program, Oct. 14, 8:15 a.m. to 9:30 a.m. at Janesville Mall Food Court, 2500 Milton Ave., Janesville. Event will include health presentation, heart-healthy continental breakfast, health screenings and door prizes.

National Alliance on Mental Illness support group meeting, Oct. 14, 6:30 p.m. to 8 p.m. in Room K at the Rock County Job Center, 1900 Center Ave., Janesville. Meeting will include candlelight vigil in honor of Mental Illness Awareness Week and support group caring and sharing. For more information, call 608-289-4305.

Word Processing Basics 2010 class, Oct. 14, 3:30 p.m. at Hedberg Public Library, 316 S. Main St., Janesville.

Disc golf glow leagues random draw doubles, Oct. 14 at Lustig Park, 1500 Riverview Drive, Janesville. Check-in is at 6 p.m. and event starts at 6:30 p.m.

Mercy Hospice Grief Care support group meeting, Oct. 14, 6 p.m. at Mercy Clinic North, community room, 3400 Deerfield Drive, Janesville. For more information, call 888-39-MERCY.

Janesville budget study session, Oct. 14, 6 p.m. at Janesville City Hall, 18 N. Jackson St., Janesville.

Wednesday, Oct. 15:
Candidate forum for 15th Senate District, Oct. 15, 7 p.m. at Hedberg Public Library, 316 S. Main St., Janesville.

Referendum education forum, Oct. 15, 8 a.m. to 9 a.m. at Janesville City Hall, 18 N. Jackson St., Janesville. Information about the proposed street rehabilitation program referendum that will be placed on the November ballot.

STEAMPunks club meeting, Oct. 15, 12:15 p.m. at Eager Free Library, 39 W.

Main St., Janesville. For children in kindergarten through fifth grade and includes science, technology, engineering, arts and math activities.

Friends of Riverside Park meeting, Oct. 15, 6 p.m. at Commercial Bank, lower level, 1400 Black Bridge Road, Janesville. For more information, call 608-752-2676 or go to JvIRiversidePark.com.

Sons of Norway, Norland Lodge No. 544 meeting, Oct. 15, 6:30 p.m. at the lodge, 418 W. Milwaukee St., Janesville. Judy Niedermeier will present a video of photos taken at Eidsvoll, Norway, of Syttende Mai on May 17.

Vietnam Veterans Chapter 236 Scoopie Night, Oct. 15, 4 p.m. to 8 p.m., Culver's, 2633 Milton Ave., Janesville.

Thursday, Oct. 16:
Rock Regional Business Expo and Luncheon, Oct. 16. Luncheon from 11 a.m. to 1 p.m. at Pontiac Convention Center, 2809 N. Pontiac Drive, Janesville. Expo from 1 p.m. to 7 p.m. at Holiday Inn Express and Janesville Conference Center, 3100 Wellington Place, Janesville. Call 608-757-3160 or go to ForwardJanesville.com.

Agrace Hospice volunteer orientation, Oct. 16, 5 p.m. to 9 p.m. at Agrace Center for Hospice & Palliative Care, 2901 N. Wright Road, Janesville. Call 608-314-2922.

Janesville Art League pumpkin decorating program, Oct. 16, 11 a.m. at the Hodge Farm in LaPrairie Township. Call 608-754-4544.

See us for all of your 401(k) rollover options.



Steve Thompson
Financial Advisor
212 West Fulton Street
Edgerton, WI 53534
608-884-8000
www.edwardjones.com

Edward Jones
MAKING SENSE OF INVESTING

Member SIPC 186071



FLOOR NOW PAY LATER
NO INTEREST FOR 24 MONTHS*
OCTOBER 1—NOVEMBER 10, 2014
With Your Shaw Floors Credit Card, 24 Equal Monthly Payments Required.

GRAND CENTRAL CHALLENGE
EARN \$150 MANUFACTURERS REBATE
ON STYLES FEATURED IN GRAND CENTRAL'S VANDERBILT HALL**

Carpet | Tile & Stone | Hardwood | Laminate | Resilient | shawfloors.com

Shaw FLOORS

House of Carpets
Beloit's Carpet Superstore
Since 1966

1410 CRANSTON RD.
Beloit • (608) 362-7113
www.houseofcarpetsofBeloit.com

FF PAYS TO SEE THE EXPERTS
Mon. & Fri. 8:30 to 8:00;
Tues., Wed. & Thurs. 8:30 to 5:30; Sat. 9:30 to 4:00



* Offer applies only to single-receipt qualifying purchases. No interest will be charged on promo purchase and equal monthly payments are required equal to initial promo purchase amount divided equally by the number of months in promo period until promo is paid in full. The equal monthly payment will be rounded to the next highest whole dollar and may be higher than the minimum payment that would be required if the purchase was a non-promotional purchase. Regular account terms apply to non-promotional purchases. For new accounts: Purchase APR is 29.99%; Minimum Interest Charge is \$2. Existing cardholders should see their credit card agreement for their applicable terms. Subject to credit approval.
** Qualifying Styles Include: All Anso Nylon styles, All EPIC hardwood styles (excluding style Heartland), All 5th & Main Resilient styles (excluding 6 mil). Purchase minimum quantities required for rebate of 50 square yards of Anso Nylon Carpet or 500 square feet of EPIC Hardwood or Resilient styles.
186374

TOUCHDOWN MONDAY 10/13

5% OFF for EVERY Badger TD

Up To 25% Off Your ENTIRE Purchase of WI Clothing & Gifts!



Present your ticket stub OR Facebook coupon on the Monday after a home game.

See store for any exclusions.

the university BOOK STORE
uwbookstore.com

Janesville Mall
facebook.com/badgershop

POLITICS THIS WEEK

Sen. Johnson not convinced there is a 'skills gap'

Sen. Ron Johnson says the two things holding people back from seeking careers in manufacturing are a push for high school graduates to attend college and extended unemployment benefits keeping workers at home.

Rather than a skills gap, Johnson says, "I think it's more a willingness to work gap."

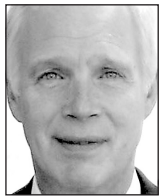
Johnson sat down for questions before his visit Monday at Precision Plus in Elkhorn.

Johnson is traveling the state as part of his Manufacturing Week tour.

Precision Plus, a manufacturer of precision machine parts, also is an active leader in promoting manufacturing as a career.

They held an open house for high school students in conjunction with Wisconsin Manufacturing Day a week earlier, according to Director of Education and Outreach Barry Butters. Butters also was at a career fair the morning of Johnson's visit at Beloit Memorial High School.

Johnson met with company president Michael Reader, toured the facility and spoke



Johnson

DAN PLUTCHAK
EDITOR



Politics this week is a roundup of election news for local candidates. It will run Sundays until the Nov. 4 election. Send tips and scoops to dplutchak@communityshoppers.com.

with employees during his 90-minute visit.

"I'm hoping to learn about a business that despite the regulatory burden and tax burden, is still able to grow and succeed and provide good paying jobs," Johnson said.

Johnson said too many high school graduates are wasting time in college.

"We're telling people they have to go on to college," he said. "We're denigrating the trades. All work has value. We need carpenters, electricians, plumbers and people to work in manufacturing."

He said unemployment payments also are keeping people from re-entering the workforce.

We have a problem with continuing to extend employment

benefits, according to Johnson. People won't come back to work until their unemployment runs out.

He said he's heard this from dozens of employers.

However, considering unemployment insurance pays only a small percentage of a laid-off employee's regular check, it's hard to imagine many refusing to return to work just because of the money, unless they're making very little in the first place.

So, I asked Johnson what could be done to grow wages to make it worth working?

"If you really want higher wages, you want a robust economy where employers are competing for labor," he said.

He also said that in manufacturing, he rarely finds companies that pay less than \$10 to \$12 an hour starting wages.

He suggested tax reform as one area that would make the U.S. economy more competitive, and he said that's an area where Republicans and Democrats could find common ground.

The latest national polling indicates that Republicans have a better than 50-50 chance to pick up six seats and gain control of the Senate.

He doesn't see a filibuster-proof majority in the Senate, and with President Obama in the White House, he says he'll seek

common ground with Democrats.

Johnson says he also agrees with Obama's goal to degrade and destroy ISIS militants in Syria and Iraq.

"We don't have any option whether we want to go to war," Johnson said. "Our only option is are we going to fight that war on the defense or on the offense."

Some inside the Pentagon are so overwhelmed with the air strikes, they're calling it "shock and yawn," he said.

He didn't come out and say if he supports ground troops, but he implied they would eventually be necessary.

"They are evil barbarians," he said. "We can't negotiate with them. We have to defeat them."

To watch video of the full interview, go to CommunityShoppers.com.

■ **Rides available for voter ID:** Members of Asbury United Methodist Church, located at 1810 Kellogg Ave., Janesville, will provide transportation to the Janesville Division of Motor Vehicles offices for residents who need an ID to vote. Volunteers are available Monday, Wednesday and Friday afternoons until Nov. 3. Call the church office at 608-752-7961 to arrange for transportation.

■ **Ryan and Zerban to debate:** Candidates for Wisconsin's 1st Congressional

District are planning two debates in October, one at Carthage College in Kenosha and the other at the University of Wisconsin-Rock County in Janesville.

Democrat **Rob Zerban** of Kenosha faces incumbent Republican **Rep. Paul Ryan** of Janesville. The debates will be:

- Monday, Oct. 13, at Carthage College in the Campbell Student Union Theater, which will be moderated by Dr. Jeffrey Roberg, chair of the college's political science department.

- Monday, Oct. 20, at UW-Rock County, in the Wells Cultural Center Theatre, which will be moderated by Tim Bremel, radio talk-show host on WCLO.

Both debates will last one hour and start at 6:30 p.m.

■ **Jorgensen urges extra DMV hours:** State Rep. **Andy Jorgensen**, D-Milton, is calling on Wisconsin Department of Transportation Secretary Mark Gottlieb to increase access to voter ID cards by extending Division of Motor Vehicle service hours to nights and weekends and launching a mobile DMV program.

Jorgensen faces Republican **Leon Hebert** in the Nov. 4 election for the 43rd Assembly District seat.

YOUR VIEWS

Thanks to stone masons

To the editor,

The Friends of Oak Hill Chapel would like to thank all the volunteer stone masons and apprentices. Some came as far away as Rice Lake to partake in the chapel work.

Lon Coplien is a friends-group member and expert stone mason. He arranged for all these volunteers to work on the chapel on Sept 19.

He also had volunteers from Madison College training and working with the tuck pointing. They went through 36 bags of mortar mix that day, which was donated by Quikrete Wisconsin Inc.

By the end of the day we were 85 percent complete on the tuck pointing of the chapel.

Thanks to all these skilled volunteers.

Richard Snyder, co-president Friends of Oak Hill Chapel

State government doesn't care

To the editor,

The middle class in Wisconsin is suffering and disappearing. Our governor has failed to create jobs that will support middle-class families. He did create and has mismanaged our state economic development agency, the Wisconsin Economic Development Corp.

The gap between the haves and have-nots is growing. Our state job growth is 33rd in the nation and our governor has fallen short of his goal of 250,000 new jobs. Greed and lack of empathy for people who are financially suffering seem to be high on our state government's agenda.

Our governor and tea party legislators have treated women as though they are second-class citizens. He signed a bill repealing equal-pay protection for women and signed bills that interfere with a woman's right to make her own health care decisions.

They have supported voter ID and stand-your-ground laws, which have elements of suppression and racism. The voter ID law recently was reinstated, and our governor said, "This is a victory for Wisconsin." In reality, this is a victory for Jim Crow and takes us back to the way we were prior to the civil rights legislation that passed in the 1960s.

If our governor is re-elected, expect Wisconsin to become a right-to-work state and our public schools will not be adequately funded. Expect voucher schools to have priority. Our governor will continue to cater to the wishes of the in-state and out-of-state millionaires who desperately want him re-elected.

Many Wisconsin citizens will feel their state government and tea party representatives do not care about them.

Leon K. Freeburg Janesville

OTHER VIEWS

We all make mistakes. Then what?

Human error. It's a fact of life. Mistakes are made and a price is paid, sometimes at great cost.

Recently, a man who traveled from Liberia to Dallas went to a hospital with symptoms that were consistent with an Ebola virus infection. Especially alarming, he revealed to medical staff that he'd recently been in West Africa, where Ebola is rampant. Those treating him sent him home with prescriptions for cough syrup and antibiotics.

As we now know, the man's condition worsened and he was eventually diagnosed with Ebola. How could this happen? Human error.

The hospital recently had practiced mock scenarios in the unlikely event an Ebola patient would enter its building. Time will reveal the damage done by such an oversight.

In war, mistakes are called "friendly fire." In flight, they're called "pilot error." In government, they call it "someone else's fault." Baseball even keeps track of fielding errors and gives an award to the players with the least errors, but only a few ever have played an entire season without committing an error.

In life, we're all prone to human error. We call them lapses in judgment, mental errors, goofs, gaffes, bloopers, mess-ups and accidents. We excuse them by saying we were tired, or distracted or unlucky. We say

MIKE DISSMORE
GUEST COLUMNIST



things like "nobody's perfect" or "we all make mistakes." Indeed, as Alexander Pope penned, "to err is human; to forgive, divine."

The Apostle Paul admitted that he wasn't perfect. He wrote in Philippians 3:12, "Not that I have already obtained all this, or have already been made perfect, but I press on to take hold of that for which Christ Jesus took hold of me." He recognized that perfection was a process that we should ever strive to attain. Elsewhere, he encouraged us to "aim for perfection" (2 Corinthians 13:11).

Jesus said in Matthew 5:48 to "be perfect, therefore, as your heavenly Father is perfect." Clearly, we can never achieve godly perfection through our own human ability, but we can strive to achieve it through God's strength.

People prefer to call our sinfulness human error. Instead of admitting our sin, we call it a "mistake." Was it a mistake when Adam and Eve ate the forbidden fruit in the Garden of Eden? It was not; it was willful disobedience. They trusted the serpent, who told them they would be "like God" if they ate

the fruit. In that moment, they chose not to trust God who had given them full access to everything except the fruit of that tree. Their act of rebellion against God was sin — with far-reaching effect.

We can't entirely blame Adam and Eve for our present predicament. Romans 3:23 tells us "all have sinned and fall short of the glory of God." Every single human from that time to the present has sinned except for Jesus, who lived a sinless life. We can't explain away our behavior by calling it a mistake or an accident. We must acknowledge our sinfulness.

Fortunately, God forgives. A price had to be paid to redeem us from our lost and sinful condition. Romans 6:23 says "For the wages of sin is death, but the gift of God is eternal life in Christ Jesus our Lord." That price was fulfilled in the death and resurrection of Jesus, who died in our place.

It's required of us to confess our sins and accept his salvation. 1 John 1:9 says "If we confess our sins, he is faithful and just and will forgive us our sins." To not do so would be a mistake.

The Rev. Mike Dissmore is the senior pastor at Christ the Rock Church in Janesville. He can be reached at (608) 756-2232 or pastormike@christtherock.org.

Quilt show set for Oct. 18 in Edgerton

EDGERTON — The seventh annual Edgerton Quilt Show will be held from 9 a.m. to 4 p.m. Saturday, Oct. 18, at Edgerton Middle School, 300 Elm High Drive.

The event will feature about 14 vendors, as well as quilting demonstrations, concession stands and basket and bed quilt raffle drawings. Adult and youth displays will be judged by viewers' choice, with a monetary prize being awarded to the first-place winner.

Quilts will be appraised by certified appraiser Sandy Schweitzer. To schedule an appointment, call Janette Jensen at 608-884-3271.

The guest speaker will be Laura Krasinski, who will talk about "Fun with Fusing." Krasinski's presentation will begin at 11 a.m.

Although the deadline for enter-

ing a quilt was Oct. 1, they will be accepted until 4 p.m. Friday, Oct. 17. For more information, call 608-884-3746. Entry forms are available at The Hair Doctors, Bonnie's Beauty Shop and local quilt shops or by calling 608-884-3002 or sending an email message to edgerton-quiltshow@yahoo.com.

The cost to attend the quilt show is \$3. Children 10 years and younger may attend for free.

The proceeds will be donated to Edgerton organizations, including the Edgerton Area Chamber of Commerce, Tri-County Community Center, Edgerton Sterling North Book and Film Festival, Sterling North Society, Badger Honor Flight, Edgerton High School band, Edgerton High School choir, Edgerton Community Outreach, Edgerton Alumni Foundation and Edgerton Senior Center.

Crystal Computer Consulting moves to new location



SUBMITTED

Crystal Computer Consulting recently conducted a ribbon cutting ceremony with Forward Janesville for its new location 3001 W. Memorial Drive in Janesville. Crystal Computer Consulting offers website development, networking services and cloud services for businesses. For more information, call 608-554-2846 or go to CrystalComputer.com.

Students invited to explore career paths at BTC

JANESVILLE — Blackhawk Technical College invites high school juniors, seniors and all adults interested in investigating technical education to its Tech Exploration Days sessions.

Tech Exploration Days provides hands-on experience in high demand fields. Prospective students are introduced to the education Blackhawk students receive in multiple fields of interests. Tours of Blackhawk's facilities also are available. Instructors provide guests with program and classroom details, high-tech demonstrations and cover employment opportunities. Entrance requirements and course demands are also discussed.

TED sessions are available in the following fields on these dates and at these BTC sites:

- Business, marketing,

accounting, business management and human resources, 8:30 a.m. to 11:15 a.m. Monday, Oct. 13, at the Central Campus, 6004 S. County Highway G, Janesville

- Information technology, network specialist, web software developer and computer service technician, 1 p.m. to 3 p.m. Monday, Oct. 13, at the Central Campus.

- Early childhood education, 9 a.m. to 10:45 a.m. Wednesday, Oct. 15, at Beloit Center, 50 Eclipse Center, Beloit.

- Beloit health science, pharmacy technician and nursing, 9 a.m. to 10:45 a.m. Wednesday, Oct. 15, at Beloit Center.

- Automotive technician and diesel/heavy equipment technician, 9 a.m. to 11:45 a.m. Tuesday, Oct. 21, at Center for Transportation Studies, 1740 U.S. Highway 14, Janesville.

- Health sciences, radiography, diagnostic medical sonography, nursing and dental assistant, 8:30 a.m. to 11:15 a.m. Thursday, Oct. 23, at Central Campus.

- Advanced manufacturing, welding, CNC, industrial mechanic, 8:30 a.m. to 11:15 a.m. Tuesday, Oct. 28, Advanced Manufacturing Training Center, 15 Plumb St., Milton.

- Manufacturing, HVAC, computer service technician/MITS, mechanical design and electromechanical technology, 1 p.m. to 3:30 p.m. Tuesday, Oct. 28, at Central Campus.

Find registration information at Blackhawk.edu, under the events link. For more information, contact Katie Lange at klange5@blackhawk.edu or at 608-743-4463.



2750 MILWAUKEE ROAD, БЕЛОIT

YOUR HOMETOWN MEAT CUTTERS




<p>10 Lbs. Fresh Boneless Skinless Chicken Breasts \$2.49 lb.</p> 	<p>10 lbs. Ground Beef \$33.90 10 lbs. Ground Chuck \$35.90</p> 	<p>Lean Beef Pot Roast \$4.29 lb. Reg \$4.99</p> 
<p>Choice Black Angus Chuck Roast \$4.99 lb. Reg \$5.99 lb.</p> 	<p>"Our ground beef and ground chuck is ground fresh everyday!" Never from a tube!</p>	<p>Stuffed Pork Chops \$3.69 lb. Reg \$4.29 lb.</p> 
<p>BOX 1 NET WEIGHT 14 LBS \$46.95 - \$3.13 lb.</p> <p>2 Lbs. Round Steak 3 Lbs. Ground Beef 3 Lbs. Chuck Roast 3 Lbs. Pork Chops 3 Lbs. Chicken Whole (in pieces)</p>	<p>BOX 2 NET WEIGHT 20 LBS \$67.95 - \$3.40 lb.</p> <p>3 Lbs. Ground Beef 3 Lbs. Chuck Roast 3 Lbs. Pork Chops 6 Chicken Whole (in pieces) 2 Lbs. Sirloin 3 Lbs. Round Steaks</p>	<p>BOX 3 NET WEIGHT 24 LBS \$94.95 - \$3.96 lb.</p> <p>5 Lbs. Chicken Breast 5 Lbs. Ground Beef 5 Lbs. T-Bone Steak 4 Lbs. Rump Roast 5 Lbs. Pork Chops</p>
<p>BOX 4 NET WEIGHT 35 LBS \$104.95 - \$2.99 lb.</p> <p>10 Lbs. Center Cut Pork Chops 10 Lbs. Spareribs 10 Lbs. Pork Steak 5 Lbs. Pork Sausage or Brats</p>	<p>BOX 5 NET WEIGHT 25 LBS \$114.95 - \$4.59 lb. Economy Beef Box</p> <p>8 Lbs. Ground Beef 6 Lbs. Chuck Roast 3 Lbs. Rump Roast 4 Lbs. Round Steak 2 Lbs. T-Bones 2 Lbs. Sirloin</p>	<p>BOX 6 NET WEIGHT 42 LBS \$185.95 - \$4.43 lb. Large Beef</p> <p>2 Lbs. T-bones 4 Lbs. Round Steak 12 Lbs. Ground Beef 9 Lbs. Chuck Roast 1 1/2 Lbs. Stew Meat 4 Lbs. Sirloin 2 - 10 oz. New York Strip 2 - 10 oz. Ribeyes 3 Lb. Rump Roast</p>
<p>BOX 7 NET WEIGHT 50 LBS \$154.95 - \$3.09 lb. Half a Hog Box</p> <p>3 Lbs. Country Ribs 9 Lbs. Pork Chops 6 Lb. Ham Shank 6 Lb. Ham Butt 6 Lbs. Sausage 2 Lbs. Ham Steaks 4 Lbs. Bacon 4 Lbs. Pork Roast 6 Lbs. Pork Steaks 1 Slab of Spareribs</p>	<p>BOX 10 BEEF AND PORK BOX \$169.95</p> <p>2 Lbs. T-Bones 5 Lbs. Pork Chops 4 Lbs. Sirloin 4 Lb. Pork Steak 8 Lbs. Ground Beef 5 Lbs. Pork Roast 5 Lbs. Country Ribs 6 Lbs. Chuck Roast 4 Lbs. Bacon 4 Lbs. Spare Ribs 3 Lbs. Round Steak</p>	<p>SIDE OF BEEF Gross Weight: 250 lbs. before processing, \$2.99/lb. Approximately 160 lbs. weight \$749.00</p> <p>15 Lbs. Ribeye 5 Lbs. Soup Bones 6 Lbs. Beef Ribs or Ground Beef 5 Lbs. Stew Meat 20 Lbs. Chuck Roast 12 Lbs. Round Steak 8 Lbs. Rolled Rump 12 Lbs. T-Bones/Porterhouse Steaks 7 Lbs. Sirloin Tip Roast 8 Lbs. Sirloin Steak</p> <p><small>For custom cuts, sizes add \$30. For 60 lb. ground chuck instead of 60 lb. ground beef add \$30.</small></p>


10 Family Value Boxes to choose from
SALE GOOD THRU OCTOBER 18, 2014
(608) 362-9325 • Every Day 9-6
WE ACCEPT LINK, QUEST & SNAP




EDUCATION, INCOME, HEALTH
The building blocks for a good quality of life




When you give, advocate, volunteer, you support nearly 100 human services programs focused on these building blocks in Rock County and northern Winnebago County.

LiveUnitedBR.org 

United Way Blackhawk Region marketing sponsors



LIVE UNITED
United Way 
United Way Blackhawk Region

CLASS SCHEDULE

MONDAY:
Janesville: 4 p.m., PTA meeting, Madison Elementary School
Janesville: 5:30 p.m., PTSA meeting, Franklin Middle School
Janesville: 6 p.m., PTA meeting, Jefferson Elementary School
Milton: 9:12 a.m. to 9:42 a.m., senior class meeting, Milton High School
Milton: 4 p.m. to 8 p.m., parent-teacher conferences, Milton High School
Parkview: 7 p.m., high school band concert, Parkview Junior/Senior High School

TUESDAY:
Janesville: 8 a.m. to 1 p.m., picture retake day, Roosevelt Elementary School
Janesville: 8:30 a.m. to 1:30 p.m., picture retake day, Jackson Elementary School
Janesville: picture retakes, Monroe Elementary School
Janesville: 6:30 p.m., Kindergarten Bedtime Stories, Adams Elementary School
Milton: 3:30 p.m. to 4:30 p.m., Market Day pickup, Milton West Elementary School
Milton: 6:30 p.m., Parents at West School meeting, Milton West Elementary School

WEDNESDAY:
Janesville: 6:35 a.m., jazz ensemble rehearsals, Franklin Middle School
Janesville: 8 a.m. to noon, picture retake day, Lincoln Elementary School
Janesville: 3 p.m., Boy Scouts meeting, Jackson Elementary School
Milton: hearing screenings, Consolidated Elementary School
Milton: 4 p.m. to 8 p.m., parent-teacher conferences, Milton High School
Milton: 6:30 p.m., financial aid information meeting, Milton High School

THURSDAY:
Janesville: 6:45 a.m., show choir rehearsal, Franklin Middle School
Janesville: picture retake day, Jefferson Elementary School
Janesville: picture retake day, Franklin Middle School
Milton: 3:30 p.m. to 6 p.m., fundraiser pickup, Milton West Elementary School

FRIDAY:
Janesville: Grandparents Day and book fair, Monroe Elementary School
Janesville: 2:15 p.m., Market Day pickup, Van Buren Elementary School
Janesville: 3:30 p.m., Walk for FUNds, Lincoln Elementary School
Milton: 3:45 p.m. to 5:15 p.m., sixth-grade Hoe Down, Northside Intermediate School
Milton: 6:30 p.m. to 9 p.m., dance, Milton Middle School
Edgerton: 6:30 p.m. to 9 p.m., Fun Night, Edgerton Middle School

Give yourself a fright at these area haunts

Some people like a good thrill, but once October and Halloween come around, even more of us like to be totally frightened. The adrenaline-pumping experience of a haunted house drives many of us to seek out a good spine-tingling chill on Halloween. If that's you, go ahead and scare yourself silly at one of these events:

BELOIT
Beloit Memorial High School haunted hayride, Oct. 11 at Leeson Park off Milwaukee Road in Beloit. Fifteen-minute rides begin at 6:45 p.m. Admission is \$5.

SOUTH BELOIT
Fear Fest, 6512 Manchester Road, South Beloit. Open 7 p.m. to 11 p.m. Fridays and Saturdays and 7 p.m. to 10 p.m. Sundays. Admission is \$12 each for the haunted barn or hayride. FearFest.info.

JANESVILLE

Fright Factory: 1405 Riverside St., Janesville. Open 7 p.m. to 10:30 p.m. Oct. 11, Oct. 17, Oct. 18, Oct. 24, Oct. 25, Oct. 31 and Nov. 1. Admission is \$13. JanesvilleHauntedHouse.com

Janesville Community Haunted House: 207 N. Academy St., Janesville. Open 7 p.m. to 11 p.m. Fridays and Saturdays in October and 7 p.m. to 10 p.m. Thursdays and Sundays in October. Admission \$8.

Forest of Freaks: 5946 U.S. Highway 51 South, Janesville. Open 8 p.m. to midnight Fridays and Saturdays and 8 p.m. to 10:30 p.m. Sundays through Nov. 1. Admission is \$10

LAKE GENEVA
Haunted hayrides, Dan Patch Stables at the Grand Geneva, 2036 Grand Geneva Way, Lake Geneva. Open 7 p.m. to midnight Fridays and Saturdays and 7 p.m. to 10 p.m. Sundays through

Nov. 1. 262-215-5303, DanPatchStables.com

EDGERTON
Rock River Threshere Haunted Train Rides: 51 E. Cox Road, Edgerton. Open 3 p.m. to 10 p.m. Oct. 11, Oct. 18 and Oct. 25; 3 p.m. to 9 p.m. Oct. 12, Oct. 19 and Oct. 26; 6 p.m. to 10 p.m. Oct. 31. Admission is \$6. Threshere.com

WHITEWATER
Shockwave Haunts: N8660 Clover Valley Road, Whitewater. Open at 7 p.m. Fridays and Saturdays through Nov. 1. Admission is \$10. 262-473-4574, ShockwaveHaunts.com

WALWORTH
Pearce's Haunted Barn and Hayride: W5470 N. Walworth Road, Walworth. Open dusk to 10 p.m. Fridays and Saturdays through Nov. 1. Admission is \$16 for the haunted barn and \$12 for the haunted hayride. 262-949-4992, Pearce-Farms.com



A skeleton is draped over the Rock River Cannonball train's front coupler. The train depot, sawmill and sorghum mill at Thresherman's Park in Edgerton are all decorated as the backdrop for October's haunted train rides. Family-oriented rides are available earlier in the afternoon, but after 6 p.m. the ghosts and ghouls come out to give you a real fright.

MILTON

Continued from page 1

community, working with the city council, working on economic issues, long-term planning and helping to maintain city services. Hulick also said he wants to help preserve the historic nature of the community.

"The city of Milton has a proud history that I want to continue to represent in both a historic nature with the historic district but also one that is progressive and looks toward the future and future growth opportunities," he said. "I want to work with the community to realize the goals that they've established and to do that in a responsible, respectful manner, to keep the city of Milton the community it wants to be while allowing it to grow at a reasonable and responsible rate that helps the working families."

Before officially starting his new job, Hulick worked closely with Schuetz and other city staff to help him become familiar with the position.

"I had the opportunity to meet with the vast majority of the individuals who work with the (city), and everything I heard about them coming into this position has continued to ring true," Hulick said. "They're a great group of people who are dedicated to their jobs and responsibilities. It's a workforce that deeply cares about the community, so it's something that drew me to the job, and it's something that's rung true."

Hulick previously worked as the economic coordinator for the city of Janesville, being responsible for new industrial development and business retention and expansion efforts.

"I didn't focus much on the commercial side of things, but it was mainly the industrial sector, greenfield development and redevelopment of brownfield sites and

business expansion and retention efforts for existing companies," he said.

Hulick said working for Janesville helped him prepare for his job as Milton city administrator.

"It was a great position in a sense that it did prepare me very well for a large aspect of this job, especially in the economic development arena," Hulick said. "The city council, when recruiting for this position, said economic development was one of their priorities. So having my time in Janesville in the economic development department was very helpful ... to assure the council that I had the tools and objectives to exercise their goals for the community on the economic development front."

Hulick said his experience in Janesville also will help enhance communication between the two communities.

"Not that there was bad relationships by any means before, but it certainly can't help but strengthen it," Hulick said. "It will hopefully be a benefit for both communities and a benefit for the region."

Alderman David Adams said Hulick had the qualifications the city council was looking for in a city administrator.

"When the selection process came up, he seemed qualified," Adams said. "The only thing he didn't have was a lot of experience supervising people, but he had a lot of experience with economic development. That seemed to be what the council's decision was based on."

Adams said Hulick will do a quality job as city administrator.

"He's enthusiastic. He's digging in with becoming familiar with the job," Adams said. "I think he will do a good job."

Hulick said he has been interested in working in city administration since high school. He received his undergraduate degree in business from the

University of Wisconsin-Whitewater and his master's degree in public administration from Northern Illinois University. While working on his master's degree, Hulick worked in the Janesville city manager's office.

"I was involved in a wide variety of tasks in Janesville. I worked in several jobs and capacities there, and one of the things I was drawn to was community and economic development during my time there," Hulick said. "I always had an interest in government, but I really became honed in community and economic development during my time in Janesville."

Despite being a Janesville resident for most of his life, Hulick said he has enjoyed living in Milton.

"My wife is originally from Milton. She was born and raised here. She enjoyed her time here, so we had a good opportunity to move to Milton last year and we took advantage of that," Hulick said. "It was a unique set of timing and circumstances that this



Share and comment on this story. www.CommunityShoppers.com

all came together. I certainly didn't expect to be the city administrator when I moved here. It just became a unique opportunity that I couldn't pass up and one I'm very thankful to do and be a part of."

Hulick and his wife, Leslie, have been married for about two years. During his free time, Hulick enjoys reading, biking and working on projects around the house.

"I'm not a big TV guy. I like to work on our home a lot. It's still new to us, so I've done home renovations and home repairs," Hulick said. "I live a pretty quiet, simple life, but that's OK for me. I get enough excitement during the day."

JANESVILLE A FREE COMMUNITY NEWSPAPER
MESSENGER A CSI Publication

333 S. Wuthering Hills Drive, Janesville, WI 53546
 Classified: (608) 752-0777
 Circulation: (608) 755-9487
 Online: www.communityshoppers.com

Circulation: 29,075

President Sidney H. Bliss
 Editor Dan Plutchak
 Associate editor Jenny Sharp
 Local sales manager Heidi Springer
 Circulation manager Ken Curtis

OFFICE HOURS:
 Monday-Friday:
 9 a.m. to 4 p.m.

DEADLINES:
 Display ads: 5 p.m. Wednesday
 Classifieds: 11 a.m. Thursday

Deadlines are advanced one working day during holiday weeks. The Messenger reserves the right to reject or edit any advertisement at any time. The Messenger is published by CSI Media, LLC, of Delavan, Wis., which also publishes the Stateline News, Shopper Advertiser and Walworth County Sunday

WFCP CIRCULATION AUDIT BY
CIRCULATION VERIFICATION COUNCIL

wisconsin community paper

PaperChain Media's Missing Link

afcp ASSOCIATION OF FREE COMMUNITY PAPERS

Janesville Citywide Rummage Sale October 18

Place your ad & WIN PRIZES from these local businesses!

Black Bridge
BOWL

1141 Black Bridge Rd.
608-757-3030

JANESVILLE
ATHLETIC CLUB
EXPRESS

15 W. Milwaukee St. • 757-6855

JANESVILLE
ATHLETIC CLUB

OPEN 24 HOURS

1301 Black Bridge Rd. • 756-3737

SUNSET TAN
1215 Blackbridge Road • Janesville, WI

1 FREE WEEK
unlimited tanning

Member client. Level 1 Tanning. Upgrades available. Not for resale. For more information, FDA approved eyewear & local picture ID required. No cash value. Expires.



Only \$10.20 for the first 5 lines, includes your address in **BOLD!** \$2.05 each additional line. *Private party only.

Ads will run in the Janesville Messenger, Stateline News, & Walworth County Shopper Advertiser

JANESVILLE FREE COMMUNITY NEWSPAPER
MESSENGER

State line NEWS

The Shopper
Walworth County
ADVERTISER

JANESVILLE A FREE COMMUNITY NEWSPAPER
MESSENGER

333 S. Wuthering Hills
(608) 752-0777

on
Wednesday, Oct. 15th
Deadline is Monday, Oct. 13th
at 11 a.m. CALL EARLY!
www.communityshoppers.com

Place your ad
24 hours/7 days a week

Searching for the perfect pumpkin (recipe)

If you judge a vegetable's worth by how big it gets, the pumpkin is the hands-down winner. Have you ever tried to pick a big one up out of the field, only to mutter, "This thing weighs a ton"? Well, pumpkins can weigh a ton. That's right, this year, a Swiss gardener has produced a pumpkin that weighs in at 2,096 pounds — that's one ton plus 96 pounds. Beni Meier, 30, had to get a special vehicle just to transport the thing.

I don't know for sure, but I'm betting it was an Atlantic Giant pumpkin.

This variety was achieved by enthusiastic farmers who started with a Hubbard squash in the mid-1800s. The Hubbard was the largest of all squash and I fed more than 50 people once just cooking one of them. Now, the seed catalogs and grocery stores are offering a smaller variety of Hubbard, and the thrill is gone. To find the really big ones, you have to buy heirloom seed and grow it yourself.

You can find pumpkins all over, but if you're into cooking them, buyer beware: those jack-o'-lantern pumpkins look good, but they're a bit too dry and stringy for baking.

Instead, I like to use the Cinderella pumpkin, which is my absolute favorite, thanks to my brother who introduced them to



LYNN GREENE
LYNN'S PLACE

me more than a few years ago.

The name evokes the shape — nice and round but more squatty than other pumpkins. Put some wheels on the thing and you have Cinderella's coach with just a bit of mental invention. This pumpkin is a really deep reddish-orange color, which is another great thing about it because the flesh keeps its color even when cooked. It is so sweet it may just remind you of sweet potatoes. And the flesh is nice and smooth, not stringy.

I'm not the only one who fell in love with this pumpkin because you can find them at farmers markets now. Whether you have this particular variety or not, don't worry, if you are in a baking mood, choose the small pie or "sugar" pumpkin. It's a pale yellow and the taste is more mild than the Cinderella or the Hubbard. But it is comparable to the canned pumpkin we have all come to adore because of its convenience and cost.

That canned pumpkin, by the way, probably has at least one kind of winter squash in it. In a food labeling industry book,

"Food Labeling Compliance Review," James L. Summers, a consultant and food labeling expert for the Food and Drug Administration, notes that certain varieties of squash are used interchangeably with pumpkin. So, when I suggest you use squash instead of pumpkin in those recipes, don't think it's anything new; if you've been using canned pumpkin, you've been using squash.

Prepared pumpkin

— Prepared pumpkin only will keep a couple of days in the refrigerator, so plan on using any leftovers up promptly or freeze it immediately. Use pumpkin or squash such as Hubbard, butternut or turban.

- 2 cups cooked pumpkin or squash, cut into cubes
- 1/2 cup apple juice or water
- 1/3 cup brown sugar
- 2 Tbsps. butter
- 1/4 tsp. salt
- 1/2 tsp. cinnamon
- 1/4 tsp. cloves
- 1/4 tsp. ginger

Combine all ingredients and mash with a potato masher to a smooth consistency. If the pumpkin is too watery, place in a heavy stockpot and cook until

the consistency of canned pumpkin. If it is too thick, add a bit more liquid.

This can be used in any recipe that calls for canned or prepared pumpkin.

Pumpkin cookies

Makes 3-1/2 dozen

- 1/3 cup butter or margarine
- 3/4 cup brown sugar
- 2 large whole eggs
- 1 tsp. vanilla
- 1 cup prepared pumpkin
- 2-1/4 cups flour
- 4 tps. baking powder
- 1/4 tsp. salt
- 1 tsp. cinnamon
- 1/2 cups raisins (optional)
- 1/2 cup chopped nuts or toasted pumpkin seeds

Preheat oven to 350 F.

Cream together butter and brown sugar. Beat in the eggs, vanilla and pumpkin and mix until creamy. Sift together the flour, baking powder, salt and cinnamon. Stir in by hand until smooth, then add raisins and nuts if desired.

Drop by teaspoon onto a greased cookie sheet and bake 12 minutes to 15 minutes or until the bottom is lightly browned and cookie is dry.

Once the cookie is cool, you can drizzle a little powdered

sugar icing over the top, dyed a bright pumpkin color, of course.

Libby's pumpkin pie

- 3/4 cup granulated sugar
- 1 tsp. ground cinnamon
- 1/2 tsp. salt
- 1/2 tsp. ground ginger
- 1/4 tsp. ground cloves
- 2 large eggs
- 1 can (15 oz.) canned pumpkin
- 1 can (12 oz.) evaporated milk
- 1 unbaked 9-inch (4-cup volume) deep-dish pie shell

Mix sugar, cinnamon, salt, ginger and cloves in small bowl. Beat eggs in large bowl. Stir in pumpkin and sugar-spice mixture. Gradually stir in evaporated milk. Pour into pie shell.

Bake in preheated 425 F oven for 15 minutes. Reduce temperature to 350 F; bake for 40 minutes to 50 minutes or until knife inserted near center comes out clean. Cool on wire rack for two hours. Serve immediately or refrigerate.

Lynn Greene is senior editor for CSI Media, which publishes this paper. To share this column or read past Lynn's Place columns, go to CommunityShoppers.com/blogs/lynn-place-blog. Contact her at (262) 728-3424 or email lgreene@communityshoppers.com.

Fall foliage makes for scenic hikes — no matter what the route

RUSS HELWIG
WEEKLY WALK



Tuesday walk report by Marv Herman:

Eight human hikers and a dog gathered at the U.S. Highway 12 meeting place on a beautiful day for hiking. After partaking of some black walnuts painstakingly gathered and cleaned by Norwin Watson, the hikers traveled to the Nordic Ski Trails where they hiked the 3.25-mile, white-blazed trail in reverse.

Wednesday long walk report by Marv Herman:

Because many of the long hikers were occupied this day with their kayaks, only six hikers carpooled to the Wisconsin Highway 67 trailhead to hike back through the prairie, a distance of about six miles.

The weather was excellent for hiking and there were no mosquitoes in evidence. Crickets could be heard throughout the hike, and the wind blew the early fall brush of gold, tan and red as we walked. Milkweed seeds flew about in the gentle breezes as did a Monarch butterfly and a few small white and yellow cabbage butterflies. A mysterious Barbie doll, tied to a post, kept watch over the prairie. All felt that this was one of the best hikes of the year.

Wednesday short walk report by Ellen Davis:

In celebration of the cooler



From the left, Russ Helwig, Rita Fox and grandchild, Janet Bryant and Mary Primozich discuss which walk they'll take. So many choices, so little time.

weather and crisp fall air, Jake Gerlach proposed a point-to-point hike on the Ice Age Trail from Duffin Road back to the IAT parking lot on U.S. 12, with an option for a short-cut back to U.S. 12 for those not wanting to walk the full distance.

This section of trail is hilly, twisty, rocky and full of roots. But we faced the challenges with enthusiasm and no serious mishaps. The fall color was just beginning.

Tiny white wood asters still bloomed beside the trail; Virginia creeper and wild grape leaves stood out in soft shades of orange and yellow.

The lake was serene, the prairie sections muted and peaceful. Big blue stem grasses bordering the trail stood taller than our heads. As we approached the shallow end of the lake, the resident great blue heron took wing. All in all, it was one of our best hikes ever.

Another short walk by Russ:

Six of us opted to hike around Lake LaGrange, a walk of nearly three miles, qualifying it as the shortest hike of the day.

The weather was beautiful, the lake picturesque and we ambled leisurely to enjoy the

scenery. A long stop at the bench overlooking the best view of the lake was enjoyed by all.

We found a small painted turtle about two-thirds of the way around. It was quite a distance from the water with prairie and wood between, but it was heading in the direction of the lake at a very fast turtle speed.

Happy trekking, Russ

Russ Helwig is a volunteer with the Walworth/Jefferson County Chapter of the Ice Age Trail Alliance. He leads hikes on Wednesdays and on Tuesdays when desired. All ages are welcome. (262) 473-2187, www.iceagetrail.org.

OUTDOOR EVENTS

■ **Oct. 18, Ice Age Trail work:** Meet at 9 a.m. at the U.S. Highway 12 parking lot five miles east of Whitewater for trail maintenance work. Contact Andy Whitney, 262-949-0286.

■ **Oct. 19, hike the Ice Age Trail:** Meet at Judy Wildermuth's at 7:45 a.m. to carpool to Gibraltar Rock in Columbia County or meet at the new Mobile Skills Crew lot on Highway V just north of Highway J. After the hike, catch lunch somewhere and maybe visit Parfrey's Glenn, Wisconsin's first state natural area. Contact Judy Wildermuth, 262-473-2415.

■ **Oct. 21, meeting of the Walworth/Jefferson County chapter, Ice Age Trail Alliance:** Meet at 7 p.m. at U.S. Bank, Elkhorn. Contact: Andy Whitney, 262-949-0286.

■ **Oct. 22-26, Mobile Skills Crew event:** Work on the Springfield Hill segment of the IAT in Dane County. Come one or more days. Sign up at www.iceagetrail.org. Contact Gary Klatt, 262-473-4973.

■ **Tuesday and Wednesday weekly walks:** Russ Helwig leads hikes at 4 p.m. Tuesdays and 10:30 a.m. Wednesdays at the U.S. Highway 12 Ice Age National Scenic Trail crossing located about four miles east of Whitewater, about a quarter mile east of the intersection of U.S. 12 with Sweno Road. The parking lot is at the west end of Sherwood Forest Road, which is a short road that intersects U.S. 12 at each end. Walks of different distances are held on Wednesdays and also on Tuesdays when desired. All ages are welcome. A current state park pass is required to park a car at the U.S. 12 meeting place.

CROSSWORD

Across

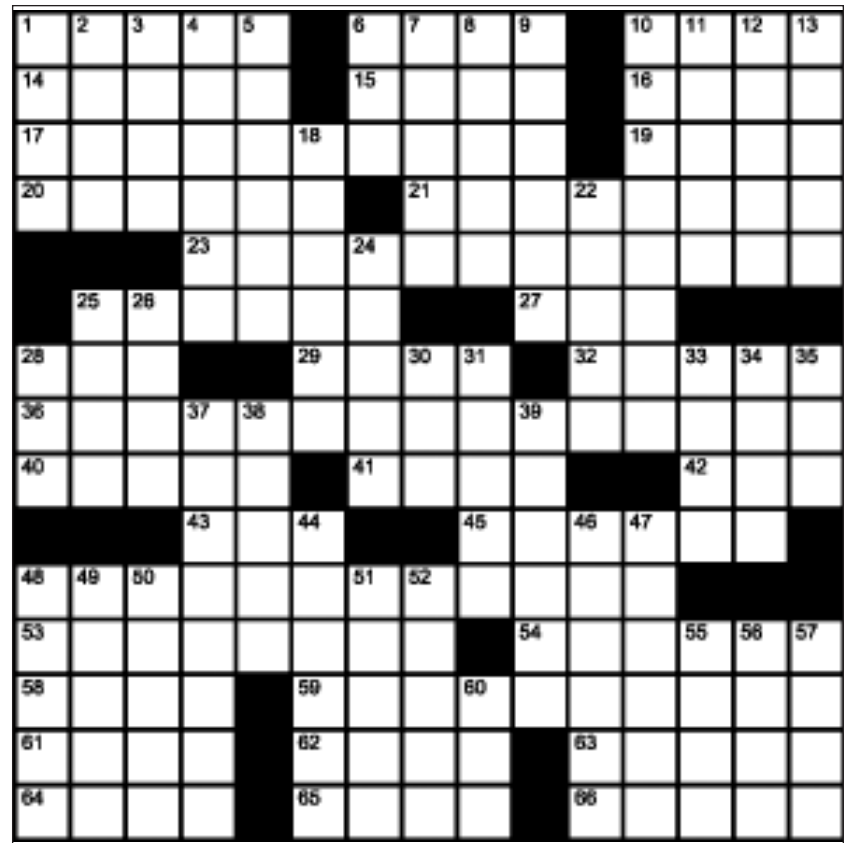
- 1. Japanese alcoholic beverages
- 6. “___ have known...” (contraction)
- 10. Air
- 14. Cast out
- 15. “My ___!”
- 16. Calendar span
- 17. Gardener
- 19. Harden
- 20. Staying power?
- 21. Etches
- 23. Snarl
- 25. Ankle injury
- 27. “I” problem
- 28. A pint, maybe
- 29. “Cool!”
- 32. Bad lighting?
- 36. Gun gamble (2 wds)
- 40. Sing like Bing
- 41. Beach bird
- 42. A hand
- 43. ___ jacket
- 45. Clippers
- 48. Entertainment recruiters (2 wds)
- 53. Short amusing opera
- 54. Esteem

- 58. Butts
- 59. Someone chosen to decide a disputed issue
- 61. #1 spot
- 62. Weaken
- 63. African antelope
- 64. Furnace output
- 65. “Planet of the ___”
- 66. English exam finale, often

Down

- 1. Transmitted
- 2. Chill
- 3. “Ol’ Man River” composer
- 4. Mint, e.g.
- 5. Breastbones
- 6. “___ me?”
- 7. Macho guys (hyphenated)
- 8. Big ape
- 9. Computer device to prevent unauthorized use
- 10. Buttonwood
- 11. Cast
- 12. Like some buckets
- 13. Extract
- 18. Focal point
- 22. Befitting a king

- 24. About
- 25. Aspersion
- 26. 100 centavos
- 28. Parenthesis, essentially
- 30. “___ we having fun yet?”
- 31. Bit of statuary
- 33. Antares, for one
- 34. “Miss ___ Regrets”
- 35. “20,000 Leagues” harpooner ___ Land
- 37. ___ Maugham, English writer
- 38. Absurd
- 39. O.K., in a way
- 44. Pontiac, e.g.
- 46. Forever, poetically
- 47. Chemical analysis (pl.)
- 48. Ark contents
- 49. Abreast (of)
- 50. Theme indicated in a title
- 51. Bacon bit
- 52. Monthly bill
- 55. Flight data, briefly
- 56. Pepsi, e.g.
- 57. Cafeteria carrier
- 60. “___ alive!” (contraction)



This week's answers



SOD
Instant Lawn

Sept., Oct. & Nov. Is a great time to lay Sod! The deadline for Seeding is Sept. 15. There is **No deadline** for laying Sod. **SOD DOES NOT** have to root down before winter! You can lay Sod up until the ground freezes solid. **Guaranteed** you will have a beautiful lawn ready to mow in the spring. **NO mud, NO weeds, NO chemicals!**

Hanover Sod Farm
2436 S. Johnson Rd., Janesville, WI 53548
Call 608-752-4030 / 800-762-8430
Picked up or delivered
The average lawn costs only \$1,000-\$1,500 dollars 174862

DYNAMITE DEALS

CLASSIFIEDS are “EXPLODING” with great deals!
www.communityshoppers.com

ADDIE'S FIREARMS
Training & Supplies
OCTOBER SPECIAL

\$25 (Reg. \$40) Long Gun Inspection & Cleaning (Parts extra)
Good through Oct. 31, 2014

- Special Orders
- Wisconsin Concealed Carry Classes (Call for details)
- Training
- Trade Ins Welcome

ADDIE'S Firearms Training & Supplies
Locally Owned - Owner Bill Disney
www.addiefirearms.com 185951

1518 Plainfield Ave. Janesville, WI 53545
608-756-1600
Find us on Facebook

DIGESTIVE HEALTH
Enzyme & 24 hr. Urine Analysis

Dr. Jacquelyn A. Baschleben, D.C. Dipl. Ac. NCCAOM, L. Ac.
Jennifer L. Bailey, Dipl. Ac. NCCAOM, L. Ac.

- Acupuncture - Board Certified
- Advanced Gentle Chiropractic

With Computerized Pro-Adjuster Technology

East-West Chiropractic Health Center, LTD.
11673 Main St., Roscoe, IL 61073 (815) 623-7694
1609 Randolph Rd., Janesville, WI (608) 758-2111
www.eastwestchiro.net www.naet.com 186006

THE RIGHT SNOWBLOWER FOR YOU! TORO www.toro.com

POWER MAX TWO STAGE

Power Max® 724 OE

- 205cc 4-cycle OHV Briggs & Stratton engine
- Electric start
- Quick Stick® Chute Control

SALE \$799⁹⁹

Power Max® 826 OTE

- 205cc Briggs & Stratton OHV engine
- Electric start
- Quick Stick® Chute Control

SALE \$999⁹⁹

POWER CLEAR SINGLE STAGE

Power Clear 518Z
99cc 4 cycle OHV engine - 18" Clearing Width
Recoil **\$359⁹⁹** SALE Electric Start **\$399⁹⁹**

Power Clear 721
212cc 4 cycle OHV engine - 21" Clearing Width
Recoil **\$499⁹⁹** SALE Electric Start **\$569⁹⁹**

Power Clear 721Q
212cc 4 cycle OHV engine w/Quick Chute Control - 21" Clearing Width
Recoil **\$669⁹⁹** SALE Electric Start **\$769⁹⁹**



518Z
38472

FINANCING AVAILABLE

Beloit **Schultz Power Equipment** 1223 Madison Road
Janesville **Porter's Lawn & Power Equip** 1640 Center Avenue

Product availability and pricing may vary per dealer. Prices shown are manufacturer's suggested promotional prices and are subject to local dealer option. *Talk with your dealer for special financing offers. For more details on products and offers, visit www.toro.com 186245

If You Have Information about A Crime, Please Call or Text The Janesville Area Crimestoppers

JANESVILLE AREA CRIME STOPPERS

756-3636
Text: JACS + Message to 274637 (CRIMES)

CASH REWARDS OF Up to \$1,000⁰⁰
CALLERS MAY REMAIN ANONYMOUS 167343

Autumn Harvest Days!
Seasons are changing and colder days are just around the corner! Time to get your building site ready!
CHECK OUT OUR WINTER BUILD PROGRAM!
Built on your level site. MN Lic BC048615

Northland Buildings Local Sales Consultant
20th Anniversary
northlandbuildings.com 1-800-736-4510

Arik Hertz, Southeast WI 186408 JM

GARAGES
Get Ready For Winter. Garage Now!

FREE ESTIMATES
EXCELLENT WORKMANSHIP
ON BUILDING AND CONCRETE SLAB
WE REMOVE OLD GARAGES & CONCRETE

See our ACTION VIDEO! at AmericanGarageBuilders.com

AMERICAN GARAGE BUILDERS **JANESVILLE**
608-756-0400 185911

FOR HOME DELIVERY CALL:
(608) 755-9487

JANESVILLE MESSENGER
A PUBLICATION
csj PUBLICATION 167342

UW-Rock starts from scratch, but ...

Rattlers resume volleyball program, look to the future

BY TODD MISHLER
SPORTS EDITOR

Statistics often don't tell the entire story, but the numbers don't lie when it comes to maintaining many of the athletic teams at the University of Wisconsin-Rock County.

That's especially true when it involves a new coach who's been tasked with resurrecting a program after a five-year hiatus.

Jaclyn Bradley found herself in that unenviable position this fall as the Rattlers resumed playing volleyball for the first time since Meg Emanuel's departure in 2009.

UW-Rock Athletic Director Grant McNall approached Bradley this summer about the job. She accepted and officially took the reins on Aug. 18, starting with three players. Bradley increased the roster to eight after school started in September and will end the season with six participants.

"These girls have very different skill levels and experience ... some played in high school and others only up to sixth or seventh grade," Bradley said of trying to balance her coaching and teaching strategies. "We didn't have a lot of time to get things together or for me to look into potential players, but we got enough. We started with the fundamentals and keep trying to move forward."

"Even though we haven't won yet, I can tell everybody has learned and is improving, and it shows on the court," Bradley added. "They've worked hard and they're coming together as a team. They're quick learners. And they're probably one of the best group of girls a new coach could ask for."

The school brought the sport back last year as a club sport and this year they again are competing in the Wisconsin Collegiate Conference.

The current roster features Emma Stultz, Melissa McGrath and Carah Johnston of Beloit Memorial, Danielle Dorweiler of Beloit Turner, Skye Galaviz of Janesville Craig and Tiffanie Lamb of Janesville Parker.



Bradley



TERRY MAYER/STAFF

First-year UW-Rock County coach Jaclyn Bradley keeps a watchful eye on players Melissa McGrath, above, and Danielle Dorweiler, below, during a recent volleyball practice.

Bradley said that she and the players have had to temper their expectations and realize that starting a program from scratch isn't easy and will take time.

"Our biggest accomplishment is just coming together as a team," she said. "The first couple of matches you could see they didn't want to step on each other's toes or get in the way ... they were too timid. But they take criticism and advice well and we're building. Defense is our biggest issue; we need good passes. I keep telling them that a good offense starts with good defense, and that means good passes to the setter, and that has improved."

Bradley knows the territory. She played volleyball for the Rattlers for two years and led the team in kills. She attended Trinity Christian High School in Virginia in 2004 and 2005 and moved to Janesville halfway through her sophomore year, attending and finishing her final two prep seasons at Craig.

The Washington, D.C., native also participated in Junior Olympics while living in Virginia and played with a traveling team out of Madison before attending UW-Rock.

Now that she and her first team have gotten their feet wet, Bradley said she intends to attend as many high school matches as she can to build relationships with coaches and prospective student-athletes around the Rock County area.

"I've always had such a passion for playing volleyball, but coaching never crossed my mind," Bradley said. "I never saw all of the things that went into it, and after our first match I went out into the hallway and was so overwhelmed."

"But now I'm so grateful that this job fell into my lap. It always was rewarding to win as a player, but it's even more rewarding to be a coach and see them changing and coming together. I get to teach these girls and bring out their potential."



Nice weather up north slowing some migrating birds

The dogs and I took sunrise hikes along the Rock River recently to see what waterfowl were migrating. The cool but relatively nice weather in most parts of the north was delaying migration of ducks and geese. In fact, some of my best viewing areas were almost vacant of migrating birds.

I took a short ride upriver through Afton and along River Road to the Wisconsin Highway 11 bridge. That stretch of river usually has a good array of species; it's shallow, so it's a good feeding area. Plus, it's tree lined and rather narrow, offering good wind protection.

I also stopped by Preservation Park in the town of Beloit because that area seems to be a rest stop for white pelicans and loons, but I didn't see much action. Some birds of prey were showing movement, such as the American kestrels and short- and rough-legged hawks.

Everyone's favorite birds, the ruby-throated hummers, were moving. But keep your feeders up until the end of the



JIM CHEADLE
SCALES AND TAILS

month.

The belief that by keeping your feeders up, you will cause the birds to stay rather than migrate is a myth. Migrants and a few persistent hummers appreciate your offerings.

During spring and fall migrations, I mix my sugar and water 3-to-1 rather than the normal 4-to-1 mixture. I figure they need a little boost in energy, because these magnificent little creatures will cross the Gulf of Mexico while heading to their wintering grounds in Central America.

Hummingbirds are not high fliers and often stay just over the tree tops, which aids them in sighting food sources. Unlike many waterfowl, they are not able to tol-

erate the cold temperatures at high altitudes. This fact debunks the old wives' tale about them riding on the backs of migrating geese.

Many hummers stage in Florida before their longest nonstop flight of about 500 miles crossing the gulf. They move just above the waves when flying over water. They also stage before crossing in Louisiana and Texas, while some take the land route through Mexico.

- With the favorable weather up north, musky fishermen were out, and their catches rated fair for numbers, with sizes ranging from the mid-30s to mid-40s in length. The most productive baits were artificial.

- It seems more and more folks are shying away from sucker fishing because mortality reports are worrying them. Now that fish are being tracked more efficiently, we're finding many with cut leaders and hooks still attached, preventing them

from properly swallowing. They end up starving to death.

For fish of most species, if you use live bait, a circle hook will ensure a safe and uninjured release.

- My fishing plans now include mornings on the tributaries on Lake Michigan. On windy days when the lake is not boat friendly, I will be wading or shore fishing. I like areas of the Root River in Racine, but be ready to move. When the fish run, sometimes up to 100 yards along the shore, you have to move with them. The best way to tire them is to use 10- and 12-foot noodle rods.

The wild goose says: Where else can you leave for a day outdoors with guns and rods to have a fun day? Don't forget the camera.

Write Jim Cheadle at 4108 W. Spring Creek, Beloit, WI 53511. Or email him at cjcheadle@gmail.com.

Spotlight on ENTERTAINMENT

Come Experience



OUR New YEAR, New LOOK!





Serving Breakfast All Day!
608-755-1983
 1010 N. Washington St. • Janesville
 Open 7 Days a Week 6AM-3PM • Fridays 6AM-8PM

\$2 OFF Fish Fry
 1010 N. Washington St. Janesville • 608.755.1983
 One coupon per person per visit. Must present coupon before ordering. Not valid with other offers. Dine-in only. Expires 1/31/15.

\$3 OFF Any Order \$20 Or More
 1010 N. Washington St. Janesville • 608.755.1983
 One coupon per person per visit. Must present coupon before ordering. Not valid with other offers. Dine-in only. Expires 1/31/15.

10% OFF Total Purchase
 Breakfast, Lunch or Dinner
 1010 N. Washington St. Janesville • 608.755.1983
 One coupon per person per visit. Must present coupon before ordering. Not valid with other offers. Dine-in only. Expires 1/31/15. 186101

Prepare to be Scared!
 at the 12th Annual Sleepy Hollow



HAUNTED HAYRIDE
 at Dan Patch Stables
 Grand Geneva Resort & Spa, Lake Geneva, WI

OCT. 3RD THRU NOV. 1ST
 Fri. & Sat. Nights Open 6:00 PM to Midnight
 Sun. Nights Open 6:00-10:00 PM
 Extended hours until midnight on Sun., Oct. 12th "Oktoberfest!"

At the request of our loyal customers, a special "FAMILY FRIENDLY" (less scary) hayride is available ONLY at 6:00 PM

Adults \$15.00 • Kids 6 & under \$6.00 • (SORRY, NO CREDIT CARDS)
 ADMISSION ON A FIRST COME, FIRST SERVED BASIS

For additional information
 (262) 215-5303 or (262) 215-2105
 or www.danpatchstables.com
 COME ENJOY THE NIGHTLY BONFIRE!




Have an item Under \$75 to sell?



Get Some Cash Fast!!
Sell it with the CSI Classifieds!!

3 lines for 2 Weeks in all of our publications

Only \$5

The Shopper Walworth County ADVERTISER
State line NEWS
JANESVILLE MESSENGER A FREE COMMUNITY NEWSPAPER

Walworth County Shopper • Delavan • 262-728-3424
Stateline News • Beloit • 608-365-1663 or 815-389-2722
Janesville Messenger • Janesville • 608-752-0777

csi Media, LLC
www.communityshoppers.com

Private Party Only - All ads are prepaid, 1 item per ad, price must be included in ad, no refunds for early ad cancellations after first publication, check ad on first insertion for accuracy.



FOR SALE

2 BURIAL PLOTS at Floral Lawn, Blackhawk Blvd, South Beloit, \$2,100 608-362-5068

2 CHROME RIMS, (P225/60 R16) 2 Rim tire on 1, \$50. 815-540-3550

2002 BUICK LE SABRE, 98K miles, great shape, \$4,500. 1995 DODGE DAKOTA, 67K actual miles. Needs some body work, \$1,000. TROYBILT 8HP Tomahawk brush/yard waste shredder, \$700. 608-289-4889

48", 5-light, 3-door oak MEDICINE, CABINET \$35 OBO 608-362-2446

52 BIRDS & BLOOMS, 31 Reminiscence, \$39 OBO, 608-201-8854

ACTION CAMERA, new, in box, like GoPro, \$75 262-835-0505

ANTHROCITE COAL Burn Clean, no smoke. \$9.00 per 50 lb. bag. 4 sizes and delivery available. Also looking for resellers. Call 920-838-2200 Clip and Save this ad. (wcan)

AQUARIUM, 30-gallon marineland w/setup, \$70 Delavan 920-256-1253

ARIENS SNOWBLOWER, 24", good cond., asking \$250, 608-373-0791

CAR BACKUP CAMERA KIT w/pop up screen, \$75, 262-835-0505

CHRISTMAS WOODEN Rocking Horses handmade for kids. 262-723-5132 or 262-275-1184

COMPUTER DESK, \$50. Dining room drop-leaf table & 4 chairs with matching china hutch. 608-868-3496

DORM SIZE REFRIGERATOR, \$50. 608-755-5789

ELECTRIC STOVE, ceramic top, self cleaning, \$25, 608-364-0535

EXTRA LARGE LONG mens black leather coat, \$60, OBO 608-302-5128

FRENCH PATIO DOOR, 71 x 80, \$75, OBO 815-289-8675

GAMBLES ROTOTILLER, needs pin, \$75, 815-389-9096

Have an item under \$75 to sell?

3 Lines for 2 Weeks in all of our Publications **ONLY \$5!!!** *Some restrictions, ask your Ad-Visor for details

Interior Pre Hung DOORS, new/used, various sizes \$10 OBO 608-362-2446

JANESVILLE MESSENGER 608-752-0777 HOURS: MONDAY-FRIDAY 9-4 CLOSED SATURDAY & SUNDAY

John Deere snow thrower, 21", starts easily, \$75, Janesville, 608-756-2349



KIMBALL organ w/bench, excellent condition, accompanied w/several different acoustic sounds 608-362-7776

FOR SALE

PINE CONES for sale, 5 gallons for \$5, 608-752-1180



PROVINCIAL dining room w/6 off-white chairs, 2 table leaves, buffet: beveled glass w/lights, 608-362-7776

ROCKWELL table saw w/52" rip capacity, 3HP single phase, \$950 608-921-4010

ROLLER SKATES, wood wheels, size, 6, \$25, 608-364-0535

SCHWINN AIRODYNE, biofit exercise bike. Great cond. \$75. 262-248-2346

Serta Sleep system beds, Kingsize, \$400; Wood dining room table-4 chairs w/pads, \$100; Wood Entertainment Center, \$70; Merits power wheelchair P320-Junior, \$300; Handiquilter w/handles-tables, \$100, all prices negotiable, call 608-346-9121

SET OF 4 HANKOOK OPTIMO 215-45R17 tires with 1,000 miles. \$320 262-215-9477

SHORT BLACK mens leather coat large, \$60, 608-302-5128

SINGER SEWING machine \$25.00, Wen speed saw, Black & Decker cordless drill with titanium drill set, \$50 for both 608-752-7722

SMALL WOOD Drop-leaf table w/2 chairs. \$40 OBO 262-279-6480

SOFTUB MODEL T-300 portable spa, enjoy full size cushioned luxury, runs on 110 outlet, water heated by motor, (up to 105 degrees), no heater to run, outer diameter 78" height 27", seats 5-6 adults, bought in March, used 5 months, \$4995 new, asking \$3500, 262-949-4045, www.softub.com for more details

Standing large butcher block on wheels, excellent condition, 608-362-7776

The Janesville Messenger Office Hours are: Monday-Friday 9-4 Closed Saturday & Sunday

WE buy, sell & trade guns. Beloit Sport Center, 557 E. Grand. 608-365-6952

WEATHER TECH Floor Liners for Ford Edge 2011, Tan color, front and back floor coverage. \$85. 262-215-2997

WOOD BEDROOM SET: full-size w/headboard & mattress, nightstands, dresser w/mirror & 4-drawer chest \$450 Call/text 608-289-6985

Woods brush hog; early '50s IH crew cab pickup truck; early '50s Chevy 4-door sedan; Yamaha Breeze 4-wheel ATV; Starcraft aluminum sportsman's boat; fiberglass & aluminum canoes; fishing boat & trailer; Loadmaster steel plate camping trailer; boat trailer & others; livestock watering tanks; lots of decorative iron farm implements; pallet racking; industrial shelving; scrap iron.

Terms: Cash or approved check. 10% buyer's fee. All purchases to be paid for & removed day of Auction.

We can sell YOURS, too. See us on Facebook - WiFi available

United Country BA&R Beloit Auction & Realty, Inc. 535 W. Grand Ave., Beloit, WI www.beloitauktion.com Toll Free: 877-364-1965

Richard Ranft, CAI, GPPA, AARE Registered Wisconsin Auctioneer #237 Registered Illinois Auctioneer #441.001071

BUSINESS NOTICE

Acorn Stairlifts. The AFFORDABLE solution to your stairs! **Limited time - \$250 Off Your Stairlift Purchase!** Buy Direct & SAVE. Please call 800-598-6714 for FREE DVD and brochure. (wcan)

AIRLINE MANUFACTURING CAREERS Start Here - Get trained as FAA certified Aviation Technician. Financial aid for qualified students. Job placement assistance. Call Aviation Institute of Maintenance 888-686-1704

All Things Basement! Basement Systems Inc. Call us for all of your basement needs! Waterproofing, Finishing, Structural Repairs, Humidity and Mold Control. FREE ESTIMATES! Call 888-929-8307 (wcan)

ARE YOU in BIG trouble with the IRS? Stop wage & bank levies, liens & audits, unfiled tax returns, payroll issues, & resolve tax debt FAST. Seen on CNN. A BBB. Call 800-601-2165. (wcan)

Bundle & Save on your TV, Internet, Phone!!! Call Bundle Deals NOW Compare all Companies, Packages and Prices! Call 1-888-986-3957 TODAY!

DIRECTV starting at \$24.95/mo. Free 3-Months of HBO, Starz, SHOWTIME & CINEMAX. FREE Receiver Upgrade! 2014 NFL Sunday Ticket Included with Select Packages. Some exclusions apply - Call for details. 800-918-1046 (wcan)

DISH TV Retailer. Starting at \$19.99/month (for 12 mos.) & High Speed Internet starting at \$14.95/month (where available). SAVE! Ask About SAME DAY Installation! CALL NOW! 800-374-3940 (wcan)

DO YOU NEED TO ADVERTISE? Make ONE call to affordably advertise in 79 Wisconsin Shoppers & Buyers' Guides! Reach nearly 1.6 MILLION households! As low as \$2.27 per paper! Call us today!

Publishers Development Service, Inc. (PDS, Inc.) 1-800-236-0737 www.pdsadnet.com (wcan)

Do you owe over \$10,000 to the IRS or State in back taxes? Get tax relief now! Call BlueTax, the nation's full service tax solution firm. 800-671-9189 (wcan)

FRESH APPLES, cider, fruit wines & more. Apple Barn Orchard and Winery W6384 Sugar Creek Rd Elkhorn, WI 53121 www.applebarnorchard and winery.com 262-728-3266

Get Lightning Fast High Speed Internet. AT&T U-Verse Plans starting at \$14.95/mo! BUNDLE & save more with AT&T Internet+Phone+TV. CALL NOW. Offers End Soon! 855-980-5126

GUN SHOW OCT 17, 18, 19. Monroe Co. Fairgrounds TOMAH, WI. Fri. 3-8:30pm, Sat. 9-5pm, Sun. 9-3pm. Info: 563-608-4401, or markkraus promotions.net (wcan)

GUN SHOW OCT 17, 18, 19. RACINE CO. FAIR-GROUNDS, 19805 Durard Ave, Union Grove, WI. Fri. 3pm-8pm, Sat. 9am-5pm, Sun. 9am-3pm. Adm. \$6. 14 & under free. Free Gun Raffles! 608-752-6677 www.bobandrocco.com

BUSINESS NOTICE

HOTELS FOR HEROS - to find out more about how you can help our service members, veterans and their families in their time of need, visit the Fisher House website at www.fisherhouse.org (wcan)

Make a Connection. Real People, Flirty Chat. Meet singles right now! Call LiveLinks. Try it FREE. Call NOW: Call 1-877-737-9447 18+

Meet singles right now! No paid operators, just real people like you. Browse greetings, exchange messages and connect live. Try it free. Call now: 800-387-3590 (wcan)

My Computer Works - Computer Problems? Viruses, Spyware, Email, Printer Issues, Bad Internet Connections - FIX IT NOW! Professional, US Based Technicians. \$25 off Service. Call for Immediate Help. 800-611-2173 (wcan)

NEW MATTRESS SETS from \$89 All Sizes In Stock! 9 Styles! PlymouthFurnitureWI.com 2133 Eastern Ave Plymouth WI Open 7 Days A Week (wcan)

REDUCE YOUR CABLE BILL! Get a whole-home Satellite system installed at NO COST and programming starting at \$19.99/mo. FREE HD/DVR Upgrade to new callers, SO CALL NOW! 800-492-0375 (wcan)

REDUCE Your Past Tax Bill by as much as 75%. Stop Levies, Leins, and Wage Garnishments. Call **The Tax DR.** Now to see if you qualify. 800-819-0736 (wcan)

Safe Step Walk-In Tub Alert for Seniors. Bathroom falls can be fatal. Approved by Arthritis Foundation. Therapeutic Jets. Less Than 4 Inch Step-In. Wide Door. Anti-Slip Floors. American Made. Installation Included. Call 800-940-3411 for \$750 Off. (wcan)

Safe Step Walk-In Tub Alert for Seniors. Bathroom falls can be fatal. Approved by Arthritis Foundation. Therapeutic Jets. Less Than 4 Inch Step-In. Wide Door. Anti-Slip Floors. American Made. Installation Included. Call 800-940-3411 for \$750 Off. (wcan)

Safe Step Walk-In Tub Alert for Seniors. Bathroom falls can be fatal. Approved by Arthritis Foundation. Therapeutic Jets. Less Than 4 Inch Step-In. Wide Door. Anti-Slip Floors. American Made. Installation Included. Call 800-940-3411 for \$750 Off. (wcan)

Safe Step Walk-In Tub Alert for Seniors. Bathroom falls can be fatal. Approved by Arthritis Foundation. Therapeutic Jets. Less Than 4 Inch Step-In. Wide Door. Anti-Slip Floors. American Made. Installation Included. Call 800-940-3411 for \$750 Off. (wcan)

Safe Step Walk-In Tub Alert for Seniors. Bathroom falls can be fatal. Approved by Arthritis Foundation. Therapeutic Jets. Less Than 4 Inch Step-In. Wide Door. Anti-Slip Floors. American Made. Installation Included. Call 800-940-3411 for \$750 Off. (wcan)

Safe Step Walk-In Tub Alert for Seniors. Bathroom falls can be fatal. Approved by Arthritis Foundation. Therapeutic Jets. Less Than 4 Inch Step-In. Wide Door. Anti-Slip Floors. American Made. Installation Included. Call 800-940-3411 for \$750 Off. (wcan)

Safe Step Walk-In Tub Alert for Seniors. Bathroom falls can be fatal. Approved by Arthritis Foundation. Therapeutic Jets. Less Than 4 Inch Step-In. Wide Door. Anti-Slip Floors. American Made. Installation Included. Call 800-940-3411 for \$750 Off. (wcan)

Safe Step Walk-In Tub Alert for Seniors. Bathroom falls can be fatal. Approved by Arthritis Foundation. Therapeutic Jets. Less Than 4 Inch Step-In. Wide Door. Anti-Slip Floors. American Made. Installation Included. Call 800-940-3411 for \$750 Off. (wcan)

Safe Step Walk-In Tub Alert for Seniors. Bathroom falls can be fatal. Approved by Arthritis Foundation. Therapeutic Jets. Less Than 4 Inch Step-In. Wide Door. Anti-Slip Floors. American Made. Installation Included. Call 800-940-3411 for \$750 Off. (wcan)

Safe Step Walk-In Tub Alert for Seniors. Bathroom falls can be fatal. Approved by Arthritis Foundation. Therapeutic Jets. Less Than 4 Inch Step-In. Wide Door. Anti-Slip Floors. American Made. Installation Included. Call 800-940-3411 for \$750 Off. (wcan)

Safe Step Walk-In Tub Alert for Seniors. Bathroom falls can be fatal. Approved by Arthritis Foundation. Therapeutic Jets. Less Than 4 Inch Step-In. Wide Door. Anti-Slip Floors. American Made. Installation Included. Call 800-940-3411 for \$750 Off. (wcan)

Safe Step Walk-In Tub Alert for Seniors. Bathroom falls can be fatal. Approved by Arthritis Foundation. Therapeutic Jets. Less Than 4 Inch Step-In. Wide Door. Anti-Slip Floors. American Made. Installation Included. Call 800-940-3411 for \$750 Off. (wcan)

Safe Step Walk-In Tub Alert for Seniors. Bathroom falls can be fatal. Approved by Arthritis Foundation. Therapeutic Jets. Less Than 4 Inch Step-In. Wide Door. Anti-Slip Floors. American Made. Installation Included. Call 800-940-3411 for \$750 Off. (wcan)

BUSINESS NOTICE

SOCIAL SECURITY DISABILITY BENEFITS. Unable to work? Denied benefits? We Can Help! WIN or Pay Nothing! Contact Bill Gordon & Associates at 800-960-0307 to start your application today! (wcan)

STOCK YOUR POND OR LAKE NOW! All varieties of Pan Fish, Game Fish and Forage Minnows. Aeration Systems also available. **Roeselerfishfarm.com 920-696-3090 (wcan)**

SUPPORT our service members, veterans and their families in their time of need. For more information visit the Fisher House website at www.fisherhouse.org

Viagra 100MG and Cialis 20mg! 40 pills + 4/FREE for only \$99.00 #1 Male Enhancement, Discreet Shipping. Save \$50! Buy The Blue Pill! 1-800-213-6202

VIROQUA GUN SHOW Oct. 24 & 25. Vernon City. Fairgrounds, Just Off Hwy 14/27. Fri. 3-8pm, Sat. 8am-4pm. Adm. \$5. BUY-SELL-TRADE-BROWSE Gun Buyer Shows, 608-548-4867 (wcan)

WCAN (Wisconsin Community Ad Network) and/or the member publications review ads to the best of their ability. Unfortunately, many unscrupulous people are ready to take your money! **PLEASE BE CAREFUL ANSWERING ANY AD THAT SOUNDS TOO GOOD TO BE TRUE!** For more information, or to file a complaint regarding an ad, please contact **The Department of Trade, Agriculture & Consumer Protection 1-800-422-7128 (wcan)**

WCAN (Wisconsin Community Ad Network) and/or the member publications review ads to the best of their ability. Unfortunately, many unscrupulous people are ready to take your money! **PLEASE BE CAREFUL ANSWERING ANY AD THAT SOUNDS TOO GOOD TO BE TRUE!** For more information, or to file a complaint regarding an ad, please contact **The Department of Trade, Agriculture & Consumer Protection 1-800-422-7128 (wcan)**

WCAN (Wisconsin Community Ad Network) and/or the member publications review ads to the best of their ability. Unfortunately, many unscrupulous people are ready to take your money! **PLEASE BE CAREFUL ANSWERING ANY AD THAT SOUNDS TOO GOOD TO BE TRUE!** For more information, or to file a complaint regarding an ad, please contact **The Department of Trade, Agriculture & Consumer Protection 1-800-422-7128 (wcan)**

WCAN (Wisconsin Community Ad Network) and/or the member publications review ads to the best of their ability. Unfortunately, many unscrupulous people are ready to take your money! **PLEASE BE CAREFUL ANSWERING ANY AD THAT SOUNDS TOO GOOD TO BE TRUE!** For more information, or to file a complaint regarding an ad, please contact **The Department of Trade, Agriculture & Consumer Protection 1-800-422-7128 (wcan)**

WCAN (Wisconsin Community Ad Network) and/or the member publications review ads to the best of their ability. Unfortunately, many unscrupulous people are ready to take your money! **PLEASE BE CAREFUL ANSWERING ANY AD THAT SOUNDS TOO GOOD TO BE TRUE!** For more information, or to file a complaint regarding an ad, please contact **The Department of Trade, Agriculture & Consumer Protection 1-800-422-7128 (wcan)**

WCAN (Wisconsin Community Ad Network) and/or the member publications review ads to the best of their ability. Unfortunately, many unscrupulous people are ready to take your money! **PLEASE BE CAREFUL ANSWERING ANY AD THAT SOUNDS TOO GOOD TO BE TRUE!** For more information, or to file a complaint regarding an ad, please contact **The Department of Trade, Agriculture & Consumer Protection 1-800-422-7128 (wcan)**

WCAN (Wisconsin Community Ad Network) and/or the member publications review ads to the best of their ability. Unfortunately, many unscrupulous people are ready to take your money! **PLEASE BE CAREFUL ANSWERING ANY AD THAT SOUNDS TOO GOOD TO BE TRUE!** For more information, or to file a complaint regarding an ad, please contact **The Department of Trade, Agriculture & Consumer Protection 1-800-422-7128 (wcan)**

WCAN (Wisconsin Community Ad Network) and/or the member publications review ads to the best of their ability. Unfortunately, many unscrupulous people are ready to take your money! **PLEASE BE CAREFUL ANSWERING ANY AD THAT SOUNDS TOO GOOD TO BE TRUE!** For more information, or to file a complaint regarding an ad, please contact **The Department of Trade, Agriculture & Consumer Protection 1-800-422-7128 (wcan)**

WCAN (Wisconsin Community Ad Network) and/or the member publications review ads to the best of their ability. Unfortunately, many unscrupulous people are ready to take your money! **PLEASE BE CAREFUL ANSWERING ANY AD THAT SOUNDS TOO GOOD TO BE TRUE!** For more information, or to file a complaint regarding an ad, please contact **The Department of Trade, Agriculture & Consumer Protection 1-800-422-7128 (wcan)**

WCAN (Wisconsin Community Ad Network) and/or the member publications review ads to the best of their ability. Unfortunately, many unscrupulous people are ready to take your money! **PLEASE BE CAREFUL ANSWERING ANY AD THAT SOUNDS TOO GOOD TO BE TRUE!** For more information, or to file a complaint regarding an ad, please contact **The Department of Trade, Agriculture & Consumer Protection 1-800-422-7128 (wcan)**

WCAN (Wisconsin Community Ad Network) and/or the member publications review ads to the best of their ability. Unfortunately, many unscrupulous people are ready to take your money! **PLEASE BE CAREFUL ANSWERING ANY AD THAT SOUNDS TOO GOOD TO BE TRUE!** For more information, or to file a complaint regarding an ad, please contact **The Department of Trade, Agriculture & Consumer Protection 1-800-422-7128 (wcan)**

WCAN (Wisconsin Community Ad Network) and/or the member publications review ads to the best of their ability. Unfortunately, many unscrupulous people are ready to take your money! **PLEASE BE CAREFUL ANSWERING ANY AD THAT SOUNDS TOO GOOD TO BE TRUE!** For more information, or to file a complaint regarding an ad, please contact **The Department of Trade, Agriculture & Consumer Protection 1-800-422-7128 (wcan)**

WCAN (Wisconsin Community Ad Network) and/or the member publications review ads to the best of their ability. Unfortunately, many unscrupulous people are ready to take your money! **PLEASE BE CAREFUL ANSWERING ANY AD THAT SOUNDS TOO GOOD TO BE TRUE!** For more information, or to file a complaint regarding an ad, please contact **The Department of Trade, Agriculture & Consumer Protection 1-800-422-7128 (wcan)**

WCAN (Wisconsin Community Ad Network) and/or the member publications review ads to the best of their ability. Unfortunately, many unscrupulous people are ready to take your money! **PLEASE BE CAREFUL ANSWERING ANY AD THAT SOUNDS TOO GOOD TO BE TRUE!** For more information, or to file a complaint regarding an ad, please contact **The Department of Trade, Agriculture & Consumer Protection 1-800-422-7128 (wcan)**

WCAN (Wisconsin Community Ad Network) and/or the member publications review ads to the best of their ability. Unfortunately, many unscrupulous people are ready to take your money! **PLEASE BE CAREFUL ANSWERING ANY AD THAT SOUNDS TOO GOOD TO BE TRUE!** For more information, or to file a complaint regarding an ad, please contact **The Department of Trade, Agriculture & Consumer Protection 1-800-422-7128 (wcan)**

MEDICAL/ HEALTH

Attention: VIAGRA and CIALIS USERS! A cheaper alternative to high drug-store prices! 50 Pill Special - \$99, FREE Shipping! 100% Guaranteed. CALL NOW: 800-916-8059 (wcan)

Medical Guardian - Top-rated medical alarm & 24/7 medical alert monitoring. For a limited time, get free equipment, no activation fees, no commitment, a 2nd waterproof alert button for free & more! Only \$29.95 per month. **800-281-6138 (wcan)**

VIAGRA 100MG and CIALIS 20mg! 40 Pills + 10 FREE. SPECIAL \$99.00 100% guaranteed. FREE Shipping! 24/7 CALL NOW! 1-888-223-8818

VIAGRA 100mg or CIALIS 20mg 40 tabs + 10 FREE! All for \$99 including Shipping! Discreet, Fast Shipping. 1-888-836-0780

VIAGRA 100MG and Cialis 20mg! 40 pills + 4/FREE for only \$99.00 #1 Male Enhancement, Discreet Shipping. Save \$50! Buy The Blue Pill! 1-800-213-6202

VIROQUA GUN SHOW Oct. 24 & 25. Vernon City. Fairgrounds, Just Off Hwy 14/27. Fri. 3-8pm, Sat. 8am-4pm. Adm. \$5. BUY-SELL-TRADE-BROWSE Gun Buyer Shows, 608-548-4867 (wcan)

WCAN (Wisconsin Community Ad Network) and/or the member publications review ads to the best of their ability. Unfortunately, many unscrupulous people are ready to take your money! **PLEASE BE CAREFUL ANSWERING ANY AD THAT SOUNDS TOO GOOD TO BE TRUE!** For more information, or to file a complaint regarding an ad, please contact **The Department of Trade, Agriculture & Consumer Protection 1-800-422-7128 (wcan)**

WCAN (Wisconsin Community Ad Network) and/or the member publications review ads to the best of their ability. Unfortunately, many unscrupulous people are ready to take your money! **PLEASE BE CAREFUL ANSWERING ANY AD THAT SOUNDS TOO GOOD TO BE TRUE!** For more information, or to file a complaint regarding an ad, please contact **The Department of Trade, Agriculture & Consumer Protection 1-800-422-7128 (wcan)**

WCAN (Wisconsin Community Ad Network) and/or the member publications review ads to the best of their ability. Unfortunately, many unscrupulous people are ready to take your money! **PLEASE BE CAREFUL ANSWERING ANY AD THAT SOUNDS TOO GOOD TO BE TRUE!** For more information, or to file a complaint regarding an ad, please contact **The Department of Trade, Agriculture & Consumer Protection 1-800-422-7128 (wcan)**

WCAN (Wisconsin Community Ad Network) and/or the member publications review ads to the best of their ability. Unfortunately, many unscrupulous people are ready to take your money! **PLEASE BE CAREFUL ANSWERING ANY AD THAT SOUNDS TOO GOOD TO BE TRUE!** For more information, or to file a complaint regarding an ad, please contact **The Department of Trade, Agriculture & Consumer Protection 1-800-422-7128 (wcan)**

WCAN (Wisconsin Community Ad Network) and/or the member publications review ads to the best of their ability. Unfortunately, many unscrupulous people are ready to take your money! **PLEASE BE CAREFUL ANSWERING ANY AD THAT SOUNDS TOO GOOD TO BE TRUE!** For more information, or to file a complaint regarding an ad, please contact **The Department of Trade, Agriculture & Consumer Protection 1-800-422-7128 (wcan)**

WCAN (Wisconsin Community Ad Network) and/or the member publications review ads to the best of their ability. Unfortunately, many unscrupulous people are ready to take your money! **PLEASE BE CAREFUL ANSWERING ANY AD THAT SOUNDS TOO GOOD TO BE TRUE!** For more information, or to file a complaint regarding an ad, please contact **The Department of Trade, Agriculture & Consumer Protection 1-800-422-7128 (wcan)**

WCAN (Wisconsin Community Ad Network) and/or the member publications review ads to the best of their ability. Unfortunately, many unscrupulous people are ready to take your money! **PLEASE BE CAREFUL ANSWERING ANY AD THAT SOUNDS TOO GOOD TO BE TRUE!** For more information, or to file a complaint regarding an ad, please contact **The Department of Trade, Agriculture & Consumer Protection 1-800-422-7128 (wcan)**

WCAN (Wisconsin Community Ad Network) and/or the member publications review ads to the best of their ability. Unfortunately, many unscrupulous people are ready to take your money! **PLEASE BE CAREFUL ANSWERING ANY AD THAT SOUNDS TOO GOOD TO BE TRUE!** For more information, or to file a complaint regarding an ad, please contact **The Department of Trade, Agriculture & Consumer Protection 1-800-422-7128 (wcan)**

WCAN (Wisconsin Community Ad Network) and/or the member publications review ads to the best of their ability. Unfortunately, many unscrupulous people are ready to take your money! **PLEASE BE CAREFUL ANSWERING ANY AD THAT SOUNDS TOO GOOD TO BE TRUE!** For more information, or to file a complaint regarding an ad, please contact **The Department of Trade, Agriculture & Consumer Protection 1-800-422-7128 (wcan)**

WCAN (Wisconsin Community Ad Network) and/or the member publications review ads to the best of their ability. Unfortunately, many unscrupulous people are ready to take your money! **PLEASE BE CAREFUL ANSWERING ANY AD THAT SOUNDS TOO GOOD TO BE TRUE!** For more information, or to file a complaint regarding an ad, please contact **The Department of Trade, Agriculture & Consumer Protection 1-800-422-7128 (wcan)**

www.beloitauktion.com



COMBINED ESTATE & HOUSEHOLD AUCTION

Wed., October 15th - 4:30 P.M.
534 W. Grand Ave., Beloit, WI

Find us on Facebook & stay connected with free WiFi in our building. Can't make it to the Auction? Our courtesy absentee bidder service will help you.

Find unique items at this combined estate bonanza. We'll sell in 2 rings during most of the Auction - home furnishings - art work - jewelry - collectibles - lots of vintage pieces to re-purpose - housewares - equipment - tools - recreational items - & much more. Both Auction rooms are packed. Have FUN shopping the AUCTION way.

Preview: Tues. - 9:30-6:00 & Wed. - 9:30-4:30
Terms: Cash, approved check, Visa, M/C, Discover American Express or Debit. 12% buyer's fee. 2% discount for cash, check or debit.

UNITED COUNTRY BELOIT AUCTION SERVICE, INC.
(608) 364-1965
Call Toll Free 1-877-364-1965



Registered Wisconsin & Illinois Auctioneer
Richard Ranft, CAI, GPPA, AARE
Registered Wisconsin Auctioneer #237
Registered Illinois Auctioneer #441.001071

www.beloitauktion.com

Internet & Wednesday Auction House Events

Complete Estates - Collectibles - Jewelry - Antiques
Household Goods - Tools - Equipment
Consignment accepted - turn your items into cash.
608.364.1965



534 W. Grand Ave.
Beloit, WI

186404

FANTASTIC ANTIQUES & COLLECTIBLES AUCTION!

MON., OCT. 13TH - 5:00 p.m. (Start)
626 Millar Dr., Beloit, WI 53511

OPEN FOR VIEWING: Mon., Oct. 13th (10 a.m. - 5 p.m.)
PICTURES & UPDATES: www.auctionzip.com (Enter 53511)
NOTE: You DON'T want to MISS this auction!
GREAT ANTIQUES & COLLECTIBLES: large wood line shaft pulley, wd. adv. boxes & candy bar boxes, Cobalt Blue collection (100 pcs.), trunks, HUGE ELK MOUNT (Rkfd. Moose Club), leaded stained glass windows (old), JEWELRY (lots of Sterling & GOLD) ... watches, rings, necklaces, costume, etc., Diamond Tested Ring, "Order of Arrow" (Sterling), old fruit jars (lots), SATSUMA vase, old radios (Philco, Emerson short wave, etc.), "Knight" tube tester, bicycle built for 2 & 50's bike, FANTASTIC ANTIQUE B.R. SET (Bed, dresser, vanity, nightstand, mirror), "Pathe" Victrola, "Brunswick" Victrola, toy tractors (J.Deere, Case, etc.) & cars & trucks, etc., IHC gas engine, metal wind-up toys & animals, lots of old clocks, stoneware (Roseville OH, etc.), lead soldiers, toy cannons, powder horns (1.800+), tin cars, 1918 U.S. Marine buttons, MARLIN 22 (LR; Model 99M), old keys, jackknives, 2 antique child's desks, antique spark plugs, clarinet, drum (old), old violin (as-is), "Bally" SLOT MACHINE, walnut chest, parlor set (Vict.), lamp table, etc., old baby carriage and LOTS MORE.
NOTE: The B.R. set ... "Rockford Furn. Co."
TERMS: 10% buyer's fee; cash or personal check (with ID).

BUE'S REALTY & AUCTION (608-362-0700)
Col. Geoff Bue, BBA (Real Estate) • Registered WI Auctioneer #627

PETS

Llewellyn English Setter puppies, 2 females from a litter of 8, born 08/12/2014, field champion blood lines, will make excellent hunting buddies & house pets, \$500 cash, 608-290-3886

DO YOU HAVE ITEMS TO SELL? ... GET RESULTS! Affordable advertising that fits your budget! Reach OVER 300,000 homes! Place your ad in MANY weekly Wisconsin Shoppers & Buyers' Guide, papers for as low as \$36.00
Call today!
Publishers Development Service, Inc. (PDS, Inc.)
1-800-236-0737
www.pdsadnet.com

FARM ITEMS

AUCTION-OCTOBER 24, NOON W398 Hwy 156 Pulaski on MACHINERY, SPECIAL ITEMS, SMALL ITEMS TOO NUMEROUS TO MENTION. Visit www.nolan-sales.com or call for details. NOLAN SALES LLC Marion WI 800-472-0290 Reg. Auctioneers #165 & #142 (wcan)

HAY FOR SALE, round bails 4x5 1/2 foot, net wrapped, grass & clover mixed, 1000lb average, stored inside, Brodhead area 608-751-7146

TIM NOLAN ARENA HORSE SALES - Fall Roundup and Colors of the Sun Sales. OCTOBER 18, 2014. Tack 9am-Horse Noon. Consignments start Friday, 10/17 from 9am-7pm and on Saturday, 10/18 at 9am. NO CALL IN CONSIGNMENTS. N11474 State Hwy 110, Marion, WI. (wcan)

WANTED To Rent: Farmland 2014 & beyond, Any size (608) 436-2792 (cell)

GOOD THINGS TO EAT

ENJOY 100% guaranteed, delivered to the door Omaha Steaks! SAVE 74% PLUS 4 FREE Burgers - The Family Value Combo - Only \$39.99. ORDER today 800-931-1898. Use code 49377PXR or www.OmahaSteaks.com/father72 (wcan)

BUSINESS OPPORTUNITIES

Start Immediately! Great money from home with our FREE mailer program. LIVE operators available now! 866-780-0580 ext.110 or visit www.pacificbrochures.com

WORK AT HOME!! \$570/WEEKLY** ASSEMBLING CHRISTMAS DECORATIONS + GREAT MONEY with our MAILER PROGRAM + HOME TYPING PROGRAM. PT/FT. Genuine! www.AvailableHelpWanted.com

BELOIT WEST

ESTATE SALE 1142 Olympian Blvd. Beloit, WI ONE DAY ONLY! Thurs. Oct. 23 8am-3pm 46 Years of Collecting! Holiday decorations, Chairs, Kitchen Items, 1X Womens' Clothing, Books, Misc. Items, Too much to list. This is the first of many mini estate sales for this home. Priced to Sell.

OTHER LOCATIONS

PAST MEMORIES ESTATE SALES and SERVICES 6524 N. Deer Path Rd Oregon, IL 61061 (Just west of Bryon off Hwy 2) Thurs. Oct.16, 9am-4pm Fri. Oct. 17, 9am-4pm Sat. Oct. 18, 8am-Noon (Sat. is Half Price Day) Short drive to a fantastic Collectable Sale! Jim Shore, Tom Clark, Longaberger Baskets. Complete Home is one of my finest sales!

SERVICES OFFERED

BELL'S REMOVAL Will haul most anything Reasonable rates Call Gary, 608-201-9114

Call-a-Pro Plumbing! Your Local Plumbing Professionals! Have plumbing problems? We have the solution! Call us 24/7. 800-605-4582 (wcan)

JAYS Mobile Home Service
Free Estimates - Insured
608-436-6175

SERVICES OFFERED

DAVE ROBERTS HOME IMPROVEMENT Kitchens, baths, decks, painting, additions, garages and more... 608-754-2598 Free Estimates

LARRY'S CLEAN UP Clean up unwanted items from rooms, basements & garages. (608) 757-0160

ON THE SPOT PAINTING BY JIM DIMITROS 608-754-7768

STUMP GRINDING/REMOVAL Free estimates 608-289-1987

BRUSH ROLL SPRAY **STAINING WALLPAPER** **TEXTURE DRYWALL**
Painting and Decorating by Michael
Insured Free Estimates **(608) 758-3642**

Over 20 Years Experience **SRB Property Management**
Full Service Maintenance, Improvement, Repair
• Mobile Homes • Home Parts
• Apartment Complexes • Accessories
• Residential
15 Parkview Dr. • Milton, WI 53563 608-580-0566
email: srbpropertymgmt@charter.net www.srbpropertymanagement.com

Rock River Home Repair
• Remodeling kitchens/baths • Painting
• Wooden & laminate floors installed • Decks
• New garages & repair of old ones • Vinyl siding
• Windows & Doors • Steps
• Finish basements • Sheds
• Wallpaper • Much, much more
Commercial & Residential • 39 years experience
Free Estimates • Fully Insured • Member of B.B.B. BBB
Call Dan 608.756.0585

DRY OTTER
BASEMENT WATERPROOFING & CONCRETE RAISING
• Interior/Exterior Drain Tile
• Crawlspace Encapsulation
• Foundation Cracks
• Egress Windows
WET BASEMENT?
Problems with water... call the otter
\$100 OFF DRAIN TILE SYSTEM
\$15 OFF WALL CRACK SEALING
815-874-6300 608-334-6044 www.dryotter.com

EPS www.epsbuildings.com
CONNELL CONSTRUCTION LLC
General Contractor
Authorized Independent Dealer
Janesville 608-295-8863 Mineral Point 608-574-7952
www.ConnellConstructionLLC.com

CLEARY BUILDING CORP.
Winter Build Sale
CALL US FOR A FREE CONSULTATION!
VERONA, WI (608) 845-9700
LAKE GENEVA, WI (262) 248-0600
FORT ATKINSON, WI (920) 563-9461
Building relationships in communities throughout the U.S. for more than 36 Years!
BUILDING SPECIALS!
30'x45'x13' • \$13,122
42'x72'x15' • \$23,167
60'x99'x17' • \$46,021
Building pictured is not priced in ad. Crew travel required over 50 miles. Local building code modifications extra. Price subject to change without notice. 20 PSF Snow Load
FEATUREING: Cleary FABRAL
800-373-5550 | ClearyBuilding.com

George Auction Service & Real Estate Auctions

Witte-Barker Plumbing & Heating
Thursday October 16th, 11:00 am
2301 Advance Drive
Beloit, WI 53511

DIRECTIONS: Turn north on Advance Drive off from Cranston Road between Prairie and Park Ave. Watch for George Auction Service signs. NOTE: Property is under camera surveillance. LUNCH: Ziggy's.
FORK LIFT: Clark Gas 26" Tires PS 4000# Cap. Fork Extensions. CARGO VANS & TRUCKS: 1991 Dodge Ram Van B350 Safety Cage, Shelves & Ladder Rack 73K; 1991 Dodge Ram Van B350 Safety Cage, Shelves & Ladder Rack 97K; 1985 Ford Ranger 4 spd 102K. SCRAP SEMI STORAGE TRAILERS & VEHICLES: 30' Semi Trailer; (3) 26' Semi trailers; 1990 Dodge Caravan (not running); 1985 Ford F150 (not running). SHOP EQUIPMENT: FECCO 15 Roto Die; Chicago 18 ga 8' Sheet Metal Brake; Chicago W-37 10 ga 8' Finger Brake; Beverly B3 Shear; Lock Former 20 ga Hammer Lock; Lock Former 20 ga Snap Lock; Lock Former 22 ga Cleat Former; Pick, Stow & Wilcox 381-D Roll Former; Ridgid 700 Portable Threader; Ridgid 400 & 400A Pipe Threaders; (2) Ridgid 450 Pipe Threaders; Ridgid 535 Pipe Threader; (2) Ridgid 1 1/2" to 8" Coring Machines; 1 1/2" to 8" Coring Bits; Ridgid Vacuum Pump, Hose & Pads; (2) Ridgid 1206 Pipe Threaders; Ridgid Oilers; (3) Ridgid Pipe Cutters; Ridgid 24", 36" & 48" Pipe Wrenches; Ridgid 1/2"-2" Pipe Dies; Reed HC4 Pipe Cutter; Ridgid Chop Saw & Pedestal; Ridgid E703 Pipe Vice; Ridgid 842 Pipe Bender; Ridgid 1 1/2" to 6" Soil Pipe Puller; Hilti DD106 Dri-Core Machine; Hilti TE12 Hammer Drill; (2) Hilti TE52 Hammer Drills; Greenlee 1804 Hole Punch Kit; E-Z Freeze Carbon Dioxide Pipe Freeze Kit; Polyolefin 1 1/2" & 2" Welding Kit; Lincoln 250 Arc Welder; Hobart 120 Wire Feed Welder; Miller XMT300 CC/CV Welder; Lincoln Ideal Arc Welder; Welding Helmets, Hammers, Clamps & Rods; Welding Fabrication Table; Antique Metal Working Bench; Antique Recip Saw; Assorted Oxy/Acetylene Torches, Carts, Helmets & Accessories; Xtramane Man Lift Hoist; Milwaukee Angle Drill; Milwaukee Sink Waste Machine; (2) Toledo Chop Saws; Bosch & Milwaukee Chop Saws; Milwaukee Portable Band Saw; (2) Bosch Elec. Impact Wrenches; Quickie Gas Cut Off saw; (2) Hilti TE52 Hammer drills; (2) Hilti Pneumatic Nails; (1) Porta Band Saw & Stand; (2) 3 Ton Chain Come-A-Longs; Chain Falls; Portable Elec. Grinders; Owatonna Wheel Puller Kit; Lectro Truck Stairwalker; Steam Jenny Steam Cleaner; Power Washer; (2) Duct Hoists; Sheet Metal Fabrication Tools; T-Drill; Benfield Pipe Benders; (6) Shop Carts & Rolling Benches; (10) Rigid, Gould & Imperial Tubing Benders; JB Fast Vac; Woodward 60HO; 4 Ton Frame Repair Kit; Taps & Dies; Imperial 37 degree Flaring Tool Kit; Anvilfor Metal Working Bench Job Boxes Parts Bins & Shelving. MISC. ITEMS: Tankless Water Heater; Home Vacuum System; Well Point; 55 gal of Propylene Glycol Spools of Electrical Wire. SHEET METAL: Pipe; Fittings; Access Panels; Diffusers; Dampers; Insulation; Etc. PLUMBING SERVICE PARTS: Kohler; Moen; T&S Brass; Sloan; Chicago; American Standard; Bemis; Galvanized & Black Pipe Fittings; Hangers; PVC Fittings 1 1/2" to 6" Fernco No Hub Clamps; Pipe Insulation; Pipe; Faucets; Toilets; Sinks; Etc. AC & HEATING SERVICE PARTS: B&G; Carrier; Honeywell; AprilAire; Taco; Oil Burner parts Radiator Valves; Motors; Filters; Boiler Parts; 500' Fin Tube; V-Belts; Etc. REFRIGERATION PARTS: Dryers; Valves; Vibration Isolators; Capacitors; Etc. OFFICE: (4) Drafting Tables; File Cabinets; Desks; Safe; Antique Adding Machines and Posting Machine; Misc.

Auction Company: Stephanie George - Registered Wisconsin Auction Company #226 11211 North Union Road, Evansville, WI 53536 (608) 882-6123
Registered Wisconsin Auctioneers: Dean George #486 & Kale George #2811, Evansville, WI (608) 882-6123; Riley Kahl #736, Verona, WI (608) 832-4839
Terms: 5% Buyer's fee. 5.5% Sales Tax. 4% courtesy charge for purchases using credit card. All sales final. All announcements made day of sale take precedence over printed material. Not responsible for accidents or losses.

For complete listing and photos log onto www.georgeauction.com

www.georgeauction.com (608) 882-6123

Real Estate Auction
(Immaculate Home on 80 Acres)
W5945 Cty. Rd. K Fort Atkinson, WI

Saturday, October 18th • 3:00 P.M.
(Absolute Opening Bid \$600,000.00 Or A + B = \$600,000.00 for Entirety)
Reason: Health Concerns - Relocating
Directions: Hwy. K south of Fort Atkinson approximately 6 miles or Hwy. N west of Whitewater or east of Newville to Hwy. KK north to Hwy. K. (Watch for Badger State Auction Signs.)
Open House Dates
(Serious Buyers Only Please)
Sunday, October 5th, Noon - 1:00 p.m.
Saturday, October 11th, 10:00 - 11:00 a.m.
Sunday, October 12th, 10:00 - 11:00 a.m.
Or By Appointment by Calling (608) 473-4175

To Be Offered in two parcels or all in its entirety.
Parcel A - Home on 10 acres
Parcel B - Approximately 70 acres of fantastic hunting land Unbelievable secluded country, 5 bedroom, 7 bath, two story, all brick home with finished basement, indoor racquet ball/basketball court, outdoor full size tennis court, huge patio and much more beyond one's imagination. Simply one of a kind and originally priced at \$1.1 million.
TERMS: 6% buyer's fee. This property will be sold as is with no contingencies. Earnest money of \$25,000.00 per parcel the day of the auction in the form of a cashiers check or certified check with proper ID. The balance will be due at the time of the closing, within 30 days of the auction. The Purchaser will be required to sign a standard offer to purchase agreement. Seller reserves the right to accept or reject any or all offers. Not responsible for listing errors if any. All announcements sale day will take precedence over any prior printed material/information provided/verbally stated.

BADGER STATE AUCTION & REAL ESTATE, LLC
BOB JOHNSON - AUCTIONEER
REGISTERED WISCONSIN AUCTIONEER #800
REGISTERED ILLINOIS AUCTIONEER #441000422
4128 HWY. KK, MILTON, WI (608) 868-2199
Broker - Tincher Realty
www.badgerstateauction.com
Where our goal is your satisfaction!

Real Estate Auction
Rock County Farmland Spectacular
565 Acres

Saturday, November 1st at 12:00 P.M.
(Registration at 11:00 A.M.)
Johnstown Community Center
9937 E. County Rd. A, Janesville (Johnstown) WI
Fantastic Investment / Land Acreage Opportunity
Reason - To Settle Three Area Estates
Parcels Located in Rock County:
Johnstown Township (Sections 4, 7, 8)
Lima Township (Sections 32, 33)
To Be Sold in 8 Separate Parcels or Combination of Parcels.
Majority of parcels tillable w/ the exception of one fantastic 35 acre wooded building site and a 52 acre parcel of prime non-tillable hunting ground. All parcels located within 5 miles of each other.

For directions, location and parcel description go to www.badgerstateauction.com and download a sale catalog or pick up a catalog in mailbox on each site.
Open House Sunday, Oct 12th, 9:00 - 11:00 A.M. to obtain additional details / brochures.
(To be held at Badger State Auction facility at 4128 N. County Road KK, Milton WI.)
Terms: 5% buyer's fee. This property will be sold as is with no contingencies. Earnest money of 10% of sale price of each parcel required the day of the auction in the form of a cashiers check or personal check with proper ID. The balance will be due at the time of the closing, within 30 days of the auction. The Purchaser will be required to sign a standard offer to purchase agreement. Seller reserves the right to accept or reject any or all offers. Not responsible for listing errors if any. All announcements sale day will take precedence over any prior printed material/information provided/verbally stated.
Jeff Roethe - Roethe Law - Attorney Representative
BADGER STATE AUCTION & REAL ESTATE, LLC
BOB JOHNSON - AUCTIONEER
REGISTERED WISCONSIN AUCTIONEER #800
REGISTERED ILLINOIS AUCTIONEER #441000422
4128 HWY. KK, MILTON, WI (608) 868-2199
www.badgerstateauction.com
Where our goal is your satisfaction!

HELP WANTED
CLASS A CDL DRIVERS: NEW PAY PACKAGE NOW IN EFFECT with a Sign on bonus of \$2000. Local company in Jefferson WI with NO east coast, great home time, easy freight, first year pay up to 60K with annual raises & benefits. Need CLEAN record & 2 yrs experience. Call Angie @ 800-383-8386 x5714

NEW TRUCKS ARRIVING - EXPERIENCED OTR DRIVERS
Van/LTL Reefer.
 VAN DIVISION: runs 48 states, heavy from WI to Philadelphia, Baltimore, MD area. Flex home-time. 99% No-Touch. Top pay. LTL DIVISION: runs east of the Rockies. Home weekends. Top pay. Vacation/401K/Vision/Dental/Disability/Health. Require Class A CDL, 2 yrs OTR exp/good MVR, references. Call Ruth or Mike TTI, Inc. 1-800-558-2664 www.TTItrucking.com

NEW TRUCKS ARRIVING - EXPERIENCED STEEL HAULERS FLATBED DIVISION
 Runs from Chicago Commercial Zone to WI, heavy in Milwaukee area. Home 3-5 nights/week plus weekends. Top pay! Vacation. 401K. Vision/Dental/Disability/Health. Need Class A CDL, 2yrs OTR exp., good MVR, references. Ruth or Mike TTI Inc. 1-800-558-2664 www.TTItrucking.com

OTR DRIVERS WANTED
 Above Average Mileage Pay Including Generous Bonus Packages. Health/Dental/Vision/HSA/Matching 401K/Vacation Pay & Holiday Pay. *Avg 2500-3500 Miles/Wk *100% No Touch *6 Mo CDL/A Exp Preferred 1-888-545-9351 EXT 13 Jackson WI www.doublejtransport.com (wcan)

GREAT SPIRITS COPPER FALLS FINE DINING
 NOW ACCEPTING APPLICATIONS
 SEASONAL BARTENDERS & SERVERS
 Apply In Person
 102 Allen Street • Clinton, WI

HELP WANTED
 Drivers: CDL-A. Average \$52K/yr plus. Excellent Home Time + Weekends. Monthly Bonuses up to \$650. 5,000w APU's for your Comfort + E-logs. Excellent Benefits. 100% no touch. 1-877-704-3773
 Drivers: Immediate Openings! \$5000 Sign-On Bonus! Home Weekends! CDL-A & 1+ yrs Exp. Req. www.CoxTransfer.com 1-800-593-3590

PRODUCT DEMONSTRATORS
 Hiring friendly, outgoing people to sample products in grocery stores. Week-end work. Transportation and card table required to set up display. **Carlson Specialty Temps** 800-453-9390 www.carlsonspecialtytemps.com (wcan)

Join the Liberty Team
Liberty Tax is now interviewing for positions for the upcoming tax season.
Opportunities include:
 • Tax Preparer
 • Processor
 • Receptionist & Call Center
 If you enjoy working with people & deliver outstanding customer service, Liberty Tax is ready to put your valuable skills to work in our busy office.

We offer flexible schedules with on going training.
 Call 608-314-1040 or Email your resume to exptaxprep@gmail.com

QPS EMPLOYMENT GROUP
NOW HIRING
 in Whitewater, Elkhorn & East Troy
 Immediate Openings include:
MATERIAL HANDLERS, ASSEMBLERS, OPERATORS, LAB TECHNICIANS & LIGHT INDUSTRIAL POSITIONS
 PAY STARTS AT \$8-11/hr.
 Please apply online at www.qpsemployment.com & contact us at 262-723-5600.
 Walk-ins welcome from 7:00am-4:30pm, M-F
15 E. Walworth St, Elkhorn, WI

LCL Bulk Elkhorn, WI NOW HIRING CDL-A DRIVERS
\$2,000 Sign On Bonus!!
 - Regional/OTR
 - Avg. \$55-68k per year
 - Excellent Hometime
 - Food grade tank carrier
 - CDL-A 2 yrs. T/T exp. req'd
 - Excellent Benefits
 Call 920-445-2503
 Apply www.LCLBULK.com

LPN FULL TIME
 2nd Shift - Every Other Weekend
 Must be flexible, a multi-tasker, detail and team oriented individual.
 Great benefits and wages.
 Fun atmosphere.
 Room to grow with company.
Come join our amazing team!
 Please apply with resume and cover letter to blindbox9560@blindbox.communityshoppers.com

Co-Staff Corp
 Employment Choices
 "The Window To Your Future."
 ⇒ WELDERS MIG, TIG
 ⇒ WAREHOUSE ASSOCIATES TEMP TO HIRE
 ⇒ EXP. INDUSTRIAL PAINTERS
 ⇒ HEAVY ASSEMBLY
 ⇒ LIGHT ASSEMBLY
 ⇒ ELECTRONIC ASSEMBLY
 1st & 2nd Shifts
NO CAR, NO PROBLEM!
 Van Service Available To Some Jobs.
 *Industrial *Clerical *Skilled Industrial Offering Temp, Full-Time & Direct Hire
 Email: resume@co-staff.com
 608.373.0710
 FAX: 608.373.0715
 2132 Center Ave., Janesville, WI
www.co-staff.com
 Se habla Español - E-Verify - EOE

Sales & Recruiting To \$30K+
 Great opportunity with a growing Janesville staffing agency for a recent college grad with sales, telemarketing or staffing industry experience!
 Email: raeann.s@andrews-staffing.com
 OR online: www.andrews-staffing.com

HIRING
STOP IN TODAY
parallelemployment.com
COMPLETE AN ONLINE APPLICATION
 Fort Atkinson Office (across from the Fireside Theatre)
 1220 Janesville Ave. #200
 Fort Atkinson, WI 53538
 920-568-1900
 • Assembly
 • Material Handlers
 • Welders
 • Sales Call Center
 • Machine Operator
 • Fabricators
fortatkinsonoffice@parallelemployment.com

JANESVILLE MESSENGER ROUTES AVAILABLE CARRIERS NEEDED!!
 The routes pictured are now open in the Janesville area!!
 Delivery two days per week. Call Ken at 608-752-0777 for more information.

Full and Part Time Downstream/Mail Clerks
 Bliss Communications Printing and Distribution facility is seeking organized and computer literate individuals to join our Distribution Center team. The Distribution Center is responsible for moving the printed newspaper immediately from the press, inserting all advertising flyers and then preparing the bundles of papers to be distributed to the proper carriers. Individuals will be responsible for coordinating and verifying the daily newspaper insertion orders, entering insert/zone data into the computer for proper bundle top sheet coordination and distributing the appropriate reports and messages to the carriers. Other duties will also include assisting with daily mail, feeding inserts and other general mailroom tasks as assigned.
 Qualified individuals will have good math skills, excellent communication skills, have the ability to deal with deadline pressure and be proficient in Excel.
 Full time positions are 35-40 hours per week, Sunday through Thursday night between the hours of 9:00 p.m. and 4:30 a.m., and offer benefits including/dental/life insurance, paid vacation and 401(k).
 Part time positions offer flexible scheduling, Sunday through Saturday. Interested applicants should submit an application and wage requirements to:
The Janesville Gazette
 1 S Parker Drive
 Janesville, WI 53545
The Janesville Gazette Print Center
 333 S Wuthering Hills Dr.
 Janesville, WI 53546
 Or send your resume to: sluebke@gazetteextra.com

AUTO SALESPERSON WANTED
 For Fast Growing Ford Dealer
 Previous Experience a Plus!
 APPLY IN PERSON to Randy or Adam at:
TOM PECK
 807 Church St., Clinton, WI
 1-608-676-2273 • 1-800-895-3270

QPS EMPLOYMENT GROUP
Apply Today! Start Tomorrow!
 Immediate Job Openings on 1st/2nd/3rd Shifts in Milton for:
 • Mail Sorters
 • Quality Assurance Technicians
 • Press Helpers
 Competitive Pay!!
 Advancement Opportunities!!
 Paid Vacation and Holidays!!
 Full Time Hours!!
 Contact QPS Employment Group at 608-868-2559 or Apply online at www.qpsemployment.com

Recruiter/Staffing Coordinator

Experienced Bilingual Spanish Staffing Industry Recruiter for well-established, family oriented staffing firm in Janesville. Heavy volume client base will keep you very busy! To \$60K Base + Commission
Email: beth.p@select-staffing.com

187365

HELP WANTED

VALLEY EXPRESS -OSHKOSH MID-WEST REGIONAL DRIVERS!
 Class A 53' Dry Van Freight. Able to Avg. 2,500 Miles/Wk. Performance Bonuses & Profit Sharing. Paid Life Insurance & Full Benefit Package Available. Questions? Call Sean @ **Valley Express 920-231-1677** ValleyExpress.net (wcan)

PART TIME accounts receivable experience, high computer skills, front desk. 262-728-3882

HELP WANTED

DRIVERS: HOME EVERY Weekend! Team, No-Touch Openings! Sign-On bonus! Avg \$77,000/yr Per Driver! Excellent Comprehensive Benefits! 2 yrs CDL-A Exp, Call Penske Logistics: 1-855-346-8801

HELP WANTED

Frac Sand Owner Operators Needed Immediately in Texas! Requires tractor, blower, pneumatic trailer. Sting Services Pays 80%...Unlimited Work 214-250-1985

Looking for experienced snowplow drivers, good driving record, 608-208-0324

FOR RENT - APARTMENTS

JANESVILLE REGENCY HOUSE 13th MONTH FREE \$100 OFF FIRST MONTH'S RENT*
 Fine apartment living for Active Adults 100 N. Franklin St. Beautiful 1 BR features appliances, air, heat, water and garbage. Security locked building with community room and styling salon. *Restrictions Apply
Call: 608-757-2566 www.doneff.com

RETIREMENT APARTMENTS, ALL INCLUSIVE. Meals, transportation, activities daily. Short Leases. Monthly specials! Call (866) 338-2607

MANUFACTURED HOMES

HOME SOURCE ONE

Janesville Area

Carport!
 2 BR, front kitchen, shed, shady lot, Needs TLC, \$3900

Corner!
 2 BR, nice kitchen, new carpet, vinyl and furnace, nice, only \$1400 down

16 x 80!
 3 BR, 2 BA, new carpet, vinyl, paint AND new kitchen, \$2000 down

Like New!
 3 BR, 2 BA, 16 x 80, covered deck, C/A, island kitchen, only \$2500 down

More to choose from
 Financing available to qualified credit!
 Pets welcome!
 608-371-3337 www.home-sourceone.net

We're easy to do business with! You can pay for your Messenger classified ad with Master Card, Visa & Discover.

Manufacturing ■ Immediate Openings!

Production Supervisor 1st/3rd - To \$23/hr
MIG Welder - To \$16/hr
General Labor Packagers - \$8/hr
General Laborer - To \$10.10/hr
 Rock & Jefferson Counties!
Email: raeann.s@andrews-staffing.com
OR online: www.andrews-staffing.com

187625

LAND FOR SALE

Crandon WI: For Sale by Owner 40 ac Wooded High Land \$79,900. More Land Avail. Financing Avail. 715-478-2085

Lovely, ranch-style, 2-3 bedroom country home for rent. Includes kitchen refrigerator, range & dishwasher. 2-car detached garage. Clinton Schools. \$900.00 a month plus utilities.
Call Sandi at Neighborhood Realty 608-774-4668

186420

REAL ESTATE-RENT

EDGERTON: 3BR, den, fireplace, laundry hook-ups, super clean, nice yard. \$725. After 6:30 pm, 262-203-2940 or 414-801-0109

JANESVILLE, 3BR, house, 1BA, Garage, \$800 mo, Available Nov, 1, 608-868-4242

MILTON TOWNSHIP: 2 BR home, partially furnished, 2 blocks from lake, available 10/15. \$650/mo + sec. 262-495-3314

We accept VISA, Discover & Mastercard for your Classified advertising

COMMERCIAL REAL ESTATE

L-7546: WELL ESTABLISHED HARDWARE STORE w/newer building in Marion, WI. Good income \$250,000.00 Contact Nolan Sales LLC, Marion WI **800-472-0290** www.nolansales.com (wcan)

FISHING FOR A JOB JUST GOT A LOT EASIER!
 "CATCH" the help wanted classifieds every Wednesday and Sunday in your **JANESVILLE MESSENGER**

Full-time Personal Banker

Community Bank CBD is seeking any individuals interested in a full-time personal banker position. This candidate's qualifications would include: Bachelor's degree in business or minimum of 2 years equivalent work experience. In addition, excellent customer service contact skills and proven propensity for sales and thorough knowledge of bank products and services. This candidate must also have cash handling experience along with teller knowledge. Good organizational and analytical skills and experience in making presentations. This position will require a rotation of Saturday hours along with assisting as necessary in the teller area.

If you are an outgoing, sales oriented, career driven professional who wants to make a real contribution to our success, please submit your resume along with salary requirements to: Jon Martin Sr. VP, Community Bank CBD, P.O. Box 648, Delavan, WI 53115 or email to: martinj@communitybankcbd.com

Community Bank CBD is an equal opportunity employer committed to creating a diverse workforce. We consider all qualified applicants without regard to race, religion, color, sex, national origin, age, sexual orientation, disability or veteran status, among other factors.

Community Bank CBD
 Jon Martin, Sr. VP/CFO
 PO Box 648
 Delavan, WI 53115
martinj@communitybankcbd.com

188653

Automotive

HARMS

AUTOMOTIVE

"Experience HARMS ... Sales & Service You Can Relate To"

2627 Morse St. • Janesville, WI



FREE Refreshments & WiFi
Convenient Scheduling
Comfortable Guest Lounges

FREE Car Wash & 27 Point Safety Inspection with Every Service

FALL/WINTER SPECIAL with FREE Battery Test \$49.99

- Oil & Filter change
- Rotate tires and check tire pressure
- Top off all fluid levels
- Check brake wear, belts & hoses
- Check exhaust system & lights
- Check battery condition

Plus tax and environmental charges. Must present coupon when order is written. Not valid with any other offers or specials. Synthetic oil slightly higher. Some makes and models extra. Max. 5 qts of oil. Expires 10/31/14.

Kids Play Center
Private Computer Access
Oil Changes While You Wait

NO APPOINTMENT SERVICE Convenient Saturday Hours

FREE THIS WEEK: WINDSHIELD WASHER FLUID \$32.95
 When you have your oil changed. Includes:
 • Change engine oil & oil filter
 • Replace drain plug gasket (if applicable)
 • Adjust fluid levels
 • Set tire pressure
 • Multi-point inspection

Must present coupon when order is written. Not valid with any other offers or specials. Some makes and models slightly higher. Additional charge for Synthetic oil. Max. 5 qts of oil. 1 gallon windshield washer fluid. Expires 10/31/14.

For Immediate Assistance:
 Service Direct: **608-314-8444**
 Parts Direct: **608-314-8448**

SUBARU KIA NISSAN

SERVICE HOURS: Mon.-Thurs. 7-6, Fri. 7-5, Sat. 7:30-2

Se habla español **WeAreHarms.com**

187328

NOW HIRING!

Email Resumes to: YourCareer@preplus.com
 Apply Online: www.preplus.com

POSITIONS AVAILABLE:

Office Assistant
 CNC Swiss Set-up/Operator
 CNC Lathe Set-up/Operator
 Quality Engineer (CMM Zeiss Programmer)

- Paid Vacation
- Fantastic 401(k) Plan
- Great working environment
- Climate controlled and clean
- Eligible for Health & Dental Insurance

PRECISION PLUS INC.
 SWISS TURNED COMPONENTS
 840 Koopman Ln. PO box 168 Elkhorn, WI. 53121 | www.preplus.com

scan to visit website

187371

CAREER OPPORTUNITIES AVAILABLE NOW!

All positions are either direct hire or temp-to-perm with our excellent client companies.

- Welders MIG & TIG - Top Pay
- Production Supervisors
- Skilled & Electrical Assembly
- Machinists
- Professional Sales

NEW POSITIONS LISTED DAILY

Serving Southern WI and Northern IL

Professional and Technical Division

1025 Ann Street, Delavan, WI (262) 728-4599
 2132 Center Ave., Janesville, WI (608) 373-0710

Submit resumes to resume@co-staff.com

Co-Staff Corp.
 Employment Choices "The Window To Your Future"

Visit our website co-staff.com
 Visit us on Facebook

E-Verify EOE Se habla Español

187377

AUTO ALMANAC

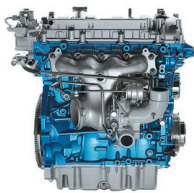


DRAWING BOARD

Volkswagen XL Sport concept: VW's two-seat exotic is based on the limited-production, wind-cheating XL1 hyper-miler. The XL Sport features a mid-mounted 197-horsepower two-cylinder Ducati motorcycle engine that's hooked up to a seven-speed automated manual transmission. Volkswagen claims the engine can propel the 1,950-pound car to 100 km-h (62 mph) from rest in just 5.7 seconds and attain a top speed of 168 mph.

AUTO TRIVIA

- The famed **East Africa Safari Rally** was originally named the **East African Coronation Safari** in 1953, in honor of the ascension of Queen Elizabeth II to the British throne that year.
- In 1914, a typical automobile's gasoline engine produced about 10 horsepower per liter of engine displacement. Today, that number is **70-80 horsepower per liter** and 120 or more for turbocharged engines.



AutoGraph
Jeff Melnychuk
www.shiftweekly.com

The 2015 Corvette Z06 uses the same aluminum frame as the base Stingray, which means it can be ordered with a take-off roof panel (the previous Z06 was coupe only) or a convertible model. As with the previous Z06, the body is wider than that of the base Corvette to cover the much wider tires. And then there's the new supercharged 6.2-liter V8 that's worth 650 horsepower. The previous top-dog ZR1 made 638.

PREVIOUS Z06
505 horses, six-speed manual trans, coupe only.

One inch taller than the non-supercharged 6.2.

BASED ON THE NEW 6.2-LITER V8 650 HORSEPOWER

- Supercharged
- Direct fuel injection
- Variable cam timing
- Variable displacement, which means it can run in four-cylinder mode under very light loads.

8-SPEED AUTOMATIC TRANSMISSION?
Standard seven-speed manual, but notice the shifter for the optional eight-speed automatic trans.

The previous Z06 and ZR1 were not available in a convertible.

2015 CORVETTE

Optional carbon-fiber aero package.

Heat extractors.

Taillamps are three inches farther apart to match the wider fenders.

Strong and light aluminum frame is shared with the base car. It's designed without an adjoining roof section, therefore the Z06 is available with a removable roof panel.

285/30-19 tires are 1.5 inches wider.

More cooling vents.

Z07 option replaces cast-iron brake rotors with 15.5-inch carbon-ceramic; lighter, fade-free and last just about forever.

Fenders are wider to cover the two-inch wider 335/30-20 tires.

BASE STINGRAY

Source: Chevrolet
COPYRIGHT WHEELBASE MEDIA, www.wheelbasemedia.com



WHO AM I?

To guess his secret identity, read the following clues!

- 1) His name was never found on any of his cars.
- 2) Before building cars, he was a partner in a motorcycle sidecar business.
- 3) The "leaper" hood ornament on his automobiles was designed to exude a feeling of grace and elegance.
- 4) It paid off as Jaguar established itself as a high-end automaker for the well-heeled.



STILL STUMPED?

more than 50 years still in tact, even after name and reputation in 1985, the Jaguar founder died

WHAT'S UP, AUTO DOC?

While the process of swapping your stock 16-inch wheels for a set of 20-inchers would appear to provide instant handling benefits, that's not usually the case. Sure, the stiffer and shorter sidewall construction of the tire will make the vehicle more responsive to steering inputs, but, conversely, it's also more responsive to bumps, potholes and small stones, all of which make the ride worse. Also seldom considered is the weight of the new wheels and tires: often heavier. For example, once 10 pounds of extra static weight at each corner gets rolling, it ends up being many times that amount. More weight is harder to control and severely taxes a stock suspension. The (expensive) cure usually lies somewhere in the spring/shock combination. Heavier wheels also reduce acceleration and increase braking distance, which is why it's just as important to pay attention to weight as well as size.



BENOY MOTORS IN WOODSTOCK

FAMILY OWNED AND OPERATED FOR OVER 60 YEARS!

NEW 2014 DODGE GRAND CARAVAN SE
MSRP-\$21,590
Rebate-\$2,000
Benoy Dis.-\$784

Stk.#D14-82
• 3.6L V6 Engine
• Keyless Entry
• 7 Passenger Seating

• Power Windows & Locks
• Air Conditioning
• TiV/Cruise

NEW ONLY: \$18,806**

THE GREAT AMERICAN DRIVE EVENT

Jeep CELEBRATION EVENT

0% APR X 72 MONTHS

NEW 2014 DODGE AVENGER SXT 4DR
MSRP-\$25,125
Rebate-\$2,500
Chry Cap Bonus-\$500
Benoy Dis.-\$1,059

Stk.#D14-118
• Rallye Pkg
• Heated Seats
• Remote Start

• 18" Aluminum Wheels
• Hands Free Cell
• Power Windows & Locks

SALE PRICE: \$21,066

NEW 2014 JEEP CHEROKEE SPORT 4X4
MSRP-\$26,185
Rebate-\$1,000
Bonus Cash-\$1,000
Jeep Cash-\$500
Benoy Dis.-\$442

Stk.#J14-140
• 2.4L Multi Air Engine
• 9 Speed Auto Trans
• Power Windows & Locks

• Hands Free Phone
• Air Conditioning
• TiV/Cruise

SALE PRICE: \$23,243**

NEW 2014 JEEP PATRIOT SPORT
MSRP-\$22,670
Rebate-\$2,000
Chry Cap Bonus-\$500
Benoy Dis.-\$571

Stk.#J14-219
• Auto Trans
• Air Conditioning
• Speed Control

• Power Windows & Locks
• 17" Aluminum Wheels
• Rear Wiper Defroster

SALE PRICE: \$19,099

Benoy of Woodstock Motor Sales Inc.

E-mail: info@benoymotors.com or www.benoymotor.com
1790 S. Eastwood Dr. (Corner of Rt. 14 & 47)
(815) 338-5100

*Prices exclude tax, title, lic. & doc fee. Includes all manufacturer rebates & incentives. Photos are for illustration purposes only and may not represent actual vehicles. Jeep & Chrysler are registered trademarks of Chrysler LLC. No prior sales. Expires 3 days after publication. See dealer for more details. †0%x72mo is \$13.88/\$1,000 financed, OAC, on select models. *Must finance thru Chrysler Capital, see dealer for complete details.

44 VEHICLES UNDER \$3,000

'98 CHEVY S-10 PICKUP	\$1,000*	'96 DODGE GRAND CARAVAN	\$2,495*
'93 PLYMOUTH GRAND VOYAGER	\$1,200*	'02 DODGE GRAND CARAVAN	\$2,495*
'95 CHRYSLER CONCORDE 4DR	\$1,200*	'05 DODGE GRAND CARAVAN SXT	\$2,495*
'92 CHEVY 1500 PICKUP	\$1,500*	'96 CHEVY TAHOE 4X4	\$2,495*
'91 GMC JIMMY 4DR 4X4	\$1,500*	'05 CHRYSLER TOWN & COUNTRY	\$2,495*
'99 PONTIAC GRAND AM 4DR	\$1,500*	'00 CHRYSLER TOWN & COUNTRY	\$2,495*
'98 CHEVY CONVERSION VAN	\$1,800*	'95 FORD CONTOUR	\$2,495*
'95 SATURN SC1 2DR	\$1,800*	'98 FORD ESCORT 4DR	\$2,495*
'00 CADILLAC SEVILLE 4DR	\$1,800*	'01 FORD FOCUS 4DR	\$2,495*
'96 CHRYSLER CONCORDE 4DR	\$1,800*	'92 FORD TAURUS 4DR	\$2,495*
'95 JEEP CHEROKEE 4X4	\$1,995*	'97 JEEP GRAND CHEROKEE 4X4	\$2,495*
'95 JEEP CHEROKEE 4DR 4X4	\$1,995*	'97 MERCURY SABLE WAGON	\$2,495*
'94 CHEVY ASTRO VAN	\$1,995*	'99 BUICK CENTURY 4DR	\$2,995*
'02 PONTIAC AZTEK 4DR	\$1,995*	'99 DODGE DURANGO	\$2,995*
'94 DODGE 1500 4X4 PICKUP	\$1,995*	'99 CHEVY TRAILBLAZER 4DR 4X4	\$2,995*
'93 CADILLAC ELDERADO 2DR	\$1,995*	'98 VOLVO S70 GT 4DR	\$2,995*
'98 DODGE 1500 PICKUP	\$1,995*	'04 CHEVY 1500 PICKUP	\$2,995*
'01 FORD WINDSTAR	\$1,995*	'04 CHEVY VENTURE	\$2,995*
'01 DODGE GRAND CARAVAN	\$2,195*	'03 DODGE STRATUS RT 4DR	\$2,995*
'95 FORD F-150 SUPER CAB	\$2,195*	'99 MAZDA 626 LX 4DR	\$2,995*
'98 DODGE GRAND CARAVAN	\$2,495*	'99 MERCURY VILLAGER VAN	\$2,995*
'00 FORD EXPLORER 2DR 4X4	\$2,495*	'98 OLDS 88 4DR	\$2,995*

WWW.BENOYMOTOR.COM

Or E-mail: info@benoymotors.com
1790 S. Eastwood Dr. (Corner of Rt. 14 & 47)
(815) 338-5100

*Prices exclude tax, title, lic. & doc fee. No prior sales. Expires 3 days after publication. See dealer for more details.

Let us do what we do best for you.

We strive to assist you in placing ads. Our professional classified department cannot wait to work with you for the best results possible.



Sunday

(262) 728-3424



(608) 365-1663
(815) 389-2722

JANESVILLE MESSENGER
(608) 752-0777

Place your ad online 24 hours/7 days



www.communityshoppers.com

CARS

1991 CAMARO, project car, covered & stored in garage, doesn't run, new paint job \$3,500 OBO 779-770-0400



2002 Pontiac Grand Prix, 97,936 miles, leather seats, sunroof, excellent condition, 608-365-1502 or 608-293-3403

2003 CHEVY TAHOE LT, emerald green, 152K miles, 5.3L V-8, leather, sunroof, 3rd row seating, 6 CD changer, factory installed hitch receiver, no rust, new water pump & serpentine belt in 2013, A/C charged, new throttle body & upper transfer case in 2014, \$7,000 Call or text 608-921-1103

CARS

2007 PT CRUISER, blue, A/C, auto, 81K miles, \$5,500 608-302-0439



2008 MITSUBISHI ECLIPSE SE, white, 4spd auto, only 35K miles. Moonroof, leather seats, Rockford-Fosgate 6CD+MP3 stereo, \$11,500 OBO. 262-607-0025

2010 CHEVY MALIBU, 126K miles, fully equipped, On Star & XM radio, very good cond., \$6000, call 262-745-8414

CASH FOR CARS: All Cars/Trucks Wanted. Running or Not! Top Dollar Paid. We Come To You! Any Make/Model. Call For Instant Offer: 1-800-864-5960

CHECK US OUT! SAVE MONEY! Affordable advertising in MANY papers! **WISCONSIN COMMUNITY PAPERS (WCP)** and the **WISCONSIN CLASSIFIED AD NETWORK (WCAN)** Call toll-free 1-800-727-8745 or visit our website: www.wisad.com (wcan)

DONATE YOUR CAR, TRUCK, OR BOAT, TO HERITAGE FOR THE BLIND. Free 3-Day Vacation. Tax Deductible. Free Towing. All paperwork taken care of! **800-856-5491 (wcan)**

NEED A CAR, BUT BANKRUPTCY, SLOW PAY OR NO CREDIT STOPPING YOU? Guaranteed 100% Credit Approvals To Every Customer within 30 seconds, ...24/7!! Call Curtis or Nicole (855) 220-0486 and get driving today!!

CARS

Need Car Insurance? Lowest Down Payment - Canceled? State Letter/SR71? Accidents? Tickets? DUI? Instant Coverage! www.InsureACar.com Toll-Free 1-888-358-0908

No Credit, Poor Credit Need a car? Call Mr. Ray 608-676-2273

USED CAR & Truck Parts We buy Junk Autos & Trucks. **NEWVILLE AUTO SALVAGE**, Hwy 59, Edgerton. 608-884-3114 Closed Saturdays

CLASSICS



RESTORED 1947 IHC KB5, 1 Owner, Title, Eng rebuilt \$14,800 OBO 262-215-3317

SPORTS UTILITIES

2003 CHEVY TAHOE Z71, 90kmiles, \$8,000 262-275-0824

2006 FORD ESCAPE XLT, Front Wheel Drive, 3.0L V6, 4-sp auto, O/D trans, sonic blue, clear coat metallic. 60K, 29 mpg, Very good condition! \$8,500 608-752-2132

2007 DODGE 4 x 4 Nitro, SLT, 72K miles, tow pkg, downsizing to 1 car, \$9990 608-868-7369

AUTO WANTED TO BUY

CARS/TRUCKS WANTED! Top \$\$\$\$ PAID! Running or Not, All Years, Makes, Models. Free Towing! We're Local! 7 Days/Week. Call Toll Free: 1-888-416-2330

AUTO WANTED TO BUY

GET CASH TODAY for any car/truck. I will buy your car today. Any Condition. Call 1-800-864-5796 or www.carbuyguy.com

TRUCKS

1999 DODGE DURANGO, fully loaded, \$1,500, 815-270-0205



2002 FORD Ranger, XLT Reg cab, V6, 6 cyl, A/C, A/T, 59K miles, Eagle top, Ex cond, \$7000.OBO 815-389-3623

VANS

1991 CHRYSLER Town & Country wheel chair lift van, full power, leather interior, 94,250 miles, good mechanical condition, \$2,800 OBO, 815-742-7360

1999 CHEVY 3500 extended van, good condition, great utility van \$4,200 OBO 815-601-4463

RECREATIONAL EQUIPMENT

2001 JAYCO CAMPER, sleeps 8, air conditioning & canopy, excellent condition, \$1800. 608-931-6665



2003 WINDSPORT 2 slide-outs. Furnished. Screen house. Reduced to \$24,500. Must sell! 623-695-1914, Clinton WI

RECREATIONAL EQUIPMENT



2011 FOUR WINDS SIESTA, Model 26BE on Ford E450 chassis w/V-10 engine, automatic w/tow setting. Always stored inside & never driven in snow or salt. Must sell. \$60,000. 608-563-1313

ATV'S, SCOOTERS & GO-KARTS. YOUTH ATV'S & SCOOTERS (80 MPG) @ \$49/ MO. SPORT & 4X4 ATV'S @ \$69/MO. AMERICAN MARINE & MOTORSPORTS, SHAWANO = SAVE= 866-955-2628 www.americanmarina.com (wcan)

CAMPER, JAYCO pop-up, sleeps 6, heater & A/C, stove, fridge, shower & toilet, screen room, \$2,000 OBO, 262-248-2533

FREE STORAGE Outside with Winterizing & Shrink Wrap! Inside Storage avail **MOON MARINE 920-907-8021 www.moonmarine.net**

TRAILERS @ LIQUIDATION PRICING. FOR BOAT, ATV, SLED OR PONTOONS. 2 OR 4 PLACE/OPEN OR ENCLOSED. AMERICAN MARINE, SHAWANO. 866-955-2628 www.americanmarina.com (wcan)

WE BUY-BOATS/RV/ PONTOONS/SLED/ATV'S & MOTORCYCLES! "CASH PAID" NOW. **AMERICAN MARINE & MOTORSPORTS SUPER CENTER, SHAWANO 866-955-2628 www.americanmarina.com (wcan)**

MOTORCYCLES

WANTED JAPANESE MOTORCYCLES 1967-1982 ONLY KAWASAKI Z1-900, KZ900, KZ1000, Z1R, KZ1000MKII, W1-650, H1-500, H2-750, S1-250, S2-350, S3-400 Suzuki, GS400, GT380, Honda CB750 (1969-1976) CASH. 1-800-772-1142, 1-310-721-0726 usa@classicrunners.com

WANTED: 60's and 70's Motorcycles. DEAD OR ALIVE! 920-371-0494 (wcan)

WATERCRAFT

1964 CHRIS CRAFT SUPER SPORT, 21', 327 engine, runs great, good interior and frame. Needs to be refinished. \$12,000 630-768-7987

24' SEA RAY, 350 V-8 Mercury & trailer, Stored indoors on boat lift, Low hours, very clean \$13,500 847-927-0361

DON'T STORE YOUR RV, AUTO, BOAT OR PONTOON-TRADE IN BY NOV. 15 AND SAVE "ALL" STORAGE & WINTERIZING FEES. PLUS "NO" PAYMENTS OR INTEREST ON YOUR NEW BOAT OR PONTOON UNTIL SPRING DELIVERY OF 2015. AMERICAN MARINE & MOTORSPORTS SUPER CENTER, SHAWANO. 715-526-4300 (wcan)

Shore Station BOAT LIFT, 5,000 lb with motor, all new bunks, \$3,100 847-927-0361

STORAGE (INSIDE) - RV/ AUTO/BOAT & PONTOON @ VERY LOW RATES. PICKUP/WINTERIZING/DELIVERY. WE DO IT ALL. AMERICAN MARINE, SHAWANO. 866-955-2628. www.americanmarina.com (wcan)

CARS WANTED

Austin Healey
Jaguar, XK-XKE
MG "T" Series, MGA
Triumph TR 2-3-4-250
Mercedes 190-220-230-250-280 SL
Porsche 356-911-912-914
Alfa Romeo
Singer
Morgan
Micro-Cars
Volvo P1800
Karmann Ghia
Ford Mustang 1964-1967
Model A and T

Other interesting European and American Cars

Generous Finders Fees
Fast payment and pick-up

Steve's British Connection
630-553-9023 • sbcinc@aol.com

FALL SPECIALS

NEW 2013 FORD C MAX HYBRID SE

\$24,995

Tom Peck Ford Discount - \$1,185

Then Choose from Rebates up to \$1,750 or Choose Low 0% Ford financing (with approved credit) for up to 72 months

2011 FORD FIESTA 4 DR.

Low miles, auto., A/C

2 to choose from **\$11,995**

TRUCKS, VANS, SUVS

2012 FORD F-150 CREW CAB 4x4 Low miles.....	* \$29,995
2012 FORD ESCAPE 4 DR. Low miles, loaded, 3 to choose.....	Starting at * \$20,995
2012 CHEVROLET COLORADO Z71 CREW 4X2 PICKUP 18,000 miles, 1 owner...	* \$25,995
2011 FORD EXPLORER 4 DR. 4x4 Sunroof, leather, Limited.....	* \$29,995
2011 FORD F-150 SUPERCAB 4X4s 2 to choose from	Starting at * \$28,995
2011 FORD ESCAPE 2 to choose from.....	Starting at * \$16,995
2011 TOYOTA SIENNA MINI VAN 1 owner, extra clean.....	* \$15,995
2010 MERCURY MARINER V6, 2 to choose from.....	Starting at * \$16,995
2010 FORD ESCAPE 4 DR. 4X4 V6, local trade.....	* \$9,995
2009 FORD F-150 CREW CAB 4X4 PICKUP Local trade-in, extra clean.....	* \$19,995
2007 CHEVY K3500 DRW 4X4 Diesel, leather.....	* \$25,995
2006 SATURN VUE 4 DR. 71,000 miles, like new.....	* \$7,995
2005 GMC YUKON 4 DR. 4X4 DVD, leather, extra clean.....	* \$14,995
2004 DODGE RAM 2500 4X4 QUAD CAB SLT Hemi, V-8.....	* \$9,995
2004 GMC ENVOY 4 DR. 4x4 Perfect in & out.....	* \$7,995
2004 GMC YUKON XL 4 DR. 4X4 High miles.....	* \$4,995
2003 DODGE CARAVAN MINI VAN Low miles, local.....	* \$6,995
2003 FORD ESCAPE 4 DR. LIMITED 4x2 V6.....	* \$6,995
2001 FORD F-150 SUPERCAB 4x4 PICKUP Local trade in.....	* \$8,995
1999 DODGE RAM 1500 SUPERCAB 4x4 PICKUP Runs and looks great.....	* \$4,995
1999 JEEP GRAND CHEROKEE 4 DR. 4x4 Local.....	* \$4,995
1997 FORD F-150 SUPERCAB 4X4 PICKUP Nice shape, snow ready.....	* \$2,995
1997 DODGE 1500 4x4 SUPERCAB PICKUP Very clean, hurry.....	* \$2,995

USED CARS

2014 SUBARU OUTBACK 4 DR. 4X4 Low miles, 1 owner.....	* \$26,995
2013 FORD TAURUS LIMITED Fully loaded.....	* \$22,995
2013 FORD FOCUS 4 DR. SEDAN Local trade in	* \$14,995
2012 FORD TAURUS 4 DR. LIMITED Leather, low miles	* \$23,995
2012 LINCOLN MKZ Sedans 3 to choose from	Starting at * \$17,995
2012 FORD FUSION 4 DR. Low miles, loaded, 4 to choose from.....	Starting at * \$14,995
2012 MAZDA 6, 4 DR. SEDAN, clean, great MPG.....	* \$14,995
2012 FORD FOCUS 4 DR. Great MPG!! 4 to choose from	Starting at * \$14,995
2011 FORD TAURUS LIMITED 4 DR. SEDAN Nice, 1 owner	* \$16,995
2011 FORD CROWN VICTORIA 4 DR.....	* \$15,995
2011 FUSION 4 DR. SEDAN Loaded, warranty.....	Starting at * \$13,995
2010 TAURUS SEL 4 DR. SEDAN Low miles, extra clean.....	* \$15,995
2010 BUICK LACROSSE 4 DR. CXL Extra clean, 1 owner.....	* \$13,995
2009 LINCOLN SIGNATURE TOWN CAR 4 DR. Low miles, 1 owner.....	* \$16,995
2009 PONTIAC VIBE GT 4 DR. Auto., loaded.....	* \$11,995
2008 FORD TAURUS 4 DR. Limited, leather, navigation.....	* \$10,995
2007 FORD FUSION 4 DR. SEL Leather, sunroof, V6.....	* \$9,995
2007 MERCURY GRAND MARQUIS LS SEDAN Extra clean.....	* \$7,995
2006 MITSUBISHI ECLIPSE GS Black, loaded.....	* \$8,995
2006 VOLKSWAGEN NEW BEETLE CONVERTIBLE 2 DR. 42,000 miles, like new.....	* \$9,995
2005 CHEVROLET MALIBU 4 DR. V6, auto., 1 owner.....	* \$4,995
2004 FORD MUSTANG GT V8, 5 speed manual.....	* \$9,995
2004 MERCURY GRAND MARQUIS Loaded.....	* \$5,995
2004 SATURN ION 4 DR. SEDAN Clean.....	* \$4,995
2001 CADILLAC 4 DR. DEVILLE Very nice, needs work, clean.....	* \$1,995
2001 LINCOLN CONTINENTAL 4 DR. Looks and runs great.....	* \$3,995
2000 FORD TAURUS 4 DR. SEDAN.....	* \$4,995
1998 LINCOLN TOWN CAR 4 DR. Runs good.....	* \$995
1979 FORD LTD 4 DR. SEDAN V8, clean.....	* \$2,995



1-800-895-3270 • 1-608-676-2273
Just 3 miles over the Stateline in Clinton, Wisconsin • Hwy. 140 & I-43

Sales Hours: M-TH: 8 - 7, Fri: 8 - 6 pm; Sat: 8 - 4:30 pm
Service Hours: M-TH: 7:30-5:30 Fri: 7:30-5:30 pm; Sat: 7:30-2 pm





THERE AT EVERY TURN.



LIONS QUICK MARTS

OPEN 24 HOURS

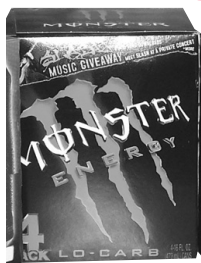


WE NEVER CLOSE!
Open 24 Hours
a Day, 365 Days
a Year!

CORNER OF MILTON AVENUE & HOLIDAY DRIVE
CORNER OF HIGHWAY 14 & HIGHWAY 51
CORNER OF MAIN STREET & RACINE STREET

• 752-9801
• 752-9800
• 752-9721

MONSTER



\$5⁶⁹
4 PACKS

ALL FLAVORS

COUPON

50¢ OFF

**LIONS QUICK MART
DELI PURCHASE**

Expires 1/31/15

BUCKY BOOK



**23RD
EDITION**

\$35⁰⁰

All profits benefit Echo of Janesville.

TAKE-N-BAKE PIZZA

1 LB. OF
CHEESE

THIS
PIZZA IS
HUGE!

16" \$9⁹⁹
Available at all
Janesville locations



FREE 2 LITER OF COKE
PRODUCT
OR
1 LITER OF DASANI
W/PURCHASE

EBT ACCEPTABLE

COUPON

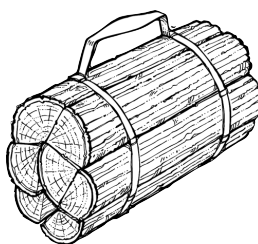
PROPANE EXCHANGE OR BUY



**\$3⁰⁰
OFF**

Expires 1/31/15

FIREWOOD BUNDLE



\$4⁶⁹

JOIN OUR FREQUENT SIPPER CLUB!

Featuring Berres Bros. Coffee!
Buy 10 cups of coffee or cappuccino
GET ONE FREE!

★★★ALL BEER & LIQUOR IN THIS AD ARE AT LOWEST LEGAL RETAIL PRICE!!

MILLER LITE



\$12⁷²
18 PK.
CANS
MGD, MGD64

LEINENKUGELS OKTOBERFEST



\$6³⁰
6 PK. BTLS.
ALL LEINES FLAVORS

MODELO



\$16⁷⁰
18 PK.
CANS

NEW GLARUS



\$6⁹⁹
6 PK.
BTLS.
ALL FLAVORS

KEYSTONE LIGHT



\$13⁴⁷
30 PK.
CANS
KEYSTONE ICE

COORS LIGHT ALUMITEK



\$8⁷⁵
9 PK.
ALUMINUM
CANS

BUD LIGHT



\$14⁶⁹
20 PK.
BTLS.
BUDWEISER

SHOCK TOP PUMPKIN WHEAT



\$5⁹⁴
6 PK.
BTLS.
ALL FLAVORS

BUSCH LIGHT



\$15⁷⁵
30 PK.
CANS
BUSCH

FLEISCHMANN'S VODKA



\$10⁵⁹
1.75
LTR.

JAGERMEISTER



\$17⁶⁰
750
ML

CAPTAIN MORGAN



\$23⁹⁷
1.75
LTR.

WHILE SUPPLIES LAST. WE RESERVE THE RIGHT TO LIMIT QUANTITIES. Prices good through 10/20/14.
FAST, FRIENDLY, CONVENIENT, QUALITY PRODUCTS AT COMPETITIVE PRICES.