

Mid-Michigan Buyers Guide

SUNDAY, JULY 17, 2016

Serving Clare, Gladwin, Gratiot, Isabella, Montcalm, & Southern Roscommon Counties

 Morning Star Publishing Company powered by  digitalfirst

2016 ISABELLA COUNTY FAIR • JULY 25TH - 30TH

FAIR SCHEDULE

Kids Day
Tues. & Sat.
1-4pm 1-4pm

Monday, July 25
Semi Truck, Super Stock Tractors & Pick up Pull • 7:00 PM



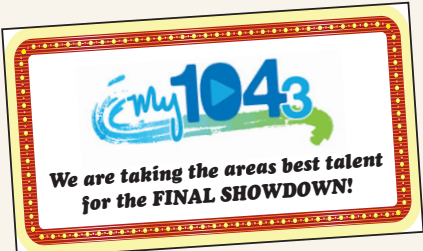
Admission \$10.00 per person
\$8.00 Children Under 12
Event Sponsor: Today's Best Music 95.3 CFX
Day Sponsor: My 104.3 WCZY & AM 830 WMMI & Mid MI Comm College

Tuesday, July 26
7:00 PM
SUPER KICKER RODEO



\$10.00 Per Adult
\$8.00 Children Under 12
Event Sponsor: Krapohl Ford
DAY SPONSOR: BADER & SONS, CO.

Admission Free



8TH ANNUAL
"HOMETOWN SHOWDOWN"
TALENT SHOW

Wednesday, July 27 • 7:00 PM

Sponsored by:
My 104.3 WCZY &
AM 830 WMMI/CMU Events
Day Sponsor: KFC

Friday, July 29
Pickup Truck Demo Derby



7:30 PM
Admission \$10.00 adult
\$8.00 Children under 12
Event Sponsor: Higgins & Assoc. • No Bull Graphix
Day Sponsor: Greenstone Farm Credit Services & 103 Country WGDN

Saturday, July 30
Car Demo Derby
7:30 PM



Admission \$10.00 adult
\$8.00 Children under 12
Event Sponsor: Higgins & Assoc. • No Bull Graphix
Day Sponsor: Morey Foundation

PROGRAM FOR THE ISABELLA COUNTY YOUTH AND FARM FAIR JULY 25-30, 2016					
SATURDAY, JULY 23, 2016			TUESDAY, JULY 26, 2016		
8:30-12 Noon	Enter Open Class Still Exhibits and Flowers	8 AM	4-H Swine Showmanship followed by judging	9 AM	4-H Demonstrations, Public Speaking
9 AM	Enter Historical Village Items	9 AM	Pocket Pet Judging	10 AM	4-H Leadership, Achievement Booth, & Outstanding Club Member (4-H Exhibit Bldg.)
9-1 PM	Open Class Beef Show	10 AM	4-H Horse Jumping, English Pleasure, English Equitation & Dressage (Arena)	10-12 Noon	Junior and Senior Dairy Judging Contest
	Enter 4-H and FFA Arts and Crafts Exhibits, 4-H Flowers	1 PM	4-H Judging of Goats and Showmanship followed by Open Class Cloverbud Poultry/ Rabbit Evaluation	1 PM	Livestock Judging - sign up in livestock pavilion
12:30 -1 PM	Enter Cloverbud Still Exhibits and Evaluation	1-4 PM	MAGIC SHOW (between Merchant Building and Fair Office)	1 PM	MIDWAY OPENS
1 PM	Enter 4-H Dogs and 4-H Cats	1-2 PM	Enter Open Class Goats	2 PM	Overall Small Animal Showmanship
3 - 4 PM	4-H Dog and 4-H Cat Shows followed by Open Shows (Small Animal Barn)	4 PM	4-H Sheep Showmanship followed by judging - To be announced	7 PM	TALENT SHOW - (Small Animal Barn)
6 PM	Enter Open Class Dogs	7 PM	Pee Wee Sheep Showmanship	7:30 PM	TRUCK DEMO DERBY (Grandstand)
	Still Exhibit Auction		SUPER KICKER RODEO -		EVENT SPONSOR: HIGGINS & ASSOCIATES and NO BULL GRAPHIX
SUNDAY, JULY 24, 2016			WEDNESDAY, JULY 27, 2016		
10-4 PM	Commercial Exhibits Entered	9 AM	DAY SPONSOR: KENTUCKY FRIED CHICKEN		Admission \$10.00 adult \$8.00 children under 12
11 AM	Enter 4-H & FFA Dairy Feeders		4-H Horse Western Pleasure, Stockseat Equitation, Command, English/Western Riding, Reining & Bareback Equitation Classes (Arena)	9 AM	SATURDAY, JULY 30, 2016
12-3 PM	Enter 4-H Horses (Vet check-in)	1 PM	Beef Showmanship followed by Judging (Livestock Pavilion)	NOON	DAY SPONSOR: THE MOREY FOUNDATION
4-7 PM	Enter 4-H & FFA Rabbits, Goats, Poultry & Pocket Pets (including feed records)	4 PM	MIDWAY OPENS	1 PM	Champion Overall Showmanship Large Animals 4-H Cloverbuds Horses
4-6:00 PM	Enter 4-H & FFA Beef and Sheep	7 PM	Goat Hand Milking Contest - (Small Animal Barn)	1-4 PM	4-H Horse Costume Classes (Arena) (Registration during Fair Week in Small Animal Barn)
5-8 PM	Enter 4-H & FFA Swine	7 PM	SMALL ANIMAL AUCTION (Small Animal Barn)	6 PM	MIDWAY OPENS - Kids Day
7:30 PM	4-H Horse Grand Entry (Drill Team)		HOMETOWN SHOWDOWN	6 PM	4-H Horse Fun Day (Arena)
MONDAY, JULY 25, 2016			THURSDAY, JULY 28, 2016		
8:30 AM	4-H Rabbit Showmanship and Breed Classes followed by Open Class	9 AM	DAY SPONSOR: McCONNELL FARM SUPPLY	8-10 PM	MAGIC SHOW (between Merchants Building and Fair Office)
9 AM 4-H	Horse Showmanship Classes with horse judging following	1 PM	4-H and FFA Horse Speed Classes (Arena)	2 - 4 PM	Shooting Sports Chili Fundraiser
8:30 - 9:30 AM	4-H and FFA Horse Trail Classes (Arena)	1 PM	4-H and FFA Dairy Show	6 PM	4-H Awards Program (Small Animal Barn)
10:00 AM	Enter Open Class Poultry and 4-H Poultry Judging & Showmanship followed by Judging	1 PM	Baby Calf Parade	6 PM	USED CAR GIVE-A-WAY - MUST BE PRESENT TO WIN (Carnival Ticket Office)
10 AM- NOON	Enter Livestock & Horse Feed Records in the Still Exhibit Building	2:30 PM	MIDWAY OPENS		Still Exhibits Released
11 AM	Dairy Feeder Showmanship - Followed by Judging	5 PM	Open Class Dairy Show	10 PM	4-H Horses Released
1-3 PM	Enter Open Class Rabbits		Hand Milking Contest (following dairy judging)	7 PM	Talent Show (Small Animal Barn)
5 PM	MIDWAY OPENS		LIVESTOCK AUCTION - (Livestock Pavilion)	7:30 PM	CAR DEMO DERBY (Grandstand)
7:00 PM	SEMI/SUPERSTOCK TRACTOR & TRUCK PULL				Admission \$10.00 adult \$8.00 children under 12
	EVENT SPONSOR: TODAY'S BEST MUSIC 95.3 CFX				EVENT SPONSOR: HIGGINS & ASSOCIATES and NO BULL GRAPHIX
Admission \$10.00 per adult, \$8.00 children under 12					

BICYCLE GIVEAWAY
Children age 12 and under
Tue. 2-4 P.M.— Sat.2-4 P.M.
Beside the Merchants Building
Must be present to win

FREE Magic Show
Tuesday & Saturday • 1-4 p.m.

CARNIVAL RIDE SPECIALS (WRISTBAND PRICES)

MONDAY 5PM - CLOSE \$10.00 Armband	FRIDAY 1 PM - CLOSE \$18.00 or 2 FOR \$30.00
TUESDAY 1 PM - CLOSE \$12.00 KIDS PLAY	SATURDAY 1 PM - CLOSE / LAST BLAST SPECIAL \$15 EACH
WEDNESDAY 1 PM - CLOSE \$18.00 Armband	
THURSDAY 1 PM - CLOSE \$18.00	

A Special Thanks to 2016 Sponsors

- | | | | |
|--|---|--|---|
| <ul style="list-style-type: none">• 103 County• 95.3 WCFX• Ace of Diamonds• Bader & Sons Co.• Celebration Cinema• Central Michigan Catering• CMU Events• Dave & Betsy Perry | <ul style="list-style-type: none">• Graff Chevrolet• Greenstone Farm Credit Services• Higgins & Associates• Hunters Ale House• John Mogg Trucking & Excavating• KFC• Krapohl Ford• Mears | <ul style="list-style-type: none">• Meijer• Mid Michigan Community College• McConnell Farm Supply• Moeggenborg FB Agency• Morey Montessori School• Muskegon Development• No Bull Graphix• Pleasant Graphics | <ul style="list-style-type: none">• Steve and Kim Recker• Summit Petroleum• The Bird Bar & Grill• The Morey Foundation• Valet Auto Care, Inc.• WCZY/WMMI |
|--|---|--|---|

LIVESTOCK AUCTION
Thursday, July 28
Starts at 5:00
For More Information Call The Fair Office: (989) 773-9070



Quality Built. Quality Features.

Stop By & Check Out Our Fresh New Selection
Of Buildings On The Lot Ready To Go!

**DON'T WASTE YOUR SUMMER
VACATION TRYING TO BUILD YOUR OWN
STORAGE BUILDING. COME SEE US,
WE WILL BUILD IT FOR YOU!!**



10x12 1 window 6' loft,
\$2,035



12x24 Side Entry Door, 3
Windows, 8' Loft, **\$4,729**



12x20 4' Loft,
\$3,458



10x20 Quaker,
\$3,610

Free Delivery w/ in 70 miles • Statewide Delivery Available

Miller's Woodworking

3209 E. Beaverton Road • Clare, MI 48617
(Voicemail) 989-465-8172

Old US 127 to Surrey West on Surrey to Grant 1 mile north on Grant

7:30am-5:00pm Evening by Chance or Appointment
Closed Sunday

Summer is here



10% OFF REGULAR RETAIL PRICES

- Chain saws
- Trimmers
- Blowers



MT4400 CHAINSAW



DS2400 STRIMMER



SA3000 BLOWER

Building Materials for Your Projects:

Large Selection
of Oregon
Lawn Mower Blades
In-Stock
Starting at
\$8.95



Lumber, OSB, Treated Posts

Trusses, Windows, Doors,

Concrete Blocks, Mortar,

Redi-mix Concrete



Welcome to the Big Green Egg®
the Original American Designed Ceramic Cooker
A Smoker • A Grill • An Oven

COMPLETE OUTDOOR COOKER



- Compost • Potting Soils
- Seed Starter • Plant Mixes & More!

HERSHBERGER'S PRO HARDWARE

10289 N. Leaton Rd., Clare, MI 48617-9107
(989) 386-5338

Full Line of Hardware & Building Supplies
Stove & Furnaces All Fuel Chimneys



Steve's Country Market

989-539-3110 3170 North Clare Ave., Harrison

44 Feet of Old Fashioned Meat Counter with Good Old Fashioned Service



Hours: Sun. - Mon. 8-8 Bridge Card & Wic Accepted

Sale Dates: July 18 - July 24, 2016

Top Quality Meats At Rock Bottom Prices!

100% Satisfaction
Guaranteed

Michigan Lottery and ATM Machine
stevescountrymarket.com

Fresh Meat, Seafood & Deli Items

GROUND
CHUCK
FAMILY PACK



\$2.49
LB.

WHOLE
NEW YORK
STRIP LOINS



\$3.69
LB.

SLICED
FREE!

WHOLE
BONELESS
PORK LOINS



\$1.79
LB.

SLICED
FREE!

BONELESS
CHICKEN
BREAST



\$1.79
LB.

USDA CHOICE
T BONE
STEAKS



\$7.99
LB.

USDA CHOICE
BONELESS
ENGLISH
ROAST



\$3.29
LB.

MARINATED
CHICKEN
BREAST



\$2.69
LB.

STEVE'S OWN
MARKET MADE
BRATS



\$3.69
LB.

BABY BACK
RIBS



\$3.49
LB.

KOEGEL
PICKLED
BOLOGNA



\$9.99
EA.

POLLOCK
FILLETS
10 LB. BOX



\$15.00
EA.

TILAPIA
FILLETS



\$3.49
LB.

COD LOINS
10 LB. BOX



\$32.00
EA.

ECKRICH
HARD
SALAMI



\$4.49
LB.

ECKRICH
DELI
HAM



\$3.99
LB.

COLBY
OR
COJACK
CHEESE



\$3.99
LB.

Fresh Produce

SEEDLESS
GRAPES
RED OR GREEN



\$1.69
LB.

BI COLOR
SWEET CORN



6/\$2.00

BANANAS



49¢
LB.

Fresh Dairy And Frozen

YODER'S SHREDDED
OR BAR CHEESE
8 OZ.



2/\$4.00

ICE CREAM
4 QT. PAIL



\$4.99
EA.

Grocery

AUNT
MILLIE'S
HOMESTYLE
BREADS
20-24 OZ.



\$1.69
EA.

AUNT MILLIE'S
HOMESTYLE
HAMBURG &
HOT DOG BUNS
8 CT.



\$1.69
EA.

TOSTITOS
TORTILLA
CHIPS
9-10 OZ.



2/\$6.00

BUD OR
BUD LIGHT



\$9.95
PLUS
DEPOSIT

LAY'S
POTATO
CHIPS
9.5-10 OZ.



**BUY 1
GET 1
FREE**

ARBOR MIST
WINES
1.5 LITER



\$6.99
EA.

While supplies last. Not responsible for printing errors.

SUMMER CLEARANCE

OUR LOWEST PRICES EVER!!

Accents

See our Website for Pictures & Descriptions: www.STATESTREET-FURNITURE.COM

Wooden Magazine Rack
\$89.00 **Clearance \$27.00**
Coat Racks
\$99.00 **Clearance \$27.00**
Snack Tables
\$129.00 **Clearance \$27.00**
End Tables
\$200.00 **Clearance \$47.00**
Ottoman
\$179.00 **Clearance \$47.00**



7Pc Dinette Set

42" x 78" Rusting Hand Planed Table Top
W/18" leaf w/6 padded side chairs
\$2,899.00 Retail
Clearance \$947.00

Living Room

Queen Ann Chairs 6 Fabrics
Sonata Sand, Victoria Sage or Plantation
Scarlet, Fudge, Sapphire, Wine
\$599.00 **Clearance \$197.00**
Apartment Size Sofa-Surfer Maize
\$699.00 **Clearance \$267.00**
Rocker Recliner-Mustang Charcoal
\$899.00 **Clearance \$327.00**
Big Leather Rocker Recliners-Chocolate, Black
or Mushroom \$1099.00 **Clearance \$387.00**
Camouflage Rocker Recliner w/cup holder-Camo
\$1099.00 **Clearance \$387.00**

ALL OVER 80% OFF

Limited Quantities



5 Tier Corner Display Shelf
Retail \$89.00
Clearance \$17.00

Plant Stands
Retail \$149.00
Clearance \$27.00



Jewelry Armoire
Retail \$249.00
Clearance \$47.00

Oak Finish Vanity
w/Bench
Retail \$299.00
Clearance \$57.00



Spider Lamp
Retail \$299.00
Clearance \$57.00

Padded Storage Bench
2dr. Cappuccino Finish
Retail \$499.00
Clearance \$97.00



Daybed w/Top Spring
White Metal
Retail \$499.00
Clearance \$97.00

Futon w/6 "Mattress
Retail \$548.00
Clearance \$107.00



Padded Storage Bench
w/2 Wicker Basket
Retail \$599.00
Clearance \$117.00

Leather Love Seats
Tan or Olive
Retail \$899.00
Clearance \$177.00



End Tables
\$309.00 **Clearance \$87.00**
Pine Toy Box
\$499.00 **Clearance \$97.00**
TV Stand
\$799.00 **Clearance \$227.00**
3Pc End Table Set-Black with Gold Trim
\$799.00 **Clearance \$297.00**
Various Floor Lamps
\$169.00 - \$429.00 **Clearance \$47.00 - \$117.00**



9pc Dinette Set

44" x 96" Traditional Mission Style Table
W/2 12" Leaves w/6 Upholstered Side
Chairs & 2 Upholstered Arm Chairs
\$3,799.00 Retail **Clearance \$1,197.00**

See our Website for Pictures & Descriptions:
www.STATESTREET-FURNITURE.COM

Love Seat Fortress Cream
\$1199.00 **Clearance \$457.00**
Sofa-Bounce Tan
\$999.00 **Clearance \$397.00**
Love Seat-Bounce Tan
\$899.00 **Clearance \$347.00**
Chair-Bounce Tan
\$799.00 **Clearance \$297.00**
Love Seat-Sienna Peat Microfiber
\$899.00 **Clearance \$347.00**
Chair-Sienna Peat Microfiber
\$799.00 **Clearance \$297.00**
Love Seat-Coil Spring Cushion-Blast Sage Brush
\$1299.00 **Clearance \$447.00**

See our Website for Pictures & Descriptions:
www.STATESTREET-FURNITURE.COM

5 Drawer Chest-Dark Oak Finish
\$419.00 **Clearance \$177.00**
7 Drawer Chest W/Mirror-Dark Oak Finish
\$698.00 **Clearance \$297.00**
Full Size Bed Headboard,
Footboard & Rails-White Metal \$699.00
Clearance \$217.00
Full Size Bed Headboard,
Footboard & Rails-White & Brass \$799.00
Clearance \$267.00
Queen Mattress Set-Sleep Number Airbed
\$4399.00 **Clearance \$1,197.00**

Bedroom

8" Futon Mattresses-Black, Khaki or Red/
Black
\$329.00 **Clearance \$97.00**
Twin Hickory Finish Head Board
\$149.00 **Clearance \$37.00**
Full Shaker Headboard-Dark Oak Finish
\$219.00 **Clearance \$97.00**
Full Bookcase Headboard-Dark Oak Finish
\$269.00 **Clearance \$117.00**
4 Drawer Chest-Dark Oak Finish
\$359.00 **Clearance \$157.00**

Symbol Mattress Big 11 1/2" Profile

Comfort 100 Tight Top

Twin Set Retail: \$999 **\$247**
Full Set Retail: \$1099 **\$297**
Queen Set Retail: \$1199 **\$347**
King Set Retail: \$1799 **\$547**

Made in USA!

Quilt
HIGH LOFT FR Fiber
11/16" Symbol Foam
2" Comfort Layer
High Profile 7" Bonnell
390 13ga Coil System
2" Support Core

FREE

Pillow, Frame,
Sheet Set &
Mattress Pad on Most
Mattress Sets!
Up to \$208.00 Value
FREE

Facts About Symbol Mattress

- * Symbol Mattress is the 3rd largest manufacturer in the Midwest and 12th largest in the United States out of 600.
- * Symbol Mattress has a higher customer satisfaction rating than both Serta & Sealy
- * Symbol Mattress sets normally sell for 20-30% less than the equivalent Serta or Sealy model

Symbol Mattress Big 13" Profile

Comfort 200 Pillow Top

Twin Set Retail: \$1099 **\$297**
Full Set Retail: \$1199 **\$347**
Queen Set Retail: \$1299 **\$397**
King Set Retail: \$1899 **\$597**

Made in USA!

Quilt
HIGH LOFT FR Fiber
11/16" Symbol Foam
2" Comfort Layer
High Profile 7" Bonnell
390 13ga Coil System
2" Support Core

***Up To 36 Months NO INTEREST Financing**

Minimum Monthly Payment Required...Minimum purchase required

Check out our Clearance Selection on our website

STATE ST
FURNITURE

318 N State St • Alma, MI 48801
(989) 463-1037 • Hours: 9-6 M-F • 9-5 Sat.
www.StateStreet-Furniture.com
*See Store for Details



DEWEY'S TRADING POST

Maple Rapids • 682-4158

Monday-Saturday: 8 am - 7 pm, Closed Sunday

Prices In This Ad Good for week of July 18th - July 23rd 2016

WIC • Bridge Card • VISA • Mastercard • Discover • American Express • Debit Card & Chamber Bucks Gift Certificates.

"Whole" New York Strips 13 lb. avg.  \$4.49 LB	Koegel's Skinless Franks 4 lb.  \$12.99 PKG	Koegel's 2 1/2 lb. Jars Pickled Bol or Red Hots  \$9.99 JAR
"Our Own" Bacon Cheddar Brats  \$2.99 LB	"Our Own" Buffalo Wing Brats  \$2.99 LB	"Our Own" Smoked Polish Sausage  \$3.99 LB
"Our Own" Beef Salami  \$4.99 LB	Choice T-Bones  \$8.99 LB	Bulk Breakfast Sausage "3 Flavors"  \$2.49 LB
Choice "Boneless" Patio Steak  \$2.99 LB	Choice Boneless Arm Roast  \$2.99 LB	Boneless Country Style Ribs  \$2.19 LB
Whole Pork Butts 9 lb. avg.  \$1.79 LB	Leg 1/4's 10 lb. bags  \$6.99 BAG	Baby Back Ribs  \$3.99 LB
Raw Shrimp 1 lb. 26-30 ct.  \$8.99 BAG	Ocean Perch 5 lb.  \$17.99 BAG	Pollock 10 lb.  \$21.99
"Our Own" Durham Sausage  BULK \$3.49 OR COILED \$3.99		Fresh Ground Hamburger 5 lb. bags  \$14.95 BAG

www.deweystradingpost.com
LIKE us on facebook & see our WEEKLY SPECIALS!



Everything Must Go By August 24th

The Paper Place Store

Closing Sale

132 Ashman Circle, Midland MI 48640

989-835-4861

Starting at

25% off lowest ticket price*

Table, Chair & Rental Inventory

- Tables & Chairs
- Ice Tables
- Carnival Games
- Linen skirting
- Balloon arch kits
- Store fixtures and more

Party Supplies

- Kids Characters
- Cake decorations
- Baby & Bridal Shower
- 30 colors of solid tableware
- Wedding • Over the hill
- Luau • Fiesta
- Retirement
- And Much More

*Punch cards will be honored and pro-rated by amount punched until August 1. After that date they cannot be used. No discount on custom printed products.

WE'VE GOT
SUMMER
fun
COVERED!

Ask us about our
LOW RATE LOANS
today!

ICCU
Isabella Community
Credit Union

989.773.5927 • ICCUonline.com
2400 Isabella Rd • 102 E Broadway • 2100 E Remus, Mt Pleasant

BRIAN'S FRUIT & MEAT MARKET

2167 S. M-76 • West Branch
(Across from Kmart)

While Supplies Last • Not responsible for printing errors

Prices good Sunday, July 17th thru Friday, July 22nd, 2016

New store hours: Open Sundays 8am - 7pm • Mon.-Sat. 7am-8pm

WE ARE A PACKAGED LIQUOR DEALER

We accept all major credit cards & EBT card

BRIAN'S MEATS: 989-345-3709

LIKE US ON FACEBOOK



WWW.BRIANSFRUITANDMEATMARKET.COM

Butter Brand SLICED OVEN ROASTED TURKEY BREAST  \$5.99 lb.	Eckrich Brand SLICED PREMIUM DELI HAM  \$3.49 lb.	Potato, Mustard Potato, Mac & Slew YODER'S 2 LB. PREMIUM DELI SALADS  2/\$7.00	Fire Up The Grill BEEF LOIN PORTERHOUSE STEAKS  \$8.99 T-BONES \$8.79	Beef It's What's For Dinner BONELESS BEEF FLANK STEAK  \$6.49 lb.
Store Ground FRESH GROUND BEEF FROM ROUND  \$3.69 lb.	xxxx Mix FRESH GROUND PORK  \$2.xx lb.	Pork The Other White Meat BONELESS BUTTERFLY PORK CHOPS  \$2.69 lb.	Great For Pulled Pork SEMI BONELESS PORK BOSTON BUTT ROAST  \$1.89 lb.	BBQ Time FROZEN BABY BACK RIBS FROZEN 3 PKGS.  \$2.99 lb.
Asst. Varieties BRIAN'S HOMEMADE FRESH BRATS  \$3.99 lb.	Breakfast Time BRIAN'S HOMEMADE BULK BREAKFAST SAUSAGE W/ BACON  \$2.99 lb.	Fresh Never Frozen FRESH BONELESS SKINLESS CHICKEN BREAST  \$1.99 lb.	Koegel's Fine Meats KOEGL'S VIENNA HOTDOGS  \$40.00 10 lb. box	

BRIAN'S PRODUCE: 989-345-2891

BAREMAN'S DAIRY MILK  \$2.29 HOMO/2% \$2.29 Skim/1%	PRAIRIE FARMS COTTAGE CHEESE  2/\$4 24 oz. tub	PRAIRIE FARMS YOGURT  5/\$2 6 oz.	FAMILY PAK ICE CREAM  \$5.99 5 qt.	HUDSONVILLE ICE CREAM  \$3.99 56 oz. tub
WILLIAM'S SAVE CHEESES  \$5.49 1 1/2 lb. block	DUTCH FARMS SHREDDED/CHUNK & SHINGLES  2/\$3 6-8 oz.	MICHIGAN BLUEBERRIES  \$10.99 5 lb. box	BAY COUNTY POTATOES  \$2.99 10 lb. bag	MICHIGAN SWEET BLACK CHERRIES  \$2.99 lb.
DESANI WATER 16.9 OZ. BOTTLES  \$3.99 24 pack	HOME GROWN CABBAGE  99¢ per head	CELERY  99¢ ea.	BABY CUT CARROTS  99¢ ea.	PABST BLUE RIBBON  \$9.99 18 pk cans + dep.
MASTER OF MIXES BIG BUCKET MARGARITA OR DAIQUIRI MIXES  \$6.99 96 oz.				

Christmas in July HOT BUYS



Lambert's Meat Market

Taste the difference "FRESH" makes!

624 E. Cedar Ave., Gladwin (next to Family Dollar)



989-246-1850

New Hours: Monday-Thursday 7-7, Friday 7-8,
Saturday 7-6, Sunday 8-4

Sale Dates Monday, July 18 through Saturday, July 23, 2016



10lb or more Sale!

Whole Ribeye Loins
(Cut Free!)
\$4.69 lb.

Family Pack Ground Beef from Chuck
80% lean
\$2.69 lb.

USDA Choice Denver Steaks or English Roast
\$3.19 lb.

Whole Eye of Round Rotisserie Roast
\$3.19 lb.

Pork Steak Or Pork Strip, Shoulder Roast or Country Style Breakfast sausage
\$1.69 lb.

Boneless Skinless Chicken Breast
\$1.79 lb.

Family Pack Ground Beef Hamburger
(73% lean)
\$2.29 lb.

Grilling Specials

USDA Choice New York Strip Steaks
\$7.99 lb.

Lambert's Own Pizza Brats or Sweet Onion Apple Bacon Brats
\$3.69 lb.

From our Bakery!

Hot Dog or Hamburger Buns
\$2.99 ea.

Pecan Sticky Cinnamon Rolls 6 pk.
\$4.99 ea.

DON'T FORGET LAMBERT'S HAS A GREAT SELECTION OF MEAT BUNDLES! Like us on Facebook! Lambertsmeatmarket.webs.com

No Rainchecks • Not Responsible for Printing Errors

Sale on 2016

Cub Cadet



Great Financing

Come in and Check out Sales on 2015 Models

Service. Knowledge. Selection. Financing. Delivery.

Check Us Out!

GRATIOT OUTDOOR EQUIPMENT

Commercial-Industrial-Residential
"We Service All Makes of Outdoor Equipment"

On M-46 in Breckenridge • **842-3844**

*See dealer for details

Largest Selection of Clean Used Cars in Central Michigan

GM Certified Pre-owned Vehicles = 2 Years of Oil Changes & Tire Rotations + 12 Month or 12,000 Mile Bumper to Bumper Warranty

USED CARS

2016 BUICK LACROSSE CXL V6, Quicksilver, 21,000 Miles.....	\$26,900
2016 CHEVROLET MALIBU LTZ Silver, 11,000 Miles, 4 Cyl.....	\$21,900
2016 CHEVROLET CRUZE LT Dk. Gray, 13,000 Miles, 4cyl.....	\$18,900
2015 BUICK REGAL Black/Black Leather, 13,000 Miles, Sunroof.....	\$22,900
2014 BUICK LACROSSE Champagne Silver, 4 Cyl, 25,000 Miles.....	\$18,900
2014 CHEVROLET IMPALA LT Silver Ice, 17,000 Miles, Great MPG.....	\$16,900
2013 BUICK LACROSSE Crystal Red, 34,000 Miles, CXL, Certified.....	\$21,900
2013 BUICK REGAL PREMIUM Diamond White, 24,000 Miles, Loaded.....	\$18,900
2013 BUICK LACROSSE CXL 41,000 Miles, Champagne Silver.....	\$18,900
2013 CHEVY IMPALA LT Red, 31,000 Miles.....	\$16,900
2013 BUICK LACROSSE Champagne Silver, 72,000 Miles, Leather.....	\$15,900
2012 BUICK LACROSSE CX Carbon Black, With E/Assist, 36,000 Miles, Certified.....	\$16,900
2012 BUICK VERANO White Diamond, 4 Cyl, 69,000 Miles.....	\$13,900
2012 CHEVROLET CRUZE LT Silver, 56,000 Miles.....	\$12,900
2011 BUICK REGAL CXL Majestic Blue, 69,000 Miles.....	\$14,900
2011 CHEVY MALIBU LS Black, 4Cyl, Well Equipped, 61,000 Miles.....	\$10,900
2010 PT CRUISER Burgundy, 90,000 Miles, Locally Owned, 4 Cyl.....	\$7,900
2009 CHEVROLET MALIBU LT Burgundy, 115,000 Miles.....	\$8,900
2007 BUICK LUCERNE CXL Dk. Blue, 3800 V6, 127,000 Miles, Leather.....	\$10,900
2007 CHEVY IMPALA LT Silver, 152,000 Miles.....	\$6,900
2007 CHEVROLET HHR LT Blue, 125,000 Miles.....	\$7,900
2005 PONTIAC BONNEVILLE SSE 119,000 Miles, Silver, Sunroof, Hands up Display.....	\$7,900

USED SUVS

2015 BUICK ENCLAVE CXL AWD, Silver Ebony, Leather, 20,000 Miles.....	\$34,900
2015 CHEVROLET TRAVERSE AWD Black, 21,000 Miles, Certified.....	\$28,900
2014 GMC ACADIA AWD SLE Summit White, 30,000 Miles, Certified.....	\$27,900
2014 GMC TERRAIN SLE FWD Ashen Gray, 20,000 Miles, 4 Cyl.....	\$21,900
2013 GMC TERRAIN FWD SLE 31,000 Miles, White, 4 Cyl.....	\$19,900
2013 CHEVY EQUINOX FWD Crystal Red, 24,000 Miles.....	\$19,900
2012 GMC YUKON DENALI Pearl White, Tan Leather, 77,000 Miles, 6.2 V8.....	\$35,900
2012 GMC TERRAIN AWD SLT 27,000 miles, Gray Green.....	\$23,900
2012 BUICK ENCLAVE CXL Cocoa Metallic, FWD, 69,000 miles, 7 passenger.....	\$23,900
2012 FORD EXPLORER XLT 4WD Brown, 63,000 Miles.....	\$21,900
2012 BUICK ENCLAVE CXL Cocoa Tan Interior, 87,000 miles, FWD.....	\$20,500
2012 GMC TERRAIN SLE FWD Burgundy, 71,000 Miles.....	\$16,900
2012 CHEVROLET EQUINOX LT FWD 102,000 Miles, Goldmist.....	\$13,900
2011 GMC TERRAIN SLT AWD 69,000 Miles, 6 Cyl.....	\$18,900
2011 GMC TERRAIN FWD SEL Goldmist, 4cyl, 32,000 Miles.....	\$16,900
2010 BLACK CADILLAC SRX Black, V6, 94,000 Miles.....	\$17,900
2009 BUICK ENCLAVE CXL FWD 92,000 Miles, Silver.....	\$16,900
2009 FORD ESCAPE XLT Med Red, FWD, 109,000 Miles, Clean.....	\$9,900
2008 BUICK ENCLAVE Burgundy, FWD, CX V6, Locally Owned, 110,000 Miles.....	\$12,900
2007 TAHOE LT 4WD Amber Bronze, Leather, Sunroof, 168,000 Miles, 1-Owner.....	\$16,900

USED TRUCKS

2015 GMC SIERRA CREW CAB 4X4 SLT 6.0 V8, 17,000 Miles, Burgandy, 3/4 Ton.....	\$44,900
2015 GMC SIERRA CREW SLE White 2500, 62,000 Miles, 1-owner, 3/4 Ton.....	\$34,900
2014 GMC SIERRA SLT 4X4 DOUBLE CAB ALL TERRAIN 24,000 Miles.....	\$34,900
2013 CHEVROLET SILVERADO CREW CAB 4X4 LTZ Mocha Steel, 29,000 Miles, Rear Camera/Remote Start.....	\$32,900
2013 GMC SIERRA CREW CAB ALL TERRAIN Black w/ Leather, 5.3 V8, 62,000 Miles.....	\$29,900
2013 CHEVROLET SILVERADO EXT. CAB 4X4 Grey, 5.3 V8, Trailer Pkg, 34,000 Miles.....	\$25,900
2012 GMC SIERRA CREW CAB 2500 DENALI 4X4 Duramax Diesel, 71,000 miles.....	\$41,900
2012 GMC SIERRA EXT. CAB SLT Black, 28,000 Miles, 5.3 V8, 1-owner.....	\$29,900
2012 CHEVY SILVERADO LT CREW CAB 4X4 Gray, 107,000 Miles, 5.3, V8,.....	\$21,900
2012 GMC SIERRA EXT. CAB SLE 4X4 5.3 V8, Mocha Steel, 73,000 Miles.....	\$23,900
2011 CHEVROLET SILVERADO Grey, 4x4, 107,000 Miles.....	\$19,900
2010 GMC EXT CAB SLE 4X4 White, 5.3 V8, 134,000 Miles.....	\$16,900
2009 GMC SIERRA EXT. CAB W/T 6.0 V8, White, 199,000 Miles, 3/4 Ton.....	\$13,900
2007 CHEVROLET SILVERADO CREW CAB 4X4 Desert Brown, 141,000 Miles.....	\$15,900
2007 GMC SIERRA CREW CAB SLE 5.3 V8, 170,000 Miles, Silver.....	\$15,900

USED VANS

2014 CHRYSLER TOWN & COUNTRY White, 43,000 Miles, Stow & Go.....	\$19,900
2012 CHRYSLER TOWN & COUNTRY Dk. Gray, 54,000 Miles, Stow & Go.....	\$18,900
2009 DODGE GRAND CARAVAN Dk. Green 132,000 Miles, Stow & Go Seating.....	\$8,900
2002 HONDA ODYSSEY Silver, 175,000 Miles.....	\$4,900

BENCHLEY BROS., INC.

1 Mile East of Doherty • US-10, Clare • Sales (989) 386-9900

For more info log on to: www.benchleybros.com

Parts & Service (989) 386-3197

Voted Clare Counties #1 Dealership

HOURS
8-6 Mon-Fri
9-2 Sat



Specializing in
GM Certified
USED VEHICLES



GREEN MOVING AUCTION

LOCATED: FROM I-75 NORTHBOUND FREEWAY, TAKE THE GRAYLING EXIT (EXIT 254), THEN CONTINUE GOING NORTH 1 ½ MILE THROUGH GRAYLING TO M-72 (LIGHT), THEN WEST 1 MILE TO OLE DAM RD. (OLE DAM RD. PARTY STORE), THEN NORTH 1 MILE TO FRIAR TUCK LN., THEN EAST 1 BLOCK TO LITTLE JOHN AVE., THEN NORTH 1 BLOCK

Grayling, MI

Sunday, July 24, 2016 • 12:00 Noon

J.D. COLLECTOR TRACTORS, LAWN & GARDEN, SHOP TOOLS & FIREARMS: 1943 J.D. H TRACTOR W/ LIKE NEW TIRES, PARADE READY, S/N 37336 • 1949 J.D. MT TRACTOR, PARADE READY S/N 11838 • J.D. 3-14" TRAILER PLOW • J.D. 2-12" TRAILER PLOW • 3 PT. 7" H.D. REAR BACK BLADE • A.C. 8 H.P. RIDING LAWN TRACTOR W/ 36" MOWER DECK & 30" SNOW BLOWER • HIGH WHEEL PUSH LAWN MOWER • STIHL BACK PACK GAS LEAF BLOWER • HUSQVARNA 142 CHAIN SAW • NUMEROUS ASST. YARD TOOLS • **HUGE AMOUNT OF GOOD SHOP RELATED HAND & POWER TOOLS • FIREARMS TO INCLUDE:** RUGER P94 .40 CAL. SEMI-AUTO. PISTOL W/ CASE & 2 MAGAZINES • REMINGTON #700 BOLT ACTION RIFLE CHAMBERED IN 30-06 W/ CHECKERED FOREARM/ STOCK & REDFIELD SCOPE (NICE) • 12 GA. SEMI-AUTO. SHOTGUN W/ EXTRA BARREL • 10 PLACE GUN CABINET • SEVERAL BOXES OF ASST. AMMO. • HUNTING SUITS • **HOUSEHOLD FURNISHINGS (ALL IN GOOD CLEAN CONDITION):** OAK DINING TABLE W/ 2 LEAVES & 4 CHAIRS • OAK CURIO CABINET • PINE CHINA CABINET • QUEEN SIZE PINE BED W/ MATTRESS • 5 PC. FULL SIZE BEDROOM • (2) DAVENPORTS • (4) RECLINERS • GLIDER/ROCKER • SANYO 55" FLAT SCREEN TELEVISION • ASST. MAPLE TABLES • (2) DRESSERS • **MANY MORE PCS. OF FURNITURE • NUMEROUS BOX LOTS • J.D. TOY TRACTOR COLLECTION, ANTIQUES & COLLECTIBLES • NUMEROUS OUTSIDE & MISC. RELATED ITEMS • THIS IS A PARTIAL LISTING! AUCTIONEERS NOTE:** PLAN TO ATTEND THIS **GOOD MOVING AUCTION** AS EVERYTHING IS IN VERY GOOD CONDITION. **TERMS OF SALE:** CASH, CHECK OR CREDIT CARDS ACCEPTED.

TO VIEW A COMPLETE LISTING WITH PHOTO'S VISIT JOHNPECKAUCTIONS.COM

Jim & Cindy Green, Owners

908 Little John Ave., Grayling, MI. 49738

JOHN PECK AUCTIONS LLC

Gladwin, MI (989) 426-8061

Thank You

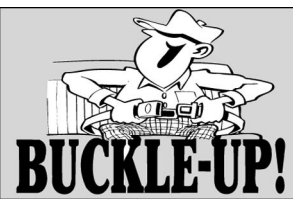
Mr. and Mrs. Wonsey

NoBull Graphix

for joining the Culligan family and becoming valued customers.

Culligan Worldwide
Celebrating 80 years

Ken's Culligan • Alma



Public Land Auction

The following County Treasurers will be offering tax-reverted real estate at public Auction on August 22nd, 2016:
Clare & Gladwin.

The Auction will be held at The Doherty Hotel and Convention Center, 604 N McEwan, Clare, MI 48617. Registration will begin at 11:30am, Auction will begin at 12:00pm.

Online bidding will be available via www.tax-sale.info.

For more information or for a list of the properties being sold, visit our website at www.tax-sale.info or call 1-800-259-7470. Sale listings are also available at your local County Treasurer's Office.

WANT FAST CASH?
CLASSIFIEDS GET RESULTS. IF YOU HAVE SOMETHING TO SELL, PLACE YOUR AD TODAY!

SYKORAAUCTIONS.COM PRESENTS!

STINSON TRUST

LARGE 2 DAY LIVE ON-SITE AUCTION

REAL ESTATE & PERSONAL PROPERTY

ROSEBUSH, MI. 48878

IN ORDER TO SETTLE THE JAMES G. & BONNIE G. STINSON TRUST, THE FOLLOWING WILL BE SOLD AT A LIVE PUBLIC AUCTION LOCATED ¼ MILE WEST OF THE 4 WAY STOP IN DOWNTOWN ROSEBUSH, MI. TO 3699 E. ROSEBUSH RD. (ISABELLA CO.) AUCTION #1 FRIDAY AUGUST 12TH, 2016 @ 10:00AM *PICKUP TRACTOR, FARM IMPLEMENTS, SHOP TOOLS, TRAILERS, & 3 HOMES & 70 ACRES OF VACANT REG. LAND • REAL ESTATE @ 6PM
AUCTION #2 FRIDAY AUGUST 19TH, 2016 @ 10:00AM, *HOME FURNISHINGS, APPLIANCES & NEW COLLECTIBLES & QUALITY USABLE ITEMS!

DAY #1 FRIDAY AUGUST 12TH, 2016 @ 10:00AM
ALL REAL ESTATE PARCELS OFFERED ON DAY #1 FRIDAY AUGUST 12TH ON-SITE AT PARCEL #1 @ 6:00 PM
PARCEL 1: LOCATED AT 3691 E. ROSEBUSH RD. ROSEBUSH, MI. 48878
2 STORY 3 BEDROOM 2 BATH COBBLESTONE FARM HOME W/ MANY UPDATES AND HIP ROOF BARN SITTING ON 2.3 +/- ACRES 250'X400' IN ISABELLA TWP. PARCEL ID# 09-010-0003-03
PARCEL 2: LOCATED 8410 MISSION RD. CLARE, MI. 48617 67+/- VACANT RECREATIONAL LAND PARCEL W/ OLDER POLE BLDG. BORDERS MISSION RD. & US-127 FREEWAY. INSPECTION ON THIS PARCEL IS ANYTIME AT YOUR WILL. IN VERNON TWP. PARCEL ID# 3 15-023-30-010-00

PARCEL 3: LOCATED 8496 MISSION RD CLARE, MI. 48617 4+/- ACRES W/ 2 STORY OLDER FARMHOUSE AND 2 BEDROOM 79 SCHULT MOBILE HOME IN VERNON TWP. PARCEL ID# 15-023-30-010-01
OPEN HOUSE INSPECTION TUESDAY JULY 19, 2016 @ PARCEL #1 6 PM. TO 7 PM AUCTIONEER ON SITE
REAL ESTATE TERMS: 10% EARNEST DEPOSIT, BALANCE DUE AT CLOSING APPROX. 45 DAYS. TITLE BY WARRANTY DEED & TITLE INS. FURNISHED, TAXES PRORATED AT CLOSING. **NO BUYERS PREMIUM** - More detailed information and viewing apps. Will be available by contacting the Sales Manager Frank Robinson 989-429-5281 @ Century 21 Pioneer (or) the Auctioneer, John McConnell at 989-429-0444 / johnm48622@gmail.com

FORD TRUCK & TRAILERS
2005 FORD F-150 XLT 4X4 CREW CAB PICKUP - HAULMARK 6X14 T/A ENCLOSED TRAILER - 6 ½' W X 12 S/A TAG TRAILER W/ LANDSCAPE GATE - 6 ½' W X 16 T/A TAG TRAILER W/ REMOVABLE RAMPS - 6'X8' S/A TAG TRAILER W/ TILT BED - 8' ELECTRIC PUEZ DUMPER BOX ON S/A TAG TRAILER - 5 ½' X 10' S/A TAG TRAILER - 1980 S/A MOBILE OFFICE/TOOL CRIB TRAILER - 96'X40FT T/A VAN STORAGE TRAILER - SHOPBUILT T/A CAR HAULER - AS IS - **TRACTOR & IMPLEMENTS - FORD 1320 AST. HYDRO MPWD DSL TRACTOR W/ 7108 HYD LOADER, 912 HOURS - 3 PT. 1 BOTTOM PLOW - 1 SECTION 48" DRAG - LEINBACH 3PT DIRT SCOOP - KING KUTTER 5' 3PT. YORK RAKE - KING KUTTER 5' BACK BLADE - HABAN 36" SELF CONTAINED GAS ENGINE ROTOTILLER - 3 PT. 9' POST AUGER - HOWARD MODEL HR 3-50 3 PT. FLATVATOR - KING KUTTER 5' 3PT. 48" ROTARY MOWER 3 PT. - KING KUTTER 5' BOX BLADE W/ SCARF TEETH - INDEPENDENT MFG 23 3 PT. DISC - **HAND/POWER TOOLS & GARAGE ITEMS: CHAMPION 4000 PEAK 3500 CONT. WATT****

PORTABLE GAS GENERATOR - MANY NEW IN BOX MAINTENANCE ITEMS & HAND TOOLS - **LAWN TRACTORS & OUTDOOR - CRAFTSMAN PGT 9000 54" LAWN TRACTOR 28 HP BRIGGS - 2014 CRAFTSMAN GT 6000 54" LAWN TRACTOR 28 HP KOHLER - LOW USE! - STIHL MS 180C CHAINSAW - SMALL S/A ATV TRAILER - 10X10 WIRE PANEL DOG KENNEL - PULL TYPE LAWN TRAILERS - METAL DUMP LAWN TRAILER - YARDMAN 5HP WALK BEHIND LEAF BLOWER - **7 FIREARMS & 4 PISTOL STORAGE BUILDINGS TO BE REMOVED - 2014 12 X 16 HIP ROOF PORTABLE SHED - 2012 10X16 GABLE ROOF STORAGE SHED - 8X12 HIP ROOF SHED ON SKIDS - SMALL METAL FRAME SHED TO BE MOVED -**
MISC. ESTATE ITEMS**

AUCTION DAY #2 FRIDAY AUGUST 19TH, 2016 @ 10:00AM
RAIN OR SHINE! BE ON TIME!
LATE MODEL FURNITURE W/ HI-QUALITY HOUSEHOLD FURNISHINGS QUALITY OAK DINING SET W/ 1 LEAF & 4 CHAIRS - COCHRANE OAK CHINA HUTCH W/ LEAD GLASS PANEL DOORS
KENT COFFEY - THE GRENADA BEDROOM SUITE - TO INCLUDE DBL BED DBL DRESSER W/ MIRROR - 5 DRAWER OAK GLASS PANEL DOOR LIGHTED CHINA HUTCH - LARGE OAK ENTERTAINMENT CENTER W/ STORAGE - DRAWER CHEST 3 FLAT SCREEN TV'S UP TO 55" - NEW DINING TABLE - SINGER TREADLE SEWER - WHITE CONSOLE SEWING MACHINE - 2 CHERRY FINISHED JEWELRY CABINETS - MAPLE DBL DRESSER W/ MIRROR - QUEEN ANNE SETTE - UPHOLSTERED PLATFORM ROCKER - SINGLE HOSPITAL BED - 2 POWER RECLINERS, BURGUNDY & TAN - CORNER OAK ENTERTAINMENT CENTER - NEW MISSION STYLE BEST CHAIRS OAK GLIDER - MANY TABLE LAMPS - **APPLIANCES: 2012 LG INVERTER DIRECT DRIVE TOP LOAD WASHER W/ MATCHING NATURAL GAS DRYER - 2013 KENMORE 16 CU FT UPRIGHT FREEZER - SMALL KITCHENWARE & APPLIANCES - 70S DR. PEPPER COCA-COLA TOP LIFT DOOR COOLER - NEW SMALL KITCHEN APPLIANCES - ELECTRIC HEATERS - **NEW IN BOX ITEMS - KNICK-KNACKS FIGURINES & COLLECTIBLES - ASSORTED 100S OF BOX LOTS OF NEW KNICK KNACKS AND SMALL ITEMS - MISC. ESTATE ITEMS - AMIGO RD POWER WHEEL CHAIR - EVERYDAY UTENSILS - INSPECTION ON PERSONAL ITEMS AM SALE DAYS ONLY! AUCTIONEER NOTE: THIS LIST ONLY DESCRIBES THE SURFACE OF THIS ESTATE. THERE IS LITERALLY HUNDREDS OF NEW AND SLIGHTLY USED SMALL ITEMS AND MULTIPLES OF EACH. PLAN ON ATTENDING 2 FUN FILLED ACTION PACKED AUCTION DAYS!!!!!!****

JAMES G. & BONNIE G. STINSON TRUST

3699 E. ROSEBUSH RD. ROSEBUSH, MI. 48878



SYKORA AUCTION SERVICE INC.

Scott Sykora, Auctioneer

(989) 386-9694 • Fax (989) 386-2246

John McConnell, Auctioneer

(989) 429-0444

Clare, Michigan • Visit our website www.sykorauctions.com

STALEY FARM ESTATE AUCTION

IN ORDER TO SETTLE THE BERNARD & MARITA STALEY ESTATE THE FOLLOWING WILL SELL AT PUBLIC AUCTION. **LOCATED:** 4 ½ MILES SOUTH OF BEAVERTON ON M-18 TO COOLDGE RD., THEN EAST 1 MILE TO ELEVEN MILE RD., THEN SOUTH ¼ MILE. **OR** FROM US-10 FREEWAY, TAKE THE BEAVERTON/GLADWIN EXIT & GO NORTH 5 MILES ON M-18 TO COOLDGE RD., THEN EAST 1 MILE TO ELEVEN MILE RD., THEN SOUTH ¼ MILE.

Farm Machinery • Firearms • Antiques • Farm Primitives • Collectibles • Household Coleman, MI

Saturday, July 23, 2016 • 10:00 A.M.

TRACTORS, FARM MACHINERY, LAWN TRACTORS, AUTO'S & MISC. ITEMS AROUND THE FARM: CASE AGRI KING 970 DSL TRACTOR, CAB, 2 W.D., 2,400 ONE OWNER HRS. • J.D. 50 TRACTOR, N.F., 3 PT. HITCH • J.D. SEMI-MTD. 4 BOTTOM PLOW • J.D. 12" DISC • J.D. 8 SHANK FIELD DIGGER • J.D. VAN BRUNT 13 HOLE GRAIN DRILL • 3 SECTION PULL TYPE DRAG • 3 PT. H.D. WOOD SPLITTER • J.D. ROTARY HOE • KEWANE 7' 3 PT. REAR BACK BLADE • 100 GALLON 3 PT. SPRAYER • H.D. 3 PT. BOOM • OLD DITCH WITCH • CASE 222 GARDEN TRACTOR, HYDRO. DRIVE W/ 44" MOWER DECK • CUB CADET 2186 RIDING LAWN TRACTOR W/ 50" MOWER DECK (BAD MOTOR) • 1981 DODGE POWER RAM 150 PICKUP, 4X4, 318 ENGINE W/ PLOW • OLD LINCOLN CONTINENTAL PARTS/SCRAP • 22" HIGH WHEEL PUSH LAWN MOWER • NUMEROUS ASST. HAND TOOLS • H.D. BENCH VISE • BATTERY CHARGERS • CLIPPER FANNING MILL • MIRRO CRAFT 14' ALUM. FISHING BOAT W/ TRAILER • (2) CANOES • EVINRUDE 6 H.P. BOAT MOTOR • (2) SETS OF FARM PLATFORM SCALES • PICKUP TOOL BOX • LOTS OF MISC. PARTS & SCRAP • **FARM WAGONS FULL OF ITEMS • (15) FIREARMS:** MARLIN 25/20 LEVER ACTION RIFLE • WINCHESTER #1894 LEVER ACTION 30-30 RIFLE (MFG. 1890) • SAVAGE 7 M.M. REM. SHORT ULTRA MAG. BOLT ACTION RIFLE W/ SIMMONS SCOPE • REMINGTON/SPRINGFIELD 30-06 SEMI-AUTO. RIFLE • WINCHESTER #77 SEMI-AUTO. 22 CAL. RIFLE • SPRINGFIELD #874 SEMI-AUTO. 22 CAL. RIFLE • SPRINGFIELD #84C BOLT ACTION 22 CAL. RIFLE • SPRINGFIELD #87A SEMI-AUTO. 22 CAL. RIFLE • MARLIN #60 SEMI-AUTO. 22 CAL. RIFLE • REMINGTON #58 SPORTSMAN 12 GA. SHOTGUN • PIONEER #28 BOLT ACTION .410 GA. SHOTGUN • NEW ENGLAND 12 GA. BREAK ACTION SHOTGUN • CHAMPION 12 GA. BREAK ACTION SHOTGUN • TAURUS #889 .357 MAG. REVOLVER • HI STANDARD SEMI AUTO. 22 CAL. PISTOL (REQUIRES CPL) • PELLET GUNS • MISC. AMMO. • 8 PLACE GUN CABINET • **ANTIQUE FURNITURE, FARM PRIMITIVES, COLLECTIBLES & GLASSWARE:** OAK SECRETARY DESK W/ MIRROR • OAK 4 DRAWER DRESSER W/ MIRROR • WALNUT 3 DRAWER CHEST OF DRAWERS W/ HANKY DRAWERS • OAK 5 DRAWER CHEST OF DRAWERS • DROP LEAF KITCHEN DINING TABLE W/ EXTRA LEAFS & 6 CHAIRS • ROUND OAK KITCHEN TABLE W/ LEAF & 5 CHAIRS • OAK COMMODE • PRIMITIVE DRY SINK • ZINC TOP BAKERS TABLE • BUFFET W/ MIRROR • LIBRARY TABLE • SEVERAL ROCKING CHAIRS • BARREL CHAIRS • ASST. WOODEN CHAIRS • TRUNKS • STANDARD ELEC. WALL CLOCK • MANTEL CLOCK • OLD MIRRORS W/ FRAMES • PIANO CHAIR • WARM MORNING STOVE • WOODEN CABINETS • CHILDS PORTA-POTTY • CHILDS SCHOOL DESKS • QUILT RACK • BEAUTIFUL HANDMADE QUILT (BY MRS. STALEY). • (2) BOB SLEIGHTS • OLD GAS PUMP • (2) COPPER BOILERS W/ LIDS • NUMEROUS OLD MUSKRAT TRAPS • VINTAGE TRAPPERS BASKET • SMALL ANVIL • 2 MAN CROSSCUT SAWS • ICE SAW • BUCK SAW • WOODEN BLOCK PLANES • DRAW SHAVES • OTHER OLD TOOLS • HAY SEEDER • IMPLEMENT SEATS • WOODEN BARN SCRAPER • JOHNSON BOAT MOTOR • BUCCANEER BOAT MOTOR • STEEL WHEELS • (2) SETS OF IDEAL WASH TUBS • WOODEN IRONING BOARD/ STOOL COMBINATION • (4) FORD MODEL T COILS • METAL DOLL HIGH CHAIR • SEVERAL 45 RECORDS • OLD KITCHEN UTENSILS • COSTUME JEWELRY • LARGE JAR OF OLD MARBLES • CHAMBER POT • MILK CANS • ANTIQUE GAS CANS • ASST. WOODEN BENCHES • HAND GRAIN SCOOP • SMALL & LARGE CROCKS • BUTCHERING KNIVES • OIL LAMPS & LANTERNS • MILK & CREAM BOTTLES • NUMEROUS COLLECTIBLE CLEAR & COLORED GLASSWARE • MANY MORE COLLECTIBLES THAT ARE PACKED AWAY AT THE HOMESTEAD! **HOUSEHOLD ITEMS:** LIKE NEW ELEC. LIFT CHAIR • (3) LIVING ROOM RECLINERS • LOVESEAT HIDE-A-BED • DAVENPORT • CHINA CABINET • SEVERAL CHEST OF DRAWERS • GRANDFATHER CLOCK • SEVERAL ASST. TABLES • FLAT SCREEN TELEVISION • ASST. FLOOR & TABLE LAMPS • BOOK SHELVES • JEWELRY ARMOIRE • LINENS • PRESSURE COOKERS • LOTS OF DISHES & KITCHENWARE • NUMEROUS CANING JARS • MANY MORE ITEMS • **THE ABOVE LISTING IS ONLY A FRACTION OF WHAT WILL BE THERE ON SALE DAY. MANY ITEMS WERE PACKED AWAY AT TIME OF AUCTION WRITE UP • THIS IS A PARTIAL LISTING! AUCTIONEERS NOTE:** PLAN TO ATTEND THIS GOOD OLD FASHION UNPICKED ESTATE AUCTION. IN A NICE COUNTRY FARM SETTING. YOUR ATTENDANCE AT THE STALEY ESTATE AUCTION IS APPRECIATED. **TERMS OF SALE:** CASH, CHECK OR CREDIT CARDS ACCEPTED.

TO VIEW A COMPLETE LISTING WITH PHOTO'S VISIT JOHNPECKAUCTIONS.COM

The Bernard & Marita Staley Estate

6817 Eleven Mile Rd. Coleman, MI.

JOHN PECK AUCTIONS LLC

Gladwin, MI (989) 426-8061

No Buyers Premium!

AUCTION

2 Auction Rings

Do to the passing of her husband Mike, Barbara Crosby has decided to sell the listed items at public auction located at 690 First St. Edmore Michigan, 48829.

Directions - From downtown Edmore - travel west 3 blocks on M-46 to First St (Wyman Rd) then south ½ mile to sale site. From Stanton - travel east 2 miles on 522 (Stanton Rd) to Wyman Rd, then north 7 ½ miles to sale site. Watch for Pioneer Auction Signs!

Saturday, July 23, 2016 @ 10am



Motorhome

1992 Damon Challenger Motorhome, sleeps 4 comfortably, 49,822 miles, comes w/454 BB chevy engine, 4 speed automatic trans, Norcold fridge/ freezer, gas range, Sunbeam microwave, awning and a Onan model 4000 built in generator, very clean, runs and drives great!
Vin#1GBJP37N7N3319425



Household • Antiques/Collectibles • Coca-Cola Collectibles • Heating & Cooling/Shop Tools

AUCTIONEERS NOTE - This is a very clean auction sale. Items are very well kept. Two auction rings running so please bring a friend. Motorhome sells at noon. Lunch wagon and two porta jons on site. On behalf of the Crosby family, and all of us at Pioneer Auction Service, thank you in advance and we'll see you there!
TERM & CONDITIONS - Cash or good personal check with proper ID. All out of state checks must have a letter from bank verifying funds. No credit cards accepted. All property to be settled for day of sale. No property to be removed from premises until settled for. Not responsible for accidents or goods after sold. Auctioneers and sale personnel act as selling agents only and assume no liability or guarantees. Announcements day of sale take precedence over printed matter.

PIONEER AUCTION SERVICE, LLC

(989) 621-7194



Auctioneer
Jason Clark



Auctioneer
Dick Clark

Like us on
Facebook

For more pics and info visit us on www.pioneerauctionservice.com

Bulk Food • Deli

2 Miles South of Rosebush • 2020 North Mission Mt. Pleasant • 989-433-8200

8:30am-5:30pm, Monday-Thursday
8:30am-7:00pm, Friday • 8:30am-4pm, Saturday

Large Selection of Freezer Food at Discounted Prices

SPECIALS OF THE WEEK

Great Selection of Bulk Foods We Accept Bridge Cards & All Major Credit Cards

<p>Walnut Creek</p> <p>Jumping Jack</p> <p>Sale \$2.99 lb. Reg. \$3.99 lb.</p>	<p>Walnut Creek</p> <p>Double Smoked Ham</p> <p>Sale \$2.99 lb. Reg. \$4.29 lb.</p>
<p>Walnut Creek</p> <p>Cheese Spreads All Varieties</p> <p>\$2.29</p>	<p>Dare</p> <p>Crackers-Garden Vegetable, Cabaret, Mini Vegetable, Mini Bretons</p> <p>Please Provide Photo \$1.99 ea.</p>
<p>Walnut Creek</p> <p>Blue Cheese Crumbles 4 oz.</p> <p>\$1.99</p>	<p>Walnut</p> <p>Cheese Balls 17 oz.</p> <p>Please Provide Photo \$3.59 ea.</p>
<p>Feta</p> <p>Cheese Crumbles 4 oz.</p> <p>Please Provide Photo \$1.99</p>	<p>Walnut Creek</p> <p>Pizza Crust 2 ct.</p> <p>\$2.49</p>

Coffee of the week: Chocolate Almond

It's Not Just for the Camp!

The "Deer Camp Special"

Monthly Payment as low as **\$189 month***
Limited Time Offer

5 Year Warranty!
Sale Price \$21,495
Reg. \$26,900

Package Includes:
LS XG3032 TRACTOR WITH LOADER AND 5' 3PT ROTO TILLER
PLUS, GET A 6' BACK BLADE FREE! (\$595 VALUE)

1980 W. US-23, Omer, MI
989-653-3173
WWW.NAGYSTRACOR.COM

***See store for details**

CAMP, FARM & HOME

- ✓ 32 HP, 3 CYL DIESEL
- ✓ 4 WD - ON DEMAND
- ✓ HYDROSTAT
- ✓ FRONT LOADER
- ✓ INDEPENDENT PTO
- ✓ TILT WHEEL
- ✓ DELUXE SEAT
- ✓ FOLDING ROPS!

Sale Ends July 31, 2016

Nagy's
Family Owned Since 1946

1946 **70th** 2016

WE'RE CELEBRATING *Christmas In July* With Gifts For YOU!



FREE

**Complete Electronic
Hearing Screening
and Consultation**

WITH OUR HEARING SPECIALISTS

Buy One, Get One 50% OFF

**Buy One Fully Digital
Miracle-Ear Hearing Aid
and Get the Second
One 50% off!**

Offer valid on all models of Hearing Solutions.
No other offer or discounts apply. Offer cannot
be combined and does not apply to prior sales.
See participating Miracle-Ear stores for details.
Offer expires 8/1/16



FREE BATTERY CHARGER WITH PURCHASE



Keep your hearing aids
charged all day with No need to keep
buying batteries.

Free charger with the purchase of any Miracle-Ear® ME-1, ME-2, and ME-3 Hearing Solutions (2
aids) with rechargeable battery options. Not valid with any other discount or offer. Does not apply to
prior purchases. Offer expires 8/1/16.

TRY OUR HEARING AIDS FOR FREE*

*You Won't Believe How
Natural They Sound!*

**NEARLY
INVISIBLE
HEARING AIDS!**
No One Will Notice!

*Free in-office demonstration



3YEAR All Parts and Labor Warranty

Valid on ME-1, ME-2, ME-3, ME-4 Solutions



Miracle-Ear Alma
116 W. Superior
Heritage Towne Sq.

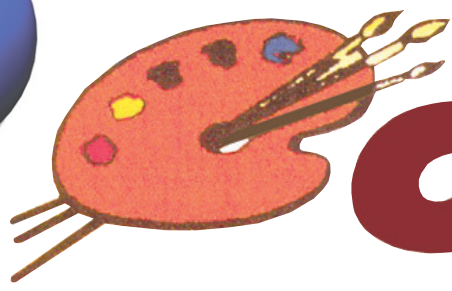
Miracle-Ear Clare
1430 N. McEwan - Carousel Mall
(Across from Woods & Patches)

Miracle-Ear Gladwin
127 N. Arcade, Suite 2
In the Neely Building

**Call Kim to schedule an
appointment for the
center nearest you**

Miracle-Ear Prudenville **Miracle-Ear Mt. Pleasant**
828 W. Houghton Lake Dr. 100 S. Mission , Suite G
(Corner of M55 and M18) Just south of Rite Aid

(888) 381-0571



ARNIE'S
ARTS 'N' CRAFTS

★ ★ ★ JULY TENT EVENT

Friday, July 1st through Sunday, July 31st

An ENTIRE Month of
SAVINGS

SALE TENT ITEMS INCLUDE:

Unbelievable Deals!!

HUNDREDS
Of Picture Frames

THOUSANDS
of Scrapbook
embellishments

THOUSANDS
of Packaged Beads
Glass • Clay • Wood

Varsity Jackets
\$50.00

**New Items
Added Daily!**

**50% – 70% Off
Art Kits!**

**Choose from oil, acrylic,
watercolor and pastels**

**Closeout Clothing, Jackets, Hoodies and
T-Shirts. Home Décor, Craft Supplies, Beading,
Artist Brushes, Easels, Scrapbook Supplies,
Kid's Kits, Yarn, Frames, Needlework and
much, much more!**



ARNIE'S
ARTS 'N' CRAFTS

Houghton Lake 989-366-8794

Mon.-Sat. 9am-5:30pm Sun. 10am-4pm | www.arnies.com | www.basketpatterns.com

Central Eavestrouthing, LLC
 LICENSED & INSURED • FREE ESTIMATES

Quality & Service Are #1!

.032 Gauge Aluminum Hidden Screw Hangers

Get Your Gutters Ready for Spring!



Husky METAL ROOFS INC.
 CLARE, MI 989-386-5100

Made in Michigan!
989-386-5100

- Residential • Contractors
- Cabins • Do-It-Yourself

METAL ROOFING IS ALL WE DO!
 Standing Seam • Steel Shingles • Barn Steel • Expert Installation
 Material Only Sales • Custom Trim • On-Site Roll Forming
www.huskyroofs.com

CUSTOM DESIGNS
 Buy Direct & Save

Also Available
 Cremation Vaults and Urns

Brewer Bouchey Monument Co.
Family Owned Since 1895
 211 N. Mill St. • Downtown St. Louis
 989-681-3300 • Toll Free 888-362-2920
 Hours: Mon.-Fri. 9-5; Sat. By Appt.
www.brewer-bouchey.com



Wolverine Optical

EYE EXAMS • GLASSES • CONTACTS • BIFOCALS • REPAIRS • TINTING

DOCTORS APPOINTMENTS AVAILABLE TUESDAY AFTERNOON, WEDNESDAY ALL DAY, THURSDAY AFTERNOON AND FRIDAY APPOINTMENTS ARE SOMETIMES AVAILABLE.

MONDAY – THURSDAY 8:00AM – 5:00PM
CLOSED FRIDAY
AND 12:00PM – 1PM DAILY

BCBS, VSP, EYE MED & DAVIS, VISION INSURANCE, MCLAREN, MERIDIAN AND STRAIGHT MEDICAID

463-1838 • 7314 ALGER RD., ALMA, MI 48801



great BIG ADS great BIG RESULTS

RE/MAX RIVER HAVEN, INC. Open Seven Days a Week to Serve You!
www.riverhavenhomes.com
 Wayne R. Walts - Broker

Main Office
 777 W. Cedar
 Riverwalk Place
 989-426-6893

Wixom Lake Office
 1239 Estey Road,
 Beaverton
 989-435-7755

Sugar Springs Office
 1415 W. Sugar River Rd.
 Gladwin, MI 48824
 989-426-9239

Sugar Springs Golf Course
 home. 3 bedroom, 2 bath,
 2 car garage.
ONLY \$59,750
 MLS#165230

Gladwin-Sugar Springs area-
 3 bedroom ranch with newer
 updates. Immediate possession
\$49,900
 possible land contract terms
 MLS#166040

Beaverton Area-35+ acres with
 2500 ft of Tobacco Riverfrontage.
 3 bedroom, 2 bath, fireplace,
 2 car att garage, newer updates.
REDUCED TO: \$179,900
 MLS#165168



Spend Your Pennies Close To Home!



Shopping Local keeps your Money Local

TREAT YOURSELF TO...



THE CLASSIFIEDS!

kmart discover more @ kmart.com

DISCOUNTS AT THIS STORE ONLY

HOUGHTON LAKE
 8171 W HOUGHTON LAKE DRIVE

STORE CLOSING

LAST 15 DAYS!

EVERYTHING MUST GO!

All Fashion Clothing PLUS All Footwear
 for the entire family

70% OFF

All Toys, Games & Dolls

60% OFF

JEWELRY
 All Fine Gold, Silver, Diamond & Gemstone*

85% OFF

*10K gold unless otherwise specified.

Store Fixtures, Furniture & Equipment for Sale Now!

ALL SALES FINAL. NO REFUNDS OR EXCHANGES. WE ACCEPT CASH, CHECKS, VISA, MASTERCARD, DISCOVER, AMERICAN EXPRESS, Kmart AND SEARS CARDS. WE ACCEPT Kmart GIFT CARDS. DISCOUNTS DO NOT APPLY TO PHARMACY, TOBACCO, ALCOHOL, PREPAID PHONE AND GIFT CARDS. SOME FOOD ITEMS ARE EXCLUDED AS REQUIRED BY LAW. INVENTORY IS LIMITED TO STOCK ON HAND. 10K GOLD JEWELRY UNLESS OTHERWISE SPECIFIED. THIS STORE IS NOT PARTICIPATING IN CURRENT Kmart CIRCULARS.

kmart | A SHOP YOUR WAY PARTNER

NOT A MEMBER? JOIN TODAY-IT'S FREE! kmart.com/shopyourway



Heart Worm Test

Special July Rates

\$30⁰⁰

Reg \$35.⁰⁰



By Appt. 426-0203

Flexible Hours

KELLY'S KRUISSING

KRITTER KARE

Kelly Jo Kelley, DVM

A-1 MOBILE A-1 ROOF-OVER SYSTEM



Michigan's Oldest and Finest
Roof Replacement System

FREE ESTIMATES

12X60 14X70

\$3,280 Installed \$3,980

Conserves Energy
Made in Michigan

1-800-872-2089

www.mobilehomeroofsmi.com



MEADOWS MOBILE HOME PARK

ENJOY COUNTRY LIVING WITHIN
THE CITY LIMITS OF ALMA

VACANT LOTS AVAILABLE

MOVE IN YOUR MOBILE HOME AND GET
TWO MONTHS FREE RENT

WE ARE ALSO TAKING APPLICATIONS FOR PART TIME
MAINTENANCE HELP. PLEASE APPLY AT OFFICE.

PH: 989-463-5187

TERESA & JIM DAVIDSON
RESIDENT MANAGERS

411 S. GROVER, #31
ALMA, MI 48801



Evans Eye Centers



Are you suffering from
cataracts?

Get Started today. Call for an Evaluation.

120 Warwick
Alma, MI 48801
989-463-Eyes (3937)

1203 S. Mission
Mt Pleasant, MI 48858
989-775-Eyes (3937)



Horse Creek Daylily Farm

Daylilies

Many Colors & Varieties For Sale

Open July 12 - July 28

Tues - Fri 10am - 7pm

Open Sat. July 16 and Sat. July 23 • 9am - 12noon

Call 989 400-3114

Located near 5749 Lincoln Rd, St Louis in
Horse Creek Estates

1/4 Mile East of US 127 Alma exit #123
for northbound traffic, State Rd exit to southbound traffic

JACK OF ALL TRADES COINS

1028 S. Mission
(next to Jon's Country Burger)

I BUY ALL COINS
Silver and Gold
FREE APPRAISALS
we will come to your home
to do free appraisals for
your convenience.

Over 25 Years experience!

Do not take your coins,
jewelry, gold, & silver to
the we buy gold places
they are not experts! We
are your only experts!
**WE PAY YOU MORE
THAN ANYONE!**

I BUY ALL COLLECTIONS

FROM ONE COIN TO A
DUMP TRUCK FULL

**We are a Full
Buy • Sell • Trade shop!**

ANTIQUES • COINS
Jewelry • Collectibles & more!

Stop in or call Matt for
your free appointment

517-204-0787



RE/MAX

River Haven

Each Office Independently Owned and Operated

777 W. Cedar Ave • Gladwin, MI 48624

Lowes4realestate@gmail.com



Chris Lowes
Associate Broker®
Cell: 989-741-3989
Call or Text



1874 Pratt Lake - \$119,900
Reduced Again!! 3 BR 1.5 Bath Home. Deck overlooking the lake, paver patio. Fenced front yard. Brick Fireplace. Natural Gas. Garage+shed. Appliances incl. Level Waterfront Lot with Sandy Frontage. Motivated Seller!!



5870 Cedar Lake - \$69,900
21 acres on paved road with frontage on no-wake Cedar Lake. 3 BR home with 1.5 baths. Attached 2 car garage. Enclosed 3-season sun room. Property is to be sold in its present "as-is" condition. Seller addendum with offer.



3401 N Hoover Ave - \$42,400
10 acres on paved road. 3 BR berm home with 2-car Garage. Land is mostly open with outbuildings. 5" Submersible well. Property is to be sold in its present "as-is" condition. Seller addendum with offer.

www.Lowes4realestate.com



visit our website!



Summer of fun with your RV!

Don't be caught broke down on the side of the road on vacation.
Let us at Quality Truck and Tire take care of your needs.

Let us
keep you by the
fire longer.



10532 N. Mission Rd., Clare, MI 48617

(989) 802-0800

**QUALITY TRUCK
AND TIRE**

Heavy Duty Truck and Trailer Repair

Visit us on Facebook at www.facebook.com/ValleyFoodCenter

Valley Food Center

989-879-3311 • 101 E. SECOND • PINCONNING

WE WELCOME THE BRIDGE CARD, GIFT CERTIFICATES
NOT RESPONSIBLE FOR PRINTING ERRORS • ALL LOTTERY GAMES AND LOTTO HERE

We Now Take Credit Cards! Visa, Mastercard & Discover

MON. - SAT. 8-8, SUN. 8-6 • PRICES GOOD SUNDAY, JULY 17TH THRU SATURDAY, JULY 23RD, 2016

SHAVED HAM, TURKEY \$2.99 LB.	FRESH POLISH SAUSAGE 10# OR MORE \$1.89 LB.	CO-JACK, LONGHORN OR MOZZARELLA CHEESE ANY SIZE CHUNK \$2.99 LB.
BONE IN PORK LOIN WHOLE OR HALF CUT INTO CHOPS FOR FREE \$1.49 LB.	CHICKEN NUGGETS 5# OR MORE \$1.99 LB.	BONE IN BEEF SHOULDER ROAST \$2.99 LB.
DAIRY FRESH SHREDDED OR CHUNK CHEESE 8 OZ. \$5.50 LB.	HOMemade BULK SAUSAGES REG. ITALIAN \$1.49 LB.	ROLL YOUR OWN TOBACCO
REAL BUTTER 1 LB. PKG. \$2.99 LB.	BONELESS PORK LOIN MAKES GREAT ROAST SEASONED AND CUT FREE \$1.99 LB.	KENTUCKY SELECT 16 oz. \$5.99
HAMBURGER 10 LB. BAG less than 10lbs. \$3.19lb \$27.90	PORK STEAK, BUTT ROAST OR FINGER RIBS \$1.59 LB.	AUSABLE RIVER TOBACCO 12 oz. bag \$1.15
WAYSIDE BACON 10# BOX \$17.99	NEW YORK STRIP CUT FREE \$3.49 LB.	BUSCH BEER REG 30 PK CANS \$16.49
OUR BEST GROUND CHUCK 10 LB. BAG 10lbs or less \$3.49lb \$29.90	WELL TRIMMED \$1.99 LB.	OR LITE \$9.75 16 oz.
HAMBURGER PATTIES 10 LBS. OR MORE \$2.49 LB.	STUFFED PORK CHOPS \$1.99 LB.	RED RIVER 4.25 6 oz. \$9.75
FRESH BONELESS CHICKEN BREASTS Less than 10#s \$1.69lb \$1.49 LB.	ROUND STEAK \$2.99 LB.	DENVER, SWISS OR GRILL STEAK \$2.99 LB.
50/50 GRIND 10 lbs. OR MORE PORK & BEEF SAME USE AS BURGER \$25.90	BOTTOM ROUND ROAST \$3.99 LB.	Leg 1/4's 49¢ LB.
	BONELESS BUTT ROAST \$1.39 LB.	BULK SLICED BACON 10 LB. OR MORE \$3.49 LB. \$2.99 LB.
	END CUT PORK CHOPS 99¢ LB.	SHORT LOIN - T-BONE \$5.99 LB.
	PORK LOIN ROAST 99¢ LB.	BIG BAG FRENCH FRIES \$4.50 \$1.99 LB. or more
	COUNTRY STYLE RIBS 99¢ LB.	SELECT RIB EYE LOINS WHOLE OR HALF Cut Free! \$8.99 LB.
	BLUE RIBBON HAMS \$2.49 LB.	HOMemade BACON SAUSAGE \$1.99 LB.
	JAMESTOWN HAMS SHANKS & BUTTS 99¢ LB.	
	WAGON MASTER BACON ENDS & PIECES 3LB. PKG. \$3.99	

Do you have a car for sale?

How about a boat?

Or maybe some furniture?

Call to place a classified ad with
one of our helpful representatives &
sell your no longer wanted items
FAST!



WEST BRANCH FURNITURE'S STOREWIDE CLEARANCE EVENT

**OPEN
SUNDAY**
11 am
to 3 pm

**12 Months
~ No
Interest**

Ashley Bonded Leather Reclining Sofa



\$469

As-Is

Ashley Micro Fiber 90" Sofa Sleeper

Your Choice of 7 Colors



\$599

Ashley Kinlock Charcoal Sofa



\$488

Ashley Garek Reclining Sofa

Your Choice of 3 Colors



\$599

Powell 5-Piece Pub Set

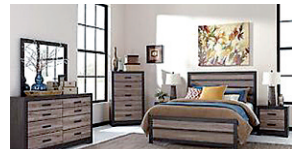
1-Only



\$289

Ashley Harlington 4-Piece Bedroom

Set includes Dresser-Mirror-Nightstand
and Queen Headboard



\$699

Ashley 42" TV Console



\$255

Coaster Wallaway Chaise Recliner



\$169

Ashley Rocker Recliner



\$259

Twin/Full Wood Bunkbed



\$259

Ashley Dailey Midnight Sofa

Your Choice of 3 Colors



\$399

SPECIAL PURCHASE

11" Comfort Firm
Queen Size Bedding Set



\$299

Bittersweet 4-Piece Bedroom Suite

Dresser, Mirror, Chest
and Headboard.



\$699

Rustic Rugs



\$69



Chairside End Tables

Your Choice



\$119

Ashley Tassler Durablend 93" Sofa



\$444

Ashley Mallenton 7-Piece Dinette



\$566



\$299

FRANKLIN
CORPORATION

Bryson Recliner

- Handle Rocker Recliner
- Arm Storage
- Padded Chaise and Arms
- Wow Seating System
- Made in America

Ashley Man Size Rocker Recliner



\$349

Ashley Power Rocker Recliner



Your Choice
4 colors
to choose
from

\$449

Ashley 2080112 Power Lift Recliner Features Heat & Massage



\$699

TRUCKLOAD

CLOSE OUT
Queen Size Sets
starting at **\$199**

*While Supplies Last

**MATTRESS
SALE!**

LIMITED TIME COUPON
Purchase any Serta
bedding set and
receive a FREE set
of sheets.

Excludes Close-Outs and Economy Plush

	TWIN SET	FULL SET	QUEEN SET	KING SET
Economy Plush	\$199 2 Pc. Set	\$259 2 Pc. Set	\$299 2 Pc. Set	NOT Available
MajesticSleep collection Davey EuroTop or Firm	\$279 2 Pc. Set	\$369 2 Pc. Set	\$399 2 Pc. Set	\$599 3 Pc. Set
MajesticSleep collection Gallion EuroTop or Comfort Firm	\$349 2 Pc. Set	\$459 2 Pc. Set	\$499 2 Pc. Set	\$799 3 Pc. Set
MajesticSleep collection Raftery Plush or Firm	\$459 2 Pc. Set	\$559 2 Pc. Set	\$599 2 Pc. Set	\$899 3 Pc. Set
MajesticSleep collection Stowcroft Super Pillow Top or Firm	\$649 2 Pc. Set	\$749 2 Pc. Set	\$799 2 Pc. Set	\$1099 3 Pc. Set

MANY 1-ONLY & FLOOR MODELS REDUCED FOR QUICK SALE - BRING YOUR TRUCK OR TALLER FOR MAXIMUM SAVINGS - ALL ITEMS SUBJECT TO PRIOR SALE



**136 S. Fifth St.
West Branch**
located 1 block south of
Mercantile off Houghton Ave.
989-345-5326



**Sunday 11-3
Mon.-Fri. 10-6
Sat. 10-5**

*Financing available to qualifying
buyers. Minimum purchase \$599 with
approved credit. Not available on
prior purchases. See store for details.

*24 months no interest on all Serta
icomfort & i-series bedding sets.



"The Outlet Store That Saves You More!"



Business Card Directory

TO RESERVE YOUR SPOT IN THIS DIRECTORY
CALL:
506-4640

CIRCULATION ISSUES:
(989) 779-6000 PRESS 2

Saturday & Sunday, July 23-24 & July 30-31
1 pm till 7 pm All 4 days!
• Food & Refreshments Provided.



Welcome to our independent and assisted living facilities. Our communities are designed with residents' independent lifestyles in mind. Services available for any type of personal/medical need.



FINANCIAL ASSISTANCE AVAILABLE



New Options for Assisted Living

- Private & Spacious Rooms • TV / Cable •
- Delicious & Nutritious Meals • Internet •
- Housekeeping Services • Air Conditioning •
- Social & Onsite Activities • Laundry Services •

1550 E. Colby Road Stanton, MI 48888
 231.760.3023 • woodlandgardensliving.com

Feel free to stop in or call ANYTIME!! 231-571-8642.



Hunting Property

80 acres of premium Hunting Property in Northern Isabella County on Stevenson Lake Rd. 1/4 mile W. of Vandecar Rd. w Cabin, Outhouse & Pitcher Pump!
\$179,000

Call: (989)506-1037

NEW LISTING!

MLS 1817008
 Gorgeous!!!! LOG HOME ON 78.8 ACRES JASPER TOWNSHIP, ST LOUIS MI
 CUSTOM THROUGH OUT WITH WALKOUT BASEMENT, 2.5 CAR GARAGE,
 SALT RIVER, & HUNTING LAND!



4626 W Shepherd St Louis Mich
 PRICED TO SELL \$339,900

CALL DEB MORRIS FOR DETAILS.



DEB MORRIS
 Sales Associate
 (989) 773-5972 EXT 282 OFFICE
 (989) 621-8912 CELL • (989) 773-2197 FAX
 debmorris@mpr.net • debmorris8912@gmail.com
 MT. PLEASANT REALTY & ASSOC.
 304 East Broadway St. Mt Pleasant, MI 48858 • www.mpr.net
 Each Office is Independently Owned And Operated.



Exciting new property now available

You're invited!
July 17, 2016 • 10-2pm

To view this home during an Open house



1499 Beech Lane, Farwell, MI • MLS # 216060554

Welcoming log cabin home with an up north feel without having to drive to the Upper Peninsula located on a full acre. 3 beautiful bedrooms, 2 full bath, finished basement and selling fully furnished! Currently used as a weekend rental property and is booked year round!

Price: 239,900.00
 Lot size: 1.14 acres
 Bedrooms: 3
 Bathrooms: 2
 Year built: 2003
 Square feet: 1500

Come out and view this lovely property!
 Call or text 248-343-3194 for Main gate guest code
 Kate Molczyk • 248-343-3194 • KateMolczyk@gmail.com
 Willowdale Realty and Dev. Co. • 3816 Farmers Creek, Metamora



PROFESSIONAL ROOF CLEANING

BY J.B. ENTERPRISE
Safe, Soft Wash Cleaning



Does your home's roof look like the left or right side of these roofs? The left side of these roofs were cleaned with our non-pressure washer system.



We also clean... • Decks • Patios • Siding

Handy Man:
Fix Up, Repair, Reside,
Reroof Homes and Garages

CALL TODAY

John Brennehan • 989-386-8024

Brad Malley Well Drilling, Inc.

Mid Michigan's
Most Experienced Well Drillers!

MALLEY CONSTRUCTION INCORPORATED

The One Contractor That Can Do It All!
AFFORDABLE WELL PACKAGES
All Major Pump Brands Available

FREE ESTIMATES
 SERVING ALL OF MID MICHIGAN
 LICENSED WELL DRILLER
 LICENSED CONTRACTOR
 MT. PLEASANT
WWW.BRADMALLEYWELLDRIILLING.COM
989.772.2765 / 800.717.6022

Stutzman's Metal Roofing Sales



Quick Turnaround
 Ask about our **HEAT-Formed Metal Roofing**

Complete Pole Barn and Roof Packages Available!



Be sure to price accessories, we will save you money!
NORTH STAR METALS MFG CO
Special: Lifetime Warranty
20 Steel Colors To Choose From
\$1.85 Lin. Ft.

Farmers Contractors Homeowners

Check out our prices, you will be AMAZED!

Everlast Roofing, Inc.
 800 SAME DAY TO GO
 Authorized Dealer

Statewide Delivery

Installation Available

Reuben & Lydia Stutzman • 9736 Tobacco Dr., Clare, MI • 989-386-3013

COUNTY WIDE SEPTIC TANK CLEANING

- Septic Tank Cleaning
- Tank Risers & Filters
- Portal Toilet / Sink Rental
- Drain Line Cleaning & Camera
- New Septic System Installation
- Existing Septic System Repairs
- Gravel / Sand / Stone / Topsoil

State Licensed & Fully Insured • Residential & Commercial

"#1 IN A #2 BUSINESS"
(989) 588-4140

VALET AUTO CARE, INC.

Since 1983



- A.R.E. Pickup Toppers
- Over 100 New & Used Toppers in Stock
- Truck Accessories
- Tonneau Covers
- Detailed Car Cleaning

A.R.E.
 Because you love your truck
www.valetaauto.com

James Motz - Owner

610 N. Mission
 (3 blocks S. of Meijer)
 Mt. Pleasant
(989) 773-3477

digitalfirst MEDIA

Kindra Norlander
 Account Executive

The Morning Sun
 The Mid-Michigan Buyers Guide

knorlander@michigannewspapers.com Cell: 989-506-4640

Call for Quotes on digital advertising, print & deliver, pre prints and print advertising

SUNRISE CONSTRUCTION



Licensed Builder
Masonry and Concrete Work

General Construction from Start to Finish
 New Construction • Remodeling • Additions

Customer Satisfaction is our #1 Goal!

David W. Byler • (989) 386-3037

C.W. GORDON
SALES & SERVICE
COLEMAN, MI

Proudly Serving Central Michigan Since 1972

115 Railway St. Coleman

Auto Sales • Parts • Service

989-465-1301



OPTIMAL YIELD

Indoor Growing Supplies

307 W. Cedar Ave. Gladwin, MI

(989) 709-5566

optimalyieldmi.com

PROPANE SOLD HERE



We make custom hoses & fittings!

SALE!!
 20 LB. CYLINDER FILL

\$9.99

GPC

PROPANE • HVAC • REFRIGERATION
 8512 E. M-46 – VESTABURG
 800-991-7477
 gasproductioncompany.com

Stutzman's Metal Roofing Sales



Quick Turnaround
 Ask about our **HEAT-Formed Metal Roofing**

Complete Pole Barn and Roof Packages Available!



Be sure to price accessories, we will save you money!
NORTH STAR METALS MFG CO
Special: Lifetime Warranty
20 Steel Colors To Choose From
\$1.85 Lin. Ft.

Farmers Contractors Homeowners

Check out our prices, you will be AMAZED!

Everlast Roofing, Inc.
 800 SAME DAY TO GO
 Authorized Dealer

Statewide Delivery

Installation Available

Reuben & Lydia Stutzman • 9736 Tobacco Dr., Clare, MI • 989-386-3013



NO JOB TOO BIG OR SMALL

CAL'S PAINTING

Over 30 Years Experience
COMMERCIAL & RESIDENTIAL
 • Interior & Exterior • Power Washing & Deck Care
 • Window Washing & Gutter Cleaning
 • Drywall Repair • Cleaning and Refinishing Log Homes
 • Cabinet, Woodwork, Door & Furniture Refinishing

GO CALL TODAY!
(989) 258-9638

• Free Estimates • Work Gauranteed • Insured
 Winter Rates Available

Business Card Directory

Shop these local Professionals

Call 989-506-4647
for Advertising Info

"Our Customers are our Warmest Friends"
Guaranteed On Time Certified
FREE TANK SETS
COYNE OIL & PROPANE
Clare • Gladwin • Harrison • Evart
800-386-7731 • 989-386-7731

Residential • Commercial
Industrial • Farm



Maury Irwin, Agent
305 S McEwan Street
Clare, MI 48617
Bus: 989-386-4141
maury.irwin.18g2@statefarm.com

**Talk to your neighbors,
then talk to me.**

See why State Farm® insures more drivers than GEICO and Progressive combined. Great service, plus discounts of up to 40 percent. *

Like a good neighbor, State Farm is there.®

CALL FOR QUOTE 24/7.

State Farm™

1001174.1

*Discounts vary by states. State Farm Mutual Automobile Insurance Company State Farm Indemnity Company, Bloomington, IL



600 S. Mission St.
Mt. Pleasant, MI 48858

989-779-7227
989-772-5009

Printer Ink & Toner,
Cartridge Refilling & Recycling,
Desktop & Laptop Repair,
Virus/Malware Removal

**BURKHART - PRESIDIO
INSURANCE AGENCY**
Auto • Home • Life • Business • Amenities

"Over 60 Years of Professional Insurance Service"

222 W. Cedar Ave. • Gladwin
989-426-9278 • www.burkhart-presidio.com
Dirk Presidio Michael Murray Jim Jacobs

Auto-Owners Insurance *Auto-Owners Insurance*

ECOWATER SYSTEMS Lindsay Soft Water Co.
 1209 Michigan Ave. P.O. Box 401
St. Louis, MI 48880 Gladwin, MI 48624

(989) 681-5436 (989) 426-4220
1-800-244-3464 Cell (989) 620-1263
www.ecowater.com

ISO 9001
GABE EAREGOOD
Water Specialist

Pole Barn Kits

Now Available

CALL OR STOP BY
FREE ESTIMATES

Luthy Metal Sales
Manufacturing, Roofing, Siding & Accessories
989.433.5705
5145 N. Mission Rd. Rosebush

CONLAY'S POWER WASHING

Concrete Siding • Decks
Deck Staining
Tractor • Trailer
Store Fronts
Snow Plowing
Lawn Care

Farm Equipment
Acid Washing
210° Water

Over 18 Years Experience
Business & Residential
989-429-9211 Farwell
Experience You Can Trust • www.conlayspowerwashing.com

Weidman Business Association Bingo

Every Wednesday. First game at 6:30.
\$500 Jack Pot on Big Game this week.
In the Community Building
Located behind Baumanns Food Pride grocery store and Isabella bank.

\$1000 off any in-stock & non-sale pair of shoes
Expires 8.6.16

CIRCLE QUALITY SHOES

Specializing in hard to fit sizes-100's of styles to pick from
• Birkenstock • Clarks • Merrell • SAS
208 Cambridge St. 835-4853 • circlequalityshoes.com

ABC Auto Body
313 W. Knox Road,
Beaverton, MI
1/2 Mile West of M-30
989-435-2707

We Take Pride In Your Ride!

• Quality Collision Repair • Custom Color Matching • Car/Light Truck
• Free Estimates • & Painting • Genuine Original Equipment Parts
• Insurance Work Welcome • We Repair All Makes and Models

HENRY EXCAVATING CONCRETE & TREE SERVICE LLC
POURED WALLS • CRAWL SPACES • BASEMENTS
OVER 30 YEARS EXPERIENCE • LICENSED & INSURED

COMMERCIAL & RESIDENTIAL
• Excavation • Flat Work
• Site Clearing • Demolition
• Septic Systems • Driveways
• Back hoe & Dozing • Tree Service

989-539-7542 • 3620 N. Clare Ave., Harrison
James Henry Cell 989-429-1175 Michael Henry (Tree Service) Cell 989-339-4377

TOM'S POLE BUILDINGS
Over 30 Years Experience
POLE BUILDINGS & GARAGES
ROOFING & SIDING
CONCRETE FLOORS DRIVEWAYS & FENCING

Special!
FEATURING ULTRA 2000 19 colors to choose from
And A 45 YEAR WARRANTY

From Beginning permit To Cleanup, We Do It All!
1-800-541-3974
We accept major credit cards. • email: tomspolebuildings@yahoo.com

Newcombe's Family Restaurant
27 S Coldwater Rd Lake Isabella, MI 48893
(989) 644-8380
FOOD SO GREAT YOU'LL SCRAPE YOUR PLATE
Sunday 7am-8pm
Mon.-Thurs. 7am-9pm
Fri & Sat 7am-10pm
Like us on Facebook

Pioneer Metal Roofs
Residential Steel Roofing


7325 S. Clare Ave.
Clare, MI 48617
(989) 386-4444 (Office)
(800) 292-0679

www.pionermetalroofs.com

DEBRIS HAULING
• Clean Outs
Basements Attics & Garages
• Tear Downs Sheds & Garages
• Scrap Metal
• Commercial Buildings

Free Estimates

DEBRIS HAULING
Good & Fast MOUNT PLEASANT No One Does It For Less, NO ONE!!!
Service AREA

Less than the price of a dumpster!

989-773-0735 10 Yards \$285 Dan Syzak

Adam Breault Auctions

Next Auction
July 15th @ 6 pm
Antique Furniture, Water Sports, Lawn & Garden Equipment, Antiques, Collectibles, Jewelry, Glassware, Power Tools, Household & More!
Ribbon Cutting at 12:00 pm with Gladwin County Chamber and Smokin' Bob-B-Que will be onsite.
Doors open all day for viewing. Hope to see you there!

Adam Breault Auctions
895 Industrial Drive
Gladwin, MI
(989) 329-0399
Visit adambreault.com for complete details.

Tag's Auto Repair
2 yr. 25,000 mile warranty nationwide on parts & labor
• Computer Diagnostic Service • 2 and 4 Wheel Alignment
BRAKES & FRONT END REPAIR!

Receive a \$25 VISA prepaid card on qualifying purchase of \$250 or more made on Drive Card

FREE Roadside Assistance
Program Towing, Flats, Lockouts, More!
Call Us For Details!

Auto Value SERVICE CENTER
3780 N. Clare Ave. Harrison
Hours M-F 8-5, Sat 10-2
989-539-1986
VISA MasterCard

**YOU LOOKED HERE
AND YOUR CUSTOMERS
WILL TOO!**

CALL **989-506-4647**

FOR INFO ON HOW YOUR AD CAN BE HERE.

E & K EXCAVATING

• SEPTIC SYSTEMS
• PONDS
• DRIVEWAYS AND ROADS
• LAND CLEARING

LICENSED
EDWIN STEINER


2239 EAST DENVER RD. ROSEBUSH, MI 48878
989-433-0004

Live It, Love It, Sew It
Trade-Ins Accepted
We repair most
Vacuums & Sewing Machines!
FREE ESTIMATES WITH SERVICE

1900 S. SAGINAW RD., MIDLAND
IN THE Kmart PLAZA
(989)-839-0800
Mon.-Fri. 9:30-5:30 • Sat. till 3:30
CIRCLE SEWING CENTER

Gladwin Hobby Shop
Stay Fit & Have Fun

RADIO CONTROL AND BICYCLES' SALES AND SERVICE \$ CASH
• Plastic Model Kits
• Testors Paints
• ESTES Rockets
• Pinewood Derby

for Old Coins & Currency!
WE BUY OLD TRAINS
Puzzles, Rock Polishers, Gift Certificates Available
Balsa & Bass Woods, and more. Visit us on Facebook
400 E. Cedar Ave. Gladwin, MI • 989-426-7300

STORAGE SPACE AVAILABLE
Paved Driveway Security Gate
420 Units

5'x12', 10'x12', 10'x20' Stalls
MIDSTATE RENTAL AND STORAGE, INC.
1 MILE EAST OF GLADWIN ON M-61
426-2981
FOR ALL YOUR RENTAL NEEDS
MON.-SAT. 8AM-5PM

FREE Hearing Test & Consult
bieri
HEARING SPECIALISTS
888-641-0087
Clare and Midland Locations
www.bierihearing.com

PIONEER POLE BUILDINGS INC.

7400 S. Clare Ave. • Clare, Michigan 48617
800-292-0679
www.pioneerpole.com

digitalfirst MEDIA
Call for Quotes on digital advertising, print & deliver, pre prints and print advertising

Marlene Bennett
Account Executive
The Morning Sun • The Mid-Michigan Buyers Guide
mbennett@michigannewspapers.com
For Advertising call 989-506-4647 or 989-779-6119
For Circulation call 989-779-6000 Press 3

SECORD LAKE MARINA ON THE WATER
989-426-7700
2631 Lakeshore Dr. • Gladwin, MI 48624
seccordlakemarina.com
email seccordlakemarina@gmail.com

SECOND LAKE MARINA
Sales • Service • Parts • Storage
Bennington Pontoons
Mercury, Yamaha, Outboard Motors
Pontoon Rentals • Boat Lift & Docking
Scott Gratopp Sales Manager/Owner Fax 989-426-5493

Kubin's Mattress Sale!



Serta Select Twin Mattress \$99

Add a Pivot Head Up Box for \$544 on most models

Guaranteed Lowest Prices ON ALL SERTA MATTRESSES!

	TWIN 2pc set	FULL 2pc Set	QUEEN 2pc Set	KING 3pc set
Majestic Davey Gentle Eurotop	\$299 Sale Compare At \$449	\$379 Sale Compare At \$569	\$399 Sale Compare At \$599	\$599 Sale Compare At \$899
Majestic Gallion Support Firm or Support Eurotop	\$349 Sale Compare At \$529	\$449 Sale Compare At \$679	\$499 Sale Compare At \$749	\$799 Sale Compare At \$1199
Majestic Raftery Premium Choice Plush or Firm	\$449 Sale Compare At \$679	\$549 Sale Compare At \$829	\$599 Sale Compare At \$899	\$899 Sale Compare At \$1349
Majestic Stowcroft Choice of Super Pillowtop or Firm	\$649 Sale Compare At \$979	\$749 Sale Compare At \$1129	\$799 Sale Compare At \$1199	\$1099 Sale Compare At \$1649
Kubin's Exclusive, Perfect Sleeper Regal Suite, 2 Sided flipable mattress Choice of Plush or Extra Firm	\$549 Sale Compare At \$829	\$699 Sale Compare At \$1049	\$799 Sale Compare At \$1199	\$1099 Sale Compare At \$1649
Serta Perfect Sleeper Swan Harbor Choice of Luxury Pillowtop or Firm	\$899 Sale Compare At \$1349	\$969 Sale Compare At \$1459	\$999 Sale Compare At \$1499	\$1299 Sale Compare At \$1949
Serta Perfect Sleeper Hatters Evercool & Gel Memory Foam	\$899 Sale Compare At \$1349	\$969 Sale Compare At \$1459	\$999 Sale Compare At \$1499	\$1299 Sale Compare At \$1949



Helps reduce tossing and turning

ComfortRight™ Layers

This advanced system of foams and fluffy fibers is designed to provide instant comfort. This helps reduce the pressure points that can cause tossing and turning so you can sleep more comfortably through the night.

Minimize impact from partner movement

TrueSense® Design

Serta's exclusive design helps minimize the impact of partner movements, working to isolate motion at its source so you can enjoy a peaceful night's sleep with fewer disruptions.

Encourages proper back support & alignment

Custom Support® System

Every Perfect Sleeper features a system of durable, yet flexible carbon steel coils that work to promote proper support and alignment across the entire body.

Resists sagging & edge roll-off

ComfortLast® Construction

Designed to enhance durability of the mattress and is thoroughly tested beyond industry standards to make sure it can resist sagging and edge roll-off. This enhanced durability can help extend the comfort life of your mattress.

Promotes a balanced sleep temperature

CoolBalance® Technology

A unique combination of high-performance heat and moisture-regulating fabric and an overall mattress design that helps promote airflow. Together, these help provide a comfortable, balanced sleep temperature.

5 reasons
to never count sheep again.



The Good Stuff on Clearance!

Top Quality, Name Brand Furniture, Rock Bottom Prices!
All pieces subject to prior sale. No raincheck. No layaway.



American Made End Table

Regular **\$349** Sale **\$229** Clearance **\$99**



Cozzia 3D Zero Gravity Massage Chair

Regular **\$6799** Sale **\$4499** Clearance **\$1999**



"Beast" Recliner

Regular **\$1199** Sale **\$799** Clearance **\$499**



Flexsteel Sofas

Regular **\$1799** Sale **\$1199** Clearance **\$599**



Best Power Reclining Sofa

Regular **\$1899** Sale **\$1199** Clearance **\$799**



LaZBoy Reclining Sofa

Regular **\$1349** Sale **\$899** Clearance **\$599**



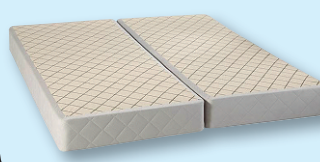
60" TV Stand Credenza

Regular **\$569** Sale **\$349** Clearance **\$229**



LaZBoy Green Rocker/Recliner

Regular **\$699** Sale **\$469** Clearance **\$299**



Closeout Boxspring Foundations

Regular **\$249** Sale **\$160** Clearance **\$79**



LaZBoy Gray Rocker/Recliner

Regular **\$999** Sale **\$649** Clearance **\$349**



Kubin's Furniture & Mattresses

101 N Mill St, Corner of M46, St. Louis, Michigan, (989) 681-5043

Hours: Mon-Thurs: 9-6, Fri: 9-8, Sat: 9-5, Closed Sunday

Sign up Your Email at: <http://www.kubins.com/signup.htm>



*SEE STORE FOR DETAILS

CUSTOMER *Appreciation* DAY

FREE
COFFEE/ DOUGHNUTS
IN THE MORNING!



11-2:30
HOT DOGS/ BRATS



DISCOUNTED
GROCERIES

PACKAGED
MEATS

WALNUT
CREEK
CHEESE

WALNUT
CREEK

HOMEMADE
JAMS

LOCAL
HONEY

10% OFF STOREWIDE
Saturday, July 23 • 8-5



SURREY
DISCOUNT FOODS

8989 Tobacco Drive, Clare
HOURS:
8-5 MONDAY-SATURDAY
PHONE: 802-1245

