

**BOARD OF TRUSTEES
VOTE TO DEVELOP 27
ACRES AT EVERGREEN
COMMUNITY COLLEGE
– PAGE 3**



**EVERY DROP COUNTS
IN THE MIDST OF THE
WORST DROUGHT IN
CALIFORNIA'S RECORDED
HISTORY – PAGE 5**



**TAIKO PERFORMED BY
CEDAR GROVE STUDENTS
AT HARU MATSURI FESTIVAL
IN MORGAN HILL ON
APRIL 19 – PAGE 8**



MAY 1–MAY 14, 2015 ■ VOL. 32, NO. 9

Evergreen Times

SERVING EVERGREEN & SILVER CREEK VALLEY ■ EVERGREENTIMES.COM

A (FIVE) GRAND GESTURE



L to R: **Sylvia Arenas**, trustee, Evergreen Elementary School District (EESD) Board of Trustees; **Bonnie Mace**, president pro-tem, EESD Board of Trustees; **Rosey Gellman**, principal, Silver Oak Elementary; **Stacey Johnston**, president, Silver Oak PTO; **Lana Sumati**, promotions manager, New Seasons Market; **Vince Songcayawon**, president, EESD Board of Trustees; **Kathy Gomez**, district superintendent, EESD.

FOOD TRUCKS IN EVERGREEN 'Off the Grid' to open May 2 at Evergreen Village Square

By Sean Eastwood
Staff writer

Off the Grid, the Bay Area's most prolific network of street food markets, announced their next market joining the Bay Area line-up is Evergreen Village Square beginning Saturday, May 2.

Off the Grid's newest location at Evergreen Village Square is the first San Jose location and will operate every Saturday from 11am – 3 pm. and free live music will entertain residents from 12 noon – 2:00 p.m.

Off the Grid will offer a rotating lineup of eight food trucks including Los Toluca, Brother Baby's BBQ, We Sushi, Dil Se, Hongry Kong, and Drewski's Hot Rod Kitchen.

See OFF THE GRID, page 11

New Seasons Market donates \$5K to Evergreen School District

By Bill Bellou
Publisher

New Seasons Market (formally New Leaf) presented a \$5,000 check to the Evergreen School District at the April 16 school board meeting.

"We are extremely grateful to New Seasons Market for their donation to the Evergreen School District," said Kathy Gomez, Superintendent, Evergreen School District.

"This donation will enable us to conduct student wellness research within the Evergreen community, which is an ideal use of funds from an important community partner that values health and general well

being," said Gomez. "Our community partnerships are a crucial part of our success as a District and we thank New Seasons for their support."

At New Seasons Market's grand opening event on March 14, 2015, New Seasons' CEO Wendy Collie announced that the store is partnering with and providing financial support to the Evergreen School District and Second Harvest Food Bank, and will donate a total of 10 percent of profits to local nonprofits each year.

Envirotoken Program

New Seasons Market's Envirotoken program encourages reusing grocery bags and
See NEW SEASONS, page 4

NOTHING bundt CAKES

**Make
Mother's Day.**

San Jose
2721 Aborn Road, Suite 10
(408) 238-7500

SEE OUR LISTINGS OF EVERGREEN AREA MEETINGS, PLACES OF WORSHIP AND CLASSIFIED ADVERTISEMENTS INSIDE THE BACK COVER

This Week:

COMMUNITY

Chaboya Symphonic Band receives top award at CMEA Band and Orchestra Festival: **PAGE 4**

COMMUNITY

Santa Clara County to replace green lawns with drought-resistant plants: **PAGE 7**

CITY

San Jose sets 30 percent water conservation target to address severe drought: **PAGE 8**



CALENDAR

Ballet San Jose Silicon Valley performs 'Cinderella' May 8-10: **PAGE 12**

ALSO

Meeting Times: **PAGE 18**
Worship Guide: **PAGE 19**

Evergreen Times

Times Media, Inc. / (408) 494-7000

PUBLISHER / CEO: WILLIAM BELLOU
williamb@timesmediainc.com

SR. ACCOUNT EXECUTIVE: BRIGITTE JONES
brigitte@timesmediainc.com

ACCOUNT EXECUTIVE: STEPHEN HARR
steve@timesmediainc.com

STAFF WRITERS: DIANE BLUM,
FRANK SHORTT

ART DIRECTOR: JEFF BAHAM
graphics@timesmediainc.com

CHIEF FINANCIAL OFFICER: SANDY BELLOU

Copyright © 2015 Times Media, Inc. All rights reserved. The Almaden Times prefers letters to the editor and submissions of guest articles and columns for possible publication to be sent by email. All submitted materials become the property of Times Media, Inc., and receipt of unsolicited materials cannot be acknowledged.

Valley Currents

cur·rent (adj.) Present, topical, timely, newsworthy. (n.) Movement in a definite direction, a flow.

OPINION: SJECCD Chancellor and Board of Trustees opaqueness hurt students and community

The current SJECCD Chancellor, Rita Cepeda and the current Board of Trustees set the tone for any communications with students, faculty, and community. Is communication open and transparent or do they hide important information, such as their plans to develop the 27 acres of EVC land and safety information - sexual assaults, car break-ins, on-campus robberies and assaults?

The current Chancellor and Board of Trustees set the tone for the work environment at the colleges and how well or not so well each college is supported financially and structurally - internal processes. Do

they help support both colleges equally so both colleges can offer a well-rounded education, or not? Do faculty at both campuses feel supported and are processes that help in the creation of curriculum the same at both colleges?

The plans to commercially develop the 27 acres, which were paid for with public money, was done in a vacuum. The 27 acres of EVC land is meant for educational purposes to provide a better college experience for our local students. The four Board of Trustees that spoke at the April 21, 2015 special meeting to accept the one and only received developer bid were: Dr. Jeffrey

Lease, Ms. Mayra Cruz, Mr. Craig Mann, and Ms. Wendy Ho.

All four of the Board Trustees admitted they did a poor job of public outreach to alert our community in their development plans - for three and a half years - three and a half years of poor public outreach. We asked that they stop the process. They did not listen to community input. The District had worked toward the development of the land since March 2004 when it voted to declare the land surplus.

EVC/SJCC students and community members need to have real-time alerts when any crime happens at either campus. Instead, the

Chancellor prefers to keep sexual assaults at her campuses hush-hush because she is ashamed her District will look bad amongst her Bay 10 peers (21 community colleges that comprise the Bay 10 Districts).

The Chancellor's lack of attentiveness in reporting the campus' sexual assaults resulted in an investigation by a federal agency. Faculty on both campuses demand another federal investigation into the Chancellor's violation of the Clery Act. The Clery Act requires colleges to accurately report sexual assault and other crimes and to give timely warnings about campus threats.

Evergreen community members are not bullies. We are property taxpayers and want our contribution of funds to the District reflected on our campus, in a better curriculum and better college experience for local students and a safer campus for students and community members.

We are involved in our college District because this Chancellor and particularly this current Board of Trustees (Mayra Cruz, Jeffrey Lease, Hoang Nguyen, Wendy Ho, Craig Mann and Rudy Nasol) are unresponsive of public input, do not dialogue with their constituents and have no desire to see improvements made at EVC therefore, the community will improve EVC; that is the mission of Friends of EVC.

When a Chancellor creates unsafe campus environments for students because she opts to have five Vice Chancellors, all making high salaries and two extra executive team members, over adding more campus police, this gives a peek into her priorities, and it is not students. Each college, EVC and SJCC, has its college president with associated staff.

The Chancellor opts to balance the budget and lease off, piecemeal and for small gain, one campus' land. Evergreen Valley College campus land is necessary to expand the college and provide better facilities

See SJECCD, page 6

Mailbox



Opposed to development of campus land

Editor,

We are opposed to the commercial development of 27 acres of land on the Evergreen Valley College campus.

The revenue earned from the San Jose Evergreen Community College District (SJECCD) proposal only earns 1.5% of a 90 million annual budget. There are better ways for the district to fund or cut costs instead of leasing this land for 99 years.

The SJECCD needs to build programs and buildings for students, not retail buildings.

This Board of Trustees needs to build open and true consultation with the community and Evergreen Valley College staff it serves.

There is only one bid for the commercial development received and it's from the same developer that wrote the proposal. This is a RED FLAG.

If a property owner pays \$10 K of San Jose City property taxes, \$735.00 goes to the SJECCD annually. The residents of City of San Jose are funding the Board of Trustees poor decisions.

This Board of Trustees needs to be recalled if they move forward

and approve the bid for non-educational use of this land.

This Board of Trustees did little to nothing to include and communicate to the community it serves. This decision was in the years in the making.

Please sign a petition to tell the district and city to save our college. Let them know there is a better vision needed to shape our college and community. <http://tinyurl.com/friendsofevc>

Contact us for more details: <https://www.facebook.com/friendsofevc>

S. Randles
Evergreen Valley

Property taxes should pay for expansion

Editor,

I just wanted to express my grief that the Board of Trustees opted to lease the land at Evergreen Valley College, for a measly 1.5 mil.

The amount the college receives from the property taxes should be more than enough to expand and become a better education model.

This act has been in planning for two years without informing the residents (how sneaky). No consideration as to how their lives will be affected, traffic and whatnot; most

of all, not considering the need for expansion of education. The rumor is that they are shrinking the classes (great vision). After the homes are built on this acreage where will the kids go to for their education.

Wake up B of T and do the right thing.

Saddened,
Ahsan Sajjad
Evergreen Valley

So long, Megabyte

Editor,

We three were once-a-week patrons of Mega Byte Pizza for the whole 14 years it was there at Canyon Creek Plaza. We are appalled at the callous closing of the doors, without warning to employees or patrons! For what defensible reason would anyone so abruptly close a business that has served this community so well for fourteen years?! No matter what the new owners serve, we will find it extremely difficult to patronize any restaurant that has shoved aside the one we've loved and visited nearly every Monday for all fourteen years! (Besides, being familiar with the mediocre offerings at Mexico Lindo, we're betting the food will not compare favorably with the fresh, creative cuisine of Aldo and his staff.) We will greatly miss Mega Byte! And so will The Villages!"

Marsha Conway
Vikki Essert
Dorene Vettel
Evergreen Valley

LET US HEAR FROM YOU!

Send your letters to editorial@timesmediainc.com or via postal mail to: The Evergreen Times, Silicon Valley Business Center, 1900 Camden Ave., San Jose, CA 95124.

Times News



More than 30 members of the community expressed their strong opposition to the development during the public comments portion of the board meeting.

Board of Trustees vote to develop 27 acres at Evergreen Community College campus

By Larry L. Harris
Special to the Times

Against the flow of public opinion and public resistance the Board of Trustees voted to develop of 27 acres adjacent to the Evergreen Community College campus April 21.

At a standing room only Board meeting, the San Jose-Evergreen Community College District (District) voted to develop 27 acres of surplus land for an annual income of \$1.5 Million deposited into the district general fund.

The Evergreen community filled the board room voicing their dissent to the proposal. Over 30 members of the community expressed their strong opposition to the development during the public comments portion of the meeting.

In addition to the public dissent, the Evergreen Community College and San Jose City College Academic Senates drafted a resolution against the development and many faculty expressed their opinions against the proposal.

After more than three hours of (sometimes angry and vulgar) community expression the vote was taken by the Board and the proposal passed with 6 yeas and 1 nay.

Issues at hand

The development project divides itself up into two issues.

The community expressed opposition based on the standard argument “Not in My Back Yard” (NIMBY) and a concern about the future growth of the college which might require all or a portion of this surplus land.

The Academic Senates (AS) provided a power point presentation depicting how future college programs (our automotive and physical education programs) might require additional land. The AS also presented an alternate use of the land as possible sports fields or separate development of the land as a for profit aquatic center.

The Board’s main concern and objective is to create an ongoing source of income to give the district revenue stability during the down years of our economy. Their hope is this revenue would minimize any deep cuts to faculty or staff which was the district’s experience in the 2008 recession.

Current proposal

“The San Jose-Evergreen Community College District (“District”) entered into a long term ground lease with a developer for the approximately 27 acres of land adjacent to Evergreen Valley College (“Surplus Land”).



The surplus land is adjacent to San Felipe Road and Yerba Buena Road.

The Surplus Land includes the old District Office site, the existing Police Academy as well as land which is currently not improved. The Surplus Land is adjacent to San Felipe Road and Yerba Buena Road. It is expected that the selected developer will, at its own cost, obtain land use entitlements for the Surplus Land and construct a mixed use project which will probably include, among other uses, multi-family rental housing and retail space. The selected developer will pay a substantial amount of rent to the District. Our goal is to ensure that there are additional (financial) resources, especially during economic downturns, to help our students achieve greater success.”

Background

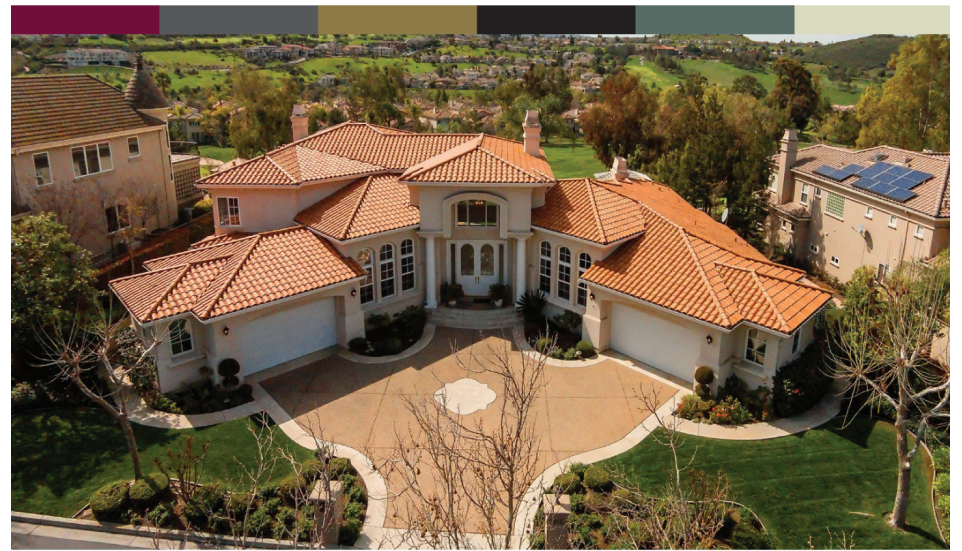
“The development of the 27 acres at the south end of the campus has been an item of study for many years. The District anticipates that it will receive millions of dollars in rent pursuant to the ground lease (1.5 million dollars per year). The exact use of the rent to be received by the District pursuant to the ground lease will be determined by the Board Trustees of the District in the future. The rent will be used to support the educational mission of the District and specific student success outcomes established by the State of California and the SJECCD Board of Trustees.”

Process

In 2004, 27 acres of land adjacent to Evergreen Valley College was declared surplus. After three years of Board study, financial analysis, public discussions the Board decided to develop the acreage.

The initial bid with was opened at the Board meeting April 14 with Republic Urban Properties as the sole bidder. Due to the high energy and reaction from the community to the bid, the Board decided to hold the final vote on the development plan at the April 21 meeting.

Express your thoughts about this issue on the blog at <http://sjeccd.blogspot.com>.



5932 Country Club Parkway
San Jose, CA 95138

A magnificent custom built home inside Silver Creek Valley Country Club. Perched above the 3rd and 4th fairways with dramatic views of the golf course, surrounding hills and city lights. Enjoy 5,174 square feet of well-designed living space mostly on the main floor with volume ceilings, extensive woodwork and crown molding throughout. Quality craftsmanship abounds. Each of the 4 bedrooms has its own bathroom, with the master bedroom and a guest suite downstairs. The large upstairs loft is perfect for a bonus or game room. Have it all...

Offered At: \$2,980,000

www.5932CountryClubParkway.com



Grant, Griffith & Jones
408.239.0990
scott@grantgriffithandjones.com
www.SilverCreekHomePreviews.com
Lic# 00890691



2015 Intero Real Estate Services Inc., a Berkshire Hathaway affiliate and a wholly owned subsidiary of HomeServices of America, Inc. All rights reserved. All information deemed reliable but not guaranteed. This is not intended as a solicitation if you are listed with another broker.

Caspian Village Restaurant
DINING & CATERING
Mediterranean Cuisine
DINING • TAKE OUT • CATERING • DELIVERY
BREAKFAST • LUNCH • DINNER



Benedicts
Pancakes
Scrambles
Omelets
Waffles
French Toast
& Many More

Kebobs
Baked Lamb Shank
Sicilian Lasagna
Moussaka
Butter Chicken
Gyros & Falafel
& Many More

Caspian Village

10% OFF
YOUR ENTIRE PURCHASE
Expires 5/31/15
Not Valid with any other promotion, special or offer. Limit one per table per visit. Maximum discount \$10 USD.

OPEN 7 DAYS A WEEK
HOURS: 7:30AM to 9:00PM
PHONE: 408-528-8500
2881 Villages Parkway,
San Jose, California, 95135
Visit us at: www.Caspianvillage.com

Times **Community Notebook**

New Seasons

Continued from page 1

supports local non-profits working to protect the environment. Customers receive tokens worth 10¢ to give to local non-profit environmental organizations for each grocery bag they reuse. Customers place their tokens in the boxes that are marked with name of the organization they want to support.

During the month of May, New Seasons Market customers will have the opportunity to vote to determine which nonprofits will be the beneficiaries of the Envirotoken program for one year.

The organizations that are currently on the ballot are: Community Alliance with Family Farmers (CAFF), California Certified Organic Farmers (CCOF), California Native Plant Rescue, FishWise: Sustainable Fishery Advocates, Organic Farming Research Foundation (OFRF), Our City Forest, San Jose Parks Foundation, Santa Clara County Open Space Authority, Silicon Valley Bicycle Coalition, Silver Creek High School PTSA Campus Beautification, and Wildlife Center of Silicon Valley.

Through the Envirotoken pro-

gram in 2014, \$11,847.20 was donated by the Evergreen store to the following local organizations: Bat Conservancy of Coastal California, California Certified Organic Farmers, Our City Forest, Santa Clara Open Space Authority, San Jose Parks Foundation, and the Wildlife Center of Silicon Valley. Additionally, a total of \$100,119 was donated to 44 different organizations in 2014 by New Leaf Community Markets, a wholly owned subsidiary of New Seasons Market.

Expanded Product Offerings

To give customers a wider range of choices, 2,500 new products were added to complement the organic and natural lines, with more products to be added over time. These new products represent about 15 percent of all products offered.

New Seasons Market is located at 5667 Silver Creek Valley Rd., San Jose, the former location of New Leaf Community Markets, a wholly owned subsidiary of New Seasons Market.

The new store offers a wider variety of products than before. For more information about New Seasons Market Evergreen, visit <http://www.newseasonsmarket.com/our-stores/evergreen>.



Chaboya Symphonic Band receives top award at CMEA Band and Orchestra Festival

Chaboya Middle School's Symphonic Band received the highest award of "Superior" at the California Association for Music Education (CMEA) Band Festival held April 18 at Evergreen High School.

This is the first CMEA "Superior" rating for Chaboya's band in more than a decade, according to the Chaboya's music instructor Karen Kolber.

The school band was the first to perform at 8 am and played three compositions followed by the sight reading session at 8:25 am. The three selections played included Affirmation Overture by Robert W. Smith, An English Celebration by James Swearingen, and Lexington March by John Edmondson

Bay Section of CMEA mission statement:

The mission of the Bay Section of the California Association for Music Education is to promote the advancement of music education and to cultivate social and educational interaction among its members. Additionally the association assists its members in seeking individual and collective growth as musicians, educators, and conductors.

CMEA Bay Section is a regional affiliate of CMEA (The California Association for Music Education) Membership is open to all music educators working in public and private schools, colleges and universities in the areas within its boundaries.



SUPER SLOW zone
MINUTES A WEEK • IN SHAPE FOR LIFE

ARE YOU IN SHAPE FOR ALL CALIFORNIA HAS TO OFFER?





- NO Membership Fees
- By Appointment Only
- 1-on-1 Training with a Certified SuperSlow Zone® Instructor

 The Zone (SuperSlow Zone)

NO? LET US HELP YOU - just 20 minutes, once-twice a week

FREE CONSULTATION & 10% off your first month

408.578.ZONE

First time clients only. Not to be combined with other offers. Exp. 5/15/15

5988 Silver Creek Valley Rd. Suite 55
San Jose, CA 95138
(Corner of Silver Creek Valley Rd and Fontanosa, by 101)

408.578.ZONE (9663)

www.sszsilvercreek.com



Drive home the savings.

Al Olseen
State Farm Agent

3267 S White Road,
San Jose, CA 95148
Phone: (408) 274-4900
Hours: 9 am – 6 pm
(Lunch 1-2 pm)

Car and home combo.
Combine your homeowners and car policies and save big-time.
Like a good neighbor, State Farm is there.®
CALL ME TODAY.



State Farm Mutual Automobile Insurance Company
State Farm Indemnity Company, State Farm Fire and Casualty Company
State Farm General Insurance Company
Bloomington, IL

Times Feature

For drought relief, every drop counts

By Vice Mayor Rose Herrera
Special to the Times

In the midst of the worst drought in California's recorded history, it is important that we do everything in our power to conserve water. That's why I voted to approve the 30 percent water reduction recommendation last week at council.

According to the U. S. Department of Agriculture drought monitor for California, we have moved from a severe drought intensity to an extreme drought intensity. The need to save water is not just a short term crisis. We live in a subtropical Mediterranean climate with little rain and about 300 full or partly sunny days a year. Encouraging residential lawn conversion and home gray water recycling addresses both short term and long term water needs. I've also called on the City Manager to utilize Santa Clara Valley Water District and Municipal Water rebate programs to create a lawn conversion program and to allow for gray water conversion in the most timely and inexpensive manner currently available.

San Jose residents have already shown they want to do the right thing when it comes to our environment, having already reduced their water usage by 12.8 percent. But we are in such a crisis that San José has declared a 30% emergency water shortage. We need to make water conservation a way of life in San Jose. The declaration calls for further water conservation to help address the effects of the past four years of severe drought. As part of the 30% emergency declaration, new watering restrictions have been established. However, if we want to meet our new goal of a 30 percent reduction in water use, we must evaluate what will give us the best value for our efforts. Lawn conversion incentives, gray water technology research, and supporting conservation legislation are all ways we can work toward water saving goals as we enter our fourth year of drought.

During this time of the emergency water shortage, San Jose residents are asked to reduce their water use by 30 percent. Outdoor water use accounts for about half of the typical water bill and may be the easiest place to reduce your water use. The following outdoor water use rules are in effect and apply to everyone in San Jose:

Water when it's coolest. Outdoor watering house are restricted to before 10 a.m. and after 8 p.m. and on two designated days when using the sprinkler system.

■ Odd numbered addresses – Mondays & Thursdays

■ Even numbered addresses – Tuesdays & Fridays

Use gray water to wash your car, take it to a commercial car wash, or leave it dirty.

Use community pools or the beach. No refilling residential pools/spas more than one foot and no initial filling with potable water, except when existing pools are drained to repair leaks.

Fix leaks on any pipes as soon as possible

Don't let water flow into gutters or streets

Install and use automatic shut-off nozzles on hoses

According to the EPA, people living in drier climates can use up to 192 gallons per day on their lawn and outside landscaping. That is a total of 60 percent of total water use per day. Changes to how residents and companies irrigate their lawns will have a large impact on the



District 8 Report

By Rose Herrera
Vice Mayor

total water usage of a household or property. Under our current system, SCVWD offers a \$2 per square foot incentive to replace lawn with drought tolerant landscaping. San Jose Municipal Water (Muni) is in a cost-sharing agreement with SCVWD to provide an additional \$1 per square foot to this incentive for their customers. If you're interested in finding out about the rebate programs, go to <http://save20gallons.org/>.

The benefits of high paying incentives over large geographic areas, similar to the ones offered by SCVWD and Muni, can be seen in our neighbors to the south in Los Angeles. Los Angeles, which has wrestled with water issues for much of its history, has provided landscape incentives to its residents for years. In light of the drought they stepped up the program, increased the incentive, and reached out to the private sector. This allowed for private companies to form around learning the rules of the landscaping conversion rebate, reaching out to residents, and re-landscaping their property for free. The program was robust enough that after all this planning, outreach, and labor, both residents and the companies were able to keep a portion of the instant rebate. Just as Los Angeles was able to work with the private sector to bring their residents' conversion costs to nothing, we hope to work in conjunction with SCVWD and additional private partners to eventually expand the program both monetarily and in scope to achieve this same goal, pending the success of a trial.

Gray water systems have been rapidly evolving due to all the drought talk and we need to be part of that technology development. Gray water systems recycle water from bathroom sinks, showers, tubs, and washing machines to be used for other applications including certain types of irrigation and toilet water. Based on America Water Works Association estimates of average water consumption, gray water accounts for 40,880 gallons per four-person household per year. A household that installs a gray water system could see as much as a 22 percent decrease in residential water use by recycling the gray water. Residents have contacted my office interested in pursuing gray water systems for their home, but being a very new technology, what is safe and possible needs further investigation. We have not shied away from new technologies before as a City and we believe it is in our power to do the same for this as well.

There are some who will argue that water conservation incentives have run their course and a comprehensive shift towards enforcement of water usage is needed. Evidence has shown that there are still plenty of ways to provide creative incentives for creating a more sustainable water system for the end user. Due to the difficult nature of water enforcement, it is important that we exhaust all of these incentives to conserve water before we dive head first into playing the part of water police. The programs and incentives our neighbors around the state and our own residents have pursued are a good guide of where to look next.

If you have any further questions or comments, please do not hesitate to email my office at district8@sanjoseca.gov.

I want to keep you informed! Sign up for the District 8 newsletter - go to www.sanjoseca.gov/district8.



NOTHING bundt CAKES®

Make Mother's Day.



FREE Bundtlet

when you purchase a bundtlet

San Jose
2721 Aborn Road, Suite 10
(408) 238-7500

Expires 5/31/15. Limit one coupon per customer. Cannot be combined with any other offer. Redeemable only at the bakery listed. Must be claimed in-store during normal business hours. No cash value. Online coupons must be printed for redemption.

WE DELIVER | ORDER ONLINE
NOTHINGBUNDTCAKES.COM



4205 San Felipe Road,
Suite 200
San Jose, CA 95135
(408) 270-4333

Children & Adults Welcome

Serving Evergreen / Silver Creek families for over 26 years!

- ★ Digital X-Ray Machines
- ★ General and Cosmetic Dentistry
- ★ Implant Dentistry
- ★ Caring, Professional Staff

Douglas W. Vierra, D.D.S. / Sharon D. Hoeffling, D.D.S.
Raju Y. Reddy, M.D., D.D.S.



Every aspect of my visit was exemplary. Entire staff was knowledgeable & you get the sense they actually care about your business. The facility is clean, new, and has state of the art equipment.

—Anthony C. 11/10/2014

Visit us online at www.plazadental.com

Please see our patient testimonials in Patient Information.

FREE Sonicare Toothbrush
after Initial Exam, X-rays & Cleaning

Plaza Dental Group – (408) 270-4333

Must present coupon at first visit. Limit one per customer. Limited to one per family. Not valid with any other offer. Expires 5/31/15



Times **Community News**



AND THEY'RE OFF

Runners get off to a fast start at the Middle School Track Meet held recently at Silver Creek High School, which included Chaboya, LeyVa, Ocala. Several students beat their best track times.

SJECCD

Continued from page 2
for students. Rather than live within the yearly budget and spread that burden throughout the District, the Chancellor chooses to harm one geographical and socio-economic group of students by having them shoulder the entire load.

The District went down the route of leasing off a six-acre chunk of Evergreen Valley College campus land in 1999 and commercially developing it (the Evergreen Marketplace) for a return of \$524,000/yearly, used to pay for an unfunded liability. Chancellor Cepeda balances the District budget on the backs of Evergreen and East San Jose students - EVC has smaller course offerings and fewer facilities than SJCC. She does not spread the pain District-wide. Our local students bear the cutbacks and endure penurious (skinflint, miserly) treatment - only EVC. Why?

Further, in District F.A.Q.s they answer the question, WHAT WILL THE DISTRICT DO WITH THE RENT IT RECEIVES [from the 27 acre commercialization of EVC campus land]: the exact use of the rent to be received by the District pursuant to the ground lease will be determined by the Board Trustees of the District in the future.

The rear of the college (eastern part of the campus next to the foothills) has two active fault lines that preclude construction of facilities there. Ground leasing the 27 acres for 95-years permanently reduces the size of the college forever. A rising population coupled with increasing higher education costs posit that an excellent, local community college would be well-attended by our local area students.

Can an educational consulting firm - Cambridge West Partnerships, employed by the Chancellor, paid for by the District (\$255,000 from November 19, 2014 to December 30, 2015 for each college for a total of \$510,000) predict with such accuracy that in the year 2110 our area will not grow in population or higher education costs will become so onerous, our community college will not be in more demand?

No matter how unappealing the

District tries to make EVC, our Full-Time Enrolled Student population is equal to within a couple hundred students of SJCC, and sometimes exceeds SJCC. Can you imagine how high student enrollment would be if the District supported EVC? Right now, EVC is just a transfer college, an educational entity to be attended for one year or two max. Counting each concentration, EVC offers 33 degrees and 23 certificates. SJCC offers 61 degrees and 60 certificates. The faculty of EVC would offer more to their students and as a community, we want our local students to have more degree and certificate choices.

West Valley College - Mission College District serves twice as many students per year and has nearly the same number of employees, yet that Chancellor has only one vice Chancellor reporting to him and a smaller overall administrative staff (one assistant, one Vice Chancellor of Administrative Services and two college presidents). The West Valley College-Mission College District spends money in the classroom and on safety.

We need better representation for our local Evergreen and East San Jose students and faculty. Several things need to happen to facilitate that representation including stopping the development of EVC's 27 acres and communicating with the public. The public was not informed for three and a half years that the District planned to develop EVC land (November 2011 to now).

The current Board of Trustees (Mayra Cruz, Jeffrey Lease, Huong Nguyen, Wendy Ho, Craig Mann and Rudy Nasol) need to be replaced with community members that think critically, question the District on the behalf of the community and make decisions for the benefit of all of the students. The public needs to provide input to the selection of the next Chancellor and we wonder how we can do that when the current Board of Trustees ignore our community and our input. Evergreen Valley College needs to be given the support to thrive and provide a larger breadth of degrees and certificates to our local students.

Brenda Serpa
Friends of EVC

www.southcountycdjr.com • www.southcountycdjr.com • www.southcountycdjr.com

Northern California's #1 CDJR Destination
See why people **DRIVE A LITTLE - SAVE A LOT™** In GILROY

SOUTH COUNTY THANK YOU FOR MAKING US **#1 AGAIN!**

CHRYSLER DODGE Jeep RAM

YES! THESE ARE NEW CARS AT THESE PRICES... UNBELIEVABLE!

"LIFTED DIESEL 2500 I GOT IT IN GILROY!" Josh Campbell	"THEY DO WHAT THEY SAY!" Mike Cooper	"BIG SELECTION BIG SAVINGS!" Veronica San Jose	"OUTSTANDING DEALS!" Edgar Milpitas	"I LOVE MY RUBICON BEST PRICE!" Andre San Jose	"GOT THE DEAL AS ADVERTISED!" Marty Los Altos	"WOW WOW WOW!" Brian Los Gatos	"GOT MY 15 CHALLENGER!" David Morgan Hill	"AMAZING NO HASSLE!" Earl Oakland	"GOT THE BEST DEAL IN GILROY!" J.T. Alameda	"IT WAS A DRIVE BUT THE PRICE WAS WORTH IT!" W. Smith San Francisco
---	---	---	--	---	--	-----------------------------------	--	--------------------------------------	--	--

2015 JEEP PATRIOT SPORT

MSRP.....\$17,790
DEALER DISCOUNT.....-\$3,791
SALE PRICE.....\$13,999
CHRYSLER CALIF BC CASH.....-\$2,000
CHRYSLER CAPITAL CASH*.....-\$1,000

NET PRICE AFTER DISCOUNTS AND REBATES
\$10,999

2 AT THIS NET PRICE #328576, 328579

2015 DODGE DART

MSRP.....\$18,265
DEALER DISCOUNT.....-\$2,672
SALE PRICE.....\$15,593
CHRYSLER RETAIL CONSUMER CASH.....-\$1,000
CHRYSLER CAPITAL CASH*.....-\$500

NET PRICE AFTER DISCOUNTS AND REBATES
\$13,888

1 AT THIS NET PRICE #330926

2015 DODGE JOURNEY AUTOMATIC

MSRP.....\$21,290
DEALER DISCOUNT.....-\$2,992
SALE PRICE.....\$18,298
CHRYSLER CONSUMER CASH.....-\$1,500

NET PRICE AFTER DISCOUNT AND REBATES
\$16,888

1 AT THIS NET PRICE #650356

NEW 2015 DODGE GRAND CARAVAN 7-PASSENGER

MSRP.....\$22,190
DEALER DISCOUNT.....-\$3,702
SALE PRICE.....\$18,488
CHRYSLER CONSUMER CASH.....-\$1,000
CHRYSLER CAPITAL CASH*.....-\$500

NET PRICE AFTER DISCOUNT AND REBATES
\$16,988

3 AT THIS NET PRICE #663517, 602220, 615292

NEW 2015 JEEP CHEROKEE SPORT AUTOMATIC, A/C

MSRP.....\$23,990
DEALER DISCOUNT.....-\$3,491
SALE PRICE.....\$20,499
CHRYSLER CALIFORNIA BONUS CASH.....-\$500
CHRYSLER RETAIL BONUS CASH.....-\$1,000
CHRYSLER RETAIL CONSUMER CASH.....-\$1,000

NET PRICE AFTER DISCOUNTS AND REBATES
\$17,999

2 AT THIS NET PRICE #660752, #700216

NEW 2015 DODGE CHALLENGER SXT

MSRP.....\$27,990
DEALER DISCOUNT.....-\$3,991
SALE PRICE.....\$23,999
CHRYSLER CALIF BONUS CASH.....-\$1,000

NET PRICE AFTER DISCOUNT AND REBATES
\$22,999

2 AT THIS NET PRICE #775578, 761785

2015 DODGE CHALLENGER R/T 6-SPD MANUAL HEMI

MSRP.....\$32,490
DEALER DISCOUNT.....-\$4,602
SALE PRICE.....\$27,888

SALE PRICE
\$27,888

1 AT THIS SALE PRICE #722949

ALL-NEW REDESIGNED 2015 DODGE CHARGER

MSRP.....\$28,990
DEALER DISCOUNT.....-\$3,102
SALE PRICE.....\$25,888
CHRYSLER RETAIL CONSUMER CASH.....-\$2,000

NET PRICE AFTER DISCOUNT AND REBATES
\$23,888

2 AT THIS NET PRICE #800841, 754503

ALL-NEW 2015 JEEP RENEGADE LATITUDE

MSRP.....\$21,990
DEALER DISCOUNT.....-\$2,992
SALE PRICE.....\$18,998

SALE PRICE
\$19,999

2 AT THIS SALE PRICE #B26355, B32225

NEW 2014 CHRYSLER 300

MSRP.....\$32,390
DEALER DISCOUNT.....-\$4,141
SALE PRICE.....\$28,249
CHRYSLER 2014 300/300C RETAIL BONUS CASH.....-\$1,000
CHRYSLER CALIFORNIA BC RETAIL CONSUMER CASH.....-\$3,250

NET PRICE AFTER DISCOUNTS AND REBATES
\$23,999

1 AT THIS NET PRICE #377694

2015 JEEP WRANGLER RUBICON 4X4 SUV 5-SPD AUTO, HARDTOP, & MORE!

MSRP.....\$21,990
DEALER DISCOUNT.....-\$5,402
SALE PRICE.....\$16,588

DEALER DISCOUNT OFF MSRP
\$6,588

1 AT THIS DEALER DISCOUNT #540386

2015 JEEP CHEROKEE LIMITED 9-SP AUTOMATIC, LEATHER, LOADED!

MSRP.....\$33,535
DEALER DISCOUNT.....-\$5,047
SALE PRICE.....\$28,488
CHRYSLER RETAIL CONSUMER CASH.....-\$1,000
CHRYSLER CALIFORNIA BONUS CASH.....-\$500

NET PRICE AFTER DISCOUNTS AND REBATES
\$26,988

1 AT THIS NET PRICE #693025

2015 DODGE DURANGO 7-PASSENGER AUTOMATIC

MSRP.....\$31,490
DEALER DISCOUNT.....-\$4,752
SALE PRICE.....\$26,738
CHRYSLER RETAIL CONSUMER CASH.....-\$750

NET PRICE AFTER DISCOUNTS AND REBATES
\$25,988

1 AT THIS NET PRICE #817198

2015 RAM 2500 SLT TRUCK CREW CAB, TURBO-DIESEL

DEALER DISCOUNT OFF MSRP.....\$9,388
RAM CALIF BC RETAIL CONSUMER CASH.....-\$2,500

NET SAVINGS OFF MSRP AFTER DISCOUNTS AND REBATES
\$11,888

1 AT THIS NET SAVINGS #635116

2015 JEEP GRAND CHEROKEE SUMMIT 4X4

DEALER DISCOUNT OFF MSRP.....\$6,500
CHRYSLER CALIF BC RETAIL CONSUMER CASH.....-\$500

NET SAVINGS OFF MSRP AFTER DISCOUNTS AND REBATES
\$7,000

1 AT THIS NET SAVINGS #753680

2015 JEEP WRANGLER UNLIMITED SPORT 4X4 SUV 4-DR AUTO, A/C, HARDTOP & MORE!

MSRP.....\$29,990
DEALER DISCOUNT.....-\$4,102
SALE PRICE.....\$25,888

SALE PRICE
\$25,888

1 AT THIS SALE PRICE #665717

2015 RAM 1500 ECO-DIESEL 4-DR

RARE OPPORTUNITY, WHILE THEY LAST!
MSRP.....\$38,840
DEALER DISCOUNT.....-\$8,841
SALE PRICE.....\$30,000
CHRYSLER RETAIL BONUS CASH.....-\$2,999
CHRYSLER RETAIL CONSUMER CASH.....-\$1,500
CHRYSLER CAPITAL CASH*.....-\$500

NET PRICE AFTER DISCOUNT AND REBATES
\$29,999

2 AT THIS NET PRICE #638291, 638292

BUSINESS LINK We Want Your Trade
Business Owner's You May Qualify for Additional Rebates - ASK!

ALL ROADS LEAD TO SOUTH COUNTY CDJR
888-470-4578

455 STUTZ WAY, GILROY CA 95020

* Factory consumer cash rebate in lieu of discount financing on approved credit. *Must finance through Chrysler Capital, not all customers may qualify. All prices exclude government fees and taxes, any finance charges, any dealer document processing charge, any electronic filing charge and any emission testing charge. Residency restrictions apply. See dealer for complete details. Vehicles pictured use for display purposes only and may vary slightly from the actual vehicle. All vehicles subject to prior sale. Not responsible for typographical errors. Sale prices end 5/31/15.

www.southcountycdjr.com • www.southcountycdjr.com • www.southcountycdjr.com

Times **Community News**

Members of the San Jose Conservation Corps are currently performing a turf conversion at the County Roads & Airports Maintenance Office on Shallenberger Road in San Jose.

Santa Clara County to replace green lawns with drought-resistant plants

By **Ken Yeager**

Board of Supervisors

In an ongoing effort to address California's water crisis, Supervisor Dave Cortese joined me in proposing a new policy to reduce the impact of county landscaping on the local water supply. On Tuesday, the Board of Supervisors voted unanimously to replace decorative lawns and other water-intensive landscapes with drought-tolerant plants.

Currently, there are numerous green grass lawns on County-owned land that require regular maintenance and watering. Those properties include the Civic Center and the Main Jail as well as the office buildings at Berger Drive and Charcot Avenue in San Jose.

The new policy requires County staff to identify such properties, including those along County roads, and create a xeriscaping—or sustainable landscaping—plan that utilizes drought-tolerant or native plants instead. Lawns that are maintained for recreational purposes such as parks and sports fields will be exempted from the policy.

There is no time to waste in mitigating the effects of this drought. The federal Environmental Protection Agency estimates that up to 50 percent of landscape water use goes to waste because of evaporation, wind, or runoff caused by overwatering. Converting to a sustainable landscape through careful plant selection and design can eliminate that lost water. This new policy is great way for the County must lead by example when it comes to water conservation.

Some of the new landscaping standards will be incorporated into existing capital projects. The County will also seek state and local water conservation grants to fund the cost of other landscape conversions. County staff will also

seek opportunities to collaborate with the Santa Clara Valley Water District, the California Conservation Corps, and certified community conservation corps to achieve mutually beneficial goals.

In addition to converting existing lawns, the new policy places a 10-year moratorium on installing any new water-intensive landscaping at County-owned facilities. This would include grass lawns that are heavily reliant on water and decorative fountains that use water.

Recently, the Board adopted an ordinance establishing permanent mandatory conservation for residents in unincorporated areas of the County. A similar measure for businesses will be considered soon. Additionally, all County Departments are currently putting 25 percent water reduction plans into place.

The County's new lawn conversion policy is in line with other recent water-saving efforts, some of which have been recognized with Silicon Valley Water Conservation Awards. Those projects have included utilizing recycled water for landscape irrigation and installing low-flow shower heads at County detention centers.

While the new policy was instigated by the drought at hand, it is being implemented with an eye toward systematic and permanent changes. The long-term effects of climate change across the region are being considered as well. We are entering a new era of mindfulness in water consumption. Conservation and smart resource management have to be the new normal.

As always, I encourage you to contact my office if you have any concerns or are interested in additional information. You can reach me at (408) 299-5040 or via email at Supervisor.Yeager@bos.sccgov.org.

GOOD *food* makes
EVERYONE
HAPPY

We like to call it Grocery Goodness: we make it so our stores are happy, fun, and easy to shop, with the best mix of classic conventional and local, organic favorites—from Coca-Cola® to air-chilled chicken. And the happiness goes beyond our store's four walls: we give back to our community, and provide a progressive workplace. But at the end of the day, it's about really good food. And good food makes everyone happy.



NEW SEASONS
MARKET

The friendliest store in town.

5667 Silver Creek Valley Rd. • San Jose, CA 95138

(408) 513-8200 • OPEN DAILY 8am-9pm

newseasonsmarket.com

Times **Community Notebook**



Amy Do, fifth grade student at Cedar Grove Elementary School, was part of the high energy performance.

Taiko performed by Cedar Grove students

Taiko was performed by several groups including students of Evergreen's Cedar Grove Elementary School at the Haru Matsuri Festival in Morgan Hill on April 19. Taiko is an ensemble drumming a broad range of Japanese percussion instruments.

Cedar Grove School's Taiko group is called Hinoki Daiko. At the end of the day, the group wrapped up the entertainment roster with one of its usual high energy performances. Hinoki Daiko began ten years ago at Cedar Grove and is comprised many talented young drummers. The group put on a great performance, holding its own with other adult Taiko groups from around the Bay Area.

In addition to Taiko, the Haru Matsuri Festival also included martial arts demonstrations, food booths and other cultural and fundraising activities.

For more information about Hinoki Daiko Taiko, contact Rebecca Shingai (408) 460.5659.



The drumming ensemble performed on a broad range of instruments. Below: Melan Penglin, sixth grade, demonstrates her skill.



San Jose sets 30 percent water conservation target to address severe drought

The San Jose City Council initiated a 30 percent emergency water declaration to comply with the State Water Resource Control Board mandate for water conservation throughout California.

The city's action also calls for further water conservation to help address the effects of the past four years of severe drought. The new rules take effect immediately through March 31, 2016. The water restrictions only apply to drinking water, not gray water (used water from baths, sinks), or recycled water.

New restrictions for outdoor watering include:

If using a sprinkler system, residents and businesses can water outdoors on only two designated days, and only before 10 a.m. and after 8 p.m. Odd numbered addresses may water on Mondays and Thursdays. Even numbered addresses may water on Tuesdays and Fridays; if using a hand-held hose with an automatic shut-off nozzle or a drip irrigation system, residents and businesses can water outdoors before 10 a.m. and after 8 p.m., without a designated day restriction. Watering in the cooler hours of the day helps reduce evaporation and allows plants and landscape to absorb more of the water.

The emergency declaration also prohibits residents from washing cars at home with potable water. Instead, car washing can be done with gray water or at a commercial car washing facility, which uses a recirculation system. The declaration also prohibits refilling residential swimming pools or outdoor spas more than one foot and no initial filling with potable water, with the exception of existing pools that are drained to make leak repairs.

New \$10,000 fine proposal
Californians who waste water could face fines of up to \$10,000 per

day under a new proposal announced by Governor Jerry Brown. The new fines would mark a dramatic increase from the current maximum fine of \$500 per day. The move is Brown's latest response to a drought that has left California in a state of emergency.

The regulation would rely on local authorities to collect the penalties, which would be a dramatic increase from the \$500 per day that water-wasting can currently incur.



State grant for San Jose Police is approved by City Council

The San Jose City Council voted Tuesday April 28 to accept a \$1.6 million state grant for the police department. Half of the money will go to new computers and servers including a new version of the mobile data computers for police cars.

The department currently uses an eleven-year-old system that crashed on the night Officer Michael Johnson was fatally shot. Police rely on the mobile computers for mapping locations, records searches and communicating with each other. But the system is prone to frequent outages.

The mobile data computers are used for mapping locations, record searches and communication between officers.

A portion of the grant will pay for body cameras. LaDoris Cordell, the city's soon-to-retire independent police auditor, has been pushing for officer-worn body cameras for years.

Awww... how cute!



These little Poodle love bugs are ready for a forever home just in time for summer fun! Poodle Puppies love people children, other dogs, long car rides, walking, playing and generally snuggling. Furry Balls of sweetness, funny, smart, cute and non-shedding and hypoallergenic! Shots are up to date and Well Puppy checks have been completed.

AKC Registered Poodles with a birth date of March 7th 2015 ~

Babies are ready for their new families. Initial Training in place; sleeping all night ~ Potty training schedule in place~ Come to a whistle.

(1) Boy (1) Girl available

Stud: Rio Francisco
Dame: Simone's Angel Girl

AKC Registered Pedigree

\$2400, sales tax included

*Includes all puppy AKC and health and Breeding information, a Potty and feeding schedule, a shopping list for everything you might need & 30 Day Training program for potty reinforcement and initial training to 16 weeks.

For info and availability call: 408.483.5458

MEXICO LINDO
RESTAURANT AND CANTINA
SILVER CREEK - SAN JOSE, CA

(408) 270-5463

5635 Silver Creek Valley Road
Canyon Creek Shopping Center

www.MexicoLindoSJ.com

Available for Holiday Banquets & Catering!
Call (408) 270-5463 or Fax (408) 270-5420

HAPPY HOUR
4:30-6:30
(MON-FRI)

HOURS:
Mon-Thu 11am-9pm
Fri-Sat 11am-10pm
Sun 11am-9pm

\$5.00 OFF*

\$5 off any purchase of \$20 or more
MON through THU 11am-2pm & 4:30-6:30pm
Must present this coupon, can not be used with any other promotion or happy hour.



Eric Parker & Nicki Brown

Silver Creek Valley and Evergreen Specialists Since 1992



Eric Parker
408.202.9000
eparker@apr.com



Nicki Brown
408.781.7389
nbrown@apr.com



For Virtual Tours, Please visit:
ParkerAndBrownHomes.com

Now is the time to make your move. Call us Today!

Eric & Nicki will create your comprehensive sales strategy providing for home preparation and staging, marketing, negotiation and more.



5866 Country Club Parkway

SCVCC 1-story Mediterranean with stunning views. 4803+/-sf, 4 bedrooms plus den/library, bonus room and 4.5 baths, 17,424+/-sf home site and a 4-car garage. **Offered at \$2,599,000**



5728 Country Club Parkway

Single-story custom just above the 8th fairway and green. Master suite wing, hardwood and marble flooring, 3bd/2.5ba plus den, 3742+/-sf, 15,246+/-sf lot. **Offered at \$2,195,000**



5866 Birkdale Way

Superb family home, downstairs suite, high ceilings, separate office/library, hardwood flooring, granite counter tops, 3-car garage, pool and panoramic views. 4bd/3.5ba/3,114+/-sf. **Offered at \$1,595,000**



2580 Bergman Court

Custom Evergreen single-story home. 3325+/-sf on 1.06+/-acres. 3bd, 2.5ba, den/office, 3-car garage, 44' RV garage, spectacular views. **Offered at \$1,895,000**

Alain Pinel Realtors Global Specialist Providing Concierge Service to Select International Buyers

World Wide Marketing Not only will you find our APR listings on the top real estate networks in the United States, but we promote our Luxury Portfolio listing inventory on prominent international real estate portals — allowing us to reach over 70 million potential buyers and investors in 30 countries, including China, Russia, India, Germany, and the United Arab Emirates to name a few.

Square footage, acreage, and other information herein, has been received from one or more of a variety of different sources. Such information has not been verified by Alain Pinel Realtors. If important to buyers, buyers should conduct their own investigation.

Times Feature



Students walked to school to honor Earth Day.

Earth Day Celebrations held at James Franklin Smith Elementary

Earth Day was celebrated in a big way at James Franklin Smith Elementary School on April 22.

The PTA's Go Green team, led by uber enthusiastic parent volunteer, Sulu Pai, planned a series of fun activities for the entire week to promote the message of protecting the environment.

During the week long festivities, students took part in a Book swap. During the first half of the week, students were encouraged to drop off their gently used kids books. Later in the week, those same students were allowed to rummage through all the donated books and select books of their preference.

More than 200 students participated and donated more than 1000 books and 600 books were traded with the remaining 400 books packed up and donated to a local Evergreen elementary schools.

JFS Student Council sponsored an Earth Day poster contest and the two winners were 6th grader Thien Kim Dang and 3rd grader Stephanie Tran.



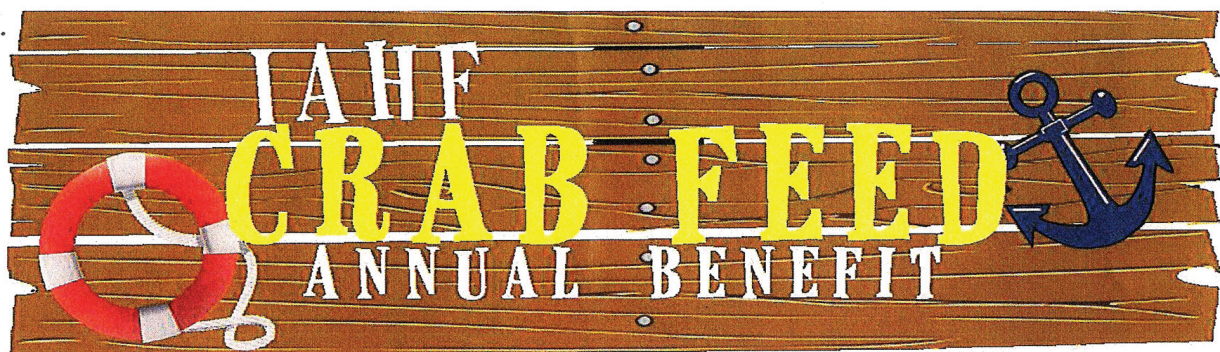
In celebration of Earth Day, students were also encouraged to walk to school. A similar Walk-To-School event had been held in the fall and was such a great success with students and family, it was brought back for a second time.

The JFS students from kinder to 6th walked to school with their friends, parents and grandparents, enjoying the cool breeze and a beautiful morning. San Jose Police Department officers were present to direct traffic.

Although Earth Day is over, the theme continues as the JFS first graders are showcasing a hydroponics display to demonstrate a new way of growing food. Plants are grown in pods where the root system is submerged in nutrient rich water.



JFS Student Council sponsored an Earth Day poster contest and the two winners were 6th grader Thien Kim Dang and 3rd grader Stephanie Tran.



FRIDAY, MAY 8, 2015

TIME

6:00 p.m. doors open - no host bar
6:30 p.m. dinner
8:00 p.m. music and dancing

OPPORTUNITY PRIZE DRAWING!

LOCATION

Italian American Heritage Foundation
Cultural Center
425 N. Fourth St. San Jose, CA 94112

COSTS

\$45.00 members and non-members
\$20.00 children 12 and under

RSVP by May 5, 2015

RESERVED TABLES AVAILABLE!



Chairs: Ken Borelli and Nancy Morreale ~ SPECIAL THANKS TO OUR MANY VOLUNTEERS

RSVP below, call 408.293.7122 or email, eventsvp@iahfsj.com

Method of Payment: all IAHF events can be paid online at iahfsj.org/programs/events/rsvp

Number of seats adult _____ at \$45.00 + children 12 and under _____ at \$20.00 = _____

Please add _____ as a donation. I cannot attend please accept my donation of _____

Check Name: _____

Cash Email: _____ Phone: _____

Visa Credit card #: _____ Exp date: _____

MasterCard CVC #: _____ Signature: _____

AMEX (3 digits on back of card)

Please seat me with: _____ Makes checks payable to the IAHF
425 N. Fourth Street, San Jose, CA 95112

World Computer Exchange program established in Evergreen Valley

A Silicon Valley Chapter of the World Computer Exchange Program is being established in Evergreen Valley, according to Paul Cianci.

Cianci said the chapter is in the early stages of establishing our chapter and have already received support from several enthusiastic Evergreen Valley High School, Evergreen Valley Community College and San Jose State University students as part of our team. While we are off to a good start, we are very much in need of computer donations, storage space and additional volunteers.

The World Computer Exchange (WCE) is North America's largest non-profit supplier of donated refurbished computers to schools and youth organizations in developing countries.

More than 800 volunteers work to keep donated com-

puters out of landfills and to give them new lives in developing countries connecting youth to the skills, opportunities, and understanding of the internet.

Computers from donors that are refurbished by WCE volunteers help connect schools in Africa, Asia, Latin America, the Caribbean or the Middle East to the internet. WCE has received the trust of partners that include the United Nations, Peace Corps Volunteers, Rotary Clubs, iEARN.org, USAID and World Economic Forum.

To find out more about the World Computer Exchange visit their website www.worldcomputerexchange.org. For more information about volunteering for the Silicon Valley Chapter, contact Paul Cianci by email: paul@cianci.org or call (408) 375.7165.

Times **Community News**

Silver Creek Academy offers alternative approaches to learning with a 6:1 student-teacher ratio.

Silver Creek Academy celebrates its eight year anniversary in Evergreen

Silver Creek Academy is celebrating its eighth year sharpening students' skills and broadening their academic horizons in Evergreen at the Canyon Creek Plaza on Silver Creek Valley Rd.

Founded by owner and teacher Shelley Swircek in 2007, the Academy offers a wide variety of small group classes that focus on the individual needs of students in kindergarten through high school. Classes cover a variety of subjects including writing, reading comprehension, math, public speaking & debate, and HSPT and SAT Prep.

Voted the Bay Area's Best Learning Center by Bay Area Parent Magazine four years and running, and the Best of Evergreen voted by readers of the Evergreen Times, the Academy proudly offers its students alternative approaches to learning in a

supportive and motivating environment with credentialed instructors and a 6:1 student-teacher ratio.

This year the Academy added courses in Competitive Debate, Logic and Critical Thinking, Typing, and Testing Well with Common Core Standards.

Swircek says her guiding principle to student success is this: "It is our passion, not just our purpose to inspire our students to learn and challenge themselves at the highest level."

The Academy is open year round and provides summer programs, as well. Along with classes, the Academy also offers one-to-one tutoring and homework help.

For more information about Silver Creek Academy, call (408) 839-5905 or visit SCAASanJose.com.



Off the Grid

Continued from page 1

Off the Grid will be collaborating with San Jose Made, featuring local makers with live demos and other special community programming as well as Evergreen Coffee Company.

Over the past year, Off the Grid has been working closely with Steve and Mary Natale of Shapell Properties to develop the Evergreen Area. Shapell Properties, along with Vice Mayor Rose Herrera, have made this area a priority.

Evergreen Village Square, located at 4075 Evergreen Village Square, San Jose, serves the community as a premier retail destination, with a variety of community events including Sunday and Wednesday Farmer's Markets, Music, Art and Wine on Friday nights during the summer as well as holiday

events throughout the year.

Off the Grid began in June 2010 with the simple idea that grouping Street Food vendors together would create an experience that would allow neighbors to connect with friends, and families to reconnect with each other. Since then, Off the Grid has worked hard to develop markets that are located in urban cores of cities, and that utilize spaces that are not easily activated effectively throughout the day.

Currently, Off the Grid operates over 40 weekly markets in the greater Bay Area, and works with more than 180 vendors weekly. At its core, Off the Grid believes in the power of a shared food experience to connect communities.

For a list of upcoming markets and more information on Off the Grid, visit www.OffTheGridSF.com or become a fan on Facebook.

Silver Creek Academy

INSPIRE EXPLORE CHALLENGE

Named Bay Area's Best Learning Center and Math Program 2014
Located in the Canyon Creek Plaza

Small Group Academic Courses and Tutoring

Our Summer Camp at Laurelwood School Is Now Available For Registration!

Our summer camp at Laurelwood School will challenge students to think critically and creatively. The program will offer the best of our award-winning Silver Creek Academy program. It will take place June 16th - July 31 from

9:00 am - 3:00 pm. The students will be studying writing, reading comprehension, math problem solving, logic and critical thinking, public speaking, and much more!

The academic camp will be taught by our credentialed, expert teachers, and is designed for small group instruction. The enjoyable program allows for personal attention and an individualized pace of learning.



Also registering for our year-round academic programs:

- Reading Comprehension
- Math Problem Solving
- Writing and Grammar
- Public Speaking and Debate
- Logic and Critical Thinking
- HSPT, PSAT & SAT Test Preparation
- High School Academic Guidance
- Study Skills for Academic Success
- Test-Taking Strategies
- Competitive Debate
- Homework Help
- Individual Tutoring

Now
REGISTERING
FOR OUR
SUMMER
AND FALL
PROGRAMS!

Our expert teachers are credentialed and some of the very best in the Bay Area.
No other program offers this type of experience and expertise.

For a complete list of programs visit:

www.SilverCreekAcademicAcademy.com

email: FunLearning@mac.com
5619 Silver Creek Valley Road
San Jose, CA 95138

(408) 839-5905

Community Calendar

Silicon Valley Bikes! Festival

What: In honor of National Bike Month, History San Jose and the Silicon Valley Bicycle Coalition are hosting the First Annual Silicon Valley Bikes! Festival and Bicycle Show. Come celebrate the Santa Clara Valley's rich bicycling history and culture. The event will include food trucks, vendors, riding demonstrations, kids activities, a racing area, and much more. Free bicycle valet parking will be provided. The cost is \$5 at the gate. Children ages 10 and under are free.

When: Sunday, May 3, from 11 a.m. to 6 p.m.

Where: History Park at Kelley Park, 1650 Senter Road, San Jose

More Information: Email siliconvalleybikes@historysanjose.org.

Water-Wise Landscaping Course

What: Guadalupe River Park Conservancy and Master Gardeners Dee Brown & Lisa Strand invite residents to learn water-saving landscaping techniques. Participants in this 3-week course will learn about the many beautiful low-water plants that thrive in our climate with minimal water usage. The cost is \$35 for GRPC members, \$45 for non-members. Pre-registration is required, and space is limited.

When: Wednesdays, May 6-20, from 6:30 to 8:30 p.m.

Where: GRPC Visitor & Education Center, 438 Coleman Avenue, San Jose

More Information: Call 408-298-7657 or visit <http://www.grpg.org>.

History Happy Hour: The

Peninsular
What: Campbell's Ainsley House is

hosting a discussion with Saratoga historian Ray Cosyn on the Peninsular, Santa Clara Valley's original public transportation system. For railroad enthusiasts, public transportation advocates, and anyone with a love of history, this lecture will be an entertaining and informative experience. The cost is \$15 per person, and attendees must be at least 21 years of age.

When: Friday, May 8, from 5:30 to 7:30 p.m.

Where: Campbell Historical Museums, 51 N Central Ave.
More Information: Call 408-866-2104 or visit www.cityofcampbell.com/museum.

Willow Glen 5K Run/Walk

What: Willow Glen Elementary School invites serious runners and casual walkers alike to its annual 5K Run/Walk in San Jose's Willow Glen neighborhood. Following the event is a post-race festival, which will include a pancake breakfast, music, games, and much more. Proceeds from the race will benefit local after-school programs.

When: Saturday, May 9 at 9 a.m.

Where: Willow Glen Elementary School, 1425 Lincoln Avenue, San Jose

More information: Visit www.willowglen5k.org or email info@willowglen5k.org.

Kids Tree Safari

What: Our City Forest invites children of all ages to join the Kids Tree Safari and discover the great urban outdoors of San Jose. In this expert-led tour, participants will learn about the unusual and wonderful plants living in our region's biggest city. RSVP is required. Bilingual services are available.

When: Saturday, May 9 and June 20, at 2 p.m.

Where: Our City Forest Community Nursery, 1000 Spring Street, San Jose

More Information: Email tree-tours@ourcityforest.org or call 408-998-7337.

Armed Forces Day Run/Walk and Fun Fest

What: The Veterans Support Services Agency presents a day of family fun in honor of Armed Forces Day. In the morning there will be a 5K run as well as a 1 mile walk, with award categories for each. After the race, the Family Fun Fest will begin, offering live music, a classic car display, local artists, food, and more. Pre-registration is required. Organizers are offering \$5.00 off the registration price with the code "newsletter".

When: Saturday, May 16 from 8 a.m. to 3 p.m.

Where: Lake Cunningham Park, 2305 S. White Road, San Jose

More information: Visit www.vssainc.org/afd/.

New Seasons Market Events

Fridays, 5-7pm: Complimentary Wine Tastings and Cheese and Food Pairings. May 1: Gnarly Head wines (Lodi), May 8: De Rose wines (Hollister), Martin Ranch (Gilroy).

Tues, May 5, 3-7pm: Mother's Day Gift Extravaganza. Enjoy delicious brunch samples, chocolates, and sparkling wine as you explore the many tables of gift items such as gift baskets, bags, body care, jewelry and more. Free. RSVP at www.newseasonsevergreen.eventbrite.com

Fri, May 8, 4-7pm: Free Skin Care or Cosmetic Consultation.

With beauty expert Mariah Guinta, AcquaCures founder. Learn about the importance of blending natural and organic skin care into your lifestyle for ultimate health and beauty. RSVP: www.newseasonsevergreen.eventbrite.com

Sat, May 9: 11am: Community Mural Unveiling.

Come see the beautiful, new mural in the café area made of tiles painted by children at the grand opening of the store.

Wed, May 13, 11am-12pm: Kick the Sugar Class. From agave to nectar to xylitol, sugar can sneak into your diet behind a variety of aliases. Learn how to spot sugar on food labels, how sugar affects your body, and tips for taming cravings. Free. RSVP: www.newseasonsevergreen.eventbrite.com

Thurs, May 14, 4-5pm: Hands-On Kids Art Class. For 5 to 10-year-olds. With instructor Murphy Adams, who led the tile art project at the grand opening. Draw and paint with pastels, watercolors, inks, and more. Offered again May 28, 4-5pm. \$5 materials fee. RSVP: www.newseasonsevergreen.eventbrite.com

Sat, May 16, 10-11am: Gluten-Free Store Tour. Walk away with a great shopping list and valuable resources to help you navigate a gluten-free world. Free. RSVP: www.newseasonsevergreen.eventbrite.com

New Seasons Market is located at: 5667 Silver Creek Rd, San Jose, 408-513-8200, www.newseasonsmarket.com/our-stores/evergreen



Ballet San Jose Silicon Valley performs 'Cinderella' May 8-10

Ballet San Jose Silicon Valley is presenting popular family entertainment for Mother's Day weekend with a performance of "Cinderella," complete with fairy godmother, a pumpkin turned into a coach, and a shiny glass slipper.

Raymond Rodriguez, associate artistic director of the company, is taking on the task of staging the production, choreographed by Ben Severson, with music by Sergei Prokofiev. Rodriguez is a former principal dancer for the ballet company.

The ballet takes place at the Center for Performing Arts, 255 S. Almaden Blvd on May 8 at 8 p.m.; May 9 at 1:30 and 8 p.m. and May 10 at 1:30 p.m. The May 9 matinee is a special family-priced performance.

Non-subscriber tickets are priced at \$25-\$110; family-priced tickets are \$25-\$80. Youth, senior and family pricing and other special promotions are available. For information on tickets or season subscriptions, visit balletsj.org.

Open Enrollment for Fall 2015 Starts

NOW!!!

Immediate Openings in ...

KINDERGARTEN

Extended Day Program

(Open to All Students in and outside School District)



IDA JEW ACADEMY

K-8th Grade Charter School

ACADEMIC EXCELLENCE

Incorporating the state standard adopted Common CORE Curriculum with an emphasis on:

STEAM

State of the Art...

Science, Technology, Engineering, Art, Mathematics including Dance and Music

SPANISH TWO-WAY DUAL IMMERSION PROGRAM

(English/Spanish)

Ida Jew Academy

(408) 223-3750 • IJA.mpsd.org

Taxes Can Be Taxing!

Let us help you cope with your personal and business tax situation.



- * Tax Planning and Return Preparation
- * Tax Audit Representation
- * New Business Assistance
- * Accounting and Bookkeeping

**Individuals
Corporations
Partnerships**

Pingrong Xue
CPA, EA, MBA

(408) 644-6776
ping@prxcpa.com

Times Feature

Bike tour will visit five branch libraries

By Amanda Choi
Librarian

Calling all bike enthusiasts! Join us on Saturday, May 9th for the **2015 Gira de Libro Library-Tour-by-Bicycle**, the second annual San Jose Public Library bicycle tour.

The Tour is a guided community and staff bicycle ride that will visit five of San Jose's twenty-three branch libraries.

The Gira de Libro will start and finish at the *Dr. Roberto Cruz-Alum Rock Branch Library* (3090 Alum Rock Ave., San Jose, CA), visiting the following branch libraries: *Evergreen, Hillview, Educational Park, and Berryessa*. The ride stops at each library to regroup covering a total distance of 32km (20 miles).



Off the Shelf
Amanda Choi
Librarian

Itinerary for the 2015 Gira de Libro Library-Tour-by-Bicycle

9:00am: Participants check-in at *Alum Rock Branch Library*

9:30am: Wheels hit the road

10:30am: Arrive *Evergreen Branch Library*
Tour of the building and public art

11:30am: Arrive *Hillview Branch Library*
Tour of the public art

12:30pm: Arrive *Educational Park Branch Library*
Tour of Tech Connect and public art

1:30 pm: Arrive *Berryessa Branch Library*
Tour of the Seed Library and public art

2:10 pm: Arrive *Alum Rock Branch Library*
Tour of the public art

Live band

Recycle bicycle inner tube activity

3:00 pm: Finis

We hope you'll be able to ride with us and enjoy the City of San Jose's libraries and bikeways. All levels of cycling experience are welcome to join. For safety purposes, registration is required. To register and for route information, please visit <http://sjpl.org/blog/gira-de-libro-library-bicycle-tour>.

Please Note: The bicycle tour will not be held in the event of inclement weather.

As always, we have many wonderful programs coming up at the Evergreen Branch Library. Children of all ages are invited to join us on Wednesday, May 6th at 6:30 p.m. for a **Mother's Day Bouquet Craft**. We'll have a special Mother's Day story time and then kids will have the chance to make a beautiful paper bouquet to give to Mom. On Thursday, May 7th at 11:30 a.m. we'll **Make a Lei in May**. Children ages 5 and up can enjoy a May Day storytime then use their creativity and the materials provided to create their own flowery lei to take home.

Additional Events

You can view Evergreen Branch Library's complete event listings and information on activities at other library locations at events.sjpl.org. Updates on library events are also available via our RSS feeds (sjpl.org/updates) and our Facebook page (<https://www.facebook.com/sanjoselibrary>)

Parking

When the library parking lot is full, customers may find additional parking available at Grace Church on the other side of Aborn Road. We thank Grace Church for this generous offer that allows the library to better serve the Evergreen community.

Amanda Choi is a librarian at the Evergreen and Berryessa Branch Libraries. Evergreen Library is located at 2635 Aborn Road, between Capitol Expressway and White Road. The library phone number is (408) 808-3060. Berryessa Branch Library is located at 3355 Noble Avenue, San José 95132. The library phone number is 408-808-3050. Both libraries are part of the San José Public Library System. For more information, visit the library website, sjpl.org.



Chaboya Boys' volleyball team wins section title

The Chaboya Boys' volleyball team defended their title as section champions against a tough team from Murphy on April 17.

The Chaboya Colts' win caps off three seasons in a row of not only winning the championship, but also being undefeated.

In the championship match the Colts raced out to an easy first game victory behind the outstanding play of Sahil Patel, who really stepped it up and had his best game when it mattered most. He would finish the match with an incredible 14 kills.

The second game was much tougher as Murphy just wouldn't quit. The team counted on Shubhankar Gaur and Amit Ahluwalia to make great decisions setting and at the net and

the delivered every time.

Vincent Dinh, Zach Argao, Derek Tan and Derek Chan seemed to keep every ball alive with outstanding defense while Sahil, Niko Veroulis, Karan Dilawari and Piort Szarecki controlled the game up front. The match would go back and forth until Dilawari ended the match with a kill to give the Colts a 25-21 victory.

All season long the boys had great leadership from returning players Shubhankar Gaur, Derek Chan and Zach Argao who not only set the tone with their play, but their guidance with new players as well. The team would not have such success without the "1B" team of Daryl Dinh, Chetas Holagunda, TJ Ng, Alex Tran, Aditya Reddy, and Ishaan Singh pushing them every day in practice.

Annual Evergreen College Poetry Festival April 29

The annual Evergreen College Poetry Festival will be held on April 29, 2015 at Montgomery Hall.

Festivities are scheduled to begin with a reception at noon with refreshments being provided. At 12:30 pm, live readings will begin and will last about an hour, at which time there will be a short intermission with refreshments.

The new 2015 issue of *Leaf by Leaf*, the annual Evergreen College review of literature will be available for purchase as one enters the theater. This year's issue promises to be very exciting, to say the least.

After the intermission, live readings will begin again and at 3 pm there will be an open mike session for all contributors of the *Leaf by Leaf* to read or recite their works.

"Our festival promises to be one of the best ever and we encourage the general public to attend and participate" said Sterling Warner who is largely responsible for this year's event.

Bike to Work Day coming on May 14

National Bike to Work Day is coming. The Bike to Work Day is a community event that encourages local residents to try bicycling as their mode of transportation to help relieve traffic congestion and curb motor vehicle emissions on May 14.

In the Bay Area, more than one million people commuting to work live fewer than five miles away from their jobs, making biking an easy alternative. Riders of all levels can take part in Bike to Work Day.



There will be energizer stations throughout the County.

Register and pledge to ride at the official Bay Area Bike to Work Day website youcanbikethere.com to be eligible to win prizes and nominate someone you know as Bike Commuter of the Year.



Want to submit a news item for the Evergreen Times?

Press day: May 12, 2015
Deadline: May 10, 2015

Write to editorial@timesmediainc.com

Evergreen Times

Times **Community Notebook****OPINION: Less, not more traffic congestion needed on Yerba Buena Road**

By **Frank Shortt**
Times staff writer

The area of San Felipe Road and Yerba Buena Road, witness to several automobile accidents recently, some fatal, has a few needs.

There needs to be less, not more traffic congestion. There needs to be less, not more businesses on the busy corner.

There needs to be double left hand turn lanes coming off Yerba Buena Road onto San Felipe Road.

Would building huge apartment complexes and businesses, on the twenty-seven "surplus" acres that the present Administration and Board of Trustees of the San Jose/Evergreen Community College are alleging that they have solve these traffic issues?

In the opinion of local residents and some local employees, this is not the case. This is not even taking

into consideration the taxing of our, already overused, sewage systems and the added pollution of the inevitable traffic that occurs. What about the drought in California? Can we afford the expense of an already dwindling supply of water brought on by adding more population to our area? We're already cutting back 25-30 percent.

It seems that several old buildings on the campus of Evergreen Community College are in need of rebuilding, or at the least, retrofitted for making them less subject to demolition in case of earthquake. The only way these buildings, on a fault-line, can expand is outward toward San Felipe Road. The present Administration and BOT have declared that the college has stopped growing and does not need the land. What would happen if affordable housing was built on the acreage and suddenly there was an

influx of students at EVC?

How would building a retirement center on that corner benefit students at EVC? There are two existing centers already there in the area adding to the confusion as ambulances and firetrucks are busily coming and going. This tends to tie up traffic on this already overtaxed corner. Have you ever tried to hurry someplace at the time classes are scheduled to commence at the college?

It is alleged that the College District has more money in its coffers than ever before and the 1.5 million that the District would receive annually would be an investment in the EVC infrastructure. This money would probably be divided between EVC, SJCC, the District Office, the Workforce Institute, and the Milpitas High School Satellite. The District claims that the place to expand is Milpitas and not EVC. Is

the District interested in investing in education? An interesting question could be asked, "Was this surplus land bought as a result of a local bond election?" If so, whose land is it? Can anyone deny that its purchase, any way one looks at the situation, was educational—not commercial?

The following is in the guidelines of the EVCCD bond elections:

Along with this opportunity, comes responsibility. (Bond measures) The district is committed to responsible stewardship of all bond funds. Measures G-2004 and G-2010 adhere to all accountability standards governing the management of a Proposition 39 bond program. A Citizen's Bond Oversight Committee, comprised of members of the community, provides Bond oversight. The oversight committee reviews all bond expenditures to ensure alignment with the ballot text.

Since when should a local College District be more interested in real

estate development than class room development? The old song and dance of any school district is that they are always in need of monies for expansion, rehabilitation of existing facilities, custodial services, maintenance services, etc. This is why they hold bond elections.

Gentle reminders seem to go unheeded in the SJECDC, BOT and Administration. Let me remind one and all that citizens pass bond measures to improve educational buildings and facilitate academic programs; they do not pass bond measures to invest in commercial real estate.

Donations for Nepal needed

By **Supervisor Dave Cortese**

Special to the Times

On Saturday April 25, 2015, a magnitude 7.8 earthquake struck Nepal, with aftershocks still rocking Kathmandu, the country's largest city. So far, the death toll is nearly 4,000. Saturday's earthquake was the same magnitude as the one that hit San Francisco in 1906 and about 16 times more powerful than the 7.0 quake that devastated Haiti in 2010.

In times of crisis, our American spirit has moved us to help the victims and survivors grappling with the aftermath of a natural disaster. Please consider helping those in urgent need now.

Here are a few aid organizations active in the Nepal crisis.

- Sahayeta: A Bay-Area Nepalese Alliance
- Habitat for Humanity
- Oxfam America
- UNICEF
- Global Giving
- American Red Cross
- Doctors Without Borders
- Save the Children
- Mercy Corps

Santa Clara County residents concerned over the well-being and location of a family relative, friend or colleague can use the following platforms to track them:

- Google Person Finder
- Facebook Safety Check
- Restoring Family Links

As Californians living along seismic fault zones, the news reminds us of our own vulnerability and the importance of being prepared as reports forewarn us of the looming "Big One." Please check out the County Office of Emergency Preparedness website for information about earthquakes locally, what to do and how to prepare a kit.

■ Governor's Office of Emergency Services

- FEMA/Ready.gov
- America's PrepareAthon

If you have questions or would like more information, please call my office at 408-299-5030 or email me at dave.cortese@bos.sccgov.org.

Public Hearing Notice

**Citizens Watchdog Committee on
2000 Measure A Program Expenditures
Results of Independent Compliance Audit on FY2014
2000 Measure A Program Expenditures**

PUBLIC HEARING: The Citizens Watchdog Committee (CWC) for the 2000 Measure A Transit Sales Tax Program ("Measure A") is holding a ballot-required public hearing on FY 2014 Measure A expenditures to receive input from the community:

Tuesday, May 12, 2015, 6:30 p.m.

**VTA Auditorium
3331 N. First Street
San Jose, CA 95134**

(This location is served by VTA Light Rail and Bus Line 58.)

The public is encouraged to attend, but for those unable, **written comments will be accepted until 5:00 p.m. on May 12** by email to: board.secretary@vta.org or by mail to: Office of the Board Secretary, 3331 N. First Street, Building B-1, San Jose, CA 95134-1927. Sign language and additional interpreter service will be provided upon request. If these services are required, please contact VTA Customer Service at least five days prior to the meeting at (408) 321-2300, TTY (408) 321-2330.

Copies of Measure A Program documents and reports are available for public inspection from 8 a.m. to 5 p.m. weekdays at the Valley Transportation Authority (VTA) offices at 3331 N. First Street, San Jose, CA in the Building B lobby. They are also available for viewing at local public libraries and at VTA's website: www.vta.org (which includes accessible versions). Questions on the public hearing should be directed to: Stephen Flynn, Advisory Committee Coordinator, at (408) 321-5720 or to stephen.flynn@vta.org.

INDEPENDENT AUDIT: Fulfilling its ballot-defined responsibilities, the CWC commissioned an audit of the Measure A Program financial records and schedule for Fiscal Year 2014 (July 1, 2013 – June 30, 2014). Macias Gini & O'Connell LLP, independent certified public accountants, conducted the compliance audit in accordance with attestation standards established by the American Institute of Certified Public Accountants. They issued an unqualified ("clean") opinion on Measure A Program compliance with the ballot. Copies of the audit results and other related reports are available at the locations stated above and at www.vta.org.





TIMES NEWSPAPERS PHOTO CONTEST



Topic: People, Places or Things

GRAND PRIZE: \$100 SECOND PRIZE: \$50 THIRD PRIZE \$25

Cash and other prizes will be awarded to our favorite photos, and you may even see your entry in print!

To enter, send your photo in the highest resolution format possible (maximum of 8x10 inches, or 2400x3000 pixels) as a jpeg (.jpg format) to photocontest@timesmediainc.com. Entries must be received by July 31, 2015.

PHOTOS BY JEFF BAHAM



EVERY DROP COUNTS

Do Your Part: Reduce Your Water Use by 30% in San José During This Drought

Please follow these rules which apply to everyone in San José:

- 1. Be cool** — water when it's coolest
Outdoor watering hours are restricted to before 10 a.m. and after 8 p.m. and on two designated days when using the sprinkler system.
 - Odd numbered addresses – Mondays & Thursdays
 - Even numbered addresses – Tuesdays & Fridays
- 2. Be trendy** — use gray water (used water from baths, sinks) to wash your car, take it to a commercial car wash, or leave it dirty
No car washing with potable (drinking) water.
- 3. Be local** — use community pools or the beach
No refilling residential pools/spas more than one foot and no initial filling with potable water, except when existing pools are drained to repair leaks.
- 4. Be quick** — fix water leaks as soon as possible
- 5. Be in control** — don't let water flow into gutters or streets
- 6. Be a sharp shooter** — with automatic shut-off nozzles
Hoses are required to have a nozzle that shuts off when the handle is released.



For more information/Para más información/
Để biết thêm thông tin
www.sjenvironment.org/waterconservation



Times Community News



Take Our Daughters and Sons to Work Day 2015

The Santa Clara County employees had a lot of extra help on Thursday, April 23, 2015, as children entered the workforce for a day to get first-hand lessons on what happens at the County

Government Center in San Jose. Take Our Daughters and Sons to Work Day also featured a presentation of a resolution by Board President **Dave Cortese**, a dance-a-long warmup in the Board Chambers and activities for children. Supervisor Cortese was joined in the presentation by Supervisor **Cindy Chavez**, top row, left, and Supervisor **Mike Wasserman**, top row, right.

Smart Craft program promotes critical thinking, creativity

By Madhavi Gupta
Special to the Times

Smart Craft is an after school program conducted at Evergreen Elementary by the school's PTA. The goal of the program is to enhance students' experience of the four C's of Common Core – Critical thinking, Creativity, and Communication and Collaboration.

Recently, Smart Craft students have been creating various utility products in teams comprised of students from different grades during the year with the help of dedicated parent volunteers.

For its grand finale event the team put together a "Market Place" for the school community to visit and purchase their handmade products held April 24. Students, wearing corporate attire, first made sales presentations to the audience including staff, parents and family.

Principal Steve Sweeney applauded the stu-



dents and presented them with medals. After the ceremony, students proceeded to the "Market Place," where in about an hour all products almost sold out.



Keep In Touch

With Your Community.
In Print and Online.

Times
Community
Newspapers

www.AlmadenTimes.com www.EvergreenTimes.com

Now Enrolling

Call to schedule your tour!

KinderCare[®]

LEARNING CENTERS

Evergreen KinderCare
3320 San Felipe Road
San Jose, CA 95135
(408) 270-0980
www.kindercare.com

KinderCare offers unique, expertly designed early education programs for infants as young as 6 weeks to school-age children up to age 12, which includes preschool and pre-kindergarten programs.

TICKETS ON SALE NOW



THE BOOK OF **MORMON**

FROM THE CREATORS OF
SOUTH PARK



WINNER 9 TONY AWARDS INCLUDING BEST MUSICAL

'THE BOOK OF MORMON' COMES TO SAN JOSE!

"THE BEST MUSICAL OF THIS CENTURY."

THE NEW YORK TIMES BEN BRANTLEY

SAN JOSE CENTER FOR THE PERFORMING ARTS
JUNE 30–JULY 12 ✨ 800.982.2787 ✨ BROADWAYSANJOSE.COM

BROADWAYsanjose
A NEDERLANDER PRESENTATION

Evergreen Area Meetings

Adlibmasters Toastmasters Club
A group dedicated to helping develop communication and leadership skills. The group meets the first and third Tuesdays of each month from 5:15 - 7 p.m. at HGST, a Western Digital Co. and the second and fourth Tuesdays from 12 - 1 p.m. at IBM. For more information, go to www.adlibmasters.org or call Lorraine Myers at (408) 717-5552 weekdays or (408) 238-4580 weekends.

District 8 Community Roundtable (D8CRT)
The District 8 Community Round Table (D8CRT) meets the first Thursday of the month from 7 - 9 p.m. at the Community Room in the new Evergreen Branch Library on Aborn Road. <http://d8crt.org>

CalRTA Area V-Div. 70 Retired Teachers Organization. Meets bi-monthly at various east-side cafes also conducts a variety of holiday socials/activities and scholarship fundraisers. Established in 1983! All teaching levels and others welcome. This organization supports the goals and purposes of the California Teachers' Retirement System. For more information call E. Paros at (408) 274-1609 or email parosej@sbcglobal.net

East Side Union High School District Board of Trustees
Meetings are typically held on the third Thursday of each month at 6 p.m. in the ESUHS Education Center, 830 N. Capitol Ave. 347-5000. Check the web site for agendas and updates: www.esuhsd.org

The Evergreen Al-Anon meetings held at St. Francis of Assisi Church on Thursdays at 7 p.m. have been cancelled indefinitely due to lack of attendance.

The Evergreen Business Association is intended to allow business owners and leaders in the Evergreen community to meet, connect, and network with each other in this fast growing part of San Jose. We believe that doing business with local business serves everyone in the community. The group will meet each month on the third Thursday at the Evergreen Branch Library. The group invites owners and leaders of B2B and B2C businesses in the Evergreen area. There is no cost for membership. For more information please refer to our Meetup page here: <http://www.meetup.com/Evergreen-Business-Association>

Evergreen-East Valley Realtors Marketing Meeting
Meets each Tuesday, 8:30 a.m. The EEVRMM invites realtors, brokers, lenders and related affiliates to its breakfast meeting. Market your listings, match buyers with sellers and share real estate success stories. Meetings are held at MegaByte Pizza Co., 5623 Silver Creek Valley Rd., San Jose, CA 95138. \$3 admission, coffee and

pastries included. For more information, call David Castillo at 238-2000.

Evergreen School District Board of Trustees
Meetings are typically held on the second Thursday of every month, in the district boardroom at 3188 Quimby Road. For more information, call (408) 270-6800.

Evergreen School District Parent Advisory Committee
The Parent Advisory Committee Meetings for 2011-12 will meet on the first Wednesday of the months of October, December, January, February, March and May. The meeting is held in the Evergreen School District boardroom, 3188 Quimby Road at 9:30 a.m.

The Evergreen Senior Advisory Council meets the third Thursday of every month at 9:30 a.m. Get involved in helping plan events for seniors, volunteering for a good cause, and getting to know your fellow seniors. For more information, call the Evergreen Community Center at (408) 270-2220.

Evergreen Valley Garden Club
Meets at the Evergreen Library on Aborn Road, San Jose the first Wednesday of the month at 7:00 p.m. Each meeting will feature a monthly gardening class FREE to the public. For further information contact Arvind Kumar at (408) 715-7020 or email chhprahiy@yahoo.com

Evergreen Valley High School Athletic Booster Club meets every second Wednesday of the month at 7 p.m. in the school's administration office.

Evergreen Valley High School Site Council
Meets the first Wednesday of every month on the EVHS campus in the administration building D, 3300 Quimby Rd., San Jose. Confirm meetings by visiting the school's web site, <http://ev.ca.campusgrid.net/home> and clicking on school site council in the left hand toolbar or calling the school at (408) 347-7000.

Evergreen Valley Service Organization
For more information, call (408) 274-6756.

Falls Creek Neighborhood Association
Homeowners from the Madison and Pulte area developments are welcome and encouraged to attend future meetings. For more information go to the Web at <http://groups.yahoo.com/group/fallscreekneighbors> or call Dave Zenker at (408) 238-2591.

The Evergreen Community Center offers a variety of classes and special events, for kids, adults, and seniors. For more information on our activities visit: www.sanjoseca.gov/prns. The Senior

nutrition program serves a delicious and well balanced meal to seniors 60 and over every Monday - Friday at noon. The suggested donation is \$3 per person. Please make reservations at least one day in advance by calling (408) 270-1244. The center is located at 4860 San Felipe Road.

Friends of Evergreen Library
Meetings are held on the second Tuesday of February, April, June, August, October and December from 6:30 p.m. to 8:00 p.m., in Group Study Room A at the Evergreen Branch Library, 2635 Aborn Road, San Jose. Visit their website at friendsofEvergreenLibrary.org or call 408-808-3060 for more information.

Hidden Glen Community
To join a neighborhood discussion egroup, go to: <http://groups.yahoo.com/group/HiddenGlenSanJose/>

LeyVa Community Action Team Association
This group is bounded by Barbary Lane and Monrovia Drive, Capitol Expressway, Aborn Road, and South King Road. For meeting time and location, please contact the association at (408) 795-5855.

Lions Club - San Jose East Valley
This group meets Tuesday evenings from 6 pm to 8 pm for a dinner meeting at Carrow's Restaurant,

1696 Tully Rd. near the corner of Tully Rd/King Road. For more information, contact Lions Club member Bill Evans at (408) 274-4728.

McLaughlin Corridor Neighborhood Assoc.
Meets second Thursday at 7 p.m. at Tully Library. 365-1300.

Meadowfair Neighborhood Association Meets the second Wednesday of odd-numbered months at 7 p.m. at Meadowfair Center, 2696 King Rd. For more information, call 539-2308.

POWERPartners is a dynamic group of small business owners with the mission of providing a positive and supportive environment to empower female sole proprietors to be their personal and professional best. By supporting each other, we can leverage each other's expertise, collaborate and provide services - some community service contributions and others for profit - to other women in the areas of health, wellness and aesthetics. In essence, help women learn how to take impeccable care of themselves as their life expectancy increases as well as to help people increase the quality of that life.

Reid—Hillview Airport Assn
Meets third Wednesday at 7:30 p.m. in the Reid Hillview airport terminal,

2350 Cunningham Ave. 251-4939. For more information visit www.rhvaa.org.

Rotary Club of San Jose East/Evergreen Meets every Thursday from 12:15 to 1:30 p.m. at the Ranch Golf Club, 4601 Hill Top View Lane. (408) 270-0557.

Story Road Business Association
Meets third Wednesday at 8:30 a.m. at Prusch Park, South King Road at Story. For more information, call 238-5422.

San Jose/Evergreen Community College District Board
Normally meets second Tuesday at 7:00 p.m. Meetings in the district board room on the Evergreen Valley College campus, 4750 San Felipe Rd. 270-6402.

San Pedro Squares Toastmasters Club
Meets every Tuesday from 7 a.m. to 8:30 a.m. at Jimmy's Restaurant, 222 W. Capitol Expressway in San Jose. Contact Barbara at 373-2815, or email baramocshesney@sbcglobal.net for further information, or check out the website at <http://www.sanpedrosquares.free-toasthost.org>.

Silver Creek (PTSA) Parent, Teacher, Student Association
Meets at 6:30 p.m. on the second Tuesday in the Silver Creek High School Principal's Conference

Room, 3434 Silver Creek Road. For more information, call 347-5830. Silver Creek School Site Council Meetings: Second Tuesday of the month at 5:30 p.m. in room V-1.

Silver Oak Educational Partnership
The Silver Oak Educational Partnership is now called the Silver Oak Elementary PTO (Parent Teacher Organization). SOEPTO will not be meeting over summer. Meetings will resume in September. New meeting schedule will be posted in August.

SIR Branch 114 at the Villages
Sons in Retirement (SIR) Branch 114 meets every first Tuesday of the month in the Villages' Clubhouse Fairway Room. The meeting agenda includes a noon luncheon for all SIR Branch 114 members and a 12:30 p.m. speaker open to all Villagers and friends. For more information, call Lou Figone, SIR 114 BIG SIR at (408) 966-4175.

West Evergreen Neighborhood Association
This group represents the area bounded approximately by Flanigan Drive, South King Road, Aborn Road, and Alvin Avenue. Meets the third Tuesday at O.B. Whaley Elementary School, 2655 Alvin Ave., 7 to 8 p.m. For more information, contact the association at 535-8613.

Classifieds

Employment

Now Hiring Soccer Officials
Silver Creek Sportsplex is looking to hire motivated, organized, individuals who have a passion for the game of Soccer. Applicants must be 18 or older and available on weekday evenings and weekends.
To submit your application and/or resume, please email efernandez@gotoplex.com or call 408.224.8774 ext 604.

Gardening

Clean Up & Go
YARD SERVICE
Fire Safety
Front / Backyard
Clean Ups
Tree / Shrub Removal
Shed / Deck Removal
7 DAYS
(408) 849-3134

WORK WITH TROPICAL PLANTS

South Bay-based Interior Plantscape Company looking for bright, motivated individual(s) to care for interior plants in corporate environments in the SF Bay Area. Flexible hours, 20-35hr week Experience preferred but will train as necessary!
Duties: Driving, caring for tropical plants, carrying 2 gallon watering cans, occasionally lifting up to 30 lbs. Company vehicle may be available, or mileage paid. Salary commensurate with experience, \$15/hr. + +. Reply to: planted100@yahoo.com



Watch out for mercury pollution!
Fluorescent lights save energy, but contain mercury which is a toxic pollutant. When it's time to replace the bulbs, dispose of used fluorescents properly to prevent polluted runoff into our creeks and Bay.

To find a convenient and FREE bulb drop-off location near you, call **(408) 299-7300** or visit www.HHW.org

Hazardous Waste Recycling & Disposal
FOR SANTA CLARA COUNTY

Watershed Watch
Protect Our Creeks And Bay

Sponsored by Santa Clara Valley Urban Runoff Pollution Prevention Program - a coalition of local government agencies.
www.MyWatershedWatch.org

Times Classifieds Work!
408-494-7000

Home Services

MORENO HAULING
SAME DAY CLEAN UP & GO TRASH HAULING
We Take Everything!
We do all loading! Residential/Commercial Trash Removal, Hauling Front/Backyards, Garage, Hoarder Cleanouts, Home/Rentals Clean-ups, **YARD SERVICE**, Front/Backyard cleanups, Tree/Shrub Removal, Shed/Deck Removal. Fire safety!
MOVING ASSISTANCE IN/OUT
Senior/Military Discounts
7 DAYS, RAIN OR SHINE!
(408) 729-0630

MORA'S PAINTING Inc.
Interior / Exterior Lic#791930
Residential • Commercial • Industrial
Arturo Mora **(650)917-1784**
(408)885-9757
www.moraspainting.com

- Custom Homes
- Apartments
- Offices
- Tree Trimming
- We clean gutters

20% Discount with this ad
Free estimates

ITEX
The Membership Trading Community
408.565.8569
www.itexSV.com

Massage Therapy
**Introductory Special*
With This Ad Expires 5/31/15 **\$35⁰⁰** reg. Price \$60.00

Voted Best of ET

Professional Staff
Rosario Espinoza, CMT
Leticia Espinoza, CMT

Swedish Massage
Deep Tissue Massage

Please call **(408) 393-1099** to schedule an appointment

Healing Touch Chiropractic Clinic
2724 Aborn Road, San Jose, CA 95121
** Introductory Price Available for First Time Clients **
Ask About Our Discount Massage Package!

Places of Worship

CAMPBELL UNITED METHODIST CHURCH

1675 Winchester Boulevard (near Hamilton), Campbell, 95008. Church Office: 378-3472. www.campbell-umc.org. E-mail us at: campbell_umc@earthlink.net. SUNDAY WORSHIP: 9:00 and 10:30 a.m. Handicapped, hearing-impaired friendly facility. (Nursery Care available). SUNDAY SCHOOL for every age at 9:00 a.m. WHAT YOU WILL FIND: Youth/Young Adult programs, Choirs for all ages, Active Senior Fellowship, a dynamic and diverse congregation of seekers motivated to explore the questions of faith and life; opportunities for fellowship, study, spiritual growth and outreach. Campbell UMC is a Reconciling Congregation ~ ALL ARE WELCOME! Campbell UMC sponsors Bright Days preschool, offering a play-based, developmentally appropriate curriculum. Call 378-8422 for information.

CONGREGATIONAL CHURCH OF ALMADEN VALLEY, UCC

6581 Camden Ave., San Jose, CA 95120
Pastor, Rev. Dr. Michele Rogers Brigham
408 268-0243
www.AlmadenCongregational.org
We are a welcoming Church engaged in progressive approach to faith, worship and giving to our local community. We are proud to be UCC, Open and affirming (O&A) and welcome members of the LGBT community. We support local Invision Shelter Feedings once a month, San Francisco Night Ministry, Second Harvest Food Bank, Church World Service, and Communities Responding to End Poverty.
Worship 9:00AM, Sunday School 10:00 AM Sundays.
1st Sundays in Worship: Holy Communion
2nd Sunday in Worship: Folk Choir
3rd Sundays at Coffee Hour: Round Table Disc.
4th Sundays in Worship: Blessing of Birthdays/Anniversaries/other "Joy" Occasions
Tuesday, AA Meetings, 8:15-9:15 PM.
Wednesdays, 9:30 AM., Women's Study Group

CARTER AVENUE CHURCH OF CHRIST

5351 Carter Avenue, San Jose, CA 95118
408.265.5837. Web: www.bibleroad.org
You are invited to a new testament worship service to fellowship with neighborhood Christians. Experience traditional singing, study of the Bible, praying with believers who acknowledge Jesus Christ as their Savior, preaching of the Gospel message, and communion every Sunday. Sunday morning Bible class at 9:30 AM, and worship service at 10:30 AM. Conveniently located in south San Jose off Kooser/Camden Avenue near Highway 85 (behind the Almaden Valley Athletic Club). Come make new friends in Christ!

EAST VALLEY CHURCH

We are a Multicultural Christian Community committed to making Christ known to our Neighbors, Community and World. Sunday Schedule: Worship 10am, Sunday School for all ages 8:30am, Coffee and Conversation 9:30am Childcare is provided for all our Sunday Services Uplifting music, Biblical teaching, ministries for Children, Youth, College & Career, Small Groups for all adults, Ministries to Men, Women, Seniors, Celebrate Recovery (Please see website for details and meeting times www.eastvalley-church.com)
VBS: June 22nd - 26th (5:45-8:30pm) & Sports Camp: July 20th - 26th (9am -12:30pm) For more details or to register please visit our website Community-Life Pastor (Youth/College & Career) - Pastor Patrick Boyd, Children's Ministry Director - Julie Garcia, Celebrate Recovery Leader - Anne Friend
We are located at 2827 Flint Ave (Between Tully & Norwood) San Jose, CA 95148, Phone 408-238-0231, e-mail info@eastvalleychurch.com
We are associated with Converge Worldwide www.convergeworldwide.org

THE EPISCOPAL CHURCH IN ALMADEN

6581 Camden Ave. San Jose, CA 95120. The Rev. Kate Flexer, Rector Phone:408-268-0243 Web:www.ecca-sj.org
The Episcopal Church in Almaden (ECA) is a place where God stops for love and laughter. Through worship, study, fellowship and outreach, we strive to nurture and grow a strong faith community of believers, a family of all ages, where each member feels welcomed, loved and valued. Children are especially welcomed and cherished as an important part of God's family. All junior high and senior high students are welcome to participate in our Youth Groups. During the school year we have joint Sunday School with our sister church, the Congregational Church of Almaden Valley, UCC. The Episcopal Church in Almaden offers the following regular opportunities for worship: Sunday at 10:30AM, Holy Communion service; Thursday at 7:30AM, short Holy Communion service. Each Sunday service is followed by a coffee hour for friendship and conversation.

EVERGREEN VALLEY CHURCH

Visit our Web Site at www.evcsj.com
2750 Yerba Buena Rd. San Jose, CA 95121. Phone: 408-274-7422. Saturday worship is at 5 pm. Sunday worship services at 9 am and 11 am. Excellent contemporary Christian music and Bible-based teaching. Nursery care and Children's Sunday School programs at 9 am and 10:45 am. Junior High students meet Sunday's at 9 am. Junior

High and High School students meet on Tuesday's at 6:30 pm. College/Young adults meet on Sunday's at 6 pm. Casa de Oración: Servicio en Español: Domingos 4 pm.

FIRST CHURCH DOWNTOWN

Worshipping at 55 N. 7th Street, in downtown San Jose. (Horace Mann school) www.firstchurch-downtown.com
Telephone: (408) 294-7254 x310. We are a community serving the Christ from the heart of the City, working to know Jesus and make Jesus known by serving, worshipping, and learning together. Worship services are at 10:00 AM at the Horace Mann Community Center (7th and Santa Clara Streets). Worship includes both contemporary and traditional music, a message that is relevant to real life, based in the Bible, and meaningful to people of all ages and backgrounds. We work in our community to provide real assistance and long-term, life-saving solutions: food, housing, counseling, and spiritual direction. Our children's & families' ministries include Sunday classes, outdoor family activities such as bike rides and fishing trips. Come, Make a Difference and feel the difference God can make in your life!

HOLY SPIRIT CATHOLIC CHURCH

Faith.Knowledge.Community - this is our promise to our members. If you are looking for an active Christian faith community, we invite you to experience Holy Spirit Parish Community. All are welcome! We are located at 1200 Redmond Avenue, San Jose, CA 95120. Mass is celebrated at 8:30 a.m. Monday - Friday. Our weekend Mass schedule is Saturday 5 p.m., Sunday 8 a.m., 9:30 a.m., 11:30 a.m. and 6 p.m. Rite of Reconciliation is every Saturday at 4 p.m. or by appointment. Our Parish Office is open Monday - Thursday 8:30 a.m. - 4:30 p.m. and Friday 9:00 a.m. - 3:00 p.m. Call 408-997-5100 for recorded information or 408-997-5101 to speak with someone in our parish office. Information on Faith Formation for children and adults can be obtained by calling our Catechetical Office at 408-997-5115. Get in the loop with our Sixty High School Youth Ministry by calling 408-997-5106. Holy Spirit School serves grades Pre-K through 8th, and is located at 1198 Redmond Avenue. You can reach the school office at 408-268-0794.

SAINT ANTHONY CATHOLIC CHURCH

We invite you to become a part of our hospitable, intimate Catholic parish. We are a caring community, promoting spiritual growth, reaching out to people in need and where you get to know people by name. We offer children's religious education (CREATE); Youth Ministry (BLAST & X-STAT-IC); Scripture Study (day &

evening); Senior's Group and many other adult ministries as well. Saint Anthony parish is located in Almaden Valley at 20101 McKean Road, San Jose, 95120. Our weekend Masses are at 4 p.m. on Saturday at our historic church at 21800 Bertram Road in New Almaden, CA 95042 and on Sunday at 8:30 a.m., 10:30 a.m., and 5:30 p.m. at the McKean Road location. Our Parish Office is open Monday 9 a.m. - 12 p.m. and Tuesday thru Thursday, 9 a.m. - 12 p.m. and 1 - 4 p.m. For more information, stop by the Parish Office or call 1+(408) 997-4800, or visit our website at www.churchstanthony.com. Fr. Larry Hendel, Pastor.

ST. FRANCIS OF ASSISI CATHOLIC CHURCH

5111 San Felipe Rd., San Jose, CA 95135
408-223-1562. www.stfrancisofofassisichurch.org
We invite you to join our community of faith located in the Evergreen area of San Jose. We are an inclusive diverse community striving to serve as Disciples of Jesus Christ in the footsteps of St. Francis, offering prayerful and joyful liturgies; evangelization, fellowship, and service opportunities to the community. We offer spiritual opportunities for all ages, including children's liturgy, dynamic E.C.H.O - Jr. High, IGNITE - High School and North Star - Young Adult Ministries, along with small faith communities and opportunities to help the poor and marginalized of San Jose. Our Preschool is the only Catholic Preschool offering quality family oriented service in the Evergreen and Silver Creek areas. Our Chapel, Gathering Hall, Parish Office, Mission Center, Parish Gift Shop, Memorial Garden and Preschool are all located at 5111 San Felipe Rd. Please come join us to worship at one of the following times and locations: St. Francis of Assisi Chapel Saturday 5:00PM, Sunday 8:30 AM, 10:30 AM, 12:30 PM, 4:00 PM (Mass in Vietnamese), 6:00 PM Youth Mass
St. Francis of Assisi Gathering Hall Sunday 9:00 AM, Sunday 11:00AM, Igbo Mass - Second Sunday of the month 12:30 PM Mt. Hamilton Grange - 2840 Aborn Road Sunday 9:30 AM The Villages Gated Community (Cribari Auditorium) Sunday 8:15 AM
For more information, please call or visit us at the Parish Mission Center open M-F 9:00 AM -12:00 PM; 1:00 PM - 4:00 PM. Come join us and share your presence with us so that together we may grow and share our gifts to help build God's Kingdom!

Worship listing advertisements are \$495 annually. Please call Brigitte at (408) 558-3623.

THANK YOU FOR YOUR SUPPORT! THANK YOU FOR YOUR SUPPORT!



Serving Our Community for Over 40 Years!

HINMAN'S EVERGREEN GARAGE

Our Customer's Cars Run...Forever!

3519 San Felipe Road
(408) 274-0879

www.hinmansgarage.com
HinmansGarage@aol.com

Helping to keep our Planet and Community Green

THANK YOU FOR YOUR SUPPORT! THANK YOU FOR YOUR SUPPORT!

THANK YOU FOR YOUR SUPPORT! THANK YOU FOR YOUR SUPPORT!

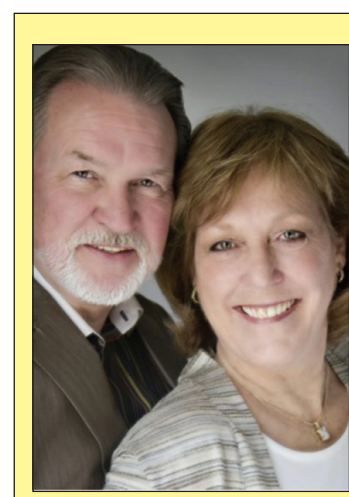


THANK YOU FOR YOUR SUPPORT! THANK YOU FOR YOUR SUPPORT!

EvergreenTimes Real Estate Guide



ELENA JOHAL
Alain Pinel Realtors
Free Staging / Landscaping!
(408) 836-6369
EJohal@apr.com



DAVID & VICKI HARRIS

2921 Villages Parkway,
San Jose
(408) 754-1572

Get listed! Call (408) 494-7000 to place your ad today!

ALAIN PINEL REALTORS

Settle in

& BUILD MEMORIES



SILVER CREEK COUNTRY CLUB \$2,599,000

5866 Country Club Parkway | 4bd/4.5ba
E. Parker/N. Brown | 408.754.1500



EVERGREEN VALLEY \$949,000

2858 Sweetleaf Court | 4bd/2.5ba
S.Gutierrez/I. Estrada | 408.754.1500



EVERGREEN VALLEY \$899,000

3481 Cedardale Drive | 4bd/3ba
S.Gutierrez/I.Estrada | 408.754.1500



THE VILLAGES \$655,000

6011 Montgomery | 3bd/3ba
David Harris | 408.754.1500

LUXURY
PORTFOLIO
INTERNATIONAL™

See it all at
APR.COM

f /alainpinelrealtors
t @alainpinelrealtors

San Jose Office 408.754.1500

ALAIN PINEL
REALTORS