

Davencorp
 WELDING AND FABRICATION, INC.
 510 W. 230th St. • Bloomfield, IA 52537
 Ph: 641-664-3480 Fax: 641-664-3482
 www.davencorp.com

YOUR MANUFACTURING & ENGINEERING RESOURCE FOR FABRICATION, WELDING & STEEL SALES

Tri-County SHOPPER

STANDARD MAIL U.S. POSTAGE PAID TRI-COUNTY SHOPPER, INC. POST OFFICE BOXHOLDER LOCAL RURAL BOXHOLDER OCCUPANT CIRCULATION OVER 11,750 THIRD CLASS

P.O. Box 168 • Bloomfield, IA 52537 • www.tri-countyshopper.com
 Phone 641-664-1333 • Fax 641-664-3761 • Email shopper@netins.net

MFCP Midwest Free Community Papers
CIRCULATION VERIFICATION COUNCIL OUR DATA SPEAKS VOLUMES

Vol. 44, No. 29
 Wednesday, July 20, 2016



TRADE UP FOR SUMMER DRIVING



2010 Silverado Crew LTZ
57k, White



2016 Impala LTZ
Leather, 12k



2011 GMC Acadia Denali
AWD



2015 Ford Mustang
V-6, Auto



2015 Ford Edge SEL
AWD, 12k, Leather



2015 GMC Sierra 3/4
Diesel, Crew, SLT



2008 Chevy Tahoe LT
4x4, Leather, TV/DVD, Sunroof, 81k



2015 GMC Yukon
4x4, SLT, 24k, Sunroof



DIESEL

2013 Silverado
Crew, LTZ, 4x4



2014 Ford Mustang GT
California Edition, Convertible, 20k



2014 Silverado
High Country, 4x4, Crew, 25k



2009 Ford Escape



2003 Chevy Trailblazer
4x4, 95k, \$8,995



2013 Dodge Ram Quad Cab
Big Horn, 4x4, Now \$20,995



2012 Ford Explorer
4 x 4, XLT



2014 Ford Focus
Good MPG



2013 Ford F150
Crew, Lariat, 4 x 4



2013 Ford Edge limited



2014 Chevy Camaro
V6, Manual, 18k



2007 Chevy Suburban
4x4, 101k, Clean!



2007 Chevy Tahoe
4x4, Good Miles



2013 Toyota Sienna Van
Now \$15,995



2014 Ford Flex SEL
Leather



2016 GMC Terrain SLT
AWD



2014 Chevy Spark
17k, Good MPG, \$10,995



2012 Ford Fusion Hybrid
Great MPG, \$12,983



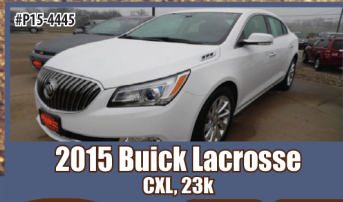
2016 Chrysler Town & Country
Touring, Leather



2014 Ford F150
Crew, 4x4, Lariat



2014 Ford F150
Crew, 4x4, Blue



2015 Buick Lacrosse
CXL, 23k



2016 Buick Enclave
CXL, AWD

FESLER AUTO MALL

Hwy 34 West, Fairfield • 641-472-3121 • 800-422-5269 • www.feslerautomall.com
 OPEN: Monday - Friday 8:00 AM - 5:00 PM • Saturday 8:00 AM - 3:00 PM

DOG DAYS!
TX WATERMELON 19¢/LB.
POLY CHAIR LOCAL MADE SET OF 4 \$149⁹⁹
CANNING JARS 10% OFF
MILK \$2⁶⁵/GAL.
GATORADE 20 OZ. \$17.50/24 CT. THAT'S ONLY 73¢ PER BOTTLE!

Village Market
Rt. 3 Box 168-A (Hwy 136 & Hwy 15)
Memphis, MO 63555 • 660-465-7307
Mon. - Fri. 8:30 - 6:00 • Sat. 8:30 - 5:00 • Sun. Closed
EBT WELCOMED!

FOR SALE: 2008 Mazda 3, 2.0L, black, automatic, black cloth interior, sunroof, PW & Lock, after market head & tail lights, 80,000 miles. Call or text: 660-341-0030 30

Are you in **BIG trouble with the IRS?** Stop wage & bank levies, liens & audits, unfiled tax returns, payroll issues, & resolve tax debt FAST. Call 888-606-6673 (MCN)

Good Shepherd Lutheran Church to host community blood drive Monday, August 1st from 3:00 to 6:30 pm at 19419 Lilac Ave., Bloomfield inside fellowship hall. To donate, please contact Shirley Arndt at 641-664-1776 or visit www.bloodcenterimpact.org and use code 5265 to locate the drive.

JR FEED & SUPPLY
641-722-3045
17599 200TH STREET • BLOOMFIELD
STOP BY MON.-FRI. 8-5 & SAT. 8-12

Complete line of bagged feed in stock!
CUSTOM BULK
Non GMO Poultry Feed we deliver!

BIRD FEEDING NEEDS WILD BIRD SEED SUNFLOWERS/CHIPS

BLOOMFIELD MINI STORAGE. Serving you from 2 safe, convenient locations. PH: 641-664-1066. TF

CUSTOM CABINETS
Let us create beautiful, custom made cabinetry for every room in your home. Choose your style, color and the perfect finishing touches. Our quality products and service are guaranteed.

Order your Cabinet Set Close to Home
Kitchen Cabinets Millwork
Custom Furniture Stairways

Kuntryside Cabinets, LLC
641-664-1677
Kenneth Yoder, Owner
15641 175th St. • Drakesville, IA 52552

Paint & Bodywork
We offer full-service collision repair and painting service to restore your vehicle to pre-accident condition.

Guaranteed Craftsmanship
Works Well With All Insurance Companies
Guaranteed Paint Match
Free Estimates

MOST COMBINED YEARS OF EXPERIENCE IN THE AREA!

Walker Motors COLLISION REPAIR, INC.
660-465-2159 Shop phone/fax
375 S. Main St. • Memphis, MO

Hertz

FOR SALE: Purebred Normandy dairy bull, about 2 years old. PH: 641-929-3674 30

FOR SALE: 20 cattle panels, 16' long x 50" wide in excellent shape, \$18 each. 120 steel T posts, mixture of 6'x 6" & 7', \$2 each. 2 wooden corner posts 9' long x 6" diameter \$5 each. PH: 641-722-3075 30

FOR SALE: Pair of LT 275 70 R18 Continental tires, new \$235; Danhuser post digger with 12" auger, \$500. PH: 641-799-3687 30
Mark Baptist Church to host community blood drive Thursday, July 28th from 3:00 to 7:00 pm at 16011 276th St., Bloomfield inside fellowship. To donate, please contact Gina at 641-929-3233 or visit www.bloodcenterimpact.org and use code 5371 to locate the drive.



500 KARR ST. • BLOOMFIELD • LISTING #20162047

40x80 steel frame building featuring (4) 12' overhead doors, insulated, concrete, bathroom, small office area, heat and air, sitting on almost a acre. Commercial set up.

Lynch REALTY, INC.
641-664-2275
lynchrealtyinc.com

CHECK IT OUT!

103 E. Franklin Bloomfield, IA
Licensed in Iowa
Stephanie Lynch, Broker

FOR SALE: Blue green Lazy Boy recliner couch, \$100, good condition. Rural Fairfield. PH: 641-751-9655 31

FOR SALE: '99 Pontiac Bonneville SSE, dark burgundy, 1 owner, high mileage, runs great, \$2,000. PH: 641-642-3760 29

Highway 2 DISCOUNT Groceries L.L.C.
While supplies last

KERNEL SEASONS POPPING CORN 24 OZ. \$1.50	WHEAT THINS VARIETY OF FLAVORS 8-9.1 OZ. ALL 85¢/EACH	NABISCO SNACKS VARIETY OF STYLES 8-9 OZ. \$1.75
GENERAL MILLS HONEY NUT CHEX NATURAL FLAVOR CHEX 2 BAGS 2 LBS. • GLUTEN FREE \$3.99	WISCON READY TO SERVE PUDDING CHOCOLATE & BANANA 7 LB. CAN \$5.10	DEL MONTE CLASSIC FRUIT COCKTAIL 6.6 LB. CAN \$4.89
EDENS KITCHEN MUSHROOM STEMS & PIECES 4 OZ. 85¢	VENICE CREAM OF MUSHROOM SOUP 10.5 OZ. 35¢	FAVORIT ASSORTED PRESERVES JAMS & JELLIES 10.5 OZ. - 12.3 OZ. NOW 65¢
VALLEY GEM MAPLE FLAVORED BAKED BEANS • 27.5 OZ. \$1.35	GOOD SENSE HAND SANITIZER 2 OZ. BUY 1 GET 1 FREE	SWEET HARVEST CRUSHED PINEAPPLE 20 OZ. 80¢
ROKEACH SHABBOS CANDLES 72 PK IN BOX NOW \$5.00	CHICKEN THIGHS 79¢/LB.	GOLD PEAK SWEET TEA 6 PK. \$5.99

19686 Hwy. 2, Bloomfield, IA
Approx. 2 miles west of Bloomfield
Mon. - Sat. 8:00 - 5:00 VM: 641-664-1187

WE CARRY ESSENTIAL OILS! CHECK OUT OUR GREAT SELECTION!

L&M Country Store

1 1/2 miles south of west Hwy 2 & 63 jct.
 Mon-Sat. 8am-5pm **CLOSED SUNDAYS**
 VM: 641-664-1936

GEORGIA PEACHES

- 20 oz. Crushed Pineapple 89¢
- 15 oz. Mandarin Oranges 89¢
- 14 oz. Honey Maid Graham Crackers \$1.29
- Local Grown Green Peppers 3/\$1
- Local Grown Candy Onions 99¢/lb.
- Frozen 10 lb. IQF Pie Cherries \$19.25

YARD SALE: 1609 South 18th Centerville, IA. Thurs., July 14th & Fri., July 15th; Thurs., July 21st & Fri., July 22nd; Thurs., July 28th & Fri., July 29th 9:00AM - 1:00PM
CANCEL IF RAIN. Lots of movies VHS & DVD, new & used shoes, baby items, lots of dolls, too much to mention. 30

RUMMAGE SALE AT DRAKESVILLE UNITED METHODIST CHURCH. Thursday, July 28th 8am-5pm & Friday, July 29th 8am-noon. Friday fill a bag for \$1.00

MOVING SALE! Friday, July 22 & Saturday, July 23 from 9:00 am - ?? Lots of tools & misc. items. 27447 Silver Trail, Floris 29



Poly Lawn Furniture

GREAT FOR FRIENDS & FAMILY CELEBRATIONS!



VM: 641-664-0207
 1 Mile East of Drakesville on Jade Ave.
 Mon.-Sat. 9:00 AM - 5:00 PM

FOR SALE: JD 6620 combine hydro chopper 3700 hours, in good condition. Asking \$4,000.
 PH: 641-208-0984 or 641-459-3867 30

FOR SALE: 1,000 gallon propane tank, good condition, \$950.
 PH: 641-919-5493 31

SHADY LANE VARIETY

Try Us For All Your Canning Needs!
 S.S. Bowls, Strawberry Hullers, Cherry Pitters, Salsa Masters, & much more!
 We Still Have Garden Care Products
 Hours: Mon-Sat 8-5
 1 m. E. of Drakesville on Jade Ave. • 641-664-0207

FANE SEPTIC & EXCAVATION LLC

Insured & Bonded
 Installation of New Septic Systems
 Water Lines • Skid Steer Work
 Gravel Driveways • Stump Removal
RUSS FANE, OWNER OPERATOR
 Unionville, IA • Cell: 641-208-0594 Bus: 641-452-6684
 REFERENCES UPON REQUEST FREE ESTIMATES

FOR SALE: 1969 Ford 3/4 ton 429 engine, 4 speed, dual R wheels, flat bed, good tires & body.
 PH: 641-722-3267 31

FOR SALE: 1973 double wide with large edition, 2,000 square feet, 3 bedroom, 2 bath, new furnace, lots of upgrades, must be moved, \$20,000 OBO.
 PH: 641-226-4412 30

NEW MATTRESSES FOR SALE!

Selling individually or in sets. Factory warranty.
 TWIN - FULL - QUEEN - KING
641-664-3060

MDM003 Bomber Chukka
 Men's & Women's Available
 Small Variety Available
 We will do special orders!
GRABER'S COUNTRY STORE
 2 miles South & 1 mile East of Drakesville

FOR SALE: 2.5 year old angus bull, originated from Houglan's. Sure breeder, nice to have around.
 PH: 641-664-3571 ext. 1 31

FLY CONTROL MINERAL FEEDERS
30 YEAR SYP TREATED POSTS
CONTINUOUS FENCING
LARGE VARIETY OF FARM GATES
 19887 Jade Ave
 2 1/2 Miles W of Bloomfield
 V.M. 641-664-2797

LANDSCAPE SPECIALS

8 FT. RAILROAD TIES!
 Check them out at...
Spilman's Auto Parts
 20311 Old Hwy. 2 • Bloomfield, IA
641-664-2463

Hawkins - Harrison Insurance

Trusted Choice
 SHOPPER ADS CAN BE DROPPED OFF HERE!
 Proud to be your partner.
 P.O. Box 365, Lancaster, MO 63548, 660-457-3020
 103 W. Monroe St., Memphis, MO 63555, 660-465-8533

POLARIS The Way Out.
 Authorized Polaris dealer since 1988
 Check Us Out!
Slayton Polaris
 8 mi. S & W from Pulaski or 6 mi. W of Memphis then 13 mi. N on Route B
BLOOMFIELD, IA 660-328-6627

Country Side Grocery

- Ketchup, 38 oz 99¢
- Red Grapes \$1.29/lb.
- Toilet Paper, 45 rolls \$17.95
- Land O'Lakes Spreadable Butter, 15 oz. \$1.49

MISSOURI PEACHES

EXPECTED WEDNESDAY, JULY 20TH
 3/4 BUSHEL #2, \$23.50
 3/4 mi. E. of Drakesville, IA on 180th St.
 Mon-Sat: 8:30am - 5:00pm
 VM: 641-664-2661

MAST VINYL WINDOWS

THERMO-PRO WINDOWS
 Custom Size Is Our Specialty
 Professional Installation Available
 THERMA-TRU DOORS
FREE ESTIMATES
 22172 Hwy. 63
 Bloomfield, IA 52537
800-206-9949

FOR SALE

Driveway Fabric Rolls
 Commercial, Heavy Duty, Designed for Heavy Traffic
 12' 6" Wide
 432' Long
 \$370/roll
660-216-0938

hot! hot! DEALS

DOG DAYS OF SUMMER

- 2013 SIERRA 1500, 4 DR. \$26,500**
- 2010 GMC DENALI 4 DR., 4WD, 42,000 MILES \$26,995⁰³**
- 2013 CHEVY SILVERADO \$26,500**
- 2013 SILVERADO 2500 \$32,500**

Kollision Korner
 504 South Drake St. • Bloomfield, IA 52537
 PH: 641-664-2648 • Fax: 641-664-2948
 Like us on facebook "Like us on Facebook!" for more pictures.



Friday, July 22nd
Jumbo Shrimp
with sides Serving at 6:00 P.M.
 Dine In **722-3355** Carry Out
RAY'S LONGBRANCH
 Drakesville, IA

PRIME RIB CAPITAL OF THE WORLD!
 SERVED ON FRIDAY & SATURDAY NIGHTS!
 Breakfast • Lunch • Dinner
Daily Hot Specials & Evening Features!
Catering & banquet facilities available for many occasions!
Southfork
MOTEL & GRILL
 JUNCT. OF HWY 2 & 63 • BLOOMFIELD • 641-664-1063
 TUES. - THUR. 7AM-9PM • FRI. - SAT. 7AM-10PM
 SUN. 7AM-2PM • CLOSED MONDAY

HUNTER SAFETY CLASS
Saturday, August 20th
8:00 am - 2:30 pm
 Izaak Walton Building
 (West end of Lake Fisher Dam)
 NEW! Registration must now be done online at the Iowa DNR website under hunter education classes or by calling 1-800-830-2268
 BRING A LUNCH or purchase lunch at the class
 After registration is completed study manuals can be picked up at the Davis County Recorder's office or the McGowen Recreation area office. Students must still pick up and complete the study manual & bring it with them to the class.
 Dress for the weather as some instruction will be outside!
 Class size is limited
 For questions & more info. call 641-664-2572

CONGRATULATIONS
 to all area fair exhibitors!
 Job Well Done!
 Nutrena pfister
CROP SERVICES, INC.
 John & Kathy Bos, Owners
 Drakesville, IA • 641-722-3293

FIRST BAPTIST CHURCH
 (Affiliated with G.A.R.B.C.)
 Sunday:
 Sunday School.....9:30 A.M.
 (all ages)
 Morning Worship..10:30 A.M.
 Evening Worship.....6:00 P.M.
 Wednesday:
 Midweek Service.....7:00 P.M.
 East of Middle School
 on North Street
 401 Crestview Ave.
 Bloomfield, Iowa 52537
 Phone 641-664-2240
 www.bloomfieldfirstbaptist.com

COBBLESTONE INN & SUITES
NOW HIRING NIGHT AUDITOR
11:00 pm - 7:00 am
 Please apply in person.
 509 S. Washington Street • Bloomfield, IA
 641-664-2000

Christmas in July Sale!
 Quilt Hangers Various Sizes **20% off**
 All Irons **10% off**
 Embroider Buddies Check out our variety of animals you can embroider on **20% off**
 All Christmas Embroidery Designs...20% off • Christmas Fat Quarters...20% off
 Christmas Fabric...10% off buy 5 yards or more **20% off**
 Sewing Machines and Sunheat misting Fan W/mosquito Repellent..on Sale
Green Acres Sew and Vac
 221 West Grand Avenue, Memphis, Missouri • 660-465-7131
 Mon.-Wed.: 8 a.m.-6 p.m.; Friday: 8 a.m.-8 p.m.; Saturday: 8 a.m.-2 p.m.; Closed Sunday
 Terms: Cash, Check, Visa, Mastercard, Discover • Layaway and Financing Available



MEMPHIS MARGARETTE
 EST 2010
 115 E. MONROE • MEMPHIS, MO
 South Side of the Square
 660-465-2102
 M- F: 8am-6pm;
 SAT.: 8am-3pm; CLOSED SUNDAY
HOT SUMMER DAYS ARE A GOOD TIME TO SEW & CRAFT INDOORS!
 Get Crafty!
 We have a nice selection of painting, scrapbooking, sewing, quilting, & craft supplies right here in Memphis!!

WESTERN'S SMOKEHOUSE

- Nationwide Shipping
- Cut to Order Meat Bundles

Snack Sticks & Beef Jerky

Gourmet Cheeses
Award Winning Sausages

Visit our retail shop in Greentop, MO
www.westerns-smokehouse.com
Mon. - Fri. 7am - 5pm • Sat. 8am - 4pm
660-949-2445 • 1-800-456-0250

VERNA'S FABRIC

10% OFF SALE
ALL FABRICS IN STORE
JULY 21ST, JULY 22ND & JULY 23RD

DOLLS, CARDS, BOARD BOOKS, FLEECE, ETC.

6 MILES E. OF BARING, MO
ALONG ROUTE K
660-397-3220

FOR SALE: 1994 Chevrolet Caprice Classic, 4 dr, V8, AT, AC, PW, PL, tilt, cruise, AM/FM/Tape, 134,000 miles. \$2,000 or offer; 2 pc. glass top end tables with lamps, \$40; Oak coffee table, \$40; Hall tree, \$20; 12 cup coffee maker, \$10; 3 pc. high dining set, \$40; 2 pc. buck skin leather living room set, \$350; dog house, \$5. Large pile firewood mixed, \$40. 8'x9'x7' chicken house, \$500. **PH: 641-208-5136** 30

FOR SALE: 1987 Toyota pickup, motor bad, 2WD, automatic, \$700 or offer. **PH: 641-722-3730** 29

LIQUIDATING All Patio Furniture!

THRESHOLD 25% off THRESHOLD
Our already discounted prices

\$URPLUS BARGAIN BARN

• Lots of summer items
• Toys • Gifts • Car seats

Bloomfield, IA 2 1/2 mi. West of Bloomfield on Hwy 2
Mon.-Fri. 9 a.m. - 5 p.m. • Sat. 9 a.m. - 4 p.m.

Davis County MEDICAL ASSOCIATES
Dedicated. Compassionate. Healthcare.

Sports Physicals Clinic

FREE!

WEDNESDAY, AUGUST 3rd
4:00 PM - 7:00 PM
DAVIS COUNTY HOSPITAL

No appointment necessary. First Come. First Served.

Sports Physical forms can be found online at www.dcmustangs.com. Please fill out forms prior to arriving for physical.

Guardian must be present for minors.

509 N. Madison, Suite 100 • Bloomfield, Iowa 52537
www.DavisCountyHospital.org

DAVIS COUNTY OLD SOLDIERS & SETTLERS REUNION
JULY 28TH, 29TH, & JULY 30TH, 2016
DRAKESVILLE, IA

SCHEDULE OF EVENTS

THURSDAY, JULY 28 TH		SATURDAY, AUGUST 30 TH	
6:00 PM	TRACTOR PULL	8:00 AM	BILL BASSETT MEMORIAL MOTORCYCLE FUN RUN
6:15 PM	EARLY BIRD DRAWING	9:00 AM	KIDS' FISHING TOURNAMENT
6:30 PM	QUEEN CONTEST	1:00 PM	INVOCATION
7:00 PM	BINGO! <small>IN THE BINGO STAND, \$100 BLACKOUT BINGO FOLLOWING STAGE DRAWING. SPONSORED BY: CATHY WARNER.</small>	3:00 PM	KIDS & ADULT GAMES
8:00 PM	TALENT SHOW	4:00 PM	BABY CONTEST <small>(INFANT-12 MOS. ON OR BEFORE AUG. 1, 2016) (12-24 MOS. ON OF BEFORE AUG. 1, 2016)</small>
9:30 PM	DRAWING <small>(IMMEDIATELY FOLLOWING TALENT SHOW) MEMBERSHIP TICKETS AVAILABLE AT THE LOG CABIN PRIZES GIVEN BY THE REUNION ORGANIZATION. \$200 TOTAL CASH! (1)-\$100 & (2)-\$50</small>	7:00 PM	FROG JUMP
1:00 PM	INVOCATION	8:00 PM	CANOE CARNIVAL
2:30 PM	KIDS & ADULT GAMES	9:15 PM	RANCH RODEO
3:00 PM	PEDAL TRACTOR PULL <small>TRACTOR PROVIDED! 8 CLASSES, 3-10 YEARS OF AGE. PRIZES AWARDED TO 1ST, 2ND, & 3RD PLACES!</small>	9:15 PM	EARLY BIRD BINGO <small>\$50 BLACKOUT SPONSORED BY: LYNCH LAW OFFICE</small>
7:00 PM	PARADE	8:00 PM	EARLY BIRD DRAWING
7:45 PM	REGISTER FOR CHAIR <small>TO BE GIVEN TO THE OLDEST SOLDIER. REGISTER AT THE LOG CABIN. CHAIR DONATED BY DEAN & MARY STOCKER.</small>	7:45 PM	\$50 BLACKOUT
7:30 PM	EARLY BIRD BINGO <small>\$50 BLACKOUT SPONSORED BY: VIRGINIA RYSDAM</small>	7:45 PM	REGISTER FOR CHAIR <small>TO BE GIVEN TO THE OLDEST SETTLER. REGISTER AT THE LOG CABIN. CHAIR DONATED BY SUSIE WARNER, DPM.</small>
8:30 PM	\$50 BLACKOUT	7:15 PM	STAGE SHOW <small>FEATURING "THE BOYS"</small>
7:45 PM	PRESENTATION OF COLORS <small>BY REED WHISLER AMERICAN LEGION POST #78 WITH INVOCATION BY THE CHAPLAIN PRESENTATION OF CHAIR OLDEST SOLDIER ALSO TO BE HONORED BY VETERANS AFFAIRS</small>	8:00 PM	PRESENTATION OF CHAIR TO THE OLDEST SETTLER
8:00 PM	EARLY BIRD DRAWING	8:30 PM	BINGO <small>IN THE BINGO STAND. SPONSORED BY: BARB COLE</small>
8:00 PM	TEAM ROPING	9:15 PM	DRAWING <small>(IMMEDIATELY FOLLOWING STAGE SHOW) PRIZES GIVEN BY THE REUNION ORGANIZATION. \$50 GIFT CERTIFICATE FROM QUICK TIME, CROP SERVICES, & RAY'S LONGBRANCH. \$400 TOTAL CASH! (3)-\$100 & (2)-\$50 SHARON ROLAND PRIZE, WOLFGANG PUCK PRESSURE OVEN</small>
8:30 PM	STAGE SHOW <small>FEATURING "THE BAKER FAMILY"</small>	9:15 PM	DANCE - "THE BOYS" <small>(IMMEDIATELY FOLLOWING DRAWING)</small>
8:30 PM	BINGO <small>IN THE BINGO STAND, \$100 BLACKOUT BINGO FOLLOWING STAGE DRAWING. SPONSORED BY: EAVES TRUCKING, GARY & DONNA EAVES</small>	MIDWAY BY AMUSEMENT ASSOCIATES CARNIVAL THURS., JULY 28TH; FRI., JULY 29TH & SAT., JULY 30TH	

Garden & Flower Show at Drakesville Old Soldiers & Settlers Reunion 2016!

1. Entries open to all Davis County & surrounding areas.
2. Each exhibitor must purchase a \$1.00 membership ticket.
3. Only one ribbon or prize per class to each exhibitor with more than one entry.
4. Entry week: Wednesday, July 27th 6-8:00 pm; Thursday, July 28th in the Green building 9:00am to noon. Judging after entries close.
5. There will be a grand prize for best of show in each division.



TRUCK LOAD CLEARANCE SALE

WALTER IS AWAY, SO WE HAVE AMAZING SALES!



DOG DAYS OF SUMMER
WE CUSTOM BUILD DOG HOUSES & CARRY A VARIETY OF SIZES!



CERTAINTED LANDMARK PREMIUM COBBLESTONE

\$39/SQ. CALL FOR PALLET PRICES WHILE SUPPLIES LAST

Cantril Lumber & Hardware

319-397-2351 or 319-397-2354
Mon-Fri 7-5 & Sat 7-12




Sales & Service of Outdoor Power Equipment

641-664-2784
502 E. Franklin • Bloomfield, IA

FRIESEN CONSTRUCTION

New Houses
Remodeling
Garages Electrical
Plumbing
Custom Cabinets

Arlen 664-3270
Cell 641-208-0170
Bloomfield, Iowa

FOR SALE: 2001 Cabana 21' travel trailer with beds that flip out at each end. Sleeps up to 2 adults plus 5 children, \$5,500.
PH: 660-988-1346 31

FOR SALE: Red & blue heeler puppies, 6 weeks old August 5th, \$80. Nelson Gingerich 1 mile east & 1 mile north of Drakesville.
PH: 641-722-3002 ext. 2 31

WANTED: '91-'96 Geo Tracker or Suzuki Sidekick, 4 wheel drive. Running or not running. Rust - no problem.
PH: 641-814-6905. 29

HUNT COLORADO FOR: Elk & Mule deer - archery or rifle - great hunting on private land. Call Alan Baier, evening or early is best.
PH: 970-487-3321 30

FOR SALE: Firewood at RJ Lumber, \$15 a pickup load. 18989 160th St., Drakesville, IA 52552. TF

160 ACRE FARM FOR SALE: 100 acres tillable, 60 acres of good timber, pond with concrete waterer, 4 bedroom house, vinyl siding, new metal roof, newer septic system, 30x50 metal building. Savannah, Iowa area. \$3,800/acre FIRM!
PH: 641-750-5558 34

WANTED: Canning jars - quart or pint sizes.
PH: 641-929-3007 30

FOR SALE: Solid oak extension table with 4 leaves & 6 oak matching chairs, \$700 OBO.
PH: 660-216-9824 29

FOR SALE: Outdoor lighting 11 brass carriage type lights. \$30/each or \$250 for the whole lot.
PH: 641-208-0318 29

FOR SALE: Purebred registered Beagle puppies. Good hunting parents, 8 weeks old, all shots & wormed. Ready to go!
PH: 641-664-2610 ext. 1 29



HOT DEALS



Available NOW!

Missouri Peaches

IL CONTENDER PEACHES
Available Week of July 25



\$22⁵⁰

10# box

Fresh Michigan
Blueberries

\$1²⁹

per lb.



75% lean Tray Pack

Ground Beef



\$1³⁹

per lb.

Whole Boneless
Pork Loin

Lodi Apples
(great for sauce)
by the bushel



99¢

per lb. by the 24 lb. Lug



Fresh Michigan
Apricots

\$1²⁵

per lb. by the Lug

LAST LOAD!

Michigan Fresh
Dark Sweet
Bing Cherries

\$2⁹⁹

6.7 lb.



Kingsford®
Match Light
Charcoal

\$3⁹⁹

WOW

gallon



Miracle Whip

75¢

8 oz.



Winco®
SHREDDED CHEESE

RO-TEL ORIGINAL
DICED TOMATOES & GREEN CHILIES
15 oz. **69¢**



KRAFT® VELVEETA 2LB. \$3.75
BUY BOTH FOR ONLY \$4

\$2⁴⁹

per lb.



Armour brand®
Honey Ham
Virginia Ham

Wright® Frozen 13lb. **79¢** lb.

6 pack **\$1⁹⁹**

plus deposit

.5 Liter
7up Products



\$4⁹⁹

40 pack half Liters



Ice mountain®
Bottled Water

We welcome you to the Villages of Van Buren and the

ONE DAY ONLY!

J40 FARM CRAWL
Saturday, July 23, 2016
8 AM to 5 PM
 From Pittsburg to Lebanon and Beyond...



FREE Homemade Ice Cream All Day

10% OFF
 on all Items Purchased or Ordered

Also... **5% OFF**
 on Outdoor Poly Lawn Furniture

Yoder's Indian Creek Furniture LLC

22769 Rte. V64 • Milton, IA • 319-538-7332 v.m. • Mon.-Sat. 8 AM-5 PM • No Sunday Sales

FOR SALE: Five Equipto brand adjustable steel shelving units. Good for parts bins or books. \$60 each. Three Hon brand four drawer vertical file cabinets. Gray color. \$80 each. Kenmore five burner gas range with griddle, set up for Natural gas. \$250. Maytag LP Gas dryer. \$125. Both are white, nice condition. call between 8 AM and 8 PM. PH: 641-208-6453 30

IN STOCK: Gas range with sealed or standard burners, 40 gallon LP water heaters, on demand LP water heater, ventless wall heaters. **Gingerich Stoves & Plumbing.** VM: 641-664-2814 TFO

1 DAY ONLY! **1 DAY ONLY!**

CHRISTMAS IN JULY SALE

MONDAY, JULY 25TH

Everything in the store..... **10% OFF!**
 Montana Silversmith Jewelry..... **20% OFF!**
 All Outerwear..... **35% OFF!**
 All Reg. Priced Apparel..... **20% OFF!**

Reg. Priced Long Sleeve Western Shirts 25% OFF **Reg. Priced Jeans BOGO 50% OFF**

(Sale excludes ropes)

WANT TO WIN A \$100 GIFT CERTIFICATE?
 Visit our Facebook page now for details!!

DOUBLE C-COWBOY COUNTRY
 1123 S. Madison Ave. • Ottumwa, IA
 641-684-8372
 Mon.-Fri. 9-6, Sat. 9-4

RETAIL OR OFFICE SPACE AND/OR WAREHOUSE SPACE AVAILABLE FOR RENT: Located in Bloomfield, Iowa. Depending on what you need we may be able to remodel to fit your needs. Good access to a farm to market street with good traffic count. Contact me, Mike Howk, for an appointment to show. PH: 641-208-6453 30

FOR SALE: 3 small window AC units, \$50/each, 1 large 220 window unit, \$75. PH: 660-216-3981 30

Vinyl Windows
 Replacement & New Construction

Window Features...
 Fusion Welded
 Triple Weather Strip
 Aluminum Reinforced

Sliding/Swinging Patio Doors

Gerkin
 "Quality products since 1932"

FREE ESTIMATES

Yoder Glass & Window
 641-722-3667
 19467 Driftwood Blvd.
 Bloomfield, IA 52537

Christmas in July HOT BUYS

GREAT CHRISTMAS SHOPPING IDEAS

FAB FOURS BUMPERS INSTALLED FOR \$995!

B&W TRAILER HITCHES INSTALLED FOR \$475!

Remove Ball
 Turn Ball Over
 Replace Ball In Socket

NERF BARS

Black Powder Coat

2009 Dodge Ram 1500 Crew Cab.....	\$159
2009 Dodge Ram 1500 Quad Cab.....	\$159
2001-09 Chevy Silverado / Sierra Crew Cab.....	\$159
2009 Ford F150 Super Crew Cab.....	\$159

Stainless Steel

2002-07 Dodge Ram 1500 Regular Cab.....	\$202
2003-07 Dodge Ram 2500/3500 Regular Cab.....	\$202
1994-01 Dodge Ram 1500 Quad Cab.....	\$149
1994-02 Dodge Ram 2500/3500 Quad Cab.....	\$149
1999-12 Chevy Silverado / GMC Sierra 1500/2500 LD Ext. Cab.....	\$139
2004-08 Ford F150 Super Cab/Extended Cab.....	\$149
2009 Ford F150 Super Crew Cab.....	\$149
1999-2009 Ford Super Duty Regular Cab.....	\$202
1999-11 Ford F250/350 Super Duty Crew Cab.....	\$149

WHILE SUPPLIES LAST

GRILLE GUARDS

Big Tex Chrome Plated W/ Brush Guard

2006-07 Dodge Ram 1500.....	\$477
2006-09 Dodge Ram 2500/3500.....	\$477
2006-08 Ford F150.....	\$462

TrailFX Black Powder Coated W/ Brush Guard

1999-04 Ford F250/350/450/550 Super Duty.....	\$350
2000-04 Ford Excursion.....	\$350

WHILE SUPPLIES LAST

101 North St. • Cantril, IA
 319-397-2406

ZIMMERMAN AUTO LLC TRAILER INC.

Make a Move

Full and Part Time Positions

- CNA
- RN

In addition to our generous benefits package, enjoy:

- Free Meals
- Merit Pay Increases
- Shoe and Uniform Allowance
- Scholarship and Tuition Reimbursement

"Like" us on Facebook- ABCM Corporation Careers!

Apply in person or at www.abcmcorp.com!

Bloomfield Care Center

800 North Davis • Bloomfield, IA 52537
 (641) 664-2699 • www.abcmcorp.com

Enhancing Relationships



ABCM Corporation is an Equal Opportunity Employer



RT Auto

LOAD TRAIL



WE NOW HAVE A GREAT SELECTION OF TRAILERS! LET US HELP YOU HAUL IT ALL!

505 S Washington St.
Bloomfield, IA
(641)664-3000



AMISH TAXI SERVICE. You call, I will haul! Short or long distances. Reasonable rates.
PH: 660-216-4143 29

NEXT ONLINE SALE: August 4th, download your lynchboys app or <http://bidwrangler.lynchboys.com>.
PH: 641-208-5056 30

FOR SALE: two gravity wagons, one has JD gear, \$225/each. Also, 20 ft. harrowgator, \$750.
PH: 319-750-1968 30

FOR SALE - TO BE MOVED: '97 single wide, 2 bed, 2 bath, 1 owner, no smoking, no pets.
PH: 641-208-5056 30

MAST OVERHEAD DOORS, INC.

105 S. Dodge St., Bloomfield, IA 52537



GARAGE DOORS
Residential & Commercial
Doors & Operators

641-680-2016

CALL FOR AN APPOINTMENT

Quality Products
+ Quality Workmanship
= Quality Customers

Free Estimates We Fix Doors

HELP WANTED CLUBHOUSE MANAGER

The Bloomfield Country Club is currently seeking a full time Clubhouse Manager.

The qualified applicant must be willing to manage clubhouse staff, have a working knowledge of food preparation, and possess excellent communication skills. Salary will be dependent upon qualifications.

Please submit resume to Bloomfield Country Club, PO Box 74, Bloomfield, IA 52537 or email to dct@netins.net by July 29th.

OPEN ALL SUMMER

WE STILL HAVE A GOOD SUPPLY OF ANNUALS & PERENNIALS!

HANGING BASKETS

STOP IN AND SEE WHAT WE'VE GOT!

Lilac Hill GREENHOUSE
660-342-9554

25957 US Hwy 136 • Lancaster, MO
Between Lancaster & Downing
Mon. - Fri. 8am-8pm • Sat. 8am-5pm • Closed Sunday

We've got you covered

Agricultural Residential Commercial Industrial

Specializing on Pole Barn Packages
Metal Roofing • Crews Available
Free Estimates on Complete Packages

WAGLER METALS

19049 Ice Ave., Bloomfield, IA
641-722-3692
M-F 7:30AM - 5PM • Sat. 8-11:30 AM

JULY PROMO!! Rent mini skid steer and get any of these attachments free! - bucket, pallet forks, post hole digger, or concrete breaker. **RESERVE TODAY!**
Bloomfield Rent-All
PH: 641-664-3806 27

FOR SALE: 1998 Jeep Grand Cherokee Limited, 4WD, clean, good tires, air.
PH: 641-722-3267 31

FOR SALE: 2 horse bumper trailer, new floor, asking \$1,200.
PH: 641-799-7720 31

HOURS
8:00 A.M.
to
5:00 P.M.
DAILY EXCEPT
SUNDAY



Our Everyday Low Prices!

Zimmerman's Store
Rutledge, MO
660-883-5766

FRESH MICHIGAN BLUEBERRIES HERE NOW 10# BOX \$21.50

- Lodi Apples..... \$15.50 Full Bushel
 - Cantaloupe & Watermelon
 - Home Grown Eggplant..... 4/\$1
 - Home Grown Candy Onions..... \$1.19/lb.
 - Home Grown Large Blackberries..... \$3.98/qt.
- MORE PEACHES & CHERRIES EXPECTED ?

- 30 oz. Butcher Boy 100% Refined Coconut Oil.....\$3.65
- Butcher Boy 100% Refined Coconut Oil..... \$11.25/gal.
- 54 oz. Organic Virgin Coconut Oil Unrefined.....\$18.85
- * also smaller containers

- Mrs. Wages Pickle Mixes (8 kinds to choose from)..... \$2.29/pk.
- Mrs. Wages Tomato Mixes (8 kinds to choose from)..... \$2.29/pk.
- 3# Mrs. Wages Pickling & Canning Salt..... \$2.35
- 1# Pickling Lime..... \$2.69
- Garden Harvest Apple Cider Vinegar..... \$2.45/gal. 95¢/qt.
- Garden Harvest White Vinegar..... \$1.75/gal. 75¢/qt.
- Garden Harvest Raw Apple Cider Vinegar..... \$5.69/gal.
- Spectrum Organic Apple Cider Vinegar..... \$19.15
- Bragg Organic Apple Cider Vinegar 32 oz. (in glass bottle)..... \$5.89
- Woebers 32 oz. Real Red Wine Vinegar..... \$1.29

Large Amount of Eastwind Nut Butters with Sea Salt

- 20 oz. Gators Ketchup..... ONLY 69¢/ea.
- 1.6 qt. Large Hidden Valley Original Ranch Dressing..... \$7.75
- BELOW WHOLESALE PRICE!
- 22 oz. Super A Squeezable Mayonnaise..... ONLY 75¢

CHECK OUT OUR ROLLS OF E CLOTH (21 KINDS) CLEANING WITH JUST WATER!

- Igloo 16 qt. Cooler ONLY \$19.95
- Flour Sack Towel \$1.39/each
- MORE NEW QUILTING FABRICS
- SOFT SWEEP BROOMS

8TH ANNUAL CUSTOMER APPRECIATION SALE! JULY 22ND & 23RD

Friday, homemade donuts! Saturday, FREE BREAKFAST - Pancakes, Sausage, OJ, & Coffee!

- COOL OFF! Smoothie mixes: Iced Java, Peach Mango, & Raspberry!
- ADIRONDACK SWIVEL GLIDERS \$189 (original price \$229)
- Spend \$30 & receive a FREE TRAVEL MUG (while supplies last)



Cheese Chunk Sale!
Colby, Cojack, & Cheddar \$1.99/lb.



Wright's Bacon
\$1.99/lb.



Pure Cane Sugar
50 lbs. Great for canning
\$23.99/lb.



Ground Beef
\$1.99/lb.



PEACHY SALE!
10% off everything peachy

COUNTRYSIDE MARKET

BULK FOODS • SPICES • PRODUCE
Hwy 63, Kirksville, MO • 660-665-3215 or 660-988-0742
Mon.-Fri., 8:30 am-5:30 pm, Sat., 8:30 am-4:30 pm




Fox Valley Welding

No matter what size the project customer satisfaction is always our first priority.

Tig & Aluminum Welding Milwork	Lathe New Steel	Fabricating CNC Machining CNC Cutting
--------------------------------------	--------------------	---

Hours: M-F 8-5:30
641-656-4684 • 12190 East Hwy. 2 • Milton, IA

FOR SALE: 2012 Vermeer R2300 rake, good condition, asking \$12,500.
PH: 641-208-5667 29


BRIDGE PLANKS FOR SALE: All lumber is creosote treated, 3x12 up to 24', 4x16 up to 30'. 12x12 beams various sizes and lengths available. Also railroad ties up to 16'. 30' & 40' Pony truss structures with components.
PH:660-216-7168 30

FOR SALE: 18 big round bales oat hay, baled with 568 J.D. baler, \$55; 4 section harrow on cart, \$200; 2004 Harley Davidson Deuce, 5400 miles, lots of chrome vance and Hines pipes, 240 rear tire, excellent condition, \$9,500.
PH: 641-208-7714 31

Wortmann Machine & Welding

- Large Steel Inventory
- Lathe Work
- Mill Work
- Shear Capacity 8x10 Ga.
- Press Work
- Oxygen & Welding Gases (Rent or Lease)
- S. J. Smith & Midwest Airgas

**910 W. Walnut
Bloomfield, IA
Ph: 641-664-1300**




We provide materials & expertise for all building projects.



**New Homes
Remodels
Decks
Kitchens
ICF Basements
Pole Buildings**

Josh & Emily Hill
218 S. 2nd St. • Pulaski, IA
641-675-3405

The Car Spa

Auto Body Shop
Auto Glass
Automotive Restoration
Hand Detailing Service

KARR COLLISION CENTER & AUTO DETAILING

Shawn Scott, Owner
701 Karr Ave. • Bloomfield, IA
641-664-1024

CAR DETAILING GIFT
CERTIFICATES AVAILABLE!



CONGRATULATIONS!

4-H & FFA Participants





We are proud of the hard work and quality exhibits displayed during the fair by local 4-Hers & FFA Members.

Hamilton Produce Co.

641-664-2459 or
1-800-469-7749



105 W. Franklin
Bloomfield

**PREMIUM QUALITY
WESTERN
WHEAT STRAW**

**\$95
PER TON
DELIVERED**

660-216-0938

HERE NOW! THORNLESS BLACKBERRIES AT YODER'S COUNTRY STORE! Highway N, Downing, MO.

FOR SALE: 3 year old cross bred ram, Circus X Trump bred, has sired champion lambs past 3 years, \$500.
PH: 660-216-6843 31

Garages • Pole Barns
Commercial Free
Estimates



**Lancaster
Lumber, Inc.**

We Stock a Complete Line of Building Materials Complete Buildings or Packages Available

Toll Free 800-424-5071 Fax 660-457-3133

Ron Oliver, Owner Lancaster, MO 63548
www.lancasterlumber.com



MIDWEST Overhead Door

21387 Route V64
Keosauqua, IA 52565
660-216-0812

Our goal is to keep your doors rolling smooth!

Sales • Parts • Service ~ Free Estimates
We sell new doors and openers or we'll service your old one.

The Only Ceramic Grill That's "Made in America"



patent oval shape

**19091 180th St
Bloomfield, IA
VM 641-664-2814**
3/4 miles east of Drakesville, south side






McAfee/Hayes Auction Service, LLC
375 S Johnson • Kahoka, MO
660-727-3796
www.mcafeeauctionservice.com

MACHINERY AND TOOL AUCTION


THURSDAY, JULY 28TH - 10 AM

Sale conducted 3 mile East of Mt. Sterling Iowa on Rte. V or South of Farmington, Iowa on Hwy. 81 to MO Rte. V or North of Kahoka, MO on Hwy. 81 to Rte. V, then West 6 miles to sale site.




Selling 1975 Fiat-Allis 16-B Dozer, P.S., 12' U-blade; 1979 JD 4640 cab tractor, QR, duals, 5613 hours; 2001 NH 973 30' platform, (3) NH 974 6RW corn heads; (4) JD 7000 planters; Tillage Equipment; 220 Spra-Coupe and Trailer Master Sprayer; Trucks; Trailers; Snap-On and S&K tools, Shop Equipment; Scrap Iron, Parts, Salvage.

KENNETH R. KENNEDY, SELLER



Antique - Collectible Hit N Miss Auction

Located: 1 mile West of Downing, Mo on Hwy 136
Saturday, July 23, 2016 @ 9:00 a.m.
Hit-N-Miss Engines

1917 Stover 6 hp. on cart w/ extra pulley (runs good)
Galloway 5 hp. on original Waterloo cart (runs good)
Worthington 6 hp. on cart (runs good)
IH M 11/2 hp (for parts) - Novo 3 hp. original complete
NI 11/2 to 3 hp. on cart complete (run with a little help)
Witte 2 hp. on cart (not stuck) - Ottawa log saw complete
Fairbanks 3 hp. on cart (stuck but complete)
Alamo on cart needs gas tank and oiler (not stuck)

Misc. Antique & Collectible 5 hole grain drill
JD mod. V 5 hole grain drill (nice) - old wooden wheel cart
Boyer horse drawn fire extinguisher - old toy trucks etc.
Favorite wooden corn sheller - Perfection seed cleaner
Clipper seed cleaner - old scales on cart - well pumps
Old metal signs - old wall telephone - crocks - butter churns
Copper boiler - chicken nest - chicken feeders - shovels
Blue carnival water sets - Fire King and other glassware
Lots of harness hames - RR spike puller bar - horse collars
Pressure cookers - Maytag washers - double & triple trees
Lard press - RR light - lots of Fisher Price toys & misc items

Horse drawn Machinery
Field King wooden flarebox wagon w/ endgate seeder
Wooden box wagon on steel - rotary hoe on steel wheels
Dunham cultimulcher (nice) - JD 2 row corn planter
JD 2 bottom gang plow - Massey Harris 2 bottom plow
6' pull type brush cutter - potato plow
Large lot of rough cut walnut lumber 2"x10" to 18" - 8' to 16'

Make plans to attend this auction as there will be something for everyone. This is a partial listing as there were several items pending at time of print, we are expecting lots more!!
For photos go to www.auctionzip.com

Randy High 660.216.0515 ~ Clair High 660.341.1687

Eliminates high heating bills.

Up to **\$500***
Instant Rebate

The Classic Edge is the perfect combination of **performance and value**

- Easy to operate and easy to maintain
- EPA-Certified, clean-burning

Backyard Depot
Bloomfield, IA
641-722-3641



CENTRALBOILER.COM
16-1301

*Instant rebate savings up to \$500 on select in-stock Central Boiler outdoor furnace models. Savings shown is on a Classic Edge 750. See dealer for details.

FOR HIRE: Dry or wet round baling & tree pulling, bale moving or dirt skidloader work.
PH: 641-208-5059

30

NOTICE

The Ottumwa/Wapello County Regional Collection Center will be in Bloomfield on July 23, 2016 to collect household hazardous waste.

Who can participate? Any urban or rural household from Davis County at NO CHARGE. Quantity 25 gallons or 220 pounds per household. This is not for businesses, farm chemicals or industry.

If you would like to bring material and drop it off, make an inventory of your HHW, call 641-683-0685, and schedule your appointment.

How do you know if you have HHW? If it says "Warning," "Caution," "Hazardous," "Poison," or "Danger," it may be HHW.

This event will be held at the Davis County Shop, 21585 Lilac Ave., Bloomfield from 8 a.m. until appointments end.

Home For Sale

402 West Jefferson Street • Bloomfield, Iowa



- Two-story, four-bedroom home with a first floor master bedroom
- Features a wrap around porch and a two-car garage

For Property Details, Contact:

Farmers
National
Company™

L-1600634

Mike Howk, Agent
Bloomfield, Iowa

Phone: (641) 208-6453

MHowk@FarmersNational.com

www.FarmersNational.com/MichaelHowk

www.FarmersNational.com

Real Estate Sales • Auctions • Farm and Ranch Management
Appraisal • Insurance • Consultation • Oil and Gas Management
Forest Resource Management • National Hunting Leases
Lake Management • FNC Ag Stock

FOR SALE: 2016 Alfalfa, FOR SALE: 2 cemetery plots
large squares and large located at IOOF Cemetery in
rounds. Bloomfield.

PH: 641-919-9447

29

PH: 641-814-2431

30

AUCTION

SATURDAY, JULY 23, 2016 10:00 AM

SALE TO BE CONDUCTED AT THE PROPERTY LOCATED
1671 SOUTH MILNER, OTTUMWA, IOWA
OR from the Intersection of Mary Street & Milner Ave., in South Ottumwa,
Go South on Milner Street approx. 2 miles, just outside city limits
Auction Signs Will Be Posted

FURNITURE & HOUSEHOLD ITEMS: Amana refrigerator/freezer; Whirlpool 16 cu. ft upright deep freezer; Beautiful Thomasville dining table w/6 matching chairs; Large Thomasville 3-door lighted hutch; (2) Blue upholstered Lazy Boy recliners; Drop-leaf dinette table; Large like new glass-top coffee table & 2 matching round end tables; 4-pc. bedroom suite incl. queen-size bed w/mattress & box springs, triple dresser w/mirror, 2-drawer nightstand and 4-drawer chest; (2) Full-size beds w/mattress & box springs; Handmade solid walnut 7-drawer kneehole desk; Floral upholstered hide-a-bed sofa; Asst. of floor & table lamps; End tables; Upholstered bench; Folding card table; Exercise bike; Weight bench & weights; Old oak single-sided school desk; Large antique dinner bell; Wooden stool; 4-drawer file cabinet; (3) Wooden bookshelves; Double dresser w/mirror; 2-door wardrobe; Metal folding chairs; Set of gold-rimmed dishes; Dresser lamps; Coal bucket; Patio table & chairs; (2) Child's sleds.

TRACTORS & EQUIPMENT: 1973 Ford 5000 tractor, high crop, diesel, WF, dual outlets, Hinniker cab, 15.5x38 rear tires; Like new New Holland TC33 FWA tractor, diesel, hydro, roll bar, 3-pt, 1314 hours, sells w/New Holland 7308 quick-attach loader w/joystick – this tractor & loader are like new; Ford 9N, WF, 3-pt, runs & starts good, completely restored; Kuhn PTO 3-pt. rotary rake; Danuser 3-pt. posthole digger; John Deere MX-7 3-pt. brush cutter; Kelderman 10-wheel rake; (4) Metal bale rings; Pull-type lawn spreader; 6-1/2hp rear-tine tiller, like new; Rubbermaid pull-type lawn cart; 6-bale gooseneck hay trailer; 16' tandem-axle car trailer; 1996 WW 5x16 bumper-hitch stock trailer; IH 14' wheel disc; 6' 3-pt. blade; 6' 3-pt. brush cutter; Shop-made 3-pt. bale stabber; Flarebox wagon & gear; Big Valley self-catching head gate; Single-sided calf creep feeder; Pipe gates – assorted sizes; Asst. of fencing items; Pair – 15.5x38 clamp-on duals; Set – 15.5x38 rear tractor chains. **CONSIGNEE BY OTHERS:** Hesston 1014 12' hydro-swing mower/conditioner; Woods 6' pull-type brush cutter; John Deere manure spreader; John Deere 6-pt. blade. **HAY:** Approx. 1,500 square bales of grass hay.

TOOLS: Craftsman 10" radial-arm saw; Craftsman elec. mitre saw; Oxyacetylene torch set; Small port. air compressor; Craftsman bench grinder; Delta jigsaw; Delta & Dremel belt & disc sanders; Routers; Hand-held sanders; Anglehead grinder; Small bandsaw; Craftsman circular saw; Asst. of air tools incl. 1/2" impact, air ratchet, air chisels, Sears port. blast heater; Shop vac; Alum. extension ladder; Handyman jack; Craftsman 6" jointer/planer; Craftsman 10" table saw; Large wooden workbench on wheels; Hammers & wrenches; Rechargeable drills & drill bits; Lighting items; Hand tools; Drop cords; Mechanic's creeper; Shop lights; Folding saw horses; Asst. of metal shelving; Craftsman air tank; Stepladder; Floor jack; Asst. of hoes, rakes, shovels, post jobbers, hand & garden tools; Elec. motors; Extremely large asst. of lumber & metal barn siding; Antique pedal grindstone; 150-gal. fuel barrel on stand; Battery charger; Fence stretchers; Elec. fence; Log chains; Tap & die set; Drills & bits; Craftsman air nailer; Toolboxes; Material stand.

AUCTIONEER'S NOTE: Roger has sold his farm and is moving to town and will sell an outstanding lineup of acreage equipment and tools. Check website for pictures: www.almartinauction.net.

TERMS: CASH/GOOD CHECK
POSITIVE ID REQUIRED

MASTERCARD/VISA
DEBIT/CREDIT CARDS

All property must be settled for before removal – All items sold as is where is – Not responsible in case of accident. Announcements made day of sale take precedence over any advertising.

ROGER LEFFLER, OWNER

JIM KOSMAN, ROGER CLINGAN, & TODD CARROLL – AUCTIONEERS
AL MARTIN REAL ESTATE & AUCTION CO., INC.
307 Church St., Ottumwa, IA 52501
641-682-5465 • www.almartinauction.net

Absolute MEMPHIS, MO MACHINERY AUCTION

MON., AUGUST 1ST @ 10:00 A.M.

Sale to be held at the farm located northwest of Memphis, MO. From the west edge of Memphis, MO: Take Hwy 136 west 5 miles to Hwy B., then right/north approx. 5.5 miles to Blacktop JJ, then left/west 1.5 miles to the farm. Watch for sale day directional signs.



Abbreviated listing...complete listing and photos at
www.sullivanauctioneers.com

TRACTORS: '04 JD 8420 MFWD, PS trans., 4 outlets, 540/1000 PTO, 42.5 GPM hyd. pump, 480/80R50 rear tires & duals, 420/85R34 front tires & fenders, 22 front weights, rear wheel weights, HID lights, 2,011 one-owner hrs., SN RW8420P027827 - Consigned by Roy Holton (brother) (217) 440-5873; '97 C-IH 8950 MFWD, PS trans., 3 outlets, quick hitch, 650/65R42 rear tires & duals, 14.9-30 front tires, 15 front weights, big 1000 PTO, 4,376 hrs., SN JJA0073249; '95 C-IH 7240 MFWD, PS trans., 3 outlets, quick hitch, 520/85R46 rear tires & duals, 380/85R30 front tires, 20 front weights, big 1000 PTO, 4,041 hrs., JJA0061013; '78 IH 1086 2wd, factory cab, 2 outlets, 540/1000 PTO, 480/80R38 rear tires, 9,836 hrs., SN 28218.

COMBINE & HEADS: '05 Gleaner R75 2wd combine, lateral tilt, turret auger, chopper, spreader, 480/80R42 drive tires & duals (R1), 18.4-26 steer tires (R1), auto header height, AutoTrac capable, 350 eng. hp, 300 bushel grain tank, shows 762 eng./490 sep. hrs. (actual hours are 3,000+), SN R75-HP72112 - One owner; '03 Agco Hugger 830 8R30" corn head, electric deck plates, header height control, lateral tilt, single point hookup, SN 83RHM27187; '05 Agco 800-25F 25' grain platform, fore/aft, lateral tilt, single point hookup, SN 25FRHP84733; (2) WD Products 32' head trailers, front dolly wheels, single rear axle, SN 01111 & 01266.

TRUCKS & TRAILERS: '88 Kenworth semi, Fuller 9 spd., 855 Cummins, 232" wheel base, 48" sleeper, shows 340,797 miles, aluminum fronts, VIN 1XKAD29X4JS05361; '04 Timplt 42' aluminum hopper bottom trailer, 72" sides, Shur-Lok roll tarp, 11R24.5 tires, stainless rear, 8 aluminum wheels.

FARM EQUIPMENT: Kinze 3600 16/31 planter, ground drive, finger pickup, no till, row cleaners, row shutoffs (no controller), KPM II monitor, corn & bean meters, box toppers, SN 616968; selling separate: (16) extra planter boxes; Sunflower 6332-26 26" soil finisher, 6" spacing, 4-bar spike tooth harrow, rolling baskets, walking tandems on main frame & wings; C-IH 4800 32' field cultivator, 4-bar spike tooth harrow, walking tandems on main frame & wings, 6" spacing; C-IH 496 30' disk, rock flex gangs, 7.5" spacing, 21" blades on front & rear; Landoll To The Max 32' vertical tillage tool, front choppers, rolling baskets, hyd. controlled rear leveler, tandems on main frame, gauge wheels; White 13' disc chisel, individual spring loaded coulters, 6 twisted spring loaded shanks, 5 spring loaded ripper shanks on rear bar, walking tandems; Kinze 840 row crop grain cart, 12" extensions, tarp, scales, no display, 18.4-38 row crop duals, SN 502475; Kinze 640 grain cart, 12" extensions, tarp, 30.5-32 diamond tread tires, SN 503459; Westendorf 350 bu. gravity wagon, truck tires; Clark Easi Load 4-box tandem axle seed tender, self contained Honda power unit, poly flighting; Toreq 10-yard scraper, 19L-24 front tires, front dolly, 23.1-26 (R1) rear tires, requires 2 outlets; Westfield MK100-71 10'x 71' swing away grain auger, SN 161852; Westfield RK80-61 8'x 61' grain auger, hyd. drive hopper, Shopbuilt 1000 bu. grain cart.

ALSO SELLING: Ag Leader Insight controller, used for mapping & guidance on combine and row shutoffs on planter.

AUCTIONEERS' NOTE: Short auction; less than 1 hour sale...DO NOT BE LATE! All equipment sells absolute. Complimentary light lunch available. Internet bidding available...go to www.sullivanauctioneers.com for details. Auction personnel available sale day to assist in load out. Not responsible for accidents, errors or omissions. Announcements sale day take precedence.

PAUL & WANDA HOLTON (641) 799-2893

AUCTION MANAGER: TERRY REYNOLDS (660) 341-1092

SULLIVAN AUCTIONEERS, LLC • TOLL FREE (844) 847-2161
www.sullivanauctioneers.com • IL License #444000107

AUCTION

SUNDAY, JULY 24, 2016 12:00 NOON

SALE TO BE CONDUCTED AT THE PROPERTY LOCATED

10860 JEWEL AVENUE, BLOOMFIELD, IOWA

OR 6 miles South of Ottumwa on Point Isabelle Rd.

Auction Signs Will Be Posted

REAL ESTATE: This property consists of a 2-story, 4-bedroom home with main level consisting of modern, updated kitchen with oak cabinetry, large living room, full bath, main floor bedroom plus large 3-seasons room. Upper level contains 3 large bedrooms and is accessed by open stairway. This home has an open front porch, 30'x40' pole building used as a garage and finished living quarters. There is an older frame barn, all situated on 10 acres, with rural water, in a private, secluded setting with great scenic views and nearly a 2-acre pond. **TERMS:** 20% down day of sale, balance in cash upon delivery of a Warranty Deed, accompanied by Abstract of Title showing merchantable title. Real estate taxes will be pro-rated to possession date, possession given upon settlement. **REAL ESTATE WILL SELL AT 1:00 PM.** For further particulars or an appointment to inspect the property, please call the auction company: 641-682-5465.

FURNITURE & HOUSEHOLD ITEMS: Rustic hand-carved log table & 6 chairs; Amana refrigerator/freezer; Upright & chest-type deep freezers; (2) Twin-size beds w/mattress & box springs; Grandfather clock; Gas log fireplace; Dresser w/mirror; Asst. of shelving; Floor & table lamps; Ping pong table; Approx. 20 framed wildlife prints, incl. Terry Redlin & Larry Zach; Collection of toy tractors; Asst. of antique toys; Old sled; (2) Gas grills; Antique furniture.

GUNS, HUNTING & FISHING EQUIPMENT: New Marlin Model 60 22 rifle; New Savage Model 93 22 magnum rifle; New Savage 13 Model 17-cal. rifle; Ruger 10-22 rifle; Remington Dupont 66 22 rifle; Remington 20-ga. 870 Wingmaster shotgun; Revelation Model 552 22 rifle; Thompson Center Fire 7mm w/scope; Ruger Red Label 12-ga. over & under. Gun permit required for the purchase of all firearms. (7) Bushnell trail cameras; (2) Canoes; (2) Fiberglass kayaks; Approx. 20 tree stands; Hunting blinds; Trail cameras; Deer, elk & caribou mounts & deer antlers; Fishing rods & reels, tackle incl. several antique fishing lures & old tackle; Knives; Lots of hunting items.

PICKUP, ATV'S & TRAILER: 1978 Ford F150 PU, 6 cyl, auto, 4x2; 2015 Can-Am Outlander 800 4-wheeler, camo color, approx. 352 actual miles, like new; Arctic-Cat 90 4-wheeler; Kawasaki 90 4-wheeler; 2004 Polaris Magnum 4-wheeler, 4x4 w/snowblade; 5'x8' 2-wheel trailer; 2012 Toro zero-turn riding lawn mower, 54" deck, approx. 211 hours; New ATV ramps; 2-wheel lawn mower trailer; 15' field cultivator; 6' 3-pt. tandem disc; Fuel barrel & stand; Pipe gates; Stihl weedeater; Stihl chain saw; (2) Husqvarna chain saws; Wood lathe; Bandsaw; Router; Disc sander; Set – markers for 7000 John Deere planter; Steel posts; Hoes, rakes, shovels; IH Model 45 20' field cultivator w/harrow attachment.

TERMS: CASH/GOOD CHECK
POSITIVE ID REQUIRED

MASTERCARD/VISA
DEBIT/CREDIT CARDS

All property must be settled for before removal – All items sold as is where is – Not responsible in case of accident. Announcements made day of sale take precedence over any advertising.

BRENT A. EDEL, OWNER

JIM KOSMAN, ROGER CLINGAN, & TODD CARROLL – AUCTIONEERS
AL MARTIN REAL ESTATE & AUCTION CO., INC.
307 Church St., Ottumwa, IA 52501
641-682-5465 • www.almartinauction.net

KEOSAUQUA SALE CO.

20511 Hwy. 1, Keosauqua, IA

Results from July 16th
 Butchers.....\$46.00-\$51.00/cwt
 Sows.....\$36.00-\$45.00/cwt
 Lambs
 under 80 lbs \$138.00-\$165.00/cwt
 over 110 lbs. \$153.00-\$160.00/cwt
 Ewes.....\$49.00-\$69.00/cwt
 Kid Goats 40-70 lbs.....\$58.00-\$120.00/hd
 Cull Nannies..\$61.00-\$123.50/hd

Pound Cows
 Low yielding.....\$56.00-\$72.00/cwt High yielding... \$72.50-\$83.00/cwt
Pound bulls.....\$85.00-\$104.00/cwt

BRED COW SALE

Saturday, July 23rd

39 hd short solid & aged blk cows bred black bull due Aug 20th big fancy cows, Suter
 14 hd 7-aged blkx cows bred Black Simm bull due Sept 1st. Levelane
 20 hd 4-7 xbred cows bred to black & red bulls, Miller Farm
 12 hd 4-7 yr old mixed cow calf pairs, Miller Farm
 10 hd 5-short solid blk & bwf cows bred Angus due Aug 25th Harryman/Boyer
 2 yr old Angus bull, Matheny

REGULAR SALE

Saturday, July 30th

Thank You For Your Business! For More Information Contact:
 Selling Times
 Hogs.....9:30 a.m.
 Sheep & Goats.....10:00 a.m.
 Outside Merch.....11:00 a.m.
 Cattle.....Noon
 Keosauqua Sale Co.
 319-293-3508
 Bill Goehring
 641-919-9365

www.keosauquasaleco.com

Scotland County LIVESTOCK AUCTION

P.O. Box 111 • Hwy 15 North • Memphis, MO
660-465-7213 • Jerry & Barb Blomme
 660-341-0069 • Grant Blomme

CATTLE SALE
 Sat., July 23rd at 12:30 PM

CATTLE SALE
 Sat., July 30th at 12:30 PM

RESULTS OF SALE, SAT., JULY 16th: Steers & Heifers lite test; LB Cows: \$64 to \$79.50; Holstein Veals: \$100 to \$120.

www.ScotlandCountyLivestock.com

Trailer SALE! Skidloader/ Equipment trailers 14,000# with full-width spring assist ramps SAVE \$400.00 and 1/2 price spare; 6'X12' V-nose ramp door \$2,750; 7'X16' V-nose ramp door \$4,169; Close-out on steel & aluminum utility trailers. 515-972-4554 TRAILER REPAIRS & PARTS; www.FortDodgeTrailerWorld.com(MCN)

Switch to DIRECTV and get a \$100 Gift Card. FREE Whole-Home Genie HD/ DVR upgrade. Starting at \$19.99/mo. New Customers Only. Don't settle for cable. Call Now 1-800-203-4378 (MCN)

SAVE on internet and TV bundles! Order the best exclusive cable and satellite deals in your area! If eligible, get up to \$300 in Visa Gift Cards. CALL NOW! 1-800-925-0146 (MCN)

DONATE YOUR CAR, TRUCK OR BOAT TO HERITAGE FOR THE BLIND. Free 3 Day Vacation, Tax Deductible, Free Towing, All Paperwork Taken Care Of. 1-800-283-0205 (MCN)

PACKAGE DEAL



ORDER ANY GO BOB CONTINUOUS FENCE PANEL (1.25", 1.66" or Monster Fence) and get two 2 7/8" OD 9' SAW CUT POSTS FOR \$15 EACH!

1547 Broad St. (Just off Hwy. 1)
Keosauqua, IA
319-293-9105

Like us on Facebook

Big Bend Livestock Solutions

LINE-X OF OTTUMWA



KEEP YOUR RIDE IN GREAT SHAPE!
 PROTECT IT WITH A LINE-X COATING!

Bring it in and we can LINE-X® it!

Brad Lisk
 15514 Blackhawk Rd., Ottumwa, IA

Gift Cards Available!
 641-683-9334

2016 MID-SUMMER CONSIGNMENT AUCTION

SELLERS: BERNICE KING, MARILYN CRAWFORD, VIRGINIA RYSBAM, AND OTHERS.

AUCTION

JULY 23, 2016 START TIME: 10:00 A.M.
 ADDRESS: 608 SOUTH WEST STREET • BLOOMFIELD, IA 52537



Household items

- Oreck XL Air Purifier
- Oreck hand held vacuum
- Oreck Upright vacuum
- Hoover Steam vacuum
- Eureka upright bagless vacuum
- Bathroom towel racks
- Bath scales
- Table lamps/ picture frames
- Ceramic water crock with matching canister set pattern 2 blue stripes (5 pieces)
- Oak magazine rack
- Utility Shelving
- Corning glass/ Pyrex/ glassware
- Graniteware roaster/ canner
- Card tables
- Many kitchen utensil/ utility items

Furniture

- Sofa loveseat
- Recliner sofa
- Coffee table and matching end table
- Coffee table
- Oak entertainment Center
- Oak pedestal table with 2 leaves
- Grandfather clock Walnut (may need some work)
- 2 door storage pantry
- Air beds on expandable frames (Coleman, etc.)
- 3 Sofas, rough condition.

Collectibles/Antiques/Tools

- Antique dresser with mirror (very nice)
- Library table
- Lane Cedar chest
- Steamer trunks (2)
- Side board cabinet
- Pitcher and bowl set floral print
- Candles
- Figurines
- Set of Bainbridge "old time" photos Frames
- Several framed prints/ photos
- Sylvania TV Radio Serviceman tool box
- Carrom board set
- Glass door display cabinet
- Office chairs
- Reel to reel player
- Typewriters
- Brass gasoline torchs (4)
- Kerosene lantern

Tools/Antique Tools

- Stanley saw set punch tool (NIB)
- Air compressor
- Table saw
- Drill press
- Bench grinder
- Jointer
- Bottle jacks
- tool boxes
- Scroll saw
- Workmate folding work bench
- Galvanized tubs (1 round, 1 square)
- Router

- Belt sander
- Ladder jack set (for walk plank)
- Many nice hand tools
- Double tank top LP heater

Miscellaneous

- Tackle boxes with lures
- Wheel chair
- Commode chair
- Walker
- Portable composter
- String trimmer
- Fertilizer broadcast spreader
- Sawhorses
- Singer sewing machines
- Portable radios
- Ladies size 6 bowling shoes/ bowling ball bag
- 3 drawer file cabinets
- Folding high chair
- Folding playpen
- Some toys
- Whole box of TY Beanie Babies
- Christmas decorations / light string sets
- hayrack of miscellaneous lumber, gutter parts, etc. (sells first)
- And much more!

Please note this is only a partial listing. Announcements made the day of the auction take precedent over any advertising.

For More Information:
 www.qualitymarkllc.com

Terms are cash or good check. Absolute Auction.

BCS MOW ANYWHERE

BEST WARRANTY

HANDLES ROTATE 180°

ALL GEAR DRIVE

BCS Two Wheel Tractors will tackle any mowing job not suited for larger four wheel machines with front mounted attachments like the Sickle Bar Mower, Flail Mower, Brush Mower, Lawn Mower, and more.



Sickle Bar Mower



Lawn Mower w/ Sulky



Brush Mower

Homestead Valley Sales
 22271 Ice Avenue, Bloomfield, IA 52537 (641) 664-1209

This Auction Arranged & Conducted by:

Quality Mark LLC Auction Services
 Col. Michael Howk, Auctioneer

For questions, please call 641.208.6453 or email questions to qualitymarkllc@gmail.com.
 See us on Auctionzip! #38275 or View more pictures on www.qualitymarkllc.com

Indoor Facility - Rain or Shine
 Food service by L & M Quick Shop



BLOOMFIELD LIVESTOCK MARKET



Wed., July 27th Special Feeder Sale 11:00 AM
 Wed., August 3rd NO SALE

TUESDAY POUND COW SALE EVERY WEEK
 10:30 a.m. Fat Cattle, Butcher Cows, Bulls, Veals

SALE BARN OPEN UNTIL 9:00 PM
EVERY MONDAY TO RECEIVE LIVESTOCK

Top Consignor's Report For July 13th, 2016. Selling 912 head.

STEERS

Jim Robertson	9 BLK	466 lbs	\$169.00
James Martin	67 BLK	761 lbs	\$153.85
Fabius Creek Lamb	25 BLK	687 lbs	\$152.75
Andy Yoder	8 BLK	628 lbs	\$151.50
Mark Henderson	70 BLK	768 lbs	\$148.00
Melvin Johnston	67 BBWF	842 lbs	\$144.00

HEIFERS

Fabius Creek Lamb	9 BLK	552 lbs	\$150.00
TA Family Farm	6 BLK	573 lbs	\$146.00
Ervin & Arlene Nolt Trust	85 BLK	682 lbs	\$144.35
Fabius Creek Lamb	34 BLK	645 lbs	\$142.50
Roger Porter	4 RED	682 lbs	\$139.00
Mark Henderson	51 BLK	670 lbs	\$138.50

We appreciate your business!

Phil Schooley 641-664-3450
 Ron Schooley 641-777-0302
 Roman Schooley 515-450-3685

Tyler Schooley 641-208-5442
 Barn Phone 641-664-2435

HWY. 63 NORTH • BLOOMFIELD, IA

FOR SALE: Large radial arm drill press, need more room in my shop.
 PH: 641-208-6177 31

FOR SALE: 24' gooseneck livestock Travalong trailer.
 PH: 641-208-6203 31

HAY FOR SALE: Round bales grass, grass-clover mix and grass-alfalfa mix.
 PH: 641-208-5961 29

FOR SALE: Black refrigerator & freezer; black cookstove; blue plaid sofa; 2 A/C units, 12,000 BTU, 1 with remote, works good; blue cast iron frying pan 6 piece set; good used cabinets, tops & bottom; nice kids & adult clothing & tennis shoes; 2 nice lazy boy recliners; diamond table with 4 chairs.
 PH: 641-895-2966 30

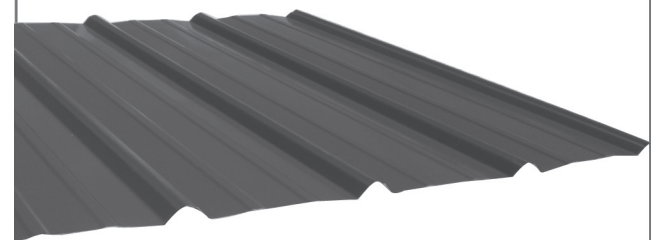
CUSTOM SILAGE CHOPPING: Late model Deere & supporting equipment.
 PH: 641-208-6177 31

FOR SALE: Australian Shepherd/Beagle X Jack Russel/ Pomeranian puppies. Parents like to hunt rabbits. Very cuddly and cute.
 PH: 641-722-3592 ext 3 30

FOR SALE: Reg. Angus and Charloais Bulls. With all the data. Trojan Hill Farm, Bloomfield, IA. Phil Archer: 641-680-6769 32

FOR SALE: 2006 Crown Victoria LX Sport, excellent condition, new tires + new snow tires with studs. 27 MPG, 112,000 miles. \$4,900 OBO.
 PH: 641-980-8542 30

Premium Metal Roofing



- Buy Direct & Save
- Fast Service
- Cut-to-length
- Professional Contractors Available



641-664-3990 • awmetal.net

FOR SALE: 6 bale hay gooseneck trailer, \$800. Phil Archer. PH: 641-680-6769 31

WD 63 PIPE & STEEL

CATTLE GUARDS NO RUST

PIPE SIZES 3/4" - 60" any size or thickness

BEST PRICES AND UNMATCHED QUALITY!

HEAVY GATES AVAILABLE! 4' TO 18' LONG 5, 6, 7 BAR

NEW & USED PIPE

GALVANIZED ROAD & CULVERT TUBES 8"-30" PLUS SIZES AVAILABLE

BIG SALE ON CORRAL PIPE & PANELS!!

660.216.9061
660.341.4753

RAILROAD TANKERS & BOX CARS

JUST SOUTH OF LANCASTER, MO OFF HWY. 63

INSTALLATION & ESTIMATES AVAILABLE • LIVESTOCK HANDLING EQUIPMENT

SAVING YOU MONEY & TIME ON ALL THOSE HARD TO FIND AUTO PARTS!



ALL MAJOR BODY PARTS!
 TAIL LAMPS, DOOR HANDLES, MIRRORS, ENGINES, TRANSMISSIONS, STARTERS, ALTERNATORS, SEATS, & MORE!

SPILMAN AUTO PARTS

20311 Old Hwy. 2, Bloomfield, IA • 641-664-2463 • 1-800-477-1367
 M-F 8AM-5PM • Sat. 8AM-12Noon • www.SpilmanAuto.com



Bring your plans in for a **FREE ESTIMATE**



Trusses Engineered and Designed to Your Specs

Imagine a Lifetime of Beauty with the strength of steel.

As the original stone coated steel roofing system, the DECRA product line represents a perfect blending of over 50 years of research and practical experience. Offering the ultimate in performance and engineering design is what DECRA roofing systems are all about.

SHINGLE XD **DECRA** SHAKER XD
 Stone Coated Steel Roofing Systems



17893 212th Street • Bloomfield, IA 52537
 641-722-3605 • Mon.-Fri. 7 AM to 5 PM